

# LubeMizer Option

Safety, Installation,  
Operation & Parts Manuals

---

**AC LMS (Installed Non-Remote)rev. A.01**  
**AC LMS-A (Boxed Non-Remote)rev. A.01**

---



**Safety is our #1 concern!** Read and understand all safety information and instructions before operating, setting up or maintaining this machine.

*Form #985*

## Table of Contents

## Section-Page

|                  |  |            |
|------------------|--|------------|
| <b>SECTION 1</b> | <b>LUBEMIZER INSTALLATION</b>                                | <b>1-1</b> |
| 1.1              | Control Box Installation .....                               | 1-1        |
| 1.2              | Control Box Wiring .....                                     | 1-3        |
| 1.3              | Pump Installation And Wiring.....                            | 1-4        |
| 1.4              | Water Lube Bottle Conversion and Hose Line Installation..... | 1-9        |
| 1.5              | Finishing Steps .....  | 1-11       |
| <b>SECTION 2</b> | <b>OPERATION</b>   | <b>2-1</b> |
| 2.1              | The LubeMizer System .....                                   | 2-1        |
| 2.2              | Lube Additives .....   | 2-3        |
| <b>SECTION 3</b> | <b>MAINTENANCE</b>   | <b>3-1</b> |
| <b>SECTION 4</b> | <b>REPLACEMENT PARTS</b>                                     | <b>4-1</b> |
| 4.1              | Pump Assembly.....   | 4-1        |
| 4.2              | Filter Assembly .....  | 4-3        |
| 4.3              | Blade Guide Block Assembly .....                             | 4-4        |
| 4.4              | Control Panel Assembly .....                                 | 4-5        |
| <b>SECTION 5</b> | <b>ELECTRICAL INFORMATON</b>                                 | <b>5-1</b> |
| 5.1              | Electrical Components.....                                   | 5-1        |
| 5.2              | Electrical Wiring Diagram .....                              | 5-2        |

# Table of Contents

# Section-Page

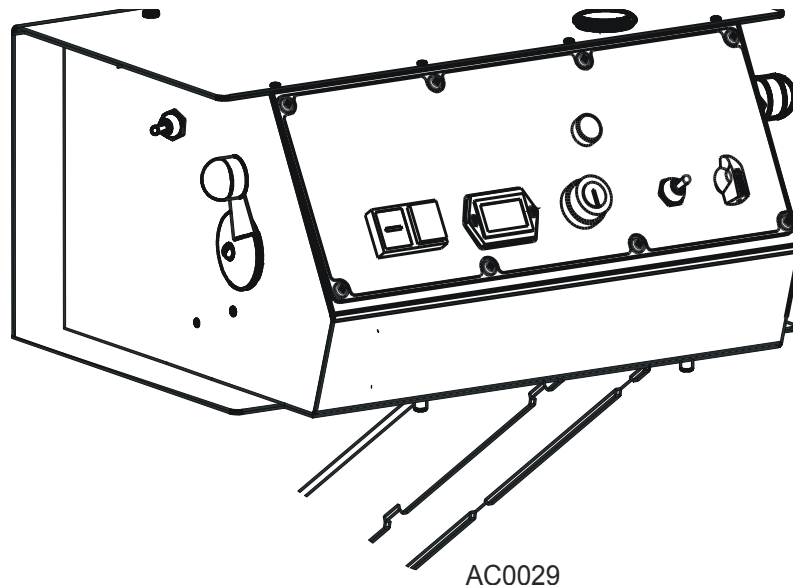
|                  |  |            |
|------------------|--|------------|
| <b>SECTION 1</b> | <b>LUBEMIZER INSTALLATION</b>                                | <b>1-1</b> |
| 1.1              | Control Box Installation.....                                | 1-1        |
| 1.2              | Control Box Wiring.....                                      | 1-3        |
| 1.3              | Pump Installation And Wiring.....                            | 1-4        |
| 1.4              | Water Lube Bottle Conversion and Hose Line Installation..... | 1-9        |
| 1.5              | Finishing Steps.....   | 1-11       |
| <b>SECTION 2</b> | <b>OPERATION</b>   | <b>2-1</b> |
| 2.1              | The LubeMizer System.....                                    | 2-1        |
| 2.2              | Lube Additives.....  | 2-3        |
| <b>SECTION 3</b> | <b>MAINTENANCE</b>   | <b>3-1</b> |
| <b>SECTION 4</b> | <b>REPLACEMENT PARTS</b>                                     | <b>4-1</b> |
| 4.1              | Pump Assembly.....   | 4-1        |
| 4.2              | Filter Assembly.....   | 4-3        |
| 4.3              | Blade Guide Block Assembly.....                              | 4-4        |
| 4.4              | Control Panel Assembly.....                                  | 4-5        |
| <b>SECTION 5</b> | <b>ELECTRICAL INFORMATON</b>                                 | <b>5-1</b> |
| 5.1              | Electrical Components.....                                   | 5-1        |
| 5.2              | Electrical Wiring Diagram.....                               | 5-2        |

## SECTION 1 LUBEMIZER INSTALLATION

### 1.1 Control Box Installation

1. Turn the key to the OFF (#0) position and remove the key.
2. Turn the main switch on the electric control box to the "0" position.
3. Disconnect the power supply from the electric control box.
4. Check to ensure that wires are not kinked or pinched. After wiring, the lube control assembly will be secured in place.

See Figure 1-1.



**FIG. 1-1**

5. The next step is wiring installation.

**See Table 1-1.** Refer to the table below for your model mill and the applicable wire installation section.

| Mill Model        | Wiring Instructions Section     |
|-------------------|---------------------------------|
| LT30              | <a href="#">See Section 1.4</a> |
| LT40              | <a href="#">See Section 1.4</a> |
| LT30HD/40HD       | <a href="#">See Section 1.4</a> |
| LT30 Super        | <a href="#">See Section 1.2</a> |
| LT40 Super        | <a href="#">See Section 1.2</a> |
| LT30HD/40HD Super | <a href="#">See Section 1.2</a> |

**TABLE 1-1**

## 1.2 Control Box Wiring



**DANGER!** The key switch should still be off, the key removed and the negative battery cable disconnected as stated at the beginning of this section. The incoming power supply of electric-powered sawmills should be disconnected and locked out. Failure to do so will result in serious injury or death.



**IMPORTANT!** Avoid pinch and pivot points, unnecessary wire bending and open spaces where the wire could get caught by a log, etc. If you have any questions, call Wood-Mizer customer service.

Refer to the appropriate wiring diagram while performing the wiring steps below.

- Locate red wire #19 inside the sawmill control box. Disconnect wire #19 from the red jumper wire connected to the #2 drum switch terminal.
  - Connect red lube wire #251 to red wire #19. Connect red lube wire #250 to the red jumper wire.
  - Locate black wire #20 inside the sawmill control box. Disconnect wire #20 from the black jumper wire connected to the ground stud at the back of the control box.
  - Connect blue lube wire #257 to black wire #20. Connect black lube wire #259 to the black ground jumper wire.
6. Using the existing mounting bolts, install the lube control assembly to the sawmill control box.

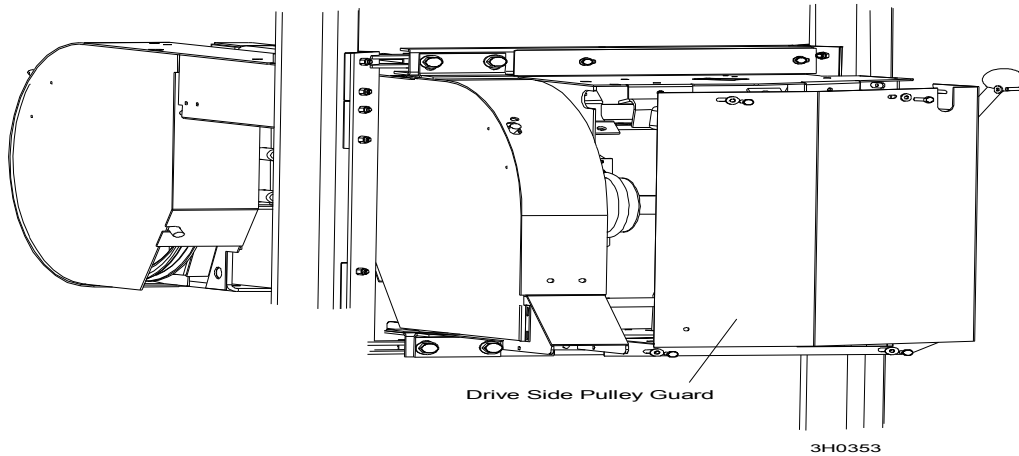


***STOP! You have completed Control Box Wiring. Proceed to Section 1.3 Pump Installation And Wiring.***

### 1.3 Pump Installation And Wiring

1. Remove the drive pulley guard from the sawmill as shown.

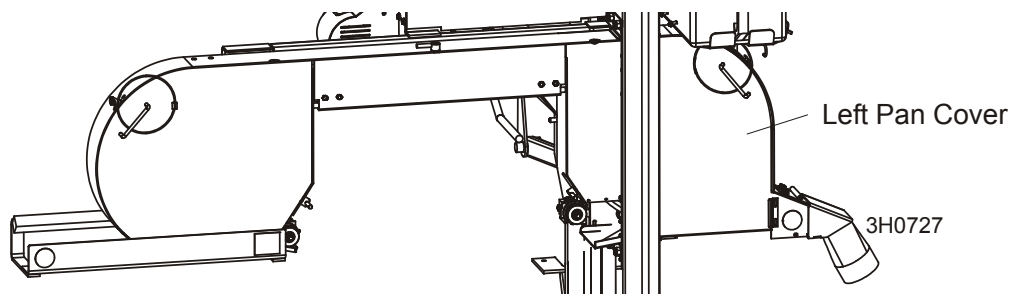
See Figure 1-2.



**FIG. 1-2**

2. Remove the left pan cover from the sawmill as shown.

See Figure 1-3.



**FIG. 1-3**

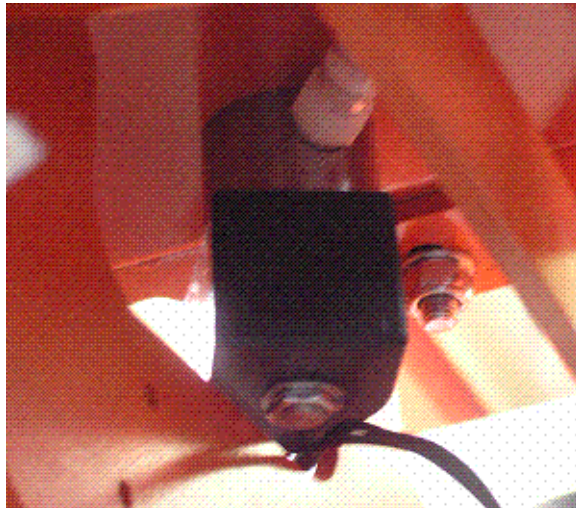
3. Remove all 3/8" water lube hose from the mill.
4. Remove the water bottle and fuel tank from the mill and set aside.

**1****LubeMizer Installation***Pump Installation And Wiring*

---

- 5. For Super series sawmills only,** disconnect the red and black sawmill harness wires from the water lube solenoid valve. Remove the solenoid valve.

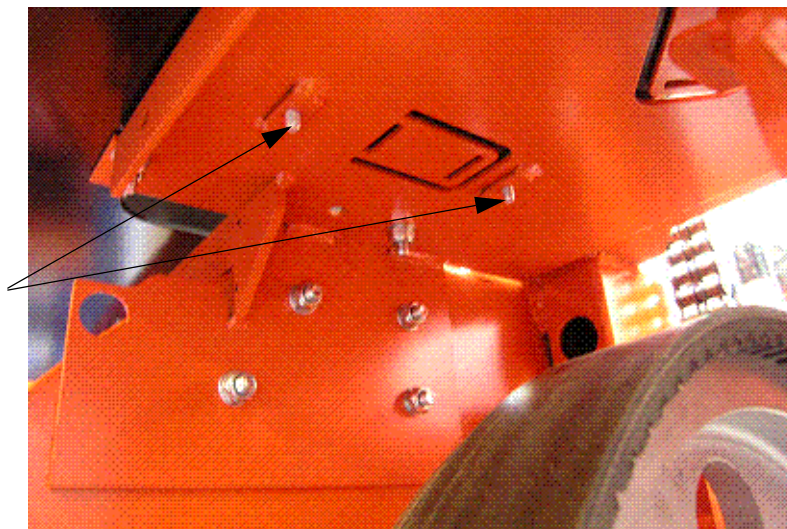
See Photo 1-4.



**PHOTO 1-4**

- 6. Using the existing bolts and nuts of the LMS mounting plate,** mount the LMS pump assembly on the sawmill as shown below.

See Photo 1-5.

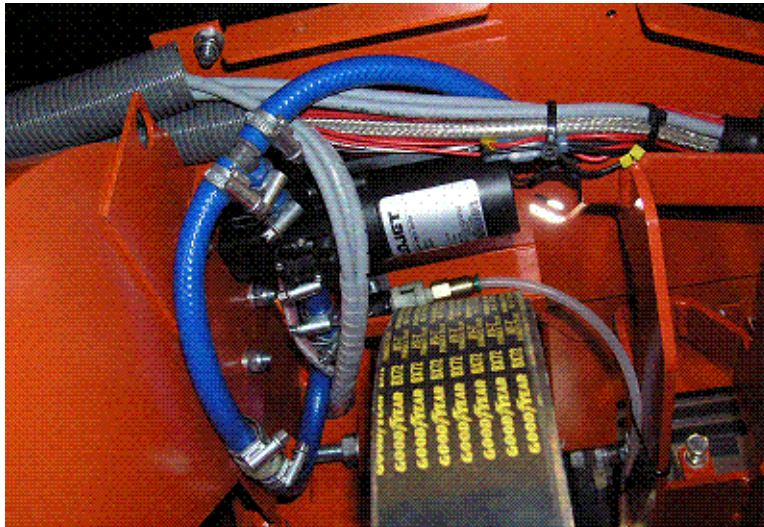


**PHOTO 1-5**



7. Route the hoses as shown on the photo below.

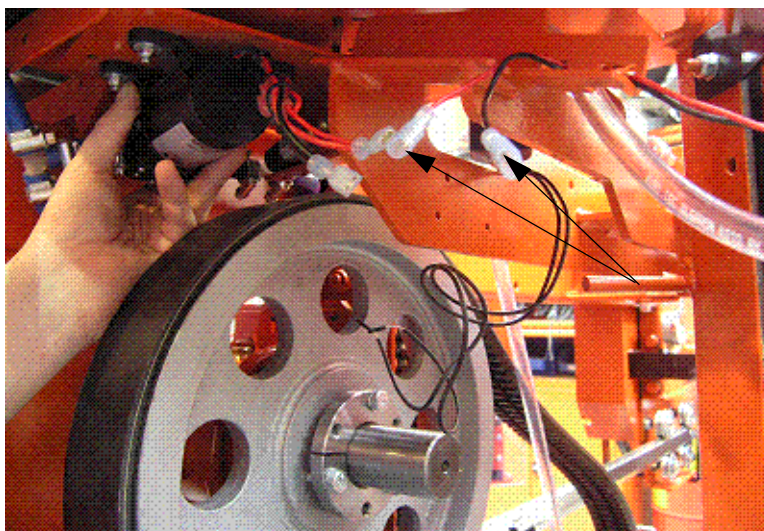
**See Photo 1-6.**



**PHOTO 1-6**

8. Strip the ends of the solenoid valve wires and install a provided male terminal to each wire - to connect the LMS. Connect the red wire to the red wire and the black wire to the black wire.

**See Photo 1-7.**



**PHOTO 1-7**

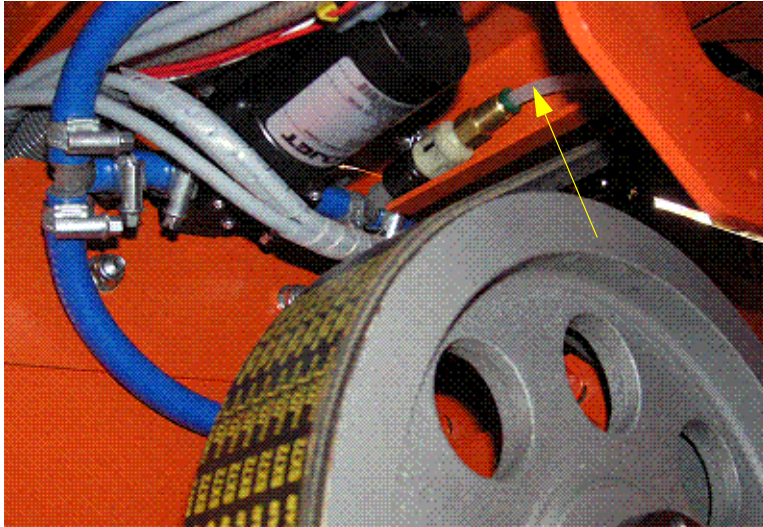
# 1 LubeMizer Installation

## Pump Installation And Wiring

---

9. Connect the LMS hose to the fitting.

See Photo 1-8.



**PHOTO 1-8**

10. Install the water filter using the brackets shown below and connect the hose from the filter to the water tank.

See Photo 1-9.

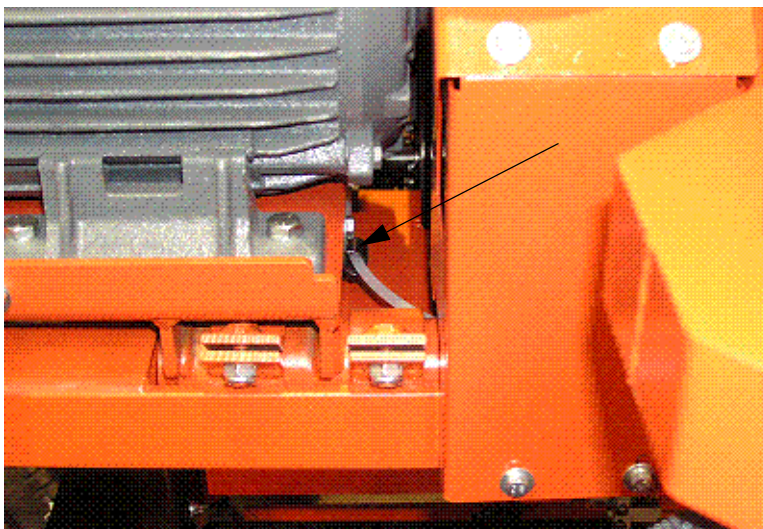


**PHOTO 1-9**



11. Route the LMS hose through the clamps as shown on the photo below.

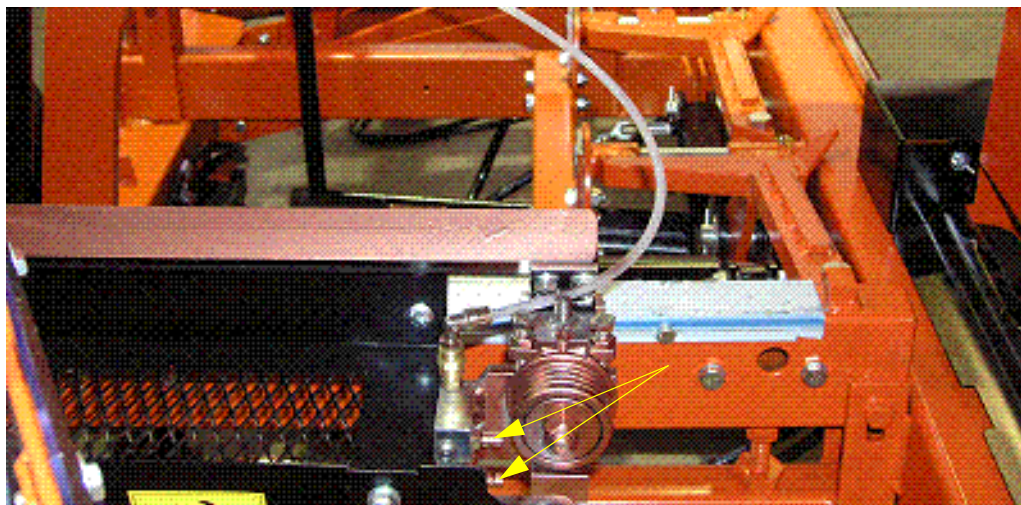
See Photo 1-10.



**PHOTO 1-10**

12. Replace the nozzles with the nozzles provided in the LMS kit.

See Photo 1-11.



**PHOTO 1-11**

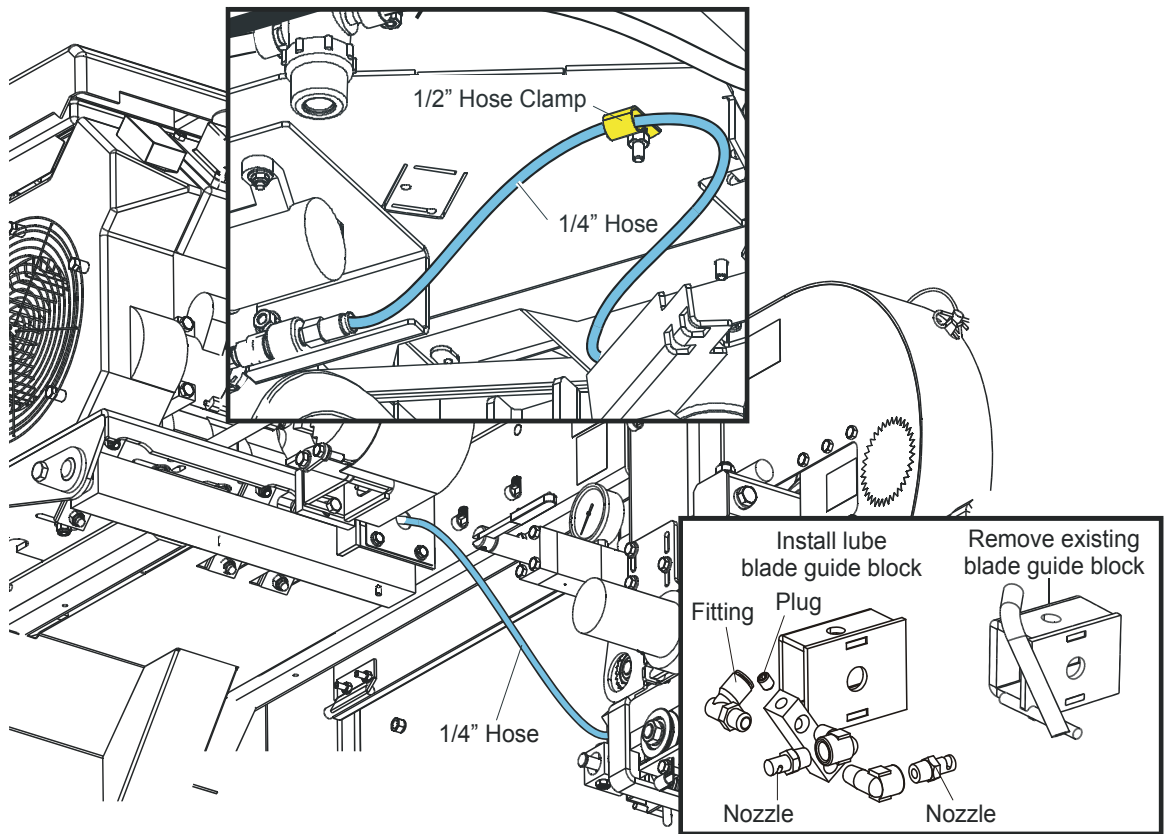
## 1.4 Water Lube Bottle Conversion and Hose Line Installation

1. Reinstall the bottle to the mill.
2. Reinstall the fuel bottle. If necessary, resecure the fuel line hose clamps.
3. Remove the entire blade guide roller and block assembly from the sawmill.
4. Remove the roller from the block and install it to the provided lube blade guide block assembly.

Wrap the threads of the provided fittings, nozzles and plug with teflon tape (pipe tape) and install the components to the blade guide block as shown in the following graphic.

**NOTE:** An extra nozzle is provided for service replacement.

5. Install the lube block assembly to the mill. Orient the nozzles so that oil flow is directed on the blade.
6. Locate the provided 1/4" hose. Insert one end to the pump valve as shown. Route the hose through 1/2" hose clamp. Continue routing through the grommet in the motor mount and connect the remaining end to the fitting on the block assembly. Use wire ties to secure in place as necessary.



3H0751B

FIG. 1-11

## 1.5 Finishing Steps

1. Reinstall the drive side blade housing cover and left pan cover.



**DANGER!** Make sure all guards and covers are in place and secured before operating or towing the sawmill. Failure to do so may result in serious injury. Be sure the blade housing and pulley covers are in place and secure. Use the safety retainer pin and cable to fasten blade housing covers.

2. Reconnect the negative battery terminal cable and replace the battery box cover.
3. Align the inner blade guide assembly as instructed in the alignment section of your Wood-Mizer Operator's Manual. After blade guide alignment, be sure to check the scale indicator to make sure it is adjusted properly (procedure also found in the alignment section of your Wood-Mizer Operator's Manual).

## SECTION 2 OPERATION

### 2.1 The LubeMizer System

This option is used in place of the standard Water Lube system to lubricate the blade during sawing. The LubeMizer option applies lubricant to both sides of the blade as you are sawing to reduce resin buildup on the blade. The system utilizes an automatic valve which activates the lubricant flow only when the saw carriage is moving forward. The LubeMizer control box allows you to adjust the volume of lubricant for various wood types. The LubeMizer option uses less volume than the standard Water Lube, helping to reduce lubricant/sawdust mess and waste, and to prevent stained boards.

Usual flow will be between .07 and 2.5 gallons (2.6 - 9.5 liters) per hour.

1. To start the self-priming system,
  - Open the water lube bottle valve all the way.
  - Turn the sawmill control box key to the ACC or ON position.
  - Turn the lube control switch to PULSE<sup>1</sup> and set the lube dial to the desired flow rate. Use the lowest setting that successfully eliminates pitch buildup.

**NOTE:** Softwood applications will usually require more lubricant than hardwood applications.

2. Cut the log as normal.
3. To shut of the lube,
  - Turn the lube control switch to OFF.
  - Close the lube bottle valve all the way.

**See Figure 2-1.** The lube control panel is shown in the following graphic.

---

<sup>1</sup> Pulse is suitable for most cutting applications. CONTINUOUS delivers a steady stream of lubricant and should be used only for heavy pitch buildup or occasional blade cleaning.

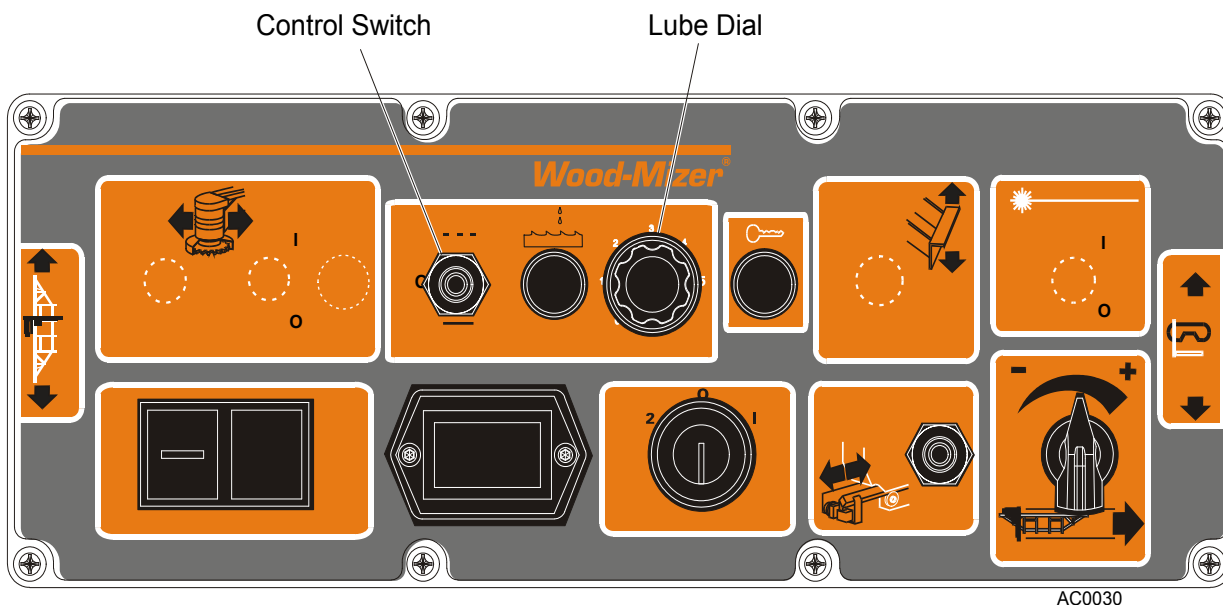


FIG. 2-1

4. If you are sawing or storing the sawmill in freezing temperatures, use windshield washer fluid to help prevent the water from freezing ([See Section 2.2](#)).



**CAUTION!** Add windshield washer fluid to the water tank and prime as recommended when sawing or storing the sawmill in below-freezing temperatures. Use windshield washer fluid with a freezing point of at least  $-20^{\circ}\text{F}$  ( $-29^{\circ}\text{C}$ ). Failure to do so will cause damage to the LubeMizer system may result.



## 2.2 Lube Additives

For further benefits, add one 12oz. bottle of Wood-Mizer Lube Additive to a 5 gallon jug of water. Wood-Mizer Lube Additive enables some previously impossible timbers to be cut by significantly reducing resin buildup on the blade. It helps to reduce heat buildup, wavy cuts, and blade noise. This biodegradable and environmentally friendly pre-mix includes a water softener additive, so it works with hard water.



**WARNING!** Use ONLY water, Wood-Mizer Lube Additive or windshield washer fluid with the water lube accessory. Never use flammable fuels or liquids such as diesel fuel. If these types of liquids are necessary to clean the blade, remove it and clean with a rag. Failure to do so can damage the equipment and may result in serious injury or death.

**See Table 2-1.** Use windshield washer fluid as an antifreeze to prevent the water from freezing and damaging the LubeMizer system. See the chart below for recommended mixture levels depending on the temperature where you are sawing or storing the sawmill.

Run the LubeMizer system on the “Continuous” setting for 30 seconds after adding the windshield washer fluid to the system. This will insure the water throughout the system will not freeze and damage the check valves.



**CAUTION!** Add windshield washer fluid to the water tank and prime as recommended when sawing or storing the sawmill in below-freezing temperatures. Use windshield washer fluid with a freezing point of at least -20°F (-29°C). Failure to do so may cause damage to the LubeMizer system.

| Ratio<br>WWF <sup>1</sup> :Water to<br>fill 5 Gal. tank | Freezing Point<br>Of Solution |      |
|---|-------------------------------|------|
|   | (°F)                          | (°C) |
| 5:0   | -22                           | -30  |
| 4:1   | -3                            | -19  |
| 3:2   | 7                             | -14  |
| 2.5:2.5   | 13                            | -10  |
| 1:4   | 24                            | -4   |
| 0:5   | 32                            | 0    |

**TABLE 2-1**

<sup>1</sup> WWF = Windshield Washer Fluid with -20°F (-29°C) freezing point.

## SECTION 3 MAINTENANCE



**DANGER!** On electric mills, hazardous voltage inside the disconnect box, starter box, and at the electric motor can cause shock, burns, or death. Disconnect and lock out power supply before performing service! Follow all applicable electrical codes.

**DANGER!** Make sure all electrical installation, service and/or maintenance work is performed by a qualified electrician and is in accordance with applicable electrical codes. Failure to do so will result in serious injury or death.

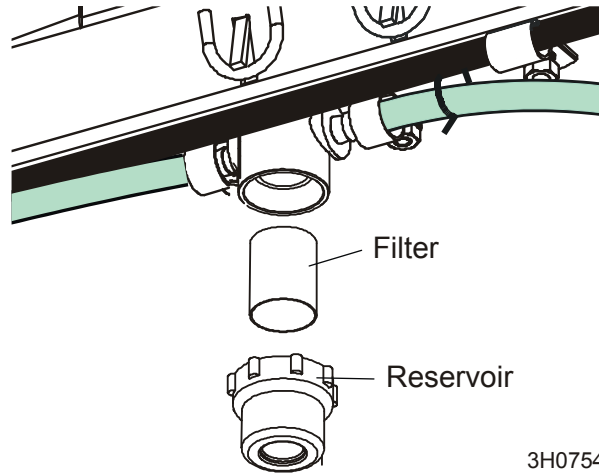
**DANGER!** Before performing any service to this equipment, turn the key to the OFF position, remove the key, and disconnect the battery ground terminal. Failure to do so will result in serious injury or death.

1. Clean the lube filter as needed.

See **Figure 3-1**. To clean,

- Make sure the lube control is in the OFF position and the lube bottle valve is closed all the way.
- Unscrew the filter reservoir and flush with water.
- Remove the cylindrical mesh filter and gently flush with water.

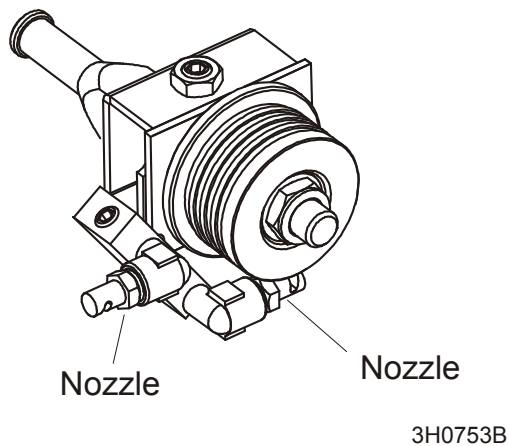
- Replace the filter and reservoir.



**FIG. 3-1**

2. Periodically check lube hoses and lines for buildup. Remove and flush with water as needed.
3. Periodically check the blade guide bracket nozzles for buildup. Remove and flush with water as needed.

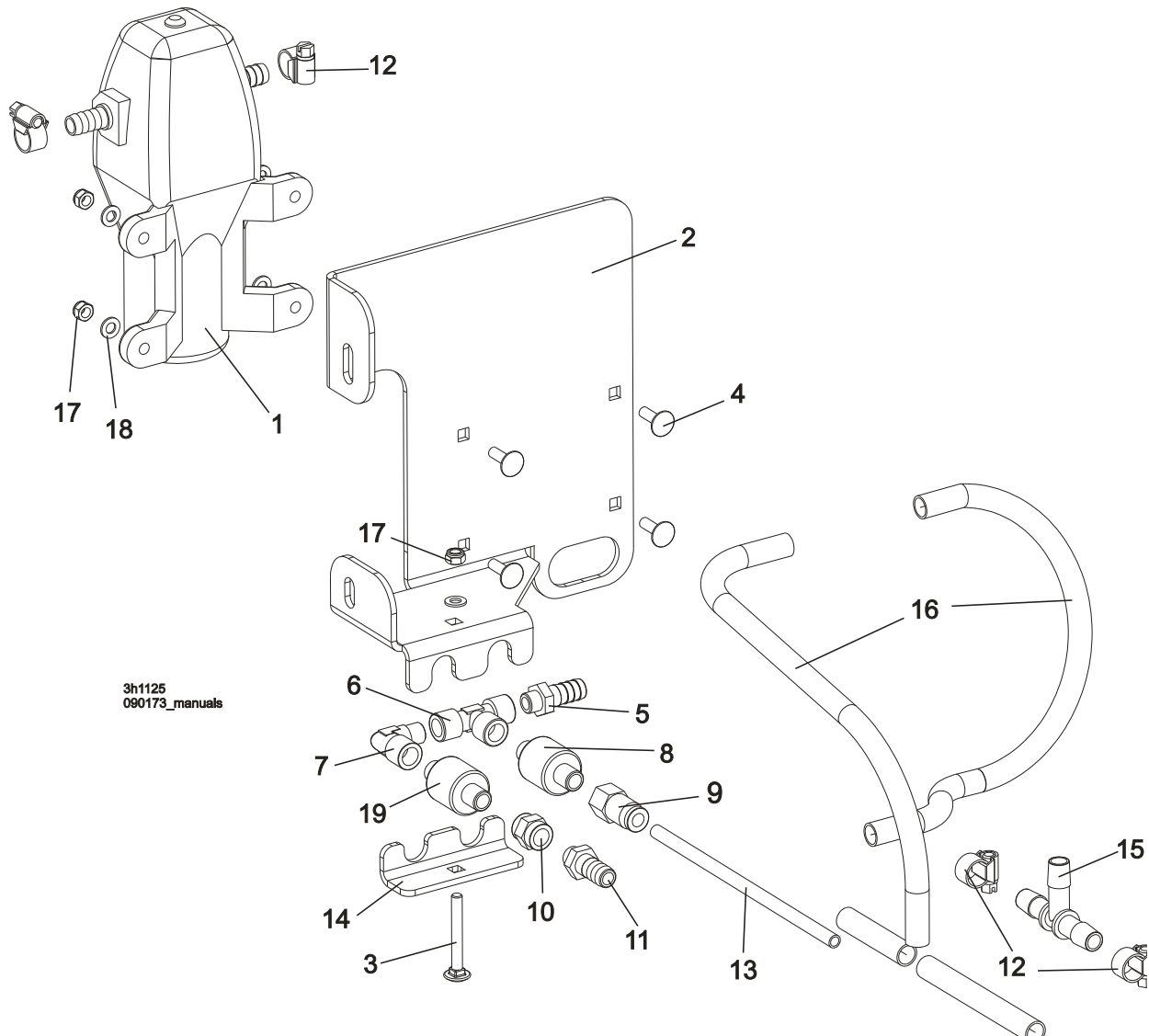
**See Figure 3-2.**



**FIG. 3-2**

## SECTION 4 REPLACEMENT PARTS

### 4.1 Pump Assembly



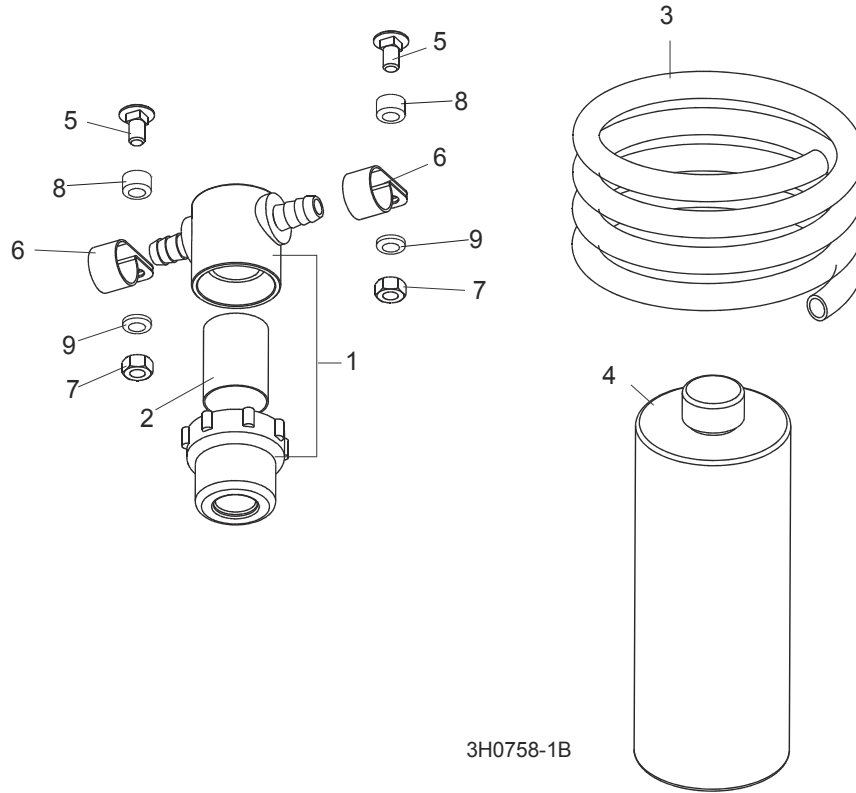
| REF | DESCRIPTION (◆ Indicates Parts Available In Assemblies Only) | PART #    | QTY. |  |
|-----|--|-----------|------|--|
| 1   | PUMP, LFP12V S/V 2C SW 35 NBP                                | 512766    | 1    |  |
| 2   | PLATE, LMS PUMP MOUNT  | 513248-1  | 1    |  |
| 3   | BOLT, M5X40 DIN 603 CARRIAGE                                 | F81000-76 | 1    |  |
| 4   | BOLT, M5X16 DIN 603 CARRIAGE                                 | F81000-75 | 4    |  |
| 5   | FITTING, G1/8 THREADED (FOR 10MM HOSE)                       | 512715    | 1    |  |
| 6   | FITTING, T WWW G1/8 THREADED TEE                             | 512716    | 1    |  |

|    |  |           |      |  |
|----|--|-----------|------|--|
| 7  | ELBOW, WZ G1/8 THREADED                | 512717    | 1    |  |
| 8  | VALVE, 1/8"NPT 3PSI CHECK              | 033449    | 1    |  |
| 9  | FITTING, 1/4TBX1/8FPT, STRAIGHT AIR    | 033450    | 1    |  |
| 10 | NIPPLE, G1/8 FEMALE THREAD             | 512718    | 1    |  |
| 11 | FITTING, G1/8 THREADED (FOR 10MM HOSE) | 512715    | 1    |  |
| 12 | CLAMP, 8-12 MM HOSE                    | F81080-1  | 4    |  |
| 13 | TUBING, 1/2" AIR LINE                  | R01869-2  |      |  |
| 14 | PLATE, 3 MM THICK ST3S                 | 512668-1  | 1    |  |
| 15 | FITTING, 3/8 BARB TEE CONNECTOR        | 033451    | 1    |  |
| 16 | TUBING, WATER LUBE                     | R01885    |      |  |
| 17 | NUT, M5-8-Fe/Zn5 DIN985                | F81030-2  | 5    |  |
| 18 | WASHER, 5.3 FLAT ZINC                  | F81052-1  | 5    |  |
| 19 | VALVE, 1/8"NPT 6PSI CHECK              | 512790    | 1    |  |
|    | CABLE, 1 SQ MM, RED                    | R80583-2  | 1,3m |  |
|    | CABLE H05V-K 1x1mm2 BK BLACK           | R80583-21 | 1,5m |  |

# 4 Replacement Parts

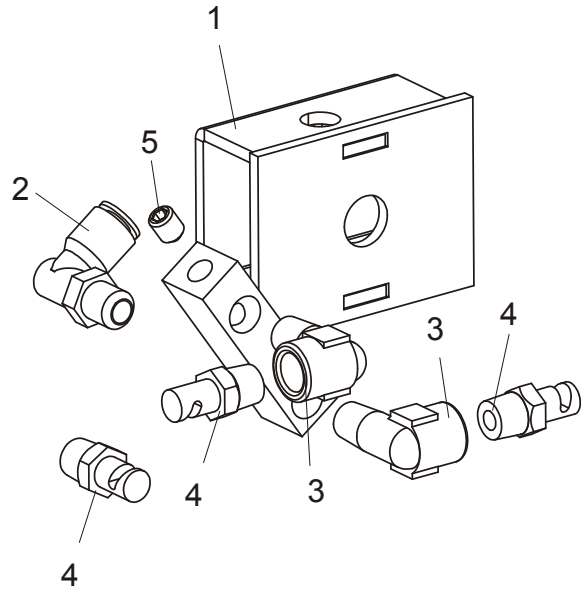
## Filter Assembly

### 4.2 Filter Assembly



| REF | DESCRIPTION (◆ Indicates Parts Available In Assemblies Only) | PART #    | QTY. |  |
|-----|--|-----------|------|--|
| 1   | FILTER, PRESSURE LUBE  | 033447    | 1    |  |
| 2   | Screen Kit, Mesh Filter                                      | 033441    | 1    |  |
| 3   | TUBING, WATER LUBE   | R01885    | 1    |  |
| 4   | ADDITIVE, BLADE LUBRICANT CASE                               | ADD-2     | 11   |  |
| 5   | SCREW M6x25-8.8-Fe/Zn5 PN/M-82406                            | F81001-20 | 2    |  |
| 6   | CLAMP, 5/8" EMT COATED                                       | 010748    | 2    |  |
| 7   | NUT, M6-8-B HEX NYLON ZINC LOCK                              | F81031-2  | 2    |  |
| 8   | SPACER, WATER FILTER   | 088728    | 2    |  |
| 9   | WASHER, 6.5 FLAT ZINC SPECIAL                                | F81053-11 | 2    |  |

### 4.3 Blade Guide Block Assembly



3H0758B

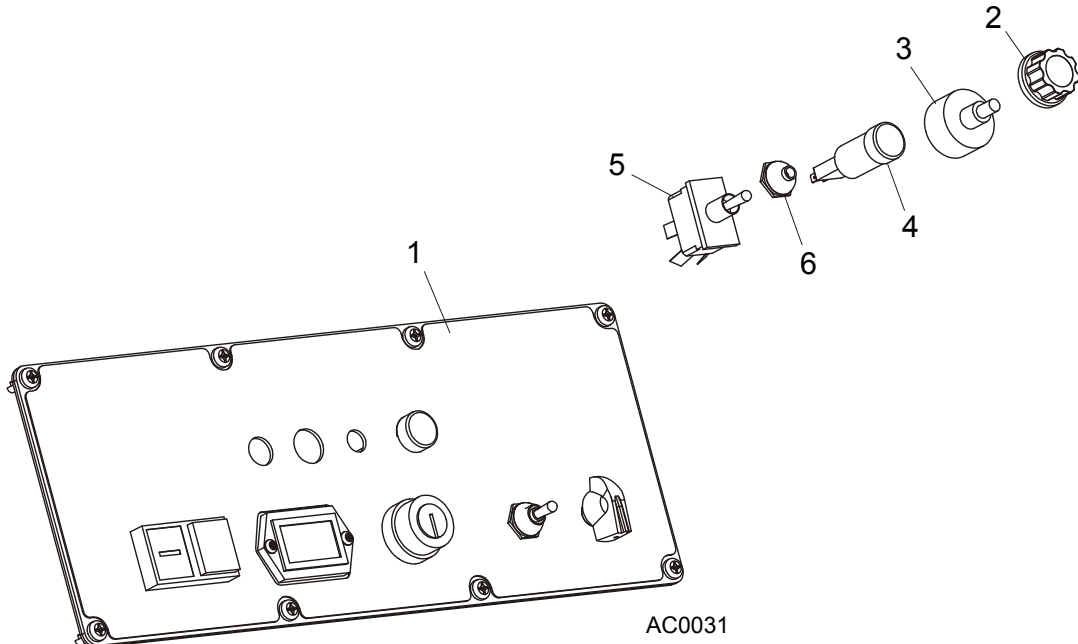
| REF | DESCRIPTION (◆ Indicates Parts Available In Assemblies Only) | PART #              | QTY. |  |
|-----|--|---------------------|------|--|
| 1   | BLOCK WELDMENT, PRESSURE LUBE                                | 033464 <sup>1</sup> | 1    |  |
| 2   | FITTING, 90° ELBOW 1/8" MPT 1/4" TUBE SWIVEL                 | P09736              | 1    |  |
| 3   | FITTING, 1/8" NPT STREET ELBOW LONG                          | 033440              | 2    |  |
| 4   | NOZZLE, BLADE LUBE SPRAY                                     | 033479              | 3    |  |
| 5   | FITTING, 1/16" NPT PLUG                                      | P09206              | 1    |  |

<sup>1</sup> LT40 sawmills manufactured before 2004 only.

# 4 Replacement Parts

## Control Panel Assembly

### 4.4 Control Panel Assembly



| REF | DESCRIPTION (◆ Indicates Parts Available In Assemblies Only) | PART # | QTY. |
|-----|--|--------|------|
| 1   | <b>PANEL ASSEMBLY, AC LMS CONTROL FRONT</b>                  | 087387 | 1    |
|     | Potentiometer Assembly, 500K 2W 10% CP Panel Mount w/Wires   | 024590 | 1    |
| 2   | Knob, 1/4" ID Fluted Round Plastic                           | 033478 | 1    |
| 3   | Potentiometer  | N/A    | 1    |
| 4   | Light, Green 12V XB6 1V 3BB                                  | 087348 | 1    |
| 5   | Switch, 15A Toggle   | 024588 | 1    |
| 6   | Boot, Toggle Switch Sealing                                  | 024589 | 1    |



## SECTION 5 ELECTRICAL INFORMATON

### 5.1 Electrical Components

| Component | Manufacturer Part No. | Manufacturer     | Wood-Mizer Part No. | Description  |
|-----------|-----------------------|------------------|---------------------|--|
| F1        | --                    | --               | E85238              | Fuseholder, In-Line 3-20 Amp ATC w/Cover           |
| F2        | --                    | --               | E85238              | Fuseholder, In-Line 3-20 Amp ATC w/Cover           |
| L1        | 1090QD5-12V           | --               | 087348              | Light, Control XB6 AV 3BB                          |
| Pot       | N/A                   | N/A              | 024590              | Potentiometer Assembly, 500K 2W 10% CP Panel Mount |
| R1        | 024591 A              | Pioneer Standard | 094807              | Resistor, 47K / 0.25W                              |
| SW1       | 2GM51-73              | Carlingswitch    | 024588              | Switch, 15 Amp Toggle                              |
| T1        | 4600A-1-1-A           | Artisan Controls | 024530              | Timer, Repeat Cycle 12VDC 1A .2-60 Seconds         |

## 5.2 Electrical Wiring Diagram

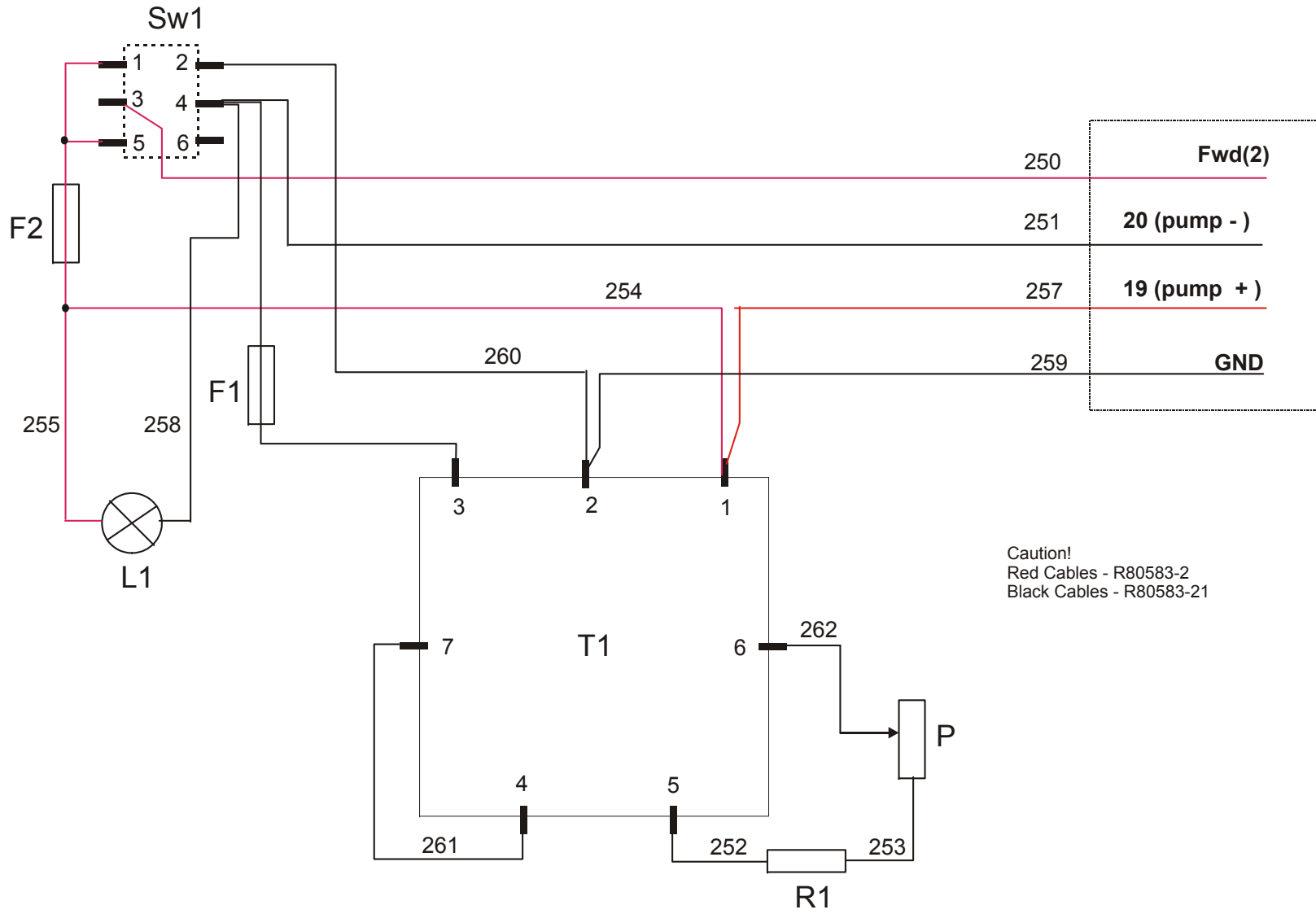


FIG. 5-1