

Wood-Mizer®

Replacement Parts List

LT15P (097237-PRP)

rev. A1.04



Safety is our #1 concern! Read and understand all safety information and instructions before operating, setting up and/or maintaining this machine.

Form #833

Table of Contents

Section-Page

SECTION 1	GENERAL INFORMATION	1-1
1.1	How To Use the Parts List.....	1-1
1.2	Sample Assembly	1-1
SECTION 2	BED FRAME COMPONENTS	2-1
2.1	Side Support Assembly	2-1
2.2	Log Clamp Assembly	2-2
2.3	Bed Section	2-4
2.4	Side Support Assembly 538940	2-5
2.5	Side Support 514990	2-6
SECTION 3	BED FRAME PARTS	3-1
3.1	Bed Frame Segment	3-1
3.2	Bed Frame Extension	3-3
3.3	Bed Frame M Segment	3-4
3.4	Bed Frame S Segment	3-5
3.5	Bumpers	3-6
3.6	Bumpers	3-7
3.7	Bed Foot	3-8
3.8	Retrofit Assembly, LX100 Side Support Angle Setting	3-9
3.9	Cross Rail Cover Set (Option)	3-10
3.10	Additional Cross Bars w/Covers & Side Support Rollers (Option)	3-11
3.11	Additional Cross Bar w/Cover (Option)	3-12
3.12	Side Support Roller (Option)	3-13
SECTION 4	SAWMILL MAST	4-1
4.1	Electrical Box with Control Panel	4-1
4.2	Track Rollers, Scale Indicator and Scrapers	4-3
4.3	Up/Down System Control Subassembly & Limit Switches	4-5
SECTION 5	BLADE GUIDES & BLADE GUIDE ARM	5-1
5.1	Blade Guide Assembly, Idle Side	5-1
5.2	Blade Guide Assembly, Drive Side	5-2
5.3	Blade Guide Roller Guard	5-4
5.4	Blade Tensioner Assembly	5-5
SECTION 6	BLADE WHEELS & TENSIONER	6-1
6.1	Blade Wheel Assembly, Drive Side	6-1
6.2	Blade Wheel Assembly, Idle Side	6-2
6.3	Blade Tensioner Assembly	6-3
6.4	Electric Motor	6-5
6.5	Power Cord Hanger	6-6
SECTION 7	SAW HEAD	7-1
7.1	Blade Housing Cover	7-1
7.2	Water Bottle	7-3
7.3	Slide Pads	7-4
7.4	Blade Height Scale	7-6
7.5	Up/Down Sprockets	7-8
7.6	LT15-POWER Saw Head Decals.....	7-9
SECTION 8	POWER FEED DRIVE	8-1

SECTION 1 GENERAL INFORMATION

1.1 How To Use the Parts List

- Use the index above to locate the assembly that contains the part you need.
- Go to the appropriate section and locate the part in the illustration.
- Use the number pointing to the part to locate the correct part number and description in the table.
- Parts shown indented under another part are included with that part.
- Parts marked with a diamond (◆) are only available in the assembly listed above the part.

See the sample table below. Sample Part #A01111 includes part F02222-2 and subassembly A03333. Subassembly A03333 includes part S04444-4 and subassembly K05555. The diamond (◆) indicates that S04444-4 is not available except in subassembly A03333. Subassembly K05555 includes parts M06666 and F07777-77. The diamond (◆) indicates M06666 is not available except in subassembly K05555.

1.2 Sample Assembly				
REF.	DESCRIPTION (◆ Indicates Parts Available In Assemblies Only)	PART #	QTY	
	Sample Assembly, Complete (Includes All Indented Parts Below)	A01111	1	
1	Sample Part	F02222-22	1	
	Sample Subassembly (Includes All Indented Parts Below)	A03333	1	
2	Sample Part (◆ Indicates Part Is Only Available With A03333)	S04444-4	1	◆
	Sample Subassembly (Includes All Indented Parts Below)	K05555	1	
3	Sample Part (◆ Indicates Part Is Only Available With K05555)	M06666	2	◆
4	Sample Part	F07777-77	1	

To Order Parts:

- From Europe call our European Headquarters and Manufacturing Facility in Kolo, Poland at **+48-63-2626000**. From the continental U.S., call our toll-free Parts hotline at **1-800-525-8100**. Have your customer number, vehicle identification number, and part numbers ready when you call. From other international locations, contact the Wood-Mizer distributor in your area for parts.

Office Hours:

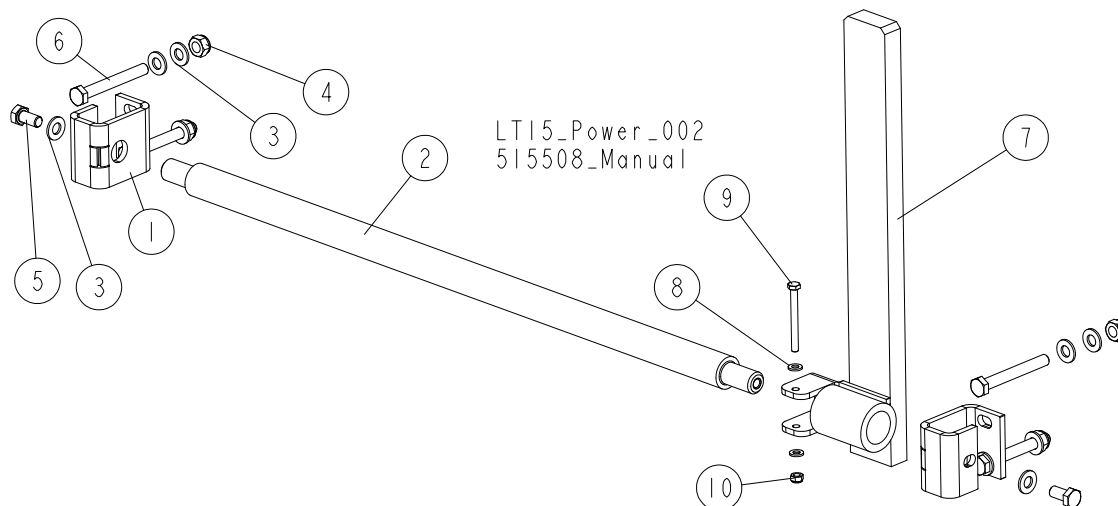
Country	Monday - Friday	Saturday	Sunday
Poland	7-15	Closed	Closed
US	8 a.m.- 5 p.m.	8 a.m.- 12 p.m.	Closed



CAUTION! It is strongly recommended that only original spare parts be used.

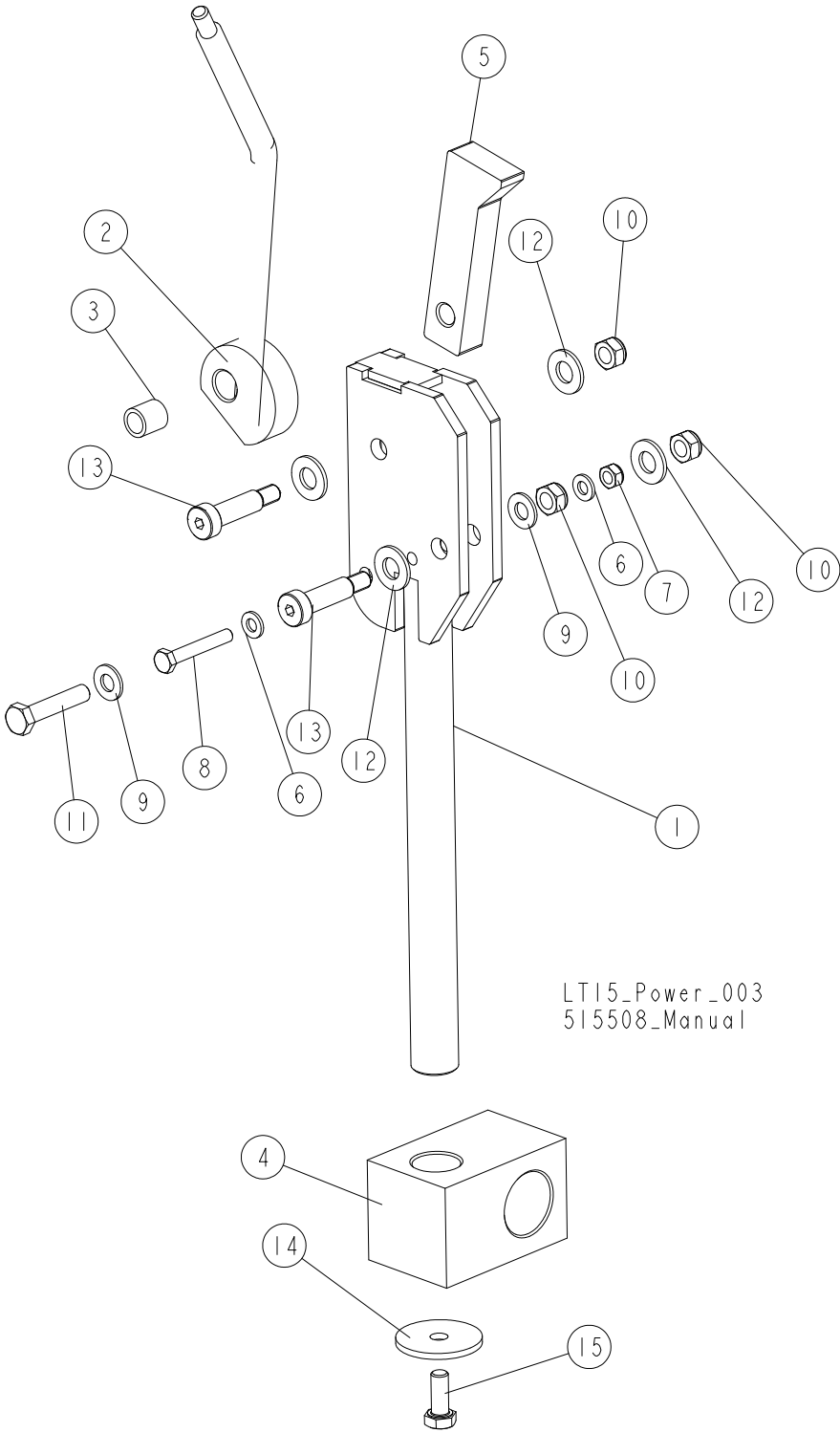
SECTION 2 BED FRAME COMPONENTS

2.1 Side Support Assembly



REF.	DESCRIPTION (◆ indicates parts available in assemblies only)	PART #	QTY
	SUPPORT ASSEMBLY, LOG SIDE	514987	1
1	BRACKET, CLAMP MOUNT	500338-1	2
2	ROD, LOG CLAMP MAIN	515059-1	1
3	WASHER, 10.5 FLAT ZINC	F81055-1	10
4	NUT, M10-8-B HEX NYLON ZINC LOCK	F81033-1	4
5	BOLT, M10X20-5.8 HEX HEAD FULL THREAD ZINC	F81003-1	2
6	BOLT, M10X80-8.8 HEX HEAD ZINC	F81003-50	4
	SUPPORT, LOG SIDE - COMPLETE	514990	1
7	SUPPORT WELDMENT, LOG SIDE	514993-1	1
8	WASHER, 6.4 FLAT ZINC	F81053-1	2
9	BOLT, M6X60-8.8 HEX HEAD FULL THREAD ZINC	F81001-9	1
10	NUT, M6-8-B HEX NYLON ZINC LOCK	F81031-2	1

2.2 Log Clamp Assembly



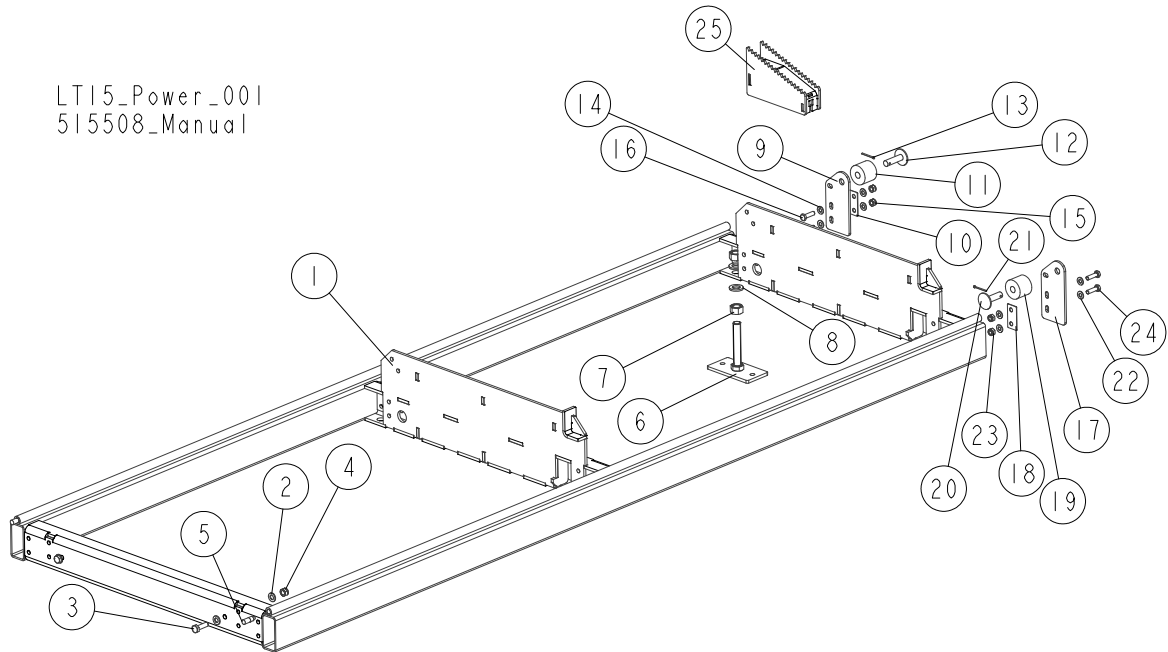
REF.	DESCRIPTION (◆ indicates parts available in assemblies only)	PART #	QTY
	CLAMP, LOG - COMPLETE	514955	1
1	BRACKET, CLAMPING HEAD MOUNT	514951-1	1
	LEVER, LOG CLAMP - COMPLETE	515047	1

2

BED FRAME COMPONENTS*Log Clamp Assembly*

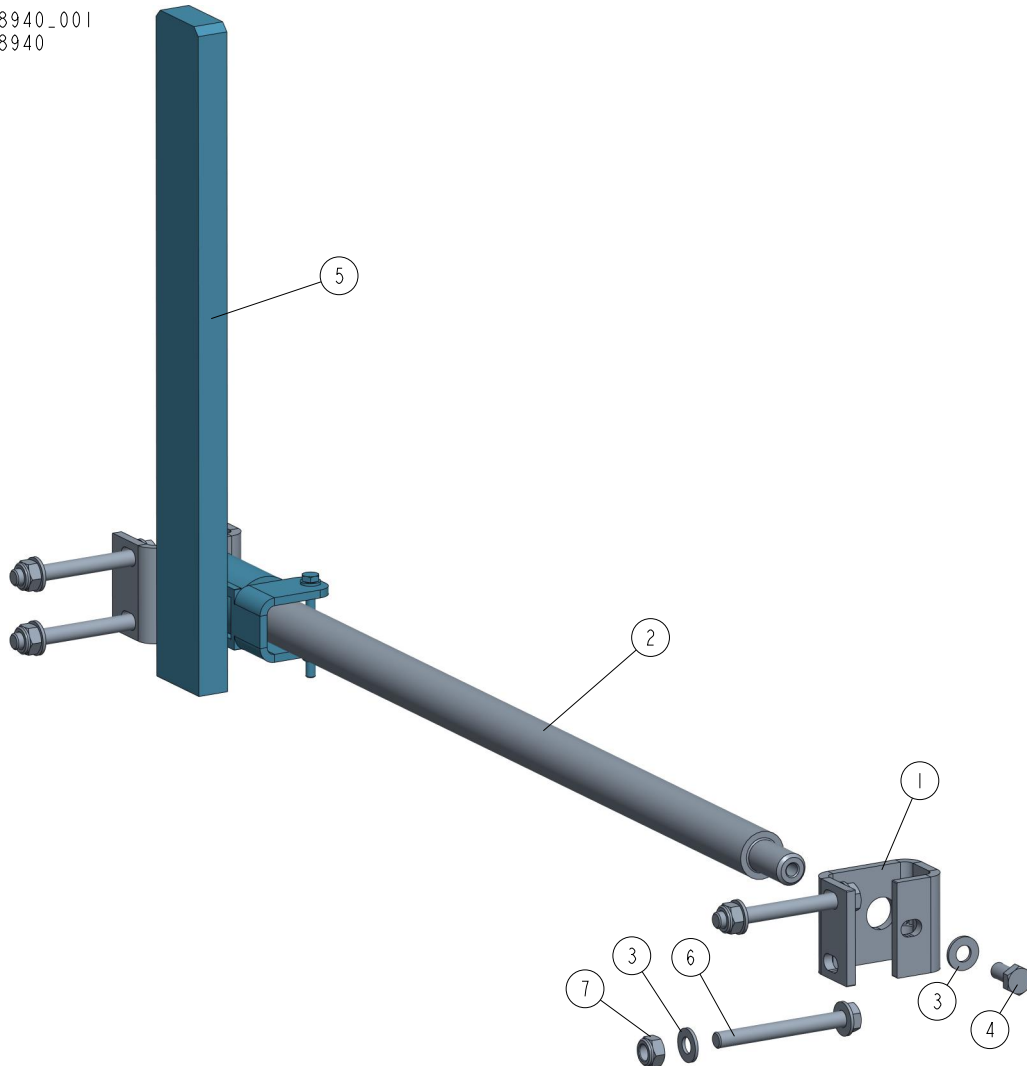
REF.	DESCRIPTION (◆ indicates parts available in assemblies only)	PART #	QTY	
2	LEVER, LOG CLAMP	514954-1	1	
3	BUSHING, CAM	514961	1	
4	BLOCK, LOG CLAMP BASE	514962-1	1	
5	HEAD, CLAMPING	514949-1	1	
6	WASHER, 6.4 FLAT ZINC	F81053-1	2	
7	NUT, M6-8-B HEX NYLON ZINC LOCK	F81031-2	1	
8	BOLT, M6X40-8.8 HEX HEAD FULL THREAD ZINC	F81001-5	1	
9	WASHER, 8.4 FLAT ZINC	F81054-1	2	
10	NUT, M8 8 HEX NYLON ZINC LOCK	F81032-2	3	
11	BOLT, M8X40-8.8 HEX HEAD FULL THREAD ZINC	F81002-15	1	
12	WASHER, 10.5 FLAT ZINC	F81055-1	4	
13	BOLT, 10/M8X30 12.9 ISO7379 SHOULDER	F81003-81	2	
14	WASHER, 8.3/40-3 ZINC-PLATED	094128-1	1	
15	BOLT, M8X20 5.8 HEX HEAD FULL THREAD ZINC	F81002-1	1	

2.3 Bed Section



REF.	DESCRIPTION (◆ indicates parts available in assemblies only)	PART #	QTY
1	SECTION WELDMENT, LT15 BED (3 BEAMS)	514970-1	1
2	WASHER, 13 ZINC FLAT	F81056-1	4
3	BOLT, M12x40-8.8 HEX HEAD FULL THREAD ZINC	F81004-4	2
4	NUT, M12-8 HEX NYLON ZINC LOCK	F81034-2	2
5	PIN	090675	1
	FOOT, LT15 BED - COMPLETE	514997	1
6	FOOT WELDMENT, LT15 BED	514996-1	2
7	NUT, M20-8- HEX ZINC	F81037-1	2
8	WASHER, 21 FLAT ZINC	F81059-2	1
	BUMPER, LT15 COMPLETE RIGHT	515062	1
9	PLATE, BUMPER	516075-1	1
10	WASHER, BUMPER PLATE SPACER	515061-1	1
11	BUSHING, 11/16X2 1/8X1 3/4 RUBBER	P12165	1
12	MOUNT WELDMENT, BUMPER	086182-1	1
13	PIN, S-Zn 4x25 COTTER	F81043-2	1
14	WASHER, 10.5 FLAT ZINC	F81055-1	4
15	NUT, M10-8-B HEX NYLON ZINC LOCK	F81033-1	2
16	BOLT, M10X35 8.8 HEX HEAD FULL THREAD ZINC	F81003-17	2
	BUMPER, LT15 COMPLETE LEFT	515063	1
17	PLATE, BUMPER	516075-1	1
18	WASHER, BUMPER PLATE SPACER	515061-1	1
19	BUSHING, 11/16X2 1/8X1 3/4 RUBBER	P12165	1
20	MOUNT WELDMENT, BUMPER	086182-1	1
21	PIN, S-Zn 4x25 COTTER	F81043-2	1
22	WASHER, 10.5 FLAT ZINC	F81055-1	4
23	NUT, M10-8-B HEX NYLON ZINC LOCK	F81033-1	2
24	BOLT, M10X35 8.8 HEX HEAD FULL THREAD ZINC	F81003-17	2
25	WEDGE, LT15 BED	515413-1	1

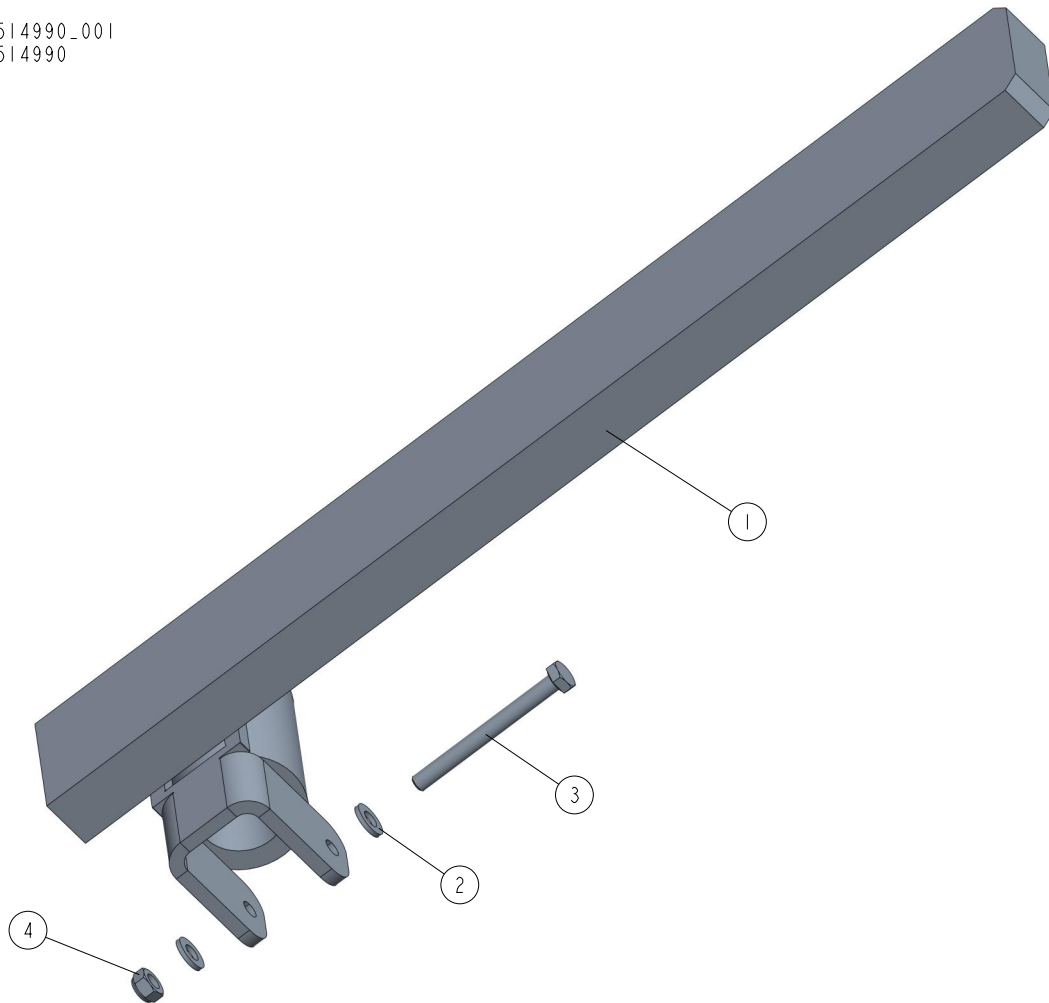
2.4 Side Support Assembly 538940

538940_001
538940

REF	DESCRIPTION (◆ indicates parts available in assemblies only)	PART #	QTY
-	SUPPORT ASSEMBLY, LOG SIDE	538940	1
1	BRACKET, CLAMP MOUNT	500338-1	2
2	ROD, SIDE SUPPORT MAIN	515059-1	1
3	WASHER, 10.5 FLAT ZINC	F81055-1	10
4	BOLT, M10X20-5.8 HEX HEAD FULL THREAD ZI	F81003-1	2
5	SUPPORT, LOG SIDE - COMPLETE See Section 2.5	514990	1
6	BOLT, M10X90-8.8-B HEX HEAD ZINC	F81003-66	4
7	NUT M10 ZC 8 NYLOCK DIN 982 ISO 7040	F81033-1	4

2.5 Side Support 514990

514990_001
514990

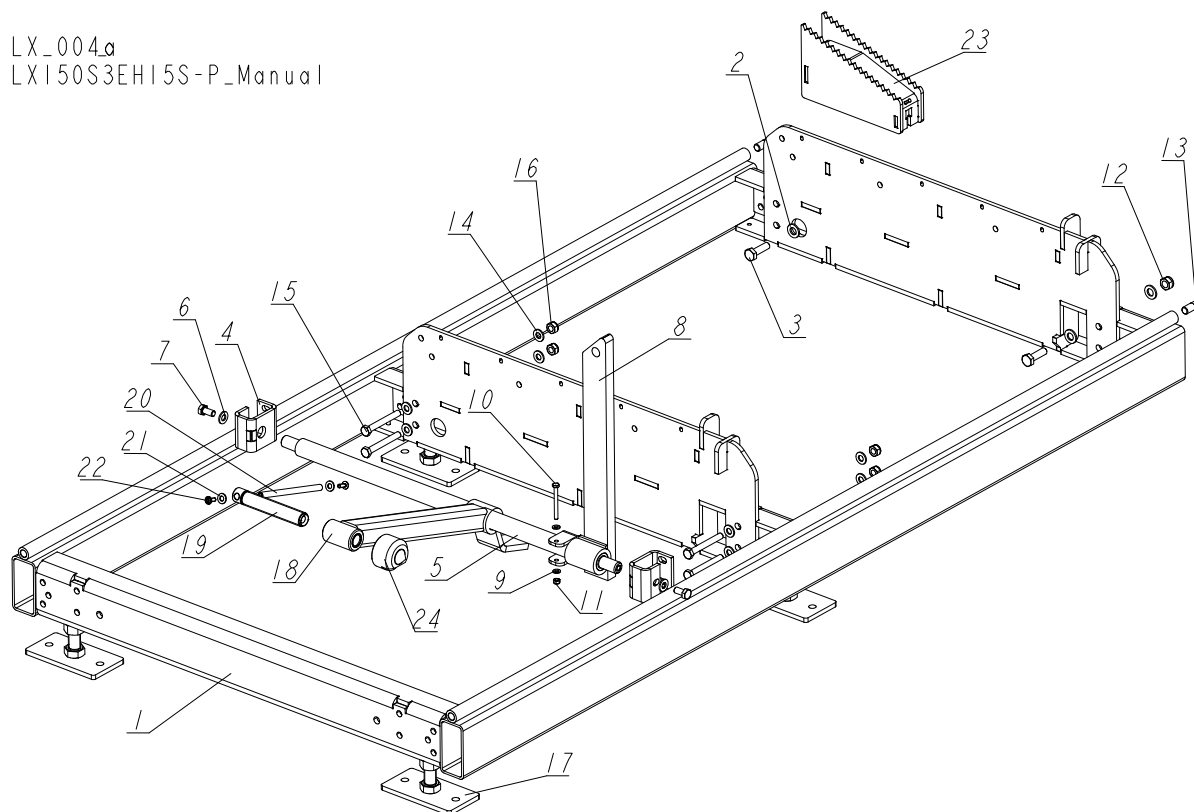


REF	DESCRIPTION (◆ indicates parts available in assemblies only)	PART #	QTY	
-	SUPPORT, LOG SIDE - COMPLETE	514990	1	
1	SUPPORT WELDMENT, LOG SIDE	514993-1	1	
2	WASHER, 6.4 FLAT ZINC	F81053-1	2	
3	BOLT, M6X60-8.8 HEX HEAD FULL THREAD ZIN	F81001-9	1	
4	NUT, M6-8-B HEX NYLON ZINC LOCK	F81031-2	1	

SECTION 3 BED FRAME PARTS

3.1 Bed Frame Segment

LX_004.a
 LX150S3EH15S-P_Manual



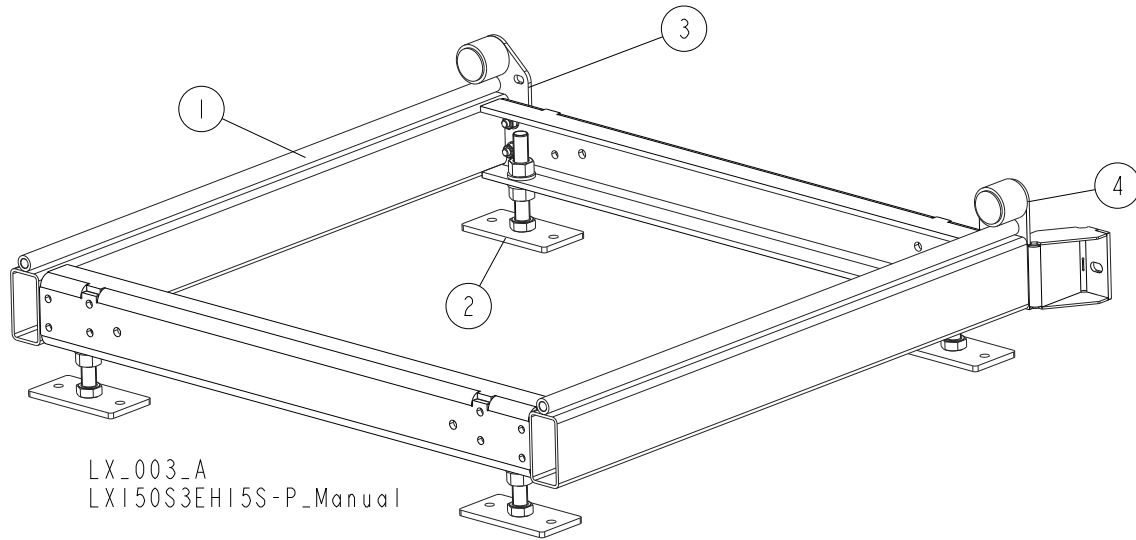
REF.	DESCRIPTION (◆ indicates parts available in assemblies only)	PART #	QTY
	SEGMENT, S - COMPLETE	516516	1/0
	SEGMENT, M - COMPLETE	516513	0/1
1	SEGMENT WELDMENT, S (3 CROSS RAILS)	516261-1	1/0
	SEGMENT WELDMENT, M (4 CROSS RAILS)	516250-1	0/1
2	WASHER, 13 FLAT ZINC	F81056-1	4
3	BOLT, M12X40-8.8 HEX HEAD FULL THREAD ZINC	F81004-4	2
	SIDE SUPPORT ASSEMBLY	517242	1
4	BRACKET, LOG CLAMP MOUNTING	500338-1	2
5	ROD, LOG CLAMP MAIN	515059-1	1
6	WASHER, 10.5 FLAT ZINC	F81055-1	2
7	BOLT, M10X20-5.8 HEX HEAD FULL THREAD ZINC	F81003-1	2
	SUPPORT, SIDE - COMPLETE	517721	1
8	SUPPORT WELDMENT, SIDE	517722-1	1
9	WASHER, 6.4 FLAT ZINC	F81053-1	2
10	BOLT, M6X60-8.8 HEX HEAD FULL THREAD ZINC	F81001-9	1
11	NUT, M6-8-B HEX NYLON ZINC LOCK	F81031-2	1
12	NUT, M12 8 HEX NYLON ZINC LOCK	F81034-2	2
13	PIN, SPECIAL	090675	2
14	WASHER, 10.5 FLAT ZINC	F81055-1	8

REF.	DESCRIPTION (◆ indicates parts available in assemblies only)	PART #	QTY	
15	BOLT, M10X80-8.8 HEX HEAD ZINC	F81003-50	4	
16	NUT, M10-8-B HEX NYLON ZINC LOCK	F81033-1	4	
17	FOOT, LT15 BED - COMPLETE See Section 3.7	514997	4/6	
18	ARM, LOG CLAMP	521465-1	1/2	
	STUD W/ROD, LOG CLAMP - COMPLETE	507563	1/2	
19	STUD, LOG CLAMP	507463	1	
	COMPLETE ROD	511924	1	
20	ROD, ZINC-PLATED	511923-1	1	
21	WASHER, 8.4 FLAT ZINC	F81054-1	2	
22	SCREW, M6X16 BN 11252 "BOSSARD".	F81001-24	2	
23	WEDGE, LT15 BED	515413-1	1	
24	CAP, MOUNTING, CLAMP	T00414	1	

3 BED FRAME PARTS

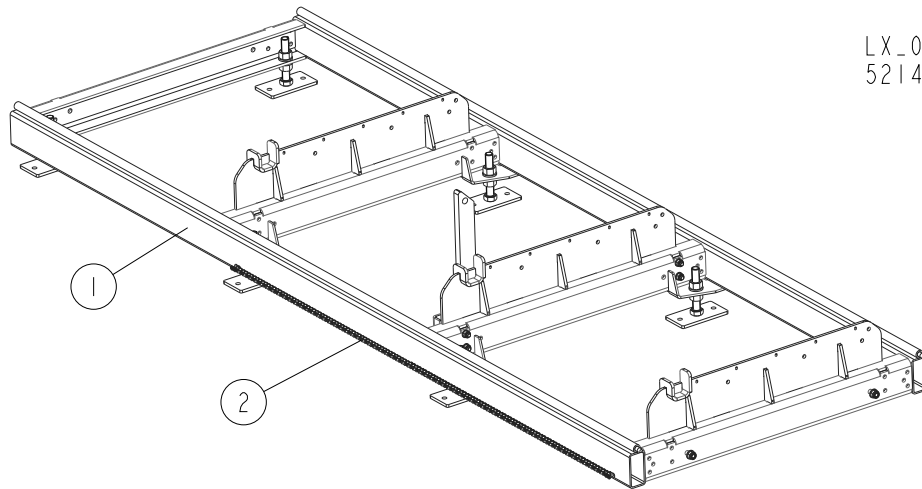
Bed Frame Extension

3.2 Bed Frame Extension



REF.	DESCRIPTION (◆ indicates parts available in assemblies only)	PART #	QTY
	EXTENSION, BED FRAME - COMPLETE	516525	1
1	EXTENSION, BED FRAME	516268-1	1
2	FOOT, LT15 BED - COMPLETE	514997	4
3	BUMPER, LT15 RIGHT - COMPLETE See Section 3.5	515062	1
4	BUMPER, LT15 LEFT - COMPLETE See Section 3.6	517896	1

3.3 Bed Frame M Segment



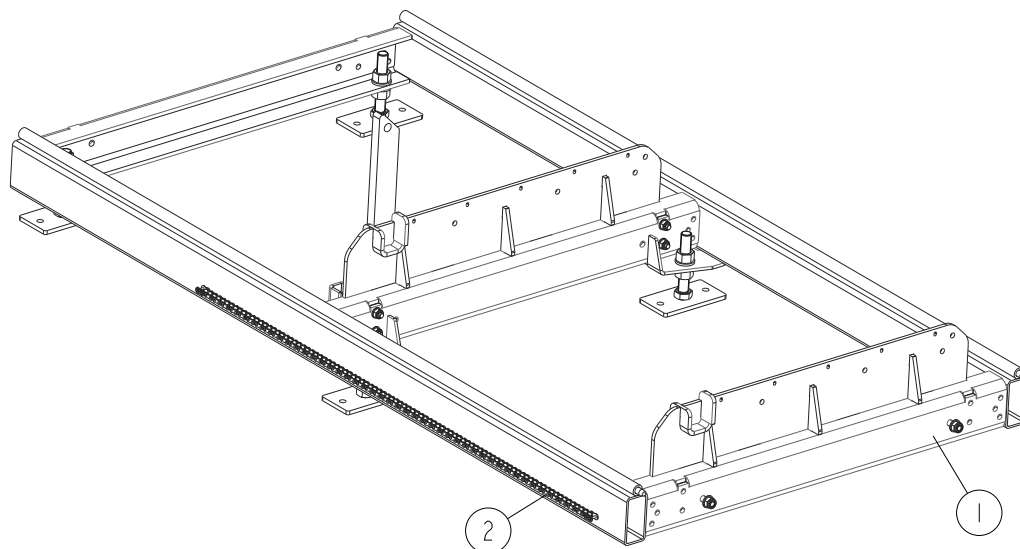
LX_046
 521434_Manual

REF.	DESCRIPTION (◆ indicates parts available in assemblies only)	PART #	QTY
	BED SEGMENT, LX100 M WITH POWER FEED	521434	1
1	SEGMENT M complete LX100	516513	1
2	CHAIN 08B; LENGTH.=2,78M (219 LINKS)	521433	1

3 BED FRAME PARTS

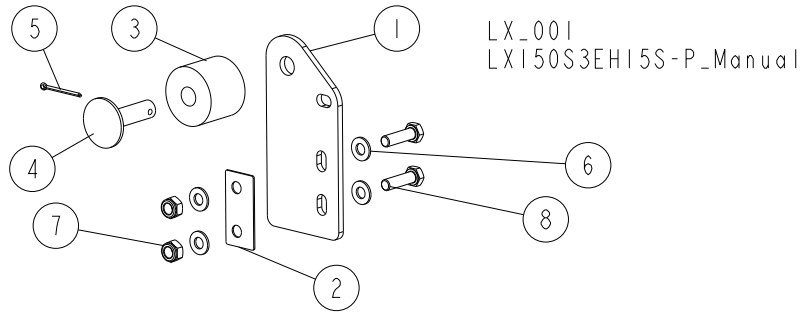
Bed Frame S Segment

3.4 Bed Frame S Segment



REF.	DESCRIPTION (◆ indicates parts available in assemblies only)	PART #	QTY	
	BED SEGMENT, LX100 S WITH POWER FEED	521432	1	
1	SEGMENT S, COMPLETE LX100	516516	1	
2	CHAIN 08B; LENGTH.=1,87M (147 LINKS)	521431	1	

3.5 Bumpers

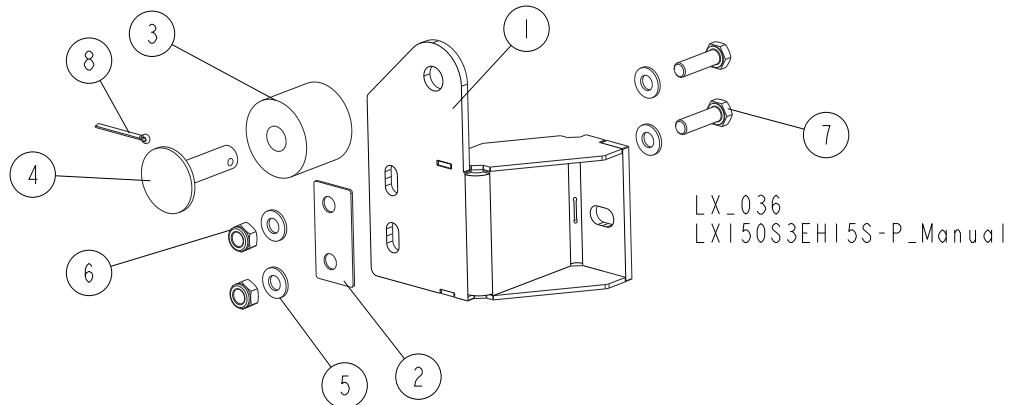


REF.	DESCRIPTION (◆ indicates parts available in assemblies only)	PART #	QTY
	BUMPER, LT15 RIGHT - COMPLETE	515062	1
	BUMPER, LT15 LEFT - COMPLETE	515063	1
1	PLATE, BUMPER	516075-1	1
2	WASHER, BUMPER PLATE SPACER	515061	1
3	BUSHING, 11/16X2 1/8X1 3/4 RUBBER	P12165	1
4	MOUNT WELDMENT, CARRIAGE STOP	086182-1	1
5	PIN, S-ZN 4X25 COTTER	F81043-2	1
6	WASHER, 10.5 FLAT ZINC	F81055-1	4
7	NUT, M10-8-B HEX NYLON ZINC LOCK	F81033-1	2
8	BOLT, M10X35 8.8 HEX HEAD FULL THREAD ZINC	F81003-17	2

3 BED FRAME PARTS

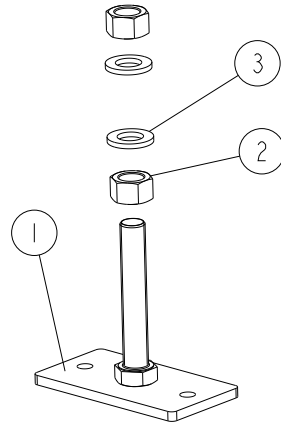
Bumpers

3.6 Bumpers



REF.	DESCRIPTION (◆ indicates parts available in assemblies only)	PART #	QTY
	BUMPER, RIGHT - COMPLETE	517897	1/0
	BUMPER, LEFT - COMPLETE	517896	0/1
1	BRACKET WELDMENT, RIGHT	517902-1	1/0
	BRACKET WELDMENT, LEFT	517901-1	0/1
2	WASHER, BUMPER PLATE SPACER	515061-1	1
3	BUSHING, 11/16X2 1/8X1 3/4 RUBBER	P12165	1
4	MOUNT WELDMENT, CARRIAGE STOP	086182-1	1
5	WASHER, 10.5 FLAT ZINC	F81055-1	4
6	NUT, M10-8-B HEX NYLON ZINC LOCK	F81033-1	2
7	BOLT, M10X35 8.8 HEX HEAD FULL THREAD ZINC	F81003-17	2
8	PIN, S-ZN 4X25 COTTER	F81043-2	1

3.7 Bed Foot

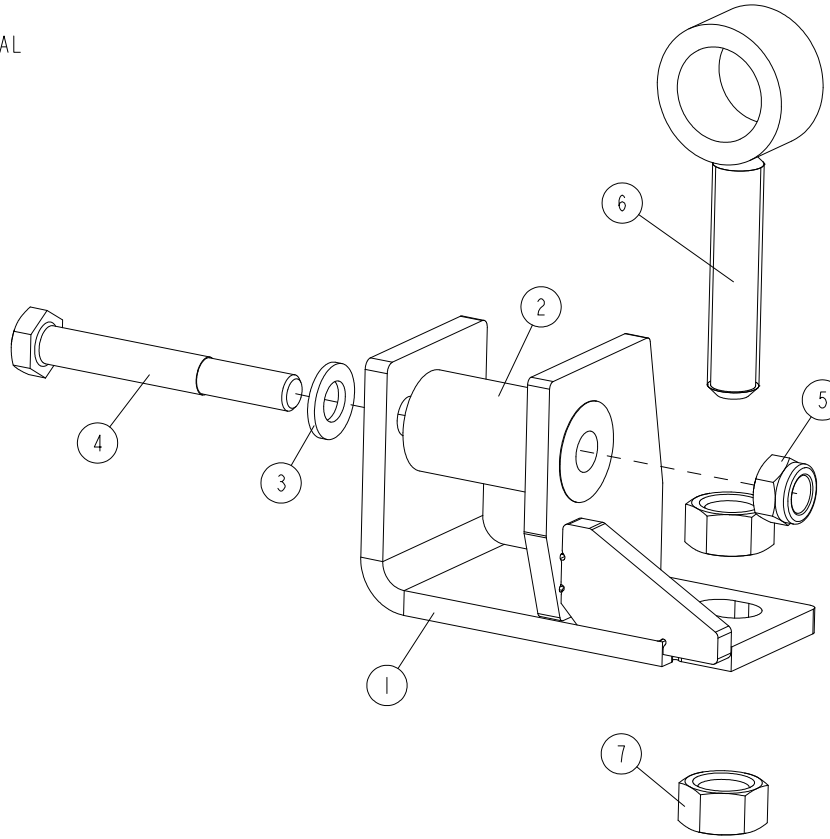


LX_002
 LXI50S3EHI5S-P_Manual

REF.	DESCRIPTION (◆ indicates parts available in assemblies only)	PART #	QTY	
	FOOT, LT15 BED - COMPLETE	514997	1	
1	FOOT WELDMENT, LT15 BED	514996-1	1	
2	NUT, M20-8 HEX ZINC	F81037-1	2	
3	WASHER, 21 FLAT ZINC	F81059-2	2	

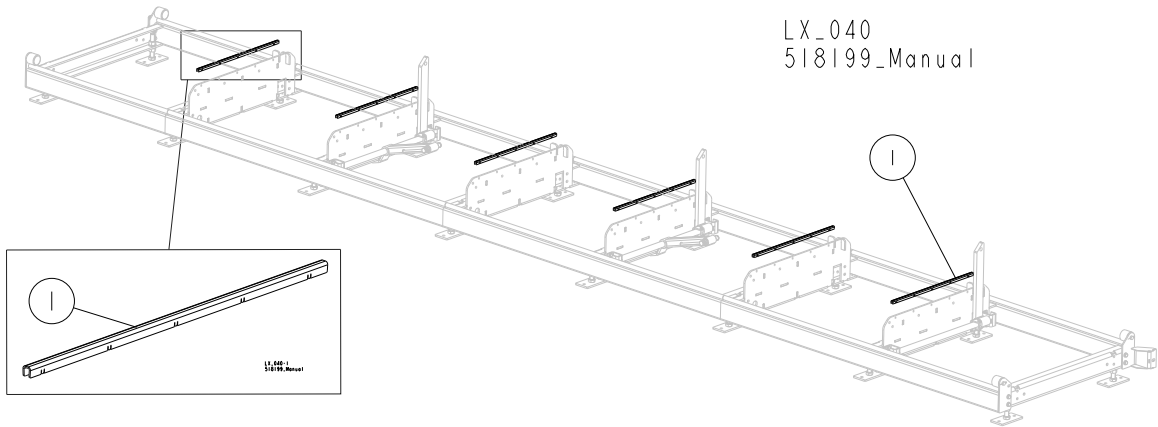
3.8 Retrofit Assembly, LX100 Side Support Angle Setting

538683_001
538683_MANUAL



REF.	DESCRIPTION (◆ indicates parts available in assemblies only)	PART #	QTY	
-	RETROFIT ASSEMBLY, LX100 SIDE SUPPORT ANGLE SETTING	538683	1	
1	BRACKET WELDMENT	538682-1	1	
2	BUSHING, 13/32 - 57	538681-1	1	
3	WASHER, 13 FLAT ZINC	F81056-1	1	
4	BOLT, M12X90 8.8 HEX HEAD ZINC	F81004-2	1	
5	NUT, M12-8 DIN 982 HEX NYLON ZINC LOCK	F81034-2	1	
6	ROD WELDMENT, SIDE SUPPORT POSITIONER	538677-1	1	
7	NUT, M16 5.8 HEX	F81036-5	2	

3.9 Cross Rail Cover Set (Option)



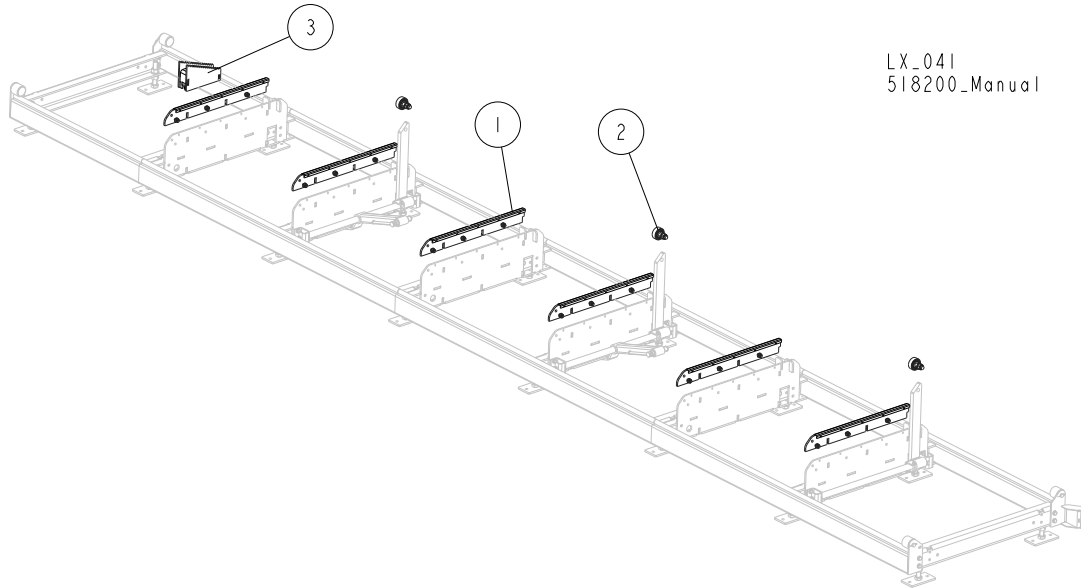
REF.	DESCRIPTION (◆ indicates parts available in assemblies only)	PART #	QTY	
	COVER SET, BED CROSS RAIL (FOR LX100 S2 FRAME)	518199-S2	1/-/-	
	COVER SET, BED CROSS RAIL (FOR LX100 S3 FRAME)	518199-S3	-/1/-	
	COVER SET, BED CROSS RAIL (FOR LX100 S4 FRAME)	518199-S4	-/-/1-	
	COVER SET, BED CROSS RAIL (FOR LX100 S5 FRAME)	518199-S5	-/-/1	
1	COVER, CROSS RAIL	518225	4/6/8/10	

3

BED FRAME PARTS

Additional Cross Bars w/Covers & Side Support Rollers (Option)

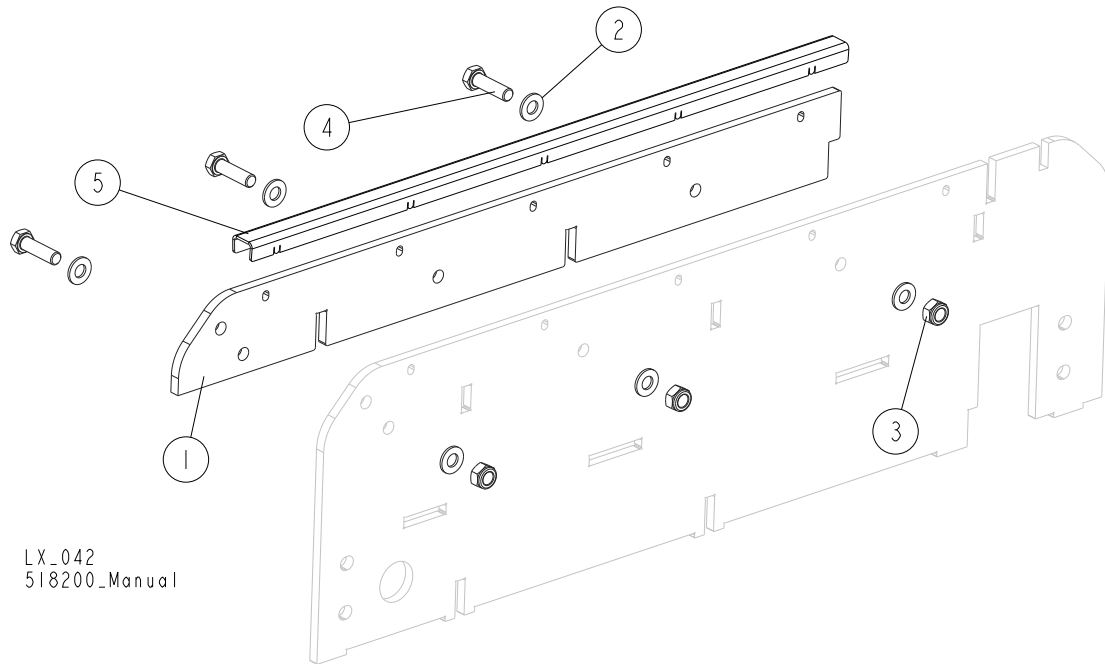
3.10 Additional Cross Bars w/Covers & Side Support Rollers (Option)



LX_041
518200_Manual

REF.	DESCRIPTION (◆ indicates parts available in assemblies only)	PART #	QTY
	ADDITIONAL CROSS BARS W/COVERS & SIDE SUPPORT ROLLERS (FOR LX100 S2 FRAME)	518200-S2	1/-/-
	ADDITIONAL CROSS BARS W/COVERS & SIDE SUPPORT ROLLERS (FOR LX100 S3 FRAME)	518200-S3	-/1/-
	ADDITIONAL CROSS BARS W/COVERS & SIDE SUPPORT ROLLERS (FOR LX100 S4 FRAME)	518200-S4	-/-/1-
	ADDITIONAL CROSS BARS W/COVERS & SIDE SUPPORT ROLLERS (FOR LX100 S5 FRAME)	518200-S5	-/-/1
1	BAR, CROSS W/COVER - ADDITIONAL See Section 3.11	518180	4/2/8/10
2	ROLLER ASSEMBLY, SIDE SUPPORT See Section 3.12	518181	2/3/4/5
3	WEDGE, LX100 WIDE BED	518204-1	1

3.11 Additional Cross Bar w/Cover (Option)

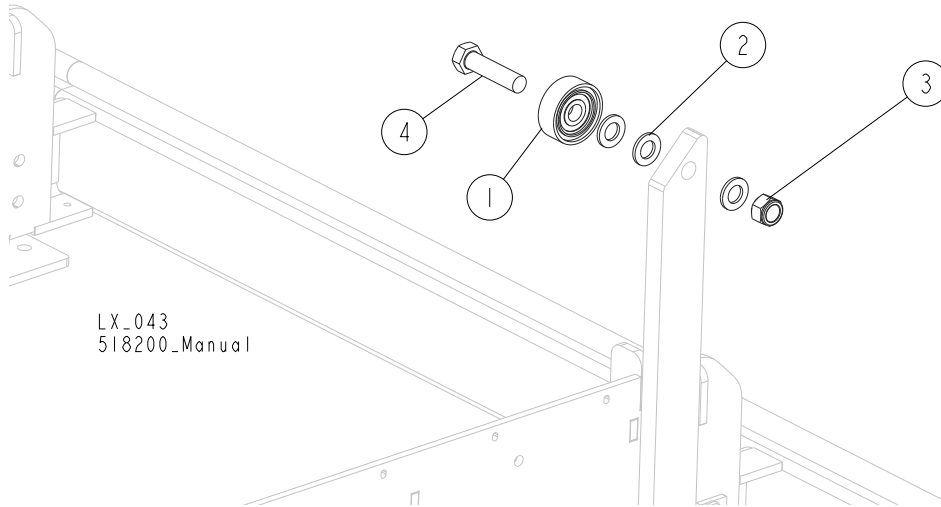


REF.	DESCRIPTION (◆ indicates parts available in assemblies only)	PART #	QTY
	BAR, CROSS W/COVER - ADDITIONAL	518180	1
1	BAR	517730	1
2	WASHER, 10.5 FLAT ZINC	F81055-1	6
3	NUT, M10-8-B HEX NYLON ZINC LOCK	F81033-1	3
4	BOLT, M10X35 8.8 HEX HEAD FULL THREAD ZINC	F81003-17	3
5	COVER, CROSS RAIL (WIDE)	518179	1

3 BED FRAME PARTS

Side Support Roller (Option)

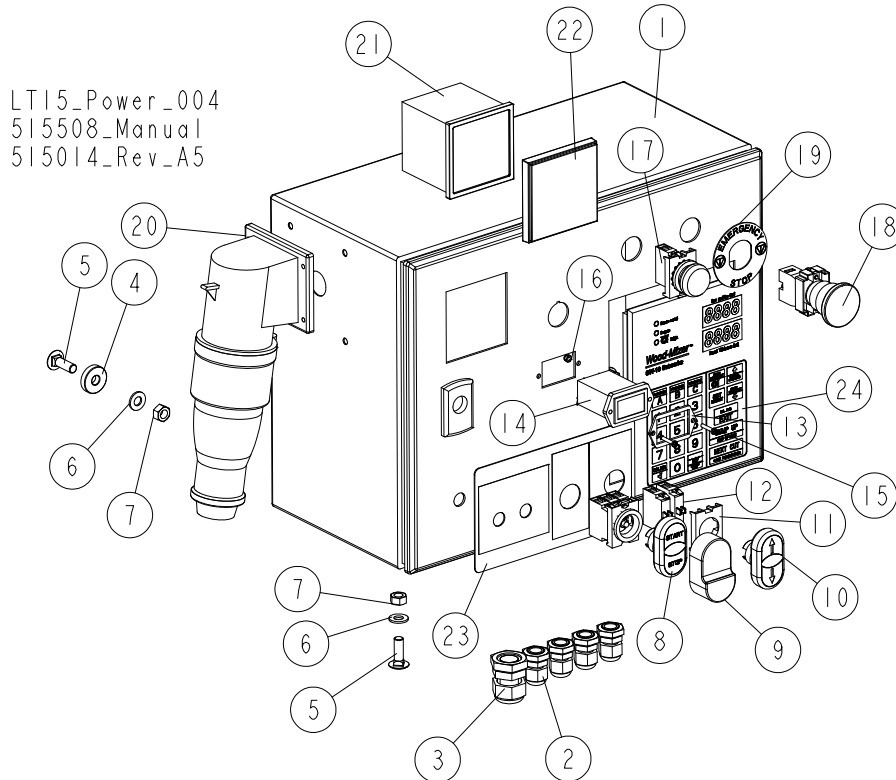
3.12 Side Support Roller (Option)



REF.	DESCRIPTION (◆ indicates parts available in assemblies only)	PART #	QTY
	ROLLER ASSEMBLY, SIDE SUPPORT	518181	1
1	ROLLER, SIDE SUPPORT	015014-1	1
2	WASHER, 17 SPLIT LOCK ZINC	F81058-1	3
3	NUT, M16-8 HEX NYLON ZINC LOCK	F81036-2	1
4	BOLT, M16x65-8.8-B HEX HEAD FULL THREAD ZINC	F81006-1	1

SECTION 4 SAWMILL MAST

4.1 Electrical Box with Control Panel

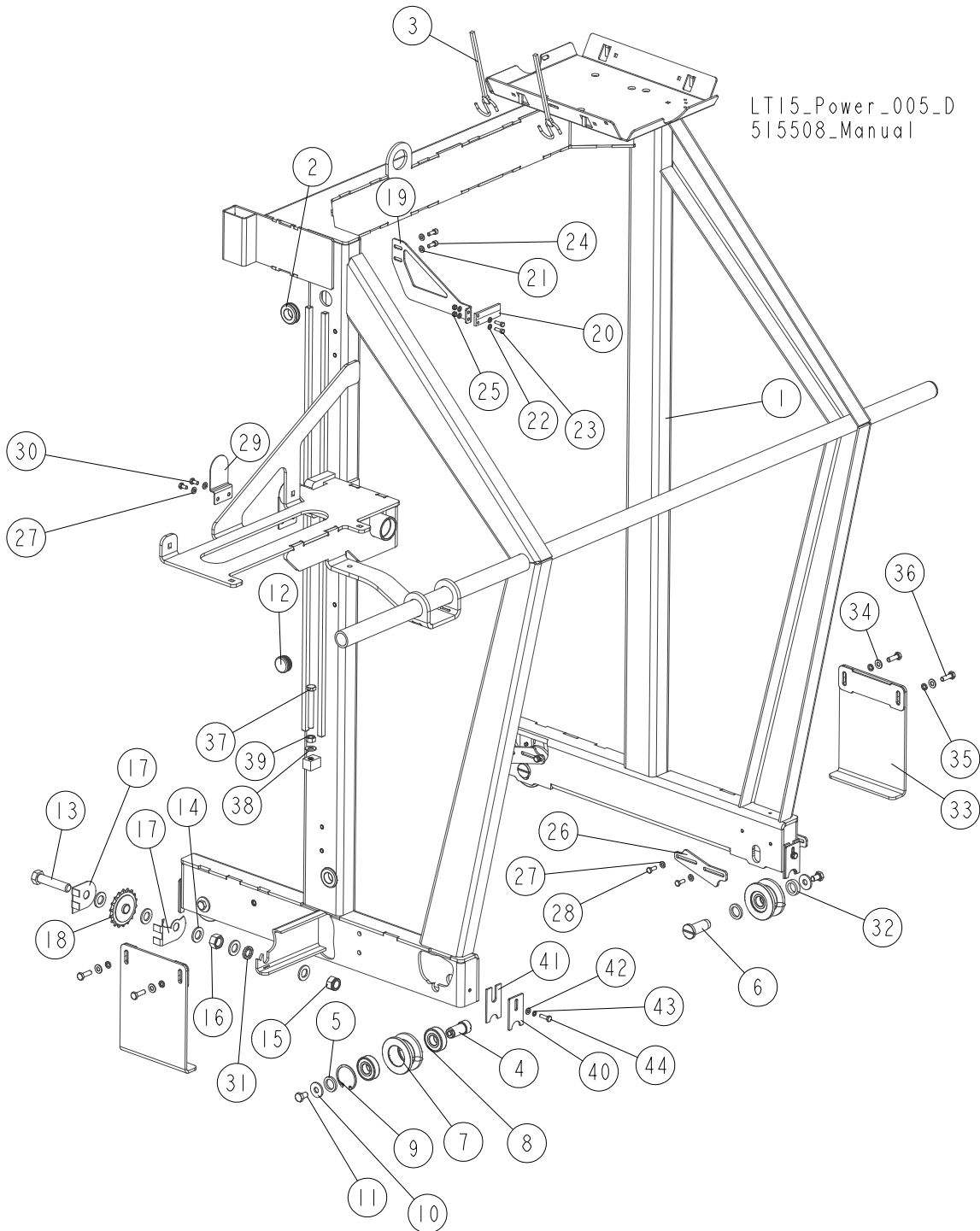


REF.	DESCRIPTION (◆ indicates parts available in assemblies only)	PART #	QTY
	BOX, ELECTRICAL	515014	1
1	BOX (300X400X200)	515025	1
2	GLAND, DP9/H CABLE	F81096-2	4
3	GLAND, DP16/H CABLE	F81096-7	1
4	WASHER, 8.5/25-6 POLYAMIDE	523952	2
5	BOLT, M8X25-8.8 CARRIAGE ZINC	F81002-67	4
6	WASHER, 8.4 FLAT ZINC	F81054-1	4
7	NUT, M8-8-B HEX ZINC	F81032-1	4
8	SWITCH, 24V ILLUMINATED START/STOP (MOELLER)	090452	1
9	DIAPHRAGM, M22-T-DD	090462	1
10	ACTUATOR, M22-DD-S-X7/X7 BUTTON	090917	1
11	CONNECTOR, M22-A	100905	1
12	ELEMENT, M22 K10 MOELLER CONTACT	091362	2
13	GASKET, HOUR METER	093346	1
14	METER, HOUR (HOBBS-HONEYWELL)	093166	1
15	SCREW, M3X16 5.8-B CROSS RECESSED PAN HEAD ZINC	F81028-3	2
16	NUT, M3-6 HEX NYLON ZINC LOCK	F81028-2	2
17	LIGHT, M22 LED 24V BLUE CONTROL	090448	1
18	SWITCH, XB4 BS542 EMERGENCY STOP	086556	1
19	WASHER, EMERGENCY STOP SWITCH	086561	1
20	PLUG, 32A 5P 400V	E85235	1
21	AMMETER, EQB72 25/50A	505371	1

4**SAWMILL MAST***Electrical Box with Control Panel*

REF.	DESCRIPTION (◆ indicates parts available in assemblies only)	PART #	QTY	
22	COVER, IP65 EQB72 AMMETER	505389	1	
23	DECAL, ELECTRICAL BOX	515369	1	
24	SW-10 CONTROLLER	500628	1	

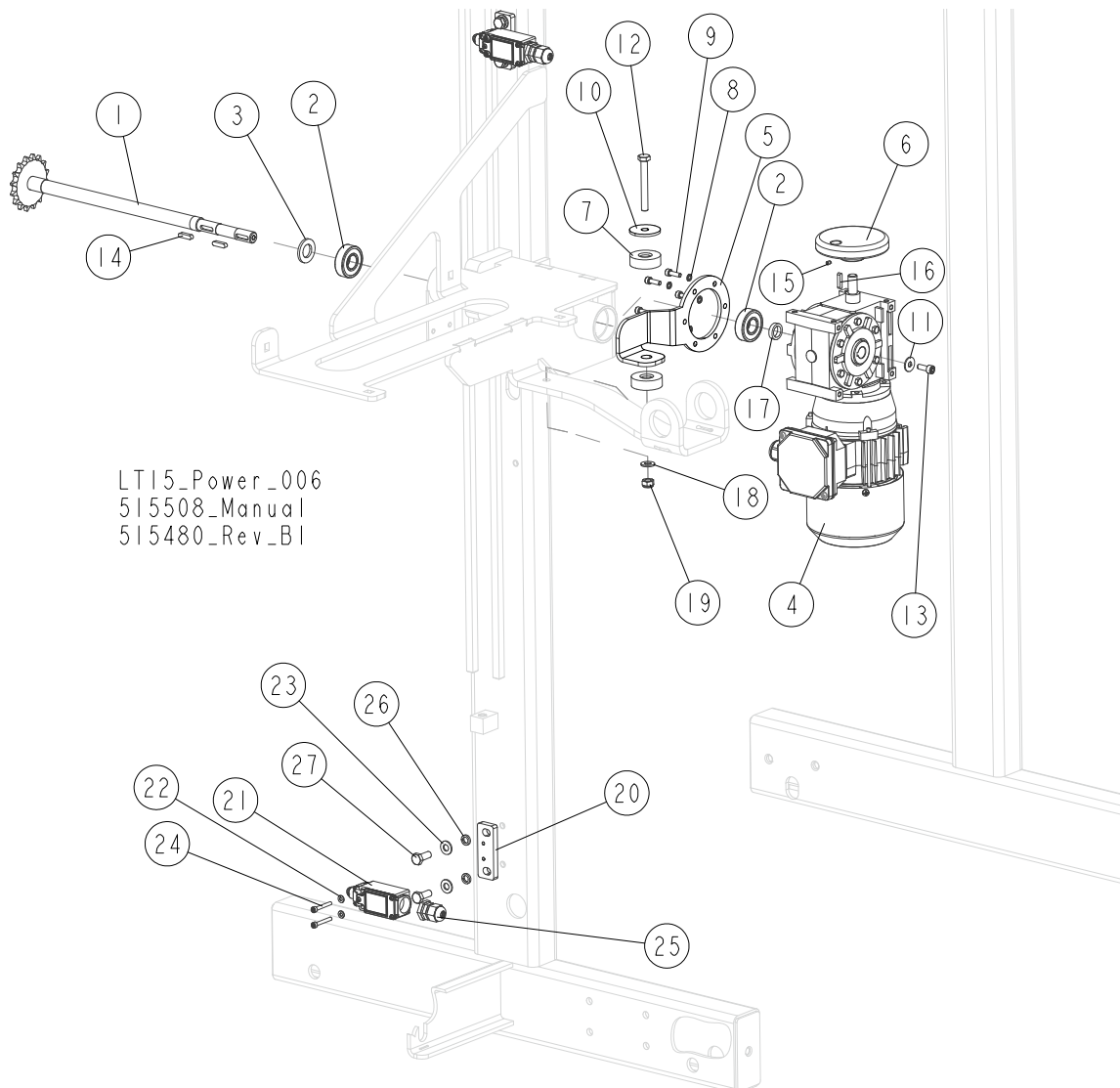
4.2 Track Rollers, Scale Indicator and Scrapers



REF.	DESCRIPTION (◆ indicates parts available in assemblies only)	PART #	QTY
1	MAST, SAWMILL	515030-1	1
2	GROMMET, 22MM I.D. RUBBER	087400	3
3	STRAP, 24" RUBBER WITH HOOKS	P11258	2
4	PIN, FIXED TRACK ROLLER	515018	2
5	WASHER, 20.5X30-4 ZINC-PLATED	515021-1	2
6	PIN, ADJUSTABLE ROLLER	515101	2
	ROLLER ASSEMBLY, TRACK	515015	4

REF.	DESCRIPTION (◆ indicates parts available in assemblies only)	PART #	QTY	
7	ROLLER, TRACK	514889	1	
8	BEARING, 6204 2RS CX ROLLING	088447	2	
9	RING, W 47 INSIDE RETAINING	089653	1	
10	WASHER, 11/30-3 ZINC-PLATED	088787-1	4	
11	BOLT, M10X16-8.8 HEX HEAD FULL THREAD ZINC	F81003-13	4	
12	CAP, 1530 (HOLE 30) ROUND TUBE	517616	2	
13	BOLT, M16X75-8.8-B HEX HEAD FULL THREAD ZINC	F81006-10	1	
14	WASHER, 17 SPLIT LOCK ZINC	F81058-1	5	
15	NUT, M16-8 HEX NYLON ZINC LOCK	F81036-2	1	
16	NUT, M16-8 HEX ZINC	F81036-1	1	
17	GUARD, CHAIN SPROCKET	092566-1	2	
18	SPROCKET, #40 IDLER 17T 5/8 ID	P04333	1	
	INDICATOR, BLADE HEIGHT SCALE - COMPLETE	515106	1	
19	BRACKET, SCALE INDICATOR	515094-1	1	
20	INDICATOR, BLADE HEIGHT SCALE	094821	1	
21	WASHER, 6.4 FLAT ZINC	F81053-1	2	
22	WASHER, 5.3 FLAT ZINC	F81052-1	4	
23	BOLT, M5 X 16-8.8 HEX HEAD FULL THREAD ZINC	F81000-20	2	
24	SCREW, M6X16 8.8 HEX SOCKET HEAD CAP ZINC	F81001-21	2	
25	NUT, M5-8 DIN985 HEX NYLON ZINC LOCK	F81030-2	2	
26	BAR, ROLLER ADJUSTMENT	520177-1	4	
27	WASHER, 6.4 FLAT ZINC	F81053-1	10	
28	BOLT, M6X16-8.8 HEX HEAD FULL THREAD ZINC	F81001-15	8	
29	GUARD, SAW HEAD UPPER SPROCKET	092567-1	1	
30	BOLT, M6X12 8.8 HEX HEAD FULL THREAD ZINC	F81001-7	2	
31	BUSHING	095937-1	1	
32	BUSHING, 21/30-7.2 WM1000 ZINC-PLATED	503478-1	2	
	PLATE, COMPLETE	517608	2	
33	PLATE WELDMENT	517605-1	1	
34	WASHER, 8.4 FLAT ZINC	F81054-1	1	
35	WASHER, 8.2 SPLIT LOCK ZINC	F81054-4	1	
36	BOLT, M8x25-8.8-B HEX HEAD FULL THREAD ZINC	F81002-5	1	
37	BOLT, M10X80 8.8 HEX HEAD FULL THREAD ZINC	F81003-76	1	
38	WASHER, 10.5 ZINC FLAT	F81055-1	1	
39	NUT, M10 8 HEX ZINC	F81033-3	1	
	COMPLETE SCRAPER	517611	4	
40	PLATE, SCRAPER CLAMP	517610-1	1	
41	SCRAPER	517609	1	
42	WASHER, 6.4 FLAT ZINC	F81053-1	1	
43	WASHER, Z 6.1 SPLIT LOCK ZINC	F81053-3	1	
44	BOLT, M6X20 8.8 HEX HEAD FULL THREAD ZINC	F81001-2	1	

4.3 Up/Down System Control Subassembly & Limit Switches



REF.	DESCRIPTION (◆ indicates parts available in assemblies only)	PART #	QTY
1	SHAFT W/SPROCKET, LT10 VERSION III	513307	1
2	BEARING, 6203-2RS ROLLING	086114	2
3	WASHER, 17 SPLIT LOCK ZINC	F81058-1	1
	SUBASSEMBLY, LT15 UP/DOWN SYSTEM CONTROL	515033	1
4	GEAR MOTOR, MR-03/16[0.25-280011/24]WJ2/B3	514045	1
5	PLATE, TORQUE ARM	515087-1	1
6	KNOB	513305	1
7	WASHER, RUBBER VIBRATION DAMPING	090443	2
8	WASHER, 5.1 SPLIT LOCK	F81052-2	6
9	SCREW, M5x16-8.8 HEX SOCKET HEAD CAP ZINC	F81000-25	6
10	WASHER, 5x9x38	513086	1
11	WASHER, 6.5 SPECIAL FLAT ZINC	F81053-11	1
12	BOLT, M8X65 8.8 HEX HEAD FULL THREAD ZINC	F81002-9	1
13	SCREW, M6x16 8.8 HEX SOCKET HEAD CAP ZINC	F81001-21	1
14	KEY, A5x5x20 PARALLEL	513320	2
15	SCREW, M4x6 ISO4028 SET	F81014-6	1

4

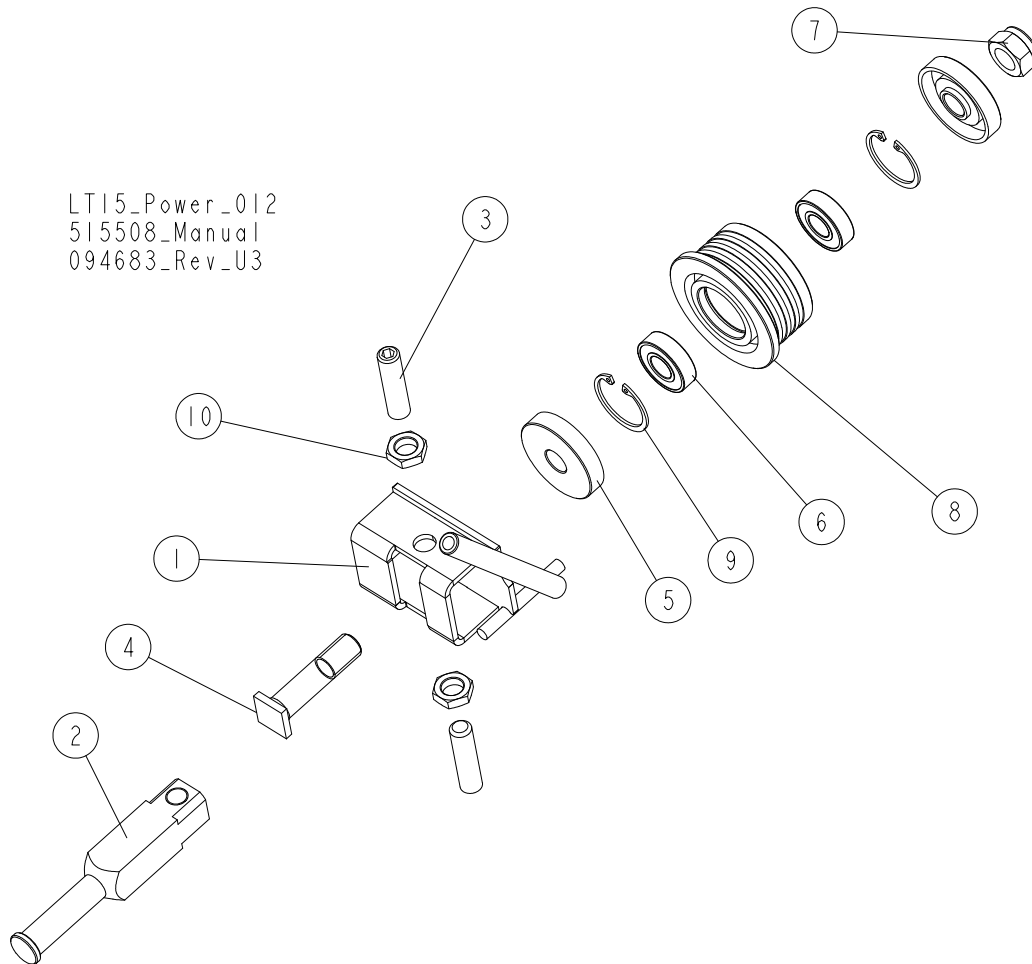
SAWMILL MAST

Up/Down System Control Subassembly & Limit Switches

REF.	DESCRIPTION (◆ indicates parts available in assemblies only)	PART #	QTY	
16	KEY, A4x4x20 PARALLEL	513321	1	
17	BUSHING, 14/20-5	513160	1	
18	WASHER, 8.4 FLAT ZINC	F81054-1	1	
19	NUT, M8 8 HEX NYLON ZINC LOCK	F81032-2	1	
	SWITCH, LIMIT W/MOUNT PLATE	094227	2	
20	PLATE, LIMIT SWITCH ZINC-PLATED MOUNT	094228-1	1	
21	SWITCH, KMB2S11 LIMIT	100910	1	
22	WASHER, 4.3 FLAT ZINC	F81051-2	2	
23	WASHER, 8.4 FLAT ZINC	F81054-1	2	
24	SCREW, M4x30-8.8 HEX SOCKET HEAD CAP ZINC	F81000-85	2	
25	GLAND, DP9/H CABLE	F81096-2	1	
26	WASHER, 8.2 SPLIT LOCK ZINC	F81054-4	2	
27	BOLT, M8x20-8.8-B HEX HEAD FULL THREAD ZINC	F81002-4	2	

SECTION 5 BLADE GUIDES & BLADE GUIDE ARM

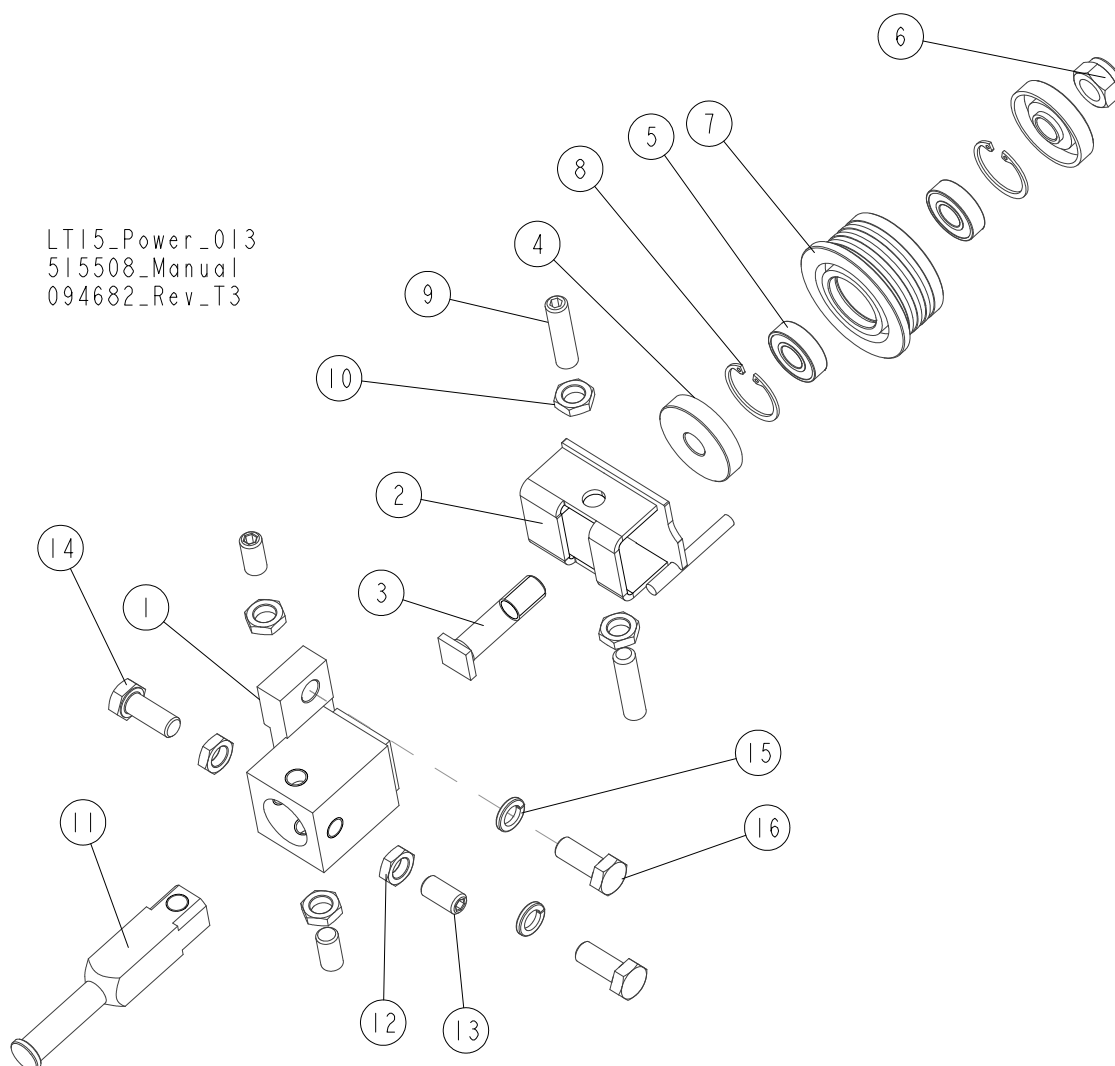
5.1 Blade Guide Assembly, Idle Side



REF.	DESCRIPTION (◆ indicates parts available in assemblies only)	PART #	QTY
	BLADE GUIDE ASSEMBLY, IDLE SIDE	094683	1
1	BRACKET WELDMENT, BLADE GUIDE ROLLER ZINC-PLATED	094681-1	1
2	SHAFT, ZINC-PLATED BLADE GUIDE MOUNT	503588-1	1
3	SCREW, M10X1X40 DIN913 A2-70 STAINLESS STEEL SET	F81015-2	2
	ROLLER, BLADE GUIDE NARROW W/BEARINGS	087887	1
4	SHAFT, BLADE GUIDE ROLLER ZINC-PLATED	087763-1	1
5	RING, ZINC-PLATED SPACER	087891-1	2
6	BEARING, 6001 2RSR (FAG, SKF)	087893	2
7	NUT, M12 8 HEX NYLON ZINC LOCK	F81034-2	1
8	ROLLER, BLADE GUIDE NARROW W/BEARINGS	087889	1
9	RING, W28 INSIDE RETAINING	F81090-9	2
10	NUT, M10X1-04-ST-A2E ISO8675 THIN	F81033-10	2

5.2 Blade Guide Assembly, Drive Side

LT15_Power_013
 515508_Manual
 094682_Rev_T3



REF.	DESCRIPTION (◆ indicates parts available in assemblies only)	PART #	QTY
1	BRACKET, BLADE GUIDE MOUNT (METRIC GP SAW HEAD)	087744	1
	BLADE GUIDE ASSEMBLY, DRIVE SIDE	094682	1
2	BRACKET WELDMENT, BLADE GUIDE ROLLER ZINC-PLATED	094679-1	1
	ROLLER, BLADE GUIDE NARROW W/BEARINGS	087887	1
3	SHAFT, BLADE GUIDE ROLLER ZINC-PLATED	087763-1	1
4	RING, ZINC-PLATED SPACER	087891-1	2
5	BEARING, 6001 2RSR (FAG, SKF)	087893	2
6	NUT, M12 8 HEX NYLON ZINC LOCK	F81034-2	1
7	ROLLER, BLADE GUIDE NARROW W/BEARINGS	087889	1
8	RING, W28 INSIDE RETAINING	F81090-9	2
9	SCREW, M10X1X40 DIN913 A2-70 STAINLESS STEEL SET	F81015-2	2
10	NUT, M10X1-04-ST-A2E ISO8675 THIN	F81033-10	2
11	SHAFT, ZINC-PLATED BLADE GUIDE MOUNT	503588-1	1
12	NUT, M10X1-04-ST-A2E ISO8675 THIN	F81033-10	4
13	SCREW, M10X1X25 DIN 913 STAINLESS STEEL SET	F81015-4	3

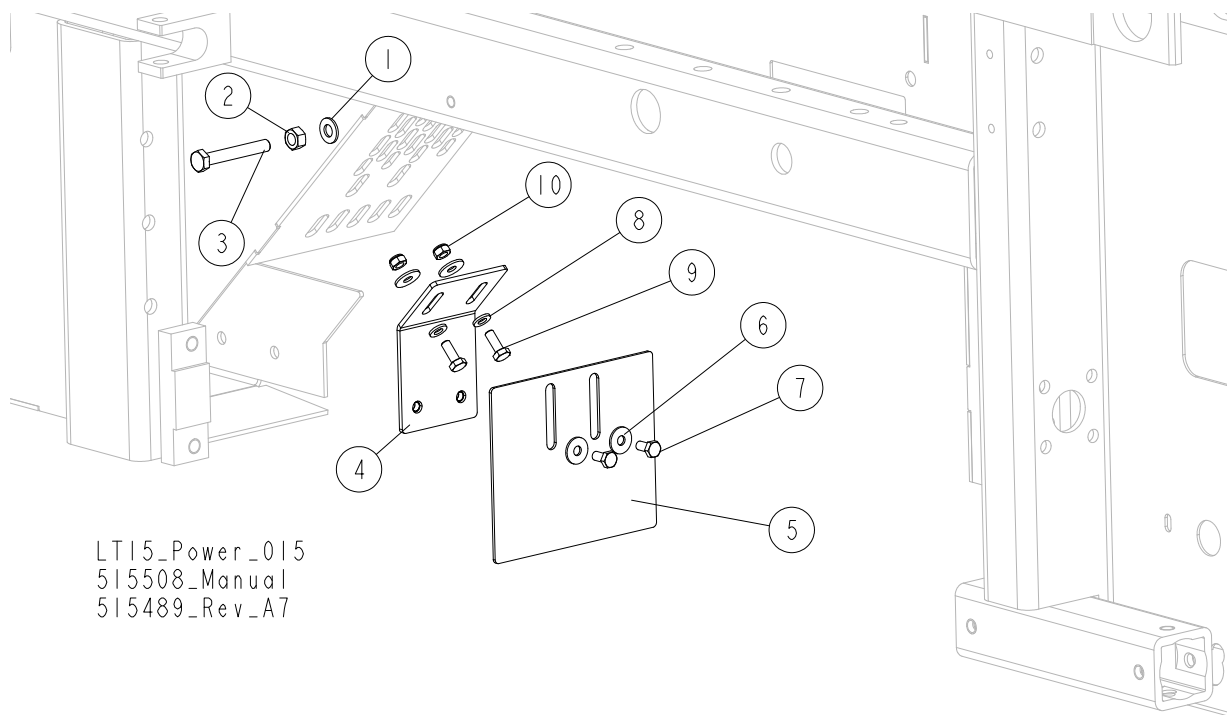
BLADE GUIDES & BLADE GUIDE ARM

Blade Guide Assembly, Drive Side

5

REF.	DESCRIPTION (◆ indicates parts available in assemblies only)	PART #	QTY	
14	BOLT, M10X1X25 DIN 933 STAINLESS STEEL	F81003-28	1	
15	WASHER, Z10.2 SPLIT LOCK ZINC	F81055-2	2	
16	BOLT, M10X25 8.8 HEX HEAD FULL THREAD ZINC	F81003-11	2	

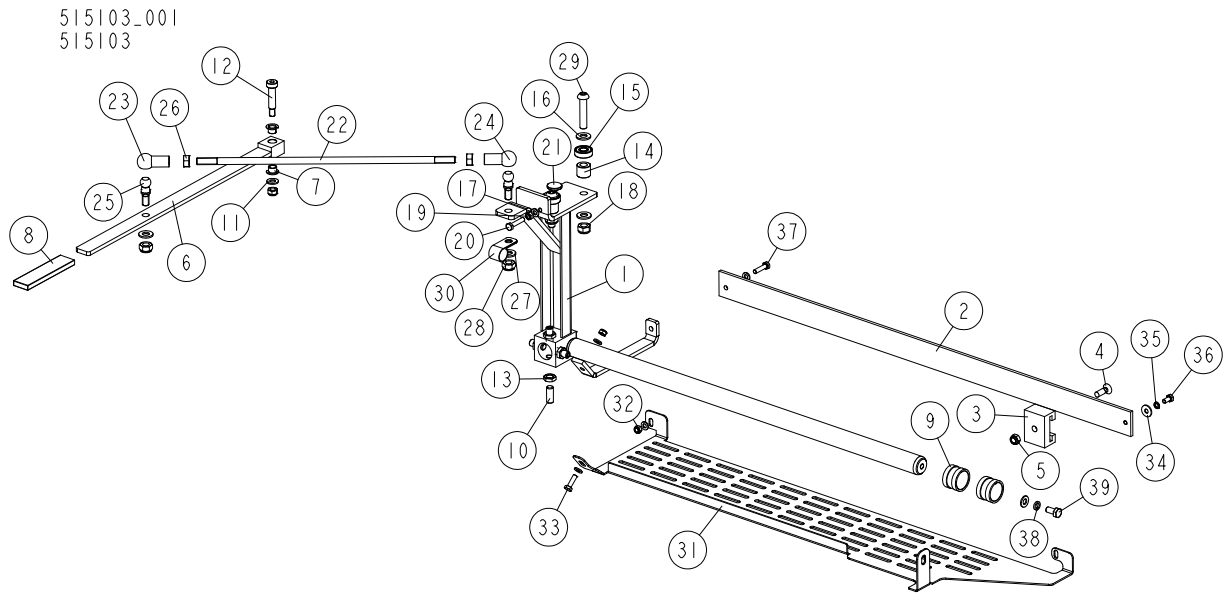
5.3 Blade Guide Roller Guard



LT15_Power_015
 515508_Manual
 515489_Rev_A7

REF.	DESCRIPTION (* Indicates Parts Available In Assemblies Only)	PART #	QTY
1	WASHER, 8.4 FLAT ZINC	F81054-1	1
2	NUT, M8-8-B HEX ZINC	F81032-1	1
3	BOLT, M8X55-8.8 HEX HEAD ZINC	F81002-8	1
4	BRACKET, BLADE GUIDE ROLLER GUARD	092378-1	1
5	GUARD, BLADE GUIDE ROLLER	092379-1	1
6	WASHER, 6.5 SPECIAL FLAT ZINC	F81053-11	4
7	BOLT, M6X12 8.8 HEX HEAD FULL THREAD ZINC	F81001-7	2
8	WASHER, 6.4 FLAT ZINC	F81053-1	2
9	BOLT, M6X16-8.8 HEX HEAD FULL THREAD ZINC	F81001-15	2
10	NUT, M6-8-B HEX NYLON ZINC LOCK	F81031-2	2

5.4 Blade Tensioner Assembly

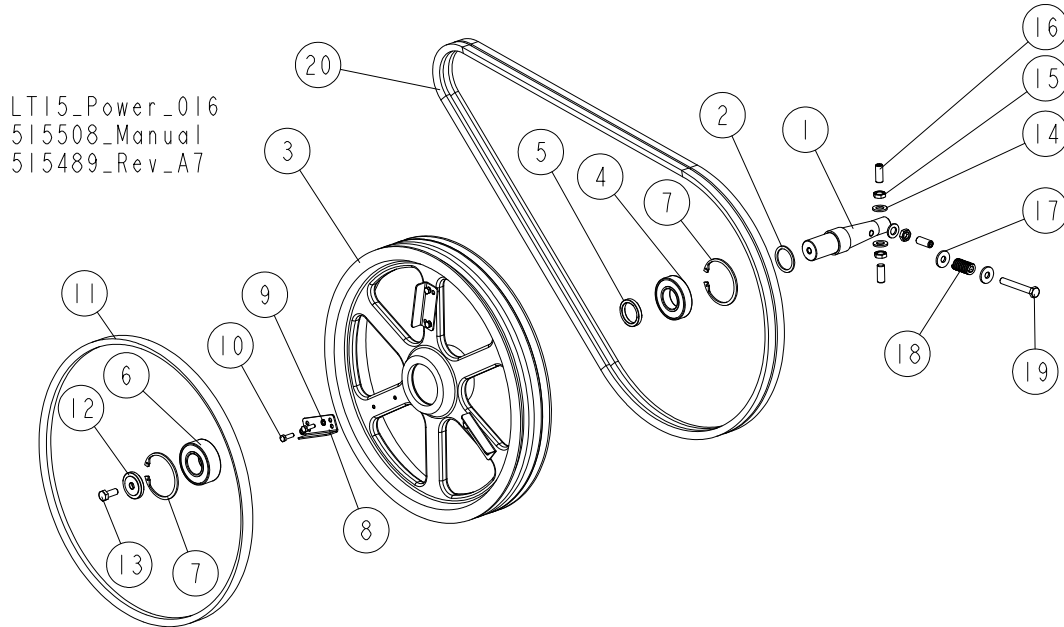


REF	DESCRIPTION (u indicates parts available in assemblies only)	PART #	QTY
-	BLADE GUIDE ARM W/LEVER - COMPLETE	515103	1
1	ARM WELDMENT, BLADE GUIDE	094138-1	1
2	BAR, BLADE GUARD	088306	1
3	BRACKET, BLADE GUIDE ARM GUIDE	088305	1
4	SCREW, M8X25-5.8 CROSS RECESSED COUNTERS	F81002-51	1
5	NUT, M8-8-B HEX NYLON ZINC LOCK	F81032-2	2
-	LEVER, BLADE GUIDE ARM ADJUSTMENT - COMP	515104	1
6	LEVER, BLADE GUIDE ARM ADJUSTMENT	515105-1	1
7	BEARING, TUF1 10.090 (CX)	099074	2
8	CAP, RRWA 91626 HANDLE END	086875	1
9	BUSHING, BLADE GUIDE	086684	2
10	SCREW, M10X1X25 DIN 913 STAINLESS STEEL	F81015-4	4
11	WASHER, 8.4 FLAT ZINC	F81054-1	2
12	BOLT, 10/M8X35 12.9 ISO7379 SHOULDER	F81003-63	1
13	NUT, M10X1-04-ST-A2 ISO 8675 THIN	F81033-10	4
14	BUSHING, 11/20-17 ZINC-PLATED	094255-1	2
15	BEARING, 6000.2RSR	087471	2
16	WASHER, 10.5 FLAT ZINC	F81055-1	4
17	WASHER, 6.4 FLAT ZINC	F81053-1	5
18	NUT, M10-8-B HEX NYLON ZINC LOCK	F81033-1	2
19	NUT, M6 8 HEX ZINC	F81031-1	1
20	BOLT, M6X30-8.8 HEX HEAD FULL THREAD	F81001-13	1
21	BUSHING, BLADE GUIDE ARM	095936	1
-	STUD BOLT ASSEMBLY, ARM LEVER CONNECTION	094204	1
22	BOLT, ZINC-PLATED STUD	094203-1	1
23	SEAT, BALL	093824	1
24	SEAT, BALL	093824-1	1
25	STUD, 16/SW-13 DIN71803-C BN486 BALL	093823	2
26	NUT, M10-8-B-HEX ZINC	F81033-3	2

REF	DESCRIPTION (u indicates parts available in assemblies only)	PART #	QTY	
27	WASHER, 10.5 FLAT ZINC	F81055-1	2	
28	NUT, M10-8-B HEX NYLON ZINC LOCK	F81033-1	2	
29	BOLT, M10X50-8.8 HEX HEAD FULL THREAD ZI	F81003-131	2	
30	CLAMP, 5/8 EMT COATED	010748	1	
31	GUARD, BOTTOM	525592-1	1	
32	NUT, M6-8-B HEX NYLON ZINC LOCK	F81031-2	2	
33	BOLT, M6X20 8.8 HEX HEAD FULL THREAD ZIN	F81001-2	1	
34	WASHER, 6.5 SPECIAL FLAT ZINC	F81053-11	1	
35	WASHER, Z 6.1 SPLIT LOCK	F81053-3	1	
36	BOLT, M6X12-8.8 HEX HEAD FULL THREAD ZIN	F81001-7	1	
37	BOLT, M6X25-5.8 HEX HEAD FULL THREAD ZIN	F81001-3	1	
38	WASHER 8,2 SPLIT LOCK ZINC	F81054-4	1	
39	BOLT, M8X16 -8.8-B HEX HEAD FULL THREAD	F81002-20	1	

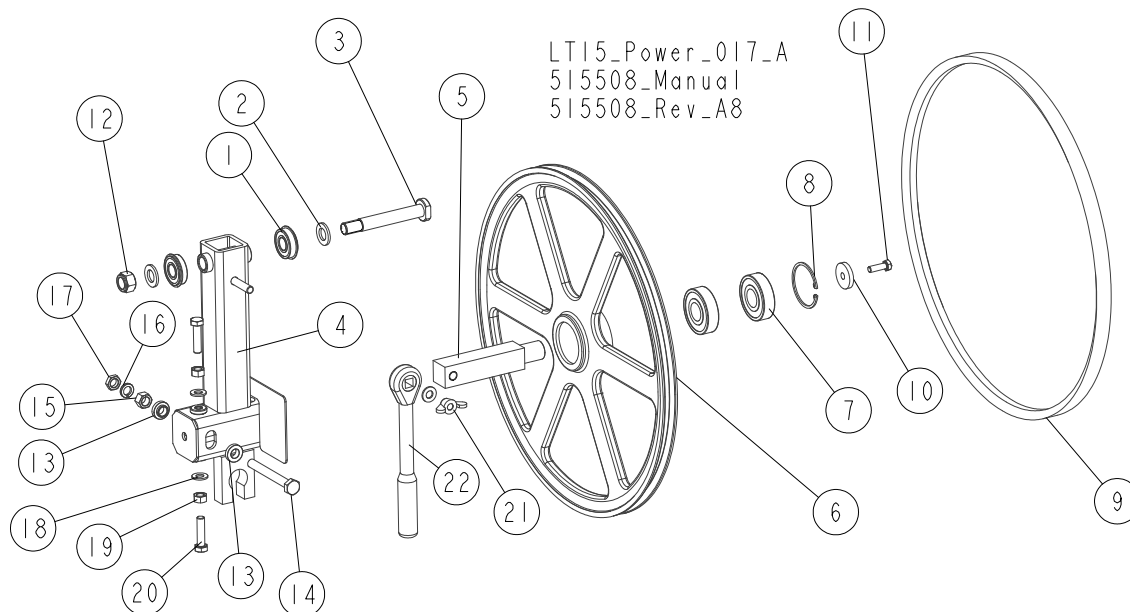
SECTION 6 BLADE WHEELS & TENSIONER

6.1 Blade Wheel Assembly, Drive Side



REF.	DESCRIPTION (◆ indicates parts available in assemblies only)	PART #	QTY
1	SHAFT, LT15 DRIVE SIDE BLADE WHEEL	093850	1
2	WASHER, 36/45-2	091851	1
	WHEEL, BLADE DRIVE - COMPLETE	550620	1
3	WHEEL, LT20 DRIVE	090646-1	1
4	BEARING, 6207-2RS1	014811	1
5	BUSHING, SPACER	096778	1
6	BEARING, 3207B.2RSR.TVH "FAG"	092005	1
7	RING, W72 INSIDE RETAINING	F81090-4	2
8	WING	097808-1	3
9	WASHER, Z 6.1 SPLIT LOCK ZINC	F81053-3	6
10	BOLT, M6X20 8.8 HEX HEAD FULL THREAD ZINC	F81001-2	6
11	V-BELT, B-57 DRIVE	P04185-2	1
12	WASHER, DRIVE SIDE BLADE WHEEL ZINC-PLATED	092006	1
13	BOLT, M10X25 8.8 HEX HEAD FULL THREAD ZINC	F81003-11	1
14	WASHER, 13 FLAT ZINC	F81056-1	3
15	NUT, M12X1.25 DIN 439 A2-70 THIN STAINLESS STEEL	F81034-9	3
16	SCREW, M12X1.25X30 DIN913 A2-70 SET	F81016-1	3
17	WASHER, 10.5 SPECIAL FLAT ZINC	F81055-6	2
18	SPRING, 3/4 O.D.X 1 1/2 DIE	034430	1
19	BOLT, M10X75-8.8 HEX HEAD ZINC	F81003-15	1
20	V-BELT, 2BX81	014819-2	1

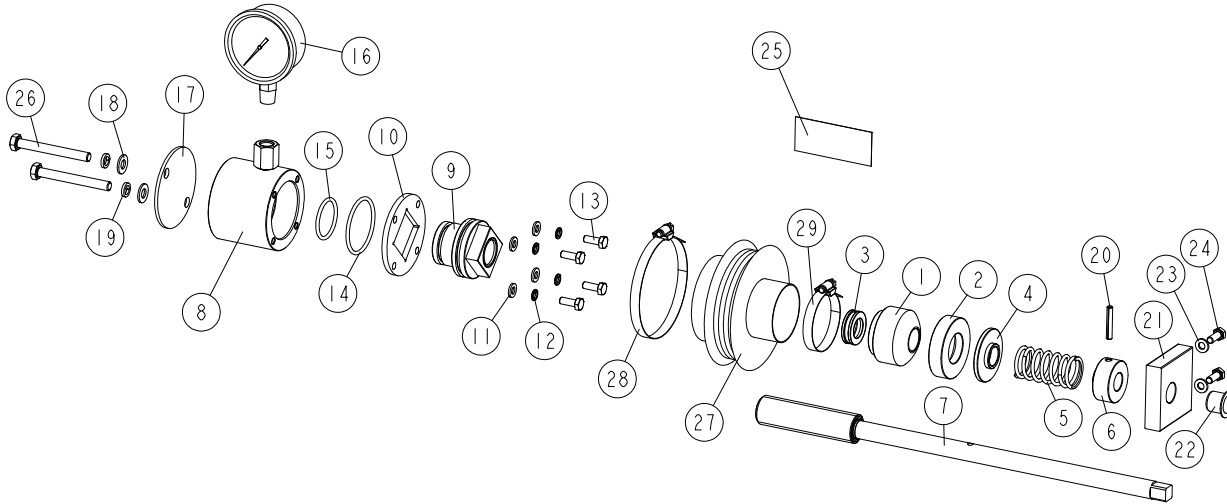
6.2 Blade Wheel Assembly, Idle Side



REF.	DESCRIPTION (◆ Indicates Parts Available in Assemblies Only)	PART #	QTY	
1	BEARING, 6203-2RS NR NSK W/SNAP RING	086395	2	
2	WASHER, 17 SPLIT LOCK ZINC	F81058-1	2	
3	PIN, ARM BEARING MOUNT	086404	1	
4	ROCKER ARM, IDLE SIDE WHEEL - COMPLETE	093857-1	1	
5	SHAFT, IDLE SIDE WHEEL (METRIC)	096045	1	
	PULLEY ASSEMBLY, 19"(482.6 MM) BLADE IDLE SIDE	A08218	1	
6	SHEAVE, 18.62" IDLER	P08125	1	
7	BEARING, 6305 2RS NSK	P08066	2	
8	RING, 2 7/16" BEVELLED SNAP	F04254-21	1	
9	V- BELT, B-57 DRIVE	P04185-2	1	
10	WASHER, ZINC-PLATED CLAMPING	093854-1	1	
11	BOLT, M8X25-8.8-B HEX HEAD FULL THREAD ZINC	F81002-5	1	
12	NUT, M16-8 HEX NYLON ZINC LOCK	F81036-2	1	
13	BUSHING, 12.8/23.8-8.6 16-3.3 ZINC-PLATED	086769-1	2	
14	BOLT, M12X1.25X100-8.8 HEX HEAD FULL THREAD ZINC	F81004-41	1	
15	NUT, M12X1.25-8-B HEX ZINC	F81034-8	1	
16	WASHER, Z12.2 SPLIT LOCK ZINC	F81056-2	1	
17	NUT, M12X1.25-8 THIN ZINC	F81034-5	1	
18	WASHER, 10.5 FLAT ZINC	F81055-1	3	
19	NUT, M10 8 HEX ZINC	F81033-3	2	
20	BOLT, M10X40-8.8 HEX HEAD FULL THREAD ZINC	F81003-16	2	
21	NUT, M10 ZINC WING	F81033-8	1	
22	WRENCH, BLADE TENSION	091620	1	

6.3 Blade Tensioner Assembly

510640_001
510640_MANUAL

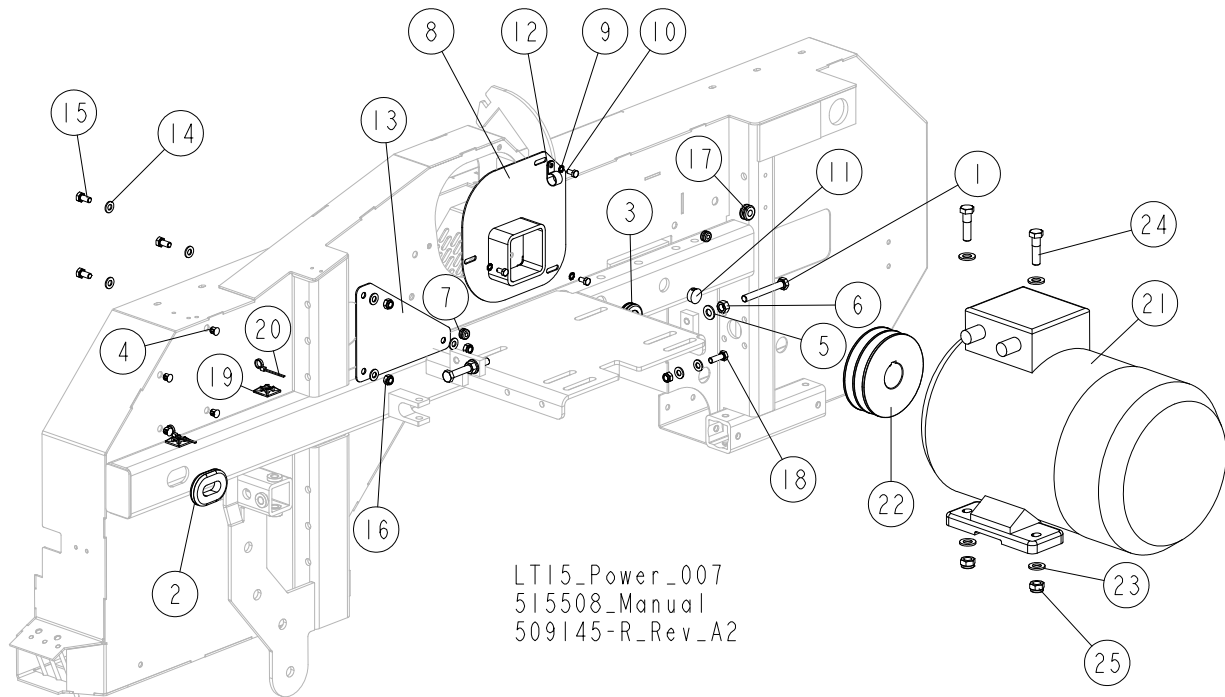


REF	DESCRIPTION (u indicates parts available in assemblies only)	PART #	QTY
-	COMPLETE BLADE TENSIONER	510640	1
1	HOUSING, BALL THRUST BEARING	510635	1
2	SOCKET, BEARING HOUSING	510634-1	1
3	BEARING, 51103. BALL THRUST	086675	1
4	WASHER	510633-1	1
5	SPRING, 60X23X3	088992	1
6	BUSHING, BLADE TENSIONER SCREW	510636-1	1
7	SCREW, BLADE TENSIONER ZINC-PLATED	510650-1	1
-	CYLINDER ASSEMBLY	510641	1
8	CYLINDER ASSEMBLY WITH REDUCTION	550762-1	1
9	PISTON	510638	1
10	PLATE, CYLINDER	510490-1	1
11	WASHER, 6.4 FLAT ZINC	F81053-1	4
12	WASHER, Z 6.1 SPLIT LOCK	F81053-3	4
13	BOLT, M6X16-5.8 HEX HEAD FULL THREAD ZIN	F81001-15	4
14	O-RING, 46.2X3	510646	1
15	O-RING, 32.2X3	510647	1
16	GAUGE, 3000PSI/200 BAR OIL PRESSURE	505176	1
17	COVER, TENSIONER	550761-1	1
18	WASHER, 8.4 FLAT ZINC	F81054-1	2
19	WASHER 8,2 SPLIT LOCK ZINC	F81054-4	2
20	PIN 5X30 ROLL	F81044-21	1
21	BLOCK, TENSIONER HANDLE MOUNT	096730	1
22	BUSHING, GFM-1618-17	089589	1
23	WASHER, 6.4 FLAT ZINC	F81053-1	2
24	BOLT, M6X16-5.8 HEX HEAD FULL THREAD ZIN	F81001-15	2
25	DECAL, BLADE TENSION INDICATOR ADJUSTMEN	510643	1
26	BOLT, M8X70-8.8 HEX HEAD ZINC	F81002-71	2
-	BELLOWS, COMPLETE	515050	1

6**BLADE WHEELS & TENSIONER***Blade Tensioner Assembly*

REF	DESCRIPTION (u indicates parts available in assemblies only)	PART #	QTY	
27	BELLOWS	515051	1	
28	CLAMP, 70-80MM DIA.	F81095-5	1	
29	CLAMP, 40-60MM DIA.	F81095-4	1	

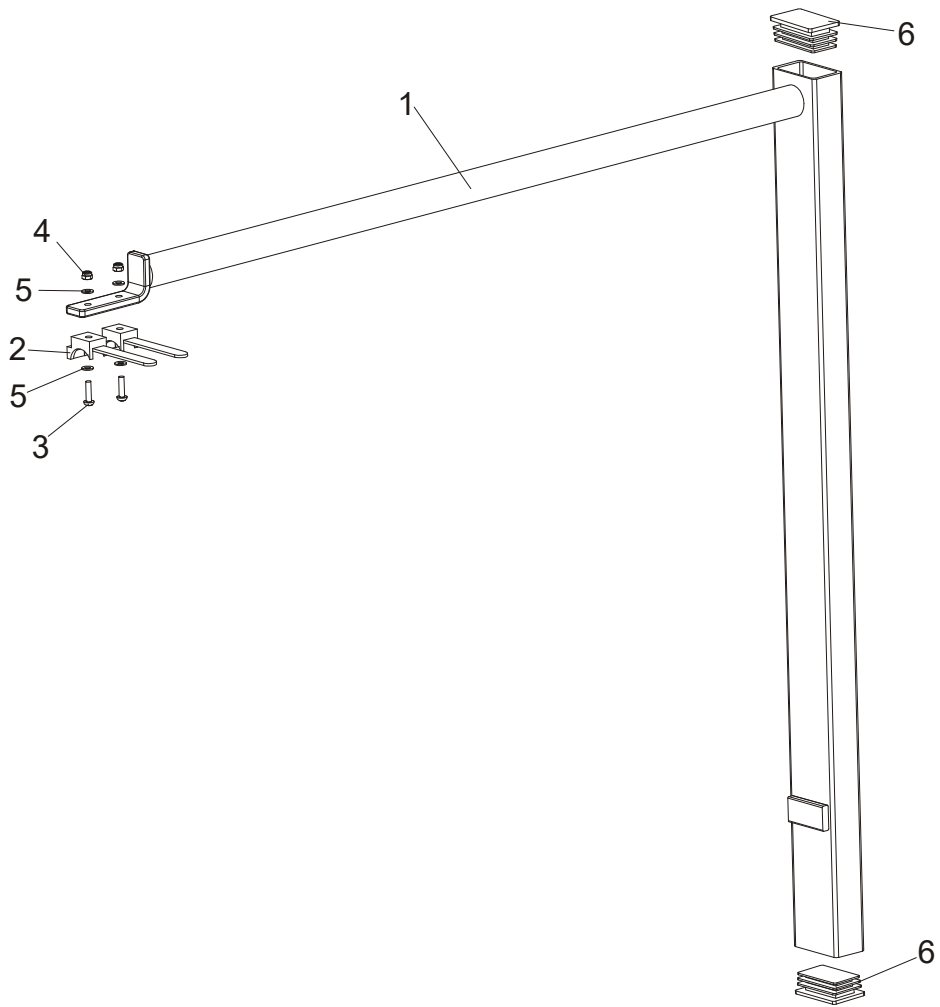
6.4 Electric Motor



LT15_Power_007
515508_Manual
509145-R_Rev_A2

REF.	DESCRIPTION (◆ indicates parts available in assemblies only)	PART #	QTY
1	BOLT, M10X80 8.8 HEX HEAD FULL THREAD ZINC	F81003-76	2
2	GROMMET, 38X26X4MM RUBBER	085613	1
3	GROMMET, 22MM I.D. RUBBER	087400	1
4	CAP, SR1086-9.5 #46009 (MOSS)	096846	4
5	WASHER, 10.5 FLAT ZINC	F81055-1	2
6	NUT, M10 8 HEX ZINC	F81033-3	2
7	GROMMET, 6MM I.D. RUBBER	085338	2
8	GUARD, E11/E15 MOTOR SHAFT	095335-1	1
9	WASHER, 6.4 EXTERNAL TOOTH ZINC LOCK	F81053-2	3
10	BOLT, M6X12 8.8 HEX HEAD FULL THREAD ZINC	F81001-7	3
11	CAP, 20.6 HEYMAN DP-812 HOLE	086811	1
12	CLAMP, VINYL COATED LOOM 1/2"X5/8"ID	010748	1
13	PLATE, COVER	094247-1	1
14	WASHER, 8.4 FLAT ZINC	F81054-1	8
15	BOLT, M8X16-8.8-B HEX HEAD FULL THREAD ZINC	F81002-20	3
16	NUT, M8 8 HEX NYLON ZINC LOCK	F81032-2	4
17	GROMMET, 3/8 DIA. RUBBER	025248	1
18	BOLT, M8X25-8.8-B HEX HEAD FULL THREAD ZINC	F81002-5	1
19	ELEMENT, E9S SELF-ADHESIVE MOUNTING	087695	2
20	WRAP, TKUV 20/5 WIRE TIE	F05089-1	2
	MOTOR KIT, LT15 - RUSSIA	509145-R	1
21	MOTOR, 11kW 1LE1002-1CA63-4AA4-Z ELECTRICAL	P85186	1
22	PULLEY, E15 MOTOR 2-GROOVE	091560	1
23	WASHER, 13 FLAT ZINC	F81056-1	8
24	BOLT, M12X45 8.8 HEX HEAD ZINC	F81004-32	4
25	NUT, M12 8 HEX NYLON ZINC LOCK	F81034-2	4

6.5 Power Cord Hanger

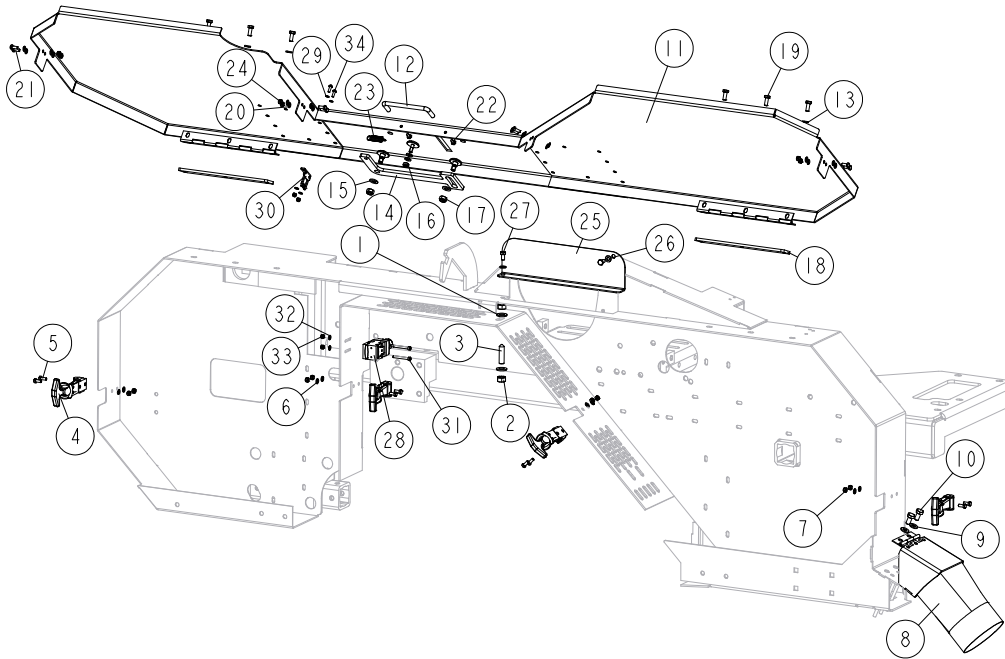


REF.	DESCRIPTION (◆ indicates parts available in assemblies only)	PART #	QTY	
	HANGER, LT15 POWER CORD - COMPLETE	097449	1	
1	HANGER, LT15 POWER CORD	086132-1	1	
2	HOLDER, UP30 CABLE PLASTIC TIE	F81082-1	2	
3	SCREW, M4X16 5.8-B CROSS RECESSED PAN HEAD ZINC	F81011-42	2	
4	NUT, M4-B HEX NYLON ZINC LOCK	F81029-1	2	
5	WASHER, 4.3 FLAT ZINC	F81051-2	4	
6	CAP, 50X30 BLACK	095919	2	

SECTION 7 SAW HEAD

7.1 Blade Housing Cover

LT15SCS3G19SP-ESWP_002
LT15SCS3G19SP-ESWP_MANUAL



REF	DESCRIPTION (u indicates parts available in assemblies only)	PART #	QTY
1	WASHER, 10.5 FLAT ZINC	F81055-1	2
2	NUT, M10-8-B-HEX ZINC	F81033-3	2
3	SCREW, M10 X 40-45H HEX SOCKET SET CONE	F81003-61	1
4	LATCH, FLEXIBLE DRAW	014829	4
5	BOLT, M5X12 8.8 HEX HEAD FULL THREAD ZIN	F81000-5	8
6	WASHER, 5.3 FLAT ZINC	F81052-1	8
7	NUT, M5-8 DIN985 ZINC-PLATED	F81030-2	8
8	CHUTE WELDMENT, SAWDUST	100903-1	1
9	WASHER, 8.4 FLAT ZINC	F81054-1	2
10	BOLT, M8X16 -8.8-B HEX HEAD FULL THREAD	F81002-20	2
-	COVER, LT15 FRONT COMPLETE	098678	1
11	COVER WELDMENT, LT20 BLADE HOUSING	096776-1	1
12	HANDLE, BLADE HOUSING COVER	P08065	1
13	WASHER, 6.4 FLAT ZINC	F81053-1	8
14	PAWL, LOCKING	090643-1	1
15	WASHER, 8.4 FLAT ZINC	F81054-1	2
16	NUT, M6-8-B HEX NYLON ZINC LOCK	F81031-2	1
17	NUT, M8-8-B HEX NYLON ZINC LOCK	F81032-2	2
18	PLATE WELDMENT, COVER MOUNT	086701-1	1
19	BOLT, M6X16-5.8 HEX HEAD FULL THREAD ZIN	F81001-15	6
20	WASHER, 5.3 FLAT ZINC	F81052-1	16



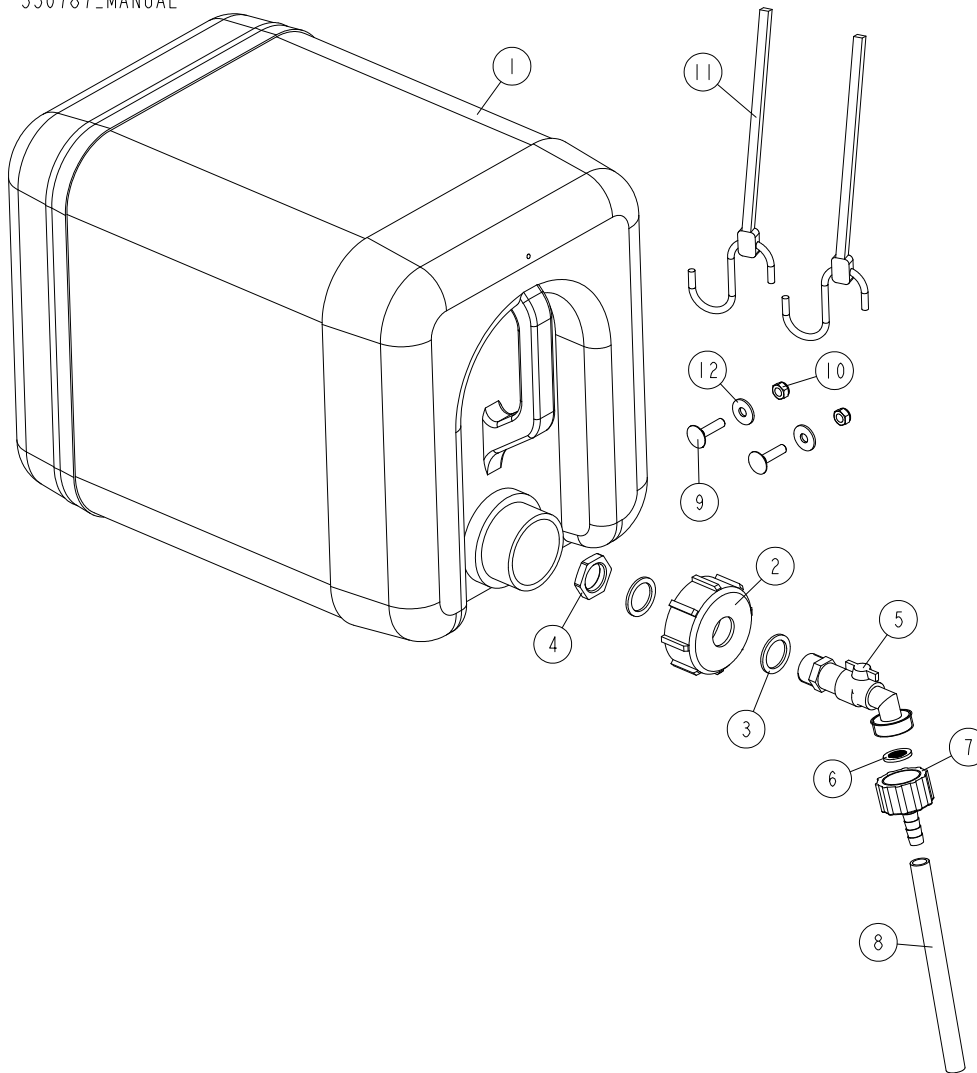
SAW HEAD

Blade Housing Cover

REF	DESCRIPTION (u indicates parts available in assemblies only)	PART #	QTY	
21	BOLT, M5X12 8.8 HEX HEAD FULL THREAD ZIN	F81000-5	8	
22	SCREW, #8-32X3/8, SELF-TAPPING	F05015-8	2	
23	SPRING, 1.6X12X38 EXTENSION	092208	1	
24	NUT, M5-8 DIN985 ZINC-PLATED	F81030-2	6	
25	COVER, SAW HEAD MOUNT	096788-1	1	
26	WASHER, 6.4 FLAT ZINC	F81053-1	2	
27	BOLT, M6X12-8.8 HEX HEAD FULL THREAD ZIN	F81001-7	2	
28	SWITCH, AZ17-11ZRK SAFETY 1	094232	1	
29	KEY, AZ17/170-B5 SAFETY SWITCH 2	094422	1	
30	KEY, AZ17/170-B5 SAFETY SWITCH 2	094422	1	
31	SCREW, M4X35 8.8 HEX SOCKET HEAD CAP ZIN	F81011-34	2	
32	WASHER, 4.3 FLAT ZINC	F81051-2	2	
33	NUT, M4-8 HEX NYLON ZINC LOCK	F81029-1	4	
34	SCREW, M4X12 5,8-B CROSS RECESSED PAN HE	F81011-43	2	

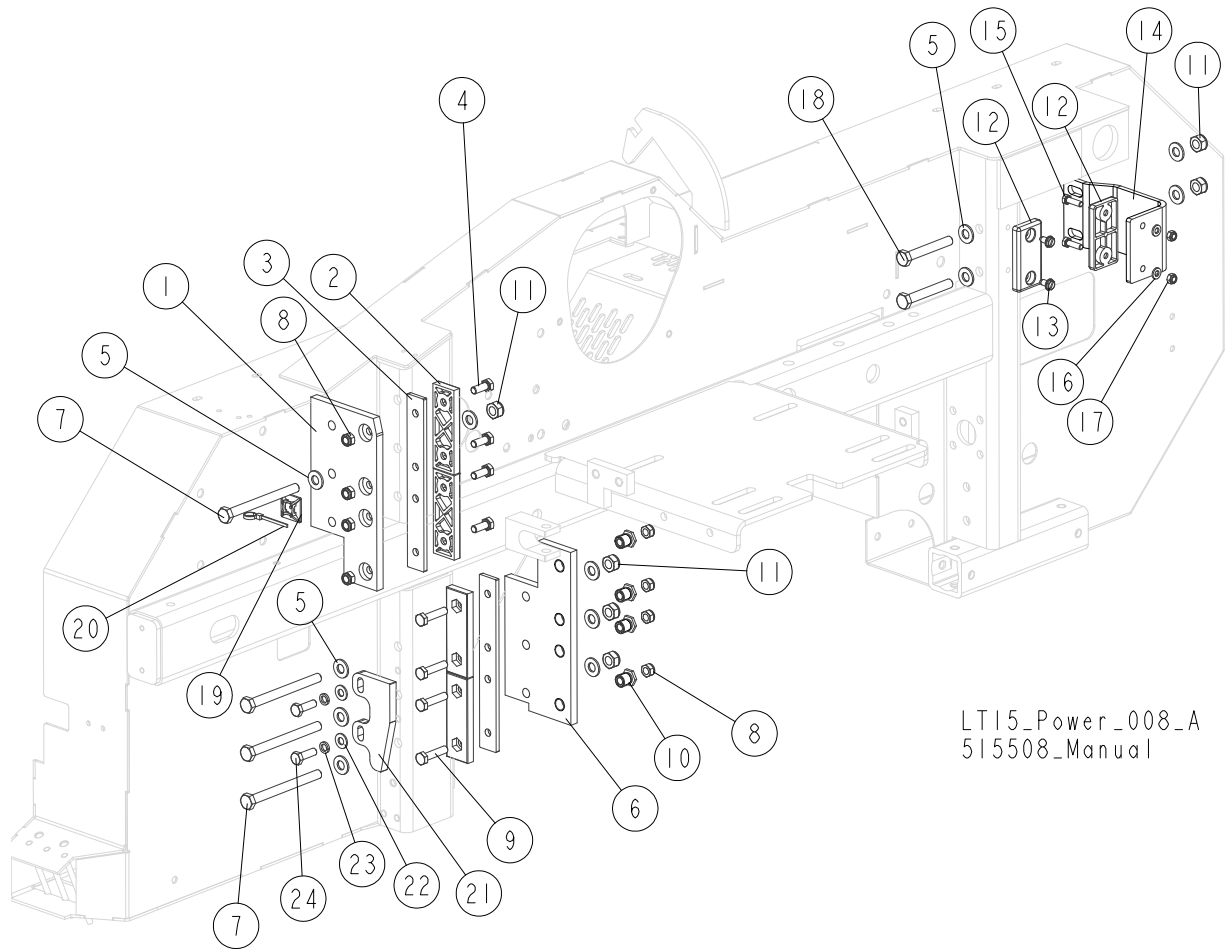
7.2 Water Bottle

550787_003_LT15SC
550787_MANUAL



REF	DESCRIPTION (u indicates parts available in assemblies only)	PART #	QTY
-	TANK, OIL	550787	1
1	BOTTLE, WATER	513866	1
2	NUT, BOTTLE	550785	1
3	SEAL, 27X20X1.5 ESSENTRA 467673 RUBBER	550780	2
4	NUT, 1/2 ESSENTRA 467615 GLAND	550779	1
5	FITTING, WATER LUBE SHUTOFF VALVE	550776	1
6	FILTER, WATER LUBE	550778	1
7	FITTING, G3/4" X 10MM HOSE BARB	550777	1
8	TUBING, WATER LUBE 3/8" I.D.	R01885	1
9	BOLT, M6X25-8.8 ZINC	F81001-20	2
10	NUT, M6-8-B HEX NYLON ZINC LOCK	F81031-2	2
11	STRAP, 24" RUBBER (FOR FUEL TANK - SEE E	P11258	2
12	WASHER, FLAT ZINC	F81053-11	2

7.3 Slide Pads



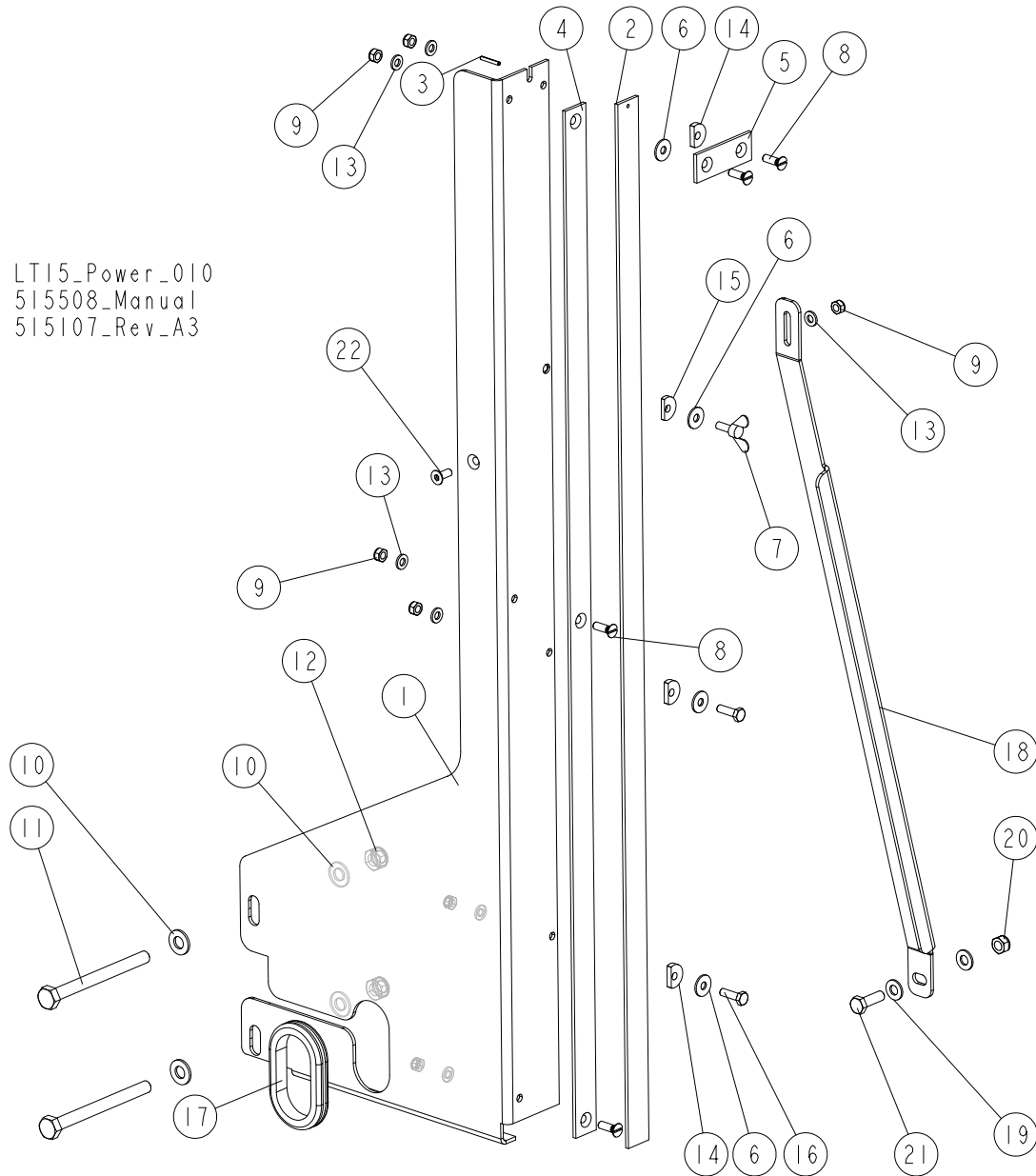
LT15_Power_008_A
515508_Manual

REF.	DESCRIPTION (◆ Indicates Parts Available in Assemblies Only)	PART #	QTY
1	PLATE, SAW HEAD UPPER GUIDE	094139-1	1
2	PADS, DELRIN UP/DOWN SLIDE	M04096	4
3	PLATE, SLIDE PAD SPACER	094140-1	2
4	BOLT, M8X20 8.8 HEX HEAD FULL THREAD ZINC	F81002-4	4
5	WASHER, 10.5 FLAT ZINC	F81055-1	12
6	PLATE, SAW HEAD LOWER ZINC-PL. GUIDE	086682-1	1
7	BOLT, M10X110-8.8 HEX HEAD ZINC	F81003-43	4
8	NUT, M8 8 HEX NYLON ZINC LOCK	F81032-2	8
9	BOLT, M8X35-8.8 HEX HEAD FULL THREAD ZINC	F81002-13	4
10	NUT, SLIDE PAD ADJUSTMENT ZINC-PLATED	086683-1	4
11	NUT, M10-8-B HEX NYLON ZINC LOCK	F81033-1	6
12	PAD, CATAPILLAR TRACK	P13576	2
13	BOLT, 1/4-20X1/2 TYPE "23" SELF-TAPPING	F05015-1	2
14	BRACKET, MAST GUIDE IDLE SIDE	087192-1	1
15	BOLT, M6X20 8.8 HEX HEAD FULL THREAD ZINC	F81001-2	2
16	WASHER, 6.4 FLAT ZINC	F81053-1	2
17	NUT, M6-8-B HEX NYLON ZINC LOCK	F81031-2	2
18	BOLT, M10X70 8.8 HEX HEAD FULL THREAD ZINC	F81003-20	2
19	ELEMENT, E9S SELF-ADHESIVE MOUNTING	087695	1
20	TIE WRAP, 1/4X6	F05089-1	1

REF.	DESCRIPTION (◆ Indicates Parts Available in Assemblies Only)	PART #	QTY	
	PLATE, LIMIT SWITCH ACTIVATOR - COMPLETE	516510	1	
21	PLATE, LIMIT SWITCH ACTIVATOR	516509-1	1	
22	WASHER, 8.4 FLAT ZINC	F81054-1	2	
23	WASHER, 8.2 SPLIT LOCK ZINC	F81054-4	2	
24	BOLT, M8X25-8.8-B HEX HEAD FULL THREAD ZINC	F81002-5	2	

7.4 Blade Height Scale

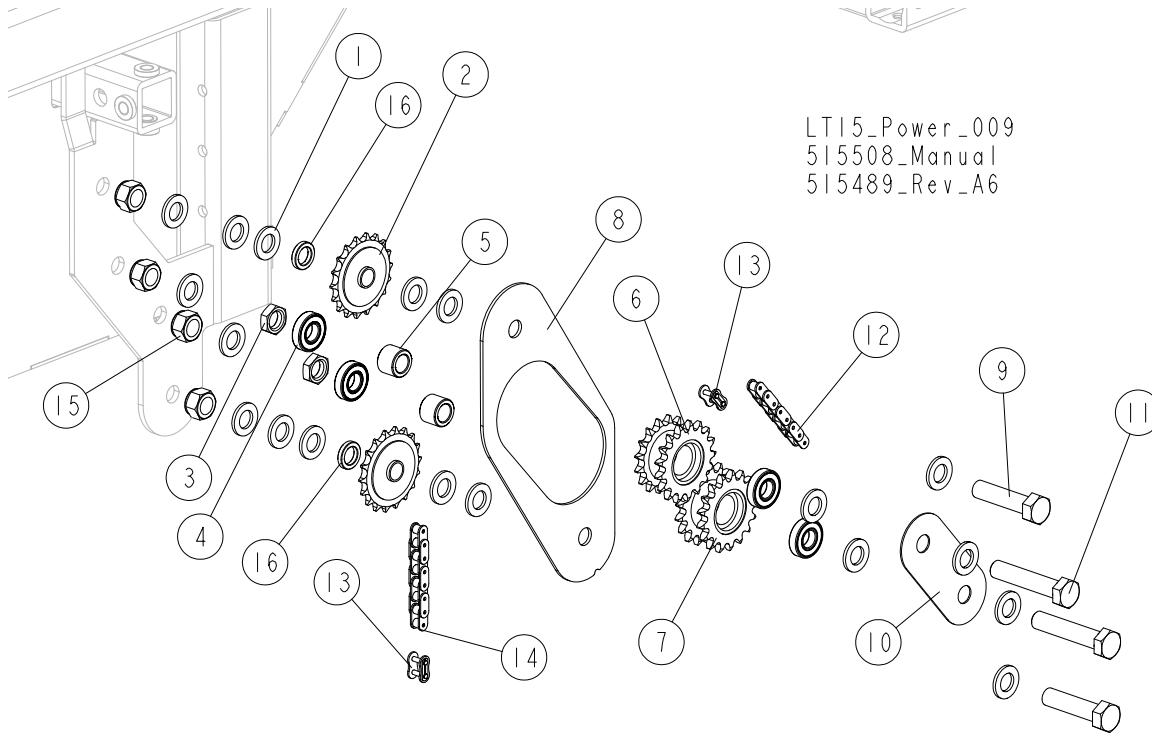
LT15_Power_010
515508_Manual
515107_Rev_A3



REF.	DESCRIPTION (◆ Indicates Parts Available in Assemblies Only)	PART #	QTY
	BLADE HEIGHT SCALE - COMPLETE (METRIC)	515107	1
1	BRACKET WELDMENT, BLADE HEIGHT SCALE	515773-1	1
2	BAR, INCH SCALE	093133	1
3	PIN, 3X20 GEOMET ROLL	F81044-5	1
4	BAR, SCALE	092750	1
5	BAR, SCALE CLAMP	093134	1
6	WASHER, 6.5 SPECIAL FLAT ZINC	F81053-11	4
7	SCREW, M6X16 DIN-316/BN-276 ZINC-PL. WING	F81001-16	1
8	SCREW, M6X20-5.8-B SLOTTED COUNTERSUNK HEAD ZINC	F81001-31	4
9	NUT, M6-8-B HEX NYLON ZINC LOCK	F81031-2	7
10	WASHER, 10.5 FLAT ZINC	F81055-1	4

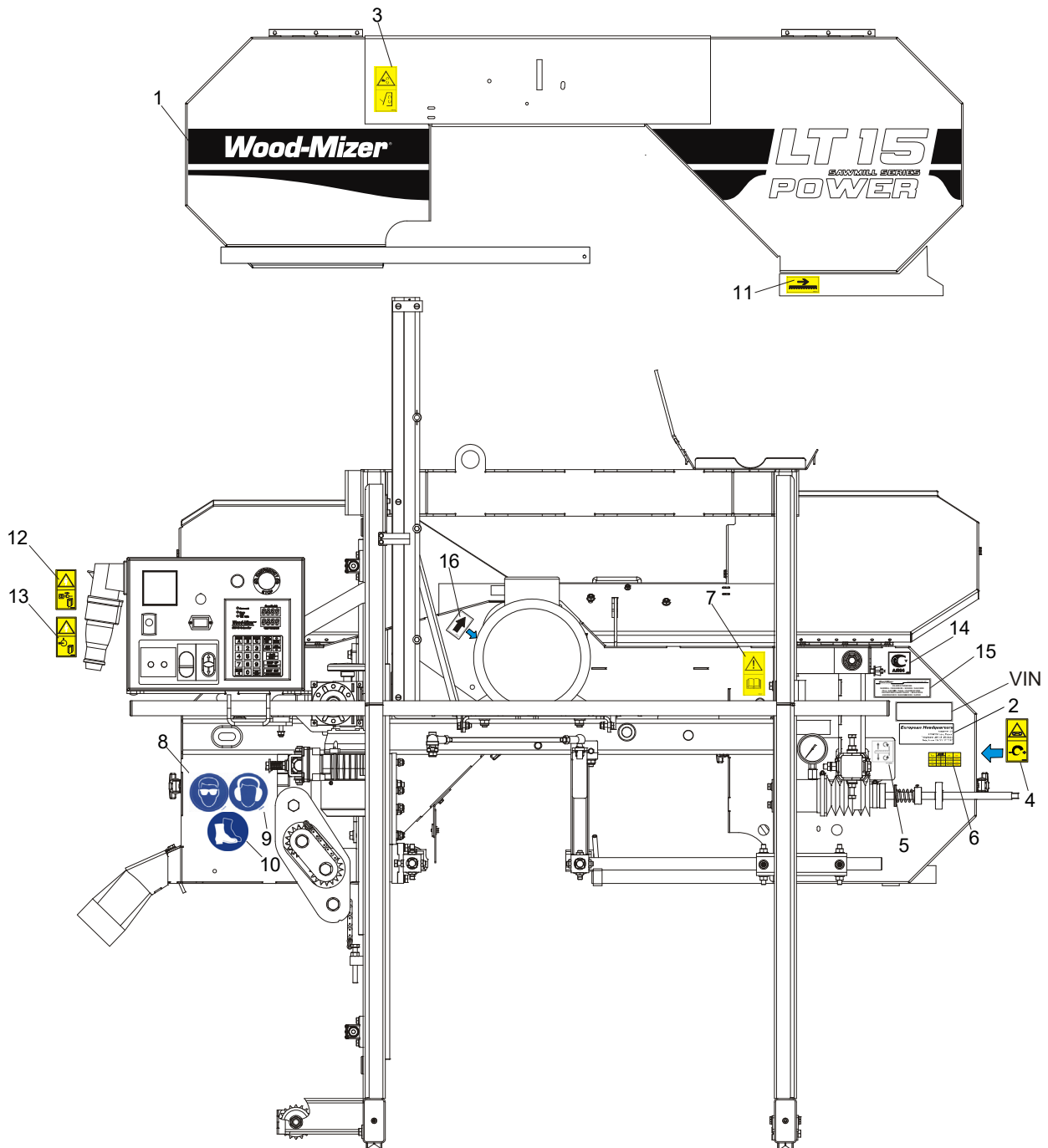
REF.	DESCRIPTION (◆ Indicates Parts Available in Assemblies Only)	PART #	QTY	
11	BOLT, M10X115-8.8 HEX HEAD	F81003-19	2	
12	NUT, M10-8-B HEX NYLON ZINC LOCK	F81033-1	2	
13	WASHER, 6.4 FLAT ZINC	F81053-1	7	
14	WASHER, 6.2X20X4.5 SPECIAL	503098	3	
15	WASHER, 6.2X20X3.5 SPECIAL	503096	1	
16	BOLT, M6X20 8.8 HEX HEAD FULL THREAD ZINC	F81001-2	2	
17	GROMMET, RUBBER	087065	1	
18	BRACKET, BLADE HEIGHT SCALE	515095-1	1	
19	WASHER, 8.4 FLAT ZINC	F81054-1	2	
20	NUT, M8 8 HEX NYLON ZINC LOCK	F81032-2	1	
21	BOLT, M8X25-8.8-B HEX HEAD FULL THREAD ZINC	F81002-5	1	
22	SCREW, M6X16-10.9 DIN7991 FLAT SOCKET HEAD CAP ZINC	F81001-55	1	

7.5 Up/Down Sprockets



REF.	DESCRIPTION (◆ Indicates Parts Available in Assemblies Only)	PART #	QTY
1	WASHER, 17 SPLIT LOCK ZINC	F81058-1	18
2	SPROCKET, #40 IDLER 17T 5/8 ID	P04333	2
3	NUT, M16 8 THIN ZINC	F81036-4	2
4	BEARING, R10-2NSL	P04156	4
5	BUSHING	095938-1	2
6	SPROCKET WELDMENT, 16/17 DUAL	086813-1	1
7	SPROCKET WELDMENT, 17/17 DUAL	086812-1	1
8	GUARD, UP/DOWN CHAIN INTERNAL	014907-1	1
9	BOLT, M16X65 8.8 HEX HEAD FULL THREAD ZINC	F81006-1	2
10	PLATE, UP/DOWN CHAIN GUARD	087104-1	1
11	BOLT, M16X80-8.8 HEX HEAD FULL THREAD ZINC	F81006-11	2
12	CHAIN, #40 LENGTH: 14.5" (369MM)	P12496	1
13	LINK, #40 MASTER	P04200	2
14	CHAIN, #40X112 1/2"	014831	1
15	NUT, M16-8 HEX NYLON ZINC LOCK	F81036-2	4
16	BUSHING	095937-1	2

7.6 LT15-POWER Saw Head Decals



REF.	DESCRIPTION (◆ Indicates Parts Available in Assemblies Only)	PART #	QTY
	DECAL KIT, LT15-POWER PICTOGRAPHIC	515699	1
1	DECAL, LT15 POWER SAWMILL LOGO	515698	1
2	DECAL, EUROPEAN HEADQUARTERS ADDRESS	015841	1
3	DECAL, "CLOSE GUARDS AND COVERS BEFORE OPERATING."	099220	1
4	DECAL, BLADE TENSION (PICTOGRAM)	099219	1
5	DECAL, BLADE ALIGNMENT	P11789	1
6	DECAL, PRESSURE VALUES	510643	1
7	DECAL, READ OPERATOR'S MANUAL (PICTOGRAM)	096317	1

7

SAW HEAD

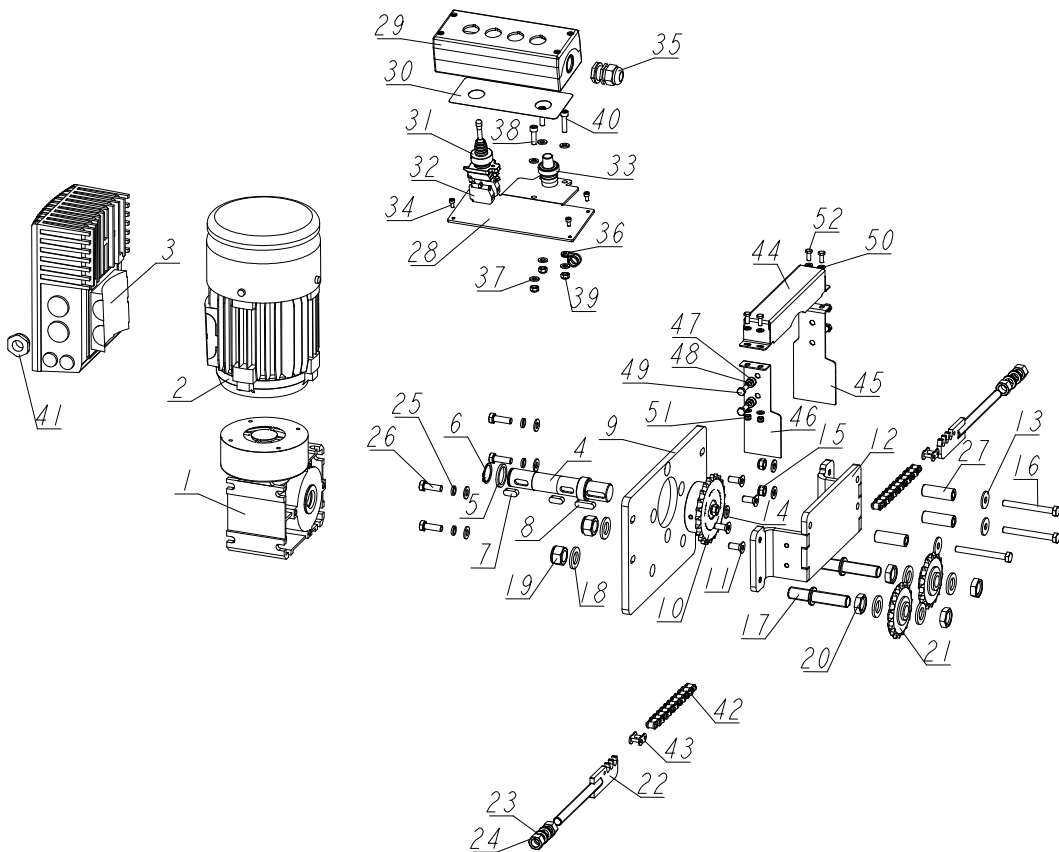
LT15-POWER Saw Head Decals

8	DECAL, EYE PROTECTION WARNING (PICTOGRAM)	S12004G	1	
9	DECAL, EAR PROTECTION WARNING (PICTOGRAM)	S12005G	1	
10	DECAL, USE SAFETY BOOTS (PICTOGRAM)	501465	1	
11	DECAL, BLADE MOVEMENT DIRECTION (PICTOGRAM)	096321	1	
12	DECAL, "DISCONNECT POWER SUPPLY BEFORE OPENING THE ELECTRICAL BOX"	096319	1	
13	DECAL, HIGH VOLTAGE INSIDE ELECTRICAL BOX	096316	1	
14	DECAL, RUSSIAN SAFETY CERTIFICATION	099401	1	
15	DECAL, INTERNATIONAL SAWMILL NAME	501466	1	
16	DECAL, MOTOR REVOLUTIONS DIRECTION	S20097	1	

SECTION 8 POWER FEED DRIVE

8.1 Power Feed Drive, LT15P

527605-M3_001
527605-M3_MANUAL



REF	DESCRIPTION (◆ indicates parts available in assemblies only)	PART #	QTY
-	POWER FEED DRIVE, LT15P M3 FRAME	527605-M3	1
	POWER FEED DRIVE, LT15P M2 FRAME	527605-M2	1
	POWER FEED DRIVE, LT15P S3 FRAME	527605-S3	1
	POWER FEED DRIVE, LT15P S4 FRAME	527605-S4	1
	POWER FEED DRIVE, LT15P S5 FRAME	527605-S5	1
-	DRIVE ASSEMBLY, LT15P POWER FEED	517885R	1
-	KIT, SK1SI50-IEC80-80LH/4 TF RD 180E + S	538654	1
-	MOTOREDUCER, SK1SI50-IEC80-80LH/4 TF RD	536452	1
1	GEARBOX, SK1SI50-IEC80-80LH/4 TF RD 180E MOTOREDU-CER	538709	1
2	MOTOR, MOTOREDUCER SK1SI50-IEC80-80LH/4 TF RD 180E	538710	1
3	INVERTER, SK 180E-750-340-B FREQUENCY	538539	1
4	SHAFT, OUTPUT	550428	1
5	WASHER, DRIVE ASSY, ZINC-PLATED	500863-1	1
6	RING, 25Z OUTSIDE RETAINING	F81090-22	1
7	KEY, A8X7X20	099059	2
8	KEY, A8X7X28 PARALLEL	096035	1

REF	DESCRIPTION (◆ indicates parts available in assemblies only)	PART #	QTY	
9	PLATE, GEAR BOX MOUNT	550433-1	1	
10	SPROCKET,08B-1; Z=23;DP=93,27 (T72548)	517883-1	1	
11	SCREW M8X20 HSFHS ZC 8.8 DIN 7991 ISO 1	F81002-70	4	
12	BRACKET, MOUNTING	517886-1	1	
13	WASHER, 8.5 SPECIAL FLAT ZINC	F81054-11	3	
14	WASHER, 8.4 ZINC FLAT	F81054-1	7	
15	NUT, M8-8-B HEX NYLON ZINC LOCK	F81032-2	3	
16	BOLT, M8 X 75 8.8 HEX HEAD ZINC	F81002-91	3	
-	SPROCKET ASSEMBLY	517890	2	
17	SHAFT, SPROCKET	517891-1	1	
18	WASHER, 17 FLAT ZINC	F81058-1	3	
19	NUT, M16,HEX, NYLON ZINC LOCK	F81036-2	1	
20	NUT, M16 HEX THIN ZINC	F81036-4	2	
21	SPROCKET, IDLER Z=18 KSR16.L0.08.10.18.0	088700	1	
22	BRACKET, POWER FEED CHAIN	517895-1	2	
23	WASHER, 12.2 SPLIT LOCK ZINC	F81056-2	4	
24	NUT, M12-8-B HEX ZINC	F81034-1	4	
25	WASHER, 8.2 SPLIT LOCK ZINC	F81054-4	4	
26	BOLT, M8X25-8.8-B HEX HEAD FULL THREAD Z	F81002-5	4	
27	BUSHING, 9/16-44.5 ZINC-PLATED	517914-1	3	
28	MOUNTING PLATE, LT15P POWER FEED CONTROL PANEL	524909-1	1	
-	CONTROL PANEL, LT15P POWER FEED CONTROL PANEL	524908	1	
29	HOUSING, CONTROL PANEL	094259	1	
30	DECAL, LT15P POWER FEED DRIVE	525358	1	
31	JOYSTICK, XD4PA22	087815	1	
32	CONTACT, ZBE 101	087817	2	
33	SWITCH, POTENTIOMETER 22MM 5K	068077	1	
34	SCREW, M4X8 8.8 HEX SOCKET HEAD CAP ZINC	F81011-36	4	
35	ELECTRICAL GLAND 20 HML	F81096-41	1	
36	CLIP, RSGU 1.10/12 W1 RETAINING	086861	1	
37	WASHER, 6.4 ZINC FLAT	F81053-1	6	
38	SCREW, M6X20 8.8 HEX SOCKET HEAD CAP ZIN	F81001-22	2	
39	NUT, M6-8-B HEX NYLON LOCK ZINC	F81031-2	3	
40	SCREW, M6X25-8.8 HEX SOCKET HEAD CAP ZIN	F81001-41	1	
41	REDUCER, DR25M/16M CABLE GLAND	F81097-21	1	
42	CHAIN, 08B; LENGTH = 8.34 M (657 LINKS), LT15P M3 FRAME	525801	1	
	CHAIN, 08B; LENGTH = 8.34M (657 LINKS), LT15P M2 FRAME	533936	1	
	CHAIN, 08B; LENGTH = 6.72M (529 LINKS), LT15P S3 FRAME	517898-S3 M2	1	
	CHAIN, 08B; LENGTH = 8.57M (675 LINKS), LT15P S4 FRAME	527605-S4	1	
	CHAIN, 08B; LENGTH = 10.43M (821 LINKS), LT15P S5 FRAME	527605-S5	1	
43	LINK, 08B-1PZ MASTER	091625	2	
-	COVER ASSEMBLY, POWER FEED SEE SECTION 7	517915	1	
44	GUARD, UPPER	517912-1	1	
45	PLATE, RIGHT SIDE	517906-1	1	
46	PLATE, LEFT SIDE	517909-1	1	
47	WASHER, 6.4 ZINC FLAT	F81053-1	4	
48	WASHER, 6.1 DIN 127 (A2-304) STAINLESS S	F81053-4	4	

REF	DESCRIPTION (◆ indicates parts available in assemblies only)	PART #	QTY	
49	BOLT, M6X16-8.8 HEX HEAD FULL THREAD ZIN	F81001-15	4	
50	WASHER, 5.3 FLAT ZINC	F81052-1	8	
51	NUT, M5-8-FE/ZN5 DIN985	F81030-2	4	
52	BOLT, M5X12-5.8 HEX HEAD FULL THREAD ZIN	F81000-5	4	