

Wood-Mizer®

Replacement Parts

LDT

rev. A1.00



Safety is our #1 concern! Read and understand all safety information and instructions before operating, setting up or maintaining this machine.

Form #809

Table of Contents

Section-Page

SECTION 1	GENERAL INFORMATION	1-1
1.1	How To Use The Parts List	1-1
1.2	Sample Assembly	1-1
SECTION 2	MAIN COMPONENTS	2-1
2.1	SLP Log Turner w/Log Ramp	2-1
2.2	Foot	2-2
SECTION 3	SLP LINE OPERATOR STAND	3-1
3.1	SLP Operator Stand	3-1
3.2	Light LDT Operator Stand	3-3
3.3	Air Supply Assembly	3-5
3.4	Frame, Ladder & Seat	3-7
3.5	Control Box	3-9
SECTION 4	INCLINE LOG DECK COMPONENTS	4-1
4.1	Incline Log Deck	4-1
4.2	Incline Log Deck - Main Components	4-2
4.3	Incline Log Deck - Drive and Guards	4-4
4.4	Short Foot	4-6
4.5	Long Foot	4-7
4.6	Incline Log Deck Chute	4-8
4.7	Log Deck Chute Section	4-9
SECTION 5	SLP LINE LOG TURNER	5-1
5.1	Log Turner	5-1
5.2	Brackets w/Bumper Plates	5-2
5.3	Log Singulator	5-3
5.4	Main Shaft	5-4
5.5	Log Turner Guards	5-5
5.6	Log Support Bracket	5-6
5.7	Log Turner Sensor	5-7
5.8	Photoelectric Sensor Mirror	5-8
5.9	Pulleys	5-9
5.10	Log Feed Drive Assembly	5-11
5.11	Chain Guide Bar Support	5-13
5.12	Log Feed Roller Assembly	5-14
5.13	Air Supply Assembly	5-15
SECTION 6	LIGHT LDT MAIN COMPONENTS	6-1
6.1	Log Loading System Components	6-1

Table of Contents

Section-Page

6.2	Reflective Mirror Mount Tube	6-2	
6.3	Photoelectric Sensor Mount Tube	6-3	
SECTION 7 LOG TURNER INFEED TABLE			7-1
7.1	Infeed Table	7-1	
7.2	Idler Sprocket Assembly	7-3	
7.3	Front Hold-Down Wheel	7-4	
7.4	Front Hold-Down Wheel	7-5	
7.5	Long Hold-Down Wheel Assembly	7-6	
7.6	Front Hold-Down Wheel Assembly	7-8	
7.7	Hold-Down Wheel	7-10	
SECTION 8 INCLINE LOG DECK W/LOG SINGULATOR			8-1
8.1	Incline Log Deck, Light LDT	8-1	
8.2	Incline Log Deck	8-2	
8.3	Sensor Mirror	8-3	
8.4	Log Deck Short Foot	8-4	
8.5	Log Deck Long Foot	8-5	
8.6	Log Singulator	8-6	
8.7	Log Singulator Main Shaft	8-8	
SECTION 9 LIGHT LDT LOG TURNER			9-1
9.1	Log Turner Carriage Frame - Lower Part	9-1	
9.2	Side Carriage Stop	9-2	
9.3	Log Turner Carriage Frame - Upper Part	9-3	
9.4	Log Bumper	9-4	
9.5	Log Turner Carriage	9-5	
9.6	Log Turner Drive Shaft	9-7	
9.7	Log Turner Idle Shaft	9-8	
9.8	Bearing w/Housing	9-9	
9.9	Motoreducer w/Mount Bracket	9-10	
9.10	Limit Switch & Photoelectric Sensor	9-12	
9.11	Fork Pocket	9-13	
9.12	Log Turner Cylinder Assembly	9-14	

SECTION 1 GENERAL INFORMATION

1.1 How To Use The Parts List

- Use the index above to locate the assembly that contains the part you need.
- Go to the appropriate section and locate the part in the illustration.
- Use the number pointing to the part to locate the correct part number and description in the table.
- Parts shown indented under another part are included with that part.
- Parts marked with a diamond (◆) are only available in the assembly listed above the part.

See the sample table below. Sample Part #A01111 includes part F02222-2 and subassembly A03333. Subassembly A03333 includes part S04444-4 and subassembly K05555. The diamond (◆) indicates that S04444-4 is not available except in subassembly A03333. Subassembly K05555 includes parts M06666 and F07777-77. The diamond (◆) indicates M06666 is not available except in subassembly K05555.

1.2 Sample Assembly				
REF.	DESCRIPTION (◆ Indicates Parts Available In Assemblies Only)	PART #	QTY	
	Sample Assembly, Complete (Includes All Indented Parts Below)	A01111	1	
1	Sample Part	F02222-22	1	
	Sample Subassembly (Includes All Indented Parts Below)	A03333	1	
2	Sample Part (◆ Indicates Part Is Only Available With A03333)	S04444-4	1	◆
	Sample Subassembly (Includes All Indented Parts Below)	K05555	1	
3	Sample Part (◆ Indicates Part Is Only Available With K05555)	M06666	2	◆
4	Sample Part	F07777-77	1	

To Order Parts:

- From Europe call our European Headquarters and Manufacturing Facility in Kolo, Poland at **+48-63-2626000**. From the continental U.S., call our toll-free Parts hotline at **1-800-525-8100**. Have your customer number, vehicle identification number, and part numbers ready when you call. From other international locations, contact the Wood-Mizer distributor in your area for parts.

Office Hours:

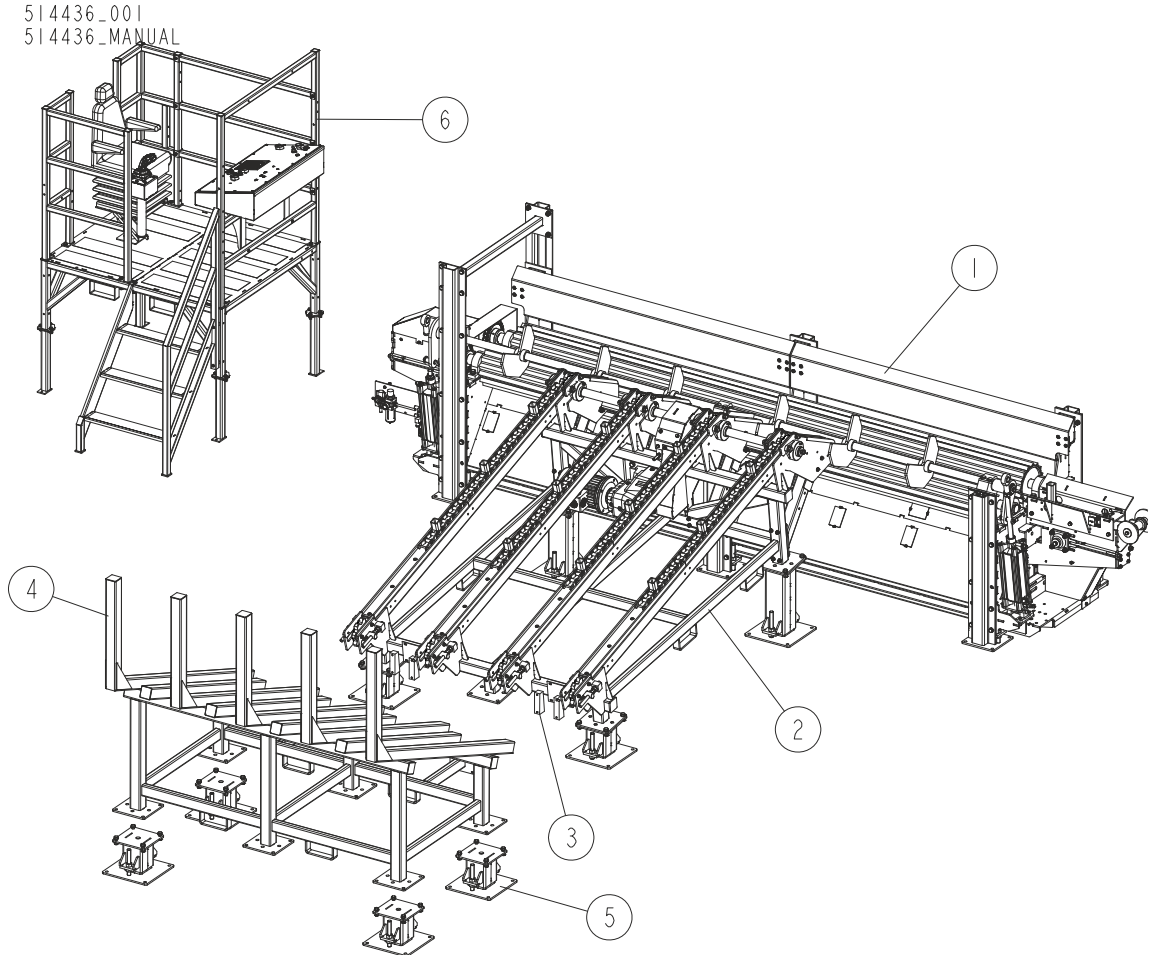
Country	Monday - Friday	Saturday	Sunday
Poland	7-15	Closed	Closed
US	8 a.m.- 5 p.m.	8 a.m.- 12 p.m.	Closed



CAUTION! It is strongly recommended that only original spare parts be used.

SECTION 2 MAIN COMPONENTS

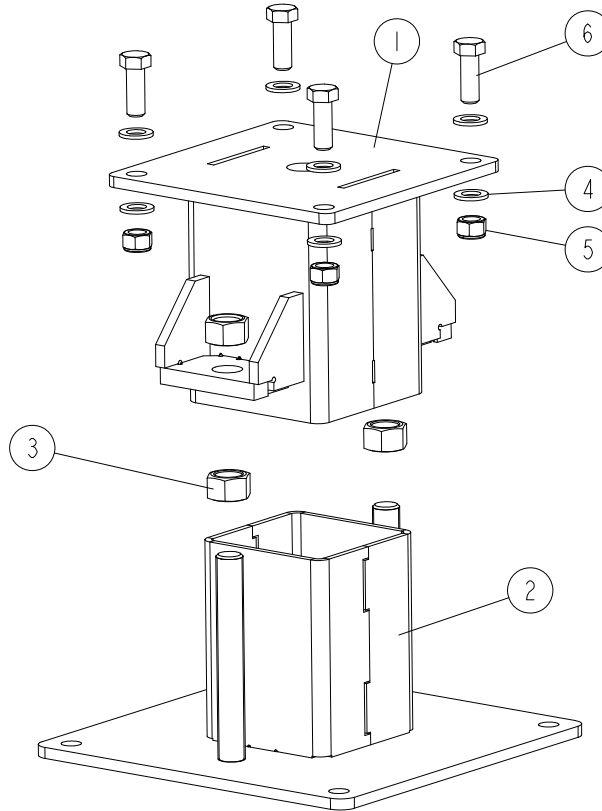
2.1 SLP Log Turner w/Log Ramp



REF.	DESCRIPTION (* Indicates Parts Available in Assemblies Only)	PART #	QTY
-	SLP LOG TURNER WITH LOG RAMP	514436	1
1	SLP LOG TURNER See Section 5.1	512678	1
2	INCLINE LOG DECK, SLP LOG TURNER See Section 4.1	513127	1
3	SPACER, SLPLT INCLINE LOG DECK	515635	4
4	LOG RAMP	098020-1	1
5	FOOT, LOG DECK/LOG RAMP - COMPLETE See Section 2.2	515634	4
6	SLP LINE OPERATOR STAND See Section 3.1	514733	1

2.2 Foot

515634_001
515634_MANUAL

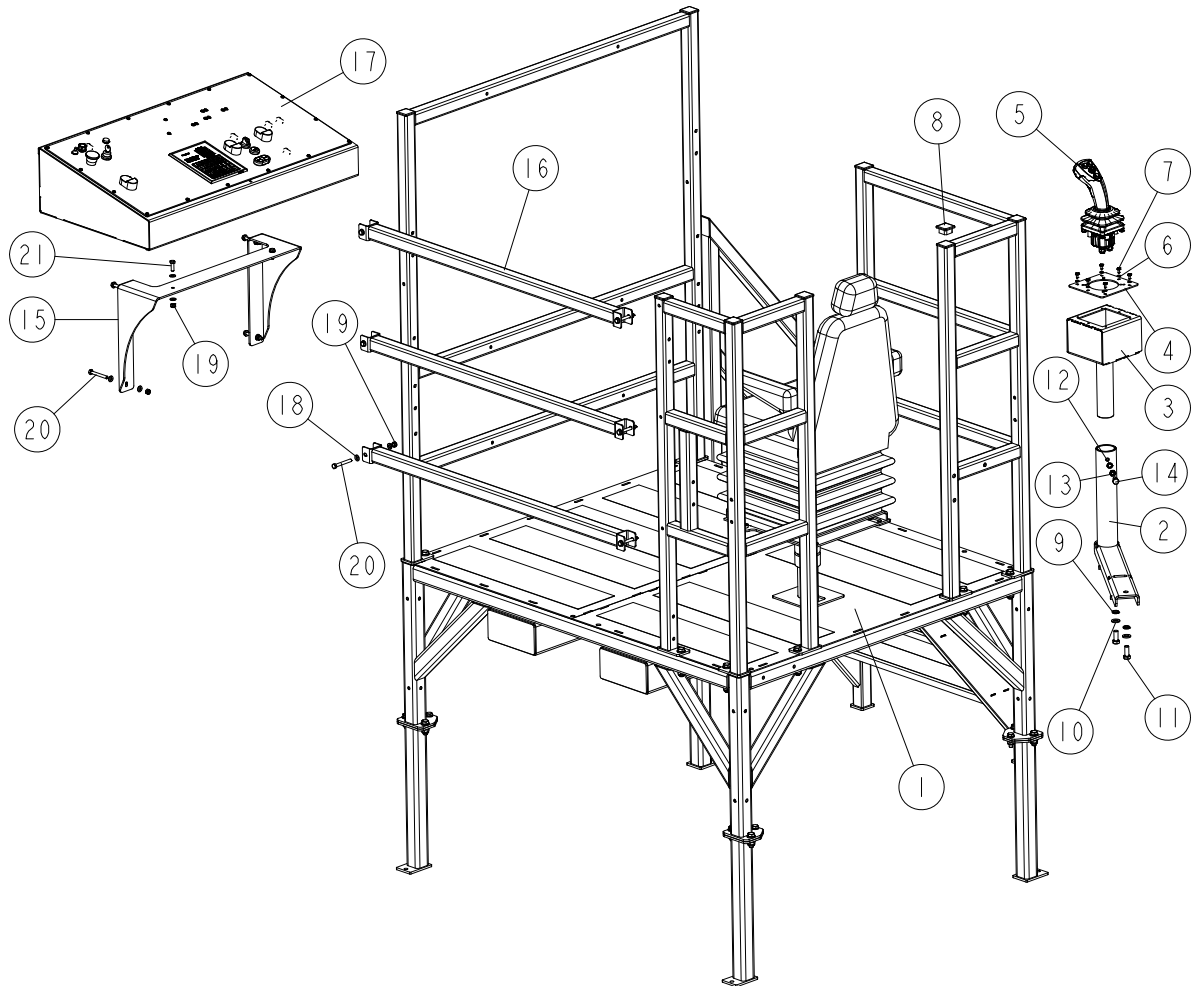


REF.	DESCRIPTION (* Indicates Parts Available in Assemblies Only)	PART #	QTY
-	FOOT, INCLINE LOG DECK/LOG RAMP - COMPLETE	515634	1
1	FOOT WELDMENT - UPPER PART	515456-1	1
2	BASE WELDMENT, FOOT	513230-1	1
3	NUT, M24-8-B HEX ZINC	F81039-12	4
4	WASHER, 17 SPLIT LOCK ZINC	F81058-1	8
5	NUT, M16-8 HEX NYLON ZINC LOCK	F81036-2	4
6	BOLT, M16X45-8.8 HEX HEAD FULL THREAD ZINC	F81006-46	4

SECTION 3 SLP LINE OPERATOR STAND

3.1 SLP Operator Stand

514733_001
514733_MANUAL



REF.	DESCRIPTION (* Indicates Parts Available in Assemblies Only)	PART #	QTY
-	SLP LINE OPERATOR STAND	514733	1
1	FRAME W/LADDER & SEAT See Section 3.3	514741	1
2	ARM WELDMENT, JOYSTICK	711484	1
3	MOUNT WELDMENT, JOYSTICK	711491-1	1
4	PLATE, MOUNTING	711492-1	1
5	JOYSTICK, 5 BUTTON (OTTO)	069716	1
6	WASHER, 5.3 FLAT ZINC	F81052-1	6
7	BOLT, #10-24X1/2 SELF -TAPPING	F05015-7	6
8	CAP, 40X40X(3-4) MOSS TUBE	097480	1
9	WASHER, Z12.2 SPLIT LOCK ZINC	F81056-2	2
10	WASHER, 13 FLAT ZINC	F81056-1	2
11	BOLT, M12X30 8.8 HEX HEAD FULL THREAD ZINC	F81004-22	2
12	WASHER, Z 10.2 SPLIT LOCK ZINC	F81055-2	1
13	NUT, M10-04-A THIN ZINC	F81033-6	1

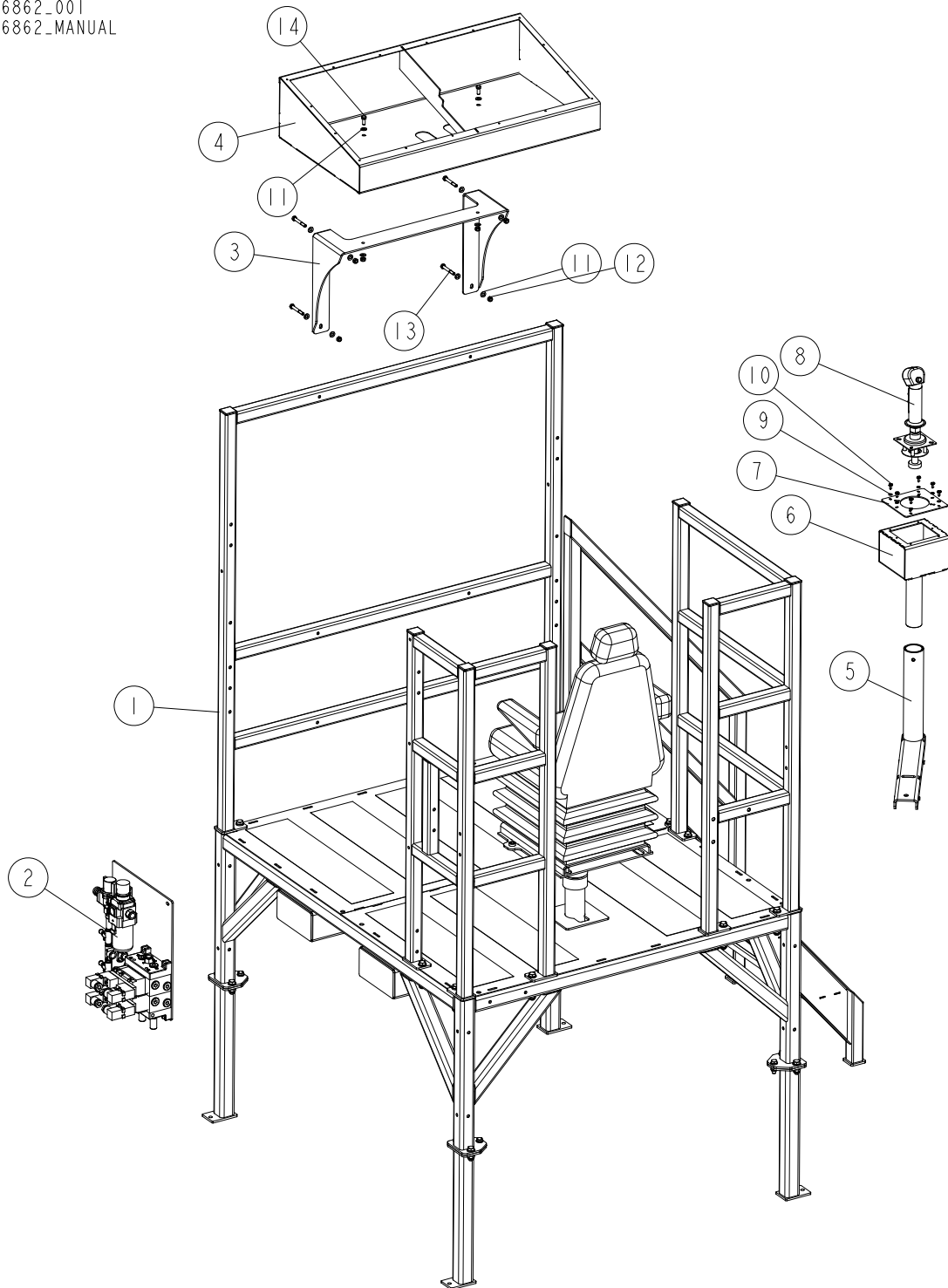
3 SLP LINE OPERATOR STAND

SLP Operator Stand

REF.	DESCRIPTION (* Indicates Parts Available in Assemblies Only)	PART #	QTY	
14	BOLT, M10X20-8.8 HEX HEAD FULL THREAD ZINC	F81003-1	1	
15	BRACKET, CONTROL BOX MOUNT	514735-1	1	
16	RAIL, OPERATOR STAND HORIZONTAL	514738-1	3	
17	BOX, SLP2-TVS CONTROL See Section 3.5	514740	1	
18	WASHER, 8.4 FLAT ZINC	F81054-1	24	
19	NUT, M8-8-B HEX NYLON ZINC LOCK	F81032-2	12	
20	BOLT, M8X65 5.8 HEX HEAD ZINC	F81002-3	10	
21	BOLT, M8X25-8.8-B HEX HEAD FULL THREAD ZINC	F81002-5	2	

3.2 Light LDT Operator Stand

526862_001
526862_MANUAL



REF.	DESCRIPTION (* Indicates Parts Available in Assemblies Only)	PART #	QTY
-	STAND, SLP OPERATOR - COMPLETE	526862	1
1	FRAME W/LADDER & SEAT See Section 3.3	514741	1
2	AIR SUPPLY ASSEMBLY - DISK TURNER Patrz rozdział 3.3	526858	1
3	BRACKET, CONTROL BOX MOUNT	514735-1	1
4	BOX, SLP LINE CONTROL	508506-1	1



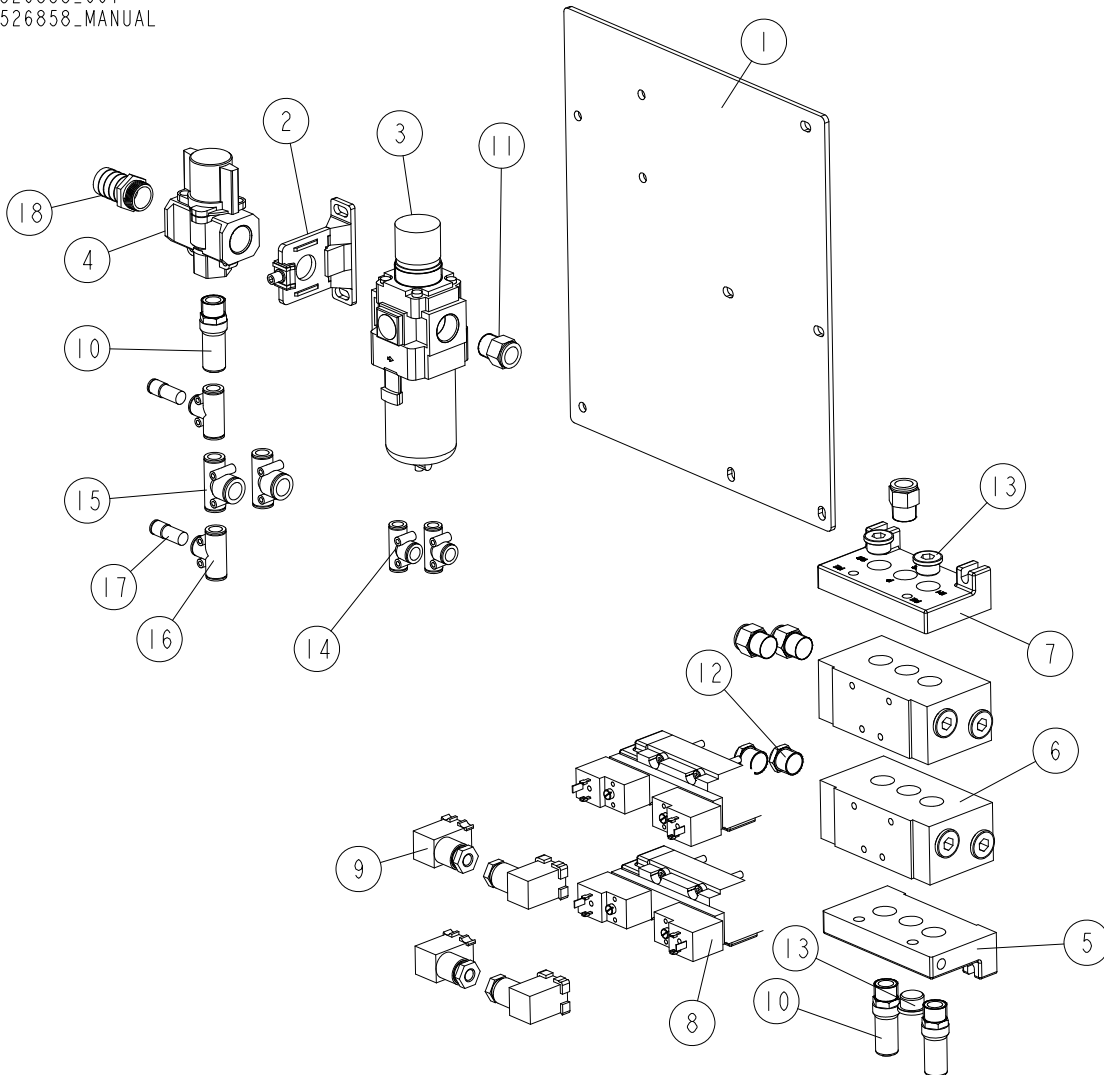
SLP LINE OPERATOR STAND

Light LDT Operator Stand

REF.	DESCRIPTION (* Indicates Parts Available in Assemblies Only)	PART #	QTY	
5	ARM WELDMENT, JOYSTICK	711484-1	1	
6	BOX WELDMENT, JOYSTICK MOUNT	711491-1	1	
7	PLATE, JOYSTICK MOUNT	711492-1	1	
8	JOYSTICK, 3-BUTTON	036757	1	
9	WASHER, 5.3 FLAT ZINC	F81052-1	6	
10	BOLT, #10-24X1/2 SELF-TAPPING	F05015-7	6	
11	WASHER, 8.4 FLAT ZINC	F81054-1	12	
12	NUT, M8-8-B HEX NYLON ZINC LOCK	F81032-2	6	
13	BOLT, M8X60 8.8 HEX HEAD ZINC	F81002-54	4	
14	BOLT, M8X20 8.8 HEX HEAD FULL THREAD ZINC	F81002-4	2	

3.3 Air Supply Assembly

526858_001
526858_MANUAL



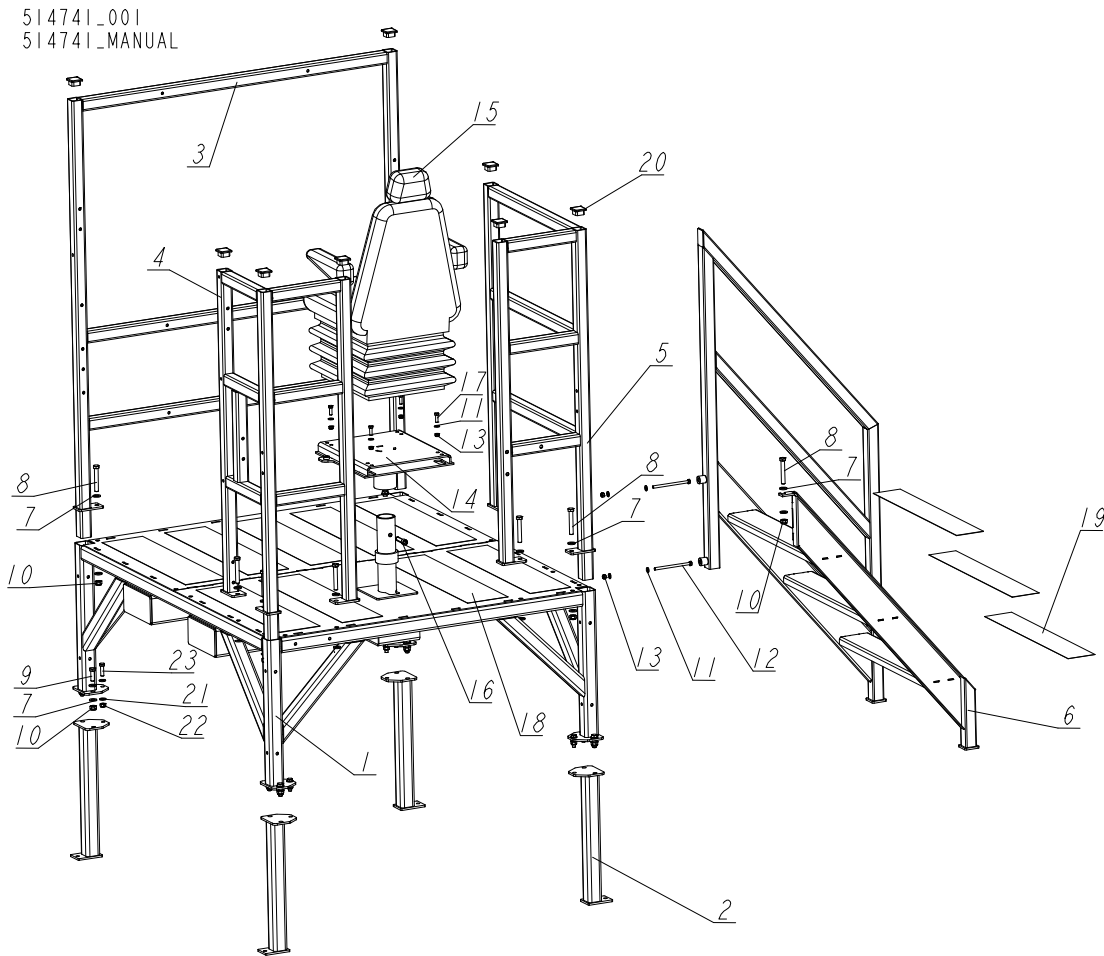
REF.	DESCRIPTION (* Indicates Parts Available in Assemblies Only)	PART #	QTY
-	AIR SUPPLY ASSEMBLY - DISK TURNER	526858	1
1	PLATE, FRL MOUNT- DISK TURNER	526937-1	1
2	SPACER, Y500T-A W/BRACKET	526857	1
3	REGULATOR, AW40-F06EH-B FILTER	526856	1
4	VALVE, VHS40-06-F06B PRESSURE RELIEF	526855	1
5	PLATE, L - EAXT512-LA-04 END	526933	1
6	BLOCK ASSEMBLY, EAXT512-1A-A04 MANIFOLD	526935	2
7	PLATE, R - EAXT512-RA-04 END	526934	1
8	VALVE, 5/2 EVS7-8FG-D-3CVO-Q SOLENOID	526936	2
9	PLUG, DIN A0 W/O DIODE & OVERVOLTAGE PROTECTION	515601	4
10	SILENCER, R1/2 - AN40-04	515602	3
11	FITTING, KQ2H16-04AS MALE STRAIGHT	526938	4
12	FITTING, KQ2H12-04AS MALE	515603	2
13	PLUG, G1/2 - BSF12A HOLE	526939	3
14	FITTING, 2X10/1X12MM - KQ2T10-12A TEE	526940	2

3 SLP LINE OPERATOR STAND

Air Supply Assembly

REF.	DESCRIPTION (* Indicates Parts Available in Assemblies Only)	PART #	QTY	
15	FITTING, 2X12/16 - KQ2T12-16A TEE	526945	2	
16	FITTING, 12MM - KQ2T12-00A UNION TEE	515604	2	
17	FITTING, KQ2R08-12A STRAIGHT MALE	526946	2	
18	NIPPLE, MOS. 3/4"X25/ 14621 HERMES	526949	1	

3.4 Frame, Ladder & Seat



REF.	DESCRIPTION (* Indicates Parts Available in Assemblies Only)	PART #	QTY
-	OPERATOR STAND FRAME, LADDER & SEAT	514741	1
1	BASE WELDMENT, OPERATOR STAND	513437-1	1
2	LEG, OPERATOR STAND	513886-1	4
3	RAIL WELDMENT, FRONT	514315-1	1
4	RAIL WELDMENT, REAR LEFT	514313-1	1
5	RAIL WELDMENT, REAR RIGHT	514311-1	1
6	LADDER, WB2000 OPERATOR STAND	711478-1	1
7	WASHER, 13 FLAT ZINC	F81056-1	34
8	BOLT, M12X80-8.8 HEX HEAD ZINC	F81004-46	9
9	BOLT, M12X35 8.8 HEX HEAD FULL THREAD ZINC	F81004-24	8
10	NUT, M12 8 HEX NYLON ZINC LOCK	F81034-2	17
11	WASHER, 8.4 FLAT ZINC	F81054-1	8
12	BOLT, M8X130-8.8 HEX HEAD ZINC	F81002-50	2
13	NUT, M8-8-B HEX NYLON ZINC LOCK	F81032-2	6
14	BRACKET, OPERATOR SEAT MOUNT	711496-1	1
15	SEAT, CS85/C1 AR HD PVC OPERATOR	711482	1
16	SCREW, M12X45-8.8-B HEX SOCKET HEAD CAP ZINC	F81004-93	1

3 SLP LINE OPERATOR STAND

Frame, Ladder & Seat

REF.	DESCRIPTION (* Indicates Parts Available in Assemblies Only)	PART #	QTY	
17	BOLT, M8X25-8.8-B HEX HEAD FULL THREAD ZINC	F81002-5	4	
18	PAD, NON-SKID	711494	9	
19	PAD, NON-SKID STEP	711495	3	
20	CAP, 40X40X(3-4) MOSS TUBE END	097480	8	
21	WASHER, 10.5 FLAT ZINC	F81055-1	8	
22	NUT, M10-8-B HEX NYLON ZINC LOCK	F81033-1	4	
23	BOLT, M10X35 8.8 HEX HEAD FULL THREAD ZINC	F81003-17	4	



SLP LINE OPERATOR STAND

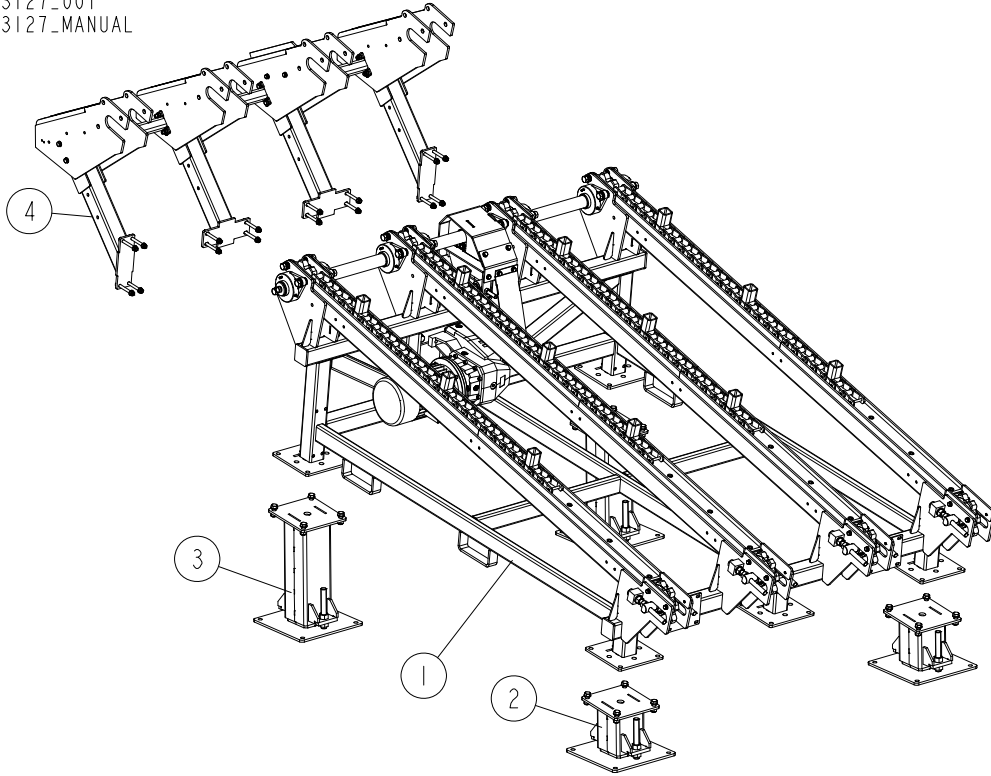
Control Box

REF.	DESCRIPTION (* Indicates Parts Available in Assemblies Only)	PART #	QTY
-	BOX, SLP2-TVS CONTROL	514740	1
1	BOX, SLP LINE CONTROL	508506-1	1
2	GASKET, SLP CONTROL BOX	508515	1
3	PANEL, SLP CONTROL BOX FRONT	514739-1	1
4	CAP, TVS CONTROLLER	504378	1
5	CONTROLLER, TVS	503467	1
6	POTENTIOMETER, 500K 2W CP	024553	1
7	SWITCH, DPDT ON/OFF/ON 15A TOGGLE	024588	1
8	KNOB, 1/4 ID FLUTED ROUND PLASTIC	033478	1
9	BUTTON, XB4 BS542 EMERGENCY STOP	086556	1
10	LIGHT, XB6 AV 3BB CONTROL	087348	1
11	SWITCH, 24V MOELLER ILLUMINATED START/STOP	090452	3
12	DIAPHRAGM, M22-T-DD MOELLER	090462	1
13	RELAY, FINDER 40.52.9.024.00.00	090515	9
14	ACTUATOR, M22-DD-S-X7/X7 SWITCH	090917	1
15	BUTTON, M22 RED	090926	1
16	SWITCH, MOELLER 3-POSITION GREEN	091359	1
17	SWITCH, M22 3-POSITION KEY	091361	1
18	ELEMENT, M22 K10 MOELLER CONTACT	091362	2
19	ADAPTOR, M22-XC-Y CODING	092687	2
20	RESISTOR, 47K/0.25W	094807	1
21	RESISTOR, 1AK/0.5W	096228	5
22	ADAPTER, M22-A MOUNTING	100905	1
23	BOLT, #10-24X1/2 PH	F05015-17	16
24	TERMINAL, HI 1/6 INSULATED CORD-END	F81083-3	10
25	BOOT, TOGGLE SWITCH	P02575	1
26	KNOB, SPEED CONTROL	P06257	5
27	LIGHT, SMBD 08614 LED WHITE	090998	4
28	LIGHT, LED YELLOW CONTROL	711548	1
29	LIGHT, SMBD 08214 LED GREEN CONTROL	091456	6
30	LIGHT, LED GREEN CONTROL	514729	1
31	RELAY, 4600A-2-1-A 24VDC TIME DELAY	510764	1
32	BLOCK, PYK 2.5-2F GREY TERMINAL	F81086-94	32
33	PLATE, NPP/PYK 2.5-2FT GREY END	F81096-95	9
34	GROMMET, CONTROL BOX RUBBER	087065	2

SECTION 4 INCLINE LOG DECK COMPONENTS

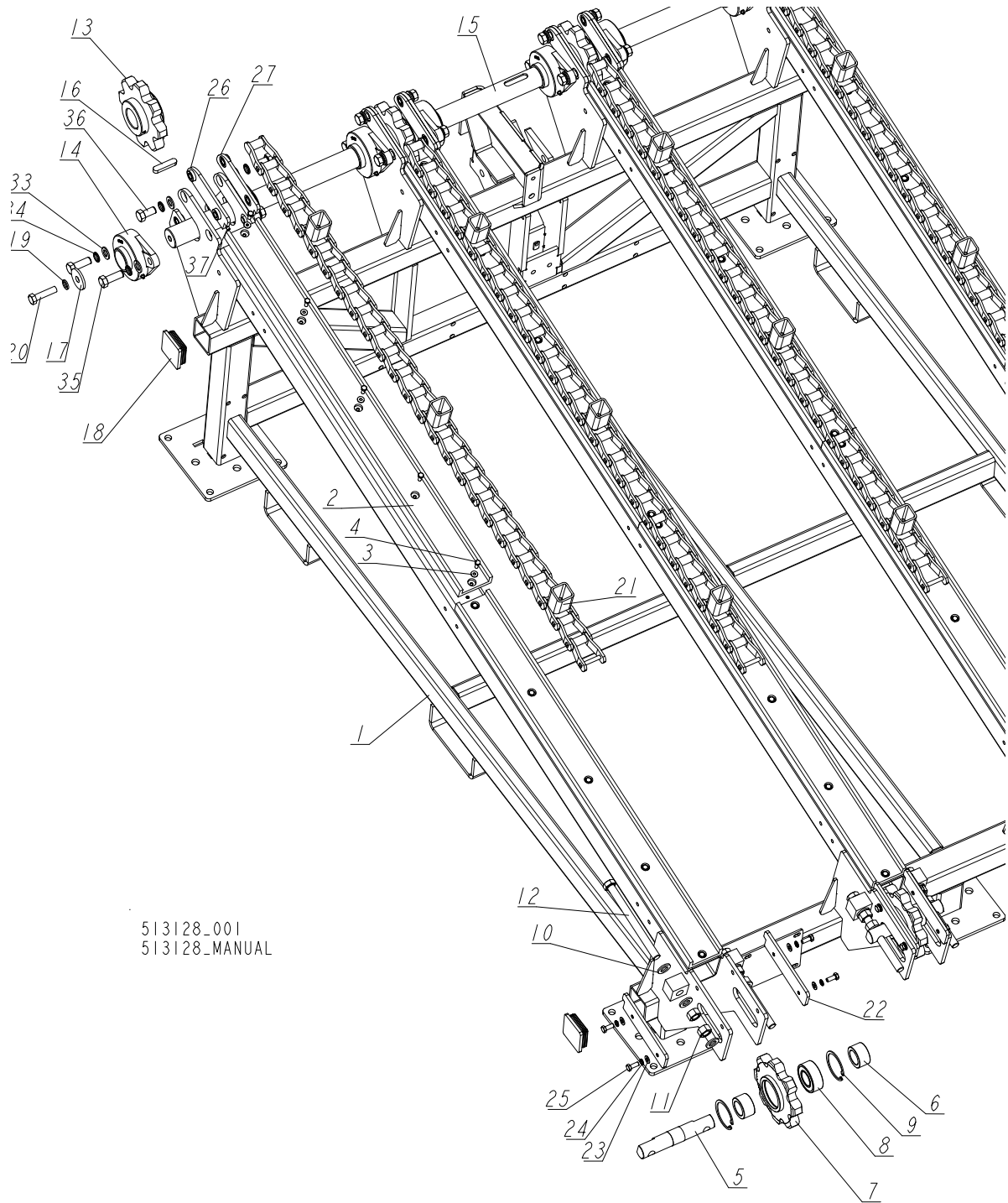
4.1 Incline Log Deck

513127_001
 513127_MANUAL



REF.	DESCRIPTION (* Indicates Parts Available in Assemblies Only)	PART #	QTY
-	DECK, INCLINE LOG (SLP LINE LOG TURNER)	513127	1
1	DECK, TVS INCLINE LOG See Section 4.2 , See Section 4.3	513128	1
2	FOOT, COMPLETE SHORT See Section 4.4	515696	2
3	FOOT, COMPLETE LONG See Section 4.5	515697	2
4	CHUTE, INCLINE LOG DECK - COMPLETE See Section 4.6	515695	1

4.2 Incline Log Deck - Main Components



513128_001
513128_MANUAL

REF.	DESCRIPTION (* Indicates Parts Available in Assemblies Only)	PART #	QTY
-	DECK, TVS INCLINE LOG	513128	1
1	DECK WELDMENT, TVS INCLINE LOG	513143-1	1
2	CHANNEL, UHMW CONVEYOR	033722	8
3	WASHER, 6.5 SPECIAL FLAT ZINC	F81053-11	38
4	BOLT, M8X20-8.8 HEX HEAD FULL THREAD ZINC	F81002-1	40
5	SHAFT, IDLER SPROCKET ZINC-PLATED	089915-1	4

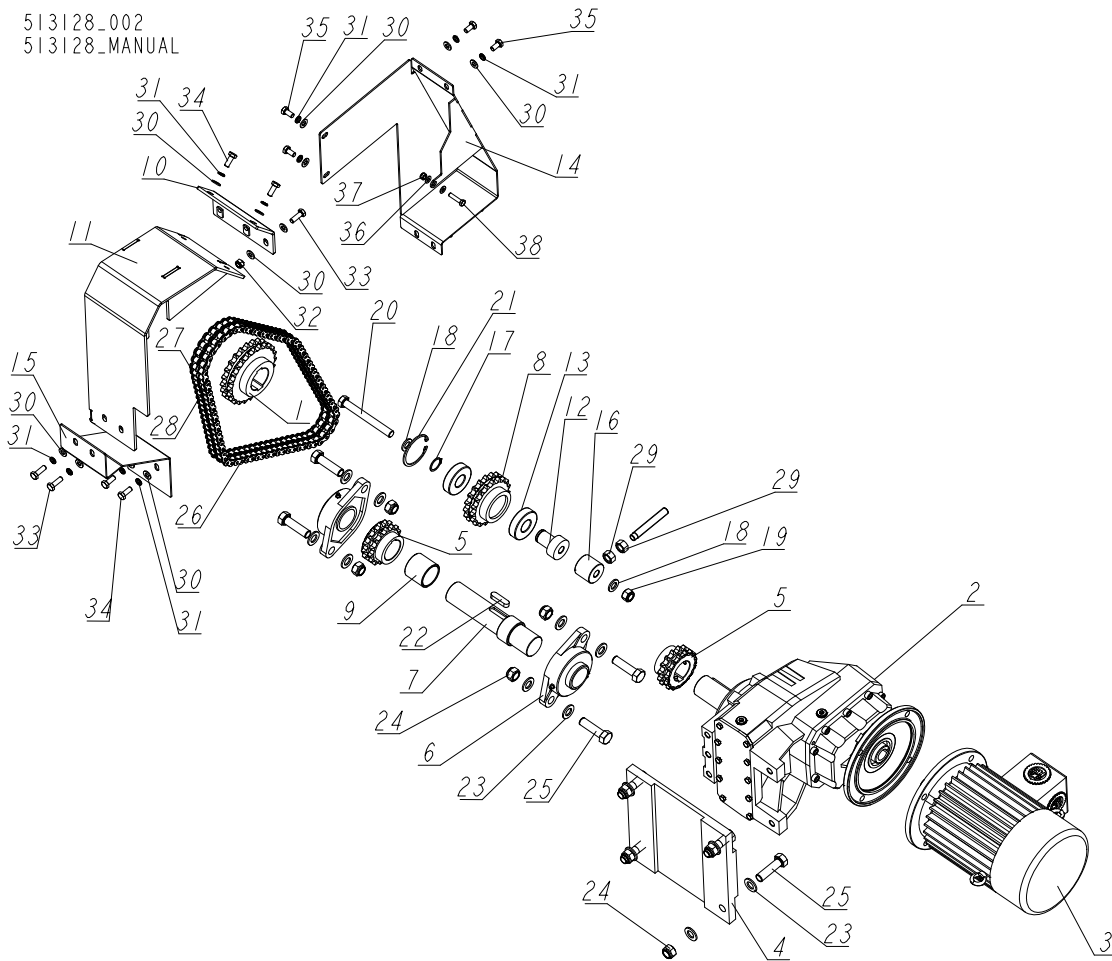
INCLINE LOG DECK COMPONENTS

Incline Log Deck - Main Components

4

REF.	DESCRIPTION (* Indicates Parts Available in Assemblies Only)	PART #	QTY
6	BUSHING, 40.5/59.9-33 ZINC-PLATED	089916-1	8
-	SPROCKET, Z8 COMPLETE	507234	4
7	SPROCKET, Z8 REAR	089919-1	1
8	BEARING, 3208. 2RSR. TVH (FAG) ROLLING	088449	1
9	RING, W80 INSIDE RETAINING	F81090-25	2
10	WASHER, 21 FLAT ZINC	F81059-2	24
11	NUT, M20-8 HEX ZINC	F81037-1	16
12	BOLT, M20X240-8.8 HEX HEAD FULL THREAD ZINC	F81007-1	8
13	SPROCKET, Z8	089888-1	4
14	BEARING, UCFL211 W/HOUSING	513117	8
15	SHAFT, LOG DECK MAIN	513193	1
16	KEY, A16X10X70 PARALLEL	098029	4
17	WASHER, 17.5/60-6 ZINC-PLATED	098012-1	2
18	CAP, 80X80 GR 2-4 #111227 TUBE	089644	4
19	WASHER, 16.3 SPLIT LOCK ZINC	F81058-2	2
20	BOLT, M16x65-8.8-B HEX HEAD FULL THREAD ZINC	F81006-1	2
21	CHAIN, TVS INCLINE LOG DECK	098479-1	4
22	PLATE, IDLE SIDE SPACER	509027-1	8
23	WASHER, 10.5 FLAT ZINC	F81055-1	16
24	WASHER, Z 10.2 SPLIT LOCK ZINC	F81055-2	16
25	BOLT, M10X25 8.8 HEX HEAD FULL THREAD ZINC	F81003-11	16
26	PLATE, RIGHT W/THREADED BUSHINGS	513145-1	4
27	PLATE, LEFT W/THREADED BUSHINGS	514068-1	4
28	MOTOREDUCER, HMZ-503/48,55/4-1400/L/B7	515537	1
29	COVER, UPPER SHORT - COMPLETE	513179-1	1
30	COVER, LOWER	513176-1	1
31	GUARD, INNER - COMPLETE	513186-1	1
32	ARM, CHAIN TENSIONER	513192-1	1
33	WASHER, 19 FLAT ZINC	F81060-1	24
34	WASHER, 18.2 SPLIT LOCK ZINC	F81060-3	24
35	BOLT, M18X50-8.8 HEX HEAD FULL THREAD ZINC	F81008-1	16
36	BOLT, M18X35-8.8 HEX HEAD FULL THREAD ZINC	F81008-2	8
37	SCREW, M8X8-33H GEOMET HEX SOCKET SET W/FLAT POINT	F81014-1	8

4.3 Incline Log Deck - Drive and Guards



REF.	DESCRIPTION (* Indicates Parts Available in Assemblies Only)	PART #	QTY
-	DECK, TVS INCLINE LOG	513128	1
1	SPROCKET, 24Z12B-2	513071-1	1
-	MOTOREDUCER, HMZ-503/48,55/4-1400/L/B7	515537	1
2	BOX, HMZ-503/48.55/250/28 COAXIAL GEAR	515538	1
3	MOTOR, SKG112M-4 (4KW) IM B5 IE2	515539	1
4	BRACKET, HMZ-502/503 MOTOREDUCER	513092	1
5	SPROCKET, 15Z12B-2	513069-1	2
6	BEARING, UCFL210 W/HOUSING	098824	2
7	SHAFT, TENSION SPROCKET	513074	1
8	SPROCKET, 19Z12B-2	513096-1	1
9	BUSHING, 50/58-52 MAL	513104-1	1
10	COVER, UPPER SHORT - COMPLETE	513179-1	1
11	COVER, UPPER	513176-1	1
12	ARBOR, IDLER SPROCKET	513097	1
13	BEARING, 6306 2RS BALL	507482	2
14	GUARD, INNER - COMPLETE	513186-1	1
15	COVER, LOWER	513188-1	1
16	ARM, CHAIN TENSIONER	513192-1	1

INCLINE LOG DECK COMPONENTS

Incline Log Deck - Drive and Guards

4

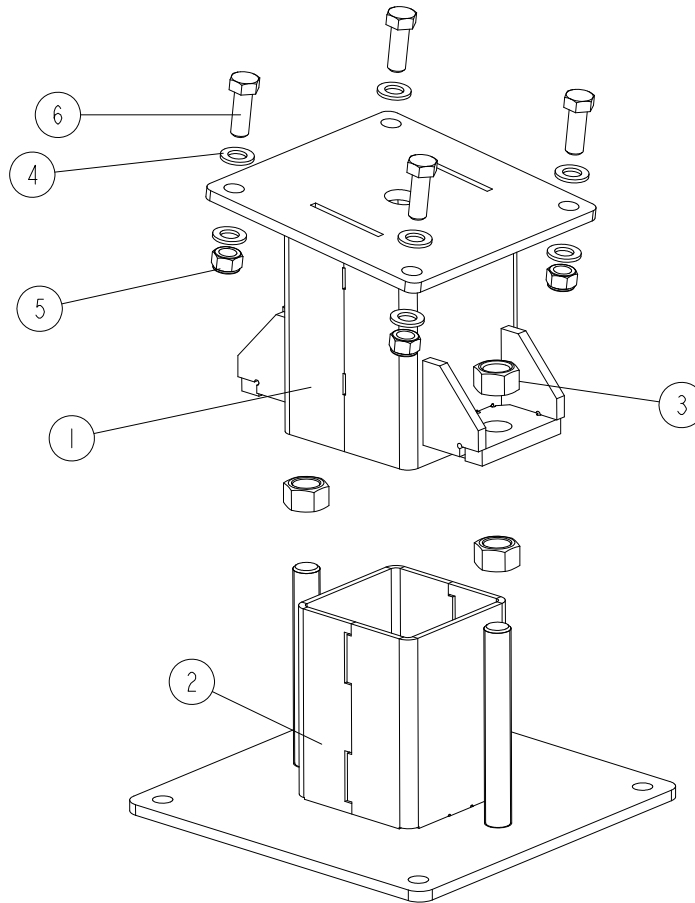
REF.	DESCRIPTION (* Indicates Parts Available in Assemblies Only)	PART #	QTY	
17	RING, 30Z OUTSIDE RETAINING	F81090-23	1	
18	WASHER, 17 SPLIT LOCK ZINC	F81058-1	2	
19	NUT, M16-8 HEX NYLON ZINC LOCK	F81036-2	1	
20	BOLT, M16X140 HEX HEAD ZINC	F81006-4	1	
21	RING, W72 INSIDE RETAINING	F81090-4	1	
22	KEY, A 14X9X50 PARALLEL	514071	1	
23	WASHER, 19 FLAT ZINC	F81060-1	16	
24	NUT, M18 HEX NYLON LOCK	F81039-15	8	
25	BOLT, M18X65-8.8 HEX HEAD FULL THREAD ZINC	F81008-3	8	
-	CHAIN, INCLINE LOG DECK	515646	1	
26	CHAIN, 12B-2, L=1505 (79-LINK)	515645	1	
27	LINK, 12B-2PZ MASTER	099249	1	
28	LINK, 12B-2 OFFSET	515850	1	
29	NUT, M16-8 HEX ZINC	F81036-1	2	
30	WASHER, 10.5 FLAT ZINC	F81055-1	14	
31	WASHER, Z 10.2 SPLIT LOCK ZINC	F81055-2	12	
32	NUT, M10-8-B HEX NYLON ZINC LOCK	F81033-1	1	
33	BOLT, M10X30-8.8 HEX HEAD FULL THREAD ZINC	F81003-2	3	
34	BOLT, M10X25 8.8 HEX HEAD FULL THREAD ZINC	F81003-11	6	
35	BOLT, M10X20-8.8 HEX HEAD FULL THREAD ZINC	F81003-1	4	
36	WASHER, 8.4 FLAT ZINC	F81054-1	2	
37	NUT, M8-8-B HEX NYLON ZINC LOCK	F81032-2	1	
38	BOLT, M8X35-8.8 HEX HEAD FULL THREAD ZINC	F81002-13	1	

4 INCLINE LOG DECK COMPONENTS

Short Foot

4.4 Short Foot

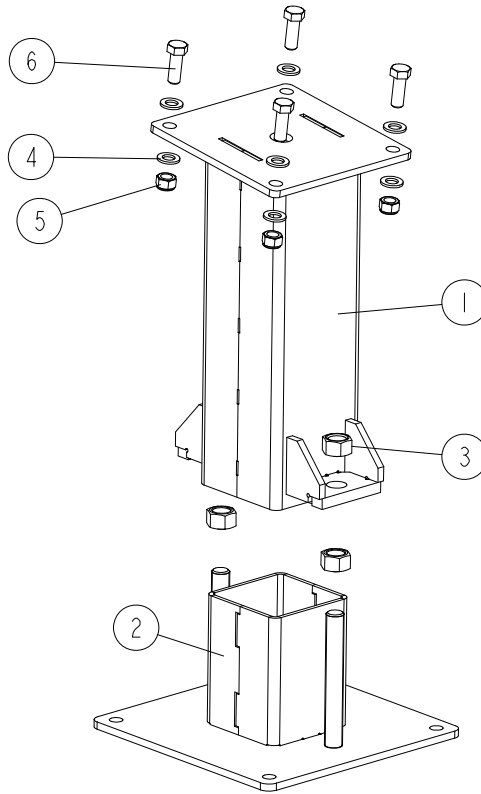
515696_001
515696_MANUAL



REF.	DESCRIPTION (* Indicates Parts Available in Assemblies Only)	PART #	QTY
-	FOOT, INCLINE LOG DECK SHORT - COMPLETE	515696	1
1	FOOT WELDMENT - UPPER PART	513106-1	1
2	BASE WELDMENT, FOOT	513230-1	1
3	NUT, M24-8-B HEX ZINC	F81039-12	4
4	WASHER, 17 SPLIT LOCK ZINC	F81058-1	8
5	NUT, M16-8 HEX NYLON ZINC LOCK	F81036-2	4
6	BOLT, M16X45-8.8 HEX HEAD FULL THREAD ZINC	F81006-46	4

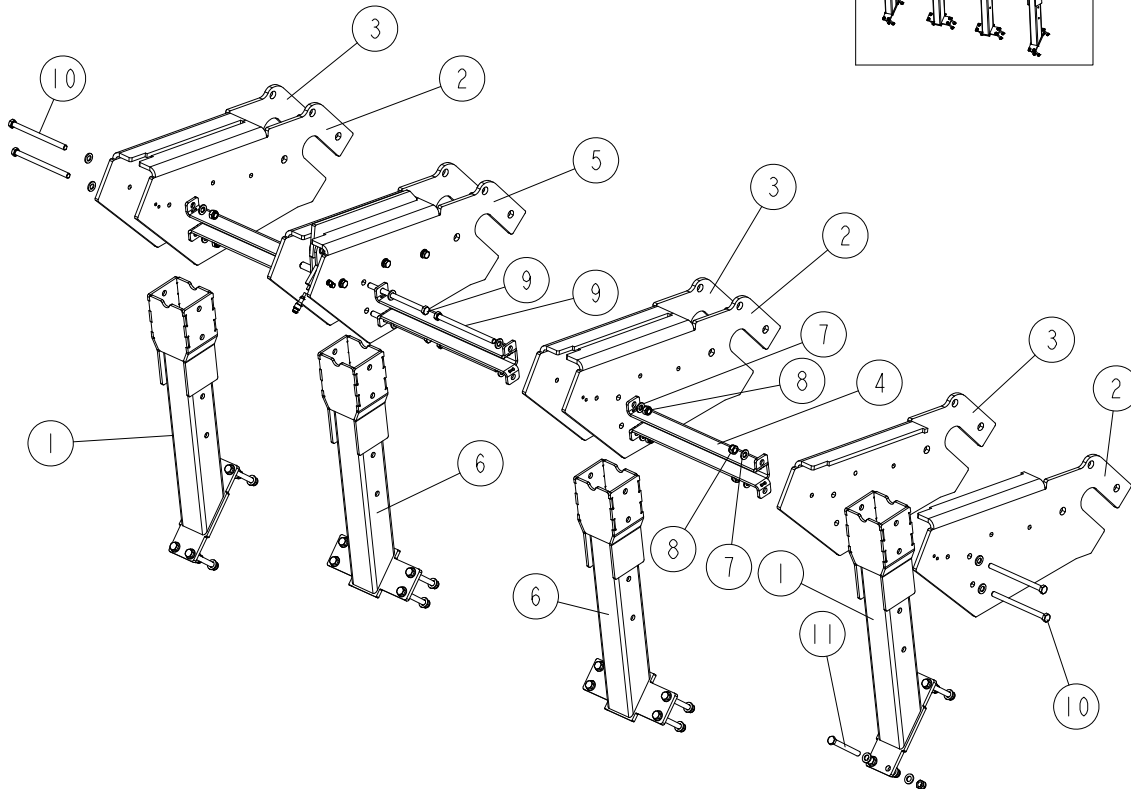
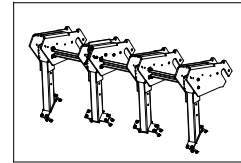
4.5 Long Foot

515697_001
515697_MANUAL



REF.	DESCRIPTION (* Indicates Parts Available in Assemblies Only)	PART #	QTY
-	FOOT, INCLINE LOG DECK LONG - COMPLETE	515697	1
1	FOOT WELDMENT - UPPER PART	513111-1	1
2	BASE WELDMENT, FOOT	513230-1	1
3	NUT, M24-8-B HEX ZINC	F81039-12	4
4	WASHER, 17 SPLIT LOCK ZINC	F81058-1	8
5	NUT, M16-8 HEX NYLON ZINC LOCK	F81036-2	4
6	BOLT, M16X45-8.8 HEX HEAD FULL THREAD ZINC	F81006-46	4

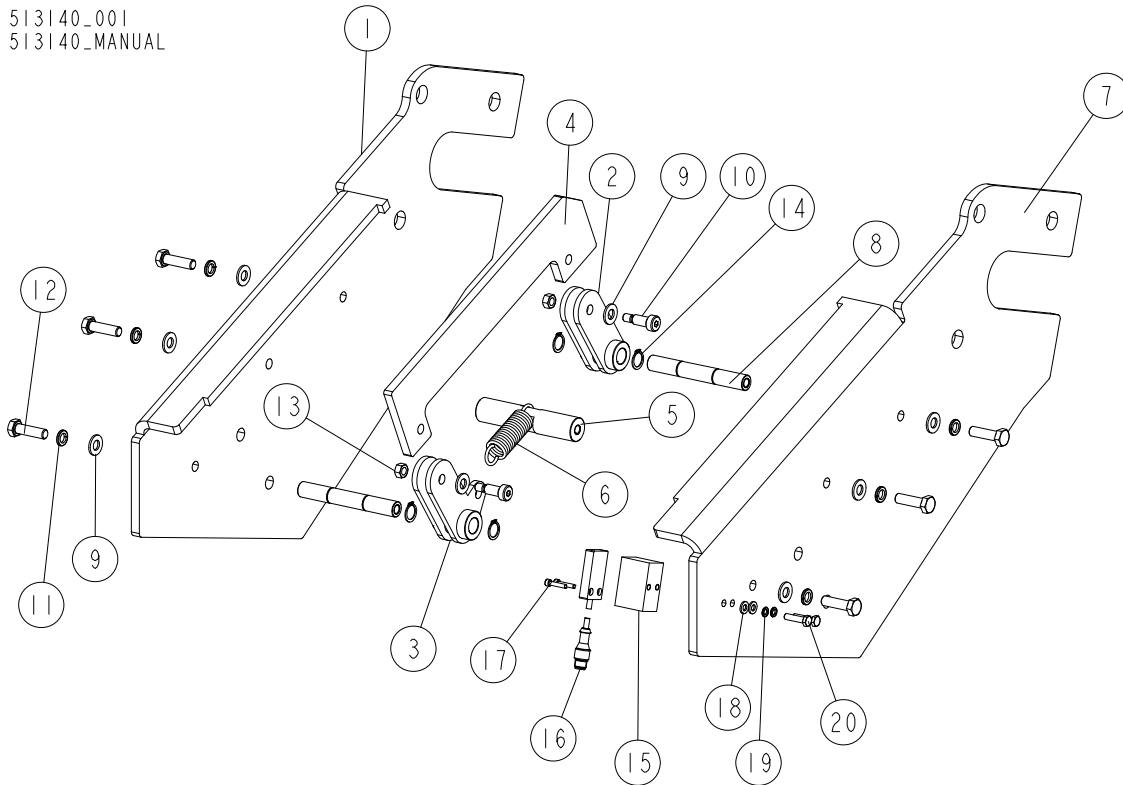
4.6 Incline Log Deck Chute

515695_001
515695_MANUAL

REF.	DESCRIPTION (* Indicates Parts Available in Assemblies Only)	PART #	QTY
-	CHUTE, INCLINE LOG DECK - COMPLETE	515695	1
1	BRACKET WELDMENT, INCLINE LOG DECK	513124-1	2
2	PLATE, RIGHT SIDE	513118-1	3
3	PLATE, LEFT SIDE	513130-1	3
4	PLATE, CHUTE SECTION CONNECTION	513129-1	3
5	SECTION, LOG DECK CHUTE - COMPLETE See Section 4.7	513140	1
6	BRACKET WELDMENT, INCLINE LOG DECK	513195-1	2
7	WASHER, 13 FLAT ZINC	F81056-1	48
8	NUT, M12 8 HEX NYLON ZINC LOCK	F81034-2	24
9	BOLT, M12X180-8.8 HEX HEAD ZINC	F81004-49	4
10	BOLT, M12X170-8.8 HEX HEAD ZINC	F81004-7	4
11	BOLT, M12X110-8.8-B HEX HEAD ZINC	F81004-47	16

4.7 Log Deck Chute Section

513140_001
513140_MANUAL

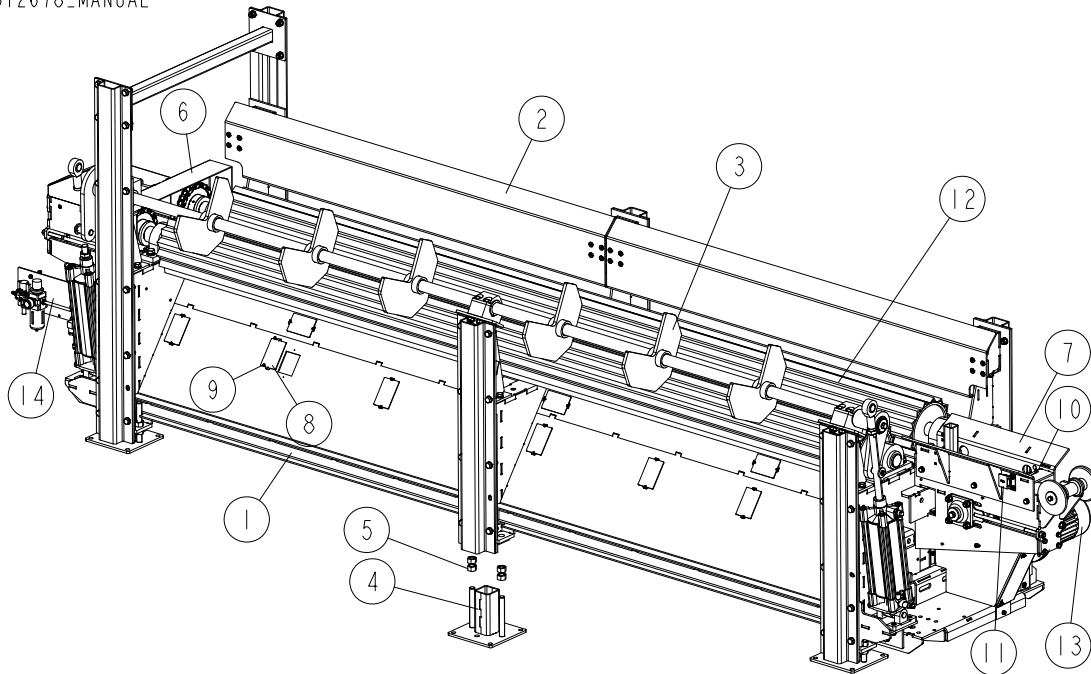


REF.	DESCRIPTION (* Indicates Parts Available in Assemblies Only)	PART #	QTY
-	SECTION, LOG DECK CHUTE - COMPLETE	513140	1
1	PLATE, LEFT SIDE	513130-1	1
2	ARM WELDMENT, PAWL	513135-1	1
3	ARM, PAWL RETURN	513139-1	1
4	PLATE, PAWL	513131-1	1
5	ROD, SPRING HOOK	513141-1	1
6	SPRING, N3XN30.3X75 (0080255044) ZINC-PLATED	515822	1
7	PLATE, RIGHT SIDE	513118-1	1
8	PIVOT, PAWL	513194-1	2
9	WASHER, 10.5 FLAT ZINC	F81055-1	8
10	BOLT, 10/M8X20-12.9 BOSSARD SHOULDER	F81003-99	2
11	WASHER, Z 10.2 SPLIT LOCK ZINC	F81055-2	6
12	BOLT, M10X35 8.8 HEX HEAD FULL THREAD ZINC	F81003-17	6
13	NUT, M8-8-B HEX BLACK	F81032-14	2
14	RING, Z16 OUTSIDE RETAINING	F81090-59	4
15	BLOCK, SENSOR MOUNT	515967-1	1
16	SENSOR, BES 516-347-MO-C-S4-00.2 INDUCTIVE	515966	1
17	SCREW, M4X20 8.8 HEX SOCKET HEAD CAP ZINC	F81011-31	2
18	WASHER, 6.4 FLAT ZINC	F81053-1	2
19	WASHER, Z 6.1 SPLIT LOCK ZINC	F81053-3	2
20	BOLT, M6X25-8.8 HEX HEAD FULL THREAD ZINC	F81001-3	2

SECTION 5 SLP LINE LOG TURNER

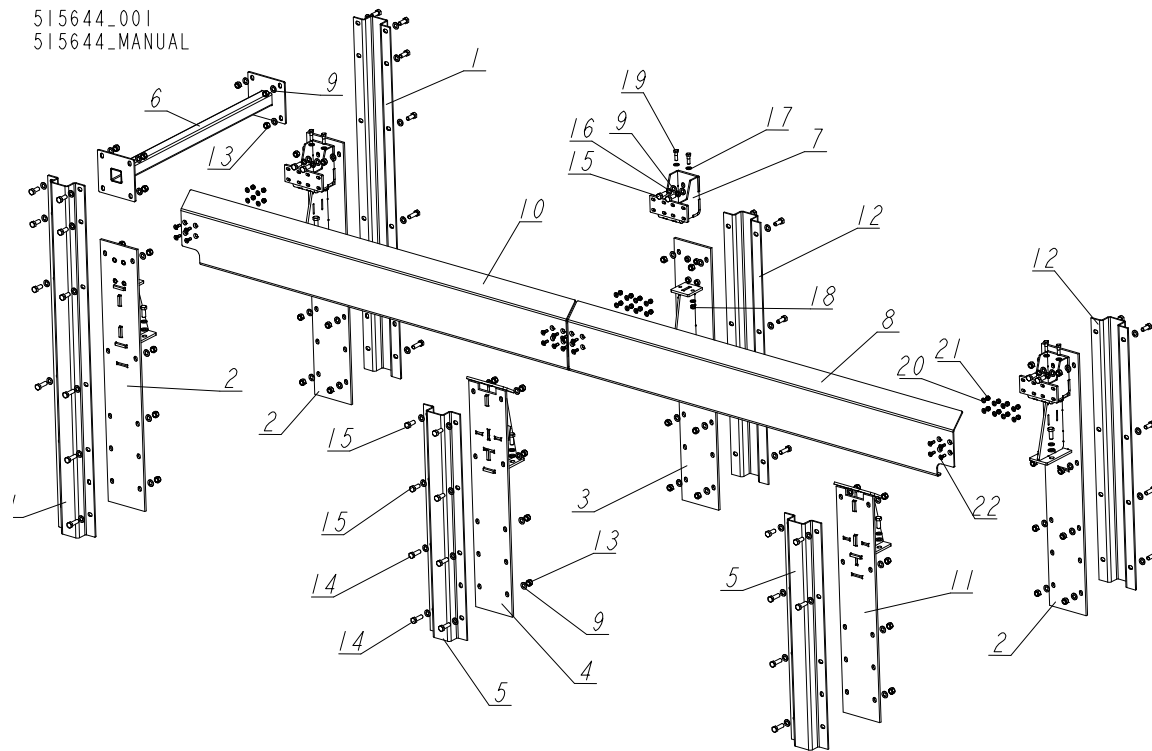
5.1 Log Turner

512678_001
512678_MANUAL



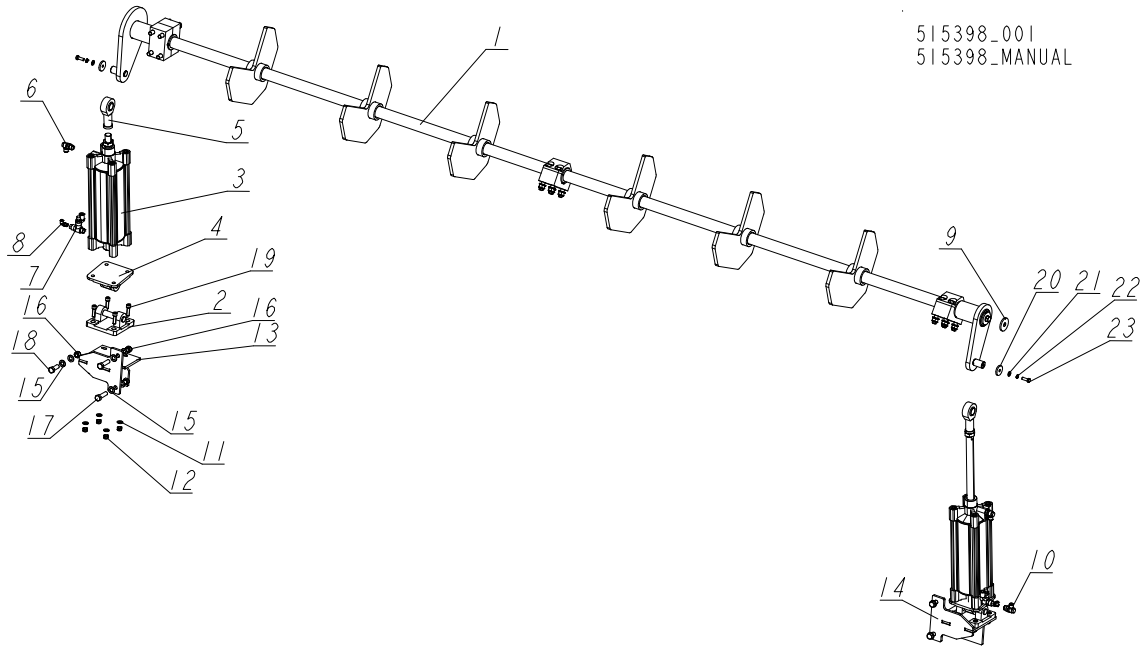
REF.	DESCRIPTION (* Indicates Parts Available in Assemblies Only)	PART #	QTY
-	LOG TURNER FOR SLP LINE	512678	1
1	FRAME, LOG TURNER	512729-1	1
2	BRACKETS W/BUMPER PLATES See Section 5.2	515644	1
3	SINGULATOR, LOG - COMPLETE See Section 5.3	515398	1
4	FOOT, SLP LOG TURNER	513221-1	6
5	NUT, M24-8-B HEX ZINC	F81039-12	24
6	GUARDS, SLP2 LOG TURNER See Section 5.5	513210	1
7	BRACKET, LOG SUPPORT - COMPLETE See Section 5.6	515643	1
8	PLATE, COVER	515458-1	20
9	BOLT, #8-32X3/8 SELF-TAPPING	F05015-8	40
10	SENSOR, LOG TURNER - COMPLETE See Section 5.7	515371	1
11	MIRROR, SENSOR - COMPLETE See Section 5.8	515368	1
12	PULLEYS, LOG TURNER See Section 5.9	515633	1
13	DRIVE ASSEMBLY, SLP LOG TURNER FEED See Section 5.10	515640	1
14	AIR SUPPLY ASSEMBLY FOR LDT-3.6 See Section 5.13	515592	1

5.2 Brackets w/Bumper Plates



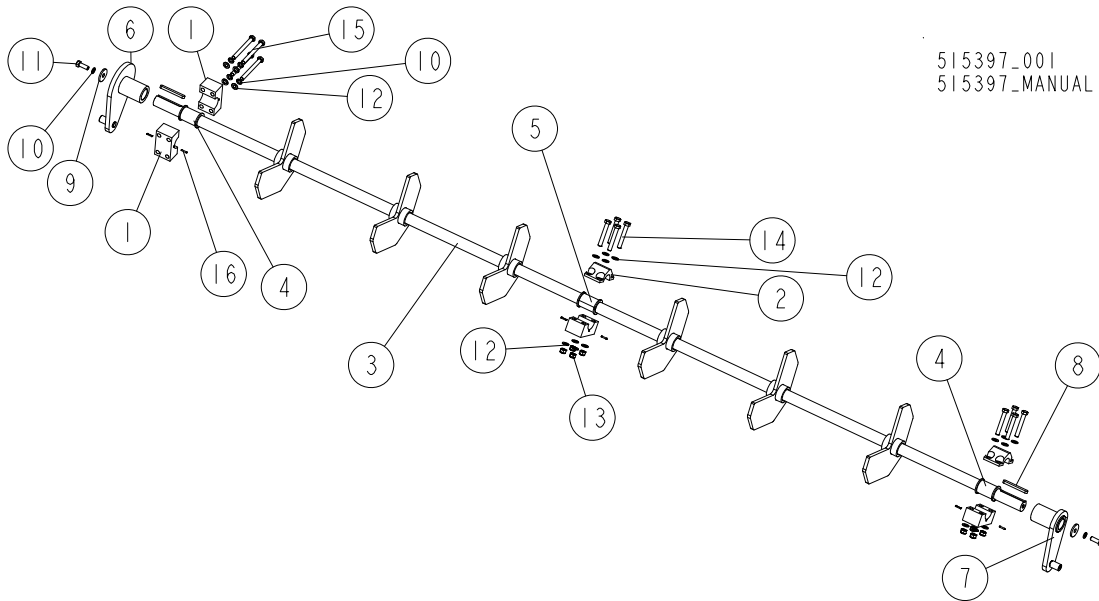
REF.	DESCRIPTION (* Indicates Parts Available in Assemblies Only)	PART #	QTY
-	BRACKETS W/BUMPER PLATES	515644	1
1	PLATE, VERTICAL	512722-1	2
2	BRACKET, LOG SINGULATOR MOUNT - 1	512809-1	3
3	BRACKET, BUMPER PLATE MIDDLE	512819-1	1
4	BRACKET, LOG SINGULATOR MIDDLE	512823-1	1
5	PLATE, SHORT	512826-1	2
6	TUBE, MIDDLE CROSS	512829-1	1
7	BRACKET, BUMPER PLATE	512857-1	3
8	PLATE, RIGHT BUMPER - COMPLETE	512838-1	1
9	WASHER, 17 SPLIT LOCK ZINC	F81058-1	124
10	PLATE, LEFT BUMPER - COMPLETE	513207-1	1
11	BRACKET, LOG SINGULATOR MOUNT - 2	515115-1	1
12	PLATE, MIDDLE SHORT	514234-1	2
13	NUT, M16-8 HEX NYLON ZINC LOCK	F81036-2	54
14	BOLT, M16X50-8.8 HEX HEAD FULL THREAD ZINC	F81006-38	26
15	BOLT, M16X40-8.8 HEX HEAD FULL THREAD ZINC	F81006-13	44
16	WASHER, 16.3 SPLIT LOCK ZINC	F81058-2	18
17	WASHER, 13 FLAT ZINC	F81056-1	12
18	NUT, M12 8 HEX NYLON ZINC LOCK	F81034-2	6
19	BOLT, M12X40-8.8 HEX HEAD	F81004-1	6
20	WASHER, 10.5 FLAT ZINC	F81055-1	20
21	NUT, M10-8-B HEX NYLON ZINC LOCK	F81033-1	20
22	SCREW, M10X30-10.9 DIN 7991 FLAT SOCKET HEAD CAP ZINC	F81003-104	16

5.3 Log Singulator



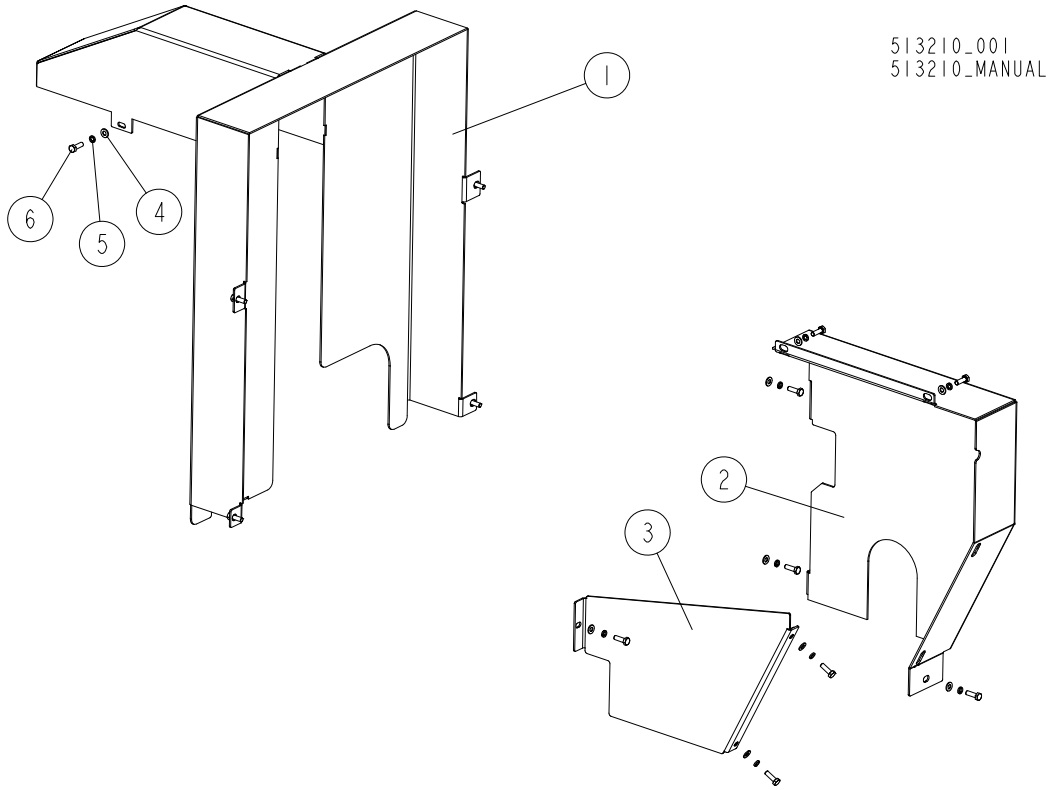
REF.	DESCRIPTION (* Indicates Parts Available in Assemblies Only)	PART #	QTY
-	LOG SINGULATOR - COMPLETE	515398	1
1	SHAFT, MAIN - COMPLETE See Section 5.4	515397	1
2	CLEVIS, 125MM - D5125 FEMALE HEAD END	512869	2
-	CYLINDER, SLP LINE LOG TURNER - COMPLETE	515498	2
3	CYLINDER, ISO/VDMA - CP96SDB125-320	512429	1
4	CLEVIS, CP96, N125 - C5125 MALE HEAD END	512427	1
5	JOINT, CP96, N125 - KJ27D PISTON ROD BALL	512428	1
6	VALVE, AS4201F-04-12SA FLOW CONTROL	515594	1
7	VALVE, ASP630F-04-12S PILOT FLOW CONTROL	526854	1
8	FITTING, KQ2L08-02AS MALE	526944	1
9	WASHER, 17.5/60-6 ZINC-PLATED	098012-1	1
10	VALVE, AS4201F-04-12SA FLOW CONTROL	515594	1
11	WASHER, 13 FLAT ZINC	F81056-1	8
12	NUT, M12 8 HEX NYLON ZINC LOCK	F81034-2	8
13	BRACKET, LEFT CYLINDER MOUNT	514239-1	1
14	BRACKET, RIGHT CYLINDER MOUNT	514242-1	1
15	WASHER, 17 SPLIT LOCK ZINC	F81058-1	12
16	NUT, M16-8 HEX NYLON ZINC LOCK	F81036-2	6
17	BOLT, M16X60-8.8 HEX HEAD FULL THREAD ZINC	F81006-12	4
18	BOLT, M16X45-8.8 HEX HEAD FULL THREAD ZINC	F81006-46	2
19	SCREW, M12X40-8.8-B DNI 912 (BN 3) SOCKET HEAD CAP ZINC	F81004-71	8
20	WASHER, 10.5/45-6 ZINC-PLATED	086286-1	2
21	WASHER, 10.5 FLAT ZINC	F81055-1	2
22	WASHER, Z 10.2 SPLIT LOCK ZINC	F81055-2	2
23	BOLT, M10X30-8.8 HEX HEAD FULL THREAD ZINC	F81003-2	2

5.4 Main Shaft



REF.	DESCRIPTION (* Indicates Parts Available in Assemblies Only)	PART #	QTY
-	SHAFT, COMPLETE MAIN	515397	1
1	BLOCK, SHAFT MOUNT - LOWER PART	512814-1	4
2	BLOCK, SHAFT MIDDLE MOUNT - UPPER PART	512810-1	2
3	SHAFT, S/M LOG SINGULATOR	515396-1	1
4	BEARING, SLIDE	515535	2
5	BEARING, SLIDE	515536	2
6	ARM, LEFT CYLINDER - COMPLETE	515400-1	1
7	ARM, RIGHT CYLINDER - COMPLETE	515117-1	1
8	KEY, A16X10X125 PARALLEL	515414	2
9	WASHER, 60X17X6 ZINC-PLATED CLAMPING	509636-1	2
10	WASHER, 16.3 SPLIT LOCK ZINC	F81058-2	6
11	BOLT, M16X45-8.8 HEX HEAD FULL THREAD ZINC	F81006-46	2
12	WASHER, 17 SPLIT LOCK ZINC	F81058-1	20
13	NUT, M16-8 HEX NYLON ZINC LOCK	F81036-2	8
14	BOLT, M16X110-8.8-B HEX HEAD ZINC	F81006-24	8
15	BOLT, M16X150 HEX HEAD ZINC	F81006-9	4
16	PIN, 5X26 ROLL ZINC	F81044-2	6

5.5 Log Turner Guards

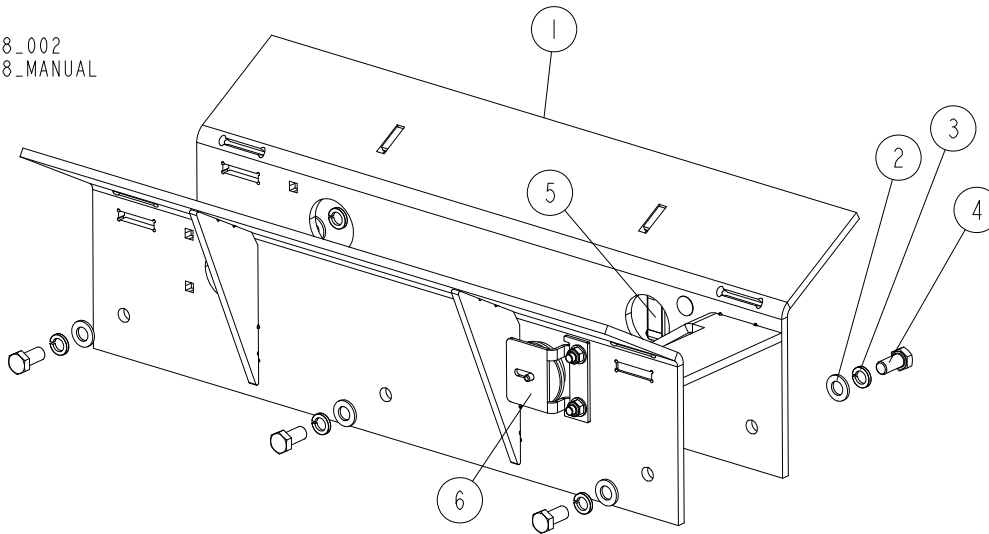


513210_001
 513210_MANUAL

REF.	DESCRIPTION (* Indicates Parts Available in Assemblies Only)	PART #	QTY
-	GUARDS, SLP2 LOG TURNER	513210	1
1	GUARD, PULLEY DRIVE CHAIN	513208-1	1
2	GUARD, LOG FEED CHAIN	513218-1	1
3	GUARD, COMPLETE SIDE	514280-1	1
4	WASHER, 8.4 FLAT ZINC	F81054-1	15
5	WASHER, 8.2 SPLIT LOCK ZINC	F81054-4	15
6	BOLT, M8X25-8.8-B HEX HEAD FULL THREAD ZINC	F81002-5	15

5.6 Log Support Bracket

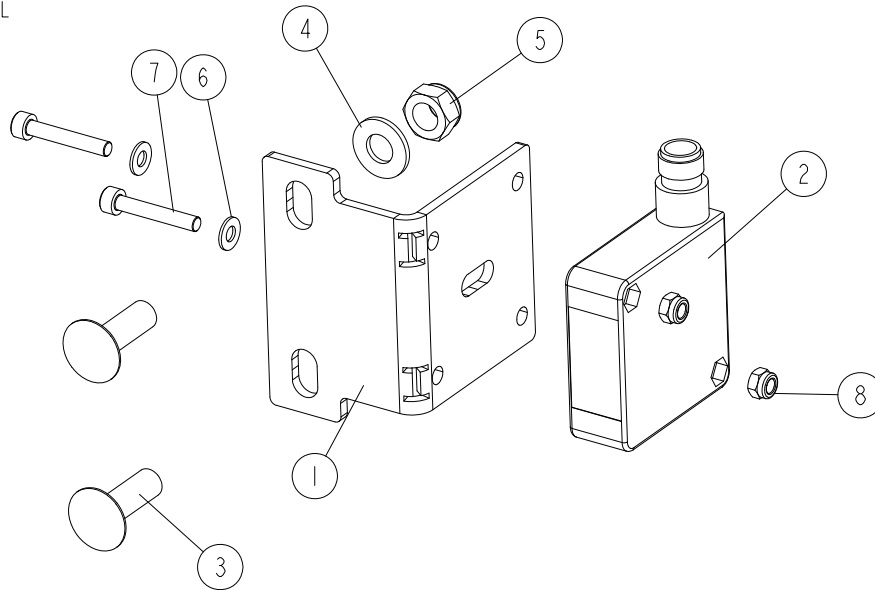
512678_002
 512678_MANUAL



REF.	DESCRIPTION (* Indicates Parts Available in Assemblies Only)	PART #	QTY
-	BRACKET, LOG SUPPORT - COMPLETE	515643	1
1	BRACKET, LOG SUPPORT	514275-1	1
2	WASHER, 13 FLAT ZINC	F81056-1	6
3	WASHER, Z12.2 SPLIT LOCK ZINC	F81056-2	6
4	BOLT, M12X25-8.8 HEX HEAD FULL THREAD ZINC	F81004-31	6
5	SENSOR, LOG TURNER - COMPLETE See Section 5.7	515371	1
6	MIRROR, SENSOR - COMPLETE See Section 5.8	515368	1

5.7 Log Turner Sensor

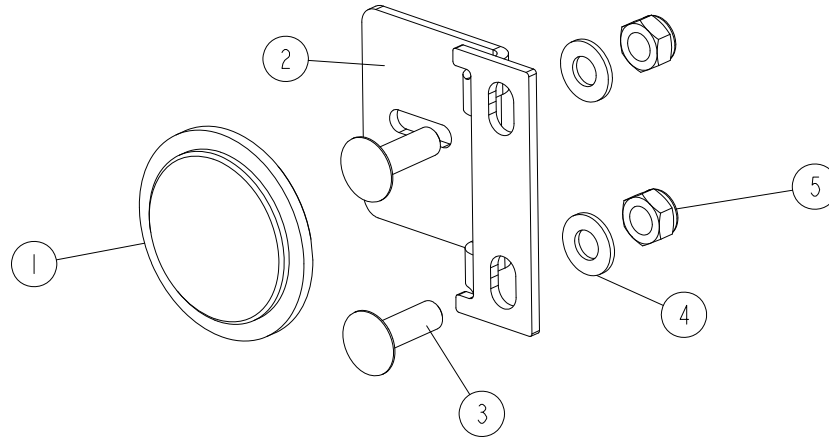
515371_001
515371_MANUAL



REF.	DESCRIPTION (* Indicates Parts Available in Assemblies Only)	PART #	QTY
-	SENSOR, LOG TURNER - COMPLETE	515371	1
1	BRACKET, PHOTOELECTRIC SENSOR	515370-1	1
2	SENSOR, XUK 1APANM12 PHOTOELECTRIC	093169	1
3	BOLT, M8X25-8.8 CARRIAGE ZINC	F81002-59	2
4	WASHER, 8.4 FLAT ZINC	F81054-1	2
5	NUT, M8-8-B HEX NYLON ZINC LOCK	F81032-2	2
6	WASHER, 4.3 FLAT ZINC	F81051-2	2
7	SCREW, M4X25-8.8 HEX SOCKET HEAD CAP ZINC	F81011-3	2
8	NUT, M4-8 HEX NYLON ZINC LOCK	F81029-1	2

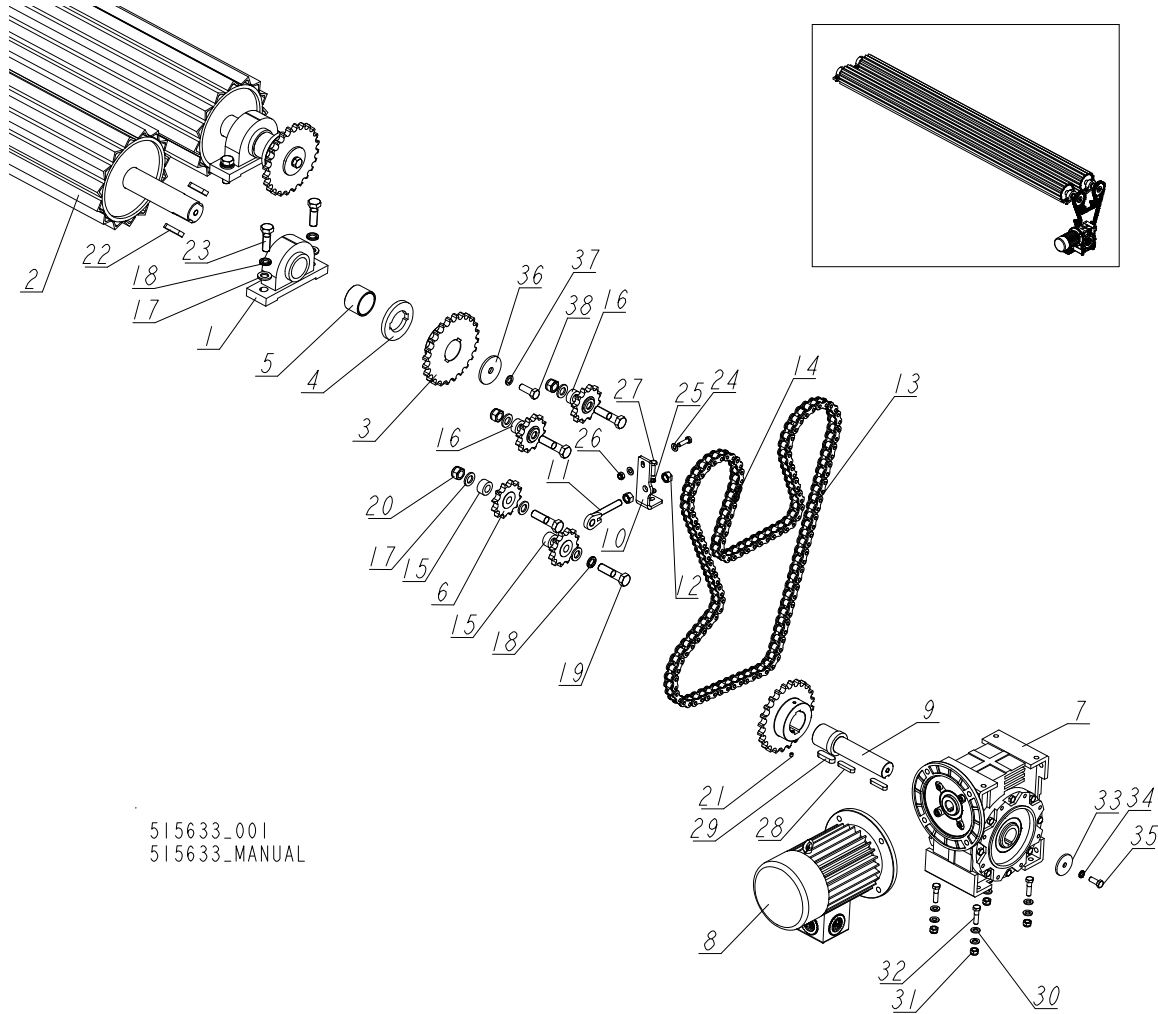
5.8 Photoelectric Sensor Mirror

515368_001
 515368_MANUAL



REF.	DESCRIPTION (* Indicates Parts Available in Assemblies Only)	PART #	QTY
-	MIRROR, PHOTOELECTRIC SENSOR - COMPLETE	515368	1
1	MIRROR, REFLECTIVE	091401	1
2	BRACKET, SENSOR MOUNT	515367-1	1
3	BOLT, M8X25-8.8 CARRIAGE ZINC	F81002-59	2
4	WASHER, 8.4 FLAT ZINC	F81054-1	2
5	NUT, M8-8-B HEX NYLON ZINC LOCK	F81032-2	2

5.9 Pulleys



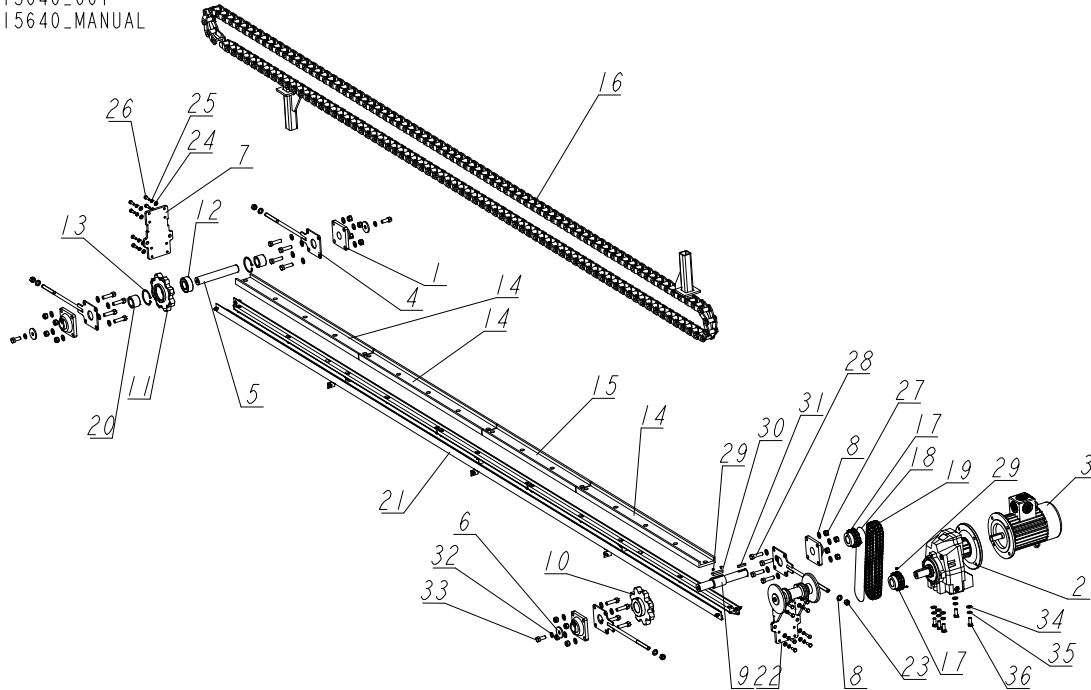
515633_001
515633_MANUAL

REF.	DESCRIPTION (* Indicates Parts Available in Assemblies Only)	PART #	QTY
-	PULLEYS, LOG TURNER	515633	1
1	BEARING, UCP212 W/HOUSING	512677	4
2	PULLEY	512675-1	2
3	SPROCKET, 24Z16B-1	512686-1	3
4	WASHER, 61/110X12 SPACER	512688-1	2
5	BUSHING, 61/70-48	512687-1	2
6	SPROCKET, KSR20-LO-16-10-12-15	099746	4
-	MOTOREDUCER, MR-120 I=39 3KW N=900 r.p.m. - B8	512860	1
7	BOX, MR-120/250 GEAR	512858	1
8	MOTOR, 3KW 900 r.p.m. 250/28 CELMA/INDUKTA	512859	1
9	SHAFT, MR-120 SLPLT MOTOREDUCER	512861	1
10	PLATE, TENSION	514246-1	1
11	TENSIONER, PULLEY CHAIN	512702-1	1
12	NUT, M16-8 HEX ZINC	F81036-1	2
-	CHAIN, LOG TURNER PULLEY DRIVE	515541	1
13	CHAIN, 12 B-1 L=3,2M	514278	1
14	LINK, I00149 12 B-1 MASTER	515540	1

REF.	DESCRIPTION (* Indicates Parts Available in Assemblies Only)	PART #	QTY	
15	BUSHING, 20.5/38-20	514835-1	2	
16	BUSHING, 20.5/38-15	514834-1	2	
17	WASHER, 21 FLAT ZINC	F81059-2	15	
18	WASHER, 20.5 SPLIT LOCK ZINC	F81059-1	9	
19	BOLT, M20X80-8.8 HEX HEAD FULL THREAD ZINC	F81007-10	4	
20	NUT, M20-8 DIN985 HEX NYLON ZINC LOCK	F81037-2	3	
21	SCREW, M8-1.25X8MM SH SET BO	F05004-234	1	
22	KEY, A18X11X63 PARALLEL	515641	4	
23	BOLT, M20X60-8.8 HEX HEAD ZINC	F81007-7	8	
24	WASHER, 10.5 FLAT ZINC	F81055-1	3	
25	WASHER, Z 10.2 SPLIT LOCK ZINC	F81055-2	1	
26	NUT, M10-8-B HEX NYLON ZINC LOCK	F81033-1	1	
27	BOLT, M10X35 8.8 HEX HEAD FULL THREAD ZINC	F81003-17	2	
28	KEY, A14X9X56 PARALLEL	504601	2	
29	KEY, A18X11X56 PARALLEL	515642	1	
30	WASHER, 13 FLAT ZINC	F81056-1	8	
31	NUT, M12 8 HEX NYLON ZINC LOCK	F81034-2	4	
32	BOLT, M12X45 8.8 HEX HEAD ZINC	F81004-32	4	
33	WASHER, 13/60-5 ZINC-PLATED	098613-1	1	
34	WASHER, Z12.2 SPLIT LOCK ZINC	F81056-2	1	
35	BOLT, M12X30 8.8 HEX HEAD FULL THREAD ZINC	F81004-22	1	
36	WASHER, 17.5/80-6 ZINC-PLATED	512703-1	2	
37	WASHER, 16.3 SPLIT LOCK ZINC	F81058-2	2	
38	BOLT, M16X45-8.8 HEX HEAD FULL THREAD ZINC	F81006-46	2	

5.10 Log Feed Drive Assembly

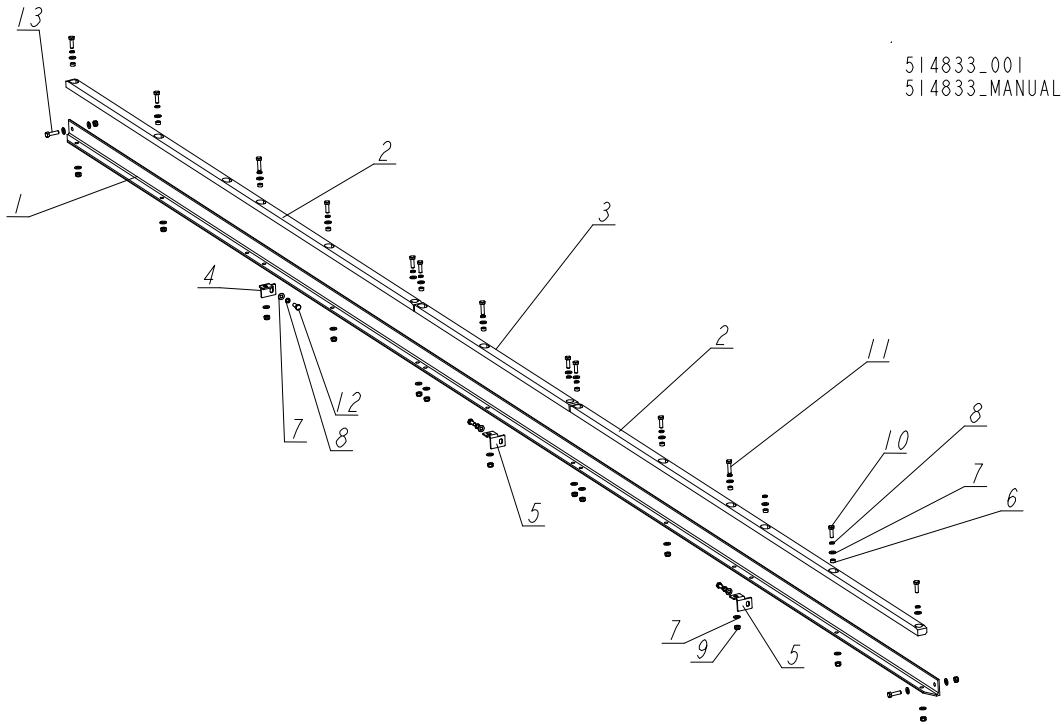
515640_001
515640_MANUAL



REF.	DESCRIPTION (* Indicates Parts Available in Assemblies Only)	PART #	QTY
-	DRIVE ASSEMBLY, LOG FEED	515640	1
1	BEARING, UCF208 W/HOUSING	512725	4
-	MOTOREDUCER, HMZ-402/3kW, I=30.42-B3	515495	1
2	BOX, HMZ-402_100B5(250MM) I=30.42 GEAR	515496	1
3	MOTOR, 2SIEK100L4B5 (250MM) 1400 r.p.m. 3kW	515494	1
4	ARM, FEED CHAIN TENSIONER	513217-1	4
5	SHAFT, IDLER	514073	1
6	WASHER, 17.5/60-6 ZINC-PLATED	098012-1	3
7	PLATE, TENSIONER MOUNT	513214-1	1
8	WASHER, 17 SPLIT LOCK ZINC	F81058-1	36
9	SHAFT, DRIVE	514250	1
10	SPROCKET, Z8	089888-1	1
-	SPROCKET, Z8 - COMPLETE	507234	1
11	SPROCKET, Z8 REAR	089919-1	1
12	BEARING, 3208. 2RSR. TVH (FAG) ROLLING	088449	1
13	RING, W80 INSIDE RETAINING	F81090-25	2
14	CHANNEL, UHMW CONVEYOR	033722	3
15	CHANNEL, CHAIN GUIDE - SHORT	514277	1
16	CHAIN, SLP LINE LOG TURNER	514230-1	1
17	SPROCKET, 15Z12B-2 (T 13853)	514235	2
-	CHAIN, LOG FEED	514285	1
18	CHAIN, 12B-2 L=1018MM (54-LINK) DIN 8187	514285	1
19	LINK, 12B-2PZ MASTER	099249	1
20	BUSHING, 40.5/60-41	514678-1	2

REF.	DESCRIPTION (* Indicates Parts Available in Assemblies Only)	PART #	QTY	
21	ANGLE, CHAIN GUIDE BAR SUPPORT - COMPLETE See Section 5.11	514833	2	
22	ROLLER, LOG FEED W/BRACKET - COMPLETE See Section 5.12	514441	1	
23	NUT, M16-8 HEX ZINC	F81036-1	4	
24	WASHER, 10.5 FLAT ZINC	F81055-1	16	
25	WASHER, Z 10.2 SPLIT LOCK ZINC	F81055-2	16	
26	BOLT, M10X30-8.8 HEX HEAD FULL THREAD ZINC	F81003-2	16	
27	NUT, M16-8 HEX NUYLON ZINC LOCK	F81036-2	16	
28	BOLT, M16X60-8.8 HEX HEAD FULL THREAD ZINC	F81006-12	16	
29	SCREW, M8X8-33H GEOMET HEX SOCKET SET W/FLAT POINT	F81014-1	6	
30	KEY, A16X10X60 PARALLEL	099238	1	
31	KEY, A12X8X50 DIN6885 PARALLEL	506735	1	
32	WASHER, 16.3 SPLIT LOCK ZINC	F81058-2	3	
33	BOLT, M16X40-8.8 HEX HEAD FULL THREAD ZINC	F81006-13	3	
34	WASHER, 15 FLAT ZINC	F81057-2	5	
35	WASHER, 14.2 SPLIT LOCK ZINC	F81057-1	5	
36	BOLT, M14X35-8.8 ISO 4017 HEX HEAD FULL THREAD ZINC	F81005-1	5	

5.11 Chain Guide Bar Support

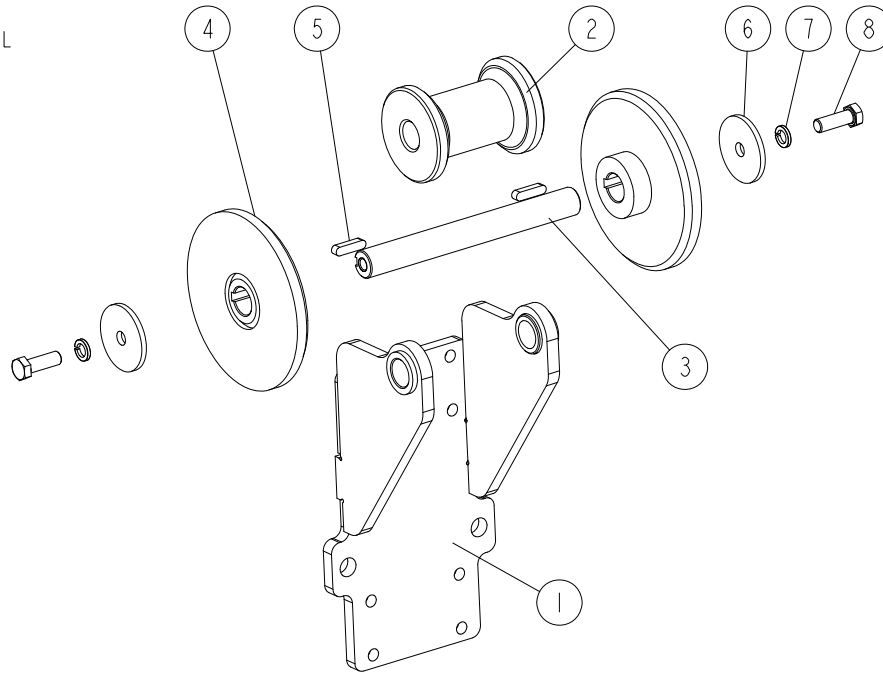


514833_001
514833_MANUAL

REF.	DESCRIPTION (* Indicates Parts Available in Assemblies Only)	PART #	QTY
-	ANGLE, CHAIN GUIDE BAR SUPPORT - COMPLETE	514833	1
1	ANGLE, CHAIN GUIDE BAR SUPPORT	514243-1	1
2	BAR, CHAIN GUIDE - OUTER	514244	2
3	BAR, CHAIN GUIDE - MIDDLE	514282	1
4	BRACKET, ANGLE MOUNT - RIGHT	514838-1	1
5	BRACKET, ANGLE MOUNT - LEFT	514837-1	2
6	BUSHING, 8.4/12.5-6 ZINC-PLATED	504040-1	11
7	WASHER, 8.4 FLAT ZINC	F81054-1	34
8	WASHJER, 8.2 SPLIT LOCK ZINC	F81054-4	17
9	NUT, M8-8-B HEX NYLON ZINC LOCK	F81032-2	15
10	BOLT, M8X25-8.8-B HEX HEAD FULL THREAD ZINC	F81002-5	10
11	BOLT, M8X30 8.8 HEX HEAD FULL THREAD ZINC	F81002-7	3
12	BOLT, M8X20 8.8 HEX HEAD FULL THREAD ZINC	F81002-4	3
13	BOLT, M8X30-8.8-B HEX HEAD FULL THREAD ZINC	F81002-2	2

5.12 Log Feed Roller Assembly

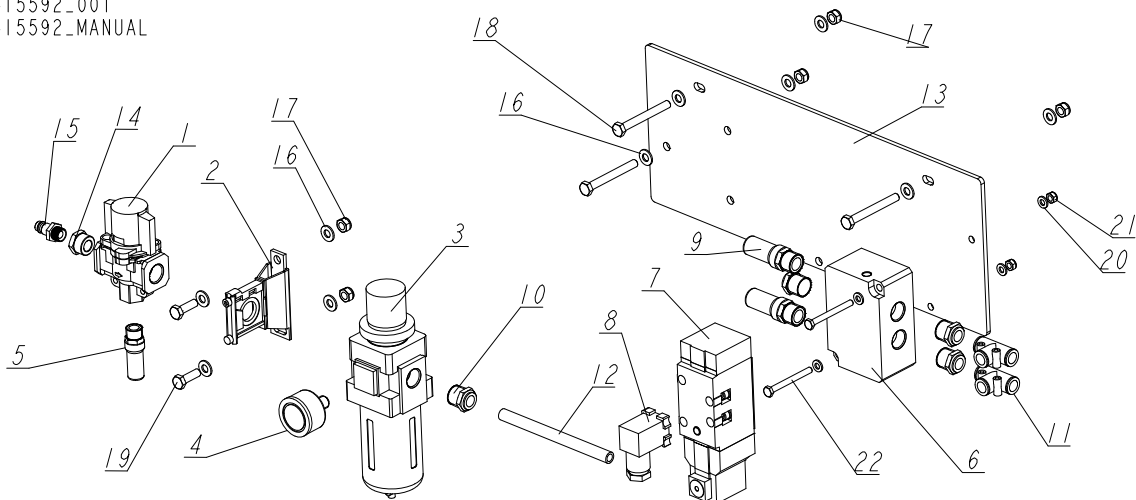
514441_001
 514441_MANUAL



REF.	DESCRIPTION (* Indicates Parts Available in Assemblies Only)	PART #	QTY
-	ROLLER, LOG FEED W/BRACKET - COMPLETE	514441	1
1	BRACKET WELDMENT, LOG FEED ROLLER	514439-1	1
2	ROLLER, INSIDE	515076-1	1
3	SHAFT, LOG FEED ROLLER	514283	1
4	PLATE, SIDE	515079-1	2
5	KEY, A8X7X32 PARALLEL	088564	2
6	WASHER, 60/12.5 - 5 SPECIAL	513627	2
7	WASHER, Z12.2 SPLIT LOCK ZINC	F81056-2	2
8	BOLT, M12X35 8.8 HEX HEAD FULL THREAD ZINC	F81004-24	2

5.13 Air Supply Assembly

515592_001
515592_MANUAL

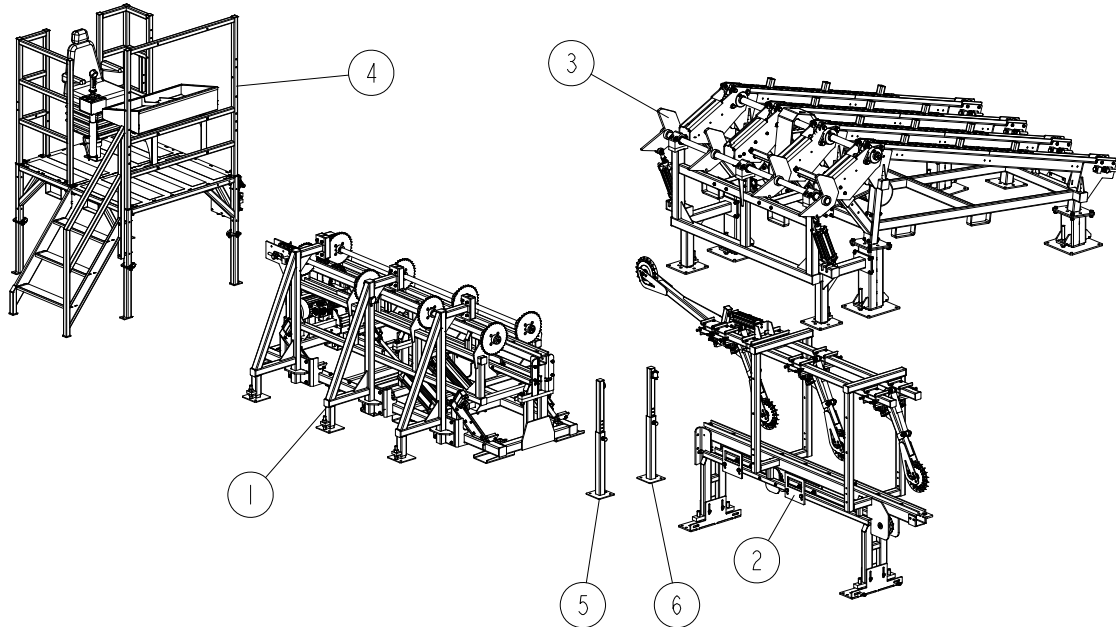


REF.	DESCRIPTION (* Indicates Parts Available in Assemblies Only)	PART #	QTY
-	AIR SUPPLY ASSEMBLY FOR LDT-3.6	515592	1
1	VALVE, 3/2 VHS40-F04 SHUT-OFF	515593	1
2	SPACER, T - Y400T W/BRACKET	515595	1
3	REGULATOR, 5UM - AW40-F04H FILTER	515596	1
4	GAUGE, G46-10-02 PRESSURE	515597	1
5	SILENCER, R3/8 - AN30-03	515598	1
6	MANIFOLD, EVS7-2-A04F	515599	1
7	VALVE, E/P 5/2 24VDC - VQ7-8-FG-S-3ZRO-Q	515600	1
8	PLUG, DIN A0 W/O DIODE & OVERVOLTAGE PROTECTION	515601	1
9	SILENCER, R1/2 - AN40-04	515602	2
10	FITTING, KQ2H12-04AS MALE	515603	4
11	FITTING, 12MM - KQ2T12-00A UNION TEE	515604	2
12	TUBING, TU1208B-20 POLYURETHANE	R80705-1	1
13	PLATE, MOUNT	515815-1	1
14	FITTING, R12A-14I (G1/4-G1/2) REDUCER	515814	1
15	FITTING, GK 1381A GZ 1/4" MALE	510171	1
16	WASHER, 8.4 FLAT ZINC	F81054-1	10
17	NUT, M8-8-B HEX NYLON ZINC LOCK	F81032-2	5
18	BOLT, M8X70-8.8 HEX HEAD ZINC	F81002-71	3
19	BOLT, M8X25-8.8-B HEX HEAD FULL THREAD ZINC	F81002-5	2
20	WASHER, 6.4 FLAT ZINC	F81053-1	4
21	NUT, M6-8-B HEX NYLON ZINC LOCK	F81031-2	2
22	BOLT, M6X60-8.8 HEX HEAD FULL THREAD ZINC	F81001-9	2

SECTION 6 LIGHT LDT MAIN COMPONENTS

6.1 Log Loading System Components

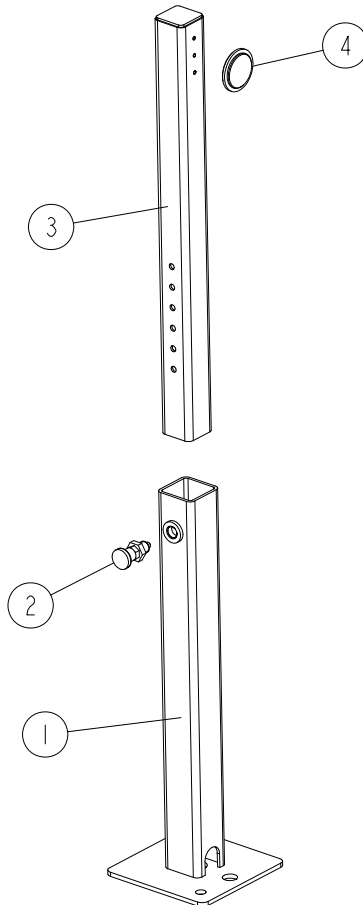
517180_001
517180_MANUAL



REF.	DESCRIPTION (* Indicates Parts Available In Assemblies Only)	PART #	QTY
-	LOG LOADING SYSTEM (SLP)	517180	1
1	TURNER, SLP LOG See Section 9.1	517158	1
2	TABLE, INFEED - COMPLETE See Section 7.1	517744	1
3	DECK, INCLINE LOG W/LOG SINGULATOR See Section 8.1	517976	1
4	STAND, SLP LINE OPERATOR - COMPLETE See Section 3.2	526862	1
5	TUBE, REFLECTIVE MIRROR MOUNT - COMPLETE See Section 6.2	518483	1
6	TUBE, PHOTOELECTRIC SENSOR MOUNT - COMPLETE See Section 6.3	518482	1

6.2 Reflective Mirror Mount Tube

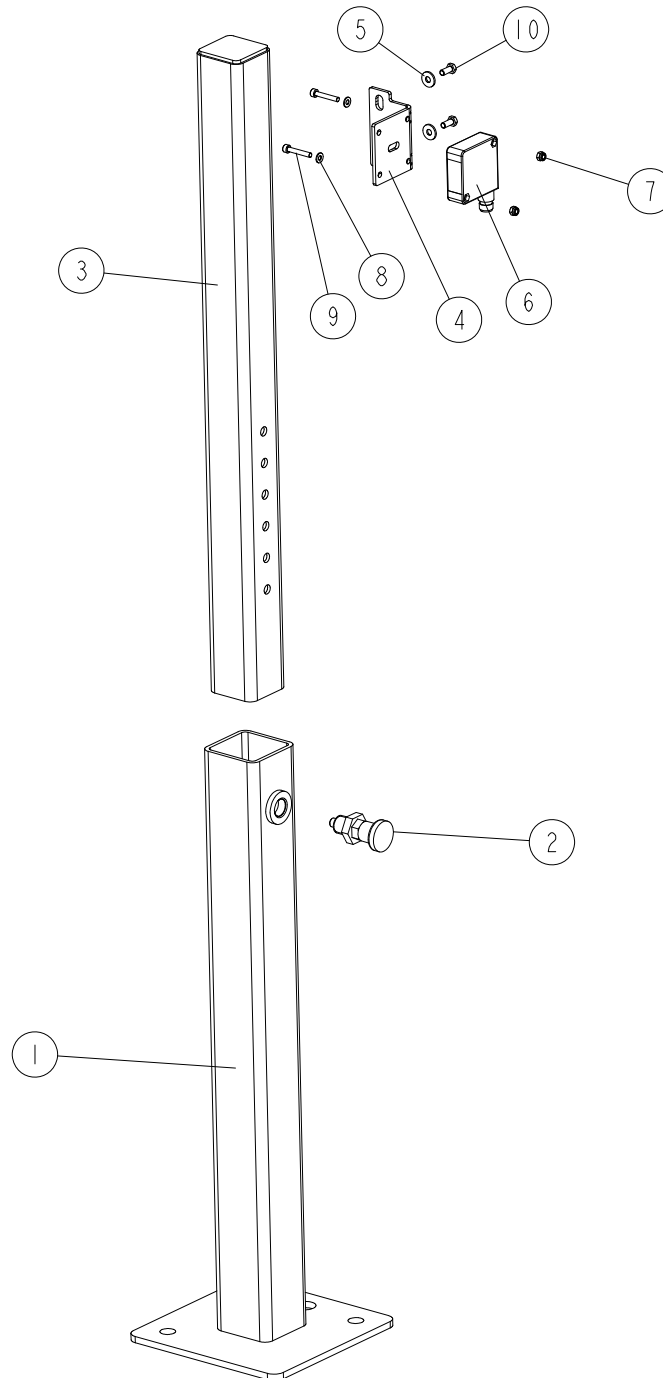
518483_001
 518483_MANUAL



REF.	DESCRIPTION (* Indicates Parts Available In Assemblies Only)	PART #	QTY
-	TUBE, REFLECTIVE MIRROR MOUNT - COMPLETE	518483	1
1	BASE, MIRROR/SENSOR MOUNT TUBE	518485-1	1
2	PLUNGER, 817-8-8-C-NI INDEXING	090197	1
3	TUBE, COMPLETE INSIDE (MIRROR/SENSOR MOUNT)	518481-1	1
4	MIRROR, REFLECTIVE	091401	1

6.3 Photoelectric Sensor Mount Tube

518482_001
518482_MANUAL



REF.	DESCRIPTION (* Indicates Parts Available In Assemblies Only)	PART #	QTY
-	TUBE, PHOTOELECTRIC SENSOR MOUNT - COMPLETE	518482	1
1	BASE, MIRROR/SENSOR MOUNT TUBE	518485-1	1
2	PLUNGER, 817-8-8-C-NI INDEXING	090197	1
3	TUBE, COMPLETE INSIDE (MIRROR/SENSOR MOUNT)	518481-1	1
4	BRACKET, PHOTOELECTRIC SENSOR	515370-1	1
5	WASHER, 5.5 SPECIAL FLAT ZINC	F81052-3	2
6	SENSOR, XUK 1APANM12 PHOTOELECTRIC	093169	1
7	NUT, M4-8 HEX NYLON ZINC LOCK	F81029-1	2

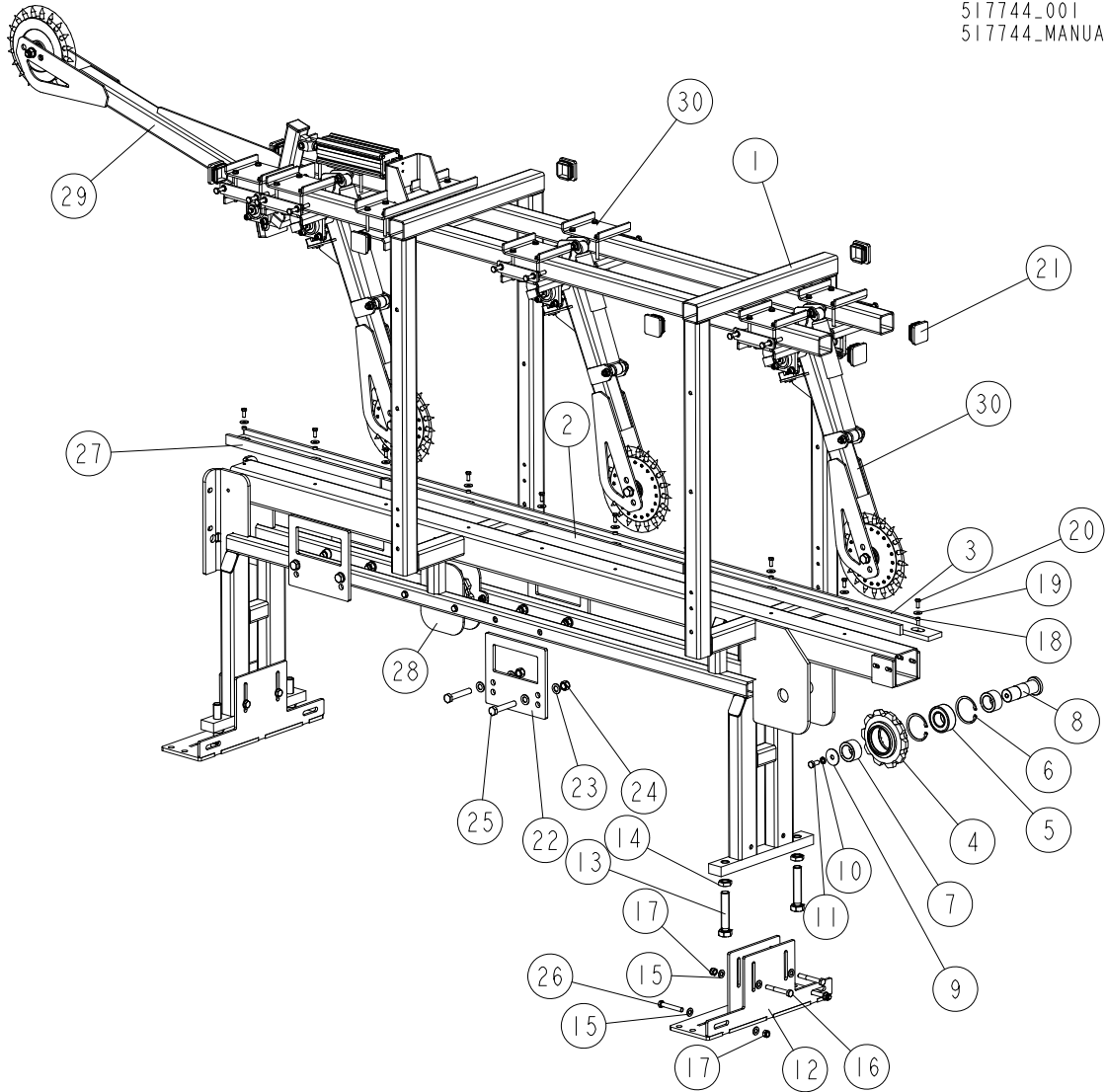
6 Light LDT Main Components

Photoelectric Sensor Mount Tube

REF.	DESCRIPTION (* Indicates Parts Available In Assemblies Only)	PART #	QTY	
8	WASHER, 4.3 FLAT ZINC	F81051-2	2	
9	SCREW, M4X25-8.8 HEX SOCKET HEAD CAP ZINC	F81011-3	2	
10	BOLT, M5X12 8.8 HEX HEAD FULL THREAD ZINC	F81000-5	2	

SECTION 7 LOG TURNER INFEED TABLE

7.1 Infeed Table



517744_001
517744_MANUAL

REF.	DESCRIPTION (* Indicates Parts Available in Assemblies Only)	PART #	QTY
-	TABLE, INFEED - COMPLETE	517744	1
1	TABLE, INFEED	517743-1	1
2	CHANNEL, CHAIN GUIDE	502562	1
3	CHANNEL, SHORT CHAIN GUIDE	502561	1
4	SPROCKET, 10Z 20B/2"N80 FRONT	502566-1	1
5	BEARING, 3208. 2RSR. TVH (FAG) ROLLING	088449	1
6	RING, W80 INSIDE RETAINING	F81090-25	2
7	BUSHING, 40.5/59.9-33 ZINC-PLATED	089916-1	2
8	PIN, IDLER SPROCKET PIVOT	501689-1	1
9	WASHER	501761-1	1
10	WASHER, Z12.2 SPLIT LOCK ZINC	F81056-2	1
11	BOLT, M12X25-8.8-HEX HEAD FULL THREAD ZINC	F81004-31	1

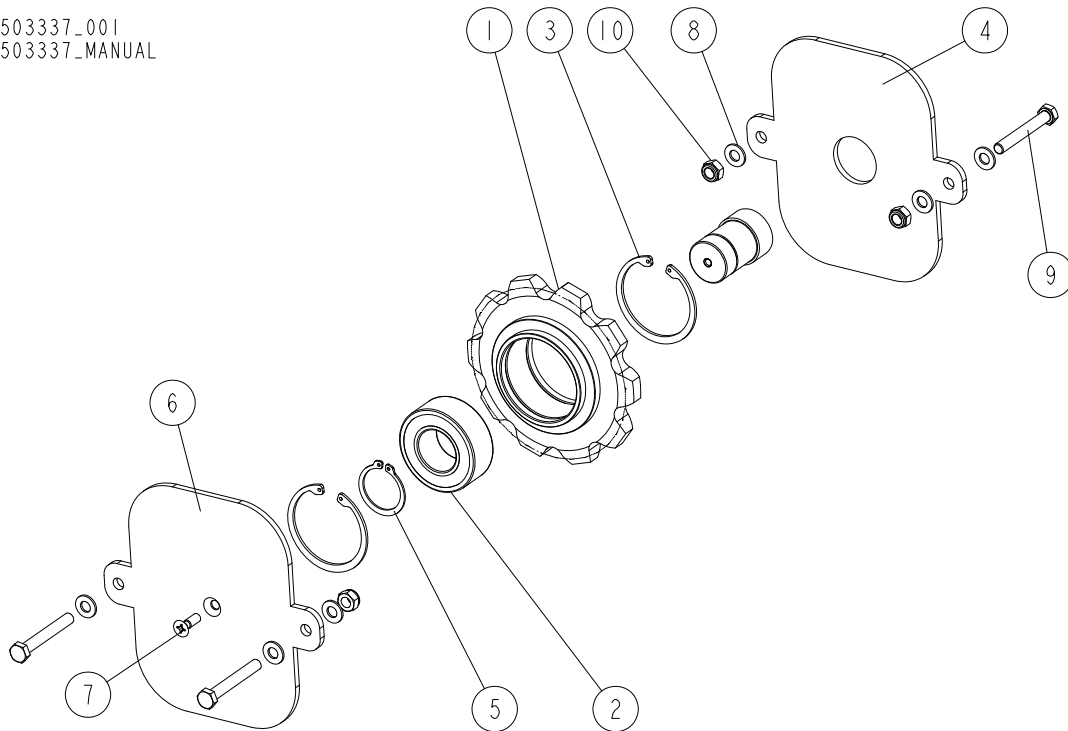
7 Log Turner Infeed Table

Infeed Table

REF.	DESCRIPTION (* Indicates Parts Available in Assemblies Only)	PART #	QTY
12	FOOT WELDMENT, TVS TABLE	502750-1	2
13	BOLT, M24X120 8.8 HEX HEAD FULL THREAD ZINC	F81009-6	4
14	NUT, M24-04-B HEX THIN ZINC	F81039-3	4
15	WASHER, 13 FLAT ZINC	F81056-1	12
16	BOLT, M12X90 8.8 HEX HEAD ZINC	F81004-2	4
17	NUT, M12 8 HEX NYLON ZINC LOCK	F81034-2	6
18	BUSHING, 8.4/12.5-6 ZINC-PLATED	504040-1	9
19	WASHER, ISO 7093-1-8-200 HV-A2E	F81054-11	12
20	BOLT, M8X20 8.8 HEX HEAD FULL THREAD ZINC	F81002-4	12
21	CAP, SR 1540 199211 OUTRIGGER LEG	089710	8
22	PLATE, TVS MOUNTING	099145-1	4
23	WASHER, 17 SPLIT LOCK ZINC	F81058-1	16
24	NUT, M16-8 HEX NYLON ZINC LOCK	F81036-2	8
25	BOLT, M16X90-8.8 HEX HEAD ZINC	F81006-17	8
26	BOLT, M12X80-8.8 HEX HEAD ZINC	F81004-46	2
27	CHANNEL, TVS SC - L=621MM CHAIN GUIDE	517778	1
28	IDLER SPROCKET ASSEMBLY See Section 7.2	503337	1
29	WHEEL, FRONT PNEUMATIC HOLD-DOWN - SPIKY See Section 7.3	517787	1
30	WHEEL, LONG HOLD-DOWN - SPIKY See Section 7.5	517794	3

7.2 Idler Sprocket Assembly

503337_001
 503337_MANUAL

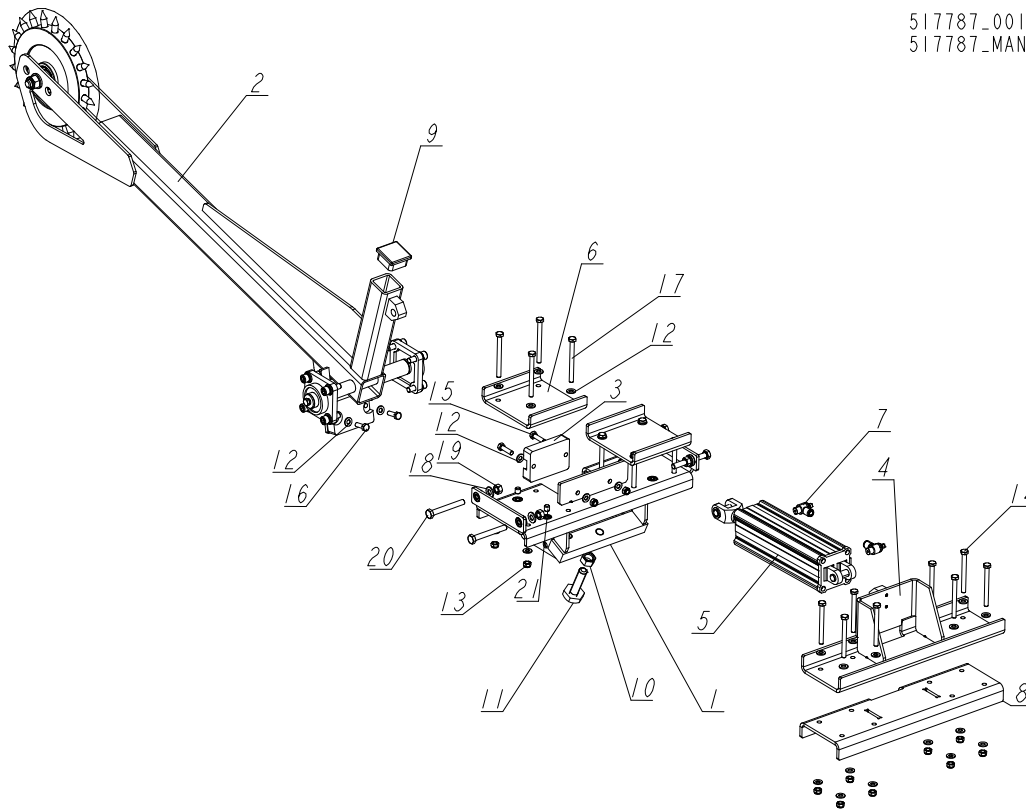


REF.	DESCRIPTION (* Indicates Parts Available in Assemblies Only)	PART #	QTY
-	SPROCKET ASSEMBLY, IDLER	503337	1
1	SPROCKET, 10Z 20B/2"N80 FRONT	502566-1	1
2	BEARING, 3208. 2RSR. TVH (FAG) ROLLING	088449	1
3	RING, W80 INSIDE RETAINING	F81090-25	2
4	MOUNT WELDMENT, IDLER SPROCKET	503340-1	1
5	RING, Z40 OUTSIDE RETAINING	F81090-40	1
6	BRACKET, IDLER SPROCKET	503341-1	1
7	SCREW, M8X25 CROSS RECESSED COUNTERSUNK HEAD ZINC	F81002-51	1
8	WASHER, 10.5 FLAT ZINC	F81055-1	8
9	BOLT, M10X75-8.8 HEX HEAD ZINC	F81003-15	4
10	NUT, M10-8-B HEX NYLON ZINC LOCK	F81033-1	4

7 Log Turner Infeed Table

Front Hold-Down Wheel

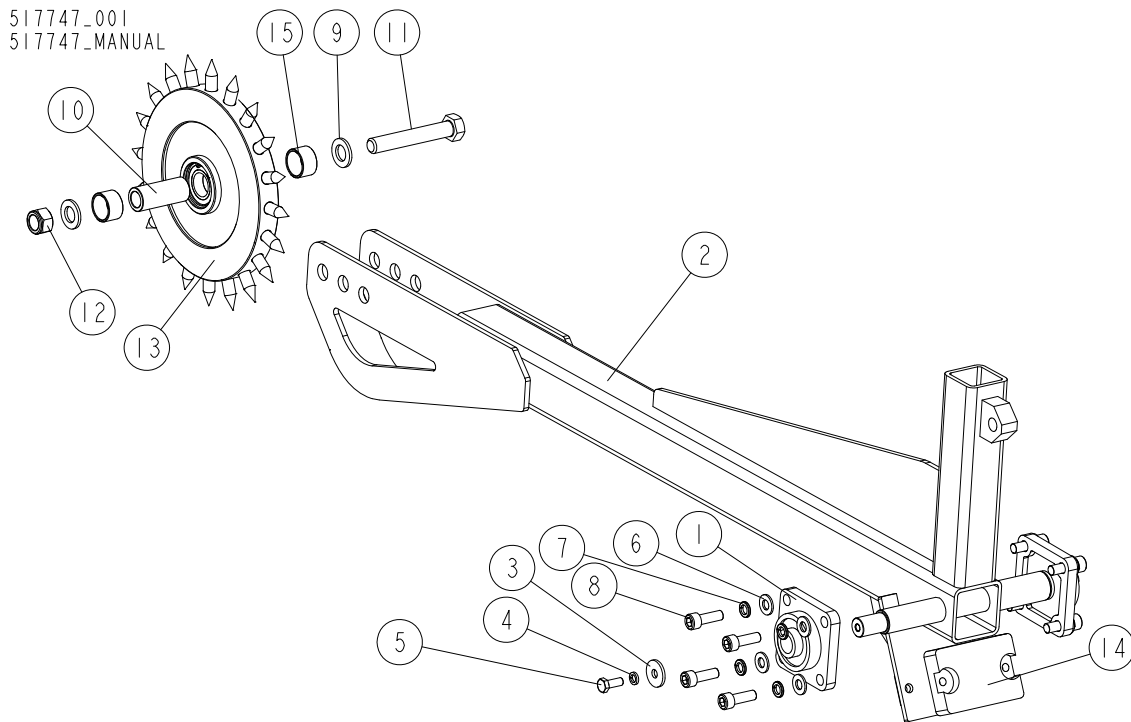
7.3 Front Hold-Down Wheel



517787_001
517787_MANUAL

REF.	DESCRIPTION (* Indicates Parts Available in Assemblies Only)	PART #	QTY
-	WHEEL, FRONT PNEUMATIC HOLD-DOWN - SPIKY	517787	1
1	MOUNT WELDMENT, HOLD-DOWN WHEEL	517775-1	1
2	WHEEL, FRONT HOLD-DOWN - COMPLETE See Section 7.4	517747	1
3	BUMPER, GRENE 70 3201 0010. SHR RUBBER	094969	1
4	BRACKET, AIR CYLINDER MOUNT	517786-1	1
5	CYLINDER, 63X200 AIR	508875	1
6	PLATE, UPPER MOUNT	517977-1	2
7	CONTROLLER, AS2201F-02-08S SPEED	509039	2
8	PLATE, AIR CYLINDER BRACKET	517779-1	1
9	CAP, 50X50 (3-5MM THICK) #199274 TUBE END	095371	1
10	NUT, M16-8 HEX ZINC	F81036-1	1
11	BOLT, M16 BAD RAIL	505006	1
12	WASHER, 8.4 FLAT ZINC	F81054-1	38
13	NUT, M8-8-B HEX NYLON ZINC LOCK	F81032-2	18
14	BOLT, M8X85-8.8 HEX HEAD ZINC	F81002-63	8
15	BOLT, M8X30-8.8-B HEX HEAD FULL THREAD ZINC	F81002-2	2
16	BOLT, M8X25-8.8-B HEX HEAD FULL THREAD ZINC	F81002-5	2
17	BOLT, M8X90-8.8 HEX HEAD FULL THREAD ZINC	F81002-16	8
18	WASHER, 10.5 FLAT ZINC	F81055-1	4
19	NUT, M10 8 HEX ZINC	F81033-3	4
20	BOLT, M10X80 8.8 HEX HEAD FULL THREAD ZINC	F81003-76	4
21	SCREW, M10X12-45H ZINC SET	F81003-46	4

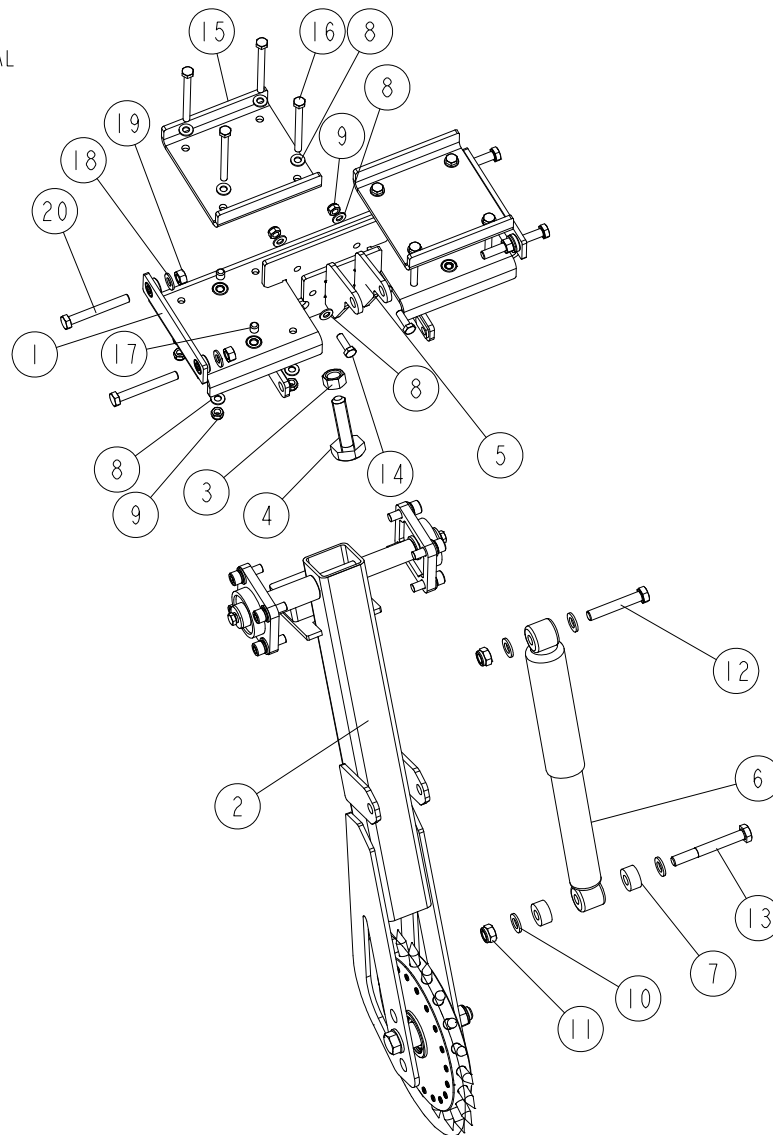
7.4 Front Hold-Down Wheel



REF.	DESCRIPTION (* Indicates Parts Available in Assemblies Only)	PART #	QTY
-	WHEEL, FRONT HOLD-DOWN - COMPLETE	517747	1
1	BEARING, UCF 204 W/HOUSING	097667	2
2	ARM WELDMENT, HOLD-DOWN WHEEL	517781-1	1
3	WASHER, 9 DIN440 A2 STAINLESS STEEL	F81054-9	2
4	WASHER, 8.2 SPLIT LOCK ZINC	F81054-4	2
5	BOLT, M8X20 8.8 HEX HEAD FULL THREAD ZINC	F81002-4	2
6	WASHER, 10.5 FLAT ZINC	F81055-1	8
7	WASHER, Z 10.2 SPLIT LOCK ZINC	F81055-2	8
8	SCREW, M10X30 8.8 HEX SOCKET HEAD CAP ZINC	F81003-110	8
9	WASHER, 17 SPLIT LOCK ZINC	F81058-1	2
10	BUSHING, 16.5/25-60 ZINC-PLATED	098610-1	1
11	BOLT, M16X100-8.8 HEX HEAD FULL THREAD ZINC	F81006-2	1
12	NUT, M16-8 HEX NYLON ZINC LOCK	F81036-2	1
13	WHEEL, HOLD-DOWN - COMPLETE See Section 7.7	502639	1
14	BUMPER, 95X65X20 RUBBER	094969	1
15	BUSHING, 25.5/30-18 ZINC-PLATED	502645-1	2

7.5 Long Hold-Down Wheel Assembly

517794_001
 517794_MANUAL



REF.	DESCRIPTION (* Indicates Parts Available in Assemblies Only)	PART #	QTY
-	WHEEL ASSEMBLY, LONG HOLD-DOWN - SPIKY	517794	1
1	MOUNT WELDMENT, HOLD-DOWN WHEEL	517775-1	1
2	ROLLER, FRONT HOLD-DOWN - COMPLETE See Section 7.6	517789	1
3	NUT, M16-8 HEX ZINC	F81036-1	1
4	BOLT, M16 BED RAIL	505006	1
5	BRACKET, SHOCK ABSORBER UPPER MOUNT	517797-1	1
6	ABSORBER, WERTTEILE 554412 SHOCK	513494	1
7	WASHER, 12.5/28-14 NYLON	517798	2
8	WASHER, 8.4 FLAT ZINC	F81054-1	20
9	NUT, M8-8-B HEX NYLON ZINC LOCK	F81032-2	10
10	WASHER, 13 FLAT ZINC	F81056-1	4
11	NUT, M12 8 HEX NYLON ZINC LOCK	F81034-2	2
12	BOLT, M12X70-8.8 HEX HEAD ZINC	F81004-39	1
13	BOLT, M12X95 8.8 HEX HEAD ZINC	F81004-29	1

Log Turner Infeed Table

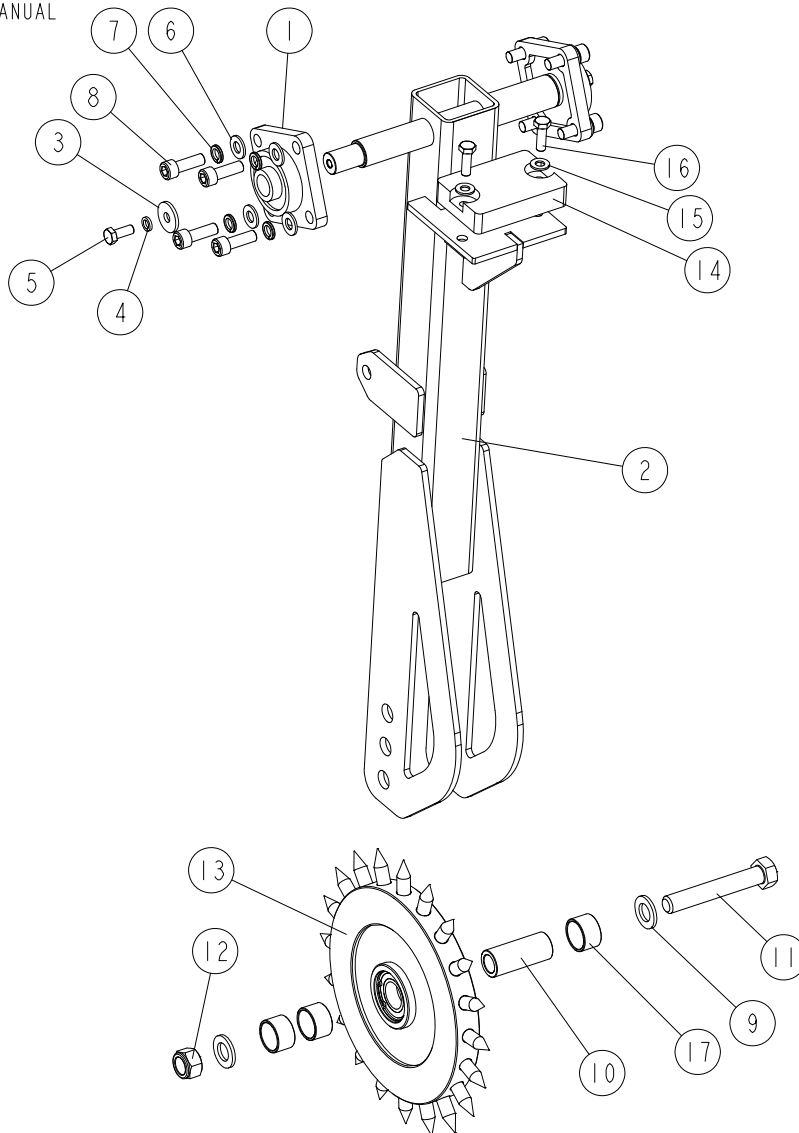
Long Hold-Down Wheel Assembly

7

REF.	DESCRIPTION (* Indicates Parts Available in Assemblies Only)	PART #	QTY	
14	BOLT, M8X25-8.8-B HEX HEAD FULL THREAD ZINC	F81002-5	2	
15	PLATE, UPPER MOUNT	517977-1	2	
16	BOLT, M8X90-8.8 HEX HEAD FULL THREAD ZINC	F81002-16	8	
17	SCREW, M10X12-45H ZINC SET	F81003-46	4	
18	WASHER, 10.5 FLAT ZINC	F81055-1	5	
19	NUT, M10 8 HEX ZINC	F81033-3	4	
20	BOLT, M10X80 8.8 HEX HEAD FULL THREAD ZINC	F81003-76	4	

7.6 Front Hold-Down Wheel Assembly

517789_001
 517789_MANUAL



REF.	DESCRIPTION (* Indicates Parts Available in Assemblies Only)	PART #	QTY
-	WHEEL ASSEMBLY, FRONT HOLD-DOWN	517789	1
1	BEARING, UCF 204 W/HOUSING	097667	2
2	ARM WELDMENT, HOLD-DOWN WHEEL	517788-1	1
3	WASHER, 9 DIN440 A2 STAINLESS STEEL	F81054-9	2
4	WASHER, 8.2 SPLIT LOCK ZINC	F81054-4	2
5	BOLT, M8X20 8.8 HEX HEAD FULL THREAD ZINC	F81002-4	2
6	WASHER, 10.5 FLAT ZINC	F81055-1	8
7	WASHER, Z 10.2 SPLIT LOCK ZINC	F81055-2	8
8	SCREW, M10X30 8.8 HEX SOCKET HEAD CAP ZINC	F81003-110	8
9	WASHER, 17 SPLIT LOCK ZINC	F81058-1	2
10	BUSHING, 16.5/25-60 ZINC-PLATED	098610-1	1
11	BOLT, M16X100-8.8 HEX HEAD FULL THREAD ZINC	F81006-2	1
12	NUT, M16-8 HEX NYLON ZINC LOCK	F81036-2	1

Log Turner Infeed Table

Front Hold-Down Wheel Assembly

7

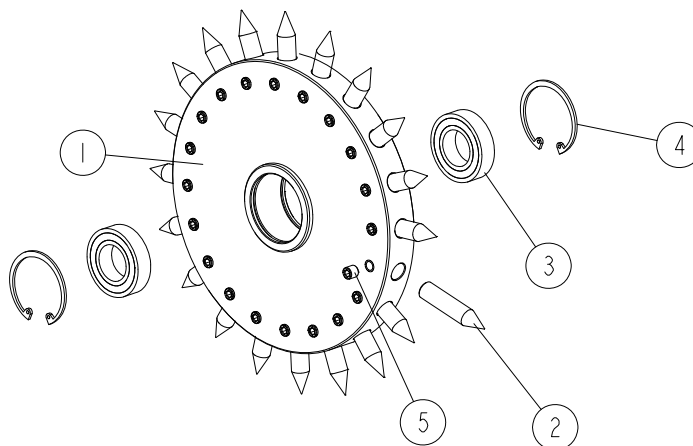
REF.	DESCRIPTION (* Indicates Parts Available in Assemblies Only)	PART #	QTY	
13	WHEEL, COMPLETE HOLD-DOWN See Section 7.7	502639	1	
14	BUMPER, 95X65X20 RUBBER	094969	1	
15	WASHER, 8.4 FLAT ZINC	F81054-1	2	
16	BOLT, M8X25-8.8-B HEX HEAD FULL THREAD ZINC	F81002-5	2	
17	BUSHING, 25.5/30-18 ZINC-PLATED	502645-1	4	

7 Log Turner Infeed Table

Hold-Down Wheel

7.7 Hold-Down Wheel

502639_001
502639_MANUAL

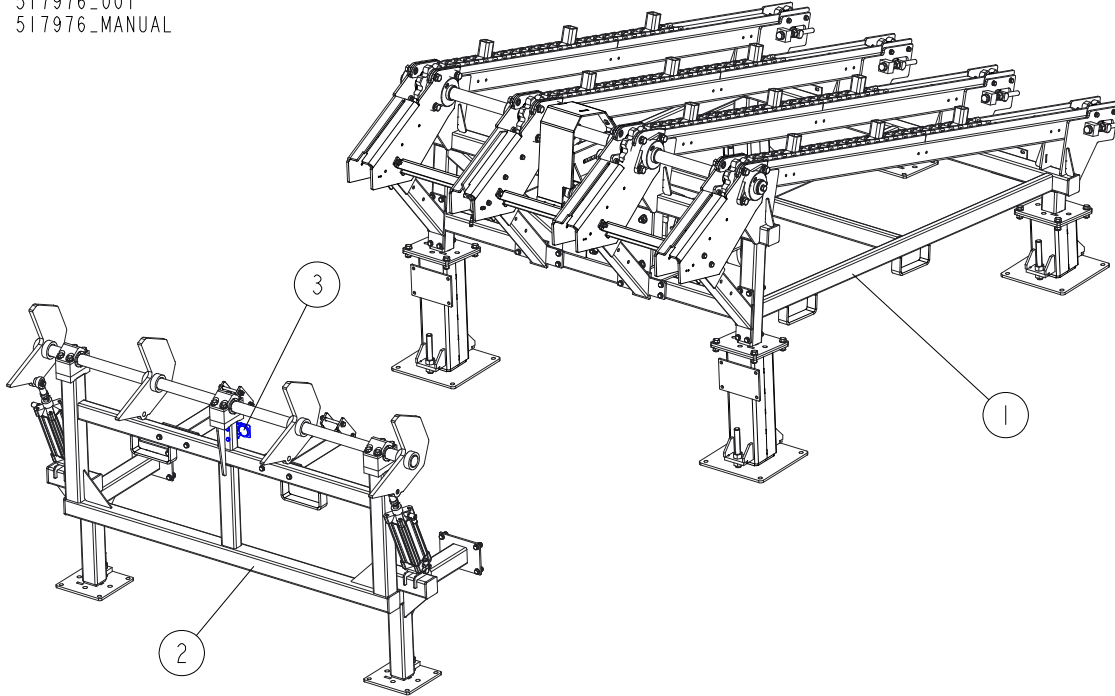


REF.	DESCRIPTION (* Indicates Parts Available in Assemblies Only)	PART #	QTY	
-	WHEEL, HOLD-DOWN - COMPLETE	502639	1	
1	WHEEL, HOLD-DOWN	502638-1	1	
2	SPIKE	502651-1	20	
3	BEARING, 6005 2RS, PN-85/M-86100	089652	2	
4	RING, W 47 INSIDE RETAINING	089653	2	
5	SCREW, M8X8-33H HEX SOCKET SET FLAT POINT ZINC	F81014-1	20	

SECTION 8 INCLINE LOG DECK W/LOG SINGULATOR

8.1 Incline Log Deck, Light LDT

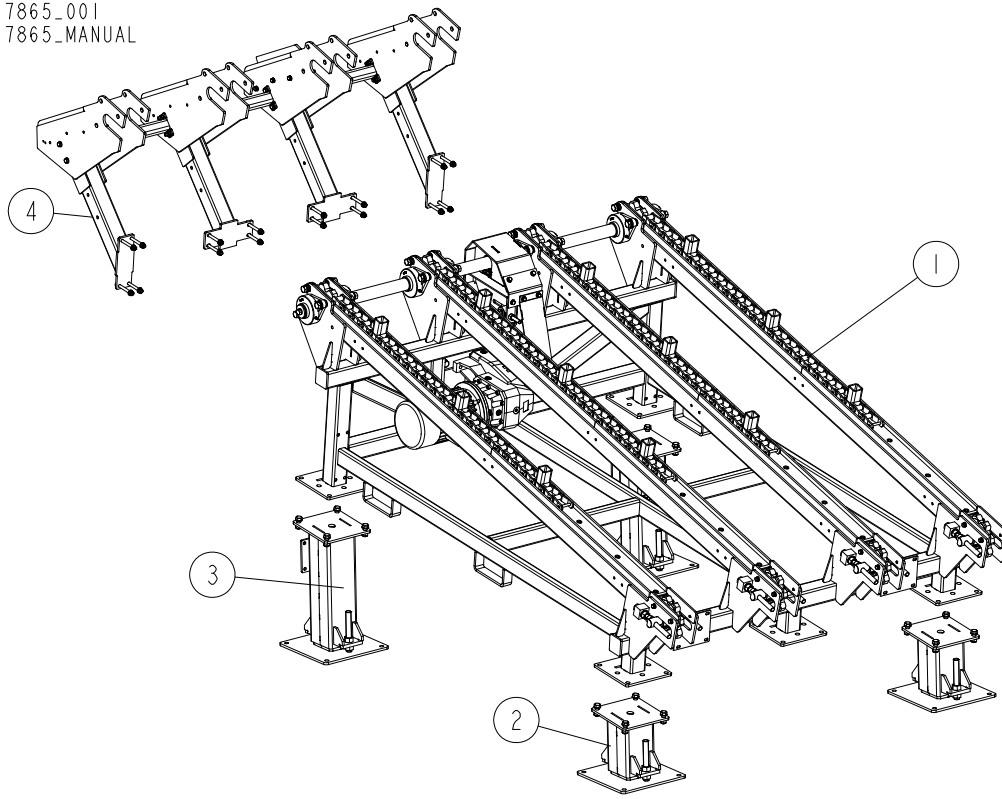
517976_001
 517976_MANUAL



REF.	DESCRIPTION (* Indicates Parts Available in Assemblies Only)	PART #	QTY	
-	INCLINE LOG DECK W/LOG SINGULATOR	517976	1	
1	DECK, SLP INCLINE LOG See Section 8.2	517865	1	
2	SINGULATOR, LOG See Section 8.6	517857	1	
3	MIRROR, SENSOR - COMPLETE See Section 8.3	519378	1	

8.2 Incline Log Deck

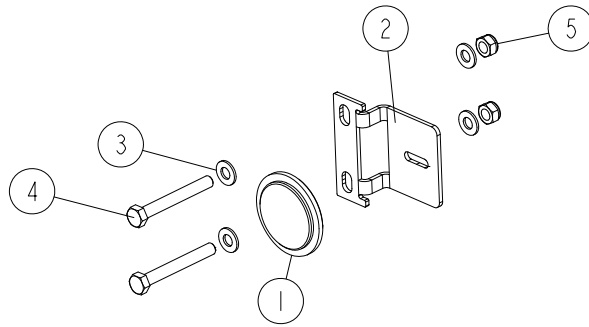
517865_001
 517865_MANUAL



REF.	DESCRIPTION (* Indicates Parts Available in Assemblies Only)	PART #	QTY	
-	DECK, SLP INCLINE LOG	517865	1	
1	DECK, TVS INCLINE LOG See Section 8.2 , See Section 8.3	513128	1	
2	FOOT, SHORT - COMPLETE See Section 8.4	517835	2	
3	FOOT, LONG - COMPLETE See Section 8.5	517858	2	
4	CHUTE, INCLINE LOG DECK - COMPLETE See Section 4.6	515695	1	

8.3 Sensor Mirror

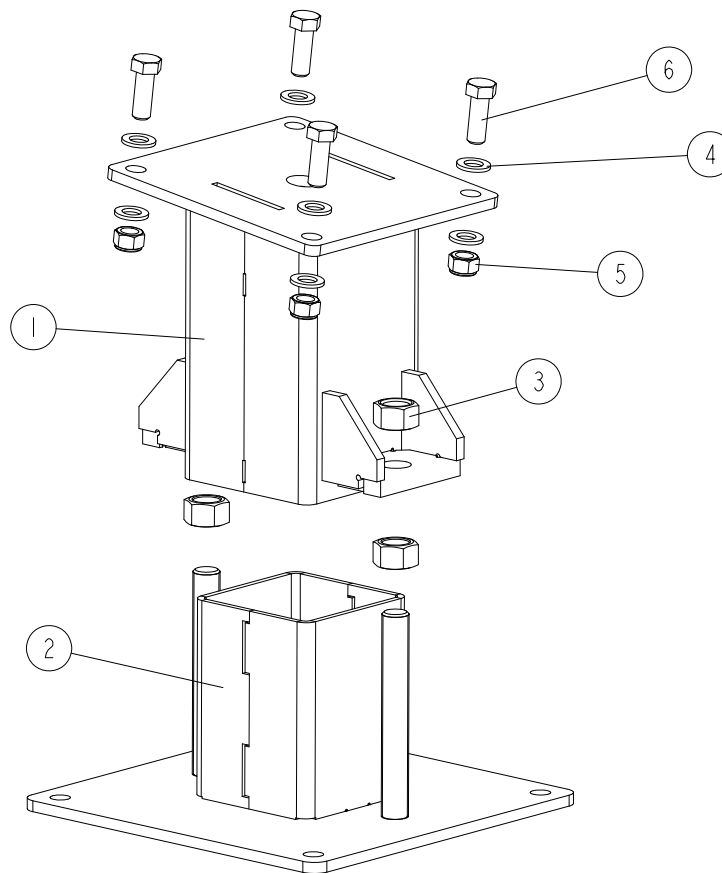
519378_001
519378_MANUAL



REF.	DESCRIPTION (* Indicates Parts Available in Assemblies Only)	PART #	QTY	
-	MIRROR, SENSOR - COMPLETE	519378	1	
1	MIRROR, REFLECTIVE	091401	1	
2	BRACKET, SENSOR MIRROR MOUNT	515367-1	1	
3	WASHER, 8.4 FLAT ZINC	F81054-1	4	
4	BOLT, M8X65 5.8 HEX HEAD ZINC	F81002-3	2	
5	NUT, M8-8-B HEX NYLON ZINC LOCK	F81032-2	2	

8.4 Log Deck Short Foot

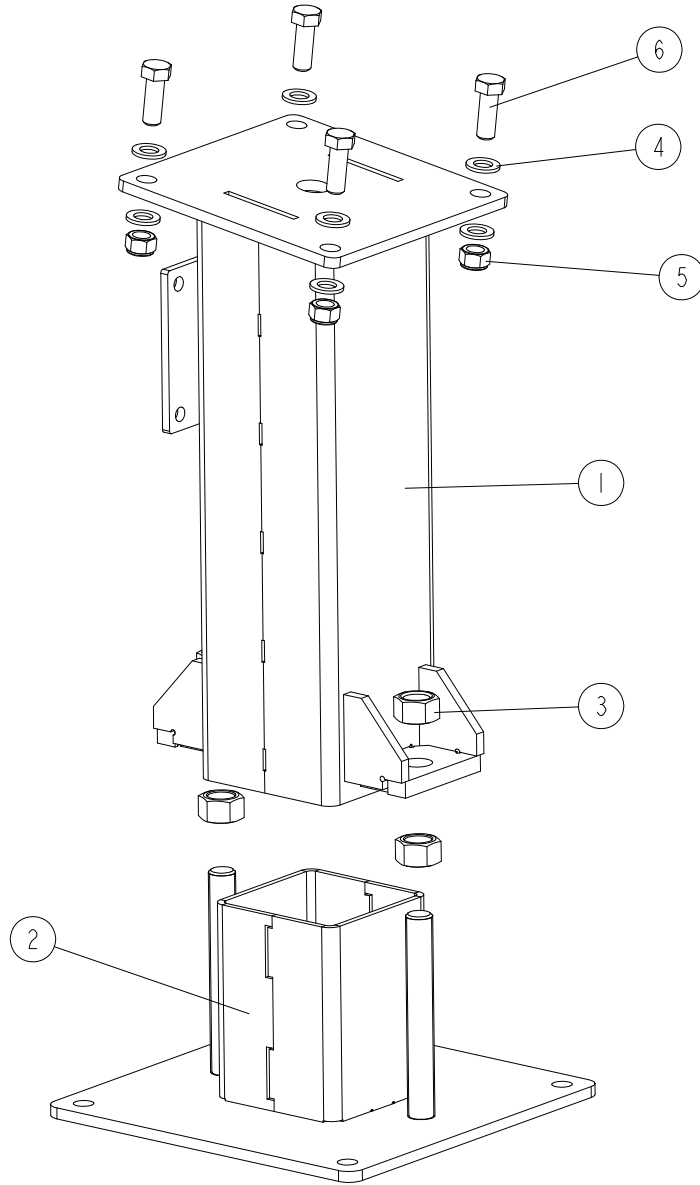
517835_001
517835_MANUAL



REF.	DESCRIPTION (* Indicates Parts Available in Assemblies Only)	PART #	QTY
-	FOOT, LOG DECK - COMPLETE SHORT	517835	1
1	FOOT WELDMENT - UPPER PART	517834-1	1
2	BASE WELDMENT, FOOT	513230-1	1
3	NUT, M24-8-B HEX ZINC	F81039-12	4
4	WASHER, 17 SPLIT LOCK ZINC	F81058-1	8
5	NUT, M16-8 HEX NYLON ZINC LOCK	F81036-2	4
6	BOLT, M16X45-8.8 HEX HEAD FULL THREAD ZINC	F81006-46	4

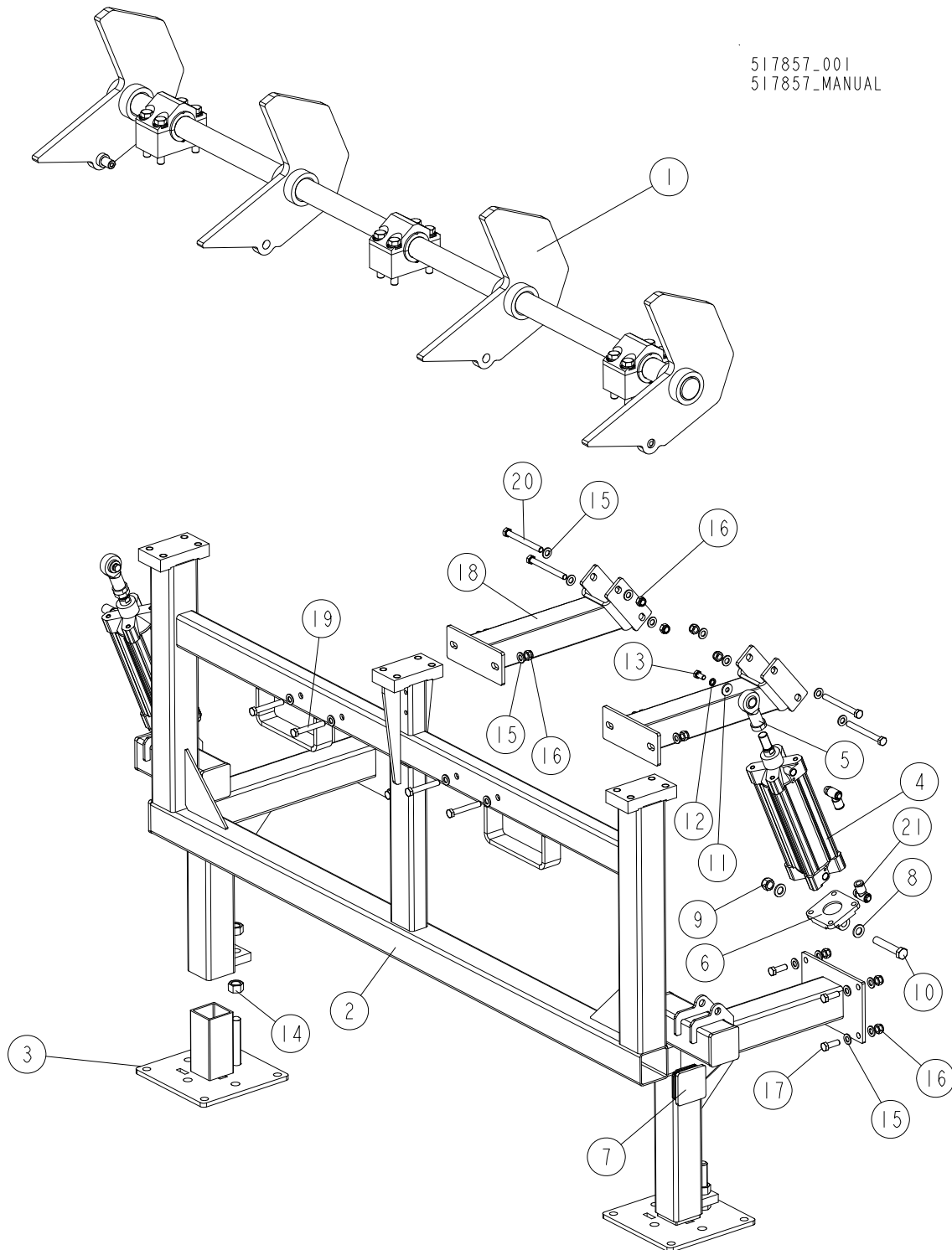
8.5 Log Deck Long Foot

517858-001
517858-MANUAL



REF.	DESCRIPTION (* Indicates Parts Available in Assemblies Only)	PART #	QTY
-	FOOT, LOG DECK - COMPLETE LONG	517858	1
1	FOOT WELDMENT - UPPER PART	517838-1	1
2	BASE WELDMENT, FOOT	513230-1	1
3	NUT, M24-8-B HEX ZINC	F81039-12	4
4	WASHER, 17 SPLIT LOCK ZINC	F81058-1	8
5	NUT, M16-8 HEX NYLON ZINC LOCK	F81036-2	4
6	BOLT, M16X45-8.8 HEX HEAD FULL THREAD ZINC	F81006-46	4

8.6 Log Singulator



REF.	DESCRIPTION (* Indicates Parts Available in Assemblies Only)	PART #	QTY
-	SINGULATOR, LOG	517857	1
1	SHAFT, MAIN - COMPLETE See Section 8.7	517816	1
2	BASE, LOG SINGULATOR	517820-1	1
3	FOOT WELDMENT	512225-1	2

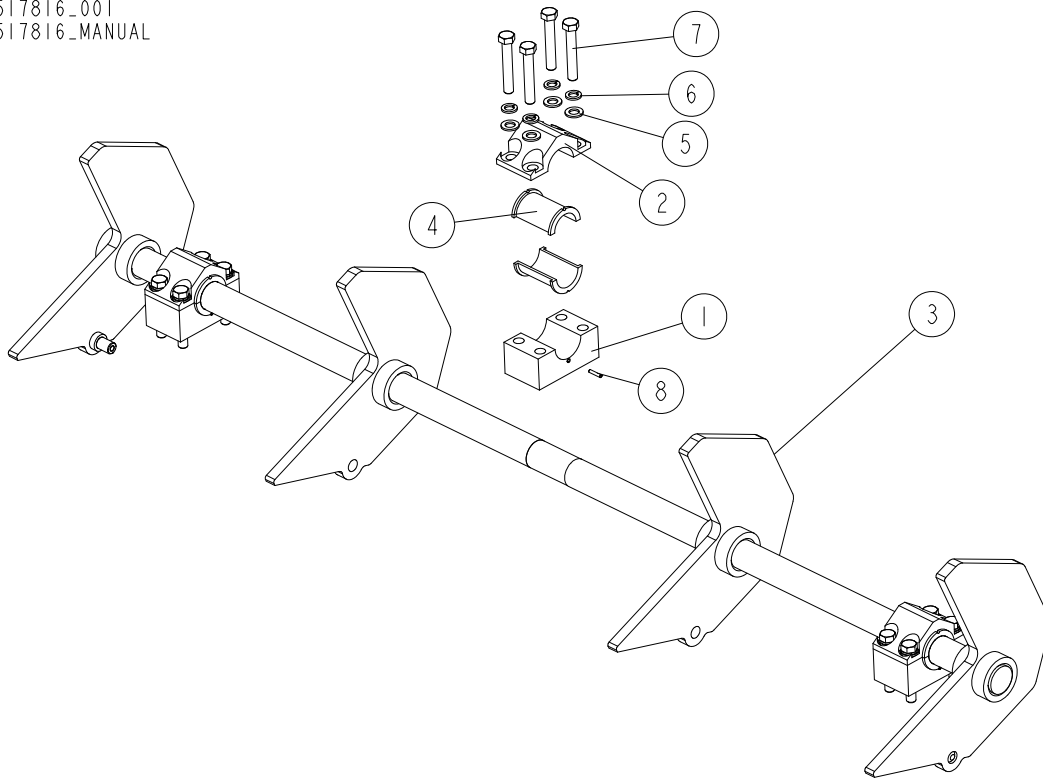
REF.	DESCRIPTION (* Indicates Parts Available in Assemblies Only)	PART #	QTY	
-	CYLINDER, AIR - COMPLETE	517863	2	
4	CYLINDER, CP96SDB80-200 AIR	517860	1	
5	JOINT, KJ20D BALL	517861	1	
6	CLEVIS, C5080(F)	517862	1	
7	CAP, 80X80 GR 2-4 #111227 TUBE	089644	6	
8	WASHER, 17 SPLIT LOCK ZINC	F81058-1	4	
9	NUT, M16-8 HEX NYLON ZINC LOCK	F81036-2	2	
10	BOLT, M16X90-8.8 HEX HEAD ZINC	F81006-17	2	
11	WASHER, 10.5 SPECIAL FLAT ZINC	F81055-6	2	
12	WASHER, Z 10.2 SPLIT LOCK ZINC	F81055-2	2	
13	BOLT, M10X20-8.8 HEX HEAD FULL THREAD ZINC	F81003-1	2	
14	NUT, M20-8 HEX ZINC	F81037-1	4	
15	WASHER, 13 FLAT ZINC	F81056-1	32	
16	NUT, M12 8 HEX NYLON ZINC LOCK	F81034-2	16	
17	BOLT, M12X35 8.8 HEX HEAD FULL THREAD ZINC	F81004-24	8	
18	TUBE WELDMENT, LOG SINGULATOR CONNECTION	518456-1	2	
19	BOLT, M12X80-8.8 HEX HEAD ZINC	F81004-46	4	
20	BOLT, M12X120-8.8 HEX HEAD ZINC	F81004-38	4	
21	VALVE, AS320IF-03-10S FLOW CONTROL	511070	4	

8 Incline Log Deck w/Log Singulator

Log Singulator Main Shaft

8.7 Log Singulator Main Shaft

517816_001
517816_MANUAL

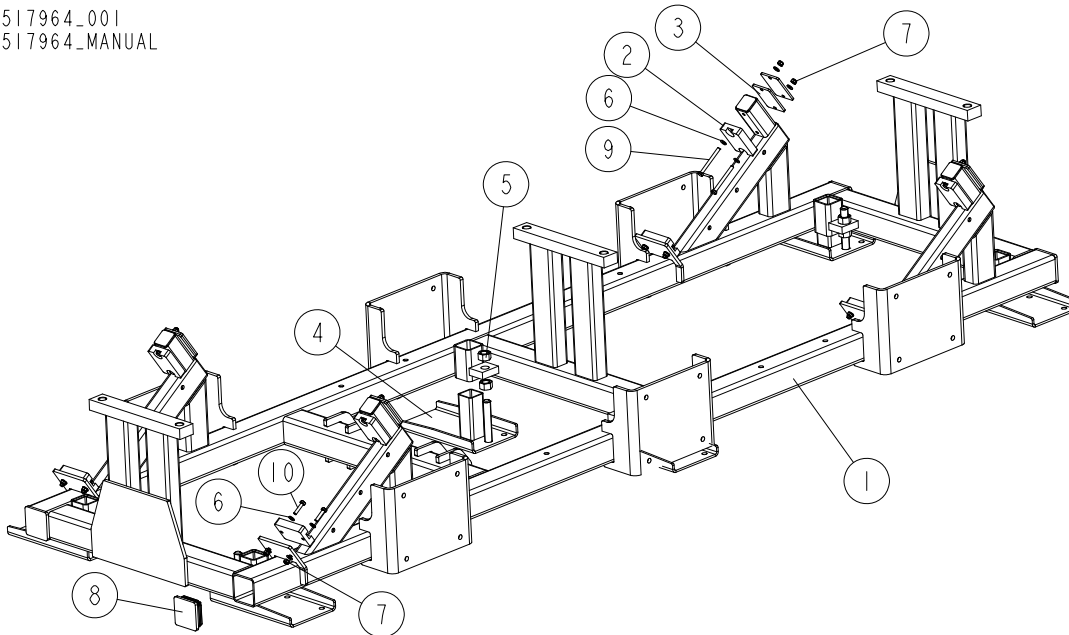


REF.	DESCRIPTION (* Indicates Parts Available in Assemblies Only)	PART #	QTY	
-	LOG SINGULATOR MAIN - COMPLETE	517816	1	
1	BLOCK, SHAFT MOUNT - LOWER PART	512814-1	3	
2	BLOCK, SHAFT MIDDLE MOUNT - UPPER PART	512810-1	3	
3	SHAFT, S/M LOG SINGULATOR	517815-1	1	
4	BEARING, SLIDE	515536	6	
5	WASHER, 17 SPLIT LOCK ZINC	F81058-1	12	
6	WASHER, 16.3 SPLIT LOCK ZINC	F81058-2	12	
7	BOLT, M16X100-8.8 HEX HEAD FULL THREAD ZINC	F81006-2	12	
8	PIN, 5X26 ROLL ZINC	F81044-2	6	

SECTION 9 LIGHT LDT LOG TURNER

9.1 Log Turner Carriage Frame - Lower Part

517964_001
 517964_MANUAL

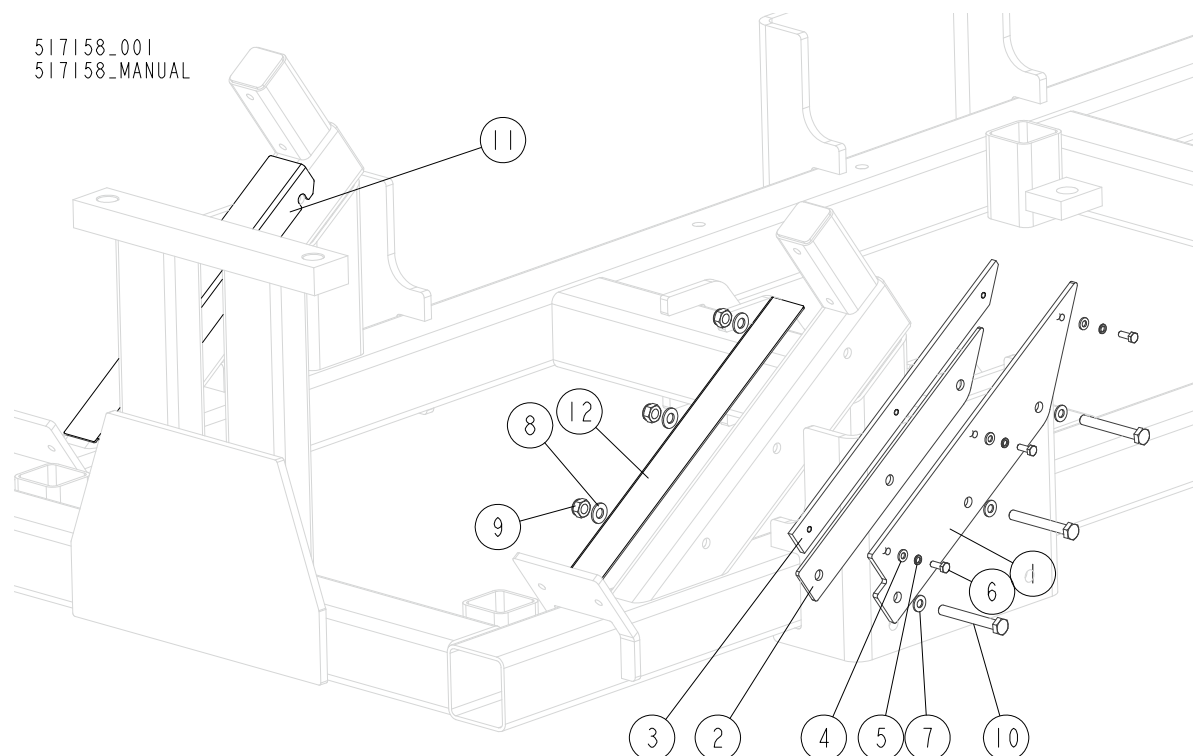


REF.	DESCRIPTION (* Indicates Parts Available in Assemblies Only)	PART #	QTY
-	FRAME, LOG TURNER CARRIAGE - COMPLETE LOWER PART	517964	1
1	FRAME, S/M TURNER CARRIAGE - LOWER PART	517963-1	1
2	BUMPER, GRENE 70 3201 0010 RUBBER	094969	8
3	PLATE, BUMPER SPACER	517732-1	8
4	FOOT, WIDE	500775-1	6
5	NUT, M20-8 HEX ZINC	F81037-1	12
6	WASHER, 8.4 FLAT ZINC	F81054-1	32
7	NUT, M8-8-B HEX NYLON ZINC LOCK	F81032-2	16
8	CAP, 80X80 2-4 #111227 TUBE END	089644	4
9	BOLT, M8X85-8.8 HEX HEAD ZINC	F81002-63	8
10	BOLT, M8X35-8.8 HEX HEAD FULL THREAD ZINC	F81002-13	8

9 LIGHT LDT LOG TURNER

Side Carriage Stop

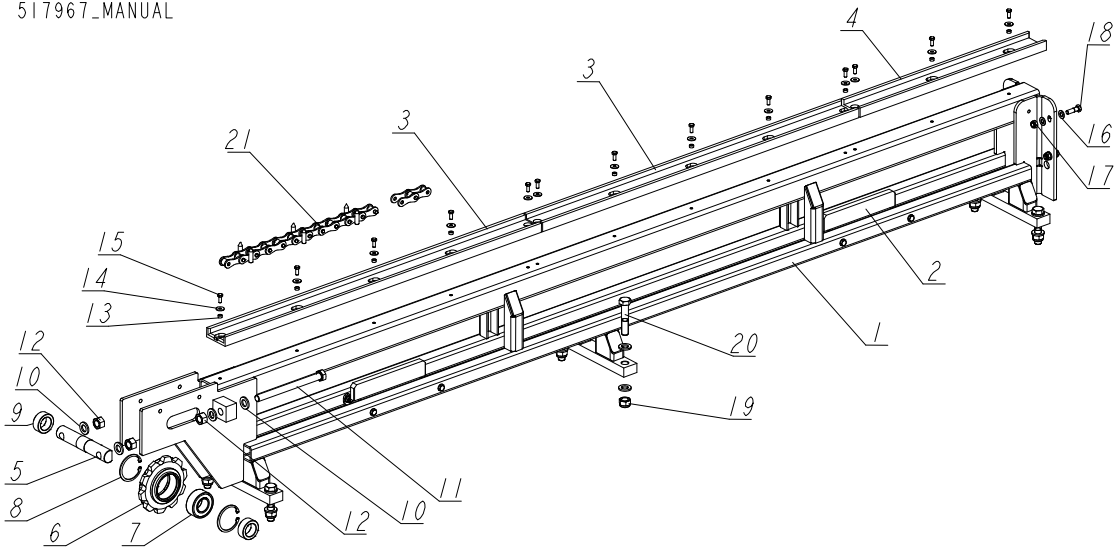
9.2 Side Carriage Stop



REF.	DESCRIPTION (* Indicates Parts Available in Assemblies Only)	PART #	QTY
-	STOP, SIDE CARRIAGE - COMPLETE	518452	1
1	STOP, SIDE CARRIAGE	518436	1
2	PLATE, SPACER	518451	1
3	PAD, NYLON	518437	1
4	WASHER, 6.4 FLAT ZINC	F81053-1	3
5	WASHER, Z 6.1 SPLIT LOCK ZINC	F81053-3	3
6	BOLT, M6X16-8.8 HEX HEAD FULL THREAD ZINC	F81001-15	3
7	WASHER, 8.4 FLAT ZINC	F81054-1	3
8	WASHER, 10.5 FLAT ZINC	F81055-1	3
9	NUT, M10-8-B HEX NYLON ZINC LOCK	F81033-1	3
10	BOLT, M10X80-8.8 HEX HEAD ZINC	F81003-50	3
11	PLATE, CARRIAGE WHEEL SPACER - LEFT	526740	1
12	PLATE, CARRIAGE WHEEL SPACER - RIGHT	526741	1

9.3 Log Turner Carriage Frame - Upper Part

517967_001
517967_MANUAL



REF.	DESCRIPTION (* Indicates Parts Available in Assemblies Only)	PART #	QTY
-	FRAME, LOG TURNER CARRIAGE - COMPLETE UPPER PART	517967	1
1	FRAME, S/M LOG TURNER CARRIAGE	517966-1	1
2	BRACKET, CHAIN SUPPORT	517178	2
3	CHANNEL, CHAIN GUIDE	502562	2
4	CHANNEL, CHAIN GUIDE	517738	1
5	SHAFT, IDLER SPROCKET ZINC-PLATED	089915-1	1
6	SPROCKET, 10Z 20B/2"N80 FRONT	502566-1	1
7	BEARING, 3208. 2RSR. TVH (FAG) ROLLING	088449	1
8	RING, W80 INSIDE RETAINING	F81090-25	2
9	BUSHING, 40.5/59.9-24	518419-1	2
10	WASHER, 21 FLAT ZINC	F81059-2	18
11	BOLT, M20X240-8.8 HEX HEAD FULL THREAD ZINC	F81007-1	2
12	NUT, M20-8 HEX ZINC	F81037-1	4
13	BUSHING, 8.4/12.5-6 ZINC-PLATED	504040-1	10
14	WASHER, ISO 7093-1-8-200 HV-A2E	F81054-11	13
15	BOLT, M8X20 8.8 HEX HEAD FULL THREAD ZINC	F81002-4	13
16	WASHER, 13 FLAT ZINC	F81056-1	8
17	NUT, M12 8 HEX NYLON ZINC LOCK	F81034-2	4
18	BOLT, M12X40-8.8 HEX HEAD	F81004-1	4
19	NUT, M20-8 DIN985 HEX NYLON ZINC LOCK	F81037-2	6
20	BOLT, M20X100-8.8 HEX HEAD ZINC	F81007-6	6
21	CHAIN, 20B P=2" ROLLER SPIKY (157-LINK)	526308-1	1

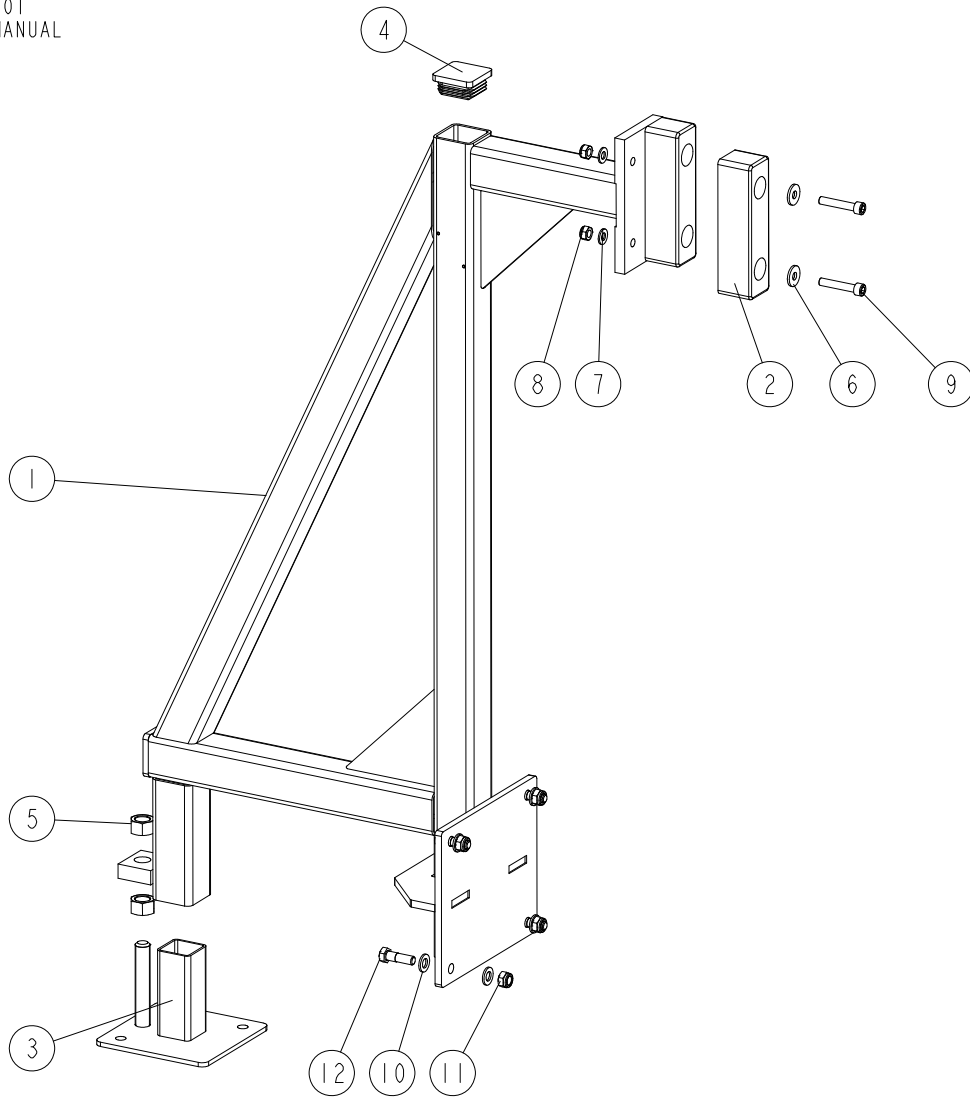


LIGHT LDT LOG TURNER

Log Bumper

9.4 Log Bumper

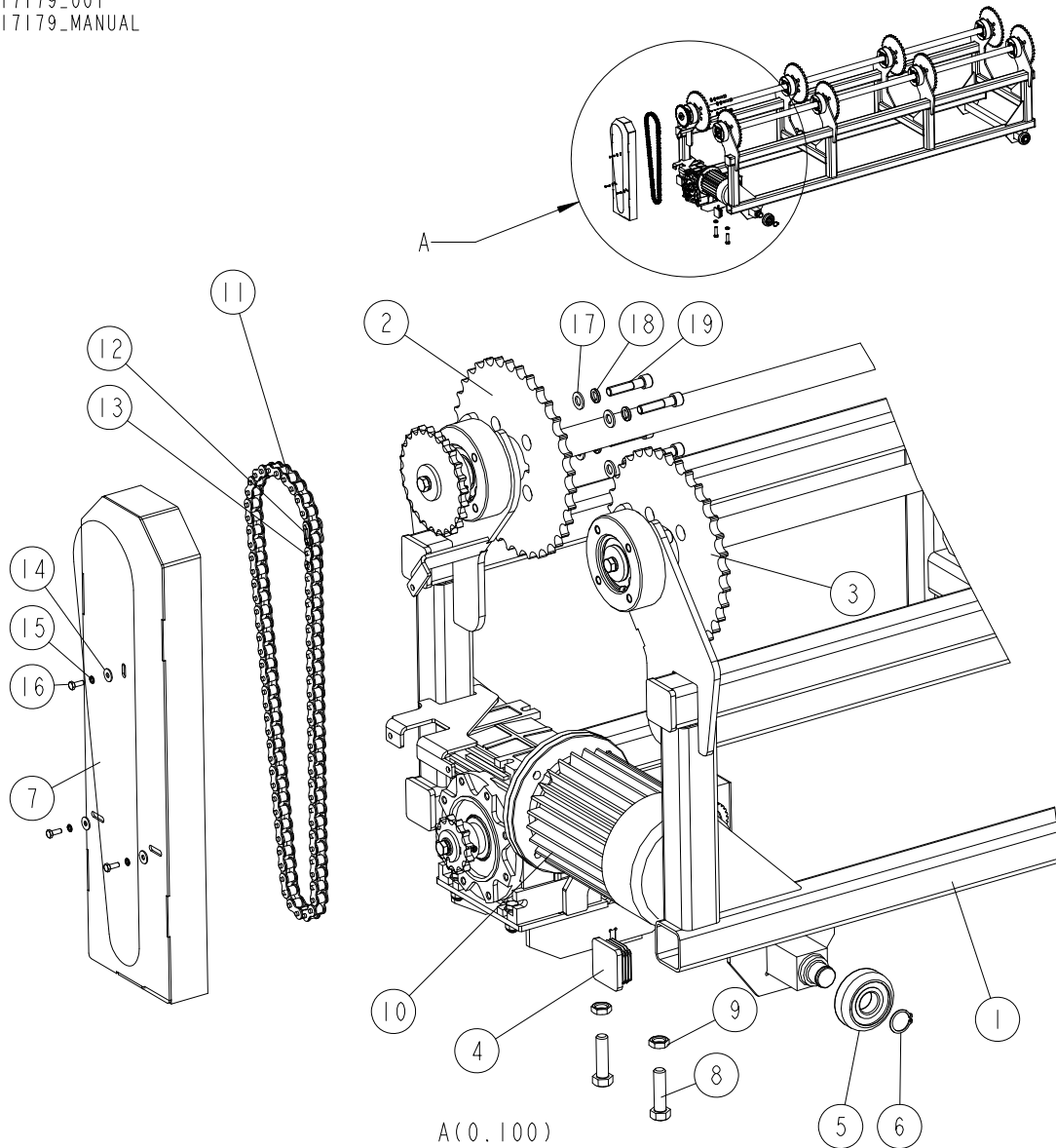
518631_001
518631_MANUAL



REF.	DESCRIPTION (* Indicates Parts Available in Assemblies Only)	PART #	QTY
-	BUMPER, LOG TURNER	518631	1
1	BUMPER WELDMENT, LOG	518630-1	1
2	BLOCK, RUBBER	089717	2
3	FOOT ASSEMBLY	099281-1	1
4	CAP, 60X60 3-4 #199211 TUBE END	089710	2
5	NUT, M20-8 HEX ZINC	F81037-1	2
6	WASHER, 10.5 SPECIAL FLAT ZINC	F81055-6	4
7	WASHER, 10.5 FLAT ZINC	F81055-1	4
8	NUT, M10-8-B HEX NYLON ZINC LOCK	F81033-1	4
9	SCREW, M10X55-8.8 HEX SOCKET HEAD CAP ZINC	F81003-55	4
10	WASHER, 13 FLAT ZINC	F81056-1	8
11	NUT, M12 8 HEX NYLON ZINC LOCK	F81034-2	4
12	BOLT, M12X40-8.8 HEX HEAD	F81004-1	4

9.5 Log Turner Carriage

517179_001
517179_MANUAL



REF.	DESCRIPTION (* Indicates Parts Available in Assemblies Only)	PART #	QTY
-	CARRIAGE, (SLP) LOG TURNER - COMPLETE	517179	1
1	CARRIAGE WELDMENT, LOG TURNER	517128-1	1
2	SHAFT, DRIVE See Section 9.6	517970	1
3	SHAFT, IDLE See Section 9.7	517971	1
4	CAP, 60X60 3-4 #199211 TUBE END	089710	8
5	BEARING, SBBA3084-01 ROLLING (COMPLEX)	088433	4
6	RING, 30Z OUTSIDE RETAINING	F81090-23	4
7	GUARD, CARRIAGE CHAIN	517871-1	1
8	BOLT, M16X60-8.8 HEX HEAD FULL THREAD ZINC	F81006-12	2
9	NUT, M16 THIN ZINC	F81036-4	2
10	MOTOREDUCER W/MOUNT BRACKET See Section 9.9	517875	1
-	CHAIN, LOG TURNER DRIVE	519376	1



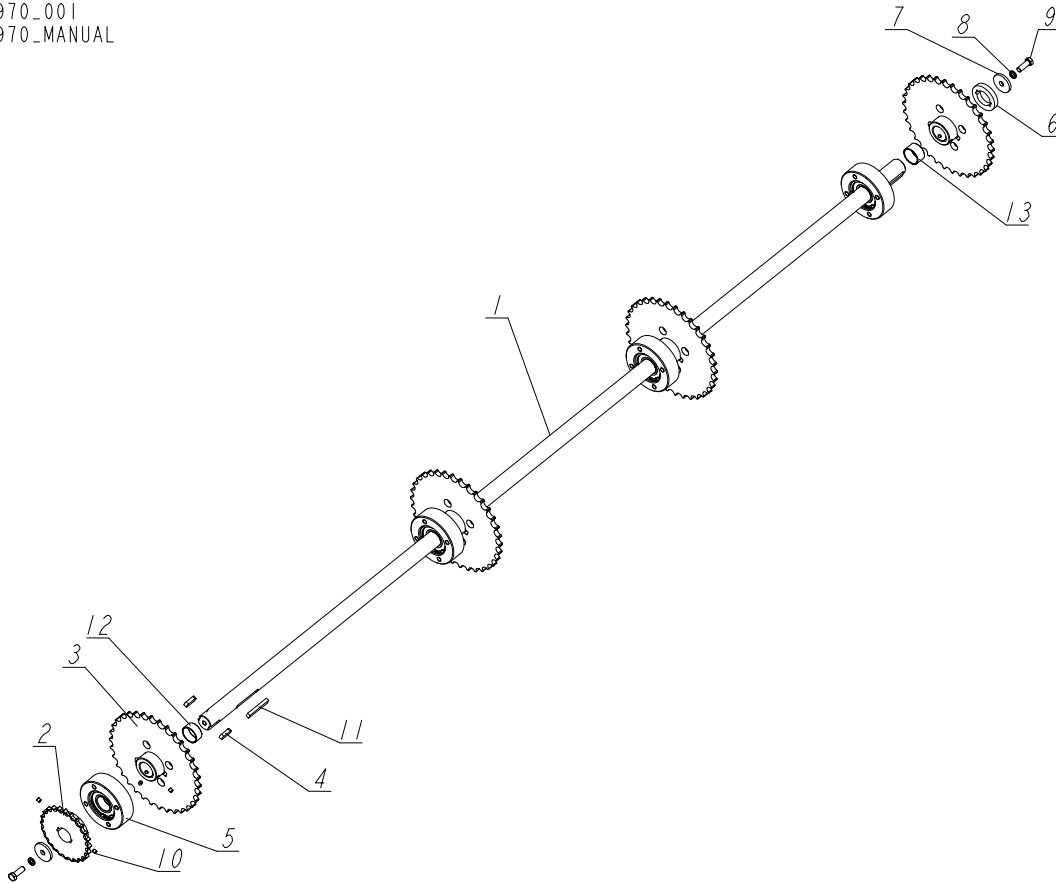
LIGHT LDT LOG TURNER

Log Turner Carriage

REF.	DESCRIPTION (* Indicates Parts Available in Assemblies Only)	PART #	QTY	
11	CHAIN, 12B-1, L=1391MM (73-LINK)	519377	1	
12	LINK, 12B-1PZ CHAIN	090713	1	
13	LINK, 12B-1 OFFSET W/COTTER PIN (DIN8187)	519884	1	
14	WASHER, 6.5 SPECIAL FLAT ZINC	F81053-11	3	
15	WASHER, Z 6.1 SPLIT LOCK ZINC	F81053-3	3	
16	BOLT, M6X16-8.8 HEX HEAD FULL THREAD ZINC	F81001-15	3	
17	WASHER, 13 FLAT ZINC	F81056-1	32	
18	WASHER, Z12.2 SPLIT LOCK ZINC	F81056-2	32	
19	SCREW, M12X55-8.8-B HEX SOCKET HEAD CAP ZINC	F81004-23	32	

9.6 Log Turner Drive Shaft

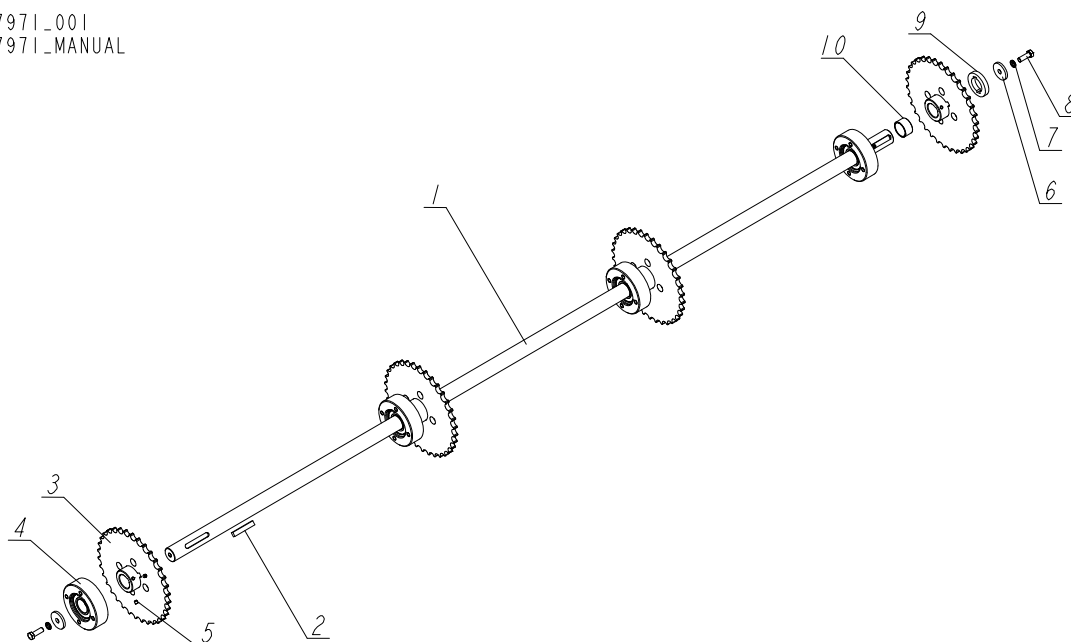
517970_001
 517970_MANUAL



REF.	DESCRIPTION (* Indicates Parts Available in Assemblies Only)	PART #	QTY
-	SHAFT, LOG TURNER DRIVE	517970	1
1	SHAFT, DRIVE	517137	1
2	SPROCKET, 12B-1 Z24 N40/145.94	519375-1	1
3	DISK, TOOTHED - COMPLETE	503499-1	4
4	KEY, A12X8X36 PARALLEL	503182	2
5	BEARING, 2208 2RS W/HOUSING See Section 9.8	518459	4
6	WASHER, 41/70-12	503505-1	1
7	WASHER, 13/50-6	503504-1	2
8	WASHER, Z12.2 SPLIT LOCK ZINC	F81056-2	2
9	BOLT, M12X35 8.8 HEX HEAD FULL THREAD ZINC	F81004-24	2
10	SCREW, M8X8-33H GEOMET HEX SOCKET SET W/FLAT POINT	F81014-1	10
11	KEY, A12X8X70 PARALLEL	089232	4
12	BUSHING, 40.2/45-19	526737-1	1
13	BUSHING, 40.2/45-25	526738-1	1

9.7 Log Turner Idle Shaft

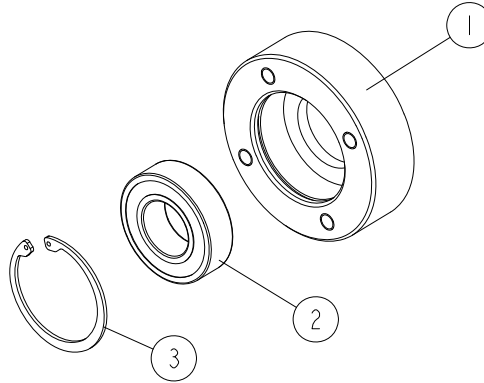
517971_001
517971_MANUAL



REF.	DESCRIPTION (* Indicates Parts Available in Assemblies Only)	PART #	QTY
-	SHAFT, LOG TURNER IDLE	517971	1
1	SHAFT, IDLE	517873	1
2	KEY, A12X8X70 PARALLEL	089232	4
3	DISK, TOOTHED - COMPLETE	503499-1	4
4	BEARING, 2208 2RS See Section 9.8	518459	4
5	SCREW, M8X8-33H GEOMET HEX SOCKET SET W/FLAT POINT	F81014-1	8
6	WASHER, 13/50-6	503504-1	2
7	WASHER, Z12.2 SPLIT LOCK ZINC	F81056-2	2
8	BOLT, M12X35 8.8 HEX HEAD FULL THREAD ZINC	F81004-24	2
9	WASHER, 41/70-12	503505-1	1
10	BUSHING, 40.2/45-25	526738-1	1

9.8 Bearing w/Housing

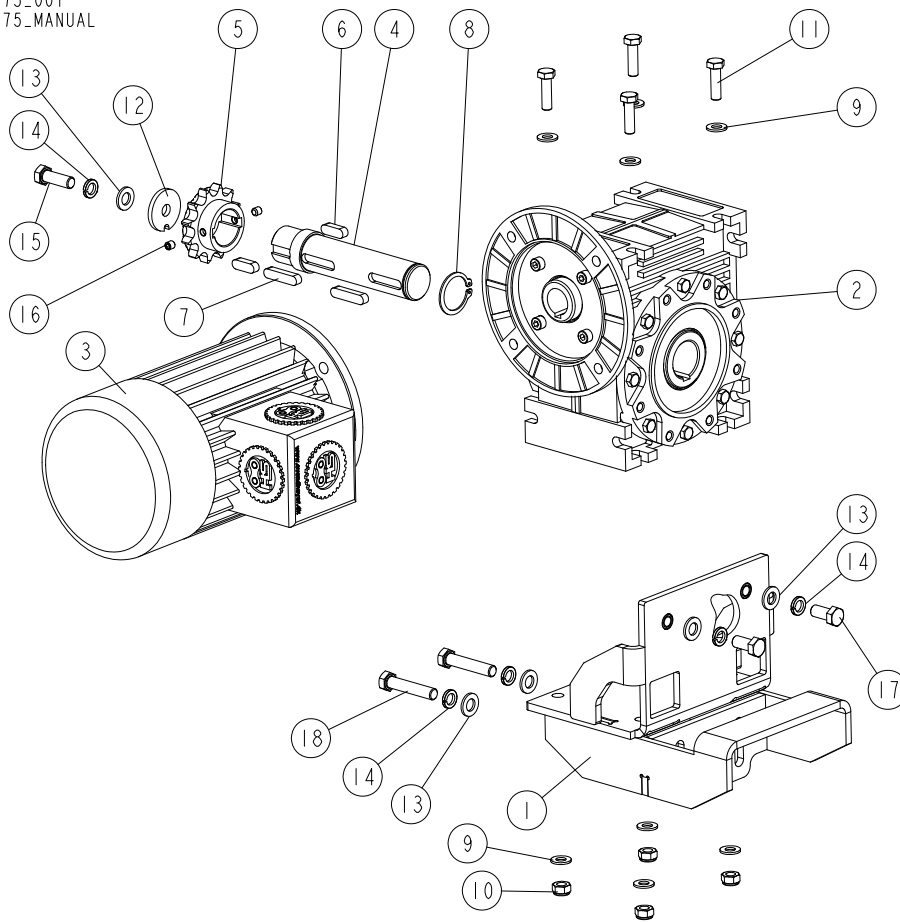
518459_001
 518459_MANUAL



REF.	DESCRIPTION (* Indicates Parts Available in Assemblies Only)	PART #	QTY	
-	BEARING, 2208 2RS W/HOUSING	518459	1	
1	HOUSING, 2208 BEARING	518458	1	
2	BEARING, 2208.2RS.TV BALL	518457	1	
3	RING, W80 INSIDE RETAINING	F81090-25	1	

9.9 Motoreducer w/Mount Bracket

517875_001
517875_MANUAL



REF.	DESCRIPTION (* Indicates Parts Available in Assemblies Only)	PART #	QTY
-	MOTOREDUCER W/MOUNT BRACKET	517875	1
1	BRACKET, MOTOREDUCER MOUNT	517156-1	1
-	MOTOREDUCER, MR-80/21[1.1-900-200/24]B8	517129	1
2	BOX, MR-80/21 (900RPM) GEAR	517131	1
3	MOTOR, SKH 90L-6 (1.1KW/ 900RPM)	517130	1
4	SHAFT, MOTOREDUCER OUTPUT	517133	1
5	SPROCKET, 12B-1 Z12 N38/73.6	519374-1	1
6	KEY, A10X8X30 PARALLEL	507012	2
7	KEY, A10X8X45 PARALLEL	091312	2
8	RING, Z38 OUTSIDE RETAINING	F81090-26	1
9	WASHER, 10.5 FLAT ZINC	F81055-1	8
10	NUT, M10-8-B HEX NYLON ZINC LOCK	F81033-1	4
11	BOLT, M10X35 8.8 HEX HEAD FULL THREAD ZINC	F81003-17	4
12	WASHER, 12.5/44-5	085981-1	1
13	WASHER, 13 FLAT ZINC	F81056-1	5
14	WASHER, Z12.2 SPLIT LOCK ZINC	F81056-2	5
15	BOLT, M12X35 8.8 HEX HEAD FULL THREAD ZINC	F81004-24	1
16	SCREW, M8X8-33H GEOMET HEX SOCKET SET W/FLAT POINT	F81014-1	2
17	BOLT, M12X25-8.8 HEX HEAD FULL THREAD ZINC	F81004-31	2

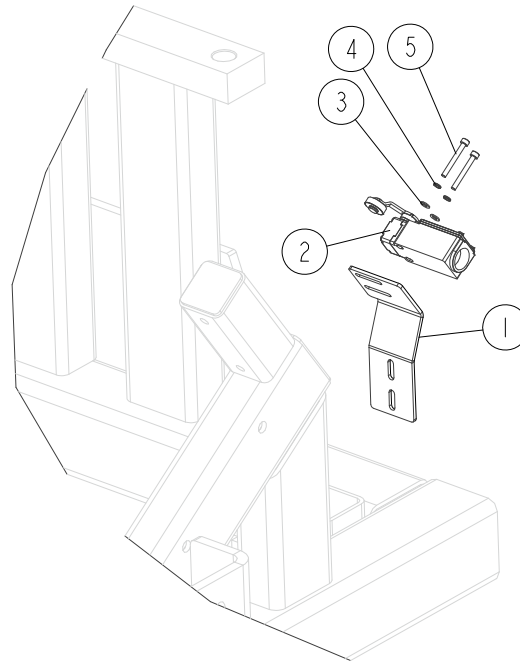
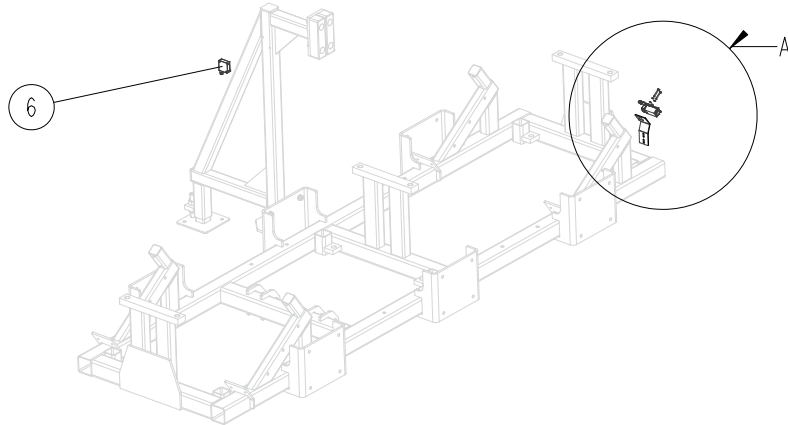
LIGHT LDT LOG TURNER
Motoreducer w/Mount Bracket



REF.	DESCRIPTION (* Indicates Parts Available in Assemblies Only)	PART #	QTY	
18	BOLT, M12X60-8.8 HEX HEAD FULL THREAD ZINC	F81004-51	2	

9.10 Limit Switch & Photoelectric Sensor

517158_005
 517158_MANUAL

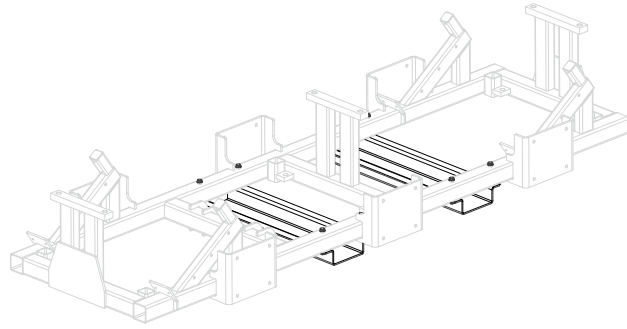
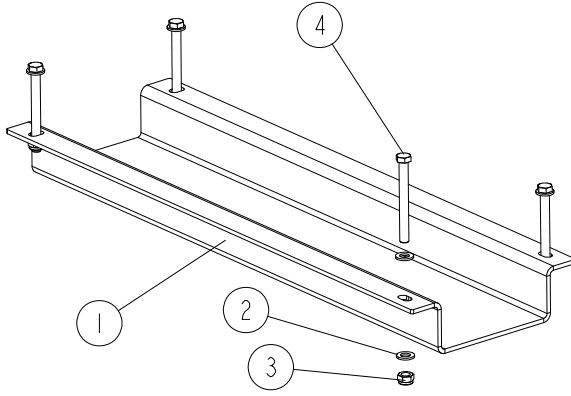


A(0.150)

REF.	DESCRIPTION (* Indicates Parts Available in Assemblies Only)	PART #	QTY
1	BRACKET, LIMIT SWITCH	527110-1	1
2	SWITCH, FA138 Z11 LIMIT	100931	1
3	WASHER, 4.3 FLAT ZINC	F81051-2	2
4	WASHER, Z 4.1 SPLIT LOCK ZINC	F81051-1	2
5	SCREW, M4X35 8.8 HEX SOCKET HEAD CAP ZINC	F81011-34	2
6	SENSOR, XUK 1APANM12 PHOTOELECTRIC	093169	1

9.11 Fork Pocket

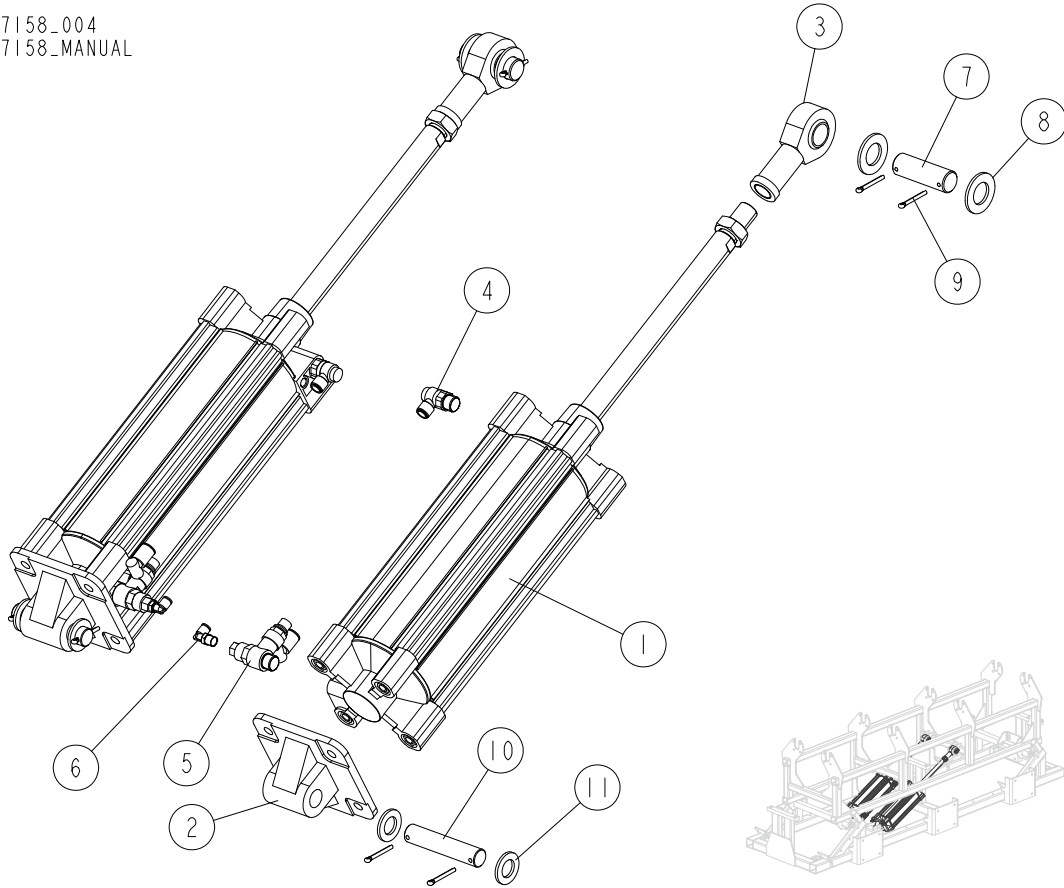
517973_001
517973_MANUAL



REF.	DESCRIPTION (* Indicates Parts Available in Assemblies Only)	PART #	QTY
-	POCKET ASSEMBLY, FORK	517973	1
1	POCKET, FORK	517876-1	1
2	WASHER, 13 FLAT ZINC	F81056-1	8
3	NUT, M12 8 HEX NYLON ZINC LOCK	F81034-2	4
4	BOLT, M12X115-8.8-B HEX HEAD ZINC	F81004-33	4

9.12 Log Turner Cylinder Assembly

517158_004
517158_MANUAL



REF.	DESCRIPTION (* Indicates Parts Available in Assemblies Only)	PART #	QTY
-	CYLINDER, SLP LINE LOG TURNER - COMPLETE	515498	2
1	CYLINDER, ISO/VDMA - CP96SDB125-320	512429	1
2	CLEVIS, CP96, N125 - C5125 MALE HEAD END	512427	1
3	JOINT, CP96, N125 - KJ27D PISTON ROD BALL	512428	1
4	VALVE, AS4201F-04-12SA FLOW CONTROL	515594	1
5	VALVE, ASP630F-04-12S PILOT FLOW CONTROL	526854	1
6	FITTING, KQ2L08-02AS MALE	526944	1
7	PIN, 30X89	517974-1	2
8	WASHER, 31 FLAT ZINC	F81061-9	4
9	PIN, S-FE 5X40 COTTER	F81043-31	8
10	PIN, 25X122 ZINC-PLATED	517975-1	2
11	WASHER, 25 FLAT ZINC	F81061-3	4