

# **Wood-Mizer®**

## **Replacement Parts Manual**

---

<b>LT15SC S2-4 G15</b>	<b>rev. A2.07</b>
<b>LT15SC M2-4 G15</b>	<b>rev. A2.07</b>
<b>LT15SC S2-4 D10</b>	<b>rev.A2.07</b>
<b>LT15SC M2-4 D10</b>	<b>rev. A2.07</b>

---



**Safety is our #1 concern!** Read and understand all safety information and instructions before operating, setting up or maintaining this machine.

*Form #799*

## Table of Contents

## Section-Page

<b>SECTION 1</b>	<b>GENERAL INFORMATION</b>	<b>1-1</b>
1.1	How To Use the Parts List.....	1-1
1.2	Sample Assembly .....	1-1
<b>SECTION 2</b>	<b>FRAME PARTS</b>	<b>2-1</b>
2.1	Log Side Support Assembly .....	2-1
2.2	Bed Section Connecting Hardware .....	2-2
2.3	Stationary Leg Kit .....	2-4
2.4	Outrigger Leg Kit .....	2-5
2.5	Log Clamp Assembly .....	2-6
2.6	Auxiliary Bed Rail Assembly .....	2-7
2.7	Manual Toe Board (Optional) .....	2-8
2.8	LT15 Manual Log Turner (Optional) .....	2-10
2.9	Complete Winch .....	2-12
2.10	"M" Type Frame Bed Section .....	2-14
2.11	"S" Type Bed Frame Section, LT15 1950 .....	2-15
2.12	Mast Track Extension .....	2-16
2.13	Mast Track Extension Tube .....	2-17
2.14	Additional Bed Frame Section with Adjustable Legs .....	2-18
2.15	Log Loading Ramp Assembly 097977 .....	2-19
2.16	Loading Ramp Assembly 097483 .....	2-20
2.17	Ramp Bracket 507518 .....	2-21
<b>SECTION 3</b>	<b>BLADE GUIDE ROLLERS &amp; ARM</b>	<b>3-1</b>
3.1	Blade Guide Assembly, Idle Side.....	3-1
3.2	Blade Guide Assembly, Drive Side.....	3-2
3.3	Blade Guide Roller Guard .....	3-4
3.4	Zespół ramienia prowadnika piły. (094136) .....	3-5
<b>SECTION 4</b>	<b>BLADE WHEELS &amp; TENSIONER</b>	<b>4-1</b>
4.1	Blade Wheel Assembly, Drive Side .....	4-1
4.2	Wide Blade Wheel Assembly, Drive Side, E15 Motor .....	4-2
4.3	Blade Wheel Assembly, Idle Side .....	4-3
4.4	Blade Tensioner Assembly .....	4-5
<b>SECTION 5</b>	<b>SAW HEAD</b>	<b>5-1</b>
5.1	Blade Housing Cover .....	5-1
5.2	Water Lube Assembly .....	5-3
5.3	Blade Lube System (not available in EC version).....	5-4
5.4	LT15DC Saw Head Decals .....	5-5
5.5	Control Box, LT15SC DC (Sawmill w/Power Feed).....	5-7
5.6	Electrical Box, LT15 DC.....	5-9
5.7	D10 & G15 Engine Mounting Plate .....	5-10
5.8	Battery Box (Part No. 521450) .....	5-11

**Table of Contents**

**Section-Page**

<b>SECTION 6</b>	<b>FEED SYSTEM</b>	<b>6-1</b>
6.1	Feed Crank Assembly.....	6-1
6.2	Track Rail, Rollers & Travel Pins .....	6-3
6.3	Track Roller Cover Assembly .....	6-5
6.4	Feed Rope, V-Groove Rollers & Brackets.....	6-6
6.5	Power Feed System - Optional .....	6-7
<b>SECTION 7</b>	<b>UP/DOWN SYSTEM</b>	<b>7-1</b>
7.1	Up/Down Assembly, DC.....	7-1
7.2	Service Kit, LT15 Up/Down System.....	7-4
7.3	Slide Pads & Blade Height Scale Indicator.....	7-5
7.4	Blade Height Scale Assembly .....	7-7

## Getting Service

Wood-Mizer is committed to providing you with the latest technology, best quality and strongest customer service available on the market today. We continually evaluate our customers' needs to ensure we're meeting current wood-processing demands. Your comments and suggestions are welcome.

### General Contact Information

From Europe call your local distributor or our European Headquarters and Manufacturing Facility in Koło, Nagórna 114 St, Poland at **+48-63-2626000**. From the continental U.S., call our U.S. Headquarter 8180 West 10th St. Indianapolis, IN 46214, toll-free at **1-800-525-8100**. Ask to speak with a Customer Service Representative. Please have your machine identification number and your customer number ready when you call. The Service Representative can help you with questions about the operation and maintenance of your machine. He also can schedule you for a service call.

### Office Hours:

Country	Monday - Friday	Saturday	Sunday
Poland	7 a.m.- 3 p.m.	Closed	Closed
US	8 a.m.- 5 p.m.	8 a.m.- 12 p.m	Closed

Please have your vehicle identification number and your customer number ready when you call.

Wood-Mizer will accept these methods of payment:

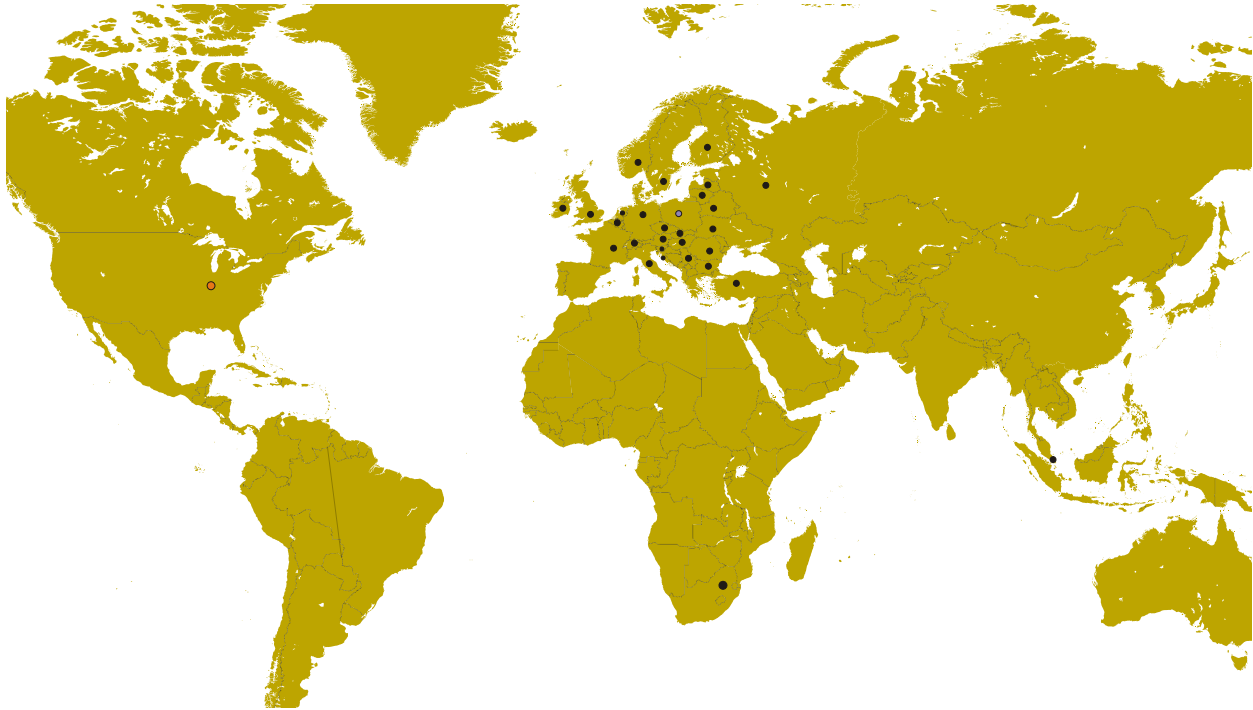
- Visa, Mastercard, or Discover
- COD
- Prepayment
- Net 15 (with approved credit)

Be aware that shipping and handling charges may apply. Handling charges are based on size and quantity of order.

Technical data are subject to change without prior notice.

Actual product may differ from product images. Some illustrations show machines with optional equipment.

Branches & Authorized Sales Centers Wood-Mizer Locations (North and South America)



EUROPE		UNITED STATES
<p><b>European Headquarters</b>  <b>Wood-Mizer Industries Sp. z o.o.</b>                      Nagórna 114, 62-600 Kolo, Poland                      Tel.: +48-63-26-26-000                      Fax: +48-63-27-22-327  <a href="http://www.woodmizer.eu">www.woodmizer.eu</a></p>		<p><b>World Headquarters</b>  <b>Wood-Mizer LLC</b>                      8180 West 10th Street                      Indianapolis, Indiana 46214-2400, USA                      Tel.: +1-317-271-1542                      Fax: +1-317-273-1011  <a href="http://www.woodmizer.com">www.woodmizer.com</a></p>
<p><b>BELARUS MOST-GRUPP</b>                      Siemashko 15, k.3                      Minsk 2200116                      Tel.: +375-17-270-90-08                      Fax: +375-17-270-90-08                      GSM: +375-29-649-90-80                      e-mail: <a href="mailto:most-by@mail.ru">most-by@mail.ru</a></p>	<p><b>SWITZERLAND Stefan Wespi</b>                      Maschinen u. Geräte                      Spezialarbeiten GmbH                      Eichstraße 4                      6353 Weggis                      Tel.: +41-413-900-312                      GSM: +41-799-643-594  <a href="mailto:info@woodmizer.ch">info@woodmizer.ch</a>  <a href="http://www.woodmizer.ch">www.woodmizer.ch</a></p>	<p><b>RUSSIA Dariusz Mikołajewski</b>  <b>OOO WOOD-MIZER INDUSTRIES</b>                      141031, Moscow                      Reg., Mytishenski raj., pos. Veshki,                      Zavodskaja str., 3B                      Tel.Fax: +7(495) 788-72-35                      Tel.Fax: +7(495) 641-51-60                      e-mail: <a href="mailto:dariuszm@woodmizer-moscow.ru">dariuszm@woodmizer-moscow.ru</a></p>
<p><b>BULGARIA Kalin Simeonov</b>  <b>Ecotechproduct</b>                      38 Star Lozenski pat str.                      Sofia 1186                      Tel.: +359-2-462-7035                      Tel.: +359-2-963-1656                      Tel./Fax : +359-2-979-1710  <b>Kalin Simeonov</b>                      GSM: +3592-963-2559                      e-mail: <a href="mailto:office@ecotechproduct.com">office@ecotechproduct.com</a></p>	<p><b>HUNGARY Wiktor Turoczy</b>  <b>Wood-Mizer Hungary K.F.T.</b>                      Szonyi Ut 67., 2921 Komárom                      Tel./Fax: +36-34-346-255                      e-mail: <a href="mailto:woodmizer@woodmizer.hu">woodmizer@woodmizer.hu</a></p>	<p><b>RUSSIA Far East Wladimir Glazaczew</b>  <b>"WM Service"</b>                      Krasnoretchenskaya Str.111                      680006 Khabarovsk                      Tel./Fax: +7-914-541-1183                      e-mail: <a href="mailto:wms-khv@mail.ru">wms-khv@mail.ru</a></p>

*Branches & Authorized Sales Centers Wood-Mizer Locations (North and South America)*

<p><b>CROATIA Krešimir Pregernik</b>  <b>Pregimex d.o.o.</b>                  S. Batušića 31, 10090 Zagreb                  Tel./Fax: +3851-38-94-668  <b>Krešimir Pregernik</b>                  GSM: +3851-98-207-106                  e-mail: <a href="mailto:Kresimir.Pregernik@gmail.com">Kresimir.Pregernik@gmail.com</a></p>	<p><b>ITALY Pasquale Felice</b>  <b>Wood-Mizer Italia Srl</b>  <b>Cda. Capoiaccio SN</b>                  86012 Cercemaggiore                  Campobasso                  Tel./Fax: +39-0874-798-357                  GSM: +39-333-281-03-79                  e-mail: <a href="mailto:wmitaliasrl@gmail.com">wmitaliasrl@gmail.com</a></p>	<p><b>SERBIA Dragan Markov</b>  <b>Wood-Mizer Balkan d.o.o.</b>                  Svetosavska GA 3/3; P. Fah 25                  23 300 Kikinda                  Tel./Fax: +381-230-25-754                  Tel./Fax: +381-230-23-567                  GSM: +381-63-568-658                  e-mail: <a href="mailto:office@woodmizer.co.yu">office@woodmizer.co.yu</a></p>
<p><b>CZECH REPUBLIC Miroslav Greill</b>  <b>Wood-Mizer CZ s.r.o.</b>                  Za Kasárny 946                  339 01 Klatovy                  Tel: +420-376-312-220                  GMS: +420-608-111-104  <b>Miroslav Greill</b>                  GMS: + 420-602-439-799                  E-mail: <a href="mailto:woodmizer@woodmizer.cz">woodmizer@woodmizer.cz</a></p>		<p><b>SLOVAKIA Wiktor Turoczy</b>  <b>Wood-Mizer Danubia s.r.o.</b>                  Hadovce 5, 94501 Komárno                  Tel.: +421-35-77-40-316                  Fax: +421-35-7740-326                  GSM: +421-905-930-972                  e-mail: <a href="mailto:woodmizer@woodmizer.sk">woodmizer@woodmizer.sk</a></p>
<p><b>CZECH REPUBLIC Lubomir Kudlik</b>  <b>Wood-Mizer Moravia</b>                  Sovadinova 6                  69002 Breclav                  Tel./Fax: +420-519-322-443  <b>Lubomir Kudlik</b>                  GSM: +420-602-734-792                  e-mail: <a href="mailto:info@wood-mizer.net">info@wood-mizer.net</a></p>	<p><b>LATVIA Vilmars Jansons</b>  <b>OBERTS Ltd</b>                  Gaujas str. 32/2                  LV-2167 Marupe, Rigas Raj.                  Tel.: +371-7-810-666                  Fax: +371-7-810-655  <b>Vilmars Jansons</b>                  GSM: +371-92-06-966  <b>Andris Orols</b>                  GSM: +371-28-33-07-90                  e-mail: <a href="mailto:andris@oberts.lv">andris@oberts.lv</a></p>	<p><b>TURKEY</b>  <b>Er-Ka Ahsap Profil Kerestecilik San. ve Tic. Ltd. Sti.</b>                  Adana Keresteciler Sitesi 191 sk No.41                  ADANA                  Tel.: +90-322-346-15-86                  Fax: +90-322-345-17-07                  GSM: +90-533-363-18-44                  e-mail: <a href="mailto:info@erkaahsap.com.tr">info@erkaahsap.com.tr</a></p>
<p><b>FINLAND Howard Blackbourn</b>  <b>Oy Falkberg Jordbruk Ab</b>                  Falkintie 220                  25610 Ylonkyla                  Tel.: +358-2732-2253                  Fax: +358-2732-2263  <b>Howard Blackbourn</b>                  GSM: +358-440-424-339                  e-mail: <a href="mailto:falkberg@woodmizer.fi">falkberg@woodmizer.fi</a></p>	<p><b>LITHUANIA Andrius Zuzevicius</b>  <b>UAB Singlis</b>                  Savanoriu pr. 187, 2053 Vilnius                  Tel.: +370-5-2-32-22-44                  Fax: +370-5-2-64-84-15                  GSM: +370-620-28-645                  e-mail: <a href="mailto:andrius.z@singlis.lt">andrius.z@singlis.lt</a></p> <p><b>Dmitrij Gaiduk</b>                  GSM: +370-69-84-51-91                  e-mail: <a href="mailto:dmitrijus.g@singlis.lt">dmitrijus.g@singlis.lt</a></p>	<p><b>UKRAINE Ivan Vinnicki</b>  <b>MOST UKRAINA</b>                  bul. Myru 3, Bajkivtsi Ternoplskyj r-j                  Ternopolska oblast                  47711 Ukraine                  Tel/Fax: +38 (0352) 52 37 74                  GSM: +38 (067) 352 54 34                  GSM: +38 (067) 674 50 68                  E-mail: <a href="mailto:most-ukraine@ukr.net">most-ukraine@ukr.net</a></p>
<p><b>FRANCE Tizoc Chavez</b>  <b>Wood-Mizer France</b>                  556 chemin des Embouffus,                  ZAC des Basses Echarrieres                  38440 SAINT JEAN DE BOURNAY                  Tel: +33-4 74 84 84 44                  GSM: +33-607 52 02 82                  Mail: <a href="mailto:tchavez@woodmizer.fr">tchavez@woodmizer.fr</a></p>	<p><b>NORWAY Tor Bakken Flaathe</b>  <b>Bakken Flaathe A/S</b>                  Løkenvegen 5, 2034 Holter                  Tel: + 47-638 74 989                  Sales: + 47- 412 80 076                  Service: +47- 975 87 588  <a href="mailto:post@woodmizer.no">post@woodmizer.no</a>  <a href="http://www.woodmizer.no">www.woodmizer.no</a></p>	<p><b>UNITED KINGDOM &amp; IRELAND</b>  <b>Wood-Mizer UK</b>                  Hopfield Barn                  Kenward Road, Yalding                  Kent ME18 6JP, UK                  Tel.: +44-1622-813-201                  Fax: +44-1622-815-534                  e-mail: <a href="mailto:info@woodmizer.co.uk">info@woodmizer.co.uk</a></p>
<p><b>SLOVENIA Jan Fale</b>  <b>FAMTEH d.o.o.</b>                  Gacnikova pot 2,                  2390 Ravne na Koroskem                  Tel.: +386-2-62-04-232                  Fax: +386-2-62-04-231  <b>Jan Fale</b>                  GSM: +386-2-62-04-230                  e-mail: <a href="mailto:jan.fale@famteh.si">jan.fale@famteh.si</a></p> <p><b>Matjaz Kolar</b>                  Tel.: +386-2-62-04-232                  GSM: +386-31-775-999                  e-mail: <a href="mailto:matjaz.kolar@famteh.si">matjaz.kolar@famteh.si</a></p>		

*Branches & Authorized Sales Centers Wood-Mizer Locations (North and South America)*

<p><b>GERMANY/AUSTRIA Klaus Longmuss</b>  <b>Wood-Mizer GmbH</b>                  Dorfstraße 5, 29485 Schletau  <b>Büro</b>                  Tel: +49-5883 988 010  <b>Werkstatt</b>                  Tel: +49-5883 988 220  <b>Ersatzteilservice</b>                  Tel: +49 58 83 - 98 80 250  <b>Schärfservice</b>                  Tel: +49-58 83 - 98 80 270  <b>E-mail:</b>  <a href="mailto:info@woodmizer.de">info@woodmizer.de</a>  <a href="http://www.woodmizer.de">www.woodmizer.de</a>  <b>Klaus Longmuss</b>                  Tel.: +49-5883-9880-12                  GSM: +49-17-298-55-892                  e-mail: <a href="mailto:KLongmuss@woodmizer.de">KLongmuss@woodmizer.de</a></p>	<p><b>Subagent:</b>  <b>SWEDEN Kjell Larsson</b>  <b>Mekwood AB</b>                  Slingan 14, 812 41 Gästrike-Hammarby                  Tel.: +46-290-515-65  <b>Kjell Larsson</b>                  GSM: +46-706-797-965                  e-mail: <a href="mailto:kjell.larsson@mekwood.se">kjell.larsson@mekwood.se</a></p>	<p><b>IRELAND</b>  <b>Wood-Mizer Ireland</b>                  Stephen Brennan                  Cum Lahardane Ballina County Mayo                  Tel:+353 96 51345                   E-mail: <a href="mailto:brennanmill@ericom.net">brennanmill@ericom.net</a></p>
<p><b>Subagents:</b>  <b>DENMARK Kevin Christiansen</b>                  Kevin Christiansen's                  savværker PMV                  Arnborgvej 40, 7330 Brande- Fasterholt                   Mobile: +45 61468763                  Mobile: +45-23495828  <a href="mailto:Info@woodmizer.dk">Info@woodmizer.dk</a>                  www.woodmizer.dk</p>	<p><b>ROMANIA Adrian Echert</b>  <b>SC WOOD-MIZER RO SRL</b>                  TRANSILVANIEI Nr. 5                  Sibiu, Cisanadie 555300                  Tel./Fax: : +40-369-405-433                  GSM: +40-745-707-323                  e-mail: <a href="mailto:aechert@woodmizer.ro">aechert@woodmizer.ro</a></p>	<p>Regional Manager - Asia                  Robert Moxham                  Regional Direction - Asia                  Wood-Mizer Asia Manufacturing Co., Ltd.                  No.2, Gongyequ 40th Rd. Xitun District,                  Taichung City, 40768, Taiwan, R.O.C.                  TEL: +886-4-2359 3022                  FAX: +886-4-2359 3205                  CELL: +886-9-0568 7708                  EMAIL: <a href="mailto:RMoxham@woodmizer.com">RMoxham@woodmizer.com</a>  <a href="http://www.woodmizerasia.com">www.woodmizerasia.com</a>                  Skype: r.g.moxham</p>
<p><b>NETHERLANDS Gerlo Breukers</b>                  Breukers Houtzagerij en Bosbouwmachines                  Hazenweg 5, 7481 PC Haaksbergen                  Tel: +31-535741326                  Mobile: +31-620419412  <a href="mailto:info@woodmizer.nl">info@woodmizer.nl</a>  <a href="http://www.woodmizer.nl">www.woodmizer.nl</a></p>	<p><b>Subagent:</b>  <b>ROMANIA M. Echert</b>  <b>S.C. Echert Comprod s.r.l</b>                  Str. Schitului Nr. 6, Apt.7 etajul-1                  725 70 Vatra Dornei, Romania                  Tel./Fax: +40-230-374-235                  Tel. : +40-740-35-35-74</p>	<p>Regional Manager - Africa                  Gavin Prowse                  Regional Sales Director - Africa                  Wood-Mizer Africa (Pty) Ltd.                  Unit 1, Leader Park                  20 Chariot Street                  Stormill Ext.5                  Maraisburg, Johannesburg                  South Africa                  TEL: +27 11 473 1313                  FAX: +27 11 473 2005                  CELL: +27 71 398 8010                  EMAIL: <a href="mailto:growse@woodmizer.com">growse@woodmizer.com</a>  <a href="http://www.woodmizerafrika.com">www.woodmizerafrika.com</a>                  Skype: gavin.prowse</p>

**USA World Headquarters**

*Serving North & South America, Oceania, East Asia*

Wood-Mizer LLC  
 8180 West 10th Street  
 Indianapolis, IN 46214  
  
 Phone: 317.271.1542 or 800.553.0182  
 Customer Service: 800.525.8100  
 Fax: 317.273.1011  
 Email: [infocenter@woodmizer.com](mailto:infocenter@woodmizer.com)

**Brazil Headquarters**

*Serving Brazil*

Wood-Mizer do Brasil  
 Rua Dom Pedro 1, No: 205 Bairro: Sao Jose  
 Ivoti/RS CEP:93.900-000  
  
 Tel: +55 51 9894-6461/ +55 21 8030-3338/ +55 51 3563-4784  
 Email: [info@woodmizer.com.br](mailto:info@woodmizer.com.br)

**Canadian Headquarters**

*Serving Canada*

Wood-Mizer Canada  
 396 County Road 36, Unit B  
 Lindsay, ON K9V 4R3  
  
 Phone: 705.878.5255 or 877.357.3373  
 Fax: 705.878.5355  
 Email: [ContactCanada@woodmizer.com](mailto:ContactCanada@woodmizer.com)

**Europe Headquarters**

*Serving Europe, Africa, West Asia*

Wood-Mizer Industries Sp z o.o.  
 Nagorna 114  
 62-600 Kolo, Poland  
  
 Phone: +48.63.26.26.000  
 Fax: +48.63.27.22.327

**Branches & Authorized Sales Centers**

For a complete list of dealers, visit [www.woodmizer.com](http://www.woodmizer.com)

## SECTION 1 GENERAL INFORMATION

### 1.1 How To Use the Parts List

- Use the index above to locate the assembly that contains the part you need.
- Go to the appropriate section and locate the part in the illustration.
- Use the number pointing to the part to locate the correct part number and description in the table.
- Parts shown indented under another part are included with that part.
- Parts marked with a diamond (◆) are only available in the assembly listed above the part.

See the sample table below. Sample Part #A01111 includes part F02222-2 and subassembly A03333. Subassembly A03333 includes part S04444-4 and subassembly K05555. The diamond (◆) indicates that S04444-4 is not available except in subassembly A03333. Subassembly K05555 includes parts M06666 and F07777-77. The diamond (◆) indicates M06666 is not available except in subassembly K05555.

1.2 Sample Assembly				
REF.	DESCRIPTION (◆ Indicates Parts Available In Assemblies Only)	PART #	QTY	
	Sample Assembly, Complete (Includes All Indented Parts Below)	A01111	1	
1	Sample Part	F02222-22	1	
	Sample Subassembly (Includes All Indented Parts Below)	A03333	1	
2	Sample Part (◆ Indicates Part Is Only Available With A03333)	S04444-4	1	◆
	Sample Subassembly (Includes All Indented Parts Below)	K05555	1	
3	Sample Part (◆ Indicates Part Is Only Available With K05555)	M06666	2	◆
4	Sample Part	F07777-77	1	

#### To Order Parts:

- From Europe call our European Headquarters and Manufacturing Facility in Kolo, Poland at **+48-63-2626000**. From the continental U.S., call our toll-free Parts hotline at **1-800-525-8100**. Have your customer number, vehicle identification number, and part numbers ready when you call. From other international locations, contact the Wood-Mizer distributor in your area for parts.

#### Office Hours:

Country	Monday - Friday	Saturday	Sunday
Poland	7-15	Closed	Closed
US	8 a.m.- 5 p.m.	8 a.m.- 12 p.m.	Closed

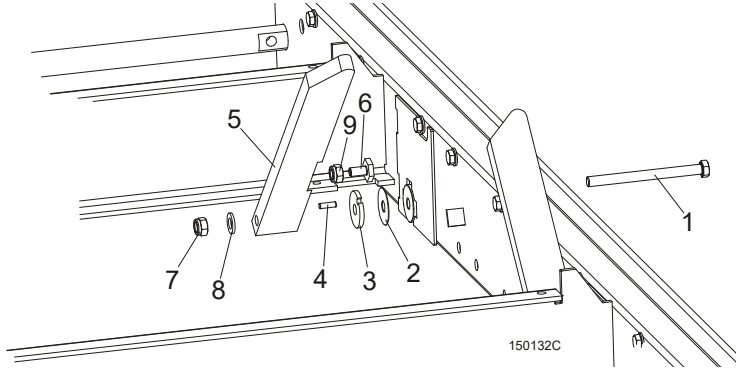


**CAUTION!** It is strongly recommended that only original spare parts be used.



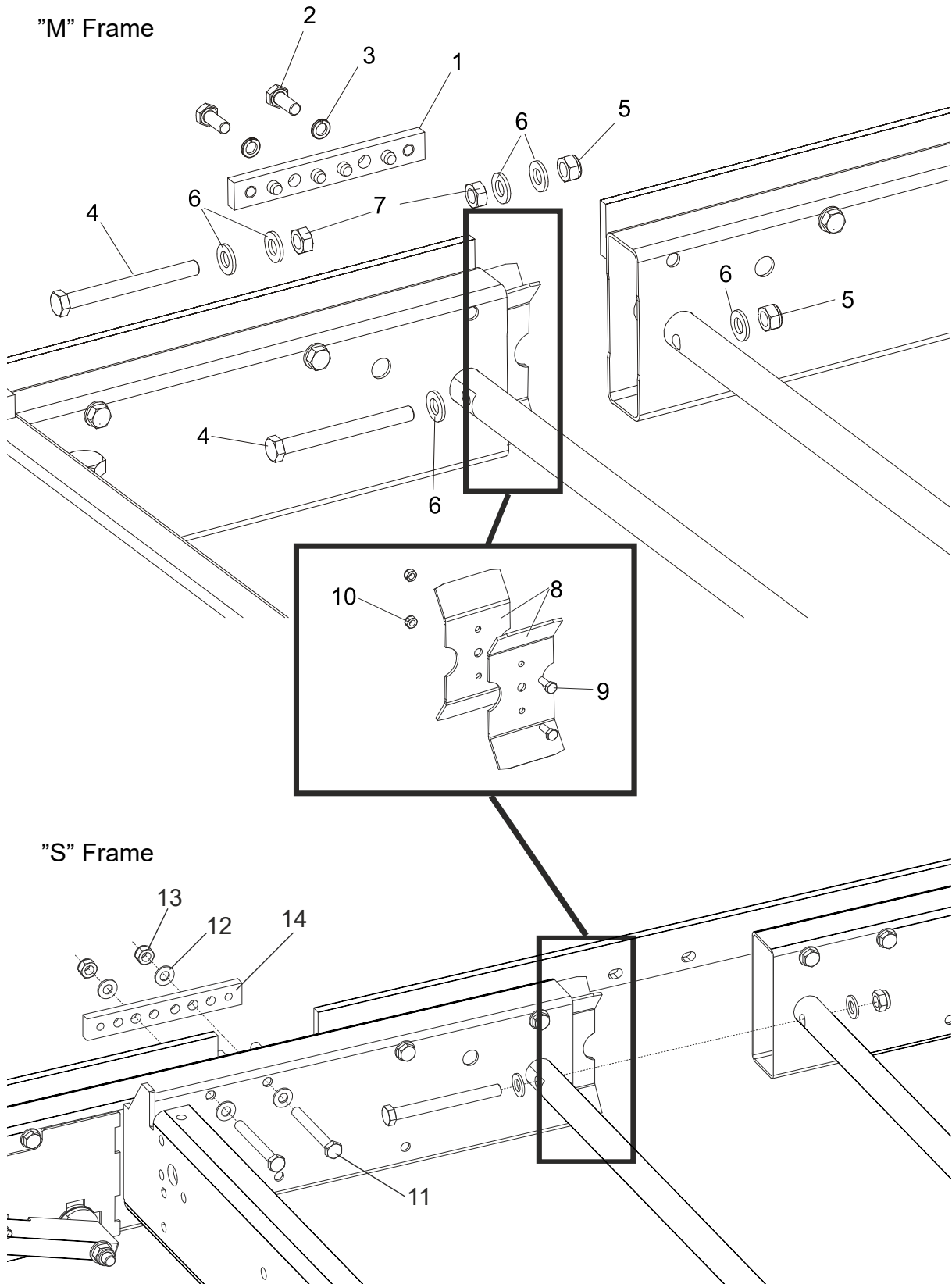
## SECTION 2 FRAME PARTS

### 2.1 Log Side Support Assembly



REF.	DESCRIPTION (◆ Indicates Parts Available In Assemblies Only)	PART #	QTY
1	<b>BOLT, M12X140-8.8 HEX HEAD ZINC</b>	F81004-35	1
2	<b>WASHER, 33/64 X 1 3/4 X 1/32" NYLON</b>	014972	1
3	<b>WASHER, LT15 THICK SPACER</b>	085981-1	1
	<b>SUPPORT, LT15 LOG SIDE COMPLETE PAINTED</b>	085982-1	1
4	PIN, H 6n6x20 60HRC ROLL	100472	1
5	PLATE, LT15 LOG SIDE SUPPORT	085980	1
6	<b>BOLT, M10x20 SPECIAL</b>	100076-1	1
7	<b>NUT, M12-8 HEX NYLON ZINC LOCK</b>	F81034-2	1
8	<b>WASHER, 13 FLAT ZINC</b>	F81056-1	1
9	<b>NUT, M10-8-B HEX ZINC</b>	F81033-3	1

2.2 Bed Section Connecting Hardware



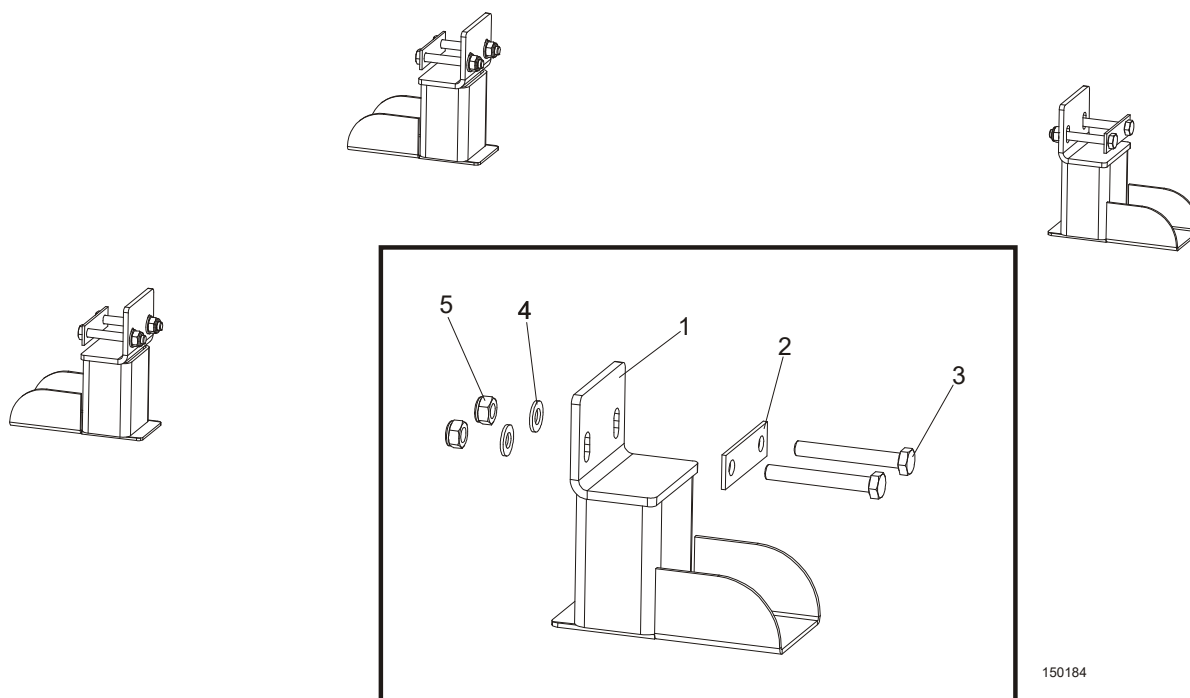
REF.	DESCRIPTION (◆ Indicates Parts Available In Assemblies Only)	PART #	QTY	
1	<b>SPLICE, TRACK BAR PINNED ZINC-PLATED</b>	086659-1	1	
2	<b>BOLT, M10x25-8.8 HEX HEAD FULL THREAD ZINC</b>	F81003-11	2	
3	<b>WASHER, 10.2 SPLIT LOCK ZINC</b>	F81055-2	2	
4	<b>BOLT, M12x120 8.8 HEX HEAD ZINC</b>	F81004-38	2	
5	<b>NUT, M12-8 HEX NYLON ZINC LOCK</b>	F81034-2	2	
6	<b>WASHER, 13 FLAT ZINC</b>	F81056-1	6	
7	<b>NUT, M12-8-B HEX ZINC</b>	F81034-1	2	
	<b>CONNECTOR, LT15 BED FRAME SECTION</b>	506288 <sup>1</sup>	2	
8	PLATE, BED SECTION CONNECTOR	506287-1	1	
9	BOLT, M6x16 8.8 HEX HEAD FULL THREAD ZINC	F81001-15	2	
10	NUT, M6-8-B HEX NYLON ZINC LOCK	F81031-2	2	
11	<b>BOLT, M10X85-8.8 HEX HEAD ZINC</b>	F81003-125	2	
12	<b>WASHER, 10.5 FLAT ZINC</b>	F81055-1	4	
13	<b>NUT, M10-8-B HEX NYLON ZINC LOCK</b>	F81033-1	2	
14	<b>SPLICE, LT15 TRACK BAR PINNED</b>	086660	1	

<sup>1</sup> 2 pieces for each bed section

## 2 FRAME PARTS

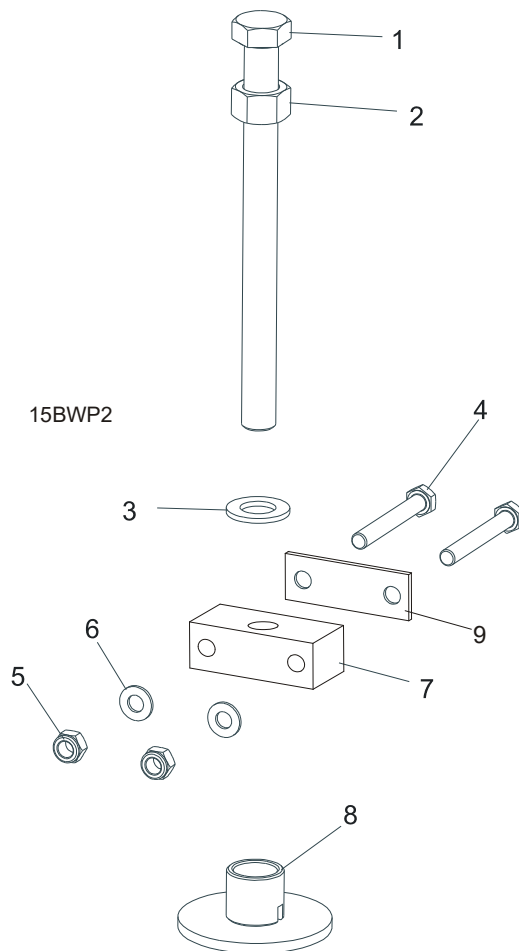
### Stationary Leg Kit

### 2.3 Stationary Leg Kit



REF.	DESCRIPTION (◆ Indicates Parts Available In Assemblies Only)	PART #	QTY
	<b>STATIONARY LEG KIT FOR 1950 MM BED SECTION</b>	100069	1
1	Leg, LT15 Stationary Bed	100064-1	4
2	Washer, LT15 Bed Leg	085994-1	4
3	Bolt, M10x75-8.8 Hex Head Zinc	F81003-15	8
4	Washer, 10.5 Flat Zinc	F81055-1	8
5	Nut, M10-8-B Hex Nylon Zinc Lock	F81033-1	8
	<b>STATIONARY LEG KIT FOR 2700 MM BED SECTION</b>	100070	1
1	Leg, LT15 Stationary Bed	100064-1	6
2	Washer, LT15 Bed Leg	085994-1	6
3	Bolt, M10x75-8.8 Hex Head Zinc	F81003-15	12
4	Washer, 10.5 Flat Zinc	F81055-1	12
5	Nut, M10-8-B Hex Nylon Zinc Lock	F81033-1	12

## 2.4 Outrigger Leg Kit

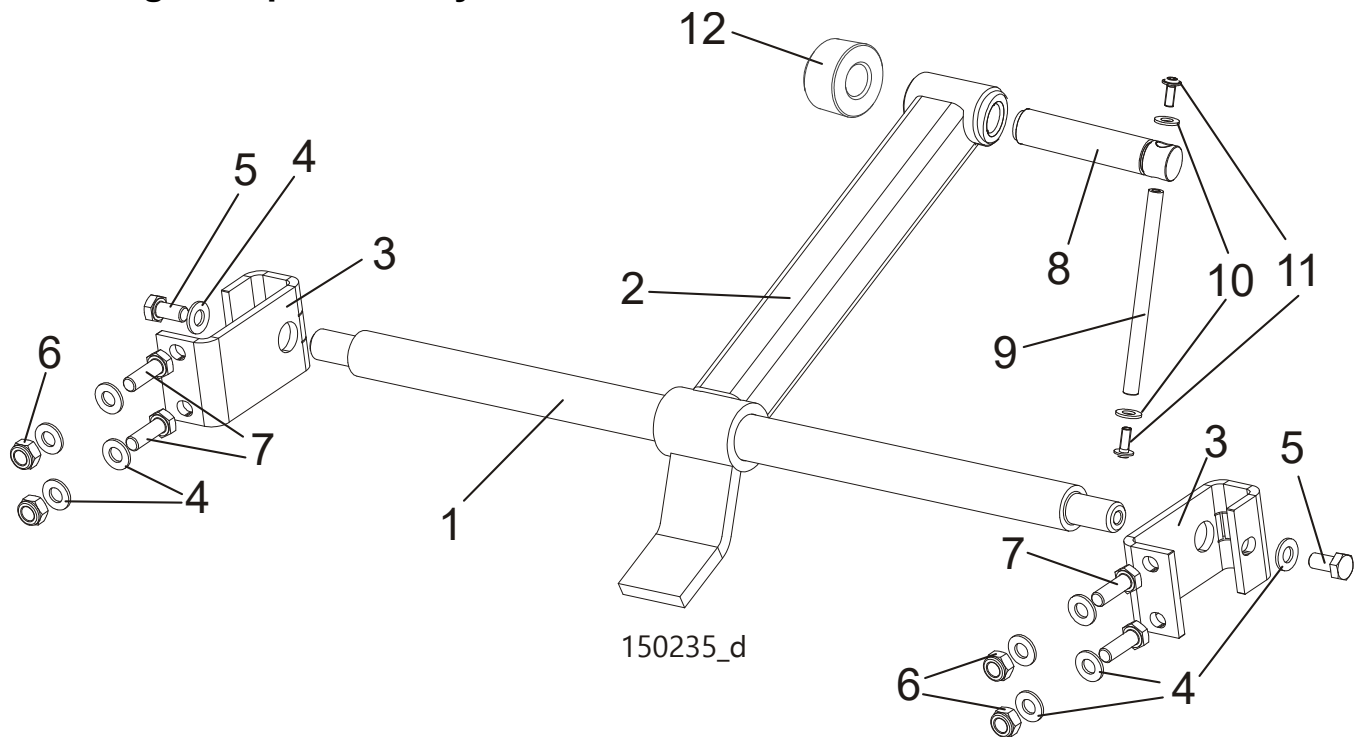


REF.	DESCRIPTION (◆ Indicates Parts Available In Assemblies Only)	PART #	QTY
	<b>OUTRIGGER LEG KIT FOR 1950 MM BED SECTION (LT15S3)</b>	095232 <sup>1</sup>	3
	<b>OUTRIGGER LEG KIT FOR 2700 MM BED SECTION (LT15M2)</b>	095234 <sup>2</sup>	2
1	Bolt, M20x240-8.8 Hex Head Full Thread Zinc	F81007-1	1
2	Nut, M20-8 Hex Zinc	F81037-1	1
3	Washer, 21 Flat Zinc	F81059-2	1
4	Bolt, M10x120-8.8 Hex Head Zinc	F81003-58	2
5	Nut, M10-8-B Hex Nylon Zinc Lock	F81033-1	2
6	Washer, 10.5 Flat Zinc	F81055-1	2
7	Block, LT15 Leg Mount	095745-1	1
8	Plate Weldment, LT15 Leg Foot Zinc-plated	087771-1	1
9	Washer, LT15 Bed	085994-1	1

<sup>1</sup> Four legs are mounted to each 1950-mm long bed section.

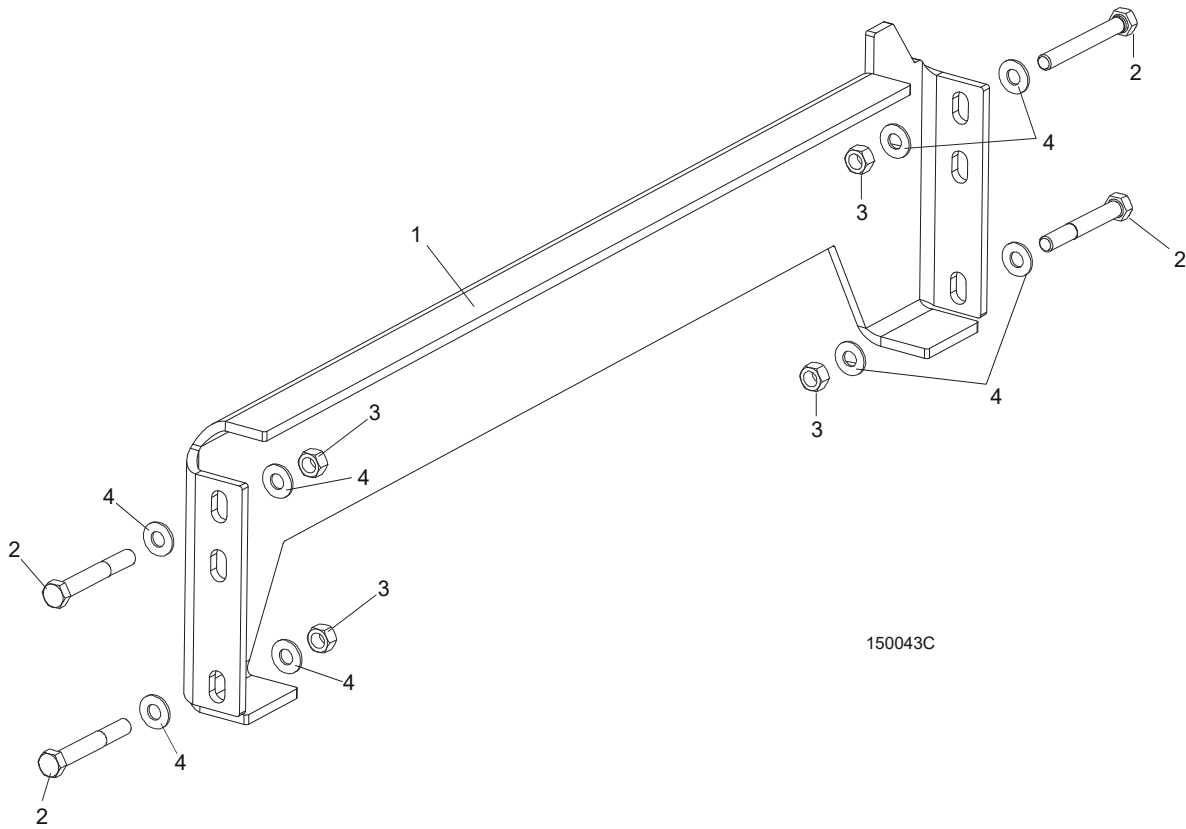
<sup>2</sup> Six legs are mounted to each 2700-mm long bed section.

**2.5 Log Clamp Assembly**



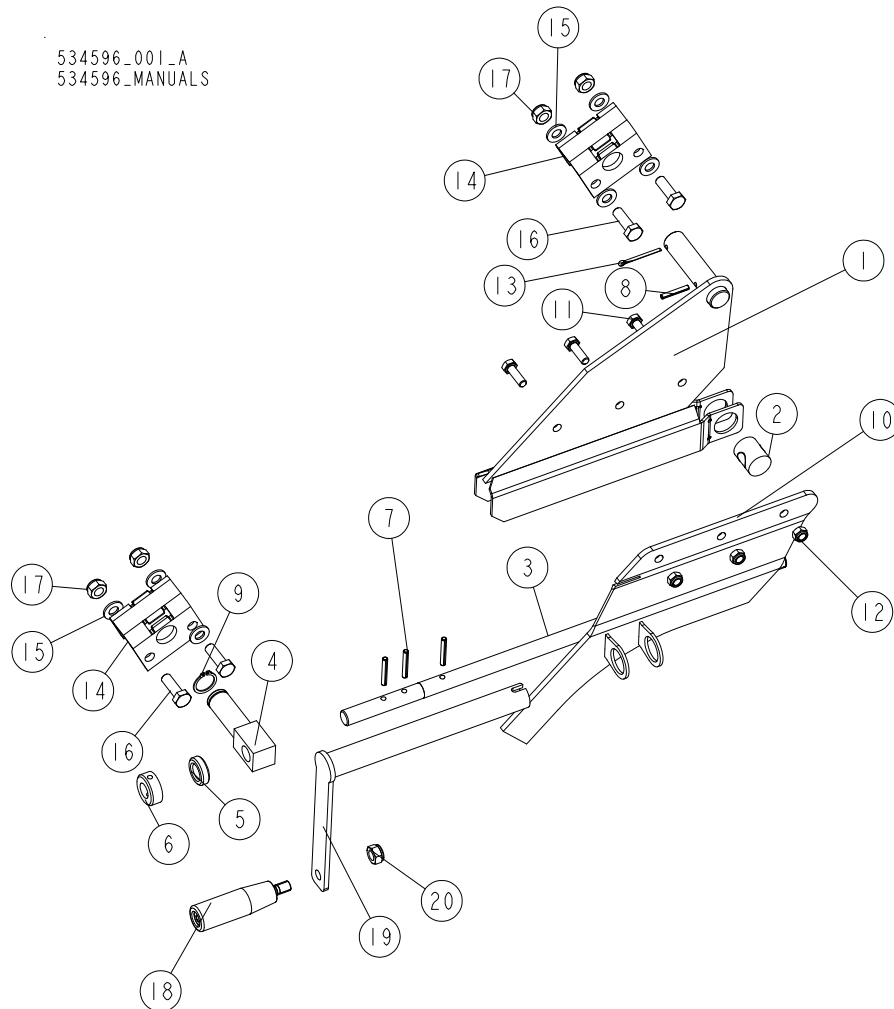
REF.	DESCRIPTION (◆ Indicates Parts Available In Assemblies Only)	PART #	QTY
	<b>LOG CLAMP ASSEMBLY, LT10/15 COMPLETE</b>	<b>507565</b>	<b>2</b>
1	ROD, CLAMP ZINC-PLATED MAIN	500343-1	1
2	ARM, CLAMP LX50 ZINC	530701-1	1
3	BRACKET, LOG CLAMP MOUNT ZINC	506535-1	2
4	WASHER, 10.5 FLAT ZINC	F81055-1	10
5	BOLT, M10x20-5.8 HEX HEAD FULL THREAD ZINC	F81003-1	2
6	NUT, M10-8-B NYLON HEX ZINC LOCK	F81033-1	4
7	BOLT, M10x30-5.8 HEX HEAD FULL THREAD ZINC	F81003-2	4
	<b>BOLT, CLAMP - COMPLETE</b>	<b>507563</b>	<b>1</b>
8	BOLT, CLAMP	507463	1
	<b>ROD, COMPLETE</b>	<b>511924</b>	<b>1</b>
9	ROD, ZINC-PLATED	511923-1	1
10	WASHER, 8.4 FLAT ZINC	F81054-1	2
11	BOLT, M6x16 BN 11252 "BOSSARD"	F81001-24	2
12	CAP, MOUNTING	T00414	1

## 2.6 Auxiliary Bed Rail Assembly



REF.	DESCRIPTION (◆ Indicates Parts Available In Assemblies Only)	PART #	QTY	
1	RAIL WELDMENT, LT15 AUXILIARY BED	095490-1	1	◆
2	BOLT, M10X75-8.8 HEX HEAD ZINC	F81003-15	4	
3	NUT, M10-8-B HEX NYLON ZINC LOCK	F81033-1	4	
4	WASHER, 10.5 ZINC FLAT	F81055-1	8	

**2.7 Manual Toe Board (Optional)**



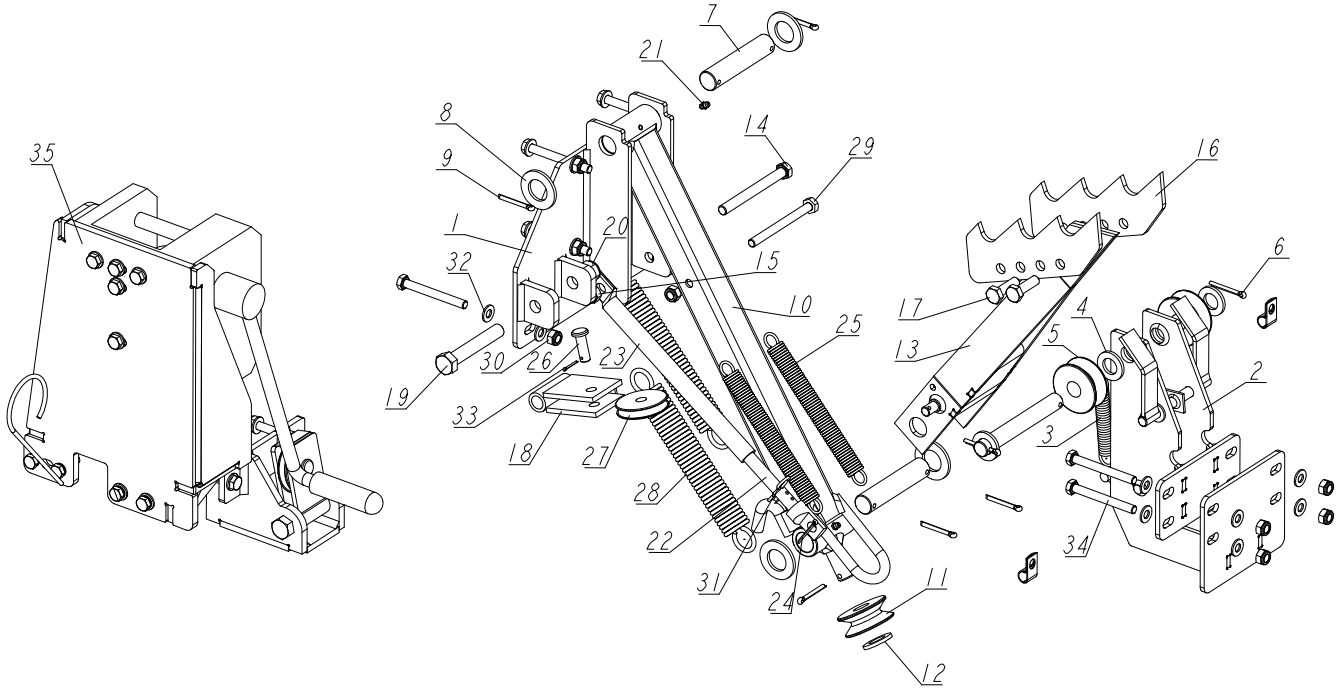
REF.	DESCRIPTION (* indicates parts available in assemblies only)	PART NO.	QTY
-	<b>MANUAL TOE BOARD W/CRANK HANDLE (SINGLE)</b>	534596	1
-	LT15 MANUAL TOE BOARD	534573	1
-	<b>MANUAL TOE BOARD W/CRANK HANDLE (DOUBLE)</b>	534596	1
-	LT15 MANUAL TOE BOARD	534573	2
-	HANDLE, TOE BOARD - COMPLETE	534595	1
1	PLATE WELDMENT, MANUAL TOE BOARD FRONT	094927-1	1
2	PIN, THREADED (MANUAL TOE BOARD)	090017	1
3	SHAFT, MANUAL TOE BOARD	580809-1	1
4	PIVOT, MANUAL TOE BOARD SHAFT ZINC-PLATED (1)	094931-1	1
5	BEARING, 5/8 THRUST	581701	1
6	RING, 16 ADJUSTING	F81039-30	1
7	PIN, 5X35-N-C PN-EN ISO 8752 ROLL	F81044-9	3
8	PIN, 4X30 ROLL ZINC	F81044-7	1
9	RING, Z 22 OUTSIDE RETAINING	F81090-24	1



REF.	DESCRIPTION (* indicates parts available in assemblies only)	PART NO.	QTY	
10	PLATE, MANUAL TOE BOARD COVER - COMPLETE	534593-1	1	
11	BOLT, M8X25-8.8-B HEX HEAD FULL THREAD ZINC	F81002-5	3	
12	NUT, M8-8-B HEX NYLON LOCK ZINC	F81032-2	3	
13	PIN, S-ZN, 4 X 25 COTTER	F81043-2	1	
14	PLATE	534574-1	2	
15	WASHER, 10.5 FLAT ZINC	F81055-1	7	
16	BOLT, DIN 933-M10X30 8.8-A2E	F81003-111	4	
17	NUT, M10-8-B NYLON HEX ZINC LOCK	F81033-1	4	
-	HANDLE, MANUAL TOE BOARD CRANK	500600	1	
18	KNOB, L=85 M10, RO11-M10 PLASTIC CRANK HANDLE	086338	1	
19	MANUAL TOE BOARD KNOB - WELDMENT	500599-1	1	
20	NUT, M10-8-B NYLON HEX ZINC LOCK	F81033-1	1	

**2.8 LT15 Manual Log Turner (Optional)**

538960\_001  
538960\_MANUAL

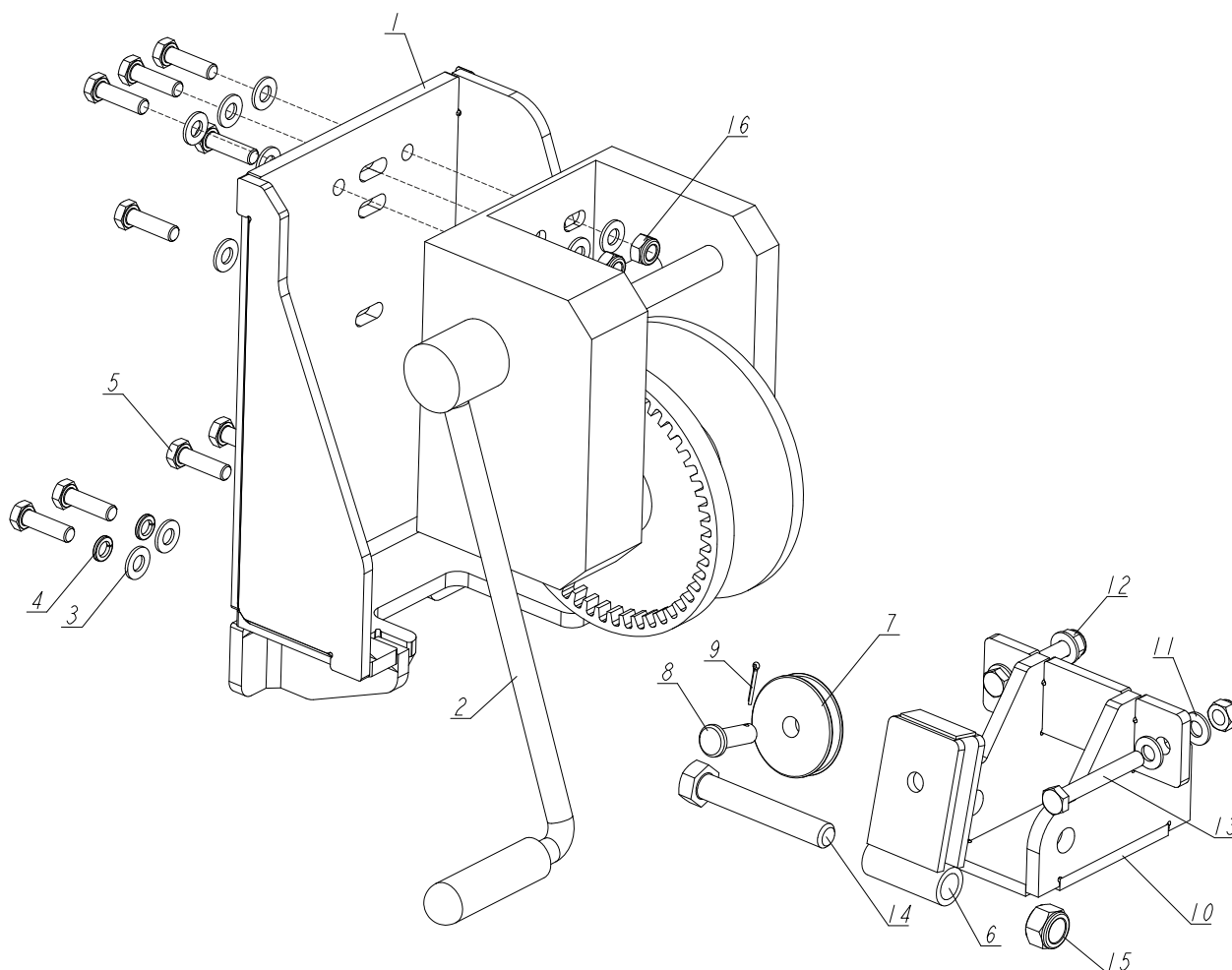


REF.	DESCRIPTION (* indicates parts available in assemblies only)	PART #	QTY
-	<b>TURNER, LT15 MANUAL LOG - COMPLETE</b>	538960	1
1	BRACKET WELDMENT, LT15 MANUAL LOG TURNER	538959-1	1
-	<b>BRACKET, MANUAL LOG TURNER CABLE - COMPLETE</b>	538972	1
2	BRACKET WELDMENT, TURNER CABLE	538974-1	1
3	SPRING, N1.9 N20X114.3 (U.200.190.1143.AX) EXTENSION	538975	1
4	WASHER, 21 FLAT ZINC	F81059-2	4
5	SHEAVE, ZINC-PLATED	091280-1	2
6	PIN, S-FE 5X40 COTTER	F81043-31	2
7	PIN, MANUAL TURNER ARM PIVOT ZINC-PL.	091275-1	2
8	WASHER, 28 FLAT ZINC	F81061-1	4
9	PIN, S-FE 5X40 COTTER	F81043-31	5
10	ARM WELDMENT, LT15 MANUAL TURNER - LOWER	538962-1	1
11	SHEAVE, ZINC-PLATED	091280-1	1
12	WASHER, 21 FLAT ZINC	F81059-2	1
13	ARM WELDMENT, LT15 MANUAL TURNER - UPPER	538964-1	1
14	BOLT, M12X120-8.8 HEX HEAD ZINC	F81004-38	1
15	NUT, M12-8 DIN 982 HEX NYLON ZINC LOCK	F81034-2	3
16	CLAW, LOG TURNER	088082-OLD	2
17	BOLT, M12X40-8.8 HEX HEAD FULL THREAD ZINC	F81004-4	2
18	BRACKET WELDMENT, CABLE GUIDE PULLEY	091295-1	1
19	BOLT, M16X100-8.8 HEX HEAD FULL THREAD ZINC	F81006-2	1

REF.	DESCRIPTION (* indicates parts available in assemblies only)	PART #	QTY
20	NUT, M16-8 HEX NYLON ZINC LOCK	F81036-2	1
21	FITTING, M6 TYPE A STRAIGHT GREASE	086280	2
22	ROD WELDMENT, COMPLETE	538968-1	1
23	TUBE	538969-1	1
24	PIN, S-ZN 4X25 COTTER	F81043-2	1
25	SPRING, N2.8XN22.2X183	091864	2
26	PIN, B-12X35-FS/ZN5	F81049-1	1
27	PULLEY, CABLE GUIDE ZINC-PLATED	091273-1	1
28	SPRING, N4.5XN40X236 (T_400_450_2360_A)	538971	2
29	BOLT, M10X115-8.8 HEX HEAD	F81003-19	1
30	NUT, M10-8-B HEX NYLON ZINC LOCK	F81033-1	10
31	PIN, 1/8X1 13/16 SAFETY	P05059	1
32	WASHER, 10.5 ZINC FLAT	F81055-1	18
33	PIN, S-ZN-2.5X20 COTTER	F81043-1	1
34	BOLT, M10X90-8.8-B HEX HEAD ZINC	F81003-66	9
35	COMPLETE WINCH	538991	1

## 2.9 Complete Winch

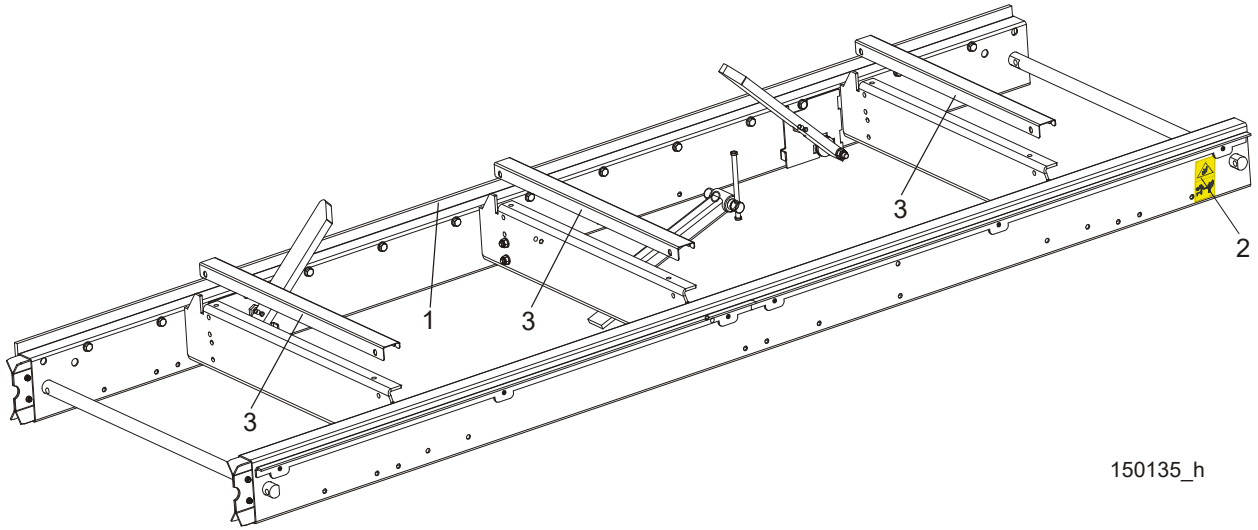
538991\_001  
538991\_MANUAL



REF.	DESCRIPTION (* indicates parts available in assemblies only)	PART #	QTY
-	<b>COMPLETE WINCH</b>	538991	1
1	MOUNT WELDMENT, WINCH	538983-1	1
2	WINCH, AL-KO TYPE 901	096453	1
3	WASHER, 10.5 FLAT ZINC	F81055-1	12
4	WASHER, Z 10.2 SPLIT LOCK ZINC	F81055-2	4
5	BOLT, M10X35 8.8 HEX HEAD FULL THREAD ZINC	F81003-17	9
-	BRACKET, CABLE GUIDE PULLEY MOUNT - COMPLETE	538993	1
6	BRACKET, CABLE GUIDE PULLEY MOUNT	538990-1	1
7	PULLEY, CABLE GUIDE ZINC-PLATED	091273-1	1
8	PIN, B-12X35-FS/ZN5	F81049-1	1
9	PIN, S-ZN-2.5X20 COTTER	F81043-1	1
10	MOUNT WELDMENT, GUIDE PULLEY BRACKET	538994-1	1
11	WASHER, 10.5 FLAT ZINC	F81055-1	4
12	NUT, M10-8-B HEX NYLON ZINC LOCK	F81033-1	2

REF.	DESCRIPTION (* indicates parts available in assemblies only)	PART #	QTY	
13	BOLT, M10X75-8.8 HEX HEAD ZINC	F81003-15	2	
14	BOLT, M16X100-8.8 HEX HEAD FULL THREAD ZINC	F81006-2	1	
15	NUT, M16-8 HEX NYLON ZINC LOCK	F81036-2	1	
16	NUT, M10-8-B HEX NYLON ZINC LOCK	F81033-1	5	

**2.10 "M" Type Frame Bed Section**



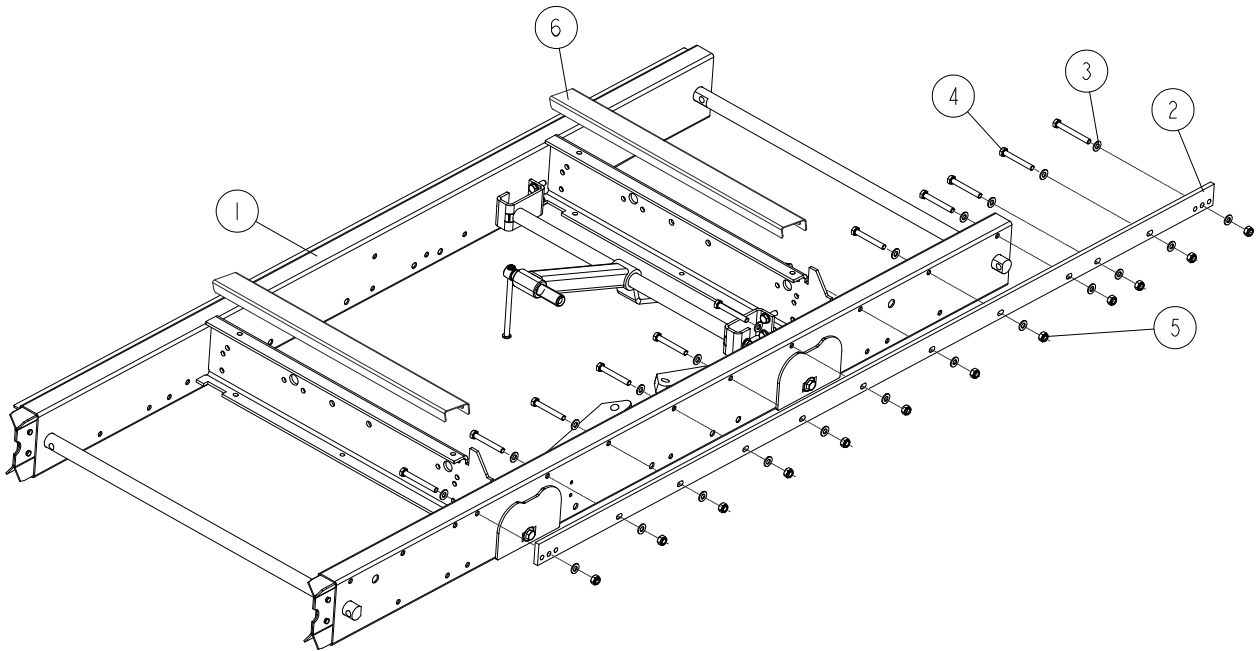
150135\_h

REF.	DESCRIPTION (◆ Indicates Parts Available In Assemblies Only)	PART #	QTY	
	<b>LT15 BED SECTION ASSEMBLY - LONG</b>	<b>094697</b>		
<b>1</b>	BAR, LT15 2700 TRACK ZINC-PLATED	538935-1	1	
<b>2</b>	DECAL, KEEP AWAY DANGER, PICTOGRAM	099221	1	
<b>3</b>	COVER, BED RAIL LT10/15	509300 <sup>1</sup>	3	

<sup>1</sup> Option

**2.11 "S" Type Bed Frame Section, LT15 1950**

538800\_001  
538800\_MANUALS

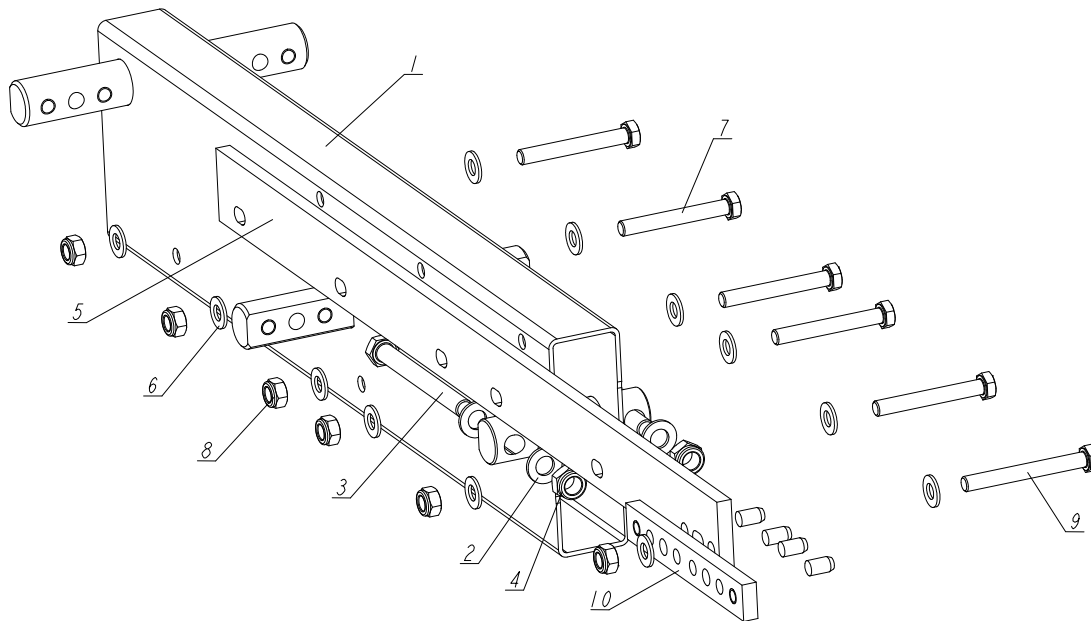


REF.	DESCRIPTION (◆ Indicates Parts Available In Assemblies Only)	PART #	QTY
-	<b>SECTION, LT 15 1950 BED FRAME - COMPLETE</b>	538800	1
1	FRAME WELDMENT, LT15 1950 BED	538801-1	1
2	RAIL, LT15 1950 TRACK	538799-1	1
3	WASHER, 10.5 FLAT ZINC	F81055-1	24
4	BOLT, M10X75-8.8 HEX HEAD ZINC	F81003-15	10
5	NUT, M10-8-B HEX NYLON ZINC LOCK	F81033-1	12
6	COVER, LT15 BED RAIL	509300 <sup>1</sup>	2

<sup>1</sup> Option

## 2.12 Mast Track Extension

538808\_001\_A  
538808\_MANUAL

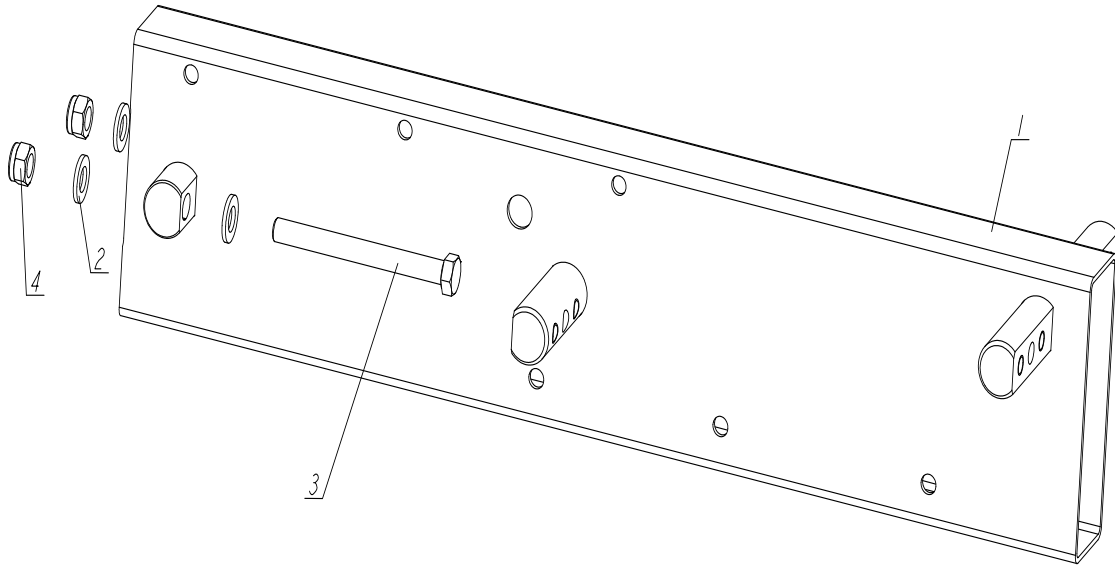


REF	DESCRIPTION (◆ indicates parts available in assemblies only)	PART #	QTY
-	<b>EXTENSION, MAST TRACK REAR - COMPLETE</b>	538808	1
1	TUBE, MAST TRACK EXTENSION	538809-1	1
2	WASHER, 13 FLAT ZINC	F81056-1	4
3	BOLT M12X120 8.8 FE/ZN5	F81004-38	2
4	NUT, M12 8 HEX NYLON ZINC LOCK	F81034-2	2
5	BAR, EXTENSION TRACK ZINC-PLATED	538811-1	1
6	WASHER, 10.5 FLAT ZINC	F81055-1	12
7	BOLT, M10X75-8.8 HEX HEAD ZINC	F81003-15	5
8	NUT, M10-8-B HEX NYLON ZINC LOCK	F81033-1	6
9	BOLT, M10X85-8.8 HEX HEAD ZINC	F81003-125	1
10	BED SECTION CONNECTOR, LT15	086659-1	1



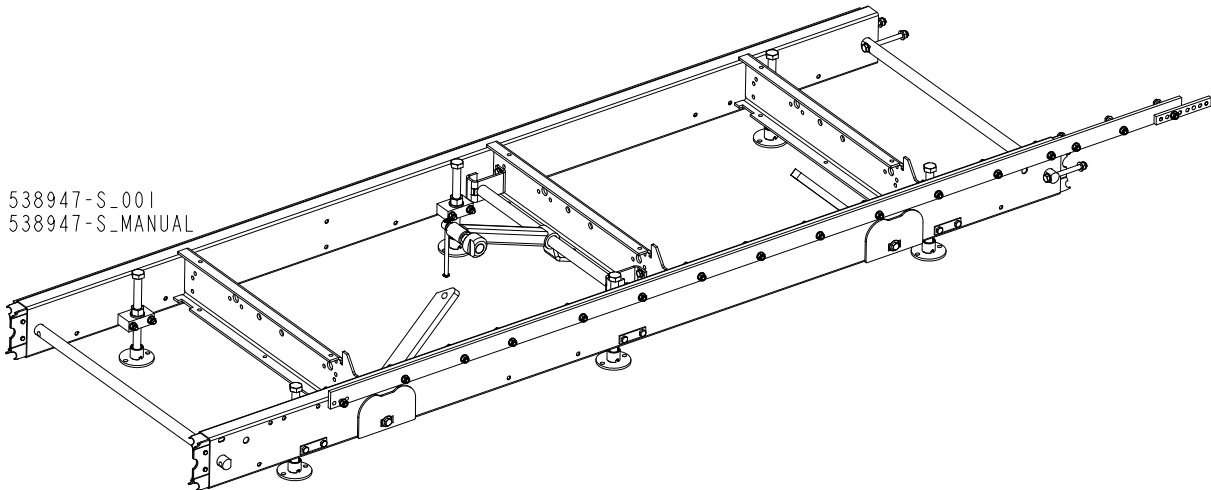
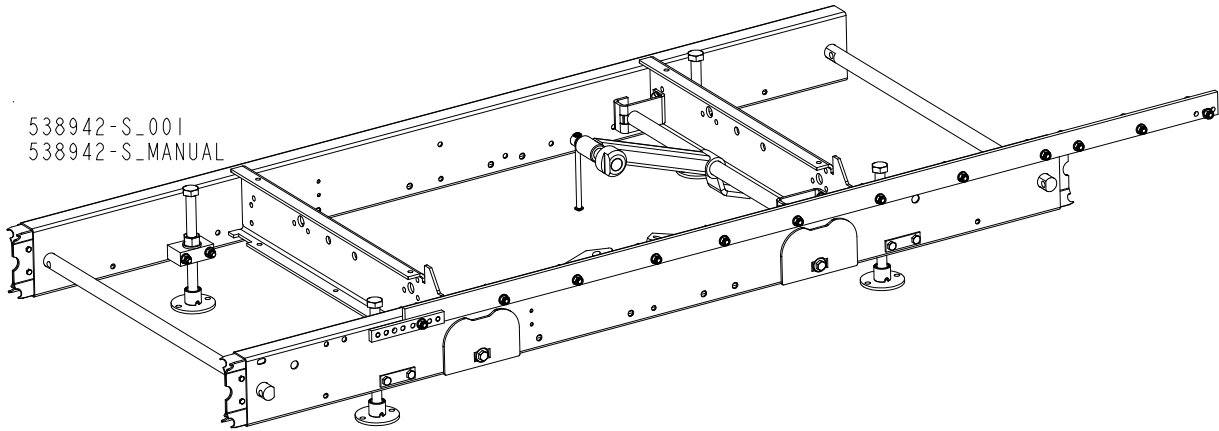
## 2.13 Mast Track Extension Tube

538807\_001\_A  
538807\_MANUALS



REF	DESCRIPTION (◆ indicates parts available in assemblies only)	PART #	QTY
-	EXTENSION, MAST TRACK FRONT - COMPLETE	538807	1
1	TUBE, MAST TRACK EXTENSION	538809-1	1
2	WASHER, 13 FLAT ZINC	F81056-1	4
3	BOLT M12X120 8.8 FE/ZN5	F81004-38	2
4	NUT, M12 8 HEX NYLON ZINC LOCK	F81034-2	2

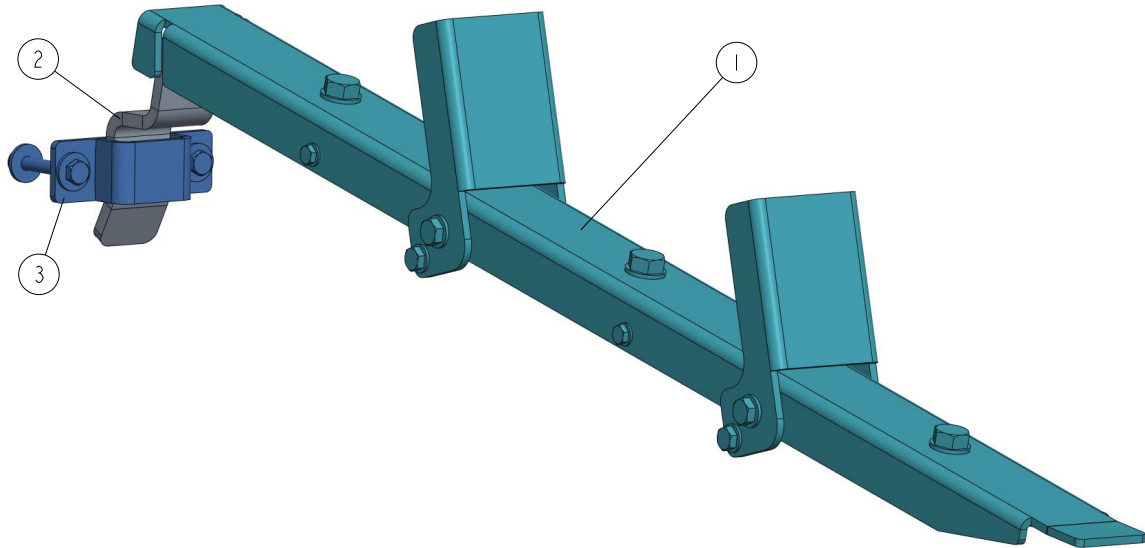
**2.14 Additional Bed Frame Section with Adjustable Legs**



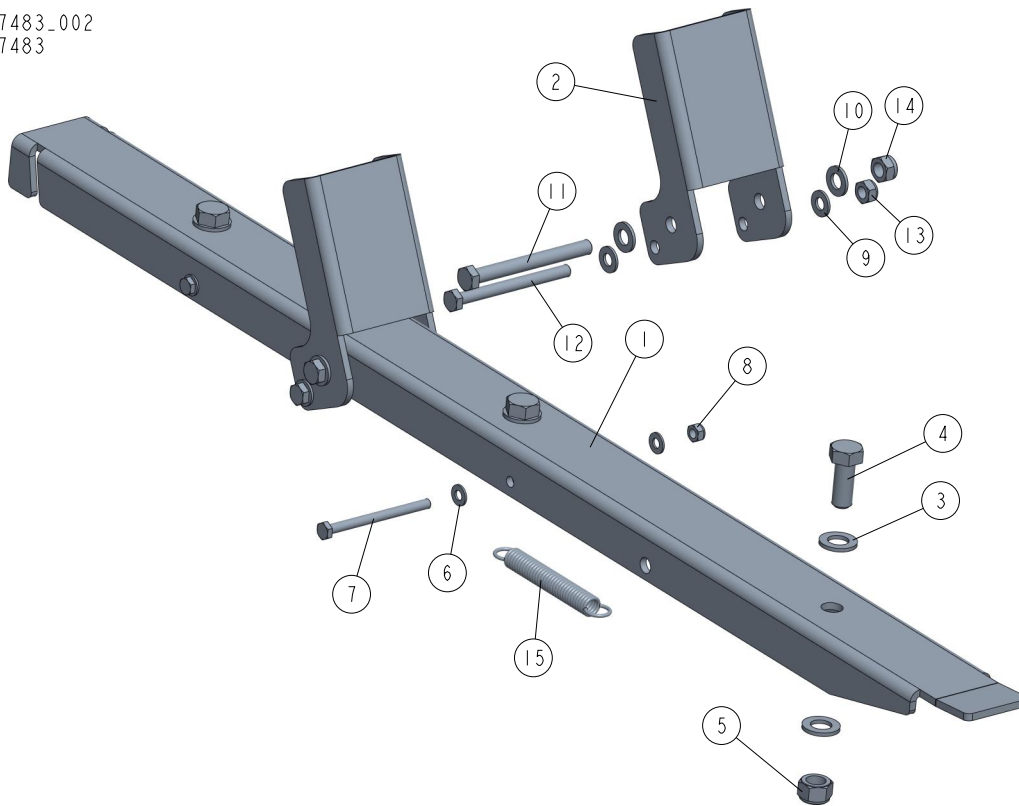
REF.	DESCRIPTION (◆ Indicates Parts Available In Assemblies Only)	PART #	QTY
	BED SECTION, UNIVERSAL S-TYPE, 1950MM SERVICE	538942-S	1
	BED SECTION, UNIVERSAL M-TYPE, 2700MM SERVICE	538947-S	1

### 2.15 Log Loading Ramp Assembly 097977

097977\_001  
097977



REF	DESCRIPTION (◆ indicates parts available in assemblies only)	PART #	QTY
-	RAMP ASSEMBLY, LOG LOADING, LT15 COMPL.	097977	1
1	RAMP ASSEMBLY, LOADING <a href="#">See Section 2.16</a>	097483	1
2	BRACKET, LT15 RAMP ZINC-PLATED	097976-1	1
3	BRACKET, LT15 RAMP - COMPLETE <a href="#">See Section 2.17</a>	507518	1

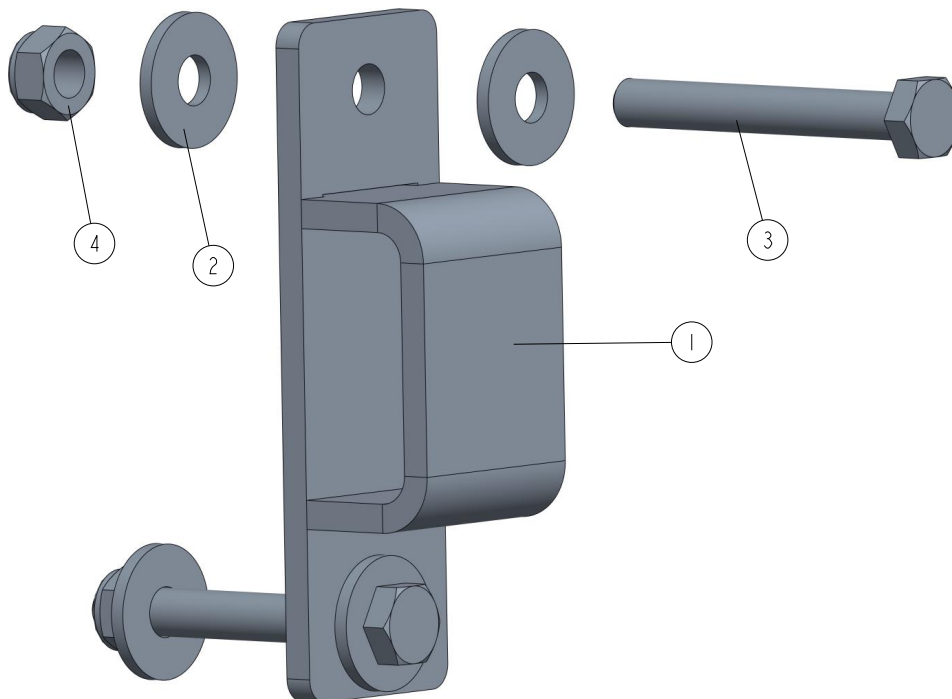
2.16 Loading Ramp Assembly 097483<sup>1</sup>097483\_002  
097483

REF	DESCRIPTION (◆ indicates parts available in assemblies only)	PART #	QTY
-	RAMP ASSEMBLY, LOADING	097483	1
1	PLATE, LT10 LOADING RAMP - MAIN	097481-1	1
2	BRACKET, LOG LOADING STOP	097482-1	2
3	WASHER, 17 SPLIT LOCK ZINC	F81058-1	6
4	BOLT, M16X40-8.8 HEX HEAD FULL THREAD ZI	F81006-13	3
5	NUT, M16-8 HEX NYLON ZINC LOCK	F81036-2	3
6	WASHER, 8,4-FLAT ZINC	F81054-1	4
7	BOLT, M8X100-8.8 HEX HEAD ZINC	F81002-23	2
8	NUT, M8-8-B HEX NYLON ZINC LOCK	F81032-2	2
9	WASHER, 10.5 FLAT ZINC	F81055-1	4
10	WASHER, 13 FLAT ZINC	F81056-1	4
11	BOLT, M12X115-8.8-B HEX HEAD ZINC	F81004-33	2
12	BOLT, M10X110-8.8 HEX HEAD ZINC	F81003-43	2
13	NUT M10 ZC 8 NYLOCK DIN 982 ISO 7040	F81033-1	2
14	NUT, M12-8 HEX NYLON ZINC LOCK	F81034-2	2
15	SPRING, N1.9XN14.2X104	091865	2

1.(2x097483) included in assembly 586967

## 2.17 Ramp Bracket 507518

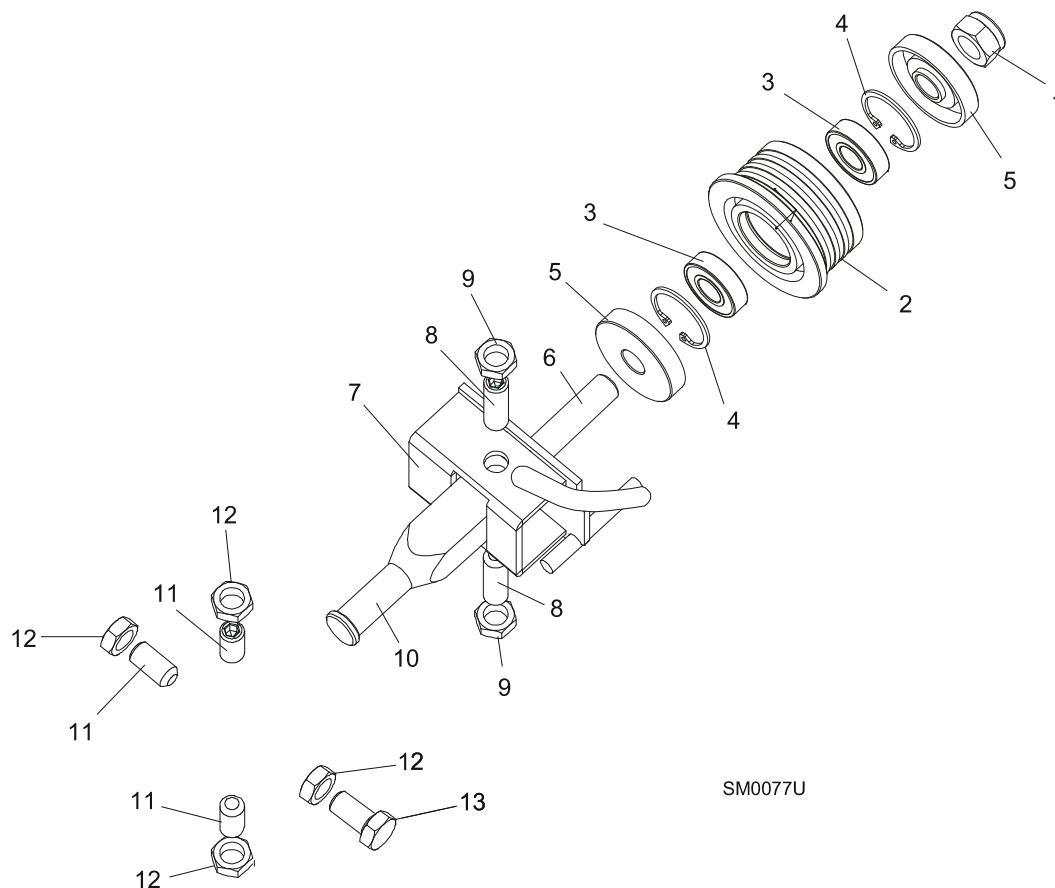
507518\_001  
507518



REF	DESCRIPTION (◆ indicates parts available in assemblies only)	PART #	QTY	
-	BRACKET, LT15 RAMP - COMPLETE	507518	1	
1	BRACKET WELDMENT, LT15 RAMP	507517-1	1	
2	WASHER 10,5 ZC FENDER DIN 9021 ISO 7093	F81055-6	4	
3	BOLT, M10X75-8.8-FE/ZN5 PN-M/82101	F81003-15	2	
4	NUT M10 ZC 8 NYLOCK DIN 982 ISO 7040	F81033-1	2	

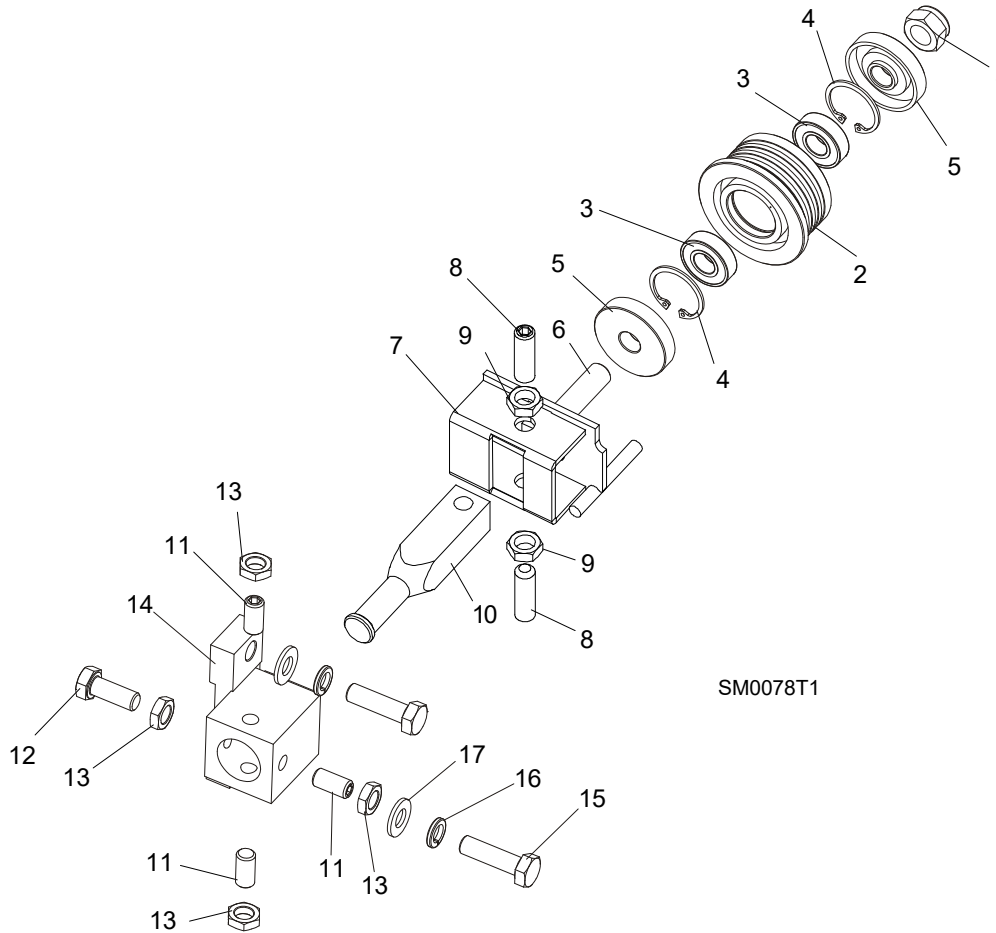
## SECTION 3 BLADE GUIDE ROLLERS & ARM

### 3.1 Blade Guide Assembly, Idle Side



REF.	DESCRIPTION (◆ Indicates Parts Available In Assemblies Only)	PART #	QTY	
	<b>BLADE GUIDE ASSEMBLY, IDLE SIDE</b>	094683	1	
	Roller, Blade Guide Complete Standard	087887	1	
1	Nut, M12-8 Hex Nylon Zinc Lock	F81034-2	1	
2	Roller, Blade Guide Narrow	087889	1	◆
3	Bearing, 6001 2RSR FAG	087893	2	
4	Ring, W28 Inside Retaining	F81090-9	1	
5	Washer, Zinc-plated Spacer	087891-1	2	
6	Shaft, Blade Guide Roller Zinc-plated	087763-1	1	
7	Bracket Weldment, Idle Side Blade Guide	094681-1	1	
8	Screw, M10x1x40 DIN 913 A2-70 Set Stainless Steel	F81015-2	2	
9	Nut, M10x1-04-ST-A2 ISO 8675 Thin	F81033-10	2	
10	Shaft, Zinc-plated Blade Guide Mount	503588-1	1	
11	<b>SCREW, M10X1X25 DIN 913 SET STAINLESS STEEL</b>	F81015-4	4	
12	<b>NUT, M10x1-04-ST-A2 ISO 8675 THIN</b>	F81033-10	4	

### 3.2 Blade Guide Assembly, Drive Side



SM0078T1

REF.	DESCRIPTION (◆ Indicates Parts Available In Assemblies Only)	PART #	QTY
	<b>BLADE GUIDE ASSEMBLY, DRIVE SIDE</b>	094682	1
	Roller, Blade Guide Complete Standard	087887	1
1	Nut, M12-8 Hex Nylon Zinc Lock	F81034-2	1
2	Roller, Blade Guide Narrow	087889	1
3	Bearing, 6001 2RSR FAG	087893	2
4	Ring, W28 Inside Retaining	F81090-9	1
5	Washer, Zinc-plated Spacer	087891-1	2
6	Shaft, Blade Guide Roller Zinc-plated	087763-1	1
7	Bracket Weldment, Blade Guide Painted	094679-1	1
	Screw Kit, Blade Guide Adjustment w/Nuts (for two blade guide assemblies)	K09942	1
8	Screw, M10x1x40 DIN 913 A2-70 Set Stainless Steel	F81015-2	2
9	Nut, M10x1-04-ST-A2 ISO 8675 Thin	F81033-10	2
10	Shaft, Zinc-plated Blade Guide Mount	503588-1	1
11	<b>SCREW, M10X1X25 DIN 913 SET STAINLESS STEEL</b>	F81015-4	3
12	<b>BOLT, M10X1X25 DIN 933 STAINLESS STEEL</b>	F81003-28	1
13	<b>NUT, M10x1-04-ST-A2 ISO 8675 THIN</b>	F81033-10	4

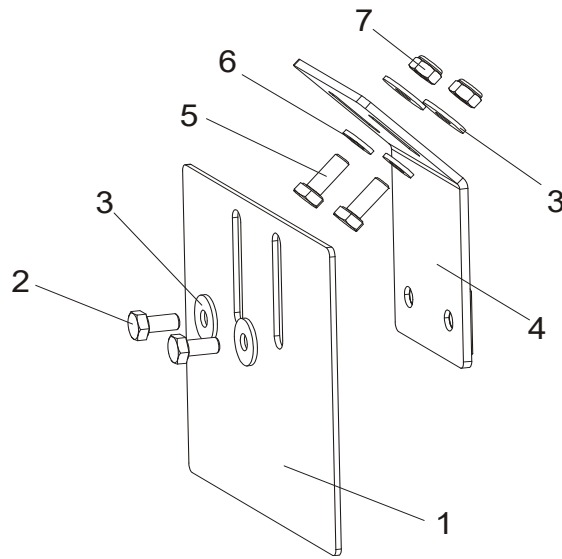
**3****Blade Guide Rollers & Arm***Blade Guide Assembly, Drive Side*

---

14	TUBE, BLADE GUIDE MOUNT	087744	1	
15	BOLT, M10X35-8.8 HEX HEAD FULL THREAD ZINC	F81003-17	2	
16	WASHER, 10.2 SPLIT LOCK ZINC	F81055-2	2	
17	WASHER, 10.5 FLAT ZINC	F81055-1	2	

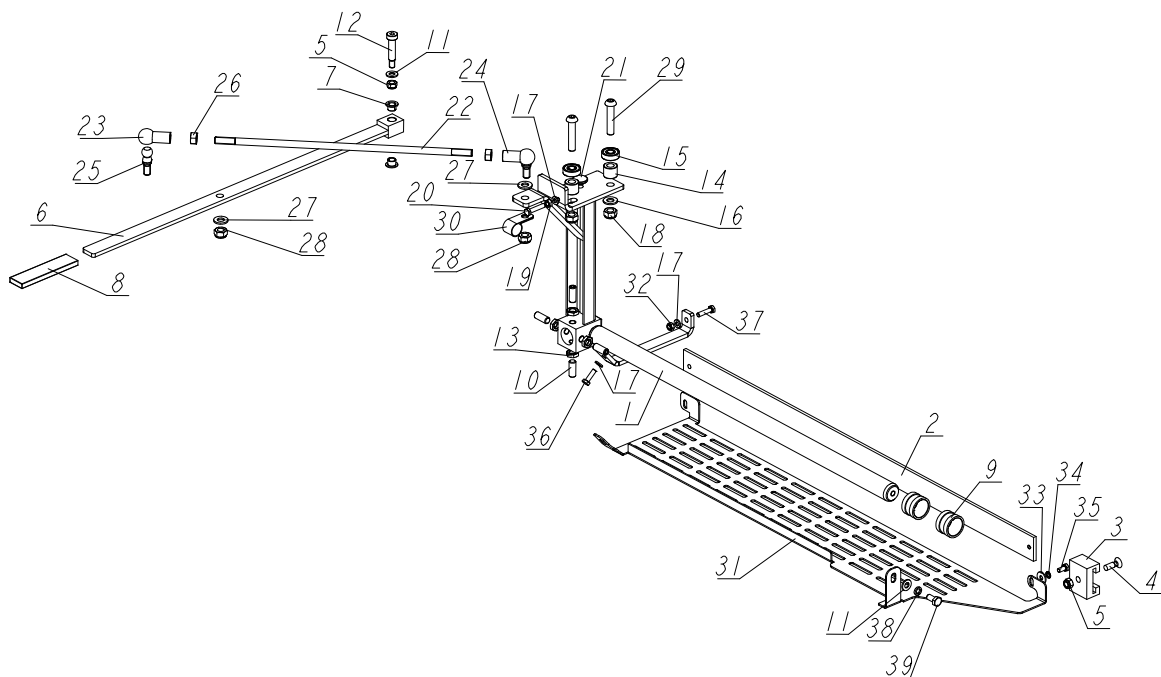


### 3.3 Blade Guide Roller Guard



REF.	DESCRIPTION (◆ Indicates Parts Available In Assemblies Only)	PART #	QTY
1	GUARD, BLADE GUIDE ROLLER	092379-1	1
2	BOLT, M6X12-8.8 HEX HEAD FULL THREAD ZINC	F81001-7	2
3	WASHER, 6.5 SPECIAL FLAT ZINC	F81053-11	4
4	BRACKET, ROLLER GUARD MOUNT	092378-1	1
5	BOLT, M6X16 8.8 HEX HEAD FULL THREAD ZINC	F81001-15	2
6	WASHER, 6.4 FLAT ZINC	F81053-1	2
7	NUT, M6-8-B HEX NYLON ZINC LOCK	F81031-2	2

## 3.4 Zespół ramienia prowadnika piły. (094136)

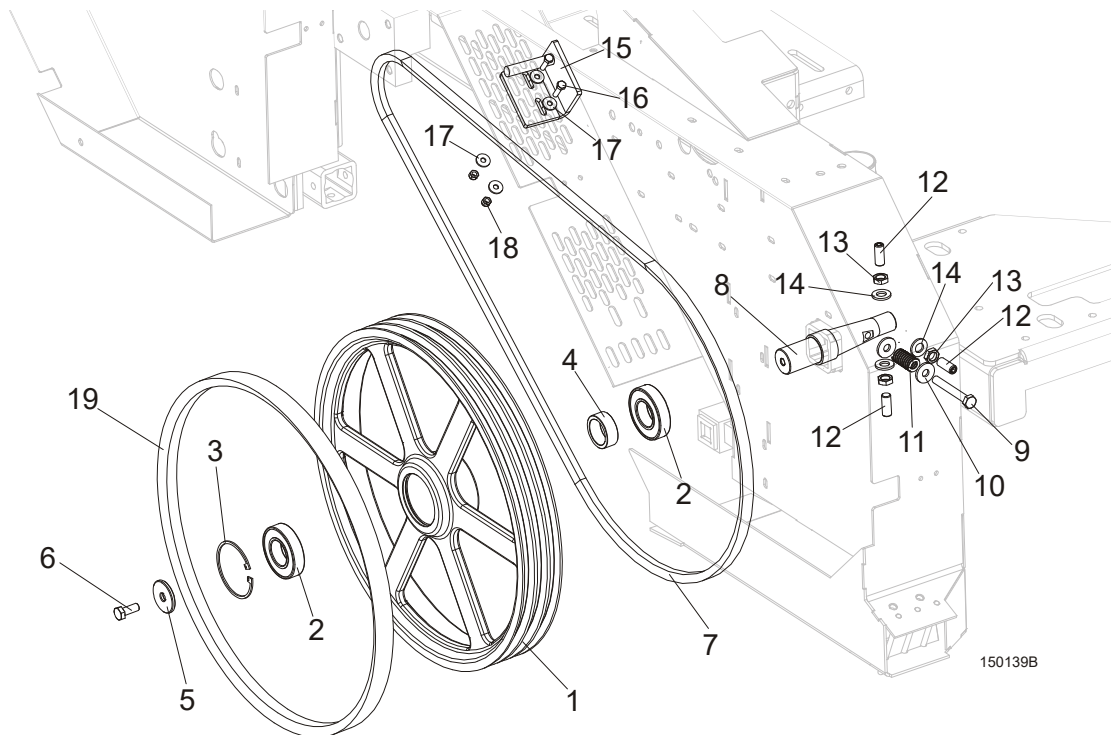
094136\_001\_A  
094136\_MANUAL

LP.	OPIS (* wskazuje części dostępne jedynie w zespołach)	Nr części	Ilość
-	<b>NAPĘD ROZSUWU ROLKI PODPOROWEJ, KPL.</b>	094136	1
1	PODPORA PRZESUWNA ROLKI PROWADZĄCEJ, MALOWANA	094138-1	1
2	LISTWA OSŁONOWA PIŁY TRAKA LT15	088306	1
3	PROWADNICA LISTWY OSŁONOWEJ LT15	088305	1
4	WKRĘT Z ŁBEM STOŻK. M8X25-5.8-FE/ZN5 PN-M-82208	F81002-51	1
5	NAKRĘTKA M8-8-B-FE/ZN5 Z WKL. PN-M/82175.	F81032-2	2
-	DŹWIGNIA	531630	1
6	DŹWIGNIA NAPĘDU ROZSUWU ROLEK	531628-1	1
7	ŁOŻYSKO ŚLIZGOWE TUF1 10.090 (CX)	099074	2
8	OSŁONA RĘKOJEŚCI RRWA-91626-110	086875	1
9	TULEJA PROWADNIKA PIŁY LT15	086684	2
10	WKRĘT DOCISKOWY NIERDZEWNY M10X1X25 DIN 913	F81015-4	4
11	PODKŁADKA 8.4 FE/ZN5 PN-78/M-82005	F81054-1	2
12	ŚRUBA PASOW. 10/M8X35 12.9 ISO7379	F81003-63	1
13	NAKRĘTKA NISKA M10X1-04-ST-A2E ISO8675	F81033-10	4
14	TULEJA 11/20-17 CYNK	094255-1	2
15	ŁOŻYSKO 6000.2RSR	087471	2
16	PODKŁADKA OKR. 10,5 FE/ZN5 PN-78/M-82005	F81055-1	2
17	PODKŁADKA 6.4 FE/ZN5 PN-78/M-82005	F81053-1	5
18	NAKRĘTKA M10 Z WKŁAD. M10-8-B FE/ZN5 PN-M82175	F81033-1	2
19	NAKRĘTKA M6-8-FE/ZN5 PN-M/82144	F81031-1	1
20	ŚRUBA M6X30-8.8-FE/ZN5 PN-85/M-82105.	F81001-8	1
21	TULEJKA PROWADNICY PIŁY	095936	1
-	ŁĄCZNIK NAPĘDU ROZSUWU ROLEK, NAP. ROZS. ROLKI.	094204	1
22	ŚRUBA DWUSTRONNA ROZSUWU ROLEK, CYNKOWANA.	094203-1	1

LP.	OPIS (* wskazuje części dostępne jedynie w zespołach)	Nr części	Ilość
23	GNIAZDO KULISTE 16-M10 BN488 DIN71805-C.	093824	1
24	GNIAZDO KULISTE, MAŁOWANE.	093824-1	1
25	CZOP KULISTY 16-M10, BN-486, DIN 71803 C (BOSSARD).	093823	2
26	NAKRĘTKA ZWYKŁA M10 8 FE/ZN5 PN-86/M-82144	F81033-3	2
27	PODKŁADKA OKR. 10,5 FE/ZN5 PN-78/M-82005	F81055-1	2
28	NAKRĘTKA M10 Z WKŁAD. M10-8-B FE/ZN5 PN-M82175	F81033-1	2
29	ŚRUBA Z ŁBEM KUL.M10X50-A2 ISO7380-1	F81003-131	2
30	OPASKA 5/8" POKRYTA EMT	010748	1
31	OSŁONA DOLNA	525592-1	1
32	NAKRĘTKA M6-8-B-FE/ZN5 PN-85/M-82175.	F81031-2	2
33	PODKŁADKA 6.5 POW. FE/ZN5 PN-M/82030.	F81053-11	1
34	PODKŁADKA SPREŻYSTA Z 6.1	F81053-3	1
35	ŚRUBA M6X12 8.8 FE/ZN5 PN-85/M-82105	F81001-7	1
36	ŚRUBA M6X20 8.8 FE/ZN5 PN-85/M-82105	F81001-2	1
37	ŚRUBA M6X25-8.8 FE/ZN5 PN-85/M-82105	F81001-3	1
38	PODKŁADKA SPREŻYSTA 8.2 FE/ZN5 PN-M/82008	F81054-4	1
39	ŚRUBA M8X16-8.8-B-FE/ZN5	F81002-20	1

### SECTION 4 BLADE WHEELS & TENSIONER

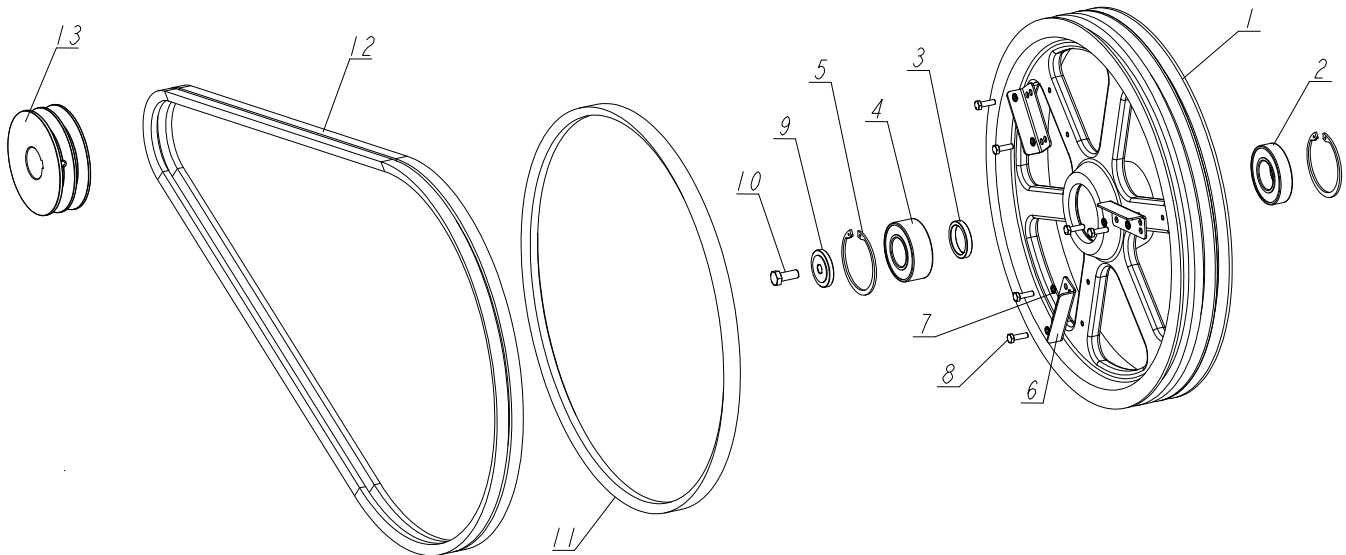
#### 4.1 Blade Wheel Assembly, Drive Side



REF.	DESCRIPTION (◆ Indicates Parts Available In Assemblies Only)	PART #	QTY
	<b>WHEEL ASSEMBLY, DRIVE SIDE BLADE</b>	093849	1
1	WHEEL, DRIVE SIDE BLADE	014727	1
2	BEARING, 6207 2RS 35X72X17 FAG	014811	2
3	RING, 72MM OD N5002-281 RETAINING	F04254-30	1
4	SPACER, DRIVE BEARING	093851	1
5	WASHER, LT15 DRIVE SIDE BLADE WHEEL	086286	1
6	BOLT, M10X25-8.8 HEX HEAD FULL THREAD ZINC	F81003-11	1
7	BELT, G15/D10	097448	1
8	SHAFT, LT15 DRIVE SIDE BLADE WHEEL	093850	1
9	BOLT, M10X75-8.8 HEX HEAD ZINC	F81003-15	1
10	WASHER, 10.5 FLAT SPECIAL ZINC-PLATED	F81055-6	2
11	SPRING, 3/4 O.D.X 1 1/2 DIE	034430	1
12	SCREW, M12X1,25X30 DIN913 STAINLESS STEEL SET	F81016-1	3
13	NUT, M12X1.25 DIN439 STAINLESS STEEL THIN	F81034-9	3
14	WASHER, 13 FLAT ZINC	F81056-1	3
15	BRACKET, DRIVE BELT LOWER	092636-1	1
16	BOLT, M6X20-8.8 HEX HEAD FULL THREAD ZINC	F81001-2	2
17	WASHER, 6.5 SPECIAL FLAT ZINC	F81053-11	4
18	NUT, M6-8-B HEX NYLON LOCK ZINC	F81031-2	2
19	V-BELT, B57	P04185-2	1

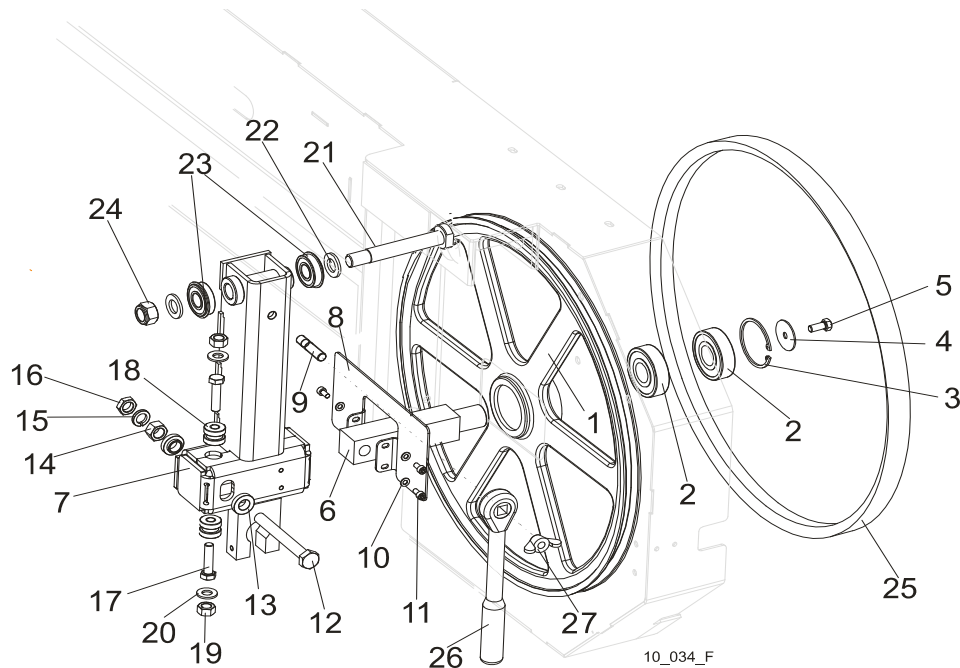
## 4.2 Wide Blade Wheel Assembly, Drive Side, E15 Motor

LT15SCS3EH15EP-E\_001\_C  
 LT15SCS3EH15EP-E\_MANUAL



REF.	DESCRIPTION (◆ Indicates Parts Available In Assemblies Only)	PART #	QTY
-	<b>BLADE WHEEL, DRIVE SIDE - COMPLETE</b>	550620	1
1	WHEEL, LT20 DRIVE SIDE	090646-1	1
2	BEARING, 6207 -2RS1 SKF	014811	1
3	BUSHING, SPACER	096778	1
4	BEARING, 3207B.2RSR.TVH "FAG"	092005	1
5	RING, W72 INSIDE RETAINING	F81090-4	2
6	WING	097808-1	3
7	WASHER, Z 6.1 SPLIT LOCK ZINC	F81053-3	6
8	BOLT, M6X20 8.8 HEX HEAD FULL THREAD ZINC	F81001-2	6
9	<b>WASHER, CLAMPING</b>	092006	1
10	<b>BOLT, M10X25 8.8 HEX HEAD FULL THREAD ZINC</b>	F81003-11	1
11	<b>BELT, B-57</b>	P04185-2	1
12	<b>V-BELT, 2BX81</b>	014819-2	1
13	<b>PULLEY, E15 MOTOR 2-GROOVE</b>	091560	1

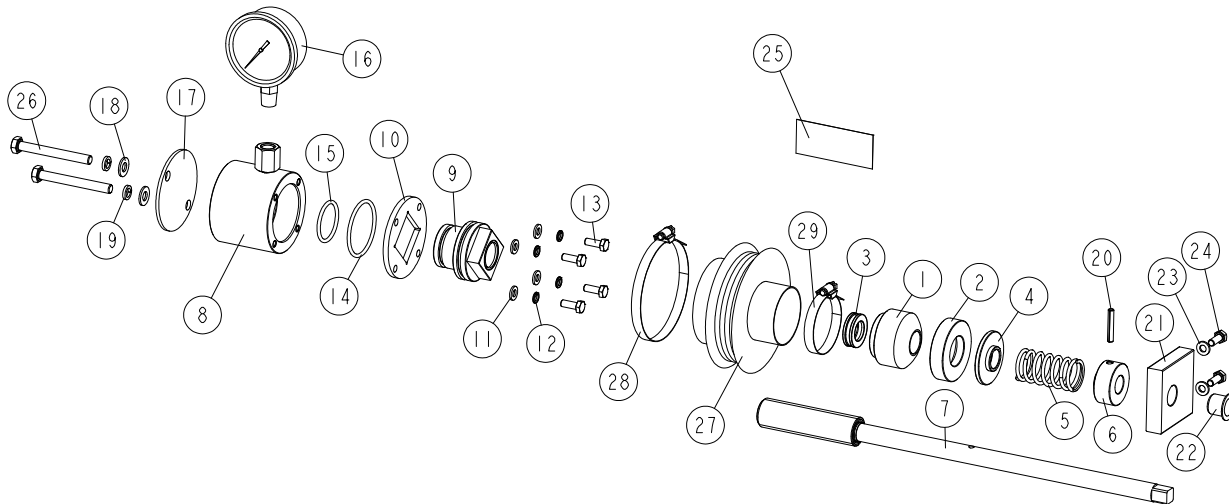
## 4.3 Blade Wheel Assembly, Idle Side



REF.	DESCRIPTION (◆ Indicates Parts Available In Assemblies Only)	PART #	QTY
	<b>WHEEL ASSEMBLY, IDLE SIDE BLADE</b>	<b>A08218</b>	<b>1</b>
1	WHEEL ASSEMBLY, 18.62" IDLE SIDE BLADE	P08125	1
2	BEARING, 6305 2RS NSK IDLE SIDE WHEEL	P08066	2
3	RING, 2 7/16" INSIDE RETAINING	F04254-21	1
	<b>HOUSING, LT10 &amp; LT15 IDLER SHAFT, COMPLETE</b>	<b>100180</b>	<b>1</b>
4	WASHER, IDLE SIDE WHEEL RETAINING	093854-1	1
5	BOLT, M8X25-8.8-B HEX HEAD FULL THREAD ZINC	F81002-5	1
6	SHAFT, IDLE SIDE BLADE WHEEL (METRIC)	096045	1
	<b>ARM, IDLE SIDE WHEEL ROCKER - COMPLETE</b>	<b>508145</b>	<b>1</b>
7	ARM WELDMENT, IDLE SIDE BLADE WHEEL ROCKER	508144-1	1
8	COVER, IDLER SHAFT HOUSING - COMPLETE	508128-1	1
9	STUDBOLT, M10X35-8.8	F81003-9	1
10	WASHER, 5.3 FLAT ZINC	F81052-1	3
11	SCREW, M5x10 DIN912 A2-70 HEX SOCKET HEAD	F81000-23	3
12	BOLT, M12X1.25X100-8.8 HEX HEAD FULL THREAD ZINC	F81004-41	1
13	WASHER, FLANGED ZINC-PLATED	086769-1	2
14	NUT, M12X1.25 -8 HEX ZINC	F81034-8	1
15	WASHER, 12.2 SPLIT LOCK ZINC	F81056-2	1
16	NUT, M12x1.25 DIN439 THIN STAINLESS STEEL	F81034-5	1
17	BOLT, M10 X 40-8.8 HEX HEAD FULL THREAD ZINC	F81003-16	2
18	BUSHING, M10 IDLER SHAFT HOUSING	086987	2
19	NUT, M10-8-B HEX HEAD ZINC	F81033-3	2
20	WASHER, 10.5 FLAT ZINC	F81055-1	2
21	PIN, IDLER ARM MOUNT	086404	1
22	WASHER, 17 FLAT ZINC	F81058-1	2
23	BEARING, 6203-2RS NR NSK W/SNAP RING	086395	2

24	NUT, M16-8 HEX NYLON ZINC LOCK	F81036-2	1	
25	V-BELT, B57	P04185-2	1	
26	WRENCH, LT20 BLADE TENSION	091620	1	
27	NUT, M10 WING ZINC	F81033-8	1	

## 4.4 Blade Tensioner Assembly

510640\_001  
510640\_MANUAL

REF	DESCRIPTION (u indicates parts available in assemblies only)	PART #	QTY
-	<b>COMPLETE BLADE TENSIONER</b>	510640	1
1	HOUSING, BALL THRUST BEARING	510635	1
2	SOCKET, BEARING HOUSING	510634-1	1
3	BEARING, 51103. BALL THRUST	086675	1
4	WASHER	510633-1	1
5	SPRING, 60X23X3	088992	1
6	BUSHING, BLADE TENSIONER SCREW	510636-1	1
7	SCREW, BLADE TENSIONER ZINC-PLATED	510650-1	1
-	<b>CYLINDER ASSEMBLY</b>	510641	1
8	CYLINDER ASSEMBLY WITH REDUCTION	550762-1	1
9	PISTON	510638	1
10	PLATE, CYLINDER	510490-1	1
11	WASHER, 6.4 FLAT ZINC	F81053-1	4
12	WASHER, Z 6.1 SPLIT LOCK	F81053-3	4
13	BOLT, M6X16-5.8 HEX HEAD FULL THREAD ZIN	F81001-15	4
14	O-RING, 46.2X3	510646	1
15	O-RING, 32.2X3	510647	1
16	GAUGE, 3000PSI/200 BAR OIL PRESSURE	505176	1
17	COVER, TENSIONER	550761-1	1
18	WASHER, 8.4 FLAT ZINC	F81054-1	2
19	WASHER 8,2 SPLIT LOCK ZINC	F81054-4	2
20	PIN 5X30 ROLL	F81044-21	1
21	BLOCK, TENSIONER HANDLE MOUNT	096730	1
22	BUSHING, GFM-1618-17	089589	1
23	WASHER, 6.4 FLAT ZINC	F81053-1	2
24	BOLT, M6X16-5.8 HEX HEAD FULL THREAD ZIN	F81001-15	2
25	DECAL, BLADE TENSION INDICATOR ADJUSTMEN	510643	1

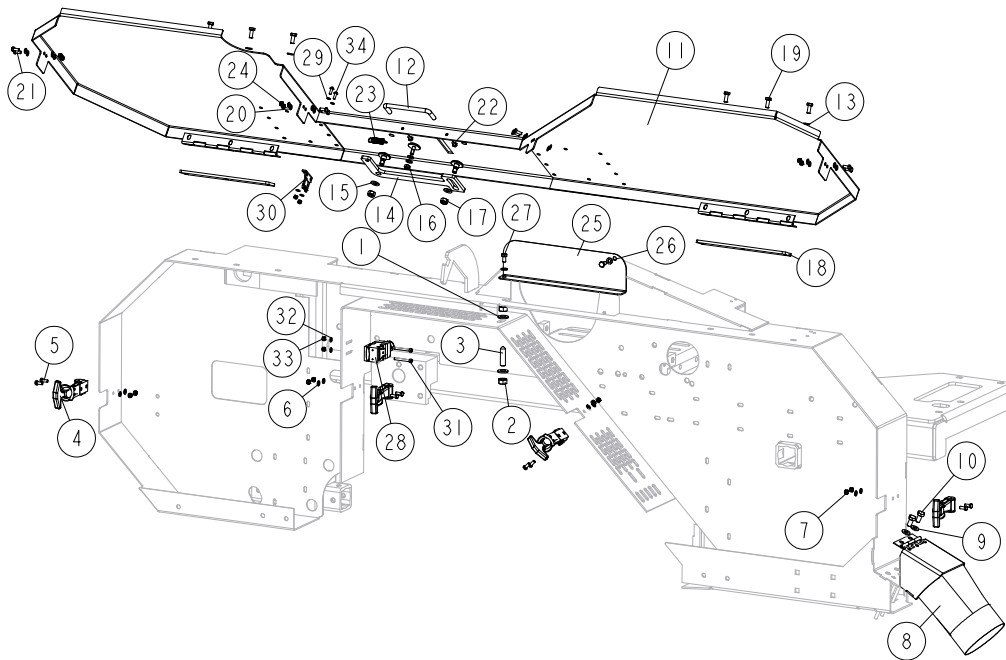


REF	DESCRIPTION (u indicates parts available in assemblies only)	PART #	QTY	
26	BOLT, M8X70-8.8 HEX HEAD ZINC	F81002-71	2	
-	BELLOWS, COMPLETE	515050	1	
27	BELLOWS	515051	1	
28	CLAMP, 70-80MM DIA.	F81095-5	1	
29	CLAMP, 40-60MM DIA.	F81095-4	1	

**SECTION 5 SAW HEAD**

**5.1 Blade Housing Cover**

LT15SCS3G19SP-ESWP\_002  
LT15SCS3G19SP-ESWP\_MANUAL

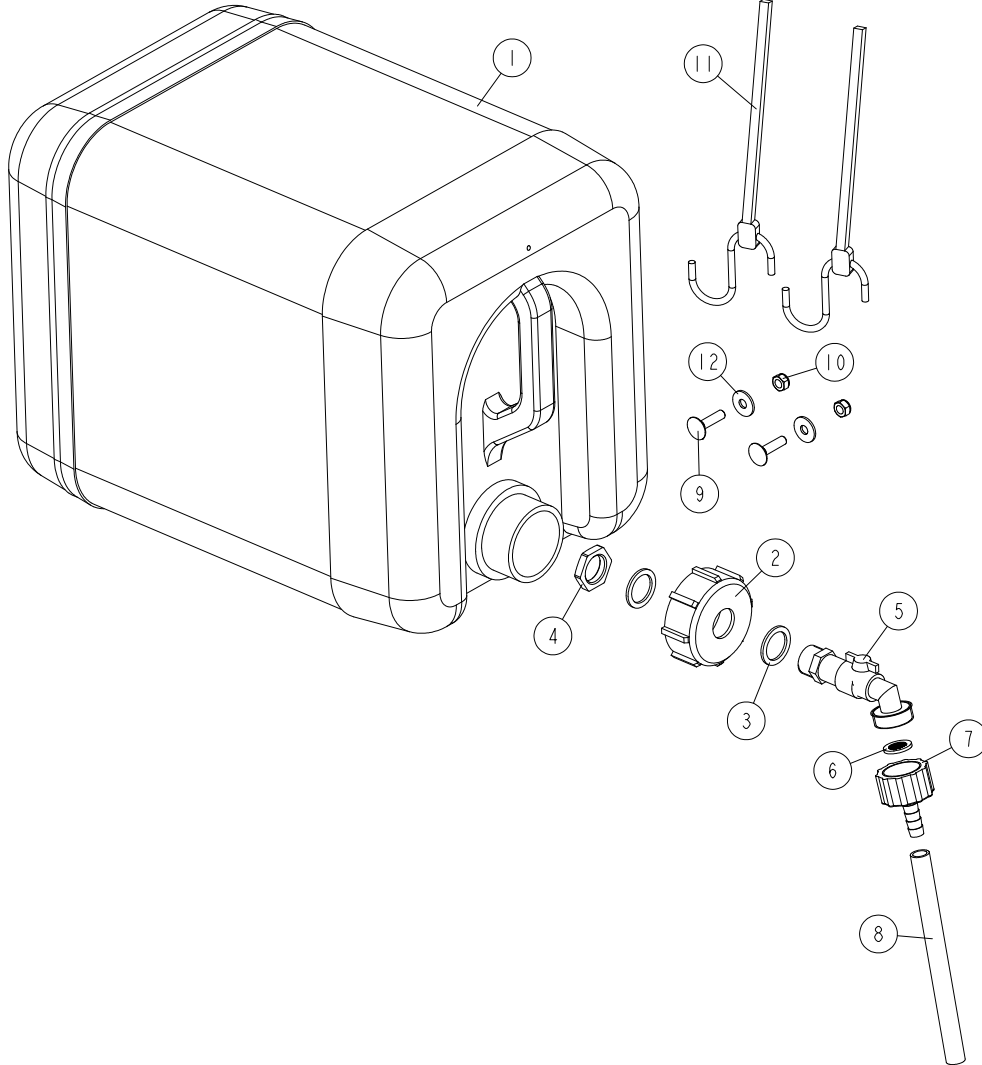


REF	DESCRIPTION (u indicates parts available in assemblies only)	PART #	QTY
1	WASHER, 10.5 FLAT ZINC	F81055-1	2
2	NUT, M10-8-B-HEX ZINC	F81033-3	2
3	SCREW, M10 X 40-45H HEX SOCKET SET CONE	F81003-61	1
4	LATCH, FLEXIBLE DRAW	014829	4
5	BOLT, M5X12 8.8 HEX HEAD FULL THREAD ZIN	F81000-5	8
6	WASHER, 5.3 FLAT ZINC	F81052-1	8
7	NUT, M5-8 DIN985 ZINC-PLATED	F81030-2	8
8	CHUTE WELDMENT, SAWDUST	100903-1	1
9	WASHER, 8.4 FLAT ZINC	F81054-1	2
10	BOLT, M8X16 -8.8-B HEX HEAD FULL THREAD	F81002-20	2
-	COVER, LT15 FRONT COMPLETE	098678	1
11	COVER WELDMENT, LT20 BLADE HOUSING	096776-1	1
12	HANDLE, BLADE HOUSING COVER	P08065	1
13	WASHER, 6.4 FLAT ZINC	F81053-1	8
14	PAWL, LOCKING	090643-1	1
15	WASHER, 8.4 FLAT ZINC	F81054-1	2
16	NUT, M6-8-B HEX NYLON ZINC LOCK	F81031-2	1
17	NUT, M8-8-B HEX NYLON ZINC LOCK	F81032-2	2

REF	DESCRIPTION (u indicates parts available in assemblies only)	PART #	QTY	
18	PLATE WELDMENT, COVER MOUNT	086701-1	1	
19	BOLT, M6X16-5.8 HEX HEAD FULL THREAD ZIN	F81001-15	6	
20	WASHER, 5.3 FLAT ZINC	F81052-1	16	
21	BOLT, M5X12 8.8 HEX HEAD FULL THREAD ZIN	F81000-5	8	
22	SCREW, #8-32X3/8, SELF-TAPPING	F05015-8	2	
23	SPRING, 1.6X12X38 EXTENSION	092208	1	
24	NUT, M5-8 DIN985 ZINC-PLATED	F81030-2	6	
25	<b>COVER, SAW HEAD MOUNT</b>	096788-1	1	
26	<b>WASHER, 6.4 FLAT ZINC</b>	F81053-1	2	
27	<b>BOLT, M6X12-8.8 HEX HEAD FULL THREAD ZIN</b>	F81001-7	2	
28	<b>SWITCH, AZ17-11ZRK SAFETY 1</b>	094232	1	
29	<b>KEY, AZ17/170-B5 SAFETY SWITCH 2</b>	094422	1	
30	KEY, AZ17/170-B5 SAFETY SWITCH 2	094422	1	
31	<b>SCREW, M4X35 8.8 HEX SOCKET HEAD CAP ZIN</b>	F81011-34	2	
32	<b>WASHER, 4.3 FLAT ZINC</b>	F81051-2	2	
33	<b>NUT, M4-8 HEX NYLON ZINC LOCK</b>	F81029-1	4	
34	<b>SCREW, M4X12 5,8-B CROSS RECESSED PAN HE</b>	F81011-43	2	

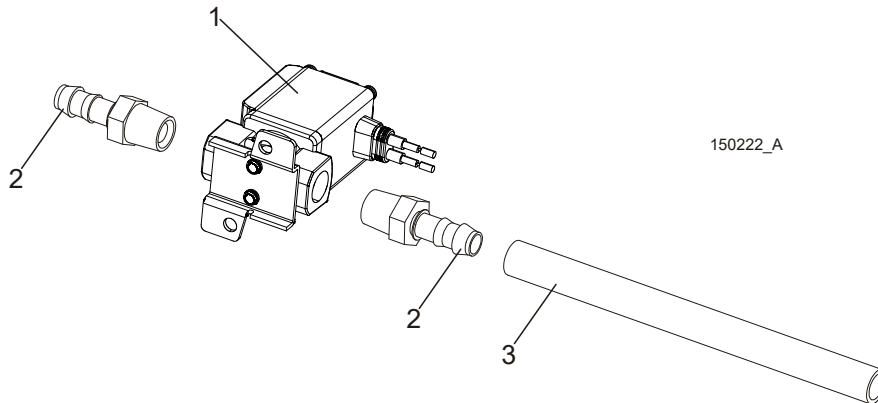
**5.2 Water Lube Assembly**

550787\_003-LT15SC  
550787\_MANUAL



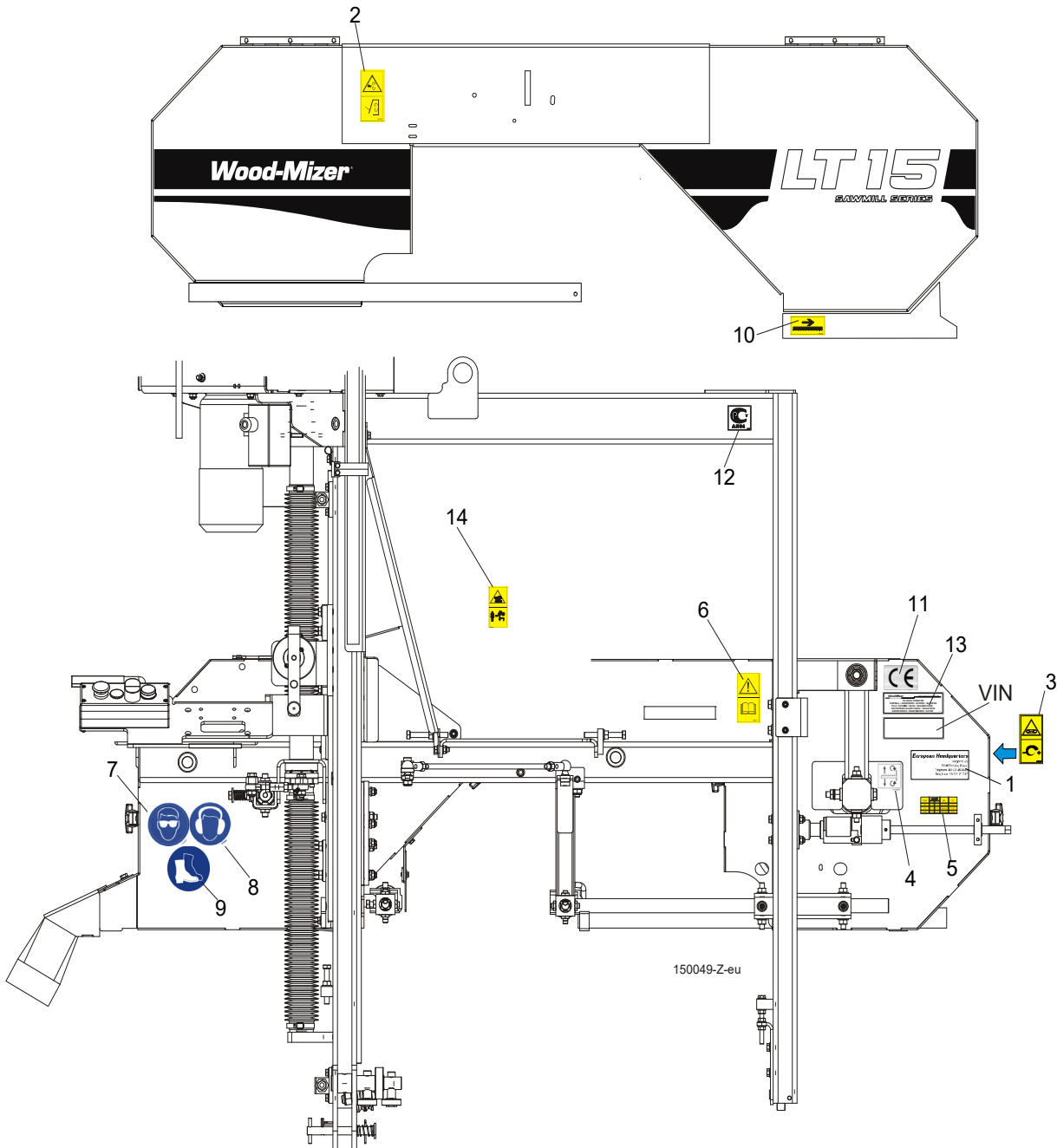
REF	DESCRIPTION (u indicates parts available in assemblies only)	PART #	QTY
-	TANK, OIL	550787	1
1	BOTTLE, WATER	513866	1
2	NUT, BOTTLE	550785	1
3	SEAL, 27X20X1.5 ESSENTA 467673 RUBBER	550780	2
4	NUT, 1/2 ESSENTA 467615 GLAND	550779	1
5	FITTING, WATER LUBE SHUTOFF VALVE	550776	1
6	FILTER, WATER LUBE	550778	1
7	FITTING, G3/4" X 10MM HOSE BARB	550777	1
8	TUBING, WATER LUBE 3/8" I.D.	R01885	1
9	BOLT, M6X25-8.8 ZINC	F81001-20	2
10	NUT, M6-8-B HEX NYLON ZINC LOCK	F81031-2	2
11	STRAP, 24" RUBBER (FOR FUEL TANK - SEE E	P11258	2
12	WASHER, FLAT ZINC	F81053-11	2

### 5.3 Blade Lube System (not available in EC version)



REF.	DESCRIPTION (◆ Indicates Parts Available In Assemblies Only)	PART #	QTY
	<b>KIT, LT15DC BLADE LUBE SYSTEM</b>	503471-S	1
1	SOLENOID, WATER LUBE	509113	1
2	FITTING, 3/8 BARB 1/4NPT MALE NYLON	P04682	2
3	TUBING, WATER LUBE	R01885	3.8m
	HOSE, WSN6	R80620-2	1m
	CABLE, 1 SQ MM BLUE	R80583-1	0,5m
	TERMINAL, KO 2.5/5 RING	F81064-1	2
	CONNECTOR, 16-14GA FI BUTT	F04875-1	2
	WASHER, 5.1 SPLIT LOCK ZINC	F81052-2	2
	SCREW, 10-32X1/2 HH MACHINE	F05004-60	2
	WASHER, 5.3 FLAT ZINC	F81052-1	2

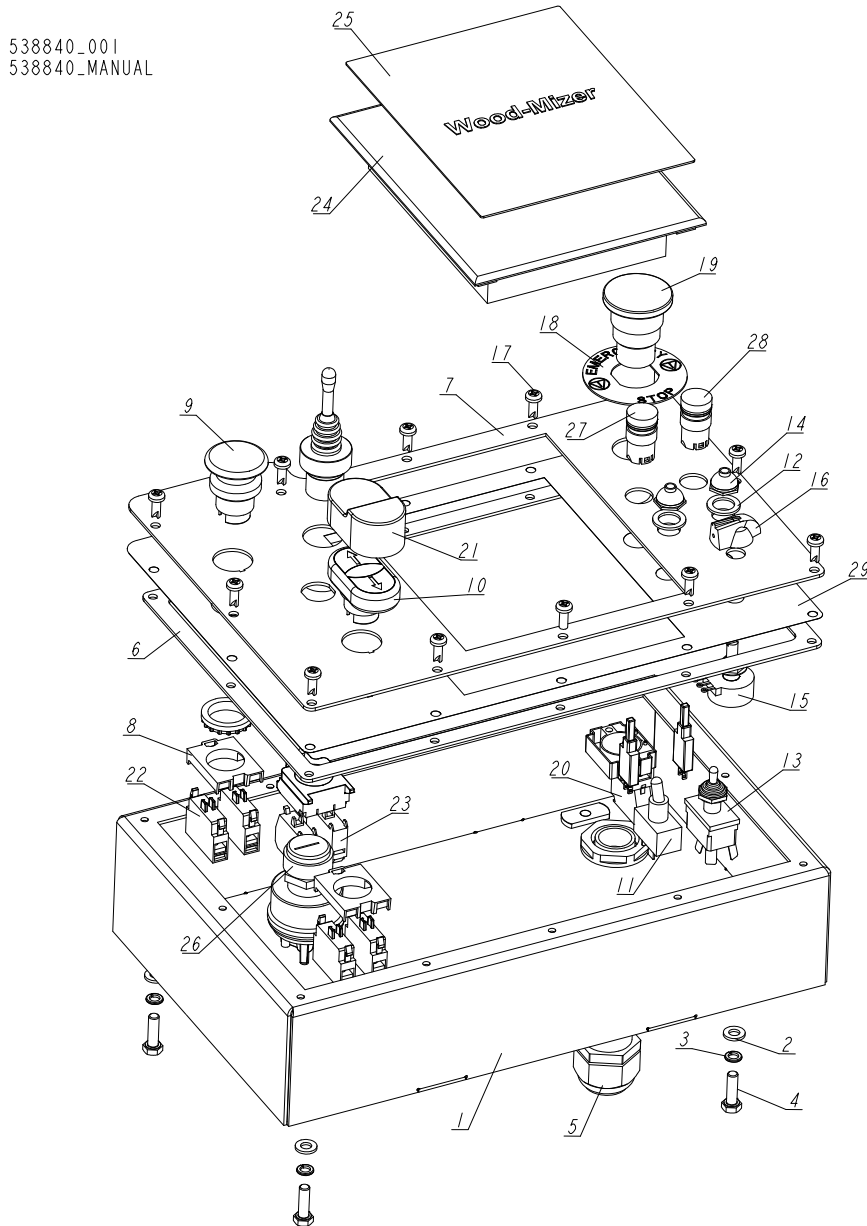
**5.4 LT15DC Saw Head Decals**



REF.	DESCRIPTION (◆ Indicates Parts Available In Assemblies Only)	PART #	QTY
	<b>PICTOGRAPHIC DECAL KIT, LT15DC</b>	099421	1
	DECAL, LT15 SERIES SAWMILL	092761	1
1	DECAL, EUROPEAN HEADQUARTERS ADDRESS	015841	1
2	DECAL, SAWMILL COVERS CAUTION	099220	1
3	DECAL, BLADE TENSION (PICTOGRAM)	099219	1
4	DECAL, BLADE ALIGNMENT	P11789	1
5	DECAL, BLADE TENSION INDICATOR ADJUSTMENT	510643	1

6	DECAL, READ OPERATOR'S MANUAL (PICTOGRAM)	096317	1	
7	DECAL, EYE PROTECTION WARNING (PICTOGRAM)	S12004G	1	
8	DECAL, EAR PROTECTION WARNING (PICTOGRAM)	S12005G	1	
9	DECAL, USE SAFETY BOOTS (PICTOGRAM)	501465	1	
10	DECAL, BLADE MOVEMENT DIRECTION (PICTOGRAM)	096321	1	
11	<b>DECAL, CE CERTIFIED SAWMILL (SMALL)</b>	P85070	1	
12	<b>DECAL, RUSSIAN SAFETY CERTIFICATION</b>	099401	1	
13	<b>DECAL, INTERNATIONAL SAWMILL NAME</b>	501466	1	
14	<b>DECAL, KEEP AWAY - HOT PARTS</b>	086099	1	

**5.5 Control Box, LT15SC DC (Sawmill w/Power Feed)**



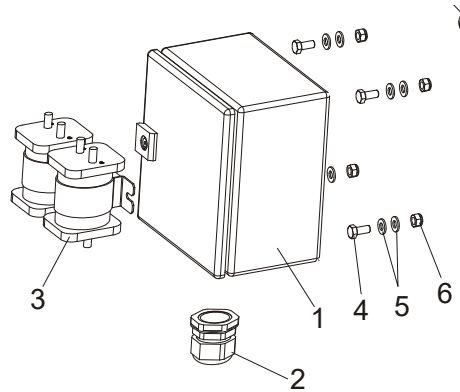
REF.	DESCRIPTION (◆ Indicates Parts Available In Assemblies Only)	PART #	QTY
-	<b>BOX, LT15SC/DC CONTROL</b>	538840	1
	<b>ELECTRICAL BOX, LT15AC - NORWAY</b>	094237-P2	1
	<b>ELECTRICAL BOX, LT15AC - RSA</b>	094237-P3	1
	<b>ELECTRICAL BOX, LT15AC - RUSSIA</b>	094237-R	1
	<b>ELECTRICAL BOX, LT15E15</b>	505376	1
<b>1</b>	<b>BOX WELDMENT, LT15</b>	538729-1	1
<b>2</b>	<b>WASHER, 6.4 FLAT ZINC</b>	F81053-1	4
<b>3</b>	<b>WASHER, Z 6.1 SPLIT LOCK ZINC</b>	F81053-3	4
<b>4</b>	<b>BOLT, M6X20 8.8 HEX HEAD FULL THREAD ZINC</b>	F81001-2	4
<b>5</b>	<b>GLAND, DP21/H CABLE</b>	F81096-3	1



Control Box, LT15SC DC (Sawmill w/Power Feed)

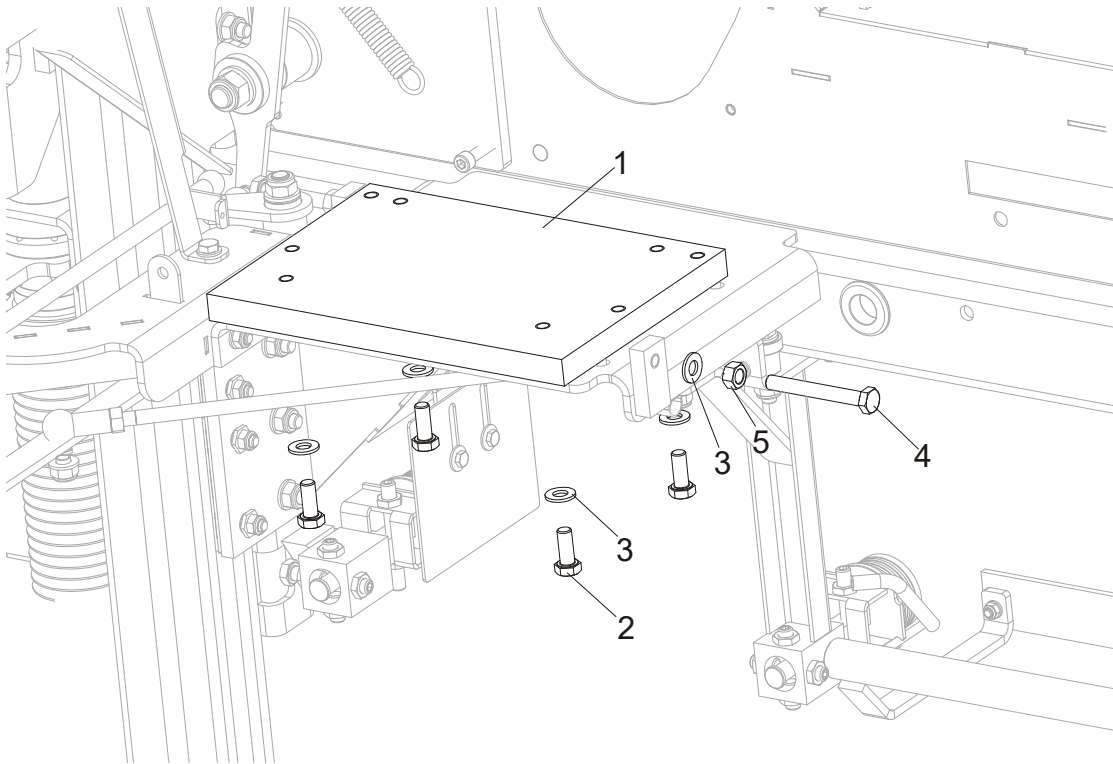
REF.	DESCRIPTION (◆ Indicates Parts Available In Assemblies Only)	PART #	QTY	
6	GASKET, LT15 CONTROL BOX	538732	1	
7	PANEL, LT15 CONTROL BOX FRONT	538839-1	1	
8	ADAPTER, LPXAU120 MOUNTING	535438	2	
9	BUTTON, LPCB6143	536909	1	
10	SWITCH, LPCBL7191	536908	1	
11	SWITCH, TOGGLE	P03027	1	
12	WASHER, 1/2X3/4X1/16 NYLON	P05251-1	2	
13	SWITCH, TOGGLE 21A DPDT REV MOM SPADE	024200	1	
14	BOOT, TOGGLE SWITCH	P02575	2	
15	POTENTIOMETER, 1K, LTAGA	E20519	1	
16	KNOB, SPEED CONTROL	P06257	1	
17	BOLT, #10-24X1/2 PH	F05015-17	12	
18	WASHER, LPX AU115 EMERGENCY STOP BUTTON	536912	1	
19	BUTTON, LPCB6644 EMERGENCY STOP	535445-K	1	
20	CONTACT, 1NCLPXC01	535440	1	
21	BOOT, LPXAU157 BUTTON	536926	1	
22	CONTACT, 1NOLPXC10	535439	4	
23	JOYSTICK, BLM 2T J200	536914	1	
-	CAP, CONTROLLER - COMPLETE	527597	1	
24	CAP, CONTROLLER	504378	1	
25	DECAL, CONTROLLER CAP	504381	1	
26	SWITCH, KEY	P04350	1	
27	LIGHT, XB6 AV 3BB CONTROL	087348	1	
28	LIGHT, XB6 AV 4BB CONTROL	091099	1	
29	DECAL, DC CONTROL BOX	538855	1	

**5.6 Electrical Box, LT15 DC**



REF.	DESCRIPTION (◆ Indicates Parts Available In Assemblies Only)	PART #	QTY
1	<b>ELECTRIC BOX, LT15 DC COMPLETE</b>	097450	1
	<b>ELECTRIC BOX, LT15 DC COMPLETE (POWER FEED OPTION)</b>	501290	1
2	Connector, PG29	F81096-1	1
	Connector, DP7/H	F81096-11	1
3	Solenoid, 200A 12V DPST	015417	2
4	Bolt, M8x16-8.8-B Hex Head Full Thread Zinc	F81002-20	4
5	Washer, 8.4 Flat Zinc	F81054-1	8
6	Nut, M8-8-B Hex Nylon Zinc Lock	F81032-2	4

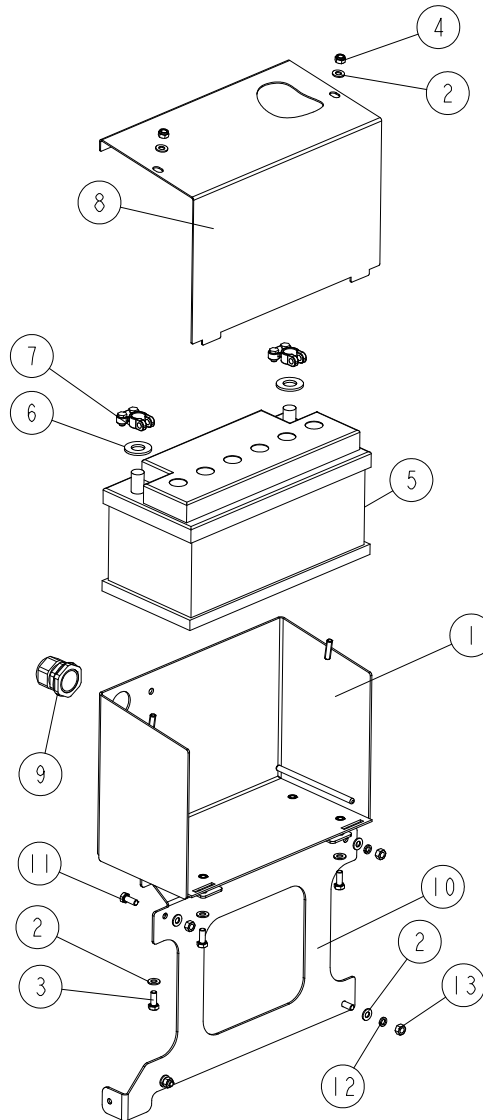
## 5.7 D10 & G15 Engine Mounting Plate



REF.	DESCRIPTION (◆ Indicates Parts Available In Assemblies Only)	PART #	QTY	
1	PLATE, D10, G13, G15 MOTOR MOUNT	506271	1	
2	BOLT, M10X25-8.8 HEX HEAD FULL THREAD ZINC	F81003-11	4	
3	WASHER, 10.5 FLAT ZINC	F81055-1	5	
4	BOLT, M10X80-8.8 HEX HEAD FULL THREAD ZINC	F81003-76	1	
5	NUT, M10-8-B HEX ZINC	F81033-3	1	

### 5.8 Battery Box (Part No. 521450)

521450\_001  
521450\_MANUAL

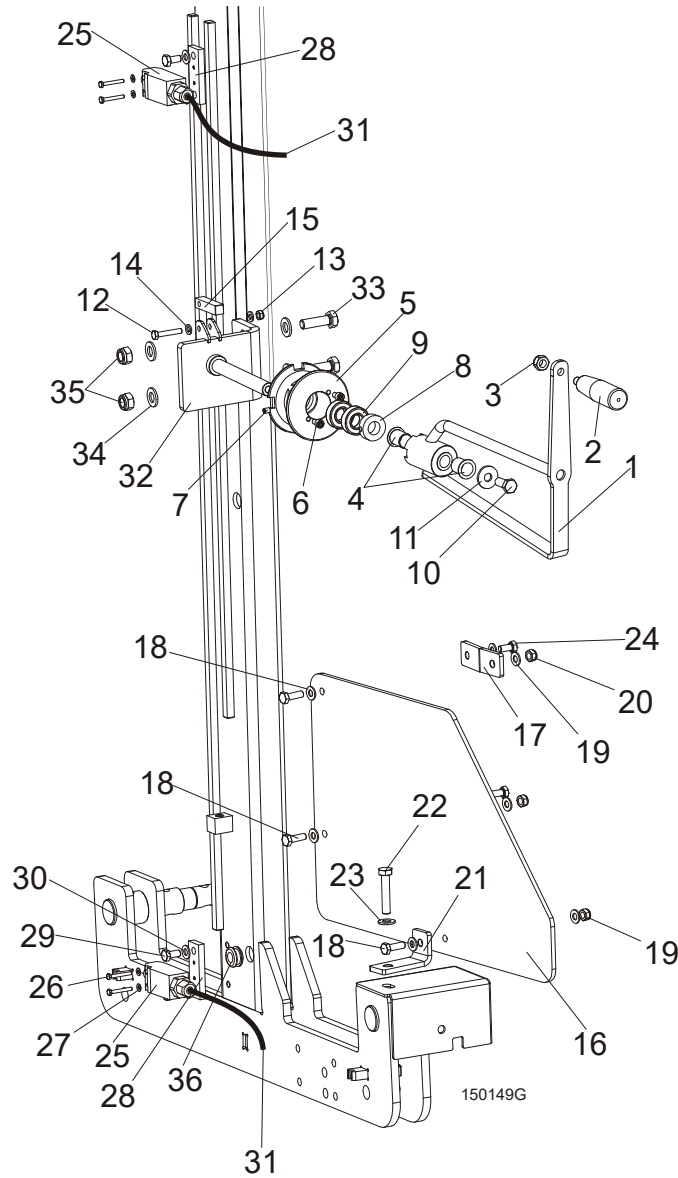


REF.	DESCRIPTION (◆ Indicates Parts Available In Assemblies Only)	PART #	QTY
-	<b>BOX, BATTERY - COMPLETE</b>	521450	1
1	BOX, BATTERY	519920-1	1
2	WASHER, 8.4 FLAT ZINC	F81054-1	10
3	BOLT, M8X20 5.8 HEX HEAD FULL THREAD ZINC	F81002-1	4
4	WASHER, 8.4 FLAT ZINC	F81032-2	2
5	BATTERY, "BANNER" 12V100AH	088323	1
6	WASHER, FELT BATTERY TERMINAL	P12161	2
7	TERMINAL, BATTERY	P05085	2
8	COVER, BATTERY BOX	097489-1	1
9	GLAND, PG29 CABLE	F81096-1	1
-	<b>BRACKET, BATTERY BOX - COMPLETE</b>	543493-1	1
10	BRACKET, BATTERY BOX	543492	1
11	BOLT, M8X20-8.8 HEX HEAD FULL THREAD BLACK	F81002-75	4
12	WASHER, 8.2 SPLIT LOCK ZINC	F81054-4	4

REF.	DESCRIPTION (◆ Indicates Parts Available In Assemblies Only)	PART #	QTY	
13	NUT, M8-8-B HEX ZINC	F81032-1	4	

## SECTION 6 FEED SYSTEM

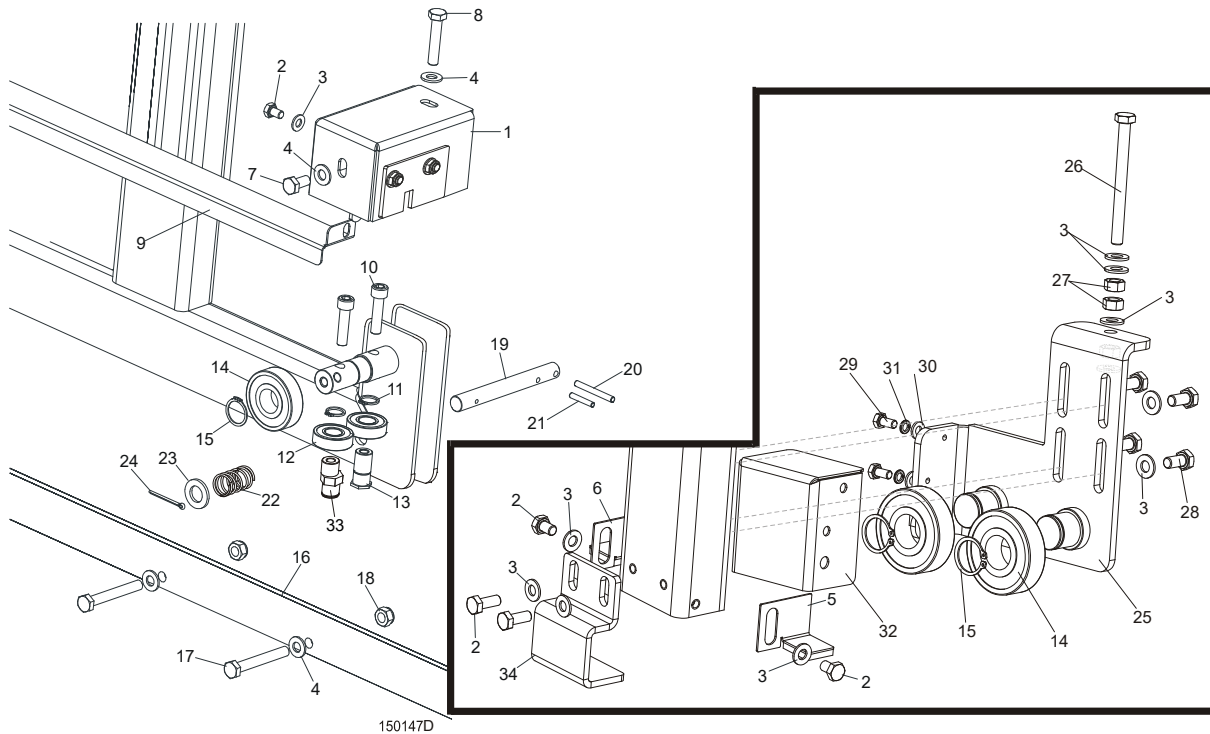
### 6.1 Feed Crank Assembly



REF.	DESCRIPTION (◆ Indicates Parts Available In Assemblies Only)	PART #	QTY
	<b>MANUAL FEED SYSTEM</b>	094186	1
	<b>Crank Assembly, LT15 Feed</b>	<b>506426</b>	<b>1</b>
1	Crank Weldment, Feed	538949-1	1
2	Knob, 12992M10 Plastic Crank Handle	086338	1
3	Nut, M10-8-B Hex Nylon Zinc Lock	F81033-1	1
4	Bushing, GFM-1719-25	094142	2
5	Pulley, LT15 Feed Rope	086117	1
6	Screw, M6x10-8.8 Hex Socket Head Cap Zinc	F81001-12	2
7	Screw, M6x8 Hex Socket Set Cone Point Zinc	F81013-1	1

8	Ring, 17 Stopping Light Type Zinc-plated	F81039-1	1	
9	Bearing, 6003-2RS FAG Rolling	086116	2	
10	Bolt, M10x25-8.8 Hex Head Full Thread Zinc	F81003-11	1	
11	Washer, 10.5 Special Flat Zinc	F81055-6	1	
12	Bolt, M6x35 8.8 Hex Head Zinc	F81001-71	1	
13	Nut, M6-8-B Hex Nylon Zinc Lock	F81031-2	1	
14	Washer, 6.4 Flat Zinc	F81053-1	2	
15	Pawl, LT15 Detent Zinc-plated	086156-1	1	
	<b>GUARD, LT15 COMPLETE LOWER</b>	093858	1	
16	Plate, LT15 Lower Guard	093859	1	
17	Bracket, Side Painted	086171-1	2	
18	Bolt, M8x25-8.8-B Hex Head Full Thread Zinc	F81002-5	3	
19	Washer, 8.4 Flat Zinc	F81054-1	6	
20	Nut, M8-8-B Hex Nylon Zinc Lock	F81032-2	3	
21	Bracket, Lower Painted	086172-1	1	
22	<b>BOLT, M10X50-8.8 HEX HEAD FULL THREAD ZINC</b>	F81003-4	1	
23	<b>WASHER, 10.5 FLAT ZINC</b>	F81055-1	1	
24	<b>BOLT, M8X16-8.8-B HEX HEAD FULL THREAD ZINC</b>	F81002-20	1	
	<b>EVN2000C LIMIT SWITCH W/MOUNT PLATE</b>	094227	2	
25	Switch, GLCB01C Limit	100910	1	
26	Bolt, M4x30 8.8 Hex Head Full Thread Zinc	F81000-85	2	
27	Washer, 4.3 Flat Zinc	F81051-2	2	
28	Plate, Limit Switch Mount Painted	094228-1	1	
29	Bolt, M8x16 -8.8-B Hex Head Full Thread Zinc	F81002-20	2	
30	Washer, 8.4 Flat Zinc	F81054-1	2	
31	Cable, OLFLEX 400P 2x1	R80583-5	3m	
32	<b>SUPPORT, LT15 MANUAL FEED SYSTEM</b>	501411-1	1	
33	<b>BOLT, M12X40 8.8 HEX HEAD FULL THREAD ZINC</b>	F81004-4	2	
34	<b>WASHER, 13 FLAT ZINC</b>	F81056-1	4	
35	<b>NUT, M12-8 HEX NYLON ZINC LOCK</b>	F81034-2	2	
36	<b>GROMMET, 20/13 RUBBER</b>	086188	1	

## 6.2 Track Rail, Rollers & Travel Pins



REF.	DESCRIPTION (◆ Indicates Parts Available In Assemblies Only)	PART #	QTY
1	COVER ASSEMBLY, TRACK ROLLER <a href="#">See Section 6.3</a>	542800	2
2	BOLT, M8X12-8.8 HEX HEAD FULL THREAD ZINC	F81002-6	6
3	WASHER, 8.4 FLAT ZINC	F81054-1	14
4	WASHER, 10.5 FLAT ZINC	F81055-1	13
5	PLATE, RIGHT TRACK WIPER	086322	1
6	PLATE, LEFT TRACK WIPER	086323	1
7	BOLT, M10 X 20 5.8 HEX HEAD FULL THREAD ZINC	F81003-1	2
8	BOLT, M10X50-8.8 HEX HEAD FULL THREAD ZINC	F81003-4	2
9	COVER, MIDDLE TRACK	086745	1
10	SCREW, M10X40 HEX SOCKET HEAD CAP ZINC	F81003-22	4
11	RING, Z 17 OUTSIDE RETAINING	F81090-21	4
12	BEARING, 6203-2RS ROLLING	086114	4
13	SHAFT, SIDE BEARING MOUNT ZINC-PLATED	086645-1	2
14	BEARING, 6305-2RS CX	085706	4
15	RING, 25Z OUTSIDE RETAINING	F81090-22	4
16	RAIL, LT15 1950 (LT15S3) TRACK ZINC-PLATED	094427-1	3
	RAIL, LT15 2700 (LT15M2) TRACK ZINC-PLATED	538935-1	2
17	BOLT, M10X75-8.8 HEX HEAD ZINC	F81003-15	9/13 <sup>1</sup>
18	NUT, M10-8-B HEX NYLON ZINC LOCK	F81033-1	9/13 <sup>2</sup>
19	PIN, TRAVEL LOCK ZINC-PLATED	086743-1	1



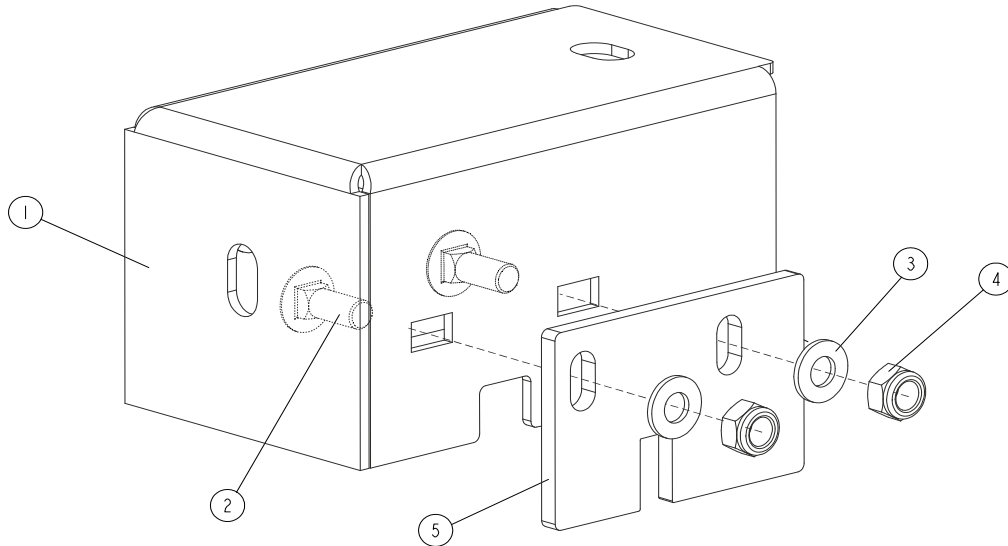
20	PIN, 6X50 ROLL ZINC	F81045-1	1	
21	PIN, 5 X 30 ROLL ZINC	F81044-21	1	
22	SPRING, 18X37X1.8 COMPRESSION ZINC-PLATED	087301	1	
23	WASHER, 17 FLAT ZINC	F81058-1	1	
24	PIN, 4 X 25 COTTER ZINC	F81043-2	1	
25	BRACKET, ROLLER	506707-1	1	
26	BOLT, M8X90-8.8 HEX HEAD FULL THREAD ZINC	F81002-16	1	
27	NUT, M8-8-B HEX ZINC	F81032-1	3	
28	BOLT, M8X16-8.8-B HEX HEAD FULL THREAD ZINC	F81002-20	4	
29	BOLT, M6X12 8.8 HEX HEAD FULL THREAD ZINC	F81001-7	2	
30	WASHER, 6.4 FLAT ZINC	F81053-1	2	
31	WASHER, Z 6.1 SPLIT LOCK ZINC	F81053-3	2	
32	COVER, ROLLER	501783-1	1	
33	SHAFT, E=3.3 ECCENTRIC ZINC-PLATED	531678-1	2	
34	GUIDE, LT15 MAST IDLE SIDE	086202-1	1	

<sup>1</sup> Number of bolts for one bed section.

<sup>2</sup> Number of nuts for one bed section.

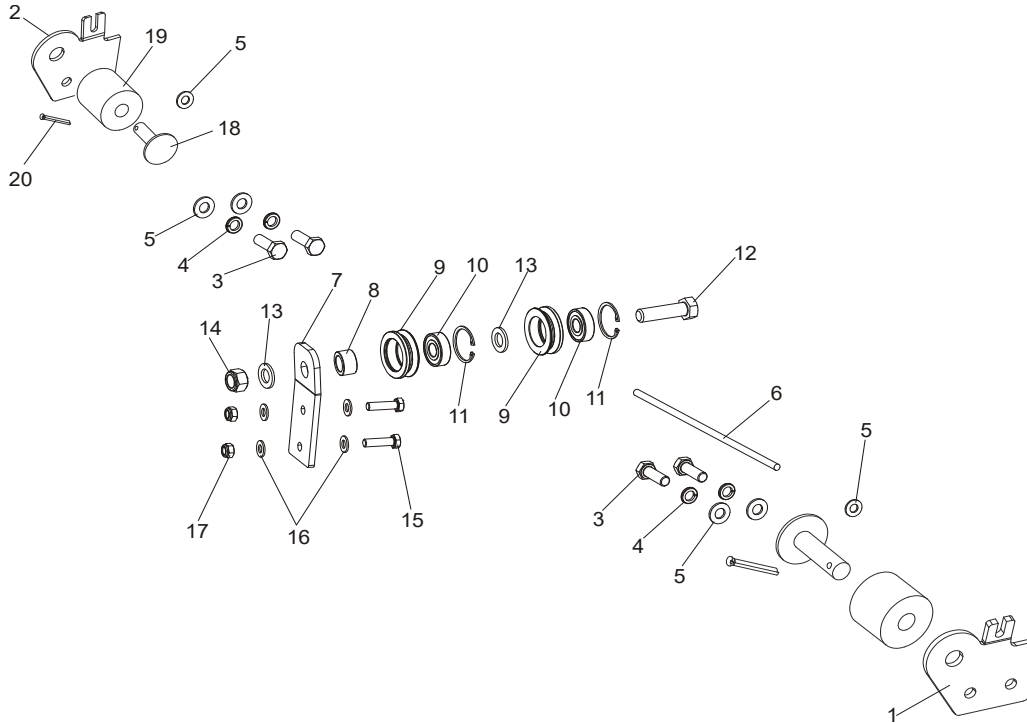
### 6.3 Track Roller Cover Assembly

542800\_001  
542800\_MANUAL



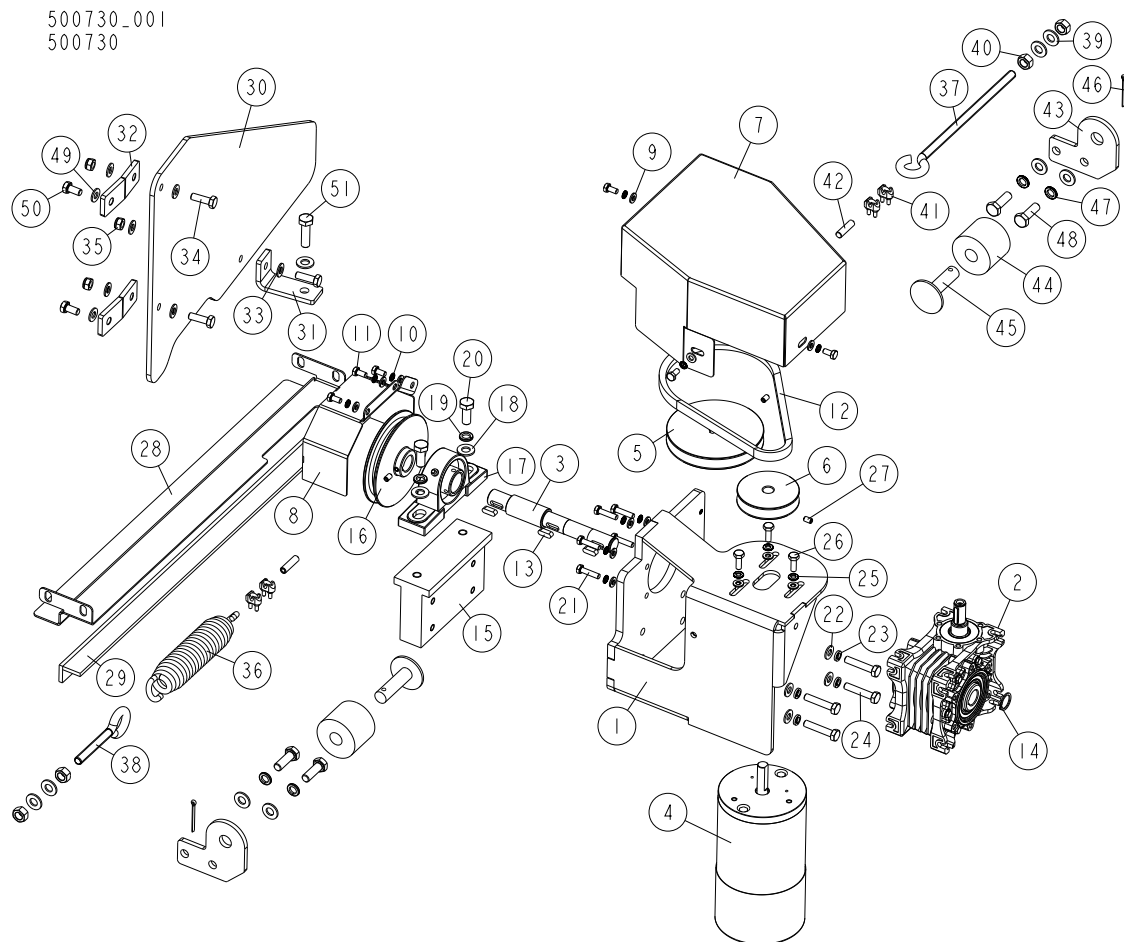
REF.	DESCRIPTION (◆ indicates parts available in assemblies only)	PART #	QTY	
	<b>COVER ASSEMBLY, TRACK ROLLER</b>	542800	2	
1	COVER, TRACK ROLLER	531664-1	1	
2	BOLT, M8x20-8.8 CARRIAGE ZINC	F81002-11	4	
3	WASHER, 8.4 FLAT ZINC	F81054-1	4	
4	NUT, M8-8-B HEX NYLON ZINC LOCK	F81032-2	4	
5	PLATE, TRACK WIPER	531670	2	

## 6.4 Feed Rope, V-Groove Rollers & Brackets



REF.	DESCRIPTION (◆ Indicates Parts Available In Assemblies Only)	PART #	QTY
1	BRACKET, LT15 ROPE MOUNT FRONT	502725-1	1
2	BRACKET, LT15 ROPE MOUNT REAR	502726-1	1
3	BOLT, M10X30-5.8 HEX HEAD FULL THREAD ZINC	F81003-2	4
4	WASHER, 10.2 SPLIT LOCK ZINC	F81055-2	4
5	WASHER, 10.5 FLAT ZINC	F81055-1	6
6	ROPE, 5/16" DIA. BRAIDED POLYESTER	R02080	9.0 m
	<b>ROLLER ROPE GUIDE SYSTEM - COMPLETE</b>	<b>502521</b>	<b>1</b>
7	SUPPORT, ROLLER ROPE GUIDE SYSTEM	501955	1
8	SPACER, N25XN16.5X60 BEARING	501415-1	1
	ROLLER ASSEMBLY, V-GROOVE W/BEARING	093855	2
9	ROLLER, V-GROOVE ZINC-PLATED	093856-1	1
10	BEARING, 6203 2RS 5/8 CX	095087	1
11	RING, W40 INSIDE RETAINING	F81090-3	1
12	BOLT, M16X70 8.8 HEX HEAD FULL THREAD ZINC	F81006-16	1
13	WASHER, 17 FLAT ZINC	F81058-1	2
14	NUT, M16-8 HEX NYLON ZINC LOCK	F81036-2	1
15	BOLT, M8X30-8.8 HEX HEAD FULL THREAD ZINC	F81002-7	2
16	WASHER, 8.4 FLAT ZINC	F81054-1	4
17	NUT, M8-8-B HEX NYLON ZINC LOCK	F81032-2	2

## 6.5 Power Feed System - Optional



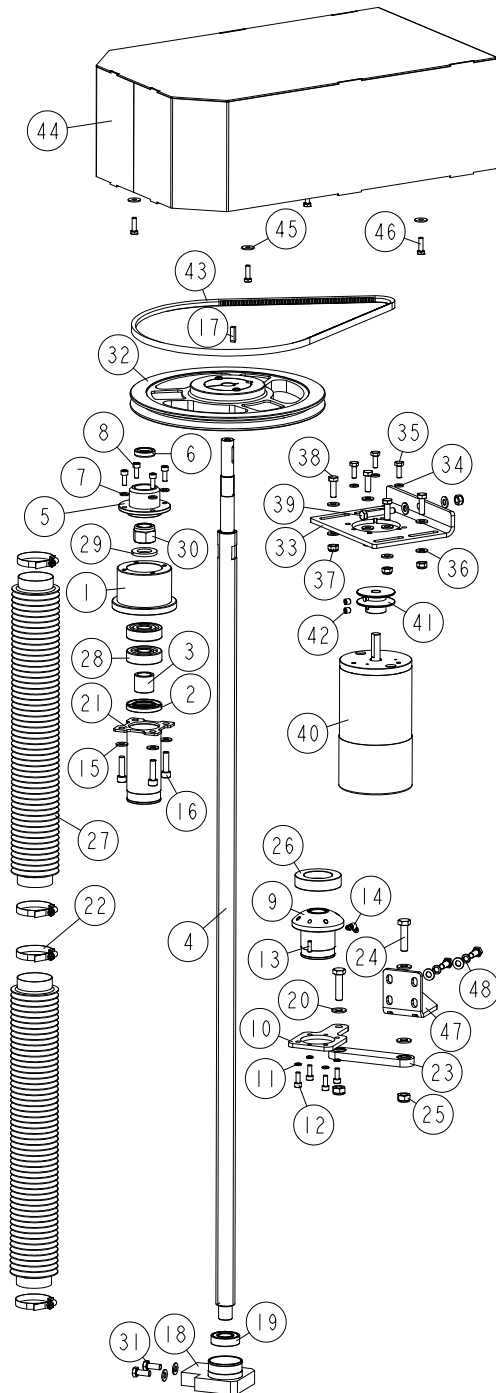
REF	DESCRIPTION (u indicates parts available in assemblies only)	PART #	QTY
-	<b>POWER FEED ASSEMBLY, LT15DC</b>	500730	1
	JOYSTICK, XD4PA22	087815	1
	CONTACT, ZBE 101	087817	2
-	<b>POWER FEED DRIVE ASSEMBLY, LT15DC</b>	500720	1
1	BRACKET, MOTOR & REDUCER	501273-1	1
2	REDUCER, MR-40/15,5-WBS-V5	593797	1
3	SHAFT, MOTOREDCER OUTPUT	593798	1
4	MOTOR, 12V 0.5HP	006747	1
	Brush Kit, 1/2 HP 12V DC	061794	
5	PULLEY, 117/14	500715-1	1
6	PULLEY, 75/12.7	500714-1	1
7	COVER, MAIN COMPLETE	500724-1	1
8	COVER, FRONT	501505-1	1
9	WASHER, 6.4 FLAT ZINC	F81053-1	14
10	WASHER, Z 6.1 SPLIT LOCK	F81053-3	11
11	BOLT, M6X12-8.8 HEX HEAD FULL THREAD ZIN	F81001-7	6
12	V-BELT, HA-560 (STOMIL-SANOK)	088562	1

REF	DESCRIPTION (u indicates parts available in assemblies only)	PART #	QTY
13	KEY, A 6X6X18 PARALLEL	089404	3
14	RING, 19Z OUTSIDE RETAINING	F81090-20	1
15	CUBE, MOUNTING	501271-1	1
16	PULLEY, LT15 POWER FEED ROPE	500864-1	1
17	BEARING ASSEMBLY, UCP 205CX	088468	1
18	WASHER, 10.5 FLAT ZINC	F81055-1	2
19	WASHER, Z 10.2 SPLIT LOCK ZINC	F81055-2	2
20	BOLT, M10X25 8.8 HEX HEAD FULL THREAD ZI	F81003-11	2
21	BOLT, M6X25-5.8 HEX HEAD FULL THREAD ZIN	F81001-3	5
22	WASHER, 8.4 FLAT ZINC	F81054-1	4
23	WASHER 8,2 SPLIT LOCK ZINC	F81054-4	4
24	BOLT, M8X40-8.8 HEX HEAD FULL THREAD ZIN	F81002-15	4
25	WASHER, 1/4" UNC ZINC SPLIT LOCK	F81052-21	3
26	BOLT, 1/4-20X3/4 FT HHC	F05005-1	3
27	SCREW, M6X10-45H HEX SOCKET SET W/FLAT P	F81001-26	3
-	COVER, LT15 TRACK W/FELT STRIP	500839	1
28	COVER, LT15 TRACK	500838-1	1
29	STRIP, FELY LONG TRACK WIPER LT15	086319	2
-	COVER, LT15 COMPLETE LOWER	500727	1
30	PLATE, LT15 LOWER COVER	500726	1
31	BRACKET, BOTTOM	086172-1	1
32	BRACKET, SIDE	086171-1	2
33	WASHER, 8.4 FLAT ZINC	F81054-1	6
34	BOLT, M8X25-8.8-B HEX HEAD FULL THREAD Z	F81002-5	3
35	NUT, M8-8-B HEX NYLON ZINC LOCK	F81032-2	3
36	SPRING, HOLD-DOWN ROLLER - ZINC-PLATED	089689-1	1
37	TENSIONER, ZINC-PLATED	500846-1	1
38	TENSIONER, SHORT ZINC-PLATED	500848-1	1
39	WASHER, 10.5 FLAT ZINC	F81055-1	9
40	NUT, M10-8-B-HEX ZINC	F81033-3	4
41	CLAMP, LT20 STRING	091614	4
42	POINTER, STEEL CABLE	501417-1	2
43	PLATE, LT15 POWER FEED SUPPORT	501414-1	2
44	BUSHING, RUBBER STOP	P12165	2
45	MOUNT WELDMENT, RUBBER BUSHING	086182-1	2
46	PIN, S-ZN, 4 X 25 COTTER	F81043-2	2
47	WASHER, Z 10.2 SPLIT LOCK ZINC	F81055-2	4
48	BOLT, M10X30-5.8 HEX HEAD FULL THREAD ZI	F81003-2	4
49	WASHER, 8.4 FLAT ZINC	F81054-1	2
50	BOLT, M8X16 -8.8-B HEX HEAD FULL THREAD	F81002-20	2
51	BOLT,M10X35-8.8 HEX HEAD FULL THREAD ZIN	F81003-17	1
-	<b>CABLE, STEEL ZINC-PLATED F 4 L=5450MM</b>	R80663-2S	1
-	<b>CABLE, STEEL ZINC-PLATED F 4 L=7400MM</b>	R80663-3S	1
-	<b>CABLE, STEEL ZINC-PLATED F 4 L=9350MM</b>	R80663-4S	1
-	<b>CABLE, STEEL ZINC-PLATED F 4 L=6950MM</b>	R80663-2M	1
-	<b>CABLE, STEEL ZINC-PLATED F 4 L=9650MM</b>	R80663-3M	1
-	<b>CABLE, STEEL ZINC-PLATED F 4 L=12350MM</b>	R80663-4M	1

## SECTION 7 UP/DOWN SYSTEM

### 7.1 Up/Down Assembly, DC

095253\_001  
095253



REF	DESCRIPTION (u indicates parts available in assemblies only)	PART #	QTY	
-	DRIVE ASSEMBLY, DC UP/DOWN	095253	1	
1	HOUSING, ACME SCREW BEARING	094164-1	1	

REF	DESCRIPTION (u indicates parts available in assemblies only)	PART #	QTY
2	RING, AO28X52X7 SEALING	094155	1
3	BUSHING, 20/28-25 ZINC-PLATED	094156-1	1
4	SCREW, TR 28X5 ACME	094144	1
5	COVER, ACME SCREW BEARING HOUSING	094165-1	1
6	RING, A18X30X7 SEALING	094159	1
7	WASHER, 6.4 FLAT ZINC	F81053-1	4
8	SCREW, M6X16 -8.8 HEX SOCKET HEAD CAP ZI	F81001-21	4
-	NUT, UP/DOWN DRIVE - COMPLETE	094150	1
9	NUT, TR28X5 UP/DOWN DRIVE	505315	1
10	PLATE, NUT HOUSING SEAT	094242-1	1
11	WASHER, Z 6.1 SPLIT LOCK	F81053-3	4
12	SCREW, M6X16 -8.8 HEX SOCKET HEAD CAP ZI	F81001-21	4
13	PIN, 5X16 ROLL ZINC	F81044-3	2
14	SMAROWNICZKA KATOWA KULKOWA M6 WG. PN/M-	094213	1
15	WASHER, 8.4 FLAT ZINC	F81054-1	8
16	BOLT, M8 X 30-8.8 SOCKET HEAD	F81002-31	4
17	KEY, 6X6X23	089191	1
18	HOUSING, LOWER BEARING (W/LOWER BELLOWS	093866-1	1
19	BEARING, 6004 2RS CX ROLLING	093868	1
20	WASHER, 10.5 FLAT ZINC	F81055-1	3
21	BRACKET, UPPER BELLOWS MOUNT ZINC-PLATED	094221-1	1
22	CLAMP, 40-60MM DIA.	F81095-4	4
23	LINK, SBPL 10104 PIVOTAL (COMPLEX)	097700	1
24	BOLT, M10X40-8.8 HEX HEAD FULL THREAD ZI	F81003-16	2
25	NUT, M10-8-B HEX NYLON ZINC LOCK	F81033-1	2
26	WASHER, DIN6319-42-C SPHERICAL SEAT	F81061-7	1
27	BELLOWS, 50/700 PROTECTIVE	094208	2
28	BEARING, 7304B-UO. ROLLING	094256	2
29	WASHER, 21 FLAT ZINC	F81059-2	1
30	NUT, ISO10512-M20X1.5-8-A2 SELF-LOCKING	F81037-5	1
31	BOLT, M8X20 8.8 HEX HEAD FULL THREAD ZIN	F81002-4	4
32	PULLEY, SPA 280 X 1 W/18 SPLIT TAPER BUS	094157	1
-	DRIVE MOTOR, U/D, DC.	095339	1
33	PLATE, DRIVE BELT TENSION	094162-1	1
34	WASHER, 6.4 FLAT ZINC	F81053-1	3
35	BOLT, 1/4-20X3/4 FT HHC	F05005-1	3
36	WASHER, 8.4 FLAT ZINC	F81054-1	10
37	NUT, M8-8-B HEX NYLON ZINC LOCK	F81032-2	5
38	BOLT, M8X25-8.8-B HEX HEAD FULL THREAD Z	F81002-5	4
39	BOLT, M8X50 -8.8 HEX HEAD FULL THREAD ZI	F81002-19	1
40	MOTOR, 12V 0.5HP	006747	1
41	PULLEY, LT15DC UP/DOWN DRIVE	095340-1	1
42	SCREW, M8X8-33H HEX SOCKET SET FLAT POIN	F81014-1	2
43	V-BELT, AVX-13X1100LA	095306	1
-	COVER, UP/DOWN DRIVE HIGH - COMPLETE	096948	1
44	GUARD, LT15 UP/DOWN DRIVE	096945-1	1
45	WASHER, 6.5 SPECIAL FLAT ZINC	F81053-11	4

**7****Up/Down System***Up/Down Assembly, DC*

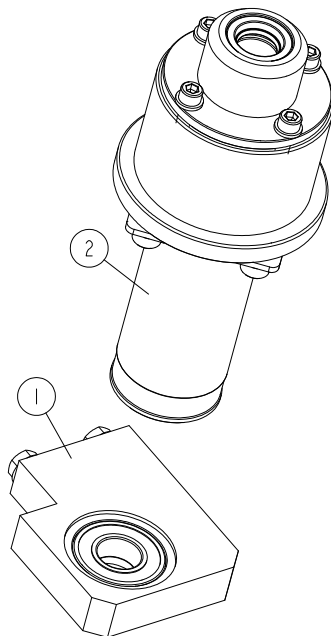
---

REF	DESCRIPTION (u indicates parts available in assemblies only)	PART #	QTY	
46	BOLT, M6X20 8.8 HEX HEAD FULL THREAD ZIN	F81001-2	4	
47	BRACKET, PIVOTAL LINK MOUNT	511217-1	1	
48	WASHER 8,2 SPLIT LOCK ZINC	F81054-4	2	



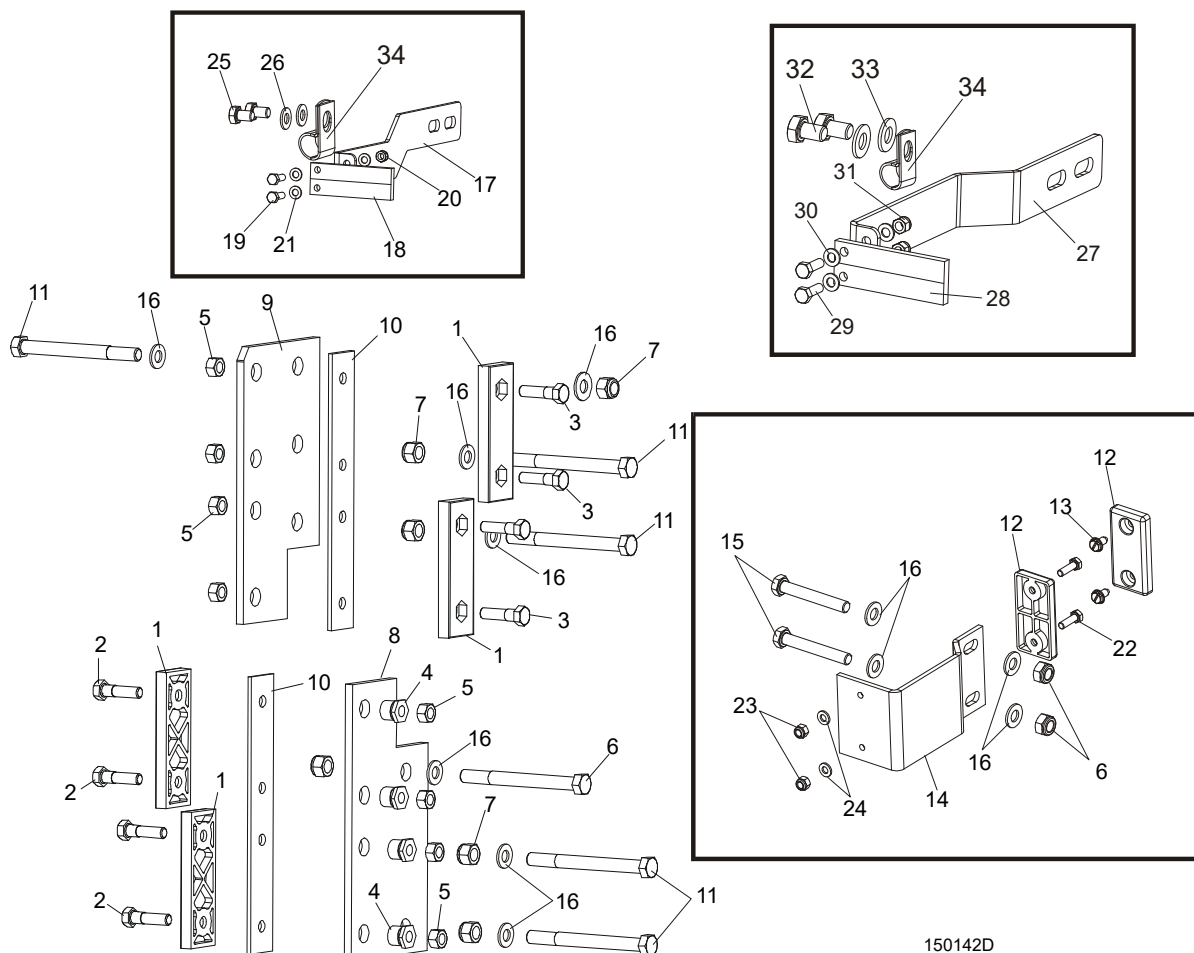
## 7.2 Service Kit, LT15 Up/Down System

512233\_001  
 512233



REF.	DESCRIPTION (◆ Indicates Parts Available In Assemblies Only)	PART #	QTY	
	<b>SERVICE KIT, LT15 UP/DOWN SYSTEM</b>	512233	1	
1	<b>SEAT, LOWER BEARING, COMPLETE</b>	512231	1	
2	<b>HOUSING, UP/DOWN BEARING</b>	512232	1	

### 7.3 Slide Pads & Blade Height Scale Indicator



150142D

REF.	DESCRIPTION (◆ Indicates Parts Available In Assemblies Only)	PART #	QTY
1	PADS, DELRIN UP/DOWN SLIDE	M04096	4
2	BOLT, M8X35-8.8 HEX HEAD FULL THREAD ZINC	F81002-13	4
3	BOLT, M8X20-8.8 HEX HEAD FULL THREAD ZINC	F81002-4	4
4	NUT, LT15 SLIDE PAD ADJUSTMENT	086683-1	4
5	NUT, M8-8-B HEX NYLON ZINC LOCK	F81032-2	8
6	BOLT, M10X110 8.8 HEX HEAD ZINC	F81003-43	1
7	NUT, M10-8-B HEX NYLON ZINC LOCK	F81033-1	8
8	PLATE, SAW HEAD LOWER GUIDE PAINTED	086682-1	1
9	PLATE, SAW HEAD UPPER GUIDE PAINTED	094139-1	1
10	PLATE, SLIDE PAD SPACER PAINTED	094140-1	2
11	BOLT, M10X115-8.8 HEX HEAD ZINC	F81003-19	5
12	PAD, IDLE SIDE SLIDE	P13576	2
13	SCREW, 1/4-20 X 1/2" "23" TYPE SELF-TAPPING	F05015-1	2
14	GUIDE, LT15 SAW HEAD PAINTED	087192-1	1

15	<b>BOLT, M10X70-8.8 HEX HEAD FULL THREAD ZINC</b>	F81003-20	2	
16	<b>WASHER, 10.5 FLAT ZINC</b>	F81055-1	11	
	<b>SCALE INDICATOR (STANDARD)</b>	094226	1	
17	Bracket, Scale Indicator Mount	094224-1	1	
18	Indicator, Blade Height Scale	094821	1	
19	Bolt, M5NX16-8.8 Hex Head Full Thread Zinc	F81000-20	2	
20	Nut, M5-8 DIN 985 Zinc-Plated	F81030-2	2	
21	Washer, 5.3 Flat Zinc	F81052-1	4	
22	<b>BOLT, M6X20-8.8 HEX HEAD FULL THREAD ZINC</b>	F81001-2	2	
23	<b>NUT, M6-8-B HEX NYLON ZINC LOCK</b>	F81031-2	2	
24	<b>WASHER, 6.4 FLAT ZINC</b>	F81053-1	2	
25	<b>BOLT, M8X12-8.8 HEX HEAD FULL THREAD ZINC</b>	F81002-6	2	
26	<b>WASHER, 8.4 FLAT ZINC</b>	F81054-1	2	
	<b>SCALE INDICATOR (OPTIONAL)</b>	095967		
27	Bracket, Scale Indicator Mount	095968-1	1	
28	Indicator, Blade Height Scale	094821	1	
29	Bolt, M5X16-8.8 Hex Head Full Thread Zinc	F81000-20	2	
30	Washer, 5.3 Flat Zinc	F81052-1	4	
31	Nut, M5-8 DIN 985 Zinc-plated	F81030-2	2	
32	Bolt, M8x12-8.8 Hex Head Full Thread Zinc	F81002-6	2	
33	Washer, 8.4 Flat Zinc	F81054-1	2	
34	<b>CLAMP, 1/2" EMT COATED</b>	P07584	1	



REF.	DESCRIPTION (◆ Indicates Parts Available In Assemblies Only)	PART #	QTY	
10	WASHER, 6.4 FLAT ZINC	F81053-1	6	
11	WASHER, 6.2X20X4.5 SPECIAL	503098	3	
12	WASHER, 6.2X20X3.5 SPECIAL	503096	1	
13	BOLT, M6X20 8.8 HEX HEAD FULL THREAD ZINC	F81001-2	2	
-	INDICATOR, BLADE HEIGHT SCALE - COMPLETE	095967	1	
14	BRACKET, INDICATOR MOUNT	095968-1	1	
15	INDICATOR, BLADE HEIGHT SCALE	094821	1	
16	WASHER, 5.3 FLAT ZINC	F81052-1	4	
17	NUT, M5-8-FE/ZN5 DIN985	F81030-2	2	
18	BOLT, M5X16 8.8 HEX HEAD FULL THREAD ZINC	F81000-20	2	
19	WASHER, 8.4 FLAT ZINC	F81054-1	2	
20	BOLT, M8X12-8.8 HEX HEAD FULL THREAD ZINC	F81002-6	2	