

Wood-Mizer®

Debarker

Safety, Installation, Operation, Maintenance & Parts Manual

LX100 Debarker

rev. A.1



Safety is our #1 concern! Read and understand all safety information and instructions before operating, setting up or maintaining this machine

Form #788

Table of Contents

Section-Page

| | | |
|------------------|--|------------|
| SECTION 1 | SAFETY & GENERAL INFORMATION | 1-1 |
| 1.1 | Installation and Maintenance..... | 1-1 |
| 1.2 | Operation and Towing..... | 1-1 |
| SECTION 2 | DEBARKER INSTALLATION | 2-1 |
| 2.1 | Debarker frame mounting holes | 2-2 |
| 2.2 | Debarker Installation | 2-2 |
| 2.3 | Wiring Instructions..... | 2-5 |
| 2.4 | Control & Cover Installation..... | 2-5 |
| 2.5 | Alignment | 2-8 |
| 2.6 | Debarker arm adjustment | 2-10 |
| SECTION 3 | OPERATION AND MAINTENANCE | 3-1 |
| 3.1 | Locking pin operation..... | 3-1 |
| 3.2 | Operation | 3-2 |
| 3.3 | Maintenance | 3-3 |
| 3.4 | Troubleshooting..... | 3-8 |
| SECTION 4 | DEBARKER PARTS | 4-1 |
| 4.1 | How To Use The Parts List | 4-1 |
| 4.2 | Sample Assembly | 4-1 |
| 4.3 | Debarker AC. 515301 | 4-2 |
| 4.4 | AC Debarker Blade Drive (096239) | 4-5 |
| 4.5 | Debarker DC (No. 518690) | 4-7 |
| 4.6 | Debarker Blade Drive Assembly (No. 097497) | 4-10 |
| 4.7 | Debarker Decal Kit. 098699_538001 | 4-12 |

SECTION 1 SAFETY & GENERAL INFORMATION



This symbol calls your attention to instructions concerning your personal safety. This symbol accompanies a signal word. The word **DANGER** indicates an imminently hazardous situation which, if not avoided, will result in death or serious injury. **WARNING!** suggests a potentially hazardous situation which, if not avoided, could result in death or serious injury. **CAUTION** refers to potentially hazardous situations which, if not avoided, may result in minor or moderate injury to persons or equipment. Read all safety instructions before operating this equipment. Be sure to observe and follow these instructions.

1.1 Installation and Maintenance



DANGER! On electric mills, hazardous voltage inside the disconnect box, starter box, and at the electric motor can cause shock, burns, or death. Disconnect and lock out power! Follow all applicable electrical codes.

DANGER! On gas/diesel mills, before performing any service to this equipment, turn the key to the OFF position, remove the key and disconnect the sawmill battery ground terminal. Failure to do so may result in serious injury or death.

DANGER! Make sure all electrical installation, service and/or maintenance work is performed by a qualified electrician and is in accordance with applicable electrical codes. Failure to do so may result in serious injury or death.



WARNING! Before replacing the debarker blade, move the sawmill blade guide arm in front of the sawmill blade to cover the blade teeth. Failure to do so may result in serious injury or death.

1.2 Operation and Towing



DANGER! Make sure all guards and covers are in place and secured before operating the debarker option. Failure to do so may result in serious injury.

DANGER! Keep all persons out of the path of moving equipment when operating the debarker. Failure to do so may result in serious injury.

1

Safety & general information

Operation and Towing


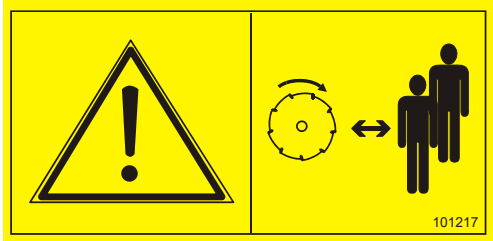
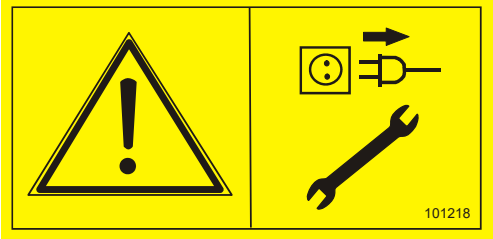

DANGER! Always remove the key from the control panel before preparing the debarker for towing. Failure to do so may result in serious injury.

WARNING! If the debarker continues to run with the key switch in the OFF position, remove the negative battery terminal from the battery post.

DO NOT continue to operate the mill if the main key switch does not control debarker operation. Failure to do so may result in serious injury. Call Wood-Mizer customer service for more information.

See table 1-1. Pictogram decals used to warn and inform the user about danger in the LX100 Debarker are shown below.

TABLE 1-1

| Decal View | Decal No. | Description |
|---|-----------|--|
|  | 101216 | CAUTION! Read thoroughly the operator's manual before operating the sawmill. Observe all safety instructions and rules when operating the machine. |
|  | 101217 | CAUTION! Keep away from the debarker blade! |
|  | 101218 | CAUTION! Disconnect power supply before servicing. |
|  | S20097 | Debarker motor rotation direction. |

SECTION 2 DEBARKER INSTALLATION



DANGER! On electric mills, hazardous voltage inside the disconnect box, starter box, and at the electric motor can cause shock, burns, or death. Disconnect and lock out power! Follow all applicable electrical codes.

2.1 Debarker frame mounting holes

IMPORTANT! Sawmills are equipped with pre-drilled debarker mounting holes. **Verify hole locations before beginning debarker installation. Proper hole location is imperative for safe and effective debarker operation.**

2.2 Debarker Installation

1. Open the blade housing cover. Remove the hole plugs from sawmills saw head.

See figure 2-1.

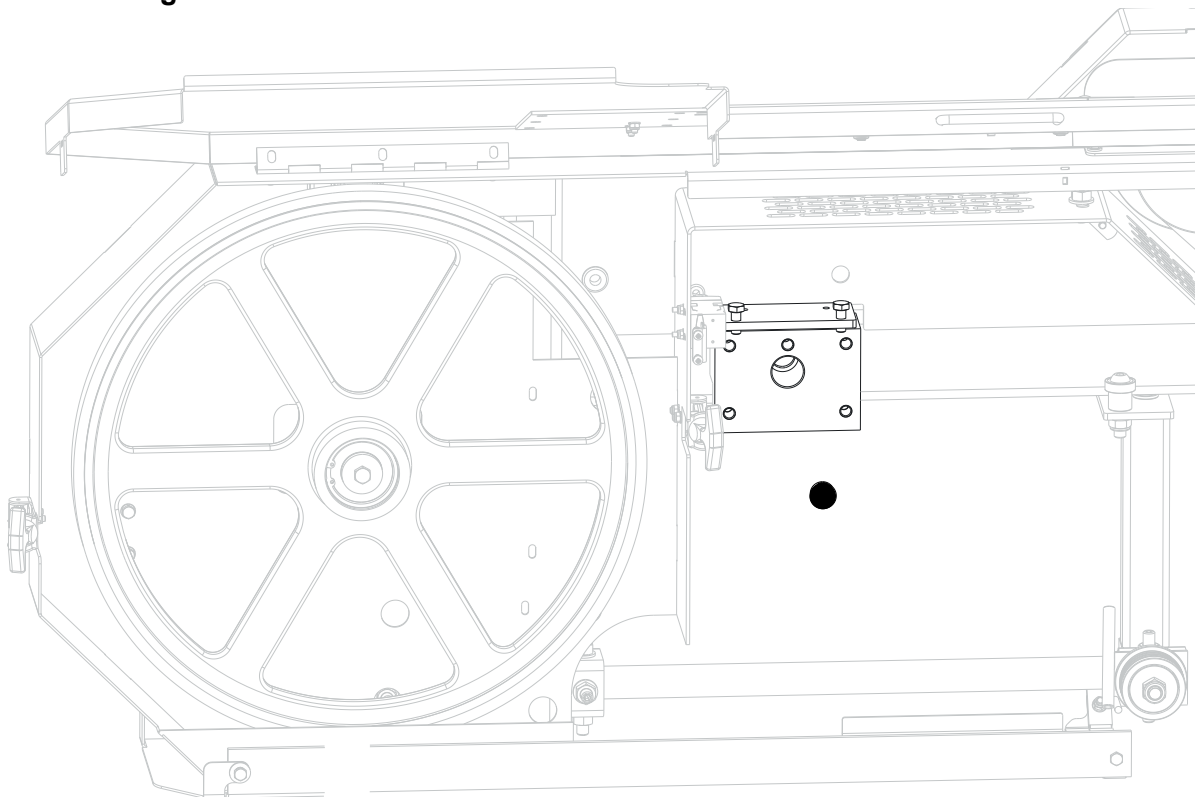


FIG. 2-1

2 Debarker Installation

Debarker Installation

2. Assemble the debarker to the sawmill saw head. Align the debarker arm holes and the holes in the saw head. Route the debarker wire harness through the protective conduit and next through the saw head tube to the electric box and next through the saw head hole and debarker arm.

See figure 2-2.

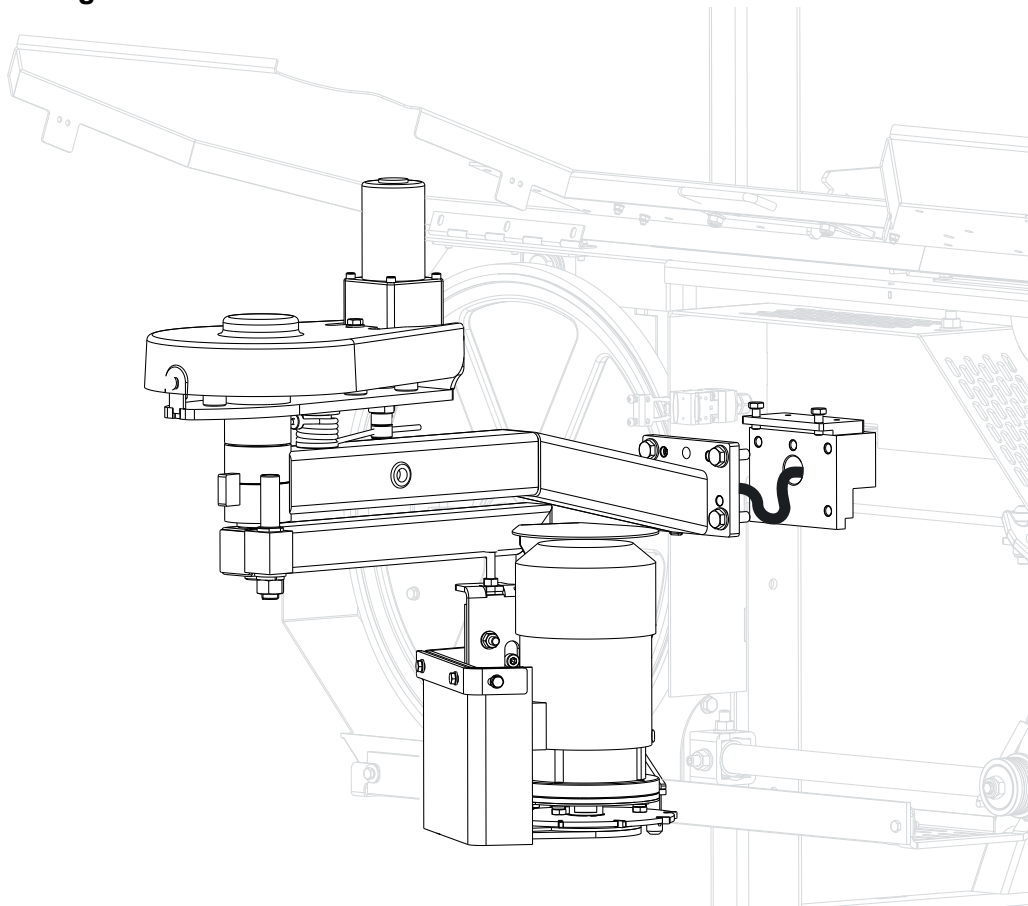
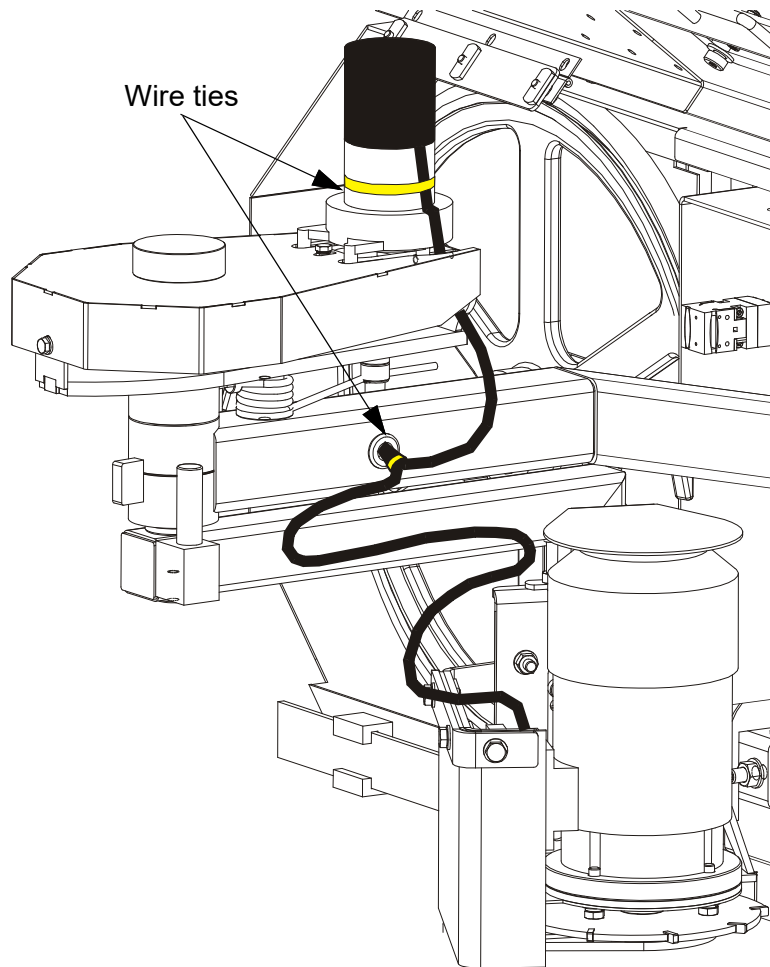


FIG. 2-2

3. Take out the wire harness from the debarker arm. Slide the debarker motor harness through one of the supplied harness clamps. Secure the wires with wire ties.

See figure 2-3.



150204

FIG. 2-3

2.3 Wiring Instructions



DANGER! On electric mills, hazardous voltage inside the disconnect box, starter box, and at the electric motor can cause shock, burns, or death. Disconnect and lock out power! Follow all applicable electrical codes.



IMPORTANT! Avoid pinch and pivot points, unnecessary wire bending and open spaces where the wire could get caught by a log, etc. If you have any questions, call Wood-Mizer customer service.



IMPORTANT! Make sure that the ring terminals do not touch the motor body.

2.4 Control & Cover Installation



DANGER! On electric mills, hazardous voltage inside the disconnect box, starter box, and at the electric motor can cause shock, burns, or death. Disconnect and lock out power! Follow all applicable electrical codes.

1. Remove the front panel (leave wire connections) from the control box.
2. Using the back side of the front panel for a guideline, cut out the holes in the front panel decal for the debarker switches. Install the provided debarker on/off switch, in/out switch, nylon washer, and rubber boot in place as shown.

See figure 2-4.

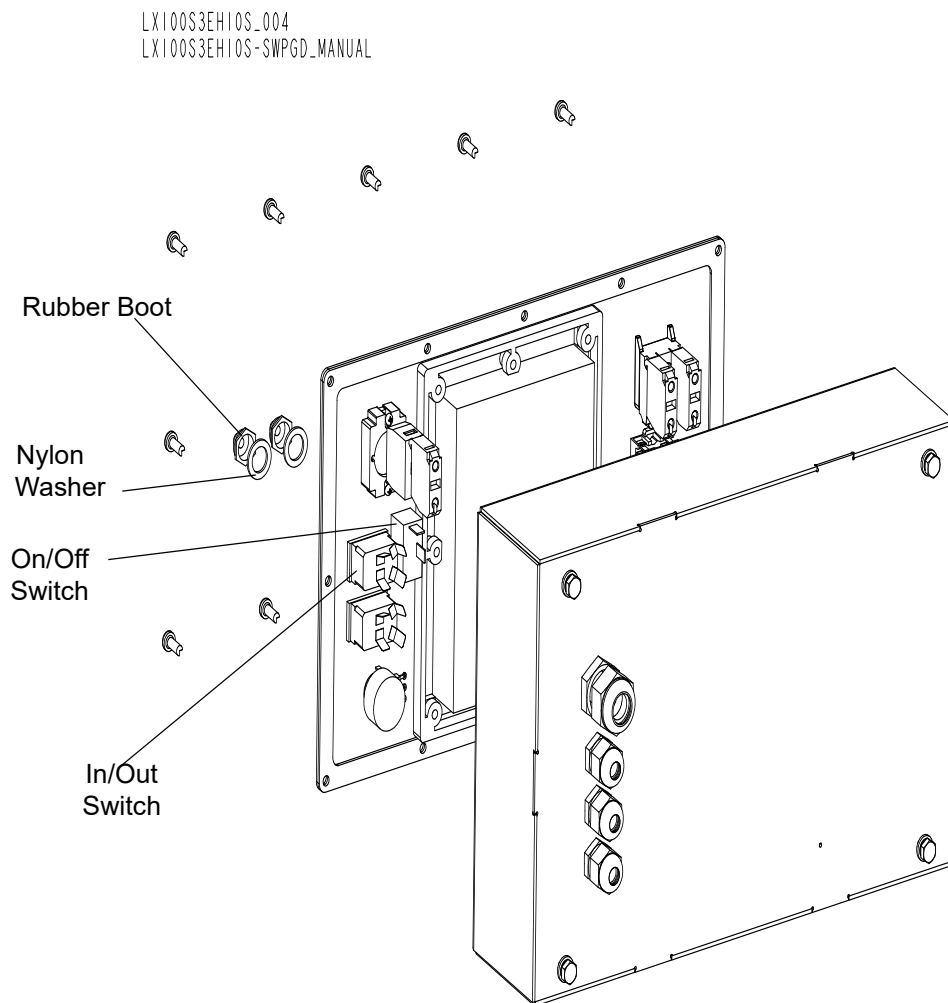


FIG. 2-4

2 Debarker Installation

Control & Cover Installation

See figure 2-5. LX100 AC control panel debarker wires connection.

LX100S3EH10S_005
LX100S3EH10S-SWPGD_MANUAL

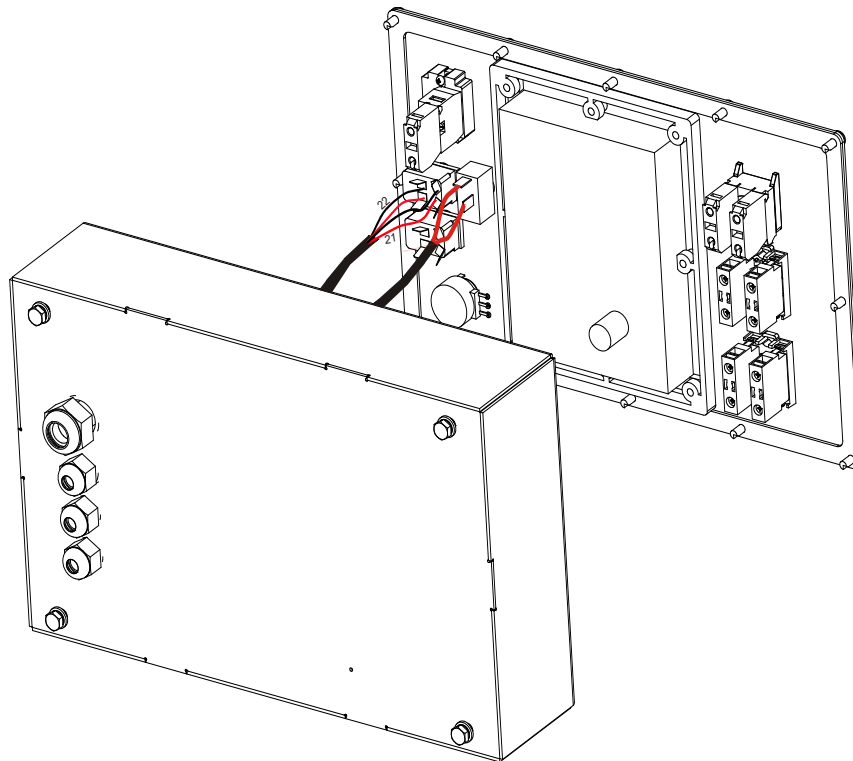


FIG. 2-5

3. Mount the control box front panel.

2.5 Alignment

The debarker blade should remain parallel to the sawmill blade throughout the debarker's range of motion.

1. Turn the key to ON position and use the debarker in/out switch to move the debarker all the way in. Turn the key to OFF (0) position and remove the key. This will prevent the debarker from being turned on while performing alignment procedures.
2. Clip the blade guide alignment tool to the sawmill blade. Make sure the tool does not rest on a tooth and is lying flat on the blade.

See figure 2-6.

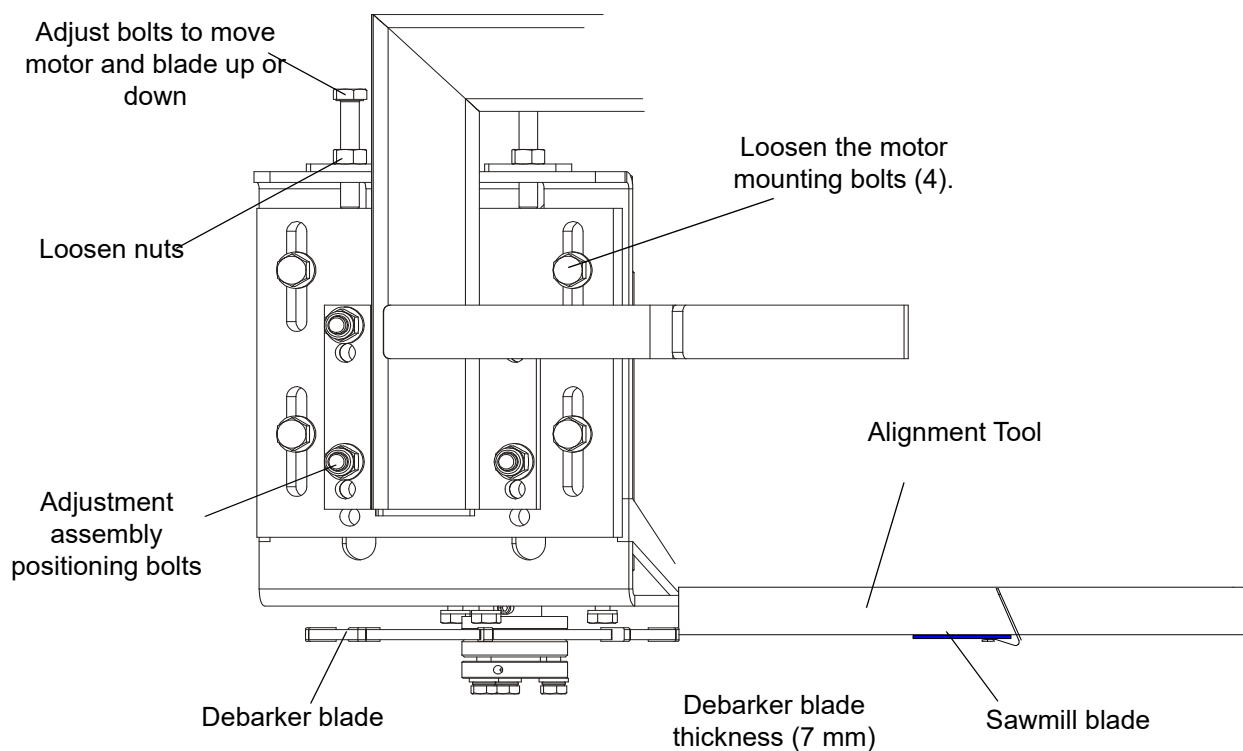


FIG. 2-6

2

Debarker Installation

Alignment

3. Check the height of the debarker blade against the alignment tool. The bottom edge of the tool should align with the center of the debarker blade.

To adjust blade up or down, loosen the four blade motor mount bolts. Next, loosen the nuts on the adjustment bolts. Turn the adjustment bolts clockwise to push the motor and blade down. Turn the adjustment bolts counterclockwise to raise the motor and blade. Retighten the nuts on the adjustment bolts and four motor mounting bolts.

NOTE: If the adjusting range is insufficient, unscrew the positioning bolts and change the adjustment assembly position.

4. Insert the key and use the debarker in/out switch to move the debarker all the way out. Turn the key to OFF (0) position and remove the key.
5. Move the blade guide alignment tool on the sawmill blade and check the position of the debarker blade against the tool. If the debarker blade is not centered with the tool, you will need to adjust the debarker mount.

2.6 Debarker arm adjustment

In order to provide proper operation of the debarker, its blade should remain parallel to the sawmill blade throughout the debarker's range of motion.

1. Loosen the mounting bolts (A).
2. Adjust the debarker arm in the vertical plane using the hex screws (B).
3. Lightly tighten screws (A), and then adjust the tilt of the debarker using bolts (C). The bolt (D) is the pivot point of the debarker.
4. After completing the adjustment, tighten the mounting bolts (A).

See figure 2-7.

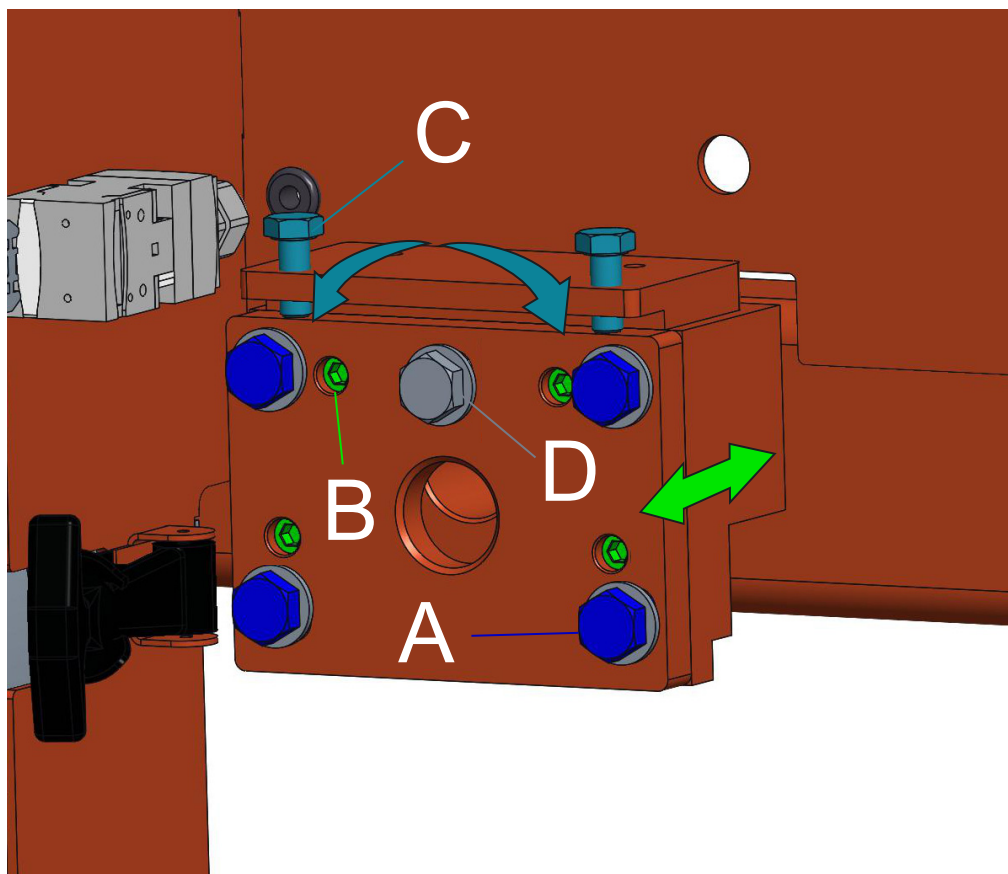


FIG. 2-7

SECTION 3 OPERATION AND MAINTENANCE

3.1 Locking pin operation

Main Menu



See figure 3-1. The debarker is equipped with a locking pin located on the debarker arm. Two hole locations are provided for the locking pin.

Before operating the debarker, make sure the locking pin is removed. Turn the key to OFF (0) position and remove the key. Pull the debarker out to relieve pressure on the locking pin. Pull down split cotter. Remove the locking pin.

Before towing the sawmill, lock the debarker in the travel position. Turn the key to OFF (0) position and remove the key. Manually move the debarker arm to align the holes. Insert the locking pin and secure with the split cotter

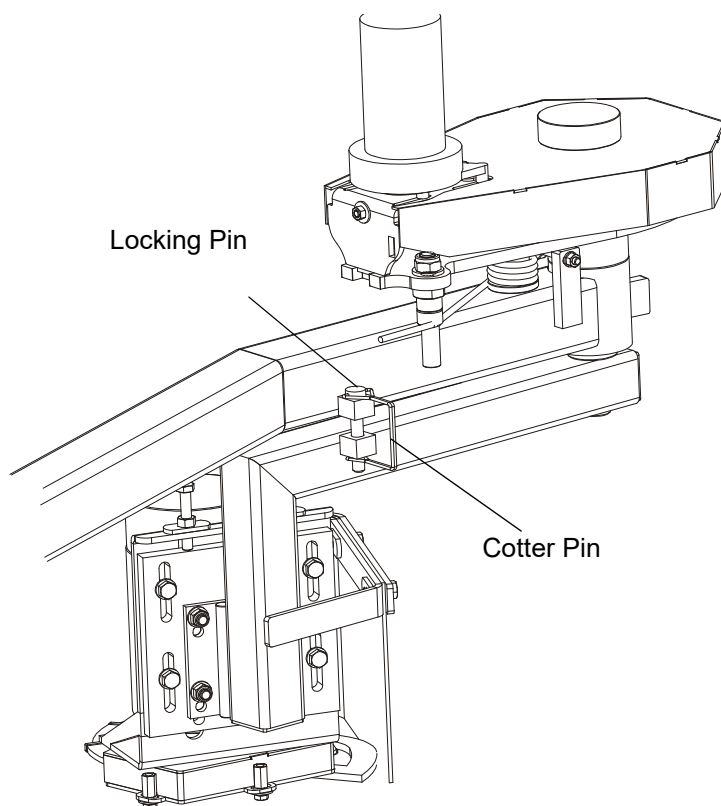


FIG. 3-1

3.2 Operation

The debarker option allows you to remove bark from logs before cutting.



DANGER! Make sure all guards and covers are in place and secured before operating the debarker option. Failure to do so may result in serious injury.

DANGER! Keep all persons out of the path of moving equipment when operating the debarker. Failure to do so may result in serious injury.

1. Use the debarker in/out switch to move the debarker all the way out.
2. Move the sawmill saw head forward and pivot the debarker in until the front fence engages with the end/side of the log. Continue to pivot the debarker in until the spring arm is half loaded.
3. Turn the debarker on/off switch to ON (1).
4. Proceed with cutting. The spring will keep the debarker against the side of the log.



NOTE: The debarker can continuously remove up to approximately 2cm of material from the log; no motor cool down time is required. Slower feed rates may be required for optimal debarker operation.

5. Once the saw head is past the end of the log, pivot the debarker away from the log. Return the saw head.
6. When done sawing and ready to store or transport the sawmill, place the debarker in its travel position before towing the sawmill. ([See Section 3.1.](#))

Main Menu



3.3 Maintenance



DANGER! Before performing any service to this equipment, turn the key to the OFF (0) position and remove the key. Failure to do so may result in serious injury or death.

1. Periodically check the flexible guard. Adjust the guard up or down so the bottom is even with the bottom of the debarker blade. Replace the guard as needed.
2. Periodically check the debarker blade. Align or replace as needed.



WARNING! Before replacing the debarker blade, move the sawmill blade guide arm in front of the sawmill blade to cover the blade teeth. Failure to do so may result in serious injury or death.

To replace the debarker blade, remove the lower blade guard plate.

Place one wrench on the blade arbor, above the blade bearing. Place the other wrench on the lower bolt and rotate counterclockwise. Remove the bolt and washer. Remove the blade and spacer. Reinstall the spacer with the new blade. Reinstall the bolt and washer and turn clockwise to tighten. Reinstall the blade guard plate.

Unscrew three mounting bolts. Remove the bushing and the blade. Reinstall the bushing with new blade. Reinstall bolts and washers. Reinstall the lower blade guard plate.



WARNING! Adjusting the belt and spring tension (described below) is very important. Failure to do it properly will result in damage to the debarker blade motor.

3. Once a week check belt for tension and wear. Adjust or replace the belt if necessary. To tighten the belt, turn the key to OFF (0) position and remove the key. Remove the belt guard and loosen the four motor mount screws. Turn the adjustment nut clockwise to move the motor out and tighten the belt. The belt should be tensioned to allow 6-7mm deflection measured halfway between the pulleys with 2kg force. Retighten the motor mount screws and replace the belt guard.

See figure 3-2.

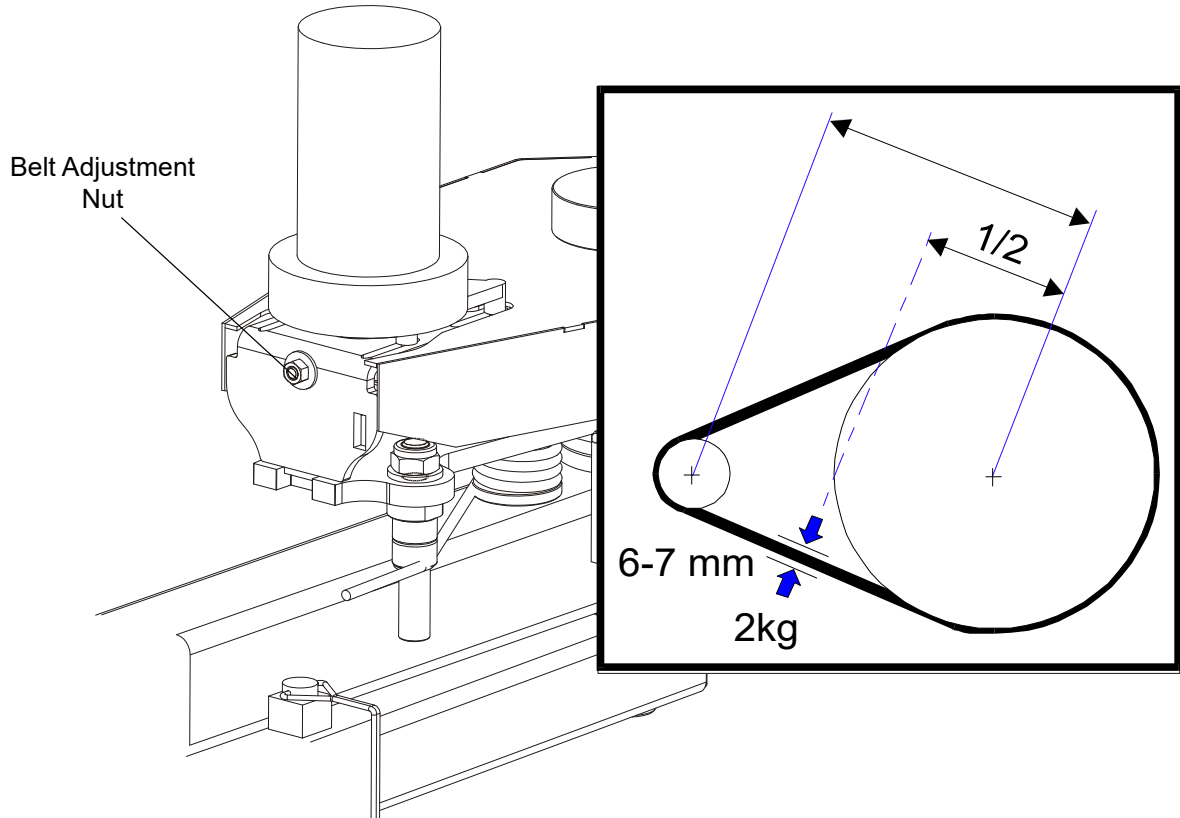


FIG. 3-2

3

Operation and maintenance

Maintenance

4. Once a week and after each spring replacing, check the spring tension. Use the in/out switch to pivot the debarker all the way in. Turn the key to OFF (0) position and remove the key. Pull the debarker arm. The spring should be tensioned to allow to move the debarker arm halfway with 4,5 kg force. Adjust the spring tension if necessary.

See figure 3-3.

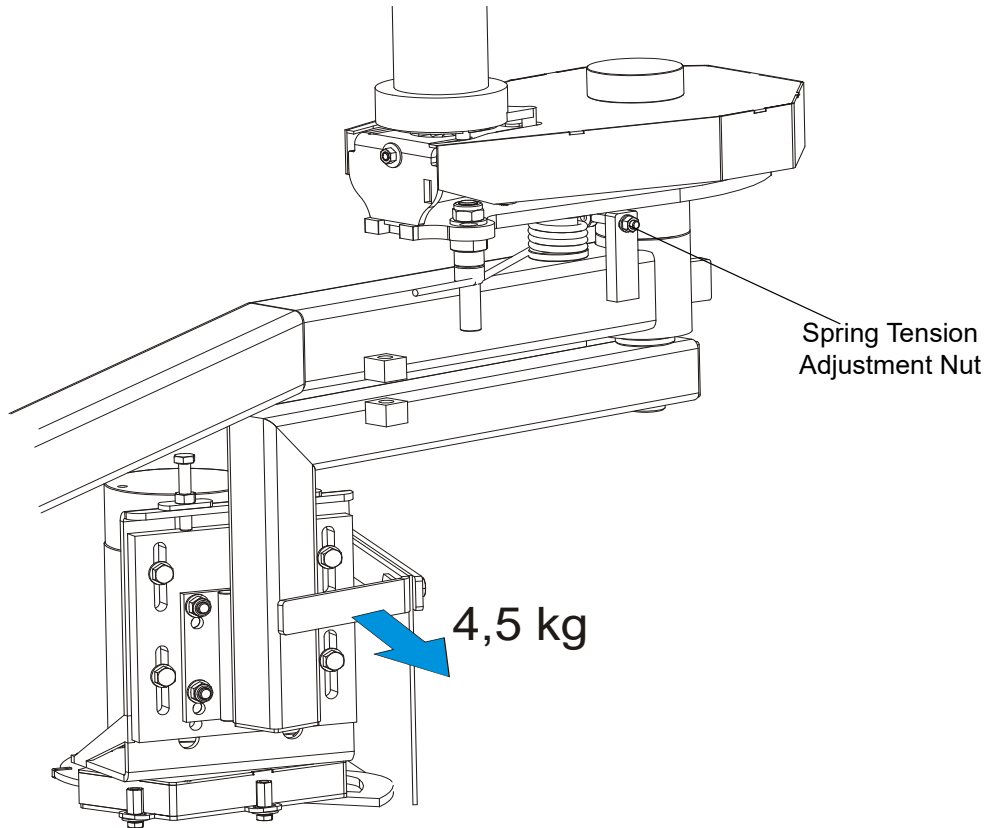


FIG. 3-3

Main Menu



5. Once a week check the braking time. The time from switching off the debarker till the moment when the blade is completely stopped should be no longer than 10 seconds.

If this time is longer than 10 seconds, loosen the locking nut and turn right the braking pin adjustment screw by 360°. Tighten the locking nut and recheck the braking time.

See figure 3-4.

Main Menu

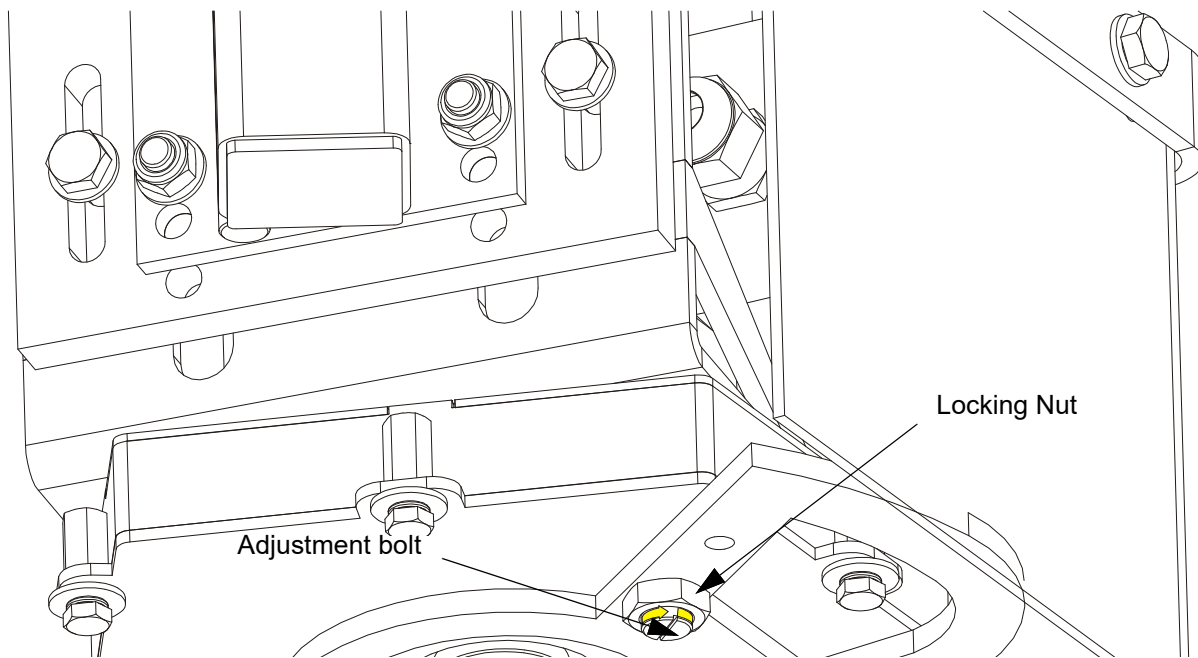


FIG. 3-4



WARNING! The braking pin must be adjusted as described above. Failure to do so may result in serious injury.

If the braking pin is worn or the spring is damaged, it is necessary to replace them. ([See Section 4.5](#) for parts numbers).

To replace the braking pin and/or spring with a new one, dismount the blade guard. Replace the braking pin and/or spring with a new one. Loosen the locking nut and turn the adjustment screw left or right so that the braking pin protrudes about 8 mm - see the figure below.

See figure 3-5.

Main Menu
■ ■ ■
■ ■ ■
■ ■ ■

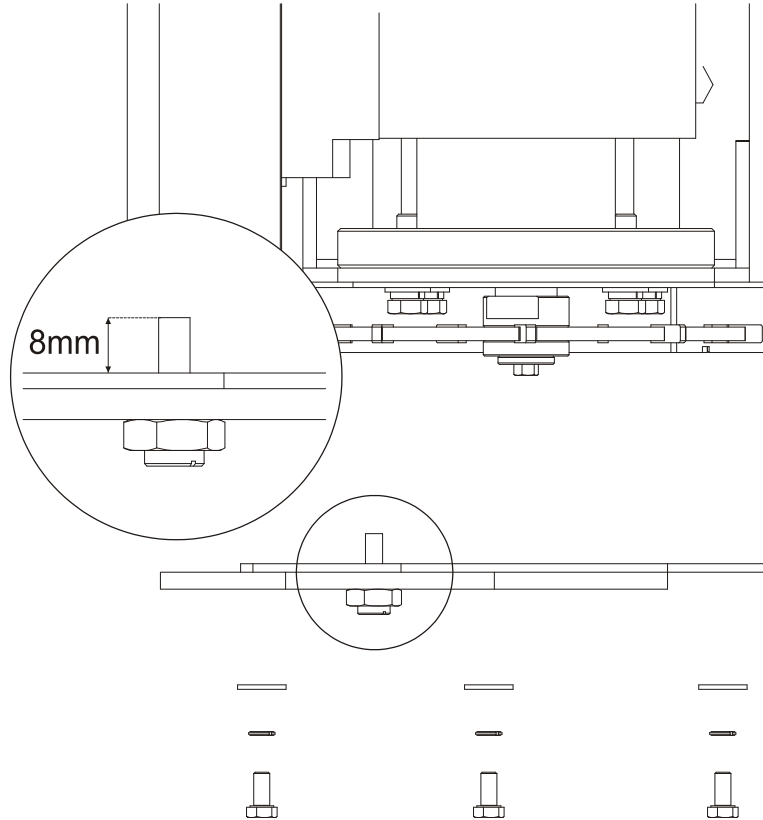


FIG. 3-5

3.4 Troubleshooting



DANGER! Before performing any service to this equipment, turn the key to the OFF (0) position and remove the key and disconnect the sawmill battery ground terminal. Failure to do so may result in serious injury or death.

Main Menu



| PROBLEM | CAUSE | SOLUTION |
|---|--|--|
| 70A circuit breaker tripping | Wood or bark jammed in blade guard | Turn the key to OFF (0) position and remove the key. Remove wood or bark from blade guard. |
| | Pivot pin is binding. | Inspect for bind by moving debarker head to full in position. Turn the key to OFF (0) position and remove the key. Pull arm to full out position by hand. If available, use a weight scale to pull arm to full out position. Should not have more than 6kg of resistance to pull out. Check the spring and belt tension. |
| | Ring terminal of red wire touching debarker motor housing or motor body. | Move terminal away from motor housing. Reset circuit breaker and retest. |
| Light comes on, but debarker motor do not operate | Circuit breaker weak from repeated tripping. | Replace circuit breaker. |
| | Circuit breaker tripped. | Reset circuit breaker. |
| Debarker shuts off, but the circuit breaker is not tripped | Bad ignition wire connection | Check ignition wire connection outside and inside of debarker control box. |
| | Intermittent key switch | Replace key switch |
| | Other loose wiring connection | Check wire connections inside control box. |
| Debarker will not shut off. | Solenoid is stuck closed. | Replace solenoid. |
| IN/OUT Motor does not move IN or OUT | Drive belt too loose | Tension the drive belt properly. |
| | Switch not working properly | Check switch wiring for loose connections. If wiring looks OK, replace switch. |
| Blade motor damage | Motor overload | Replace blade motor. Adjust the belt and spring tension. See page 4. |

SECTION 4 DEBARKER PARTS

4.1 How To Use The Parts List

- Use the table of contents or index to locate the assembly that contains the part you need.
- Go to the appropriate section and locate the part in the illustration.
- Use the number pointing to the part to locate the correct part number and description in the table.
- Parts shown indented under another part are included with that part.
- Parts marked with a diamond (◆) are only available in the assembly listed above the part.

See the sample table below. Sample Part #A01111 includes part F02222-2 and subassembly A03333. Subassembly A03333 includes part S04444-4 and subassembly K05555. The diamond (◆) indicates that S04444-4 is not available except in subassembly A03333. Subassembly K05555 includes parts M06666 and F07777-77. The diamond (◆) indicates M06666 is not available except in subassembly K05555.

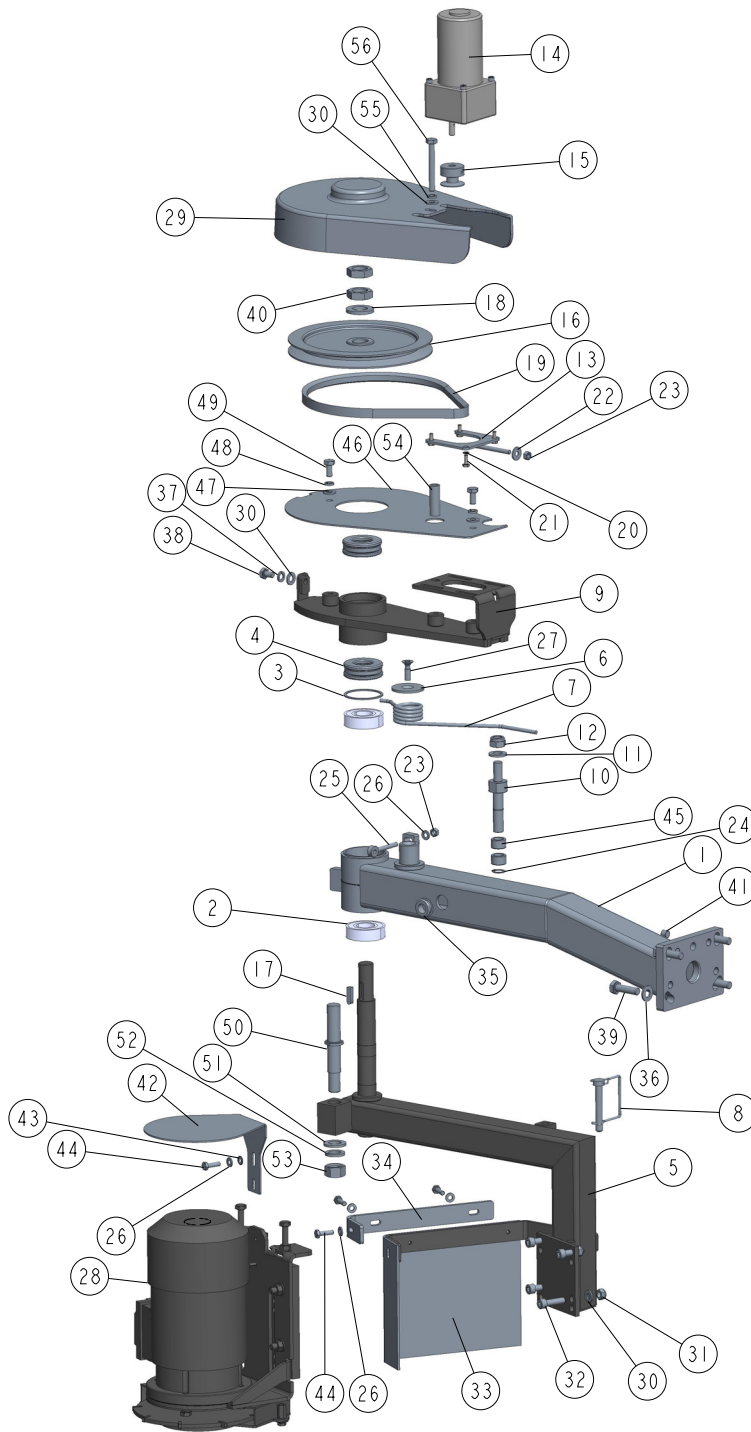
| 4.2 Sample Assembly | | | | |
|---------------------|---|-----------|------|---|
| REF | DESCRIPTION (◆ Indicates Parts Available In Assemblies Only) | PART # | QTY. | |
| | SAMPLE ASSEMBLY, COMPLETE (INCLUDES ALL INDENTED PARTS BELOW) | A01111 | 1 | |
| 1 | Sample Part | F02222-22 | 1 | |
| | Sample Subassembly (Includes All Indented Parts Below) | A03333 | 1 | |
| 2 | Sample Part (◆ Indicates Part Is Only Available With A03333) | S04444-4 | 1 | ◆ |
| | Sample Subassembly (Includes All Indented Parts Below) | K05555 | 1 | |
| 3 | Sample Part (◆ Indicates Part Is Only Available With K05555) | M06666 | 2 | ◆ |
| 4 | Sample Part | F07777-77 | 1 | |

To Order Parts:

- From Europe call our European Headquarters and Manufacturing Facility in Kolo, Poland at **+48-63-2626000** or **+48-3912-1319**. From the continental U.S., call **1-800-448-7881** to order parts. Have your customer number, vehicle identification number, and part numbers ready when you call.
- From other international locations, contact the Wood-Mizer distributor in your area for parts.

4.3 Debarker AC. 515301

515301_001
515301



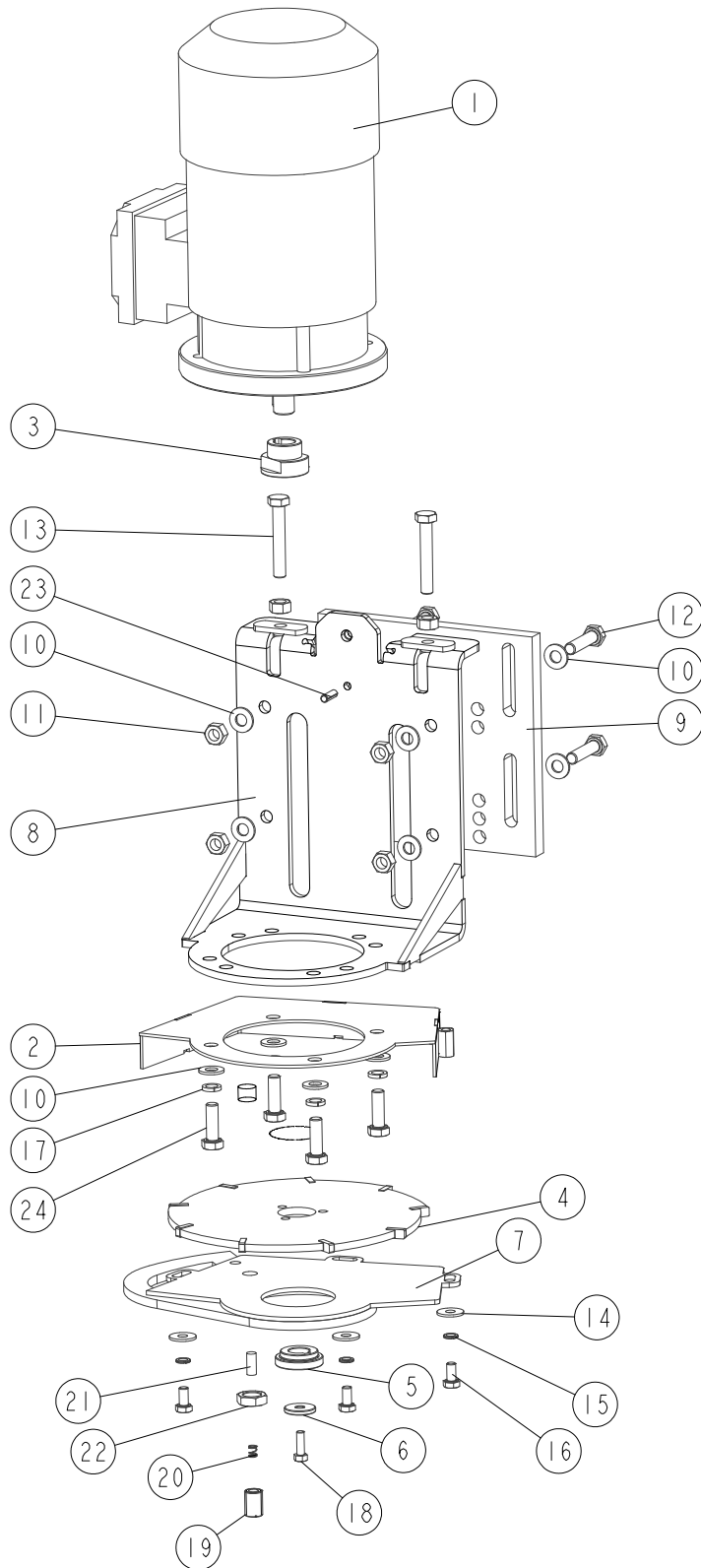
| REF | DESCRIPTION (◆ indicates parts available in assemblies only) | PART # | QTY |
|-----|--|----------|-----|
| - | DEBARKER AC LX100/097237-PRP | 515301 | 1 |
| 1 | ARM WELDMENT, DEBARKER SHORT (LT15AC) | 098635-1 | 1 |
| 2 | BEARING, 6205 2RS BALL | 091804 | 2 |
| 3 | RING, SPACER | 098491 | 1 |
| 4 | BEARING, 51305 AXIAL | 098597 | 2 |
| 5 | ARM, DEBARKER | 098645-1 | 1 |
| 6 | PLATE, SPRING BUSHING | 098592-1 | 1 |

| REF | DESCRIPTION (◆ indicates parts available in assemblies only) | PART # | QTY | |
|-----|---|-----------|-----|--|
| 7 | SPRING, DEBARKER RETAINING | 098605 | 1 | |
| 8 | PIN, 3/8X2 1/4 SNAP | 014151 | 1 | |
| 9 | ARM, DEBARKER | 098626-1 | 1 | |
| 10 | PIN, DEBARKER | 098593-1 | 1 | |
| 11 | WASHER, 13 FLAT ZINC | F81056-1 | 1 | |
| 12 | NUT, M12-8 HEX NYLON ZINC LOCK | F81034-2 | 1 | |
| 13 | TENSIONER WELDMENT, DEBARKER IN/OUT MOTO | 089969-1 | 1 | |
| 14 | MOTOREDUCER COMPACT | 557161 | 1 | |
| 15 | SHEAVE, DEBARKER MOTOR ZINC-PLATED | 089954-1 | 1 | |
| 16 | PULLEY, DEBARKER MOTOR | 098594-1 | 1 | |
| 17 | KEY, 6X6X23 | 089191 | 1 | |
| 18 | WASHER, 21 FLAT ZINC | F81059-2 | 1 | |
| 19 | BELT, 4L280V | P04031 | 1 | |
| 20 | WASHER, 5.1 SPLIT LOCK ZINC | F81052-2 | 4 | |
| 21 | BOLT, #10-32X1/2 HH | F05004-60 | 4 | |
| 22 | WASHER, 6.5 SPECIAL FLAT ZINC | F81053-11 | 1 | |
| 23 | NUT, M6 8 HEX ZINC | F81031-1 | 2 | |
| 24 | RING, Z14 OUTSIDE RETAINING | F81090-31 | 1 | |
| 25 | BOLT, M6 TURNED EYE | 098596 | 1 | |
| 26 | WASHER, 6.4 FLAT ZINC | F81053-1 | 5 | |
| 27 | SCREW, M8X25-5.8 CROSS RECESSED COUNTERS | F81002-51 | 1 | |
| 28 | DRIVE ASSEMBLY, AC DEBARKER BLADE See Section 4.4 | 096239 | 1 | |
| 29 | GUARD, DEBARKER BELT | 557350 | 1 | |
| 30 | WASHER, 8.4 FLAT ZINC | F81054-1 | 6 | |
| 31 | NUT, M8-8-B HEX NYLON ZINC LOCK | F81032-2 | 4 | |
| 32 | BOLT, M8 X 30-8.8 SOCKET HEAD | F81002-31 | 4 | |
| 33 | GUARD, DEBARKER FLEXIBLE DEBRIS | 097020 | 1 | |
| 34 | GUARD, DEBARKER WRAP-AROUND PAINTED | 098695-1 | 1 | |
| 35 | GROMMET, 20/13 RUBBER | 086188 | 1 | |
| 36 | WASHER, 10.5 FLAT ZINC | F81055-1 | 4 | |
| 37 | WASHER 8,2 SPLIT LOCK | F81053-17 | 1 | |
| 38 | BOLT, M8X12-8.8 HEX HEAD FULL THREAD ZIN | F81002-6 | 1 | |
| 39 | BOLT, M10X35-8.8 HEX HEAD FULL THREAD ZI | F81003-17 | 4 | |
| 40 | NUT, M20X1,5 THIN | F81037-7 | 2 | |
| 41 | PLUG, M10X1 DIN906 BN40 ZINC | F81015-3 | 2 | |
| 42 | GUARD, DEBARKER MOTOR | 101332-1 | 1 | |
| 43 | WASHER, 6.1 DIN 127 (A2-304) STAINLESS S | F81053-4 | 1 | |
| 44 | BOLT, M6X20-8.8 HEX HEAD FULL THREAD ZIN | F81001-2 | 4 | |
| 45 | BEARING, HK 1412 NEEDLE | 098595 | 2 | |
| - | COVER ASSEMBLY | 519064 | 1 | |
| 46 | PLATE, GUARD | 557349-1 | 1 | |
| 47 | WASHER, 8.4 FLAT ZINC | F81054-1 | 2 | |
| 48 | WASHER, 8.2 SPLIT LOCK ZINC | F81054-4 | 2 | |
| 49 | BOLT, M8X16-8.8-B HEX HEAD FULL THREAD Z | F81002-20 | 2 | |
| - | PIN, COMPLETE | 519066 | 1 | |
| 50 | PIN, LOC,KING | 519065-1 | 1 | |
| 51 | WASHER, 17 SPLIT LOCK ZINC | F81058-1 | 1 | |

| REF | DESCRIPTION (◆ indicates parts available in assemblies only) | PART # | QTY | |
|-----|--|----------|-----|--|
| 52 | WASHER, 16.3 SPLIT LOCK ZINC | F81058-2 | 1 | |
| 53 | NUT, M16-8 HEX ZINC | F81036-1 | 1 | |
| 54 | BUSHING, 9/13-40.5 | 519067-1 | 1 | |
| 55 | WASHER, 8.2 SPLIT LOCK ZINC | F81054-4 | 1 | |
| 56 | BOLT, M8X65 8.8 HEX HEAD FULL THREAD ZIN | F81002-9 | 1 | |

4.4 AC Debarker Blade Drive (096239)

096239_001
096239_MANUAL

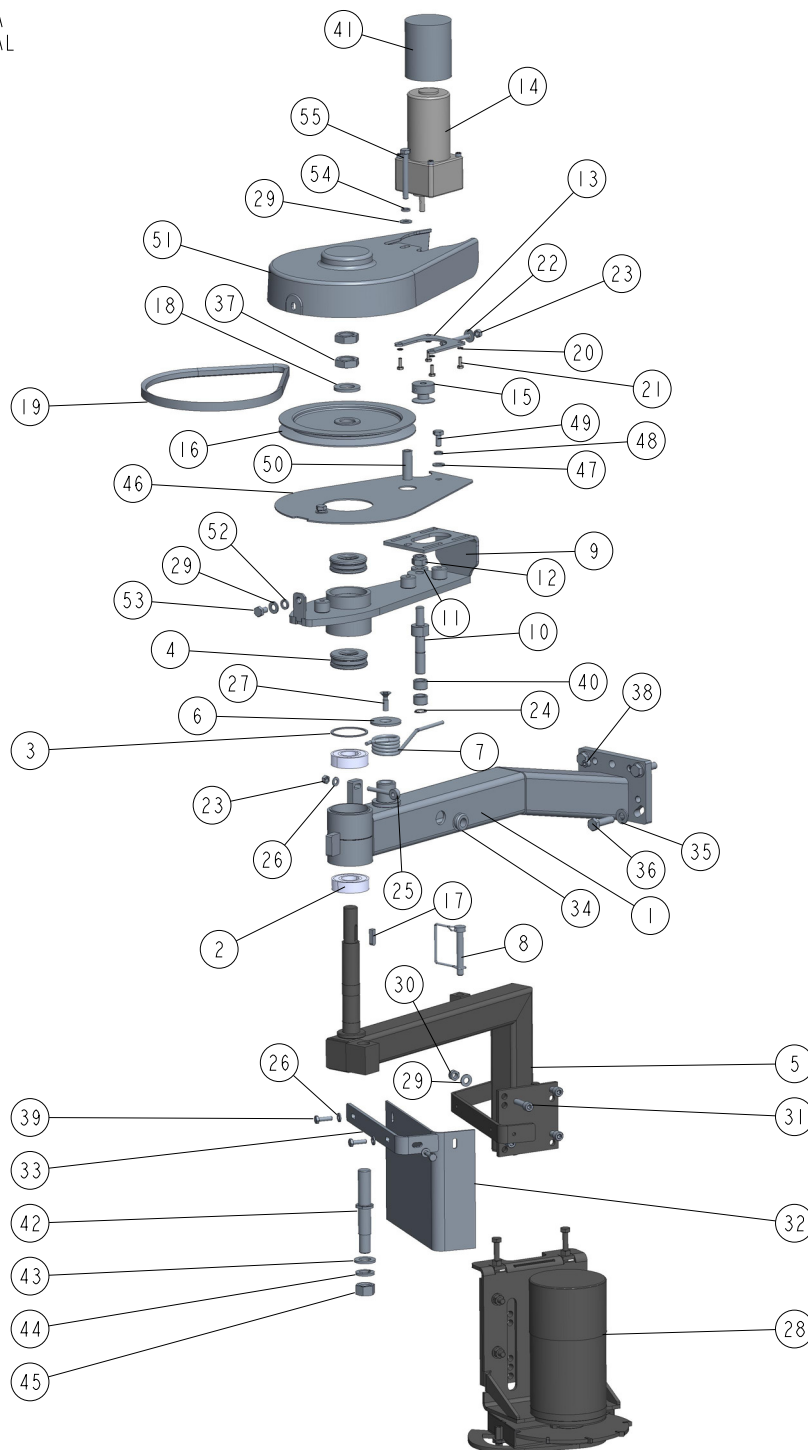


| REF. | DESCRIPTION (* indicates parts available in assemblies only) | PART # | QTY |
|------|--|--------|-----|
| - | DRIVE ASSEMBLY, AC DEBARKER BLADE | 096239 | 1 |

| REF. | DESCRIPTION (* indicates parts available in assemblies only) | PART # | QTY | |
|------|--|-----------|-----|--|
| - | DRIVE ASSEMBLY, AC DEBARKER BLADE | 096239-UL | 1 | |
| 1 | MOTOR, STKG71X-2C IMB5 AC DEBARKER | 096777 | 1 | |
| | MOTOR, STKG71X-2C IMB5 AC DEBARKER | 096777-UL | 1 | |
| 2 | GUARD, DEBARKER BLADE UPPER | 096244-1 | 1 | |
| 3 | BUSHING, CLAMPING | 096088 | 1 | |
| 4 | BLADE, 180 B-06.5/5.0 D-25.5 - COMPLETE | 083848-1 | 1 | |
| 5 | BUSHING, RETAINING | 096087 | 1 | |
| 6 | WASHER | 096238-1 | 1 | |
| 7 | GUARD, DEBARKER BLADE LOWER | 096245-1 | 1 | |
| 8 | BRACKET, DEBARKER MOTOR MOUNT | 096780-1 | 1 | |
| 9 | PLATE, DEBARKER MOTOR MOUNT | 089551 | 1 | |
| 10 | WASHER, 8.4 FLAT ZINC | F81054-1 | 12 | |
| 11 | NUT, M8-8-B HEX ZINC | F81032-1 | 6 | |
| 12 | BOLT, M8X35-8.8 HEX HEAD FULL THREAD ZINC | F81002-13 | 4 | |
| 13 | BOLT, M8X50-8.8 HEX HEAD FULL THREAD ZINC | F81002-19 | 2 | |
| 14 | WASHER, 6.5 SPECIAL FLAT ZINC | F81053-11 | 3 | |
| 15 | WASHER, Z 6.1 SPLIT LOCK ZINC | F81053-3 | 3 | |
| 16 | BOLT, M6X12 8.8 HEX HEAD FULL THREAD ZINC | F81001-7 | 3 | |
| 17 | WASHER, 8.2 SPLIT LOCK ZINC | F81054-4 | 4 | |
| 18 | BOLT, M5X16 8.8 HEX HEAD FULL THREAD ZINC | F81000-20 | 1 | |
| - | PIN ASSEMBLY, DEBARKER BLADE BRAKING | 501464 | 1 | |
| 19 | SCREW, M12X17 SET | 501462 | 1 | |
| 20 | SPRING, 0.5X5.5-7 | 501463 | 1 | |
| 21 | PIN, DEBARKER BLADE BRAKING | 501461 | 1 | |
| 22 | NUT, M12-04-A THIN | F81034-6 | 1 | |
| 23 | PIN, 5X16 ROLL ZINC | F81044-3 | 1 | |
| 24 | BOLT, M8X25-8.8-B HEX HEAD FULL THREAD ZINC | F81002-5 | 4 | |

4.5 Debarker DC (No. 518690)

518690_001_A
518690_MANUAL



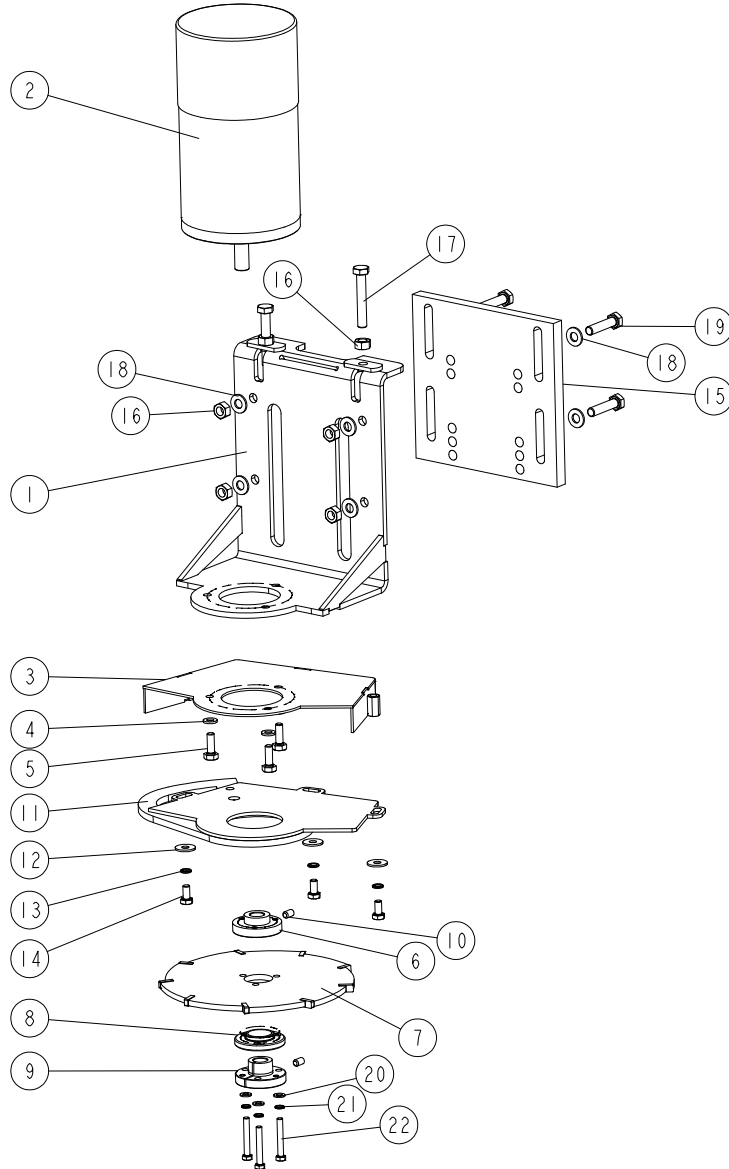
| REF | DESCRIPTION (◆ indicates parts available in assemblies only) | PART # | QTY |
|-----|--|----------|-----|
| - | DEBARKER LX100 DC | 518690 | 1 |
| 1 | ARM WELDMENT, DEBARKER SHORT (LT15AC) | 098635-1 | 1 |
| 2 | BEARING, 6205 2RS BALL | 091804 | 2 |
| 3 | RING, SPACER | 098491 | 1 |
| 4 | BEARING, 51305 AXIAL | 098597 | 2 |

| REF | DESCRIPTION (◆ indicates parts available in assemblies only) | PART # | QTY |
|-----|--|-----------|-----|
| 5 | ARM, DEBARKER | 098645-1 | 1 |
| 6 | PLATE, SPRING BUSHING | 098592-1 | 1 |
| 7 | SPRING, DEBARKER RETAINING | 098605 | 1 |
| 8 | PIN, 3/8X2 1/4 SNAP | 014151 | 1 |
| 9 | ARM, DEBARKER | 098626-1 | 1 |
| 10 | PIN, DEBARKER | 098593-1 | 1 |
| 11 | WASHER, 13 FLAT ZINC | F81056-1 | 1 |
| 12 | NUT, M12-8 HEX NYLON ZINC LOCK | F81034-2 | 1 |
| 13 | TENSIONER WELDMENT, DEBARKER IN/OUT MOTO | 089969-1 | 1 |
| 14 | MOTOREDUCER COMPACT | 557161 | 1 |
| 15 | SHEAVE, DEBARKER MOTOR ZINC-PLATED | 089954-1 | 1 |
| 16 | PULLEY, DEBARKER MOTOR | 098594-1 | 1 |
| 17 | KEY, 6X6X23 | 089191 | 1 |
| 18 | WASHER, 21 FLAT ZINC | F81059-2 | 1 |
| 19 | BELT, 4L280V | P04031 | 1 |
| 20 | WASHER, 5.1 SPLIT LOCK ZINC | F81052-2 | 4 |
| 21 | BOLT, #10-32X1/2 HH | F05004-60 | 4 |
| 22 | WASHER, 6.5 SPECIAL FLAT ZINC | F81053-11 | 1 |
| 23 | NUT, M6 8 HEX ZINC | F81031-1 | 2 |
| 24 | RING, Z14 OUTSIDE RETAINING | F81090-31 | 1 |
| 25 | BOLT, M6 TURNED EYE | 098596 | 1 |
| 26 | WASHER, 6.4 FLAT ZINC | F81053-1 | 4 |
| 27 | SCREW, M8X25-5.8 CROSS RECESSED COUNTERS | F81002-51 | 1 |
| 28 | DC DEBARKER BLADE DRIVE ASSEMBLY See Section 4.6 | 097497 | 1 |
| 29 | WASHER, 8.4 FLAT ZINC | F81054-1 | 6 |
| 30 | NUT, M8-8-B HEX NYLON ZINC LOCK | F81032-2 | 4 |
| 31 | BOLT, M8 X 30-8.8 SOCKET HEAD | F81002-31 | 4 |
| 32 | GUARD, DEBARKER FLEXIBLE DEBRIS | 097020 | 1 |
| 33 | GUARD, DEBARKER WRAP-AROUND PAINTED | 098695-1 | 1 |
| 34 | GROMMET, 20/13 RUBBER | 086188 | 1 |
| 35 | WASHER, 10.5 FLAT ZINC | F81055-1 | 4 |
| 36 | BOLT, M10X35-8.8 HEX HEAD FULL THREAD ZI | F81003-17 | 4 |
| 37 | NUT, M20X1,5 THIN | F81037-7 | 2 |
| 38 | PLUG, M10X1 DIN906 BN40 ZINC | F81015-3 | 2 |
| 39 | BOLT, M6X20-8.8 HEX HEAD FULL THREAD ZIN | F81001-2 | 3 |
| 40 | BEARING, HK 1412 NEEDLE | 098595 | 2 |
| 41 | CAP, 2,5" IDX2" RUBBER | 023720 | 1 |
| - | PIN, COMPLETE | 519066 | 1 |
| 42 | PIN, LOC,KING | 519065-1 | 1 |
| 43 | WASHER, 17 SPLIT LOCK ZINC | F81058-1 | 1 |
| 44 | WASHER, 16.3 SPLIT LOCK ZINC | F81058-2 | 1 |
| 45 | NUT, M16-8 HEX ZINC | F81036-1 | 1 |
| - | COVER ASSEMBLY | 519064 | 1 |
| 46 | PLATE, GUARD | 557349-1 | 1 |
| 47 | WASHER, 8.4 FLAT ZINC | F81054-1 | 2 |
| 48 | WASHER, 8.2 SPLIT LOCK ZINC | F81054-4 | 2 |
| 49 | BOLT, M8X16-8.8-B HEX HEAD FULL THREAD Z | F81002-20 | 2 |

| REF | DESCRIPTION (◆ indicates parts available in assemblies only) | PART # | QTY | |
|-----|--|-----------|-----|--|
| 50 | BUSHING, 9/13-40.5 | 519067-1 | 1 | |
| 51 | GUARD, DEBARKER BELT | 557350 | 1 | |
| 52 | WASHER 8,2 SPLIT LOCK | F81053-17 | 1 | |
| 53 | BOLT, M8X12-8.8 HEX HEAD FULL THREAD ZIN | F81002-6 | 1 | |
| 54 | WASHER, 8.2 SPLIT LOCK ZINC | F81054-4 | 1 | |
| 55 | BOLT, M8X65 8.8 HEX HEAD FULL THREAD ZIN | F81002-9 | 1 | |

4.6 Debarker Blade Drive Assembly (No. 097497)

097497_001
097497_MANUAL

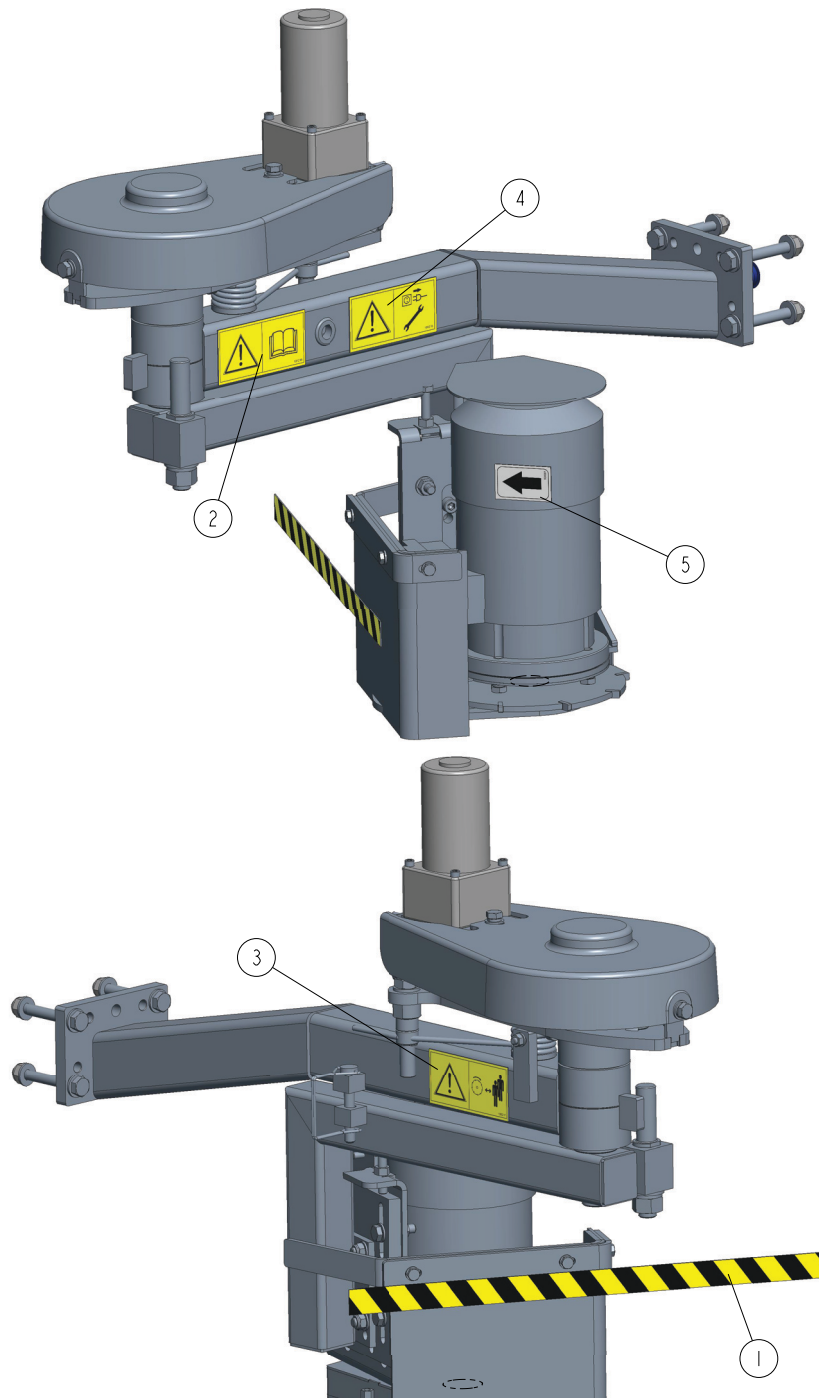


| REF. | DESCRIPTION (* indicates parts available in assemblies only) | PART # | QTY |
|------|--|-----------|-----|
| - | MOTOR ASSEMBLY, DEBARKER BLADE | 097497 | 1 |
| 1 | BRACKET, DC DEBARKER MOTOR | 097493-1 | 1 |
| 2 | MOTOR, 0.5HP/1550 R.P.M. 12V DC | 006747 | 1 |
| 3 | GUARD, DEBARKER BLADE UPPER | 097499-1 | 1 |
| 4 | WASHER, 6.4 FLAT ZINC | F81053-1 | 3 |
| 5 | BOLT, 1/4-20X3/4 FULL THREAD HEX HEAD CAP | F05005-1 | 3 |
| 6 | BUSHING, CLAMPING | 097496 | 1 |
| 7 | BLADE, 180 B-06.5/5.0 D-25.5 - COMPLETE | 083848-1 | 1 |
| 8 | BUSHING, MOUNTING | 097495 | 1 |
| 9 | BUSHING, TAPER | 097494 | 1 |
| 10 | SCREW, M6X10-45H HEX SOCKET SET FLAT POINT ZINC | F81001-26 | 2 |

| REF. | DESCRIPTION (* indicates parts available in assemblies only) | PART # | QTY | |
|------|--|-----------|-----|--|
| 11 | GUARD, DEBARKER BLADE LOWER | 096245-1 | 1 | |
| 12 | WASHER, 6.5 SPECIAL FLAT ZINC | F81053-11 | 3 | |
| 13 | WASHER, Z 6.1 SPLIT LOCK ZINC | F81053-3 | 3 | |
| 14 | BOLT, M6X12 8.8 HEX HEAD FULL THREAD ZINC | F81001-7 | 3 | |
| 15 | PLATE, DEBARKER MOTOR MOUNT | 089551 | 1 | |
| 16 | NUT, M8-8-B HEX ZINC | F81032-1 | 6 | |
| 17 | BOLT, M8X50 -8.8 HEX HEAD FULL THREAD ZINC | F81002-19 | 2 | |
| 18 | WASHER, 8.4 FLAT ZINC | F81054-1 | 8 | |
| 19 | BOLT, M8X35-8.8 HEX HEAD FULL THREAD ZINC | F81002-13 | 4 | |
| 20 | WASHER, 5.3 FLAT ZINC | F81052-1 | 3 | |
| 21 | WASHER, 5.1 SPLIT LOCK | F81052-2 | 3 | |
| 22 | BOLT, M5X35 8.8 HEX HEAD FULL THREAD ZINC | F81000-10 | 3 | |

4.7 Debarker Decal Kit. 098699_538001

098699_002
098699



| REF | DESCRIPTION (◆ indicates parts available in assemblies only) | PART # | QTY |
|-----|--|--------|-----|
| - | DEBARKER DECAL KIT | 538001 | 1 |
| 1 | DECAL, LT15 DEBARKER WARNING STRIPE | 098175 | 1 |
| 2 | DECAL, READ OPERATOR'S MANUAL - HORIZONTAL | 101216 | 1 |
| 3 | DECAL, KEEP AWAY FROM DEBARKER BLADE - HORIZONTAL | 101217 | 1 |
| 4 | DECAL, DISCONNECT POWER SUPPLY BEFORE SERVICING - HORIZONTAL | 101218 | 1 |
| 5 | DECAL, MOTOR ROTATION DIRECTION | S20097 | 1 |