

G14 Engine

Safety, Operation, Maintenance & Parts Manual

LT15

rev. A2.06



Safety is our #1 concern! Read and understand all safety information and instructions before operating, setting up or maintaining this machine.

Form #700

**This is the original language
for the manual.**

SECTION 1	SAFETY & GENERAL INFORMATION	1-1
1.1	Refueling	1-1
1.2	Engine Operation.....	1-1
1.3	General Information	1-3
1.4	Engine Specifications	1-4
SECTION 2	OPERATION	2-1
2.1	Starting The Engine.....	2-1
SECTION 3	MAINTENANCE	3-1
3.1	Air Filter & Pre-Cleaner.....	3-1
3.2	Engine Oil & Filter.....	3-1
3.3	Air Cooling System	3-1
3.4	Fuel Filter	3-2
3.5	Miscellaneous Maintenance	3-2
3.6	Drive Belt Adjustment.....	3-2
3.7	RPM Adjustments	3-3
SECTION 4	REPLACEMENT PARTS	4-1
4.1	How To Use The Parts List	4-1
4.2	Sample Assembly	4-1
4.3	G14 Engine Kit	4-2
4.4	Operator's Handle Assembly - CE Version	4-4
4.5	Operator's Handle Assembly	4-5
4.6	Belt Tensioner/Brake Assembly	4-6
4.7	Tension Roller w/Brake (No. 097446)	4-7
4.8	Tension Roller	4-8
4.9	Tensioner and Brake Handle (No. 097436)	4-9

SECTION 1 SAFETY & GENERAL INFORMATION



IMPORTANT! This manual is provided as a supplement to the equipment manufacturer's manuals. This manual takes into account the specific use of engines on the Wood-Mizer sawmill. Only safety, maintenance, and operating procedures that are not provided by the manufacturer are supplied in this manual. Refer to the manufacturer's manual before attempting to operate this equipment.



This symbol calls your attention to instructions concerning your personal safety. Be sure to observe and follow these instructions. This symbol accompanies a signal word. The word **DANGER** indicates an imminently hazardous situation which, if not avoided, will result in death or serious injury. **WARNING** suggests a potentially hazardous situation which, if not avoided, could result in death or serious injury. **CAUTION** refers to potentially hazardous situations which, if not avoided, may result in minor or moderate injury to persons or equipment. Read all safety instructions before operating this equipment and observe all safety warnings!

1.1 Refueling



WARNING! Store gasoline away from sawdust and other flammable materials. Failure to do so may result in serious injury.

1.2 Engine Operation



DANGER! Operate your engine/machine only in well ventilated areas. The exhaust gases of your engine can cause nausea, delirium and potentially death unless adequate ventilation is present.

DANGER! Never operate an engine with a fuel or oil leak. The leaking fuel or oil could potentially come in contact with hot surfaces and ignite into flames.

DANGER! Engine components can become very hot during operation. Avoid contact with any part of a hot engine. The exhaust components of your engine are especially hot during and following operation. Contact with hot engine components can cause serious burns. Therefore, never touch or perform service functions on a hot engine. Allow the engine to cool sufficiently before beginning any service function.

DANGER! Always be aware of and take proper protective measures against rotating shafts, pulleys, fans, etc. Always stay a safe distance from rotating members and make sure that loose clothing or long hair does not engage rotating members resulting in possible injury.



DANGER! Always be sure the blade is disengaged and all persons are out of the path of the blade before starting the engine or motor. Failure to do so will result in serious injury.



WARNING! Do not for any reason adjust the engine drive belts or belt support bracket with the engine running. Doing so may result in serious injury.

WARNING! Do not operate engine without proper and operational spark arrester/muffler. Sparks emitted from the engine exhaust could ignite surrounding materials, causing serious injury or death.

WARNING! Remove the blade before performing any engine service. Failure to do so may result in serious injury.

WARNING! Always wear proper and necessary safety equipment when performing service functions. Proper safety equipment includes eye protection, breathing protection, hand protection and foot protection.



IMPORTANT! Always dispose of coolant, oil, fuel, oil filters and fuel filters in a responsible manner and in conformance with local, state and federal regulations.



WARNING! Always disconnect the machine battery cables before performing service functions.



DANGER! Batteries expel explosive gases. Keep sparks, flames, burning cigarettes, or other ignition sources away at all times.



IMPORTANT! Carburetor icing:


NOTE: Running engine with cover positioned for cold weather operation in normal conditions can damage engine.

Carburetor icing can take place when certain combinations of temperature and humidity exist. Result of carburetor icing is rough running at idle or low speed as well as black or white smoke. To reduce likelihood of carburetor icing, air cleaner cover can be rotated to draw warmer air from muffler side. For cold weather operation, position air cleaner cover with snowflake decal out.

For normal operation, position air cleaner cover with sun decal out.¹

1.Retrieved from the equipment manufacturer's manual.

1.3 General Information

 **IMPORTANT!** Read the engine manual for instructions and safety precautions before operating the engine.

See Figure 1-1. The main components of the G14 engine are shown below.

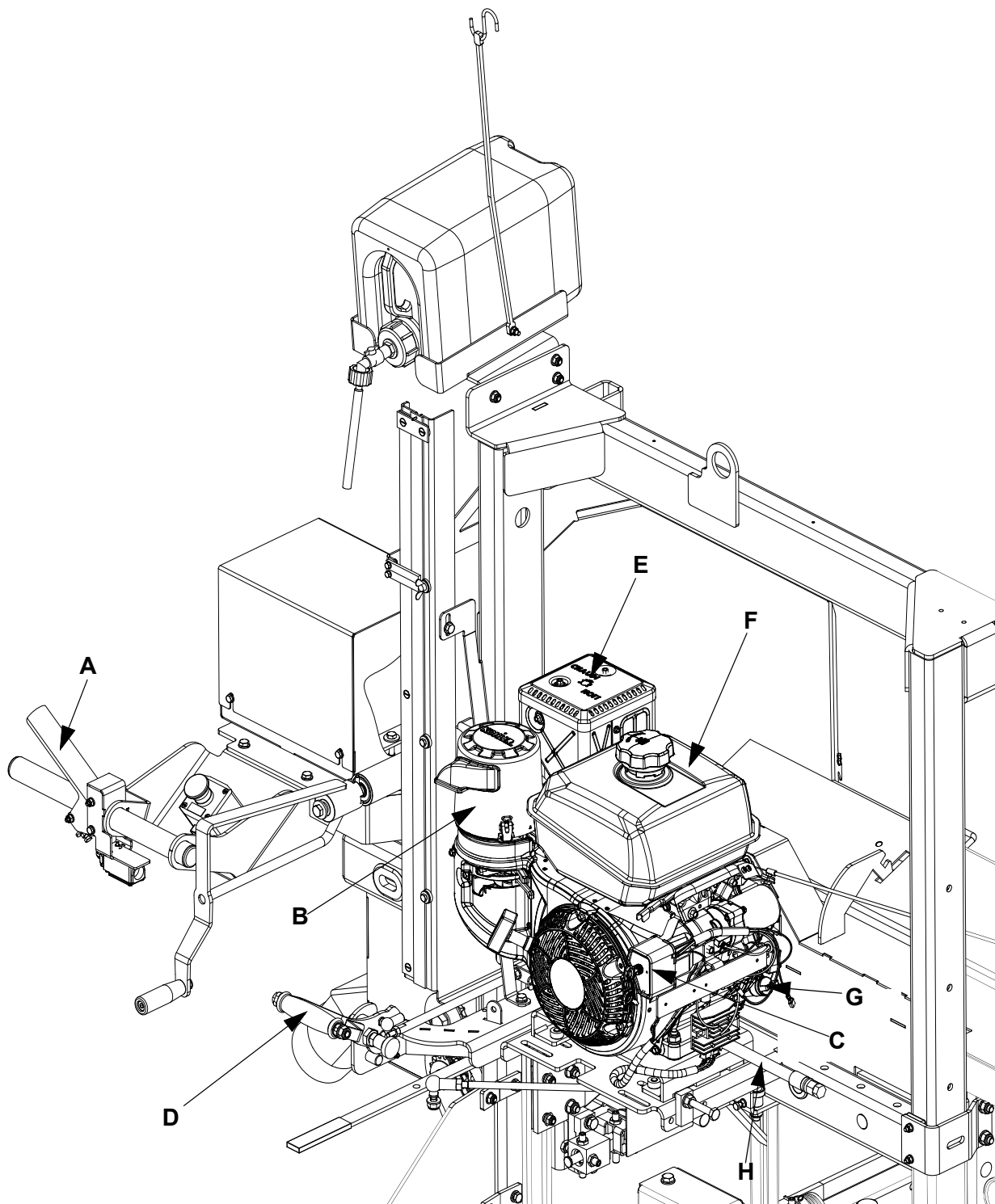


FIG. 1-1

- A - Safety Handle,
- B - Air Filter,
- C - Ignition Switch with Key,
- D - Clutch/Brake Handle,
- E - Muffler,
- F - Fuel Tank,
- G - Oil Level Stick,
- H - Oil Drain Hose.

1.4 Engine Specifications

G14 Kohler	
Type	Air cooled, 4-cycle, gasoline, OHV, Aluminum Block
Number of cylinders	1
Bore and stroke mm	89 x 69
Total displacement cm³	429
Power H.P. (SAEJ 1349) [HP/min⁻¹ (rpm)]	14/3600
Peak Torque (Nm)	22,7/3600
Dry Weight kg [lbs.]	35
Oil Capacity (w/filter)	1.3L

SECTION 2 OPERATION

2.1 Starting The Engine

Engine Start



WARNING! Do not start the engine when the clutch/brake lever is in the ENGAGED (forward) position. Always be sure that the blade is disengaged and all persons are away from the sawmill before starting the engine.

1. Set the clutch/brake lever in the DISENGAGE (back) position.

See Figure 2-1.

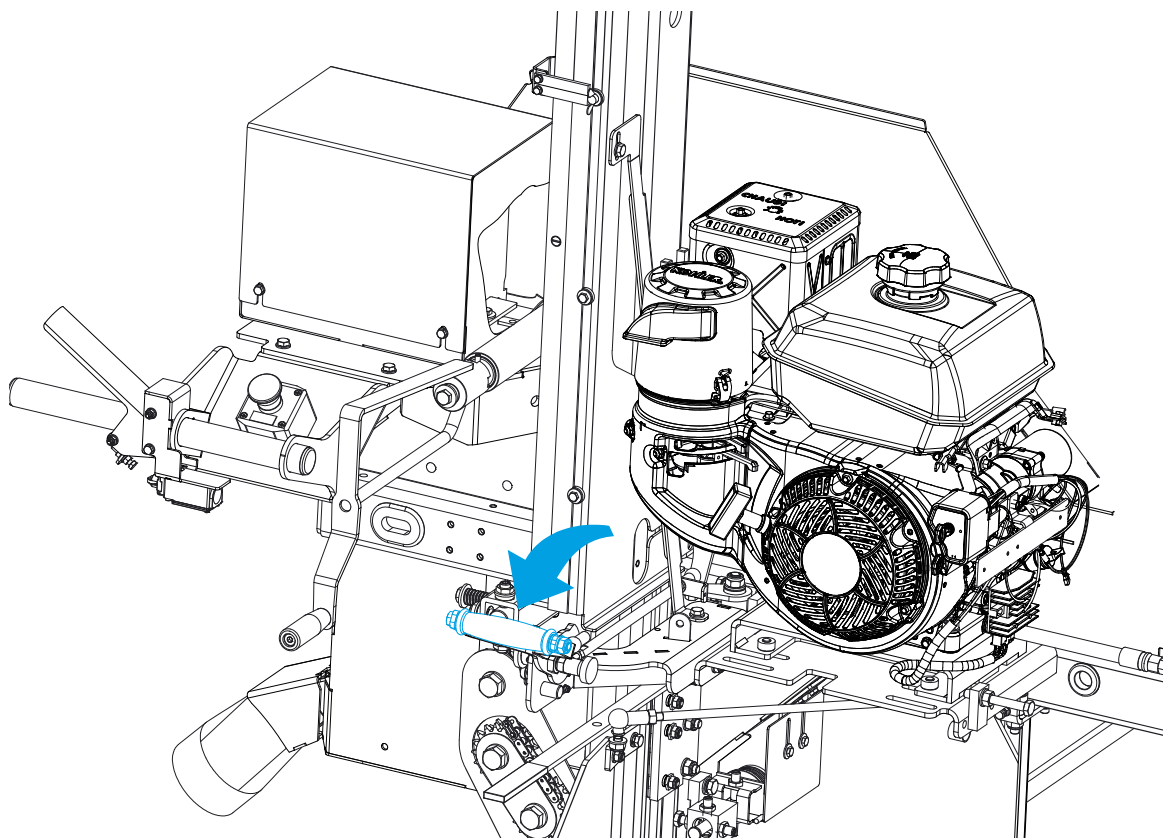


FIG. 2-1

2. Open the fuel supply valve and turn on the ignition by moving the ignition/fuel lever to the “ON” position.

See Figure 2-2.

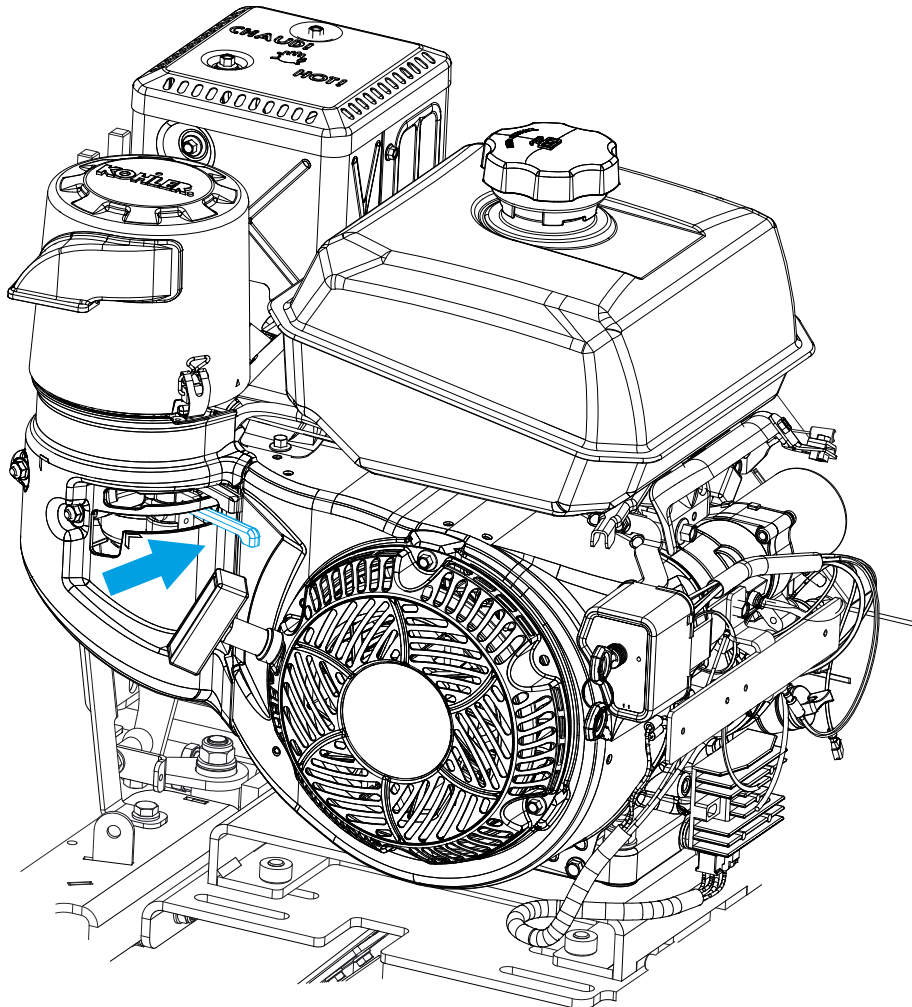


FIG. 2-2

3. Set the choke lever (A) and the throttle lever (B) as follows:

Cold engine: Close the engine choke by moving the choke lever to the “ON” position. Set the throttle lever midway between the SLOW and FAST positions.

Warm engine: Set the throttle lever midway between the SLOW and FAST positions. A warm engine does not usually require turning the choke on.

See Figure 2-3.

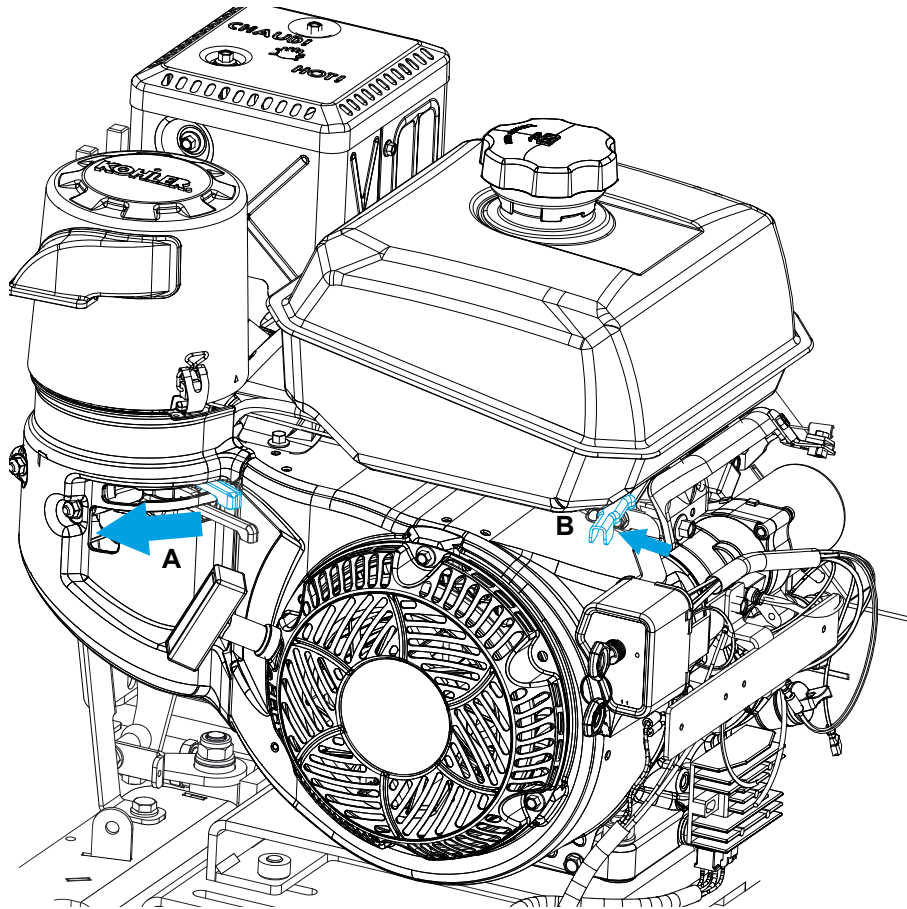


FIG. 2-3

4. Turn the key to the START position.

See Figure 2-4.

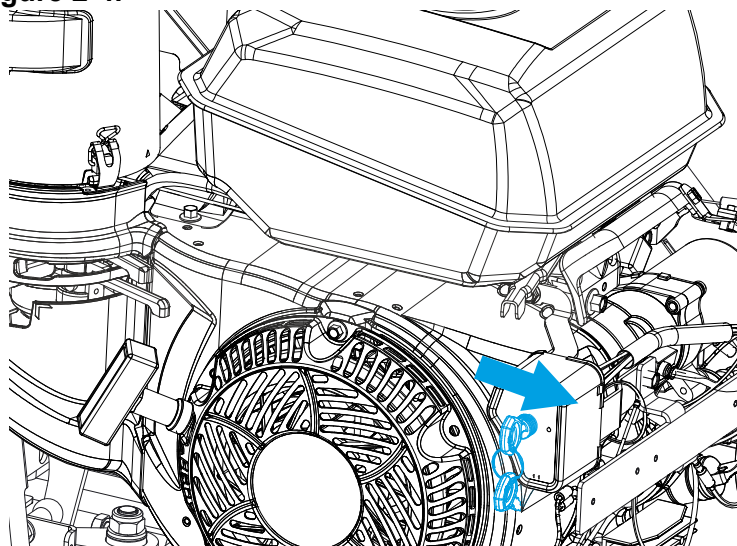


FIG. 2-4

5. When the engine starts, slowly open the choke all the way by moving the choke lever to the “OFF” position.

See Figure 2-5.

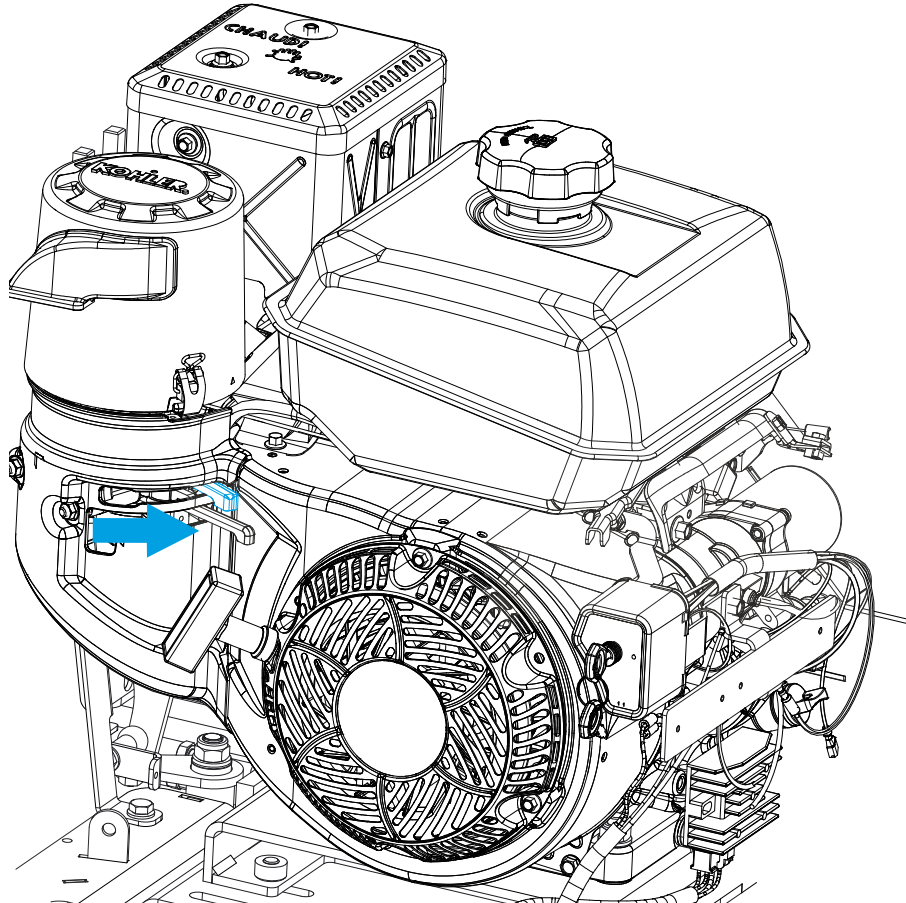


FIG. 2-5

6. To engage the blade, set the throttle lever to about 1/3 of its movement and push the clutch/brake lever forward to the ENGAGED (forward) position. Then set the throttle lever to the FAST position.

When the blade drive is engaged, press and hold the safety lever (A). Releasing the safety lever when the blade drive is engaged will result in the engine shutting down.

See Figure 2-6.

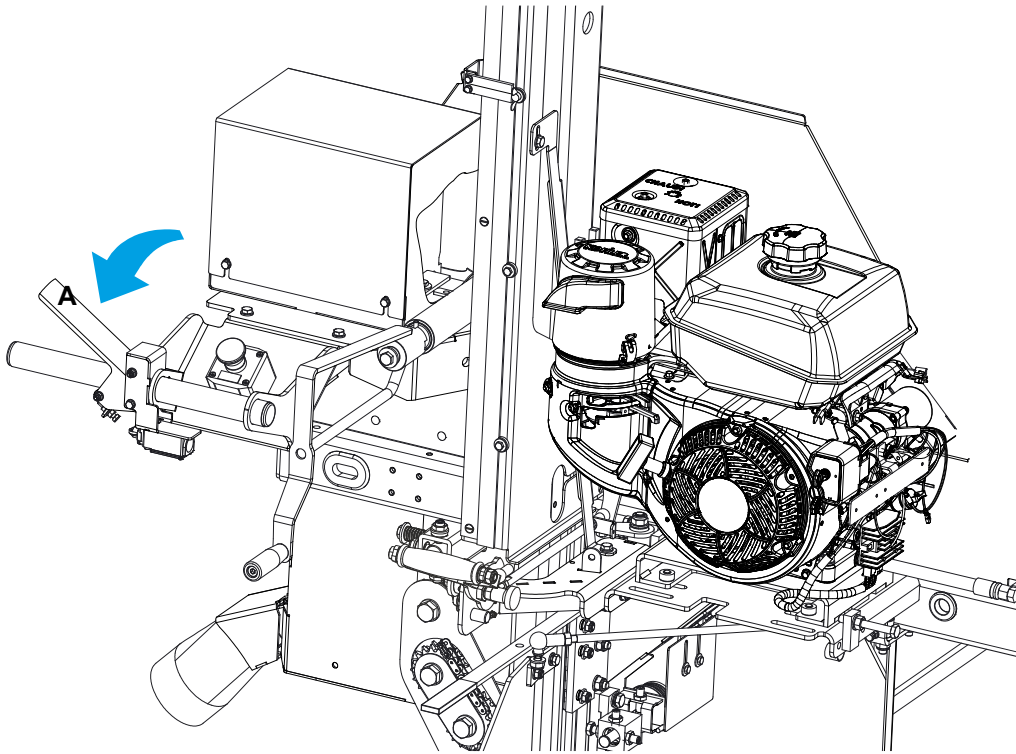


FIG. 2-6



CAUTION! If the starter is on for too long, the battery may go flat. Always keep the key in the “ON” position while the engine is running.

Let the engine idle at low rpm for about 3 minutes to warm up before starting to cut.

Engine Shutoff

1. Set the throttle lever to idling.
2. Set the clutch/brake lever in the DISENGAGE (back) position to stop the blade.
3. Let the engine idle for 15 seconds without load and then stop the engine by moving the ignition lever to the “OFF” position.



CAUTION! Before stopping the engine, reduce the load slowly. Do not stop the engine suddenly as it may result in an excessive temperature rise.

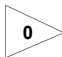
SECTION 3 MAINTENANCE



IMPORTANT! This manual only provides information about additional procedures or procedures to be performed at different time intervals than found in the engine manufacturer's manuals. Refer to the [manufacturer's manual](#) for complete maintenance instructions.




WARNING! Remove the blade before performing any engine service. Failure to do so may result in serious injury.

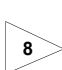
 **This symbol** identifies the interval (hours of operation) at which each maintenance procedure should be performed. "AR" signifies maintenance procedures which should be performed as required.


3.1 Air Filter & Pre-Cleaner



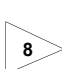
WARNING! Always wear proper and necessary safety equipment when performing service functions. Proper safety equipment includes eye protection, breathing protection, hand protection and foot protection.


 Service the pre-cleaner every four hours of operation. Service by gently shaking excess sawdust and debris from the foam element. Do not let any impurities to fall into intake manifold.

 Clean the pre-cleaner (foam element) every eight hours of operation. See the engine manual for further instructions. Replace if necessary.

 Replace the air filter (paper element) every 200 hours of operation.

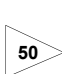
3.2 Engine Oil & Filter

 Check the oil level every 8 hours of operation. Add oil as necessary. See the engine manual for oil viscosity and grade recommendations.

 **IMPORTANT!** During initial break-in, change the oil and the oil filter after the first 50 hours and every 150-200 hours thereafter. Continue to check oil level every 8 hours of operation and refill as necessary.

NOTE: Engine at factory is filled with 10W/40 Shell Helix HX7, semi-synthetic oil.

3.3 Air Cooling System

 Proper cooling is essential. Brush off or blow off sawdust and debris every 50 hours of operation. Clean the screens, cooling fins, cooling fan and other external surfaces of the engine. Remove any dust, dirt or oil. See engine manual for further instructions.

3.4 Fuel Filter

100

Replace the fuel filter every 100 hours of operation.

3.5 Miscellaneous Maintenance

100

Inspect the spark plugs every 100 hour of operation. Remove any deposits and adjust gap if necessary. See the engine manual for further information.

3.6 Drive Belt Adjustment



WARNING! Do not for any reason adjust the engine drive belts or belt support bracket with the engine running. Doing so may result in serious injury.

50

Check the drive belt tension after the first 20 hours, and every 50 hours thereafter.

The drive belt tension should be adjusted with the tensioner handle engaged (in the forward position), by moving the engine assembly on the engine mount plate. To make the adjustment, perform the following steps:

1. Loosen the engine mounting bolts and the jam nuts.
2. Using the adjustment bolts, shown in the figure below, adjust the belt tension to approximately 11 mm deflection with 7.2 kG of deflection force.
3. Tighten the jam nuts and the engine mounting bolts.

See Figure 3-1.

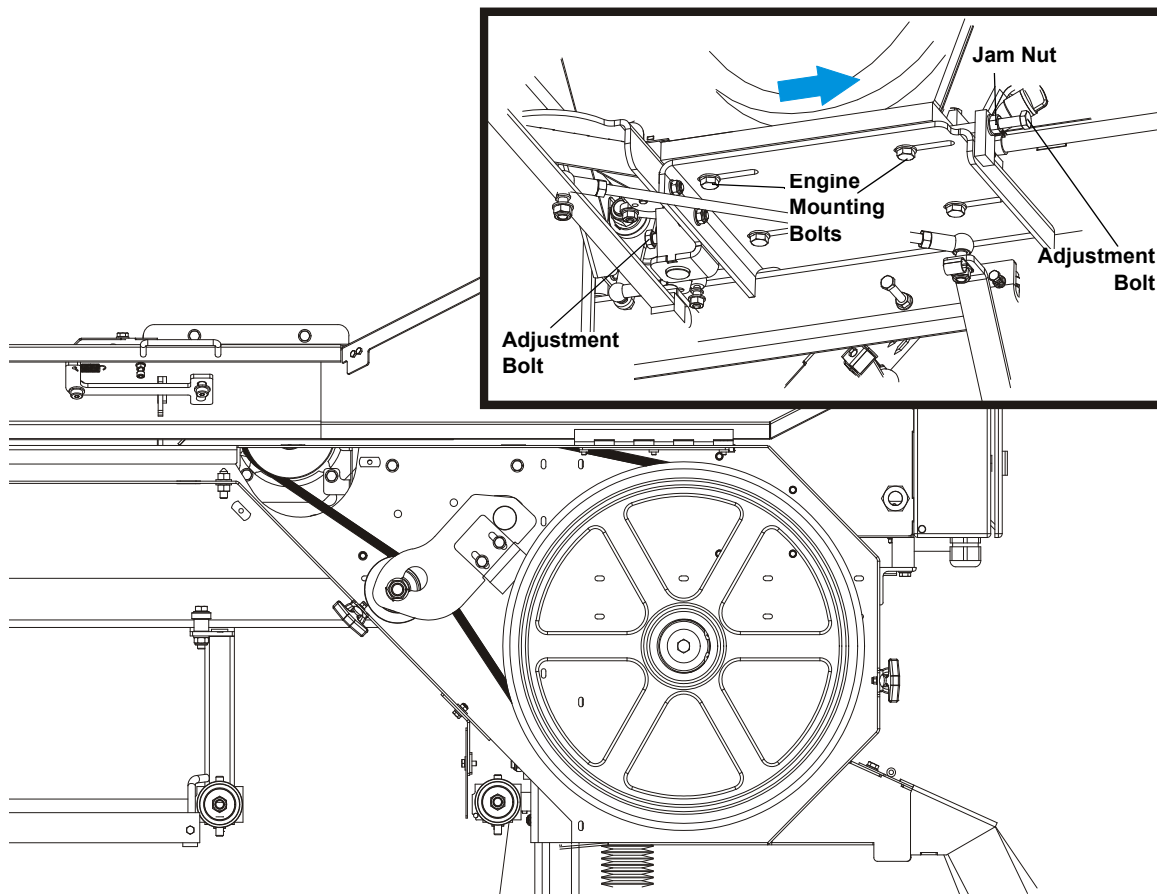


FIG. 3-1

Periodically check all belts for wear. Replace any damaged or worn belts as needed.

AR
3.7 RPM Adjustments

The engine RPM is factory set and do not need to be adjusted. If any problems with engine RPM are being observed, contact Wood-Mizer Customer Service.

SECTION 4 REPLACEMENT PARTS

4.1 How To Use The Parts List

- Use the table of contents or the index to locate the assembly that contains the part you need.
- Go to the appropriate section and locate the part in the illustration.
- Use the number pointing to the part to locate the correct part number and description in the table.
- Parts shown indented under another part are included with that part.
- Parts marked with a diamond (◆) are only available in the assembly listed above the part.

See the sample table below. Sample Part #A01111 includes part F02222-2 and subassembly A03333. Subassembly A03333 includes part S04444-4 and subassembly K05555. The diamond (◆) indicates that S04444-4 is not available except in subassembly A03333. Subassembly K05555 includes parts M06666 and F07777-77. The diamond (◆) indicates M06666 is not available except in subassembly K05555.

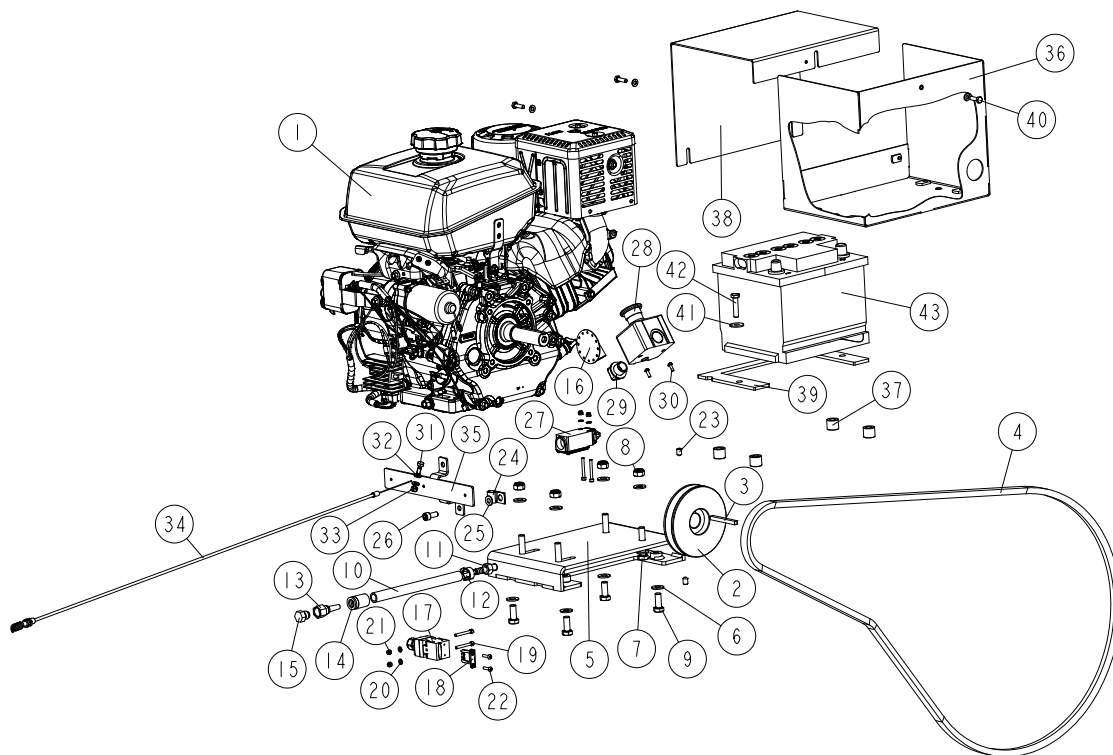
4.2 Sample Assembly			
REF.	DESCRIPTION (◆ Indicates Parts Available In Assemblies Only)	PART #	QTY
	SAMPLE ASSEMBLY, COMPLETE (INCLUDES ALL INDENTED PARTS BELOW)	A01111	1
1	Sample Part	F02222-22	1
	Sample Subassembly (Includes All Indented Parts Below)	A03333	1
2	Sample Part (◆ Indicates Part Is Only Available With A03333)	S04444-41	1 ◆
	Sample Subassembly (Includes All Indented Parts Below)	K05555	1
3	Sample Part (◆ Indicates Part Is Only Available With K05555)	M06666	2 ◆
4	Sample Part	F07777-77	1

To Order Parts:

- From Europe call our European Headquarters and Manufacturing Facility in Kolo, Poland at **+48-63-2626000**. From the continental U.S., call **1-800-448-7881** to order parts. Have your customer number, vehicle identification number, and part numbers ready when you call.
- From other international locations, contact the Wood-Mizer distributor in your area for parts.

4.3 G14 Engine Kit

580038_001
580038_MANUAL



REF	DESCRIPTION (* indicates parts available in assemblies only)	PART #	QTY
-	G14S ENGINE KIT (CE VERSION) WITH ELECTRIC STARTER	580038	1
-	G14 ENGINE KIT (NON CE VERSION) WITH ELECTRIC STARTER	580038-3	1
1	ENGINE, G14 PA-CH440-3275 CH440 E16	580027	1
2	PULLEY, D10,G13,G15 - ENGINE ZINC	096447-1	1
3	KEY, 6,35 X 6,35 X 63,5, PARALLEL ZINC	095334	1
4	V-BELT, 17BX2250 BX87 2210LI-GOOD-Y	097448	1
-	PLATE, ENGINE MOUNT - COMPLETE	520535	1
5	PLATE WELDMENT, G14 ENGINE MOUNT	520532-1	1
6	WASHER 10,5 ZC DIN 126 ISO 7091	F81055-1	12
7	BOLT, M10X50MM,HEX HEAD FULL THREAD ZINC	F81003-4	4
8	NUT, M10-8-B HEX NYLON ZINC LOCK	F81033-1	4
9	BOLT, M10X25 8.8 HEX HEAD FULL THREAD ZI	F81003-11	4
-	HOSE, G14 OIL DRAIN	524889	1
10	HOSE, OIL DRAIN - COMPLETE	091756	1
11	FITTING	524888	1
12	CLAMP, 12-20	F81080-3	1
13	FITTING, JIC 9/16-18 HYDRAULIC	085900	1
14	CRIMP SOCKET 3/8" HYDRAULIC HOSE	085901	1

4 REPLACEMENT PARTS

G14 Engine Kit

REF	DESCRIPTION (* indicates parts available in assemblies only)	PART #	QTY	
15	CAP, 9/16"	095491	1	
16	DEFLECTOR, KOHLER14HP EXHAUST	110187	1	
17	SWITCH, AZ17-11ZRK SAFETY ¹	094232	1	
18	KEY, AZ17/170-B5 SAFETY SWITCH ²	094422	1	
19	SCREW, M4X35 8.8 HEX SOCKET HEAD CAP ZIN ³	F81011-34	4	
20	WASHER, 4.3 FLAT ZINC ⁴	F81051-2	4	
21	NUT, M4-8 HEX NYLON ZINC LOCK ⁵	F81029-1	4	
22	SCREW, M4X16 5.8-B CROSS RECESSED PAN HEAD ⁶	F81011-42	2	
23	SCREW, M8X12-45H FE/ZN DIN914 HEX SOCKET	F81002-105	2	
24	CLAMP, 1/2" EMT COATED	P07584	1	
25	WASHER, 8.4 FLAT ZINC	F81054-1	1	
26	SCREW, M8X20-8.8 HEX SOCKET HEAD CAP ZINC	F81002-30	1	
27	LIMIT SWITCH GLCB01C - D25 ⁷	100910	1	
28	BUTTON, XALK 178 EMERGENCY STOP ⁸	E22703-P	1	
29	GLAND, QVT20 M20 GREY SPLIT CABLE ⁹	F81096-20	1	
30	SCREW, M4X12 5.8-B CROSS RECESSED PAN HEAD ¹⁰	F81011-43	2	
31	BOLT, THROTTLE CABLE CLAMP ZINC-PLATED	088120-1	1	
32	WASHER, 6.4 FLAT ZINC	F81053-1	5	
33	NUT, M6-8-B NYLON HEX ZINC LOCK	F81031-2	1	
34	CABLE, G14 THROTTLE	550812	1	
35	BRACKET, WELDMENT	557184-1	1	
36	BOX WELDMENT, BATTERY	091377-1	1	
37	BUSHING, 11/20-17 ZINC-PLATED	094255-1	4	
38	LID, BATTERY BOX PTD	091382-1	1	
39	BRACKET, BATTERY HOLD-DOWN PTD	091381-1	1	
40	BOLT, M6X20 8.8 HEX HEAD FULL THREAD ZINC	F81001-2	3	
41	WASHER, 8.5 SPECIAL FLAT ZINC	F81054-11	2	
42	BOLT, M8X35-8.8 HEX HEAD FULL THREAD ZINC	F81002-13	2	
43	BATTERY, 36AH BANNER 53646	091775	1	

¹ not included in 580038-3

² not included in 580038-3

³ not included in 580038-3

⁴ not included in 580038-3

⁵ not included in 580038-3

⁶ not included in 580038-3

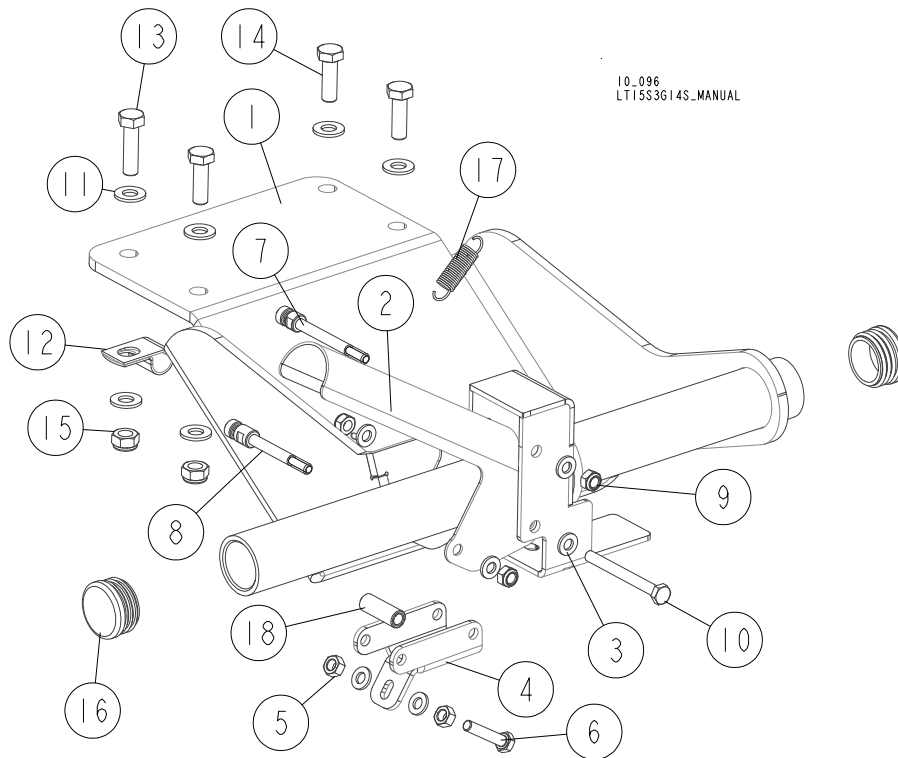
⁷ not included in 580038-3

⁸ not included in 580038-3

⁹ not included in 580038-3

¹⁰ not included in 580038-3

4.4 Operator's Handle Assembly - CE Version



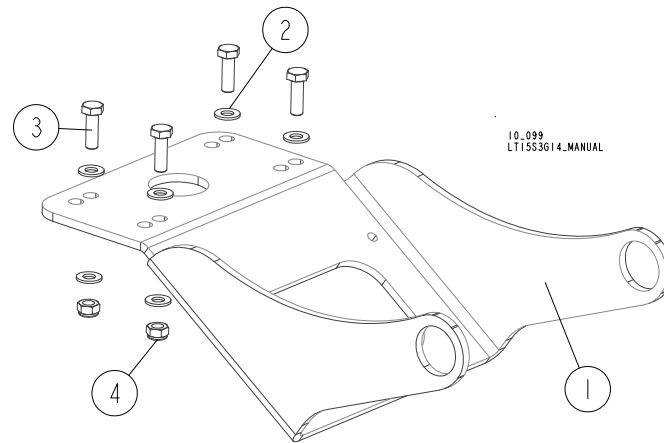
REF.	DESCRIPTION (◆ indicates parts available in assemblies only)	PART #	QTY
-	HANDLE ASSEMBLY, OPERATOR	526510	1
1	PLATE WELDMENT	526511-1	1
2	HANDLE	526357-1	1
3	WASHER, 6.4 FLAT ZINC	F81053-1	6
4	BRACKET	516201-1	1
5	NUT, M6 8 HEX ZINC	F81031-1	2
6	BOLT, M6X30-8.8 HEX HEAD FULL THREAD ZINC	F81001-8	1
7	ROD, UPPER	526508-1	1
8	ROD, LOWER	526509-1	1
9	NUT, M6-8-B HEX NYLON ZINC LOCK	F81031-2	3
10	BOLT, M6X60-8.8 HEX HEAD FULL THREAD ZINC	F81001-9	1
11	WASHER, 8.4 FLAT ZINC	F81054-1	8
12	CLAMP, 1/2EMT COATED	P07584	1
13	BOLT, M8X30-5.8-B HEX HEAD FULL THREAD ZINC	F81002-2	1
14	BOLT, M8X25-8.8-B HEX HEAD FULL THREAD ZINC	F81002-5	3
15	NUT, M8-8-B HEX NYLON ZINC LOCK	F81032-2	4
16	CAP, SR1530 (HOLE 30) TUBE	517616	2
17	SPRING, 1.6X12X38 EXTENSION	092208	1
18	BUSHING, 6.2/10-28	526351-1	1

4

REPLACEMENT PARTS

Operator's Handle Assembly

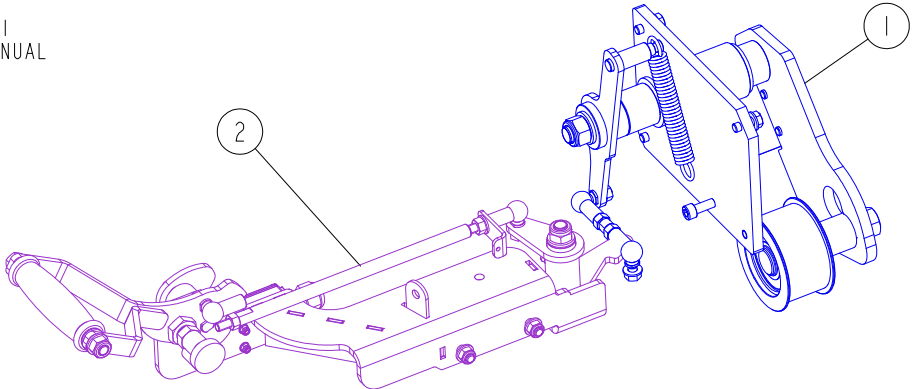
4.5 Operator's Handle Assembly



REF.	DESCRIPTION (◆ indicates parts available in assemblies only)	PART #	QTY	
1	HANDLE WELDMENT, LT10	513302-1	1	
2	WASHER, 8.4 FLAT ZINC	F81054-1	8	
3	BOLT, M8X25-8.8-B HEX HEAD FULL THREAD ZINC	F81002-5	4	
4	NUT, M8-8-B HEX NYLON ZINC LOCK	F81032-2	4	

4.6 Belt Tensioner/Brake Assembly

096448_001
096448_MANUAL

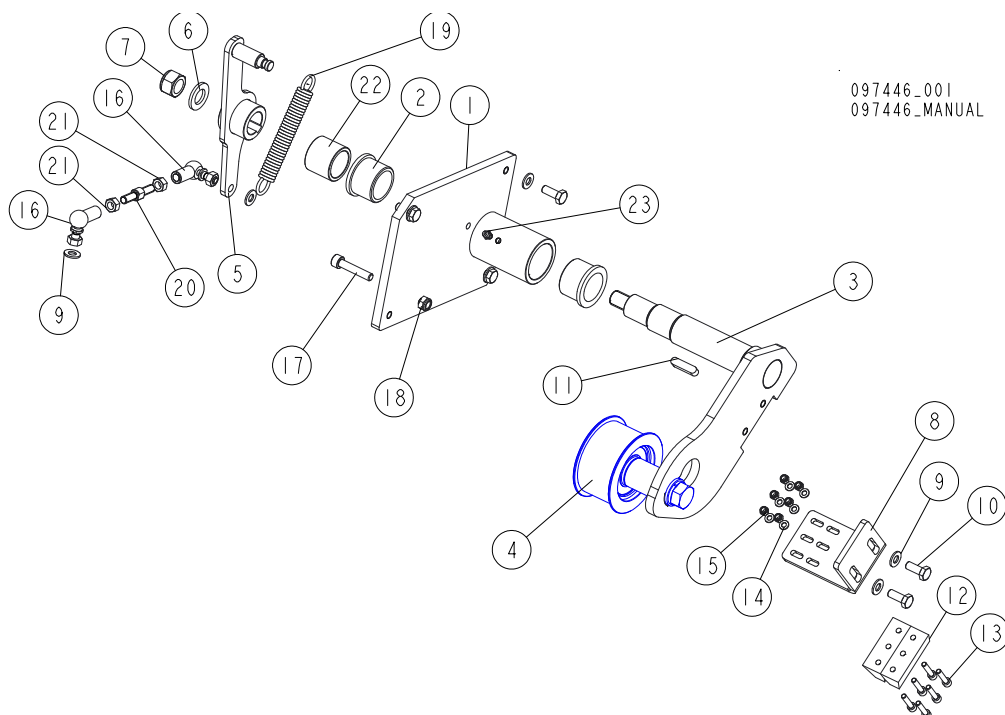


REF	DESCRIPTION (u indicates parts available in assemblies only)	PART #	QTY
-	BELT TENSIONER & BRAKE ASSEMBLY	096448	1
1	TENSION ROLLER W/BRAKE, COMPLETE See Section 4.7	097446	1
2	HANDLE, TENSIONER AND BRAKE - COMPLETE See Section 4.9	097436	1

4 REPLACEMENT PARTS

Tension Roller w/Brake (No. 097446)

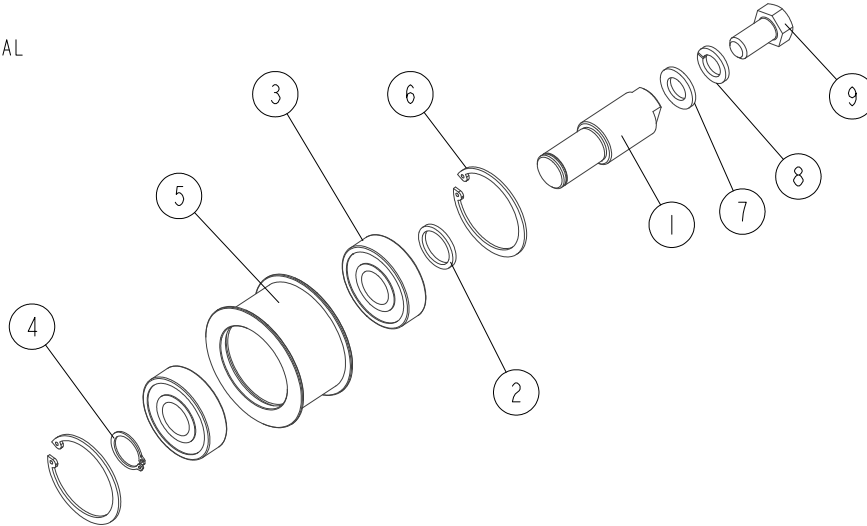
4.7 Tension Roller w/Brake (No. 097446)



REF.	DESCRIPTION (* indicates parts available in assemblies only)	PART#	QTY
-	ROLLER, TENSION W/BRAKE - COMPLETE	097446	1
1	MOUNT WELDMENT, TENSIONER SHAFT	091112-1	1
2	BUSHING, MFM-3240-30 (IGUS)	088461	2
3	SHAFT WELDMENT, BELT TENSIONER	096451-1	1
4	ROLLER, COMPLETE TENSION See Section 4.8	511166	1
5	HANDLE, TENSIONER	096449-1	1
6	WASHER, 17 SPLIT LOCK ZINC	F81058-1	1
7	NUT, M16-8-HEX NYLON ZINC LOCK	F81036-2	1
8	BRACKET, BRAKE BLOCK MOUNT	091248-1	1
9	WASHER, 8.4 FLAT ZINC	F81054-1	7
10	BOLT, M8X20 8.8 HEX HEAD FULL THREAD ZINC	F81002-4	5
11	KEY, A8X7X32 PARALLEL	088564	1
12	BLOCK, BRAKING	092111	2
13	SCREW, M5X25 8.8 HEX SOCKET HEAD CAP ZINC	F81000-7	6
14	WASHER, 5.3 FLAT ZINC	F81052-1	6
15	NUT, M5-8 DIN985 ZINC-PLATED	F81030-2	6
16	JOINT, 13-M8 (T17628- ULMER) BALL	095285	2
17	SCREW, M8X40-8.8 HEX SOCKET HEAD CAP ZINC	F81002-29	1
18	NUT, M8-8-B HEX NYLON ZINC LOCK	F81032-2	1
19	SPRING, N1.9XN14.2X104	091865	1
20	PUSHER, SHORT ZINC-PLATED	097445-1	1
21	NUT, M8-8-B HEX ZINC	F81032-1	2
22	BUSHING, TENSIONER ZINC-PLATED SPACER	097447-1	1
23	FITTING, M6 GREASE	086280	1

4.8 Tension Roller

511166_001
511166_MANUAL



REF.	DESCRIPTION (◆ indicates parts available in assemblies only)	PART #	QTY
	ROLLER, COMPLETE TENSION	511166	1
1	SHAFT, TENSION ROLLER	509901-1	1
2	WASHER, 25.1/32-3 ZINC-PLATED	500863-1	1
3	BEARING, .9843X2.4409X.6693	P08066	2
4	RING, 25Z OUTSIDE RETAINING	F81090-22	1
5	ROLLER, LT15 TENSION	087671-1	1
6	RING, 62W INSIDE RETAINING	F81090-1	2
7	WASHER, 17 SPLIT LOCK ZINC	F81058-1	1
8	WASHER, 16.3 SPLIT LOCK ZINC	F81058-2	1
9	BOLT, M16X30-8.8 HEX HEAD FULL THREAD ZINC	F81006-36	1

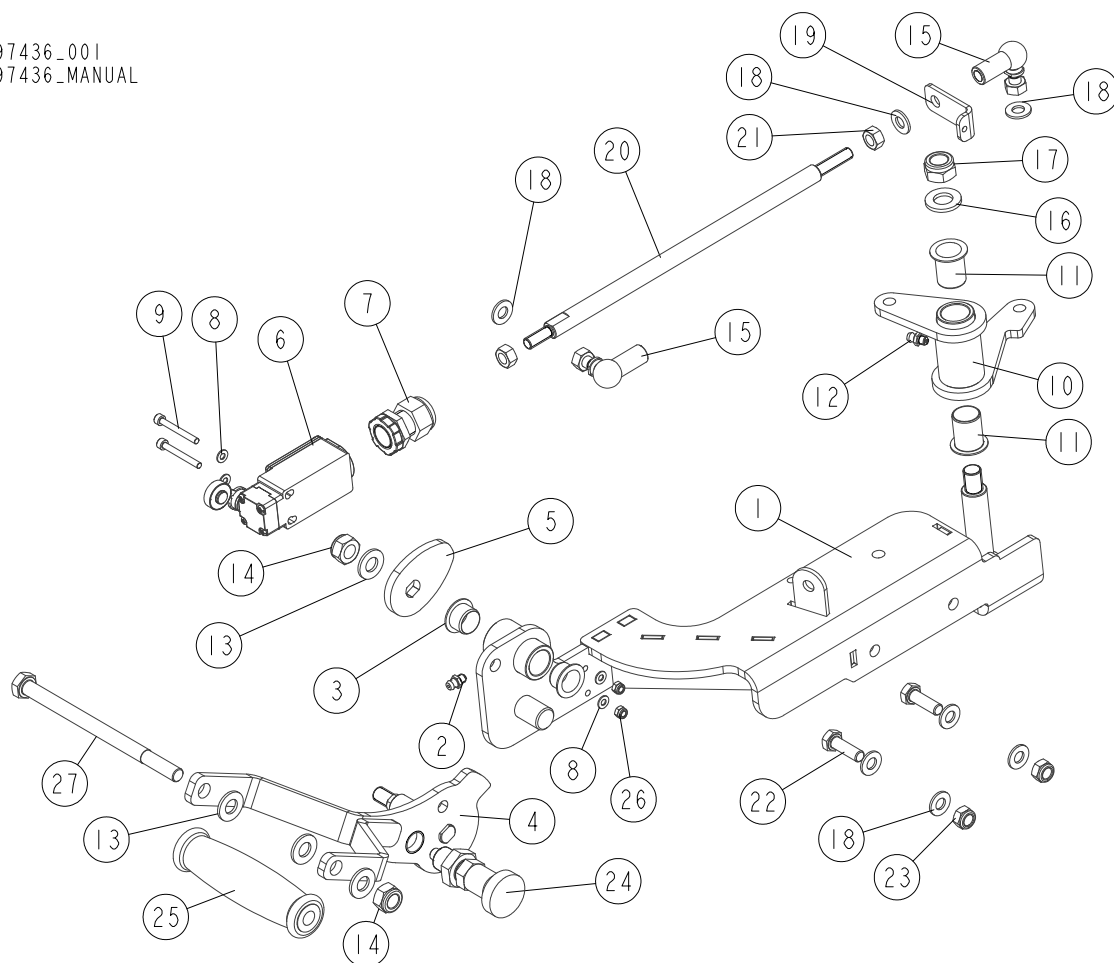
4

REPLACEMENT PARTS

Tensioner and Brake Handle (No. 097436)

4.9 Tensioner and Brake Handle (No. 097436)

097436_001
097436_MANUAL



REF.	DESCRIPTION (* indicates parts available in assemblies only)	PART #	QTY
-	HANDLE, TENSIONER AND BRAKE - COMPLETE	097436	1
-	PLATE, TENSIONER/BRAKE HANDLE MOUNT - COMPLETE	097437	1
1	PLATE, TENSIONER/BRAKE HANDLE MOUNT	097438-1	1
2	FITTING, M6 GREASE	086280	1
3	BUSHING, GFM-1618-12	091455	2
4	HANDLE, TENSIONER/BRAKE	524091-1	1
5	PLATE, LT15 LIMIT SWITCH ZINC-PL. ACTIVATOR	096969-1	1
6	SWITCH, FA138 Z11 LIMIT	100931	1
7	GLAND, PG13.5 CABLE	086524	1
8	WASHER, 4.3 FLAT ZINC	F81051-2	4
9	SCREW, M4X35 8.8 HEX SOCKET HEAD CAP ZINC	F81011-34	2
-	LEVER, ANGLE -COMPLETE	097432	1
10	LEVER, ANGLE	097433-1	1
11	BUSHING, GFM 1719-25 (IGUS)	094142	2
12	FITTING, M6 GREASE	086280	1
13	WASHER, 10.5 FLAT ZINC	F81055-1	4
14	NUT, M10-8-B HEX NYLON ZINC LOCK	F81033-1	2

REPLACEMENT PARTS*Tensioner and Brake Handle (No. 097436)***4**

REF.	DESCRIPTION (* indicates parts available in assemblies only)	PART #	QTY	
15	PIVOT, FI 13-M8 ANGLE (T17628-ULMER)	095285	2	
16	WASHER, 13 FLAT ZINC	F81056-1	1	
17	NUT, M12 8 HEX NYLON ZINC LOCK	F81034-2	1	
18	WASHER, 8.4 FLAT ZINC	F81054-1	7	
19	PLATE, TENSIONER	097442-1	1	
20	PUSHER, M8 ZINC-PLATED LONG	097444-1	1	
21	NUT, M8-8-B HEX ZINC	F81032-1	2	
22	BOLT, M8X25-8.8-B HEX HEAD FULL THREAD ZINC	F81002-5	2	
23	NUT, M8-8-B HEX NYLON ZINC LOCK	F81032-2	2	
24	PIN, 45308DNW DETENT	089939	1	
25	GRIP, I.135/120-10 REVOLVING	524094	1	
26	NUT, M4-8 HEX NYLON ZINC LOCK	F81029-1	2	
27	BOLT, M10X150-8.8 HEX HEAD ZINC	F81003-124	1	