

# **G19 Engine G25 Engine**

## **Safety, Operation, Maintenance & Parts Manual**

---

**LT15SC DC  
LT15WC**

**rev. A2.06  
rev. A2.01**

---



**Safety is our #1 concern!** Read and understand all safety information and instructions before operating, setting up or maintaining this machine.

*September 2022*

**This is the original language  
for the manual.**

<b>SECTION 1</b>	<b>SAFETY &amp; GENERAL INFORMATION</b>	<b>1-1</b>
1.1	Refueling .....	1-1
1.2	Engine Operation.....	1-1
1.3	General Information .....	1-3
1.4	Engine Specifications .....	1-4
<b>SECTION 2</b>	<b>OPERATION</b>	<b>2-1</b>
2.1	Starting The Engine.....	2-1
<b>SECTION 3</b>	<b>MAINTENANCE</b>	<b>3-1</b>
3.1	Air Filter & Pre-Cleaner.....	3-1
3.2	Engine Oil & Filter.....	3-1
3.3	Air Cooling System .....	3-1
3.4	Fuel Filter .....	3-2
3.5	Miscellaneous Maintenance .....	3-2
3.6	Drive Belt Adjustment.....	3-2
3.7	RPM Adjustments .....	3-4
<b>SECTION 4</b>	<b>G19 ENGINE REPLACEMENT PARTS</b>	<b>4-1</b>
4.1	How To Use The Parts List .....	4-1
4.2	Sample Assembly .....	4-1
4.3	LT15 G19 Engine Mount Kit .....	4-2
4.4	LT15WC Fuel Tank Assembly .....	4-4
4.5	LT15SC Fuel Tank Assembly.....	4-6
4.6	LT15 G19 Engine Assembly .....	4-8
4.7	Fuel Pump Assembly .....	4-9
4.8	Throttle Cable Assembly .....	4-10
4.9	Muffler Assembly .....	4-11
4.10	Muffler Guards .....	4-12
4.11	Alternator Kit .....	4-13
4.12	Control Box, LT15SC G19 Engine .....	4-15
4.13	Control Box, LT15WC G19 Engine .....	4-17
4.14	Brake/Belt Tensioner Assembly .....	4-19
4.15	Tensioner/Brake Handle .....	4-20
4.16	Tension Roller w/Brake .....	4-22
4.17	Tension Roller .....	4-23
4.18	Electric Box, LT15DC G19 .....	4-24
4.19	Electric Kit, G19/G25 (LT15WC only) .....	4-25
4.20	Tensioner Assembly, G19/G25 Drive Belt (LT15WC only) .....	4-26

**SECTION 5            G25 ENGINE REPLACEMENT PARTS**

**5-1**

5.1	G25 Engine Kit (No. 531680) .....	5-1
5.2	Electrical Kit (No. 531666-G) .....	5-2
5.3	Blade Lube Kit (No. 503471) .....	5-3
5.4	Belt Tensioner (No. 531695) .....	5-4
5.5	Control Box, LT15WC G25 (No. 531688-G25) .....	5-5
5.6	G25 Engine Mounting Kit (Part No. 531665) .....	5-7
5.7	Alternator Kit (No. 531669) .....	5-8
5.8	Throttle Cable Assembly (No. 506280) .....	5-10
5.9	Muffler Guard (Part No. 520167) .....	5-11
5.10	Fuel Pump Assembly (No. 520170) .....	5-12
5.11	Fuel Tank Assembly (No. 531667) .....	5-13

## SECTION 1 SAFETY & GENERAL INFORMATION



**IMPORTANT!** This manual is provided as a supplement to the equipment manufacturer's manuals. This manual takes into account the specific use of engines on the Wood-Mizer sawmill. Only safety, maintenance, and operating procedures that are not provided by the manufacturer are supplied in this manual. Refer to the manufacturer's manual before attempting to operate this equipment.



This symbol calls your attention to instructions concerning your personal safety. Be sure to observe and follow these instructions. This symbol accompanies a signal word. The word **DANGER** indicates an imminently hazardous situation which, if not avoided, will result in death or serious injury. **WARNING** suggests a potentially hazardous situation which, if not avoided, could result in death or serious injury. **CAUTION** refers to potentially hazardous situations which, if not avoided, may result in minor or moderate injury to persons or equipment. Read all safety instructions before operating this equipment and observe all safety warnings!

### 1.1 Refueling



**WARNING!** Store gasoline away from sawdust and other flammable materials. Failure to do so may result in serious injury.

### 1.2 Engine Operation



**DANGER!** Operate your engine/machine only in well ventilated areas. The exhaust gases of your engine can cause nausea, delirium and potentially death unless adequate ventilation is present.

**DANGER!** Never operate an engine with a fuel or oil leak. The leaking fuel or oil could potentially come in contact with hot surfaces and ignite into flames.

**DANGER!** Engine components can become very hot during operation. Avoid contact with any part of a hot engine. The exhaust components of your engine are especially hot during and following operation. Contact with hot engine components can cause serious burns. Therefore, never touch or perform service functions on a hot engine. Allow the engine to cool sufficiently before beginning any service function.

**DANGER!** Always be aware of and take proper protective measures against rotating shafts, pulleys, fans, etc. Always stay a safe distance from rotating members and make sure that loose clothing or long hair does not engage rotating members resulting in possible injury.



**DANGER!** Always be sure the blade is disengaged and all persons are out of the path of the blade before starting the engine or motor. Failure to do so will result in serious injury.



**WARNING!** Do not for any reason adjust the engine drive belts or belt support bracket with the engine running. Doing so may result in serious injury.

**WARNING!** Do not operate engine without proper and operational spark arrester/muffler. Sparks emitted from the engine exhaust could ignite surrounding materials, causing serious injury or death.

**WARNING!** Remove the blade before performing any engine service. Failure to do so may result in serious injury.

**WARNING!** Always wear proper and necessary safety equipment when performing service functions. Proper safety equipment includes eye protection, breathing protection, hand protection and foot protection.



**IMPORTANT!** Always dispose of coolant, oil, fuel, oil filters and fuel filters in a responsible manner and in conformance with local, state and federal regulations.




**WARNING!** Always disconnect the machine battery cables before performing service functions.



**DANGER!** Batteries expel explosive gases. Keep sparks, flames, burning cigarettes, or other ignition sources away at all times.

### 1.3 General Information

 **IMPORTANT!** Read the engine manual for instructions and safety precautions before operating the engine.

See Figure 1-1. The main components of the engine are shown below.

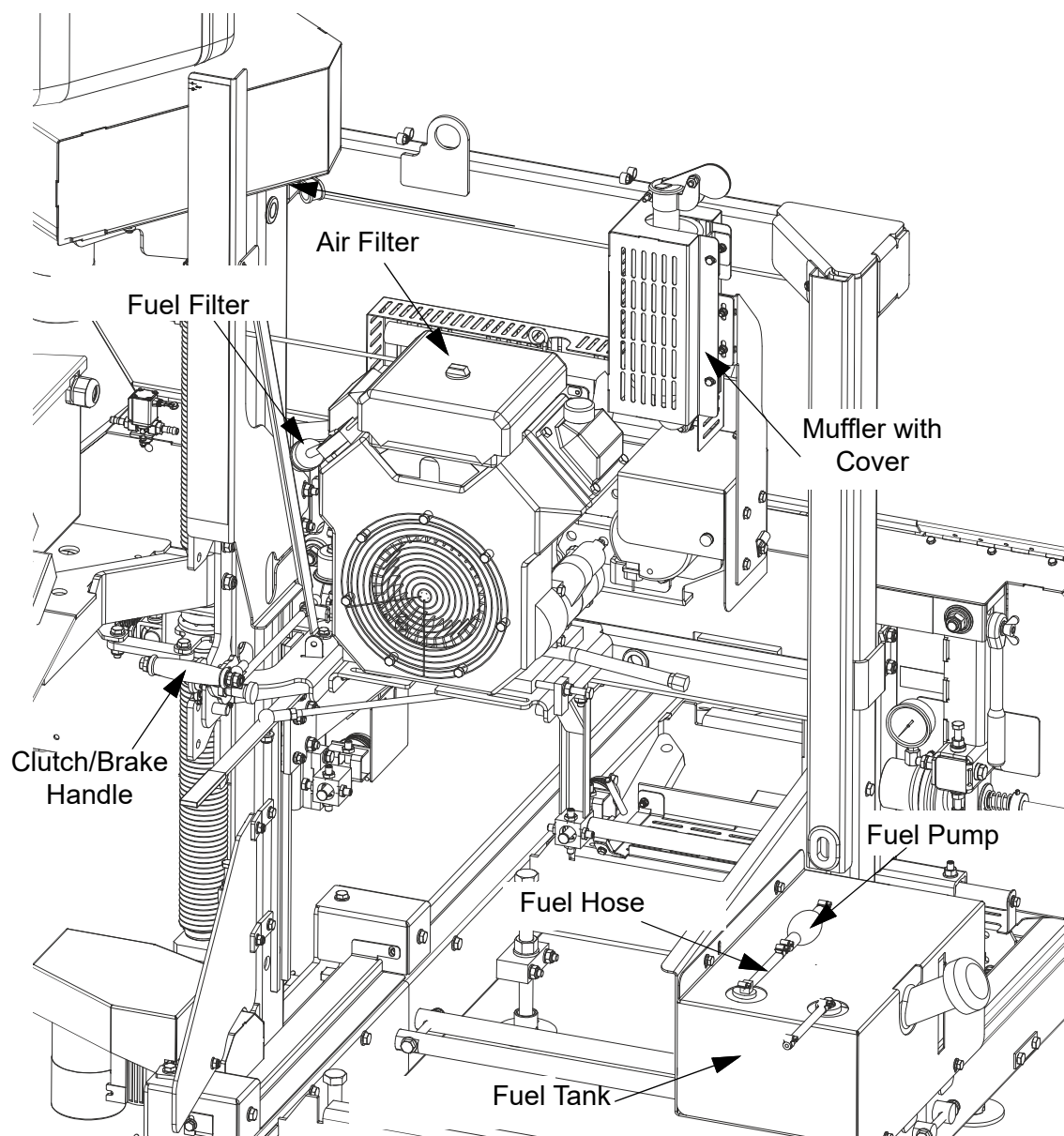


FIG. 1-1

## 1.4 Engine Specifications

<b>G19 Kohler</b>	
Type	Air cooled, V-Twin, 4-cycle, gasoline, OHV
Number of cylinders	2
Bore and stroke mm	80 x 67
Total displacement cm <sup>3</sup>	674
Power H.P. ( SAEJ 1349 ) [HP/min <sup>-1</sup> ( rpm )]	19/3600
Peak Torque	47,5/3600
Type of shaft	OHV
Dry Weight kg [ lbs. ]	41 [90]
Oil Capacity (w/filter)	1.6 - 1.8l

<b>G25 Kohler</b>	
Type	Air cooled, V-Twin, 4-cycle, gasoline, OHV
Number of cylinders	2
Bore and stroke mm	83 x 67
Total displacement cm <sup>3</sup>	725
Power H.P. ( SAEJ 1349 ) [HP/min <sup>-1</sup> ( rpm )]	23,5/3600
Peak Torque	52,1/3600
Type of shaft	OHV
Dry Weight kg [ lbs. ]	43 [94]
Oil Capacity (w/filter)	1.6 - 1.8l

## SECTION 2 OPERATION

### 2.1 Starting The Engine

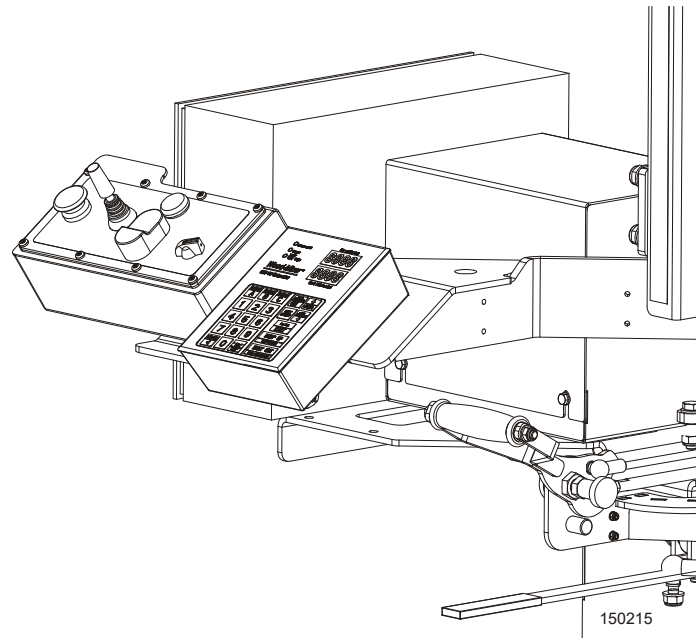
#### Engine Start



**WARNING!** Do not start the engine when the tensioner lever is in the ENGAGED (up) position. Always be sure the blade is disengaged and all persons are away from the sawmill before starting the engine.

1. Set and lock with the pin the tensioner lever in the ENGINE START position (middle position).

See Figure 2-1.



**FIG. 2-1**



2. Close the engine choke by pulling completely the choke rod.

See Figure 2-2.



FIG. 2-2

3. Turn the key to the START position.

See Figure 2-3.

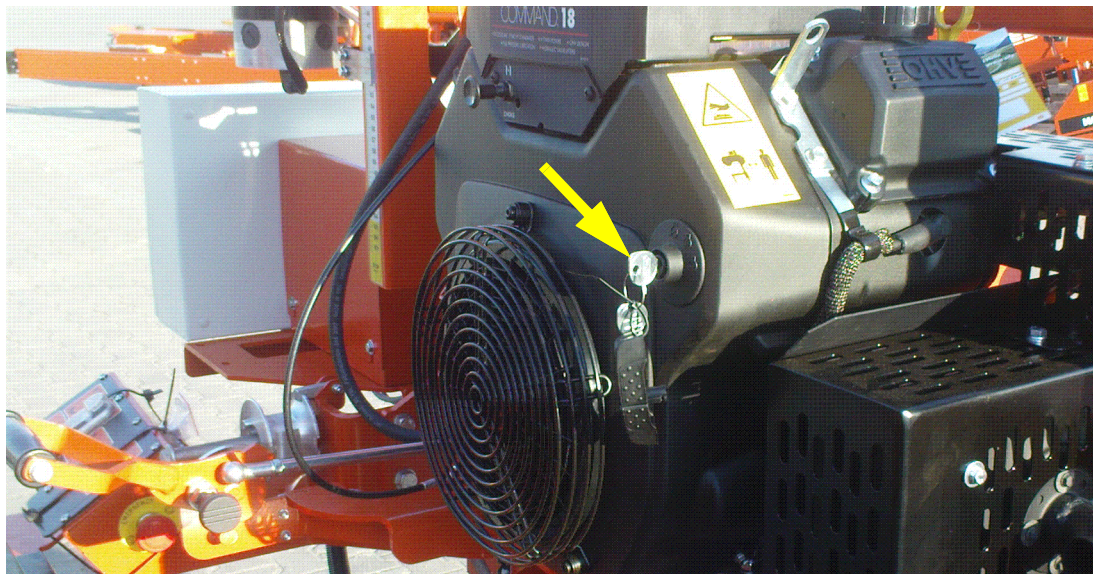


FIG. 2-3

- When the engine is started, release the tensioner lever to the IDLING position and slowly open the choke by pushing the choke rod.

See Figure 2-4.

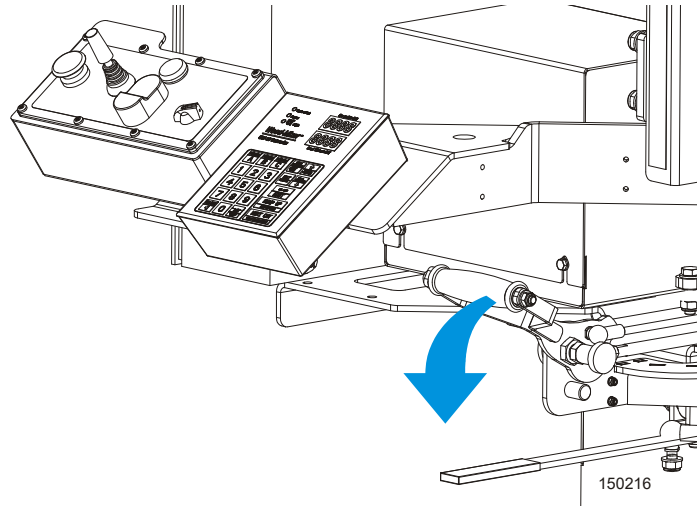


FIG. 2-4

- To engage the blade, press and hold the green button on the control box and push the tensioner lever forward to the ENGAGED position.

See Figure 2-5.

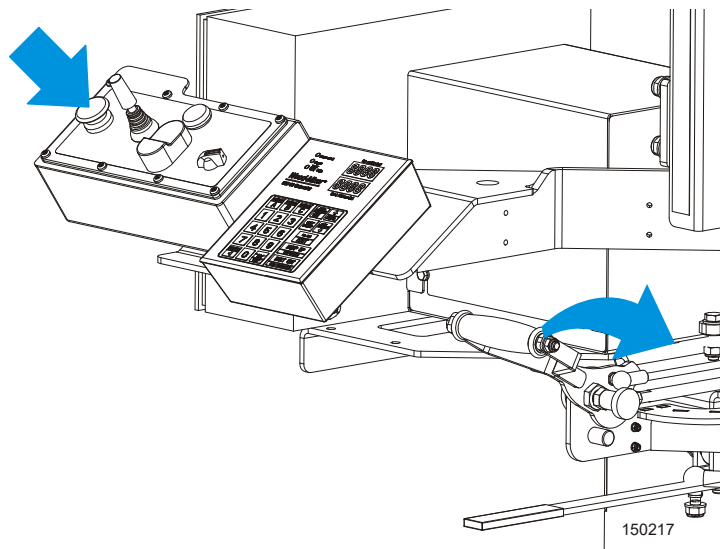


FIG. 2-5



**CAUTION!** If the starter is on for too long time, the battery may go flat. Always keep the key in the “ON” position while the engine is running.



**IMPORTANT!** The control light should be on when the key is in the ON position.

Let the engine to idle for about 3 minutes to warm up the engine before starting to cut.

### Engine Shutoff

1. Disengage the tensioner lever to stop the blade (backward).
2. Let the engine run for 15 seconds without load and then turn the key to the OFF position.



**CAUTION!** When stopping the engine, reduce the load slowly. Do not stop the engine suddenly as it may cause the temperature to raise abnormally.

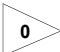
## SECTION 3 MAINTENANCE



**IMPORTANT!** This manual only provides information about additional procedures or procedures to be performed at different time intervals than found in the engine manufacturer's manuals. Refer to the [manufacturer's manual](#) for complete maintenance instructions.



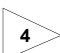
**WARNING!** Remove the blade before performing any engine service. Failure to do so may result in serious injury.

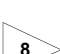
 **This symbol** identifies the interval (hours of operation) at which each maintenance procedure should be performed. "AR" signifies maintenance procedures which should be performed as required.

### 3.1 Air Filter & Pre-Cleaner



**WARNING!** Always wear proper and necessary safety equipment when performing service functions. Proper safety equipment includes eye protection, breathing protection, hand protection and foot protection.

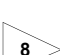
 Service the pre-cleaner every four hours of operation. Service by gently shaking excess sawdust and debris from the foam piece.



 Clean the air filter (air cleaner element) and pre-cleaner (element wrapper) every eight hours of operation. See the engine manual for further instructions.

 Replace the air filter (cleaner) every 200 hours of operation.

 Replace the pre-cleaner (element wrapper) every 2000 hours of operation.

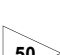
### 3.2 Engine Oil & Filter

 Check the oil level every 8 hours of operation. Add oil as necessary. See the engine manual for oil viscosity and grade recommendations.

  **IMPORTANT!** During initial break-in, change the oil and the oil filter after the first 50 hours and every 100 hours thereafter. Continue to check oil level every 8 hours of operation and refill as necessary.

**NOTE:** Engine at factory is filled with 10W/40 Shell Helix HX7, semi-synthetic oil.

### 3.3 Air Cooling System

 Wash the engine or brush off sawdust and debris every 50 hours of operation. Clean the grass screen, cooling fins, and external surfaces. Remove any dust, dirt or oil. See engine manual for further

instructions.

### 3.4 Fuel Filter

200

Replace the fuel filter every 200 hours of operation.

### 3.5 Miscellaneous Maintenance

100

Inspect the spark plugs every 100 hour of operation. Remove any deposits and adjust gap if necessary. See the engine manual for further information.

### 3.6 Drive Belt Adjustment



**WARNING!** Do not for any reason adjust the engine drive belts or belt support bracket with the engine running. Doing so may result in serious injury.

50

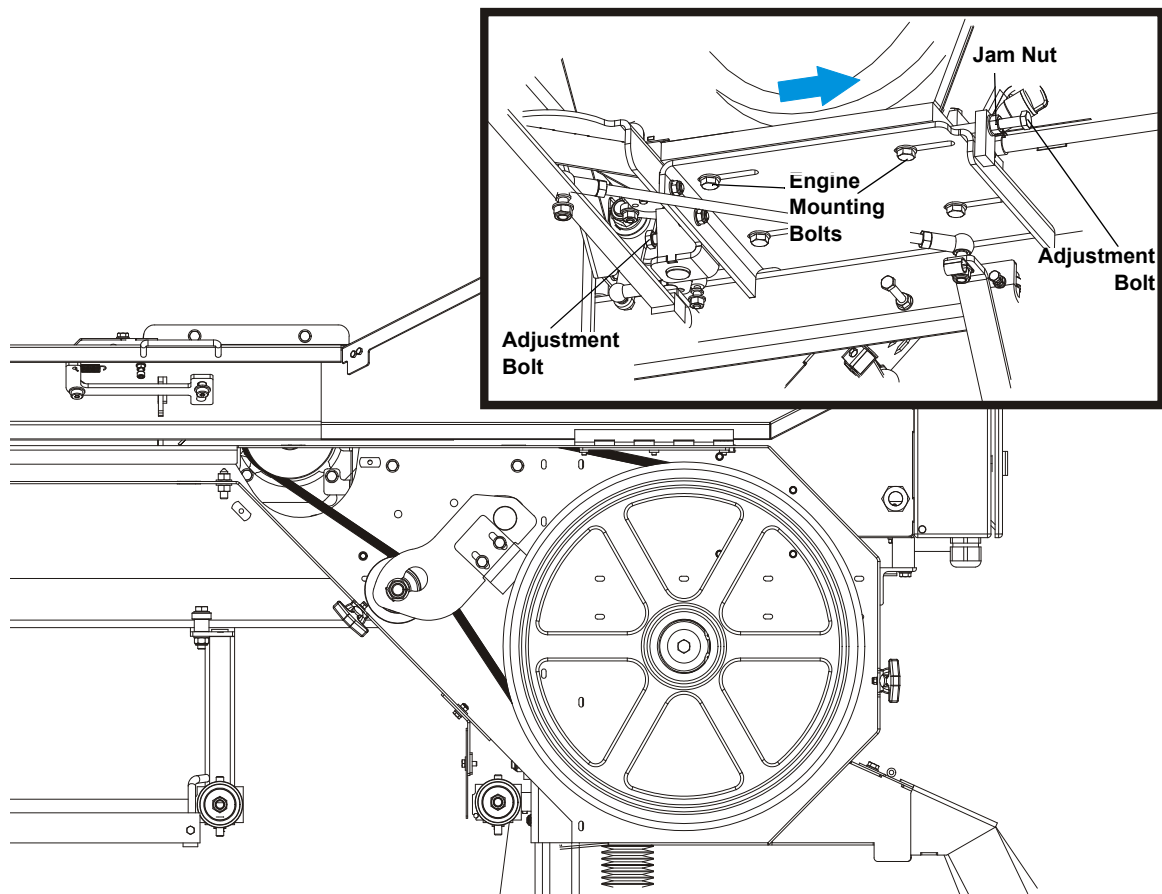
Check the drive belt tension after the first 20 hours, and every 50 hours thereafter.

The drive belt tension should be adjusted with the tensioner handle engaged (in the up position), by moving the engine assembly on the engine mount plate. To make the adjustment, perform the following steps:

1. Loosen the engine mounting bolts and the jam nuts.
2. Using the adjustment bolts, shown in the figure below, adjust the belt tension to approximately 11 mm deflection with 7.2 kG of deflection force.
3. Tighten the jam nuts and the engine mounting bolts.



See Figure 3-1.



**FIG. 3-1**

Periodically check all belts for wear. Replace any damaged or worn belts as needed.

AR

## 3.7 RPM Adjustments



**WARNING!** Remove the blade before performing any engine service. Failure to do so may result in serious injury.

▶ Check the RPM with a tachometer after the first 20 hours of operation and every 200 hours thereafter. High-end RPM should be 3650 ( $\pm 100$ ) RPM and low-end RPM should be 1200 (not to exceed 1500).

Before checking the RPM, make sure belt and brake strap tension are correct (see "Sawmill Maintenance").

1. Start the engine to measure the low-end RPM.

Make sure that the throttle linkage is not affecting the engine RPM while the clutch/brake handle is disengaged. Make sure the cable is not bent or kinked. Refer to the engine manual to adjust the low-end RPM.

2. Engage the clutch handle to throttle the engine and measure the high-end RPM. Readjust the throttle linkage if necessary to increase or reduce the high-end engine speed.

The engine should start to throttle as soon as you start pushing the clutch handle. If the engine dies instead, restart the engine and adjust the throttle linkage as far as possible without affecting low-end RPM. **NOTE:** A properly adjusted throttle will extend the cable spring 1/4" to 3/8" (6.4 - 9.5 mm) when running and have a slight amount of slack in the cable when idling.

**SECTION 4 G19 ENGINE REPLACEMENT PARTS****4.1 How To Use The Parts List**

- Use the table of contents or the index to locate the assembly that contains the part you need.
- Go to the appropriate section and locate the part in the illustration.
- Use the number pointing to the part to locate the correct part number and description in the table.
- Parts shown indented under another part are included with that part.
- Parts marked with a diamond (◆) are only available in the assembly listed above the part.

See the sample table below. Sample Part #A01111 includes part F02222-2 and subassembly A03333. Subassembly A03333 includes part S04444-4 and subassembly K05555. The diamond (◆) indicates that S04444-4 is not available except in subassembly A03333. Subassembly K05555 includes parts M06666 and F07777-77. The diamond (◆) indicates M06666 is not available except in subassembly K05555.

<b>4.2 Sample Assembly</b>				
REF.	DESCRIPTION (◆ Indicates Parts Available In Assemblies Only)	PART #	QTY.	
	<b>SAMPLE ASSEMBLY, COMPLETE (INCLUDES ALL INDENTED PARTS BELOW)</b>	A01111	1	
1	Sample Part	F02222-22	1	
	Sample Subassembly (Includes All Indented Parts Below)	A03333	1	
2	Sample Part (◆ Indicates Part Is Only Available With A03333)	S04444-41	1	◆
	Sample Subassembly (Includes All Indented Parts Below)	K05555	1	
3	Sample Part (◆ Indicates Part Is Only Available With K05555)	M06666	2	◆
4	Sample Part	F07777-77	1	

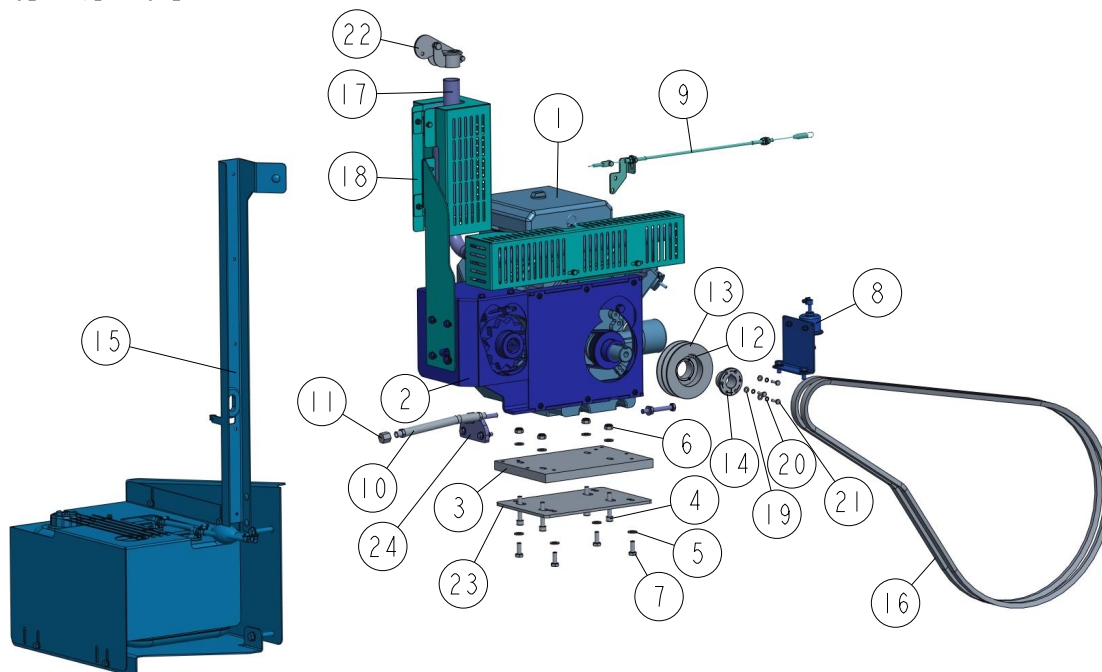
**To Order Parts:**

- From Europe call our European Headquarters and Manufacturing Facility in Koło, Poland at **+48-63-2626000**. From the continental U.S., call **1-800-448-7881** to order parts. Have your customer number, vehicle identification number, and part numbers ready when you call.
- From other international locations, contact the Wood-Mizer distributor in your area for parts.



**4.3 LT15 G19 Engine Mount Kit**

521440\_001\_C  
 521440\_MANUAL



REF	DESCRIPTION (◆ indicates parts available in assemblies only)	PART #	QTY
-	<b>ENGINE KIT, G19 W/ALTERNATOR LT15SC</b>	521440	1
1	ENGINE, KOHLER (18HP) - BASIC KIT <a href="#">See Section 4.6</a>	520841	1
2	ALTERNATOR KIT, LT15 G19 <a href="#">See Section 4.11</a>	521441	1
3	PLATE, G19/G25 ENGINE MOUNT	534424	1
4	BOLT, M10X55 -8.8 FE/ZN5 PN-M/82302	F81003-55	4
5	WASHER, 10.5 FLAT ZINC	F81055-1	8
6	NUT M10 ZC 8 NYLOCK DIN 982 ISO 7040	F81033-1	4
7	BOLT, M10X25 8.8 HEX HEAD FULL THREAD ZI	F81003-11	4
8	PUMP ASSEMBLY, LT15 G18 FUEL <a href="#">See Section 4.7</a>	520170	1
9	CABLE ASSEMBLY, G18/LT15 THROTTLE <a href="#">See Section 4.8</a>	506280	1
10	HOSE, 3/8NPTX9 5/8 RUBBER	P10082	1
11	CAP, 3/8 PIPE GALVANIZE	P04332	1
12	KEY, B6,35X6,35X85 ZINC	097822	1
13	PULLEY G19 ENGINE	506266-1	1
14	BUSHING, SPLIT TAPER	091572	1
15	TANK ASSEMBLY, LT15SC FUEL <a href="#">See Section 4.5</a>	518351	1
16	V-BELT, 17BX2250 BX87 2210LI-GOOD-Y	097448	2
17	MUFFLER ASSEMBLY, LT15 G19 <a href="#">See Section 4.9</a>	521437	1
18	GUARD SET, MUFFLER <a href="#">See Section 4.10</a>	521445	1
19	WASHER, 6.4 FLAT ZINC	F81053-1	3
20	WASHER, Z 6.1 SPLIT LOCK ZINC	F81053-3	3
21	BOLT, M6X20 8.8 HEX HEAD FULL THREAD ZIN	F81001-2	3
22	CAP, MUFFLER	521486	1

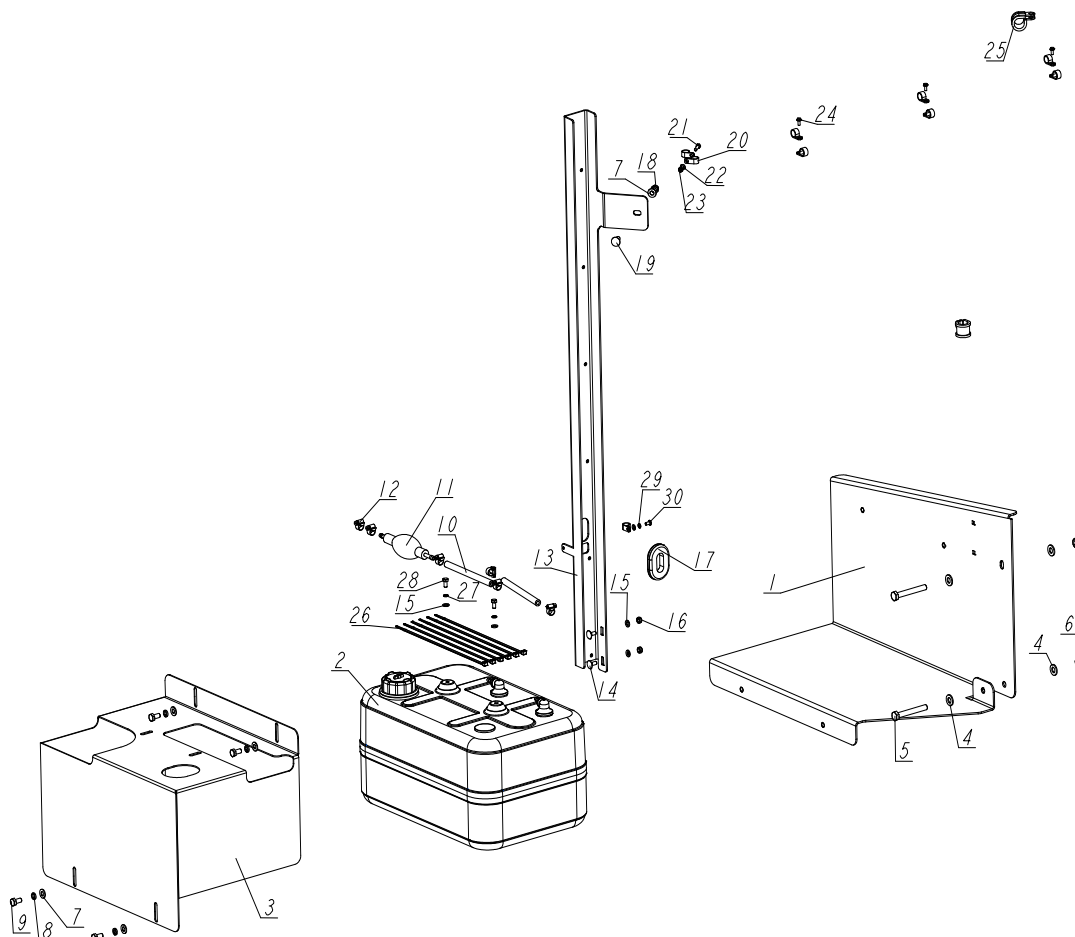
**4****G19 ENGINE Replacement Parts***LT15 G19 Engine Mount Kit*

---

REF	DESCRIPTION (◆ indicates parts available in assemblies only)	PART #	QTY	
23	PLATE, ENGINE SPACER	592344-1	1	
24	TENSIONER, LT15WC G25/G19 BELT <a href="#">See Section 5.4</a>	531695	1	

## 4.4 LT15WC Fuel Tank Assembly

531667\_001\_A  
531667\_MANUAL



REF	DESCRIPTION (* indicates parts available in assemblies only)	PART #	QTY
-	<b>TANK ASSEMBLY, LT15 WIDE FUEL</b>	531667	1
1	PLATE, LT15 FUEL TANK - COMPLETE	550766-1	1
2	FUEL TANK, 25-LITRE	550767	1
3	COVER, FUEL TANK	550769-1	1
4	WASHER, 10.5 FLAT ZINC	F81055-1	4
5	BOLT, M10X75-8.8 HEX HEAD ZINC	F81003-15	2
6	NUT, M10-8-B HEX NYLON ZINC LOCK	F81033-1	2
7	WASHER, 8.4 FLAT ZINC	F81054-1	5
8	WASHER, 8.2 SPLIT LOCK ZINC	F81054-4	4
9	BOLT, M8X16	F81002-20	4
10	FUEL LINE, DIESEL ENGINE	P642	2
11	BULB, FUEL PRIMER	014481	1
12	CLAMP, PLASTIC HOSE DIA. 8-12MM	F81080-1	6
13	BRACKET, FUEL HOSE GUIDE	531668-1	1
14	BOLT, M6X16 -8.8 CARRIAGE ZINC	F81001-36	2

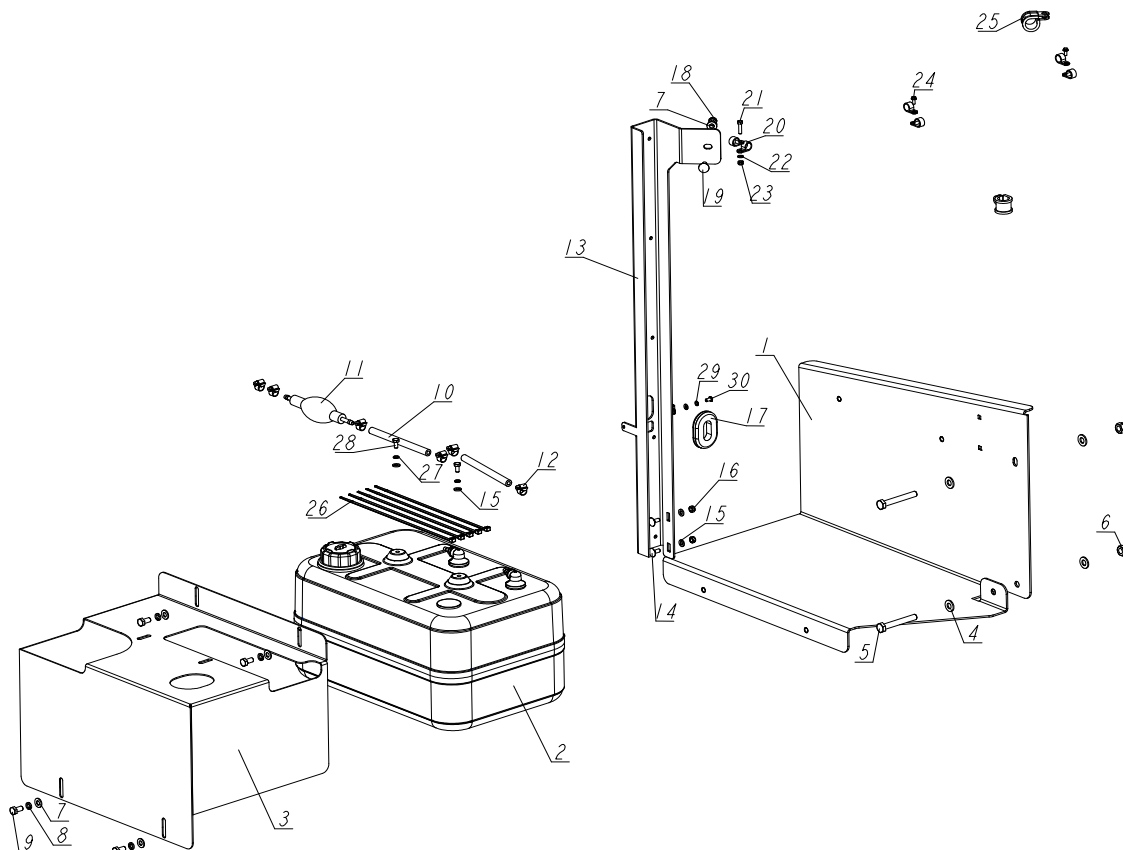
## 4

**G19 ENGINE Replacement Parts***LT15WC Fuel Tank Assembly*

REF	DESCRIPTION (* indicates parts available in assemblies only)	PART #	QTY	
15	WASHER, 6.4 FLAT ZINC	F81053-1	4	
16	NUT, M6-8-B NYLON HEX ZINC LOCK	F81031-2	2	
17	GROMMET, 26MM I.D. RUBBER	085613	1	
18	NUT, M8-8-B HEX NYLON ZINC LOCK	F81032-2	1	
19	BOLT, M8X20-8.8 CARRIAGE HEAD ZINC	F81002-11	1	
20	CLAMP, 1/2 WIRE PLAS.	F05114-1	9	
21	BOLT M6X20 HH FT ZC 8.8 DIN 933 ISO 4017	F81000-35	1	
22	WASHER, 5.3 FLAT ZINC	F81052-1	2	
23	NUT, M5-8 DIN985 ZINC	F81030-2	1	
24	SCREW, #8-32 X 3/8" SELF-TAPPING	F05015-8	3	
25	CLIP, RSGU 1.20/20 METAL & RUBBER RETAIN	F81087-2	2	
26	WRAP, TKUV 30/5 WIRE TIE	F81082-5	6	
27	WASHER, Z 6.1 SPLIT LOCK ZINC	F81053-3	2	
28	BOLT, M6X12-8.8 HEX HEAD FULL THREAD ZIN	F81001-7	2	
29	WASHER, 5.1 SPLIT LOCK ZINC	F81052-2	1	
30	BOLT, M5X10 WG. ISO 7380	F81000-32	1	

## 4.5 LT15SC Fuel Tank Assembly

518351\_001  
518351\_MANUAL

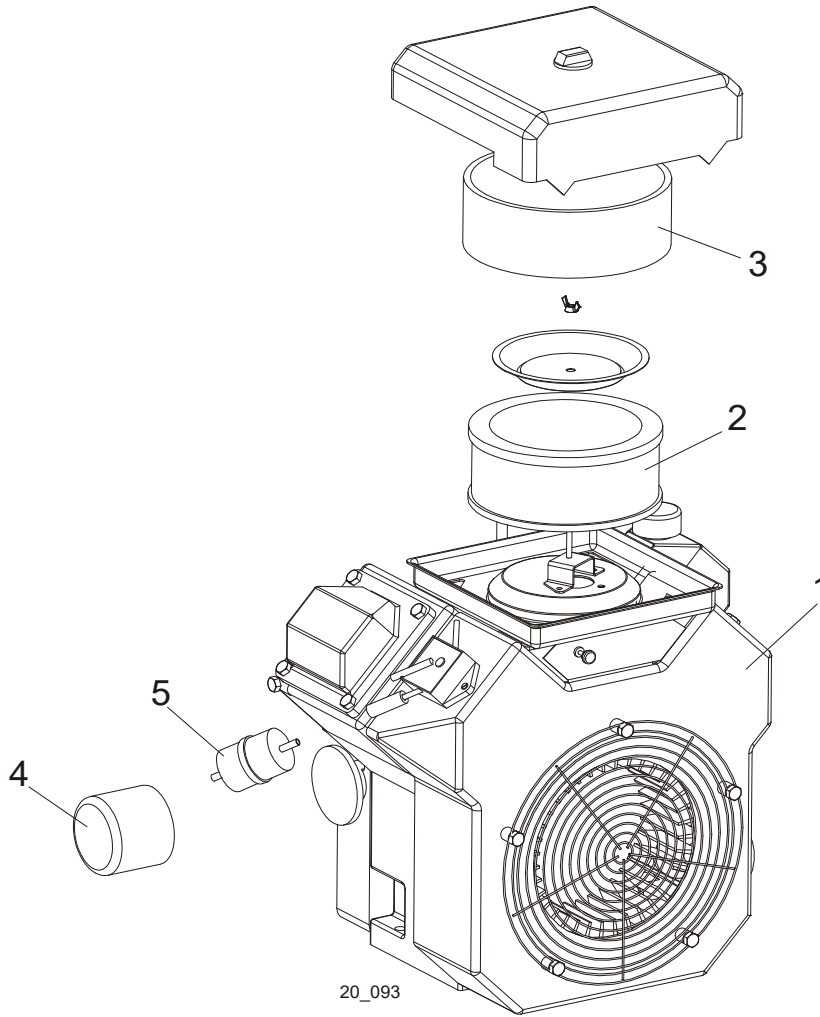


REF	DESCRIPTION (* indicates parts available in assemblies only)	PART #	QTY
-	<b>TANK ASSEMBLY, LT15SC FUEL</b>	518351	1
1	PLATE, LT15 FUEL TANK - COMPLETE	550766-1	1
2	FUEL TANK, 25-LITRE	550767	1
3	COVER, FUEL TANK	550769-1	1
4	WASHER, 10.5 FLAT ZINC	F81055-1	4
5	BOLT, M10X75-8.8 HEX HEAD ZINC	F81003-15	2
6	NUT, M10-8-B HEX NYLON ZINC LOCK	F81033-1	2
7	WASHER, 8.4 FLAT ZINC	F81054-1	5
8	WASHER, 8.2 SPLIT LOCK ZINC	F81054-4	4
9	BOLT, M8X16	F81002-20	4
10	FUEL LINE, DIESEL ENGINE	P642	2
11	BULB, FUEL PRIMER	014481	1
12	CLAMP, PLASTIC HOSE DIA. 8-12MM	F81080-1	6
13	GUIDE, HOSE LT15SC	518343-1	1
14	BOLT, M6X16 -8.8 CARRIAGE ZINC	F81001-36	2
15	WASHER, 6.4 FLAT ZINC	F81053-1	4
16	NUT, M6-8-B NYLON HEX ZINC LOCK	F81031-2	2

**G19 ENGINE Replacement Parts***LT15SC Fuel Tank Assembly*

REF	DESCRIPTION (* indicates parts available in assemblies only)	PART #	QTY	
17	GROMMET, 26MM I.D. RUBBER	085613	1	
18	NUT, M8-8-B HEX NYLON ZINC LOCK	F81032-2	1	
19	BOLT, M8X20-8.8 CARRIAGE HEAD ZINC	F81002-11	1	
20	CLAMP, 1/2 WIRE PLAS.	F05114-1	7	
21	BOLT M6X20 HH FT ZC 8.8 DIN 933 ISO 4017	F81000-35	1	
22	WASHER, 5.3 FLAT ZINC	F81052-1	2	
23	NUT, M5-8 DIN985 ZINC	F81030-2	1	
24	SCREW, #8-32 X 3/8" SELF-TAPPING	F05015-8	2	
25	CLIP, RSGU 1.20/20 METAL & RUBBER RETAIN	F81087-2	2	
26	WRAP, TKUV 30/5 WIRE TIE	F81082-5	5	
27	WASHER, Z 6.1 SPLIT LOCK ZINC	F81053-3	2	
28	BOLT, M6X12-8.8 HEX HEAD FULL THREAD ZIN	F81001-7	2	
29	WASHER, 5.1 SPLIT LOCK ZINC	F81052-2	1	
30	BOLT, M5X10 WG. ISO 7380	F81000-32	1	

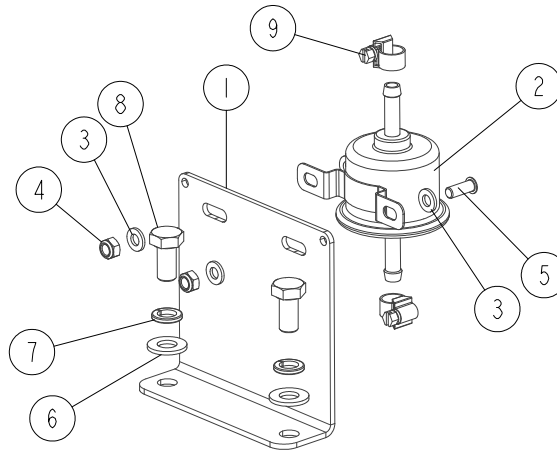
**4.6 LT15 G19 Engine Assembly**



REF.	DESCRIPTION (◆ Indicates Parts Available In Assemblies Only)	PART #	QTY	
1	<b>ENGINE, KOHLER (18HP) - BASIC KIT</b>	520841	1	◆
2	CLEANER, KOHLER 18HP #47 083 03-S AIR	093741	1	
3	FILTER, G19 KOHLER #24 083 02-S PRELIMINARY AIR	093742	1	
	PLUG, RC12YC SPARK	P12757	2	
	MODULE KIT, KOHLER IGNITION #KH24-584-11 (QTY.2)	016079	1	
	PUMP, KOHLER FUEL #24-393-16S	048391	1	
	SWITCH, IGNITION G19/25	061150	1	
4	FILTER, G19 KOHLER #12 050 01-S OIL	093743	1	
5	FILTER, G19 KOHLER #25 050 03-S FUEL	093744	1	

## 4.7 Fuel Pump Assembly

520170\_001  
520170\_MANUAL

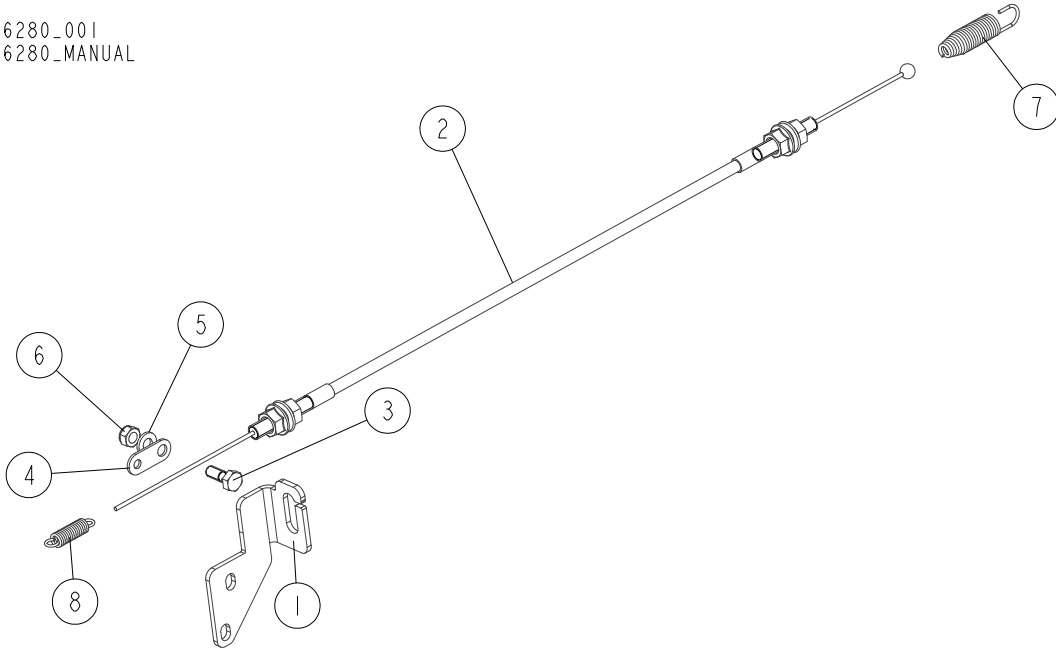


REF.	DESCRIPTION (◆ Indicates Parts Available In Assemblies Only)	PART #	QTY
	<b>PUMP ASSEMBLY, LT15 G19 FUEL</b>	<b>520170</b>	<b>1</b>
1	PLATE, FUEL PUMP MOUNT	520171-1	1
2	PUMP, D42/D33 KUBOTA ELECTRIC FUEL	083565	1
3	WASHER, 6.4 FLAT ZINC	F81053-1	4
4	NUT, M6-8-B HEX NYLON ZINC LOCK	F81031-2	2
5	BOLT, M6X16-8.8 HEX HEAD FULL THREAD ZINC	F81001-15	2
6	WASHER, 10.5 FLAT ZINC	F81055-1	2
7	WASHER, Z10.2 SPLIT LOCK ZINC	F81055-2	2
8	BOLT, M10X20-5.8 HEX HEAD FULL THREAD ZINC	F81003-1	2
9	CLAMP, 8-12MM DIA. WORM	F81080-1	2



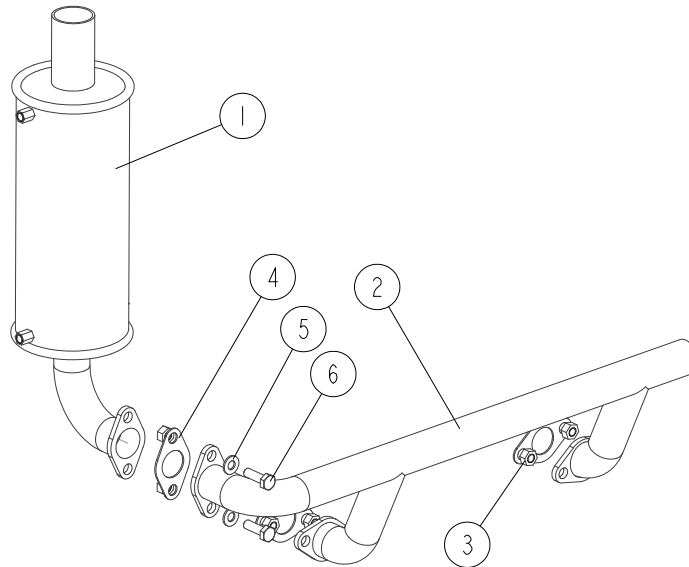
### 4.8 Throttle Cable Assembly

506280\_001  
 506280\_MANUAL



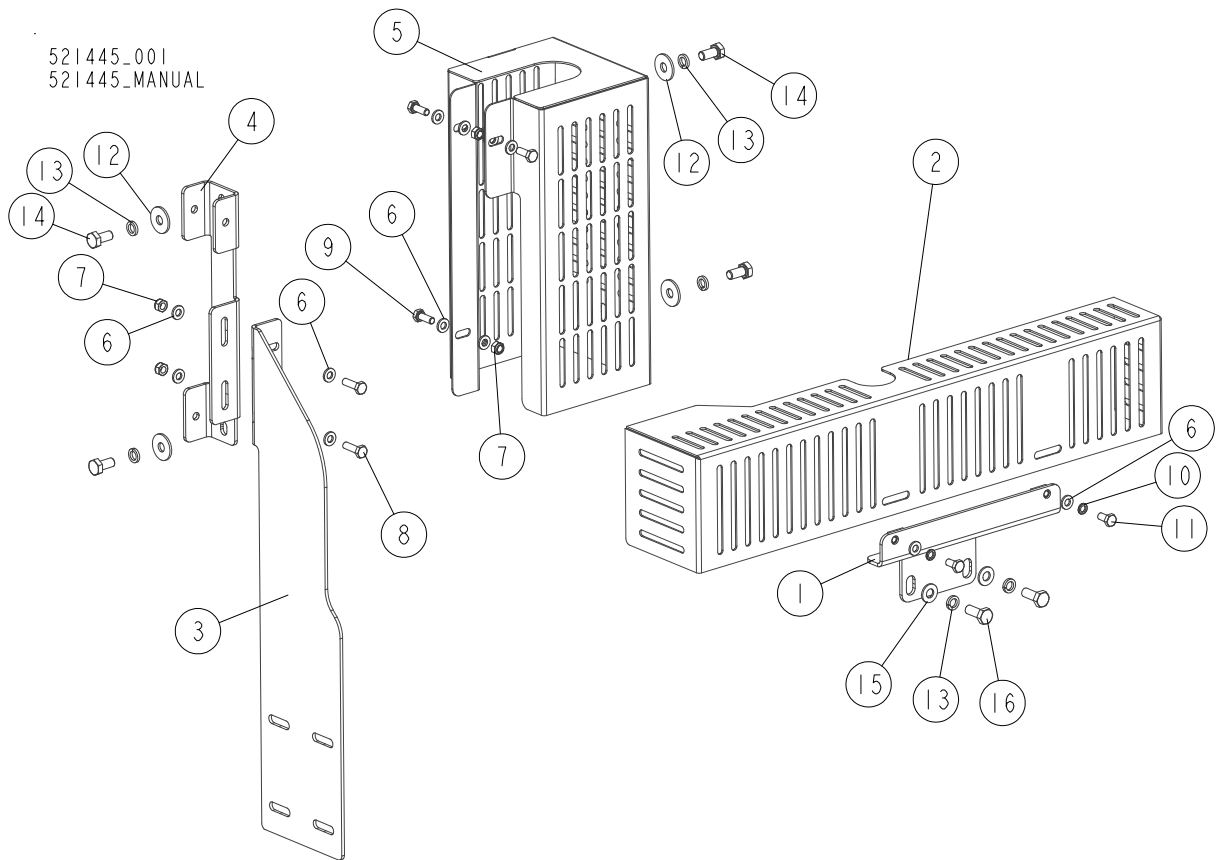
REF.	DESCRIPTION (◆ Indicates Parts Available In Assemblies Only)	PART #	QTY
	<b>CABLE ASSEMBLY, LT15 G19 THROTTLE</b>	<b>506280</b>	<b>1</b>
1	BRACKET, LT15 G19 THROTTLE CABLE	506281-1	1
2	CABLE, THROTTLE	506282	1
3	BOLT, THROTTLE CABLE CLAMP ZINC-PLATED	088120-1	1
4	PLATE, G19 THROTTLE CABLE SPRING MOUNT ZINC-PL.	092531	1
5	WASHER, 6.4 FLAT ZINC	F81053-1	1
6	NUT, M6-8-B HEX NYLON ZINC LOCK	F81031-2	1
7	SPRING, 35 X9.5 X 1.6 SPECIAL	097443	1
8	SPRING, 1.3 X 8 X 20 EXTENSION	092549	1

## 4.9 Muffler Assembly

521437\_001  
521437\_MANUAL

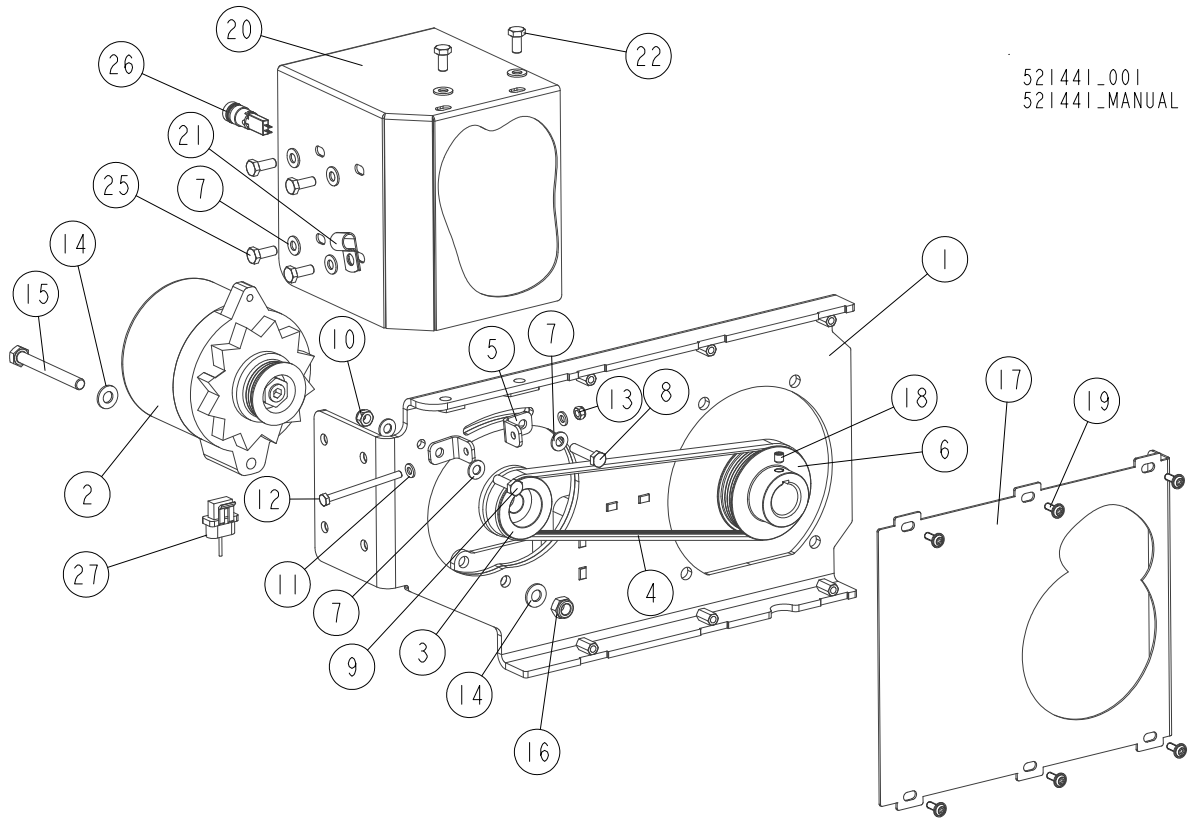
REF.	DESCRIPTION (◆ Indicates Parts Available In Assemblies Only)	PART #	QTY
	<b>MUFFLER ASSEMBLY, LT15 G19</b>	<b>521437</b>	<b>1</b>
	<b>MUFFLER W/EXHAUST MANIFOLD</b>	<b>521480</b>	<b>1</b>
1	MUFFLER, G19 BLACK	521438	1
2	MANIFOLD, LT15 G19 ENGINE MUFFLER EXHAUST	521439	1
3	SEAL KIT, G19 ENGINE MUFFLER (KIT NO. 25 786 01-S)	521489	1
4	SEAL W/NUTS, G19 ENGINE MUFFLER	521489_POLOWA	1
5	WASHER, 8.4 FLAT ZINC	F81054-1	2
6	BOLT, M8X25-8.8-B HEX HEAD FULL THREAD ZINC	F81002-5	2

## 4.10 Muffler Guards



REF.	DESCRIPTION (◆ Indicates Parts Available In Assemblies Only)	PART #	QTY
	<b>GUARD SET, MUFFLER</b>	<b>521445</b>	<b>1</b>
1	BRACKET WELDMENT, MUFFLER GUARD	521443-1	1
2	GUARD, MUFFLER	521444-1	1
3	BRACKET, MUFFLER LOWER	521481-1	1
4	BRACKET, MUFFLER UPPER	521482-1	1
5	GUARD, MUFFLER	521485-1	1
6	WASHER, 6.4 FLAT ZINC	F81053-1	12
7	NUT, M6-8-B HEX NYLON ZINC LOCK	F81031-2	5
8	BOLT, M6X20 8.8 HEX HEAD FULL THREAD ZINC	F81001-2	2
9	BOLT, M6X16-8.8 HEX HEAD FULL THREAD ZINC	F81001-15	3
10	WASHER, Z 6.1 SPLIT LOCK ZINC	F81053-3	2
11	BOLT, M6X12 8.8 HEX HEAD FULL THREAD ZINC	F81001-7	2
12	WASHER, ISO 7093-1-8-200 HV-A2E	F81054-11	4
13	WASHER, 8.2 SPLIT LOCK ZINC	F81054-4	6
14	BOLT, M8X16-8.8-B HEX HEAD FULL THREAD ZINC	F81002-20	4
15	WASHER, 8.4 FLAT ZINC	F81054-1	2
16	BOLT, M8X20 5.8 HEX HEAD FULL THREAD ZINC	F81002-1	2

## 4.11 Alternator Kit

521441\_001  
521441\_MANUAL

REF.	DESCRIPTION (◆ Indicates Parts Available In Assemblies Only)	PART #	QTY
	<b>ALTERNATOR KIT, LT15 G19</b>	<b>521441</b>	<b>1</b>
1	BRACKET, LT20 G25 ALTERNATOR	097811-1	1
2	ALTERNATOR, 105A 12V CS130	050287	1
3	PULLEY, 105A (050287) ZINC-PLATED ALTERNATOR	506378-1	1
4	BELT, 4PK755 MULTI-RIBBED (GOOD-YEAR)	097815	1
5	TENSIONER, 30A ALTERNATOR BELT	095296-1	2
6	PULLEY, 105A G25 ZINC-PLATED ALTERNATOR DRIVE	097814-1	1
7	WASHER, 8.4 FLAT ZINC	F81054-1	9
8	BOLT, M8X35-8.8 HEX HEAD FULL THREAD ZINC	F81002-13	1
9	BOLT, M8X25-8.8-B HEX HEAD FULL THREAD ZINC	F81002-5	1
10	NUT, M8 8 HEX NYLON ZINC LOCK	F81032-2	1
11	WASHER, 6.4 FLAT ZINC	F81053-1	2
12	BOLT, M6X80 8.8 HEX HEAD FULL THREAD ZINC	F81001-61	1
13	NUT, M6-8-B HEX NYLON ZINC LOCK	F81031-2	1
14	WASHER, 10.5 FLAT ZINC	F81055-1	2
15	BOLT, M10X90-8.8-B HEX HEAD ZINC	F81003-66	1
16	NUT, M10-8-B HEX NYLON ZINC LOCK	F81033-1	1
17	COVER, 105A G25 ALTERNATOR BELT	097816-1	1
18	SCREW, M8X8-33H GEOMET HEX SOCKET SET W/FLAT POINT	F81014-1	1
19	SCREW, M6X16 BN 11252 "BOSSARD" BUTTON HEAD SOCKET CAP	F81001-24	6

## 4

**G19 ENGINE Replacement Parts***Alternator Kit*

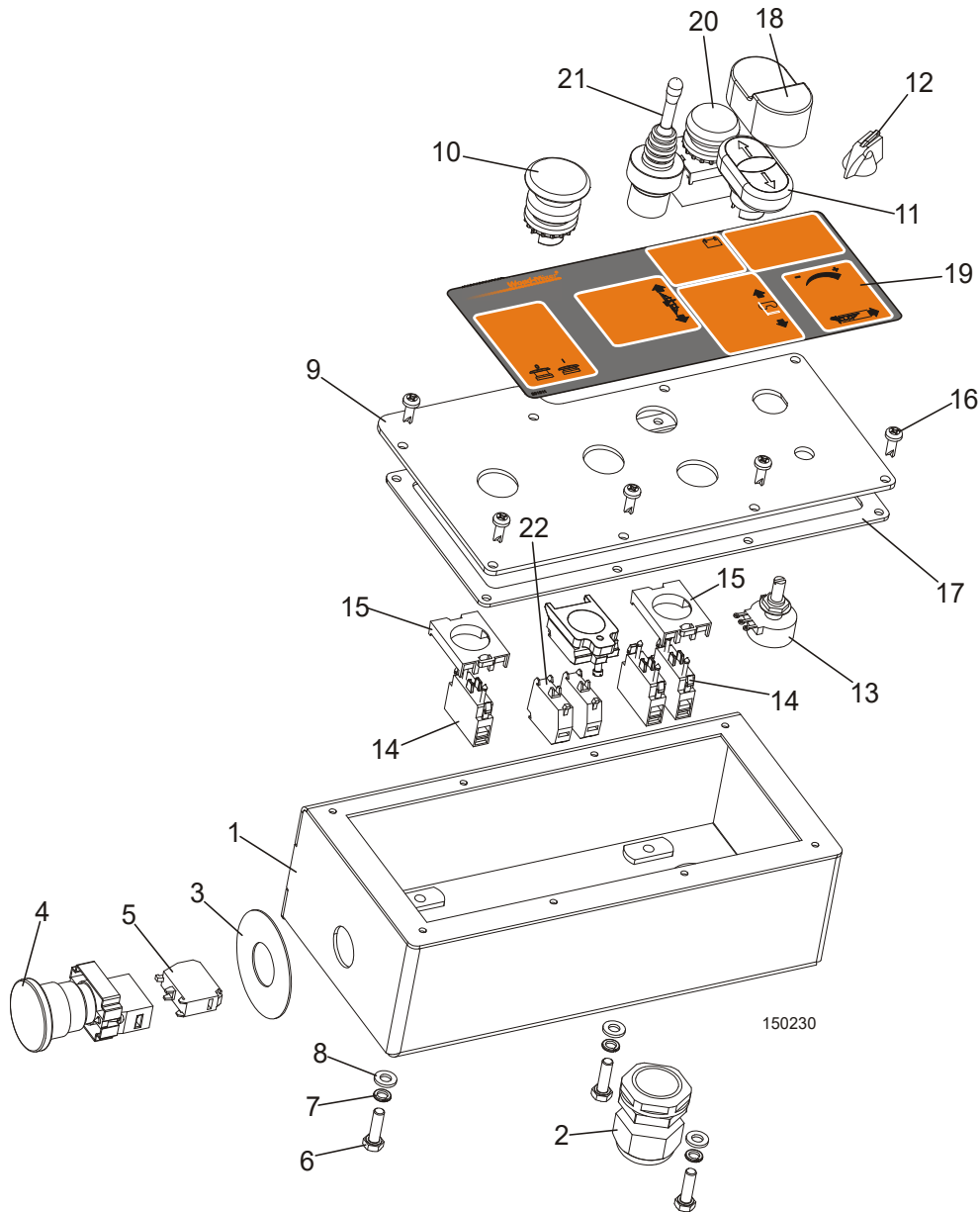
REF.	DESCRIPTION (◆ Indicates Parts Available In Assemblies Only)	PART #	QTY	
20	GUARD, ALTERNATOR	521864-1	1	
21	CLAMP, 1/2" EMT COATED	P07584	1	
22	BOLT, M8X16-8.8-B HEX HEAD FULL THREAD ZINC	F81002-20	2	
23	WASHER, Z12.2 SPLIT LOCK ZINC	F81056-2	4	
24	BOLT, UNC 7/16-14X1 8.8 DIN 933 BN67(BOSSARD)	F05007-145	4	
25	BOLT, M8X20 5.8 HEX HEAD FULL THREAD ZINC	F81002-1	4	
26	LIGHT, XB6 AV 3BB CONTROL	087348	1	
27	WIRE ASSEMBLY, ALTERNATOR PLUG 61A	015969	1	

# 4

## G19 ENGINE Replacement Parts

Control Box, LT15SC G19 Engine

### 4.12 Control Box, LT15SC G19 Engine



REF.	DESCRIPTION (◆ Indicates Parts Available In Assemblies Only)	PART #	QTY
	<b>CONTROL BOX, LT15 G19 ENGINE</b>	506365	1
1	BOX WELDMENT, LT15 CONTROL	501275-1	1
2	GLAND, DP 21/H CABLE	F81096-3	1
3	WASHER, ZBY9330 EMERGENCY STOP SWITCH	086561	1
4	SWITCH, XB4 BS542 EMERGENCY STOP	086556	1
5	CONTACT, ZBE102	086810	1
6	BOLT, M6x20-8.8 HEX HEAD FULL THREAD ZINC	F81001-2	3
7	WASHER, Z 6.1 SPLIT LOCK ZINC	F81053-3	3
8	WASHER, 6.4 FLAT ZINC	F81053-1	3

## 4

**G19 ENGINE Replacement Parts***Control Box, LT15SC G19 Engine*

	FRONT PANEL ASSEMBLY, LT15/G19 CONTROL BOX	506354	1	
9	PANEL, LT15DC CONTROL BOX - FRONT PAINTED	506353-1	1	
10	OPERATOR, M22-DP-G PUSHBUTTON	094328	1	
11	OPERATOR, M22-DD-S-X7/X7 DUAL PUSHBUTTON	090917	1	
12	KNOB, SPEED CONTROL	P06257	1	
13	POTENTIOMETER, 1k	E20519	1	
14	ELEMENT, M22-K10 CONTACT	091362	5	
15	ADAPTER, M22-A FIXING	100905	2	
16	SCREW, #10-24x1/2 SELF-TAPPING	F05015-7	8	
17	GASKET, LT15 CONTROL BOX	501279	1	
18	DIAPHRAGM, M22-T-DD	090462	1	
19	LABEL, LT15DC CONTROL BOX	506355	1	
20	LIGHT, M22 LED24V RED CONTROL	092719	1	
21	<b>JOYSTICK, XD4PA22</b>	087815	1	
22	CONTACT, ZBE 101	087817	2	

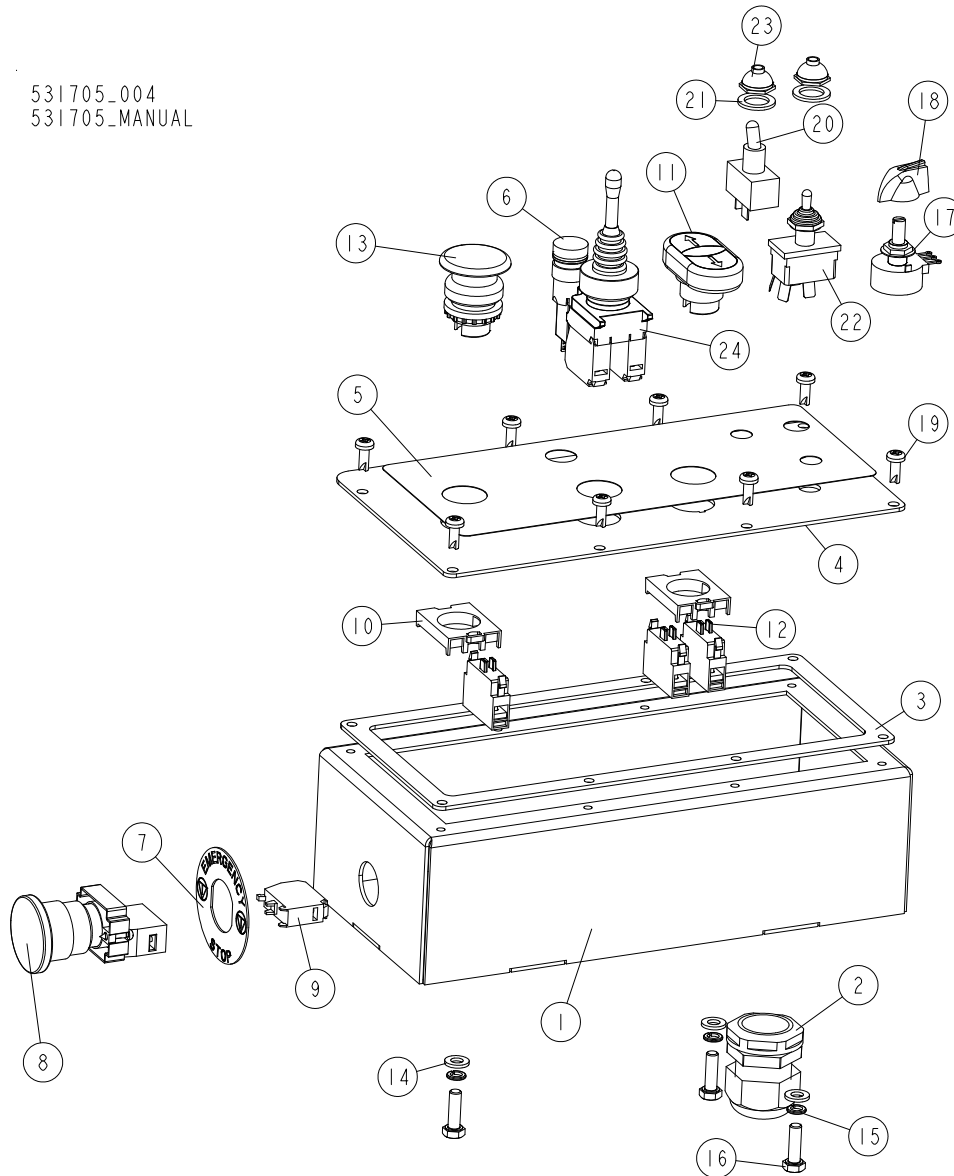
# 4

## G19 ENGINE Replacement Parts

Control Box, LT15WC G19 Engine

### 4.13 Control Box, LT15WC G19 Engine

531705\_004  
531705\_MANUAL



REF.	DESCRIPTION (◆ Indicates Parts Available In Assemblies Only)	PART #	QTY
-	BOX, LT15WC G19 CONTROL	531688-G19	1
1	BOX WELDMENT, LT15	501275-1	1
2	GLAND, DP21/H CABLE	F81096-3	1
3	GASKET, LT15 CONTROL BOX	501279	1
4	PANEL, LT15WC/G19 FRONT	531722-1	1
5	DECAL, LT15WC/G25 CONTROL BOX	531723	1
6	LIGHT, XB6 AV 4BB CONTROL	091099	1
7	WASHER, LPX AU115 EMERGENCY STOP BUTTON	536912	1
8	BUTTON, LPCB6644 EMERGENCY STOP	535445-K	1
9	CONTACT, 1NCLPXC01	535440	1
11	SWITCH, LPCBL7191	536908	1



**4****G19 ENGINE Replacement Parts***Control Box, LT15WC G19 Engine*

12	CONTACT, 1NOLPXC10	535439	3	
13	BUTTON, LPCB6143	536909	1	
14	WASHER, 6.4 FLAT ZINC	F81053-1	3	
15	WASHER, Z 6.1 SPLIT LOCK ZINC	F81053-3	3	
16	BOLT, M6X20 8.8 HEX HEAD FULL THREAD ZINC	F81001-2	3	
17	POTENTIOMETER, 1K LTAGA	E20519	1	
18	KNOB, SPEED CONTROL	P06257	1	
19	BOLT, #10-24X1/2 PH	F05015-17	8	
20	SWITCH, TOGGLE	P03027	1	
21	WASHER, 1/2X3/4X1/16 NYLON	P05251-1	2	
22	SWITCH, TOGGLE 21A DPDT REV MOM SPADE	024200	1	
23	BOOT, TOGGLE SWITCH	P02575	2	
24	JOYSTICK, 2-POS. 8LM2T J200	536914	1	

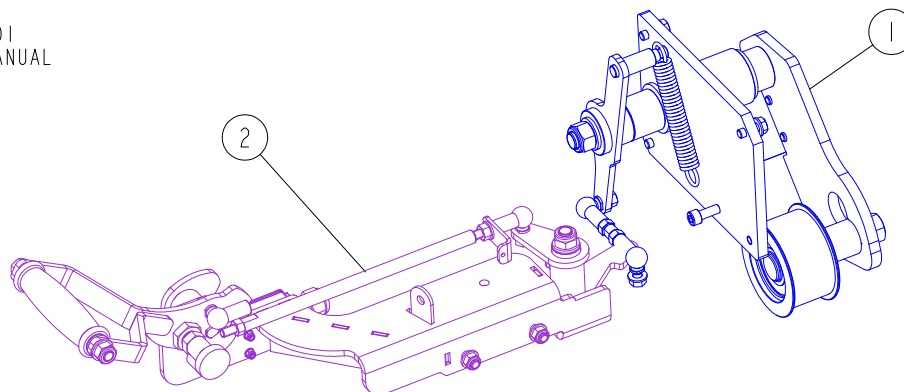
# 4

## G19 ENGINE Replacement Parts

### Brake/Belt Tensioner Assembly

#### 4.14 Brake/Belt Tensioner Assembly

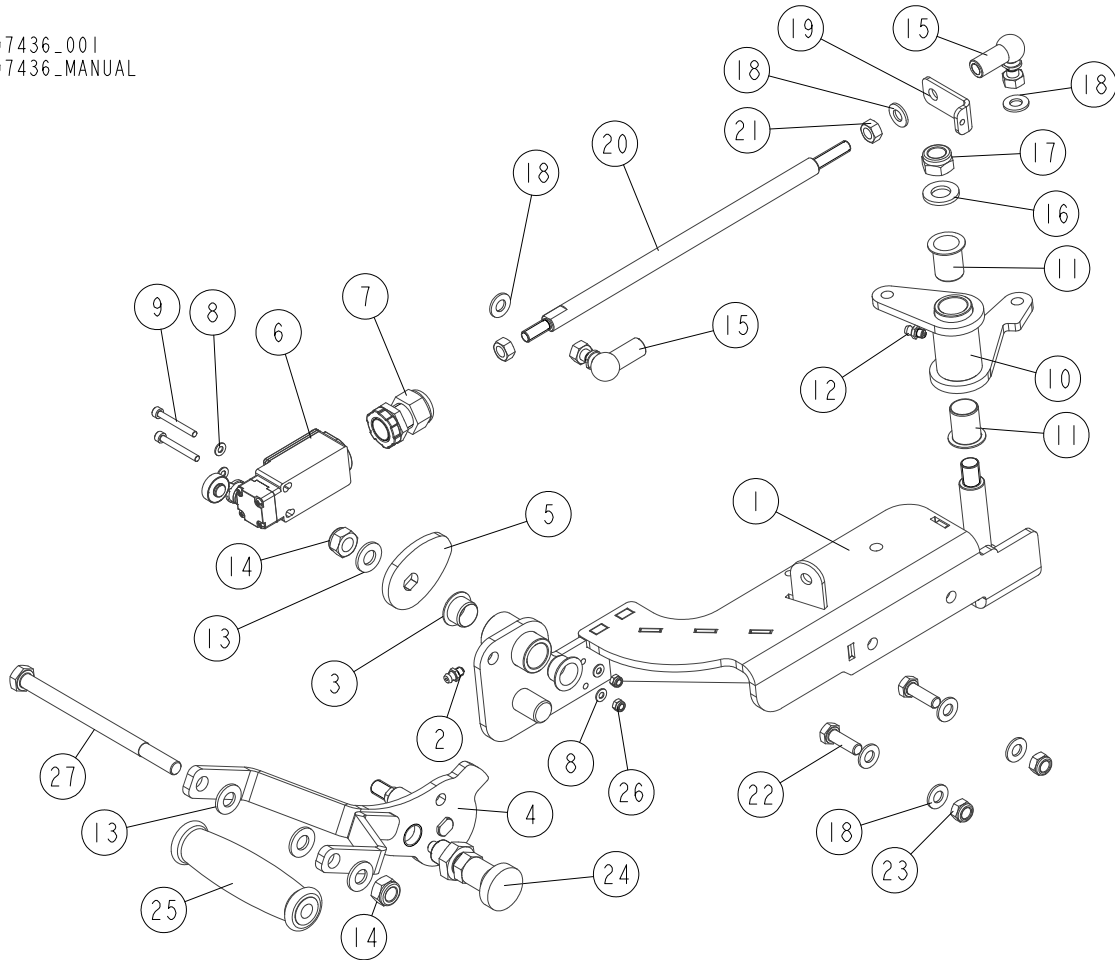
096448\_001  
096448\_MANUAL



REF.	DESCRIPTION (◆ Indicates Parts Available In Assemblies Only)	PART #	QTY
-	BELT TENSIONER & BRAKE ASSEMBLY, E15 MOTOR	<b>096448</b>	<b>1</b>
1	ROLLER, TENSION W/BRAKE - COMPLETE <a href="#">See Section 4.16</a>	097446	1
2	HANDLE, TENSIONER AND BRAKE - COMPLETE <a href="#">See Section 4.15</a>	097436	1

**4.15 Tensioner/Brake Handle**

097436\_001  
097436\_MANUAL



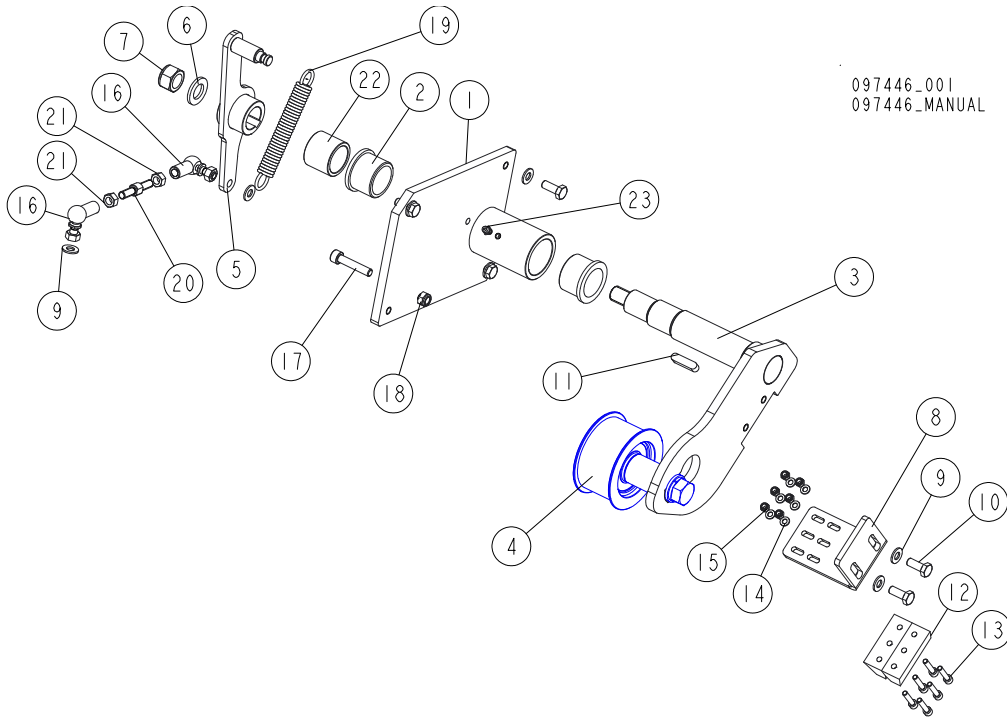
REF.	DESCRIPTION (◆ Indicates Parts Available In Assemblies Only)	PART #	QTY
-	<b>HANDLE, TENSIONER AND BRAKE - COMPLETE</b>	<b>097436</b>	<b>1</b>
-	BRACKET, TENSIONER/BRAKE HANDLE - COMPLETE	097437	1
1	BRACKET, TENSIONER/BRAKE HANDLE	097438-1	1
2	FITTING, M6 GREASE	086280	1
3	BUSHING, GFM-1618-12	091455	2
4	HANDLE WELDMENT	524091-1	1
5	PLATE, LT15 ZINC-PLATED SAFETY SWITCH ACTIVATOR	096969-1	1
6	SWITCH, FA138 Z11 SAFETY	100931	1
7	GLAND, PG13.5 CABLE	086524	1
8	WASHER, 4.3 FLAT ZINC	F81051-2	4
9	SCREW, M4X35 8.8 HEX SOCKET HEAD CAP ZINC	F81011-34	2
-	LEVER, PIVOT - COMPLETE	097432	1
10	LEVER, PIVOT	097433-1	1
11	BUSHING, GFM 1719-25 (IGUS)	094142	2
12	FITTING, M6 GREASE	086280	1
13	WASHER, 10.5 FLAT ZINC	F81055-1	4
14	NUT, M10-8-B HEX NYLON ZINC LOCK	F81033-1	2
15	JOINT, FI 13-M8 (T17628-ULMER) BALL	095285	2

## 4

**G19 ENGINE Replacement Parts***Tensioner/Brake Handle*

REF.	DESCRIPTION (◆ Indicates Parts Available In Assemblies Only)	PART #	QTY	
16	WASHER, 13 FLAT ZINC	F81056-1	1	
17	NUT, M12 8 HEX NYLON ZINC LOCK	F81034-2	1	
18	WASHER, 8.4 FLAT ZINC	F81054-1	7	
19	PLATE, THROTTLE CABLE	097442-1	1	
20	PUSHER, M8 LONG ZINC-PLATED	097444-1	1	
21	NUT, M8-8-B HEX ZINC	F81032-1	2	
22	BOLT, M8X25-8.8-B HEX HEAD FULL THREAD ZINC	F81002-5	2	
23	NUT, M8-8-B HEX NYLON ZINC LOCK	F81032-2	2	
24	PIN, 45308DNW DETENT	089939	1	
25	HANDLE, I.135/120-10 REVOLVING	524094	1	
26	NUT, M4-8 HEX NYLON ZINC LOCK	F81029-1	2	
27	BOLT, M10X150-8.8 HEX HEAD ZINC	F81003-124	1	

4.16 Tension Roller w/Brake



097446\_001  
097446\_MANUAL

REF.	DESCRIPTION (◆ Indicates Parts Available In Assemblies Only)	PART #	QTY
-	<b>ROLLER, TENSION W/BRAKE - COMPLETE</b>	097446	1
1	MOUNT WELDMENT, TENSIONER SHAFT	091112-1	1
2	BUSHING, MFM-3240-30 (IGUS)	088461	2
3	SHAFT WELDMENT, BELT TENSIONER	096451-1	1
4	ROLLER, COMPLETE TENSION <a href="#">See Section 4.17</a>	511166	1
5	HANDLE, TENSIONER	096449-1	1
6	WASHER, 17 SPLIT LOCK ZINC	F81058-1	1
7	NUT, M16-8-HEX NYLON ZINC LOCK	F81036-2	1
8	BRACKET, BRAKE BLOCK MOUNT	550421-1	1
9	WASHER, 8.4 FLAT ZINC	F81054-1	7
10	BOLT, M8X20 8.8 HEX HEAD FULL THREAD ZINC	F81002-4	5
11	KEY, A8X7X32 PARALLEL	088564	1
12	BLOCK, BRAKING	092111	2
13	SCREW, M5X25 8.8 HEX SOCKET HEAD CAP ZINC	F81000-7	6
14	WASHER, 5.3 FLAT ZINC	F81052-1	6
15	NUT, M5-8 DIN985 ZINC-PLATED	F81030-2	6
16	JOINT, 13-M8 (T17628- ULMER) BALL	095285	2
17	SCREW, M8X40-8.8 HEX SOCKET HEAD CAP ZINC	F81002-29	1
18	NUT, M8-8-B HEX NYLON ZINC LOCK	F81032-2	1
19	SPRING, N1.9XN14.2X104	091865	1
20	PUSHER, SHORT ZINC-PLATED	097445-1	1
21	NUT, M8-8-B HEX ZINC	F81032-1	2
22	BUSHING, TENSIONER ZINC-PLATED SPACER	097447-1	1
23	FITTING, M6 GREASE	086280	1

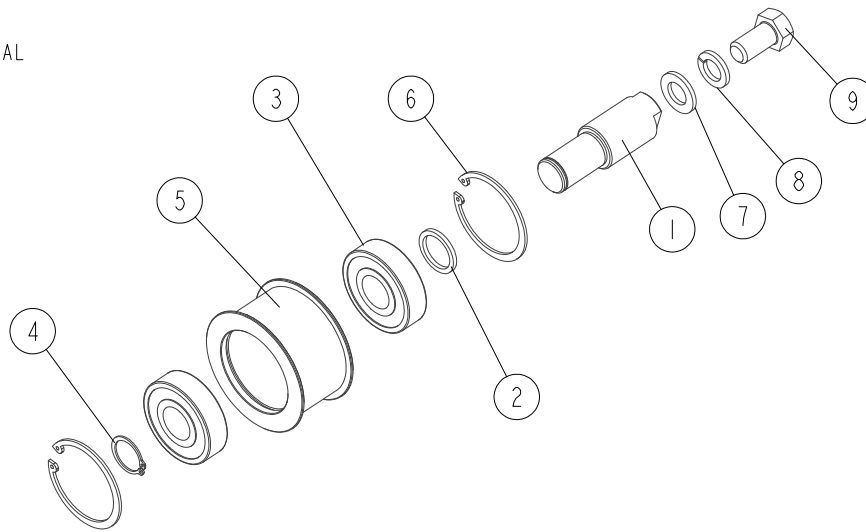
# 4

## G19 ENGINE Replacement Parts

### Tension Roller

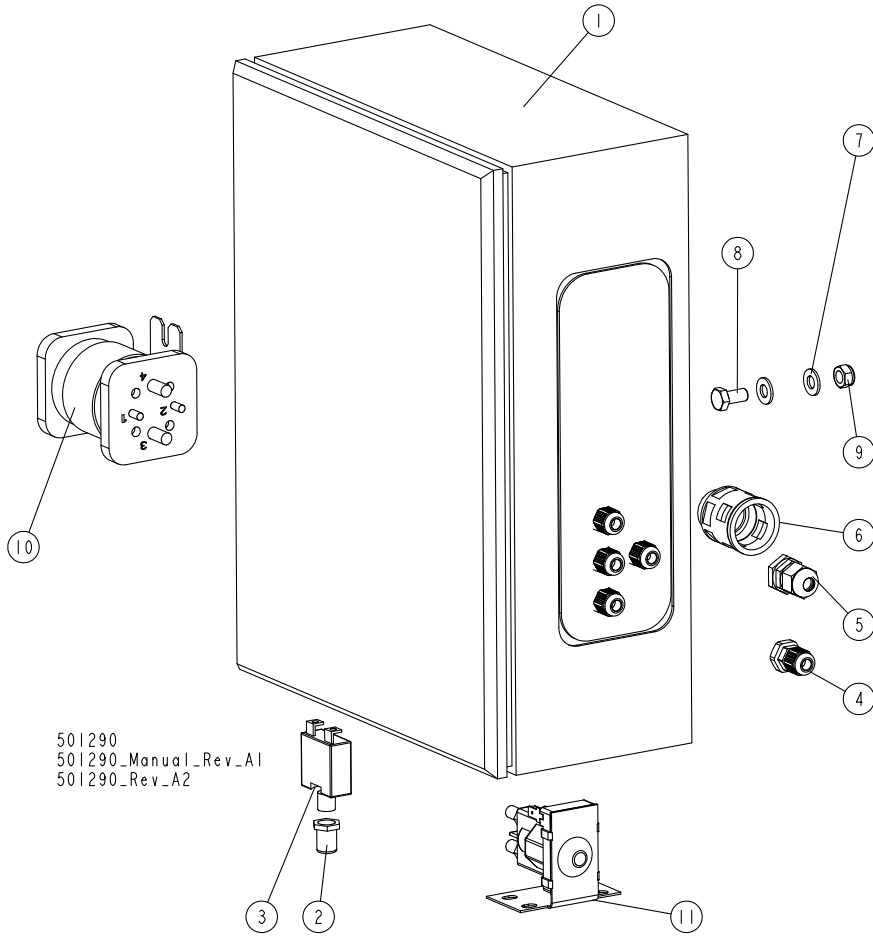
#### 4.17 Tension Roller

511166\_001  
511166\_MANUAL

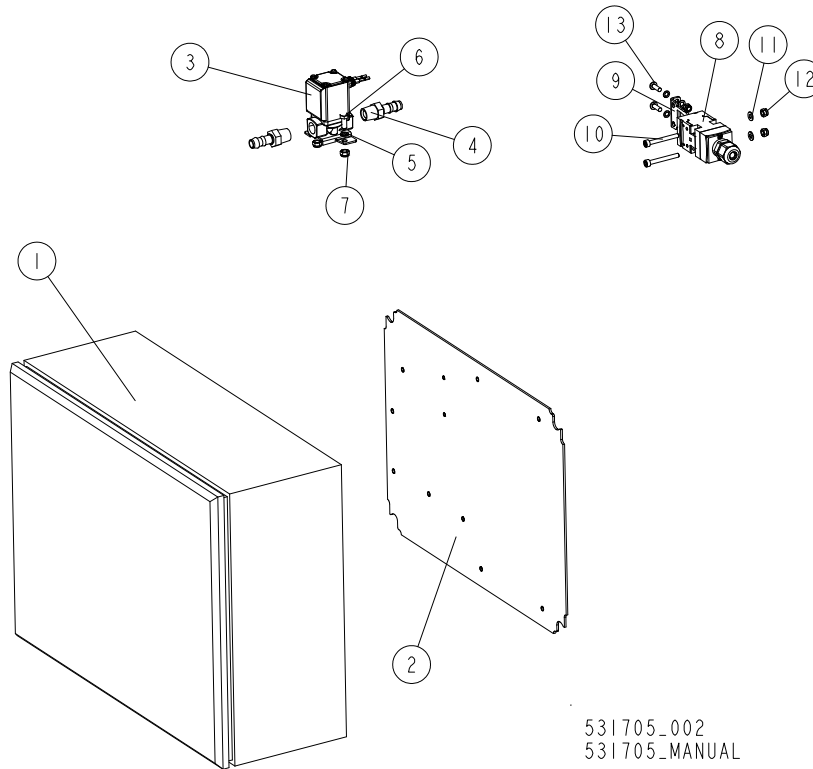


REF.	DESCRIPTION (◆ Indicates Parts Available In Assemblies Only)	PART #	QTY
	<b>ROLLER, COMPLETE TENSION</b>	<b>511166</b>	<b>1</b>
1	SHAFT, TENSION ROLLER	509901-1	1
2	WASHER, 25.1/32-3 ZINC-PLATED	500863-1	1
3	BEARING, .9843X2.4409X.6693	P08066	2
4	RING, 25Z OUTSIDE RETAINING	F81090-22	1
5	ROLLER, LT15 TENSION	087671-1	1
6	RING, 62W INSIDE RETAINING	F81090-1	2
7	WASHER, 17 SPLIT LOCK ZINC	F81058-1	1
8	WASHER, 16.3 SPLIT LOCK ZINC	F81058-2	1
9	BOLT, M16X30-8.8 HEX HEAD FULL THREAD ZINC	F81006-36	1

**4.18 Electric Box, LT15DC G19**



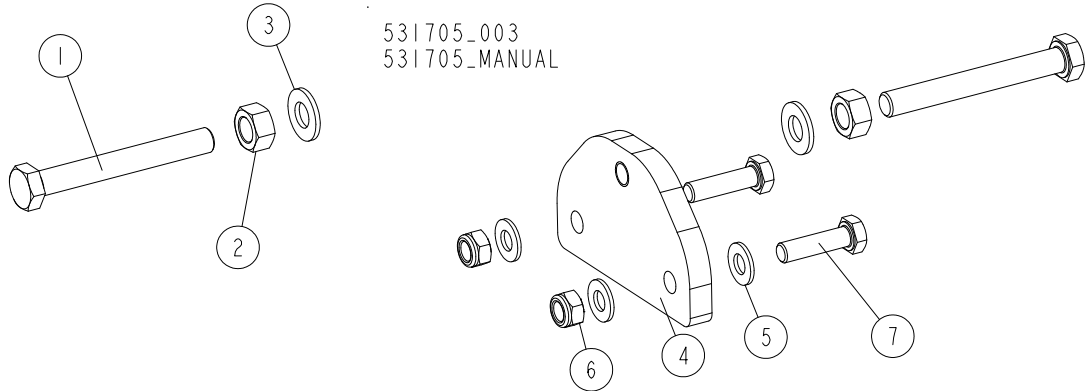
REF.	DESCRIPTION (◆ Indicates Parts Available In Assemblies Only)	PART #	QTY
	<b>BOX, LT15DC ELECTRIC - COMPLETE</b>	<b>514029</b>	<b>1</b>
1	BOX, SAREL S83018 /400X300X200/ ELECTRIC	091355	1
2	BOOT, CIRCUIT BREAKER	021253	2
3	BREAKER, 50A MANUAL RESET PANEL MOUNT	021256	2
4	GLAND, DP7/H CABLE	F81096-11	5
5	GLAND, DP9/H CABLE	F81096-2	1
6	CONNECTOR, GP21 MAXI-FLEX	086577	1
7	WASHER, 8.4 FLAT ZINC	F81054-1	8
8	BOLT, M8X16-8.8-B HEX HEAD FULL THREAD ZINC	F81002-20	4
9	NUT, M8-8-B HEX NYLON ZINC LOCK	F81032-2	4
10	SOLENOID, 200A 12V DPST	015417	2
11	SOLENOID, 120-943 HYD. SHUT-OFF	P10449	1

**4.19 Electric Kit, G19/G25 (LT15WC only)**

REF.	DESCRIPTION (◆ Indicates Parts Available In Assemblies Only)	PART #	QTY
-	ELECTRIC KIT, LT15WC G25/G19 CE	531666-G	1
-	BOX, LT15WB-G25/G19 ELECTRIC - COMPLETE	531686	1
1	BOX, SAREL S83012(300X400X150)	091355	1
2	PLATE, LT15DC ELECTRIC BOX MOUNT	091355-3	1
-	LUBE KIT, LT15DC BLADE	503471	1
3	VALVE, VX212FZ1DAXB SMC SOLENOID	509113	1
4	FITTING, 3/8 BARB 1/4NPT MALE	P04682	2
5	WASHER, 5.1 SPLIT LOCK ZINC	F81052-2	2
6	BOLT, M5X12 8.8 HEX HEAD FULL THREAD ZINC	F81000-5	2
7	NUT, M5-8-FE/ZN5 DIN985	F81030-2	2
8	SWITCH, AZ17-11ZRK SAFETY	094232	1
9	KEY, AZ17/170-B5	094422	1
10	SCREW, M4X35 8.8 HEX SOCKET HEAD CAP ZINC	F81011-34	2
11	WASHER, 4.3 FLAT ZINC	F81051-2	2
12	NUT, M4-8 HEX NYLON ZINC LOCK	F81029-1	4
13	SCREW, M4X12-5.8-B CROSS RECESSED PAN HEAD ZINC	F81011-43	2



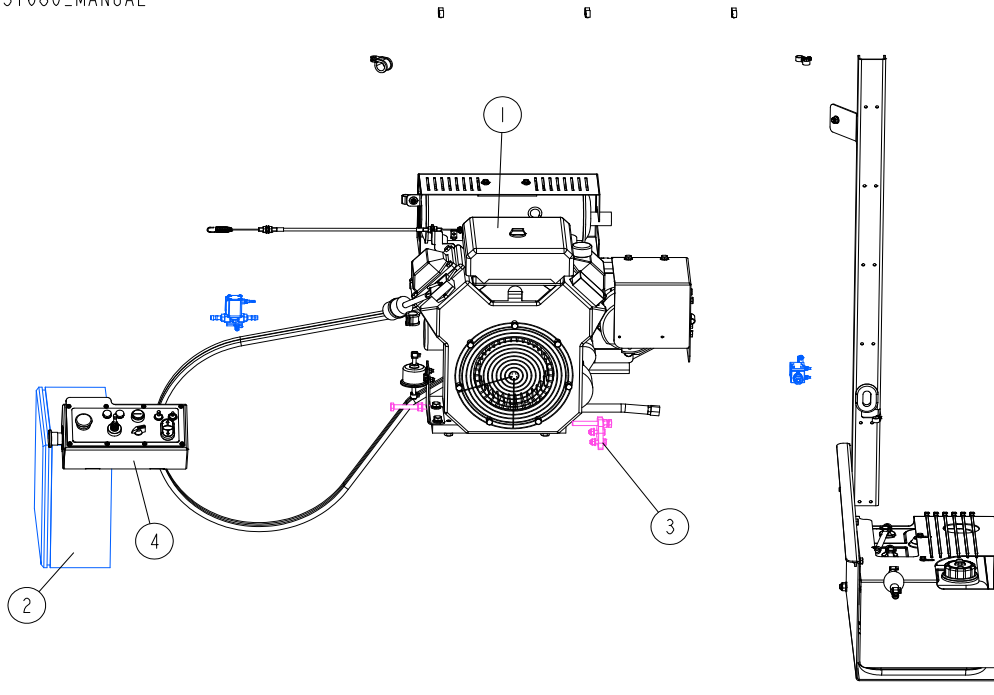
### 4.20 Tensioner Assembly, G19/G25 Drive Belt (LT15WC only)



REF.	DESCRIPTION (◆ Indicates Parts Available In Assemblies Only)	PART #	QTY
-	TENSIONER ASSEMBLY, DO LT15WC G25/G19 BELT	531695	1
1	BOLT, M10X80 8.8 HEX HEAD FULL THREAD ZINC	F81003-76	2
2	NUT, M10 8 HEX ZINC	F81033-3	2
3	WASHER, 10.5 FLAT ZINC	F81055-1	2
4	PLATE, TENSION	531696-1	1
5	WASHER, 8.4 FLAT ZINC	F81054-1	4
6	NUT, M8-8-B HEX NYLON ZINC LOCK	F81032-2	2
7	BOLT, M8X30 8.8 HEX HEAD FULL THREAD ZINC	F81002-7	2

## SECTION 5 G25 ENGINE REPLACEMENT PARTS

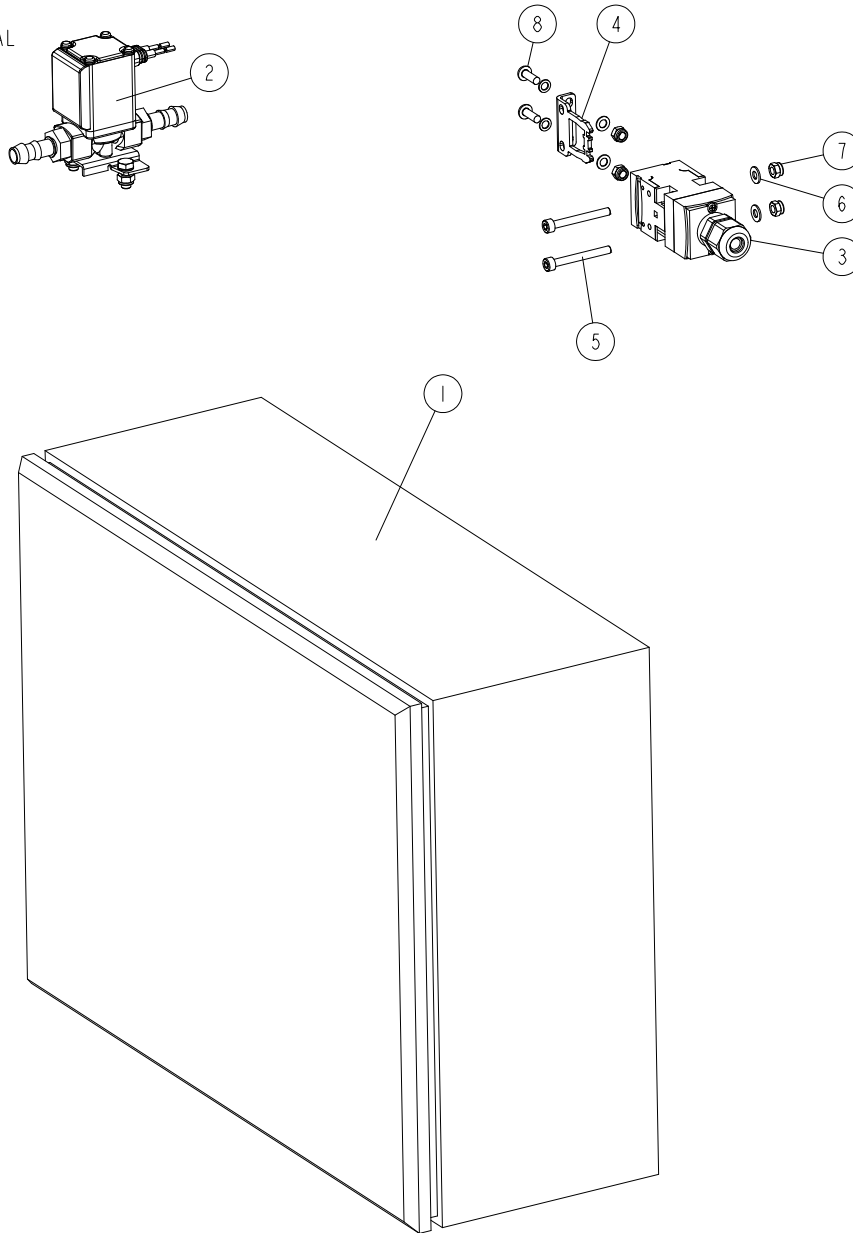
## 5.1 G25 Engine Kit (No. 531680)

531680\_001  
531680\_MANUAL

REF.	DESCRIPTION (* indicates parts available in assemblies only)	PART #	QTY
-	ENGINE KIT, G25 LT15WC CE	531680	1
1	MOUNTING KIT, LT15WC G25 ENGINE <a href="#">See Section 5.6</a>	531665	1
2	ELECTRICAL KIT, LT15WC G25/G19 CE <a href="#">See Section 5.2</a>	531666-G	1
3	TENSIONER, LT15WC G25/G19 BELT <a href="#">See Section 5.4</a>	531695	1
4	BOX, LT15WC G25 CONTROL <a href="#">See Section 5.5</a>	531688-G25	1

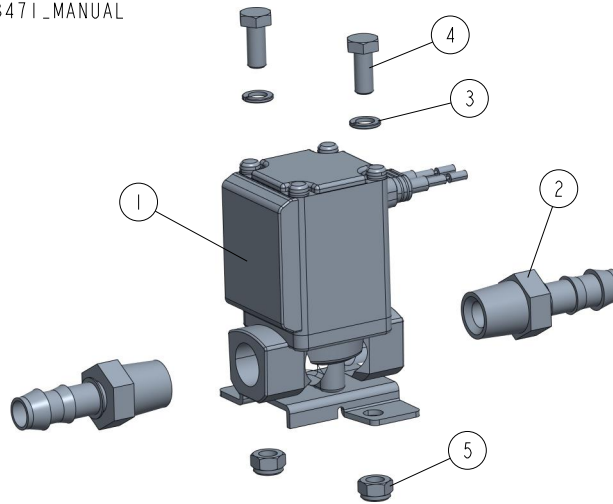
## 5.2 Electrical Kit (No. 531666-G)

531666-G-001  
531666-G-MANUAL



REF.	DESCRIPTION (* indicates parts available in assemblies only)	PART #	QTY	
-	<b>ELECTRICAL KIT, LT15WC G25/G19 CE</b>	531666-G	1	
1	BOX, LT15WB-G25/G19 COMPLETE ELECTRICAL	531686	1	
2	LUBE KIT, LT15DC BLADE <a href="#">See Section 5.3</a>	503471	1	
3	SWITCH, AZ17-11ZRK SAFETY	094232	1	
4	KEY, AZ17/170-B5 SAFETY SWITCH	094422	1	
5	SCREW, M4X35 8.8 HEX SOCKET HEAD CAP ZINC	F81011-34	2	
6	WASHER, 4.3 FLAT ZINC	F81051-2	2	
7	NUT, M4-8 HEX NYLON ZINC LOCK	F81029-1	4	
8	SCREW, M4X12 -5.8-B CROSS RECESSED PAN HEAD ZINC	F81011-43	2	

## 5.3 Blade Lube Kit (No. 503471)

503471\_001  
503471\_MANUAL

REF.	DESCRIPTION (* indicates parts available in assemblies only)	PART #	QTY	
-	<b>LUBE KIT, LT15DC BLADE</b>	503471	1	
1	VALVE, VX212FZ1DAXB SMC SOLENOID	509113	1	
2	FITTING, 3/8 BARB 1/4NPT MALE	P04682	2	
3	WASHER, 5.1 SPLIT LOCK	F81052-2	2	
4	BOLT, M5X12 8.8 HEX HEAD FULL THREAD ZINC	F81000-5	2	
5	NUT, M5-8 DIN985 HEX NYLON ZINC LOCK	F81030-2	2	

**5.4 Belt Tensioner (No. 531695)**

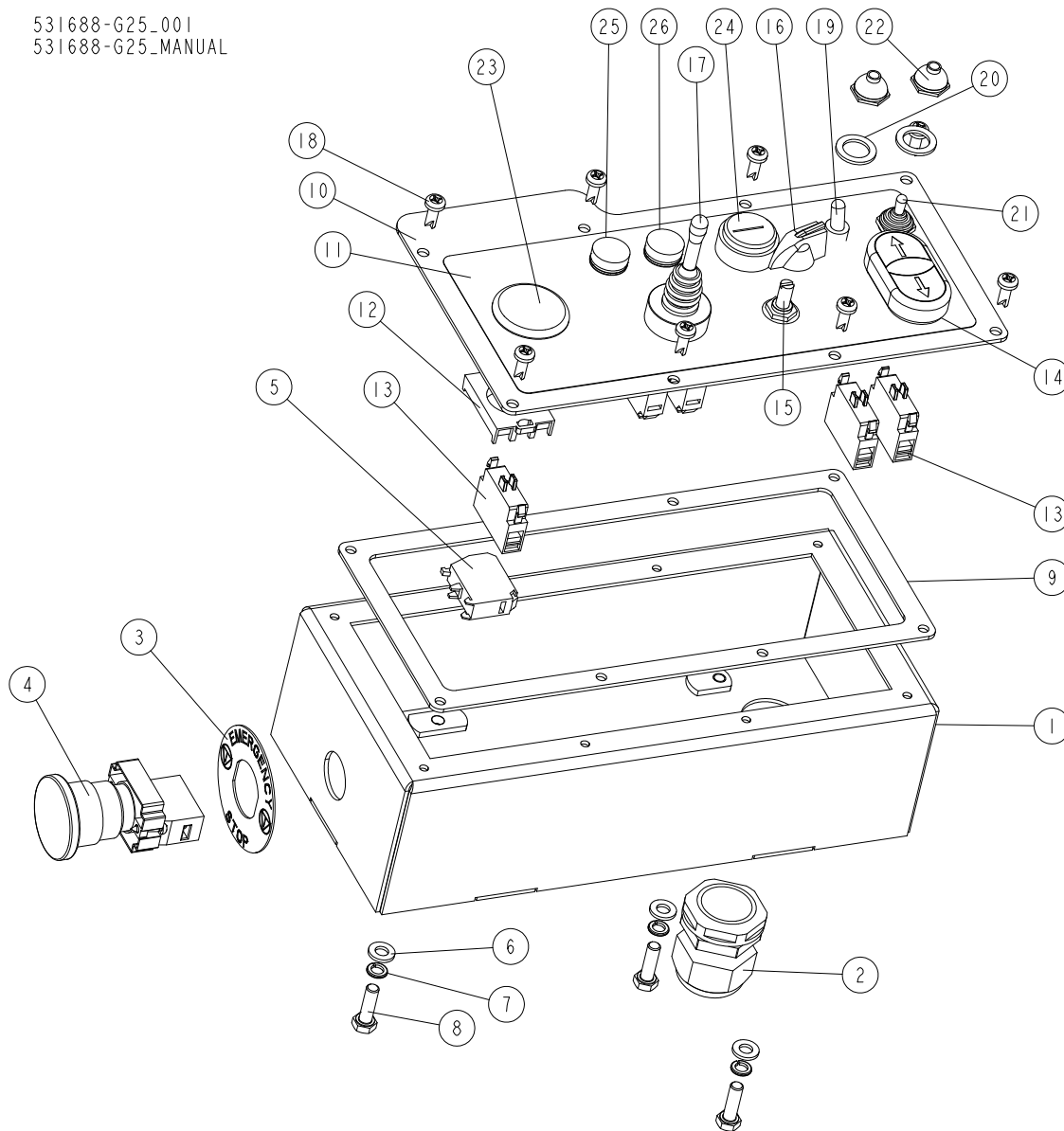
531695\_001  
531695\_MANUAL



REF.	DESCRIPTION (* indicates parts available in assemblies only)	PART #	QTY
-	<b>TENSIONER, LT15WC G25/G19 BELT</b>	531695	1
1	BOLT, M10X80 8.8 HEX HEAD FULL THREAD ZINC	F81003-76	2
2	NUT, M10 8 HEX ZINC	F81033-3	2
3	WASHER, 10.5 FLAT ZINC	F81055-1	2
4	PLATE, TENSIONER	531696-1	1
5	WASHER, 8.4 FLAT ZINC	F81054-1	4
6	NUT, M8-8-B HEX NYLON ZINC LOCK	F81032-2	2
7	BOLT, M8X30 8.8 HEX HEAD FULL THREAD ZINC	F81002-7	2

### 5.5 Control Box, LT15WC G25 (No. 531688-G25)

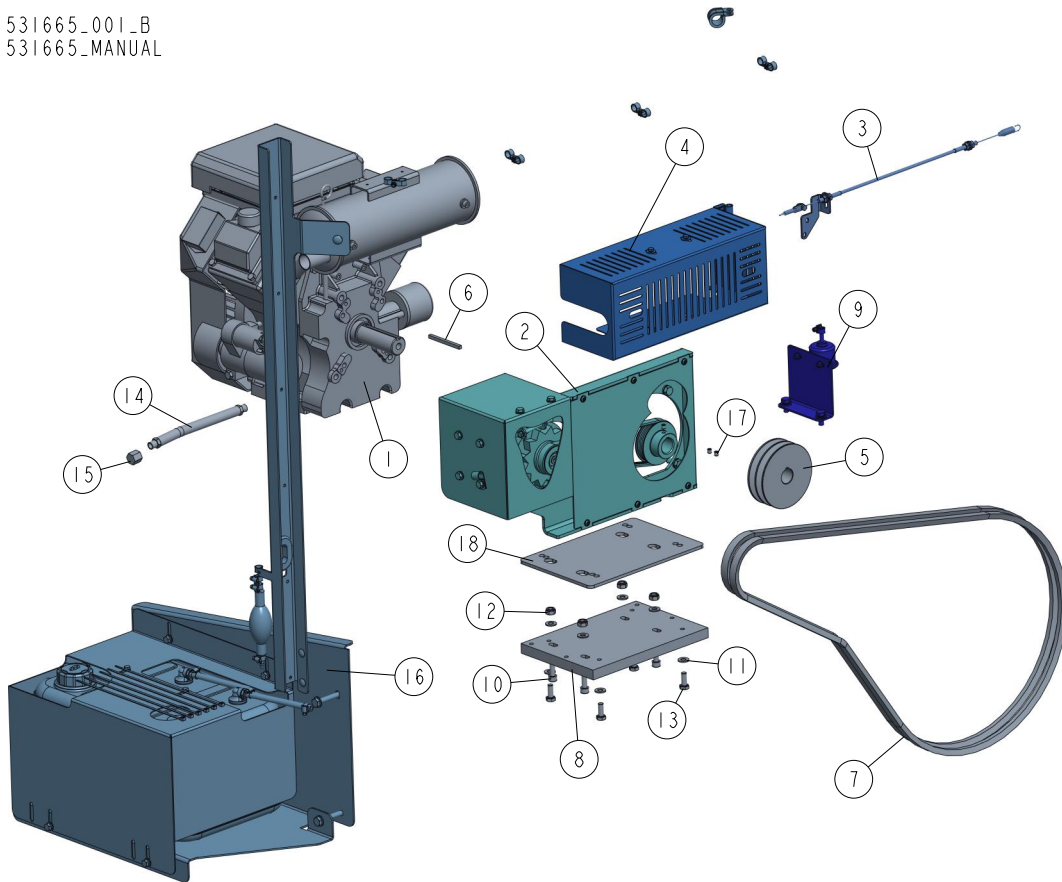
531688-G25-001  
531688-G25-MANUAL



REF.	DESCRIPTION (* indicates parts available in assemblies only)	PART #	QTY
-	<b>BOX, LT15WC G25 CONTROL</b>	531688-G25	1
1	BOX WELDMENT, LT15 CONTROL	501275-1	1
2	GLAND, DP21/H CABLE	F81096-3	1
3	WASHER, EMERGENCY STOP SWITCH	086561	1
4	SWITCH, XB4 BS542 EMERGENCY STOP	086556	1
5	CONTACT, ZB102	086810	1
6	WASHER, 6.4 FLAT ZINC	F81053-1	3
7	WASHER, Z 6.1 SPLIT LOCK ZINC	F81053-3	3
8	BOLT, M6X20 8.8 HEX HEAD FULL THREAD ZINC	F81001-2	3
9	GASKET, LT15 CONTROL BOX	501279	1
10	PANEL, LT15WC/DC CONTROL BOX FRONT	532816-1	1

REF.	DESCRIPTION (* indicates parts available in assemblies only)	PART #	QTY	
11	DECAL, LT15WC/G25 CONTROL BOX	532817	1	
12	CONNECTOR, M22-A	100905	2	
13	ELEMENT, M22 K10 CONTACT	091362	3	
14	ACTUATOR, M22-DD-S-X7/X7 BUTTON	090917	1	
15	POTENTIOMETER, 1K LTAGA	E20519	1	
16	KNOB, SPEED CONTROL	P06257	1	
17	COMPLETE JOYSTICK	087815	1	
18	BOLT, #10-24X1/2 PH	F05015-17	8	
19	SWITCH, TOGGLE	P03027	1	
20	WASHER, 1/2X3/4X1/16 NYLON	P05251-1	2	
21	SWITCH, TOGGLE 21A DPDT REV MOM SPADE	024200	1	
22	BOOT, TOGGLE SWITCH	P02575	2	
23	BUTTON, MOELLER GREEN	094328	1	
24	SWITCH, KEY	P04350	1	
25	LIGHT, XB6 AV 4BB CONTROL	091099	1	
26	LIGHT, XB6 AV 3BB CONTROL	087348	1	

## 5.6 G25 Engine Mounting Kit (Part No. 531665)

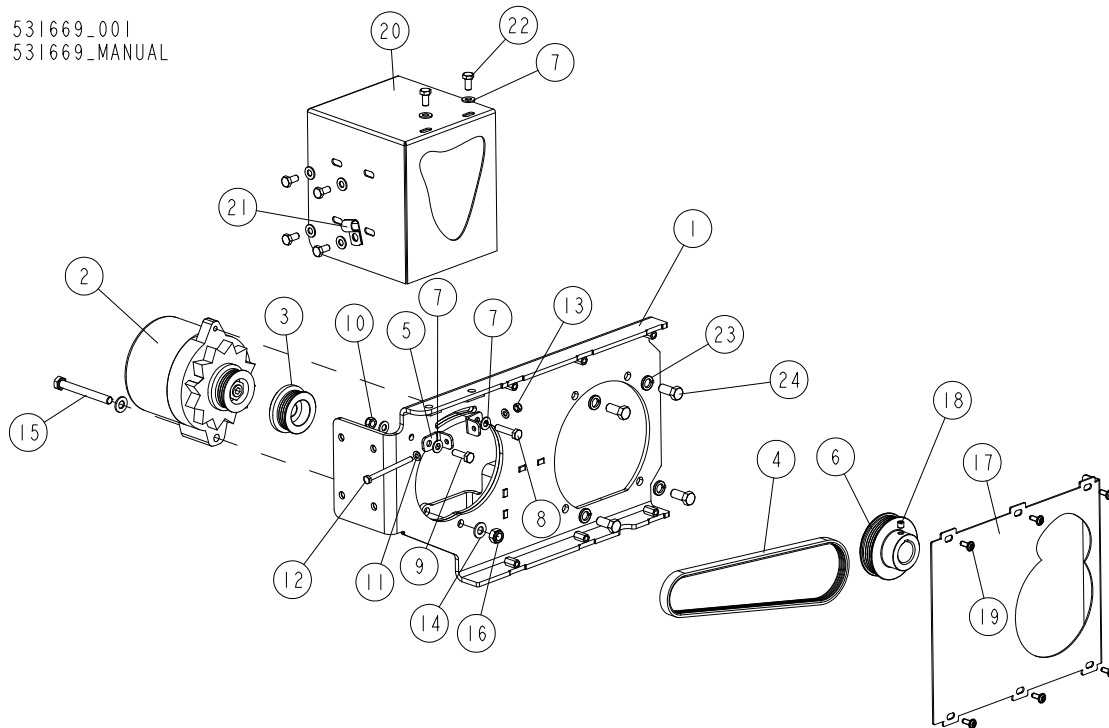
531665\_001\_B  
531665\_MANUAL

REF	DESCRIPTION (◆ indicates parts available in assemblies only)	PART #	QTY
-	<b>MOUNTING KIT, LT15WC G25 ENGINE</b>	531665	1
1	ENGINE, 25HP KOHLER	074352-POL	1
2	ALTERNATOR KIT, LT15WC-G25 <a href="#">See Section 5.7</a>	531669	1
3	CABLE ASSEMBLY, G18/LT15 THROTTLE <a href="#">See Section 5.8</a>	506280	1
4	GUARD, MUFFLER - COMPLETE <a href="#">See Section 5.9</a>	520167	1
5	PULLEY, G19 ENGINE ZINC-PLATED 2-GROOVE	092253-1	1
6	KEY, B6,35X6,35X85 ZINC	097822	1
7	V-BELT, 17BX2250 BX87 2210LI-GOOD-Y	097448	2
8	PLATE, G19/G25 ENGINE MOUNT	534424	1
9	PUMP ASSEMBLY, LT15 G18 FUEL <a href="#">See Section 5.10</a>	520170	1
10	BOLT, M10X55 -8.8 FE/ZN5 PN-M/82302	F81003-55	4
11	WASHER, 10.5 FLAT ZINC	F81055-1	8
12	NUT M10 ZC 8 NYLOCK DIN 982 ISO 7040	F81033-1	4
13	BOLT, M10X25 8.8 HEX HEAD FULL THREAD ZI	F81003-11	4
14	HOSE, 3/8NPTX9 5/8 RUBBER	P10082	1
15	CAP, 3/8 PIPE GALVANIZE	P04332	1
16	TANK ASSEMBLY, LT15 WIDE FUEL <a href="#">See Section 5.11</a>	531667	1
17	SCREW, M8X8 45H GEOMET HEX SOCKET SET W/	F81014-1	2
18	PLATE, ENGINE SPACER	592344-1	1



### 5.7 Alternator Kit (No. 531669)

531669\_001  
531669\_MANUAL

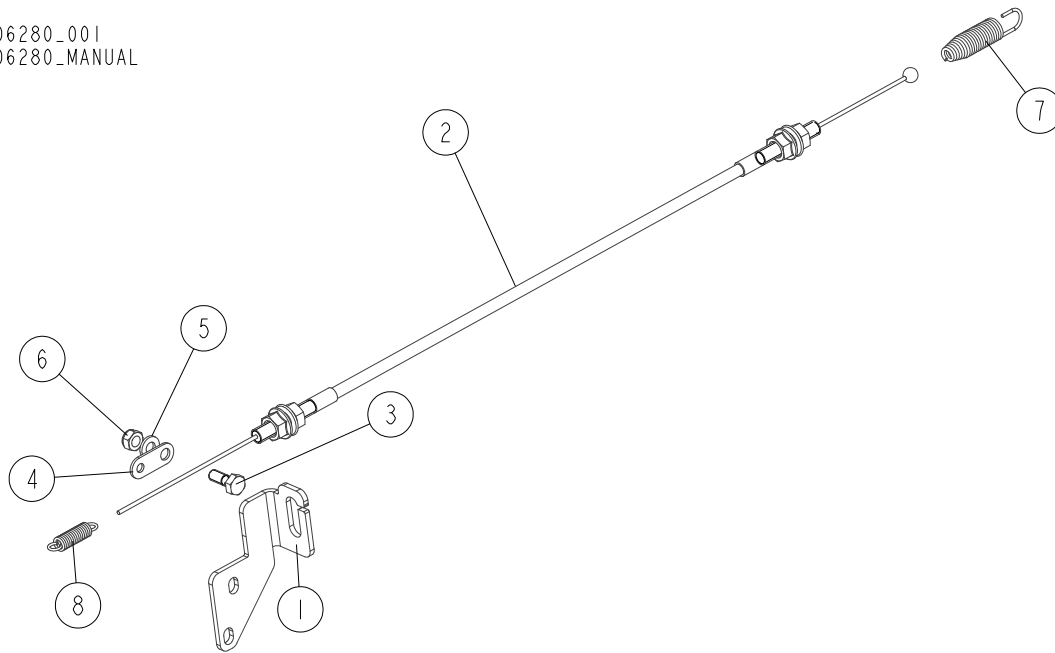


REF.	DESCRIPTION (* indicates parts available in assemblies only)	PART #	QTY
-	<b>ALTERNATOR KIT, LT15WC-G25</b>	531669	1
1	BRACKET, LT20 G25 ALTERNATOR MOUNT	097811-1	1
2	ALTERNATOR, 105A 12V CS130	050287	1
3	PULLEY, 105A (050287) ALTERNATOR ZINC-PLATED	506378-1	1
4	BELT, 4PK755 (GOOD-YEAR) MULTI-GROOVE	097815	1
5	TENSIONER, 30A ALTERNATOR BELT	095296-1	2
6	PULLEY, 105A G25 ALTERNATOR DRIVE ZINC-PLATED	097814-1	1
7	WASHER, 8.4 FLAT ZINC	F81054-1	9
8	BOLT, M8X35-8.8 HEX HEAD FULL THREAD ZINC	F81002-13	1
9	BOLT, M8X25-8.8-B HEX HEAD FULL THREAD ZINC	F81002-5	1
10	NUT, M8-8-B HEX NYLON ZINC LOCK	F81032-2	1
11	WASHER, 6.4 FLAT ZINC	F81053-1	2
12	BOLT, M6X80 8.8 HEX HEAD FULL THREAD ZINC	F81001-61	1
13	NUT, M6-8-B HEX NYLON ZINC LOCK	F81031-2	1
14	WASHER, 10.5 FLAT ZINC	F81055-1	2
15	BOLT, M10X90-8.8-B HEX HEAD ZINC	F81003-66	1
16	NUT, M10-8-B HEX NYLON ZINC LOCK	F81033-1	1
17	GUARD, 105A G25 ALTERNATOR BELT	097816-1	1
18	SCREW, M8X8-33H GEOMET HEX SOCKET SET W/FLAT POINT	F81014-1	1
19	SCREW, M6X16 BN 11252 "BOSSARD" BUTTON HEAD SOCKET CAP W/FLANGE	F81001-24	6
20	GUARD, 105A LT15WC G25 ALTERNATOR	531677-1	1
21	CLAMP, 1/2EMT COATED	P07584	1
22	BOLT, M8X16-8.8-B HEX HEAD FULL THREAD ZINC	F81002-20	6
23	WASHER, Z12.2 SPLIT LOCK ZINC	F81056-2	4

REF.	DESCRIPTION (* indicates parts available in assemblies only)	PART #	QTY	
24	BOLT, UNC 7/16-14X1 8.8 DIN 933 BN67 (BOSSARD) HEX HEAD FULL THREAD	F05007-145	4	

### 5.8 Throttle Cable Assembly (No. 506280)

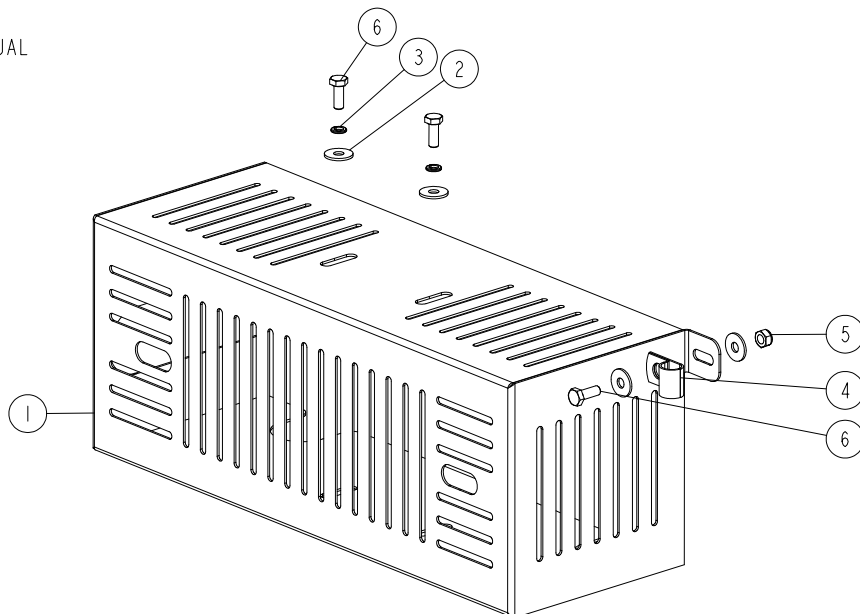
506280\_001  
506280\_MANUAL



REF.	DESCRIPTION (* indicates parts available in assemblies only)	PART #	QTY
-	<b>CABLE ASSEMBLY, G18/LT15 THROTTLE</b>	506280	1
1	BRACKET, LT15 G18 THROTTLE CABLE	506281-1	1
2	CABLE, LT15 G18 THROTTLE	506282	1
3	BOLT, THROTTLE CABLE ZINC-PLATED CLAMPING	088120-1	1
4	BRACKET, G18 THROTTLE CABLE SPRING	092531-1	1
5	WASHER, 6.4 FLAT ZINC	F81053-1	1
6	NUT, M6-8-B HEX NYLON ZINC LOCK	F81031-2	1
7	SPRING, 35X9.5X1.6 SPECIAL	097443	1
8	SPRING, 1.3X8X20 EXTENSION	092549	1

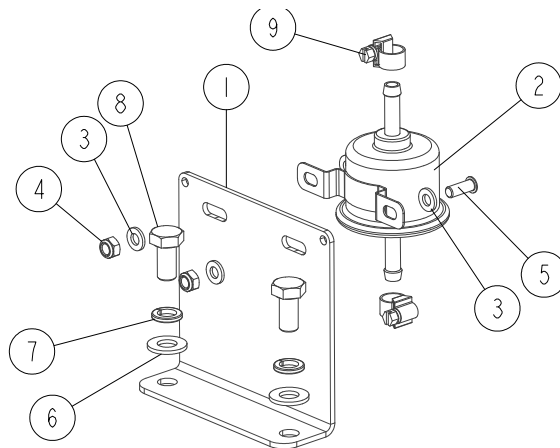
**5.9 Muffler Guard (Part No. 520167)**

520167\_001  
520167\_MANUAL



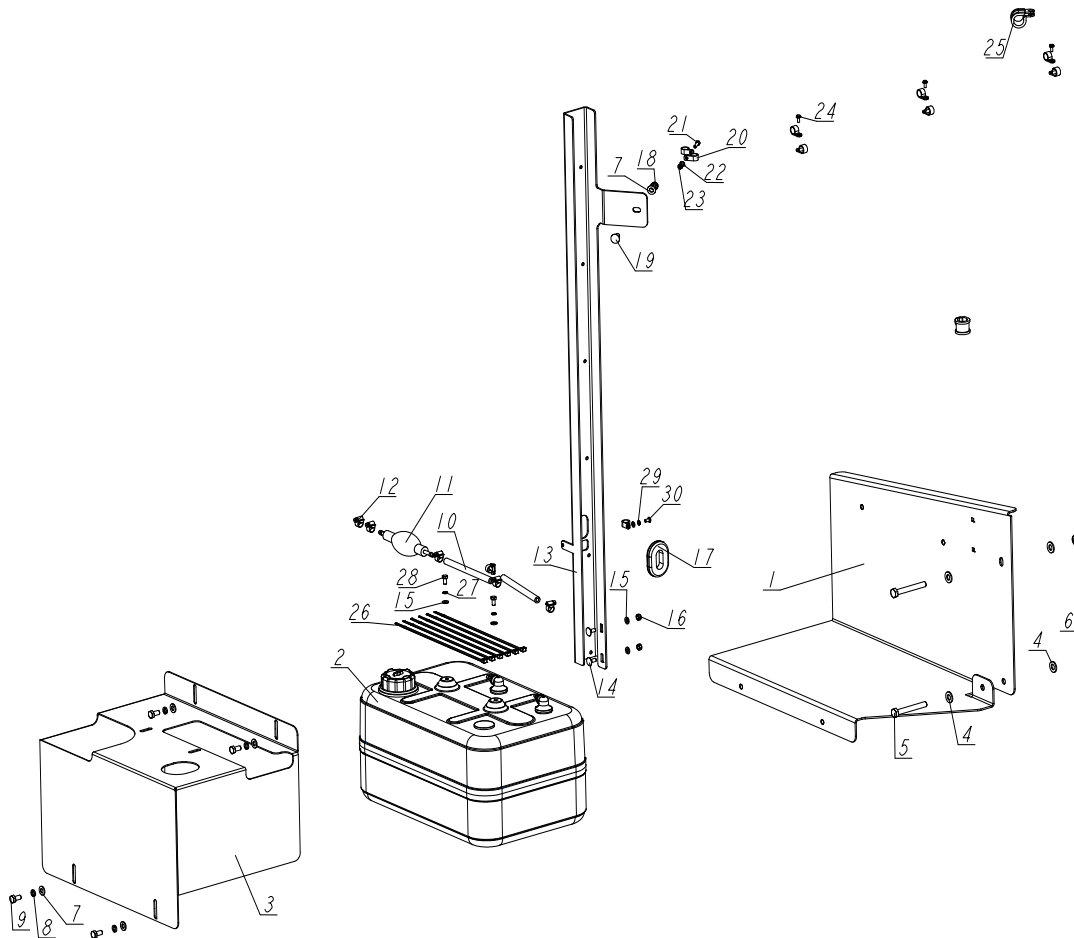
REF.	DESCRIPTION (* indicates parts available in assemblies only)	PART #	QTY	
-	<b>GUARD, MUFFLER - COMPLETE</b>	520167	1	
1	GUARD, MUFFLER	521463-1	1	
2	WASHER, 6.5 ZINC SPECIAL FLAT	F81053-11	4	
3	WASHER, Z 6.1 SPLIT LOCK ZINC	F81053-3	2	
4	CLAMP, 1/2EMT COATED	P07584	1	
5	NUT, M6-8-B HEX NYLON ZINC LOCK	F81031-2	1	
6	BOLT, M6X16-8.8 HEX HEAD FULL THREAD ZINC	F81001-15	3	

## 5.10 Fuel Pump Assembly (No. 520170)

520170\_001  
520170\_MANUAL

REF.	DESCRIPTION (* indicates parts available in assemblies only)	PART #	QTY
-	<b>PUMP ASSEMBLY, LT15-G18 FUEL - COMPLETE</b>	520170	1
1	PLATE, FUEL PUMP MOUNT	520171-1	1
2	PUMP, D42/D33 KUBOTA ELECTRIC FUEL	083565	1
3	WASHER, 6.4 FLAT ZINC	F81053-1	4
4	NUT, M6-8-B HEX NYLON ZINC LOCK	F81031-2	2
5	BOLT, M6X16-8.8 HEX HEAD FULL THREAD ZINC	F81001-15	2
6	WASHER, 10.5 FLAT ZINC	F81055-1	2
7	WASHER, Z 10.2 SPLIT LOCK ZINC	F81055-2	2
8	BOLT, M10X20-5.8 HEX HEAD FULL THREAD ZINC	F81003-1	2
9	CLAMP, 8-12	F81080-1	2

## 5.11 Fuel Tank Assembly (No. 531667)

531667\_001\_A  
531667\_MANUAL

REF	DESCRIPTION (* indicates parts available in assemblies only)	PART #	QTY
-	<b>TANK ASSEMBLY, LT15 WIDE FUEL</b>	531667	1
1	PLATE, LT15 FUEL TANK - COMPLETE	550766-1	1
2	FUEL TANK, 25-LITRE	550767	1
3	COVER, FUEL TANK	550769-1	1
4	WASHER, 10.5 FLAT ZINC	F81055-1	4
5	BOLT, M10X75-8.8 HEX HEAD ZINC	F81003-15	2
6	NUT, M10-8-B HEX NYLON ZINC LOCK	F81033-1	2
7	WASHER, 8.4 FLAT ZINC	F81054-1	5
8	WASHER, 8.2 SPLIT LOCK ZINC	F81054-4	4
9	BOLT, M8X16	F81002-20	4
10	FUEL LINE, DIESEL ENGINE	P642	2
11	BULB, FUEL PRIMER	014481	1
12	CLAMP, PLASTIC HOSE DIA. 8-12MM	F81080-1	6
13	BRACKET, FUEL HOSE GUIDE	531668-1	1
14	BOLT, M6X16 -8.8 CARRIAGE ZINC	F81001-36	2
15	WASHER, 6.4 FLAT ZINC	F81053-1	4

REF	DESCRIPTION (* indicates parts available in assemblies only)	PART #	QTY	
16	NUT, M6-8-B NYLON HEX ZINC LOCK	F81031-2	2	
17	GROMMET, 26MM I.D. RUBBER	085613	1	
18	NUT, M8-8-B HEX NYLON ZINC LOCK	F81032-2	1	
19	BOLT, M8X20-8.8 CARRIAGE HEAD ZINC	F81002-11	1	
20	CLAMP, 1/2 WIRE PLAS.	F05114-1	9	
21	BOLT M6X20 HH FT ZC 8.8 DIN 933 ISO 4017	F81000-35	1	
22	WASHER, 5.3 FLAT ZINC	F81052-1	2	
23	NUT, M5-8 DIN985 ZINC	F81030-2	1	
24	SCREW, #8-32 X 3/8" SELF-TAPPING	F05015-8	3	
25	CLIP, RSGU 1.20/20 METAL & RUBBER RETAIN	F81087-2	2	
26	WRAP, TKUV 30/5 WIRE TIE	F81082-5	6	
27	WASHER, Z 6.1 SPLIT LOCK ZINC	F81053-3	2	
28	BOLT, M6X12-8.8 HEX HEAD FULL THREAD ZIN	F81001-7	2	
29	WASHER, 5.1 SPLIT LOCK ZINC	F81052-2	1	
30	BOLT, M5X10 WG. ISO 7380	F81000-32	1	