

Wood-Mizer®

Remote Operation

LT40-RC (Remote Curtain) rev. A1.00

Operator's Manual



This manual is to replace the related appropriate
information from the non-remote sawmill
Operator's Manual

Form #683

Table of Contents

Section-Page

SECTION 1	SPECIFICATIONS & INSTALLATION	1-1
1.1	Sawmill Specifications	1-2
1.2	Cables Installation	1-5
1.3	Mounting Cables on Roller Hangers	1-7
SECTION 2	REPLACEMENT PARTS	2-1
2.1	How To Use The Parts List	2-1
2.2	Sample Assembly	2-1
2.3	Remote Equipment Option	2-2
2.4	Stationary Pulley	2-4
2.5	Pulley	2-5

SECTION 1 SPECIFICATIONS & INSTALLATION

The Remote Option provides remote operation for all sawmill functions from a single location at the front of the sawmill. The option includes all cables with traveling guide chain, a remote electrical power junction box, a front-mounted sawmill control box, and a remote clutch mechanism with a switch to engage the blade from the remote location.

The Remote Option also includes Wood-Mizer's Simple Networks system which allows automatic, incremental up/down movement of the cutting head.

1.1 Sawmill Specifications

Set up the sawmill as instructed in your sawmill operator's manual.



CAUTION! Moving the saw carriage before removing the cable chain support may cause damage to the chain. Also, moving the saw carriage when the chain is frozen can damage the chain. [See Section 1.4](#) for recommended chain deicing procedure.

See Figure 1-1.

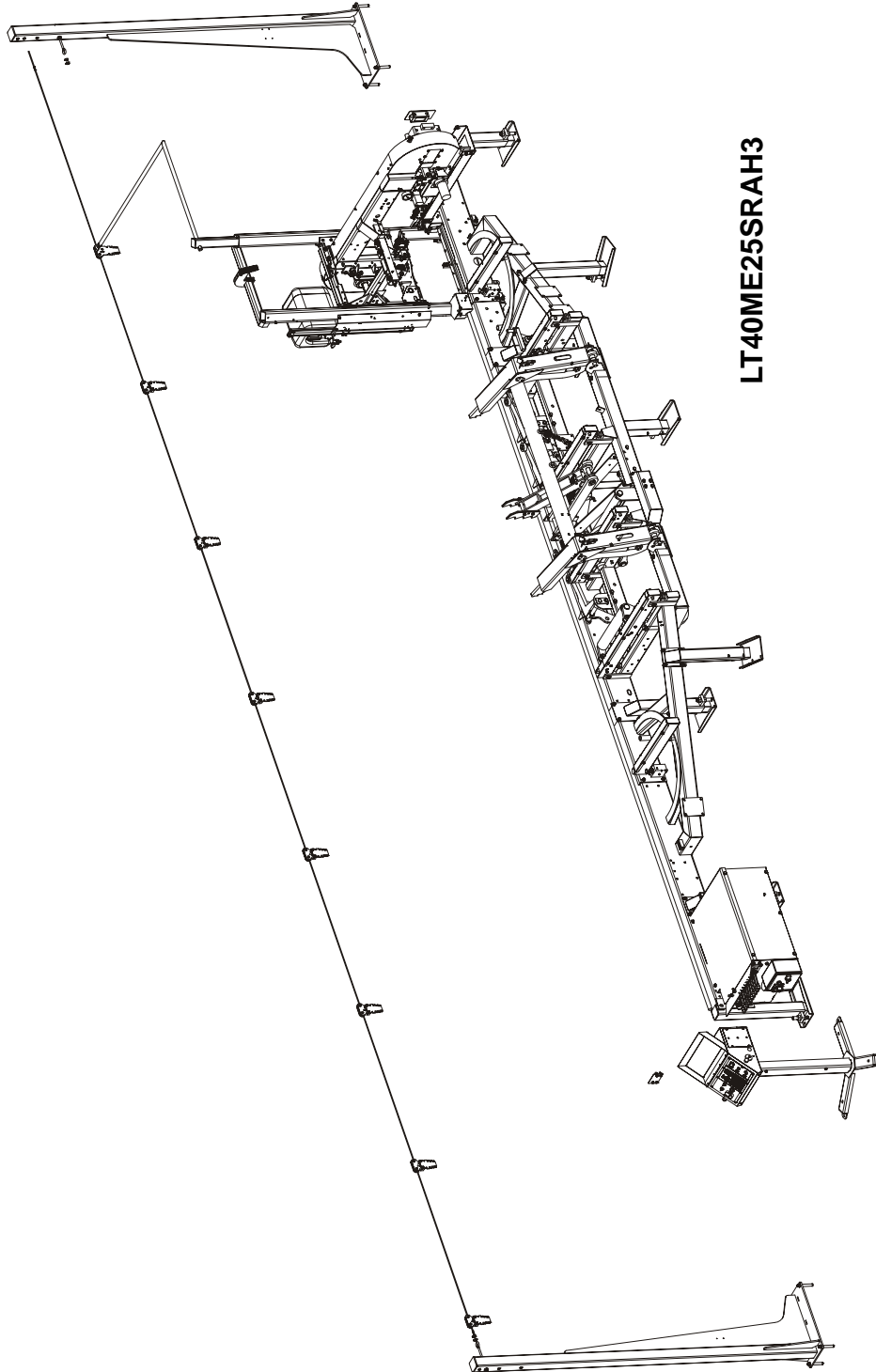


FIG. 1-1

1 SPECIFICATIONS & INSTALLATION

Sawmill Specifications

See Figure 1-2. The figure shows locations of the sawmill legs and columns.

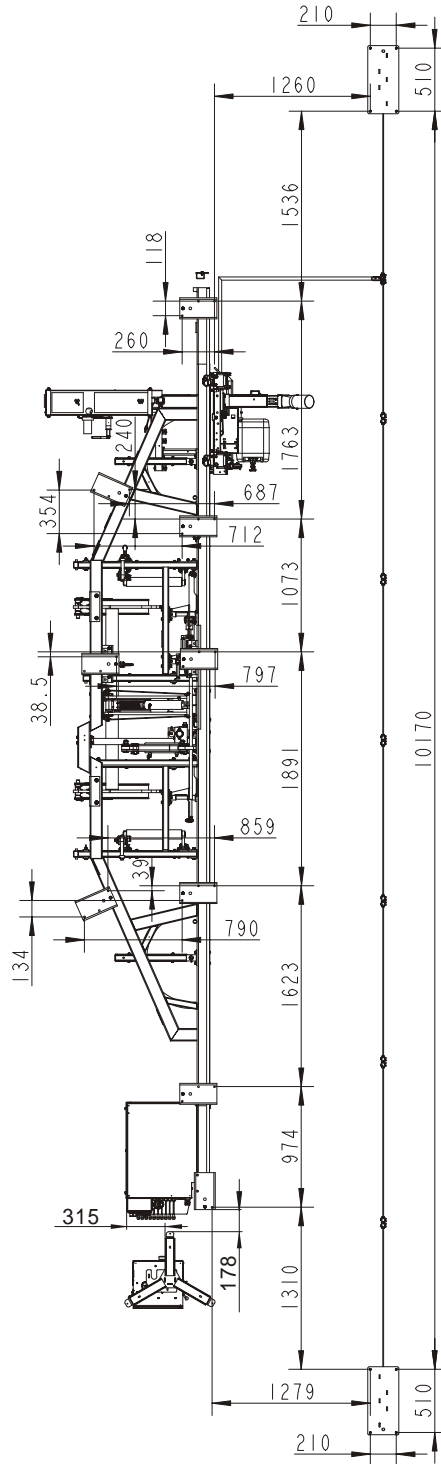


FIG. 1-2

1.2 Cables Installation

Proper routing of the cables on the cable guide is shown below.

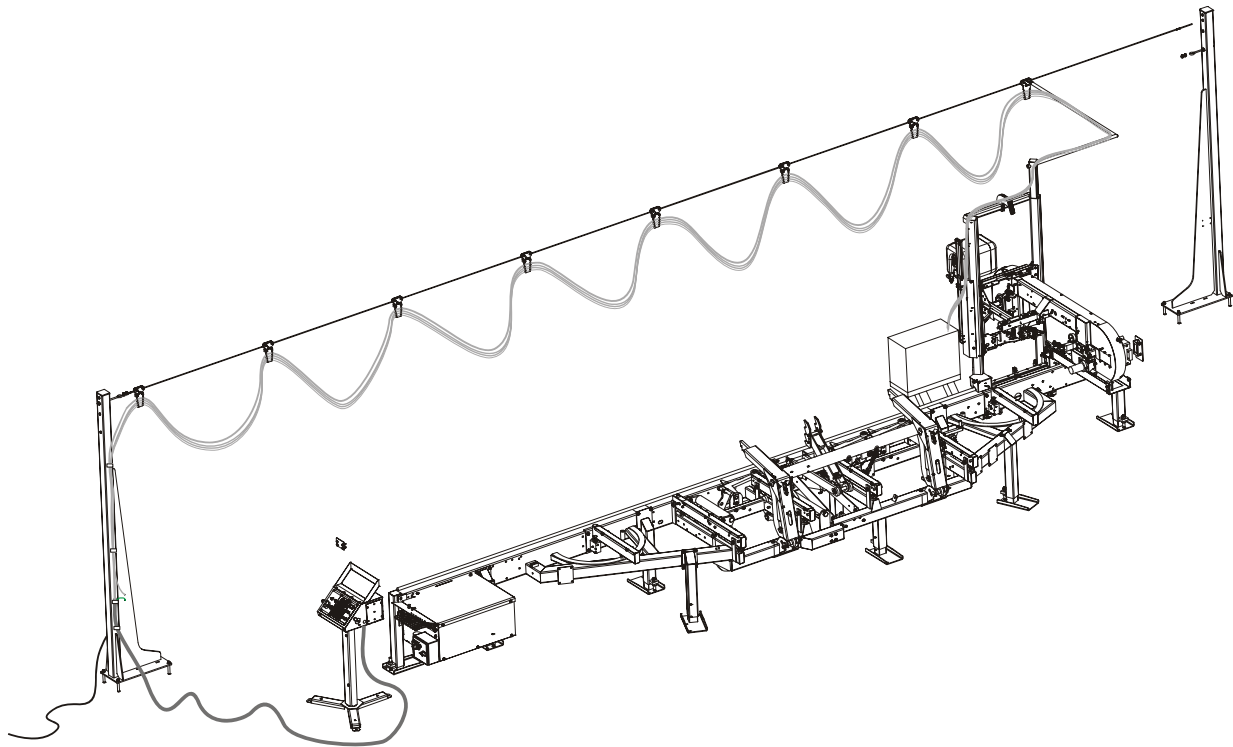


FIG. 1-3

1 SPECIFICATIONS & INSTALLATION

Cables Installation

The photo below shows how the cables and the socket should be installed on the column.



PHOTO 1-1

1.3 Mounting Cables on Roller Hangers

The photos below show how the cables should be installed on the roller hangers.



PHOTO 1-2

1

SPECIFICATIONS & INSTALLATION

Mounting Cables on Roller Hangers



PHOTO 1-3



CAUTION! Be sure the larger diameter cables are mounted to the upper brackets of the roller hangers, and the smaller diameter cables are mounted to the lower brackets of the hangers.

SECTION 2 REPLACEMENT PARTS

2.1 How To Use The Parts List

- Use the table of contents or index to locate the assembly that contains the part you need.
- Go to the appropriate section and locate the part in the illustration.
- Use the number pointing to the part to locate the correct part number and description in the table.
- Parts shown indented under another part are included with that part.
- Parts marked with a diamond (◆) are only available in the assembly listed above the part.

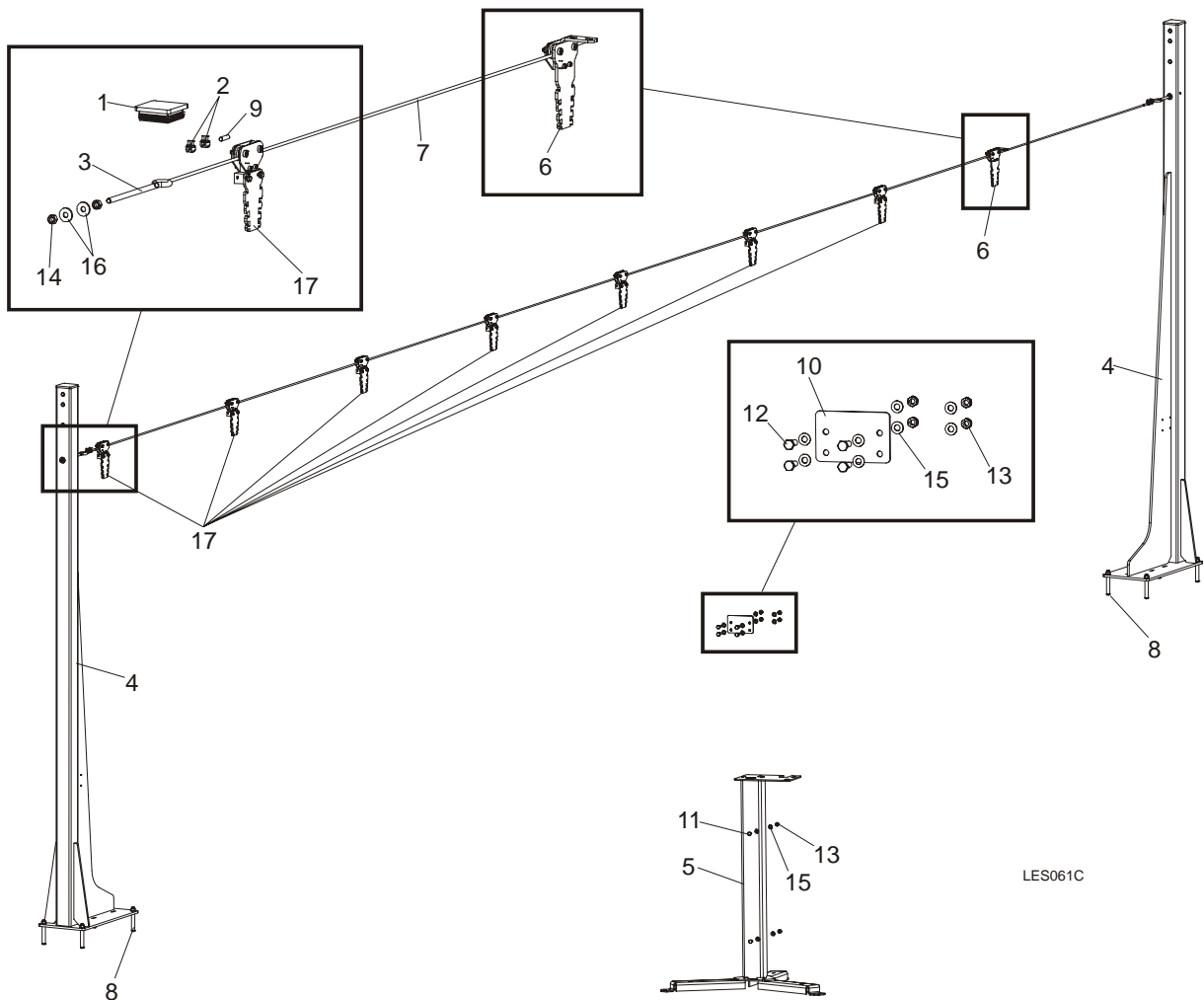
See the sample table below. Sample Part #A01111 includes part F02222-2 and subassembly A03333. Subassembly A03333 includes part S04444-4 and subassembly K05555. The diamond (◆) indicates that S04444-4 is not available except in subassembly A03333. Subassembly K05555 includes parts M06666 and F07777-77. The diamond (◆) indicates M06666 is not available except in subassembly K05555.

2.2 Sample Assembly				
REF	DESCRIPTION (◆ Indicates Parts Available In Assemblies Only)	PART #	QTY.	
	SAMPLE ASSEMBLY, COMPLETE (INCLUDES ALL INDENTED PARTS BELOW)	A01111	1	
1	Sample Part	F02222-22	1	
	Sample Subassembly (Includes All Indented Parts Below)	A03333	1	
2	Sample Part (◆ Indicates Part Is Only Available With A03333)	S04444-4	1	◆
	Sample Subassembly (Includes All Indented Parts Below)	K05555	1	
3	Sample Part (◆ Indicates Part Is Only Available With K05555)	M06666	2	◆
4	Sample Part	F07777-77	1	

To Order Parts:

- From Europe call our European Headquarters and Manufacturing Facility in Kolo, Poland at **+48-63-2626000** or **+48-3912-1319**. From the continental U.S., call **1-800-448-7881** to order parts. Have your customer number, vehicle identification number, and part numbers ready when you call.
- From other international locations, contact the Wood-Mizer distributor in your area for parts.

2.3 Remote Equipment Option



LES061C

REF	DESCRIPTION (◆ Indicates Parts Available In Assemblies Only)	PART #	QTY.
	EQUIPMENT, REMOTE COMPLETE	501649	1
1	CAP, EDGER FRAME	089644	2
2	CLAMP, LT20 STRING	091614	4
3	TENSIONER, ZINC-PLATED	500846-1	2
4	COLUMN, LT20B LINE GUIDE	503600-1	2
5	STAND, LT20B CONTROL BOX	501651-1	1
6	PULLEY, STATIONARY	504264	1
7	CABLE, 6MM (11,5 M) STEEL	504279	1
8	PIN, LT 16X120	501877	8
9	POINTER, 6MM STEEL CABLE	504280-1	2
10	CAP, LT20B REMOTE CONTROL BOX	501879-1	1
11	BOLT, M8X20-5.8 HEX HEAD FULL THREAD ZINC	F81002-1	2
12	BOLT, M8x25-8.8-B HEX HEAD FULL THREAD ZINC	F81002-5	4
13	NUT, M8-8-B HEX NYLON ZINC LOCK	F81032-2	6

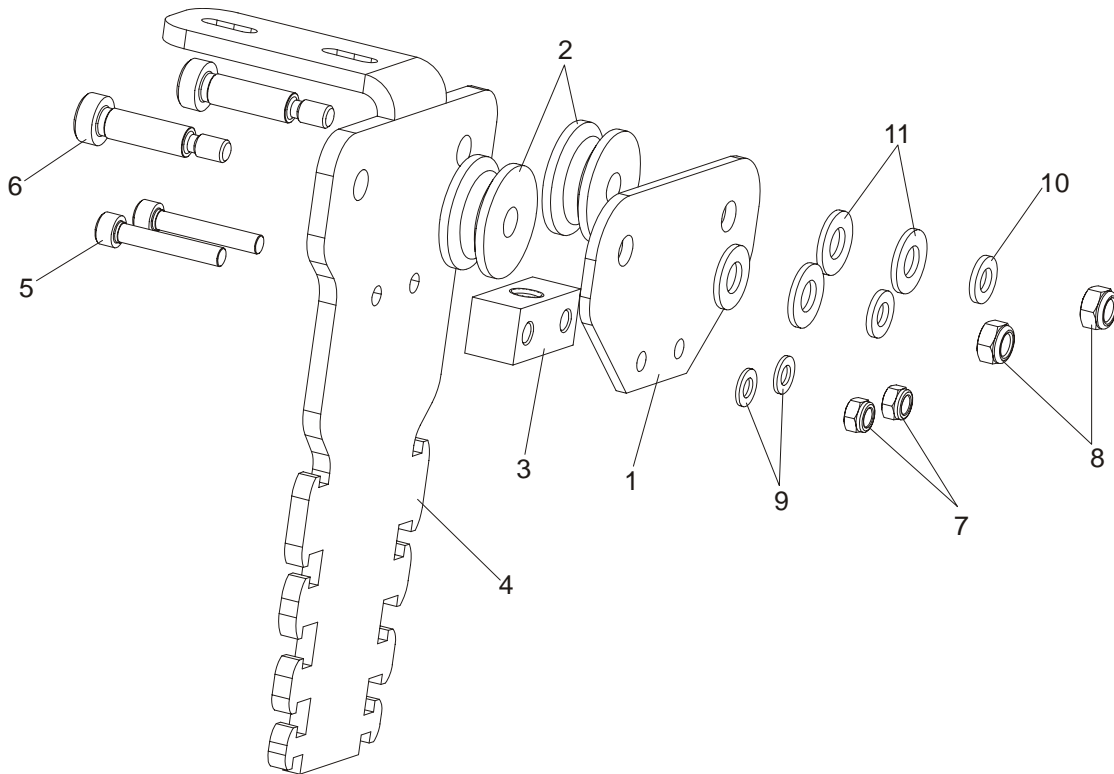
REPLACEMENT PARTS

Remote Equipment Option

2

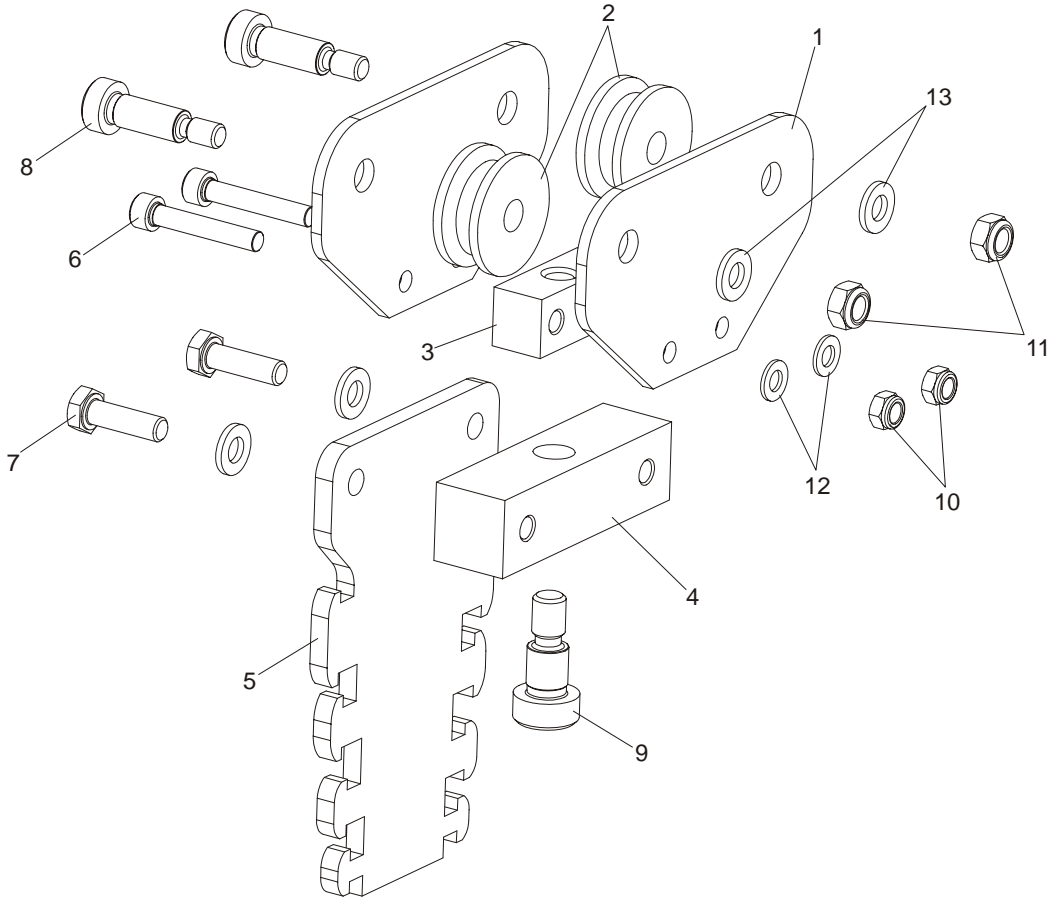
14	NUT, M10-8-B HEX ZINC	F81033-3	4	
15	WASHER, 8.4 FLAT ZINC	F81054-1	12	
16	WASHER, 10.5 ZINC FLAT SPECIAL	F81055-6	4	
17	PULLEY	504114	7	

2.4 Stationary Pulley



L.P.	DESCRIPTION (◆ Indicates Parts Available In Assemblies Only)	PART #	QTY.
	PULLEY, FIXED	504264	1
1	PLATE, PULLEY DOUBLE	504003-1	1
2	WHEEL, CURTAIN PULLEY	504113	2
3	CUBE, PULLEY	504115-1	1
4	PLATE, CABLE STATIONARY	504263-1	1
5	BOLT, M5x30-5.8 FE/ZN5 PN-M/82302 SOCKET HEAD	F81000-71	2
6	BOLT, 8/M6X25 ISO7379 SHOULDER	F81001-47	2
7	NUT, M5-8-Fe/Zn5 DIN985	F81030-2	2
8	NUT, M6-8-B HEX NYLON ZINC LOCK	F81031-2	2
9	WASHER, 5.3 FLAT ZINC	F81052-1	2
10	WASHER, 6.4 FLAT ZINC	F81053-1	2
11	WASHER, 8.4 FLAT ZINC	F81054-1	4

2.5 Pulley



L.P.	DESCRIPTION (◆ Indicates Parts Available In Assemblies Only)	PART #	QTY.
	PULLEY	504114	1
1	PLATE, PULLEY DOUBLE	504003-1	1
2	WHEEL, CURTAIN PULLEY	504113	2
3	CUBE, PULLEY	504115-1	1
4	CUBE, CABLE PULLEY MOUNT	504116-1	1
5	PLATE, CABLE STATIONARY	504123-1	1
6	BOLT, M5x30-5.8 FE/ZN5 PN-M/82302 SOCKET HEAD	F81000-71	2
7	BOLT, M6x20-8.8 HEX HEAD FULL THREAD ZINC	F81001-2	2
8	BOLT, 8/MX20 12.9 SHOULDER	F81001-25	2
9	BOLT, 10/M8 X 12-12.9 ISO-7379 SHOULDER	F81003-62	1
10	NUT, M5-8-Fe/Zn5 DIN985	F81030-2	2
11	NUT, M6-8-B HEX NYLON ZINC LOCK	F81031-2	2
12	WASHER, 5.3 FLAT ZINC	F81052-1	2
13	WASHER, 6.4 FLAT ZINC	F81053-1	4