

# **Wood-Mizer®**

## **Remote Operation**

**LT40 AC Remote - ST**

**rev. A1.00**

## **Operator's Manual**



This manual is to replace the related appropriate information from the non-remote sawmill *Operator's Manual*

*Form #682*

# Table of Contents

# Section-Page

<b>SECTION 1</b>	<b>REMOTE OPERATION</b>	<b>1-1</b>
1.1	Preparing for Remote Operation .....	1-2
1.2	Remote Sawmill Operation .....	1-4
1.3	Preparing The Remote Option For Towing.....	1-5
1.4	Cold Weather Operation.....	1-6
1.5	Hydraulic Control Operation.....	1-7
1.6	Loading, Turning, And Clamping Logs .....	1-9
<b>SECTION 2</b>	<b>MAINTENANCE &amp; TROUBLESHOOTING</b>	<b>2-1</b>
2.1	Clean The Cable Chain & Support Tray .....	2-1
2.2	Cable Chain Repair.....	2-2
2.3	Cable Chain And Support Tray Alignment.....	2-3
2.4	Board Removal Bumper Adjustment .....	2-5
<b>SECTION 3</b>	<b>REPLACEMENT PARTS</b>	<b>3-1</b>
3.1	How To Use The Parts List .....	3-2
3.2	Sample Assembly .....	3-2
	Protective Conduits, LT70L Super Hydraulic Hoses	
3.3	Remote Control Box .....	3-4
3.4	Remote Control Box M-Super frame .....	3-6
3.5	Electric Box Base .....	3-8
3.6	Adaptation Kit, Board Removal Bumper .....	3-9
3.7	Board Removal Bumper .....	3-10
3.8	Board Removal Bumper Assembly .....	3-12
3.9	Board Removal Bumper .....	3-13
3.10	Remote Equipment for Installation on a Wall (Cutting Length of 6.5 m) .....	3-15
3.11	Remote Equipment for Installation on a Wall (Cutting Length of 6.5-10 m ) .....	3-16
3.12	Guide Rail Support Post .....	3-17
3.13	Guide Rail Support Post .....	3-19
3.14	4-Post Remote Set .....	3-21
3.15	5-Post Remote Set .....	3-22
3.16	Support Assembly, Hoses & Cables .....	3-23
3.17	Support Assembly, Hoses & Cables .....	3-24
3.18	Support Assembly, Hoses & Cables .....	3-25
3.19	Support Assembly, Hoses & Cables .....	3-26
3.20	Board Return Assembly .....	3-27
3.21	Board Return Guide .....	3-28
3.22	Board Return Arm .....	3-30
3.23	Electric Box, ST 4 kW (557006) .....	3-32
3.24	Electric Box, ST 4 kW (557003) .....	3-33
3.25	Roller with Rubber Bushing .....	3-34
<b>SECTION 4</b>	<b>ELECTRICAL WIRING DIAGRAMS, LT40ME20SRAH4-ST</b>	<b>4-1</b>

---

## SECTION 1 REMOTE OPERATION

The Remote Option provides remote operation for all sawmill functions from a single location at the front of the sawmill. The option includes all cables with traveling guide chain, a remote electrical power junction box, a front-mounted sawmill control box, and a remote clutch mechanism with switch to engage the blade from the remote location.


The Remote Option also includes Wood-Mizer's Simple Networks system which allows automatic, incremental up/down movement of the cutting head.

# 1 Remote Operation

## Preparing for Remote Operation

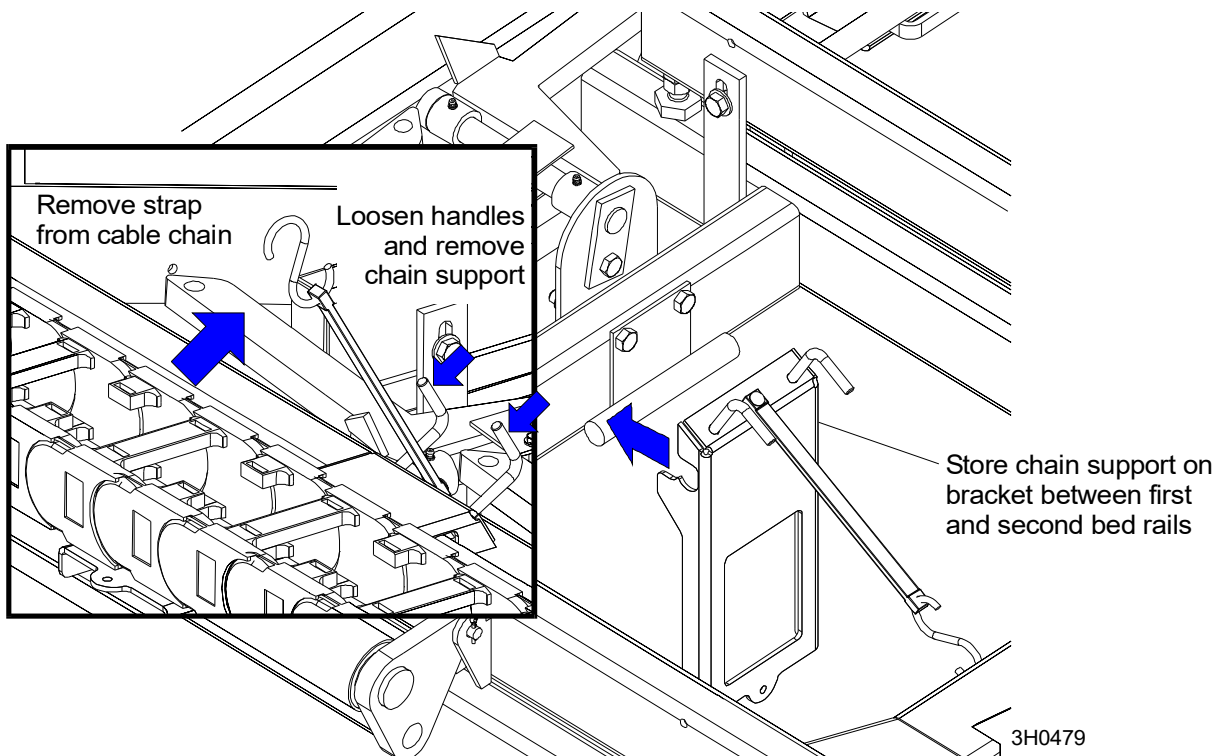
### 1.1 Preparing for Remote Operation

Set up the sawmill as instructed in your sawmill operator's manual.

 **CAUTION!** Moving the saw carriage before removing the cable chain support may cause damage to the chain. Also, moving the saw carriage when the chain is frozen can damage the chain. [See Section 1.4](#) for recommended chain deicing procedure.

**See Figure 1-1.** Before moving the saw carriage, remove the cable chain support bracket.

1. Disengage the rubber strap holding the cable chain to the support bracket.
2. Loosen the handles and remove the support bracket from the sawmill track rail.
3. Place the support bracket on the storage bracket located on the sawmill frame between the first and second bed rails. Tighten the handles to secure the support bracket to the storage bracket and secure the rubber strap in the bracket hole.



**FIG. 1-1**

See Figure 1-2.

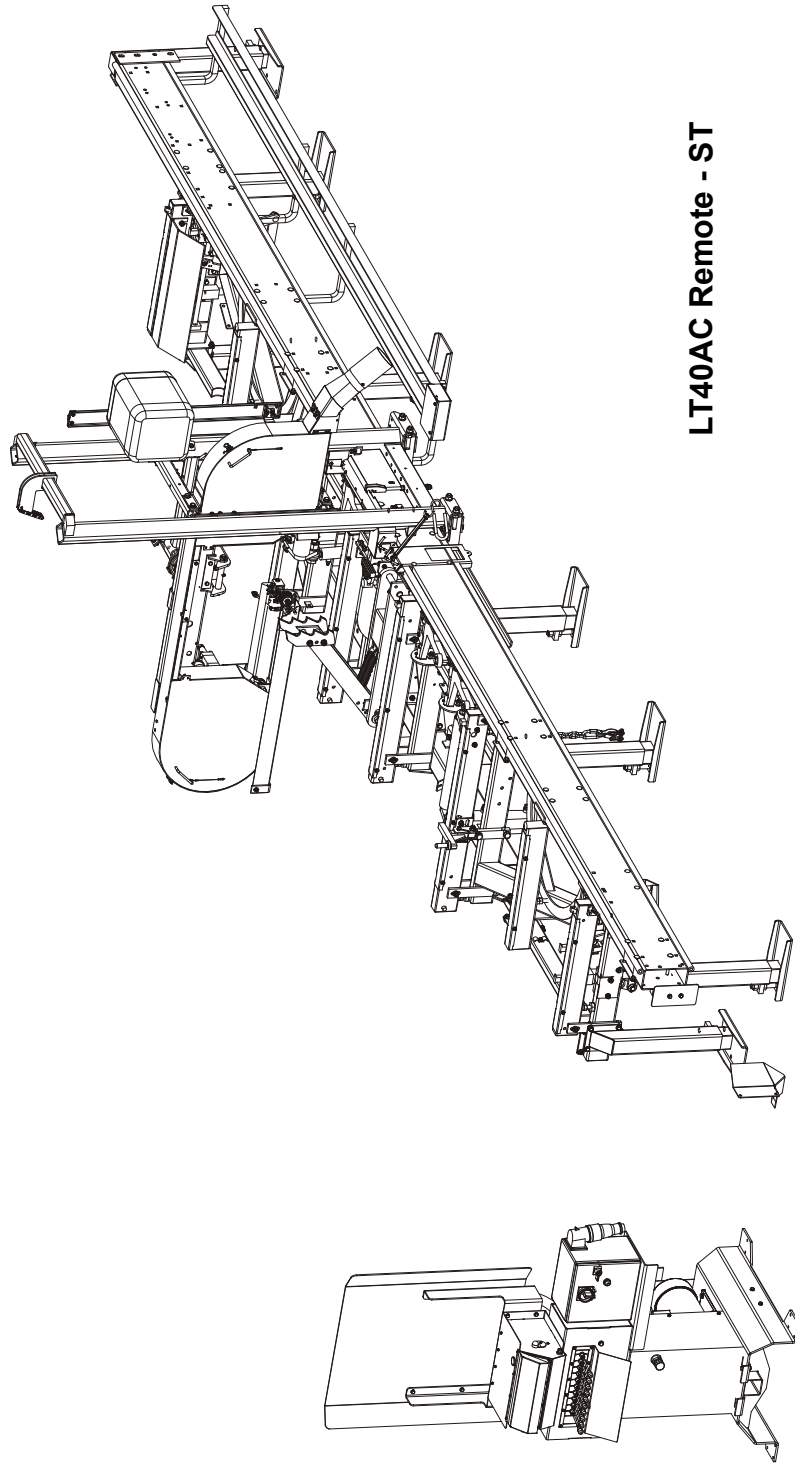


FIG. 1-2

# 1

## Remote Operation

### Remote Sawmill Operation

---

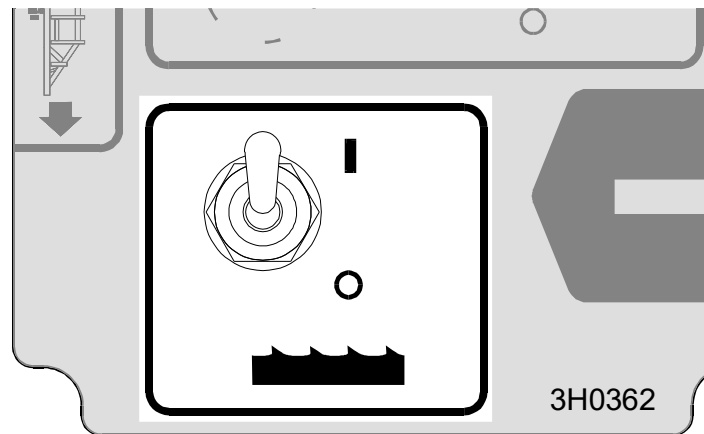
## 1.2 Remote Sawmill Operation



**See Figure 1-3.** All sawmill controls operate exactly as described in your sawmill operator's manual except the clutch/brake. Instead of pulling a handle to engage the blade, push the toggle switch on the control panel up. Hold the switch up until the clutch motor stops completely. The remote clutch mechanism will disengage the brake, rev the motor to full throttle, and start the blade spinning.



**DANGER!** Keep all persons out of the path of moving equipment and logs when operating sawmill or loading and turning logs. Failure to do so will result in serious injury.



**FIG. 1-3**

To stop the blade and engage the blade brake, push the toggle switch down. This will also return the engine to idle.

**NOTE:** Be sure the toggle switch stays in the up or down position. The boot on the switch may spring the switch back to neutral. You may need to hold the switch in position until the remote clutch motor completes its cycle.

### 1.3 Preparing The Remote Option For Towing



1. After placing the saw head in its traveling position, engage the remote clutch switch to engage the drive belts. This will keep the engine from bouncing while towing the sawmill.
2. Place the chain support bracket under the cable chain, located between the first and second bed rails.

See Figure 1-4.

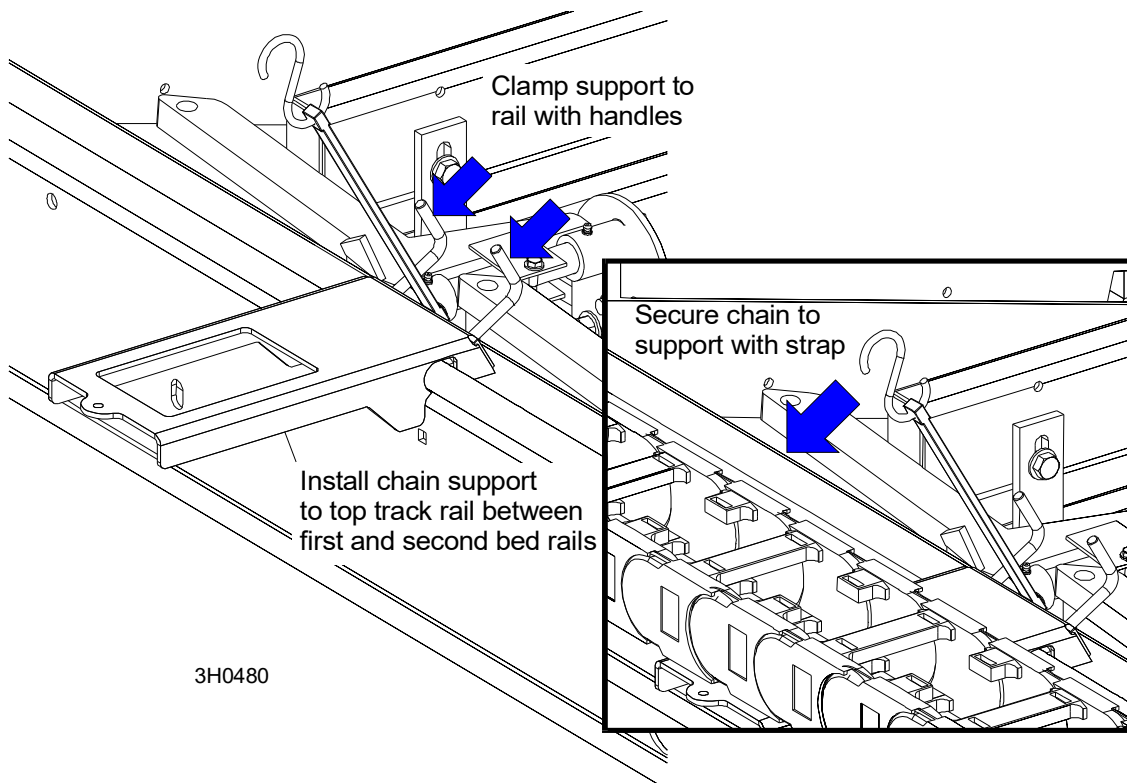


FIG. 1-4

3. Tighten the support handles and secure the chain to the support with the rubber strap.

## 1.4 Cold Weather Operation

If the sawmill is operated or stored in freezing conditions, the cable chain may freeze. Before moving the saw carriage, check to see if the chain is frozen:

1. Remove the chain support bracket ([See Section 1.1](#)).
2. Pull the chain up at a few locations to determine if it moves freely. If you detect the chain is frozen, proceed to the recommended deicing procedure below.
3. If the chain seems to move freely by hand, use the power feed to slowly move the saw carriage toward the rear of the mill. Since the saw carriage returns only at full speed, moving the saw carriage forward will allow you to slowly engage the cable chain to be sure it is not frozen. If you detect the chain is frozen, proceed to the recommended deicing procedure below.

### ***Recommended Cable Chain deicing Procedure***

To de-ice the chain, apply a salt solution (preferably calcium chloride and water) to the entire length of the chain. Allow the solution to sit until the chain can move freely. The strength of the solution and time required to free the chain will depend on how cold the weather is and how much ice has accumulated in the chain.

Before storing the sawmill after using the salt solution, be sure to rinse the salt from any metal portions of the sawmill frame to prevent corrosion. Refer to the recommended cold-weather storage procedure below to prevent the chain from freezing.

### ***Recommended Cable Chain Ice Prevention Procedure***

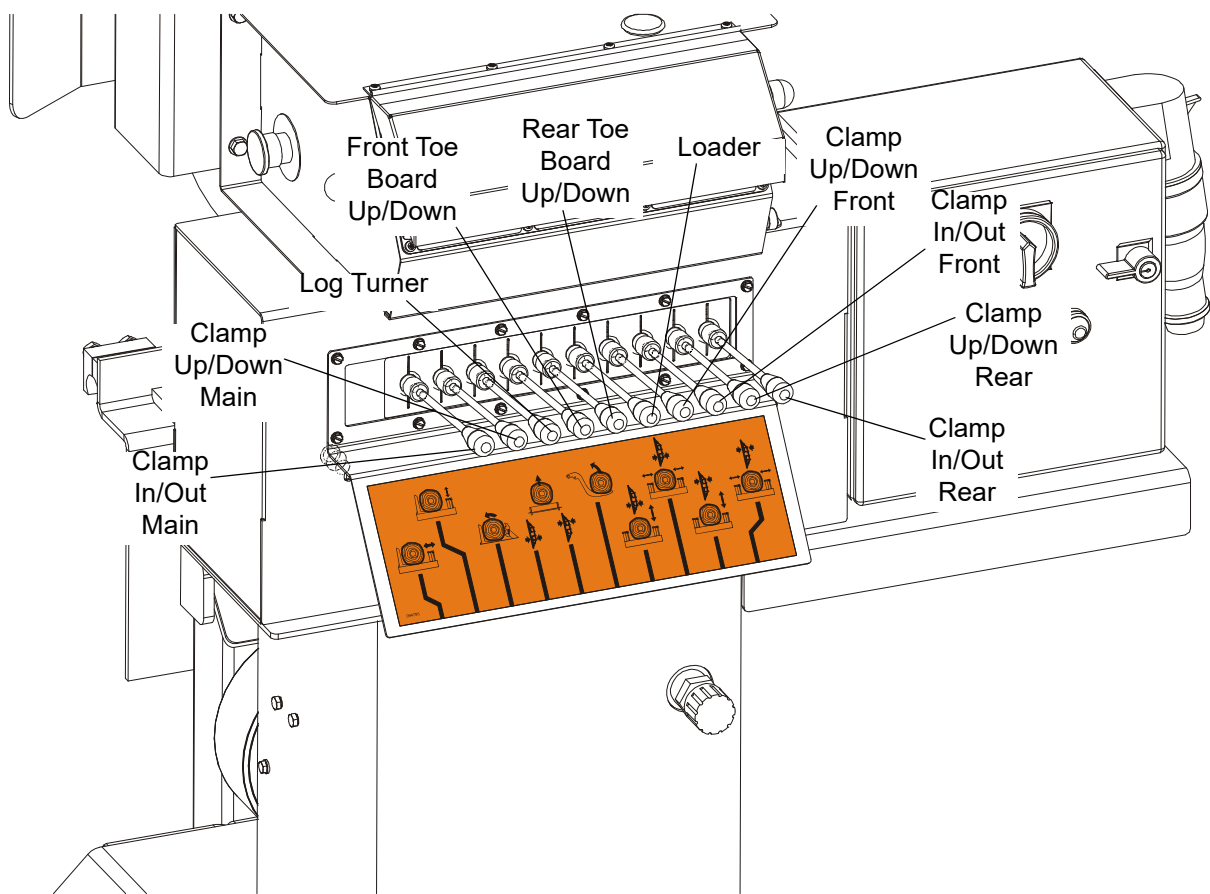
Before storing the sawmill in freezing temperatures, apply a 50/50 solution of environmentally safe antifreeze (Sierra) and water to the cable chain. A garden sprayer can be used to apply the solution.



## 1.5 Hydraulic Control Operation

The hydraulic control levers become operational when the contacts at the bottom of the carriage touch the power strip on the frame tube. The hydraulic control levers will only work when the cutting head is close enough to the front end of the mill to touch the power strip.

**See Figure 1-5.** Hydraulic units have ten control levers to load, clamp, turn and level logs.



**FIG. 1-5 OPERATOR CONTROL BOX**

Use the hydraulic control levers to get the mill ready to load a log.



**DANGER!** Keep all persons out of the path of moving equipment and logs when operating sawmill or loading and turning logs. Failure to do so will result in serious injury.

# 1

## Remote Operation

### Hydraulic Control Operation

---

1. Move the clamp out and down so it will not get in the way of logs being loaded onto the bed.



Lower the clamp in/out lever to move the clamp out toward the loading side of the sawmill.



Lower the clamp up/down lever to lower the clamp below bed level.

2. Raise the log loader lever to extend the legs of the log loader out as far as they will go.



3. The chain securing the log loading arm to the bed frame will be tight. Manually push the log loader arm until there is slack in the chain.

4. Unchain the loading arm from the bed frame.

5. Manually lower the log loader so it rests on the ground.



**CAUTION!** Be careful when manually lowering the log loader. Do not drop the loader onto the ground or perform any action which might break the velocity fuse valves on the loader cylinders. These valves control hydraulic flow and are necessary to prevent the loading arm from collapsing during use.

6. Lower the loader lever to lower the loading arm as far as it will go. Logs must be rolled onto the loading arms one at a time.



7. The front, middle and rear toe boards should be below bed level. Once a tapered log has been loaded, the front or rear end of the log may be lifted to parallel the heart of the log to the path of the blade.



The front toe board is raised by lifting the front toe board lever up. The middle toe board is raised by lifting the middle toe board lever up. The rear toe board is raised by lifting the rear toe board lever up. Once a flat has been made and the log is ready to be turned, push the appropriate toe board lever down to lower either toe board until it falls below the level of the bed.

## 1.6 Loading, Turning, And Clamping Logs



**CAUTION!** Before loading a log, be sure the cutting head is moved far enough forward so the log does not hit it. Damage to the sawmill may result.



**CAUTION!** Be sure the pivot rails, turning arm, clamp, and toe boards are below bed level before loading a log onto the bed. Failure to do so may result in machine damage or cause misalignment.

### To Load Logs

1. Move a log up to the loading arm. Use cant hooks or loading equipment to move the logs to the foot of the loading arms.
2. Roll the log onto the loader so that it is approximately centered with the sawmill bed. The log turner will operate much easier if the log is centered on the sawmill bed.
3. Raise the side supports.



4. Raise the loader lever to raise the log onto the sawmill bed. Simply let the loader rise until the log rolls onto the mill bed.

5. Raise the clamp up (raise the clamp up/down lever) to prevent the log from rolling off the bed.
6. Lower the loading arm. Leave the loading arm about halfway up while squaring the log. This will stop the log from rolling off the side of the mill.



**WARNING!** Always leave loading arm halfway up while log is on sawmill bed. Failure to do so will result in serious injury or death.

**NOTE:** Logs also may be loaded onto the mill with a tractor or other equipment specifically designed for that purpose.

7. Raise the clamp up to prevent the log from rolling off the bed.
8. Raise the clamp up/down lever.



# 1

## Remote Operation

### *Loading, Turning, And Clamping Logs*

---

#### To Turn Logs

1. Raise the turner lever to engage the log turner arm. Let the arm rise until it touches the log and starts to turn it.



2. Spin the log against the side supports until it is turned the way you want it for the first cut. If you want to turn the log more, do the following steps.

3. Engage the clamp by raising the clamp in/out lever. Clamp the log against the side supports.



4. Lower the turner lever to lower the turner arm below the log.



5. Raise the turner arm to get a new bite on the log.
6. Disengage the clamp.
7. The log can be turned now. Repeat steps 4 through 7 until the log is turned as desired.

#### To Turn Logs (Optional Procedure)

If you are turning a small cant, you may opt to use the clamp to turn the cant.

1. Lower the clamp up/down lever to lower the clamp below bed level.
2. Raise the clamp in/out lever to move the clamp in, beneath the edge of the cant.
3. Raise the clamp up/down lever to raise the clamp and flip the cant.

**To Clamp Logs**

1. Raise the clamp in/out lever and clamp the log against the side supports.



2. Lower the turner lever until the turner arm falls below the bed.



3. When the turner arm is lowered all the way, the side supports will begin to lower. Back the clamp off slightly, and let the side supports come down until they are positioned below the level of your first few cuts.
4. Lower the side supports, to make few cuts.
5. Use the clamp in/out lever to clamp the log.

Depending on the log length, front and rear clamp (min. log length - 3.5m), or main clamp together with front or rear one (with logs shorter than 3.5m) can be used. They allow to find optimal position of the log on the bed, and prevent distortions during cutting.

1. Raise the front/rear clamp up/down lever to raise the clamp.



Raise the front/rear clamp in/out lever to clamp the log.



Use the middle clamp in/out lever to clamp the log against the side supports.



Lower the front/rear clamp up/down lever to lower the clamp, until the log lays flat on the bed.

**To Level A Tapered Log**

Use the toe board lever(s) to raise either end of a tapered log, if desired. Log can be moved forward or backward using the power roller.



Raise the appropriate lever to raise the front or rear toe board until the heart of the log measures the same distance from the bed rails at each end of the log.

**Pull-Down Clamps**

When a cant is being cut, internal stress in the wood may cause the cant to deform slightly. The cant with internal stress tends to raise on ends. To prevent this, use two additional Pull-Down clamps. These clamps are mounted at both bed frame ends and if necessary hold the cant down so it lies flat on the bed.

## **SECTION 2 MAINTENANCE & TROUBLESHOOTING**

### **2.1 Clean The Cable Chain & Support Tray**

As you operate the sawmill, be aware of any pieces of debris that may fall on the cable chain and/or support tray. Stop the sawmill and immediately remove any pieces of wood, bark or anything else that may divert the path of the chain or cause it to jam.

Clean the cable chain and support track of sawdust buildup every eight hours of operation. Blow or brush the sawdust from the track and tray and remove any accumulated sawdust that is high enough to contact the chain/tray.

## 2.2 Cable Chain Repair

If a component of the cable chain breaks or is missing, replace the component.



**CAUTION!** Do not operate the remote sawmill if the cable chain is damaged or components of the chain are missing. The chain components are interlocking and continued operation will cause more damage to the chain.

See Figure 2-1. To disassemble the chain use a screwdriver to pry the connecting links apart. After removing the connecting links, the side plates can be disassembled by pulling them apart at an angle.

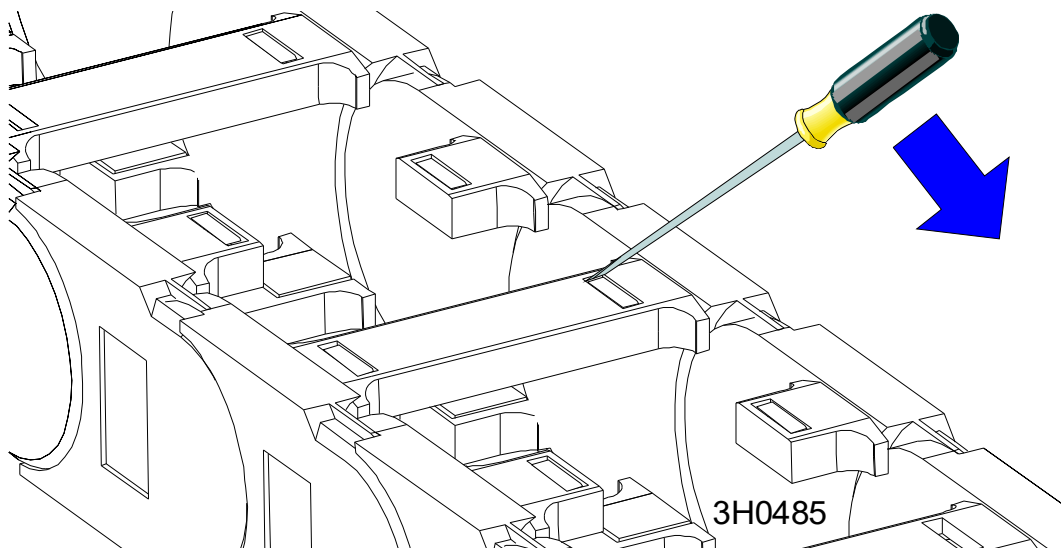


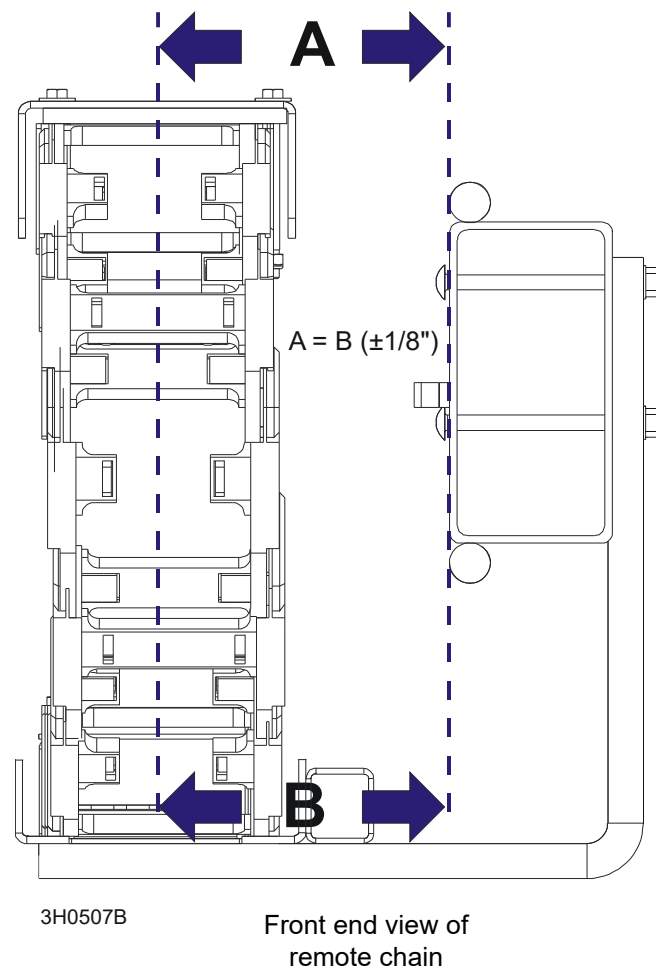
FIG. 2-1

### 2.3 Cable Chain And Support Tray Alignment

During each sawmill setup, check the alignment of the cable chain and the support tray:

1. The chain should travel in a straight line. Traveling at an angle will cause the chain to prematurely wear and break. Check the alignment of the chain by measuring from the sawmill frame tube to the center of the chain at the top and bottom. The measurements should be the same ( $\pm 1/8''$ ).

See Figure 2-2.



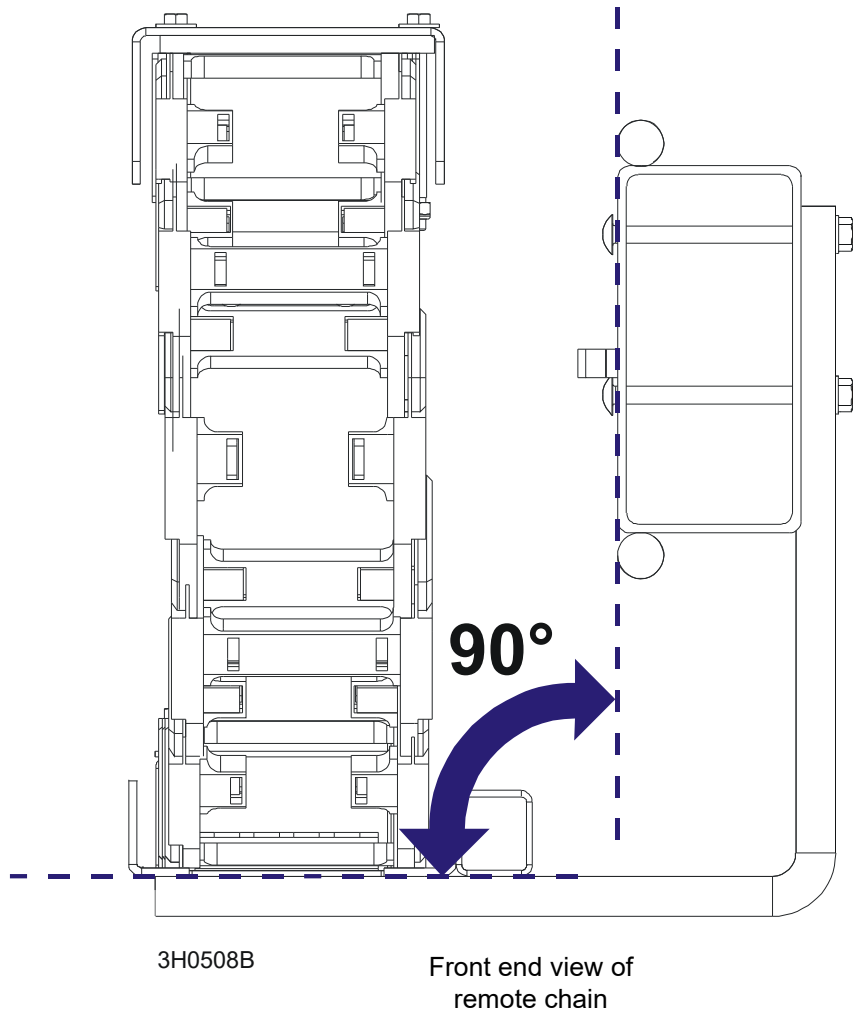
**FIG. 2-2**

Loosen the mounting bolts at the top or bottom of the chain to adjust the distance from the sawmill frame tube.



2. The chain support tray must be level to prevent premature wear of the chain. Use a square to check the angle of the tray to the sawmill frame. Check at several locations along the length of the tray.

**See Figure 2-3.**



**FIG. 2-3**

Bend the tray up or down as necessary to square it to the sawmill frame.

## 2 Maintenance & Troubleshooting

### Board Removal Bumper Adjustment

#### 2.4 Board Removal Bumper Adjustment

See Figure 2-4.

Lightly compress the lower springs using the nuts shown below (A). Make sure the bumper roller is below the bed rail level.

525029\_OPER\_001\_A  
525029\_OPER\_MANUAL

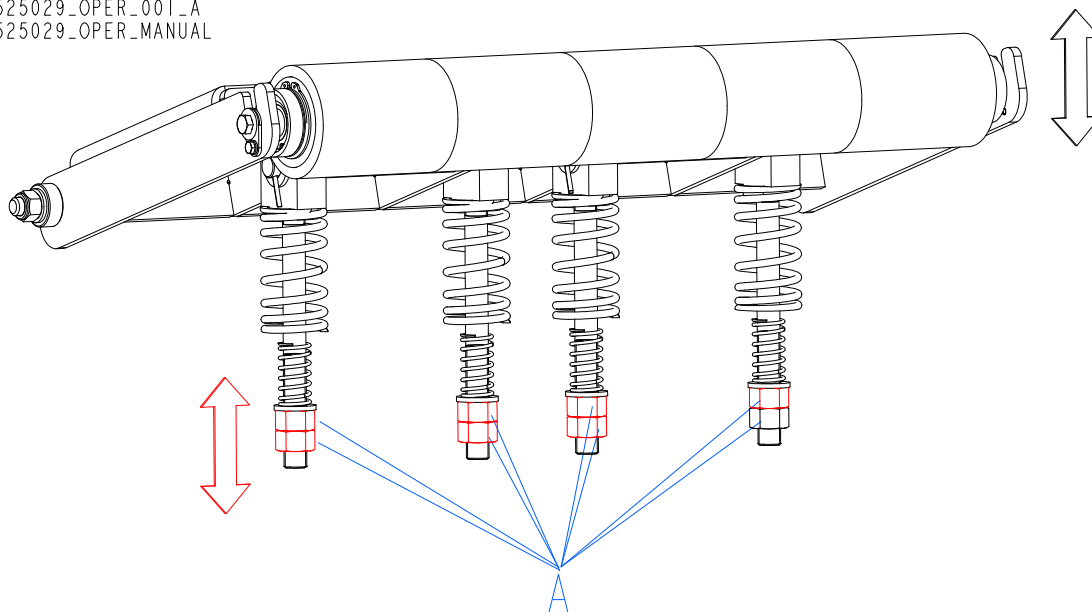


FIG. 2-4

## SECTION 3 REPLACEMENT PARTS

### 3.1 How To Use The Parts List

- Use the table of contents or index to locate the assembly that contains the part you need.
- Go to the appropriate section and locate the part in the illustration.
- Use the number pointing to the part to locate the correct part number and description in the table.
- Parts shown indented under another part are included with that part.
- Parts marked with a diamond (◆) are only available in the assembly listed above the part.

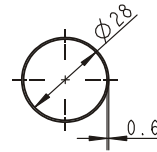
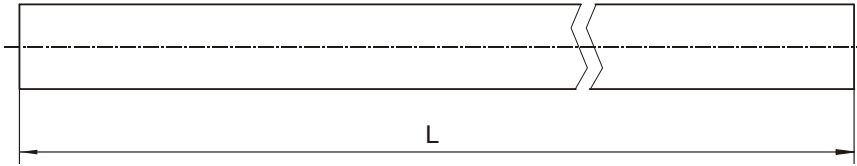
See the sample table below. Sample Part #A01111 includes part F02222-2 and subassembly A03333. Subassembly A03333 includes part S04444-4 and subassembly K05555. The diamond (◆) indicates that S04444-4 is not available except in subassembly A03333. Subassembly K05555 includes parts M06666 and F07777-77. The diamond (◆) indicates M06666 is not available except in subassembly K05555.

<b>3.2 Sample Assembly</b>				
REF.	DESCRIPTION (◆ Indicates Parts Available in Assemblies Only)	PART #	QTY	
	SAMPLE ASSEMBLY, COMPLETE (INCLUDES ALL INDENTED PARTS BELOW)	A01111	1	
1	Sample Part	F02222-22	1	
	Sample Subassembly (Includes All Indented Parts Below)	A03333	1	
2	Sample Part (◆ Indicates Part Is Only Available With A03333)	S04444-4	1	◆
	Sample Subassembly (Includes All Indented Parts Below)	K05555	1	
3	Sample Part (◆ Indicates Part Is Only Available With K05555)	M06666	2	◆
4	Sample Part	F07777-77	1	

*To Order Parts:*

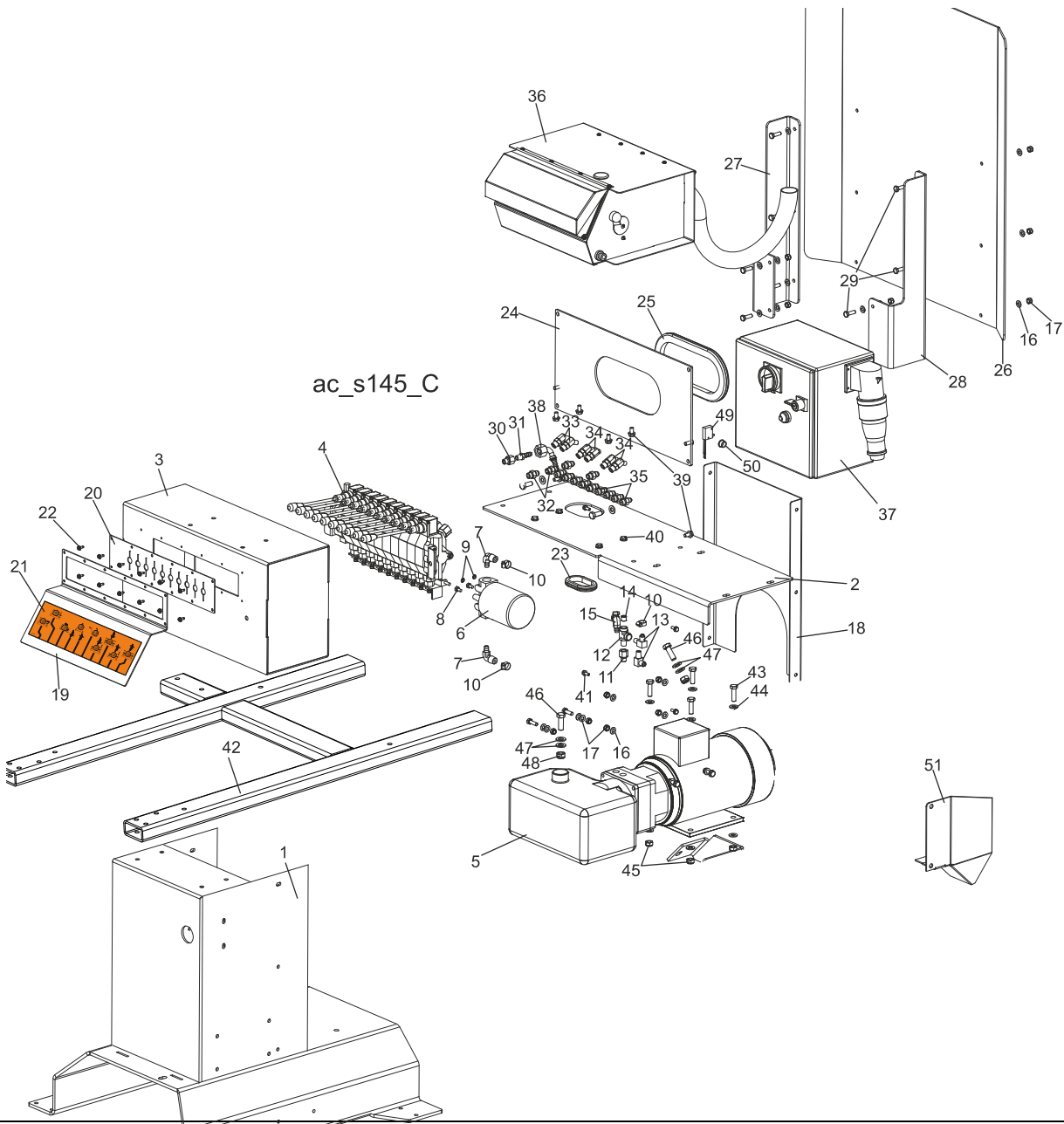
- From Europe call our European Headquarters and Manufacturing Facility in Kolo, Poland at +48-63-2626000 or +48-3912-1319. From the continental U.S., call 1-800-448-7881 to order parts. Have your customer number, vehicle identification number, and part numbers ready when you call.
- From other international locations, contact the Wood-Mizer distributor in your area for parts.

Protective Conduits, LT70L Super Hydraulic Hoses



LENGTH „L”	DESCRIPTION (◆ Indicates Parts Available in Assemblies Only)	PART #	QTY	
0.70	PROTECTIVE CONDUIT, LOG TURNER HOSE	099761	2	
0.80	PROTECTIVE CONDUIT, IN/OUT LOG CLAMP CYLINDER HOSE- BASE	099762	1	
0.80	PROTECTIVE CONDUIT, IN/OUT LOG CLAMP CYLINDER HOSE- TOP	099763	1	
1.35	PROTECTIVE CONDUIT, UP/DOWN LOG CLAMP CYL. HOSE- BASE	099764	1	
1.65	PROTECTIVE CONDUIT, UP/DOWN LOG CLAMP CYL. HOSE- TOP	099765	1	

### 3.3 Remote Control Box



REF.	DESCRIPTION (◆ Indicates Parts Available in Assemblies Only)	PART #	QTY
	<b>BOX ASSEMBLY, 10-SECTION REMOTE CONTROL</b>	<b>501103</b>	<b>1</b>
	<b>BOX ASSEMBLY, 10-SECTION REMOTE CONTROL</b>	<b>509276</b>	<b>1</b>
	<b>BOX ASSEMBLY, 10-SECTION REMOTE CONTROL FRONT</b>	<b>512224</b>	<b>1</b>
1	BASE, REMOTE CONTROL BOX	500509-1	1
2	PLATE, REMOTE CONTROL BOX	500121-1	1
3	BOX WELDMENT, HYDRAULIC	500128-1	1
4	VALVE, HDS11/10- 8-SECTION HYDRAULIC	091344	1
5	PUMP, AC.4KW 1.5L/MIN HYDRAULIC W/MOTOR	500958	1
6	MANIFOLD W/FILTER	P22683	1
7	FITTING, 1/2NPT-3/8 BARB ELBOW	P12707	2
8	BOLT, 1/4-20X1/2 HEX HEAD	F05005-15	2
9	WASHER, Z6.1 SPLIT LOCK ZINC	F81053-3	2
10	CLAMP, 11/16 WORM	P12739	4

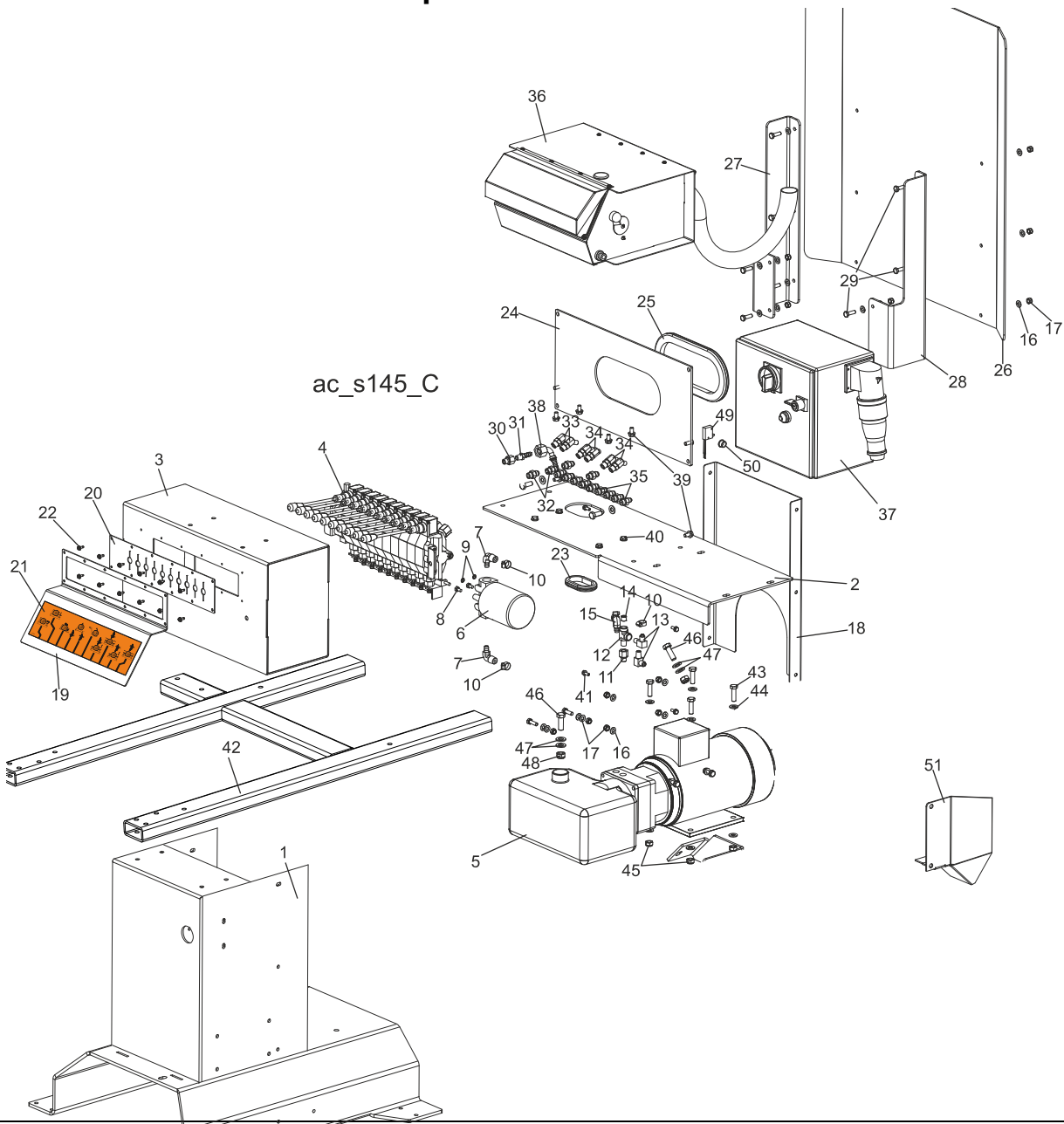
11	FITTING, 6SAE MALE-1/4NPT FEMALE	014686	1	
12	FITTING, 1/4NPT MALE RUN TEE	P09141	1	
13	FITTING, 3/8JIC-1/4NPT 90L	015491	1	
14	PLUG, 1/4" NPT W/EXTERNAL THREAD	096221	1	
15	FITTING, 3/8NPT-3/8 BARB ELBOW	P12708	1	
16	WASHER, 8.4 FLAT ZINC	F81054-1	32	
17	NUT, M8-8-B HEX NYLON ZINC LOCK	F81032-2	24	
18	PLATE, REMOTE CONTROL BOX REAR	500516-1	1	
19	PLATE, FRONT	500122-1	1	
20	GUARD, 10-SECTION HYDRAULIC VALVE RUBBER	091739	1	
21	DECAL, AH5 HYDRAULIC SYSTEM CONTROL	094795	1	
22	BOLT, #10-24x1/2 SELF-TAPPING	F05015-7	12	
23	GROMMET, RUBBER	087065	1	
24	PANEL, HYDRAULIC BOX REAR	500124-1	1	
25	GROMMET, 230x95x15mm RUBBER	085759	1	
26	GUARD, LT70 CONTROL BOX POLYCARBONATE	090219	1	
27	BRACKET, CONTROL BOX GUARD	500766-1	1	
28	BRACKET, CONTROL BOX GUARD - LEFT	500767-1	1	
29	BOLT, M8X25-8.8-B HEX HEAD FULL THREAD ZINC	F81002-5	14	
30	FITTING, 6SAE MALE-1/4NPT FEMALE	014686	1	
31	FITTING, 1/4NPT-3/8 BARB	014685	1	
32	FITTING, 3/8O-RING-3/8JIC	014687	5	
33	FITTING, #6SAE 45DEG ELBOW	015489	1	
34	FITTING, 6SAE-4JIC 45 DEG ELBOW	015488	3	
35	FITTING, 1/4JIC-3/8 O-RING	P26284	9	
36	BOX, LT70 AC CONTROL	093022	1	
37	BOX, AC REMOTE ELECTRIC	087807	1	
38	FITTING, PN10AOL13-90 ELBOW	094485	1	
39	BOLT, M8 x -16-8.8-B HEX HEAD FULL THREAD ZINC	F81002-20	8	
40	BOLT, M8x20 -5.8 HEX HEAD FULL THREAD ZINC	F81002-1	4	
41	BOLT, M6 x 16-8.8 HEX HEAD FULL THREAD ZINC	F81001-32	6	
42	BRACKET, REMOTE CONTROL BOX TRANSPORT	502378-1	1	
43	BOLT, M10x35 -8.8 HEX HEAD FULL THREAD ZINC	F81003-17	4	
44	WASHER, 10.5 FLAT ZINC	F81055-1	8	
45	NUT, M10-8-B HEX NYLON ZINC LOCK	F81033-1	4	
46	BOLT, M12 x 35-8.8 HEX HEAD FULL THREAD ZINC	F81004-24	2	
47	WASHER, 13 FLAT ZINC	F81056-1	4	
48	NUT, M12-8 HEX NYLON ZINC LOCK	F81034-2	2	
49	SWITCH, 2A 125V R-LEVER NO/NC/COM	014765	1	
50	GROMMET, 15,9 UB625 RUBBER	086816	1	
51	GUARD, CABLE	501102-1	1	
	GUARD, CABLE	502500-1 <sup>1</sup>	1	

<sup>1</sup> Belongs to 512224

# 3

## Replacement Parts Remote Control Box M-Super frame

### 3.4 Remote Control Box M-Super frame



REF.	DESCRIPTION (◆ Indicates Parts Available in Assemblies Only)	PART #	QTY
	<b>BOX ASSEMBLY, 10-SECTION REMOTE CONTROL</b>	<b>528385</b>	<b>1</b>
	<b>BOX ASSEMBLY, 10-SECTION REMOTE CONTROL</b>	<b>528343</b>	<b>1</b>
1	BASE, REMOTE CONTROL BOX	500509-1	1
2	PLATE, REMOTE CONTROL BOX	500121-1	1
3	BOX WELDMENT, HYDRAULIC	500128-1	1
4	VALVE, HDS11/10- 8-SECTION HYDRAULIC	091344	1
5	PUMP, AC.5.5KW 18.5L/MIN HYDRAULIC W/MOTOR	517840	1
6	MANIFOLD W/FILTER	P22683	1
7	FITTING, 1/2NPT-3/8 BARB ELBOW	P12707	2
8	BOLT, 1/4-20X1/2 HEX HEAD	F05005-15	2
9	WASHER, Z6.1 SPLIT LOCK ZINC	F81053-3	2
10	CLAMP, 11/16 WORM	P12739	4
11	FITTING, 6SAE MALE-1/4NPT FEMALE	014686	1



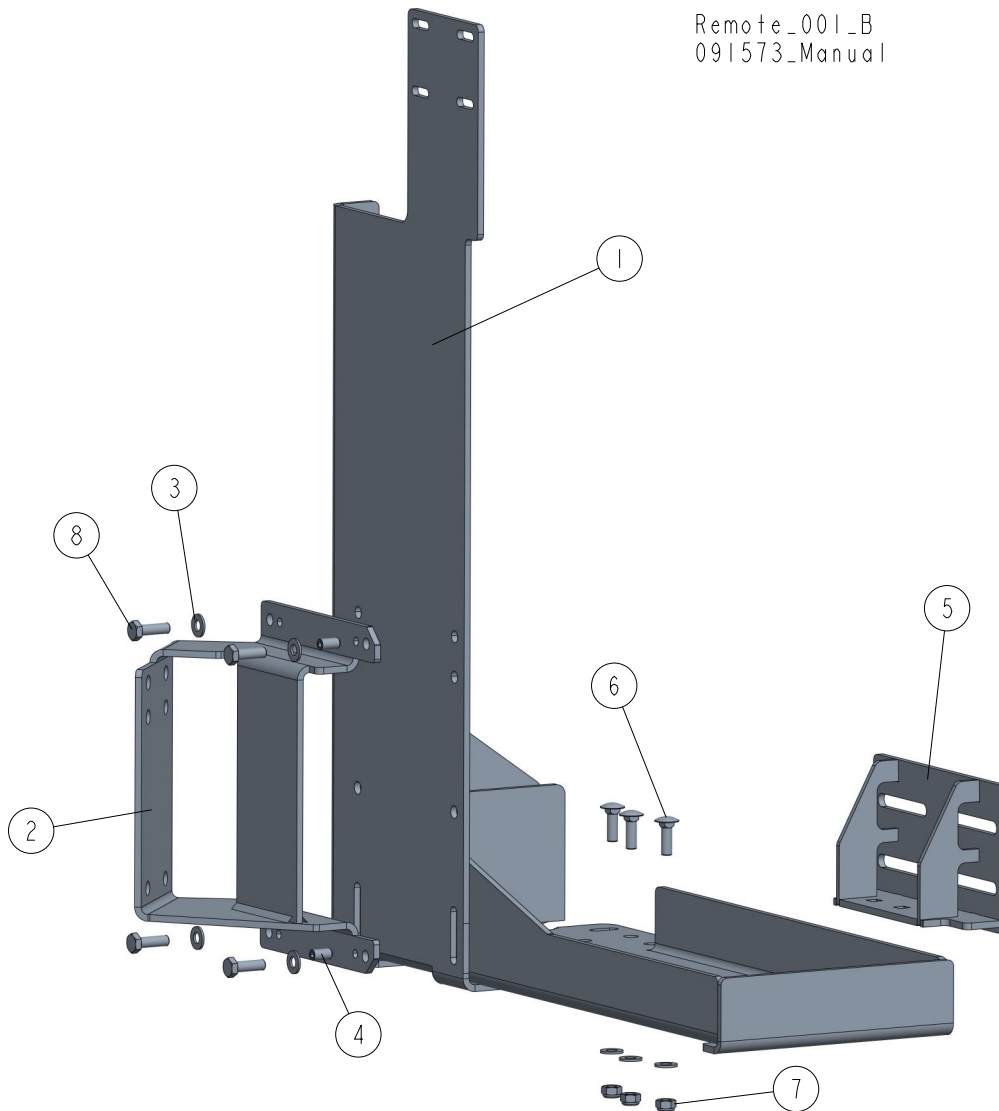
12	FITTING, 1/4NPT MALE RUN TEE	P09141	1	
13	FITTING, 3/8JIC-1/4NPT 90L	015491	1	
14	PLUG, 1/4" NPT W/EXTERNAL THREAD	096221	1	
15	FITTING, 3/8NPT-3/8 BARB ELBOW	P12708	1	
16	WASHER, 8.4 FLAT ZINC	F81054-1	32	
17	NUT, M8-8-B HEX NYLON ZINC LOCK	F81032-2	24	
18	PLATE, REMOTE CONTROL BOX REAR	500516-1	1	
19	PLATE, FRONT	500122-1	1	
20	GUARD, 10-SECTION HYDRAULIC VALVE RUBBER	091739	1	
21	DECAL, AH5 HYDRAULIC SYSTEM CONTROL	094795	1	
22	BOLT, #10-24x1/2 SELF-TAPPING	F05015-7	12	
23	GROMMET, RUBBER	087065	1	
24	PANEL, HYDRAULIC BOX REAR	500124-1	1	
25	GROMMET, 230x95x15mm RUBBER	085759	1	
26	GUARD, LT70 CONTROL BOX POLYCARBONATE	090219	1	
27	BRACKET, CONTROL BOX GUARD	500766-1	1	
28	BRACKET, CONTROL BOX GUARD - LEFT	500767-1	1	
29	BOLT, M8X25-8.8-B HEX HEAD FULL THREAD ZINC	F81002-5	14	
30	FITTING, 6SAE MALE-1/4NPT FEMALE	014686	1	
31	FITTING, 1/4NPT-3/8 BARB	014685	1	
32	FITTING, 3/8O-RING-3/8JIC	014687	5	
33	FITTING, #6SAE 45DEG ELBOW	015489	1	
34	FITTING, 6SAE-4JIC 45 DEG ELBOW	015488	3	
35	FITTING, 1/4JIC-3/8 O-RING	P26284	9	
36	BOX, LT70 AC CONTROL	093022	1	
37	BOX, AC REMOTE ELECTRIC	087807	1	
38	FITTING, PN10AOL13-90 ELBOW	094485	1	
39	BOLT, M8 x -16-8.8-B HEX HEAD FULL THREAD ZINC	F81002-20	8	
40	BOLT, M8x20 -5.8 HEX HEAD FULL THREAD ZINC	F81002-1	4	
41	BOLT, M6 x 16-8.8 HEX HEAD FULL THREAD ZINC	F81001-32	6	
42	BRACKET, REMOTE CONTROL BOX TRANSPORT	502378-1	1	
43	BOLT, M10x35 -8.8 HEX HEAD FULL THREAD ZINC	F81003-17	4	
44	WASHER, 10.5 FLAT ZINC	F81055-1	8	
45	NUT, M10-8-B HEX NYLON ZINC LOCK	F81033-1	4	
46	BOLT, M12 x 35-8.8 HEX HEAD FULL THREAD ZINC	F81004-24	2	
47	WASHER, 13 FLAT ZINC	F81056-1	4	
48	NUT, M12-8 HEX NYLON ZINC LOCK	F81034-2	2	
49	SWITCH, 2A 125V R-LEVER NO/NC/COM	014765	1	
50	GROMMET, 15,9 UB625 RUBBER	086816	1	
51	GUARD, CABLE	501102-1	1	

# 3 Replacement Parts

## Electric Box Base

### 3.5 Electric Box Base

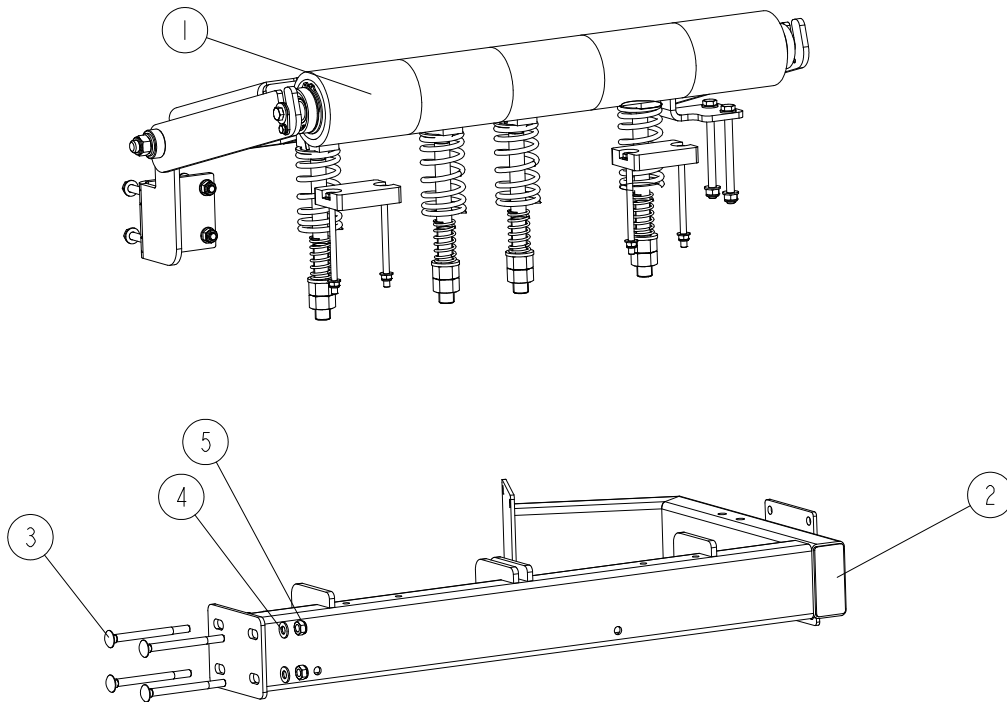
Remote\_001\_B  
091573\_Manual



REF.	DESCRIPTION (◆ Indicates Parts Available in Assemblies Only)	PART #	QTY
	<b>BASE, AC REMOTE ELECTRIC BOX - COMPLETE</b>	<b>088324</b>	<b>1</b>
1	MOUNT WELDMENT, AC REMOTE ELECTRIC BOX	550045-1	1
2	BRACKET, AC REMOTE ELECTRIC BOX BASE	530171-1	1
3	WASHER, 8.4 FLAT ZINC	F81054-1	11
4	SCREW, M8x16 45H GEOMET SET	F81014-2	2
5	BRACKET, CABLE CARRIER	516829-1	1
6	BOLT, M8x25-8.8 CARRIAGE ZINC	F81002-59	3
7	NUT, M8-8-B HEX NYLON ZINC LOCK	F81032-2	7
8	BOLT, M8x25-8.8-B HEX HEAD FULL THREAD ZINC	F81002-5	4

### 3.6 Adaptation Kit, Board Removal Bumper

527071\_001  
527071\_MANUAL



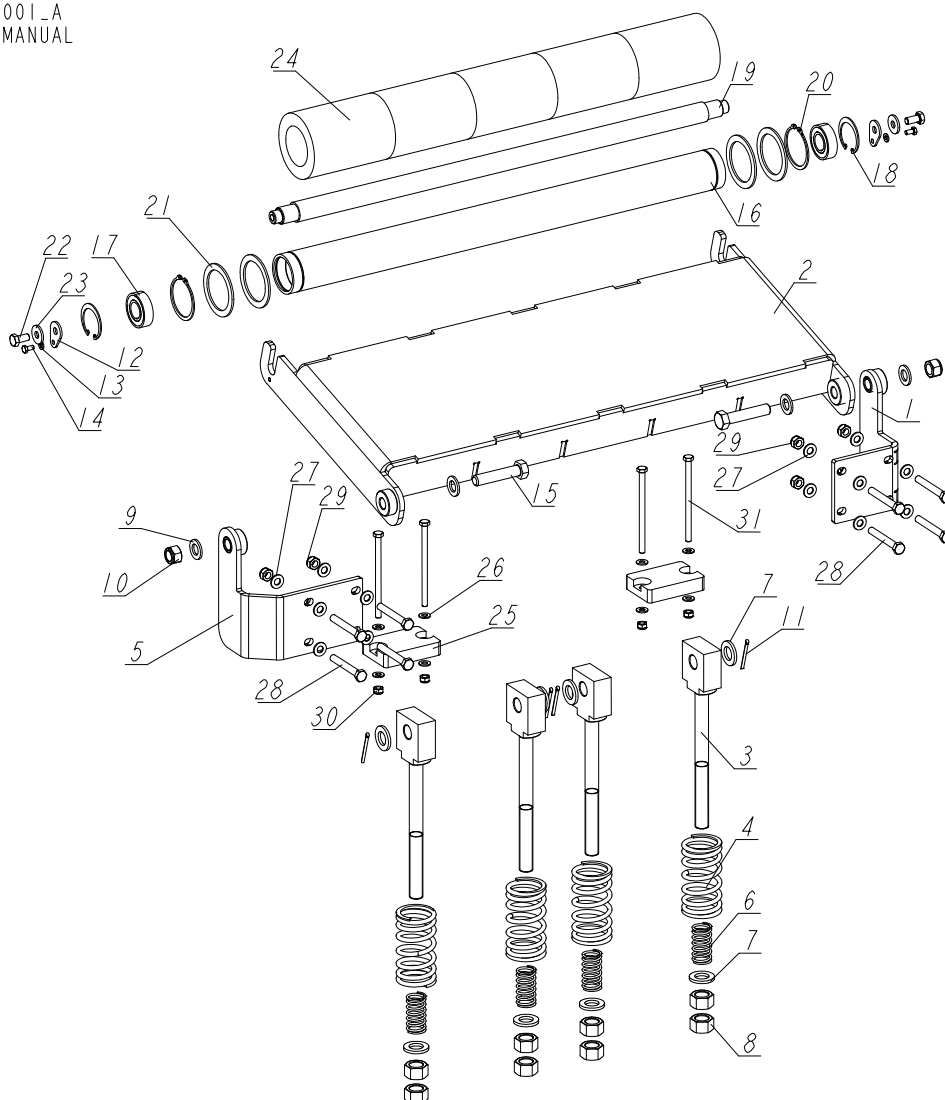
REF.	DESCRIPTION (◆ Indicates Parts Available in Assemblies Only)	PART #	QTY
-	<b>ADAPTATION KIT, BOARD REMOVAL BUMPER (FOR NEW "M" FRAME)</b>	527071	1
1	BUMPER, BOARD REMOVAL	525029	1
2	MOUNT WELDMENT, BOARD REMOVAL BUMPER - "M" FRAME	527021-1	1
3	BOLT, M10X120 8.8 CARRIAGE ZINC	F81003-33	4
4	WASHER, 10.5 FLAT ZINC	F81055-1	4
5	NUT, M10-8-B HEX NYLON ZINC LOCK	F81033-1	4

# 3 Replacement Parts

## Board Removal Bumper

### 3.7 Board Removal Bumper

525029\_001\_A  
525029\_MANUAL



REF.	DESCRIPTION (◆ Indicates Parts Available in Assemblies Only)	PART #	QTY
-	<b>BUMPER, BOARD REMOVAL - S FRAME</b>	525029	1
1	BRACKET, BUMPER RIGHT	525025-1	1
2	PLATE WELDMENT, BOARD REMOVAL BUMPER	509547-1	1
3	ROD WELDMENT, BUMPER SPRING	510818-1	1
4	SPRING, 110X46X6.5 CUSHION	510815	4
5	BRACKET, BUMPER LEFT	525024-1	4
6	SPRING, 60X23X3	088992	4
7	WASHER, 21 FLAT ZINC	F81059-2	8
8	NUT, M20-8 HEX ZINC	F81037-1	8
9	WASHER, 17 SPLIT LOCK ZINC	F81058-1	4
10	NUT, M16-8 HEX NYLON ZINC LOCK	F81036-2	2
11	PIN, S-ZN-4X45 COTTER	F81043-22	4
12	WASHER, WM4000 ROLLER MOUNTING	510874-1	2
13	WASHER, 6.4 FLAT ZINC	F81053-1	2
14	BOLT, M6X12 8.8 HEX HEAD FULL THREAD ZINC	F81001-7	2

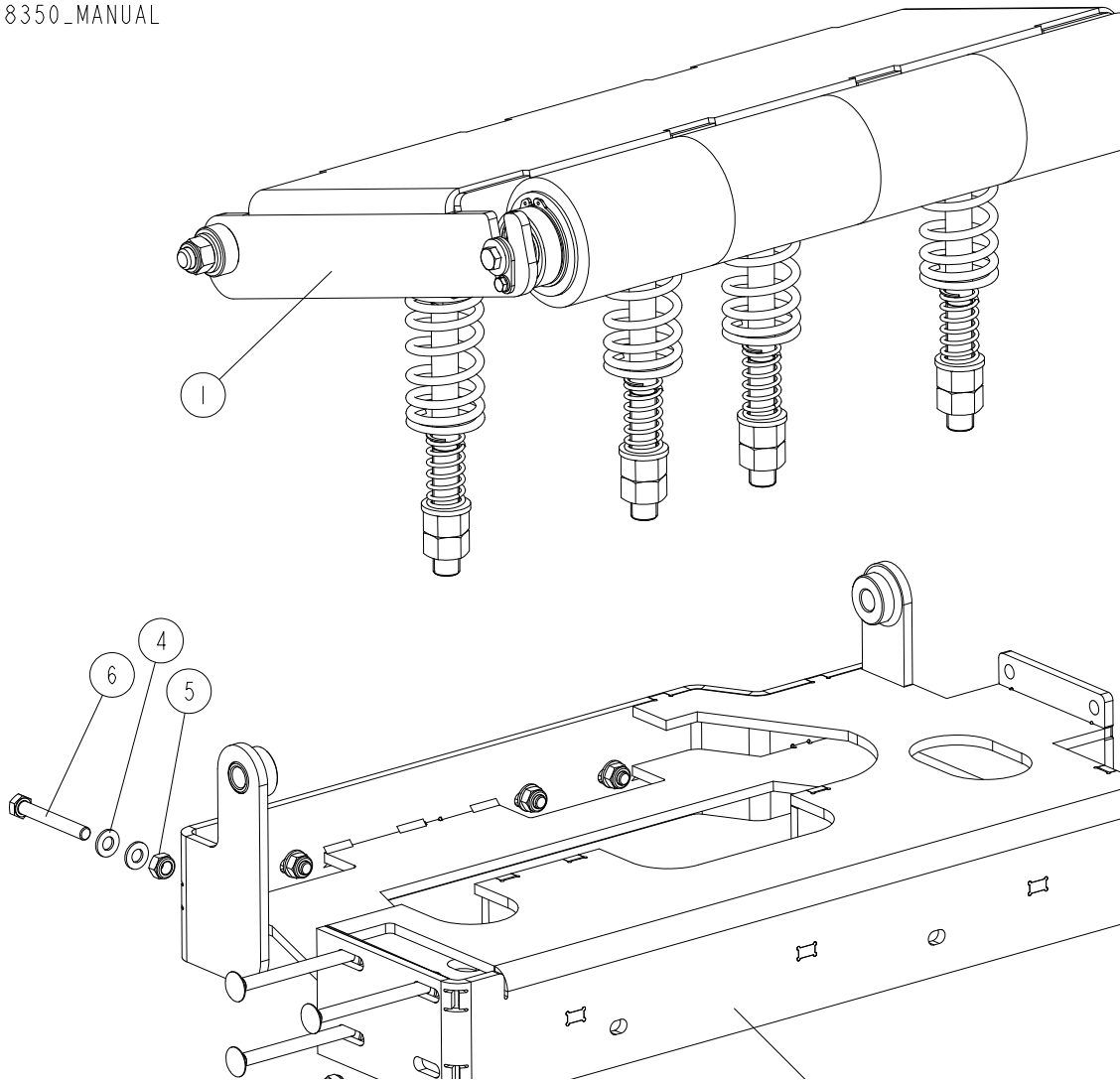
REF.	DESCRIPTION (◆ Indicates Parts Available in Assemblies Only)	PART #	QTY	
15	BOLT, M16X75-8.8-B HEX HEAD FULL THREAD ZINC	F81006-10	2	
-	ROLLER W/RUBBER BUSHING	514758	1	
-	ROLLER, LT300	091782-1	1	
16	TUBE, LT70AHDE30S ROLLER	091781	1	
17	BEARING, 6205 2RS BALL	091804	2	
18	RING, W 52 INSIDE RETAINING	091805	2	
19	SHAFT, LT70AHDE30S ROLLER	091793	1	
20	RING, Z60 OUTSIDE RETAINING	F81090-62	2	
21	RING, 61/80X3 SPACER	515895	4	
22	BOLT, M10X20-5.8 HEX HEAD FULL THREAD ZINC	F81003-1	2	
23	WASHER, 10.5 SPECIAL FLAT ZINC	F81055-6	2	
24	ROLLER, RUBBER	517493	5	
25	BUMPER, GRENE 70 3201 0010 RUBBER	094969	2	
26	WASHER, 8.4 FLAT ZINC	F81054-1	16	
27	WASHER, 10.5 FLAT ZINC	F81055-1	8	
28	BOLT, M10X75-8.8 HEX HEAD ZINC	F81003-15	8	
29	NUT, M10-HEX NYLON ZINC LOCK	F81033-1	8	
30	NUT, M8-8-B HEX NYLON ZINC LOCK	F81032-2	4	
31	BOLT, M8X130-8.8 HEX HEAD ZINC	F81002-50	4	

# 3

## Replacement Parts Board Removal Bumper Assembly

### 3.8 Board Removal Bumper Assembly

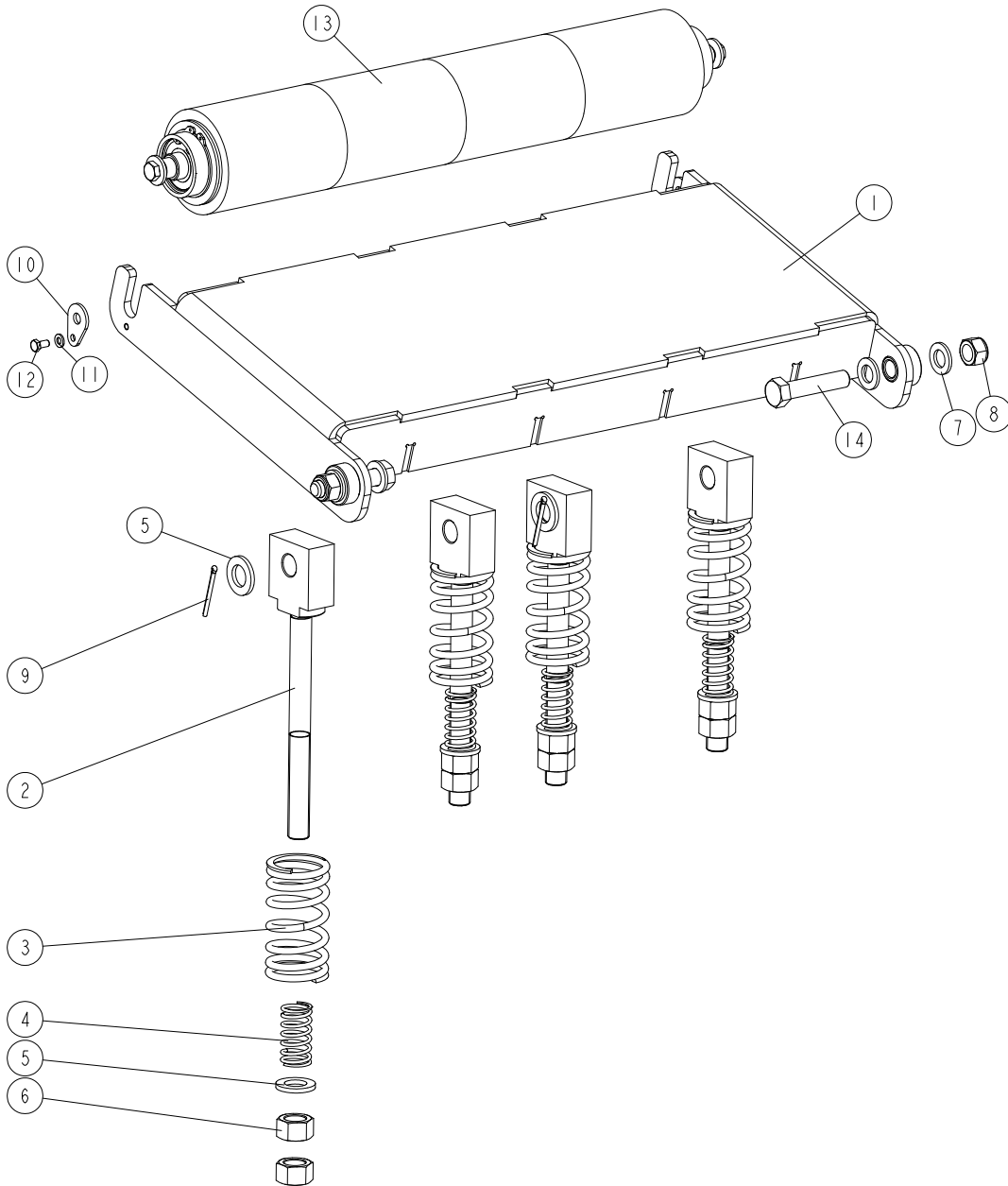
528350\_001  
528350\_MANUAL



REF.	DESCRIPTION (◆ Indicates Parts Available in Assemblies Only)	PART #	QTY
-	<b>BOARD REMOVAL BUMPER ASSEMBLY, FRAME M</b>	528350	1
1	BOARD REMOVAL BUMPER, FRAME M/S <a href="#">See Section 3.9</a>	527049	1
2	FRAME, BOARD REMOVAL BUMPER ASSEMBLY	529773-1	1
3	BOLT, M12X130 8.8 CARRIAGE HEAD ZINC	F81004-26	4
4	WASHER, 13-FLAT, ZINC	F81056-1	4
5	NUT, M12 8 HEX NYLON ZINC LOCK	F81034-2	4
6	WASHER, 10,5 FLAT ZINC	F81055-1	8
7	NUT, M10 HEX NYLON ZINC LOCK	F81033-1	4
8	BOLT, M10X75-8.8 HEX HEAD ZINC	F81003-15	4

### 3.9 Board Removal Bumper

527049\_001  
527049\_MANUAL



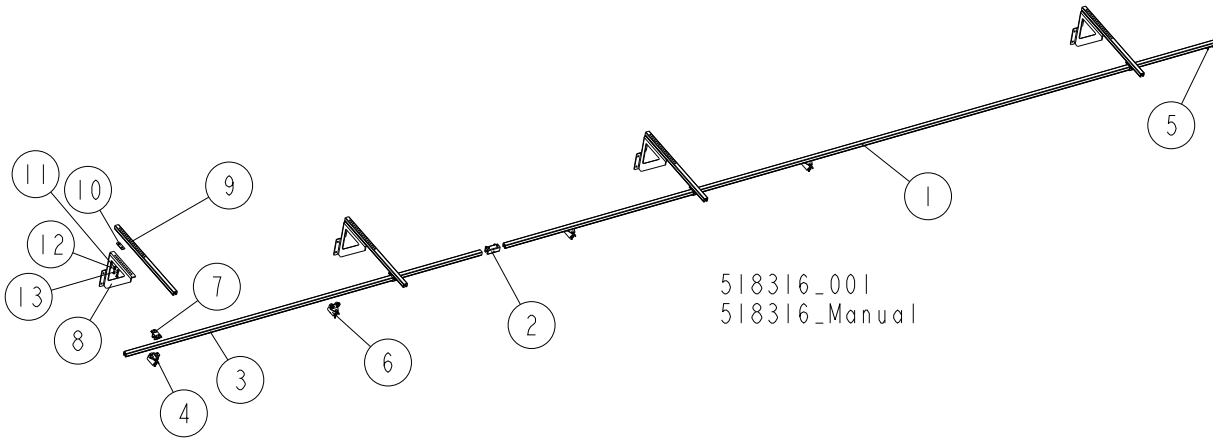
REF.	DESCRIPTION (◆ Indicates Parts Available in Assemblies Only)	PART #	QTY
-	<b>BUMPER, BOARD REMOVAL - S/M FRAME</b>	527049	1
1	PLATE WELDMENT, BOARD REMOVAL BUMPER	527046-1	1
2	ROD WELDMENT, BUMPER SPRING	510818-1	4
3	SPRING, 110X46X6.5 CUSHION	510815	4
4	SPRING, 60X23X3 ZINC	088992	4
5	WASHER, 21 FLAT ZINC	F81059-2	8
6	NUT, M20-8- HEX ZINC	F81037-1	8
7	WASHER, 17 SPLIT LOCK ZINC	F81058-1	4
8	NUT, M16-8 HEX NYLON ZINC LOCK	F81036-2	2
9	PIN, S-ZN-4X45 COTTER	F81043-22	4

**3****Replacement Parts**  
*Board Removal Bumper*

REF.	DESCRIPTION (◆ Indicates Parts Available in Assemblies Only)	PART #	QTY	
10	WASHER, WM4000 ROLLER MOUNTING	510874-1	2	
11	WASHER, 6.4 FLAT ZINC	F81053-1	2	
12	BOLT, M6X12 8.8 HEX HEAD ZINC LOCK	F81001-7	2	
13	ROLLER W/RUBBER BUSHING <a href="#">See Section 3.25</a>	527048	1	
14	BOLT, M16X75-8.8-B-HEX HEAD FULL THREAD ZINC	F81006-10	2	



**3.10 Remote Equipment for Installation on a Wall (Cutting Length of 6.5 m)**



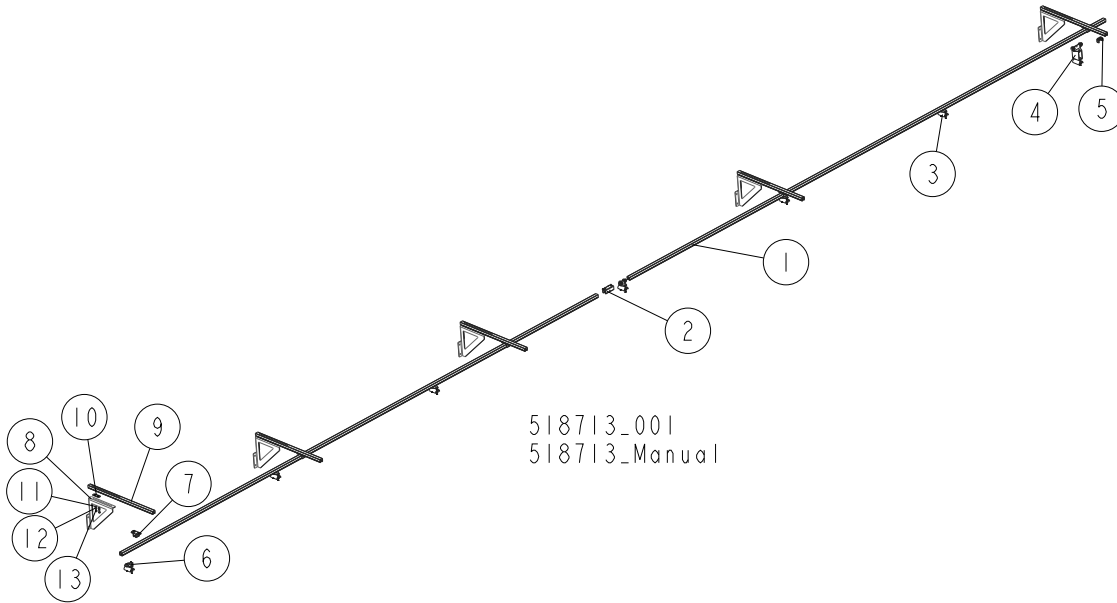
REF.	DESCRIPTION (◆ Indicates Parts Available In Assemblies Only)	PART #	QTY
	<b>REMOTE EQUIPMENT (CUTTING LENGTH OF 6.5 M)</b>	<b>518316</b>	<b>1</b>
	RAIL, COMPLETE GUIDE (CUTTING LENGTH OF 6.5M)	518315	1
1	RAIL, 6 M C-PROFILE	518332	1
2	COUPLER, TRACK	518705	1
3	RAIL, 3 M C-PROFILE	518313	1
4	CLAMP, FLAT CABLE - END	518701	1
5	TROLLEY, TOWING	518334	1
6	STOP, END	518700	1
7	TROLLEY, CABLE MOVING	518333	3
8	BRACKET, BOLT-ON	518702	4
	RAIL BRACKET KIT FOR WALL MOUNTING	518724	4
9	BRACKET, GUIDE RAIL (FOR WALL MOUNTING)	518728-1	1
10	ARM, RAIL BRACKET	518709	1
11	PLATE, ARM CLAMPING	518885-1	1
12	WASHER, 8.4 FLAT ZINC	F81054-1	2
13	WASHER, 8.2 SPLIT LOCK ZINC	F81054-4	2
14	BOLT, M8x16-8.8-B HEX HEAD FULL THREAD ZINC	F81002-20	2

# 3

## Replacement Parts

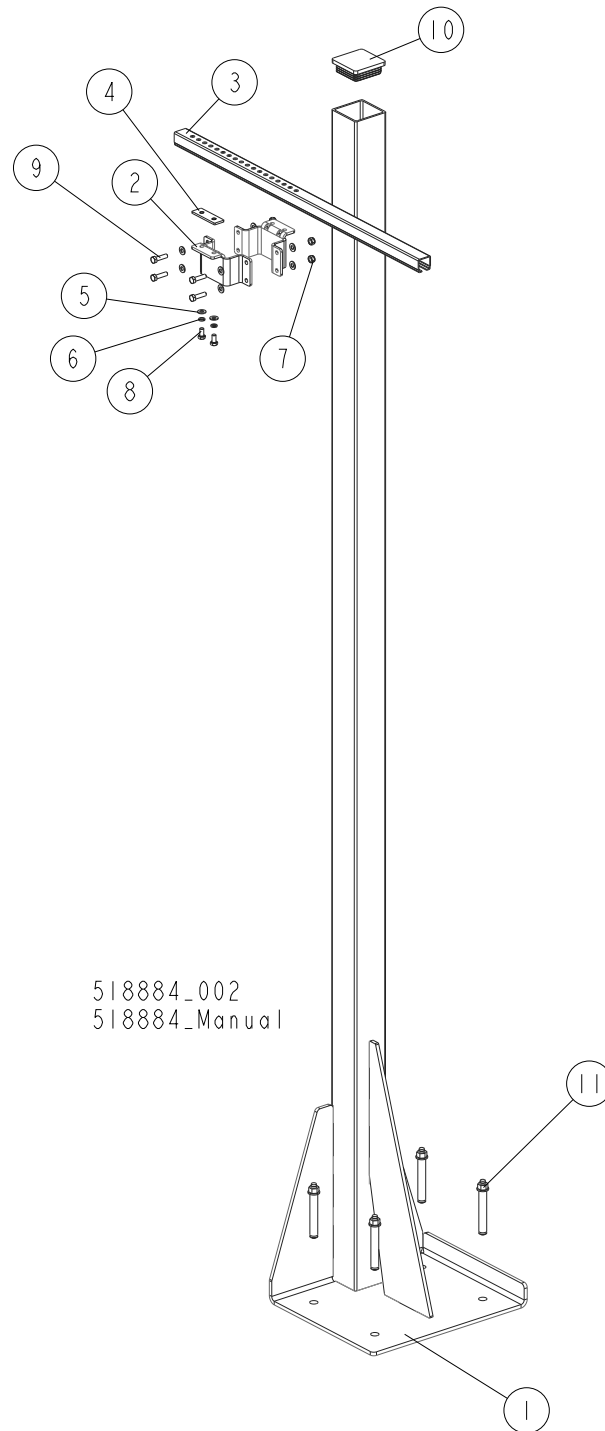
Remote Equipment for Installation on a Wall (Cutting Length of 6.5-10 m)

### 3.11 Remote Equipment for Installation on a Wall (Cutting Length of 6.5-10 m )



REF.	DESCRIPTION (◆ Indicates Parts Available In Assemblies Only)	PART #	QTY
	REMOTE EQUIPMENT (CUTTING LENGTH OF 6.5-10 M)	518713	1
	RAIL, COMPLETE GUIDE (CUTTING LENGTH OF 6.5-10 M)	518704	1
1	RAIL, 6 M C-PROFILE	518332	2
2	COUPLER, TRACK	518705	1
3	TROLLEY, CABLE MOVING	518333	5
4	TROLLEY, TOWING	518334	1
5	STOP, END	518700	1
6	CLAMP, FLAT CABLE - END	518701	1
7	BRACKET, BOLT-ON	518702	5
8	RAIL BRACKET KIT FOR WALL MOUNTING	518724	5
9	BRACKET, GUIDE RAIL (FOR WALL MOUNTING)	518728-1	1
10	ARM, RAIL BRACKET	518709	1
11	PLATE, ARM CLAMPING	518885-1	1
12	WASHER, 8.4 FLAT ZINC	F81054-1	2
13	WASHER, 8.2 SPLIT LOCK ZINC	F81054-4	2

### 3.12 Guide Rail Support Post



518884\_002  
 518884\_Manual

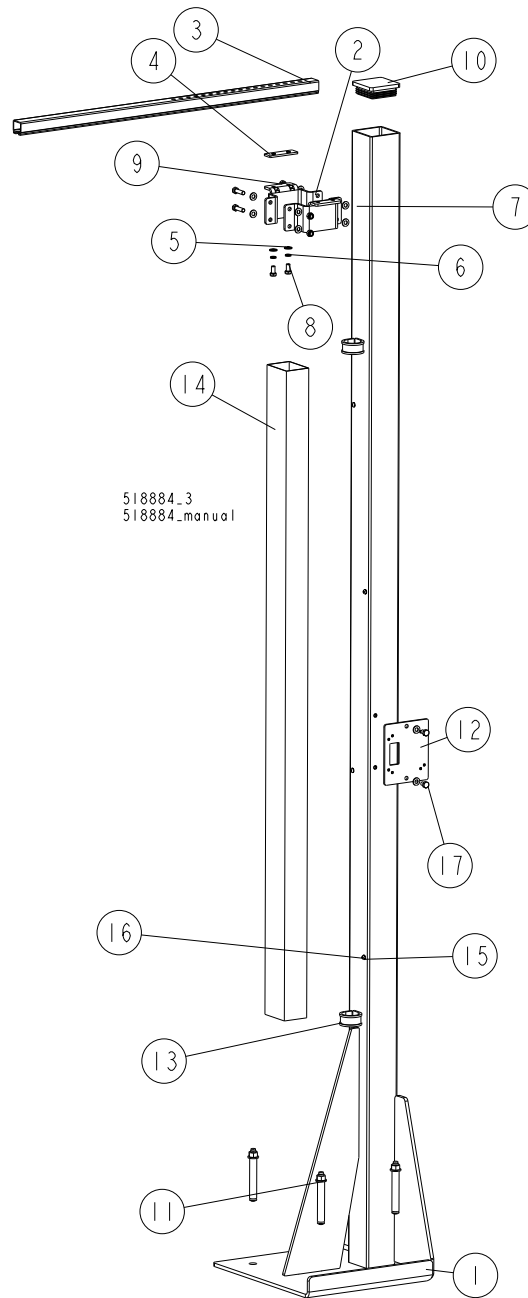
REF.	DESCRIPTION (◆ Indicates Parts Available In Assemblies Only)	PART #	QTY
	POST, GUIDE RAIL SUPPORT - COMPLETE	<b>518736</b>	<b>1</b>
1	POST, GUIDE RAIL SUPPORT	518707-1	1
2	BRACKET, 80X80 TUBE WRAP	518725-1	2
3	ARM, RAIL BRACKET	518709	1
4	PLATE, ARM CLAMPING	518885-1	1
5	WASHER, 8.4 FLAT ZINC	F81054-1	10
6	WASHER, 8.2 SPLIT LOCK ZINC	F81054-4	2

**3****Replacement Parts***Guide Rail Support Post*

---

<b>REF.</b>	<b>DESCRIPTION</b> (◆ Indicates Parts Available In Assemblies Only)	<b>PART #</b>	<b>QTY</b>
7	NUT, M8 8 HEX NYLON ZINC LOCK	F81032-2	4
8	BOLT, M8X16-8.8-B HEX HEAD FULL THREAD ZINC	F81002-20	2
9	BOLT, M8X30-5.8-B HEX HEAD FULL THREAD ZINC	F81002-2	4
10	CAP, 80X80 2-4 #111227 TUBE END	089644	1
11	PIN, LT 16X120	501877	4

### 3.13 Guide Rail Support Post

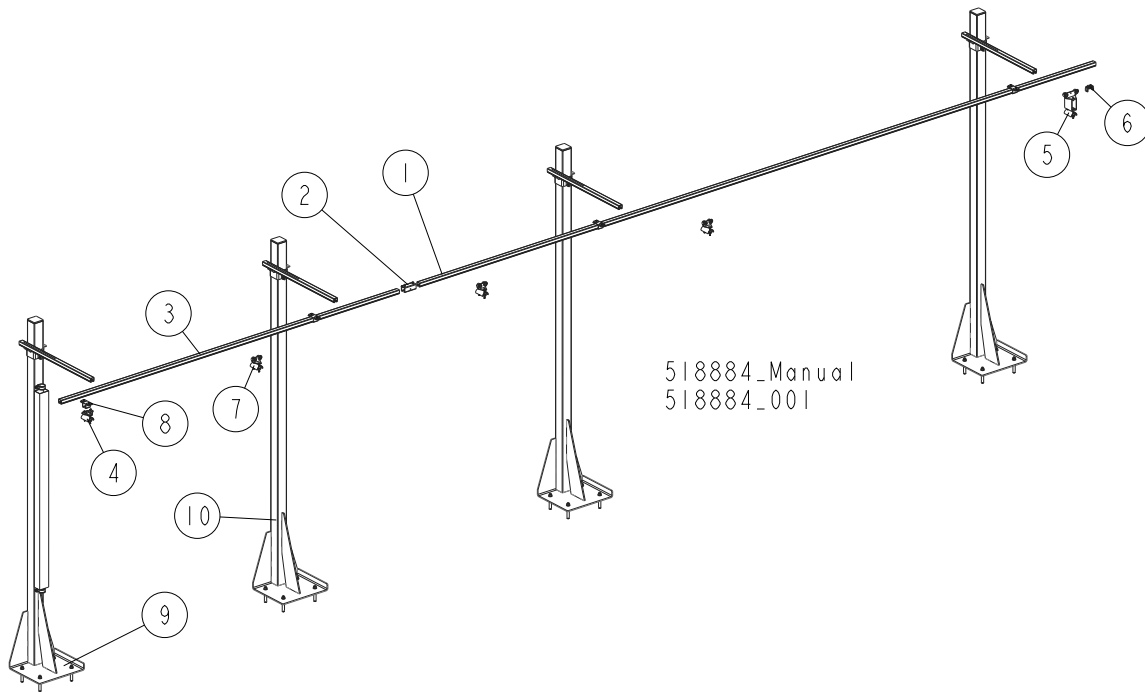


REF.	DESCRIPTION (◆ Indicates Parts Available In Assemblies Only)	PART #	QTY
	<b>POST, GUIDE RAIL SUPPORT - COMPLETE</b>	<b>520669</b>	<b>1</b>
1	POST WELDMENT W/HOLES	520667-1	1
2	BRACKET, 80X80 TUBE WRAP	518725-1	2
3	ARM, RAIL BRACKET	518709	1
4	PLATE, ARM CLAMP	518885-1	1
5	WASHER, 8.4 FLAT ZINC	F81054-1	14
6	WASHER, 8.2 SPLIT LOCK ZINC	F81054-4	2

**3****Replacement Parts**  
*Guide Rail Support Post*

REF.	DESCRIPTION (◆ Indicates Parts Available In Assemblies Only)	PART #	QTY
7	NUT, M8 8 HEX NYLON ZINC LOCK	F81032-2	4
8	BOLT, M8X16-8.8-B HEX HEAD FULL THREAD ZINC	F81002-20	4
9	BOLT, M8X30-5.8-B HEX HEAD FULL THREAD ZINC	F81002-2	4
10	CAP, 80X80 GR 2-4 #111227 TUBE END	089644	1
11	PIN, LT 16X120	501877	4
12	PLATE, SOCKET MOUNT	517664-1	1
13	CLAMP, RSGU 1.42/20 W1 METAL & RUBBER	F81087-3	2
14	DUCT, CABLE	520670	1
15	WASHER, 5.3 FLAT ZINC	F81052-1	4
16	SCREW, M5X10-8.8 CROSS RECESSED PAN HEAD ZINC	F81000-13	4
17	BOLT, M8X12-8.8 HEX HEAD FULL THREAD ZINC	F81002-6	2

### 3.14 4-Post Remote Set

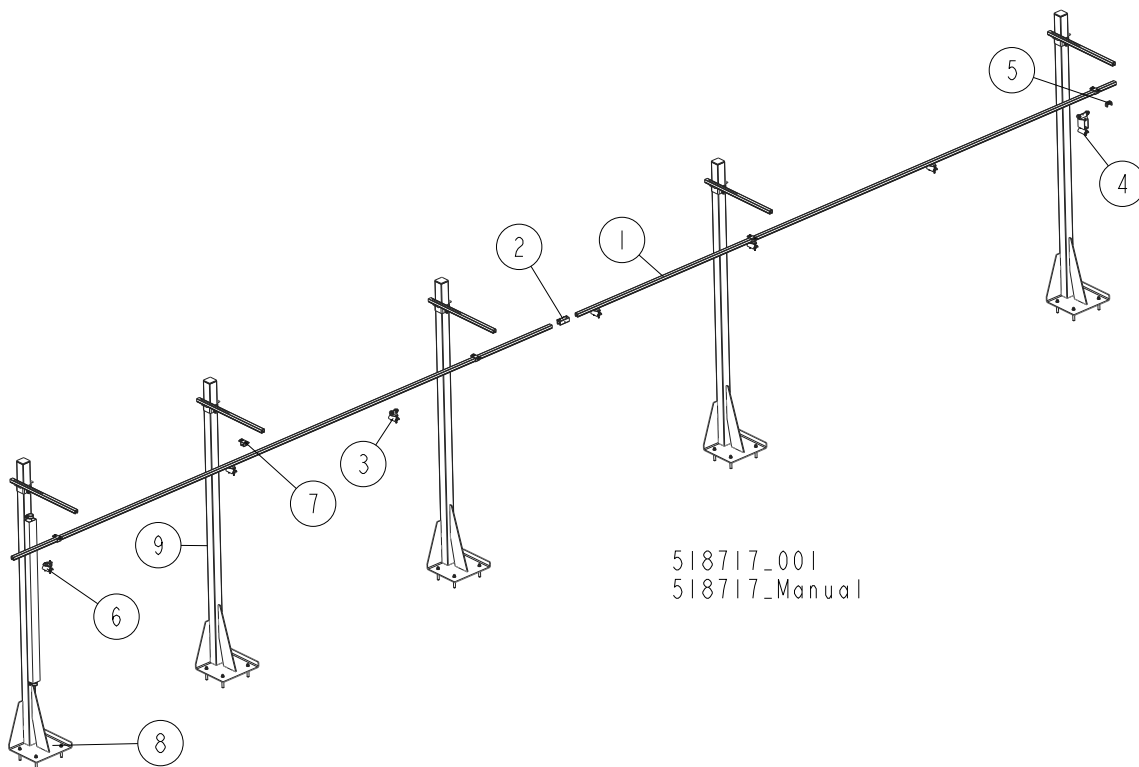


REF.	DESCRIPTION (◆ Indicates Parts Available In Assemblies Only)	PART #	QTY
	REMOTE SET, 4-POST	<b>518884</b>	<b>1</b>
	RAIL, COMPLETE GUIDE (CUTTING LENGTH OF 6.5M)	518315	1
1	RAIL, 6 M C-PROFILE	518332	1
2	COUPLER, TRACK	518705	1
3	RAIL, 3 M C-PROFILE	518313	1
4	CLAMP, FLAT CABLE - END	518701	1
5	TROLLEY, TOWING	518334	1
6	STOP, END	518700	1
7	TROLLEY, CABLE MOVING	518333	3
8	BRACKET, BOLT-ON	518702	4
9	POST, GUIDE RAIL SUPPORT - COMPLETE <a href="#">See Section 3.13</a>	520669	1
10	POST, GUIDE RAIL SUPPORT - COMPLETE <a href="#">See Section 3.12</a>	518736	3

# 3 Replacement Parts

## 5-Post Remote Set

### 3.15 5-Post Remote Set

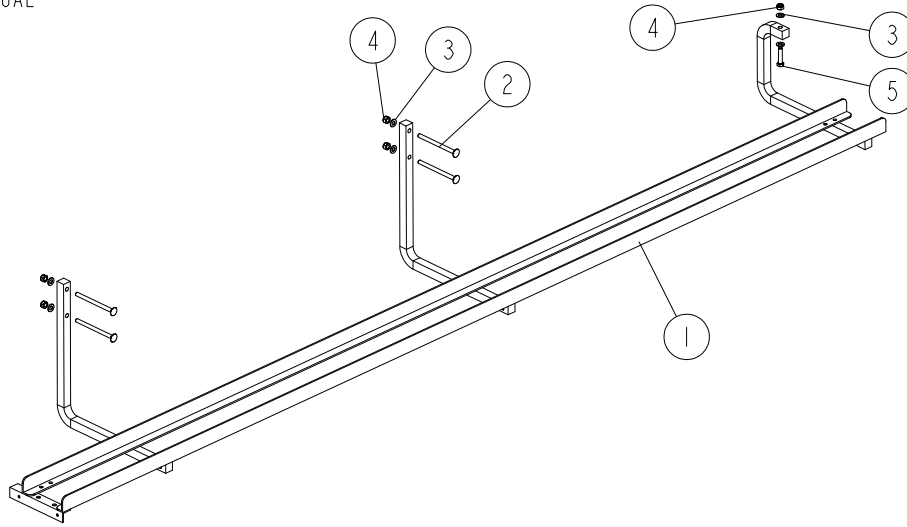


REF.	DESCRIPTION (◆ Indicates Parts Available In Assemblies Only)	PART #	QTY
	REMOTE SET, 5-POST	<b>518717</b>	<b>1</b>
	RAIL, COMPLETE GUIDE (CUTTING LENGTH OF 6.5-10 M)	518704	1
1	RAIL, 6 M C-PROFILE	518332	2
2	COUPLER, TRACK	518705	1
3	TROLLEY, CABLE MOVING	518333	5
4	TROLLEY, TOWING	518334	1
5	STOP, END	518700	1
6	CLAMP, FLAT CABLE - END	518701	1
7	BRACKET, BOLT-ON	518702	5
8	POST, GUIDE RAIL SUPPORT - COMPLETE <a href="#">See Section 3.13</a>	520669	1
9	POST, GUIDE RAIL SUPPORT - COMPLETE <a href="#">See Section 3.12</a>	518736	4



### 3.16 Support Assembly, Hoses & Cables

521956\_001\_B  
521956\_MANUAL



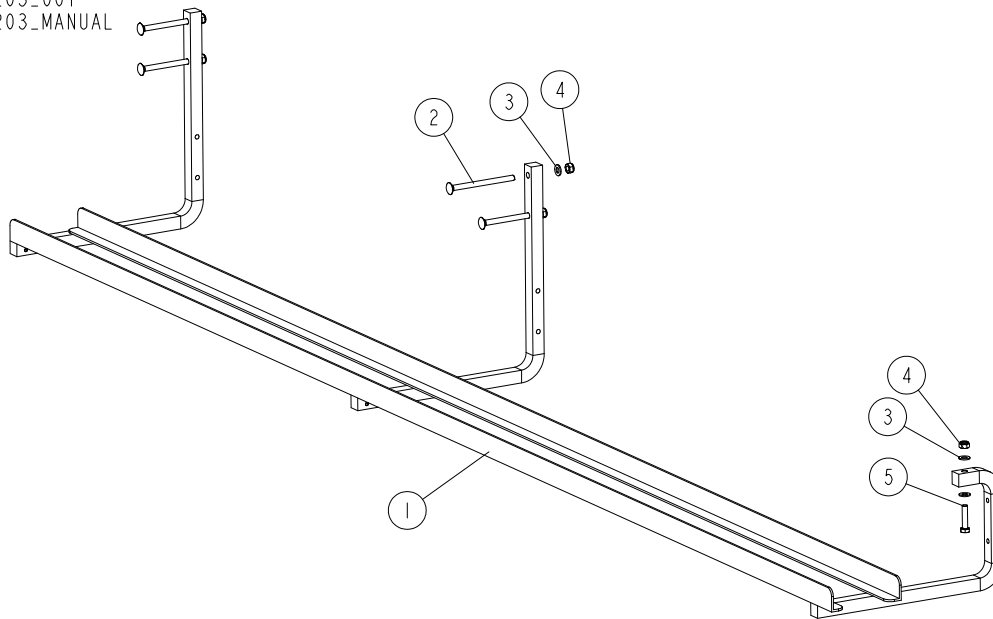
REF.	DESCRIPTION (◆ Indicates Parts Available In Assemblies Only)	PART #	QTY	
-	BRACKET ASSEMBLY, HOSES & CABLES SUPPORT ("M" FRAME)	521956	1	
1	SUPPORT WELDMENT. CABLE DUCT.	525086-1	1	
2	BOLT, M10X140-4.8 CARRIAGE ZINC	F81003-14	4	
3	WASHER, 10.5 FLAT ZINC	F81055-1	6	
4	NUT, M10-8-B HEX NYLON ZINC LOCK	F81033-1	5	
5	BOLT, M10X45 HEX HEAD FULL THREAD ZINC	F81003-3	1	

# 3

## Replacement Parts Support Assembly, Hoses & Cables

### 3.17 Support Assembly, Hoses & Cables

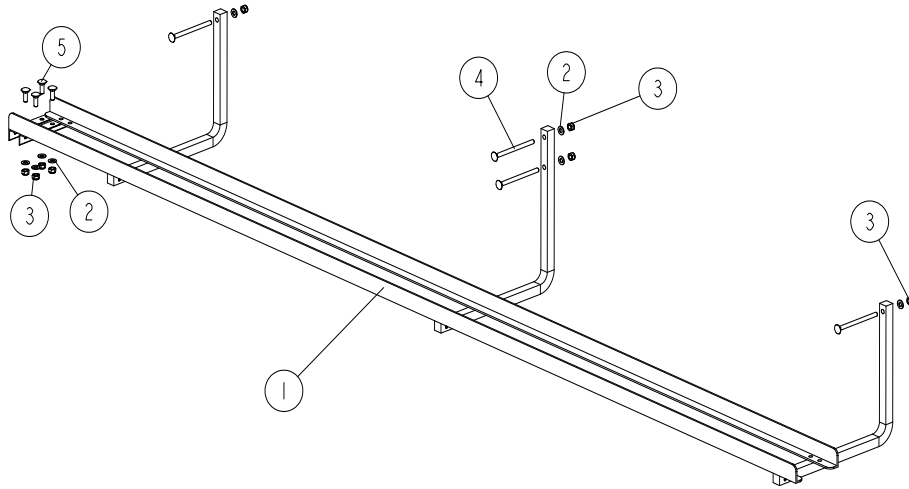
093203\_001  
093203\_MANUAL



REF.	DESCRIPTION (◆ Indicates Parts Available In Assemblies Only)	PART #	QTY
-	<b>SUPPORT WELDMENT. CABLE DUCT.</b>	<b>093203</b>	<b>1</b>
1	SUPPORT WELDMENT. CABLE DUCT.	093194-1	1
2	BOLT, M10X140-4.8 CARRIAGE ZINC	F81003-14	4
3	WASHER, 10.5 FLAT ZINC	F81055-1	6
4	NUT, M10-8-B HEX NYLON ZINC LOCK	F81033-1	5
5	BOLT, M10X45 HEX HEAD FULL THREAD ZINC	F81003-3	1

### 3.18 Support Assembly, Hoses & Cables

500504\_001\_B  
500504\_MANUAL



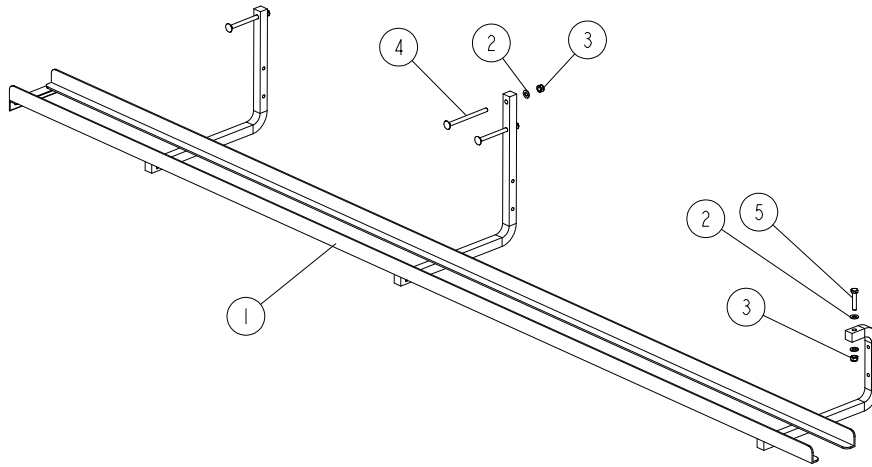
REF	DESCRIPTION (◆ indicates parts available in assemblies only)	PART #	QTY	
-	<b>SUPPORT WELDMENT. CABLE DUCT.</b>	500504	1	
1	SUPPORT WELDMENT. CABLE DUCT.	500505-1	1	
2	WASHER, 10.5 FLAT ZINC	F81055-1	8	
3	NUT, M10-8-B HEX NYLON ZINC LOCK	F81033-1	8	
4	NUT, M10-8-B HEX NYLON ZINC LOCK	F81003-14	4	
5	BOLT, M10X30-8.8 CARRIAGE HEAD ZINC	F81003-101	4	

# 3

## Replacement Parts Support Assembly, Hoses & Cables

### 3.19 Support Assembly, Hoses & Cables

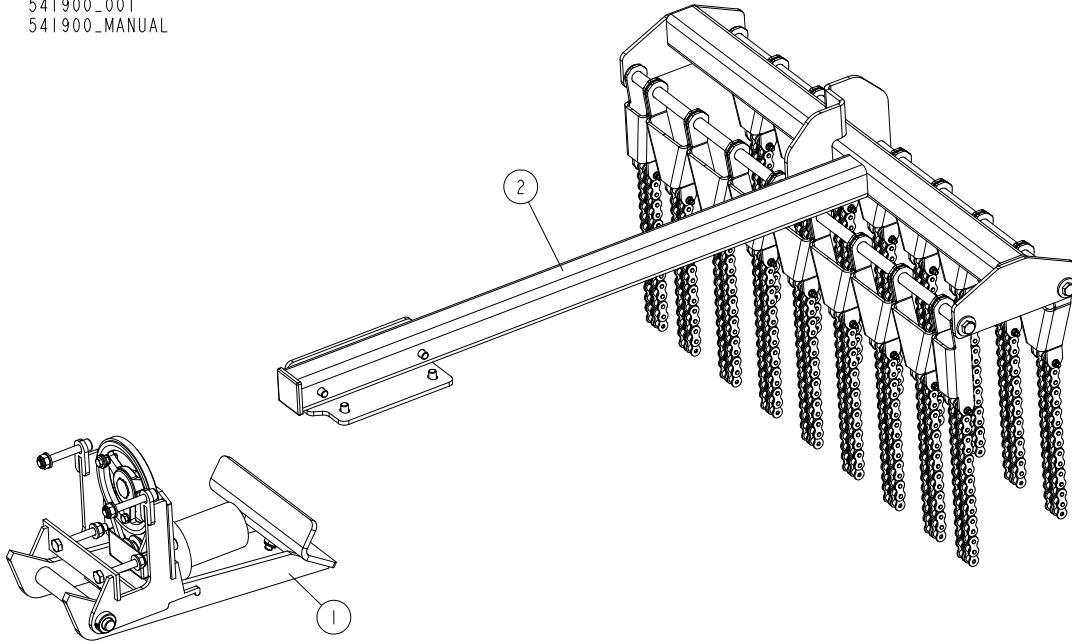
518063-001  
518063-MANUAL



REF.	DESCRIPTION (◆ Indicates Parts Available In Assemblies Only)	PART #	QTY	
-	<b>SUPPORT WELDMENT. CABLE DUCT.</b>	<b>518063</b>	<b>1</b>	
1	SUPPORT WELDMENT. CABLE DUCT.	518064-1	1	
2	BOLT, M10X140-4.8 CARRIAGE ZINC	F81055-1	5	
3	WASHER, 10.5 FLAT ZINC	F81033-1	4	
4	NUT, M10-8-B HEX NYLON ZINC LOCK	F81003-14	3	
5	BOLT, M10X45 HEX HEAD FULL THREAD ZINC	F81003-4	1	

### 3.20 Board Return Assembly

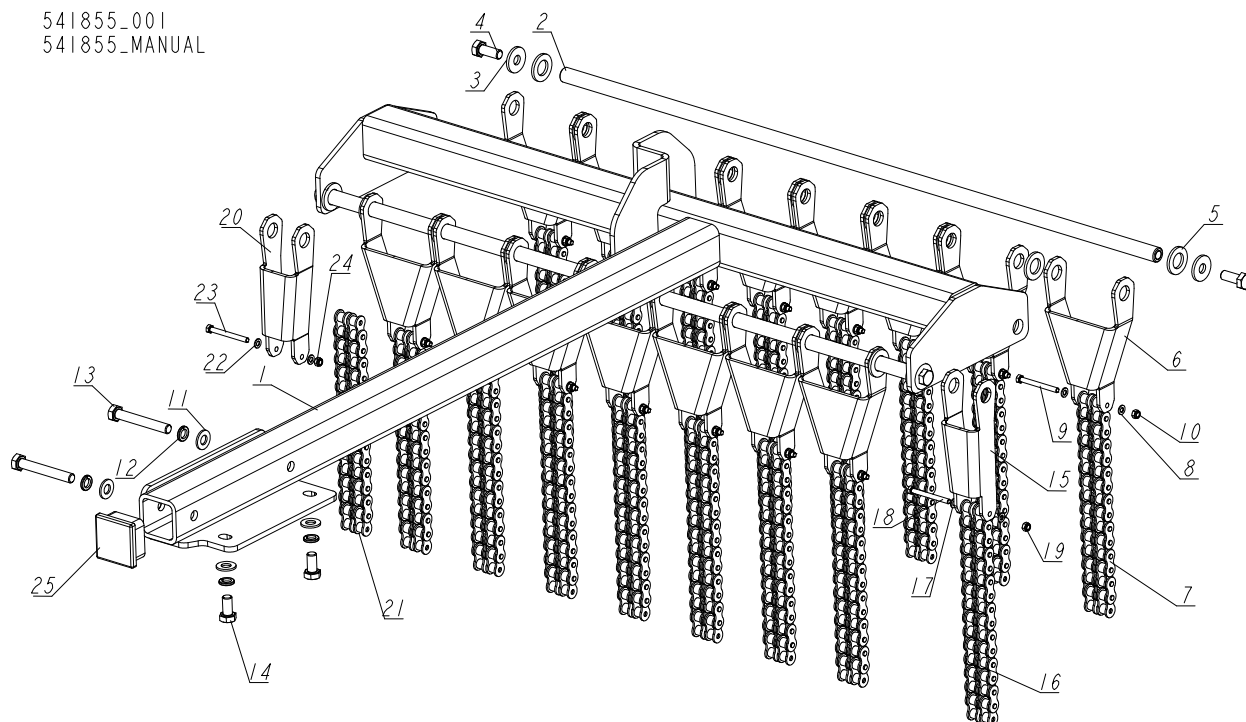
541900\_001  
 541900\_MANUAL



REF.	DESCRIPTION (◆ Indicates Parts Available In Assemblies Only)	PART #	QTY	
-	<b>LT40 BOARD RETURN ASSEMBLY</b>	541900	1	
1	LT40 BOARD RETURN ARM	541904	1	
2	BOARD RETURN GUIDE	541855	1	

### 3.21 Board Return Guide

541855\_001  
541855\_MANUAL



REF.	DESCRIPTION (◆ Indicates Parts Available In Assemblies Only)	PART #	QTY
-	<b>GUIDE, BOARD RETURN</b>	541855	1
1	GUIDE WELDMENT	541856-1	1
2	ROD, CHAIN GUIDE	539459-1	2
3	WASHER, 10.5 SPECIAL FLAT ZINC	F81055-6	4
4	BOLT, M10X25 8.8 HEX HEAD FULL THREAD	F81003-31	4
5	WASHER, 17 FLAT ZINC	F81058-1	19
-	CHAIN ASSEMBLY	541860	15
6	BRACKET, CHAIN	541859-1	1
7	CHAIN, 10B-2 15-LINK	538014	1
8	WASHER, 5.3 FLAT ZINC	F81052-1	2
9	BOLT, M5X50-8.8 HEX HEAD ZINC	F81000-1	1
10	NUT, M5-8 DIN985 HEX NYLON ZINC LOCK	F81030-2	1
11	WASHER, 10.5 FLAT ZINC	F81055-1	4
12	WASHER, Z10.2 SPLIT LOCK ZINC	F81055-2	4
13	BOLT, M10X70 8.8 HEX HEAD FULL THREAD ZINC	F81003-20	2
14	BOLT, ISO 4017-M10X20-8.8-A2E HEX HEAD	F81003-53	2
-	CHAIN ASSEMBLY, LEFT END	541896	1
15	BRACKET, CHAIN LEFT NARROW	541895-1	1
16	CHAIN, 10B-2 15-LINK	538014	1
17	WASHER, 5.3 FLAT ZINC	F81052-1	2
18	BOLT, M5X50-8.8 HEX HEAD ZINC	F81000-1	1
19	NUT, M5-8 DIN985 HEX NYLON ZINC LOCK	F81030-2	1
-	CHAIN ASSEMBLY, RIGHT END	541905	1
20	BRACKET, CHAIN RIGHT NARROW	541909-1	1
21	CHAIN, 10B-2 15-LINK	538014	1

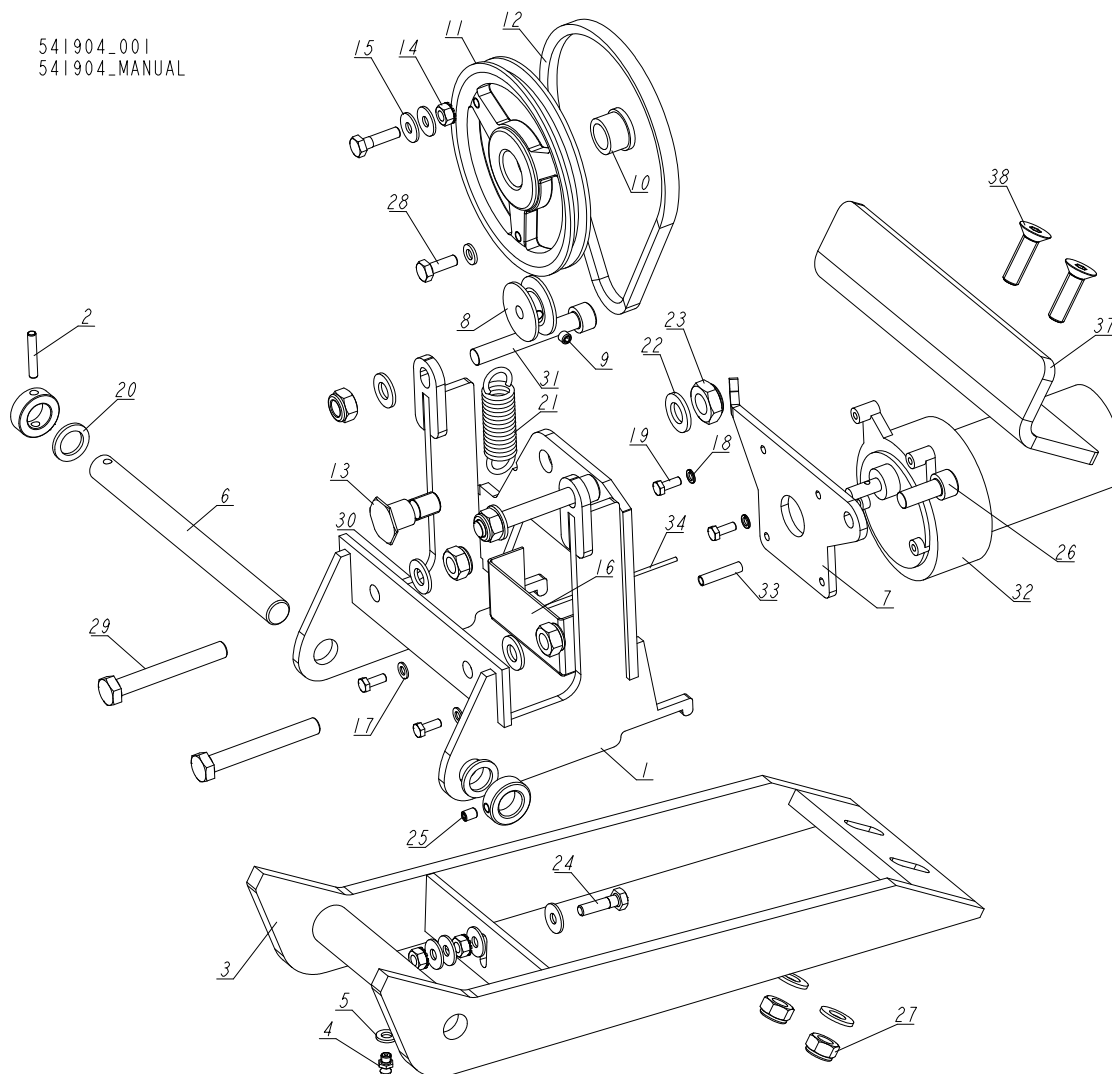
REF.	DESCRIPTION (◆ Indicates Parts Available In Assemblies Only)	PART #	QTY	
22	WASHER, 5.3 FLAT ZINC	F81052-1	2	
23	BOLT, M5X50-8.8 HEX HEAD ZINC	F81000-1	1	
24	NUT, M5-8 DIN985 HEX NYLON ZINC LOCK	F81030-2	1	
25	CAP, 50X50 (3-5 MM THICK) (199274 MOSS) TUBE END	095371	1	

# 3 Replacement Parts

## Board Return Arm

### 3.22 Board Return Arm

541904\_001  
541904\_MANUAL

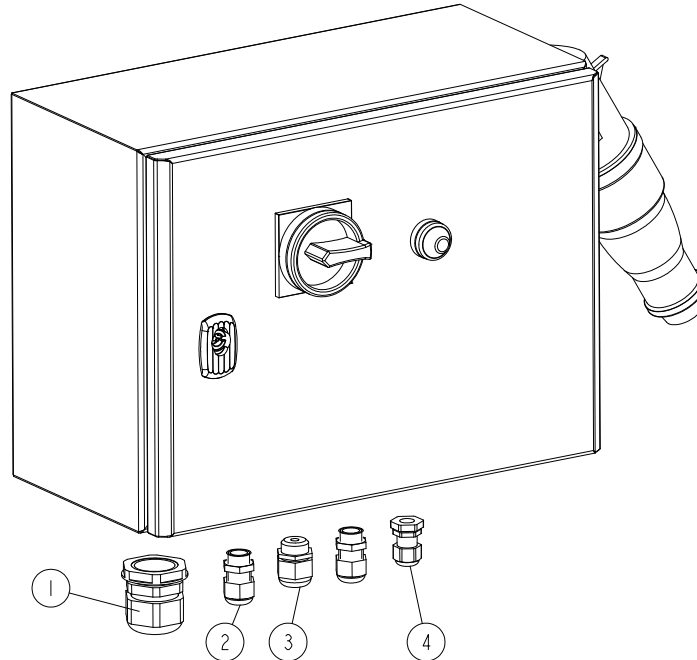


REF.	DESCRIPTION (◆ Indicates Parts Available In Assemblies Only)	PART #	QTY
-	<b>ARM, LT40 BOARD RETURN</b>	541904	1
1	BRACKET WELDMENT, BOARD RETURN	087788-1	1
2	PIN, 5X30 ROLL ZINC	F81044-21	1
3	ARM WELDMENT, BOARD RETURN	087838-1	1
4	FITTING, M6 GREASE	086280	1
5	WASHER, 6.4 FLAT ZINC	F81053-1	2
6	PIN, BOARD RETURN BRACKET ZINC-PLATED	087837-1	1
7	PLATE, MOTOR MOUNT	087871-1	1
8	SHEAVE, 1.42X.32	015074	1
9	1/4-28X1/4 CUP POINT SET, B/O	F05005-105	1
10	BUSHING, 5/8X7/8X1/2 BRONZ	P05135	1
11	SHEAVE, OK50X1/2 MOD.	015224	1
12	BELT, 3L190	015477	1
13	BOLT, IDLER PULLEY PIVOT	015221	1
14	NUT, 1/4-20 KEPS	F05010-9	3
15	WASHER, 6.5 SPECIAL FLAT ZINC	F81053-11	6
16	GUARD, BOARD RETURN PLATE	087985-1	1



REF.	DESCRIPTION (◆ Indicates Parts Available In Assemblies Only)	PART #	QTY	
17	WASHER, 5.3 FLAT ZINC	F81052-1	2	
18	WASHER, 5.1 SPLIT LOCK	F81052-2	2	
19	BOLT, #10-32X1/2 HH	F05004-60	4	
20	WASHER, 5/8X5/16X.094 NYLON	F05011-19	2	
21	SPRING, 3/4X2 7/8X12GA	015479	1	
22	WASHER, 13 FLAT ZINC	F81056-1	1	
23	NUT, 1/2-20 JAM NYLON LOCK	F05010-79	1	
24	BOLT, 1/4-20X1 HH GRADE 2	F05005-38	2	
25	SCREW, M6X8-45H HEX SOCKET SET W/FLAT POINT	F81013-1	1	
26	SCREW, M10X25 8.8 HEX SOCKET HEAD CAP ZINC	F81003-32	1	
27	NUT, M10-8-B HEX NYLON ZINC LOCK	F81033-1	7	
28	BOLT, 1/4-20X3/4 FT HHC	F05005-1	1	
29	BOLT, M10X75-8.8 HEX HEAD ZINC	F81003-15	2	
30	WASHER, 10.5 FLAT ZINC	F81055-1	6	
31	SCREW, M10X70-8.8 HEX SOCKET HEAD CAP ZINC	F81003-60	2	
32	MOTOR, CURRENT APP 1/30HP 12VDC GEAR	079214	1	
33	CONNECTOR, 16-14GA FI BUTT	F04875-1	1	
34	CABLE, 3/32 DIA BOARD RETURN	016090	1	
35	ANGLE, BOARD REMOVAL	541903-1	1	
36	SCREW, M10X35-10.9 DIN 7991 FLAT SOCKET HEAD CAP ZINC	F81003-106	2	

## 3.23 Electric Box, ST 4 kW (557006)

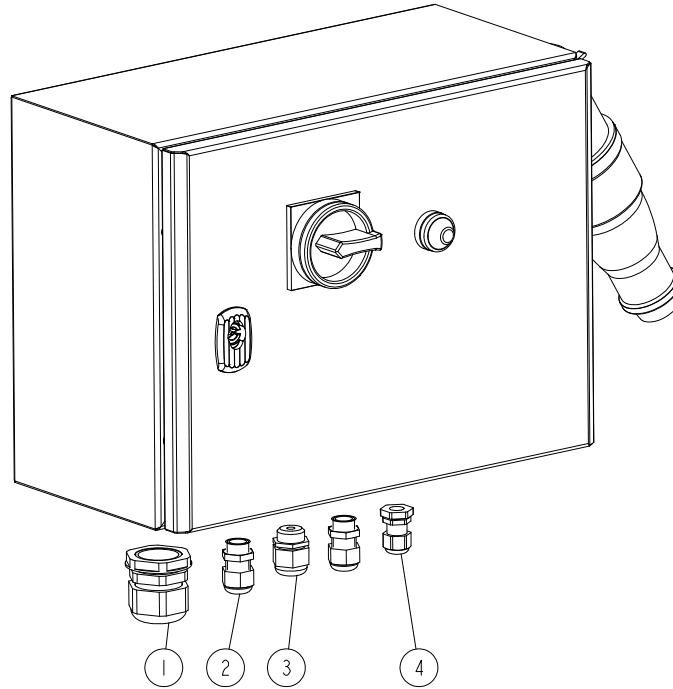
557006\_001  
557006\_MANUAL

LP.	OPIS (* wskazuje części dostępne jedynie w zespołach)	Nr części	Ilość
-	<b>BOX ELECTRIC AC</b>	557006 <sup>1</sup>	1
1	GLAND, PG29 CABLE	F81096-1	1
2	GLAND NUT, TRAILER HITCH, DW 11/H	085388	2
3	GLAND, DP 13/H CABLE	F81096-4	1
4	GLAND, DP 9/H	F81096-2	1

<sup>1</sup> The remaining electric box components are included in the Electrical Parts List provided together with the electrical diagrams.

### 3.24 Electric Box, ST 4 kW (557003)

557003\_001  
557003\_MANUAL

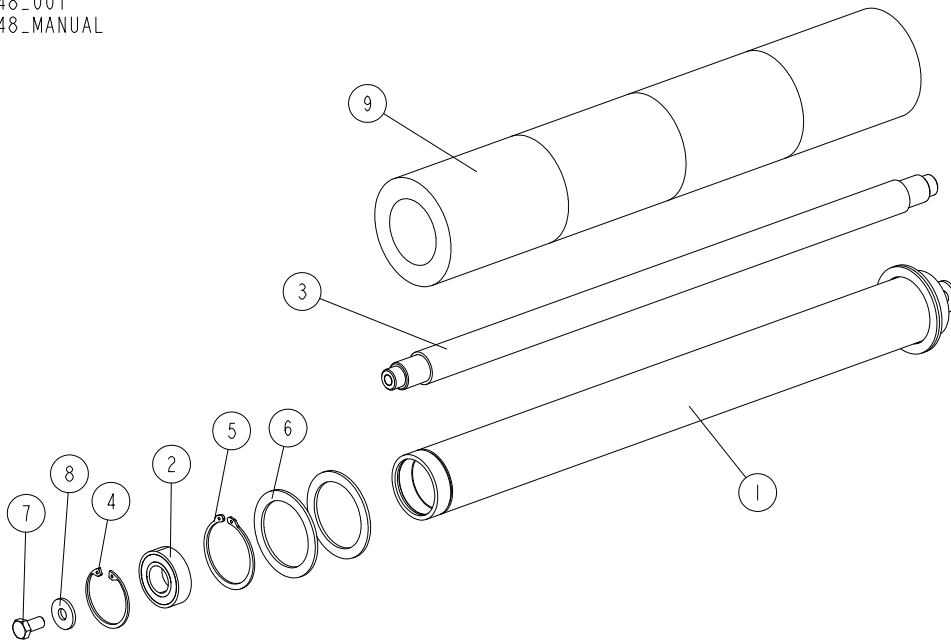


REF	DESCRIPTION (◆ indicates parts available in assemblies only)	PART #	QTY
-	<b>BOX ELECTRIC AC</b>	557003 <sup>1</sup>	1
1	GLAND, PG29 CABLE	F81096-1	1
2	GLAND NUT, TRAILER HITCH, DW 11/H	085388	2
3	GLAND, DP 13/H CABLE	F81096-4	1
4	GLAND, DP 9/H	F81096-2	1

<sup>1</sup> The remaining electric box components are included in the Electrical Parts List provided together with the electrical diagrams.

## 3.25 Roller with Rubber Bushing

527048\_001  
527048\_MANUAL



REF.	DESCRIPTION (◆ Indicates Parts Available in Assemblies Only)	PART #	QTY
-	<b>ROLLER W/RUBBER BUSHING</b>	527048	1
-	ROLLER, FRAME M/S	527044-1	1
1	TUBE, ROLLER - FRAME M/S - SR	527043	1
2	BEARING, 6205 2RS BALL	091804	2
3	SHAFT, ROLLER - FRAME M/S-SR	527050	1
4	RING, W52 INSIDE RETAINING	F81090-6	2
5	RING, Z60 OUTSIDE RETAINING	F81090-62	2
6	RING, 61/80X3 SPACER	515895	4
7	BOLT, M10X20-8.8 HEX HEAD FULL THREAD ZINC	F81003-1	2
8	WASHER, 10.5 SPECIAL FLAT ZINC	F81055-6	2
9	ROLLER, RUBBER	517493	4

---

## SECTION 4 ELECTRICAL WIRING DIAGRAMS, LT40ME20SRAH4-ST



**IMPORTANT!** When using a sawmill with the rewired control panel it is very important not to switch between saw head forward/backward movement until the saw head stops. Failure to do so may result in serious sawmill damage.



**WARNING!** When using the variable reverse speed wiring it is recommended that the operator should stop the head, turn the potentiometer to zero, engage reverse and then increase speed. Failure to do this may result in damage to the circuit. There is a protection in the circuit and if this is activated it will not allow the head to start the return movement until the potentiometer is set to zero.

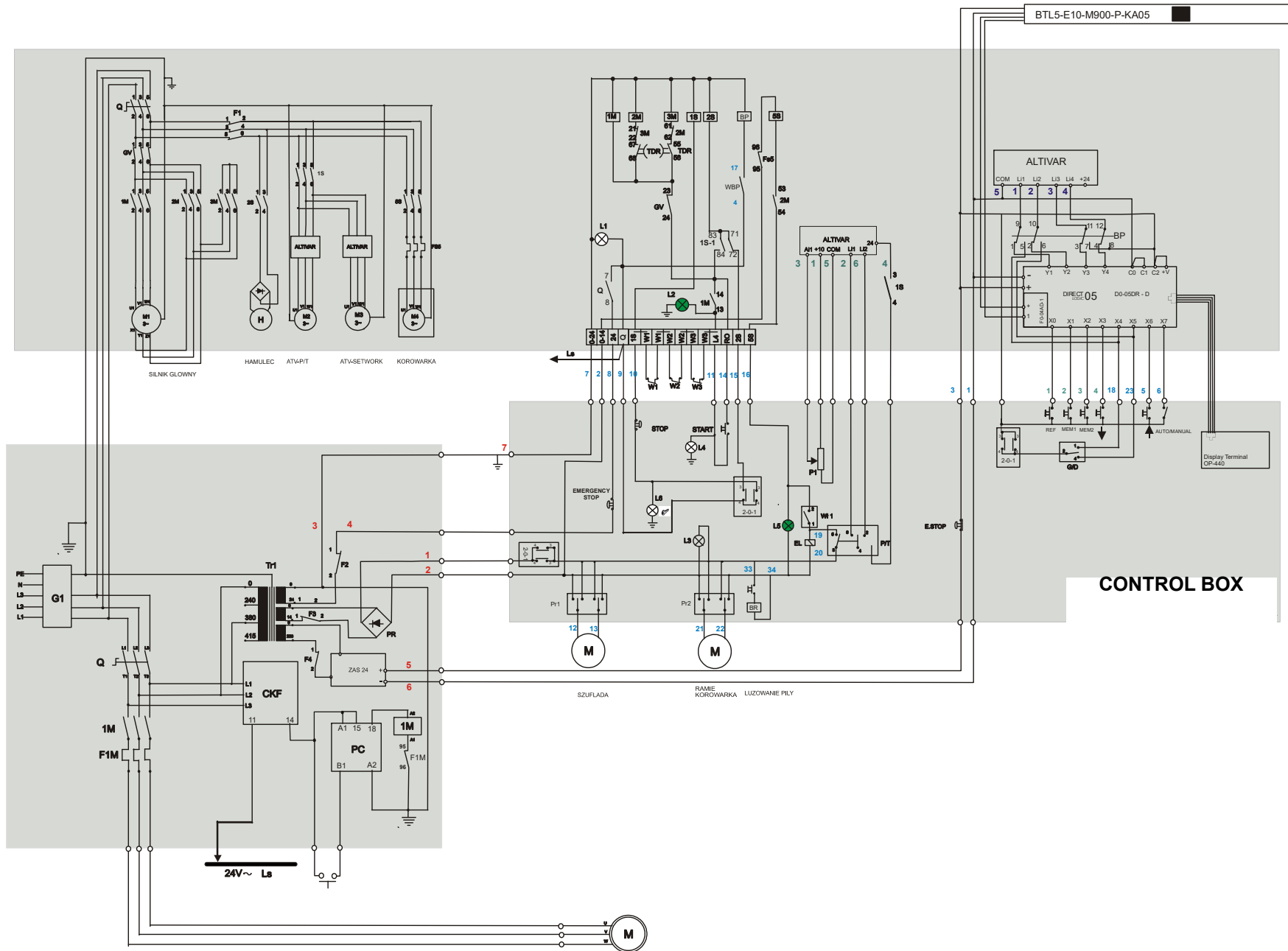


FIG. 4-1 . LT40ME20SRAH4-ST

**FIG. 4-2**

