

Wood-Mizer®

Remote Operation

LT70 AC Remote - ST

rev. A1.00

Operator's Manual



This manual is to replace the related appropriate information from the non-remote sawmill Operator's Manual

Form #681

Table of Contents

Section-Page

SECTION 1	REMOTE OPERATION	1-1
1.1	Sawmill Major Components.....	1-2
1.2	Machine and Site Preparation.....	1-3
1.3	Preparing for Remote Operation	1-5
1.4	Remote Sawmill Operation	1-6
1.5	Preparing The Remote Option For Towing.....	1-7
1.6	Cold Weather Operation.....	1-8
1.7	Hydraulic Control Operation.....	1-9
1.8	Loading, Turning, And Clamping Logs	1-11
SECTION 2	MAINTENANCE & TROUBLESHOOTING	2-1
2.1	Clean The Cable Chain & Support Tray	2-1
2.2	Cable Chain Repair.....	2-2
2.3	Cable Chain And Support Tray Alignment	2-3
2.4	Board Removal Bumper Adjustment	2-5

Table of Contents

Section-Page

SECTION 3	REPLACEMENT PARTS	3-1
3.1	How To Use The Parts List	3-1
3.2	Sample Assembly	3-1
Protective Conduits, LT70L Super Hydraulic Hoses		
3.3	Remote Control Box	3-3
3.4	Remote Control Box M-Super frame	3-5
3.5	Remote Control Box Parts.....	3-7
3.6	Hydraulic Control Box, 7-Section Remote Control	3-10
3.7	Hydraulic Control Box, 12-Section Remote Super	3-13
3.8	Remote Control Box (16-Section)	3-16
3.9	Remote Control Box (14-Section) 2x5.5kW	3-18
3.10	Remote Control Box, Super, 16-Section	3-20
3.11	Remote Control Box, 22-Section	3-22
3.12	Board Return Table	3-25
3.13	Electric Box & Cable Connectors (African BS Version)	3-27
3.14	Cable Connectors (African BS Version)	3-28
3.15	Plate w/Connectors (African BS Version)	3-31
3.16	Hydraulic Fittings (African BS Version)	3-32
3.17	Adaptation Kit, Board Removal Bumper	3-33
3.18	Board Removal Bumper	3-34
3.19	Board Removal Bumper Assembly	3-36
3.20	Board Removal Bumper	3-37
3.21	Bed Extension LT70 Remote	3-39
3.22	Remote Equipment for Installation on a Wall (Cutting Length of 6.5 m)	3-41
3.23	Remote Equipment for Installation on a Wall (Cutting Length of 6.5-10 m)	3-42
3.24	Guide Rail Support Post	3-43
3.25	Guide Rail Support Post	3-45
3.26	4-Post Remote Set	3-47
3.27	5-Post Remote Set	3-48
3.28	Support Assembly, Hoses & Cables	3-49
3.29	Support Assembly, Hoses & Cables	3-50
3.30	Support Assembly, Hoses & Cables	3-51
3.31	Support Assembly, Hoses & Cables	3-52
3.32	Hoses & Cables	3-53
3.33	Cable Duct	3-54
3.34	LT70H E30 RC Motor Kit	3-55
3.35	Board Return Assembly	3-56
3.36	Electric Box, ST 4 kW (557006)	3-58
3.37	Electric Box, ST 4 kW (557003)	3-59
3.38	Roller with Rubber Bushing	3-60
3.39	Side Of The Platform(545626)	3-61
3.40	Mounting Kit 500613-PLC1	3-62
3.41	Base, AC Remote Electric Box 088324	3-64
3.42	Switch Assembly 505711	3-65



Remote Operation

SECTION 1 REMOTE OPERATION

The Remote Option provides remote operation for all sawmill functions from a single location at the front of the sawmill. The option includes all cables with traveling guide chain, a remote electrical power junction box, a front-mounted sawmill control box, and a remote clutch mechanism with switch to engage the blade from the remote location.

1.1 Sawmill Major Components

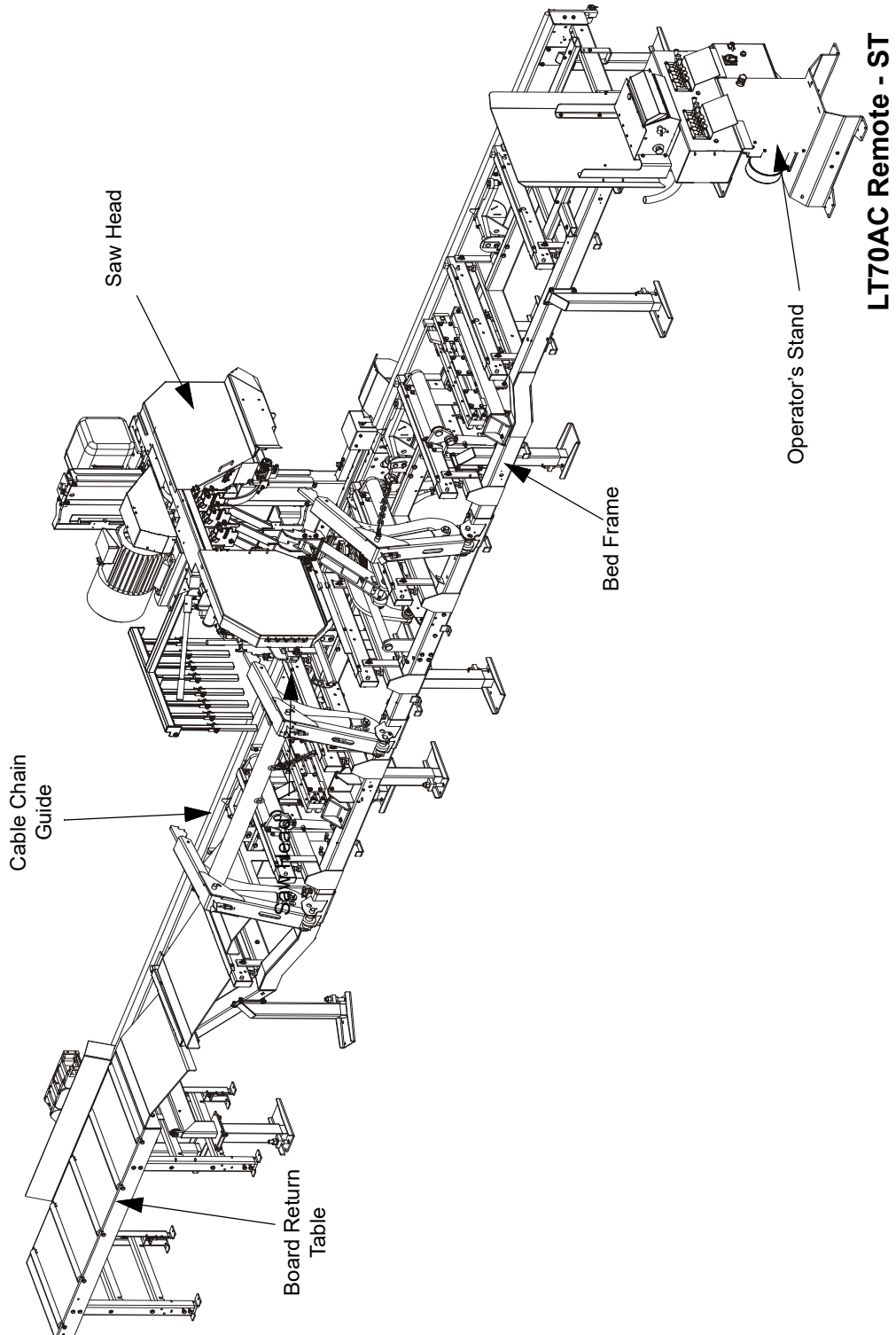


FIG. 1-1

1 Remote Operation

Machine and Site Preparation

1.2 Machine and Site Preparation

The Wood-Mizer LT70 Remote-ST sawmill has to be prepared to work after transportation. Due to the weight, it has to be transported with auxiliary carrier equipment and in accordance with general safety rules.

The moulder must be installed in the work-place as instructed in the operator's manual. To ensure safe operation of the machine, the work-place dimensions should be 13 m x 3,5 m. If your machine is equipped with bed extension, prepare an appropriately larger work area. The work-place must be protected from rain and snow.

Before sawmill setup remove the control panel from the sawmill bed frame.

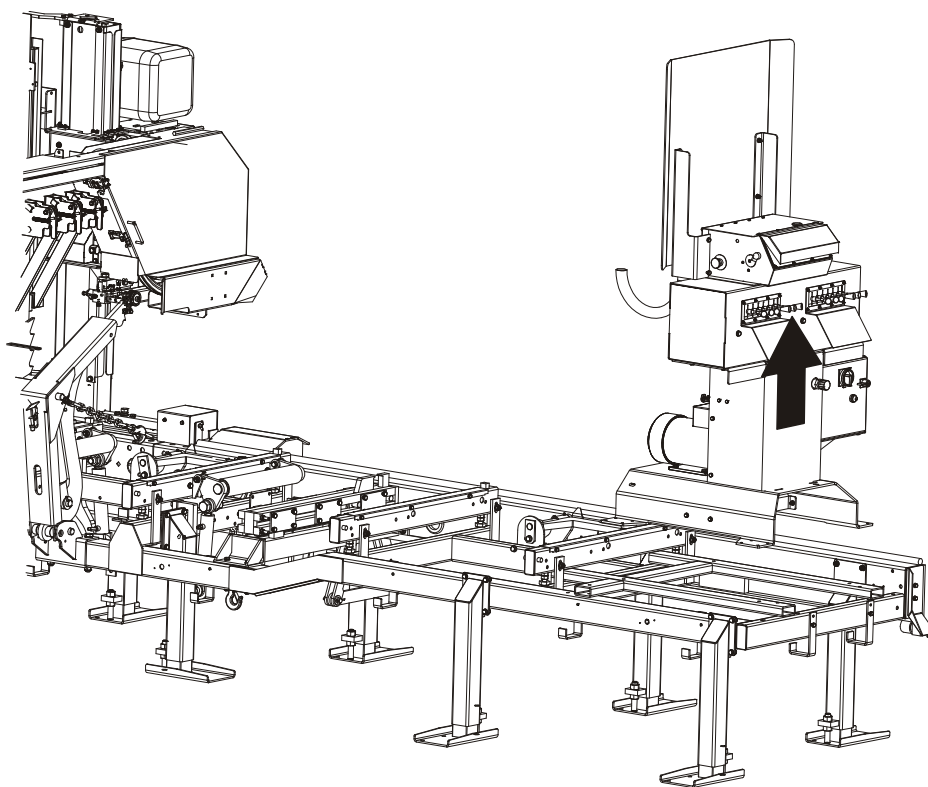


FIG. 1-2

Prepare concrete foot pads according to the drawing below.

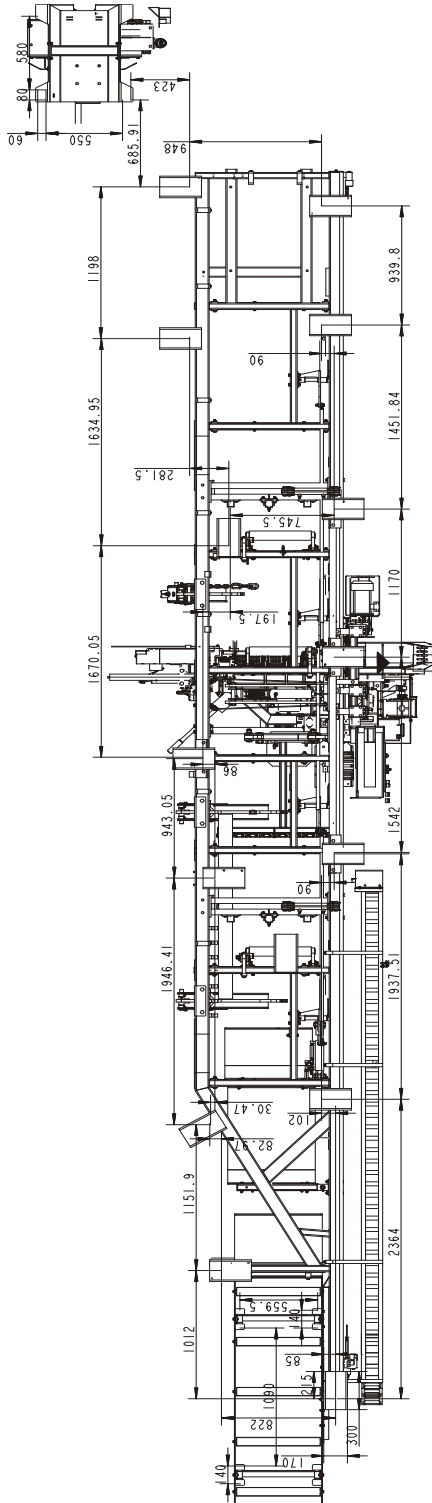



FIG. 1-3

1 Remote Operation

Preparing for Remote Operation

1.3 Preparing for Remote Operation

Set up the sawmill as instructed in your sawmill operator's manual.

 **CAUTION!** Moving the saw carriage before removing the cable chain support may cause damage to the chain. Also, moving the saw carriage when the chain is frozen can damage the chain. [See Section 1.6](#) for recommended chain deicing procedure.

See Figure 1-4. Before moving the saw carriage, remove the cable chain support bracket.

1. Disengage the rubber strap holding the cable chain to the support bracket.
2. Loosen the handles and remove the support bracket from the sawmill track rail.
3. Place the support bracket on the storage bracket located on the sawmill frame between the first and second bed rails. Tighten the handles to secure the support bracket to the storage bracket and secure the rubber strap in the bracket hole.

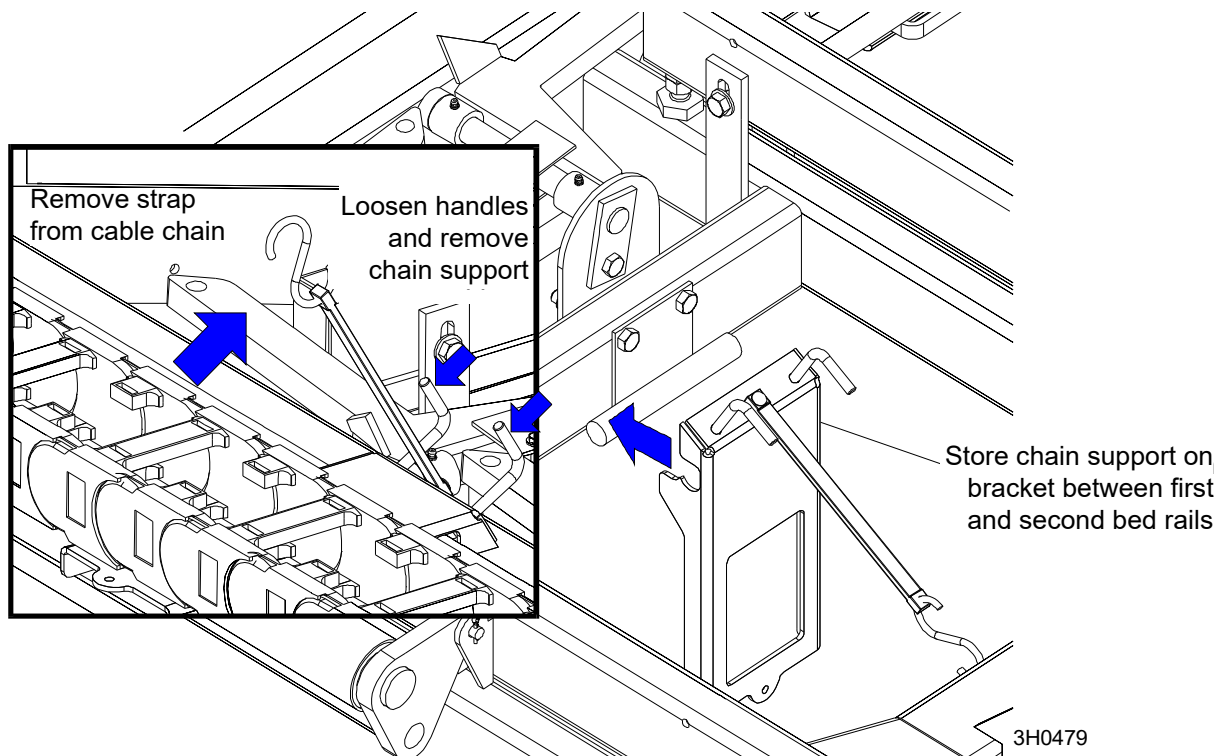


FIG. 1-4

1.4 Remote Sawmill Operation



See Figure 1-5. All sawmill controls operate exactly as described in your sawmill operator's manual except the clutch/brake. Instead of pulling a handle to engage the blade, push the toggle switch on the control panel up. Hold the switch up until the clutch motor stops completely. The remote clutch mechanism will disengage the brake, rev the motor to full throttle, and start the blade spinning.



DANGER! Keep all persons out of the path of moving equipment and logs when operating sawmill or loading and turning logs. Failure to do so will result in serious injury.

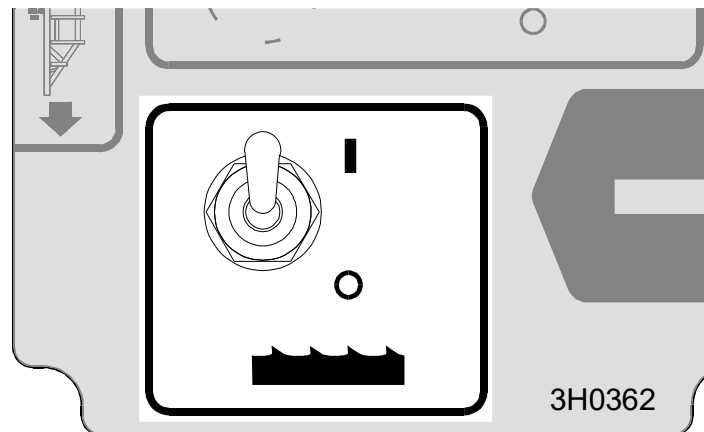


FIG. 1-5

To stop the blade and engage the blade brake, push the toggle switch down. This will also return the engine to idle.

NOTE: Be sure the toggle switch stays in the up or down position. The boot on the switch may spring the switch back to neutral. You may need to hold the switch in position until the remote clutch motor completes its cycle.

IMPORTANT! If your sawmill is equipped with board return tables, minimum board length is 2 meter.

1

Remote Operation

Preparing The Remote Option For Towing

1.5 Preparing The Remote Option For Towing



1. After placing the saw head in its traveling position, engage the remote clutch switch to engage the drive belts. This will keep the engine from bouncing while towing the sawmill.
2. Place the chain support bracket under the cable chain, located between the first and second bed rails.

See Figure 1-6.

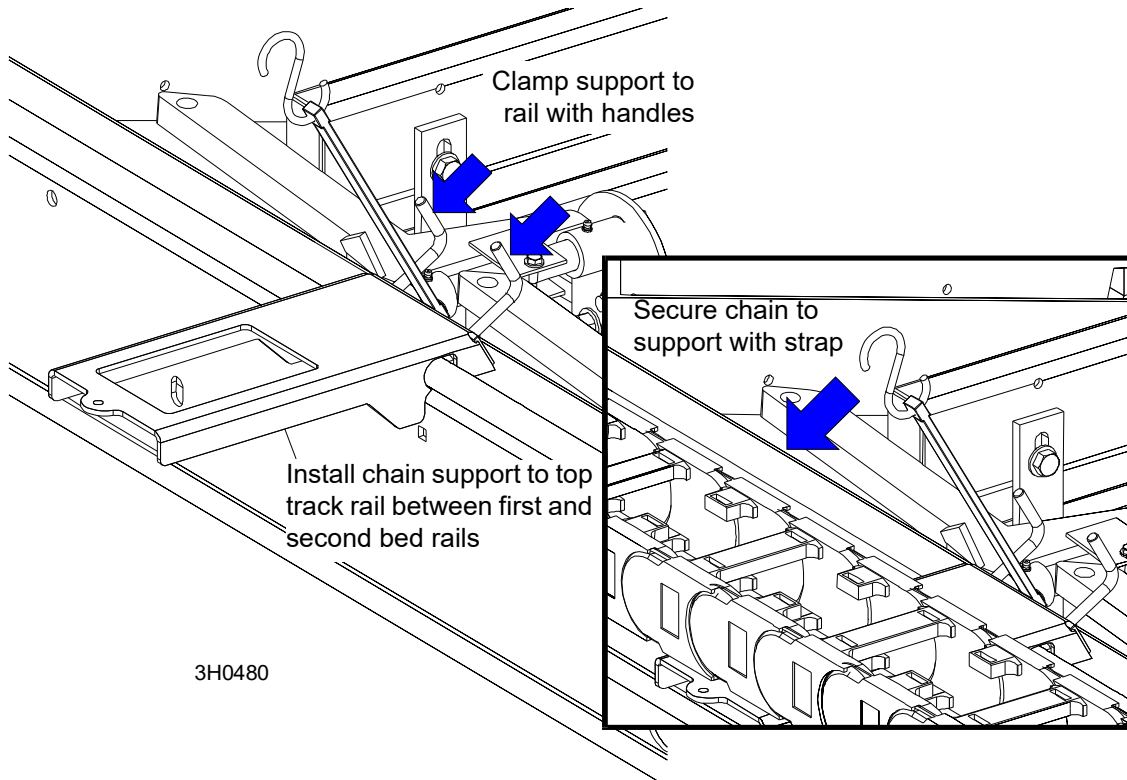


FIG. 1-6

3. Tighten the support handles and secure the chain to the support with the rubber strap.

1.6 Cold Weather Operation

If the sawmill is operated or stored in freezing conditions, the cable chain may freeze. Before moving the saw carriage, check to see if the chain is frozen:

1. Remove the chain support bracket ([See Section 1.3](#)).
2. Pull the chain up at a few locations to determine if it moves freely. If you detect the chain is frozen, proceed to the recommended deicing procedure below.
3. If the chain seems to move freely by hand, use the power feed to slowly move the saw carriage toward the rear of the mill. Since the saw carriage returns only at full speed, moving the saw carriage forward will allow you to slowly engage the cable chain to be sure it is not frozen. If you detect the chain is frozen, proceed to the recommended deicing procedure below.

Recommended Cable Chain deicing Procedure

To de-ice the chain, apply a salt solution (preferably calcium chloride and water) to the entire length of the chain. Allow the solution to sit until the chain can move freely. The strength of the solution and time required to free the chain will depend on how cold the weather is and how much ice has accumulated in the chain.

Before storing the sawmill after using the salt solution, be sure to rinse the salt from any metal portions of the sawmill frame to prevent corrosion. Refer to the recommended cold-weather storage procedure below to prevent the chain from freezing.

Recommended Cable Chain Ice Prevention Procedure

Before storing the sawmill in freezing temperatures, apply a 50/50 solution of environmentally safe antifreeze (Sierra) and water to the cable chain. A garden sprayer can be used to apply the solution.

1 Remote Operation

Hydraulic Control Operation

1.7 Hydraulic Control Operation

The hydraulic control levers become operational when the contacts at the bottom of the carriage touch the power strip on the frame tube. The hydraulic control levers will only work when the cutting head is close enough to the front end of the mill to touch the power strip.

See Figure 1-7. Hydraulic units have twelve control levers to load, clamp, turn and level logs.

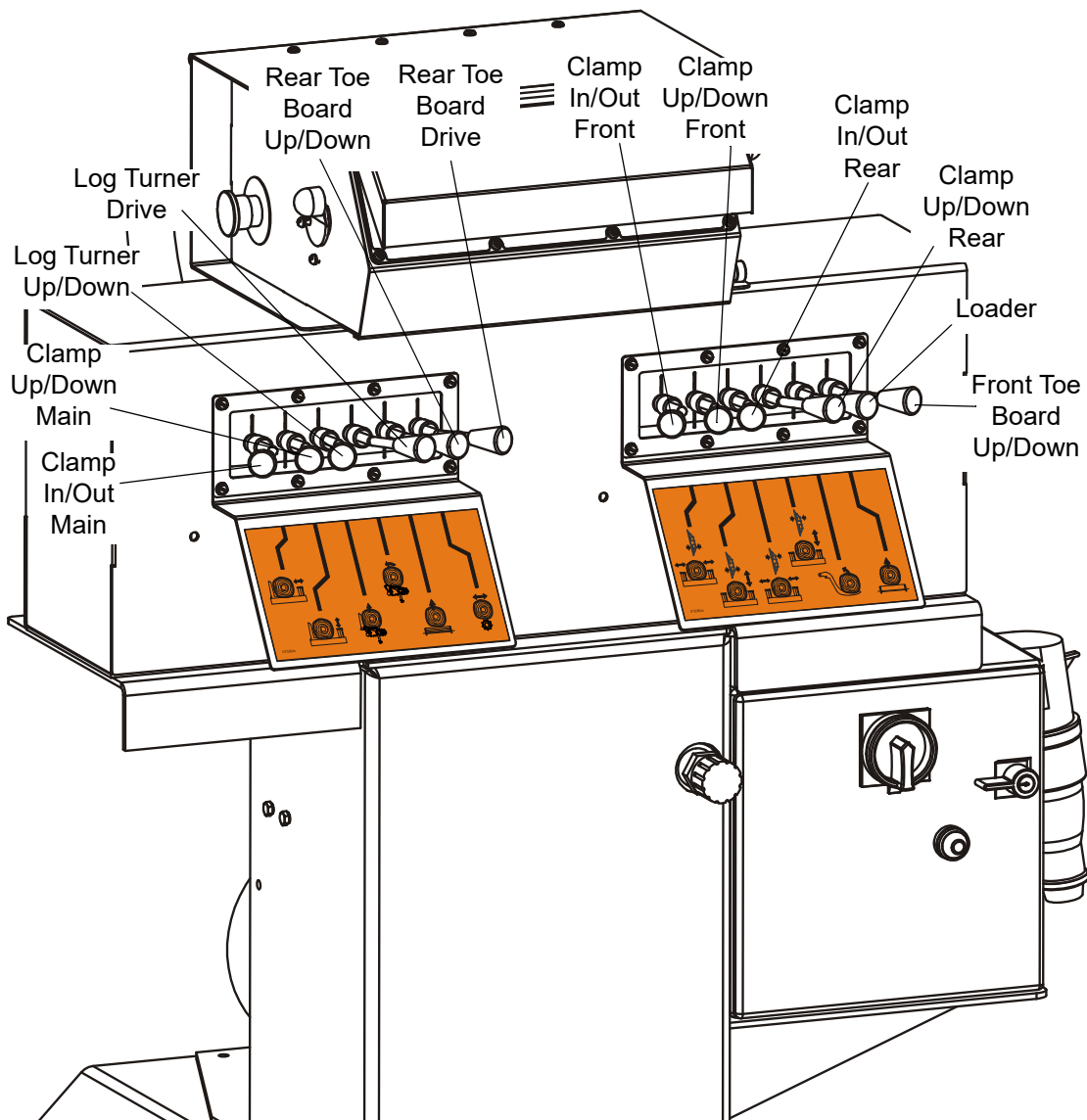



FIG. 1-7 OPERATOR CONTROL BOX

Use the hydraulic control levers to get the mill ready to load a log.

 **DANGER!** Keep all persons out of the path of moving equipment and logs when operating sawmill or loading and turning logs. Failure to do so will result in serious injury.

1. Move the clamp out and down so it will not get in the way of logs being loaded onto the bed.



Lower the clamp in/out lever to move the clamp out toward the loading side of the sawmill.




Lower the clamp up/down lever to lower the clamp below bed level.

2. Raise the log loader lever to extend the legs of the log loader out as far as they will go.



The chain securing the log loading arm to the bed frame will be tight. Manually push the log loader arm until there is slack in the chain.

4. Unchain the loading arm from the bed frame.
5. Manually lower the log loader so it rests on the ground.

 **CAUTION!** Be careful when manually lowering the log loader. Do not drop the loader onto the ground or perform any action which might break the velocity fuse valves on the loader cylinders. These valves control hydraulic flow and are necessary to prevent the loading arm from collapsing during use.

6. Lower the loader lever to lower the loading arm as far as it will go. Logs must be rolled onto the loading arms one at a time.



7. The front, middle and rear toe boards should be below bed level. Once a tapered log has been loaded, the front or rear end of the log may be lifted to parallel the heart of the log to the path of the blade.



The front toe board is raised by lifting the front toe board lever up. The middle toe board is raised by lifting the middle toe board lever up. The rear toe board is raised by lifting the rear toe board lever up. Once a flat has been made and the log is ready to be turned, push the appropriate toe board lever down to lower either toe board until it falls below the level of the bed.


Use the power roller to move the log forward and backward.




1 Remote Operation

Loading, Turning, And Clamping Logs

1.8 Loading, Turning, And Clamping Logs

 **CAUTION!** Before loading a log, be sure the cutting head is moved far enough forward so the log does not hit it. Damage to the sawmill may result.

 **CAUTION!** Be sure the pivot rails, turning arm, clamp, and toe boards are below bed level before loading a log onto the bed. Failure to do so may result in machine damage or cause misalignment.

To Load Logs


1. Move a log up to the loading arm. Use cant hooks or loading equipment to move the logs to the foot of the loading arms.
2. Roll the log onto the loader so that it is approximately centered with the sawmill bed. The log turner will operate much easier if the log is centered on the sawmill bed.
3. Raise the side supports.



4. Raise the loader lever to raise the log onto the sawmill bed. Simply let the loader rise until the log rolls onto the mill bed.

5. Raise the clamp up (raise the clamp up/down lever) to prevent the log from rolling off the bed.

6. Lower the loading arm. Leave the loading arm about halfway up while squaring the log. This will stop the log from rolling off the side of the mill.

 **WARNING!** Always leave loading arm halfway up while log is on sawmill bed. Failure to do so will result in serious injury or death.

NOTE: Logs also may be loaded onto the mill with a tractor or other equipment specifically designed for that purpose.

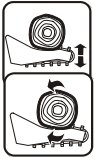
7. Raise the clamp up to prevent the log from rolling off the bed.

8. Raise the clamp up/down lever.



To Turn Logs

1. Raise the side supports.
2. Raise the turner lever to engage the log turner arm.



Spin the log against the side supports until it is turned the way you want it for the first cut.

4. Engage the clamp by raising the clamp in/out lever. Clamp the log against the side supports.



5. Lower the side supports.

6. Lower the turner lever to lower the turner arm below the log.

**To Turn Logs (Optional Procedure)**

If you are turning a small cant, you may opt to use the clamp to turn the cant.

1. Lower the clamp up/down lever to lower the clamp below bed level.
2. Raise the clamp in/out lever to move the clamp in, beneath the edge of the cant.
3. Raise the clamp up/down lever to raise the clamp and flip the cant.

To Clamp Logs

1. Raise the clamp up/down lever to raise the clamp.



2. Raise the clamp in/out lever and clamp the log against the side supports.

3. Lower the turner lever until the turner arm falls below the bed.



Use the clamp in/out lever, gently release the clamp.

5. Lower the side supports, to make few cuts.
6. Use the clamp in/out lever to clamp the log.

1

Remote Operation

Loading, Turning, And Clamping Logs

Depending on the log length, front and rear clamp (min. log length - 3.5m), or main clamp together with front or rear one (with logs shorter than 3.5m) can be used . They allow to find optimal position of the log on the bed, and prevent distortions during cutting.

1. Raise the front/rear clamp up/down lever to raise the clamp.



2. Raise the front/rear clamp in/out lever to clamp the log.



3. Use the middle clamp in/out lever to clamp the log against the side supports.



4. Lower the front/rear clamp up/down lever to lower the clamp, until the log lays flat on the bed.

To Level A Tapered Log

Use the toe board lever(s) to raise either end of a tapered log, if desired. Log can be moved forward or backward using the power roller.



5. Raise the appropriate lever to raise the front or rear toe board until the heart of the log measures the same distance from the bed rails at each end of the log.



SECTION 2 MAINTENANCE & TROUBLESHOOTING

2.1 Clean The Cable Chain & Support Tray

As you operate the sawmill, be aware of any pieces of debris that may fall on the cable chain and/or support tray. Stop the sawmill and immediately remove any pieces of wood, bark or anything else that may divert the path of the chain or cause it to jam.

Clean the cable chain and support track of sawdust buildup every eight hours of operation. Blow or brush the sawdust from the track and tray and remove any accumulated sawdust that is high enough to contact the chain/tray.

2 Maintenance & Troubleshooting

Cable Chain Repair

2.2 Cable Chain Repair

If a component of the cable chain breaks or is missing, replace the component.



CAUTION! Do not operate the remote sawmill if the cable chain is damaged or components of the chain are missing. The chain components are interlocking and continued operation will cause more damage to the chain.

See **Figure 2-1**. To disassemble the chain use a screwdriver to pry the connecting links apart. After removing the connecting links, the side plates can be disassembled by pulling them apart at an angle.

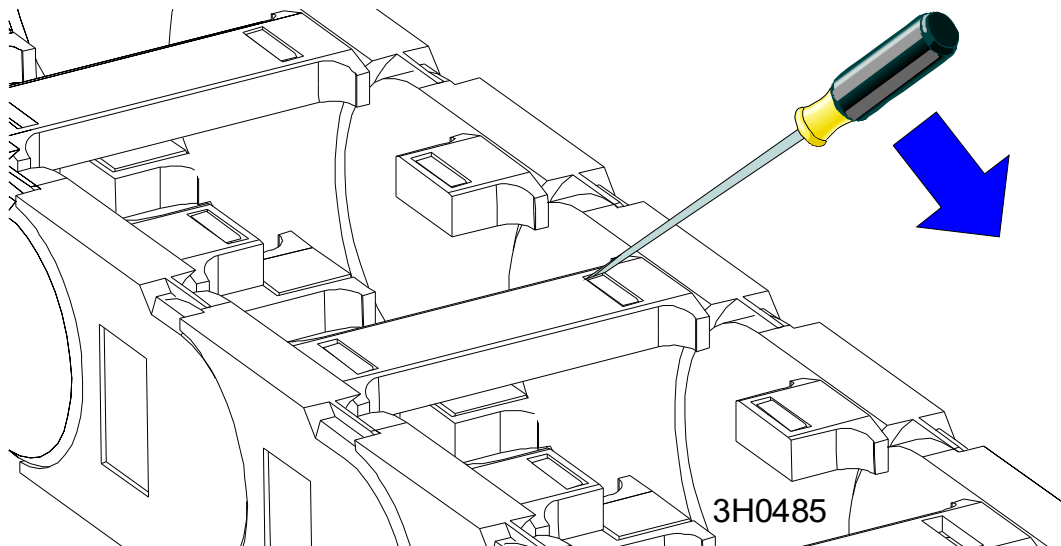


FIG. 2-1

2.3 Cable Chain And Support Tray Alignment

During each sawmill setup, check the alignment of the cable chain and the support tray:

1. The chain should travel in a straight line. Traveling at an angle will cause the chain to prematurely wear and break. Check the alignment of the chain by measuring from the sawmill frame tube to the center of the chain at the top and bottom. The measurements should be the same ($\pm 1/8$ ").

See Figure 2-2.

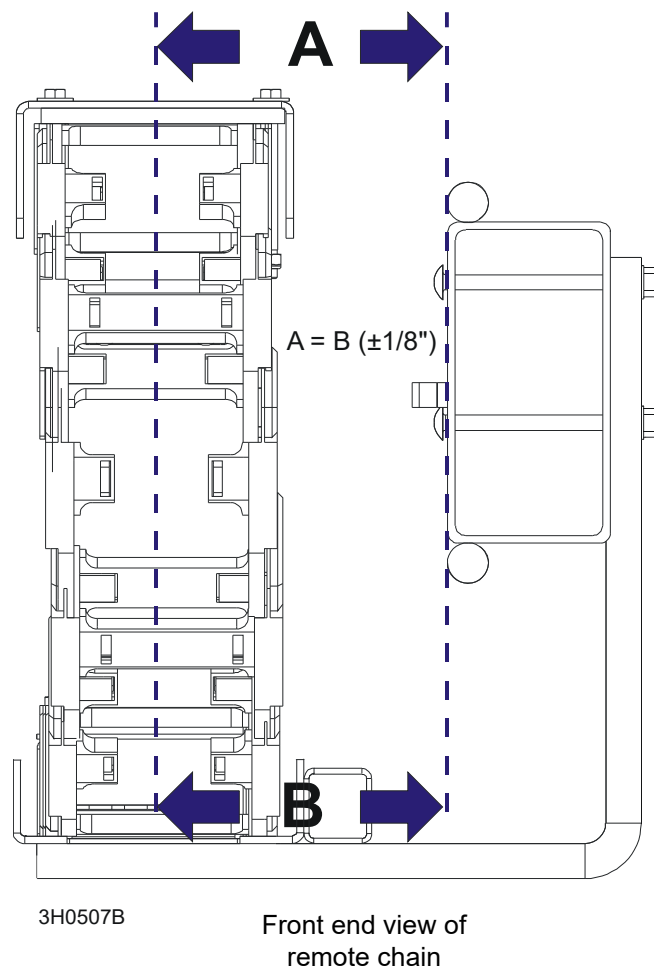


FIG. 2-2

Loosen the mounting bolts at the top or bottom of the chain to adjust the distance from the sawmill frame tube.

2

Maintenance & Troubleshooting

Cable Chain And Support Tray Alignment

2. The chain support tray must be level to prevent premature wear of the chain. Use a square to check the angle of the tray to the sawmill frame. Check at several locations along the length of the tray.

See Figure 2-3.

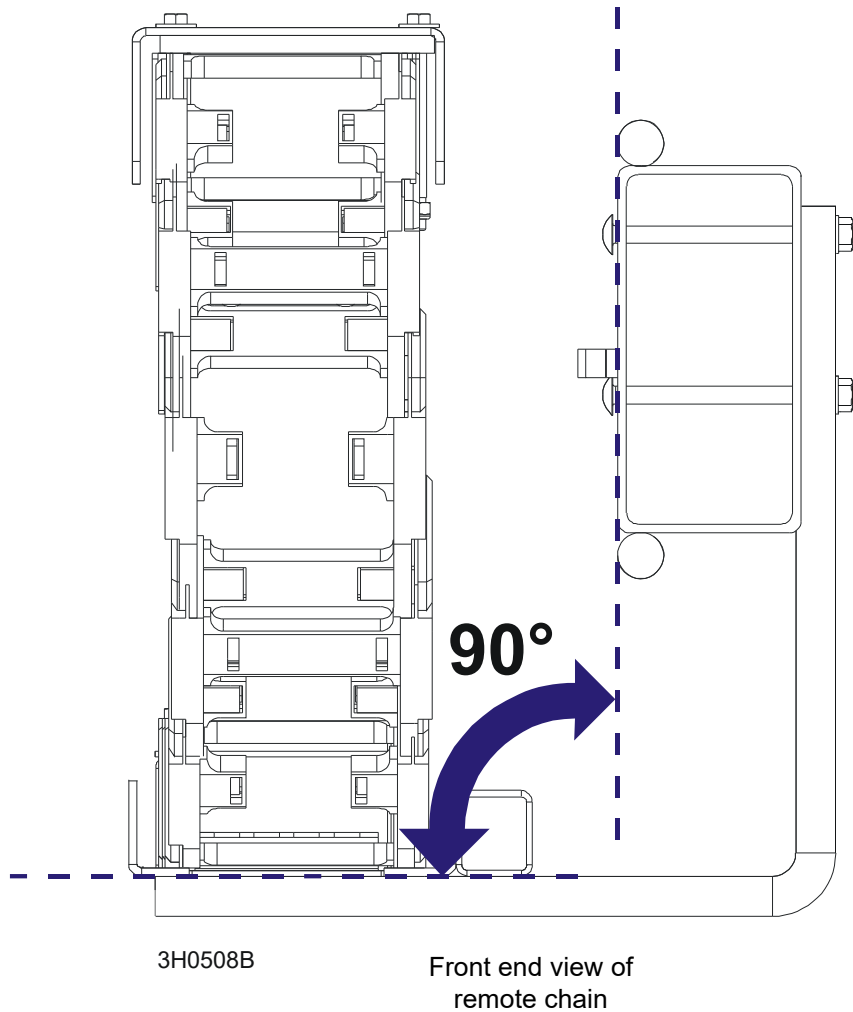


FIG. 2-3

Bend the tray up or down as necessary to square it to the sawmill frame.

2.4 Board Removal Bumper Adjustment

See Figure 2-4.

Lightly compress the lower springs using the nuts shown below (A). Make sure the bumper roller is below the bed rail level.

525029_OPER_001_A
525029_OPER_MANUAL

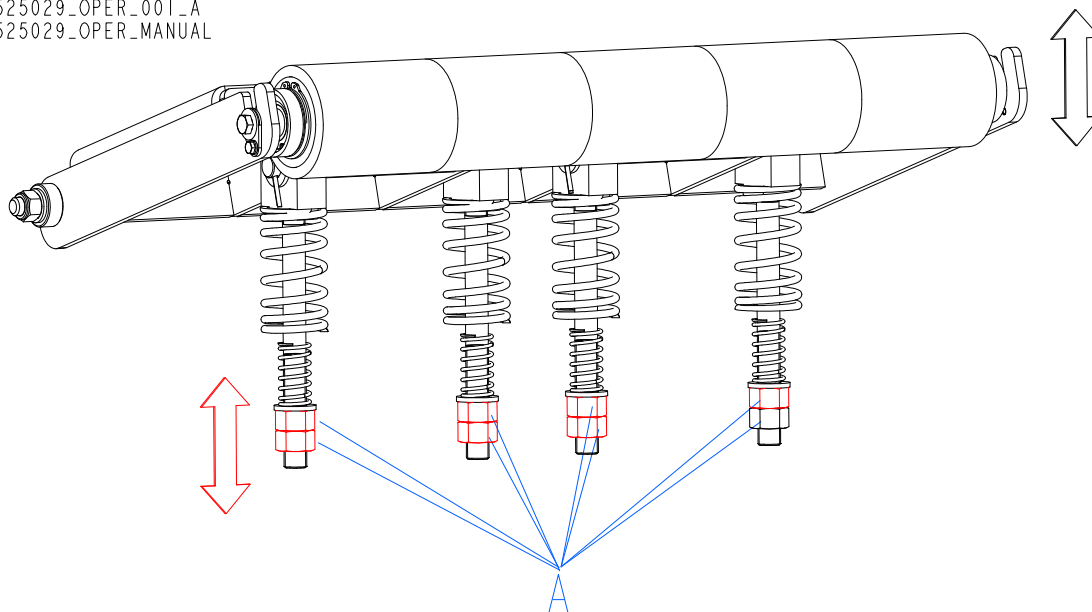


FIG. 2-4

SECTION 3 REPLACEMENT PARTS

3.1 How To Use The Parts List

- Use the table of contents or index to locate the assembly that contains the part you need.
- Go to the appropriate section and locate the part in the illustration.
- Use the number pointing to the part to locate the correct part number and description in the table.
- Parts shown indented under another part are included with that part.
- Parts marked with a diamond (◆) are only available in the assembly listed above the part.

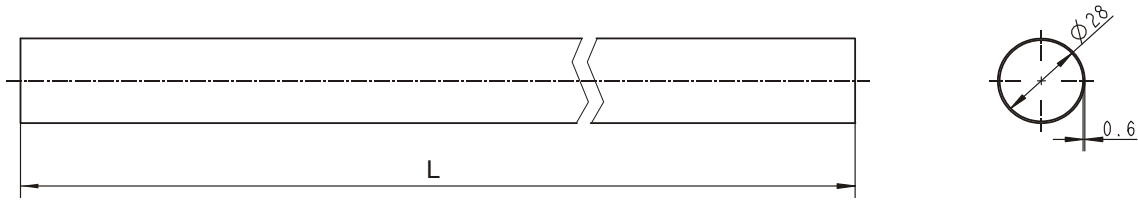
See the sample table below. Sample Part #A01111 includes part F02222-2 and subassembly A03333. Subassembly A03333 includes part S04444-4 and subassembly K05555. The diamond (◆) indicates that S04444-4 is not available except in subassembly A03333. Subassembly K05555 includes parts M06666 and F07777-77. The diamond (◆) indicates M06666 is not available except in subassembly K05555.

3.2 Sample Assembly				
REF.	DESCRIPTION (◆ Indicates Parts Available In Assemblies Only)	PART #	QTY	
	SAMPLE ASSEMBLY, COMPLETE (INCLUDES ALL INDENTED PARTS BELOW)	A01111	1	
1	Sample Part	F02222-22	1	
	Sample Subassembly (Includes All Indented Parts Below)	A03333	1	
2	Sample Part (◆ Indicates Part Is Only Available With A03333)	S04444-4	1	◆
	Sample Subassembly (Includes All Indented Parts Below)	K05555	1	
3	Sample Part (◆ Indicates Part Is Only Available With K05555)	M06666	2	◆
4	Sample Part	F07777-77	1	

To Order Parts:

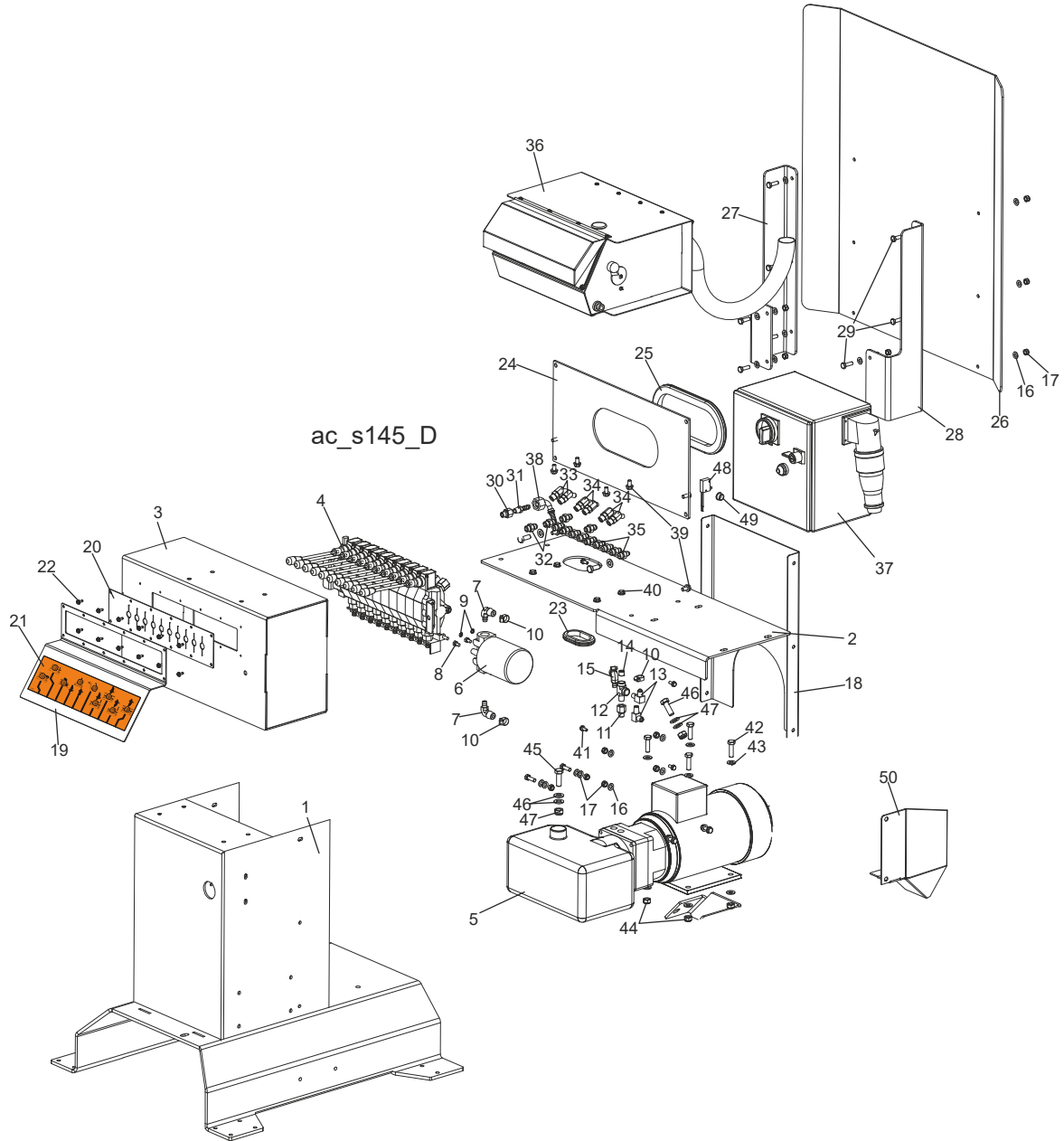
- From Europe call our European Headquarters and Manufacturing Facility in Kolo, Poland at **+48-63-2626000** or **+48-3912-1319**. From the continental U.S., call **1-800-448-7881** to order parts. Have your customer number, vehicle identification number, and part numbers ready when you call.
- From other international locations, contact the Wood-Mizer distributor in your area for parts.

Protective Conduits, LT70L Super Hydraulic Hoses



LENGTH "L"	DESCRIPTION (◆ Indicates Parts Available In Assemblies Only)	PART #	QTY	
0,70	PROTECTIVE CONDUIT, LOG TURNER HOSE	099761	2	
0,80	PROTECTIVE CONDUIT, IN/OUT LOG CLAMP CYLINDER HOSE- BASE	099762	1	
0,80	PROTECTIVE CONDUIT, IN/OUT LOG CLAMP CYLINDER HOSE- TOP	099763	1	
1,35	PROTECTIVE CONDUIT, UP/DOWN LOG CLAMP CYL. HOSE- BASE	099764	1	
1,65	PROTECTIVE CONDUIT, UP/DOWN LOG CLAMP CYL. HOSE- TOP	099765	1	

3.3 Remote Control Box



REF.	DESCRIPTION (◆ Indicates Parts Available in Assemblies Only)	PART #	QTY
	BOX ASSEMBLY, 10-SECTION REMOTE CONTROL	501103	1
	BOX ASSEMBLY, 10-SECTION REMOTE CONTROL	509276	1
	BOX ASSEMBLY, 10-SECTION REMOTE CONTROL FRONT	512224	1
1	BASE, REMOTE CONTROL BOX	500509-1	1
2	PLATE, REMOTE CONTROL BOX	500121-1	1
3	BOX WELDMENT, HYDRAULIC	500128-1	1
4	VALVE, HDS11/10- 8-SECTION HYDRAULIC	091344	1
5	PUMP, AC.4KW 1.5L/MIN HYDRAULIC W/MOTOR	500958	1
6	MANIFOLD W/FILTER	P22683	1
7	FITTING, 1/2NPT-3/8 BARB ELBOW	P12707	2

REPLACEMENT PARTS

Remote Control Box

3

8	BOLT, 1/4-20X1/2 HEX HEAD	F05005-15	2	
9	WASHER, Z6.1 SPLIT LOCK ZINC	F81053-3	2	
10	CLAMP, 11/16 WORM	P12739	4	
11	FITTING, 6SAE MALE-1/4NPT FEMALE	014686	1	
12	FITTING, 1/4NPT MALE RUN TEE	P09141	1	
13	FITTING, 3/8JIC-1/4NPT 90L	015491	1	
14	PLUG, 1/4" NPT W/EXTERNAL THREAD	096221	1	
15	FITTING, 3/8NPT-3/8 BARB ELBOW	P12708	1	
16	WASHER, 8.4 FLAT ZINC	F81054-1	32	
17	NUT, M8-8-B HEX NYLON ZINC LOCK	F81032-2	24	
18	PLATE, REMOTE CONTROL BOX REAR	500516-1	1	
19	PLATE, FRONT	500122-1	1	
20	GUARD, 10-SECTION HYDRAULIC VALVE RUBBER	091739	1	
21	DECAL, AH5 HYDRAULIC SYSTEM CONTROL	094795	1	
22	BOLT, #10-24x1/2 SELF-TAPPING	F05015-7	12	
23	GROMMET, RUBBER	087065	1	
24	PANEL, HYDRAULIC BOX REAR	500124-1	1	
25	GROMMET, 230x95x15mm RUBBER	085759	1	
26	GUARD, LT70 CONTROL BOX POLYCARBONATE	090219	1	
27	BRACKET, CONTROL BOX GUARD	500766-1	1	
28	BRACKET, CONTROL BOX GUARD - LEFT	500767-1	1	
29	BOLT, M8X25-8.8-B HEX HEAD FULL THREAD ZINC	F81002-5	14	
30	FITTING, 6SAE MALE-1/4NPT FEMALE	014686	1	
31	FITTING, 1/4NPT-3/8 BARB	014685	1	
32	FITTING, 3/8O-RING-3/8JIC	014687	5	
33	FITTING, #6SAE 45DEG ELBOW	015489	1	
34	FITTING, 6SAE-4JIC 45 DEG ELBOW	015488	3	
35	FITTING, 1/4JIC-3/8 O-RING	P26284	9	
36	BOX, LT70 AC CONTROL	093022	1	
37	BOX, AC REMOTE ELECTRIC	087807	1	
38	FITTING, PN10AOL13-90 ELBOW	094485	1	
39	BOLT, M8 x -16-8.8-B HEX HEAD FULL THREAD ZINC	F81002-20	8	
40	BOLT, M8x20 -5.8 HEX HEAD FULL THREAD ZINC	F81002-1	4	
41	BOLT, M6 x 16-8.8 HEX HEAD FULL THREAD ZINC	F81001-32	6	
42	BOLT, M10x35 -8.8 HEX HEAD FULL THREAD ZINC	F81003-17	4	
43	WASHER, 10.5 FLAT ZINC	F81055-1	8	
44	NUT, M10-8-B HEX NYLON ZINC LOCK	F81033-1	4	
45	BOLT, M12 x 35-8.8 HEX HEAD FULL THREAD ZINC	F81004-24	2	
46	WASHER, 13 FLAT ZINC	F81056-1	4	
47	NUT, M12-8 HEX NYLON ZINC LOCK	F81034-2	2	
48	SWITCH, 2A 125V R-LEVER NO/NC/COM	014765	1	
49	GROMMET, 15,9 UB625 RUBBER	086816	1	
50	GUARD, CABLE	501102-1	1	
	GUARD, CABLE	502500-1 ¹	1	

¹ Belongs to 512224

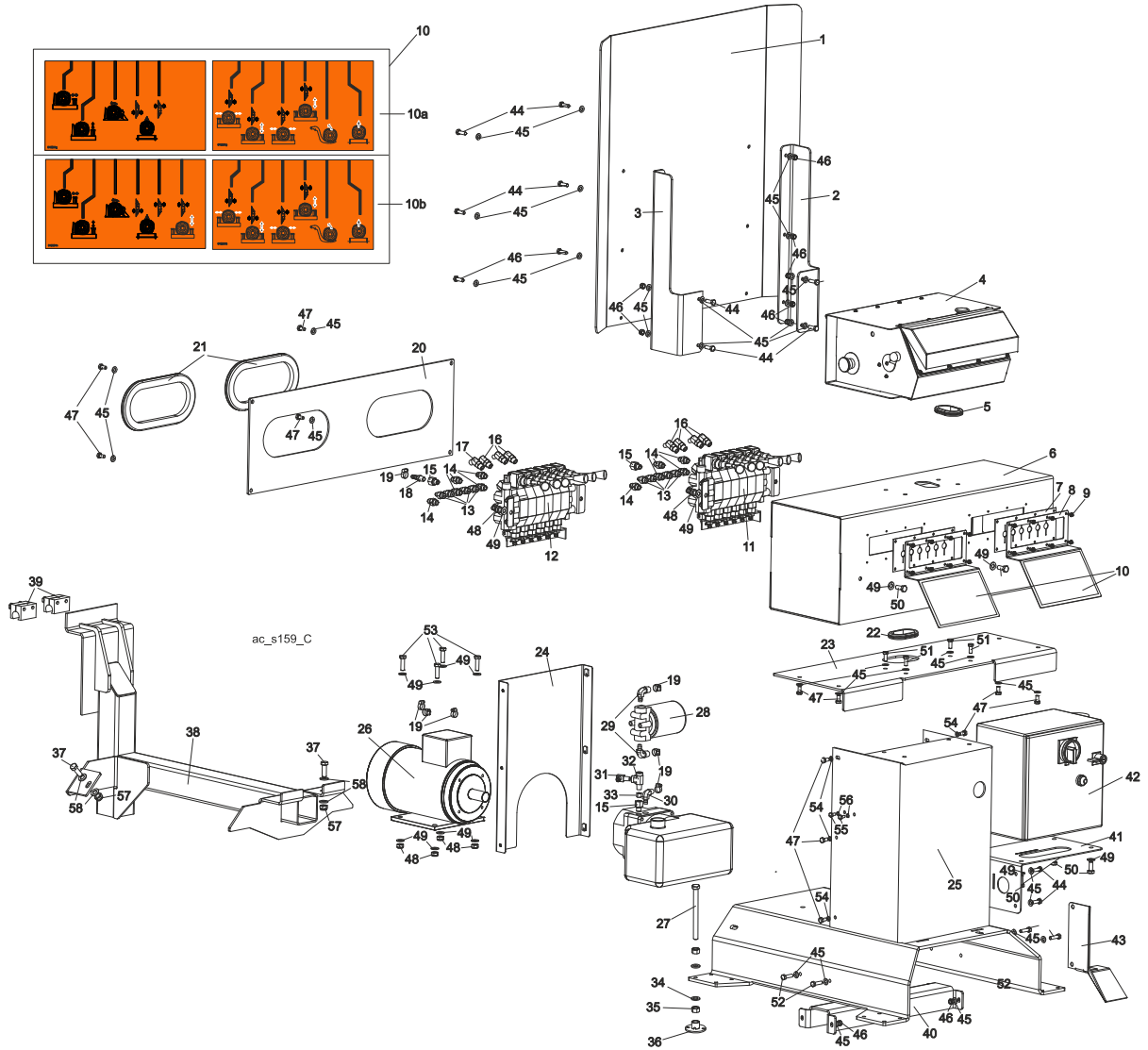
REPLACEMENT PARTS

Remote Control Box M-Super frame

3

9	WASHER, Z6.1 SPLIT LOCK ZINC	F81053-3	2	
10	CLAMP, 11/16 WORM	P12739	4	
11	FITTING, 6SAE MALE-1/4NPT FEMALE	014686	1	
12	FITTING, 1/4NPT MALE RUN TEE	P09141	1	
13	FITTING, 3/8JIC-1/4NPT 90L	015491	1	
14	PLUG, 1/4" NPT W/EXTERNAL THREAD	096221	1	
15	FITTING, 3/8NPT-3/8 BARB ELBOW	P12708	1	
16	WASHER, 8.4 FLAT ZINC	F81054-1	32	
17	NUT, M8-8-B HEX NYLON ZINC LOCK	F81032-2	24	
18	PLATE, REMOTE CONTROL BOX REAR	500516-1	1	
19	PLATE, FRONT	500122-1	1	
20	GUARD, 10-SECTION HYDRAULIC VALVE RUBBER	091739	1	
21	DECAL, AH5 HYDRAULIC SYSTEM CONTROL	094795	1	
22	BOLT, #10-24x1/2 SELF-TAPPING	F05015-7	12	
23	GROMMET, RUBBER	087065	1	
24	PANEL, HYDRAULIC BOX REAR	500124-1	1	
25	GROMMET, 230x95x15mm RUBBER	085759	1	
26	GUARD, LT70 CONTROL BOX POLYCARBONATE	090219	1	
27	BRACKET, CONTROL BOX GUARD	500766-1	1	
28	BRACKET, CONTROL BOX GUARD - LEFT	500767-1	1	
29	BOLT, M8X25-8.8-B HEX HEAD FULL THREAD ZINC	F81002-5	14	
30	FITTING, 6SAE MALE-1/4NPT FEMALE	014686	1	
31	FITTING, 1/4NPT-3/8 BARB	014685	1	
32	FITTING, 3/8O-RING-3/8JIC	014687	5	
33	FITTING, #6SAE 45DEG ELBOW	015489	1	
34	FITTING, 6SAE-4JIC 45 DEG ELBOW	015488	3	
35	FITTING, 1/4JIC-3/8 O-RING	P26284	9	
36	BOX, LT70 AC CONTROL	093022	1	
37	BOX, AC REMOTE ELECTRIC	087807	1	
38	FITTING, PN10AOL13-90 ELBOW	094485	1	
39	BOLT, M8 x -16-8.8-B HEX HEAD FULL THREAD ZINC	F81002-20	8	
40	BOLT, M8x20 -5.8 HEX HEAD FULL THREAD ZINC	F81002-1	4	
41	BOLT, M6 x 16-8.8 HEX HEAD FULL THREAD ZINC	F81001-32	6	
42	BOLT, M10x35 -8.8 HEX HEAD FULL THREAD ZINC	F81003-17	4	
43	WASHER, 10.5 FLAT ZINC	F81055-1	8	
44	NUT, M10-8-B HEX NYLON ZINC LOCK	F81033-1	4	
45	BOLT, M12 x 35-8.8 HEX HEAD FULL THREAD ZINC	F81004-24	2	
46	WASHER, 13 FLAT ZINC	F81056-1	4	
47	NUT, M12-8 HEX NYLON ZINC LOCK	F81034-2	2	
48	SWITCH, 2A 125V R-LEVER NO/NC/COM	014765	1	
49	GROMMET, 15,9 UB625 RUBBER	086816	1	
50	GUARD, CABLE	501102-1	1	

3.5 Remote Control Box Parts



REF.	DESCRIPTION (◆ Indicates Parts Available In Assemblies Only)	PART #	QTY
	BOX, COMPLETE REMOTE 12-SECTION CONTROL (FOR L & M SUPER FRAMES)	505611	1
	BOX, COMPLETE REMOTE 12-SECTION CONTROL SUPER HYDRAULICS	528382	1
	BOX, COMPLETE REMOTE 12-SECTION CONTROL	500508	1
1	GUARD, LT70 CONTROL BOX PC	090219	1
2	BRACKET, CONTROL BOX GUARD RIGHT PTD	500766-1	1
3	BRACKET, CONTROL BOX GUARD LEFT PTD	500767-1	1
4	BOX, LT70 REMOTE CONTROL	500630	1
5	GROMMET, RUBBER	087065	1
6	HOUSING, HYDRAULIC VALVE - REMOTE CONTROL BOX	500512-1	1
7	GUARD, RUBBER DOUBLE VALVE	015079	2

REPLACEMENT PARTS

Remote Control Box Parts

3

8	PLATE, RUBBER GUARD DOUBLE	015078	2	
9	BOLT, #10-24X1/2 SELF-TAPPING	F05015-7	16	
10	DECAL, HYD. CONTROL SUPER	015364	1	
	10A - DECAL	015364G		
	10B - DECAL	015364H		
11	VALVE, 6-SECTION HDS10/6-6	015260	1	
12	VALVE, 6-SECTION (FOR SERIES CONNECTION)	501104	1	
13	FITTING, 1/4JIC-3/8 O-RING	P26284	8	
14	FITTING, 3/8O-RING-3/8JIC	014687	10	
15	FITTING, 6SAE MALE-1/4NPT FEMALE	014686	3	
16	FITTING, #4JIC-#6SAE 45DEG ELBOW	015488	7	
17	FITTING, #6SAE 45DEG ELBOW	015489	1	
18	FITTING, 1/4NPT-3/8 BARB	014685	1	
19	CLAMP, 11/16 WORM	P12739	8	
20	PANEL, HYDRAULIC VALVE HOUSING REAR	500515-1	1	
21	GROMMET, RUBBER, 4 3/8 X 10 OVAL	085759	2	
22	GROMMET, RUBBER	087065	1	
23	PLATE, REMOTE CONTROL BOX PTD	500510-1	1	
24	PLATE, REMOTE CONTROL BOX REAR	500516-1	1	
25	PEDESTAL WLDMNT, REMOTE CONTROL BOX PTD	500509-1	1	
26	PUMP, AC.4KW 1.5L/MIN HYDRAULIC W/MOTOR	500958 ¹	1	
	PUMP, AC.5,5KW 18.5L/MIN HYDRAULIC W/MOTOR	500958 ²	1	
27	BOLT, M20x240-8.8 HEX HEAD FULL THREAD ZINC	F81007-1	4	
28	MANIFOLD, W/FILTER	P22683	1	
29	FITTING, 1/2NPT-3/8 BARB ELBOW	P12707	2	
30	FITTING, 3/8NPT-3/8 BARB ELBOW	P12708	1	
31	FITTING, 3/8JIC-1/4NPT 90L	015491	1	
32	FITTING, 1/4NPT BRANCH TEE	015486	1	
33	PLUG, TN 192-1/4NPT MALE THREAD	096221	1	
34	WASHER, 21 FLAT ZINC	F81059-2	8	
35	NUT, M20-8 HEX ZINC	F81037-1	8	
36	BOLT, M8x75 8.8 HEX HEAD ZINC	F81002-91	4	
37	BOLT, M12 X 35-8.8 HEX HEAD FULL THREAD ZINC	F81004-24	2	
38	BRACKET, REMOTE CONTROL BOX TRANSPORT PTD (REMOTE BOX 500508)	500292-1	1	
39	STOP, CARRIAGE SAFETY PAINTED (UKRAINE)	085973-1	2	
40	BRACE, CONTROL BOX PEDESTAL CROSS PTD	500763-1	1	
41	SHELF, ELECTRIC BOX COMPLETE	500518-1	1	
42	BOX, AC REMOTE ELECTRIC	087807	1	
43	SUPPORT, CABLES ROUTING (REMOTE)	501102-1	1	
44	BOLT, M8X25-8.8-B HEX HEAD FULL THREAD ZINC	F81002-5	14	
45	WASHER, 8.4 FLAT ZINC	F81054-1	48	
46	NUT, M8-8-B HEX NYLON ZINC LOCK	F81032-2	18	
47	BOLT, M8X16 -8.8-B HEX HEAD FULL THREAD ZINC	F81002-20	14	
48	NUT, M10-8-B HEX NYLON ZINC LOCK	F81033-1	8	
49	WASHER, 10.5 FLAT ZINC	F81055-1	20	

3**REPLACEMENT PARTS***Remote Control Box Parts*

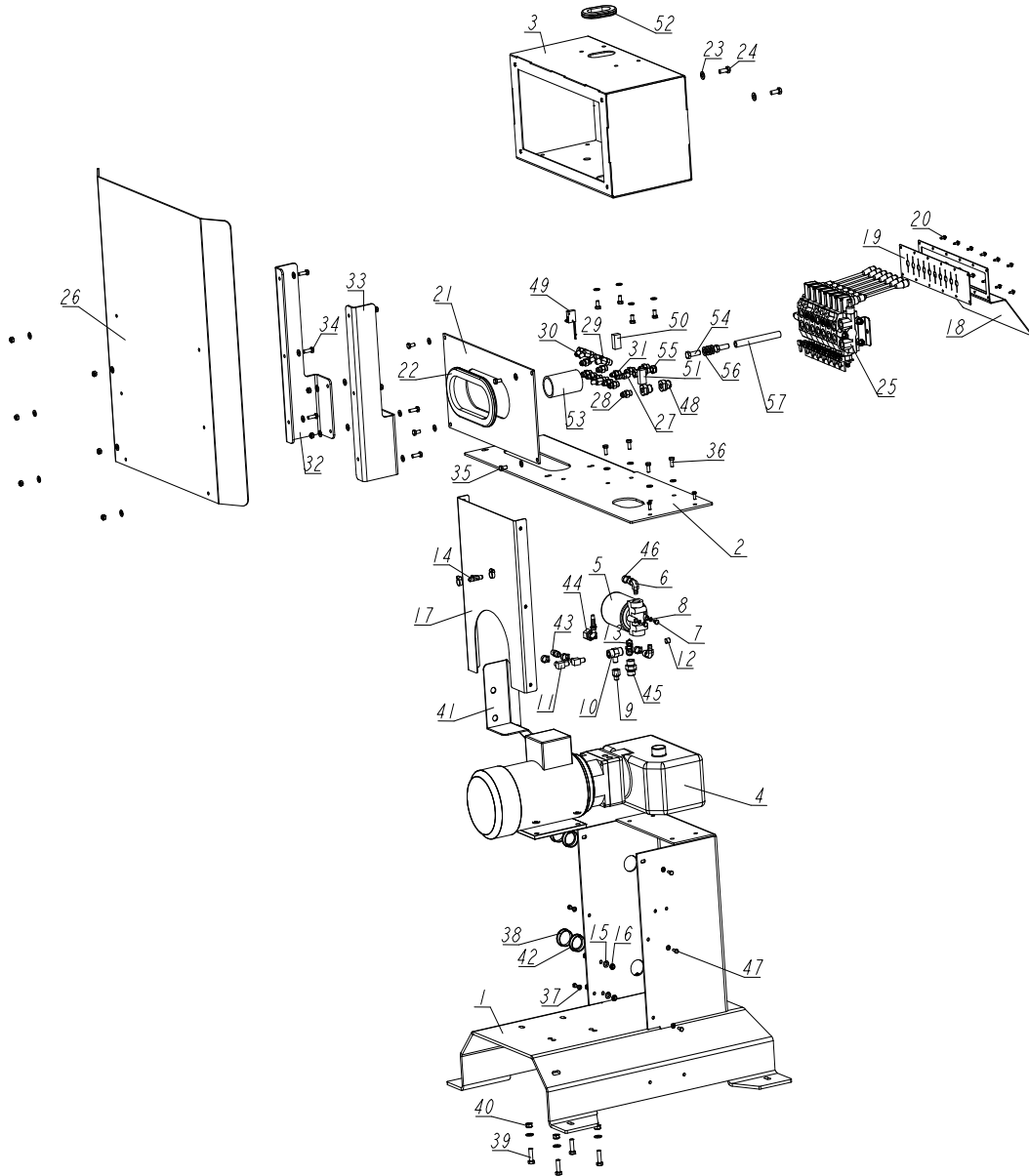
50	BOLT, M10X25-8.8 HEX HEAD FULL THREAD ZINC	F81003-11	8	
51	BOLT, M8x20-8.8-B HEX HEAD FULL THREAD ZINC	F81002-4	4	
52	BOLT, M8X30-5.8 HEX HEAD FULL THREAD ZINC	F81002-2	4	
53	BOLT,M10X35-8.8 HEX HEAD FULL THREAD ZINC	F81003-17	4	
54	WASHER, 6.4 FLAT ZINC	F81053-1	6	
55	BOLT, 1/4-20 X 1/2 HEX HEAD ZINC GRADE 2	F05005-15	2	
56	WASHER, Z6.1 SPLIT LOCK ZINC	F81053-3	2	
57	NUT, M12-8 HEX NYLON ZINC LOCK	F81034-2	2	
58	WASHER, 13 FLAT ZINC	F81056-1	4	

¹ Belongs to 505611, 500508

² Belongs to 528382

3.6 Hydraulic Control Box, 7-Section Remote Control

568291_001
568291_MANUAL



REF.	DESCRIPTION (* indicates parts available in assemblies only)	PART #	QTY
-	HYDRAULIC CONTROL BOX, 7-SECTION REMOTE CONTROL	568291	1
1	BASE WELDMENT, REMOTE HYDRAULIC CONTROL	500509-1	1
2	PLATE, REMOTE CONTROL BOX	500121-1	1
3	BOX WELDMENT, HYDRAULIC	500128-1	1
4	HYDRAULIC PUMP W/MOTOR AC.4KW 14.5L/MIN	500958	1
5	MANIFOLD, W/FILTER	P22683	2

3

REPLACEMENT PARTS

Hydraulic Control Box, 7-Section Remote Control

REF.	DESCRIPTION (* indicates parts available in assemblies only)	PART #	QTY	
6	FITTING, 1/2NPT-3/8 BARB ELBOW	P12707	2	
7	BOLT, 1/4-20 X 1/2" HEX HEAD	F05005-15	2	
8	WASHER, Z 6.1 SPLIT LOCK ZINC	F81053-3	2	
9	FITTING, 6SAE MALE-1/4NPT FEMALE	014686	2	
10	FITTING, C3759X4 MALE TEE	015486	1	
11	FITTING, 3/8JIC-1/4NPT 90L	015491	2	
12	PLUG, 1/4-18 NPT BLANK	096221	1	
13	FITTING, 3/8NPT-3/8 ELBOW	P12708	1	
14	FITTING, 3/8 BARB TEE	015485	1	
15	WASHER, 8.4 FLAT ZINC	F81054-1	36	
16	NUT, M8-8-B HEX NYLON ZINC LOCK	F81032-2	14	
17	PLATE, REMOTE HYDRAULIC CONTROL BOX REAR	500516-1	1	
18	PLATE, REMOTE HYDARULIC CONTROL BOX FRONT	500122-1	1	
19	GUARD, RUBBER HYDRAULIC VALVE 10-SECTION	091739	1	
20	BOLT, #10-24X1/2 SELF-TAPPING	F05015-7	12	
21	PANEL, HYDRAULIC BOX REAR	500124-1	1	
22	GROMMET, 4 3/8 X 10 OVAL RUBBER	085759	1	
23	WASHER, 10.5 FLAT ZINC	F81055-1	10	
24	BOLT, M10X25-8.8-FE/ZN5	F81003-11	2	
25	VALVE, 7-SECTION HYDRAULIC	510560	1	
26	GUARD, LT70 AC REMOTE CONTROL BOX (PC)	090219	1	
27	FITTING, 1/4NPT-3/8 BARB	014685	1	
28	FITTING, 3/8" O-RING X 3/8" JIC	014687	5	
29	FITTING, #6SAE 45 DEG ELBOW	015489	1	
30	FITTING, #4 SAE - #6 SAE 45° ELBOW	015488	7	
31	FITTING, 1/4JIC-3/8 O-RING	P26284	8	
32	BRACKET, CONTROL BOX GUARD	500766-1	1	
33	BRACKET, CONTROL BOX GUARD - LEFT	500767-1	1	
34	BOLT, M8X25-8.8-B HEX HEAD FULL THREAD Z	F81002-5	14	
35	BOLT, M8X16 -8.8-B HEX HEAD FULL THREAD	F81002-20	8	
36	BOLT, M8X20-8.8-B HEX HEAD FULL THREAD Z	F81002-4	4	
37	WASHER, 6.4 FLAT ZINC	F81053-1	6	
38	CAP, 44.5 MM NO. 466923 HOLE	500768	2	
39	BOLT, M10X35-8.8 HEX HEAD FULL THREAD ZI	F81003-17	4	
40	NUT, M10-8-B HEX NYLON ZINC LOCK	F81033-1	4	
41	COVER, HYDRAULIC HOSE - SPECIAL	502500-1	1	
42	BUSH, MOSS 44.5MM 465901 SNAP-FIT	R80670-3	2	
43	FITTING, 3/8" JIC - 1/4" NPT STRAIGHT	015560	1	
44	FITTING, PN10AFL 13-90 ELBOW	094485	1	
45	FITTING, VMNW10HS22	094486	1	
46	CLAMP, 11/16 WORM	061807	8	
47	BOLT, M6X16 8.8 HEX HEAD FULL THREAD ZIN	F81001-15	8	
48	FITTING, M22X1.5 / 1/4 -18 NPT ZINC-PL.	093139-1	2	
49	MICROSWITCH, HYDRAULIC VALVE	014765	1	
50	CONTACT ASSEMBLY, LT40/70 AC NEGATIVE	086624	1	

REPLACEMENT PARTS

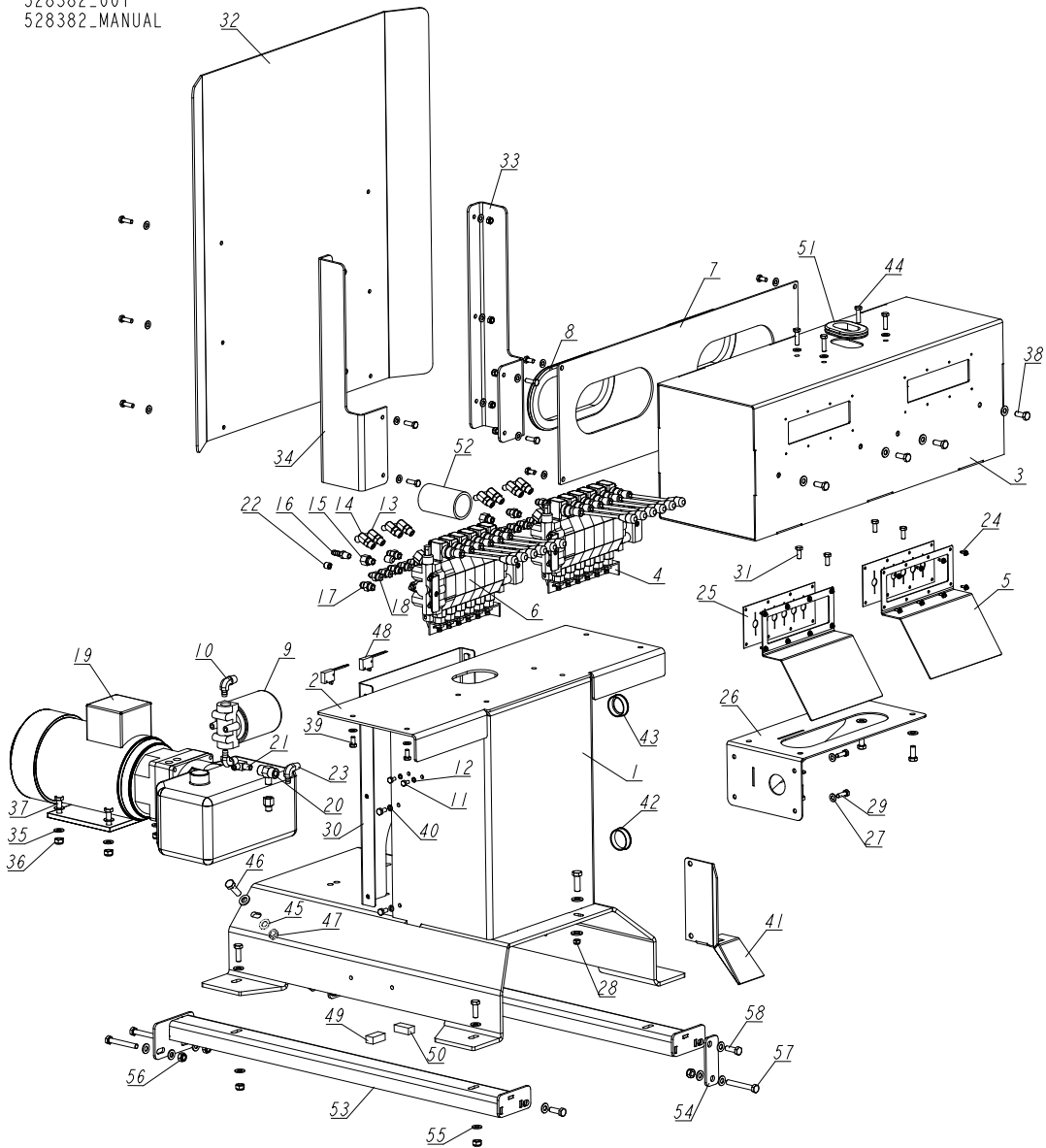
Hydraulic Control Box, 7-Section Remote Control

3

REF.	DESCRIPTION (* indicates parts available in assemblies only)	PART #	QTY	
51	CONTACT ASSEMBLY, LT40/70 AC POSITIVE	086625	1	
52	GROMMET, RUBBER	089532	1	
53	SLEEVE, LT40/70 0.6 THICK 3.5 LONG PROTE	510287	1	
54	BOLT, M12 X 35-8.8 HEX HEAD FULL THREAD	F81004-24	2	
55	NUT, M12 8 HEX NYLON ZINC LOCK	F81034-2	2	
56	WASHER, 13 FLAT ZINC	F81056-1	4	
57	HOSE, 3/8" LOW PRESSURE HYDRAULIC	R01892-1	1	

3.7 Hydraulic Control Box, 12-Section Remote Super

528382-001
528382-MANUAL



REF	DESCRIPTION (◆ indicates parts available in assemblies only)	PART #	QTY
-	BOX, 12-SECTION REMOTE SUPER HYDRAULIC CONTROL	528382	1
1	BASE WELDMENT, REMOTE HYDRAULIC CONTROL BOX	500509-1	1
2	PLATE, REMOTE HYDRAULIC CONTROL BOX	500510-1	1
3	HOUSING WELDMENT, HYDRAULIC VALVE - REMOTE CONTROL BOX	500512-1	1
4	VALVE, HDS10/6-6 6-SECTION	015260_	1
5	PLATE, RUBBER GUARD DOUBLE	015078	2
6	VALVE, 6-SECTION SERIES CONNECTION	501104	1
7	PANEL, HYDRAULIC VALVE HOUSING REAR	500515	1
8	GROMMET, 4 3/8 X 10 OVAL RUBBER	085759	2
9	MANIFOLD, W/FILTER	P22683	1
10	FITTING, 1/2NPT-3/8 BARB ELBOW	P12707	2

REPLACEMENT PARTS

Hydraulic Control Box, 12-Section Remote Super

3

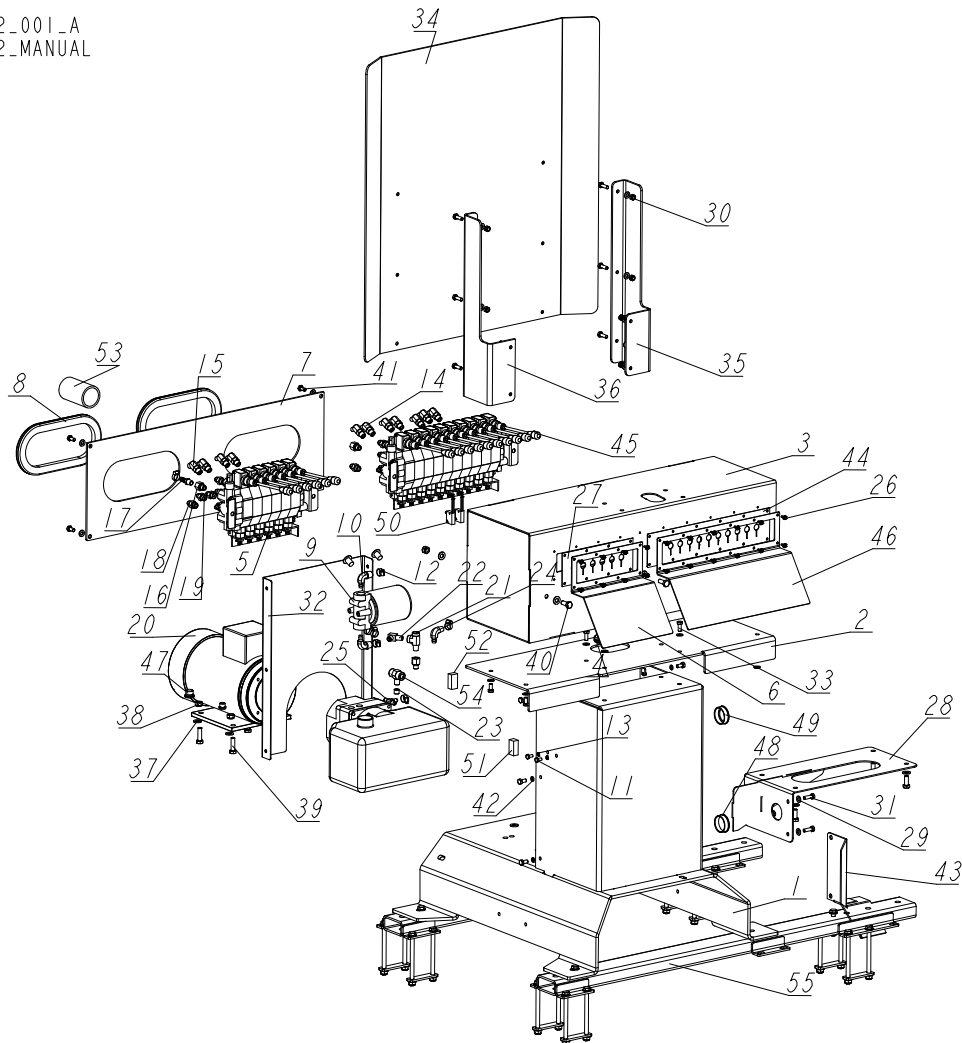
REF	DESCRIPTION (◆ indicates parts available in assemblies only)	PART #	QTY	
11	BOLT, 1/4-20X1/2 HH	F05005-15	2	
12	WASHER, Z 6.1 SPLIT LOCK ZINC	F81053-3	2	
13	FITTING, #4 SAE - #6 SAE 45° ELBOW	015488	7	
14	FITTING, #6 SAE 45° ELBOW	015489	1	
15	FITTING, 6SAE MALE-1/4NPT FEMALE	014686	3	
16	FITTING, 1/4NPT-3/8 BARB	014685	1	
17	FITTING, 3/8 O-RING-3/8JIC	014687	10	
18	FITTING, 1/4JIC-3/8 O-RING	P26284	8	
19	HYDRAULIC PUMP, AC 18.5L/ 5.5 KW (22.049	517840	1	
20	FITTING, 1/4 BRANCH TEE	015486	1	
21	FITTING, 3/8JIC-1/4NPT 90L	015491	1	
22	PLUG, 1/4-18 NPT BLANK	096221	1	
23	FITTING, 3/8NPT-3/8 BARB ELBOW	P12708	1	
24	BOLT, #10-24X1/2 SELF-TAPPING	F05015-7	16	
25	SEAL, RUBBER VALVE HANDLE	015079	2	
26	BRACKET, HYDRAULIC CONTROL BOX BASE - COMPLETE	539352-1	1	
27	WASHER, 8.4 FLAT ZINC	F81054-1	48	
28	NUT, M8-8-B HEX NYLON ZINC LOCK	F81032-2	19	
29	BOLT, M8X25-8.8-B HEX HEAD FULL THREAD ZINC	F81002-5	14	
30	PLATE, REMOTE HYDRAULIC CONTROL BOX REAR	500516-1	1	
31	BOLT, M8X20 8.8 HEX HEAD FULL THREAD ZINC	F81002-4	4	
32	GUARD, LT70 AC REMOTE CONTROL BOX (PC)	090219	1	
33	BRACKET, CONTROL BOX GUARD	500766-1	1	
34	BRACKET, CONTROL BOX GUARD - LEFT	500767-1	1	
35	WASHER, 10.5 FLAT ZINC	F81055-1	20	
36	NUT, M10-8-B HEX NYLON ZINC LOCK	F81033-1	8	
37	BOLT, M10X35-8.8 HEX HEAD FULL THREAD ZINC	F81003-17	4	
38	BOLT, M10X25 8.8 HEX HEAD FULL THREAD ZINC	F81003-11	8	
39	BOLT, M8X16-8.8-B HEX HEAD FULL THREAD ZINC	F81002-20	12	
40	WASHER, 6.4 FLAT ZINC	F81053-1	6	
41	GUARD, CABLE	501102-1	1	
42	CAP, 44.5 MM NO. 466923 HOLE	500768	1	
43	BUSH, MOSS 44.5MM 465901 SNAP-FIT	R80670-3	1	
44	BOLT, M8X30 8.8 HEX HEAD FULL THREAD ZINC	F81002-7	4	
45	WASHER, 13 FLAT ZINC	F81056-1	4	
46	BOLT, M12X35 8.8 HEX HEAD FULL THREAD ZINC	F81004-24	2	
47	NUT, M12-8 HEX NYLON ZINC LOCK	F81034-2	1	
48	MICROSWITCH, HYDRAULIC VALVE	014765	2	
49	CONTACT ASSEMBLY, LT40/70 AC NEGATIVE	086624	1	
50	CONTACT ASSEMBLY, LT40/70 AC POSITIVE	086625	1	
51	GROMMET, RUBBER	089532	1	
52	SLEEVE, LT40/70 0.6 THICK 3.5 LONG PROTECTIVE	510287	1	
-	BASE, SR CONTROL BOX TRANSPORT - COMPLETE	550066	1	
53	BASE WELDMENT, SR CONTROL BOX TRANSPORT	550063-1	2	
54	BAR, CONTROL BOX TRANSPORT BASE	550065-1	1	

3**REPLACEMENT PARTS***Hydraulic Control Box, 12-Section Remote Super*

REF	DESCRIPTION (◆ indicates parts available in assemblies only)	PART #	QTY	
55	WASHER, 10.5 FLAT ZINC	F81055-1	22	
56	NUT, M10-8-B HEX NYLON ZINC LOCK	F81033-1	11	
57	BOLT, M10X75-8.8 HEX HEAD ZINC	F81003-15	5	
58	BOLT, DIN933-M10X30-8.8-A2E	F81003-111	6	

3.8 Remote Control Box (16-Section)

505272_001_A
505272_MANUAL



REF	DESCRIPTION (u indicates parts available in assemblies only)	PART #	QTY
-	BOX, 16-SECTION REMOTE CONTROL - COMPLET	505272	1
1	BASE, REMOTE CONTROL BOX	500509-1	1
2	PLATE, REMOTE CONTROL BOX MOUNT	500510-1	1
3	HOUSING, HYDRAULIC VALVE	505273-1	1
4	GROMMET, RUBBER	087065	1
5	VALVE, 6-SPOOL FOR SERIES CONNECTION	501104	1
6	PLATE, RUBBER GUARD DOUBLE	015078	1
7	COVER REAR HOUSING CONTROL BOX	500515	1
8	GROMMET, 230X95X15MM, RUBBER	085759	2
9	MANIFOLD, W/FILTER	P22683	1
10	FITTING, 1/2NPT-3/8 BARB ELBOW	P12707	2
11	BOLT, 1/4-20 X 1/2 HH	F05005-15	2
12	CLAMP, 11/16 WORM	P12739	7
13	WASHER, Z 6.1 SPLIT LOCK ZINC	F81053-3	2
14	FITTING, #4JIC-#6SAE 45DEG ELBOW	015488	10
15	FITTING, #6SAE 45DEG ELBOW	015489	1

3

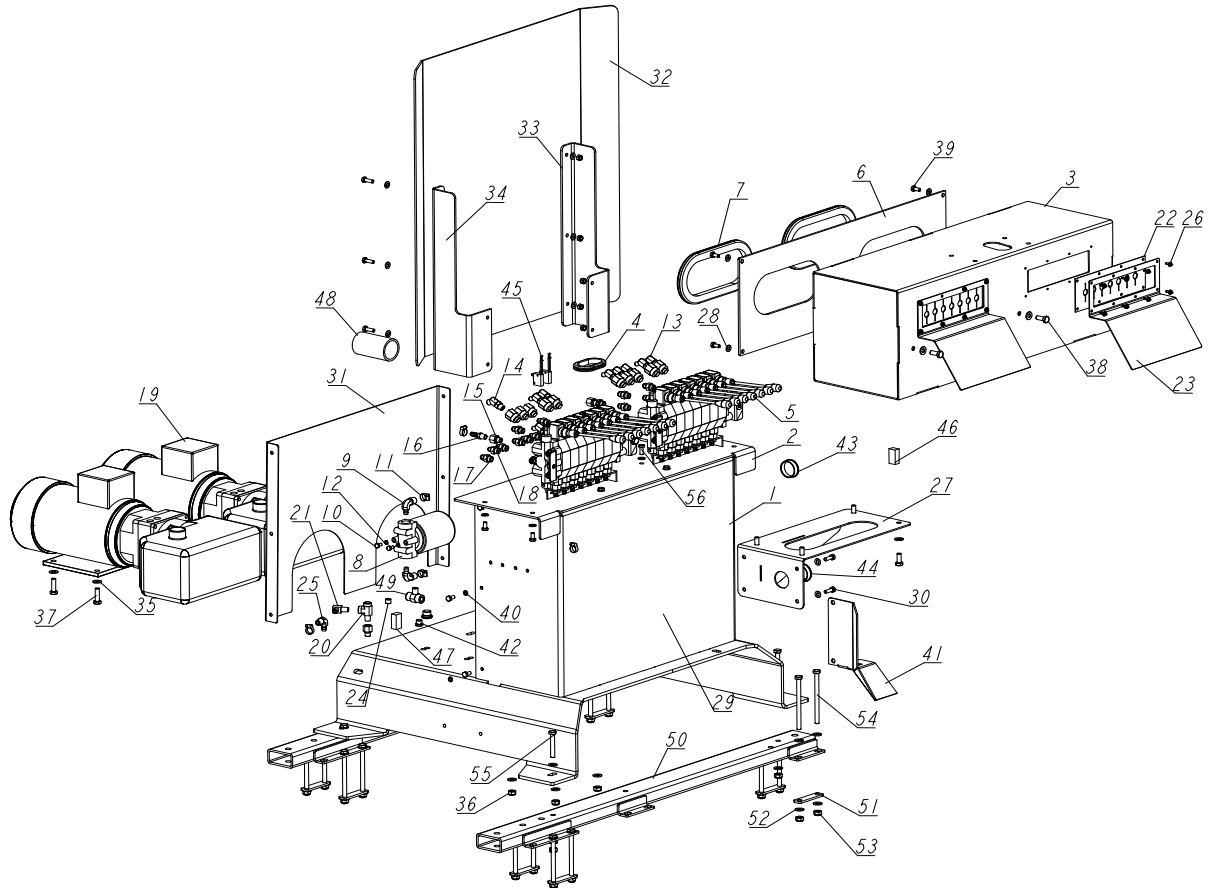
REPLACEMENT PARTS

Remote Control Box (16-Section)

REF	DESCRIPTION (u indicates parts available in assemblies only)	PART #	QTY	
16	FITTING, 6SAE MALE-1/4NPT FEMALE	014686	3	
17	FITTING, 1/4NPT-3/8 BARB	014685	1	
18	FITTING, 3/8O-RING-3/8JIC	014687	12	
19	FITTING, 1/4JIC-3/8 O-RING	P26284	4	
20	HYDRAULIC PUMP W/MOTOR AC.4KW 14.5L/MIN	500958	1	
21	FITTING, 1/4NPT MALE RUN TEE	P09141	1	
22	FITTING, 3/8JIC-1/4NPT 90L	015491	1	
23	PLUG, 1/4" NPT BLANK	096221	1	
24	FITTING, 3/8NPT-3/8 BARB ELBOW	P12708	1	
25	FITTING, 3/8 BARB TEE	015485	1	
26	BOLT, #10-24X1/2 SELF TAP	F05015-7	20	
27	GUARD, RUBBER DOUBLE VALVE	015079	1	
28	SHELF, ELECTRIC BOX - COMPLETE	539352-1	1	
29	WASHER, 8.4 FLAT ZINC	F81054-1	36	
30	NUT, M8-8-B HEX NYLON ZINC LOCK	F81032-2	14	
31	BOLT, M8X25-8.8-B HEX HEAD FULL THREAD Z	F81002-5	10	
32	PLATE, REMOTE CONTROL BOX REAR	500516-1	1	
33	BOLT, M8X20MM,HH,GR 8.8,FULL THRD,ZINC	F81002-1	4	
34	GUARD, LT70 CONTROL BOX PC	090219	1	
35	BRACKET, CONTROL BOX GUARD	500766-1	1	
36	BRACKET, CONTROL BOX GUARD - LEFT	500767-1	1	
37	WASHER, 10.5 FLAT ZINC	F81055-1	21	
38	NUT, M10-8-B HEX NYLON ZINC LOCK	F81033-1	8	
39	BOLT,M10X35-8.8 HEX HEAD FULL THREAD ZIN	F81003-17	4	
40	BOLT, M10X25-8.8-FE/ZN5	F81003-11	10	
41	BOLT M8X16 -8.8-B-FE/ZN5 PN-85/M-82105	F81002-20	12	
42	WASHER, 6.4 FLAT ZINC	F81053-1	6	
43	GUARD, CABLE	501102-1	1	
44	GUARD, RUBBER HYDRAULIC VALVE 10-SECTION	091739	1	
45	VALVE, HDS11/10- 8-SECTION HYDRAULIC	091344	1	
46	PLATE, FRONT	500122-1	1	
47	PLUG KIT (500508)	505060	1	
48	CAP, 44.5 MM NO. 466923 HOLE	500768	1	
49	BUSH, MOSS 44.5MM 465901 SNAP-FIT	R80670-3	1	
50	SWITCH, 2A 125V R-LEVER NO/NC/COM	014765	2	
51	CONTACT ASSEMBLY, HYDRAULIC POWER SUPPLY	086624	1	
52	CONTACT, ASSEMBLY HOT AC	086625	1	
53	SLEEVE, LT40/70 0.6 THICK 3.5 LONG PROTE	510287	1	
54	FITTING, 1/4NPT BRANCH TEE	015486	1	
55	PLATFORM SIDE COMPLETE See Section 3.39	545626	2	

3.9 Remote Control Box (14-Section) 2x5.5kW

550011_001
550011_MANUAL



REF	DESCRIPTION (u indicates parts available in assemblies only)	PART #	QTY
-	REMOTE CONTROL BOX - COMPLETE -14-SECTION 2x5.5kW	550011	1
1	BASE, REMOTE CONTROL BOX WLDMT/PTD	539329-1	1
2	PLATE, REMOTE CONTROL BOX MOUNT	539333-1	1
3	HOUSING, CONTROL VALVE	550010-1	1
4	GROMMET, RUBBER	087065	1
5	VALVE, 7-SECTION AC HYDRAULIC	510560	2
6	COVER, HYDRAULIC VALVE HOUSING REAR	500515	1
7	GROMMET, RUBBER 4 3/8 X 10 OVAL	085759	2
8	MANIFOLD, W/FILTER	P22683	1
9	FITTING, 1/2NPT-3/8 BARB ELBOW	P12707	2
10	BOLT, 1/4-20X1/2 HH	F05005-15	2
11	CLAMP, 11/16 WORM	061807	5
12	WASHER, Z 6.1 SPLIT LOCK ZINC	F81053-3	2
13	FITTING, #4SAE-#6SAE 45 DEG ELBOW	015488	8
14	FITTING, #6SAE 45 DEG ELBOW	015489	1
15	FITTING, 6SAE MALE-1/4NPT FEMALE	014686	3
16	FITTING, 1/4NPT-3/8 BARB	014685	1
17	FITTING, 3/8 O-RING-3/8JIC	014687	12

3

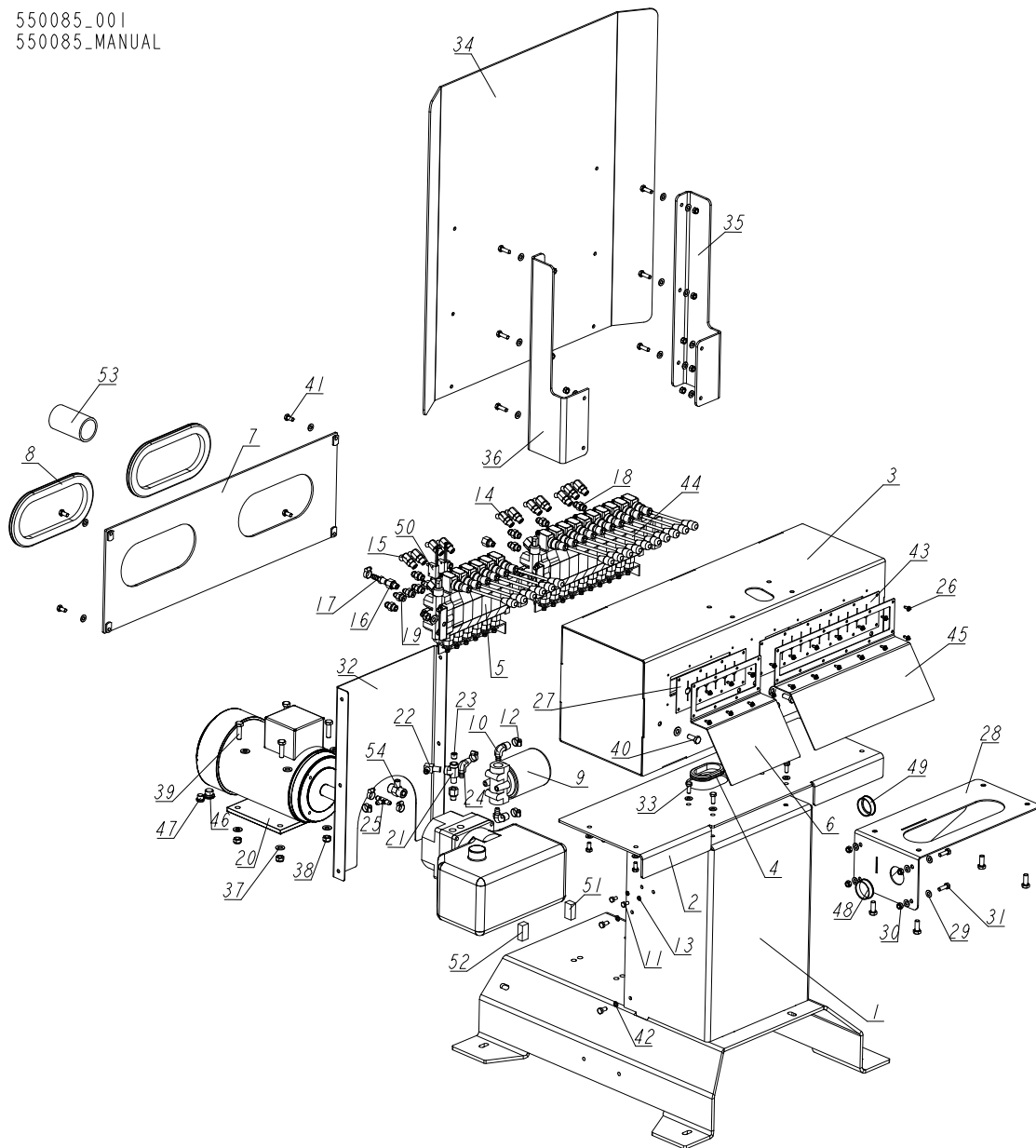
REPLACEMENT PARTS

Remote Control Box (14-Section) 2x5.5kW

REF	DESCRIPTION (u indicates parts available in assemblies only)	PART #	QTY	
18	FITTING, 1/4JIC-3/8 O-RING	P26284	4	
19	PUMP, AC 18,5L/ 5,5 KW HYDRAULIC W/MOTOR	517840	2	
20	FITTING, 1/4NPTX1/4JIC MALE RUN TEE	P09141	1	
21	FITTING, 3/8JIC-1/4NPT 90L	015491	1	
22	COVER, RUBBER (7 SECTIONS)	510566	2	
23	PLATE, FRONT	550012-1	2	
24	PLUG, 1/4-18 NPT BLANK	096221	1	
25	FITTING, 3/8NPT-3/8 BARB ELBOW	P12708	1	
26	BOLT, #10-24X1/2 SLF TP SC	F05015-7	16	
27	SHELF, ELECTRIC BOX - COMPLETE	539352-1	1	
28	WASHER, 8.4 FLAT ZINC	F81054-1	36	
29	NUT, M8-8-B-HEX NYLON ZINC LOCK	F81032-2	14	
30	BOLT, M8X25-8.8-B-HEX HEAD FULL THREAD ZINC	F81002-5	10	
31	PLATE, REMOTE CONTROL BOX REAR (2 HYD. PUMPS)	539331-1	1	
32	GUARD, LT70 AC REMOTE CONTROL BOX	090219	1	
33	BRACKET, CONTROL BOX GUARD	500766-1	1	
34	BRACKET, CONTROL BOX GUARD LEFT	500767-1	1	
35	WASHER, 10,5 FLAT ZINC	F81055-1	20	
36	NUT, M10 HEX NYLON ZINC LOCK	F81033-1	8	
37	BOLT, M10X35 8.8 HEX HEAD FULL THREAD ZINC	F81003-17	4	
38	BOLT, M10X25 8.8 HEX HEAD FULL THREAD ZINC	F81003-11	8	
39	BOLT, M8X16-8.8-B-HEX HEAD FULL THREAD ZINC	F81002-20	12	
40	WASHER, 6.4 FLAT ZINC	F81053-1	6	
41	GUARD, CABLE	501102-1	1	
42	PLUG KIT, 500508	505060	1	
43	CAP, 44.5 MM (466923) HOLE	500768	1	
44	BUSH, MOSS 44.5MM 465901 SNAP-FIT	R80670-3	1	
45	SWITCH, 2A 125V R-LEVER NO/NC/COM	014765	2	
46	CONTACT ASSEMBLY, HYDRAULIC POWER SUPPLY	086624	1	
47	CONTACT ASSEMBLY, HOT AC	086625	1	
48	SLEEVE, LT40/70 THICK 0.6 LONG 3.5 PROTECTION	510287	1	
49	FITTING, 1/4 BRANCH TEE	015486	1	
-	BRACKET, SR SIDE TRANSPORT - COMPLETE	545626	2	
50	BRACKET, SIDE TRANSPORT WLDMT/PTD	545625-1	1	
51	BAR, TRANSPORT BRACKET MOUNT	545627-1	4	
52	WASHER, 10,5 FLAT ZINC	F81055-1	20	
53	NUT, M10 HEX NYLON ZINC LOCK	F81033-1	10	
54	BOLT, M10X140-8.8 HEX HEAD ZINC	F81003-5	8	
55	BOLT, M10X65-8.8 HEX HEAD ZINC	F81003-67	2	
56	BOLT, M8X20 8.8 HEX HEAD FULL THREAD ZINC	F81002-4	4	

3.10 Remote Control Box, Super, 16-Section

550085_001
550085_MANUAL



REF	DESCRIPTION (u indicates parts available in assemblies only)	PART #	QTY
-	BOX ASSEMBLY, 16-SECTION REMOTE CONTROL	550085	1
1	BASE WELDMENT, REMOTE HYDRAULIC CONTROL	500509-1	1
2	PLATE, REMOTE HYDRAULIC CONTROL BOX	500510-1	1
3	HOUSING, HYDRAULIC VALVE	505273-1	1
4	GROMMET, RUBBER	087065	1
5	VALVE, 6-SPOOL FOR SERIES CONNECTION	501104	1
6	PLATE, RUBBER GUARD DOUBLE	015078	1
7	PANEL, HYDRAULIC VALVE HOUSING REAR	500515-1	1
8	GROMMET, 4 3/8 X 10 OVAL RUBBER	085759	2
9	MANIFOLD, W/FILTER	P22683	1
10	FITTING, 1/2NPT-3/8 BARB ELBOW	P12707	2

3

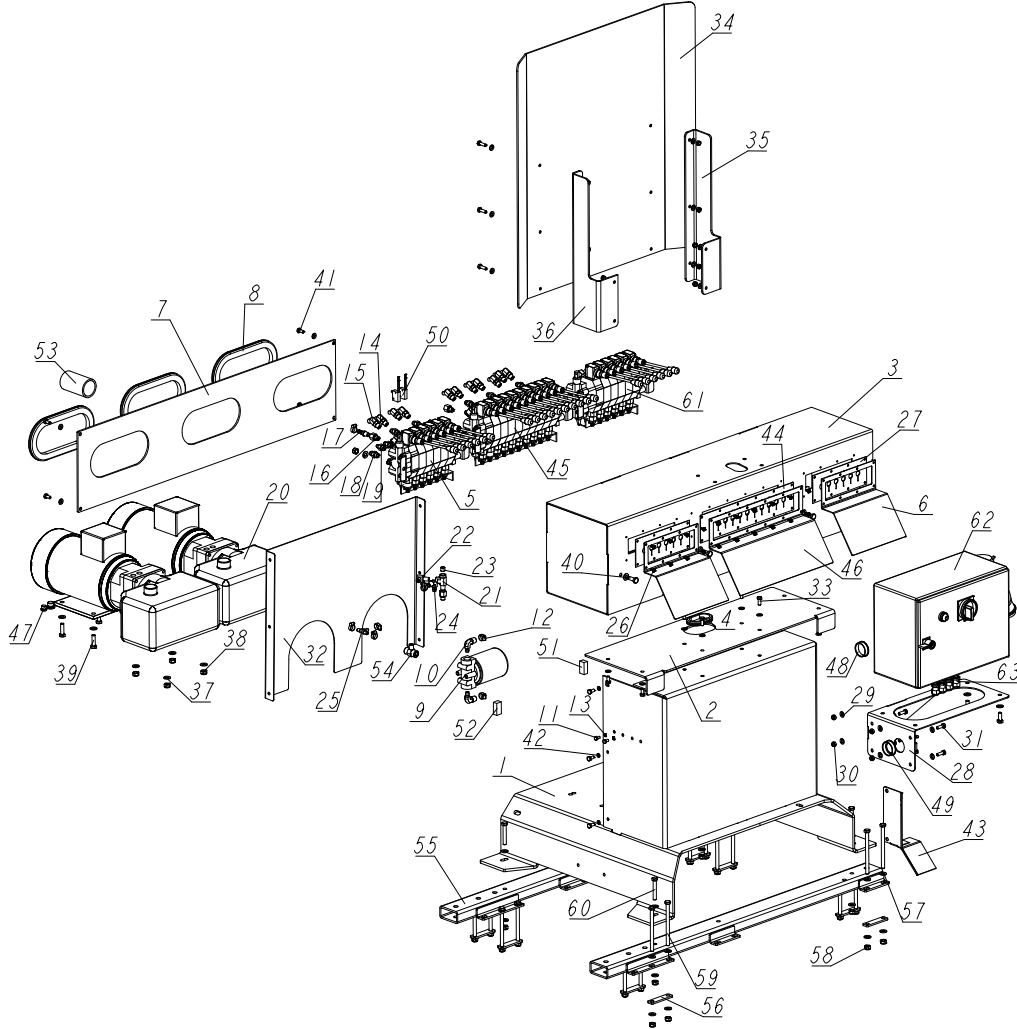
REPLACEMENT PARTS

Remote Control Box, Super, 16-Section

REF	DESCRIPTION (u indicates parts available in assemblies only)	PART #	QTY	
11	BOLT, 1/4-20X1/2 HH	F05005-15	2	
12	CLAMP, 11/16 WORM	061807	7	
13	WASHER, Z6.1 SPLIT LOCK ZINC	F81053-3	2	
14	FITTING, #4SAE-#6SAE 45 DEG ELBOW	015488	10	
15	FITTING, #6SAE 45 DEG ELBOW	015489	1	
16	FITTING, 6SAE MALE-1/4NPT FEMALE	014686	3	
17	FITTING, 1/4NPT-3/8 BARB	014685	1	
18	FITTING, 3/8 O-RING-3/8JIC	014687	12	
19	FITTING, 1/4JIC-3/8 O-RING	P26284	4	
20	PUMP, AC.5,5KW 18.5L/MIN HYDRAULIC W/MOT	517840	1	
21	FITTING, 1/4NPTX1/4JIC MALE RUN TEE	P09141	1	
22	FITTING, 3/8JIC-1/4NPT 90L	015491	1	
23	PLUG, 1/4-18 NPT BLANK	096221	1	
24	FITTING, 3/8NPT-3/8 BARB ELBOW	P12708	1	
25	FITTING 3/8 TEE BARB	015485	1	
26	BOLT, #10-24X1/2 SELF-TAPPING	F05015-7	20	
27	SEAL, RUBBER VALVE HANDLE	015079	1	
28	BRACKET, HYDRAULIC CONTROL BOX BASE - CO	539352-1	1	
29	WASHER, 8.4 FLAT ZINC	F81054-1	36	
30	NUT, M8-8-B HEX NYLON ZINC LOCK	F81032-2	14	
31	BOLT, M8X25-8.8-B HEX HEAD FULL THREAD Z	F81002-5	10	
32	PLATE, REMOTE HYDRAULIC CONTROL BOX REAR	500516-1	1	
33	BOLT, M8X20MM, HEX HEAD,GR 5.8 ZINC	F81002-4	4	
34	GUARD, LT70 AC REMOTE CONTROL BOX (PC)	090219	1	
35	BRACKET, CONTROL BOX GUARD	500766-1	1	
36	BRACKET, CONTROL BOX GUARD - LEFT	500767-1	1	
37	WASHER, 10.5 FLAT ZINC	F81055-1	20	
38	NUT, M10-8-B HEX NYLON ZINC LOCK	F81033-1	8	
39	BOLT, M10X35-8.8 HEX HEAD FULL THREAD ZI	F81003-17	4	
40	BOLT, M10X25-8.8 ZINC	F81003-11	8	
41	BOLT M8X16 -8.8-B-FE/ZN5 PN-85/M-82105	F81002-20	12	
42	WASHER, 6.4 FLAT ZINC	F81053-1	6	
43	GUARD, RUBBER HYDRAULIC VALVE 10-SECTION	091739	1	
44	VALVE, HDS11/10- 8-SECTION HYDRAULIC	091344	1	
45	PLATE, FRONT	500122-1	1	
-	PLUG KIT FOR 500508	505060	1	
46	PLUG FOR 500508	505060_1	1	
47	PLUG FOR 500508	505060_2	1	
48	CAP, 44.5 MM NO. 466923 HOLE	500768	1	
49	BUSH, MOSS 44.5MM 465901 SNAP-FIT	R80670-3	1	
50	SWITCH, 2A 125V R-LEVER NO/NC/COM	014765	2	
51	CONTACT ASSEMBLY, AC NEGATIVE	086624	1	
52	CONTACT ASSEMBLY, AC POSITIVE	086625	1	
53	SLEEVE, LT40/70 0.6 THICK 3.5 LONG PROTE	510287	1	
54	FITTING, 1/4NPT BRANCH TEE	015486	1	

3.11 Remote Control Box, 22-Section

550089_001
550089_MANUAL



REF	DESCRIPTION (u indicates parts available in assemblies only)	PART #	QTY
-	BOX ASSEMBLY, 22-SECTION REMOTE CONTROL	550089	1
1	BASE, REMOTE CONTROL BOX WLDMT/PTD	539329-1	1
2	PLATE, REMOTE CONTROL BOX MOUNT	539333-1	1
3	HOUSING, HYDRAULIC VALVE	550087-1	1
4	GROMMET, RUBBER	087065	1
5	VALVE, 6-SPOOL FOR SERIES CONNECTION	501104	1
6	PLATE, RUBBER GUARD DOUBLE	015078	2
7	PANEL, HYDRAULIC VALVE HOUSING REAR	550090-1	1
8	GROMMET, 4 3/8 X 10 OVAL RUBBER	085759	3
9	MANIFOLD, W/FILTER	P22683	1
10	FITTING, 1/2NPT-3/8 BARB ELBOW	P12707	2
11	BOLT, 1/4-20X1/2 HH	F05005-15	2
12	CLAMP, 11/16 WORM	061807	7
13	WASHER, Z6.1 SPLIT LOCK ZINC	F81053-3	2

3

REPLACEMENT PARTS

Remote Control Box, 22-Section

REF	DESCRIPTION (u indicates parts available in assemblies only)	PART #	QTY	
14	FITTING, #4SAE-#6SAE 45 DEG ELBOW	015488	10	
15	FITTING, #6SAE 45 DEG ELBOW	015489	1	
16	FITTING, 6SAE MALE-1/4NPT FEMALE	014686	3	
17	FITTING, 1/4NPT-3/8 BARB	014685	1	
18	FITTING, 3/8 O-RING-3/8JIC	014687	12	
19	FITTING, 1/4JIC-3/8 O-RING	P26284	4	
20	PUMP, AC.5.5KW 18.5L/MIN HYDRAULIC W/MOT	517840	2	
21	FITTING, 1/4NPTX1/4JIC MALE RUN TEE	P09141	1	
22	FITTING, 3/8JIC-1/4NPT 90L	015491	1	
23	PLUG, 1/4-18 NPT BLANK	096221	1	
24	FITTING, 3/8NPT-3/8 BARB ELBOW	P12708	1	
25	FITTING 3/8 TEE BARB	015485	1	
26	BOLT, #10-24X1/2 SELF-TAPPING	F05015-7	20	
27	SEAL, RUBBER VALVE HANDLE	015079	2	
28	BRACKET, HYDRAULIC CONTROL BOX BASE - CO	539352-1	1	
29	WASHER, 8.4 FLAT ZINC	F81054-1	36	
30	NUT, M8-8-B HEX NYLON ZINC LOCK	F81032-2	14	
31	BOLT, M8X25-8.8-B HEX HEAD FULL THREAD Z	F81002-5	10	
32	PLATE, REMOTE CONTROL BOX REAR (2 HYD. P	539331-1	1	
33	BOLT, M8X20MM, HEX HEAD,GR 5.8 ZINC	F81002-4	4	
34	GUARD, LT70 AC REMOTE CONTROL BOX (PC)	090219	1	
35	BRACKET, CONTROL BOX GUARD	500766-1	1	
36	BRACKET, CONTROL BOX GUARD - LEFT	500767-1	1	
37	WASHER, 10.5 FLAT ZINC	F81055-1	22	
38	NUT, M10-8-B HEX NYLON ZINC LOCK	F81033-1	8	
39	BOLT, M10X35-8.8 HEX HEAD FULL THREAD ZI	F81003-17	4	
40	BOLT, M10X25-8.8 ZINC	F81003-11	10	
41	BOLT M8X16 -8.8-B-FE/ZN5 PN-85/M-82105	F81002-20	12	
42	WASHER, 6.4 FLAT ZINC	F81053-1	6	
43	GUARD, CABLE	501102-1	1	
44	GUARD, RUBBER HYDRAULIC VALVE 10-SECTION	091739	1	
45	VALVE, HDS11/10- 8-SECTION HYDRAULIC	091344	1	
46	PLATE, FRONT	500122-1	1	
47	PLUG KIT FOR 500508	505060	1	
48	CAP, 44.5 MM NO. 466923 HOLE	500768	1	
49	BUSH, MOSS 44.5MM 465901 SNAP-FIT	R80670-3	1	
50	SWITCH, 2A 125V R-LEVER NO/NC/COM	014765	2	
51	CONTACT ASSEMBLY, AC NEGATIVE	086624	1	
52	CONTACT ASSEMBLY, AC POSITIVE	086625	1	
53	SLEEVE, LT40/70 0.6 THICK 3.5 LONG PROTE	510287	1	
54	FITTING, 1/4NPT BRANCH TEE	015486	1	
-	PLATFORM SIDE COMPLETE	545626	2	
55	PLATFORM SIDE WLDMT	545625-1	1	
56	FLAT BAR MOUNTING BASE PLATFORM	545627-1	4	
57	WASHER, 10.5 FLAT ZINC	F81055-1	20	

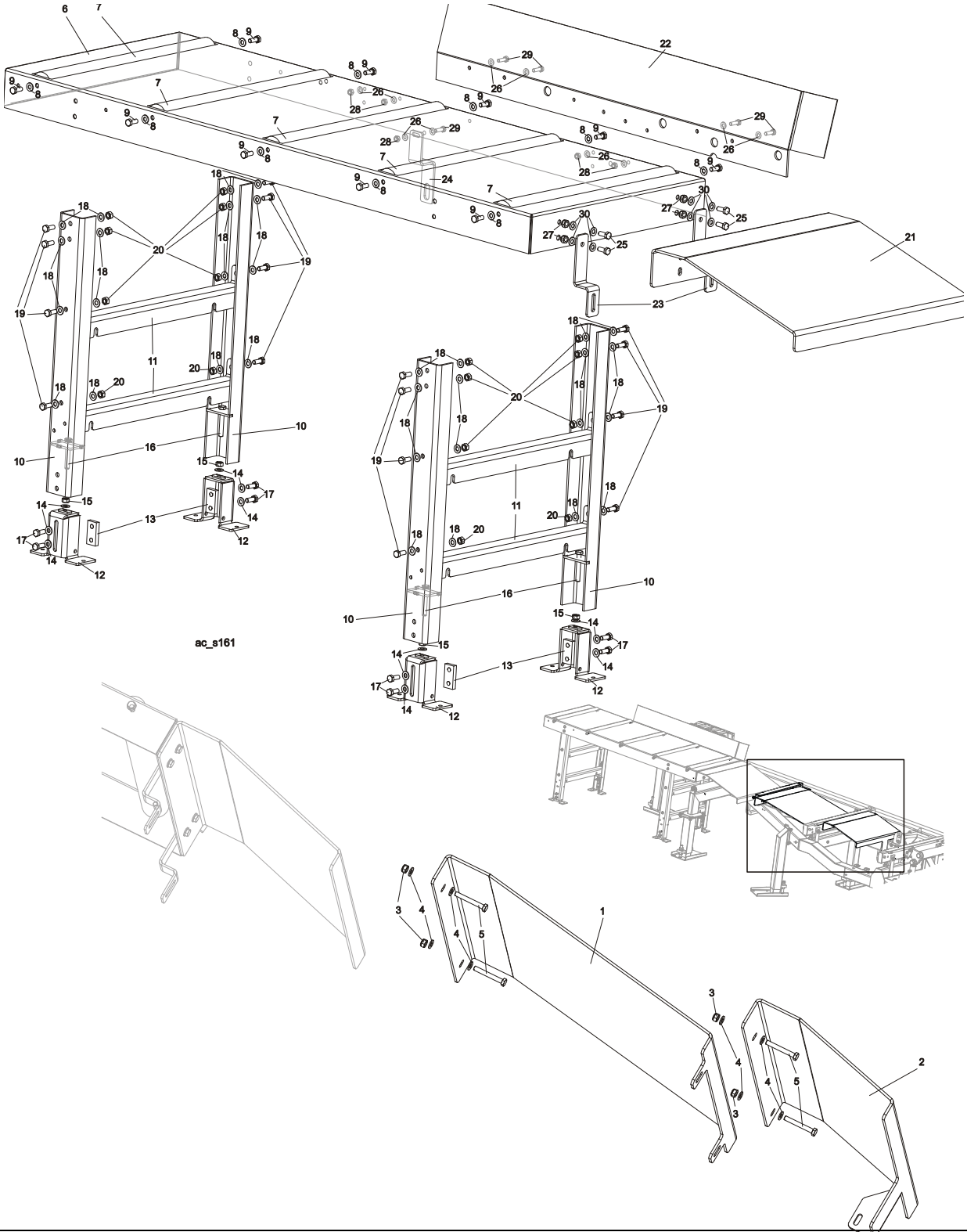
REPLACEMENT PARTS

Remote Control Box, 22-Section



REF	DESCRIPTION (u indicates parts available in assemblies only)	PART #	QTY	
58	NUT, M10-8-B HEX NYLON ZINC LOCK	F81033-1	10	
59	BOLT, M10X140-8.8 HEX HEAD ZINC	F81003-5	8	
60	BOLT, M10X65-8.8-B HEX HEAD ZINC	F81003-67	2	
61	VALVE, 6-SECTION HDS10/6-6 (SEE FORM # 5	015260	1	
62	ELECTRIC BOX, AC 5.5KW	539350	1	
63	GLAND, DW11/H CABLE	085388	4	

3.12 Board Return Table



REF.	DESCRIPTION (◆ Indicates Parts Available In Assemblies Only)	PART #	QTY
1	PLATE, BOARD RETURN TABLE FRONT	505781-1	1
2	PLATE, BOARD RETURN TABLE SHORT	505782-1	1

REPLACEMENT PARTS

Board Return Table

3

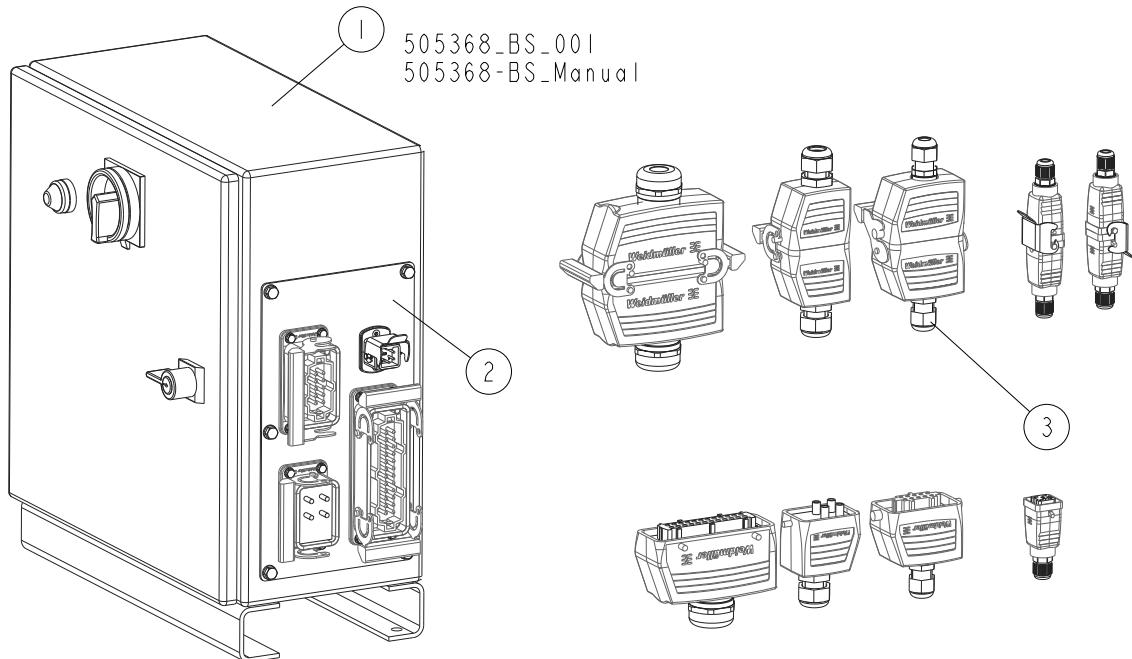
3	NUT, M10-8-B HEX NYLON ZINC LOCK	F81033-1	4	
4	WASHER, 10.5 FLAT ZINC	F81055-1	8	
5	BOLT, M10x75-8.8 HEX HEAD ZINC	F81003-15	4	
	TABLE, L-ST FRAME LONG	505771	1	
	TABLE, M-TYPE FRAME LONG	502539	1	
6	TOP, EDGER TABLE PTD	500078-1	1	
7	ROLLER, 63.5/20x600 PTD (EDGER)	500077-1	5	
8	WASHER, 10.5 FLAT ZINC	F81055-1	10	
9	BOLT, M10x25-8.8 HEX HEAD FULL THREAD ZINC	F81003-11	10	
	LEG, BOARD RETURN TABLE COMPLETE	501974	2	
10	CHANNEL WLDMT, TABLE LEG	501976	2	
11	CROSS-BAR, TABLE LEG (EDGER)	500074-1	2	
	FOOT, COMPLETE ADJUSTABLE (EDGER)	101014	2	
12	FOOT, ADJUSTABLE (EDGER)	101022-1	1	
13	PLATE, M10 CLAMPING ZINC-PL.	101242-1	1	
14	WASHER, 10.5 FLAT ZINC	F81055-1	3	
15	NUT, M10-8-B HEX ZINC	F81033-3	1	
16	BOLT, M10x70-8.8 HEX HEAD FULL THREAD ZINC	F81003-20	1	
17	BOLT, M10x25-8.8 HEX HEAD FULL THREAD ZINC	F81003-11	2	
18	WASHER, 10.5 FLAT ZINC	F81055-1	16	
19	BOLT, M10x25-8.8 HEX HEAD FULL THREAD ZINC	F81003-11	8	
20	NUT, M10-8-B HEX ZINC	F81033-3	8	
21	PLATE, BOARD RETURN TABLE FRONT	502814-1	1	
22	PLATE, BOARD RETURN TABLE SIDE	501978-1	1	
23	BRACKET, L-TYPE FRAME TABLE - SPECIAL	505769-1	2	
24	BRACKET, L-TYPE FRAME LONG TABLE	505786-1	1	
25	BOLT, M10x25-8.8 HEX HEAD FULL THREAD ZINC	F81003-11	4	
26	WASHER, 8.4 FLAT ZINC	F81054-1	10	
27	NUT, M10-8-B HEX NYLON ZINC LOCK	F81033-1	4	
28	NUT, M8-8-B HEX NYLON ZINC LOCK	F81032-2	5	
29	BOLT, M8x25-8.8-B HEX HEAD FULL THREAD ZINC	F81002-5	5	
30	WASHER, 10.5 FLAT ZINC	F81055-1	8	

3

REPLACEMENT PARTS

Electric Box & Cable Connectors (African BS Version)

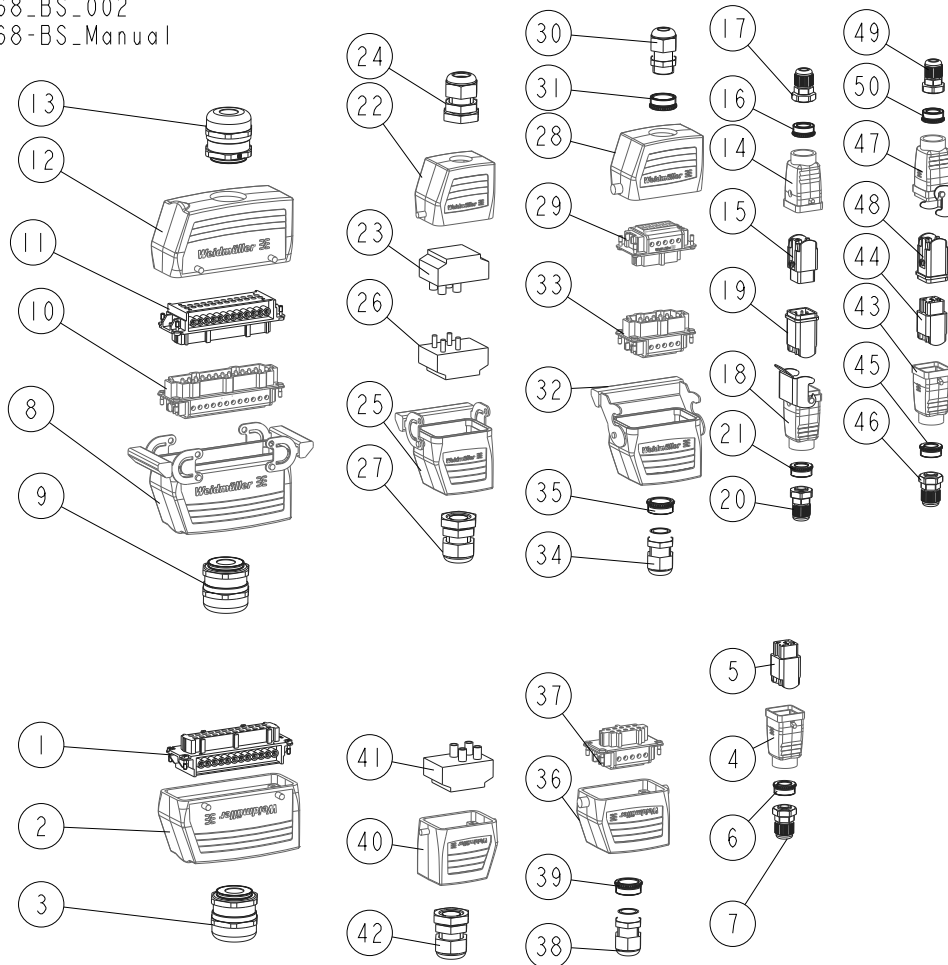
3.13 Electric Box & Cable Connectors (African BS Version)



REF.	DESCRIPTION (◆ Indicates Parts Available In Assemblies Only)	PART #	QTY	
1	BOX, LT40/70 AC STSW ELECTRIC	505368	1	
2	PLATE W/CONNECTORS - COMPLETE (AFRICA) See Section 3.15	519249	1	
3	CABLE CONNECTORS See Section 3.14	516654	1	

3.14 Cable Connectors (African BS Version)

505368_BS_002
505368-BS_Manual



REF.	DESCRIPTION (◆ Indicates Parts Available in Assemblies Only)	PART #	QTY
	CONNECTOR KIT, CABLE	516654	1
	CONNECTOR, 24 FEMALE	516667	1
1	INSERT, HDC HE24 FS FEMALE	519241	1
2	HOUSING, HDC 24B TOBU 1PG21G	519011	1
3	GLAND, PG21 CABLE	519242	1
	CONNECTOR, CABLE - BOX (4)	516661	1
	CONNECTOR, 4 FEMALE	516662	1
4	HOUSING, HDC 04ATOLU 1PG11G	519017	1
5	INSERT, HDC HA 4FS FEMALE	519243	1
6	REDUCER, PG11 TO PG7	519247	1
7	GLAND, PG7 CABLE	519244	1
	CONNECTOR, 24 CABLE-CABLE	516668	1
	CONNECTOR, 24 MALE	516659	1
8	HOUSING, HDC 24B KBU 1PG21G	519012	1
9	GLAND, PG21 CABLE	519242	1
10	INSERT, HDC HE24 MS MALE	519010	1
	CONNECTOR, 24 FEMALE	516667	1

3

REPLACEMENT PARTS

Cable Connectors (African BS Version)

REF.	DESCRIPTION (◆ Indicates Parts Available in Assemblies Only)	PART #	QTY	
11	INSERT, HDC HE24 FS FEMALE	519241	1	
12	HOUSING, HDC 24B TOBU 1PG21G	519011	1	
13	GLAND, PG21 CABLE	519242	1	
	CONNECTOR, 4 CABLE - CABLE	516669	1	
	CONNECTOR, 4 MALE	516662	1	
14	HOUSING, HDC 04ATOLU 1PG11G	519017	1	
15	INSERT, HDC HA 4FS FEMALE	519243	1	
16	REDUCER, PG11 TO PG7	519247	1	
17	GLAND, PG7 CABLE	519244	1	
	CONNECTOR, 4 MALE	516670	1	
18	HOUSING, HDC 04A KOLU 1PG11G	519018	1	
19	INSERT, HDC HA 4 MS MALE	519240	1	
20	GLAND, PG7 CABLE	519244	1	
21	REDUCER, PG11 TO PG7	519247	1	
	CONNECTOR, CABLE - CABLE	516673	1	
	CONNECTOR, MALE	516655	1	
22	HOUSING, HDC 06BTOLU 1PG16G	519005	1	
23	INSERT, HDC S4 BAS FEMALE	519007	1	
24	GLAND, PG16 CABLE	519245	1	
	CONNECTOR, FEMALE	516674	1	
25	HOUSING, HDC 06B KLU 1PG16G	519008	1	
26	INSERT, HDC S4 SAS MALE	519006	1	
27	GLAND, PG16 CABLE	519245	1	
	CONNECTOR, 10 CABLE - CABLE	516671	1	
	CONNECTOR, 10 MALE	516665	1	
28	HOUSING, HDC 10B TOLU 1PG16G	519013	1	
29	INSERT, HDC HE10 FS FEMALE	519014	1	
30	GLAND, PG11 CABLE	519246	1	
31	REDUCER, PG16 - PG11	519248	1	
	CONNECTOR, 10 FEMALE	516672	1	
32	HOUSING, HDC 10B KLU 1PG16G	519016	1	
33	INSERT, HDC HE10 MS MALE	519015	1	
34	GLAND, PG11 CABLE	519246	1	
35	REDUCER, PG16 TO PG11	519248	1	
	CONNECTOR, 10 CABLE - BOX	516664	1	
	CONNECTOR, 10 MALE	516665	1	
36	HOUSING, HDC 10B TOLU 1PG16G	519013	1	
37	INSERT, HDC HE10 FS FEMALE	519014	1	
38	GLAND, PG11 CABLE	519246	1	
39	REDUCER, PG16 TO PG11	519248	1	
	CONNECTOR, MALE	516655	1	
40	HOUSING, HDC 06BTOLU 1PG16G	519005	1	
41	INSERT, HDC S4 BAS FEMALE	519007	1	
42	GLAND, PG16 CABLE	519245	1	
	CONNECTOR, 3 CABLE - CABLE	519250	1	

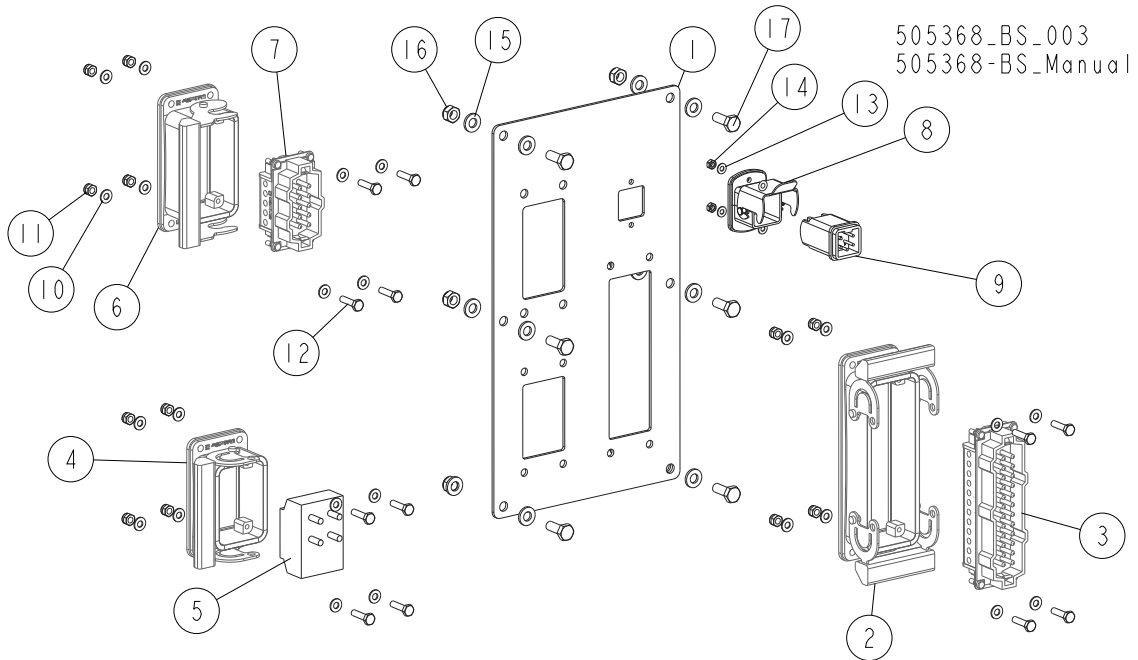
REF.	DESCRIPTION (◆ Indicates Parts Available In Assemblies Only)	PART #	QTY	
	CONNECTOR, 3 MALE	519251	1	
43	HOUSING, HDC 04ATOLU 1PG11G	519017	1	
44	INSERT, HDC HA 3FS FEMALE	519253	1	
45	REDUCER, PG11 TO PG7	519247	1	
46	GLAND, PG7 CABLE	519244	1	
	CONNECTOR, 3 FEMALE	519252	1	
47	HOUSING, HDC 04A KOLU 1PG11G	519018	1	
48	INSERT, HDC HA 3 MS MALE	519255	1	
49	GLAND, PG7 CABLE	519244	1	
50	REDUCER, PG11 TO PG7	519247	1	

3

REPLACEMENT PARTS

Plate w/Connectors (African BS Version)

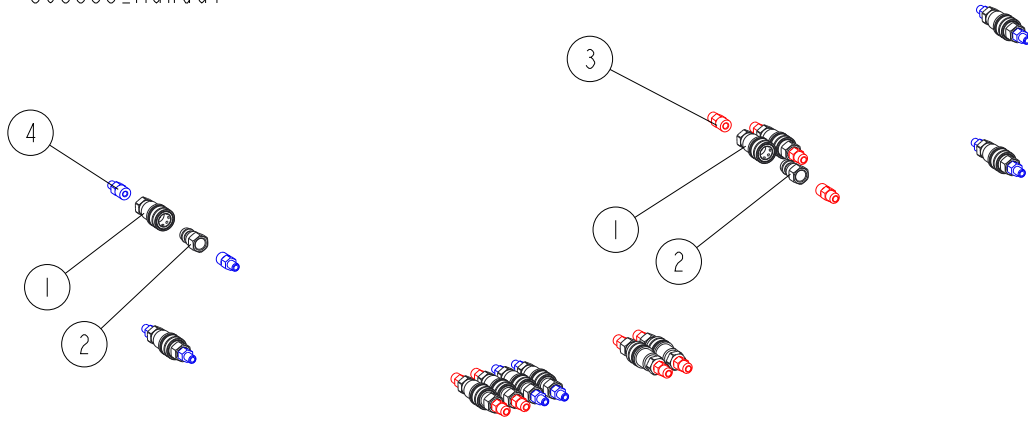
3.15 Plate w/Connectors (African BS Version)



REF	DESCRIPTION (◆ Indicates Parts Available In Assemblies Only)	PART #	QTY
	PLATE W/CONNECTORS - COMPLETE (AFRICA)	519249	1
1	PLATE, CONNECTOR MOUNT	519254-1	1
	INSERT, 24 W/HOUSING	516660	1
2	HOUSING	519019	1
3	INSERT, HDC HE24 MS MALE	519010	1
	INSERT W/HOUSING	516656	1
4	HOUSING, HDC 06B ALU	519009	1
5	INSERT, HDC S4 SAS MALE	519006	1
	INSERT, 10 W/HOUSING	516666	1
6	HOUSING	519238	1
7	INSERT, HDC HE10 MS MALE	519015	1
	INSERT, 4 W/HOUSING	516663	1
8	HOUSING	519239	1
9	INSERT, HDC HA 4 MS MALE	519240	1
10	WASHER, 4.3 FLAT ZINC	F81051-2	24
11	NUT, M4-B HEX NYLON ZINC LOCK	F81029-1	12
12	BOLT, M4X16 8.8 HEX HEAD FULL THREAD ZINC	F81011-6	12
13	WASHER, 3.2 FLAT ZINC	F81050-2	4
14	NUT, M3-6-A HEX	F81028-1	2
15	WASHER, 6.4 FLAT ZINC	F81053-1	12
16	NUT, M6-8-B HEX NYLON ZINC LOCK	F81031-2	6
17	BOLT, M6 X 16 8.8 HEX HEAD FULL THREAD ZINC	F81001-15	6

3.16 Hydraulic Fittings (African BS Version)

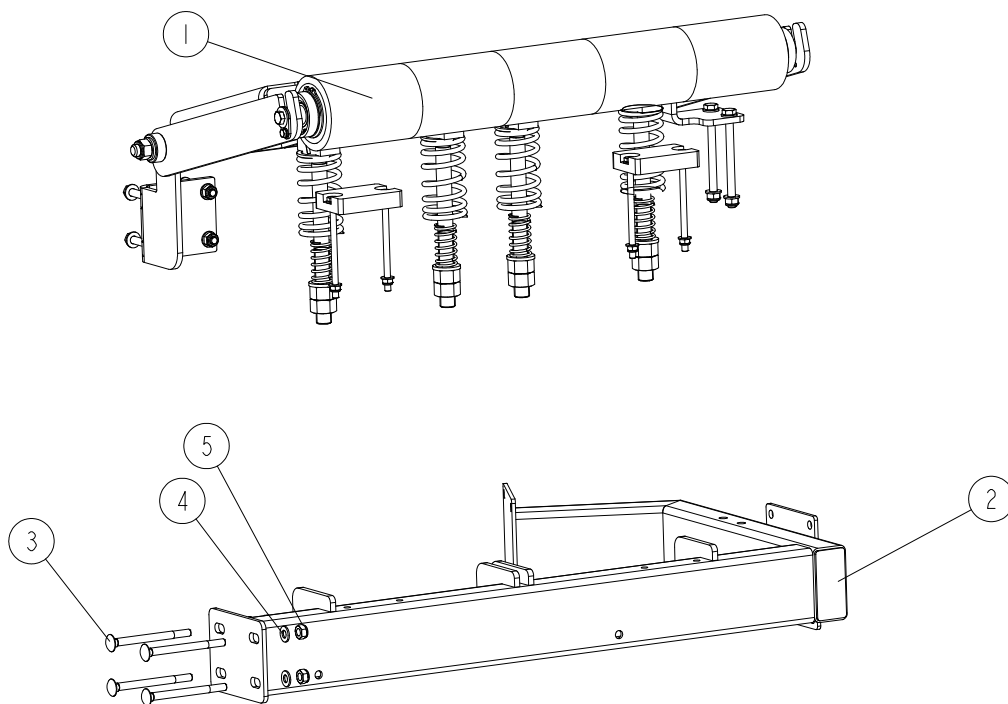
503533_001
 503533_Manual



REF.	DESCRIPTION (◆ Indicates Parts Available in Assemblies Only)	PART #	QTY	
1	FITTING, GW 3/8" BSP FEMALE QUICK DISCONNECT	504965	12	
2	FITTING, 3/8" INT. THREAD BSP MALE QUICK	504966	12	
3	FITTING, 9/16" JIC/ 3/8"BSP STRAIGHT	091842	12	
4	FITTING, Z7/16" UNF JIC-Z3/8" BSPP STRAIGHT	505747	12	

3.17 Adaptation Kit, Board Removal Bumper

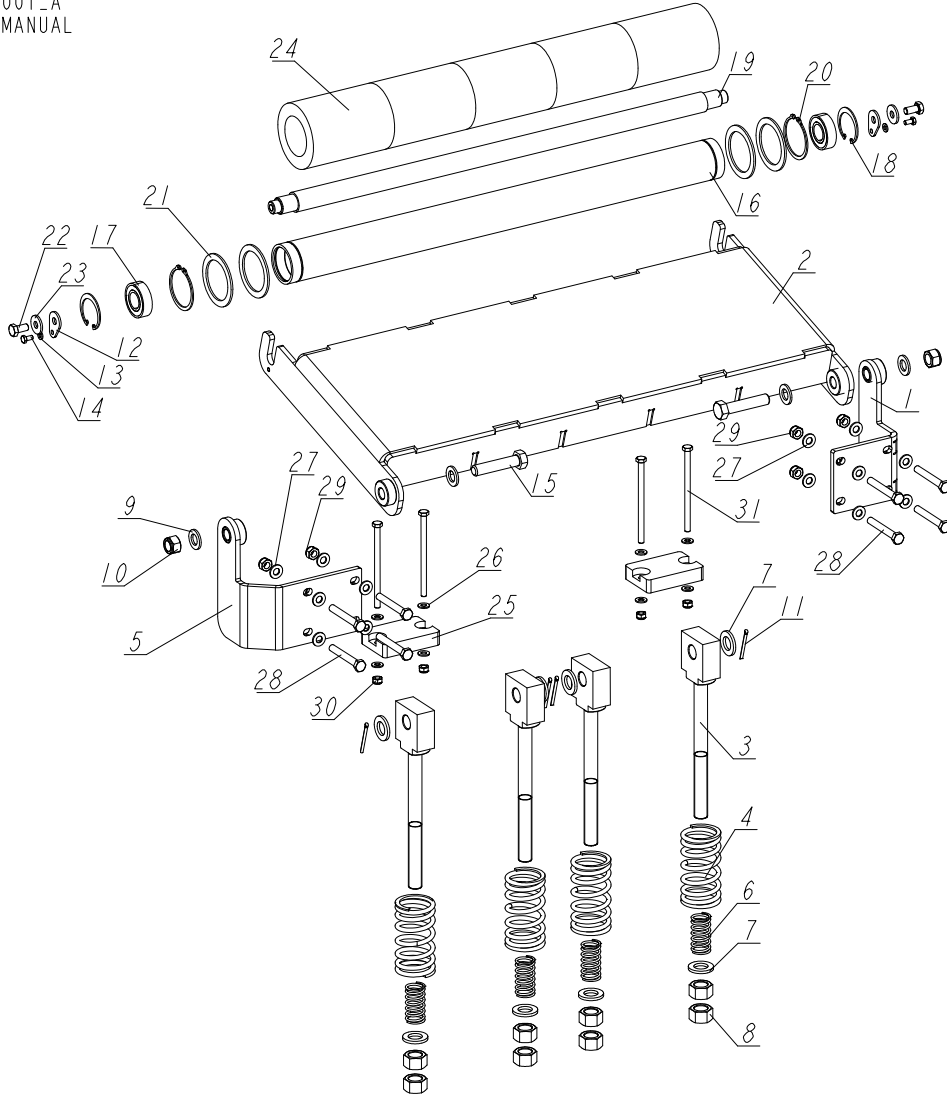
527071_001
527071_MANUAL



REF.	DESCRIPTION (◆ Indicates Parts Available in Assemblies Only)	PART #	QTY
-	ADAPTATION KIT, BOARD REMOVAL BUMPER (FOR NEW "M" FRAME)	527071	1
1	BUMPER, BOARD REMOVAL	525029	1
2	MOUNT WELDMENT, BOARD REMOVAL BUMPER - "M" FRAME	527021-1	1
3	BOLT, M10X120 8.8 CARRIAGE ZINC	F81003-33	4
4	WASHER, 10.5 FLAT ZINC	F81055-1	4
5	NUT, M10-8-B HEX NYLON ZINC LOCK	F81033-1	4

3.18 Board Removal Bumper

525029_001_A
525029_MANUAL



REF.	DESCRIPTION (◆ Indicates Parts Available in Assemblies Only)	PART #	QTY
-	BUMPER, BOARD REMOVAL - S FRAME	525029	1
1	BRACKET, BUMPER RIGHT	525025-1	1
2	PLATE WELDMENT, BOARD REMOVAL BUMPER	509547-1	1
3	ROD WELDMENT, BUMPER SPRING	510818-1	1
4	SPRING, 110X46X6.5 CUSHION	510815	4
5	BRACKET, BUMPER LEFT	525024-1	4
6	SPRING, 60X23X3	088992	4
7	WASHER, 21 FLAT ZINC	F81059-2	8
8	NUT, M20-8 HEX ZINC	F81037-1	8
9	WASHER, 17 SPLIT LOCK ZINC	F81058-1	4
10	NUT, M16-8 HEX NYLON ZINC LOCK	F81036-2	2
11	PIN, S-ZN-4X45 COTTER	F81043-22	4
12	WASHER, WM4000 ROLLER MOUNTING	510874-1	2

3

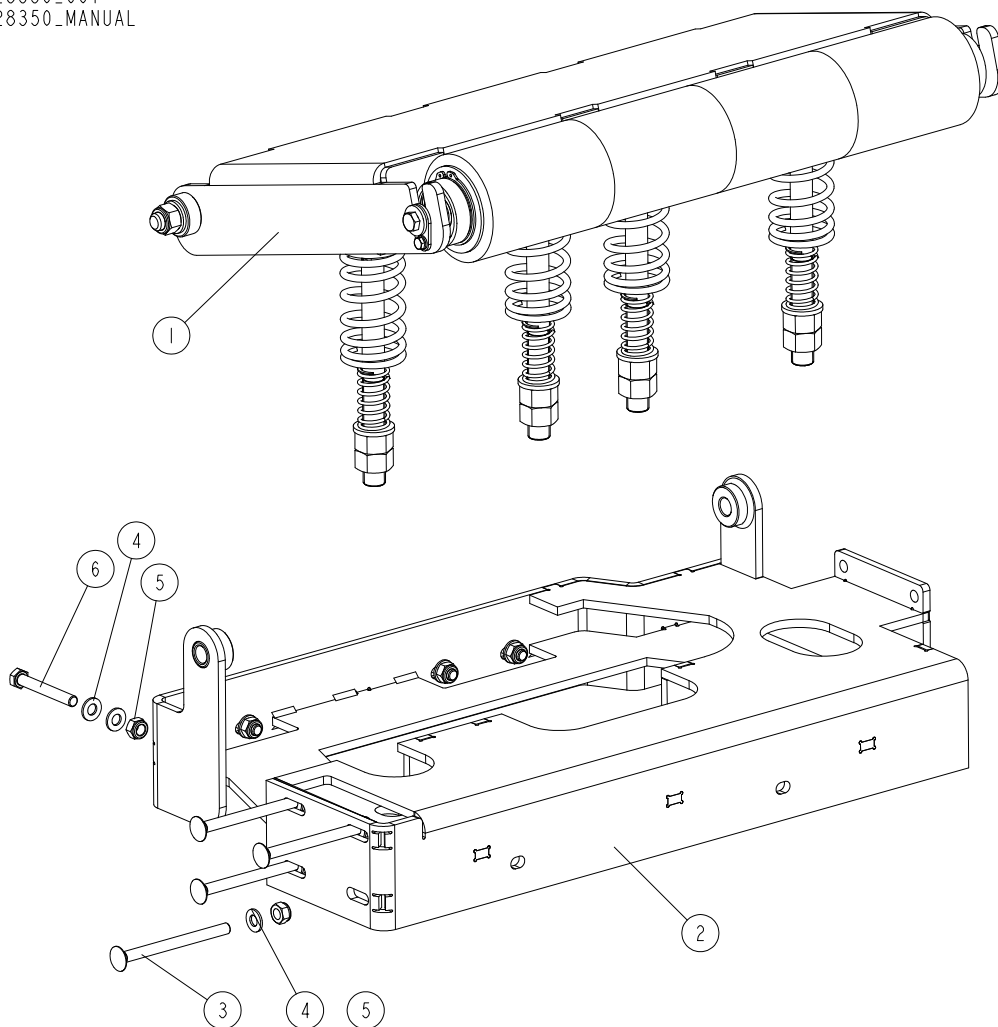
REPLACEMENT PARTS

Board Removal Bumper

REF.	DESCRIPTION (◆ Indicates Parts Available in Assemblies Only)	PART #	QTY	
13	WASHER, 6.4 FLAT ZINC	F81053-1	2	
14	BOLT, M6X12 8.8 HEX HEAD FULL THREAD ZINC	F81001-7	2	
15	BOLT, M16X75-8.8-B HEX HEAD FULL THREAD ZINC	F81006-10	2	
-	ROLLER W/RUBBER BUSHING	514758	1	
-	ROLLER, LT300	091782-1	1	
16	TUBE, LT70AHDE30S ROLLER	091781	1	
17	BEARING, 6205 2RS BALL	091804	2	
18	RING, W 52 INSIDE RETAINING	091805	2	
19	SHAFT, LT70AHDE30S ROLLER	091793	1	
20	RING, Z60 OUTSIDE RETAINING	F81090-62	2	
21	RING, 61/80X3 SPACER	515895	4	
22	BOLT, M10X20-5.8 HEX HEAD FULL THREAD ZINC	F81003-1	2	
23	WASHER, 10.5 SPECIAL FLAT ZINC	F81055-6	2	
24	ROLLER, RUBBER	517493	5	
25	BUMPER, GRENE 70 3201 0010 RUBBER	094969	2	
26	WASHER, 8.4 FLAT ZINC	F81054-1	16	
27	WASHER, 10.5 FLAT ZINC	F81055-1	8	
28	BOLT, M10X75-8.8 HEX HEAD ZINC	F81003-15	8	
29	NUT, M10-HEX NYLON ZINC LOCK	F81033-1	8	
30	NUT, M8-8-B HEX NYLON ZINC LOCK	F81032-2	4	
31	BOLT, M8X130-8.8 HEX HEAD ZINC	F81002-50	4	

3.19 Board Removal Bumper Assembly

528350_001
528350_MANUAL



REF.	DESCRIPTION (◆ Indicates Parts Available in Assemblies Only)	PART #	QTY
-	BOARD REMOVAL BUMPER ASSEMBLY, FRAME M	528350	1
1	BOARD REMOVAL BUMPER, FRAME M/S See Section 3.20	527049	1
2	FRAME, BOARD REMOVAL BUMPER ASSEMBLY	529773-1	1
3	BOLT, M12X130 8.8 CARRIAGE HEAD ZINC	F81004-26	4
4	WASHER, 13-FLAT, ZINC	F81056-1	4
5	NUT, M12 8 HEX NYLON ZINC LOCK	F81034-2	4
6	WASHER, 10,5 FLAT ZINC	F81055-1	8
7	NUT, M10 HEX NYLON ZINC LOCK	F81033-1	4
8	BOLT, M10X75-8.8 HEX HEAD ZINC	F81003-15	4

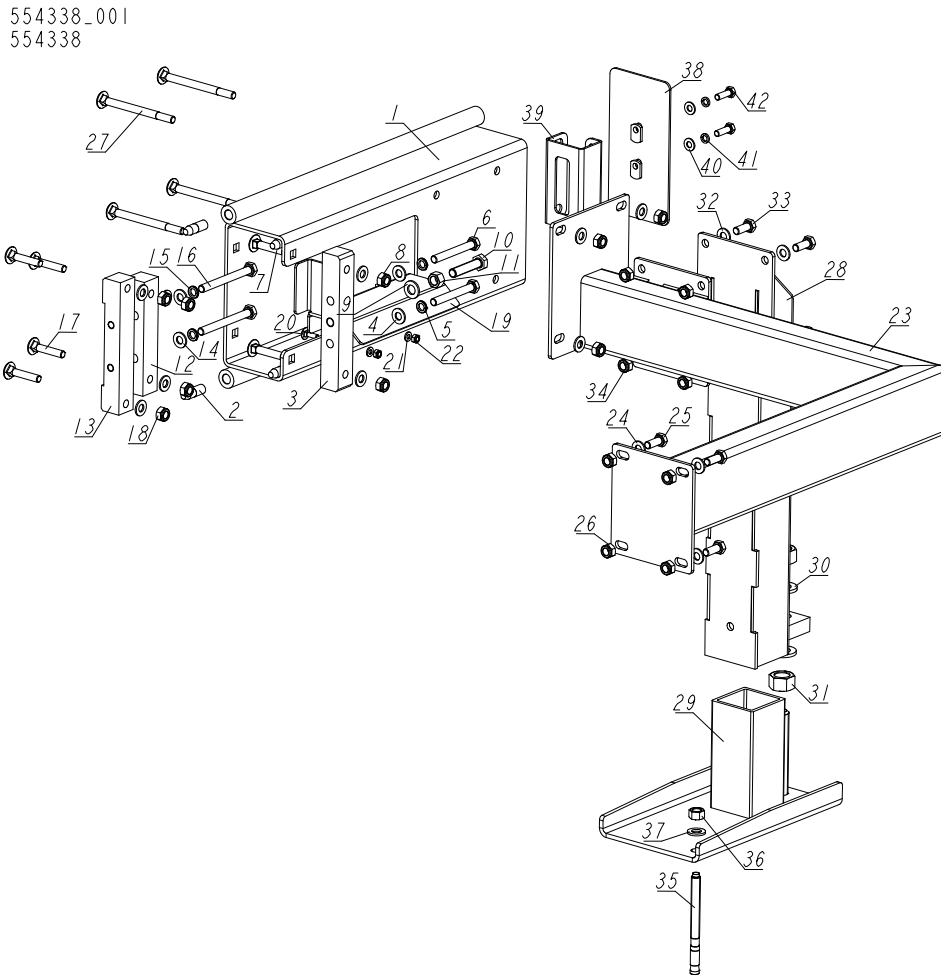
REPLACEMENT PARTS

Board Removal Bumper

3

REF.	DESCRIPTION (◆ Indicates Parts Available in Assemblies Only)	PART #	QTY	
7	WASHER, 17 SPLIT LOCK ZINC	F81058-1	4	
8	NUT, M16-8 HEX NYLON ZINC LOCK	F81036-2	2	
9	PIN, S-ZN-4X45 COTTER	F81043-22	4	
10	WASHER, WM4000 ROLLER MOUNTING	510874-1	2	
11	WASHER, 6.4 FLAT ZINC	F81053-1	2	
12	BOLT, M6X12 8.8 HEX HEAD ZINC LOCK	F81001-7	2	
13	ROLLER W/RUBBER BUSHING See Section 3.38	527048	1	
14	BOLT, M16X75-8.8-B-HEX HEAD FULL THREAD ZINC	F81006-10	2	

3.21 Bed Extension LT70 Remote



REF	DESCRIPTION (u indicates parts available in assemblies only)	PART #	QTY
-	BED EXTENSION, LT70 REMOTE	554338	1
1	TUBE, EXTENSION W/RODS 20 CAL.	554339-1	1
2	PIN, SPECIAL	090675	2
-	BAR, MOUNTING	554342	1
3	BLOCK, SPACER	554341	1
4	WASHER, 10.5 FLAT ZINC	F81055-1	4
5	WASHER, 10.2 SPLIT LOCK ZINC	F81055-2	2
6	BOLT, M10X80 8.8 HEX HEAD FULL THREAD ZI	F81003-76	2
7	BOLT, M10X50 CARRIAGE ZC 8.8	F81003-133	2
8	NUT, M10-8-B NYLON HEX ZINC LOCK	F81033-1	2
9	WASHER, 13 FLAT ZINC	F81056-1	1
10	BOLT, M12X55-8.8 HEX HEAD FULL THREAD ZI	F81004-43	1
11	NUT, M12-8-B HEX ZINC	F81034-1	1
-	BAR, MOUNTING	554344	1
12	BLOCK, SPACER	554343	1
13	BLOCK, SPACER	554345	1
14	WASHER, 10.5 FLAT ZINC	F81055-1	6

REPLACEMENT PARTS

Bed Extension LT70 Remote

3

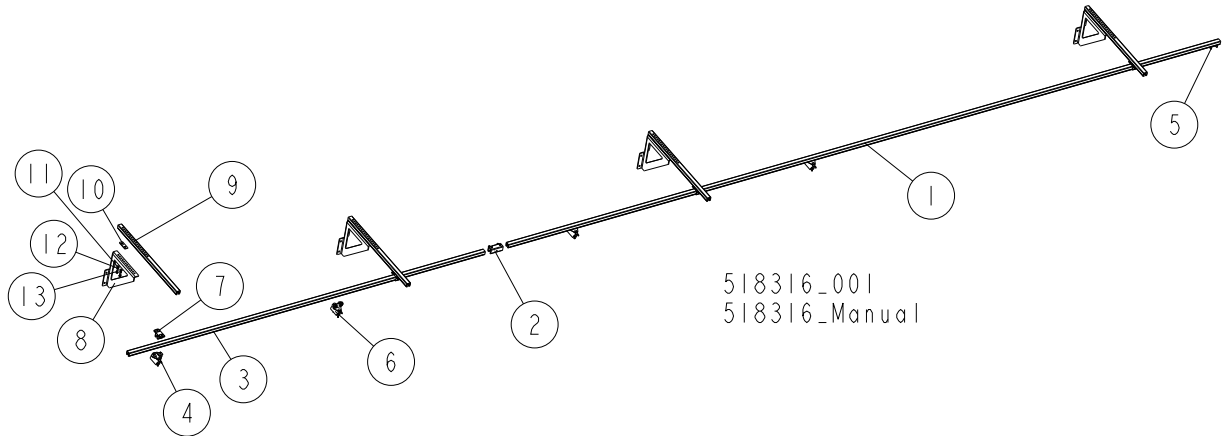
REF	DESCRIPTION (u indicates parts available in assemblies only)	PART #	QTY	
15	WASHER, 10.2 SPLIT LOCK ZINC	F81055-2	2	
16	BOLT, M10X100-8.8 HEX HEAD FULL THREAD Z	F81003-91	2	
17	BOLT, M10X50 CARRIAGE ZC 8.8	F81003-171	4	
18	NUT, M10-8-B NYLON HEX ZINC LOCK	F81033-1	4	
-	PLATE, SUPPORT	554347	1	
19	PLATE	554346-1	1	
20	BOLT, M6X20 CARRIAGE ZC 8.8	F81001-119	2	
21	WASHER, 6.4 FLAT ZINC	F81053-1	2	
22	NUT, M6-8-B HEX NYLON ZINC LOCK	F81031-2	2	
-	BX BRACE, 20 CAL.	556362	1	
23	BX BRACE, WLDMT. 20 CAL.	556361-1	1	
24	WASHER, 10.5 FLAT ZINC	F81055-1	8	
25	BOLT, M10X25 8.8 HEX HEAD FULL THREAD ZI	F81003-11	4	
26	NUT, M10-8-B NYLON HEX ZINC LOCK	F81033-1	8	
27	BOLT, M10X120 8.8 CARRIAGE ZINC	F81003-33	4	
-	LEG, LEFT ADJUSTABLE STATIONARY	501639	1	
28	LEG, ADJUSTABLE	507715-1	1	
29	FOOT, WIDE	501084-1	1	
30	WASHER, 21 FLAT ZINC	F81059-2	2	
31	NUT, M20-8 HEX ZINC	F81037-1	2	
32	WASHER, 10.5 FLAT ZINC	F81055-1	4	
33	BOLT, M10X25 8.8 HEX HEAD FULL THREAD ZI	F81003-11	4	
34	NUT, M10-8-B NYLON HEX ZINC LOCK	F81033-1	4	
-	STUD, M12 140MM ANCHOR	084529	1	
35	STUD, M12 140MM ANCHOR	084529	1	
36	NUT, M12-8-B HEX ZINC	F81034-1	1	
37	WASHER, 13 FLAT ZINC	F81056-1	1	
-	COVER ASSEMBLY, MAIN TUBE	093052	1	
38	COVER, 201X101.6X3 TUBE	015023-1	1	
39	BRACKET WELDMENT, REAR MAIN TUBE COVER	087105-1	1	
40	WASHER, 8.4 FLAT ZINC	F81054-1	2	
41	WASHER, 8.2 SPLIT LOCK ZINC	F81054-4	2	
42	BOLT, M8X25-8.8-B HEX HEAD FULL THREAD	F81002-5	2	

3

REPLACEMENT PARTS

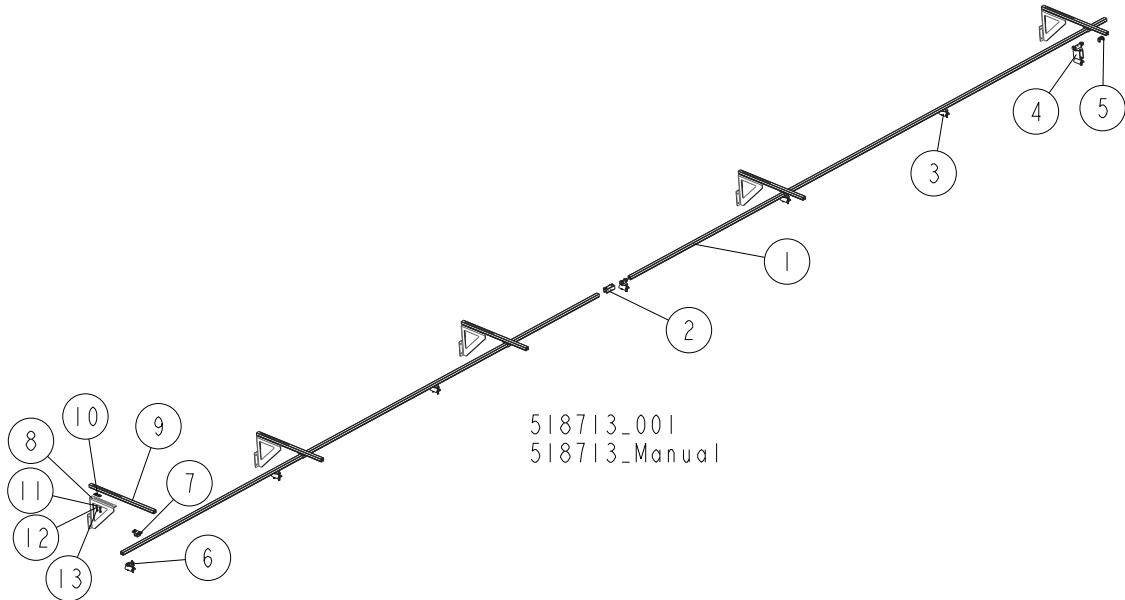
Remote Equipment for Installation on a Wall (Cutting Length of 6.5 m)

3.22 Remote Equipment for Installation on a Wall (Cutting Length of 6.5 m)



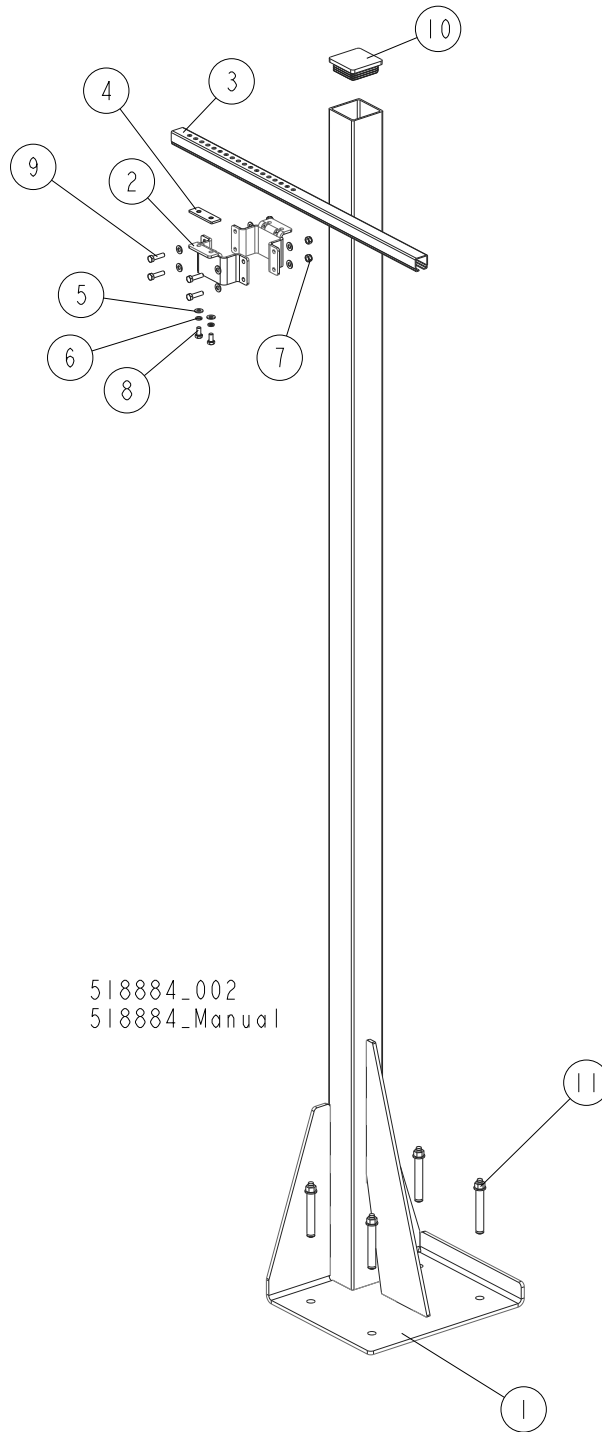
REF.	DESCRIPTION (◆ Indicates Parts Available In Assemblies Only)	PART #	QTY
	REMOTE EQUIPMENT (CUTTING LENGTH OF 6.5 M)	518316	1
	RAIL, COMPLETE GUIDE (CUTTING LENGTH OF 6.5M)	518315	1
1	RAIL, 6 M C-PROFILE	518332	1
2	COUPLER, TRACK	518705	1
3	RAIL, 3 M C-PROFILE	518313	1
4	CLAMP, FLAT CABLE - END	518701	1
5	TROLLEY, TOWING	518334	1
6	STOP, END	518700	1
7	TROLLEY, CABLE MOVING	518333	3
8	BRACKET, BOLT-ON	518702	4
	RAIL BRACKET KIT FOR WALL MOUNTING	518724	4
9	BRACKET, GUIDE RAIL (FOR WALL MOUNTING)	518728-1	1
10	ARM, RAIL BRACKET	518709	1
11	PLATE, ARM CLAMPING	518885-1	1
12	WASHER, 8.4 FLAT ZINC	F81054-1	2
13	WASHER, 8.2 SPLIT LOCK ZINC	F81054-4	2
14	BOLT, M8x16-8.8-B HEX HEAD FULL THREAD ZINC	F81002-20	2

3.23 Remote Equipment for Installation on a Wall (Cutting Length of 6.5-10 m)



REF.	DESCRIPTION (◆ Indicates Parts Available In Assemblies Only)	PART #	QTY
	REMOTE EQUIPMENT (CUTTING LENGTH OF 6.5-10 M)	518713	1
	RAIL, COMPLETE GUIDE (CUTTING LENGTH OF 6.5-10 M)	518704	1
1	RAIL, 6 M C-PROFILE	518332	2
2	COUPLER, TRACK	518705	1
3	TROLLEY, CABLE MOVING	518333	5
4	TROLLEY, TOWING	518334	1
5	STOP, END	518700	1
6	CLAMP, FLAT CABLE - END	518701	1
7	BRACKET, BOLT-ON	518702	5
8	RAIL BRACKET KIT FOR WALL MOUNTING	518724	5
9	BRACKET, GUIDE RAIL (FOR WALL MOUNTING)	518728-1	1
10	ARM, RAIL BRACKET	518709	1
11	PLATE, ARM CLAMPING	518885-1	1
12	WASHER, 8.4 FLAT ZINC	F81054-1	2
13	WASHER, 8.2 SPLIT LOCK ZINC	F81054-4	2

3.24 Guide Rail Support Post



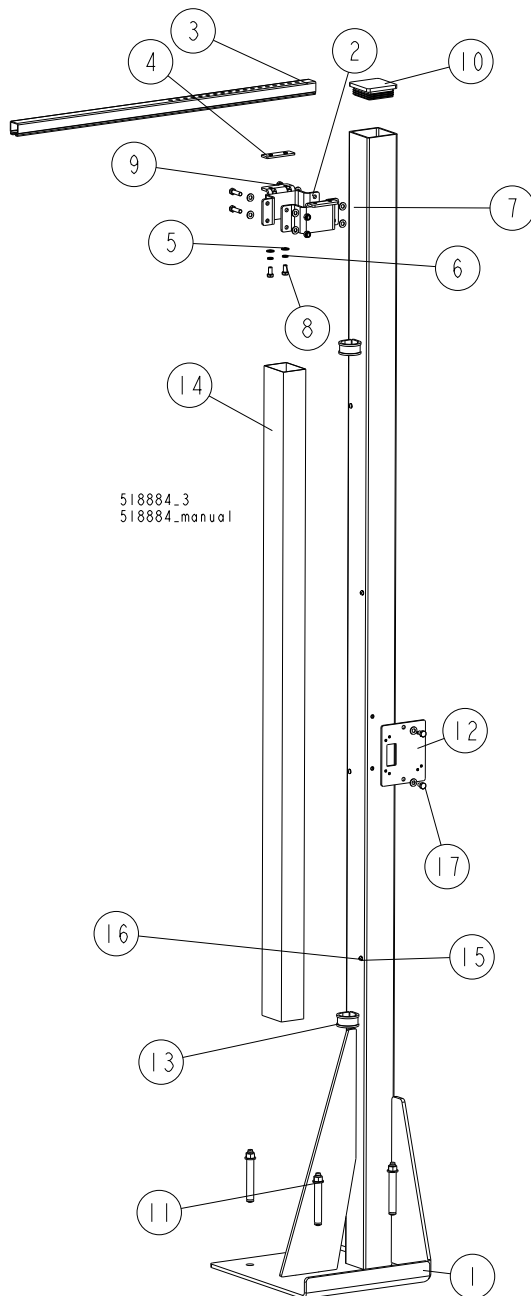
REF.	DESCRIPTION (◆ Indicates Parts Available In Assemblies Only)	PART #	QTY
	POST, GUIDE RAIL SUPPORT - COMPLETE	518736	1
1	POST, GUIDE RAIL SUPPORT	518707-1	1
2	BRACKET, 80X80 TUBE WRAP	518725-1	2
3	ARM, RAIL BRACKET	518709	1
4	PLATE, ARM CLAMPING	518885-1	1

REF.	DESCRIPTION (◆ Indicates Parts Available In Assemblies Only)	PART #	QTY
5	WASHER, 8.4 FLAT ZINC	F81054-1	10
6	WASHER, 8.2 SPLIT LOCK ZINC	F81054-4	2
7	NUT, M8 8 HEX NYLON ZINC LOCK	F81032-2	4
8	BOLT, M8X16-8.8-B HEX HEAD FULL THREAD ZINC	F81002-20	2
9	BOLT, M8X30-5.8-B HEX HEAD FULL THREAD ZINC	F81002-2	4
10	CAP, 80X80 2-4 #111227 TUBE END	089644	1
11	PIN, LT 16X120	501877	4

3 REPLACEMENT PARTS

Guide Rail Support Post

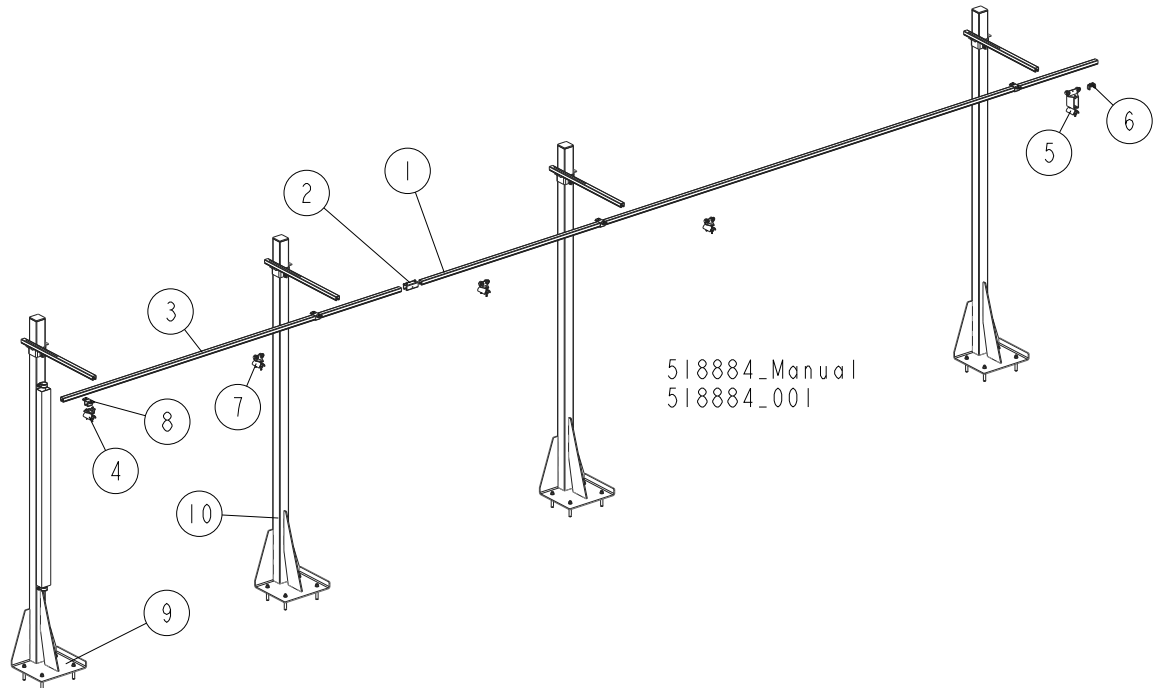
3.25 Guide Rail Support Post



REF.	DESCRIPTION (◆ Indicates Parts Available In Assemblies Only)	PART #	QTY
	POST, GUIDE RAIL SUPPORT - COMPLETE	520669	1
1	POST WELDMENT W/HOLES	520667-1	1
2	BRACKET, 80X80 TUBE WRAP	518725-1	2
3	ARM, RAIL BRACKET	518709	1
4	PLATE, ARM CLAMP	518885-1	1

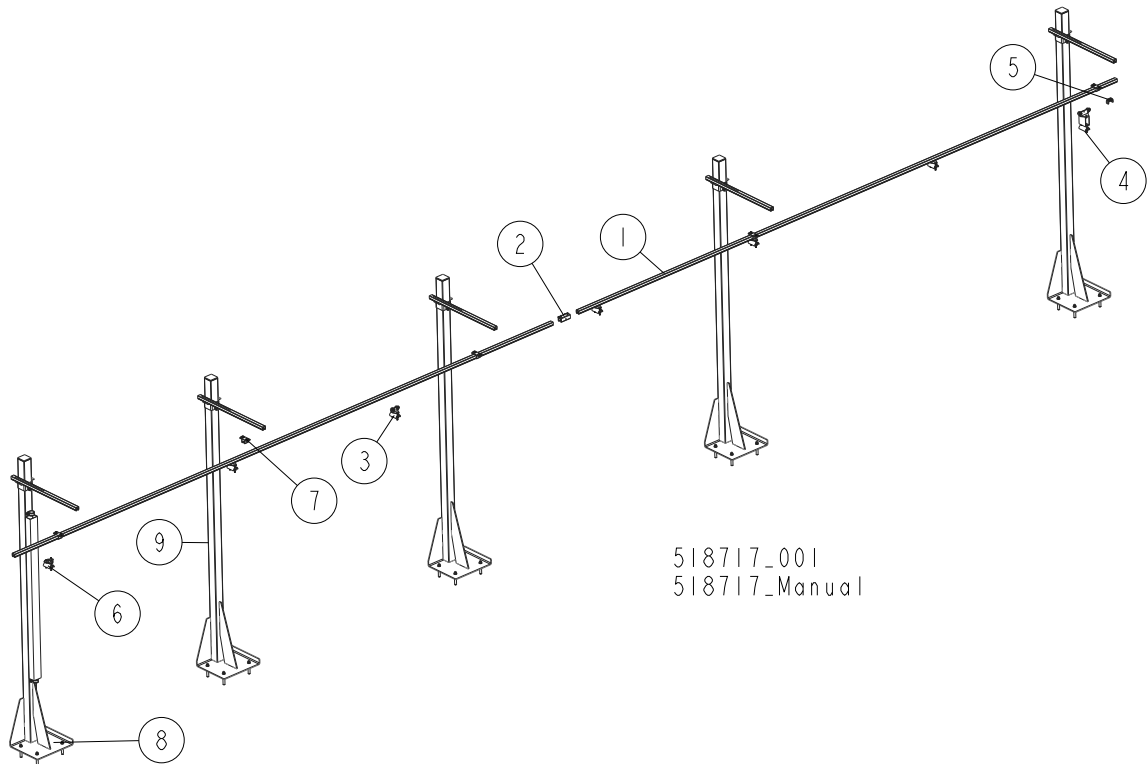
REF.	DESCRIPTION (◆ Indicates Parts Available In Assemblies Only)	PART #	QTY
5	WASHER, 8.4 FLAT ZINC	F81054-1	14
6	WASHER, 8.2 SPLIT LOCK ZINC	F81054-4	2
7	NUT, M8 8 HEX NYLON ZINC LOCK	F81032-2	4
8	BOLT, M8X16-8.8-B HEX HEAD FULL THREAD ZINC	F81002-20	4
9	BOLT, M8X30-5.8-B HEX HEAD FULL THREAD ZINC	F81002-2	4
10	CAP, 80X80 GR 2-4 #111227 TUBE END	089644	1
11	PIN, LT 16X120	501877	4
12	PLATE, SOCKET MOUNT	517664-1	1
13	CLAMP, RSGU 1.42/20 W1 METAL & RUBBER	F81087-3	2
14	DUCT, CABLE	520670	1
15	WASHER, 5.3 FLAT ZINC	F81052-1	4
16	SCREW, M5X10-8.8 CROSS RECESSED PAN HEAD ZINC	F81000-13	4
17	BOLT, M8X12-8.8 HEX HEAD FULL THREAD ZINC	F81002-6	2

3.26 4-Post Remote Set



REF.	DESCRIPTION (◆ Indicates Parts Available In Assemblies Only)	PART #	QTY
	REMOTE SET, 4-POST	518884	1
	RAIL, COMPLETE GUIDE (CUTTING LENGTH OF 6.5M)	518315	1
1	RAIL, 6 M C-PROFILE	518332	1
2	COUPLER, TRACK	518705	1
3	RAIL, 3 M C-PROFILE	518313	1
4	CLAMP, FLAT CABLE - END	518701	1
5	TROLLEY, TOWING	518334	1
6	STOP, END	518700	1
7	TROLLEY, CABLE MOVING	518333	3
8	BRACKET, BOLT-ON	518702	4
9	POST, GUIDE RAIL SUPPORT - COMPLETE See Section 3.25	520669	1
10	POST, GUIDE RAIL SUPPORT - COMPLETE See Section 3.24	518736	3

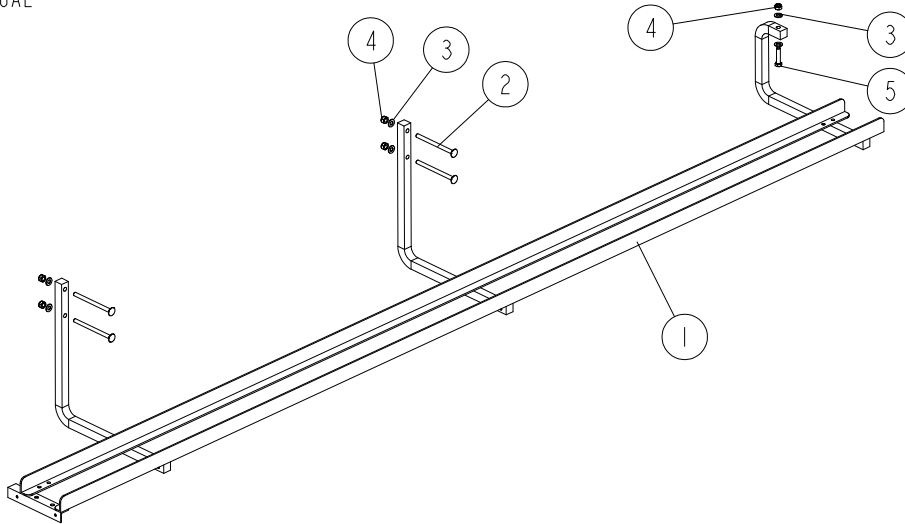
3.27 5-Post Remote Set



REF.	DESCRIPTION (◆ Indicates Parts Available In Assemblies Only)	PART #	QTY
	REMOTE SET, 5-POST	518717	1
	RAIL, COMPLETE GUIDE (CUTTING LENGTH OF 6.5-10 M)	518704	1
1	RAIL, 6 M C-PROFILE	518332	2
2	COUPLER, TRACK	518705	1
3	TROLLEY, CABLE MOVING	518333	5
4	TROLLEY, TOWING	518334	1
5	STOP, END	518700	1
6	CLAMP, FLAT CABLE - END	518701	1
7	BRACKET, BOLT-ON	518702	5
8	POST, GUIDE RAIL SUPPORT - COMPLETE See Section 3.25	520669	1
9	POST, GUIDE RAIL SUPPORT - COMPLETE See Section 3.24	518736	4

3.28 Support Assembly, Hoses & Cables

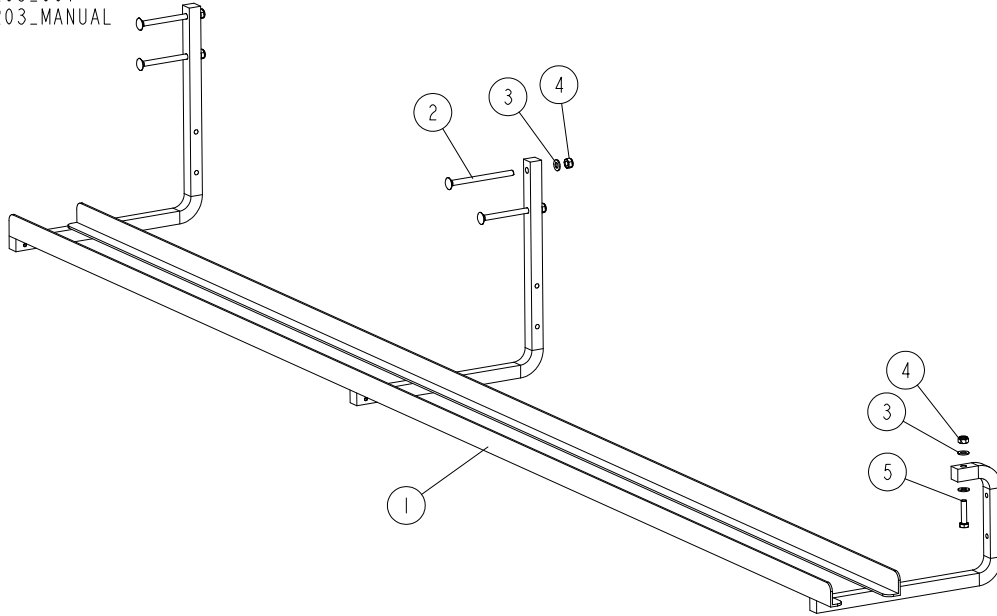
521956_001_B
 521956_MANUAL



REF.	DESCRIPTION (◆ Indicates Parts Available In Assemblies Only)	PART #	QTY	
-	BRACKET ASSEMBLY, HOSES & CABLES SUPPORT ("M" FRAME)	521956	1	
1	SUPPORT WELDMENT. CABLE DUCT.	525086-1	1	
2	BOLT, M10X140-4.8 CARRIAGE ZINC	F81003-14	4	
3	WASHER, 10.5 FLAT ZINC	F81055-1	6	
4	NUT, M10-8-B HEX NYLON ZINC LOCK	F81033-1	5	
5	BOLT, M10X45 HEX HEAD FULL THREAD ZINC	F81003-3	1	

3.29 Support Assembly, Hoses & Cables

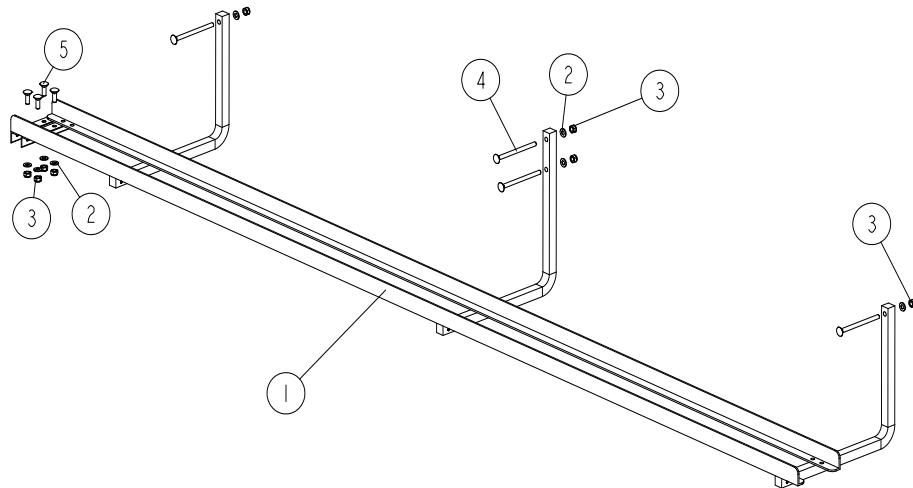
093203_001
 093203_MANUAL



REF.	DESCRIPTION (◆ Indicates Parts Available In Assemblies Only)	PART #	QTY	
-	SUPPORT WELDMENT. CABLE DUCT.	093203	1	
1	SUPPORT WELDMENT. CABLE DUCT.	093194-1	1	
2	BOLT, M10X140-4.8 CARRIAGE ZINC	F81003-14	4	
3	WASHER, 10.5 FLAT ZINC	F81055-1	6	
4	NUT, M10-8-B HEX NYLON ZINC LOCK	F81033-1	5	
5	BOLT, M10X45 HEX HEAD FULL THREAD ZINC	F81003-3	1	

3.30 Support Assembly, Hoses & Cables

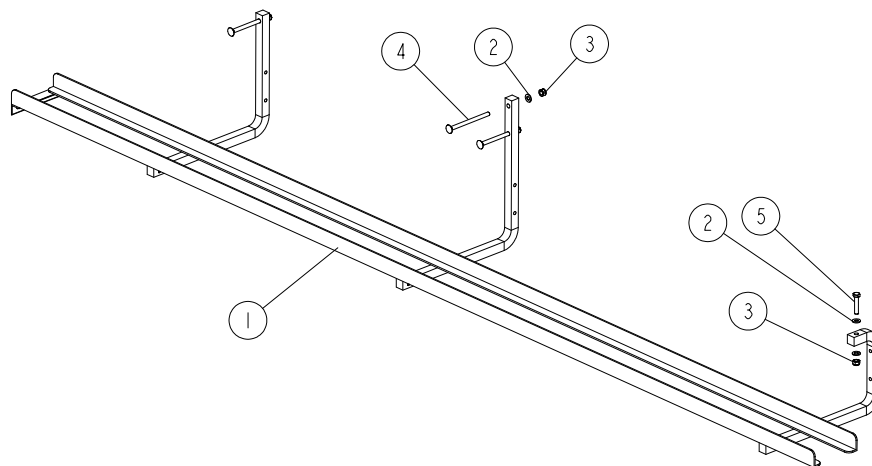
500504_001_B
 500504_MANUAL



REF	DESCRIPTION (◆ indicates parts available in assemblies only)	PART #	QTY
-	SUPPORT WELDMENT. CABLE DUCT.	500504	1
1	SUPPORT WELDMENT. CABLE DUCT.	500505-1	1
2	WASHER, 10.5 FLAT ZINC	F81055-1	8
3	NUT, M10-8-B HEX NYLON ZINC LOCK	F81033-1	8
4	NUT, M10-8-B HEX NYLON ZINC LOCK	F81003-14	4
5	BOLT, M10X30-8.8 CARRIAGE HEAD ZINC	F81003-101	4

3.31 Support Assembly, Hoses & Cables

518063_001
 518063_MANUAL



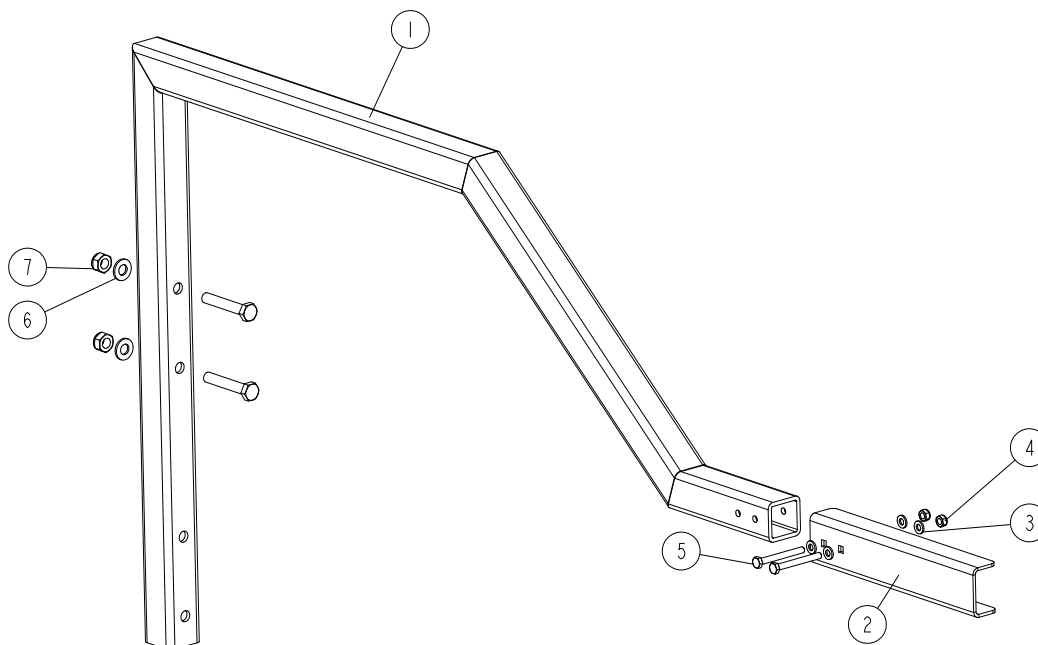
REF.	DESCRIPTION (◆ Indicates Parts Available In Assemblies Only)	PART #	QTY	
-	SUPPORT WELDMENT. CABLE DUCT.	518063	1	
1	SUPPORT WELDMENT. CABLE DUCT.	518064-1	1	
2	BOLT, M10X140-4.8 CARRIAGE ZINC	F81055-1	5	
3	WASHER, 10.5 FLAT ZINC	F81033-1	4	
4	NUT, M10-8-B HEX NYLON ZINC LOCK	F81003-14	3	
5	BOLT, M10X45 HEX HEAD FULL THREAD ZINC	F81003-4	1	

3 REPLACEMENT PARTS

Hoses & Cables

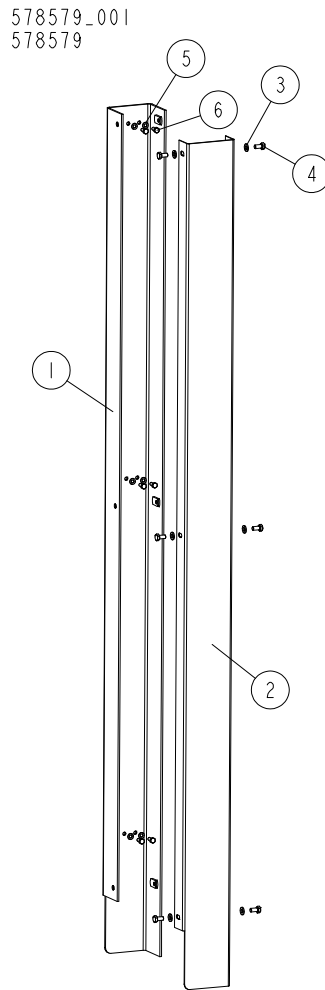
3.32 Hoses & Cables

532223_001
532223_MANUAL



REF.	DESCRIPTION (◆ Indicates Parts Available In Assemblies Only)	PART #	QTY
-	CABLE DUCT LT70	532223	1
1	CABLE DUCT LT70	532224-1	1
2	CABLE DUCT TROLLEY	518733-1	1
3	WASHER, M6, FLAT,ZINC	F81053-1	4
4	NUT,M6-8-B HEX,NYLON LOCK ZINC	F81031-2	2
5	BOLT M6X55-8.8	F81001-73	2
6	WASHER, 10.5 FLAT ZINC	F81055-1	2
7	NUT,M10-8-B NYLON HEX ZINC LOCK	F81033-1	2

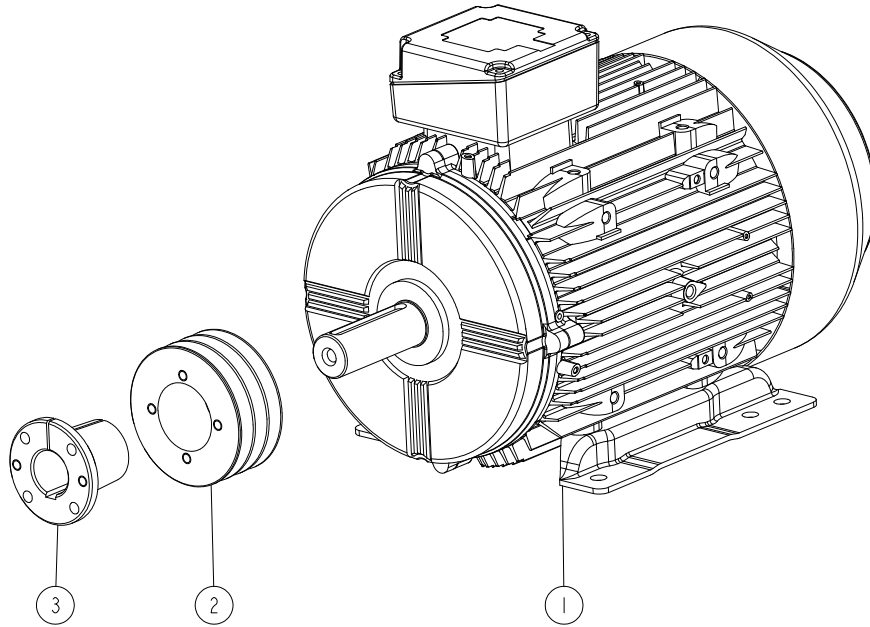
3.33 Cable Duct



REF	DESCRIPTION (u indicates parts available in assemblies only)	PART #	QTY
-	DUCT, CABLE LT70 RC	578579	1
1	CHANNEL, CABLE W/NUTS	578578-1	1
2	DUCT, COVER	578574-1	1
3	WASHER, 6.4 FLAT ZINC	F81053-1	6
4	BOLT, M6X12-8.8 HEX HEAD FULL THREAD ZIN	F81001-7	6
5	WASHER, 5.3 FLAT ZINC	F81052-1	6
6	BOLT, M5 X 12-5.8-HEX HEAD FULL THREAD Z	F81000-5	6

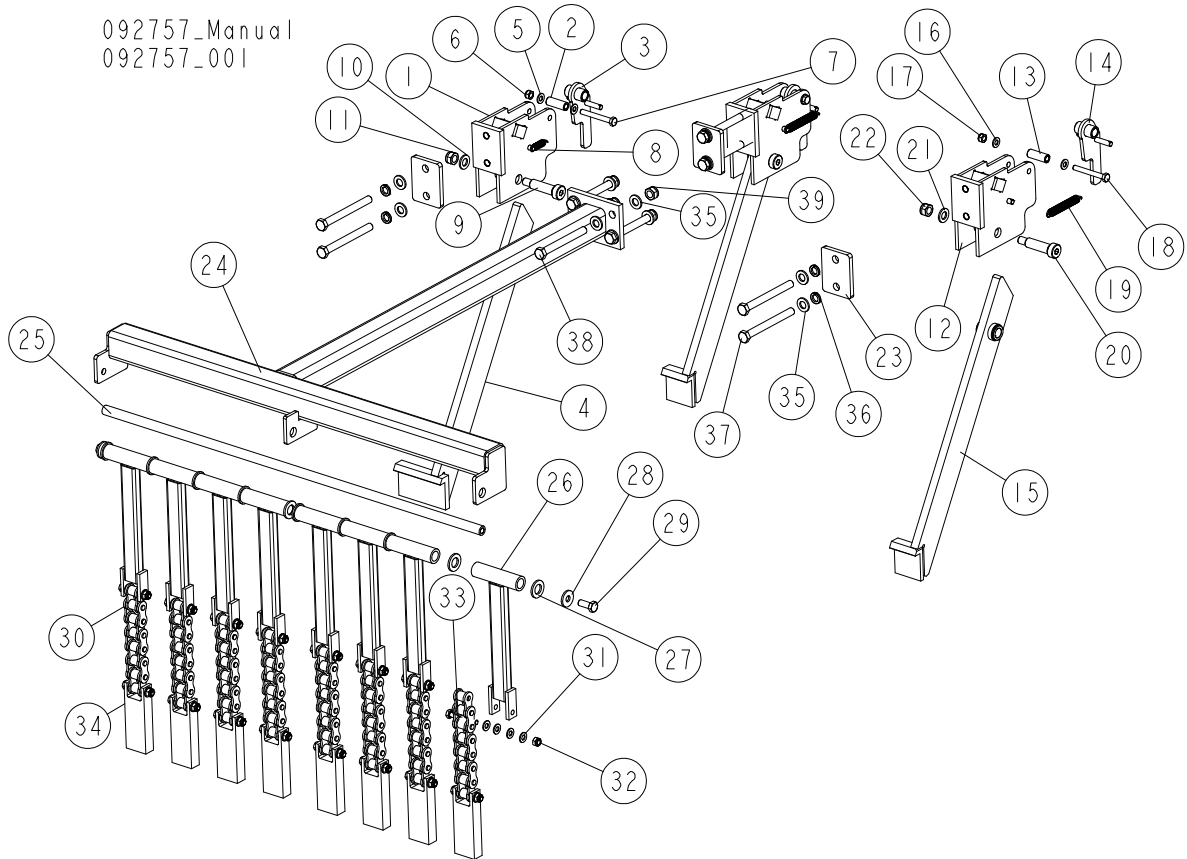
3.34 LT70H E30 RC Motor Kit

533793_001
533793_MANUAL



REF.	DESCRIPTION (◆ Indicates Parts Available In Assemblies Only)	PART #	QTY
-	MOTOR KIT E30 RC LT70 H	533793	1
1	MOTOR 22KW 1LE1002-1DA63-4AA4-ZF1+12	534490	1
2	PULLEY, ELECTRIC MOTOR 15/18,5KW	085671	1
3	SLEEVE, CONE,25HP ELECTRIC MOTOR KIT	085714	1
	BELT, 3BX 2437 LP	089464	1

3.35 Board Return Assembly



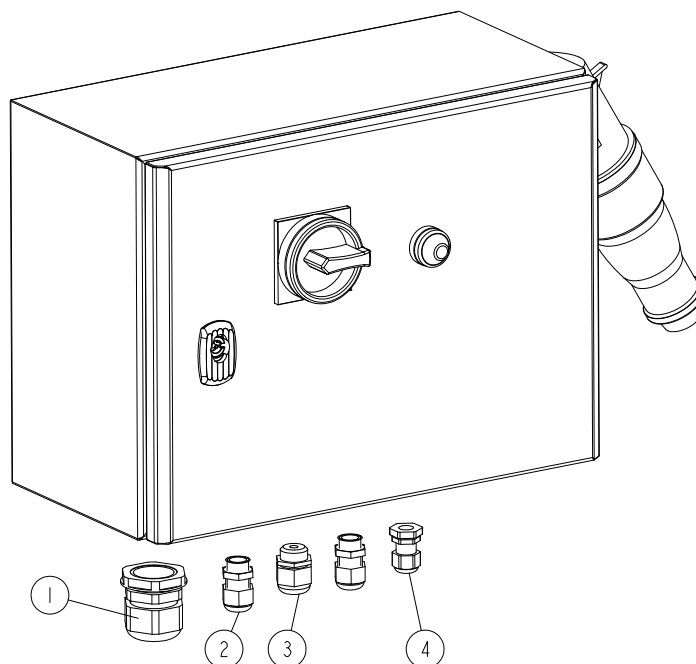
REF	DESCRIPTION (u indicates parts available in assemblies only)	PART #	QTY
-	BOARD RETURN ASSEMBLY	092757	1
-	BOARD, RETURN ASSEMBLY	578563	1
1	MOUNT WELDMENT, BOARD RETURN ARM	090109-1	1
2	SPACER, ZINC	090115-1	1
3	LATCH WELDMENT, BOARD RETURN ARM	090118-1	1
4	ARM, BOARD RETURN	578565-1	1
5	WASHER, 8,4-FLAT ZINC	F81054-1	2
6	NUT, M8-8-B HEX NYLON ZINC LOCK	F81032-2	1
7	BOLT, M8X65-5.8 HEX HEAD ZINC	F81002-3	1
8	SPRING, 1.6X12X38 EXTENSION	092208	2
9	BOLT, N16/M12X50 12.9 ISO 7379 "BOSSARD"	F81004-25	1
10	WASHER, 13 FLAT ZINC	F81056-1	1
11	NUT, M12-8 HEX NYLON ZINC LOCK	F81034-2	1
-	BOARD, RETURN ASSEMBLY	090120	2
12	MOUNT WELDMENT, BOARD RETURN ARM	090109-1	1
13	SPACER, ZINC	090115-1	1
14	LATCH WELDMENT, BOARD RETURN ARM	090118-1	1
15	ARM, BOARD RETURN	090112-1	1

3

REPLACEMENT PARTS*Board Return Assembly*

REF	DESCRIPTION (u indicates parts available in assemblies only)	PART #	QTY	
16	WASHER, 8,4-FLAT ZINC	F81054-1	2	
17	NUT, M8-8-B HEX NYLON ZINC LOCK	F81032-2	1	
18	BOLT, M8X65-5.8 HEX HEAD ZINC	F81002-3	1	
19	SPRING, EXT 1/2X2 1/4X.06	014817	2	
20	BOLT, N16/M12X50 12.9 ISO 7379 "BOSSARD"	F81004-25	1	
21	WASHER, 13 FLAT ZINC	F81056-1	1	
22	NUT, M12-8 HEX NYLON ZINC LOCK	F81034-2	1	
23	WASHER, SPECIAL	092756-1	3	
-	GUIDE, BOARD RETURN	514162	1	
24	GUIDE WELDMENT, BOARD RETURN	091067-1	1	
25	ROD, BOARD RETURN GUIDE	091074	1	
26	ARM WELDMENT, BOARD RETURN GUIDE	091070-1	8	
27	WASHER, 17 SPLIT LOCK ZINC	F81058-1	10	
28	WASHER, 10.5 SPECIAL FLAT ZINC	F81055-6	2	
29	BOLT, M10X25 8.8 HEX HEAD FULL THREAD	F81003-31	2	
30	CHAIN 16B-1 - 0.18M	578562	8	
31	WASHER, 8,4-FLAT ZINC	F81054-1	64	
32	NUT, M8-8-B HEX NYLON ZINC LOCK	F81032-2	16	
33	BOLT, M8X55-8.8 HEX HEAD ZINC	F81002-8	16	
34	BLOCK, ALUMINUM 42X20	578561	8	
35	WASHER, 13 FLAT ZINC	F81056-1	14	
36	WASHER, Z12.2 SPLIT LOCK ZINC	F81056-2	6	
37	BOLT, M12X120 8.8 HEX HEAD ZINC	F81004-38	6	
38	BOLT, M12X110-8.8-B HEX HEAD ZINC	F81004-47	4	
39	NUT, M12-8 HEX NYLON ZINC LOCK	F81034-2	4	

3.36 Electric Box, ST 4 kW (557006)

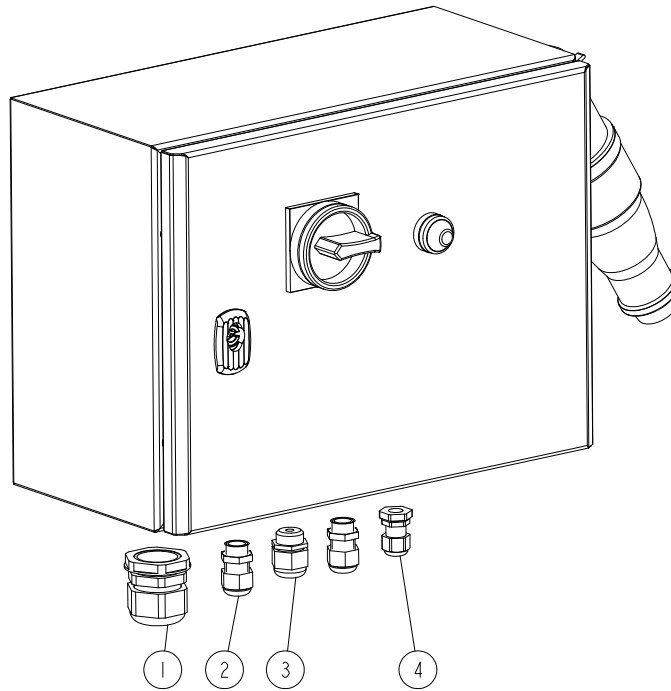
557006_001
557006_MANUAL

LP.	OPIS (* wskazuje części dostępne jedynie w zespołach)	Nr części	Ilość
-	BOX ELECTRIC AC	557006 ¹	1
1	GLAND, PG29 CABLE	F81096-1	1
2	GLAND NUT, TRAILER HITCH, DW 11/H	085388	2
3	GLAND, DP 13/H CABLE	F81096-4	1
4	GLAND, DP 9/H	F81096-2	1

¹ The remaining electric box components are included in the Electrical Parts List provided together with the electrical diagrams.

3.37 Electric Box, ST 4 kW (557003)

557003_001
557003_MANUAL

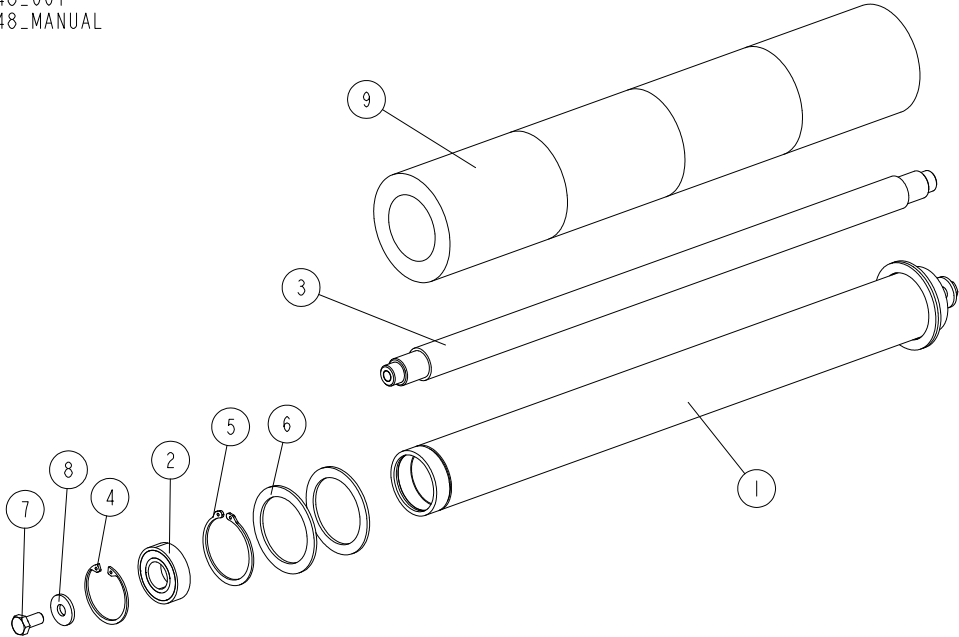


REF	DESCRIPTION (◆ indicates parts available in assemblies only)	PART #	QTY
-	BOX ELECTRIC AC	557003 ¹	1
1	GLAND, PG29 CABLE	F81096-1	1
2	GLAND NUT, TRAILER HITCH, DW 11/H	085388	2
3	GLAND, DP 13/H CABLE	F81096-4	1
4	GLAND, DP 9/H	F81096-2	1

¹ The remaining electric box components are included in the Electrical Parts List provided together with the electrical diagrams.

3.38 Roller with Rubber Bushing

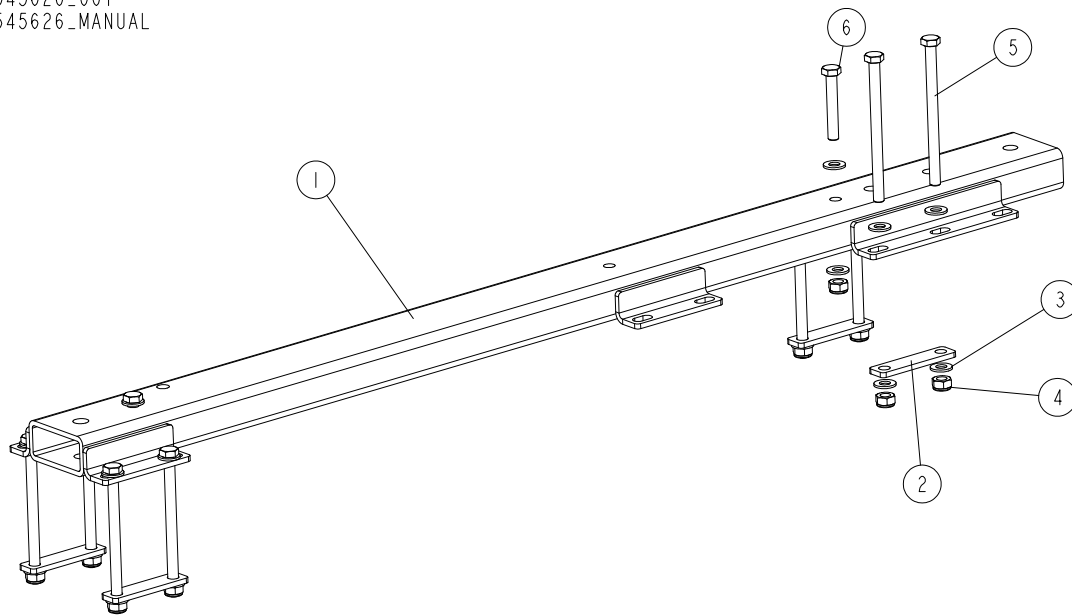
527048_001
527048_MANUAL



REF.	DESCRIPTION (◆ Indicates Parts Available in Assemblies Only)	PART #	QTY
-	ROLLER W/RUBBER BUSHING	527048	1
-	ROLLER, FRAME M/S	527044-1	1
1	TUBE, ROLLER - FRAME M/S - SR	527043	1
2	BEARING, 6205 2RS BALL	091804	2
3	SHAFT, ROLLER - FRAME M/S-SR	527050	1
4	RING, W52 INSIDE RETAINING	F81090-6	2
5	RING, Z60 OUTSIDE RETAINING	F81090-62	2
6	RING, 61/80X3 SPACER	515895	4
7	BOLT, M10X20-8.8 HEX HEAD FULL THREAD ZINC	F81003-1	2
8	WASHER, 10.5 SPECIAL FLAT ZINC	F81055-6	2
9	ROLLER, RUBBER	517493	4

3.39 Side Of The Platform(545626)

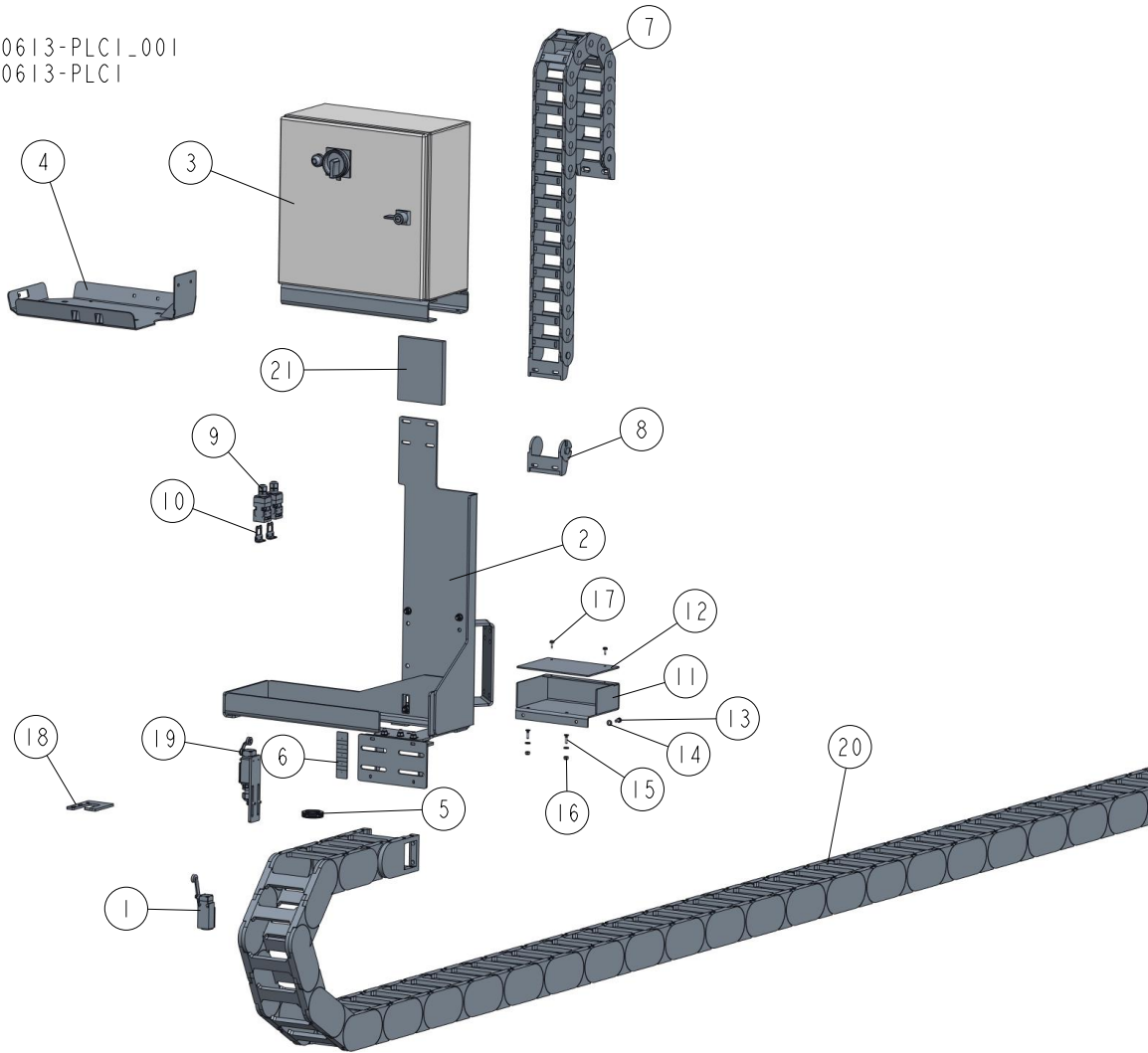
545626_001
545626_MANUAL



REF	DESCRIPTION (◆ indicates parts available in assemblies only)	PART #	QTY
-	PLATFORM SIDE COMPLETE	545626	1
1	PLATFORM SIDE WLDMT	545625-1	1
2	FLAT BAR MOUNTING BASE PLATFORM	545627-1	4
3	WASHER, 10.5 FLAT ZINC	F81055-1	20
4	NUT, M10-8-B HEX NYLON ZINC LOCK	F81033-1	10
5	BOLT, M10X140-8.8 HEX HEAD ZINC	F81003-5	8
6	BOLT, M10X65-8.8-B HEX HEAD ZINC	F81003-67	2

3.40 Mounting Kit 500613-PLC1

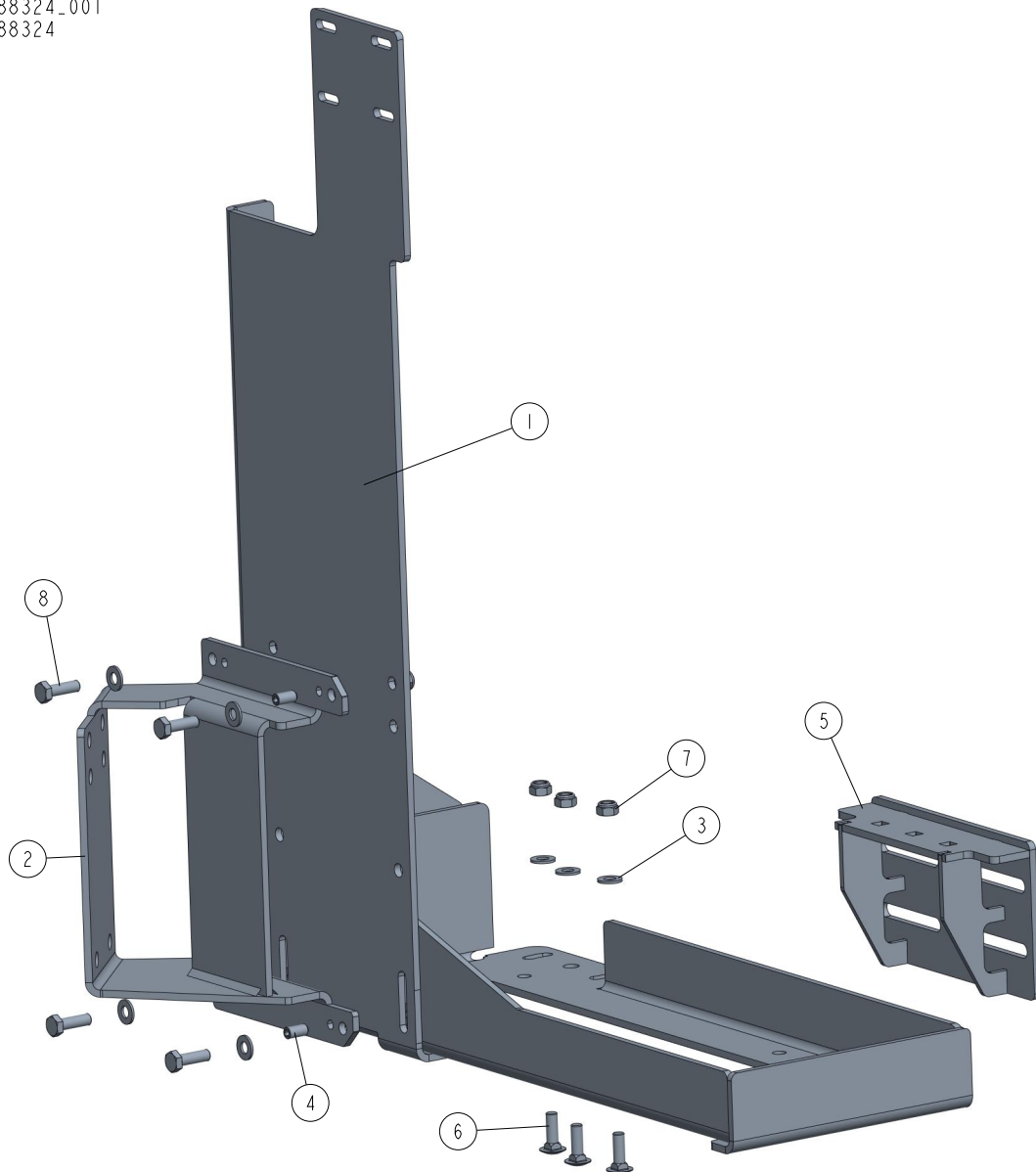
500613-PLC1_001
500613-PLC1



REF	DESCRIPTION (◆ indicates parts available in assemblies only)	PART #	QTY
-	MOUNTING KIT E25 LT70.	500613-PLC 1	1
1	SWITCH, GLCB01A2B (HONEYWELL) LIMIT	086469	1
2	BASE, AC REMOTE ELECTRIC BOX - COMPLETE See Section 3.41	088324	1
3	BOX, ELECTRIC LT70 REMOTE PLC1	087808-PLC 1	1
4	TRAY, WATER LUBE BOTTLE/FUEL TANK	088307-1	1
5	NUT, 53019060 GMP-GL 29	086560	3
6	ELEMENT, E9S SELF-ADHESIVE MOUNT	087695	5
7	CARRIER, INGUS 27.07.063 CABLE	088048	1
8	BRACKET SET, 2607.12PZ CABLE CARRIER	087773	1
9	SWITCH, AZ17-11ZRK SAFETY	094232	2
10	KEY, AZ17/170-B5	094422	2
-	WIRES GUARD, COMPLETE	089310	1
11	GUARD, WIRES	089306-1	1
12	PLATE, GUARD TOP	089308-1	1

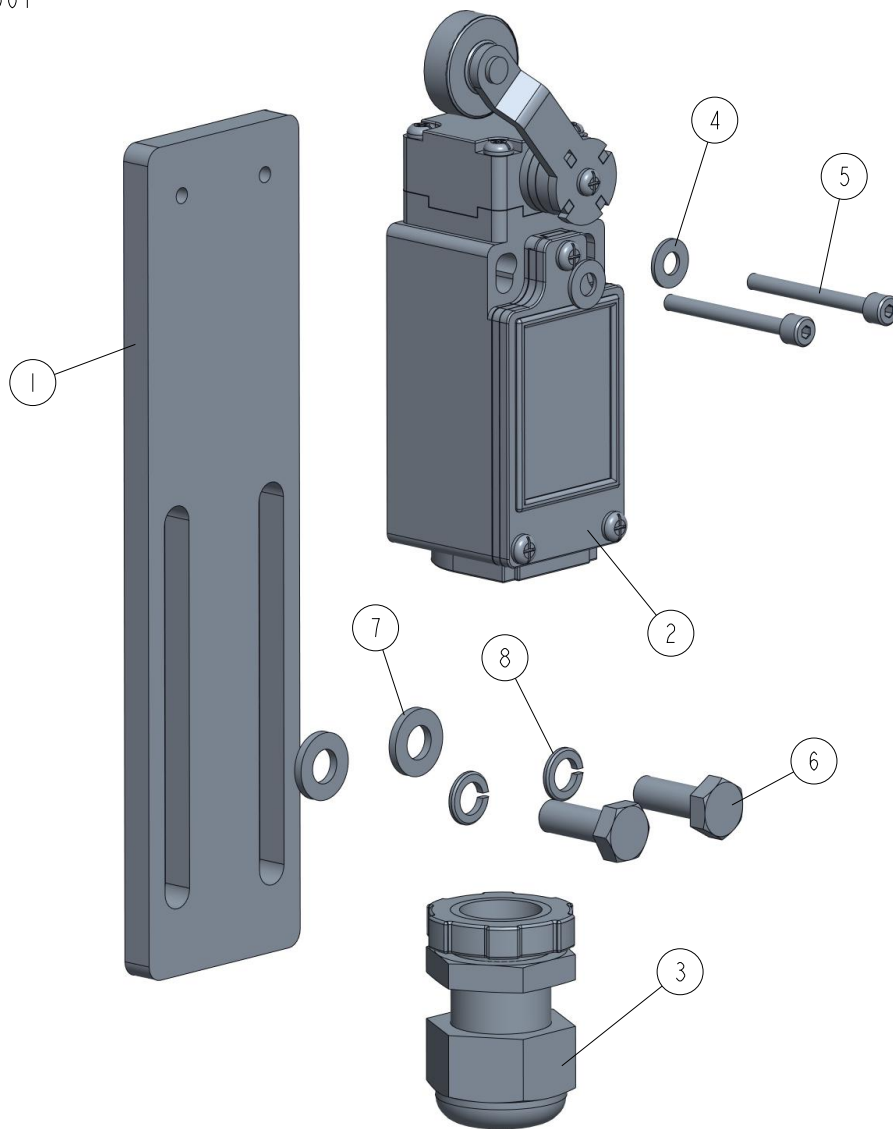
REF	DESCRIPTION (◆ indicates parts available in assemblies only)	PART #	QTY	
13	BOLT, M6X12 8.8 HEX HEAD FULL THREAD ZIN	F81001-7	2	
14	WASHER, 6.4 FLAT ZINC	F81053-1	4	
15	SCREW, M6X20-5.8-B SLOTTED COUNTERSUNK H	F81001-31	2	
16	NUT, M6-8-B HEX NYLON ZINC LOCK	F81031-2	2	
17	BOLT, #10-24X1/2 SELF TAPPING	F05015-7	2	
18	BRACKET, LIMIT SWITCH	091852-1	1	
19	SWITCH ASSEMBLY, LT70 SAFETY LOWER See Section 3.42	505711	1	
20	CARRIER, 400.100.200.0 IGUS CABLE	092367	1	
21	CONTROLLER, ALTIVAR ATV312HU11N4 SPEED	093488	1	

3.41 Base, AC Remote Electric Box 088324

088324_001
088324

REF	DESCRIPTION (u indicates parts available in assemblies only)	PART #	QTY
-	BASE, AC REMOTE ELECTRIC BOX - COMPLETE	088324	1
1	MOUNT WELDMENT, AC REMOTE ELECTRIC BOX	550045-1	1
2	BRACKET, AC REMOTE ELECTRIC BOX BASE	530171-1	1
3	WASHER, 8.4 FLAT ZINC	F81054-1	11
4	SCREW, M8X16 45H GEOMET SET	F81014-2	2
5	BRACKET, CABLE CARRIER	516829-1	1
6	BOLT, M8X25 8.8 CARRIAGE ZINC	F81002-59	3
7	NUT, M8 8 HEX NYLON ZINC LOCK	F81032-2	7
8	BOLT, M8X25-8.8-B HEX HEAD FULL THREAD Z	F81002-5	4

3.42 Switch Assembly 505711

505711_001
505711

REF.	DESCRIPTION (◆ Indicates Parts Available in Assemblies Only)	PART #	QTY	
	SWITCH ASSEMBLY, LT70 LOWER LIMIT	505711	1	
1	BAR, LIMIT SWITCH MOUNTING	505125-1	1	
2	LIMIT SWITCH, FA138 Z11	100931	1	
3	STUFFING-BOX, SKINTOP PG 13.5	086524	1	
4	WASHER, 4.3 FLAT ZINC	F81051-2	2	
5	SCREW, M3X30 8.8 HEX SOCKET HEAD CAP ZINC	F81011-38	2	
6	BOLT, M6 X 16 8.8 HEX HEAD FULL THREAD ZINC	F81001-15	2	
7	WASHER, 6.4 FLAT ZINC	F81053-1	2	
8	WASHER, Z 6.1 SPLIT LOCK ZINC	F81053-3	2	