

Operator Seat

Safety, Operation, Maintenance & Parts Manual

OSS

rev. E.00



Safety is our #1 concern! Read and understand all safety information and instructions before operating, setting up or maintaining this machine.

Form #613

Table of Contents

Section-Page

SECTION 1	OPERATION	1-1
1.1	Overview	1-1
1.2	Installation	1-2
1.3	Seat Roller Replacement	1-4
SECTION 2	REPLACEMENT PARTS	2-1
2.1	Operator Seat	2-2
2.2	Lower Roller Bearings	2-4
2.3	Seat Frame/Latch/Travel Pin	2-6

SECTION 1 OPERATION

1.1 Overview

The operator seat is compatible with all '97 and later model LT30, LT40, LT30HD, and LT40HD standard and super mills. The seat allows the operator to be seated while traveling with the saw head. **NOTE:** The seat reduces maximum cutting length by 25". The seat can be easily removed for full-size logs.



CAUTION! Seat capacity: 300 lb (136 kg). Overloading will damage the feed system.



WARNING! Remove seat when not using with sawmill. Unused seat creates possible pinch point with moving saw carriage.

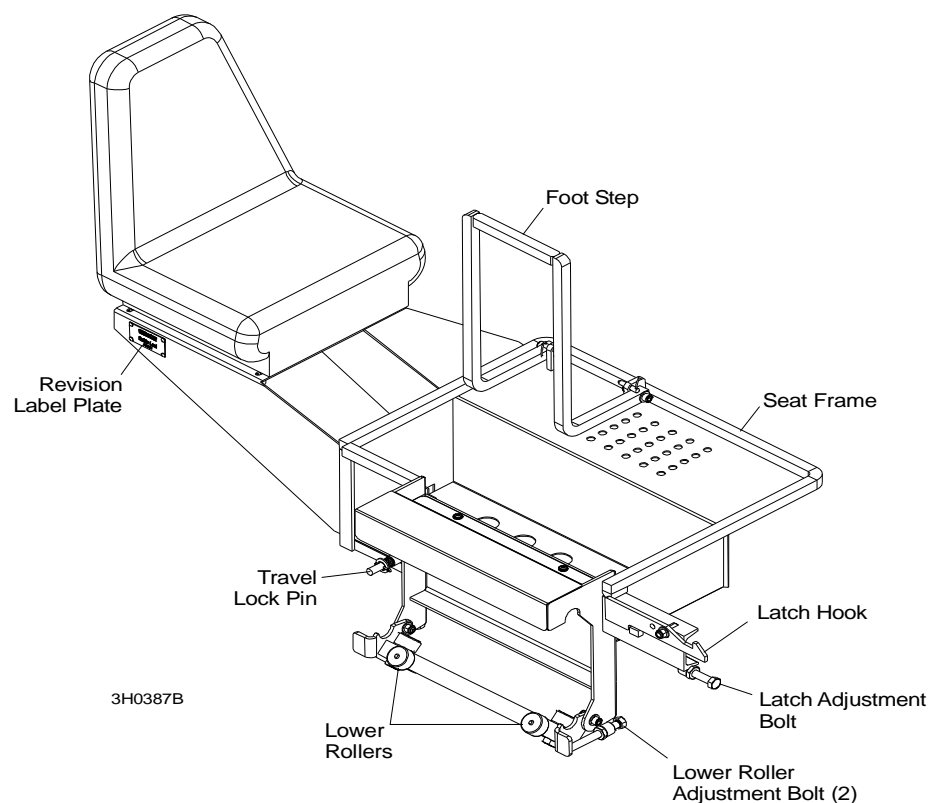


FIG. 1-1

1.2 Installation



CAUTION! (LT30HD & LT40HD Only). Move the saw carriage forward until the power supply contact button is disengaged from the hydraulic power strip. Disconnect the negative (-) battery cable before performing service near the hydraulic power supply. Failure to disconnect the cable could cause damage to the electrical system.

1. Back the lower roller adjustment bolts all the way out.
2. Position the seat at the front of the mill on the operator's side, facing the saw carriage. Position the top rollers on the top bed rail. Position the lower rollers on each side of the bottom bed rail.
3. Remove the two step retaining pins and lower the foot step. Replace the retaining pins.

See Figure 1-2.

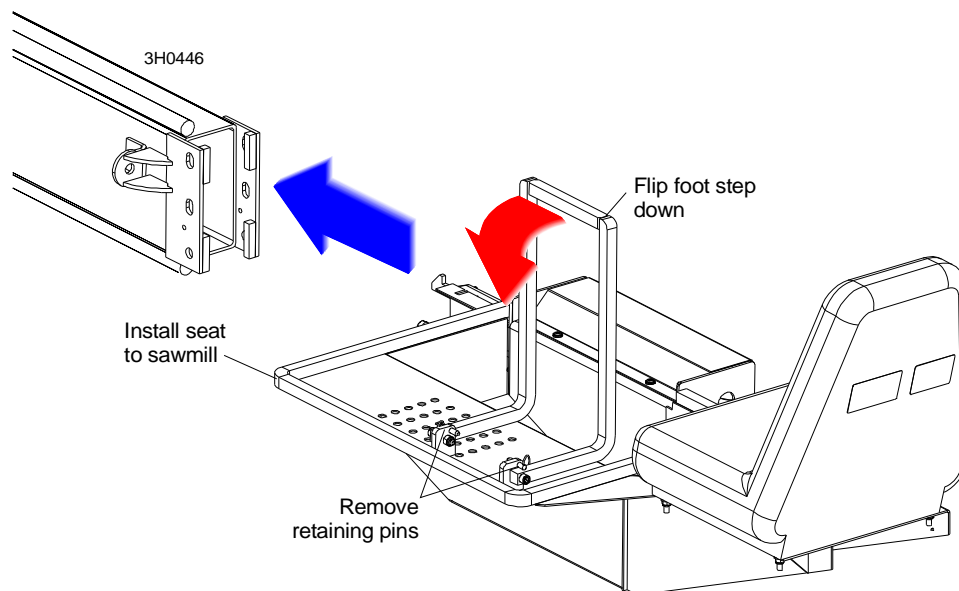


FIG. 1-2

- Secure the seat in place by tightening the lower roller adjustment bolts until the lower rollers just touch the bottom bed rail. **DO NOT OVERTIGHTEN!** The seat should roll freely when properly installed.

See Figure 1-3.

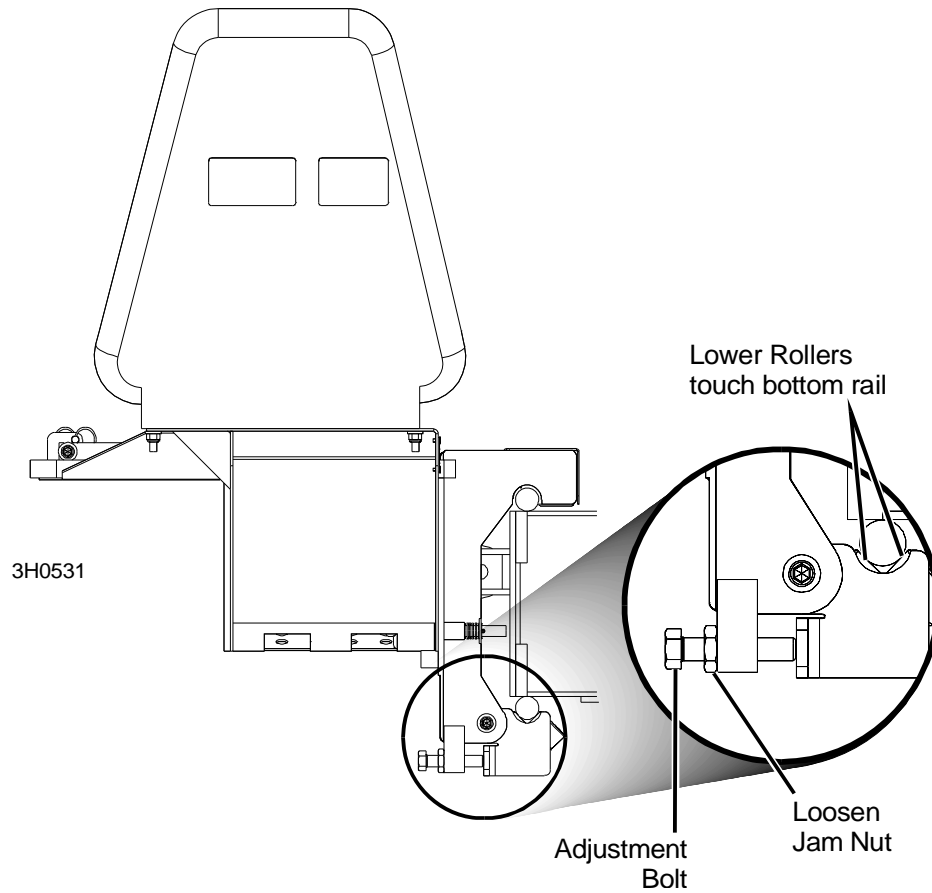


FIG. 1-3

- Remove the fender on the operator's side of the sawmill.

1

Operation

Seat Roller Replacement

6. Connect the seat to the sawmill carriage. Lift up on the seat latch, and move the seat toward the carriage until the latch hook is underneath the track roller housing. Release the latch.

See Figure 1-4. Make sure the seat is securely fastened to the carriage and there is no looseness between the seat and the sawmill carriage. Use the latch adjustment bolt to adjust the latch. Loosen the jam nut on the latch adjustment bolt. Turn the adjustment bolt out as desired. Check the seat for looseness. Repeat as necessary until the seat is securely fastened to the carriage. Retighten the jam nut.

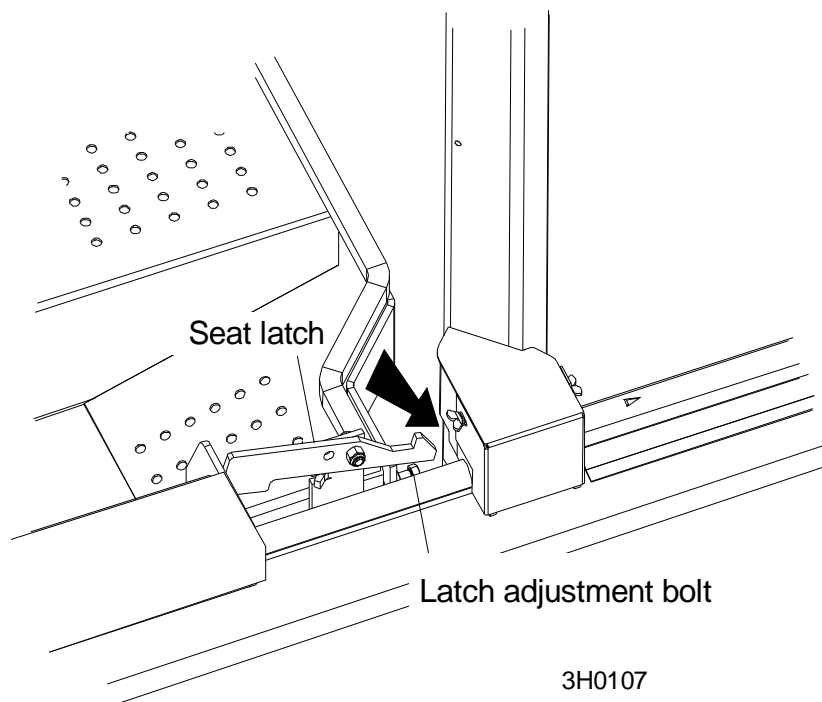


FIG. 1-4

7. An adjustment handle is provided to allow the operator to slide the seat forward or back. Pull the handle to the side and adjust the seat as desired. Release the handle.

1.3 Seat Roller Replacement

When replacing seat roller bearings, be careful not to overtighten the nuts that secure the bearings to the frame.



CAUTION! Overtightening the seat roller nuts may damage the threads on the bearing stud and/or the nut.

Maximum torque used to tighten the nuts is 65 ft.-lbs. (dry threads) or 32 ft.-lbs. (oiled threads).

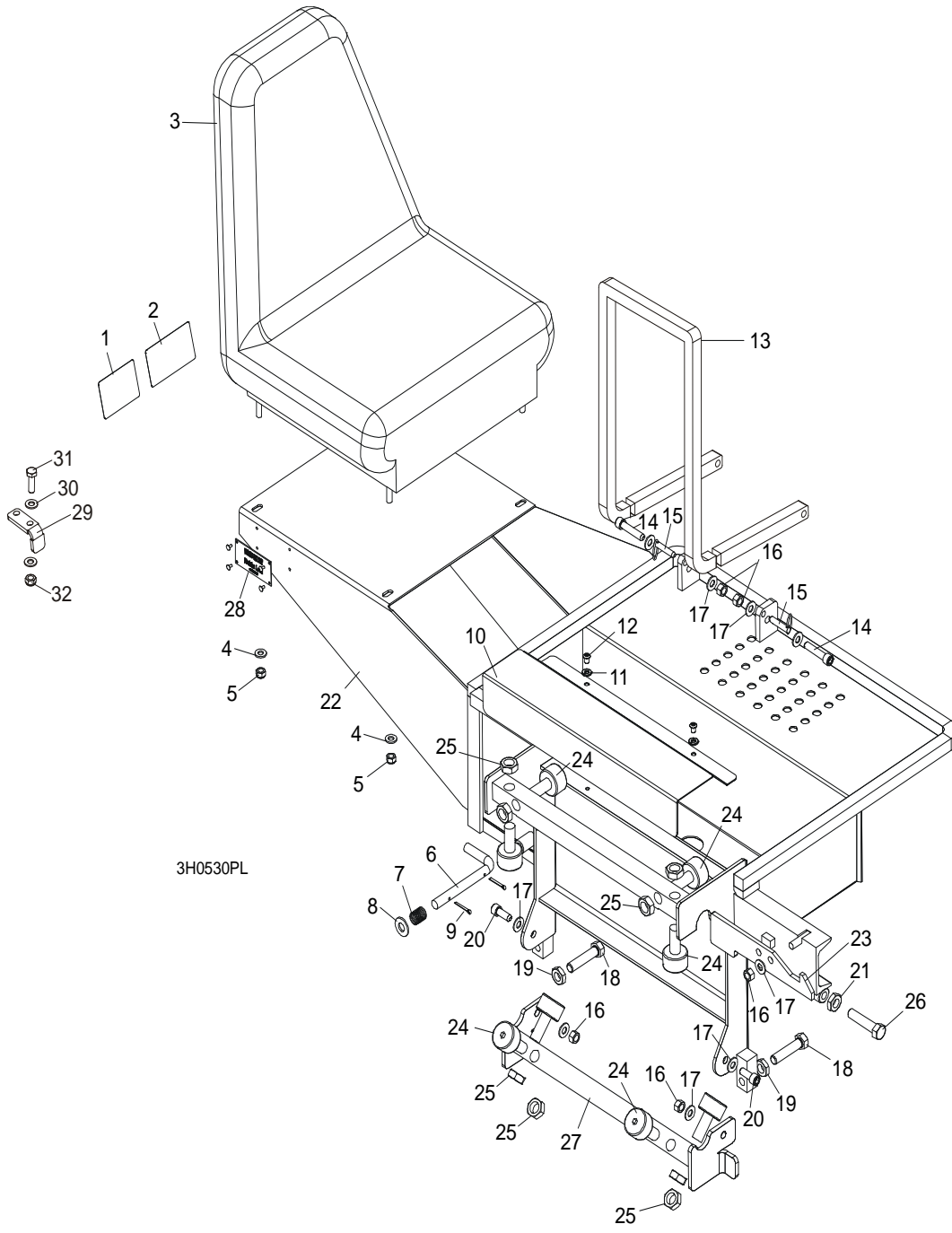


Operation

Seat Roller Replacement

SECTION 2 REPLACEMENT PARTS

2.1 Operator Seat



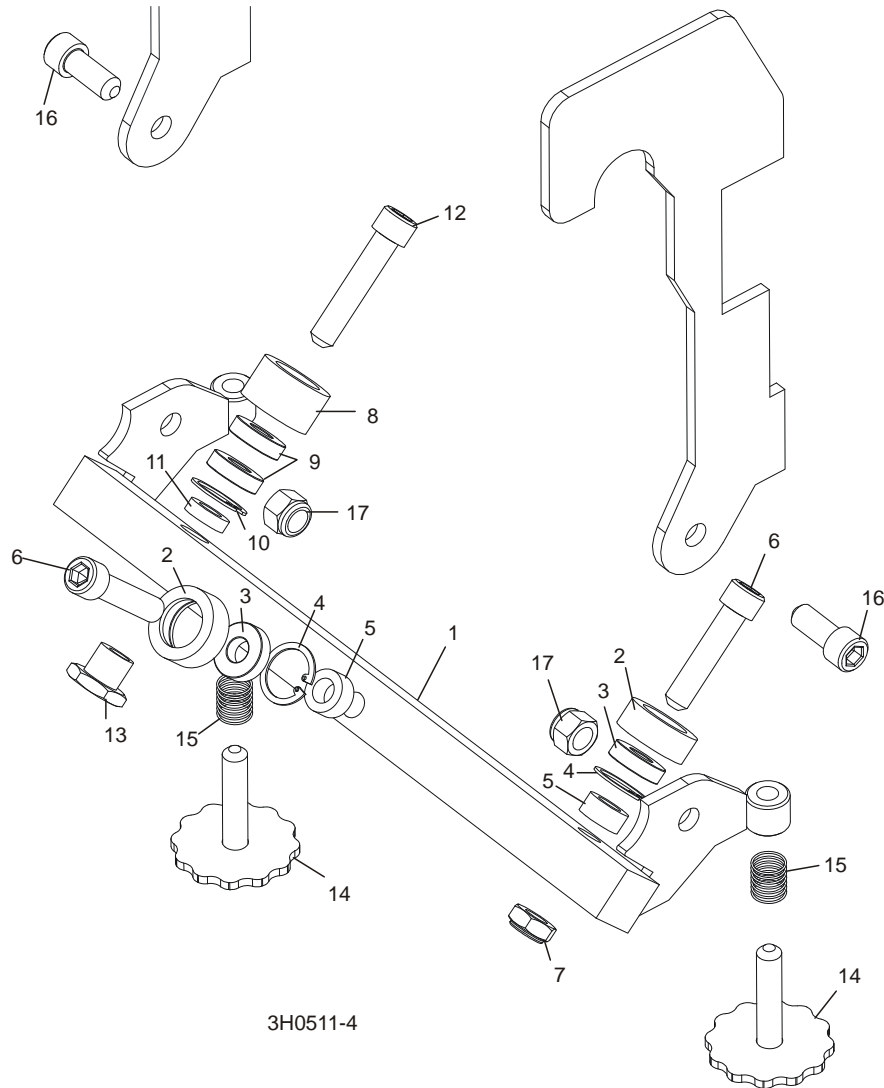
REF.	DESCRIPTION (◆ Indicates Parts Available In Assemblies Only)	PART #	QTY.	
	OPERATOR SEAT OPTION, COMPLETE '97	OS	1	
1	Decal, Remove Operator Seat Warning	S12000	1	
2	Decal, 300 Lb. Capacity Caution	S11999	1	
3	Seat, Operator	P26206	1	
4	Washer, 5/16" SAE Flat	F05011-17	4	
5	Nut, 5/16-18 Nylon Lock	F05010-58	4	
6	Pin, Operator Seat Travel Lock	S11335	1	
7	Spring, Operator Seat Travel Pin	P04282	1	
8	Washer, 1/2" SAE Flat	F05011-2	1	
9	Pin, 1/8" X 1" Cotter	F05012-1	2	
10	Guard, OS Bearing	015782	1	
11	Washer, 1/4" Split Lock	F05011-14	2	
12	Screw, 1/4-20 x 3/8" Socket Button Head	F05005-62	2	
13	Step Weldment, OS	086260-1	1	
14	Screw, 3/8-16 x 1 3/4" Socket Head Cap	F05007-53	2	
15	Pin, 5/16 x 1" Detaining	F05012-45	2	
16	Nut, 3/8-16 Hex Lock	F05010-25	5	
17	Washer, 3/8" SAE Flat	F05011-3	9	
18	Bolt, 1/2-13 x 2 1/2" Hex Head Full Thread	F05008-27	2	
19	Nut, 1/2-13 Jam	F05010-31	2	
20	Screw, 3/8-16 x 1" Socket Head	F05007-52	2	
21	Nut, 1/2-13 Jam	F05010-31	1	
22	Frame Weldment, Operator Seat	015775	1	◆
23	Latch, Operator Seat	018010	1	
24	Bearing, Seat Roller	012797	8	
25	Nut, 5/8-18 Hex Jam	F05010-11	8	
26	Bolt, 1/2-13 x 3" Hex Head Full Thread	F05008-7	1	
27	Bar Weldment, Lower Bearing	015942	1	
28	Decal, Operator Seat Revision	016187-O S	1	
	Manual, 1997 Operator's Seat Option	M613	1	
	Plate, Limit Switch Activator - Complete	517080	1	
29	Plate, Limit Switch Activator	516221-1	1	
30	Washer, 8.4 Flat Zinc	F81054-1	2	
31	Bolt, M8x25-8.8-B Hex Head Full Thread Zinc	F81002-5	1	
32	Nut, M8 8 Hex Nylon Zinc Lock	F81032-2	1	

2

Replacement Parts

Lower Roller Bearings

2.2 Lower Roller Bearings



REF.	DESCRIPTION (◆ Indicates Parts Available In Assemblies Only)	PART #	QTY.	
	BRACKET ASSEMBLY, OPERATOR SEAT LOWER ROLLER MOUNT	W11325	1	◆
1	Bracket Weldment, Operator Seat Lower Roller Mount	W11324	1	
	Roller, Single Bearing	A11912	2	◆
2	Housing, R8 Roller Bearing	N/A	1	◆
3	Bearing, R8-2RS Sealed	P11917	1	
4	Ring, 1 1/8" Inside Retaining	F04254-1	1	
5	Spacer, Operator Seat Roller	S11914	2	
6	Bolt, 1/2-20 X 2 1/4" Socket Head	F05008-79	2	
7	Nut, 1/2-20 Hex Jam Nylon Lock	F05010-79	2	
	Roller Kit, OS96 Double Bearing Replacement	015976	1	

Replacement Parts 2

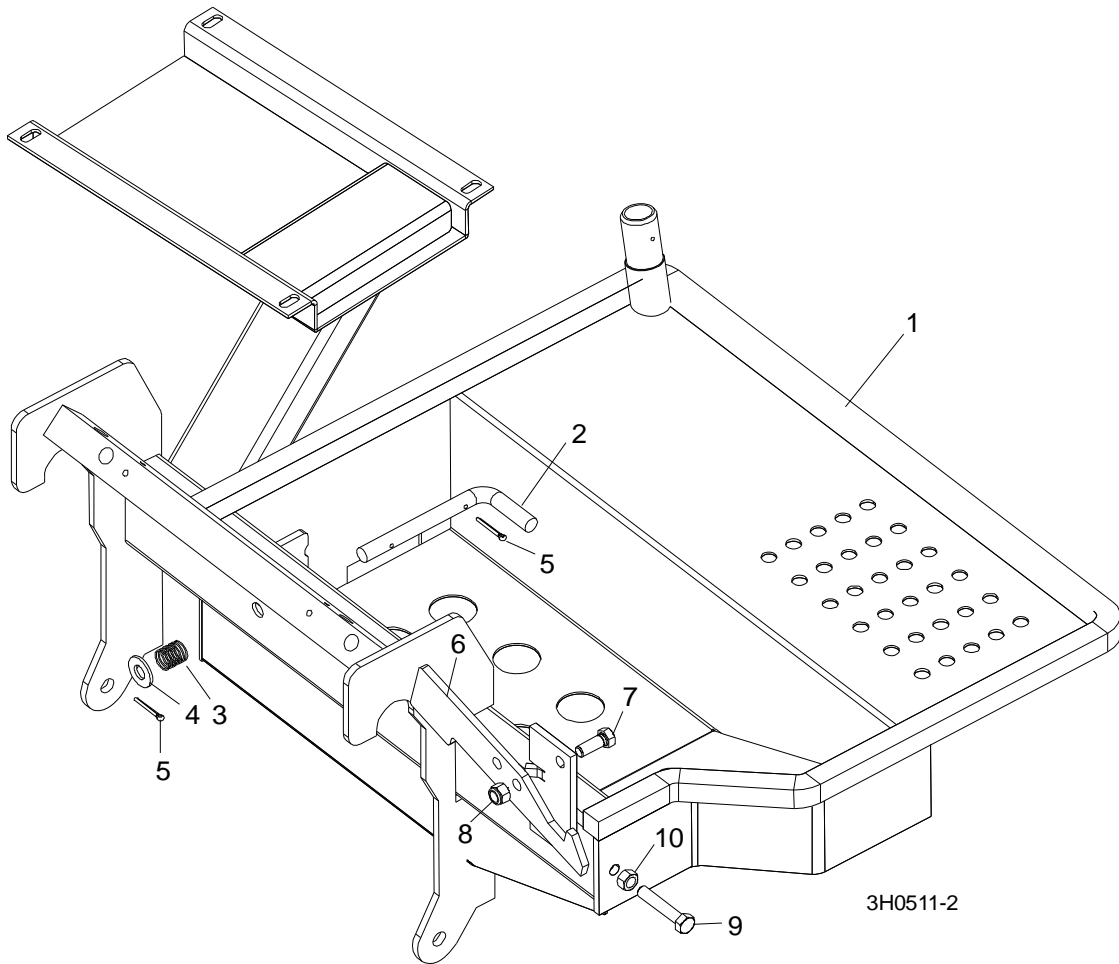
Lower Roller Bearings

	Roller Assembly, Double Bearing	011923	1	◆
8	Housing, Double Bearing Roller	N/A	1	◆
9	Bearing, R8-2RS Sealed	P11917	2	
10	Ring, 1 1/8" Inside Retaining	F04254-1	1	
11	Spacer, Operator Seat Roller	011924	1	
12	Bolt, 1/2-20 X 2 1/2" Socket Head	F05008-45	1	
	Nut, 1/2-20 Hex Jam Nylon Lock	F05010-79	1	
13	Spacer, Eccentric Operator Seat	S12517	1	
14	KNOB, OPERATOR SEAT ROLLER ADJUSTMENT	W11329	2	
15	SPRING, OPERATOR SEAT ROLLER ADJUSTMENT	P04282	2	
16	BOLT, 1/2-13 X 1 1/4" SOCKET HEAD	F05008-38	2	
17	NUT, 1/2-13 HEX NYLON LOCK	F05010-8	2	

2

Replacement Parts Seat Frame/Latch/Travel Pin

2.3 Seat Frame/Latch/Travel Pin



REF.	DESCRIPTION (◆ Indicates Parts Available In Assemblies Only)	PART #	QTY.	
1	FRAME WELDMENT, OPERATOR SEAT	W11319	1	◆
2	PIN, OPERATOR SEAT TRAVEL LOCK	S11335	1	
3	SPRING, OPERATOR SEAT TRAVEL PIN	P04282	1	
4	WASHER, 1/2" SAE FLAT	F05011-2	1	
5	PIN, 1/8" X 1" COTTER	F05012-1	2	
6	LATCH, OPERATOR SEAT	S11337	1	
7	BOLT, 3/8-16 X 1" HEX HEAD GRADE 5	F05007-87	1	
8	NUT, 3/8-16 HEX NYLON LOCK	F05010-10	1	
9	BOLT, 3/8-16 X 2" HEX HEAD FULL THREAD	F05007-16	1	
10	NUT, 3/8-16 HEX	F05010-1	1	