

Debarker

Safety, Installation, Operation, Maintenance & Parts Manual

Debarker LX450

rev. A.1



Safety is our #1 concern! Read and understand all safety information and instructions before operating, setting up or maintaining this machine.

Form No 559

**This is the original language
for the manual**

Table of contest

Section-Page

SECTION 1	SAFETY & GENERAL INFORMATION	1-1
1.1	Installation and Maintenance.....	1-1
1.2	Operation and Towing.....	1-1
SECTION 2	DEBARKER INSTALLATION	2-1
2.1 Debarker frame mounting holes	2-1
2.2	Debarker Installation	2-1
2.3	Wiring Instructions.....	2-4
2.4	Control component installation	2-4
2.5	Alignment.....	2-8
SECTION 3	OPERATION AND MAINTENANCE	3-1
3.1	Locking pin operation.....	3-1
3.2	Operation	3-2
3.3	Maintenance	3-3
3.4	Troubleshooting.....	3-8
SECTION 4	REPLACEMENT PARTS	4-1
4.1	How To Use The Parts List	4-1
4.2	Sample Assembly	4-1
4.3	Debarker Assembly	4-2
4.4	Debarker	4-3
4.5	AC Debarker Blade Drive (096239)	4-6
4.6	Debarker Decal Kit. 520117_538001	4-8

SECTION 1 SAFETY & GENERAL INFORMATION



This symbol calls your attention to instructions concerning your personal safety. This symbol accompanies a signal word. The word **DANGER** indicates an imminently hazardous situation which, if not avoided, will result in death or serious injury. **WARNING!** suggests a potentially hazardous situation which, if not avoided, could result in death or serious injury. **CAUTION** refers to potentially hazardous situations which, if not avoided, may result in minor or moderate injury to persons or equipment. Read all safety instructions before operating this equipment. Be sure to observe and follow these instructions.

1.1 Installation and Maintenance



DANGER! On electric mills, hazardous voltage inside the disconnect box, starter box, and at the electric motor can cause shock, burns, or death. Disconnect and lock out power! Follow all applicable electrical codes.

DANGER! On gas/diesel mills, before performing any service to this equipment, turn the key to the OFF position, remove the key and disconnect the sawmill battery ground terminal. Failure to do so may result in serious injury or death.

DANGER! Make sure all electrical installation, service and/or maintenance work is performed by a qualified electrician and is in accordance with applicable electrical codes. Failure to do so may result in serious injury or death.



WARNING! Before replacing the debarker blade, move the sawmill blade guide arm in front of the sawmill blade to cover the blade teeth. Failure to do so may result in serious injury or death.

1.2 Operation and Towing



DANGER! Make sure all guards and covers are in place and secured before operating the debarker option. Failure to do so may result in serious injury.

DANGER! Keep all persons out of the path of moving equipment when operating the debarker. Failure to do so may result in serious injury.

1 Safety & general information

Operation and Towing

DANGER! Always remove the key from the control panel before preparing the debarker for towing. Failure to do so may result in serious injury.

WARNING! If the debarker continues to run with the key switch in the OFF position, remove the negative battery terminal from the battery post.

DO NOT continue to operate the mill if the main key switch does not control debarker operation. Failure to do so may result in serious injury. Call Wood-Mizer customer service for more information.

See table 1-1. Pictogram decals used to warn and inform the user about danger in the LX450 debarker are shown below.

TABLE 1-1


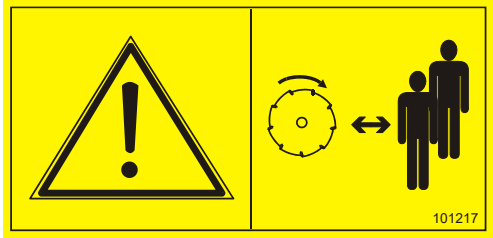
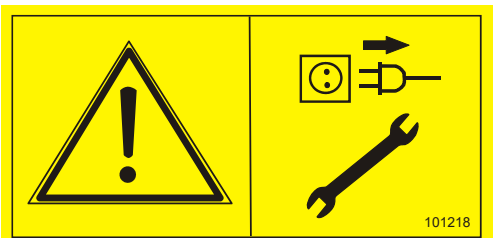


Decal View	Decal No.	Description
	101216	CAUTION! Read thoroughly the operator's manual before operating the sawmill. Observe all safety instructions and rules when operating.
	101217	CAUTION! Keep away from debarker blade!
	101218	CAUTION! Disconnect power supply before servicing.

TABLE 1-1

	<p>S20097</p>	<p>Debarker motor rotation direction.</p>
<p>a b c</p> 	<p>100582</p>	<p>a. Debarker On/Off (option) B. Starting motor c. Debarker In/Out (option)</p>

SECTION 2 DEBARKER INSTALLATION



DANGER! On electric mills, hazardous voltage inside the disconnect box, starter box, and at the electric motor can cause shock, burns, or death. Disconnect and lock out power! Follow all applicable electrical codes.

DANGER! Before performing any service to this equipment, turn the key to the OFF (0) position, remove the key and disconnect the sawmill battery ground terminal. Failure to do so may result in serious injury or death.

2.1 Debarker frame mounting holes

IMPORTANT! Sawmills are equipped with pre-drilled debarker mounting holes. **Verify hole locations before beginning debarker installation. Proper hole location is imperative for safe and effective debarker operation.**

2.2 Debarker Installation

1. Open the blade housing cover.

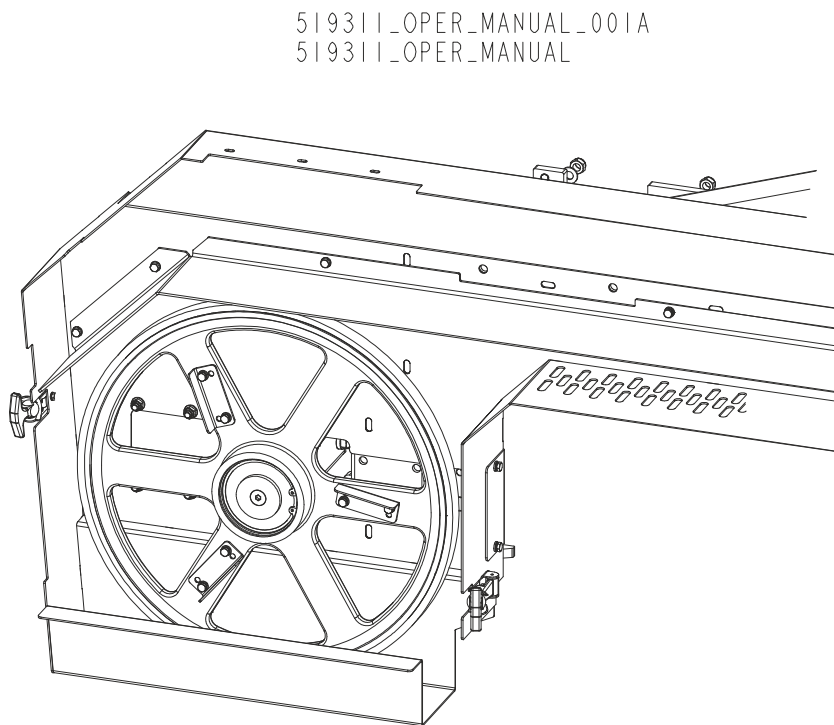
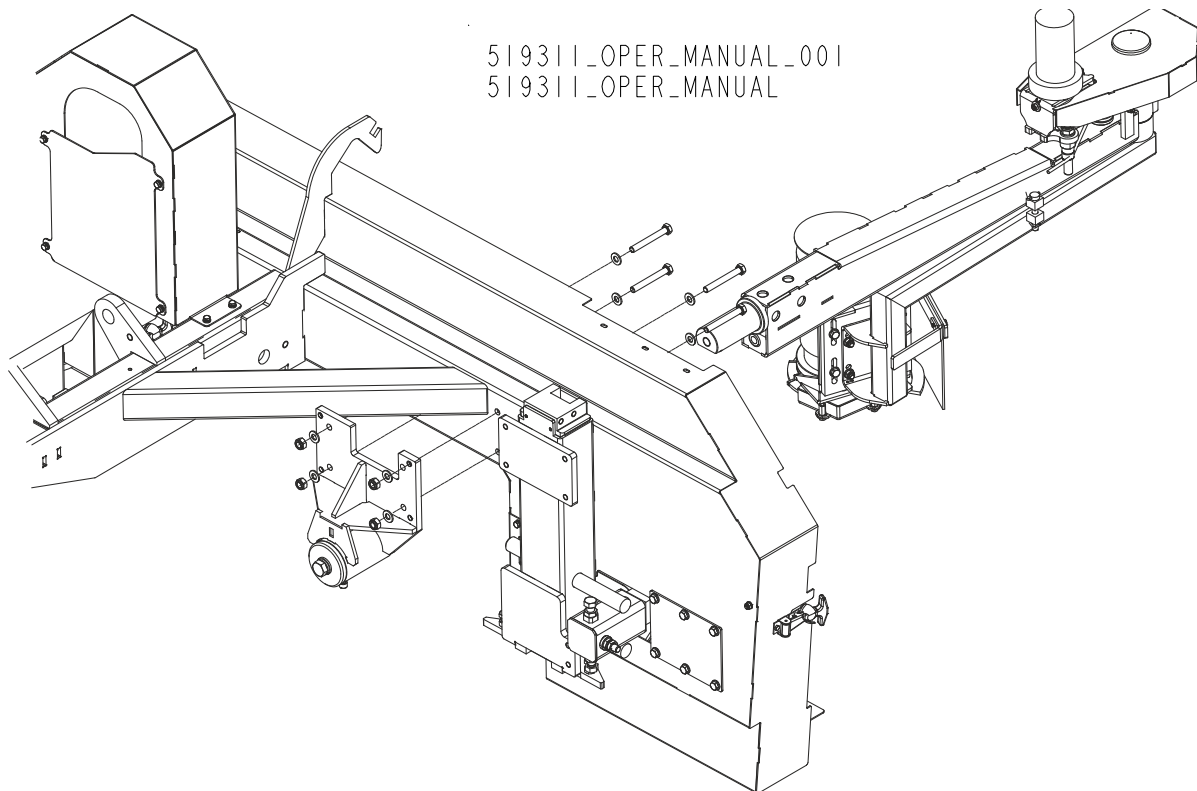


FIG. 2-1

2. Assemble the debarker to the sawmill saw head. Align the debarker arm holes and the holes in the saw head. Insert the bolts through the debarker mounting plate holes. Use the lock nuts to secure in place. Route the debarker wire harness along the saw head, next through the saw head hole and in debarker arm brackets.

**FIG. 2-2**

2 Debarker Installation

Debarker Installation

3. Slide the debarker motor harness to the sawmill electric box.

See figure 2-3.

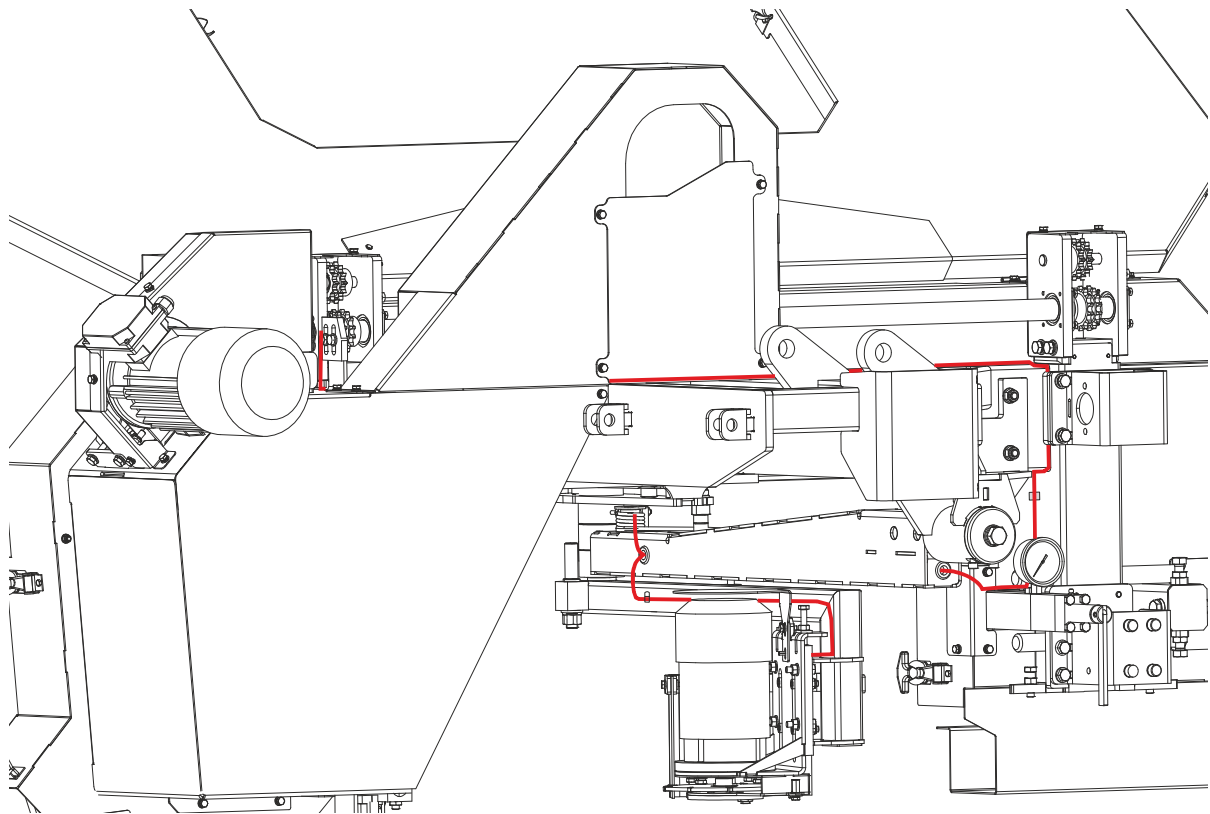


FIG. 2-3

2.3 Wiring Instructions



DANGER! On electric mills, hazardous voltage inside the disconnect box, starter box, and at the electric motor can cause shock, burns, or death. Disconnect and lock out power! Follow all applicable electrical codes.

DANGER! On gas/diesel mills, before performing any service to this equipment, turn the key to the OFF (0) position, remove the key and disconnect the sawmill battery ground terminal. Failure to do so may result in serious injury or death.



IMPORTANT! Avoid pinch and pivot points, unnecessary wire bending and open spaces where the wire could get caught by a log, etc. If you have any questions, call Wood-Mizer customer service.



IMPORTANT! Make sure that the ring terminals do not touch the motor body.

2.4 Control component installation



DANGER! On electric mills, hazardous voltage inside the disconnect box, starter box, and at the electric motor can cause shock, burns, or death. Disconnect and lock out power! Follow all applicable electrical codes.

DANGER! On gas/diesel mills, before performing any service to this equipment, turn the key to the OFF (0) position, remove the key and disconnect the sawmill battery ground terminal. Failure to do so may result in serious injury or death.

1. Remove the front panel (leave wire connections) from the control box.
2. Using the back side of the front panel for a guideline, cut out the holes in the front panel decal for the debarker switches. Install the provided toggle switches, on/off switch, nylon washer and rubber boot in place as shown below.

2 Debarker Installation

Control component installation

See figure 2-4.

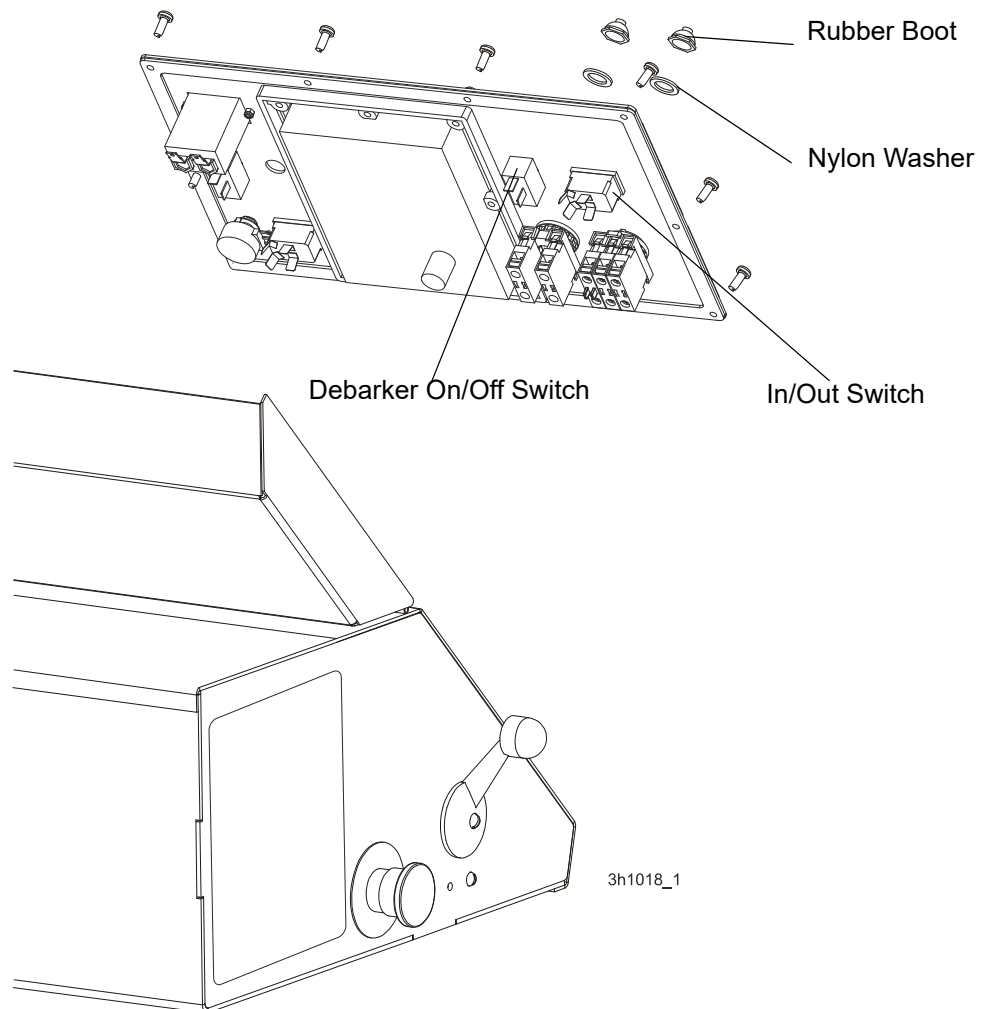


FIG. 2-4

3. Locate the two wire harness on the floor of the sawmill control box (one has two red wires, the second has two red and two black wires).
4. Connect the two red wires from the first harness to the debarker on/off switch. Connect the two red and two black wires from the second harness to the debarker in/out toggle switch, as shown on the picture below.

NOTE: If the debarker arm movement direction is not appropriate (e.g. the arm moves out when the switch is switched left), interchange the 21 and 22 wires connection.

See figure 2-5. LX450 control panel debarker wires connection.

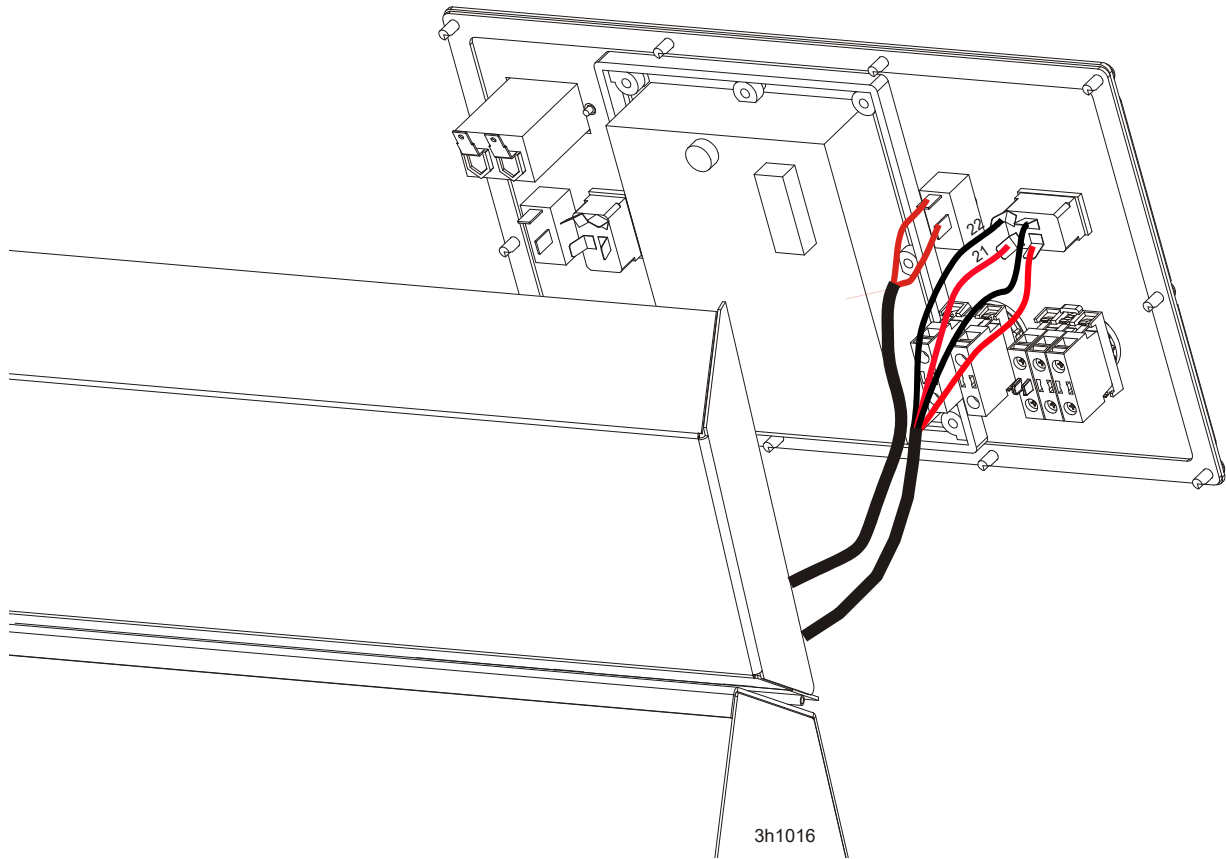


FIG. 2-5

2 Debarker Installation

Control component installation

See figure 2-6. LX450 control panel debarker wires connection.

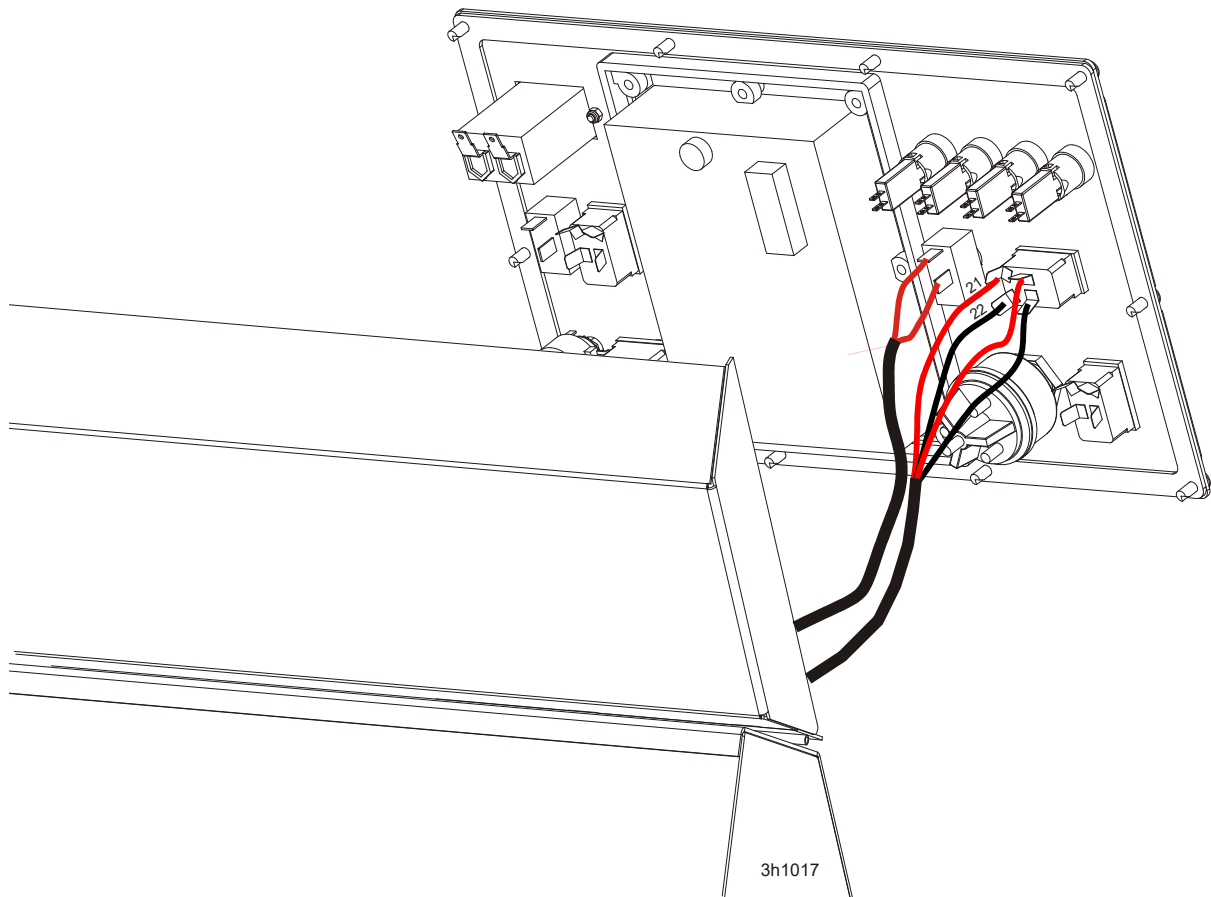


FIG. 2-6

5. Mount the control box front panel.

2.5 Alignment



DANGER! Before performing any service to this equipment, turn the key to the OFF (0) position and remove the key. Failure to do so may result in serious injury or death.

The debarker blade should remain parallel to the sawmill blade throughout the debarker's range of motion.

1. Turn the key to ON position. Use the debarker in/out switch to move the debarker all the way in. Turn the key to OFF (0) position and remove the key. This will prevent the debarker from being turned on while performing alignment procedures.
2. Clip the blade guide alignment tool to the sawmill blade. Make sure the tool does not rest on a tooth and is lying flat on the blade.

See figure 2-7.

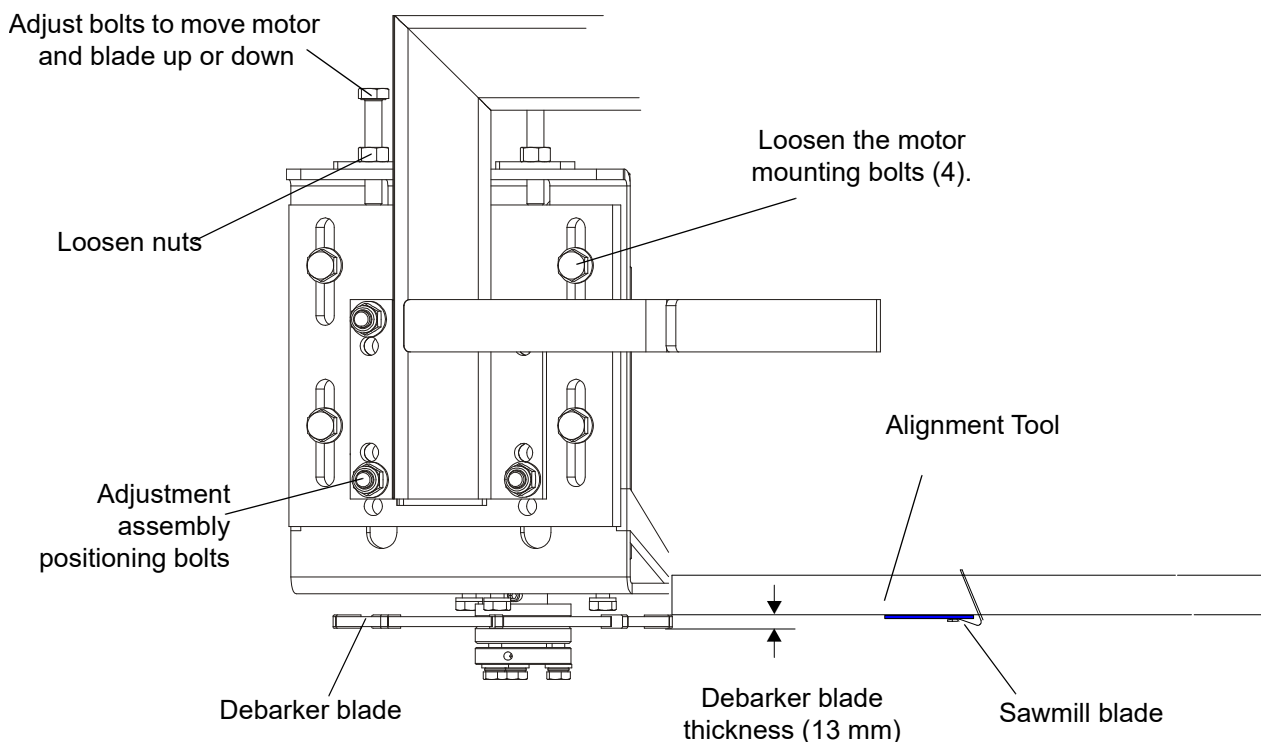


FIG. 2-7

2

Debarker Installation

Alignment

3. Check the height of the debarker blade against the alignment tool. The bottom edge of the tool should be align with 1/2 height of the debarker blade.

To adjust blade up or down, loosen the four blade motor mount bolts. Next, loosen the nuts on the adjustment bolts. Turn the adjustment bolts clockwise to push the motor and blade down. Turn the adjustment bolts counterclockwise to raise the motor and blade. Retighten the nuts on the adjustment bolts and four motor mounting bolts.

NOTE: If the adjusting range is insufficient, unscrew the positioning bolts and change the adjustment assembly position.

4. Insert the key and use the debarker in/out switch to move the debarker all the way out. Turn the key to OFF (0) position and remove the key.
5. Move the blade guide alignment tool on the sawmill blade and check the position of the debarker blade against the tool. If the debarker blade is not centered with the tool, the debarker mount should be adjusted.

Loosen four debarker mounting bolts and use a mallet to adjust the debarker arm position. (The mounting holes are oversized to allow small adjustments of the debarker.) Tilt the debarker mount until the debarker blade is centered on the tool (See Point 3). Recheck the debarker blade with the debarker all the way out.

When the debarker blade is centered on the tool in both positions, tighten the debarker mounting bolts.

See figure 2-8.

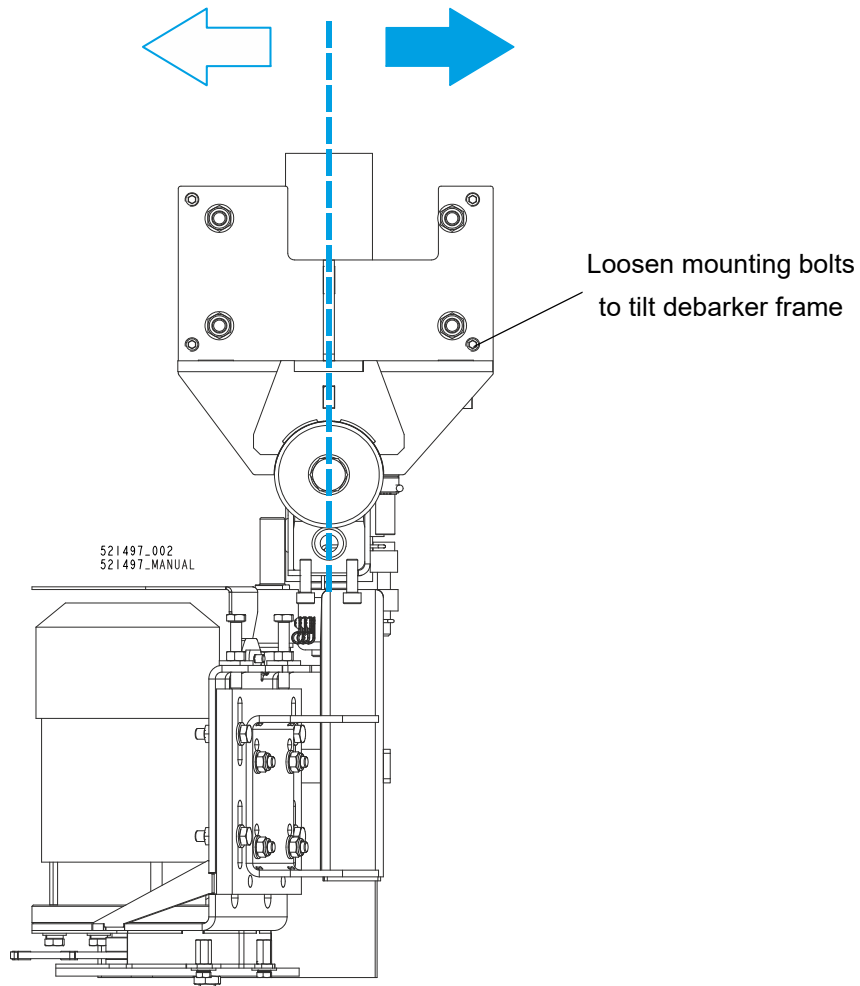


FIG. 2-8

SECTION 3 OPERATION AND MAINTENANCE

3.1 Locking pin operation

See figure 3-1. The debarker is equipped with a locking pin to prevent the debarker arm during transportation. Two hole locations are provided for the locking pin (see figure below).

Before operating the debarker, make sure the locking pin is removed. Turn the key to OFF (0) position and remove the key. Pull the debarker out to relieve pressure on the locking pin. Pull down split cotter. Remove the locking pin.

Before towing the sawmill, lock the debarker in travel position using the locking pin. Turn the key to OFF (0) position and remove the key. Manually move the debarker arm to align the holes. Insert the locking pin and secure with the split cotter

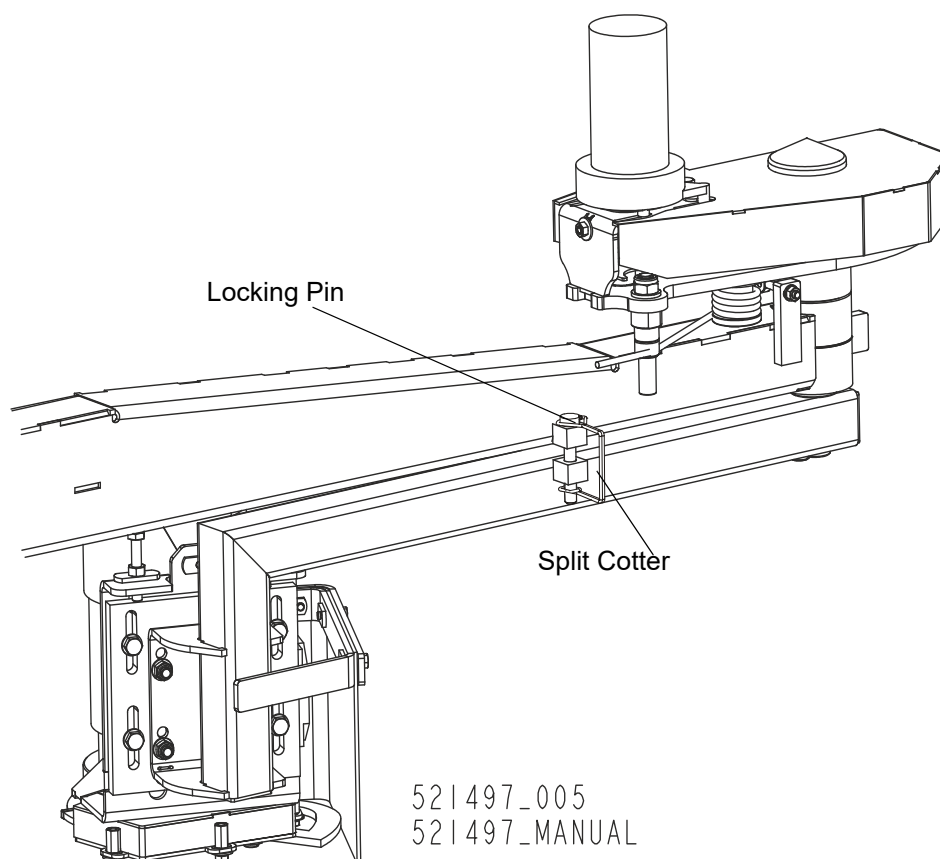


FIG. 3-1

3.2 Operation

The debarker option allows you to remove bark from logs before cutting.



DANGER! Make sure all guards and covers are in place and secured before operating the debarker option. Failure to do so may result in serious injury.

DANGER! Keep all persons out of the path of moving equipment when operating the debarker. Failure to do so may result in serious injury.

1. Use the debarker in/out switch to move the debarker all the way out.
2. Move the sawmill saw head forward and pivot the debarker in until the front fence touches the end side of the log. Continue to pivot the debarker in until the spring arm is half loaded.
3. Turn the debarker on/off switch to ON (1) position.
4. Proceed with cutting. The spring will keep the debarker against the side of the log.



NOTE: The debarker can continuously remove up to approximately 2 cm of material from the log; no motor cool down time is required. Slower feed rates may be required for optimal debarker operation.

5. Once the saw head is past the end of the log, pivot the debarker away from the log. Return the saw head to the front of the mill.
6. When done sawing and ready to store or transport the sawmill, place the debarker in travel position. ([See Section 3.1.](#))

3.3 Maintenance



DANGER! Before performing any service to this equipment, turn the key to the OFF (0) position and remove the key. Failure to do so may result in serious injury or death.

1. Periodically check the flexible guard. Adjust the guard up or down so the bottom is even with the bottom of the debarker blade. Replace the guard as needed.
2. Periodically check the debarker blade. Align or replace as needed.



WARNING! Before replacing the debarker blade, move the sawmill blade guide arm in front of the sawmill blade to cover the blade teeth. Failure to do so may result in serious injury or death.

To replace the debarker blade, remove the lower blade guard plate.

Place one wrench on the blade arbor, above the blade bearing. Place the other wrench on the lower bolt and rotate counterclockwise. Remove the bolt and washer. Remove the blade and spacer. Reinstall the spacer with the new blade. Reinstall the bolt and washer and turn clockwise to tighten. Reinstall the blade guard plate.

Unscrew three mounting bolts. Remove the bushing and the blade. Reinstall the bushing with new blade. Reinstall bolts and washers. Reinstall the lower blade guard plate.



WARNING! Adjusting the belt and spring tension (described below) is very important. Failure to do it properly will result in damage to the debarker blade motor.

3. Once a week check belt for tension and wear. Adjust or replace the belt if necessary. To tighten the belt, turn the key to OFF (0) position and remove the key. Remove the belt guard and loosen the four motor mount screws. Turn the adjustment nut clockwise to move the motor out and tighten the belt. The belt should be tensioned to allow 6-7mm deflection measured halfway between the pulleys with 2kg force. Retighten the motor mount screws and replace the belt guard.

See figure 3-2.

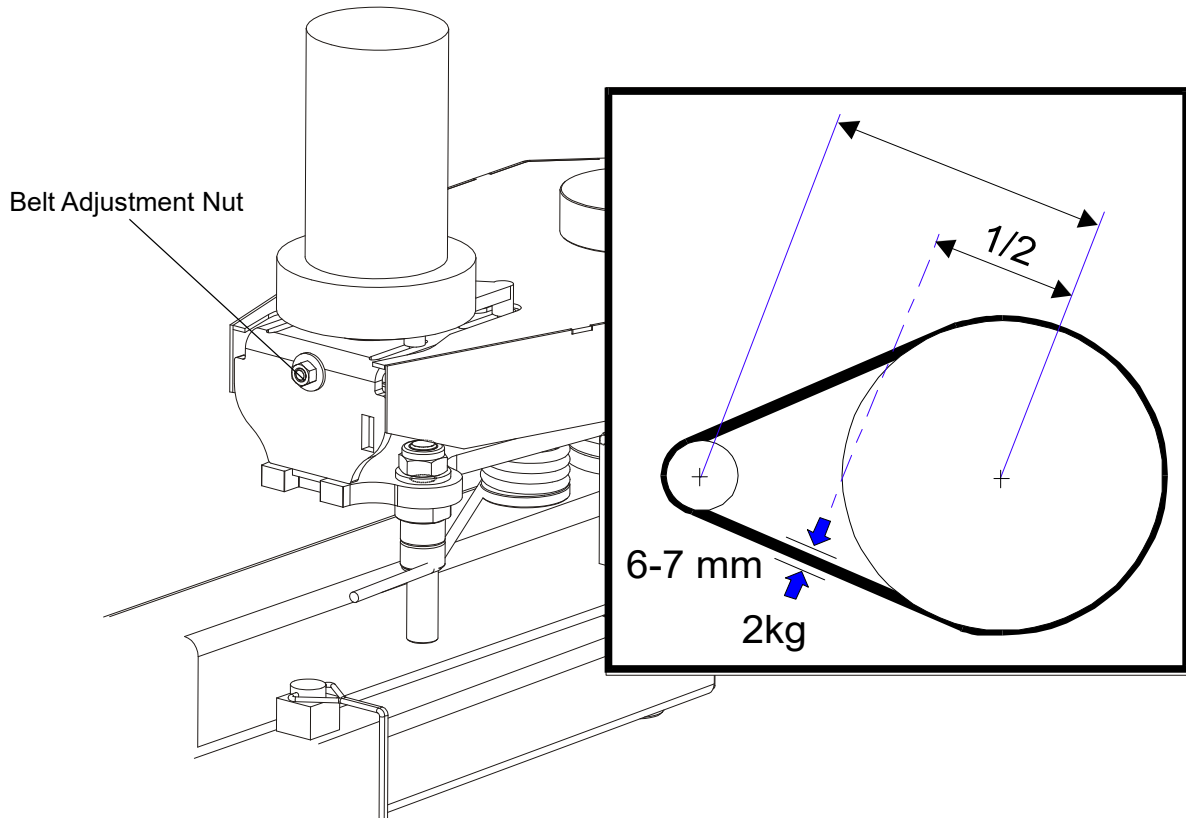


FIG. 3-2

3

Operation and maintenance

Maintenance

4. Once a week and after each spring replacing, check the spring tension. Use the in/out switch to pivot the debarker all the way in. Turn the key to OFF (0) position and remove the key. Pull the debarker arm. Spring should be tensioned to allow to move the debarker arm halfway with 4.5kg force. Adjust the spring tension if necessary.

See figure 3-3.

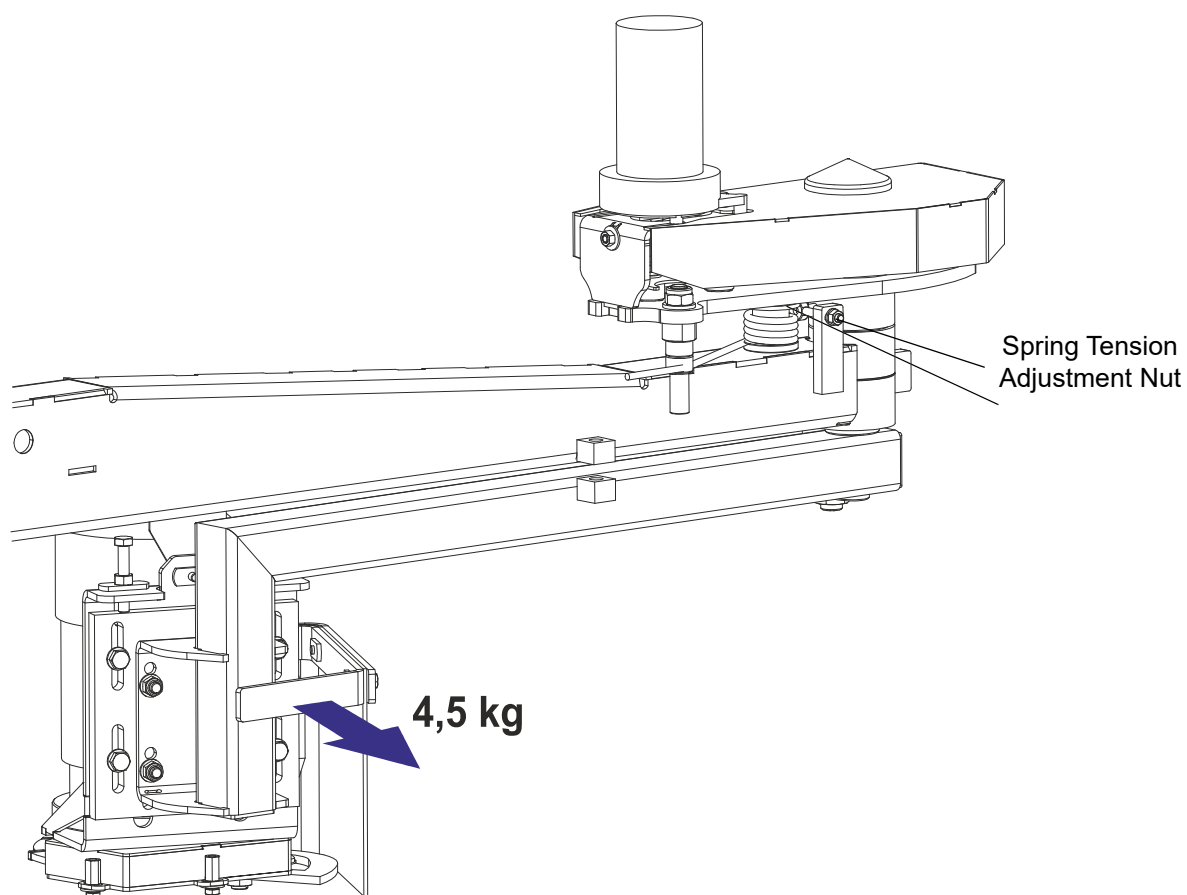


FIG. 3-3

5. Once a week check the braking time. The time from switching off the debarker till the moment when the blade is completely stopped should be no longer than 10 seconds.

If this time is longer than 10 seconds, loosen the lockin nut and turn right the braking pin adjustment screw by 360°. Tighten the lockng nut and recheck the braking time.

See figure 3-4.

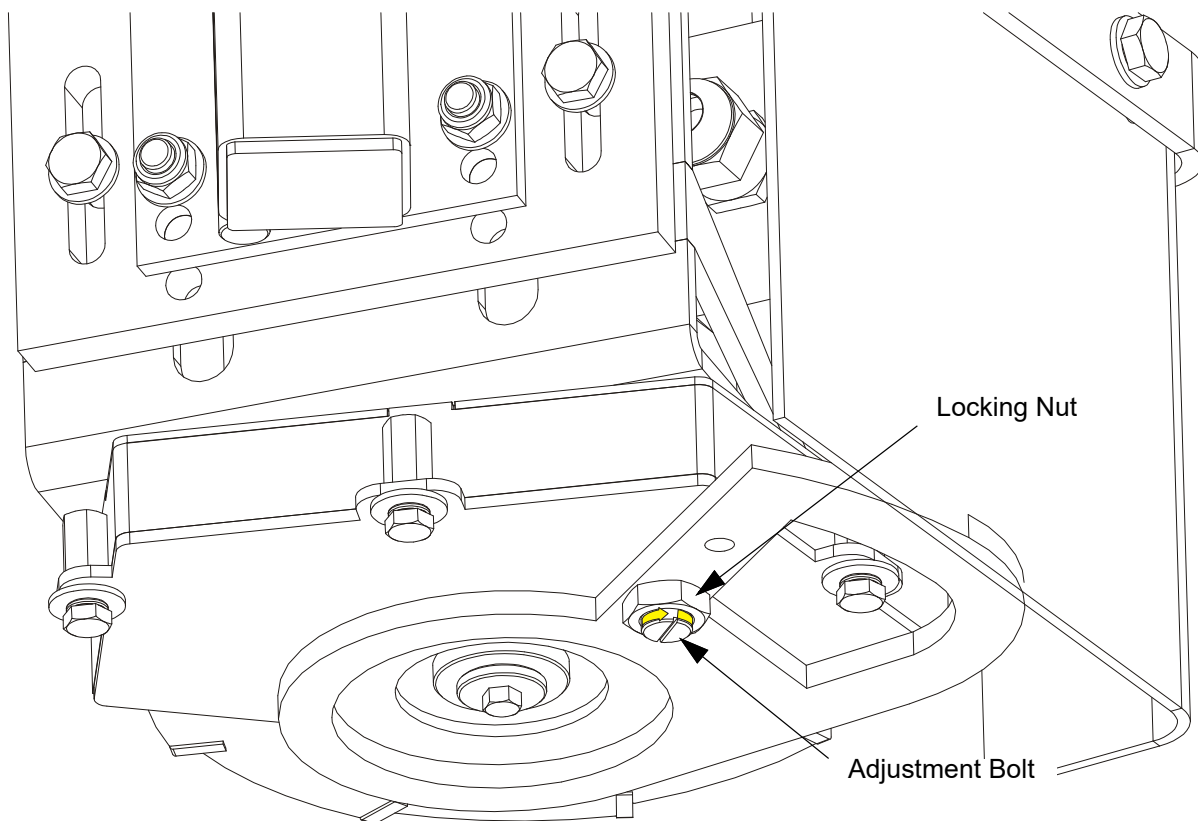


FIG. 3-4



WARNING! The braking pin must be adjusted as described above. Failure to do so may result in serious injury.

If the braking pin is worn or the spring is damaged, it is necessary to replace them. ([See Section 4.3](#) for parts numbers).

To replace the braking pin and/or spring with a new one, dismount the blade guard. Replace the braking pin and/or spring with a new one. Loosen the locking nut and turn the adjustment screw left or right so that the braking pin protrudes about 8 mm - see the figure below.

3 Operation and maintenance

Maintenance

See figure 3-5.

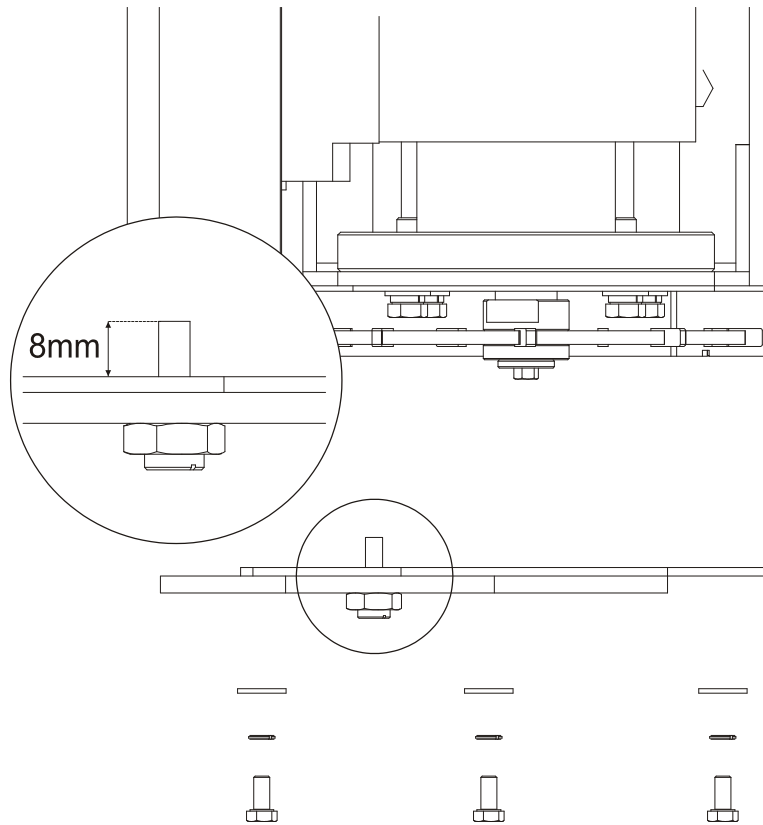


FIG. 3-5

3.4 Troubleshooting



DANGER! Before performing any service to this equipment, turn the key to the OFF (0) position and remove the key and disconnect the sawmill battery ground terminal. Failure to do so may result in serious injury or death.

PROBLEM	CAUSE	SOLUTION
70A circuit breaker tripping	Wood or bark jammed in blade guard	Turn the key to OFF (0) position and remove the key. Remove wood or bark from blade guard.
	Pivot pin is binding.	Inspect for bind by moving debarker head to full in position. Turn the key to OFF (0) position and remove the key. Pull arm to full out position by hand. If available, use a weight scale to pull arm to full out position. Should not have more than 6kg of resistance to pull out. Check the spring and belt tension.
	Ring terminal of the red wire touching debarker motor housing or motor.	Move terminal away from motor housing. Reset circuit breaker and retest.
Light comes on, but debarker motor do not operate	Circuit breaker weak from repeated tripping.	Replace circuit breaker.
	Circuit breaker tripped.	Reset circuit breaker.
Debarker shuts off, but the circuit breaker is not tripped	Bad ignition wire connection.	Check ignition wire connection outside and inside of debarker control box.
	Intermittent key switch	Replace key switch
	Other loose wiring connection	Check wire connections inside control box.
Debarker will not shut off.	Solenoid is stuck closed.	Replace solenoid.
In/Out motor does not move the debarker in or out	Drive belt too loose.	Tension the drive belt properly.
	Switch not working properly	Check switch wiring for loose connections. If wiring looks OK, replace switch.
Blade motor damage	Motor overload	Replace blade motor. Adjust the belt and spring tension. See page 4.

SECTION 4 REPLACEMENT PARTS

4.1 How To Use The Parts List

- Use the index above to locate the assembly that contains the part you need.
- Go to the appropriate section and locate the part in the illustration.
- Use the number pointing to the part to locate the correct part number and description in the table.
- Parts shown indented under another part are included with that part.
- Parts marked with a diamond (◆) are only available in the assembly listed above the part.

See the sample table below. Sample Part #A01111 includes part F02222-2 and subassembly A03333. Subassembly A03333 includes part S04444-4 and subassembly K05555. The diamond (◆) indicates that S04444-4 is not available except in subassembly A03333. Subassembly K05555 includes parts M06666 and F07777-77. The diamond (◆) indicates M06666 is not available except in subassembly K05555.

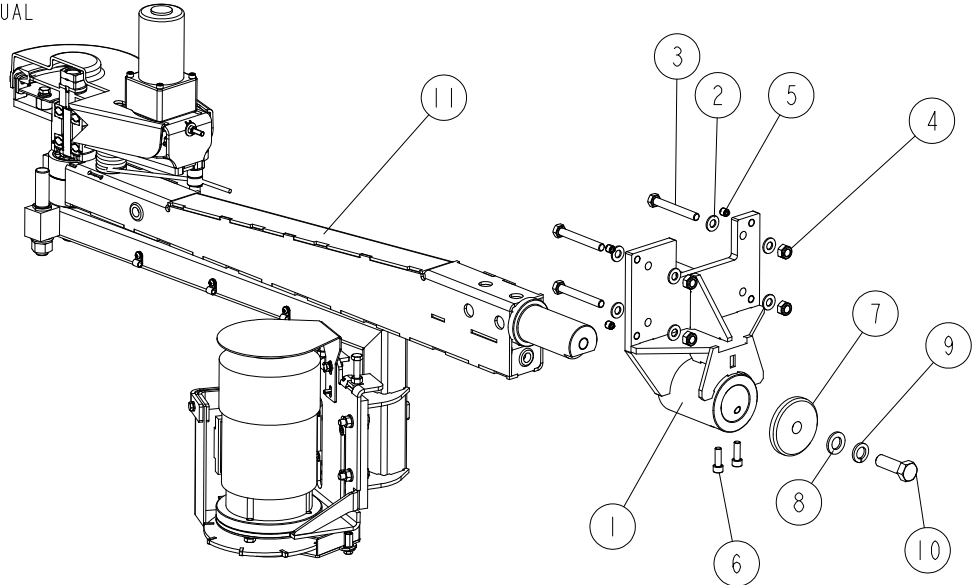
4.2 Sample Assembly				
REF.	DESCRIPTION (◆ Indicates Parts Available In Assemblies Only)	PART #	QTY	
	Sample Assembly, Complete (Includes All Indented Parts Below)	A01111	1	
6	Sample Part	F02222-22	1	
	Sample Subassembly (Includes All Indented Parts Below)	A03333	1	
7	Sample Part (◆ Indicates Part Is Only Available With A03333)	S04444-4	1	◆
	Sample Subassembly (Includes All Indented Parts Below)	K05555	1	
8	Sample Part (◆ Indicates Part Is Only Available With K05555)	M06666	2	◆
9	Sample Part	F07777-77	1	

To Order Parts:

- From Europe call our European Headquarters and Manufacturing Facility in Kolo, Poland at **+48-63-2626000**. From the continental U.S., call our toll-free Parts hotline at **1-800-525-8100**. Have your customer number, vehicle identification number, and part numbers ready when you call.
- From other international locations, contact the Wood-Mizer distributor in your area for parts.

4.3 Debarker Assembly

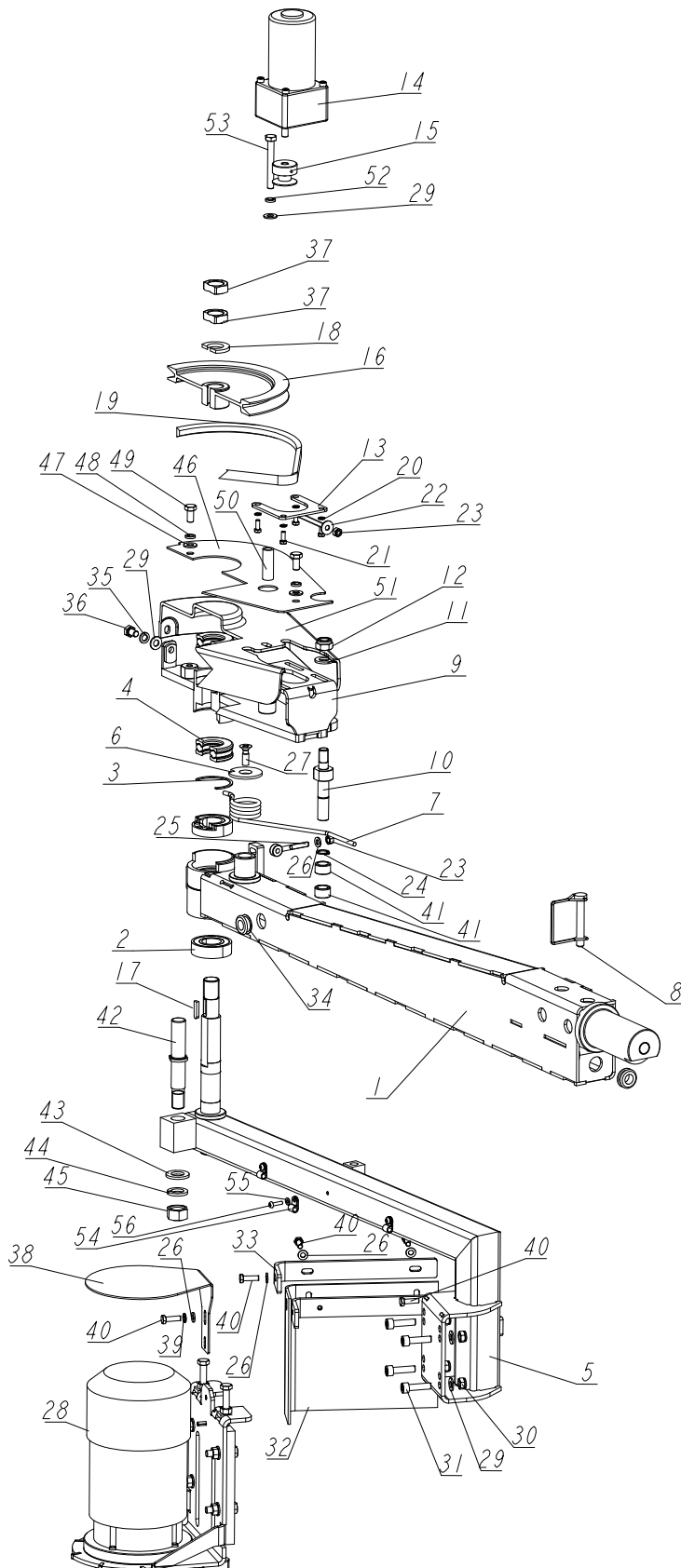
521497_001_A
 521497_MANUAL



REF	DESCRIPTION (◆ INDICATES PARTS AVAILABLE IN ASSEMBLIES ONLY)	PART #	QTY
-	DEBARKER ASSEMBLY, LX450	521497	1
-	BRACKET, DEBARKER MOUNT - COMPLETE	520267	1
1	BRACKET, DEBARKER MOUNT	520266-1	1
2	WASHER, 10.5 FLAT ZINC	F81055-1	8
3	BOLT, M10X80-8 8 HEX HEAD ZINC	F81003-51	4
4	NUT, M10-8-B HEX NYLON ZINC LOCK	F81033-1	4
5	PLUG, M10X1 DIN906 BN40 ZINC	F81015-3	4
6	SCREW, M8X25-8.8 HEX SOCKET HEAD CAP ZI	F81002-21	2
7	WASHER, CLAMPING	520116-1	1
8	WASHER, 17 SPLIT LOCK ZINC	F81058-1	1
9	WASHER, 16.3 SPLIT LOCK ZINC	F81058-2	1
10	BOLT, M16 X 50-8.8 HEX HEAD FULL THREAD	F81006-7	1
11	DEBARKER, LX450 See Section 4.4	520117	1

4.4 Debarker

520117_001_A
 520117_MANUAL



REF	DESCRIPTION (◆ INDICATES PARTS AVAILABLE IN ASSEMBLIES ONLY)	PART #	QTY	
-	DEBARKER, LX450	520117	1	
1	MOUNT WELDMENT, LX450 DEBARKER	520261-1	1	
2	BEARING, 6205 2RS BALL	091804	2	
3	RING, SPACER	098491	1	
4	BEARING, 51305 AXIAL	098597	2	
5	ARM WELDMENT, DEBARKER	520120-1	1	
6	PLATE, SPRING BUSHING	098592-1	1	
7	SPRING, DEBARKER RETAINING	098605	1	
8	PIN, 3/8X2 1/4 SNAP	014151	1	
9	ARM, DEBARKER	098626-1	1	
10	PIN, DEBARKER	098593-1	1	
11	WASHER, 13 FLAT ZINC	F81056-1	1	
12	NUT, M12 8 HEX NYLON ZINC LOCK	F81034-2	1	
13	TENSIONER WELDMENT, DEBARKER IN/OUT MOTO	089969-1	1	
14	MOTOREDUCER COMPACT	557161	1	
15	SHEAVE, DEBARKER MOTOR ZINC-PLATED	089954-1	1	
16	PULLEY, DEBARKER MOTOR	098594-1	1	
17	KEY, 6X6X23	089191	1	
18	WASHER, 21 FLAT ZINC	F81059-2	1	
19	BELT, 4L280V	P04031	1	
20	WASHER, M5 SPLIT LOCK	F81052-2	4	
21	SCREW, 10-32X1/2 HH MACHINE	F05004-60	4	
22	WASHER, 6.5 SPECIAL FLAT ZINC	F81053-11	1	
23	NUT, M6 8 HEX ZINC	F81031-1	2	
24	RING, Z14 OUTSIDE RETAINING	F81090-31	1	
25	BOLT, M6 TURNED EYE	098596	1	
26	WASHER, 6.4 FLAT ZINC	F81053-1	5	
27	SCREW, M8X25-5.8 CROSS RECESSED COUNTERS	F81002-51	1	
28	DEBARKER BLADE DRIVE ASSEMBLY See Section 4.5	096239	1	
29	WASHER, 8.4 FLAT ZINC	F81054-1	6	
30	NUT, M8-8-B HEX NYLON ZINC LOCK	F81032-2	4	
31	BOLT, M8 X 30-8.8 SOCKET HEAD	F81002-31	4	
32	GUARD, DEBARKER FLEXIBLE DEBRIS	097020	1	
33	GUARD, DEBARKER WRAP-AROUND PAINTED	098695-1	1	
34	GROMMET, 20/13 RUBBER	086188	2	
35	WASHER 8,2 SPLIT LOCK	F81053-17	1	
36	BOLT, M8X12-8.8 HEX HEAD FULL THREAD ZIN	F81002-6	1	
37	NUT, M20X1,5 THIN	F81037-7	2	
38	GUARD, DEBARKER MOTOR	101332-1	1	
39	WASHER, 6.1 DIN 127 (A2-304) STAINLESS S	F81053-4	1	
40	BOLT, M6X20 8.8 HEX HEAD FULL THREAD ZIN	F81001-2	5	
41	BEARING, HK 1412 NEEDLE	098595	2	
-	PIN, COMPLETE	519066	1	
42	PIN, LOC,KING	519065-1	1	
43	WASHER, 17 SPLIT LOCK ZINC	F81058-1	1	

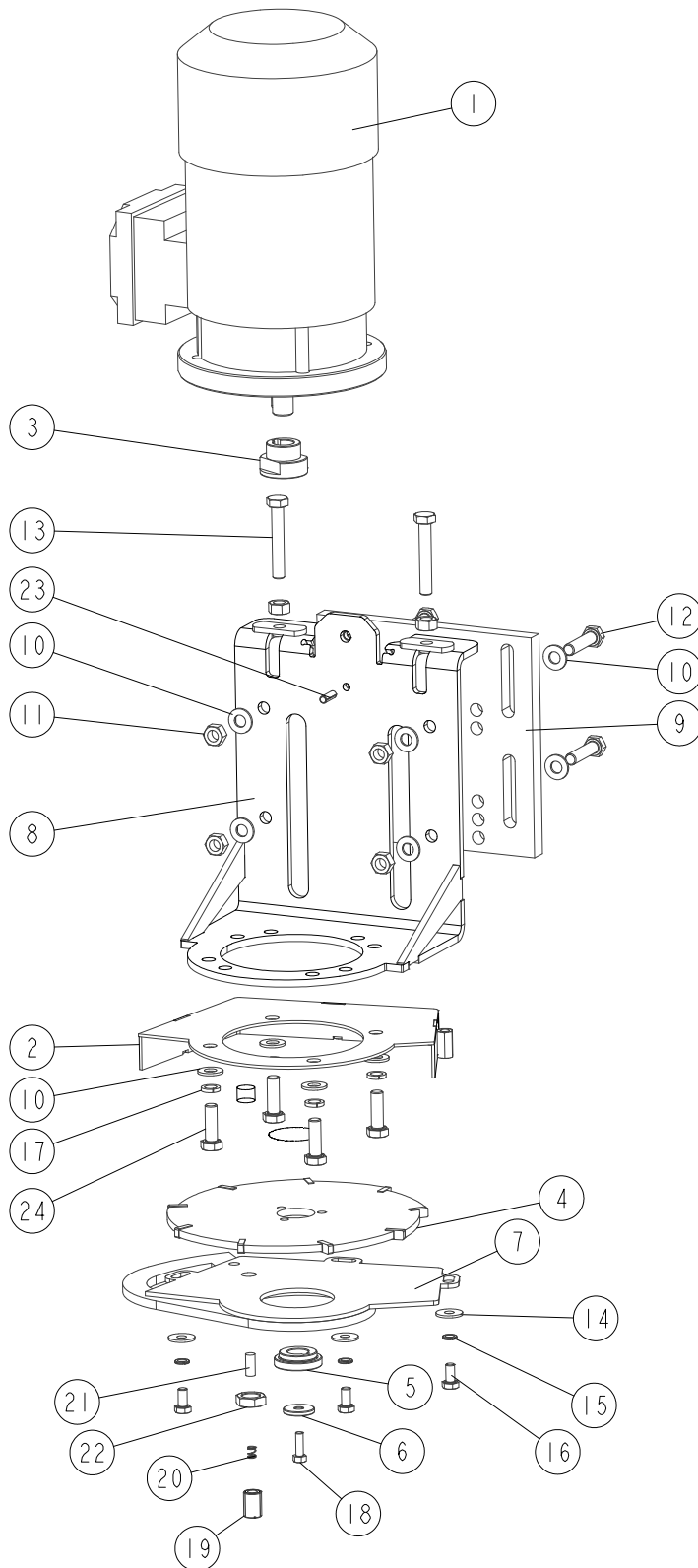
4 Replacement Parts

Debarker

REF	DESCRIPTION (◆ INDICATES PARTS AVAILABLE IN ASSEMBLIES ONLY)	PART #	QTY	
44	WASHER, 16.3 SPLIT LOCK ZINC	F81058-2	1	
45	NUT, M16-5.8 HEX ZINC	F81036-1	1	
-	COVER ASSEMBLY	519064	1	
46	PLATE, GUARD	557349-1	1	
47	WASHER, 8.4 FLAT ZINC	F81054-1	2	
48	WASHER 8,2 SPLIT LOCK ZINC	F81054-4	2	
49	BOLT, M8X16 -8.8-B HEX HEAD FULL THREAD	F81002-20	2	
50	BUSHING, 9/13-40.5	519067-1	1	
51	GUARD, DEBARKER BELT	557350	1	
52	WASHER 8,2 SPLIT LOCK ZINC	F81054-4	1	
53	BOLT, M8X65 8.8 HEX HEAD FULL THREAD ZIN	F81002-9	1	
54	ELEMENT, EE63 MOUNTING	F81080-4	3	
55	WASHER, 4.3 FLAT ZINC	F81051-2	3	
56	SCREW, M4X16 5.8-B CROSS RECESSED PAN HE	F81011-42	3	

4.5 AC Debarker Blade Drive (096239)

096239_001
096239_MANUAL

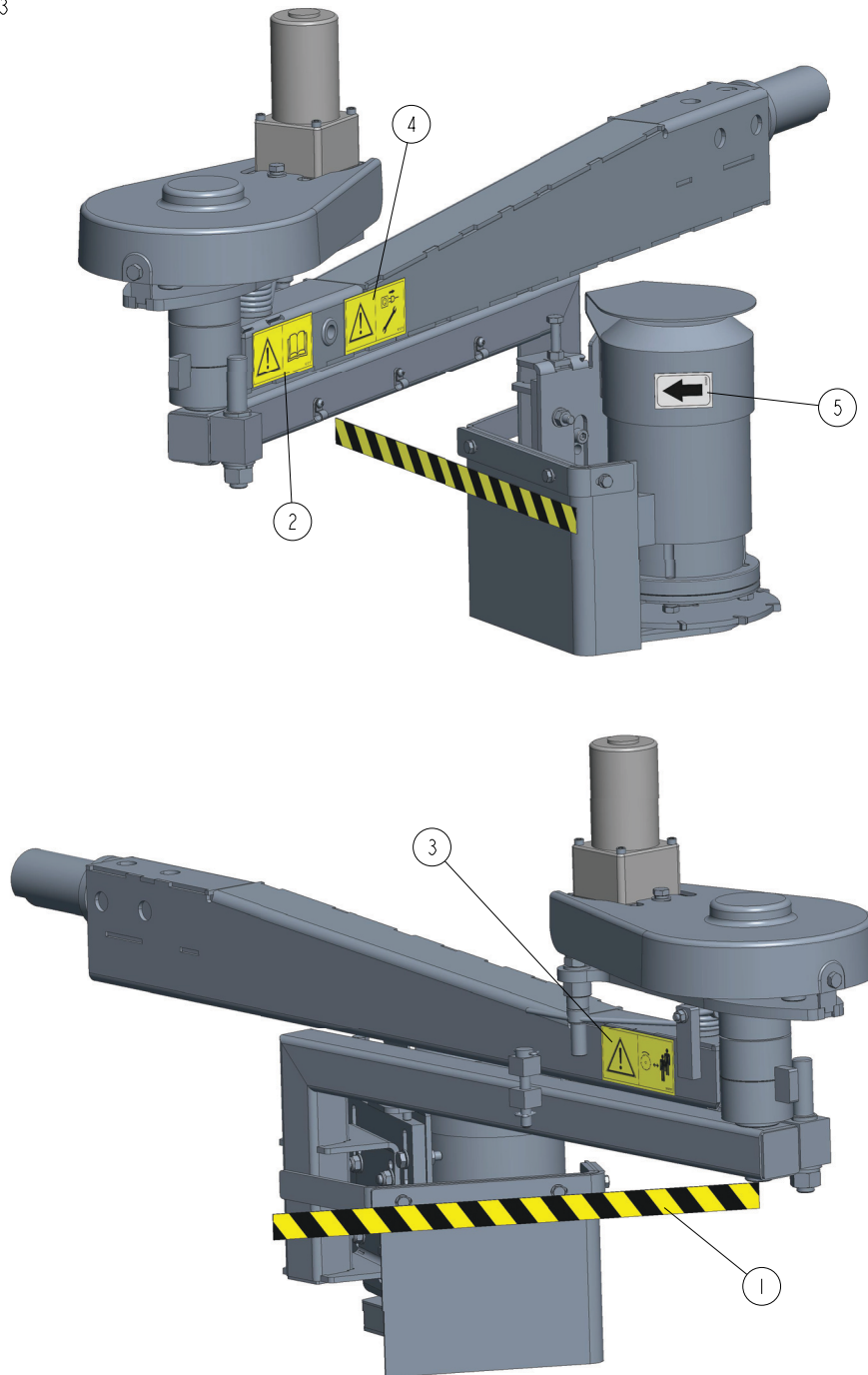


REF.	DESCRIPTION (* indicates parts available in assemblies only)	PART #	QTY
-	DRIVE ASSEMBLY, AC DEBARKER BLADE	096239	1
-	DRIVE ASSEMBLY, AC DEBARKER BLADE	096239-UL	1

REF.	DESCRIPTION (* indicates parts available in assemblies only)	PART #	QTY	
1	MOTOR, STKG71X-2C IMB5 AC DEBARKER	096777	1	
	MOTOR, STKG71X-2C IMB5 AC DEBARKER	096777-UL	1	
2	GUARD, DEBARKER BLADE UPPER	096244-1	1	
3	BUSHING, CLAMPING	096088	1	
4	BLADE, 180 B-06.5/5.0 D-25.5 - COMPLETE	083848-1	1	
5	BUSHING, RETAINING	096087	1	
6	WASHER	096238-1	1	
7	GUARD, DEBARKER BLADE LOWER	096245-1	1	
8	BRACKET, DEBARKER MOTOR MOUNT	096780-1	1	
9	PLATE, DEBARKER MOTOR MOUNT	089551	1	
10	WASHER, 8.4 FLAT ZINC	F81054-1	12	
11	NUT, M8-8-B HEX ZINC	F81032-1	6	
12	BOLT, M8X35-8.8 HEX HEAD FULL THREAD ZINC	F81002-13	4	
13	BOLT, M8X50-8.8 HEX HEAD FULL THREAD ZINC	F81002-19	2	
14	WASHER, 6.5 SPECIAL FLAT ZINC	F81053-11	3	
15	WASHER, Z 6.1 SPLIT LOCK ZINC	F81053-3	3	
16	BOLT, M6X12 8.8 HEX HEAD FULL THREAD ZINC	F81001-7	3	
17	WASHER, 8.2 SPLIT LOCK ZINC	F81054-4	4	
18	BOLT, M5X16 8.8 HEX HEAD FULL THREAD ZINC	F81000-20	1	
-	PIN ASSEMBLY, DEBARKER BLADE BRAKING	501464	1	
19	SCREW, M12X17 SET	501462	1	
20	SPRING, 0.5X5.5-7	501463	1	
21	PIN, DEBARKER BLADE BRAKING	501461	1	
22	NUT, M12-04-A THIN	F81034-6	1	
23	PIN, 5X16 ROLL ZINC	F81044-3	1	
24	BOLT, M8X25-8.8-B HEX HEAD FULL THREAD ZINC	F81002-5	4	

4.6 Debarker Decal Kit. 520117_538001

520117_003
520117



REF	DESCRIPTION (◆ indicates parts available in assemblies only)	PART #	QTY
-	DEBARKER DECAL KIT	538001	1
1	DECAL, LT15 DEBARKER WARNING STRIPE	098175	1
2	DECAL, READ OPERATOR'S MANUAL - HORIZONTAL	101216	1
3	DECAL, KEEP AWAY FROM DEBARKER BLADE - HORIZONTAL	101217	1
4	DECAL, DISCONNECT POWER SUPPLY BEFORE SERVICING - HORIZONTAL	101218	1
5	DECAL, MOTOR ROTATION DIRECTION	S20097	1