

# **Wood-Mizer®**

## **Replacement Parts List**

---

**EG350EH15S, EG350EH22S rev. A2.01**

---



**Safety is our #1 concern!** Read and understand all safety information and instructions before operating, setting up or maintaining this machine.

*Form #351*

# Table of Contents

# Section-Page

<b>SECTION 1</b>	<b>GENERAL INFORMATION</b>	<b>1-1</b>
1.1	How To Use the Parts List.....	1-1
1.2	Sample Assembly .....	1-1
<b>SECTION 2</b>	<b>EG350 REPLACEMENT PARTS</b>	<b>2-1</b>
2.1	Control Box .....	2-1
2.2	Press Roller Housing - Outfeed Side .....	2-3
2.3	Press Roller Housing - Infeed Side .....	2-4
2.4	Outfeed Side Press Roller .....	2-6
2.5	Laser Setting Assembly .....	2-7
2.6	Table Support .....	2-9
2.7	Laser Sight .....	2-10
2.8	Blade Housing .....	2-11
2.9	Electrical Box .....	2-12
2.10	E15 Motor Mounting Plate .....	2-13
2.11	E22 Motor Mounting Plate .....	2-15
2.12	Sawdust Hopper .....	2-17
2.13	Table Drive Assembly .....	2-18
2.14	Blade Setting Drive & Laser Setting Chain .....	2-19
2.15	Middle Screw Support Bracket .....	2-21
2.16	Blade Setting Gear Motor .....	2-22
2.17	Laser Drive Chain Tensioner .....	2-24
2.18	Guards .....	2-25
2.19	Left Laser Mount Assembly .....	2-26
2.20	Right Laser Mount Assembly .....	2-27
2.21	Decals .....	2-28
2.22	Table Support .....	2-30
2.23	Brush with fixing 553886 .....	2-31
2.24	Table (No. 552953) .....	2-32
2.25	Table (No. 552971) .....	2-34
2.26	Driven Roller (No. 514830) .....	2-36
2.27	Drive Roller (No. 514688) .....	2-37
2.28	Return Roller (No. 515363) .....	2-38
2.29	Tension Pulley Scraper (No. 552967) .....	2-39
2.30	Fixed Pulley Scraper (No. 552968) .....	2-40
2.31	Belt Scraper (No. 552975) .....	2-41

## SECTION 1 GENERAL INFORMATION

### 1.1 How To Use the Parts List

- Use the index above to locate the assembly that contains the part you need.
- Go to the appropriate section and locate the part in the illustration.
- Use the number pointing to the part to locate the correct part number and description in the table.
- Parts shown indented under another part are included with that part.
- Parts marked with a diamond (◆) are only available in the assembly listed above the part.

See the sample table below. Sample Part #A01111 includes part F02222-2 and subassembly A03333. Subassembly A03333 includes part S04444-4 and subassembly K05555. The diamond (◆) indicates that S04444-4 is not available except in subassembly A03333. Subassembly K05555 includes parts M06666 and F07777-77. The diamond (◆) indicates M06666 is not available except in subassembly K05555.

<b>1.2 Sample Assembly</b>				
REF.	DESCRIPTION (◆ Indicates Parts Available In Assemblies Only)	PART #	QTY	
	Sample Assembly, Complete (Includes All Indented Parts Below)	A01111	1	
1	Sample Part	F02222-22	1	
	Sample Subassembly (Includes All Indented Parts Below)	A03333	1	
2	Sample Part (◆ Indicates Part Is Only Available With A03333)	S04444-4	1	◆
	Sample Subassembly (Includes All Indented Parts Below)	K05555	1	
3	Sample Part (◆ Indicates Part Is Only Available With K05555)	M06666	2	◆
4	Sample Part	F07777-77	1	

#### To Order Parts:

- From Europe call our European Headquarters and Manufacturing Facility in Kolo, Poland at **+48-63-2626000**. From the continental U.S., call our toll-free Parts hotline at **1-800-525-8100**. Have your customer number, vehicle identification number, and part numbers ready when you call. From other international locations, contact the Wood-Mizer distributor in your area for parts.

#### Office Hours:

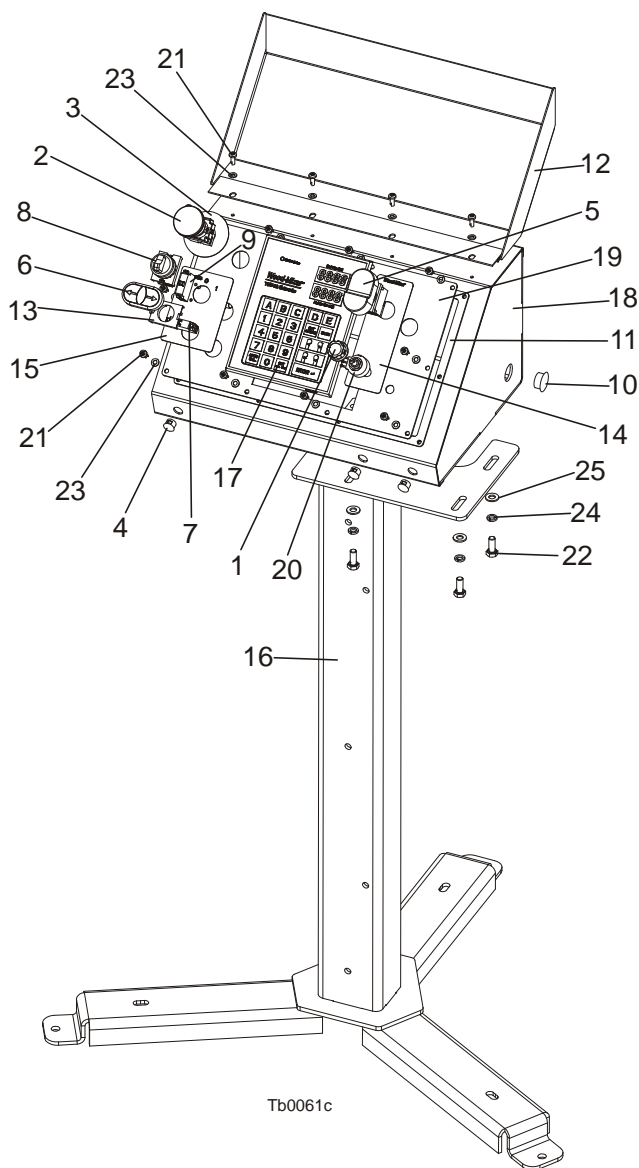
Country	Monday - Friday	Saturday	Sunday
Poland	7-15	Closed	Closed
US	8 a.m.- 5 p.m.	8 a.m.- 12 p.m.	Closed



**CAUTION!** It is strongly recommended that only original spare parts be used.

## SECTION 2 EG350 Replacement Parts

### 2.1 Control Box



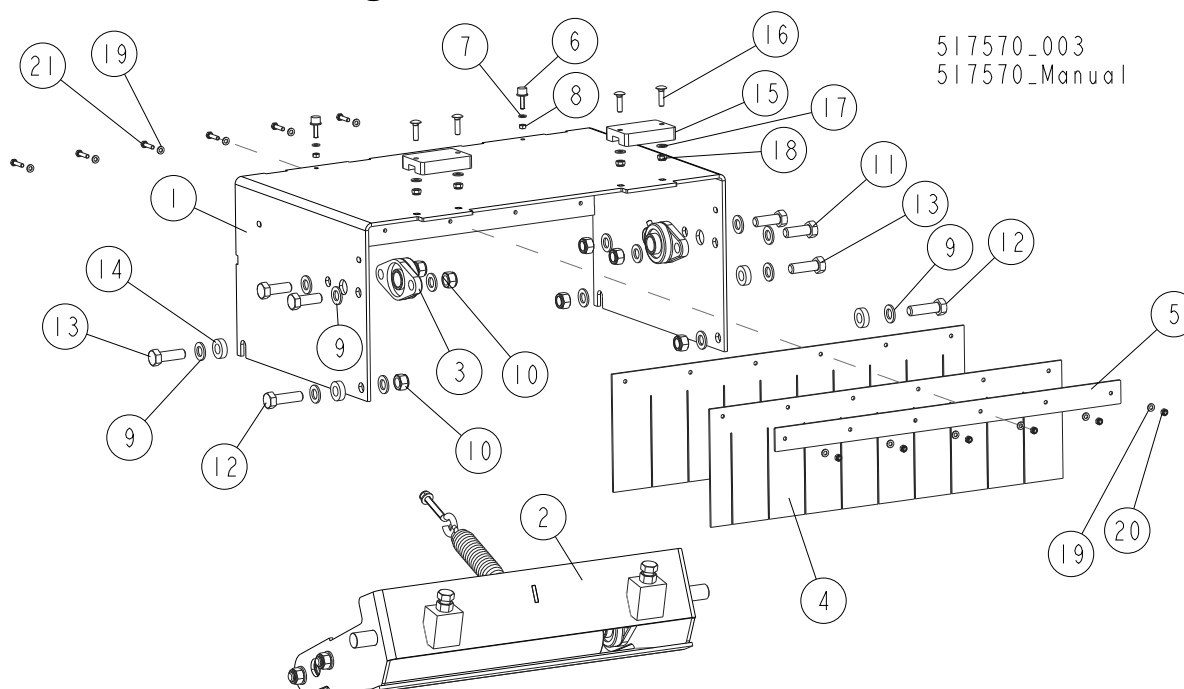
REF	DESCRIPTION (◆ indicates parts available in assemblies only)	PART #	QTY
	CONTROL BOX, EG300 EDGER COMPLETE	504374	1
1	◆ KNOB, 1/4 ID FLUTED ROUND PLASTIC	033478	1
2	◆ SWITCH EMERGENCY XB4 BS542	086556	1
3	◆ LEGEND, ZBY9320 E-STOP MARKED	086561	1
4	◆ CAP, DP 812 HEJMAN 12.7 DIA. HOLE	086773	3
5	◆ START/STOP SWITCH 24V	090452	1
6	◆ BUTTON, M22-DD-S-X7/X7	090917	1
7	◆ ELEMENT, M22-K10 CONTACT	091362	1
8	◆ SWITCH, 2POSITION KEY	091467	1
9	◆ ELEMENT, M22-K01 CONTACT	092684	1
10	◆ PLUG, SR1086 NA OT.22,2	093544	2
11	◆ GASKET, LT20 CONTROL BOX	097132	1

12	COVER, LT20/40 CONTROL BOX - COMPLETE	097135-1	1	
13	CONNECTOR, M22-A	100905	1	
14	DECAL, EDGER CONTROL BOX (1)	500035	1	
15	DECAL, EDGER CONTROL BOX (2)	500035-1	1	
16	STAND, LT20B CONTROL BOX	501651-1	1	
17	CONTROLLER, TBS01 BLADE POSITION	503467	1	
18	CONTROL BOX, TVS	503536-1	1	
19	PANEL, EG300 CONTROL BOX FRONT	504375-1	1	
20	POTENTIOMETER, 1K LTAGA	E20519	1	
21	BOLT, #10-24 x 1/2 PH PAN HD, TYPE 23	F05015-17	14	
22	BOLT, M8x20-8.8-B HEX HEAD FULL THREAD ZINC	F81002-4	4	
23	WASHER, 5.3 FLAT ZINC	F81052-1	14	
24	WASHER, 8.4 FLAT ZINC	F81054-1	4	
25	WASHER 8,2 FE/ZN9	F81054-4	4	

# 2 EG350 REPLACEMENT PARTS

## Press Roller Housing - Outfeed Side

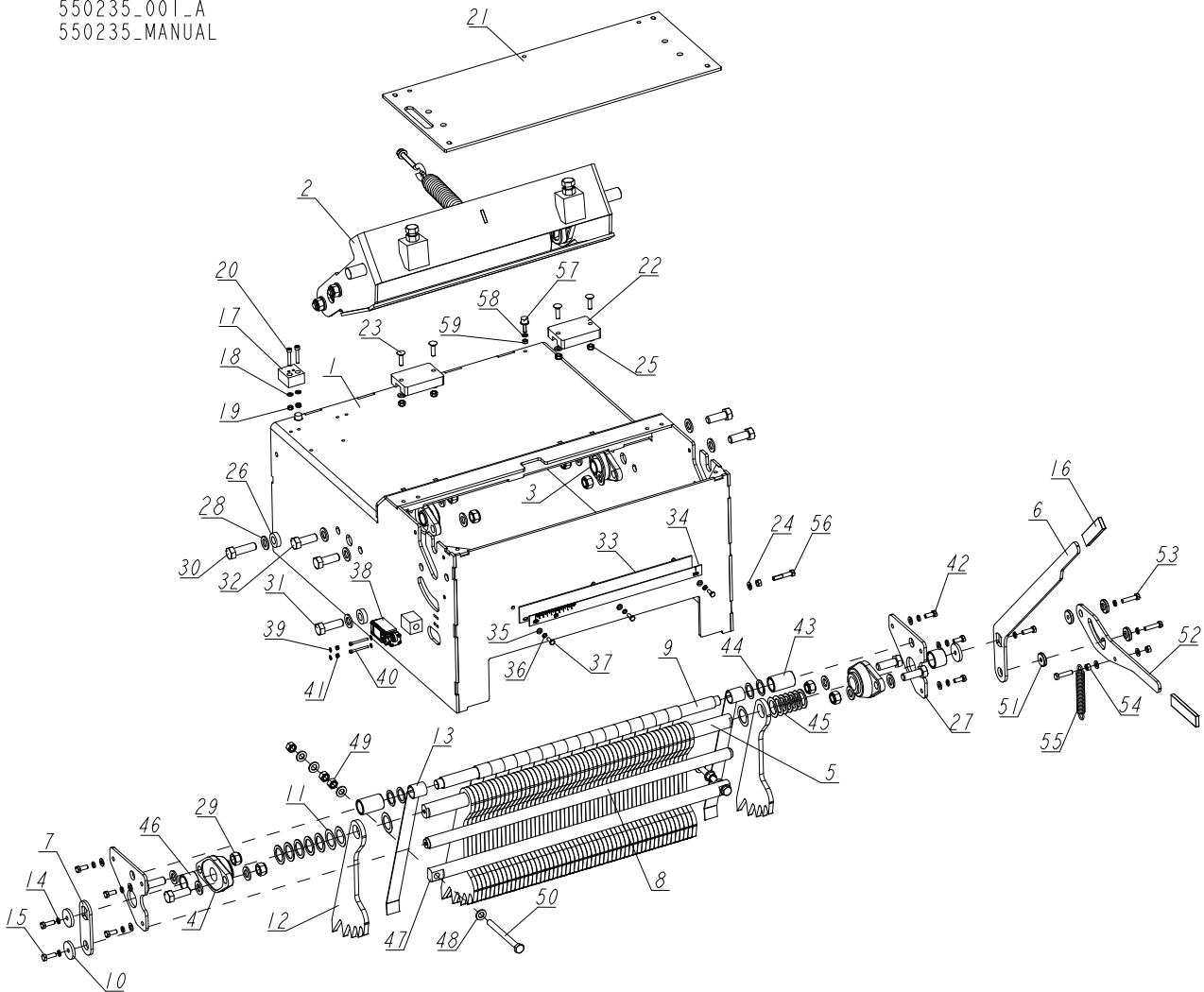
### 2.2 Press Roller Housing - Outfeed Side



REF	DESCRIPTION (◆ indicates parts available in assemblies only)	PART #	QTY
	<b>HOUSING, PRESS ROLLER - COMPLETE (OUTFEED SIDE)</b>	<b>515269</b>	<b>1</b>
1	HOUSING, PRESS ROLLER - OUTFEED SIDE	515270-1	1
2	ROLLER, PRESS - COMPLETE <a href="#">See Section 2.3</a>	515265	1
3	BEARING, UCFL 205	089124	2
4	CURTAIN, EG350 PLASTIC	513574	2
5	BAR, CURTAIN MOUNTING	512800-1	1
	<b>BUMPER, COMPLETE A/022</b>	<b>088376</b>	<b>2</b>
6	BUMPER, A/022 RUBBER & METAL	088375	1
7	WASHER, 6.4 FLAT ZINC	F81053-1	1
8	NUT, M6-8 HEX ZINC	F81031-1	1
9	WASHER, 17 FLAT ZINC	F81058-1	16
10	NUT, M16,HEX, NYLON ZINC LOCK	F81036-2	8
11	BOLT, M16X45-8.8 HEX HEAD FULL THREAD ZINC	F81006-46	4
12	BOLT, M16X55-8.8 HEX HEAD FULL THREAD ZINC	F81006-61	2
13	BOLT, M16 X 50-8.8 HEX HEAD	F81006-7	2
14	WASHER, 16.5/32-9.5 NYLON	514092	4
15	BUMPER, GRENE 70 3201 0010. SHR RUBBER	094969	2
16	BOLT, M8X30-8.8 CARRIAGE ZINC (DIN 603)	F81002-69	4
17	WASHER, 8.4 FLAT ZINC	F81054-1	4
18	NUT, M8-8-B HEX NYLON ZINC LOCK	F81032-2	4
19	WASHER, 6.4 FLAT ZINC	F81053-1	12
20	NUT, M6-8-B HEX NYLON ZINC LOCK	F81031-2	6
21	BOLT, M6X25-5.8 HEX HEAD FULL THREAD ZINC	F81001-3	6

**2.3 Press Roller Housing - Infeed Side**

550235\_001\_A  
 550235\_MANUAL



REF	DESCRIPTION (u indicates parts available in assemblies only)	PART #	QTY
-	<b>HOUSING, PRESS ROLLER - COMPLETE (INFEED)</b>	550235	1
1	HOUSING, PRESS ROLLER - INFEED SIDE	550236-1	1
2	ROLLER, PRESS - COMPLETE	515265	1
3	BEARING, UCFL 205	089124	2
4	BEARING, FYTB30FJ BALL (SKF)	090851	2
5	SHAFT, 30X762	550296-1	1
6	LEVER, ANTI-KICKBACK	550298-1	1
7	PLATE, MOUNTING	550297-1	1
8	SHAFT, 25X762	550299-1	1
9	SHAFT, 25X705	550294-1	1
10	WASHER, 8.5/40-6 ZINC-PLATED	512011-1	3
11	WASHER, 30.5/45-0.5	550241	58
12	FINGER, EG350 ANTI-KICKBACK	550243-1	55
13	FINGER, EG350 ANTI-SPLINTER	550244-1	18
14	WASHER 8,2 FE/ZN9	F81054-4	11
15	BOLT, M8X25-8.8-B HEX HEAD FULL THREAD Z	F81002-5	3
16	COVER, LT15 GRIP LOG CLAMP	086875	2
17	BLOCK, FLEXIBLE DRAW LATCH MOUNT	513616-1	1

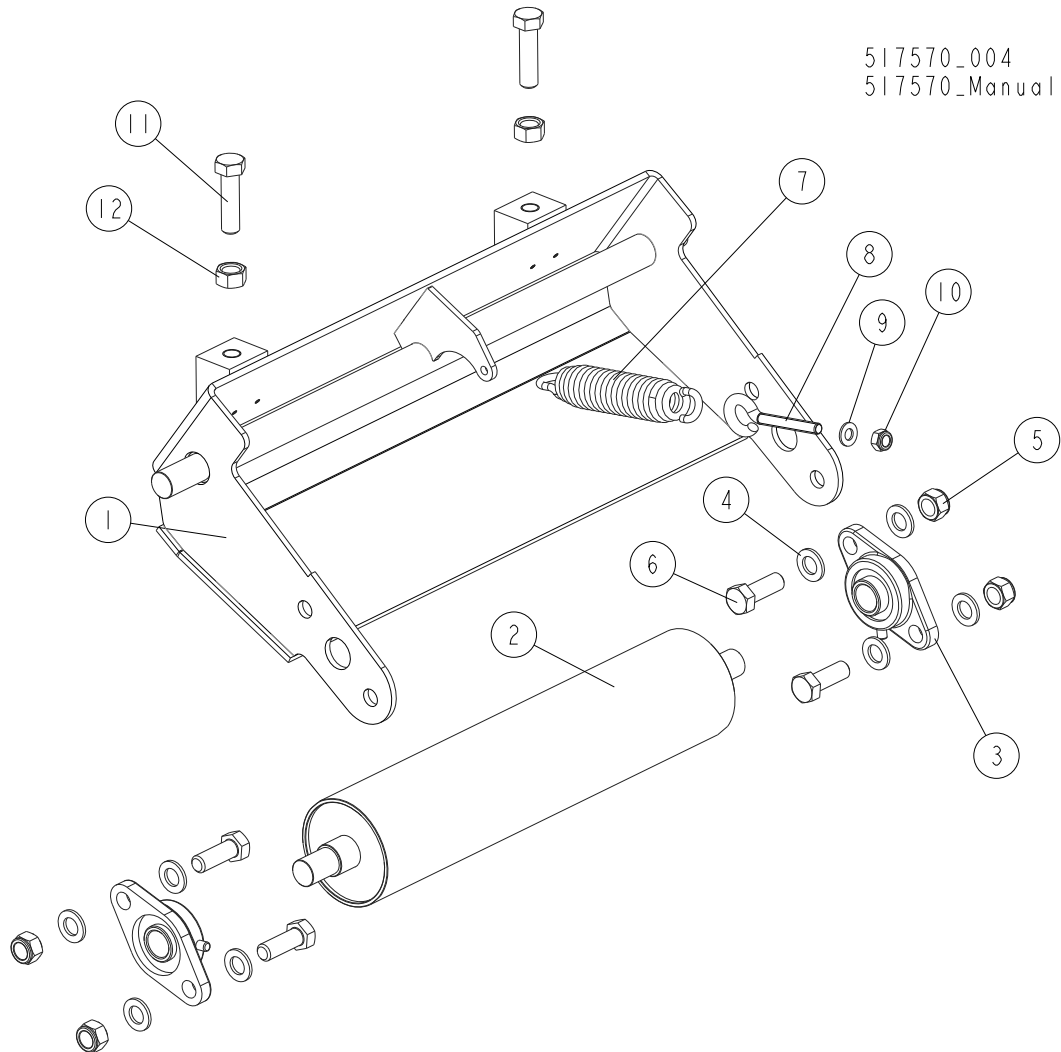
## 2 EG350 REPLACEMENT PARTS

### Press Roller Housing - Infeed Side

REF	DESCRIPTION (u indicates parts available in assemblies only)	PART #	QTY	
18	WASHER, 6.4 FLAT ZINC	F81053-1	2	
19	NUT, M6-8-B HEX NYLON ZINC LOCK	F81031-2	2	
20	BOLT, M6 X 35 8.8 FE/ZN5, PN-M/82302	F81001-23	2	
21	COVER WELDMENT, PRESS ROLLER HOUSING	515267-1	1	
22	BUMPER, GRENE 70 3201 0010. SHR RUBBE	094969	2	
23	BOLT, M8X30-8.8 CARRIAGE ZINC (DIN 603)	F81002-69	4	
24	WASHER, 8.4 FLAT ZINC	F81054-1	14	
25	NUT, M8-8-B HEX NYLON ZINC LOCK	F81032-2	4	
26	WASHER, 16.5/32-9.5 NYLON	514092	4	
27	PLATE, MOUNTING	550293-1	2	
28	WASHER, 17 FLAT ZINC	F81058-1	24	
29	NUT, M16,HEX, NYLON ZINC LOCK	F81036-2	12	
30	BOLT, M16X55-8.8 HEX HEAD FULL THREAD ZI	F81006-61	2	
31	BOLT, M16 X 50-8.8 HEX HEAD	F81006-7	2	
32	BOLT, M16X45-8.8 HEX HEAD FULL THREAD ZI	F81006-46	8	
-	SCALE, EG350 CUTTING WIDTH - COMPLETE	516450	1	
33	PLATE, EG350 CUTTING WIDTH DECAL	516448-1	1	
34	DECAL, EG350 CUTTING WIDTH	516447	1	
35	WASHER, 6.4 FLAT ZINC	F81053-1	3	
36	WASHER, Z 6.1 SPLIT LOCK ZINC	F81053-3	3	
37	BOLT, M6 X 16 8.8 FE/ZN5 PN-M/82105	F81001-15	3	
38	LIMIT SWITCH, FA138 Z11	100931	1	
39	WASHER 4,3 FE/ZN5 PN-M/82005	F81051-2	4	
40	BOLT M4X40 8.8 FE/ZN HEX	F81011-37	2	
41	NUT M4-B FE/ZN5 PN-M/82175	F81029-1	2	
42	BOLT, M8X20-8.8-B HEX HEAD FULL THREAD Z	F81002-4	6	
43	BUSHING, 25.7/33.7-52.5 ZINC-PLATED	550239-1	2	
44	WASHER	503406	4	
45	WASHER 30/42-2 FE/ZN5 DIN 988	F81069-1	10	
46	BUSHING, 30.5/38-29	550240-1	2	
47	ROD, ANTI-KICKBACK FINGER STOP	550301-1	1	
48	WASHER, 13 FLAT ZINC	F81056-1	8	
49	NUT, M12-8-B ZINC HEX	F81034-1	6	
50	BOLT, M12X130-8.8 FE/ZN/PN/M82105	F81004-55	2	
51	BUSHING, 8.2/30-9.5 15-3.5 ZINC-PLATED	550304-1	4	
52	PLATE, LEVER LOCK	550303-1	1	
53	BOLT,M8X35-8.8 HEX HEAD FULL THREAD ZINC	F81002-13	3	
54	NUT, M8-8-B HEX ZINC	F81032-1	4	
55	SPRING, FI 1,9 X FI 14,2 X 104	091865	1	
56	BOLT M8X45-8.8	F81002-17	1	
-	BUMPER, COMPLETE A/022	088376	2	
57	BUMPER, A/022 RUBBER & METAL	088375	1	
58	WASHER, 6.4 FLAT ZINC	F81053-1	1	
59	NUT, M6-8 HEX ZINC	F81031-1	1	

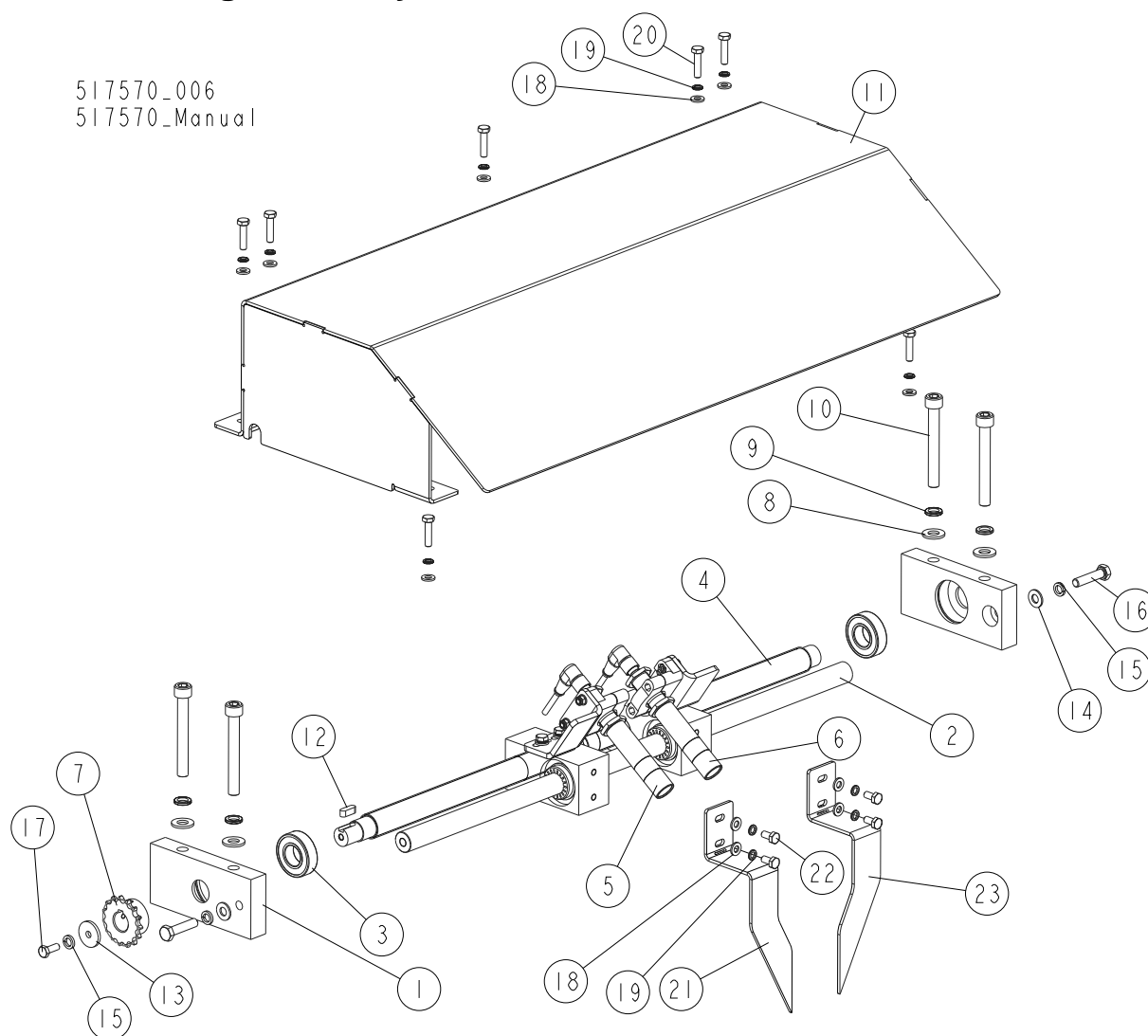


**2.4 Outfeed Side Press Roller**



REF	DESCRIPTION (◆ indicates parts available in assemblies only)	PART #	QTY
	<b>ROLLER, PRESS - COMPLETE</b>	<b>515265</b>	<b>1</b>
1	MOUNT WELDMENT, PRESS ROLLER	515259-1	1
2	ROLLER, PRESS	503170-1	1
3	BEARING, UCFL 205	089124	2
4	WASHER, 17 FLAT ZINC	F81058-1	8
5	NUT, M16,HEX, NYLON ZINC LOCK	F81036-2	4
6	BOLT, M16X45-8.8 HEX HEAD FULL THREAD ZINC	F81006-46	4
7	SPRING, PRESS ROLLER ZINC-PLATED	089689-1	1
8	TENSIONER, SHORT ZINC-PLATED	500848-1	1
9	WASHER, 10.5 FLAT ZINC	F81055-1	1
10	NUT, M10-8-B HEX NYLON ZINC LOCK	F81033-1	1
11	BOLT, M16 X 60 8.8 FE/ZN5 HEX HEAD FULL	F81006-12	2
12	NUT, M16-5.8 HEX ZINC	F81036-1	2

## 2.5 Laser Setting Assembly



REF	DESCRIPTION (◆ indicates parts available in assemblies only)	PART #	QTY
1	PLATE, SIDE MOUNTING	516182-1	2
2	ROD, LASER SETTING	515975	1
3	BEARING, 6004 2RS ROLLING	093868	2
4	SCREW, LASER SETTING	515974	1
5	LASER SIGHT - LEFT <a href="#">See Section 2.7</a>	515980	1
6	LASER SIGHT - RIGHT <a href="#">See Section 2.7</a>	515984	1
7	SPROCKET, 06B-1 Z15 N18 (T74922)	515961-1	1
8	WASHER, 10.5 FLAT ZINC	F81055-1	4
9	WASHER, 10.2 SPLIT LOCK ZINC	F81055-2	4
10	SCREW, M10X80-8.8 HEX SOCKET HEAD CAP ZINC	F81003-69	4
11	GUARD, LASER	516012-1	1
12	KEY, A6X6X18	089404	1
13	WASHER, 6.5/25-3	516008-1	1
14	WASHER, 8.4 FLAT ZINC	F81054-1	2
15	WASHER 8,2 FE/ZN9	F81054-4	3
16	BOLT, M8X35-8.8 HEX HEAD FULL THREAD ZINC	F81002-13	2
17	BOLT, M6 X 16 8.8 FE/ZN5 PN-M/82105	F81001-15	1

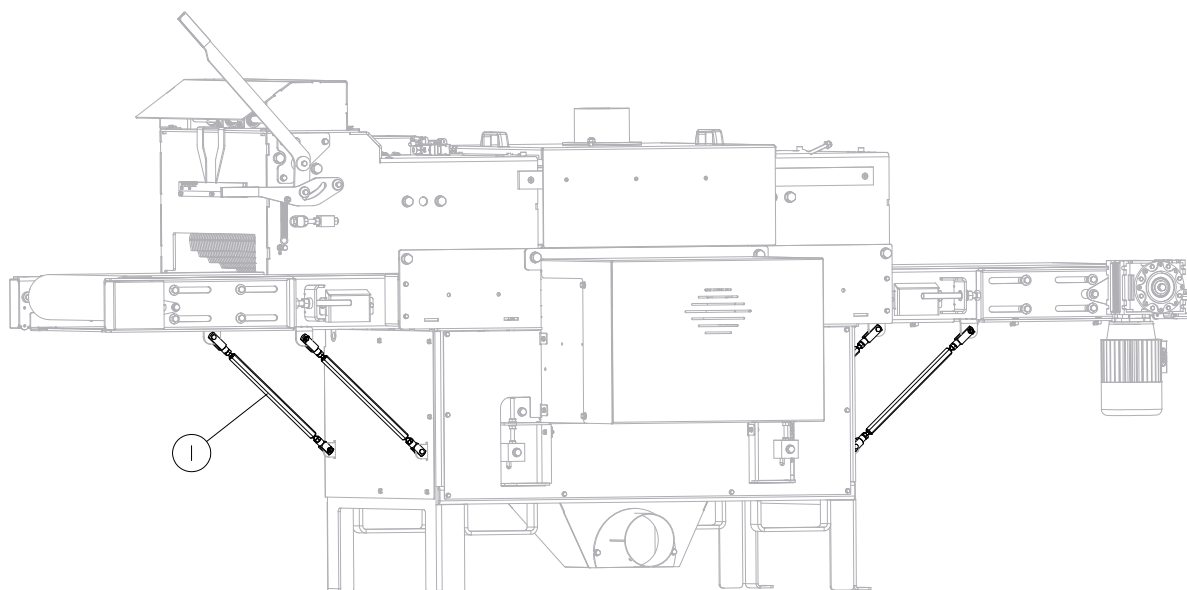
REF	DESCRIPTION (◆ indicates parts available in assemblies only)	PART #	QTY
18	WASHER, 6.4 FLAT ZINC	F81053-1	11
19	WASHER, Z 6.1 SPLIT LOCK ZINC	F81053-3	11
20	BOLT, M6X25-5.8 HEX HEAD FULL THREAD ZINC	F81001-3	7
21	INDICATOR, CUTTING WIDTH - LEFT	517563-1	1
22	BOLT, M6X12-8.8 HEX HEAD FULL THREAD ZINC	F81001-7	4
23	INDICATOR, CUTTING WIDTH - RIGHT	517564-1	1

# 2 EG350 REPLACEMENT PARTS

## Table Support

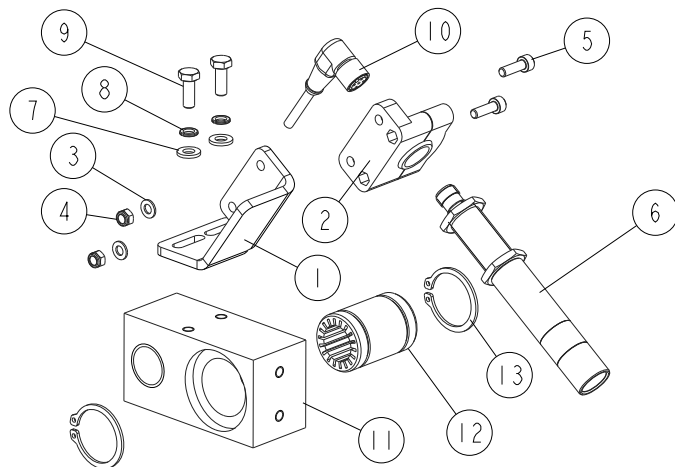
### 2.6 Table Support

517570\_019  
517570\_MANUAL



REF	DESCRIPTION (u indicates parts available in assemblies only)	PART #	QTY	
1	SUPPORT, TABLE - COMPLETE. <a href="#">See Section 2.22</a>	557060	1	

2.7 Laser Sight



517570\_007  
517570\_Manual

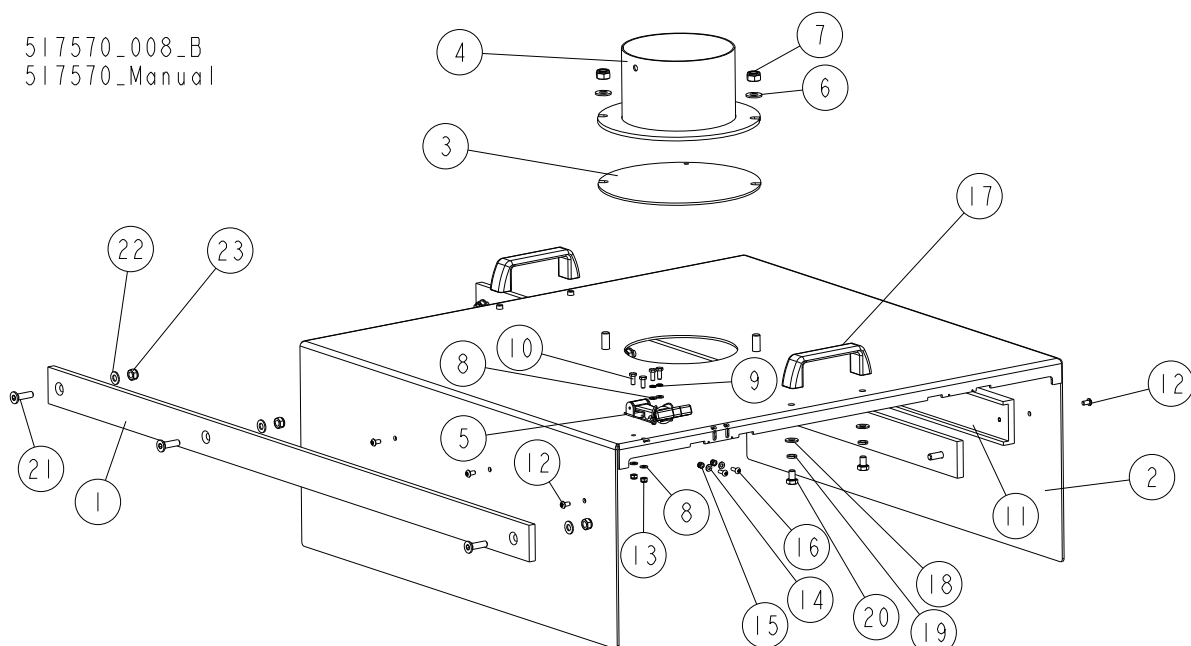
REF	DESCRIPTION (◆ indicates parts available in assemblies only)	PART #	QTY
	<b>LASER SIGHT - LEFT</b>	<b>515980</b>	<b>1/0</b>
	<b>LASER SIGHT - RIGHT</b>	<b>515984</b>	<b>0/1</b>
1	BRACKET, LASER SIGHT MOUNT	515701-1	1
2	BRACKET LASER SMB18SF	503469	1
3	WASHER, 5.3 FLAT ZINC	F81052-1	2
4	NUT, M5-8-FE/ZN5 DIN985	F81030-2	2
5	SCREW, M5X16-8.8 HEX SOCKET HEAD CAP ZINC	F81000-25	2
6	LASER, Z5M18B-F-532-IG90 LINEAR, GREEN	501025	1
7	WASHER, 6.4 FLAT ZINC	F81053-1	2
8	WASHER, Z 6.1 SPLIT LOCK ZINC	F81053-3	2
9	BOLT, M6 X 16 8.8 FE/ZN5 PN-M/82105	F81001-15	2
10	CABLE, 5M SAFETY SWITCH	087652	1
	<b>BLOCK, LASER GUIDE - COMPLETE LEFT</b>	<b>515976</b>	<b>1/0</b>
	<b>BLOCK, LASER GUIDE - COMPLETE RIGHT</b>	<b>515979</b>	<b>0/1</b>
11	BLOCK, LASER GUIDE - LEFT	515964	1/0
	BLOCK, LASER GUIDE - RIGHT	515978	0/1
12	BEARING, RJMP-01-20 LINEAR	515977	1
13	RING, Z32 OUTSIDE RETAINING	F81090-61	2

# 2 EG350 REPLACEMENT PARTS

## Blade Housing

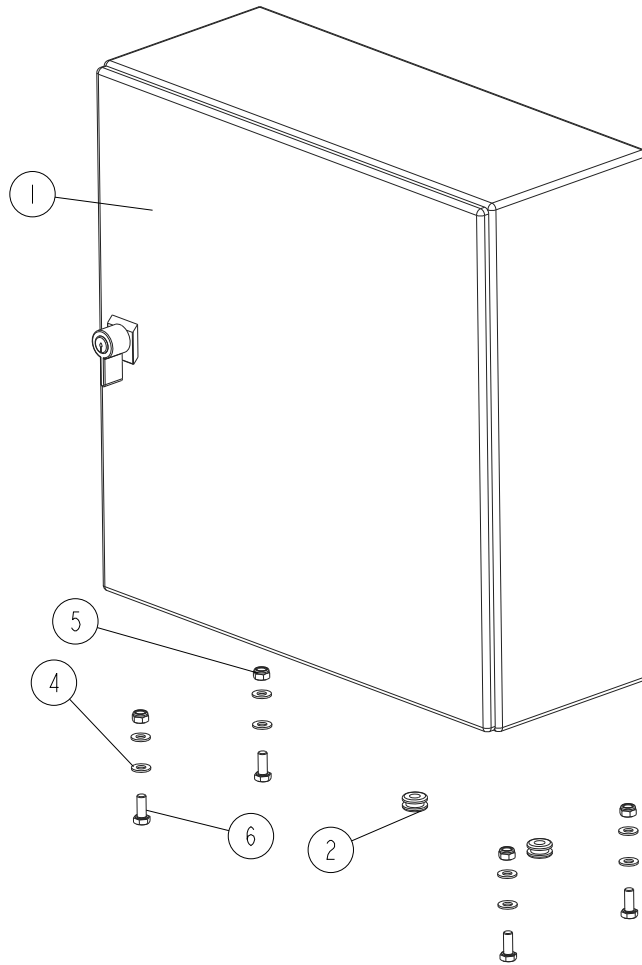
### 2.8 Blade Housing

517570\_008-B  
517570\_Manual



REF	DESCRIPTION (◆ indicates parts available in assemblies only)	PART #	QTY
1	<b>BAR, BLADE HOUSING</b>	<b>516687-1</b>	<b>2</b>
	<b>HOUSING, EG350 BLADE - COMPLETE</b>	<b>516688</b>	<b>1</b>
2	HOUSING WELDMENT, BLADE	516689-1	1
3	HANDLE, 4" W/BOLTS	P08065	2
4	COVER, HOPPER HOLE PAINTED	095413-1	1
5	TUBE, SAWDUST EXH CONNECTOR	095412-1	1
6	LATCH, FLEXIBLE DRAW	014829	1
7	WASHER, 10.5 FLAT ZINC	F81055-1	2
8	NUT, M10-8-B HEX NYLON ZINC LOCK	F81033-1	2
9	WASHER, 5.3 FLAT ZINC	F81052-1	4
10	WASHER, 5.1 SPLIT LOCK ZINC	F81052-2	2
11	BOLT, M5 X 12-5.8-FE/ZN5, PN-M/82105	F81000-5	4
12	CHANNEL, BLADE HOUSING	516692	2
13	BOLT, M5X10 WG. ISO 7380	F81000-32	6
14	BOLT, #8-32X3/8 SELF TAP	F05015-8	4
15	NUT, M5-8-FE/ZN5 DIN985	F81030-2	2
16	WASHER 4,3 FE/ZN5 PN-M/82005	F81051-2	2
17	NUT M4-B FE/ZN5 PN-M/82175	F81029-1	2
18	SCREW, M4X12 5,8-B CROSS RECESSED PAN HEAD	F81011-43	2
19	SCREW, M8X30-8.8 FLAT SOCKET HEAD CAP ZINC	F81002-43	6
20	WASHER, 8.4 FLAT ZINC	F81054-1	5
21	NUT, M8-8-B HEX NYLON ZINC LOCK	F81032-2	5

2.9 Electrical Box



517570\_009  
 517570\_Manual

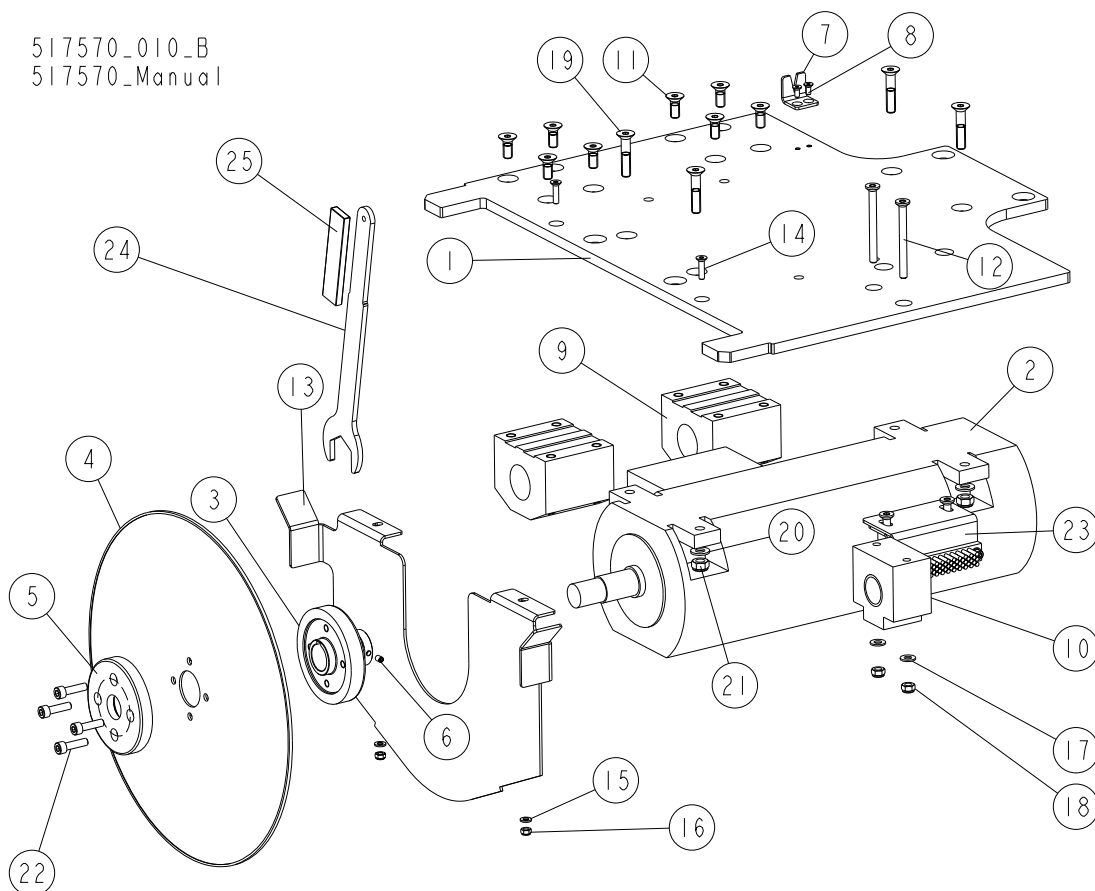
REF	DESCRIPTION (◆ indicates parts available in assemblies only)	PART #	QTY	
	<b>BOX, EG350E15 ELECTRICAL</b>	<b>515965</b>	<b>1</b>	<b>-</b>
	<b>BOX, EG350E22 ELECTRICAL</b>	<b>516726</b>	<b>-</b>	<b>1</b>
	BOX, EG350 ELECTRICAL E15	516014	1	-
	BOX, EG350 ELECTRICAL E22	516727	-	1
1	BOX, SAREL NSYSCRN4420 /500x500x200/	095844	1	-
	BOX, SAREL 600x500x200/	516728	-	1
2	GROMMET, RUBBER 3/8 ID	025248	2	2
3	GUARD, LASER SIGHT	516012-1	1	1
4	WASHER, 8.4 FLAT ZINC	F81054-1	8	8
5	NUT, M8-8-B HEX NYLON ZINC LOCK	F81032-2	4	4
6	BOLT, M8X20-8.8-B HEX HEAD FULL THREAD ZINC	F81002-4	4	4

# 2 EG350 REPLACEMENT PARTS

## E15 Motor Mounting Plate

### 2.10 E15 Motor Mounting Plate

517570\_010\_B  
517570\_Manual



REF	DESCRIPTION (◆ indicates parts available in assemblies only)	PART #	QTY
	PLATE, MOTOR MOUNT - COMPLETE LEFT	517561	1/0
	PLATE, MOTOR MOUNT - COMPLETE RIGHT	517562	0/1
1	PLATE, MOTOR MOUNT - LEFT	516559-1	1/0
	PLATE, MOTOR MOUNT - RIGHT	516533-1	0/1
2	MOTOR, SPG-75-2E - 5.2KW - LEFT REVOLUTI	512949-L	1/0
	MOTOR, SPG-75-2E - 5.2KW - RIGHT REVOLUT	512949-P	0/1
2	MOTOR, SPG-75-2E - 5.2KW - LEFT REVOLUTI	512949-L	1
3	FLANGE, BLADE CLAMPING W/NUT	513874-1	1
4	BLADE, 20 AA 400-4,2/2,8; D=40, Z=24+4R	514172	1
5	FLANGE, BLADE CLAMPING	513875-1	1
6	SCREW M6X8	F81013-1	2
7	INDICATOR, CUTTING WIDTH SCALE	512330-1	1/0
8	SCREW, M5X12-10.9 DIN7991(BN 0021) FLAT	F81000-45	2/0
9	BEARING, SMA 40 UU LINEAR	516532	2
10	BLOCK, THREADED - RIGHT	516560	1
11	BOLT, M10x25 -10.9- Fe/Zn5 DIN 7991	F81003-82	8
12	SCREW, M8X90-8.8 FLAT SOCKET HEAD CAP ZI	F81002-92	2
13	SHIELD, SAWDUST	516540-1	1
14	SCREW M6X25 HSFH ZC 8.8 DIN7991	F81001-68	2
15	WASHER, 6.4 FLAT ZINC	F81053-1	2
16	NUT, M6-8-B HEX NYLON ZINC LOCK	F81031-2	2
17	WASHER, 8.4 FLAT ZINC	F81054-1	2



# EG350 REPLACEMENT PARTS

*E15 Motor Mounting Plate*

2

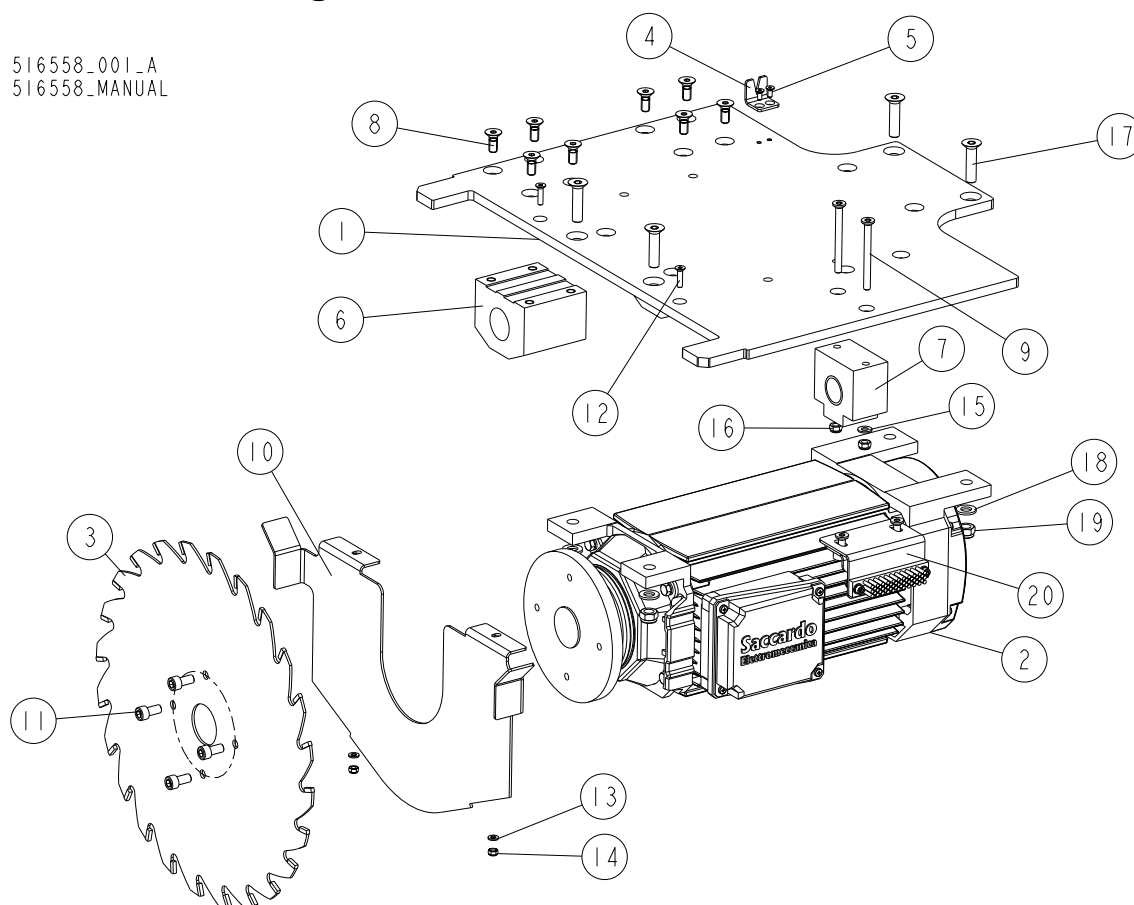
REF	DESCRIPTION (◆ indicates parts available in assemblies only)	PART #	QTY	
18	NUT, M8-8-B HEX NYLON ZINC LOCK	F81032-2	2	
19	SCREW, M10X50-10.9 DIN7991 (BN 7933) FLA	F81003-97	4	
20	WASHER, 10.5 FLAT ZINC	F81055-1	4	
21	NUT, M10-8-B HEX NYLON ZINC LOCK	F81033-1	4	
22	BOLT, M8 X 30-8.8 SOCKET HEAD	F81002-31	4	
23	BRUSH, WITH FIXING - EG350	553886	1	
-	KEY, EG-350, COMPLETE	516408	1	
24	KEY, EG-350, ZINC	516408-1	1	
25	COVER, LT15 GRIP LOG CLAMP	086875	1	

# 2 EG350 REPLACEMENT PARTS

## E22 Motor Mounting Plate

### 2.11 E22 Motor Mounting Plate

516558\_001\_A  
516558\_MANUAL



REF	DESCRIPTION (◆ indicates parts available in assemblies only)	PART #	QTY	
	<b>PLATE, MOTOR MOUNT - COMPLETE LEFT</b>	<b>516558</b>	<b>1</b>	<b>-</b>
	<b>PLATE, MOTOR MOUNT - COMPLETE RIGHT</b>	<b>516528</b>	<b>-</b>	<b>1</b>
1	PLATE, MOTOR MOUNT - LEFT	516559-1	1	-
	PLATE, MOTOR MOUNT - RIGHT	516533-1	-	1
2	THREEPHASE ASYNCHRONOUS E-MOTORS	516527	1	1
3	BLADE, 20AA 450-4,2/2,8 D=50, Z=24+4R	516512	1	1
4	INDICATOR, CUTTING WIDTH SCALE	512330-1	1	-
5	SCREW, M5X12-10.9 DIN7991(BN 0021) FLAT SOCKET HEAD CAP ZINC	F81000-45	2	-
6	BEARING, SMA 40 UU LINEAR	516532	2	2
7	BLOCK, LEFT THREADED	516534	1	-
	BLOCK, THREADED - RIGHT	516560	-	1
8	BOLT, M10X25 -10.9- FE/ZN5 DIN 7991	F81003-82	8	8
9	SCREW, M8X90-8.8 FLAT SOCKET HEAD CAP ZINC (DIN7991)	F81002-92	2	2
10	SHIELD, SAWDUST	516540-1	1	1
11	BOLT, M10X20 8.8 FE/ZN5 PN-M/82302	F81003-108	4	4
12	SCREW M6X25 HSFH ZC 8.8 DIN7991	F81001-68	2	2
13	WASHER, 6.4 FLAT ZINC	F81053-1	2	2
14	NUT, M6-8-B HEX NYLON ZINC LOCK	F81031-2	2	2
15	WASHER, 8.4 FLAT ZINC	F81054-1	2	2
16	NUT, M8-8-B HEX NYLON ZINC LOCK	F81032-2	2	2
17	SCREW, M12X50-10.9 FLAT SOCKET HEAD CAP ZINC (DIN7991)	F81004-19	4	4
18	WASHER, 13 FLAT ZINC	F81056-1	4	4

# EG350 REPLACEMENT PARTS

*E22 Motor Mounting Plate*

2

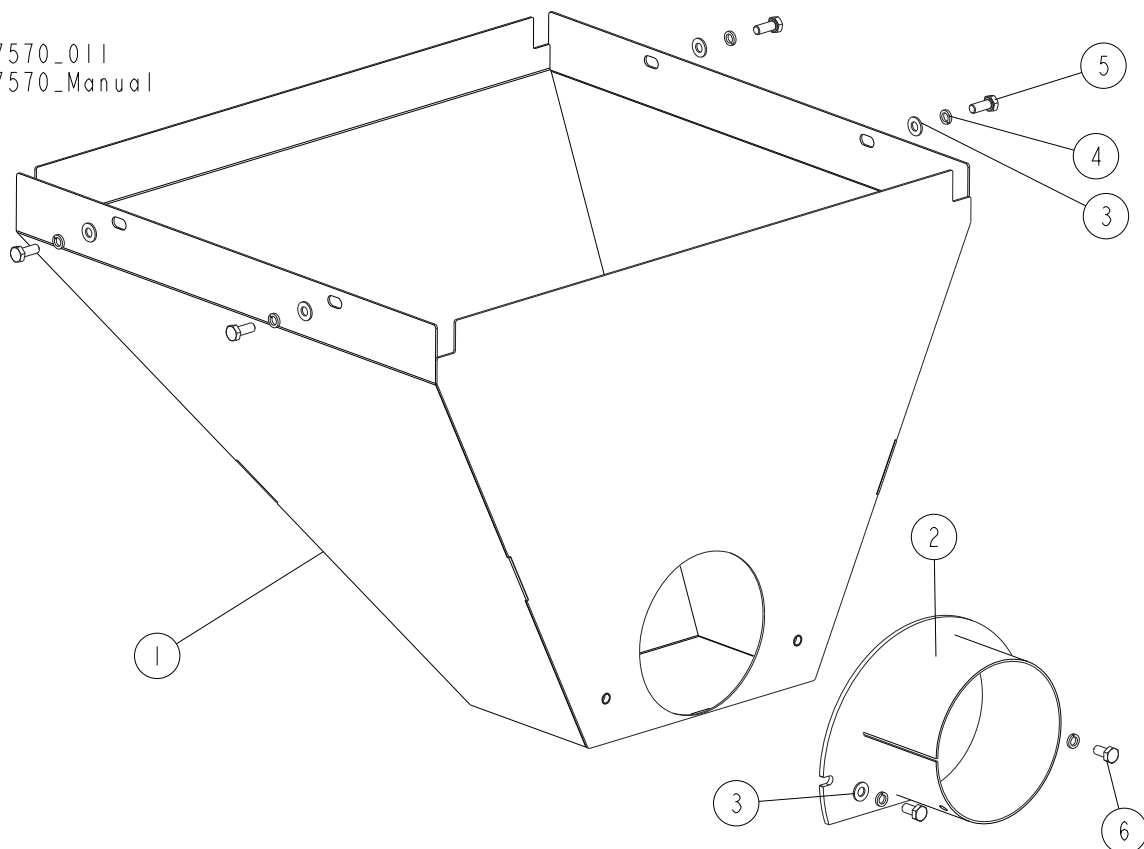
REF	DESCRIPTION (◆ indicates parts available in assemblies only)	PART #	QTY	
19	NUT, M12-8 HEX NYLON ZINC LOCK	F81034-2	4	4
20	BRUSH, WITH FIXING - EG350 <a href="#">See Section 2.23</a>	553886	1	1

# 2 EG350 REPLACEMENT PARTS

## Sawdust Hopper

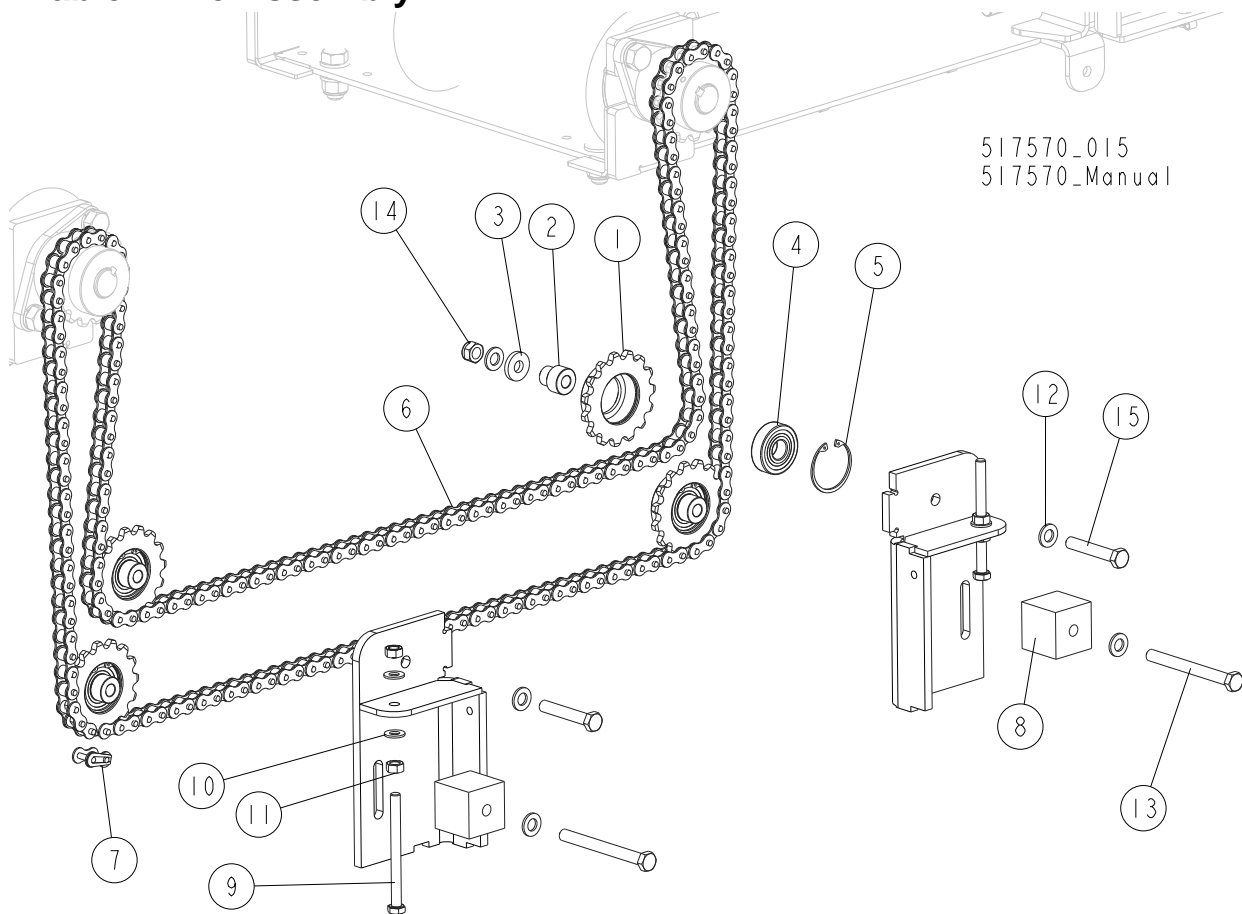
### 2.12 Sawdust Hopper

517570\_011  
517570\_Manual



REF	DESCRIPTION (◆ indicates parts available in assemblies only)	PART #	QTY
	<b>HOPPER, EG350 SAWDUST - COMPLETE</b>	<b>516693</b>	<b>1</b>
1	HOPPER, EG350 SAWDUST	516694-1	1
2	TUBE, EG350 SAWDUST EXTRACTOR CONNECTION	516700-1	1
3	WASHER, 8.4 FLAT ZINC	F81054-1	6
4	WASHER 8,2 FE/ZN9	F81054-4	6
5	BOLT, M8X20-8.8-B HEX HEAD FULL THREAD ZINC	F81002-4	4
6	BOLT M8X16 -8.8-B-FE/ZN5 PN-85/M-82105	F81002-20	2

## 2.13 Table Drive Assembly



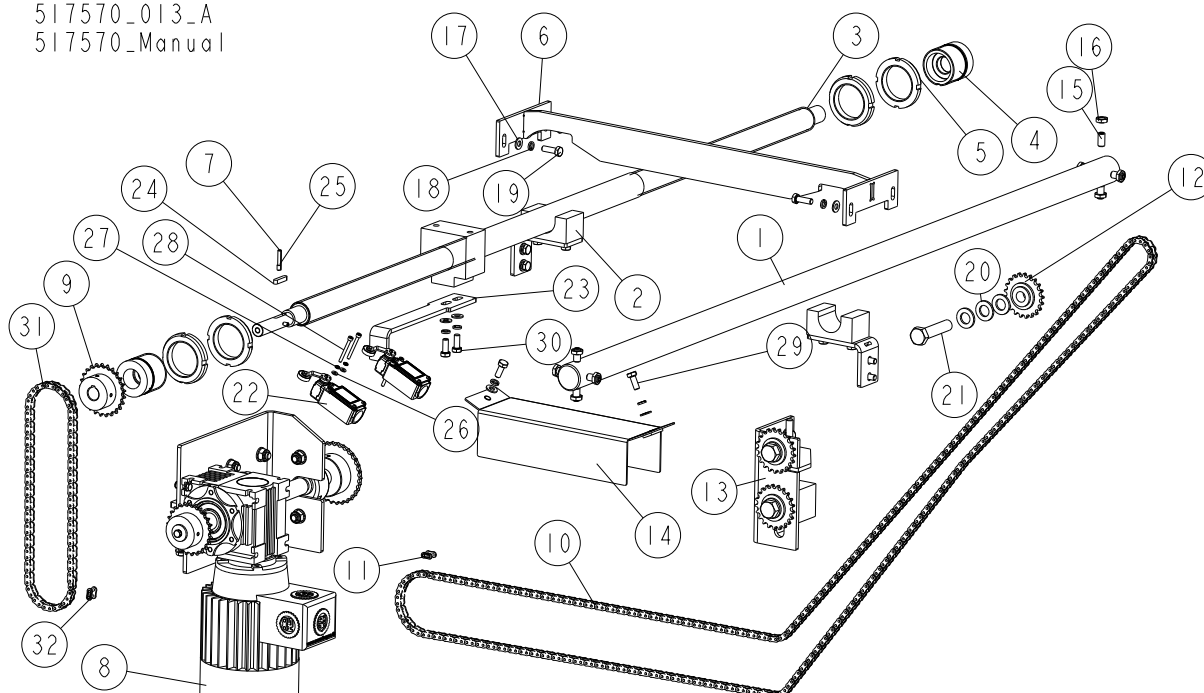
REF	DESCRIPTION (◆ indicates parts available in assemblies only)	PART #	QTY
	<b>SPROCKET, EG350 COMPLETE</b>	<b>511957</b>	<b>4</b>
1	SPROCKET, z15/12B-1 (T 08268)	511951-1	1
2	BUSHING, 12.5/27.5-29.5 20-14.5	511955-1	1
3	WASHER, 12.5/30-5 SPECIAL	511956-1	1
4	BEARING, 6304 2RS	512739	1
5	RING, W52 INSIDE RETAINING	F81090-6	1
	<b>CHAIN, EG350 TABLE DRIVE</b>	<b>516703</b>	<b>1</b>
6	CHAIN, 2B-1 L= CA.3677 (193-LINK)	516704	1
7	LINK, 12B-1PZ CHAIN	090713	1
8	BLOCK, TENSIONER	512623-1	2
9	BOLT, M10X120 8.8 HEX HEAD FULL THREAD ZINC	F81003-47	2
10	WASHER, 10.5 FLAT ZINC	F81055-1	4
11	NUT, M10-8-B-FE	F81033-3	4
12	WASHER, 13 FLAT ZINC	F81056-1	8
13	BOLT M12X120 8.8 FE/ZN5	F81004-38	2
14	NUT, M12-8 HEX NYLON ZINC LOCK	F81034-2	4
15	BOLT, M12X70 8.8 FE/ZN5 HEX HEAD	F81004-39	2

## 2 EG350 REPLACEMENT PARTS

### Blade Setting Drive & Laser Setting Chain

## 2.14 Blade Setting Drive & Laser Setting Chain

517570\_013\_A  
517570\_Manual



REF	DESCRIPTION (◆ indicates parts available in assemblies only)	PART #	QTY
1	ROD, N40H6/1420MM BLADE SETTING	516542	1
2	BRACKET, MIDDLE SCREW SUPPORT - COMPLETE <a href="#">See Section 2.15</a>	516547	2
3	SCREW, BLADE SETTING	516541	1
4	BUSHING, BLADE SETTING SCREW - COMPLETE	516545	2
5	NUT, KM11 CX BEARING LOCKING	516705	4
6	GUIDE WELDMENT, BOARD MIDDLE	516553-1	1
7	PIN 5X30 ROLL	F81044-21	1
8	MOTOREDUCER ASSEMBLY, BLADE SETTING <a href="#">See Section 2.16</a>	515932	1
9	SPROCKET 06B-1, Z25, FI 19	552923-1	1
-	CHAIN, LASER SETTING DRIVE	550306	1
10	CHAIN, 06B-1, L=3153 (331-LINK)	550307	1
11	LINK; W/MASTER; 06B-1 AS80 (BMT300AS)	500972	1
12	SPROCKET, 06B-1,N16, DP=63.91 TENSION	515935	1
13	TENSIONER ASSEMBLY, LASER SETTING CHAIN <a href="#">See Section 2.17</a>	515963	1
14	GUARD, CHAIN LOWER - COMPLETE	516557-1	1
15	SCREW,M10X1X20 DIN913 STAINLESS STEEL SE	F81015-1	8
16	NUT, M10X1 DIN439 THIN	F81033-10	8
17	WASHER, 8.4 FLAT ZINC	F81054-1	8
18	WASHER 8,2 FE/ZN9	F81054-4	8
19	BOLT, M8X25-8.8-B HEX HEAD FULL THREAD Z	F81002-5	4
20	WASHER, 17 FLAT ZINC	F81058-1	3
21	BOLT, M16X70-8.8-FE/ZN5 PN-M/82101	F81006-16	1
22	LIMIT SWITCH, FA138 Z11	100931	2
23	PLATE, LIMIT SWITCH ACTIVATOR	516733-1	1
24	KEY, A6X6X30 PARALLEL	094245	1
25	SCREW WITHOUT HEAD M5X8 45H DIN 913	F81014-7	2
26	WASHER 4,3 FE/ZN5 PN-M/82005	F81051-2	4

# EG350 REPLACEMENT PARTS

Blade Setting Drive & Laser Setting Chain

2

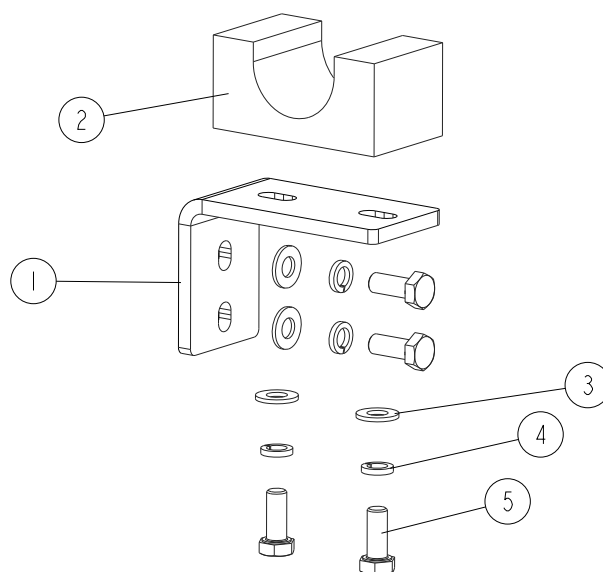
REF	DESCRIPTION (◆ indicates parts available in assemblies only)	PART #	QTY	
27	WASHER, Z 4.1 SPLIT LOCK	F81051-1	4	
28	BOLT M4X40 8.8 FE/ZN HEX	F81011-37	4	
29	BOLT, M8X20MM,HH,GR 8.8,FULL THRD,ZINC	F81002-1	2	
30	BOLT, M8X20-8.8-B HEX HEAD FULL THREAD Z	F81002-4	2	
-	CHAIN, BLADE SETTING DRIVE	553878	1	
31	CHAIN 06B-1, 752MM 79	553879	1	
32	LINK; W/MASTER; 06B-1 AS80 (BMT300AS)	500972	1	

# 2 EG350 REPLACEMENT PARTS

## Middle Screw Support Bracket

### 2.15 Middle Screw Support Bracket

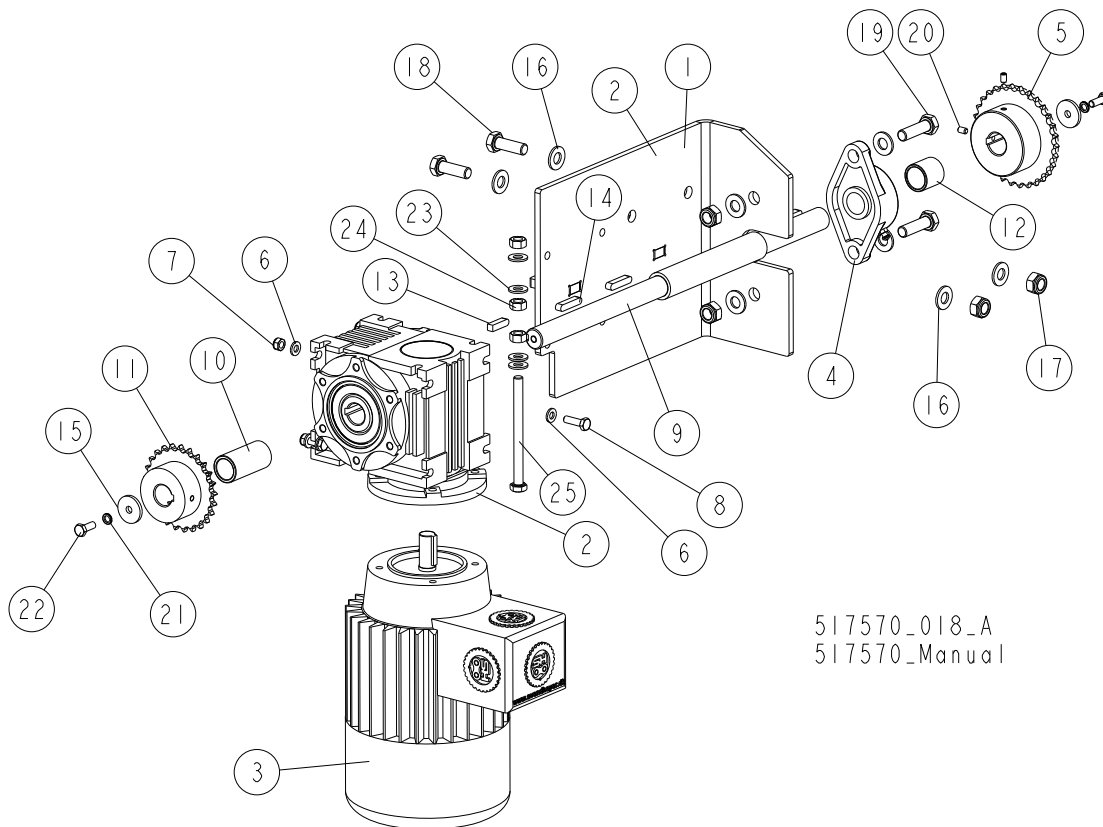
517570\_016  
517570\_Manual



REF	DESCRIPTION (◆ indicates parts available in assemblies only)	PART #	QTY
	<b>BRACKET, MIDDLE SCREW SUPPORT - COMPLETE</b>	<b>516547</b>	<b>1</b>
1	ARM, MIDDLE SCREW SUPPORT BRACKET	516548-1	1
2	BLOCK, MIDDLE SCREW SUPPORT BRACKET	516549	1
3	WASHER, 8.4 FLAT ZINC	F81054-1	4
4	WASHER 8,2 FE/ZN9	F81054-4	4
5	BOLT, M8X20MM,HH,GR 8.8,FULL THRD,ZINC	F81002-1	4



**2.16 Blade Setting Gear Motor**



517570\_018\_A  
517570\_Manual

REF	DESCRIPTION (◆ indicates parts available in assemblies only)	PART #	QTY
-	MOTOREDUCER ASSEMBLY, BLADE SETTING	515932	1
1	PLATE BLADE SETTING DRIVE	553883-1	1
-	MOTOREDUCER, MR-40/15.5/105/14/0.37-1400	515715	1
2	REDUCER MR-40/71B14/l=15.5	515713	1
3	MOTOR 71B14/C2 - 0,37KW/1400 REV/MIN	515714	1
4	BEARING, UCFL 204	500060	1
5	SPROCKET, 06B-1 Z30 N20 (T72490)	515933-1	1
6	WASHER, 6.4 FLAT ZINC	F81053-1	8
7	NUT, M6-8-B HEX NYLON ZINC LOCK	F81031-2	4
8	BOLT, M6X20-8.8 HEX HEAD FULL THREAD ZIN	F81001-2	4
9	SHAFT, DRIVE	516005	1
10	BUSHING, 19.1/25-48 ZINC-PLATED	516007-1	1
11	SPROCKET 06B-1, Z25, FI 19	552923-1	1
12	BUSHING, 20.1/25-25 ZINC-PLATED	516006-1	1
13	KEY, AB 6X6X23 PN-70/M-85005 PARALLEL	089191	1
14	KEY, A6X6X30 PARALLEL	094245	3
15	WASHER, 6.5/25-3	516008-1	2
16	WASHER, 10.5 FLAT ZINC	F81055-1	8
17	NUT, M10-8-B HEX NYLON ZINC LOCK	F81033-1	4
18	BOLT, M10X30-5.8 HEX HEAD FULL THREA	F81003-2	2
19	BOLT, M10X35-8.8 HEX HEAD FULL THREAD ZIN	F81003-17	2
20	SCREW WITHOUT HEAD M5X8 45H DIN 913	F81014-7	2
21	WASHER, Z 6.1 SPLIT LOCK ZINC	F81053-3	2

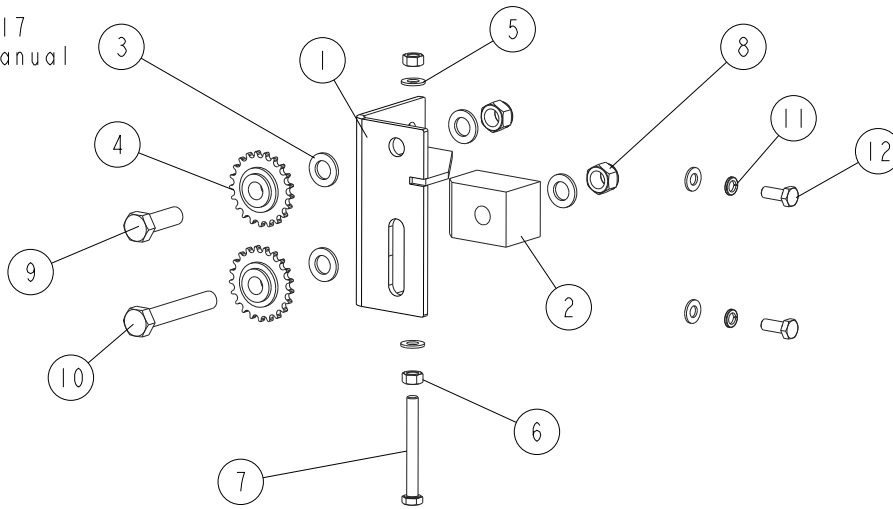
**2****EG350 REPLACEMENT PARTS***Blade Setting Gear Motor*

---

REF	DESCRIPTION (◆ indicates parts available in assemblies only)	PART #	QTY	
22	BOLT, M6 X 16 8.8 FE/ZN5 PN-M/82105	F81001-15	2	
23	WASHER, 8.4 FLAT ZINC	F81054-1	8	
24	NUT, M8-8-B HEX ZINC	F81032-1	6	
25	BOLT, M8X100-8.8 HEX HEAD FULL THREAD ZI	F81002-86	2	

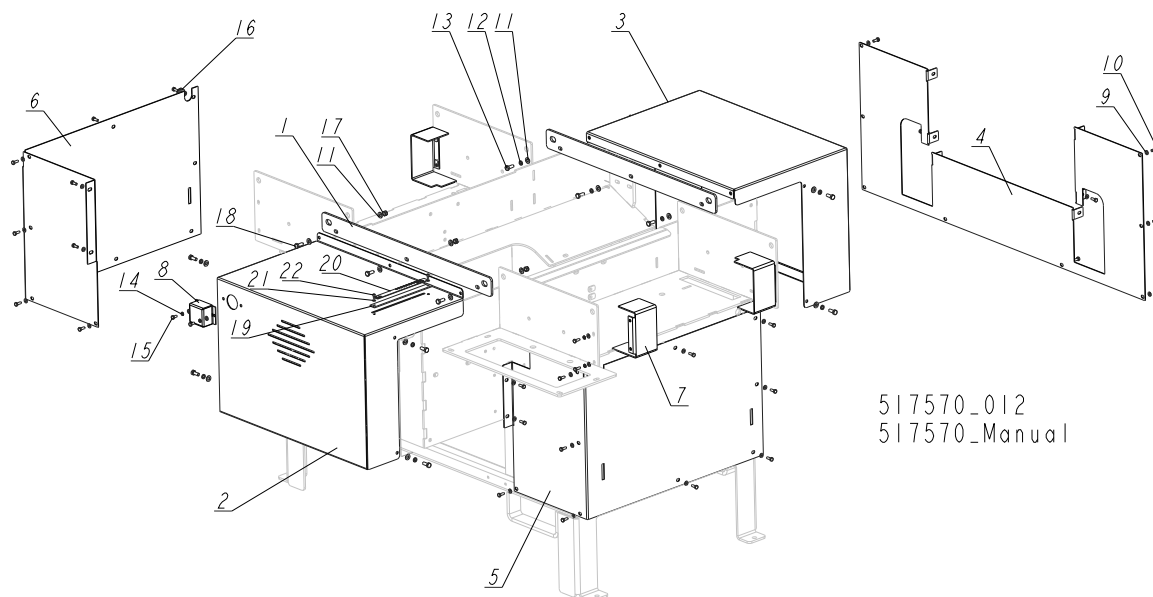
**2.17 Laser Drive Chain Tensioner**

517570\_017  
 517570\_Manual



REF	DESCRIPTION (◆ indicates parts available in assemblies only)	PART #	QTY
	<b>TENSIONER ASSEMBLY, LASER SETTING CHAIN</b>	<b>515963</b>	<b>1</b>
1	BRACKET, CHAIN TENSIONER	515940-1	1
2	BLOCK, CHAIN TENSIONER	515956-1	1
3	WASHER, 17 FLAT ZINC	F81058-1	4
4	SPROCKET, 06B-1,N16, DP=63.91 TENSION	515935	2
5	WASHER, 10.5 FLAT ZINC	F81055-1	4
6	NUT, M10-8-B-FE	F81033-3	2
7	BOLT, M10X90-8.8 HEX HEAD FULL THREAD ZINC	F81003-90	1
8	NUT, M16,HEX, NYLON ZINC LOCK	F81036-2	2
9	BOLT, M16 X 50-8.8 HEX HEAD	F81006-7	1
10	BOLT, M16X100MM,HEX HEAD FULL THRD,ZINC	F81006-2	1
11	WASHER, 10.2 SPLIT LOCK ZINC	F81055-2	2
12	BOLT, M10X25-8.8-FE/ZN5	F81003-11	2

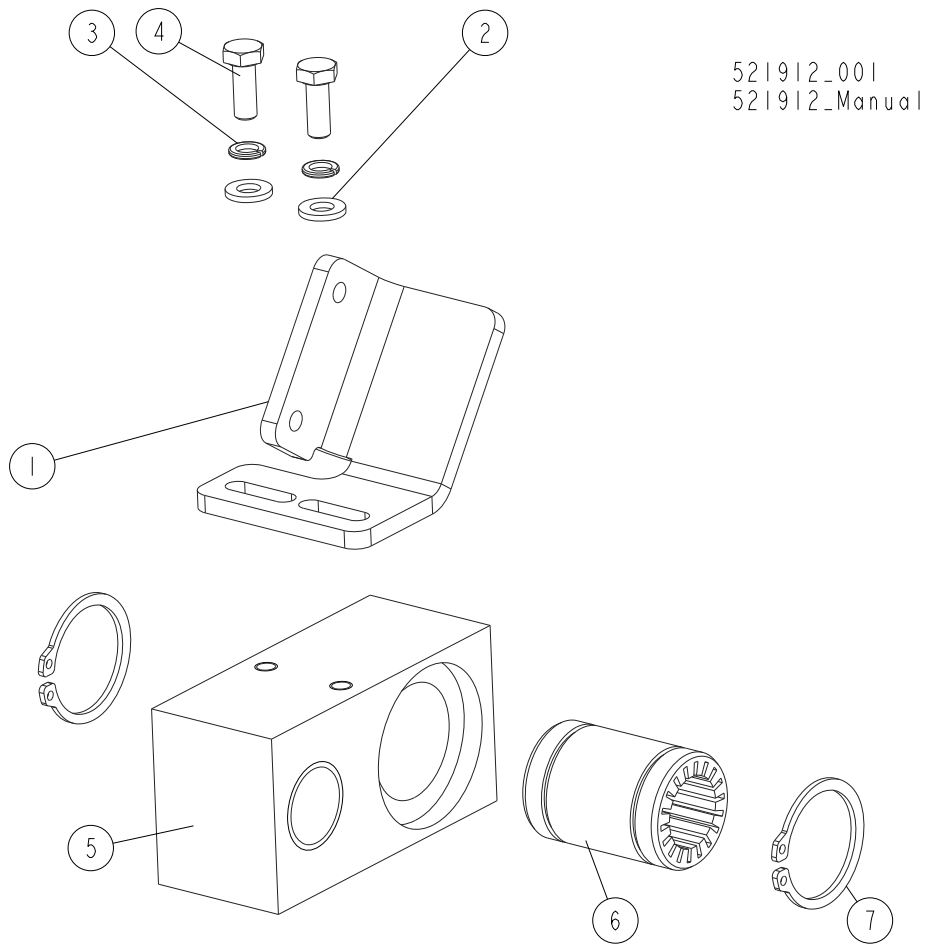
### 2.18 Guards



517570\_012  
517570\_Manual

REF	DESCRIPTION (◆ indicates parts available in assemblies only)	PART #	QTY
1	BAR, SIDE CONNECTION	516686-1	2
2	GUARD, MOTOR - COMPLETE LEFT	516565-1	1
3	GUARD, MOTOR - COMPLETE RIGHT	516564-1	1
4	GUARD, FRONT	516556-1	1
5	GUARD, RIGHT SIDE	513709-1	1
6	GUARD, LEFT SIDE	513710-1	1
7	GUARD, SPROCKET - COMPLETE	512898-1	3
8	GUARD, BLADE SETTING SCREW	515930-1	1
9	WASHER, 6.4 FLAT ZINC	F81053-1	42
10	BOLT, M6 X 16 8.8 FE/ZN5 PN-M/82105	F81001-15	40
11	WASHER, 8.4 FLAT ZINC	F81054-1	17
12	WASHER 8,2 FE/ZN9	F81054-4	11
13	BOLT, M8X20MM,HH,GR 8.8,FULL THRD,ZINC	F81002-1	11
14	WASHER, Z 6.1 SPLIT LOCK ZINC	F81053-3	8
15	BOLT, M6X12-8.8 HEX HEAD FULL THREAD ZINC	F81001-7	2
16	GROMMET, 20/13 RUBBER	086188	1
17	NUT, M8-8-B HEX NYLON ZINC LOCK	F81032-2	3
18	BOLT, M8X20-8.8-B HEX HEAD FULL THREAD ZINC	F81002-4	3
	<b>SCALE, CUTTING WIDTH - COMPLETE SIDE</b>	<b>516770</b>	<b>1</b>
19	PLATE, SIDE CUTTING WIDTH SCALE	516769-1	1
20	DECAL, 60-400 EG150 SCALE	514089	1
21	WASHER 4,3 FE/ZN5 PN-M/82005	F81051-2	2
22	BOLT, #8-32 X 3/8" SOCKET HEAD	F81011-36	2

**2.19 Left Laser Mount Assembly**



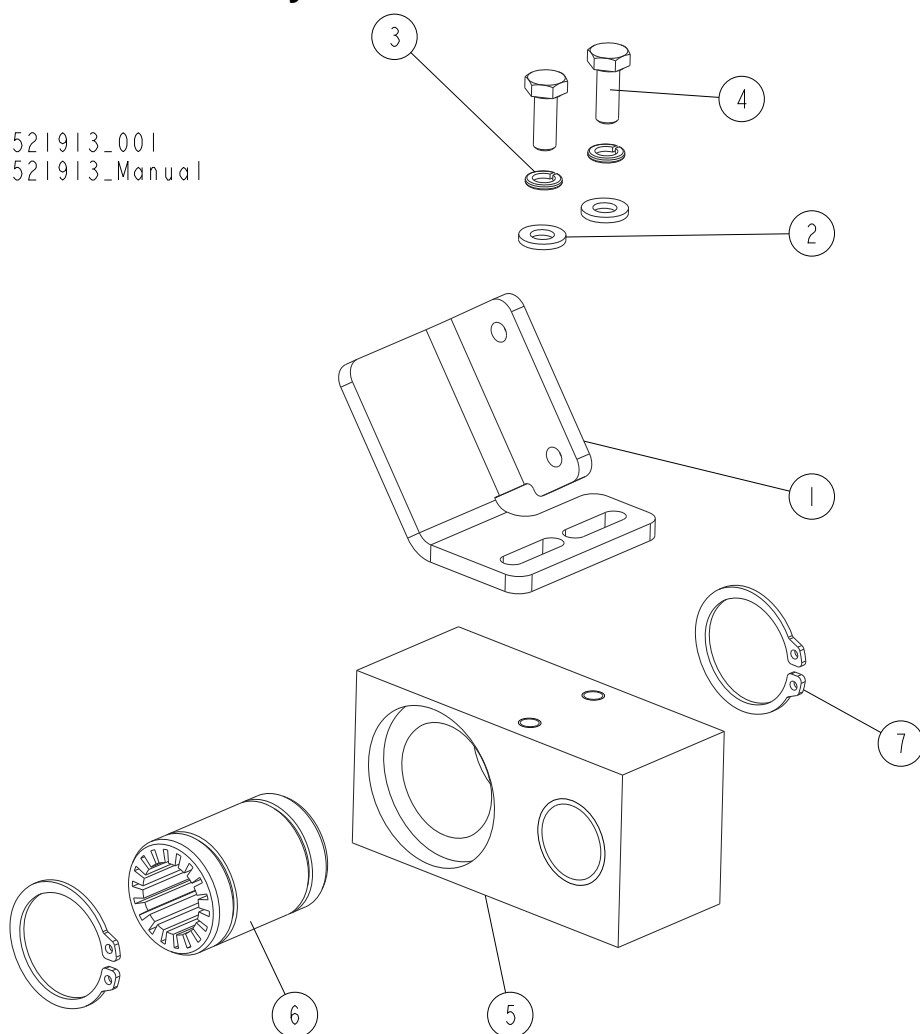
REF	DESCRIPTION (◆ indicates parts available in assemblies only)	PART #	QTY
	<b>MOUNT ASSEMBLY, LASER - LEFT</b>	<b>521912</b>	<b>1</b>
1	BRACKET, LASER SIGHT MOUNT	515701-1	1
2	WASHER, 6.4 FLAT ZINC	F81053-1	2
3	WASHER, Z 6.1 SPLIT LOCK ZINC	F81053-3	2
4	BOLT, M6 X 16 8.8 FE/ZN5 PN-M/82105	F81001-15	2
	<b>BLOCK, LASER GUIDE - COMPLETE LEFT</b>	<b>515976</b>	<b>1</b>
5	BLOCK, LASER GUIDE - LEFT	515964	1
6	BEARING, RJMP-01-20 LINEAR	515977	1
7	RING, Z32 OUTSIDE RETAINING	F81090-61	2

# 2 EG350 REPLACEMENT PARTS

## Right Laser Mount Assembly

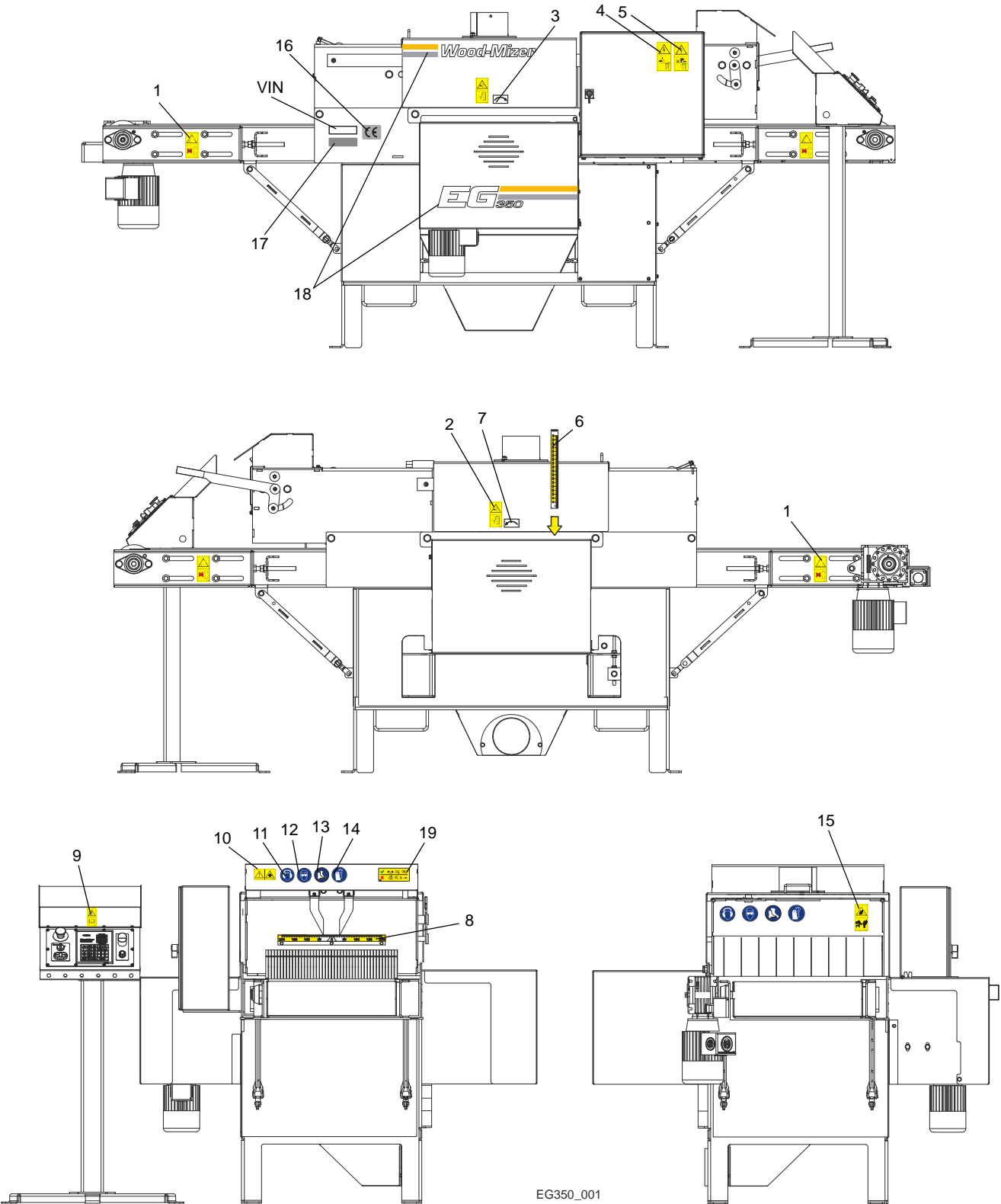
### 2.20 Right Laser Mount Assembly

521913\_001  
521913\_Manual



REF	DESCRIPTION (◆ indicates parts available in assemblies only)	PART #	QTY
	<b>MOUNT ASSEMBLY, LASER - RIGHT</b>	<b>521913</b>	<b>1</b>
1	BRACKET, LASER PTD	505470-1	1
2	WASHER, 6.4 FLAT ZINC	F81053-1	2
3	WASHER, Z 6.1 SPLIT LOCK ZINC	F81053-3	2
4	BOLT, M6 X 16 8.8 FE/ZN5 PN-M/82105	F81001-15	2
	<b>BLOCK, LASER GUIDE - COMPLETE RIGHT</b>	<b>515979</b>	<b>1</b>
5	BLOCK, LASER GUIDE - RIGHT	515978	1
6	BEARING, RJMP-01-20 LINEAR	515977	1
7	RING, Z32 OUTSIDE RETAINING	F81090-61	2

2.21 Decals



EG350\_001

## 2 EG350 REPLACEMENT PARTS

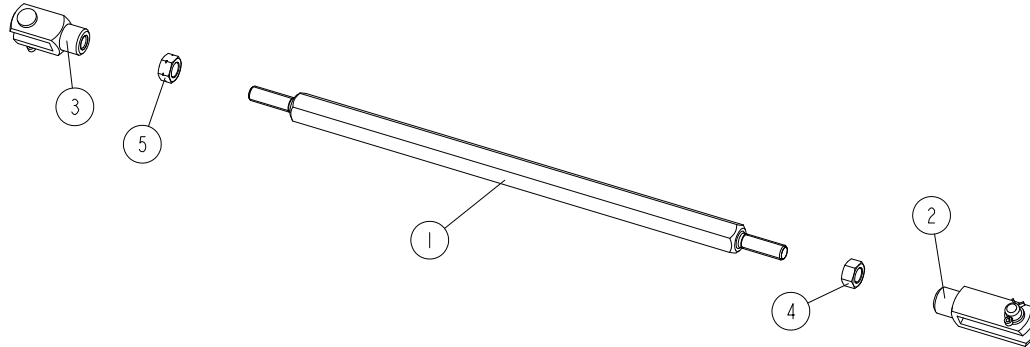
### Decals

REF	DESCRIPTION (◆ indicates parts available in assemblies only)	PART #	QTY	
	<b>DECAL KIT, EG350</b>	<b>523215</b>	<b>1</b>	
1	DECAL, GEAR DANGER (PICTOGRAM)	099540	4	
2	DECAL, CLOSE GUARDS BEFORE OPERATING	099220	2	
3	DECAL, REVOLUTIONS DIRECTION - RIGHT	523214	1	
4	DECAL, HIGH VOLTAGE IN ELECTRIC BOX	096316	1	
5	DECAL, DISCONNECT POWER SUPPLY BEFORE OPE	096319	1	
6	DECAL, 60-400 EG150 SCALE	514089	1	
7	DECAL, DIRECTION OF ROTATION	089296	1	
8	DECAL, EG350 CUTTING WIDTH	516447	1	
9	DECAL, READ MANUAL BEFORE OPERATING	096317	1	
10	DECAL, CAUTION - LASER BEAM (OPTIONAL)	099504	1	
11	DECAL, EAR WARNING	S12005G	2	
12	DECAL, EYE WARNING	S12004G	2	
13	DECAL, USE SAFETY BOOTS (PICTOGRAM)	501465	2	
14	DECAL, "USE SAFETY GLOVES"	512107	2	
15	DECAL, KEEP A SAFE DISTANCE	099221	1	
16	DECAL, CE , CERTIFIED SAWMILL (SMALL)	P85070	1	
17	DECAL, INTERNATIONAL SAWMILL NAME	501466	1	
18	DECAL, EG350 EDGER LOGO	523216	1	
19	DECAL, ALLOWABLE AND NON-ALLOWABLE SHAPES OF SAWN MATERIAL	551701	1	



## 2.22 Table Support

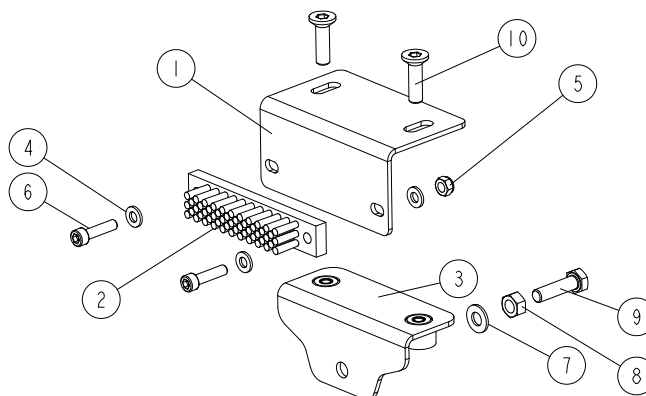
557060\_001  
557060



REF	DESCRIPTION (u indicates parts available in assemblies only)	PART #	QTY	
-	<b>SUPPORT, TABLE - COMPLETE.</b>	557060	1	
1	BOLT, ADJUSTMENT	557059-1	1	
2	FORK JOINT (M10 RIGHT)	557061	1	
3	FORK JOINT (M10 LEFT)	557062	1	
4	NUT, M10 8 HEX ZINC	F81033-3	1	
5	NUT, M10L-8-B HEX ZINC	F81033-12	1	

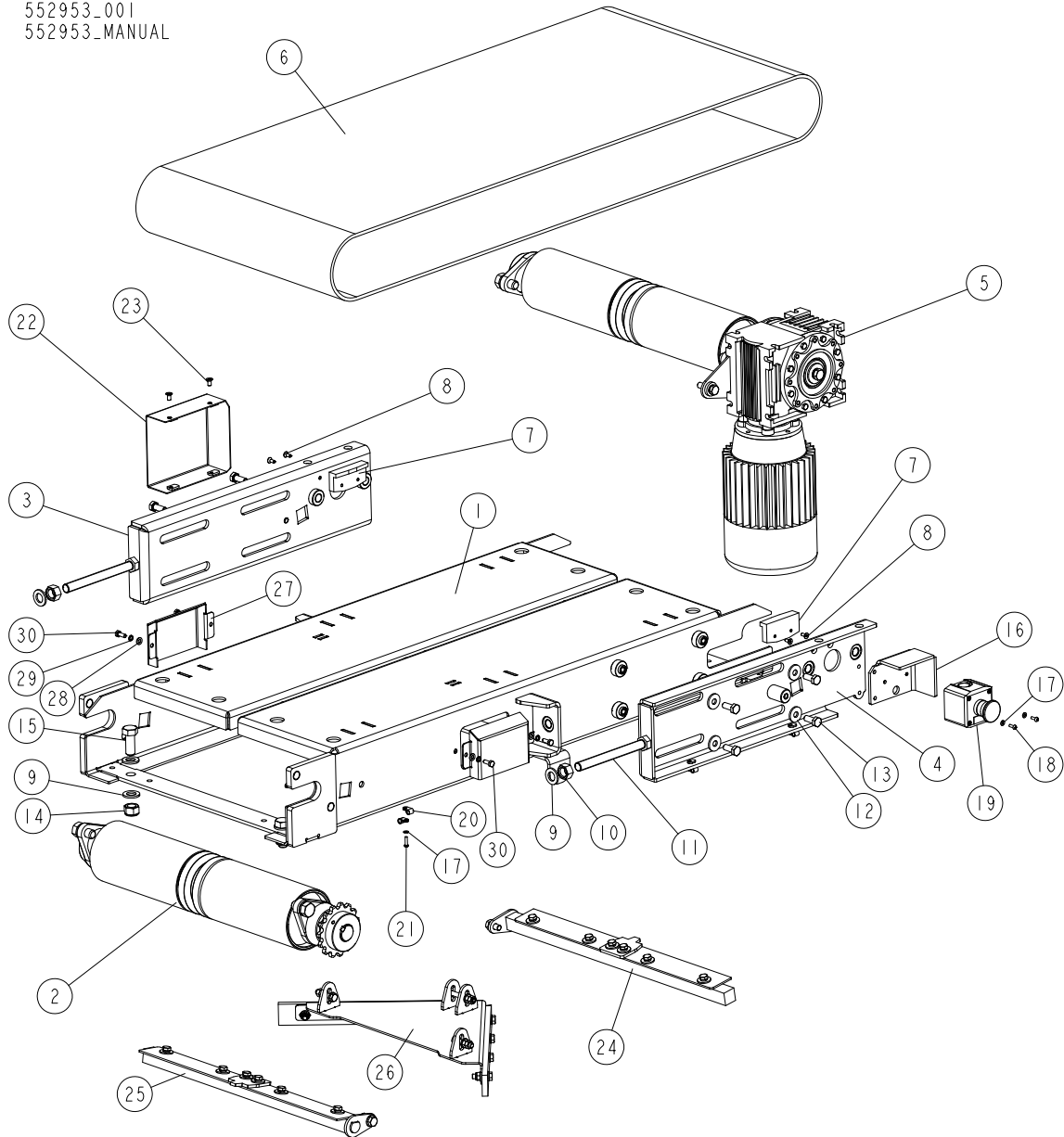
## 2.23 Brush with fixing 553886

553886\_001  
553886\_MANUAL



REF.	DESCRIPTION (◆ indicates parts available in assemblies only)	PART #	QTY
-	<b>BRUSH, WITH FIXING - EG350</b>	553886	1
1	ANGLE PLATE, BRUSH FIXING - EG350	553885-1	1
2	BRUSH, STRIP	549652	1
3	ANGLE PLATE, PUSHING, ZINC-PLATED - EG350	553888-1	1
4	WASHER, 6.4 FLAT ZINC	F81053-1	4
5	NUT, M6-8-B HEX NYLON ZINC LOCK	F81031-2	2
6	SCREW, M6X25-8.8 HEX SOCKET HEAD CAP ZINC	F81001-41	2
7	WASHER, 8.4 FLAT ZINC	F81054-1	1
8	NUT, M8-8-B HEX ZINC	F81032-1	1
9	BOLT, M8X30-8.8-B HEX HEAD FULL THREAD ZINC	F81002-7	1
10	SCREW, M8X30-8.8 FLAT SOCKET HEAD CAP ZINC	F81002-43	2

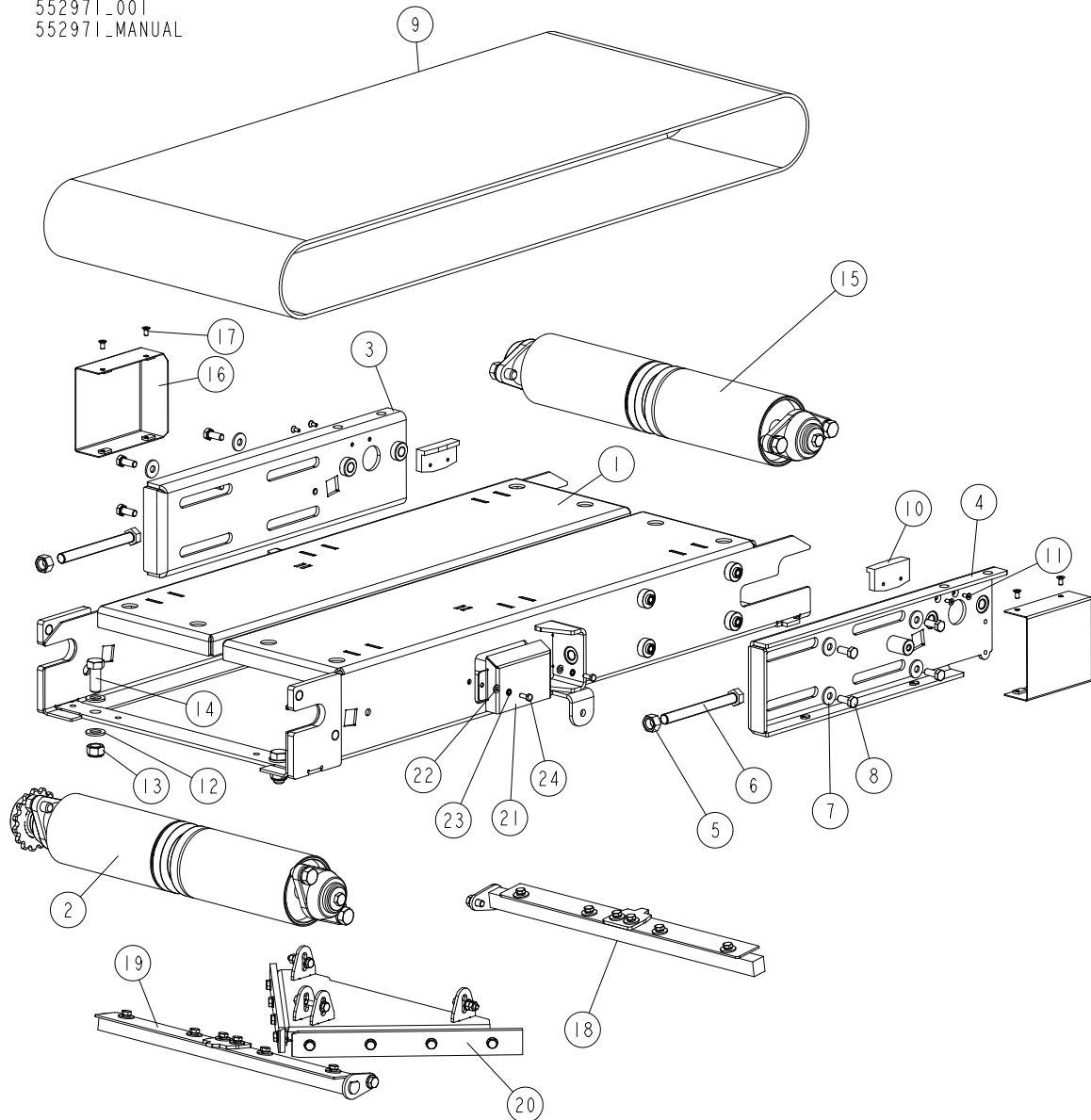
## 2.24 Table (No. 552953)

552953\_001  
552953\_MANUAL

REF.	DESCRIPTION (◆ indicates parts available in assemblies only)	PART #	QTY
-	<b>TABLE, EG350 OUTFEED</b>	552953	1
1	TABLE, EG350 S/M INFEED/OUTFEED	552954-1	1
2	ROLLER, DRIVEN <a href="#">See Section 2.26</a>	514830	1
3	PLATE, COMPLETE MOUNT	552957-1	1
4	PLATE, TORQUE ARM COMPLETE MOUNT	552959-1	1
5	ROLLER, DRIVE - COMPLETE <a href="#">See Section 2.27</a>	514688	1
6	BELT, 500X2600/K17 W/RS125 STAPLE FASTEN	514819	1
7	PLATE, SAFETY	513161	2
8	SCREW, M5X12-10.9 DIN7991(BN 0021) FLAT SOCKET HEAD CAP ZINC	F81000-45	4
9	WASHER, 17 FLAT ZINC	F81058-1	6
10	NUT, M16-5.8 HEX ZINC	F81036-1	2
11	BOLT, M16X160-8.8 HEX HEAD FULL THREAD ZINC	F81006-23	2

REF.	DESCRIPTION (◆ indicates parts available in assemblies only)	PART #	QTY	
12	WASHER,10.5 ZINC FLAT SPECIAL	F81055-6	8	
13	BOLT, M10X25-8.8 HEX HEAD FULL THREAD ZINC	F81003-11	8	
14	NUT, M16-8 HEX NYLON ZINC LOCK	F81036-2	2	
15	BOLT, M16X40-8.8 HEX HEAD FULL THREAD ZINC	F81006-13	2	
16	BRACKET, EMERGENCY STOP MOUNT	512782-1	1	
17	WASHER, 4.3 FLAT ZINC	F81051-2	7	
18	SCREW, M4X12 5,8-B CROSS RECESSED PAN HEAD ZINC	F81011-43	2	
19	SWITCH, EMERGENCY XALJ174F	E22703-P	1	
20	ELEMENT, EE63 (112-312000) SELF-ADHESIVE	F81080-4	10	
21	SCREW, M4X16 5.8-B CROSS RECESSED PAN HEAD ZINC	F81011-42	5	
22	GUARD, BEARING - COMPLETE	523213-1	1	
23	SCREW, M6X12-10.9 DIN7991 FLAT SOCKET HEAD CAP ZINC	F81001-54	2	
24	SCRAPER, TENSION PULLEY <a href="#">See Section 2.29</a>	552967	1	
25	SCRAPER, FIXED PULLEY <a href="#">See Section 2.30</a>	552968	1	
26	SCRAPER, BELT - COMPLETE <a href="#">See Section 2.31</a>	552975	1	
27	COVER, TABLE CUTOUT	553877-1	2	
28	WASHER, 6.4 FLAT ZINC	F81053-1	4	
29	WASHER, Z 6.1 SPLIT LOCK ZINC	F81053-3	4	
30	BOLT, M6 X 16 8.8 HEX HEAD FULL THREAD ZINC	F81001-15	4	

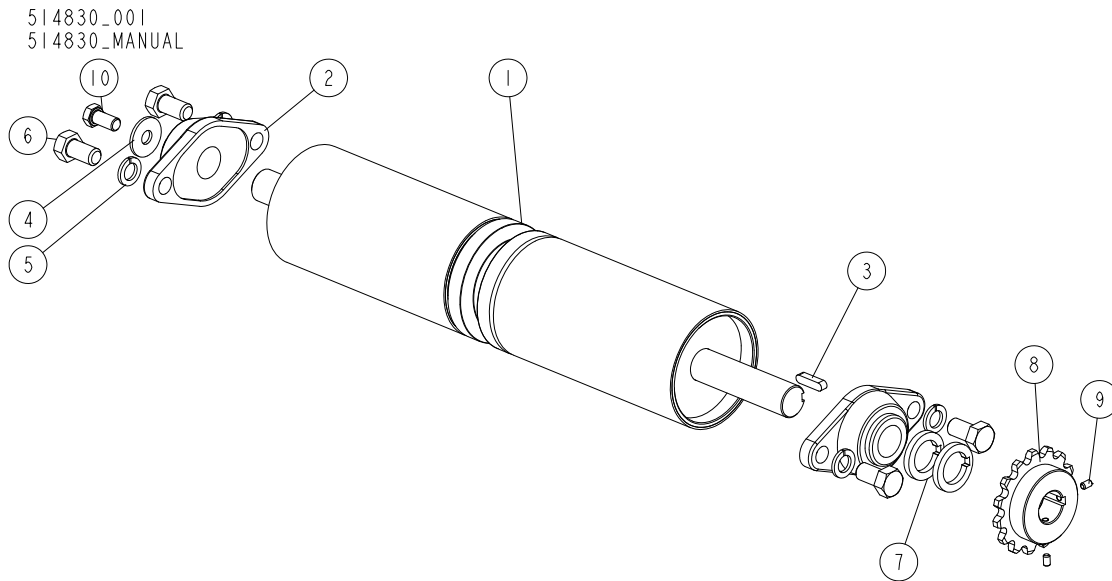
## 2.25 Table (No. 552971)

552971\_001  
552971\_MANUAL

REF.	DESCRIPTION (◆ indicates parts available in assemblies only)	PART #	QTY
-	<b>TABLE, EG350 INFEED</b>	552971	1
1	TABLE, EG350 S/M INFEED/OUTFEED	552954-1	1
2	ROLLER, DRIVEN <a href="#">See Section 2.26</a>	514830	1
3	PLATE, MOUNT - COMPLETE	552957-1	1
4	PLATE, TORQUE ARM MOUNT - COMPLETE	552959-1	1
5	NUT, M16-5.8 HEX ZINC	F81036-1	2
6	BOLT, M16X160-8.8 HEX HEAD FULL THREAD ZINC	F81006-23	2
7	WASHER, 10.5 ZINC FLAT SPECIAL	F81055-6	8
8	BOLT, M10X25-8.8 HEX HEAD FULL THREAD ZINC	F81003-11	8
9	BELT, 500X2600/K17 W/RS125 STAPLE FASTEN	514819	1
10	PLATE, SAFETY	513161	2
11	SCREW, M5X12-10.9 DIN7991(BN 0021) FLAT SOCKET HEAD CAP ZINC	F81000-45	4

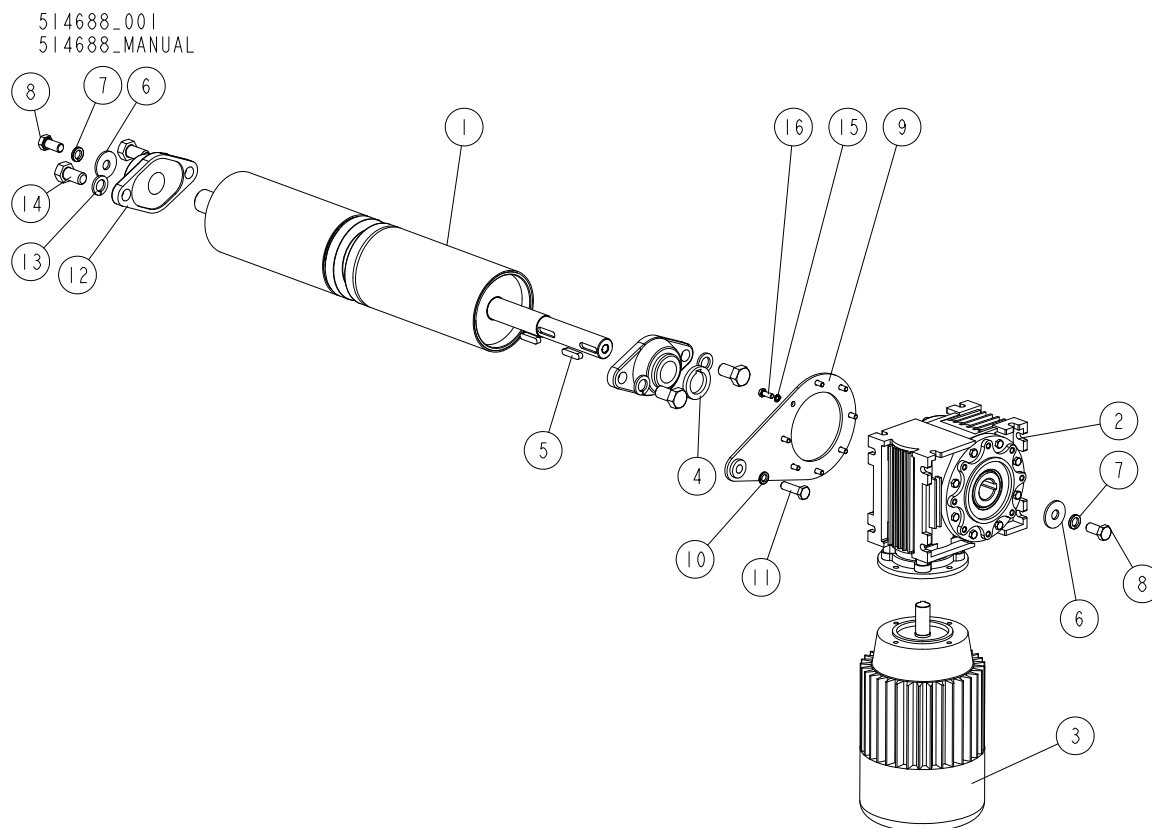
REF.	DESCRIPTION (◆ indicates parts available in assemblies only)	PART #	QTY	
12	WASHER, 17 FLAT ZINC	F81058-1	4	
13	NUT, M16-8 HEX NYLON ZINC LOCK	F81036-2	2	
14	BOLT, M16X40-8.8 HEX HEAD FULL THREAD ZINC	F81006-13	2	
15	ROLLER, RETURN - COMPLETE <a href="#">See Section 2.28</a>	515363	1	
16	GUARD, BEARING - COMPLETE	523213-1	2	
17	SCREW, M6X12-10.9 DIN7991 FLAT SOCKET HEAD CAP ZINC	F81001-54	4	
18	SCRAPER, TENSION PULLEY <a href="#">See Section 2.29</a>	552967	1	
19	SCRAPER, FIXED PULLEY <a href="#">See Section 2.30</a>	552968	1	
20	SCRAPER, BELT - COMPLETE <a href="#">See Section 2.31</a>	552975	1	
21	COVER, TABLE CUTOUT	553877-1	2	
22	WASHER, 6.4 FLAT ZINC	F81053-1	4	
23	WASHER, Z 6.1 SPLIT LOCK ZINC	F81053-3	4	
24	BOLT, M6 X 16 8.8 HEX HEAD FULL THREAD ZINC	F81001-15	4	

## 2.26 Driven Roller (No. 514830)



REF.	DESCRIPTION (◆ indicates parts available in assemblies only)	PART #	QTY
-	ROLLER, DRIVEN	514830	1
1	ROLLER, DRIVEN W/LAGGING	515362	1
2	BEARING, FYTB30FJ BALL (SKF)	090851	2
3	KEY, A8X7X32 PARALLEL	088564	1
4	WASHER, 13 SPECIAL FLAT ZINC	F81056-14	1
5	WASHER, 16.3 SPLIT LOCK ZINC	F81058-2	4
6	BOLT, M16X30 8.8 HEX HEAD FULL THREAD ZINC	F81006-36	4
7	WASHER, 30.3/45-6	512502-1	2
8	SPROCKET, Z15/D1=30 (12B-1)	511946-1	1
9	SCREW, SET	F81001-26	2
10	BOLT, M12X25-8.8 HEX HEAD FULL THREAD ZINC	F81004-31	1

**2.27 Drive Roller (No. 514688)**

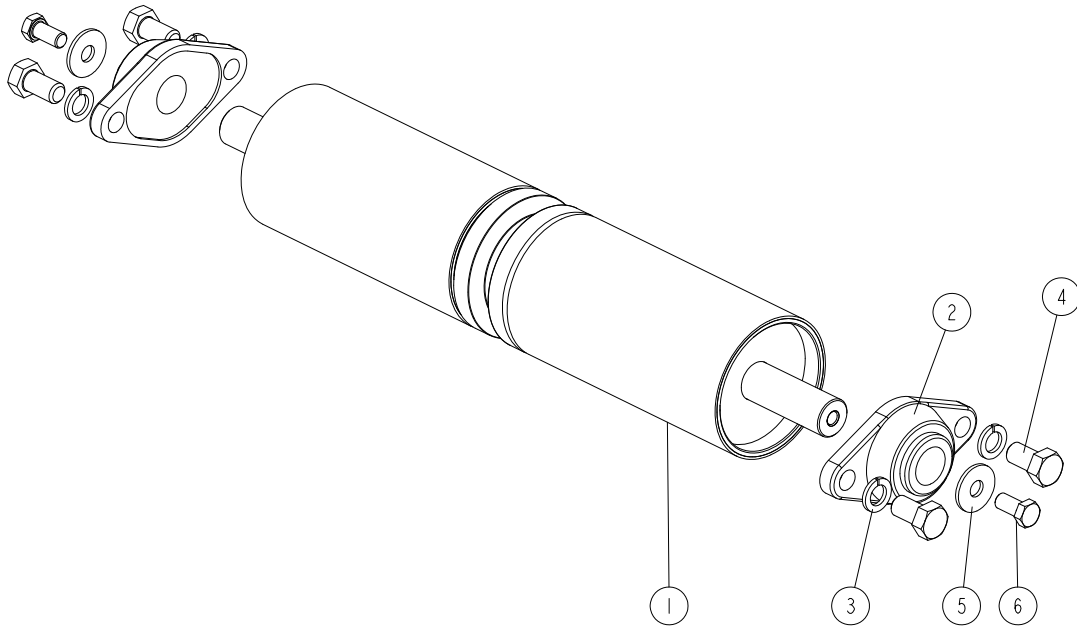


REF.	DESCRIPTION (◆ indicates parts available in assemblies only)	PART #	QTY
-	ROLLER, DRIVE - COMPLETE	514688	1
1	ROLLER, DRIVE W/LAGGING	515339	1
-	GEAR MOTOR, MR-63/39/120/19/0.75-1400 V	513608	1
2	MR-63/145/I=39	513609	1
3	MOTOR, SKH 80/ 1400RPM/ 0.75KW/ B14(120 MM)	512913	1
4	WASHER, 30.3/45-6	512502-1	1
5	KEY, A8X7X32 PARALLEL	088564	2
6	WASHER,13 SPECIAL FLAT ZINC	F81056-14	2
7	WASHER, Z12.2 SPLIT LOCK ZINC	F81056-2	2
8	BOLT, M12X25-8.8 HEX HEAD FULL THREAD ZINC	F81004-31	2
9	ARM, R63 TORQUE	513290-1	1
10	WASHER, 10.2 SPLIT LOCK ZINC	F81055-2	1
11	BOLT, M10X35-8.8 HEX HEAD FULL THREAD ZINC	F81003-17	1
12	BEARING, FYTB30FJ BALL (SKF)	090851	2
13	WASHER, 16.3 SPLIT LOCK ZINC	F81058-2	4
14	BOLT, M16X30 8.8 HEX HEAD FULL THREAD ZINC	F81006-36	4
15	WASHER, Z 6.1 SPLIT LOCK ZINC	F81053-3	8
16	BOLT, M6 X 16 8.8 HEX HEAD FULL THREAD ZINC	F81001-15	8



## 2.28 Return Roller (No. 515363)

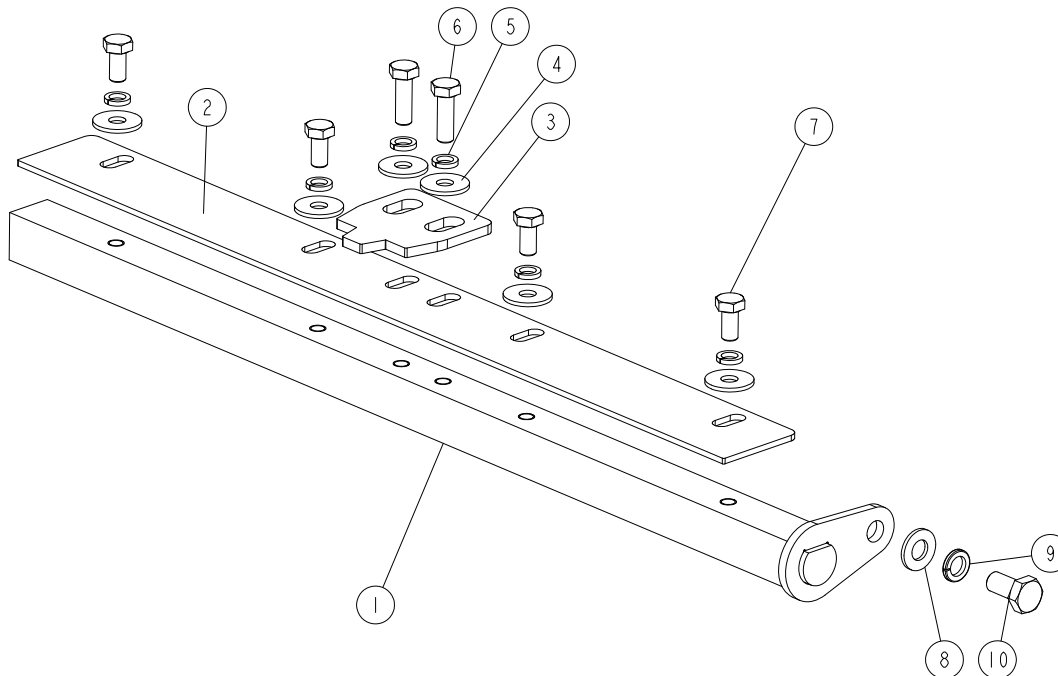
515363\_001  
515363\_MANUAL



REF.	DESCRIPTION (◆ indicates parts available in assemblies only)	PART #	QTY	
-	ROLLER, RETURN - COMPLETE	515363	1	
1	ROLLER, RETURN W/LAGGING	515340	1	
2	BEARING, FYTB30FJ BALL (SKF)	090851	2	
3	WASHER, 16.3 SPLIT LOCK ZINC	F81058-2	4	
4	BOLT, M16X30 8.8 HEX HEAD FULL THREAD ZINC	F81006-36	4	
5	WASHER, 13 SPECIAL FLAT ZINC	F81056-14	2	
6	BOLT, M12X25-8.8 HEX HEAD FULL THREAD ZINC	F81004-31	2	

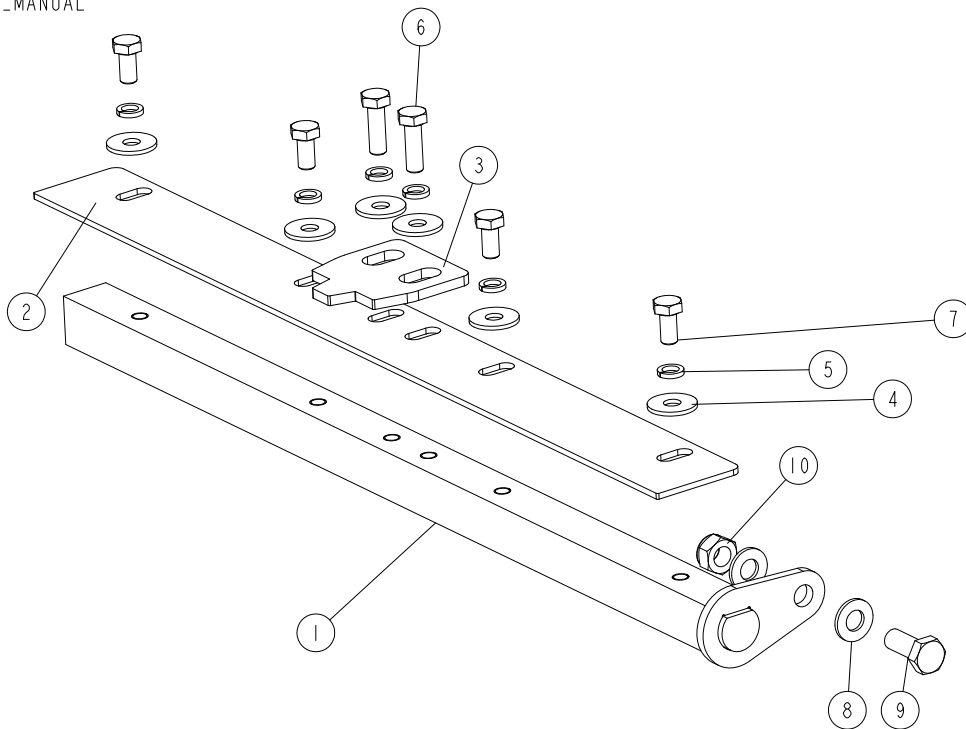
**2.29 Tension Pulley Scraper (No. 552967)**

552967\_001  
552967\_MANUAL



REF	DESCRIPTION (◆ indicates parts available in assemblies only)	PART #	QTY
-	<b>SCRAPER, TENSION PULLEY</b>	552967	1
1	BAR WELDMENT, SCRAPER MOUNT	552966-1	1
2	SCRAPER, PULLEY	552964-1	1
3	SCRAPER, PULLEY GROOVE	552963-1	1
4	WASHER, 8.5 SPECIAL FLAT ZINC	F81054-11	6
5	WASHER, 8.2 SPLIT LOCK ZINC	F81054-4	6
6	BOLT, M8X25-8.8-B HEX HEAD FULL THREAD ZINC	F81002-5	2
7	BOLT, M8X16-8.8-B HEX HEAD FULL THREAD ZINC	F81002-20	4
8	WASHER, 10.5 FLAT ZINC	F81055-1	1
9	WASHER, 10.2 SPLIT LOCK ZINC	F81055-2	1
10	BOLT, ISO4017-M10X20-8.8-A2E HEX HEAD	F81003-53	1

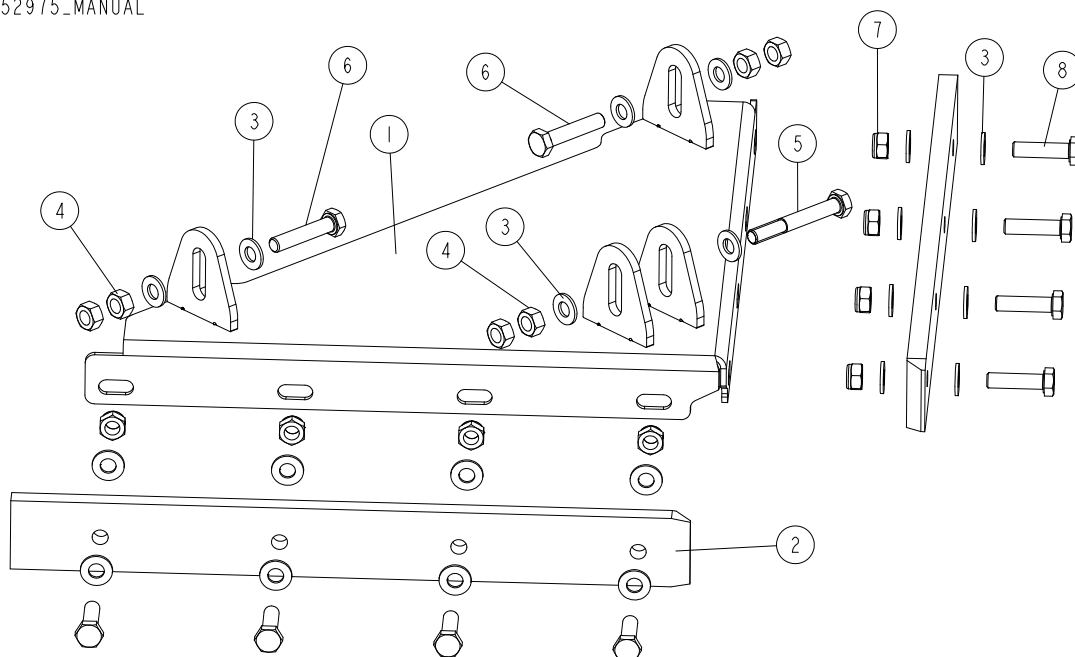
## 2.30 Fixed Pulley Scraper (No. 552968)

552968\_001  
552968\_MANUAL

REF.	DESCRIPTION (◆ indicates parts available in assemblies only)	PART #	QTY
-	<b>SCRAPER, FIXED PULLEY</b>	552968	1
1	BAR WELDMENT, MOUNT	552969-1	1
2	SCRAPER, PULLEY	552964-1	1
3	SCRAPER, PULLEY GROOVE	552963-1	1
4	WASHER, 8.5 SPECIAL FLAT ZINC	F81054-11	6
5	WASHER, 8.2 SPLIT LOCK ZINC	F81054-4	6
6	BOLT, M8X25-8.8-B HEX HEAD FULL THREAD ZINC	F81002-5	2
7	BOLT, M8X16 -8.8-B HEX HEAD FULL THREAD ZINC	F81002-20	4
8	WASHER, 10.5 FLAT ZINC	F81055-1	2
9	BOLT, M10X25-8.8 HEX HEAD FULL THREAD ZINC	F81003-11	1
10	NUT, M10-8-B HEX NYLON ZINC LOCK	F81033-1	1

**2.31 Belt Scraper (No. 552975)**

552975\_001  
552975\_MANUAL



REF.	DESCRIPTION (◆ indicates parts available in assemblies only)	PART #	QTY
-	<b>SCRAPER, BELT COMPLETE</b>	552975	1
1	MOUNT WELDMENT, SCRAPER	552973-1	1
2	PLATE, BELT SCRAPER	552974	2
3	WASHER, 8.4 FLAT ZINC	F81054-1	22
4	NUT, M8-8-B HEX ZINC	F81032-1	6
5	BOLT, M8X60 8.8 HEX HEAD ZINC	F81002-54	1
6	BOLT, M8X40-8.8 HEX HEAD FULL THREAD ZINC	F81002-15	2
7	NUT, M8-8-B HEX NYLON ZINC LOCK	F81032-2	8
8	BOLT M8X30-8.8 HEX HEAD FULL THREAD ZINC	F81002-7	8