

Wood-Mizer®

Replacement Parts

BMT300

rev. C1.01



Safety is our #1 concern! Read and understand all safety information and instructions before operating, setting up or maintaining this machine.

Form #2590

Table of Contents

Section-Page

SECTION 1	GENERAL INFORMATION	1-1
1.1	How To Use the Parts List.....	1-1
1.2	Sample Assembly	1-1
SECTION 2	REPLACEMENT PARTS	2-1
2.1	Pivoting Index Motor Assembly	2-1
2.2	Cam Drive Unit Assembly	2-3
2.3	Cylinder Clamp Assembly	2-5
2.4	Air Regulator Assembly	2-7
2.5	Rear Adjuster, Blade Height, Index Ramp Assemblies	2-8
2.6	Control Panel	2-10
2.7	Control Base Assembly	2-11
2.8	Blade Support Arms, Index Plate	2-13
2.9	Stand Option	2-14
2.10	Decals, BMT300.....	2-15
2.11	3" Blade Support Kit - Aut. Toothsetter (Option)	2-16
2.12	Transporting brackets	2-18
2.13	Back Clamp Block. 101346	2-19
2.14	Back Clamp Block (No. 564953)	2-21
2.15	Front Clamp Block. 101361	2-22
2.16	Clamp Block. 101360	2-23

SECTION 1 GENERAL INFORMATION

1.1 How To Use the Parts List

- Use the index above to locate the assembly that contains the part you need.
- Go to the appropriate section and locate the part in the illustration.
- Use the number pointing to the part to locate the correct part number and description in the table.
- Parts shown indented under another part are included with that part.
- Parts marked with a diamond (◆) are only available in the assembly listed above the part.

See the sample table below. Sample Part #A01111 includes part F02222-2 and subassembly A03333. Subassembly A03333 includes part S04444-4 and subassembly K05555. The diamond (◆) indicates that S04444-4 is not available except in subassembly A03333. Subassembly K05555 includes parts M06666 and F07777-77. The diamond (◆) indicates M06666 is not available except in subassembly K05555.

1.2 Sample Assembly				
REF.	DESCRIPTION (◆ Indicates Parts Available In Assemblies Only)	PART #	QTY	
	Sample Assembly, Complete (Includes All Indented Parts Below)	A01111	1	
1	Sample Part	F02222-22	1	
	Sample Subassembly (Includes All Indented Parts Below)	A03333	1	
2	Sample Part (◆ Indicates Part Is Only Available With A03333)	S04444-4	1	◆
	Sample Subassembly (Includes All Indented Parts Below)	K05555	1	
3	Sample Part (◆ Indicates Part Is Only Available With K05555)	M06666	2	◆
4	Sample Part	F07777-77	1	

To Order Parts:

- From Europe call our European Headquarters and Manufacturing Facility in Kolo, Poland at **+48-63-2626000**. From the continental U.S., call our toll-free Parts hotline at **1-800-525-8100**. Have your customer number, vehicle identification number, and part numbers ready when you call. From other international locations, contact the Wood-Mizer distributor in your area for parts.

Office Hours:

Country	Monday - Friday	Saturday	Sunday
Poland	7-15	Closed	Closed
US	8 a.m.- 5 p.m.	8 a.m.- 12 p.m.	Closed



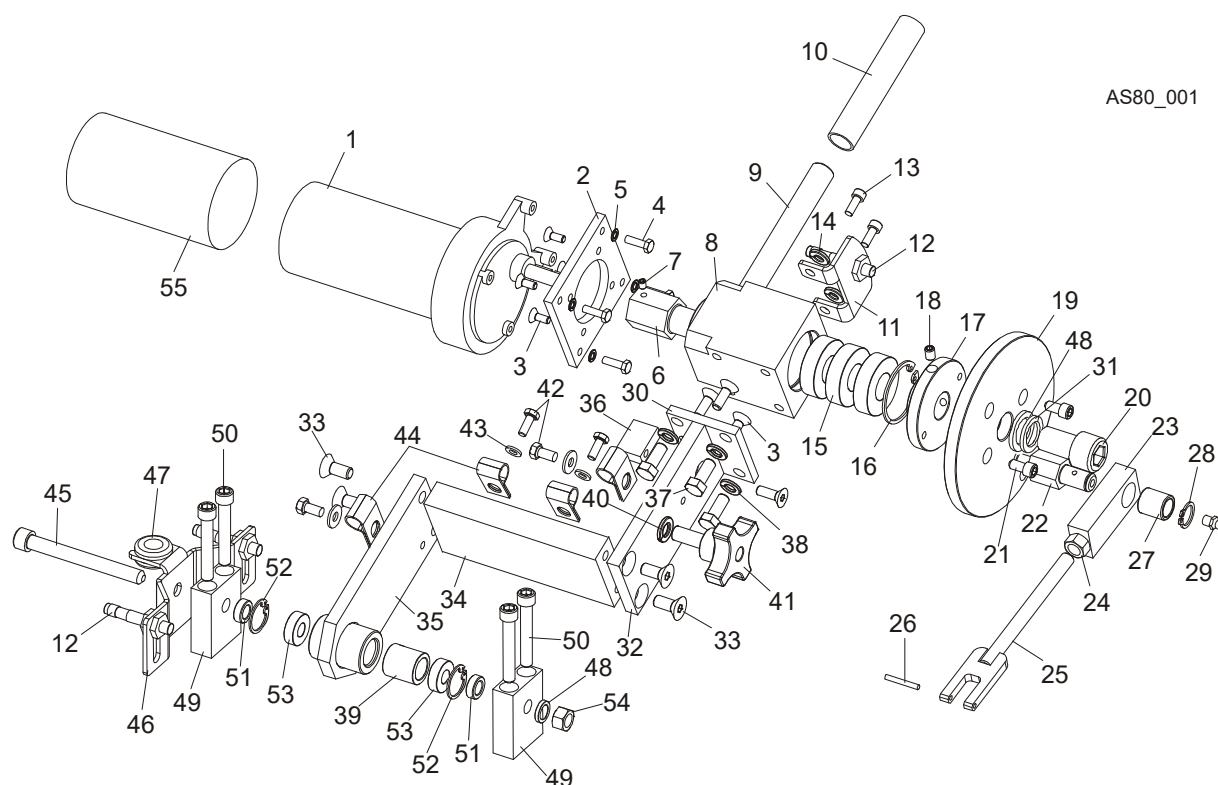
CAUTION! It is strongly recommended that only original spare parts be used.

2 REPLACEMENT PARTS

Pivoting Index Motor Assembly

SECTION 2 REPLACEMENT PARTS

2.1 Pivoting Index Motor Assembly



REF.	DESCRIPTION (◆ Indicates Parts Available In Assemblies Only)	PART #	QTY.
	INDEX ASSEMBLY, PIVOTING	101390	1
1	MOTOR ASSEMBLY, 24V 60RPM GEAR	035659	1
2	PLATE, MOTOR MOUNT	101382-1	1
3	SCREW, M6X20-10.9 FE/ZN5 DIN-7991	F81001-17	8
4	BOLT, #10-32 X 5/8" HEX HEAD	F05004-152	4
5	WASHER, 5.1 SPLIT LOCK ZINC	F81052-2	4
6	SHAFT, BMT300 DRIVE	101381	1
7	SCREW M6X8	F81013-1	2
8	HOUSING, BMT300 BEARING	101383-1	1
9	HANDLE, INDEX PIVOT	500040-1	1
10	GRIP, HANDLE 1/2IDX3 LG	014835	1
11	BRACKET, INDEX PROXIMITY SENSOR	101394-1	1
12	SENSOR, BESM08MI-PSC20B-BV02 PROXIMITY	500456	3
13	SCREW, M6X16, HEX SOCKET HEAD CAP	F81001-21	2
14	WASHER, 6.4 FLAT ZINC	F81053-1	2
15	BEARING, 6004 2RS CX ROLLING	093868	3

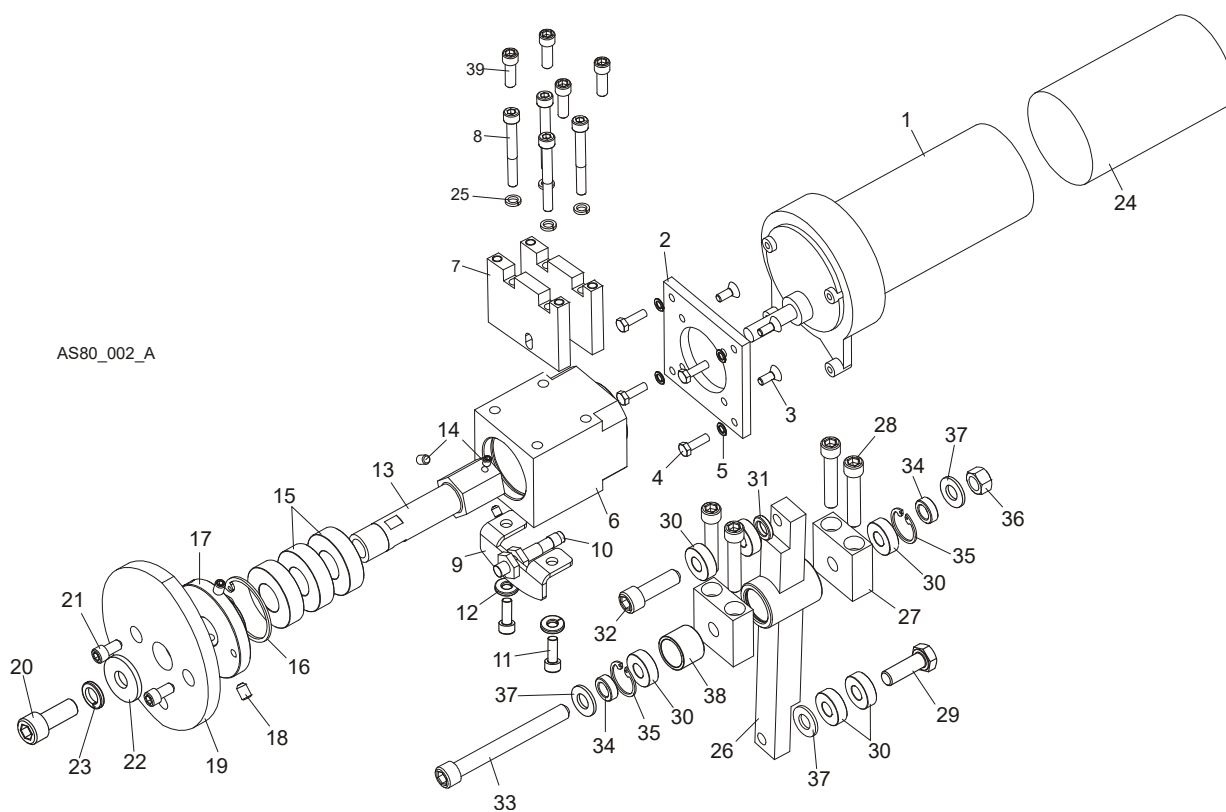
REPLACEMENT PARTS*Pivoting Index Motor Assembly***2**

16	RING, W40 SPRING RETAINING	F81090-3	1	
17	PLATE, CAM	101385-1	1	
18	SCREW, M6x10-45H Fe/Zn5 PN84/M-82314 SET	F81001-26	2	
19	Plate, BMT300 Cam	101393-1	1	
20	BOLT, M10 X 25 8.8, PN-M/82302	F81003-32	1	
21	SCREW, M6X10 8.8 HEX SOCKET HEAD CAP ZINC	F81001-12	2	
22	SHAFT, BMT300 INDEX PIVOT	500041-1	1	
	PAWL ASSY, BMT300 PUSH	500047	1	
23	BLOCK, BMT300 PUSH PAWL	500046-1	1	
24	NUT, M10-8-B-FE	F81033-3	1	
25	PAWL WELDMENT, BMT300 PUSH	500045-1	1	
26	PIN, 3m6x24 DIN6325 HRC60 ROLL	F81048-9	1	
27	BEARING, 16/12-19 BMT300	500042	1	
28	RING, Z12 OUTSIDE RETAINING	F81090-14	1	
29	FITTING, M6 GREASE	086280	1	
30	PLATE, MOTOR MOUNT	500048-1	1	
31	WASHER, 10.2 SPLIT LOCK ZINC	F81055-2	1	
32	PLATE, UPPER INDEX SUPPORT	500049-1	1	
33	BOLT, M8X30-8.8-FE/ZN5 DIN 7991	F81002-43	4	
34	SPACER, INDEX ARM	500087-1	1	
35	ARM WLDMNT, INDEX PIVOT	500089-1	1	
36	BLOCK, INDEX MOTOR SUPPORT	500050-1	1	
37	BOLT, M8X16 -8.8-B-FE/ZN5 PN-85/M-82105	F81002-20	4	
38	WASHER 8,2 FE/ZN9	F81054-4	4	
39	SPACER, 22/18-17.5 BMT300 BEARING	101380	1	
40	WASHER, 8.5 SPLIT LOCK ZINC	F81054-11	1	
41	KNOB, SR50/M8x25 (466406 MOSS) THRU HOLE	500973	1	
42	BOLT, M6 X 16 8.8 FE/ZN5 PN-M/82105	F81001-15	3	
43	WASHER, 6.4 FLAT ZINC	F81053-1	3	
44	CLAMP, 1/2 EMT COATED	P07584	3	
45	BOLT, M10X95-8.8-B HEX HEAD ZINC	F81003-71	1	
46	BRACKET, INDEX PIVOT HOME	095845-1	1	
47	GROMMET, 20/13 RUBBER	086188	1	
48	WASHER, 10.5 FLAT ZINC	F81055-1	2	
49	BLOCK, INDEX ARM PIVOT	101369-1	2	
50	SCREW, M8X60 SOCKET HEAD	F81002-41	4	
51	SPACER, 15/10.2-8 BEARING ZINC	101372-1	2	
52	RING, W22 RETAINING	F81090-7	1	
53	BEARING, 61900-2RSI ROLLING	101371	2	
54	NUT, M10-8-B-FE	F81033-3	1	
55	CAP, 2.5ID x 3 RUBBER	023720	1	

2 REPLACEMENT PARTS

Cam Drive Unit Assembly

2.2 Cam Drive Unit Assembly



REF.	DESCRIPTION (◆ Indicates Parts Available In Assemblies Only)	PART #	QTY.
	CAM DRIVE ASSEMBLY, BMT300	101387	1
1	MOTOR ASSEMBLY, 24V 60 RPM GEAR	035659	1
2	PLATE, BMT300 MOTOR MOUNT	101382-1	1
3	SCREW, M6X20-10.9 FE/ZN5 DIN-7991	F81001-17	4
4	BOLT, #10-32 X 5/8" HEX HEAD	F05004-152	4
5	WASHER, 5.1 SPLIT LOCK ZINC	F81052-2	4
6	HOUSING, BMT300 BEARING	101383-1	1
7	RISER, CAM HOUSING	101384-1	1
8	SCREW, M8X65-8.8-FE/ZN5 PN/M 82302 SOCKET HEAD	F81002-45	4
9	BRACKET, INDEX PROXIMITY	101388-1	1
10	SENSOR, BESM08MI-PSC20B-BV02 PROXIMITY	500456	1
11	SCREW, M6X16, HEX SOCKET HEAD CAP	F81001-21	2
12	WASHER, 6.4 FLAT ZINC	F81053-1	2
13	SHAFT, BMT300 DRIVE	101381-1	1
14	SCREW M6X8	F81013-1	2
15	BEARING, 6004 2RS CX ROLLING	093868	3

REPLACEMENT PARTS

Cam Drive Unit Assembly

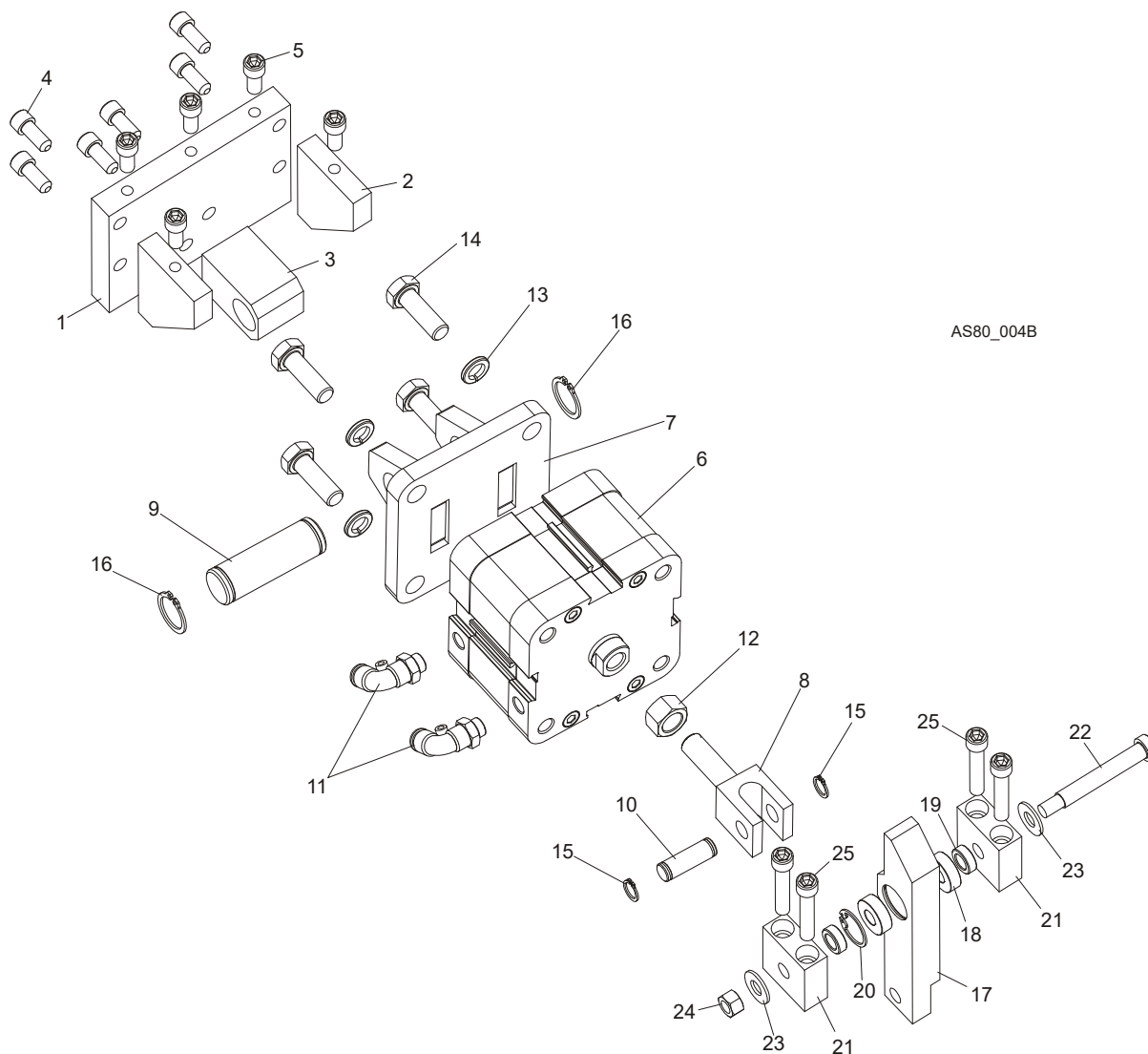
2

16	RING, W40 SPRING RETAINING	F81090-3	1	
17	PLATE, CAM	101385-1	1	
18	SCREW, M6x10-45H Fe/Zn5 PN84/M-82314 SET	F81001-26	2	
19	CAM, BMT300 SET	101386-1	1	
20	SCREW, M10x25 8.8 HEX SOCKET HEAD CAP ZINC	F81003-32	1	
21	SCREW, M6x10 8.8 HEX SOCKET HEAD CAP ZINC	F81001-12	2	
22	WASHER, 10.5 ZINC FLAT SPECIAL	F81055-6	1	
23	WASHER, 10.2 SPLIT LOCK ZINC	F81055-2	1	
24	CAP, 2.5ID x 3 RUBBER	023720	1	
25	WASHER 8,2 FE/ZN9	F81054-4	4	
	ARM ASSEMBLY, PUSHER PIVOT	101378	1	
26	ARM WELDMENT, CAM PIVOT	101377-1	1	
27	BLOCK, PIVOT	101369-1	2	
28	SCREW, M8X60 SOCKET HEAD ZINC	F81002-41	4	
29	BOLT, M10X30-5.8 HEX HEAD FULL THREAD ZINC	F81003-2	1	
30	BEARING, 61900-2RSI ROLLING	101371	6	
31	SPACER, 15/10.2-5 BEARING	101379-1	2	
32	SCREW, M10x35 SOCKET HEAD ZINC	F81003-56	1	
33	BOLT, M10x95-8.8-B HEX HEAD ZINC	F81003-71	1	
34	SPACER, 15/10.2-8 ZINC	101372-1	2	
35	RING, W22 RETAINING	F81090-7	2	
36	NUT, M10-8-B-FE	F81033-3	1	
37	WASHER, 10.5 FLAT ZINC	F81055-1	2	
38	SPACER, 22/18-17.5 BEARING	101380	1	
39	BOLT, M8 X 20-8.8 SOCKET HEAD	F81002-30	4	

2 REPLACEMENT PARTS

Cylinder Clamp Assembly

2.3 Cylinder Clamp Assembly



REF.	DESCRIPTION (◆ Indicates Parts Available In Assemblies Only)	PART #	QTY.
	MOUNT ASSEMBLY, CYLINDER	101368	1
1	PLATE, PIVOT	101366-1	1
2	GUSSET, CLAMP CYLINDER	101367-1	1
3	BLOCK, PIVOT	101365-1	1
4	BOLT, M8 X 20-8.8 SOCKET HEAD	F81002-30	6
5	BOLT, M8 X 20-8.8 SOCKET HEAD	F81002-30	5
6	CYLINDER, ISO80 AIR	502697	1
7	BRACKET, AIR CYLINDER	501608-1	1
8	BLOCK, CLEVIS	500974-1	1

REPLACEMENT PARTS

Cylinder Clamp Assembly

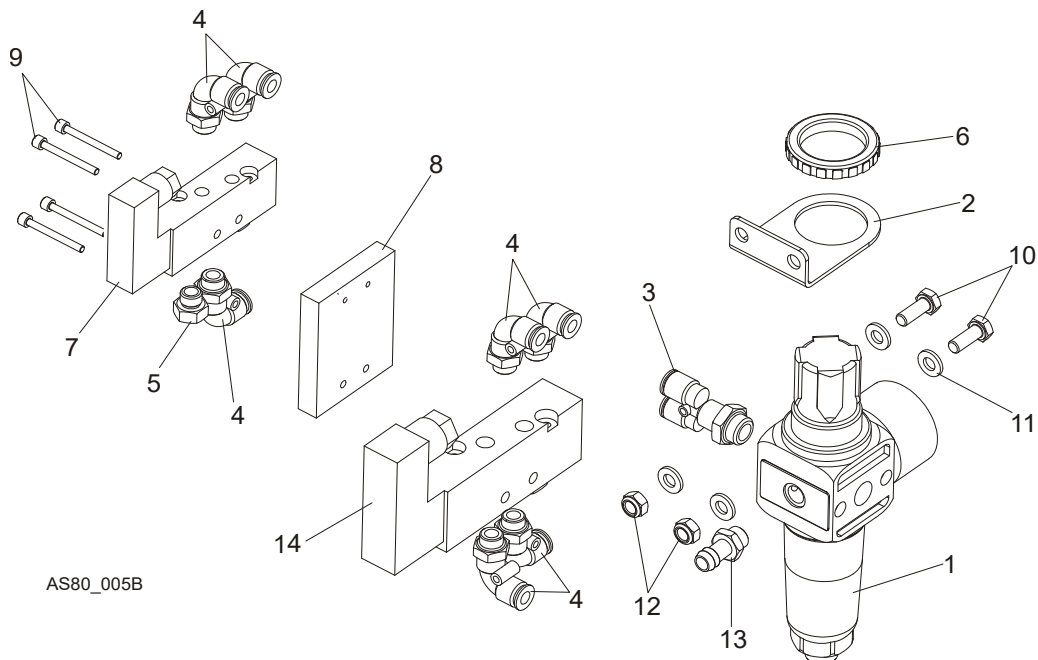
2

9	PIN, CYLINDER ZINC-PLATED	501609-1	1	
10	PIN, CYLINDER	501610-1	1	
11	FITTING, G1/8 6MM ELBOW	502704	2	
12	NUT, M12-8-B ZINC HEX	F81034-1	1	
13	WASHER, 10.2 SPLIT LOCK ZINC	F81055-2	4	
14	BOLT, M10x30-5.8 HEX HEAD FULL THREAD ZINC	F81003-2	4	
15	RING, Z10 OUTSIDE RETAINING	F81090-13	2	
16	RING, Z20 OUTSIDE RETAINING	F81090-27	2	
	ARM ASSEMBLY, CLAMP	101373	1	
17	ARM, CLAMP PIVOT	101370-1	1	
18	BEARING, 61900-2RSI ROLLING	101371	2	
19	SPACER, 15/10.2-8 BEARING ZINC	101372-1	2	
20	RING, W22 RETAINING	F81090-7	1	
21	BLOCK, PIVOT	101369-1	2	
22	BOLT, 10/M8X60-12.9 ISO 7379 ZINC	F81003-79	1	
23	WASHER, 10.5 FLAT ZINC	F81055-1	2	
24	NUT, M8-8-B HEX NYLON ZINC LOCK	F81032-2	1	
25	SCREW, M8x60 SOCKET HEAD	F81002-41	4	

2 REPLACEMENT PARTS

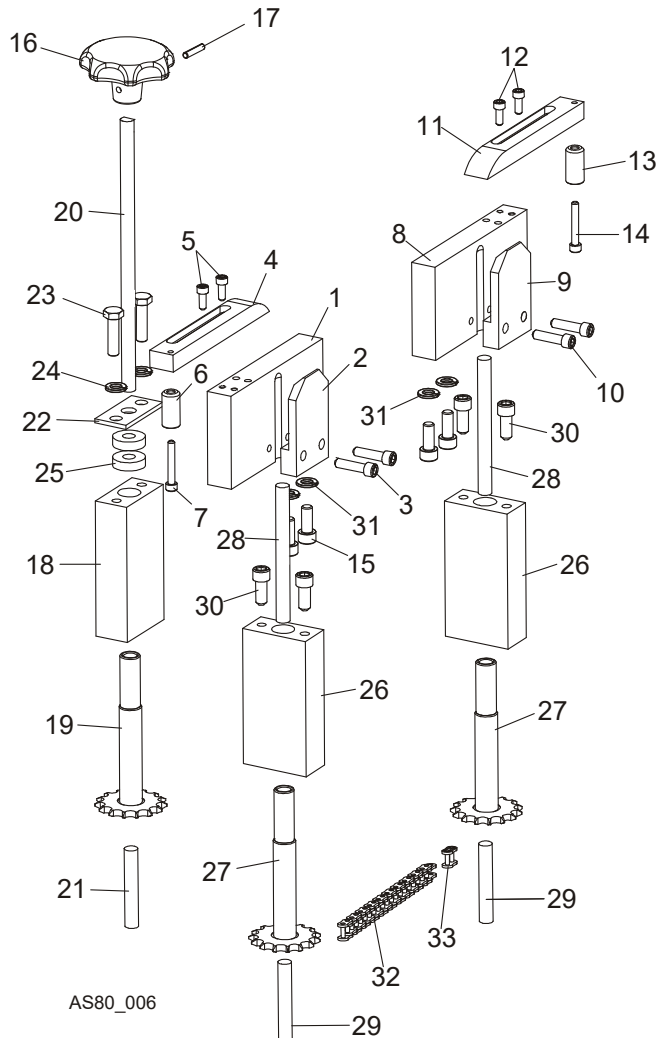
Air Regulator Assembly

2.4 Air Regulator Assembly



REF.	DESCRIPTION (◆ Indicates Parts Available In Assemblies Only)	PART #	QTY
1	KIT, FR G1/4 TOOTHSETTER PNEUMATICS	502700	1
2	BRACKET, TOOTHSETTER PNEUMATICS KIT	502701	1
3	FITTING, G1/8 6MM DAM ELBOW	502702	1
4	FITTING, G1/8 6MM ELBOW	502704	7
5	SILENCER, G1/8 AIR BRASS	502705	1
6	RING, BMT300 TOOTHSETTER PNEUMATICS KIT	503492	1
7	SOLENOID, 5/2 G1/8 24VDC AIR	502695	1
8	BRACKET, SOLENOID	101147-1	1
9	BOLT, M3X30 8.8 SOCKET HEAD ZINC	F81011-38	4
10	BOLT, M6x16 8.8 Fe/Zn5 PN-M/82105	F81001-15	2
11	WASHER, 6.4 FLAT ZINC	F81053-1	4
12	NUT, M6-8-B HEX NYLON ZINC LOCK	F81031-2	2
13	BUSHING, GT13/09 NO. 13539	092783	1
14	VALVE, 5/2 M G1/8 24/DC SOLENOID	533952	1
	LINE, 6MM AIR	R01869-3	1

2.5 Rear Adjuster, Blade Height, Index Ramp Assemblies



REF.	DESCRIPTION (◆ Indicates Parts Available In Assemblies Only)	PART #	QTY.
	BLOCK ASSEMBLY, BMT300 INDEX LEFT	101350	1
1	BLOCK, BMT300 INDEX	101349-1	1
2	BLOCK, BMT300 BLADE GUIDE	101353-1	1
3	SCREW, M6X30-8.8 SOCKET HEAD	F81001-42	2
4	RAMP, BMT300 INDEX LEFT	101351	1
5	SCREW, M4X20 8,8 FE/ZN5 HEX SOCKET HEAD	F81011-31	2
6	PIN, BLADE WEAR	S32105	1
7	SCREW, M5X35 8.8 SOCKET HEAD	F81000-73	1
	BLOCK ASSEMBLY, BMT300 INDEX RIGHT	101355	1
8	BLOCK, BMT300 INDEX	101349-1	1
9	BLOCK, BMT300 BLADE GUIDE	101353-1	1

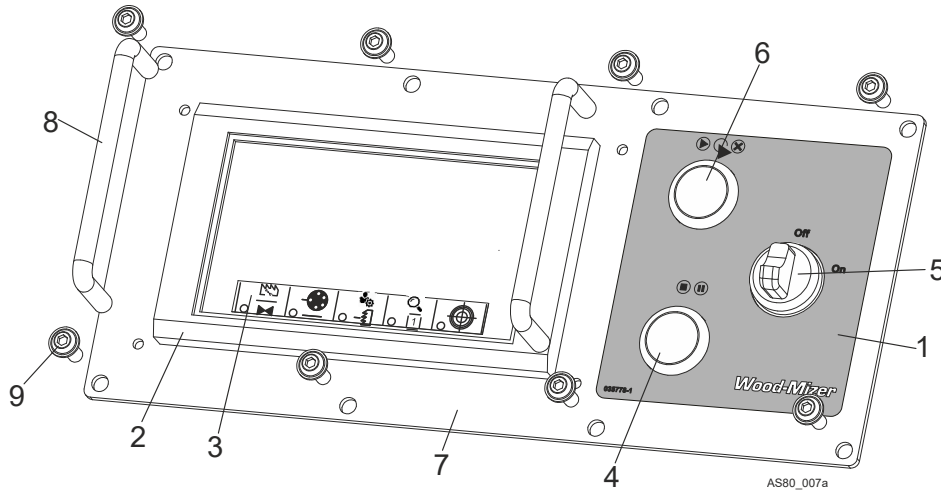
2

REPLACEMENT PARTS

Rear Adjuster, Blade Height, Index Ramp Assemblies

10	SCREW, M6X30-8.8 SOCKET HEAD	F81001-42	2	
11	RAMP, BMT300 INDEX RIGHT	101354	1	
12	SCREW, M4X20 8,8 FE/ZN5 HEX SOCKET HEAD	F81011-31	2	
13	PIN, BLADE WEAR	S32105	1	
14	SCREW, M5X35 8.8 SOCKET HEAD	F81000-73	1	
15	BOLT, M8 X 20-8.8 SOCKET HEAD	F81002-30	4	
16	KNOB, BLADE HEIGHT ADJUSTMENT	098514	1	
17	PIN, ISO8752-4X20 ST AOP ROLL	F81044-11	1	
	BLOCK ASSEMBLY, BMT300 REAR BLADE HEIGHT ADJUSTMENT	101158	1	
18	BLOCK, HEIGHT ADJUSTMENT	101152-1	1	
19	IDLE SIDE WELDMENT	101154-1	1	
20	PIN, CARBIDE WEAR	101157	1	
21	BOLT, M6x45 WITHOUT HEAD	F81014-5	1	
22	PLATE, WASHER RETAINER	101159-1	1	
23	BOLT M8X30-8.8	F81002-7	2	
24	WASHER, 8.4 FLAT ZINC	F81054-1	2	
25	WASHER, 3/8" ID X 7/8" OD X 1/4" FELT	P32102	2	
	BLOCK ASSEMBLY, BLADE HEIGHT ADJUSTMENT	101156	2	
26	BLOCK, HEIGHT ADJUSTMENT	101152-1	1	
27	IDLE SIDE WELDMENT	101154-1	1	
28	PIN, CARBIDE WEAR	101155	1	
29	BOLT, M6x45 WITHOUT HEAD	F81014-5	1	
30	SCREW, M8x16-8.8 SOCKET HEAD	F81002-39	4	
31	WASHER 8.2 ZINC	F81054-4	4	
32	CHAIN, 06B-1, L=0,91m -96 LINKS BMT300	500971	1	
33	LINK, 06B-1 BMT300 W/MASTER	500972	1	

2.6 Control Panel

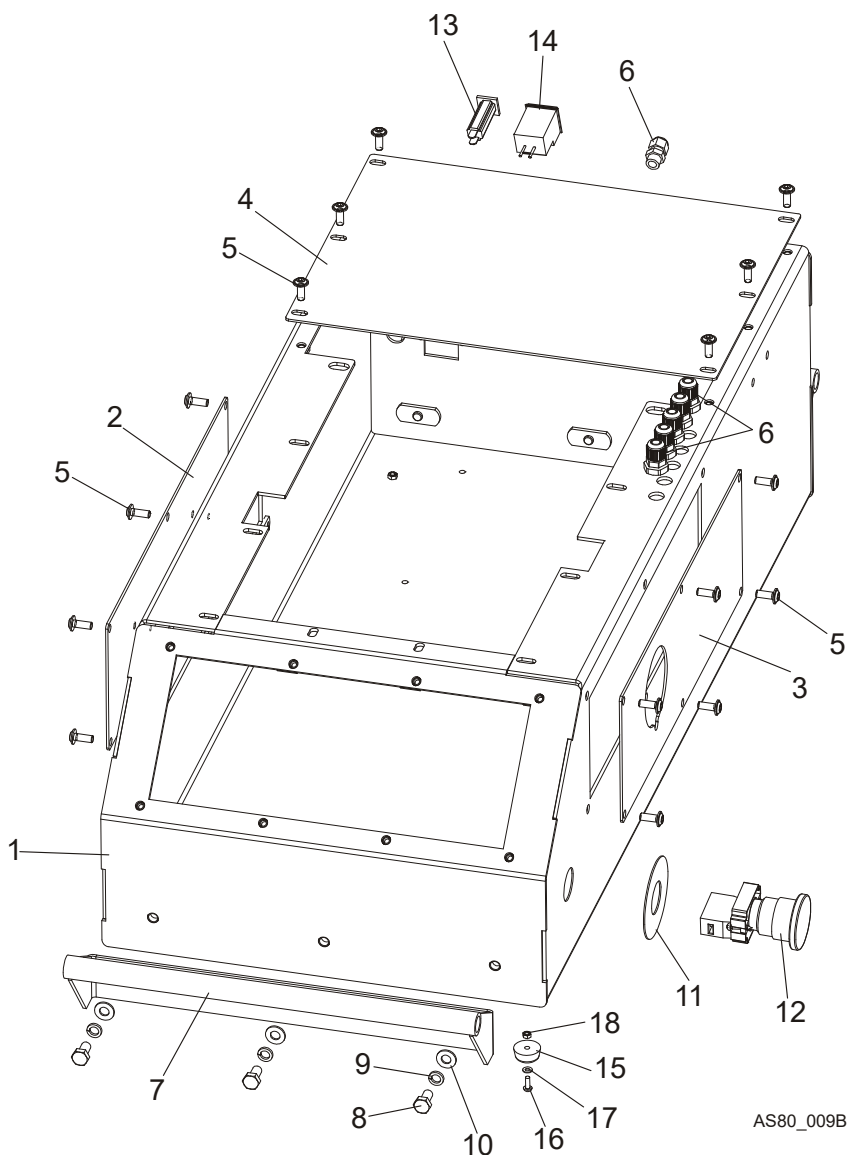


REF.	DESCRIPTION (◆ Indicates Parts Available In Assemblies Only)	PART #	QTY.
	PANEL ASSEMBLY, BMT300 CONTROL	526505	1
1	DECAL, BMT300 CONTROL	035778-1	1
2	OPERATOR TOUCH DISPLAY	526278	1
3	LABEL, BMT300 OPERATOR	527879	1
4	SWITCH HEAD, M22 RED EXTENDED	091364	1
5	SWITCH, 2 POS 1 NO CONTACT TOGGLE	091467	1
6	SWITCH HEAD, M22 GREEN GUARDED	091363	1
	ELEMENT, M22-K10 CONTACT	091362	1
	MEMBRANE M22-T-D	094316	1
7	PLATE, FRONT CONTROL BOX	526506-1	1
8	HANDLE, DOOR	P08065	2
	SEAL, BMT300 PANEL	501928	1
9	BOLT, M6x16 BN 11252 "BOSSARD"	F81001-24	8

2 REPLACEMENT PARTS

Control Base Assembly

2.7 Control Base Assembly



AS80_009B

REF.	DESCRIPTION (◆ Indicates Parts Available In Assemblies Only)	PART #	QTY.
1	BOX WELDMENT, BMT300 CONTROL	101142-1	1
2	PANEL, CONTROL BOX SERVICE LEFT SIDE	101148-1	1
3	PANEL, CONTROL BOX SERVICE RIGHT SIDE	101149-1	1
4	PANEL, CONTROL BOX TOP SERVICE	500093-1	1
5	BOLT, M6x16 BN 11252 "BOSSARD"	F81001-24	18
6	GLAND, DP7/H CABLE	F81096-11	5
7	HANDLE, BMT300 TRANSPORT COMPLETE (OPTION)	500815-1	2
8	BOLT, M8x16-8.8-B HH ZINC	F81002-20	6

REPLACEMENT PARTS

Control Base Assembly

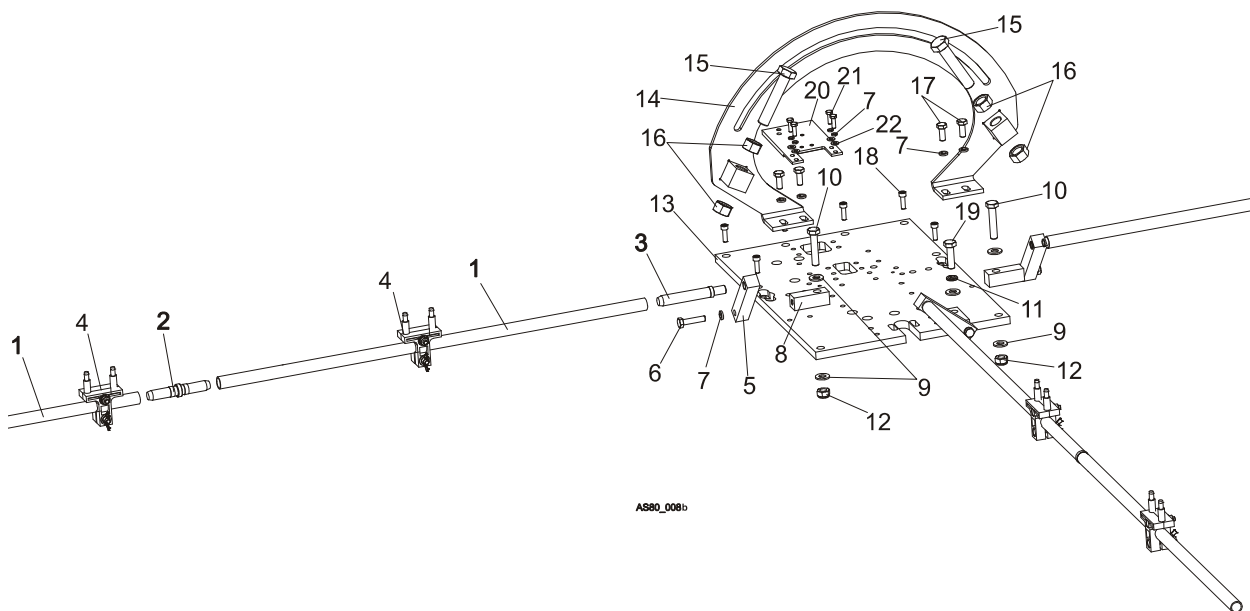
2

9	WASHER 8,2 ZINC	F81054-4	6	
10	WASHER, 8.4 FLAT ZINC	F81054-1	6	
11	SWITCH EMERGENCY XB2 BS542	086556	1	
12	LEGEND, ZBY9320 E-STOP MARKED	086561	1	
13	BREAKER, 3A PANEL MOUNT	E10466	1	
14	SOCKET, FYL06T1 POWER ENTRY	500454	1	
	FUSE, ZKT 2A TIME DELAY	500455	1	
15	FOOT, BASE ADJUSTABLE	092839	4	
16	NUT, M10-8--FE	F81033-3	4	
17	WASHER 10,5 FLAT ZINC	F81055-1	4	

2 REPLACEMENT PARTS

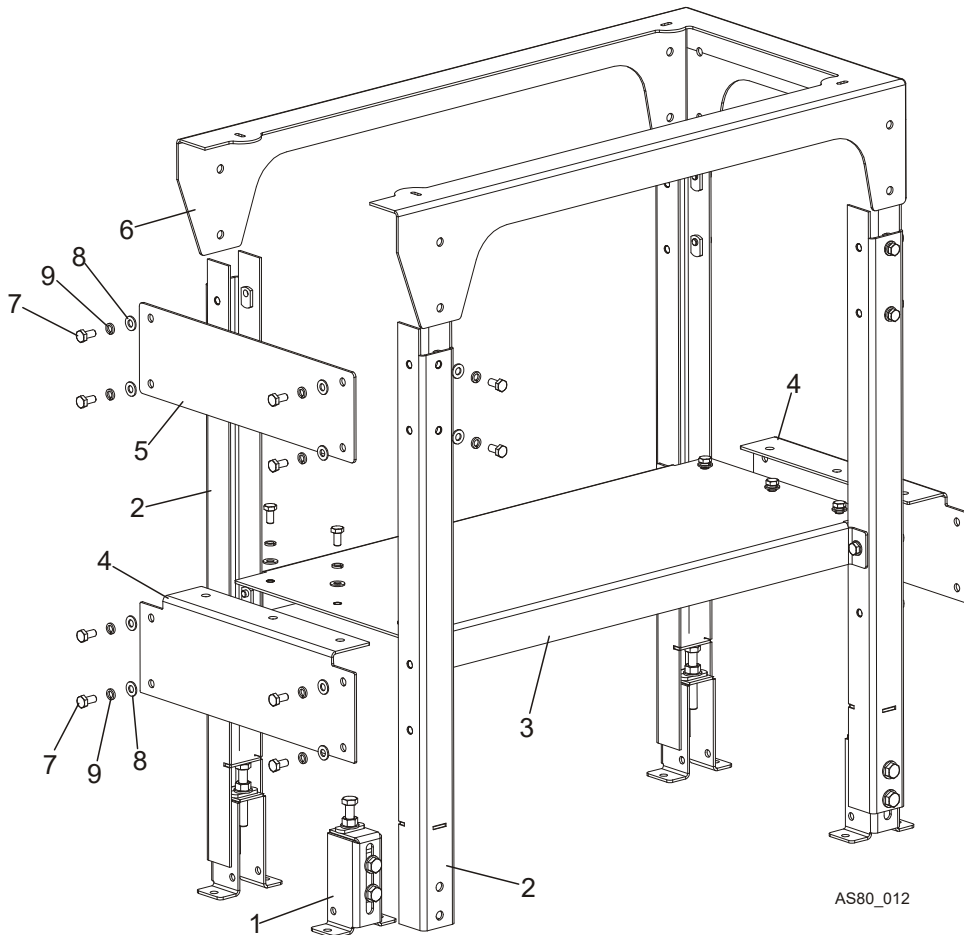
Blade Support Arms, Index Plate

2.8 Blade Support Arms, Index Plate



REF.	DESCRIPTION (◆ Indicates Parts Available In Assemblies Only)	PART #	QTY.
	ARM ASSEMBLY, BLADE SUPPORT	500170	3
1	TUBE ASSY, BLADE SUPPORT	500095-1	2
2	LINK, BLADE ARM SUPPORT	500158	1
3	BLADE ARM SUPPORT	545666-1	1
4	GUIDE ASSEMBLY, BLADE SUPPORT	A30008	2
5	SUPPORT, BLADE ARM VERTICAL	500172-1	3
6	BOLT, M8X35-8.8 HEX HEAD FULL THREAD ZINC	F81002-13	3
7	WASHER 8,2 ZINC	F81054-4	11
8	BLOCK, BMT300 BLADE SUPPORT ARM MOUNTING	500160-1	3
9	WASHER, 10.5 FLAT ZINC	F81055-1	6
10	BOLT, M10X50MM, HEX HEAD FULL THRD ZINC	F81003-4	2
11	WASHER, 10.2 SPLIT LOCK ZINC	F81055-2	1
12	NUT, M10-8-B HEX NYLON ZINC LOCK	F81033-1	3
13	PLATE, BMT300 BASE	101150-1	1
14	PLATE WELDMENT, INDEX STOP	500090-1	1
15	BOLT, M16X80 8.8-B- FE/ZN5 HEX HEAD FULL	F81006-11	2
16	NUT, M16-5.8 HEX ZINC	F81036-1	4
17	BOLT, M8X20-5.8 HEX HEAD FULL THREAD ZINC	F81002-1	4
18	SCREW, M6 X 20 8.8 SOCKET HEAD	F81001-22	6
19	BOLT, M10X35-8.8 HEX HEAD FULL THREAD ZINC	F81003-17	1
20	PLATE EXTENSION, TOOTHSETTER	500092-1	1
21	BOLT, M8x25-8.8-B HEX HEAD FULL THREAD ZINC	F81002-5	4
22	WASHER, 8.4 FLAT ZINC	F81054-1	4

2.9 Stand Option

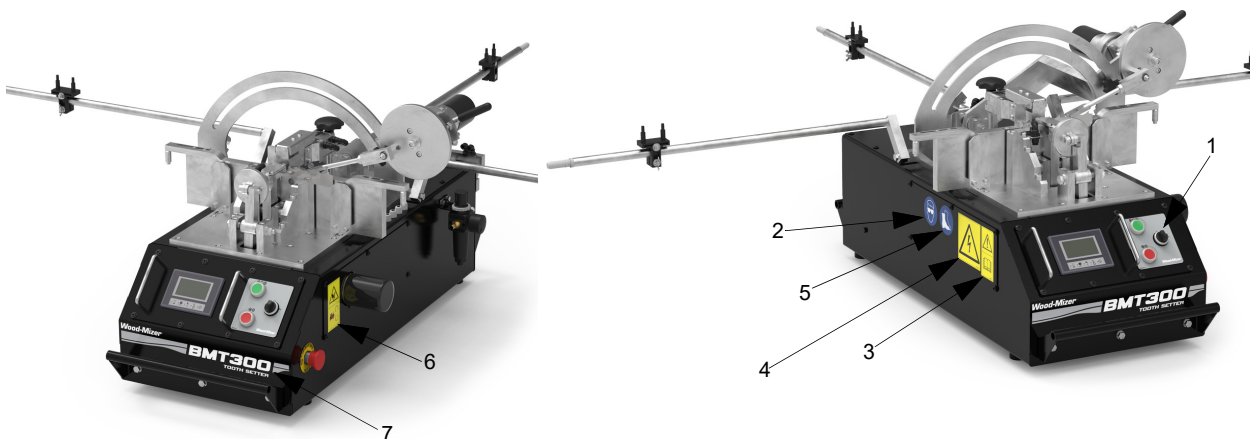


REF.	DESCRIPTION (◆ Indicates Parts Available In Assemblies Only)	PART #	QTY.
	STAND, BMT300 COMPLETE	501795	1
1	FOOT, OUTRIGGER COMPLETE	101237	4
2	BRACKET, STAND VERTICAL	501791-1	4
3	SHELF, BMT300 STAND COMPLETE	501792-1	1
4	PLATE, LOWER STRENGTHEN	501793-1	2
5	PLATE, STRENGTHEN	501794-1	1
6	FRAME, BMT300 STAND	501796-1	1
7	BOLT M8x16 -8.8-B-Fe/Zn5 PN-85/M-82105	F81002-20	34
8	WASHER, 8.4 FLAT ZINC	F81054-1	35
9	WASHER, 8.2 SPLIT LOCK ZINC	F81054-4	30

2 REPLACEMENT PARTS

Decals, BMT300

2.10 Decals, BMT300



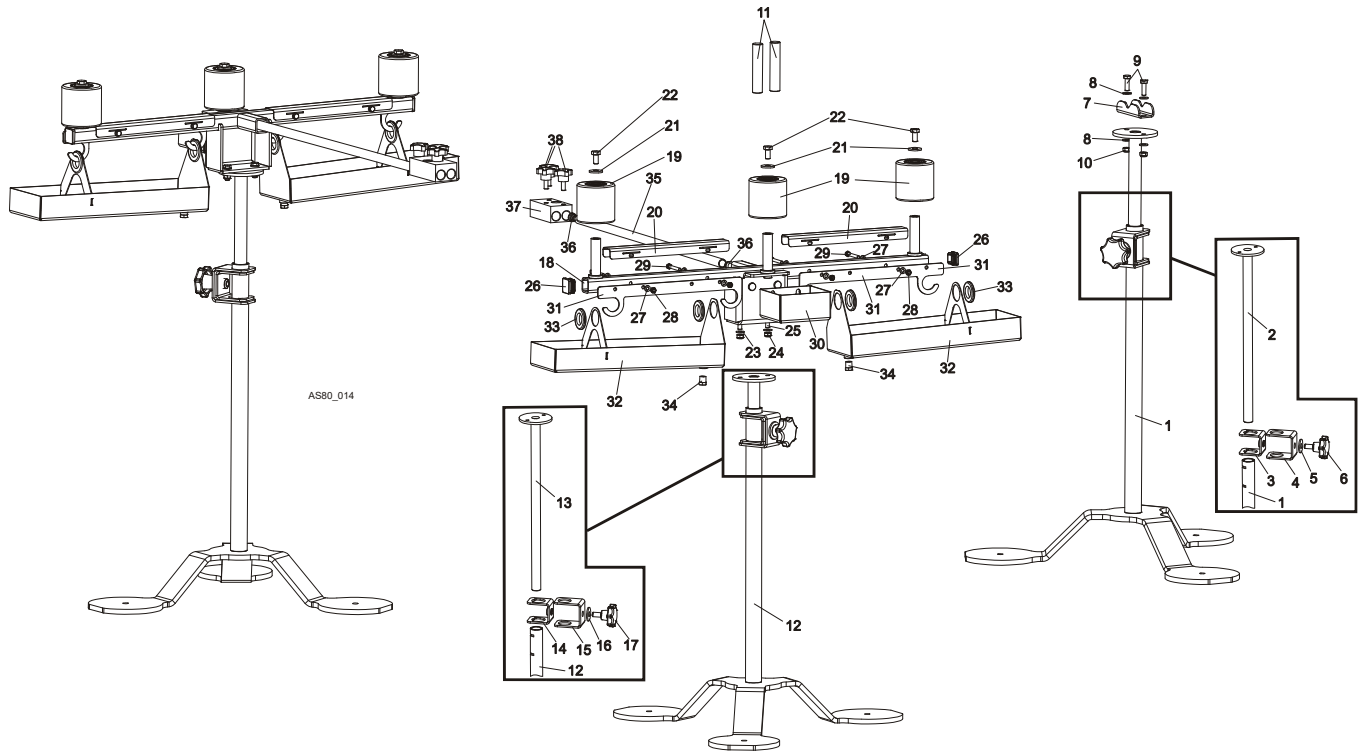
REF.	DESCRIPTION (◆ Indicates Parts Available In Assemblies Only)	PART #	QTY.
	DECAL KIT, BMT300	502948	1
1	DECAL, BMT300 CONTROL	035778-1	1
2	DECAL, EYE WARNING SMALL	S12004G-1	1
3	DECAL, READ OPERATOR'S MANUAL	096317	1
4	DECAL, ELECTRIC POWER SIGN	S10364-P2	1
5	DECAL, USE SAFETY BOOTS SMALL (PICTOGRAM)	501465-1	1
6	DECAL, HAND INJURY DANGER - KEEP HANDS AWAY	509255	1
7	DECAL, BMT300 TOOTHSETTER		1
	DECAL, MIN. 4 BAR AIR PRESSURE	502950	1
	DECAL, CE CERTIFICATION SMALL	P85070	1

REPLACEMENT PARTS

3" Blade Support Kit - Aut. Toothsetter (Option)

2

2.11 3" Blade Support Kit - Aut. Toothsetter (Option)



REF.	DESCRIPTION (◆ Indicates Parts Available In Assemblies Only)	PART #	QTY.
	BLADE SUPPORT ASSEMBLY, 3", 9M AUTOMATIC TOOTHSETTER	507752	1
	SUPPORT, IS203 SHARPENER ARM COMPLETE	504391	1
	STAND, 690-1100 KP BLADE SUPPORT ADJUSTABLE	504401	1
1	TUBE WLDMT, STAND BASE PTD	504392-1	1
2	TUBE WLDMT, STAND ADJUSTMENT ZINC-PL.	504398-1	1
3	CHANNEL, INNER CLAMPING ZINC-PL.	504394-1	1
4	CHANNEL, STAND OUTER ZINC-PL.	504400-1	1
5	WASHER, 13 SPECIAL FLAT ZINC	F81056-14	1
6	KNOB, 1580 DIA. 63x25 M12	500460	1
	BRACKET, TOOTHSETTER ARM SUPPORT - COMPLETE	505585	1
7	BRACKET, TOOTHSETTER ARM SUPPORT ZINC-PLATED	504397-1	1
8	WASHER, 8.4 FLAT ZINC	F81054-1	4
9	BOLT, M8x25-8.8-B HEX HEAD FULL THREAD ZINC	F81002-5	2
10	NUT, M8-8-B HEX NYLON ZINC LOCK	F81032-2	2
11	BUSHING, 3" BLADE GUIDE	507754	2
	SUPPORT, 3" BLADE COMPLETE - ENTRY SIDE	504402	2
	STAND, 690-1100 KP BLADE SUPPORT ADJUSTABLE	504401	1
12	TUBE WLDMT, STAND BASE PTD	504392-1	1
13	TUBE WLDMT, STAND ADJUSTMENT ZINC-PL.	504398-1	1

2

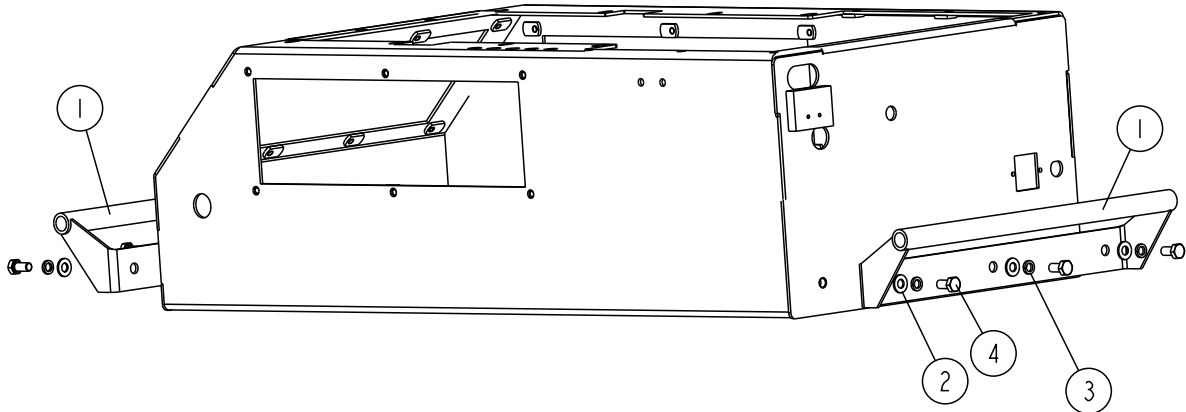
REPLACEMENT PARTS

3" Blade Support Kit - Aut. Toothsetter (Option)

14	CHANNEL, INNER CLAMPING ZINC-PL.	504394-1	1	
15	CHANNEL, STAND OUTER ZINC-PL.	504400-1	1	
16	WASHER, 13 SPECIAL FLAT ZINC	F81056-14	1	
17	KNOB, 1580 DIA. 63x25 M12	500460	1	
	COVER, ENTRY-SIDE BLADE SUPPORT COMPLETE	505568	1	
18	ARM, ENTRY-SIDE BLADE SUPPORT PTD	505571-1	1	
19	ROLLER, R-80-80 W/BEARING	099429	3	
20	COVER, BLADE SUPPORT ARM STAINLESS STEEL	505575	2	
21	WASHER, 10.5 SPECIAL FLAT ZINC	F81055-6	3	
22	BOLT, ISO4017-M10x20-8.8-A2E HEX HEAD	F81003-53	3	
23	WASHER, 8.4 FLAT ZINC	F81054-1	4	
24	NUT, M8-8-B HEX NYLON ZINC LOCK	F81032-2	2	
25	BOLT, M8x25-8.8-B HEX HEAD FULL THREAD ZINC	F81002-5	2	
26	CAP, 30x30x3 1540 DIA.	099463	2	
27	WASHER, 6.4 FLAT ZINC	F81053-1	8	
28	NUT, M6-8-B HEX NYLON ZINC LOCK	F81031-2	4	
29	BOLT, M6x50-8.8 HEX HEAD ZINC	F81001-62	4	
30	PAN, OIL DRIP PTD	505579-1	1	
31	PLATE, OIL DRIP PAN HANGER PTD	505582-1	2	
	PAN, OIL DRIP COMPLETE	505583	2	
32	PAN WLDMT, OIL DRIP PTD	101257-1	1	
33	GROMMET, 1" ID RUBBER	P11765	2	
34	PLUG, B-1/4-KU (BST R 1/4")	087605	1	
	TUBE, BLADE SUPPORT SPACER COMPLETE	505576	2	
35	TUBE, IS203 SIDE EXTENSION ZINC-PL.	502405-1	1	
36	CAP, 1530 DIA. 18x2	100847	2	
	BLOCK, SPACER TUBE CONNECTION COMPLETE	505577	2	
37	BLOCK, SPACER TUBE CONNECTION ZINC-PL.	505578-1	1	
38	HANDWHEEL, 40 DIA./M8x20 (462053 MOSS)	500973	3	

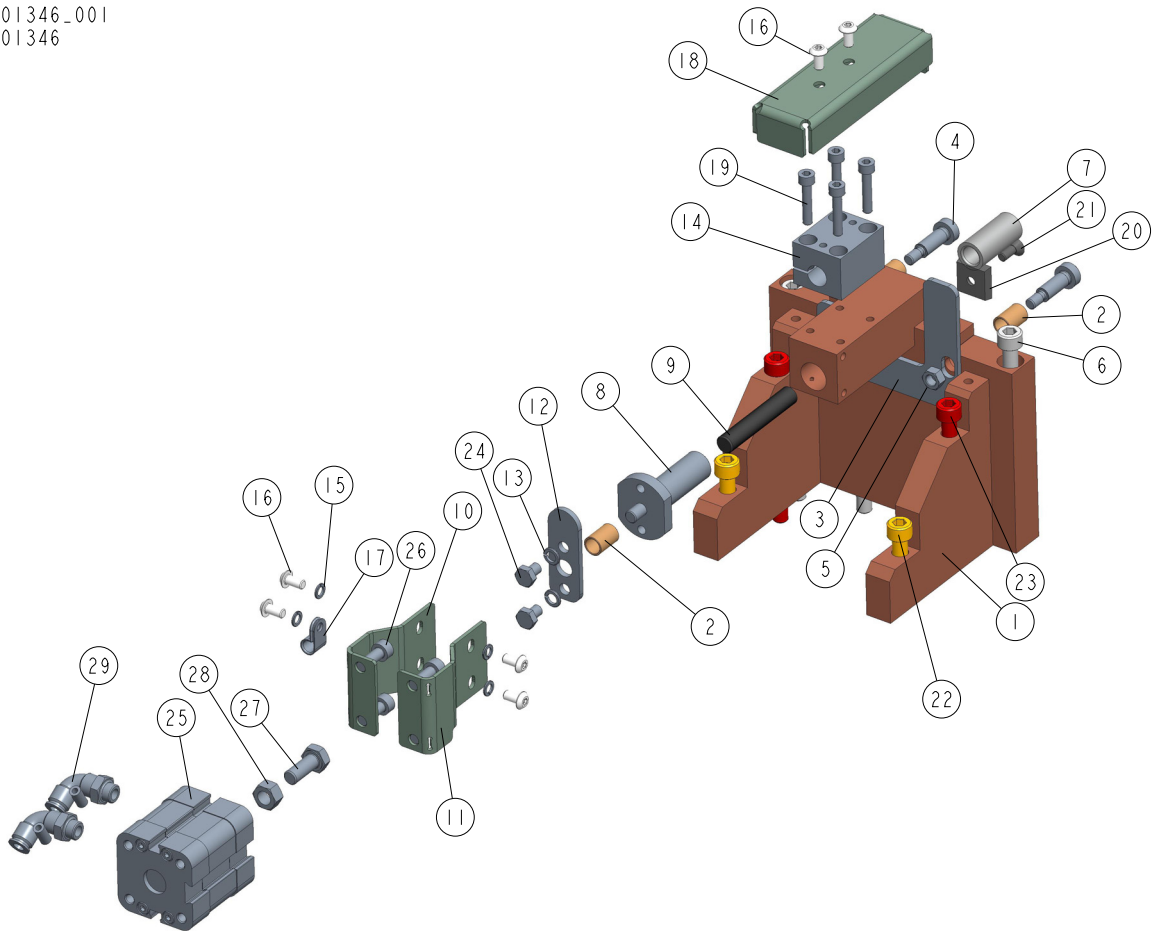
2.12 Transporting brackets

AS80_016
 101175_Manual_Rev_A1
 101175_Rev_E2
 500815-1_Rev_A2



	DESCRIPTION (* Indicates Parts Available in Assemblies Only)	PART #	QTY	
1	BRACKET, TRANSPORTING, COMPLETE	500815-1	2	
2	WASHER, 8.4 FLAT ZINC	F81054-1	6	
3	WASHER 8,2 FE/ZN9	F81054-4	6	
4	BOLT M8X16 -8.8-B-FE/ZN5 PN-85/M-82105	F81002-20	6	

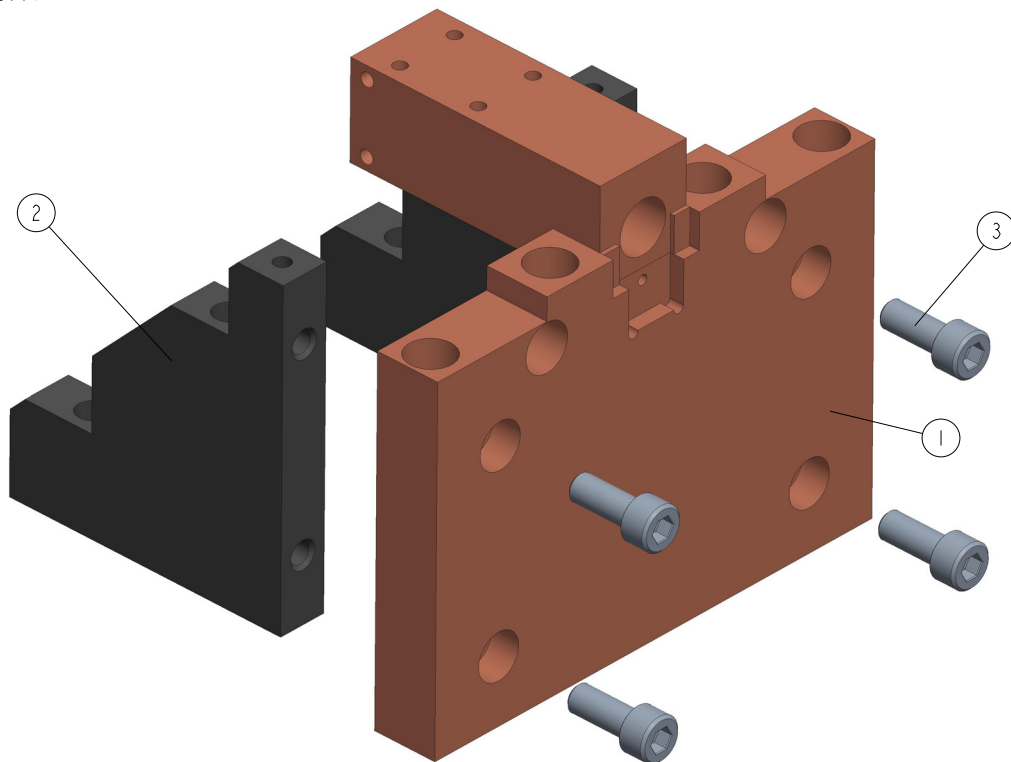
2.13 Back Clamp Block. 101346

101346_001
101346

REF	DESCRIPTION (◆ indicates parts available in assemblies only)	PART #	QTY
-	CLAMP ASSEMBLY, BMT300 BACK	101346	1
1	BLOCK, CLAMP BACK COMPLETE See Section 2.14	564953	1
2	SPRING, .75 LTH COMPRESSION	P32011	3
3	PLATE, BLADE RELEASE	101165-1	1
4	BOLT, 8/M6X20-12.9 ISO 7379 SHOULDER	F81001-25	2
5	NUT, M6 \varnothing 8 HEX ZINC	F81031-1	2
6	SCREW, M8X120-8.8 HEX SOCKET HEAD CAP ZI	F81002-40	4
7	BUSHING, SENSOR PIN GUIDE	502340	1
-	PIN ASSEMBLY, BMT300 SENSOR	502949	1
8	PIN, REAR LINEAR	101172	1
9	PIN, SENSOR	101348	1
10	SUPPORT, BMT300 AIR CYLINDER - RIGHT	505715	1
11	SUPPORT, BMT300 AIR CYLINDER - LEFT	505714	1
12	PIN ASSEMBLY, BMT300 SENSOR	101345-1	1
13	WASHER, Z 6.1 SPLIT LOCK ZINC	F81053-3	2
14	BLOCK, SENSOR MOUNT	101167-1	1
15	WASHER, 5.1 SPLIT LOCK ZINC	F81052-2	4
16	BOLT M5X10 WG. ISO 7380	F81000-32	6
17	ELEMENT, EE63 MOUNTING	F81080-4	1

REF	DESCRIPTION (◆ indicates parts available in assemblies only)	PART #	QTY	
18	GUARD, TOP SENSOR	101168-1	1	
19	SCREW, M5X25 -8.8 HEX SOCKET HEAD CAP ZI	F81000-7	4	
20	INSERT, 3/4" CARBIDE CLAMPING	P32010	1	
21	BOLT, #10-24 X 1/2" FLAT SOCKET HEAD	F05004-61	1	
22	SCREW, M8X40-8.8 HEX SOCKET HEAD CAP ZIN	F81002-29	2	
23	SCREW M8X90 SHCS ZC 8.8 DIN 912 ISO 476	F81002-44	2	
24	BOLT, M6X8-8.8 HEX HEAD FULL THREAD ZINC	F81001-33	2	
25	CYLINDER, ISO32 AIR	502696	1	
26	SCREW, M6X16-8.8 HEX SOCKET HEAD CAP ZIN	F81001-21	4	
27	BOLT, M8X20-8.8-B HEX HEAD FULL THREAD Z	F81002-4	1	
28	NUT, M8-8-B HEX ZINC	F81032-1	1	
29	FITTING, G1/8 6MM ELBOW	502704	2	

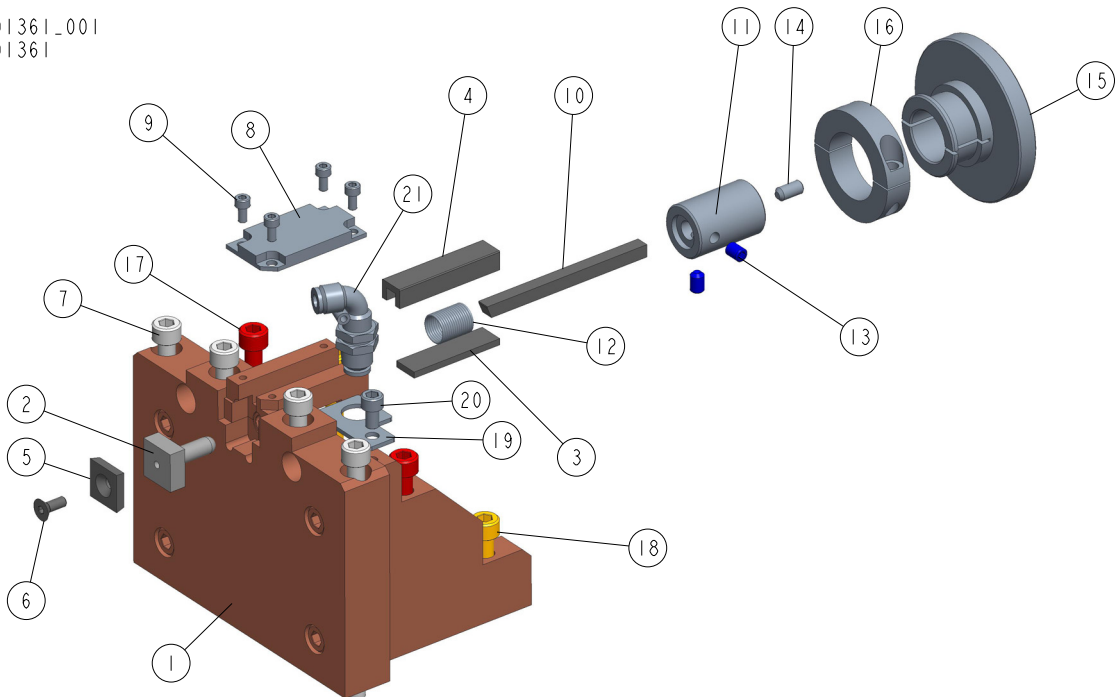
2.14 Back Clamp Block (No. 564953)

564953_001
564953

REF	DESCRIPTION (◆ indicates parts available in assemblies only)	PART #	QTY
-	BLOCK, CLAMP BACK COMPLETE	564953	1
1	CLAMP WELDMENT, BMT300 BACK	101163-1	1
2	GUSSET, CLAMP SUPPORT	101160-1	2
3	BOLT, M8 X 20-8.8 SOCKET HEAD	F81002-30	4

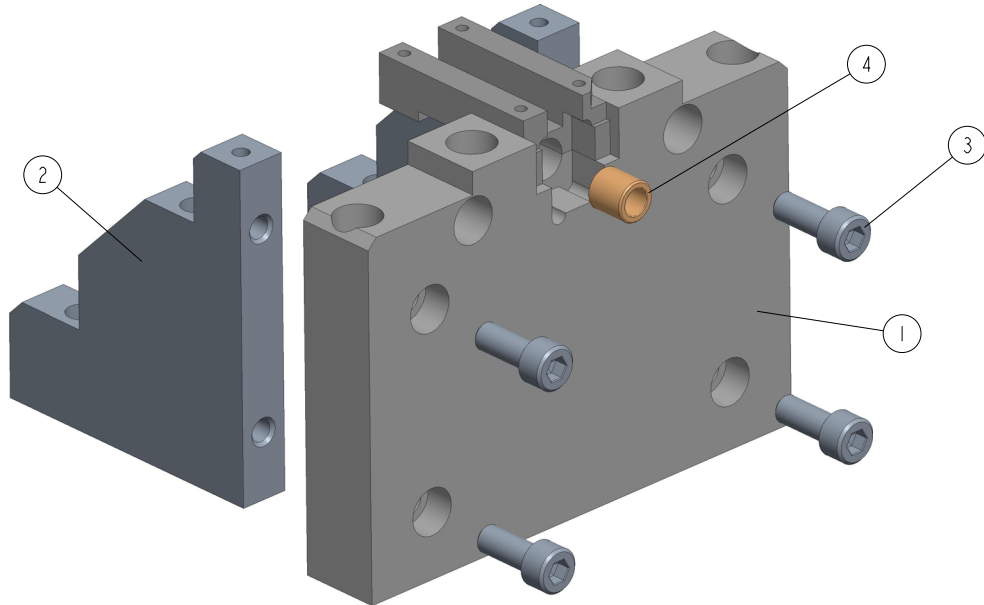
2.15 Front Clamp Block. 101361

101361_001
101361



REF	DESCRIPTION (◆ indicates parts available in assemblies only)	PART #	QTY
-	CLAMP ASSEMBLY, BMT300 FRONT	101361	1
1	CLAMP WLDMT, FRONT See Section 2.16	101360	1
2	PIN, CLAMP	S32018	1
3	PLATE, LOWER WEAR	032360	1
4	BRACKET, PUSHER PIN CHANNEL	032361	1
5	INSERT, 3/4" CARBIDE CLAMPING	P32010	1
6	BOLT, #10-24 X 1/2" FLAT SOCKET HEAD	F05004-61	1
7	SCREW, M8X120-8.8 HEX SOCKET HEAD CAP ZI	F81002-40	4
8	PLATE, PUSHER TOP SAS	101364-1	1
9	SCREW, M4X8 8.8 HEX SOCKET HEAD CAP ZINC	F81011-36	4
10	PIN, PUSHER	032362-REF	1
11	HOLDER, PUSH PIN	035465	1
12	SPRING, .6 DIA COMPRESSION .510 ID X 3/4	032377	1
13	SCREW, 1/4-20X3/8 SHCP SET	F05005-47	2
14	SCREW, 1/4-20 SOCKET HEAD SET CUP POINT	F05005-55	1
15	KNOB, SET ADJUSTER	035467	1
16	COLLAR, 1-1/4 I.D. 2-PIECE CLAMPING	035468	1
17	SCREW M8X90 SHCS ZC 8.8 DIN 912 ISO 476	F81002-44	2
18	SCREW, M8X40-8.8 HEX SOCKET HEAD CAP ZIN	F81002-29	2
19	BRACKET, BLOWOFF	502939-1	1
20	SCREW, M6X10-8.8 HEX SOCKET HEAD CAP	F81001-12	1
21	FITTING, G1/8 6MM ELBOW	502703	1

2.16 Clamp Block. 101360

101360_001
101360

REF	DESCRIPTION (◆ indicates parts available in assemblies only)	PART #	QTY
-	CLAMP WLDMT, FRONT	101360	1
-	BLOCK, FRONT CLAMP	564954	1
1	CLAMP WLDMT, FRONT	101358-1	1
2	GUSSET, CLAMP SUPPORT	101160-1	2
3	BOLT, M8 X 20-8.8 SOCKET HEAD	F81002-30	4
4	BUSHING, 12/7.9-12.5 DRILL	101359	1