

Wood-Mizer®

Replacement Parts

BMS500
BMS600

rev. A1.09
rev. A1.08



Safety is our #1 concern! Read and understand all safety information and instructions before operating, setting up or maintaining this machine.

Form #2587

SECTION 1	REPLACEMENT PARTS	1-1
1.1	How to use the Parts List.....	1-1
1.2	Sample Assembly	1-1
1.3	Stand Assembly	1-2
1.4	Cover Assembly	1-4
1.5	Blade Support Assembly	1-6
1.6	Additional Blade Support Assembly (Option)	1-7
1.7	Rear Blade Guide (Option).....	1-8
1.8	Side Blade Guide (Option)	1-9
1.9	Electric Box	1-10
1.10	Control Panel	1-11
1.11	Coolant Tank	1-12
1.12	Mounting Plate	1-13
1.13	Sharpener Head	1-14
1.14	Cam & Index Arm Drive Assembly	1-17
1.15	Sharpener Head Lever	1-19
1.16	Clamp and Coolant Wiper	1-20
1.17	Deburr Assembly.....	1-22
1.18	Magnetic Filter	1-24
1.19	Magnetic Filter (BMS600 Sharpener)	1-26
1.20	Alignment Tool & Blade ProfileTemplate	1-27
1.21	Decal Kit.....	1-28
1.22	3" Blade Supports Kit (Option)	1-29
1.23	Table Extensions Kit (BMS600 Option)	1-32
1.24	Blade Profile Templates (EU, 592837)	1-1

SECTION 1 REPLACEMENT PARTS

1.1 How to use the Parts List

- Use the table of contents or index to locate the assembly that contains the part you need.
- Go to the appropriate section and locate the part in the illustration.
- Use the number pointing to the part to locate the correct part number and description in the table.
- Parts shown indented under another part are included with that part.
- Parts marked with a diamond (◆) are only available in the assembly listed above the part.

See the sample table below. Sample Part #A01111 includes part F02222-2 and subassembly A03333. Subassembly A03333 includes part S04444-4 and subassembly K05555. The diamond (◆) indicates that S04444-4 is not available except in subassembly A03333. Subassembly K05555 includes parts M06666 and F07777-77. The diamond (◆) indicates M06666 is not available except in subassembly K05555.

1.2 Sample Assembly				
REF.	DESCRIPTION (◆ Indicates Parts Available In Assemblies Only)	PART #	QTY	
	SAMPLE ASSEMBLY, COMPLETE (INCLUDES ALL INDENTED PARTS BELOW)	A01111	1	
1	Sample Part	F02222-22	1	
	Sample Subassembly (Includes All Indented Parts Below)	A03333	1	
2	Sample Part (◆ Indicates Part Is Only Available With A03333)	S04444-4	1	◆
	Sample Subassembly (Includes All Indented Parts Below)	K05555	1	
3	Sample Part (◆ Indicates Part Is Only Available With K05555)	M06666	2	◆
4	Sample Part	F07777-77	1	

To Order Parts:

- From Europe call your local distributor or our European Headquarters and Manufacturing Facility in Kolo, Nagórna 114 St, Poland at **+48-63-2626000**. From the continental U.S., call our U.S. Headquarter 8180 West 10th St.Indianapolis, IN 46214, toll-free at **1-800-525-8100**. Have your customer number, vehicle identification number, and part numbers ready when you call.
- From other international locations, contact the Wood-Mizer distributor in your area for parts.

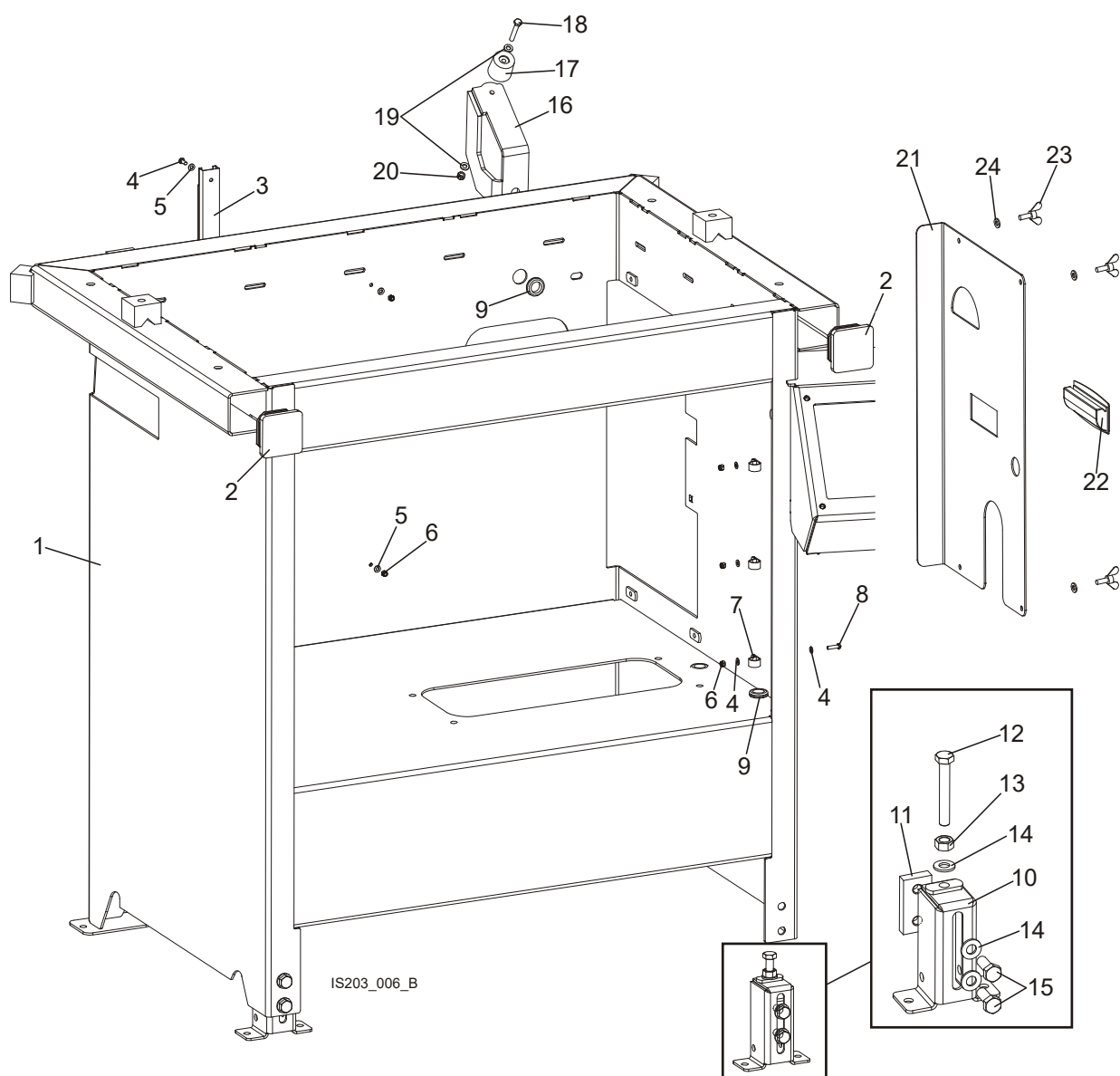
Office Hours:

Country	Monday - Friday	Saturday	Sunday
Poland	7 a.m.- 3 p.m.	Closed	Closed
US	8 a.m.- 5 p.m.	8 a.m.- 5 p.m	Closed

1 REPLACEMENT PARTS

Stand Assembly

1.3 Stand Assembly



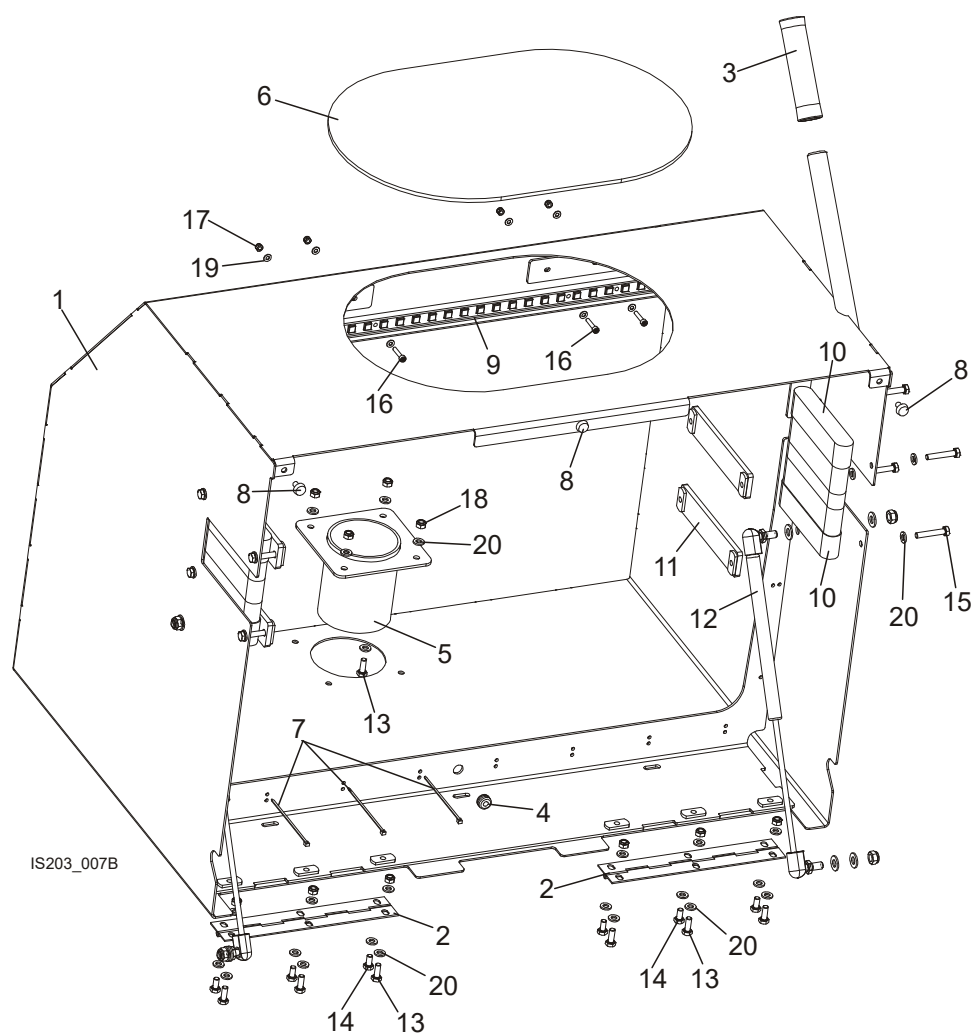
REF.	DESCRIPTION (◆ Indicates Parts Available In Assemblies Only)	PART #	QTY
	STAND, BMS500/600 SHARPENER - COMPLETE	101264	1
1	STAND, BMS500/600 SHARPENER	101265-1	1
2	CAP, SR 1540 OUTRIGGER LEG	089710	2
3	WIRE HOUSING, SHARPENER BASE	500465	1
4	SCREW, M4x12 -5.8-B CROSS RECESSED PAN HEAD	F81011-43	8
5	WASHER 4.3 FLAT ZINC	F81051-2	14
6	NUT, M4-B HEX NYLON ZINC LOCK	F81029-1	7
7	CLAMP, #3307 HEYMAN WIRE	F05114-1	3
8	SCREW, M4x16 5,8-B CROSS RECESSED PAN HEAD	F81011-42	3
9	GROMMET, 5/8" ID RUBBER	P11764	4
	FOOT, ADJUSTABLE COMPLETE	101237	2

10	FOOT, ADJUSTABLE SHARPENER	101238-1	1	
11	PLATE, CLAMPING M10-ZINC	101242-1	1	
12	BOLT, M10x70-8.8-HEX HEAD FULL THREAD ZINC	F81003-20	1	
13	NUT, M10-8-B-HEX ZINC	F81033-3	1	
14	WASHER, 10.5 FLAT ZINC	F81055-1	3	
15	BOLT, M10x25-8.8 HEX HEAD FULL THREAD ZINC	F81003-11	2	
	SUPPORT, HEAD COVER - COMPLETE	500468	1	
16	SUPPORT, HEAD COVER	500461-1	1	
17	BUMPER, COVER BRACKET	087825	1	
18	BOLT, M6x40-8.8 HEX HEAD FULL THREAD ZINC	F81001-5	1	
19	WASHER, 6.4 FLAT ZINC	F81053-1	2	
20	NUT, M6-8-B HEX NYLON ZINC LOCK	F81031-2	1	
	COVER, SIDE - COMPLETE	101280	1	
21	COVER, SIDE	101281-1	1	
22	HANDLE, EPR.90-PF-C1(261051-C1) FLUSH PULL	100012	1	
23	BOLT, M6x16 BN276 DIN 316	F81001-16	4	
24	WASHER, 6.4 FLAT ZINC	F81053-1	4	

1 REPLACEMENT PARTS

Cover Assembly

1.4 Cover Assembly



REF.	DESCRIPTION (◆ Indicates Parts Available In Assemblies Only)	PART #	QTY
	COMPLETE SHARPENER COVER	100850	1
1	SHARPENER COVER	100851-1	1
2	HINGE, COVER	088257	2
3	GRIP, LONG HANDLE	086164	1
4	SEAL WIRE, GH6	085338	1
5	PIPE, FUME EXHAUST CONNECTION	087974-1	1
6	VIEWFINDER, TOP COVER	505180	1
7	CABLE TIE, TKUV 9/3	F81082-4	11
8	FEET, SR1591 12X6 GROMMET	101279	3
9	STRIP, SUPERFLUX24 LED LLSFW-24-3WC	101283	1
10	CLEANER, BLADE	101284	4
11	BRACKET, BLADE CLEANER	101285-1	4
12	SPRING, 150N - COMPLETE GAS LIFTING	500464	2
13	BOLT, M6x16 8.8 HEX HEAD FULL THREAD ZINC	F81001-15	10
14	BOLT, M6x12-8.8 HEX HEAD FULL THREAD ZINC	F81001-7	6

REPLACEMENT PARTS

Cover Assembly

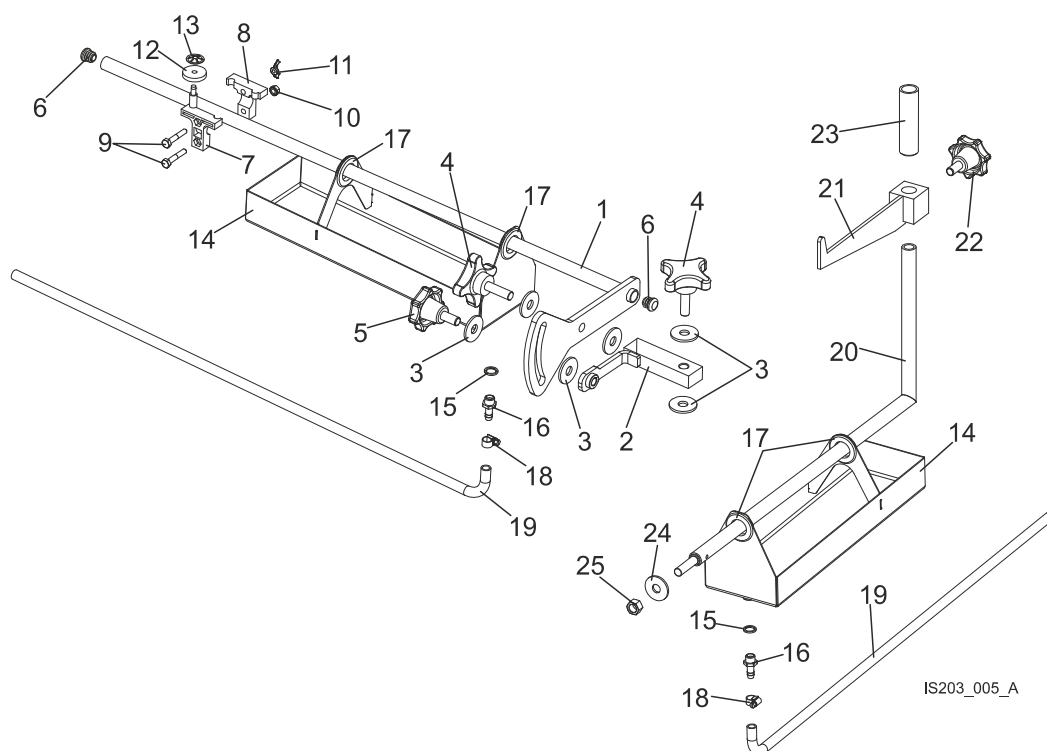


15	BOLT, M6x35 8.8 HEX HEAD ZINC	F81001-71	8	
16	SCREW, M4x20 8.8 HEX SOCKED HEAD ZINC	F81011-31	4	
17	NUT, M4-B HEX NYLON ZINC LOCK	F81029-1	4	
18	NUT, M6-8-B HEX NYLON ZINC LOCK	F81031-2	10	
19	WASHER, 4.3 FLAT ZINC	F81051-2	8	
20	WASHER, 6.4 FLAT ZINC	F81053-1	34	

1 REPLACEMENT PARTS

Blade Support Assembly

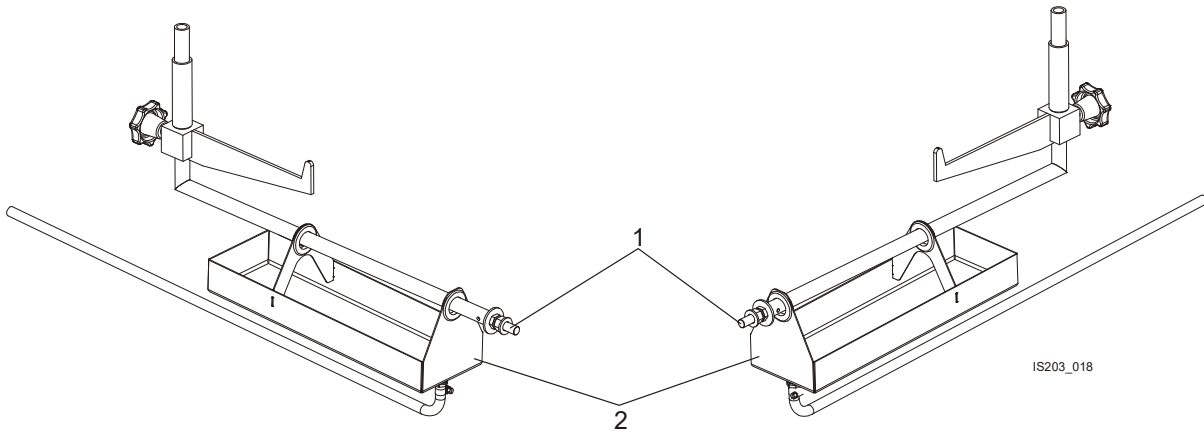
1.5 Blade Support Assembly



REF.	DESCRIPTION (◆ Indicates Parts Available In Assemblies Only)	PART #	QTY
	BLADE SUPPORT, SIDE COMPLETE	101261	2
1	SUPPORT, BLADE SIDE ZINC	100844-1	1
2	BRACKET, BLADE SIDE SUPPORT	101247-1	1
3	WASHER, 13 SPECIAL FLAT	F81056-14	6
4	KNOB, SR1580, 80X40 M12	100848	2
5	KNOB, SR1580 63x25 M12	500460	1
6	CAP, SR1530 18x2	100847	2
	SUPPORT ASSEMBLY, BLADE REPLACEMENT	A10617-POLAND	1
7	Guide, Blade Support w/Post	S10611	1
8	Guide, Blade Support w/o Post	S10612	1
9	Bolt, 1/4-20 x 1 1/2" Hex Head Zinc	F05005-5	2
10	Nut, 1/4-20 Self-Locking Zinc	F05010-9	1
11	Nut, 1/4-20 Wing	F05010-13	1
12	Wheel, Blade Support	S10539	1
13	Nut, 1/4" Push	P10614	1
	PAN, COOLANT DRIP - COMPLETE	101256	2
14	PAN, COOLANT DRIP	101257-1	1
15	SEAL, G1/4 PD13	090809	1
16	BUSHING, GT13/09 NR 13539	092783	1
17	GROMMET, 1" ID RUBBER	P11765	2
18	CLAMP, 8-12mm PLASTIC HOSE	F81080-1	1
19	HOSE, OIL FLOW	101260	1

	SUPPORT, BLADE COMPLETE BACK	101262	2	
20	PIPE, SUPPORT	087584-1	1	
21	REST WELDMENT, BLADE	101243-1	1	
22	KNOB, 63mm M12x25 SR 1580	500460	1	
23	PIPE, BLADE WEAR REAR	087590	1	
24	WASHER, 13 SPECIAL FLAT ZINC	F81056-14	1	
25	NUT, M12-8-B HEX ZINC	F81034-1	1	

1.6 Additional Blade Support Assembly (Option)



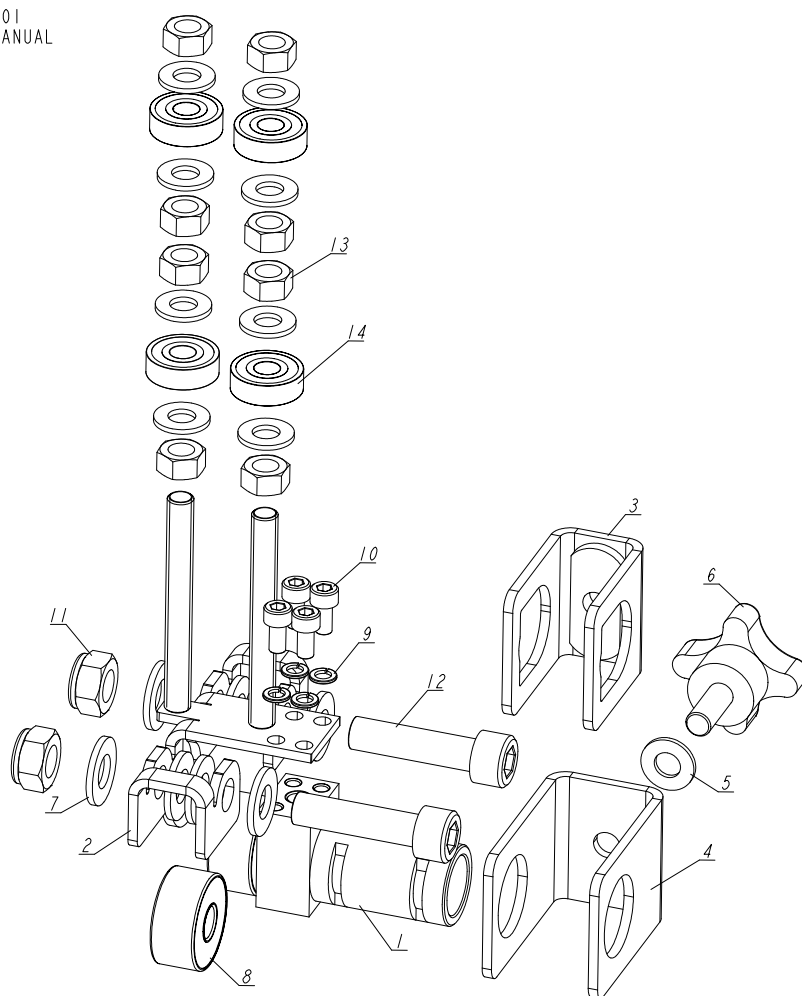
REF.	DESCRIPTION (◆ Indicates Parts Available In Assemblies Only)	PART #	QTY	
	ADDITIONAL BLADE SUPPORT ASSEMBLY	500469	1	
1	SUPPPORT, BLADE REAR - COMPLETE	101262	2	
2	PAN, COOLANT DRIP	101256	2	

1 REPLACEMENT PARTS

Rear Blade Guide (Option)

1.7 Rear Blade Guide (Option)

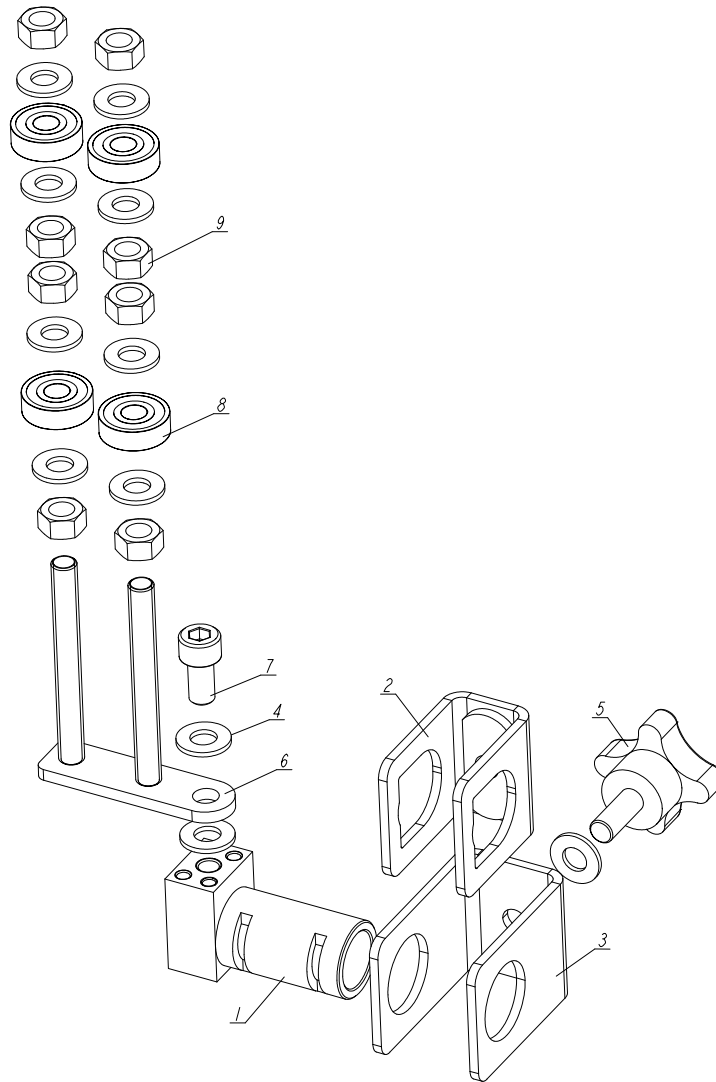
525322_001
525322_MANUAL



REF.	DESCRIPTION (◆ Indicates Parts Available In Assemblies Only)	PART #	QTY
-	GUIDE, REAR BLADE - COMPLETE	525322	1
1	BASE, BLADE GUIDE ZINC-PLATED	525323-1	1
2	BRACKET, BLADE GUIDE ROLLER ZINC-PLATED	525325-1	1
3	CHANNEL, CLAMPING ZINC-PLATED	525328-1	1
4	CHANNEL, BLADE GUIDE ZINC-PLATED	525330-1	1
5	WASHER, 8.4 FLAT ZINC	F81054-1	9
6	KNOB, SR.40/M8X20 STAR (462053 MOSS)	500973	1
7	WASHER, 10.5 FLAT ZINC	F81055-1	8
8	BEARING, 62200-2RSR	525324	2
9	WASHER, 5.1 SPLIT LOCK	F81052-2	4
10	SCREW, M5X10 DIN 912 A2-70 HEX SOCKET HEAD CAP STAINLESS STEEL	F81000-23	4
11	NUT, M10-8-B HEX NYLON ZINC LOCK	F81033-1	2
12	SCREW, M10X40-8.8 HEX SOCKET HEAD CAP ZINC	F81003-22	2
13	NUT, M8-8-B HEX ZINC	F81032-1	8
14	BEARING, 608 2RS BALL	086197	4

1.8 Side Blade Guide (Option)

527137_001
 527137_MANUAL

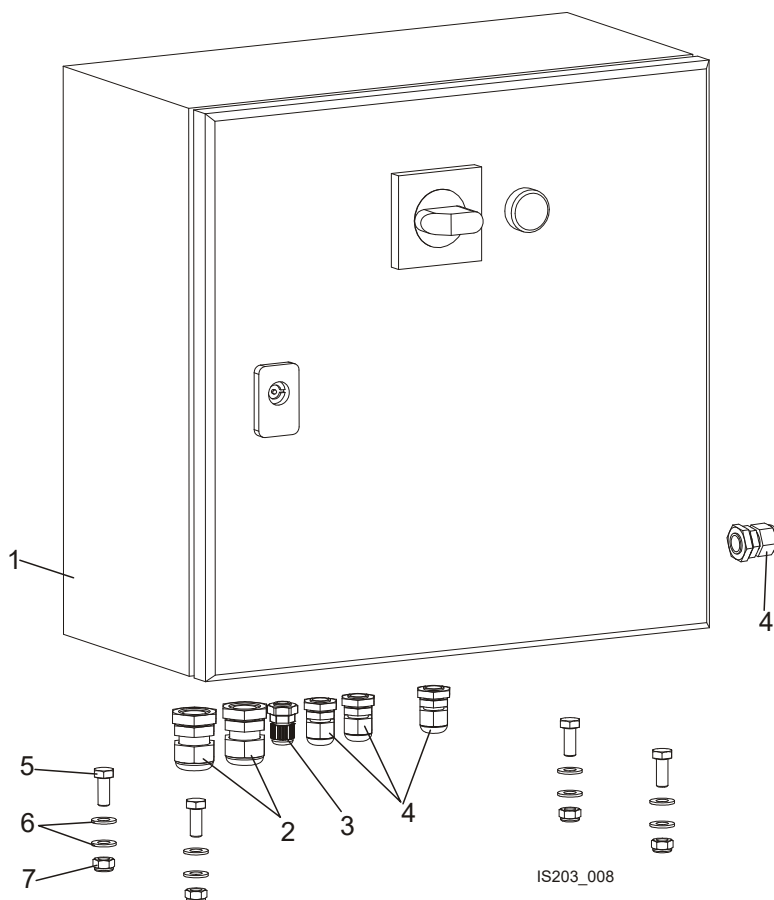


REF.	DESCRIPTION (◆ Indicates Parts Available In Assemblies Only)	PART #	QTY
-	GUIDE, SIDE BLADE - COMPLETE	527137	1
1	BASE, BLADE GUIDE ZINC-PLATED	525323-1	1
2	CHANNEL, CLAMPING ZINC-PLATED	525328-1	1
3	CHANNEL, BLADE GUIDE ZINC-PLATED	525330-1	1
4	WASHER, 8.4 FLAT ZINC	F81054-1	11
5	KNOB, SR.40/M8X20 STAR (462053 MOSS)	500973	1
6	BRACKET, SIDE BLADE GUIDE ZINC-PLATED	527138-1	1
7	SCREW, M8X16-8.8 HEX SOCKET HEAD CAP ZINC	F81002-39	1
8	BEARING, 608 2RS BALL	086197	4
9	NUT, M8-8-B HEX ZINC	F81032-1	8

1 REPLACEMENT PARTS

Electric Box

1.9 Electric Box



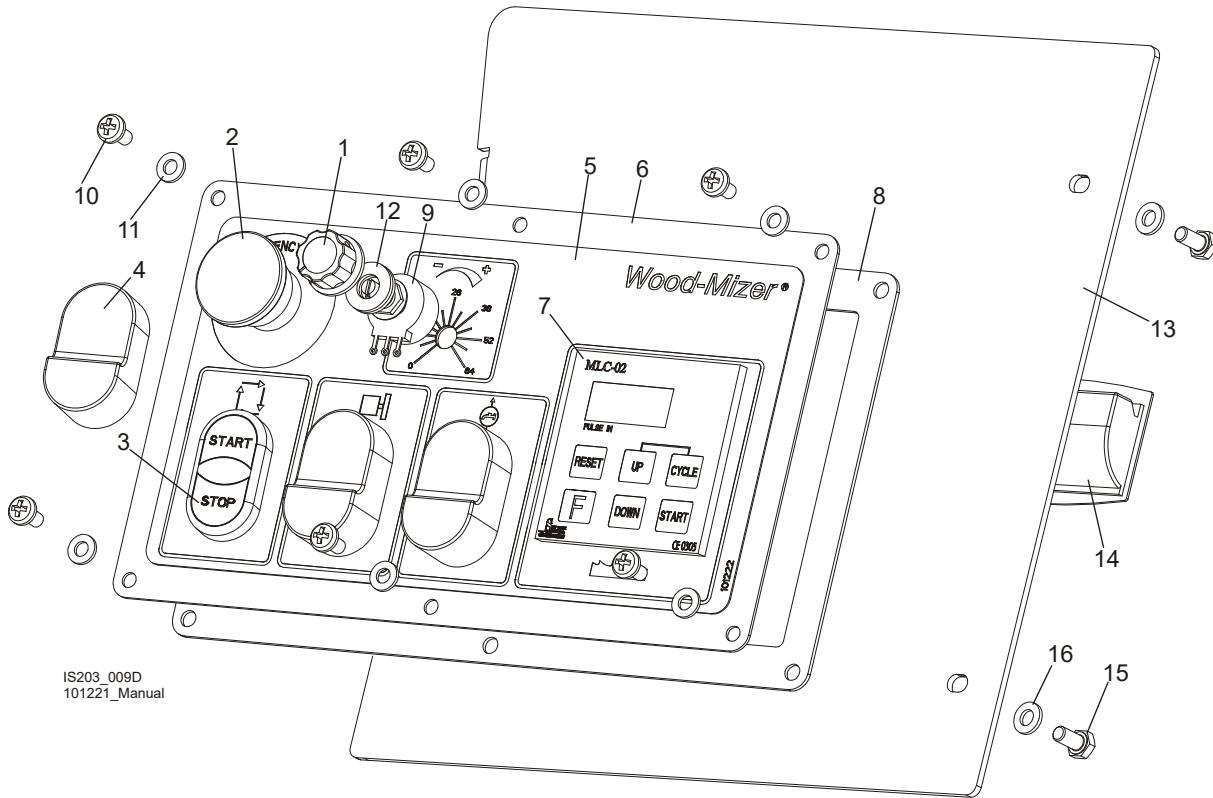
REF.	DESCRIPTION (◆ Indicates Parts Available In Assemblies Only)	PART #	QTY
	CONTROL BOX, SHARPENER BMS500AU	101141-M21 ¹	1
	CONTROL BOX, SHARPENER BMS500BS	101141-M2 ²	1
	CONTROL BOX, SHARPENER BMS500CU	101141-M4 ³	1
	CONTROL BOX, SHARPENER BMS500HS	101141-M ⁴	1
	CONTROL BOX, SHARPENER BMS600AU	101141-M21 HD ⁵	1
	CONTROL BOX, SHARPENER BMS600BU	101141-M2 HD ⁶	1
	CONTROL BOX, SHARPENER BMS500HS	101141-M4 HD ⁷	1
	KEY, ELECTRIC BOX	083850	1
1	BOX, SHARPENER CONTROL	101141	1
2	GLAND, DP 16/H SEAL	F81096-7	2
3	GLAND, DP7/H SEAL	F81096-11	1
4	GLAND, DP 9/H SEAL	F81096-2	4
5	BOLT, M8x20-8.8-B-HEX HEAD FULL THREAD ZINC	F81002-4	4
6	WASHER, 8,4-FLAT ZINC	F81054-1	8
7	NUT, M8-8-B-HEX NYLON ZINC LOCK	F81032-2	4

¹ Includes components listed in [8.2 Electrical Component List, BMS500A](#).

² Includes components listed in [8.8 Electrical Component List, BMS500BS](#).

- 3 Includes components listed in [8.10 Electrical Component List, BMS500C](#).
- 4 Includes components listed in [8.14 Electrical Component List, BMS500HS](#).
- 5 Includes components listed in [8.16 Electrical Component List, BMS600AU](#).
- 6 Includes components listed in [8.18 Electrical Component List, BMS600BU](#).
- 7 Includes components listed in [8.20 Electrical Component List, BMS600CU](#).

1.10 Control Panel



IS203_009D
101221_Manual

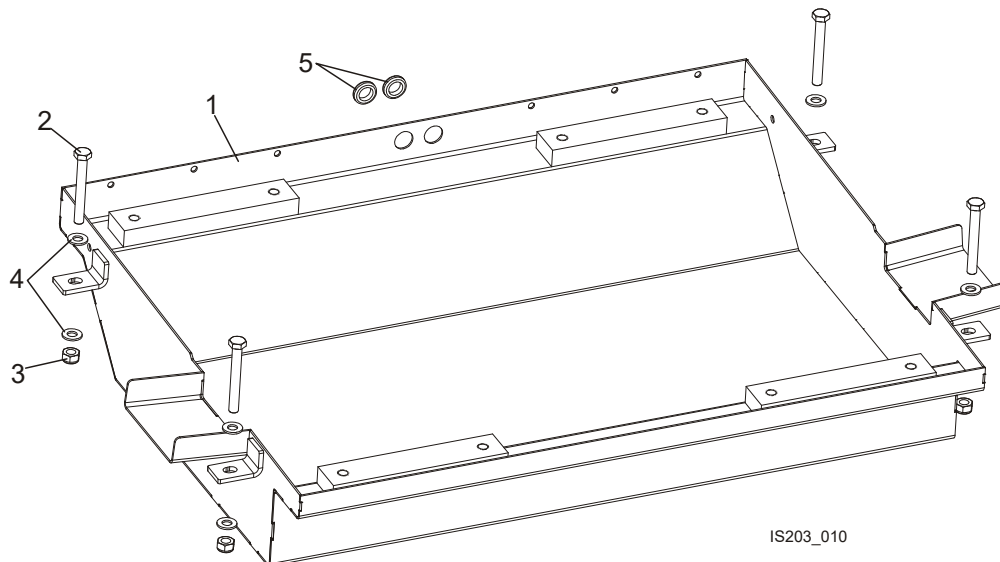
REF.	DESCRIPTION (◆ Indicates Parts Available In Assemblies Only)	PART #	QTY
	CONTROL PANEL, SHARPENER	101221	1
	CONTROL PANEL, SHARPENER, BMS 500/600 BU	513418	1
	CONTROL PANEL, SHARPENER, BMS 500/600 CU	513419	1
	CONTROL PANEL, SHARPENER, BMS 500/600 AU	513420	1
1	KNOB, 1/4"ID FLUTED ROUND PLASTIC	033478	1
2	SWITCH, XB4 BS542 EMERGENCY	535445-K	1
3	SWITCH, 24V START/STOP	535451-K	3
4	MEMBRANE M22-T-DD	090462	3
5	DECAL, SHARPENER CONTROL PANEL	101222	1
6	COVER, CONTROL PANEL FRONT	101288-1	1
7	CONTROLLER, MLC-02 SHARPENER	098692	1
8	GASKET, SHARPENER CONTROL PANEL	101289	1
9	POTENTIOMETER, 1k	E20519	1
10	SCREW, ISO 7045-M6x12-4.8	F81001-40	6
11	WASHER, 6.4 FLAT ZINC	F81053-1	6
12	WASHER, 10.5 FLAT ZINC	F81055-1	2
	COVER, CONTROL PANEL REAR - COMPLETE	101291	1
13	COVER, CONTROL PANEL REAR	101290-1	1

1 REPLACEMENT PARTS

Coolant Tank

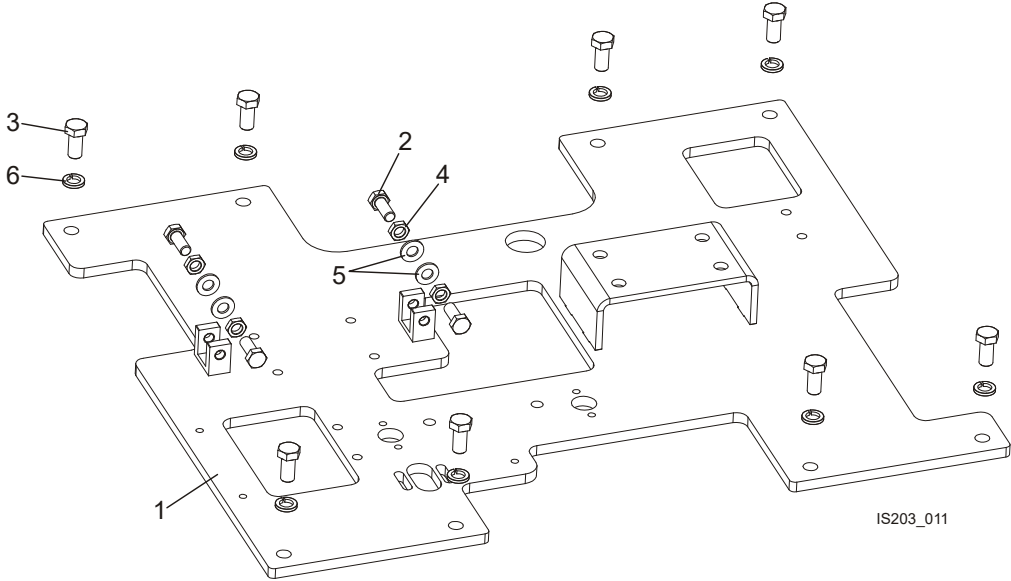
14	HANDLE, EPR.90-PF-C1(261051-C1) FLUSH PULL	100012	1	
15	BOLT, M6x12-8.8-HEX HEAD FULL THREAD ZINC	F81001-7	3	
16	WASHER, 6.4 FLAT ZINC	F81053-1	3	

1.11 Coolant Tank



REF.	DESCRIPTION (◆ Indicates Parts Available In Assemblies Only)	PART #	QTY	
	TANK, BMS500/600 SHARPENER COOLANT - COMPLETE	101245	1	
1	TANK, COOLANT	100839-1	1	
2	BOLT, M10x80-8.8 HEX HEAD ZINC	F81003-50	4	
3	NUT, M10-8-B HEX NYLON ZINC LOCK	F81033-1	4	
4	WASHER, 10.5 FLAT ZINC	F81055-1	8	
5	GROMMET, 5/8" ID RUBBER	P11764	2	
	OIL GRINDING, CBN (5 liters) ACP-1E (European Market)	083559-1	1	
	OIL GRINDING, CBN (5 gallons) CE150S (US Market)	010740	1	

1.12 Mounting Plate

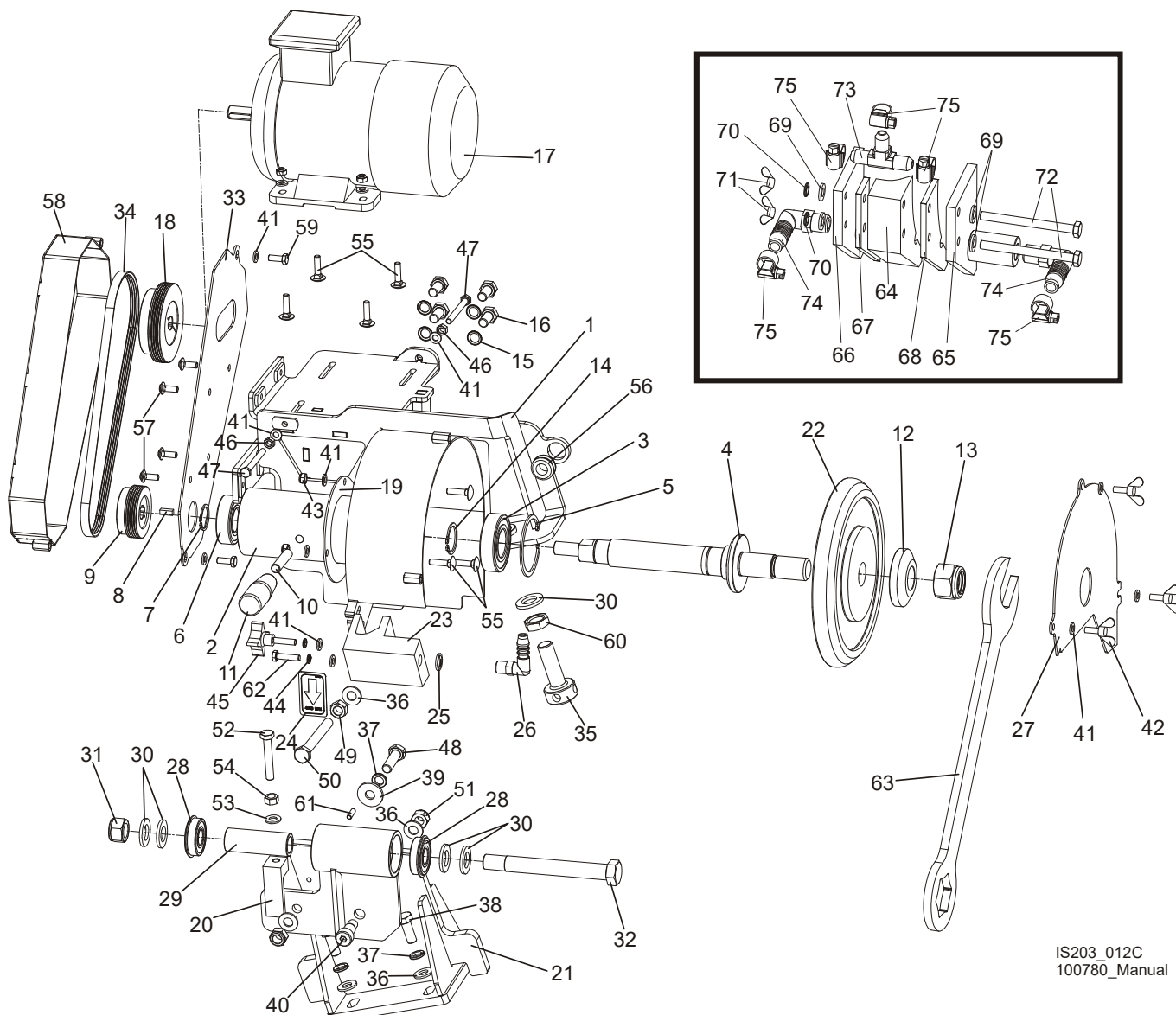


REF.	DESCRIPTION (◆ Indicates Parts Available In Assemblies Only)	PART #	QTY
	PLATE, SHARPENER MOUNTING - COMPLETE	100843	1
1	PLATE, MOUNTING ZINC	100837-1	1
2	BOLT, M10x1x25 DIN 933	F81003-28	4
3	BOLT, M12x25-8.8-HEX HEAD FULL THREAD ZINC	F81004-31	8
4	NUT, M10x1-04-ST-A2 ISO 8675 THIN	F81033-10	4
5	WASHER, 10.5 FLAT ZINC	F81055-1	4
6	WASHER, Z12.2 SPLIT LOCK ZINC	F81056-2	8

1 REPLACEMENT PARTS

Sharpener Head

1.13 Sharpener Head



IS203_012C
100780_Manual

REF.	DESCRIPTION (◆ Indicates Parts Available In Assemblies Only)	PART #	QTY
	HEAD, BMS500 SHARPENER - COMPLETE	100781	1
	HEAD, BMS600 SHARPENER - COMPLETE	100781-RS	1
1	HOUSING, SHARPENER HEAD	100782-1	1
	SPINDLE, BMS500/600 SHARPENER - COMPLETE	100785	1
2	SLEEVE, BEARING ZINC	100783-1	1
3	BEARING, 6206 2RSR P6 ROLLING	100787	1
4	SHAFT, SPINDLE COMPLETE	100784	1
5	RING, W62 SPRING RETAINING	F81090-1	1
6	BEARING, 6205 2RSR P6 ROLLER	087353	1
7	RING, Z25 OUTSIDE RETAINING	F81090-22	1
8	KEY, B 5x5.1x14	087365	1

REPLACEMENT PARTS

Sharpener Head

1

9	PULLEY, PYB 56-4J TAPER-LOCK 14	100811	1	
10	BOLT, M10x35-8.8 ZINC	F81003-9	1	
11	GRIP, L70 THREAD M10 13870M10	089445	1	
12	PLATE, GRINDING WHEEL CLAMPING, ZINC	100806-1	1	
13	NUT, M24x2-8-B HEX ZINC	F81039-11	1	
14	RING, Z30 SPRING RETAINING	F81090-23	1	
15	WASHER, 791 M10/10.5 RIBBED LOCK	F81055-7	4	
16	BOLT, ISO4017-M10x20-8.8-A2E HEX HEAD	F81003-53	4	
17	MOTOR, Sh7IX-2C BESEL	087358	1	
18	PULLEY, PYB 85-4J TAPER-LOCK 14	100788	1	
19	PLUG	100803-1	1	
20	BUSHING, SHARPENER VERTICAL PIVOT	088339-1	1	
21	BRACKET, SHARPENER HEAD	100794-1	1	
22	WHEEL, 8" 10°/30° 7/8" TS .250TH- BACK ANG GRINDING	030310	1	
	WHEEL, 8" 10°/30° VOTRTEX .875" TS CBN GRINDING	077700	1	
	WHEEL, 8" 13°/29° 7/8TS .300TH GRINDING	030388	1	
	WHEEL, 8" 10°/30° 1" TS033" TH CBN GRINDING	077707	1	
	WHEEL, 8" 12°/28° .656TS .200TH GRINDING	030394	1	
	WHEEL, 8" 4°/32° 7/8TS .250TH GRINDING	050145	1	
	WHEEL, 8" 7°/34° 7/8" TS .295TH GRINDING	053096	1	
	WHEEL, 8" 10°/30° 3/4TS .260TH GRINDING	053359	1	
	WHEEL, 8" 10°/30° 1/2TS .160TH GRINDING	053412	1	
	WHEEL, 8" 7°/34° 1-1/8TS .330TH GRINDING	053447	1	
	WHEEL, 8" 7°/39.5° 7/8" TS .33TH GRINDING	066267	1	
	WHEEL, 8" 7°/47° 0.875" TS 0.35" TH CBN GRINDING	077721		
	WHEEL, 8" 9°/29° 7/8TS .220TH GRINDING	P30188	1	
	WHEEL, 8" 10°/30° 1-1/8TS .330TH GRINDING	052861	1	
	WHEEL, 8" 13°/29° 1-1/8TS .330TH GRINDING	052672	1	
	Grinding Wheel, 8" VORTEX	077700	1	
	Grinding Wheel, 8" 7°/39.5° 1.25"TS 0.4"TH CBN	077703	1	
	23	OILER,CBN 8" - SHARPENER STANDARD	100805	1
OILER, CBN 8" 0.875"TS-1.25"TS, BMS 500 SHARPENER		101235	1	
OILER, SHARPENER BMS500 - VORTEX		522705 ¹	1	
OILER, SHARPENER BMS500 - VORTEX (for a new version of the Grinding Wheel)		585707 ^{1 2}	1	
24	DECAL KIT, GRINDING WHEEL ROTATION	S20097K ³	1	
25	SEAL, G1/4 PD13	090809	1	
26	FITTING, WES 10/R 1/4 ELBOW	088379	1	
27	COVER, SIDE GUIDE	100807-1	1	
28	BEARING, 6203 DDUNR NSK W/SNAP RING	086395	2	
29	BUSHING, SHARPENER HEAD SPACER	092672	1	
30	WASHER, 17 FLAT ZINC	F81058-1	5	
31	NUT, M16-8-HEX	F81036-2	1	
32	SCREW, M16d1f6 x140-8.8- SHOULDER ZINC	F81006-33	1	
33	GUARD, SIDE BELT GRINDER	100808-1	1	
34	BELT, 4PJ660 (OPTIBELT)	100804	1	
35	BOLT, M16X50 MUSHROOM HEAD SQUARE NECK ZINC	101219-1	1	
36	WASHER, 10.5 FLAT ZINC	F81055-1	7	
37	WASHER, 10.2 SPLIT LOCK ZINC	F81055-2	5	

1 REPLACEMENT PARTS

Sharpener Head

38	BOLT, M10x25-8.8 HEX HEAD FULL THREAD ZINC	F81003-11	4	
39	WASHER, 10.5 ZINC FLAT SPECIAL	F81055-6	1	
40	SCREW, 12/M10X16 12.9 BOSSARD SHOULDER	F81003-64	1	
41	WASHER, 6.4 FLAT ZINC	F81053-1	16	
42	BOLT, M6x16 BN276 DIN 316	F81001-16	3	
43	NUT, M6-8-B HEX NYLON ZINC LOCK	F81031-2	7	
44	WASHER, Z 6.1 SPLIT LOCK ZINC	F81053-3	2	
45	KNOB, STAR.SR38/M6x25(493936 MOSS)	515275	1	
46	NUT, M6-8-HEX ZINC	F81031-1	2	
47	BOLT, M6x60-8.8-HEX HEAD FULL THREAD ZINC	F81001-9	2	
48	BOLT, M10x35-8.8 HEX HEAD FULL THREAD ZINC	F81003-17	1	
49	NUT, M10-8-B-HEX ZINC	F81033-3	1	
50	BOLT, M10X90-8.8 HEX HEAD FULL THREAD ZINC	F81003-90	1	
51	NUT, M10-8-B HEX NYLON ZINC LOCK	F81033-1	2	
52	BOLT, M8X50-8.8 HEX HEAD FULL THREAD ZINC	F81002-19	1	
53	WASHER, 8.4 FLAT ZINC	F81054-1	1	
54	NUT, M8-8-B-HEX ZINC	F81032-1	1	
55	BOLT, M6x25-8.8-MUSHROOM HEAD SQUARE NECK ZINC	F81001-20	4	
56	GROMMET, 20/13 RUBBER	086188	1	
57	BOLT, M6x16 BN 11252 "BOSSARD"	F81001-24	4	
58	GUARD, BELT GRINDER	100798-1	1	
59	BOLT, M6x16 8.8 HEX HEAD FULL THREAD ZINC	F81001-15	2	
60	NUT, M16 THIN ZINC	F81036-4	1	
61	PIN, 5x16 ROLL ZINC	F81044-3	1	
62	BOLT, M6x25 -5.8 HEX HEAD FULL THREAD ZINC	F81001-3	1	
63	WRENCH, 36 OPEN/BOX-END ZINC-PLATED	502968-1	1	
	OILER ASSEMBLY	505670⁴	1	
64	BLOCK, OILER INSIDE	505672	1	
	BLOCK, OILER INSIDE BMS600 - VORTEX	523669	1	
65	PLATE WLDMT, OILER BRACKET - RIGHT	505677	1	
66	PLATE WLDMT, OILER BRACKET - LEFT	505676	1	
67	WASHER, OILER RIGHT	505673-1 ⁵	1	
68	WASHER, OILER LEFT	505674-1	1	
69	WASHER, 6.4 FLAT ZINC	F81053-1	4	
70	WASHER, Z6.1 SPLIT LOCK ZINC	F81053-3	2	
71	NUT, M8 HEX SWAGED LOCK ZINC	F81032-3	2	
72	BOLT, M6 X 80 5.8 HEX HEAD FULL THREAD ZINC	F81001-61	2	
73	FITTING, 3/8 BARB TEE	015485	1	
74	FITTING WES 10/R 1/4 ELBOW	088379	2	
75	CLAMP, PLASTIC HOSE	F81080-1	5	

¹ For BMS500 Sharpener only.

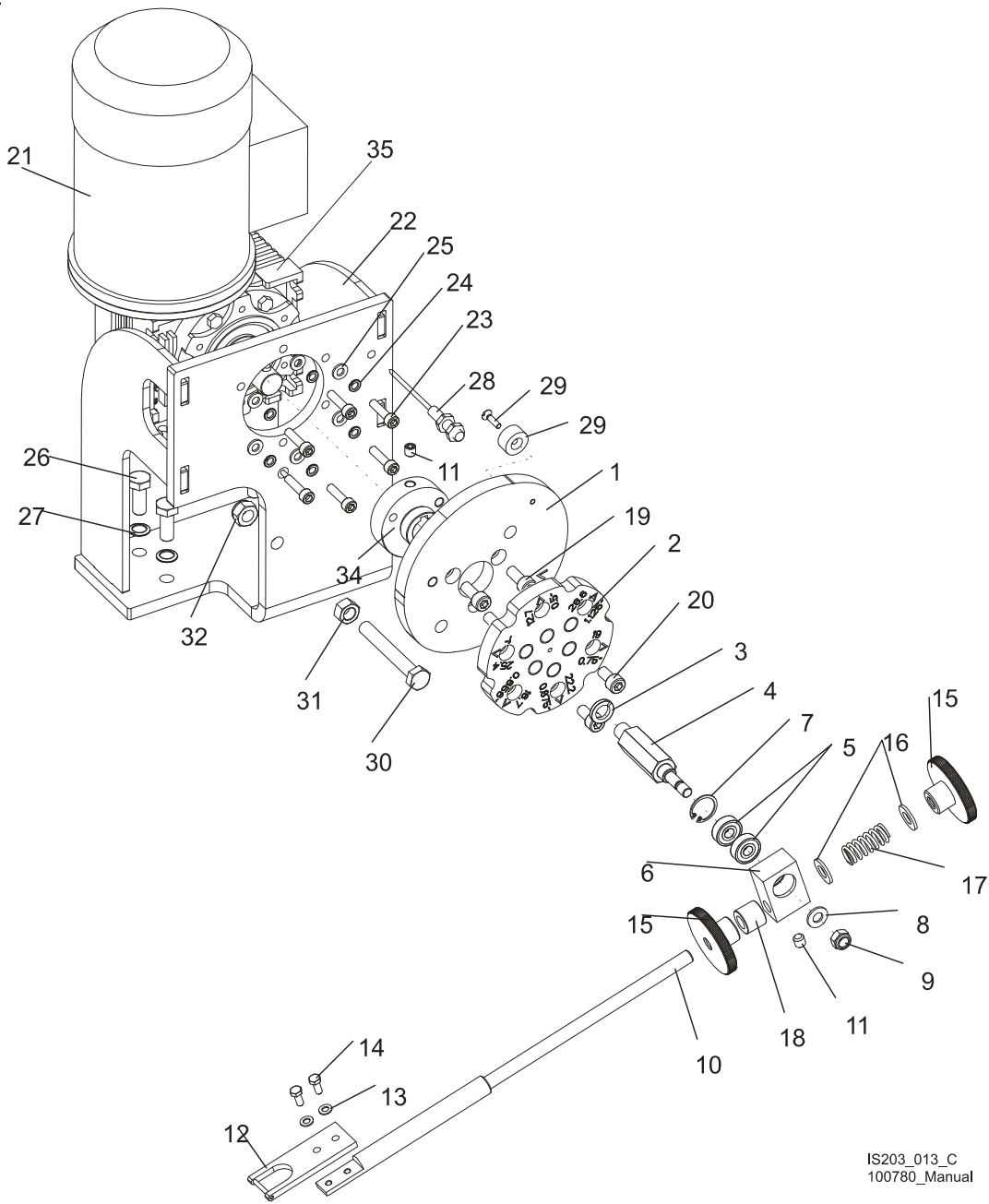
² Applicable to the 077700 grinding wheel

³ Belongs to Sharpener Decal Kit BMS500 - 500467.

⁴ Belongs to BMS600 Only.

⁵ For BMS600 units needing to process 1 1/4" tooth spacing add one 505673-1 to the left side of the BMS600 1 1/8" oiler.

1.14 Cam & Index Arm Drive Assembly



IS203_013_C
100780_Manual

REF.	DESCRIPTION (◆ Indicates Parts Available In Assemblies Only)	PART #	QTY
	CAM & INDEX ARM DRIVE ASSEMBLY	100820	1
1	CAM, BMS500/600 SHARPENER ZINC-PLATED	509734-1	1
2	PLATE, STROKE ADJUSTMENT ZINC	511878-1	1
	COMPLETE PUSH PAWL	083942	1
3	WASHER, Z12.2 SPLIT LOCK ZINC	F81056-2	1
4	SHAFT, INDEX CAM - ZINC	100821-1	1
5	BEARING, 608-2RS FLT ROLLER	086197	2
6	BLOCK, INDEX ZINC	087373-1	1

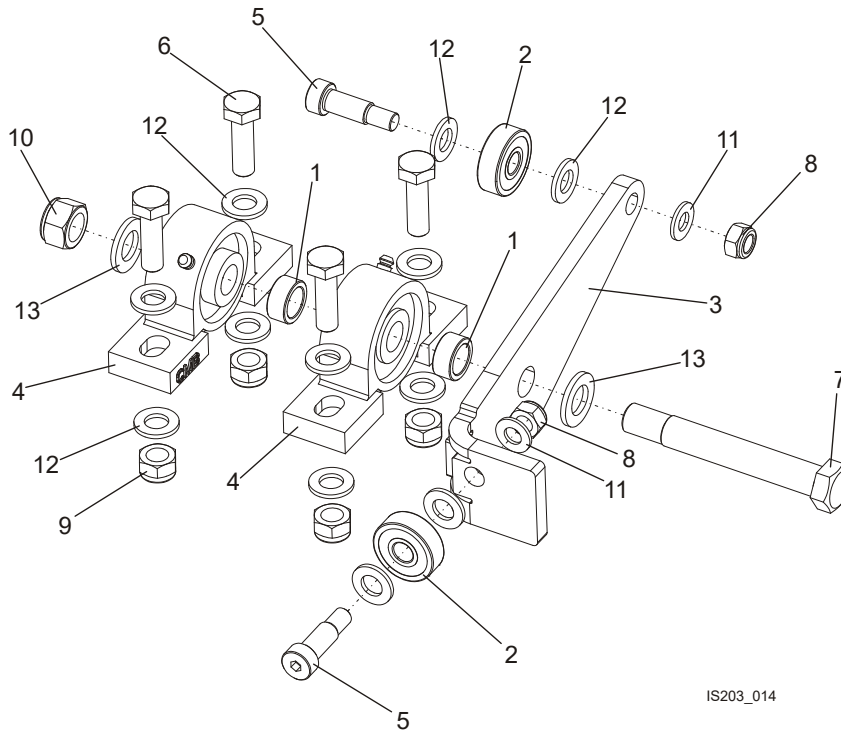
1

REPLACEMENT PARTS

Cam & Index Arm Drive Assembly

7	RING, W22 INSIDE RETAINING	F81090-7	1	
8	WASHER, 8.4 FLAT ZINC	F81054-1	1	
9	NUT, M8-8-B, HEX, NYLON LOCK ZINC	F81032-2	1	
10	PAWL WELDMENT, BLADE INDEX - ZINC	100814-1	1	
11	SCREW, M8x8 45H HEX SOCKET SET FLAT POINT	F81014-1	2	
12	PUSHER, BLADE COMPLETE	093358	1	
13	WASHER, 5.3 FLAT ZINC	F81052-1	2	
14	BOLT, M5x12-5.8 HEX HEAD FULL THREAD ZINC	F81000-5	2	
15	KNOB, 55xM10x1 ZINC	100813-1	1	
16	WASHER, 10.5 FLAT ZINC	F81055-1	2	
17	SPRING, BLADE PUSHER	087376	1	
18	BUSHING, ZINC-PLATED SPACER	094255-1	1	
19	BOLT, M8x20-8.8 SOCKET HEAD ZINC	F81002-30	3	
20	SCREW, M8x16-8.8 HEX SOCKET HEAD CAP ZINC	F81002-39	2	
21	MOTOR SKH 71-4A1/8213/1 0,25kW 230/400V MOTOR SKH 71-4A1/8213/1 0,25kW230/460UL	526634 527652	1	
22	BRACKET, MOTOREDCER	100834-1	1	
23	SCREW, M6x25-8.8 HEX SOCKET HEAD CAP ZINC	F81001-41	6	
24	WASHER, Z 6.1 SPLIT LOCK ZINC	F81053-3	6	
25	WASHER, 6.4 FLAT ZINC	F81053-1	6	
26	BOLT, M10x25-8.8 HEX HEAD FULL THREAD ZINC	F81003-11	4	
27	WASHER, 791 M10/10.5 RIBBED LOCK	F81055-7	4	
28	SENSOR, SMC08S MAGNETIC	101252	1	
29	MAGNET, M20 SENSOR	101253	1	
30	BOLT, M10x75-8.8 HEX HEAD ZINC	F81003-15	1	
31	NUT, M10-8-B HEX ZINC	F81033-3	1	
32	NUT, M10-8-B HEX NYLON ZINC LOCK	F81033-1	1	
33	SCREW, M4x16 5.8-B SLOTTED COUNTERSUNK HEAD ZINC	F81011-4	1	
34	HUB, CAM - ZINC	100822-1	1	
35	REDUCER, MR-40-21-140/14 V5	597513	1	

1.15 Sharpener Head Lever

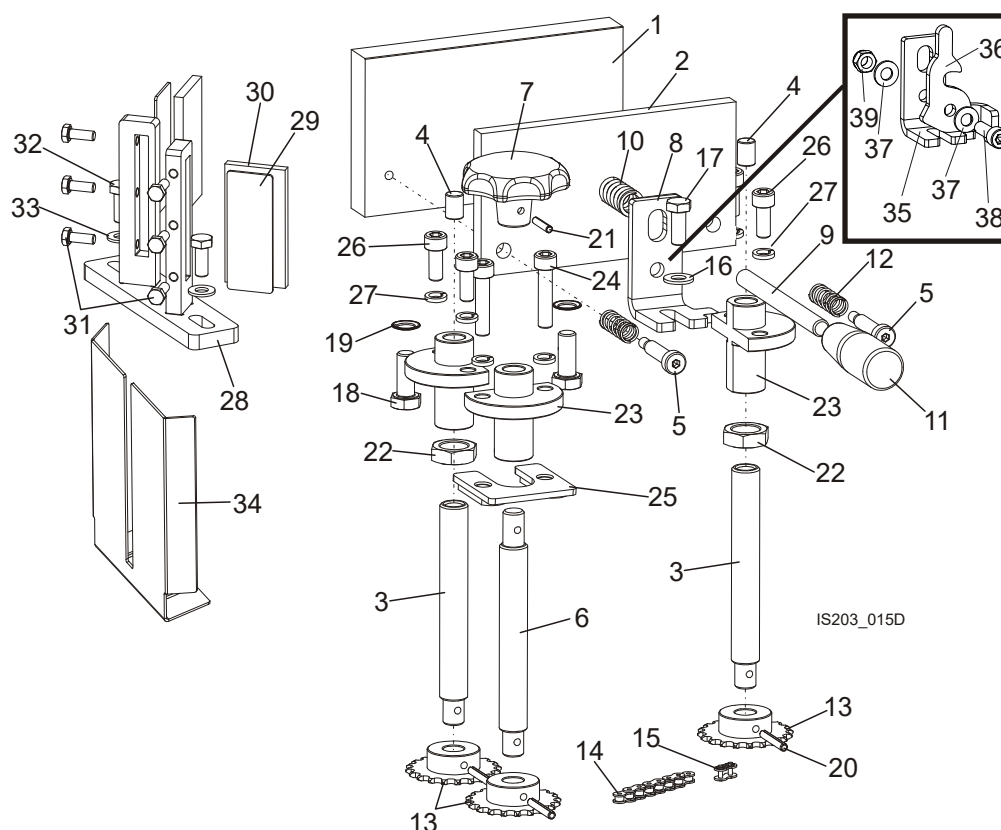


REF.	DESCRIPTION (◆ Indicates Parts Available In Assemblies Only)	PART #	QTY
	SHARPENER HEAD LEVER - COMPLETE	100809	1
1	SPACER	087965-1	2
2	BEARING, 6301-DDU (NSK) ROLLING	100816	2
3	LEVER, ANGLE ZINC-PLATED	100817-1	1
4	BEARING ASSEMBLY, UCP 203 CX	101108	2
5	BOLT, 12/M10x25 12.9 ISO7379	F81003-84	2
6	BOLT, M12x40-8.8-HEX HEAD FULL THREAD ZINC	F81004-4	4
7	BOLT, M16d1f6 x120-8.8 SHOULDER ZINC	F81006-34	1
8	NUT, M10-8-B HEX NYLON ZINC LOCK	F81033-1	2
9	NUT, M12-8 HEX NYLON ZINC LOCK	F81034-2	4
10	NUT, M16-8-HEX NYLON ZINC LOCK	F81036-2	1
11	WASHER, 10.5 FLAT ZINC	F81055-1	2
12	WASHER, 13 FLAT ZINC	F81056-1	12
13	WASHER, 17 FLAT ZINC	F81058-1	2

1 REPLACEMENT PARTS

Clamp and Coolant Wiper

1.16 Clamp and Coolant Wiper



REF.	DESCRIPTION (◆ Indicates Parts Available In Assemblies Only)	PART #	QTY
	CLAMP ASSEMBLY WITH HEIGHT ADJUSTMENT, COMPLETE BMS500	101225	1
	CLAMP ASSEMBLY WITH HEIGHT ADJUSTMENT, COMPLETE BMS600	101225-RS	1
1	PLATE, FIXED CLAMP ZINC	101229-1	1
2	PLATE, MOVING CLAMP ZINC	101228-1	1
3	SCREW, BLADE HEIGHT ADJUSTMENT - COMPLETE	101226-1	2
4	ROLLER, Ø10x14 CYLINDRICAL	096864	2
5	BOLT, 8/M6x30-12.9 ISO-7379	F81001-18	2
6	SCREW, BLADE HEIGHT ADJUSTMENT DRIVING ZINC	101227-1	1
7	KNOB, DIN6336-GG-63-B12-C BLADE HEIGHT ADJUSTMENT	098514	1
8	BRACKET, BLADE CLAMP SPRING	097069-1 ¹	1
9	STUD-BOLT, 1M10X90-8.8-ZINC	F81003-85	1
10	SPRING, BLADE PUSHER	087376	1
11	GRIP, THREAD M10 13870M10	089445	1
12	SPRING, 9x30x1.2 COMPRESSION	088368	2
13	SPROCKET, 05B-1 Z20 8X3-12H7 ZINC-PLATED	098513-1	3
	CHAIN, BLADE HEIGHT ADJUSTMENT - COMPLETE	098515	1
14	CHAIN, 05B-1-73 DRIVING	098516	1
15	LINK, QRC05B-1 MASTER	098517	1
16	WASHER, 8.4 FLAT ZINC	F81054-1	1
17	BOLT, M8x20-8.8-B-HEX HEAD FULL THREAD ZINC	F81002-4	1

18	BOLT, M10x25-8.8-HEX HEAD FULL THREAD ZINC	F81003-11	2	
19	WASHER, 791 M10/10.5 RIBBED LOCK	F81055-7	2	
20	PIN, 4x30 SPRING-TYPE STRAIGHT ZINC-PLATED	F81044-7	3	
21	PIN, PN-EN ISO8752-4X20 ST AOP ROLL	F81044-11	1	
22	NUT, M16x1.5-08-B-ZINC HEX THIN	F81036-6	2	
23	NUT, BLADE HEIGHT ADJUSTMENT	101254	3	
24	SCREW, M8x30-8.8 HEX SOCKET HEAD CAP ZINC	F81002-31	2	
25	NUT, M8 DOUBLE ZINC	503102-1	1	
26	SCREW, M8 X 20-8.8 HEX SOCKET HEAD CAP ZINC	F81002-30	4	
27	WASHER 8.2 SPLIT LOCK ZINC	F81054-4	6	
	COMPLETE BLADE WIPER	101230	1	
28	BRACKET, BLADE WIPER MOUNT	101231-1	1	
29	BRACE, BLADE WIPER ZINC-PLATED	101233	2	
30	WIPER, BLADE	101234	2	
31	BOLT, M6x16 8.8 HEX HEAD FULL THREAD ZINC	F81001-15	6	
32	BOLT, M8x20-8.8-HEX HEAD FULL THREAD ZINC	F81002-4	2	
33	WASHER, 8.4 FLAT ZINC	F81054-1	2	
34	COVER, OIL	505978-1 ²	1	
	BRACKET, SHARPENER BLADE CLAMP SPRING - COMPLETE	508842 ³	1	
35	BRACKET, BLADE CLAMP SPRING	097069-1	1	
36	TRIGGER, BLADE CLAMP SPRING	508841-1	1	
37	WASHER, 8.4 FLAT ZINC	F81054-1	2	
38	SCREW, M8x25-8.8 HEX SOCKET HEAD CAP ZINC	F81002-21	2	
39	NUT, M8-8-B HEX NYLON ZINC LOCK	F81032-2	1	

¹ Element belongs to 101225

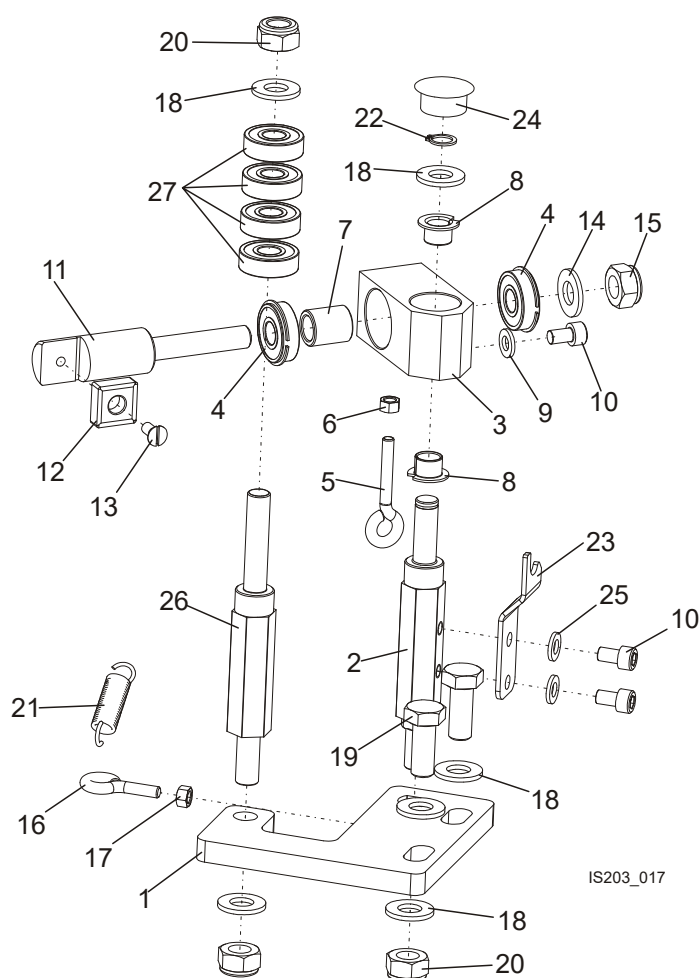
² Element is available only in BMS600 Sharpener

³ Element is available only in BMS600 Sharpener

1 REPLACEMENT PARTS

Deburr Assembly

1.17 Deburr Assembly



REF.	DESCRIPTION (◆ Indicates Parts Available In Assemblies Only)	PART #	QTY
	DEBURR ASSEMBLY	100824	1
1	PLATE, MOUNTING DEBURR ZINC-PLATED	100825-1	1
2	SHAFT, PIVOT ARM ZINC	100826-1	1
	ARM, PIVOT ASSEMBLY	100828	1
3	ARM, PIVOT ZINC-PLATED	100827-1	1
4	BEARING, 6000 2RSR NR. ROLLING	100831	2
5	BOLT, M5x30 BN1006 (BOSSARD) TURNED EYE	F81000-31	1
6	NUT, M5-8 HEX ZINC	F81030-1	2
7	SPACER, 11x16x18.5 ZINC-PLATED	100830-1	1
8	BEARING, TUF1 10.090 SLIDE	099074	2
9	WASHER, 6.4 FLAT ZINC	F81053-1	3
10	SCREW, M6x10-8.8 HEX SOCKET HEAD CAP	F81001-12	3
11	BAR, DEBURR ZINC-PLATED	100829-1	1
12	PLATE, SNMG190612 CARBIDE CUTTING	100832	1
13	SCREW, M5x12- 5.8-B SLOTTED COUNTERSUNK HEAD ZINC	F81000-15	1
14	WASHER, 10.5 FLAT ZINC	F81055-1	1

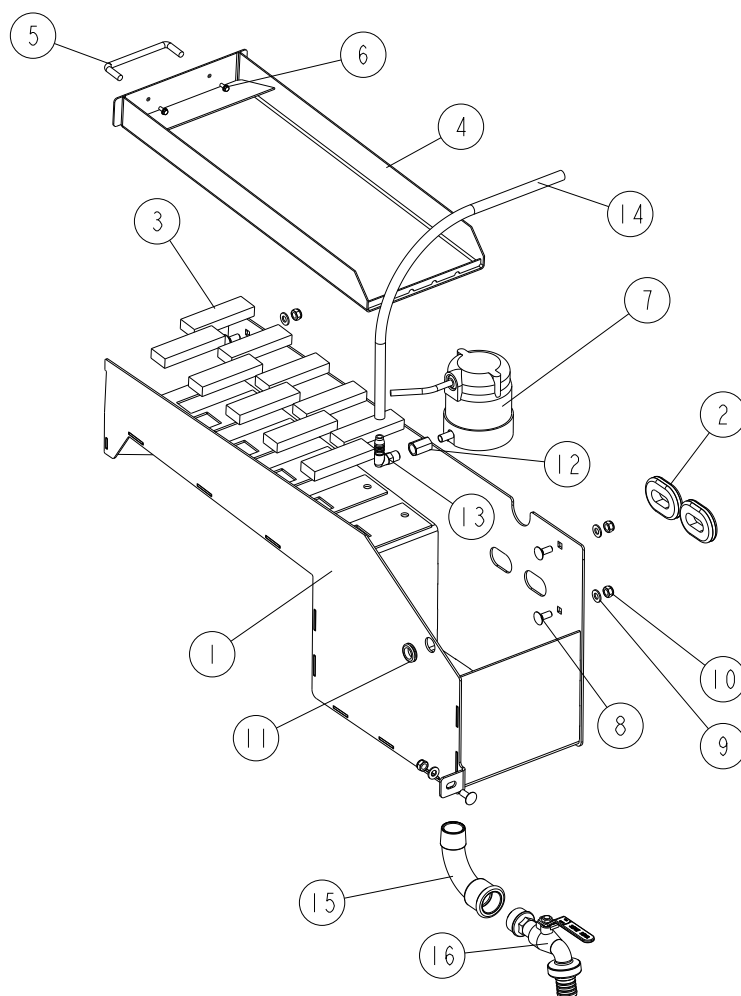
REPLACEMENT PARTS*Deburr Assembly***1**

15	NUT, M10-8-B HEX NYLON ZINC LOCK	F81033-1	1	
16	BOLT, M5x15 BN1006 (BOSSARD) TURNED EYE	F81000-30	1	
17	NUT, M5-8-HEX ZINC	F81030-1	1	
18	WASHER, 10.5 FLAT ZINC	F81055-1	6	
19	BOLT, M10x25-8.8-HEX HEAD FULL THREAD ZINC	F81003-11	2	
20	NUT, M10-8-B HEX NYLON ZINC LOCK	F81033-1	3	
21	SPRING, 1.6x12x38 EXTENSION	092208	1	
22	RING, Z10 OUTSIDE RETAINING	F81090-13	1	
23	BRACKET, PIVOT ARM ZINC-PLATED	101255-1	1	
24	PLUG, SR1086 22.2 HOLE	093544	1	
25	WASHER, 6.4 FLAT ZINC	F81053-1	2	
26	SHAFT, BEARING ZINC-PLATED	500459-1	1	
27	BEARING, 6000 2RSR	087471	4	

1 REPLACEMENT PARTS

Magnetic Filter

1.18 Magnetic Filter



IS203_016_A
100780_Manual

REF.	DESCRIPTION (◆ Indicates Parts Available In Assemblies Only)	PART #	QTY
	FILTER, BMS500 MAGNETIC - COMPLETE	101269	1
1	TANK, MAGNETIC FILTER	101270-1	1
2	SEAL, RUBBER WIRE INSIDE DIA. 26MM	085613	2
3	MAGNET, 100X30X15 FILTER	516192	10
	PAN, BMS500/600 SHARPENER FILTER - COMPLETE	101249	1
4	PAN WELDMENT, BMS500/600 SHARPENER FILTER	101251	1
5	HANDLE, 4" W/BOLTS	P08065	1
6	BOLT, #8-32X3/8 SELF -TAPPING	F05015-8	2
7	PUMP, AUTO SHARPENER COOLANT	P09836	1
8	BOLT, M8 X 20 CARRIAGE ZINC	F81002-11	5
9	WASHER, 8.4 FLAT ZINC	F81054-1	5
10	NUT, M8-8-B HEX NYLON ZINC LOCK	F81032-2	5
11	GROMMET, 5/8 ID RUBBER	P11764	1
12	FITTING, 1/4 F.TH./1/4 F.TH.893-302-	090808	1
13	FITTING, WES 10/R 1/4 ELBOW	088379	1
14	HOSE, COOLANT MAGNETIC FILTER	500466	1

REPLACEMENT PARTS

Magnetic Filter



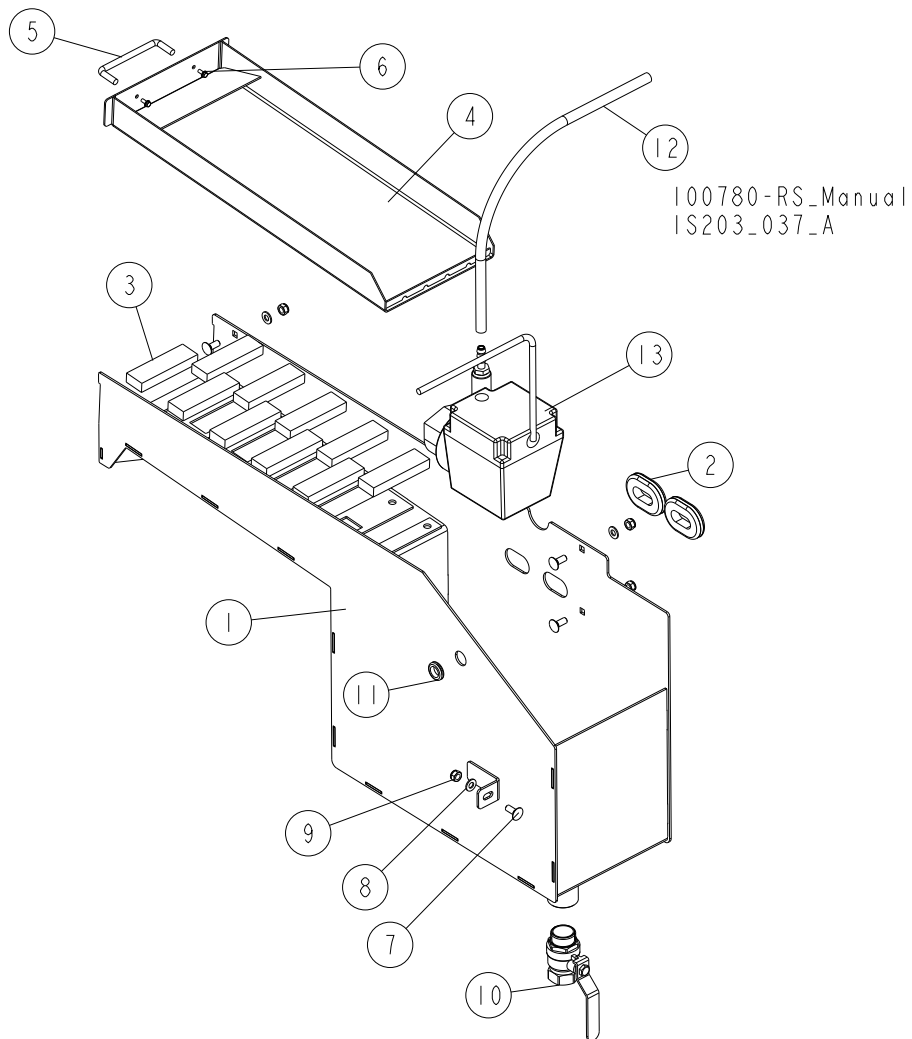
REF.	DESCRIPTION (◆ Indicates Parts Available In Assemblies Only)	PART #	QTY	
15	TUBE, 90\$ Z GW BSP/GZ BSPT 1" (EE-1/13-16 TUBES) ZINC-PL.	517294	1	
16	VALVE, SENA PN 25 RHGC3 BALL	517293	1	

1

REPLACEMENT PARTS

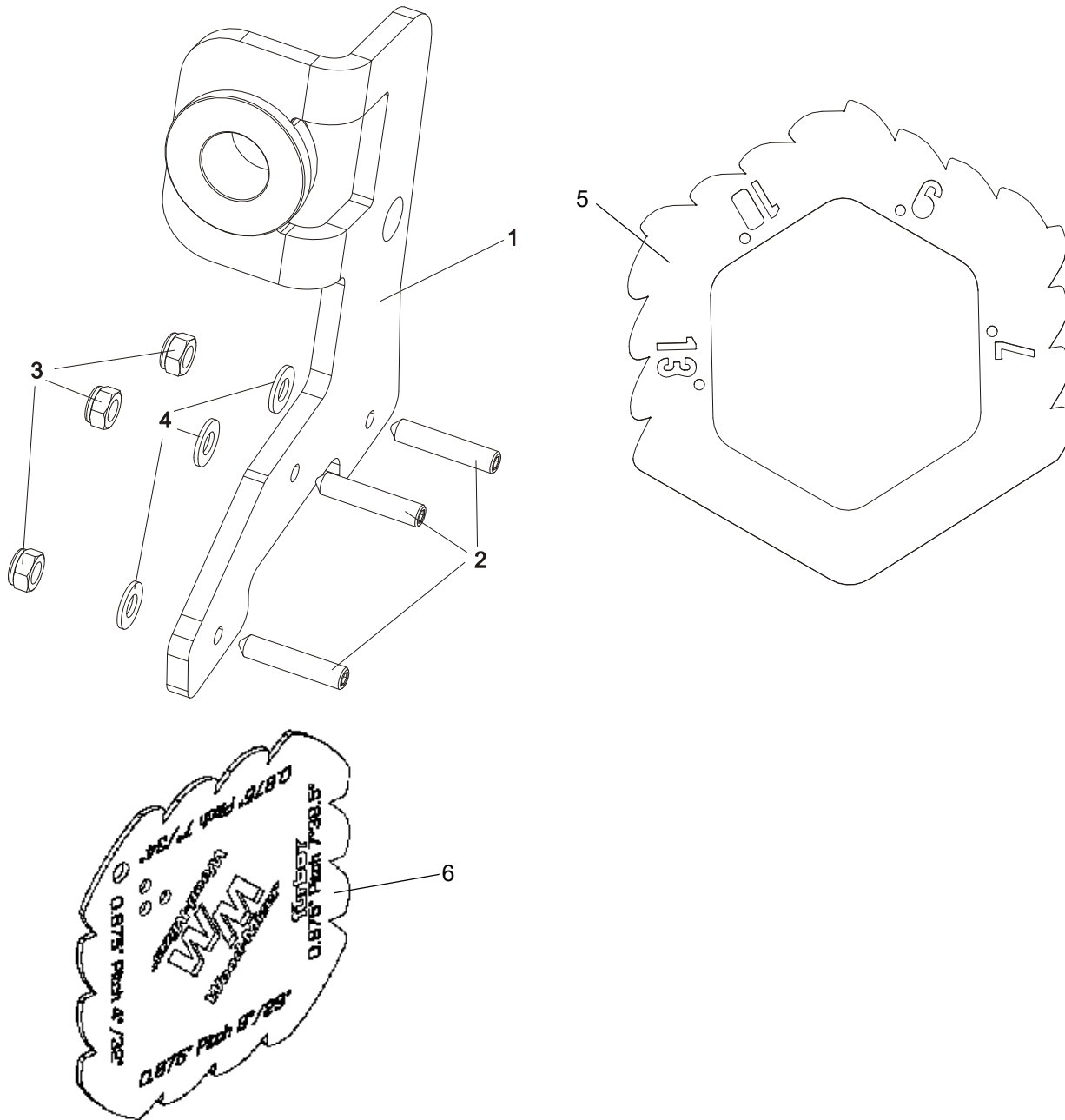
Magnetic Filter (BMS600 Sharpener)

1.19 Magnetic Filter (BMS600 Sharpener)



REF.	DESCRIPTION (◆ Indicates Parts Available In Assemblies Only)	PART #	QTY
	FILTER, BMS600 SHARPENER MAGNETIC - COMPLETE	101269-RS	1
1	TANK, MAGNETIC FILTER	505665-1	1
2	SEAL RUBBER, WIRE INSIDE DIA. 26MM	085613	2
3	MAGNET, 1 00X30X15 FILTER	516192	10
	PAN, BMS500/600 SHARPENER FILTER - COMPLETE	101249	1
4	PAN WELDMENT, BMS500/600 SHARPENER FILTER	101251	1
5	HANDLE, 4" W/BOLTS	P08065	1
6	BOLT, #8-32X3/8 SELF-TAPPING	F05015-8	2
7	BOLT, M8 X 20 CARRIAGE ZINC	F81002-11	5
8	WASHER, 8.4 FLAT ZINC	F81054-1	5
9	NUT, M8-8-B HEX NYLON ZINC LOCK	F81032-2	5
10	VALVE, 1" WZ SENNA RH018 BALL	506596	1
11	GROMMET, 5/8 ID RUBBER	P11764	1
12	HOSE, COOLANT MAGNETIC FILTER	500466	1
13	PUMP ASSY, INDUSTRIAL SHARPENER OIL	P30273	1

1.20 Alignment Tool & Blade Profile Template



REF.	DESCRIPTION (◆ Indicates Parts Available In Assemblies Only)	PART #	QTY
	ALIGNMENT TOOL, SHARPENER BMS500/600	505190	1
1	TOOL, BMS500/600 ALIGNMENT ZINC-PLATED	504890-1	1
2	SCREW, M8x40-45H HEX SOCK.SET CONE POINT	F81002-52	3
3	NUT, M8-8-B HEX NYLON ZINC LOCK	F81032-2	3
4	WASHER, 8.4 FLAT ZINC	F81054-1	3
5	TEMPLATE, BLADE PROFILE	514846-1	3
6	ASSY, BLADE PROFILE GAUGES	109064	1

1 REPLACEMENT PARTS

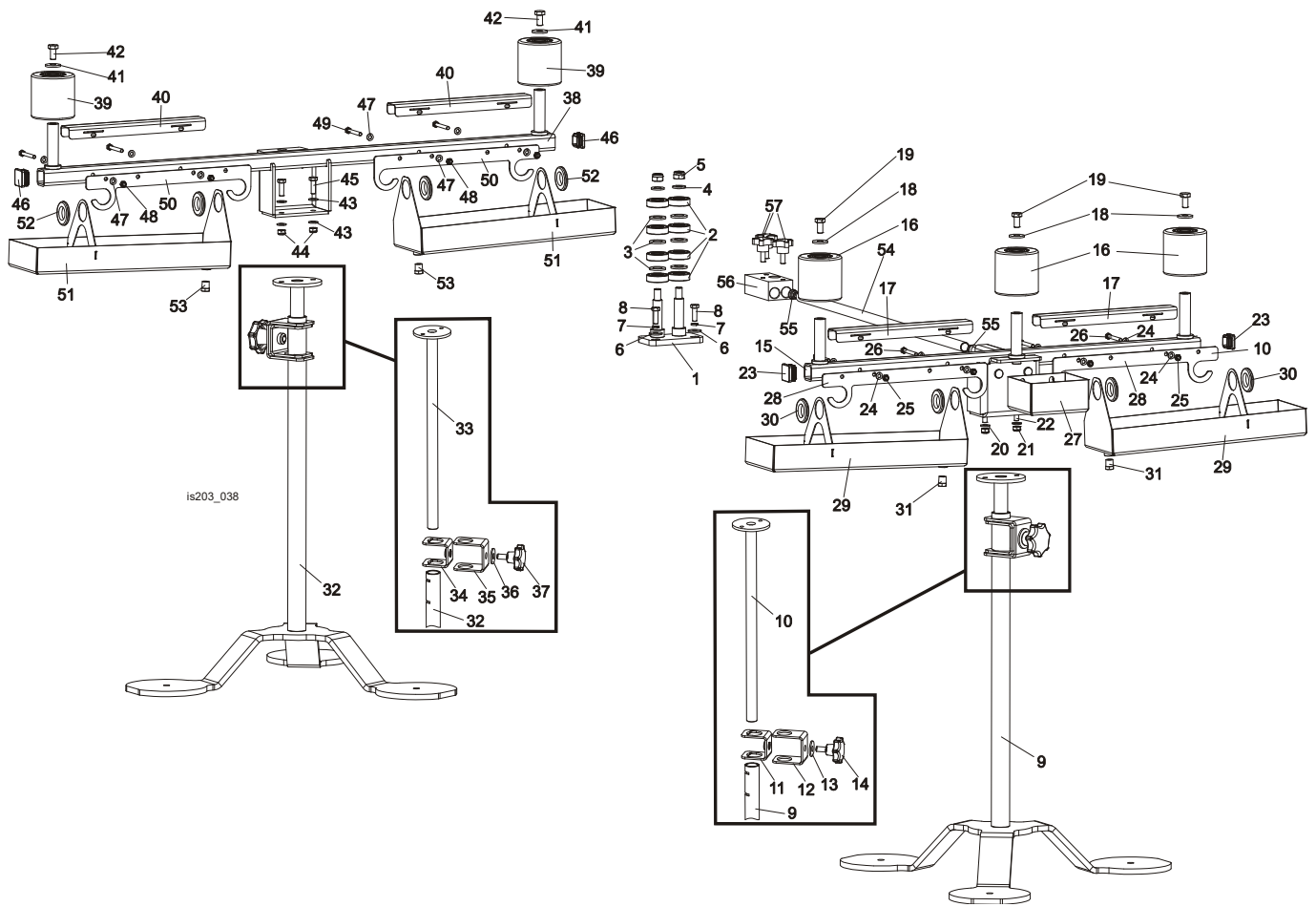
Decal Kit

1.21 Decal Kit



REF.	DESCRIPTION (◆ Indicates Parts Available In Assemblies Only)	PART #	QTY
	DECAL KIT, BMS500 SHARPENER	500467	1
1	DECAL, BMS500 SHARPENER	500801	1
2	DECAL, GENERAL WARNING	086362	1
3	DECAL, EYE WARNING, SMALL	S12004G-1	1
4	DECAL, ELECTRIC POWER SIGN	S10364-P2	1
5	DECAL, READ OPERATOR'S MANUAL	096317	1
6	DECAL, SHARPENER COVERS CAUTION	099220	1
7	DECAL - PICTOGRAM "OIL"	095961	1
8	DECAL, CE - CERTIFIED SAWMILL (SMALL)	P85070	1
9	DECAL, CLEAN THE SHARPENER EVERY 8 HOURS	524490	1
	DECAL, SHARPENER ROTATION (1.13 Sharpener Head)	S20097K	1

1.22 3" Blade Supports Kit (Option)



REF.	DESCRIPTION (◆ Indicates Parts Available In Assemblies Only)	PART #	QTY
	SUPPORT KIT, BMS500/600 3" BLADE	505584	1
	GUIDE, 3" BLADE COMPLETE	503790	1
1	PLATE, 3" BLADE GUIDE ZINC-PL.	503791-1	1
2	BEARING, 6203 2RS CX	086114	8
3	WASHER, 17 FLAT ZINC	F81058-1	6
4	WASHER, 13 FLAT ZINC	F81056-1	2
5	NUT, M12-8 HEX NYLON ZINC LOCK	F81034-2	2
6	WASHER, 8.5 SPECIAL FLAT ZINC	F81054-11	2
7	WASHER, 8.2 SPLIT LOCK ZINC	F81054-4	2
8	BOLT, M8x25-8.8-B HEX HEAD FULL THREAD ZINC	F81002-5	2
	SUPPORT, 3" BLADE COMPLETE - ENTRY SIDE	504402	1
	STAND, 690-1100 KP BLADE SUPPORT ADJUSTABLE	504401	1
9	TUBE WLDMT, STAND BASE PTD	504392-1	1
10	TUBE WLDMT, STAND ADJUSTMENT ZINC-PL.	504398-1	1
11	CHANNEL, INNER CLAMPING ZINC-PL.	504394-1	1
12	CHANNEL, STAND OUTER ZINC-PL.	504400-1	1
13	WASHER, 13 SPECIAL FLAT ZINC	F81056-14	1
14	KNOB, 1580 DIA. 63x25 M12	500460	1
	COVER, ENTRY-SIDE BLADE SUPPORT COMPLETE	505568	1



REPLACEMENT PARTS

3" Blade Supports Kit (Option)

15	ARM, ENTRY-SIDE BLADE SUPPORT	505571-1	1	
16	ROLLER, R-80-80 W/BEARING	099429	3	
17	COVER, BLADE SUPPORT ARM STAINLESS STEEL	505575	2	
18	WASHER, 10.5 SPECIAL FLAT ZINC	F81055-6	3	
19	BOLT, ISO4017-M10x20-8.8-A2E HEX HEAD	F81003-53	3	
20	WASHER, 8.4 FLAT ZINC	F81054-1	4	
21	NUT, M8-8-B HEX NYLON ZINC LOCK	F81032-2	2	
22	BOLT, M8x25-8.8-B HEX HEAD FULL THREAD ZINC	F81002-5	2	
23	CAP, 30x30x3 1540 DIA.	099463	2	
24	WASHER, 6.4 FLAT ZINC	F81053-1	8	
25	NUT, M6-8-B HEX NYLON ZINC LOCK	F81031-2	4	
26	BOLT, M6x50-8.8 HEX HEAD ZINC	F81001-62	4	
27	PAN, OIL DRIP PTD	505579-1	1	
28	PLATE, OIL DRIP PAN HANGER	505582-1	2	
	PAN, OIL DRIP - COMPLETE	505583	2	
29	PAN WELDMNT, OIL DRIP	101257-1	1	
30	GROMMET, 1" ID RUBBER	P11765	2	
31	PLUG, B-1/4-KU (BST R 1/4")	087605	1	
	SUPPORT, 3" BLADE COMPLETE - EXIT SIDE	504403	1	
	STAND, 690-1100 KP BLADE SUPPORT ADJUSTABLE	504401	1	
32	TUBE WLDMT, STAND BASE P	504392-1	1	
33	TUBE WLDMT, STAND ADJUSTMENT ZINC-PL.	504398-1	1	
34	CHANNEL, INNER CLAMPING ZINC-PL.	504394-1	1	
35	CHANNEL, STAND OUTER ZINC-PL.	504400-1	1	
36	WASHER, 13 SPECIAL FLAT ZINC	F81056-14	1	
37	KNOB, 1580 DIA. 63x25 M12	500460	1	
	COVER, EXIT-SIDE BLADE SUPPORT - COMPLETE	505569	1	
38	ARM, EXIT-SIDE BLADE SUPPORT PTD	505566-1	1	
39	ROLLER, R-80-80 W/BEARING	099429	2	
40	COVER, BLADE SUPPORT ARM STAINLESS STEEL	505575	2	
41	WASHER, 10.5 SPECIAL FLAT ZINC	F81055-6	3	
42	BOLT, ISO4017-M10x20-8.8-A2E HEX HEAD	F81003-53	3	
43	WASHER, 8.4 FLAT ZINC	F81054-1	4	
44	NUT, M8-8-B HEX NYLON ZINC LOCK	F81032-2	2	
45	BOLT, M8x25-8.8-B HEX HEAD FULL THREAD ZINC	F81002-5	2	
46	CAP, 30x30x3 1540 DIA.	099463	2	
47	WASHER, 6.4 FLAT ZINC	F81053-1	8	
48	NUT, M6-8-B HEX NYLON ZINC LOCK	F81031-2	4	
49	BOLT, M6x50-8.8 HEX HEAD ZINC	F81001-62	4	
50	PLATE, OIL DRIP PAN HANGER	505582-1	2	
	PAN, OIL DRIP - COMPLETE	505583	2	
51	PAN WLDMT, OIL DRIP	101257-1	1	
52	GROMMET, 1" ID RUBBER	P11765	2	
53	PLUG, B-1/4-KU (BST R 1/4")	087605	1	
	TUBE, BLADE SUPPORT SPACER - COMPLETE	505576	1	
54	TUBE, BMS500/600 SIDE EXTENSION ZINC-PL.	502405-1	1	
55	CAP, 1530 DIA. 18x2	100847	2	
	BLOCK, SPACER TUBE CONNECTION - COMPLETE	505577	1	

REPLACEMENT PARTS
3" Blade Supports Kit (Option)

1

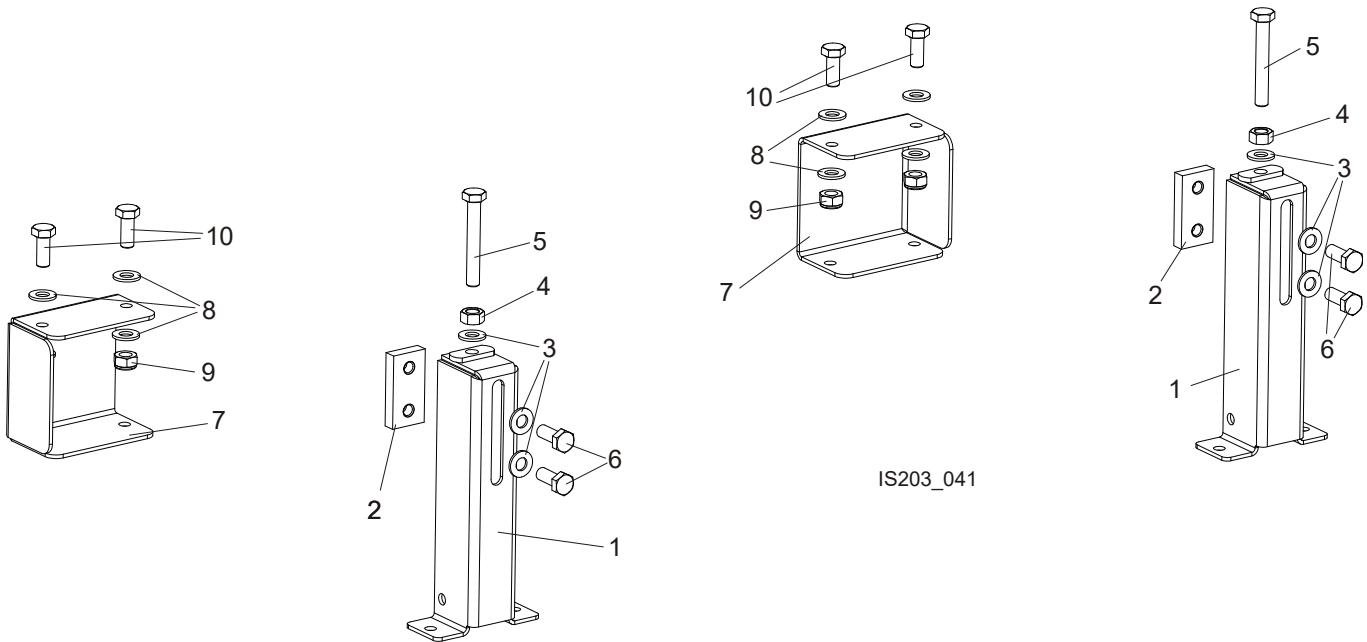
56	BLOCK, SPACER TUBE CONNECTION ZINC-PL.	505578-1	1	
57	HANDWHEEL, 40 DIA./M8x20 (462053 MOSS)	500973	3	

1

REPLACEMENT PARTS

Table Extensions Kit (BMS600 Option)

1.23 Table Extensions Kit (BMS600 Option)



REF.	DESCRIPTION (◆ Indicates Parts Available In Assemblies Only)	PART #	QTY
	TABLE EXTENSIONS KIT, BMS600 (OPTION)	508838	1
	LEG, ADJUSTABLE HIGH - COMPLETE	508845	2
1	LEG, ADJUSTABLE HIGH	508844-1	1
2	PLATE, M10 ZINC	101242-1	1
3	WASHER, 10.5 FLAT ZINC	F81055-1	3
4	NUT, M10-8-B HEX ZINC	F81033-3	1
5	BOLT, M10 X 70-8.8 HEX HEAD FULL THREAD ZINC	F81003-20	1
6	BOLT, M10X25-8.8 HEX HEAD FULL THREAD ZINC	F81003-11	2
7	FOOT EXTENSION, SHARPENER	508846-1	2
8	WASHER, 10.5 FLAT ZINC	F81055-1	8
9	NUT, M10-8-B NYLON HEX ZINC LOCK	F81033-1	4
10	BOLT, M10X25-8.8 HEX HEAD FULL THREAD ZINC	F81003-11	4

1.24 Blade Profile Templates (EU, 592837)

592837_001
592837



REF.	DESCRIPTION (* indicates parts available in assemblies only)	PART #	QTY
-	TEMPLATE SET, BLADE PROFILE (EU)	592837	1
1	TEMPLATE, BLADE PROFILE (BMS, No. 3)	592835	1
2	TEMPLATE, BLADE PROFILE (BMS, No. 2)	592836	1