

Wood-Mizer®

Replacement Parts

BMS200	rev. B.08
BMS250	rev. B.08



Safety is our #1 concern! Read and understand all safety information and instructions before operating, setting up or maintaining this machine.

Form #2586

Table of Contents

Section-Page

SECTION 1	REPLACEMENT PARTS	1-1
1.1	How To Use The Parts List	1-1
1.2	Blade Support Assembly	1-2
1.3	Grinder Assembly.....	1-3
1.4	Sharpener Mounting Plate	1-6
1.5	Blade Clamp Assembly	1-8
1.6	Oil Pump/Pan, Control Box, BMS250	1-10
1.7	Oil Pump/Pan, Control Box, BMS200	1-12
1.8	Cover Assembly	1-14
1.9	Alignment tool & Blade Profile Template	1-16
1.10	Motor assy SEKH63 110V UL 580881	1-17
1.11	Cam & Index Arm Drive Assembly 098520	1-18
1.12	Cam Lever 098522	1-20
1.13	Blade Profile Templates (EU, 592837)	1-1

SECTION 1 REPLACEMENT PARTS

1.1 How To Use The Parts List

- Use the table of contents or index to locate the assembly that contains the part you need.
- Go to the appropriate section and locate the part in the illustration.
- Use the number pointing to the part to locate the correct part number and description in the table.
- Parts shown indented under another part are included with that part.
- Parts marked with a diamond (◆) are only available in the assembly listed above the part.

See the sample table below. Sample Part #A01111 includes part F02222-2 and subassembly A03333. Subassembly A03333 includes part S04444-4 and subassembly K05555. The diamond (◆) indicates that S04444-4 is not available except in subassembly A03333. Subassembly K05555 includes parts M06666 and F07777-77. The diamond (◆) indicates M06666 is not available except in subassembly K05555.

Sample Assembly				
REF.	DESCRIPTION (◆ Indicates Parts Available In Assemblies Only)	PART #	QTY.	
	SAMPLE ASSEMBLY, COMPLETE (INCLUDES ALL INDENTED PARTS BELOW)	A01111	1	
1	Sample Part	F02222-22	1	
	Sample Subassembly (Includes All Indented Parts Below)	A03333	1	
2	Sample Part (◆ Indicates Part Is Only Available With A03333)	S04444-4	1	◆
	Sample Subassembly (Includes All Indented Parts Below)	K05555	1	
3	Sample Part (◆ Indicates Part Is Only Available With K05555)	M06666	2	◆
4	Sample Part	F07777-77	1	

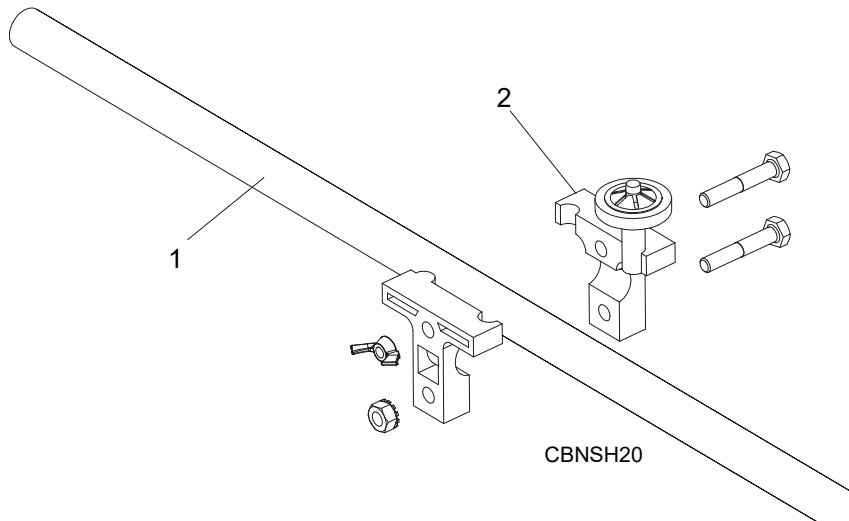
To Order Parts:

- From Europe call our European Headquarters and Manufacturing Facility in Kolo, Poland at **+48-63-2626000**. From the continental U.S., call our toll-free Parts hotline at **1-800-448-7881**. Have your customer number, vehicle identification number, and part numbers ready when you call.
- From other international locations, contact the Wood-Mizer distributor in your area for parts.

1 REPLACEMENT PARTS

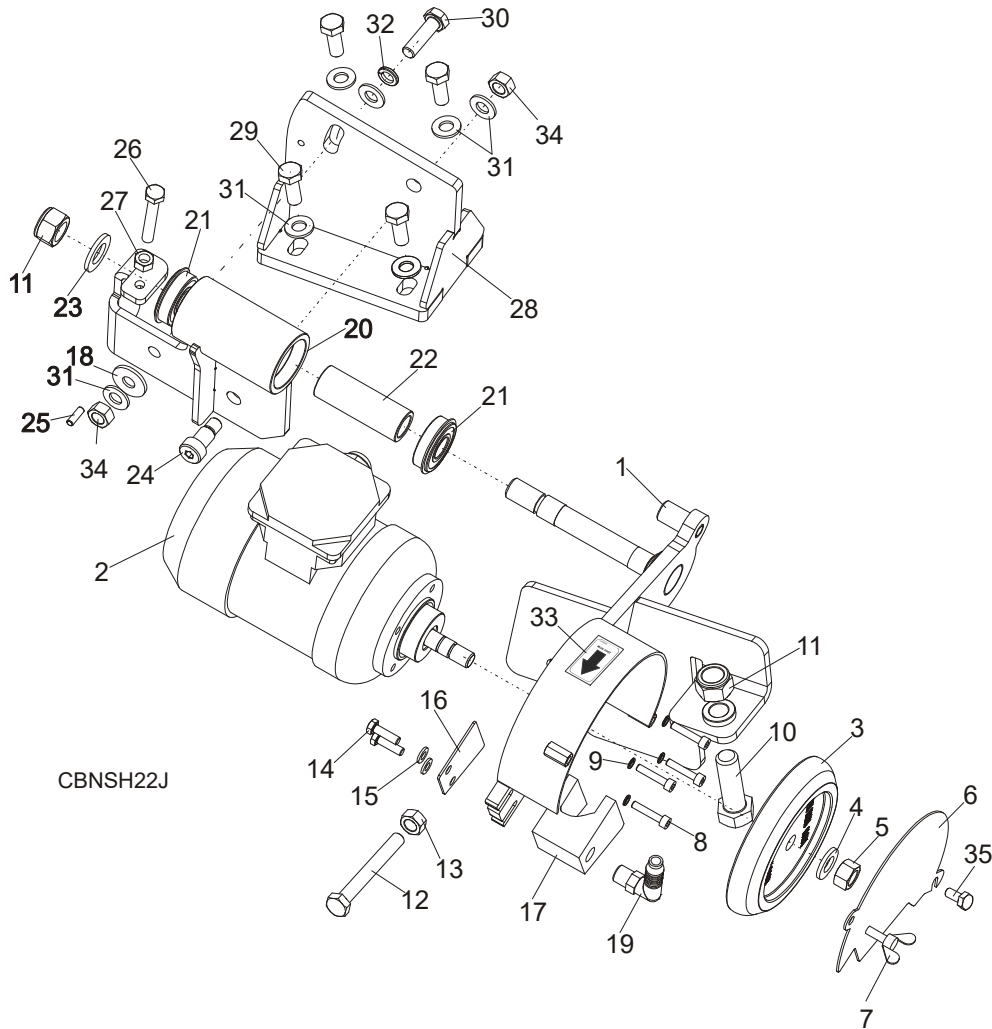
Blade Support Assembly

1.2 Blade Support Assembly



REF.	DESCRIPTION (◆ Indicates Parts Available In Assemblies Only)	PART #	QTY	
1	BLADE SUPPORT ASSEMBLY, COMPLETE	087518-1	3	
1	GUIDE KIT, BLADE SUPPORT	A10617-POLAND	1	

1.3 Grinder Assembly



REF.	DESCRIPTION (◆ Indicates Parts Available In Assemblies Only)	PART #	QTY
	SHARPENER HEAD, BMS250 COMPLETE	097030	1
1	Arm, Sharpener Head Weldment	507795-1	1
2	Motor, SEKh 56-2C2/162A 230V 50Hz	089383	1
	SEKh63-2C2/162F 0,37kW 230V 60Hz IP56 UL	563061	1
	Motor, SEKh63 110V See Section 1.10	580881	1
	Capacitor, BMS250MU Start	061137	1
	Fan, SEKh 56-2C2/162F 230V60Hz Motor	083961	1

1 REPLACEMENT PARTS

Grinder Assembly

3	Wheel, 9°/29° 7/8TS .220TH 5" BMS250 Grinding CBN Profile	030380	1	
	Wheel, 10°/30° 7/8" TS .250TH 5" BMS250 Grinding CBN Profile	030381	1	
	Wheel, 13°/29° 7/8TS .300TH 5" BMS250 Grinding CBN Profile	030389	1	
	Wheel, 12°/28° .656TS .200TH 5" BMS250 Grinding CBN Profile	030395	1	
	Wheel, 4°/32° 7/8TS .250TH 5" BMS250 Grinding CBN Profile	050744	1	
	Wheel, 13°/29° 1-1/8TS .330TH 5" BMS250 Grinding CBN Profile	053033	1	
	Wheel, 10°/30° 1-1/8TS .330TH 5" BMS250 Grinding CBN Profile	053034	1	
	Wheel, 7°/34° 7/8" TS .295TH 5" BMS250 Grinding CBN Profile	053294	1	
	Wheel, 10°/30° 3/4TS .260TH 5" BMS250 Grinding CBN Profile	053358	1	
	Wheel, 10°/30° 1/2TS .160TH 5" BMS250 Grinding CBN Profile	053411	1	
	Wheel, 7°/34° 1-1/8TS .330TH 5" BMS250 Grinding CBN Profile	053446	1	
	Wheel, 5" 7°/39.5° 7/8" TS .33TH BMS250 Grinding CBN Profile	066268	1	
	Wheel, 5" 7°/47° 0.875"TS 0.35"TH CBN	077722	1	
	Wheel, 5" 10°/30° Vortex .875"TS CBN	077698	1	
	Wheel, 5" 10°/30° 1"TS 0.33"TH CBN	077708	1	
	Wheel, 5" 7°/39.5° 1.25"TS 0.4"TH BMS250 Grinding CBN Profile	077704	1	
Grinding Wheel, 5" VORTEX	077698	1		
4	Washer, M12 Flat Zinc	F81056-1	1	
5	Nut, M12x1,25-8 Hex Zinc	F81034-8	1	
6	Cover, Front Guard	088247-1	1	
7	Bolt, M6x10 FE/ZN5 DIN-316/BN-276	F81001-49	1	
8	Screw, M5x25 -8.8 Hex Socket Head Cap Zinc	F81000-7	4	
9	Washer, 10.2 Split Lock Zinc	F81055-2	1	
10	Bolt, M16x50-8.8 Hex Flat Head	F81006-38	1	
11	Nut, M16-8 Hex Nylon Zinc Lock	F81036-2	2	
12	Bolt, M10-80-8.8 Fe/Zn5 Hex Head Full Thread	F81003-76	1	
13	Nut, M10 -8-B Hex Zinc	F81033-3	1	
14	Bolt, M6x20-8.8 Hex Head Full Thread Zinc	F81001-2	2	
15	Washer, 6.4 Flat Zinc	F81053-1	2	
16	Washer, Oiler Spacer	094060-1	1	
17	Oiler, BMS 200/250; 0.500"TS-0.875"TS	093193	1	
	Oiler, BMS 200/250; 7/8"-1-1/4"TS	509580 ¹	1	
	Oiler, Vortex BMS 200/250	522706	1	
	Oiler, Vortex BMS 200/250 (for new grinding wheel version)	583408 ²	1	
18	Washer, 10.5 Zinc Flat Special	F81055-6	1	
19	Stud, WES 10/R 1/4 Elbow	088379	1	
20	Bushing, Sharpener Vertical Pivot	507787-1	1	
21	Bearing w/Ring	086395	2	
22	Bushing, Sharpener Head Spacer	092672	1	
23	Washer, 17 Flat Zinc	F81058-1	1	
24	Screw, 12/M10x16 12.9 Bossard Socket Head Shoulder	F81003-64	1	
25	Pin, 5x16 Roll Fe/Zn Zinc	F81044-3	1	
26	Bolt, M8x50 - 8.8 Hex Head Full Thread Zinc	F81002-19	1	

REPLACEMENT PARTS

Grinder Assembly

1

27	Nut, M8 Hexagon, Grade 5.8 Free Zinc	F81032-1	1	
28	Base Weldment, Sharpener Head	507785-1	1	
29	Bolt, M10X25-8.8-Fe/Zn5	F81003-11	4	
30	Bolt, M10x35 - 8.8 Hex Head Full Thread Zinc	F81003-17	4	
31	Washer, 10.5 Flat Zinc	F81055-1	3	
32	Washer, 5.1 Split Lock Zinc	F81052-2	4	
33	Decal, 2800 RPM Motor Rotation Direction	S20097C ³	1	
34	Nut, M10-8-B Nylon Hex Zinc Lock	F81033-1	2	
35	Bolt, M6x12-8.8 Hex Head Full Thread Zinc	F81001-7	1	
	OIL GRINDING, CBN (5 liters) ACP-1E (European Market)	083559-1	1	
	OIL GRINDING, CBN (5 gallons) CE150S (US Market)	010740	1	

¹ Oiler #509580 (revision B or earlier) are only compatible for sharpening teeth up to 1-1/8" tooth spacing. Please contact Wood-Mizer Customer Service.

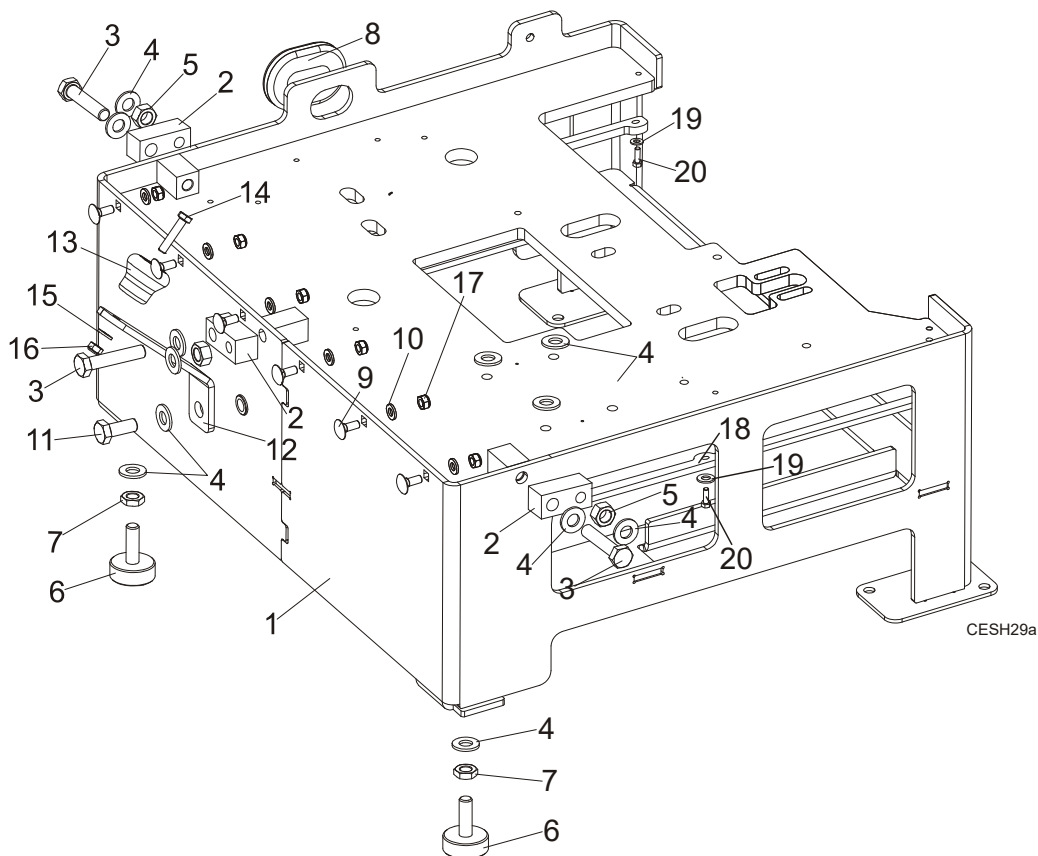
² Applicable to the 077698 grinding wheel

³ Belongs to 088855 - BMSBS250 Decal Kit.

1 REPLACEMENT PARTS

Sharpener Mounting Plate

1.4 Sharpener Mounting Plate



REF.	DESCRIPTION (◆ Indicates Parts Available In Assemblies Only)	PART #	QTY
1	PLATE, BMSBS250 AC SHARPENER MOUNTING	507777-1	1
2	ARM, BLADE MOUNTING PTD	093183-1	3
3	BOLT, M10X50MM, HEX HEAD FULL THREAD ZINC	F81003-4	3
4	WASHER, 10.5 FLAT ZINC	F81055-1	13
5	NUT, M10-8-B-FE	F81033-3	3
6	foot, base adjust	092839	2
7	NUT, 10MM x 1.25 NYLON	F81033-6	2
8	SEAL RUBBER, WIRE INSIDE DIA 26MM	085613	1
9	Bolt, M6x16 8.8 Hex Head Full THREAD ZINC	F81001-36	6
10	Washer, 6.4 Flat ZINC	F81053-1	6
11	BOLT, M10X25-8.8-FE/ZN5	F81003-11	1
	BRACKET, CBN-AC COVER WELDMENT	087824	1
12	Bracket, Cover Weldment	087826-1	1
13	Bumper, Cover Bracket	087825	1
14	Bolt, M6x30 5.8 Hex Zinc	F81001-13	1

REPLACEMENT PARTS

Sharpener Mounting Plate

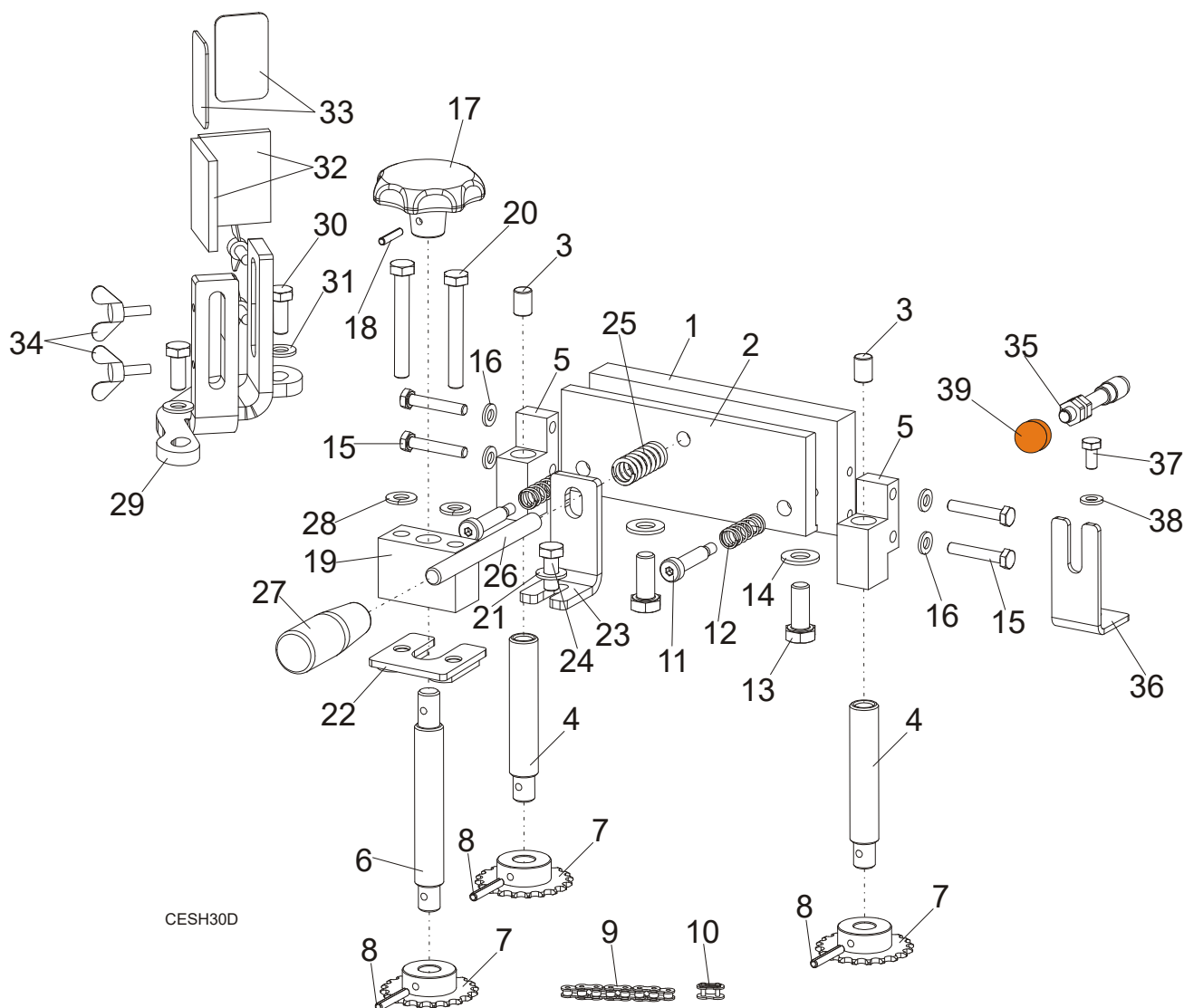
1

15	Washer, 6.4 Flat Zinc	F81053-1	1	
16	Nut, M6-8-B Hex Nylon Zinc Lock	F81031-2	1	
17	Nut, M6-8-B Hex Nylon Zinc Lock	F81031-2	6	
18	Plate, Sharpener Base	507782	1	
19	Washer, M5, Flat Zinc	f81052-1	7	
20	Bolt, M5x16-8.8 Hex Head Full Thread Zinc	F81000-20	7	

1 REPLACEMENT PARTS

Blade Clamp Assembly

1.5 Blade Clamp Assembly



REF.	DESCRIPTION (◆ Indicates Parts Available In Assemblies Only)	PART #	QTY
	BLADE CLAMP WITH BLADE HEIGHT ADJUSTMENT	098512	1
1	PLATE, FIXED CLAMP ZINC-PLATED	097025-1	1
2	PLATE, MOVING CLAMP ZINC-PLATED	097026-1	1
3	ROLLER, $\phi 10 \times 14$ CYLINDRICAL	096864	2
4	SCREW, BLADE HEIGHT ADJUSTMENT ZINC-PLATED	096865-1	2
5	BLOCK, THREADED ZINC-PLATED	096866-1	1
6	SCREW, BLADE HEIGHT ADJUSTMENT DRIVING ZINC-PLATED	096867-1	1
7	SPROCKET, 05B-1 Z20 8x3-12H7 ZINC-PLATED	098513-1	3

REPLACEMENT PARTS

Blade Clamp Assembly

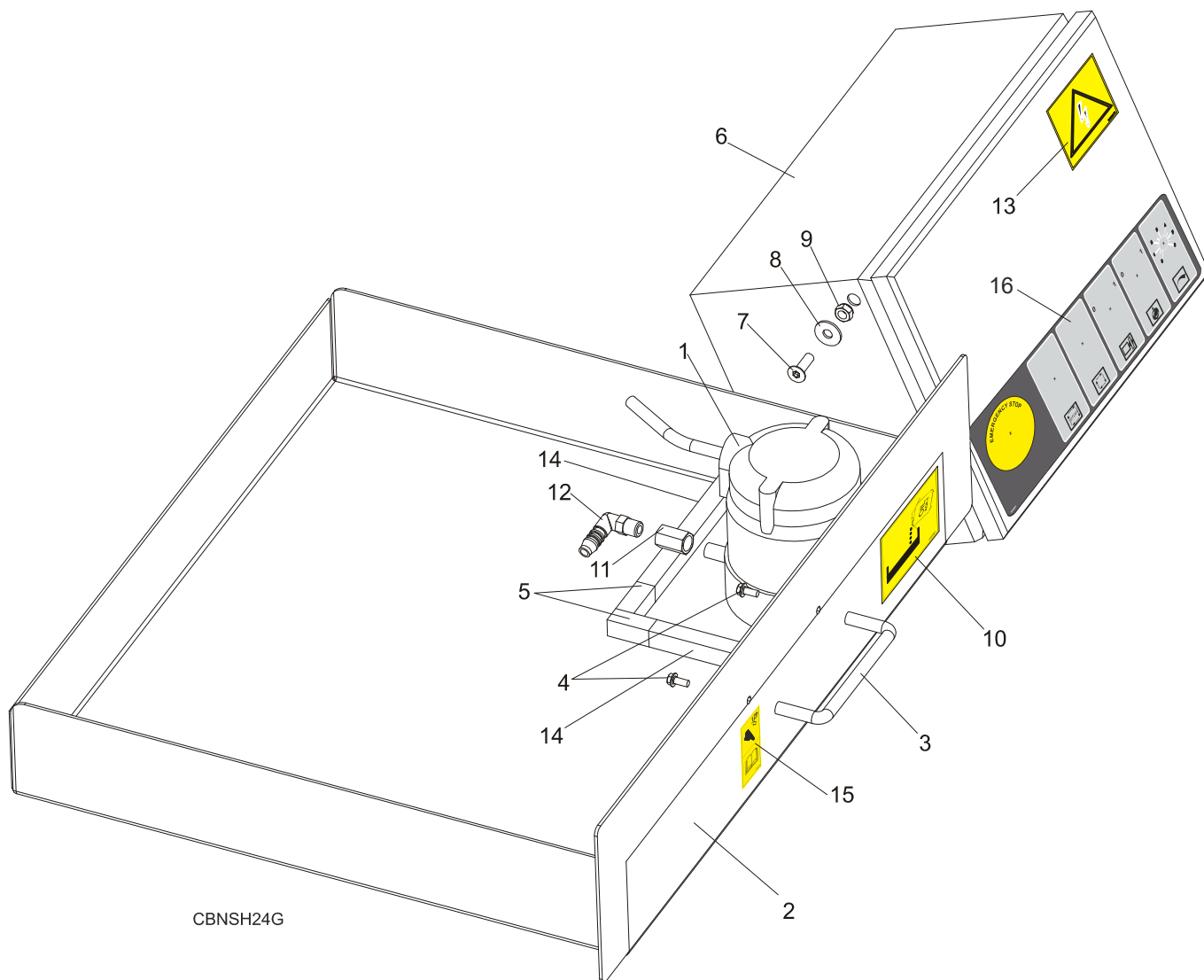
1

8	PIN, 4X30 SPRING-TYPE STRAIGHT ZINC-PLATE	F81044-7	3	
	CHAIN, BLADE HEIGHT ADJUSTMENT - COMPLETE	098515	1	
9	CHAIN, 05B-1-73 DRIVING	098516	1	
10	LINK, QRC05B-1 MASTER	098517	1	
11	SCREW, 8/M6X30-12.9 SOCKET HEAD SHOULDER	F81001-18	2	
12	SPRING, 9X30X1.2 COMPRESSION	088368	2	
13	BOLT, M10X25-8.8 HEX HEAD FULL THREAD ZINC	F81003-11	2	
14	WASHER, 10.5 FLAT ZINC	F81055-1	2	
15	BOLT, M6x35 8.8 HEX HEAD ZINC	f81001-71	4	
16	WASHER, 6.4 FLAT ZINC	F81053-1	4	
17	KNOB, DIN6336-GG-63-B12-C BLADE HEIGHT ADJUSTMENT	098514	1	
18	PIN, PN-EN ISO8752-4X20 ST AOP ROLL	f81044-11	1	
19	BLOCK, ADJUSTMENT KNOB MOUNTING ZINC-PLATED	097062-1	1	
20	BOLT, M8X60-8.8 HEX HEAD ZINC	f81002-54	2	
21	WASHER, 8.4 FLAT ZINC	f81054-1	1	
22	NUT, M8 DOUBLE ZINC	503104-1	1	
23	BRACKET, BLADE CLAMP SPRING	097069-1	1	
24	BOLT, M8X20-8.8 HEX HEAD FULL THREAD ZINC	F81002-4	1	
25	SPRING	087376	1	
26	STUD-BOLT, 1M10X90-8.8-FE/ZN5	f81003-85	1	
27	GRIP, L70 THREAD M10 13870M10	089445	1	
28	WASHER, 8.2 SPLIT LOCK ZINC	f81054-4	2	
	COMPLETE BLADE WIPER	098526	1	
29	BRACKET WELDMENT, BLADE WIPER MOUNT	508426-1	1	
30	BOLT, M8X20-8.8 HEX HEAD FULL THREAD ZINC	F81002-4	2	
31	WASHER, 8.4 FLAT ZINC	f81054-1	2	
32	WIPER, FLEXAM 3T2862 BLADE	087608	2	
33	BRACE, BLADE WIPER	088098-1	2	
34	SCREW, M5X16 DIN 316 THUMB	f81000-44	4	
35	INDUCTIVE SENSOR 48VDC 200MA XS+OPTIONS (not in BMS200 Version)	088268	1	
36	BRACKET, MAGNETIC SHUTOFF SENSOR MOUNT (NOT IN BMSBS250 EC VERSION)	088366-1	1	
37	BOLT, M6X12MM HEX HEAD ZINC (NOT IN BMS250 EC VERSION)	f81001-7	1	
38	WASHER, 6.4 FLAT ZINC (NOT IN BMS250 EC VERSION)	F81053-1	1	
39	MAGNET, ORANGE PAINTED	S10519-1	1	

1 REPLACEMENT PARTS

Oil Pump/Pan, Control Box, BMS250

1.6 Oil Pump/Pan, Control Box, BMS250



REF.	DESCRIPTION (◆ Indicates Parts Available In Assemblies Only)	PART #	QTY
1	PUMP, AUTO SHARPENER COOLANT	P09836	1
2	PAN, SHARPENER OIL	088201	1
3	HANDLE, 4" W/BOLTS	P08065	1
4	BOLT #8-32x3/8	F05018-5	2
5	MAGNET 50X30X15, OIL FILTER	516220	2
6	BOX, CN SHARPENER CONTROL, 230V 50Hz	092628	1
	BOX, CBN SHARPENER CONTROL, 230V 60Hz	092628-5	1
	BOX, CBN SHARPENER CONTROL, 110V 60Hz	092628-6	1

REPLACEMENT PARTS

Oil Pump/Pan, Control Box, BMS250

1

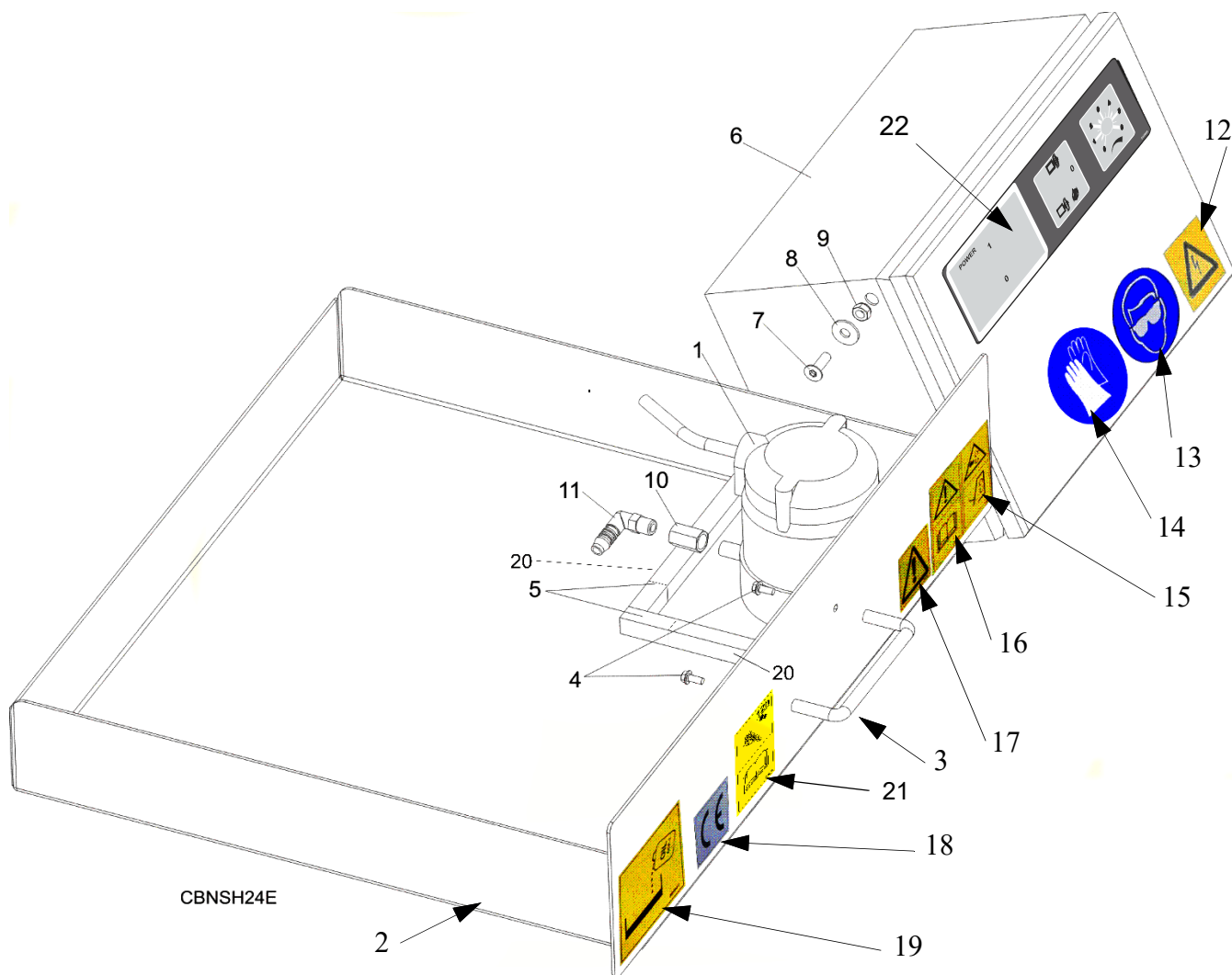
7	SCREW, M6x20-10.9 Fe/Zn5 DIN-7991	F81001-17	2	
8	WASHER, 6.5 FLAT ZINC	F81053-11	2	
9	NUT, M6-8-B HEX NYLON ZINC LOCK	f81031-2	2	
10	DECAL - „OIL" PICTOGRAM	095961 ¹	1	
11	FITTING, 1/4 F.TH./1/4 F.TH.893-302-000-4	090808	1	
12	STUD, WES 10/R 1/4 ELBOW	088379	1	
13	DECAL, ELECTRIC POWER WARNING	S10364-P3 ¹	1	
14	MAGNET 100X30X15, OIL FILTER	516192	2	
15	DECAL, CLEAN THE SCHARPENER EVERY 8 HOURS	524490	1	
16	DECAL, ELECTRIC BOX BS250/BMS250	533687	1	
	KEY, ELECTRIC BOX	083850	1	
	HOSE, WATER LUBE STOCK	R01885	0.9 m	

¹ Belongs to 088855 - BMS250 Decal Kit.

1 REPLACEMENT PARTS

Oil Pump/Pan, Control Box, BMS200

1.7 Oil Pump/Pan, Control Box, BMS200



REF.	DESCRIPTION (◆ Indicates Parts Available In Assemblies Only)	PART #	QTY
1	PUMP, AUTO SHARPENER COOLANT	P09836	1
2	PAN, SHARPENER OIL	088201	1
3	HANDLE, 4" W/BOLTS	P08065	1
4	BOLT #8-32x3/8	F05018-5	2
5	MAGNET 50X30X15, OIL FILTER	516220	2
6	BOX, BMS200A SHARPENER CONTROL 230V 50Hz	507241	1
	BOX, BMS200AU SHARPENER CONTROL 230V 60Hz	507241-5	1
	BOX, BMS200MU SHARPENER CONTROL 110V 60Hz	507241-6	1
7	SCREW, M6x20-10.9 Fe/Zn5 DIN-7991	F81001-17	2

REPLACEMENT PARTS

Oil Pump/Pan, Control Box, BMS200

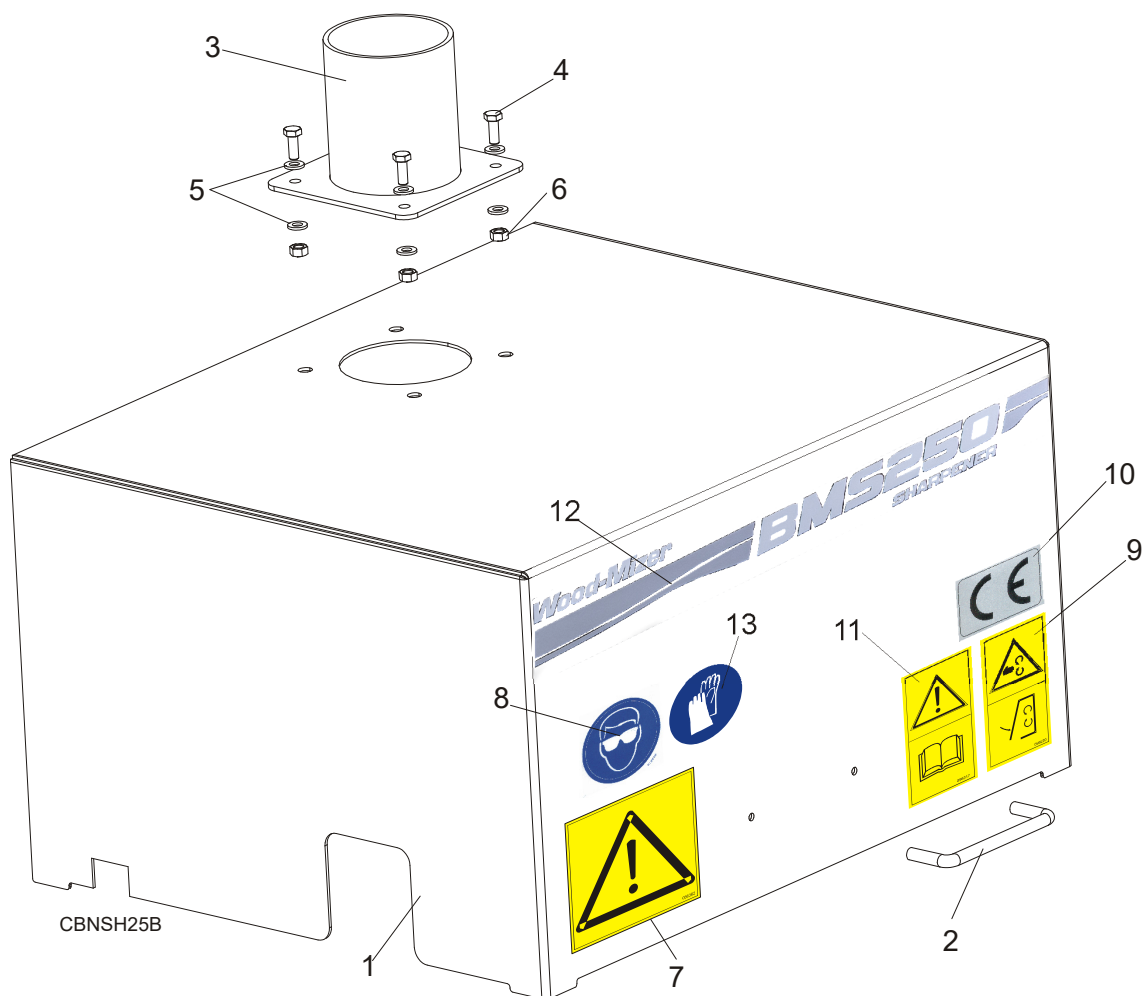
1

8	WASHER, 6.5 FLAT ZINC	F81053-11	2	
9	NUT, M6-8-B HEX NYLON ZINC LOCK	f81031-2	2	
10	FITTING, 1/4 F.TH./1/4 F.TH.893-302-000-4	090808	1	
11	STUD, WES 10/R 1/4 ELBOW	088379	1	
	KIT, BMS200 DECALS	509256	1	
12	DECAL, ELECTRIC POWER WARNING	s10364-p3	1	
13	DECAL, EYE WARNING, SMALL	S12004G-1	1	
14	DECAL, PICTOGRAM, "USE SAFETY GLOVES"	510080	1	
15	DECAL , CLOSE ALL GUARDS BEFORE OPERATING	099220	1	
16	DECAL, READ OPERATOR'S MANUAL (PICTOGRAM)	096317	1	
17	DECAL, GENERAL WARNING "!"	086362	1	
18	DECAL, CE CERTIFIED SAWMILL (SMALL)	P85070	1	
19	DECAL - PICTOGRAM "OIL"	095961	1	
20	MAGNET 100X30X15, OIL FILTER	516192	2	
21	DECAL, CLEAN THE SCHARPENER EVERY 8 HOURS	524490	1	
22	DECAL, ELECTRICAL BOX BS200/BMS200	533689	1	
	KEY, ELECTRIC BOX	083850	1	

1 REPLACEMENT PARTS

Cover Assembly

1.8 Cover Assembly



REF.	DESCRIPTION (◆ Indicates Parts Available In Assemblies Only)	PART #	QTY
	SHARPENER COVER, COMPLETE (not in BMS200 Version)	088302	1
1	Cover Weldment	088254-1	1
2	Handle w/Bolts	P08065	1
3	Pipe, Fume Exhaust Connection	087974-1	1
4	Bolt, M6x16 8.8 Hex Head Full Thread Zinc	F81001-15	4
5	Washer, 6.4 Flat Zinc	F81053-1	8
6	Nut, M6 -8 Hex Zinc	F81031-1	4
7	DECAL, GENERAL WARNING	086362 ¹	1
8	DECAL, EYE WARNING, SMALL	S12004G-1 ¹	1
9	DECAL , CLOSE ALL GUARDS BEFORE OPERATING	099220 ¹	1

REPLACEMENT PARTS

Cover Assembly

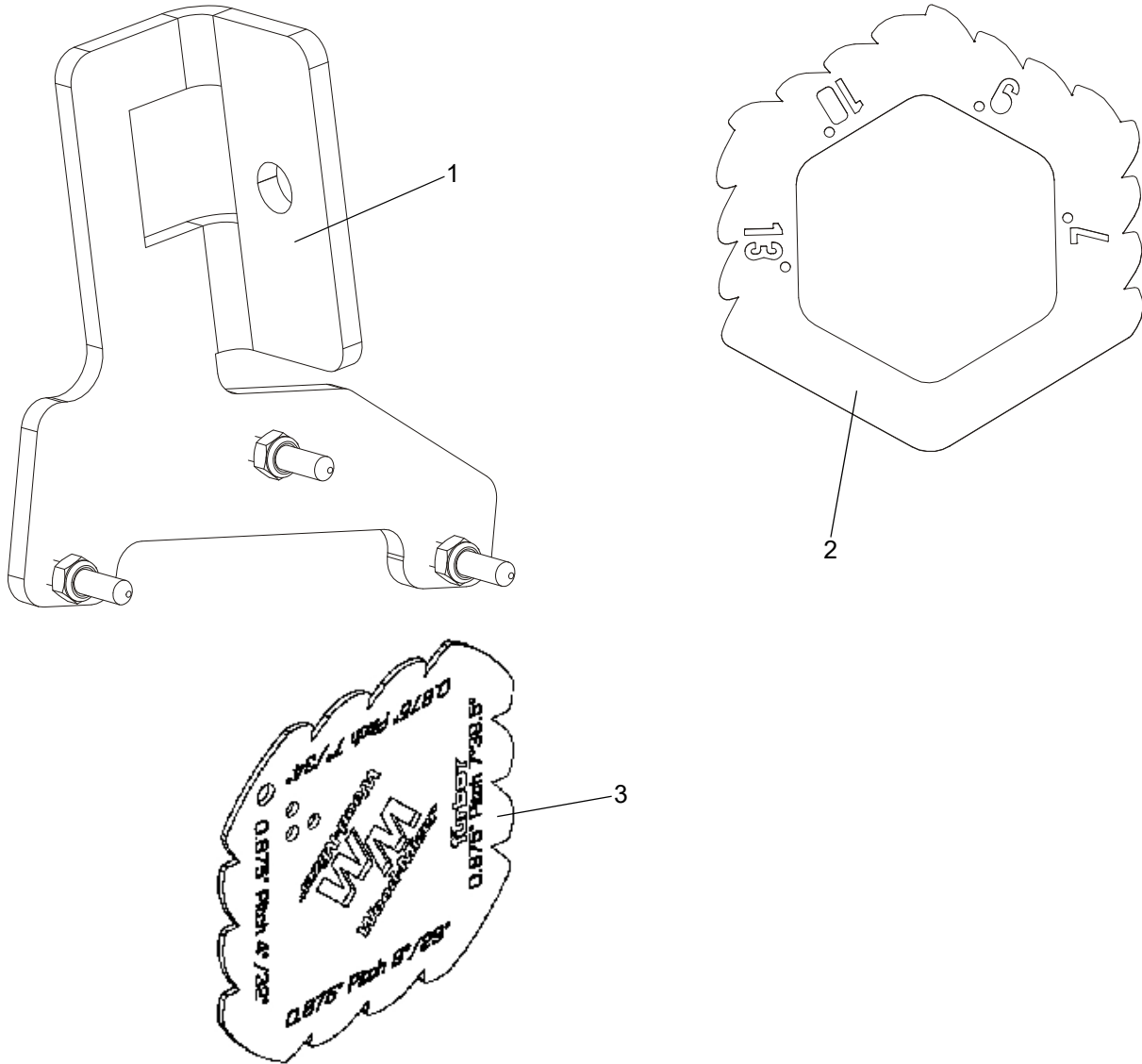
1

10	DECAL, CE CERTIFIED SAWMILL - SMaLL	P85070 ¹	1	
11	DECAL, READ OPERATOR'S MANUAL (PICTOGRAM)	096317 ¹	1	
12	DECALS250, BMS250	510083 ¹	1	
13	DECAL, PICTOGRAM, "USE SAFETY GLOVES"	510080	1	

¹ Belongs to 088855 - BMS250 Decal Kit.

1 **REPLACEMENT PARTS**
Alignment tool & Blade Profile Template

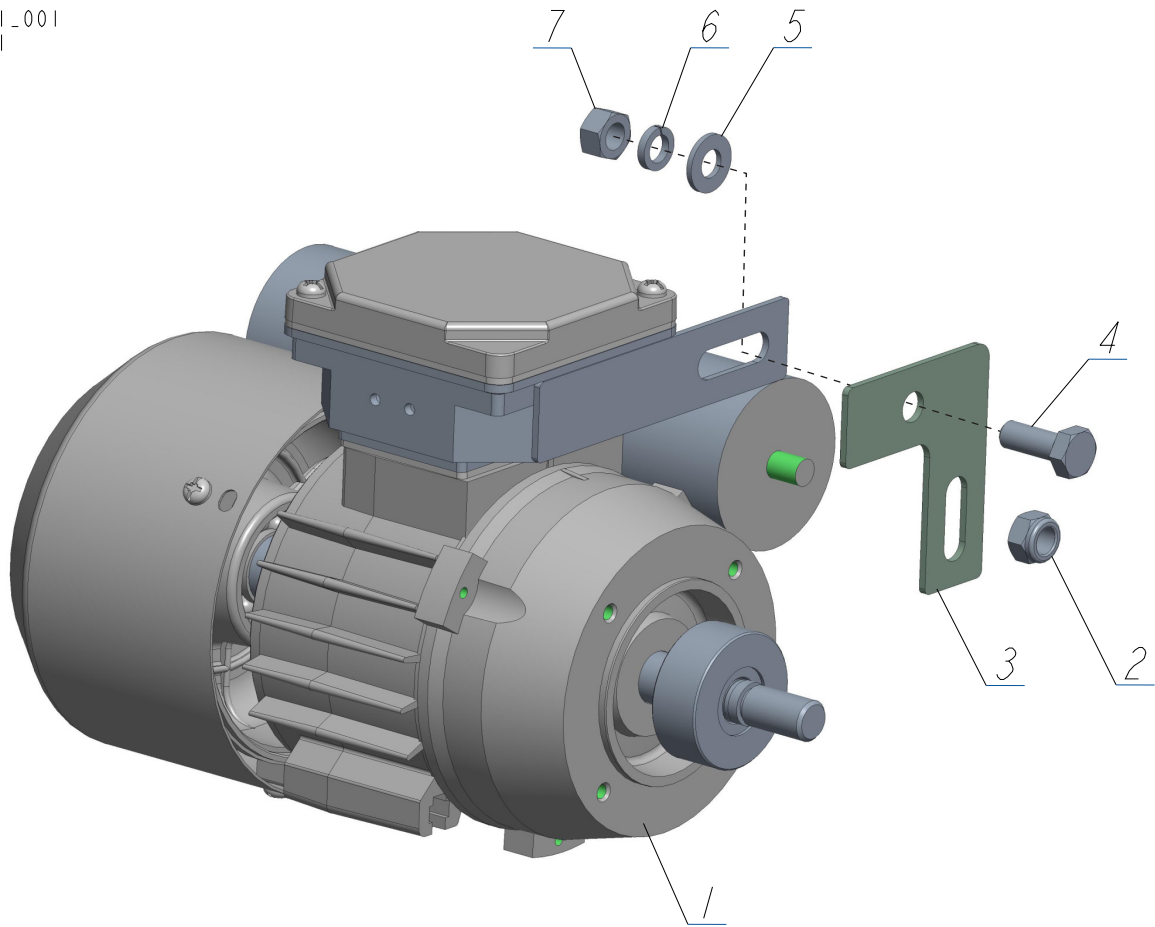
1.9 Alignment Tool & Blade Profile Template



REF.	DESCRIPTION (◆ Indicates Parts Available In Assemblies Only)	PART #	QTY
1	ALIGNMENT TOOL, SHARPENER	088382	1
2	TEMPLATE, BLADE PROFILE	514846-1	1
3	ASSY, BLADE PROFILE GAUGES	109064	1

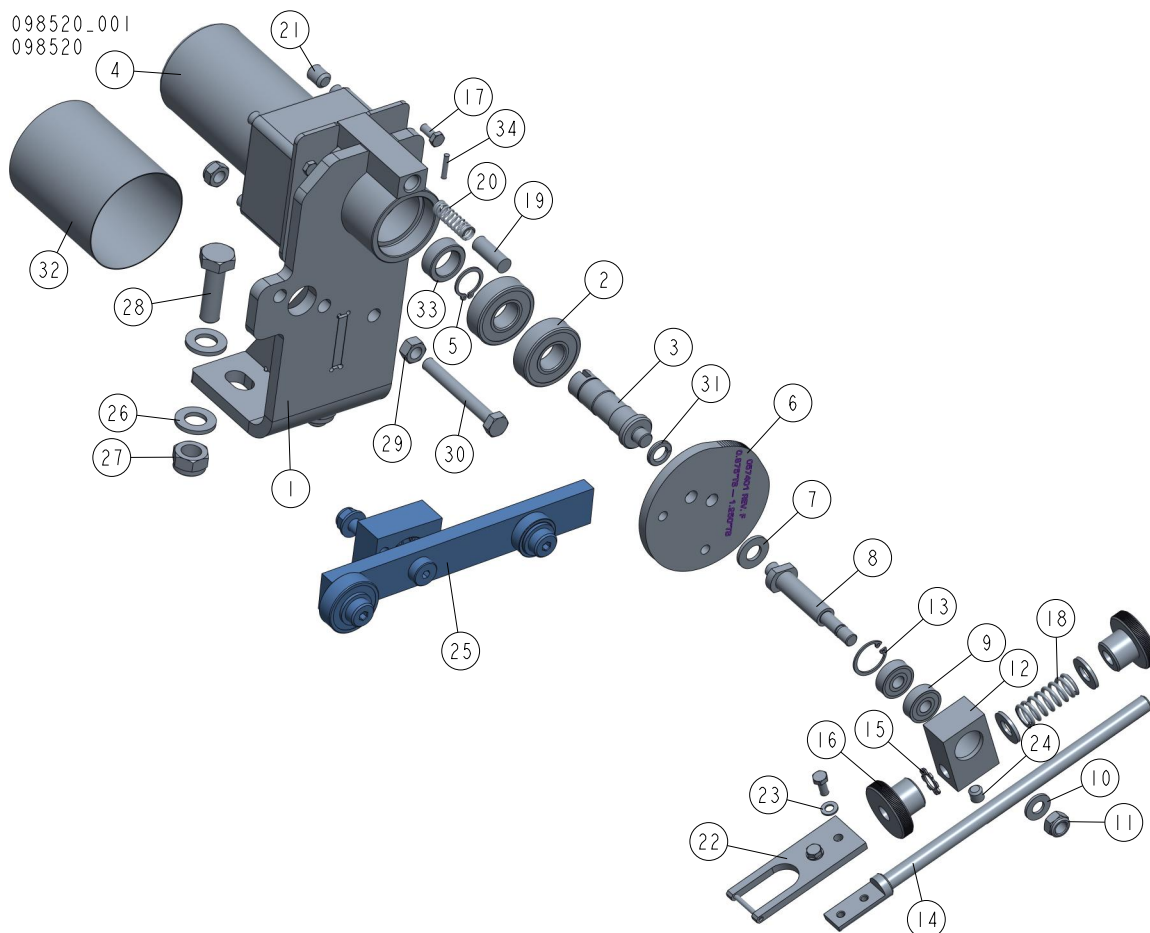
1.10 Motor assy SEKH63 110V UL 580881

580881_001
580881



REF	DESCRIPTION (◆ indicates parts available in assemblies only)	PART #	QTY
-	Motor assy SEKH63 110V UL BMS250	580881	1
1	SEKH63-2C2/162G 0,37KW 110V 60HZ IP56 UL	563062	1
2	NUT, M8-8-B HEX NYLON ZINC LOCK	F81032-2	1
3	PLATE, CAPACITOR BMS250 110V UL	580879-1	1
4	BOLT, M8X20 8.8 HEX HEAD FULL THREAD ZIN	F81002-4	1
5	WASHER, 8.4 FLAT ZINC	F81054-1	1
6	WASHER, 8.2 SPLIT LOCK	F81054-4	1
7	NUT, M8-8-B HEX ZINC	F81032-1	1

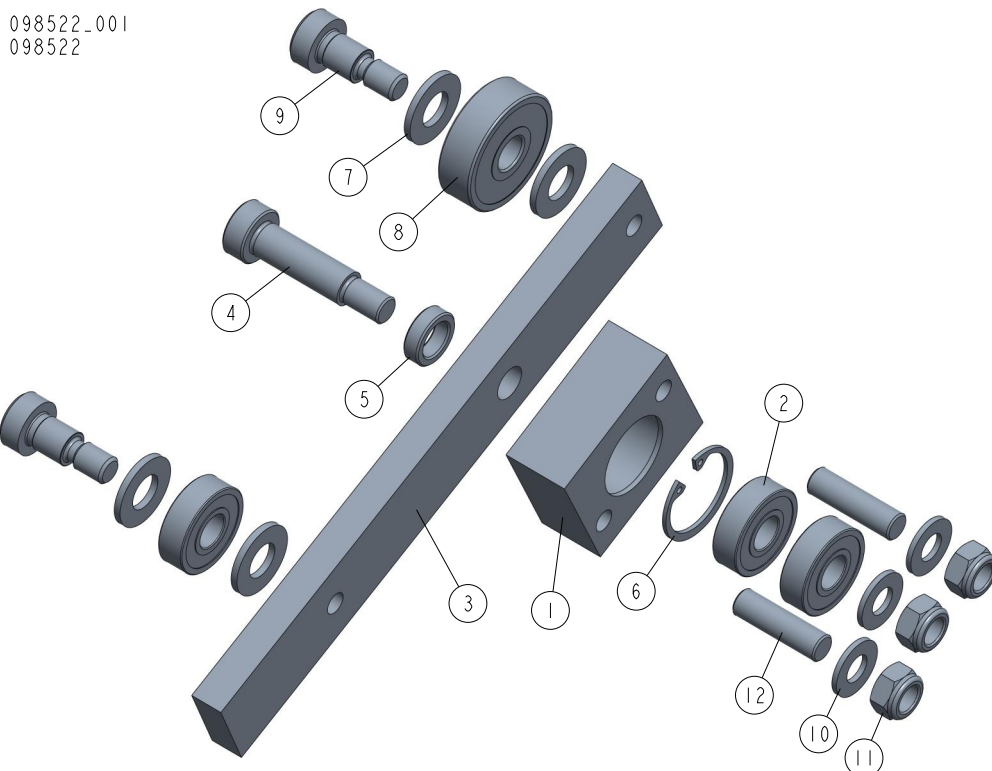
1.11 Cam & Index Arm Drive Assembly 098520



REF	DESCRIPTION (◆ indicates parts available in assemblies only)	PART #	QTY
-	CAM & INDEX ARM DRIVE ASSEMBLY, COMPLETE	098520	1
1	HOUSING WDMT, INDEX CAM DRIVE SHAFT PTD	557368-1	1
2	BEARING, 6203-2RS FLT ROLLING	086114	2
3	SHAFT, CAM DRIVE	087366	1
4	MOTOREDUCER COMPACT	557161	1
5	RING, 17Z OUISSIDE RETAINING	F81090-21	1
6	CAM, AGA PROFILE; 0.875"TS - 1.250"TS	057401	1
7	WASHER, 10.5 FLAT ZINC	F81055-1	3
8	SHAFT, INDEX CAM - ZINC	087372-1	1
9	BEARING, 608-2RS ROLLER	086197	2
10	WASHER, 8,4-FLAT ZINC	F81054-1	1
11	NUT, M8-8-B HEX NYLON ZINC LOCK	F81032-2	2
12	BLOCK, INDEX - ZINC	087373-1	1
13	RING, W22 RETAINING	F81090-7	1
14	PAWL WELDMENT, BLADE INDEX - ZINC	087374-1	1
15	WASHER, 10.5 EXTERNAL TOOTH ZINC LOCK	F81055-3	1
16	NUT, DIN466-M10 GANTER-GRIFF PUSH PAWL A	087375	2
17	BOLT, M5X12-5.8 HEX HEAD FULL THREAD ZIN	F81000-5	6

REF	DESCRIPTION (◆ indicates parts available in assemblies only)	PART #	QTY	
18	SPRING, INDEX ARM	087376	1	
19	PIN, CAM BRAKE	518242	1	
20	SPRING, LC-045E-12	P04734	1	
21	SCREW, M12X12-33H HEX SOCKET FLAT POINT	F81004-15	1	
22	PUSHER, BLADE COMPLETE	093358	1	
23	WASHER, M5, FLAT ZINC	F81052-1	2	
24	SCREW, M8X8 45H GEOMET HEX SOCKET SET W/	F81014-1	1	
25	COMPLETE CAM LEVER See Section 1.12	098522	1	
26	WASHER, 13 FLAT ZINC	F81056-1	4	
27	NUT, M12-8 HEX NYLON ZINC LOCK	F81034-2	2	
28	BOLT, M12X40-8.8 HEX HEAD FULL THREAD ZI	F81004-4	2	
29	NUT M8 ZC 8 DIN 934	F81032-1	1	
30	BOLT, M8X65 5.8 HEX HEAD ZINC	F81002-3	1	
31	WASHER, Z 10.2 SPLIT LOCK ZINC	F81055-2	1	
32	CAP, 2.5 ID X 3 RUBBER	023720	1	
33	BUSHING SPACER FI 31 X 38 8	098615	1	
34	PIN, DOWEL	F05012-31	1	

1.12 Cam Lever 098522



REF	DESCRIPTION (◆ indicates parts available in assemblies only)	PART #	QTY
-	COMPLETE CAM LEVER	098522	1
1	HOUSING, CAM LEVER BEARINGS ZINC-PLATED	098523-1	1
2	BEARING, 6000.2RSR	087471	3
3	LEVER, CAM ZINC-PLATED	098521-1	1
4	BOLT, 10/M8X30 12.9 ISO 7379 SHOULDER	F81003-81	1
5	BUSHING, CAM LEVER SPACER ZINC-PLATED	098524-1	1
6	RING, W26 PN/M-85111 INSIDE RETAINING	F81090-34	1
7	WASHER, 10.5 FLAT ZINC	F81055-1	4
8	BEARING, 6300.2 RSR CX	098519	1
9	BOLT, 10/M8 X 12-12.9 ISO-7379	F81003-62	2
10	WASHER, 8,4-FLAT ZINC	F81054-1	3
11	NUT, M8-8-B HEX NYLON ZINC LOCK	F81032-2	3
12	STUD-BOLT, 1 M8X20-8.8 ZINC-PLATED	F81002-38	2

1.13 Blade Profile Templates (EU, 592837)

592837_001
592837



REF.	DESCRIPTION (* indicates parts available in assemblies only)	PART #	QTY
-	TEMPLATE SET, BLADE PROFILE (EU)	592837	1
1	TEMPLATE, BLADE PROFILE (BMS, No. 3)	592835	1
2	TEMPLATE, BLADE PROFILE (BMS, No. 2)	592836	1