

# **Wood-Mizer®**

## **Parts List**

---

**LT15WA E15**

**rev. A1.01**

**LT15WA G23**

**rev.A1.01**

---



**Safety is our #1 concern!** Read and understand all safety information and instructions before operating, setting up and/or maintaining this machine.

*Form #2536*



# Table of Contents

# Section-Page

<b>SECTION 1</b>	<b>GENERAL INFORMATION</b>	<b>1-1</b>
1.1	How To Use the Parts List.....	1-1
1.2	Sample Assembly .....	1-1
<b>SECTION 2</b>	<b>BED FRAME COMPONENTS</b>	<b>2-1</b>
2.1	Section, Bed Frame S .....	2-1
2.2	Service Section, S-Type Bed Frame .....	2-3
2.3	SECTION, BED FRAME M-TYPE .....	2-4
2.4	Section, M-Type Bed Frame Service LT15WC .....	2-5
2.5	Log Clamp .....	2-6
2.6	Rollers Assembly .....	2-7
2.7	Outrigger Leg Kit (LT15WC) .....	2-8
2.8	Bed Frame Connectors .....	2-9
2.9	Mast Track Extension (M-Type Frame).....	2-10
2.10	Mast Track Extension, Rear (S-Type Frame).....	2-11
2.11	Mast Track Extension, Front (S-Type Frame) .....	2-12
2.12	Wedge .....	2-13
2.13	Manual Toe Board Assembly (Option).....	2-14
2.14	BUMPER, SAW HEAD .....	2-16
2.15	Additional Bed Sections w/Adjustable Outriggers.....	2-17
2.16	LT15 Bed Frame Section Connector (No. 506288) .....	2-18
<b>SECTION 3</b>	<b>LEG ASSEMBLY</b>	<b>3-1</b>
3.1	Leg Assembly, S-Type Frame .....	3-1
3.2	Leg Assembly, M-Type Frame .....	3-2
<b>SECTION 4</b>	<b>DECALS</b>	<b>4-1</b>
4.1	Saw Head Decals, LT15WA AC .....	4-1
<b>SECTION 5</b>	<b>SAW HEAD</b>	<b>5-1</b>
5.1	Covers, grommets .....	5-1
5.2	Saw Head Housing Cover LT15WC (No. 531636) .....	5-3
5.3	Left Up/Down Slide Pads Assembly (No. 531633) .....	5-4
5.4	Right Up/Down Slide Pads Assembly (No. 531639) .....	5-6
5.5	Blade Height Scale Assembly, LT15 Wide (Stationary Sawmill).....	5-7
5.6	Blade Guide Roller Assembly, Drive Side. (094682) .....	5-9
5.7	Blade Guide Roller Cover, Drive Side. (No. 531627) .....	5-10
5.8	Blade Guide Roller Assembly, Idle Side (094683) .....	5-11
5.9	Blade Guide Arm Assembly (No. 586706) .....	5-12
5.10	Drive Belt Lower Support Bracket (092636-1) .....	5-14
<b>SECTION 6</b>	<b>BLADE WHEELS &amp; TENSIONER</b>	<b>6-1</b>
6.1	Blade Wheel Assembly, Drive Side .....	6-1
6.2	Blade Wheel Assembly, Idle Side .....	6-2
6.3	Blade Tensioner Assembly .....	6-4
6.4	Blade Wheel Assembly, Drive Side Motor E15.....	6-6
<b>SECTION 7</b>	<b>UP/DOWN ASSEMBLY LT15WA</b>	<b>7-1</b>
7.1	Lift Assist Assembly, LT15WA .....	7-1
7.2	Saw Head Height Adjustment Assembly w/Lift Assist (550870) .....	7-2
7.3	Lift Assist LT15W (550837) .....	7-3
7.4	Sawmill Mast, LT1WA (550851-1) .....	7-5

# Table of Contents

# Section-Page

## SECTION 8 ENGINE/MOTOR KITS

8-1

8.1	EH15 LT15WA Motor Kit .....	8-1
8.2	G23 Engine Mount Kit, LT15WA (No. 550886) .....	8-3
8.3	Fuel Tank Assembly, LT15 Wide (No. 586776) .....	8-5

## SECTION 1 GENERAL INFORMATION

### 1.1 How To Use the Parts List

- Use the index above to locate the assembly that contains the part you need.
- Go to the appropriate section and locate the part in the illustration.
- Use the number pointing to the part to locate the correct part number and description in the table.
- Parts shown indented under another part are included with that part.
- Parts marked with a diamond (◆) are only available in the assembly listed above the part.

See the sample table below. Sample Part #A01111 includes part F02222-2 and subassembly A03333. Subassembly A03333 includes part S04444-4 and subassembly K05555. The diamond (◆) indicates that S04444-4 is not available except in subassembly A03333. Subassembly K05555 includes parts M06666 and F07777-77. The diamond (◆) indicates M06666 is not available except in subassembly K05555.

1.2 Sample Assembly				
REF.	DESCRIPTION (◆ Indicates Parts Available In Assemblies Only)	PART #	QTY	
	Sample Assembly, Complete (Includes All Indented Parts Below)	A01111	1	
1	Sample Part	F02222-22	1	
	Sample Subassembly (Includes All Indented Parts Below)	A03333	1	
2	Sample Part (◆ Indicates Part Is Only Available With A03333)	S04444-4	1	◆
	Sample Subassembly (Includes All Indented Parts Below)	K05555	1	
3	Sample Part (◆ Indicates Part Is Only Available With K05555)	M06666	2	◆
4	Sample Part	F07777-77	1	

#### To Order Parts:

- From Europe call our European Headquarters and Manufacturing Facility in Kolo, Poland at **+48-63-2626000**. From the continental U.S., call our toll-free Parts hotline at **1-800-525-8100**. Have your customer number, vehicle identification number, and part numbers ready when you call. From other international locations, contact the Wood-Mizer distributor in your area for parts.

#### Office Hours:

Country	Monday - Friday	Saturday	Sunday
Poland	7-15	Closed	Closed
US	8 a.m.- 5 p.m.	8 a.m.- 12 p.m.	Closed



**CAUTION!** It is strongly recommended that only original spare parts be used.

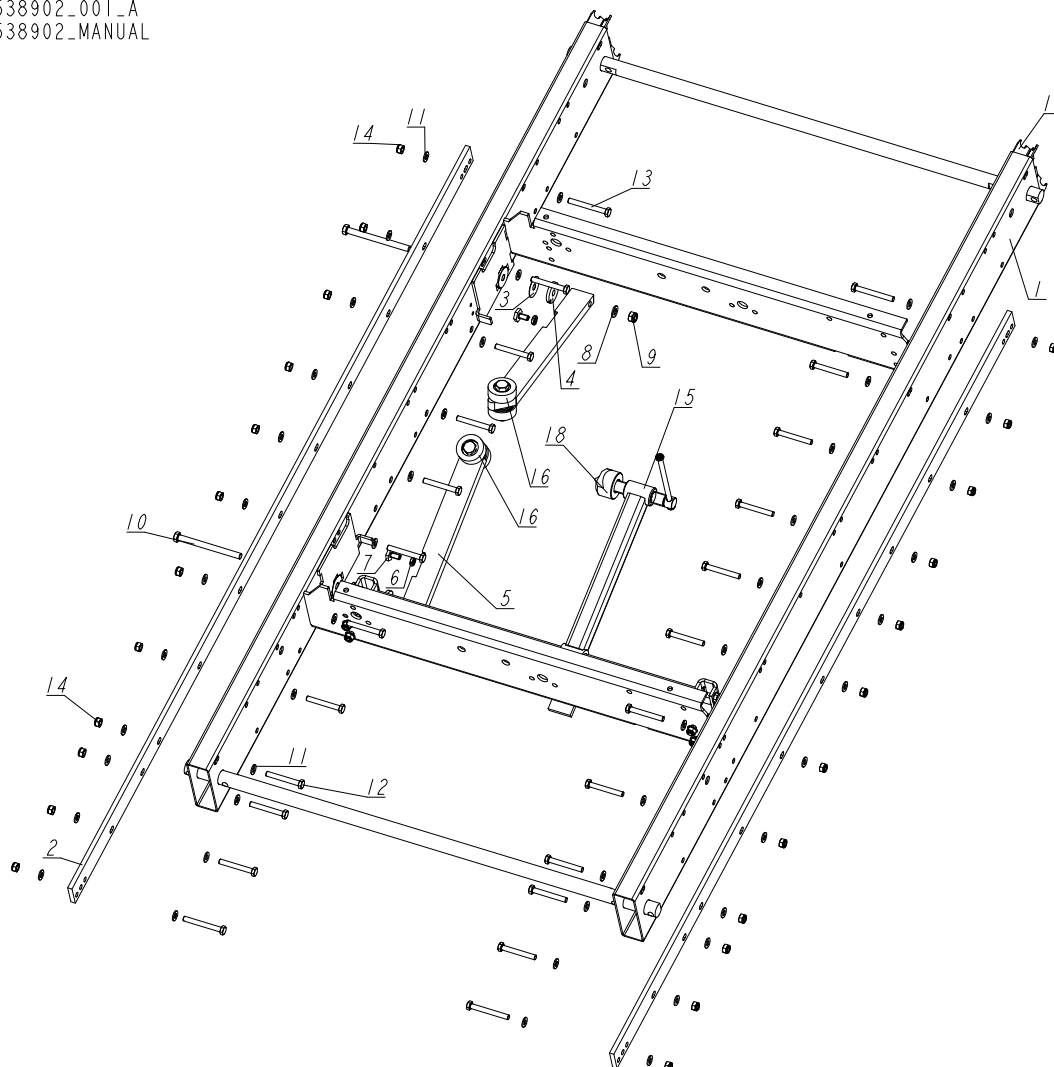
# 2 BED FRAME COMPONENTS

Section, Bed Frame S

## SECTION 2 BED FRAME COMPONENTS

### 2.1 Section, Bed Frame S

538902\_001\_A  
538902\_MANUAL



REF.	DESCRIPTION (* indicates parts available in assemblies only)	PART #	QTY
-	<b>SECTION, BED FRAME S - COMPLETE (LT15WIDE)</b>	538902	1
1	FRAME, BED WLDMT/PTD. LT15WIDE - 1950	538903-1	1
2	RAIL, TRACK LT15 1950	538799-1	2
3	WASHER, 33/64X1 3/4X1/32 NYLON	014972	2
4	WASHER, 12.5/44-5 PTD.	085981-1	2
-	SUPPORT, SIDE - COMPLETE (LT15WIDE)	526462	2
5	SUPPORT, SIDE - COMPLETE LT15	085982-1	1
6	NUT, M10 THIN	F81033-20	1
7	BOLT, M10X20 SPECIAL	100076-1	1
8	WASHER, 13 FLAT ZINC	F81056-1	2
9	NUT, M12-8 DIN 982 HEX NYLON ZINC LOCK	F81034-2	2
10	BOLT, M12X140-8.8 HEX HEAD ZINC	F81004-35	2

# BED FRAME COMPONENTS

## Section, Bed Frame S

2

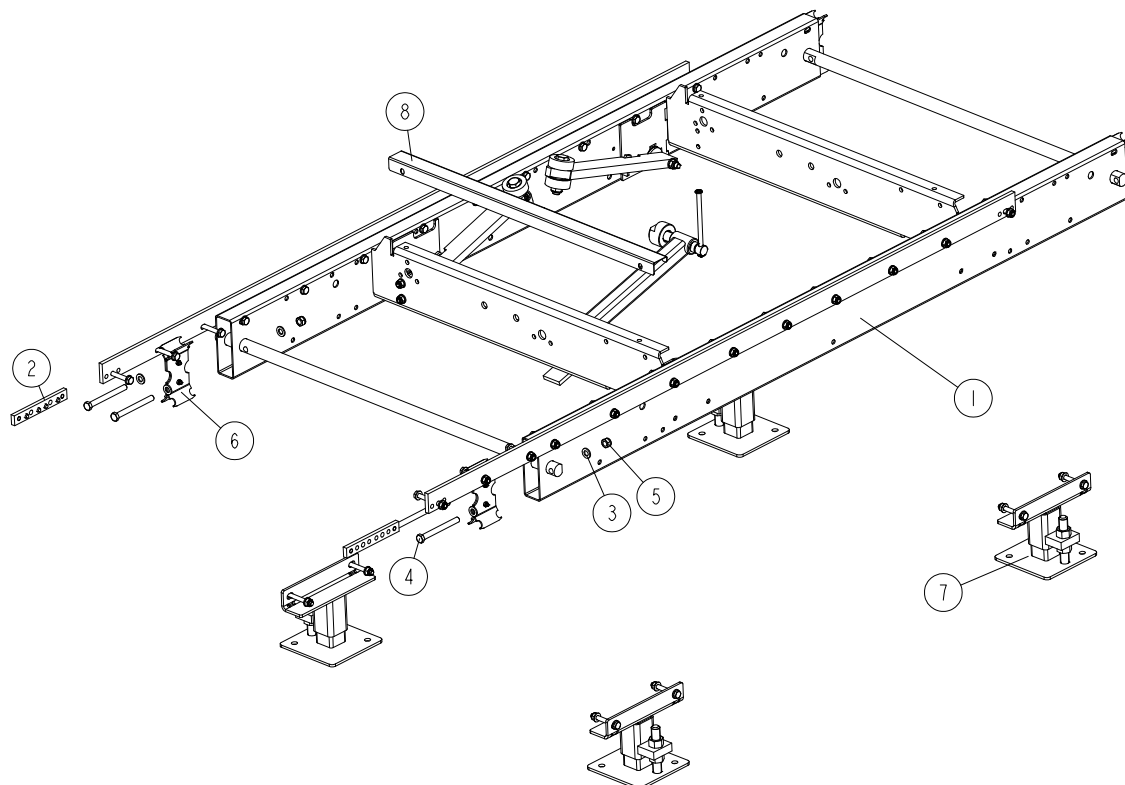
REF.	DESCRIPTION (* indicates parts available in assemblies only)	PART #	QTY	
11	WASHER, 10.5 ZINC FLAT	F81055-1	48	
12	BOLT, M10X75-8.8 HEX HEAD ZINC	F81003-15	20	
13	BOLT, M10X85-8.8 HEX HEAD ZINC	F81003-125	4	
14	NUT, M10-8-B HEX NYLON ZINC LOCK	F81033-1	24	
15	CLAMP, LOG - COMPLETE (LT15WIDE) <a href="#">See Section 2.5</a>	526466	1	
16	ROLLERS ASSEMBLY <a href="#">See Section 2.6</a>	526475	2	
17	CONNECTOR, LT15 BED FRAME SECTION <a href="#">See Section 2.16</a>	506288	2	
18	CAP, CLAMP	T00414	1	

# 2 BED FRAME COMPONENTS

Service Section, S-Type Bed Frame

## 2.2 Service Section, S-Type Bed Frame

538902-S\_001\_EXP  
538902-S\_MANUAL

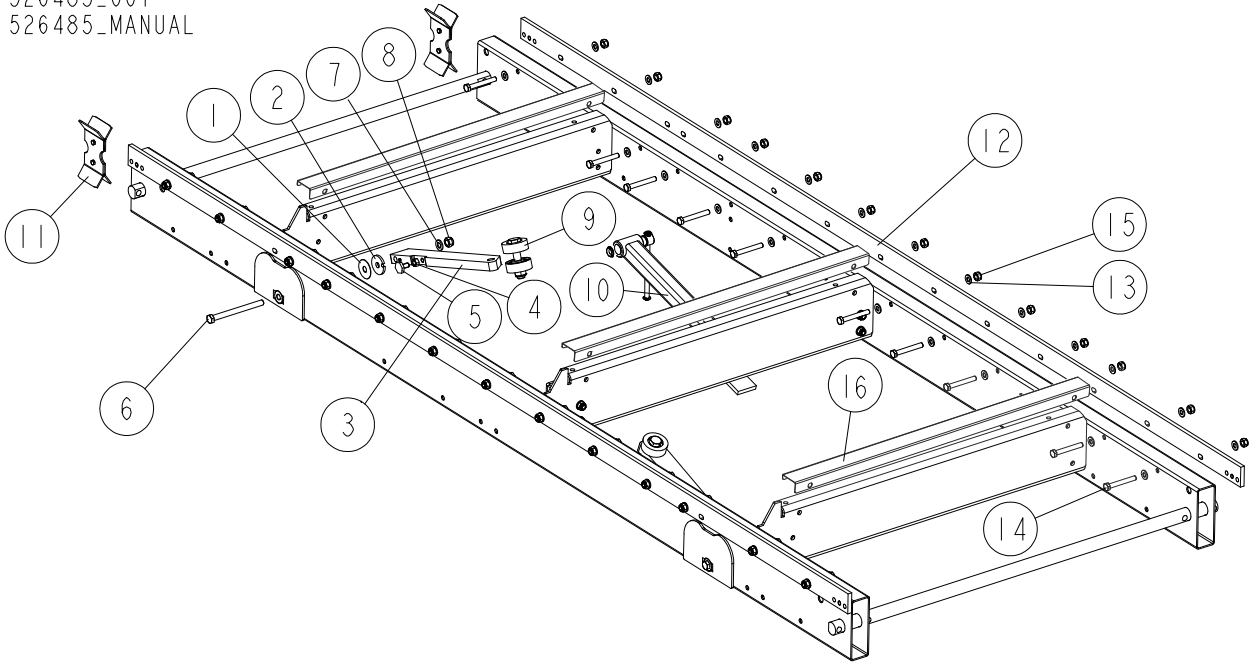


REF.	DESCRIPTION (* indicates parts available in assemblies only)	PART #	QTY
-	<b>BED FRAME SECTION S-TYPE, SERVICE W/FEED (LT15WIDE)</b>	538902-S-P	1
-	<b>SECTION, BED FRAME S-TYPE SERVICE - COMPLETE (LT15WIDE)</b>	538902-S	1
1	SECTION, BED FRAME S-TYPE - COMPLETE <a href="#">See Section 2.1</a>	538902	1
2	CONNECTOR, TRACK RAIL ZINC-PLATED	086659-1	2
3	WASHER, 13 ZINC FLAT	F81056-1	8
4	BOLT, M12x120-8.8 HEX HEAD ZINC	F81004-38	4
5	NUT, M12-8 DIN 982 HEX NYLON ZINC LOCK	F81034-2	4
6	CONNECTOR, LT15 BED FRAME SECTION <a href="#">See Section 2.16</a>	506288	2
7	OUTRIGGER LEG KIT, LT15 <a href="#">See Section 3.1</a>	508240	1
	CHAIN, 08B; LENGTH=1.94 m (153-LINK)	605911	1
	LINK, 08B-1PZ MASTER	091625	2
8	<b>COVER, BED RAIL LT15 WIDE</b>	526476	1



**2.3 SECTION, BED FRAME M-TYPE**

526485\_001  
526485\_MANUAL

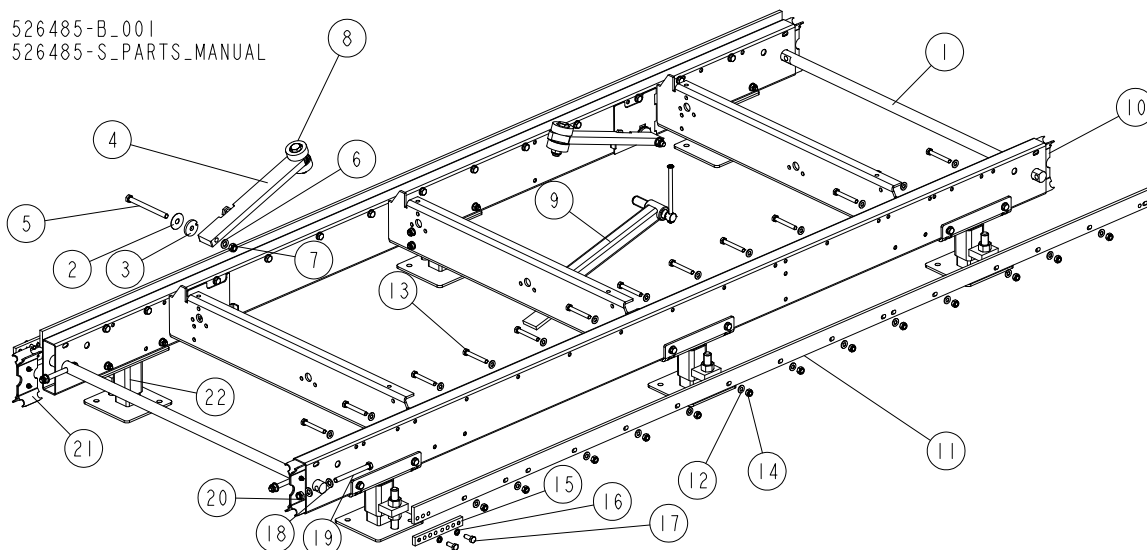


REF.	DESCRIPTION (* indicates parts available in assemblies only)	PART #	QTY
-	<b>SECTION, BED FRAME M-TYPE - COMPLETE (LT15WIDE)</b>	526485	1
1	WASHER, 33/64X1 3/4X1/32 NYLON	014972	2
2	WASHER, 12.5/44-5 PTD.	085981-1	2
-	SUPPORT, SIDE - COMPLETE	526462	2
3	SUPPORT, SIDE - COMPLETE LT15	085982-1	1
4	NUT, M10 DIN439 THIN	F81033-20	1
5	BOLT, M10X20 SPECIAL	100076-1	1
6	BOLT, M12X140-8.8 HEX HEAD ZINC	F81004-35	2
7	WASHER, 13 FLAT ZINC	F81056-1	2
8	NUT, M12 8 HEX NYLON ZINC LOCK	F81034-2	2
9	ROLLERS ASSEMBLY <a href="#">See Section 2.6</a>	526475	2
10	CLAMP, LOG - COMPLETE (LT15WIDE) <a href="#">See Section 2.5</a>	526466	1
11	CONNECTOR, LT15 BED FRAME SECTION <a href="#">See Section 2.16</a>	506288	2
12	RAIL, TRACK LT15 2700	538935-1	2
13	WASHER, 10.5 FLAT ZINC	F81055-1	52
14	BOLT, M10X75-8.8 HEX HEAD ZINC	F81003-15	26
15	NUT, M10 HEX NYLON ZINC LOCK	F81033-1	26
16	COVER, BED RAIL LT15 WIDE (OPTION)	526476	3
	BOLT, M10X25 8.8 HEX HEAD FULL THREAD (OPTION)	F81003-31	2
	WASHER, 10.5 ZINC FLAT (OPTION)	F81055-1	4
	NUT, M10-8-B HEX NYLON ZINC LOCK (OPTION)	F81033-1	2

## 2 BED FRAME COMPONENTS

### Section, M-Type Bed Frame Service LT15WC

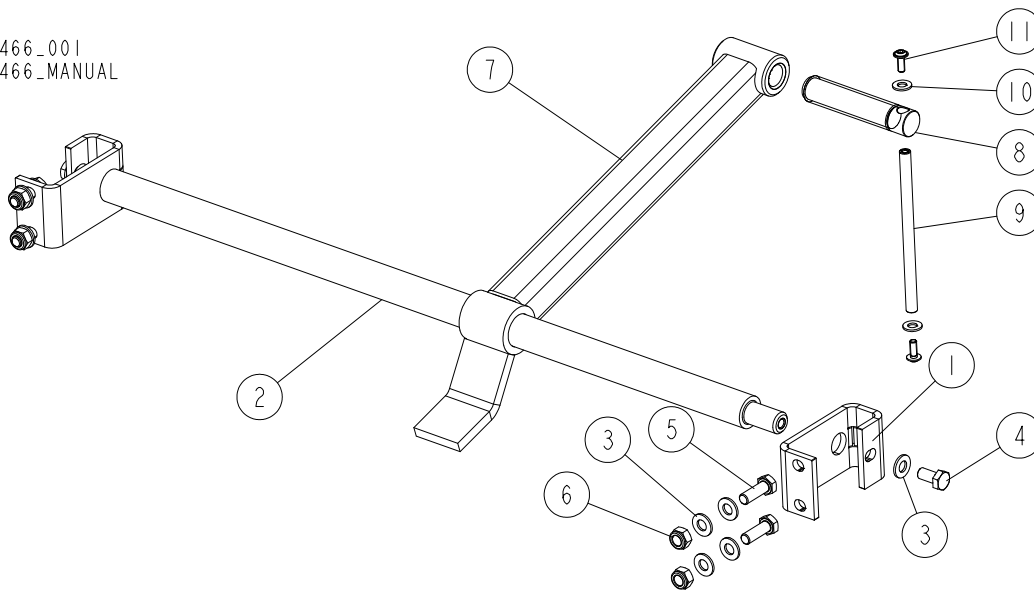
## 2.4 Section, M-Type Bed Frame Service LT15WC



REF.	DESCRIPTION (* indicates parts available in assemblies only)	PART #	QTY
-	<b>SECTION, BED FRAME M-TYPE SERVICE LT15 WIDE W/POWER FEED</b>	526485-S-P	1
-	<b>SERVICE SECTION, M-TYPE BED FRAME LT15WC</b>	526485-S	1
-	SECTION, BED FRAME M-TYPE - COMPLETE (LT15WIDE)	526485	1
1	FRAME, BED WLDMT/PTD. LT15WIDE - 2700	526480-1	1
2	WASHER, 33/64x1 3/4x1/32 NYLON	014972	2
3	WASHER, 12.5/44-5 PTD.	085981-1	2
4	SUPPORT, SIDE - COMPLETE (LT15 WIDE)	526462	2
5	BOLT, M12x140-8.8 HEX HEAD ZINC	F81004-35	2
6	WASHER, 13 ZINC FLAT	F81056-1	2
7	NUT, M12-8 DIN 982 HEX NYLON ZINC LOCK	F81034-2	2
8	ROLLERS ASSEMBLY <a href="#">See Section 2.6</a>	526475	2
9	CLAMP, LOG - COMPLETE (LT15 WIDE) <a href="#">See Section 2.5</a>	526466	1
10	CONNECTOR, LT15 BED FRAME SECTION <a href="#">See Section 2.16</a>	506288	2
11	RAIL, TRACK LT15 2700	538935-1	2
12	WASHER, 10.5 ZINC FLAT	F81055-1	52
13	BOLT, M10X75-8.8 HEX HEAD ZINC	F81003-15	26
14	NUT, M10 HEX NYLON ZINC LOCK	F81033-1	26
15	CONNECTOR, TRACK RAIL ZINC-PLATED	086659-1	2
16	WASHER, Z 10.2 SPLIT LOCK ZINC	F81055-2	4
17	BOLT, M10X25 8.8 HEX HEAD FULL THREAD ZINC	F81003-11	4
18	WASHER, 13 FLAT ZINC	F81056-1	8
19	BOLT, M12x120-8.8 HEX HEAD ZINC	F81004-38	4
20	NUT, M12-8 DIN 982 HEX NYLON ZINC LOCK	F81034-2	4
21	CONNECTOR, LT15 BED FRAME SECTION <a href="#">See Section 2.16</a>	506288	2
22	OUTRIGGER LEG KIT, M-TYPE FRAME LT15 <a href="#">See Section 2.7</a>	550415	1
	CHAIN, 08B; LENGTH=2.78 M (219-LINK)	521433	1
	LINK, 08B-1PZ MASTER	091625	2

2.5 Log Clamp

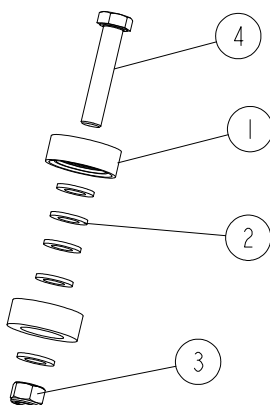
526466\_001  
526466\_MANUAL



REF.	DESCRIPTION (* indicates parts available in assemblies only)	PART #	QTY
-	<b>CLAMP, LOG - COMPLETE (LT15WIDE)</b>	526466	1
1	BRACKET, CLAMP MOUNT LT15	506535-1	2
2	ROD, LOG CLAMP MAIN	526467-1	1
3	WASHER, 10.5 FLAT ZINC	F81055-1	10
4	BOLT, M10X20-8.8 HEX HEAD FULL THREAD ZINC	F81003-1	2
5	BOLT, M10X30-8.8 HEX HEAD FULL THREAD ZINC	F81003-2	4
6	NUT, M10 HEX NYLON ZINC LOCK	F81033-1	4
7	ARM, LX100 LOG CLAMP	521465-1	1
-	BOLT, LOG CLAMP - COMPLETE	507563	1
8	BOLT, LOG CLAMP	507463	1
-	ROD, COMPLETE	511924	1
9	ROD, ZINC-PLATED	511923-1	1
10	WASHER, 8.4 FLAT ZINC	F81054-1	2
11	SCREW, M6X16 BN 11252 "BOSSARD" BUTTON HEAD SOCKET CAP W/FLANGE	F81001-24	2

## 2.6 Rollers Assembly

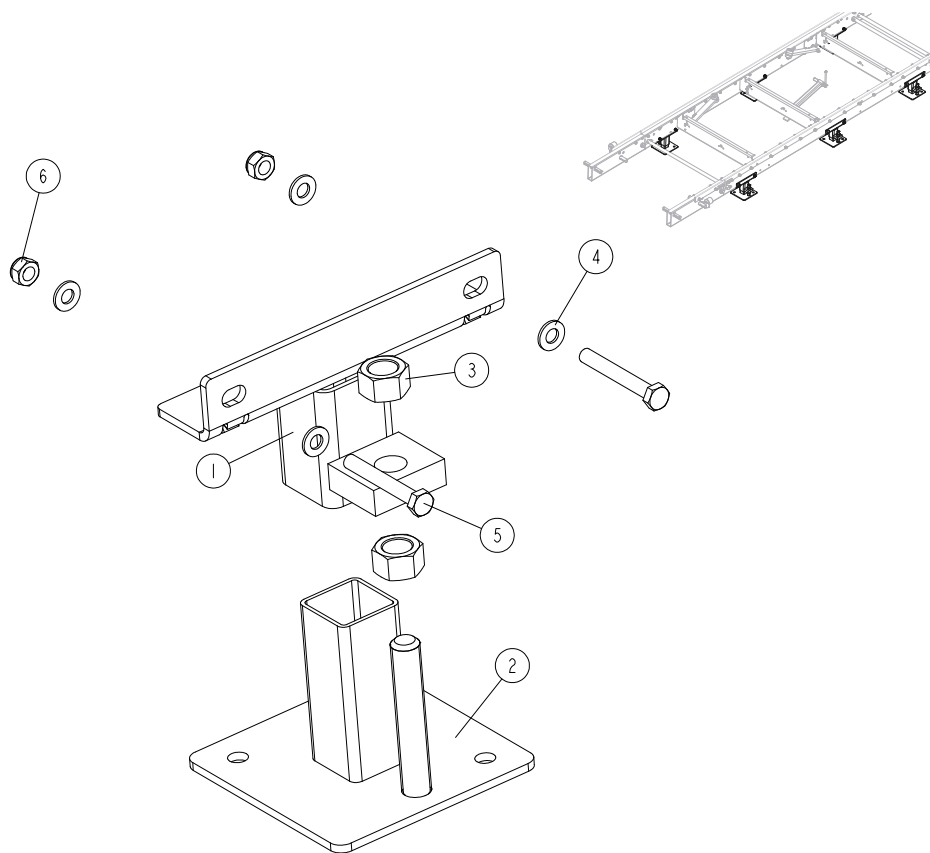
526475\_001  
 526475\_MANUAL



REF.	DESCRIPTION (* indicates parts available in assemblies only)	PART #	QTY	
-	<b>ROLLERS ASSEMBLY</b>	526475	1	
1	ROLLER, SIDE SUPPORT	015014-1	2	
2	WASHER, 17 SPLIT LOCK ZINC	F81058-1	5	
3	NUT, M16-8 HEX NYLON ZINC LOCK	F81036-2	1	
4	BOLT, M16X80-8.8 HEX HEAD ZINC	F81006-41	1	

**2.7 Outrigger Leg Kit (LT15WC)**

550415\_001  
 550415\_MANUAL

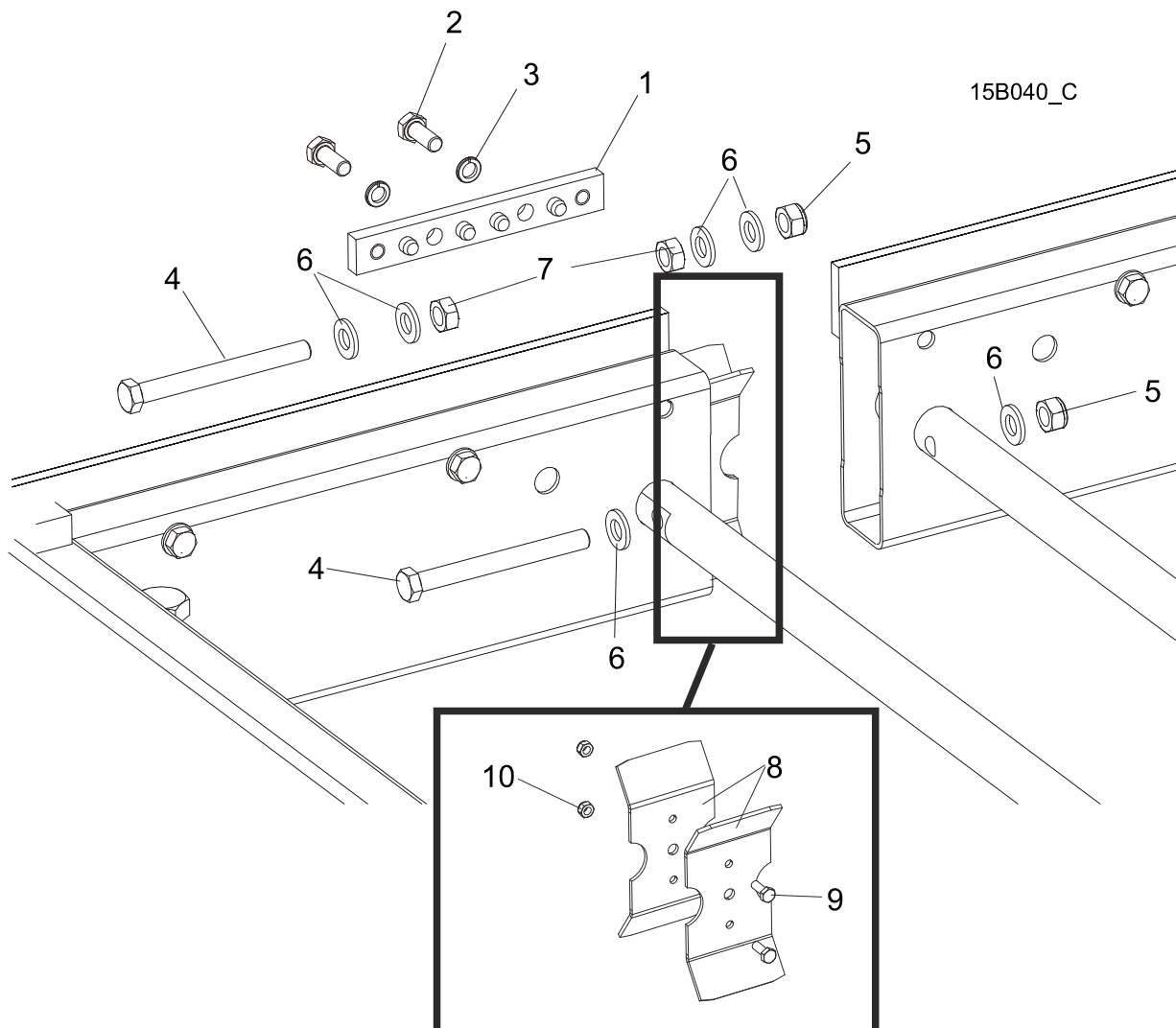


REF.	DESCRIPTION (* indicates parts available in assemblies only)	PART #	QTY
-	<b>OUTRIGGER LEG KIT, M-TYPE FRAME LT15</b>	550415	1
1	FOOT WELDMENT - UPPER PART (LOW)	550408-1	6
2	FOOT, TABLE LEG	099281-1	6
3	NUT, M20-8- HEX ZINC	F81037-1	12
4	WASHER, 10.5 FLAT ZINC	F81055-1	24
5	BOLT, M10X75-8.8 HEX HEAD ZINC	F81003-15	12
6	NUT, M10 HEX NYLON ZINC LOCK	F81033-1	12

# 2 BED FRAME COMPONENTS

## Bed Frame Connectors

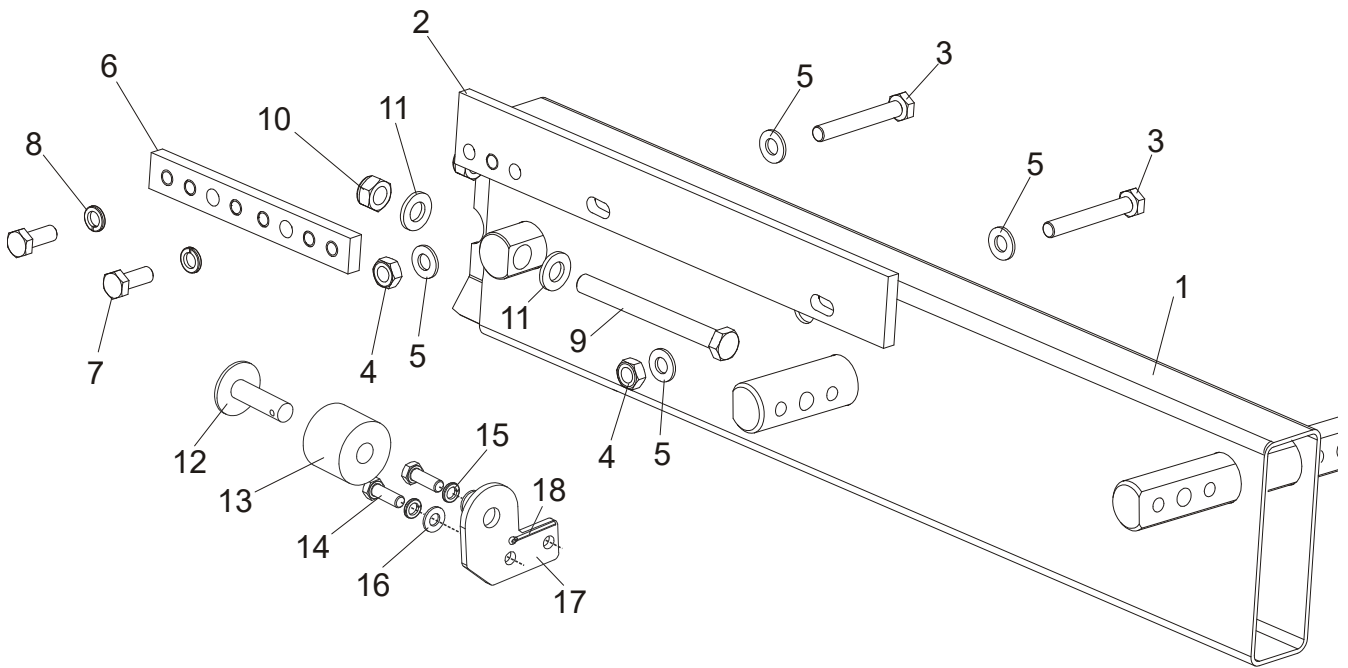
### 2.8 Bed Frame Connectors



REF.	DESCRIPTION (◆ indicates parts available in assemblies only)	PART #	Qty
1	CONNECTOR, TRACK RAIL ZINC-PLATED LT15	086659-1	1
2	BOLT, M10x25-8.8 HEX HEAD FULL THREAD ZINC	F81003-11	2
3	WASHER, 10.2 SPLIT LOCK ZINC	F81055-2	2
4	BOLT, M12x120 8.8 HEX HEAD ZINC	F81004-38	2
5	NUT, M12-8 HEX NYLON ZINC LOCK	F81034-2	2
6	WASHER, 13 FLAT ZINC	F81056-1	6
7	NUT, M12-8-B HEX ZINC	F81034-1	2
	CONNECTOR, LT15 BED FRAME SECTION	506288 <sup>1</sup>	2
8	PLATE, BED SECTION CONNECTOR	506287-1	1
9	BOLT, M6x16 8.8 HEX HEAD FULL THREAD ZINC	F81001-15	2
10	NUT, M6-8-B HEX NYLON ZINC LOCK	F81031-2	2

<sup>1</sup> 2 pieces for each bed frame section

## 2.9 Mast Track Extension (M-Type Frame)



15B009d

REF.	DESCRIPTION (◆ indicates parts available in assemblies only)	PART #	Qty
	<b>EXTENSION, MAST TRACK FRONT - COMPLETE</b>	500845	1
	<b>EXTENSION, MAST TRACK REAR - COMPLETE</b>	500843	1
1	EXTENSION, MAST TRACK LT15	500844-1	1
2	RAIL, EXTENSION ZINC-PLATED TRACK	094250-1	1
3	BOLT, M10X75-8.8 HEX HEAD ZINC	F81003-15	2
4	NUT, M10-8-B HEX NYLON ZINC LOCK	F81033-1	2
5	WASHER, 10.5 ZINC FLAT	F81055-1	4
6	FRAME MOUNTING STRAP, ZINC-PLATED LT15	086659-1	1
7	BOLT, M10x30-8.8 HEX HEAD FULL THREAD ZINC	F81003-2	2
8	WASHER, 10.2 SPLIT LOCK ZINC	F81055-2	2
9	BOLT, M12x120 8.8 HEX HEAD ZINC	F81004-38	2
10	NUT, M12-8 HEX NYLON ZINC LOCK	F81034-2	2
11	WASHER, 13 ZINC FLAT	F81056-1	4
12	MOUNT WELDMENT, SAW HEAD STOP	086182-1	1
13	BUSHING, 11/16X2 1/8X1 3/4 RUBBER	P12165	1
14	BOLT, M10x30-5.8 HEX HEAD FULL THREAD ZINC	F81003-2	2
15	WASHER, 10.2 SPLIT LOCK ZINC	F81055-2	2
16	WASHER, 10.5 ZINC FLAT	F81055-1	2
17	PLATE, POWER FEED BRACKET, LT15 ZINC-PLATED.	501414-1	1
18	PIN, S-Zn 4x25 COTTER	F81043-2, F05012-1	1

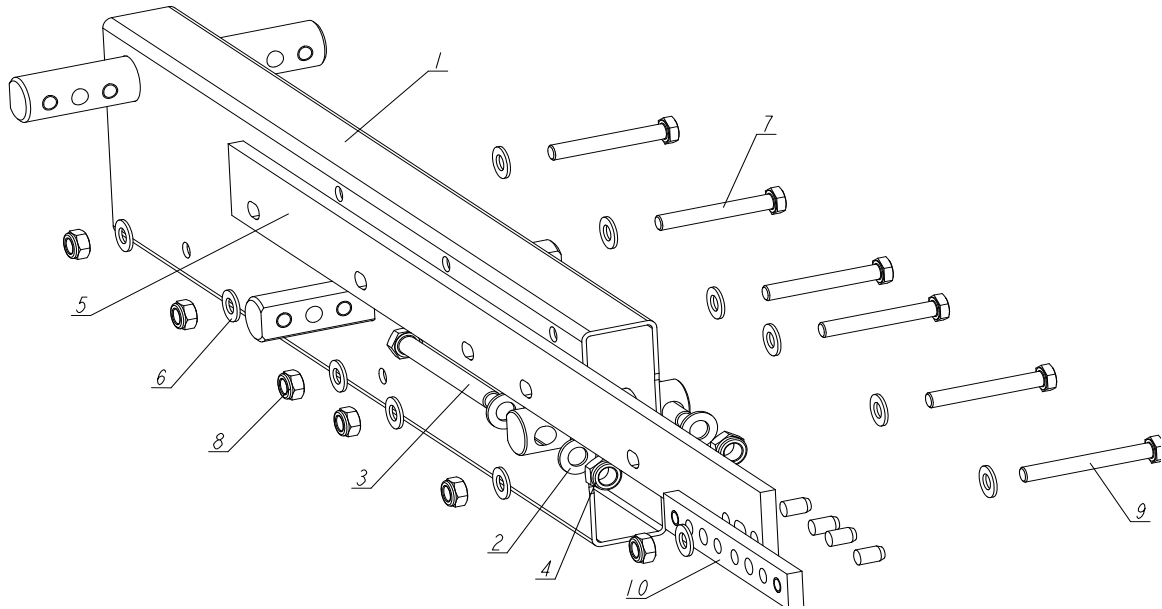
# 2

## BED FRAME COMPONENTS

### Mast Track Extension, Rear (S-Type Frame)

#### 2.10 Mast Track Extension, Rear (S-Type Frame)

538808\_001\_A  
538808\_MANUAL

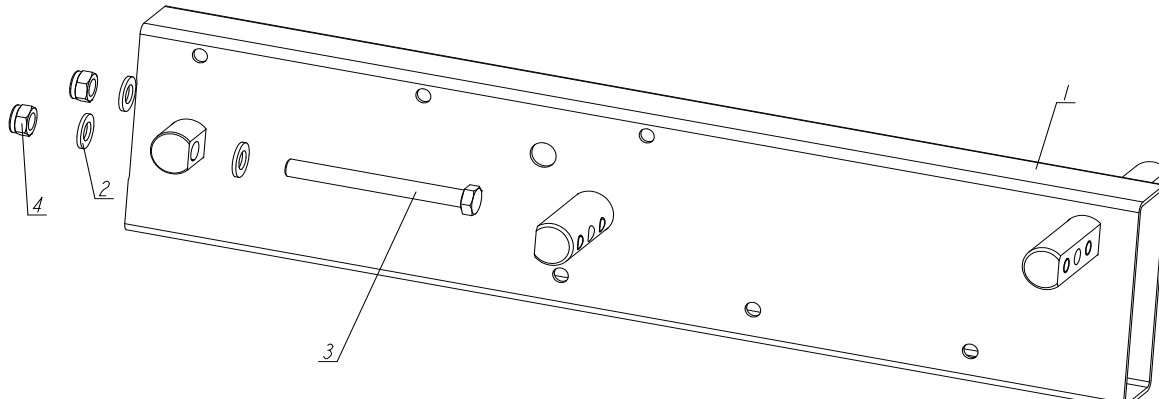


REF.	DESCRIPTION (* indicates parts available in assemblies only)	PART #	QTY
-	EXTENSION, MAST TRACK REAR - COMPLETE	538808	1
	EXTENSION, MAST TRACK REAR - COMPLETE	538905	1
1	EXTENSION, MAST TRACK	538809-1	1
2	WASHER, 13 FLAT ZINC	F81056-1	4
3	BOLT, M12X120-8.8 HEX HEAD ZINC	F81004-38	2
4	NUT, M12-8 DIN 982 HEX NYLON ZINC LOCK	F81034-2	2
5	RAIL, EXTENSION ZINC-PLATED TRACK	538811-1	1
6	WASHER, 10.5 FLAT ZINC	F81055-1	12
7	BOLT, M10X75-8.8 HEX HEAD ZINC	F81003-15	5
8	NUT, M10-8-B HEX NYLON ZINC LOCK	F81033-1	6
9	BOLT, M10X85-8.8 HEX HEAD ZINC	F81003-125	1
10	CONNECTOR, TRACK RAIL ZINC-PLATED	086659-1	1



**2.11 Mast Track Extension, Front (S-Type Frame)**

538807\_001\_A  
538807\_MANUALS



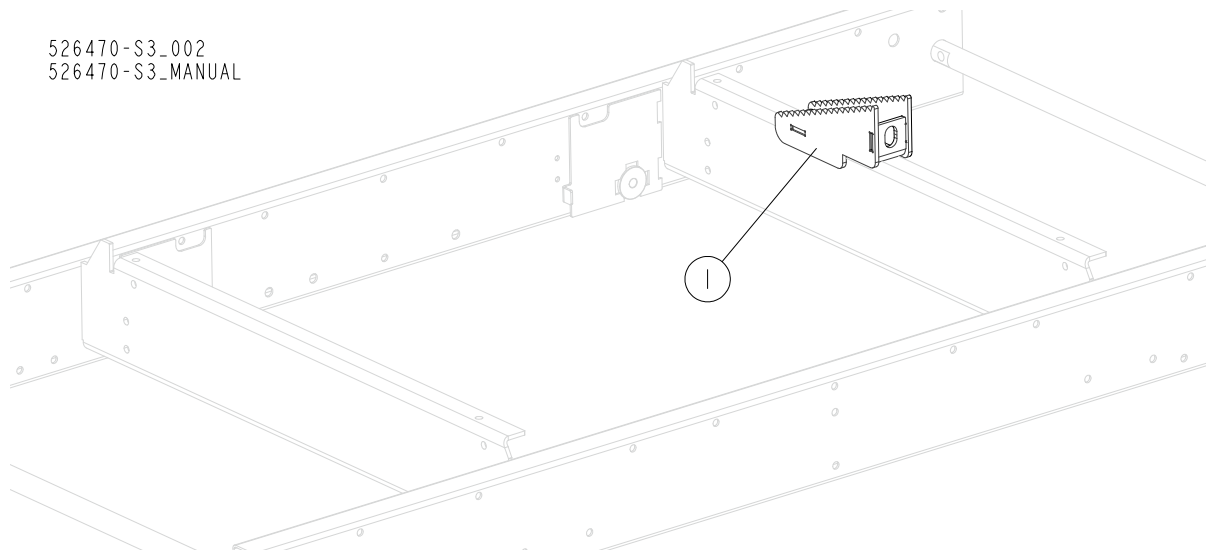
REF.	DESCRIPTION (* indicates parts available in assemblies only)	PART #	QTY
-	EXTENSION, MAST TRACK FRONT - COMPLETE	538807	1
1	EXTENSION, MAST TRACK	538809-1	1
2	WASHER, 13 FLAT ZINC	F81056-1	4
3	BOLT, M12X120-8.8 HEX HEAD ZINC	F81004-38	2
4	NUT, M12-8 DIN 982 HEX NYLON ZINC LOCK	F81034-2	2

# 2 BED FRAME COMPONENTS

## Wedge

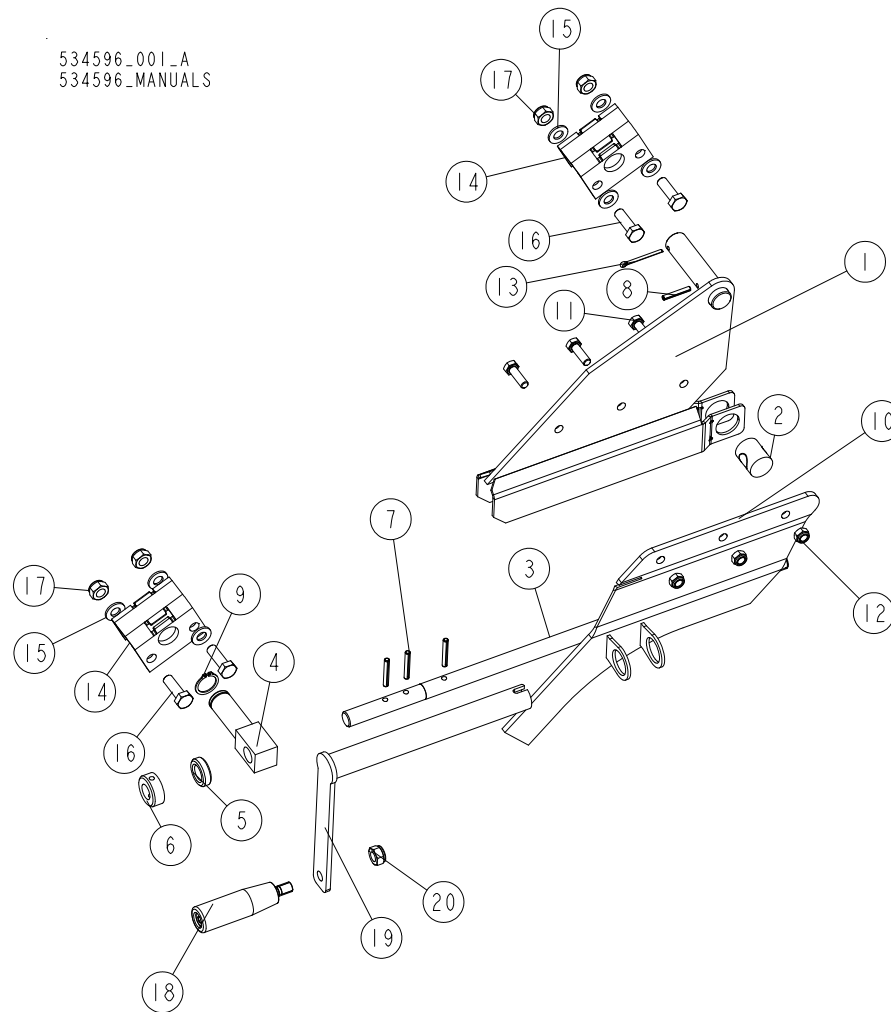
### 2.12 Wedge

526470-S3\_002  
526470-S3\_MANUAL



REF.	DESCRIPTION (* indicates parts available in assemblies only)	PART #	QTY
1	WEDGE	526473-1	1
	WEDGE, LT10/15 BED W/SERVICE PLATE (OPTION)	515360-1	1

**2.13 Manual Toe Board Assembly (Option)**



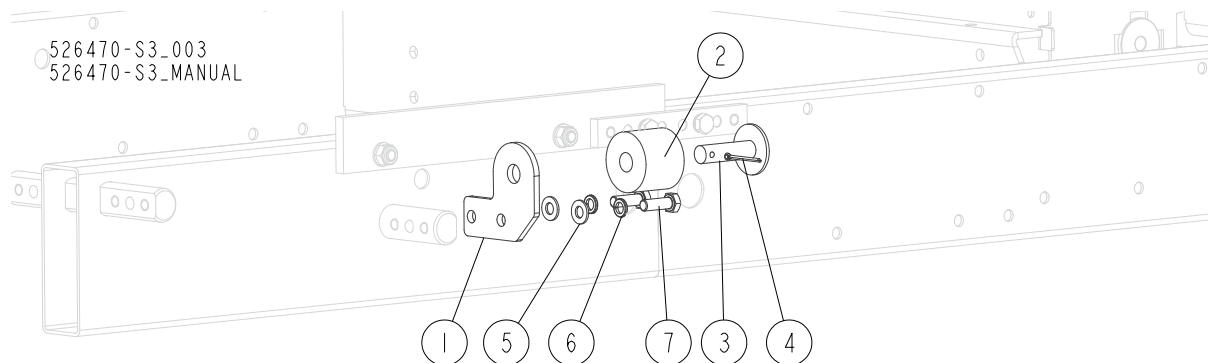
REF.	DESCRIPTION (* indicates parts available in assemblies only)	PART #	QTY
-	<b>MANUAL TOE BOARD ASSEMBLY (SINGLE)</b>	550806	1
-	MANUAL TOE BOARD ASSEMBLY, LT15	534573	1
-	<b>MANUAL TOE BOARD ASSEMBLY (DOUBLE)</b>	534596	1
-	MANUAL TOE BOARD ASSEMBLY, LT15	534573	2
-	CRANK, TOE BOARD - COMPLETE	534595	1
1	BRACKET WELDMENT, TOE BOARD PTD.	094927-1	1
2	PIN, THREADED (MANUAL TOE BOARD)	090017	1
3	ROD, THREADED (MANUAL TOE BOARD)	580809-1	1
4	PIVOT 1, MANUAL TOE BOARD SHAFT ZINC-PLATED	094931-1	1
5	BEARING, 5/8 BALL THRUST	581701	1
6	RING, 16 RETAINING	F81039-30	1
7	PIN, 5X35-N-C ROLL	F81044-9	3
8	PIN, ROLL	F81044-7	1
9	RING, Z 22 OUTSIDE RETAINING	F81090-24	1
10	PLATE, MANUAL TOE BOARD COVER - COMPLETE	534593-1	1
11	BOLT, M8X25-8.8-B HEX HEAD FULL THREAD ZINC	F81002-5	3

## 2

**BED FRAME COMPONENTS***Manual Toe Board Assembly (Option)*

REF.	DESCRIPTION (* indicates parts available in assemblies only)	PART #	QTY	
12	NUT, M8-8-B HEX NYLON ZINC LOCK	F81032-2	3	
13	PIN, S-ZN 4X25 COTTER	F81043-2	1	
14	PLATE	534574-1	2	
15	WASHER, 10.5 FLAT ZINC	F81055-1	7	
16	SCREW, DIN933-M10X30-8.8-A2E HEX CAP FULL THREAD	F81003-111	4	
17	NUT, M10-8-B HEX NYLON ZINC LOCK	F81033-1	4	
-	CRANK ASSEMBLY, MANUAL TOE BOARD	500600	1	
18	KNOB, L=85 M10, RO11-M10 PLASTIC CRANK HANDLE	086338	1	
19	CRANK, MANUAL TOE BOARD	500599-1	1	
20	NUT, M10-8-B HEX NYLON ZINC LOCK	F81033-1	1	

**2.14 BUMPER, SAW HEAD**

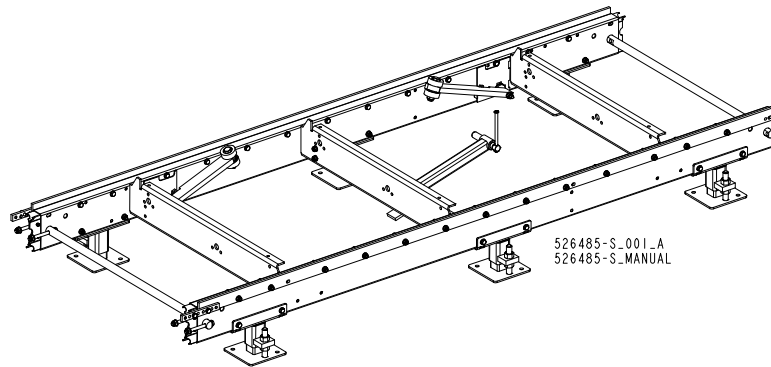
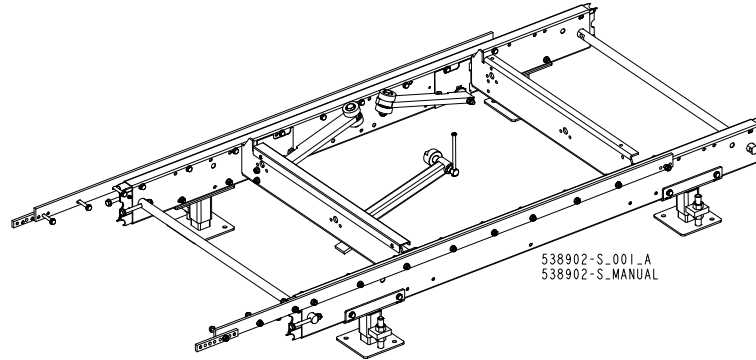


REF.	DESCRIPTION (* indicates parts available in assemblies only)	PART #	QTY
1	PLATE, POWER FEED BRACKET, LT15	501414-1	1
2	BUSHING, 11/16X2 1/8X1 3/4 RUBBER	P12165	1
3	MOUNT WELDMENT, SAW HEAD STOP	086182-1	1
4	PIN, S-ZN 4X25 COTTER	F81043-2	1
5	WASHER, 10.5 FLAT ZINC	F81055-1	2
6	WASHER, Z 10.2 SPLIT LOCK ZINC	F81055-2	2
7	BOLT, M10X30-8.8 HEX HEAD FULL THREAD ZINC	F81003-2	2

# 2 BED FRAME COMPONENTS

Additional Bed Sections w/Adjustable Outriggers

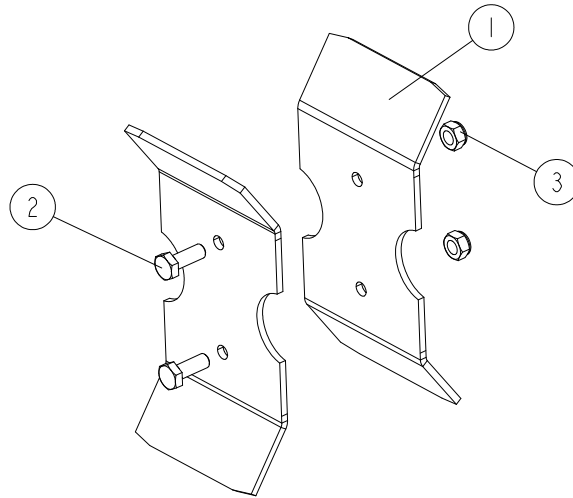
## 2.15 Additional Bed Sections w/Adjustable Outriggers



REF.	DESCRIPTION (◆ indicates parts available in assemblies only)	PART #	Qty	
	BED SECTION, LT15 WIDE UNIVERSAL S-TYPE - COMPLETE	538902-S	1	
	BED SECTION, LT15 WIDE UNIVERSAL M-TYPE - COMPLETE	526485-S	1	

2.16 LT15 Bed Frame Section Connector (No. 506288)

506288\_001  
506288\_MANUAL

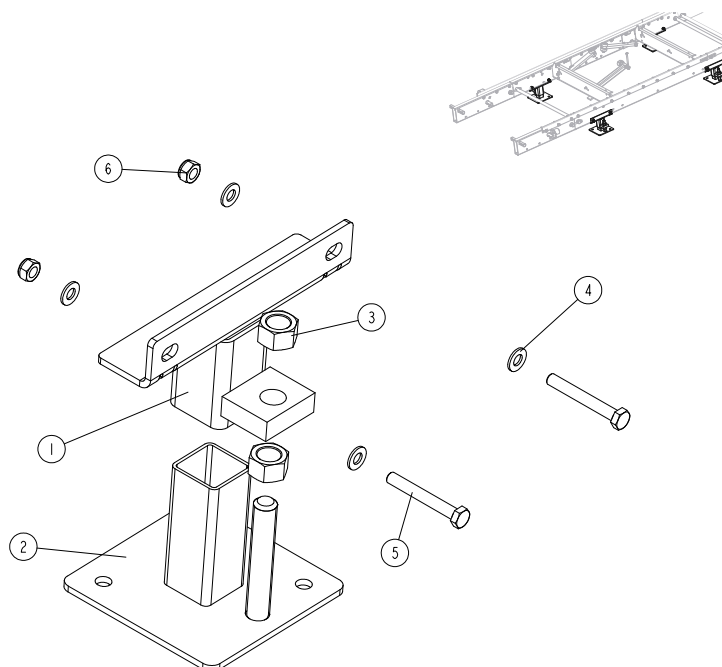


REF.	DESCRIPTION (* indicates parts available in assemblies only)	PART #	QTY
-	<b>CONNECTOR, LT15 BED FRAME SECTION</b>	506288	1
1	PLATE, BED SECTION CONNECTOR	506287-1	2
2	BOLT, M6X16-8.8 HEX HEAD FULL THREAD ZINC	F81001-15	2
3	NUT, M6-8-B HEX NYLON ZINC LOCK	F81031-2	2

## SECTION 3 LEG ASSEMBLY

### 3.1 Leg Assembly, S-Type Frame

508240\_001  
 508240\_MANUAL

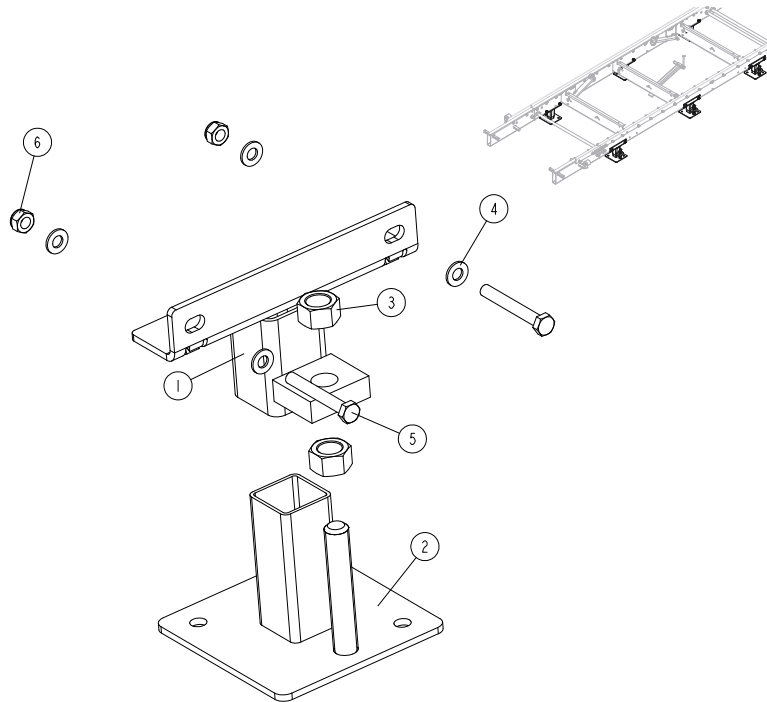


REF.	DESCRIPTION (* indicates parts available in assemblies only)	PART #	QTY
-	<b>OUTRIGGER LEG KIT, LT15</b>	508240	1
1	FOOT WELDMENT - UPPER PART (LOW)	550408-1	4
2	FOOT, TABLE LEG PTD.	099281-1	4
3	NUT,M20-8-HEXZINC	F81037-1	8
4	WASHER, 10.5 FLAT ZINC	F81055-1	16
5	BOLT, M10X75-8.8 HEX HEAD ZINC	F81003-15	8
6	NUT, M10 HEX NYLON ZINC LOCK	F81033-1	8



### 3.2 Leg Assembly, M-Type Frame

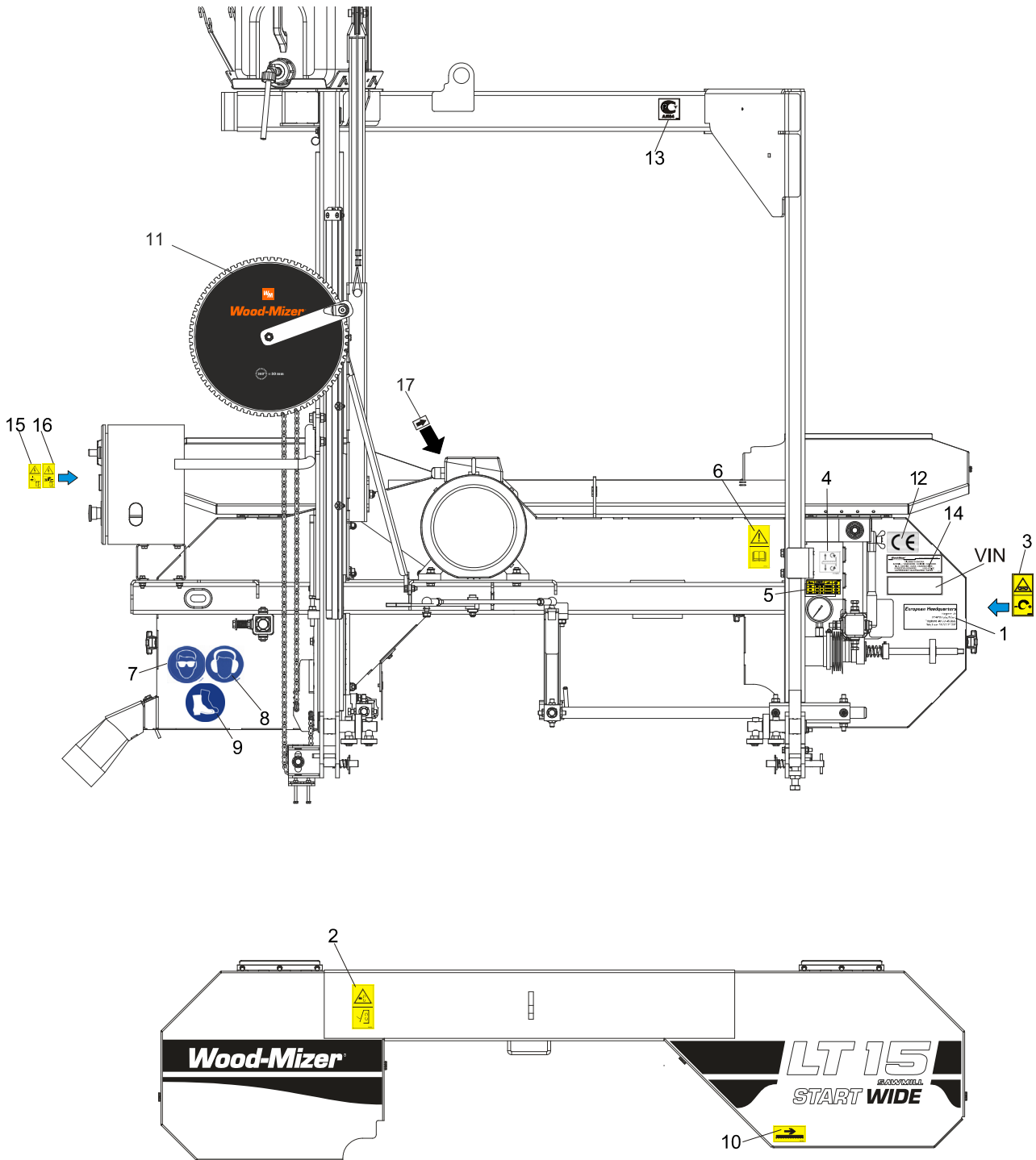
550415\_001  
 550415\_MANUAL



REF.	DESCRIPTION (* indicates parts available in assemblies only)	PART #	QTY
-	<b>OUTRIGGER LEG KIT, M-TYPE FRAME LT15</b>	550415	1
1	FOOT WELDMENT - UPPER PART (LOW)	550408-1	6
2	FOOT, TABLE LEG	099281-1	6
3	NUT, M20-8- HEX ZINC	F81037-1	12
4	WASHER, 10.5 ZINC FLAT	F81055-1	24
5	BOLT, M10X75-8.8 HEX HEAD ZINC	F81003-15	12
6	NUT, M10-8-B HEX NYLON ZINC LOCK	F81033-1	12

## SECTION 4 DECALS

### 4.1 Saw Head Decals, LT15WA AC



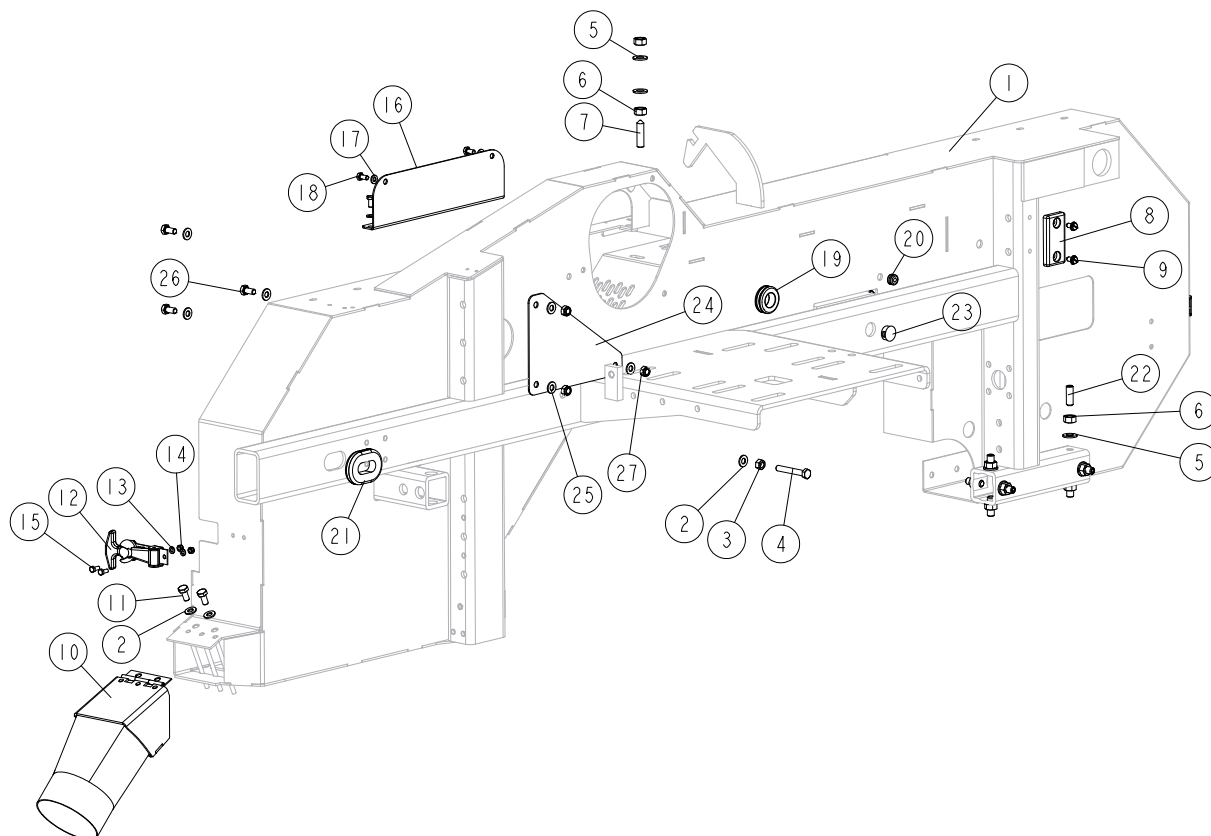
REF.	DESCRIPTION (◆ Indicates Parts Available in Assemblies Only)	PART #	QTY
	<b>PICTOGRAM DECALS KIT, LT15WC AC</b>	591105	1
	DECAL, SAWMILL TYPE LT15WC AC	591106	1
<b>1</b>	DECAL, EUROPEAN HEADQUARTERS ADDRESS	015841	1
<b>2</b>	DECAL, "CLOSE GUARDS AND COVERS BEFORE OPERATING."	099220	1

3	DECAL, BLADE TENSION (PICTOGRAM)	099219	1	
4	DECAL, BLADE ALIGNMENT	P11789	1	
5	DECAL, BLADE TENSION INDICATOR SETTING	510643	1	
6	DECAL, READ OPERATOR'S MANUAL (PICTOGRAM)	096317	1	
7	DECAL, EYE PROTECTION WARNING (PICTOGRAM)	S12004G	1	
8	DECAL, EAR PROTECTION WARNING (PICTOGRAM)	S12005G	1	
9	DECAL, USE SAFETY BOOTS (PICTOGRAM)	501465	1	
10	DECAL, BLADE MOVEMENT DIRECTION (PICTOGRAM)	096321	1	
11	DECAL, UP/DOWN ASSEMBLY LT15WA	586717	1	
	DECAL, "KEEP A SAFE DISTANCE" (PICTOGRAM)	099221	2 <sup>1</sup>	
	DECAL, BLADE SETTING	P85066	1	
12	<b>DECAL, CE CERTIFIED SAWMILL</b>	P85070	1	
13	<b>DECAL, RUSSIAN SAFETY CERTIFICATION</b>	099401	1	
14	<b>DECAL, INTERNATIONAL SAWMILL NAME</b>	501466	1	
15	<b>DECAL, HAZARDOUS VOLTAGE INSIDE THE ELECTRIC BOX (PICTOGRAM)</b>	096316	1	
16	<b>DECAL, "REMOVE THE PLUG BEFORE OPENING THE ELECTRIC BOX " (PICTOGRAM)</b>	096319	1	
17	<b>DECAL, MOTOR REVOLUTIONS DIRECTION</b>	S20097	1	

<sup>1</sup> 2 pieces for each bed frame section

## SECTION 5 SAW HEAD

### 5.1 Covers, grommets

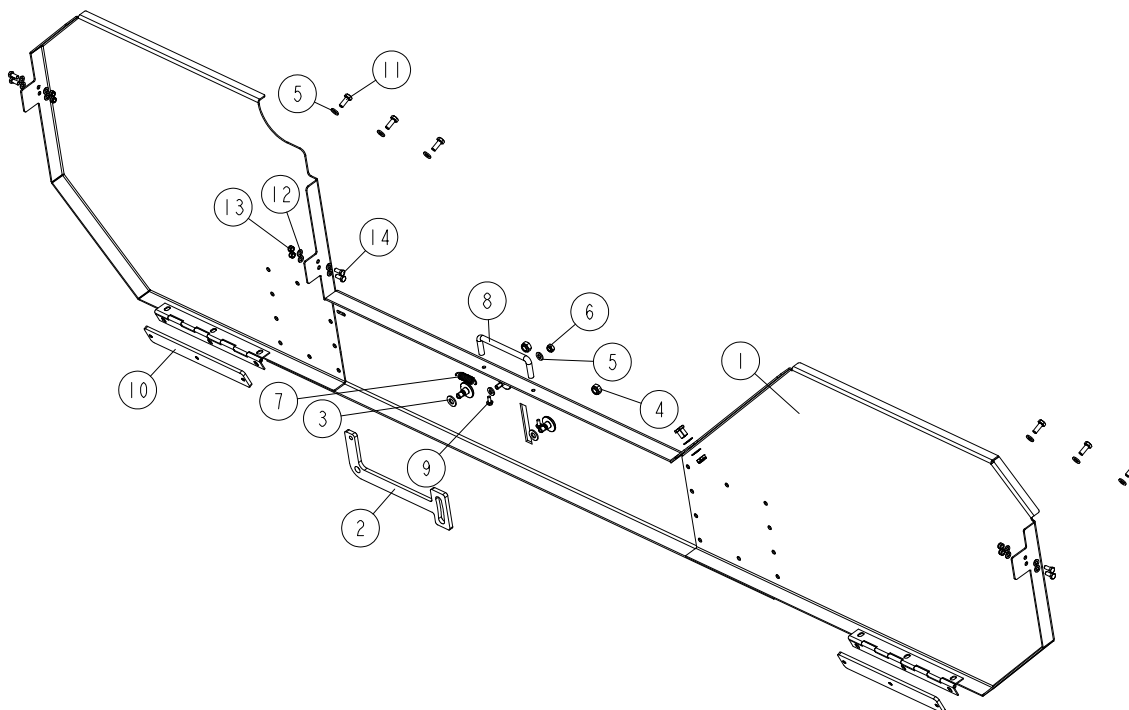


REF.	DESCRIPTION (* indicates parts available in assemblies only)	PART #	QTY
1	SAW HEAD WELDMENT/PTD., LT15WC	550880-1	1
2	WASHER, 8.4 FLAT ZINC	F81054-1	3
3	NUT, M8-8-B HEX ZINC	F81032-1	1
4	BOLT, M8X55-8.8 HEX HEAD ZINC	F81002-8	1
5	WASHER, 10.5 FLAT ZINC	F81055-1	10
6	NUT, M10 8 HEX ZINC	F81033-3	10
7	SCREW, M10X40-45H-GEOMET HEX SOCKET SET W/FLAT POINT	F81003-61	1
8	PAD, CATAPILLAR TRACK	P13576	1
9	BOLT, 1/4-20X1/2 SL HEX HEAD	F05015-1	2
10	SAWDUST CHUTE	100903-1	1
11	BOLT, M8X16-8.8-B HEX HEAD FULL THREAD ZINC	F81002-20	2
12	LATCH, FLEXIBLE DRAW	014829	4
13	WASHER, 5.3 FLAT ZINC	F81052-1	8
14	NUT, M5-8 DIN985 HEX NYLON ZINC LOCK	F81030-2	8
15	BOLT, M5X12 8.8 HEX HEAD FULL THREAD ZINC	F81000-5	8
16	PLATE, COVER	096788-1	1
17	WASHER, 6.4 FLAT ZINC	F81053-1	4
18	BOLT, M6X12 8.8 HEX HEAD FULL THREAD ZINC	F81001-7	4
19	GROMMET, 22MM I.D. RUBBER	087400	1

REF.	DESCRIPTION (* indicates parts available in assemblies only)	PART #	QTY	
20	GROMMET, 6MM I.D. RUBBER	085338	1	
21	GROMMET, 1 X 1 3/4 OVAL RUBBER	085613	1	
22	SCREW, M10X30-33H-GEOMET HEX SOCKET SET W/FLAT POINT	F81003-35	8	
23	CAP, 20.6 HEYMAN DP-812 HOLE	086811	1	
24	PLATE, COVER PTD.	094247-1	1	
25	WASHER, 8.4 FLAT ZINC	F81054-1	6	
26	BOLT, M8X16-8.8-B HEX HEAD FULL THREAD ZINC	F81002-20	3	
27	NUT, M8-8-B HEX NYLON ZINC LOCK	F81032-2	3	

**5.2 Saw Head Housing Cover LT15WC (No. 531636)**

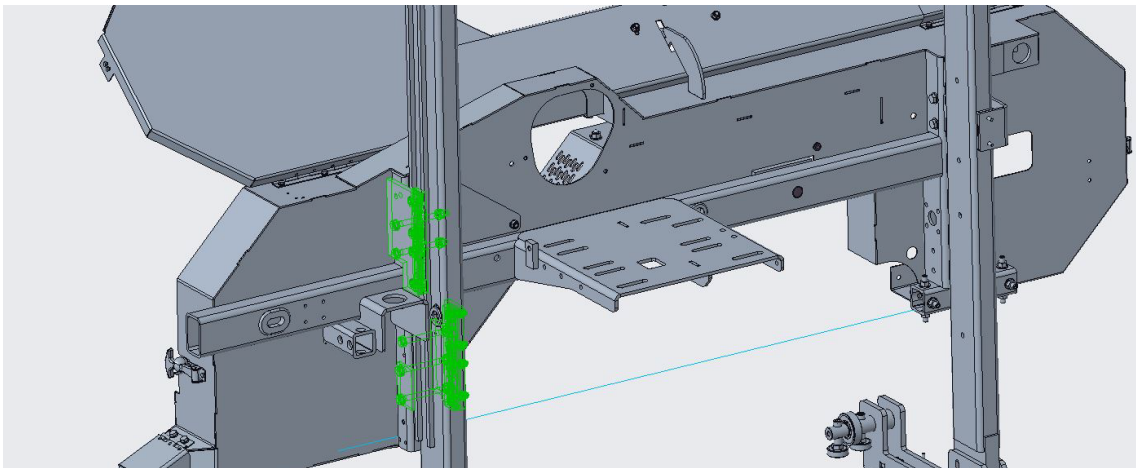
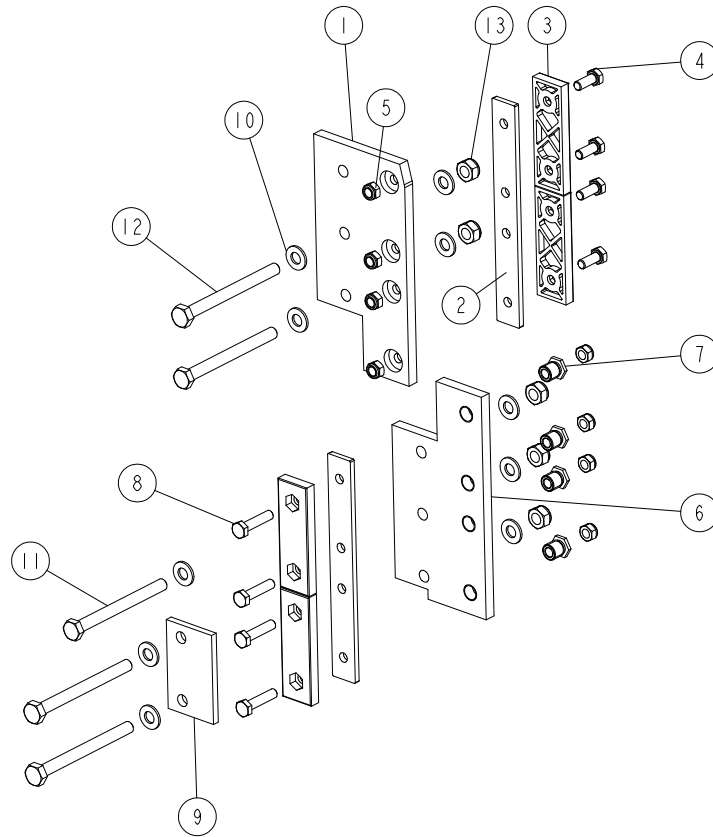
531636\_001\_A  
531636\_MANUAL



REF.	DESCRIPTION (* indicates parts available in assemblies only)	PART #	QTY
-	<b>COVER, LT15WC CE SAW HEAD HOUSING - COMPLETE</b>	531636	1
1	COVER WELDMENT, SAW HEAD LT15WC CE PTD.	531635-1	1
2	PAWL, LT20 LOCKING PTD.	090643-1	1
3	WASHER, 8.4 FLAT ZINC	F81054-1	2
4	NUT, M8-8-B HEX NYLON ZINC LOCK	F81032-2	2
5	WASHER, 6.4 FLAT ZINC	F81053-1	8
6	NUT, M6-8-B HEX NYLON ZINC LOCK	F81031-2	1
7	SPRING, 1.6X12X38 EXTENSION	092208	1
8	HANDLE W/BOLTS	P08065	1
9	BOLT, #8-32X3/8 SELF-TAPPING	F05015-8	2
10	PLATE WELDMENT, COVER MOUNTING	086701-1	2
11	BOLT, M6X16-8.8 HEX HEAD FULL THREAD ZINC	F81001-15	6
12	WASHER, 5.3 FLAT ZINC	F81052-1	16
13	NUT, M5-8 DIN985 HEX NYLON ZINC LOCK	F81030-2	8
14	BOLT, M5X12 8.8 HEX HEAD FULL THREAD ZINC	F81000-5	8

### 5.3 Left Up/Down Slide Pads Assembly (No. 531633)

531633\_001  
531633\_MANUAL



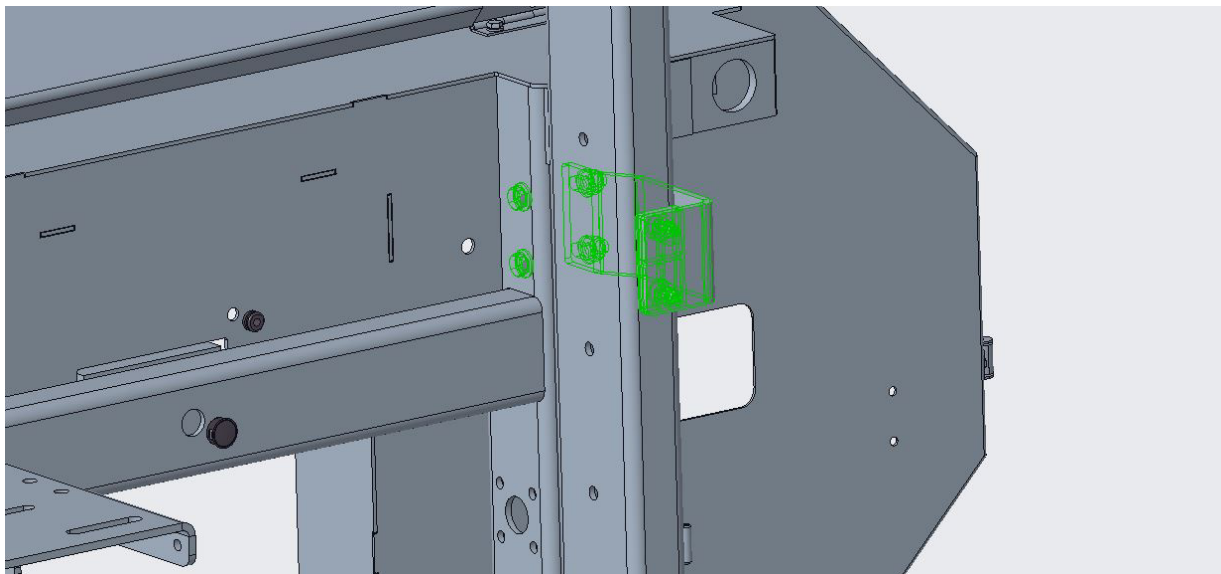
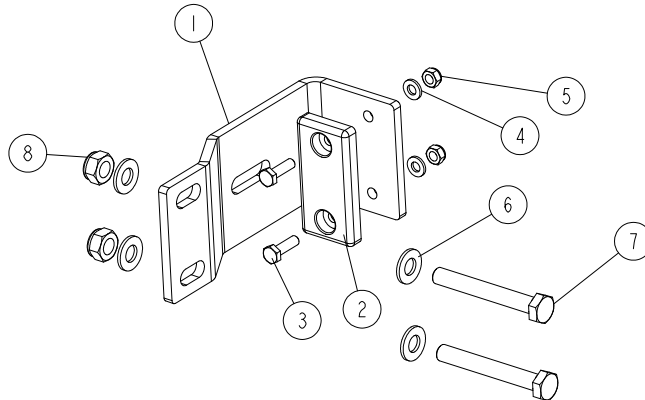
REF.	DESCRIPTION (* indicates parts available in assemblies only)	PART #	QTY
-	<b>UP/DOWN SLIDE PADS ASSEMBLY, LEFT</b>	531633	1
1	PLATE, SAW HEAD UPPER GUIDE PAINTED	094139-1	1
2	PLATE, SLIDE PAD SPACER PAINTED	094140-1	2
3	PADS, DELRIN UP/DOWN SLIDE	M04096	4
4	BOLT, M8X20 8.8 HEX HEAD FULL THREAD ZINC	F81002-4	4
5	NUT, M8-8-B HEX NYLON ZINC LOCK	F81032-2	8
6	PLATE, SAW HEAD LOWER GUIDE LT15 PAINTED	086682-1	1
7	NUT, LT15 SLIDE PAD ADJUSTMENT ZINC-PLATED	086683-1	4
8	BOLT, M8X35-8.8 HEX HEAD FULL THREAD ZINC	F81002-13	4
9	PLATE, GUIDE SHORT PAINTED	085978-1	1

REF.	DESCRIPTION (* indicates parts available in assemblies only)	PART #	QTY	
10	WASHER, 10.5 FLAT ZINC	F81055-1	10	
11	BOLT, M10X110-8.8 HEX HEAD ZINC	F81003-43	2	
12	BOLT, M10X115-8.8 HEX HEAD	F81003-19	3	
13	NUT, M10-8-B HEX NYLON ZINC LOCK	F81033-1	5	



5.4 Right Up/Down Slide Pads Assembly (No. 531639)

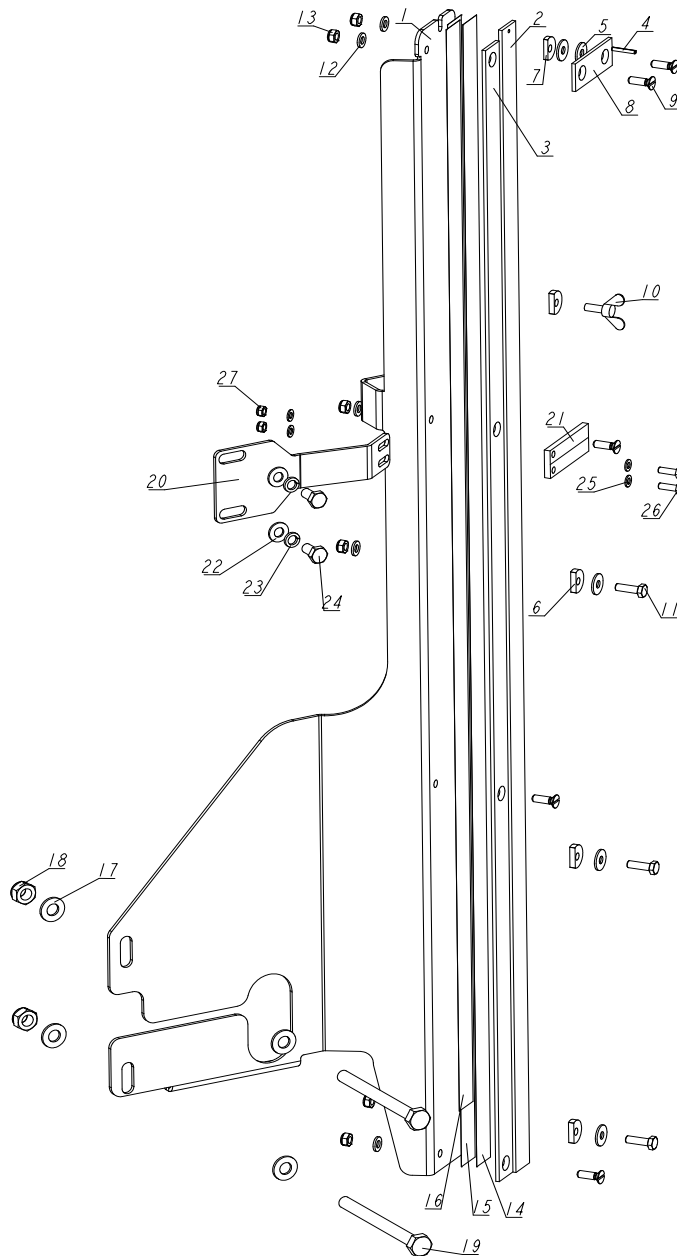
531639\_001  
531639\_MANUAL



REF.	DESCRIPTION (* indicates parts available in assemblies only)	PART #	QTY
-	RIGHT UP/DOWN SLIDE PADS ASSEMBLY - COMPLETE	531639	1
1	BRACKET	531638-1	1
2	PAD, CATAPILLAR TRACK	P13576	1
3	BOLT, M6X20 8.8 HEX HEAD FULL THREAD ZINC	F81001-2	2
4	WASHER, 6.4 FLAT ZINC	F81053-1	2
5	NUT, M6-8-B HEX NYLON ZINC LOCK	F81031-2	2
6	WASHER, 10.5 FLAT ZINC	F81055-1	4
7	BOLT, M10X75-8.8 HEX HEAD ZINC	F81003-15	2
8	NUT, M10-8-B HEX NYLON ZINC LOCK	F81033-1	2

5.5 Blade Height Scale Assembly, LT15 Wide (Stationary Sawmill)

550800\_001\_A  
550800\_MANUAL

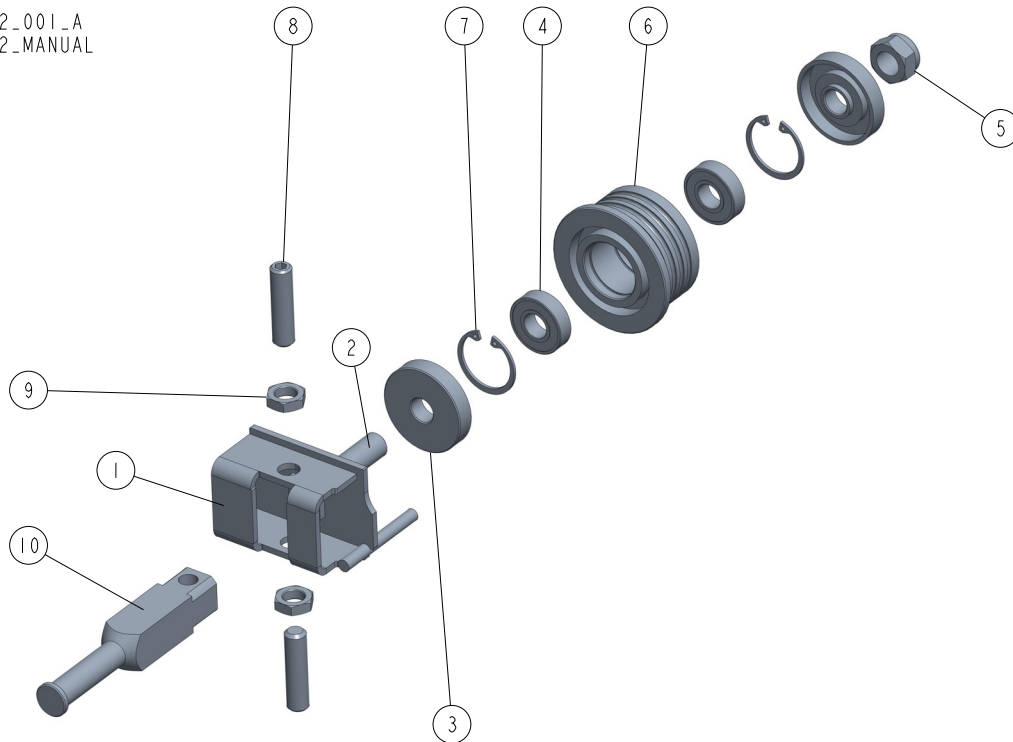


REF.	DESCRIPTION (* indicates parts available in assemblies only)	PART #	QTY
-	<b>BLADE HEIGHT SCALE ASSEMBLY</b>	550800	1
-	BLADE HEIGHT SCALE ASSEMBLY, LT15W	550802	1
1	BRACKET, BLADE HEIGHT SCALE LT15	550798-1	1
2	BAR, SCALE	550434	1
3	BAR, SCALE	550435	1
4	PIN, 3X20 GEOMET ROLL	F81044-5	1
5	WASHER, 6.5 SPECIAL FLAT ZINC	F81053-11	5
6	WASHER, 6.2X20X4.5 SPECIAL	503098	4

REF.	DESCRIPTION (* indicates parts available in assemblies only)	PART #	QTY	
7	WASHER, 6.2X20X3.5 SPECIAL	503096	1	
8	BAR, SCALE CLAMP	093134	1	
9	SCREW, M6X20-5.8-B SLOTTED COUNTERSUNK HEAD ZINC	F81001-31	5	
10	SCREW, M6X16 DIN-316/BN-276 ZINC-PL. WING	F81001-16	1	
11	BOLT, M6X20 8.8 HEX HEAD FULL THREAD ZINC	F81001-2	3	
12	WASHER, 6.4 FLAT ZINC	F81053-1	8	
13	NUT, M6-8-B HEX NYLON ZINC LOCK	F81031-2	8	
14	DECAL, METRIC SCALE 16-40MM LT15WIDE	550438	1	
15	DECAL, METRIC SCALE 45-63MM LT15WIDE	550439	1	
16	DECAL, CENTIMETER SCALE LT15WIDE	550440	1	
17	WASHER, 10.5 ZINC FLAT	F81055-1	4	
18	NUT, M10-8-B HEX NYLON ZINC LOCK	F81033-1	2	
19	BOLT, M10X115-8.8 HEX HEAD	F81003-19	2	
-	INDICATOR, BLADE HEIGHT SCALE - COMPLETE	550801	1	
20	PLATE, BLADE HEIGHT SCALE INDICATOR	550797-1	1	
21	INDICATOR, BLADE HEIGHT SCALE	094821	1	
22	WASHER, 8.4 FLAT ZINC	F81054-1	2	
23	WASHER, 8.2 SPLIT LOCK ZINC	F81054-4	2	
24	BOLT, M8X16-8.8-B HEX HEAD FULL THREAD ZINC	F81002-20	2	
25	WASHER, 5.3 FLAT ZINC	F81052-1	4	
26	BOLT, M5x16-8.8 HEX HEAD FULL THREAD ZINC	F81000-20	2	
27	NUT, M5-8 DIN985 HEX NYLON ZINC LOCK	F81030-2	2	

## 5.6 Blade Guide Roller Assembly, Drive Side. (094682)

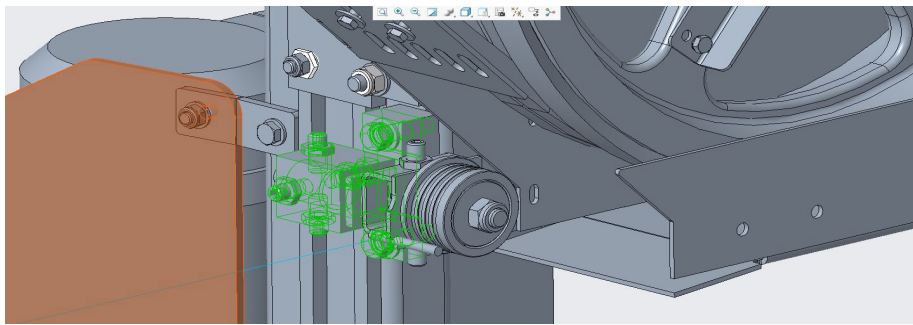
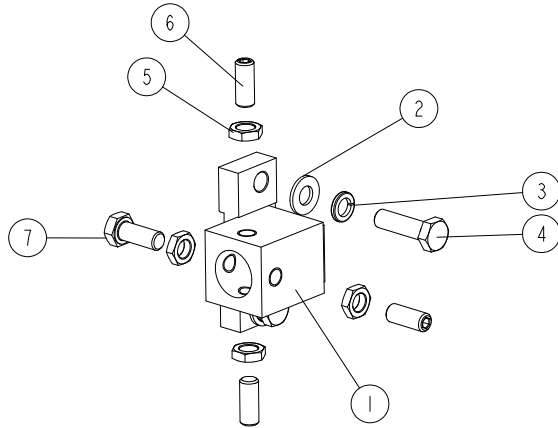
094682\_001\_A  
094682\_MANUAL



REF.	DESCRIPTION (* indicates parts available in assemblies only)	PART #	QTY
-	<b>BLADE GUIDE ROLLER ASSEMBLY, DRIVE SIDE</b>	094682	1
1	BRACKET WELDMENT, BLADE GUIDE ROLLER ZINC-PLATED	094679-1	1
-	ROLLER, BLADE GUIDE NARROW W/BEARINGS	087887	1
2	SHAFT, BLADE GUIDE ROLLER ZINC-PLATED	087763-1	1
3	RING, ZINC-PLATED SPACER	087891-1	2
4	BEARING, 6001 2RSR (FAG, SKF)	087893	2
5	NUT, M12 8 HEX NYLON ZINC LOCK	F81034-2	1
6	ROLLER, BLADE GUIDE NARROW	087889	1
7	RING, W28 INSIDE RETAINING	F81090-9	2
8	SCREW, M10X1X40 DIN913 A2-70 STAINLESS STEEL SET	F81015-2	2
9	NUT, M10X1-04-ST-A2E ISO8675 THIN	F81033-10	2
10	SHAFT, ZINC-PLATED BLADE GUIDE MOUNT	503588-1	1

5.7 Blade Guide Roller Cover, Drive Side. (No. 531627)

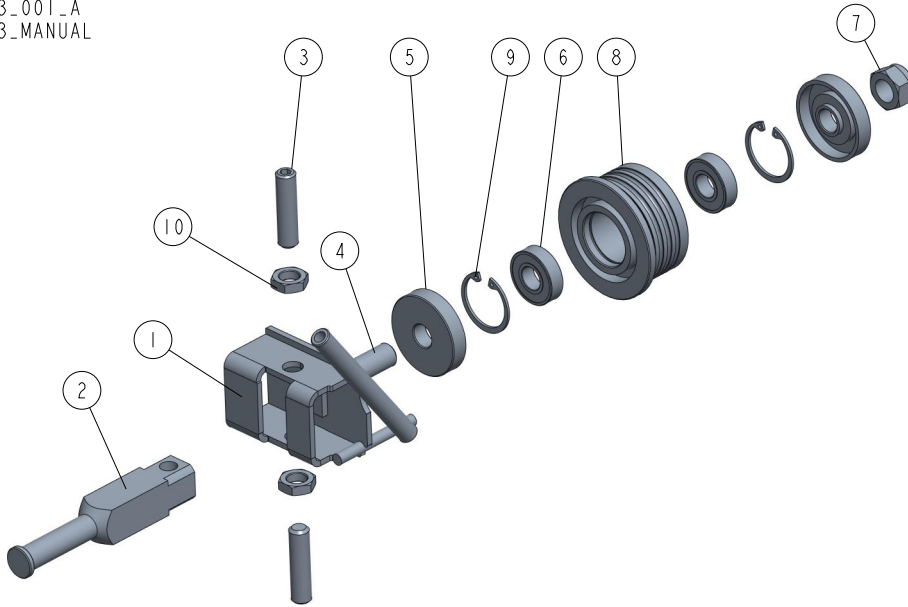
531627\_001  
531627\_MANUAL



REF.	DESCRIPTION (* indicates parts available in assemblies only)	PART #	QTY
-	<b>BLOCK, BLADE GUIDE MOUNT - COMPLETE</b>	531627	1
1	MOUNT WELDMENT, BLADE GUIDE (METRIC GP SAW HEAD)	087744	1
2	WASHER, 10.5 FLAT ZINC	F81055-1	2
3	WASHER, Z 10.2 SPLIT LOCK ZINC	F81055-2	2
4	BOLT, M10X35 8.8 HEX HEAD FULL THREAD ZINC	F81003-17	2
5	NUT, M10X1-04-ST-A2E ISO8675 THIN	F81033-10	4
6	SCREW, M10X1X25 DIN 913 STAINLESS STEEL SET	F81015-4	3
7	BOLT, M10X1X25 DIN 933 STAINLESS STEEL	F81003-28	1

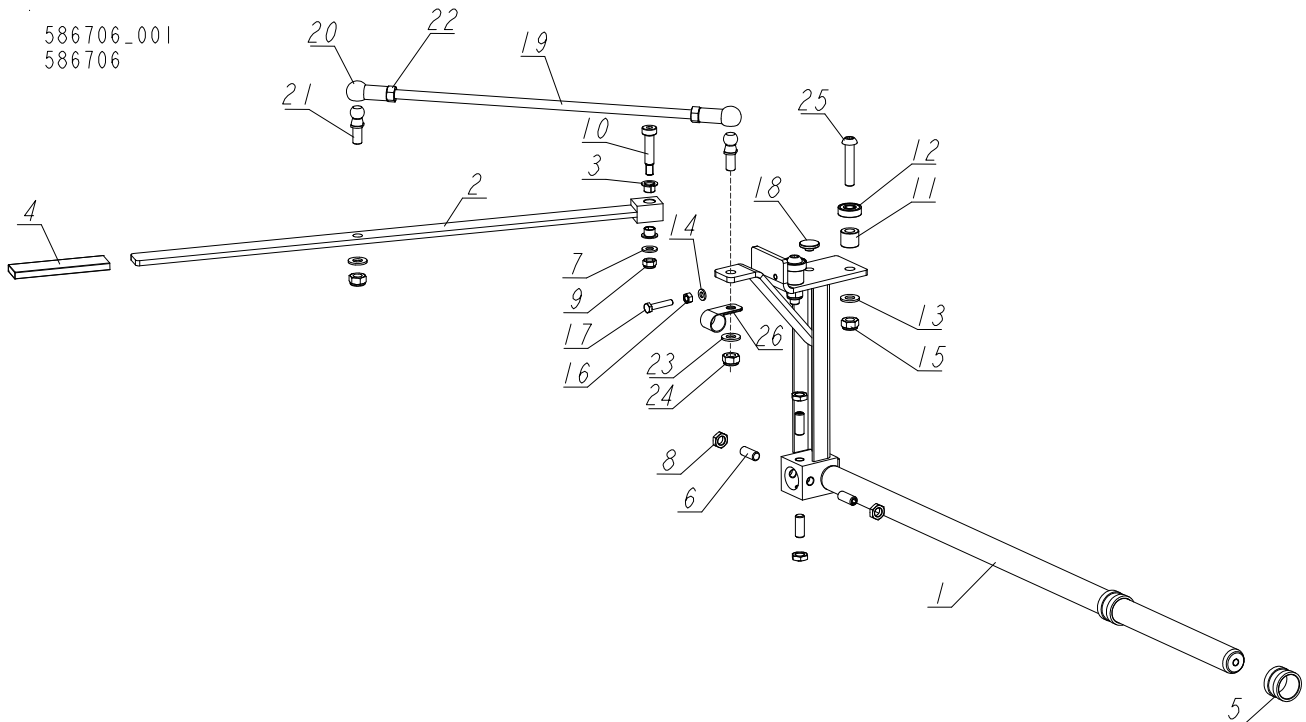
**5.8 Blade Guide Roller Assembly, Idle Side (094683)**

094683\_001\_A  
094683\_MANUAL



REF.	DESCRIPTION (* indicates parts available in assemblies only)	PART #	QTY
-	<b>BLADE GUIDE ROLLER ASSEMBLY, IDLE SIDE</b>	094683	1
1	BRACKET WELDMENT, BLADE GUIDE ROLLER ZINC-PLATED MOUNT	094681-1	1
2	SHAFT, ZINC-PLATED BLADE GUIDE MOUNT	503588-1	1
3	SCREW, M10X1X40 DIN913 A2-70 STAINLESS STEEL SET	F81015-2	2
-	ROLLER, BLADE GUIDE NARROW W/BEARINGS	087887	1
4	SHAFT, BLADE GUIDE ROLLER ZINC-PLATED	087763-1	1
5	RING, ZINC-PLATED SPACER	087891-1	2
6	BEARING, 6001 2RSR (FAG, SKF)	087893	2
7	NUT, M12 8 HEX NYLON ZINC LOCK	F81034-2	1
8	ROLLER, BLADE GUIDE NARROW	087889	1
9	RING, W28 INSIDE RETAINING	F81090-9	2
10	NUT, M10X1-04-ST-A2E ISO8675 THIN	F81033-10	2

## 5.9 Blade Guide Arm Assembly (No. 586706)



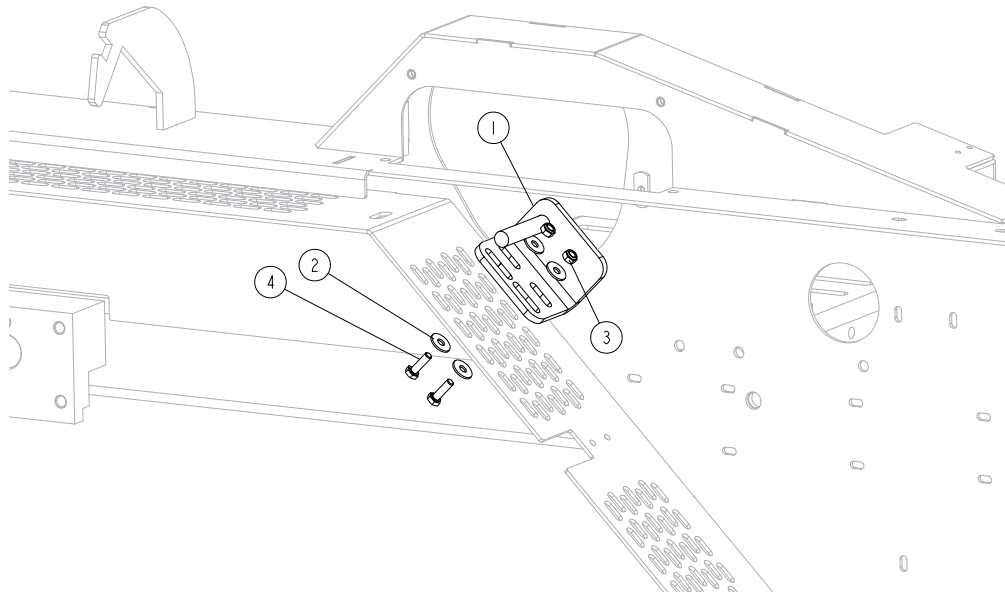
REF.	DESCRIPTION (* indicates parts available in assemblies only)	PART #	QTY
-	<b>ARM, BLADE GUIDE - COMPLETE</b>	586706	1
1	ARM WELDMENT, BLADE GUIDE PTD. (NON CE)	586707-1	1
-	HANDLE ASSEMBLY	531630	1
2	HANDLE, BLADE GUIDE ARM	531628-1	1
3	BEARING, TUF1 10.090 (CX) SLIDE	099074	2
4	SLEEVE, VINYL GUARD	086875	1
5	BUSHING, LT15 BLADE GUIDE	086684	2
6	SCREW, M10X1X25 DIN 913 STAINLESS STEEL SET	F81015-4	4
7	WASHER, 8.4 FLAT ZINC	F81054-1	1
8	NUT, M10X1-04-ST-A2E ISO8675 THIN	F81033-10	4
9	NUT, M8-8-B HEX NYLON ZINC LOCK	F81032-2	1
10	BOLT, 10/M8X35 12.9 ISO7379 SHOULDER	F81003-63	1
11	BUSHING, 11/20-17 ZINC-PLATED	094255-1	2
12	BEARING, 6000 2RSR	087471	2
13	WASHER, 10.5 ZINC FLAT	F81055-1	2
14	WASHER, 6.4 FLAT ZINC	F81053-1	1
15	NUT, M10-8-B HEX NYLON ZINC LOCK	F81033-1	2
16	NUT, M6 8 HEX ZINC	F81031-1	1
17	BOLT, M6X30 -8.8 HEX HEAD FULL THREAD	F81001-13	1
18	BUSHING, BLADE GUIDE	095936	1
-	STUD BOLT ASSEMBLY, ARM LEVER CONNECTION	094204	1
19	BOLT, ZINC-PLATED STUD	094203-1	1
20	SEAT, BALL PTD.	093824	1
21	STUD, 16-M10, BALL BN-486, DIN 71803 C (BOSSARD).	093823	2
22	NUT, M10 8 HEX ZINC	F81033-3	2

REF.	DESCRIPTION (* indicates parts available in assemblies only)	PART #	QTY	
23	WASHER, 10.5 ZINC FLAT	F81055-1	2	
24	NUT, M10-8-B HEX NYLON ZINC LOCK	F81033-1	2	
25	SCREW, M10X50-A2 ISO7380-1 BUTTON HEAD	F81003-131	2	
26	CLAMP, 5/8 EMT COATED	010748	1	



5.10 Drive Belt Lower Support Bracket (092636-1)

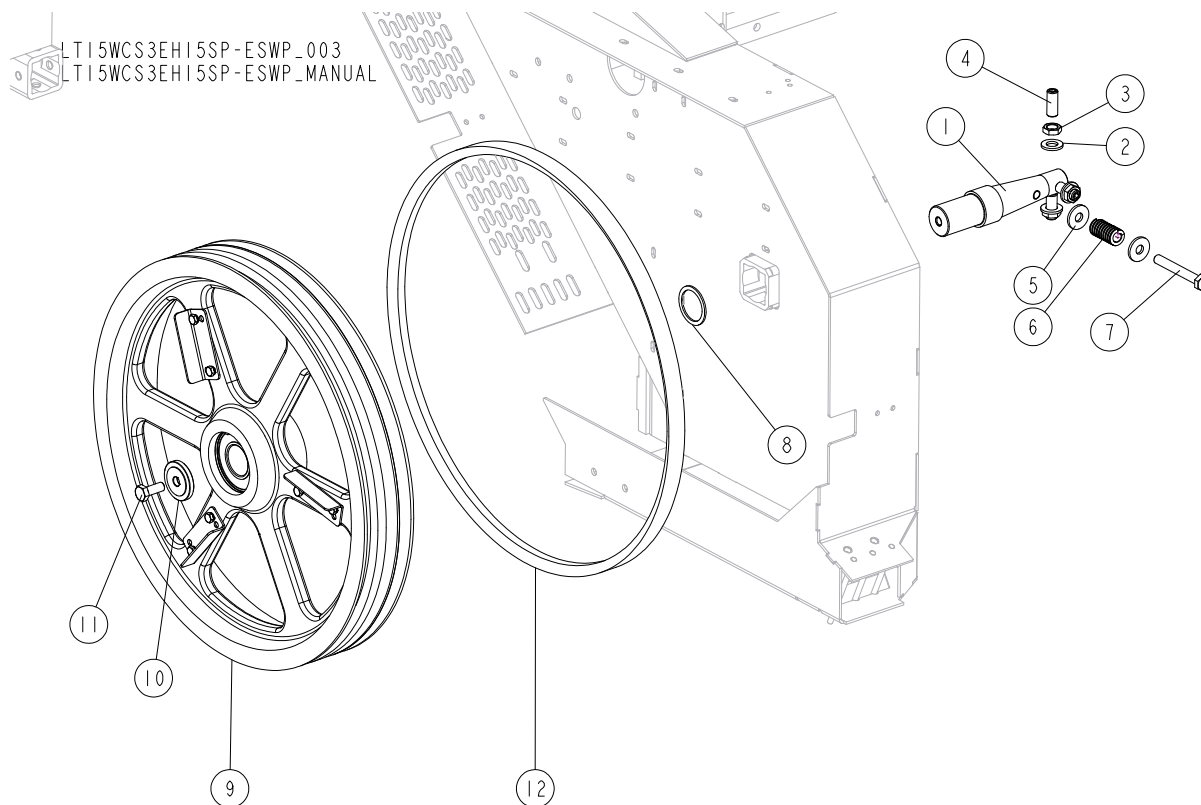
LT15WCS3G25SP-ESWP\_001  
 LT15WCS3G25SP-ESWP\_MANUAL



REF.	DESCRIPTION (* indicates parts available in assemblies only)	PART #	QTY
1	BRACKET, DRIVE BELT LOWER SUPPORT WLDMT/PTD	092636-1	1
2	WASHER, 6.5 SPECIAL FLAT ZINC	F81053-11	4
3	NUT, M6-8-B HEX NYLON ZINC LOCK	F81031-2	2
4	BOLT, M6X20 8.8 HEX HEAD FULL THREAD ZINC	F81001-2	2

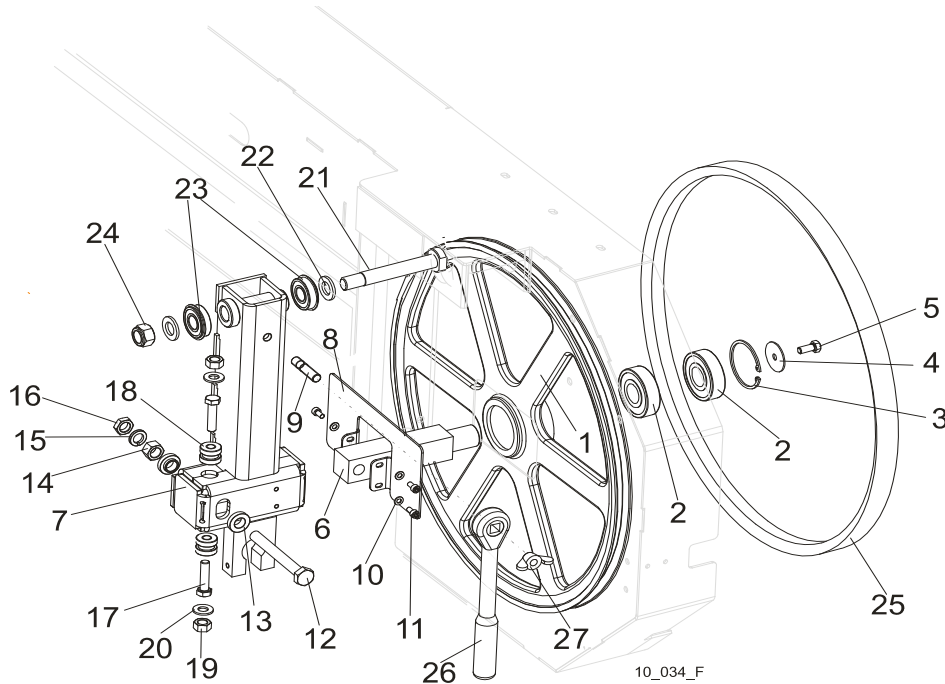
## SECTION 6 BLADE WHEELS & TENSIONER

### 6.1 Blade Wheel Assembly, Drive Side



REF.	DESCRIPTION (* indicates parts available in assemblies only)	PART #	QTY	
1	SHAFT, LT 15 DRIVE SIDE BLADE WHEEL	093850	1	
2	WASHER, 13 FLAT ZINC	F81056-1	3	
3	NUT, M12X1.25 DIN 439 A2-70 THIN STAINLESS STEEL	F81034-9	3	
4	SCREW, M12X1.25X30 DIN913 A2-70 SET	F81016-1	3	
5	WASHER, 10.5 SPECIAL FLAT ZINC	F81055-6	2	
6	SPRING, 3/4 O.D.X 1 1/2 DIE	034430	1	
7	BOLT, M10X75-8.8 HEX HEAD ZINC	F81003-15	1	
8	WASHER, 36/45-2	091851	1	
9	BLADE WHEEL, DRIVE SIDE - COMPLETE <a href="#">See Section 6.4</a>	091612	1	
10	WASHER, CLAMPING	092006	1	
11	BOLT, M10X25 8.8 HEX HEAD FULL THREAD ZINC	F81003-11	1	
12	BELT, B-57	P04185-3	1	

**6.2 Blade Wheel Assembly, Idle Side**



REF.	DESCRIPTION (◆ indicates parts available in assemblies only)	PART #	QTY
	<b>WHEEL ASSEMBLY, IDLE SIDE BLADE</b>	<b>A08218</b>	<b>1</b>
1	SHEAVE, 18.62" IDLER	P08125	1
2	BEARING, 6305 2RS NSK	P08066	2
3	RING, 2 7/16 IR N 5002-244 BEVELED SNAP	F04254-21	1
	<b>ROCKER ARM, LT10/LT15 IDLE SIDE WHEEL - COMPLETE</b>	<b>100180</b>	<b>1</b>
4	WASHER, ZINC-PLATED CLAMPING	093854-1	1
5	BOLT, M8x25-8.8-B HEX HEAD FULL THREAD ZINC	F81002-5	1
6	SHAFT, IDLE SIDE WHEEL (METRIC)	096045	1
	<b>ROCKER ARM, IDLE SIDE WHEEL - COMPLETE</b>	<b>508145</b>	<b>1</b>
7	ARM WELDMENT, IDLER WHEEL ROCKER	508144-1	1
8	GUARD, IDLER WHEEL SHAFT	508128-1	1
9	STUD, M10x35-8.8 ZINC-PLATED	F81003-9	1
10	WASHER, 5.3 FLAT ZINC	F81052-1	3
11	SCREW, M5x10 DIN912 A2-70 HEX SOCKET HEAD CAP STAINLESS STEEL	F81000-23	3
12	BOLT, M12x1.25x100-8.8 HEX HEAD FULL THREAD ZINC	F81004-41	1
13	SPACER, FLANGED	086769-1	2
14	NUT, M12x1.25 -8 HEX ZINC	F81034-8	1
15	WASHER, 12.2 SPLIT LOCK ZINC	F81056-2	1
16	NUT, M12x1.25 8.8 THIN ZINC	F81034-5	1
17	BOLT, M10x40-8.8 HEX HEAD FULL THREAD ZINC	F81003-16	2
18	BUSHING, M10 IDLER WHEEL SHAFT HOUSING	086987	2
19	NUT, M10-8-B HEX ZINC	F81033-3	2
20	WASHER, 10.5 ZINC FLAT	F81055-1	2
21	<b>PIN, ARM BEARING MOUNT</b>	086404	1
22	<b>WASHER, 17 ZINC FLAT</b>	F81058-1	2
23	<b>BEARING, 6203-2RS NR NSK W/SNAP RING</b>	086395	2
24	<b>NUT, M16-8 HEX NYLON ZINC LOCK</b>	F81036-2	1

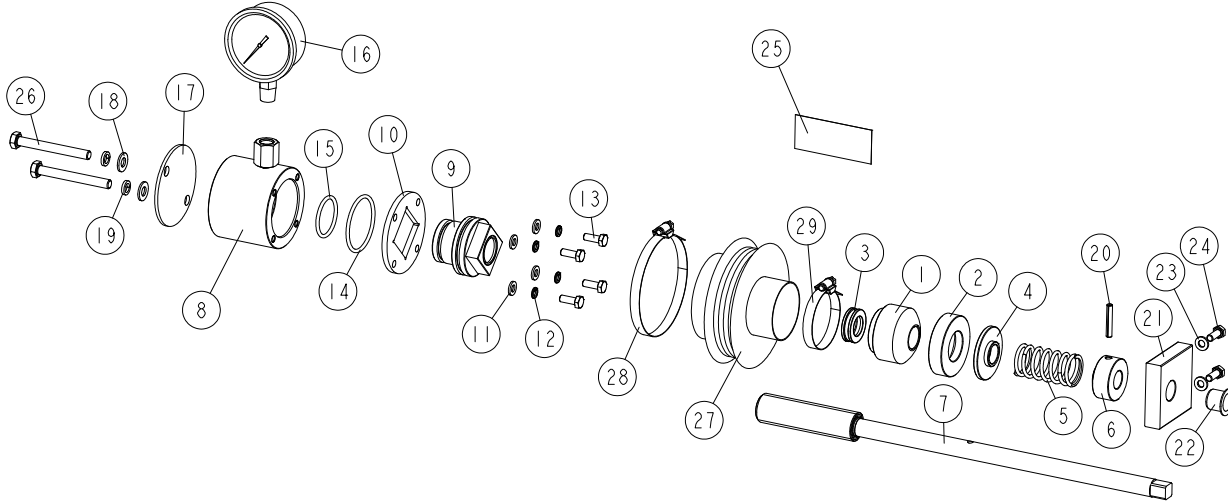
**6****BLADE WHEELS & TENSIONER***Blade Wheel Assembly, Idle Side*

---

25	V- BELT, B-57 DRIVE	P04185-3	1	
26	WRENCH, BLADE TENSION	091620	1	
27	NUT, M10 WING ZINC	F81033-8	1	

**6.3 Blade Tensioner Assembly**

510640\_001  
510640\_MANUAL



REF.	DESCRIPTION (* indicates parts available in assemblies only)	PART #	QTY
-	<b>TENSIONER ASSEMBLY, LT20 BLADE</b>	510640	1
1	HOUSING, ROUND	510635	1
2	SOCKET, BEARING HOUSING	510634-1	1
3	BEARING, 51103 BALL THRUST	086675	1
4	WASHER	510633-1	1
5	SPRING, 60X23X3	088992	1
6	BUSHING, 16.1/38-20 22.5-4 ZINC-PLATED	510636-1	1
7	SCREW, BLADE TENSIONER ZINC-PLATED	510650-1	1
-	COMPLETE CYLINDER	510641	1
8	CYLINDER ASSEMBLY, W/ADAPTER FITTING	550762-1	1
9	PISTON	510638	1
10	PLATE, TENSIONER	510490-1	1
11	WASHER, 6.4 FLAT ZINC	F81053-1	4
12	WASHER, Z 6.1 SPLIT LOCK ZINC	F81053-3	4
13	BOLT, M6X16-8.8 HEX HEAD FULL THREAD ZINC	F81001-15	4
14	O-RING 46.2X3	510646	1
15	O-RING 32.2X3	510647	1
16	GAUGE, 200 BAR/3000PSI OIL PRESSURE	505176	1
17	PLATE, TENSIONER COVER	550761-1	1
18	WASHER, 8.4 FLAT ZINC	F81054-1	2
19	WASHER, 8.2 SPLIT LOCK ZINC	F81054-4	2
20	PIN, 5X30 ZINC-PLATED ROLL	F81044-21	1
21	BLOCK, TENSIONER HANDLE MOUNT	096730	1
22	BUSHING, GFM-1618-17	089589	1
23	WASHER, 6.4 FLAT ZINC	F81053-1	2
24	BOLT, M6X16-8.8 HEX HEAD FULL THREAD ZINC	F81001-15	2
25	DECAL, PRESSURE VALUES	510643	1
26	BOLT, M8X70-8.8 HEX HEAD ZINC	F81002-71	2

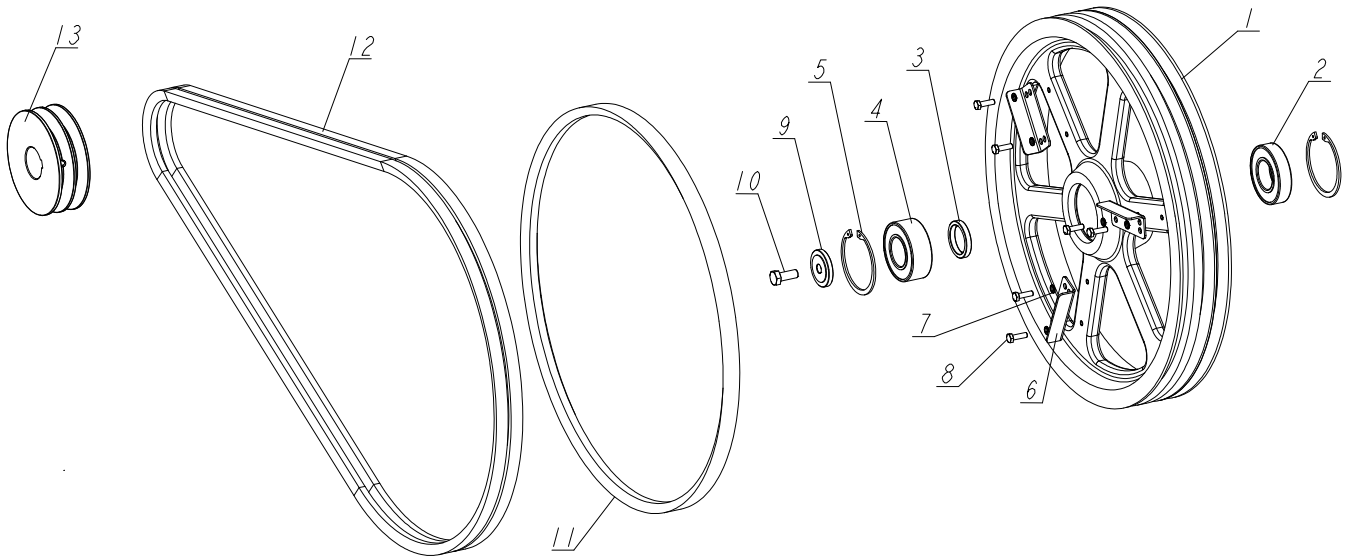
**6****BLADE WHEELS & TENSIONER***Blade Tensioner Assembly*

---

REF.	DESCRIPTION (* indicates parts available in assemblies only)	PART #	QTY	
-	BELLOWS, COMPLETE	515050	1	
27	BELLOWS	515051	1	
28	CLAMP, 70-80 MM.	F81095-5	1	
29	CLAMP, 40-60 MM.	F81095-4	1	

## 6.4 Blade Wheel Assembly, Drive Side Motor E15

LT15SCS3EH15EP-E\_001\_C  
LT15SCS3EH15EP-E\_MANUAL

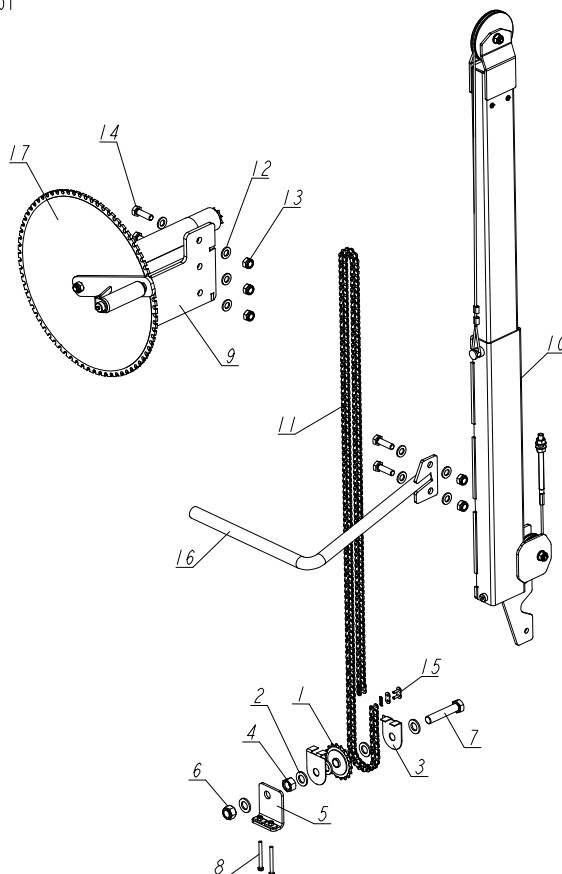


REF.	DESCRIPTION (* indicates parts available in assemblies only)	PART #	QTY
-	<b>BLADE WHEEL, DRIVE - COMPLETE</b>	550620	1
1	BLADE WHEEL, LT20 DRIVE SIDE	090646-1	1
2	BEARING, 6207-2RS, C3, 35X72X17	014811	1
3	BUSHING, SPACER	096778	1
4	BEARING, 3207B.2RSR.TVH "FAG"	092005	1
5	RING, W72 INSIDE RETAINING	F81090-4	2
6	WING	097808-1	3
7	WASHER, Z 6.1 SPLIT LOCK ZINC	F81053-3	6
8	BOLT, M6X20 8.8 HEX HEAD FULL THREAD ZINC	F81001-2	6
9	<b>WASHER, CLAMPING</b>	092006	1
10	<b>BOLT, M10X25 8.8 HEX HEAD FULL THREAD ZINC</b>	F81003-11	1
11	<b>BELT, B-57</b>	P04185-2	1
12	<b>BELT, 2BX81</b>	014819-2	1
13	<b>PULLEY, E15 MOTOR 2-GROOVE E15</b>	091560	1

## SECTION 7 UP/DOWN ASSEMBLY LT15WA

### 7.1 Lift Assist Assembly, LT15WA

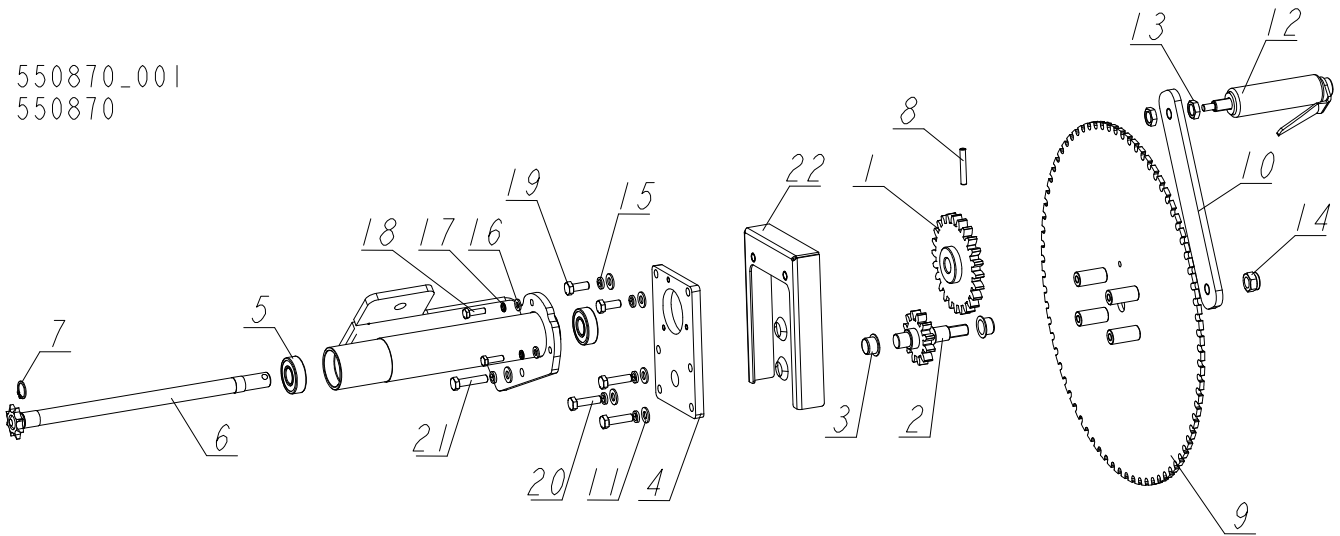
550830-AC\_001  
550830-AC



REF.	DESCRIPTION (* indicates parts available in assemblies only)	PART #	QTY
-	<b>LIFT ASSIST LT15WA</b>		1
-	SPROCKET ASSEMBLY, LOWER	518175	1
1	SPROCKET, 40 IDLER 18T 5/8ID	P04333	1
2	WASHER, 17 FLAT ZINC	F81058-1	5
3	GUARD, CHAIN SPROCKET PTD.	092566-1	2
4	NUT, M16-8 HEX ZINC	F81036-1	1
5	TENSIONER WELDMENT	502525-1	1
6	NUT, M16-8 HEX NYLON ZINC LOCK	F81036-2	1
7	BOLT, M16X80-8.8 HEX HEAD FULL THREAD ZINC	F81006-11	1
8	BOLT, M6X60-8.8 HEX HEAD FULL THREAD ZINC	F81001-9	2
9	SAW HEAD HEIGHT ADJUSTMENT ASSEMBLY W/LIFT ASSIST <a href="#">See Section 7.2</a>	550870	1
10	LIFT ASSIST, LT15W - COMPLETE <a href="#">See Section 7.3</a>	550837	1
11	CHAIN, 08B L-2375 (187-LINK)	550882	1
12	WASHER, 13 FLAT ZINC	F81056-1	10
13	NUT, M12-8 DIN 982 HEX NYLON ZINC LOCK	F81034-2	5
14	BOLT, M12X40 8.8 HEX HEAD FULL THREAD ZINC	F81004-4	5
15	LINK, 08B-1PZ MASTER	091625	2
16	HANDLE - COMPLETE	550892-1	1
17	DECAL, UP/DOWN ASSEMBLY LT15WA	586717	1



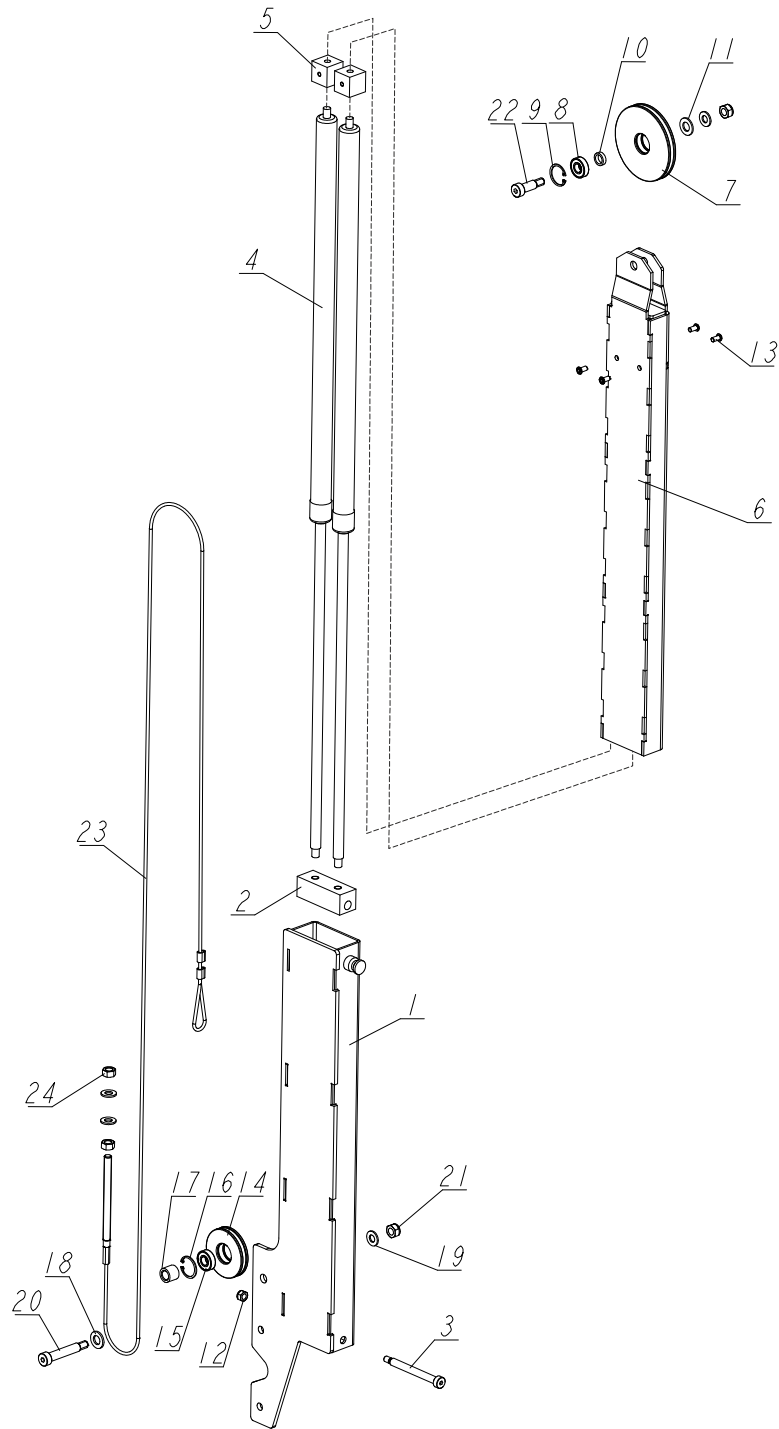
## 7.2 Saw Head Height Adjustment Assembly w/Lift Assist (550870)

550870\_001  
550870

REF.	DESCRIPTION (* indicates parts available in assemblies only)	PART #	QTY
-	<b>SAW HEAD HEIGHT ADJUSTMENT ASSEMBLY W/LIFT ASSIST</b>	550870	1
1	SPROCKET, WLDMT LARGE	550868-1	1
2	SHAFT WELDMENT, CRANK	550866-1	1
3	BUSHING, GFM-1618-12	091455	2
4	PLATE	550871-1	1
-	CRANK MOUNTING ASSEMBLY	550860-1	1
5	BEARING, 6203-2RS ROLLING	086114	2
6	SHAFT, LIFT ASSIST - COMPLETE	550873	1
7	RING, 17Z OUISSIDE RETAINING	F81090-21	2
8	PIN, 6X40 ZINC-PLATED ROLL	F81045-8	1
9	PLATE ASSEMBLY, LOCKING	586713-1	1
10	PLATE, CRANK HANDLE	586715-1	1
11	WASHER, 8.4 FLAT ZINC	F81054-1	6
12	HANDLE, CUTTING WIDTH SETTING	096499	1
13	NUT, M12-04-A THIN ZINC	F81034-6	2
14	NUT, M12-8 DIN 982 HEX NYLON ZINC LOCK	F81034-2	1
15	WASHER, 8.2 SPLIT LOCK ZINC	F81054-4	6
16	WASHER, 6.4 FLAT ZINC	F81053-1	3
17	WASHER, Z 6.1 SPLIT LOCK ZINC	F81053-3	3
18	BOLT, M6X20 8.8 HEX HEAD FULL THREAD ZINC	F81001-2	3
19	BOLT, M8X20 8.8 HEX HEAD FULL THREAD ZINC	F81002-4	2
20	BOLT, M8X30 8.8 HEX HEAD FULL THREAD ZINC	F81002-7	3
21	BOLT, M8X35-8.8 HEX HEAD FULL THREAD ZINC	F81002-13	1
22	COVER, WELDMENT	550878-1	a

**7.3 Lift Assist LT15W (550837)**

550837\_001  
550837

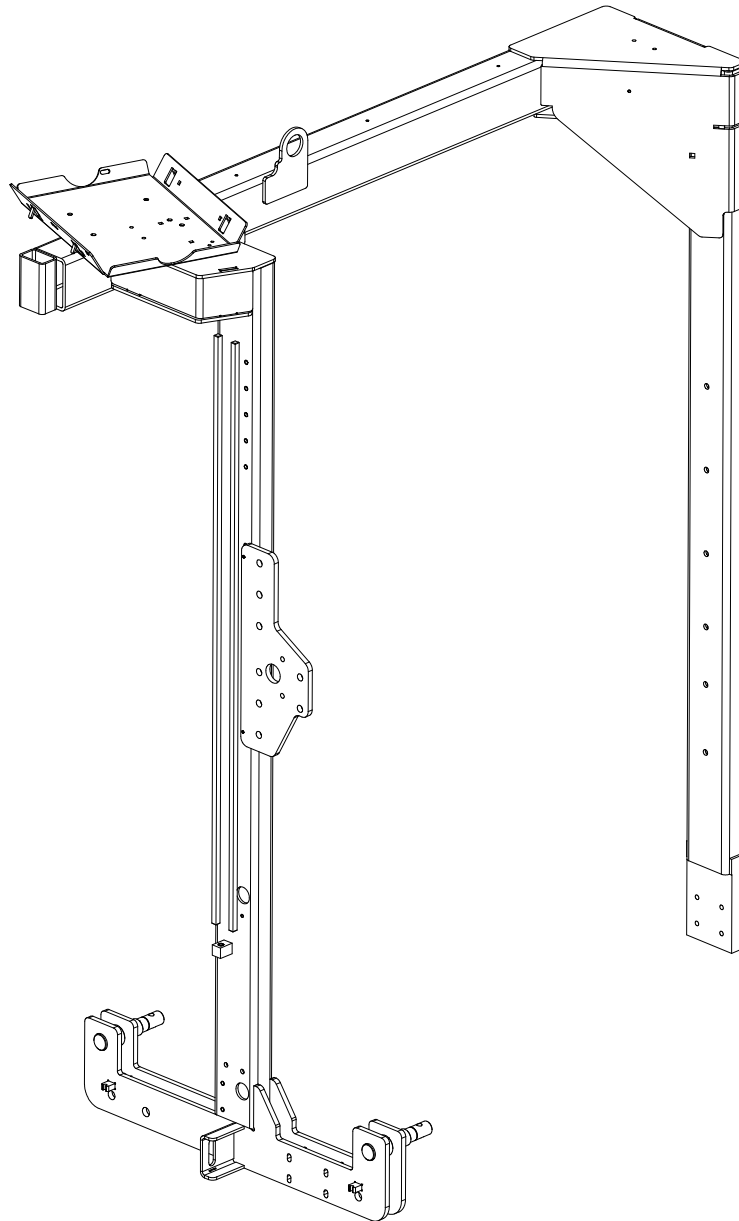


REF.	DESCRIPTION (* indicates parts available in assemblies only)	PART #	QTY
-	LIFT ASSIST, LT15W - COMPLETE	550837	1
1	HOUSING, GAS CYLINDER	550831-1	1
2	BLOCK, GAS CYLINDER MOUNTING	550844-1	1
3	BOLT, 10/M8X90 12.9 ISO 7379 SHOULDER	F81003-184	1
4	CYLINDER, SUSPA 2000N GAS	586718	2

REF.	DESCRIPTION (* indicates parts available in assemblies only)	PART #	QTY	
5	BLOCK, GAS CYLINDER MOUNTING	550839-1	2	
6	HOUSING, GAS CYLINDER	586773-1	1	
-	PULLEY, TOP	550849	1	
7	ROLLER, LIFT CABLE GUIDE	550850	1	
8	BEARING, 6001 2RSR (FAG, SKF).	087893	1	
9	RING, W28 INSIDE RETAINING	F81090-9	1	
10	WASHER, 13/18-5 STAINLESS STEEL	586785	1	
11	WASHER, 13/24.5-2 STAINLESS STEEL	586784	1	
12	NUT, M8-8-B-HEX NYLON ZINC LOCK	F81032-2	1	
13	SCREW,, M6X12 10.9 SHCS ZINC	F81001-105	4	
-	PULLEY, Ø75 - COMPLETE	550846	1	
14	ROLLER, LIFT CABLE GUIDE	550845	1	
15	BEARING, 6001 2RSR (FAG, SKF).	087893	1	
16	RING, W28 INSIDE RETAINING	F81090-9	1	
17	BUSHING, 12.5/20-17 ZINC	550848-1	1	
18	WASHER, 13-FLAT ZINC	F81056-1	1	
19	WASHER, 10,5 FLAT ZINC	F81055-1	4	
20	BOLT, 12/M10X56 12.9 ISO7379 (BOSSARD). SHOULDER	F81003-92	1	
21	NUT, M10 HEX HEAD ZINC LOCK	F81033-1	2	
22	BOLT, 12/M10X25 12.9 ISO7379 (BOSSARD). SHOULDER	F81003-84	1	
23	CABLE, L=2400MM LIFT ASSIST STEEL	550857	1	
24	NUT, M10 8 HEX ZINC	F81033-3	2	

**7.4 Sawmill Mast, LT1WA (550851-1)**

550851-1\_001  
550851-1

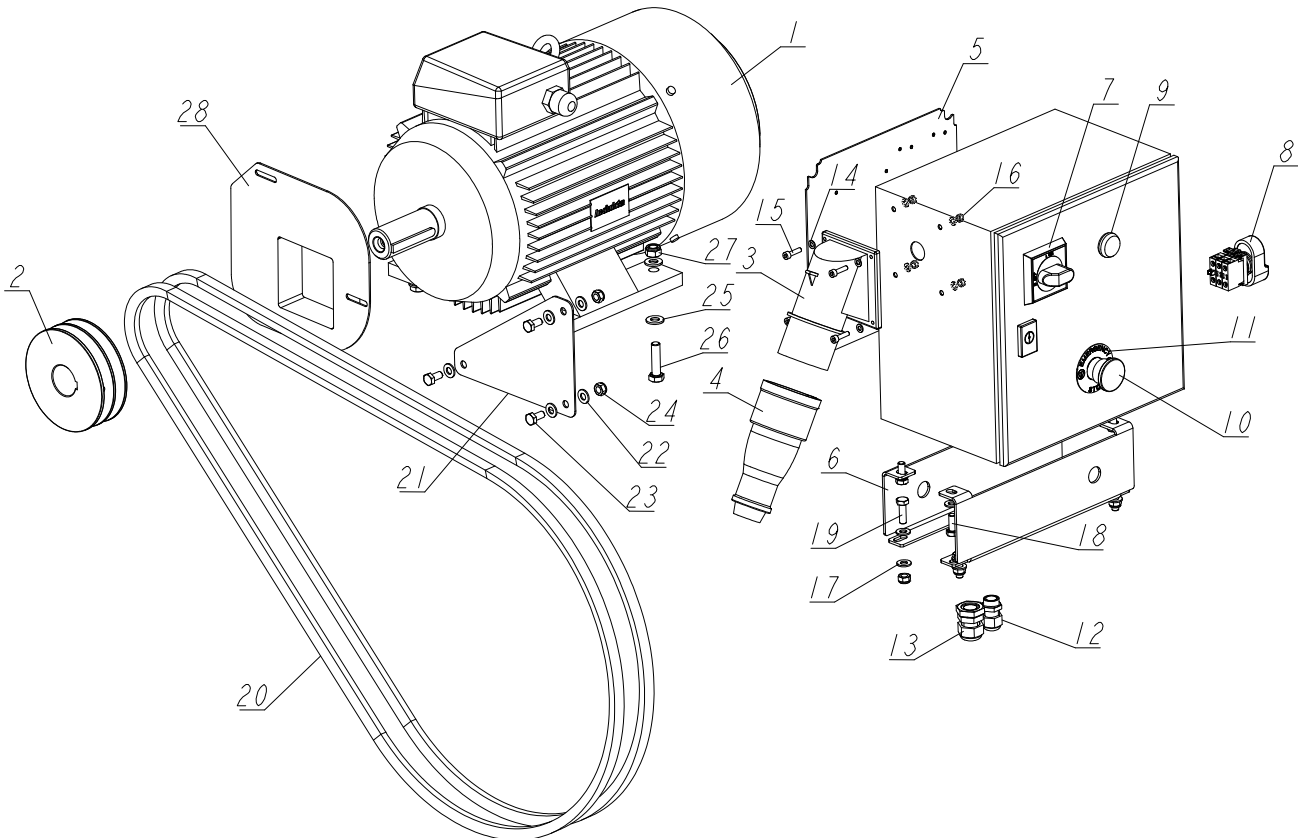


REF.	DESCRIPTION (* indicates parts available in assemblies only)	PART #	QTY
-	SAWMILL MAST, LT15WA WLDMT/PTD	550851-1	1

## SECTION 8 ENGINE/MOTOR KITS

### 8.1 EH15 LT15WA Motor Kit

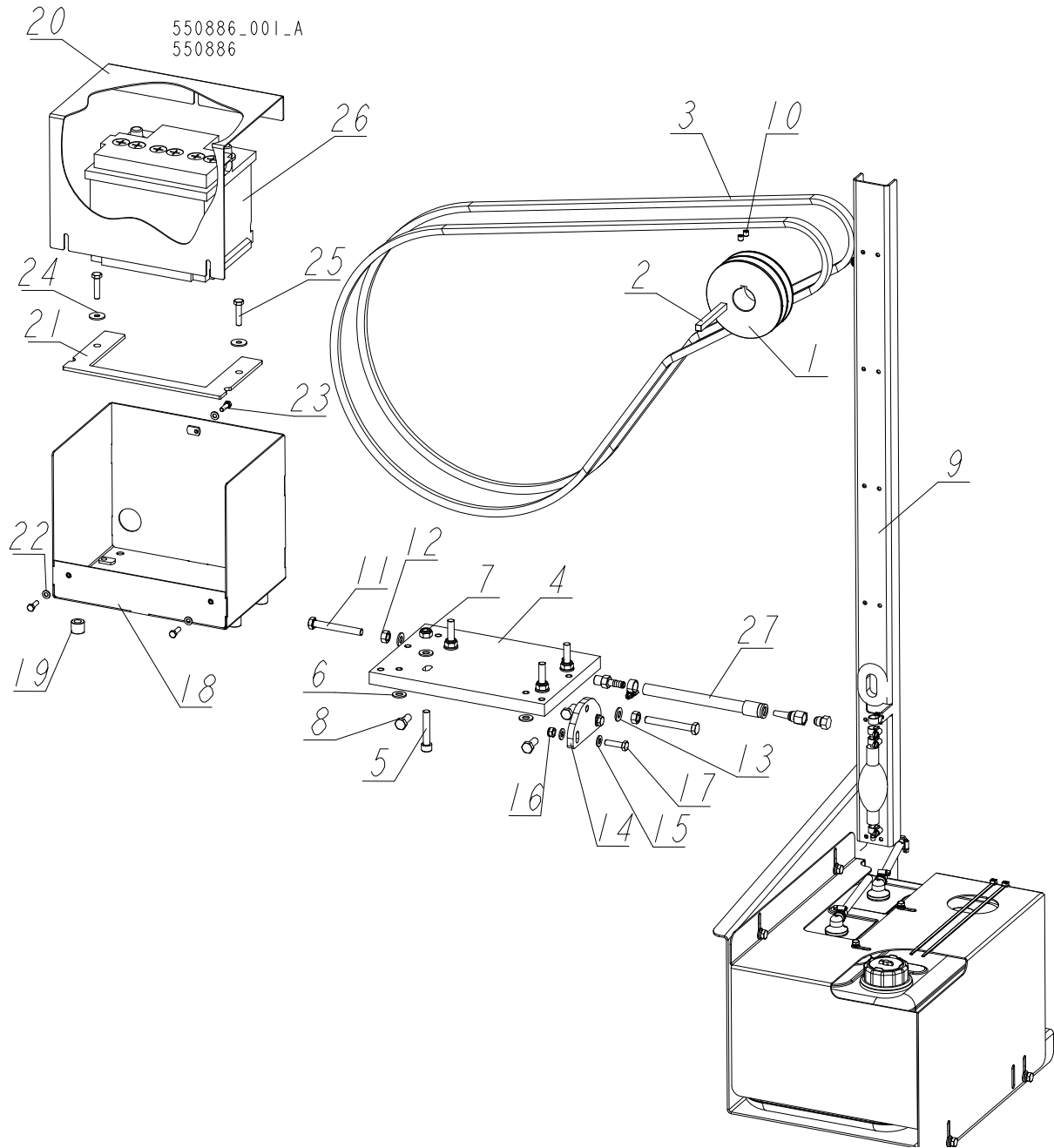
550985-3\_001  
550985-3



REF.	DESCRIPTION (* indicates parts available in assemblies only)	PART #	QTY
-	<b>MOTOR KIT, EH15 LT15WA</b>	550985-3	1
1	MOTOR, 11KW SG 132M-2A ELECTRIC	526677	1
2	PULLEY, E15 MOTOR 2-GROOVE E15	091560	1
-	<b>BOX, EH15 LT15WA ELECTRIC</b>	586705	1
3	PLUG, 32A 5P 400V IP67 MAIN W/SWITCH	E85235	1
4	PLUG-IN-SOCKET, PLASTIC SEALED GT	E85236	1
5	PLATE, ELECTRIC BOX MOUNTING	507750	1
6	MOUNT, ELECTRICAL BOX	586704-1	2
7	HANDLE, OHB S2A1 AB SWITCH	502312-1	1
8	SWITCH, 24V ILLUMINATED START/STOP (MOELLER)	090452	1
9	LIGHT, M22 LED 24V BLUE CONTROL	090448	1
10	SWITCH, XB4 BS542 EMERGENCY STOP	086556	1
11	WASHER, EMERGENCY STOP SWITCH	086561	1
12	GLAND, DW11/H CABLE	085388	1
13	GLAND, DP16/H CABLE	F81096-7	1
14	WASHER, 5.3 FLAT ZINC	F81052-1	8
15	SCREW, M5X20 8.8 HEX SOCKET HEAD CAP ZINC	F81000-72	4
16	NUT, M5-8 DIN985 HEX NYLON ZINC LOCK	F81030-2	4
17	WASHER, 8.4 FLAT ZINC	F81054-1	16

REF.	DESCRIPTION (* indicates parts available in assemblies only)	PART #	QTY	
18	BOLT, M8X20 8.8 HEX HEAD FULL THREAD ZINC	F81002-4	4	
19	BOLT, M8X25-8.8-B HEX HEAD FULL THREAD ZINC	F81002-5	4	
20	BELT, 2BX81	014819-2	1	
21	PLATE, COVER PTD.	094247-1	1	
22	WASHER, 8.4 FLAT ZINC	F81054-1	6	
23	BOLT, M8X16-8.8-B HEX HEAD FULL THREAD ZINC	F81002-20	3	
24	NUT, M8-8-B HEX NYLON ZINC LOCK	F81032-2	3	
25	WASHER, 10.5 ZINC FLAT	F81055-1	8	
26	BOLT, M10X40-8.8 HEX HEAD FULL THREAD ZINC	F81003-16	4	
27	NUT, M10-8-B HEX NYLON ZINC LOCK	F81033-1	4	
28	GUARD, E10,/E15 MOTOR SHAFT	095335-1	1	

8.2 G23 Engine Mount Kit, LT15WA (No. 550886)

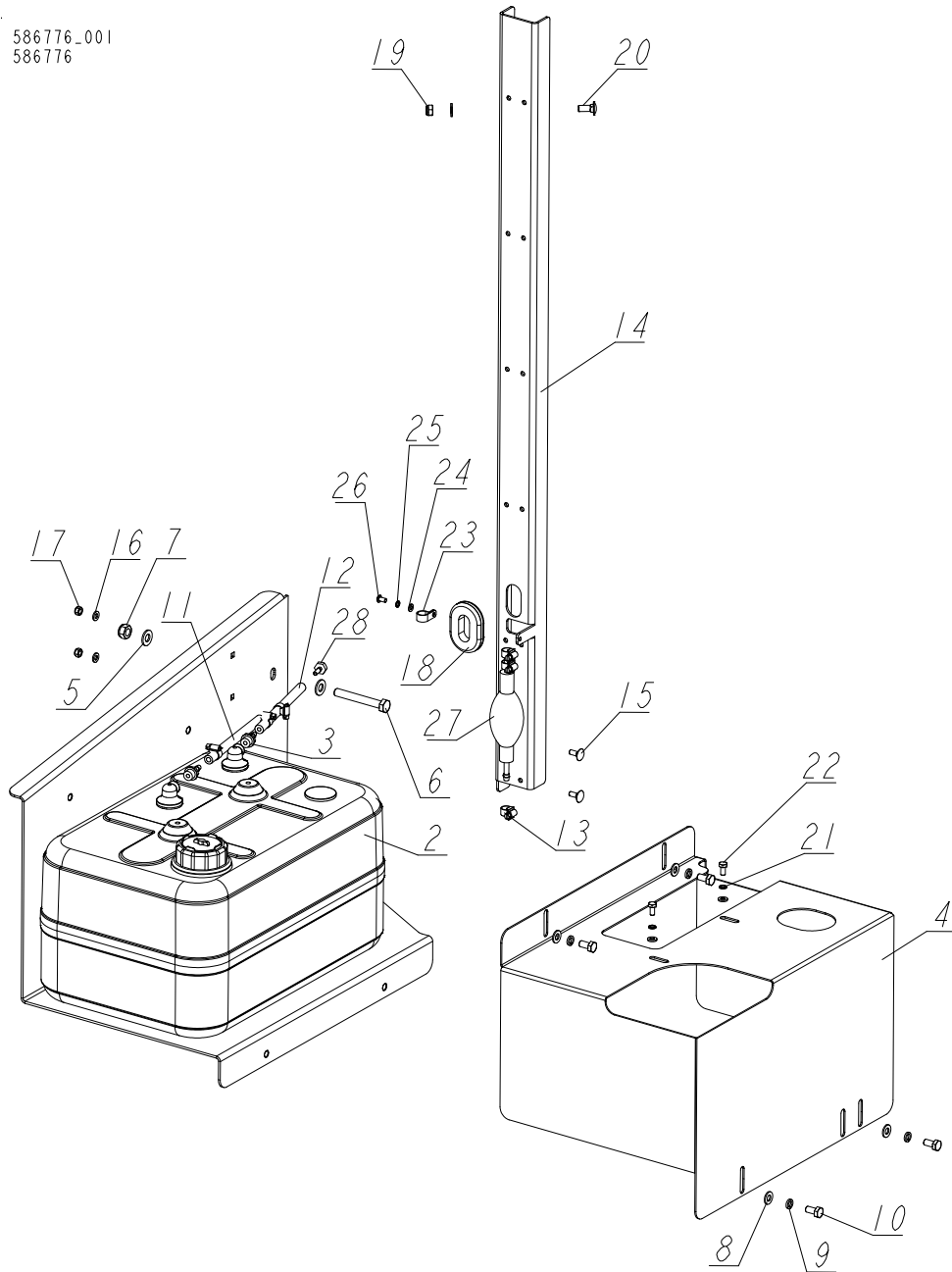


REF	DESCRIPTION (◆ indicates parts available in assemblies only)	PART #	QTY
-	<b>MOUNT KIT, LT15WA G23 ENGINE</b>	550886	1
1	PULLEY, SPB-2 N127/36.5 G23 ZINC-PLATED	586746-1	1
2	KEY, B9.5X9.5X92 ZINC-PLATED	586747-1	1
3	V-BELT, 17BX2250 BX87 2210LI-GOOD-Y	097448	2
4	PLATE, G23 ENGINE MOUNT	550893	1
5	SCREW, M10X55-8.8 HEX SOCKET HEAD CAP ZINC	F81003-55	4
6	WASHER, 10.5 FLAT ZINC	F81055-1	8
7	NUT, M10-8-B HEX NYLON ZINC LOCK	F81033-1	4
8	BOLT, M10X25 8.8 HEX HEAD FULL THREAD ZINC	F81003-11	4
9	TANK ASSEMBLY, LT15WIDE FUEL <a href="#">See Section 8.3</a>	586776	1

REF	DESCRIPTION (◆ indicates parts available in assemblies only)	PART #	QTY	
10	SCREW, M8X8-33H HEX SOCKET SET FLAT POIN	F81014-1	2	
-	TENSIONER, LT15WC G25/G19 BELT	531695	1	
11	BOLT, M10X80 8.8 HEX HEAD FULL THREAD ZI	F81003-76	2	
12	NUT, M10-8-B-HEX ZINC	F81033-3	2	
13	WASHER, 10.5 FLAT ZINC	F81055-1	2	
14	PLATE, TENSIONER	531696-1	1	
15	WASHER, 8.4 FLAT ZINC	F81054-1	4	
16	NUT, M8-8-B HEX NYLON ZINC LOCK	F81032-2	2	
17	BOLT, M8 X 30-8.8-B HEX HEAD FULL THREAD	F81002-7	2	
-	BATTERY ASSEMBLY, LT15WA G23	586780	1	
18	BOX WELDMENT, BATTERY	091377-1	1	
19	BUSHING, 11/20-17 ZINC-PLATED	094255-1	4	
20	LID, BATTERY BOX PTD	091382-1	1	
21	BRACKET, BATTERY HOLD-DOWN PTD	091381-1	1	
22	WASHER, 6.4 FLAT ZINC	F81053-1	3	
23	BOLT, M6X20 8.8 HEX HEAD FULL THREAD ZIN	F81001-2	3	
24	WASHER, 8.5 SPECIAL FLAT ZINC	F81054-11	2	
25	BOLT, M8X35-8.8 HEX HEAD FULL THREAD ZIN	F81002-13	2	
26	BATTERY, 36AH BANNER 53646	091775	1	
27	HOSE, G23 OIL DRAIN	586782	1	



8.3 Fuel Tank Assembly, LT15 Wide (No. 586776)



REF.	DESCRIPTION (* indicates parts available in assemblies only)	PART #	QTY
-	<b>TANK ASSEMBLY, LT15 WIDE FUEL</b>	586776	1
1	BRACKET, LT15 FUEL TANK MOUNT - COMPLETE	550766-1	1
-	TANK, 25L FUEL (A NEW)	550767	1
2	TANK, SP 198214 25L PORTABLE FUEL	550772	1
3	ADAPTOR, 1/4" X 6 MM (BEVO #0440134) HOSE TAIL	550770	2
4	GUARD, FUEL TANK	550769-1	1
5	WASHER, 10.5 FLAT ZINC	F81055-1	4
6	BOLT, M10X75-8.8 HEX HEAD ZINC	F81003-15	2
7	NUT, M10-8-B HEX NYLON ZINC LOCK	F81033-1	2
8	WASHER, 8.4 FLAT ZINC	F81054-1	5
9	WASHER, 8.2 SPLIT LOCK ZINC	F81054-4	4

REF.	DESCRIPTION (* indicates parts available in assemblies only)	PART #	QTY
10	BOLT, M8X16-8.8-B HEX HEAD FULL THREAD ZINC	F81002-20	4
11	HOSE, NITRIL WEATHERHEAD FUEL	P642	1
12	HOSE, 5X12 FUEL	R80703-4	1
13	CLAMP, 8-12	F81080-1	6
14	BRACKET, FUEL HOSE GUIDE	531668-1	1
15	BOLT, M6X16-8.8 CARRIAGE ZINC	F81001-36	2
16	WASHER, 6.4 FLAT ZINC	F81053-1	4
17	NUT, M6-8-B HEX NYLON ZINC LOCK	F81031-2	2
18	GROMMET, 1 X 1 3/4 OVAL RUBBER	085613	1
19	NUT, M8-8-B HEX NYLON ZINC LOCK	F81032-2	1
20	BOLT, M8X20-8.8 CARRIAGE ZINC	F81002-11	1
21	WASHER, Z 6.1 SPLIT LOCK ZINC	F81053-3	2
22	BOLT, M6X12 8.8 HEX HEAD FULL THREAD ZINC	F81001-7	2
23	CLAMP, 1/2 WIRE PLAS.	F05114-1	1
24	WASHER, 5.3 FLAT ZINC	F81052-1	1
25	WASHER, 5.1 SPLIT LOCK ZINC	F81052-2	1
26	SCREW, M5X10 ISO7380 HEX SOCKET BUTTON HEAD	F81000-32	1
27	BULB, FUEL PRIMER	014481	1
28	CAP	543868-1	1