

# **Wood-Mizer®**

## **Replacement Parts**

---

**LX250 E20**

**rev. A1.00**

---



**Safety is our #1 concern!** Read and understand all safety information and instructions before operating, setting up and/or maintaining this machine.

*Form #2505*

# Table of Contents

# Section-Page

<b>SECTION 1</b>	<b>GENERAL INFORMATION</b>	<b>1-1</b>
1.1	How To Use the Parts List.....	1-1
1.2	Sample Assembly .....	1-1
<b>SECTION 2</b>	<b>LX250 SAWMILL</b>	<b>2-1</b>
2.1	LX250 .....	2-1
2.2	Decals .....	2-2
<b>SECTION 3</b>	<b>LX250 BED FRAME SECTIONS</b>	<b>3-1</b>
3.1	LX250 Bed Assembly .....	3-1
3.2	Bed Section (No. 539781) .....	3-2
3.3	Log Clamp (No. 547258) .....	3-3
3.4	Right Bumper (No. 540395) .....	3-4
3.5	Left Bumper (No. 540392) .....	3-5
3.6	Additional Bed Section Assembly (No. 539781-S) .....	3-6
3.7	Bed Frame Feet (No. 540484) .....	3-7
3.8	Right Corner Foot (No. 540441) .....	3-8
3.9	Left Corner Foot (No. 540442) .....	3-9
3.10	Bed Foot (No. 514997) .....	3-10
<b>SECTION 4</b>	<b>SAWMILL MAST ASSEMBLY</b>	<b>4-1</b>
4.1	Mast (Left Side) .....	4-1
4.2	Mast (Right Side) .....	4-4
4.3	Sawmill Mast (Middle Part) .....	4-7
4.4	Saw Head Bumper .....	4-8
<b>SECTION 5</b>	<b>SAW HEAD (NO. 540416)</b>	<b>5-1</b>
5.1	Scale Bracket .....	5-1
5.2	Magnetic Strip Assembly (No. 540461) .....	5-2
5.3	Water Bottle Assembly & Blade Lube Kit .....	5-4
5.4	Safety Switch, Right Blade Housing Cover .....	5-5
5.5	Safety Switch, Left Blade Housing Cover .....	5-6
5.6	Blade Guide Roller Guard .....	5-7
5.7	Blade, Safety Switch Activator Plates, Blade Wheels, Blade Wheel Belts, Blade Tensioning Tool .....	5-8
5.8	Blade, Safety Switch Activator Plates, Blade Wheels, Blade Wheel Belts, Blade Tensioning Tool .....	5-10
5.9	Motor Pulley Guard .....	5-12
5.10	Drive Wheel Shaft .....	5-13
5.11	Drive Wheel Adjustment Parts .....	5-14
5.12	Mast Slide Pads .....	5-15
5.13	Saw Head Mounting Parts .....	5-16

## Table of Contents

## Section-Page

5.14	Left Head Mount Assembly (No. 011459)	5-17
5.15	Middle Throat Bolt	5-18
5.16	Idle Blade Wheel Mount & Tool Retaining Latch	5-19
5.17	Idle Blade Wheel Mount (Part No. 011267)	5-20
5.18	Sawdust Diverter Plate	5-21
5.19	Blade Housing Cover	5-22
5.20	Water Bottle Assembly (No. 513864)	5-23
5.21	Blade Tensioner (No. 510640)	5-24
5.22	Blade Tensioner Cylinder (No. 510641)	5-25
5.23	Blade Guide Arm Drive (No. 517270)	5-26
5.24	Blade Guide Roller w/Mount Block (No. 540564)	5-28
5.25	Blade Guide Roller Assembly, Drive Side (No. 094682)	5-29
5.26	Blade Guide Roller Assembly, Idle Side (No. 094683)	5-30
5.27	Sawdust Chute (No. 110968)	5-31
5.28	Blade Lube Kit (No. 518651)	5-32
5.29	Blade Guide Arm Assembly (No. 540565)	5-33
5.30	Blade Wheel Assembly, Drive Side (No. 091612)	5-35
5.31	Blade Wheel, Idle Side (No. A08218)	5-36

### SECTION 6 LX250 MOTORS

6-1

6.1	Motor Set, LX250 AC 15 kW	6-1
6.2	Electrical Box w/Mounting Parts (No. 540440)	6-2
6.3	Electrical Box (No. 540466)	6-4
6.4	Control Box (No. 540415)	6-5
6.5	Up//Down Motor w/Mounting Parts (No. 540591)	6-7
6.6	15 kW Motor w/Belt & Guard (No. 540411)	6-9
6.7	Gear Motors (540486, 540487)	6-11
6.8	Horizontal Cable Guide (No. 540473)	6-13

## SECTION 1 GENERAL INFORMATION

### 1.1 How To Use the Parts List

- Use the index above to locate the assembly that contains the part you need.
- Go to the appropriate section and locate the part in the illustration.
- Use the number pointing to the part to locate the correct part number and description in the table.
- Parts shown indented under another part are included with that part.
- Parts marked with a diamond (◆) are only available in the assembly listed above the part.

See the sample table below. Sample Part #A01111 includes part F02222-2 and subassembly A03333. Subassembly A03333 includes part S04444-4 and subassembly K05555. The diamond (◆) indicates that S04444-4 is not available except in subassembly A03333. Subassembly K05555 includes parts M06666 and F07777-77. The diamond (◆) indicates M06666 is not available except in subassembly K05555.

1.2 Sample Assembly				
REF.	DESCRIPTION (◆ Indicates Parts Available In Assemblies Only)	PART #	QTY	
	Sample Assembly, Complete (Includes All Indented Parts Below)	A01111	1	
1	Sample Part	F02222-22	1	
	Sample Subassembly (Includes All Indented Parts Below)	A03333	1	
2	Sample Part (◆ Indicates Part Is Only Available With A03333)	S04444-4	1	◆
	Sample Subassembly (Includes All Indented Parts Below)	K05555	1	
3	Sample Part (◆ Indicates Part Is Only Available With K05555)	M06666	2	◆
4	Sample Part	F07777-77	1	

#### To Order Parts:

- From Europe call our European Headquarters and Manufacturing Facility in Kolo, Poland at **+48-63-2626000**. From the continental U.S., call our toll-free Parts hotline at **1-800-525-8100**. Have your customer number, vehicle identification number, and part numbers ready when you call. From other international locations, contact the Wood-Mizer distributor in your area for parts.

#### Office Hours:

Country	Monday - Friday	Saturday	Sunday
Poland	7-15	Closed	Closed
US	8 a.m.- 5 p.m.	8 a.m.- 12 p.m.	Closed

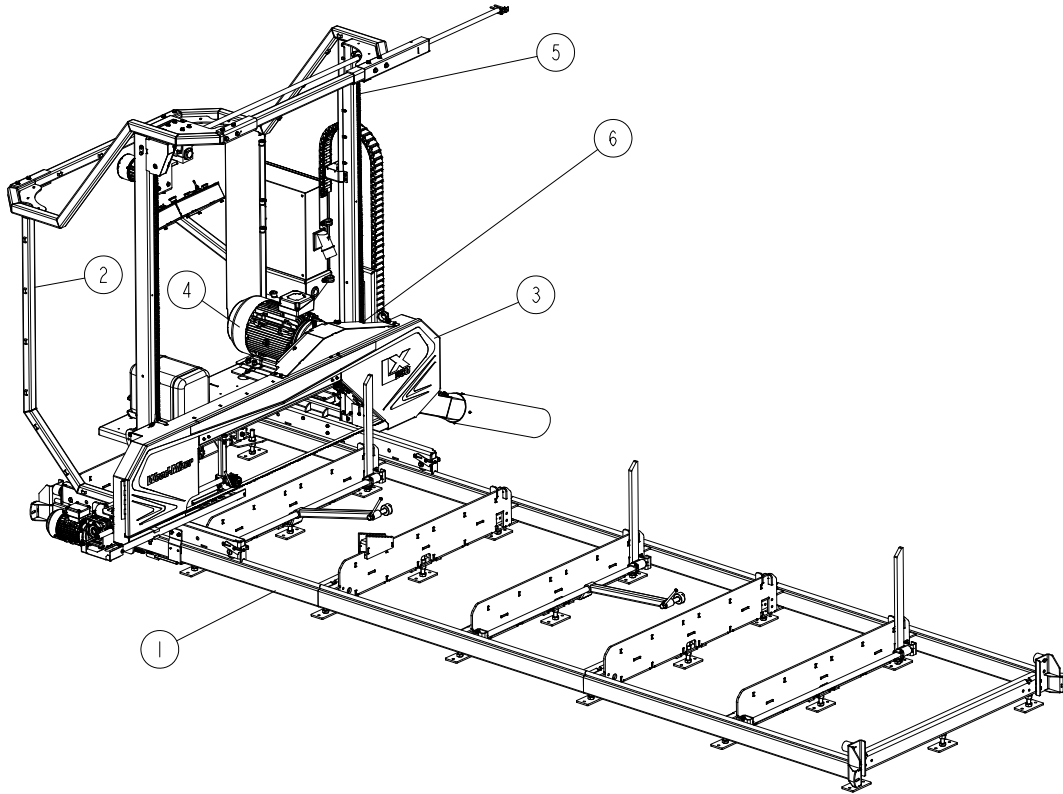


**CAUTION!** It is strongly recommended that only original spare parts be used.

## SECTION 2 LX250 SAWMILL

### 2.1 LX250

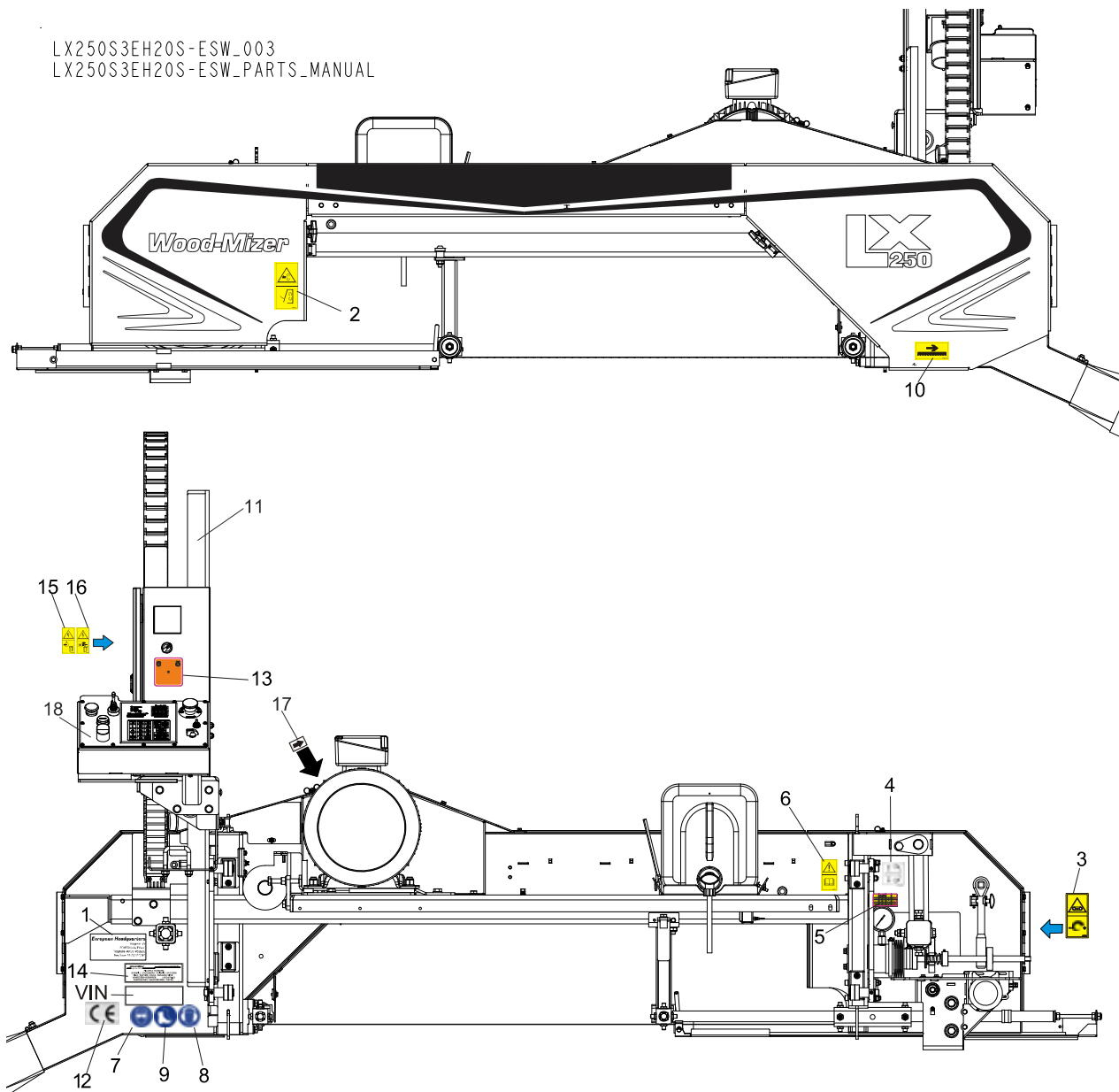
LX250S3EH20S-ESW\_001  
LX250S3EH20S-ESW\_PARTS\_MANUAL



REF.	DESCRIPTION (* indicates parts available in assemblies only)	PART #	QTY
-	<b>LX250 AC 15 kW</b>	LX250S3EH20S-ESW	1
1	LX250 BED ASSEMBLY <a href="#">See Section 3.1</a>	540390	1
2	LX250 MAST ASSEMBLY <a href="#">See Section 4.1</a>	540426	1
3	LX250 SAW HEAD ASSEMBLY <a href="#">See Section 5.1</a>	540416	1
4	MOTOR SET, AC 15 KW LX250 <a href="#">See Section 6.1</a>	539827	1
-	CHAIN, #40 LENGTH: 4130 MM W/MASTER LINKS	539053	2
5	CHAIN, #40 LENGTH: 4130 MM (325-LINK)	539772	1
6	LINK, #40 MASTER	P04200	2

**2.2 Decals**

LX250S3EH20S-ESW\_003  
LX250S3EH20S-ESW\_PARTS\_MANUAL



REF.	DESCRIPTION (◆ Indicates Parts Available in Assemblies Only)	PART #	QTY
	<b>DECAL KIT, LX250</b>	553252	1
	DECAL, LX250 SAWMILL TYPE	553251	1
1	DECAL, EUROPEAN HEADQUARTERS ADDRESS	015841	1
2	DECAL, "CLOSE GUARDS AND COVERS BEFORE OPERATING."	099220	1
3	DECAL, BLADE TENSION (PICTOGRAM)	099219	1
4	DECAL, BLADE ALIGNMENT	P11789	1
5	DECAL, LX250 BLADE TENSION	552834	1
6	DECAL, READ OPERATOR'S MANUAL (PICTOGRAM)	096317	1
7	DECAL, EYE PROTECTION WARNING (PICTOGRAM)	S12004G	1
8	DECAL, EAR PROTECTION WARNING (PICTOGRAM)	S12005G	1
9	DECAL, USE SAFETY BOOTS (PICTOGRAM)	501465	1

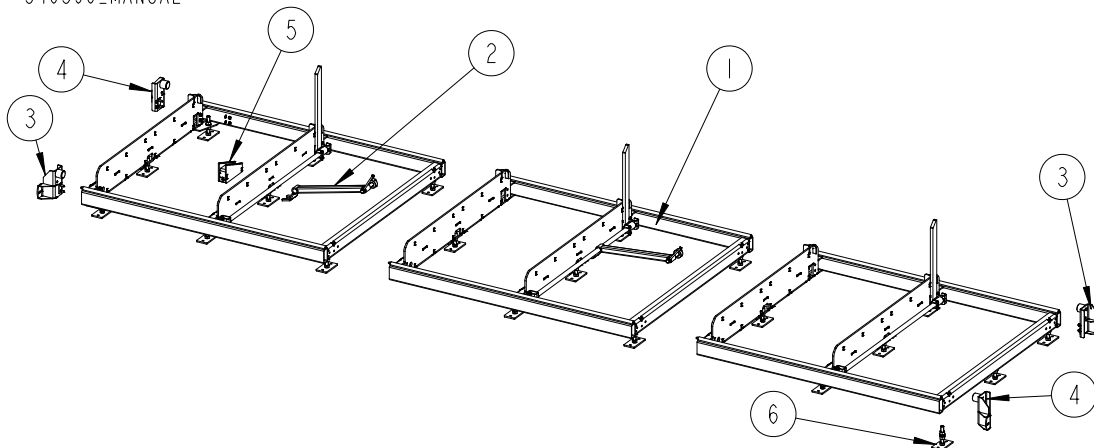
<b>10</b>	DECAL, BLADE MOVEMENT DIRECTION (PICTOGRAM)	096321	1	
<b>11</b>	SCALE, LX250 MM/INCH	540551	1	
	DECAL, "KEEP A SAFE DISTANCE" (PICTOGRAM)	099221	2 <sup>1</sup>	
	DECAL, BLADE SETTING	P85066	1	
<b>12</b>	DECAL, CE CERTIFIED SAWMILL	P85070	1	
<b>13</b>	DECAL, LX250 MOTOR BRAKE OPERATION MODE	552835	1	
<b>14</b>	DECAL, INTERNATIONAL SAWMILL NAME	501466	1	
<b>15</b>	DECAL, HAZARDOUS VOLTAGE INSIDE THE ELECTRIC BOX (PICTOGRAM)	096316	1	
<b>16</b>	DECAL, "REMOVE THE PLUG BEFORE OPENING THE ELECTRIC BOX" (PICTOGRAM)	096319	1	
<b>17</b>	DECAL, MOTOR REVOLUTIONS DIRECTION	S20097	1	
<b>18</b>	DECAL, LX250 CONTROL BOX	547205	1	

<sup>1</sup> 2 pieces for each bed frame section

## SECTION 3 LX250 BED FRAME SECTIONS

### 3.1 LX250 Bed Assembly

540390\_001\_A  
540390\_MANUAL

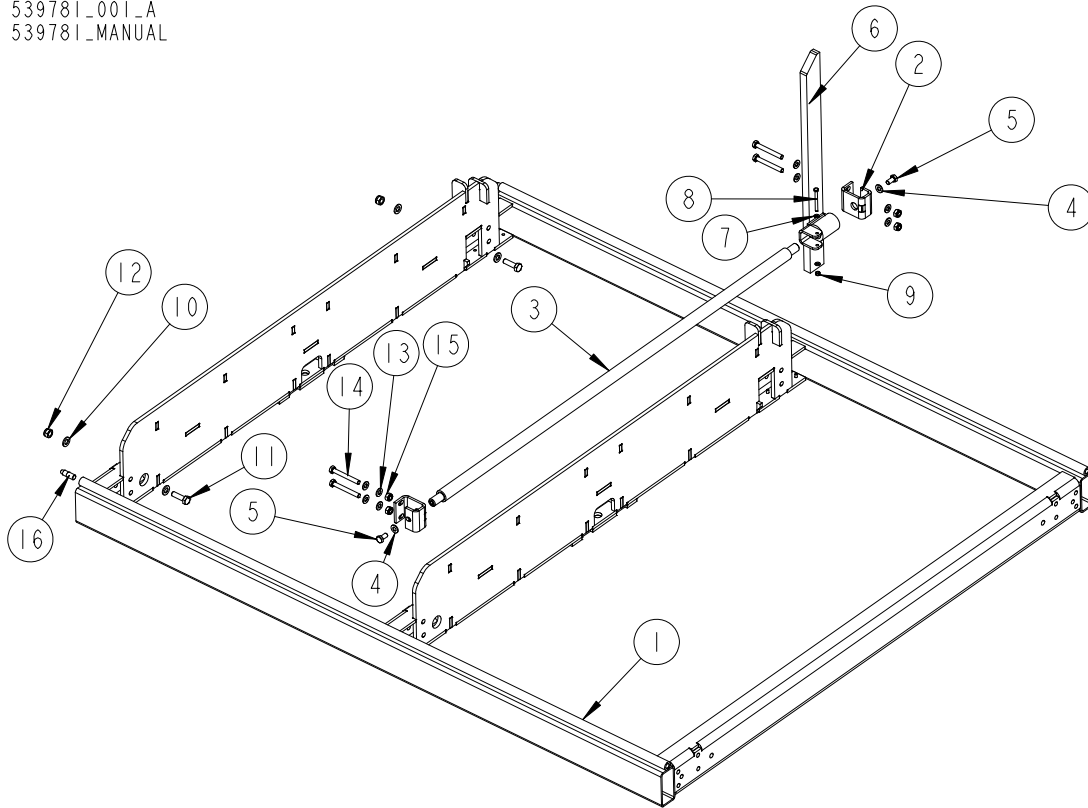


REF.	DESCRIPTION (* indicates parts available in assemblies only)	PART #	QTY
-	<b>LX250 BED ASSEMBLY</b>	540390	1
1	SECTION, LX250 BED - COMPLETE <a href="#">See Section 3.2</a>	539781	3
2	LOG CLAMP, LX250 - COMPLETE <a href="#">See Section 3.3</a>	547258	2
3	BUMPER, COMPLETE RIGHT <a href="#">See Section 3.4</a>	540395	2
4	BUMPER, COMPLETE LEFT <a href="#">See Section 3.5</a>	540392	2
5	WEDGE, LX250 BED	540398-1	1
6	FOOT SET, LX250 BED <a href="#">See Section 3.7</a>	540484	1



3.2 Bed Section (No. 539781)

539781\_001\_A  
 539781\_MANUAL



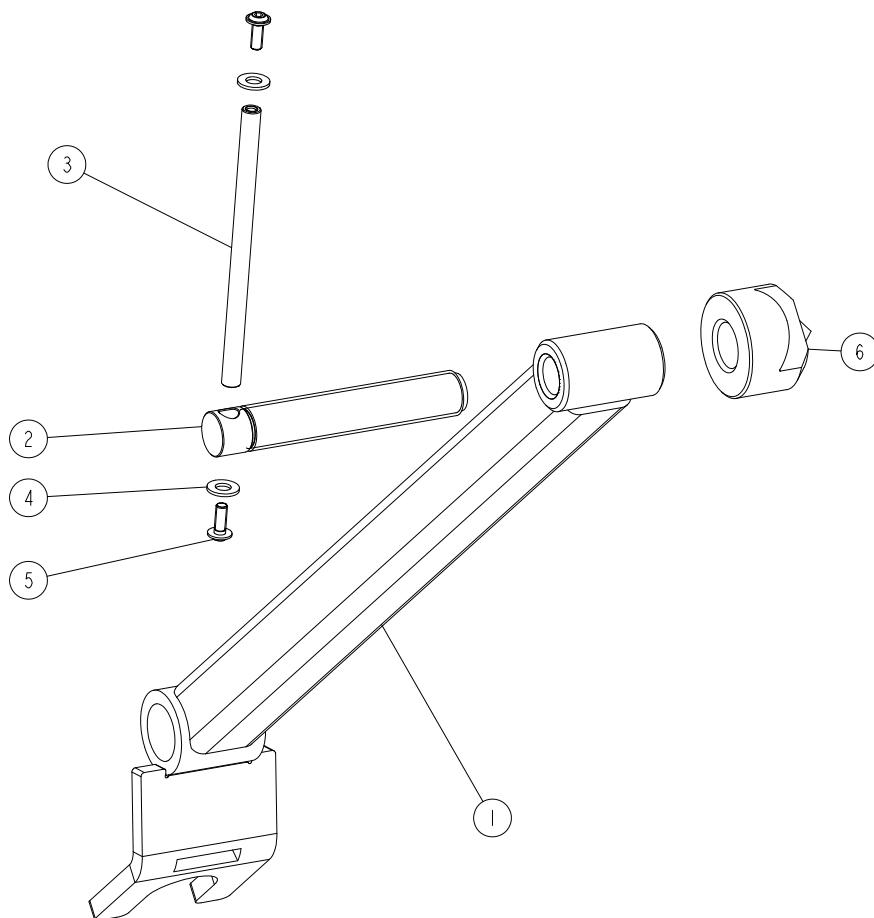
REF.	DESCRIPTION (* indicates parts available in assemblies only)	PART #	QTY
-	<b>SECTION, LX250 BED - COMPLETE</b>	539781	1
1	SECTION WELDMENT, LX250 BED (3 BEAMS)	539782-1	1
-	SUPPORT ASSEMBLY, LOG SIDE	539786	1
2	BRACKET, CLAMP MOUNT	500338-1	2
3	ROD, LOG CLAMP MAIN	539787-1	1
4	WASHER, 10.5 FLAT ZINC	F81055-1	2
5	BOLT, ISO 4017-M10X20-8.8-A2E HEX HEAD FULL THREAD	F81003-53	2
-	SUPPORT, LOG SIDE - COMPLETE	539788	1
6	SUPPORT WELDMENT, LOG SIDE	539790-1	1
7	WASHER, 6.4 FLAT ZINC	F81053-1	2
8	BOLT, M6X60-8.8 HEX HEAD FULL THREAD ZINC	F81001-9	1
9	NUT, M6-8-B HEX NYLON ZINC LOCK	F81031-2	1
10	WASHER, 13 FLAT ZINC	F81056-1	4
11	BOLT, M12X40 8.8 HEX HEAD FULL THREAD ZINC	F81004-4	2
12	NUT, M12-8 DIN 982 HEX NYLON ZINC LOCK	F81034-2	2
13	WASHER, 10.5 FLAT ZINC	F81055-1	8
14	BOLT, M10X80-8.8 HEX HEAD ZINC	F81003-50	4
15	NUT, M10-8-B HEX NYLON ZINC LOCK	F81033-1	4
16	PIN, SPECIAL	090675	2

# 3 LX250 Bed Frame Sections

## Log Clamp (No. 547258)

### 3.3 Log Clamp (No. 547258)

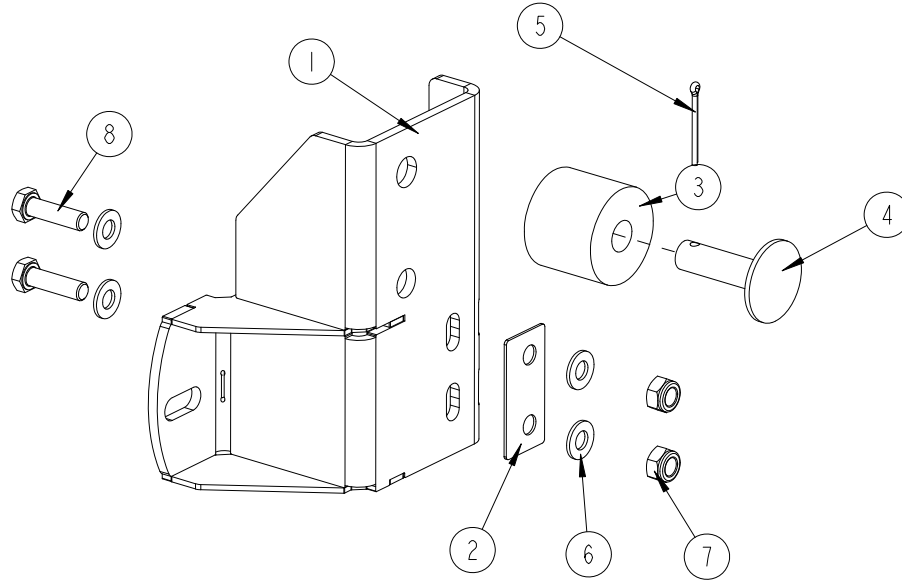
547258-001  
547258\_MANUAL



REF.	DESCRIPTION (* indicates parts available in assemblies only)	PART #	QTY
-	<b>LOG CLAMP, LX250 - COMPLETE</b>	547258	1
1	ARM, LX250 LOG CLAMP	540490-1	1
-	BOLT, LOG CLAMP - COMPLETE	507563	1
2	BOLT, LOG CLAMP	507463	1
3	ROD, ZINC-PLATED	511923-1	1
4	WASHER, 8.4 FLAT ZINC	F81054-1	2
5	SCREW, M6X16 BN 11252 "BOSSARD" BUTTON HEAD SOCKET CAP W/FLANGE	F81001-24	2
6	CAP, CLAMP	T00414	1

3.4 Right Bumper (No. 540395)

540395\_001  
 540395\_MANUAL



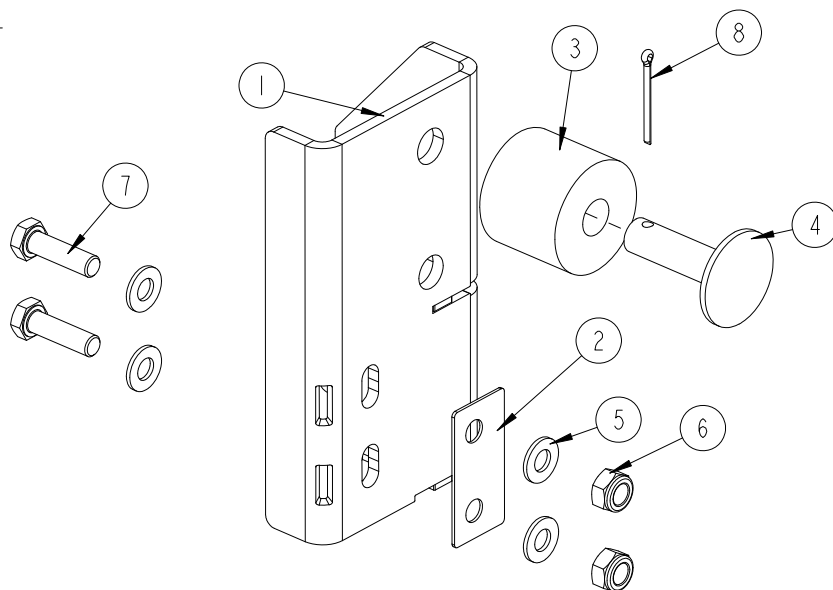
REF.	DESCRIPTION (* indicates parts available in assemblies only)	PART #	QTY
-	<b>BUMPER, COMPLETE RIGHT</b>	540395	1
1	BRACKET WELDMENT, RIGHT BUMPER MOUNT	540396-1	1
2	WASHER, BUMPER BRACKET SPACER	515061-1	1
3	BUSHING, 11/16X2 1/8X1 3/4 RUBBER	P12165	1
4	PIN WELDMENT, BUMPER MOUNT	086182-1	1
5	PIN, S-ZN 4X25 COTTER	F81043-2	1
6	WASHER, 10.5 FLAT ZINC	F81055-1	4
7	NUT, M10-8-B HEX NYLON ZINC LOCK	F81033-1	2
8	BOLT, M10X35 8.8 HEX HEAD FULL THREAD ZINC	F81003-17	2

# 3 LX250 Bed Frame Sections

## Left Bumper (No. 540392)

### 3.5 Left Bumper (No. 540392)

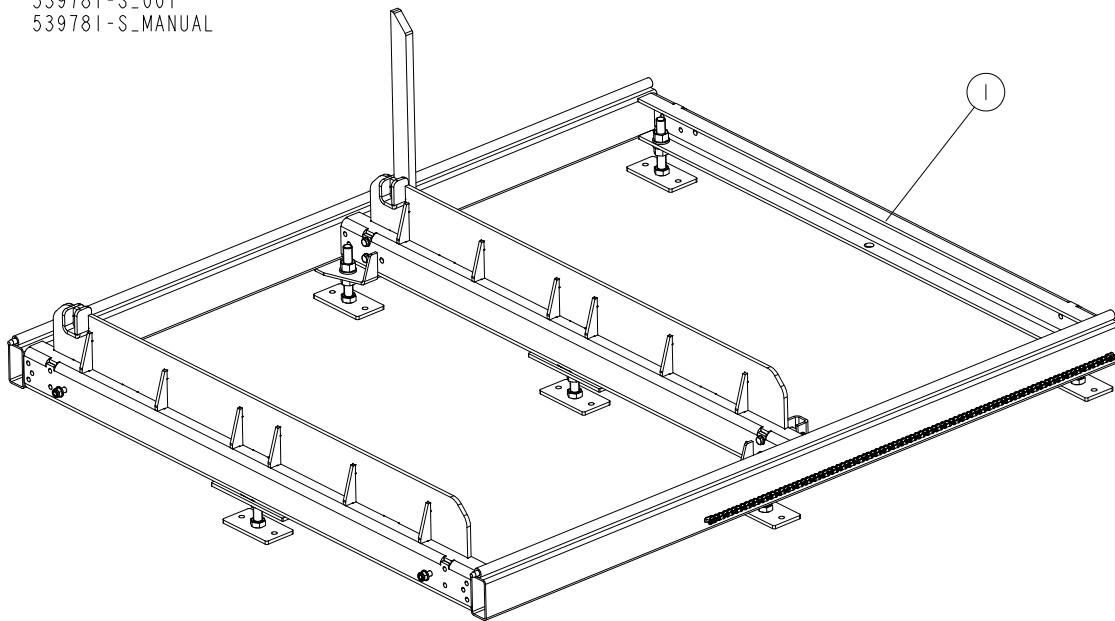
540392\_001  
540392\_MANUAL



REF.	DESCRIPTION (* indicates parts available in assemblies only)	PART #	QTY
-	<b>BUMPER, COMPLETE LEFT</b>	540392	1
1	BRACKET WELDMENT, LEFT BUMPER MOUNT	540393-1	1
2	WASHER, BUMPER BRACKET SPACER	515061-1	1
3	BUSHING, 11/16X2 1/8X1 3/4 RUBBER	P12165	1
4	PIN WELDMENT, BUMPER MOUNT	086182-1	1
5	WASHER, 10.5 FLAT ZINC	F81055-1	4
6	NUT, M10-8-B HEX NYLON ZINC LOCK	F81033-1	2
7	BOLT, M10X35 8.8 HEX HEAD FULL THREAD ZINC	F81003-17	2
8	PIN, S-ZN 4X25 COTTER	F81043-2	1

### 3.6 Additional Bed Section Assembly (No. 539781-S)

539781-S\_001  
 539781-S\_MANUAL



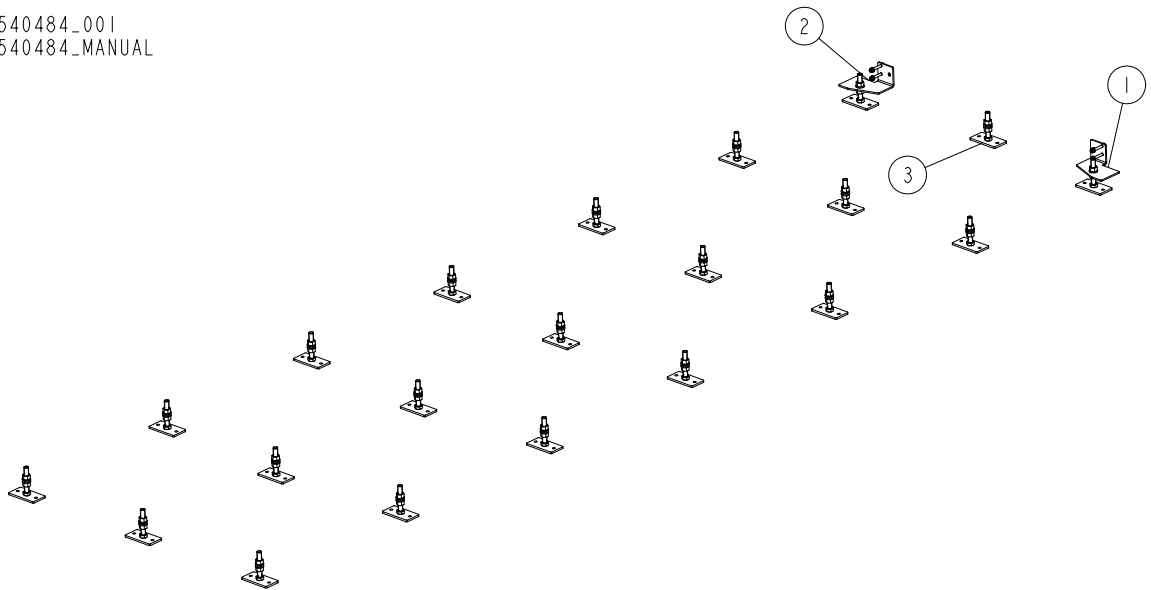
REF.	DESCRIPTION (* indicates parts available in assemblies only)	PART #	QTY	
1	SECTION ASSEMBLY, LX250 BED - ADDITIONAL	539781-S	1	

# 3 LX250 Bed Frame Sections

## Bed Frame Foots (No. 540484)

### 3.7 Bed Frame Foots (No. 540484)

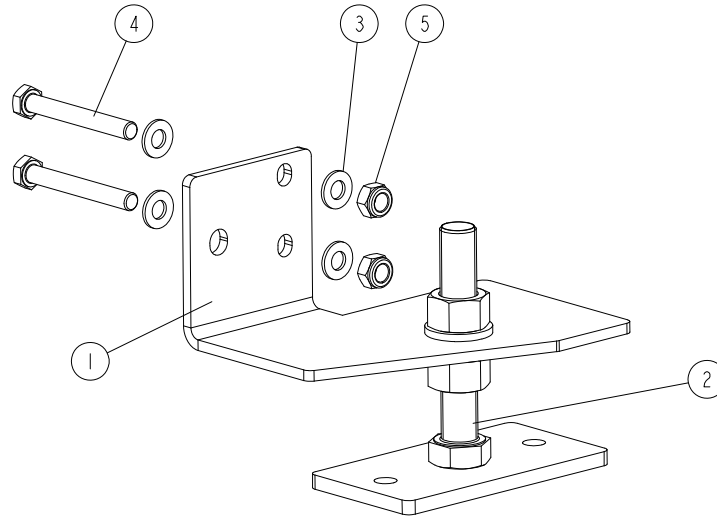
540484\_001  
540484\_MANUAL



REF.	DESCRIPTION (* indicates parts available in assemblies only)	PART #	QTY	
-	FOOT SET, LX250 BED	540484	1	
1	FOOT, LX250 RIGHT CORNER <a href="#">See Section 3.8</a>	540441	1	
2	FOOT, LX250 LEFT CORNER <a href="#">See Section 3.9</a>	540442	1	
3	FOOT, LT15P BED - COMPLETE <a href="#">See Section 3.10</a>	514997	19	

### 3.8 Right Corner Foot (No. 540441)

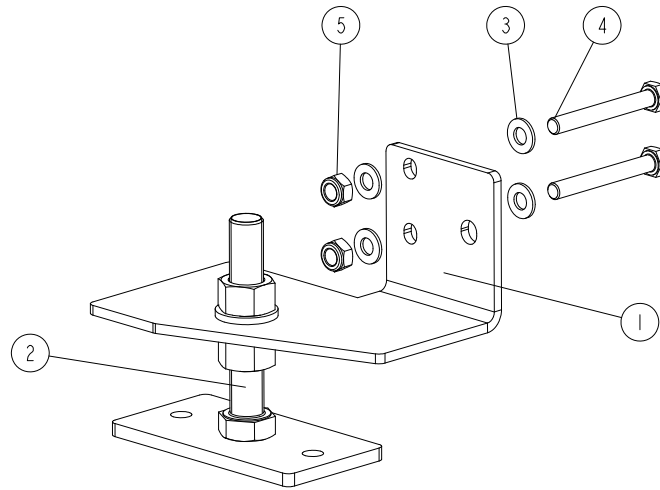
540441\_001  
540441\_MANUAL



REF.	DESCRIPTION (* indicates parts available in assemblies only)	PART #	QTY
-	<b>FOOT, LX250 RIGHT CORNER</b>	540441	1
1	PLATE, LX250 LEFT FOOT MOUNT	540424-1	1
2	FOOT, LT15P BED - COMPLETE <a href="#">See Section 3.10</a>	514997	1
3	WASHER, 10.5 FLAT ZINC	F81055-1	4
4	BOLT, M10X80-8.8 HEX HEAD ZINC	F81003-50	2
5	NUT, M10-8-B HEX NYLON ZINC LOCK	F81033-1	2

**3.9 Left Corner Foot (No. 540442)**

540442\_001  
540442\_MANUAL

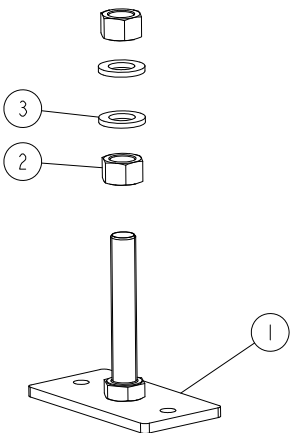


REF.	DESCRIPTION (* indicates parts available in assemblies only)	PART #	QTY	
-	<b>FOOT, LX250 LEFT CORNER</b>	540442	1	
1	PLATE, LX250 LEFT FOOT MOUNT	540430-1	1	
2	FOOT, LT15P BED - COMPLETE <a href="#">See Section 3.10</a>	514997	1	
3	WASHER, 10.5 FLAT ZINC	F81055-1	4	
4	BOLT, M10X80-8.8 HEX HEAD ZINC	F81003-50	2	
5	NUT, M10-8-B HEX NYLON ZINC LOCK	F81033-1	2	



### 3.10 Bed Foot (No. 514997)

514997\_001  
514997\_MANUAL



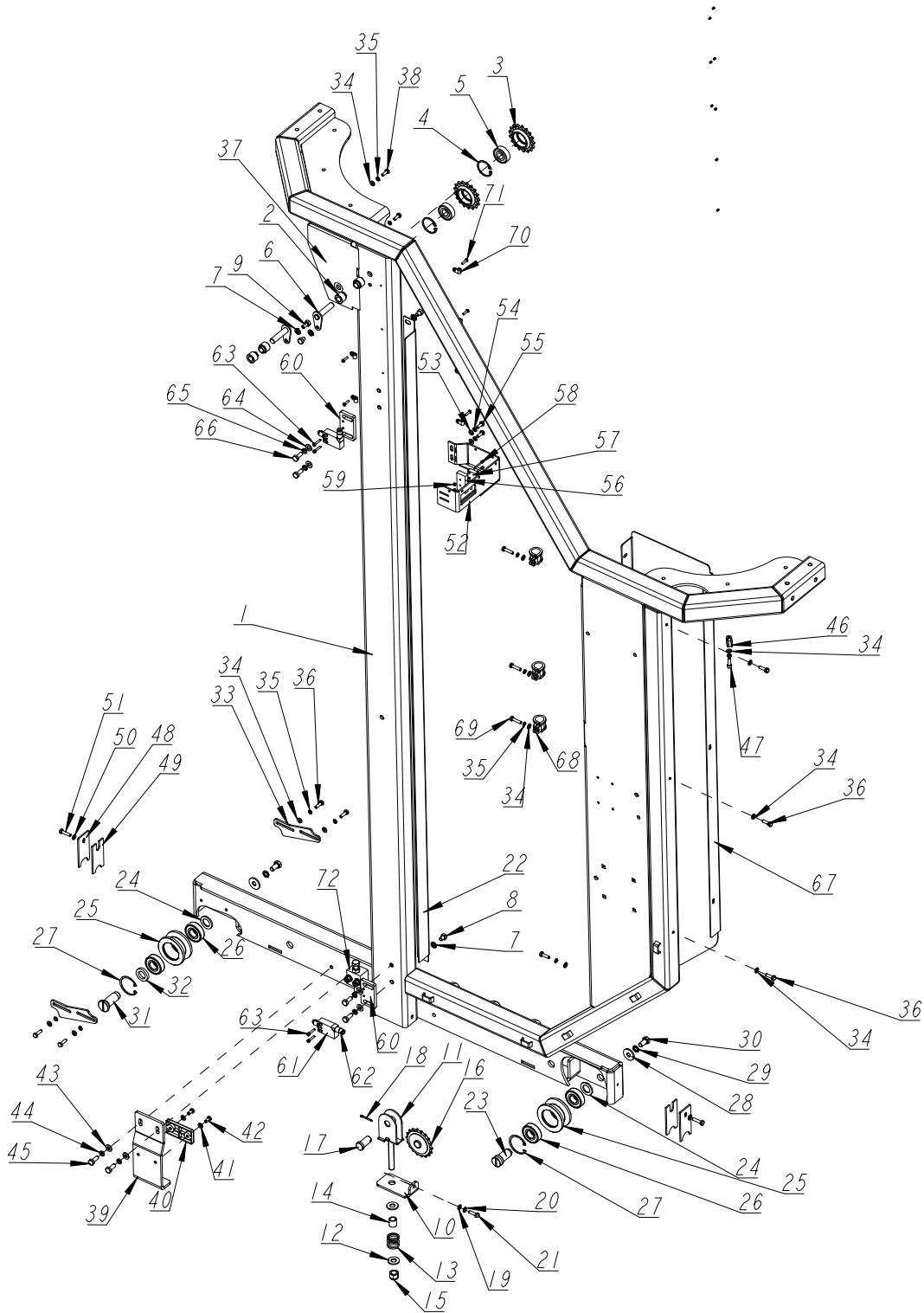
REF.	DESCRIPTION (* indicates parts available in assemblies only)	PART #	QTY	
-	<b>FOOT, LT15 BED - COMPLETE</b>	514997	1	
1	FOOT WELDMENT, LT15 BED ZINC-PLATED	514996-1	1	
2	NUT, M20-8- HEX ZINC	F81037-1	2	
3	WASHER, 21 FLAT ZINC	F81059-2	2	

# 4 SAWMILL MAST ASSEMBLY

Mast (Left Side)

## SECTION 4 SAWMILL MAST ASSEMBLY

### 4.1 Mast (Left Side)



REF.	DESCRIPTION (* indicates parts available in assemblies only)	PART #	QTY
1	UPRIGHT WELDMENT RH, LX250	113961	1
2	BUSHING, IDLER SPACING	011176	4

# SAWMILL MAST ASSEMBLY

Mast (Left Side)

4

REF.	DESCRIPTION (* indicates parts available in assemblies only)	PART #	QTY
-	SPROCKET ASSEMBLY	016366	2
3	SPROCKET, #40/41 CHAIN 17 TOOTH	016365	1
4	RING, 1.575 ID N5100-156 SNAP	F04254-4	1
5	BEARING, JAPANESE 6203-2RS 5/8 C3/ALV3	BEARING016366	1
6	WLDMNT, 1/2X2-1/8 IDLER PIN	011213	2
7	WASHER, 8MM SPLIT LOCK, ZN	F05011-45	4
8	BOLT, M8-1.25X20MM HHC	F05021-51	3
9	BOLT, M8-1.25X16 HH ZINC	F05004-47	1
10	WELDMNT, TENSION SPROCKET MOUNTING	011372	1
-	ASSY, LX150 UP/DN CHAIN TENSION	011370	1
11	WLDMNT, LX150 UP/DN CHAIN TENSION	011369	1
12	WASHER, 1/2 SAE FLAT	F05011-2	2
13	SPRING, 1ODX1LONGX.125WIRE COMP	016516	1
14	SPACER, UP/DN CHAIN TENSIONER	016515	1
15	NUT, 1/2-13 NYL HEX LOCK	F05010-8	1
16	SPROCKET, 40 IDLER 18T 5/8ID	P04333	1
17	PIN, 5/8X1 USABLE LG. CLEVIS	F05012-159	1
18	PIN, 1/8X1 COTTER	F05012-1	1
19	WASHER, M6 FLAT CLASS 4	F05026-1	1
20	WASHER, M6 SPLIT LOCK	F05026-2	1
21	BOLT, M6-1X20 HH CLASS 8	F05020-6	1
22	ANGLE, MAST TUBE STAINLESS	011430	1
23	PIN, FIXED TRACK ROLLER	515018	1
24	WASHER, 20.6X33.3X3 SPECIAL	540528-1	2
-	ROLLER ASSEMBLY, TRACK	515015	2
25	ROLLER, TRACK	514889	1
26	BEARING, 6204 2RS CX ROLLING	088447	2
27	RING, W47 INSIDE RETAINING	089653	1
28	WASHER, 11/30-3 ZINC-PLATED	088787-1	2
29	WASHER, Z 10.2 SPLIT LOCK ZINC	F81055-2	2
30	BOLT, ISO 4017-M10X20-8.8-A2E HEX HEAD FULL THREAD	F81003-53	2
31	PIN, ADJUSTABLE ROLLER	515101	1
32	WASHER, 20.6X33.3X6 SPECIAL	540588-1	1
33	BAR, ROLLER ADJUSTMENT	520177-1	2
34	WASHER, 6.4 FLAT ZINC	F81053-1	15
35	WASHER, Z 6.1 SPLIT LOCK ZINC	F81053-3	15
36	BOLT, M6X20 8.8 HEX HEAD FULL THREAD ZINC	F81001-2	8
37	GUARD WELDMNT, UP/DOWN CHAIN - LEFT	540443-1	1
38	BOLT, M6X16-8.8 HEX HEAD FULL THREAD ZINC	F81001-15	2
-	PLATE ASSEMBLY, LX250 MAST SAFETY	540447	1
39	PLATE, MAST SAFETY	540448-1	1
40	PAD, CATAPILLAR TRACK	P13576	1
41	WASHER, 6.4 FLAT ZINC	F81053-1	2
42	BOLT, M6X12 8.8 HEX HEAD FULL THREAD ZINC	F81001-7	2
43	WASHER, 8.4 FLAT ZINC	F81054-1	2
44	WASHER, 8.2 SPLIT LOCK ZINC	F81054-4	2
45	BOLT, M8X20 8.8 HEX HEAD FULL THREAD ZINC	F81002-4	2

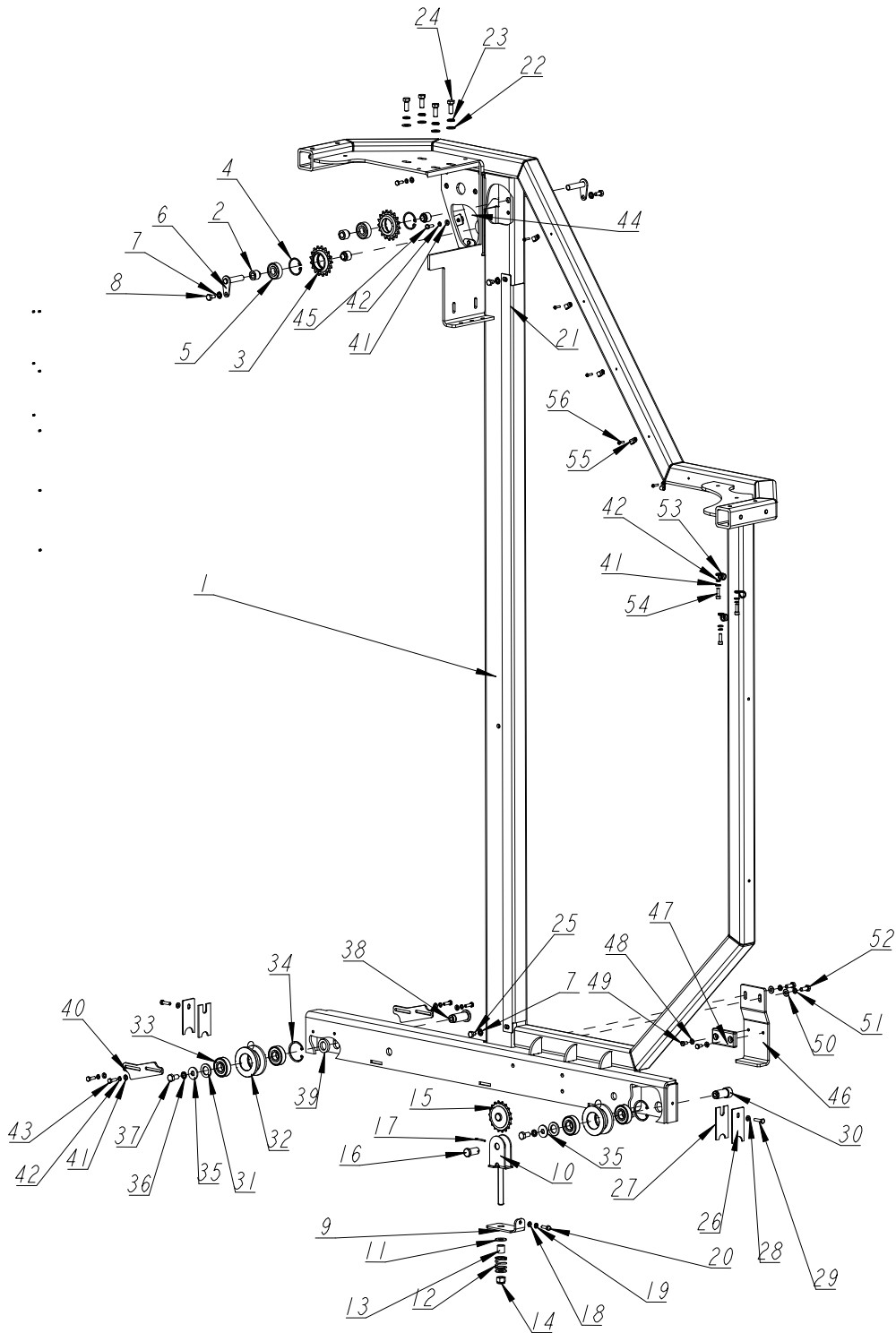
## 4

## SAWMILL MAST ASSEMBLY

## Mast (Left Side)

REF.	DESCRIPTION (* indicates parts available in assemblies only)	PART #	QTY	
46	CLIP, RSGU 1.10/12W1 RETAINING	086861	2	
47	SCREW, M6X20 8.8 HEX SOCKET HEAD CAP ZINC	F81001-22	2	
-	SCRAPER, LX250 COMPLETE	547266	2	
48	PLATE, SCRAPER CLAMP	088559-1	1	
49	SCRAPER	515022	1	
50	WASHER, 6.4 FLAT ZINC	F81053-1	1	
51	BOLT, M6X25 -8.8 HEX HEAD FULL THREAD ZINC	F81001-3	1	
-	SENSOR W/BRACKET	540458	1	
52	PLATE, SCALE INDICATOR	540457-1	1	
53	WASHER, 6.4 FLAT ZINC	F81053-1	2	
54	WASHER, Z 6.1 SPLIT LOCK ZINC	F81053-3	2	
55	BOLT, M6X16-8.8 HEX HEAD FULL THREAD ZINC	F81001-15	2	
56	BLOCK, MSK SENSOR BRACKET SPACER	540459	1	
57	SENSOR, MSK-320 MAGNETIC	096014	1	
58	SCREW, M3X30 8.8 HEX SOCKET HEAD CAP ZINC	F81011-38	2	
59	NUT, M3-6 HEX ZINC	F81028-1	2	
-	LIMIT SWITCH W/MOUNTI PLATE	540558	2	
60	PLATE, LIMIT SWITCH ZINC-PLATED MOUNT	540563-1	1	
61	SWITCH, XCMD2102M12 LIMIT	540559	1	
62	CONNECTOR, M12 LIMIT SWITCH	540559_KONEKTOR	1	
63	SCREW, M4X20 8.8 HEX SOCKET HEAD CAP ZINC	F81011-31	2	
64	WASHER, 8.4 FLAT ZINC	F81054-1	2	
65	WASHER, 8.2 SPLIT LOCK ZINC	F81054-4	2	
66	BOLT, M8X20 8.8 HEX HEAD FULL THREAD ZINC	F81002-4	2	
67	GUARD, LEFT	540589-1	1	
68	CLIP, RSGU 1.20/20 RETAINING	F81087-2	3	
69	BOLT, M6X25 -8.8 HEX HEAD FULL THREAD ZINC	F81001-3	3	
70	ELEMENT, EE63 MOUNTING	F81080-4	6	
71	SCREW, M4X16 5.8-B CROSS RECESSED PAN HEAD ZINC	F81011-42	6	
72	BUMPER, SAW HEAD <a href="#">See Section 4.4</a>	547268	1	

**4.2 Mast (Right Side)**



REF.	DESCRIPTION (* indicates parts available in assemblies only)	PART #	QTY
1	UPRIGHT WELDMENT LH, LX250	113967	1
2	BUSHING, IDLER SPACING	011176	4
-	SPROCKET ASSEMBLY	016366	2
3	SPROCKET, #40/41 CHAIN 17 TOOTH	016365	1

## 4

**SAWMILL MAST ASSEMBLY***Mast (Right Side)*

REF.	DESCRIPTION (* indicates parts available in assemblies only)	PART #	QTY
4	RING, 1.575 ID N5100-156 SNAP	F04254-4	1
5	BEARING, JAPANESE 6203-2RS 5/8 C3/ALV3	BEAR- ING016366	1
6	WLDMNT, 1/2X2-1/8 IDLER PIN	011213	2
7	WASHER, 8MM SPLIT LOCK, ZN	F05011-45	4
8	BOLT, M8-1.25X16 HH ZINC	F05004-47	2
9	WELDMNT, TENSION SPROCKET MOUNTING	011372	1
-	ASSY, LX150 UP/DN CHAIN TENSION	011370	1
10	WLDMNT, LX150 UP/DN CHAIN TENSION	011369	1
11	WASHER, 1/2 SAE FLAT	F05011-2	2
12	SPRING, 1ODX1LONGX.125WIRE COMP	016516	1
13	SPACER, UP/DN CHAIN TENSIONER	016515	1
14	NUT, 1/2-13 NYL HEX LOCK	F05010-8	1
15	SPROCKET, 40 IDLER 18T 5/8ID	P04333	1
16	PIN, 5/8X1 USABLE LG. CLEVIS	F05012-159	1
17	PIN, 1/8X1 COTTER	F05012-1	1
18	WASHER, M6 FLAT CLASS 4	F05026-1	1
19	WASHER, M6 SPLIT LOCK	F05026-2	1
20	BOLT, M6-1X20 HH CLASS 8	F05020-6	1
21	ANGLE, MAST TUBE STAINLESS	011430	1
22	WASHER, 3/8 FLAT SAE	F05011-3	4
23	WASHER, 3/8 SPLIT LOCK	F05011-4	4
24	BOLT, 3/8-16X1 GR5 HH	F05007-87	4
25	BOLT, M8-1.25X20MM HHC	F05021-51	2
-	SCRAPER, LX250 COMPLETE	547266	2
26	PLATE, SCRAPER CLAMP	088559-1	1
27	SCRAPER	515022	1
28	WASHER, 6.4 FLAT ZINC	F81053-1	1
29	BOLT, M6X25 -8.8 HEX HEAD FULL THREAD ZINC	F81001-3	1
30	PIN, FIXED TRACK ROLLER	515018	1
31	WASHER, 20.6X33.3X3 SPECIAL	540528-1	2
-	ROLLER ASSEMBLY, TRACK	515015	2
32	ROLLER, TRACK	514889	1
33	BEARING, 6204 2RS CX ROLLING	088447	2
34	RING, W47 INSIDE RETAINING	089653	1
35	WASHER, 11/30-3 ZINC-PLATED	088787-1	2
36	WASHER, Z 10.2 SPLIT LOCK ZINC	F81055-2	2
37	BOLT, ISO 4017-M10X20-8.8-A2E HEX HEAD FULL THREAD	F81003-53	2
38	PIN, ADJUSTABLE ROLLER	515101	1
39	WASHER, 20.6X33.3X6 SPECIAL	540588-1	1
40	BAR, ROLLER ADJUSTMENT	520177-1	2
41	WASHER, 6.4 FLAT ZINC	F81053-1	9
42	WASHER, Z 6.1 SPLIT LOCK ZINC	F81053-3	9
43	BOLT, M6X20 8.8 HEX HEAD FULL THREAD ZINC	F81001-2	4
44	GUARD WELDMNT, UP/DOWN CHAIN - RIGHT	540485-1	1
45	BOLT, M6X16-8.8 HEX HEAD FULL THREAD ZINC	F81001-15	2
-	PLATE ASSEMBLY, LX250 MAST SAFETY	540447	1

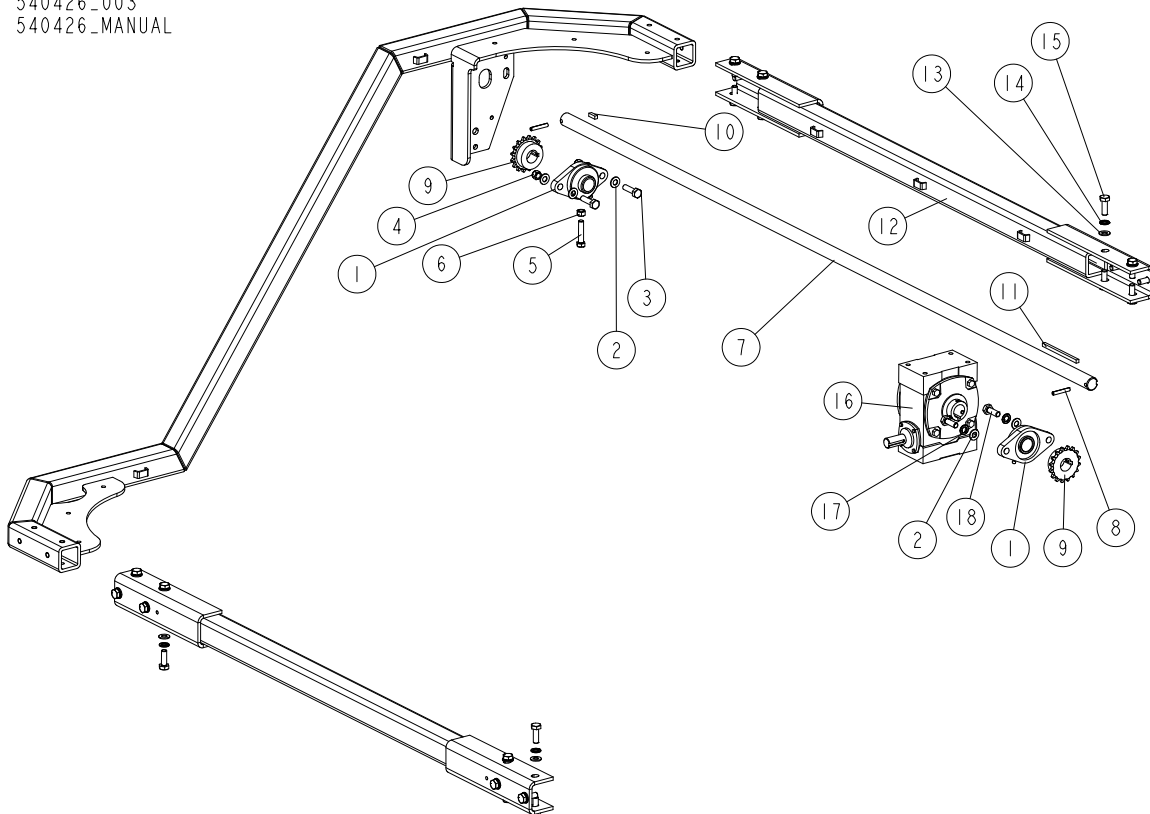
# SAWMILL MAST ASSEMBLY

*Mast (Right Side)*

4

REF.	DESCRIPTION (* indicates parts available in assemblies only)	PART #	QTY	
46	PLATE, MAST SAFETY	540448-1	1	
47	PAD, CATAPILLAR TRACK	P13576	1	
48	WASHER, 6.4 FLAT ZINC	F81053-1	2	
49	BOLT, M6X12 8.8 HEX HEAD FULL THREAD ZINC	F81001-7	2	
50	WASHER, 8.4 FLAT ZINC	F81054-1	2	
51	WASHER, 8.2 SPLIT LOCK ZINC	F81054-4	2	
52	BOLT, M8X20 8.8 HEX HEAD FULL THREAD ZINC	F81002-4	2	
53	CLIP, RSGU 1.10/12W1 RETAINING	086861	3	
54	SCREW, M6X20 8.8 HEX SOCKET HEAD CAP ZINC	F81001-22	3	
55	ELEMENT, EE63 MOUNTING	F81080-4	5	
56	SCREW, M4X16 5.8-B CROSS RECESSED PAN HEAD ZINC	F81011-42	5	

## 4.3 Sawmill Mast (Middle Part)

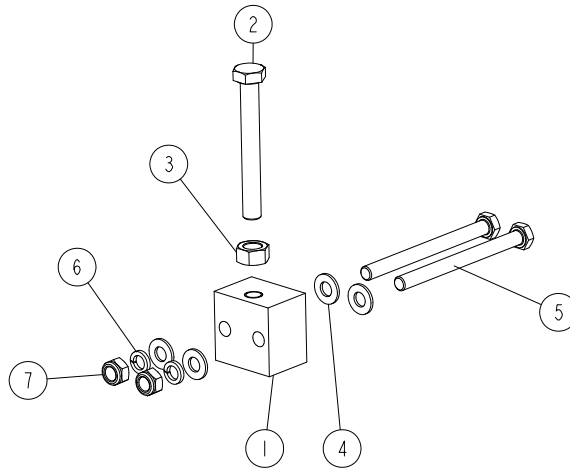
540426\_003  
540426\_MANUAL

REF.	DESCRIPTION (* indicates parts available in assemblies only)	PART #	QTY
1	BEARING, 1 FLANGED, VF2S 216	038124	2
2	WASHER, M10 FLAT	F05011-134	6
3	BOLT, M10-1.50 X 35MM HH GR 8.8	F05022-18	2
4	NUT, M10-1.50 HEX NYL LOCK	F05004-270	2
5	BOLT, 3/8-16X1 3/4 HH FT	F05007-19	1
6	NUT, 3/8-16 HEX	F05010-1	1
7	SHAFT, LX250 UP/DN	011405	1
8	PIN, 1/4 X 1-1/2 ROLL	F05012-125	2
9	SPROCKET, 40B16X1	007311	2
10	KEY, 1/4 SQX3/4 LONG	S03167	1
11	KEY, 1/4X4 1/4	S22440	1
-	FRAME ASSY, LX250 CROWN	113971	2
12	FRAME WELDMENT, LX250 CROWN	113964	1
13	WASHER, M10 FLAT	F05011-134	12
14	WASHER, 10MM SPLIT LOCK	F05011-88	12
15	BOLT, M10-1.5X30 HH CLASS 8	F05022-3	12
16	GEARBOX, 60:1 THRU SHAFT	011317	1
17	WASHER, 10MM SPLIT LOCK	F05011-88	2
18	BOLT, M10-1.5X30 HH CLASS 8	F05022-3	2



### 4.4 Saw Head Bumper

547268\_001  
 547268\_MANUAL

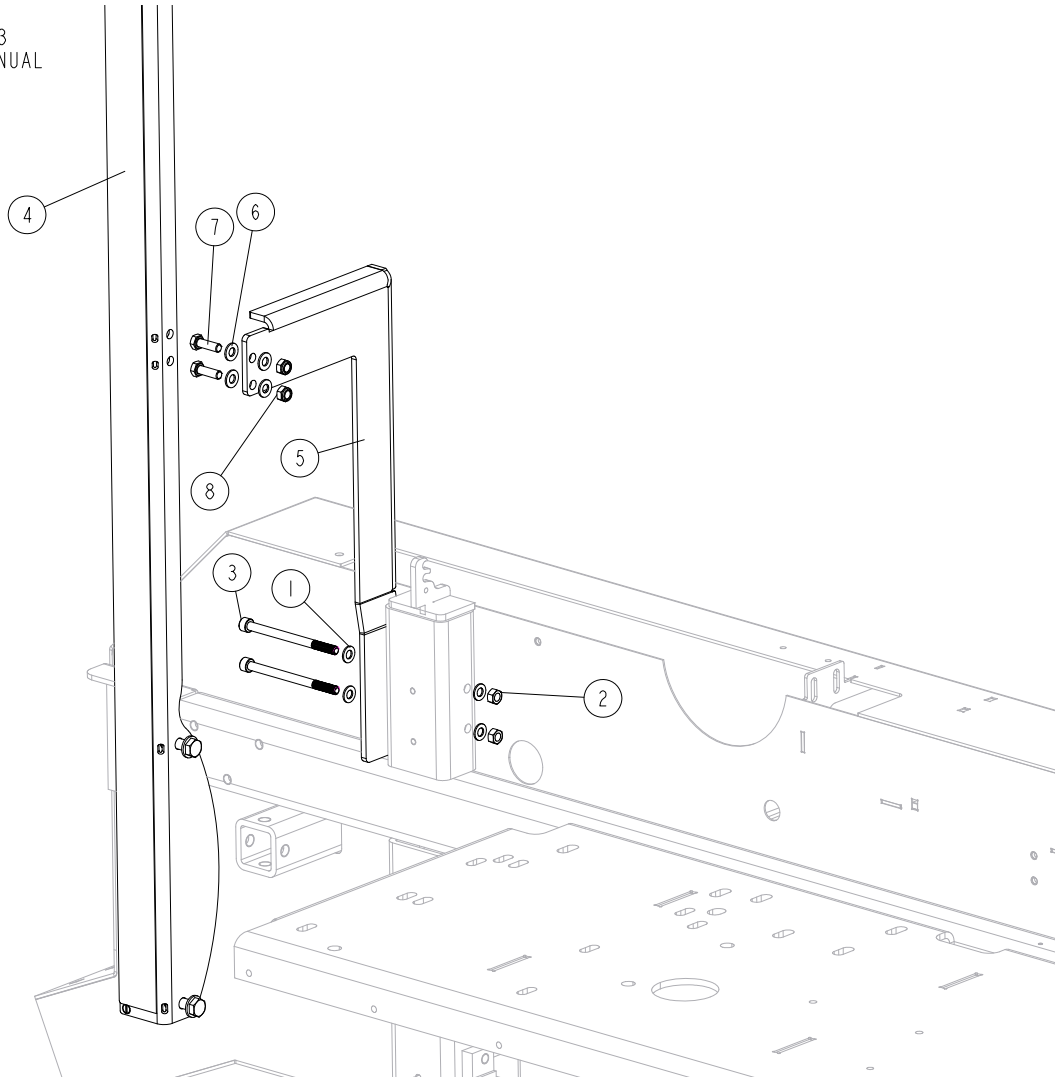


REF.	DESCRIPTION (* indicates parts available in assemblies only)	PART #	QTY
-	<b>BUMPER, SAW HEAD</b>	547268	1
1	BLOCK, SAW HEAD BUMPER	547264-1	1
2	BOLT, M10X80 8.8 HEX HEAD FULL THREAD ZINC	F81003-76	1
3	NUT, M10 8 HEX ZINC	F81033-3	1
4	WASHER, 8.4 FLAT ZINC	F81054-1	4
5	BOLT, M8X95-8.8 HEX HEAD ZINC	F81002-98	2
6	WASHER, 8.2 SPLIT LOCK ZINC	F81054-4	2
7	NUT, M8-8-B HEX NYLON ZINC LOCK	F81032-2	2

**SECTION 5 SAW HEAD (NO. 540416)**

**5.1 Scale Bracket**

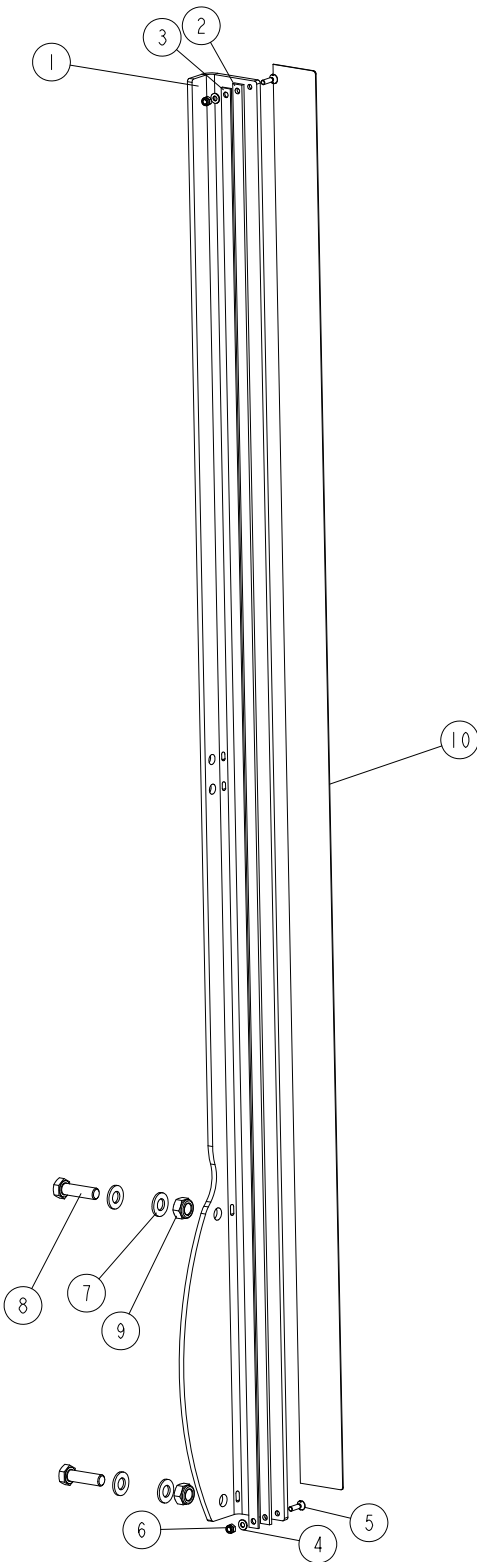
540416\_003  
540416\_MANUAL



REF.	DESCRIPTION (* indicates parts available in assemblies only)	PART #	QTY
1	WASHER, M8 FLAT	F05026-4	4
2	NUT, M8 HEX NYLOCK	F05010-132	2
3	SCREW, M8-1.25X110MM SHCS	F05021-39	2
4	STRIP ASSEMBLY, LX250 MAGNETIC <a href="#">See Section 5.2</a>	540461	1
-	BRACKET, LX250 SCALE	540573	1
5	PLATE, LX250 SCALE BRACKET	540574-1	1
6	WASHER, 8.4 FLAT ZINC	F81054-1	4
7	BOLT, M8X25-8.8-B HEX HEAD FULL THREAD ZINC	F81002-5	2
8	NUT, M8-8-B HEX NYLON ZINC LOCK	F81032-2	2

**5.2 Magnetic Strip Assembly (No. 540461)**

540461\_001  
 540461\_MANUAL



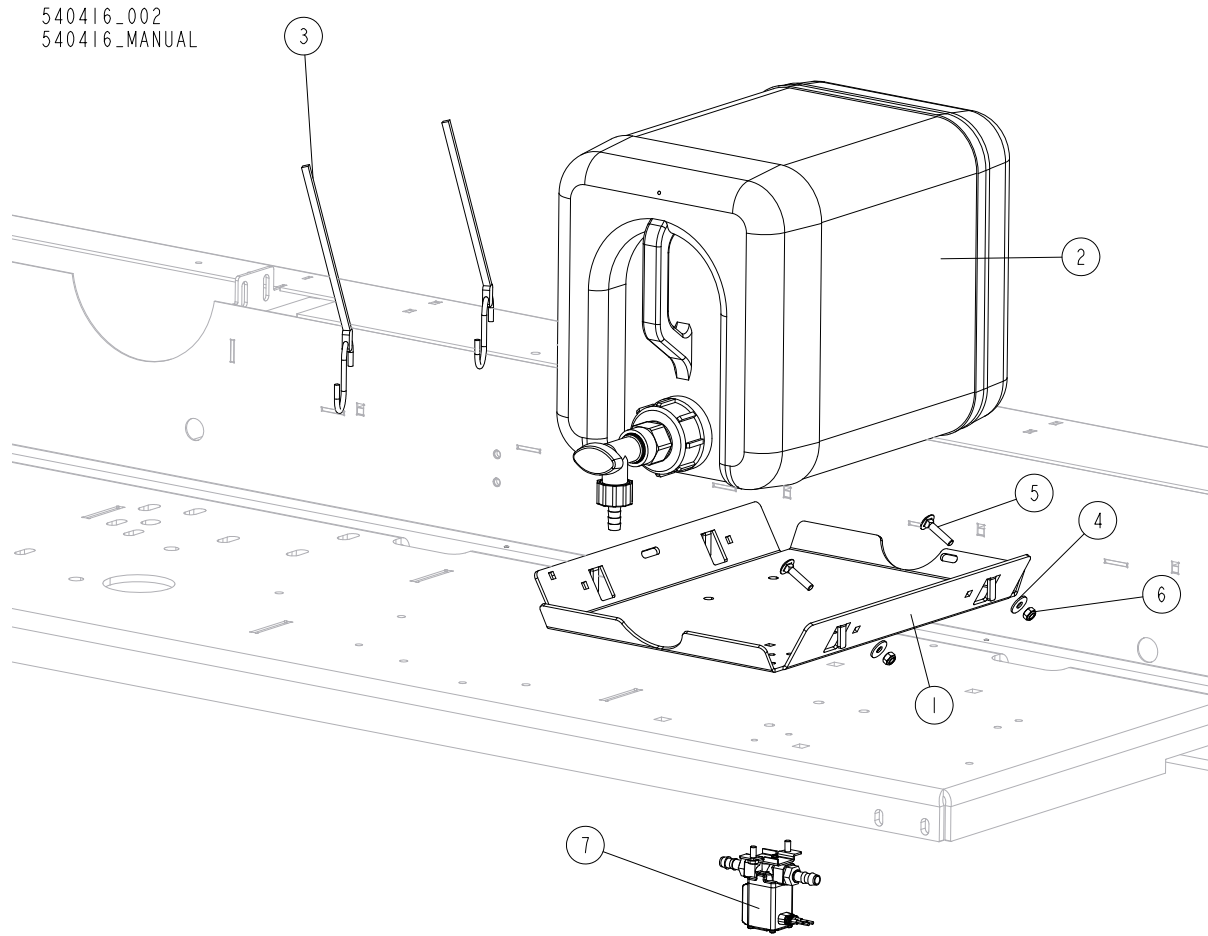
REF.	DESCRIPTION (* indicates parts available in assemblies only)	PART #	QTY
-	STRIP ASSEMBLY, LX250 MAGNETIC	540461	1
1	ANGLE, SCALE	540561-1	1

**SAW HEAD (NO. 540416)***Magnetic Strip Assembly (No. 540461)*

---

REF.	DESCRIPTION (* indicates parts available in assemblies only)	PART #	QTY	
-	BAR W/MAGNETIC TAPE	540462	1	
2	BAR, MAGNETIC STRIP	540463	1	
3	TAPE, MB 320 (1308 MM) MAGNETIC	540464	1	
4	WASHER, 4.3 FLAT ZINC	F81051-2	2	
5	SCREW, M4X16-5.8-B SLOTTED COUNTERSUNK HEAD ZINC	F81011-4	2	
6	NUT, M4-8 HEX NYLON ZINC LOCK	F81029-1	2	
7	WASHER, 10.5 FLAT ZINC	F81055-1	4	
8	BOLT, M10X35 8.8 HEX HEAD FULL THREAD ZINC	F81003-17	2	
9	NUT, M10-8-B HEX NYLON ZINC LOCK	F81033-1	2	
10	SCALE, LX250 MM/INCH	540551	1	

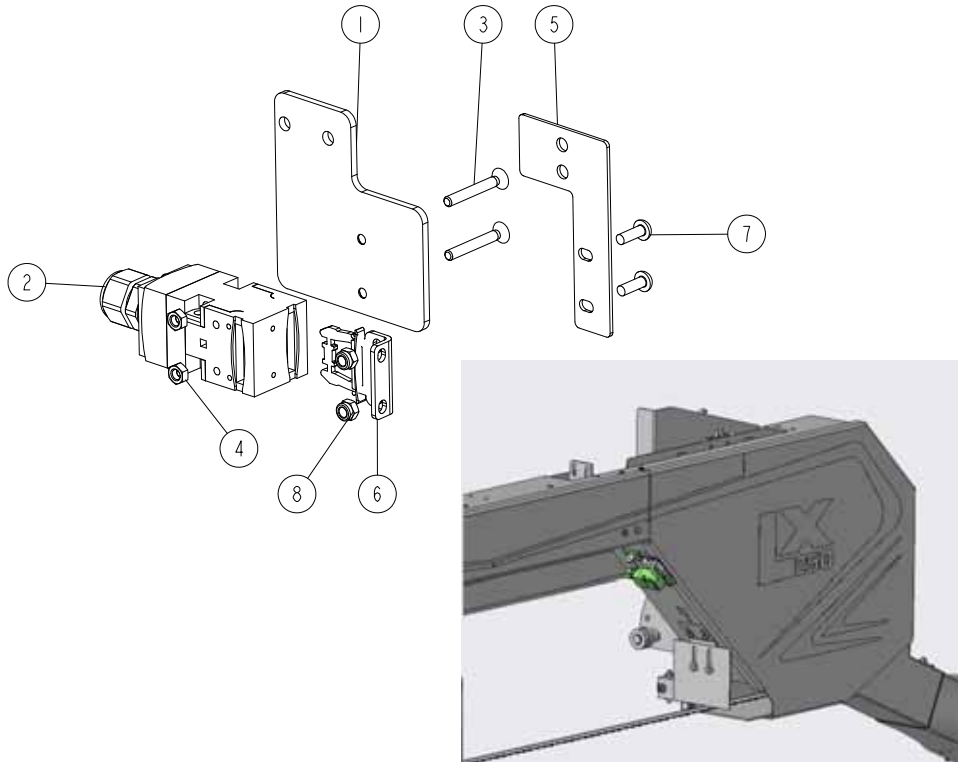
### 5.3 Water Bottle Assembly & Blade Lube Kit



REF.	DESCRIPTION (* indicates parts available in assemblies only)	PART #	QTY
1	TRAY, LT20 WATER BOTTLE	091368-1	1
-	BOTTLE ASSEMBLY, WATER	517110	1
2	BOTTLE, WATER - COMPLETE <a href="#">See Section 5.20</a>	513864	1
3	STRAP, 24 RUBBER W/HOOKS	P11258	2
4	WASHER, 6.5 SPECIAL FLAT ZINC	F81053-11	2
5	BOLT, M6X30-8.8 CARRIAGE ZINC	F81001-59	2
6	NUT, M6-8-B HEX NYLON ZINC LOCK	F81031-2	2
7	LUBE KIT, LX100 AC BLADE <a href="#">See Section 5.28</a>	518651	1

**5.4 Safety Switch, Right Blade Housing Cover**

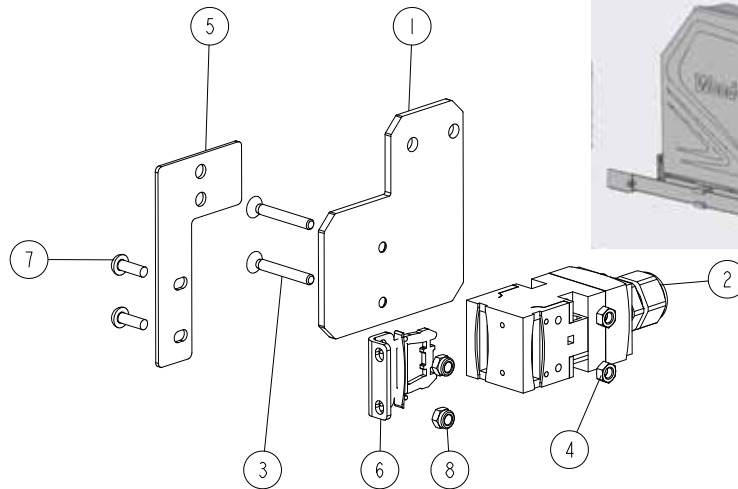
540530\_001  
 540530\_MANUAL



REF.	DESCRIPTION (* indicates parts available in assemblies only)	PART #	QTY
-	<b>SWITCH ASSEMBLY, SAFETY - RIGHT</b>	540530	1
1	PLATE, RIGHT SAFETY SWITCH MOUNT	540480-1	1
2	SWITCH, AZ17-11ZRK SAFETY	094232	1
3	SCREW, M4X30 5.8-B CROSS RECESSED COUNTERSUNK HEAD ZINC	F81011-44	2
4	NUT, M4 8 HEX ZINC	F81029-2	2
5	PLATE, SAFETY SWITCH KEY MOUNT	540479-1	1
6	KEY, AZ 17/170-B5 SAFETY SWITCH	094422	1
7	SCREW, M4X12 -5.8-B CROSS RECESSED PAN HEAD ZINC	F81011-43	2
8	NUT, M4-8 HEX NYLON ZINC LOCK	F81029-1	2

**5.5 Safety Switch, Left Blade Housing Cover**

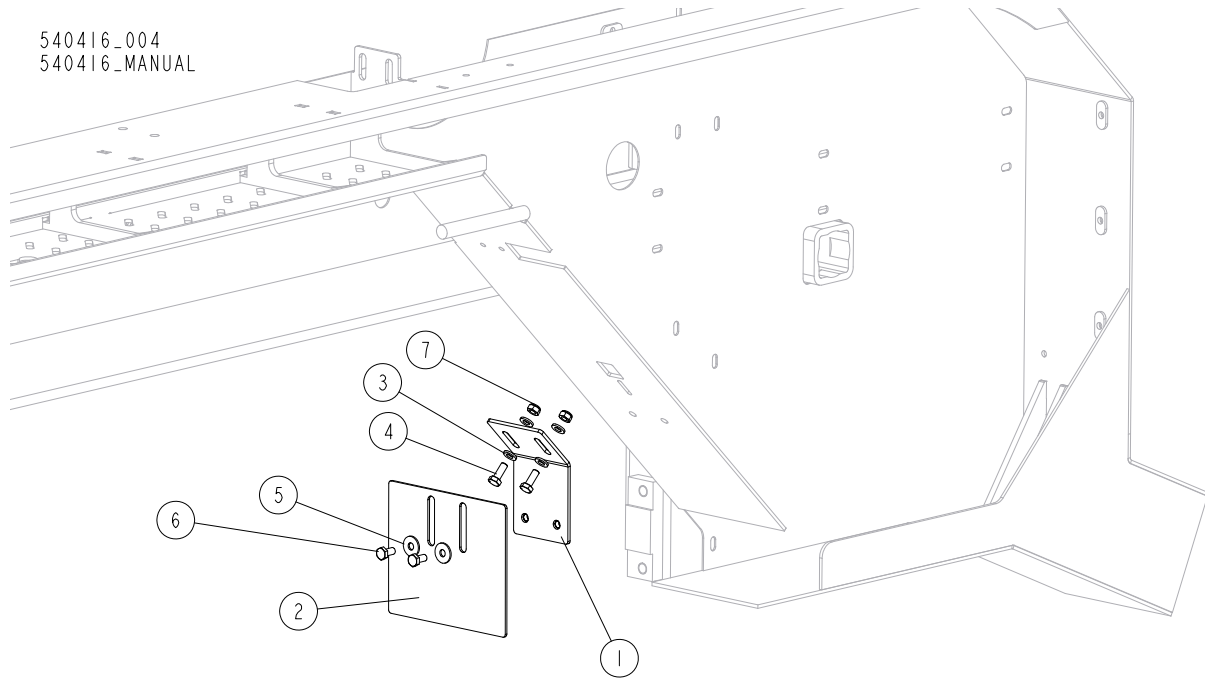
540529\_001  
540529\_MANUAL



REF.	DESCRIPTION (* indicates parts available in assemblies only)	PART #	QTY
-	<b>SWITCH ASSEMBLY, SAFETY - LEFT</b>	540529	1
1	PLATE, LEFT SAFETY SWITCH MOUNT	540481-1	1
2	SWITCH, AZ17-11ZRK SAFETY	094232	1
3	SCREW, M4X30 5.8-B CROSS RECESSED COUNTERSUNK HEAD ZINC	F81011-44	2
4	NUT, M4 8 HEX ZINC	F81029-2	2
5	PLATE, SAFETY SWITCH KEY MOUNT	540479-1	1
6	KEY, AZ 17/170-B5 SAFETY SWITCH	094422	1
7	SCREW, M4X12 -5.8-B CROSS RECESSED PAN HEAD ZINC	F81011-43	2
8	NUT, M4-8 HEX NYLON ZINC LOCK	F81029-1	2

**5.6 Blade Guide Roller Guard**

540416\_004  
540416\_MANUAL

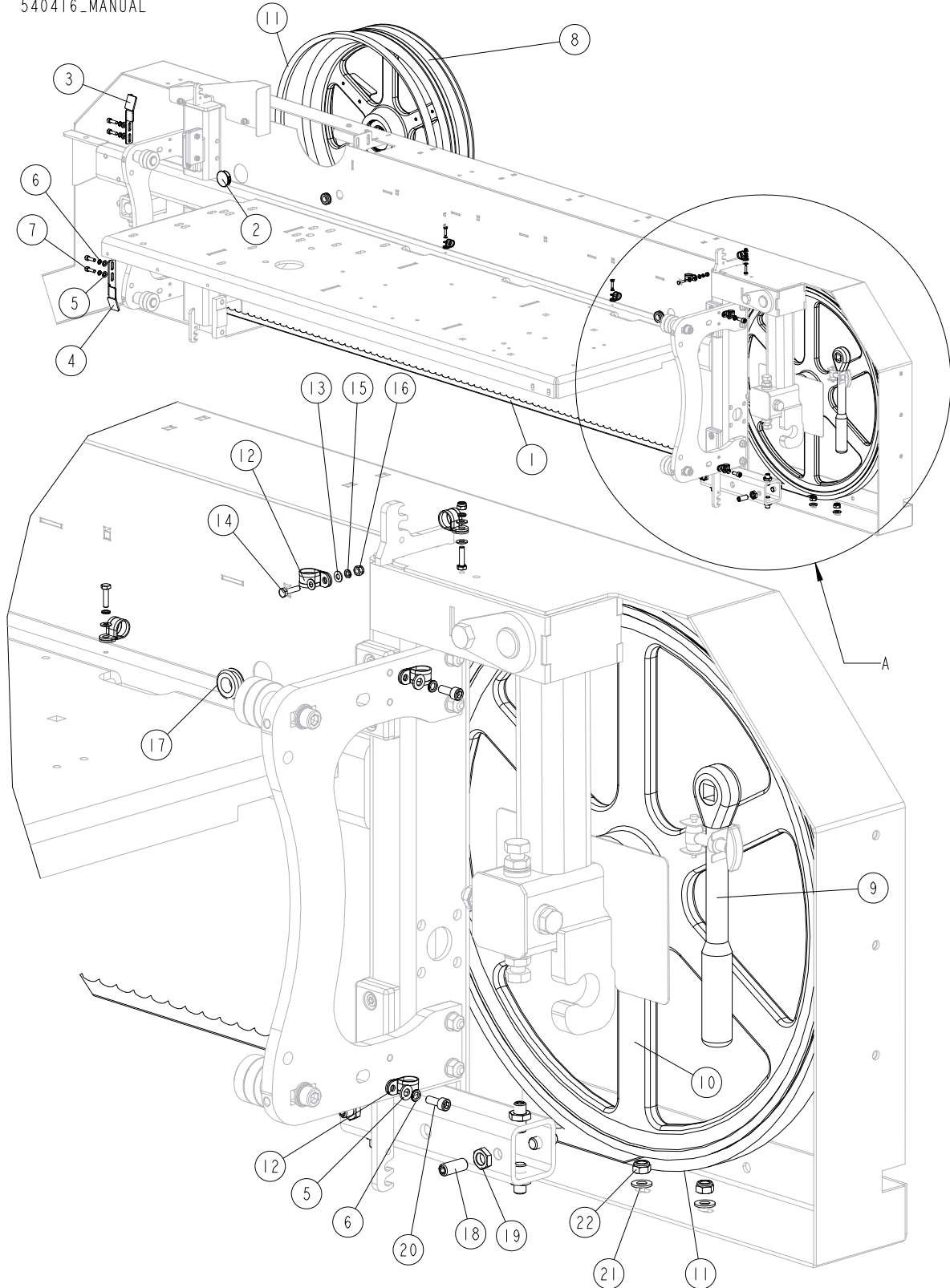


REF.	DESCRIPTION (* indicates parts available in assemblies only)	PART #	QTY
1	BRACKET, ROLLER GUARD MOUNT	092378-1	1
2	GUARD, BLADE GUIDE ROLLER	092379-1	1
3	WASHER, 6.4 FLAT ZINC	F81053-1	4
4	BOLT, M6X16-8.8 HEX HEAD FULL THREAD ZINC	F81001-15	2
5	WASHER, 6.5 SPECIAL FLAT ZINC	F81053-11	2
6	BOLT, M6X12 8.8 HEX HEAD FULL THREAD ZINC	F81001-7	2
7	NUT, M6-8-B HEX NYLON ZINC LOCK	F81031-2	2



**5.7 Blade, Safety Switch Activator Plates, Blade Wheels, Blade Wheel Belts, Blade Tensioning Tool**

540416\_005  
540416\_MANUAL

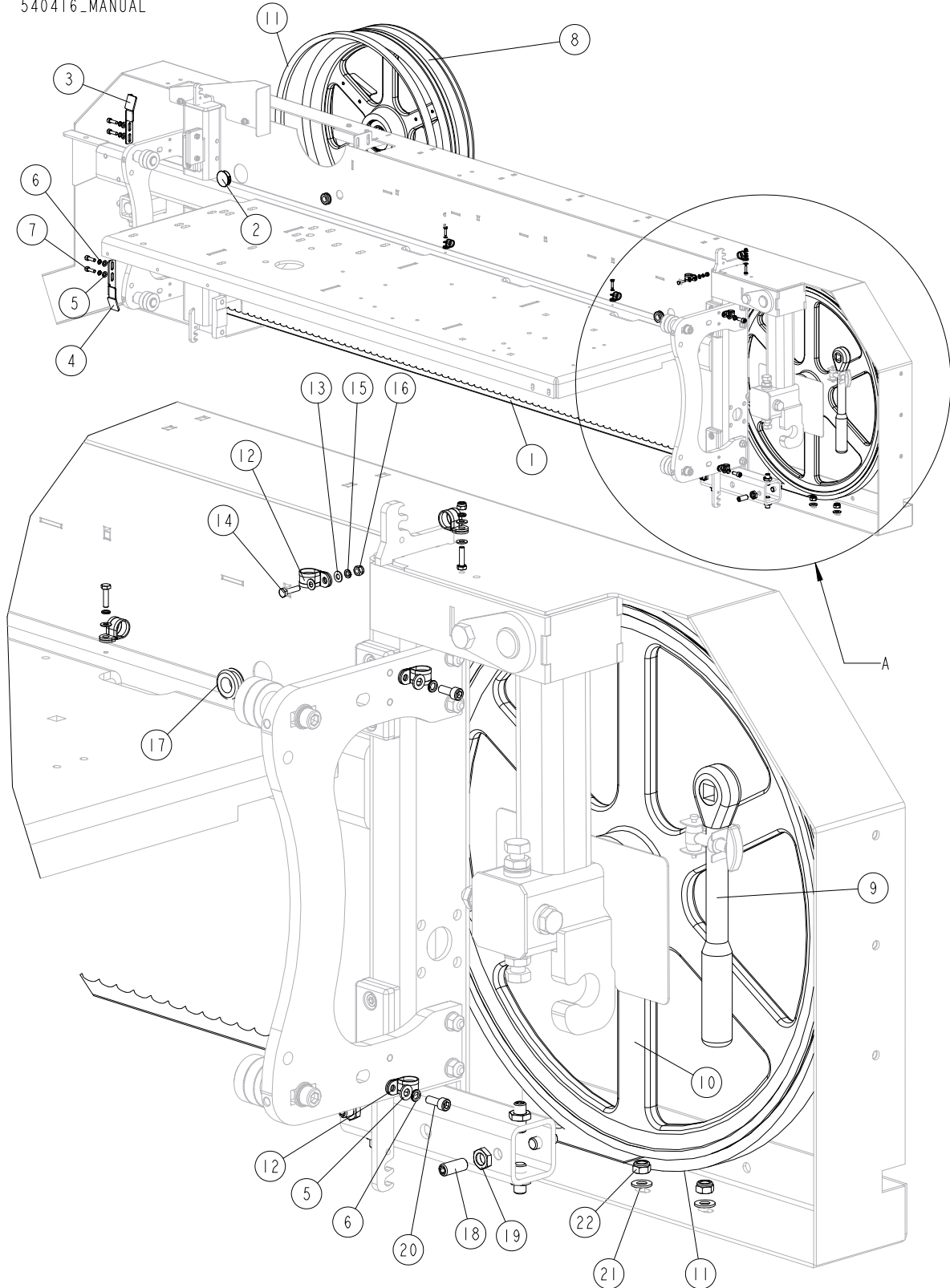


**SAW HEAD (NO. 540416)***Blade, Safety Switch Activator Plates, Blade Wheels, Blade Wheel Belts, Blade Tensioning*

REF.	DESCRIPTION (* indicates parts available in assemblies only)	PART #	QTY
1	BLADE, LX250	540575	1
2	PLUG, 32 MM 1.25" HOLE	540576	1
3	PLATE, SAFETY SWITCH ACTIVATOR - UPPER	540527-1	1
4	PLATE, SAFETY SWITCH ACTIVATOR - LOWER	539740-1	1
5	WASHER, 6.4 FLAT ZINC	F81053-1	6
6	WASHER, Z 6.1 SPLIT LOCK ZINC	F81053-3	6
7	SCREW, M6X20 8.8 HEX SOCKET HEAD CAP ZINC	F81001-22	4
8	BLADE WHEEL, DRIVE - COMPLETE <a href="#">See Section 5.30</a>	091612	1
9	TOOL, LT20 BLADE TENSIONING	091620	1
10	PULLEY, 19IN IDLER ASSY <a href="#">See Section 5.31</a>	A08218	1
11	BELT, B-57	P04185-3	2
12	CLIP, RSGU 1.10/12W1 RETAINING	086861	6
13	WASHER, 4.3 FLAT ZINC	F81051-2	6
14	BOLT, M4X16-8.8 HEX HEAD FULL THREAD ZINC	F81011-6	4
15	WASHER, Z 4.1 SPLIT LOCK ZINC	F81051-1	4
16	NUT, M4-8 HEX NYLON ZINC LOCK	F81029-1	2
17	GROMMET, 20/13 RUBBER	086188	2
18	SCREW, M10X1X25 DIN 913 STAINLESS STEEL SET	F81015-4	8
19	NUT, M10X1-04-ST-A2E ISO8675 THIN	F81033-10	8
20	SCREW, M6X16 8.8 HEX SOCKET HEAD CAP ZINC	F81001-21	2
21	WASHER, 8.4 FLAT ZINC	F81054-1	2
22	NUT, M8-8-B HEX NYLON ZINC LOCK	F81032-2	2

5.8 Blade, Safety Switch Activator Plates, Blade Wheels, Blade Wheel Belts, Blade Tensioning Tool

540416\_005  
540416\_MANUAL

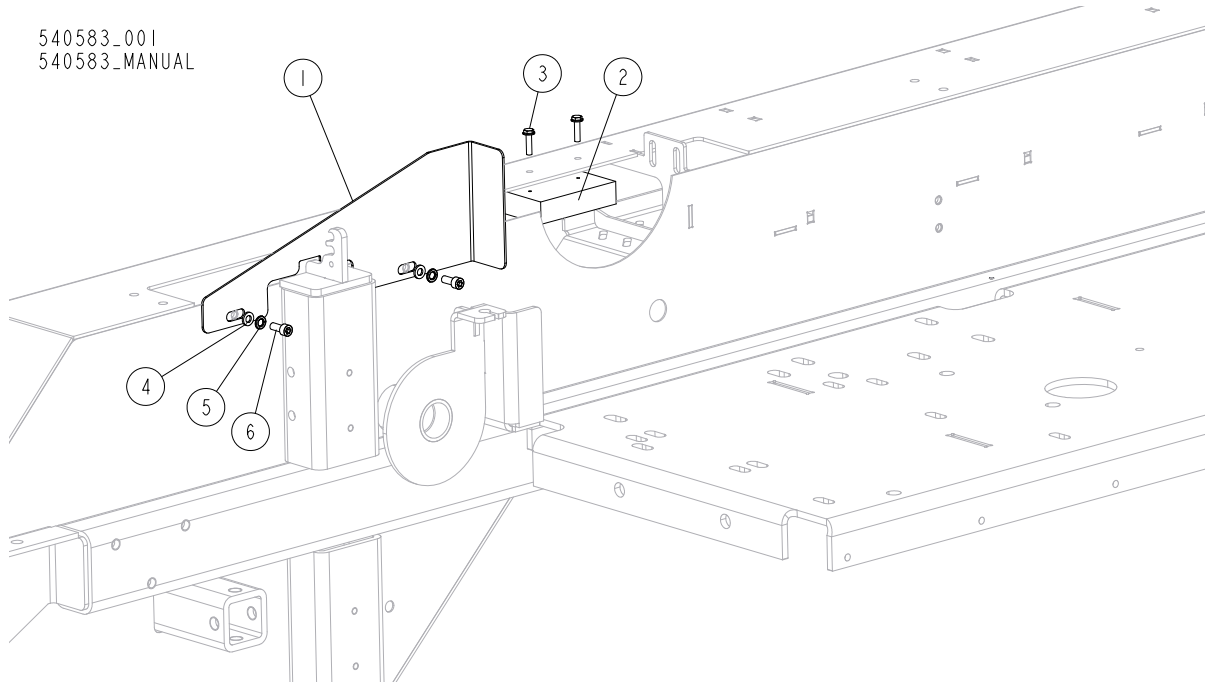


**SAW HEAD (NO. 540416)***Blade, Safety Switch Activator Plates, Blade Wheels, Blade Wheel Belts, Blade Tensioning*

REF.	DESCRIPTION (* indicates parts available in assemblies only)	PART #	QTY
1	BLADE, LX250	540575	1
2	PLUG, 32 MM 1.25" HOLE	540576	1
3	PLATE, SAFETY SWITCH ACTIVATOR - UPPER	540527-1	1
4	PLATE, SAFETY SWITCH ACTIVATOR - LOWER	539740-1	1
5	WASHER, 6.4 FLAT ZINC	F81053-1	6
6	WASHER, Z 6.1 SPLIT LOCK ZINC	F81053-3	6
7	SCREW, M6X20 8.8 HEX SOCKET HEAD CAP ZINC	F81001-22	4
8	BLADE WHEEL, DRIVE - COMPLETE	091612	1
9	TOOL, LT20 BLADE TENSIONING	091620	1
10	PULLEY, 19IN IDLER ASSY	A08218	1
11	BELT, B-57	P04185-3	2
12	CLIP, RSGU 1.10/12W1 RETAINING	086861	6
13	WASHER, 4.3 FLAT ZINC	F81051-2	6
14	BOLT, M4X16-8.8 HEX HEAD FULL THREAD ZINC	F81011-6	4
15	WASHER, Z 4.1 SPLIT LOCK ZINC	F81051-1	4
16	NUT, M4-8 HEX NYLON ZINC LOCK	F81029-1	2
17	GROMMET, 20/13 RUBBER	086188	2
18	SCREW, M10X1X25 DIN 913 STAINLESS STEEL SET	F81015-4	8
19	NUT, M10X1-04-ST-A2E ISO8675 THIN	F81033-10	8
20	SCREW, M6X16 8.8 HEX SOCKET HEAD CAP ZINC	F81001-21	2
21	WASHER, 8.4 FLAT ZINC	F81054-1	2
22	NUT, M8-8-B HEX NYLON ZINC LOCK	F81032-2	2

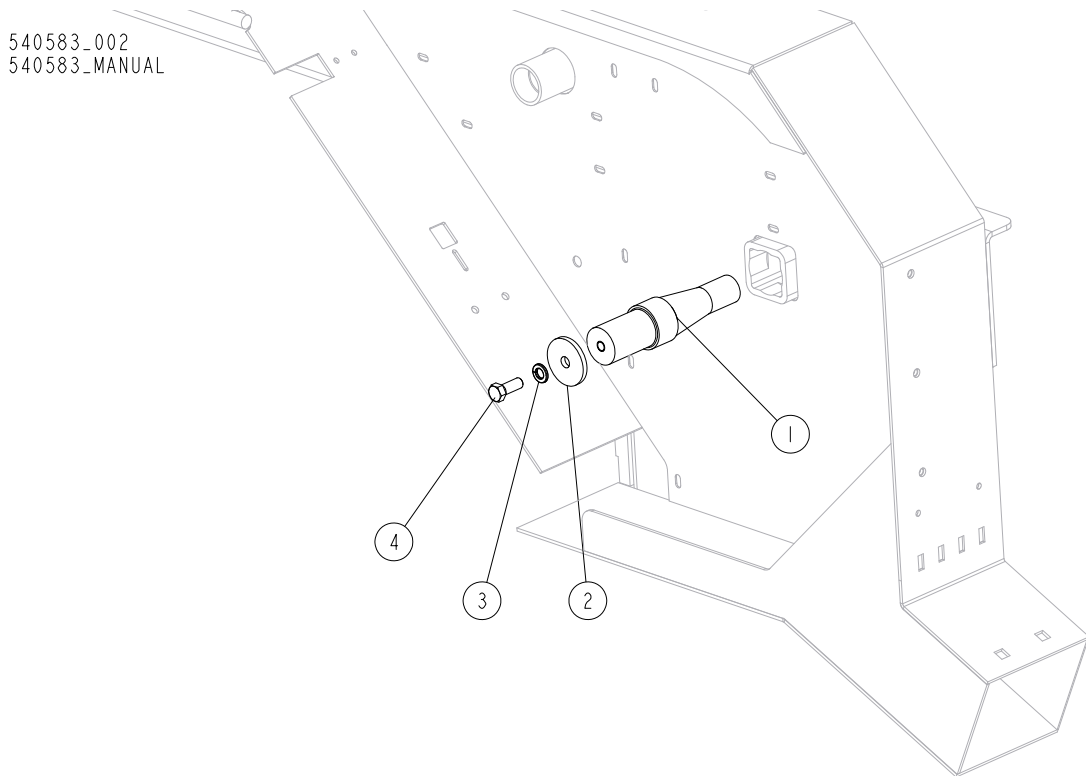
**5.9 Motor Pulley Guard**

540583\_001  
 540583\_MANUAL



REF.	DESCRIPTION (* indicates parts available in assemblies only)	PART #	QTY
1	GUARD, ANGLE MOTOR	110946	1
2	PAD, BLADE VIBRATION	015844	1
3	SCREW, #10X3/4 SL HEX WAS HEAD SCR	F05015-33	2
4	WASHER, M6 FLAT CLASS 4	F05026-1	2
5	WASHER, M6 SPLIT LOCK	F05026-2	2
6	BOLT, M6-1.0X16MM SHCS	F05004-206	2

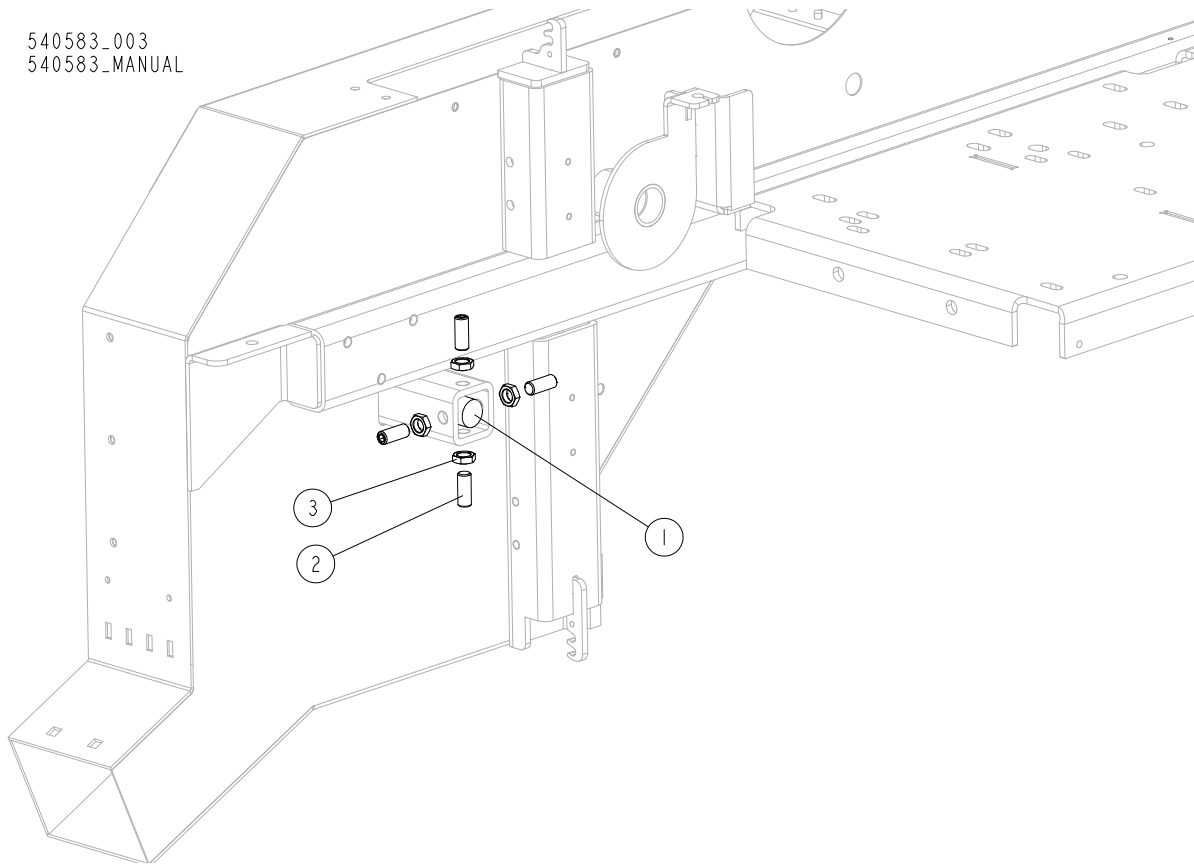
**5.10 Drive Wheel Shaft**



REF.	DESCRIPTION (* indicates parts available in assemblies only)	PART #	QTY
1	Shaft, LT15 Drive	014729	1
2	WASHER, LT15 DRIVE WHEEL RET.	014728	1
3	WASHER, 3/8 SPLIT LOCK	F05011-4	1
4	BOLT, 3/8-16X1 GR5 HH	F05007-87	1

**5.11 Drive Wheel Adjustment Parts**

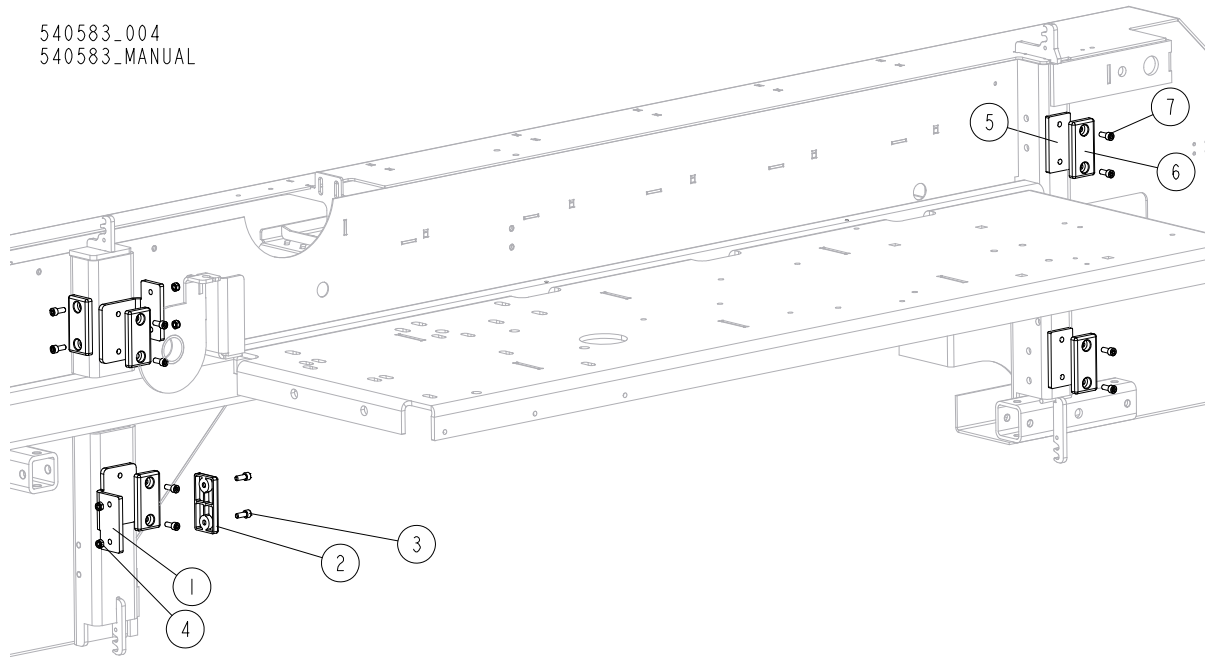
540583\_003  
 540583\_MANUAL



REF.	DESCRIPTION (* indicates parts available in assemblies only)	PART #	QTY
1	SHAFT, LT15 DRIVE	014729	1
2	SCREW, M12X1.25X30 DIN913 A2-70 SET	F81016-1	4
3	NUT, M12X1.25 DIN 439 A2-70 THIN STAINLESS STEEL	F81034-9	4

### 5.12 Mast Slide Pads

540583\_004  
540583\_MANUAL

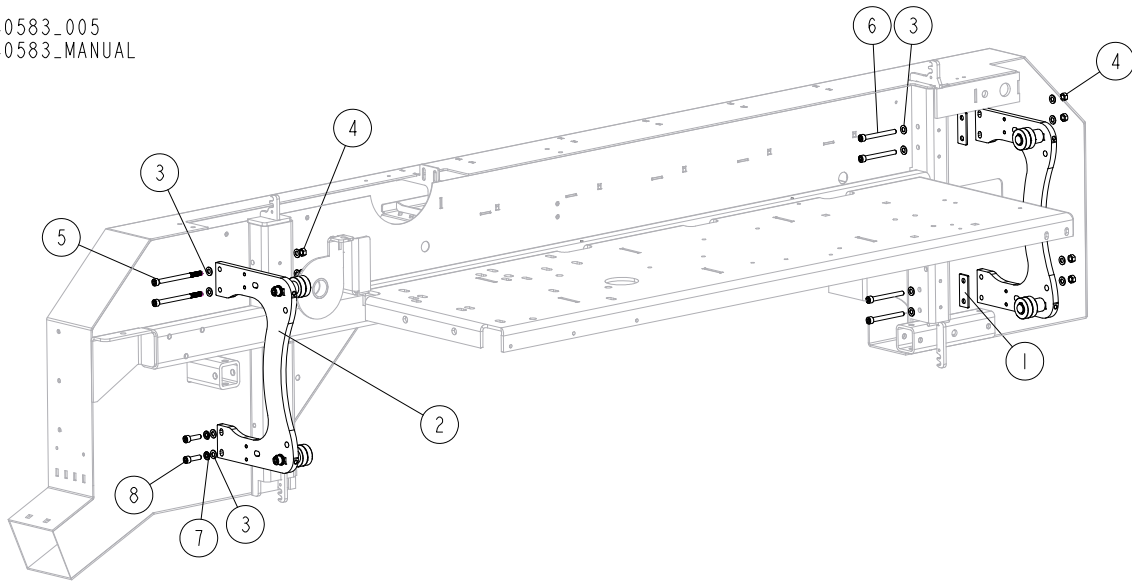


REF.	DESCRIPTION (* indicates parts available in assemblies only)	PART #	QTY
-	MAST SLIDES, LX DRIVE SIDE	110969	2
1	BRACKET, SLIDE PAD MOUNT	110806	1
2	PAD, CATAPILLAR TRACK	P13576	2
3	BOLT, M6-1.0X16MM SHCS	F05004-206	4
4	NUT, M6-1.0 NYLON LOCK	F05010-200	2
-	MAST SLIDE, LX IDLE SIDE	110971	2
5	SHIM, SLIDE PAD, 1/4	110807	1
6	PAD, CATAPILLAR TRACK	P13576	1
7	BOLT, M6-1.0X16MM SHCS	F05004-206	2



**5.13 Saw Head Mounting Parts**

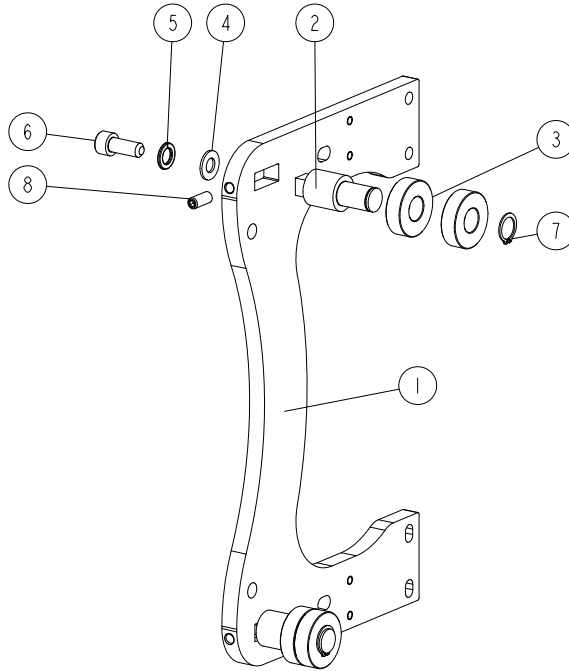
540583\_005  
 540583\_MANUAL



REF.	DESCRIPTION (* indicates parts available in assemblies only)	PART #	QTY
1	SHIM PLATE, MAST ROLLERS	110599	2
2	ASSY, LEFT HEAD MOUNTING <a href="#">See Section 5.14</a>	011459	2
3	WASHER, M8 FLAT	F05026-4	14
4	NUT, M8 HEX NYLOCK	F05010-132	6
5	SCREW, M8-1.25X110MM SHCS	F05021-39	2
6	SCREW, M8-1.25 X 80 SHC FT	F05021-27	4
7	WASHER, 8MM SPLIT LOCK, ZN	F05011-45	2
8	SCREW, M8-1.25 X 30 SHC	F05021-1	2

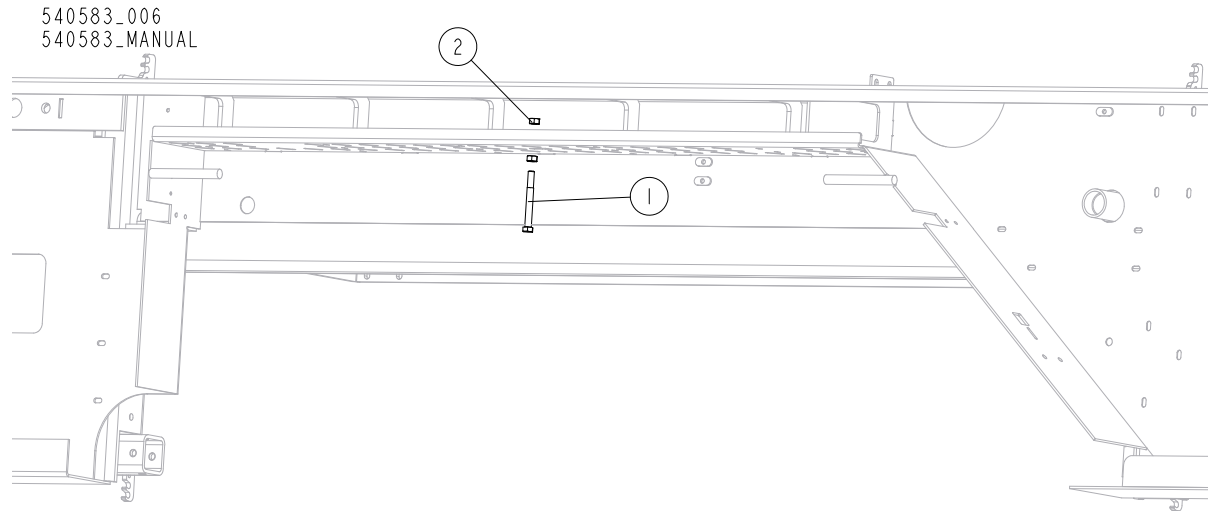
**5.14 Left Head Mount Assembly (No. 011459)**

011459\_001  
 011459\_MANUAL



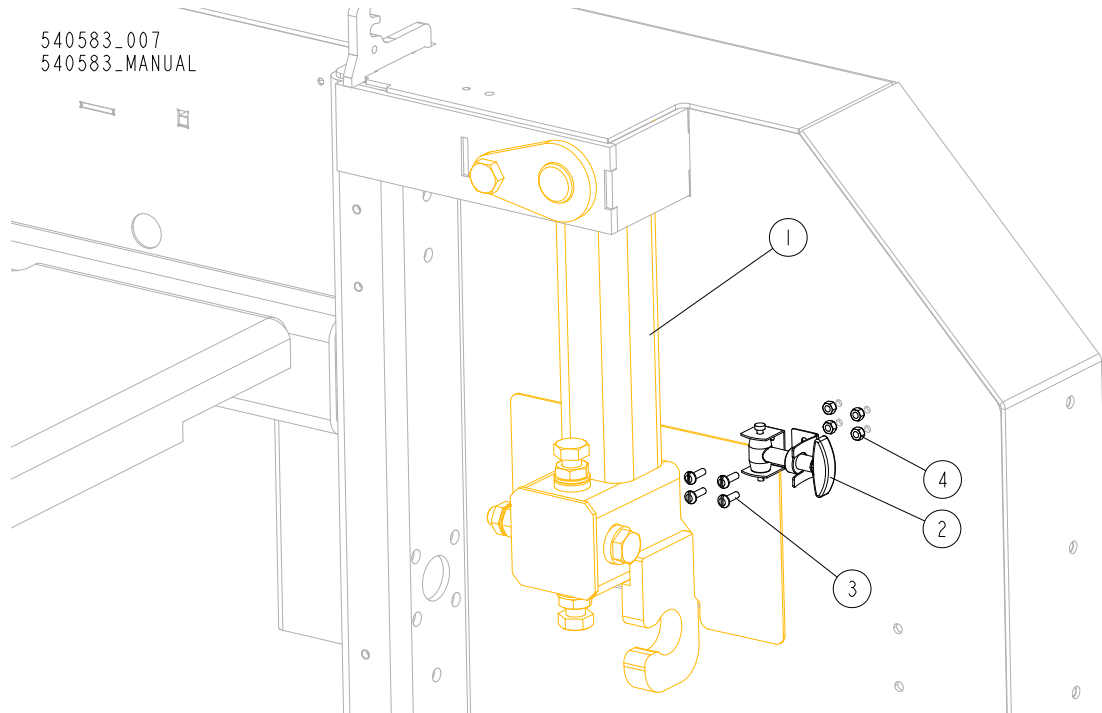
REF.	DESCRIPTION (* indicates parts available in assemblies only)	PART #	QTY
-	<b>ASSY, LEFT HEAD MOUNTING</b>	011459	1
1	GUIDE, LX150 MAST	110799	1
2	SHAFT, HEAD HOLD DOWN LX250	011472	2
3	BEARING, 6203-2NSL 17MM SRI-2 ABEC-1	P06030-2	4
4	WASHER, M10 FLAT	F05011-134	2
5	WASHER, 10MM SPLIT LOCK	F05011-88	2
6	BOLT, M10-1.5 X 25 SHC	F05022-12	2
7	RING, 17MM OR	F04254-16	2
8	SCREW, M8-1.25 X20 SHFP SET	F05021-7	2

**5.15 Middle Throat Bolt**



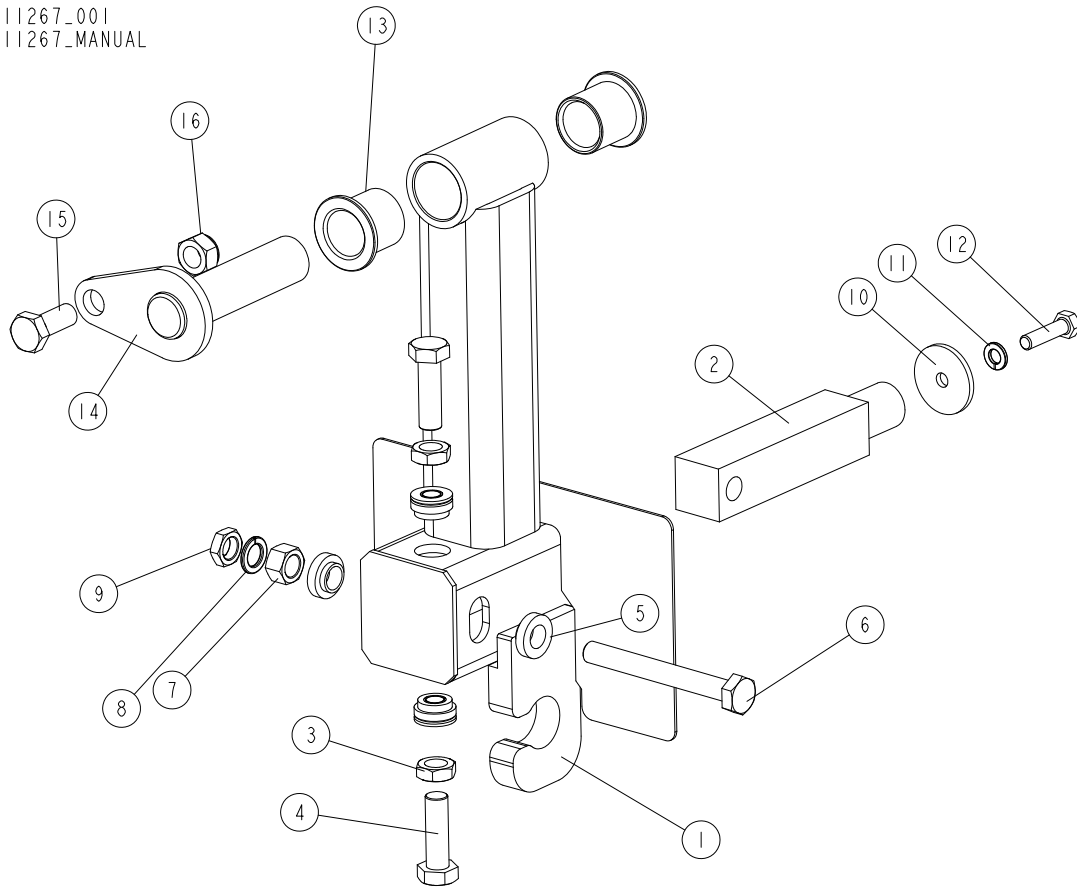
REF.	DESCRIPTION (* indicates parts available in assemblies only)	PART #	QTY	
1	BOLT, M8-1.25X75MM HH CLASS8.8	F05021-19	1	
2	NUT, M8-1.25 SWAGED HEX	F05027-17	2	

**5.16 Idle Blade Wheel Mount & Tool Retaining Latch**



REF.	DESCRIPTION (* indicates parts available in assemblies only)	PART #	QTY
1	ASSY, LX150 BLADE WHEEL IDLER <a href="#">See Section 5.17</a>	011267	1
2	LATCH, TOOL RETAINING	011360	1
3	SCREW, 4MX12 CRSL ROUND HEAD MACHINE	F05004-74	4
4	NUT, M4-.7 CLASS 8 NYLOCK	F05027-8	4

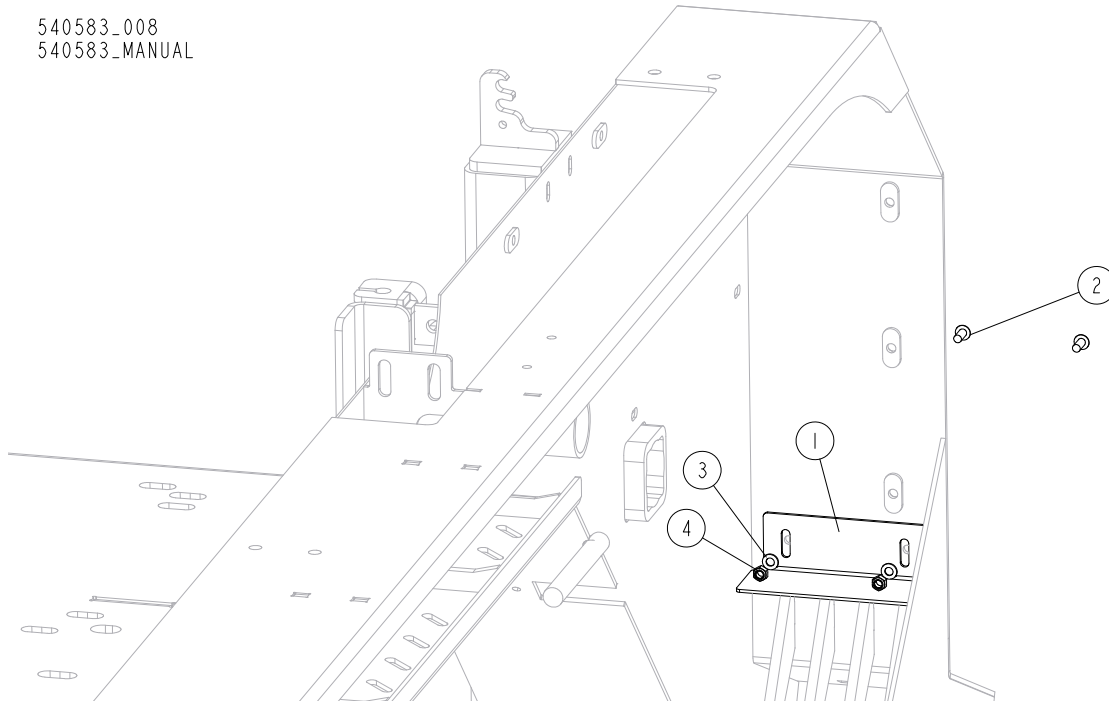
## 5.17 Idle Blade Wheel Mount (Part No. 011267)

011267\_001  
011267\_MANUAL

REF.	DESCRIPTION (* indicates parts available in assemblies only)	PART #	QTY
-	<b>ASSY, LX150 BLADE WHEEL IDLER</b>	011267	1
1	WLDMNT, LX150 BLADE WHEEL IDLER	011268	1
2	SHAFT, IDLE SIDE WHEEL (METRIC)	096045	1
3	NUT, M12-1.75 ZINC JAM	F05027-19	2
4	BOLT, M12X1.75X40MM HH FT CL10.9 ZINC	F05004-250	2
5	SPACER, .510X.937X.34	S04253	2
6	BOLT, M12X1.25X100-8.8 HEX HEAD FULL THREAD ZINC	F81004-41	1
7	NUT, M12X1.25 - 8 - B HEX ZINC	F81034-8	1
8	WASHER, 12MM SPLIT LOCK	F05011-123	1
9	NUT, M12X1.25-8 THIN ZINC	F81034-5	1
10	WASHER, .313X1.5X.125	S08220	1
11	WASHER, 8MM SPLIT LOCK, ZN	F05011-45	1
12	BOLT, M8X1.25X1 HH FT	F05004-40	1
13	BUSHING, 1 IDX1-1/4 ODX1-1/4 FL	P109_LX250	2
14	PIN WLDMT, SIDE SUPPORT	042232	1
15	BOLT, M12X1.75X30MM HH ZNC	F05008-175	1
16	NUT, M12X1.75 HEX NYLOCK	F05010-209_	1

**5.18 Sawdust Diverter Plate**

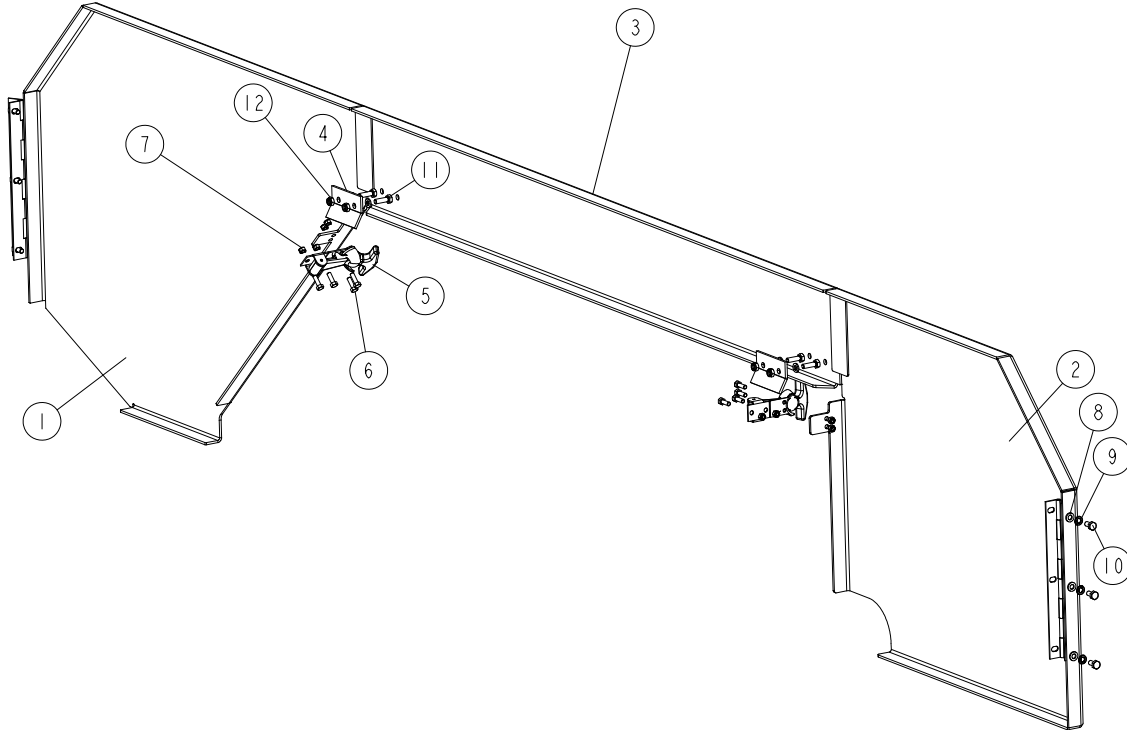
540583\_008  
540583\_MANUAL



REF.	DESCRIPTION (* indicates parts available in assemblies only)	PART #	QTY	
1	PLATE, LX150 SAWDUST DIVERTER	108060	1	
2	SCREW, M5-.8X12MM BHCS SS	F05020-55	2	
3	WASHER, 5.3 FLAT ZINC	F81052-1	2	
4	NUT, M5-.8 CLASS 8 HEX NYLOCK	F05027-3	2	

**5.19 Blade Housing Cover**

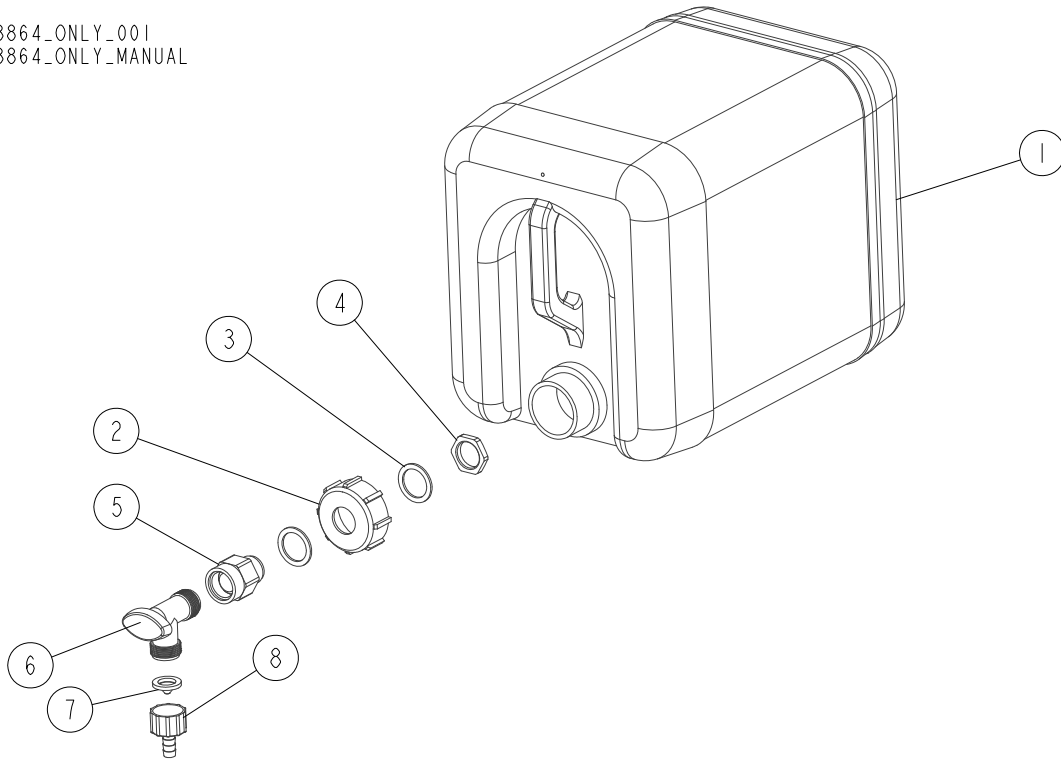
110966\_001  
110966\_MANUAL



REF.	DESCRIPTION (* indicates parts available in assemblies only)	PART #	QTY
-	<b>COVERS, LX250 DOOR</b>	110966	1
1	WELDMNT, COVER RIGHT	117076	1
2	WELDMNT, COVER LEFT	011416	1
3	WELDMNT, COVER CENTER	117077	1
4	HINGE, MIDDLE COVER PTD	S07522	2
5	LATCH, FLEXIBLE DRAW	014829	2
6	BOLT, M5 X 16-8.8 HEX HEAD FULL THREAD ZINC	F81000-20	8
7	NUT, M5-.8 CLASS 8 HEX NYLOCK	F05027-3	8
8	WASHER, M6 FLAT CLASS 4	F05026-1	10
9	WASHER, M6 SPLIT LOCK	F05026-2	6
10	SCREW, M6 X 12 HHC FT	F05005-99	6
11	BOLT, M6-1X20 HH CLASS 8	F05020-6	4
12	NUT, M6-1.0 NYLON LOCK	F05010-200	4

**5.20 Water Bottle Assembly (No. 513864)**

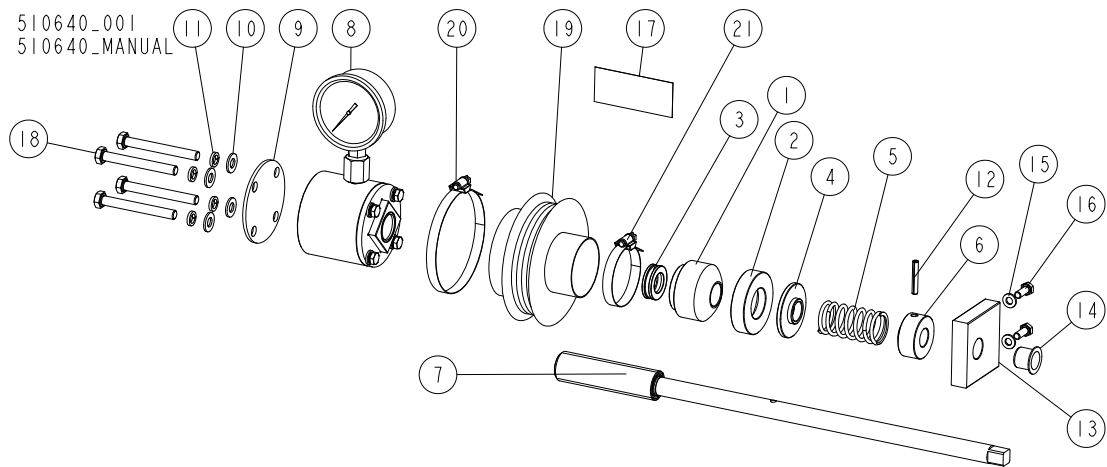
513864\_ONLY\_001  
513864\_ONLY\_MANUAL



REF.	DESCRIPTION (* indicates parts available in assemblies only)	PART #	QTY	
-	<b>BOTTLE, WATER - COMPLETE</b>	513864	1	
-	BOTTLE, WATER W/CAP	513865	1	
<b>1</b>	BOTTLE, WATER	513866	1	
<b>2</b>	CAP, WATER BOTTLE	513867	1	
<b>3</b>	SEAL, 35X26X2 RUBBER	513869	2	
<b>4</b>	NUT, 3/4 NPT	513868	1	
<b>5</b>	FITTING, 3/4FPTX3/4MPT	014636	1	
<b>6</b>	VALVE, 5/8 90 DEG. MALE SHUTOFF	014100	1	
<b>7</b>	FILTER, WATER LUBE	016086	1	
<b>8</b>	FITTING, 5/8-3/8 HOSE BARB	014113	1	



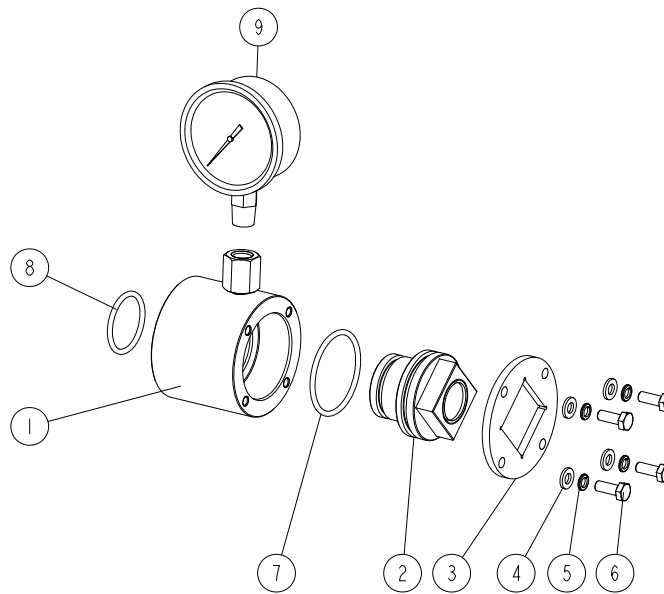
## 5.21 Blade Tensioner (No. 510640)



REF.	DESCRIPTION (* indicates parts available in assemblies only)	PART #	QTY
-	<b>TENSIONER ASSEMBLY, LT20 BLADE</b>	510640	1
1	HOUSING, ROUND	510635	1
2	RING, ROUND	510634-1	1
3	BEARING, 51103 BALL THRUST	086675	1
4	WASHER	510633-1	1
5	SPRING, 60X23X3	088992	1
6	BUSHING, 16/38-20 22.5-4 ZINC-PLATED	510636-1	1
7	SCREW, BLADE TENSIONER ZINC-PLATED	510650-1	1
8	COMPLETE CYLINDER <a href="#">See Section 5.22</a>	510641	1
9	PLATE, TENSIONER COVER	510642-1	1
10	WASHER, 8.4 FLAT ZINC	F81054-1	4
11	WASHER, 8.2 SPLIT LOCK ZINC	F81054-4	4
12	PIN, 5X30 ZINC-PLATED ROLL	F81044-21	1
13	BLOCK, TENSIONER HANDLE MOUNT	096730	1
14	BUSHING, GFM-1618-17	089589	1
15	WASHER, 6.4 FLAT ZINC	F81053-1	2
16	BOLT, M6X16-8.8 HEX HEAD FULL THREAD ZINC	F81001-15	2
17	DECAL, PRESSURE VALUES	510643	1
18	BOLT, M8X70-8.8 HEX HEAD ZINC	F81002-71	4
-	BELLOWS, COMPLETE	515050	1
19	BELLOWS	515051	1
20	CLAMP, 70-80 MM	F81095-5	1
21	CLAMP, 40-60 MM	F81095-4	1

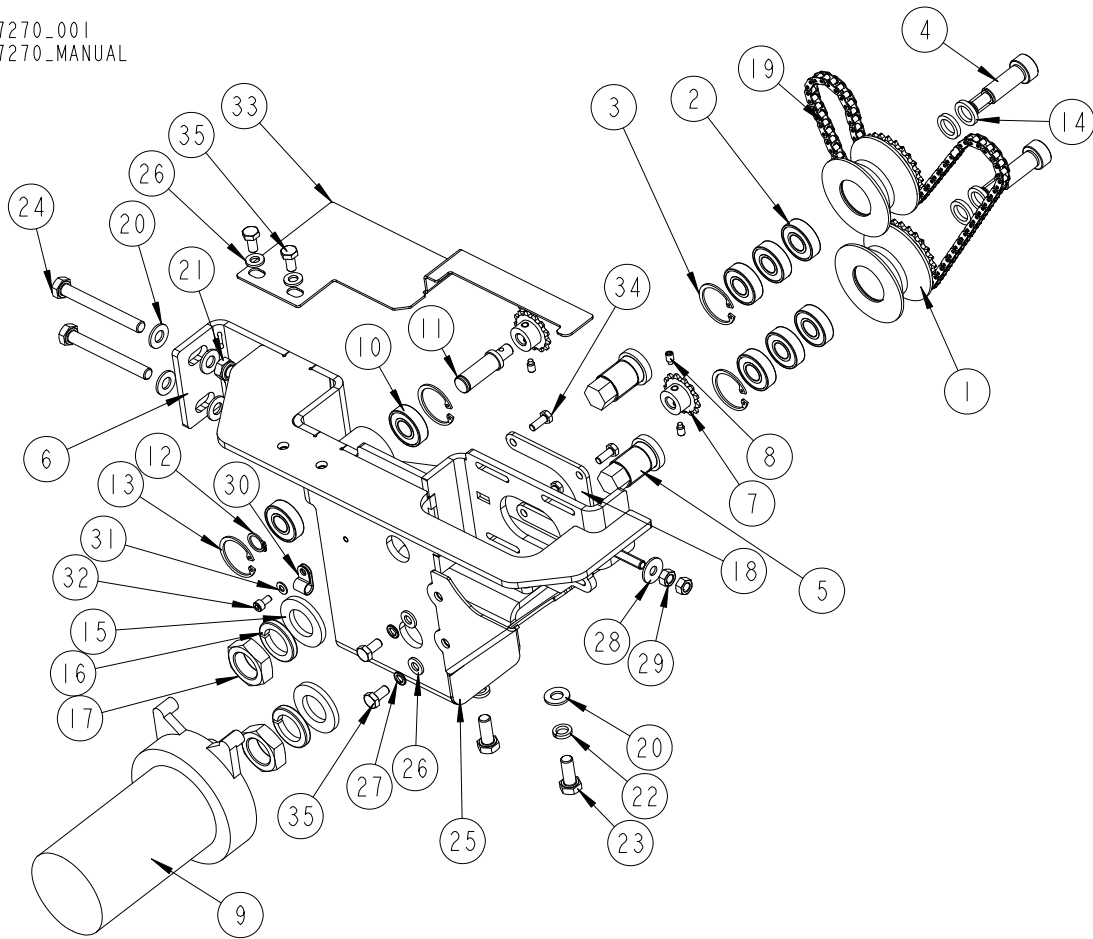
## 5.22 Blade Tensioner Cylinder (No. 510641)

510641\_001  
510641\_MANUAL



REF.	DESCRIPTION (* indicates parts available in assemblies only)	PART #	QTY
-	<b>COMPLETE CYLINDER</b>	510641	1
1	CYLINDER ASSEMBLY, W/REDUCER FITTING	510657-1	1
2	PISTON	510638	1
3	PLATE, TENSIONER	510490-1	1
4	WASHER, 6.4 FLAT ZINC	F81053-1	4
5	WASHER, Z 6.1 SPLIT LOCK ZINC	F81053-3	4
6	BOLT, M6X16-8.8 HEX HEAD FULL THREAD ZINC	F81001-15	4
7	O-RING 46.2X3	510646	1
8	O-RING 32.2X3	510647	1
9	GAUGE, 200 BAR/3000PSI OIL PRESSURE	505176	1

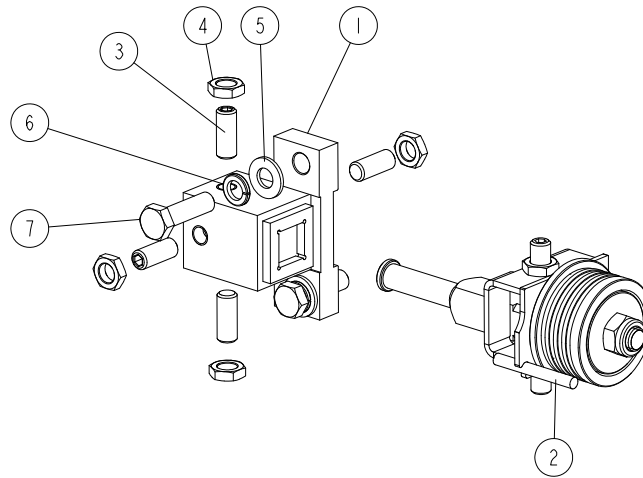
## 5.23 Blade Guide Arm Drive (No. 517270)

517270-001  
517270-MANUAL

REF.	DESCRIPTION (* indicates parts available in assemblies only)	PART #	QTY
-	<b>DRIVE ASSEMBLY, BLADE GUIDE ARM</b>	517270	1
-	COMPLETE ROLLER	517269	2
1	ROLLER W/SPROCKET	517253-1	1
2	BEARING, 6001 2RSR (FAG, SKF)	087893	3
3	RING, W28 INSIDE RETAINING	F81090-9	1
4	BOLT, 12/M10X30 12.9 ISO7379 SHOULDER	F81003-70	2
5	BOLT, BLADE GUIDE	517257-1	2
6	PLATE, COMPLETE MOUNT	517259-1	1
-	SPROCKET ASSY, 25B13X.3130	P09970	2
7	SPROCKET, 25B13X.3130	P09970-2	1
8	SCREW, 10-24X1/4 SHBO FULL DOG PT SET	F05004-274	2
9	MOTOR, 1/30HP 62 R.P.M. 12VDC GEAR	P09698-1-CE	1
10	BEARING, 6001 2RSR (FAG, SKF)	087893	2
11	SHAFT, IDLER	517260	1
12	RING, Z 12 OUTSIDE RETAINING	F81090-14	1
13	RING, W28 INSIDE RETAINING	F81090-9	2
14	WASHER, 12.3/18-3	517256	4
15	WASHER, 21 FLAT ZINC	F81059-2	2
16	WASHER, 20.5 SPLIT LOCK ZINC	F81059-1	2

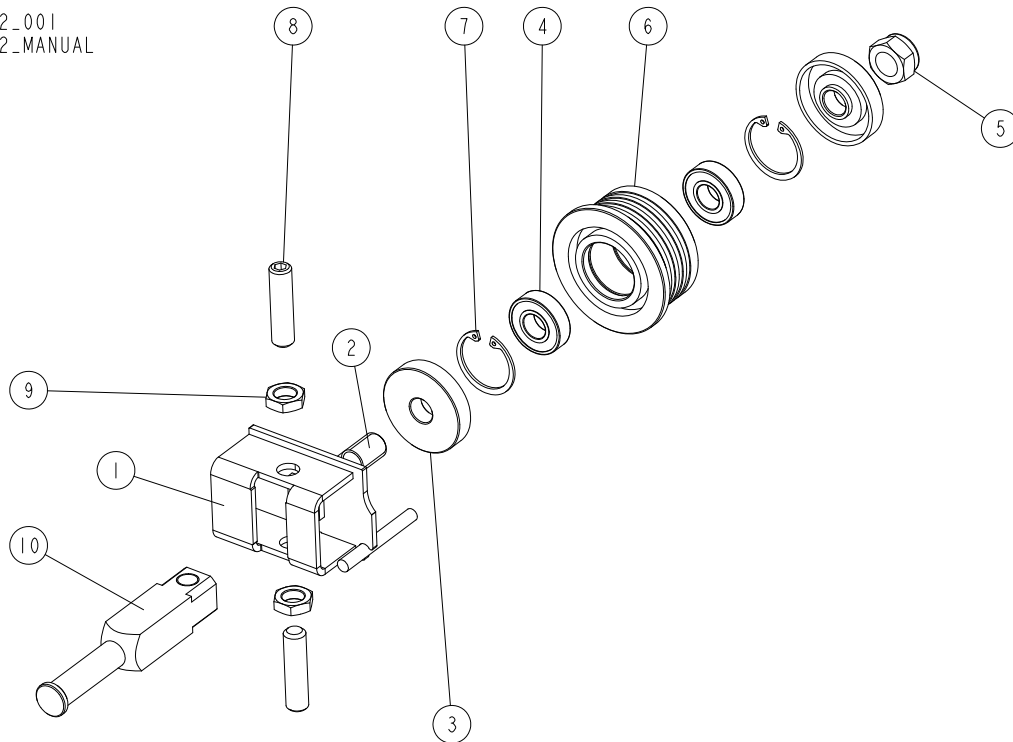
REF.	DESCRIPTION (* indicates parts available in assemblies only)	PART #	QTY	
17	NUT, M20X1.5 THIN ZINC	F81037-7	2	
18	TENSIONER, DEBARKER MOTOR	089969-1	1	
19	CHAIN, BLADE GUIDE ARM DRIVE	517267	1	
20	WASHER, 8.4 FLAT ZINC	F81054-1	6	
21	NUT, M8-8-B HEX NYLON ZINC LOCK	F81032-2	2	
22	WASHER, 8.2 SPLIT LOCK ZINC	F81054-4	2	
23	BOLT, M8X20 8.8 HEX HEAD FULL THREAD ZINC	F81002-4	2	
24	BOLT, M8X70-8.8 HEX HEAD ZINC	F81002-71	2	
25	COVER, CHAIN	517268-1	1	
26	WASHER, 6.4 FLAT ZINC	F81053-1	4	
27	WASHER, Z 6.1 SPLIT LOCK ZINC	F81053-3	2	
28	WASHER, 6.5 SPECIAL FLAT ZINC	F81053-11	1	
29	NUT, M6 8 HEX ZINC	F81031-1	2	
30	ELEMENT, EE63 MOUNTING	F81080-4	1	
31	WASHER, 4.3 FLAT ZINC	F81051-2	1	
32	SCREW, M4X8 8.8 HEX SOCKET HEAD CAP ZINC	F81011-36	1	
33	COVER, TOP	517262-1	1	
34	BOLT, #10-32X1/2 HEX HEAD	F05004-60	4	
35	BOLT, M6X12 8.8 HEX HEAD FULL THREAD ZINC	F81001-7	4	

## 5.24 Blade Guide Roller w/Mount Block (No. 540564)

540564\_001  
540564\_MANUAL

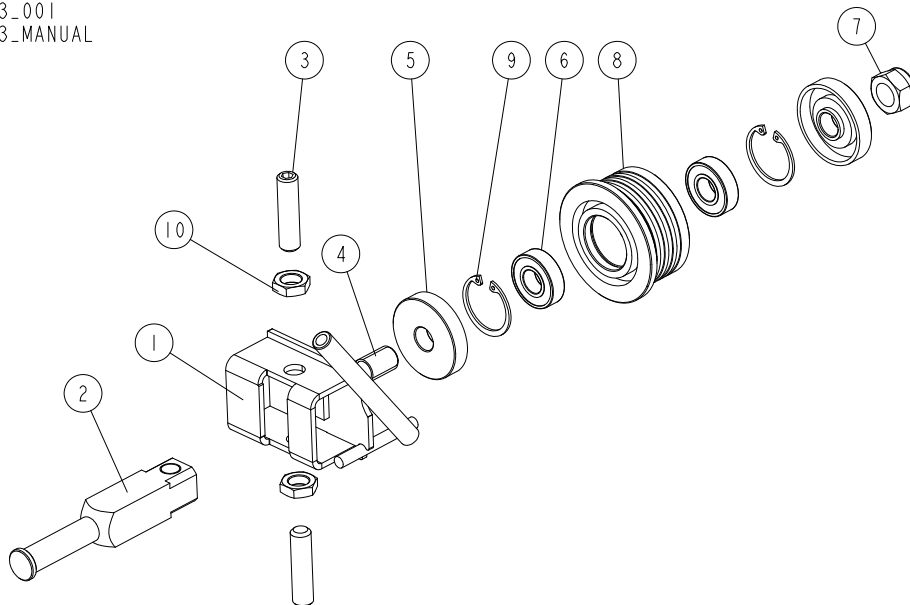
REF.	DESCRIPTION (* indicates parts available in assemblies only)	PART #	QTY
-	<b>ROLLER ASSEMBLY, BLADE GUIDE W/MOUNT BLOCK</b>	540564	1
1	BLOCK WELDMENT, BLADE GUIDE MOUNT	087744-1	1
2	BLADE GUIDE ROLLER ASSEMBLY, DRIVE SIDE <a href="#">See Section 5.25</a>	094682	1
3	SCREW, M10X1X25 DIN 913 STAINLESS STEEL SET	F81015-4	4
4	NUT, M10X1-04-ST-A2E ISO8675 THIN	F81033-10	4
5	WASHER, 10.5 FLAT ZINC	F81055-1	2
6	WASHER, Z 10.2 SPLIT LOCK ZINC	F81055-2	2
7	BOLT, M10X35 8.8 HEX HEAD FULL THREAD ZINC	F81003-17	2

## 5.25 Blade Guide Roller Assembly, Drive Side (No. 094682)

094682\_001  
094682\_MANUAL

REF.	DESCRIPTION (* indicates parts available in assemblies only)	PART #	QTY
-	<b>BLADE GUIDE ROLLER ASSEMBLY, DRIVE SIDE</b>	094682	1
1	BRACKET WELDMENT, BLADE GUIDE ROLLER ZINC-PLATED	094679-1	1
-	ROLLER, BLADE GUIDE NARROW W/BEARINGS	087887	1
2	SHAFT, BLADE GUIDE ROLLER ZINC-PLATED	087763-1	1
3	WASHER, ZINC-PLATED SPACER	087891-1	2
4	BEARING, 6001 2RSR (FAG, SKF)	087893	2
5	NUT, M12 8 HEX NYLON ZINC LOCK	F81034-2	1
6	ROLLER, BLADE GUIDE NARROW	087889	1
7	RING, W28 INSIDE RETAINING	F81090-9	2
8	SCREW, M10X1X40 DIN913 A2-70 STAINLESS STEEL SET	F81015-2	2
9	NUT, M10X1-04-ST-A2E ISO8675 THIN	F81033-10	2
10	SHAFT, ZINC-PLATED BLADE GUIDE MOUNT	503588-1	1

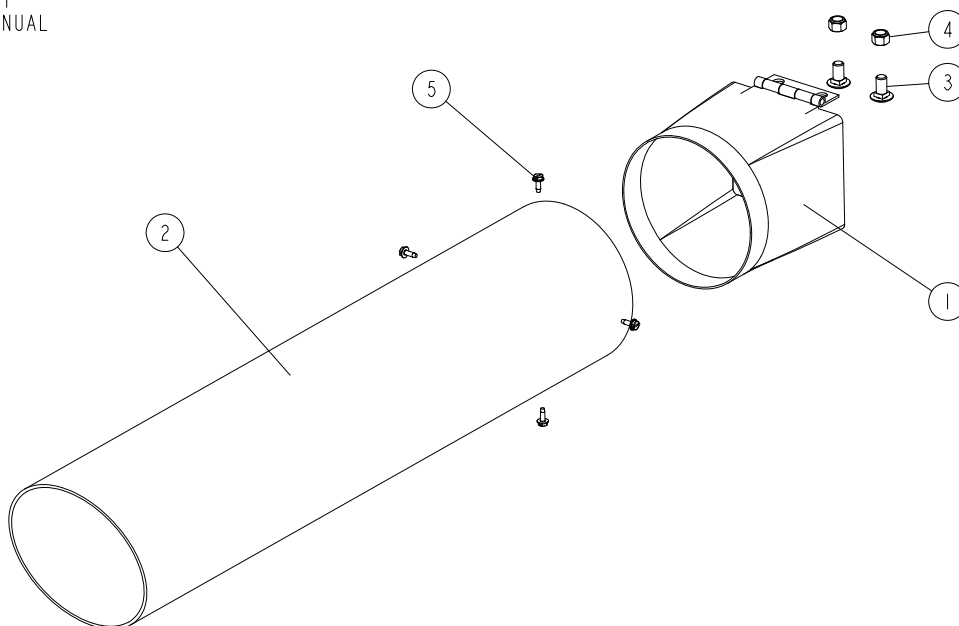
## 5.26 Blade Guide Roller Assembly, Idle Side (No. 094683)

094683\_001  
094683\_MANUAL

REF.	DESCRIPTION (* indicates parts available in assemblies only)	PART #	QTY	
-	<b>BLADE GUIDE ROLLER ASSEMBLY, IDLE SIDE</b>	094683	1	
1	BRACKET WELDMENT, BLADE GUIDE ROLLER ZINC-PLATED	094681-1	1	
2	SHAFT, ZINC-PLATED BLADE GUIDE MOUNT	503588-1	1	
3	SCREW, M10X1X40 DIN913 A2-70 STAINLESS STEEL SET	F81015-2	2	
-	ROLLER, BLADE GUIDE NARROW W/BEARINGS	087887	1	
4	SHAFT, BLADE GUIDE ROLLER ZINC-PLATED	087763-1	1	
5	WASHER, ZINC-PLATED SPACER	087891-1	2	
6	BEARING, 6001 2RSR (FAG, SKF)	087893	2	
7	NUT, M12 8 HEX NYLON ZINC LOCK	F81034-2	1	
8	ROLLER, BLADE GUIDE NARROW	087889	1	
9	RING, W28 INSIDE RETAINING	F81090-9	2	
10	NUT, M10X1-04-ST-A2E ISO8675 THIN	F81033-10	2	

**5.27 Sawdust Chute (No. 110968)**

110968\_001  
110968\_MANUAL

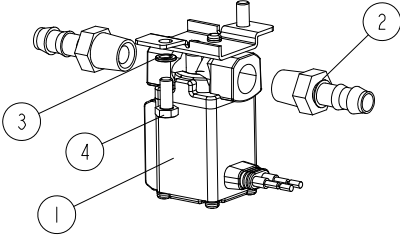


REF.	DESCRIPTION (* indicates parts available in assemblies only)	PART #	QTY
-	<b>CHUTE ASSY, LX250 SAWDUST</b>	110968	1
1	TUBE WLDMT, SAWDUST CHUTE	034396	1
2	CHUTE, RUBBER SAWDUST, 6IN	017829	1
3	BOLT, M10-1.5X20MM CARRIAGE CLASS 8.8	F05022-23	2
4	NUT, M10-1.50 HEX NYLON LOCK	F05004-270	2
5	BOLT, #10-24X1/2 SELF-TAPPING	F05015-7	4



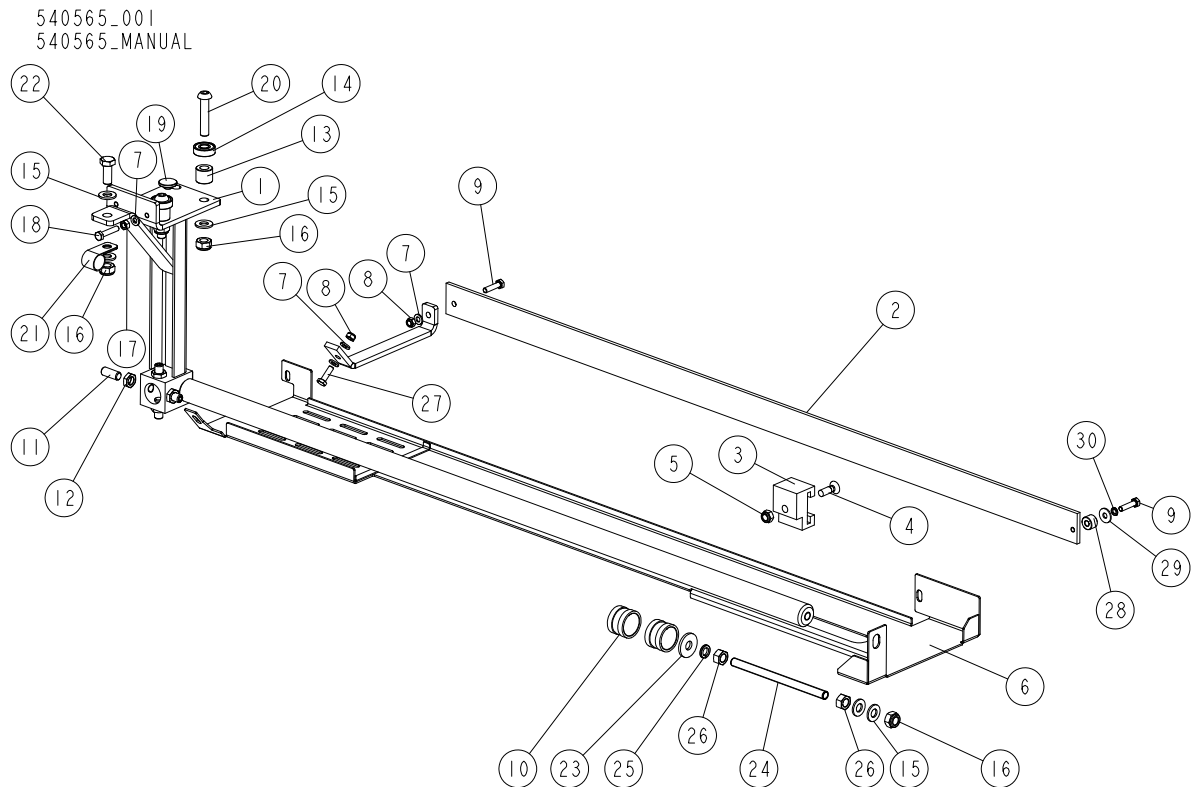
**5.28 Blade Lube Kit (No. 518651)**

518651\_001  
518651\_MANUAL



REF.	DESCRIPTION (* indicates parts available in assemblies only)	PART #	QTY
-	<b>LUBE KIT, LX100 AC BLADE</b>	518651	1
1	VALVE, VX212FZ1UAXB 24VAC SOLENOID	514046	1
2	FITTING, 3/8 BARB 1/4NPT MALE	P04682	2
3	WASHER, 5.1 SPLIT LOCK	F81052-2	2
4	BOLT, M5X12 8.8 HEX HEAD FULL THREAD ZINC	F81000-5	2

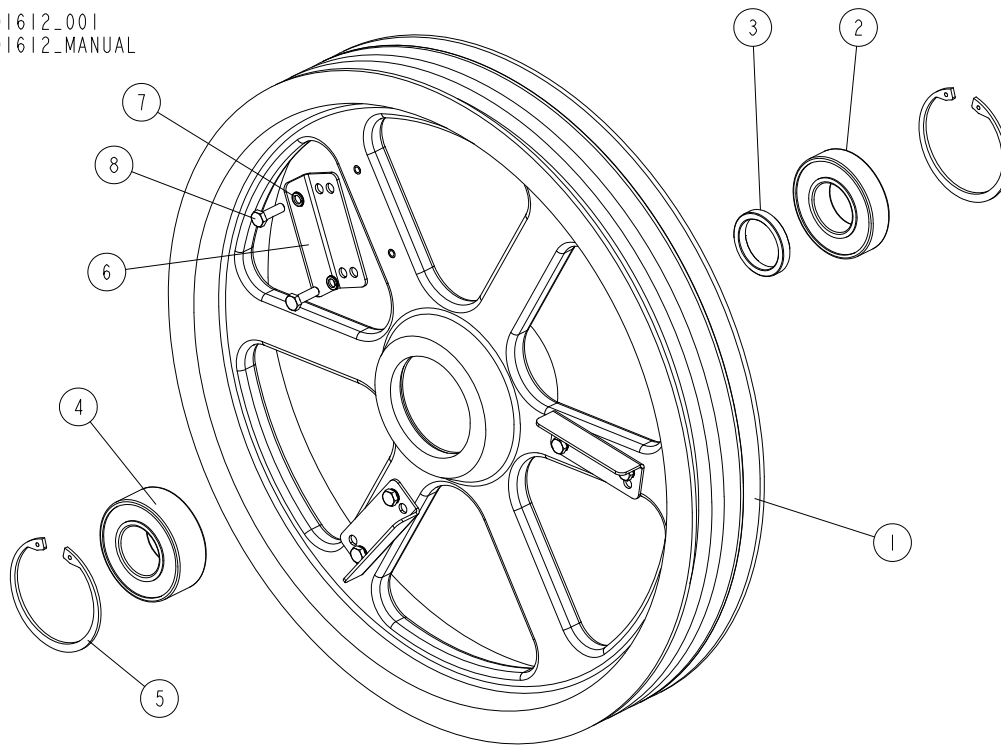
## 5.29 Blade Guide Arm Assembly (No. 540565)



REF.	DESCRIPTION (* indicates parts available in assemblies only)	PART #	QTY
-	<b>ARM, LX250 BLADE GUIDE - COMPLETE</b>	540565	1
1	ROD WELDMENT, BLADE GUIDE ARM	524775-1	1
2	BAR, BLADE GUARD	524773	1
3	GUIDE, LX250 BLADE GUARD	540571	1
4	SCREW, M8X25-5.8 CROSS RECESSED FLAT HEAD ZINC	F81002-51	1
5	NUT, M8-8-B HEX NYLON ZINC LOCK	F81032-2	1
6	GUARD WELDMENT, LX250 BOTTOM	540567-1	1
7	WASHER, 6.4 FLAT ZINC	F81053-1	4
8	NUT, M6-8-B HEX NYLON ZINC LOCK	F81031-2	2
9	BOLT, M6X25 -8.8 HEX HEAD FULL THREAD ZINC	F81001-3	2
10	BUSHING, LT15 BLADE GUIDE	086684	2
11	SCREW, M10X1X25 DIN 913 STAINLESS STEEL SET	F81015-4	4
12	NUT, M10X1-04-ST-A2E ISO8675 THIN	F81033-10	4
13	BUSHING, 11/20-17 ZINC-PLATED	094255-1	2
14	BEARING, 6000 2RSR	087471	2
15	WASHER, 10.5 FLAT ZINC	F81055-1	6
16	NUT, M10-8-B HEX NYLON ZINC LOCK	F81033-1	4
17	NUT, M6 8 HEX ZINC	F81031-1	1
18	BOLT, M6X30-8.8 HEX HEAD FULL THREAD ZINC	F81001-8	1
19	BUSHING, BLADE GUIDE	095936	1
20	SCREW, M10X50-A2 ISO7380-1 BUTTON HEAD	F81003-131	2
21	CLAMP, 5/8 EMT COATED	010748	1

REF.	DESCRIPTION (* indicates parts available in assemblies only)	PART #	QTY	
22	BOLT, M10X25 8.8 HEX HEAD FULL THREAD ZINC	F81003-11	1	
23	WASHER, 11/30-3 ZINC-PLATED	088787-1	1	
24	ROD, M10X150 THREADED	540572	1	
25	WASHER, Z 10.2 SPLIT LOCK ZINC	F81055-2	1	
26	NUT, M10 8 HEX ZINC	F81033-3	2	
27	BOLT, M6X20 8.8 HEX HEAD FULL THREAD ZINC	F81001-2	1	
28	BUSHING, 6.5/16-10.5	525463-1	1	
29	WASHER, 6.5 SPECIAL FLAT ZINC	F81053-11	1	
30	WASHER, Z 6.1 SPLIT LOCK ZINC	F81053-3	1	

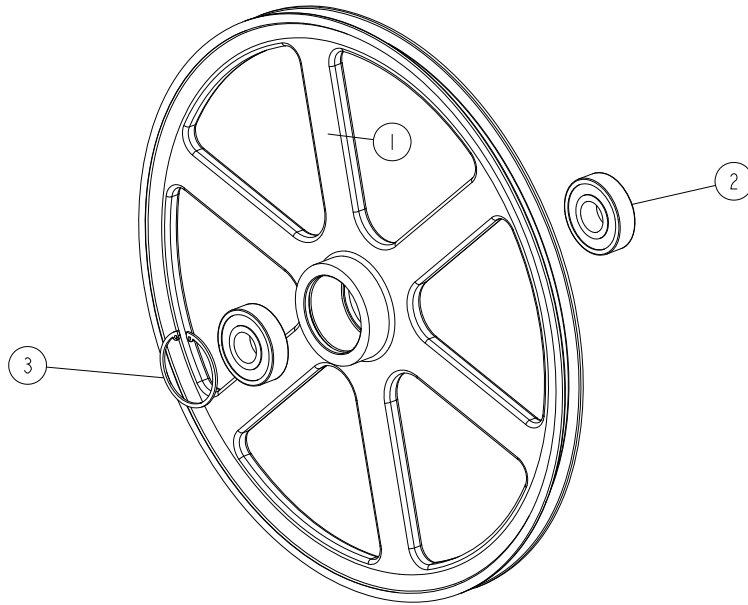
## 5.30 Blade Wheel Assembly, Drive Side (No. 091612)

091612\_001  
091612\_MANUAL

REF.	DESCRIPTION (* indicates parts available in assemblies only)	PART #	QTY
-	<b>BLADE WHEEL, DRIVE - COMPLETE</b>	091612	1
1	BLADE WHEEL, LT20 DRIVE SIDE	090646-1	1
2	BEARING, 6207-2RS, C3, 35X72X17	014811	1
3	BUSHING, SPACER	096778	1
4	BEARING, 3207B.2RSR.TVH "FAG"	092005	1
5	RING, W72 INSIDE RETAINING	F81090-4	2
6	WING	097808-1	3
7	WASHER, Z 6.1 SPLIT LOCK ZINC	F81053-3	6
8	BOLT, M6X20 8.8 HEX HEAD FULL THREAD ZINC	F81001-2	6

### 5.31 Blade Wheel, Idle Side (No. A08218)

A08218\_001  
A08218\_MANUAL

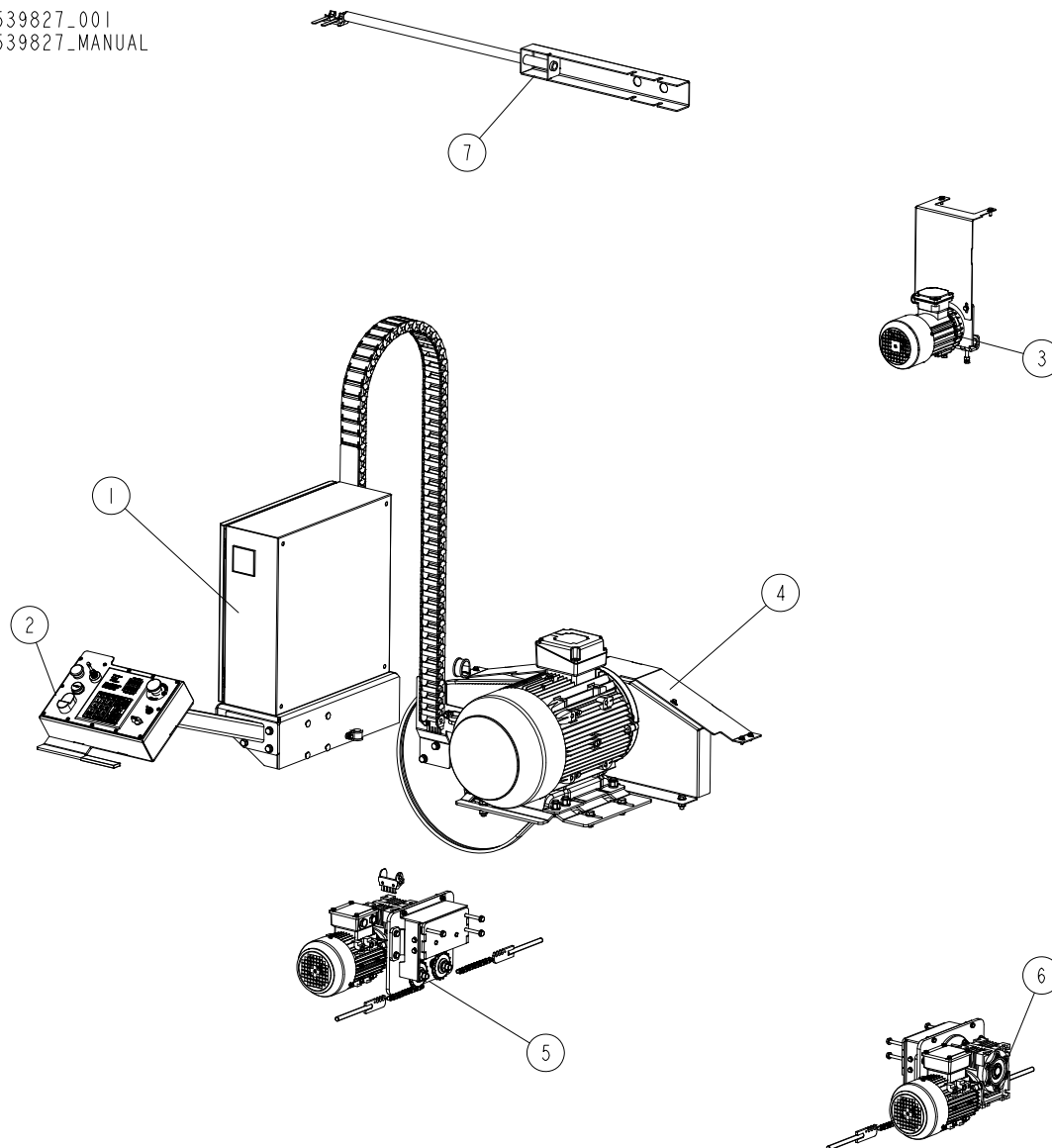


REF.	DESCRIPTION (* indicates parts available in assemblies only)	PART #	QTY	
-	<b>PULLEY ASSEMBLY, 19IN IDLER</b>	A08218	1	
1	PULLEY, 19 INCH	P08125	1	
2	BEARING, 6305 2RS NSK	P08066	2	
3	SNAP RING, 2 7/16 IR BEVELED	F04254-21	1	

## SECTION 6 LX250 MOTORS

### 6.1 Motor Set, LX250 AC 15 kW

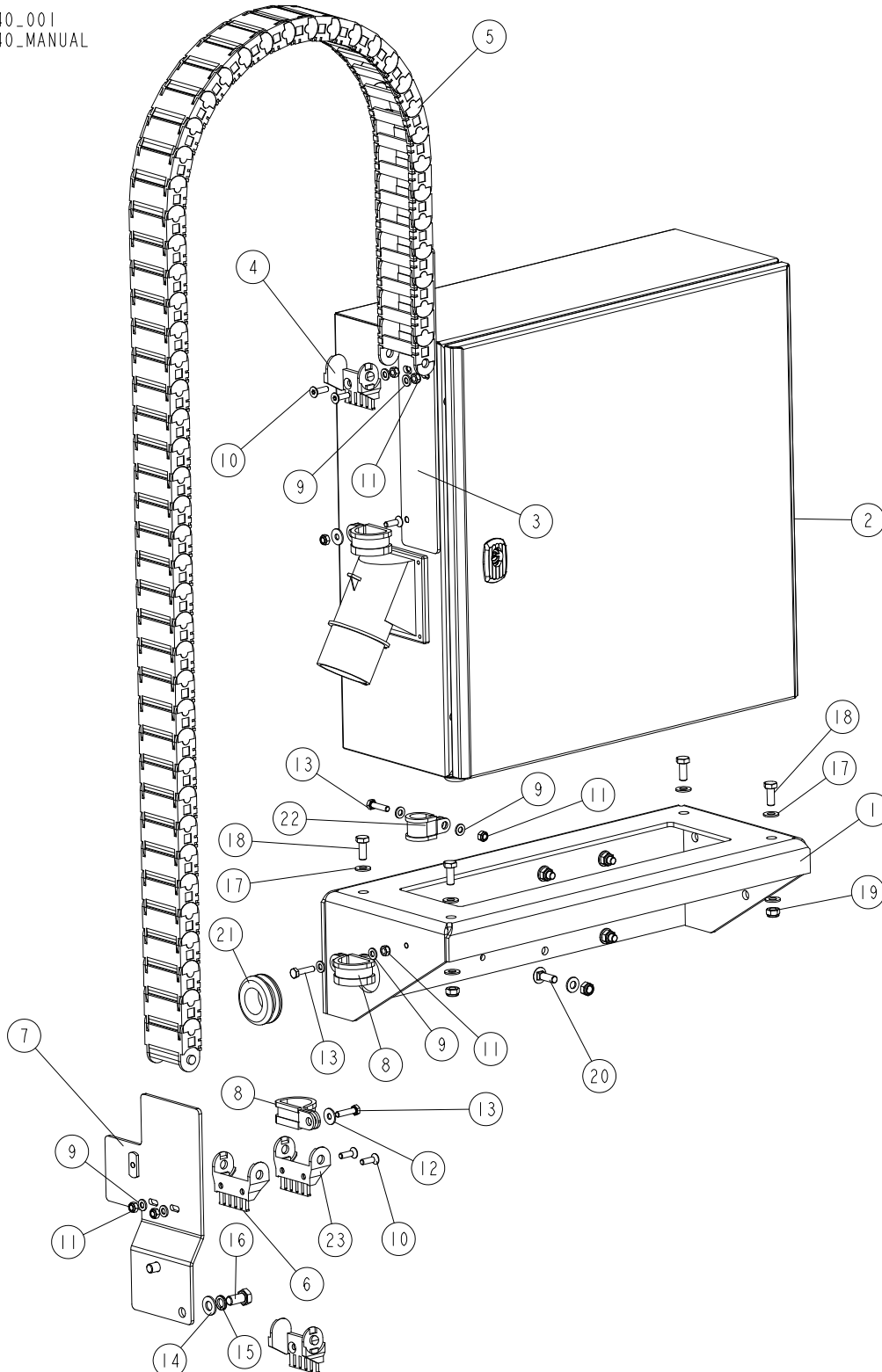
539827\_001  
 539827\_MANUAL



REF.	DESCRIPTION (* indicates parts available in assemblies only)	PART #	QTY
-	<b>MOTOR SET, AC 15 kW LX250</b>	539827	1
1	ELECTRICAL BOX W/MOUNTING PARTS <a href="#">See Section 6.2</a>	540440	1
2	CONTROL BOX W/MOUNTING PARTS <a href="#">See Section 6.4</a>	540415	1
3	UP/DOWN MOTOR W/MOUNTING PARTS <a href="#">See Section 6.5</a>	540591	1
4	15 KW MOTOR W/BELT & GUARD <a href="#">See Section 6.6</a>	540411	1
5	GEAR MOTOR W/MOUNTING PARTS - LEFT (KACPEREK) <a href="#">See Section 6.7</a>	540486	1
6	GEAR MOTOR W/MOUNTING PARTS - RIGHT (KACPEREK) <a href="#">See Section 6.7</a>	540487	1
7	GUIDE ASSEMBLY, HORIZONTAL CABLE <a href="#">See Section 6.8</a>	540473	1

6.2 Electrical Box w/Mounting Parts (No. 540440)

540440\_001  
540440\_MANUAL



REF.	DESCRIPTION (* indicates parts available in assemblies only)	PART #	QTY
-	ELECTRICAL BOX W/MOUNTING PARTS	540440	1
1	MOUNT WELDMENT, ELECTRICAL BOX	540469-1	1

## 6

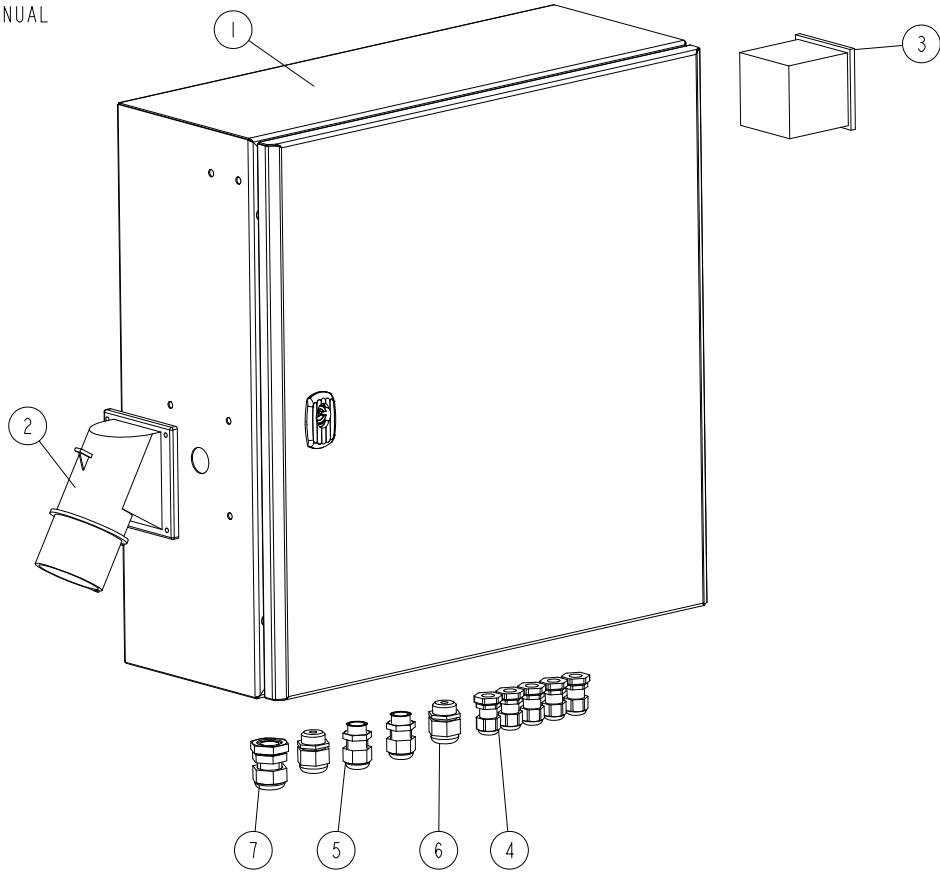
**LX250 MOTORS***Electrical Box w/Mounting Parts (No. 540440)*

REF.	DESCRIPTION (* indicates parts available in assemblies only)	PART #	QTY	
2	BOX, LX250 15 KW EL ELECTRICAL <a href="#">See Section 6.3</a>	540466	1	
3	PLATE, CABLE CARRIER MOUNT	540578-1	1	
4	BRACKET, 14050.2PZ MOUNTING	512945_2PZ	1	
5	CARRIER, IGUS 1_76M CABLE	540438	1	
6	BRACKET, 14050.1PZ MOUNTING	512945_1PZ	1	
7	SAFETY SWITCH W/MOUNTING PLATE	540562-1	1	
8	CLIP, RSGU 1.30/20 W1 RETAINING	F81087-1	3	
9	WASHER, 6.4 FLAT ZINC	F81053-1	8	
10	SCREW, M6X20 7991 10.9 FLAT SOCKET HEAD CAP ZINC	F81001-17	5	
11	NUT, M6-8-B HEX NYLON ZINC LOCK	F81031-2	7	
12	WASHER, 6.5 SPECIAL FLAT ZINC	F81053-11	2	
13	BOLT, M6X25 -8.8 HEX HEAD FULL THREAD ZINC	F81001-3	3	
14	WASHER, 10.5 FLAT ZINC	F81055-1	2	
15	WASHER, Z 10.2 SPLIT LOCK ZINC	F81055-2	2	
16	BOLT, ISO 4017-M10X20-8.8-A2E HEX HEAD FULL THREAD	F81003-53	2	
17	WASHER, 8.4 FLAT ZINC	F81054-1	12	
18	BOLT, M8X20 8.8 HEX HEAD FULL THREAD ZINC	F81002-4	4	
19	NUT, M8-8-B HEX NYLON ZINC LOCK	F81032-2	8	
20	BOLT, M8X25-8.8 CARRIAGE ZINC	F81002-59	4	
21	GROMMET, 30X42X8 RUBBER	509717	1	
22	CLIP, RSGU 1.20/20 RETAINING	F81087-2	1	
23	BRACKET, 14050.12PZ MOUNTING	512945	1	



**6.3 Electrical Box (No. 540466)**

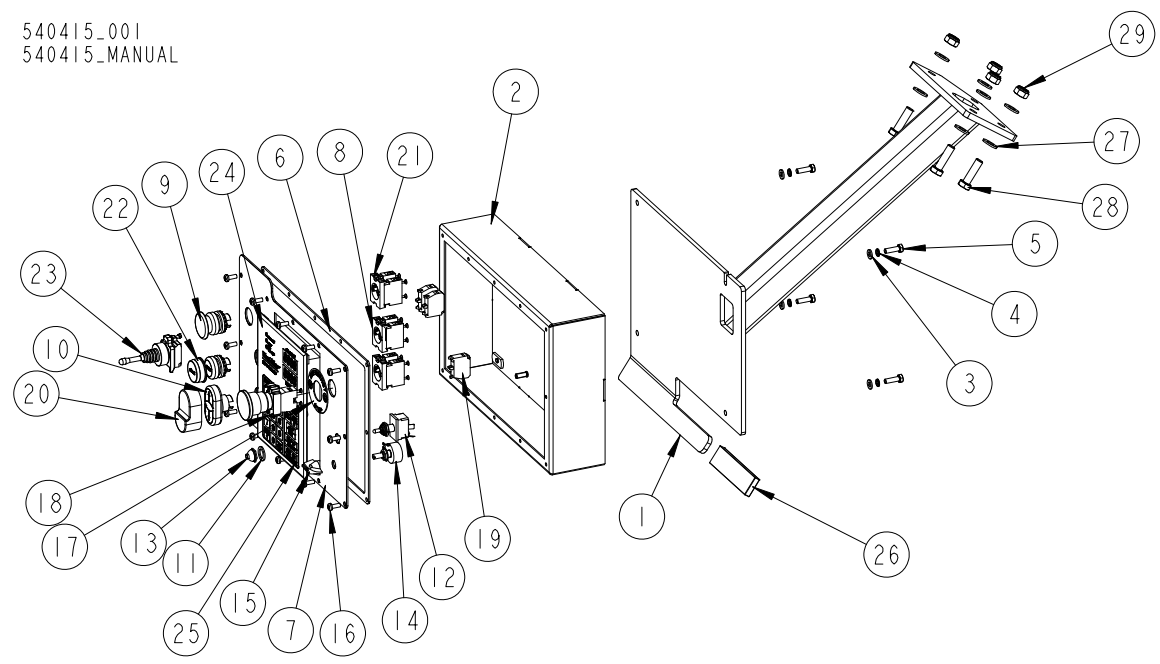
540466\_001  
 540466\_MANUAL



REF.	DESCRIPTION (* indicates parts available in assemblies only)	PART #	QTY
-	<b>BOX, LX250 15 kW EL ELECTRICAL</b>	540466	1
1	BOX, LX250 15 KW EL ELECTRICAL	540412	1
2	PLUG, 32A 5P 400V IP67 MAIN W/SWITCH	E85235	1
3	AMMETER, EQB72 40/80A	505373	1
4	GLAND, DP 9/H CABLE	F81096-2	5
5	GLAND, DW11/H CABLE	085388	2
6	GLAND, DP 13/H CABLE	F81096-4	2
7	GLAND, DP16/H CABLE	F81096-7	1

**6.4 Control Box (No. 540415)**

540415-001  
540415-MANUAL

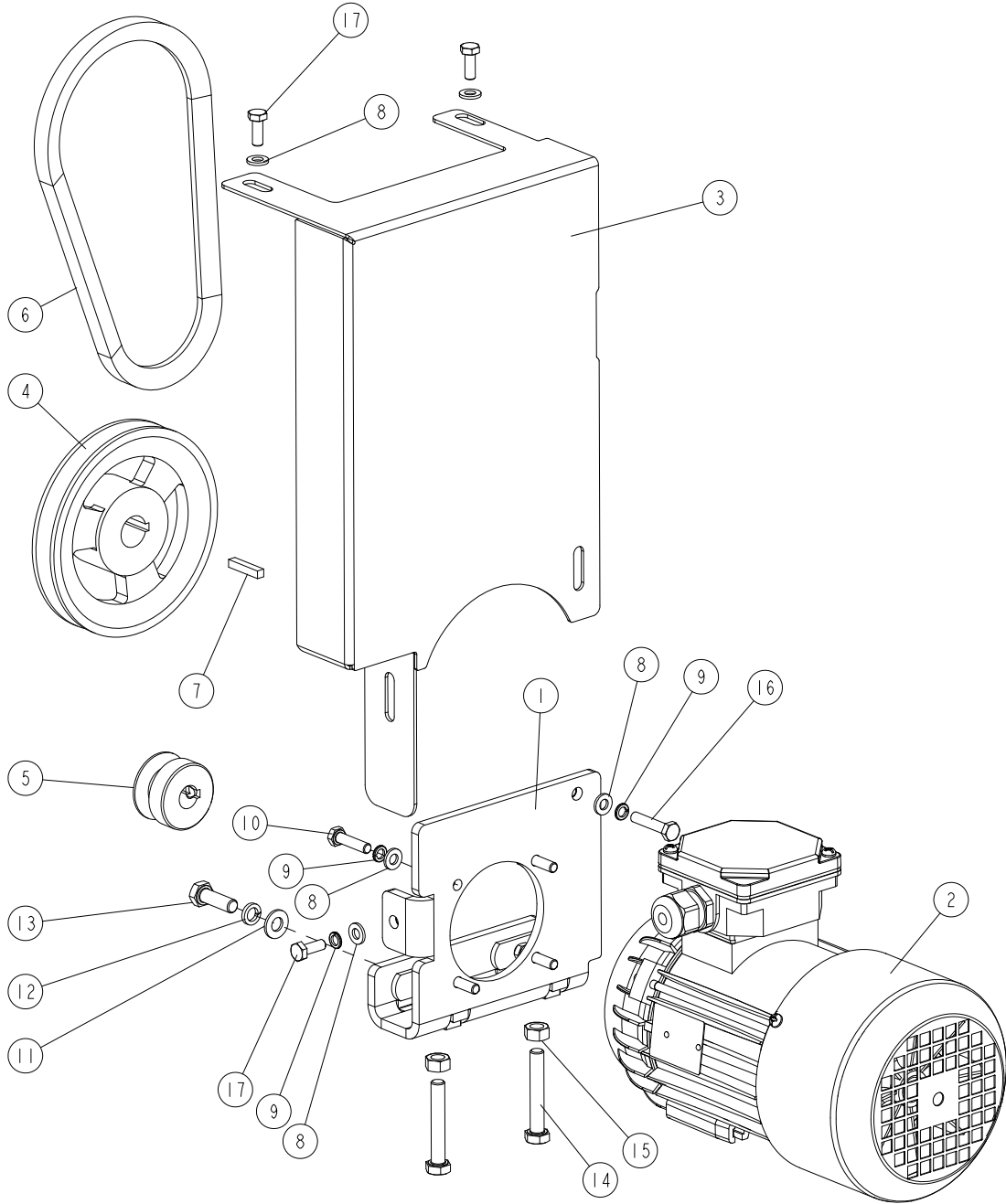


REF.	DESCRIPTION (* indicates parts available in assemblies only)	PART #	QTY
-	<b>CONTROL BOX W/MOUNTING PARTS</b>	540415	1
1	BRACKET, LX250 CONTROL BOX MOUNT	540439-1	1
-	BOX, LX250/AC CONTROL	547203	1
2	BOX WELDMENT, LT15 CONTROL	538729-1	1
3	WASHER, 6.4 FLAT ZINC	F81053-1	4
4	WASHER, Z 6.1 SPLIT LOCK ZINC	F81053-3	4
5	BOLT, M6X20 8.8 HEX HEAD FULL THREAD ZINC	F81001-2	4
6	GASKET, LT15 CONTROL BOX	538732	1
7	PANEL, LX250 CONTROL BOX FRONT	547204-1	1
8	ADAPTER, LPXAU120 MOUNTING	535438	3
9	BUTTON, LPCB6143	536909	1
10	SWITCH, LPCBL7191	536908	1
11	WASHER, 1/2X3/4X1/16 NYLON	P05251-1	1
12	SWITCH, TOGGLE 21A DPDT REV MOM SPADE	024200	1
13	BOOT, TOGGLE SWITCH	P02575	1
14	POTENTIOMETER, 1K, LTAGA	E20519	1
15	KNOB, SPEED CONTROL	P06257	1
16	BOLT, #10-24X1/2 PH	F05015-17	12
17	WASHER, LPX AU115 E-STOP BUTTON	536912	1
18	BUTTON, LPCB6644 EMERGENCY STOP	535445-K	1
19	ELEMENT, 1NCLPXC01 CONTACT	535440	1
20	BOOT, LPXAU157 BUTTON	536926	1
21	ELEMENT, 1NOLPXC10 CONTACT	535439	6
22	BUTTON, LPCBL1163	536921	1
23	JOYSTICK, BLM 2T J200	536914	1
24	SW-10 CONTROLLER	500628	1

REF.	DESCRIPTION (* indicates parts available in assemblies only)	PART #	QTY	
25	DECAL, LX250 CONTROL BOX	547205	1	
26	SLEEVE, VINYL GUARD	086875	1	
27	WASHER, 10.5 FLAT ZINC	F81055-1	8	
28	BOLT, M10X35 8.8 HEX HEAD FULL THREAD ZINC	F81003-17	4	
29	NUT, M10-8-B HEX NYLON ZINC LOCK	F81033-1	4	

**6.5 Up//Down Motor w/Mounting Parts (No. 540591)**

540591\_001  
540591\_MANUAL

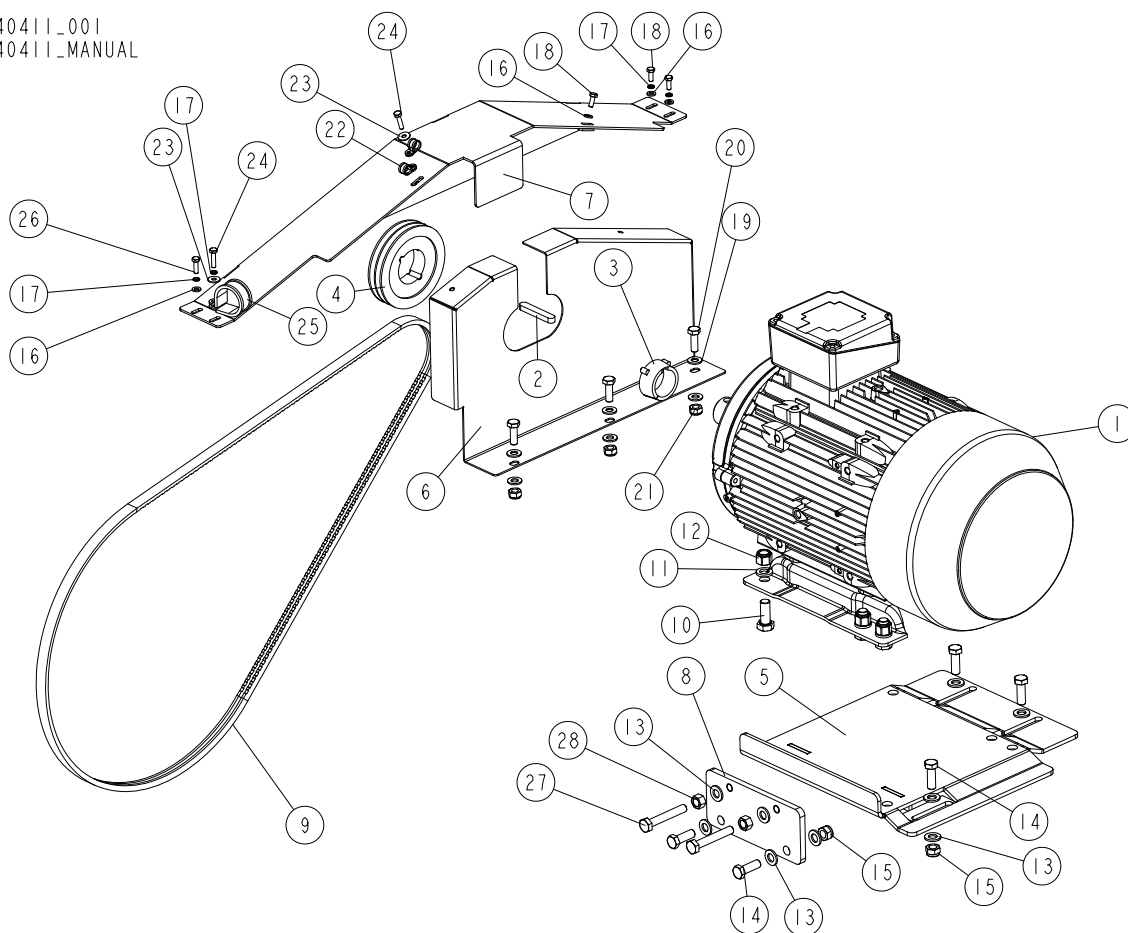


REF.	DESCRIPTION (* indicates parts available in assemblies only)	PART #	QTY
-	<b>UP/DOWN MOTOR W/MOUNTING PARTS</b>	540591	1
1	BRACKET, UP/DOWN MOTOR MOUNT	540413-1	1
2	MOTOR, BESEL 2SIEK 71-4B2 0.37 KW B14/2 IE2 ELECTRIC	540483	1
3	COVER, UP/DOWN BELT	540437-1	1
4	SHEAVE, AK51X3/4	015256	1
5	SHEAVE, UP/DOWN	540436-1	1

REF.	DESCRIPTION (* indicates parts available in assemblies only)	PART #	QTY	
6	V-BELT, 4L245	038459	1	
7	3/16 SQ KEY X 1 IN LONG	S31027	1	
8	WASHER, 6.4 FLAT ZINC	F81053-1	8	
9	WASHER, Z 6.1 SPLIT LOCK ZINC	F81053-3	6	
10	BOLT, M6X25 -8.8 HEX HEAD FULL THREAD ZINC	F81001-3	4	
11	WASHER, 8.4 FLAT ZINC	F81054-1	2	
12	WASHER, 8.2 SPLIT LOCK ZINC	F81054-4	2	
13	BOLT, M8X25-8.8-B HEX HEAD FULL THREAD ZINC	F81002-5	2	
14	BOLT, M8X50 -8.8 HEX HEAD FULL THREAD ZINC	F81002-19	2	
15	NUT, M8-8-B HEX ZINC	F81032-1	2	
16	BOLT, M6X30-8.8 HEX HEAD FULL THREAD ZINC	F81001-8	1	
17	BOLT, M6X16-8.8 HEX HEAD FULL THREAD ZINC	F81001-15	3	

**6.6 15 kW Motor w/Belt & Guard (No. 540411)**

540411\_001  
 540411\_MANUAL

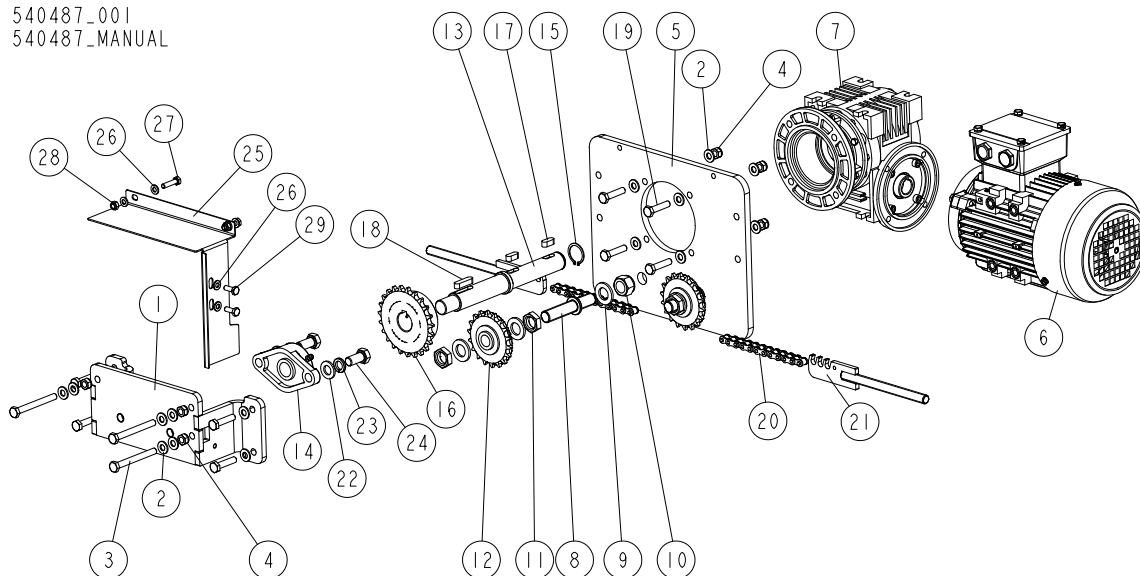


REF.	DESCRIPTION (* indicates parts available in assemblies only)	PART #	QTY
-	<b>15 kW MOTOR W/BELT &amp; GUARD</b>	540411	1
1	MOTOR, 15KW 3SG160M-2B-HM-T ELECTRIC	522987	1
2	KEY, A12X8X70 PARALLEL	715417	1
3	BUSHING, 1610/42 T 31081 TAPER LOCK	539908	1
4	PULLEY, SPZ 125-2 (F02173)	538724	1
5	MOUNT WELDMENT, MOTOR	540419-1	1
6	COVER WELDMENT, MOTOR	540421-1	1
7	COVER, DRIVE BELT	540524-1	1
8	PLATE, BELT TENSIONER	540467-1	1
9	V-BELT, XPZ2160/2	538938	1
10	BOLT, M14X35-8.8-FE/ZN5 ISO 4017 HEX HEAD FULL THREAD	F81005-1	6
11	WASHER, 14.2 SPLIT LOCK ZINC	F81057-1	6
12	NUT, M14 HEX NYLON ZINC LOCK	F81035-2	6
13	WASHER, 13 FLAT ZINC	F81056-1	12
14	BOLT, M12X35 8.8 HEX HEAD FULL THREAD ZINC	F81004-24	5
15	NUT, M12-8 DIN 982 HEX NYLON ZINC LOCK	F81034-2	5
16	WASHER, 6.4 FLAT ZINC	F81053-1	4
17	WASHER, Z 6.1 SPLIT LOCK ZINC	F81053-3	4

<b>REF.</b>	<b>DESCRIPTION (* indicates parts available in assemblies only)</b>	<b>PART #</b>	<b>QTY</b>	
<b>18</b>	BOLT, M6X16-8.8 HEX HEAD FULL THREAD ZINC	F81001-15	3	
<b>19</b>	WASHER, 10.5 FLAT ZINC	F81055-1	6	
<b>20</b>	SCREW, DIN933-M10X30-8.8-A2E HEX CAP FULL THREAD	F81003-111	3	
<b>21</b>	NUT, M10-8-B HEX NYLON ZINC LOCK	F81033-1	3	
<b>22</b>	CLIP, RSGU 1.10/12W1 RETAINING	086861	2	
<b>23</b>	WASHER, 6.5 SPECIAL FLAT ZINC	F81053-11	2	
<b>24</b>	BOLT, M6X25 -8.8 HEX HEAD FULL THREAD ZINC	F81001-3	2	
<b>25</b>	CLIP, RSGU 1.42/20 W1 RETAINING	F81087-3	1	
<b>26</b>	BOLT, M6X20 8.8 HEX HEAD FULL THREAD ZINC	F81001-2	1	
<b>27</b>	BOLT, M12X75-8.8 DIN 933 HEX HEAD FULL THREAD ZINC	F81004-10	2	
<b>28</b>	NUT, M12-8-B HEX ZINC	F81034-1	2	

**6.7 Gear Motors (540486, 540487)**

540487-001  
540487-MANUAL



REF.	DESCRIPTION (* indicates parts available in assemblies only)	PART #	QTY
	<b>GEAR MOTOR W/MOUNTING PARTS - LEFT (KACPEREK)</b>	540486	1
	<b>GEAR MOTOR W/MOUNTING PARTS - RIGHT (KACPEREK)</b>	540487	1
1	BRACKET, MOUNT	540449-1	1
2	WASHER, 8.4 FLAT ZINC	F81054-1	22
3	BOLT, M8X75-8.8 HEX HEAD ZINC	F81002-91	3
4	NUT, M8-8-B HEX NYLON ZINC LOCK	F81032-2	11
5	PLATE, GEAR MOTOR MOUNT (KACPEREK)	540488-1	1
	GEAR MOTOR, MR-50/15/0,75-1380/B14 KS1 - COMPLETE	540497-L <sup>1</sup>	1
	GEAR MOTOR, MR-50/15/0,75-1380/B14 KS2 - COMPLETE	540497-P <sup>2</sup>	1
6	MOTOR, G-IE2-80-4-0,75-120/19-230/400V-SPEC-PTC-RAL7024	540495-L <sup>3</sup>	1
	MOTOR, G-IE2-80-4-0,75-120/19-230/400V-PTC-RAL7024	540495-P <sup>4</sup>	1
7	GEAR BOX, MR-50/15-120/19-K140/1-B3 K	540499	
	GEAR BOX, MR-50/15-120/19-K140/2-B3 KACPEREK	540500	1
	SPROCKET ASSEMBLY	517890	2
8	SHAFT, SPROCKET	517891-1	1
9	WASHER, 17 SPLIT LOCK ZINC	F81058-1	3
10	NUT, M16-8 HEX NYLON ZINC LOCK	F81036-2	1
11	NUT, M16 8 THIN ZINC	F81036-4	2
12	SPROCKET, Z=18 LARGE	088700	1
13	SHAFT, KACPEREK GEAR MOTOR OUTPUT	540489	1
14	BEARING, UCFL 204 (CX)	500060	1
15	RING, Z 24 OUTSIDE RETAINING	089654	1
16	SPROCKET, 08B-1; Z=23; DP=93.27(T 72548)	517883-1	1
17	KEY, A8X7X20 PARALLEL	099059	2
18	KEY, A8X7X32 PARALLEL	088564	1
19	BOLT, M8X35-8.8 HEX HEAD FULL THREAD ZINC	F81002-13	8
20	CHAIN, 08B; LENGTH=6.72 M (529-LINK)	517898-S3M2	1

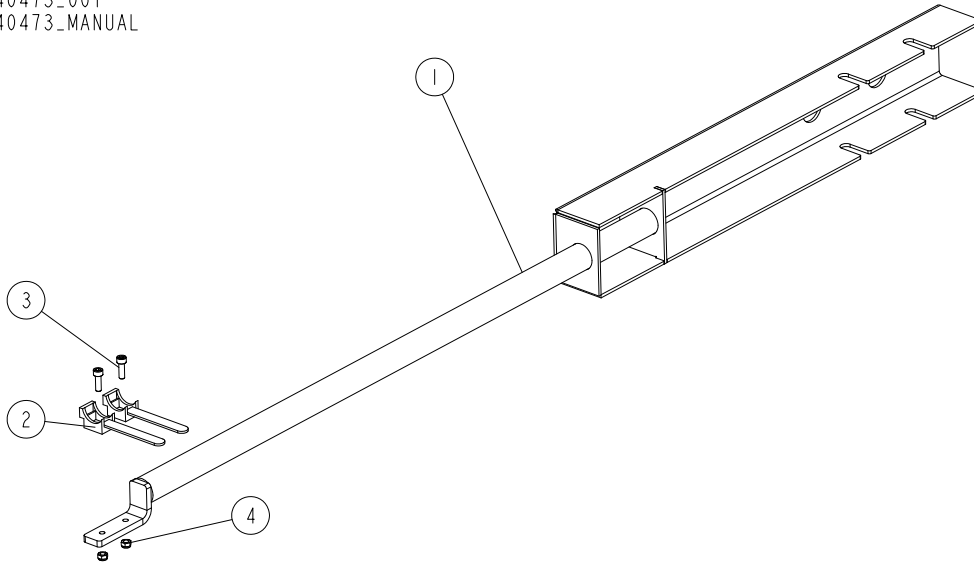


REF.	DESCRIPTION (* indicates parts available in assemblies only)	PART #	QTY	
21	BRACKET, POWER FEED CHAIN	517895-1	2	
22	WASHER, 13 FLAT ZINC	F81056-1	2	
23	WASHER, Z12.2 SPLIT LOCK ZINC	F81056-2	2	
24	BOLT, M12X25-8.8 HEX HEAD FULL THREAD ZINC	F81004-31	2	
	COVER ASSEMBLY, LX250 POWER FEED DRIVE - LEFT	540556 <sup>5</sup>	1	
	COVER ASSEMBLY, LX250 POWER FEED DRIVE - RIGHT	540557 <sup>6</sup>	1	
25	COVER, LX250 POWER FEED DRIVE - LEFT	540554-1 <sup>7</sup>	1	
	COVER, LX250 POWER FEED DRIVE - RIGHT	540555-1 <sup>8</sup>	1	
26	WASHER, 6.4 FLAT ZINC	F81053-1	6	
27	BOLT, M6X25 -8.8 HEX HEAD FULL THREAD ZINC	F81001-3	2	
28	NUT, M6-8-B HEX NYLON ZINC LOCK	F81031-2	2	
29	BOLT, M6X16-8.8 HEX HEAD FULL THREAD ZINC	F81001-15	2	

- <sup>1</sup> Included in assy # 540486
- <sup>2</sup> Included in assy # 540487
- <sup>3</sup> Included in assy # 540497-L
- <sup>4</sup> Included in assy # 540497-P
- <sup>5</sup> Included in assy # 540486
- <sup>6</sup> Included in assy # 540487
- <sup>7</sup> Included in assy # 540556
- <sup>8</sup> Included in assy # 540557

**6.8 Horizontal Cable Guide (No. 540473)**

540473-001  
540473-MANUAL



REF.	DESCRIPTION (* indicates parts available in assemblies only)	PART #	QTY	
-	<b>GUIDE ASSEMBLY, HORIZONTAL CABLE</b>	540473	1	
1	GUIDE WELDMENT, HORIZONTAL CABLE	540471-1	1	
2	HOLDER, CABLE PLASTIC TIE	F81082-1	2	
3	SCREW, M5X16-8.8 HEX SOCKET HEAD CAP ZINC	F81000-25	2	
4	NUT, M5-8 DIN985 HEX NYLON ZINC LOCK	F81030-2	2	