

Wood-Mizer®

Replacement Parts

LX250 E20

rev. A3.00



Safety is our #1 concern! Read and understand all safety information and instructions before operating, setting up and/or maintaining this machine.

Form #2505

Table of Contents

Section-Page

SECTION 1	GENERAL INFORMATION	1-1
1.1	How To Use the Parts List.....	1-1
1.2	Sample Assembly	1-1
SECTION 2	LX250 SAWMILL	2-1
2.1	LX250	2-1
2.2	Decals	2-2
SECTION 3	LX250 BED FRAME SECTIONS	3-1
3.1	LX250 Bed Assembly	3-1
3.2	Bed Section (539781)	3-2
3.3	Log Clamp (547258)	3-3
3.4	Right Bumper (540395)	3-4
3.5	Left Bumper (540392)	3-5
3.6	Additional Bed Section Assembly (539781-S)	3-6
3.7	Bed Frame Foot Set (540484)	3-7
3.8	Right Corner Foot (540441)	3-8
3.9	Left Corner Foot (540442)	3-9
3.10	Bed Foot (514997)	3-10
SECTION 4	SAWMILL MAST ASSEMBLY	4-1
4.1	Mast (Left Side)	4-2
4.2	Mast (Right Side)	4-4
4.3	Sawmill Mast (Middle Part)	4-6
4.4	Saw Head Bumper	4-7
4.5	Gear Assembly w/ Mounting (560241)	4-8
4.6	Limit Switch w/ Mounting Plate (540558)	4-9
4.7	Scraper (517611)	4-10
4.8	Fixed Track Roller (560361)	4-11
4.9	Mast Safety Plate (540447)	4-12
4.10	Chain Tensioner (560248)	4-13
4.11	Adjustable Roller Assembly (560360)	4-14
SECTION 5	SAW HEAD (560270)	4-15
5.1	LX250 Saw Head (560270)	4-15
5.2	Drive Wheel (560353)	4-17
5.3	Saw Head Mounting - Left (560312)	4-18
5.4	Saw Head Mounting - Right (560315)	4-19
5.5	Idle Blade Wheel Mount (560351)	4-20
5.6	Blade Tensioner (510640)	4-22
5.7	Sawdust Separator (560316)	4-24
5.8	LX250 Covers (560318)	4-25

Table of Contents

Section-Page

5.9	Mast Slide Pad - Double (560326)	4-26
5.10	Mast Slide Pad - Single (560328)	4-27
5.11	Sawdust Chute (560350)	4-28
5.12	LX250 Scale Bracket (540461)	4-29
5.13	Water Bottle Assembly (560354)	4-30
5.14	Sensor (547315)	4-32
5.15	Idle Side Blade Wheel (A08218)	4-33
5.16	Blade Guide Roller w/ Mount Block (540564)	4-34
5.17	Blade Guide Roller Guard (560352)	4-35
5.18	Blade Guide Assembly w/ Motor (560331)	4-36
5.19	Blade Guide Arm Roller w/ Sprocket (547580)	4-37
5.20	Blade Guide Arm Roller (547581)	4-38
5.21	Blade Guide Arm (560342)	4-39
5.22	Blade Guide Roller Assembly, Idle Side (094683)	4-41
5.23	Blade Guide Roller Assembly, Drive Side. (094682)	4-42

SECTION 6 LX250 MOTOR SET

5-1

6.1	Motor Set, LX250 E20	5-1
6.2	Motor Set, LX250 E25/E25S (CE Compliant Version)	5-3
6.3	Motor Set, LX250 EJ15	5-5
6.4	Electrical Box w/ Mounting Parts (540440)	5-7
6.5	Electrical Box (540466)	5-9
6.6	Electrical Box (557004)	5-10
6.7	Electrical Box (558009-7)	5-11
6.8	Up/Down Motor w/ Mounting Parts (540591)	5-12
6.9	Motor w/Belt & Guard Mounting (540411)	5-14
6.10	Gear Motors (540486, 540487)	5-16
6.11	Horizontal Cable Guide (540473)	5-18
6.12	Control Box Transport Bracket (547269)	5-19
6.13	Control Box Mounting (540415)	5-20
6.14	Control Box (547203)	5-21

SECTION 1 GENERAL INFORMATION

1.1 How To Use the Parts List

- Use the index above to locate the assembly that contains the part you need.
- Go to the appropriate section and locate the part in the illustration.
- Use the number pointing to the part to locate the correct part number and description in the table.
- Parts shown indented under another part are included with that part.
- Parts marked with a diamond (◆) are only available in the assembly listed above the part.

See the sample table below. Sample Part #A01111 includes part F02222-2 and subassembly A03333. Subassembly A03333 includes part S04444-4 and subassembly K05555. The diamond (◆) indicates that S04444-4 is not available except in subassembly A03333. Subassembly K05555 includes parts M06666 and F07777-77. The diamond (◆) indicates M06666 is not available except in subassembly K05555.

1.2 Sample Assembly				
REF.	DESCRIPTION (◆ Indicates Parts Available In Assemblies Only)	PART #	QTY	
	Sample Assembly, Complete (Includes All Indented Parts Below)	A01111	1	
1	Sample Part	F02222-22	1	
	Sample Subassembly (Includes All Indented Parts Below)	A03333	1	
2	Sample Part (◆ Indicates Part Is Only Available With A03333)	S04444-4	1	◆
	Sample Subassembly (Includes All Indented Parts Below)	K05555	1	
3	Sample Part (◆ Indicates Part Is Only Available With K05555)	M06666	2	◆
4	Sample Part	F07777-77	1	

To Order Parts:

- From Europe call our European Headquarters and Manufacturing Facility in Kolo, Poland at **+48-63-2626000**. From the continental U.S., call our toll-free Parts hotline at **1-800-525-8100**. Have your customer number, vehicle identification number, and part numbers ready when you call. From other international locations, contact the Wood-Mizer distributor in your area for parts.

Office Hours:

Country	Monday - Friday	Saturday	Sunday
Poland	7-15	Closed	Closed
US	8 a.m.- 5 p.m.	8 a.m.- 12 p.m.	Closed

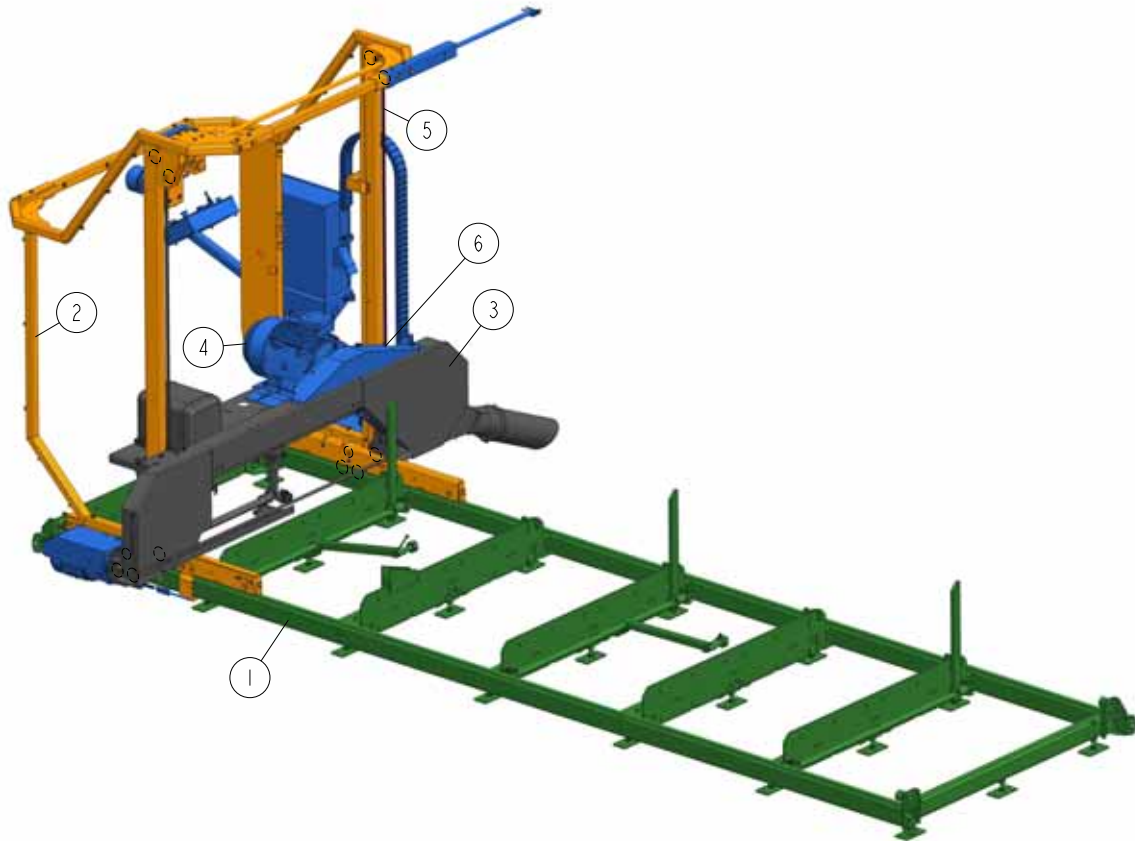


CAUTION! It is strongly recommended that only original spare parts be used.

SECTION 2 LX250 SAWMILL

2.1 LX250

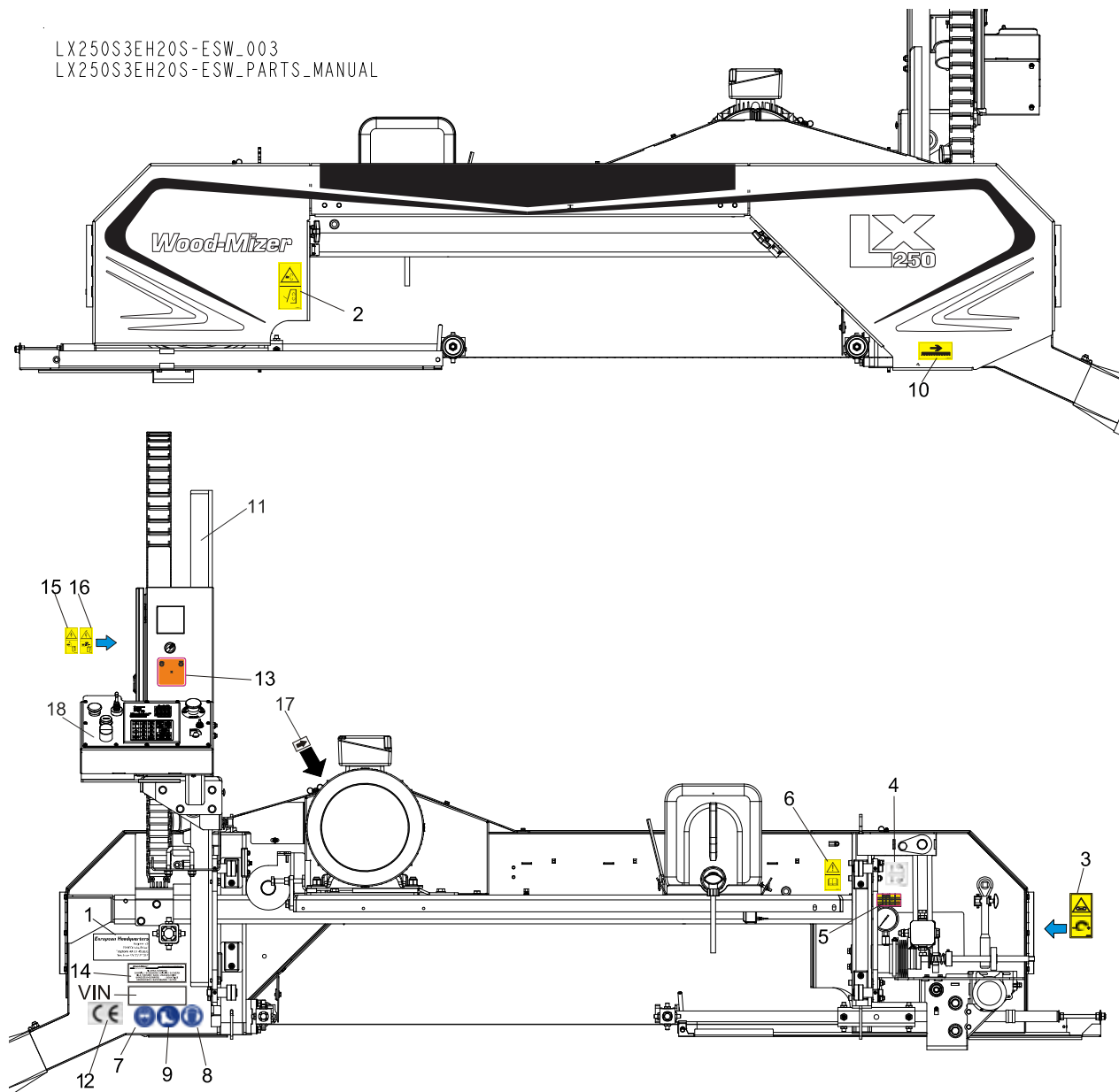
LX250S3EH20S-ESW_001
LX250S3EH20S-ESW_PARTS_MANUAL



REF.	DESCRIPTION (◆ Indicates Parts Available in Assemblies Only)	PART #	QTY	
-	LX250 AC 15 KW	LX250S3EH 20S-ESW	1	
1	LX250 BED ASSEMBLY See Section 3.1	540390	1	
2	LX250 MAST ASSEMBLY See Section 4.1	560213	1	
3	LX250 SAW HEAD ASSEMBLY See Section 5.1	560270	1	
4	MOTOR SET, AC 15 KW LX250 See Section 6.1	539827	1	
-	CHAIN, 08B-1, 4130 MM W/ MASTER LINKS	560355	2	
5	CHAIN, 08B-1, 4130 MM (325 LINK) IWIS T35719	560356	1	
6	LINK, 08B-1 MASTER IWIS T35755	560391	2	

2.2 Decals

LX250S3EH20S-ESW_003
LX250S3EH20S-ESW_PARTS_MANUAL



REF.	DESCRIPTION (◆ Indicates Parts Available in Assemblies Only)	PART #	QTY
	DECAL KIT, LX250	553252	1
	DECAL, LX250 SAWMILL TYPE	553251	1
1	DECAL, EUROPEAN HEADQUARTERS ADDRESS	015841	1
2	DECAL, "CLOSE GUARDS AND COVERS BEFORE OPERATING."	099220	1
3	DECAL, BLADE TENSION (PICTOGRAM)	099219	1
4	DECAL, BLADE ALIGNMENT	P11789	1
5	DECAL, LX250 BLADE TENSION	552834	1
6	DECAL, READ OPERATOR'S MANUAL (PICTOGRAM)	096317	1
7	DECAL, EYE PROTECTION WARNING (PICTOGRAM)	S12004G	1
8	DECAL, EAR PROTECTION WARNING (PICTOGRAM)	S12005G	1
9	DECAL, USE SAFETY BOOTS (PICTOGRAM)	501465	1

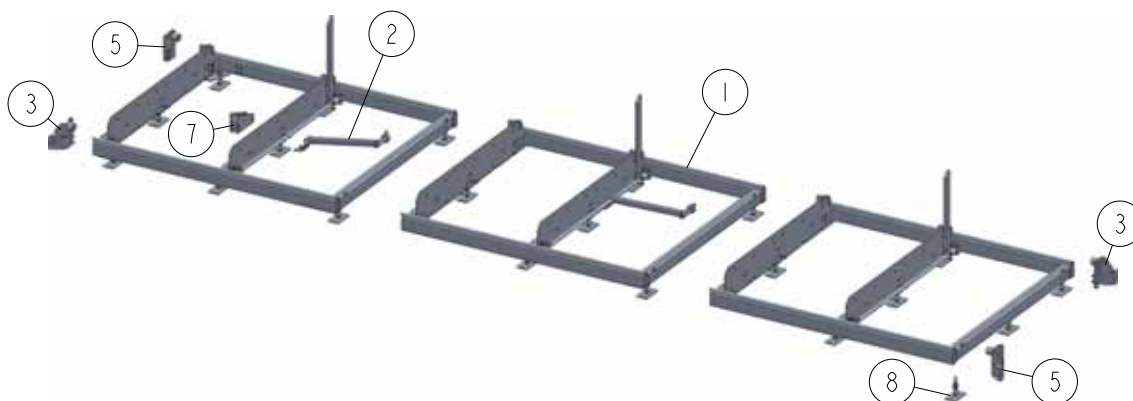
10	DECAL, BLADE MOVEMENT DIRECTION (PICTOGRAM)	096321	1	
11	SCALE, LX250 MM/INCH	540551	1	
	DECAL, "KEEP A SAFE DISTANCE" (PICTOGRAM)	099221	2 ¹	
	DECAL, BLADE SETTING	P85066	1	
12	DECAL, CE CERTIFIED SAWMILL	P85070	1	
13	DECAL, LX250 MOTOR BRAKE OPERATION MODE	552835	1	
14	DECAL, INTERNATIONAL SAWMILL NAME	501466	1	
15	DECAL, HAZARDOUS VOLTAGE INSIDE THE ELECTRIC BOX (PICTOGRAM)	096316	1	
16	DECAL, "REMOVE THE PLUG BEFORE OPENING THE ELECTRIC BOX" (PICTOGRAM)	096319	1	
17	DECAL, MOTOR REVOLUTIONS DIRECTION	S20097	1	
18	DECAL, LX250 CONTROL BOX	547205	1	

¹ 2 pieces for each bed frame section

SECTION 3 LX250 BED FRAME SECTIONS

3.1 LX250 Bed Assembly

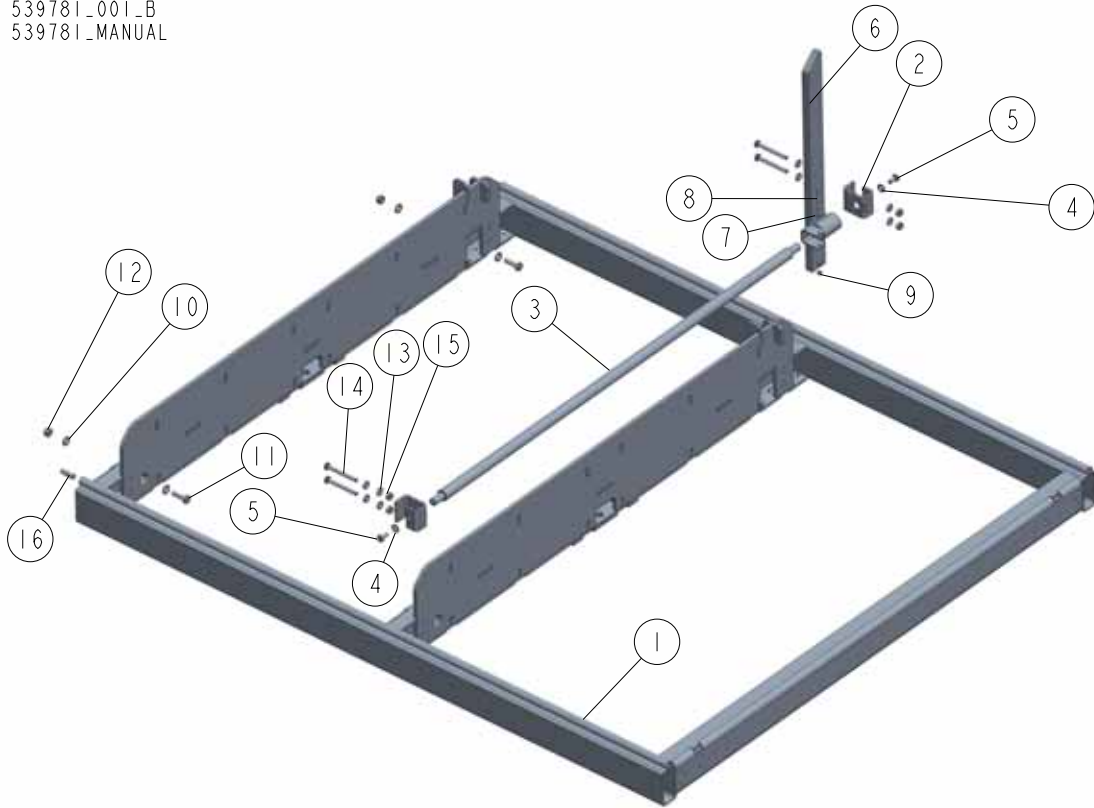
540390_001_B
 540390_MANUAL



REF	DESCRIPTION (◆ indicates parts available in assemblies only)	PART #	QTY
-	LX250 BED ASSEMBLY	540390	1
1	SECTION, LX250 BED - COMPLETE See Section 3.2	539781	3
2	LOG CLAMP, LX250 - COMPLETE See Section 3.3	547258	2
3	BUMPER, COMPLETE RIGHT See Section 3.4	540395	2
4	BUMPER, COMPLETE LEFT See Section 3.5	540392	2
5	WEDGE, LX250 BED	540398-1	1
6	FOOT SET, LX250 BED See Section 3.7	540484	1

3.2 Bed Section (539781)

539781_001_B
 539781_MANUAL



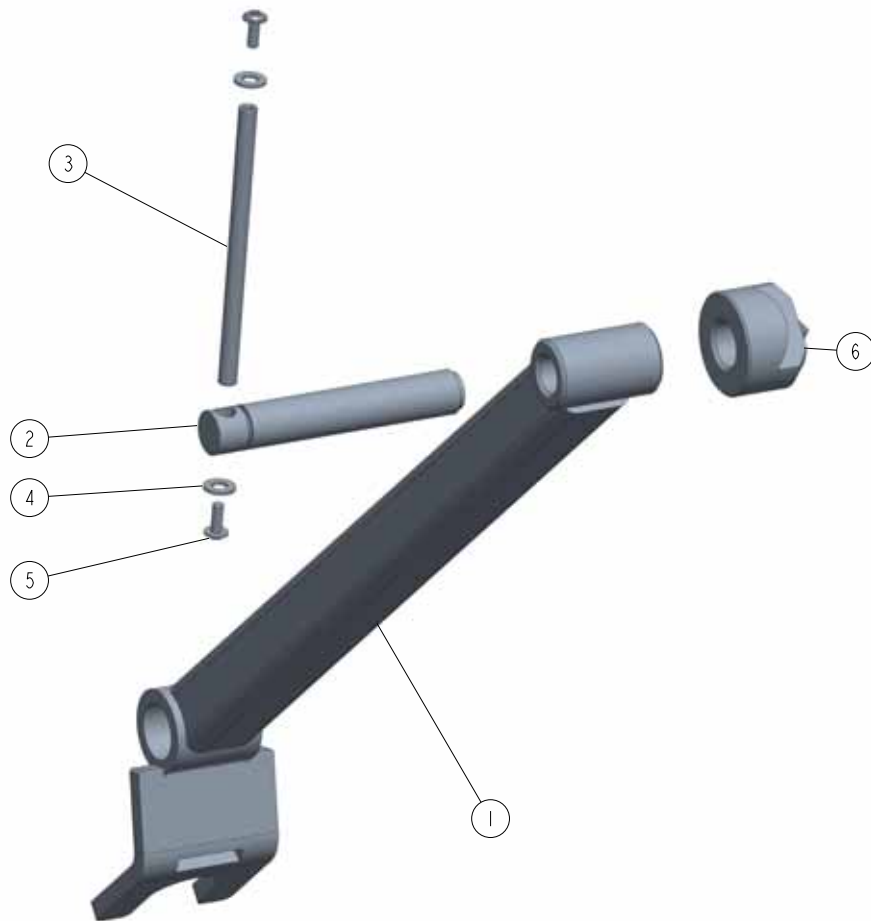
REF	DESCRIPTION (◆ indicates parts available in assemblies only)	PART #	QTY
-	SECTION, LX250 BED - COMPLETE	539781	1
1	SECTION WELDMENT, LX250 BED (3 BEAMS)	539782-1	1
-	SUPPORT ASSEMBLY, LOG SIDE	539786	1
2	BRACKET, LOG CLAMP MOUNT ZINC-PL.	500338-1	2
3	ROD, LOG CLAMP MAIN	539787-1	1
4	WASHER, 10.5 FLAT ZINC	F81055-1	2
5	BOLT, ISO 4017-M10X20-8.8-A2E HEX HEAD	F81003-53	2
-	SUPPORT, LOG SIDE - COMPLETE	539788	1
6	SUPPORT WELDMENT, LOG SIDE	539790-1	1
7	WASHER, 6.4 FLAT ZINC	F81053-1	2
8	BOLT, M6X60-8.8 HEX HEAD FULL THREAD ZIN	F81001-9	1
9	NUT, M6-8-B HEX NYLON ZINC LOCK	F81031-2	1
10	WASHER 13 ZC DIN 126 ISO 7091	F81056-1	4
11	BOLT, M12X40-8.8 HEX HEAD FULL THREAD ZI	F81004-4	2
12	NUT M12 ZC 8 NYLOCK DIN 982 ISO 7040	F81034-2	2
13	WASHER, 10.5 FLAT ZINC	F81055-1	8
14	BOLT, M10X90-8.8-B HEX HEAD ZINC	F81003-66	4
15	NUT M10 ZC 8 NYLOCK DIN 982 ISO 7040	F81033-1	4
16	PIN, SPECIAL	090675	2

3 LX250 Bed Frame Sections

Log Clamp (547258)

3.3 Log Clamp (547258)

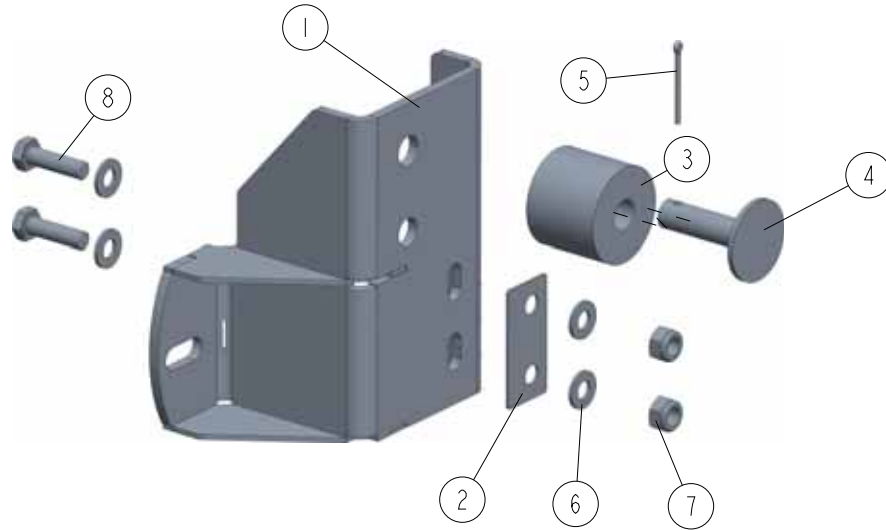
547258-001-A
547258_MANUAL



REF	DESCRIPTION (◆ indicates parts available in assemblies only)	PART #	QTY
-	LOG CLAMP, LX250 - COMPLETE	547258	1
1	ARM, LX250 LOG CLAMP	540490-1	1
-	CLAMP BOLT - COMPLETE	507563	1
2	CLAMP BOLT	507463	1
3	ROD - ZINC-PLATED	511923-1	1
4	WASHER, 8.4 FLAT ZINC	F81054-1	2
5	SCREW, M6X16 BN 11252 "BOSSARD".	F81001-24	2
6	CAP, CLAMP	T00414	1

3.4 Right Bumper (540395)

540395_001_A
 540395_MANUAL



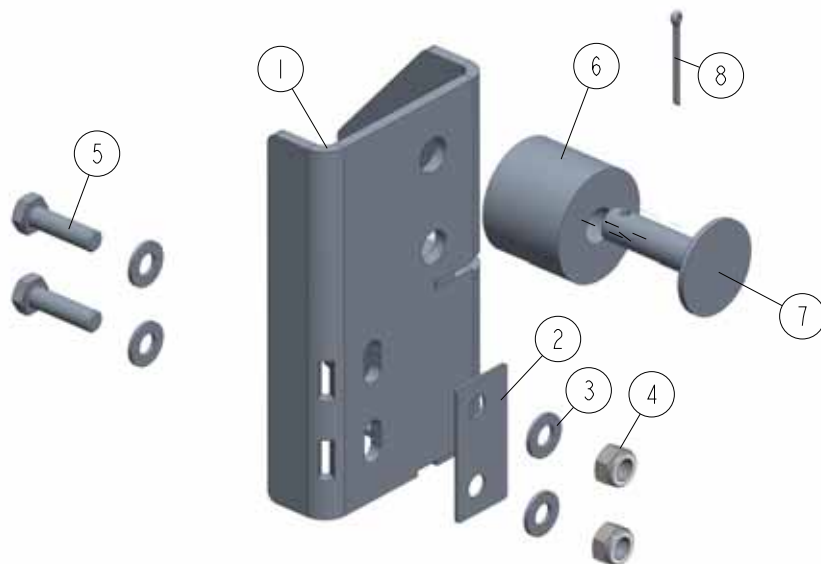
REF	DESCRIPTION (◆ indicates parts available in assemblies only)	PART #	QTY
-	BUMPER, COMPLETE RIGHT	540395	1
1	BRACKET WELDMENT, RIGHT BUMPER MOUNT	540396-1	1
2	WASHER, BUMPER BRACKET SPACER	515061-1	1
3	STOP, RUBBER CARRIAGE	P12165	1
4	PIN, RUBBER CARRIAGE STOP	086182-1	1
5	PIN, S-ZN 4X25 COTTER	F81043-2	1
6	WASHER, 10.5 FLAT ZINC	F81055-1	4
7	NUT M10 ZC 8 NYLOCK DIN 982 ISO 7040	F81033-1	2
8	BOLT, M10X35-8.8 HEX HEAD FULL THREAD ZIN	F81003-17	2

3 LX250 Bed Frame Sections

Left Bumper (540392)

3.5 Left Bumper (540392)

540392_001_A
540392_MANUAL



REF	DESCRIPTION (◆ indicates parts available in assemblies only)	PART #	QTY
-	BUMPER, COMPLETE LEFT	540392	1
1	BRACKET WELDMENT, LEFT BUMPER MOUNT	540393-1	1
2	WASHER, BUMPER PLATE SPACER	515061	1
3	WASHER, 10.5 FLAT ZINC	F81055-1	4
4	NUT M10 ZC 8 NYLOCK DIN 982 ISO 7040	F81033-1	2
5	BOLT, M10X35-8.8 HEX HEAD FULL THREAD ZIN	F81003-17	2
6	STOP, RUBBER CARRIAGE	P12165	1
7	PIN, RUBBER CARRIAGE STOP	086182-1	1
8	PIN, S-ZN 4X25 COTTER	F81043-2	1

3.6 Additional Bed Section Assembly (539781-S)

539781-S_001_A
 539781-S_MANUAL



REF	DESCRIPTION (◆ indicates parts available in assemblies only)	PART #	QTY	
1	SECTION ASSEMBLY, LX250 BED - ADDITIONAL	539781-S	1	

3 LX250 Bed Frame Sections

Bed Frame Foot Set (540484)

3.7 Bed Frame Foot Set (540484)

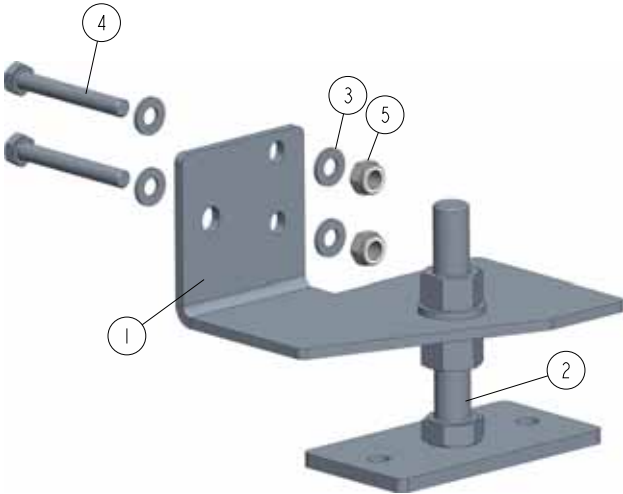
540484_001_A
540484_MANUAL



REF	DESCRIPTION (◆ indicates parts available in assemblies only)	PART #	QTY	
-	FOOT SET, LX250 BED	540484	1	
1	FOOT, LX250 RIGHT CORNER See Section 3.8	540441	1	
2	FOOT, LX250 LEFT CORNER See Section 3.9	540442	1	
3	FOOT, LT15 BED - COMPLETE See Section 3.10	514997	19	

3.8 Right Corner Foot (540441)

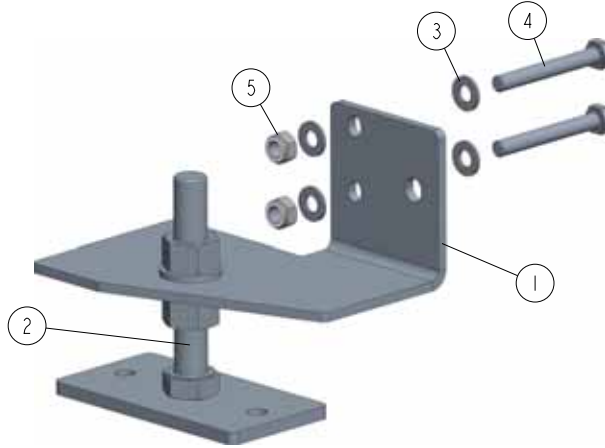
540441_001_A
540441_MANUAL



REF.	DESCRIPTION (* indicates parts available in assemblies only)	PART #	QTY
-	FOOT, LX250 RIGHT CORNER	540441	1
1	PLATE, LX250 LEFT FOOT MOUNT	540424-1	1
2	FOOT, LT15P BED - COMPLETE See Section 3.10	514997	1
3	WASHER, 10.5 FLAT ZINC	F81055-1	4
4	BOLT, M10X80-8.8 HEX HEAD ZINC	F81003-50	2
5	NUT, M10-8-B HEX NYLON ZINC LOCK	F81033-1	2

3.9 Left Corner Foot (540442)

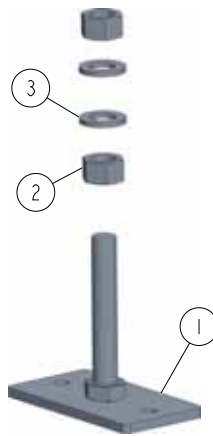
540442_001_A
540442_MANUAL



REF.	DESCRIPTION (* indicates parts available in assemblies only)	PART #	QTY
-	FOOT, LX250 LEFT CORNER	540442	1
1	PLATE, LX250 LEFT FOOT MOUNT	540430-1	1
2	FOOT, LT15P BED - COMPLETE See Section 3.10	514997	1
3	WASHER, 10.5 FLAT ZINC	F81055-1	4
4	BOLT, M10X80-8.8 HEX HEAD ZINC	F81003-50	2
5	NUT, M10-8-B HEX NYLON ZINC LOCK	F81033-1	2

3.10 Bed Foot (514997)

514997_001_A
514997_MANUAL



REF.	DESCRIPTION (* indicates parts available in assemblies only)	PART #	QTY	
-	FOOT, LT15P BED - COMPLETE	514997	1	
1	FOOT WELDMENT, LT15 BED ZINC-PLATED	514996-1	1	
2	NUT, M20-8 HEX ZINC	F81037-1	2	
3	WASHER, 21 FLAT ZINC	F81059-2	2	



SECTION 4 SAWMILL MAST ASSEMBLY

4.1 Mast (Left Side)

560213_001
560213



4

SAWMILL MAST ASSEMBLY

Mast (Left Side)

REF	DESCRIPTION (◆ indicates parts available in assemblies only)	PART #	QTY	
-	MAST - COMPLETE	560213	1	
1	WELDED, LEFT SIDE - MAST	560214-1	1	
2	GEAR ASSEMBLY W/ MOUNTING See Section 4.5	560241	2	
3	CHAIN TENSIONER ASSY. See Section 4.10	560248	1	
4	ANGLE, MAST VERTICAL	560306	1	
5	WASHER, 8.4 FLAT ZINC	F81054-1	2	
6	WASHER 8,2 SPLIT LOCK ZINC	F81054-4	2	
7	BOLT, M8X16 -8.8-B HEX HEAD FULL THREAD	F81002-20	2	
8	CLIP, RSGU 1.10/12W1 RETAINING	086861	4	
9	WASHER, 5.3 FLAT ZINC	F81052-1	4	
10	WASHER, 5.1 SPLIT LOCK ZINC	F81052-2	12	
11	BOLT, M5X20-8.8 SOCKET HEAD ZINC	F81000-72	12	
12	CLIP, RSGU 1.15/20 PIPE RETAINING	509701	8	
13	WASHER, 5.5 SPECIAL FLAT ZINC	F81052-3	8	
14	FIXED WHEEL ASSEMBLY See Section 4.8	560361	2	
15	GUARD WELDMENT, UP/DOWN CHAIN - LEFT	540443-1	1	
16	WASHER, 6.4 FLAT ZINC	F81053-1	2	
17	WASHER, Z 6.1 SPLIT LOCK	F81053-3	9	
18	BOLT M6X16 HH ZC FT 8.8 DIN 933	F81001-15	2	
19	PLATE ASSEMBLY, LX250 MAST SAFETY See Section 4.9	540447	1	
20	WASHER, 6.5 SPECIAL FLAT ZINC	F81053-11	7	
21	BOLT, M6X20 8.8 HEX HEAD FULL THREAD ZIN	F81001-2	7	
22	COMPLETE SCRAPER See Section 4.7	517611	2	
23	SENSOR W/BRACKET	540458	1	
24	LIMIT SWITCH W/MOUNTI PLATE See Section 4.6	540558	2	
25	GUARD, LEFT	540589-1	1	
26	CLIP, RSGU 1.20/20 METAL & RUBBER RETAIN	F81087-2	3	
27	BUMPER, SAW HEAD See Section 4.4	547268	1	
-	BAR, W/MAGNETIC TAPE	540462	1	
28	BAR, MAGNETIC STRIP	540463	1	
29	TAPE, MB 320 (1308 MM) MAGNETIC	540464	1	
30	SCREW, M4X12 5,8-B CROSS RECESSED PAN HE	F81011-43	5	
31	ELEMENT, EE63 MOUNTING	F81080-4	3	
32	BOLT, M12X1.25X100-8.8 HEX HEAD FULL THR	F81004-41	1	
33	NUT, M12X1.25-8 ZINC HEX	F81034-8	1	

4.2 Mast (Right Side)

560213_002
 560213



REF	DESCRIPTION (u indicates parts available in assemblies only)	PART #	QTY
-	MAST - COMPLETE	560213	1
1	WELDED, LEFT SIDE - MAST	560235-1	1
2	GEAR ASSEMBLY W/ MOUNTING See Section 4.5	560241	2
3	CHAIN TENSIONER ASSY. See Section 4.10	560248	1

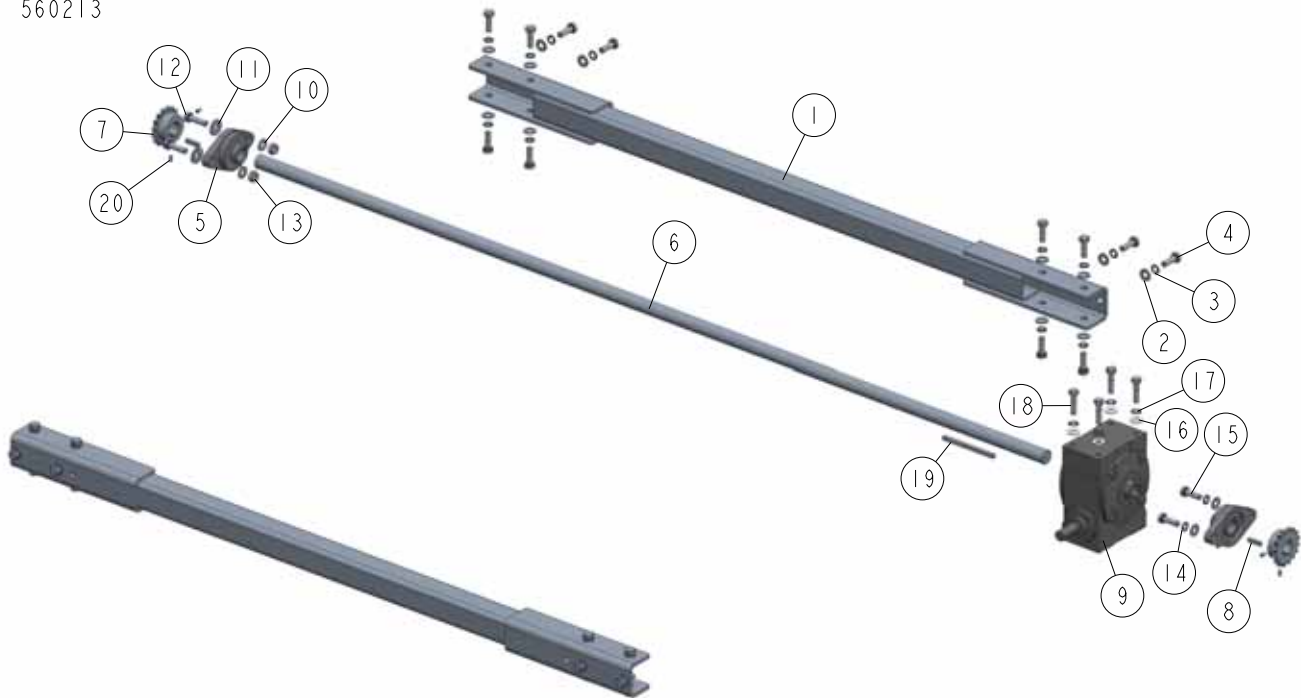
4

SAWMILL MAST ASSEMBLY*Mast (Right Side)*

REF	DESCRIPTION (u indicates parts available in assemblies only)	PART #	QTY	
4	ANGLE, MAST VERTICAL	560306	1	
5	WASHER, 8.4 FLAT ZINC	F81054-1	2	
6	WASHER, 8.2 SPLIT LOCK ZINC	F81054-4	2	
7	BOLT, M8X16-8.8-B HEX HEAD FULL THREAD Z	F81002-20	2	
8	COMPLETE SCRAPER See Section 4.7	517611	2	
9	GUARD WELDMENT, UP/DOWN CHAIN - RIGHT	540485-1	1	
10	WASHER, 6.4 FLAT ZINC	F81053-1	2	
11	WASHER, Z6.1 SPLIT LOCK ZINC	F81053-3	5	
12	BOLT, M6X16 8.8 HEX HEAD FULL THREAD	F81001-15	2	
13	PLATE ASSEMBLY, LX250 MAST SAFETY See Section 4.9	540447	1	
14	CLIP, RSGU 1.15/20 PIPE RETAINING	509701	3	
15	WASHER 6.5 FLAT SPECIAL ZINC	F81053-11	3	
16	BOLT, M6X20-8.8 HEX HEAD FULL THREAD ZIN	F81001-2	3	
17	CLIP, RSGU 1.10/12W1 RETAINING	086861	10	
18	WASHER, 5.3 FLAT ZINC	F81052-1	7	
19	WASHER, 5.1 SPLIT LOCK ZINC	F81052-2	10	
20	SCREW, M5X20 8.8 HEX SOCKET HEAD CAP ZIN	F81000-72	10	
21	WASHER, 5.5 SPECIAL FLAT ZINC	F81052-3	3	
22	ADJUSTABLE ROLLER ASSEMBLY See Section 4.11	560360	2	

4.3 Sawmill Mast (Middle Part)

560213_003
560213



REF	DESCRIPTION (u indicates parts available in assemblies only)	PART #	QTY
-	MAST, COMPLETE	560213	1
-	BRACKET, CROSS	560231	2
1	CROSS BRACKET - WELDMENT	560232-1	1
2	WASHER, 10.5 FLAT ZINC	F81055-1	12
3	WASHER, 10.2 SPLIT LOCK ZINC	F81055-2	12
4	BOLT, M10X30-8.8 FE/ZN5 PN-M/82105	F81003-111	12
-	SHAFT ASSY, W/ UP/DOWN GEAR	560362	1
5	BEARING, 1 FLANGED, VF2S 216	038124	2
6	SHAFT, DRIVE	560257-1	1
-	SPROCKET, 0B-1 Z16 OTW. T08228	560242	2
7	SPROCKET, 0B-1 Z16 T08228	560243	1
8	KEY, A6X6X30 PARALLEL	094245	2
9	GEARBOX, 60:1 THRU SHAFT	011317	1
10	WASHER, 10.5 FLAT ZINC	F81055-1	4
11	WASHER, 10.5 ZINC FLAT SPECIAL	F81055-6	2
12	BOLT, M10X35-8.8 HEX HEAD FULL THREAD ZIN	F81003-17	2
13	NUT, M10-8-B HEX NYLON ZINC LOCK	F81033-1	2
14	WASHER, 10.2 SPLIT LOCK ZINC	F81055-2	2
15	BOLT, M10X30-8.8 FE/ZN5 PN-M/82105	F81003-111	2
16	WASHER, 3/8 FLAT SAE	F05011-3	4
17	WASHER, 3/8 STAR EXTERNAL	F05011-36	4
18	BOLT, 3/8-16X1 1/2 HH GR2, ZINC	F05007-3	4
19	KEY, 1/4X4 1/4	S22440	1
20	SCREW, M6X10-45H HEX SOCKET SET FLAT POI	F81001-26	4

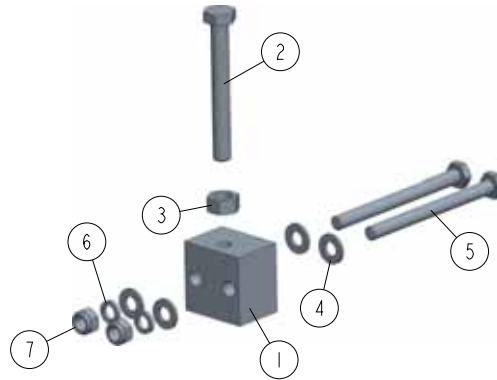
4

SAWMILL MAST ASSEMBLY

Saw Head Bumper

4.4 Saw Head Bumper

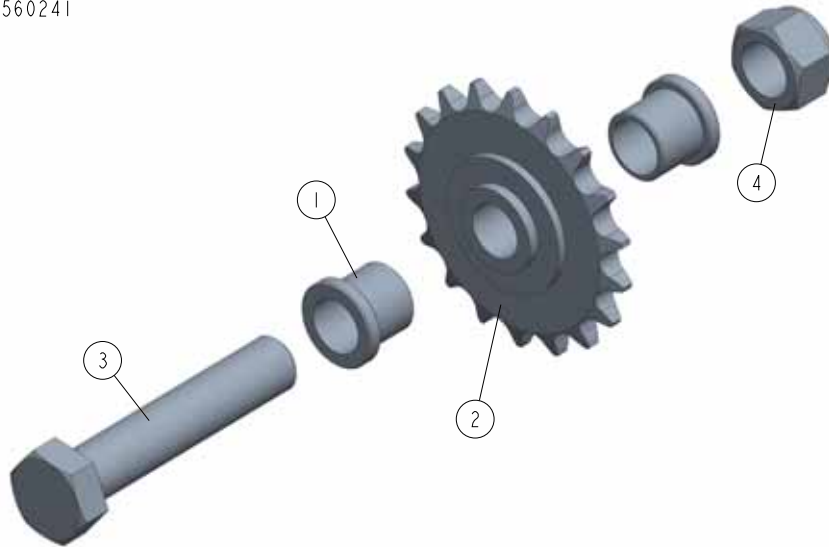
547268_001_A
547268_MANUAL



REF.	DESCRIPTION (* indicates parts available in assemblies only)	PART #	QTY
-	BUMPER, SAW HEAD	547268	1
1	BLOCK, SAW HEAD BUMPER	547264-1	1
2	BOLT, M10X80 8.8 HEX HEAD FULL THREAD ZINC	F81003-76	1
3	NUT, M10 8 HEX ZINC	F81033-3	1
4	WASHER, 8.4 FLAT ZINC	F81054-1	4
5	BOLT, M8X95-8.8 HEX HEAD ZINC	F81002-98	2
6	WASHER, 8.2 SPLIT LOCK ZINC	F81054-4	2
7	NUT, M8-8-B HEX NYLON ZINC LOCK	F81032-2	2

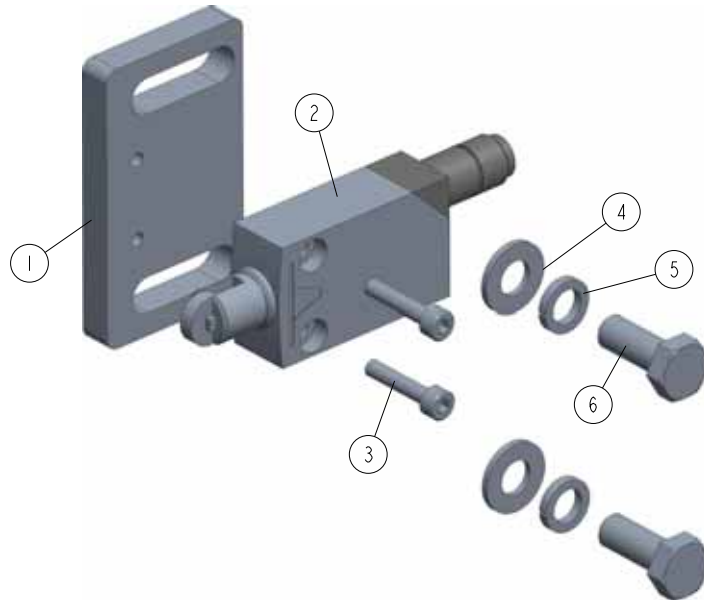
4.5 Gear Assembly w/ Mounting (560241)

560241_001
560241



REF	DESCRIPTION (◆ indicates parts available in assemblies only)	PART #	QTY	
-	GEAR ASSEMBLY W/ MOUNTING	560241	1	
1	BUSHING, 16.1/25-20 FLANGED	560244-1	2	
2	SPROCKET, IDLER Z=18 KSR16.L0.08.10.18.0	088700	1	
3	BOLT, M16X80 8.8-B- FE/ZN5 HEX HEAD FULL	F81006-11	1	
4	NUT, M16 HEX NYLON ZINC LOCK	F81036-2	1	

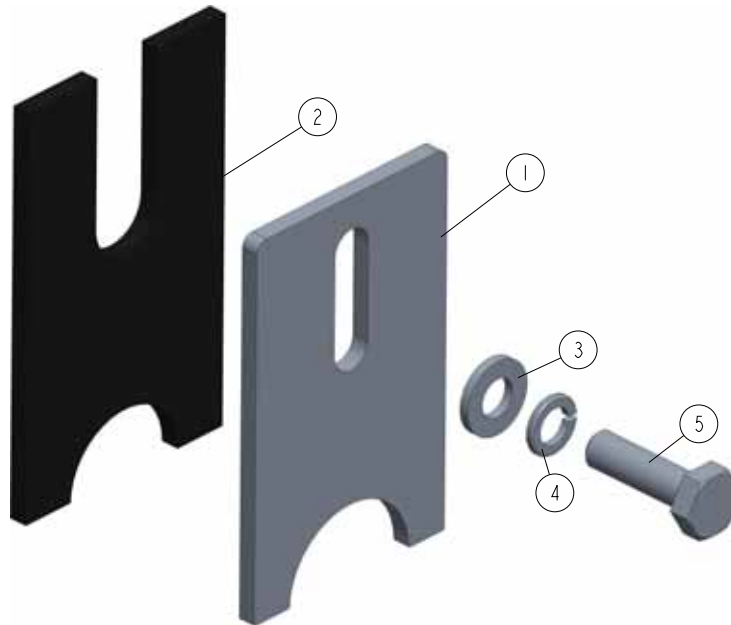
4.6 Limit Switch w/ Mounting Plate (540558)

540558_001
540558

REF	DESCRIPTION (◆ indicates parts available in assemblies only)	PART #	QTY	
-	LIMIT SWITCH W/MOUNTING PLATE	540558	1	
1	PLATE, LIMIT SWITCH ZINC-PLATED MOUNT	540563-1	1	
2	SWITCH, XCMD2102M12 LIMIT	540559	1	
3	SCREW, M4X20 8,8 FE/ZN5 HEX SOCKET HEAD	F81011-31	2	
4	WASHER, 8.4 FLAT ZINC	F81054-1	2	
5	WASHER, 8.2 SPLIT LOCK ZINC	F81054-4	2	
6	BOLT, M8X20-8.8-B HEX HEAD FULL THREAD Z	F81002-4	2	

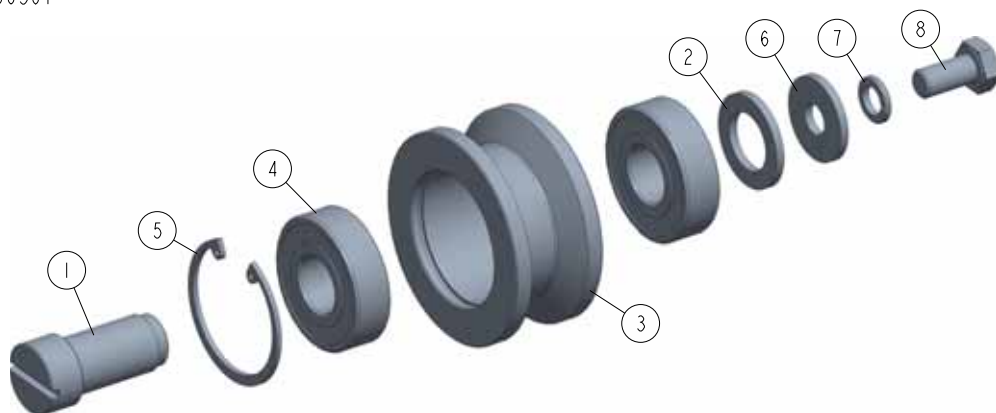
4.7 Scraper (517611)

517611_001
517611



REF	DESCRIPTION (◆ indicates parts available in assemblies only)	PART #	QTY	
-	COMPLETE SCRAPER	517611	1	
1	PLATE, SCRAPER CLAMPING	517610-1	1	
2	SCRAPER	517609	1	
3	WASHER, 6.4 FLAT ZINC	F81053-1	1	
4	WASHER, Z6.1 SPLIT LOCK ZINC	F81053-3	1	
5	BOLT, M6X20-8.8 HEX HEAD FULL THREAD ZIN	F81001-2	1	

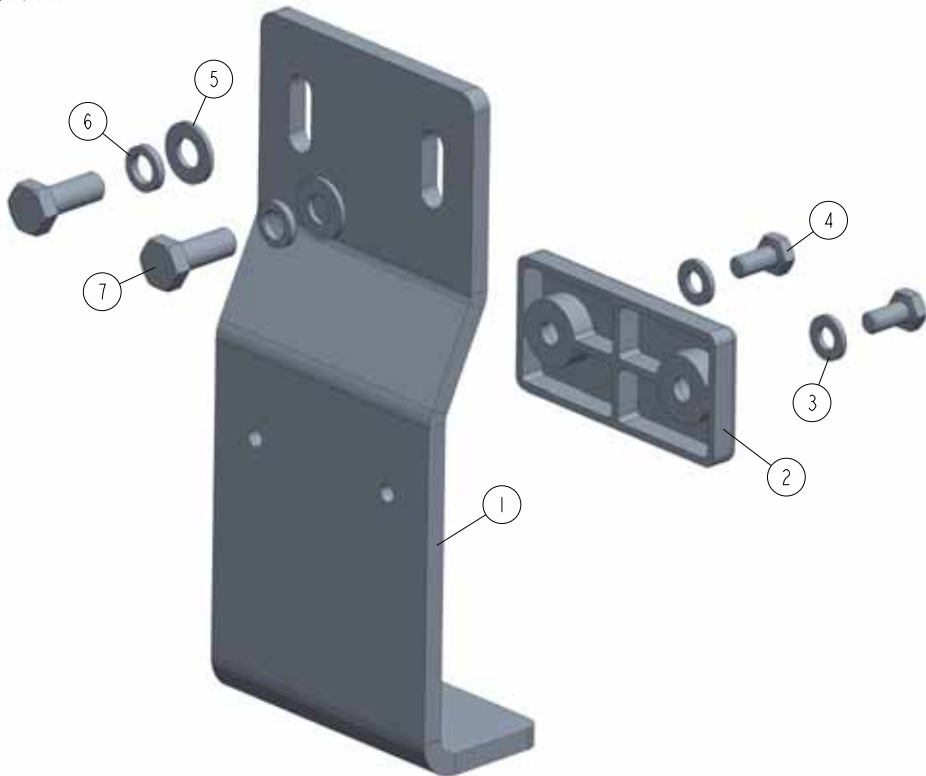
4.8 Fixed Track Roller (560361)

560361_001
560361

REF	DESCRIPTION (◆ indicates parts available in assemblies only)	PART #	QTY
-	FIXED TRACK ROLLER	560361	1
1	PIN, FIXED TRACK ROLLER	515018	1
2	WASHER, 20.6X33.3X3 SPECIAL	540528-1	1
-	ROLLER ASSEMBLY, TRACK	515015	1
3	ROLLER, TRACK	514889	1
4	BEARING, 6204 2RS CX ROLLING	088447	2
5	RING, W47 INSIDE RETAINING	089653	1
6	WASHER, 11/30-3 ZINC-PLATED	088787-1	1
7	WASHER, Z 10.2 SPLIT LOCK ZINC	F81055-2	1
8	BOLT, ISO 4017-M10X20-8.8-A2E HEX HEAD	F81003-53	1

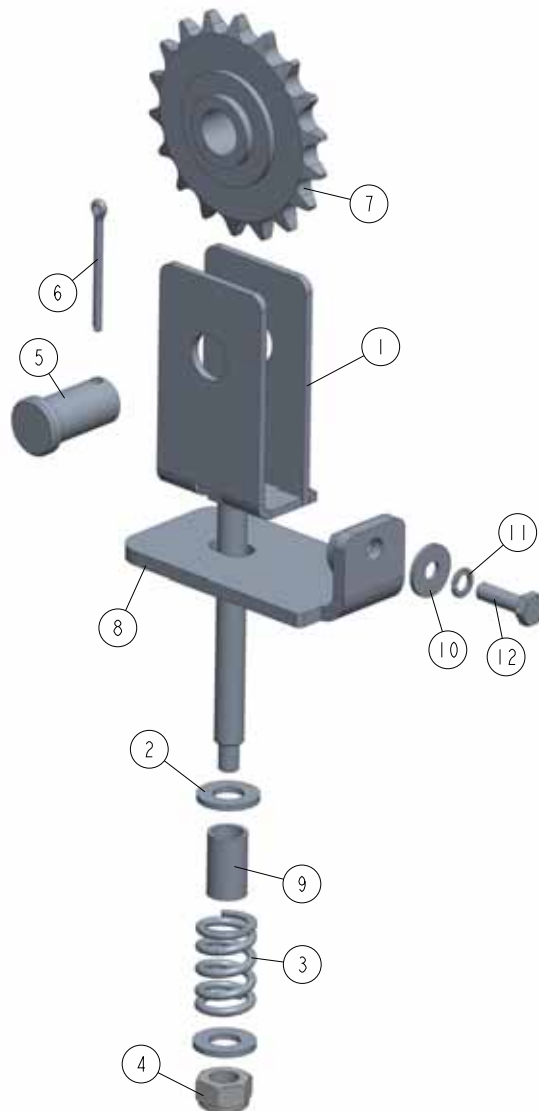
4.9 Mast Safety Plate (540447)

540447_001
540447



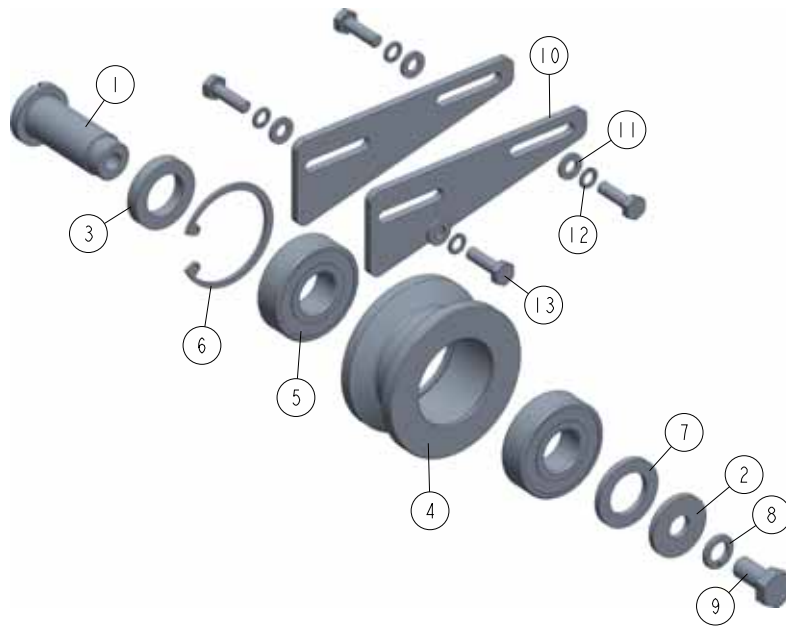
REF	DESCRIPTION (◆ indicates parts available in assemblies only)	PART #	QTY	
-	PLATE ASSEMBLY, LX250 MAST SAFETY	540447	1	
1	PLATE, MAST SAFETY	540448-1	1	
2	PAD, CATAPILLAR TRACK	P13576	1	
3	WASHER, 6.4 FLAT ZINC	F81053-1	2	
4	BOLT, M6X12-8.8 HEX HEAD FULL THREAD ZIN	F81001-7	2	
5	WASHER, 8.4 FLAT ZINC	F81054-1	2	
6	WASHER, 8.2 SPLIT LOCK ZINC	F81054-4	2	
7	BOLT, M8X20-8.8-B HEX HEAD FULL THREAD Z	F81002-4	2	

4.10 Chain Tensioner (560248)

560248_001
560248

REF	DESCRIPTION (◆ indicates parts available in assemblies only)	PART #	QTY
-	CHAIN TENSIONER ASSEMBLY	560248	1
1	CHAIN TENSIONER - WELDED	560249-1	1
2	WASHER, 10.5 FLAT ZINC	F81055-1	2
3	SPRING, 14 X 30 X 3.2	090797	1
4	NUT, M10-8-B HEX NYLON ZINC LOCK	F81033-1	1
5	PIN, TENSIONER	560251-1	1
6	PIN, S-ZN 4X25 COTTER	F81043-2	1
7	SPROCKET, IDLER Z=18 KSR16.L0.08.10.18.0	088700	1
8	PLATE, TENSIONER MOUNTING	560255-1	1
9	BUSHING 10.5/14-22	560258-1	1
10	WASHER, 6.5 SPECIAL FLAT ZINC	F81053-11	1
11	WASHER 6.1 ZC SPRING LOCK DIN 127	F81053-3	1
12	BOLT, M6X20 8.8 HEX HEAD FULL THREAD ZIN	F81001-2	1

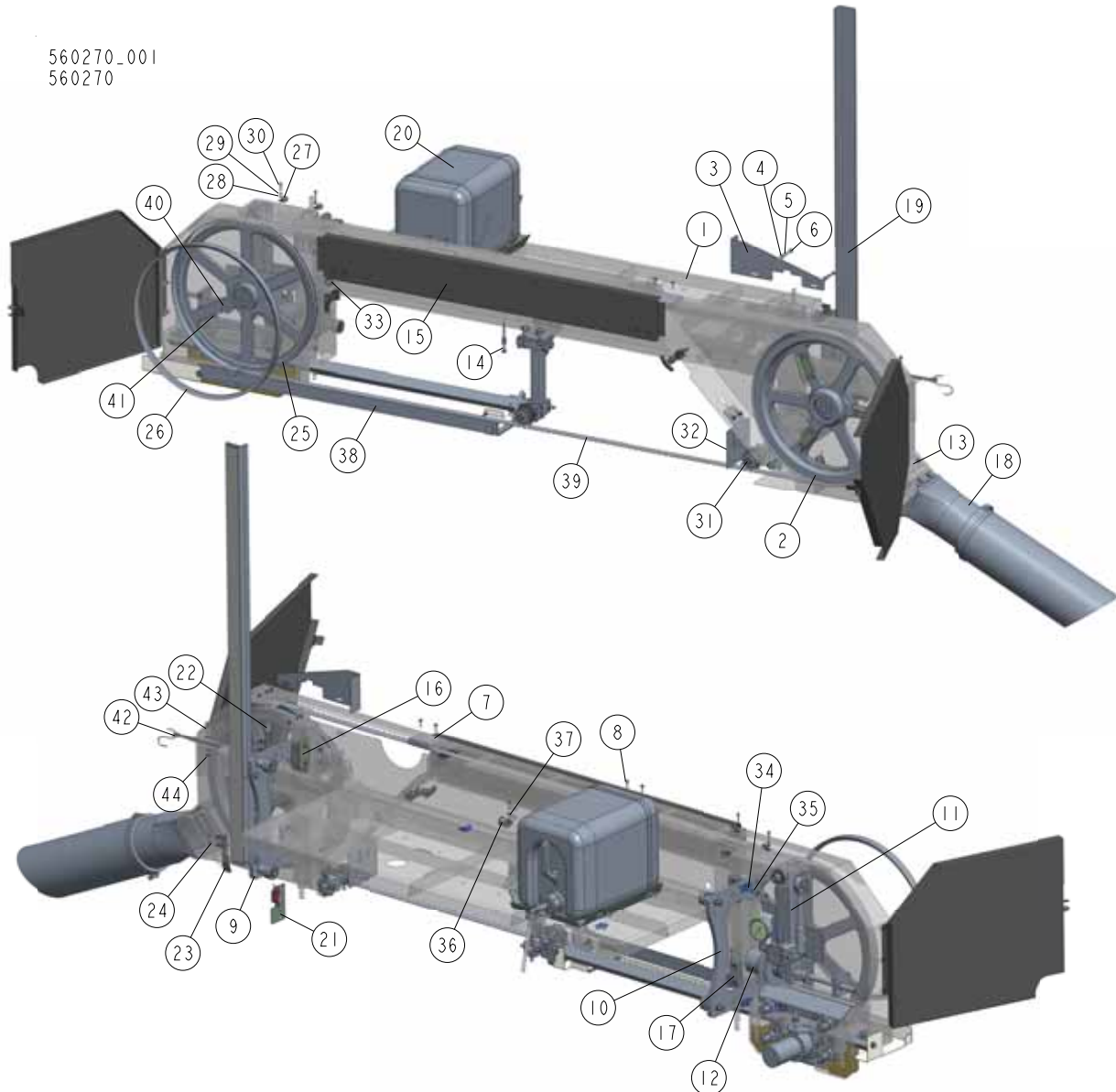
4.11 Adjustable Roller Assembly (560360)

560360_001
560360

REF	DESCRIPTION (◆ indicates parts available in assemblies only)	PART #	QTY
-	ADJUSTABLE ROLLER ASSEMBLY	560360	1
1	PIN, ADJUSTABLE ROLLER	515101	1
2	WASHER, 11/30-3 ZINC-PLATED	088787-1	1
3	WASHER, 20.6X33.3X6 SPECIAL	540588-1	1
-	ROLLER ASSEMBLY, TRACK	515015	1
4	ROLLER, TRACK	514889	1
5	BEARING, 6204 2RS CX ROLLING	088447	2
6	RING, W47 INSIDE RETAINING	089653	1
7	WASHER, 20.6X33.3X3 SPECIAL	540528-1	1
8	WASHER, Z 10.2 SPLIT LOCK ZINC	F81055-2	1
9	BOLT, ISO 4017-M10X20-8.8-A2E HEX HEAD	F81003-53	1
10	PLATE, ROLLER ADJUSTMENT	516508-1	2
11	WASHER, 6.4 FLAT ZINC	F81053-1	4
12	WASHER 6.1 ZC SPRING LOCK DIN 127	F81053-3	4
13	BOLT, M6X20 8.8 HEX HEAD FULL THREAD ZIN	F81001-2	4

SECTION 5 SAW HEAD (560270)

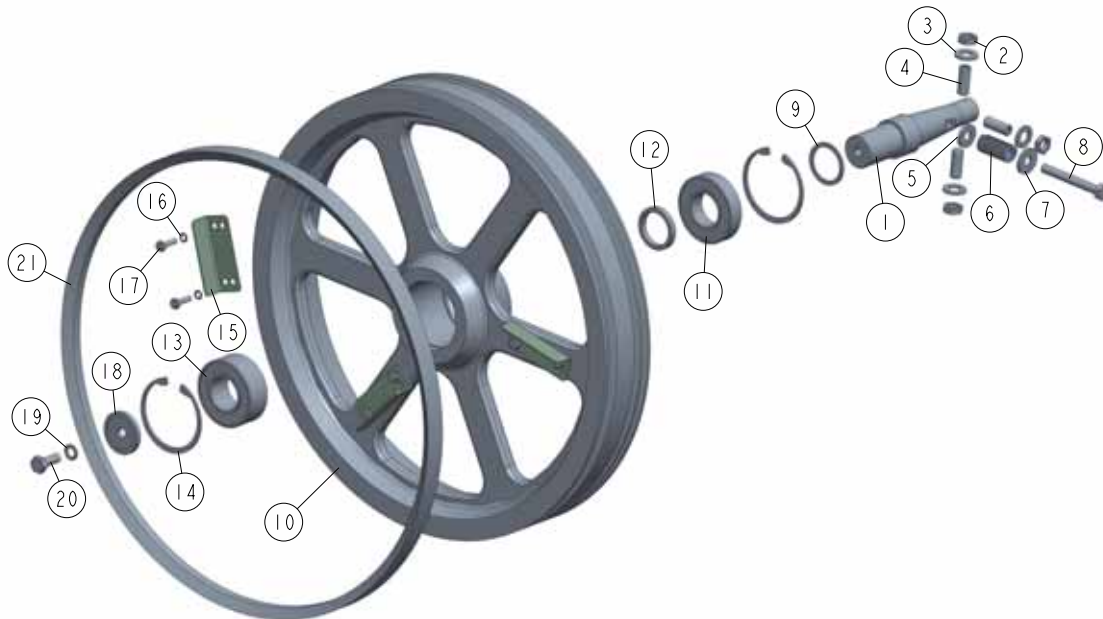
5.1 LX250 Saw Head (560270)



REF	DESCRIPTION (◆ indicates parts available in assemblies only)	PART #	QTY
-	SAW HEAD, LX250	560270	1
1	SAW HEAD WELDMENT, LX250	560271-1	1
2	WHEEL ASSY, DRIVE See Section 5.2	560353	1
3	MOTOR COVER	560310-1	1
4	WASHER, 6.4 FLAT ZINC	F81053-1	6
5	WASHER, Z6.1 SPLIT LOCK ZINC	F81053-3	8
6	SCREW, M6X16-8.8 HEX SOCKET HEAD CAP ZIN	F81001-21	4
7	CUBE, ANTI-VIBRATION	560401	2
8	SCREW,#10 X 3/4 SL HEX WASHER HEAD SHEET	F05015-33	4
9	ASSY, LEFT HEAD MOUNTING See Section 5.3	560312	1

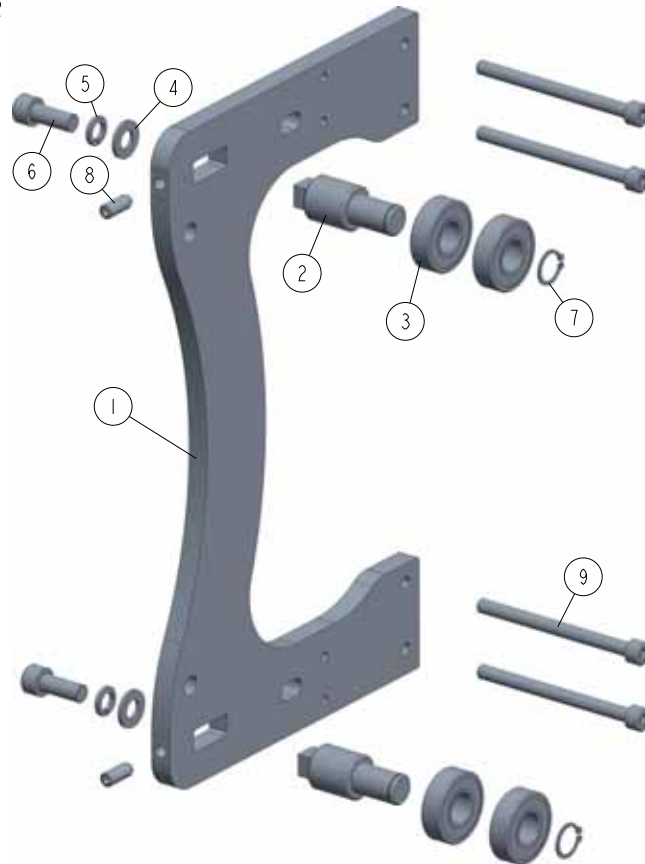
REF	DESCRIPTION (◆ indicates parts available in assemblies only)	PART #	QTY
10	ASSY, RIGHT HEAD MOUNTING See Section 5.4	560315	1
11	ASSY, IDLE BLADE WHEEL MOUNT See Section 5.5	560351	1
12	COMPLETE BLADE TENSIONER See Section 5.6	510640	1
13	SEPARATOR, SAWDUST See Section 5.7	560316	1
14	BOLT, 8MM X 1.25 X 90MM HH FT ZINC	F81002-16	1
15	COVERS, LX250 See Section 5.8	560318	1
16	SLIDE PAD, DOUBLE MAST See Section 5.9	560326	2
17	SLIDE PAD, SINGLE MAST See Section 5.10	560328	2
18	SAWDUST CHUTE. See Section 5.11	560350	1
19	MAGNETIC STRIP ASSEMBLY LX250 See Section 5.12	540461	1
20	BOTTLE ASSEMBLY, WATER See Section 5.13	560354	1
21	SENSOR ASSEMBLY See Section 5.14	547315	1
22	PLATE, SAFETY SWITCH ACTIVATOR - UPPER	540527-1	1
23	PLATE, SAFETY SWITCH ACTIVATOR - LOWER	539740-1	1
24	SCREW, M6 X 20 8.8 SOCKET HEAD	F81001-22	4
25	WHEEL ASSEMBLY, IDLE SIDE BLADE See Section 5.15	A08218	1
26	V-BELT, B57	P04185-3	1
27	CLIP, RSGU 1.10/12W1 RETAINING	086861	6
28	WASHER, 5.3 FLAT ZINC	F81052-1	6
29	WASHER, 5.1 SPLIT LOCK	F81052-2	9
30	SCREW, M5X20 8.8 HEX SOCKET HEAD CAP ZIN	F81000-72	9
31	ROLLER ASSEMBLY, BLADE GUIDE W/MOUNT BLO See Section 5.16	540564	1
32	COVER, DRIVE WHEEL PULLEY See Section 5.17	560352	1
33	GROMMET, 20/13 RUBBER	086188	3
34	CLAMP, 1/2" EMT COATED	P07584	4
35	WASHER, 6.5 SPECIAL FLAT ZINC	F81053-11	4
36	CLIP, RSGU 1.15/20 PIPE RETAINING	509701	3
37	WASHER, 5.5 SPECIAL FLAT ZINC	F81052-3	3
38	GUIDE ASSY. W/ MOTOR See Section 5.18	560331	1
39	SAWBLADE, LX250	540575	1
40	WASHER, IDLE SIDE WHEEL RETAINING	093854-1	1
41	BOLT, M8X25-8.8-B HEX HEAD FULL THREAD Z	F81002-5	1
42	STRAP, 24" RUBBER (FOR FUEL TANK - SEE E	P11258	1
43	BOLT, M6X30-8.8 HEX HEAD FULL THREAD ZIN	F81001-8	1
44	NUT, M6-8-B HEX NYLON ZINC LOCK	F81031-2	1

5.2 Drive Wheel (560353)

560353_001
560353

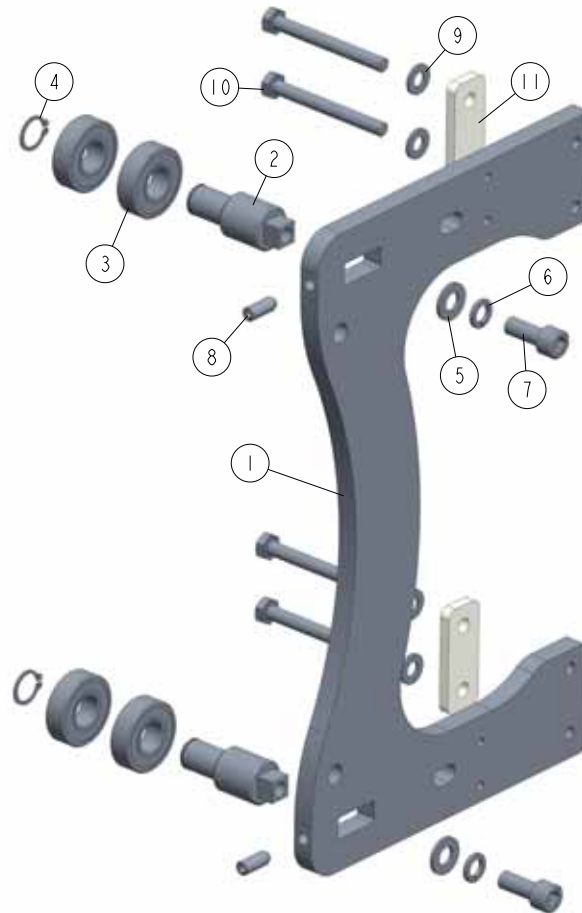
REF	DESCRIPTION (◆ indicates parts available in assemblies only)	PART #	QTY
-	DRIVE WHEEL ASSY.	560353	1
1	SHAFT, DRIVE SIDE BLADE WHEEL	093850	1
2	NUT,M12X1.25 DIN439 THIN STAINLESS STEEL	F81034-9	3
3	WASHER, M12 , FLAT, ZINC	F81056-1	3
4	SCREW,M12X1.25X30 DIN913 STAINLESS STEEL	F81016-1	3
5	WASHER, ZINC	098813-1	1
6	SPRING, 3/4 O.D.X 1 1/2 DIE	034430	1
7	WASHER, 10.5 SPECIAL FLAT ZINC	F81055-6	1
8	BOLT, M10X75-8.8 HEX HEAD ZINC	F81003-15	1
9	WASHER, 36/45-2	091851	1
-	BLADE WHEEL, DRIVE SIDE - COMPLETE SEE S	091612	1
10	WHEEL, DRIVE SIDE	538726-1	1
11	BEARING, 6207 2RS 35X72X17 FAG	014811	1
12	BUSHING, SPACER	096778	1
13	BEARING, 3207B, 2RSR. TVH FAQ	092005	1
14	RING, W72 INSIDE RETAINING	F81090-4	2
15	WING	097808-1	3
16	WASHER, Z6.1 SPLIT LOCK ZINC	F81053-3	6
17	BOLT, M6X20MM, HH, FULL THREAD, ZINC	F81001-2	6
18	WASHER, CLAMPING	092006	1
19	WASHER, Z 10.2 SPLIT LOCK ZINC	F81055-2	1
20	BOLT, M10-1.5X25MM HH GR8.8	F81003-11	1
21	V-BELT, B57	P04185-3	1

5.3 Saw Head Mounting - Left (560312)

560312_001
560312

REF	DESCRIPTION (◆ indicates parts available in assemblies only)	PART #	QTY	
-	LEFT HEAD MOUNTING	560312	1	
1	PLATE, HEAD GUIDE	560313-1	1	
2	AXLE, HEAD GUIDE	560314-1	2	
3	BEARING, 6203-2RS FLT ROLLING	086114	4	
4	WASHER, 10.5 FLAT ZINC	F81055-1	2	
5	WASHER, Z 10.2 SPLIT LOCK ZINC	F81055-2	2	
6	BOLT, M10 X 25 8.8, PN-M/82302	F81003-32	2	
7	RING, 17Z OUISSIDE RETAINING	F81090-21	2	
8	SCREW M8X20 HSS W/DOG POINT ZC 45H DIN 9	F81002-77	2	
9	BOLT, HEX M8X100-8.8-FE/ZN5	F81002-97	4	

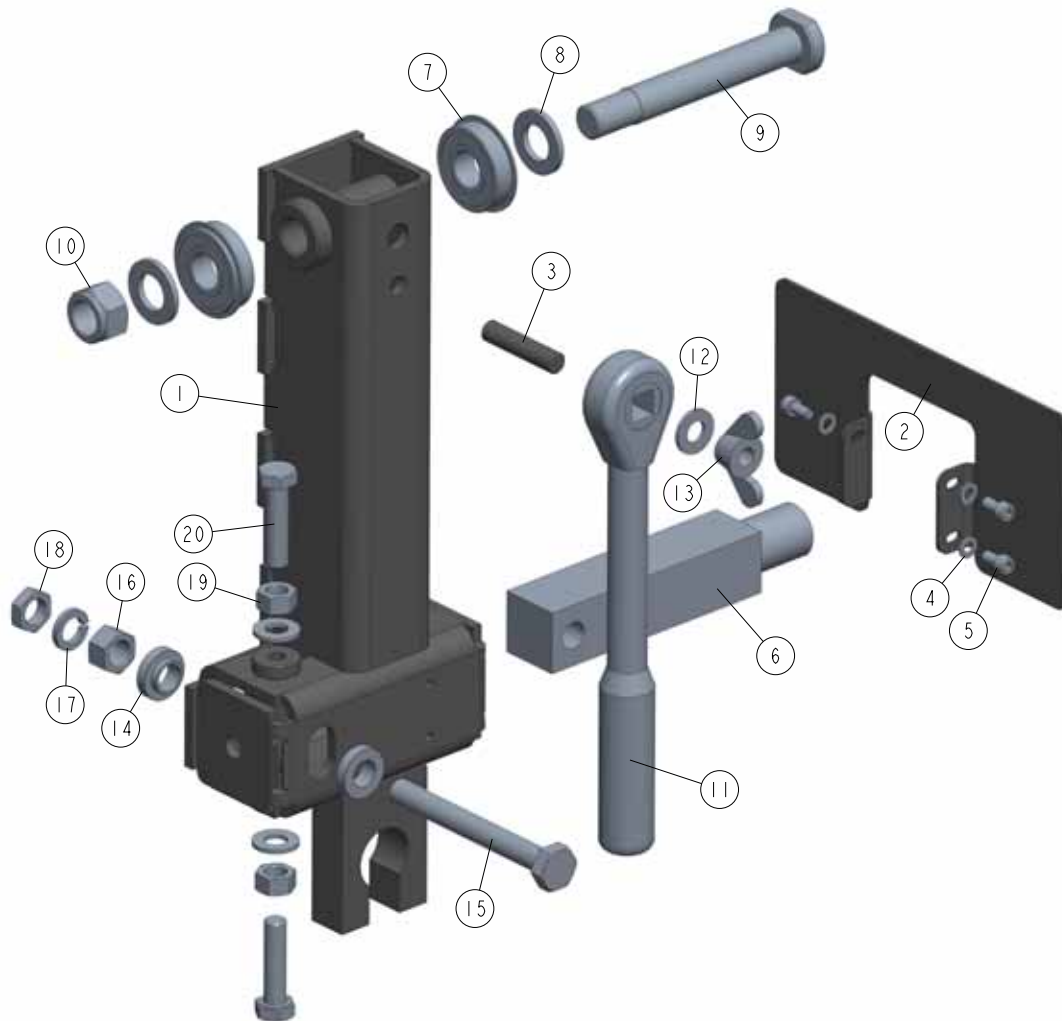
5.4 Saw Head Mounting - Right (560315)

560315_001
560315

REF	DESCRIPTION (◆ indicates parts available in assemblies only)	PART #	QTY
-	RIGHT HEAD MOUNTING	560315	1
1	PLATE, HEAD GUIDE	560313-1	1
2	AXLE, HEAD GUIDE	560314-1	2
3	BEARING, 6203-2RS FLT ROLLING	086114	4
4	RING, 17Z OUISSIDE RETAINING	F81090-21	2
5	WASHER, 10.5 FLAT ZINC	F81055-1	2
6	WASHER, Z 10.2 SPLIT LOCK ZINC	F81055-2	2
7	BOLT, M10 X 25 8.8, PN-M/82302	F81003-32	2
8	SCREW M8X20 HSS W/DOG POINT ZC 45H DIN 9	F81002-77	2
9	WASHER, 8.4 FLAT ZINC	F81054-1	4
10	BOLT, M8 X 75 8.8 HEX HEAD ZINC	F81002-91	4
11	GUIDE PAD	560311-1	2

5.5 Idle Blade Wheel Mount (560351)

560351_001
560351

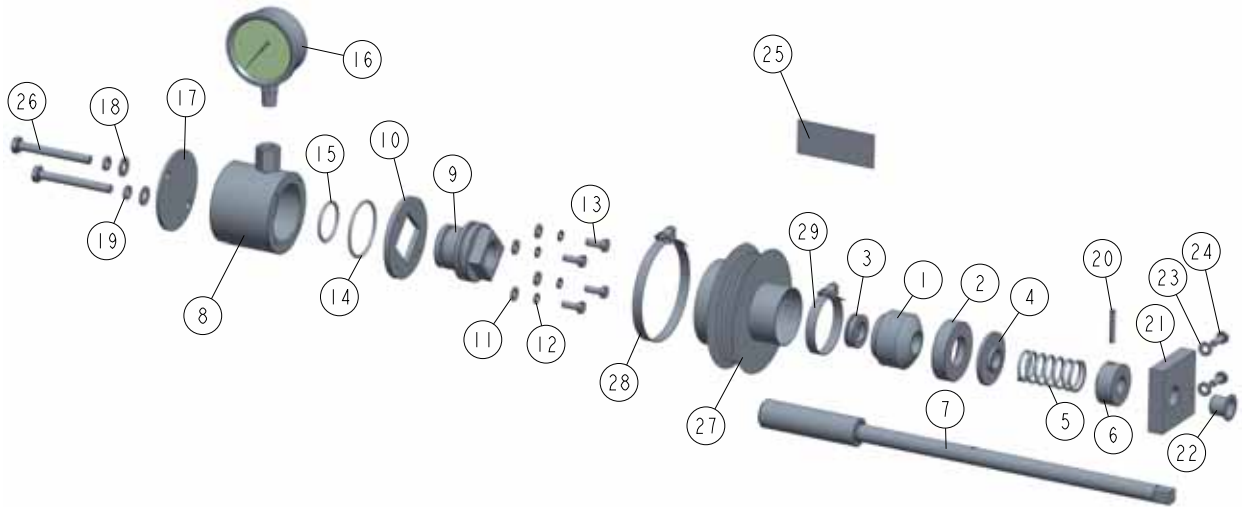


REF	DESCRIPTION (◆ indicates parts available in assemblies only)	PART #	QTY
-	ASSY, IDLE BLADE WHEEL MOUNT	560351	1
-	HOUSING, IDLER SHAFT COMPLETE	508145	1
1	HOUSING, IDLER SHAFT WELDED/PAINTED	508144-1	1
2	COVER, HOUSING, IDLER SHAFT COMPLETE PAI	508128-1	1
3	BOLT M10X35-8.8	F81003-9	1
4	WASHER, 5.3 FLAT ZINC	F81052-1	3
5	SCREW, M5X10 DIN912 A2-70 HEX SOCKET HEAD	F81000-23	3
6	SHAFT, IDLE SIDE BLADE WHEEL (METRIC)	096045	1
7	BEARING, 6203-2RS NR NSK W/RING	086395	2
8	WASHER, 17 SPLIT LOCK ZINC	F81058-1	2
9	PIN, IDLER ARM MOUNT	086404	1
10	NUT, M16-8 HEX NYLON ZINC LOCK	F81036-2	1
11	WRENCH, LT20 BLADE TENSION	091620	1
12	WASHER, 10.5 FLAT ZINC	F81055-1	3
13	NUT, M10 WING	F81033-8	1
14	BUSHING, 12.8/23.8-8.6 16-3.3 ZINC-PLAT	086769-1	2

REF	DESCRIPTION (◆ indicates parts available in assemblies only)	PART #	QTY	
15	BOLT, M12X1.25X100-8.8 HEX HEAD FULL THR	F81004-41	1	
16	NUT, M12X1.25 - 8 - B HEX ZINC	F81034-8	1	
17	WASHER, Z12.2 SPLIT LOCK ZINC	F81056-2	1	
18	NUT, M12X1.25-8 THIN ZINC	F81034-5	1	
19	NUT, M10 8 HEX ZINC	F81033-3	2	
20	BOLT, M10X40-8.8 HEX HEAD FULL THREAD ZI	F81003-16	2	

5.6 Blade Tensioner (510640)

510640_001
510640_MANUAL



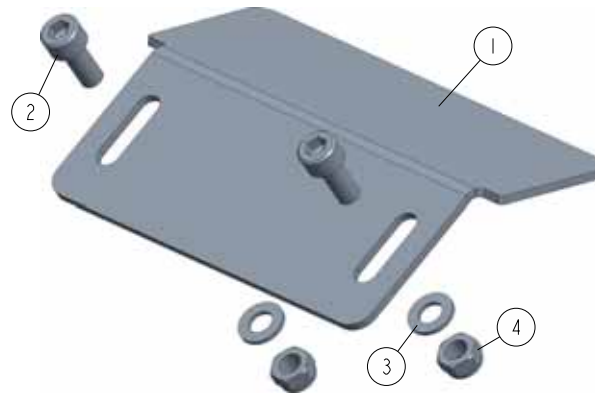
REF	DESCRIPTION (u indicates parts available in assemblies only)	PART #	QTY
-	COMPLETE BLADE TENSIONER	510640	1
1	HOUSING, BALL THRUST BEARING	510635	1
2	SOCKET, BEARING HOUSING	510634-1	1
3	BEARING, 51103. BALL THRUST	086675	1
4	WASHER	510633-1	1
5	SPRING, 60X23X3	088992	1
6	BUSHING, BLADE TENSIONER SCREW	510636-1	1
7	SCREW, BLADE TENSIONER ZINC-PLATED	510650-1	1
-	CYLINDER ASSEMBLY	510641	1
8	CYLINDER ASSEMBLY WITH REDUCTION	550762-1	1
9	PISTON	510638	1
10	PLATE, CYLINDER	510490-1	1
11	WASHER, 6.4 FLAT ZINC	F81053-1	4
12	WASHER, Z 6.1 SPLIT LOCK	F81053-3	4
13	BOLT, M6X16-5.8 HEX HEAD FULL THREAD ZIN	F81001-15	4
14	O-RING, 46.2X3	510646	1
15	O-RING, 32.2X3	510647	1
16	GAUGE, 3000PSI/200 BAR OIL PRESSURE	505176	1
17	COVER, TENSIONER	550761-1	1
18	WASHER, 8.4 FLAT ZINC	F81054-1	2
19	WASHER 8,2 SPLIT LOCK ZINC	F81054-4	2
20	PIN 5X30 ROLL	F81044-21	1
21	BLOCK, TENSIONER HANDLE MOUNT	096730	1
22	BUSHING, GFM-1618-17	089589	1
23	WASHER, 6.4 FLAT ZINC	F81053-1	2
24	BOLT, M6X16-5.8 HEX HEAD FULL THREAD ZIN	F81001-15	2
25	DECAL, BLADE TENSION INDICATOR ADJUSTMEN	510643	1
26	BOLT, M8X70-8.8 HEX HEAD ZINC	F81002-71	2
-	BELLOWS, COMPLETE	515050	1
27	BELLOWS	515051	1

4**Blade Tensioner (510640)**

REF	DESCRIPTION (u indicates parts available in assemblies only)	PART #	QTY	
28	CLAMP, 70-80MM DIA.	F81095-5	1	
29	CLAMP, 40-60MM DIA.	F81095-4	1	

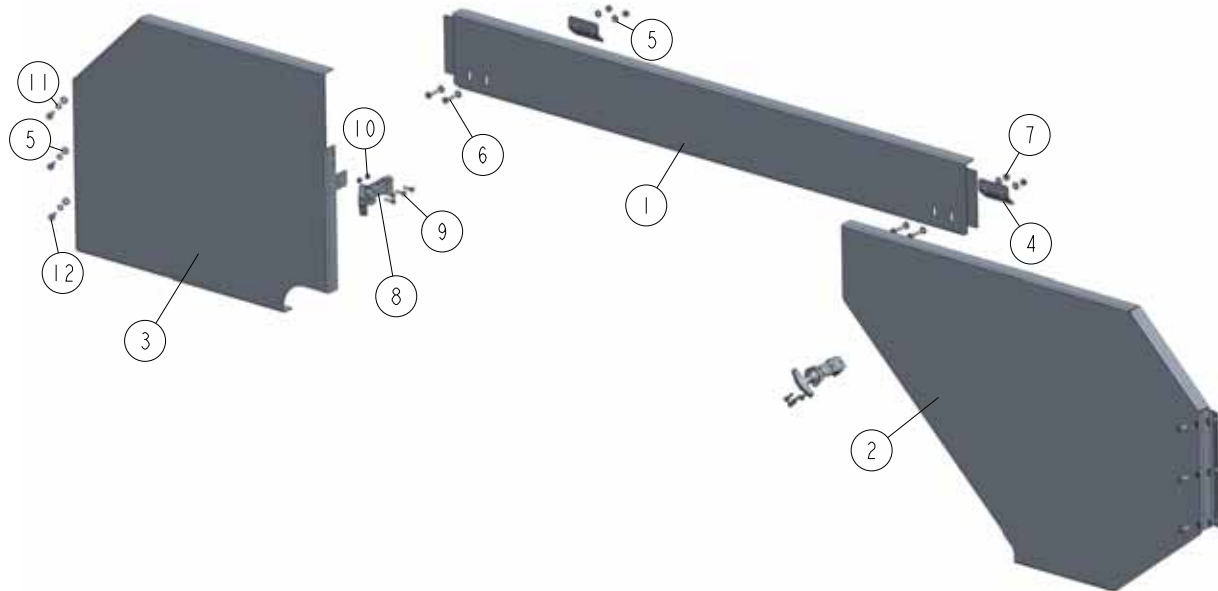
5.7 Sawdust Separator (560316)

560316_001
560316



REF	DESCRIPTION (◆ indicates parts available in assemblies only)	PART #	QTY	
-	SEPARATOR, SAWDUST	560316	1	
1	PLATE, SAWDUST SEPARATOR	560317-1	1	
2	SCREW, M5X12 8.8 DIN 912 ISO 4762 HEX SO	F81000-53	2	
3	WASHER, 5.3 FLAT ZINC	F81052-1	2	
4	NUT, M5-8-FE/ZN5 DIN985	F81030-2	2	

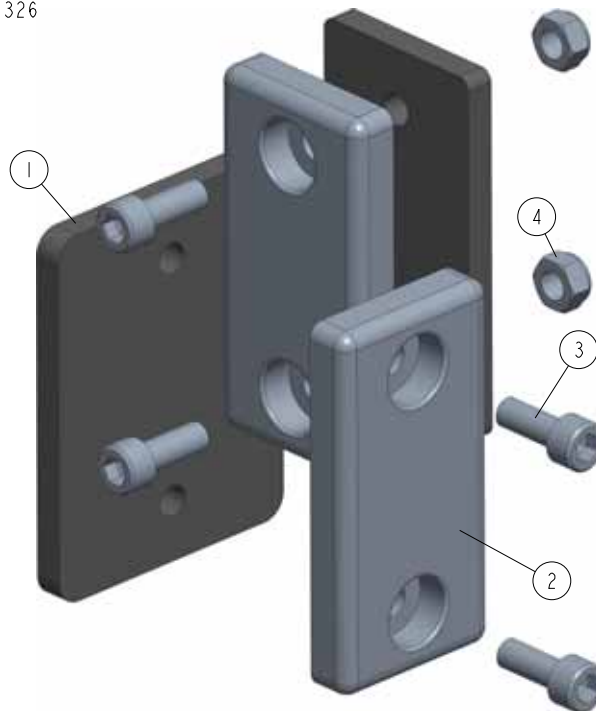
5.8 LX250 Covers (560318)

560318_001
560318

REF	DESCRIPTION (◆ indicates parts available in assemblies only)	PART #	QTY	
-	COVERS, LX250	560318	1	
1	COVER, MIDDLE	560323-1	1	
2	COVER, RIGHT	560319-1	1	
3	COVER, LEFT	560321-1	1	
4	HADNLE, MIDDLE COVER	560359-1	2	
5	WASHER, 6.4 FLAT ZINC	F81053-1	14	
6	BOLT, M6X20MM, HH, FULL THREAD, ZINC	F81001-2	4	
7	NUT, M6-8-B HEX NYLON ZINC LOCK	F81031-2	4	
8	LATCH, FLEXIBLE DRAW	014829	2	
9	BOLT, M5X16 -8.8- FE/ZN5 HEX HEAD FULL T	F81000-20	8	
10	NUT, M5-8-FE/ZN5 DIN985	F81030-2	8	
11	WASHER, Z6.1 SPLIT LOCK ZINC	F81053-3	6	
12	BOLT, M6 X 16 8.8 FE/ZN5 PN-M/82105	F81001-15	6	

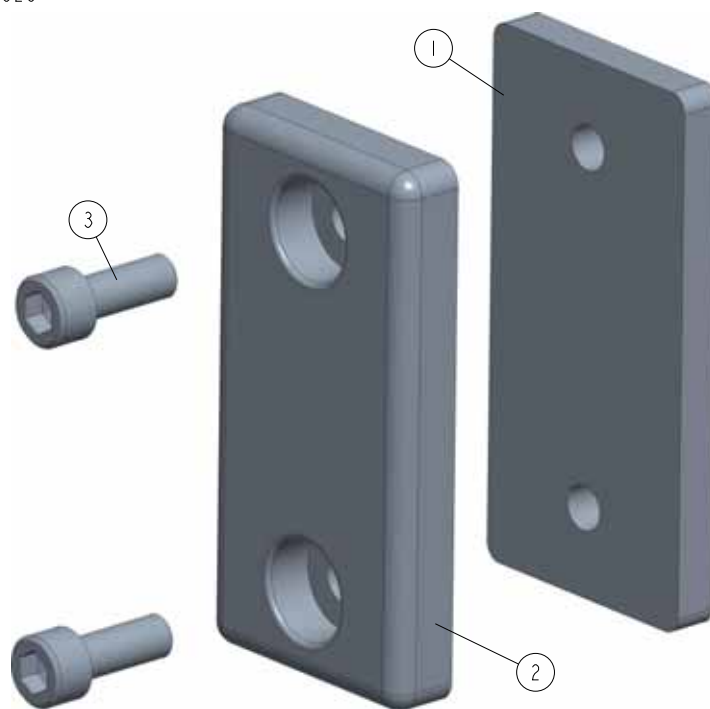
5.9 Mast Slide Pad - Double (560326)

560326_001
560326



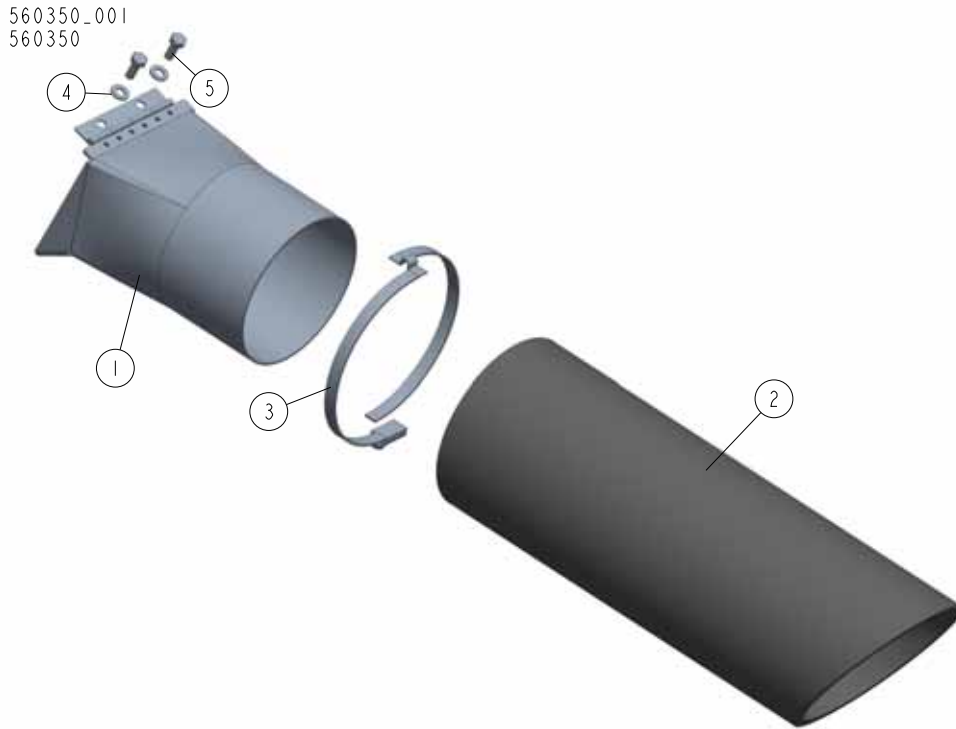
REF	DESCRIPTION (◆ indicates parts available in assemblies only)	PART #	QTY	
-	MAST SLIDE PAD - DOUBLE	560326	1	
1	MOUNTING, SLIDE PAD	560327-1	1	
2	PAD, CATAPILLAR TRACK	P13576	2	
3	SCREW, M6X16-8.8 HEX SOCKET HEAD CAP ZIN	F81001-21	4	
4	NUT, M6-8-B HEX NYLON ZINC LOCK	F81031-2	2	

5.10 Mast Slide Pad - Single (560328)

560328_001
560328

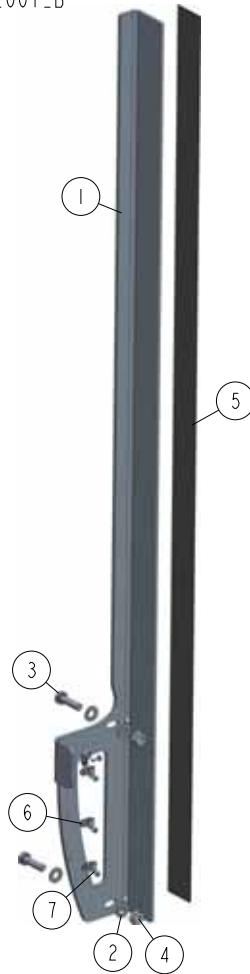
REF	DESCRIPTION (◆ indicates parts available in assemblies only)	PART #	QTY	
-	MAST SLIDE PAD - SINGLE	560328	1	
1	PLATE, MAST SLIDE PAD	560329-1	1	
2	PAD, CATAPILLAR TRACK	P13576	1	
3	SCREW, M6X16-8.8 HEX SOCKET HEAD CAP ZIN	F81001-21	2	

5.11 Sawdust Chute (560350)



REF	DESCRIPTION (◆ indicates parts available in assemblies only)	PART #	QTY	
-	SAWDUST CHUTE	560350	1	
1	CHUTE WELDMENT, SAWDUST	089352-1	1	
2	OUTLET PIPE, RUBBER SAWDUST CHUTE	560309	1	
3	CLAMP, TORRO-SPIRO AP-O-TSP9-155175-W2	560365	1	
4	WASHER, M8, FLAT, ZINC	F81054-1	2	
5	BOLT, M8X20-8.8-B HEX HEAD FULL THREAD Z	F81002-4	2	

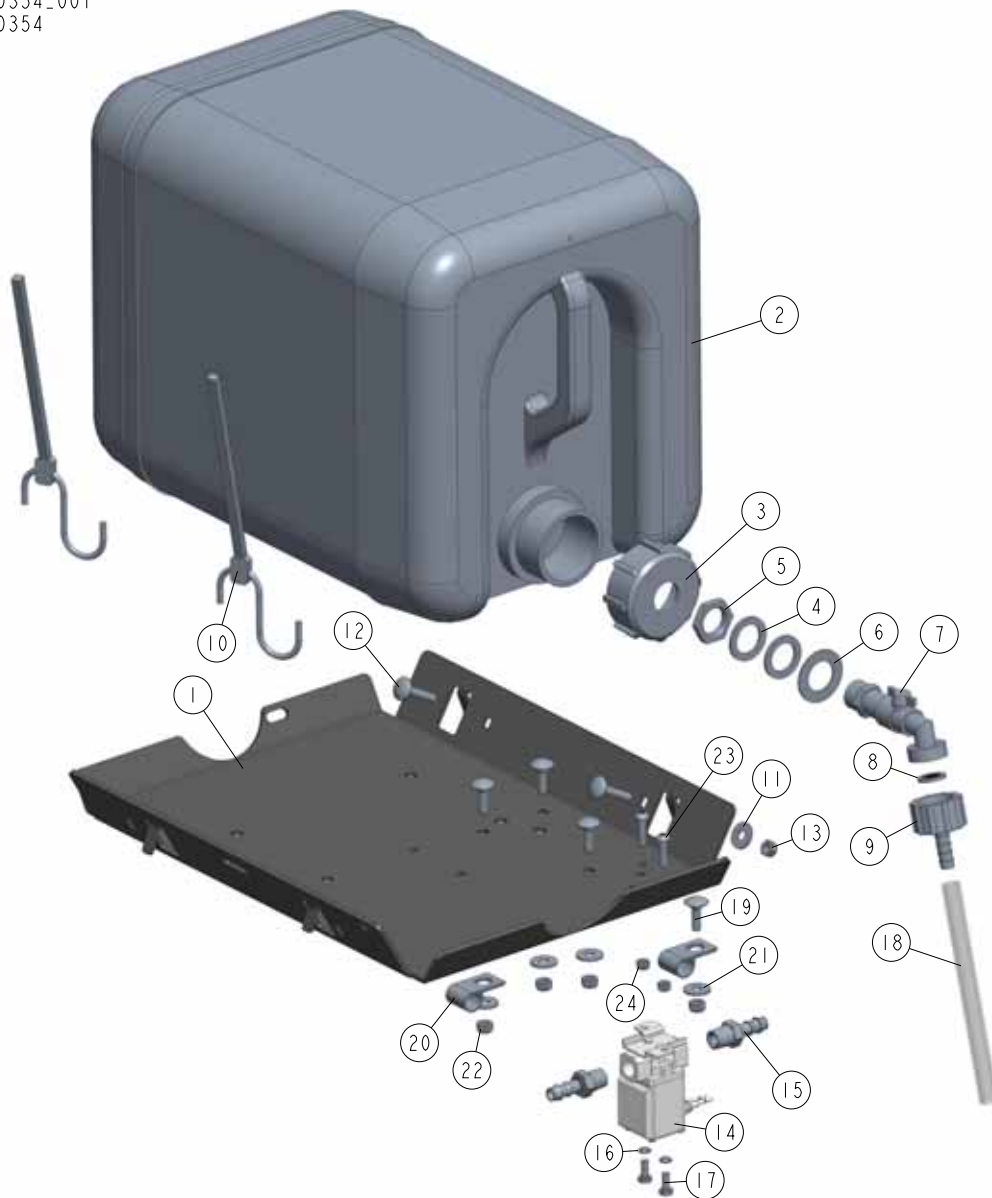
5.12 LX250 Scale Bracket (540461)

540461_001_B
540461

REF	DESCRIPTION (◆ indicates parts available in assemblies only)	PART #	QTY	
-	MAGNETIC STRIP ASSEMBLY LX250	540461	1	
1	ANGLE, SCALE	540561-1	1	
-	BAR, W/MAGNETIC TAPE	540462	1	
2	BAR, MAGNETIC STRIP	540463	1	
3	TAPE, MB 320 (1308 MM) MAGNETIC	540464	1	
4	WASHER, 4.3 FLAT ZINC	F81051-2	2	
5	SCREW, M4X16-5.8-B SLOTTED FLAT HEAD ZIN	F81011-4	2	
6	NUT, M4-8 HEX NYLON ZINC LOCK	F81029-1	2	
7	WASHER, FLAT, M10, ZINC	F81055-1	4	
8	BOLT, M10X35 -8.8 HEX HEAD FULL THREAD Z	F81003-17	2	
9	NUT, M10-8-B HEX NYLON ZINC LOCK	F81033-1	2	
10	SCALE, LX250 MM/INCH	540551	1	

5.13 Water Bottle Assembly (560354)

560354_001
560354

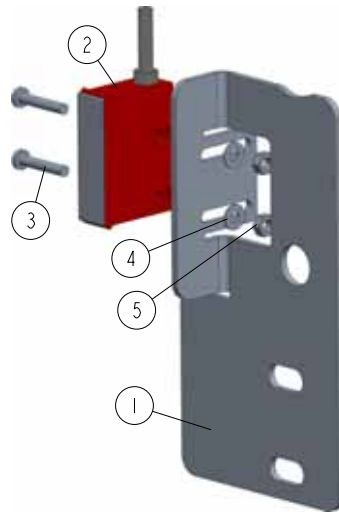


REF	DESCRIPTION (◆ indicates parts available in assemblies only)	PART #	QTY
-	BOTTLE ASSEMBLY, WATER	560354	1
1	TRAY, LT20 WATER BOTTLE	091368-1	1
-	BOTTLE ASSEMBLY, WATER	517110	1
-	TANK, OIL	550787	1
2	BOTTLE, WATER	513866	1
3	NUT, BOTTLE	550785	1
4	SEAL, 27X20X1.5 ESSENTRA 467673 RUBBER	550780	2
5	NUT, 1/2 ESSENTRA 467615 GLAND	550779	1
6	SHIM, 21/37-1	530841	1
7	FITTING, WATER LUBE SHUTOFF VALVE	550776	1
8	FILTER, WATER LUBE	550778	1

REF	DESCRIPTION (◆ indicates parts available in assemblies only)	PART #	QTY	
9	FITTING, G3/4" X 10MM HOSE BARB	550777	1	
10	STRAP, 24" RUBBER (FOR FUEL TANK - SEE E	P11258	2	
11	WASHER, M6, FLAT, ZINC	F81053-11	2	
12	SCREW, M6X30-8.8-FE/ZN5	F81001-59	2	
13	NUT, M6-8-B HEX NYLON ZINC LOCK	F81031-2	2	
-	LUBE KIT, LX100 AC BLADE	518651	1	
14	SOLENOID, WATER LUBE	514046	1	
15	FITTING, 1/4" MALE NPT 3/8" HOSE BARB	P04682	2	
16	WASHER, 5.1 SPLIT LOCK	F81052-2	2	
17	BOLT, M5 X 12-5.8-FE/ZN5, PN-M/82105	F81000-5	2	
18	TUBING, WATER LUBE 3/8" I.D.	R01885	1	
19	BOLT, M6X20 CARRIAGE ZC 8.8	F81001-119	4	
20	CLAMP, 1/2" EMT COATED	P07584	2	
21	WASHER, M6, FLAT, ZINC	F81053-11	4	
22	NUT, M6-8-B HEX NYLON ZINC LOCK	F81031-2	4	
23	SCREW, M5X20 8.8 CROSS RECESSED PAN HEAD	F81000-34	2	
24	NUT, M5-8-FE/ZN5 DIN985	F81030-2	2	

5.14 Sensor (547315)

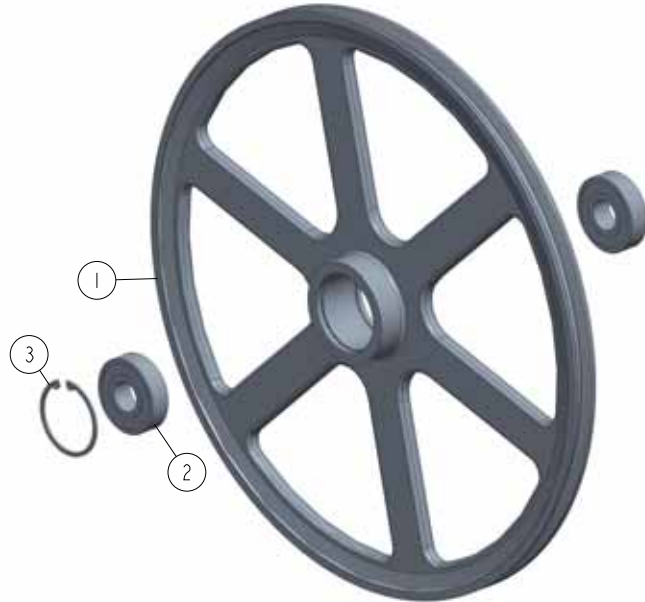
547315_001_A
547315_MANUAL



REF.	DESCRIPTION (* indicates parts available in assemblies only)	PART #	QTY
-	SENSOR ASSEMBLY	547315	1
1	PLATE, SENSOR MOUNTING	547316-1	1
2	SENSOR, MSK-320	096014	1
3	SCREW, M3X16 5.8-B CROSS RECESSED PAN HEAD ZINC	F81028-3	2
4	WASHER, 3.2-LAT ZINC	F81050-2	2
5	NUT, M3-6-HEX ZINC	F81028-1	2

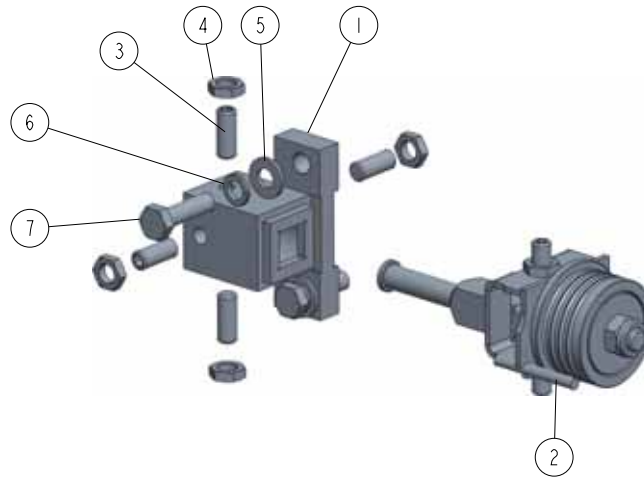
5.15 Idle Side Blade Wheel (A08218)

A08218_001_A
A08218_MANUAL



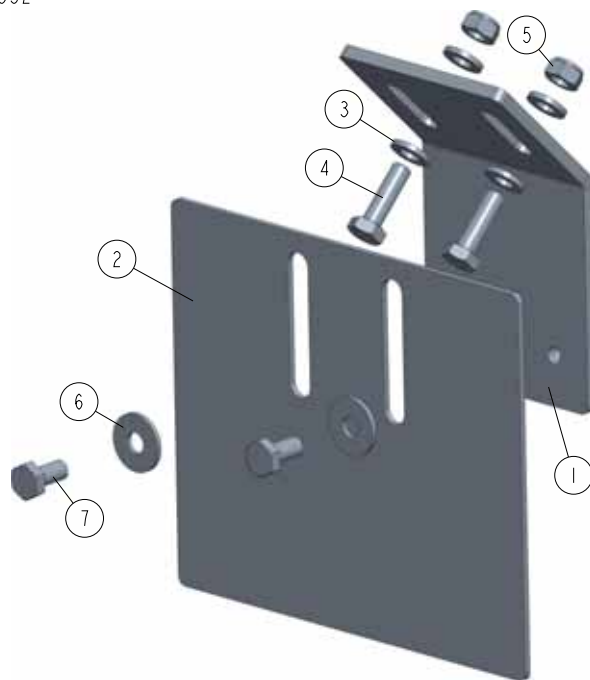
REF.	DESCRIPTION (* indicates parts available in assemblies only)	PART #	QTY
-	WHEEL ASSEMBLY, IDLE SIDE BLADE	A08218	1
1	WHEEL, 19 INCH	P08125	1
2	BEARING, 6305 2RS NSK	P08066	2
3	SNAP RING, 2 7/16 IR BEVELED	F04254-21	1

5.16 Blade Guide Roller w/ Mount Block (540564)

540564_001_A
540564_MANUAL

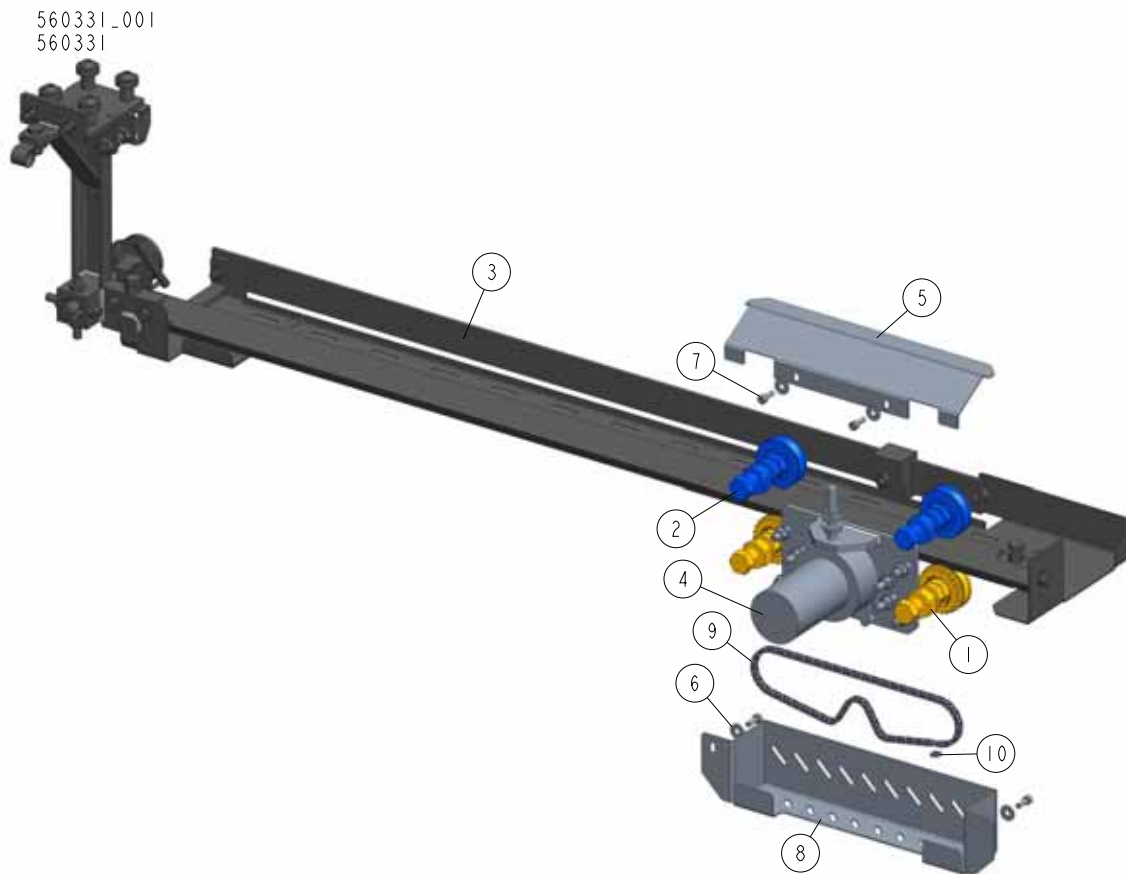
REF.	DESCRIPTION (* indicates parts available in assemblies only)	PART #	QTY	
-	ROLLER ASSEMBLY, BLADE GUIDE W/MOUNT BLOCK	540564	1	
1	BLOCK WELDMENT, BLADE GUIDE MOUNT	087744-1	1	
2	BLADE GUIDE ROLLER ASSEMBLY, DRIVE SIDE See Section 5.23	094682	1	
3	SCREW, M10X1X25 DIN 913 STAINLESS STEEL SET	F81015-4	4	
4	NUT, M10X1-04-ST-A2E ISO8675 THIN	F81033-10	4	
5	WASHER, 10.5 FLAT ZINC	F81055-1	2	
6	WASHER, Z 10.2 SPLIT LOCK ZINC	F81055-2	2	
7	BOLT, M10X35 8.8 HEX HEAD FULL THREAD ZINC	F81003-17	2	

5.17 Blade Guide Roller Guard (560352)

560352_001
560352

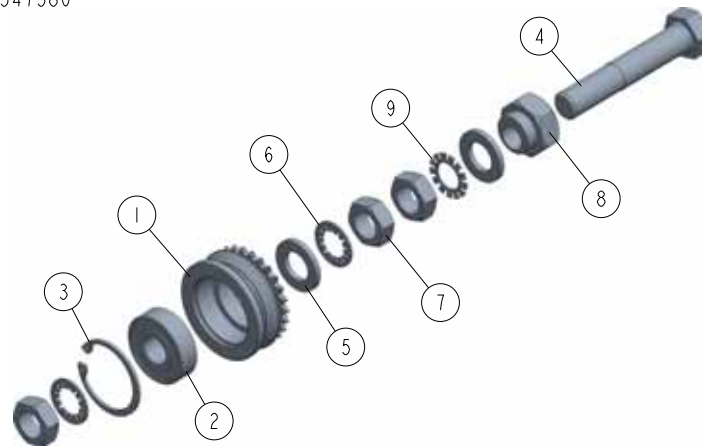
REF	DESCRIPTION (◆ indicates parts available in assemblies only)	PART #	QTY	
-	BLADE GUIDE ROLLER GUARD	560352	1	
1	BRACKET, BLADE GUIDE ROLLER GUARD	092378-1	1	
2	GUARD, BLADE GUIDE ROLLER	092379-1	1	
3	WASHER, 6.4 FLAT ZINC	F81053-1	4	
4	BOLT, M6X20MM, HH, FULL THREAD, ZINC	F81001-2	2	
5	NUT, M6-8-B HEX NYLON ZINC LOCK	F81031-2	2	
6	WASHER, M6, FLAT, ZINC	F81053-11	2	
7	BOLT, M6X12MM HEX HEAD ZINC	F81001-7	2	

5.18 Blade Guide Assembly w/ Motor (560331)



REF	DESCRIPTION (◆ indicates parts available in assemblies only)	PART #	QTY
-	GUIDE ASSY. W/ MOTOR	560331	1
1	ROLLER, BLADE GUIDE ARM W/SPROCKET See Section 5.19	547580	2
2	ROLLER, BLADE GUIDE ARM See Section 5.20	547581	2
3	GUIDE ARM W/ COVER See Section 5.21	560342	1
4	MOTOR, GUIDE	560336	1
5	UPPER COVER, GUIDE	560357-1	1
6	WASHER, M6, FLAT, ZINC	F81053-11	4
7	SCREW, M6X16-8.8 HEX SOCKET HEAD CAP ZIN	F81001-21	4
8	COVER, ECCENTRIC	560358-1	1
-	DRIVE CHAIN, BLADE GUIDE	560380	1
9	DRIVE CHAIN, BLADE GUIDE	560381	1
10	LINK, 25 MASTER	P09983	1

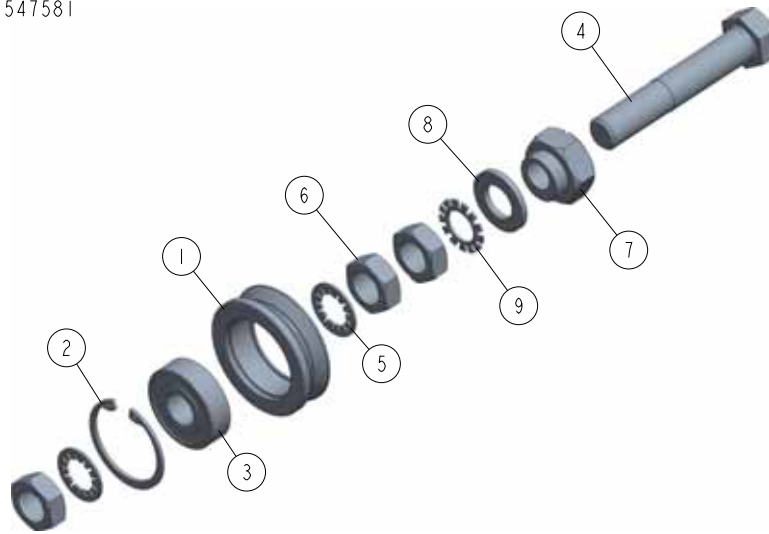
5.19 Blade Guide Arm Roller w/ Sprocket (547580)

547580_001
547580

REF	DESCRIPTION (◆ indicates parts available in assemblies only)	PART #	QTY
-	ROLLER, BLADE GUIDE ARM W/SPROCKET	547580	1
-	ROLLER ASSEMBLY, BLADE GUIDE ARM WITH BE	501496	1
1	ROLLER, BLADE GUIDE ARM W/SPROCKET	501495-1	1
2	BEARING, 6203-2RSP6-5/8 CX	095087	1
3	RING, W40 INSIDE RETAINING	F81090-3	1
4	BOLT, 5/8-16 X 3 1/2" HEX HEAD FULL THRE	F05009-16	1
5	WASHER, 17 FLAT ZINC	F81058-1	2
6	WASHER, 5/8" INTERNAL STAR	F05011-25	2
7	NUT, 5/8-18 HEX JAM	F05010-11	3
8	NUT, ECCENTRIC 5/8"-18	560402-1	1
9	WASHER, 5/8" EXTERNAL STAR	F05011-26	1

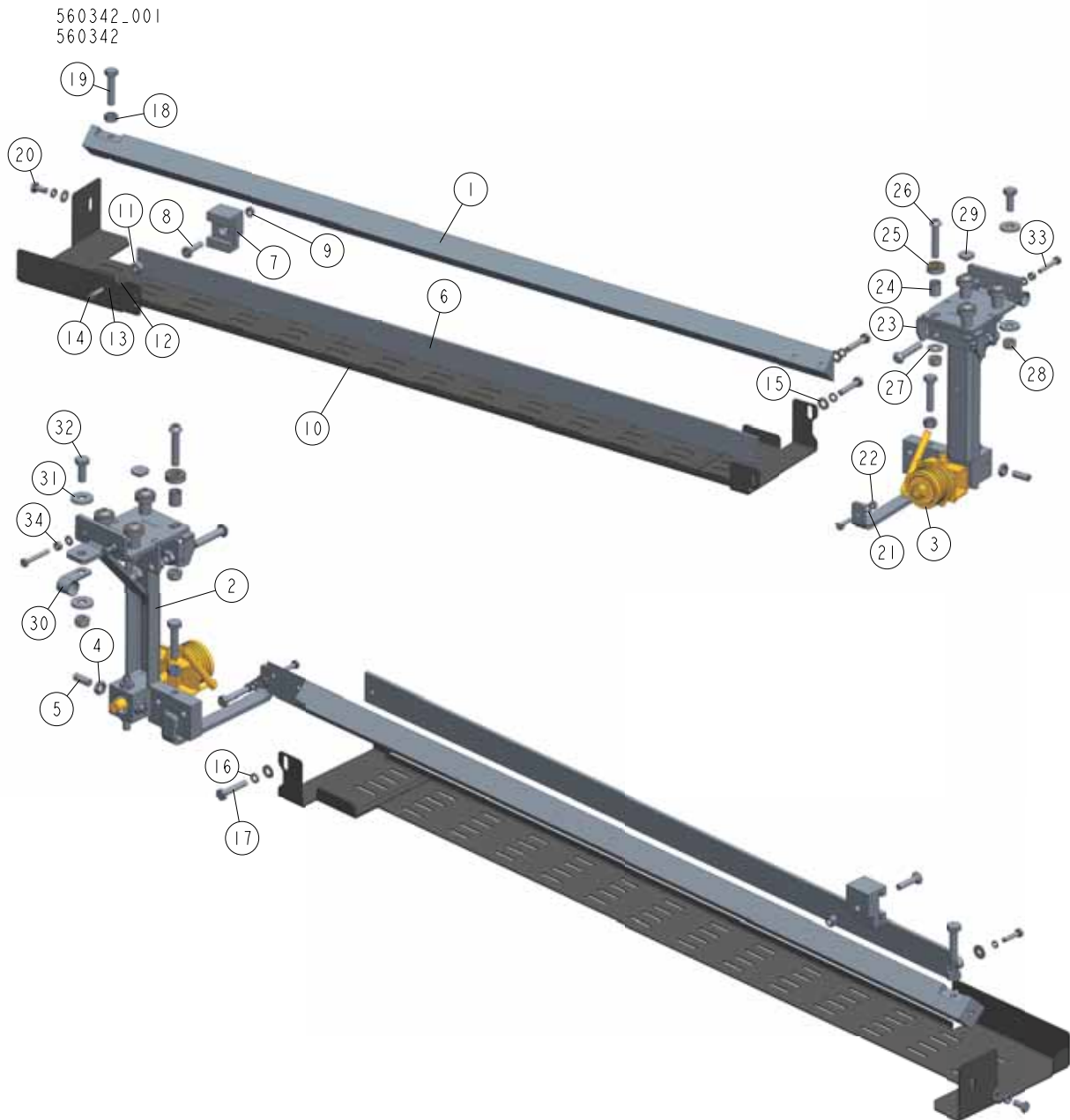
5.20 Blade Guide Arm Roller (547581)

547581_001
547581



REF	DESCRIPTION (◆ indicates parts available in assemblies only)	PART #	QTY	
-	ROLLER, BLADE GUIDE ARM	547581	1	
-	ROLLER ASSEMBLY, BLADE GUIDE ARM WITH BEARING	093855	1	
1	ROLLER, BLADE GUIDE ARM V-GROOVE	093856-1	1	
2	RING, W40 INSIDE RETAINING	F81090-3	1	
3	BEARING, 6203-2RSP6-5/8 CX	095087	1	
4	BOLT, 5/8-16 X 3 1/2" HEX HEAD FULL THRE	F05009-16	1	
5	WASHER, 5/8" INTERNAL STAR	F05011-25	2	
6	NUT, 5/8-18 HEX JAM	F05010-11	3	
7	NUT, ECCENTRIC 5/8"-18	560402-1	1	
8	WASHER, 17 FLAT ZINC	F81058-1	1	
9	WASHER, 5/8" EXTERNAL STAR	F05011-26	1	

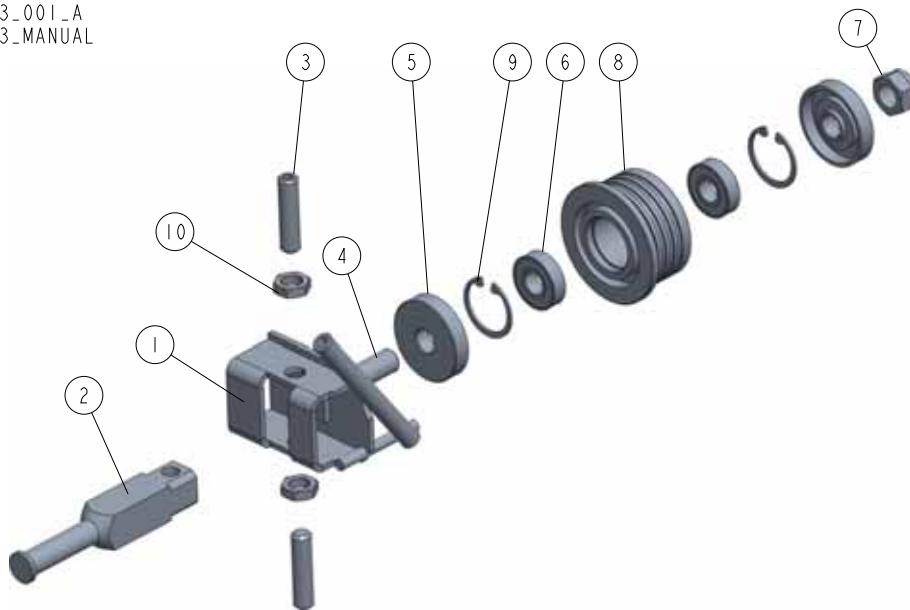
5.21 Blade Guide Arm (560342)



REF	DESCRIPTION (◆ indicates parts available in assemblies only)	PART #	QTY
-	BLADE GUIDE ARM W/ COVER	560342	1
1	BLADE GUIDE	547566-1	1
2	HOUSING W/ ROLLER	560343-1	1
3	BLADE GUIDE ASSEMBLY, IDLE SIDE	094683	1
4	NUT, M10X1-04-ST-A2E ISO8675 THIN	F81033-10	4
5	SCREW, M10X1X25 DIN 913 STAINLESS STEEL	F81015-4	4
6	BAR, LX150 BLADE GUARD	524773	1
7	GUIDE, LX250 BLADE GUARD	540571	1
8	SCREW, M8X35-8.8 FLAT SOCKET HEAD CAP ZI	F81002-60	1
9	NUT, M8-8-B, HEX, NYLON LOCK ZINC	F81032-2	1

REF	DESCRIPTION (◆ indicates parts available in assemblies only)	PART #	QTY	
10	COVER BOTTOM WLDMT	547571-1	1	
11	BUSHING, 6.5/16-10.5	525463-1	1	
12	WASHER, M6, FLAT, ZINC	F81053-11	1	
13	WASHER, Z6.1 SPLIT LOCK ZINC	F81053-3	1	
14	BOLT, M6X25-5.8 HEX HEAD FULL THREAD ZIN	F81001-3	2	
15	WASHER, M8, FLAT, ZINC	F81054-1	3	
16	WASHER, 8,2 SPLIT LOCK ZINC	F81054-4	3	
17	BOLT, M8X40-8.8 HEX HEAD FULL THREAD ZIN	F81002-15	2	
18	NUT, M10 8 HEX ZINC	F81033-3	6	
19	BOLT, M10X45 HEX HEAD FULL THREAD ZINC	F81003-3	2	
20	BOLT, M8X16-8.8-B HEX HEAD FULL THREAD Z	F81002-20	1	
21	WASHER, 6.4 FLAT ZINC	F81053-1	3	
22	NUT, M6-8-B HEX NYLON ZINC LOCK	F81031-2	1	
23	PLATE, TENSION	560368-1	1	
24	SPACER, 11X16X18.5 ZINC-PLATED	100830-1	4	
25	BEARING, 6000.2RSR	087471	4	
26	BOLT, M10X50-8.8 HEX HEAD FULL THREAD ZI	F81003-131	6	
27	WASHER, FLAT, M10, ZINC	F81055-1	4	
28	NUT, M10-8-B HEX NYLON ZINC LOCK	F81033-1	7	
29	BUSHING, BLADE GUIDE ARM	095936	1	
30	CLAMP, 5/8 EMT COATED	010748	1	
31	WASHER, 10.5 SPECIAL FLAT ZINC	F81055-6	2	
32	BOLT, M10-1.5X25MM HH GR8.8	F81003-11	1	
33	BOLT, M6X40-8.8 HEX HEAD FULL THREAD ZIN	F81001-5	2	
34	NUT, M6-8 HEX ZINC	F81031-1	2	

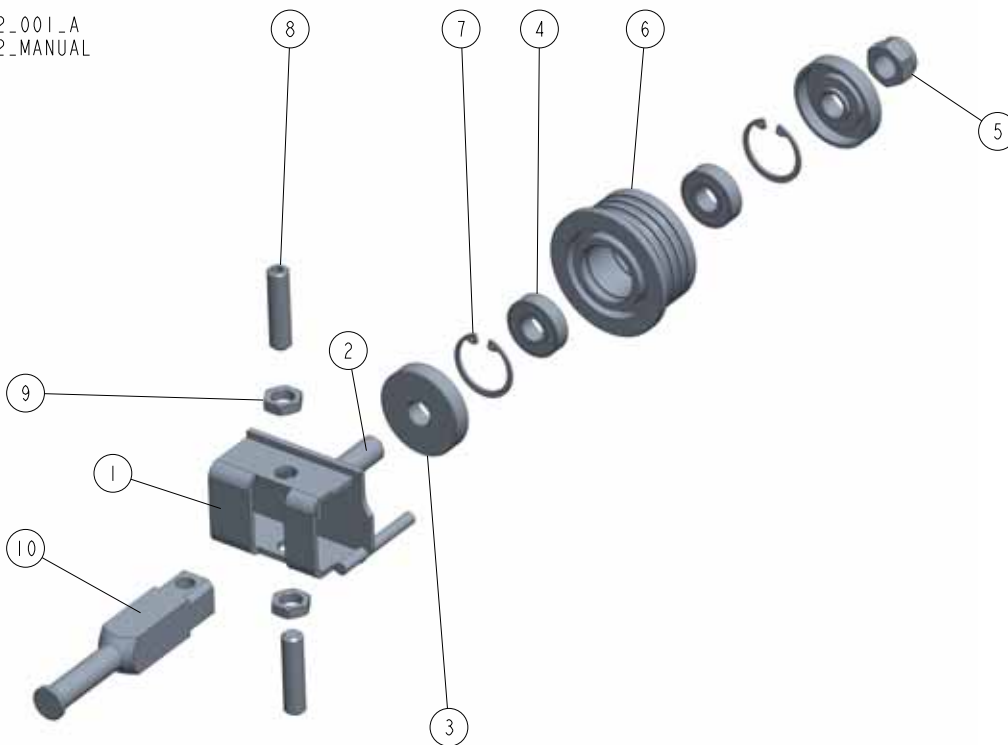
5.22 Blade Guide Roller Assembly, Idle Side (094683)

094683_001_A
094683_MANUAL

REF.	DESCRIPTION (* indicates parts available in assemblies only)	PART #	QTY
-	BLADE GUIDE ROLLER ASSEMBLY, IDLE SIDE	094683	1
1	BRACKET WELDMENT, BLADE GUIDE ROLLER ZINC-PLATED MOUNT	094681-1	1
2	SHAFT, ZINC-PLATED BLADE GUIDE MOUNT	503588-1	1
3	SCREW, M10X1X40 DIN913 A2-70 STAINLESS STEEL SET	F81015-2	2
-	ROLLER, BLADE GUIDE NARROW W/BEARINGS	087887	1
4	SHAFT, BLADE GUIDE ROLLER ZINC-PLATED	087763-1	1
5	RING, ZINC-PLATED SPACER	087891-1	2
6	BEARING, 6001 2RSR (FAG, SKF)	087893	2
7	NUT, M12 8 HEX NYLON ZINC LOCK	F81034-2	1
8	ROLLER, BLADE GUIDE NARROW	087889	1
9	RING, W28 INSIDE RETAINING	F81090-9	2
10	NUT, M10X1-04-ST-A2E ISO8675 THIN	F81033-10	2

5.23 Blade Guide Roller Assembly, Drive Side. (094682)

094682_001_A
094682_MANUAL

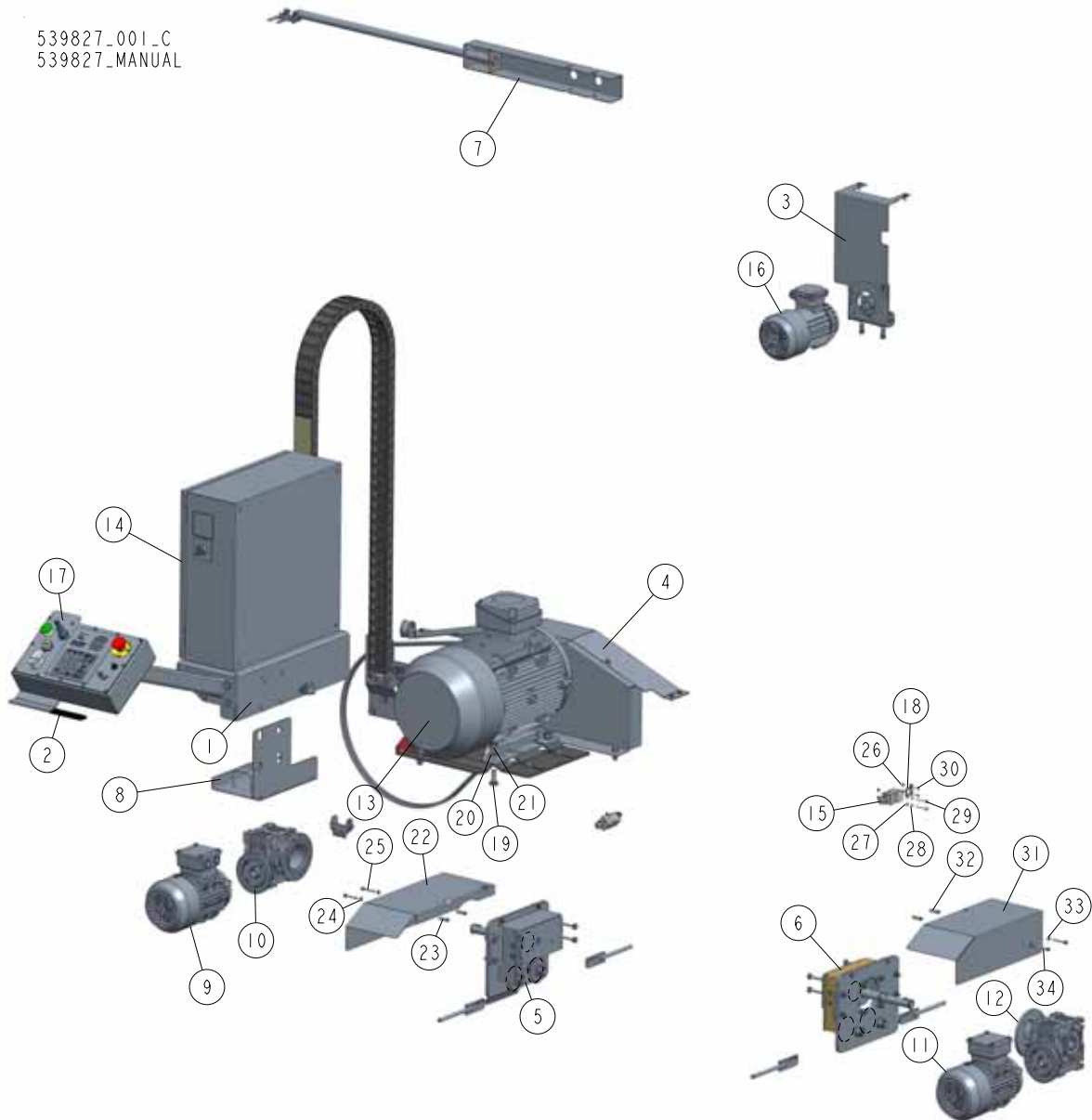


REF.	DESCRIPTION (* indicates parts available in assemblies only)	PART #	QTY
-	BLADE GUIDE ROLLER ASSEMBLY, DRIVE SIDE	094682	1
1	BRACKET WELDMENT, BLADE GUIDE ROLLER ZINC-PLATED	094679-1	1
-	ROLLER, BLADE GUIDE NARROW W/BEARINGS	087887	1
2	SHAFT, BLADE GUIDE ROLLER ZINC-PLATED	087763-1	1
3	RING, ZINC-PLATED SPACER	087891-1	2
4	BEARING, 6001 2RSR (FAG, SKF)	087893	2
5	NUT, M12 8 HEX NYLON ZINC LOCK	F81034-2	1
6	ROLLER, BLADE GUIDE NARROW	087889	1
7	RING, W28 INSIDE RETAINING	F81090-9	2
8	SCREW, M10X1X40 DIN913 A2-70 STAINLESS STEEL SET	F81015-2	2
9	NUT, M10X1-04-ST-A2E ISO8675 THIN	F81033-10	2
10	SHAFT, ZINC-PLATED BLADE GUIDE MOUNT	503588-1	1

SECTION 6 LX250 MOTOR SET

6.1 Motor Set, LX250 E20

539827_001_C
539827_MANUAL

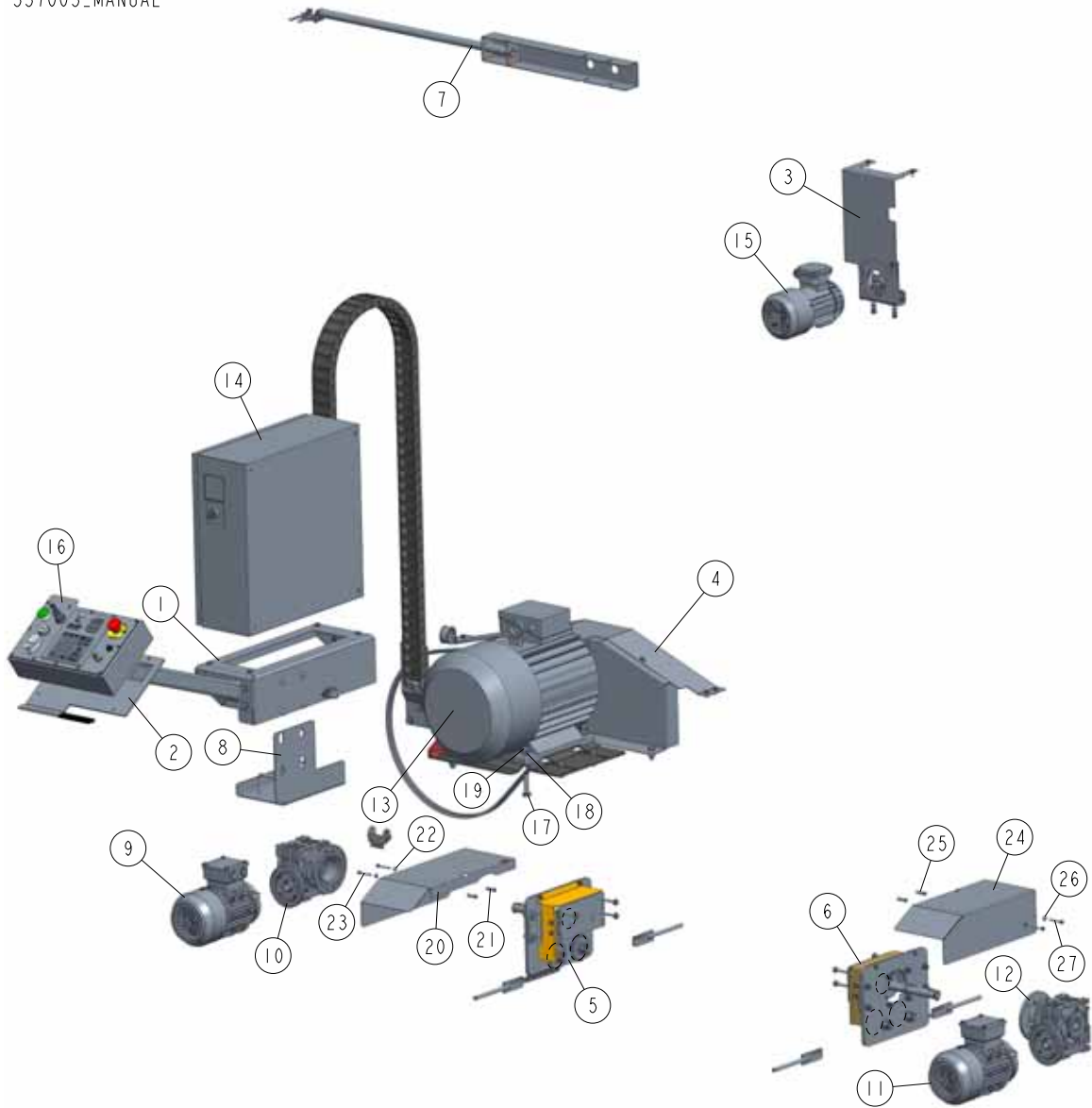


REF	DESCRIPTION (u indicates parts available in assemblies only)	PART #	QTY
-	MOTOR SET, AC 15 KW LX250	539827	1
1	ELECTRICAL BOX W/MOUNTING PARTS See Section 6.4	540440	1
2	CONTROL BOX W/MOUNTING PARTS See Section 6.13	540415	1
3	UP/DOWN MOTOR W/MOUNTING PARTS See Section 6.8	540591	1
4	MOTOR W/BELT & GUARD MOUNTING See Section 6.8	540411	1
5	GEAR MOTOR W/MOUNTING PARTS - LEFT (KACPEREK) See Section 6.9	540486	1
6	GEAR MOTOR W/MOUNTING PARTS - RIGHT (KACPEREK) See Section 6.10	540487	1
7	GUIDE ASSEMBLY, HORIZONTAL CABLE See Section 6.11	540473	1
8	CONTROL BOX TRANSPORT BRACKET ASSEMBLY	547269	1
-	GEAR MOTOR, MR-50/15/0,75-1380/B14 KS1 -	540497-L	1

REF	DESCRIPTION (u indicates parts available in assemblies only)	PART #	QTY
9	MOTOR G-IE2-80-4-0,75-120/19-230/400V-SP	540495-L	1
10	REDUCER MR-50/15-120/19-K140/1-B3	540499	1
-	GEAR MOTOR, MR-50/15/0,75-1380/B14 KS2 -	540497-P	1
11	MOTOR G-IE2-80-4-0,75-120/19-230/400V-PTC-RAL7024	540495-P	1
12	REDUCER MR-50/15-120/19-K140/2-B3	540500	1
13	ENGINE ELECTR.15KW WITH BRAKE 3SG 160M-2	522987	1
14	BOX, LX250 15 KW EL ELECTRICAL See Section 6.5	540466	1
15	SWITCH, AZ17-11ZRK SAFETY	094232	2
16	MOTOR, BESEL 2SIEK 71-4B2 0.37 KW B14/2	540483	1
17	BOX, LX250/AC CONTROL See Section 6.14	547203	1
18	KEY, AZ17/170-B5	094422	2
19	BOLT, M14X35-8.8 ISO 4017 HEX HEAD FULL	F81005-1	4
20	WASHER, Z 14.2 SPLIT LOCK ZINC	F81057-1	4
21	NUT, M14 HEX NYLON ZINC LOCK	F81035-2	4
-	COVER ASSY, LEFT GEAR MOTOR	560403	1
22	COVER, LEFT GEAR MOTOR	560366-1	1
23	BUSHING 6.2/10-30	547036	2
24	WASHER, 6.4 FLAT ZINC	F81053-1	2
25	SCREW, M6X30-8.8 HEX SOCKET HEAD CAP ZIN	F81001-112	2
26	NUT, M4-8 HEX NYLON ZINC LOCK	F81029-1	8
27	WASHER 4,3 FE/ZN5 PN-M/82005	F81051-2	4
28	WASHER, Z 4.1 SPLIT LOCK ZINC	F81051-1	4
29	BOLT, M4X35-8.8 HEX HEAD FULL THREAD ZIN	F81011-7	4
30	SCREW, M4X12 5,8-B CROSS RECESSED PAN HE	F81011-43	4
-	COVER ASSY, RIGHT GEAR MOTOR	560398	1
31	COVER, RIGHT GEAR MOTOR	560395-1	1
32	BUSHING 6.2/10-30	547036	2
33	WASHER, 6.4 FLAT ZINC	F81053-1	2
34	SCREW, M6X30-8.8 HEX SOCKET HEAD CAP ZIN	F81001-112	2

6.2 Motor Set, LX250 E25/E25S (CE Compliant Version)

557005_001_A
557005_MANUAL



REF	DESCRIPTION (u indicates parts available in assemblies only)	PART #	QTY
-	MOTOR SET, LX250 E25	557005	1
1	ELECTRICAL BOX W/MOUNTING PARTS See Section 6.4	540440	1
2	CONTROL BOX W/MOUNTING PARTS See Section 6.13	540415	1
3	UP/DOWN MOTOR W/MOUNTING PARTS See Section 6.8	540591	1
4	MOTOR W/BELT & GUARD MOUNTING See Section 6.9	540411	1
5	GEAR MOTOR W/MOUNTING PARTS - LEFT (KACPEREK) See Section 6.10	540486	1
6	GEAR MOTOR W/MOUNTING PARTS - RIGHT (KACPEREK) See Section 6.10	540487	1
7	GUIDE ASSEMBLY, HORIZONTAL CABLE SEE SEC See Section 6.11	540473	1
8	CONTROL BOX TRANSPORT BRACKET ASSEMBLY	547269	1
-	GEAR MOTOR, MR-50/15/0,75-1380/B14 KS1 -	540497-L	1
9	MOTOR G-IE2-80-4-0,75-120/19-230/400V-SP	540495-L	1
10	REDUCER MR-50/15-120/19-K140/1-B3	540499	1

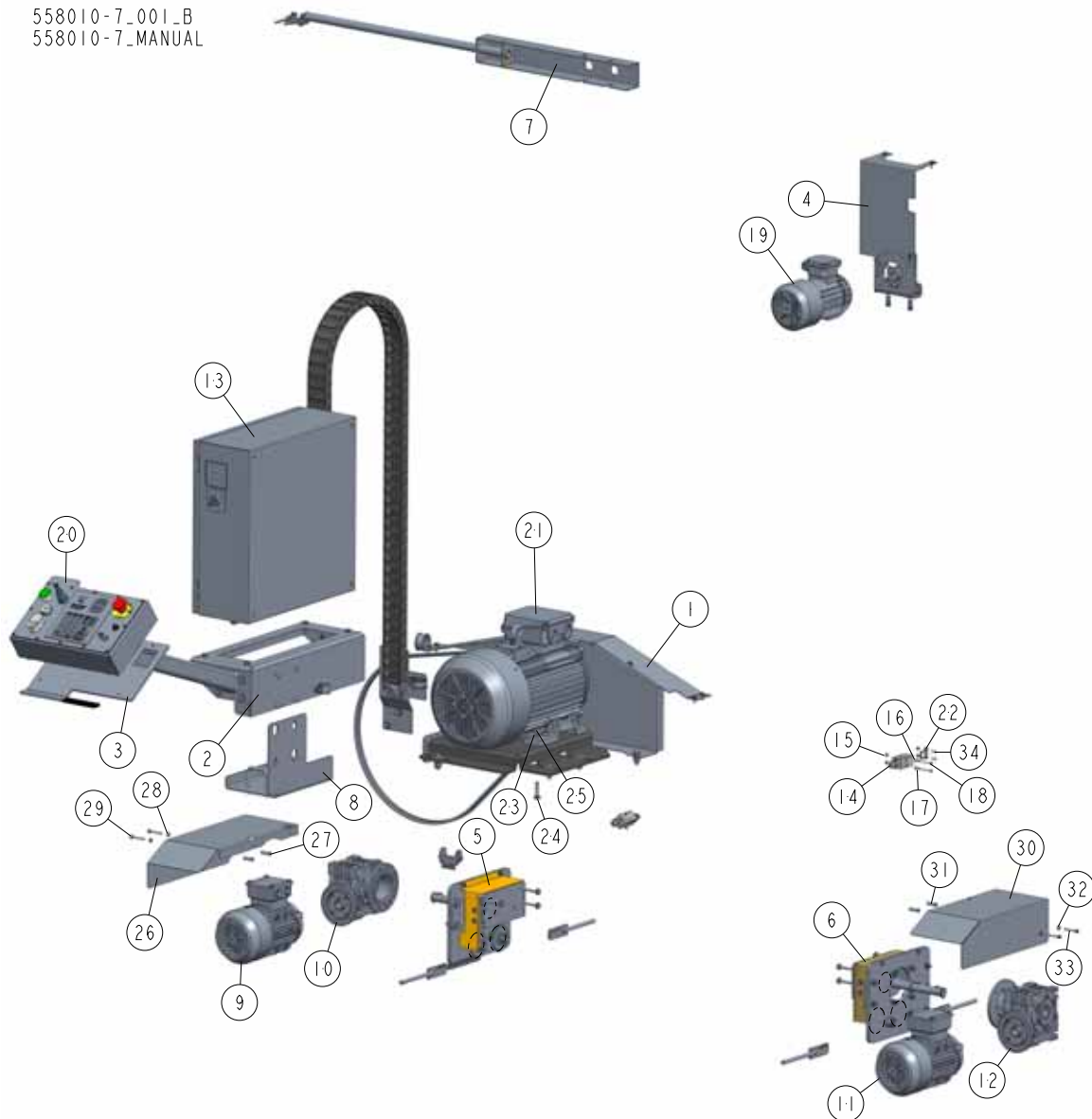
REF	DESCRIPTION (u indicates parts available in assemblies only)	PART #	QTY
-	GEAR MOTOR, MR-50/15/0,75-1380/B14 KS2 -	540497-P	1
11	MOTOR G-IE2-80-4-0,75-120/19-230/400V-PTC-RAL7024	540495-P	1
12	REDUCER MR-50/15-120/19-K140/2-B3	540500	1
13	MOTOR, ELECTRIC 18.5 KW/25HP EURO	085519	1
	MOTOR, 18.5 KW 3SG160L-2-HM-T 400V (CE COMPLIANT VERSION)	522988	1
14	ELECTRIC BOX LX250EH25S See Section 6.6	557004	1
15	MOTOR, BESEL 2SIEK 71-4B2 0.37 KW B14/2	540483	1
16	BOX, LX250/AC CONTROL See Section 6.14	547203	1
17	BOLT, M14X55-8.8 HEX HEAD FULL THREAD ZI	F81005-2	4
18	WASHER, Z 14.2 SPLIT LOCK ZINC	F81057-1	4
19	NUT, M14 HEX NYLON ZINC LOCK	F81035-2	4
-	COVER ASSY, LEFT GEAR MOTOR	560403	1
20	COVER, LEFT GEAR MOTOR	560366-1	1
21	BUSHING 6.2/10-30	547036	2
22	WASHER, 6.4 FLAT ZINC	F81053-1	2
23	SCREW, M6X30-8.8 HEX SOCKET HEAD CAP ZIN	F81001-112	2
-	COVER ASSY, RIGHT GEAR MOTOR	560398	1
24	COVER, RIGHT GEAR MOTOR	560395-1	1
25	BUSHING 6.2/10-30	547036	2
26	WASHER, 6.4 FLAT ZINC	F81053-1	2
27	SCREW, M6X30-8.8 HEX SOCKET HEAD CAP ZIN	F81001-112	2
	SAFETY SWITCH, AZ17-11ZRK (CE COMPLIANT VERSION)	094232	2
	KEY, AZ17/170-B5 SAFETY SWITCH (CE COMPLIANT VERSION)	094422	2

6 LX250 MOTOR SET

Motor Set, LX250 EJ15

6.3 Motor Set, LX250 EJ15

558010-7_001_B
558010-7_MANUAL

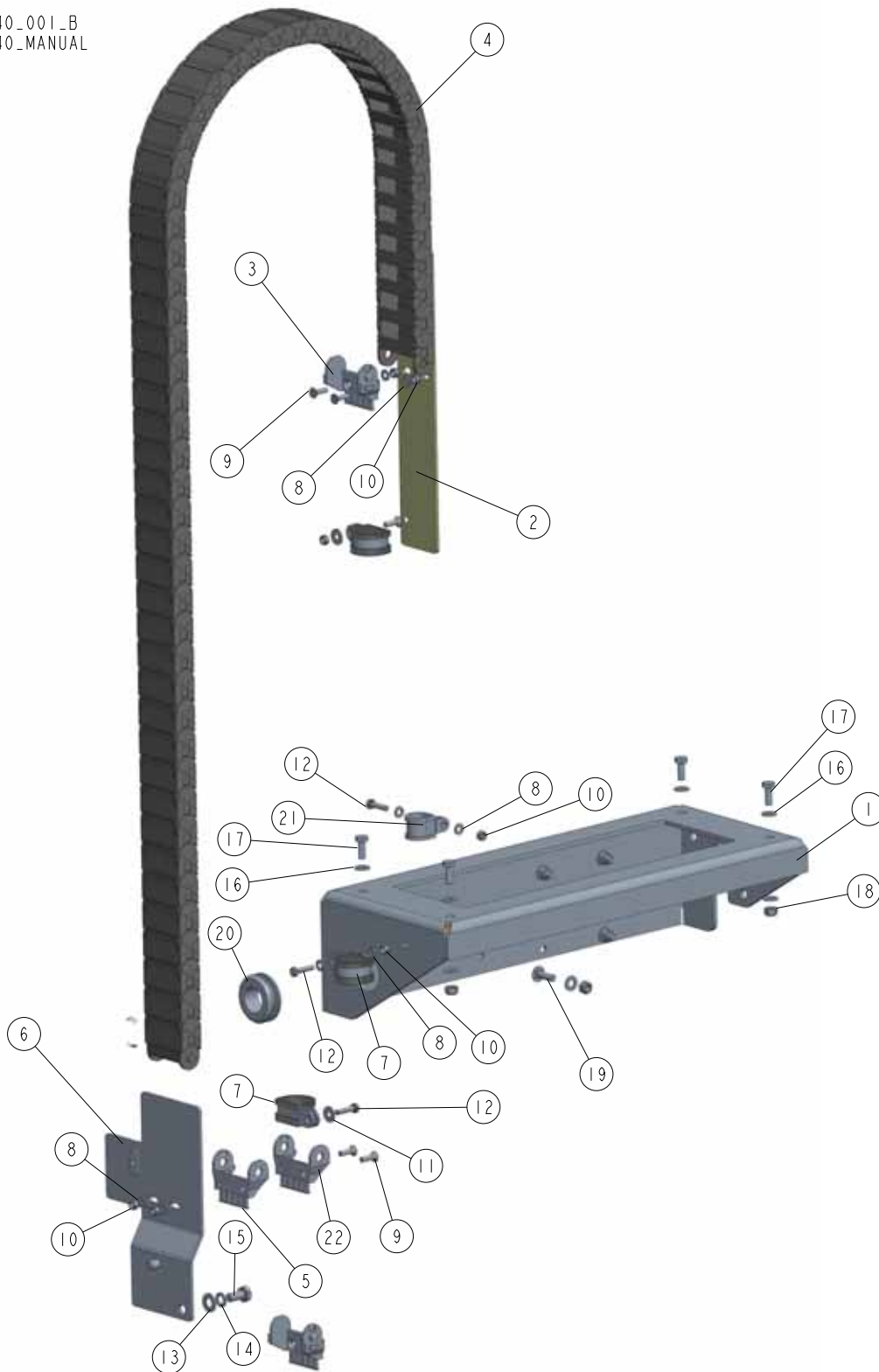


REF	DESCRIPTION (u indicates parts available in assemblies only)	PART #	QTY
-	MOTOR SET LX250 EJ15 200V 60HZ	558010-7	1
1	MOTOR W/BELT & GUARD MOUNTING See Section 6.9	558126	1
2	ELECTRICAL BOX W/MOUNTING PARTS See Section 6.4	540440	1
3	CONTROL BOX W/MOUNTING PARTS See Section 6.13	540415	1
4	UP/DOWN MOTOR W/MOUNTING PARTS See Section 6.8	540591	1
5	GEAR MOTOR W/MOUNTING PARTS - LEFT (KACPEREK) See Section 6.10	540486	1
6	GEAR MOTOR W/MOUNTING PARTS - RIGHT (KACPEREK) See Section 6.10	540487	1
7	GUIDE ASSEMBLY, HORIZONTAL CABLE See Section 6.11	540473	1
8	CONTROL BOX TRANSPORT BRACKET ASSEMBLY See Section 6.12	547269	1
-	GEAR MOTOR, MR-50/15/0,75-1380/B14 3X200	540497-7L	1
9	MOTOR G-IE2-80-4-0,75-120/19-200V-SPEC-I	540495-7L	1
10	REDUCER MR-50/15-120/19-K140/1-B3	540499	1

REF	DESCRIPTION (u indicates parts available in assemblies only)	PART #	QTY	
-	GEAR MOTOR, MR-50/15/0,75-1380/B14 3X200	540497-7P	1	
11	MOTOR B-IE3-80-4-0,75-120/19-200V-IP54-R	540495-7P	1	
12	REDUCER MR-50/15-120/19-K140/2-B3	540500	1	
13	BOX, LX250 11 KW 200V 60HZ ELECTRICAL See Section 6.7	558009-7	1	
14	SWITCH, AZ17-11ZRK SAFETY	094232	2	
15	NUT, M4-8 HEX NYLON ZINC LOCK	F81029-1	8	
16	WASHER 4,3 FE/ZN5 PN-M/82005	F81051-2	4	
17	WASHER, Z 4.1 SPLIT LOCK ZINC	F81051-1	4	
18	BOLT, M4X35-8.8 HEX HEAD FULL THREAD ZIN	F81011-7	4	
19	MOTOR BESEL 3SIEK 71-4B2 0.37 KW IEC71B1	540483-7	1	
20	BOX, LX250/AC CONTROL See Section 6.14	547203	1	
21	MOTOR 3SIE 132M2A-HM 11KW E15 3540 1/MIN	089049-7	1	
22	KEY, AZ17/170-B5	094422	2	
23	WASHER, 10.5 ZC DIN 126 ISO 7091	F81055-1	6	
24	BOLT, M10X40-8.8 HEX HEAD FULL THREAD ZI	F81003-16	6	
25	NUT, M10-8-B HEX NYLON ZINC LOCK	F81033-1	6	
-	COVER ASSY, LEFT GEAR MOTOR	560403	1	
26	COVER, LEFT GEAR MOTOR	560366-1	1	
27	BUSHING 6.2/10-30	547036	2	
28	WASHER, 6.4 FLAT ZINC	F81053-1	2	
29	SCREW, M6X30-8.8 HEX SOCKET HEAD CAP ZIN	F81001-112	2	
-	COVER ASSY, RIGHT GEAR MOTOR	560398	1	
30	COVER, RIGHT GEAR MOTOR	560395-1	1	
31	BUSHING 6.2/10-30	547036	2	
32	WASHER, 6.4 FLAT ZINC	F81053-1	2	
33	SCREW, M6X30-8.8 HEX SOCKET HEAD CAP ZIN	F81001-112	2	
34	SCREW, M4X12 5,8-B CROSS RECESSED PAN HE	F81011-43	4	

6.4 Electrical Box w/ Mounting Parts (540440)

540440_001_B
 540440_MANUAL

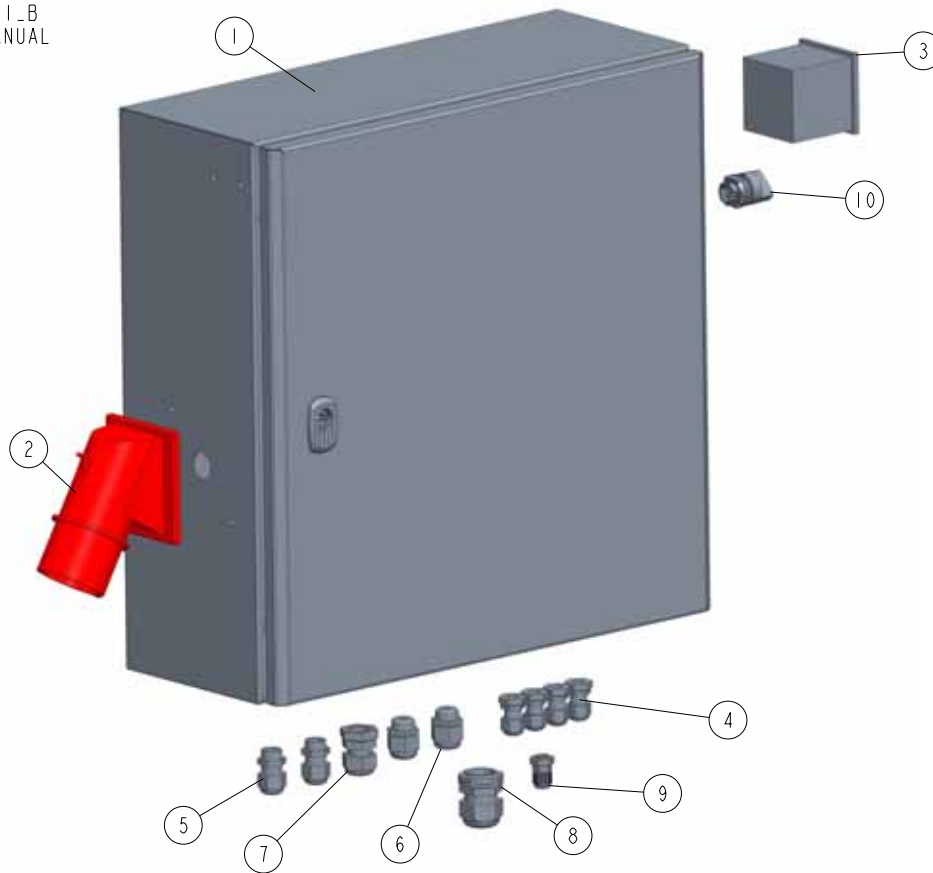


REF	DESCRIPTION (◆ indicates parts available in assemblies only)	PART #	QTY
-	ELECTRICAL BOX W/MOUNTING PARTS See Sect	540440	1
1	MOUNT WELDMENT, ELECTRICAL BOX	540469-1	1

REF	DESCRIPTION (◆ indicates parts available in assemblies only)	PART #	QTY
2	PLATE, CABLE CARRIER MOUNT	540578-1	1
3	BRACKET, 14050, 2PZ MOUNT	512945_2PZ	1
4	CARRIER, IGUS 1_76M CABLE	540438	1
5	BRACKET, 14050, 1PZ MOUNT	512945_1PZ	1
6	SAFETY SWITCH W/MOUNTING PLATE	540562-1	1
7	CLAMP, RSGU 1.30/20	F81087-1	3
8	WASHER, 6.4 FLAT ZINC	F81053-1	8
9	SCREW, M6X20-10.9 FE/ZN5 DIN-7991	F81001-17	5
10	NUT, M6-8-B HEX NYLON ZINC LOCK	F81031-2	7
11	WASHER, FLAT ZINC	F81053-11	2
12	BOLT, M6X25-5.8 HEX HEAD FULL THREAD ZIN	F81001-3	3
13	WASHER, 10.5 FLAT ZINC	F81055-1	2
14	WASHER, 10.2 SPLIT LOCK ZINC	F81055-2	2
15	BOLT, ISO4017-M10X20-8.8-A2E HEX HEAD	F81003-53	2
16	WASHER, 8.4 FLAT ZINC	F81054-1	12
17	BOLT, M8X20-8.8-B HEX HEAD FULL THREAD Z	F81002-4	4
18	NUT, M8-8-B HEX NYLON ZINC LOCK	F81032-2	8
19	BOLT M8X25 CARRIAGE ZC 8.8 DIN603 ISO 86	F81002-59	4
20	GROMMET, 30X42X8 RUBBER	509717	1
21	CLIP, RSGU 1.20/20 METAL & RUBBER RETAIN	F81087-2	1
22	BRACKET, 14050, 12PZ MOUNT	512945	1

6.5 Electrical Box (540466)

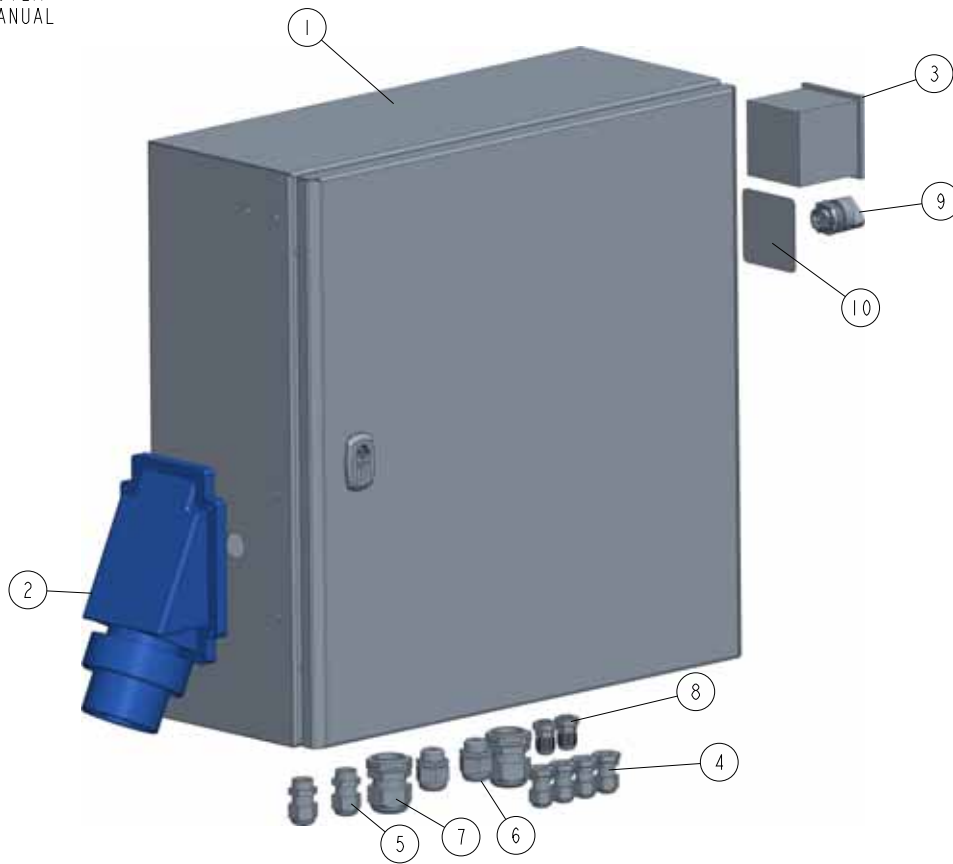
540466_001_B
 540466_MANUAL



REF	DESCRIPTION (◆ indicates parts available in assemblies only)	PART #	QTY
-	BOX, LX250 15 KW EL ELECTRICAL	540466	1
1	BOX, LX250 15 KW EL ELECTRICAL	540412	1
2	PLUG, MAIN W/SWITCH-ADJUSTABLE PHASE GT	E85235	1
3	AMMETER EQB72 40/80A FOR E25 ELECT. MOTO	505373	1
4	GLAND, DP 9/H CABLE	F81096-2	5
5	GLAND NUT, TRAILER HITCH, DW 11/H	085388	2
6	GLAND, DP 13/H CABLE	F81096-4	2
7	GLAND, DP 16/H	F81096-7	1
8	GLAND, DP21/H	F81096-3	1
9	GLAND, DP 7/H	F81096-11	1
10	SWITCH, 2-POSITION ZB5AD2	536902	1

6.6 Electrical Box (557004)

557004_001_A
 557004_MANUAL



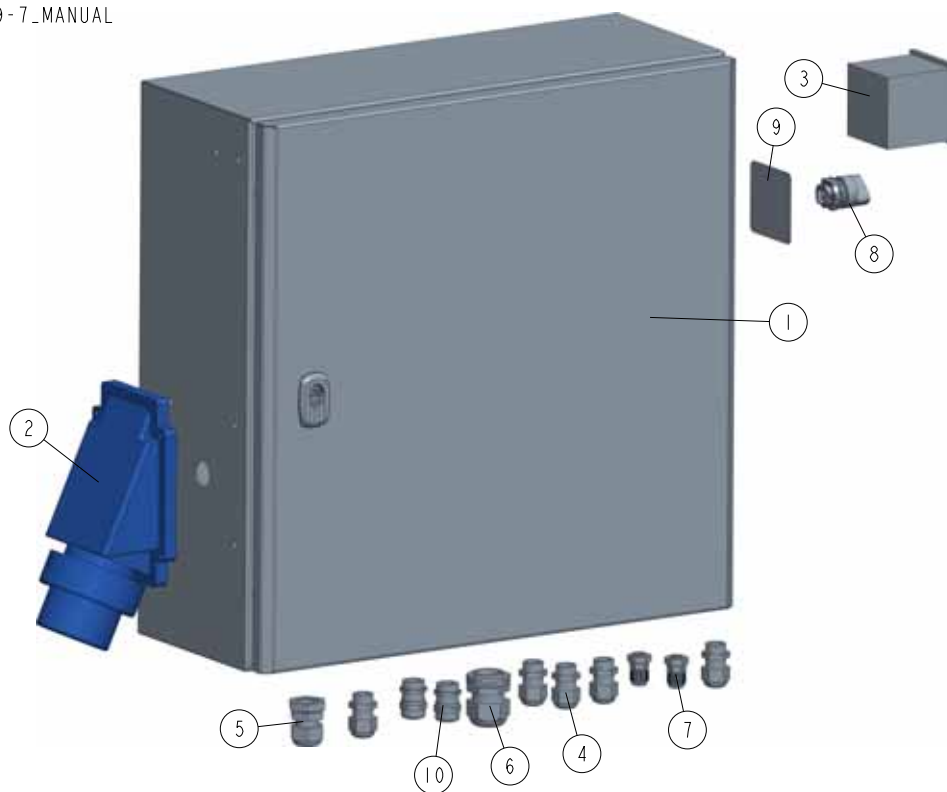
REF	DESCRIPTION (u indicates parts available in assemblies only)	PART #	QTY
-	ELECTRIC BOX LX250EH25S	557004	1
1	ELECTRIC BOX	547577	1
2	PLUG MAIN	503521-2	1
3	AMMETER EQB72 40/80A FOR E25 ELECT. MOTO	505373	1
4	GLAND, DP 9/H	F81096-2	4
5	GLAND NUT, TRAILER HITCH, DW 11/H	085388	2
6	GLAND, DP 13/H CABLE	F81096-4	2
7	GLAND, PG 21 CABLE	F81096-3	2
8	GLAND, DP7/H CABLE	F81096-11	2
9	SWITCH, M22-WRK	536902	1
10	DECAL OPERATING MODE	553526	1

6 LX250 MOTOR SET

Electrical Box (558009-7)

6.7 Electrical Box (558009-7)

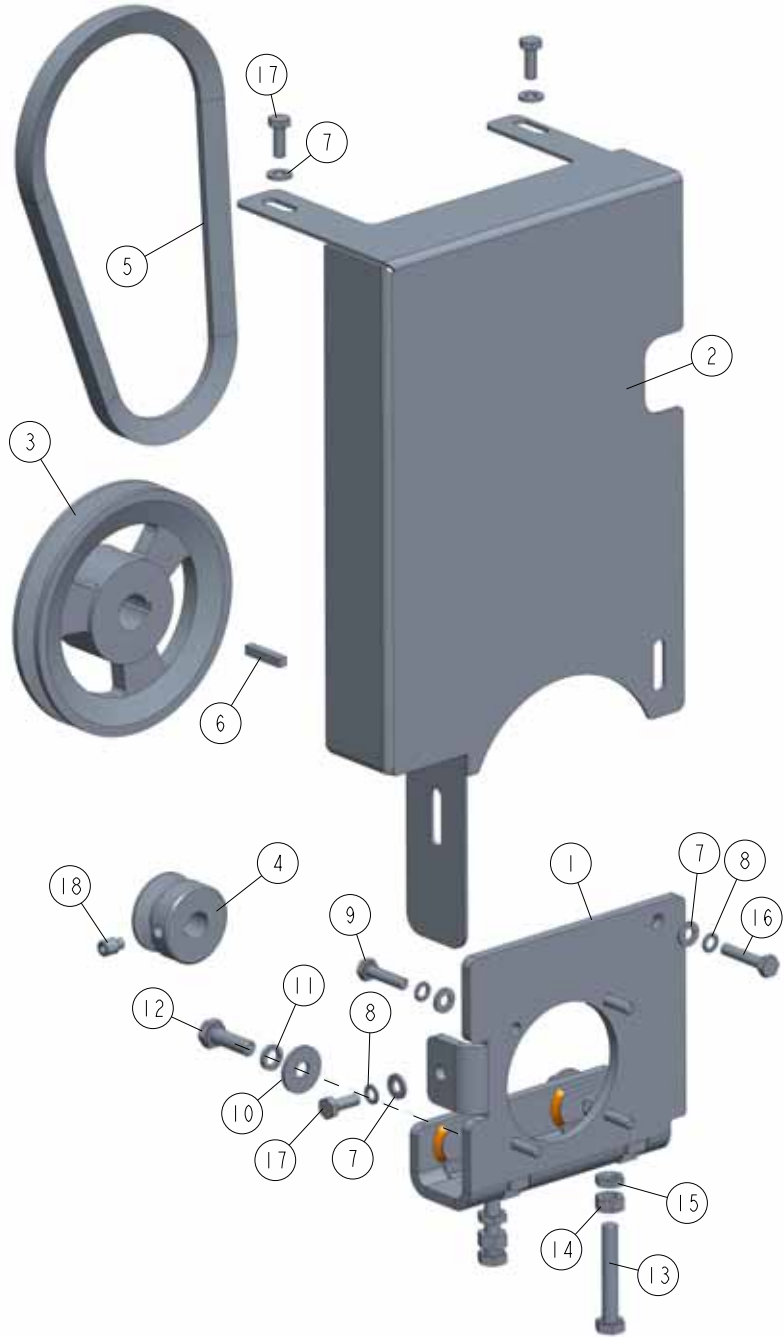
558009-7_001_B
558009-7_MANUAL



REF	DESCRIPTION (u indicates parts available in assemblies only)	PART #	QTY
-	BOX, LX250 11 kW 200V 60Hz ELECTRICAL	558009-7	1
1	ELECTRIC BOX	559205	1
2	PLUG MAIN	503521-2	1
3	AMMETER, EQB72 40/80A FOR E25 MOTOR	505373	1
4	GLAND, DW11/H CABLE	085388	5
5	GLAND, DP16/H CABLE	F81096-7	1
6	GLAND, DP21/H CABLE	F81096-3	1
7	GLAND, DP 7/H CABLE	F81096-11	2
8	SWITCH, M22-WRK	536902	1
9	DECAL OPERATING MODE	553526	1
10	GLAND EMC, M20X1.5	539859	2

6.8 Up/Down Motor w/ Mounting Parts (540591)

540591_001_A
540591_MANUAL

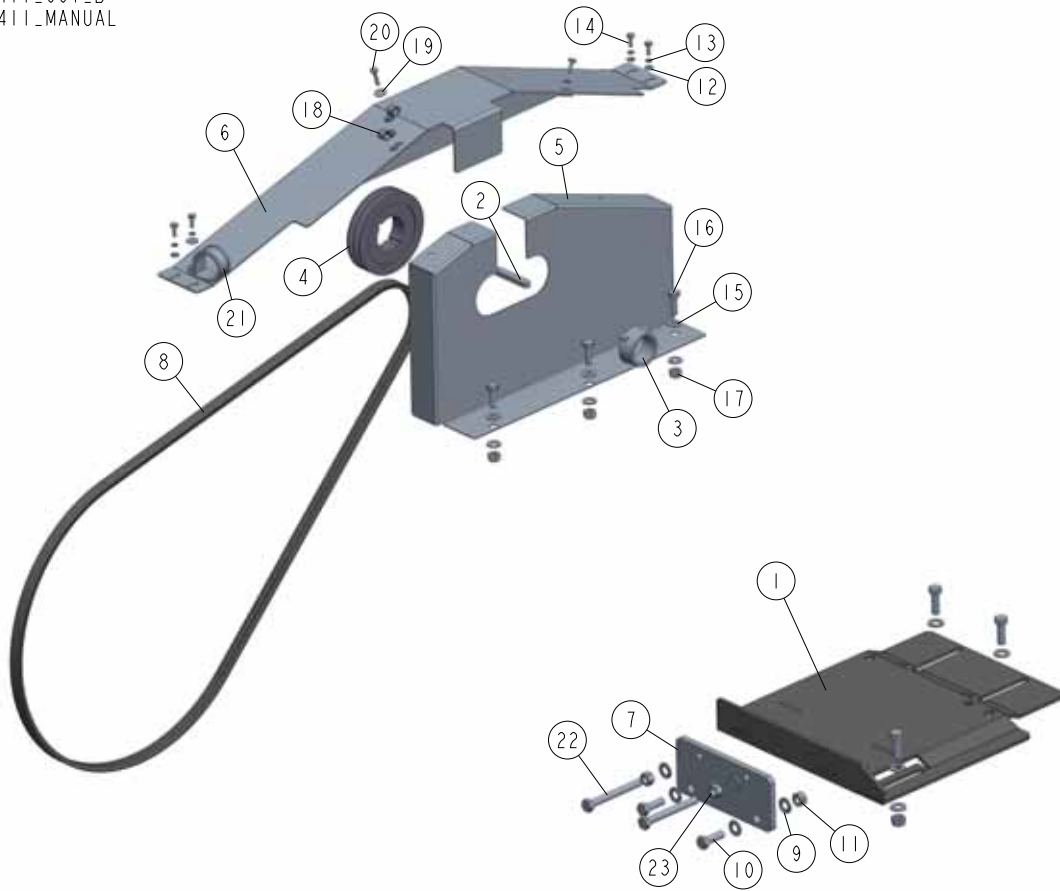


REF	DESCRIPTION (u indicates parts available in assemblies only)	PART #	QTY
-	UP/DOWN MOTOR W/MOUNTING PARTS	540591	1
1	BRACKET, UP/DOWN MOTOR MOUNT	540413-1	1
2	COVER, UP/DOWN BELT	540437-1	1
3	PULLEY, UP/DOWN	015256	1
4	SHEAVE, UP/DOWN	540436-1	1

REF	DESCRIPTION (u indicates parts available in assemblies only)	PART #	QTY	
5	BELT, 4L245	038459	1	
6	KEY, 3/16" SQUARE X 1" LONG	S31027	1	
7	WASHER, 6.4 FLAT ZINC	F81053-1	8	
8	WASHER, Z 6.1 SPLIT LOCK ZINC	F81053-3	6	
9	BOLT, M6X25 -8.8 HEX HEAD FULL THREAD ZI	F81001-3	4	
10	WASHER, ISO 7093-1-8-200 HV-A2E.	F81054-11	2	
11	WASHER, 8.2 SPLIT LOCK ZINC	F81054-4	2	
12	BOLT, M8X25-8.8-B HEX HEAD FULL THREAD Z	F81002-5	2	
13	BOLT, M8X50 -8.8 HEX HEAD FULL THREAD ZI	F81002-19	2	
14	NUT, M8-8-B HEX ZINC	F81032-1	2	
15	NUT, M8-04-FE/ZN ISO4035 HEX THIN	F81032-8	2	
16	BOLT, M6X30-8.8 HEX HEAD FULL THREAD ZIN	F81001-8	1	
17	BOLT, M6X16-8.8 HEX HEAD FULL THREAD ZIN	F81001-15	3	
18	SCREW, M8X12-45H- PN-EN-ISO 4028 ; DIN91	F81002-122	1	

6.9 Motor w/Belt & Guard Mounting (540411)

540411_001_B
540411_MANUAL



REF	DESCRIPTION (u indicates parts available in assemblies only)	PART #	QTY
-	MOTOR W/BELT & GUARD MOUNTING	540411	1
1	MOUNT WELDMENT, MOTOR	540419-1	1
2	KEY, A12X8X50 PARALLEL	715417	1
3	TAPER LOCK, 1610-42 T3PBX3 1081	539908	1
4	PULLEY, SPZ 125-2 (F02173)	538724	1
5	COVER WELDMENT, MOTOR	540421-1	1
6	COVER, DRIVE BELT	540524-1	1
7	PLATE, BELT TENSIONER	540467-1	1
8	V-BELT XPZ2160/2	539735	1
9	WASHER, 13 FLAT ZINC	F81056-1	12
10	BOLT, M12X35 8.8 HEX HEAD FULL THREAD ZI	F81004-24	5
11	NUT, M12 8 HEX NYLON ZINC LOCK	F81034-2	5
12	WASHER, 6.4 FLAT ZINC	F81053-1	4
13	WASHER, Z 6.1 SPLIT LOCK ZINC	F81053-3	4
14	BOLT, M6X16-8.8 HEX HEAD FULL THREAD ZIN	F81001-15	5
15	WASHER, 10.5 ZC DIN 126 ISO 7091	F81055-1	6
16	BOLT, DIN933-M10X30-8.8-A2E HEX HEAD	F81003-111	3
17	NUT, M10-8-B HEX NYLON ZINC LOCK	F81033-1	3
18	CLIP, RSGU 1.10/12W1 METAL & RUBBER RETA	086861	2



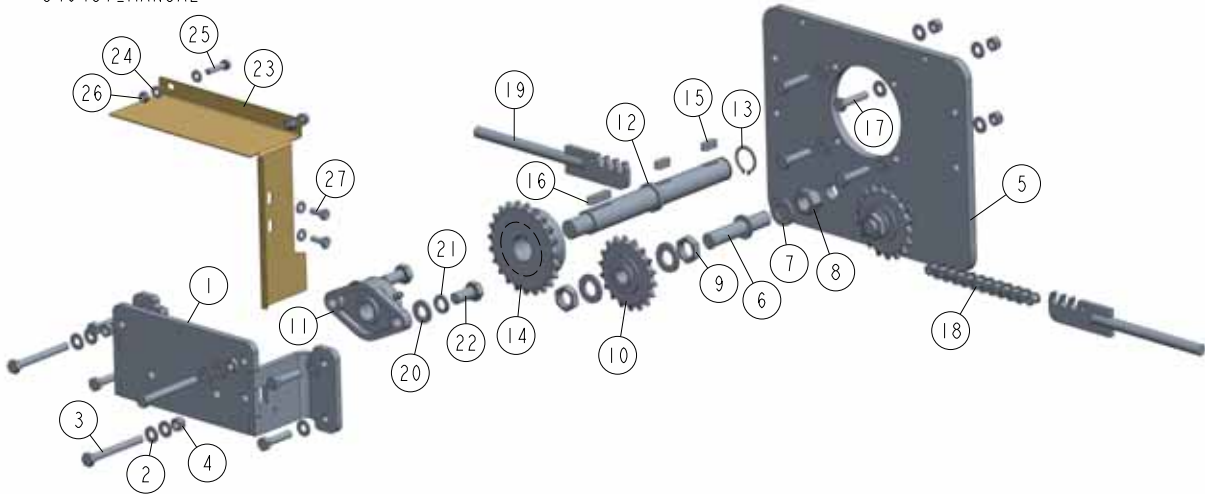
LX250 MOTOR SET

Motor w/Belt & Guard Mounting (540411)

REF	DESCRIPTION (u indicates parts available in assemblies only)	PART #	QTY	
19	WASHER, 6.5 SPECIAL FLAT ZINC	F81053-11	2	
20	BOLT, M6X25 -8.8 HEX HEAD FULL THREAD ZI	F81001-3	1	
21	CLAMP, RSGU 1.42/20 W1 METAL & RUBBER	F81087-3	1	
22	BOLT,M12X100 8.8 HEX HEAD FULL THREAD ZI	F81004-45	2	
23	NUT, M12-8-B HEX ZINC	F81034-1	2	

6.10 Gear Motors (540486, 540487)

540487_001_B
540487_MANUAL



REF	DESCRIPTION (u indicates parts available in assemblies only)	PART #	QTY
-	GEAR MOTOR W/MOUNTING PARTS - LEFT (KACPEREK)	540486	1
-	GEAR MOTOR W/MOUNTING PARTS - RIGHT (KACPEREK)	540487	1
1	BRACKET, MOUNT	540449-1	1
2	WASHER, 8.4 FLAT ZINC	F81054-1	22
3	BOLT, M8X75-8.8 HEX HEAD ZINC	F81002-91	3
4	NUT, M8 8 HEX NYLON ZINC LOCK	F81032-2	11
5	PLATE, GEAR MOTOR MOUNT (KACPEREK)	540488-1	1
-	SPROCKET ASSEMBLY	517890	2
6	SHAFT, SPROCKET	517891-1	1
7	WASHER, 17 SPLIT LOCK ZINC	F81058-1	3
8	NUT, M16-8 HEX NYLON ZINC LOCK	F81036-2	1
9	NUT, M16 8 THIN ZINC	F81036-4	2
10	SPROCKET, IDLER Z=18 KSR16.L0.08.10.18.0	088700	1
11	BEARING, UCFL204 (COMPLEX) W/HOUSING	500060	1
12	SHAFT, KACPEREK GEAR MOTOR OUTPUT	540489	1
13	RING, Z 24 OUTSIDE RETAINING	089654	1
14	SPROCKET, 08B-1; Z=23;DP=93.27 (T 72548)	517883-1	1
15	KEY, A8X7X20 PARALLEL	099059	2
16	KEY, A8X7X32 PARALLEL	088564	1
17	BOLT, M8X35-8.8 HEX HEAD FULL THREAD ZIN	F81002-13	8
18	CHAIN, 08B-1 465-LINK (5.9)	511148	1
19	BRACKET, POWER FEED CHAIN HOOK	517895-1	2
20	WASHER, 13 FLAT ZINC	F81056-1	2
21	WASHER, Z12.2 SPLIT LOCK ZINC	F81056-2	2
22	BOLT, M12X25-8.8 HEX HEAD FULL THREAD ZI	F81004-31	2
-	COVER ASSEMBLY, LX250 POWER FEED DRIVE -	540556 ¹	1
-	COVER ASSEMBLY, LX250 POWER FEED DRIVE -	540557 ²	1
23	COVER, LX250 POWER FEED DRIVE - RIGHT	540554-1 ³	1
23	COVER, LX250 POWER FEED DRIVE - RIGHT	540555-1 ⁴	1
24	WASHER, 6.4 FLAT ZINC	F81053-1	6



LX250 MOTOR SET

Gear Motors (540486, 540487)

REF	DESCRIPTION (u indicates parts available in assemblies only)	PART #	QTY	
25	BOLT, M6X25 -8.8 HEX HEAD FULL THREAD ZI	F81001-3	2	
26	NUT, M6-8-B HEX NYLON ZINC LOCK	F81031-2	2	
27	BOLT, M6X16-8.8 HEX HEAD FULL THREAD ZIN	F81001-15	2	

¹ Included in 540486

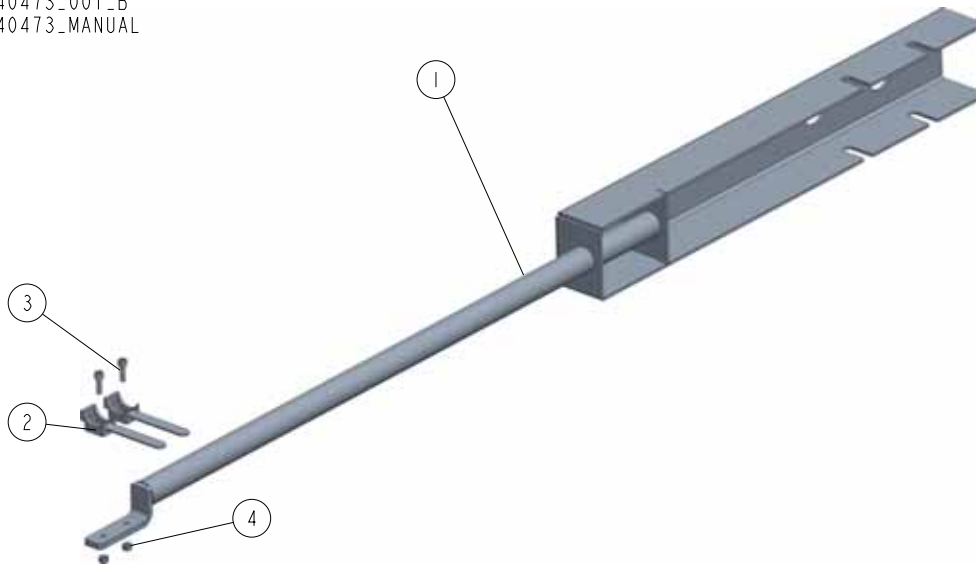
² Included in 540487

³ Included in 540556

⁴ Included in 540557

6.11 Horizontal Cable Guide (540473)

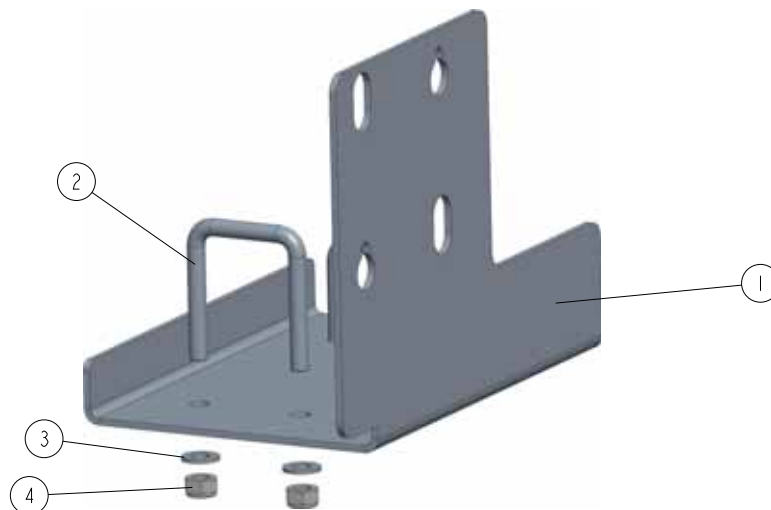
540473_001_B
540473_MANUAL



REF	DESCRIPTION (◆ indicates parts available in assemblies only)	PART #	QTY	
-	GUIDE ASSEMBLY, HORIZONTAL CABLE See Sec	540473	1	
1	GUIDE WELDMENT, HORIZONTAL CABLE	540471-1	1	
2	HOLDER - PLASTIC CABLE TIE	F81082-1	2	
3	SCREW,M5X16-8.8 HEX SOCKET HEAD CAP ZINC	F81000-25	2	
4	NUT, M5-8-FE/ZN5 DIN985	F81030-2	2	

6.12 Control Box Transport Bracket (547269)

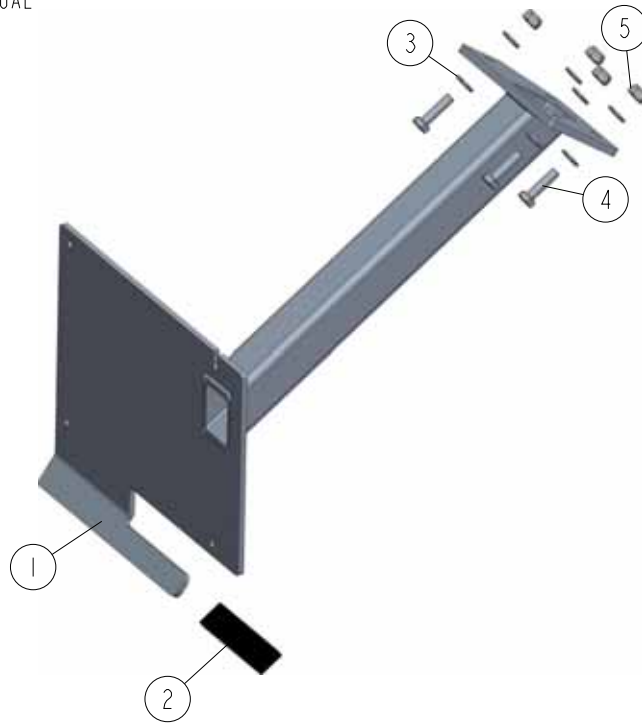
547269_001_A
547269_MANUAL



REF.	DESCRIPTION (* indicates parts available in assemblies only)	PART #	QTY
-	Control Box Transport Bracket Assembly	547269	1
1	PLATE, CONTROL PANEL TRANSPORT	547270-1	1
2	U-BOLT, 50X50 M10X30 H=80 SQUARE	F81003-168	2
3	WASHER, 10,5 FLAT ZINC	F81055-1	4
4	NUT, M10 HEX NYLON ZINC LOCK	F81033-1	4

6.13 Control Box Mounting (540415)

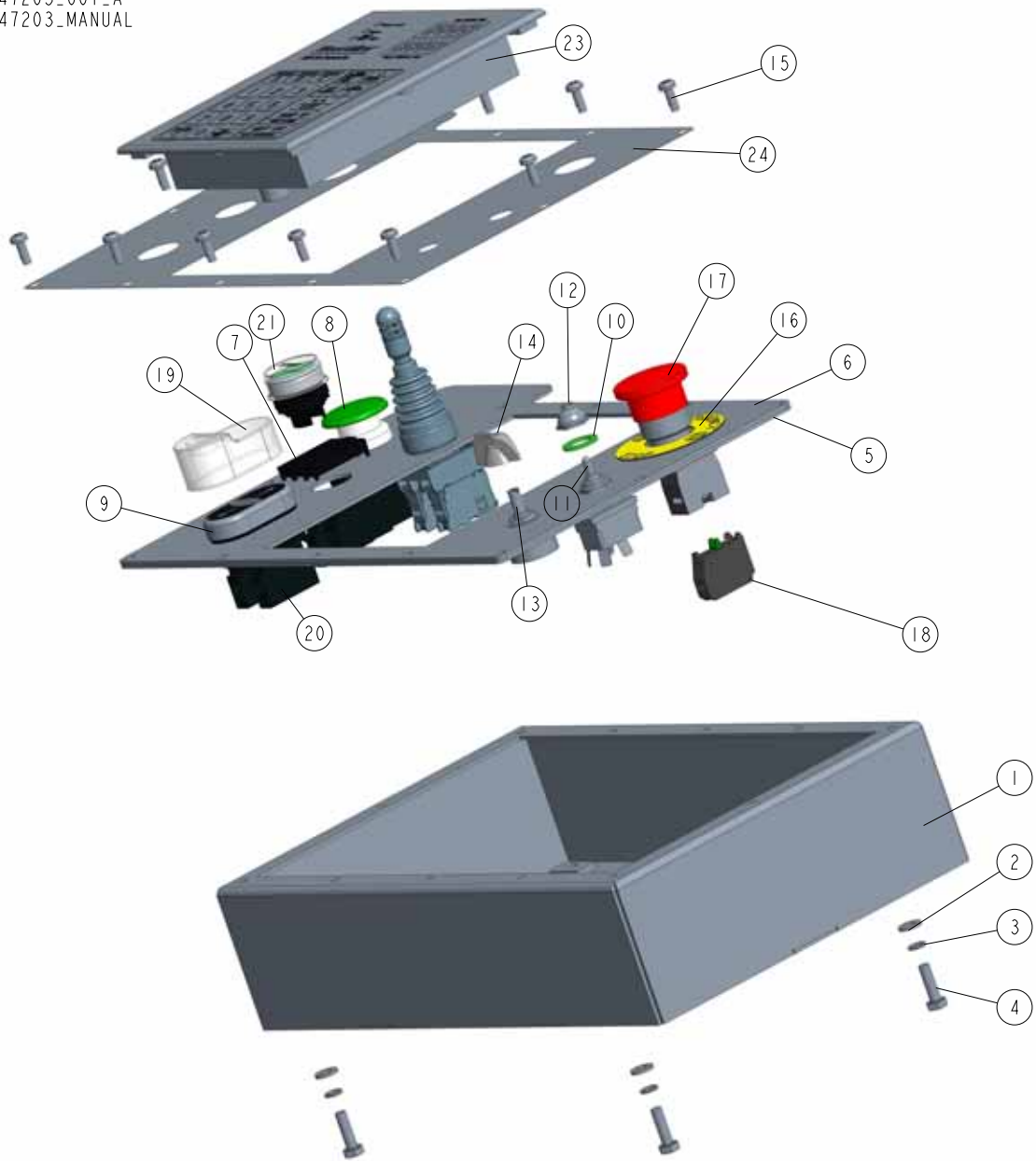
540415_001_B
540415_MANUAL



REF	DESCRIPTION (u indicates parts available in assemblies only)	PART #	QTY	
-	CONTROL BOX W/MOUNTING PARTS See Section	540415	1	
1	BRACKET, LX250 CONTROL BOX MOUNT	540439-1	1	
2	COVER, LT15 GRIP LOG CLAMP	086875	1	
3	WASHER, 10.5 FLAT ZINC	F81055-1	8	
4	BOLT,M10X35-8.8 HEX HEAD FULL THREAD ZIN	F81003-17	4	
5	NUT, M10-8-B HEX NYLON ZINC LOCK	F81033-1	4	

6.14 Control Box (547203)

547203_001_A
547203_MANUAL



REF	DESCRIPTION (u indicates parts available in assemblies only)	PART #	QTY
-	BOX, LX250/AC CONTROL	547203	1
1	BOX WELDMENT, LT15 CONTROL	538729-1	1
2	WASHER, 6.4 FLAT ZINC	F81053-1	4
3	WASHER, Z 6.1 SPLIT LOCK ZINC	F81053-3	4
4	BOLT, M6X20-8.8 HEX HEAD FULL THREAD ZIN	F81001-2	4
5	GASKET, LT15 CONTROL BOX	538732	1
6	PANEL, LX250 CONTROL BOX FRONT	547204-1	1
7	ADAPTER, LPXAU120 MOUNTING	535438	3
8	BUTTON, LPCB6143	536909	1
9	SWITCH, LPCBL7191	536908	1

REF	DESCRIPTION (u indicates parts available in assemblies only)	PART #	QTY	
10	WASHER, 1/2X3/4X1/16 NYLON	P05251-1	1	
11	SWITCH, DPDT TOGGLE 21A REV MOM SPADE	024200	1	
12	BOOT, TOGGLE SWITCH	P02575	1	
13	POTENTIOMETER, 1K LTAGA	E20519	1	
14	KNOB, SPEED CONTROL	P06257	1	
15	BOLT, #10-24 X 1/2 PH PAN HD, TYPE 23	F05015-17	12	
16	WASHER, LPX AU115 E-STOP BUTTON	536912	1	
17	SWITCH, XB4 BS542 EMERGENCY	535445-K	1	
18	CONTACT, 1NCLPXC01	535440	1	
19	BOOT, LPXAU157 BUTTON	536926	1	
20	CONTACT, 1NOLPXC10	535439	6	
21	BUTTON, LPCBL1163	536921	1	
22	JOYSTICK, 2-POS. 8LM2T J200	536914	1	
23	SW-10 SETWORK CONTROLLER	500628	1	
24	DECAL, LX250 CONTROL BOX	547205	1	