

# **Wood-Mizer®**

## **Parts Manual**

---

**MS300 E3S**  
**MS300 E2S**

**rev. A1.03**  
**rev. A1.03**

---



**Safety is our #1 concern!** Read and understand all safety information and instructions before operating, setting up or maintaining this machine.

*Form #2501*

# Table of Contents

# Section-Page

|                  |  |            |
|------------------|--|------------|
| <b>SECTION 1</b> | <b>GENERAL INFORMATION</b>                         | <b>1-1</b> |
| 1.1              | How To Use the Parts List.....                     | 1-1        |
| 1.2              | Sample Assembly .....                              | 1-1        |
| <b>SECTION 2</b> | <b>MS300 TABLE SAW</b>                             | <b>2-1</b> |
| 2.1              | Chassis .....                                      | 2-1        |
| 2.2              | MS300 Mechanical Assembly .....                    | 2-3        |
| 2.3              | Decals .....                                       | 2-5        |
| 2.4              | Motor Kit .....                                    | 2-7        |
| 2.5              | Handle Assembly (No. 542521) .....                 | 2-8        |
| 2.6              | Cutting Unit Assembly (No. 544171) .....           | 2-9        |
| 2.7              | Spindle Housing Assembly (No. 544061) .....        | 2-11       |
| 2.8              | Motor Base Assembly (No. 544067) .....             | 2-12       |
| 2.9              | Lower Body Assembly (No. 544059) .....             | 2-13       |
| 2.10             | Horizontal Drive Shaft Assembly (No. 544177) ..... | 2-14       |
| 2.11             | Saw Lift Screw Assembly (No. 544180) .....         | 2-15       |
| 2.12             | Riving Knife Assembly (No. 544053) .....           | 2-16       |
| 2.13             | Saw Dust Collector Assembly (No. 544077) .....     | 2-17       |
| 2.14             | Splitting Bar Assembly (No. 544081) .....          | 2-18       |
| 2.15             | Gauge Assembly (No. 544091) .....                  | 2-19       |
| 2.16             | Fine Adjuster (No. 544094) .....                   | 2-20       |
| 2.17             | Upper Guard Assembly (No. 544125) .....            | 2-21       |
| 2.18             | Bottom Bracket Assembly (No. 544107) .....         | 2-22       |
| 2.19             | Telescop Arm Assembly (No. 544113) .....           | 2-23       |
| 2.20             | Upper Arm Assembly (No. 544120) .....              | 2-24       |
| 2.21             | Lower Arm Assembly (No. 544118) .....              | 2-25       |
| 2.22             | Extension Shelf Assembly (No. 544057) .....        | 2-26       |
| 2.23             | Saw Tilt Drive Screw (No. 544046) .....            | 2-27       |
| 2.24             | Table Angle Measurement Team (No. 544156) .....    | 2-28       |
| 2.25             | Mounting Assembly 544154 .....                     | 2-29       |
| 2.26             | Side Clamp (No. 544350) .....                      | 2-30       |
| 2.27             | Movable table (No. 544270) .....                   | 2-31       |
| 2.28             | Main Profile 544271 .....                          | 2-32       |
| 2.29             | Lower Profile (No. 544282) .....                   | 2-33       |
| 2.30             | Cart (No. 544283) .....                            | 2-34       |
| 2.31             | Main Profile Side Handle (No. 544269) .....        | 2-35       |
| 2.32             | Main Profile Side Handle (No. 544285) .....        | 2-36       |
| 2.33             | Side Shelf (No. 544267) .....                      | 2-37       |
| 2.34             | MS300EA3S Electrical Box (Part No, 536932-6) ..... | 2-38       |
| 2.35             | Extraction Hose. (No. 544186) .....                | 2-39       |
| 2.36             | Hold-Down Assembly (No. 542460) .....              | 2-40       |
| 2.37             | Hold-Down Arm (No. 544367) .....                   | 2-41       |
| 2.38             | Extension Table. 541506 .....                      | 2-42       |

## Getting Service

Wood-Mizer is committed to providing you with the latest technology, best quality and strongest customer service available on the market today. We continually evaluate our customers' needs to ensure we're meeting current wood-processing demands. Your comments and suggestions are welcome.

### *General Contact Information*

From Europe call your local distributor or our European Headquarters and Manufacturing Facility in Koło, Nagórna 114 St, Poland at **+48-63-2626000**. From the continental U.S., call our U.S. Headquarter 8180 West 10th St. Indianapolis, IN 46214, toll-free at **1-800-525-8100**. Ask to speak with a Customer Service Representative. Please have your machine identification number and your customer number ready when you call. The Service Representative can help you with questions about the operation and maintenance of your machine. He also can schedule you for a service call.

### **Office Hours:**

| <b>Country</b> | <b>Monday - Friday</b> | <b>Saturday</b> | <b>Sunday</b> |
|----------------|------------------------|-----------------|---------------|
| Poland         | 7 a.m.- 3 p.m.         | Closed          | Closed        |
| US             | 8 a.m.- 5 p.m.         | 8 a.m.- 12 p.m  | Closed        |

Please have your vehicle identification number and your customer number ready when you call.

Wood-Mizer will accept these methods of payment:

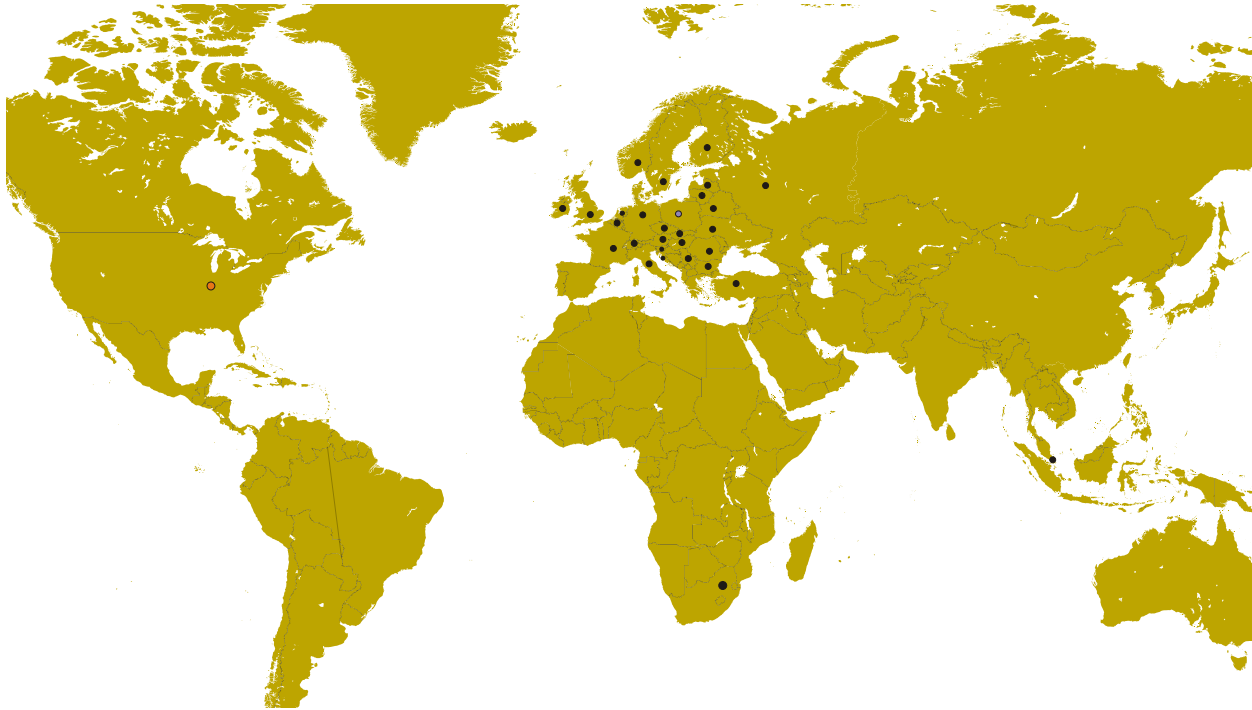
- Visa, Mastercard, or Discover
- COD
- Prepayment
- Net 15 (with approved credit)



Be aware that shipping and handling charges may apply. Handling charges are based on size and quantity of order.

Technical data are subject to change without prior notice.

Actual product may differ from product images. Some illustrations show machines with optional equipment.

**Branches & Authorized Sales Centers Wood-Mizer Locations (North and South America)**



| EUROPE   |   | UNITED STATES  |
|--|---|--|
| <p> <b>European Headquarters</b><br/> <b>Wood-Mizer Industries Sp. z o.o.</b><br/>                     Nagórna 114, 62-600 Ko?o, Poland<br/>                     Tel.: +48-63-26-26-000<br/>                     Fax: +48-63-27-22-327<br/> <a href="http://www.woodmizer.eu">www.woodmizer.eu</a></p>  |   | <p> <b>World Headquarters</b><br/> <b>Wood-Mizer LLC</b><br/>                     8180 West 10th Street<br/>                     Indianapolis, Indiana 46214-2400,<br/>                     USA<br/>                     Tel.: +1-317-271-1542<br/>                     Fax: +1-317-273-1011<br/> <a href="http://www.woodmizer.com">www.woodmizer.com</a></p>        |
| <p><b>BELARUS</b><br/> <b>MOST-GRUPP</b><br/>                     Siemashko 15, k.3<br/>                     Minsk 2200116<br/>                     Tel.: +375-17-270-90-08<br/>                     Fax: +375-17-270-90-08<br/>                     GSM: +375-29-649-90-80<br/>                     e-mail: <a href="mailto:most-by@mail.ru">most-by@mail.ru</a></p>  | <p><b>SWITZERLAND Stefan Wespi</b><br/>                     Maschinen u. Geräte<br/>                     Spezialarbeiten GmbH<br/>                     Eichstraße 4<br/>                     6353 Weggis<br/>                     Tel.: +41-413-900-312<br/>                     GSM: +41-799-643-594<br/> <a href="mailto:info@woodmizer.ch">info@woodmizer.ch</a><br/> <a href="http://www.woodmizer.ch">www.woodmizer.ch</a></p> | <p><b>RUSSIA Dariusz Miko?ajewski</b><br/> <b>OOO WOOD-MIZER INDUSTRIES</b><br/>                     141031, Moscow<br/>                     Reg., Mytishenski raj., pos. Veshki,<br/>                     Zavodskaja str., 3B<br/>                     Tel.Fax: +7(495) 788-72-35<br/>                     Tel.Fax: +7(495) 641-51-60<br/>                     e-mail: <a href="mailto:dariuszm@woodmizer-moscow.ru">dariuszm@woodmizer-moscow.ru</a></p> |
| <p><b>BULGARIA Kalin Simeonov</b><br/> <b>Ecotechproduct</b><br/>                     38 Star Lozenski pat str.<br/>                     Sofia 1186<br/>                     Tel.: +359-2-462-7035<br/>                     Tel.: +359-2-963-1656<br/>                     Tel./Fax<br/>                     : +359-2-979-1710<br/> <b>Kalin Simeonov</b><br/>                     GSM: +3592-963-2559<br/>                     e-mail: <a href="mailto:office@ecotechproduct.com">office@ecotechproduct.com</a></p> | <p><b>HUNGARY Wiktor Turoczy</b><br/> <b>Wood-Mizer Hungary K.F.T.</b><br/>                     Szonyi Ut 67., 2921 Komárom<br/>                     Tel./Fax: +36-34-346-255<br/>                     e-mail: <a href="mailto:woodmizer@woodmizer.hu">woodmizer@woodmizer.hu</a></p>   | <p><b>RUSSIA Far East Wladimir G?azaczew</b><br/> <b>"WM Service"</b><br/>                     Krasnoretchenskaya Str.111<br/>                     680006 Khabarovsk<br/>                     Tel./Fax: +7-914-541-1183<br/>                     e-mail: <a href="mailto:wms-khv@mail.ru">wms-khv@mail.ru</a></p>  |

|   |   |  |
|---|---|--|
| <p><b>CROATIA Krešimir Pregernik Pregimex d.o.o.</b><br/>S. Batušića 31, 10090 Zagreb<br/>Tel./Fax: +3851-38-94-668<br/><b>Krešimir Pregernik</b><br/>GSM: +3851-98-207-106<br/>e-mail: <a href="mailto:Kresimir.Pregernik@gmail.com">Kresimir.Pregernik@gmail.com</a></p>  | <p><b>ITALY Pasquale Felice Wood-Mizer Italia Srl Cda. Capoiaccio SN</b><br/>86012 Cercemaggiore<br/>Campobasso<br/>Tel./Fax: +39-0874-798-357<br/>GSM: +39-333-281-03-79<br/>e-mail: <a href="mailto:wmitaliasrl@gmail.com">wmitaliasrl@gmail.com</a></p>  | <p><b>SERBIA Dragan Markov Wood-Mizer Balkan d.o.o.</b><br/>Svetosavska GA 3/3; P. Fah 25<br/>23 300 Kikinda<br/>Tel./Fax: +381-230-25-754<br/>Tel./Fax: +381-230-23-567<br/>GSM: +381-63-568-658<br/>e-mail: <a href="mailto:office@woodmizer.co.yu">office@woodmizer.co.yu</a></p>                       |
| <p><b>CZECH REPUBLIC Miroslav Greill Wood-Mizer CZ s.r.o.</b><br/>Za Kasárny 946<br/>339 01 Klatovy<br/>Tel: +420-376-312-220<br/>GMS: +420-608-111-104<br/><b>Miroslav Greill</b><br/>GMS: + 420-602-439-799<br/>E-mail: <a href="mailto:woodmizer@woodmizer.cz">woodmizer@woodmizer.cz</a></p>  |   | <p><b>SLOVAKIA Wiktor Turoczy Wood-Mizer Danubia s.r.o.</b><br/>Hadovce 5, 94501 Komárno<br/>Tel.: +421-35-77-40-316<br/>Fax: +421-35-7740-326<br/>GSM: +421-905-930-972<br/>e-mail: <a href="mailto:woodmizer@woodmizer.sk">woodmizer@woodmizer.sk</a></p>  |
| <p><b>CZECH REPUBLIC Lubomir Kudlik Wood-Mizer Moravia</b><br/>Sovadinova 6<br/>69002 Breclav<br/>Tel./Fax: +420-519-322-443<br/><b>Lubomir Kudlik</b><br/>GSM: +420-602-734-792<br/>e-mail: <a href="mailto:info@wood-mizer.net">info@wood-mizer.net</a></p>   | <p><b>LATVIA Vilmars Jansons OBERTS Ltd</b><br/>Gaujas str. 32/2<br/>LV-2167 Marupe, Rigas Raj.<br/>Tel.: +371-7-810-666<br/>Fax: +371-7-810-655<br/><b>Vilmars Jansons</b><br/>GSM: +371-92-06-966<br/><b>Andris Orols</b><br/>GSM: +371-28-33-07-90<br/>e-mail: <a href="mailto:andris@oberts.lv">andris@oberts.lv</a></p>  | <p><b>TURKEY Er-Ka Ahsap Profil Kerestecilik San. ve Tic. Ltd. Sti.</b><br/>Adana Keresteciler Sitesi 191 sk No.41<br/>ADANA<br/>Tel.: +90-322-346-15-86<br/>Fax: +90-322-345-17-07<br/>GSM: +90-533-363-18-44<br/>e-mail: <a href="mailto:info@erkaahsap.com.tr">info@erkaahsap.com.tr</a></p>            |
| <p><b>FINLAND Howard Blackbourn Oy Falkberg Jordbruk Ab</b><br/>Falkintie 220<br/>25610 Ylonkyla<br/>Tel.: +358-2732-2253<br/>Fax: +358-2732-2263<br/><b>Howard Blackbourn</b><br/>GSM: +358-440-424-339<br/>e-mail: <a href="mailto:falkberg@woodmizer.fi">falkberg@woodmizer.fi</a></p>   | <p><b>LITHUANIA Andrius Zuzevicius UAB Singlis</b><br/>Savanoriu pr. 187, 2053 Vilnius<br/>Tel.: +370-5-2-32-22-44<br/>Fax: +370-5-2-64-84-15<br/>GSM: +370-620-28-645<br/>e-mail: <a href="mailto:andrius.z@singlis.lt">andrius.z@singlis.lt</a><br/><br/><b>Dmitrij Gaiduk</b><br/>GSM: +370-69-84-51-91<br/>e-mail: <a href="mailto:dmitrijus.g@singlis.lt">dmitrijus.g@singlis.lt</a></p> | <p><b>UKRAINE Ivan Vinnicki MOST UKRAINA</b><br/>bul. Myru 3, Bajkivtsi Ternoplskij r-j<br/>Ternopolska oblast<br/>47711 Ukraine<br/>Tel/Fax: +38 (0352) 52 37 74<br/>GSM: +38 (067) 352 54 34<br/>GSM: +38 (067) 674 50 68<br/>E-mail: <a href="mailto:most-ukraine@ukr.net">most-ukraine@ukr.net</a></p> |
| <p><b>FRANCE Tizoc Chavez Wood-Mizer France</b><br/>556 chemin des Embouffus,<br/>ZAC des Basses Echarrieres<br/>38440 SAINT JEAN DE BOURNAY<br/>Tel: +33-4 74 84 84 44<br/>GSM: +33-607 52 02 82<br/>Mail: <a href="mailto:tchavez@woodmizer.fr">tchavez@woodmizer.fr</a></p>  | <p><b>NORWAY Tor Bakken Flaathe</b><br/>Bakken Flaathe A/S<br/>Løkenvegen 5, 2034 Holter<br/>Tel: + 47-638 74 989<br/>Sales: + 47- 412 80 076<br/>Service: +47- 975 87 588<br/><a href="mailto:post@woodmizer.no">post@woodmizer.no</a><br/><a href="http://www.woodmizer.no">www.woodmizer.no</a></p>  | <p><b>UNITED KINGDOM &amp; IRELAND Wood-Mizer UK</b><br/>Hopfield Barn<br/>Kenward Road, Yalding<br/>Kent ME18 6JP, UK<br/>Tel.: +44-1622-813-201<br/>Fax: +44-1622-815-534<br/>e-mail: <a href="mailto:info@woodmizer.co.uk">info@woodmizer.co.uk</a></p>   |
| <p><b>SLOVENIA Jan Fale FAMTEH d.o.o.</b><br/>Gacnikova pot 2,<br/>2390 Ravne na Koroskem<br/>Tel.: +386-2-62-04-232<br/>Fax: +386-2-62-04-231<br/><b>Jan Fale</b><br/>GSM: +386-2-62-04-230<br/>e-mail: <a href="mailto:jan.fale@famteh.si">jan.fale@famteh.si</a><br/><br/><b>Matjaz Kolar</b><br/>Tel.: +386-2-62-04-232<br/>GSM: +386-31-775-999<br/>e-mail: <a href="mailto:matjaz.kolar@famteh.si">matjaz.kolar@famteh.si</a></p> |   |  |

|   |  |   |
|---|--|---|
| <p><b>GERMANY/AUSTRIA Klaus Longmuss</b><br/> <b>Wood-Mizer GmbH</b><br/> Dorfstraße 5, 29485 Schletau<br/> <b>Büro</b><br/> Tel: <a href="tel:+49-5883-988-010">+49-5883 988 010</a><br/> <b>Werkstatt</b><br/> Tel: <a href="tel:+49-5883-988-220">+49-5883 988 220</a><br/> <b>Ersatzteilservice</b><br/> Tel: <a href="tel:+49-58-83-98-80-250">+49-58 83 - 98 80 250</a><br/> <b>Schärfservice</b><br/> Tel: <a href="tel:+49-58-83-98-80-270">+49-58 83 - 98 80 270</a><br/> <b>E-mail:</b><br/> <a href="mailto:info@woodmizer.de">info@woodmizer.de</a><br/> <a href="http://www.woodmizer.de">www.woodmizer.de</a><br/> <b>Klaus Longmuss</b><br/> Tel.: <a href="tel:+49-5883-9880-12">+49-5883-9880-12</a><br/> GSM: <a href="tel:+49-17-298-55-892">+49-17-298-55-892</a><br/> e-mail: <a href="mailto:KLongmuss@woodmizer.de">KLongmuss@woodmizer.de</a></p> | <p><b>Subagent:</b><br/> <b>SWEDEN Kjell Larsson</b><br/> <b>Mekwood AB</b><br/> Slingan 14, 812 41 Gästrike-Hammarby<br/> Tel.: <a href="tel:+46-290-515-65">+46-290-515-65</a><br/> <b>Kjell Larsson</b><br/> GSM: <a href="tel:+46-706-797-965">+46-706-797-965</a><br/> e-mail: <a href="mailto:kjell.larsson@mekwood.se">kjell.larsson@mekwood.se</a></p> | <p><b>IRELAND</b><br/> <b>Wood-Mizer Ireland</b><br/> Stephen Brennan<br/> Cum Lahardane Ballina County Mayo<br/> Tel: <a href="tel:+353-96-51345">+353 96 51345</a><br/> E-mail: <a href="mailto:brennanmill@ericom.net">brennanmill@ericom.net</a></p>  |
| <p><b>Subagents:</b><br/> <b>DENMARK Kevin Christiansen</b><br/> Kevin Christiansen's<br/> savværker PMV<br/> Arnborgvej 40, 7330 Brande- Fasterholt<br/><br/> Mobile: <a href="tel:+45-61468763">+45 61468763</a><br/> Mobile: <a href="tel:+45-23495828">+45-23495828</a><br/> <a href="mailto:Info@woodmizer.dk">Info@woodmizer.dk</a><br/> <a href="http://www.woodmizer.dk">www.woodmizer.dk</a></p>   | <p><b>ROMANIA Adrian Echert</b><br/> <b>SC WOOD-MIZER RO SRL</b><br/> TRANSILVANIEI Nr. 5<br/> Sibiu, Cisanadie 555300<br/> Tel./Fax: : <a href="tel:+40-369-405-433">+40-369-405-433</a><br/> GSM: <a href="tel:+40-745-707-323">+40-745-707-323</a><br/> e-mail: <a href="mailto:aechert@woodmizer.ro">aechert@woodmizer.ro</a></p>                          | <p>Regional Manager - Asia<br/> Robert Moxham<br/> Regional Direction - Asia<br/> Wood-Mizer Asia Manufacturing Co., Ltd.<br/> No.2, Gongyequ 40th Rd. Xitun District,<br/> Taichung City, 40768, Taiwan, R.O.C.<br/> TEL: <a href="tel:+886-4-2359-3022">+886-4-2359 3022</a><br/> FAX: <a href="tel:+886-4-2359-3205">+886-4-2359 3205</a><br/> CELL: <a href="tel:+886-9-0568-7708">+886-9-0568 7708</a><br/> EMAIL: <a href="mailto:RMoxham@woodmizer.com">RMoxham@woodmizer.com</a><br/> <a href="http://www.woodmizerasia.com">www.woodmizerasia.com</a><br/> Skype: r.g.moxham</p>                         |
| <p><b>NETHERLANDS Gerlo Breukers</b><br/> Breukers Houtzagerij en Bosbouwmachines<br/> Hazenweg 5, 7481 PC Haaksbergen<br/> Tel: <a href="tel:+31-535741326">+31-535741326</a><br/> Mobile: <a href="tel:+31-620419412">+31-620419412</a><br/> <a href="mailto:info@woodmizer.nl">info@woodmizer.nl</a><br/> <a href="http://www.woodmizer.nl">www.woodmizer.nl</a></p>   | <p><b>Subagent:</b><br/> <b>ROMANIA M. Echert</b><br/> <b>S.C. Echert Comprod s.r.l</b><br/> Str. Schitului Nr. 6, Apt.7 etajul-1<br/> 725 70 Vatra Dornei, Romania<br/> Tel./Fax: <a href="tel:+40-230-374-235">+40-230-374-235</a><br/> Tel. : <a href="tel:+40-740-35-35-74">+40-740-35-35-74</a></p>   | <p>Regional Manager - Africa<br/> Gavin Prowse<br/> Regional Sales Director - Africa<br/> Wood-Mizer Africa (Pty) Ltd.<br/> Unit 1, Leader Park<br/> 20 Chariot Street<br/> Stormill Ext.5<br/> Maraisburg, Johannesburg<br/> South Africa<br/> TEL: <a href="tel:+27-11-473-1313">+27 11 473 1313</a><br/> FAX: <a href="tel:+27-11-473-2005">+27 11 473 2005</a><br/> CELL: <a href="tel:+27-71-398-8010">+27 71 398 8010</a><br/> EMAIL: <a href="mailto:growse@woodmizer.com">growse@woodmizer.com</a><br/> <a href="http://www.woodmizerafrika.com">www.woodmizerafrika.com</a><br/> Skype: gavin.prowse</p> |

## USA World Headquarters

*Serving North & South America, Oceania, East Asia*

Wood-Mizer LLC  
8180 West 10th Street  
Indianapolis, IN 46214

Phone: 317.271.1542 or 800.553.0182  
Customer Service: 800.525.8100  
Fax: 317.273.1011  
Email: [infocenter@woodmizer.com](mailto:infocenter@woodmizer.com)

## Brazil Headquarters

*Serving Brazil*

Wood-Mizer do Brasil  
Rua Dom Pedro 1, No: 205 Bairro: Sao Jose  
Ivoti/RS CEP:93.900-000

Tel: [+55 51 9894-6461](tel:+55-51-9894-6461)/ [+55 21 8030-3338](tel:+55-21-8030-3338)/ [+55 51 3563-4784](tel:+55-51-3563-4784)  
Email: [info@woodmizer.com.br](mailto:info@woodmizer.com.br)

## Canadian Headquarters

*Serving Canada*

Wood-Mizer Canada  
396 County Road 36, Unit B  
Lindsay, ON K9V 4R3

Phone: 705.878.5255 or 877.357.3373  
Fax: 705.878.5355  
Email: [ContactCanada@woodmizer.com](mailto:ContactCanada@woodmizer.com)

## Europe Headquarters

*Serving Europe, Africa, West Asia*

Wood-Mizer Industries Sp z o.o.  
Nagorna 114  
62-600 Kolo, Poland

Phone: [+48.63.26.26.000](tel:+48-63-26-26-000)  
Fax: [+48.63.27.22.327](tel:+48-63-27-22-327)

## Branches & Authorized Sales Centers

For a complete list of dealers, visit [www.woodmizer.com](http://www.woodmizer.com)

## SECTION 1 GENERAL INFORMATION

### 1.1 How To Use the Parts List

- Use the index above to locate the assembly that contains the part you need.
- Go to the appropriate section and locate the part in the illustration.
- Use the number pointing to the part to locate the correct part number and description in the table.
- Parts shown indented under another part are included with that part.
- Parts marked with a diamond (◆) are only available in the assembly listed above the part.

See the sample table below. Sample Part #A01111 includes part F02222-2 and subassembly A03333. Subassembly A03333 includes part S04444-4 and subassembly K05555. The diamond (◆) indicates that S04444-4 is not available except in subassembly A03333. Subassembly K05555 includes parts M06666 and F07777-77. The diamond (◆) indicates M06666 is not available except in subassembly K05555.

| 1.2 Sample Assembly |   |           |     |   |
|---------------------|---|-----------|-----|---|
| REF.                | DESCRIPTION (◆ Indicates Parts Available In Assemblies Only)  | PART #    | QTY |   |
|                     | Sample Assembly, Complete (Includes All Indented Parts Below) | A01111    | 1   |   |
| 1                   | Sample Part   | F02222-22 | 1   |   |
|                     | Sample Subassembly (Includes All Indented Parts Below)        | A03333    | 1   |   |
| 2                   | Sample Part (◆ Indicates Part Is Only Available With A03333)  | S04444-4  | 1   | ◆ |
|                     | Sample Subassembly (Includes All Indented Parts Below)        | K05555    | 1   |   |
| 3                   | Sample Part (◆ Indicates Part Is Only Available With K05555)  | M06666    | 2   | ◆ |
| 4                   | Sample Part   | F07777-77 | 1   |   |

#### To Order Parts:

- From Europe call our European Headquarters and Manufacturing Facility in Kolo, Poland at **+48-63-2626000**. From the continental U.S., call our toll-free Parts hotline at **1-800-525-8100**. Have your customer number, vehicle identification number, and part numbers ready when you call. From other international locations, contact the Wood-Mizer distributor in your area for parts.

#### Office Hours:

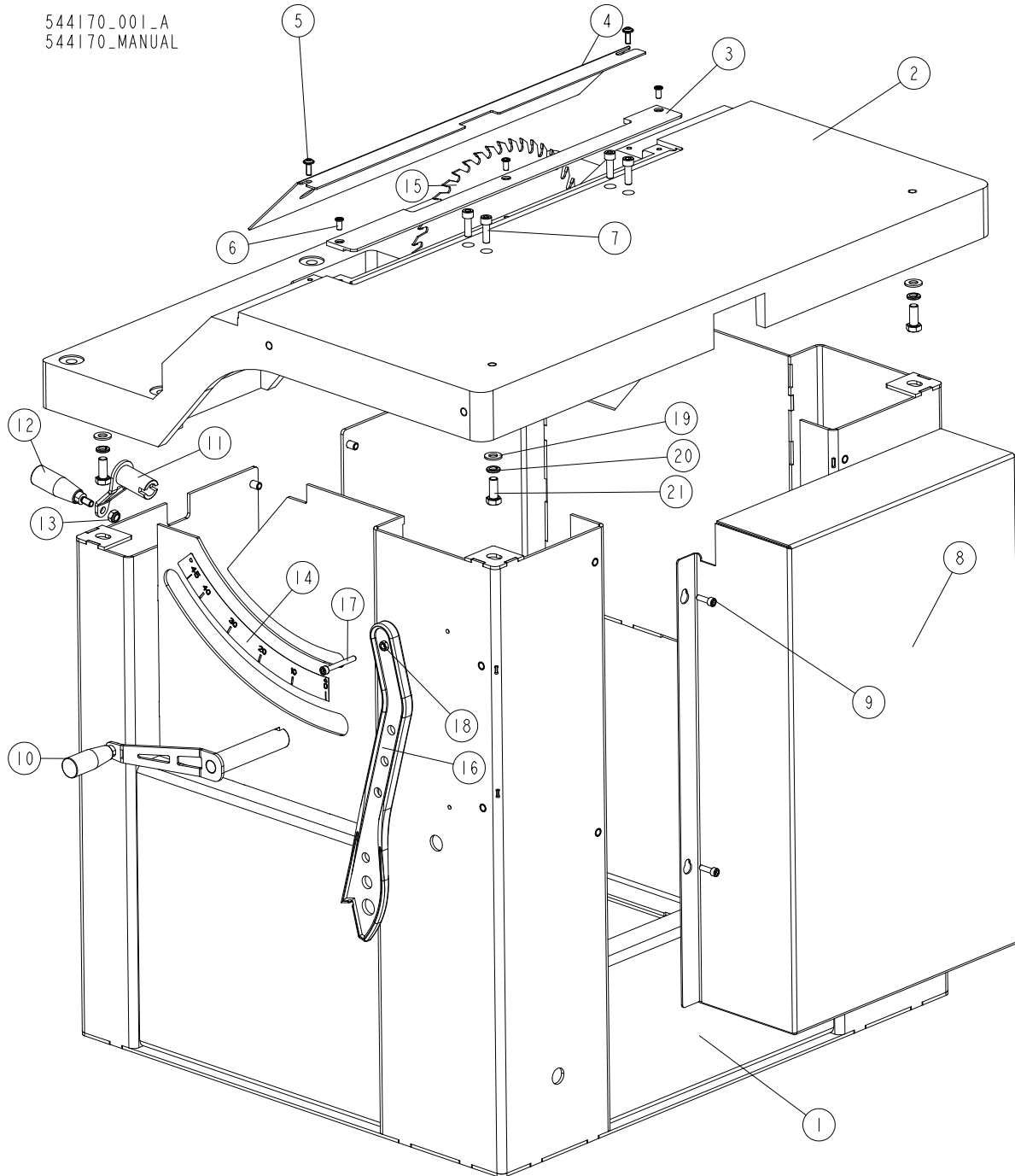
| Country | Monday - Friday | Saturday        | Sunday |
|---------|-----------------|-----------------|--------|
| Poland  | 7-15            | Closed          | Closed |
| US      | 8 a.m.- 5 p.m.  | 8 a.m.- 12 p.m. | Closed |



**CAUTION!** It is strongly recommended that only original spare parts be used.

## SECTION 2 MS300 TABLE SAW

### 2.1 Chassis



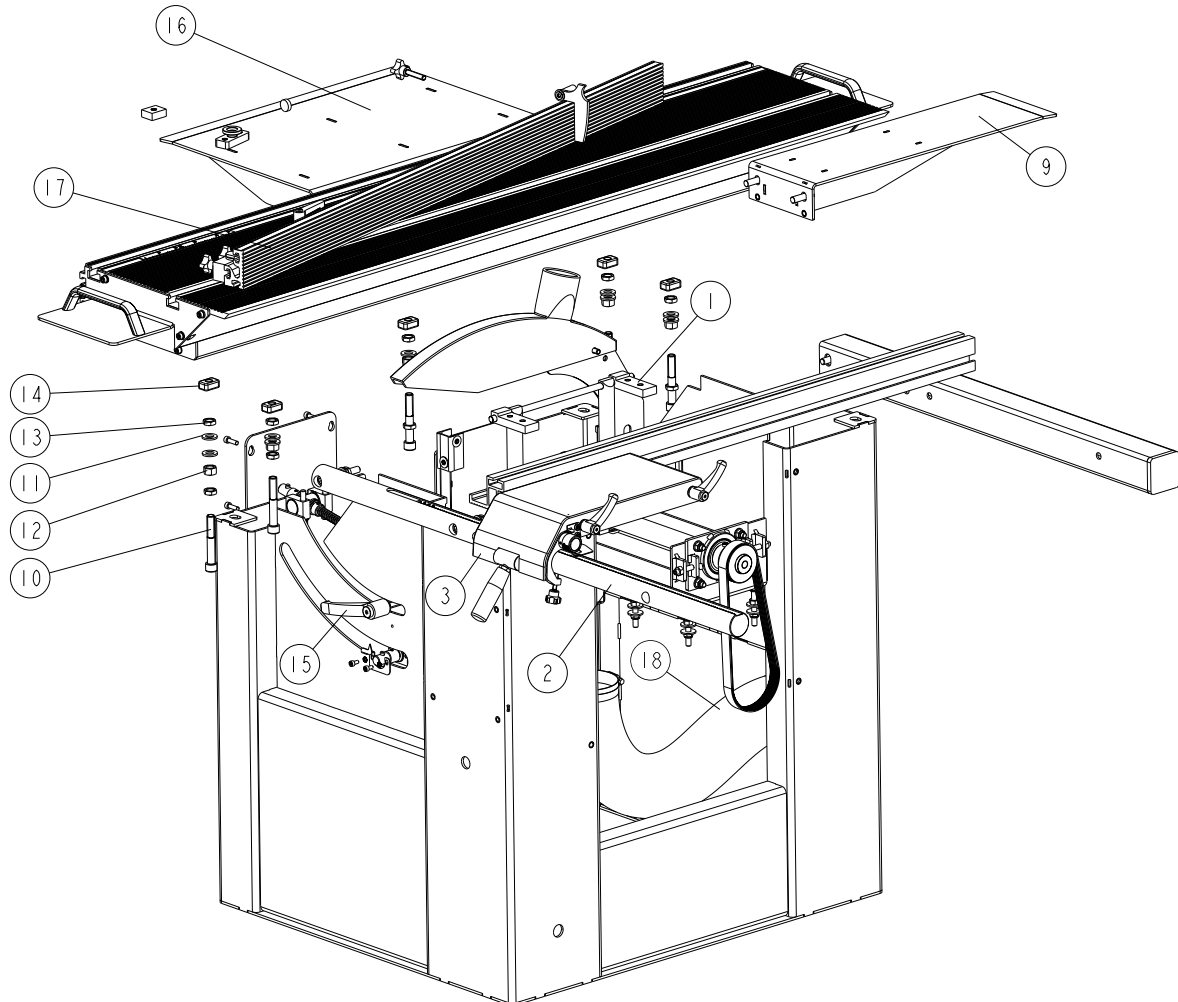
| REF. | DESCRIPTION (◆ indicates parts available in assemblies only) | PART #    | QTY |
|------|--|-----------|-----|
| -    | <b>Table Circular Saw MS300</b>                              | 544170    | 1   |
| 1    | CHASSIS WELDED AND PAINTED                                   | 544015-1  | 1   |
| 2    | TABLE  | 544020-1  | 1   |
| 3    | PLATE, TABLE   | 546427-1  | 1   |
| 4    | TABLE COVER  | 544078-1  | 1   |
| 5    | BOLT, M6X16 BN 11252 "BOSSARD"                               | F81001-24 | 2   |



| REF. | DESCRIPTION (◆ indicates parts available in assemblies only) | PART #     | QTY |  |
|------|--|------------|-----|--|
| 6    | SCREW M6X16 SHCS ZC 10.9 BN 1206                             | F81001-105 | 2   |  |
| 7    | BOLT, M8X25-10.9-FE/ZN5 HEX                                  | F81002-128 | 4   |  |
| 8    | DRIVE GUARD  | 544176-1   | 1   |  |
| 9    | SCREW, M6 X 20 8.8 SOCKET HEAD                               | F81001-22  | 4   |  |
| 10   | HANDLE, COMPLETE <a href="#">See Section 2.5</a>             | 542521     | 1   |  |
| -    | HANDLE ASSEMBLY  | 536955     | 1   |  |
| 11   | HANDLE WELDMENT  | 536953-1   | 1   |  |
| 12   | CYLINDRICAL GRIP   | 533505     | 1   |  |
| 13   | NUT, M8-8-B HEX NYLON ZINC LOCK                              | F81032-2   | 1   |  |
| 14   | STICKER ANGLE SCALE  | 544157     | 1   |  |
| 15   | BLADE, 315X3,2/2.2X30+PH2 Z=48ECO-SIL                        | 544158     | 1   |  |
| 16   | PUSHER   | 544293     | 1   |  |
| 17   | SCREW M6X60 SHCS 8.8; DIN 912 ISO 4762                       | F81001-83  | 1   |  |
| 18   | NUT, M6-8 HEX ZINC   | F81031-1   | 1   |  |
| 19   | WASHER, 10.5 FLAT ZINC                                       | F81055-1   | 4   |  |
| 20   | WASHER, 10.2 SPLIT LOCK ZINC                                 | F81055-2   | 4   |  |
| 21   | BOLT, M10X25-8.8-FE/ZN5                                      | F81003-11  | 4   |  |

## 2.2 MS300 Mechanical Assembly

544170\_002  
544170\_MANUAL

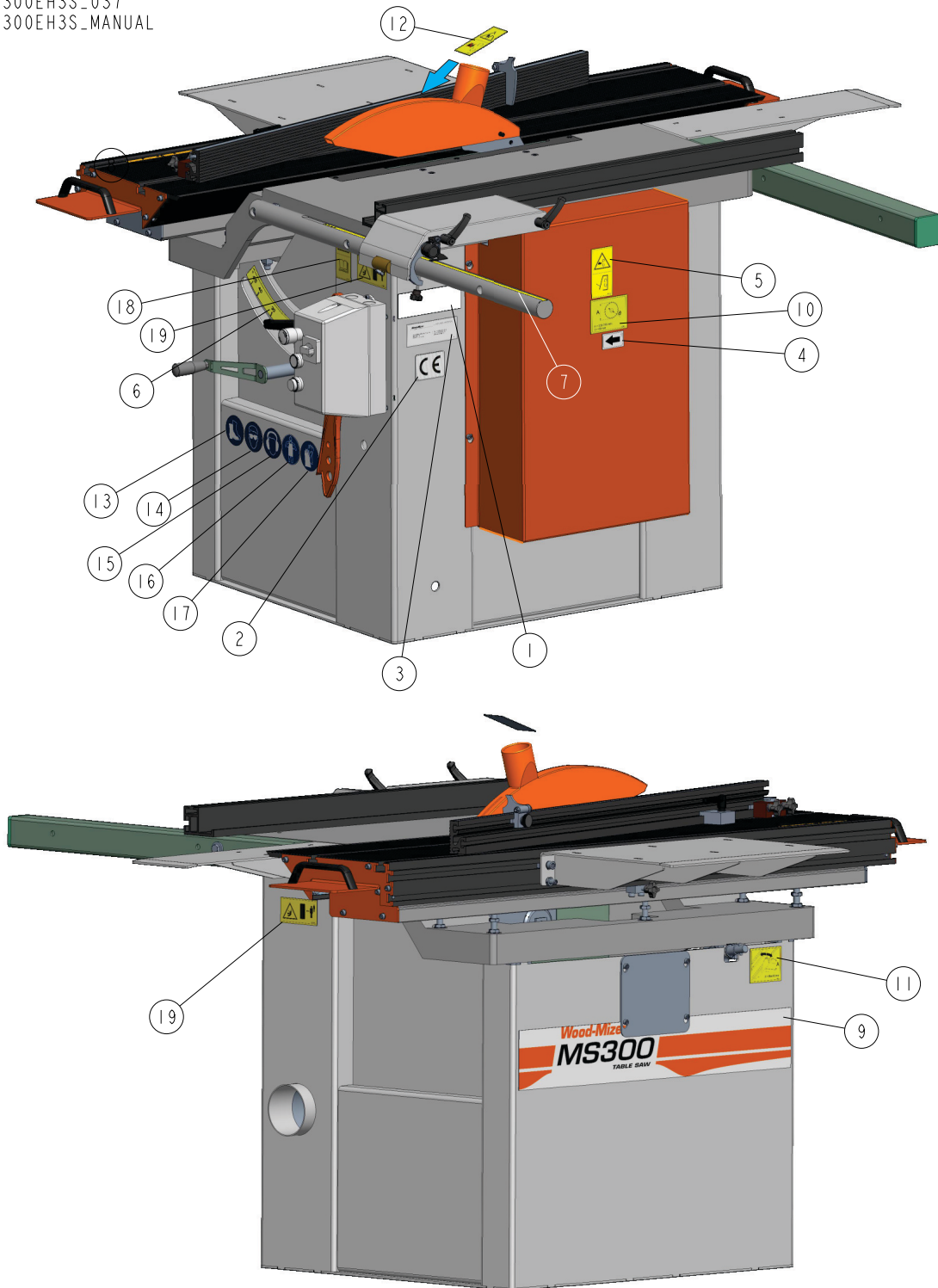


| REF. | DESCRIPTION (◆ indicates parts available in assemblies only) | PART #     | QTY |
|------|--|------------|-----|
| -    | <b>MS300 MECHANICAL ASSEMBLY</b>                             | 544170     | 1   |
| 1    | CUTTING UNIT ASSEMBLY <a href="#">See Section 2.6</a>        | 544171     | 1   |
| 2    | SPLITTING BAR ASSEMBLY <a href="#">See Section 2.14</a>      | 544081     | 1   |
| 3    | GAUGE ASSEMBLY <a href="#">See Section 2.15</a>              | 544091     | 1   |
| -    | BOTTOM BRACKET ASSEMBLY                                      | 544107     | 1   |
| 4    | TUBE (1)   | 544101     | 1   |
| 5    | CAP, 60X60 3-4 THICK #199211 TUBE END                        | 089710     | 1   |
| 6    | WASHER, 10.5 SPECIAL FLAT ZINC                               | F81055-6   | 2   |
| 7    | BOLT, M10X75-8.8 HEX HEAD ZINC                               | F81003-15  | 2   |
| 8    | BUSHING, 17/25-53.5 SPACER                                   | 546441-1   | 1   |
| 9    | EXTENSION SHELF ASSEMBLY <a href="#">See Section 2.18</a>    | 544057     | 1   |
| 10   | SCREW, M12X80-PEŁNY-GW.-8.8-B HEX SOCKET HEAD CAP ZINC       | F81004-133 | 5   |
| 11   | WASHER, 13 FLAT ZINC   | F81056-1   | 9   |
| 12   | NUT, M12-8 HEX ZINC  | F81034-1   | 5   |
| 13   | NUT, M12-04-A THIN   | F81034-6   | 10  |
| 14   | NUT, SPECIAL   | 544132-1   | 5   |

| REF. | DESCRIPTION (◆ indicates parts available in assemblies only)      | PART #    | QTY |  |
|------|---|-----------|-----|--|
| 15   | SAW TILT SCREW ASSEMBLY <a href="#">See Section 2.19</a>          | 544046    | 1   |  |
| 16   | WORKTABLE <a href="#">See Section 2.23</a>                        | 544270    | 1   |  |
| 17   | TABLE ANGLE MEASUREMENT ASSEMBLY <a href="#">See Section 2.20</a> | 544156    | 1   |  |
| 18   | EXTRACTION HOSE ASSEMBLY <a href="#">See Section 2.31</a>         | 544186    | 1   |  |
| 19   | INDICATOR, ANGLE SCALE  | 546455    | 1   |  |
| 20   | WASHER, 5.1 SPLIT LOCK  | F81052-2  | 2   |  |
| 21   | SCREW, M5X10 DIN 912 A2-70 HEX SOCKET HEAD STAINLESS STEEL CAP    | F81000-23 | 2   |  |
| 22   | PLATE, INSPECTION HOLE CAP  | 546431-1  | 1   |  |
| 23   | SCREW, M6X20 8.8 HEX SOCKET HEAD CAP ZINC                         | F81001-22 | 4   |  |

### 2.3 Decals

MS300EH3S\_037  
MS300EH3S\_MANUAL

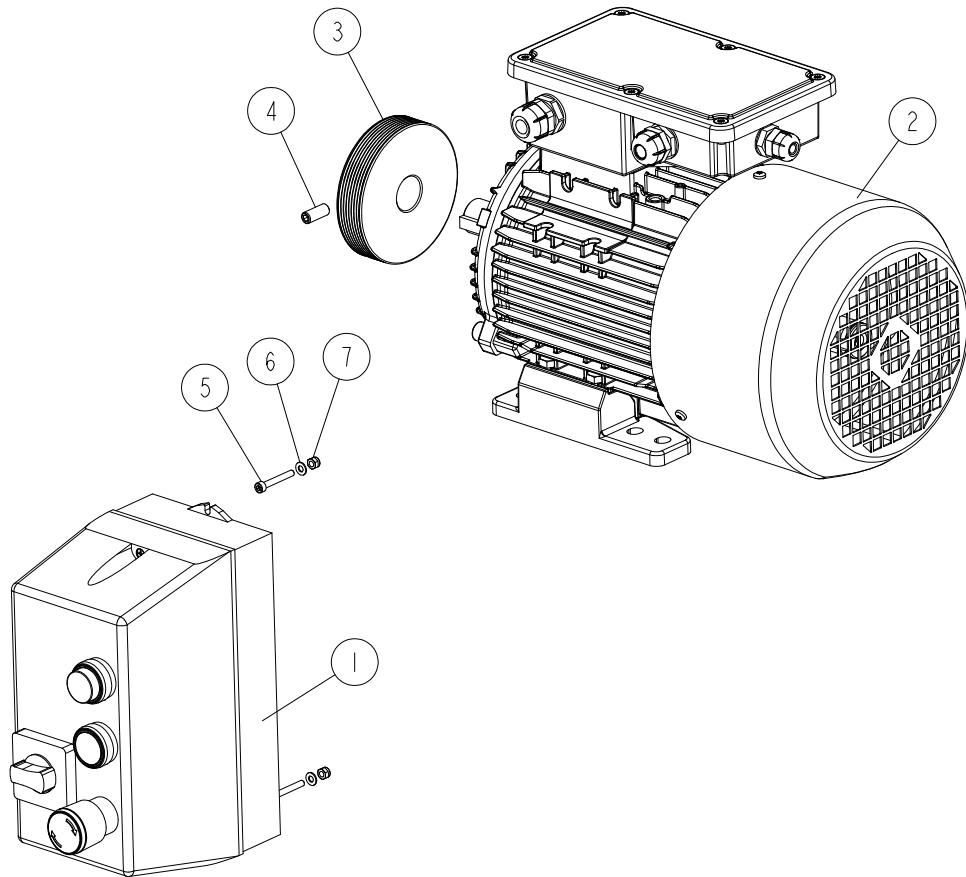


| REF. | DESCRIPTION (◆ indicates parts available in assemblies only) | PART # | QTY |
|------|--|--------|-----|
| -    | <b>MS300 DECAL KIT</b>                                       | 550401 | 1   |
| 1    | DECAL, VIN   | VIN    | 1   |
| 2    | DECAL, CE CERTIFIED SAWMILL (SMALL)                          | P85070 | 1   |
| 3    | DECAL, EUROPEAN HEADQUARTERS ADDRESS                         | 015841 | 1   |

| REF. | DESCRIPTION (◆ indicates parts available in assemblies only) | PART #    | QTY |
|------|--|-----------|-----|
| 4    | DECAL, MOTOR REVOLUTIONS DIRECTION                           | S20097    | 1   |
| 5    | DECAL, "CLOSE GUARDS AND COVERS BEFORE OPERATING"            | 099220    | 1   |
| 6    | DECAL, ANGLE SCALE   | 544157    | 1   |
| 7    | DECAL, METRIC SCALE  | 544080    | 1   |
| 8    | DECAL, MEASURE   | 544274    | 1   |
| 9    | DECAL, MS300 MACHINE TYPE                                    | 550402    | 1   |
| 10   | DECAL, MS300 CUTTING TOOLS SPECIFICATIONS                    | 550403    | 1   |
| 11   | DECAL, MS300 BLADE TILT                                      | 550404    | 1   |
| 12   | DECAL, HAND INJURY HAZARD (PICTOGRAM)                        | 509255    | 1   |
| 13   | DECAL, "USE PROTECTIVE FOOTWEAR" - SMALL (PICTOGRAM)         | 501465-1  | 1   |
| 14   | DECAL, EYE PROTECTION WARNING - 60 MM (PICTOGRAM)            | S12004G-1 | 1   |
| 15   | DECAL, "WEAR PROTECTIVE EAR MUFFS" - SMALL (PICTOGRAM)       | S12005G-1 | 1   |
| 16   | DECAL, "WEAR PROTECTIVE APRON" - SMALL (60 MM)               | 539211-1  | 1   |
| 17   | DECAL, "WEAR SAFETY GLOVES" - SMALL                          | 512107-1  | 1   |
| 18   | DECAL, "READ THE OPERATOR'S MANUAL" (PICTOGRAM)              | 096317    | 1   |
| 19   | DECAL, "KEEP A SAFE DISTANCE" (PICTOGRAM)                    | 099221H   | 2   |

## 2.4 Motor Kit

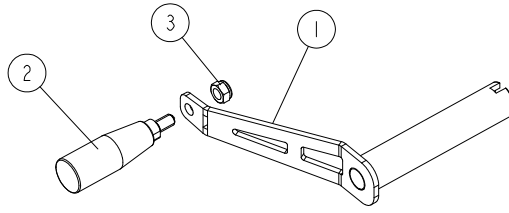
544190\_001\_A  
544190\_MANUAL



| REF. | DESCRIPTION (◆ indicates parts available in assemblies only) | PART #     | QTY |
|------|--|------------|-----|
| -    | <b>Motor Kit</b>   | 544190     | 1   |
| 1    | STARTER, 10A MAX (3-4 KW PRZY 400V) IP6                      | 536932     | 1   |
| 2    | MOTOR, 3SIE90L-2A-HM 3KW IM1001                              | 536948     | 1   |
| 3    | PULLEY, MULTI-GROOVE ALUMINIUM                               | 533585     | 1   |
| 4    | SCREW M8X20 HSS W/FLAT POINT ZC 45H DIN 913                  | F81002-103 | 1   |
| 5    | SCREW, M4X30-8.8 FE/ZN5 DIN 912 HEX SOCKET HEAD CAP          | F81000-85  | 2   |
| 6    | WASHER, 4.3 FLAT ZINC  | F81051-2   | 2   |
| 7    | NUT, M4-B HEX NYLON ZINC LOCK                                | F81029-1   | 2   |

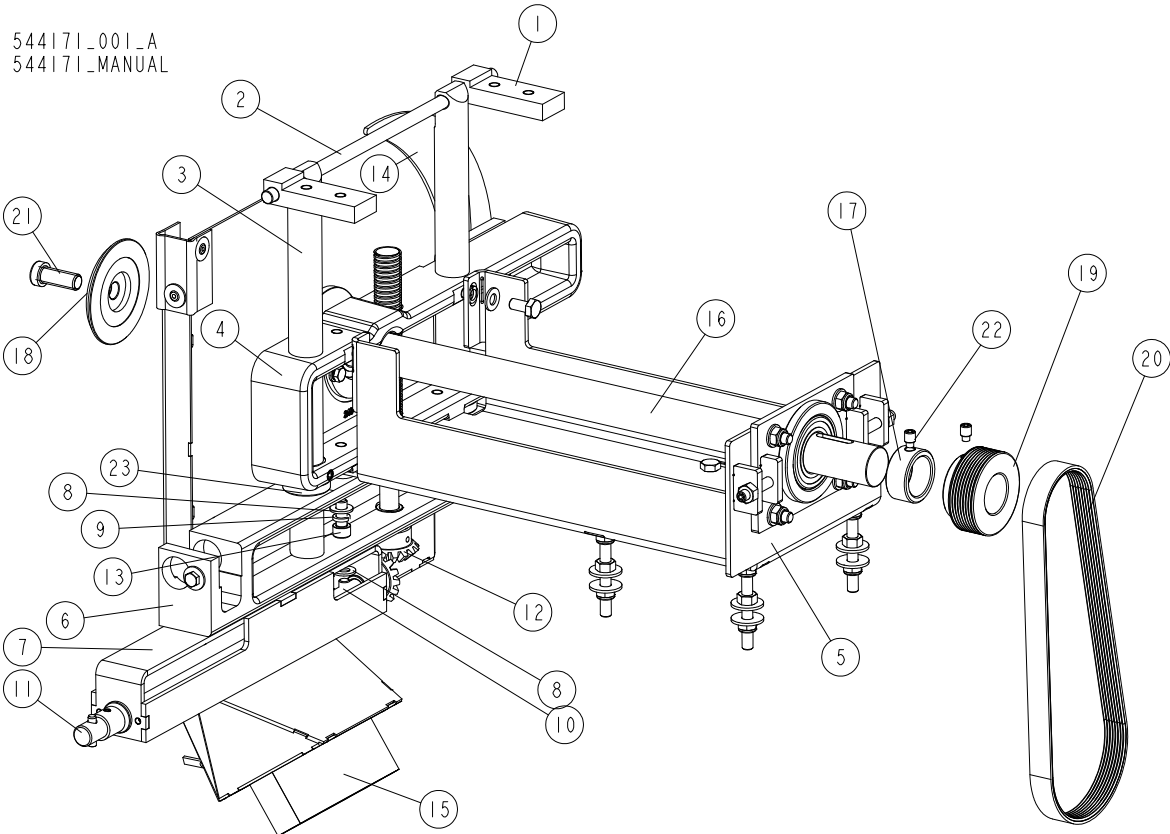
## 2.5 Handle Assembly (No. 542521)

542521\_001  
542521\_MANUAL



| REF. | DESCRIPTION (* indicates parts available in assemblies only) | PART #   | QTY |  |
|------|--|----------|-----|--|
| -    | <b>HANDLE, COMPLETE</b>                                      | 542521   | 1   |  |
| 1    | HANDLE   | 542522-1 | 1   |  |
| 2    | GRIP, CYLINDRICAL  | 533505   | 1   |  |
| 3    | NUT, M8-8-B HEX NYLON ZINC LOCK                              | F81032-2 | 1   |  |

## 2.6 Cutting Unit Assembly (No. 544171)



| REF | DESCRIPTION (u indicates parts available in assemblies only)     | PART #     | QTY |
|-----|--|------------|-----|
| -   | <b>CUTTING UNIT ASSEMBLY</b>                                     | 544171     | 1   |
| 1   | MOUNTING BRACKET   | 544023     | 2   |
| 2   | BAR  | 544024     | 1   |
| 3   | GUIDE ROD  | 544026     | 2   |
| 4   | SPINDLE HOUSING ASSEMBLY <a href="#">See Section 2.7</a>         | 544061     | 1   |
| 5   | ELECTRIC MOTOR BASE ASSEMBLY <a href="#">See Section 2.8</a>     | 544067     | 1   |
| 6   | LOWER BODY ASSEMBLY <a href="#">See Section 2.9</a>              | 544059     | 1   |
| 7   | BRACKET-WELDET & PAINTED   | 544182-1   | 1   |
| 8   | WASHER, 8.4 FLAT ZINC  | F81054-1   | 6   |
| 9   | WASHER 8,2 FE/ZN9  | F81054-4   | 6   |
| 10  | BOLT M8X16 -8.8-B-FE/ZN5 PN-85/M-82105                           | F81002-20  | 4   |
| 11  | HORIZONTAL DRIVE SHAFT ASSEMBLY <a href="#">See Section 2.10</a> | 544177     | 1   |
| 12  | SAW LIFT SCREW ASSEMBLY <a href="#">See Section 2.11</a>         | 544180     | 1   |
| 13  | BOLT, M8 X 20-8.8 SOCKET HEAD                                    | F81002-30  | 2   |
| 14  | RIVING KNIFE ASSEMBLY <a href="#">See Section 2.12</a>           | 544053     | 1   |
| 15  | SAWDUST COLLECTOR ASSEMBLY <a href="#">See Section 2.13</a>      | 544077     | 1   |
| 16  | DRIVE SHAFT ASSEMBLY   | 546394     | 1   |
| 17  | RETAINING SLEEVE   | 544029     | 1   |
| 18  | SAW CLAMPING PLATE   | 544030     | 1   |
| 19  | PULLEY,MULTI-GROOVE SMALL ALUMINIUM                              | 544135     | 1   |
| 20  | BELT, 660J/260J-715 MULTI-RIBBED                                 | 544136     | 1   |
| 21  | SRUBA IMB.M12X30-LH-8.8-FE/ZN5 DIN 6912                          | F81004-121 | 1   |



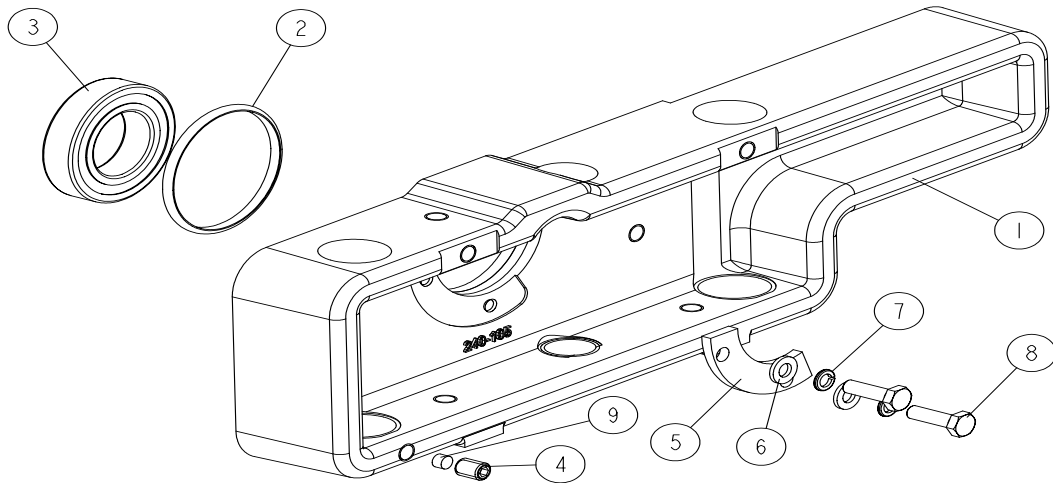
**2****Cutting Unit Assembly (No. 544171)**

---

| REF | DESCRIPTION (u indicates parts available in assemblies only) | PART #     | QTY |  |
|-----|--|------------|-----|--|
| 22  | SCREW M8X12 HSS W/DOG POINT ZC 45H DIN 9                     | F81002-122 | 2   |  |
| 23  | SPACER 25/35X8   | 546470     | 2   |  |

## 2.7 Spindle Housing Assembly (No. 544061)

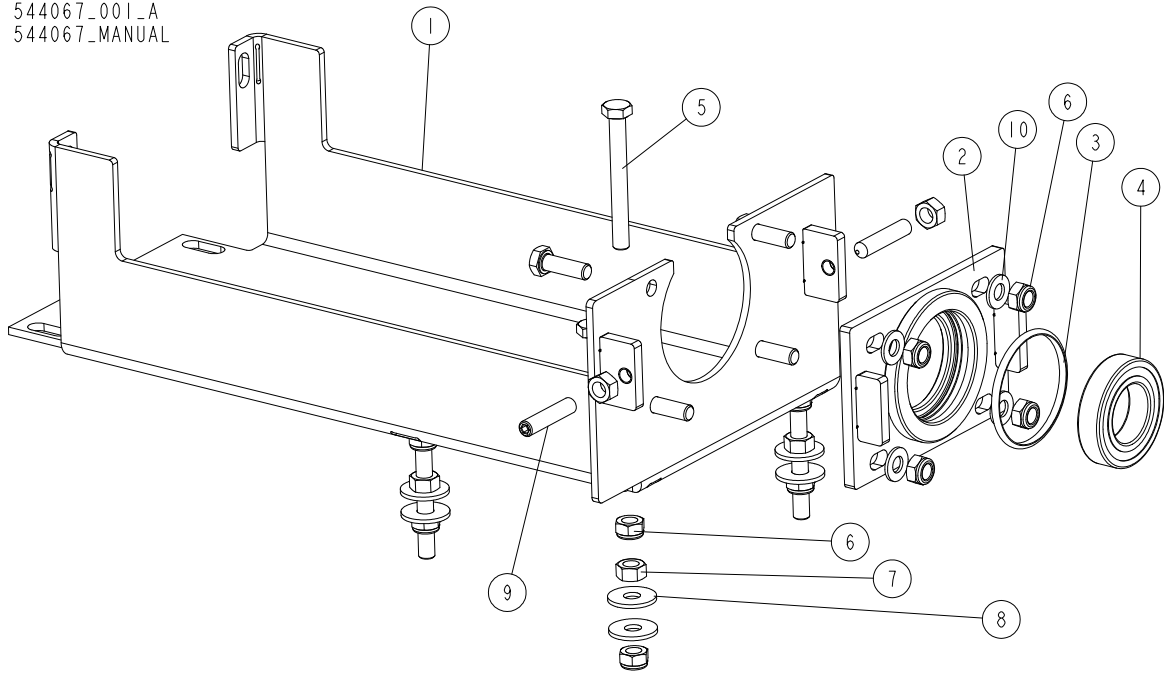
544061\_001\_B  
544061\_MANUAL



| REF | DESCRIPTION (◆ indicates parts available in assemblies only) | PART #     | QTY |
|-----|--|------------|-----|
| -   | <b>SPINDLE HOUSING ASSEMBLY</b>                              | 544061     | 1   |
| 1   | SPINDLE HOUSING CAST   | 544060-1   | 1   |
| 2   | O-RING, OR 54X3.5  | 536959_1   | 1   |
| 3   | BEARING SKF 6006 2RS1/C3                                     | 544063     | 1   |
| 4   | SCREW M8X10 HSS W/DOG POINT ZC 45H DIN 9                     | F81002-123 | 1   |
| 5   | PLATE, BEARING SUPPORT                                       | 546433     | 1   |
| 6   | WASHER, 6.4 FLAT ZINC  | F81053-1   | 2   |
| 7   | WASHER, Z 6.1 SPLIT LOCK ZINC                                | F81053-3   | 2   |
| 8   | BOLT, M6X20 8.8 HEX HEAD FULL THREAD ZIN                     | F81001-2   | 2   |
| 9   | PIN, SLIDE   | 535987     | 1   |

**2.8 Motor Base Assembly (No. 544067)**

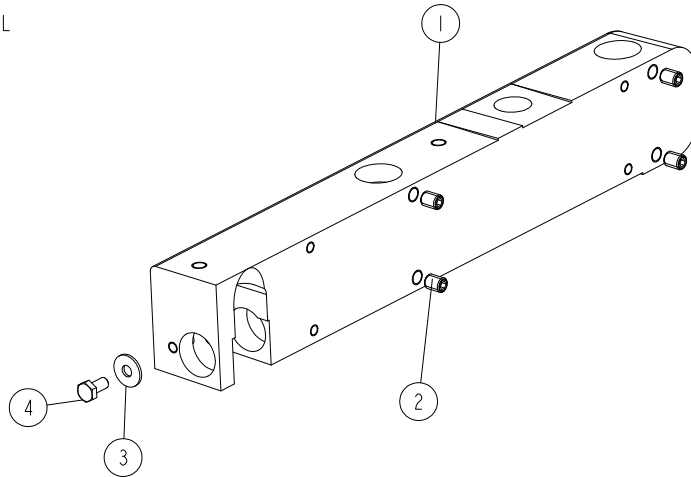
544067\_001\_A  
544067\_MANUAL



| REF | DESCRIPTION (u indicates parts available in assemblies only) | PART #     | QTY |
|-----|--|------------|-----|
| -   | <b>ELECTRIC MOTOR BASE ASSEMBLY</b>                          | 544067     | 1   |
| 1   | MOTOR BASE WELDET & PAINTED                                  | 546393-1   | 1   |
| 2   | BEARING ADJUSTMENT SYSTEM                                    | 546456-1   | 1   |
| 3   | ORING OR 54X3,5  | 536959_1   | 1   |
| 4   | BEARING SKF 6006 2RS1/C3                                     | 544063     | 1   |
| 5   | BOLT M8X70-8.8 FE/ZN5 DIN 933                                | F81002-130 | 4   |
| 6   | NUT, M8-8-B HEX NYLON ZINC LOCK                              | F81032-2   | 12  |
| 7   | NUT, M8-8-B HEX ZINC   | F81032-1   | 6   |
| 8   | WASHER, .8,5 FE/ZN5 PN-59/M-82030                            | F81054-11  | 8   |
| 9   | SCREW,M8X40-45H HEX SOCK.SET CONE POINT                      | F81002-52  | 2   |
| 10  | WASHER, 8.4 FLAT ZINC  | F81054-1   | 4   |

## 2.9 Lower Body Assembly (No. 544059)

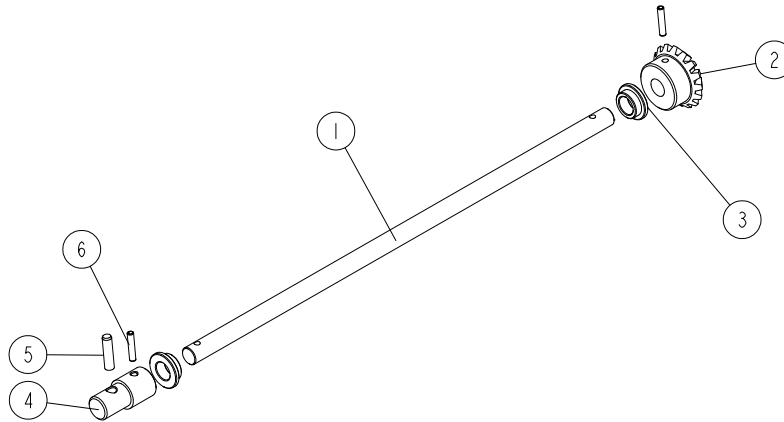
544059\_001  
544059\_MANUAL



| Ref | DESCRIPTION (* indicates parts available in assemblies only) | PART #     | QTY |  |
|-----|--|------------|-----|--|
| -   | <b>Lower Body Assembly</b>                                   | 544059     | 1   |  |
| 1   | LOWER CAST IRON  | 544058-1   | 1   |  |
| 2   | SCREW M8X10 HSS W/DOG POINT ZC 45H DIN 913 ISO 4026          | F81002-123 | 4   |  |
| 3   | WASHER 6,5 ZC FENDER DIN 9021 ISO 7093                       | F81053-11  | 1   |  |
| 4   | BOLT M6X12 HH ZC FT 8.8 DIN 933                              | F81001-7   | 1   |  |

## 2.10 Horizontal Drive Shaft Assembly (No. 544177)

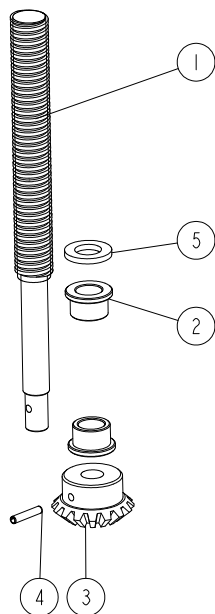
544177\_001  
544177\_MANUAL



| Ref | DESCRIPTION (* indicates parts available in assemblies only) | PART #    | QTY |  |
|-----|--|-----------|-----|--|
| -   | <b>Horizontal Drive Shaft Assembly</b>                       | 544177    | 1   |  |
| 1   | ELEVATOR DRIVE SHAFT   | 544178    | 1   |  |
| 2   | BEVEL GEAR M=2,5 T=16  | 544179    | 1   |  |
| 3   | SELF LUBRICATING BEARING, AMES N12/N18/N24-8                 | 544031    | 2   |  |
| 4   | PIN, SCALE DISK MOUNT  | 533595-1  | 1   |  |
| 5   | DOWEL PIN 6M6X12 DIN 7 ISO 2338                              | F81045-5  | 1   |  |
| 6   | COLIED SPRING PIN 4X30, ISO 8752, STEEL.                     | F81044-11 | 2   |  |

## 2.11 Saw Lift Screw Assembly (No. 544180)

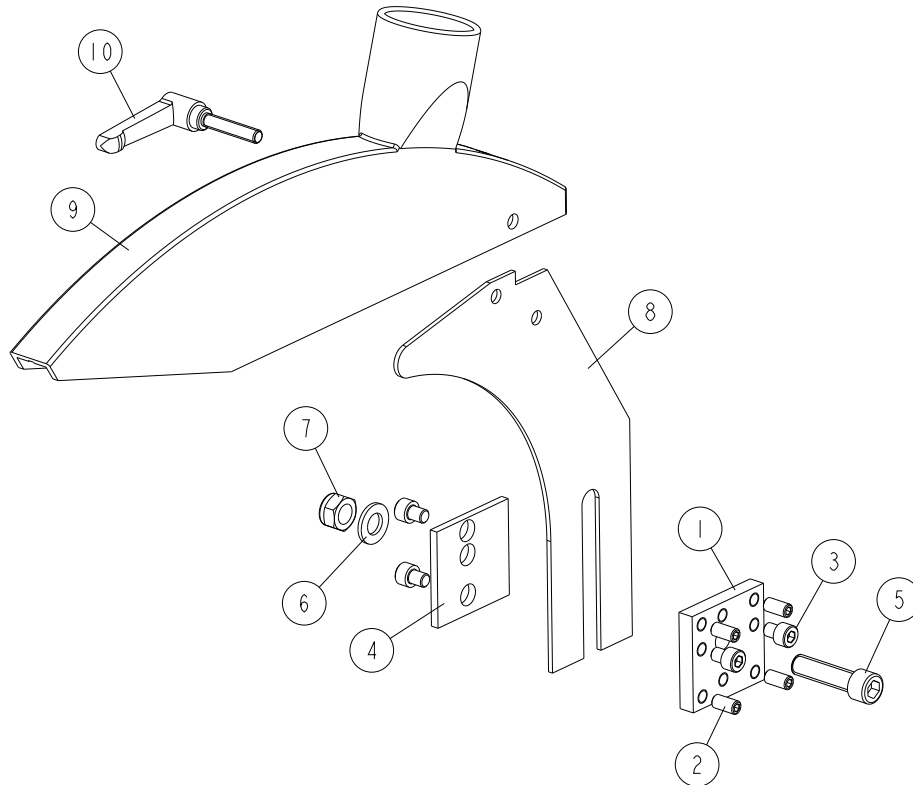
544180\_001  
544180\_MANUAL



| Ref | DESCRIPTION (* indicates parts available in assemblies only) | PART #    | QTY |
|-----|--|-----------|-----|
| -   | <b>Saw Lift Screw Assembly</b>                               | 544180    | 1   |
| 1   | SAW LIFT SCREW   | 544181    | 1   |
| 2   | SELF LUBRICATING BEARING, AMES N14/N20/N25-14                | 544037    | 2   |
| 3   | BEVEL GEAR M=2,5 T=16  | 544179    | 1   |
| 4   | COLIED SPRING PIN 4X30, ISO 8752, STEEL.                     | F81044-11 | 1   |
| 5   | WASHER 14.2  | 546243    | 1   |

## 2.12 Riving Knife Assembly (No. 544053)

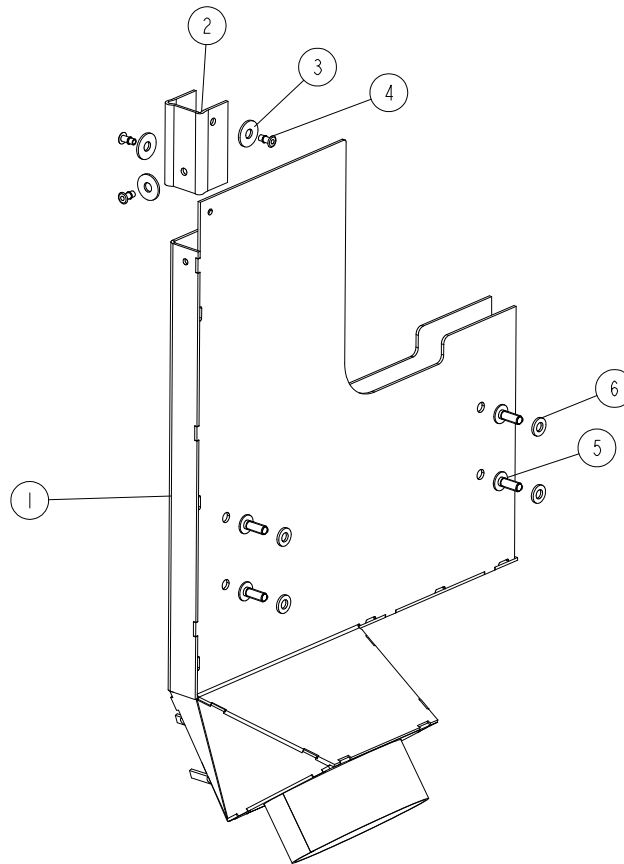
544053\_001  
544053\_MANUAL



| REF. | DESCRIPTION (◆ indicates parts available in assemblies only) | PART #     | QTY |
|------|--|------------|-----|
| -    | <b>KNIFE ASSEMBLY, RIVING</b>                                | 544053     | 1   |
| 1    | PLATE, CLAMPING (2)  | 544051-1   | 1   |
| 2    | SCREW, M8X16-45H DIN913 HEX SOCKET SET W/FLAT POINT          | F81002-124 | 4   |
| 3    | SCREW, M8X10-8.8 HEX SOCKET HEAD CAP ZINC                    | F81002-32  | 4   |
| 4    | PLATE, CLAMPING (1)  | 544050-1   | 1   |
| 5    | SCREW, M12X45-8.8-B HEX SOCKET HEAD CAP ZINC                 | F81004-93  | 1   |
| 6    | WASHER, 13 FLAT ZINC   | F81056-1   | 1   |
| 7    | NUT, M12-8-FE/ZN5 DIN 982 HEX NYLON ZINC LOCK                | F81034-2   | 1   |
| -    | GUARD, BLADE   | 562579     | 1   |
| 8    | PLATE, RIVING KNIFE  | 562577     | 1   |
| 9    | GUARD  | 562578     | 1   |
| 10   | LEVER, Elesa+GANTER GN 302-63-M8-40-SW ADJUSTABLE HAND       | 544291     | 1   |

## 2.13 Saw Dust Collector Assembly (No. 544077)

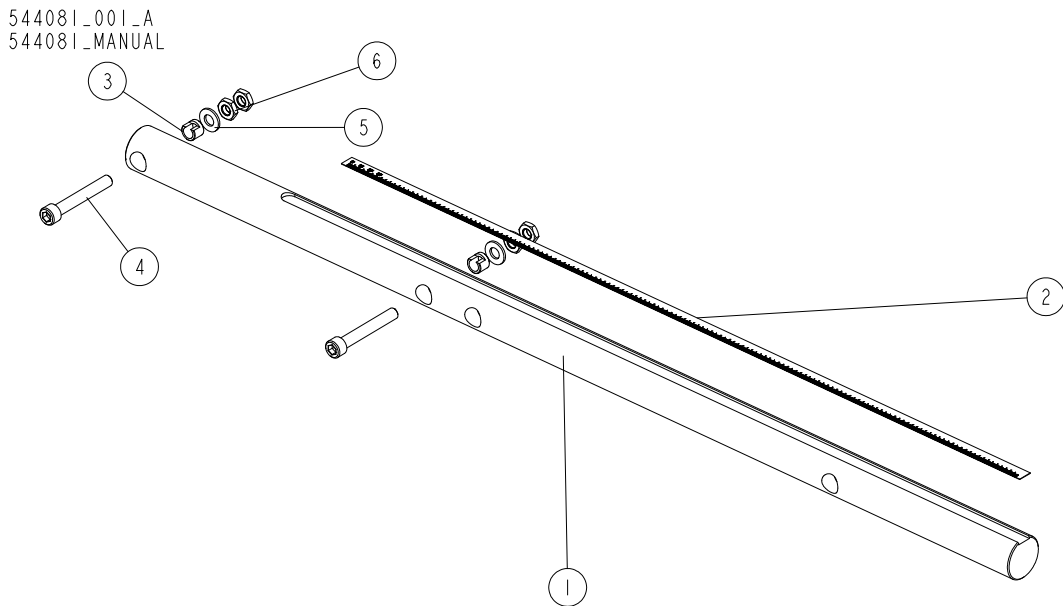
544077\_001  
544077\_MANUAL



| Ref | DESCRIPTION (* indicates parts available in assemblies only) | PART #    | QTY |  |
|-----|--|-----------|-----|--|
| -   | <b>Saw Dust Collector Assembly</b>                           | 544077    | 1   |  |
| 1   | SAWDUST SLEEVE SAW   | 544075-1  | 1   |  |
| 2   | SEAL   | 544076    | 1   |  |
| 3   | WASHER 6,5 ZC FENDER DIN 9021 ISO 7093                       | F81053-11 | 3   |  |
| 4   | BREAKING RIVET AL 4X10                                       | F81021-15 | 3   |  |
| 5   | BOLT, M6X16 BN 11252 "BOSSARD"                               | F81001-24 | 4   |  |
| 6   | WASHER 6,4 ZC DIN 126 ISO 7091                               | F81055-1  | 4   |  |

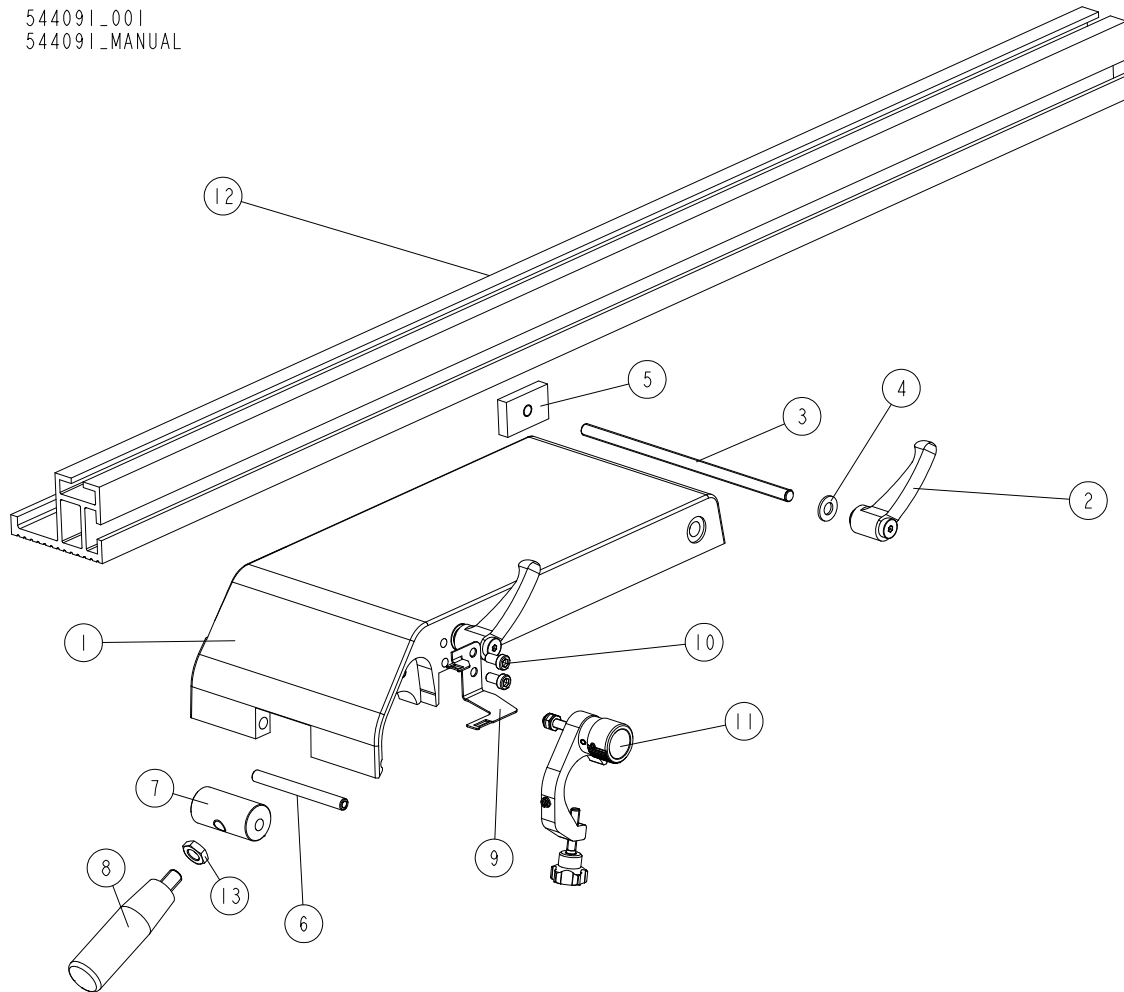


**2.14 Splitting Bar Assembly (No. 544081)**



| REF | DESCRIPTION (u indicates parts available in assemblies only) | PART #    | QTY |
|-----|--|-----------|-----|
| -   | <b>Splitting Bar Assembly</b>                                | 544081    | 1   |
| 1   | SPLITTING BAR  | 544079    | 1   |
| 2   | METRIC SCALE   | 544080    | 1   |
| 3   | SPACER SLEEVE  | 544082    | 2   |
| 4   | ALLEN SCREW M10X70-8.8 FE/ZN5 DIN 912                        | F81003-60 | 2   |
| 5   | WASHER, 10.5 FLAT ZINC                                       | F81055-1  | 2   |
| 6   | NUT, M10 DIN439 THIN   | F81033-20 | 4   |

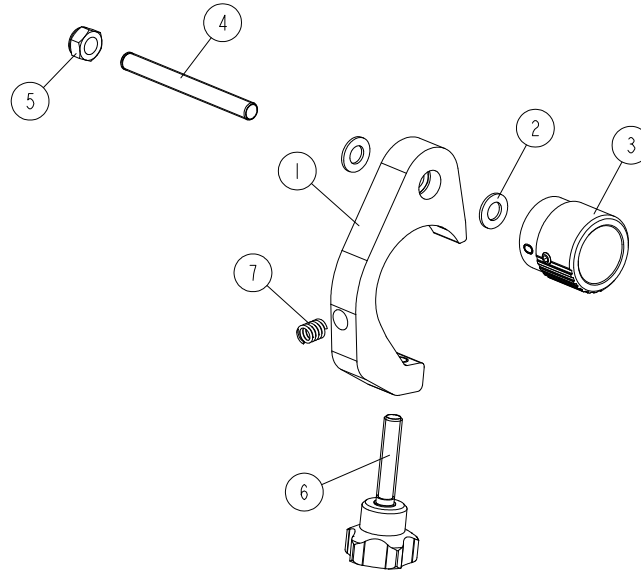
## 2.15 Gauge Assembly (No. 544091)

544091\_001  
544091\_MANUAL

| REF | DESCRIPTION (u indicates parts available in assemblies only) | PART #    | QTY |
|-----|--|-----------|-----|
| -   | <b>GAUGE ASSEMBLY</b>  | 544091    | 1   |
| 1   | CAST IRON  | 544083-1  | 1   |
| -   | MOUNTING HANDLE ASSEMBLY                                     | 544090    | 2   |
| 2   | ADJUSTABLE HANDLE ERX.63A-M8                                 | 544089    | 1   |
| 3   | THREADED ROD M8X185  | 544088    | 1   |
| 4   | WASHER, 8.4 FLAT ZINC  | F81054-1  | 1   |
| 5   | CLAMPING NUT   | 544086-1  | 2   |
| 6   | ECCENTRIC AXIS   | 544085    | 1   |
| 7   | ECCENTRIC SLEEVE   | 544084-1  | 1   |
| 8   | HANDLE NON-ROTATING I.280/90 P-M10X16                        | 544087    | 1   |
| 9   | INDICATOR PLATE  | 544093-1  | 1   |
| 10  | SCREW, M6X12-10.9 DIN 7984 LOW HEX SOCKE                     | F81001-80 | 2   |
| 11  | FINE ADJUSTER <a href="#">See Section 2.16</a>               | 544094    | 1   |
| 12  | PROWADNICA I - 820   | 544260    | 1   |
| 13  | NUT, M10-04-W THIN ZINC                                      | F81033-6  | 1   |

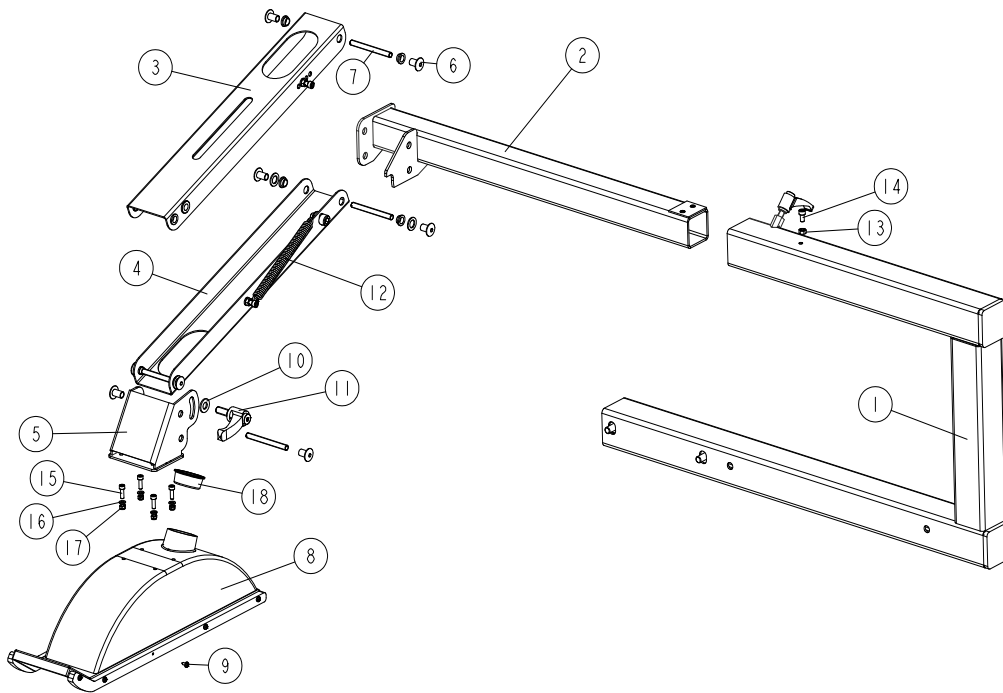
## 2.16 Fine Adjuster (No. 544094)

544094\_001  
544094\_MANUAL



| Ref | DESCRIPTION (* indicates parts available in assemblies only) | PART #   | QTY |
|-----|--|----------|-----|
| -   | <b>Fine Adjuster</b>   | 544094   | 1   |
| 1   | CLAMPING PLATE   | 544092-1 | 1   |
| 2   | WASHER   | 544096   | 2   |
| 3   | KNURLED KNOB GN726.1-27-B6-S-1                               | 544095   | 1   |
| 4   | THREADED ROD M6-60   | 544097   | 1   |
| 5   | NUT M6 ZC 8 NYLOCK DIN 982 ISO 7040                          | F81031-2 | 2   |
| 6   | HANDWHEEL VC.192 / 25 P-M6X30                                | 544099   | 1   |
| 7   | COMPRESION SPRING - VANEL C.060.055.0120.                    | 544100   | 1   |
| 8   |  |          |     |

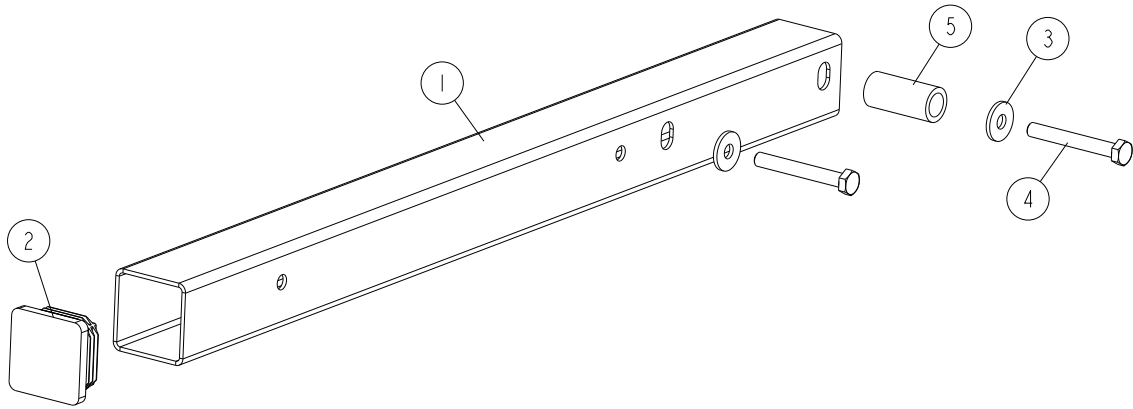
## 2.17 Upper Guard Assembly (No. 544125)

544125\_001\_B  
544125\_MANUAL

| REF. | DESCRIPTION (* indicates parts available in assemblies only) | PART #    | QTY |
|------|--|-----------|-----|
| -    | <b>UPPER GUARD ASSEMBLY</b>                                  | 544125    | 1   |
| 1    | BOTTOM BRACKET ASSEMBLY <a href="#">See Section 2.18</a>     | 544107    | 1   |
| 2    | TELESCOPIC ARM ASSEMBLY <a href="#">See Section 2.19</a>     | 544113    | 1   |
| 3    | UPPER ARM ASSEMBLY <a href="#">See Section 2.20</a>          | 544120    | 1   |
| 4    | LOWER ARM ASSEMBLY <a href="#">See Section 2.21</a>          | 544118    | 1   |
| 5    | ARM CONNECTOR  | 544122-1  | 1   |
| 6    | NUT, ERICSON M8 AN88 COLLAR ZINC                             | F81032-33 | 8   |
| 7    | THREADED ROD M8X80   | 544121    | 4   |
| 8    | SAFETY COVER, SAW BLADE                                      | 564932    | 1   |
| 9    | PAN HEAD TAPPING SCREW W/CROSS RECESS Z                      | F81010-4  | 10  |
| 10   | WASHER 10,5 ZC DIN 126 ISO 7091                              | F81055-1  | 1   |
| 11   | ADJUSTABLE HANDLE ERZ.78 P-M10X25                            | 544127    | 1   |
| 12   | SPRING 2,5X15X140 LESJOFORS 3486                             | 544128    | 1   |
| 13   | NUT, M6 8 HEX ZINC   | F81031-1  | 1   |
| 14   | SCREW M6X12 SHCS ZC 8.8 DIN 912 ISO 4762                     | F81001-87 | 1   |
| 15   | SCREW, M5X16-8.8 HEX SOCKET HEAD CAP ZIN                     | F81000-25 | 4   |
| 16   | WASHER, 5.3 FLAT ZINC  | F81052-1  | 4   |
| 17   | NUT, M5-8 DIN985 HEX NYLON ZINC LOCK                         | F81030-2  | 4   |
| 18   | CAP, COVER BLADE   | 546443    | 1   |

**2.18 Bottom Bracket Assembly (No. 544107)**

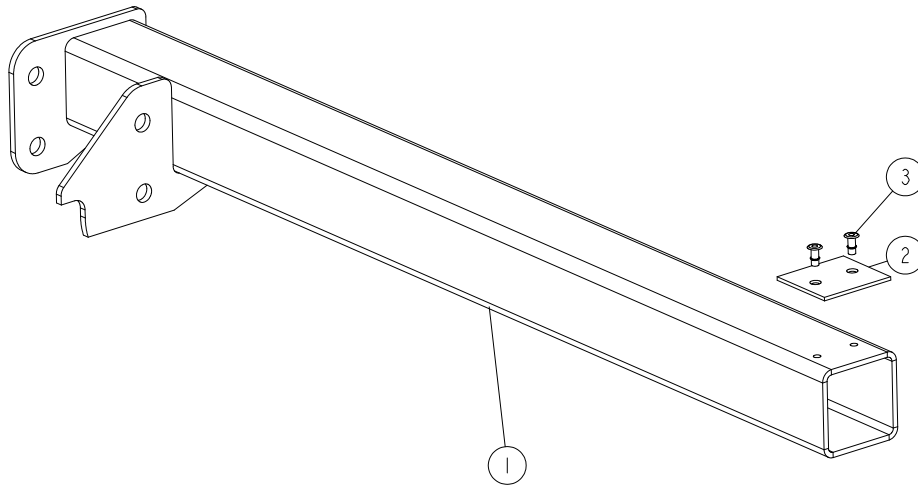
544107\_001\_A  
544107\_MANUAL



| REF. | DESCRIPTION (◆ indicates parts available in assemblies only) | PART #    | QTY |
|------|--|-----------|-----|
| -    | <b>BRACKET, BOTTOM - COMPLETE</b>                            | 544107    | 1   |
| 1    | TUBE (1)   | 544101    | 1   |
| 2    | CAP, 60X60 3-4 #199211 TUBE END                              | 089710    | 1   |
| 3    | WASHER, 10.5 SPECIAL FLAT ZINC                               | F81055-6  | 2   |
| 4    | BOLT, M10X75-8.8 HEX HEAD ZINC                               | F81003-15 | 2   |
| 5    | BUSHING, 17/25-53.5 SPACER                                   | 546441-1  | 1   |

2.19 Telescop Arm Assembly (No. 544113)

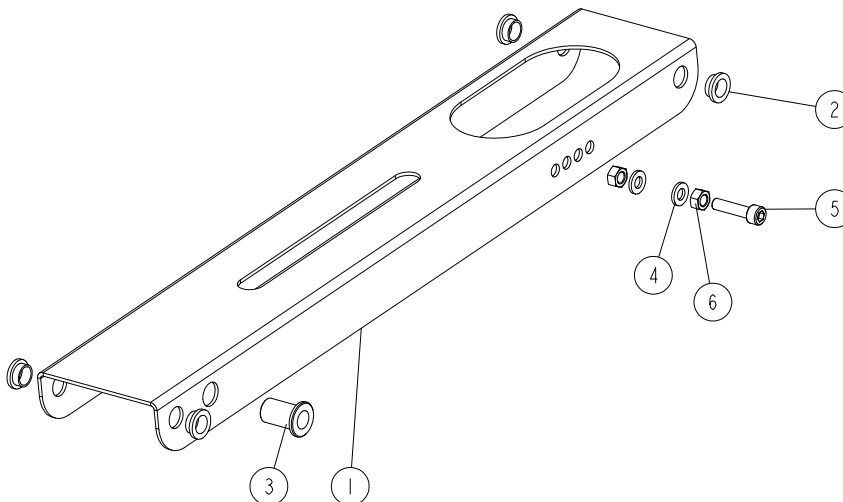
544113\_001  
544113\_MANUAL



| Ref | DESCRIPTION (* indicates parts available in assemblies only) | PART #    | QTY |
|-----|--|-----------|-----|
| -   | Telescopic Arm Assembly                                      | 544113    | 1   |
| 1   | TELESCOPIC ARM   | 544112-1  | 1   |
| 2   | POLYETHYLENE INSERT  | 544111    | 1   |
| 3   | BREAKING RIVET AL 4X10                                       | F81021-15 | 2   |

**2.20 Upper Arm Assembly (No. 544120)**

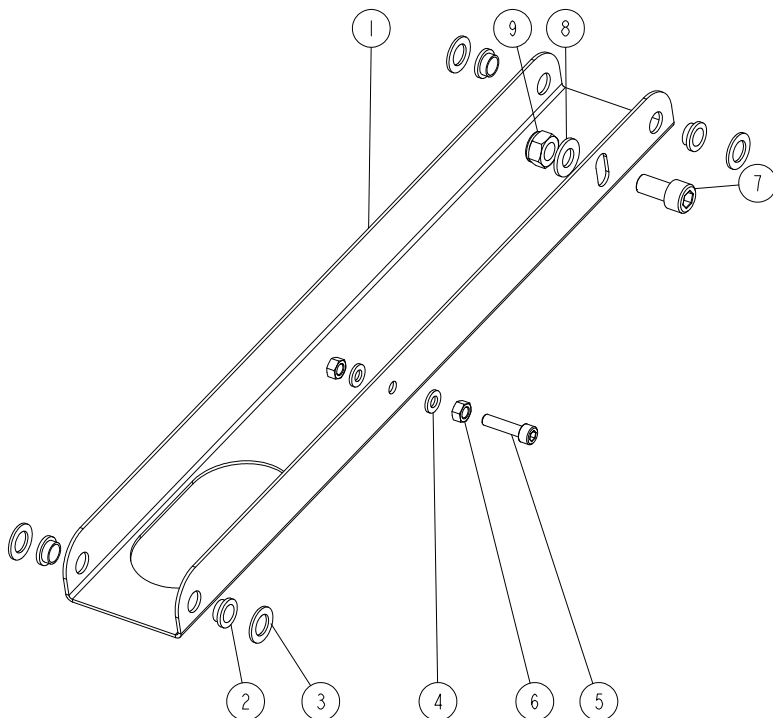
544120\_001  
544120\_MANUAL



| Ref | DESCRIPTION (* indicates parts available in assemblies only) | PART #    | QTY |
|-----|--|-----------|-----|
| -   | <b>Upper Arm Assembly</b>                                    | 544120    | 1   |
| 1   | UPPER ARM PLATE  | 544119-1  | 1   |
| 2   | BUSHING WITH FLANGE 10/12-6 FLANGE 16-2                      | 544117    | 4   |
| 3   | RIVET NUT M10 ZC W/KNURLED SHANK AND ROUND PAN HEAD          | F81033-15 | 1   |
| 4   | WASHER 6,4 ZC DIN 126 ISO 7091                               | F81053-1  | 2   |
| 5   | BOLT M6X25 SHCS ZC PT 8.8 DIN 912 ISO 4762                   | F81001-41 | 1   |
| 6   | NUT M6 ZC 8 DIN 934  | F81031-1  | 2   |

2.21 Lower Arm Assembly (No. 544118)

544118\_001  
544118\_MANUAL

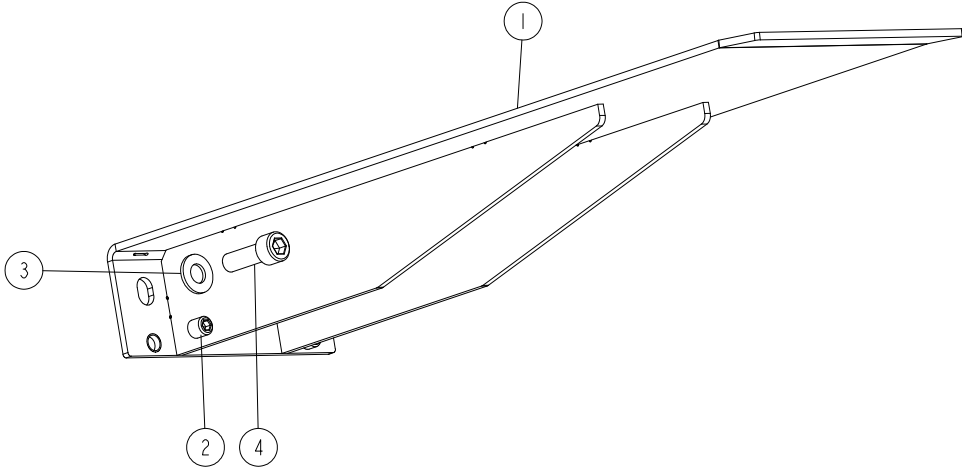


| Ref | DESCRIPTION (* indicates parts available in assemblies only) | PART #     | QTY |
|-----|--|------------|-----|
| -   | <b>Lower Arm Assembly</b>                                    | 544118     | 1   |
| 1   | LOWER ARM PLATE  | 544115-1   | 1   |
| 2   | BUSHING WITH FLANGE 10/12-6 FLANGE 16-2                      | 544117     | 4   |
| 3   | SPACER WASHER 12/20-1.5                                      | 544116-1   | 4   |
| 4   | WASHER 6,4 ZC DIN 126 ISO 7091                               | F81053-1   | 2   |
| 5   | BOLT M6X25 SHCS ZC PT 8.8 DIN 912 ISO 4762                   | F81001-41  | 1   |
| 6   | NUT M6 ZC 8 DIN 934  | F81031-1   | 2   |
| 7   | SCREW M10X20 SHCS ZC 8.8 DIN 912 ISO 4762                    | F81003-108 | 1   |
| 8   | WASHER 10,5 ZC DIN 126 ISO 7091                              | F81055-1   | 1   |
| 9   | NUT M10 ZC 8 NYLOCK DIN 982 ISO 7040                         | F81033-1   | 1   |



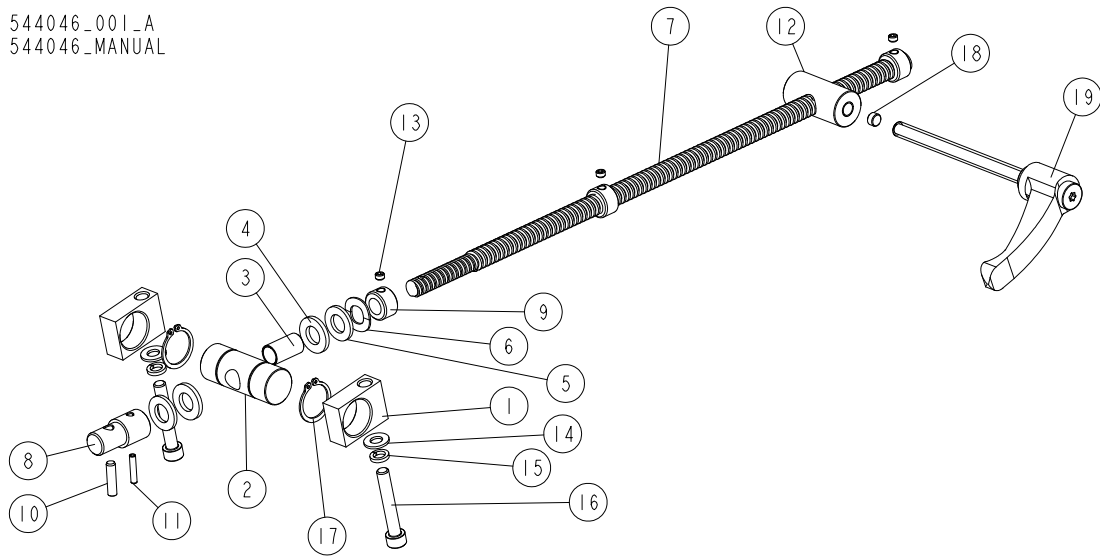
**2.22 Extension Shelf Assembly (No. 544057)**

544057\_001  
544057\_MANUAL



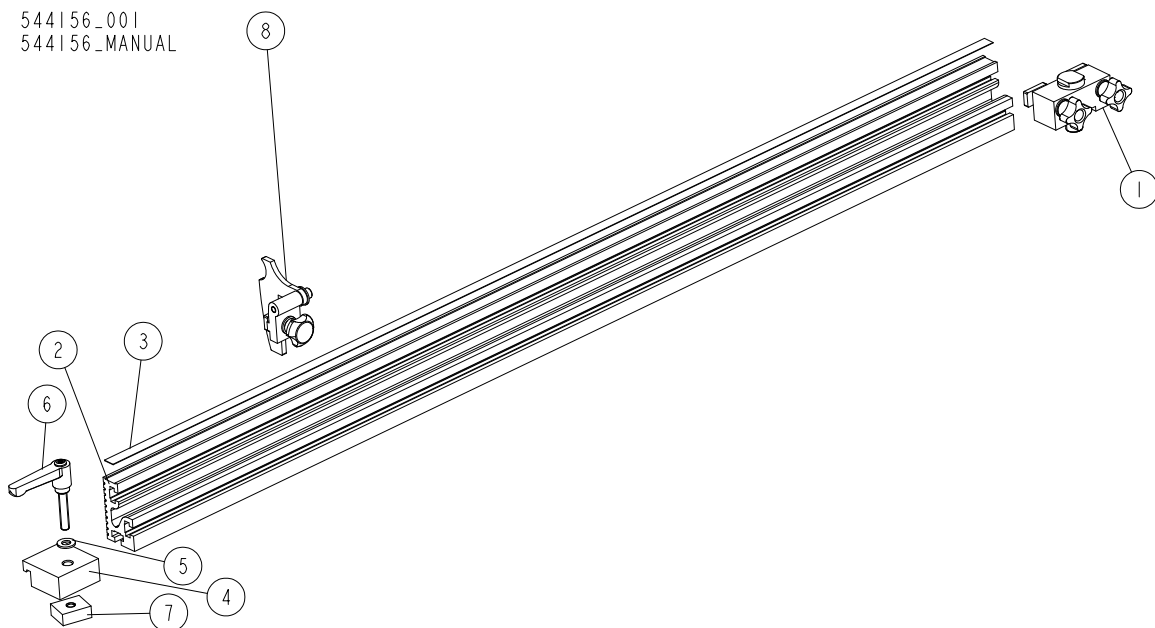
| Ref | DESCRIPTION (* indicates parts available in assemblies only) | PART #     | QTY |
|-----|--|------------|-----|
| -   | <b>Extension Shelf Assembly</b>                              | 544057     | 1   |
| 1   | EXTENSION TABLE CARRIAGE                                     | 544056-1   | 1   |
| 2   | CLAMPING SCREW M10X12-45H FE/ZN5                             | F81003-46  | 2   |
| 3   | WASHER 10,5 ZC DIN 126 ISO 7091                              | F81055-1   | 2   |
| 4   | SCREW M10X30 SHCS ZC 8.8 DIN 912 ISO 4762                    | F81003-110 | 2   |

## 2.23 Saw Tilt Drive Screw (No. 544046)

544046\_001\_A  
544046\_MANUAL

| REF | DESCRIPTION (u indicates parts available in assemblies only) | PART #     | QTY |
|-----|--|------------|-----|
| -   | <b>SAW TILT SCREW ASSEMBLY</b>                               | 544046     | 1   |
| 1   | NUT SUPPORT  | 544042     | 2   |
| 2   | HINGE  | 544041     | 1   |
| 3   | SLIDE SLEEVE   | 544044     | 1   |
| 4   | WASHER 13/24-3   | 544045     | 2   |
| 5   | WASHER, 13 FLAT ZINC   | F81056-1   | 2   |
| 6   | WASHER M12 DIN 137 B SPRING WAVE                             | F81056-21  | 1   |
| 7   | SAW TILT SCREW   | 544043     | 1   |
| 8   | PIN, SCALE DISK MOUNT  | 533595-1   | 1   |
| 9   | FIX NUT  | 544039     | 3   |
| 10  | DOWEL PIN 6M6X12 DIN 7 ISO 2338                              | F81045-5   | 1   |
| 11  | PIN, 8752-4X20 ROLL  | F81044-11  | 1   |
| 12  | NUT  | 544040     | 1   |
| 13  | SCREW M6X4-45H FE/ZN5 DIN 913                                | F81001-123 | 3   |
| 14  | WASHER, 8.4 FLAT ZINC  | F81054-1   | 2   |
| 15  | WASHER 8,2 FE/ZN9  | F81054-4   | 2   |
| 16  | SCREW M8X40 SHCS ZC 8.8 DIN 912 ISO 4762                     | F81002-85  | 2   |
| 17  | RING, 25Z OUTSIDE RETAINING                                  | F81090-22  | 2   |
| 18  | PRESSURE INSERT  | 544138     | 1   |
| 19  | MOUNTING HANDLE M10 ASSEMBLY                                 | 544143     | 1   |

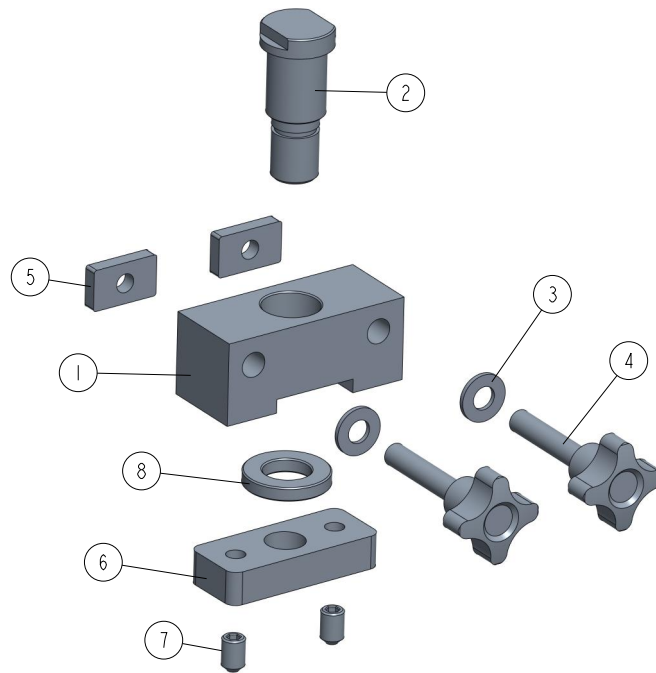
## 2.24 Table Angle Measurement Team (No. 544156)



| Ref | DESCRIPTION (* indicates parts available in assemblies only) | PART #   | QTY |
|-----|--|----------|-----|
| -   | <b>Table Angle Measurement Team</b>                          | 544156   | 1   |
| 1   | MOUNTING ASSEMBLY <a href="#">See Section 2.25</a>           | 544154   | 1   |
| -   | ADDITIONAL GUIDE MAIN TABLE WITH MEASURE                     | 544288   | 1   |
| 2   | ADDITIONAL GUDIE MAIN TABLE                                  | 544286   | 1   |
| 3   | GLUED MEASUREMENT  | 544287   | 1   |
| -   | CLAMP  | 544292   | 1   |
| 4   | CUBE   | 544289-1 | 1   |
| 5   | WASHER 8,4 ZC DIN 126 ISO 7091                               | F81054-1 | 1   |
| 6   | CLAMP- ELESA+GANter GN 302-63-M8-40-SW                       | 544291   | 1   |
| 7   | CUBE WITH THREAD   | 544290-1 | 1   |
| 8   | SIDE PRESSURE <a href="#">See Section 2.26</a>               | 544350   | 1   |

## 2.25 Mounting Assembly 544154

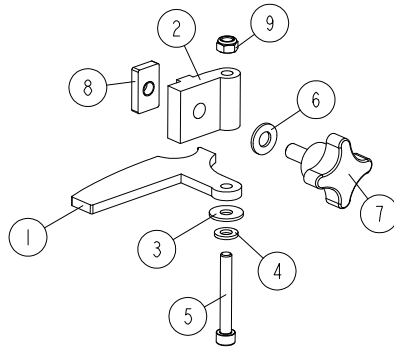
544154\_001\_A  
544154\_MANUAL



| REF | DESCRIPTION (◆ indicates parts available in assemblies only) | PART #     | QTY |
|-----|--|------------|-----|
| -   | <b>MOUNTING ASSEMBLY</b>                                     | 544154     | 1   |
| 1   | BLOCK, MOUNT   | 544152-1   | 1   |
| 2   | PIN  | 544146-1   | 1   |
| 3   | WASHER, 8.4 FLAT ZINC  | F81054-1   | 2   |
| 4   | GRIP, KIPP K1089.43208X40 PALM                               | 544155     | 2   |
| 5   | NUT, M8  | 544153-1   | 2   |
| 6   | BLOCK, GUIDE   | 544273-1   | 1   |
| 7   | SCREW M8X12 HSS W/CONE POINT ZC 45H DIN                      | F81002-105 | 2   |
| 8   | WASHER   | 544355-1   | 1   |

## 2.26 Side Clamp (No. 544350)

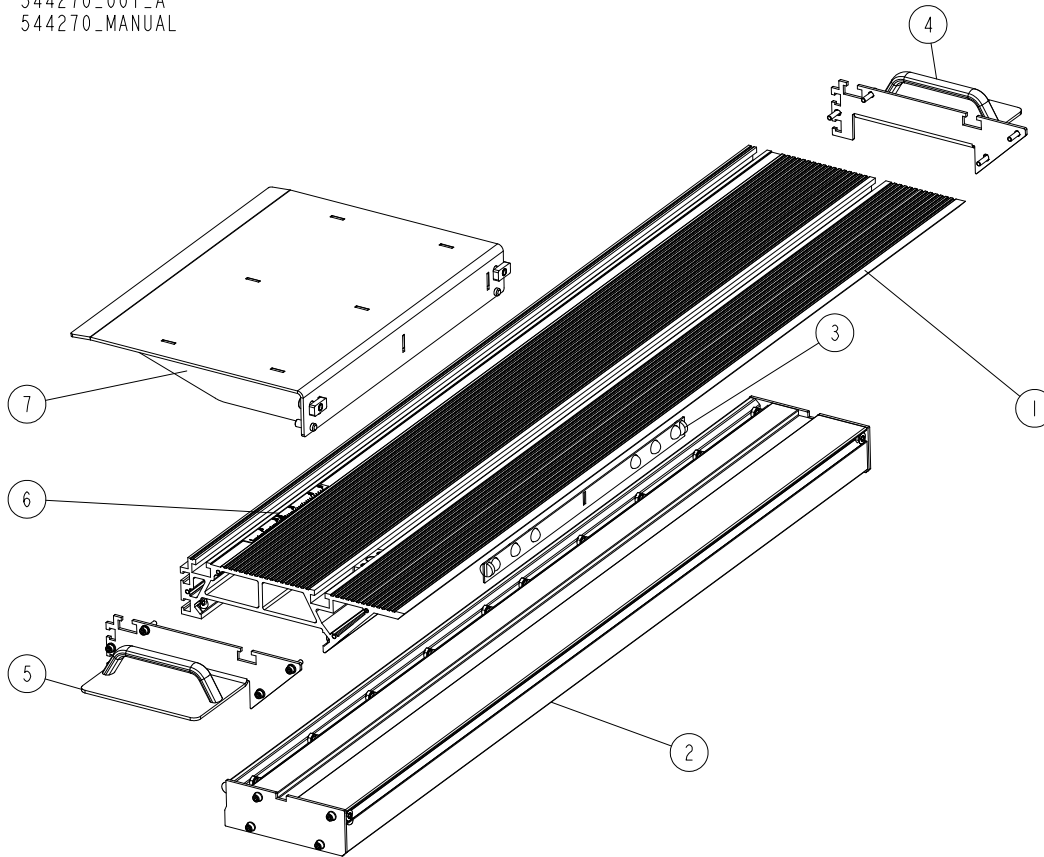
544350\_001  
544350\_MANUAL



| REF | DESCRIPTION (u indicates parts available in assemblies only) | PART #    | QTY |  |
|-----|--|-----------|-----|--|
| -   | <b>CLAMP, SIDE</b>   | 544350    | 1   |  |
| 1   | PLATE  | 544347-1  | 1   |  |
| 2   | BLOCK, ALUMINUM  | 544348-1  | 1   |  |
| 3   | WASHER, 6.5 SPECIAL FLAT ZINC-PL.                            | F81053-11 | 1   |  |
| 4   | WASHER, 6.4 FLAT ZINC  | F81053-1  | 1   |  |
| 5   | SCREW M6X45 SHC ZC 8.8 DIN 912 ISO 4762                      | F81001-86 | 1   |  |
| 6   | WASHER, 8.4 FLAT ZINC  | F81054-1  | 1   |  |
| 7   | KNOB, 50/M8X25 (466406 MOSS)                                 | 500973    | 1   |  |
| 8   | NUT, M8  | 544153-1  | 1   |  |
| 9   | NUT, M6-8-B NYLON HEX ZINC LOCK                              | F81031-2  | 1   |  |

## 2.27 Movable table (No. 544270)

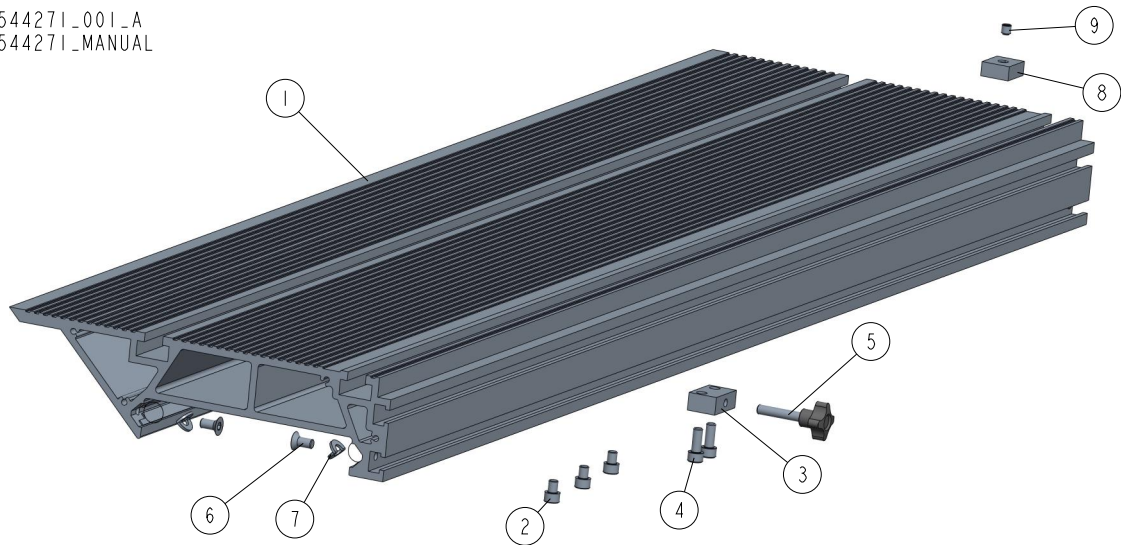
544270\_001\_A  
544270\_MANUAL



| REF | DESCRIPTION (u indicates parts available in assemblies only)  | PART # | QTY |
|-----|---|--------|-----|
| -   | <b>MOVABLE TABLE</b>  | 544270 | 1   |
| 1   | MAIN PROFILE <a href="#">See Section 2.28</a>                 | 544271 | 1   |
| 2   | LOWER PROFILE MAIN WORKTABLE <a href="#">See Section 2.29</a> | 544282 | 1   |
| 3   | COMPLETE CART <a href="#">See Section 2.30</a>                | 544283 | 2   |
| 4   | MAIN PROFILE SIDE HANDLE <a href="#">See Section 2.31</a>     | 544269 | 1   |
| 5   | MAIN PROFILE SIDE HANDLE <a href="#">See Section 2.6</a>      | 544285 | 1   |
| 6   | MEASURE   | 544274 | 1   |
| 7   | WORK TABLE SIDE SHELF <a href="#">See Section 2.33</a>        | 544267 | 1   |

## 2.28 Main Profile 544271

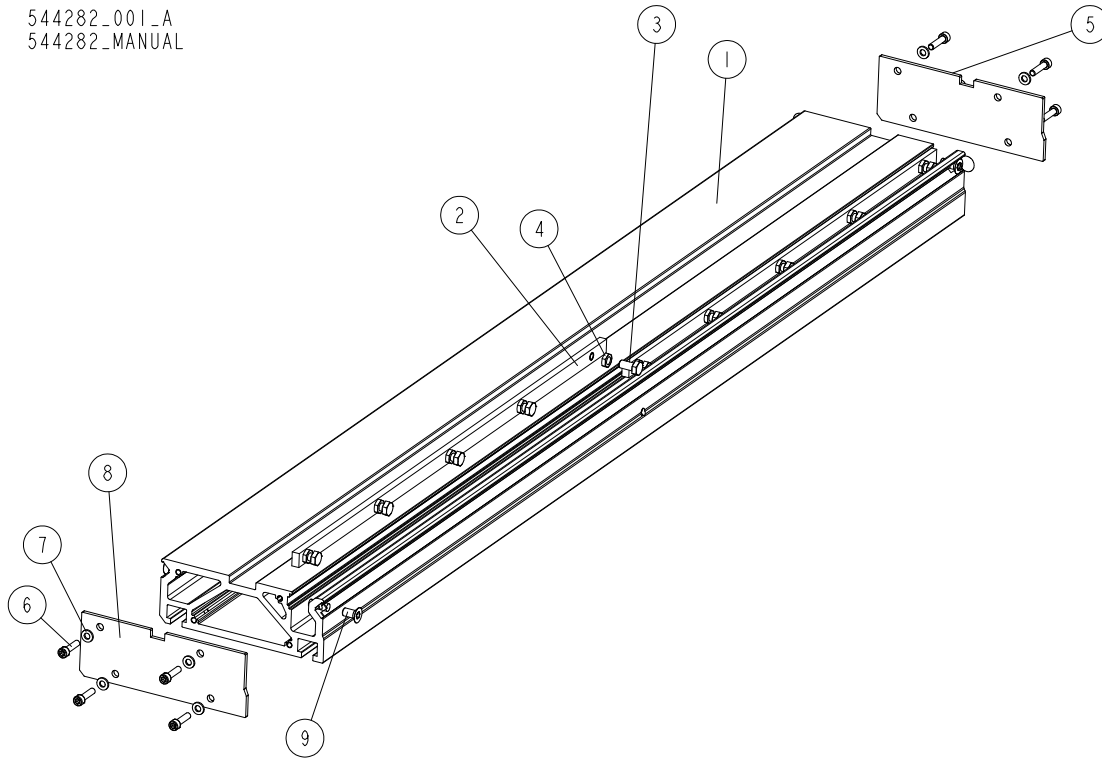
544271\_001\_A  
544271\_MANUAL



| REF | DESCRIPTION (◆ indicates parts available in assemblies only) | PART #     | QTY |
|-----|--|------------|-----|
| -   | <b>MAIN PROFILE</b>  | 544271     | 1   |
| 1   | MAIN PROFILE WITH GUIDES                                     | 544295     | 1   |
| 2   | SCREW, M8X10-8.8 HEX SOCKET HEAD CAP ZIN                     | F81002-32  | 3   |
| 3   | PROFILE BLOCK  | 544272-1   | 1   |
| 4   | SCREW, M8X20-8.8 HEX SOCKET HEAD CAP ZIN                     | F81002-30  | 2   |
| 5   | GRIP, KIPP K1089.43208X40 PALM                               | 544155     | 1   |
| 6   | SCREW M8X16 HSFHS ZC 8.8 DIN7991 ISO106                      | F81002-115 | 4   |
| 7   | BENT WASHER 10   | 544294     | 4   |
| 8   | BLOCK W/THREADED HOLE  | 544290-1   | 1   |
| 9   | SCREW, M8X8-33H HEX SOCKET SET FLAT POIN                     | F81014-1   | 1   |

## 2.29 Lower Profile (No. 544282)

544282\_001\_A  
544282\_MANUAL

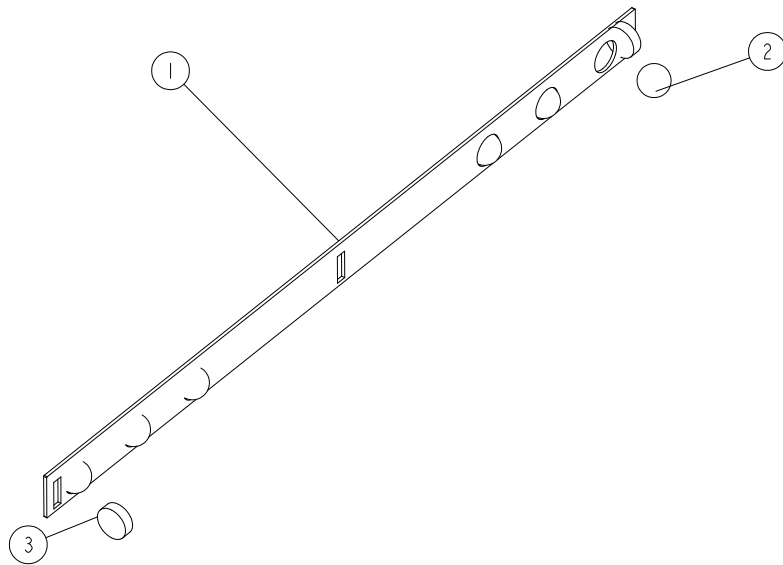


| REF | DESCRIPTION (u indicates parts available in assemblies only) | PART #     | QTY |  |
|-----|--|------------|-----|--|
| -   | <b>LOWER PROFILE MAIN WORKTABLE</b>                          | 544282     | 1   |  |
| 1   | LOWER PROFILE FOR A WORKTABLE WITH INSE                      | 544296     | 1   |  |
| 2   | FLAT   | 544281     | 2   |  |
| 3   | BOLT M8X16 -8.8-B-FE/ZN5 PN-85/M-82105                       | F81002-20  | 10  |  |
| 4   | NUT M8 BLACK 04 DIN 439 ISO 4035;                            | F81032-17  | 10  |  |
| 5   | LOWER PROFILE SIDE SHEET                                     | 546462-1   | 1   |  |
| 6   | SCREW, M6X25 -8.8-FE/ZN5 HEX SOCKET HEAD                     | F81001-41  | 8   |  |
| 7   | WASHER, 6.4 FLAT ZINC  | F81053-1   | 8   |  |
| 8   | LOWER PROFILE SIDE SHEET                                     | 544279-1   | 1   |  |
| 9   | SCREW M8X16 HSFHS ZC 8.8 DIN7991 ISO106                      | F81002-115 | 4   |  |



**2.30 Cart (No. 544283)**

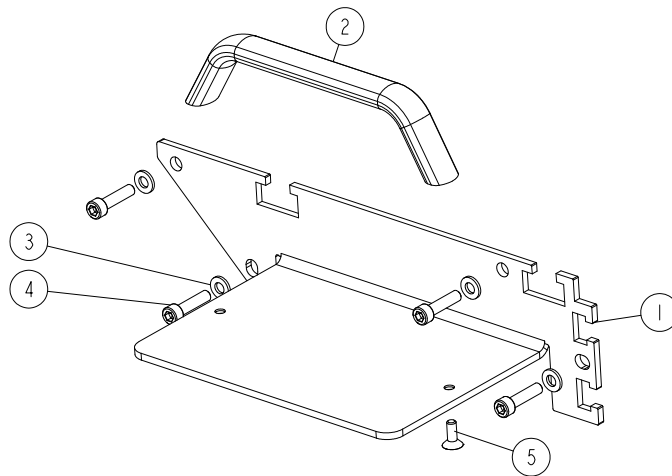
544283\_001\_A  
544283\_MANUAL



| REF | DESCRIPTION (u indicates parts available in assemblies only) | PART # | QTY |  |
|-----|--|--------|-----|--|
| -   | <b>COMPLETE CART</b>   | 544283 | 1   |  |
| 1   | CAGE, BEARING BALL   | 544275 | 1   |  |
| 2   | BEARING BALL FI 18 MM  | 546442 | 6   |  |
| 3   | FELT INSERT FI 19MM, 3/4"                                    | 544277 | 2   |  |

## 2.31 Main Profile Side Handle (No. 544269)

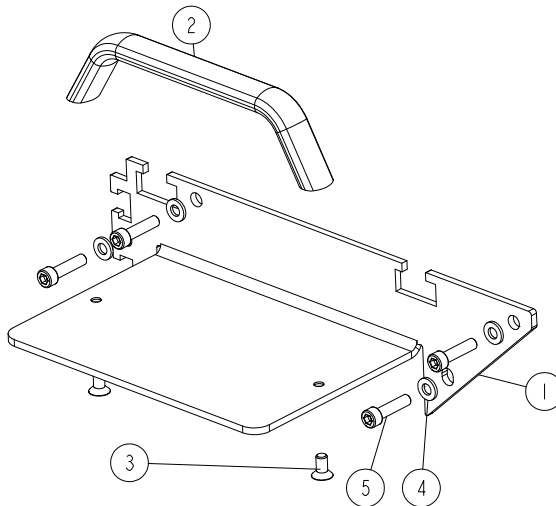
544269\_001\_A  
544269\_MANUAL



| REF | DESCRIPTION (u indicates parts available in assemblies only) | PART #     | QTY |  |
|-----|--|------------|-----|--|
| -   | <b>MAIN PROFILE SIDE HANDLE</b>                              | 544269     | 1   |  |
| 1   | HANDLE SHEET   | 544268-1   | 1   |  |
| 2   | HANDLES - ELESA+GANter GN_564-25-160                         | 546491     | 1   |  |
| 3   | WASHER, 6.4 FLAT ZINC  | F81053-1   | 4   |  |
| 4   | SCREW, M6X25 -8.8-FE/ZN5 HEX SOCKET HEAD                     | F81001-41  | 4   |  |
| 5   | SCREW M5X14-8.8 HEX  | F81001-110 | 2   |  |

**2.32 Main Profile Side Handle (No. 544285)**

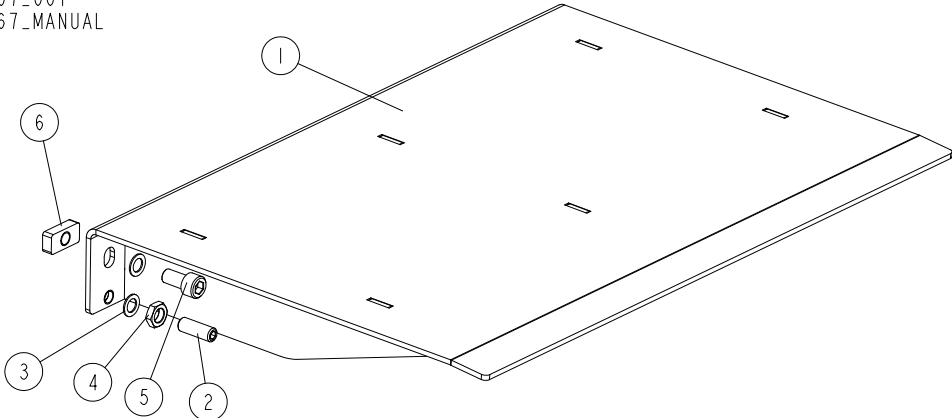
544285\_001\_A  
544285\_MANUAL



| REF | DESCRIPTION (u indicates parts available in assemblies only) | PART #    | QTY |
|-----|--|-----------|-----|
| -   | <b>MAIN PROFILE SIDE HANDLE</b>                              | 544285    | 1   |
| 1   | HANDLE SHEET   | 544284-1  | 1   |
| 2   | HANDLES - ELESA+GANter GN_564-25-160                         | 546491    | 1   |
| 3   | SCREW, M6X12-10.9 FE/ZN5 DIN7991                             | F81001-54 | 2   |
| 4   | WASHER, 6.4 FLAT ZINC  | F81053-1  | 4   |
| 5   | SCREW, M6X25 -8.8-FE/ZN5 HEX SOCKET HEAD                     | F81001-41 | 4   |

2.33 Side Shelf (No. 544267)

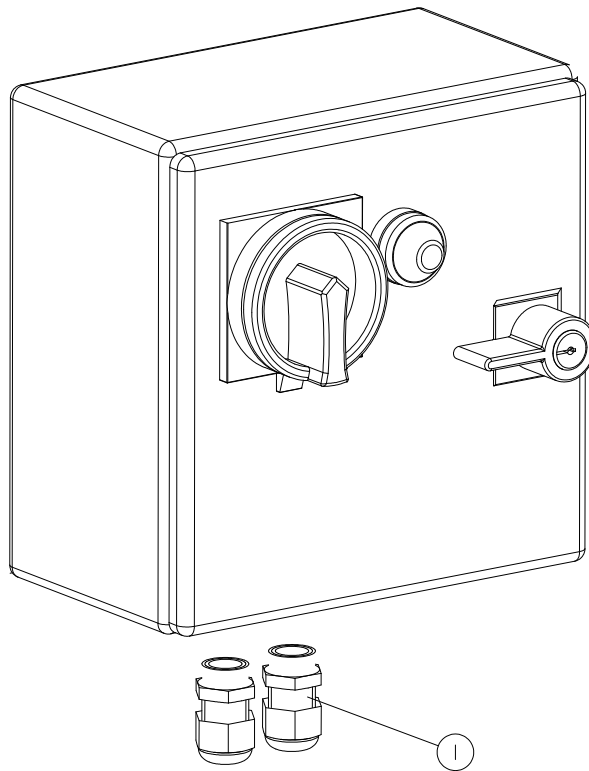
544267\_001  
544267\_MANUAL



| Ref | DESCRIPTION (* indicates parts available in assemblies only) | PART #     | QTY |  |
|-----|--|------------|-----|--|
| -   | <b>WORKWORK SIDE SHELF</b>                                   | 544267     | 1   |  |
| 1   | SIDE SHELF   | 544266-1   | 1   |  |
| 2   | GRUB SCREW, M 10X40-45H CONE POINT HEX SOCKET                | F81003-35  | 2   |  |
| 3   | LOW WASHER, 10X5 FLAT ZINC                                   | F81055-15  | 4   |  |
| 4   | NUT M10 ZC 04 THIN   | F81033-10  | 2   |  |
| 5   | SCREW M10X20 SHCS ZC 8.8 DIN 912 ISO 4762                    | F81003-108 | 2   |  |
| 6   | SHELF CUBE   | 544263-1   | 2   |  |

**2.34 MS300EA3S Electrical Box (Part No, 536932-6)**

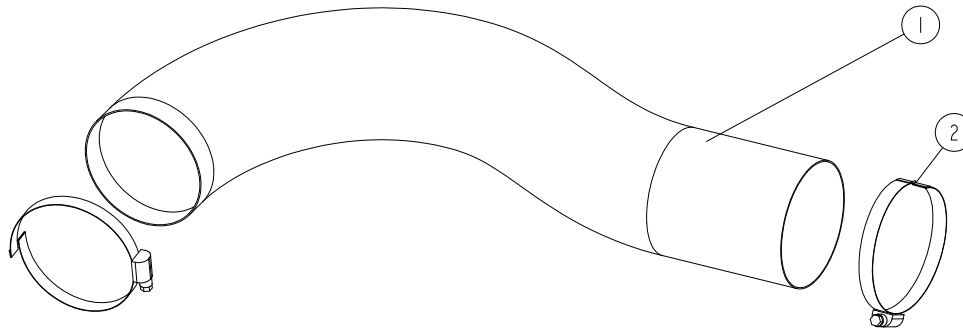
536932-6\_001  
536932-6\_MANUAL



| REF.     | DESCRIPTION (* indicates parts available in assemblies only) | PART #   | QTY |
|----------|--|----------|-----|
| -        | <b>BOX, MS300EA3S ELECTRICAL</b>                             | 536932-6 | 1   |
| <b>1</b> | GLAND, DW11/H CABLE  | 544185   | 2   |

2.35 Extraction Hose. (No. 544186)

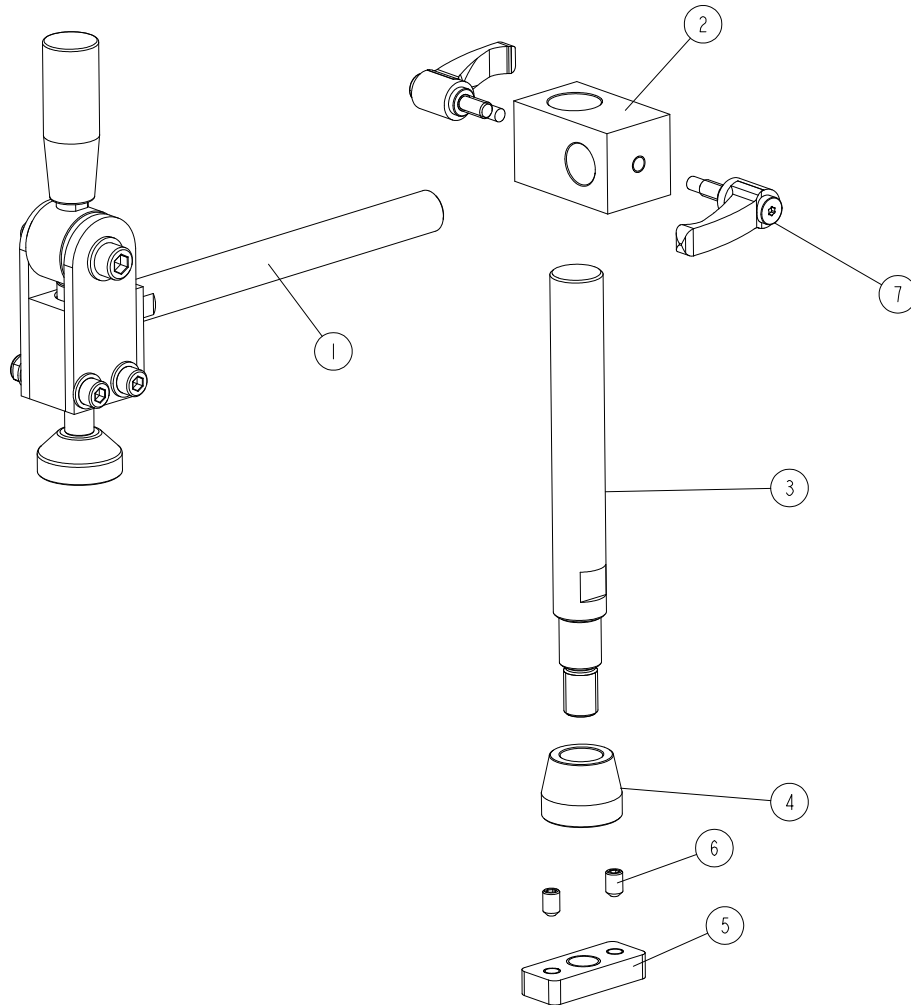
544186\_001  
544186\_MANUAL



| Ref | DESCRIPTION (* indicates parts available in assemblies only) | PART #    | QTY |  |
|-----|--|-----------|-----|--|
| -   | Extraction Hose Assembly                                     | 544186    | 1   |  |
| 1   | EXTRACTION HOSE DIA=100; L=1100                              | 544185    | 1   |  |
| 2   | BRIDGE BAND BC (N90-110)                                     | F81095-11 | 2   |  |

**2.36 Hold-Down Assembly (No. 542460)**

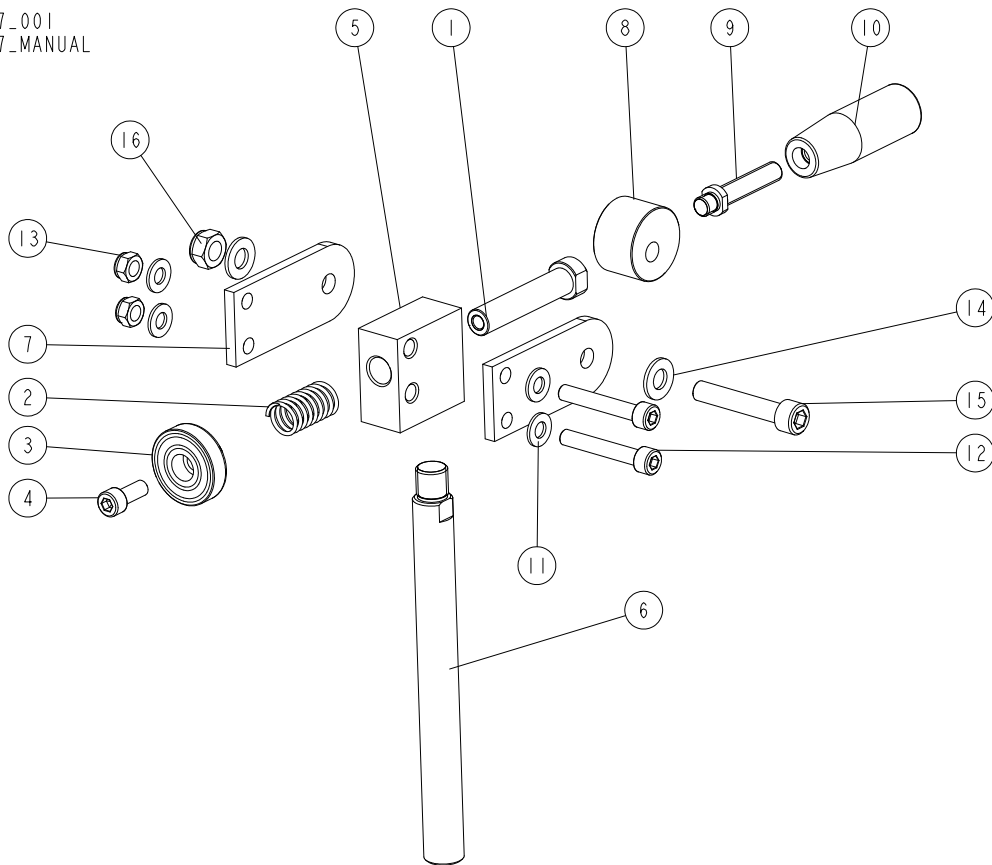
542460\_001  
542460\_MANUAL



| REF. | DESCRIPTION (* indicates parts available in assemblies only)       | PART #     | QTY |
|------|--|------------|-----|
| -    | <b>HOLD-DOWN ASSEMBLY</b>  | 542460     | 1   |
| 1    | ARM, HOLD-DOWN <a href="#">See Section 2.37</a>                    | 544367     | 1   |
| 2    | BLOCK  | 544353-1   | 1   |
| 3    | ROD  | 544352-1   | 1   |
| 4    | SLEEVE, CONICAL  | 544381-1   | 1   |
| 5    | BLOCK, GUIDE   | 544273-1   | 1   |
| 6    | SCREW, M8X12-45H FE/ZN DIN914/ PN82315 HEX SOCKET SET W/CONE POINT | F81002-105 | 2   |
| 7    | HANDLE, ERZ.63 P-M8X16 ADJUSTABLE                                  | 535988     | 2   |

### 2.37 Hold-Down Arm (No. 544367)

544367\_001  
544367\_MANUAL

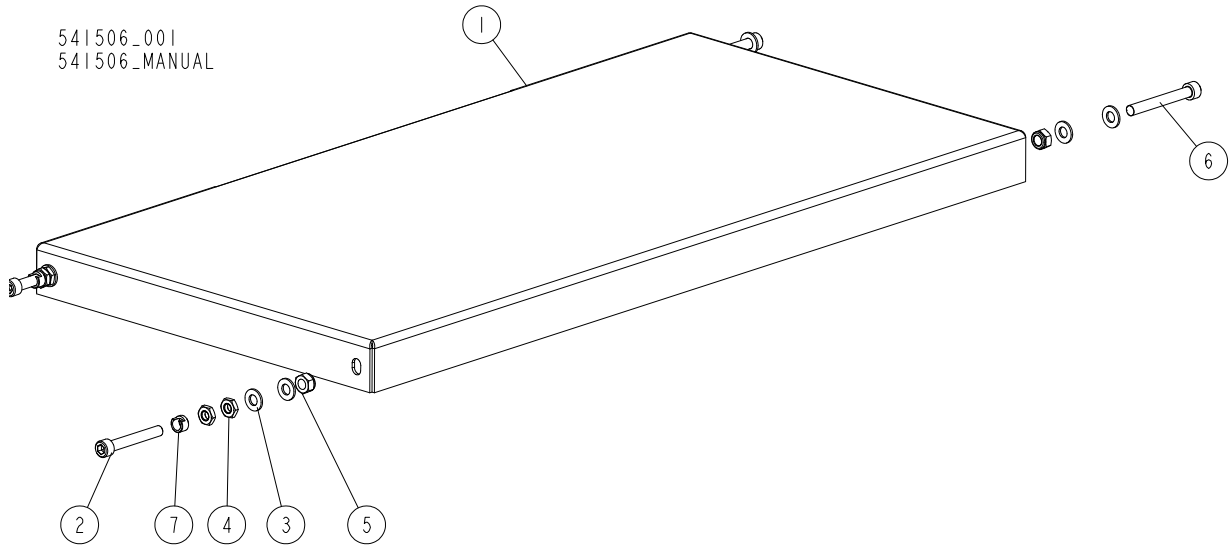


| REF. | DESCRIPTION (* indicates parts available in assemblies only) | PART #    | QTY |
|------|--|-----------|-----|
| -    | <b>ARM, HOLD-DOWN</b>  | 544367    | 1   |
| -    | HOLD-DOWN ASSEMBLY   | 544360    | 1   |
| 1    | SHAFT II   | 544359-1  | 1   |
| 2    | SPRING, 18.3X35X2  | 544361    | 1   |
| 3    | ELEMENT, HOLD-DOWN   | 544358-1  | 1   |
| 4    | SCREW, M8X20-8.8 HEX SOCKET HEAD CAP ZINC                    | F81002-30 | 1   |
| 5    | BLOCK  | 544356-1  | 1   |
| 6    | SHAFT  | 544357-1  | 1   |
| 7    | PLATE  | 544362-1  | 2   |
| -    | HANDLE ASSEMBLY  | 544365    | 1   |
| 8    | CAM  | 544363-1  | 1   |
| 9    | PIN  | 544364-1  | 1   |
| 10   | HANDLE, ELESА CYLINDRICAL                                    | 544366    | 1   |
| 11   | WASHER, 8.4 FLAT ZINC  | F81054-1  | 4   |
| 12   | SCREW, M8X40-8.8 HEX SOCKET HEAD CAP ZINC                    | F81002-85 | 2   |
| 13   | NUT, M8-8-B HEX NYLON ZINC LOCK                              | F81032-2  | 2   |
| 14   | WASHER, 10.5 FLAT ZINC                                       | F81055-1  | 2   |
| 15   | SCREW, M10X55-8.8 HEX SOCKET HEAD CAP ZINC                   | F81003-55 | 1   |
| 16   | NUT, M10-8-B HEX NYLON ZINC LOCK                             | F81033-1  | 1   |



2.38 Extension Table. 541506

541506\_001  
541506\_MANUAL



| REF | DESCRIPTION (◆ indicates parts available in assemblies only) | PART #    | QTY |
|-----|--|-----------|-----|
| -   | EXTENSION TABLE, RIP FENCE, 440 x 900 MM                     | 541506    | 1   |
| 1   | EXTENSION TABLE  | 546485-1  | 1   |
| 2   | ALLEN SCREW M10X70-8.8 FE/ZN5 DIN 912                        | F81003-60 | 2   |
| 3   | WASHER, 10.5 FLAT ZINC                                       | F81055-1  | 8   |
| 4   | NUT, M10 DIN439 THIN   | F81033-20 | 4   |
| 5   | NUT, M10-8-B HEX NYLON ZINC LOCK                             | F81033-1  | 4   |
| 6   | SCREW,M10X80-8.8HEX SOCKET HEAD CAP ZINC                     | F81003-69 | 2   |
| 7   | BUSHING, SPACER  | 546483    | 2   |