

G57 Engine

Safety, Operation, Maintenance & Parts Manual

LT70 Series

rev. F3.00



Safety is our #1 concern! Read and understand all safety information and instructions before operating, setting up or maintaining this machine.

Form #2442


Table of Contents

Section-Page

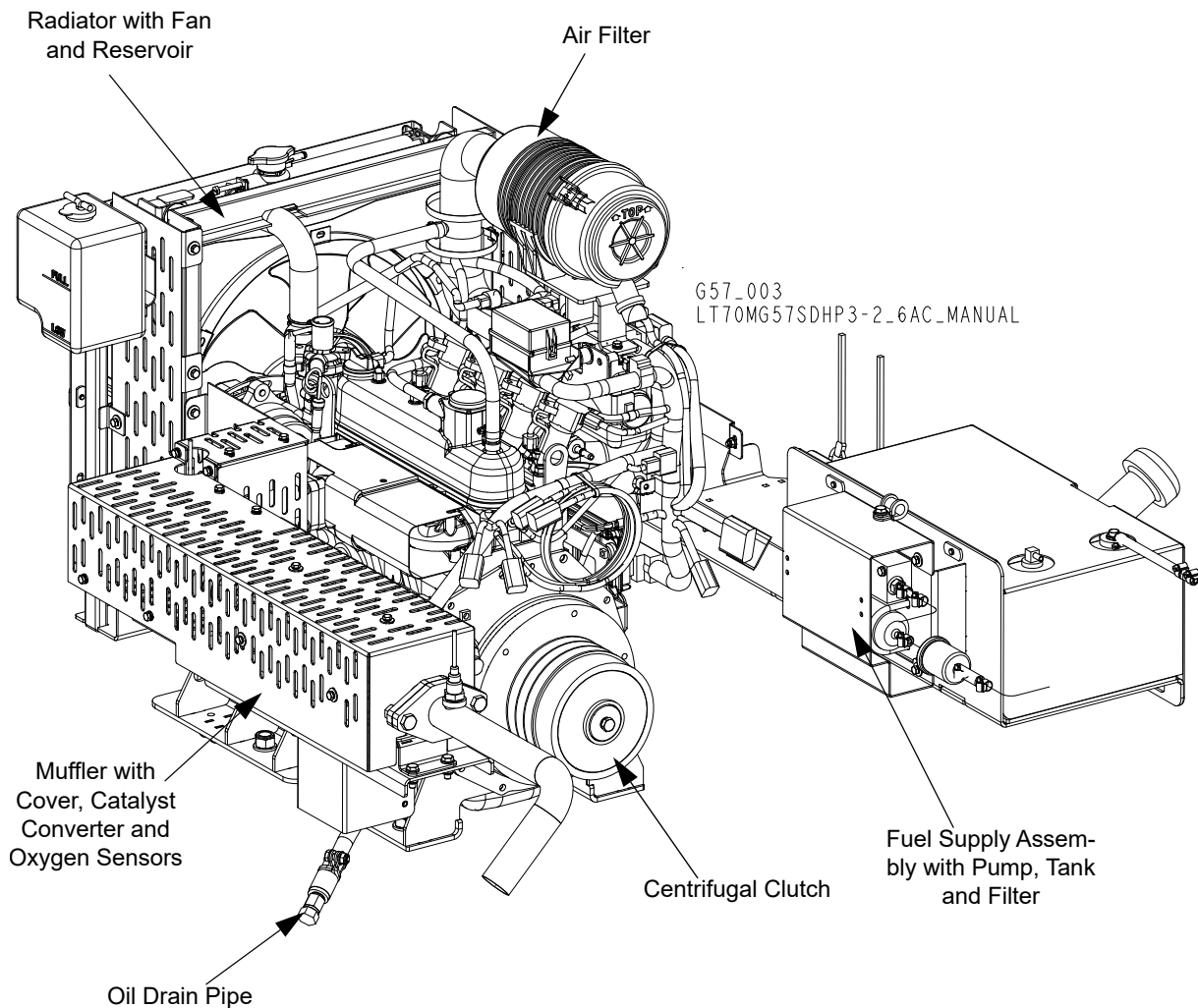
SECTION 1	OPERATION	1-1
1.1	Starting the Engine	1-1
1.2	HMI Display	1-5
1.3	Engine Specifications	1-11
SECTION 2	MAINTENANCE	2-1
2.1	Safety	2-1
2.2	Engine Oil & Filter	2-2
2.3	Cooling System	2-2
2.4	Air Cleaner	2-2
2.5	Fuel Filter	2-3
2.6	Battery	2-3
2.7	Alternator Belt	2-4
2.8	Miscellaneous Maintenance	2-5
SECTION 3	REPLACEMENT PARTS	3-1
3.1	How To Use The Parts List	3-1
3.2	Sample Assembly	3-1
3.3	G57 Engine Kit	3-2
3.4	G57 Engine Assembly	3-4
3.5	Engine Bracket Set	3-7
3.6	G57 Engine Alternator Assembly	3-9
3.7	Exhaust System w/Mount	3-11
3.8	Acceleration & Braking Mechanism	3-13
3.9	Fuel System	3-15
3.10	Battery Box	3-16
3.11	Engine Guards	3-18
3.12	Fuel Tank Assembly, LT70 - G57	3-21
3.13	Control Box, LT70-G57 (Accuset 2)	3-23

ABOUT THIS MANUAL

This manual is provided as a supplement to the equipment manufacturer's manual. This manual provides information specific to the use of this equipment on the Wood-Mizer® sawmill. Refer to the sawmill operator's manual and manufacturer's manual before attempting to operate this equipment.

 **IMPORTANT!** Read the sawmill operator's manual and engine manufacturer's manual for instructions and safety precautions before operating this equipment.

The information and instructions given in this manual do not amend or extend the limited warranties for the equipment given at the time of purchase.



ENGINE COMPONENTS

SECTION 1 OPERATION

1.1 Starting the Engine

Engine Control Lights

See **Figure 1-1**. The following indicator lights are located on the sawmill control panel.



Battery Charge Indicator: It lights up if the alternator is not charging the battery



EFI Diagnostic Indicator: A diagnostic light is provided to help troubleshoot the electronic fuel injection system. See [Engine error screen](#) for details.



Blade Lube Indicator: It lights up/blinks if the blade lube is on.

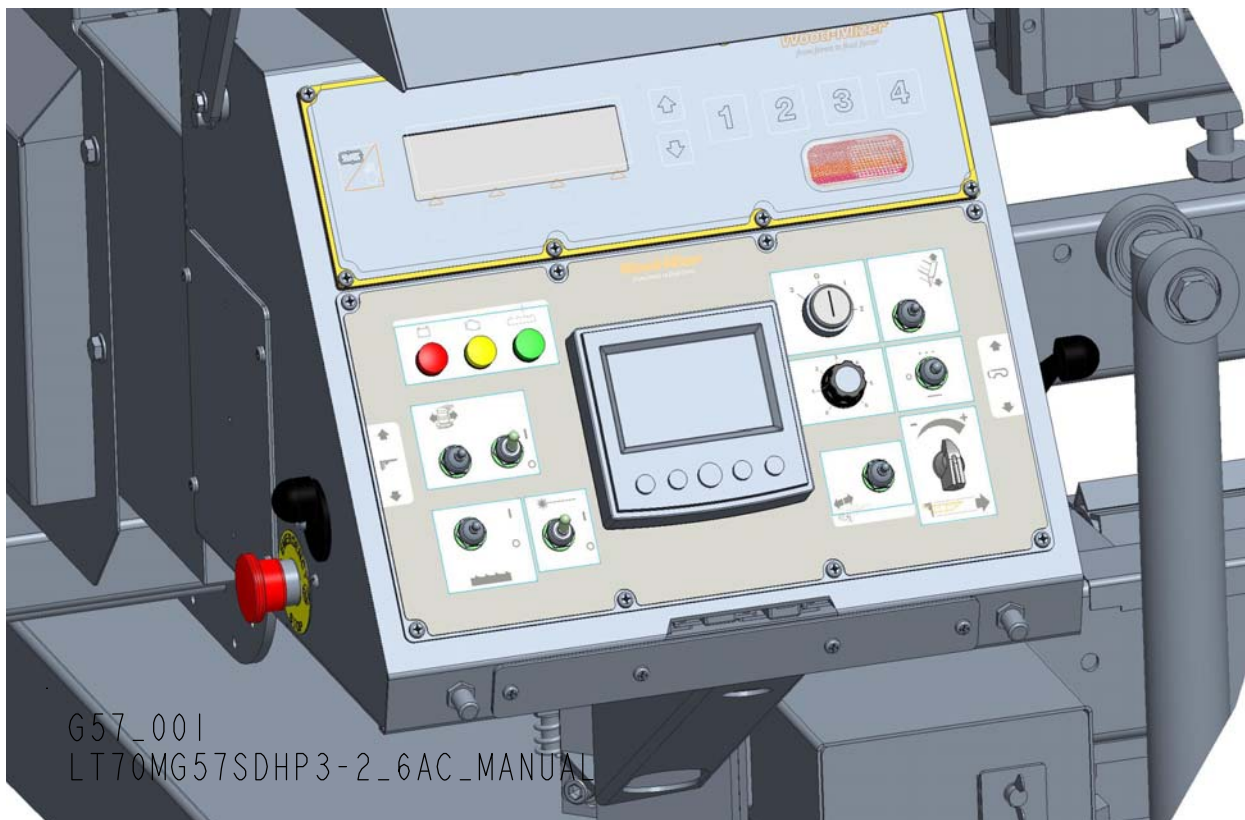


FIG. 1-1

Control Panel

Refer to the sawmill Operator's Manual.

Key switch (A):

- Position 0 - engine ignition OFF, all electrical circuits are OFF.
- Position 1 - engine ignition ON, all electrical circuits are ON.
- Position 2 - engine starter is ON
- Position 3 - engine ignition OFF, all electrical circuits are ON.

Blade drive switch (B):

- Position 0 - Blade drive is OFF. Blade brake is ON.
- Position 1 - Blade drive is ON. Blade brake is OFF.

To spin the blade wheels by hand (to track the blade), set the key switch to position 3 and move the blade drive switch to position 1. **IMPORTANT!** After the blade tracking is done, close the blade covers and **move the blade drive switch back to position 0.**

HMI Display (C): [See Section 1.2 HMI Display](#)

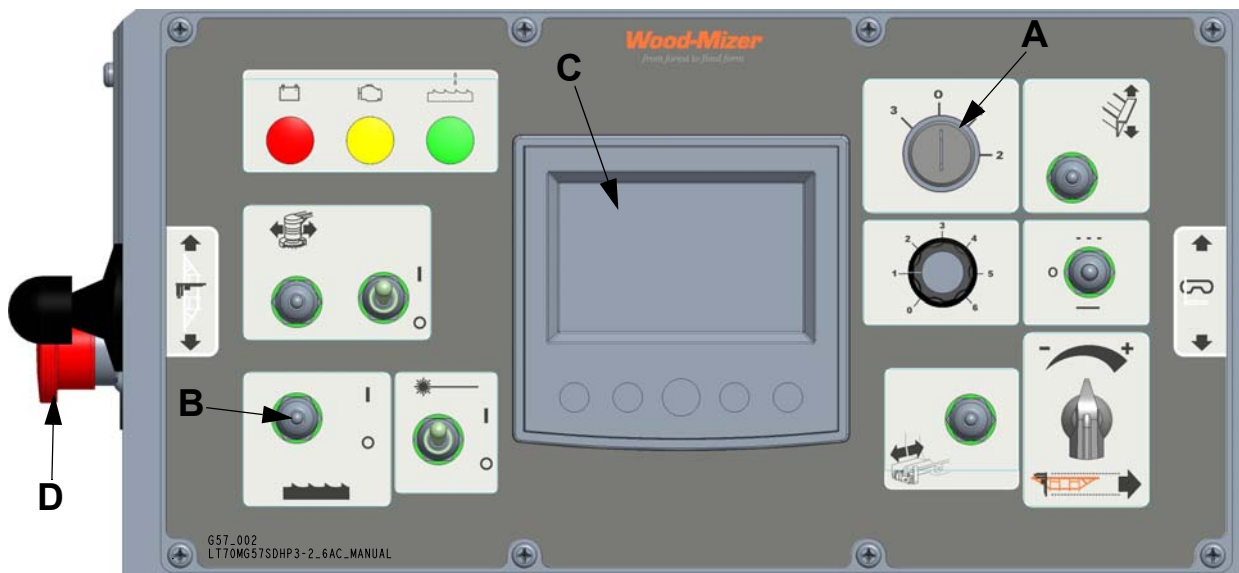


FIG. 1-2

Emergency stop button (D).



CAUTION! If at any time you need to immediately stop the machine, press the emergency stop button. To re-start the machine twist and release the emergency stop button first.



IMPORTANT! Wait 7 seconds before re-starting the machine.

Engine Start



DANGER! Always be sure the blade is disengaged and all persons are out of the path of the blade before starting the engine. Failure to do so will result in serious injury.

DANGER! Operate your engine/machine only in well-ventilated areas. The exhaust gases of your engine can cause nausea, delirium and potentially death unless adequate ventilation is provided.

DANGER! Never operate an engine with a fuel or oil leak. The leaking fuel or oil could potentially come in contact with hot surfaces and ignite into flames.



WARNING! Be sure the power feed switch is in the neutral position before turning the key switch to the “1”, “2” or “3” position. This prevents accidental carriage movement which may cause serious injury or death.

WARNING! Do not operate engine without proper and operational spark arrester/muffler. Sparks emitted from the engine exhaust could ignite surrounding materials, causing serious injury or death.



IMPORTANT! Let the engine run idle for 3 minutes to warm up before applying load.

- Open the fuel valve located on the fuel tank.
- Be sure the blade drive switch is in position 0.
- Turn the key switch to position 1. Check if the EFI indicator light is ON.
- Turn the key switch to position 2 and release.

- Check if the battery charge indicator, the oil pressure indicator (located on the HMI display) and the EFI indicator are OFF. If not, stop the engine immediately.

For more information, see the engine manufacturer's operation manual.

Engine Shut-off

- Set the blade drive switch to position 0.
- Let the engine run idle for 2 minutes to cool it down.
- Turn the key switch to position 0.

1.2 HMI Display

Start-up

After switching the key switch to position 1 (or 3), the initial welcome “Wood-Mizer” screen will appear.

The HMI contains four main screens available for the sawmill operator’s:



FIG. 1-3

Screen #1

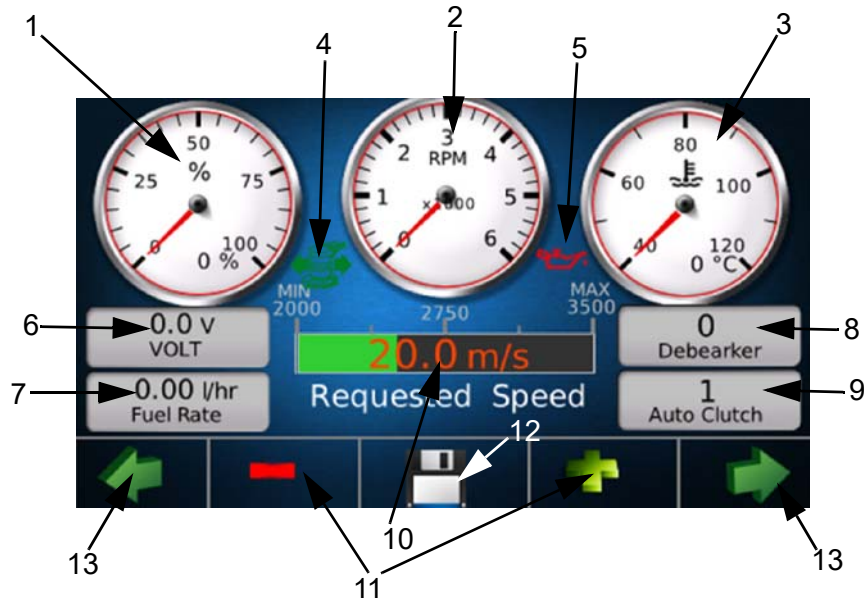


FIG. 1-4

1. Current engine load.
2. Current engine RPM.
3. Current engine coolant temperature.
4. Debarker icon (ON when debarker is working).
5. Oil pressure icon (ON when the oil pressure is too low). The icon should be ON when the engine ignition is ON and should go out immediately after the engine started.
6. Voltage of the sawmill electric circuit. When the engine is running it should indicate 14,2-14,6V. When the engine is OFF - above 12V. If the value is lower than 12V, the battery needs to be charged.
7. Temporary fuel consumption (in liters per hour).
8. Debarker status: 1-ON / 0-OFF.
9. Auto clutch status: 1 - Blade drive is engaged / 0 - Blade drive is disengaged.
10. Requested blade linear speed. Can be changed from 21m/s to 37m/s.

11. Buttons used to increase and decrease the blade speed.
12. Press to save requested blade speed.
13. Press to switch between HMI screens.

Screen #2

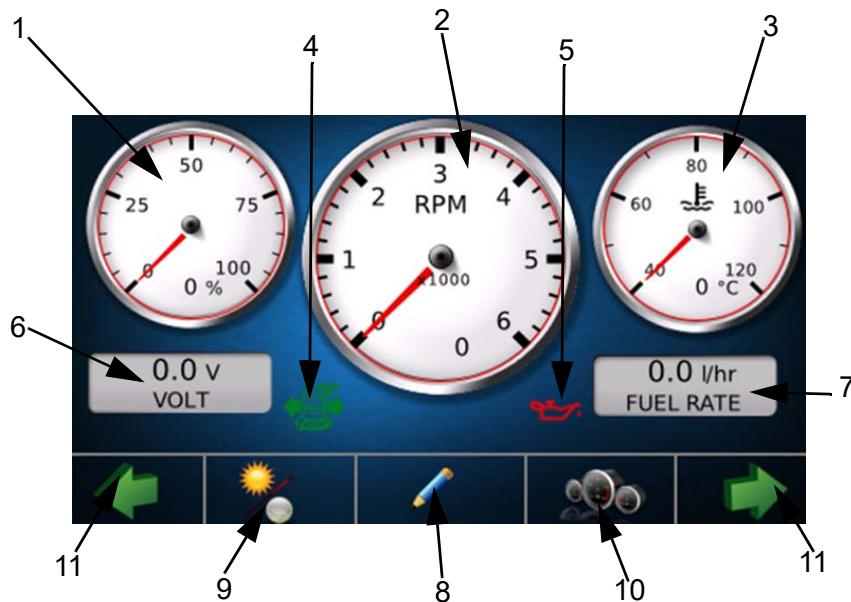


FIG. 1-5

1. Current engine load.
2. Current engine RPM.
3. Current engine coolant temperature.
4. Debarker icon (ON when debarker is working).
5. Oil pressure icon (ON when the oil pressure is too low). The icon should be ON when the engine ignition is ON and should go out immediately after the engine started.
6. Voltage of the sawmill electric circuit.
7. Temporary fuel consumption (in liters per hour).
8. Press to enter the “Setting language” screen. [See Section Language settings screen.](#)

9. Press to switch between the day and night modes.
10. Press to switch between “Engine hours” and “Fuel rate” screens.
11. Press to switch between HMI screens.

Screen #3

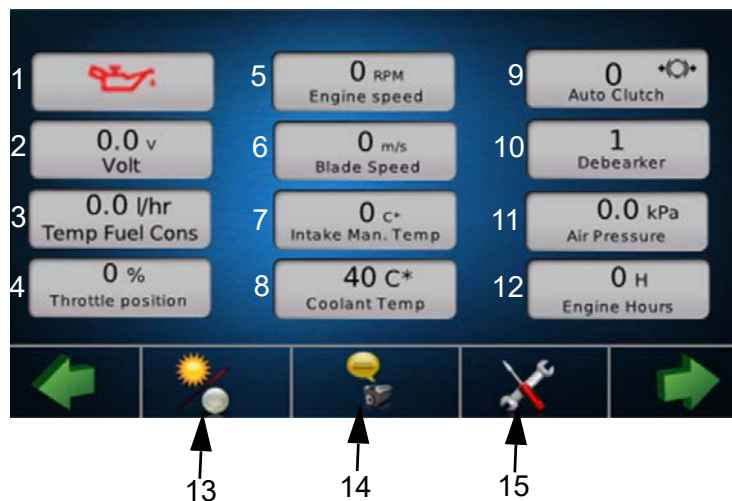



FIG. 1-6

1. Oil pressure. If the oil pressure indicator  is on, the oil pressure is too low.
2. Voltage of the sawmill electric circuit. When the engine is running it should indicate 14,2-14,6V. When the engine is OFF - above 12V. If the value is lower than 12V, the battery needs to be charged.
3. Temporary Fuel Consumption.
4. Throttle Position.
5. Actual Engine RPM.
6. Requested blade linear speed.
7. Intake Manifold Air Temperature.
8. Engine Coolant Temperature. The normal working temperature for the engine is 50-90°C.
9. Auto clutch status: 1 - Blade drive is engaged / 0 - Blade drive is disengaged.

10. Debarker status 1-ON / 0-OFF.
11. Intake Manifold Air Pressure.
12. Engine working hours.
13. Press to switch between the day and night modes.
14. Press to enter engine error screen [See Section Engine error screen](#).
15. Press to enter diagnostic screen - for service purposes only. Access is password protected.

Screen #4



FIG. 1-7

1. Switching between day and night brightness settings. Use “-” and “+” buttons to change the percentage value of brightness.
2. This button saves the selected brightness value.
3. Back to the #3 screen.

Language settings screen.

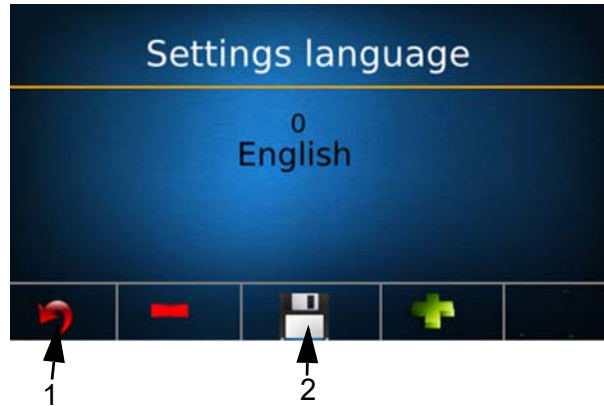


FIG. 1-8

Use “-” and “+” buttons to set the language.

1. Back to the screen #2
2. Saves the selected language.

Engine error screen

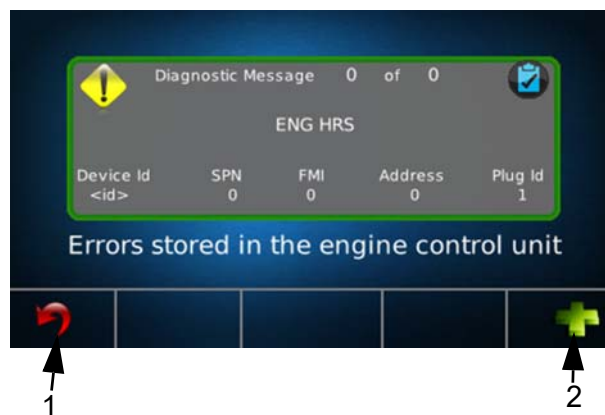


FIG. 1-9

1. Back to the screen #3
2. Toggle the errors stored in the controller memory.



Enter this screen if the EFI Diagnostic Indicator light is on. Note down the SPN and FMI codes and pass this information to the Wood-Mizer Customer Service. When the EFI

1 Operation

Engine Specifications


Diagnostic Indicator light is on, engine RPM is limited to 2500 to avoid engine damage.

1.3 Engine Specifications

	G57 Kubota
Type	Liquid cooled, 4-cycle, gasoline, OHV, electronic fuel injection
Number of cylinders	4
Bore and stroke mm	79 x 78,4
Total displacement cm³	1537
Power H.P. (SAEJ 1995) [HP/min⁻¹ (rpm)]	57/3600
Max Torque [Nm /min⁻¹ (rpm)]	120/2400
Dry Weight kg [lbs.]	119 [262]
Fuel	Unleaded gasoline
CO2 Emission data g/kWh	1090
Oil Capacity (w/filter) l.	6L


SECTION 2 MAINTENANCE

Refer to the manufacturer's manual for maintenance intervals and procedures unless otherwise instructed in this manual. Follow the manufacturer's recommendations for dusty conditions.


 **IMPORTANT!** This manual only provides information about additional procedures or procedures to be performed at different time intervals than found in the manufacturer's manuals. Refer to the manufacturer's manual for complete maintenance instructions.

2.1 Safety

Use caution when performing maintenance or service to the engine.

 **DANGER!** Always be aware of and take proper protective measures against rotating shafts, pulleys, fans, etc. Always stay a safe distance from rotating members and make sure that loose clothing or long hair does not engage rotating members resulting in possible injury.

DANGER! Engine components can become very hot during operation. Avoid contact with any part of a hot engine. The exhaust components of your engine are especially hot during and following operation. Contact with hot engine components can cause serious burns. Therefore, never touch or perform service functions on a hot engine. Allow the engine to cool sufficiently before beginning any service function.

 **WARNING!** Remove the blade before performing any engine service. Failure to do so may result in serious injury.

WARNING! Always wear proper and necessary safety equipment when performing service functions. Proper safety equipment includes eye protection, breathing protection, hand protection and foot protection.



This symbol identifies the interval (hours of operation) at which each maintenance procedure should be performed. "AR" signifies maintenance procedures which should be performed as required.

2.2 Engine Oil & Filter



Check the oil level every 8 hours of operation. Add oil as necessary. See the engine manual for oil viscosity and grade recommendations.



IMPORTANT! During initial break-in, change the oil and the oil filter after the first 50 hours and every 150-200 hours thereafter. Continue to check oil level every 8 hours of operation and refill as necessary.

NOTE: Engine in factory is filled with 10W/40 Shell Helix HX7, semi-synthetic oil.

2.3 Cooling System



Brush off sawdust and debris every 50 hours of operation. Clean the grass screen, cooling fins, and external surfaces. Remove any dust, dirt or oil. See engine manual for further instructions.

2.4 Air Cleaner



Empty the air debris collector every 8 hours of operation.

Open the air filter intake cover by loosening latches and remove all debris and dust. After all debris has been emptied close the cover.



WARNING! Always wear proper and necessary safety equipment when performing service functions. Proper safety equipment includes eye protection, breathing protection, hand protection and foot protection.



Replace the outer air cleaner cartridge and check the inner cartridge every 250 hours of operation or more often if operating the sawmill in dirty conditions or if engine performance indicates a new cartridge is necessary.



CAUTION! Do not clean elements with water or compressed air. Do not handle the inner element unless it is to be changed. Handle new elements carefully. Contact with the element could cause damage and prevent the filter from operating properly.



Replace the inner air cleaner cartridge every 1200 hours of operation or more often if operating the sawmill in dirty conditions.

2.5 Fuel Filter



Replace the fuel filter every 100 hours of operation or as required for engine performance.

2.6 Battery



Check the battery electrolyte level every 50 hours of operation. See manufacturer's manual for instructions.



DANGER! Batteries expel explosive gases. Keep sparks, flames, burning cigarettes, or other ignition sources away at all times. Always wear safety goggles and a face shield when working near batteries. Failure to do so will cause serious injury.¹



WARNING! Battery posts, terminals and related accessories contain lead and lead compounds, chemicals known to the State of California to cause cancer and reproductive harm. Wash hands after handling.

1. Battery Council International, copyright 1987

2.7 Alternator Belt



Adjust the alternator belt as needed. Check the alternator belt for tension and wear when battery is not charging properly or when the alternator belt is squeaking.

To Tighten The Belt:

3. Unscrew four bolts (**A**) and remove alternator belt cover.

See Figure 2-1.

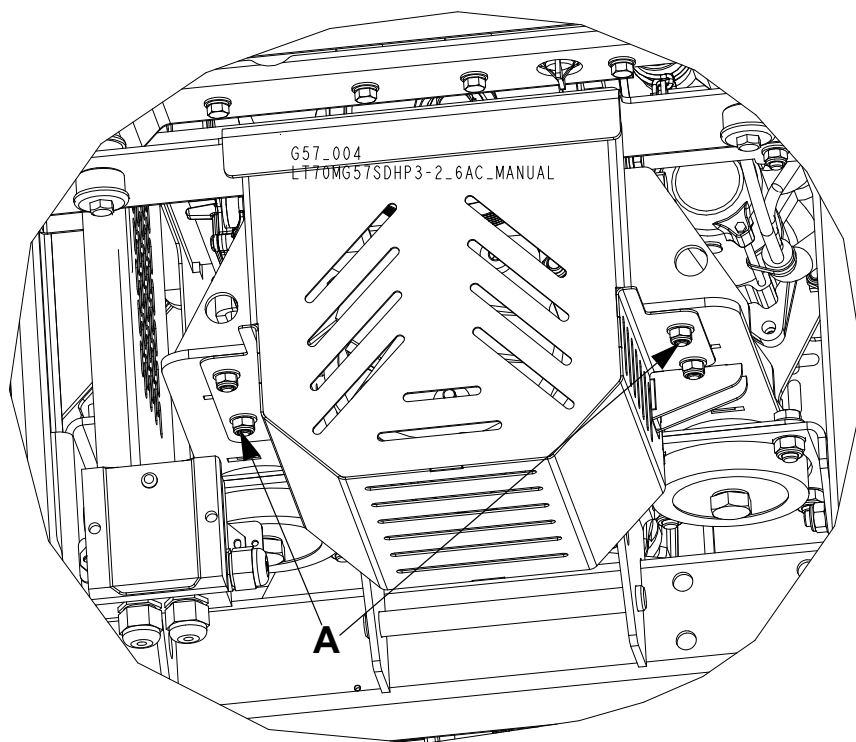


FIG. 2-1

4. Loosen the mounting bolts (**B**) and locking bolt (**C**).

See Figure 2-2.

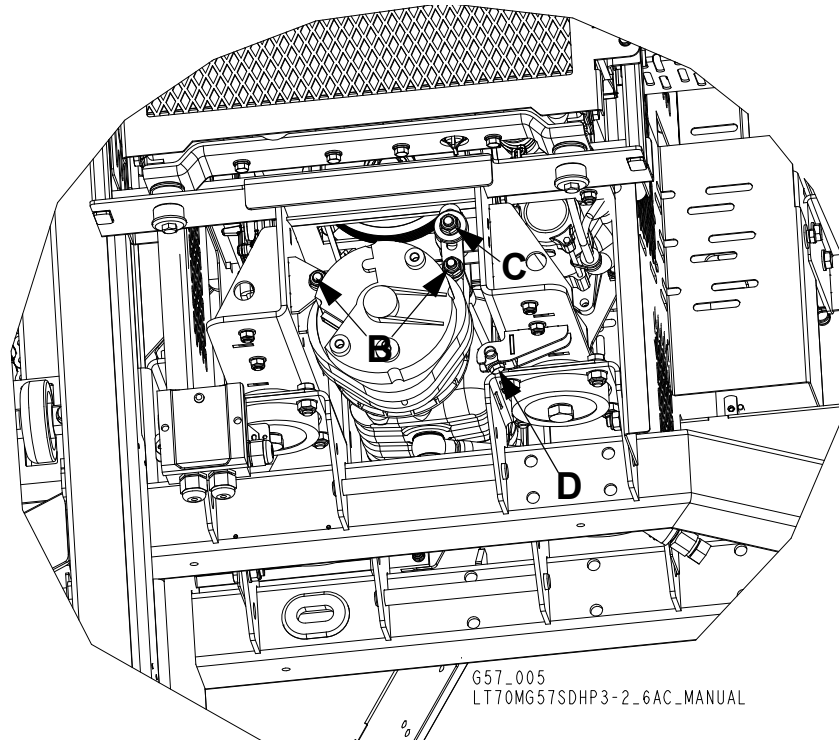


FIG. 2-2

5. Using the adjustment bolt (**D**) set the alternator belt tension until the belt has 5 mm deflection with a 2.5 kg. deflection force. Re-tighten the locking nut.
6. Reinstall alternator belt cover.

2.8 Miscellaneous Maintenance

50

Clean and inspect the spark arresters every 50 hours of operation. Replace if damaged.

100

Inspect the spark plugs every 100 hours of operation. Remove any deposits and adjust gap if necessary. See engine manual for further information.



CAUTION! Do not remove the plug wire to check for electrical spark. Damage to the ignition circuit will result.

3 REPLACEMENT PARTS

How To Use The Parts List

SECTION 3 REPLACEMENT PARTS

3.1 How To Use The Parts List

- Use the index above to locate the assembly that contains the part you need.
- Go to the appropriate section and locate the part in the illustration.
- Use the number pointing to the part to locate the correct part number and description in the table.
- Parts shown indented under another part are included with that part.
- Parts marked with a diamond (◆) are only available in the assembly listed above the part.

See the sample table below. Sample Part #A01111 includes part F02222-2 and subassembly A03333. Subassembly A03333 includes part S04444-4 and subassembly K05555. The diamond (◆) indicates that S04444-4 is not available except in subassembly A03333. Subassembly K05555 includes parts M06666 and F07777-77. The diamond (◆) indicates M06666 is not available except in subassembly K05555.

3.2 Sample Assembly				
REF.	DESCRIPTION (◆ Indicates Parts Available In Assemblies Only)	PART #	QTY	
	SAMPLE ASSEMBLY, COMPLETE (INCLUDES ALL INDENTED PARTS BELOW)	A01111	1	
7	Sample Part	F02222-22	1	
	Sample Subassembly (Includes All Indented Parts Below)	A03333	1	
8	Sample Part (◆ Indicates Part Is Only Available With A03333)	S04444-4	1	◆
	Sample Subassembly (Includes All Indented Parts Below)	K05555	1	
9	Sample Part (◆ Indicates Part Is Only Available With K05555)	M06666	2	◆
10	Sample Part	F07777-77	1	

To Order Parts:

- From Europe call our European Headquarters and Manufacturing Facility in Kolo, Poland at **+48-63-2626000**. From the continental U.S., call our toll-free Parts hotline at **1-800-525-8100**. Have your customer number, vehicle identification number, and part numbers ready when you call. From other international locations, contact the Wood-Mizer distributor in your area for parts.

Office Hours:

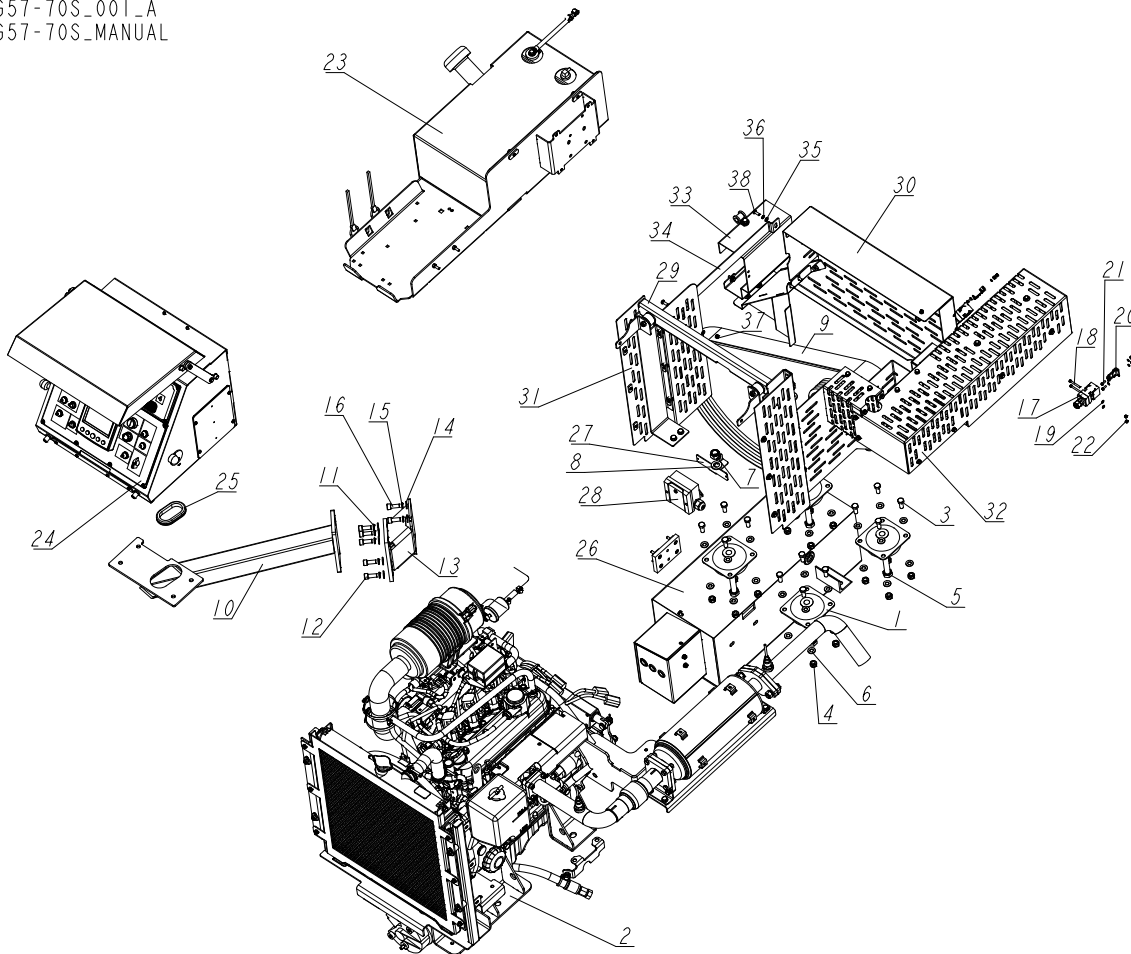
Country	Monday - Friday	Saturday	Sunday
POLAND	7-15	CLOSED	CLOSED
US	8 A.M.- 5 P.M.	8 A.M. - 5 P. M.	CLOSED



CAUTION! It is strongly recommended that only original spare parts be used.

3.3 G57 Engine Kit

G57-70S_001_A
G57-70S_MANUAL



REF	DESCRIPTION (◆ indicates parts available in assemblies only)	PART #	QTY
-	ENGINE KIT, G57S LT70	G57-70S	1
1	VIBROISOLATOR, RUBBER-METAL(70 SH)	100080	4
2	ENGINE ASSEMBLY, G57 See Section 3.4	540640	1
3	BOLT, M10 X 25 8.8 FE/ZN5, PN-M/82105	F81003-31	16
4	NUT, M10-8-B HEX NYLON ZINC LOCK	F81033-1	16
5	BOLT, M16X80 8.8-B- HEX HEAD FULL THREAD	F81006-11	4
6	WASHER, 10.5 FLAT ZINC	F81055-1	37
7	NUT, M16-8 HEX NYLON ZINC LOCK	F81036-2	4
8	WASHER, 17 FLAT ZINC	F81058-1	4
9	BELT, 3BX 2437 LP	089464	1
10	MOUNT WELDMENT, STANDARD CONTROL BOX	086732-1	1
11	WASHER, 10.2 SPLIT LOCK ZINC	F81055-2	5
12	SCREW, M10X25 8.8 HEX SOCKET HEAD CAP ZI	F81003-32	5
-	SPACER, LT70 CONTROL BOX - COMPLETE	522517	1
13	SPACER WELDMENT, LT70 CONTROL BOX	522169-1	1

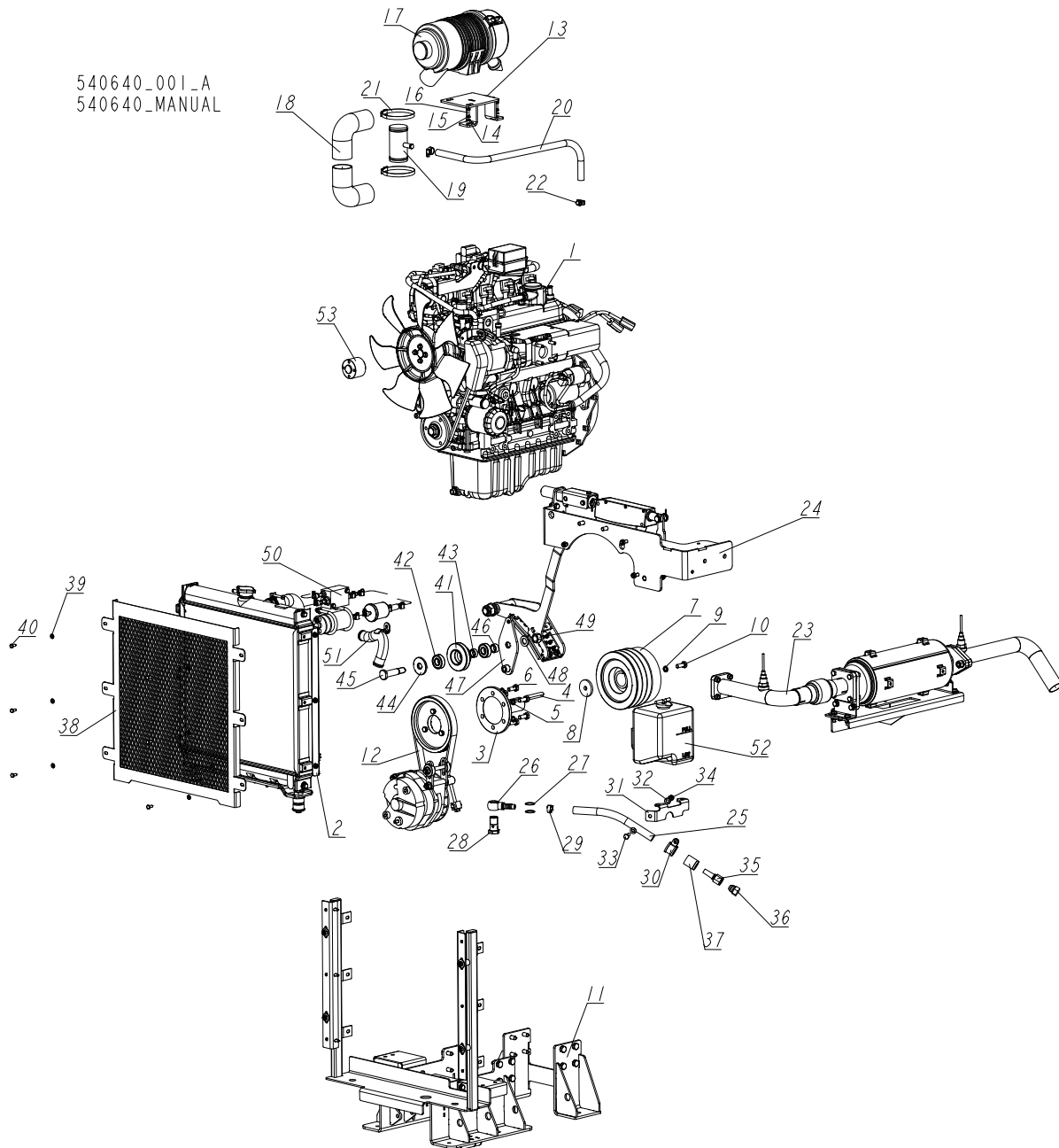
3

REPLACEMENT PARTS

G57 Engine Kit

REF	DESCRIPTION (◆ indicates parts available in assemblies only)	PART #	QTY	
14	WASHER, 10.5 FLAT ZINC	F81055-1	4	
15	WASHER, 10.2 SPLIT LOCK ZINC	F81055-2	4	
16	SCREW, M10X25 8.8 HEX SOCKET HEAD CAP ZI	F81003-32	4	
17	SWITCH, AZ17-11ZRK SAFETY	094232	2	
18	BOLT M4X35 SHCS ZC PT 8.8 DIN 912 ISO 47	F81011-34	4	
19	WASHER, 4.3 FLAT ZINC	F81051-2	4	
20	KEY, AZ17/170-B5 SAFETY SWITCH	094422	2	
21	SCREW, M4X12 -5,8-B CROSS RECESSED PAN HE	F81011-43	4	
22	NUT M4-B FE/ZN5 PN-M/82175	F81029-1	8	
23	TANK ASSEMBLY, LT70 - G57 FUEL See Section 3.12	540678	1	
24	CONTROL BOX, LT70-G57 (FOR ACCUSET) See Section 3.13	543535	1	
25	GROMMET, RUBBER	087065	1	
26	BATTERY BOX - COMPLETE See Section 3.10	089794	1	
27	BRACKET, SAFETY SWITCH RELAY	096873-1	1	
28	RELAY, SAFETY SWITCH	086486	1	
29	BRACKET ASSEMBLY, RADIATOR UPPER See Section 3.11	545965	1	
30	GUARD ASSEMBLY, DRIVE BELT See Section 3.11	545981	1	
31	GUARD ASSEMBLY, SIDE See Section 3.11	545970	1	
32	GUARD ASSEMBLY, MUFFLER See Section 3.11	545975	1	
33	GUARD, FUEL SYSTEM - COMPLETE See Section 3.11	545983	1	
-	BRACKET, CROSS - COMPLETE	546511	1	
34	BRACKET, CROSS	546510-1	1	
35	WASHER, 6.4 FLAT ZINC	F81053-1	3	
36	WASHER, Z 6.1 SPLIT LOCK ZINC	F81053-3	1	
37	NUT, M6-8-B HEX NYLON ZINC LOCK	F81031-2	1	
38	BOLT, M6X16-8.8 HEX HEAD FULL THREAD ZIN	F81001-15	2	

3.4 G57 Engine Assembly



REF	DESCRIPTION (◆ indicates parts available in assemblies only)	PART #	QTY
-	ENGINE ASSEMBLY, G57	540640	1
1	ENGINE, KUBOTA G57 (WG1605-G-E3)	540639	1
2	RADIATOR, G57	545985	1
-	SHAFT ASSEMBLY, G57 ENGINE OUTPUT	540658	1

3

REPLACEMENT PARTS

G57 Engine Assembly

REF	DESCRIPTION (◆ indicates parts available in assemblies only)	PART #	QTY	
3	SHAFT, KUBOTA ENGINE OUTPUT	088732	1	
4	KEY, A10X8X63, PARALLEL	088130	1	
5	WASHER, 10.2 SPLIT LOCK ZINC	F81055-2	6	
6	BOLT, M10X1.25X25-8.8-A HEX HEAD FULL TH	F81003-29	6	
7	CLUTCH, CENTRIFUGAL 160.236NM	089467	1	
8	WASHER, BLADE DRIVE WHEEL	088956-1	1	
9	WASHER, 10.2 SPLIT LOCK ZINC	F81055-2	1	
10	BOLT, M10 X 25 8.8 FE/ZN5, PN-M/82105	F81003-31	1	
11	BRACKET SET, ENGINE See Section 3.5	543518	1	
12	ALTERNATOR ASSEMBLY, G57 See Section 3.6	540649	1	
-	FILTER ASSEMBLY, AIR	540650	1	
13	BRACKET, AIR FILTER	540653-1	1	
14	WASHER, 6.4 FLAT ZINC	F81053-1	2	
15	WASHER, Z 6.1 SPLIT LOCK ZINC	F81053-3	2	
16	BOLT, M6X16-8.8 HEX HEAD FULL THREAD ZIN	F81001-15	2	
17	FILTER, G57 AIR	545986	1	
18	HOSE, RUBBER	545991	1	
19	T-CONNECTOR	545987	1	
20	HOSE, 12.5 L. 500 MM	540654	1	
21	CLAMP, 70-80MM DIA.	F81095-5	2	
22	CLAMP, 12-20	F81080-3	2	
23	EXHAUST SYSTEM W/MOUNT - COMPLETE See Section 3.7	540645	1	
24	ACCELERATION & BRAKING MECHANISM, LT70 G See Section 3.8	540677	1	
-	HOSE, D42 OIL DRAIN	091774	1	
25	HOSE, OIL DRAIN	091777	1	
26	END, BANJO M22X1.5X1/2 ZMB 600-22-08	091773	1	
27	WASHER, 22 COPPER	F81061-5	2	
28	BOLT, BANJO M22X1.5 ZMB 610-22/1.5	091772	1	
29	CLAMP, 12-20	F81080-3	1	
30	CLIP, RSGU 1.20/20 RETAINING	F81087-2	1	
31	BRACKET, OIL DRAIN HOSE	092516-1	1	
32	WASHER, 8.4 FLAT ZINC	F81054-1	2	
33	BOLT, M8X25-8.8-B HEX HEAD FULL THREAD ZI	F81002-5	1	
34	NUT, M8-8-B HEX NYLON ZINC LOCK	F81032-2	1	
35	FITTING, JIC 3/4"-16 UNF, END, JIC 3/4"-16 UNF STRAIGHT	094740	1	
36	CAP, 3/4"	095492	1	
37	CRIMP SOCKET, 1/2"-20 HOSE	094741	1	
-	COVER, RADIATOR FRONT - COMPLETE	543519	1	
38	COVER, RADIATOR FRONT	543525-1	1	
39	WASHER, 6.4 FLAT ZINC	F81053-1	6	
40	BOLT, M6X12 8.8 HEX HEAD FULL THREAD ZIN	F81001-7	6	
-	BELT TENSIONER, D42 KUBOTA ENGINE	087958	1	

REPLACEMENT PARTS

G57 Engine Assembly

3

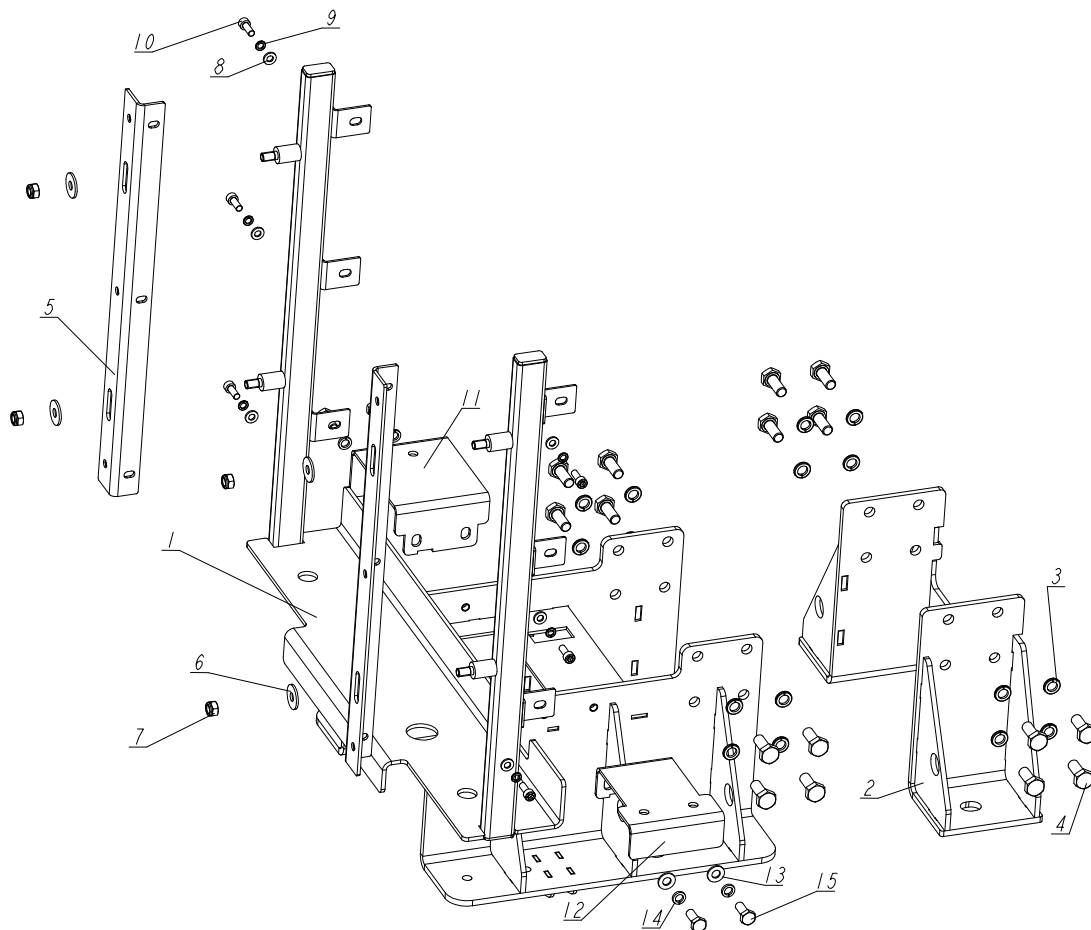
REF	DESCRIPTION (◆ indicates parts available in assemblies only)	PART #	QTY	
41	IDLER PULLEY, KUBOTA D42, OXIDIZED	087959-1	1	
42	BEARING, 6203-2RS	086114	2	
43	SPACER, AC DEBARKER CLUTCH	086357	1	
44	COVER, KUBOTA ENGINE BELT TENSIONER ZINC	087961-1	1	
45	SHAFT, KUBOTA ENGINE BELT TENSIONER	087960-1	1	
46	SPACER	087965-1	1	
47	MOUNT WELDMENT, D42 ENGINE BELT TENSIONER	087962-1	1	
48	WASHER, 17 FLAT ZINC	F81058-1	1	
49	NUT, M16-8 HEX NYLON ZINC LOCK	F81036-2	1	
50	FUEL SYSTEM See Section 3.9	540680	1	
51	PIPE, RADIATOR METAL	545993	1	
52	TANK, D42 ENGINE RADIATOR SURGE	097157	1	
53	BUSHING, D42 SPACER.	089490	1	

3 REPLACEMENT PARTS

Engine Bracket Set

3.5 Engine Bracket Set

543518_001
543518_MANUAL



REF.	DESCRIPTION (* indicates parts available in assemblies only)	PART #	QTY
-	BRACKET SET, ENGINE	543518	1
1	BRACKET WELDMENT, G57 ENGINE REAR	540670-1	1
2	BRACKET WELDMENT, G57 ENGINE FRONT	540662-1	1
3	WASHER, 10.2 SPLIT LOCK ZINC	F81055-2	16
4	BOLT, M10x1.25x25-8.8-A HEX HEAD FULL THREAD ZINC	F81003-29	16
5	BRACKET, RADIATOR	543517-1	2
6	WASHER, 8.5 SPECIAL FLAT ZINC	F81054-11	4
7	NUT, M8-8-B HEX NYLON ZINC LOCK	F81032-2	4
8	WASHER, 6.4 FLAT ZINC	F81053-1	6
9	WASHER, Z 6.1 SPLIT LOCK ZINC	F81053-3	6
10	SCREW, M6x16 HEX SOCKET HEAD CAP ZINC	F81001-21	6
11	PLATE, LEFT	545961-1	1
12	PLATE, RIGHT	545962-1	1

REPLACEMENT PARTS

Engine Bracket Set

3

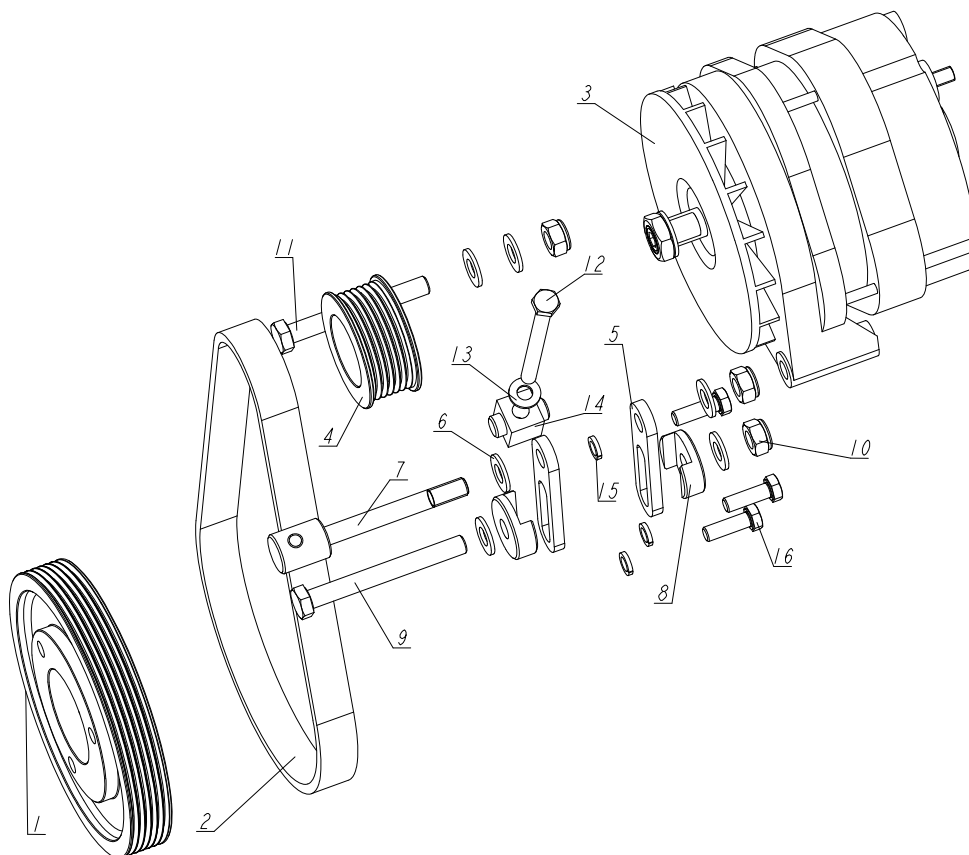
REF.	DESCRIPTION (* indicates parts available in assemblies only)	PART #	QTY	
13	WASHER, 8.4 FLAT ZINC	F81054-1	4	
14	WASHER, 8.2 SPLIT LOCK ZINC	F81054-4	4	
15	BOLT, M8x20-8.8-B HEX HEAD FULL THREAD ZINC	F81002-4	4	

3 REPLACEMENT PARTS

G57 Engine Alternator Assembly

3.6 G57 Engine Alternator Assembly

540649_001
540649_MANUAL



REF.	DESCRIPTION (◆ indicates parts available in assemblies only)	PART #	QTY
-	ALTERNATOR ASSEMBLY, G57	540649	1
1	PULLEY, ALTERNATOR DRIVE	540657-1	1
2	BELT, 6PK 775 ALTERNATOR	089465	1
-	ALTERNATOR, 190A LT60 COMPLETE	089466	1
3	ALTERNATOR, 140 AMP	034499	1
4	SHEAVE, 190A ALTERNATOR ZINC-PLATED	089441-1	1
5	PLATE, D190 ALTERNATOR BELT TENSIONER	088933-1	2
6	WASHER, 10.5 FLAT ZINC	F81055-1	6
7	BOLT, M10 SPECIAL	089472-1	1
8	WASHER, SPECIAL ZINC-PLATED	088932-1	2
9	BOLT, M10X90-8.8-B HEX HEAD ZINC	F81003-66	1
10	NUT, M10-8-B HEX NYLON ZINC LOCK	F81033-1	3
11	BOLT, M10x80-8.8 HEX HEAD ZINC	F81003-50	1
12	BOLT, M8x100-8.8 HEX HEAD FULL THREAD ZINC	F81002-86	1
13	WASHER, 8.4 FLAT ZINC	F81054-1	1

REPLACEMENT PARTS
G57 Engine Alternator Assembly

3

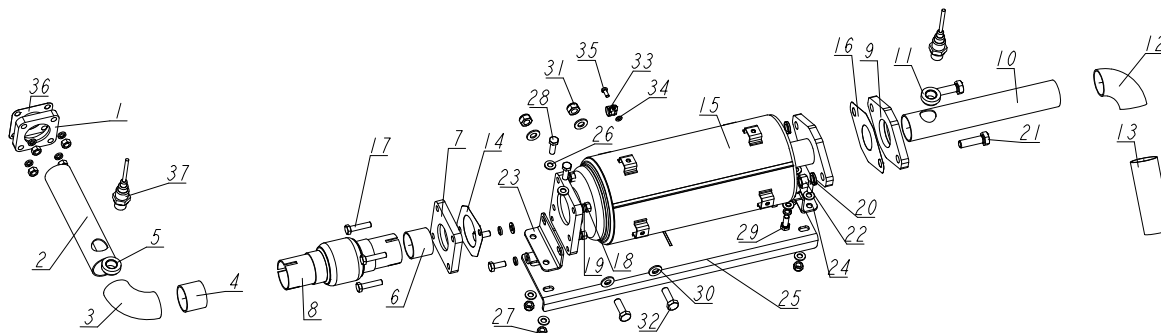
REF.	DESCRIPTION (◆ indicates parts available in assemblies only)	PART #	QTY	
14	BLOCK, ALTERNATOR BELT TENSIONER	089473-1	1	
15	WASHER, 8.2 SPLIT LOCK ZINC	F81054-4	3	
16	BOLT, M8x25-8.8-B HEX HEAD FULL THREAD ZINC	F81002-5	3	

3 REPLACEMENT PARTS

Exhaust System w/Mount

3.7 Exhaust System w/Mount

540645_001
540645_MANUAL



REF.	DESCRIPTION (◆ indicates parts available in assemblies only)	PART #	QTY
-	EXHAUST SYSTEM W/MOUNT - COMPLETE	540645	1
-	PIPE ASSEMBLY, 1 & 3 WELDED	540644	1
-	PIPE (1)	540635	1
1	PLATE (1)	540631	1
2	PIPE, 42.4X2X200	540633	1
3	ELBOW, 32003	540637	1
4	PIPE, 42.4X2X33	540634	1
5	BUSHING, M18X1.5	540636	1
-	PIPE (3)	540646	1
6	PIPE, 42.4X2X33	540634	1
7	PLATE (2)	540632	1
8	CONNECTOR, 43x200 FLEXIBLE	543526	1
-	PIPE (2)	540641	1
9	PLATE (3)	540642	1
10	PIPE, 42.4x2x250	540643	1
11	BUSHING, M18x1.5	540636	1
12	ELBOW, 32003	540637	1
13	PIPE, 42.4x2x115	540647	1
14	GASKET, EXHAUST SYSTEM 2	546508	1
15	MUFFLER/CATALYTIC CONVERTER, G57	545984	1
16	GASKET, EXHAUST SYSTEM 3	546509	1
17	BOLT, M8x35-8.8 HEX HEAD FULL THREAD ZINC	F81002-13	4
18	NUT, M8-8-B HEX ZINC	F81032-1	8
19	WASHER, 8.2 SPLIT LOCK ZINC	F81054-4	12
20	WASHER, Z12.2 SPLIT LOCK ZINC	F81056-2	2
21	BOLT, M12x40 8.8 HEX HEAD FULL THREAD ZINC	F81004-4	2
22	NUT, M12-8-B ZINC HEX	F81034-1	2
23	BRACKET, FRONT	540672-1	1
24	BRACKET, REAR	540673-1	1

REPLACEMENT PARTS

Exhaust System w/Mount

3

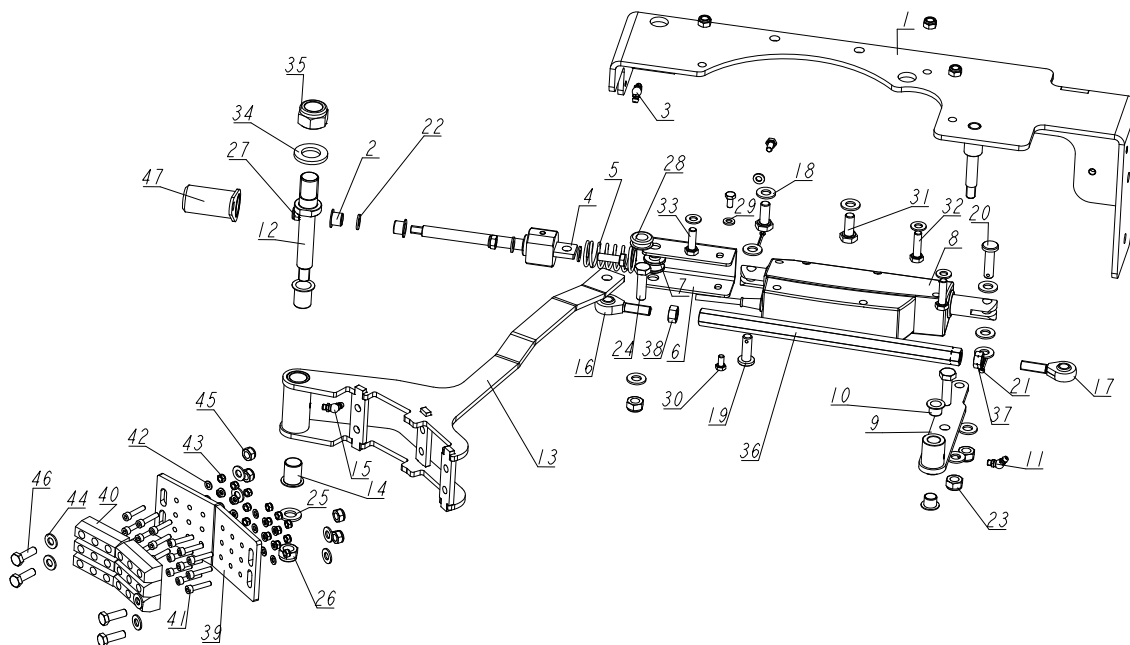
REF.	DESCRIPTION (◆ indicates parts available in assemblies only)	PART #	QTY	
25	PLATE, MOUNT	540675-1	1	
26	WASHER, 8.4 FLAT ZINC	F81054-1	12	
27	NUT, M8-8-B HEX NYLON ZINC LOCK	F81032-2	4	
28	BOLT, M8x25-8.8-B HEX HEAD FULL THREAD ZINC	F81002-5	4	
29	BOLT, M8x20-8.8-B HEX HEAD FULL THREAD ZINC	F81002-4	4	
30	WASHER, 10.5 FLAT ZINC	F81055-1	4	
31	NUT, M10-8-B HEX NYLON ZINC LOCK	F81033-1	2	
32	BOLT, DIN 933-M10X30 8.8-A2E HEX HEAD	F81003-111	2	
33	CLIP, RSGU 1.10/12W1 METAL & RUBBER RETAINING	086861	1	
34	WASHER, 5.3 FLAT ZINC	F81052-1	1	
35	BOLT, M10 X 12-5.8 HEX HEAD FULL THREAD ZINC	F81000-5	1	
36	GASKET, EXHAUST SYSTEM 1	546507	1	
37	PROBE, G57 MEASURING	546506	2	

3 REPLACEMENT PARTS

Acceleration & Braking Mechanism

3.8 Acceleration & Braking Mechanism

540677_001
540677_MANUAL



REF.	DESCRIPTION (◆ indicates parts available in assemblies only)	PART #	QTY
-	ACCELERATION & BRAKING MECHANISM, LT70 G57	540677	1
1	MOUNT WELDMENT, ACCELERATION AND BRAKING MECHANISM	540655-1	1
2	BUSHING, XFM-1214-12 FLANGED	088934	2
3	FITTING, M6 1B1 TYPE PN-M/86003 GREASE	094213	1
4	BLOCK, ACTUATOR MOUNT W/SHAFT ZINC LA12	091342-1	1
5	SPRING, 60X23X3 ZINC-PLATED	088992	1
6	COVER, SPRING	089435-1	1
7	PAD, LINEAR ACTUATOR SLIDE	089436	2
8	ACTUATOR, LA121000-20401210 LINEAR	091309	1
-	LEVER, COMPLETE	096426	1
9	LEVER	096427-1	1
10	BUSHING, XFM-1214-12 FLANGED	088934	2
11	FITTING, M6 1B1 TYPE PN-M/86003 GREASE	094213	1
12	SHAFT, BRAKE LEVER PIVOT ZINC-PLATED	096424-1	1
-	LEVER, BRAKE - COMPLETE	096418	1
13	LEVER, BRAKE	096419-1	1
14	BUSHING, GFM 1719-25	094142	2
15	FITTING, M6 1B1 TYPE PN-M/86003 GREASE	094213	1
16	ROD END, SA10	094236	1
17	ROD END, SAL 10-T/K LEFT	096431	1
18	WASHER, 10.5 FLAT ZINC	F81055-1	9

REPLACEMENT PARTS

Acceleration & Braking Mechanism

3

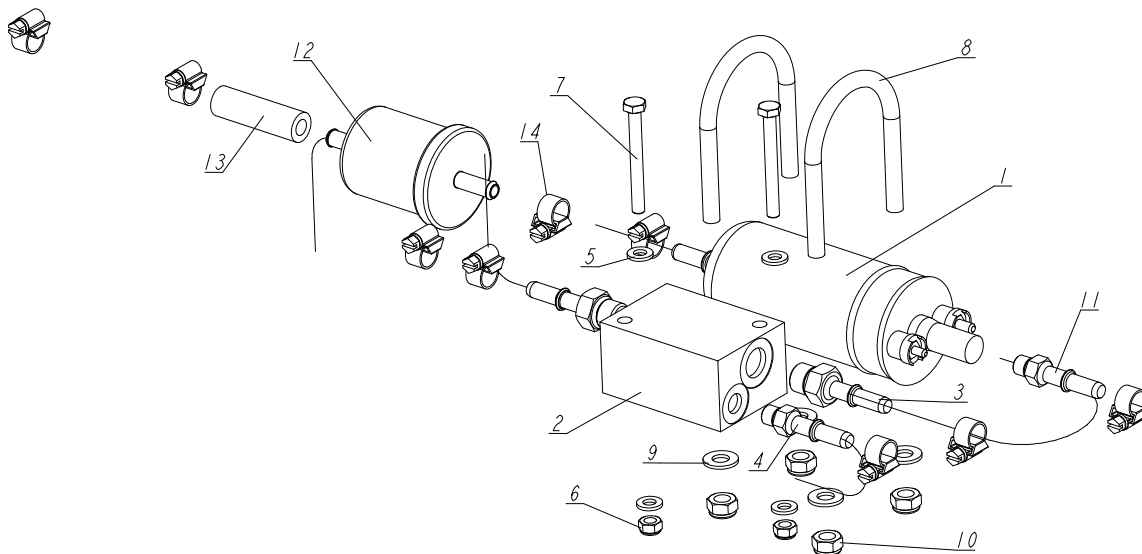
REF.	DESCRIPTION (◆ indicates parts available in assemblies only)	PART #	QTY
19	PIN, PN-EN 22341-B-10 X32 X3,2 X26-ST-A2	F81047-1	1
20	PIN, PN-EN 22341-B-10X42X3.2X33-St-A2 ZINC-PLATED	F81047-2	1
21	PIN, 3.2x25 COTTER	F81043-4	2
22	WASHER, 8.4 FLAT ZINC	F81054-1	6
23	NUT, M10-8-B HEX NYLON ZINC LOCK	F81033-1	3
24	BOLT, M10X35-8.8 HEX HEAD FULL THREAD ZINC	F81003-17	2
25	WASHER, 13 FLAT ZINC	F81056-1	1
26	NUT, M12-8 HEX NYLON ZINC LOCK	F81034-2	1
27	NUT, M8-8-B HEX NYLON ZINC LOCK	F81032-2	5
28	GROMMET, 20/13 RUBBER	086188	1
29	WASHER, 6.4 FLAT ZINC	F81053-1	3
30	BOLT, M6x12-8.8 HEX HEAD FULL THREAD ZINC	F81001-7	3
31	BOLT, M10x1.25x25-8.8-A HEX HEAD FULL THREAD ZINC	F81003-29	2
32	BOLT, M8X30-8.8-B HEX HEAD FULL THREAD ZINC	F81002-7	2
33	BOLT, M8x25-8.8-B HEX HEAD FULL THREAD ZINC	F81002-5	2
34	WASHER, 21 FLAT ZINC	F81059-2	1
35	NUT, M20-6 HEX	F81037-2	1
36	TURNBUCKLE, M10	096433-1	1
37	NUT, M10L-8-B HEX ZINC	F81033-12	1
38	NUT, M10-8-B HEX ZINC	F81033-3	1
-	PLATE ASSEMBLY, BRAKE BLOCK	096438	1
39	PLATE, BRAKE BLOCK	096420-1	1
40	BLOCK, F9353 106 BRAKE NARROW	096432	6
41	SCREW, M5 x 25-8.8 HEX SOCKET HEAD CAP ZINC	F81000-7	18
42	WASHER, 5.3 FLAT ZINC	F81052-1	18
43	NUT, M5-8 DIN985 ZINC-PLATED	F81030-2	18
44	WASHER, 8.4 FLAT ZINC	F81054-1	8
45	NUT, M8-8-B HEX NYLON ZINC LOCK	F81032-2	4
46	BOLT, M8x25-8.8-B HEX HEAD FULL THREAD ZINC	F81002-5	4
47	COVER, ACTUATOR MOUNT BLOCK	096430-1	1

3 REPLACEMENT PARTS

Fuel System

3.9 Fuel System

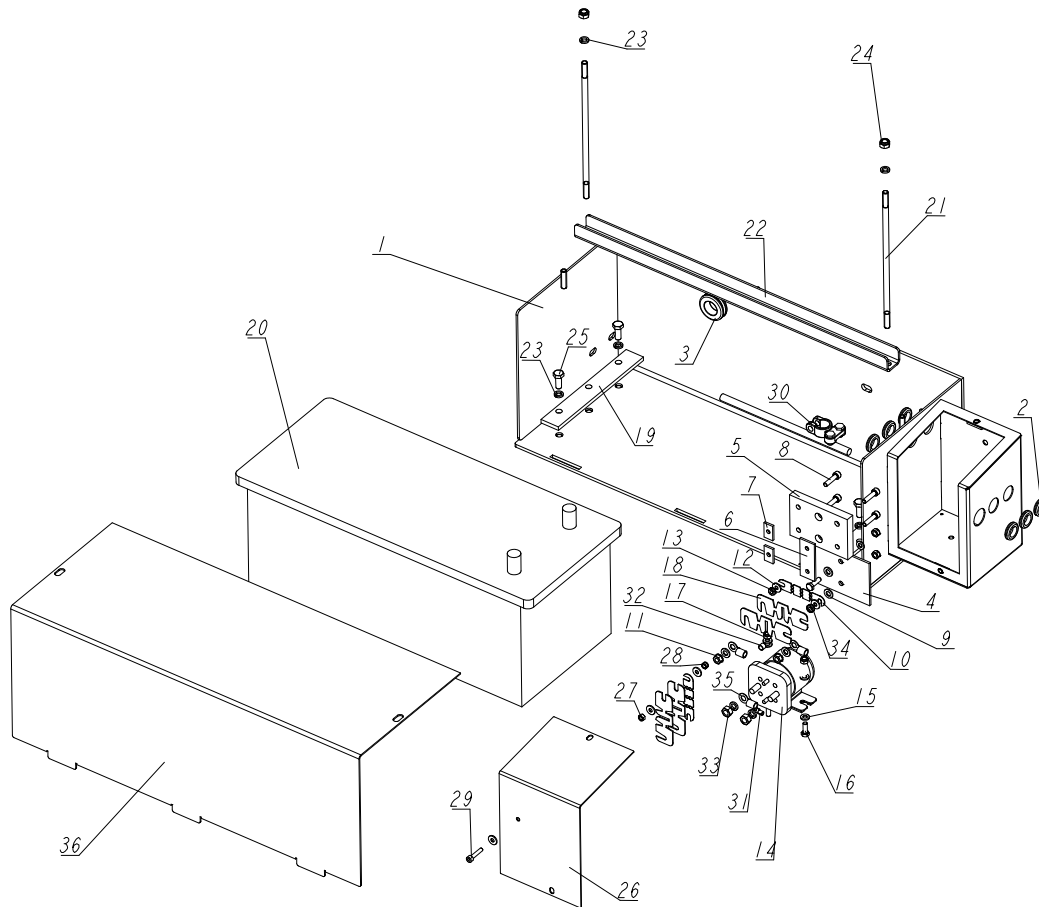
540680_001
540680_MANUAL



REF.	DESCRIPTION (◆ indicates parts available in assemblies only)	PART #	QTY
-	FUEL SYSTEM	540680	1
1	PUMP, G57 FUEL	545997	1
2	VALVE, G57 PRESSURE SOLENOID	545998	1
3	KRÓCIEC 1	545999	2
4	KRÓCIEC 2	546000	1
5	WASHER, 6.4 FLAT ZINC	F81053-1	4
6	NUT, M6-8-B HEX NYLON ZINC LOCK	F81031-2	2
7	BOLT, M6X55-8.8 HEX HEAD ZINC	F81001-73	2
8	CLAMP, UNI/52 M8-W1 HOSE	540679	2
9	WASHER, 8.4 FLAT ZINC	F81054-1	4
10	NUT, M8-8-B HEX NYLON ZINC LOCK	F81032-2	4
11	FITTING, FUEL PUMP	546001	1
12	FILTER, G57 FUEL	545996	1
13	FUEL HOSE 8MM, IV CARBUR /10-08	R80703-2	1
14	CLAMP, PLASTIC HOSE	F81080-1	9

3.10 Battery Box

089794_001
089794_MANUAL



REF.	DESCRIPTION (◆ indicates parts available in assemblies only)	PART #	QTY
-	BOX, BATTERY COMPLETE	089794	1
1	BOX WELDMENT, LT60 BATTERY	088677-1	1
2	GROMMET, 5/8 ID RUBBER	P11764	6
3	GROMMET, RUBBER	087400	1
4	PLATE, 1/8 PLAS FUSE BOX	015287	1
-	BLOCK ASSY, FUSE, HIGH AMP	017665	1
5	BLOCK, RYERTEX FUSE, HIGH AMP	017664	1
6	POST WDMT, FUSE BLOCK, HIGH AMP	017663	1
7	NUT, 1/4-20 WELD CADMIUM PLATED	S12392	2
8	SCREW, M6X25-8.8 HEX SOCKET HEAD CAP ZINC	F81001-41	4

3

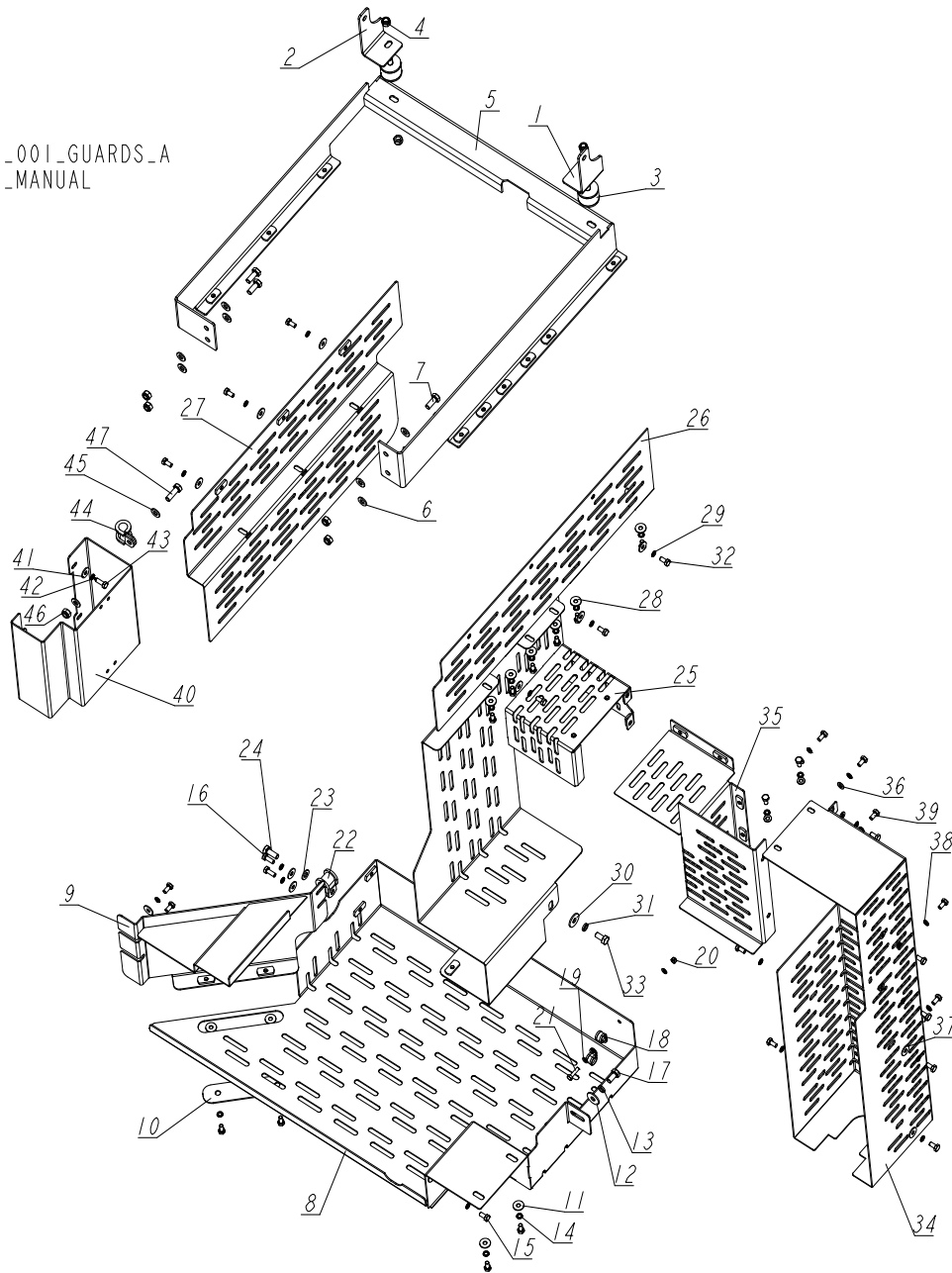
REPLACEMENT PARTS

Battery Box

REF.	DESCRIPTION (◆ indicates parts available in assemblies only)	PART #	QTY	
9	WASHER, 7.4 FLAT ZINC	F81056-11	4	
10	FUSE, 150A 12V LINK	023361	2	
11	NUT, 1/4-20 SELF-LOCKING ZINC	F05010-9	2	
12	WASHER, 5.5 FLAT ZINC SPECIAL	F81052-3	5	
13	NUT, #10-24 KEPS	F05010-14	2	
14	SOLENOID, 200A 12V SPST HYD. PUMP 1997	015470	1	
15	WASHER, 6.4 FLAT ZINC	F81053-1	6	
16	BOLT, M6 x 16 8.8 HEX HEAD FULL THREAD ZINC	F81001-15	2	
17	NUT, M6-8-B HEX NYLON ZINC LOCK	F81031-2	4	
18	FUSE, 225A 12V	P11550	4	
19	BAR, BATTERY RETAINER	088538-1	2	
20	BATTERY, "BANNER" 12V180Ah #96351	089369	1	
21	BOLT, BATTERY HOLD-DOWN	088356-1	2	
22	BRACKET, BATTERY HOLD-DOWN	088357-1	1	
23	WASHER, 8.2 SPLIT LOCK ZINC	F81054-4	8	
24	NUT, M8-8-B HEX NYLON ZINC LOCK	F81032-2	2	
25	BOLT, M8x20-8.8-B HEX HEAD FULL THREAD ZINC	F81002-4	4	
26	COVER, FUSE BOX	092222-1	1	
27	NUT, M5-8 HEX ZINC	F81030-1	1	
28	NUT, M5-8 DIN985 ZINC-PLATED	F81030-2	1	
29	SCREW, M5 x 25-8.8 HEX SOCKET HEAD CAP ZINC	F81000-7	1	
30	TERMINAL, BATTERY	P05085	1	
31	TERMINAL, #10 RING 10-12GA NI LOOSE	F05092-1	1	
32	TERMINAL, 1/4 RING 18GA NI LOOSE	F05092-7	1	
33	NUT, 5/16-24 HEX	F05010-28	2	
34	BOLT, M6x20-8.8 HEX HEAD FULL THREAD ZINC	F81001-2	2	
35	TERMINAL, 50MM2 RING	F81066-3	3	
36	COVER, HYDRAULIC BOX	088362	1	

3.11 Engine Guards

G57-70S_001_GUARDS_A
G57-70S_MANUAL



REF	DESCRIPTION (◆ indicates parts available in assemblies only)	PART #	QTY
-	ENGINE KIT, G57S LT70	G57-70S	1
-	BRACKET ASSEMBLY, RADIATOR UPPER	545965	1
1	BRACKET, RADIATOR RIGHT	545951-1	1
2	BRACKET, RADIATOR LEFT	545952-1	1
3	BUSHING, M8 RUBBER RADIATOR MOUNT	088183	2
4	NUT, M8-8-B HEX NYLON ZINC LOCK	F81032-2	8
5	BRACKET WELDMENT, RADIATOR MOUNT	545960-1	1

3

REPLACEMENT PARTS

Engine Guards

REF	DESCRIPTION (◆ indicates parts available in assemblies only)	PART #	QTY	
6	WASHER, 8.4 FLAT ZINC	F81054-1	8	
7	BOLT, M8X20 8.8 HEX HEAD FULL THREAD ZIN	F81002-4	4	
-	GUARD ASSEMBLY, DRIVE BELT	545981	1	
8	PLATE WELDMENT, FRONT GUARD	545978-1	1	
9	PLATE WELDMENT, SIDE GUARD	545979-1	1	
10	WASHER	545971-1	1	
11	WASHER, 6.5 SPECIAL FLAT ZINC	F81053-11	9	
12	WASHER, ISO 7093-1-8-200 HV-A2E.	F81054-11	1	
13	WASHER, 8.2 SPLIT LOCK ZINC	F81054-4	1	
14	WASHER, Z 6.1 SPLIT LOCK ZINC	F81053-3	9	
15	BOLT, M6X12 8.8 HEX HEAD FULL THREAD ZIN	F81001-7	7	
16	BOLT, M6X16-8.8 HEX HEAD FULL THREAD ZIN	F81001-15	2	
17	BOLT, M8X16-8.8-B HEX HEAD FULL THREAD Z	F81002-20	1	
18	CLIP, RSGU 1.10/12W1 RETAINING	086861	2	
19	WASHER, 5.3 FLAT ZINC	F81052-1	2	
20	NUT, M5-8 DIN985 HEX NYLON ZINC LOCK	F81030-2	1	
21	BOLT, M5X20 8.8 STAINLESS STEEL SHOULDER	F81000-35	1	
22	CLIP, RSGU 1.15/20 METAL&RUBBER RETAININ	509701	1	
23	WASHER, 8.4 FLAT ZINC	F81054-1	1	
24	BOLT, M8X20 8.8 HEX HEAD FULL THREAD ZIN	F81002-4	1	
-	GUARD ASSEMBLY, SIDE	545970	1	
25	GUARD WELDMENT, RIGHT	545969-1	1	
26	GUARD WELDMENT, RIGHT	545957-1	1	
27	GUARD WELDMENT, LEFT	545959-1	1	
28	WASHER, 6.5 SPECIAL FLAT ZINC	F81053-11	15	
29	WASHER, Z 6.1 SPLIT LOCK ZINC	F81053-3	15	
30	WASHER, ISO 7093-1-8-200 HV-A2E.	F81054-11	1	
31	WASHER, 8.2 SPLIT LOCK ZINC	F81054-4	1	
32	BOLT, M6X12 8.8 HEX HEAD FULL THREAD ZIN	F81001-7	15	
33	BOLT, M8X16-8.8-B HEX HEAD FULL THREAD Z	F81002-20	1	
-	GUARD ASSEMBLY, MUFFLER	545975	1	
34	GUARD, MUFFLER UPPER	545974-1	1	
35	PLATE WELDMENT, MUFFLER GUARD LOWER	545973-1	1	
36	WASHER, 6.4 FLAT ZINC	F81053-1	10	
37	WASHER, 6.5 SPECIAL FLAT ZINC	F81053-11	6	
38	WASHER, Z 6.1 SPLIT LOCK ZINC	F81053-3	16	
39	BOLT, M6X12 8.8 HEX HEAD FULL THREAD ZIN	F81001-7	16	
-	GUARD, FUEL SYSTEM - COMPLETE	545983	1	
40	GUARD, FUEL SYSTEM	545982-1	1	
41	WASHER, 6.5 SPECIAL FLAT ZINC	F81053-11	4	
42	WASHER, Z 6.1 SPLIT LOCK ZINC	F81053-3	4	
43	BOLT, M6X16-8.8 HEX HEAD FULL THREAD ZIN	F81001-15	4	

REPLACEMENT PARTS

Engine Guards

3

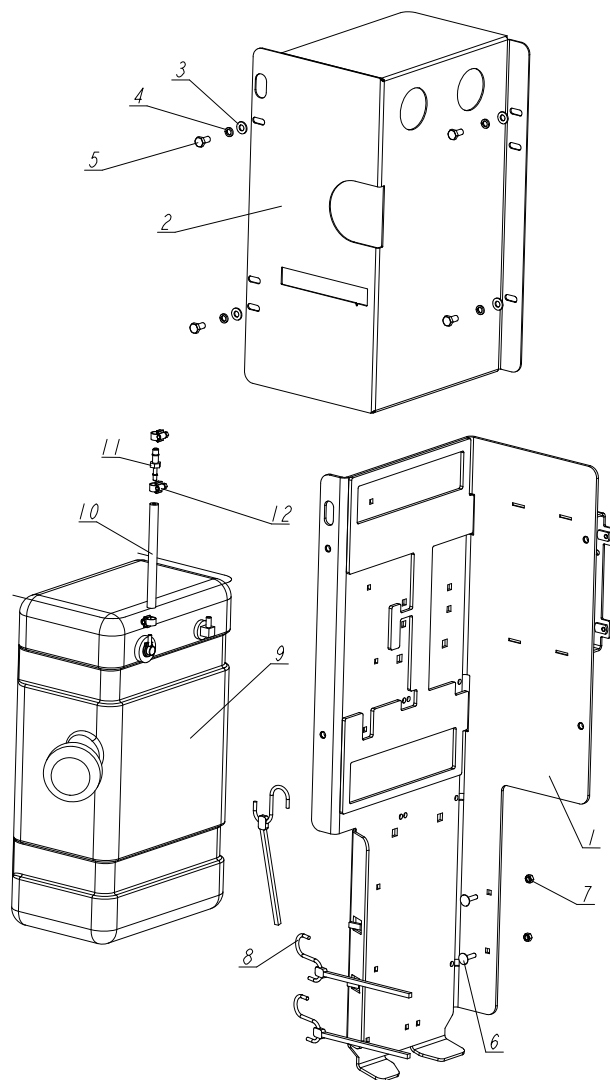
REF	DESCRIPTION (◆ indicates parts available in assemblies only)	PART #	QTY	
44	CLIP, RSGU 1.15/20 METAL&RUBBER RETAININ	509701	1	
45	WASHER, 8.4 FLAT ZINC	F81054-1	2	
46	NUT, M8-8-B HEX NYLON ZINC LOCK	F81032-2	1	
47	BOLT,M8X25-8.8-B HEX HEAD FULL THREAD ZI	F81002-5	1	

3 REPLACEMENT PARTS

Fuel Tank Assembly, LT70 - G57

3.12 Fuel Tank Assembly, LT70 - G57

540678_001
540678_MANUAL



REF.	DESCRIPTION (◆ indicates parts available in assemblies only)	PART #	QTY
-	TANK ASSEMBLY, LT70 - G57 FUEL	540678	1
1	PLATE WELDMENT, FUEL TANK MOUNT	540648-1	1
2	COVER, TANK	518303-1	1
3	WASHER, 6.5 SPECIAL FLAT ZINC	F81054-1	4
4	WASHER, 8.2 SPLIT LOCK ZINC	F81054-4	4
5	BOLT, M8x16-8.8-B HEX HEAD FULL THREAD ZINC	F81002-20	4
6	BOLT, M6x25-8.8 CARRIAGE ZINC	F81001-20	2
7	NUT, M6-8 HEX ZINC	F81031-1	2

REPLACEMENT PARTS

Fuel Tank Assembly, LT70 - G57

3

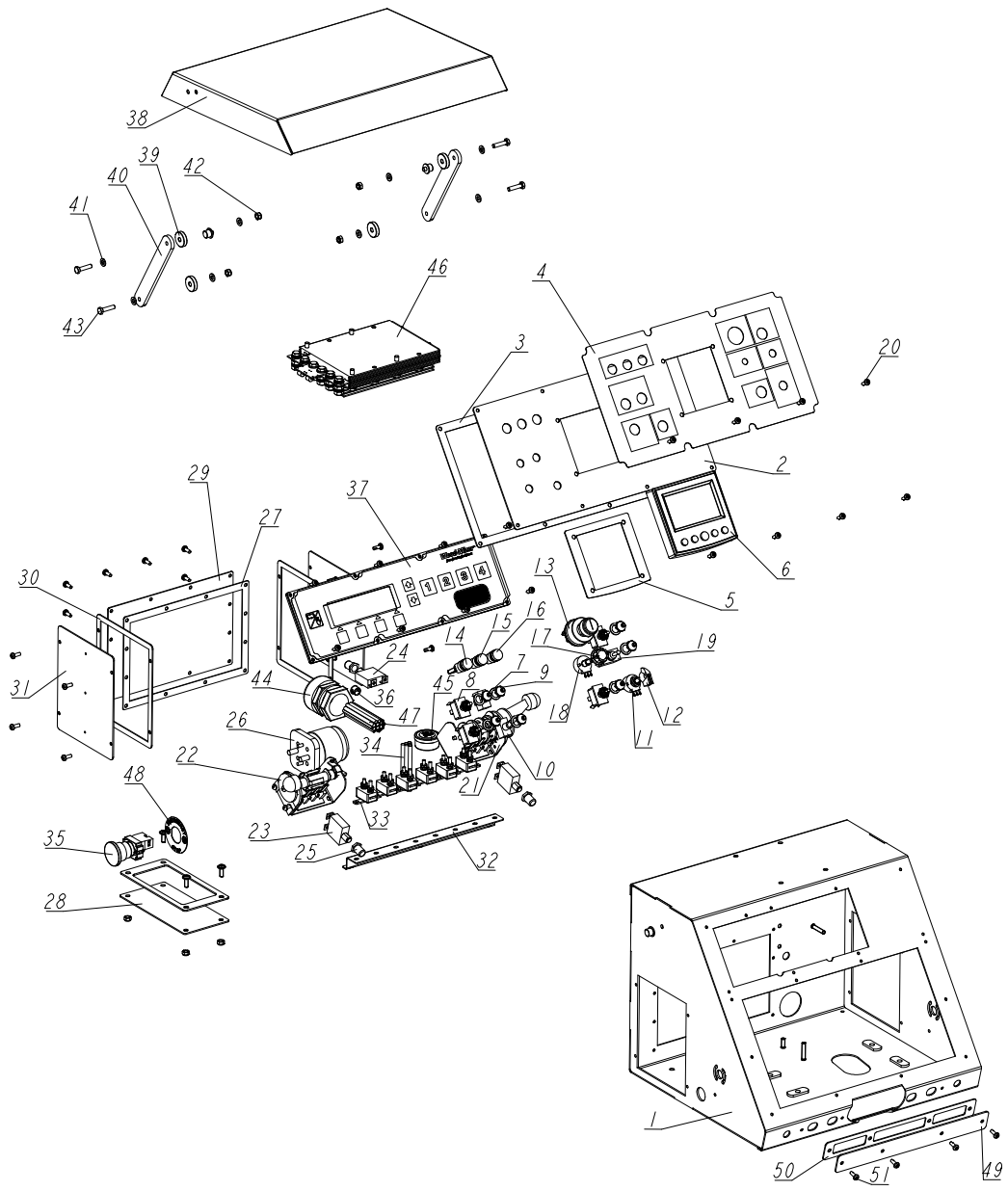
REF.	DESCRIPTION (◆ indicates parts available in assemblies only)	PART #	QTY	
8	STRAP, 20 RUBBER W/HOOK	P11668	3	
9	FUEL TANK, 5 GAL.	103878	1	
10	FUEL HOSE, 5 x12	R80703-4	1	
11	FITTING, 5-8	540659-1	1	
12	CLAMP, PLASTIC HOSE	F81080-1	3	

3 REPLACEMENT PARTS

Control Box, LT70-G57 (Accuset 2)

3.13 Control Box, LT70-G57 (Accuset 2)

543535_001
543535_MANUAL



REF.	DESCRIPTION (◆ indicates parts available in assemblies only)	PART #	QTY
-	CONTROL BOX, LT70-G57 (FOR ACCUSET)	543535	1
1	BOX WELDMENT, CONTROL	543540-1	1
-	PANEL, G57 CONTROL BOX FRONT	543531	1
2	PANEL, G57 W/ACCUSET CONTROL BOX FRONT	543532-1	1

REPLACEMENT PARTS

Control Box, LT70-G57 (Accuset 2)

3

REF.	DESCRIPTION (◆ indicates parts available in assemblies only)	PART #	QTY
3	GASKET	543529	1
4	DECAL, G57 CONTROL BOX FRONT PANEL	543533	1
5	GASKET FOR PV485	543534	1
6	DISPLAY, MURPHY PV485 78700639	539840	1
7	WASHER, 1/2X3/4X1/16 NYLON	P05251-1	7
8	SWITCH, DPDT TOGGLE 21A REV MOM SPADE	024200	4
9	BOOT, TOGGLE SWITCH	P02575	7
10	SWITCH, SPST ON/OFF 15A .25 TABS TOGGLE	P03027	2
11	POTENTIOMETER, 1K LTAGA	E20519	1
12	KNOB, SPEED CONTROL	P06257	1
13	SWITCH, KEY	P04350	1
14	LIGHT, XB6AV4BB CONTROL RED	091099	1
15	LIGHT, XB6AV5BB YELLOW	089812	1
16	CONTROL BULB XB6 AV 3BB	087348	1
17	KNOB, 1/4 ID FLUTED ROUND PLASTIC	033478	1
18	POT, 500K 2W 10% CP PANEL MOUNT	024553	1
19	SWITCH, DPDT ON/OFF/ON 15A TOGGLE	024588	1
20	BOLT, #10-24 x 1/2 PH PAN HD, TYPE 23	F05015-17	36
21	SWITCH, 1992 Up/DOWN (SERVICE PACKAGE)	E20440	1
22	SWITCH, 1992GS PWR/FEED (SERVICE PACKAGE)	E20438	1
23	BREAKER, 70A MANUAL RESET PANEL MOUNT	015527	2
24	BREAKER, 30A MANUAL RESET PANEL MOUNT	024246	1
25	BOOT, CIRCUIT BREAKER	021253	3
26	SOLENOID, 200A 12V SPST HYD. PUMP 1997	015470	1
27	GASKET, REAR ACCESS PANEL	095011	1
28	GASKET ASSEMBLY	532368	1
29	PANEL ASSEMBLY, POWER FEED CONTROL	095010-1	1
30	GASKET, SIDE PANEL CONTROL 97	015274	2
31	PANEL WELDMENT, SIDE	086699-1	2
32	RAIL, CIRCUIT BREAKER	525779-1	1
33	BREAKER, 15A MANUAL RESET	E20430	6
34	HARNESS, D42 CONTROL BOX LOWER	090252	1
35	SWITCH, XB4 BS542 EMERGENCY	086556	1
36	CAP, DP 812 HEJMAN 12.7 DIA. HOLE	086773	1
37	PANEL ASSEMBLY, ACCUSET 2	069649	1
-	COVER, CONTROL BOX COMPLETE	543543	1
38	COVER WELDMENT, CONTROL BOX	543542-1	1
39	SPACER, WATER FILTER	088728	4
40	BRACKET, CONTROL BOX MOUNT	088831-1	2
41	WASHER, 6.4 FLAT ZINC	F81053-1	8
42	NUT, M6-8-B HEX NYLON ZINC LOCK	F81031-2	4
43	BOLT, M6x25-5.8 HEX HEAD FULL THREAD ZINC	F81001-3	4

3**REPLACEMENT PARTS***Control Box, LT70-G57 (Accuset 2)*

REF.	DESCRIPTION (◆ indicates parts available in assemblies only)	PART #	QTY	
44	CONNECTOR, 1 1/4 STRAIGHT METAL CONDUIT	024402	1	
45	GREASE, DRUM SWITCH	A20463	1	
46	CONTROL ASSEMBLY, ACCUSET2 DUAL AXIS	057821LS	1	
47	HARNESS, G57 CONTROL BOX UPPER	090251-G57	1	
48	LEGEND, ZBY9320 E-STOP MARKED	086561	1	
-	PLATE, CIRCUIT BREAKER COVER - COMPLETE	543555	1	
49	PLATE	543556-1	1	
50	GASKET, COVER	543557	1	
51	BOLT, #10-24 x 1/2 PH PAN HD, TYPE 23	F05015-17	4	