

Wood-Mizer®

Parts Manual

MP260

rev. A1.01



Safety is our #1 concern! Read and understand all safety information and instructions before operating, setting up or maintaining this machine.

Form #2411

Table of Contents

Section-Page

| | | |
|------------------|------------------------------------|------------|
| SECTION 1 | GENERAL INFORMATION | 1-1 |
| 1.1 | How To Use the Parts List..... | 1-1 |
| 1.2 | Sample Assembly | 1-1 |
| SECTION 2 | MP260 | 2-1 |
| 2.1 | MP260 | 2-1 |
| 2.2 | MP260 Additional Part Kit | 2-2 |
| 2.3 | Knives | 2-3 |
| 2.4 | Castor wheels 535166 | 3-4 |
| 2.5 | Castor wheel assembly 535163 | 3-5 |
| SECTION 3 | MECHANICAL ASSEMBLY | 4-1 |
| 3.1 | Covers, Knife Set. | 4-1 |
| 3.2 | Table MP260 | 4-2 |
| 3.3 | Right Spindle Assembly | 4-4 |
| 3.4 | Bottom Cutter | 4-5 |
| 3.5 | Fence 1, 2 | 4-6 |
| 3.6 | Feed Assembly | 4-7 |
| 3.7 | Drive Shaft (533580) | 4-8 |
| 3.8 | Bearing (533520) | 4-9 |
| 3.9 | Tension Plate (537535) | 4-10 |
| 3.10 | Drive Shaft | 4-11 |
| 3.11 | Bearing Housing | 4-12 |
| 3.12 | Right Guard | 4-13 |
| 3.13 | Sawdust Outlet Guard | 4-14 |
| 3.14 | Side Guard | 4-15 |
| 3.15 | Left Guard | 4-16 |
| 3.16 | Sawdust Outlet Guard | 4-17 |
| 3.17 | Top Cover | 4-18 |
| 3.18 | Sawdust Outlet | 4-20 |
| 3.19 | V-belt Cover | 4-21 |
| 3.20 | Spindle Moving Assembly | 4-22 |
| 3.21 | Clamp Roller Assembly II | 4-24 |
| 3.22 | Lef Spindle | 4-25 |
| 3.23 | Clamp Roller Assembly | 4-26 |
| 3.24 | Trapezoidal Screw | 4-27 |
| 3.25 | Up/Down | 4-28 |
| 3.26 | Scale | 4-30 |
| 3.27 | Handle | 4-31 |
| 3.28 | Handle | 4-32 |
| 3.29 | Chain Tension | 4-33 |
| 3.30 | Chain Slide | 4-34 |
| 3.31 | Rod Set | 4-35 |

Table of Contents

Section-Page

| | | | |
|------------------------------|--|------|------------|
| 3.32 | Moving Plate | 4-36 | |
| SECTION 4 MOTOR KITS | | | 5-1 |
| 4.1 | Motor Kit for MP260 EH 3x400V CE | 5-1 | |
| 4.2 | Side Cutter Drive | 5-2 | |
| 4.3 | Horizontal Upper Cutter Drive | 5-3 | |
| 4.4 | Horizontal Bottom Cutter Drive | 5-4 | |
| 4.5 | Feed Drive | 5-6 | |
| 4.6 | Electric Box Bracket | 5-7 | |
| 4.7 | Electrical Box MP260 3x400V CE | 5-8 | |
| SECTION 5 DECALS | | | 6-1 |
| 5.1 | Decals MP260 | 6-1 | |
| SECTION 6 TABLE MP260 | | | 7-1 |
| 6.1 | Table 265-000 | 7-1 | |

SECTION 1 GENERAL INFORMATION

1.1 How To Use the Parts List

- Use the index above to locate the assembly that contains the part you need.
- Go to the appropriate section and locate the part in the illustration.
- Use the number pointing to the part to locate the correct part number and description in the table.
- Parts shown indented under another part are included with that part.
- Parts marked with a diamond (◆) are only available in the assembly listed above the part.

See the sample table below. Sample Part #A01111 includes part F02222-2 and subassembly A03333. Subassembly A03333 includes part S04444-4 and subassembly K05555. The diamond (◆) indicates that S04444-4 is not available except in subassembly A03333. Subassembly K05555 includes parts M06666 and F07777-77. The diamond (◆) indicates M06666 is not available except in subassembly K05555.

| 1.2 Sample Assembly | | | | |
|----------------------------|---|-----------|-----|---|
| REF. | DESCRIPTION (◆ Indicates Parts Available In Assemblies Only) | PART # | QTY | |
| | Sample Assembly, Complete (Includes All Indented Parts Below) | A01111 | 1 | |
| 1 | Sample Part | F02222-22 | 1 | |
| | Sample Subassembly (Includes All Indented Parts Below) | A03333 | 1 | |
| 2 | Sample Part (◆ Indicates Part Is Only Available With A03333) | S04444-4 | 1 | ◆ |
| | Sample Subassembly (Includes All Indented Parts Below) | K05555 | 1 | |
| 3 | Sample Part (◆ Indicates Part Is Only Available With K05555) | M06666 | 2 | ◆ |
| 4 | Sample Part | F07777-77 | 1 | |

To Order Parts:

- From Europe call our European Headquarters and Manufacturing Facility in Kolo, Poland at **+48-63-2626000**. From the continental U.S., call our toll-free Parts hotline at **1-800-525-8100**. Have your customer number, vehicle identification number, and part numbers ready when you call. From other international locations, contact the Wood-Mizer distributor in your area for parts.

Office Hours:

| Country | Monday - Friday | Saturday | Sunday |
|---------|-----------------|-----------------|--------|
| Poland | 7-15 | Closed | Closed |
| US | 8 a.m.- 5 p.m. | 8 a.m.- 12 p.m. | Closed |

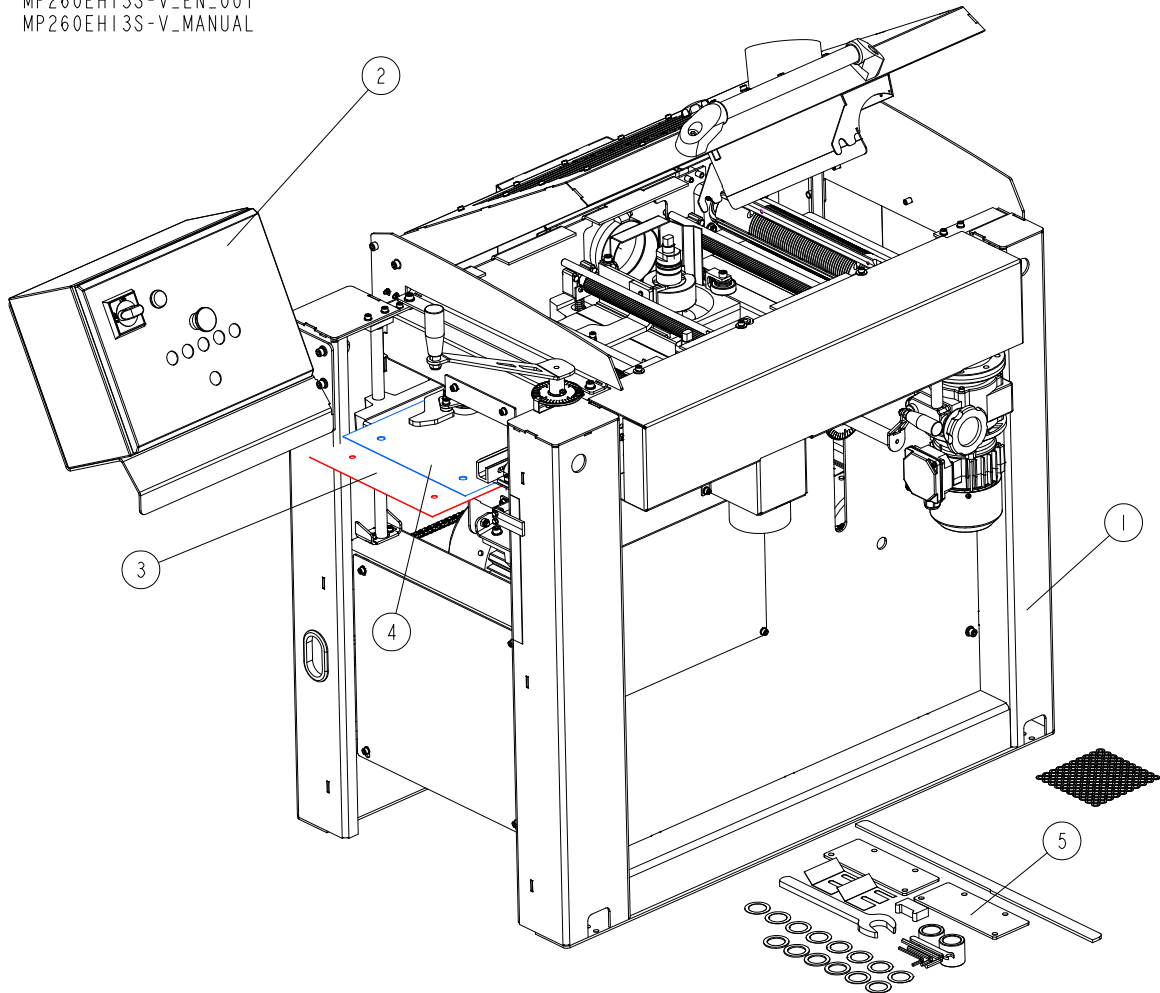


CAUTION! It is strongly recommended that only original spare parts be used.

SECTION 2 MP260

2.1 MP260

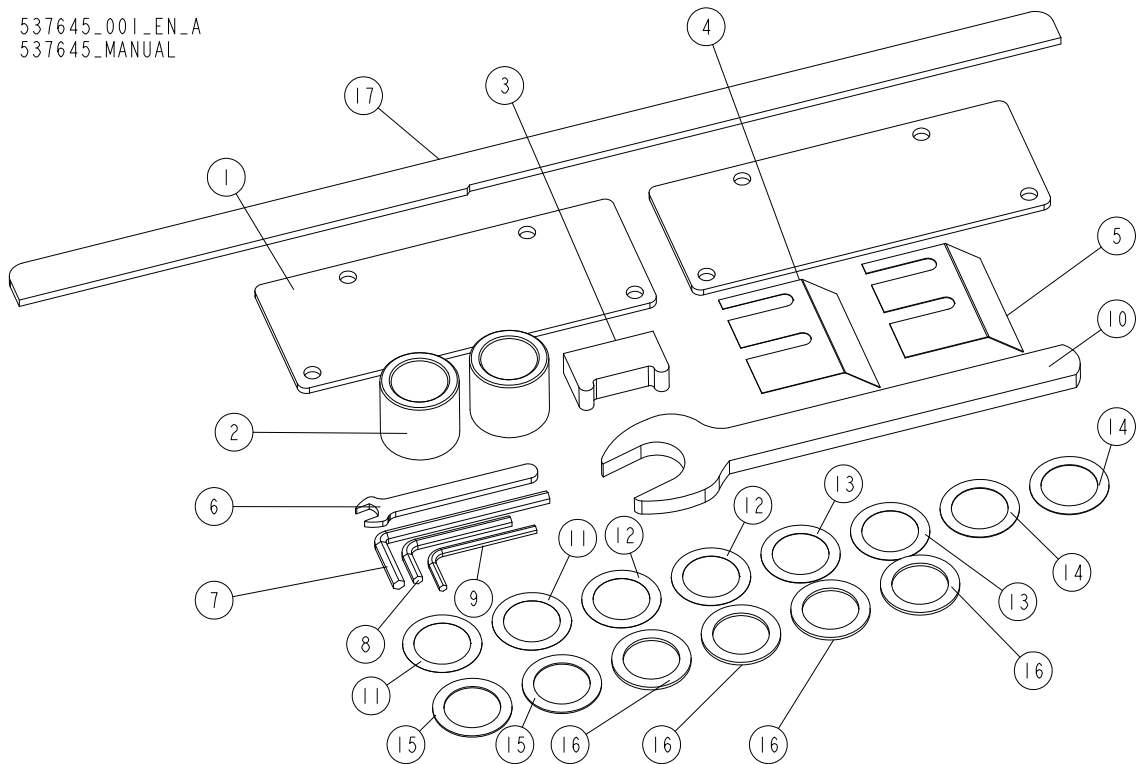
MP260EH13S-V_EN_001
MP260EH13S-V_MANUAL



| REF | DESCRIPTION (* indicates parts available in assemblies only) | PART # | QTY | |
|-----|---|--------------|-----|--|
| - | PLANER MOULDER MP260EH13S-V | MP260EH13S-V | 1 | |
| 1 | MP260- MECHANICAL ASSEMBLY See Section 2.3 | 537000 | 1 | |
| 2 | PRO MOTOR KIT FOR MP260EH 3X400V CE See Section 4.1 | 537021 | 1 | |
| 3 | PLATE 1 | 537576-1 | 1 | |
| 4 | PLATE 2 | 537577-1 | 1 | |
| 5 | MP260 ADDITIONAL PART KIT See Section 2.2 | 537645 | 1 | |

2.2 MP260 Additional Part Kit

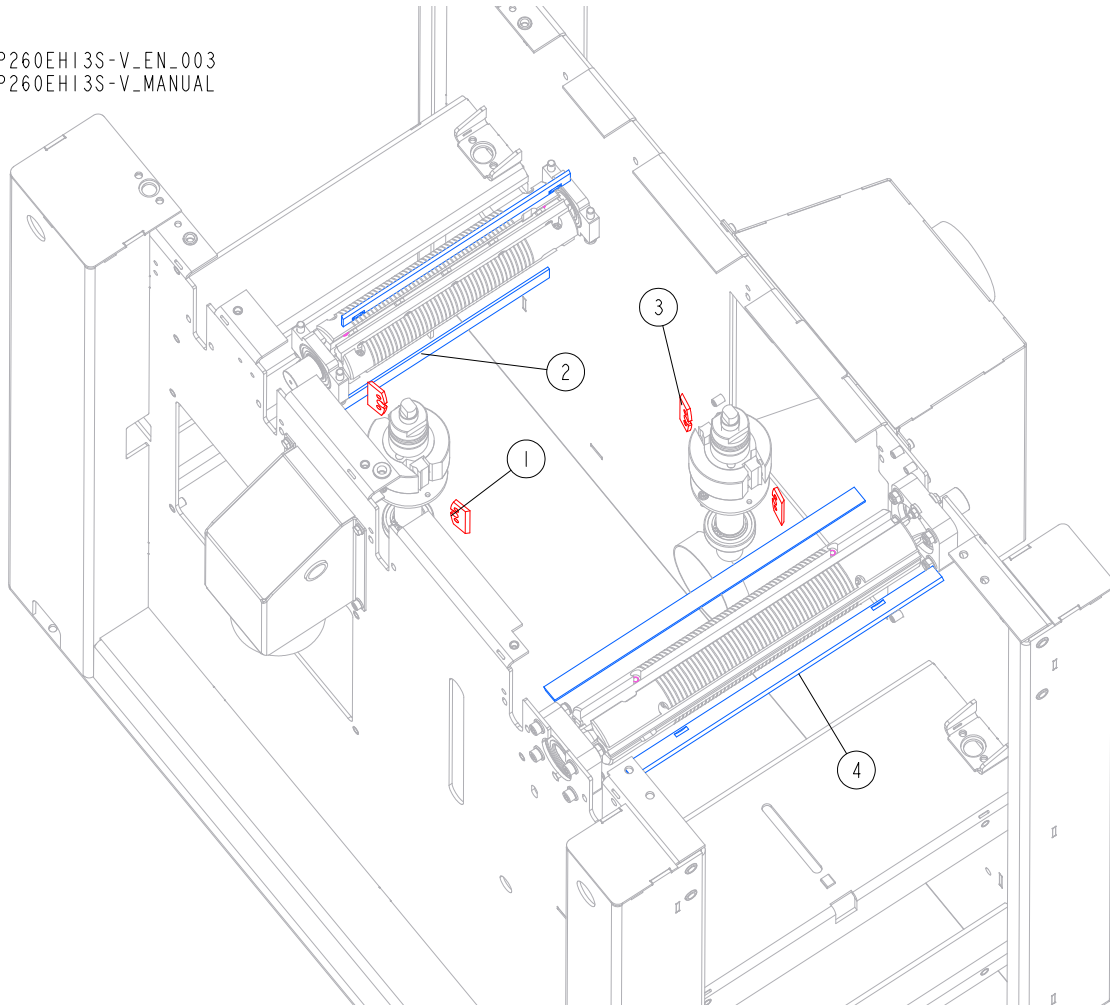
537645_001_EN_A
537645_MANUAL



| Ref | DESCRIPTION (* indicates parts available in assemblies only) | PART # | QTY |
|-----|--|----------|-----|
| - | MP260 ADDITIONAL PART KIT | 537645 | 1 |
| 1 | PLATE | 537646-1 | 2 |
| 2 | BUSHING 30/42-40.2 ZINC-PLATED | 535848-1 | 2 |
| 3 | KNIFE ALIGNMENT TOOL | 534770 | 1 |
| 4 | PLATE, 0.3 MM CUTTER GUARD | 537648 | 1 |
| 5 | PLATE, 0.5 MM CHIP BREAKER | 533502 | 1 |
| - | MP160 WRENCH KIT | 535185 | 1 |
| 6 | WRENCH, 10 FLAT | 541315 | 1 |
| 7 | WRENCH, 6MM ALLEN | 535186 | 1 |
| 8 | WRENCH, 5 ALLEN | 092915 | 1 |
| 9 | WRENCH, 4MM ALLEN | 093368 | 1 |
| 10 | WRENCH 30 DIN 894 | 537649 | 1 |
| 11 | WASHER 30/42-0.1 ZC DIN 988 | F81069-6 | 2 |
| 12 | WASHER 30/42-0.2 ZC DIN 988 | F81069-5 | 2 |
| 13 | WASHER 30/42-0.3 ZC DIN 988 | F81069-4 | 2 |
| 14 | WASHER 30/42-0.5 ZC DIN 988 | F81069-3 | 2 |
| 15 | WASHER 30/42-1 ZC DIN 988 | F81069-2 | 2 |
| 16 | WASHER 30/42-2 ZC DIN 988 | F81069-1 | 4 |
| 17 | BAR, FENCE ADJUSTMENT | 360-911 | 1 |

2.3 Knives

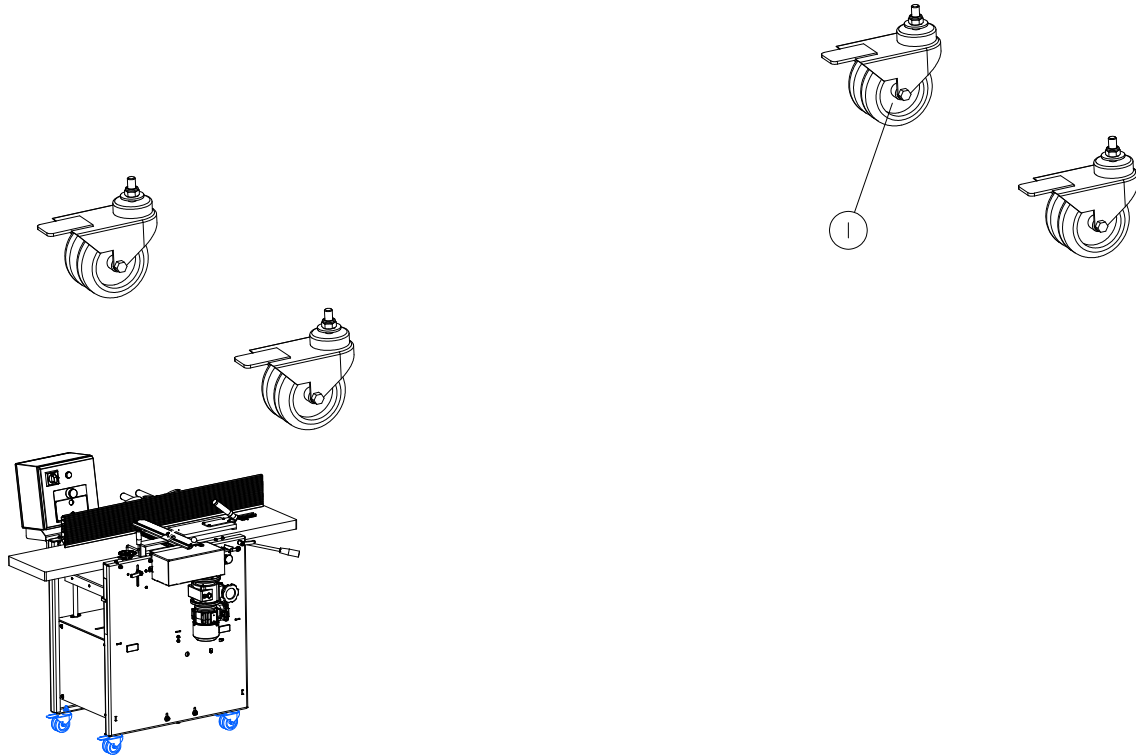
MP260EH13S-V_EN_003
MP260EH13S-V_MANUAL



| Ref | DESCRIPTION (* indicates parts available in assemblies only) | PART # | QTY |
|-----|--|---------|-----|
| 1 | KNIFE, CUTTER | 533588 | 2 |
| 2 | KNIFE SET, PLANING | 260-030 | 1 |
| 3 | KNIFE, CUTTER | 533588 | 2 |
| 4 | KNIFE SET, PLANING | 241-050 | 1 |

2.8 Castor wheels 535166

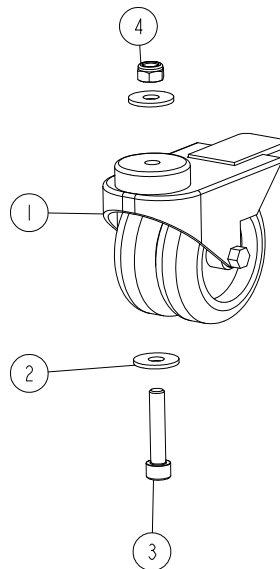
535166_001
535166_MANUAL



| REF. | DESCRIPTION (* indicates parts available in assemblies only) | PART # | QTY | |
|------|--|--------|-----|--|
| - | CASTOR WHEELS, 4 PCS. KIT | 535166 | 1 | |
| 1 | CASTOR WHEEL ASSEMBLY See Section 2.9 | 535163 | 4 | |

2.9 Castor wheel assembly 535163

535163_001
535163_MANUAL

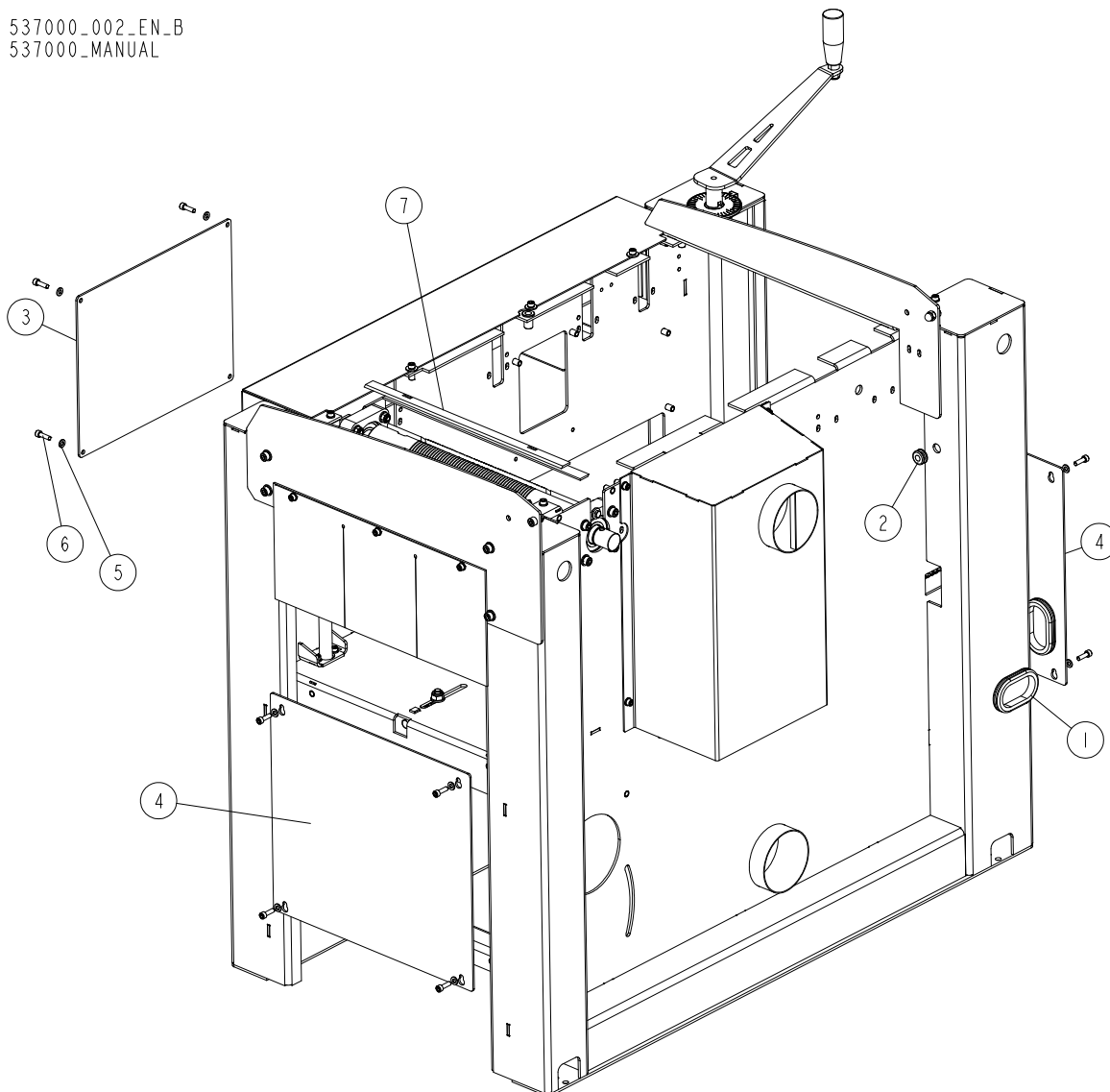


| REF. | DESCRIPTION (* indicates parts available in assemblies only) | PART # | QTY | |
|------|--|-----------|-----|--|
| - | CASTOR WHEEL ASSEMBLY | 535163 | 1 | |
| 1 | DUAL WHEEL CASTOR, KMDA-TPA 75S-HC | 533510 | 1 | |
| 2 | WASHER, ISO 7093-1-8-200 HV-A2E. | F81054-11 | 2 | |
| 3 | SCREW, M8X40-8.8 HEX SOCKET HEAD CAP ZINC | F81002-29 | 1 | |
| 4 | NUT, M8-8-B HEX NYLON ZINC LOCK | F81032-2 | 1 | |

SECTION 3 MECHANICAL ASSEMBLY

3.1 Covers, Knife Set.

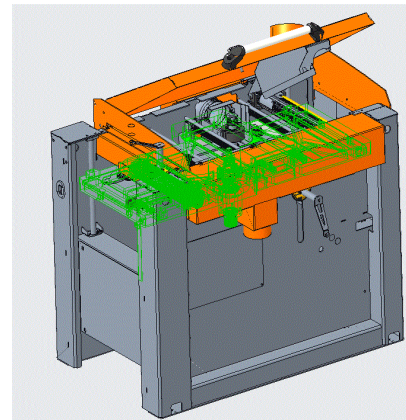
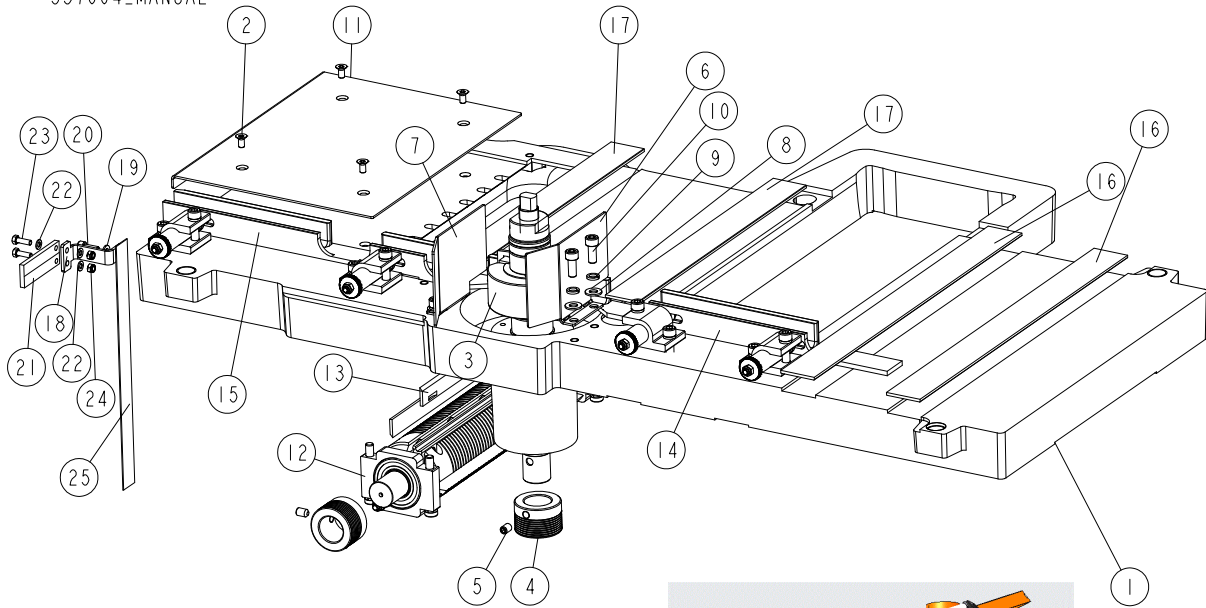
537000_002_EN_B
537000_MANUAL



| Ref | DESCRIPTION (* indicates parts available in assemblies only) | PART # | QTY |
|-----|--|-----------|-----|
| 1 | Grommet, Rubber | 087065 | 2 |
| 2 | GROMMET, RUBBER 3/8 ID | 025248 | 1 |
| 3 | FRONT SMALL COVER | 537567-1 | 1 |
| 4 | PLATE, SIDE | 533096-1 | 2 |
| 5 | WASHER 6,4 ZC DIN 126 ISO 7091 | F81053-1 | 12 |
| 6 | SCREW M6X20 SHCS ZC 8.8 DIN 912 ISO 4762 | F81001-22 | 12 |
| 7 | KNIFE SET, PLANING | 241-050 | 1 |

3.2 Table MP260

537004_001_EN_B
537004_MANUAL

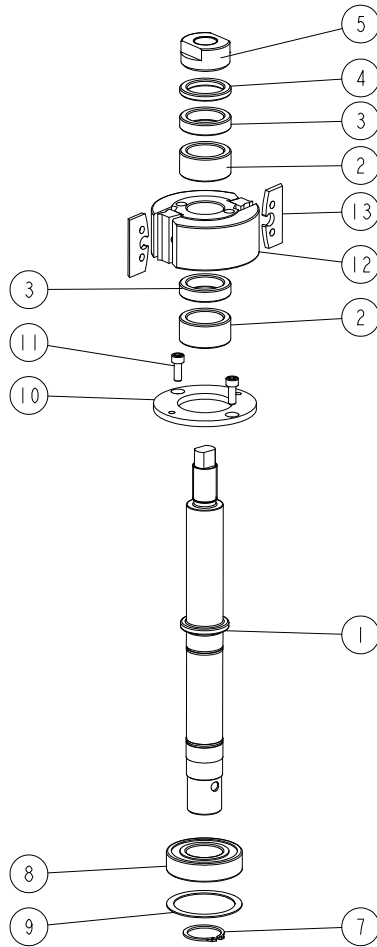


| Ref | DESCRIPTION (* indicates parts available in assemblies only) | PART # | QTY |
|-----|--|------------|-----|
| - | TABLE MP260 COMPLETE | 537004 | 1 |
| 1 | TABLE MP260 | 260-512B | 1 |
| 2 | SCREW M6X12 HSFH ZC 10.9 DIN 7991 ISO 10642 | F81001-54 | 4 |
| 3 | RIGHT SPINDLE ASSEMBLY See Section 3.3 | 537135 | 1 |
| 4 | PULLEY, MULTI-GROOVE SMALL ALUMINIUM | 533586 | 2 |
| 5 | SCREW M8X12 HSS W/CONE POINT ZC 45H DIN 914 | F81002-105 | 2 |
| 6 | CUTTER GUARD 1 | 537006 | 1 |
| 7 | CUTTER GUARD 2 | 537007 | 1 |
| 8 | WASHER 8,4 ZC DIN 126 ISO 7091 | F81054-1 | 4 |
| 9 | WASHER 8,2 ZC SPRING LOCK DIN 127 | F81054-4 | 4 |
| 10 | SCREW M8X20 SHCS ZC 8.8 DIN 912 ISO 4762 | F81002-30 | 4 |
| 11 | TABLE PLATE 1 | 537563-1 | 1 |
| 12 | BOTTOM CUTTER - ASSEMBLY See Section 3.4 | 537568 | 1 |
| 13 | KNIFE SET, PLANING | 260-030 | 1 |
| 14 | FENCE 1, ASSEMBLY See Section 3.5 | 537570 | 1 |
| 15 | FENCE 2, ASSEMBLY See Section 3.5 | 537572 | 1 |

| Ref | DESCRIPTION (* indicates parts available in assemblies only) | PART # | QTY | |
|-----|--|-----------|-----|--|
| 16 | SLIDE PLATE 1 | 537573 | 2 | |
| 17 | SLIDE PLATE 2 | 537574 | 2 | |
| 18 | INDICATOR, SCALE | 537559-1 | 1 | |
| 19 | WASHER 6,4 ZC DIN 126 ISO 7091 | F81053-1 | 1 | |
| 20 | SCREW M6X16 SHCS ZC 8.8 DIN 912 ISO 4762 | F81001-21 | 1 | |
| 21 | TEFLON PLATE | 094821 | 1 | |
| 22 | WASHER 5,3 ZC DIN 126 ISO 7091 | F81052-1 | 4 | |
| 23 | BOLT M5X16 HH ZC FT 8.8 DIN 933 | F81000-2 | 2 | |
| 24 | NUT, M5-8-FE/ZN5 DIN985 | F81030-2 | 2 | |
| 25 | DECAL, VERTICAL SCALE | 533579 | 1 | |

3.3 Right Spindle Assembly

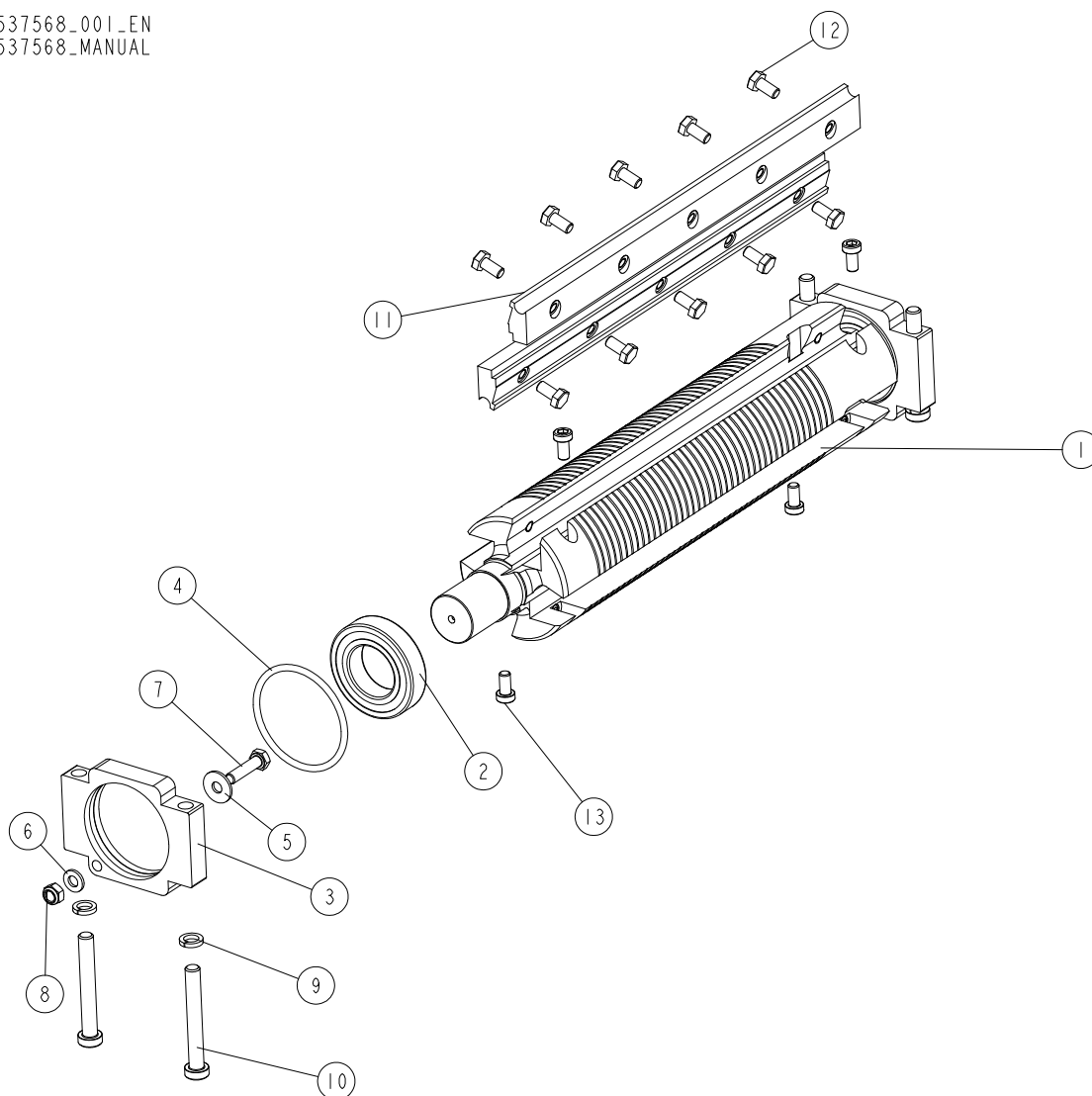
537135_001_EN
 537135_MANUAL



| REF | DESCRIPTION (* indicates parts available in assemblies only) | PART # | QTY |
|-----|--|-----------|-----|
| - | RIGHT SPINDLE ASSEMBLY | 537135 | 1 |
| 1 | SHAFT | 537134 | 1 |
| 2 | BUSHING, 30/42-20.2 ZINC-PLATED | 533541-1 | 2 |
| 3 | BUSHING, 30/42-10 ZINC-PLATED | 533539-1 | 2 |
| 4 | BUSHING, 30/42-5.2 ZINC-PLATED | 533540-1 | 1 |
| 5 | NUT, M20X1.5 | 535886-1 | 1 |
| 6 | BEARING, 6006 2RSR | 096191 | 1 |
| 7 | OUTSIDE RETAINING RING Z30 PN-M/85111 DIN 471 | F81090-23 | 2 |
| 8 | BEARING, 6206 2RSR P6 ROLLING (FAG, NSK, SKF) | 100787 | 1 |
| 9 | WASHER 50X61.6X1 | 533543 | 1 |
| 10 | PLATE, CLAMPING | 533542-1 | 1 |
| 11 | SCREW M6X16 SHCS ZC 8.8 DIN 912 ISO 4762 | F81001-21 | 2 |
| - | CUTTERHEAD, TB90-92 STEEL | 240-010 | 1 |
| 12 | CUTTERHEAD | 533587 | 1 |
| 13 | KNIFE, CUTTER | 533588 | 2 |

3.4 Bottom Cutter

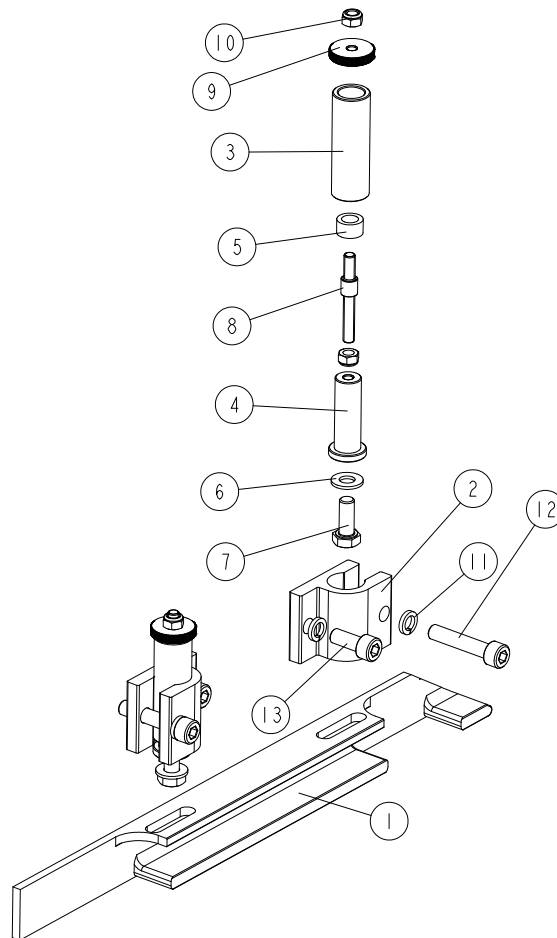
537568-001-EN
537568-MANUAL



| REF | DESCRIPTION (* indicates parts available in assemblies only) | PART # | QTY |
|-----|--|-----------|-----|
| - | BOTTOM CUTTER - ASSEMBLY | 537568 | 1 |
| 1 | LOWER CUTTER | 260-140-5 | 1 |
| 2 | BEARING, 6006 2RSR | 096191 | 2 |
| 3 | BEARING HOUSING 1 | 536958-1 | 2 |
| 4 | O-RING | 536959 | 2 |
| 5 | WASHER 6,5 ZC FENDER DIN 9021 ISO 7093 | F81053-11 | 2 |
| 6 | WASHER 6,4 ZC DIN 126 ISO 7091 | F81053-1 | 2 |
| 7 | BOLT M6X25 HH ZC FT 8.8 DIN 933 | F81001-3 | 2 |
| 8 | NUT M6 ZC 8 NYLOCK DIN 982 ISO 7040 | F81031-2 | 2 |
| 9 | WASHER 8,2 ZC SPRING LOCK DIN 127 | F81054-4 | 4 |
| 10 | SCREW M8X60 LHSCS 8.8 DIN 7984 | F81002-41 | 4 |
| 11 | SET OF FIXING WEDGES | 241-061 | 1 |
| 12 | BOLT M6X12 10.9 DIN 933 ISO 4017 | 083595 | 10 |
| 13 | SCREW M6X12 LSHCS 10.9 DIN 7984 | F81001-80 | 4 |

3.5 Fence 1, 2

537570_001_EN_A
537570_MANUAL



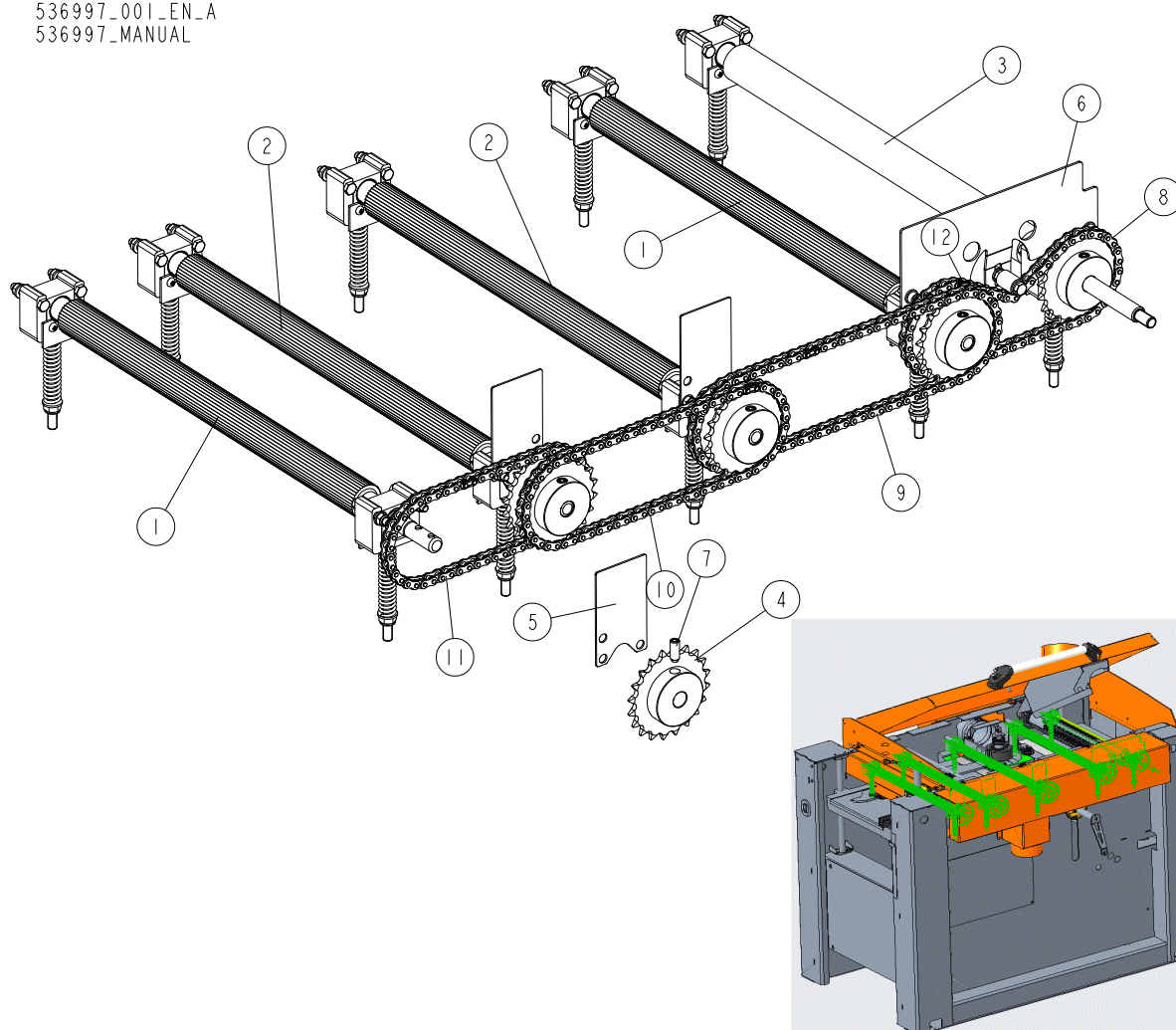
| Ref | DESCRIPTION (* indicates parts available in assemblies only) | PART # | QTY |
|-----|--|-----------------------|-----|
| - | FENCE 1, ASSEMBLY | 537570 | 1 |
| - | FENCE 2, ASSEMBLY | 537572 | 1 |
| 1 | FENCE 1 | 537569-1 ¹ | 1 |
| | FENCE 2 | 537571-1 ² | 1 |
| 2 | CLAMP | 536966-1 | 2 |
| - | ADJUSTABLE KNOB | 536965 | 2 |
| 3 | PIN GUIDE | 537001-1 | 1 |
| 4 | KNOB PIN | 536999-1 | 1 |
| 5 | INSERT | 537002 | 1 |
| 6 | WASHER 8,4 ZC DIN 126 ISO 7091 | F81054-1 | 1 |
| 7 | BOLT M8X20 HH ZC FT 8.8 DIN 933 | F81002-4 | 1 |
| 8 | THREAD PIN M6 | 541455 | 1 |
| 9 | KNURLED NUT | 541454 | 1 |
| 10 | NUT M6 ZC 8 NYLOCK DIN 982 ISO 7040 | F81031-2 | 2 |
| 11 | WASHER 8,2 ZC SPRING LOCK DIN 127 | F81054-4 | 4 |
| 12 | SCREW M8X40 SHCS ZC 8.8 DIN 912 ISO 4762 | F81002-29 | 2 |
| 13 | SCREW M8X20 SHCS ZC 8.8 DIN 912 ISO 4762 | F81002-30 | 2 |

¹ Included in 537570

² Included in 537572

3.6 Feed Assembly

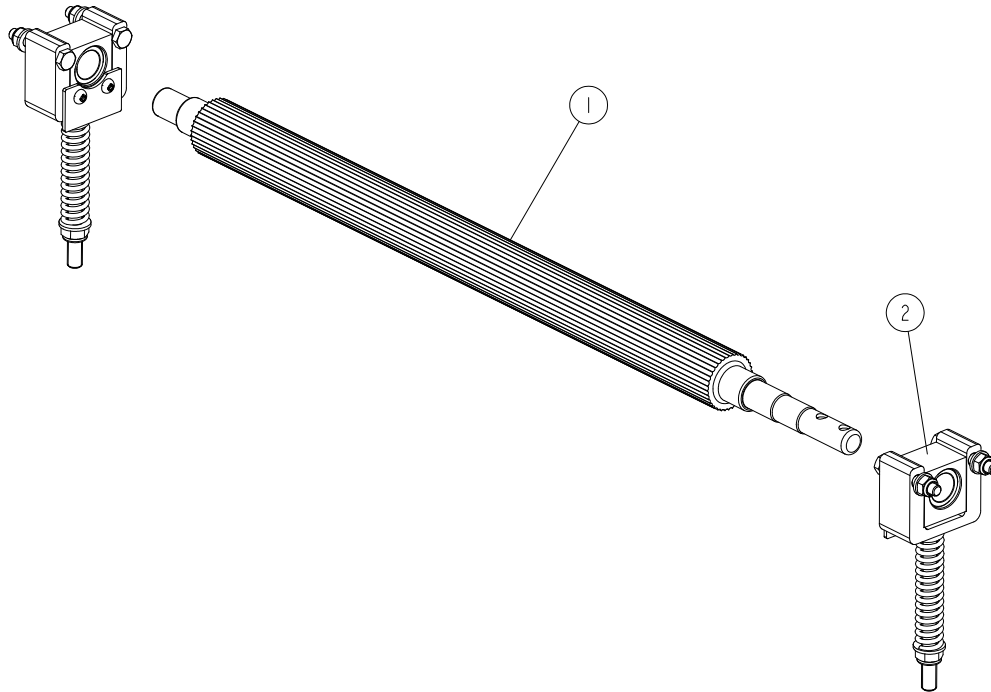
536997_001_EN_A
536997_MANUAL



| Ref | DESCRIPTION (* indicates parts available in assemblies only) | PART # | QTY |
|-----|--|-----------|-----|
| - | FEED ASSEMBLY, MP260 | 536997 | 1 |
| 1 | DRIVE SHAFT ASSEMBLY See Section 3.7 | 533580 | 2 |
| 2 | DRIVE SHAFT ASSEMBLY See Section 3.7 | 537585 | 2 |
| 3 | SHAFT ASSEMBLY, W/PROTECTIVE COVER See Section 3.7 | 533581 | 1 |
| 4 | SPROCKET Z=20; 1/2"X 3/16" CHAIN 083-1) | 533109 | 8 |
| 5 | BUSHING HOUSING PLATE | 536998-1 | 3 |
| 6 | TENSION PLATE COMPLETE See Section 3.9 | 537535 | 1 |
| 7 | SCREW M8X20 HSS W/DOG POINT ZC 45H DIN 915 ISO 4028 | F81002-77 | 8 |
| 8 | CHAIN 083-1; P=1/2"; LENGHT=0,5461M (43 LINKS) | 537052 | 1 |
| 9 | CHAIN 083-1; P=1/2"; LENGHT=0,7239M (57 LINKS) | 537053 | 1 |
| 10 | CHAIN 083-1; P=1/2"; LENGHT=0,6477M (51 LINKS) | 537054 | 1 |
| 11 | CHAIN 083-1; P-1/2"; LENGHT=0,4953M (39 LINKS) | 537051 | 1 |
| 12 | CONNECTING LINK FOR CHAIN 083-1 | 533128 | 4 |

3.7 Drive Shaft (533580)

533580_001_A
 533580_MANUAL



| REF | DESCRIPTION (* indicates parts available in assemblies only) | PART # | QTY | |
|-----|--|-----------------------|-----|--|
| - | DRIVE SHAFT ASSEMBLY | 533580 | 1 | |
| - | DRIVE SHAFT ASSEMBLY | 537585 | 1 | |
| - | DRIVE SHAFT ASSEMBLY | 533581 | 1 | |
| 1 | SHAFT, STEEL DRIVE | 533513-1 ¹ | 1 | |
| | SHAFT, STEEL DRIVE | 537586-1 ² | 1 | |
| | SHAFT W/PROTECTIVE COVER | 533512 ³ | 1 | |
| 2 | BEARING ASSEMBLY, SLIDE See Section 3.8 | 533520 | 2 | |

¹ Included in 533580

² Included in 537585

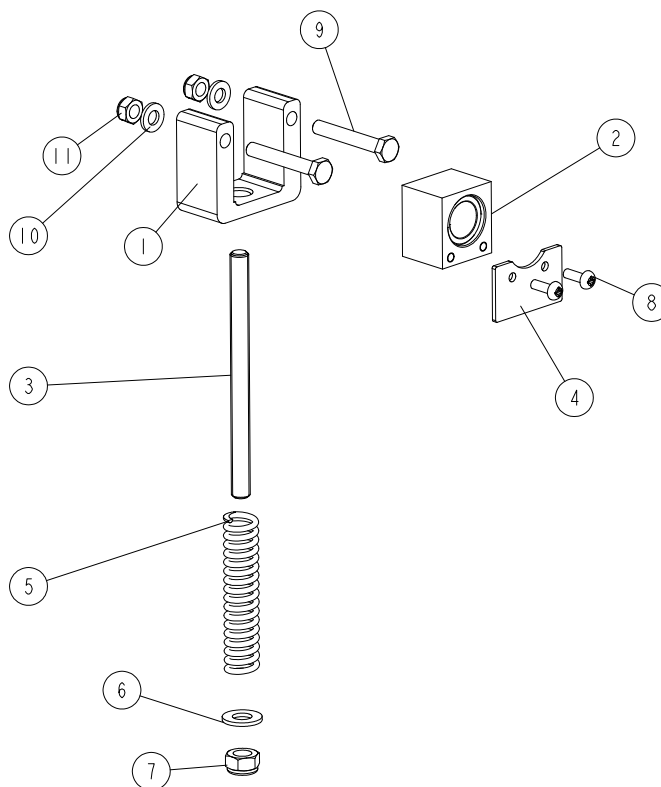
³ Included in 533581

3 MECHANICAL ASSEMBLY

Bearing (533520)

3.8 Bearing (533520)

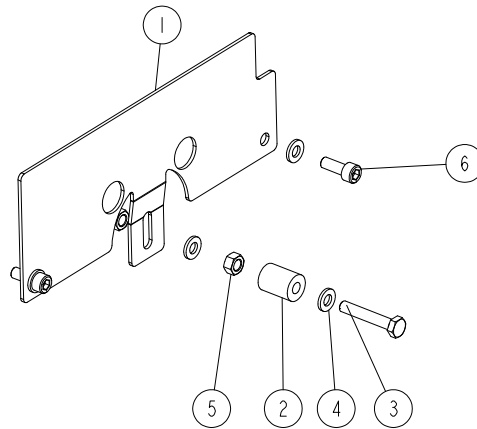
533520_001_A
533520_MANUAL



| REF | DESCRIPTION (* indicates parts available in assemblies only) | PART # | QTY |
|-----|--|-----------|-----|
| - | BEARING ASSEMBLY, SLIDE | 533520 | 1 |
| 1 | HOUSING, SLIDE BEARING | 533514 | 1 |
| 2 | SLIDE BLOCK ASSEMBLY | 537575 | 1 |
| 3 | ROD, M8 THREADED | 533518 | 1 |
| 4 | COVER, RUBBER | 533516 | 1 |
| 5 | SPRING | 533519 | 1 |
| 6 | WASHER 8,4 ZC DIN 126 ISO 7091 | F81054-1 | 1 |
| 7 | NUT M8 ZC 8 NYLOCK DIN 982 ISO 7040 | F81032-2 | 1 |
| 8 | SCREW M4X12 PHILLIPS ZC 5.8 DIN 7985 | F81011-43 | 2 |
| 9 | BOLT M6X40 HH ZC FT 8.8 DIN 933 | F81001-5 | 2 |
| 10 | WASHER 6,4 ZC DIN 126 ISO 7091 | F81053-1 | 2 |
| 11 | NUT M6 ZC 8 NYLOCK DIN 982 ISO 7040 | F81031-2 | 2 |

3.9 Tension Plate (537535)

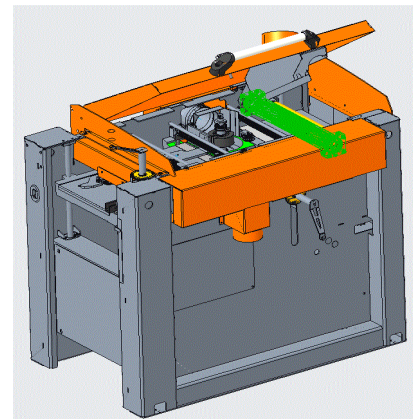
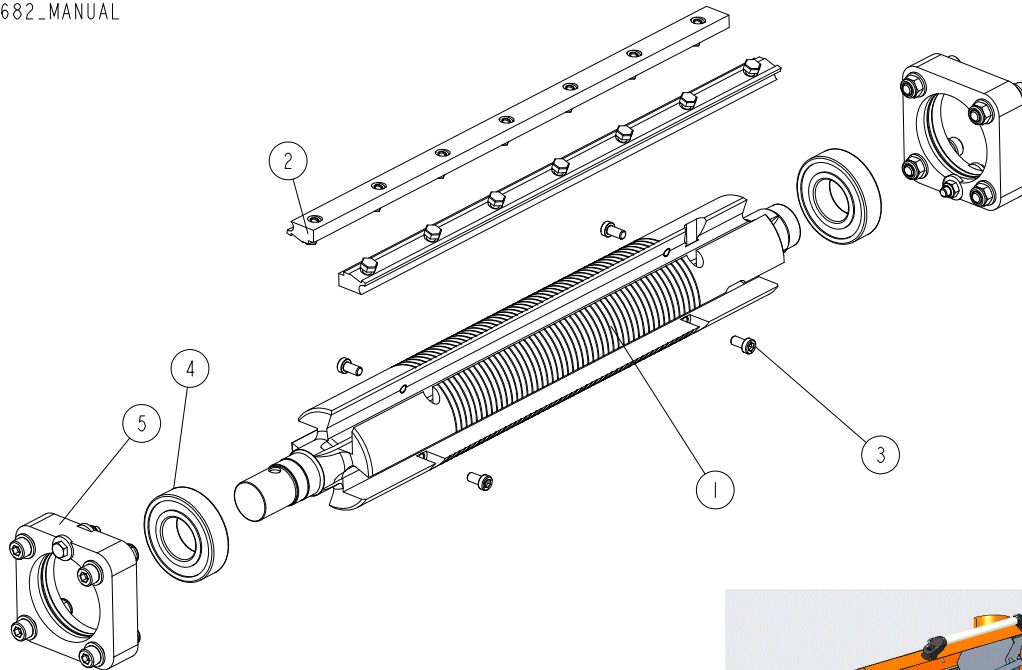
537535_001_EN
537535_MANUAL



| REF | DESCRIPTION (* indicates parts available in assemblies only) | PART # | QTY |
|-----|--|-----------|-----|
| - | TENSION PLATE COMPLETE | 537535 | 1 |
| 1 | TENSION PLATE | 537534-1 | 1 |
| 2 | BUSHING, SPACER | R80671-6 | 1 |
| 3 | BOLT M6X35 HH ZC 8.8 PT DIN 931 | F81001-71 | 1 |
| 4 | WASHER 6,4 ZC DIN 126 ISO 7091 | F81053-1 | 4 |
| 5 | NUT M6 ZC 8 DIN 934 | F81031-1 | 2 |
| 6 | SCREW M6X16 SHCS ZC 8.8 DIN 912 ISO 4762 | F81001-21 | 2 |

3.10 Drive Shaft

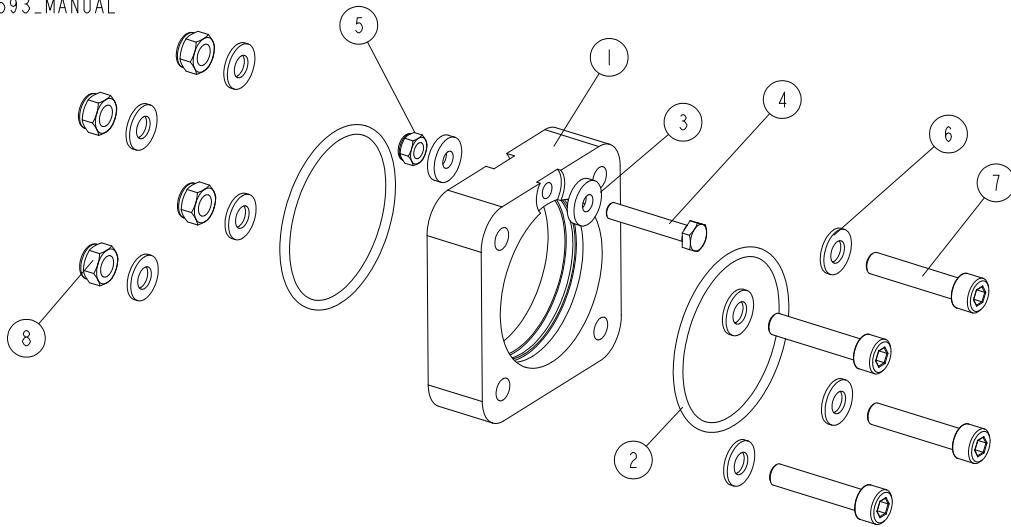
533682_001_B
533682_MANUAL



| REF | DESCRIPTION (* indicates parts available in assemblies only) | PART # | QTY |
|-----|--|-----------|-----|
| - | SHAFT ASSEMBLY, DRIVE | 533682 | 1 |
| 1 | SHAFT, MAIN | 260-138 | 1 |
| 2 | MOUNTING WEDGES | 241-060 | 1 |
| 3 | SCREW M6X12 LSHCS 10.9 DIN 7984 | F81001-80 | 4 |
| 4 | BEARING, 6206 2RSR P6 ROLLING (FAG, NSK, SKF) | 100787 | 2 |
| 5 | HOUSING ASSEMBLY, BEARING See Section 3.11 | 533593 | 2 |

3.11 Bearing Housing

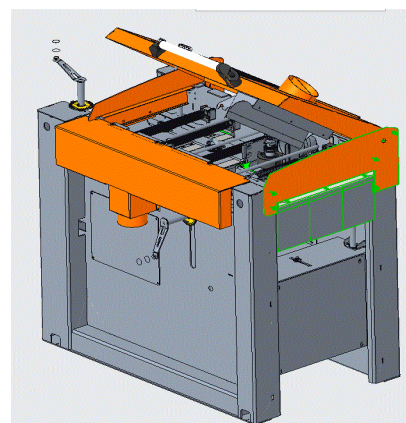
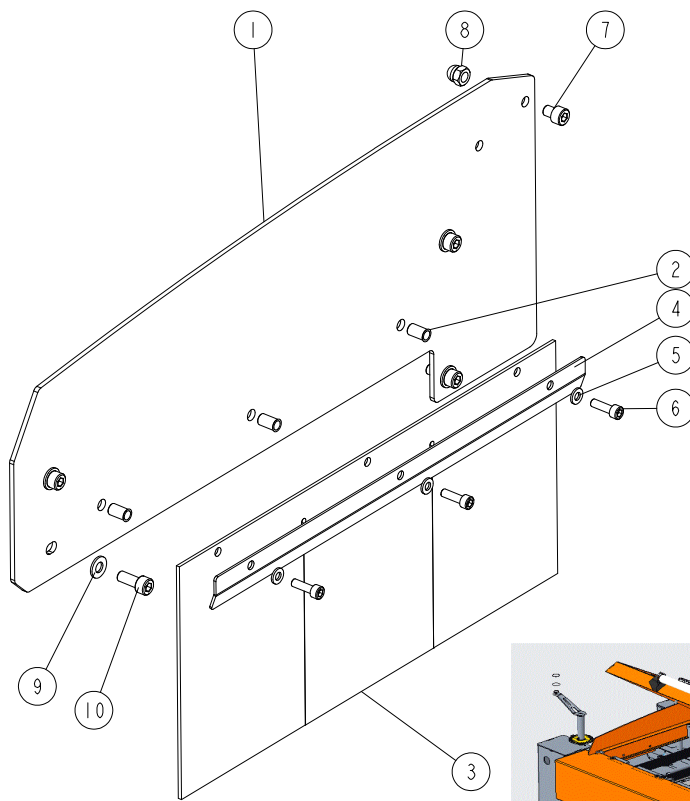
533593_001
 533593_MANUAL



| REF | DESCRIPTION (* indicates parts available in assemblies only) | PART # | QTY |
|-----|--|-----------|-----|
| - | HOUSING ASSEMBLY, BEARING | 533593 | 1 |
| 1 | HOUSING, BEARING | 533590-1 | 1 |
| 2 | O-RING, BEARING HOUSING | 533592 | 2 |
| 3 | WASHER 6,4 ZC DIN 7349 | F81053-13 | 2 |
| 4 | BOLT M6X35 HH ZC 8.8 PT DIN 931 | F81001-71 | 1 |
| 5 | NUT M6 ZC 8 NYLOCK DIN 982 ISO 7040 | F81031-2 | 1 |
| 6 | WASHER 8,4 ZC DIN 126 ISO 7091 | F81054-1 | 8 |
| 7 | SCREW M8X40 SHCS ZC 8.8 DIN 912 ISO 4762 | F81002-29 | 4 |
| 8 | NUT M8 ZC 8 NYLOCK DIN 982 ISO 7040 | F81032-2 | 4 |

3.12 Right Guard

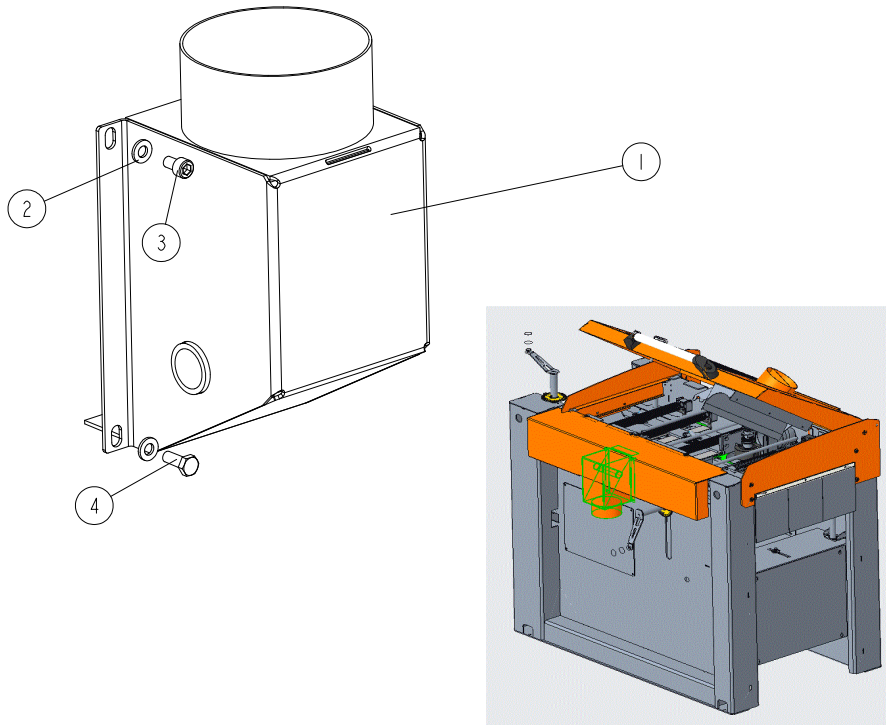
537550_001_EN
537550_MANUAL



| REF | DESCRIPTION (* indicates parts available in assemblies only) | PART # | QTY |
|-----|--|-----------|-----|
| - | RIGHT GUARD COMPLETE | 537550 | 1 |
| 1 | RIGHT GUARD PLATE | 537548-1 | 1 |
| 2 | RIVET NUT M6 1.5-4.0 W/ COUNTERSUNK HEAD AND KNURLED SHANK | F81031-13 | 3 |
| 3 | FLEXIBLE GUARD | 533083 | 1 |
| 4 | BRACKET, FLEXIBLE GUARD | 537551-1 | 1 |
| 5 | WASHER 6,4 ZC DIN 126 ISO 7091 | F81053-1 | 3 |
| 6 | SCREW M6X20 SHCS ZC 8.8 DIN 912 ISO 4762 | F81001-22 | 3 |
| 7 | BOLT M8X10 SHCS ZC PT 8.8 DIN 912 ISO 4762 | F81002-32 | 1 |
| 8 | ACORN NUT M8 ZC 6 DIN 1587 | F81033-25 | 1 |
| 9 | WASHER 8,4 ZC DIN 126 ISO 7091 | F81054-1 | 4 |
| 10 | SCREW M8X20 SHCS ZC 8.8 DIN 912 ISO 4762 | F81002-30 | 4 |

3.13 Sawdust Outlet Guard

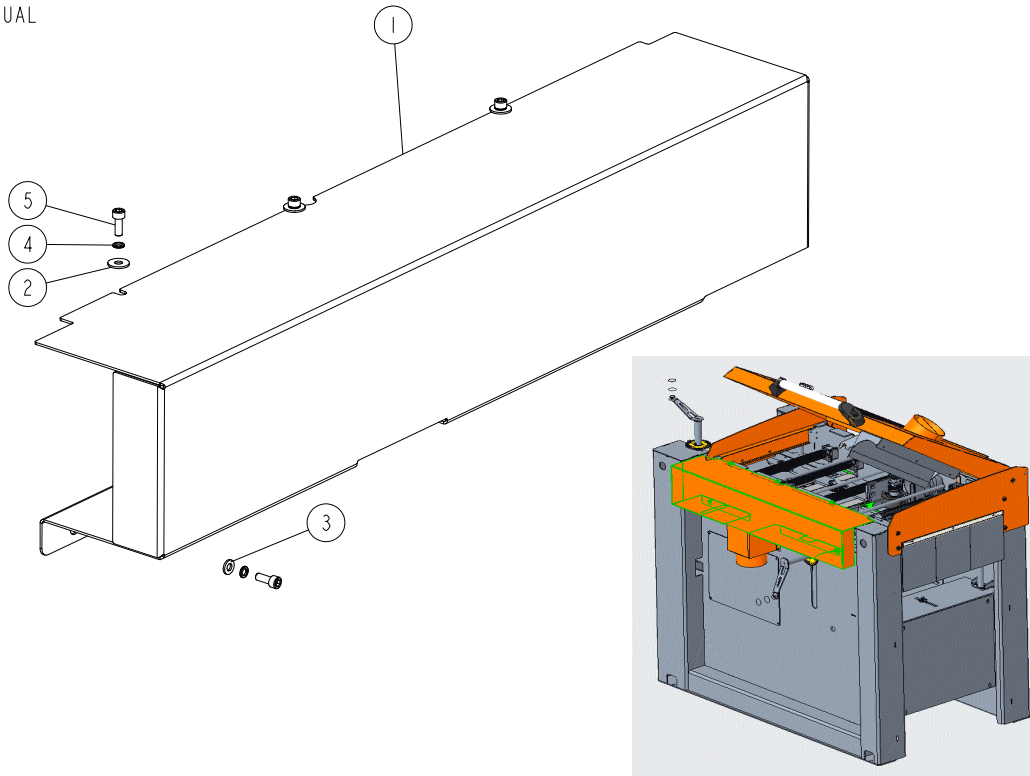
537533_001_EN_A
537533_MANUAL



| REF | DESCRIPTION (* indicates parts available in assemblies only) | PART # | QTY | |
|-----|--|-----------|-----|--|
| - | SAWDUST OUTLET GUARD COMPLETE | 537533 | 1 | |
| 1 | SAWDUST OUTLET GUARD | 537530-1 | 1 | |
| 2 | WASHER 6,4 ZC DIN 126 ISO 7091 | F81053-1 | 4 | |
| 3 | BOLT M6X10 SHCS ZC PT 8.8 DIN 912 ISO 4762 | F81001-12 | 2 | |
| 4 | BOLT M6X16 HH ZC FT 8.8 DIN 933 | F81001-15 | 2 | |

3.14 Side Guard

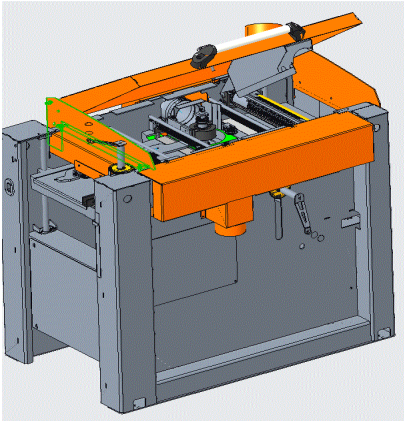
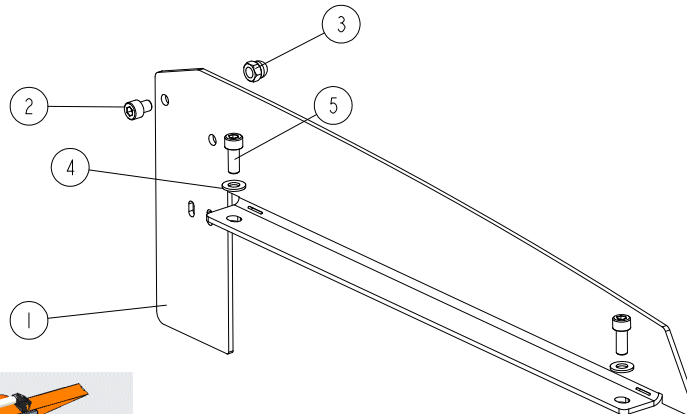
537525_001_EN
537525_MANUAL



| REF | DESCRIPTION (* indicates parts available in assemblies only) | PART # | QTY |
|-----|--|-----------|-----|
| - | SIDE GUARD COMPLETE | 537525 | 1 |
| 1 | SIDE GUARD | 537524-1 | 1 |
| 2 | WASHER 6,5 ZC FENDER DIN 9021 ISO 7093 | F81053-11 | 3 |
| 3 | WASHER 6,4 ZC DIN 126 ISO 7091 | F81053-1 | 2 |
| 4 | WASHER 6,1 ZC SPRING LOCK DIN 127 | F81053-3 | 5 |
| 5 | SCREW M6X16 SHCS ZC 8.8 DIN 912 ISO 4762 | F81001-21 | 5 |

3.15 Left Guard

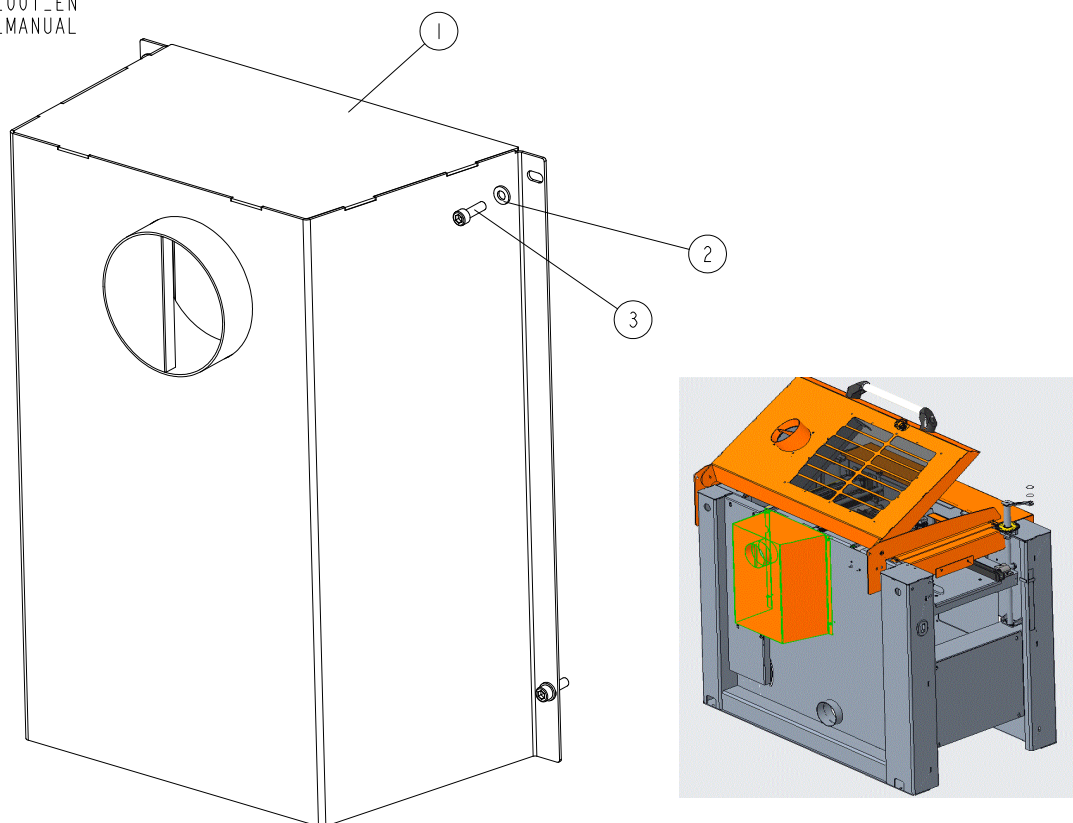
537553_001_EN
 537553_MANUAL



| REF | DESCRIPTION (* indicates parts available in assemblies only) | PART # | QTY | |
|-----|--|-----------|-----|--|
| - | LEFT GUARD COMPLETE | 537553 | 1 | |
| 1 | LEFT GUARD PLATE | 537552-1 | 1 | |
| 2 | BOLT M8X10 SHCS ZC PT 8.8 DIN 912 ISO 4762 | F81002-32 | 1 | |
| 3 | ACORN NUT M8 ZC 6 DIN 1587 | F81033-25 | 1 | |
| 4 | WASHER 8,4 ZC DIN 126 ISO 7091 | F81054-1 | 2 | |
| 5 | SCREW M8X20 SHCS ZC 8.8 DIN 912 ISO 4762 | F81002-30 | 2 | |

3.16 Sawdust Outlet Guard

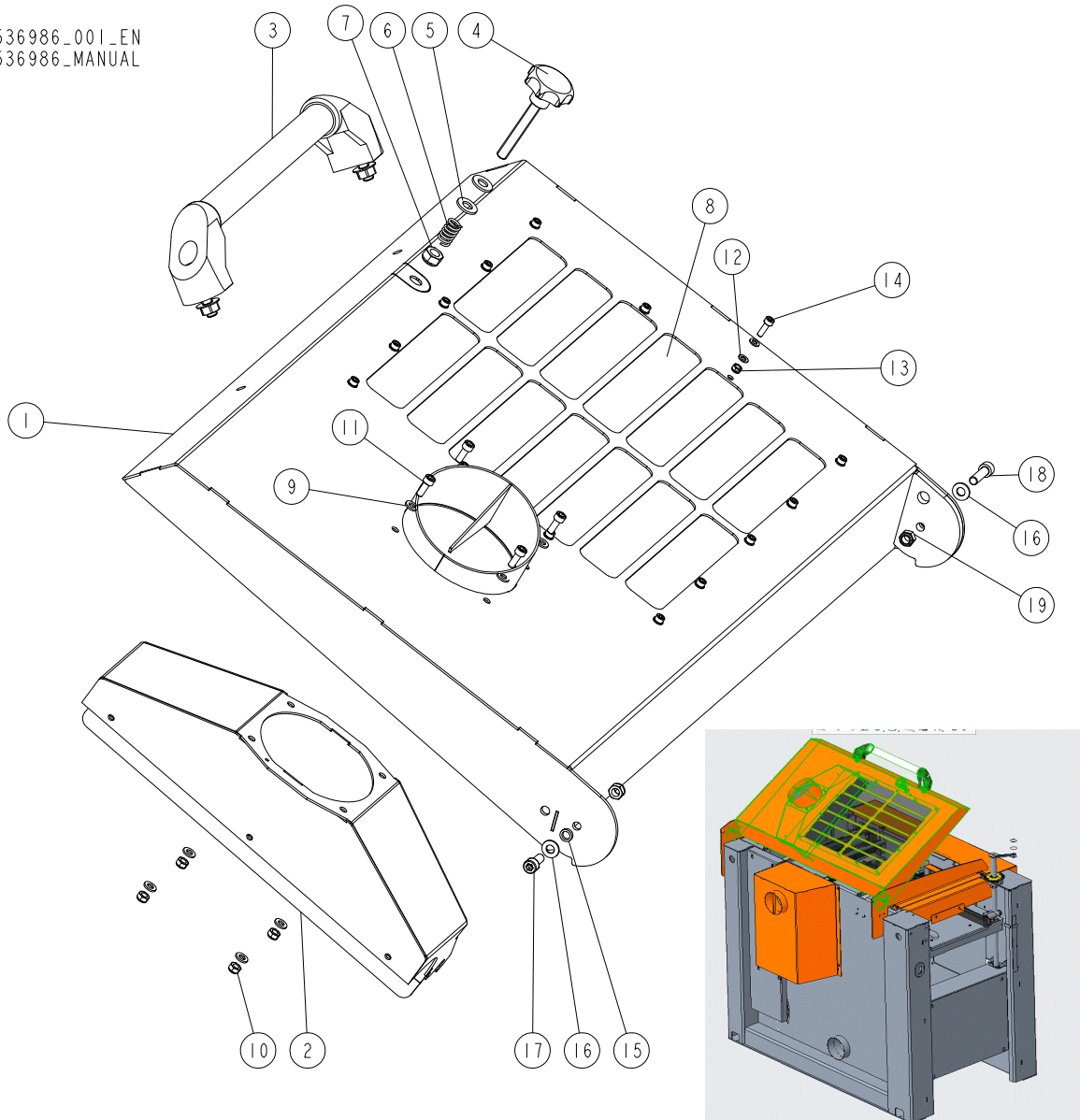
537523_001_EN
537523_MANUAL



| REF | DESCRIPTION (* indicates parts available in assemblies only) | PART # | QTY |
|-----|--|-----------|-----|
| - | SAWDUST OUTLET GUARD COMPLETE | 537523 | 1 |
| 1 | SAWDUST OUTLET GUARD | 537520-1 | 1 |
| 2 | WASHER 6,4 ZC DIN 126 ISO 7091 | F81053-1 | 4 |
| 3 | SCREW M6X20 SHCS ZC 8.8 DIN 912 ISO 4762 | F81001-22 | 4 |

3.17 Top Cover

536986_001_EN
536986_MANUAL

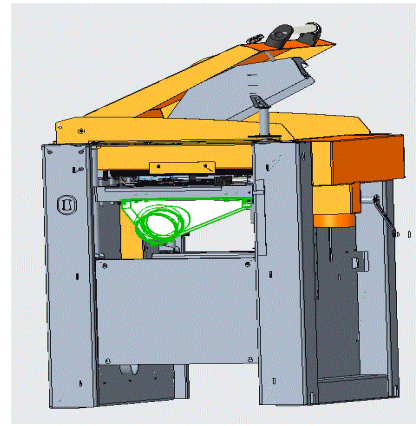
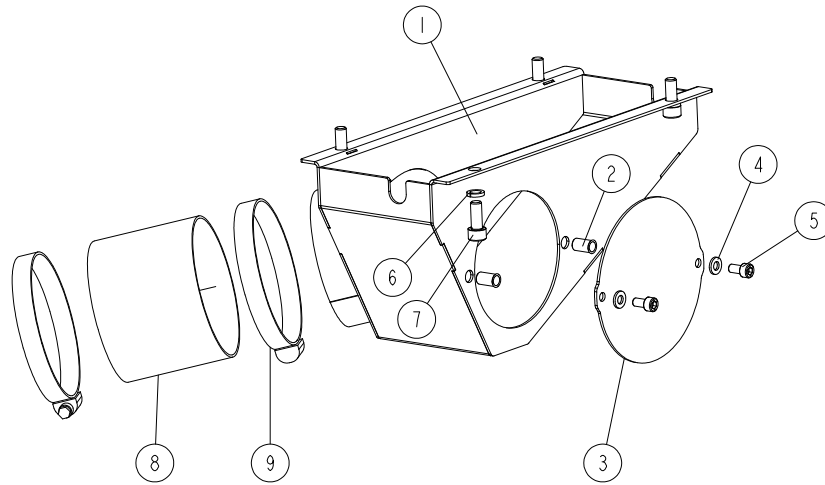


| REF | DESCRIPTION (* indicates parts available in assemblies only) | PART # | QTY |
|-----|--|-----------|-----|
| - | TOP COVER ASSEMBLY | 536986 | 1 |
| 1 | TOP COVER WELDMENT | 536985-1 | 1 |
| 2 | SAWDUST OUTLET WELDMENT | 537555-1 | 1 |
| 3 | TUBULAR HANDLE | 535614 | 1 |
| - | STAR KNOB | 533685 | 1 |
| 4 | KNOB, STAR | 533683 | 1 |
| 5 | WASHER 10,5 ZC DIN 126 ISO 7091 | F81055-1 | 2 |
| 6 | SPRING | 533677 | 1 |
| 7 | NUT M10 ZC 8 NYLOCK DIN 982 ISO 7040 | F81033-1 | 1 |
| 8 | INSPECTION WINDOW PLATE | 536987 | 1 |
| 9 | WASHER 6,4 ZC DIN 126 ISO 7091 | F81053-1 | 8 |
| 10 | NUT M6 ZC 8 NYLOCK DIN 982 ISO 7040 | F81031-2 | 4 |
| 11 | SCREW M6X16 SHCS ZC 8.8 DIN 912 ISO 4762 | F81001-21 | 4 |

| REF | DESCRIPTION (* indicates parts available in assemblies only) | PART # | QTY | |
|-----|--|-----------|-----|--|
| 12 | WASHER 5,3 ZC DIN 126 ISO 7091 | F81052-1 | 28 | |
| 13 | NUT, M5-8-FE/ZN5 DIN985 | F81030-2 | 14 | |
| 14 | BOLT M5X16 SHCS ZC PT 8.8 DIN 912 ISO 4762 | F81000-25 | 14 | |
| 15 | BUSHING, SPACER | 533674 | 2 | |
| 16 | WASHER 8,4 ZC DIN 126 ISO 7091 | F81054-1 | 2 | |
| 17 | SCREW M8X20 SHCS ZC 8.8 DIN 912 ISO 4762 | F81002-30 | 1 | |
| 18 | SCREW M8X30 SHCS ZC 8.8 DIN 912 ISO 4762 | F81002-31 | 1 | |
| 19 | NUT M8 ZC 8 NYLOCK DIN 982 ISO 7040 | F81032-2 | 2 | |

3.18 Sawdust Outlet

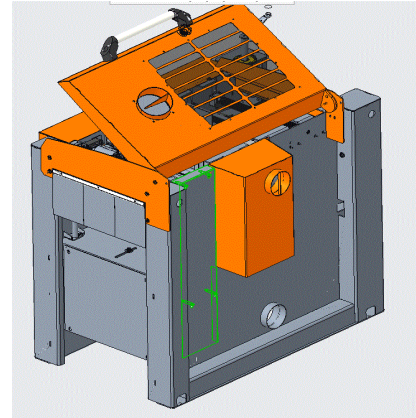
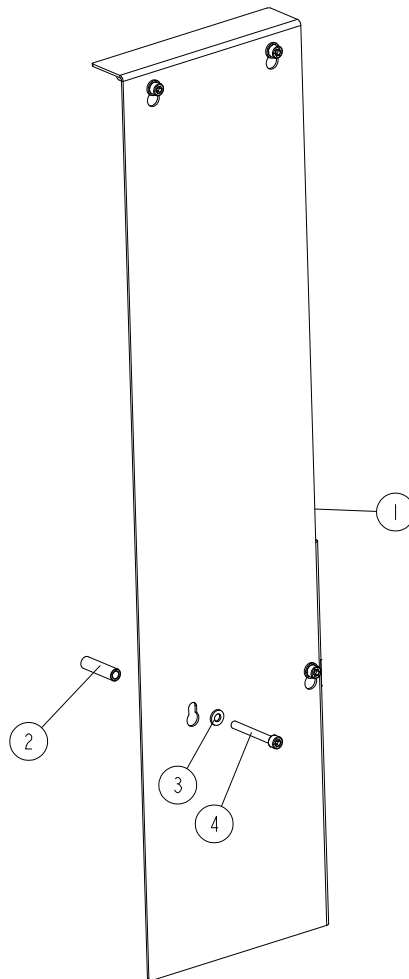
537547_001_EN
537547_MANUAL



| REF | DESCRIPTION (* indicates parts available in assemblies only) | PART # | QTY |
|-----|--|-----------|-----|
| - | SAWDUST OUTLET COMPLETE | 537547 | 1 |
| 1 | SAWDUST OUTLET | 537546-1 | 1 |
| 2 | RIVET NUT M6 1.5-4.0 W/ COUNTERSUNK HEAD AND KNURLED SHANK | F81031-13 | 2 |
| 3 | COVER | 537543-1 | 1 |
| 4 | WASHER 6,4 ZC DIN 126 ISO 7091 | F81053-1 | 2 |
| 5 | SCREW M6X12 SHCS ZC 8.8 DIN 912 ISO 4762 | F81001-87 | 2 |
| 6 | WASHER 8,2 ZC SPRING LOCK DIN 127 | F81054-4 | 4 |
| 7 | SCREW M8X20 SHCS ZC 8.8 DIN 912 ISO 4762 | F81002-30 | 4 |
| 8 | SAWDUST OUTLED HOSE, MASTER CLIP PUR DN100 L=800 [MM] | 537389 | 1 |
| 9 | WORM CLAMP 90-110 | F81095-8 | 2 |

3.19 V-belt Cover

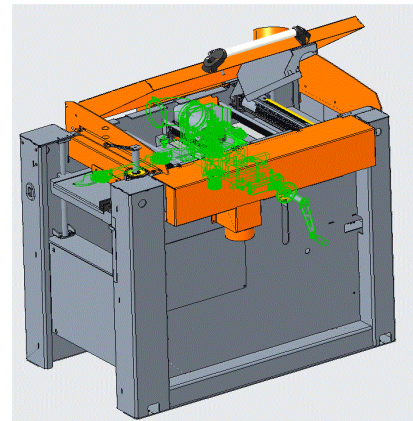
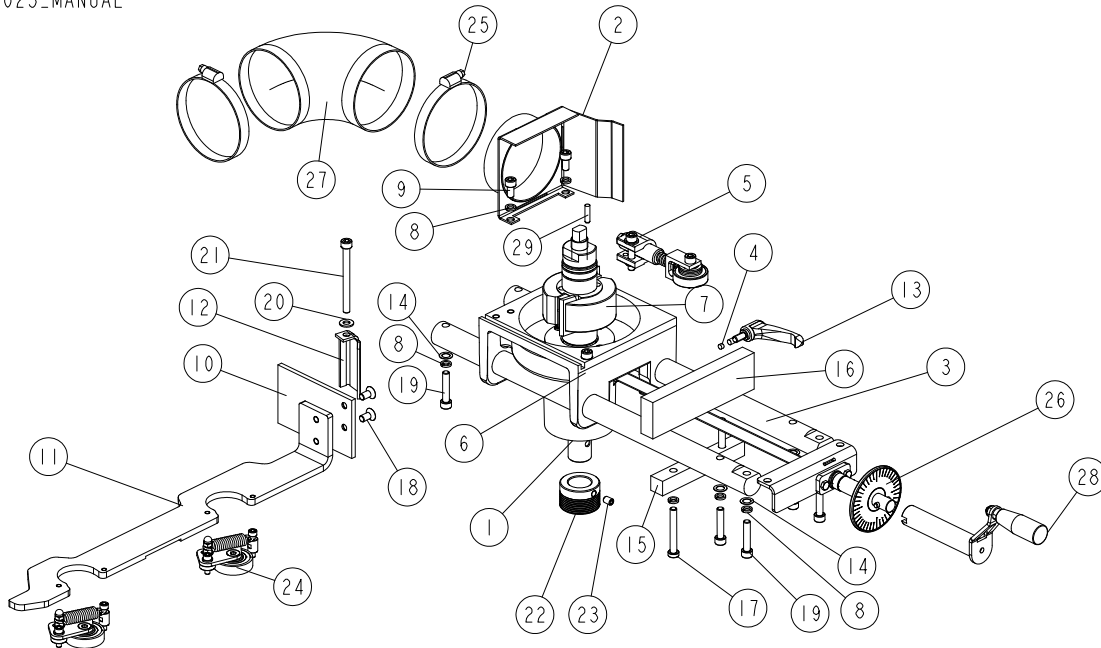
537566_001_EN
537566_MANUAL



| REF | DESCRIPTION (* indicates parts available in assemblies only) | PART # | QTY | |
|-----|--|-----------|-----|--|
| - | V-BELT COVER | 537566 | 1 | |
| 1 | SIDE PLATE | 537540-1 | 1 | |
| 2 | BUSHING 6.3/10-38 | 534209-1 | 4 | |
| 3 | WASHER 6,4 ZC DIN 126 ISO 7091 | F81053-1 | 4 | |
| 4 | SCREW M6X60 SHCS 8.8; DIN 912 ISO 4762 | F81001-83 | 4 | |

3.20 Spindle Moving Assembly

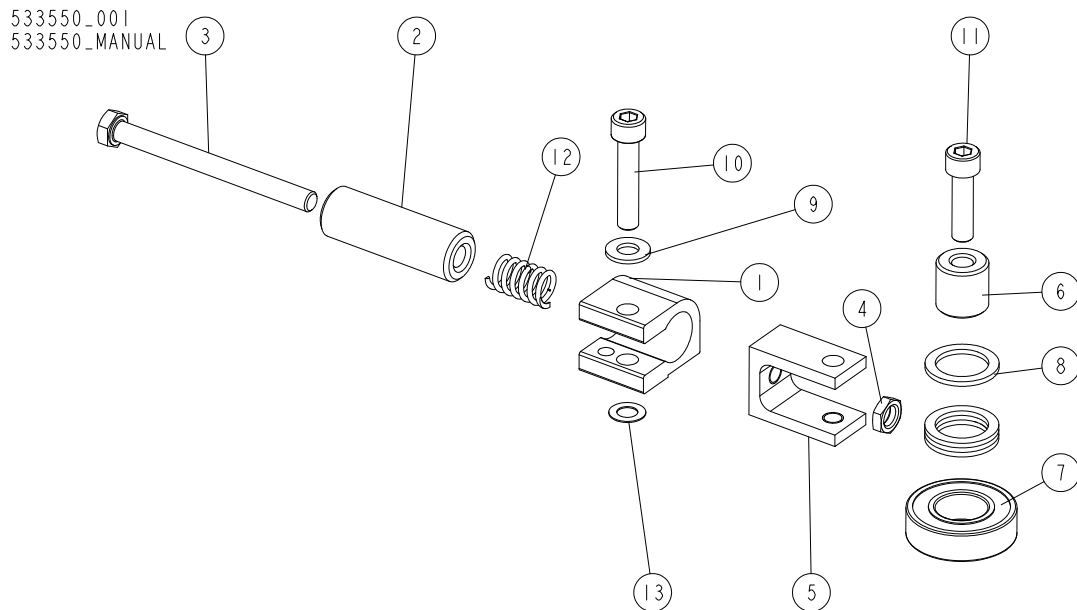
537025_001_EN_A
537025_MANUAL



| Ref | DESCRIPTION (* indicates parts available in assemblies only) | PART # | QTY |
|-----|--|-----------|-----|
| - | SPINDLE MOVING ASSEMBLY | 537025 | 1 |
| 1 | SPINDLE MOUNT BASE | 260-510B | 1 |
| 2 | SAWDUST OUTLET WELDMENT | 537028-1 | 1 |
| 3 | LEFT SPINDLE GUIDE | 537041 | 2 |
| 4 | SLIDE | 535987 | 2 |
| 5 | CLAMP ROLLER ASSEMBLY II See Section 3.21 | 533550 | 1 |
| 6 | SCREW M8X35 SHCS ZC 8.8 DIN 912 ISO 4762 | F81002-58 | 1 |
| 7 | LEFT SPINDLE ASSEMBLY See Section 3.22 | 537005 | 1 |
| 8 | WASHER 8,2 ZC SPRING LOCK DIN 127 | F81054-4 | 10 |
| 9 | SCREW M8X16 SHCS ZC 8.8 DIN 912 ISO 4762 | F81002-39 | 2 |
| 10 | MOUNT PLATE | 537027-1 | 1 |
| 11 | BOARD GUIDE FENCE | 537026-1 | 1 |
| 12 | GUIDE MOUNT BRACKET | 535984-1 | 1 |
| 13 | ADJUSTABLE HANDLE ERZ.63 P-M8X16 | 535988 | 1 |

| Ref | DESCRIPTION (* indicates parts available in assemblies only) | PART # | QTY | |
|-----|--|------------|-----|--|
| 14 | THIN WASHER 10/16-0.5 | 535990 | 8 | |
| 15 | GUIDE BLOCK 1 | 536956-1 | 1 | |
| 16 | GUIDE BLOCK 2 | 536957-1 | 1 | |
| 17 | SCREW M8X60 LHSCS 8.8 DIN 7984 | F81002-41 | 2 | |
| 18 | SCREW M8X16 HSFHS ZC 8.8 DIN7991 ISO10642 | F81002-115 | 2 | |
| 19 | SCREW M8X40 SHCS ZC 8.8 DIN 912 ISO 4762 | F81002-29 | 6 | |
| 20 | WASHER 8,4 ZC DIN 126 ISO 7091 | F81054-1 | 1 | |
| 21 | SCREW M8X90 SHCS ZC 8.8 DIN 912 ISO 4762 | F81002-44 | 1 | |
| 22 | PULLEY, MULTI-GROOVE SMALL ALUMINIUM | 533586 | 1 | |
| 23 | SCREW M8X12 HSS W/CONE POINT ZC 45H DIN 914 | F81002-105 | 1 | |
| 24 | CLAMP ROLLER COMPLETE See Section 3.23 | 536980 | 2 | |
| 25 | WORM CLAMP 90-110 | F81095-8 | 2 | |
| 26 | TRAPEZOIDAL SCREW ASSEMBLY See Section 3.24 | 537042 | 1 | |
| 27 | SAWDUST OUTLET HOSE MASTER CLIP PUR DN100 L=360 [MM] | 537390 | 1 | |
| 28 | HANDLE ASSEMBLY See Section 3.27 | 537810 | 1 | |
| 29 | DOWEL PIN 6M6X12 DIN 7 ISO 2338 | F81045-5 | 1 | |

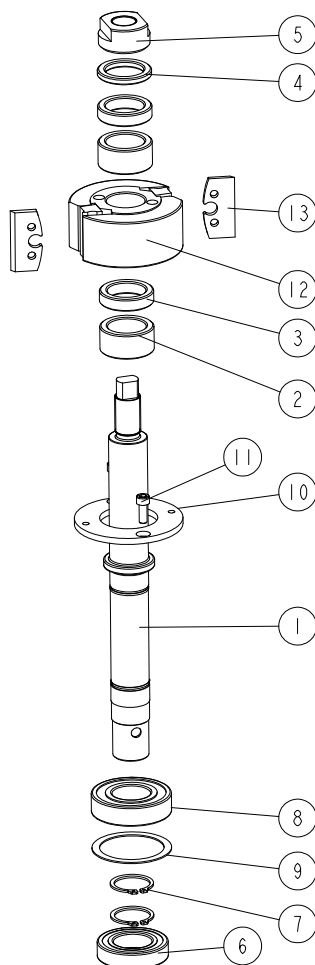
3.21 Clamp Roller Assembly II



| REF | DESCRIPTION (* indicates parts available in assemblies only) | PART # | QTY |
|-----|--|-----------|-----|
| - | CLAMP ROLLER ASSEMBLY II | 533550 | 1 |
| 1 | CONNECTOR, ALUMINIUM | 533551-1 | 1 |
| 2 | BUSHING, 8.5/20-60 ZINC-PLATED | 533553-1 | 1 |
| 3 | BOLT M8X90 HH ZC FT 8.8 DIN 933 | F81002-16 | 1 |
| 4 | NUT, M8-04-FE/ZN ISO4035 HEX THIN | F81032-8 | 1 |
| 5 | CONNECTOR, ALUMINIUM | 533552 | 1 |
| 6 | BUSHING, 8.2/20-20 | 533554-1 | 1 |
| 7 | BEARING, 6004 2RS CX ROLLING | 093868 | 1 |
| 8 | WASHER, 28/20-2 | 533555 | 4 |
| 9 | WASHER 8,4 ZC DIN 126 ISO 7091 | F81054-1 | 1 |
| 10 | SCREW M8X40 SHCS ZC 8.8 DIN 912 ISO 4762 | F81002-29 | 1 |
| 11 | SCREW M8X30 SHCS ZC 8.8 DIN 912 ISO 4762 | F81002-31 | 1 |
| 12 | SPRING, 12X25XN2 | 533556 | 1 |
| 13 | RING SHIM 14/8-05 DIN 988 | F81055-16 | 1 |

3.22 Lef Spindle

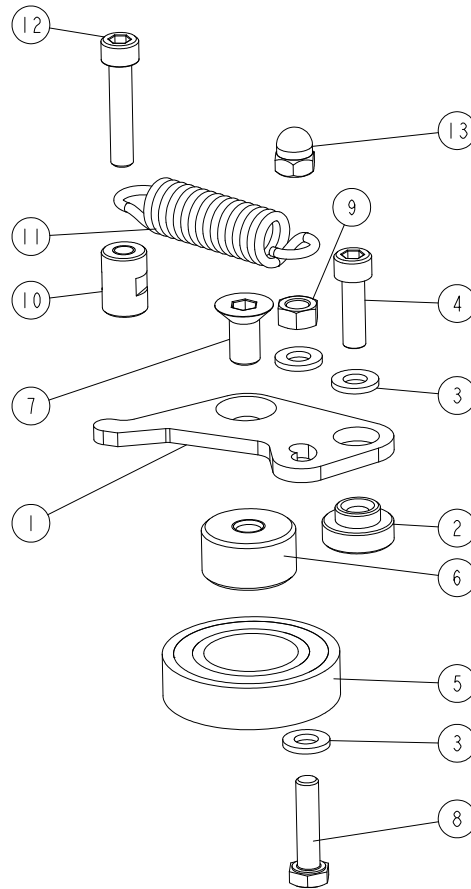
537005_001_EN
537005_MANUAL



| REF | DESCRIPTION (* indicates parts available in assemblies only) | PART # | QTY |
|-----|--|-----------|-----|
| - | LEFT SPINDLE ASSEMBLY | 537005 | 1 |
| 1 | SHAFT | 533537 | 1 |
| 2 | BUSHING, 30/42-20.2 ZINC-PLATED | 533541-1 | 2 |
| 3 | BUSHING, 30/42-10 ZINC-PLATED | 533539-1 | 2 |
| 4 | BUSHING, 30/42-5.2 ZINC-PLATED | 533540-1 | 1 |
| 5 | NUT, M20X1.5 LEFT | 533538-1 | 1 |
| 6 | BEARING, 6006 2RSR | 096191 | 1 |
| 7 | OUTSIDE RETAINING RING Z30 PN-M/85111 DIN 471 | F81090-23 | 2 |
| 8 | BEARING, 6206 2RSR P6 ROLLING (FAG, NSK, SKF) | 100787 | 1 |
| 9 | WASHER 50X61.6X1 | 533543 | 1 |
| 10 | PLATE, CLAMPING | 533542-1 | 1 |
| 11 | SCREW M6X16 SHCS ZC 8.8 DIN 912 ISO 4762 | F81001-21 | 2 |
| - | CUTTERHEAD, TB90-92 STEEL | 240-010 | 1 |
| 12 | CUTTERHEAD | 533587 | 1 |
| 13 | KNIFE, CUTTER | 533588 | 2 |

3.23 Clamp Roller Assembly

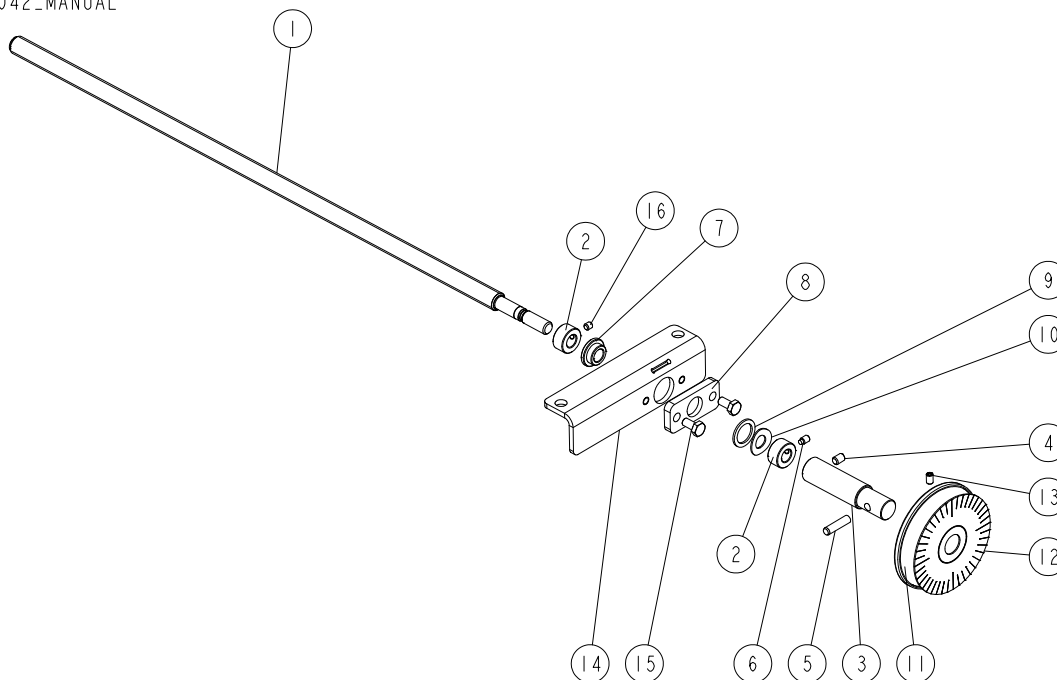
536980_001
536980_MANUAL



| REF | DESCRIPTION (* indicates parts available in assemblies only) | PART # | QTY |
|-----|--|-----------|-----|
| - | CLAMP ROLLER ASSEMBLY | 536980 | 1 |
| 1 | BRACKET, BEARING MOVABLE | 533525-1 | 1 |
| 2 | BUSHING, 6.2/12-10 FLANGED 19-6 | 533632 | 1 |
| 3 | WASHER 6.4 ZC DIN 126 ISO 7091 | F81053-1 | 3 |
| 4 | SCREW M6X20 SHCS ZC 8.8 DIN 912 ISO 4762 | F81001-22 | 1 |
| 5 | BEARING 6005 2RS | 089652 | 1 |
| 6 | BUSHING, M8/25-13.5 ZINC-PLATED | 533529-1 | 1 |
| 7 | SCREW M8X16 HSFHS ZC 10.9 DIN7991 ISO 10642 | F81002-82 | 1 |
| 8 | BOLT M6X25 HH ZC FT 8.8 DIN 933 | F81001-3 | 1 |
| 9 | NUT M6 ZC 8 DIN 934 | F81031-1 | 1 |
| 10 | BUSHING, M6/12-17 ZINC-PLATED | 533633-1 | 1 |
| 11 | SPRING, 15X65X2.5 | 533571 | 1 |
| 12 | SCREW M6X30 SHCS ZC 8.8 DIN 912 ISO 4762 | F81001-42 | 1 |
| 13 | HEX DOMED CAP NUT M6 ZC 6 DIN 1587 | F81032-20 | 1 |

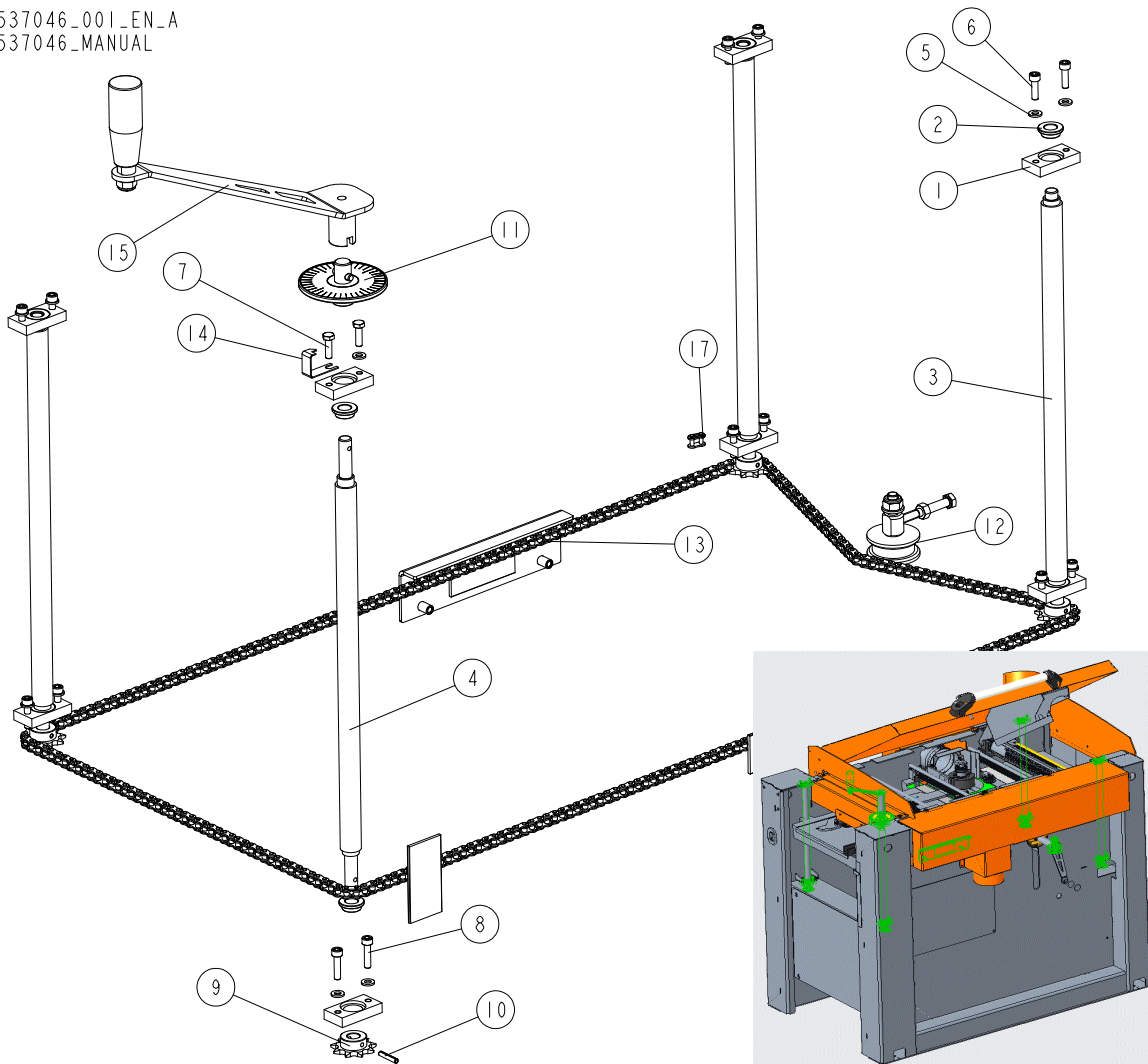
3.24 Trapezoidal Screw

537042_001_EN_A
537042_MANUAL



| Ref | DESCRIPTION (* indicates parts available in assemblies only) | PART # | QTY |
|-----|--|-----------|-----|
| - | TRAPEZOIDAL SCREW ASSEMBLY | 537042 | 1 |
| 1 | CUTTER TRAPEZOIDAL SCREW | 535996 | 1 |
| 2 | CONNECTOR 1 | 535997-1 | 2 |
| 3 | CONNECTOR 2 | 537044-1 | 1 |
| 4 | SCREW M6X8 45H HSS W/FLAT POINT ZC DIN913 ISO4026 | F81013-1 | 1 |
| 5 | DOWEL PIN 6M6X12 DIN 7 ISO 2338 | F81045-5 | 1 |
| 6 | SCREW M5X8 45H HSS W/DOG POINT ZC DIN 915 ISO4028 | F81014-15 | 1 |
| 7 | SELF LUBRICATING BEARING, AMES N10/N16/N22-8 | 541372 | 1 |
| 8 | SLIDE BUSHING PLATE | 535991-1 | 1 |
| 9 | SPACER 16/22-1.5 DIN 988 | F81055-19 | 1 |
| 10 | DIN 137 B WAVE SPRING WASHER 10.5 | F81055-18 | 1 |
| 11 | DISK, ROUND SCALE | 533594 | 1 |
| 12 | DECAL, MP200 ROUND SCALE | 533577 | 1 |
| 13 | SCREW WITHOUT HEAD M5X8 45H DIN 913 | F81014-7 | 1 |
| 14 | SCREW MOUNTING PLATE | 537045-1 | 1 |
| 15 | BOLT M6X12 HH ZC FT 8.8 DIN 933 | F81001-7 | 2 |
| 16 | SCREW M5X5 45H W/FLAT POINT ZC DIN 913 ISO 4026 | F81014-14 | 1 |

3.25 Up/Down

537046_001_EN_A
537046_MANUAL

| Ref | DESCRIPTION (* indicates parts available in assemblies only) | PART # | QTY |
|-----|--|-----------|-----|
| - | UP/DOWN FEED ASSEMBLY | 537046 | 1 |
| 1 | BLOCK | 533113-1 | 8 |
| 2 | BUSHING, 12.3/18-8 FLANGED 24-3 | 533114 | 8 |
| 3 | TRAPEZOIDAL SCREW TR20X4 | 533116 | 3 |
| 4 | ADJUSTTABLE TRAPEZOIDAL SCREW TR20X4 | 537047 | 1 |
| 5 | WASHER 6,4 ZC DIN 126 ISO 7091 | F81053-1 | 15 |
| 6 | SCREW M6X20 SHCS ZC 8.8 DIN 912 ISO 4762 | F81001-22 | 6 |
| 7 | BOLT M6X20 HH ZC FT 8.8 DIN 933 | F81001-2 | 2 |
| 8 | BOLT M6X25 SHCS ZC PT 8.8 DIN 912 ISO 4762 | F81001-41 | 8 |
| 9 | SPROCKET, Z=9; 1/2"X 3/16"(CHAIN 083-1) | 533111 | 4 |
| 10 | PIN SPRING 4X24 ZC DIN 1481 ISO 8752 | F81044-13 | 4 |
| 11 | SCALE, ROUND COMPLETE See Section 3.26 | 533676 | 1 |
| 12 | CHAIN TENSION, ASSEMBLY See Section 3.29 | 534390 | 1 |
| 13 | CHAIN SLIDE ASSEMBLY See Section 3.30 | 537560 | 1 |
| 14 | INDICATOR, SCALE | 537558 | 1 |
| 15 | HANDLE ASSEMBLY See Section 3.28 | 535975 | 1 |

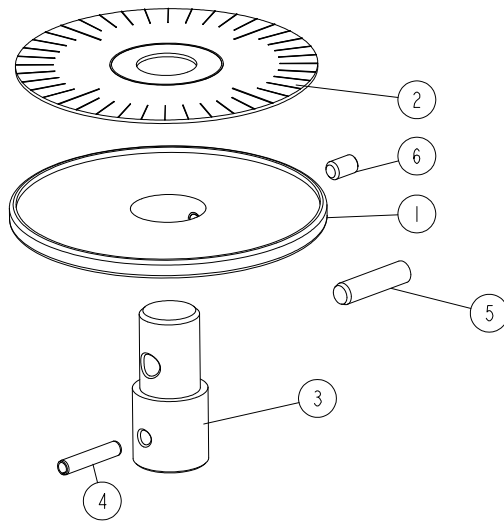
3 MECHANICAL ASSEMBLY

Up/Down

| Ref | DESCRIPTION (* indicates parts available in assemblies only) | PART # | QTY | |
|-----|---|--------|-----|--|
| 16 | CHAIN 083-1; P = 1/2 "; LENGT L = 2,7559 M (217 LINKS +1 HALF-LINK) | 537050 | 1 | |
| 17 | CONNECTING LINK FOR CHAIN 083-1 | 533128 | 1 | |

3.26 Scale

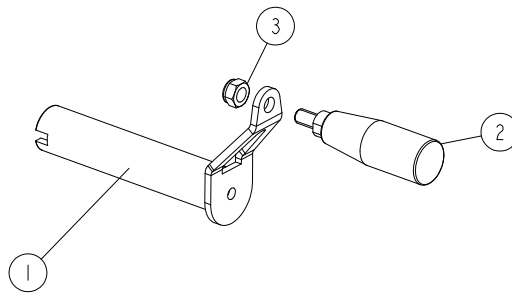
533676_001_A
533676_MANUAL



| REF | DESCRIPTION (* indicates parts available in assemblies only) | PART # | QTY | |
|-----|--|-----------|-----|--|
| - | SCALE, ROUND COMPLETE | 533676 | 1 | |
| 1 | DISK, ROUND SCALE | 533594 | 1 | |
| 2 | DECAL, MP200 ROUND SCALE | 533577 | 1 | |
| 3 | PIN, SCALE DISK MOUNT | 533595-1 | 1 | |
| 4 | COILED SPRING PIN 4X20, ISO 8752, STEEL. | F81044-11 | 1 | |
| 5 | DOWEL PIN 6M6X12 DIN 7 ISO 2338 | F81045-5 | 1 | |
| 6 | SCREW WITHOUT HEAD M5X8 45H DIN 913 | F81014-7 | 1 | |

3.27 Handle

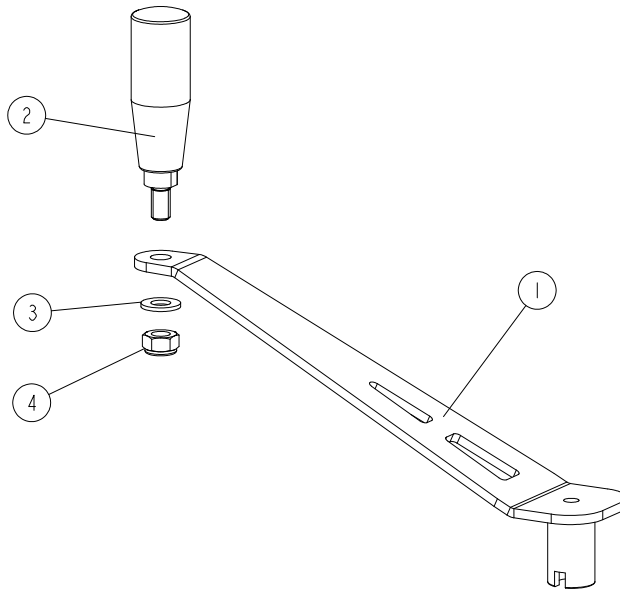
537810_001
537810_MANUAL



| Ref | DESCRIPTION (* indicates parts available in assemblies only) | PART # | QTY | |
|-----|--|----------|-----|--|
| - | HANDLE ASSEMBLY | 537810 | 1 | |
| 1 | HANDLE WELDMENT | 537811-1 | 1 | |
| 2 | REVOLVING GRIP | 533505 | 1 | |
| 3 | NUT M8 ZC 8 NYLOCK DIN 982 ISO 7040 | F81032-2 | 1 | |

3.28 Handle

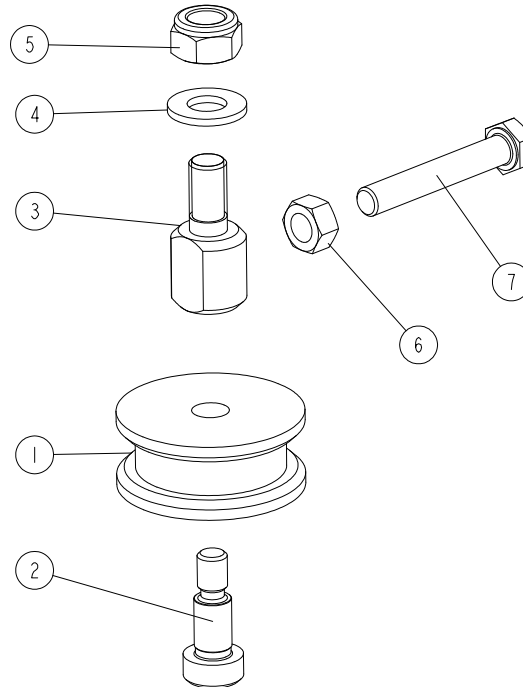
535975_001_EN
 535975_MANUAL



| Ref | DESCRIPTION (* indicates parts available in assemblies only) | PART # | QTY | |
|-----|--|----------|-----|--|
| - | HANDLE ASSEMBLY | 535975 | 1 | |
| 1 | HANDLE WELDMENT | 535973-1 | 1 | |
| 2 | REVOLVING GRIP | 535974 | 1 | |
| 3 | WASHER 10,5 ZC DIN 126 ISO 7091 | F81055-1 | 1 | |
| 4 | NUT M10 ZC 8 NYLOCK DIN 982 ISO 7040 | F81033-1 | 1 | |

3.29 Chain Tension

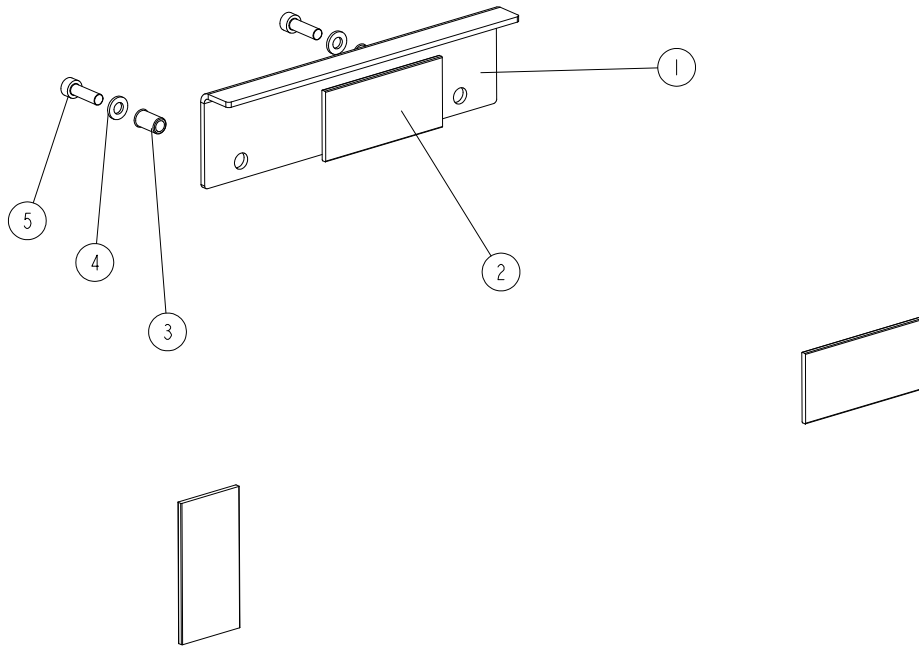
534390_001
534390_MANUAL



| Ref | DESCRIPTION (* indicates parts available in assemblies only) | PART # | QTY | |
|-----|--|------------|-----|--|
| - | CHAIN TENSION, ASSEMBLY | 534390 | 1 | |
| 1 | ROLLER, TENSIONER | 533576 | 1 | |
| 2 | SHOULDER SCREW HSH -10-M8-16; 12,9 | F81003-139 | 1 | |
| 3 | BOLT, MOUNTING | 534388-1 | 1 | |
| 4 | WASHER 10,5 ZC DIN 126 ISO 7091 | F81055-1 | 1 | |
| 5 | NUT M10 ZC 8 NYLOCK DIN 982 ISO 7040 | F81033-1 | 1 | |
| 6 | NUT M8 ZC 8 DIN 934 | F81032-1 | 1 | |
| 7 | SCREW M8X60 HH ZC 8.8 PT DIN 931 | F81002-54 | 1 | |

3.30 Chain Slide

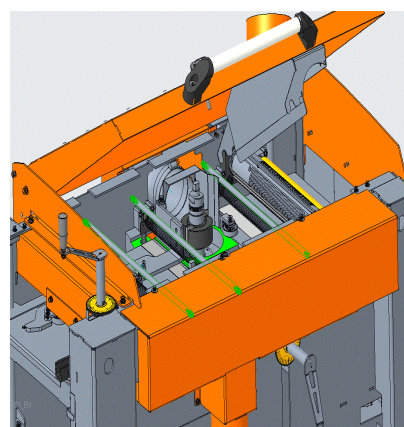
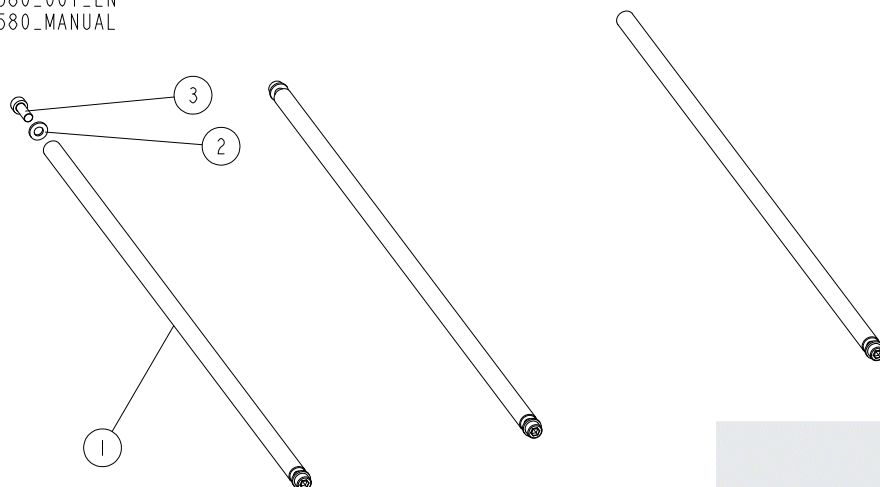
537560_001_EN_A
537560_MANUAL



| REF | DESCRIPTION (* indicates parts available in assemblies only) | PART # | QTY | |
|-----|--|-----------|-----|--|
| - | CHAIN SLIDE ASSEMBLY | 537560 | 1 | |
| 1 | ANGLE SECTION | 537561-1 | 1 | |
| 2 | SLIDE TAPE | 537562 | 1 | |
| 3 | RIVET NUT M6 1.5-4.0 W/ COUNTERSUNK HEAD AND KNURLED SHANK | F81031-13 | 2 | |
| 4 | WASHER 6,4 ZC DIN 126 ISO 7091 | F81053-1 | 2 | |
| 5 | SCREW M6X20 SHCS ZC 8.8 DIN 912 ISO 4762 | F81001-22 | 2 | |

3.31 Rod Set

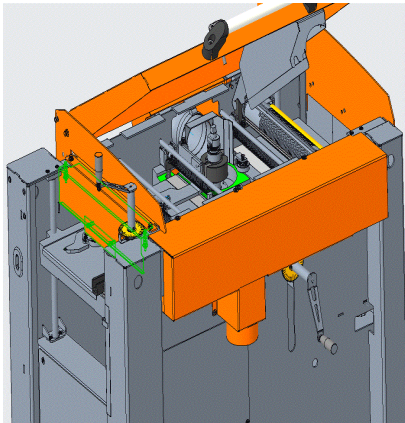
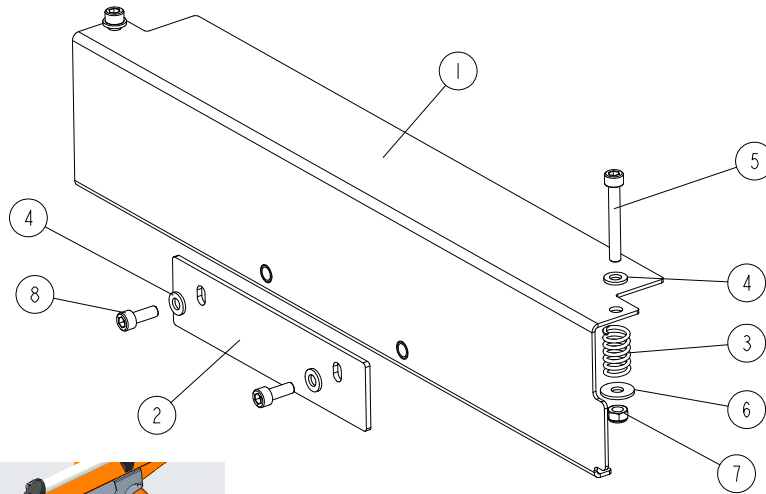
537580_001_EN
537580_MANUAL



| REF | DESCRIPTION (* indicates parts available in assemblies only) | PART # | QTY | |
|-----|--|-----------|-----|--|
| - | ROD SET | 537580 | 1 | |
| 1 | SHAFT | 533092-1 | 3 | |
| 2 | WASHER 6,4 ZC DIN 126 ISO 7091 | F81053-1 | 5 | |
| 3 | SCREW M6X16 SHCS ZC 8.8 DIN 912 ISO 4762 | F81001-21 | 5 | |

3.32 Moving Plate

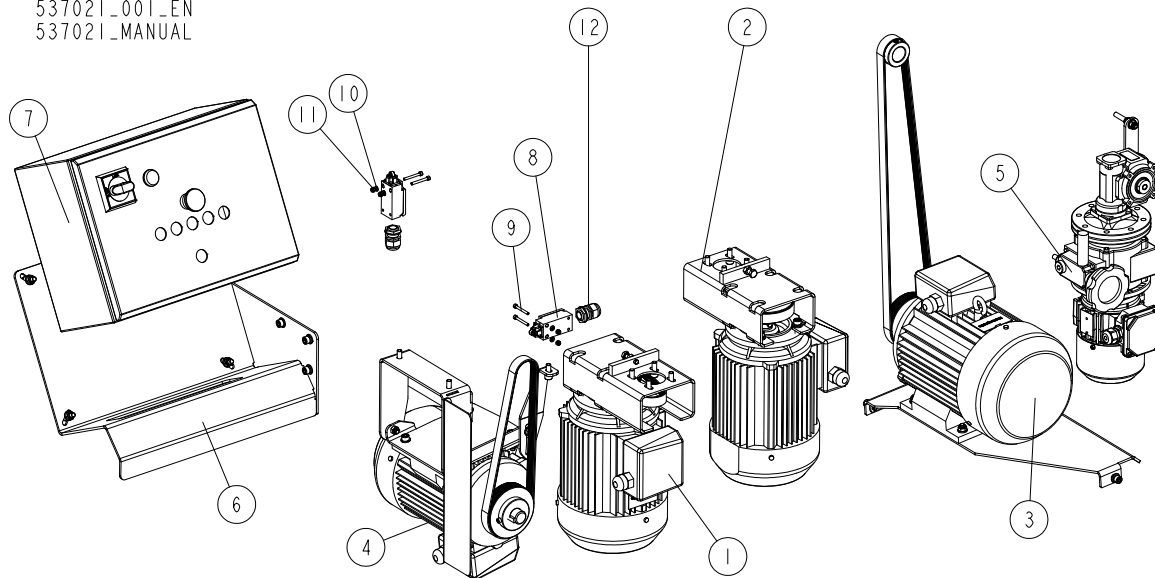
537584_001_EN
537584_MANUAL



| REF | DESCRIPTION (* indicates parts available in assemblies only) | PART # | QTY | |
|-----|--|-----------|-----|--|
| - | MOVING PLATE ASSEMBLY | 537584 | 1 | |
| 1 | MOVING PLATE | 537583 | 1 | |
| 2 | PLATE | 537582-1 | 1 | |
| 3 | SPRING | 533677 | 2 | |
| 4 | WASHER 6,4 ZC DIN 126 ISO 7091 | F81053-1 | 4 | |
| 5 | SCREW M6X45 SHC ZC 8.8 DIN 912 ISO 4762 | F81001-86 | 2 | |
| 6 | WASHER 6,5 ZC FENDER DIN 9021 ISO 7093 | F81053-11 | 2 | |
| 7 | NUT M6 ZC 8 NYLOCK DIN 982 ISO 7040 | F81031-2 | 2 | |
| 8 | SCREW M6X16 SHCS ZC 8.8 DIN 912 ISO 4762 | F81001-21 | 2 | |

SECTION 4 MOTOR KITS

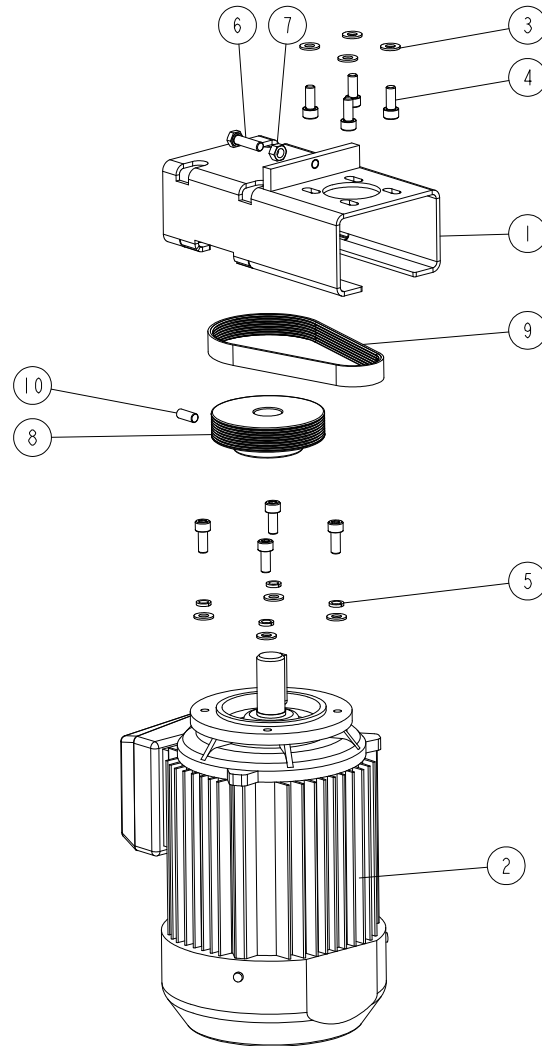
4.1 Motor Kit for MP260 EH 3x400V CE

537021_001_EN
537021_MANUAL

| REF | DESCRIPTION (* indicates parts available in assemblies only) | PART # | QTY |
|-----|---|-----------|-----|
| - | PRO MOTOR KIT FOR MP260EH 3x400V CE | 537021 | 1 |
| | PRO MOTOR KIT FOR MP260EB3x230V CE | 537021-2 | 1 |
| - | ECO MOTOR KIT FOR MP260EH 3x400V CE | 537020 | 1 |
| | ECO MOTOR KIT FOR MP260EB 3x230V CE | 537020-2 | 1 |
| 1 | SIDE CUTTER DRIVE See Section 4.2 | 533647_ | 1 |
| 2 | SIDE CUTTER DRIVE See Section 4.2 | 533647 | 1 |
| 3 | HORIZONTAL UPPER CUTTER PRO DRIVE See Section 4.3 | 537035 | 1 |
| 4 | HORIZONTAL BOTTOM CUTTER DRIVE See Section 4.4 | 537031 | 1 |
| 5 | MP260 PRO FEED DRIVE See Section 4.5 | 537036 | 1 |
| 6 | ELECTRIC BOX BRACKET-COMPLETE See Section 4.6 | 537032 | 1 |
| 7 | ELECTRICAL BOX MP260 3X400V CE COMPLETE See Section 4.7 | 532791 | 1 |
| 8 | SAFETY SWITCH D4N-4132 | 537641 | 2 |
| 9 | BOLT M4X35 SHCS ZC PT 8.8 DIN 912 ISO 4762 | F81011-34 | 4 |
| 10 | WASHER 4,3 ZC DIN 126 ISO 7091 | F81051-2 | 4 |
| 11 | NUT M4 ZC 8 NYLOCK DIN 982 ISO 7040 | F81029-1 | 4 |
| 12 | ELECTRICAL GLAND 20 HML | F81096-41 | 2 |

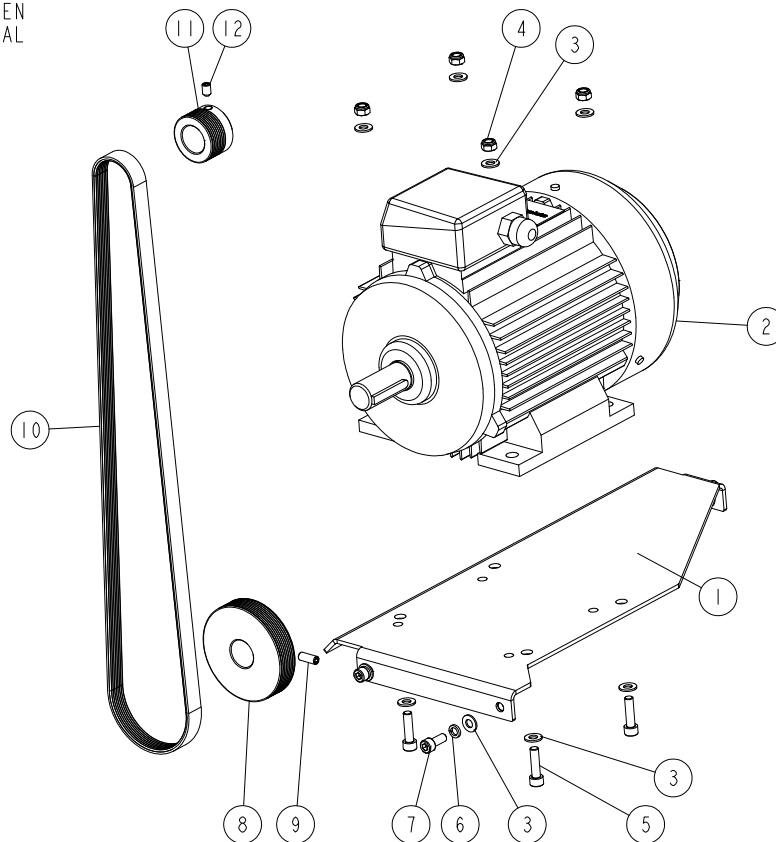
4.2 Side Cutter Drive

533647_001_A
533647_MANUAL



| REF. | DESCRIPTION (* indicates parts available in assemblies only) | PART # | QTY |
|------|--|------------|-----|
| - | SIDE CUTTER DRIVE | 533647 | 1 |
| 1 | PLATE WELDMENT, MOTOR MOUNT | 533649-1 | 1 |
| 2 | MOTOR, 3SIEK90L2A IMV19/C140 (3kW; 2860 r.p.m.) | 533646 | 1 |
| 3 | WASHER 8.4 ZC DIN 126 ISO 7091 | F81054-1 | 8 |
| 4 | SCREW M8X20 SHCS ZC 8.8 DIN 912 ISO 4762 | F81002-30 | 8 |
| 5 | WASHER 8.2 ZC SPRING LOCK DIN 127 | F81054-4 | 4 |
| 6 | BOLT M8X30 HH ZC FT 8.8 DIN 933 | F81002-7 | 1 |
| 7 | NUT M8 ZC 8 DIN 934 | F81032-1 | 1 |
| 8 | PULLEY, MULTI-GROOVE ALUMINIUM | 533585 | 1 |
| 9 | SCREW M8X20 HSS W/FLAT POINT ZC 45H DIN 913 | F81002-103 | 1 |
| 10 | BELT, 8 PJ 457 MULTI-RIBBED | 533680 | 1 |

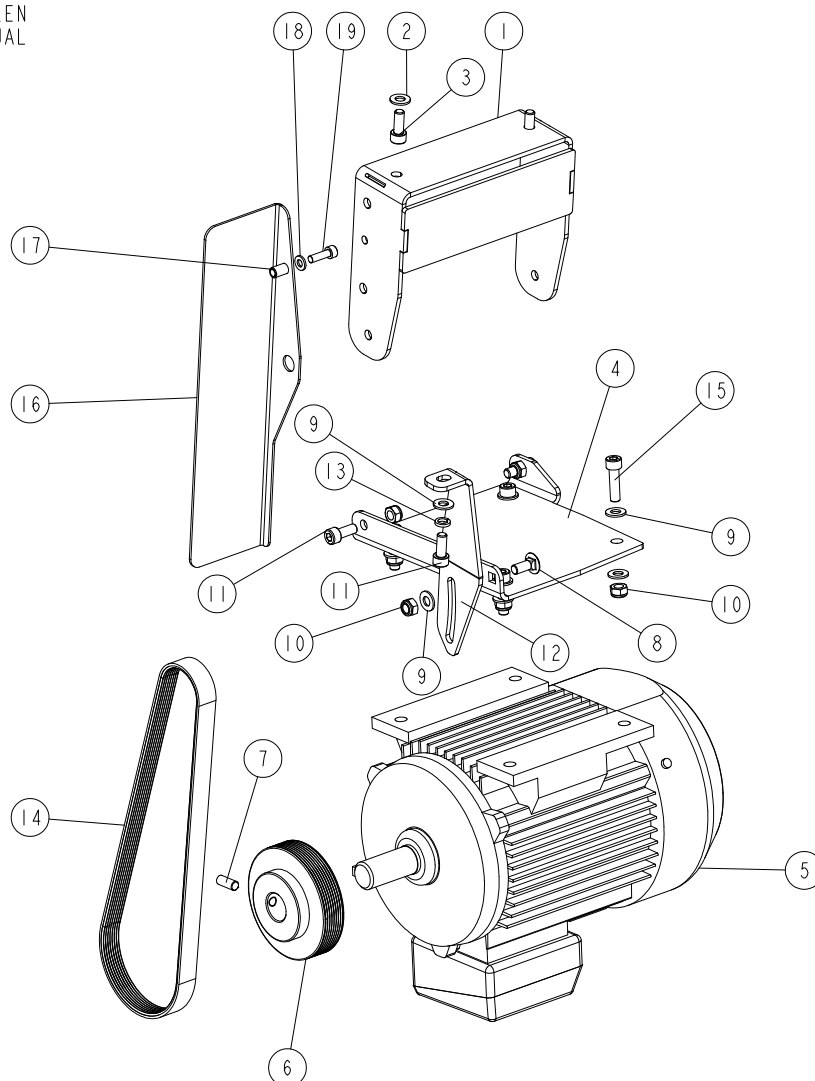
4.3 Horizontal Upper Cutter Drive

537035_001_EN
537035_MANUAL

| REF | DESCRIPTION (* indicates parts available in assemblies only) | PART # | QTY |
|-----|--|------------|-----|
| - | HORIZONTAL UPPER CUTTER PRO DRIVE | 537035 | 1 |
| 1 | MOTOR PLATE WELDMENT | 535895-1 | 1 |
| 2 | MOTOR 3SIE100L2A, 4KW, 2900 R.P.M, 50HZ | 537387 | 1 |
| 3 | WASHER 8,4 ZC DIN 126 ISO 7091 | F81054-1 | 11 |
| 4 | NUT M8 ZC 8 NYLOCK DIN 982 ISO 7040 | F81032-2 | 4 |
| 5 | SCREW M8X30 SHCS ZC 8.8 DIN 912 ISO 4762 | F81002-31 | 4 |
| 6 | WASHER 8,2 ZC SPRING LOCK DIN 127 | F81054-4 | 3 |
| 7 | SCREW M8X20 SHCS ZC 8.8 DIN 912 ISO 4762 | F81002-30 | 3 |
| 8 | PULLEY, MULTI-GROOVE ALUMINIUM MP200 PRO | 533585-P | 1 |
| 9 | SCREW M8X20 HSS W/FLAT POINT ZC 45H DIN 913 | F81002-103 | 1 |
| 10 | BELT, 1321J MULTI-RIBBED | 537022 | 1 |
| 11 | PULLEY, MULTI-GROOVE SMALL ALUMINIUM | 533586 | 1 |
| 12 | SCREW M8X12 HSS W/CONE POINT ZC 45H DIN 914 | F81002-105 | 1 |

4.4 Horizontal Bottom Cutter Drive

537031_001_EN
537031_MANUAL



| REF | DESCRIPTION (* indicates parts available in assemblies only) | PART # | QTY |
|-----|--|------------|-----|
| - | HORIZONTAL BOTTOM CUTTER DRIVE | 537031 | 1 |
| - | MOTOR MOUNT ASSEMBLY | 537539 | 1 |
| 1 | MOTOR MOUNT WELDMENT | 537538-1 | 1 |
| 2 | WASHER 8,4 ZC DIN 126 ISO 7091 | F81054-1 | 2 |
| 3 | SCREW M8X20 SHCS ZC 8.8 DIN 912 ISO 4762 | F81002-30 | 2 |
| 4 | MOTOR PLATE | 537023-1 | 1 |
| 5 | MOTOR 3SIE90L2A, 3KW, 2900 R.P.M, 50HZ | 537386 | 1 |
| 6 | PULLEY, MULTI-GROOVE ALUMINIUM | 533585 | 1 |
| 7 | SCREW M8X20 HSS W/FLAT POINT ZC 45H DIN 913 | F81002-103 | 1 |
| 8 | BOLT M8X20 CARRIAGE ZC 8.8 DIN 603 ISO 8677 | F81002-11 | 1 |
| 9 | WASHER 8,4 ZC DIN 126 ISO 7091 | F81054-1 | 10 |
| 10 | NUT M8 ZC 8 NYLOCK DIN 982 ISO 7040 | F81032-2 | 7 |
| 11 | SCREW M8X20 SHCS ZC 8.8 DIN 912 ISO 4762 | F81002-30 | 3 |
| 12 | MOUNTING BRACKET | 537024-1 | 1 |
| 13 | WASHER 8,2 ZC SPRING LOCK DIN 127 | F81054-4 | 1 |
| 14 | BELT MULTI-RIBBED 8 PJ762 | 535803 | 1 |

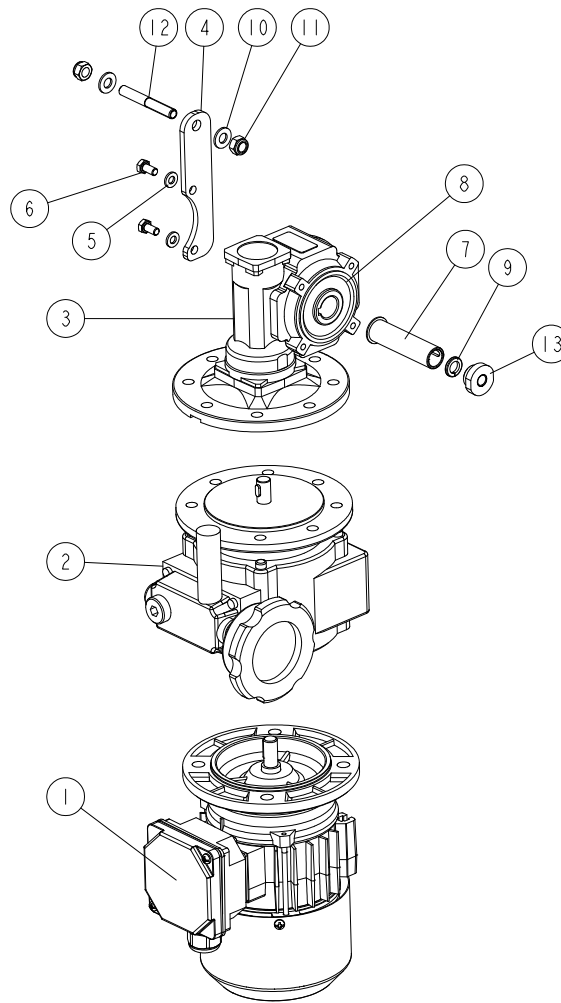
4

MOTOR KITS*Horizontal Bottom Cutter Drive*

| REF | DESCRIPTION (* indicates parts available in assemblies only) | PART # | QTY | |
|-----|--|-----------|-----|--|
| 15 | SCREW M8X30 SHCS ZC 8.8 DIN 912 ISO 4762 | F81002-31 | 4 | |
| - | BELT GUARD ASSEMBLY | 537565 | 1 | |
| 16 | GUARD PLATE | 537564-1 | 1 | |
| 17 | RIVET NUT M6 1.5-4.0 W/ COUNTERSUNK HEAD AND KNURLED SHANK | F81031-13 | 1 | |
| 18 | WASHER 6,4 ZC DIN 126 ISO 7091 | F81053-1 | 1 | |
| 19 | SCREW M6X20 SHCS ZC 8.8 DIN 912 ISO 4762 | F81001-22 | 1 | |

4.5 Feed Drive

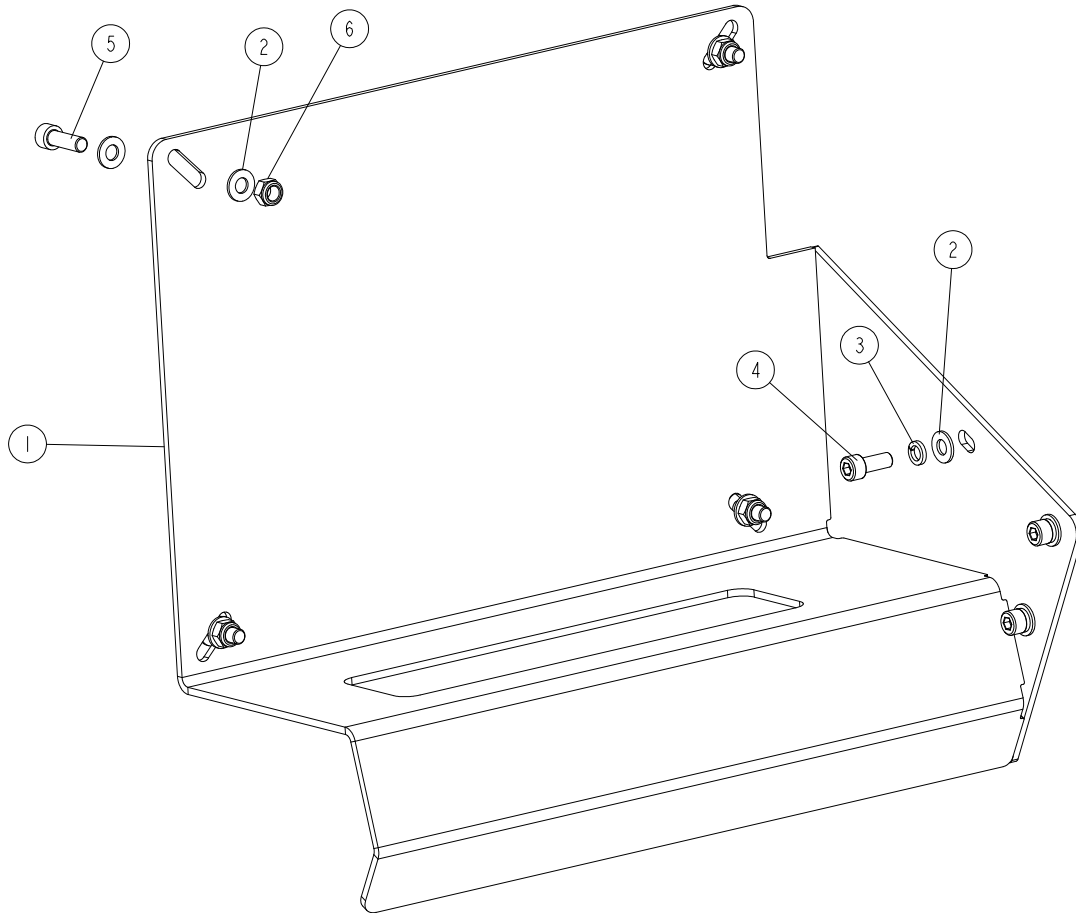
537036_001_EN_B
537036_MANUAL



| Ref | DESCRIPTION (* indicates parts available in assemblies only) | PART # | QTY | |
|-----|--|----------|-----|--|
| - | MP260 PRO FEED DRIVE | 537036 | 1 | |
| - | REDUCER, PRO KC40/P15+NF003+SKH63-2C | 533640 | 1 | |
| 1 | SKH63-2C | 533642 | 1 | |
| 2 | NF003 | 533643 | 1 | |
| 3 | KC40/P15 | 533641 | 1 | |
| 4 | ARM, TORQUE | 537037-1 | 1 | |
| 5 | WASHER 6,4 ZC DIN 126 ISO 7091 | F81053-1 | 2 | |
| 6 | BOLT M6X12 HH ZC FT 8.8 DIN 933 | F81001-7 | 2 | |
| 7 | BUSHING, REDUCER | 533731 | 1 | |
| 8 | KEY | 533732 | 2 | |
| 9 | WASHER 10,2 ZC SPRING LOCK DIN 127 | F81055-2 | 1 | |
| 10 | WASHER 8,4 ZC DIN 126 ISO 7091 | F81054-1 | 2 | |
| 11 | NUT M8 ZC 8 NYLOCK DIN 982 ISO 7040 | F81032-2 | 2 | |
| 12 | BOLT, M8 | 533635-1 | 1 | |
| 13 | NUT, M10 | 533733-1 | 1 | |

4.6 Electric Box Bracket

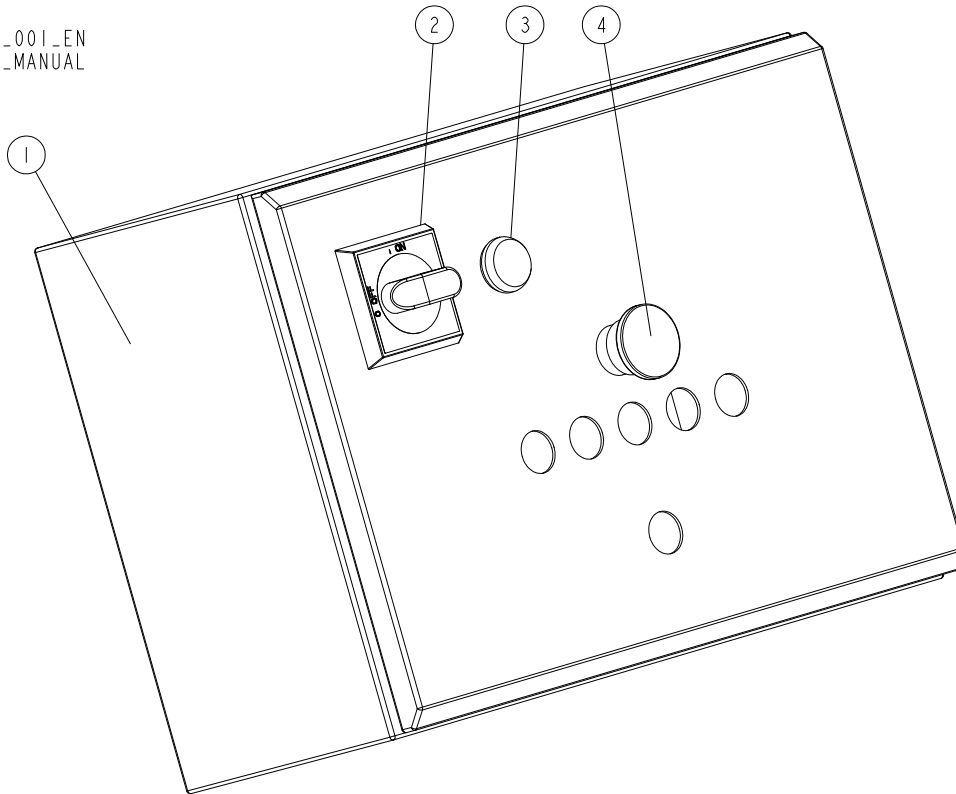
537032_001_EN
537032_MANUAL



| REF | DESCRIPTION (* indicates parts available in assemblies only) | PART # | QTY | |
|-----|--|-----------|-----|--|
| - | ELECTRIC BOX BRACKET-COMLETE | 537032 | 1 | |
| 1 | ELECTRIC BOX BRACKET WELDMENT | 533619-1 | 1 | |
| 2 | WASHER 8,4 ZC DIN 126 ISO 7091 | F81054-1 | 11 | |
| 3 | WASHER 8,2 ZC SPRING LOCK DIN 127 | F81054-4 | 3 | |
| 4 | SCREW M8X20 SHCS ZC 8.8 DIN 912 ISO 4762 | F81002-30 | 3 | |
| 5 | SCREW M8X25 SHCS ZC 8.8 DIN 912 ISO 4762 | F81002-21 | 4 | |
| 6 | NUT M8 ZC 8 NYLOCK DIN 982 ISO 7040 | F81032-2 | 4 | |

4.7 Electrical Box MP260 3x400V CE

532791_001_EN
 532791_MANUAL



| REF | DESCRIPTION (* indicates parts available in assemblies only) | PART # | QTY |
|-----|--|-----------------------|-----|
| - | ELECTRICAL BOX MP260H 3x400V CE COMPLETE | 532791 ¹ | 1 |
| - | ELECTRICAL BOX MP260B COMPLETE | 532791-2 ² | 1 |
| 1 | ELECTRIC BOX | 534148 | 1 |
| 2 | HANDLE, OHB S2A1 ABB SWITCH | 502312-1 | 1 |
| 3 | LIGHT, XB7EV7BP WHITE CONTROL | 519612 | 1 |
| 4 | BUTTON, EMERGENCY STOP | 502315 | 1 |

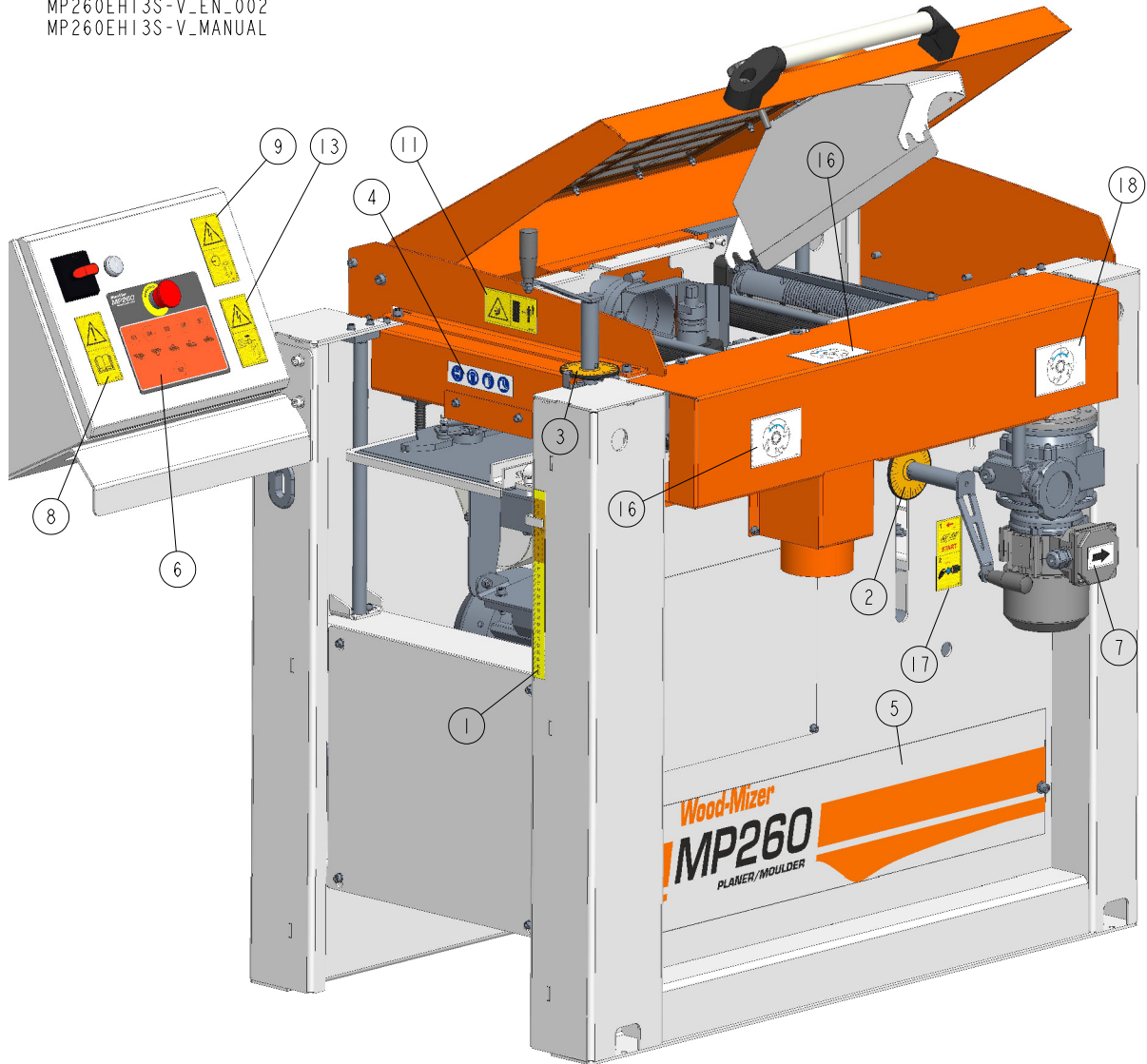
¹ Optional power supply kit (cable with plug) - 539809-3

² Optional power supply kit (cable with plug) - 539809-6

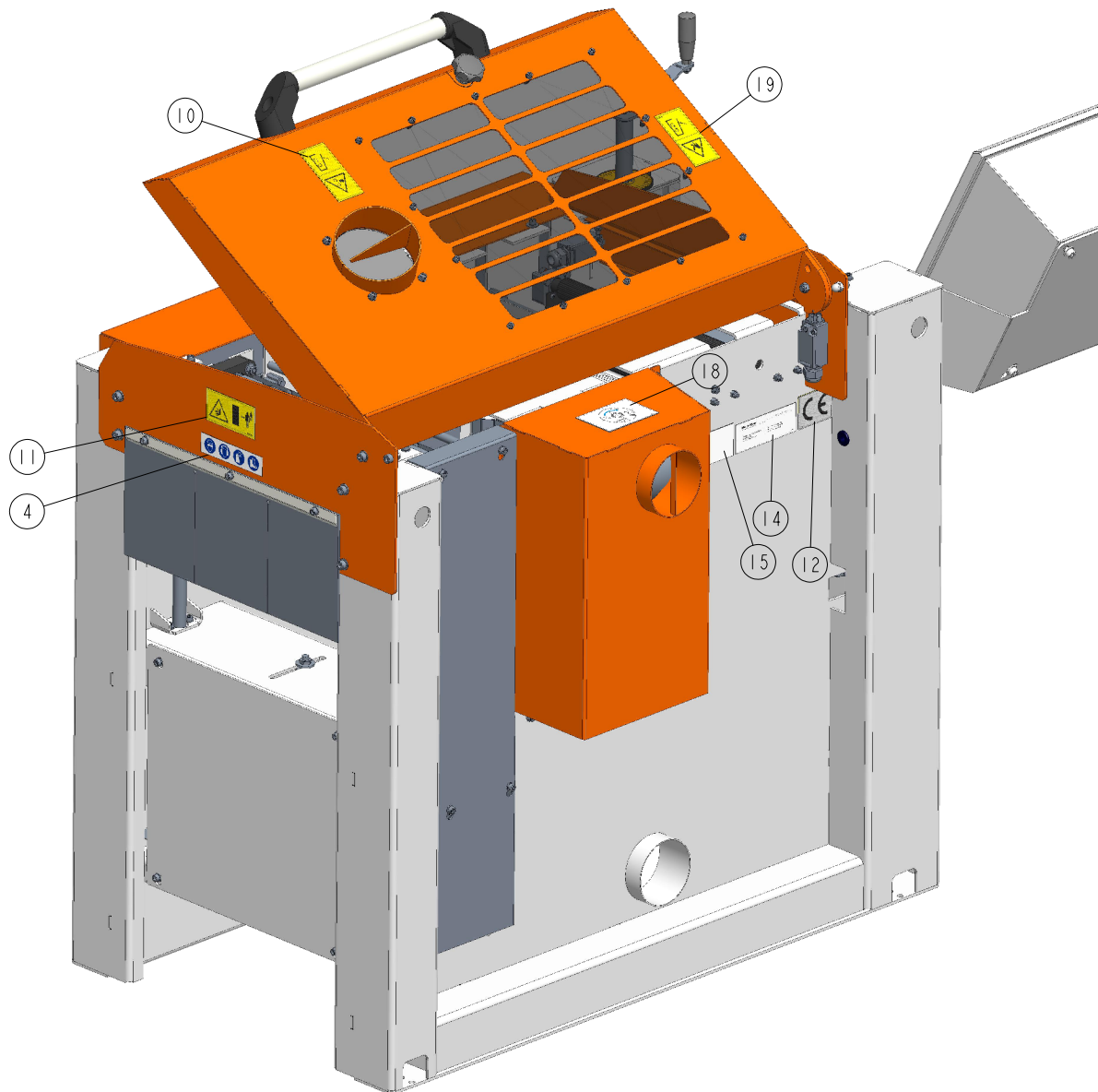
SECTION 5 DECALS

5.1 Decals MP260

MP260EH13S-V_EN_002
MP260EH13S-V_MANUAL



MP260EH13S-V_EN_002
MP260EH13S-V_MANUAL



| REF | DESCRIPTION (* indicates parts available in assemblies only) | PART # | QTY |
|-----|--|--------|-----|
| - | DECAL KIT, MP260 | 541121 | 1 |
| 1 | DECAL, VERTICAL SCALE | 533579 | 1 |
| 2 | DECAL, MP200 ROUND SCALE | 533577 | 1 |
| 3 | DECAL, MP200 ROUND SCALE | 533577 | 1 |
| 4 | DECAL - WARNING PICTOGRAMS | 535402 | 2 |
| 5 | DECAL MP260 PLANER TYPE | 541122 | 1 |
| 6 | DECAL CONTROL PANEL MP260 | 541123 | 1 |
| 7 | DECAL, MOTOR DIRECTION | S20097 | 1 |



DECALS

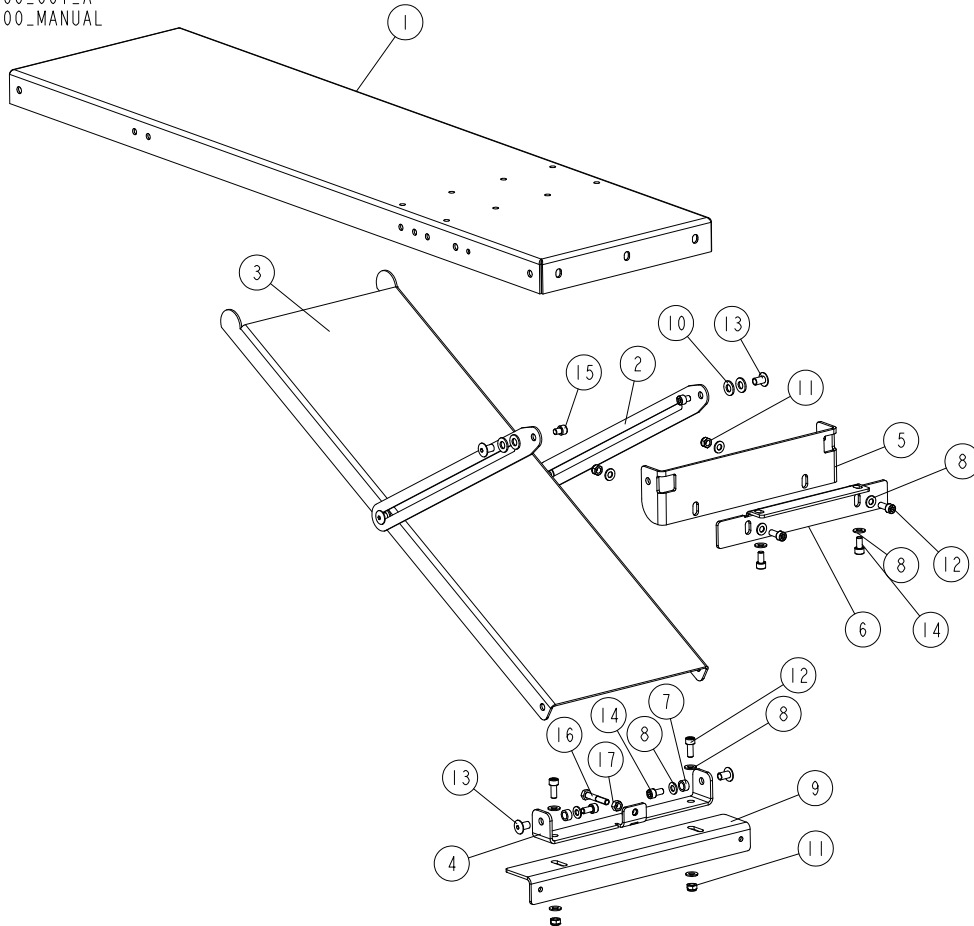
Decals MP260

| REF | DESCRIPTION (* indicates parts available in assemblies only) | PART # | QTY | |
|-----|--|---------|-----|--|
| 8 | DECAL, READ THE OPERATOR MANUAL | 096317 | 1 | |
| 9 | DECAL, HAZARDOUS VOLTAGE INSIDE THE ELECTRIC BOX (PICTOGRAM) | 096316 | 1 | |
| 10 | DECAL, CLOSE GUARDS BEFORE OPERATING | 099220 | 1 | |
| 11 | DECAL, "KEEP A SAFE DISTANCE" PICTOGRAM | 099221H | 2 | |
| 12 | DECAL, CE CERTIFIED SAWMILL - SMALL | P85070 | 1 | |
| 13 | DECAL, REMOVE THE PLUG BEFORE OPENING THE ELECTRIC BOX (PIC- | 096319 | 1 | |
| 14 | DECAL, EUROPEAN HEADQUARTER ADDRESS | 015841 | 1 | |
| 15 | DECAL, VIN | VIN | 1 | |
| 16 | DECAL, SHAFT ROTATION DIRECTION. | 539444 | 2 | |
| 17 | DECAL, USE THE CONTINUOUSLY VARIABLE TRANSMISSION WHEN THE | 535252 | 1 | |
| 18 | DECAL, MP160 SHAFT ROTATION DIRECTION | 536401 | 2 | |
| 19 | DECAL, HAND INJURY HAZARD (PICTOGRAM) | 524993 | 1 | |

SECTION 6 TABLE MP260

6.1 Table 265-000

265-000_001_A
265-000_MANUAL



| REF. | DESCRIPTION (* indicates parts available in assemblies only) | PART # | QTY |
|------|--|-----------|-----|
| - | TABLE, MP260 | 265-000 | 1 |
| 1 | PLATE, TABLE 265 | 265-100-1 | 1 |
| 2 | SLIDER, TABLE | 533728-1 | 2 |
| 3 | PLATE, TABLE SUPPORT 265-000 | 265-101-1 | 1 |
| 4 | CHANNEL SECTION | 265-103-1 | 1 |
| 5 | BRACKET | 265-106-2 | 1 |
| 6 | BRACKET | 265-102-1 | 1 |
| 7 | BUSHING, 10.3/15-7.5 | 533724 | 4 |
| 8 | WASHER, 8.4 FLAT ZINC | F81054-1 | 14 |
| 9 | ANGLE SECTION | 265-104-1 | 1 |
| 10 | WASHER, 10,5 FLAT ZINC | F81055-1 | 6 |
| 11 | NUT, M8-8-B-HEX NYLON ZINC LOCK | F81032-2 | 4 |
| 12 | SCREW, M8X20-8.8-HEX SOCKET HEAD CAP ZINC | F81002-30 | 4 |
| 13 | NUT, ERICSON M8 AN88 COLLAR ZINC | F81032-33 | 6 |
| 14 | SCREW, M8X16-8.8-HEX SOCKET HEAD CAP ZINC | F81002-39 | 4 |
| 15 | SCREW, M8X10- 8.8- HEX SOCKET HEAD CAP ZINC | F81002-32 | 4 |
| 16 | BOLT M8X45-8.8 | F81002-17 | 4 |
| 17 | NUT, M8 HEXAGON, GRADE 5.8 FREE ZINC | F81032-1 | 4 |