

Wood-Mizer®

Replacement Parts

MB200

rev. A1.02



Safety is our #1 concern! Read and understand all safety information and instructions before operating, setting up or maintaining this machine

Form #2409_PL

Table of Contents

Section-Page

SECTION 1	GENERAL INFORMATION	1-1
1.1	How To Use the Parts List.....	1-1
1.2	Sample Assembly	1-1
SECTION 2	BED ASSEMBLY	2-1
2.1	Bed segment assembly	2-1
2.2	Bed Extension (540518-S)	2-3
2.3	Bed Assembly - MB200 (Wide)	2-4
2.4	Bed Extension - Wide (560146-S)	2-6
2.5	Clamp Assembly	2-7
2.6	Board Mount	2-8
2.7	Leg Assembly	2-9
2.8	Bed Section Connection Bracket (Part No. 506288)	2-10
SECTION 3	GANTRY ASSEMBLY	3-1
3.1	Cross Feed	3-1
3.2	Power Feed	3-2
3.3	Covers & Handle	3-4
SECTION 4	UP / DOWN ASSEMBLY	4-1
4.1	Bearings.....	4-1
4.2	Up Down Assembly	4-3
4.3	Arm.....	4-5
4.4	Handle Up/Down.....	4-6
4.5	Handle, Push.....	4-7
SECTION 5	MOTOR ASSEMBLY	5-1
5.1	Motor Assembly	5-1
5.2	Control Panel Assembly - Manual Feed	5-2
5.3	Control Panel Assembly - Auto Feed.....	5-3
5.4	Control Panel - Manual Feed	5-4
5.5	Control Panel - Auto Feed	5-5
5.6	Magnetic Limiter (Left - Right Movement) - Auto Feed	5-7
5.7	Magnetic Limiter (Forwards - Backwards Movement) - Auto Feed	5-8
5.8	Cutter	5-9
5.9	Sanding Head.....	5-11
SECTION 6	DECALS	6-1
6.1	Decals MB200	6-1

SECTION 1 GENERAL INFORMATION

1.1 How To Use the Parts List

- Use the index above to locate the assembly that contains the part you need.
- Go to the appropriate section and locate the part in the illustration.
- Use the number pointing to the part to locate the correct part number and description in the table.
- Parts shown indented under another part are included with that part.
- Parts marked with a diamond (◆) are only available in the assembly listed above the part.

See the sample table below. Sample Part #A01111 includes part F02222-2 and subassembly A03333. Subassembly A03333 includes part S04444-4 and subassembly K05555. The diamond (◆) indicates that S04444-4 is not available except in subassembly A03333. Subassembly K05555 includes parts M06666 and F07777-77. The diamond (◆) indicates M06666 is not available except in subassembly K05555.

1.2 Sample Assembly				
REF.	DESCRIPTION (◆ Indicates Parts Available In Assemblies Only)	PART #	QTY	
	Sample Assembly, Complete (Includes All Indented Parts Below)	A01111	1	
1	Sample Part	F02222-22	1	
	Sample Subassembly (Includes All Indented Parts Below)	A03333	1	
2	Sample Part (◆ Indicates Part Is Only Available With A03333)	S04444-4	1	◆
	Sample Subassembly (Includes All Indented Parts Below)	K05555	1	
3	Sample Part (◆ Indicates Part Is Only Available With K05555)	M06666	2	◆
4	Sample Part	F07777-77	1	

To Order Parts:

- From Europe call our European Headquarters and Manufacturing Facility in Kolo, Poland at **+48-63-2626000**. From the continental U.S., call our toll-free Parts hotline at **1-800-525-8100**. Have your customer number, vehicle identification number, and part numbers ready when you call. From other international locations, contact the Wood-Mizer distributor in your area for parts.

Office Hours:

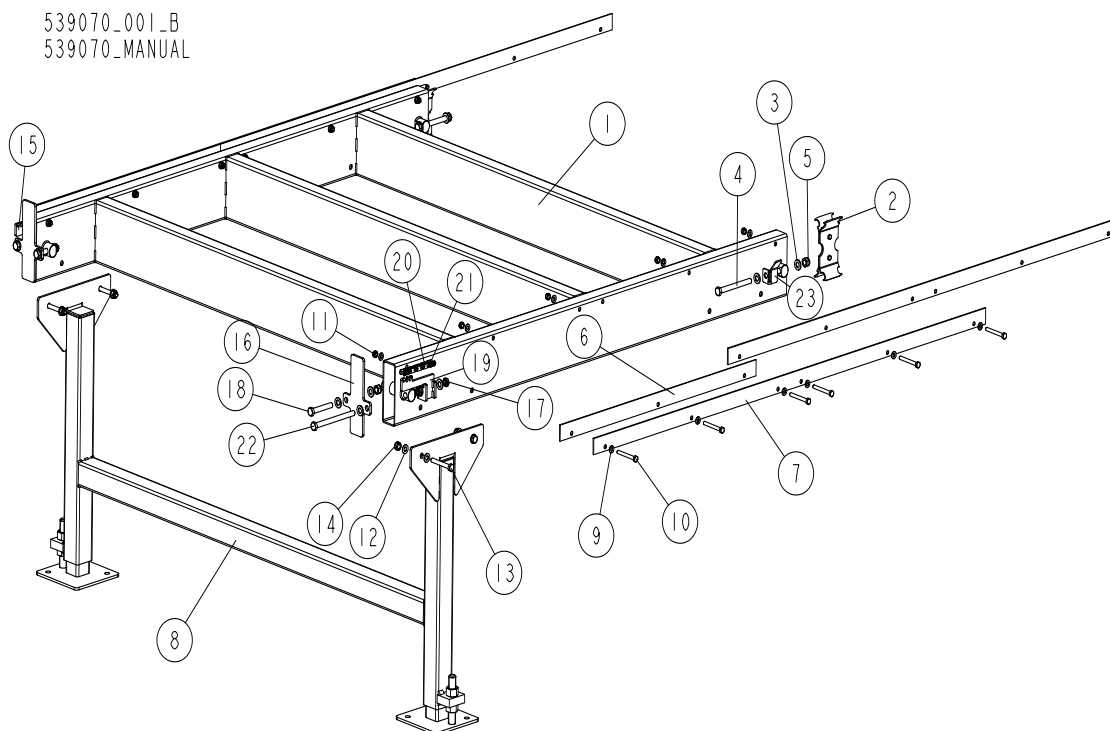
Country	Monday - Friday	Saturday	Sunday
Poland	7-15	Closed	Closed
US	8 a.m.- 5 p.m.	8 a.m.- 12 p.m.	Closed



CAUTION! It is strongly recommended that only original spare parts be used.

SECTION 2 BED ASSEMBLY

2.1 Bed segment assembly



REF	DESCRIPTION (◆ indicates parts available in assemblies only)	PART #	QTY
-	BED ASSEMBLY, MB200	539070	1
1	WELDMENT, MB200 BED	539749-1	1
2	CONNECTOR, LT15 BED FRAME SECTION See Section 2.8	506288	2
3	WASHER, 13 FLAT ZINC	F81056-1	20
4	BOLT, M12X120 8.8 HEX HEAD ZINC	F81004-38	4
5	NUT, M12-8 HEX NYLON ZINC LOCK	F81034-2	6
6	RAIL, SHORT	539071-1	2
7	RAIL, LONG	539753-1	4
8	LEG ASSEMBLY See Section 2.7	539747	1
9	WASHER, 8.4 ZINC FLAT	F81054-1	24
10	BOLT, M8X70-8.8 HEX HEAD ZINC	F81002-71	12
11	NUT, M8-8-B HEX NYLON ZINC LOCK	F81032-2	12
12	WASHER, 10.5 FLAT ZINC	F81055-1	8
13	BOLT, M10X75-8.8 HEX HEAD ZINC	F81003-15	4
14	NUT, M10-8-B NYLON HEX ZINC LOCK	F81033-1	4
15	CHAIN TENSIONER RIGHT ASSEMBLY	539755-1	1
16	PLATE, END STOP	539754-1	2
17	NUT, M12 THIN ZINC	F81034-6	6
18	BOLT, M12 X 75-8.8 HEX HEAD ZINC	F81004-21	2
19	CHAIN TENSIONER RIGHT ASSEMBLY	539759-1	1
-	CHAIN, COMPLETE #40	539757	1
20	CHAIN, #40 X 215" LT40S FEED	014744	1

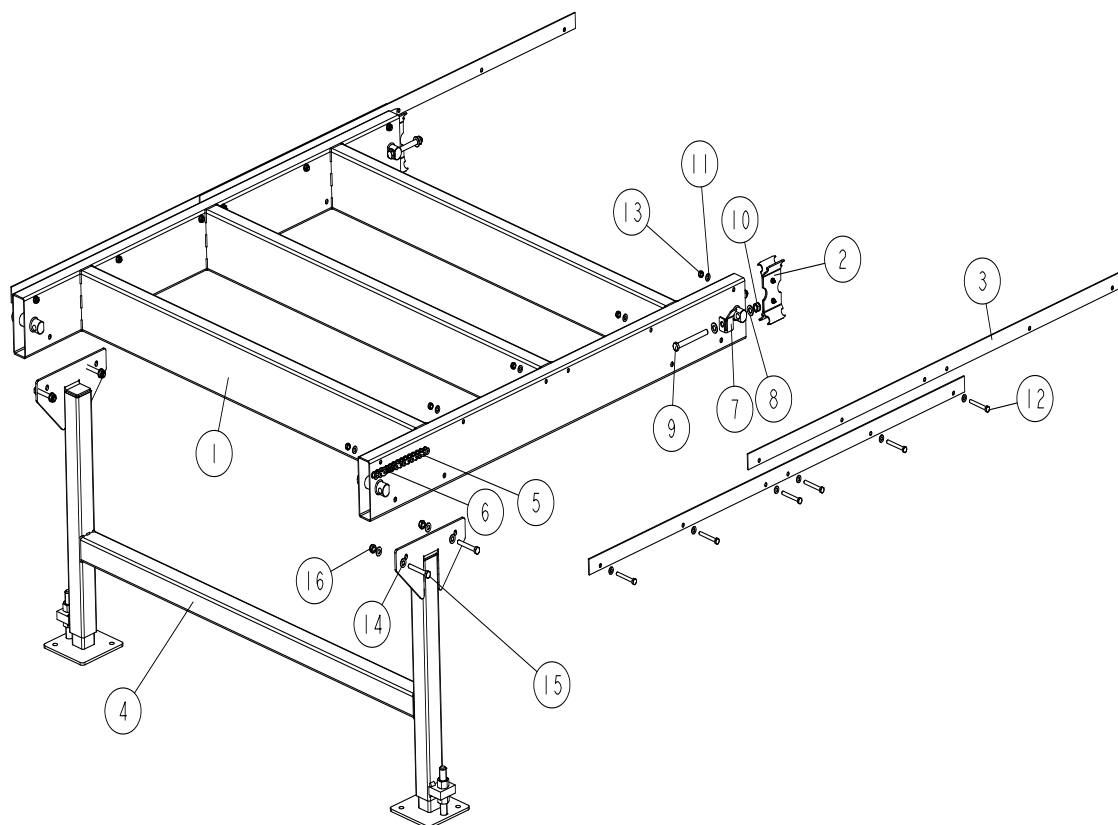
REF	DESCRIPTION (◆ indicates parts available in assemblies only)	PART #	QTY	
21	LINK, #40 MASTER	P04200	2	
22	BOLT, M12X150-8.8 HEX HEAD FULL THREAD Z	F81004-54	2	
23	STOP WELDMENT, CHAIN	577428-1	2	

2 Bed Assembly

Bed Extension (540518-S)

2.2 Bed Extension (540518-S)

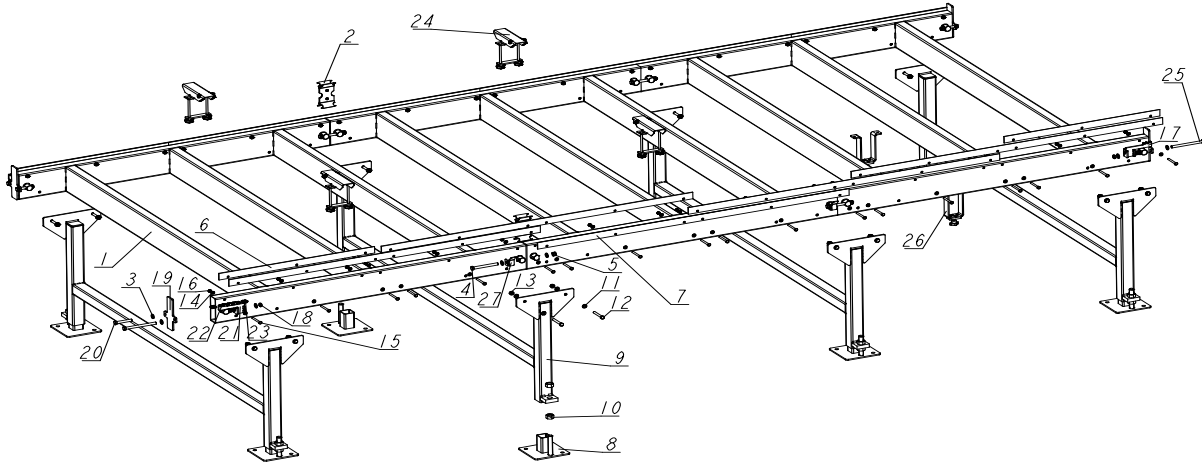
540518-S_001_A
540518-S_MANUAL



REF	DESCRIPTION (◆ indicates parts available in assemblies only)	PART #	QTY
-	MB200 - BED EXTENSION 1525MM	540518-S	1
1	WELDMENT, MB200 BED	539749-1	1
2	CONNECTOR, LT15 BED FRAME SECTION See Section 2.8	506288	2
3	RAIL, LONG	539753-1	4
4	LEG ASSEMBLY See Section 2.7	539747	1
-	CHAIN #40 -BED EXTENSION 1525MM - COMPLE	540520	1
5	CHAIN #40 X 143 1/2" (BX12)	P07355	1
6	LINK, #40 MASTER	P04200	2
7	STOP WELDMENT, CHAIN	577428-1	2
8	WASHER, 13 FLAT ZINC	F81056-1	8
9	BOLT, M12X120 8.8 HEX HEAD ZINC	F81004-38	4
10	NUT, M12-8 HEX NYLON ZINC LOCK	F81034-2	4
11	WASHER, 8.4 ZINC FLAT	F81054-1	24
12	BOLT, M8X70-8.8 HEX HEAD ZINC	F81002-71	12
13	NUT, M8-8-B HEX NYLON ZINC LOCK	F81032-2	12
14	WASHER, 10.5 FLAT ZINC	F81055-1	8
15	BOLT, M10X75-8.8 HEX HEAD ZINC	F81003-15	4
16	NUT, M10-8-B NYLON HEX ZINC LOCK	F81033-1	4

2.3 Bed Assembly - MB200 (Wide)

556909_001_A
556909_MANUAL



REF	DESCRIPTION (◆ indicates parts available in assemblies only)	PART #	QTY	
-	BED ASSEMBLY, MB200 WIDE	556909	1	
1	WELDMENT, MB200 WIDE BED	556908-1	3	
2	CONNECTOR, LT15 BED FRAME SECTION See Section 2.8	506288	4	
3	WASHER, 13 FLAT ZINC	F81056-1	40	
4	BOLT, M12X120 8.8 HEX HEAD ZINC	F81004-38	8	
5	NUT, M12-8 HEX NYLON ZINC LOCK	F81034-2	12	
6	RAIL, SHORT	539071-1	4	
7	RAIL, LONG	539753-1	10	
-	LEG ASSEMBLY, MB200 WIDE - COMPLETE	556906	4	
8	FOOT, LES TABLE LEG	099281-1	2	
9	WELDMENT, MB200 WIDE LEG ASSEMBLY	556907-1	1	
10	NUT, M20-8-FE/ZN5 PN-86/M-82144	F81037-1	4	
11	WASHER, 10.5 FLAT ZINC	F81055-1	32	
12	BOLT, M10X75-8.8 HEX HEAD ZINC	F81003-15	16	
13	NUT, M10-8-B NYLON HEX ZINC LOCK	F81033-1	16	
14	WASHER, 8.4 ZINC FLAT	F81054-1	72	
15	BOLT, M8X70-8.8 HEX HEAD ZINC	F81002-71	36	
16	NUT, M8-8-B HEX NYLON ZINC LOCK	F81032-2	36	
17	CHAIN TENSIONER RIGHT ASSEMBLY	539755-1	2	
18	NUT, M12 THIN ZINC	F81034-6	12	
19	PLATE, END STOP	539754-1	4	
20	BOLT, M12 X 75-8.8 HEX HEAD ZINC	F81004-21	4	
21	CHAIN TENSIONER RIGHT ASSEMBLY	539759-1	2	
-	CHAIN, COMPLETE #40	539757	2	
22	CHAIN, #40 X 215" LT40S FEED	014744	1	
23	LINK, #40 MASTER	P04200	2	
24	CLAMP ASSEMBLY, MB200 See Section 2.5	539769	4	
25	BOLT, M12X150-8.8 HEX HEAD FULL THREAD Z	F81004-54	4	
26	BOARD MOUNT, COMPLETE See Section 2.6	540502	2	

2

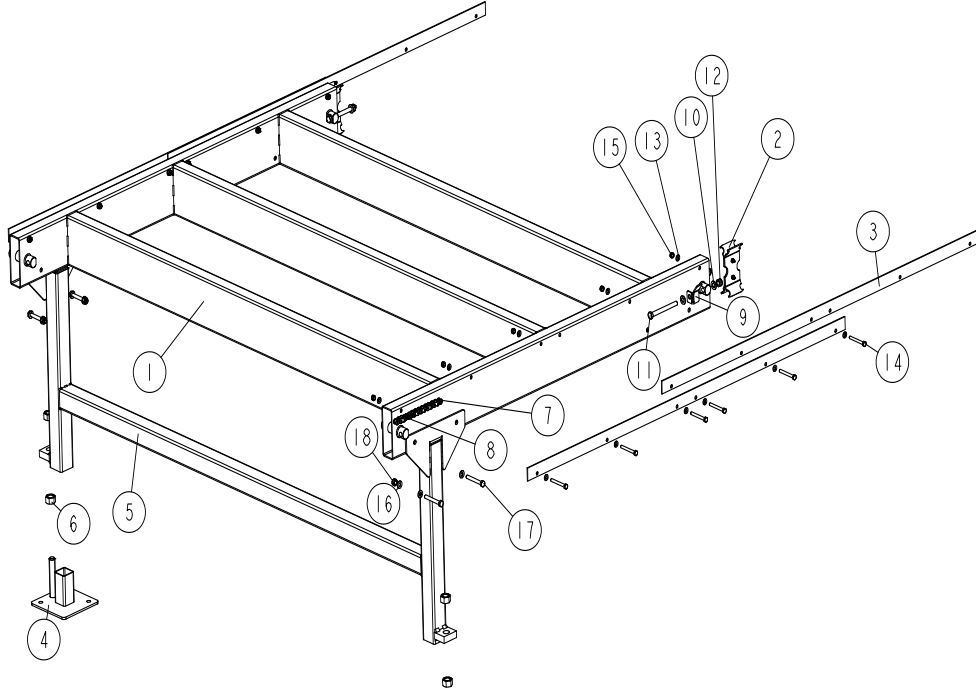
Bed Assembly

Bed Assembly - MB200 (Wide)

REF	DESCRIPTION (◆ indicates parts available in assemblies only)	PART #	QTY	
27	STOP WELDMENT, CHAIN	577428-1	2	

2.4 Bed Extension - Wide (560146-S)

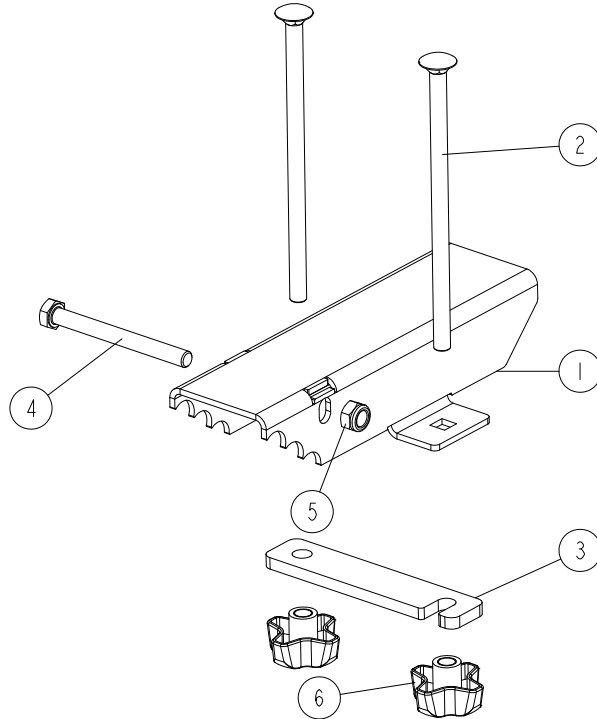
560146-S_001_B
 560146-S_MANUAL



REF	DESCRIPTION (◆ indicates parts available in assemblies only)	PART #	QTY
-	BED EXTENSION, MB200 WIDE 1525MM	560146-S	1
1	WELDMENT, MB200 WIDE BED	556908-1	1
2	CONNECTOR, LT15 BED FRAME SECTION See Section 2.8	506288	2
3	RAIL, LONG	539753-1	4
-	LEG ASSEMBLY, MB200 WIDE - COMPLETE	556906	1
4	FOOT, LES TABLE LEG	099281-1	2
5	WELDMENT, MB200 WIDE LEG ASSEMBLY	556907-1	1
6	NUT, M20-8-FE/ZN5 PN-86/M-82144	F81037-1	4
-	CHAIN #40 -BED EXTENSION 1525MM - COMPLE	540520	1
7	CHAIN #40 X 143 1/2" (BX12)	P07355	1
8	LINK, #40 MASTER	P04200	2
9	STOP WELDMENT, CHAIN	577428-1	2
10	WASHER, 13 FLAT ZINC	F81056-1	8
11	BOLT, M12X120 8.8 HEX HEAD ZINC	F81004-38	4
12	NUT, M12-8 HEX NYLON ZINC LOCK	F81034-2	4
13	WASHER, 8.4 ZINC FLAT	F81054-1	24
14	BOLT, M8X70-8.8 HEX HEAD ZINC	F81002-71	12
15	NUT, M8-8-B HEX NYLON ZINC LOCK	F81032-2	12
16	WASHER, 10.5 FLAT ZINC	F81055-1	8
17	BOLT, M10X75-8.8 HEX HEAD ZINC	F81003-15	4
18	NUT, M10-8-B NYLON HEX ZINC LOCK	F81033-1	4

2.5 Clamp Assembly

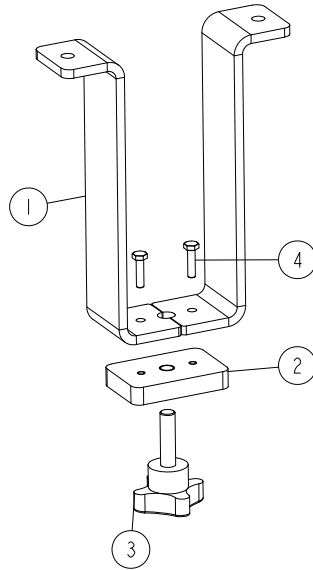
539769_001
539769_MANUAL



REF	DESCRIPTION (◆ indicates parts available in assemblies only)	PART #	QTY	
-	CLAMP ASSEMBLY, MB200	539769	1	
1	PLATE, CLAMP	539770-1	1	
2	BOLT, M8X150 CARRIAGE	F81002-125	2	
3	CLAMP, STRAP	539773-1	1	
4	BOLT, M8X80-8.8 HEX HEAD ZINC	F81002-18	1	
5	NUT, M8-8-B HEX NYLON ZINC LOCK	F81032-2	1	
6	KNOB	539774	2	

2.6 Board Mount

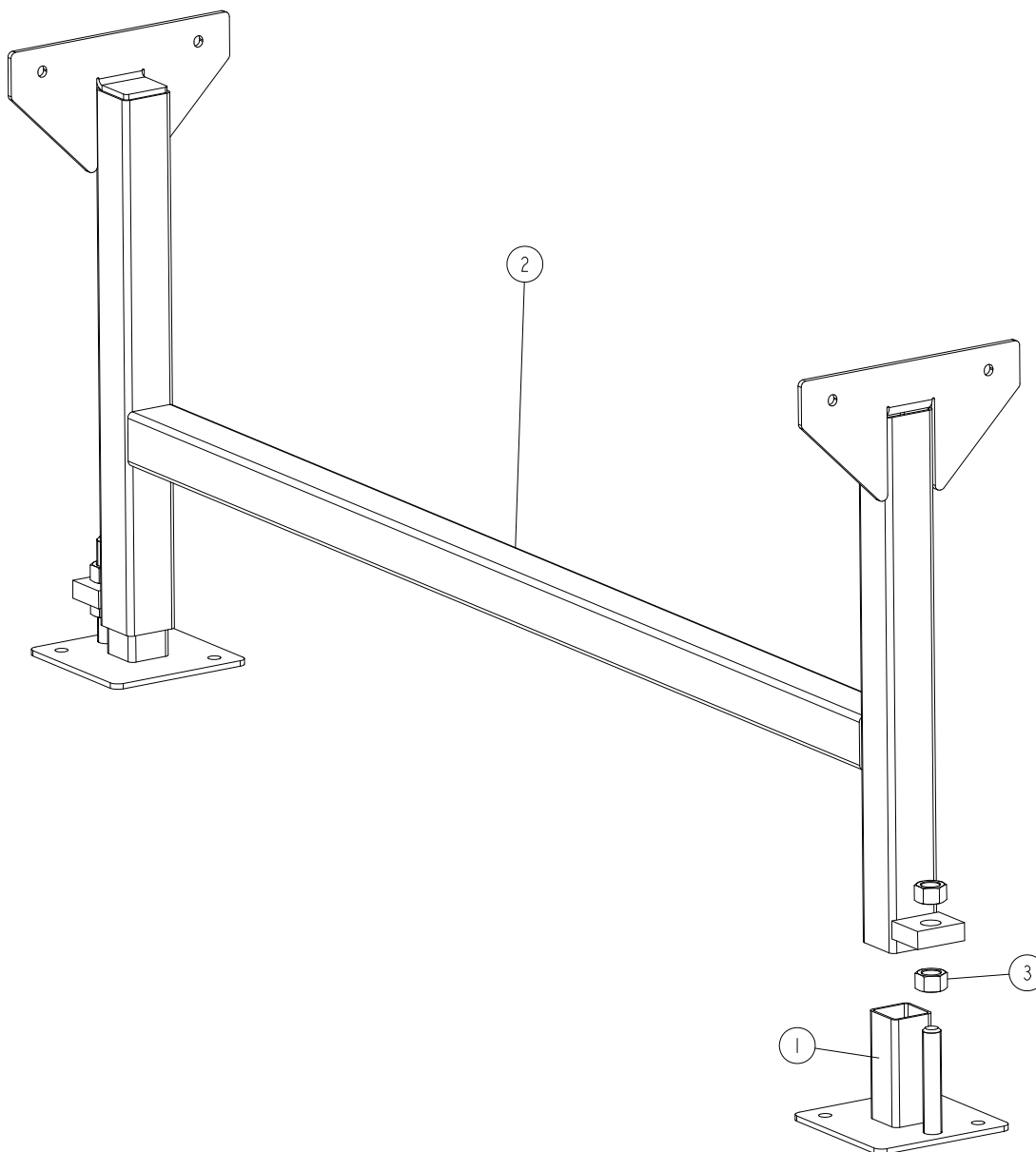
540502_001
540502_MANUAL



REF	DESCRIPTION (◆ indicates parts available in assemblies only)	PART #	QTY	
-	BOARD MOUNT, COMPLETE	540502	1	
1	PLATE, BOARD MOUNT	540501-1	2	
2	PLATE, BOARD BOTTOM MOUNT	540503-1	1	
3	KNOB, DIA. 40/M8X30 (462054 MOSS)	540504	1	
4	BOLT, M4X16-8.8 HEX HEAD FULL THREAD ZIN	F81011-6	2	

2.7 Leg Assembly

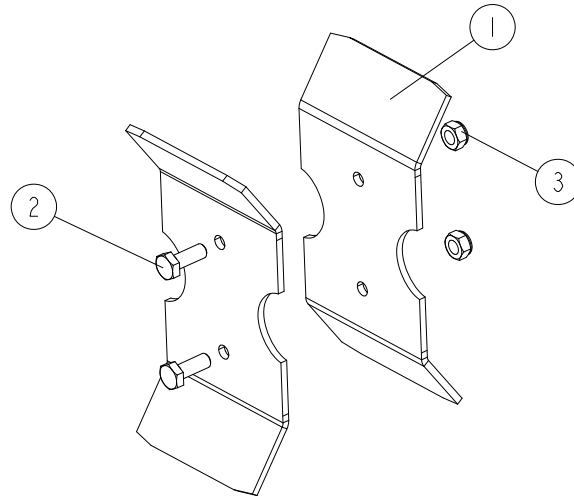
539747_001
539747_MANUAL



REF	DESCRIPTION (◆ indicates parts available in assemblies only)	PART #	QTY
-	LEG ASSEMBLY	539747	1
1	FOOT, LES TABLE LEG	099281-1	2
2	WELDMENT, LEG	539748-1	1
3	NUT, M20-8-FE/ZN5 PN-86/M-82144	F81037-1	4

2.8 Bed Section Connection Bracket (Part No. 506288)

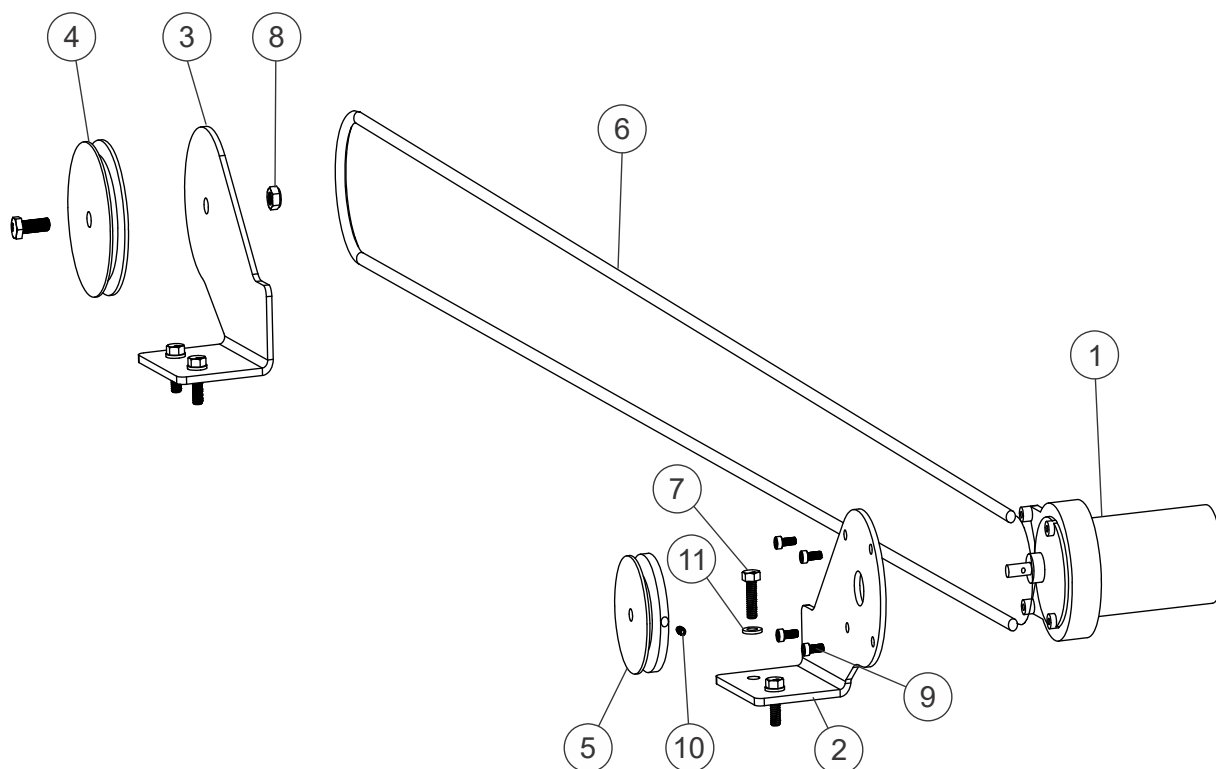
506288_001
506288_MANUAL



REF.	DESCRIPTION (* indicates parts available in assemblies only)	PART NO.	QTY	
-	BRACKET, LT15 BED SECTION CONNECTION	506288	1	
1	PLATE, CONNECTION BRACKET	506287-1	2	
2	BOLT, M6X16-8.8 HEX HEAD FULL THREAD ZINC	F81001-15	2	
3	NUT, M6-8-B HEX NYLON ZINC LOCK	F81031-2	2	

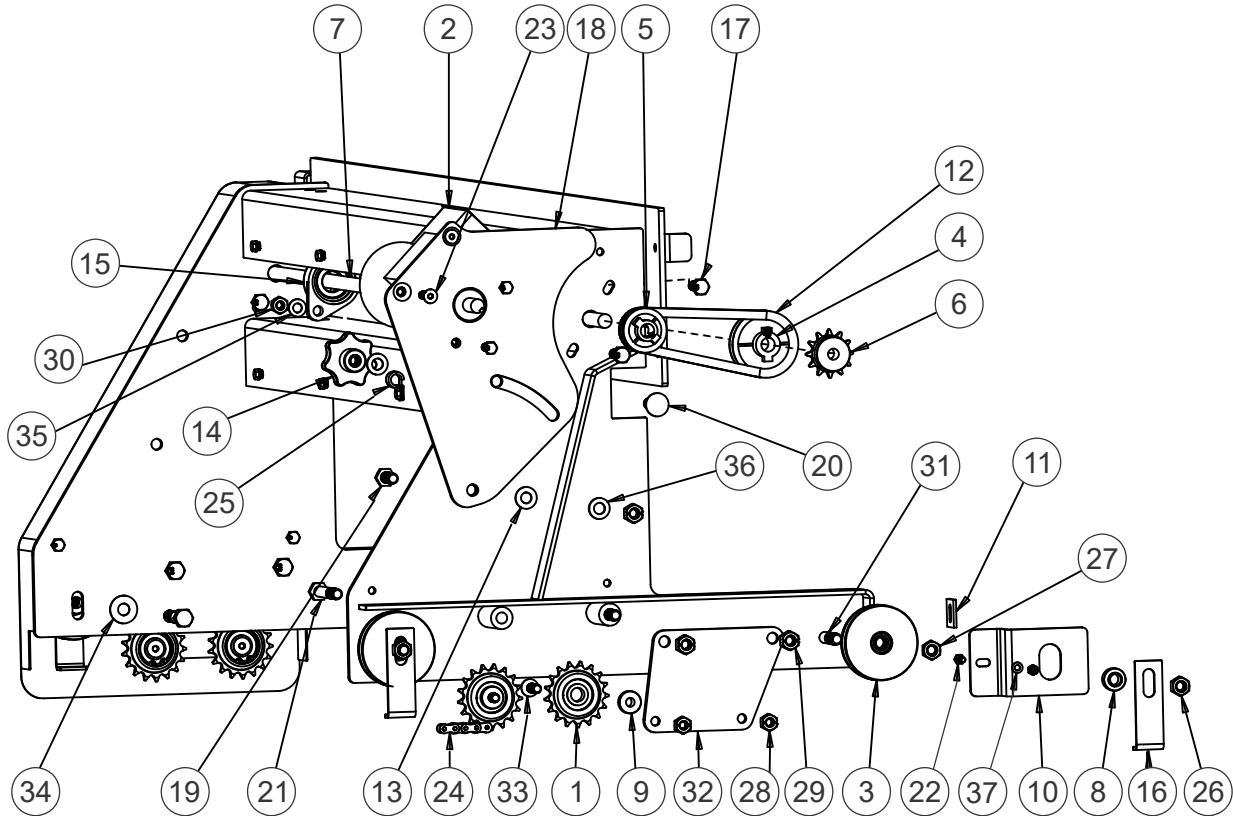
SECTION 3 GANTRY ASSEMBLY

3.1 Cross Feed



REF	DESCRIPTION (◆ Indicates Parts Available In Assemblies Only)	PART #	QTY.
	CROSS FEED	127136	
1	Motor, 1/16hp 31RPM 24 VDC 97:1	060105	1
	Shaft, Motor	036514	1
2	Plate, Cross Motor Mount	127125	1
3	Plate, Cross Idler Mount	127126	1
4	Pulley, Idler	127127	1
5	Pulley, Rope Drive	127135	1
6	Rope, 5/16	127186	1
7	Bolt, M8-1.25x25	F05004-247	5
8	Nut, M8-1.25 Lock	F05010-132	1
9	Screw, #10-32x1/2	F05004-6	4
10	Setscrew, M5	127187	1
11	Washer, Flat M8	F05026-4	4

3.2 Power Feed

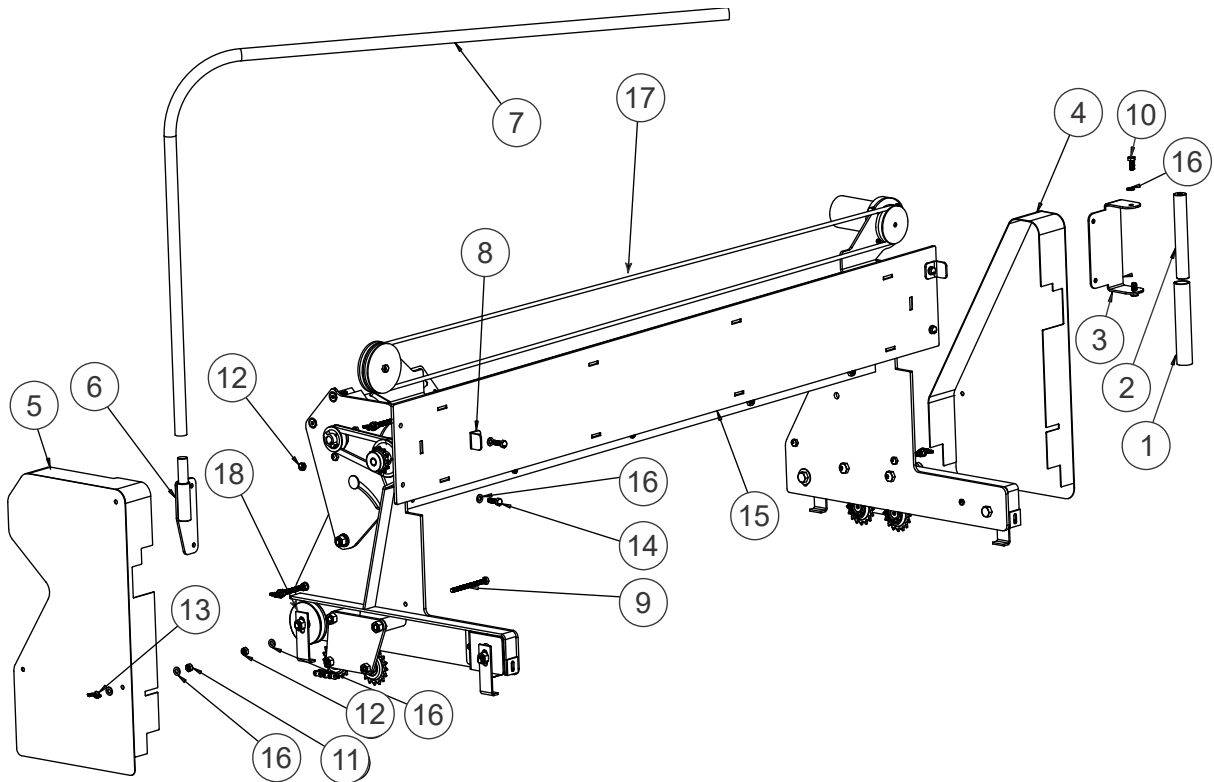


REF	DESCRIPTION (◆ Indicates Parts Available In Assemblies Only)	PART #	QTY.
	POWER FEED	127013	
1	Sprocket, Assembly	016366	4
2	Motor Assy, Power Feed	025702	1
3	Roller Assy, LT10 Lower	065632	4
4	Pulley, V-Belt 3" A	127101	1
5	Pulley, V-Belt 2" A	127102	1
6	Sprocket, 40 10x5/8	P04027	2
7	Shaft, 5/8x 63 3/4	127104	1
8	Bushing, Roller Spacer	127147	4
9	Bushing, Idler Sprocket Spacer	127148	4
10	Plate, Cover Roller	127165	2
11	Plate, Scraper	127166	2
12	Belt, A23	127177	1
13	Washer, Spring Belleville	127178	1

3 Gantry Assembly Power Feed

14	Knob, M12	127179	1	
15	Ball Bearing 5/8 Flange	127184	2	
16	Plate, Head Keeper	127180	4	
17	Plate, Idler Mount	127181	2	
18	Plate, Feed Motor Mount	127182	1	
19	Bolt M12x35 Hh	F005004-278	1	
20	Bolt M12x40 Carr	127185	1	
21	Bolt M12x85 Hh	F05004--249	4	
22	Bolt M6x18	F05020-35	8	
23	Bolt M8x40 Flat	F05006-150	2	
24	CHAIN #40	127183	2	
	Link, Master #40	P04200	4	
25	Clamp Loop	P07584	2	
26	Nut 1/2	F05010-72	4	
27	Nut 1/2 Jam	F05010-16	4	
28	Nut M10 Lock	F05004-270	4	
29	Nut M12 Lock	F05010-209	5	
30	Nut M10 Lock	F05004-270	4	
31	Bolt 1/2x2-1/2	F05008-74	4	
32	Bolt M10x35	F05022-43	2	
33	Bolt M10x35 Flat	F05004-277	4	
34	Washer 1/2	F05011-2	4	
35	Washer M10	F05011-134	4	
36	Washer M12	F05011-124	2	
37	Washer M6	F05026-1	8	

3.3 Covers & Handle



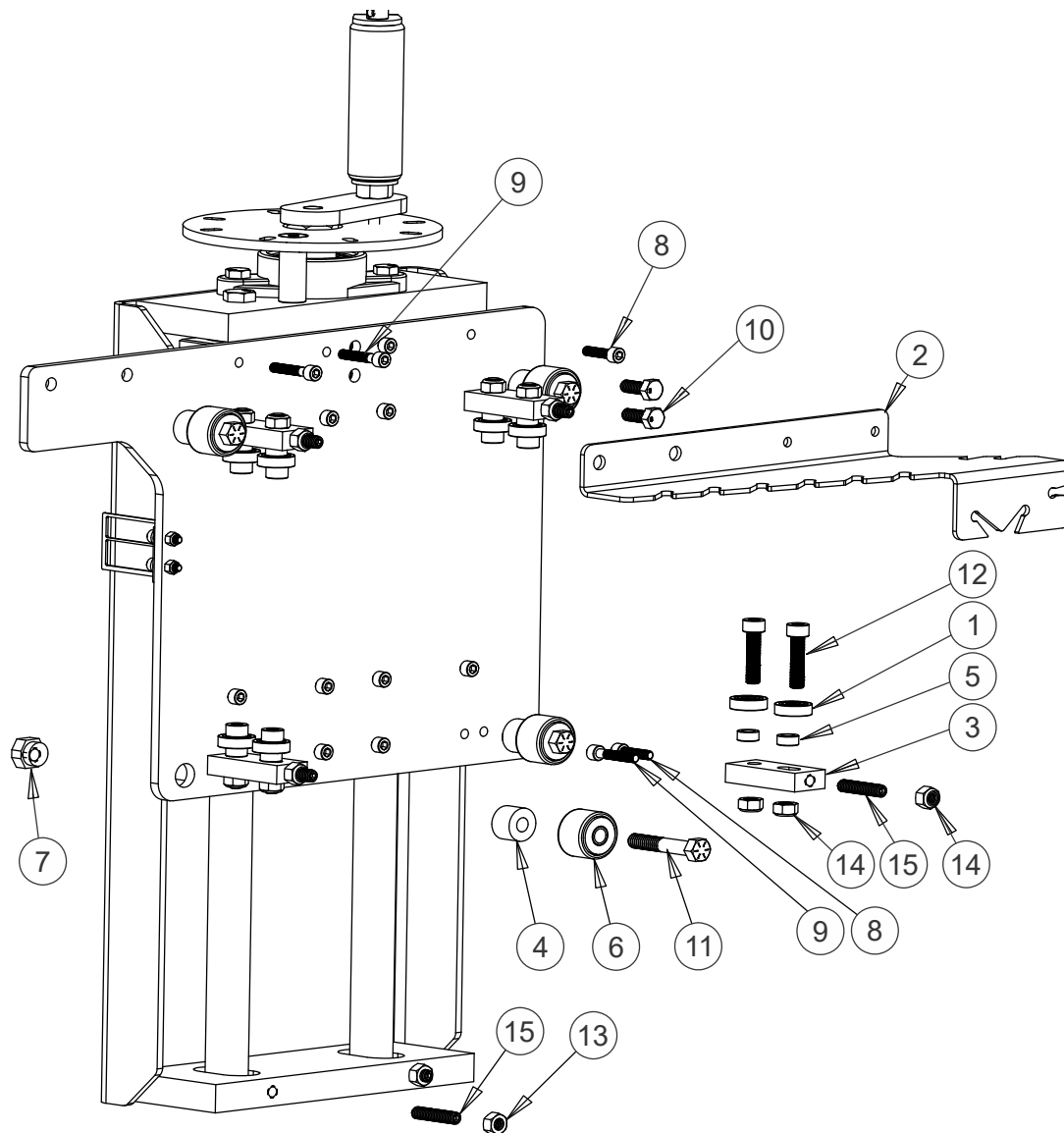
REF	DESCRIPTION (◆ Indicates Parts Available In Assemblies Only)	PART #	QTY.
1	Sleeve, Foam	127118	1
2	Rod, Handle	127117	1
3	Plate, Handle	127116	1
4	Cover, Chain Idle	127151	1
5	Cover, Chain Drive	127154	1
6	Mount, Vacuum Hose Arm	127161	1
7	Tube, Vacuum Hose Arm	127163	1
8	Plate, Head Stop	127164	2
9	Bolt, M8-1.25X90 HH	F05004-247	6
10	Bolt, M8-1.25x20 HH	F05021-2	2
11	Nut, M8-1.25 Free Zinc	F05010-162	6
12	Nut, M8-1.25 Lock	F05010-132	10
13	Nut, M8-1.25 Wing	F05027-30	6
14	Bolt, M8-1.25X25 HH	F05021-20	4
15	Gantry	127056	1
16	Washer, M8 Flat	F05026-4	16
17	Cross Feed - See Section 3.1		
18	Power Feed - See Section 3.2		

4 Up Down Assembly

Bearings

SECTION 4 UP / DOWN ASSEMBLY

4.1 Bearings



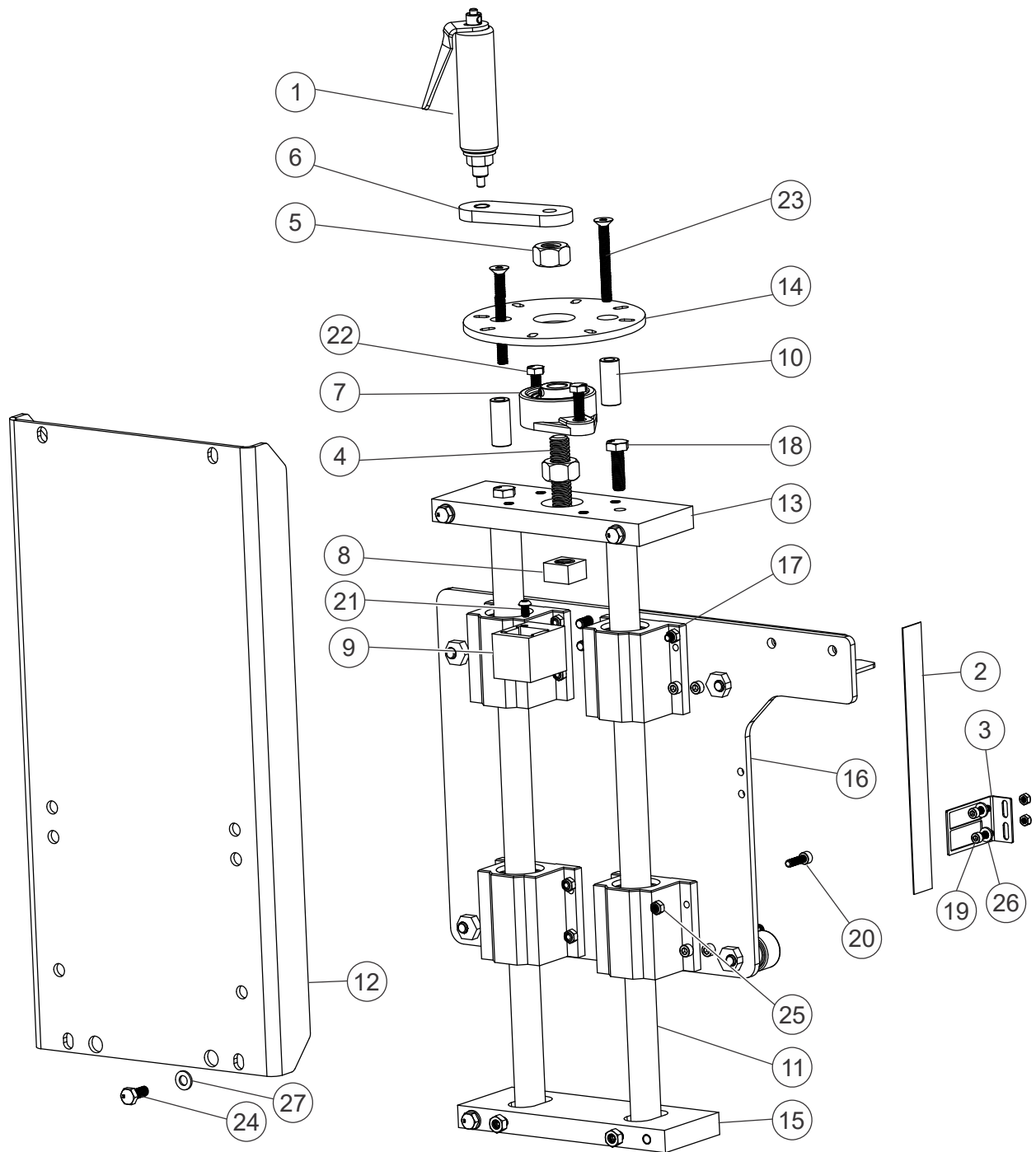
REF	DESCRIPTION (◆ Indicates Parts Available In Assemblies Only)	PART #	QTY.
UP/DOWN ASSEMBLY			
1	Bearings, Ball 608	127130	8
2	Plate, Rope Mount	127138	1
3	Block, Bearing Mount	127059	4
4	Spacer, Bearing	127060	4
5	Spacer, Bearing	127061	8

6	Bearing, CAM 1 1/4	127062	4	
7	Nut, Cam Vertical Adjustments	127063	4	
8	Bolt, M6x22 SH	127064	14	
9	Bolt, M6x30 SH	127065	6	
10	Bolt, M8x20 HH	F05021-2	6	
11	Bolt, 3/8-16x2 hh	F05007-158	4	
12	Bolt, M8-1x35 SHC	F05021-50	8	
13	Nut / M8 free	F05010-162	4	
14	Nut, M8 Lock	F05010-132	15	
15	Set Screw, M8x20	127066	8	

4 Up / Down Assembly

Up Down Assembly

4.2 Up Down Assembly



REF	DESCRIPTION (◆ Indicates Parts Available In Assemblies Only)	PART #	QTY.
	Up Down Assembly		
1	Handle Assy, Edger	047685	1

Up / Down Assembly
Up Down Assembly

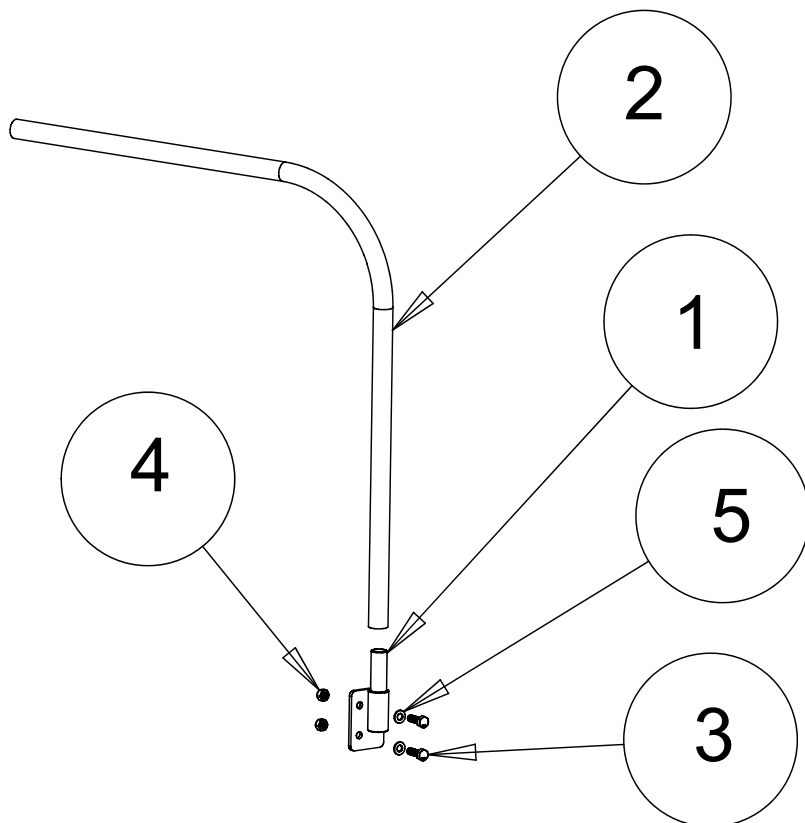
4

2	Scale, Up Down	127067	1	
3	Pointer	127134	1	
4	Rod, Acme 5/8-8x 11 7/8	127109	1	
5	Nut, Acme 5/8-8	127110	2	
6	Block, Up/Dn Handle	127111	1	
7	Bearing, 5/8" Bore 2 Bolt Flange	127112	1	
8	Nut, Acme 5/8-8 Brass	127131	1	
9	Block, Amce Nut Mount	127132	1	
10	Tube, Spacer	127133	2	
11	Rod, 1" Chrome	127188	2	
12	Plate, Motor Mount	127189	1	
13	Flat, Rod Mount Top	127190	1	
14	Plate, Up/down Latch	127191	1	
15	Flat, Rod Mount Bottom	127192	1	
16	Plate, Black	127193	1	
17	Bearing, 1" Linear Ball	127194	4	
18	Bolt, M10x 35 Hh	F05022-43	2	
19	Bolt, M5X18 SH	127195	2	
20	Bolt, M6x22 Sh	127196	14	
21	Bolt, M6x10 Button Head	127068	1	
22	Bolt, M8x25 Hh	F05021-20	4	
23	Bolt, M8x70 Flat Head	127196	2	
24	Bolt, M8x20 Hh	F05021-2	6	
25	Nut, M6 Lock	F05010-200	12	
26	Washer, M6	F05026-1	2	
27	Washer M8	F05026-4	6	

4 Up/Down Assembly

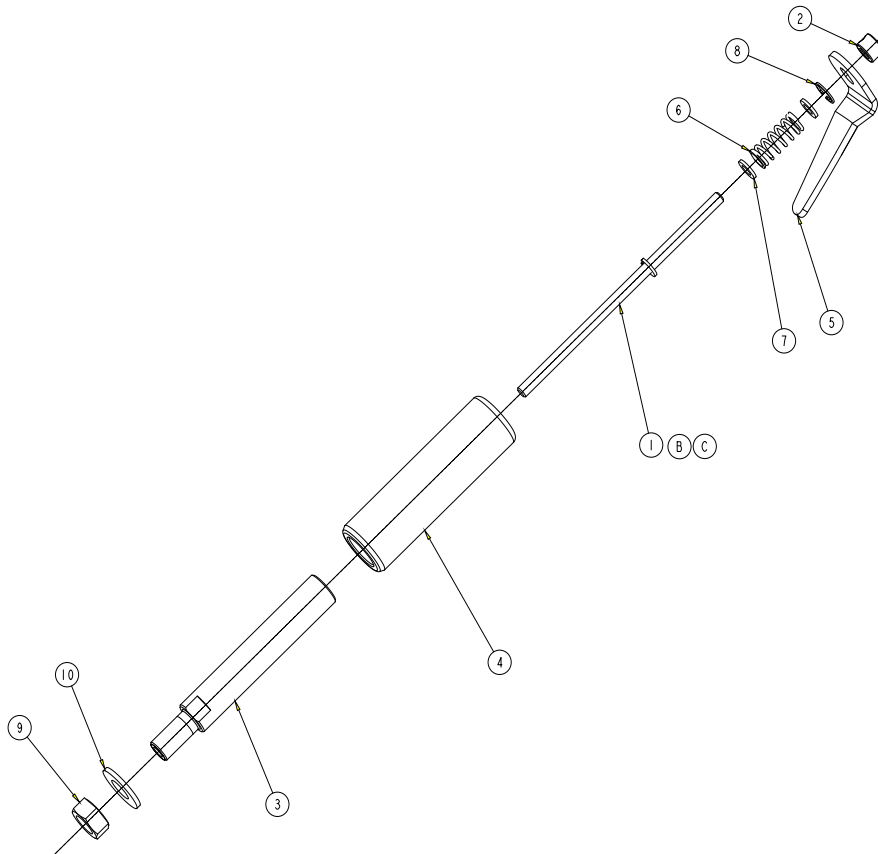
Arm

4.3 Arm



REF	DESCRIPTION (◆ Indicates Parts Available In Assemblies Only)	PART #	QTY.	
	ARM			
1	WELDMENT, ARM HOSE	127160	1	
2	TUBE, ARM HOSE	127162	1	
3	BOLT, M8X20 HH	F05010-20	2	
4	NUT, M8 LOCK	F05010-132	2	
5	WASHER, M8	F05026-4	2	

4.4 Handle Up/Down

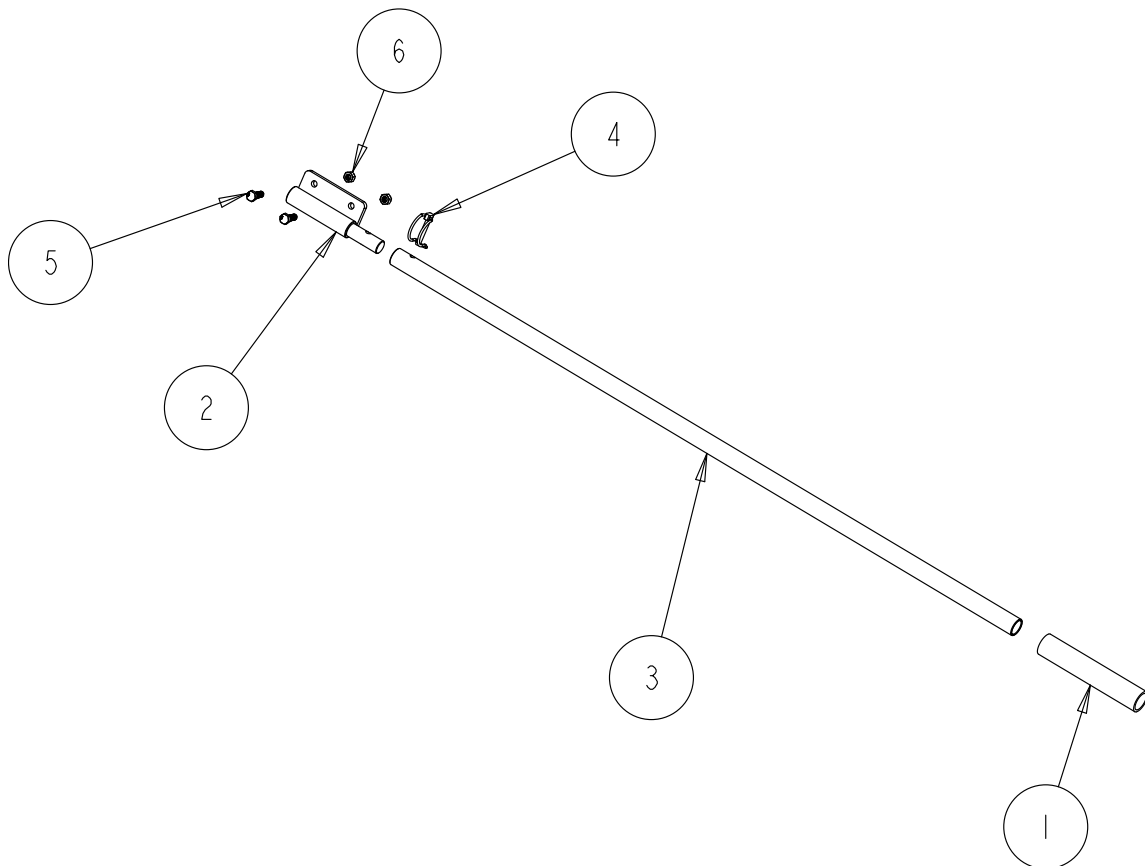


REF	DESCRIPTION (◆ Indicates Parts Available In Assemblies Only)	PART #	QTY.
HANDLE, UP/DOWN			
1	Shaft Assembly, TBE Handle	6496	1
2	Collar, 1/4 ID Shaft	31975	1
3	Shaft, Edger Handle	47686	1
4	Handle, 25/64 IDx1 1/4 ODx4 1/8 Plastic	47688	1
5	Plate, Edger Handle	47689	1
6	Spring, .48 Dia x1.5 Long SS Compression	47690	1
7	Spacer, .26 ID x .480 ODx1/16	47705	2
8	Ring, 1/2 ID IR Retaining Snap	F04254-47	1
9	Nut, 1/2-13 Free Hex, Zinc	F05010-35	1
10	Washer, 1/2 SAE Flat	F05011-2	1

4 Up/Down Assembly

Handle, Push

4.5 Handle, Push

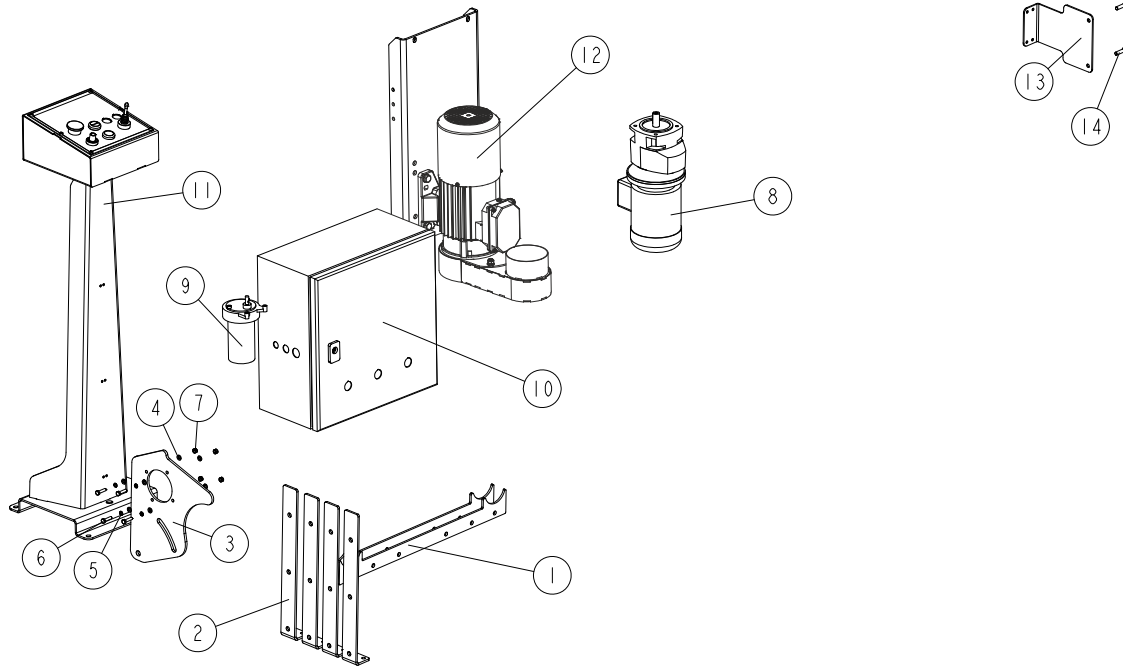


REF	DESCRIPTION (◆ Indicates Parts Available In Assemblies Only)	PART #	QTY.	
	HANDLE PUSH			
1	Handle, Foam	127118	1	
2	Weldment, Push Handle	127120	1	
3	Tube, Push Handle	127123	1	
4	Pin, Handle Lock	127159	1	
5	Bolt, m8-25 HH	F05021-20	2	
6	Nut M8 Lock	F05010-132	2	

SECTION 5 MOTOR ASSEMBLY

5.1 Motor Assembly

MB200MEH3SP-E_001_B
MB200MEH3SP-E_MANUAL

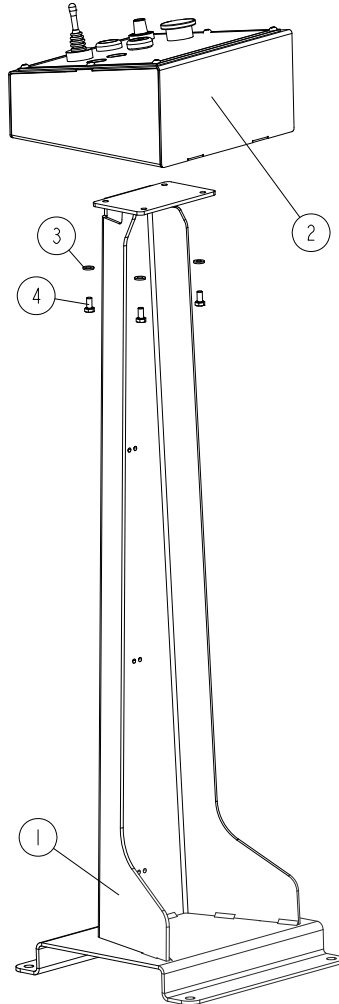


REF	DESCRIPTION (◆ indicates parts available in assemblies only)	PART #	QTY	
-	MB200 (TRANSPORT BRACKET, GEAR MOUNTING)	539767	1	
1	BRACKET, TRANSPORT	539763-1	2	
2	BRACKET, TRANSPORT	539764-1	4	
3	PLATE, GEAR MOUNTING	539064-1	1	
4	WASHER, 6.4 DIN 125/ISO 7089 (A2-304) ST	F81053-5	8	
5	WASHER, Z 6.1 SPLIT LOCK ZINC	F81053-3	4	
6	BOLT, M6X25-5.8 HEX HEAD FULL THREAD ZIN	F81001-3	4	
7	NUT, M6-8-B HEX NYLON ZINC LOCK	F81031-2	4	
-	MOTOR ASSEMBLY, MB200	536905	1	
8	MOTOREDUCER, IBC84/14,63/140-11 MOTOR 0	536913	1	
-	MOTOR, 0,18 KW/1380/140-11 200/272V	577457	1	
-	REDUCER, IBC 84/14, 63/140-11	577456	1	
9	MOTOR, 1/16HP 31R.P.M 24VDC W/GEAR	060105	1	
10	BOX, MB200EH ELECTRIC	536910	1	
11	CONTROL PANEL MB200 - COMPLETE See Section 5.2 See Section 5.3 ¹	539768	1	
12	MOTOR+MOUNT PLATE+CUTTER COVER See Section 5.8	540505	1	
13	BRACKET, CABLE	557058-1	1	
14	BOLT, M8X30-8.8-B HEX HEAD FULL THREAD Z	F81002-7	2	

¹ 539768-P (Auto Feed Option)

5.2 Control Panel Assembly - Manual Feed

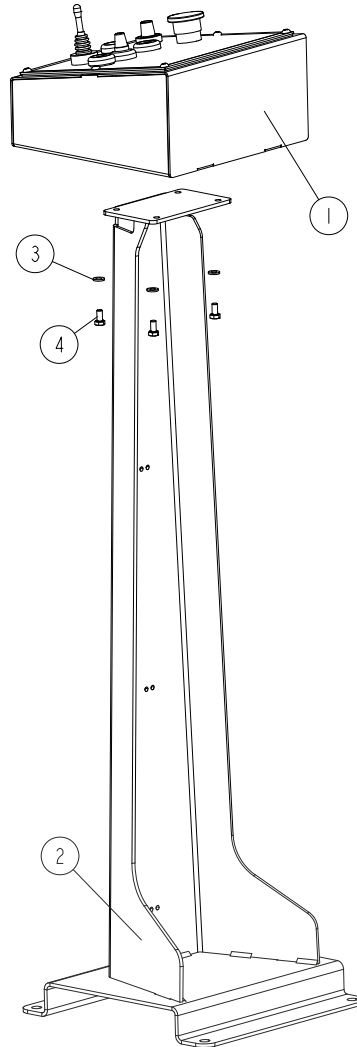
539768_MANUAL_FEED
539768_MANUAL



REF	DESCRIPTION (◆ indicates parts available in assemblies only)	PART #	QTY	
-	CONTROL PANEL MB200 - COMPLETE	539768	1	
1	CONTROL PANEL STAND ASSEMBLY MB200	539761-1	1	
2	CONTROL PANEL, MB200 MANUAL FEED See Section 5.4	536931	1	
3	WASHER, 6.4 FLAT ZINC	F81053-1	4	
4	BOLT, M6X12-8.8 HEX HEAD FULL THREAD ZIN	F81001-7	4	

5.3 Control Panel Assembly - Auto Feed

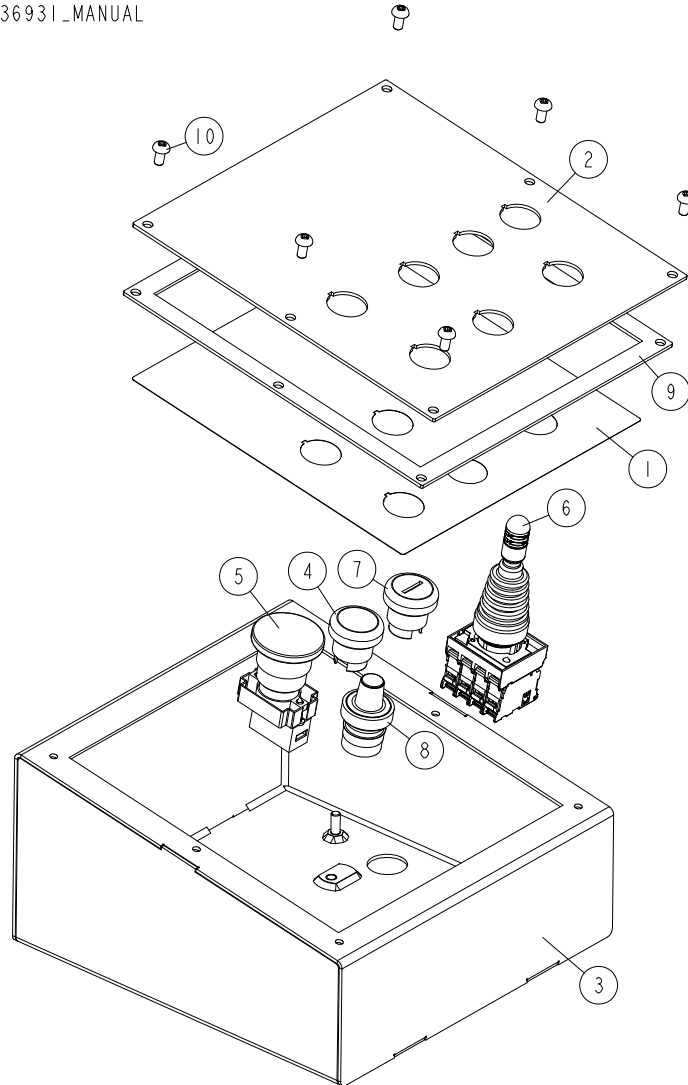
539768_AUTO_FEED
 539768_MANUAL



REF	DESCRIPTION (◆ indicates parts available in assemblies only)	PART #	QTY	
-	CONTROL PANEL MB200 - COMPLETE	539768-P	1	
1	CONTROL PANEL, MB200 AUTO FEED See Section 5.5	559571	1	
2	CONTROL PANEL STAND ASSEMBLY MB200	539761-1	1	
3	WASHER, 6.4 FLAT ZINC	F81053-1	4	
4	BOLT, M6X12-8.8 HEX HEAD FULL THREAD ZIN	F81001-7	4	

5.4 Control Panel - Manual Feed

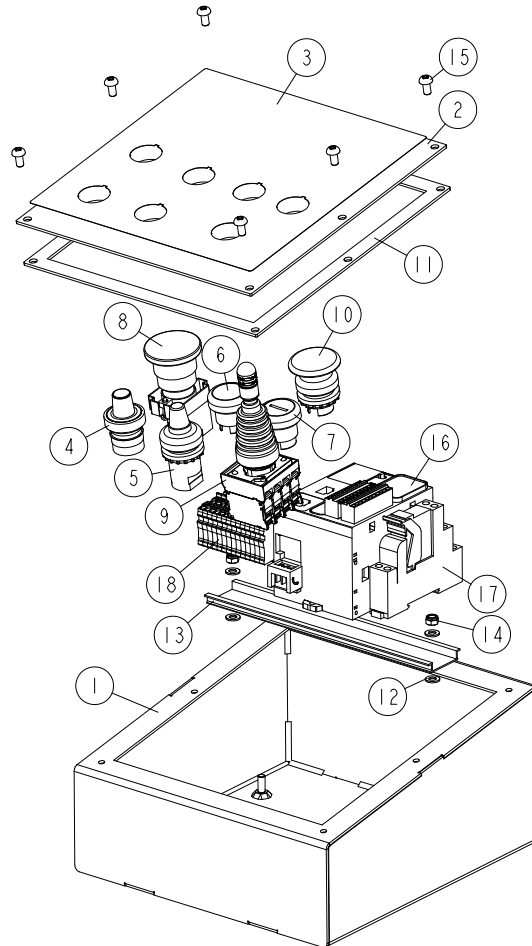
536931_001_B
536931_MANUAL



REF	DESCRIPTION (u indicates parts available in assemblies only)	PART #	QTY
-	CONTROL PANEL, MB200	536931	1
1	DECAL, SLABMIZER MB200	557046	1
2	PLATE, CONTROL PANEL	557043-1	1
3	WELDMENT, CONTROL PANEL BOX	557049-1	1
4	BUTTON, LPCB2102 COMPLETE	535437-K	1
5	BUTTON, LPCB6644 EMERGENCY STOP	535445-K	1
6	JOYSTICK, 4-POSITION LPSJ400	568414	1
7	BUTTON, LPCBL1117 COMPLETE	535441-K	1
8	SWITCH, POTENTIOMETER 22MM 5K.	068077	1
9	SEAL, SLABMIZER CONTROL PANEL	557057	1
10	SCREW, M5X10-8.8 CROSS RECESSED PAN HEAD	F81000-13	6

5.5 Control Panel - Auto Feed

559571_001_A
559571_MANUAL

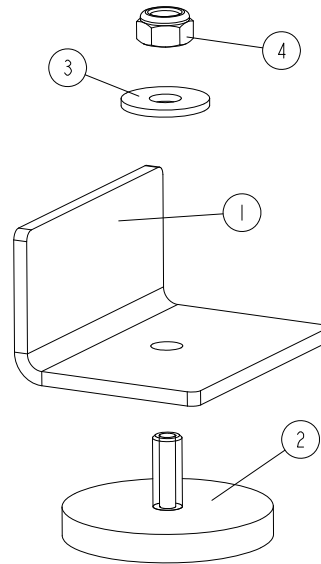


REF	DESCRIPTION (u indicates parts available in assemblies only)	PART #	QTY
-	CONTROL PANEL, MB200	559571	1
1	WELDMENT, CONTROL PANEL BOX	557049-1	1
-	PLATE, CONTROL PANEL - COMPLETE	557045	1
2	PLATE, CONTROL PANEL	557043-1	1
3	DECAL, SLABMIZER MB200	557046	1
4	SWITCH, POTENTIOMETER 22MM 5K.	068077	1
5	POTENTIOMETER, M22-R1K (229489)	093749	1
6	BUTTON, LPCB2102 COMPLETE	535437-K	1
7	BUTTON, LPCBL1117 COMPLETE	535441-K	1
8	BUTTON, LPCB6644 EMERGENCY STOP	535445-K	1
9	JOYSTICK, 4-POSITION LPSJ400	568414	1
10	BUTTON, LPCB6143	536909	1
11	SEAL, SLABMIZER CONTROL PANEL	557057	1
12	WASHER, M5, FLAT ZINC	F81052-1	4
13	BAR, MOUNTING TS35, L250	R80367-1	1
14	NUT, M5-8 DIN985 HEX NYLON ZINC LOCK	F81030-2	2

REF	DESCRIPTION (u indicates parts available in assemblies only)	PART #	QTY	
15	SCREW, M5X10-8.8 CROSS RECESSED PAN HEAD	F81000-13	6	
16	DRIVER, PLC TM221M16TG	068434	1	
17	RELAY, FINDER 40.52.9.024.00.00	090515_	1	
18	CONNECTOR, 3-WIRE	F81086-38	14	

5.6 Magnetic Limiter (Left - Right Movement) - Auto Feed

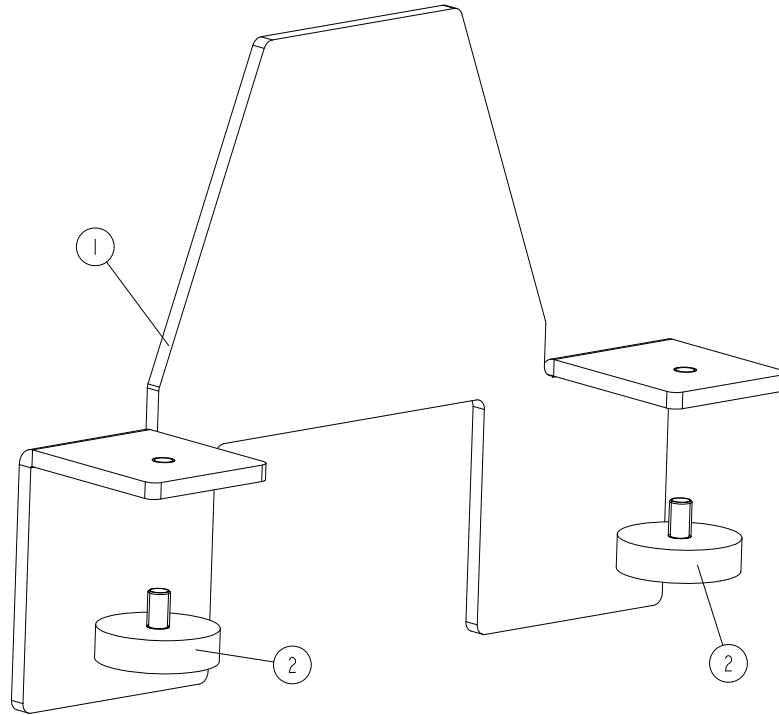
557040_001
 557040_MANUAL



REF	DESCRIPTION (◆ indicates parts available in assemblies only)	PART #	QTY	
-	ASSEMBLY, MAGNETIC LIMITER (LEFT - RIGHT MOVEMENT)	557040	1	
1	MAGNETIC LIMITER, LEFT - RIGHT MOVEMENT	557037-1	1	
2	MAGNET, GN 51.3-ND-43 ELESA+GANTER	557039	1	
3	WASHER, 6.5 SPECIAL FLAT ZINC	F81053-11	1	
4	NUT, M6-8-B HEX NYLON ZINC LOCK	F81031-2	1	

5.7 Magnetic Limiter (Forwards - Backwards Movement) - Auto Feed

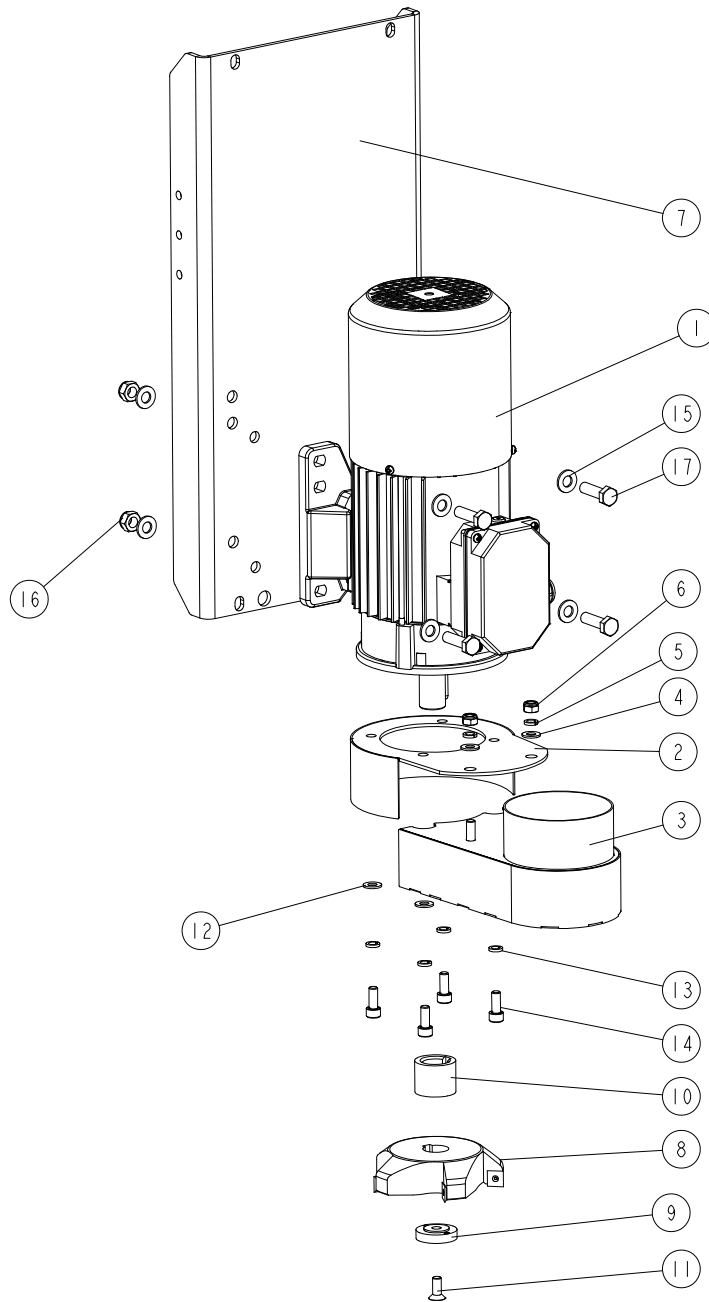
557041_001
557041_MANUAL



REF	DESCRIPTION (◆ indicates parts available in assemblies only)	PART #	QTY
-	ASSEMBLY, MAGNETIC LIMITER (FORWARDS - BACKWARDS MOVEMENT)	557041	1
1	MAGNETIC LIMITER, FORWARDS - BACKWARDS MOVEMENT	557038-1	1
2	MAGNET, GN 51.3- ND-22 ELESA+ GANTER	557042	2

5.8 Cutter

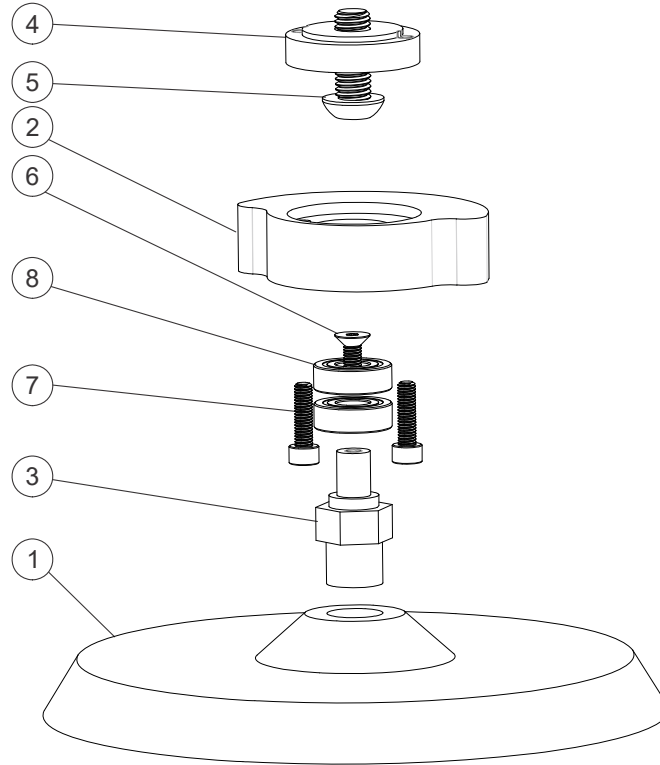
540505_001_B
540505_MANUAL



REF	DESCRIPTION (◆ Indicates Parts Available In Assemblies Only)	PART #	QTY.
	MOTOR+MOUNT PLATE+CUTTER COVER	540505	1
1	MOTOR, SLH90-2LH2SP 2,20KW IMB34/2	536935	1
-	COVER, CUTTER - COMPLETE	540511	1
2	COVER, CUTTER COMPLETE I	544394-1	1
3	COVER, CUTTER COMPLETE. II	544393-1	1
4	WASHER, 8.4 FLAT,ZINC, WASHER, 8.4 FLAT ZINC	F81054-1	2
5	WASHER 8,2 ZC SPRING LOCK DIN 127, WASHER 8,2 FE/ZN9	F81054-4	2
6	NUT,M8-8-B,HEX,NYLON LOCK ZINC, NUT, M8-8-B HEX NYLON ZINC LOCK	F81032-2	2
7	PLATE, MOTOR MOUNT	540506-1	1

REF	DESCRIPTION (◆ Indicates Parts Available In Assemblies Only)	PART #	QTY.	
8	CUTTER W/KNIVES	536936	1	
	5-WING CUTTER HEAD 127X15X24 Z=5HW	TG56.5K		
	INSERT CUTTING KNIFE HM 15X15X2.5 R150 - FOR HARDWOOD (STANDARD)	TIK.15HM	5	
	INSERT CUTTING KNIFE HM 15X15X2.5 R150 - FOR HARDWOOD AND PANELS (OPTIONAL)	TIK15HML		
	INSERT COATED CUTTING KNIFE HM 15X15X2.5 R150 - FOR HARDWOOD PANELS, EXOTIC WOOD (OPTIONAL)	TIK.15HMC		
	SCREW TOR 1065XM5X10	WHAS00015	1	
9	WASHER, CUTTER	540516-1	1	
10	BUSHING, CUTTER	540517-1	1	
11	BOLT, M8X20-10.9 DIN7991 ZINC-PLATED	F81002-113	1	
12	WASHER, 8.4 FLAT ZINC	F81054-1	4	
13	WASHER, 8.2 SPLIT LOCK ZINC	F81054-4	4	
14	SCREW, M8X20-8.8-HEX SOCKET HEAD CAP ZINC	F81002-30	4	
15	WASHER, 10.5 FLAT ZINC	F81055-1	8	
16	NUT,M10-8-B NYLON HEX ZINC LOCK, NUT, M10-8-B HEX NYLON ZINC LOCK	F81033-1	4	
17	BOLT,M10X35-8.8 HEX HEAD FULL THREAD ZIN	F81003-17	4	

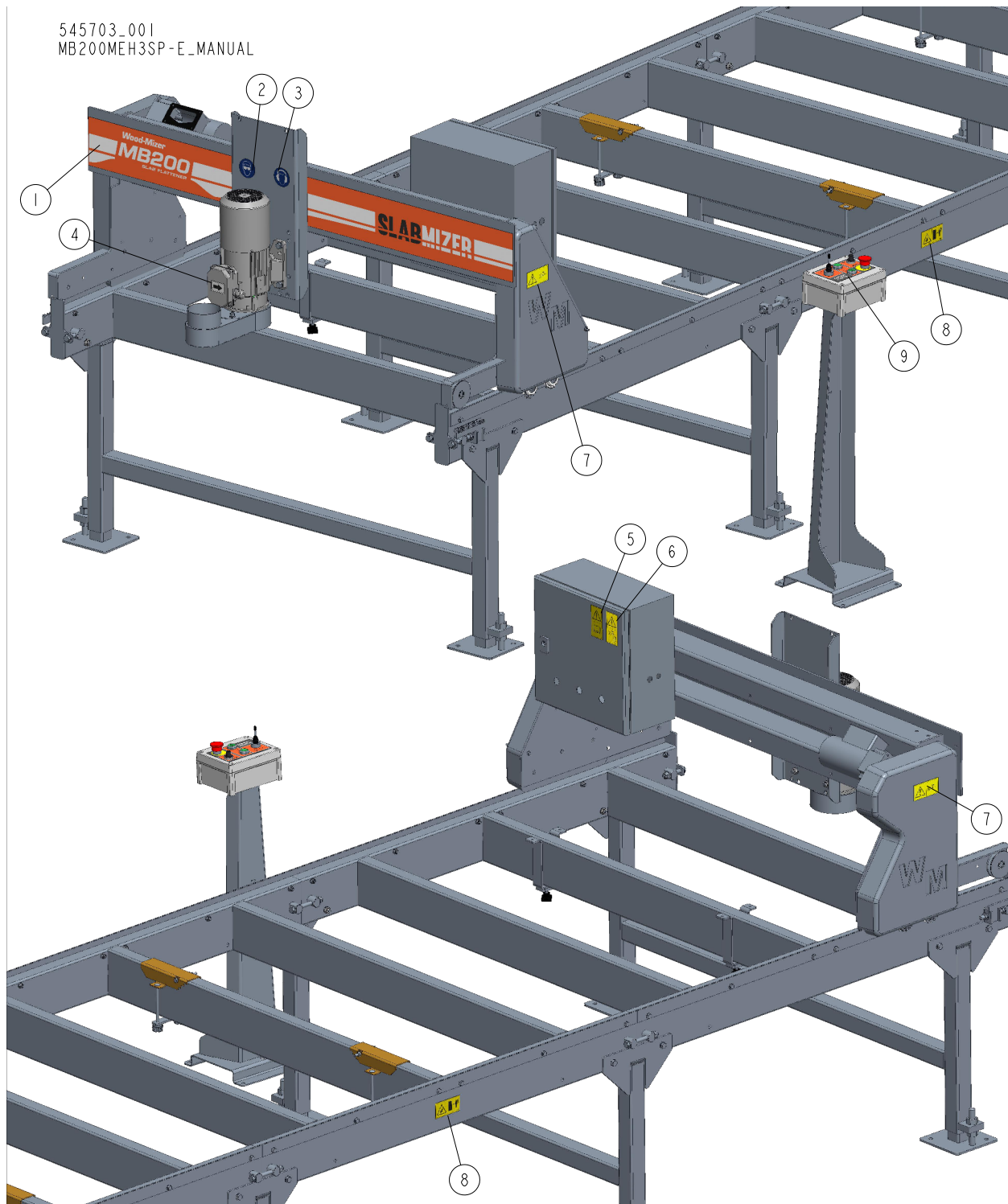
5.9 Sanding Head



REF	DESCRIPTION (◆ Indicates Parts Available In Assemblies Only)	PART #	QTY.	
	SANDING HEAD	127139		
1	Head, Sanding 7"	127140	1	
2	Balance, Orbital	127141	1	
3	Stud, Sanding	127142	1	
4	WASHER, CUTTER / SANDING	127143	2	
5	BOLT, M10X25 BUTTON HEAD	127196	1	
6	BOLT, M5X10 FLAT HEAD	127199	1	
7	BOLT, M5X18 SH	127200	2	
8	BEARING, R6-2NSL	P10688	2	
	Sandpaper, 40 Grit	127210		
	Sandpaper, 80 Grit	127211		
	Sandpaper, 180 Grit	127212		

SECTION 6 DECALS

6.1 Decals MB200



REF	DESCRIPTION (◆ Indicates Parts Available In Assemblies Only)	PART #	QTY.
-	Decal Kit, MB200	545703	1
1	DECAL, MB200	545702	1

REF	DESCRIPTION (◆ Indicates Parts Available In Assemblies Only)	PART #	QTY.	
2	DECAL, EYE PROTECTION WARNING (PICTOGRAM) - 60 MM	S12004G-1	1	
3	DECAL, EAR PROTECTION WARNING, SMALL (PICTOGRAM)	S12005G-1	1	
4	DECAL, MOTOR DIRECTION	S20097	1	
5	DECAL, READ OPERATOR'S MANUAL (PICTOGRAM)	096317	1	
6	DECAL, REMOVE THE PLUG BEFORE OPENING THE BOX (PICTOGRAM)	096319	1	
7	DECAL, REMOVE THE PLUG BEFORE REMOVING THE COVER	545701	2	
8	DECAL, KEEP THE SAFE DISTANCE (PICTOGRAM)	099221H	2	
9	DECAL, CONTROL BOX MB200	557046	1	