

# ***Wood-Mizer®***

## **MD400, MD500 Chip Extractor Fan MES Chip Extractor System Operation Manual and Parts List**

---

<b>MD400</b>	<b>rev. A1.01</b>
<b>MD500</b>	<b>rev. A1.01</b>
<b>MES401</b>	<b>rev. A1.01</b>
<b>MES402</b>	<b>rev. A1.01</b>
<b>MES403</b>	<b>rev. A1.01</b>
<b>MES501</b>	<b>rev. A1.01</b>
<b>MES502</b>	<b>rev. A1.01</b>

---



**Safety is our #1 concern!** Read and understand all safety information and instructions before operating, setting up or maintaining this machine.

*Form #2360*

## Table of Contest

## Section-Page

<b>SECTION 1</b>	<b>SAFETY &amp; GENERAL INFORMATION</b>	<b>1-1</b>
1.1	Safety Symbols.....	1-1
1.2	Site Preparation .....	1-2
<b>SECTION 2</b>	<b>SPECIFICATIONS, SETUP &amp; OPERATION</b>	<b>2-1</b>
2.1	Overall dimensions.....	2-1
2.2	Specifications of MD400 and MD500 chip extractors.....	2-2
2.3	Attaching the Chip Extractor.....	2-4
2.4	Chip Extraction Kit Assembly.....	2-4
2.5	Chip Extraction System (MES403EH3S-S) Assembly .....	2-10
2.6	Chip Extraction System (MES501EH4S-S) Assembly .....	2-13
<b>SECTION 3</b>		<b>3-1</b>
3.1	REPLACEMENT PARTS.....	3-1
3.2	How To Use The Parts List .....	3-1
3.3	MD400EH3S-S, MD400EA3S-S Chip Extractor Fan .....	3-2
3.4	MD400EB3U-S Chip Extractor Fan .....	3-4
3.5	MD500EH4S-S Chip Extractor Fan.....	3-6
3.6	MD500EH4S Chip Extractor Fan .....	3-8
3.7	MES403EH3S-S Chip Extraction System .....	3-10
3.8	Bottom Plate - Complete .....	3-12
3.9	Chip Extraction System - Body .....	3-13
3.10	Chip Extraction System .....	3-15
3.11	Chip Extraction Kit.....	3-16
3.12	Chip Extraction System.....	3-18
3.13	Chip Extraction System.....	3-19
3.14	MES 501 & MES 502 Suction Distributor (Option) .....	3-21
3.15	MD500EH4S-S Chip Extraction Kit.....	3-22
3.16	Suction Distributor (MP360, EG300).....	3-24

## Getting Service

Wood-Mizer is committed to providing you with the latest technology, best quality and strongest customer service available on the market today. We continually evaluate our customers' needs to ensure we're meeting current wood-processing demands. Your comments and suggestions are welcome.

### *General Contact Information*

From Europe call your local distributor or our European Headquarters and Manufacturing Facility in Koło, Nagórna 114 St, Poland at **+48-63-2626000**. From the continental U.S., call our U.S. Headquarter 8180 West 10th St.Indianapolis, IN 46214, toll-free at **1-800-525-8100**. Ask to speak with a Customer Service Representative. Please have your machine identification number and your customer number ready when you call. The Service Representative can help you with questions about the operation and maintenance of your machine. He also can schedule you for a service call.

### **Office Hours:**

<b>Country</b>	<b>Monday - Friday</b>	<b>Saturday</b>	<b>Sunday</b>
Poland	7 a.m.- 3 p.m.	Closed	Closed
US	8 a.m.- 5 p.m.	8 a.m.- 12 p.m	Closed

Please have your vehicle identification number and your customer number ready when you call.

Wood-Mizer will accept these methods of payment:

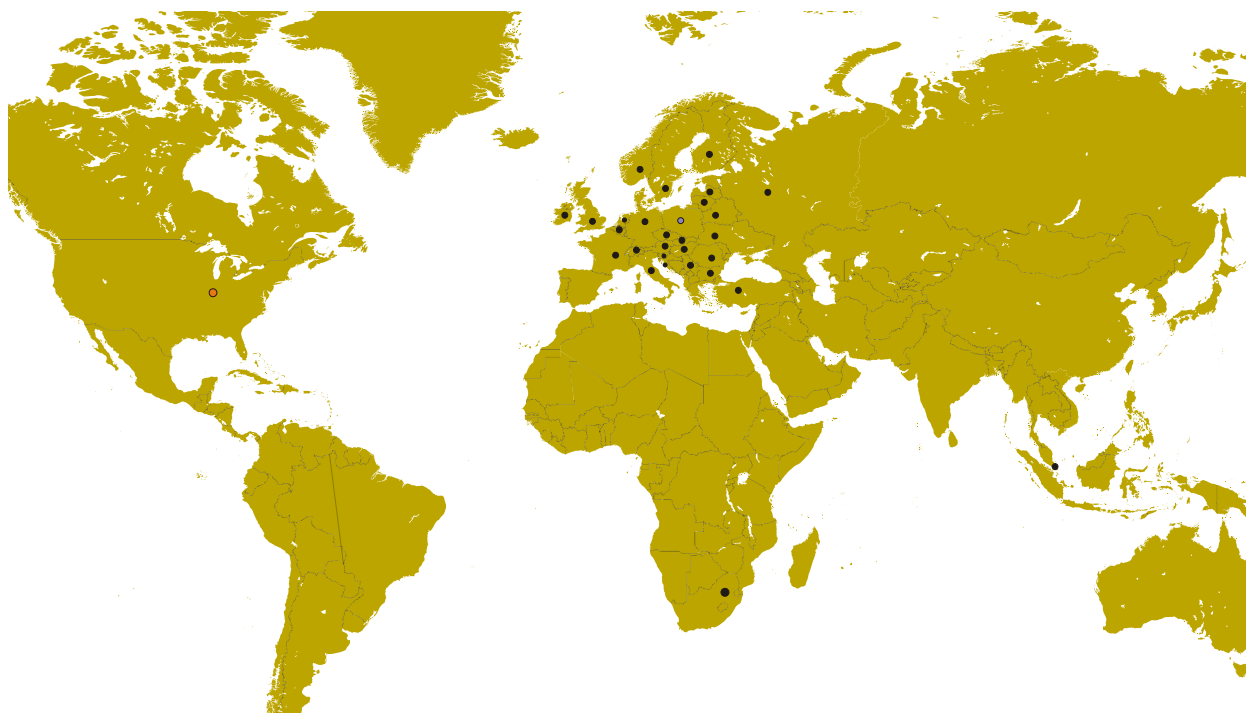
- Visa, Mastercard, or Discover
- COD
- Prepayment
- Net 15 (with approved credit)



Be aware that shipping and handling charges may apply. Handling charges are based on size and quantity of order.

Technical data are subject to change without prior notice.

Actual product may differ from product images. Some illustrations show machines with optional equipment.

**Branches & Authorized Sales Centers Wood-Mizer Locations (North and South America)**



EUROPE		UNITED STATES
<p> <b>European Headquarters</b>  <b>Wood-Mizer Industries Sp. z o.o.</b>                      Nagórna 114, 62-600 Kolo, Poland                      Tel.: +48-63-26-26-000                      Fax: +48-63-27-22-327  <a href="http://www.woodmizer.eu">www.woodmizer.eu</a></p>		<p> <b>World Headquarters</b>  <b>Wood-Mizer LLC</b>                      8180 West 10th Street                      Indianapolis, Indiana 46214-2400,                      USA                      Tel.: +1-317-271-1542                      Fax: +1-317-273-1011  <a href="http://www.woodmizer.com">www.woodmizer.com</a></p>
<p><b>BELARUS</b>  <b>MOST-GRUPP</b>                      Siemashko 15, k.3                      Minsk 2200116                      Tel.: +375-17-270-90-08                      Fax: +375-17-270-90-08                      GSM: +375-29-649-90-80                      e-mail: <a href="mailto:most-by@mail.ru">most-by@mail.ru</a></p>	<p><b>SWITZERLAND Stefan Wespi</b>                      Maschinen u. Geräte                      Spezialarbeiten GmbH                      Eichstraße 4                      6353 Weggis                      Tel.: +41-413-900-312                      GSM: +41-799-643-594  <a href="mailto:info@woodmizer.ch">info@woodmizer.ch</a>  <a href="http://www.woodmizer.ch">www.woodmizer.ch</a></p>	<p><b>RUSSIA Dariusz Mikołajewski</b>  <b>OOO WOOD-MIZER INDUSTRIES</b>                      141031, Moscow                      Reg., Mytishenski raj., pos. Veshki,                      Zavodskaja str., 3B                      Tel.Fax: +7(495) 788-72-35                      Tel.Fax: +7(495) 641-51-60                      e-mail: <a href="mailto:dariuszm@woodmizer-moscow.ru">dariuszm@woodmizer-moscow.ru</a></p>
<p><b>BULGARIA Kalin Simeonov</b>  <b>Ecotechproduct</b>                      38 Star Lozenski pat str.                      Sofia 1186                      Tel.: +359-2-462-7035                      Tel.: +359-2-963-1656                      Tel./Fax                      : +359-2-979-1710  <b>Kalin Simeonov</b>                      GSM: +3592-963-2559                      e-mail: <a href="mailto:office@ecotechproduct.com">office@ecotechproduct.com</a></p>	<p><b>HUNGARY Wiktor Turoczy</b>  <b>Wood-Mizer Hungary K.F.T.</b>                      Szonyi Ut 67., 2921 Komárom                      Tel./Fax: +36-34-346-255                      e-mail: <a href="mailto:woodmizer@woodmizer.hu">woodmizer@woodmizer.hu</a></p>	<p><b>RUSSIA Far East Wladimir Glazaczew</b>  <b>"WM Service"</b>                      Krasnoretchenskaya Str.111                      680006 Khabarovsk                      Tel./Fax: +7-914-541-1183                      e-mail: <a href="mailto:wms-khv@mail.ru">wms-khv@mail.ru</a></p>

<p><b>CROATIA Krešimir Pregernik</b>  <b>Pregimex d.o.o.</b>  S. Batušićeva 31, 10090 Zagreb  Tel./Fax: +3851-38-94-668  <b>Krešimir Pregernik</b>  GSM: +3851-98-207-106  e-mail: <a href="mailto:Kresimir.Pregernik@gmail.com">Kresimir.Pregernik@gmail.com</a></p>	<p><b>ITALY Pasquale Felice</b>  <b>Wood-Mizer Italia Srl</b>  <b>Cda. Capoiaccio SN</b>  86012 Cercemaggiore  Campobasso  Tel./Fax: +39-0874-798-357  GSM: +39-333-281-03-79  e-mail: <a href="mailto:wmitaliasrl@gmail.com">wmitaliasrl@gmail.com</a></p>	<p><b>SERBIA Dragan Markov</b>  <b>Wood-Mizer Balkan d.o.o.</b>  Svetosavska GA 3/3; P. Fah 25  23 300 Kikinda  Tel./Fax: +381-230-25-754  Tel./Fax: +381-230-23-567  GSM: +381-63-568-658  e-mail: <a href="mailto:office@woodmizer.co.yu">office@woodmizer.co.yu</a></p>
<p><b>CZECH REPUBLIC Miroslav Greill</b>  <b>Wood-Mizer CZ s.r.o.</b>  Za Kasárny 946  339 01 Klatovy  Tel: +420-376-312-220  GMS: +420-608-111-104  <b>Miroslav Greill</b>  GMS: + 420-602-439-799  E-mail: <a href="mailto:woodmizer@woodmizer.cz">woodmizer@woodmizer.cz</a></p>		<p><b>SLOVAKIA Wiktor Turoczy</b>  <b>Wood-Mizer Danubia s.r.o.</b>  Hadovce 5, 94501 Komárno  Tel.: +421-35-77-40-316  Fax: +421-35-7740-326  GSM: +421-905-930-972  e-mail: <a href="mailto:woodmizer@woodmizer.sk">woodmizer@woodmizer.sk</a></p>
<p><b>CZECH REPUBLIC Lubomir Kudlik</b>  <b>Wood-Mizer Moravia</b>  Sovadinova 6  69002 Breclav  Tel./Fax: +420-519-322-443  <b>Lubomir Kudlik</b>  GSM: +420-602-734-792  e-mail: <a href="mailto:info@wood-mizer.net">info@wood-mizer.net</a></p>	<p><b>LATVIA Vilmars Jansons</b>  <b>OBERTS Ltd</b>  Gaujas str. 32/2  LV-2167 Marupe, Rigas Raj.  Tel.: +371-7-810-666  Fax: +371-7-810-655  <b>Vilmars Jansons</b>  GSM: +371-92-06-966  <b>Andris Orols</b>  GSM: +371-28-33-07-90  e-mail: <a href="mailto:andris@oberts.lv">andris@oberts.lv</a></p>	<p><b>TURKEY</b>  <b>Er-Ka Ahsap Profil Kerestecilik San. ve Tic. Ltd. Sti.</b>  Adana Keresteciler Sitesi 191 sk No.41  ADANA  Tel.: +90-322-346-15-86  Fax: +90-322-345-17-07  GSM: +90-533-363-18-44  e-mail: <a href="mailto:info@erkaahsap.com.tr">info@erkaahsap.com.tr</a></p>
<p><b>FINLAND Howard Blackbourn</b>  <b>Oy Falkberg Jordbruk Ab</b>  Falkintie 220  25610 Ylonkyla  Tel.: +358-2732-2253  Fax: +358-2732-2263  <b>Howard Blackbourn</b>  GSM: +358-440-424-339  e-mail: <a href="mailto:falkberg@woodmizer.fi">falkberg@woodmizer.fi</a></p>	<p><b>LITHUANIA Andrius Zuzevicius</b>  <b>UAB Singlis</b>  Savanoriu pr. 187, 2053 Vilnius  Tel.: +370-5-2-32-22-44  Fax: +370-5-2-64-84-15  GSM: +370-620-28-645  e-mail: <a href="mailto:andrius.z@singlis.lt">andrius.z@singlis.lt</a></p> <p><b>Dmitrij Gaiduk</b>  GSM: +370-69-84-51-91  e-mail: <a href="mailto:dmitrijus.g@singlis.lt">dmitrijus.g@singlis.lt</a></p>	<p><b>UKRAINE Ivan Vinnicki</b>  <b>MOST UKRAINA</b>  bul. Myru 3, Bajkivtsi Ternoplskyj r-j  Ternopolska oblast  47711 Ukraine  Tel/Fax: +38 (0352) 52 37 74  GSM: +38 (067) 352 54 34  GSM: +38 (067) 674 50 68  E-mail: <a href="mailto:most-ukraine@ukr.net">most-ukraine@ukr.net</a></p>
<p><b>FRANCE Tizoc Chavez</b>  Wood-Mizer France  556 chemin des Embouffus,  ZAC des Basses Echarrieres  38440 SAINT JEAN DE BOURNAY  Tel: +33-4 74 84 84 44  GSM: +33-607 52 02 82  Mail: <a href="mailto:tchavez@woodmizer.fr">tchavez@woodmizer.fr</a></p>	<p><b>NORWAY Tor Bakken Flaathe</b>  Bakken Flaathe A/S  Lokenvegen 5, 2034 Holter  Tel: + 47-638 74 989  Sales: + 47- 412 80 076  Service: +47- 975 87 588  <a href="mailto:post@woodmizer.no">post@woodmizer.no</a>  <a href="http://www.woodmizer.no">www.woodmizer.no</a></p>	<p><b>UNITED KINGDOM &amp; IRELAND</b>  <b>Wood-Mizer UK</b>  Hopfield Barn  Kenward Road, Yalding  Kent ME18 6JP, UK  Tel.: +44-1622-813-201  Fax: +44-1622-815-534  e-mail: <a href="mailto:info@woodmizer.co.uk">info@woodmizer.co.uk</a></p>
<p><b>SLOVENIA Jan Fale</b>  <b>FAMTEH d.o.o.</b>  Gacnikova pot 2,  2390 Ravne na Koroskem  Tel.: +386-2-62-04-232  Fax: +386-2-62-04-231  <b>Jan Fale</b>  GSM: +386-2-62-04-230  e-mail: <a href="mailto:jan.fale@famteh.si">jan.fale@famteh.si</a></p> <p><b>Matjaz Kolar</b>  Tel.: +386-2-62-04-232  GSM: +386-31-775-999  e-mail: <a href="mailto:matjaz.kolar@famteh.si">matjaz.kolar@famteh.si</a></p>		

<p><b>GERMANY/AUSTRIA Klaus Longmuss</b>  <b>Wood-Mizer GmbH</b>  Dorfstraße 5, 29485 Schletau  Büro  Tel: <a href="tel:+49-5883-988-010">+49-5883 988 010</a>  <b>Werkstatt</b>  Tel: <a href="tel:+49-5883-988-220">+49-5883 988 220</a>  <b>Ersatzteilservice</b>  Tel: <a href="tel:+49-58-83-98-80-250">+49 58 83 - 98 80 250</a>  <b>Scharfservice</b>  Tel: <a href="tel:+49-58-83-98-80-270">+49-58 83 - 98 80 270</a>  <b>E-mail:</b>  <a href="mailto:info@woodmizer.de">info@woodmizer.de</a>  <a href="http://www.woodmizer.de">www.woodmizer.de</a>  <b>Klaus Longmuss</b>  Tel.: <a href="tel:+49-5883-9880-12">+49-5883-9880-12</a>  GSM: <a href="tel:+49-17-298-55-892">+49-17-298-55-892</a>  e-mail: <a href="mailto:KLongmuss@woodmizer.de">KLongmuss@woodmizer.de</a></p>	<p><b>Subagent:</b>  <b>SWEDEN Kjell Larsson</b>  <b>Mekwood AB</b>  Slingan 14, 812 41 Gästrike-Hammarby  Tel.: <a href="tel:+46-290-515-65">+46-290-515-65</a>  <b>Kjell Larsson</b>  GSM: <a href="tel:+46-706-797-965">+46-706-797-965</a>  e-mail: <a href="mailto:kjell.larsson@mekwood.se">kjell.larsson@mekwood.se</a></p>	<p><b>IRELAND</b>  <b>Wood-Mizer Ireland</b>  Stephen Brennan  Cum Lahardane Ballina County Mayo  Tel: <a href="tel:+353-96-51345">+353 96 51345</a>   E-mail: <a href="mailto:brennanmill@ericom.net">brennanmill@ericom.net</a></p>
<p><b>Subagents:</b>  <b>DENMARK Kevin Christiansen</b>  Kevin Christiansen's  savværker PMV  Arnborgvej 40, 7330 Brande- Fasterholt   Mobile: <a href="tel:+45-61468763">+45 61468763</a>  Mobile: <a href="tel:+45-23495828">+45-23495828</a>  <a href="mailto:Info@woodmizer.dk">Info@woodmizer.dk</a>  <a href="http://www.woodmizer.dk">www.woodmizer.dk</a></p>	<p><b>ROMANIA Adrian Echert</b>  <b>SC WOOD-MIZER RO SRL</b>  TRANSILVANIEI Nr. 5  Sibiu, Cisnădie 555300  Tel./Fax: : <a href="tel:+40-369-405-433">+40-369-405-433</a>  GSM: <a href="tel:+40-745-707-323">+40-745-707-323</a>  e-mail: <a href="mailto:aechert@woodmizer.ro">aechert@woodmizer.ro</a></p>	<p>Regional Manager - Asia  Robert Moxham  Regional Direction - Asia  Wood-Mizer Asia Manufacturing Co., Ltd.  No.2, Gongyequ 40th Rd. Xitun District,  Taichung City, 40768, Taiwan, R.O.C.  TEL: <a href="tel:+886-4-2359-3022">+886-4-2359 3022</a>  FAX: <a href="tel:+886-4-2359-3205">+886-4-2359 3205</a>  CELL: <a href="tel:+886-9-0568-7708">+886-9-0568 7708</a>  EMAIL: <a href="mailto:RMoxham@woodmizer.com">RMoxham@woodmizer.com</a>  <a href="http://www.woodmizerasia.com">www.woodmizerasia.com</a>  Skype: r.g.moxham</p>
<p><b>NETHERLANDS Gerlo Breukers</b>  Breukers Houtzagerij en Bosbouwmachines  Hazenweg 5, 7481 PC Haaksbergen  Tel: <a href="tel:+31-535741326">+31-535741326</a>  Mobile: <a href="tel:+31-620419412">+31-620419412</a>  <a href="mailto:info@woodmizer.nl">info@woodmizer.nl</a>  <a href="http://www.woodmizer.nl">www.woodmizer.nl</a></p>	<p><b>Subagent:</b>  <b>ROMANIA M. Echert</b>  <b>S.C. Echert Comprod s.r.l</b>  Str. Schitului Nr. 6, Apt.7 etajul-1  725 70 Vatra Dornei, Romania  Tel./Fax: <a href="tel:+40-230-374-235">+40-230-374-235</a>  Tel. : <a href="tel:+40-740-35-35-74">+40-740-35-35-74</a></p>	<p>Regional Manager - Africa  Gavin Prowse  Regional Sales Director - Africa  Wood-Mizer Africa (Pty) Ltd.  Unit 1, Leader Park  20 Chariot Street  Stormill Ext.5  Maraisburg, Johannesburg  South Africa  TEL: <a href="tel:+27-11-473-1313">+27 11 473 1313</a>  FAX: <a href="tel:+27-11-473-2005">+27 11 473 2005</a>  CELL: <a href="tel:+27-71-398-8010">+27 71 398 8010</a>  EMAIL: <a href="mailto:growse@woodmizer.com">growse@woodmizer.com</a>  <a href="http://www.woodmizerafrica.com">www.woodmizerafrica.com</a>  Skype: gavin.prowse</p>

## USA World Headquarters

*Serving North & South America, Oceania, East Asia*

Wood-Mizer LLC  
8180 West 10th Street  
Indianapolis, IN 46214  
  
Phone: 317.271.1542 or 800.553.0182  
Customer Service: 800.525.8100  
Fax: 317.273.1011  
Email: [infocenter@woodmizer.com](mailto:infocenter@woodmizer.com)

## Brazil Headquarters

*Serving Brazil*

Wood-Mizer do Brasil  
Rua Dom Pedro 1, No: 205 Bairro: Sao Jose  
Ivoti/RS CEP:93.900-000  
  
Tel: [+55 51 9894-6461](tel:+55-51-9894-6461)/ [+55 21 8030-3338](tel:+55-21-8030-3338)/ [+55 51 3563-4784](tel:+55-51-3563-4784)  
Email: [info@woodmizer.com.br](mailto:info@woodmizer.com.br)

## Canadian Headquarters

*Serving Canada*

Wood-Mizer Canada  
396 County Road 36, Unit B  
Lindsay, ON K9V 4R3  
  
Phone: 705.878.5255 or 877.357.3373  
Fax: 705.878.5355  
Email: [ContactCanada@woodmizer.com](mailto:ContactCanada@woodmizer.com)

## Europe Headquarters

*Serving Europe, Africa, West Asia*

Wood-Mizer Industries Sp z o.o.  
Nagorna 114  
62-600 Kolo, Poland  
  
Phone: [+48.63.26.26.000](tel:+48-63-26-26-000)  
Fax: [+48.63.27.22.327](tel:+48-63-27-22-327)

## Branches & Authorized Sales Centers

For a complete list of dealers, visit [www.woodmizer.com](http://www.woodmizer.com)

## SECTION 1 SAFETY & GENERAL INFORMATION

Congratulations on your purchase of a Wood-Mizer Chip Extractor!

This documentation includes information on preparing the chip extractor for operation and operating, servicing and repairing the machine.

Read and observe all safety instructions before operating this equipment! Also read any additional manufacturer's manuals and observe any applicable safety instructions including dangers, warnings, and cautions.

Always be sure that all safety decals are clean and readable. Replace all damaged safety decals to prevent personal injury or damage to the equipment. Contact your local distributor, or call your Customer Service Representative to order more decals.

Always properly dispose of all by-products, including debris, coolant and oil.

### GENERAL


Chip extractor is used for removing sawdust and chips from the process of either moulding or planing.


Check your chip extractor as soon as you receive it. Report any transport damage to the transport company immediately.


When replacing spare parts, use only original parts and make sure all electrical installation, service and/or maintenance work is performed by a qualified electrician.


### 1.1 Safety Symbols

The following symbols and signal words call your attention to instructions concerning your personal safety. Be sure to observe and follow these instructions.


 **DANGER!** indicates an imminently hazardous situation which, if not avoided, will result in death or serious injury.

 **WARNING** suggests a potentially hazardous situation which, if not avoided, could result in death or serious injury.

 **CAUTION!** refers to potentially hazardous situations which, if not avoided, may result in minor or moderate injury or damage to equipment.

 **IMPORTANT!** indicates vital information.

**NOTE:** gives helpful information.

 Warning stripes are placed on areas where a single decal would be insufficient. To avoid serious injury, keep out of the path of any equipment marked with warning stripes.

## 1.2 Site Preparation

It is up to the customer to provide power to the Chip Extractor. Consult with a qualified electrician for wiring needs, adding custom switches, or other additions.



**WARNING!** Have a **qualified electrician** install the power to your machine. Failure to follow this may result in serious injury or death.



**CAUTION!** Improper voltage will cause damage to the motor and electronic components. Have a **qualified electrician** install the power supply to the Chip Extractor.



**IMPORTANT!** The power supply must meet the motor specifications concerning wire size, fused disconnect, and voltage, **which are provided in the motor's faceplate**. The electrical installation must also meet local codes.

Wood-Mizer recommends using the following switch and motor protection:

All versions use:

Schneider Electric GV2MC02 enclosure  
Schneider Electric GV2K031 button kit

Inside the enclosure:

### **MD400 EXTRACTOR**

230V 1Ph 60Hz use Schneider Electric GV2ME21  
Set to 20.5A  
10AWG wire minimum

230V 3Ph 60Hz use Schneider Electric GV2ME20  
Set to 15.8A  
12AWG wire minimum

400V 3Ph 50Hz use Schneider Electric GV2ME14  
Set to 8A



14AWG wire minimum

**MD500 EXTRACTOR**

230V 3Ph 60Hz use Schneider Electric GV2ME21

Set to 20.5A

10AWG wire minimum

400V 3Ph 50Hz use Schneider Electric GV2ME14

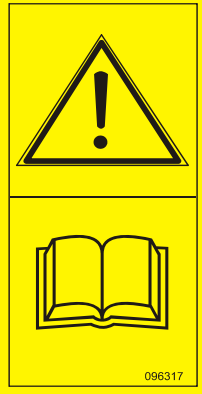

Set to 10A

14AWG wire minimum

***Safety Labels Description***

See table below for safety labels description.


**TABLE 1-1**

Label View	Label Number	Description
	096317	CAUTION! Carefully read operator's manual before handling the machine. Observe instructions and safety rules when operating.
	545705	CAUTION! Be careful with the rotating components.

**TABLE 1-1**

	<p>096319</p>	<p>Always disconnect the power cord before opening the electric box.</p>
	<p>S12004G</p>	<p>Always wear safety goggles when operating the planer/moulder with the chip extractor attached!</p>
	<p>501465</p>	<p>Always wear safety boots when operating the planer/moulder with the chip extractor attached!</p>
	<p>512107-1</p>	<p>Always wear safety gloves when operating the planer/moulder with the chip extractor attached!</p>
	<p>S20098</p>	<p>Motor rotate direction</p>

**TABLE 1-1**

	P85070	CE safety certification
---	--------	-------------------------

## SECTION 2 SPECIFICATIONS, SETUP & OPERATION

### 2.1 Overall dimensions

See Figure 2-1. The overall dimensions of both MD400 and MD500 chip extractors are shown below (all dimensions in millimeters).

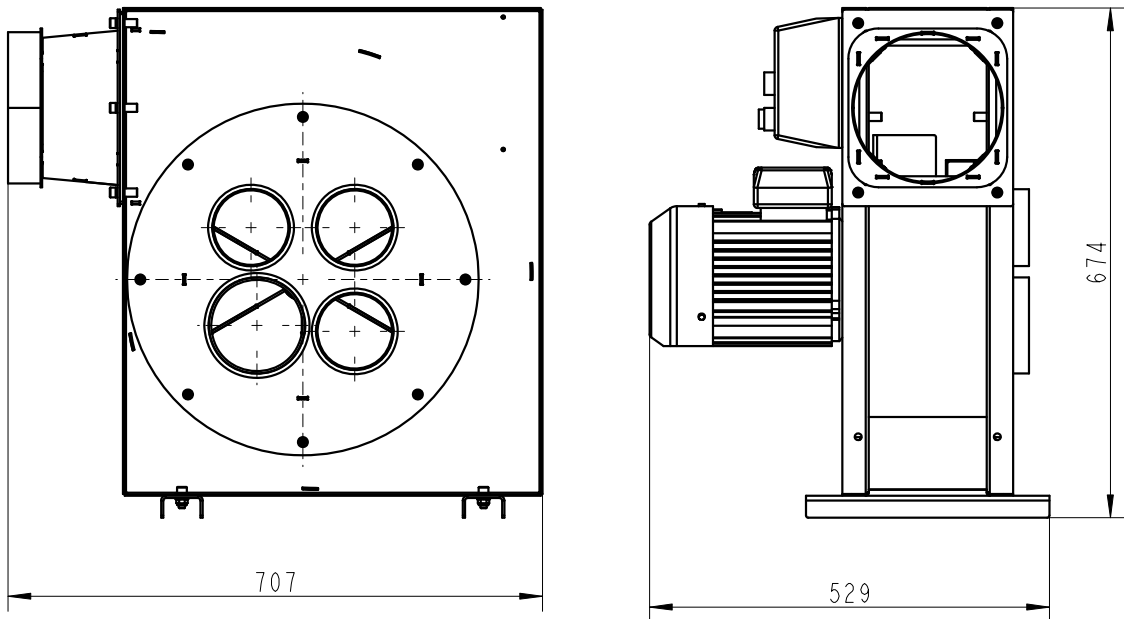


FIG. 2-1 MD400

See Figure 2-2.

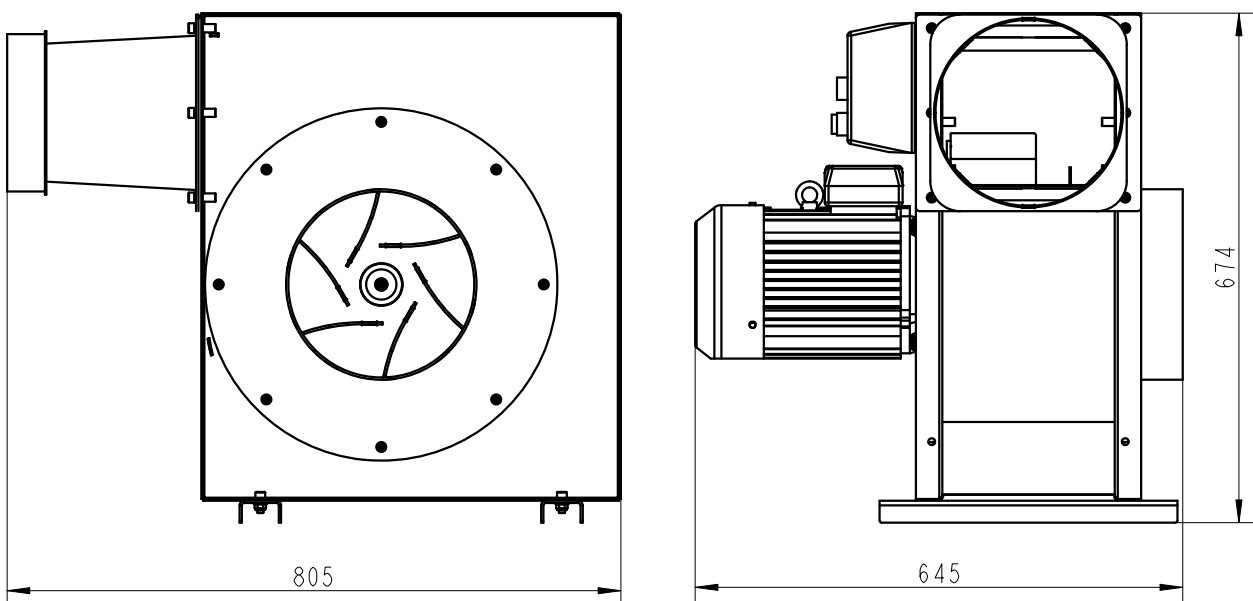


FIG. 2-2 MD500

## 2.2 Specifications of MD400 and MD500 chip extractors

See table 2-1. Wood-Mizer chip extractors nomenclature is given in the table below.

Chip Extractor Model	MD500EH4S-S
Motor Type	Electric Motor
Rated Voltage	3x400V
Mass	68.1 kg
Rated power	4 kW
Flow rate	5000 m <sup>3</sup> /h

Chip Extractor Model	MD400EH3S-S	MD400EB3U-S	MD400EA3U-S
Motor Type	Electric Motor	Electric Motor	Electric Motor
Rated Voltage	1x230V, 3x230V, 3x400V	3x230V	1x230V
Mass	56,9 kg	56,9 kg	56,9 kg
Rated power	3 kW	3 kW	3 kW
Flow rate	4000 m <sup>3</sup> /h	4000 m <sup>3</sup> /h	4000 m <sup>3</sup> /h

**TABLE 2-1**

See table 2-2. The noise level generated by Wood-Mizer Chip Extractor is given in the table below<sup>1 2</sup>

	Noise Level
<b>MES403 Chip Extractor Equipped with electric motor</b>	L <sub>WA</sub> (under load) = 99.2dB (A)

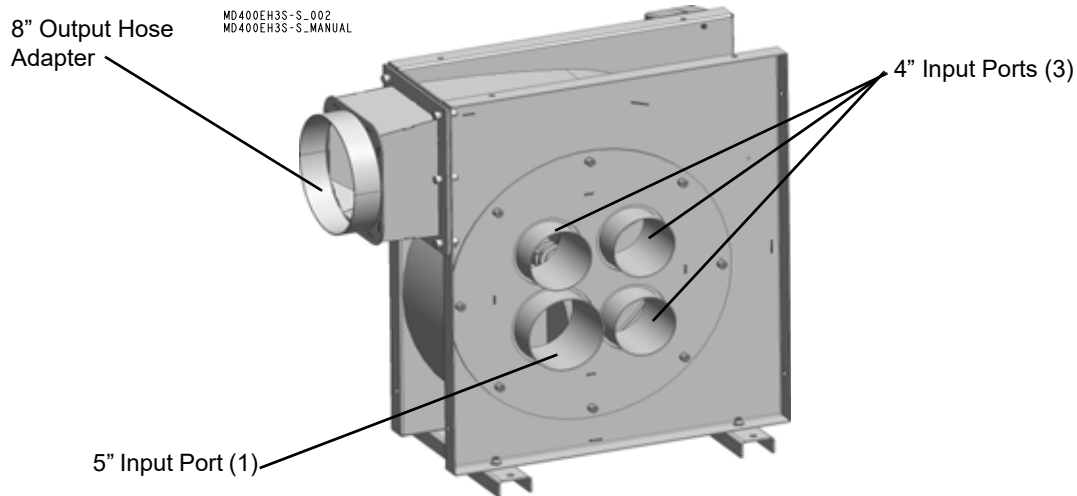
**TABLE 2-2**

1 The noise level measurement was taken in accordance with PN-EN ISO 3744:2011 Standard . Value for associated uncertainty K=2dB.

2 The measured values refer to emission levels, not necessarily to noise levels in the workplace. Although there is a relation between emission levels and exposure levels, it is not possible to determine with certainty if preventives are needed or are not needed. Factors that influence the actual level of exposure of the workforce include the characteristics of the work room and the other sources of noise etc. i.e. the number of machines and other adjacent processes. Also, the permissible exposure level value may vary depending on country. This information enables the machine's user to better identify hazards and a risk.

The MD400 Chip Extractor has 4 chip collection input ports - one 5" (125 mm) and three 4" (100 mm) ports sized to fit flexible hose, and an 8" (200 mm) output port.

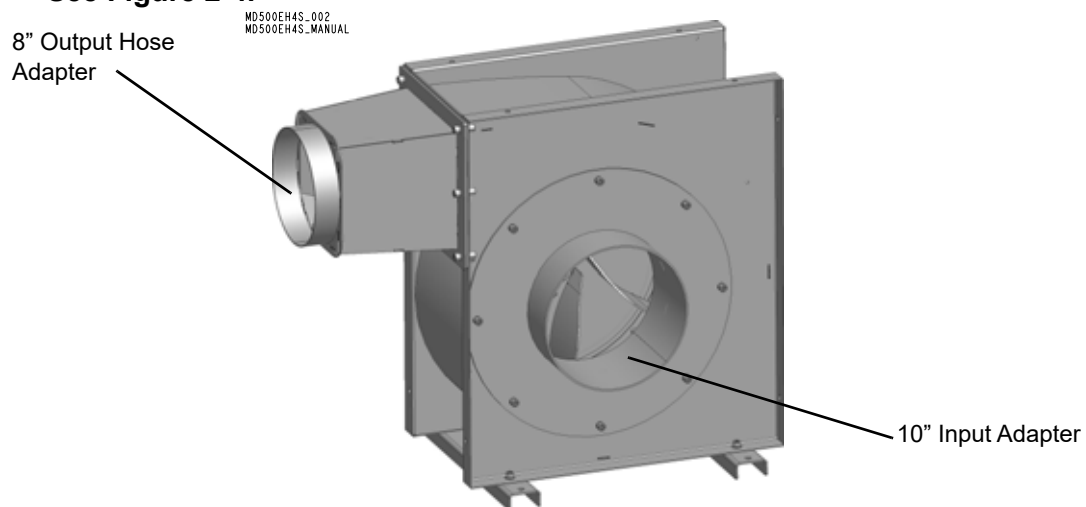
**See Figure 2-3.**



**FIG. 2-3 MD400 - UNITS MAY VARY IN COLOR**

The MD500 Chip Extractor has 10" (250 mm) collection input port and a 8" (200 mm) output port.

**See Figure 2-4.**



When using a collection system, keep in mind:

- Check your local waste disposal codes before designing your chip collection system.
- Design access to your chip collection bins so that they can be easily emptied.
- Short hose runs and smooth-walled hoses reduce suction loss within the system.
- Locate the chip collector near the planer moulder.
- Collection systems are loud; use ear protection.

- If you are operating this machine in a climate-controlled building and blowing the chips outside, the vacuum created by the chip collector can quickly empty your building of its heated or cooled air.
- If blowing the chips to an indoor bin, an air filter will be necessary to prevent wood dust from reducing the air quality inside of your building.
- If selling chips for use with livestock, do not use harsh chemicals for cleaning or lubricating machinery.

### 2.3 Attaching the Chip Extractor



**IMPORTANT!** Do not use your Chip Extractor if flexible hoses are not attached to it.

The Chip Extractor is attached to external units by means of flexible hoses. The ports have been designed to fit the hose, and are fastened with conventional hose clamps. No special accommodations are required.

See Figure 2-5.

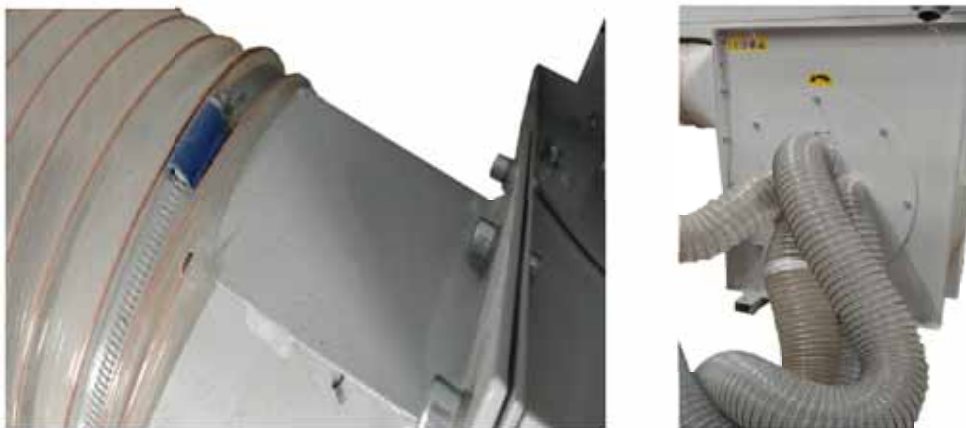


FIG. 2-5

Hose size	Input	Output
<b>MD400</b>	4" (100 mm), 5" (125 mm)	8" (200 mm)
<b>MD500</b>	10" (250 mm)	8" (200 mm)

### 2.4 Chip Extraction Kit Assembly

Tools needed for the assembly are a 6mm hex key and a 13mm open end wrench. A power drill is recommended.

1. After unpacking the kit check if all the following items are present:
  - (2) Bags,

- (2) Bag locks,
- (3) Legs (no cut-outs),
- (1) Frame,
- Bolts, washers and nuts are pre-threaded into the mounting holes,
- (2) Bag bands,
- (4) Steel rods,
- (1) Leg (with cut-out),
- (1) Hose adapter.



2. Attach the adapter to the frame using 5 bolts with lock washers. Tighten the last bolt after installing the leg with the cut-out.

See Figure 2-6. Assembly method

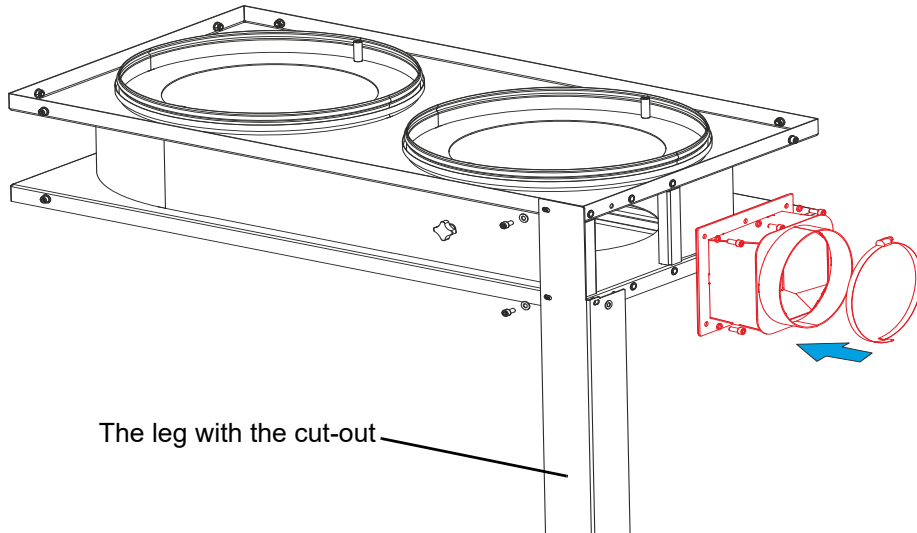


FIG. 2-6

3. Attach the 3 remaining legs to the frame with bolts, washers and nuts.

See Figure 2-7.

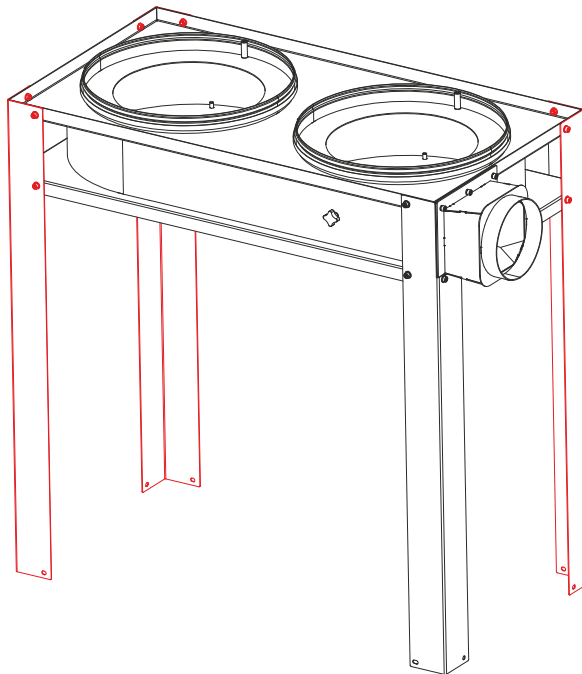


FIG. 2-7

4. Secure the rods in the bag bands as shown in the figure below.

See Figure 2-8.

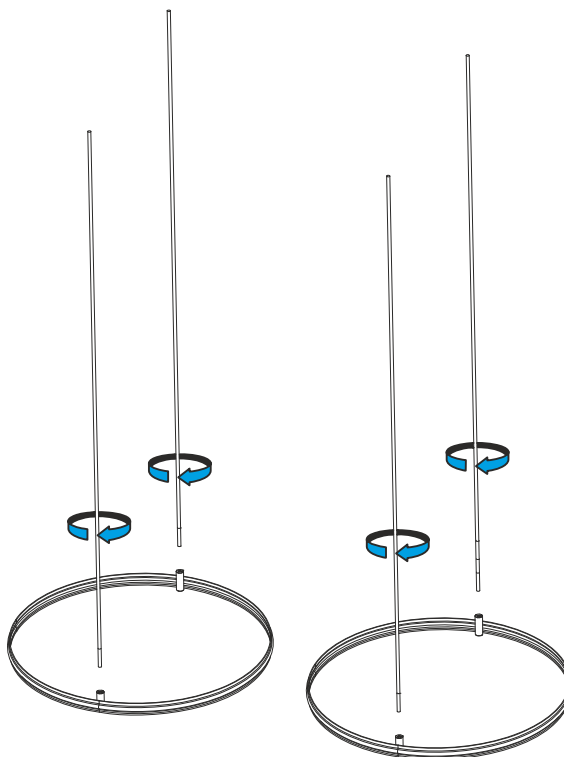


FIG. 2-8

5. Place the bands with rods into the bags, as shown in the figure below.

See Figure 2-9.

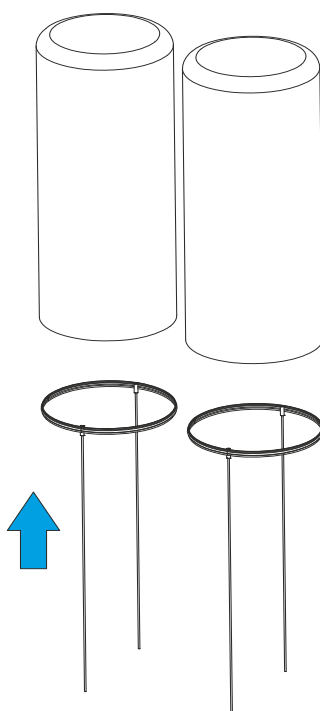


FIG. 2-9

6. Place the frame and the legs in an upright position.
7. Place the bag clamps onto the frame flanges, as shown in the figure below.

See Figure 2-10.

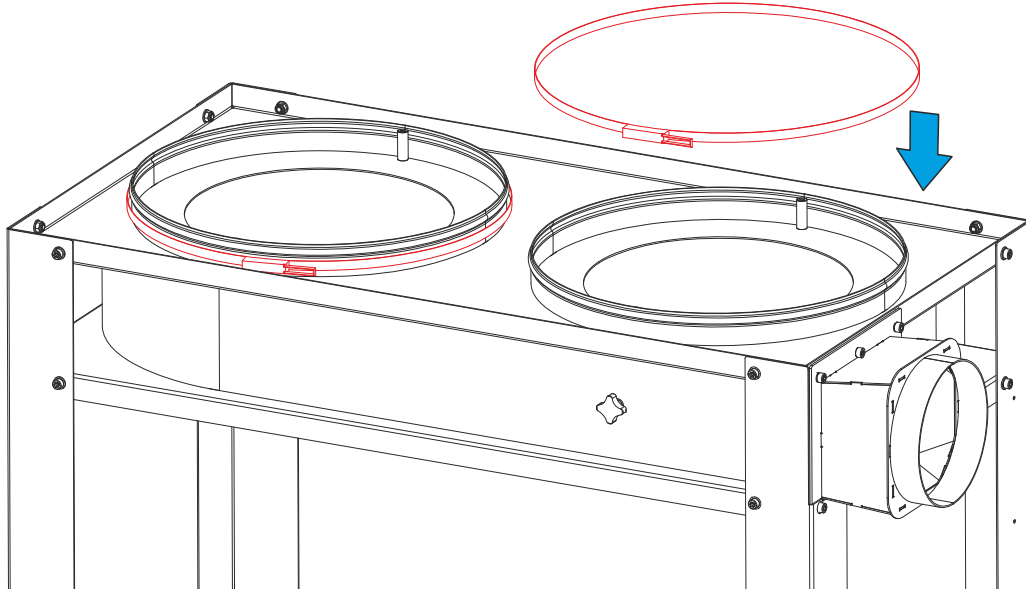


FIG. 2-10

8. Place the bags over the slots in the frame by putting the rods into the appropriate fixing slots.

See Figure 2-11.

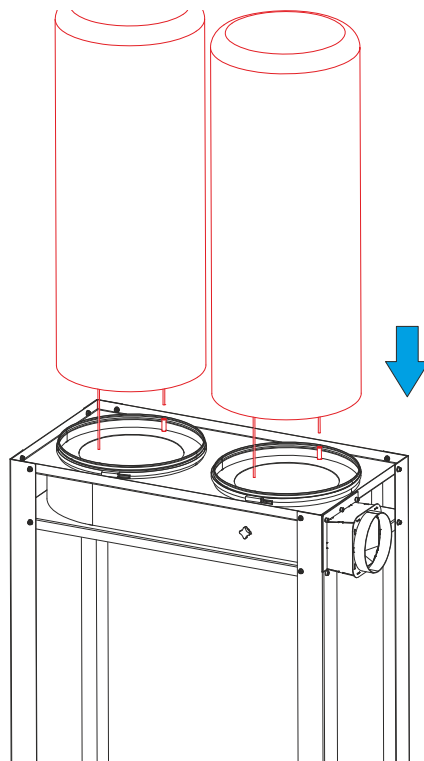


FIG. 2-11

## 2 Specifications, SETUP & OPERATION

### Chip Extraction Kit Assembly

9. Slide the bags between the slots in the frame and the bag clamps.
10. Lock the bag clamps by closing the latches, as shown in the figure below.

See Figure 2-12.

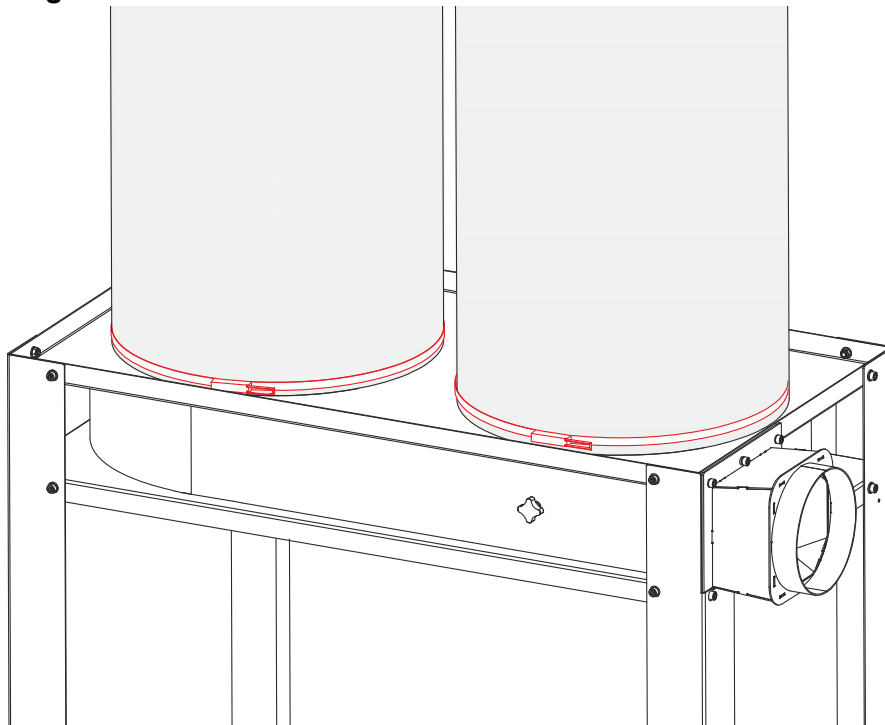


FIG. 2-12

11. Place the bags under the slots in the frame.
12. Lower the square supports of the bags by undoing the latches.
13. Thread the bags through the supports.

See Figure 2-13.

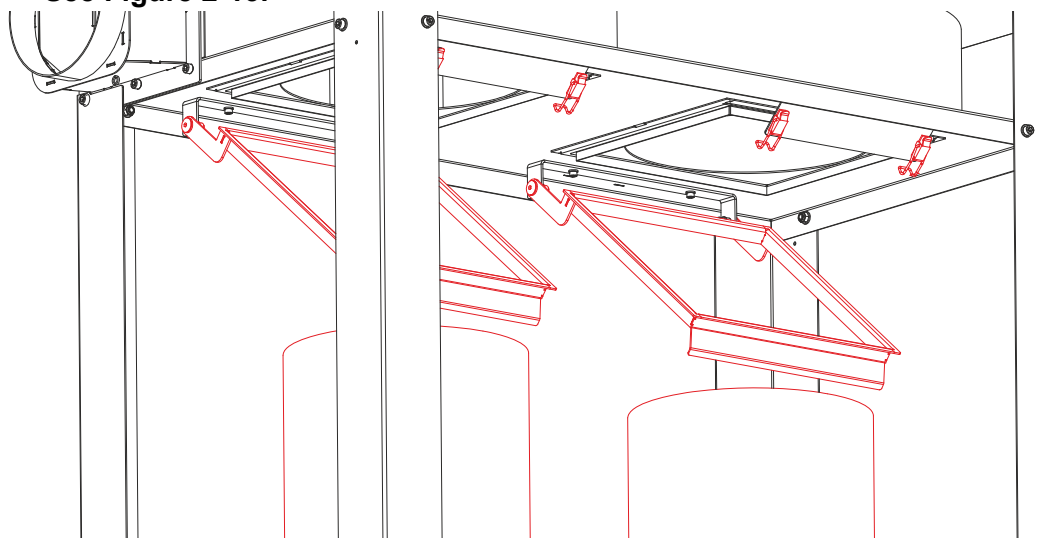


FIG. 2-13

**CAUTION:** Make sure the supports are completely covered by the bags. Otherwise, chips may run out of the bags.

14. To seal the bags, tighten the latches on the frame again.
15. Attach the 8" hose to the input port with a standard hose clamp.

The assembly of the Chip Extraction Kit has been completed.

## 2.5 Chip Extraction System (MES403EH3S-S) Assembly

1. Insert the connecting plate with seals between the body and the MD400 fan. Screw the body to the MD400 fan as shown in the picture below.

See Figure 2-14.

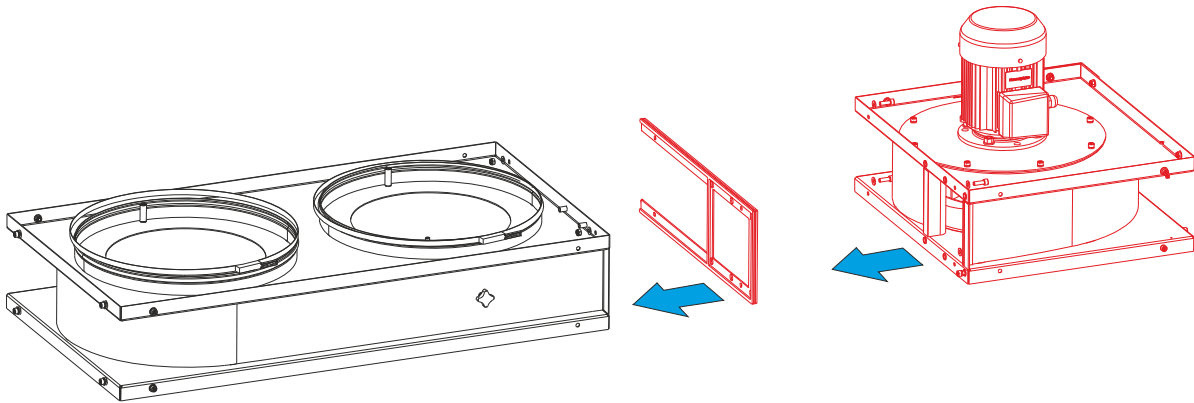


FIG. 2-14

## 2 Specifications, SETUP & OPERATION

### Chip Extraction System (MES403EH3S-S) Assembly

2. Screw the side plates to the body and the fan with bolts. Screw the 4 supports to the body and the fan. Attach the switch to the leg, as shown in the figure below.

See Figure 2-15.

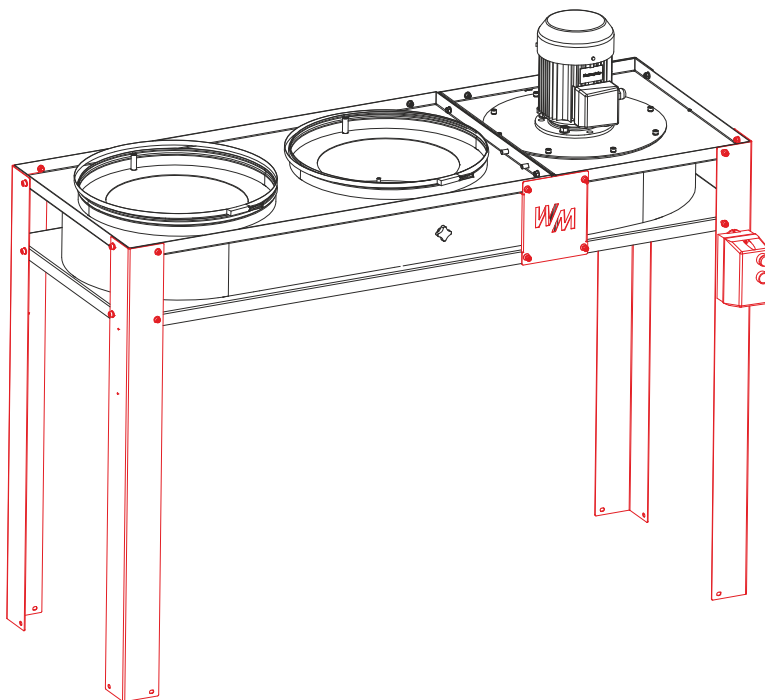
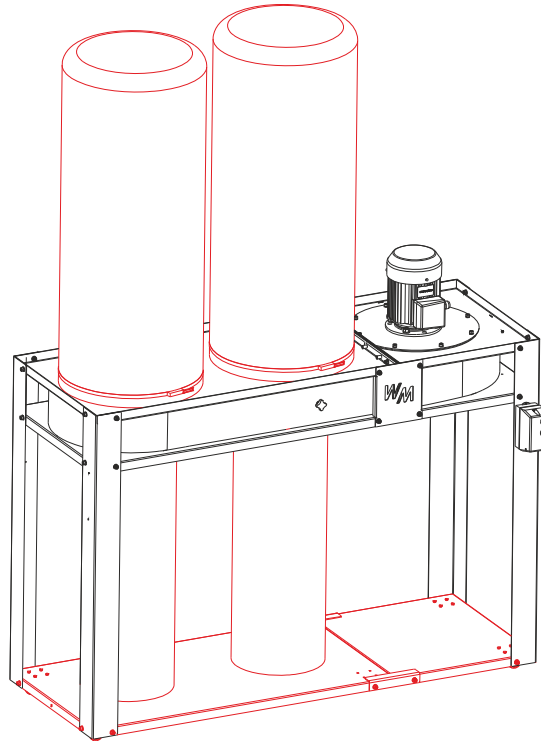


FIG. 2-15

3. Attach the complete bottom plate to the legs. The assembly of the bottom plate has been shown in section 3.6. Place the bags on the body, this process has been shown in section 2.4.

**See Figure 2-16.**



**FIG. 2-16**

## 2.6 Chip Extraction System (MES501EH4S-S) Assembly

Attach the distributor (A) to the fan (B). Attach the fan to the suction distributor (C) with a hose and clamps. Screw the fan switch (D) to the housing. Attach the chip extraction kits (E) to the distributor (A) with hoses and clamps as shown in the figure below. The clamp set (F) is used to attach the extraction hoses.

See Figure 2-17. Chip Extraction System Assembly

MES501EH4S-S\_OPER\_001  
MES501EH4S-S\_MANUAL

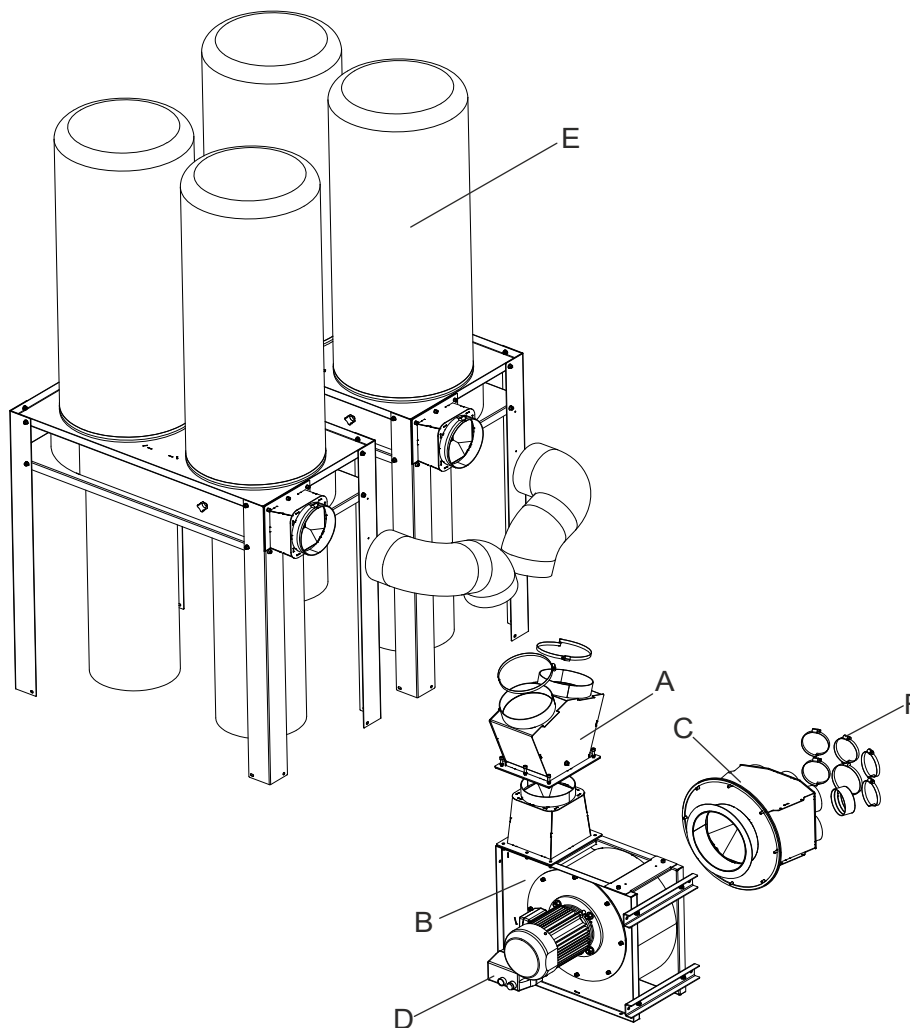


FIG. 2-17



## SECTION 3

### 3.1 REPLACEMENT PARTS

### 3.2 How To Use The Parts List

- Use the table of contents or index to locate the assembly that contains the part you need.
- Go to the appropriate section and locate the part in the illustration.
- Use the number pointing to the part to locate the correct part number and description in the table.
- Parts shown indented under another part are included with that part.
- Parts marked with a diamond (◆) are only available in the assembly listed above the part.

See the sample table below. Sample Part #A01111 includes part F02222-2 and subassembly A03333. Subassembly A03333 includes part S04444-4 and subassembly K05555. The diamond (◆) indicates that S04444-4 is not available except in subassembly A03333. Subassembly K05555 includes parts M06666 and F07777-77. The diamond (◆) indicates M06666 is not available except in subassembly K05555.

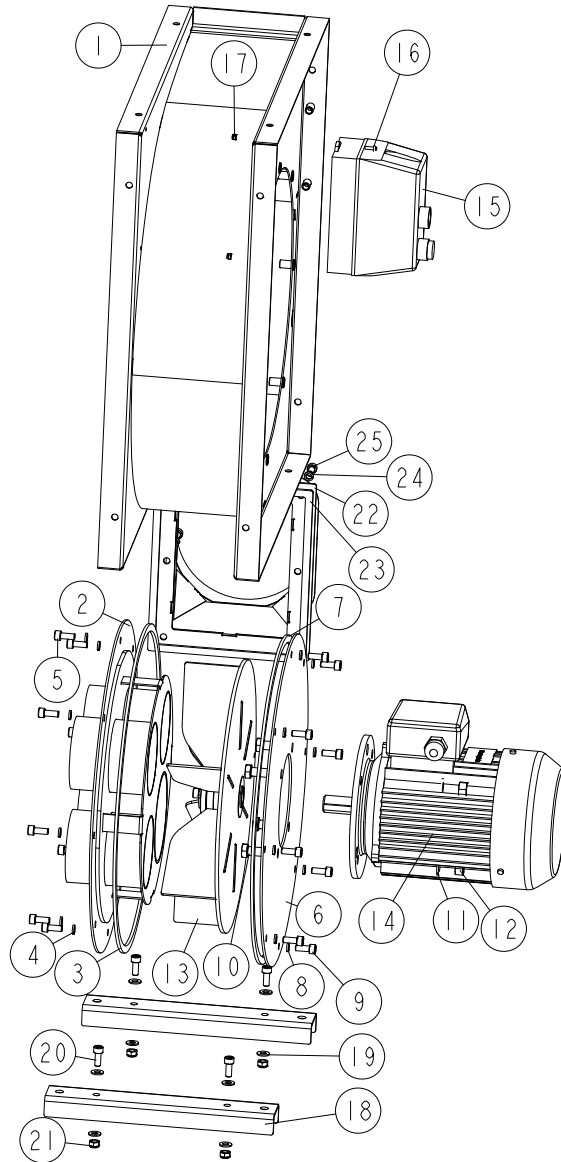
Sample Assembly				
REF.	DESCRIPTION (◆ Indicates Parts Available In Assemblies Only)	PART #	QTY.	
	<b>SAMPLE ASSEMBLY, COMPLETE (INCLUDES ALL INDENTED PARTS BELOW)</b>	A01111	1	
1	Sample Part	F02222-22	1	
	Sample Subassembly (Includes All Indented Parts Below)	A03333	1	
2	Sample Part (◆ Indicates Part Is Only Available With A03333)	S04444-4	1	◆
	Sample Subassembly (Includes All Indented Parts Below)	K05555	1	
3	Sample Part (◆ Indicates Part Is Only Available With K05555)	M06666	2	◆
4	Sample Part	F07777-77	1	

#### To Order Parts:

- From Europe call our European Headquarters and Manufacturing Facility in Kolo, Poland at **+48-63-2626000**. From the continental U.S., call our toll-free Parts hotline at **1-800-448-7881**. Have your customer number, vehicle identification number, and part numbers ready when you call.
- From other international locations, contact the Wood-Mizer distributor in your area for parts.

## 3.3 MD400EH3S-S, MD400EA3S-S Chip Extractor Fan

MD400EH3S-S\_001  
MD400EH3S-S\_MANUAL

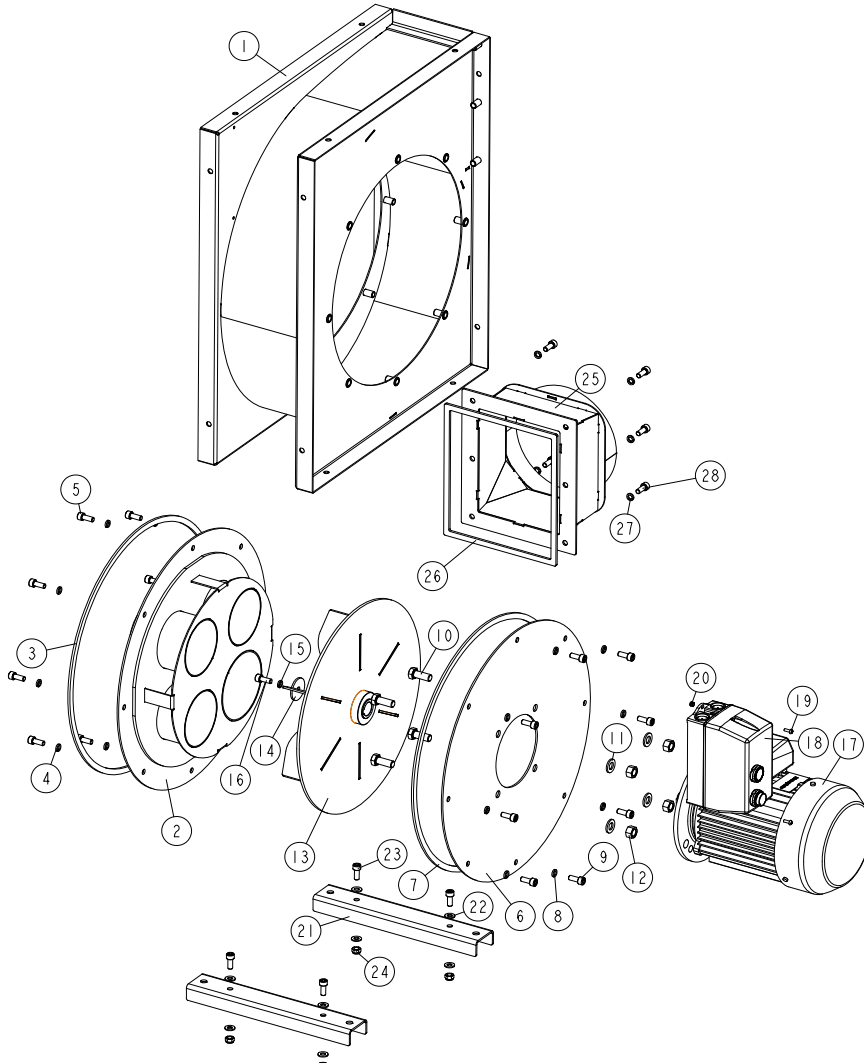


REF.	DESCRIPTION (* indicates parts available in assemblies only)	PART #	QTY	
-	MD400EH3S-S CHIP EXTRACTOR FAN	MD400EH3S-S	1	
-	MD400EA3S-S CHIP EXTRACTOR FAN	MD400EA3S-S	1	
-	MD400 MECHANICAL ASSEMBLY	537860	1	
-	BODY, MD400 - COMPLETE	537847	1	
1	WELDMENT BODY, MD400	537835-1	1	
-	ADAPTER, INPUT - COMPLETE	537853	1	
2	INPUT ADAPTER (3X100 + 1X125)	537850-1	1	
3	SEAL	537839	1	
4	WASHER 8,2 ZC SPRING LOCK DIN 127	F81054-4	8	
5	SCREW M8X20 SHCS ZC 8.8 DIN 912 ISO 4762	F81002-30	8	
-	FLANGE, MOTOR - COMPLETE	537858	1	
6	MOTOR FLANGE	537857-1	1	

REF.	DESCRIPTION (* indicates parts available in assemblies only)	PART #	QTY	
7	SEAL	537839	1	
8	WASHER 8,2 ZC SPRING LOCK DIN 127	F81054-4	8	
9	SCREW M8X20 SHCS ZC 8.8 DIN 912 ISO 4762	F81002-30	8	
10	BOLT, M12X25-8.8-FE/ZN5 PN-M/82105	F81004-31	4	
11	WASHER, 13 FLAT ZINC	F81056-1	4	
12	NUT M12 ZC 8 DIN 934	F81034-1	4	
13	ROTOR, MD400	537855	1	
-	MOTOR KIT, MD400 EH 3X400V CE	537861	1	
-	MOTOR KIT, MD400 EA 1X230V CE	537861-6	1	
14	MOTOR, 3SIEK90L2-B5, 3KW/2900 RPM/50HZ	537859	1	
-	MOTOR, SELHR90-2M2 IMB5/2 2,7KW 230V	566409	1	
15	STARTER, 10A MAX (3-4 KW, 400V), IP65	517344	1	
-	STARTER DLW-25 D24 P65-R33	517343-2	1	
16	SCREW,M4X12 -5,8-B CROSS RECESSED PAN HE	F81011-43	2	
-	SCREW M4X16 SHCS ZC 8.8 DIN 912 ISO 4762	F81011-56	2	
17	NUT M4 ZC 8 NYLOCK DIN 982 ISO 7040	F81029-1	2	
-	NUT M4 ZC 8 NYLOCK DIN 982 ISO 7040	F81029-1	2	
-	BRACKET - COMPLETE	537830	2	
18	BRACKET	537833-1	1	
19	WASHER, 8.4 FLAT ZINC	F81054-1	4	
20	SCREW M8X20 SHCS ZC 8.8 DIN 912 ISO 4762	F81002-30	2	
21	NUT, M8-8-B HEX NYLON ZINC LOCK	F81032-2	2	
-	ADAPTER, OUTPUT - COMPLETE	537870	1	
22	N200 OUTPUT ADAPTER	537869-1	1	
23	SEAL	537846	1	
24	WASHER 8,2 ZC SPRING LOCK DIN 127	F81054-4	6	
25	SCREW M8X20 SHCS ZC 8.8 DIN 912 ISO 4762	F81002-30	6	

### 3.4 MD400EB3U-S Chip Extractor Fan

MD400EB3U-S\_001  
MD400EB3U-S\_MANUAL

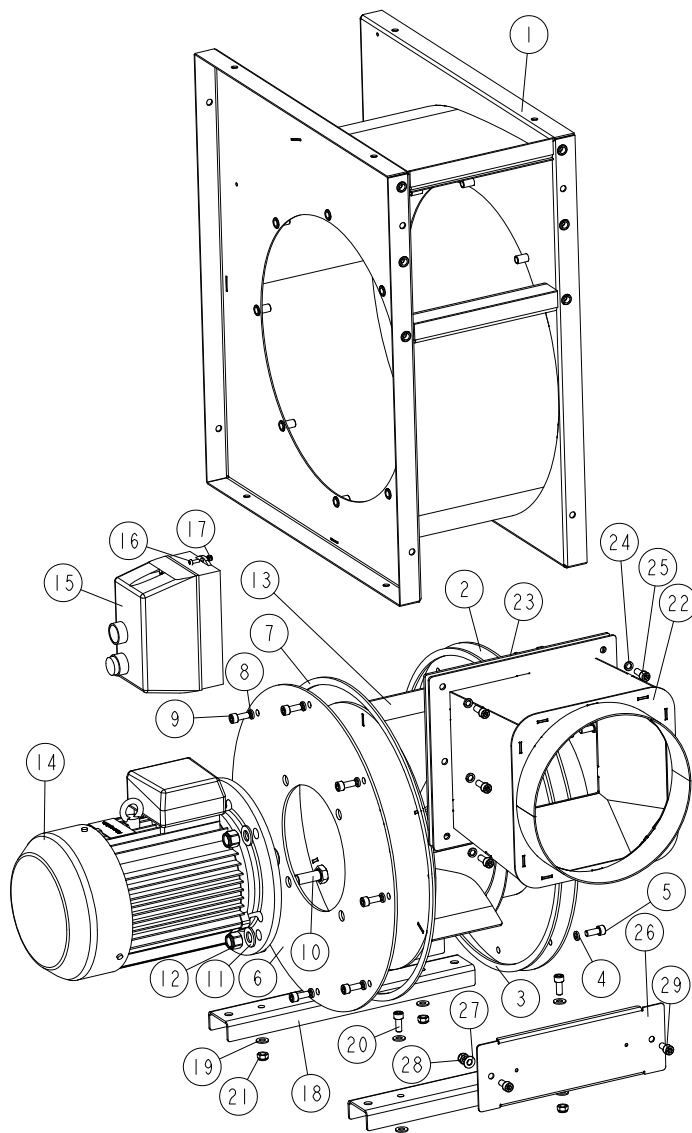


REF.	DESCRIPTION (* indicates parts available in assemblies only)	PART #	QTY
-	<b>MD400EB3U-S CHIP EXTRACTOR FAN</b>	MD400EB3 U-S	1
-	MD400EB - MECHANICAL ASSEMBLY	537860-2U	1
-	BODY, MD400 - COMPLETE	537847	1
1	WELDMENT BODY, MD400	537835-1	1
-	ADAPTER, INPUT - COMPLETE	537853	1
2	INPUT ADAPTER (3X100 + 1X125)	537850-1	1
3	SEAL	537839	1
4	WASHER, 8.2 SPLIT LOCK ZINC	F81054-4	8
5	SCREW, M8X20-8.8-HEX SOCKET HEAD CAP ZIN	F81002-30	8
-	FLANGE, MOTOR - COMPLETE	537858	1
6	MOTOR FLANGE	537857-1	1
7	SEAL	537839	1
8	WASHER, 8.2 SPLIT LOCK ZINC	F81054-4	8
9	SCREW, M8X20-8.8-HEX SOCKET HEAD CAP ZIN	F81002-30	8

REF.	DESCRIPTION (* indicates parts available in assemblies only)	PART #	QTY	
10	BOLT, M12X30 8.8 HEX HEAD FULL THREAD ZI	F81004-22	4	
11	WASHER, 13 FLAT ZINC	F81056-1	4	
12	NUT, M12-8-B HEX ZINC	F81034-1	4	
-	ROTOR, MD 400EB	537855-2U	1	
13	ROTOR, MD400 - WELDMENT	546720	1	
14	WASHER, MD400	537828	1	
15	WASHER, 8.2 SPLIT LOCK ZINC	F81054-4	1	
16	SCREW, M8X20-8.8-HEX SOCKET HEAD CAP ZINC	F81002-30	1	
-	MOTOR KIT, MD400 EH 3X400V CE	537861-2U	1	
17	MOTOR, 3KW, 3PH, 3480 RPM, 230V, 60HZ, IMB5, UL	537859-UL	1	
18	STARTER, M0P01212 2306015 UL	517344-2U	1	
19	SCREW, M4X12-5.8-B CROSS RECESSED PAN HE	F81011-43	2	
20	NUT, M4-B HEX NYLON ZINC LOCK	F81029-1	2	
-	BRACKET - COMPLETE	537830	2	
21	BRACKET	537833-1	1	
22	WASHER, 8.4 FLAT ZINC	F81054-1	4	
23	SCREW, M8X20-8.8-HEX SOCKET HEAD CAP ZIN	F81002-30	2	
24	NUT, M8-8-B HEX NYLON ZINC LOCK	F81032-2	2	
-	ADAPTER, OUTPUT - COMPLETE	537870	1	
25	N200 OUTPUT ADAPTER	537869-1	1	
26	SEAL	537846	1	
27	WASHER, 8.2 SPLIT LOCK ZINC	F81054-4	6	
28	SCREW, M8X20-8.8-HEX SOCKET HEAD CAP ZINC	F81002-30	6	

### 3.5 MD500EH4S-S Chip Extractor Fan

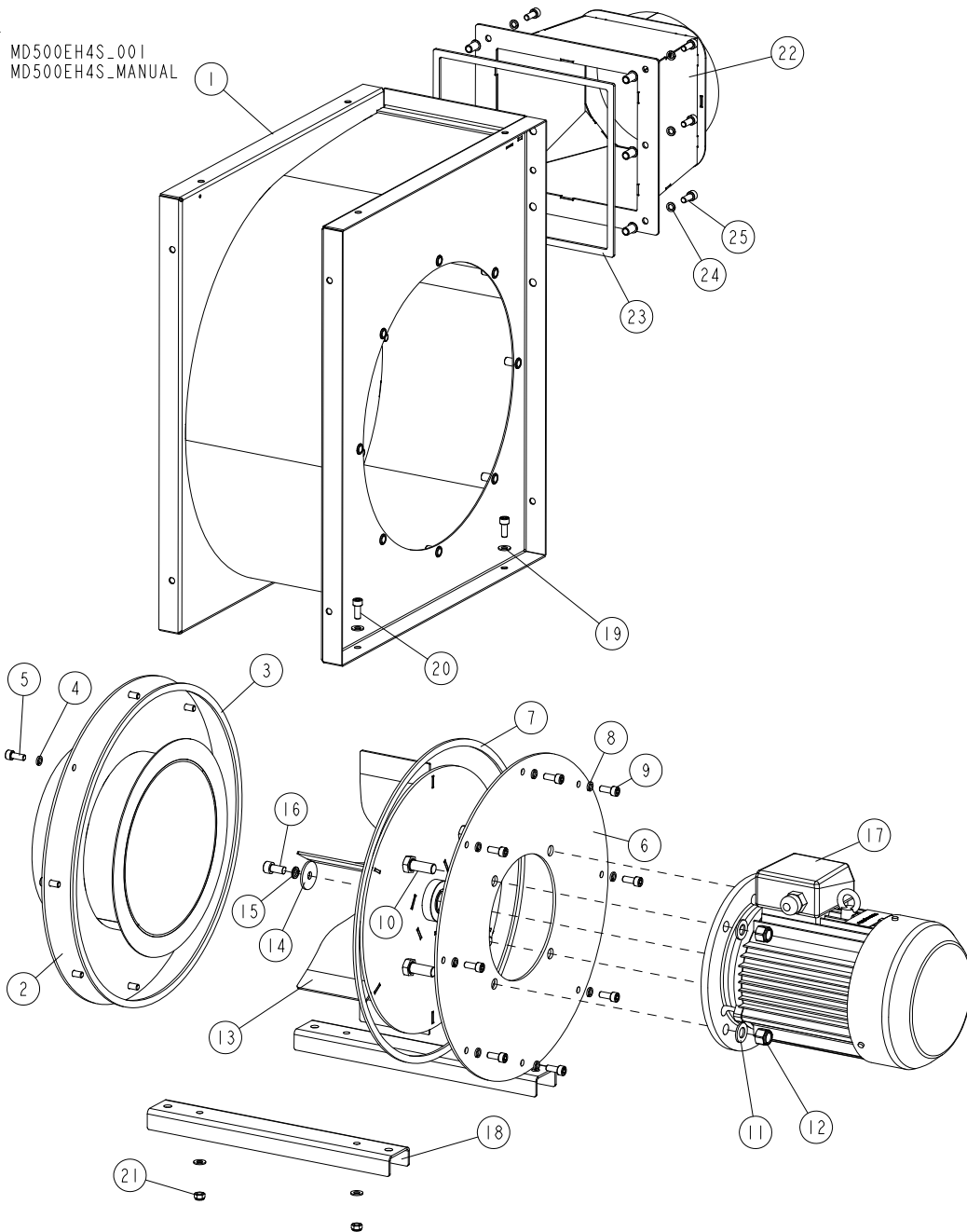
MD500EH4S-S\_001  
MD500EH4S-S\_MANUAL



REF.	DESCRIPTION (◆ Indicates Parts Available In Assemblies Only)	PART #	QTY
-	<b>MD500EH4S-S CHIP EXTRACTOR FAN</b>	MD500EH4S-S	1
-	MD500 MECHANICAL ASSEMBLY	537900	1
-	BODY, MD500 - COMPLETE	537875	1
1	WELDMENT BODY, MD500	537874-1	1
-	ADAPTER, INPUT - COMPLETE	537899	1
2	INPUT ADAPTER	537230-1	1
3	SEAL	537839	1
4	WASHER, 8.2 SPLIT LOCK ZINC	F81054-4	8
5	SCREW, M8X20-8.8 HEX SOCKET HEAD CAP ZINC	F81002-30	8
-	FLANGE, MOTOR - COMPLETE	537895	1
6	MOTOR FLANGE	537896-1	1
7	SEAL	537839	1
8	WASHER, 8.2 SPLIT LOCK ZINC	F81054-4	8

REF.	DESCRIPTION (◆ Indicates Parts Available In Assemblies Only)	PART #	QTY	
9	SCREW, M8X20-8.8 HEX SOCKET HEAD CAP ZINC	F81002-30	8	
10	BOLT, M14X35-8.8-FE/ZN5 ISO 4017 (PN/M-82105)	F81005-1	4	
11	WASHER, 15 FLAT ZINC	F81057-2	4	
12	NUT, M14 HEX NYLON ZINC LOCK	F81035-2	4	
13	ROTOR, MD500	537903	1	
-	MOTOR KIT, MD500 EH 3X400V CE	537898	1	
14	MOTOR, 3SIEK100L2A 4KW/2900RPM/50HZ	537897	1	
15	STARTER, 10A MAX (3-4 KW, 400V), IP65	517344	1	
16	SCREW, M4X12 -5,8-B CROSS RECESSED PAN HEAD ZINC	F81011-43	2	
17	NUT, M4 ZC 8 NYLOCK DIN 982 ISO 7040	F81029-1	2	
-	BRACKET - COMPLETE	537905	2	
18	BRACKET	537871-1	1	
19	WASHER, 8.4 FLAT ZINC	F81054-1	4	
20	SCREW, M8X20-8.8 HEX SOCKET HEAD CAP ZINC	F81002-30	2	
21	NUT, M8-8-B HEX NYLON ZINC LOCK	F81032-2	2	
-	ADAPTER, OUTPUT - COMPLETE	537890	1	
22	N250 OUTPUT ADAPTER	537889-1	1	
23	SEAL	537891	1	
24	WASHER, 8.2 SPLIT LOCK ZINC	F81054-4	6	
25	SCREW, M8X20-8.8 HEX SOCKET HEAD CAP ZINC	F81002-30	6	
-	PLATE - COMPLETE	542329	1	
26	PLATE	542328-1	1	
27	WASHER, 8.4 FLAT ZINC	F81054-1	2	
28	NUT, M8-8-B HEX NYLON ZINC LOCK	F81032-2	2	
29	SCREW, M8X16-8.8 HEX SOCKET HEAD CAP ZINC	F81002-39	2	

### 3.6 MD500EH4S Chip Extractor Fan



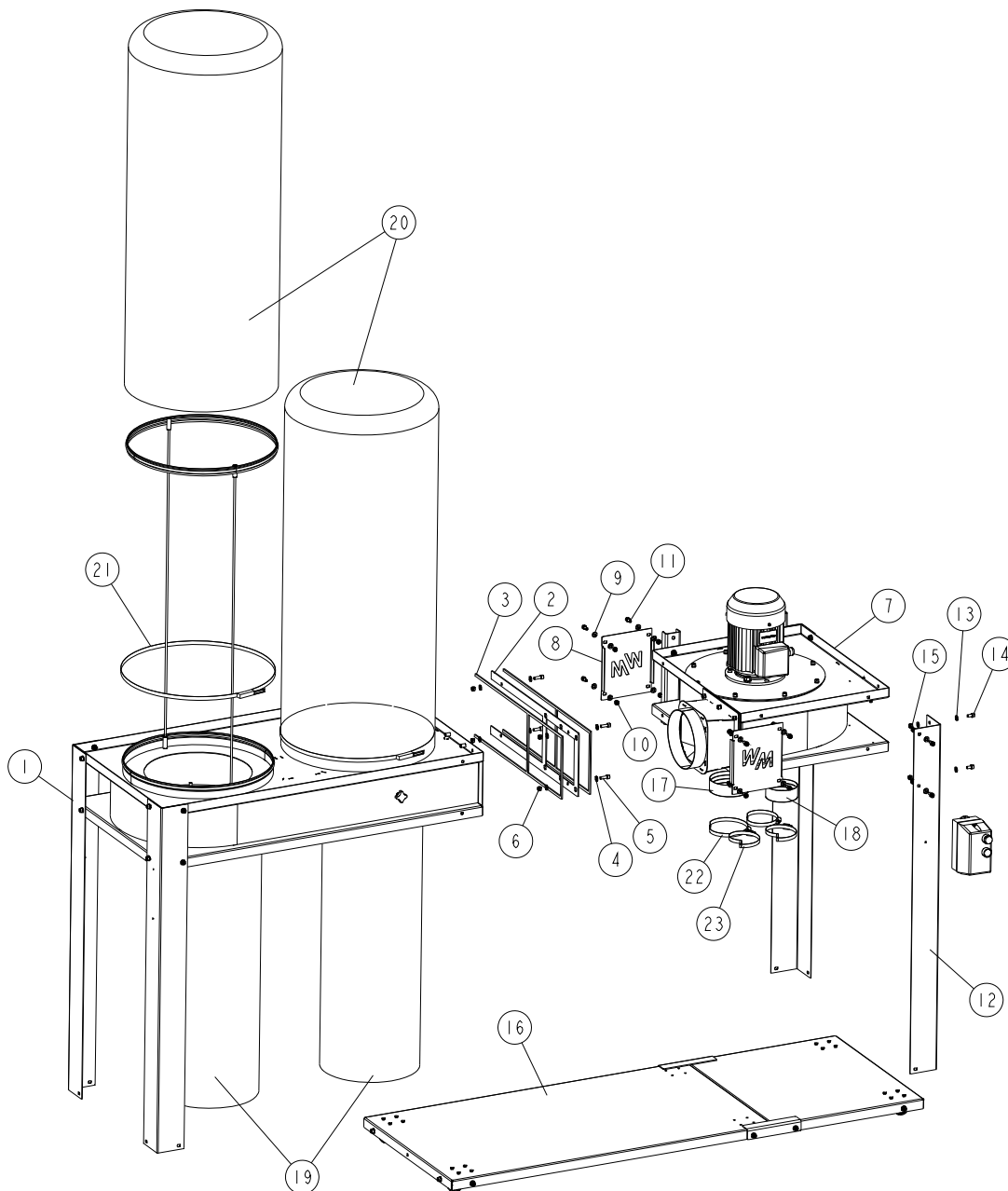
REF.	DESCRIPTION (◆ Indicates Parts Available In Assemblies Only)	PART #	QTY
-	<b>MD500EH4S CHIP EXTRACTOR FAN</b>	MD500EH4S	1
-	MD500 MECHANICAL ASSEMBLY	537900	1
-	BODY, MD500 - COMPLETE	537875	1
1	WELDMENT BODY, MD500	537874-1	1
-	ADAPTER, INPUT - COMPLETE	537899	1
2	INPUT ADAPTER	537230-1	1
3	SEAL	537839	1
4	WASHER, 8.2 SPLIT LOCK ZINC	F81054-4	8
5	SCREW, M8X20-8.8 HEX SOCKET HEAD CAP ZINC	F81002-30	8
-	FLANGE, MOTOR - COMPLETE	537895	1



REF.	DESCRIPTION (◆ Indicates Parts Available In Assemblies Only)	PART #	QTY	
6	MOTOR FLANGE	537896-1	1	
7	SEAL	537839	1	
8	WASHER, 8.2 SPLIT LOCK ZINC	F81054-4	8	
9	SCREW, M8X20-8.8 HEX SOCKET HEAD CAP ZINC	F81002-30	8	
10	BOLT, M14X35-8.8-FE/ZN5 ISO 4017 (PN/M-82105)	F81005-1	4	
11	WASHER, 15 FLAT ZINC	F81057-2	4	
12	NUT, M14 HEX NYLON ZINC LOCK	F81035-2	4	
-	ROTOR, MD500	537903	1	
13	ROTOR, MD500 - WELDMENT	544396-1	1	
14	WASHER, MD500	537904	1	
15	WASHER, 10.2 SPLIT LOCK ZINC	F81055-2	1	
16	SCREW M10X20 SHCS ZC 8.8 DIN 912 ISO4762	F81003-108	1	
17	MOTOR, 3SIEK100L2A 4KW/2900RPM/50HZ	537897	1	
-	BRACKET - COMPLETE	537905	2	
18	BRACKET	537871-1	1	
19	WASHER, 8.4 FLAT ZINC	F81054-1	4	
20	SCREW, M8X20-8.8 HEX SOCKET HEAD CAP ZINC	F81002-30	2	
21	NUT, M8-8-B HEX NYLON ZINC LOCK	F81032-2	2	
-	ADAPTER, OUTPUT - COMPLETE	542525	1	
22	N200 OUTPUT ADAPTER	542526-1	1	
23	SEAL	537891	1	
24	WASHER, 8.2 SPLIT LOCK ZINC	F81054-4	6	
25	SCREW, M8X20-8.8 HEX SOCKET HEAD CAP ZINC	F81002-30	6	

### 3.7 MES403EH3S-S Chip Extraction System

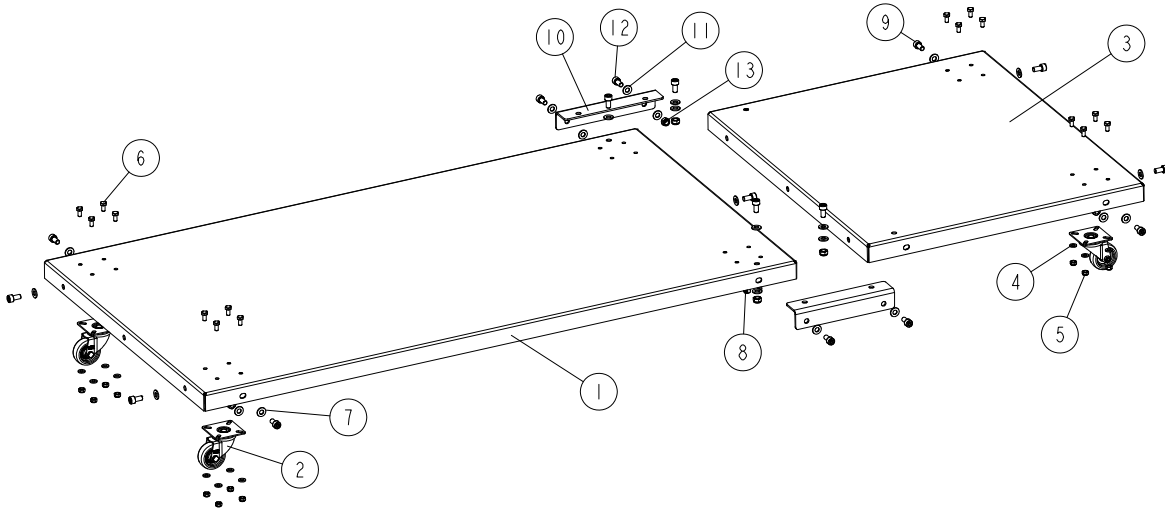
301-004\_001  
301-004\_MANUAL



REF.	DESCRIPTION (◆ Indicates Parts Available In Assemblies Only)	PART #	QTY
-	<b>MES403EH3S-S CHIP EXTRACTION SYSTEM</b>	MES403EH 3S-S	1
1	BODY, CHIP EXTRACTION SYSTEM	537990	1
-	CONNECTING PLATE - COMPLETE	542306	1
2	CONNECTING PLATE	542303-1	1
3	SEAL	542304	2
4	WASHER, 8.4 FLAT ZINC	F81054-1	8
5	SCREW, M8X25-8.8 HEX SOCKET HEAD CAP ZINC	F81002-21	4
6	NUT, M8-8-B HEX NYLON ZINC LOCK	F81032-2	4

REF.	DESCRIPTION (◆ Indicates Parts Available In Assemblies Only)	PART #	QTY	
7	MD400EH3S-S CHIP EXTRACTOR FAN <a href="#">See Section 3.3</a>	MD400EH3 S-S	1	
-	SIDE PLATE - COMPLETE	542314	2	
8	SIDE PLATE	542313-1	1	
9	WASHER, 8.4 FLAT ZINC	F81054-1	8	
10	NUT, M8-8-B HEX NYLON ZINC LOCK	F81032-2	4	
11	SCREW, M8X16-8.8 HEX SOCKET HEAD CAP ZIN	F81002-39	4	
-	LEG 1 - COMPLETE	537983	4	
12	LEG 1	537972-1	1	
13	WASHER, 8.4 FLAT ZINC	F81054-1	8	
14	SCREW, M8X16-8.8 HEX SOCKET HEAD CAP ZIN	F81002-39	4	
15	NUT, M8-8-B HEX NYLON ZINC LOCK	F81032-2	4	
16	BOTTOM PLATE - COMPLETE <a href="#">See Section 3.8</a>	542302	1	
17	PIPE PLUG 127	542312	1	
18	PIPE PLUG 101.6	542311	2	
19	SAWDUST BAG L: 1200, G: 0.15	537986	2	
20	FILTER BAG	537987	2	
21	SPRING CLAMP 500-545	537988	2	
22	CLAMP, 120-140MM	F81095-12	1	
23	CLAMP, 90-110MM	F81095-11	3	

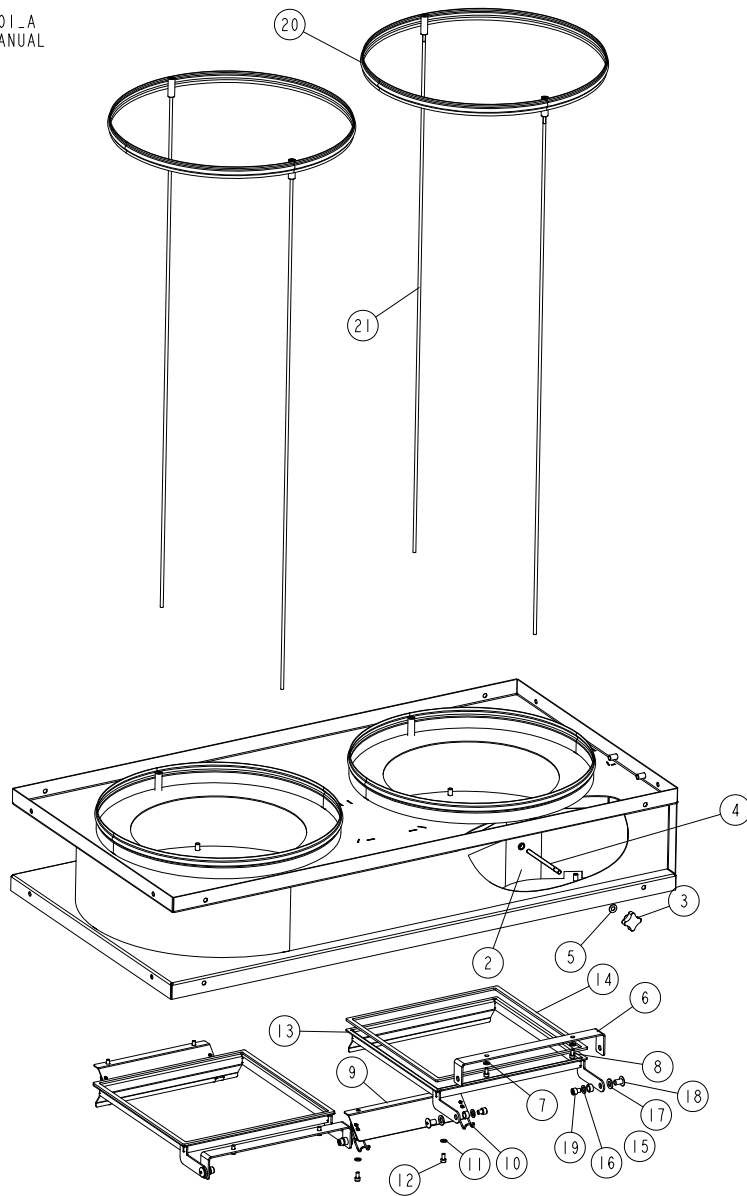
## 3.8 Bottom Plate - Complete

542302\_001\_A  
542302\_MANUAL

REF.	DESCRIPTION (* indicates parts available in assemblies only)	PART #	QTY	
-	<b>BOTTOM PLATE - COMPLETE</b>	542302	1	
1	BOTTOM PLATE	542301-1	1	
2	WHEEL	542310	4	
3	BOTTOM PLATE II	542315-1	1	
4	WASHER, 6.4 FLAT ZINC	F81053-1	16	
5	NUT, M6-8-B NYLON HEX ZINC LOCK	F81031-2	16	
6	BOLT, M6X12-8.8 HEX HEAD FULL THREAD ZIN	F81001-7	16	
7	WASHER, 8.4 FLAT ZINC	F81054-1	22	
8	NUT, M8-8-B HEX NYLON ZINC LOCK	F81032-2	11	
9	SCREW, M8X16-8.8 HEX SOCKET HEAD CAP ZIN	F81002-39	11	
-	<b>CONNECTOR - COMPLETE</b>	542317	2	
10	CONNECTOR	542316-1	1	
11	WASHER, 8.4 FLAT ZINC	F81054-1	8	
12	SCREW, M8X16-8.8 HEX SOCKET HEAD CAP ZIN	F81002-39	4	
13	NUT, M8-8-B HEX NYLON ZINC LOCK	F81032-2	4	

### 3.9 Chip Extraction System - Body

537990\_001\_A  
537990\_MANUAL

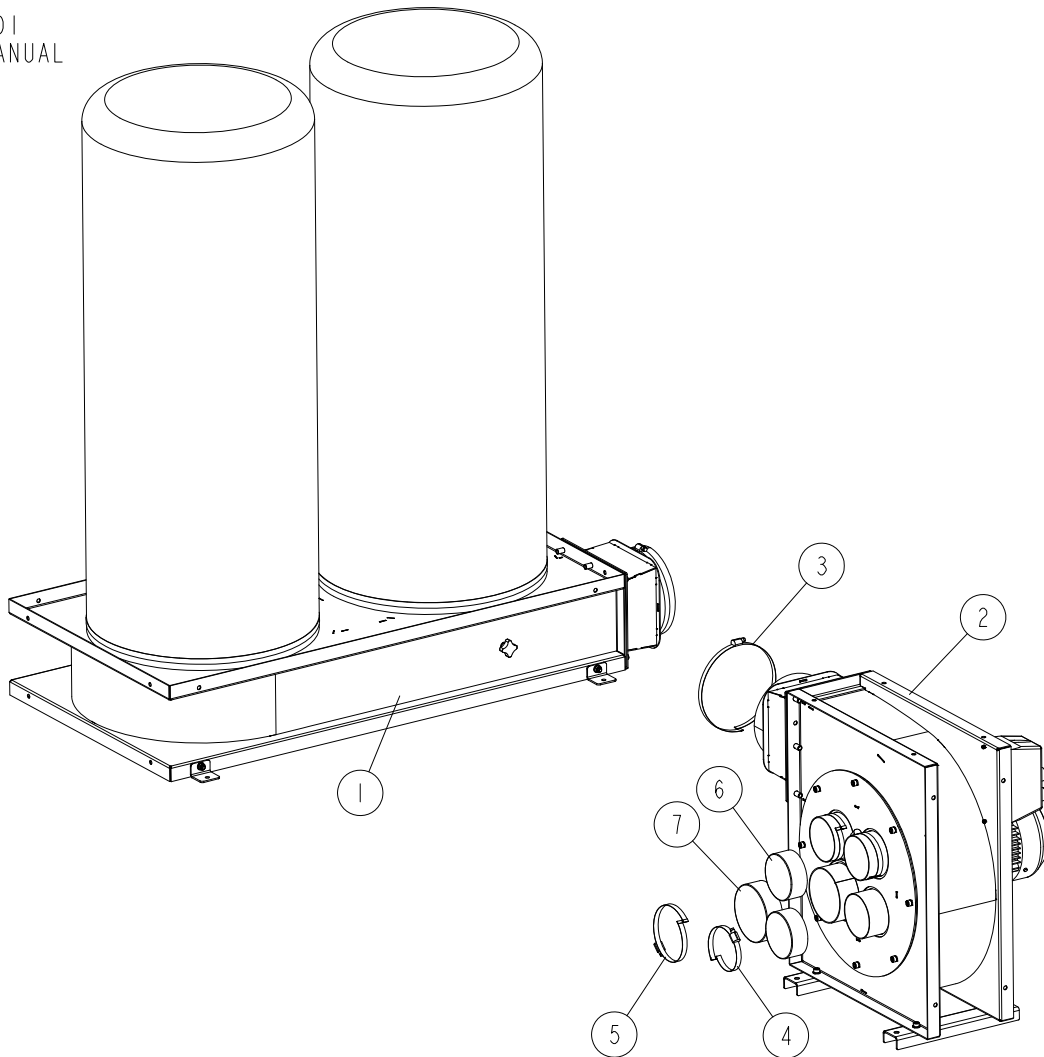


REF.	DESCRIPTION (* indicates parts available in assemblies only)	PART #	QTY
-	<b>BODY, CHIP EXTRACTION SYSTEM</b>	537990	1
1	BODY, CHIP EXTRACTION SYSTEM - COMPLETE	537985	1
-	DIRECTIONAL PLATE - COMPLETE	537975	1
2	DIRECTIONAL PLATE	537974-1	1
-	KNOB	537977	1
3	PALM GRIP	537110	1
4	ROD, M8 THREADED	537976	1
5	WASHER, 8.4 FLAT ZINC	F81054-1	1
-	CLAMPING	537982	2
6	FLAT BAR	537961-1	1
7	WASHER 6,4 ZC DIN 126 ISO 7091	F81053-1	2
8	SCREW, ISO 4762-M6X16-8.8-A2E HEX SOCKET	F81001-34	2
-	CLAMPING PLATE	537960	2

REF.	DESCRIPTION (* indicates parts available in assemblies only)	PART #	QTY	
9	PLATE	537958-1	1	
10	HOOK CLAMP TLP.Z.22-67 420181	537959	2	
11	WASHER 6,4 ZC DIN 126 ISO 7091	F81053-1	2	
12	SCREW M6X12 SHCS ZC 8.8 DIN 912 ISO 4762	F81001-87	2	
-	FRAME - COMPLETE	537970	2	
13	FRAME	537969-1	1	
14	SEAL	537971	1	
15	BUSHING, 10.3/15-7.5	533724	2	
16	WASHER 8.4/FI 16-1.6 0050410000VR	546948	2	
17	WASHER 10.5/FI20-2 0050470000VR	537967	2	
18	NUT, ERICSON M8 AN88 COLLAR ZINC	F81032-33	2	
19	SCREW, M8X10- 8.8- HEX SOCKET HEAD CAP Z	F81002-32	2	
20	FLANGE - COMPLETE	537980-1	2	
21	ROD N6	537981-1	4	

### 3.10 Chip Extraction System

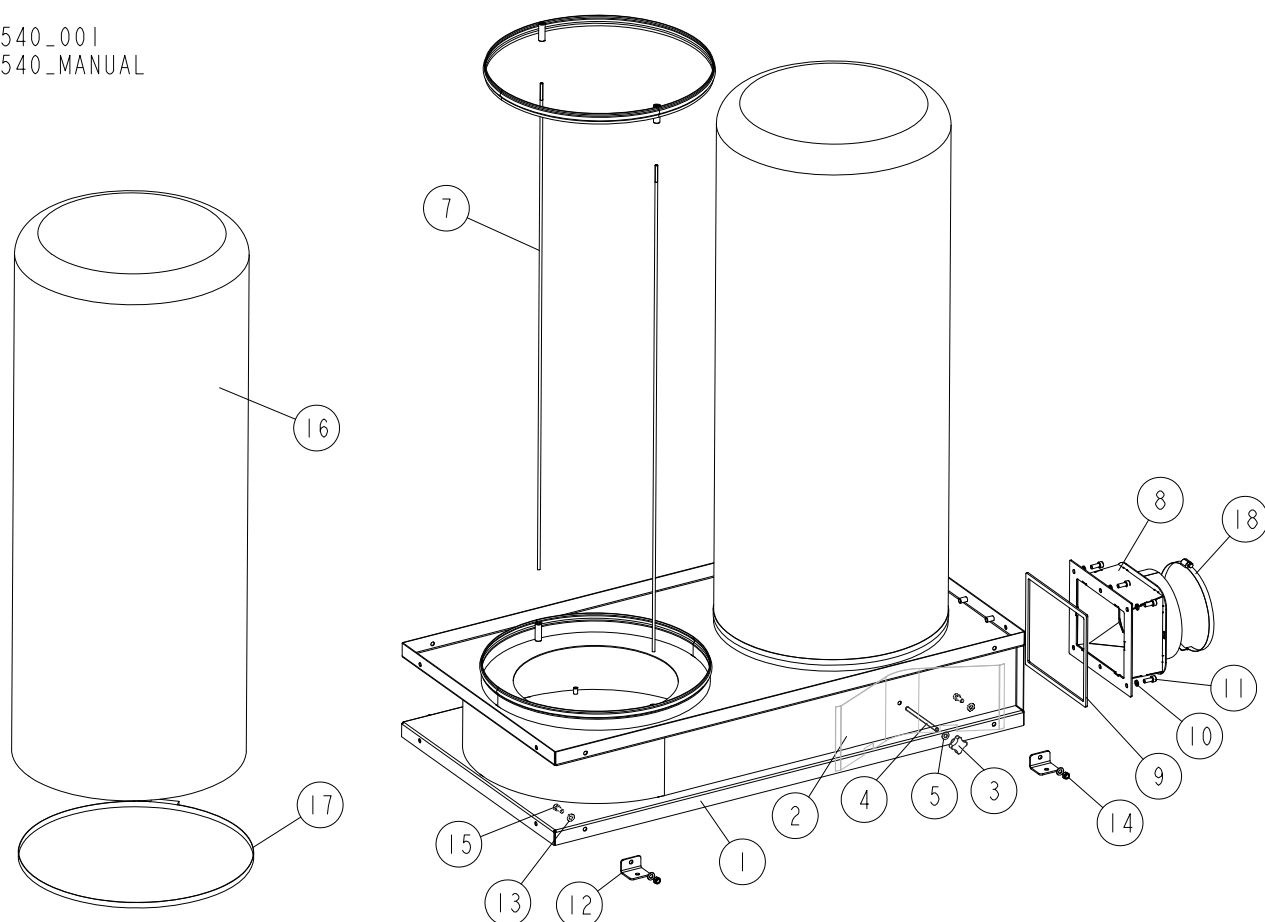
301-007\_001  
301-007\_MANUAL



REF.	DESCRIPTION (◆ Indicates Parts Available In Assemblies Only)	PART #	QTY
-	<b>CHIP EXTRACTION SYSTEM</b>	MES402EH 3S-S	1
1	CHIP EXTRACTION KIT	542540	1
2	MD400EH3S-S CHIP EXTRACTOR FAN <a href="#">See Section 3.3</a>	MD400EH3 S-S	1
3	CLAMP, 195-215MM	F81095-9	1
4	CLAMP, 90-110MM	F81095-11	3
5	CLAMP, 120-140MM	F81095-12	1
6	PIPE PLUG 101.6	542311	2
7	PIPE PLUG 127	542312	1

## 3.11 Chip Extraction Kit

542540\_001  
542540\_MANUAL



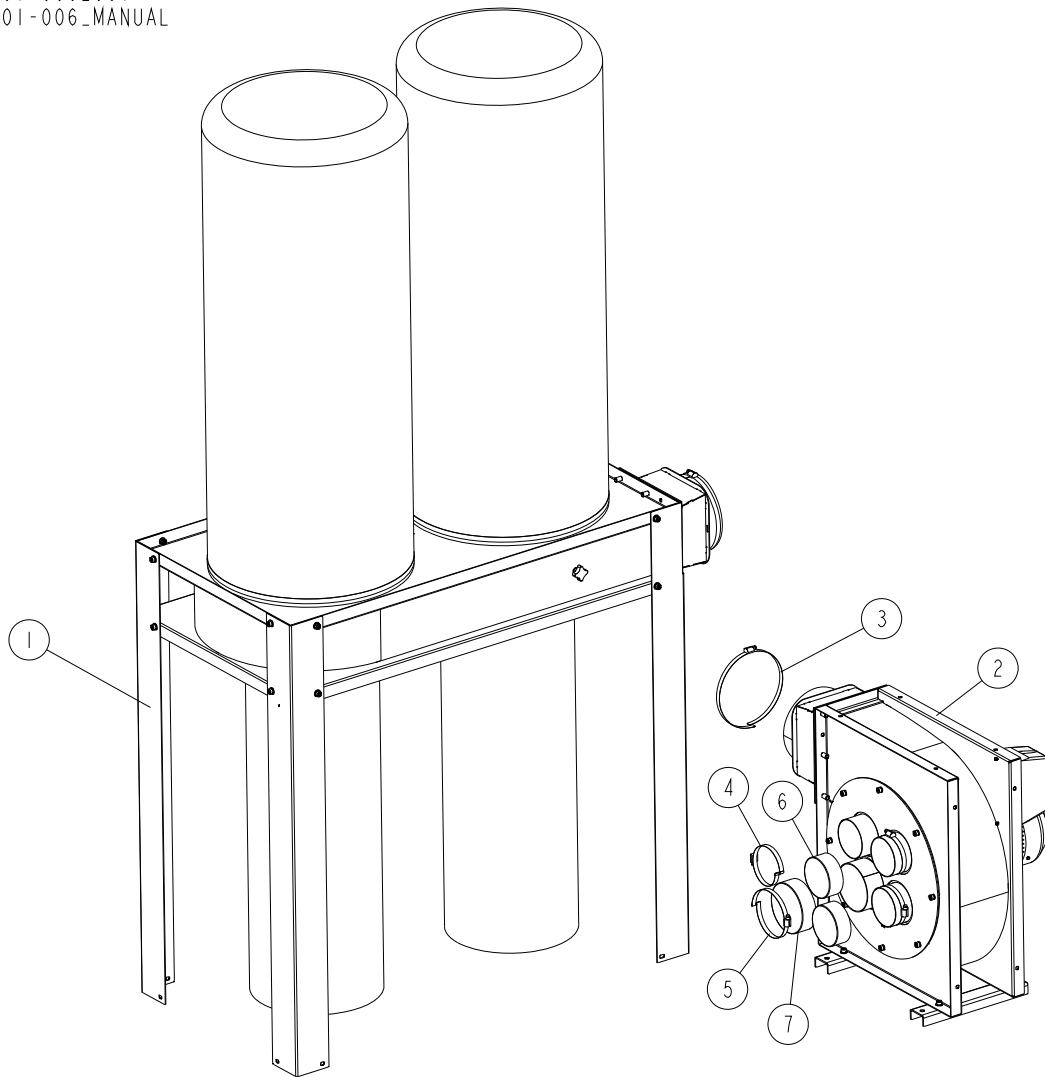
REF.	DESCRIPTION (◆ Indicates Parts Available In Assemblies Only)	PART #	QTY
-	<b>CHIP EXTRACTION KIT</b>	542540	1
-	BODY, CHIP EXTRACTION SYSTEM	542541	1
1	BODY, CHIP EXTRACTION SYSTEM - COMPLETE	537985	1
-	DIRECTIONAL PLATE - COMPLETE	537975	1
2	DIRECTIONAL PLATE	537974-1	1
-	KNOB	537977	1
3	PALM GRIP	537110	1
4	ROD, M8 THREADED	537976	1
5	WASHER, 8.4 FLAT ZINC	F81054-1	1
6	FLANGE - COMPLETE	537980-1	2
7	ROD N6	537981-1	4
-	ADAPTER, OUTPUT - COMPLETE	537870	1
8	ADAPTER, OUTPUT N200	537869-1	1
9	SEAL	537846	1
10	WASHER 8,2 ZINC SPRING LOCK DIN 127	F81054-4	6
11	BOLT, M8X20-8.8 SOCKET HEAD	F81002-30	6
-	CLAMPING - COMPLETE	542342	4
12	CLAMPING	542341-1	1
13	WASHER, 8.4 FLAT ZINC	F81054-1	2
14	NUT, M8-8-B HEX NYLON ZINC LOCK	F81032-2	1
15	BOLT, M8X20-8.8 SOCKET HEAD	F81002-30	1
16	FILTER BAG	537987	2



REF.	DESCRIPTION (◆ Indicates Parts Available In Assemblies Only)	PART #	QTY	
17	SPRING CLAMP 500-545	537988	2	
18	CLAMP, 195-215MM	F81095-9	1	

### 3.12 Chip Extraction System

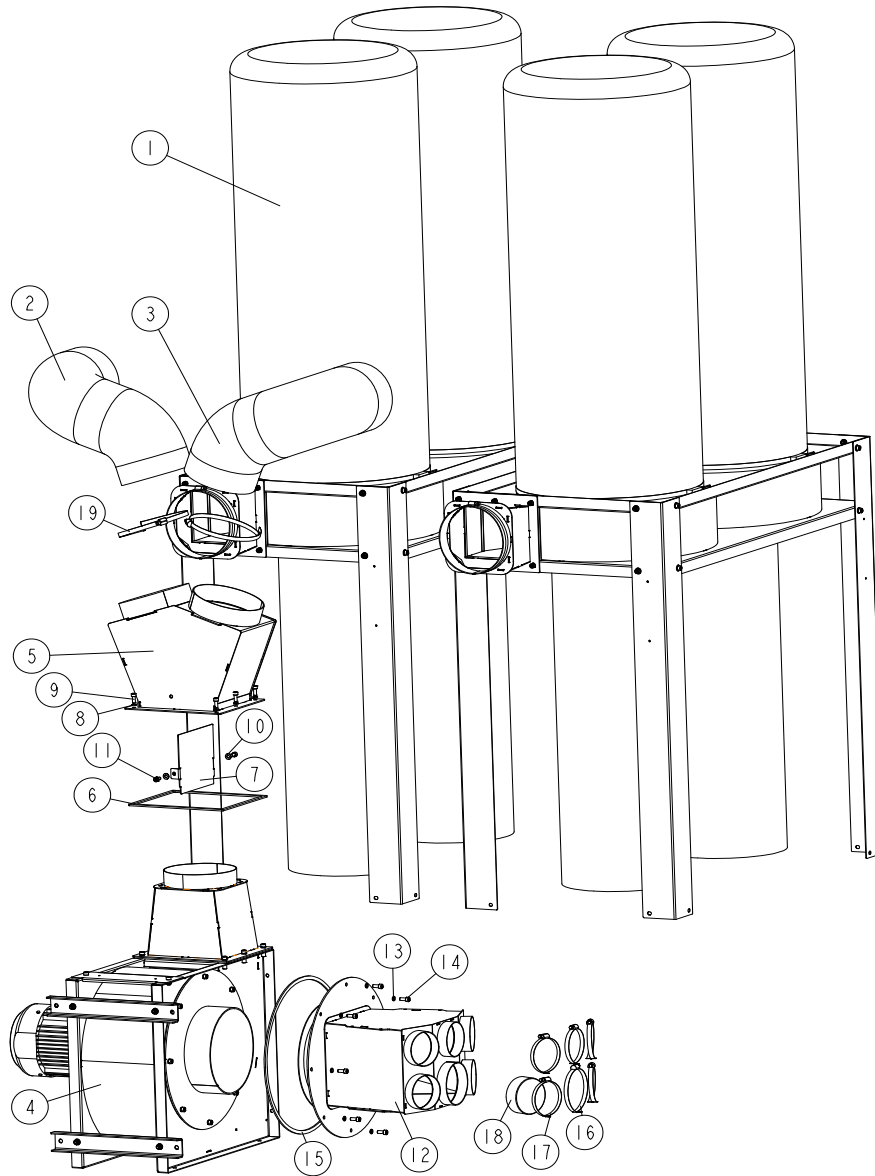
301-006-001  
301-006-MANUAL



REF.	DESCRIPTION (◆ Indicates Parts Available In Assemblies Only)	PART #	QTY
-	<b>MES401EH3S-S CHIP EXTRACTION SYSTEM</b>	MES401EH 3S-S	1
1	CHIP EXTRACTION KIT <a href="#">See Section 3.15</a>	546927	1
2	MD400EH3S-S CHIP EXTRACTION FAN <a href="#">See Section 3.3</a>	MD400EH3 S-S	1
3	CLAMP, 195-215MM	F81095-9	1
4	CLAMP, 90-110MM	F81095-11	3
5	CLAMP, 120-140MM	F81095-12	1
6	PIPE PLUG 101.6	542311	2
7	PIPE PLUG 127	542312	1

### 3.13 Chip Extraction System

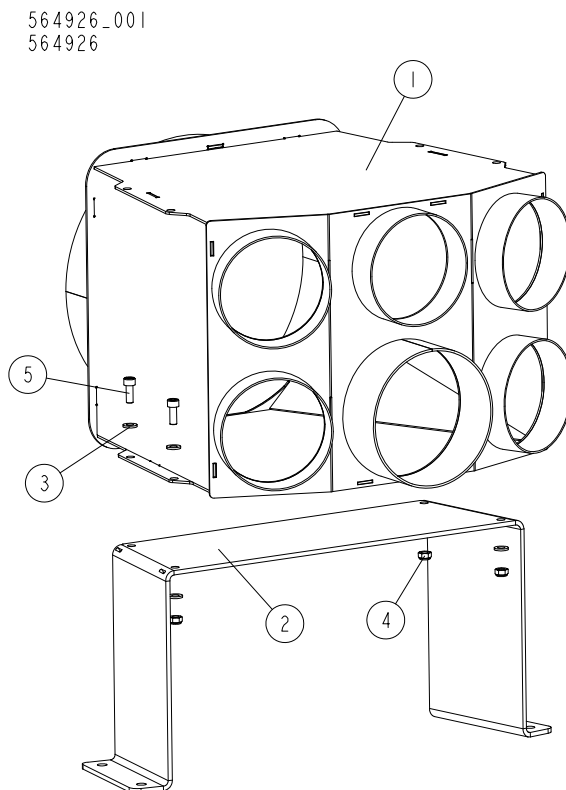
MES501EH4S-S\_001  
MES501EH4S-S\_MANUAL



REF.	DESCRIPTION (* indicates parts available in assemblies only)	PART #	QTY
-	<b>MES501EH4S-S CHIP EXTRACTION SYSTEM</b>	MES501EH4S-S	1
1	MD500EH4S-S CHIP EXTRACTION KIT <a href="#">See Section 3.15</a>	546927	2
2	SAWDUST EXTRACTION HOSE 200; L=200	542337	1
3	SAWDUST EXTRACTION HOSE 200; L=200	542337_	1
4	MD500EH4S-S CHIP EXTRACTOR FAN <a href="#">See Section 3.5</a>	MD500EH4S-S	1
-	DISTRIBUTOR 2X200	546929	1
5	DISTRIBUTOR 2X200	537940-1	1
6	SEAL	537891	1

REF.	DESCRIPTION (* indicates parts available in assemblies only)	PART #	QTY	
7	BAFFLE	537941-1	1	
8	WASHER, 8.2 SPLIT LOCK ZINC	F81054-4	6	
9	SCREW, M8 X 20-8.8 HEX SOCKET HEAD CAP Z	F81002-30	6	
10	WASHER, 8.4 FLAT ZINC	F81054-1	2	
11	SCREW, M8X16-8.8-HEX SOCKET HEAD CAP ZIN	F81002-39	2	
-	SUCTION DISTRIBUTOR	561947	1	
12	SUCTION DISTRIBUTOR	561948-1	1	
13	WASHER, 8.2 SPLIT LOCK ZINC	F81054-4	8	
14	SCREW, M8 X 20-8.8 HEX SOCKET HEAD CAP Z	F81002-30	8	
15	SEAL	537839	1	
16	CLAMP, 120-140MM	F81095-12	1	
17	CLAMP, 90-110MM	F81095-11	5	
18	PIPE PLUG 101.6	542311	1	
19	CLAMP, 195-215MM	F81095-9	2	

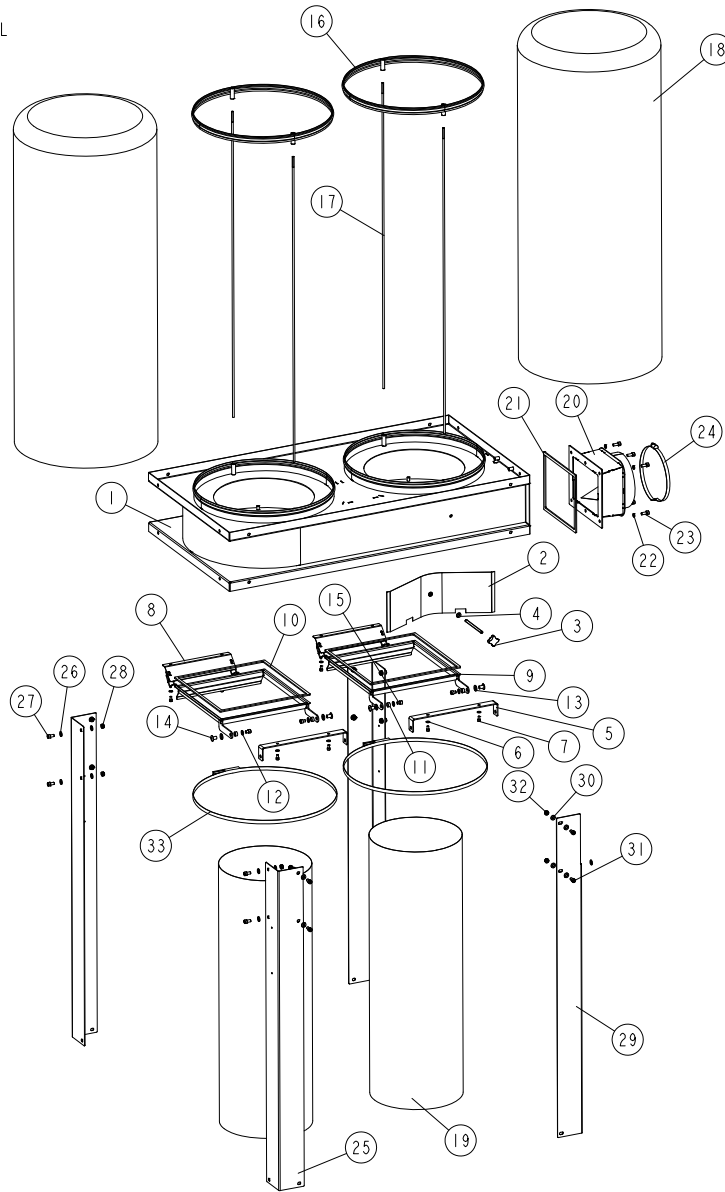
### 3.14 MES 501 & MES 502 Suction Distributor (Option)



REF.	DESCRIPTION (* indicates parts available in assemblies only)	PART #	QTY
-	<b>SUCTION DISTRIBUTOR</b>	564926	1
1	SUCTION DISTRIBUTOR	537927-1	1
-	<b>FOOT - COMPLETE</b>	537929	1
2	FOOT	537928-1	1
3	WASHER 6.4 FE/ZN5 PN-78/M-82005	F81053-1	8
4	NUT, M6-8-B HEX NYLON ZINC LOCK	F81031-2	4
5	SCREW, M6X16 8.8 HEX SOCKET HEAD CAP ZIN	F81001-21	4

### 3.15 MD500EH4S-S Chip Extraction Kit

301-008\_001\_B  
301-008\_MANUAL

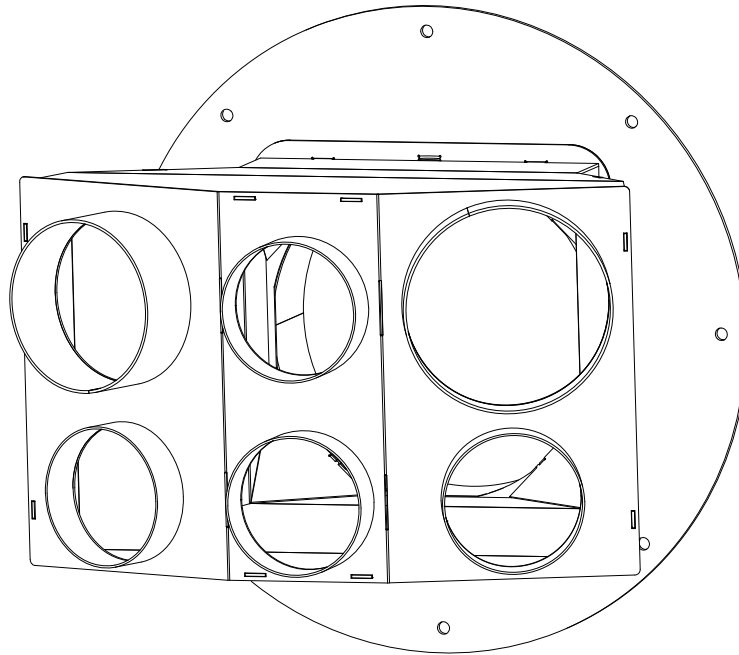


REF.	DESCRIPTION (* indicates parts available in assemblies only)	PART #	QTY
-	<b>MD500EH4S-S CHIP EXTRACTION KIT</b>	546927	1
-	BODY, CHIP EXTRACTION SYSTEM	537990	1
1	BODY, CHIP EXTRACTION SYSTEM - COMPLETE	537985	1
-	DIRECTIONAL PLATE - COMPLETE	537975	1
2	DIRECTIONAL PLATE	537974-1	1
3	KNOB	537977	1
4	WASHER, 8.4 FLAT ZINC	F81054-1	1
-	CLAMPING	537982	2
5	FLAT BAR	537961-1	1
6	WASHER 6,4 ZC DIN 126 ISO 7091	F81053-1	2
7	SCREW, ISO 4762-M6X16-8.8-A2E HEX SOCKET	F81001-34	2
8	CLAMPING PLATE	537960	2
-	FRAME - COMPLETE	537970	2

REF.	DESCRIPTION (* indicates parts available in assemblies only)	PART #	QTY	
9	FRAME	537969-1	1	
10	SEAL	537971	1	
11	BUSHING, 10.3/15-7.5	533724	2	
12	WASHER 8.4/FI 16-1.6 0050410000VR	546948	2	
13	WASHER 10.5/FI20-2 0050470000VR	537967	2	
14	NUT, ERICSON M8 AN88 COLLAR ZINC	F81032-33	2	
15	SCREW, M8X10- 8.8- HEX SOCKET HEAD CAP Z	F81002-32	2	
16	FLANGE - COMPLETE	537980-1	2	
17	ROD N6	537981-1	4	
18	FILTER BAG	537987	2	
19	SAWDUST BAG L: 1200, G: 0.15	537986	2	
-	ADAPTER, OUTPUT - COMPLETE	537870	1	
20	N200 OUTPUT ADAPTER	537869-1	1	
21	SEAL	537846	1	
22	WASHER 8,2 ZC SPRING LOCK DIN 127	F81054-4	6	
23	SCREW, M8X20-8.8-HEX SOCKET HEAD CAP ZIN	F81002-30	6	
24	CLAMP, 195-215MM	F81095-9	1	
-	LEG 1 - COMPLETE	537983	3	
25	LEG 1	537972-1	1	
26	WASHER, 8.4 FLAT ZINC	F81054-1	8	
27	SCREW, M8X16-8.8-HEX SOCKET HEAD CAP ZIN	F81002-39	4	
28	NUT, M8-8-B-HEX NYLON ZINC LOCK	F81032-2	4	
-	LEG 2 - COMPLETE	537984	1	
29	LEG 2	537973-1	1	
30	WASHER, 8.4 FLAT ZINC	F81054-1	5	
31	SCREW, M8X16-8.8-HEX SOCKET HEAD CAP ZIN	F81002-39	2	
32	NUT, M8-8-B-HEX NYLON ZINC LOCK	F81032-2	2	
33	SPRING CLAMP 500-545	537988	2	

**3.16 Suction Distributor (MP360, EG300)**

580813-1\_001  
580813-1\_MANUAL



REF.	DESCRIPTION (* indicates parts available in assemblies only)	PART #	QTY	
-	SUCTION DISTRIBUTOR (4x100, 1x125, 1x150)	580813-1	1	



## EC declaration of conformity according to EC Machinery Directive 2006/42/EC, Annex II, 1.A

Manufacturer:  
Wood-Mizer Industries sp. z o.o.  
Nagórna 114, 62-600 Koło; Poland  
Tel. +48 63 26 26 000

This declaration of conformity is issued under the sole responsibility of the manufacturer.

Following machine in our delivered version complies with the appropriate essential safety and health requirements of the EC Machinery Directive 2006/42/EC based on its design and type, as brought into circulation by us. In case of alteration of the machine, not agreed by us, this declaration is no longer valid.

**We, the undersigned herewith declare, that:**

Designation of the machine: **Wood Chip Extractor Wood-Mizer MD400 / MD500**

TYPE: MD400 / MD500

Models MD400EH3S-5 / MD500EH4S / MD500EH4S-S

Serial Number: .....

**Is in conformity with the following  
EC directives:**

Machinery Directive 2006/42/EC  
Electromagnetic Compatibility Directive  
2014/30/EU

**And is in conformity (parts of) with  
the following Harmonized Standards:**

PN-EN 12100:2012;  
PN-EN ISO 13849-1:2016-02  
PN-EN 60204-1:2018-12

Responsible for Technical Documentation: Piotr Adamiec / Engineering Manager  
Wood-Mizer Industries Sp. z o.o.  
62-600 Koło, ul. Nagórna 114, Poland  
Tel. +48 63 26 26 000

Place/Date/Authorized Signature:

Koło, 11.09.2020



Title :

Engineering Manager