

Wood-Mizer®

Parts Manual

MP180 E6S

rev. A1.05

MP180 E7S-V

rev. A1.05



Safety is our #1 concern! Read and understand all safety information and instructions before operating, setting up or maintaining this machine.

Form #2181

Table of Contents

Section-Page

SECTION 1	GENERAL INFORMATION	1-1
1.1	How To Use the Parts List.....	1-1
1.2	Sample Assembly	1-1
SECTION 2	PLANER/MOULDER, MP180	2-1
2.1	Covers	2-1
2.2	Feed Assembly	2-2
2.3	Cutter Assembly 537687	2-3
2.4	Drive Shaft (533580)	2-4
2.5	Chain tensioner (537712)	2-5
2.6	Anti-Kickback Fingers. 533125	2-6
2.7	Upper Outfeed Table (No. 537690)	2-7
2.8	Belt Cover. 534394	2-8
2.9	Decals	2-9
2.10	Additional Part Kit	2-11
2.11	Guard. 537714	2-12
2.12	Rod. 537718	2-13
2.13	Cover. 537710	2-14
2.14	Protective Guard Adjustment Assembly. 537720	2-15
2.15	Slide Bearing Assembly (No. 533520)	2-16
2.16	Foot Set (No. 536996)	2-17
2.17	Cutter assembly 534785	2-18
2.18	Helical Top Cutter Assembly - 564956 (Option)	2-19
2.19	Cutter Guard (No. 534220)	2-20
2.20	Bearing assembly 534225	2-21
2.21	Chip channel assembly 534218	2-22
2.22	Small guard assembly 534182	2-23
2.23	Mounting bar assembly 534357	2-24
2.24	Fence assembly 534185	2-25
2.25	Adjuster Assembly, Fence Panel (No. 534213)	2-26
2.26	Up/Down Assembly 537700	2-27
2.27	Knob and scale assembly 534760	2-28
2.28	Chain Tension assembly 533570	2-29
2.29	Bottom Table. 537705	2-30
2.30	Chip Breaker. 543554	2-32
2.31	Clamp Roller Assembly 533550	2-33
2.32	Fence Plate. 537715	2-34
2.33	Fence. 537674	2-35
2.34	Scale Indicator Assembly. 537738	2-36
2.35	Pusher 534166	2-37
2.36	Cutter protective cover assembly 534752	2-38
2.37	Chip Duct 534180	2-39
2.38	Upper infeed table 534355	2-40

Table of Contents

Section-Page

2.39	Front guide rail assembly 534375	2-41
2.40	Rear guide rail assembly 534376	2-42
2.41	Infeed table adjustment handle 534380	2-43

SECTION 3 MOTOR KITS MP180 CE

3-1

3.1	PRO Motor Kit 537694	3-2
3.2	ECO Motor Kit 537695	3-3
3.3	Horizontal Cutter Drive 537728	3-4
3.4	Cutting Head Drive 534196	3-5
3.5	Cutting Head Drive 534196-6	3-6
3.6	Electrical Box Mount 537704	3-7
3.7	MP180 PRO Feed Drive 533650-180	3-8
3.8	Reducer 533640	3-9
3.9	ECO Feed Drive 533638-6	3-10
3.10	Motoreducer 533654	3-11
3.11	Cover 537696	3-12
3.12	Side Cutter Drive 533647	3-13
3.13	Side Cutter Drive 533647-6	3-14
3.14	Emergency Stop Switch Assembly 535669	3-15
3.15	Electrical Box 537670	3-16
3.16	Safety switch assembly 537708	3-17
3.17	Bottom Guard 537730	3-18

SECTION 4 MOTOR KITS MP180 UL AMERICAN VERSION

4-1

4.1	PRO Motor Kit 537694-2U	4-2
4.2	PRO Motor Kit 537694-6U	4-3
4.3	Horizontal Cutter Drive PRO UL 537728-UL	4-4
4.4	Cutting Head Drive 534196-6U	4-5
4.5	MP180 PRO Feed Drive 533650-180U	4-6
4.6	Motoreducer 533640-UL	4-7
4.7	PRO Motion Drive 533650-180AU	4-8
4.8	Up/Down Drive 597559	4-9
4.9	Cover UL 570008	4-10
4.10	Cover UL- Service Kit 570008-S	4-11
4.11	Side Cutter Drive UL 533647-U	4-12
4.12	Side Cutter Drive 533647-6U	4-13
4.13	Electrical Box 537670-2U	4-14
4.14	Electrical Box 537670-6U	4-15

SECTION 1 GENERAL INFORMATION

1.1 How To Use the Parts List

- Use the index above to locate the assembly that contains the part you need.
- Go to the appropriate section and locate the part in the illustration.
- Use the number pointing to the part to locate the correct part number and description in the table.
- Parts shown indented under another part are included with that part.
- Parts marked with a diamond (◆) are only available in the assembly listed above the part.

See the sample table below. Sample Part #A01111 includes part F02222-2 and subassembly A03333. Subassembly A03333 includes part S04444-4 and subassembly K05555. The diamond (◆) indicates that S04444-4 is not available except in subassembly A03333. Subassembly K05555 includes parts M06666 and F07777-77. The diamond (◆) indicates M06666 is not available except in subassembly K05555.

1.2 Sample Assembly				
REF.	DESCRIPTION (◆ Indicates Parts Available In Assemblies Only)	PART #	QTY	
	Sample Assembly, Complete (Includes All Indented Parts Below)	A01111	1	
1	Sample Part	F02222-22	1	
	Sample Subassembly (Includes All Indented Parts Below)	A03333	1	
2	Sample Part (◆ Indicates Part Is Only Available With A03333)	S04444-4	1	◆
	Sample Subassembly (Includes All Indented Parts Below)	K05555	1	
3	Sample Part (◆ Indicates Part Is Only Available With K05555)	M06666	2	◆
4	Sample Part	F07777-77	1	

To Order Parts:

- From Europe call our European Headquarters and Manufacturing Facility in Kolo, Poland at **+48-63-2626000**. From the continental U.S., call our toll-free Parts hotline at **1-800-525-8100**. Have your customer number, vehicle identification number, and part numbers ready when you call. From other international locations, contact the Wood-Mizer distributor in your area for parts.

Office Hours:

Country	Monday - Friday	Saturday	Sunday
Poland	7-15	Closed	Closed
US	8 a.m.- 5 p.m.	8 a.m.- 12 p.m.	Closed

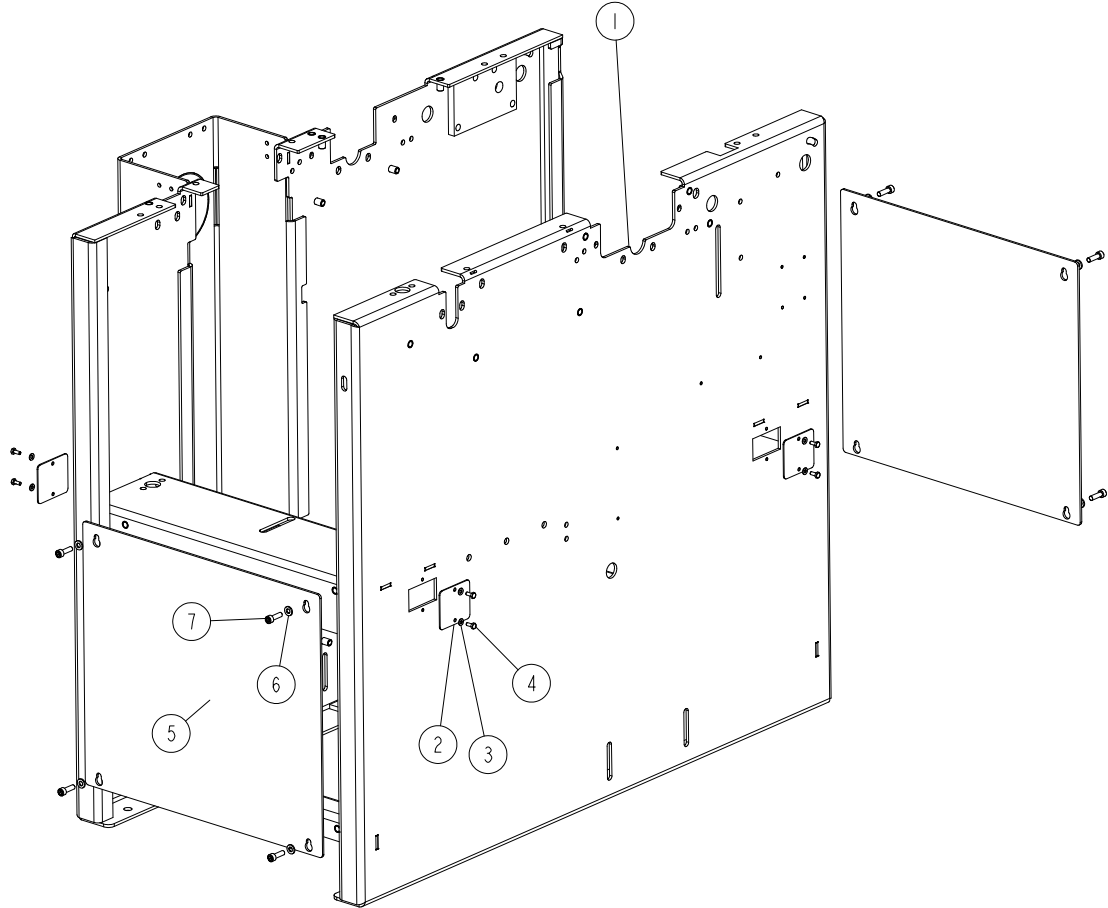


CAUTION! It is strongly recommended that only original spare parts be used.

SECTION 2 PLANER/MOULDER, MP180

2.1 Covers

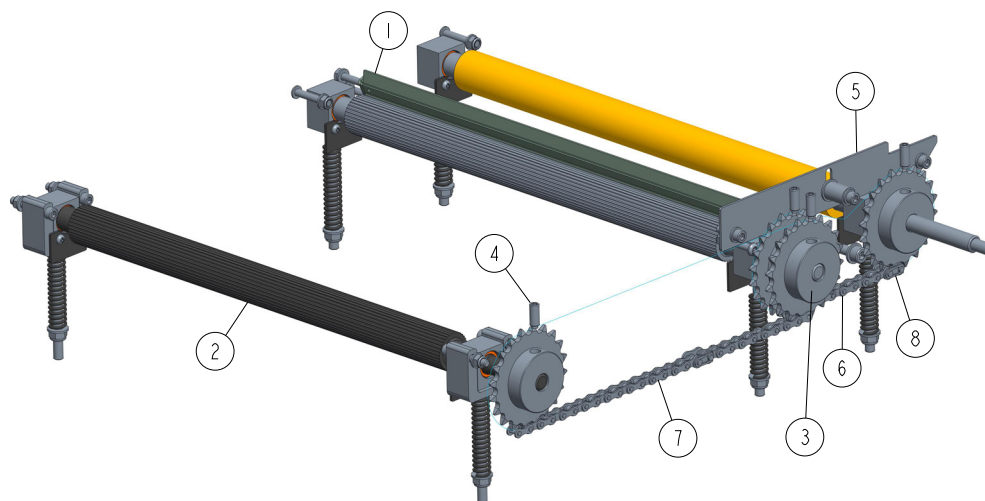
537800_001
537800_MANUAL



REF	DESCRIPTION (◆ indicates parts available in assemblies only)	PART #	QTY
1	MP180 BODY WELDMENT	537680-1	1
2	COVER, INSPECTION WINDOW	536995-1	4
3	WASHER, 4.3 FLAT ZINC	F81051-2	8
4	BOLT, M4X10 DIN 933/ISO 4017 (A2) STAINL	F81000-27	8
5	PLATE, SIDE	533096-1	2
6	WASHER, 6.4 FLAT ZINC	F81053-1	8
7	SCREW, M6X20 8.8 HEX SOCKET HEAD CAP ZIN	F81001-22	8

2.2 Feed Assembly

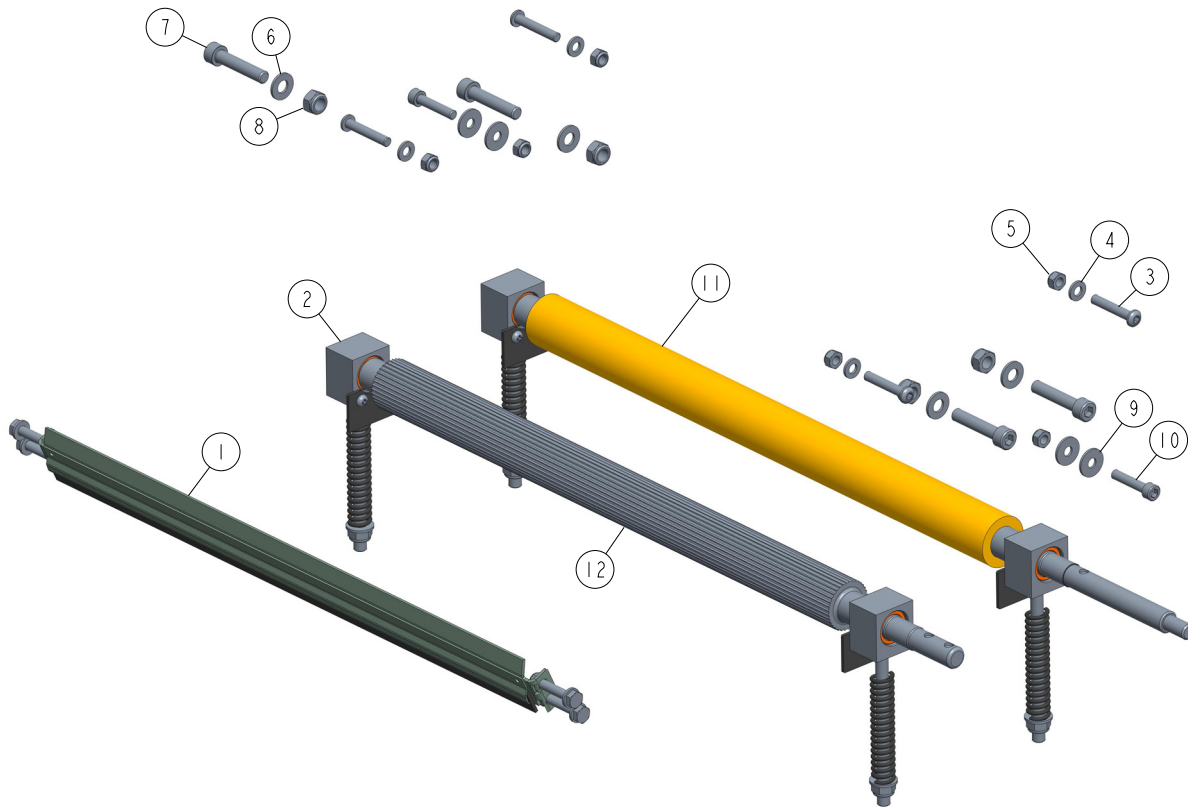
537688-001-A
537688-MANUAL



REF	DESCRIPTION (◆ indicates parts available in assemblies only)	PART #	QTY
-	MP180 FEED ASSEMBLY	537688	1
1	CUTTER ASSEMBLY See Section 2.3	537687	1
2	DRIVE SHAFT ASSEMBLY See Section 2.5	533580	1
3	SPROCKET Z=20; 1/2"X 3/16" CHAIN 083-1	533109	4
4	SCREW M8X20 HSS W/DOG POINT ZC 45H DIN 9	F81002-77	4
5	CHAIN TENSIONER ASSEMBLY See Section 2.5	537712	1
6	CHAIN 083-1; P-1/2"; LENGHT=0.4953M (39)	534393	1
7	CHAIN 083-1;P=1/2"; LENGHT=0.8636 M (67)	537689	1
8	CONNECTING LINK FOR CHAIN 083-1	533128	2

2.3 Cutter Assembly 537687

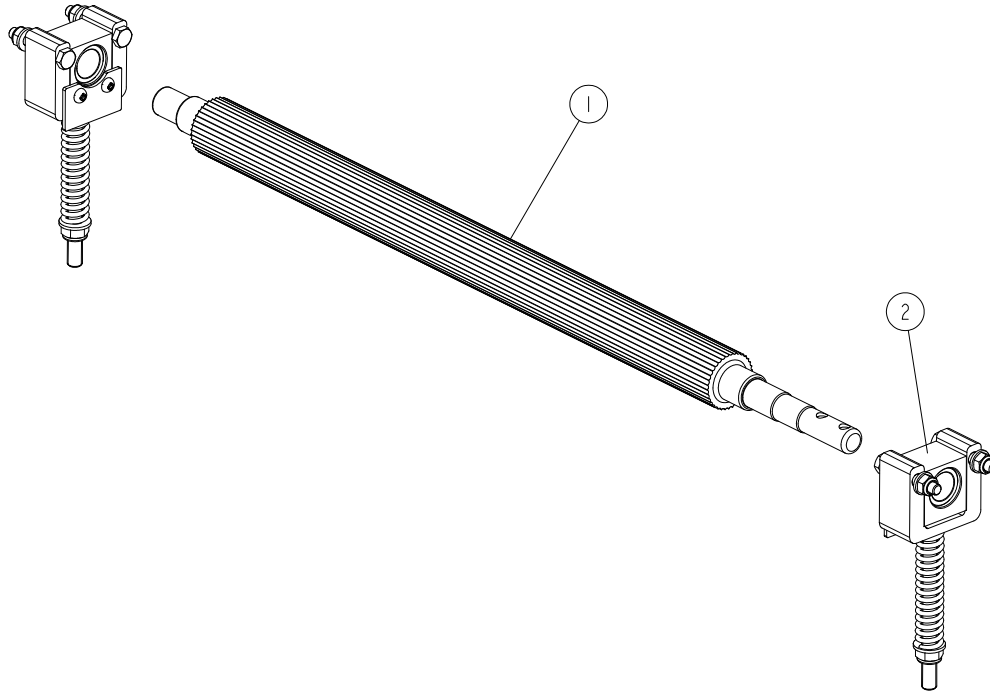
537687_001
537687_MANUAL



REF	DESCRIPTION (◆ indicates parts available in assemblies only)	PART #	QTY
-	CUTTER ASSEMBLY	537687	1
1	GUARD, CUTTER - COMPLETE See Section 2.19	534220	1
2	SLIDE BEARING ASSEMBLY See Section 2.20	534225	4
3	SCREW, M6X35 ISO 7380 ZINC SLOTTED ROUND	F81001-91	4
4	WASHER, 6.4 FLAT ZINC	F81053-1	4
5	NUT, M6-8-B HEX NYLON LOCK ZINC	F81031-2	6
6	WASHER, 8.4 FLAT ZINC	F81054-1	4
7	SCREW, M8X40-8.8 HEX SOCKET HEAD CAP ZIN	F81002-29	4
8	NUT, M8-8-B HEX NYLON ZINC LOCK	F81032-2	4
9	WASHER, 6.5 FLAT	F81053-11	4
10	SCREW M6X30 SHCS ZC 8.8 DIN 912 ISO 4762	F81001-42	2
11	SHAFT W/PROTECTIVE COVER	533512	1
12	SHAFT, STEEL DRIVE	533513-1	1

2.4 Drive Shaft (533580)

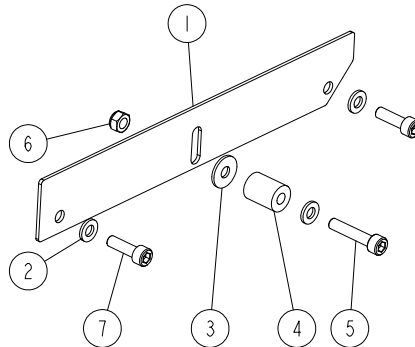
533580-001-A
 533580-MANUAL



REF	DESCRIPTION (◆ indicates parts available in assemblies only)	PART #	QTY	
-	DRIVE SHAFT ASSEMBLY	533580	1	
1	SHAFT, STEEL DRIVE	533513-1	1	
2	BEARING ASSEMBLY, SLIDE See Section 2.15	533520	2	

2.5 Chain tensioner (537712)

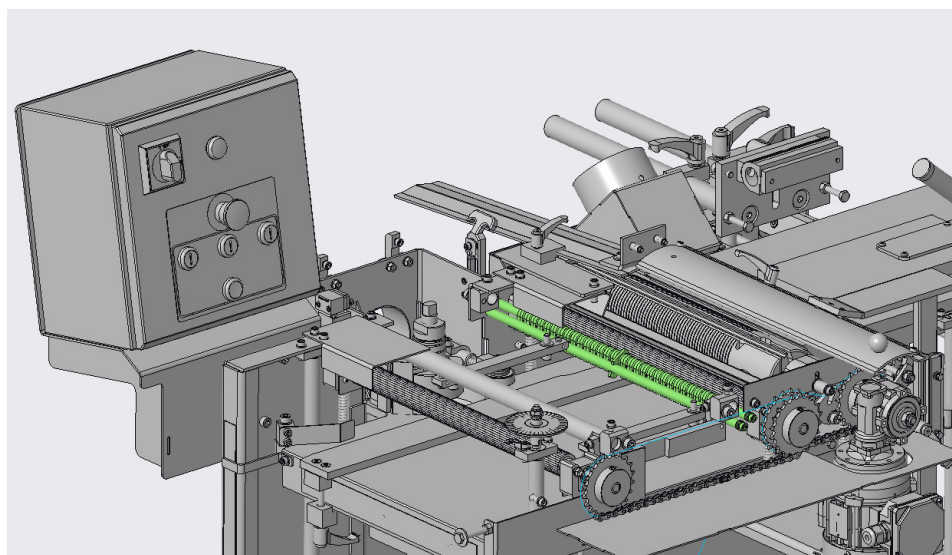
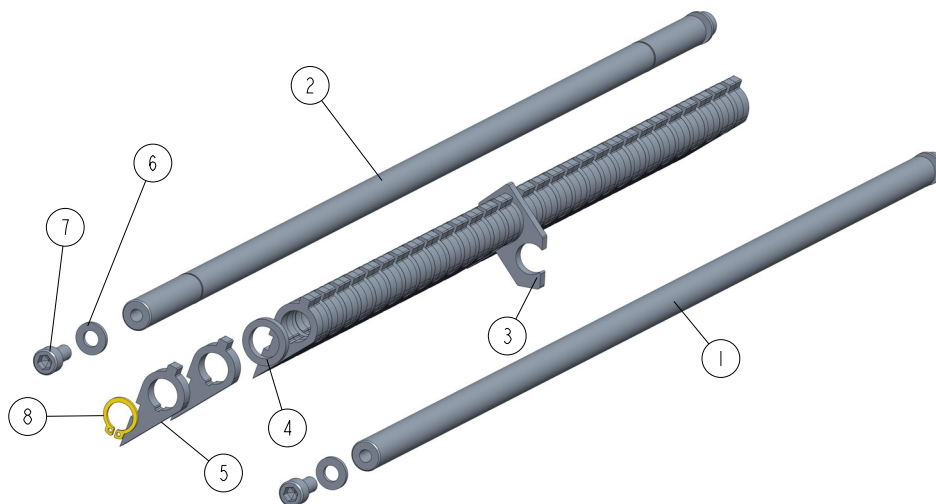
537712-001
 537712-MANUAL



REF	DESCRIPTION (◆ indicates parts available in assemblies only)	PART #	QTY
-	CHAIN TENSIONER ASSEMBLY	537712	1
1	CHAIN TENSIONER PLATE	537711-1	1
2	WASHER, 6.4 FLAT ZINC	F81053-1	3
3	WASHER, 6.5 FLAT	F81053-11	1
4	BUSHING, SPACER	R80671-6	1
5	SCREW M6X30 SHCS ZC 8.8 DIN 912 ISO 4762	F81001-42	1
6	NUT, M6-8-B HEX NYLON LOCK ZINC	F81031-2	1
7	SCREW, M6X20 8.8 HEX SOCKET HEAD CAP ZIN	F81001-22	2

2.6 Anti-Kickback Fingers. 533125

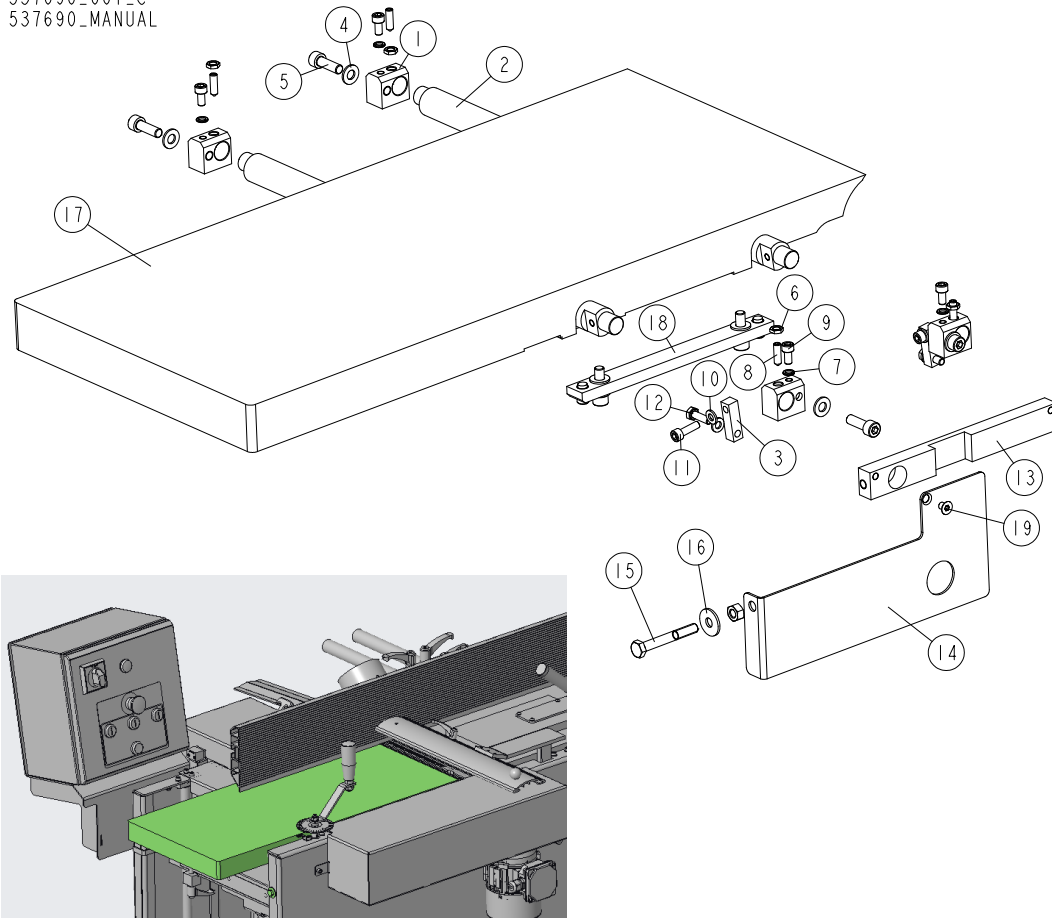
533125_001_B
 533125_MANUAL



REF	DESCRIPTION (◆ indicates parts available in assemblies only)	PART #	QTY
-	ANTI-KICKBACK FINGERS ASSEMBLY	533125	1
1	SHAFT	533092-1	1
2	ROD, ANTI-KICKBACK FINGER	546931-1	1
3	PLATE	533124-1	1
4	WASHER, DIA.1940	533123	30
5	FINGER, ANTI-KICKBACK COMPLETE	533126	30
6	WASHER, 6.4 FLAT ZINC	F81053-1	4
7	SCREW M6X12 SHCS ZC 8.8 DIN 912 ISO 4762	F81001-87	4
8	RING, Z 12 OUTSIDE RETAINING	F81090-14	2

2.7 Upper Outfeed Table (No. 537690)

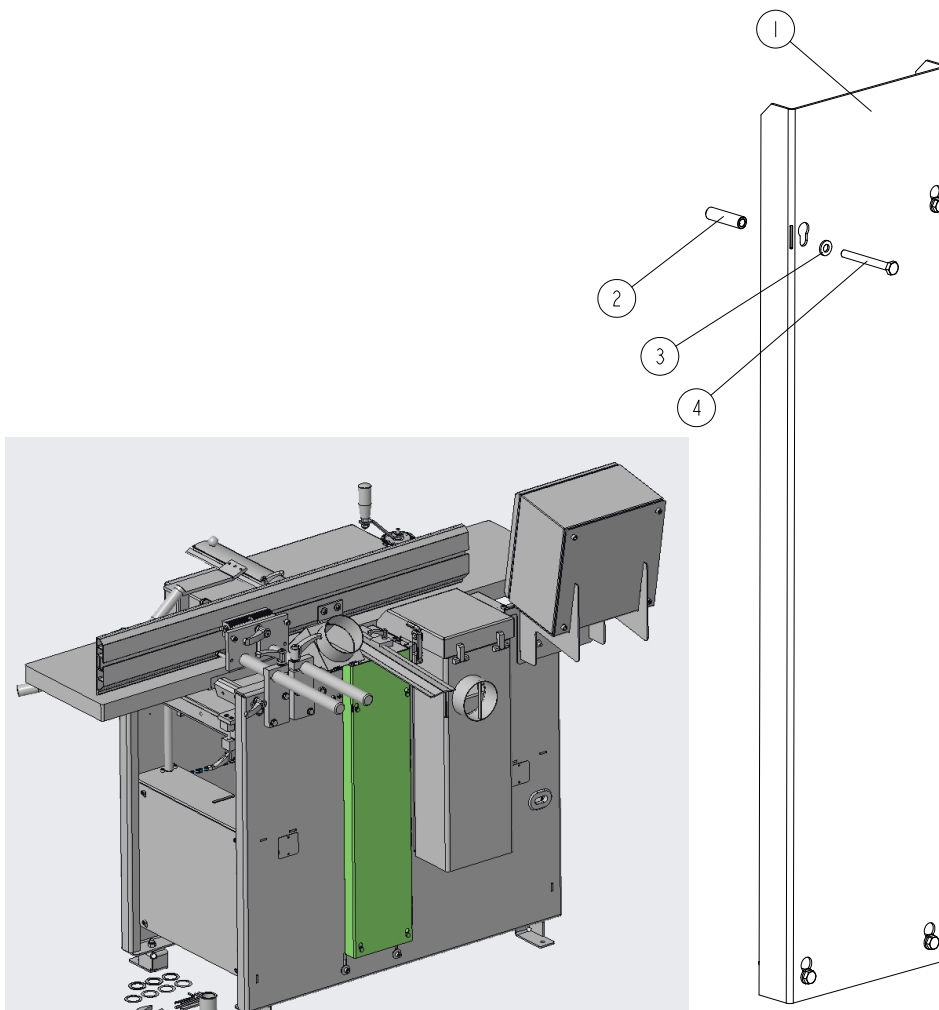
537690_001_C
537690_MANUAL



REF	DESCRIPTION (◆ indicates parts available in assemblies only)	PART #	QTY
-	UPPER OUTFEED TABLE - COMPLETE	537690	1
1	BLOCK	561711	4
2	SHAFT, ECCENTRIC	534204	2
3	BLOCK	534206-1	2
4	WASHER, 8.4 FLAT ZINC	F81054-1	4
5	SCREW, M8X25-8.8 HEX SOCKET HEAD CAP ZIN	F81002-21	4
6	NUT, M8 DIN 439 ISO 4035 THIN	F81031-14	4
7	WASHER, Z 6.1 SPLIT LOCK ZINC	F81053-3	4
8	SCREW M6X20 45H PN84-M/82315	F81001-127	4
9	SCREW M6X12 SHCS ZC 8.8 DIN 912 ISO 4762	F81001-87	4
10	WASHER, 6.4 FLAT ZINC	F81053-1	4
11	SCREW, M6X20 8.8 HEX SOCKET HEAD CAP ZIN	F81001-22	2
12	BOLT, M6X20-8.8 HEX HEAD FULL THREAD ZIN	F81001-2	2
13	BAR	534207-1	1
14	PLATE WELDMENT	537693-1	1
15	BOLT, M8X60 8.8 HEX HEAD ZINC	F81002-54	1
16	WASHER, 8.5 SPECIAL FLAT ZINC	F81054-11	1
17	OUTPUT TABLE FOR MP160	537736-1	1
18	MOUNTING BAR ASSEMBLY	534357	2
19	SCREW, M6X8 HSFHS ZC 10.9 DIN7991	F81001-69	1

2.8 Belt Cover. 534394

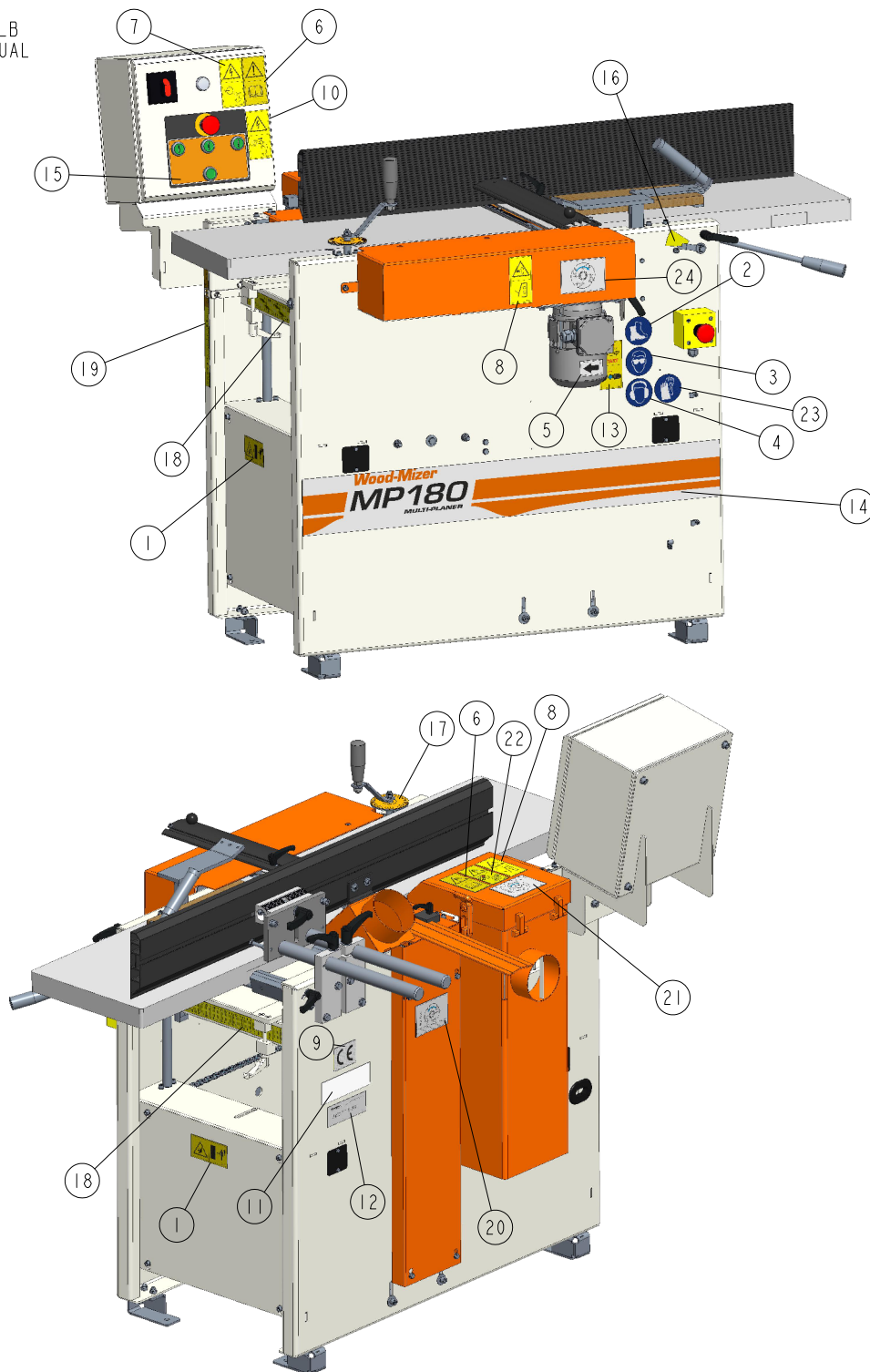
534394_001
534394_MANUAL



REF	DESCRIPTION (◆ indicates parts available in assemblies only)	PART #	QTY	
-	BELT COVER, ASSEMBLY	534394	1	
1	BELT TRANSMISSION COVER	534158-1	1	
2	BUSHING 6.3/10-38	534209-1	4	
3	WASHER, 6.4 FLAT ZINC	F81053-1	4	
4	SCREW M6X55-8.8-FE/ZN5 ISO 4014	F81001-73	4	

2.9 Decals

MP180EH6S_001_B
MP180EH6S_MANUAL

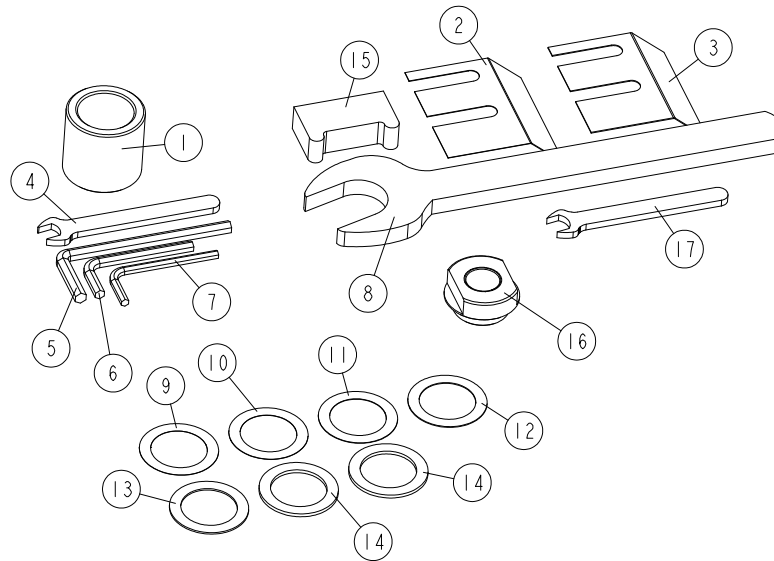


REF	DESCRIPTION (◆ indicates parts available in assemblies only)	PART #	QTY
-	DECAL KIT, MP180	547601	1
1	DECAL, KEEP A SAFE DISTANCE PICTOGRAM	099221H	2
2	DECAL, WEAR SAFETY BOOTS PICTOGRAM, SMALL	501465-1	1
3	DECAL, EYE WARNING, SMALL	S12004G-1	1

REF	DESCRIPTION (◆ indicates parts available in assemblies only)	PART #	QTY	
4	DECAL, WEAR PROTECTIVE EAR MUFFS (PICTOGRAM) SMALL	S12005G-1	1	
5	DECAL, MOTOR ROTATION DIRECTION	S20097	1	
6	DECAL, READ OPERATOR'S MANUAL (PICTOGRAM)	096317	2	
7	DECAL, HIGH VOLTAGE INSIDE THE ELECTRIC	096316	1	
8	DECAL, SAWMILL COVERS CAUTION	099220	2	
9	DECAL, CE CERTIFIED SAWMILL, SMALL	P85070	1	
10	DECAL, 'REMOVE THE PLUG BEFORE OPENING T	096319	1	
11	DECAL, VIN	VIN	1	
12	DECAL, EUROPEAN HEADQUARTERS ADDRESS	015841	1	
13	DECAL, USE THE CONTINUOUSLY VARIABLE TRANSMISSION WHEN THE	535252	1	
14	DECAL, MP180 TYPE	547602	1	
15	DECAL, ELECTRICAL BOX	537676	1	
16	DECAL	534203	1	
17	DECAL, MP200 ROUND SCALE	533577	1	
18	DECAL, HORIZONTAL SCALE	537706	2	
19	DECAL, VERTICAL SCALE	533579	1	
20	DECAL, MP200 MAXIMUM PLANING THICKNESS	535155	1	
21	DECAL, MAXIMUM PLANING THICKNESS	535303	1	
22	DECAL, WARNING ROTATING SIDE CUTTER	551139	1	
23	DECAL, WEAR SAFETY GLOVES (PICTOGRAM) - SMALL	510080-1	1	
24	DECAL, MP160 SHAFT ROTATION DIRECTION	536401	1	

2.10 Additional Part Kit

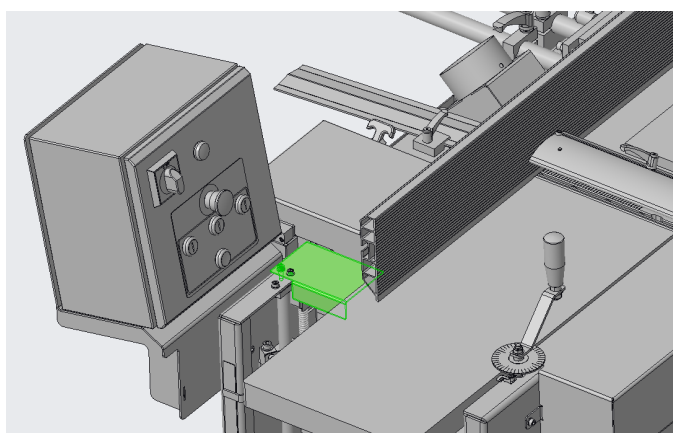
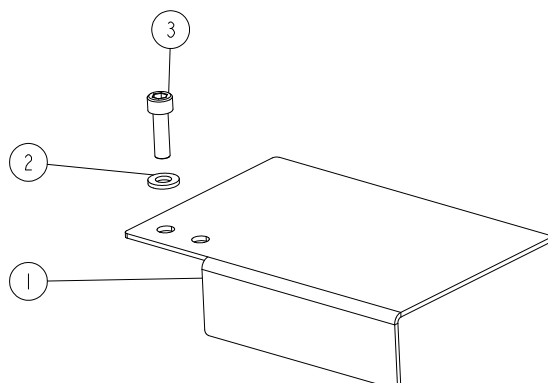
537668_001_EN_A
537668_MANUAL



REF	DESCRIPTION (◆ indicates parts available in assemblies only)	PART #	QTY
-	MP200 ADDITIONAL PART KIT	537668	1
1	BUSHING 30/42-40.2 ZINC-PLATED	535848-1	1
2	PLATE, 0.3 MM CHIP BREAKER	537648	1
3	PLATE, 0.5 MM CHIP BREAKER	533502	1
-	MP160 WRENCH KIT	535185	1
4	WRENCH, 10 FLAT	541315	1
5	WRENCH, 6MM ALLEN	535186	1
6	WRENCH, 5 ALLEN	092915	1
7	WRENCH, 4MM ALLEN	093368	1
8	WRENCH 30 DIN 894	537649	1
9	WASHER 30/42-0.1 ZC DIN 988	F81069-6	1
10	WASHER 30/42-0.2 ZC DIN 988	F81069-5	1
11	WASHER 30/42-0.3 ZC DIN 988	F81069-4	1
12	WASHER 30/42-0.5 ZC DIN 988	F81069-3	1
13	WASHER 30/42-1 ZC DIN 988	F81069-2	1
14	WASHER 30/42-2 ZC DIN 988	F81069-1	2
15	KNIFE ALIGNMENT TOOL	534770	1
16	NUT, M20X1.5 LEFT	542621-1	1
17	WRENCH, 12 FLAT	564873	1

2.11 Guard. 537714

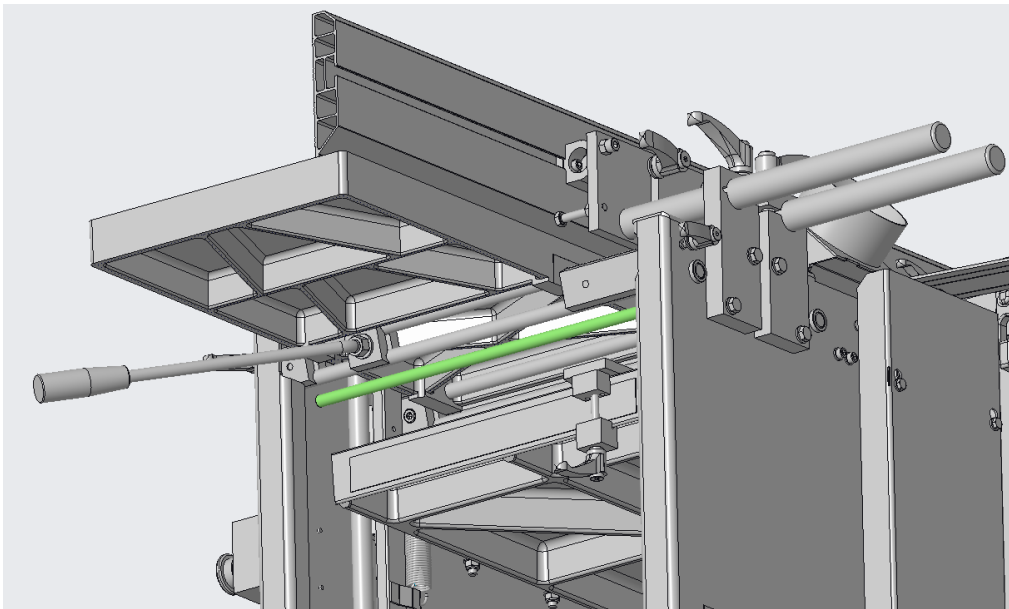
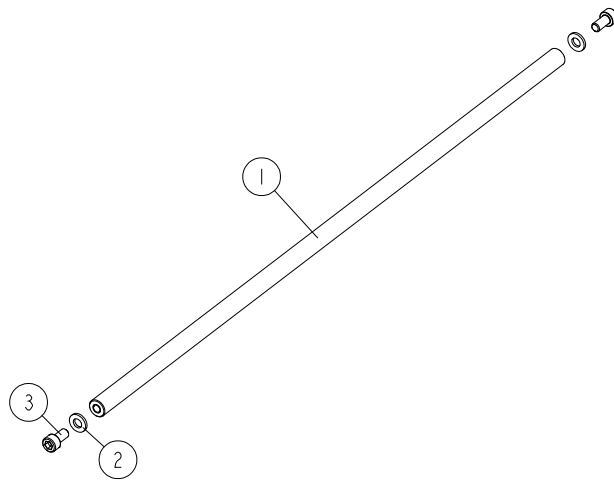
537714_001
537714_MANUAL



REF	DESCRIPTION (◆ indicates parts available in assemblies only)	PART #	QTY
-	GUARD 1 ASSEMBLY	537714	1
1	GUARD 1	537713-1	1
2	WASHER, 6.4 FLAT ZINC	F81053-1	1
3	SCREW, M6X20 8.8 HEX SOCKET HEAD CAP ZIN	F81001-22	1

2.12 Rod. 537718

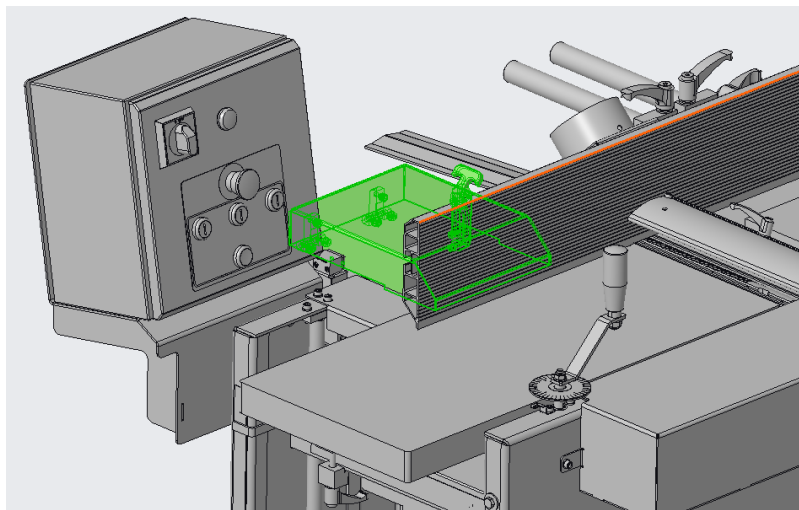
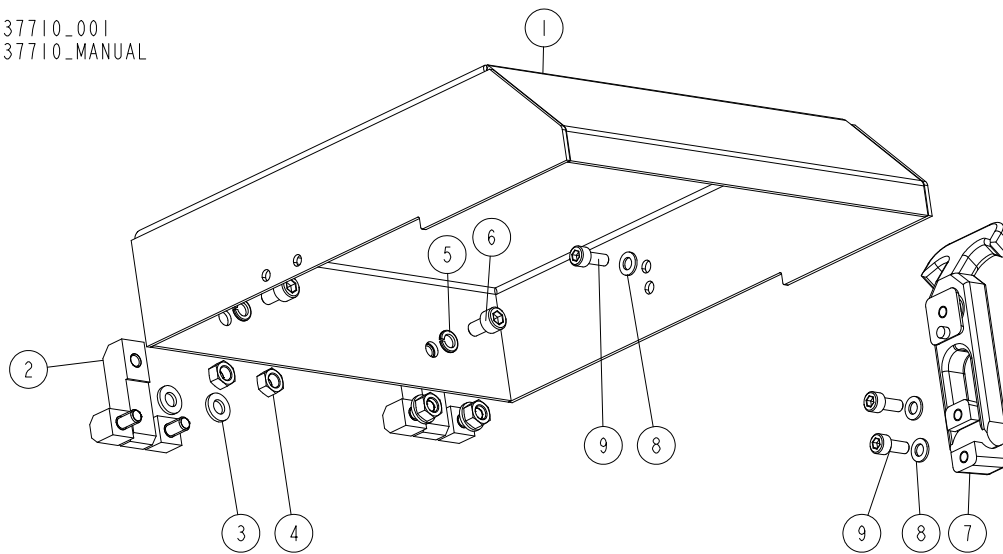
537718_001_A
537718_MANUAL



REF	DESCRIPTION (◆ indicates parts available in assemblies only)	PART #	QTY
-	COMPLETE ROD	537718	1
1	SHAFT	533092-1	1
2	WASHER, 6.4 FLAT ZINC	F81053-1	2
3	SCREW M6X12 SHCS ZC 8.8 DIN 912 ISO 4762	F81001-87	2

2.13 Cover. 537710

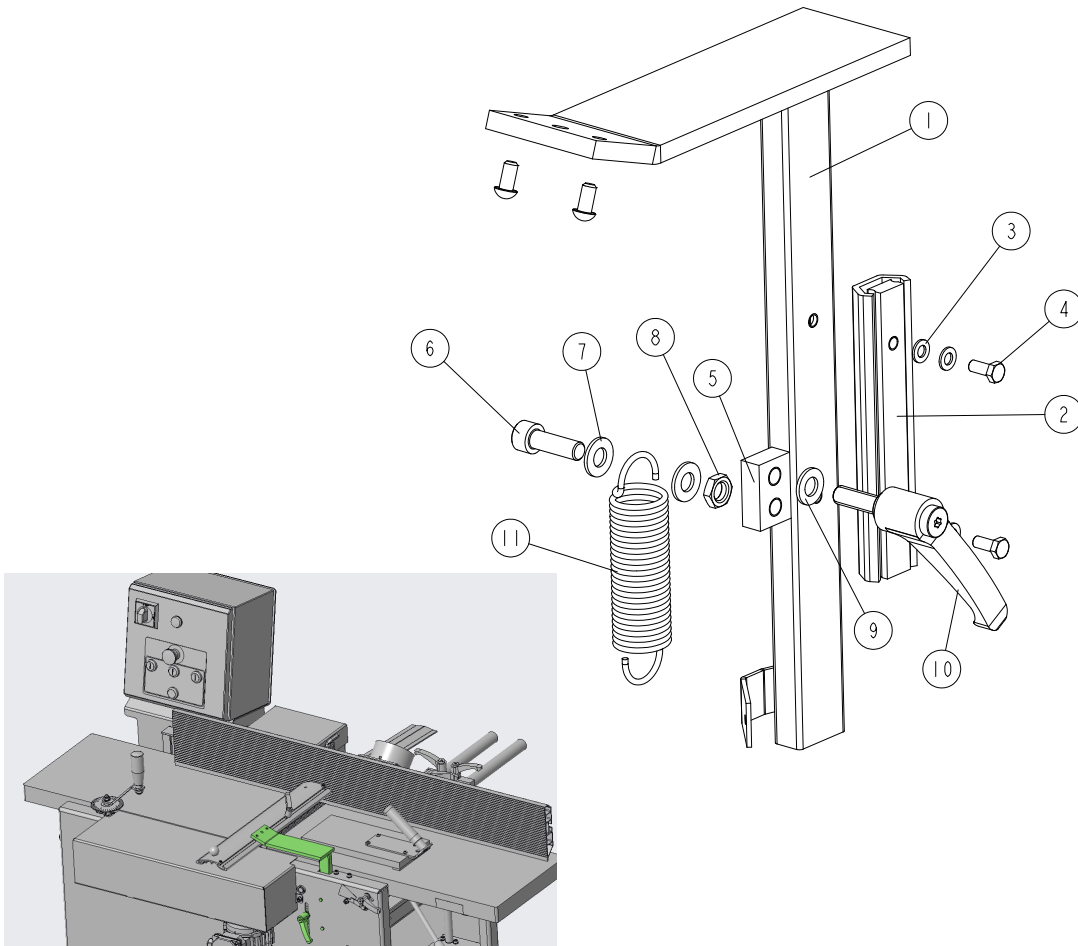
537710_001
537710_MANUAL



REF	DESCRIPTION (◆ indicates parts available in assemblies only)	PART #	QTY
-	COMPLETE COVER	537710	1
1	COVER PLATE	537709-1	1
2	HINGE K1143.0630028 (KIPP)	537616	2
3	WASHER, 6.4 FLAT ZINC	F81053-1	2
4	NUT, M6 #8 HEX ZINC	F81031-1	2
5	WASHER, Z 6.1 SPLIT LOCK ZINC	F81053-3	2
6	SCREW, M6X10-8.8 HEX SOCKET HEAD CAP	F81001-12	2
7	SELF-ADJUSTING LATCH SOUTHCO NR ART.258-4825	537617	1
8	WASHER, 5.3 FLAT	F81052-1	3
9	SCREW, M5X12 8.8 DIN 912 ISO 4762 HEX SO	F81000-53	3

2.14 Protective Guard Adjustment Assembly. 537720

537720_001_A
 537720_MANUAL

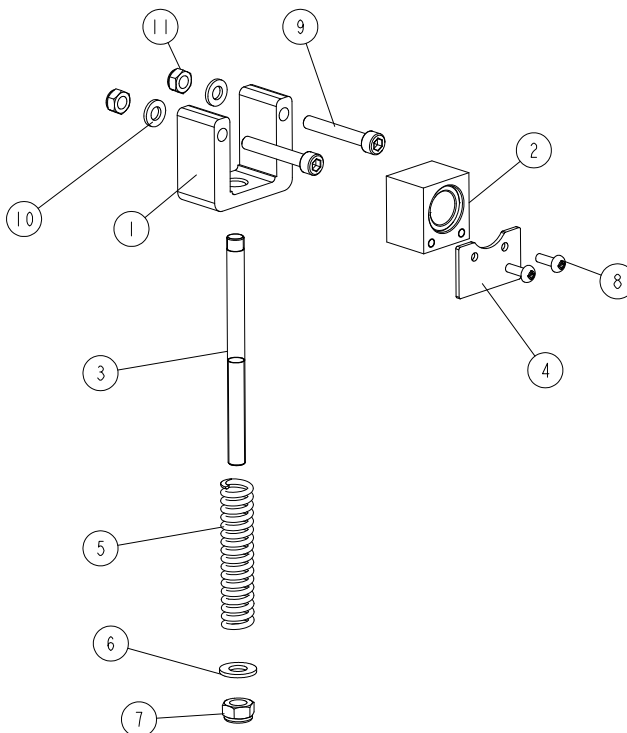


REF	DESCRIPTION (◆ indicates parts available in assemblies only)	PART #	QTY
-	PROTECTIVE GUARD ADJUSTMENT ASSEMBLY	537720 ¹	1
1	PROTECTIVE GUARD ADJUSTMENT ASSEMBLY	537723-1	1
2	LINEAR GUIDE	534167	1
3	WASHER, 5.3 FLAT	F81052-1	4
4	BOLT, M5 X 12-5.8 HEX HEAD FULL THREAD Z	F81000-5	2
5	BLOCK, HOUSING MOUNT ASSEMBLY	534168-1	1
6	SCREW, M8X25-8.8 HEX SOCKET HEAD CAP ZIN	F81002-21	1
7	WASHER, 8.4 FLAT ZINC	F81054-1	2
8	NUT, M8-04-FE/ZN ISO4035 HEX THIN	F81032-8	1
9	WASHER 8.4/FI 16-1.6 0050410000VR	546948	1
10	ADJUSTABLE HANDLE, ERZ.63P-M8X25	533591	1
11	SPRING, 25X105X2,5	534169	1

¹ Not included UL version

2.15 Slide Bearing Assembly (No. 533520)

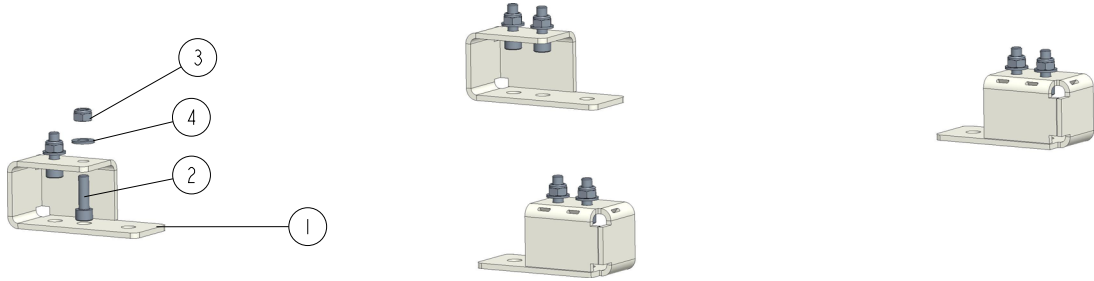
533520_001_B
533520_MANUAL



REF	DESCRIPTION (◆ indicates parts available in assemblies only)	PART #	QTY
-	BEARING ASSEMBLY, SLIDE	533520	1
1	HOUSING, SLIDE BEARING	533514	1
2	SLIDE BLOCK ASSEMBLY	537575	1
3	ROD, SHAFT TENSION	546898-1	1
4	COVER, RUBBER	533516	1
5	SPRING	533519-1	1
6	WASHER, 8.4 FLAT,ZINC	F81054-1	1
7	NUT, M8-8-B HEX NYLON ZINC LOCK	F81032-2	1
8	SCREW M4X12 PHILLIPS ZC 5.8 DIN 7985	F81011-43	2
9	BOLT M6X40 HEX	F81001-124	2
10	WASHER, M6, FLAT,ZINC	F81053-1	2
11	NUT, M6-8-B HEX NYLON ZINC LOCK	F81031-2	2

2.16 Foot Set (No. 536996)

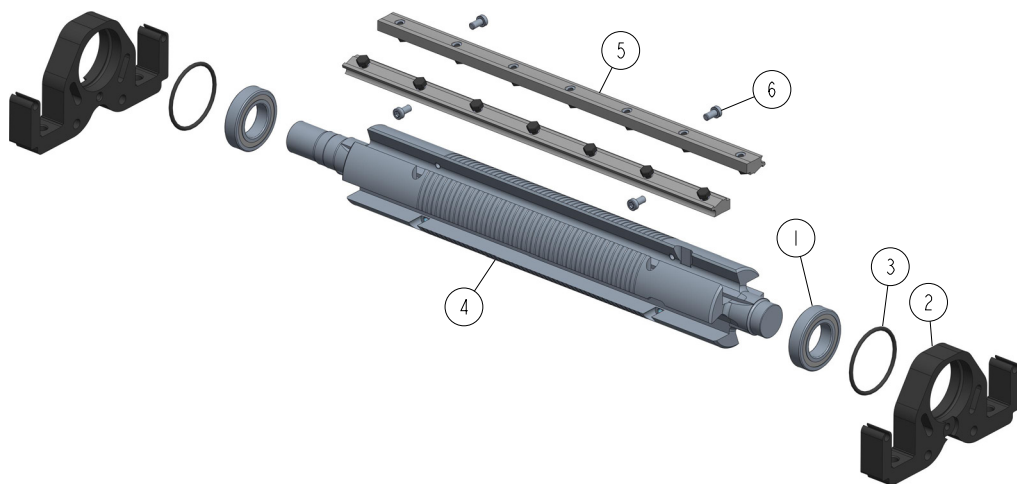
536996_001_A
536996



REF	DESCRIPTION (◆ indicates parts available in assemblies only)	PART #	QTY	
-	FOOT SET	536996	1	
1	FOOT	535828-1	4	
2	SCREW, M8X25 -8.8 HEX SOCKET HEAD CAP	F81002-21	8	
3	NUT, M8-8-B HEX NYLON ZINC LOCK	F81032-2	8	
4	WASHER, 8.4 FLAT ZINC	F81054-1	16	

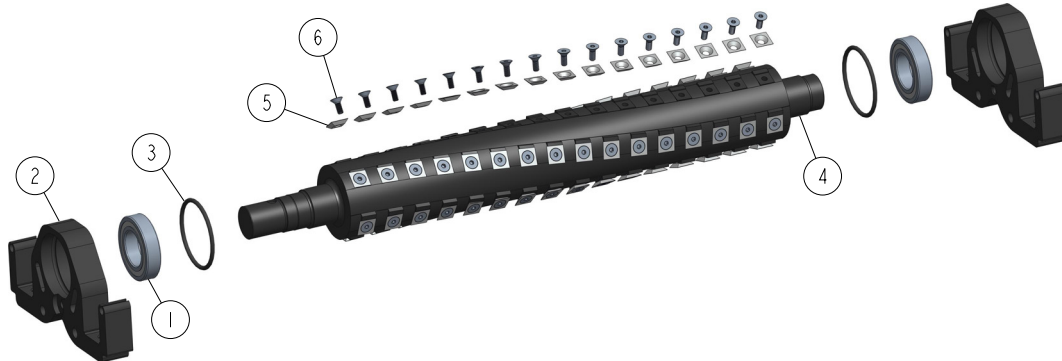
2.17 Cutter assembly 534785

534785_001_A
534785_MANUAL



REF	DESCRIPTION (◆ indicates parts available in assemblies only)	PART #	QTY
-	CUTTER ASSEMBLY	534785	1
1	BEARING, 6006 2RSR	096191	2
2	HOUSING, CUTTER PLUMMER BLOCK	534222-1	2
3	O-RING, BEARING HOUSING	534224	2
-	SHAFT, CUTTER	564943	1
4	SHAFT, MAIN	260-138	1
5	MOUNTING WEDGES	241-060	1
6	SCREW, M6X12-10.9 DIN 7984 HEX SOCKET TH	F81001-80	4

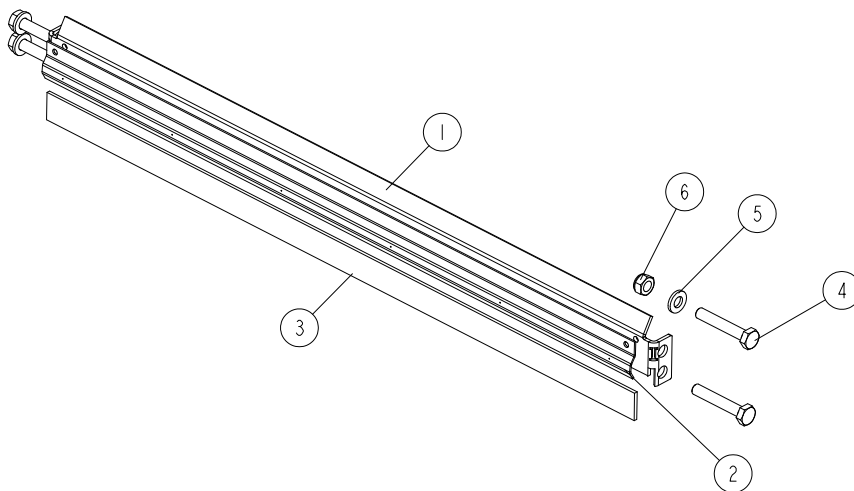
2.18 Helical Top Cutter Assembly - 564956 (Option)

564956_001
564956

REF	DESCRIPTION (◆ indicates parts available in assemblies only)	PART #	QTY	
-	CUTTER ASSY., MP160 i MP180 HELICAL TOP	564956	1	
1	BEARING, 6006-C- 2HRS-FAG	592792	2	
2	HOUSING, CUTTER PLUMMER BLOCK	534222-1	2	
3	O-RING, BEARING HOUSING	534224	2	
4	SHAFT, TSH260TC TOP	562640	1	
5	INSERT, REPLACEMENT CARBIDE	TIK19HM	80	
6	SCREW, 10-32X1/2 FH BO; TORX PLUS	F05004-325	80	

2.19 Cutter Guard (No. 534220)

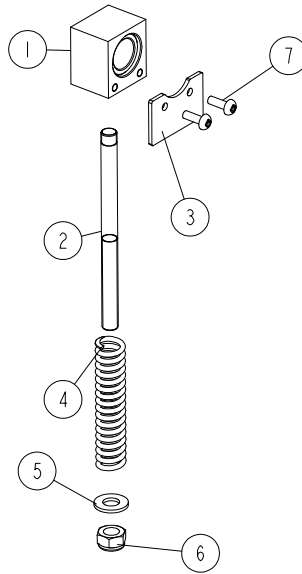
534220_001_A
534220_MANUAL



REF.	DESCRIPTION (* indicates parts available in assemblies only)	PART NO.	QTY
-	GUARD, CUTTER - COMPLETE	534220	1
	GUIDE ASSEMBLY, SAWDUST	535830	
	MOUNT ASSEMBLY, RUBBER STRIP	535827	
1	PLATE, RUBBER STRIP MOUNT	534159	1
2	PLATE, RUBBER STRIP CLAMP	534212	1
3	STRIP, RUBBER	534221	1
4	BOLT, M6x35-8.8 HEX HEAD ZINC	F81001-71	4
5	WASHER, 6.4 FLAT ZINC	F81053-1	4
6	NUT, M6-8-B HEX NYLON ZINC LOCK	F81031-2	4

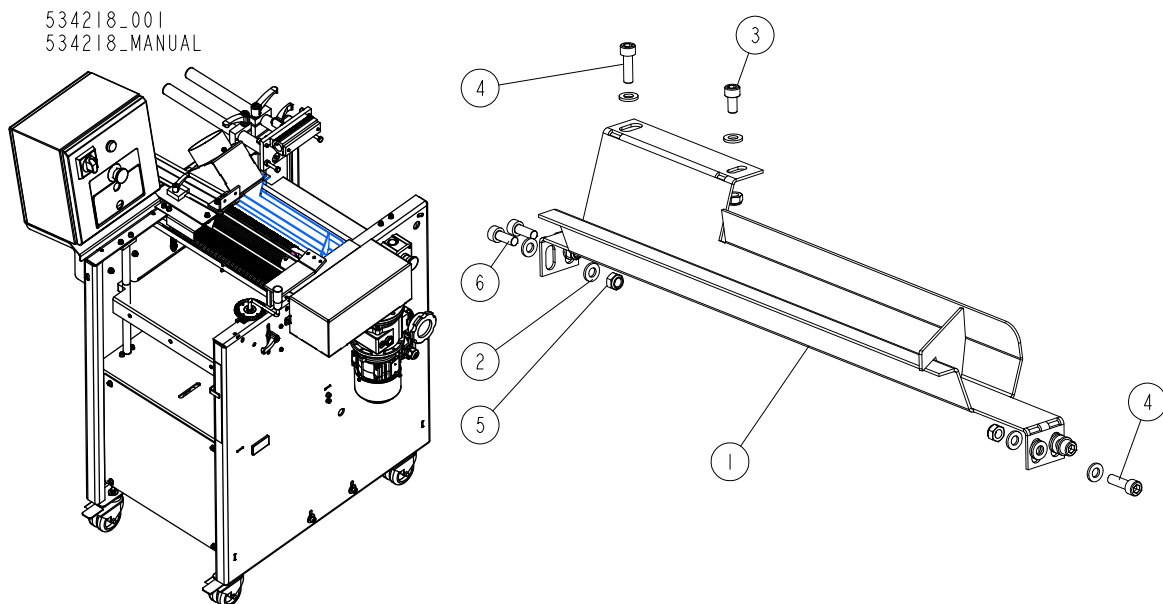
2.20 Bearing assembly 534225

534225_001_B
534225_MANUAL



REF	DESCRIPTION (◆ indicates parts available in assemblies only)	PART #	QTY	
-	SLIDE BEARING ASSEMBLY	534225	1	
1	SLIDE BLOCK ASSEMBLY	537575	1	
2	ROD, SHAFT TENSION	546898-1	1	
3	COVER, RUBBER	533516	1	
4	SPRING	533519-1	1	
5	WASHER, 8.4 FLAT,ZINC	F81054-1	1	
6	NUT, M8-8-B HEX NYLON ZINC LOCK	F81032-2	1	
7	SCREW M4X12 PHILLIPS ZC 5.8 DIN 7985	F81011-43	2	

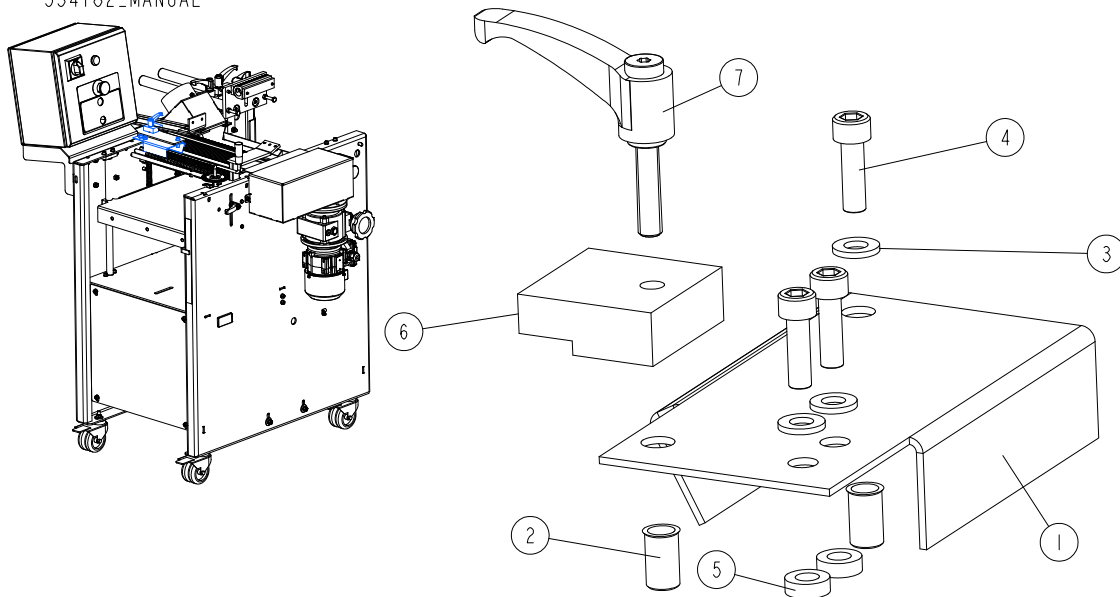
2.21 Chip channel assembly 534218



REF.	DESCRIPTION (* indicates parts available in assemblies only)	PART #	QTY
-	CHIP CHANNEL ASSEMBLY	534218	1
1	CHANNEL, CHIP W/PLATE	534217-1	1
2	WASHER, 6.4 FLAT ZINC	F81053-1	14
3	SCREW, ISO 4762-M6X12-8.8-A2E HEX SOCKET HEAD CAP	F81001-87	1
4	SCREW, M6X20 8.8 HEX SOCKET HEAD CAP ZINC	F81001-22	3
5	NUT, M6-8-B HEX NYLON ZINC LOCK	F81031-2	5
6	SCREW, M6X16 8.8 HEX SOCKET HEAD CAP ZINC	F81001-21	2

2.22 Small guard assembly 534182

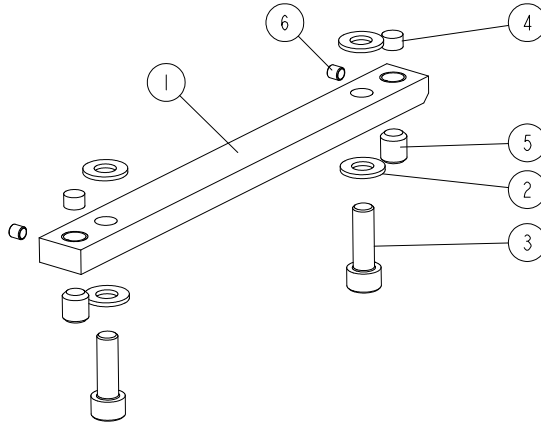
534182_001
534182_MANUAL



REF.	DESCRIPTION (* indicates parts available in assemblies only)	PART #	QTY
-	GUARD ASSEMBLY, SMALL	534182	1
1	GUARD, SMALL	534181-1	1
2	NUT, O-NIT-6-17-ZN RIVET	F81031-13	2
3	WASHER, 6.4 FLAT ZINC	F81053-1	3
4	SCREW, M6X20 8.8 HEX SOCKET HEAD CAP ZINC	F81001-22	3
5	WASHER, SPACER	534183	2
6	BLOCK, GUARD CLAMPING	534789-1	1
7	HANDLE, ERZ.44 P-M6X40 ADJUSTABLE	534790	1

2.23 Mounting bar assembly 534357

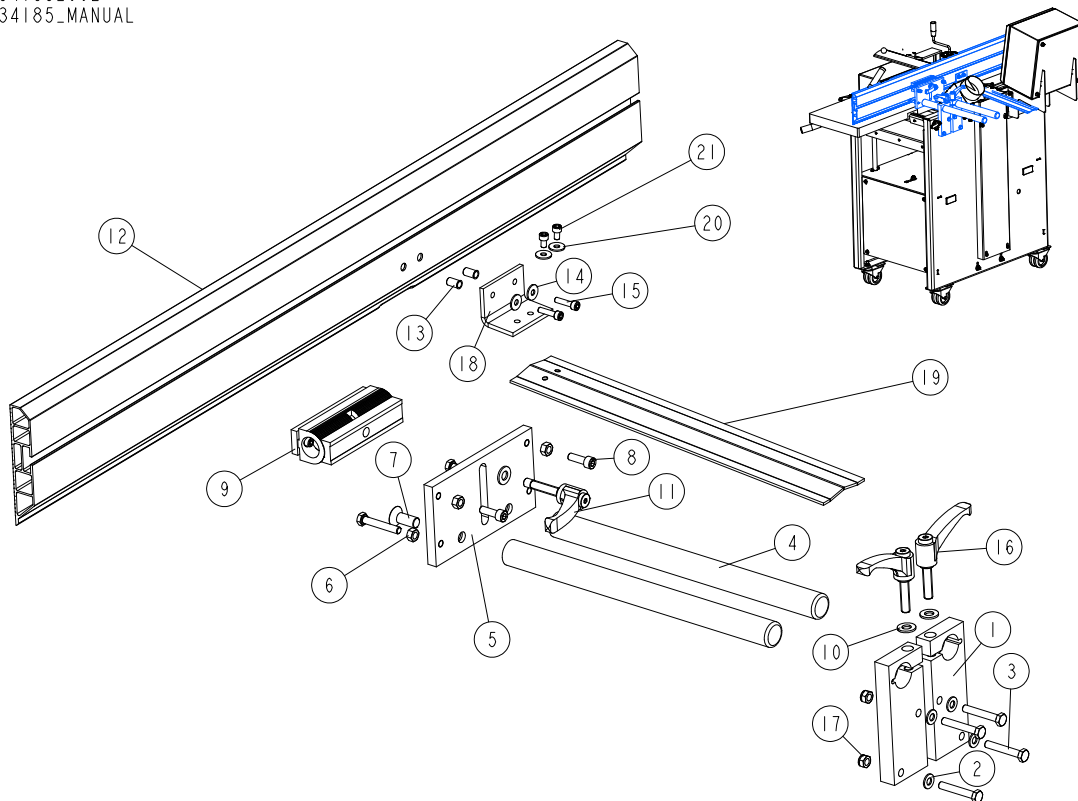
534357_001
534357_MANUAL



REF.	DESCRIPTION (* indicates parts available in assemblies only)	PART #	QTY
-	MOUNTING BAR ASSEMBLY	534357	1
1	BAR	534356-1	1
2	WASHER, 8.4 FLAT ZINC	F81054-1	4
3	SCREW, M8X25 8.8 HEX SOCKET HEAD CAP ZINC	F81002-21	2
4	PIN, ADJUSTMENT	534358	2
5	SCREW, M10X12-45H ZINC-PLATED SET	F81003-46	2
6	SCREW, M5X5-45H-DIN 916 HEX SOCKET SET WITH CUP POINT	F81000-92	2

2.24 Fence assembly 534185

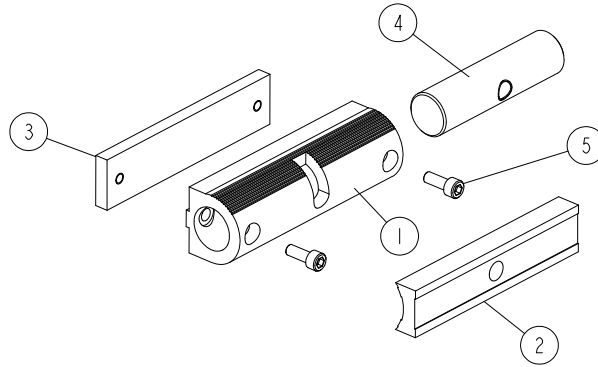
534185_002
534185_MANUAL



REF.	DESCRIPTION (* indicates parts available in assemblies only)	PART #	QTY
-	FENCE ASSEMBLY	534185	1
1	BRACKET, FENCE GUIDE MOUNTING	534184-1	2
2	WASHER, 8.4 FLAT ZINC	F81054-1	4
3	BOLT, M8X50 -8.8 HEX HEAD FULL THREAD ZINC	F81002-19	6
4	ROD	534187	2
5	PLATE, FENCE GUIDE	534186-1	1
6	NUT, M8-8-B HEX ZINC	F81032-1	4
7	SCREW, M12X30-10.9 FLAT SOCKET HEAD CAP	F81004-18	2
8	SCREW, M8X25 8.8 HEX SOCKET HEAD CAP ZINC	F81002-21	2
9	FENCE ADJUSTMENT ASSEMBLY See Section 2.25	534213	1
10	WASHER, 10.5 FLAT ZINC	F81055-1	3
11	HANDLE, ERZ.78 P-M10X50 ADJUSTABLE	534214	1
-	FENCE, GUIDE	534219	1
12	FENCE, GUIDE	534215	1
13	NUT, O-NIT-6-17-ZN RIVET	F81031-13	2
14	WASHER, 6.5 ZINC SPECIAL FLAT	F81053-11	2
15	SCREW, M6X25 -8.8-FE/ZN5 HEX SOCKET HEAD	F81001-41	2
16	HANDLE, ERZ.78 P-M10X40 ADJUSTABLE	533536	2
17	NUT, M8-8-B HEX NYLON ZINC LOCK	F81032-2	4
18	BRACKET, RUBBER CONNECTING	534788	1
19	PLATE, CUTTER COVER	534787-1	1
20	WASHER, 6.5 ZINC SPECIAL FLAT	F81053-11	2
21	SCREW, M6X10 8.8 HEX SOCKET HEAD CAP ZINC	F81001-12	2

2.25 Adjuster Assembly, Fence Panel (No. 534213)

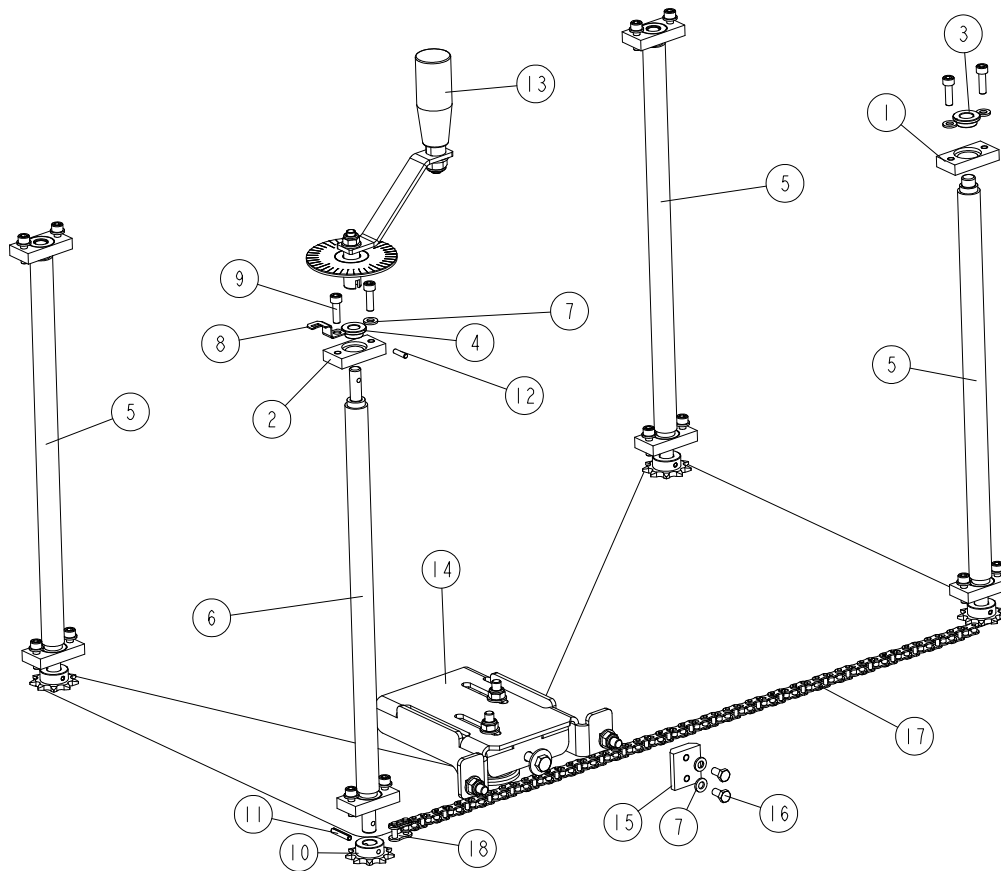
534213_001
534213_MANUAL



REF.	DESCRIPTION (* indicates parts available in assemblies only)	PART #	QTY	
-	ADJUSTER ASSEMBLY, FENCE PANEL	534213	1	
1	BLOCK, PANEL ADJUSTMENT (2)	534189	1	
2	BLOCK, ANGLE ADJUSTMENT (1)	534188	1	
3	PLATE, K3 PANEL ADJUSTMENT	534210-1	1	
4	SHAFT, PANEL ADJUSTER	534211	1	
5	SCREW, M6X16 8.8 HEX SOCKET HEAD CAP ZINC	F81001-21	2	

2.26 Up/Down Assembly 537700

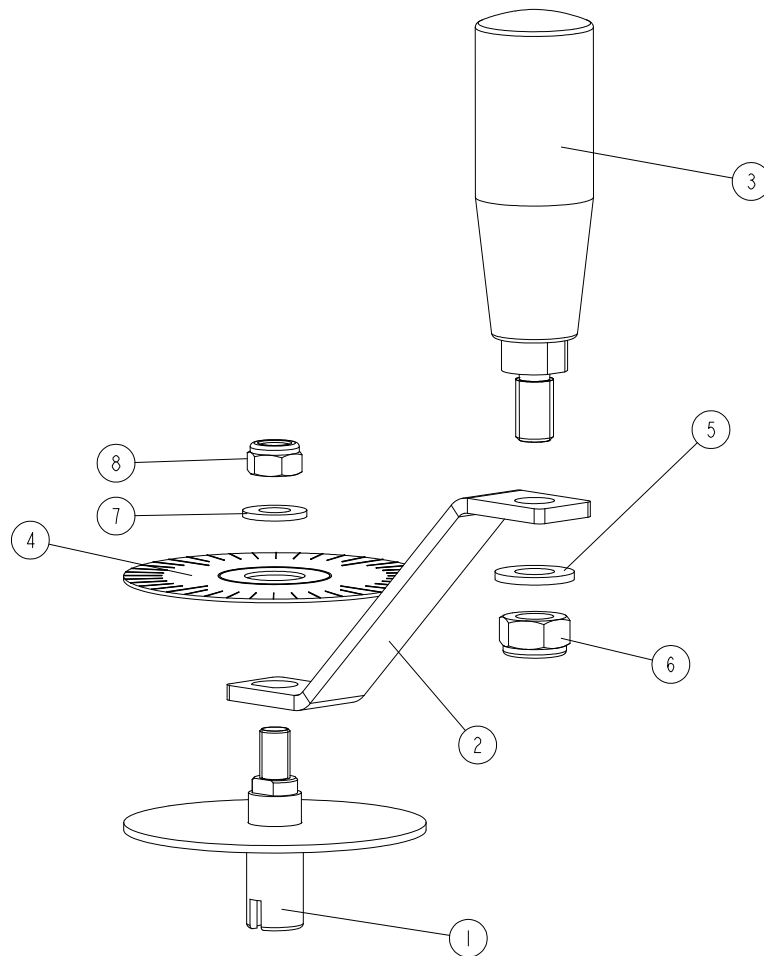
537700_001_A
537700_MANUAL



Ref	DESCRIPTION (* indicates parts available in assemblies only)	PART #	QTY	
-	MP180 UP/DOWN ASSEMBLY	537700	1	
1	BLOCK	533113-1	7	
2	BLOCK 2	546903-1	1	
3	BUSHING, 12/18-8 FLANGED 24-3	546901	7	
4	BUSHING, 10/16-8 FLANGED 22-3	546902	1	
5	SCREW, TR20X4 L=424 ACME	534386	3	
6	SCREW, TR20X4 L=445 ACME	534387	1	
7	WASHER 6,4 ZC DIN 126 ISO 7091	F81053-1	17	
8	INDICATOR, SCALE	534395	1	
9	SCREW M6X20 SHCS ZC 8.8 DIN 912 ISO 4762	F81001-22	16	
10	SPROCKET, Z=9; 1/2"X 3/16"(CHAIN 083-1)	533111	4	
11	PIN SPRING 4X24 ZC DIN 1481 ISO 8752	F81044-13	4	
12	HARDENED PIN DIAM 4H6 X16-ST.	F81048-85	1	
13	HANDLE WITH SHIELD See Section 2.27	534760	1	
14	CHAIN TENSION ASSEMBLY See Section 2.28	533570	1	
15	BLOCK, CHAIN SLIDE	533681	1	
16	BOLT M6X12 HH ZC FT 8.8 DIN 933	F81001-7	2	
17	CHAIN 083-1; P=1/2"; LENGTH=2.8702 M (225 LINKS+1 OFFSET LINK)	537701	1	
18	CONNECTING LINK FOR CHAIN 083-1	533128	1	

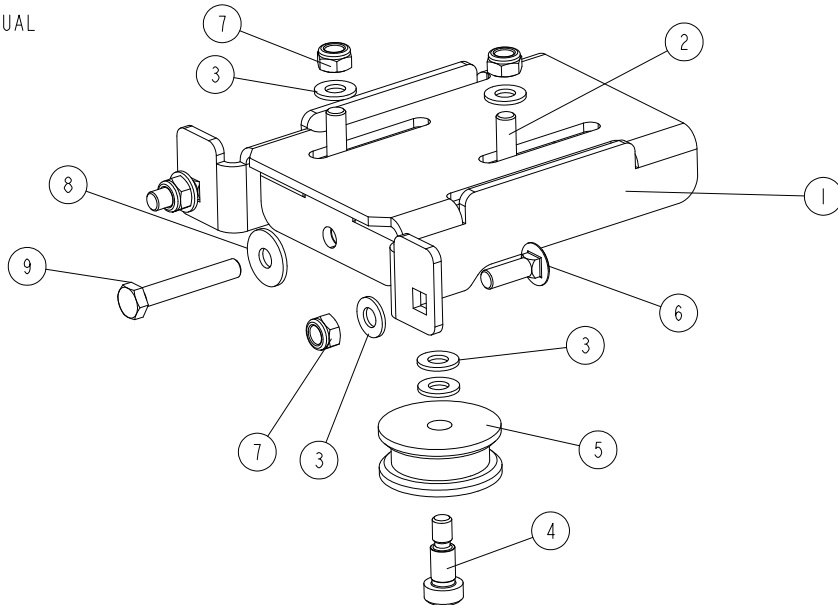
2.27 Knob and scale assembly 534760

534760_001_A
534760_MANUAL



Ref	DESCRIPTION (* indicates parts available in assemblies only)	PART #	QTY
-	HANDLE WITH SHIELD	534760	1
1	KNOB ASSEMBLY	534758-1	1
2	HANDLE PLATE	541457-1	1
3	REVOLVING GRIP	535974	1
4	DECAL, MP200 ROUND SCALE	533577	1
5	WASHER 10,5 ZC DIN 126 ISO 7091	F81055-1	1
6	NUT M10 ZC 8 NYLOCK DIN 982 ISO 7040	F81033-1	1
7	WASHER 8,4 ZC DIN 126 ISO 7091	F81054-1	1
8	NUT M8 ZC 8 NYLOCK DIN 982 ISO 7040	F81032-2	1

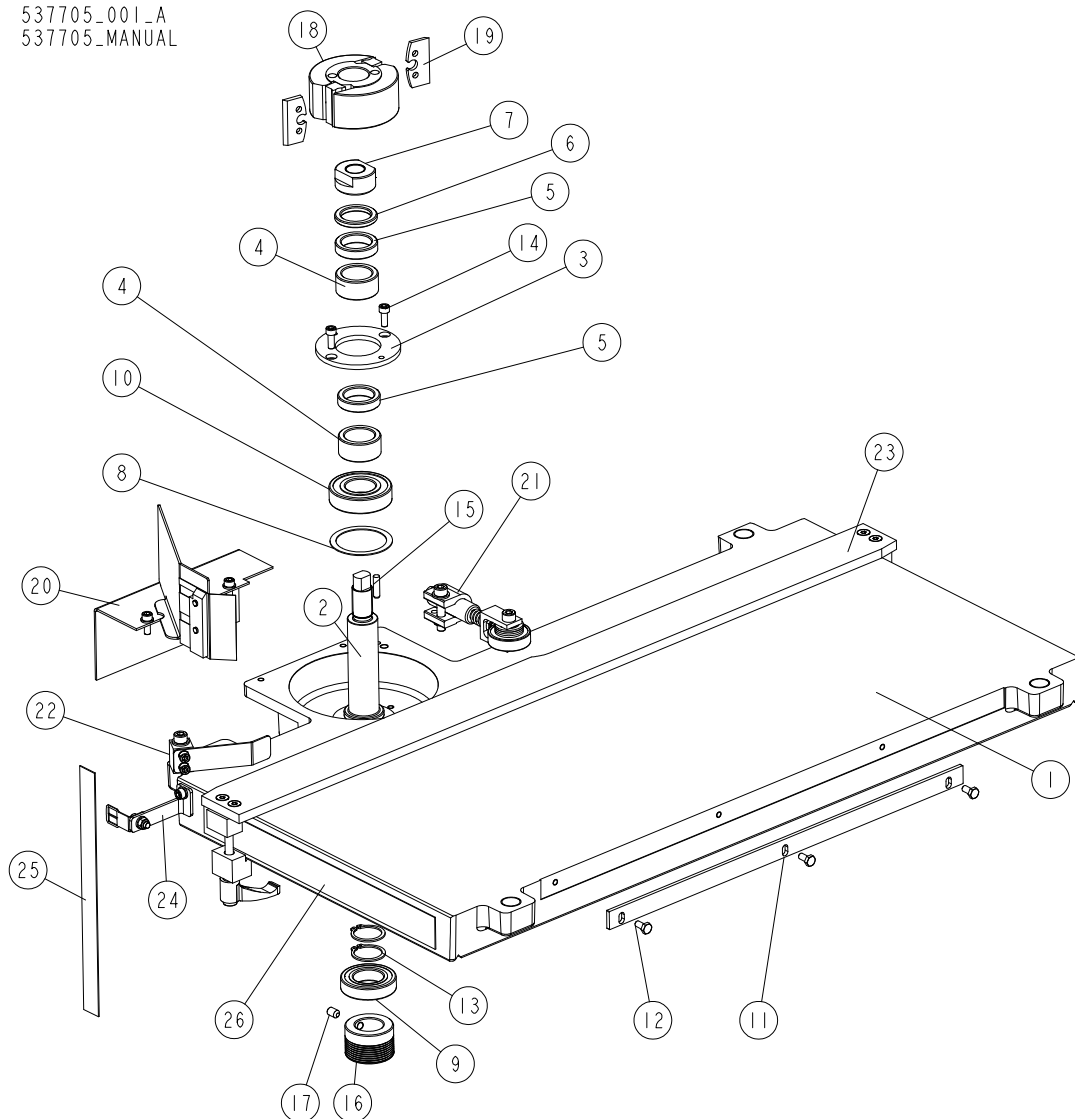
2.28 Chain Tension assembly 533570

533570_001
533570_MANUAL

Ref	DESCRIPTION (* indicates parts available in assemblies only)	PART #	QTY
-	CHAIN TENSION ASSEMBLY	533570	1
1	PLATE, CHAIN TENSIONER	533575-1	1
2	TENSIONER SLIDER	533572-1	1
3	WASHER 8,4 ZC DIN 126 ISO 7091	F81054-1	6
4	SHOULDER SCREW HSH -10-M8-16; 12,9	F81003-139	1
5	ROLLER, TENSIONER	533576	1
6	BOLT M8X25 CARRIAGE ZC 8.8 DIN603 ISO 8677	F81002-59	2
7	NUT M8 ZC 8 NYLOCK DIN 982 ISO 7040	F81032-2	4
8	WASHER 8,5 ZC FENDER DIN 9021 ISO 7093	F81054-11	1
9	BOLT M8X50 HH ZC FT 8.8 DIN 933	F81002-19	1

2.29 Bottom Table. 537705

537705-001_A
537705-MANUAL

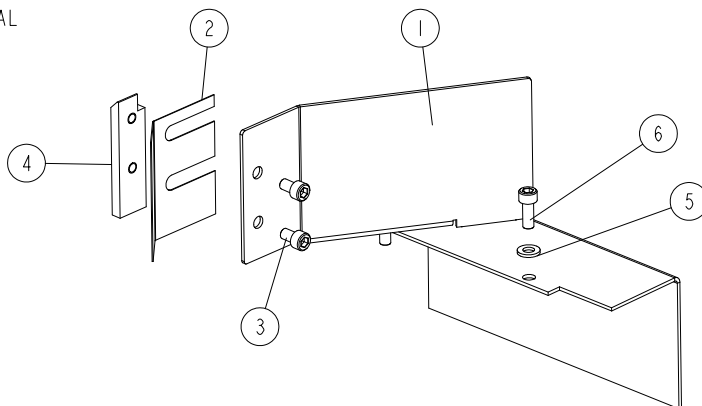


Ref	DESCRIPTION (* indicates parts available in assemblies only)	PART #	QTY
-	MP180 COMPLETE BOTTOM TABLE	537705	1
1	MP180 TABLE	546833-1	1
2	SHAFT	533537	1
3	PLATE, CLAMPING	533542-1	1
4	BUSHING, 30/42-20.2 ZINC-PLATED	533541-1	2
5	BUSHING, 30/42-10 ZINC-PLATED	533539-1	2
6	BUSHING, 30/42-5.2 ZINC-PLATED	533540-1	1
7	NUT, M20X1.5 LEFT	533538-1	1
8	WASHER 50X61.6X1	533543	1
9	BEARING, 6006-C- 2HRS-FAG	592792	1
10	BEARING, 6206-C- 2HRS-FAG	592793	1
11	BAR	533546-1	1
12	BOLT M6X12 HH ZC FT 8.8 DIN 933	F81001-7	3

Ref	DESCRIPTION (* indicates parts available in assemblies only)	PART #	QTY	
13	OUTSIDE RETAINING RING Z30 PN-M/85111 DIN 471	F81090-23	2	
14	SCREW M6X16 SHCS ZC 8.8 DIN 912 ISO 4762	F81001-21	2	
15	DOWEL PIN 6M6X12 DIN 7 ISO 2338	F81045-5	1	
16	PULLEY, MULTI-GROOVE SMALL ALUMINIUM	533586	1	
17	SCREW M8X12 HSS W/CONE POINT ZC 45H DIN 914	F81002-105	1	
-	CUTTERHEAD	TG562K	1	
18	CUTTERHEAD	533587	1	
19	KNIFE, PLANER (2 PCS)	TPK50.024.4TB	1	
20	MP180 CHIP BREAKER ASSEMBLY See Section 2.30	543554	1	
21	CLAMP ROLLER ASSEMBLY II See Section 2.30	533550	1	
22	FENCE PLATE ASSEMBLY See Section 2.32	537715	1	
23	FENCE COMPLETE See Section 2.33	537674	1	
24	SCALE INDICATOR ASSEMBLY See Section 2.34	537738	1	
25	DECAL, VERTICAL SCALE	533579	1	
26	DECAL, HORIZONTAL SCALE	537706	2	
	KIT, ADJUSTMENT SHIMS	561712-S	1	
	SHIM, 30/42-2 FE/ZN5 DIN 988	F81069-1	2	
	SHIM, 30/42-1 FE/ZN5 DIN 988	F81069-2	2	
	SHIM, 30/42-0.5 FE/ZN5 DIN 988	F81069-3	2	
	SHIM, 30/42-0.3 FE/ZN5 DIN 988	F81069-4	2	
	SHIM, 30/42-0.2 FE/ZN5 DIN 988	F81069-5	2	
	SHIM, 30/42-0.1 FE/ZN5 DIN 988	F81069-6	2	

2.30 Chip Breaker. 543554

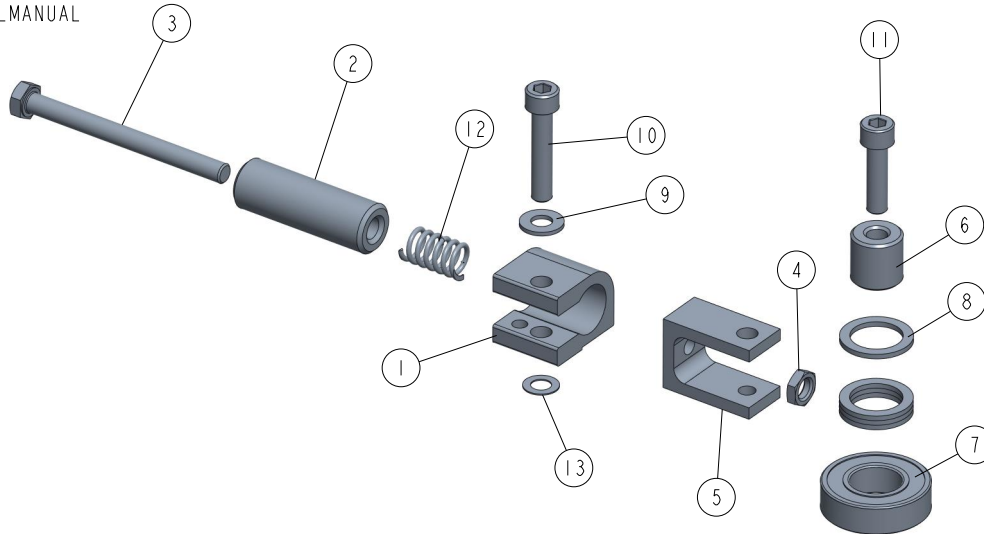
543554_001
543554_MANUAL



Ref	DESCRIPTION (* indicates parts available in assemblies only)	PART #	QTY
-	MP180 CHIP BREAKER ASSEMBLY	543554	1
1	GUARD, CUTTER	533501-1	1
2	PLATE, 0.5 MM CHIP BREAKER	533502	1
3	BOLT M6X10 SHCS ZC PT 8.8 DIN 912 ISO 4762	F81001-12	2
4	ASSEMBLY PLATE	543553-1	1
5	WASHER 6,4 ZC DIN 126 ISO 7091	F81053-1	2
6	SCREW M6X16 SHCS ZC 8.8 DIN 912 ISO 4762	F81001-21	2

2.31 Clamp Roller Assembly 533550

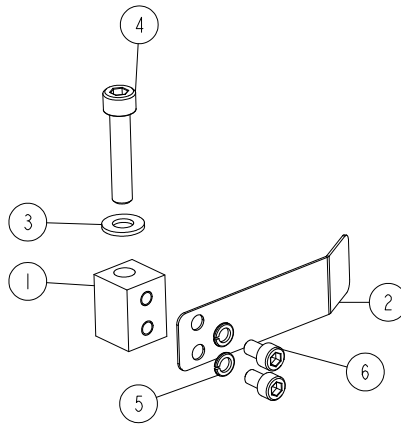
533550_001
533550_MANUAL



REF.	DESCRIPTION (* indicates parts available in assemblies only)	PART #	QTY
-	CLAMP ROLLER ASSEMBLY II	533550	1
1	CONNECTOR, ALUMINIUM	533551-1	1
2	BUSHING, 8.5/20-60 ZINC-PLATED	533553-1	1
3	BOLT, M8X90-8.8 HEX HEAD FULL THREAD ZINC	F81002-16	1
4	NUT, M8-04-HEX THIN ZINC	F81032-8	1
5	CONNECTOR, ALUMINIUM	533552	1
6	BUSHING, 8.2/20-20	533554-1	1
7	BEARING, 6004 2RS CX ROLLING	093868	1
8	WASHER, 28/20-2	533555	4
9	WASHER, 8.4 FLAT ZINC	F81054-1	1
10	SCREW, M8X40-8.8 HEX SOCKET HEAD CAP ZINC	F81002-29	1
11	SCREW, M8X30-8.8 HEX SOCKET HEAD CAP ZINC	F81002-31	1
12	SPRING, 12X25XN2	533556	1
13	WASHER, 14/8-0.5 DIN 988 SPACER	F81055-16	1

2.32 Fence Plate. 537715

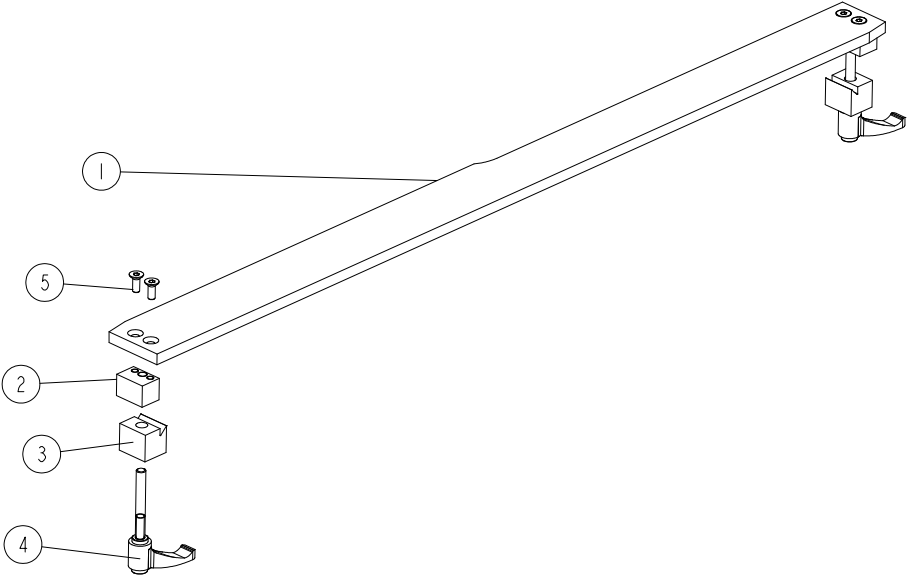
537715_001
537715_MANUAL



Ref	DESCRIPTION (* indicates parts available in assemblies only)	PART #	QTY
-	FENCE PLATE ASSEMBLY	537715	1
1	BLOCK	537716-1	1
2	FENCE PLATE	537717-1	1
3	WASHER 8,4 ZC DIN 126 ISO 7091	F81054-1	1
4	SCREW M8X40 SHCS ZC 8.8 DIN 912 ISO 4762	F81002-29	1
5	WASHER 6,1 ZC SPRING LOCK DIN 127	F81053-3	2
6	BOLT M6X10 SHCS ZC PT 8.8 DIN 912 ISO 4762	F81001-12	2

2.33 Fence. 537674

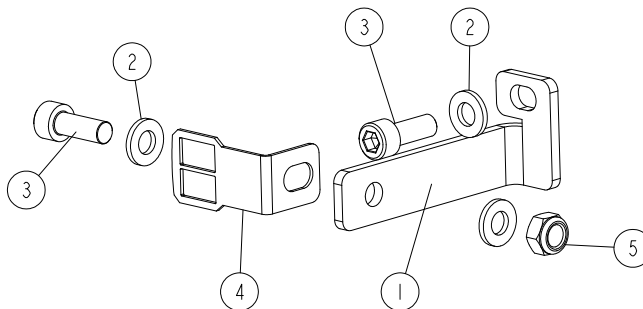
537674_001
537674_MANUAL



Ref	DESCRIPTION (* indicates parts available in assemblies only)	PART #	QTY	
-	FENCE COMPLETE	537674	1	
1	FENCE	537673-1	1	
2	CUBE II	537672-1	2	
3	CUBE I	537671-1	2	
4	ADJUSTABLE HANDLE ERZ.63 P-M8X63	537675	2	
5	SCREW M6X16 HSFHS ZC 10.9 DIN 7991	F81001-55	4	

2.34 Scale Indicator Assembly. 537738

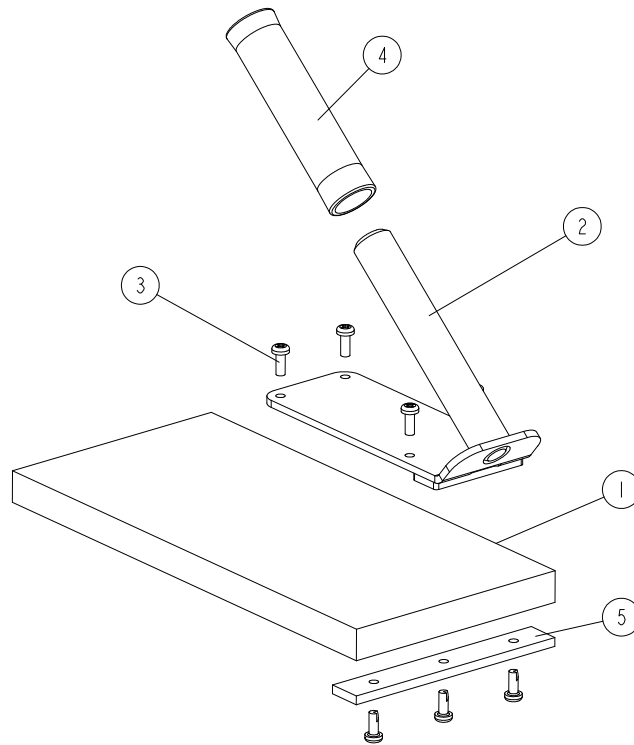
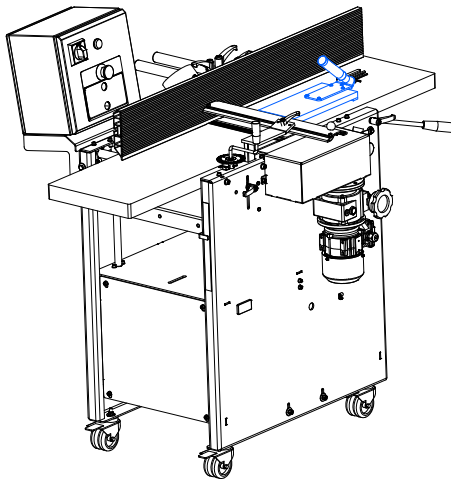
537738_001
537738_MANUAL



Ref	DESCRIPTION (* indicates parts available in assemblies only)	PART #	QTY
-	SCALE INDICATOR ASSEMBLY	537738	1
1	INDICATOR HANDLE	537737-1	1
2	WASHER 6,4 ZC DIN 126 ISO 7091	F81053-1	3
3	SCREW M6X16 SHCS ZC 8.8 DIN 912 ISO 4762	F81001-21	2
4	SCALE INDICATOR	533099	1
5	NUT M6 ZC 8 NYLOCK DIN 982 ISO 7040	F81031-2	1

2.35 Pusher 534166

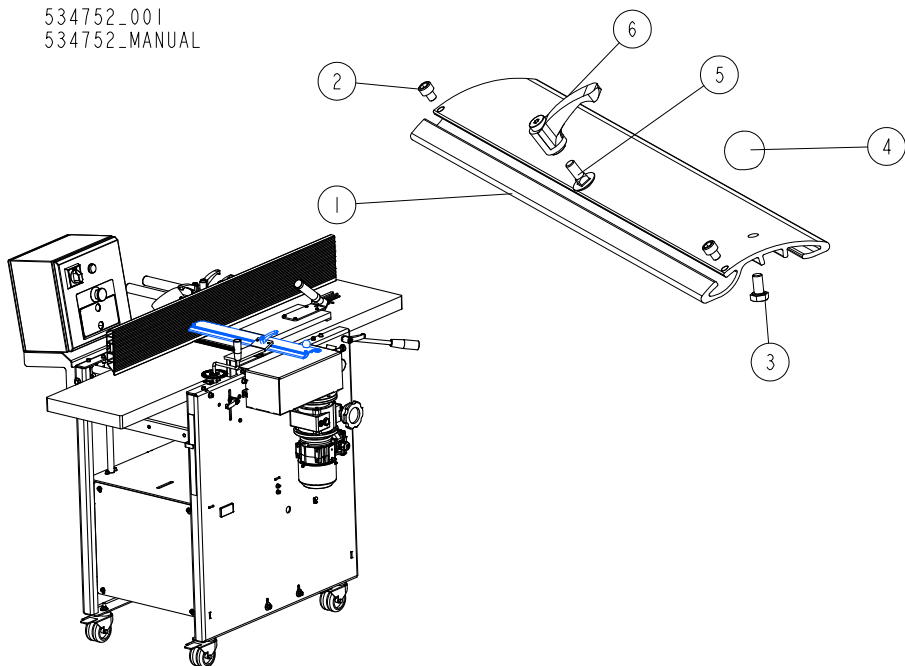
534166_001
534166_MANUAL



REF.	DESCRIPTION (* indicates parts available in assemblies only)	PART #	QTY	
-	PUSHER	534166	1	
1	PLATE, MANUAL CLAMP	534160	1	
2	MANUAL CLAMP ASSEMBLY	534165-1	1	
3	BOLT, #10-24X1/2 PH	F05015-17	7	
4	GRIP	086164	1	
5	PLATE, CLAMPING	534786-1	1	

2.36 Cutter protective cover assembly 534752

534752_001
534752_MANUAL

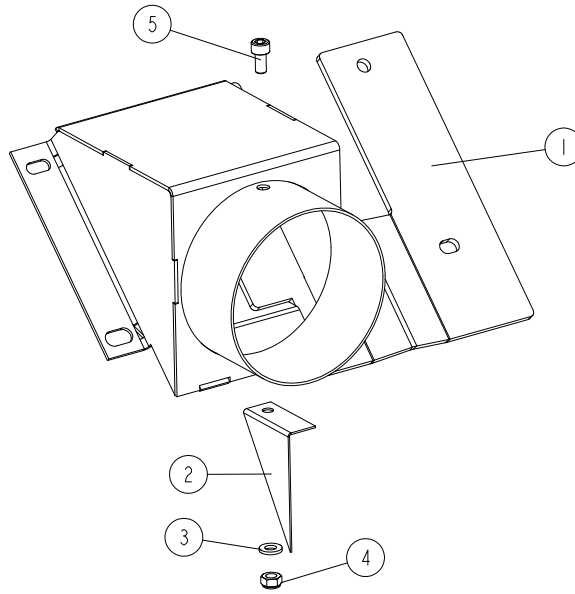


REF.	DESCRIPTION (* indicates parts available in assemblies only)	PART #	QTY
-	CUTTER PROTECTIVE COVER ASSEMBLY	534752 ¹	1
1	CUTTER PROTECTIVE COVER	534230	1
2	SCREW, M5X6 8.8 HEX SOCKET HEAD CAP ZINC	F81000-94	2
3	BOLT, M6X12 8.8 HEX HEAD FULL THREAD ZINC	F81001-7	1
4	KNOB, DIN 319-KU-25-M6-C ROUND	534769	1
5	BOLT, M6X16 -8.8 CARRIAGE ZINC	F81001-36	1
6	HANDLE, ERZ.44 A-M6 ADJUSTABLE	534751	1

¹ Not included UL version

2.37 Chip Duct 534180

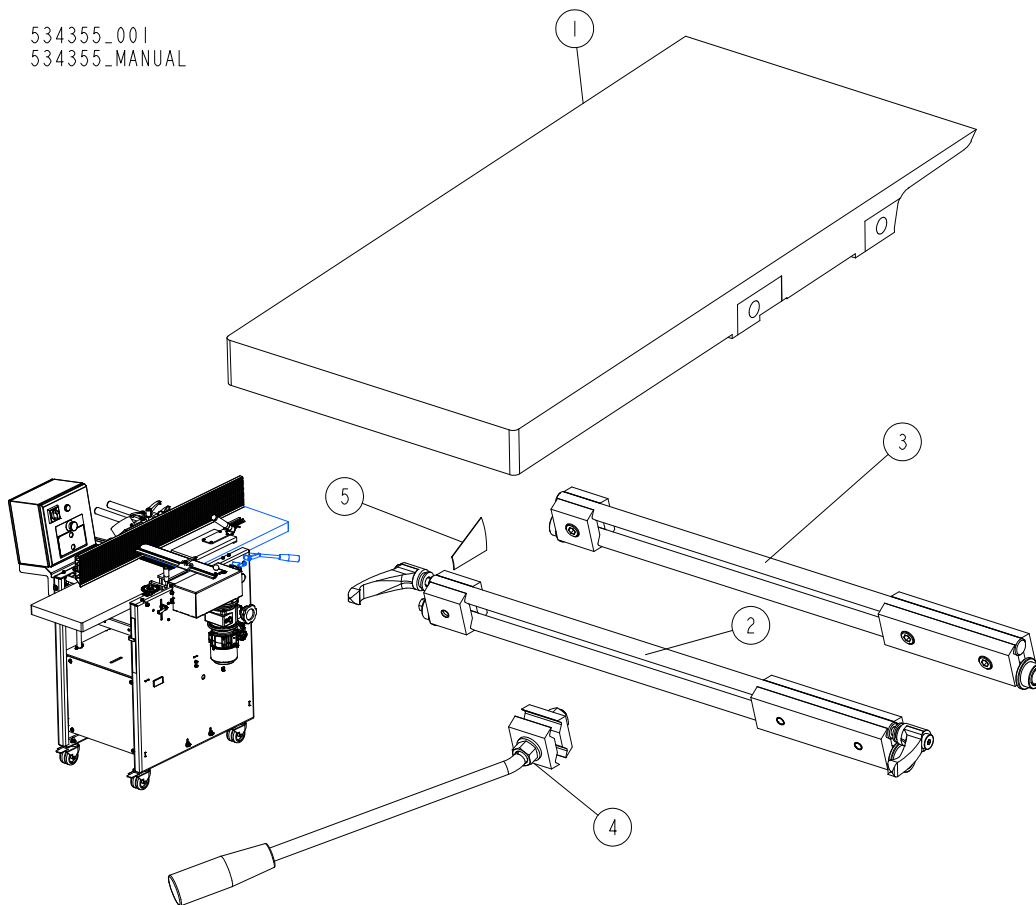
534180_001
534180_MANUAL



REF	DESCRIPTION (◆ indicates parts available in assemblies only)	PART #	QTY	
-	DUCT, CHIP	534180	1	
1	DUCT, CHIP	534175-1	1	
2	PLATE, CHIP DUCT	534179	1	
3	WASHER, 6.4 FLAT ZINC	F81053-1	1	
4	NUT, M6-8-B HEX NYLON ZINC LOCK	F81031-2	1	
5	SCREW M6X12 SHCS ZC 8.8 DIN 912 ISO 4762	F81001-87	1	

2.38 Upper infeed table 534355

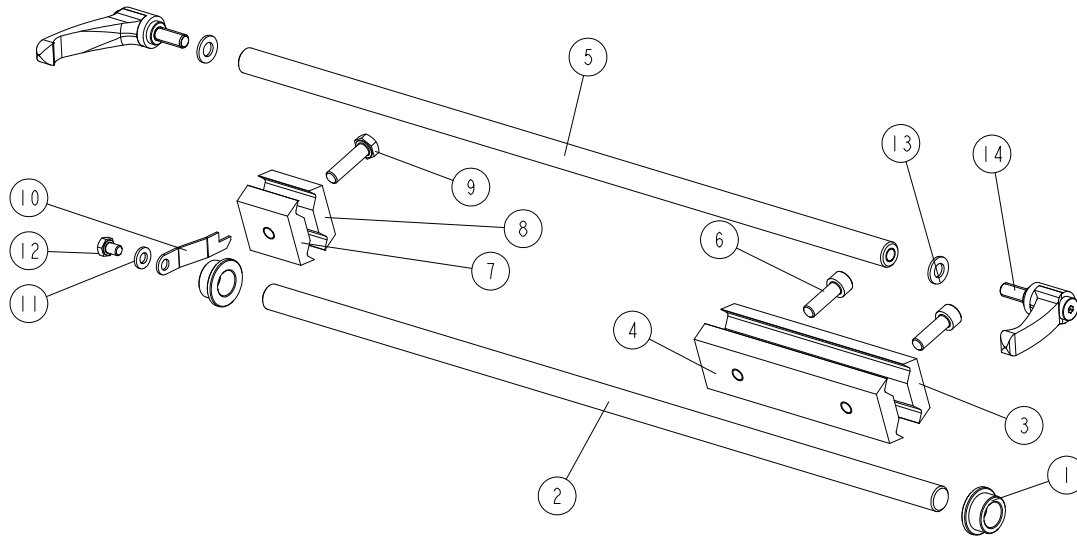
534355_001
534355_MANUAL



REF.	DESCRIPTION (* indicates parts available in assemblies only)	PART #	QTY
-	TABLE, UPPER INFEED - COMPLETE	534355	1
1	TABLE, MP160 INFEED	534353-1	1
2	FRONT GUIDE RAIL ASSEMBLY, COMPLETE See Section 2.39	534375	1
3	REAR GUIDE RAIL ASSEMBLY, COMPLETE See Section 2.40	534376	1
4	HANDLE, INFEED TABLE ADJUSTMENT See Section 2.41	534380	1
5	DECAL	534203	1

2.39 Front guide rail assembly 534375

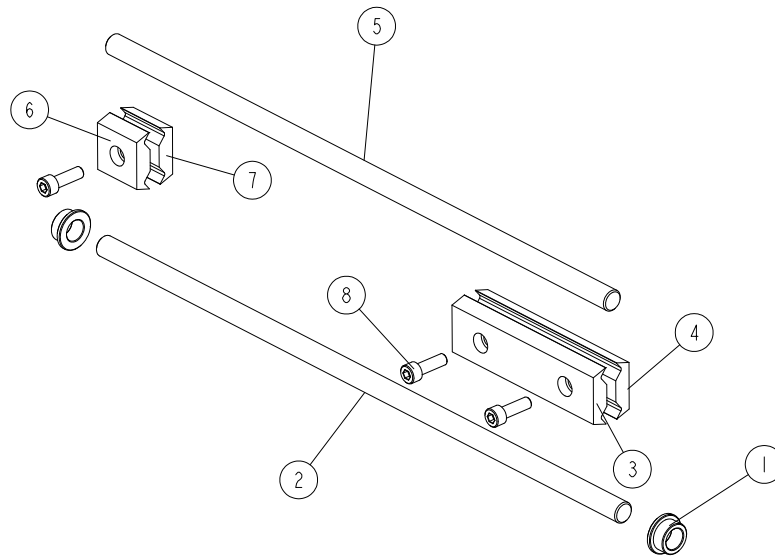
534375_001_A
534375_MANUAL



REF	DESCRIPTION (◆ indicates parts available in assemblies only)	PART #	QTY
-	FRONT GUIDE RAIL ASSEMBLY, COMPLETE	534375	1
1	BUSHING 15/22-12 FLANGED 28-3	534359	2
2	SHAFT, N15X512	534371	1
3	BRACKET, GUIDE RAIL RIGHT	534363-1	1
4	BRACKET, GUIDE RAIL RIGHT	534364-1	1
5	SHAFT, N15X492	534372	1
6	SCREW, M8X25 8.8 HEX SOCKET HEAD CAP ZINC	F81002-21	2
7	BRACKET, GUIDE RAIL	534362-1	1
8	BRACKET, GUIDE RAIL	534365-1	1
9	BOLT M8X30 HH ZC FT 8.8 DIN 933	F81002-7	1
10	INDICATOR, SCALE	534377-1	1
11	WASHER, M6, FLAT,ZINC	F81053-1	1
12	BOLT, M6X8-8.8 HEX HEAD FULL THREAD ZINC	F81001-33	1
13	WASHER, 8.4/16-1.6 PA66	546948	2
14	HAND LEVER, ERZ. 63P-M8X20 ADJUSTABLE	534378	2

2.40 Rear guide rail assembly 534376

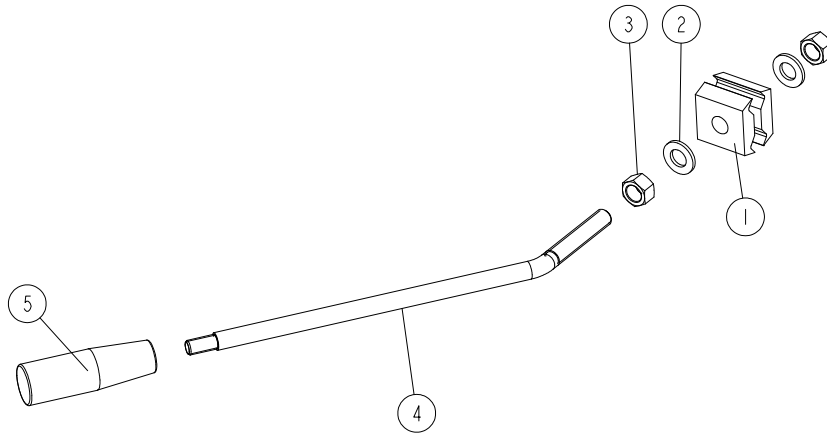
534376_001
534376_MANUAL



REF.	DESCRIPTION (* indicates parts available in assemblies only)	PART #	QTY
-	REAR GUIDE RAIL ASSEMBLY, COMPLETE	534376	1
1	BUSHING, 15/22-12 FLANGED 28-3	534359	2
2	SHAFT, LLN15X512	534374	1
3	BRACKET, GUIDE RAIL RIGHT	534363-1	1
4	BRACKET, GUIDE RAIL RIGHT	534364-1	1
5	SHAFT, LLN15X492	534373	1
6	BRACKET, GUIDE RAIL	534361-1	1
7	BRACKET, GUIDE RAIL	534362-1	1
8	SCREW, M8X25 8.8 HEX SOCKET HEAD CAP ZINC	F81002-21	3

2.41 Infeed table adjustment handle 534380

534380_001
534380_MANUAL



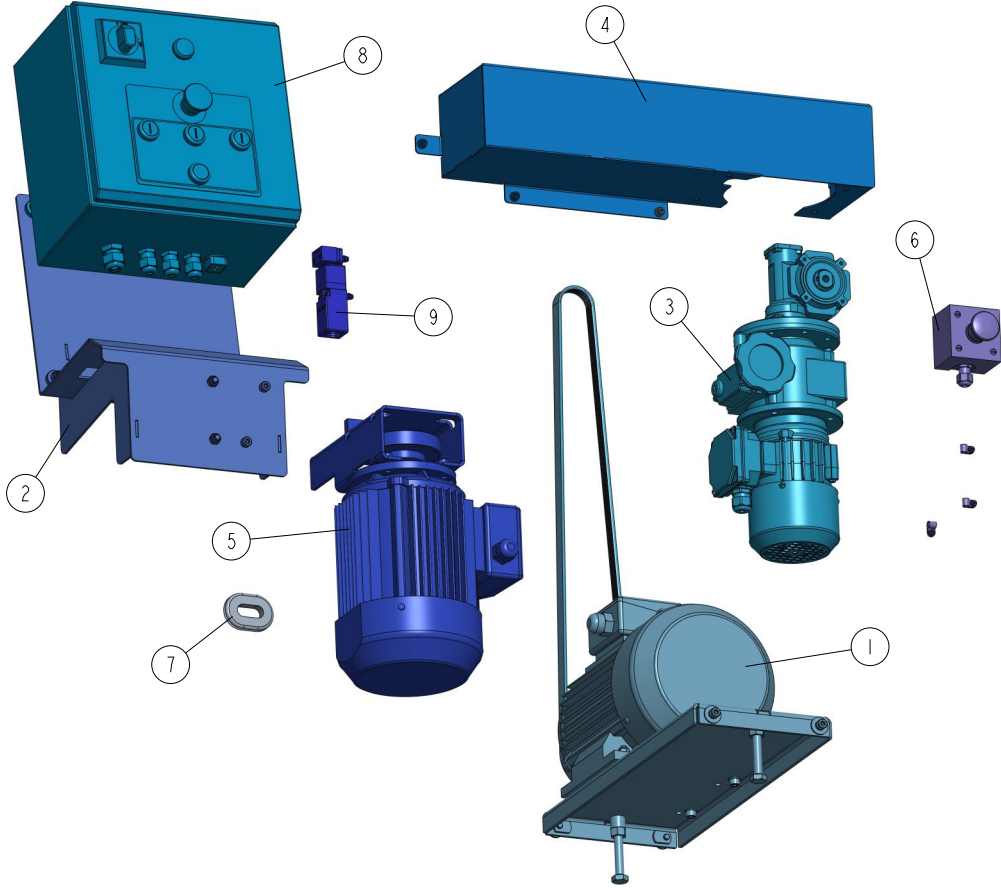
REF.	DESCRIPTION (* indicates parts available in assemblies only)	PART #	QTY	
-	INFEEED TABLE ADJUSTMENT HANDLE, COMPLETE	534380	1	
1	BRACKET, HANDLE	534366-1	2	
2	WASHER, 13 FLAT ZINC	F81056-1	2	
3	NUT, M12-8 HEX ZINC	F81034-1	2	
4	ROD, M12	534379-1	1	
5	GRIP, THREAD M10 13870M10	089445	1	



SECTION 3 MOTOR KITS MP180 CE

3.1 PRO Motor Kit 537694

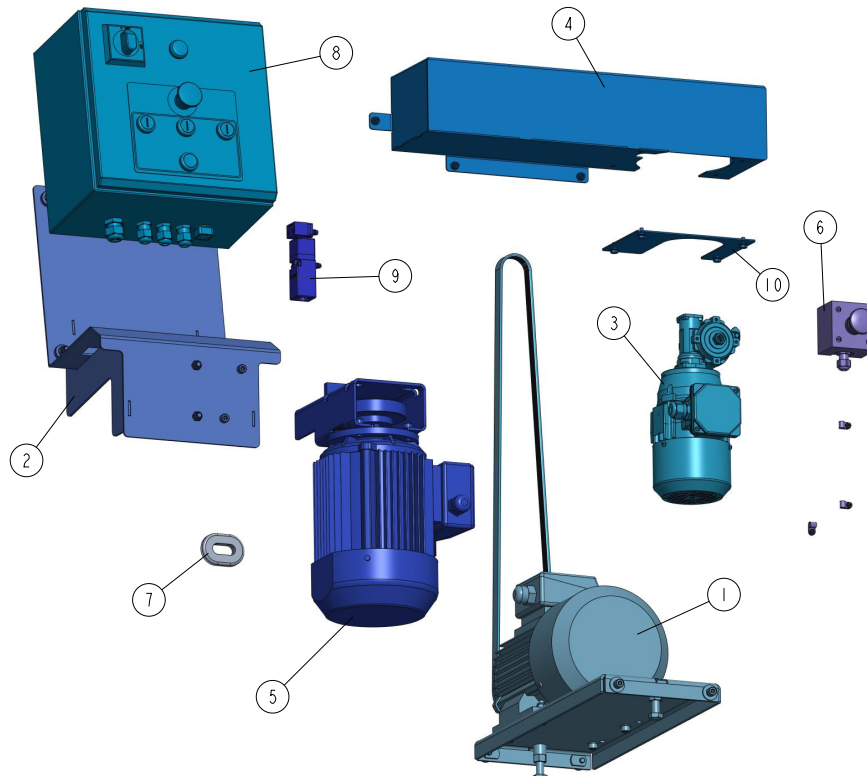
537694_001
537694



REF	DESCRIPTION (◆ indicates parts available in assemblies only)	PART #	QTY
-	PRO MOTOR KIT FOR MP180H 3x400V CE	537694	1
-	PRO MOTOR KIT FOR MP180B 3x230V CE	537694-2	1
1	HORIZONTAL CUTTER DRIVE See Section 3.3	537728	1
2	ELECTRICAL BOX MOUNT COMPLETE See Section 3.6	537704	1
3	DRIVE, MP180 PRO FEED See Section 3.7	533650-180	1
4	MP180 ECO COVER See Section 3.11	537696	1
5	SIDE CUTTER DRIVE See Section 3.13	533647	1
6	SWITCH ASSEMBLY, MP160 EMERGENCY STOP See Section 3.14	535669	1
7	GROMMET, RUBBER, 1 X 1 3/4 OVAL	085613	1
8	BOX, MP180H ELECTRICAL - COMPLETE See Section 3.15	537670	1
	BOX, MP180B ELECTRICAL - COMPLETE	537670-2 ¹	1
9	SAFETY SWITCH ASSEMBLY See Section 3.16	537708	1

¹Included in 537694-2

3.2 ECO Motor Kit 537695

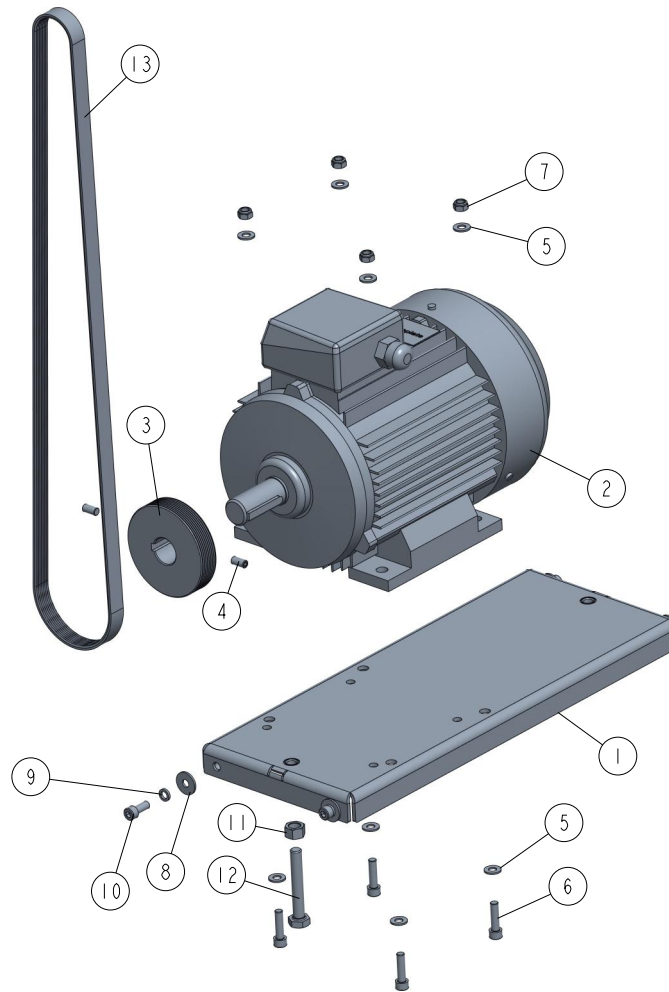
537695-001
537695-MANUAL

REF	DESCRIPTION (◆ indicates parts available in assemblies only)	PART #	QTY
-	ECO MOTOR KIT FOR MP180H 3x400V CE	537695	1
	ECO MOTOR KIT FOR MP180B 3x230V CE	537695-2	1
	ECO MOTOR KIT FOR MP180A 1x230V CE	537695-6	1
1	CUTTING HEAD DRIVE See Section 3.4	534196	1
	CUTTING HEAD DRIVE AU See Section 3.5	534196-6 ¹	1
2	ELECTRICAL BOX MOUNT COMPLETE See Section 3.6	537704	1
3	DRIVE, MP180 ECO FEED See Section 3.7	533638-180	1
	DRIVE, MP200 ECO FEED See Section 3.9	533638-6 ²	1
4	MP180 ECO COVER See Section 3.11	537696	1
5	SIDE CUTTER DRIVE See Section 3.12	533647	1
	SIDE CUTTER DRIVE See Section 3.13	533647-6 ³	1
6	SWITCH ASSEMBLY, MP160 EMERGENCY STOP See Section 3.14	535669	1
7	SEAL RUBBER, WIRE INSIDE DIA 26MM	085613	1
8	BOX, MP180H ELECTRICAL - COMPLETE See Section 3.15	537670	1
	BOX, MP180B ELECTRICAL - COMPLETE	537670-2 ⁴	1
	BOX, MP180A ELECTRICAL - COMPLETE	537670-6 ⁵	1
9	SAFETY SWITCH ASSEMBLY See Section 3.16	537708	1
10	GUARD, BOTTOM. See Section 3.17	537730	1

¹ Included in 537695-6² Included in 537695-6³ Included in 537695-6⁴ Included in 537695-2⁵ Included in 537695-6

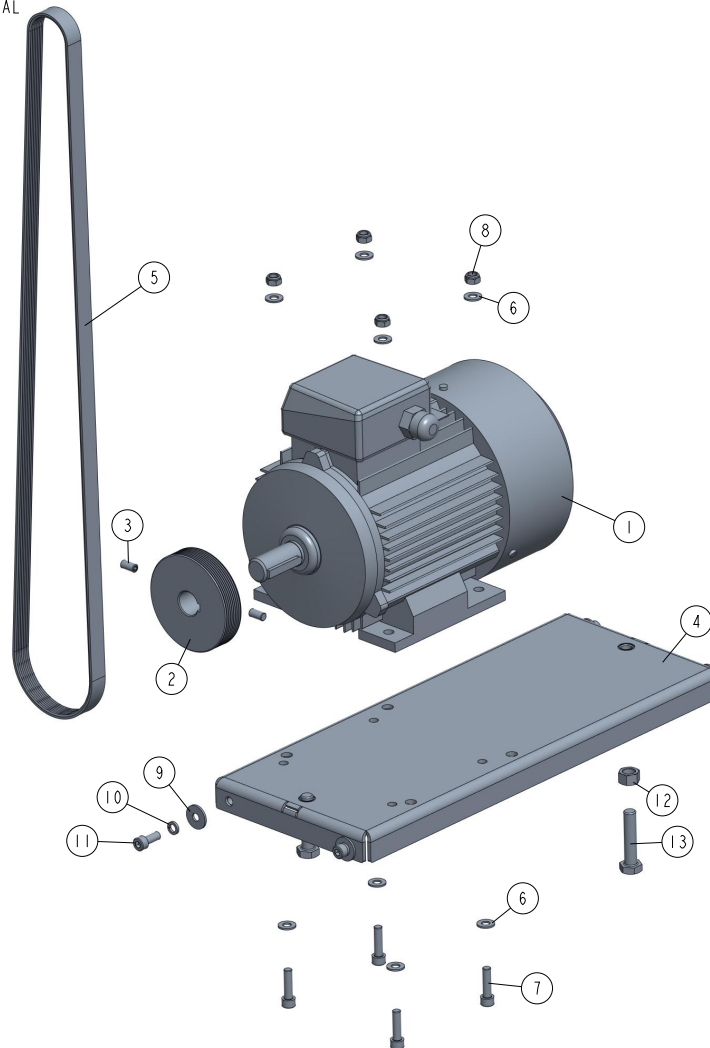
3.3 Horizontal Cutter Drive 537728

537728_001_B
537728_MANUAL



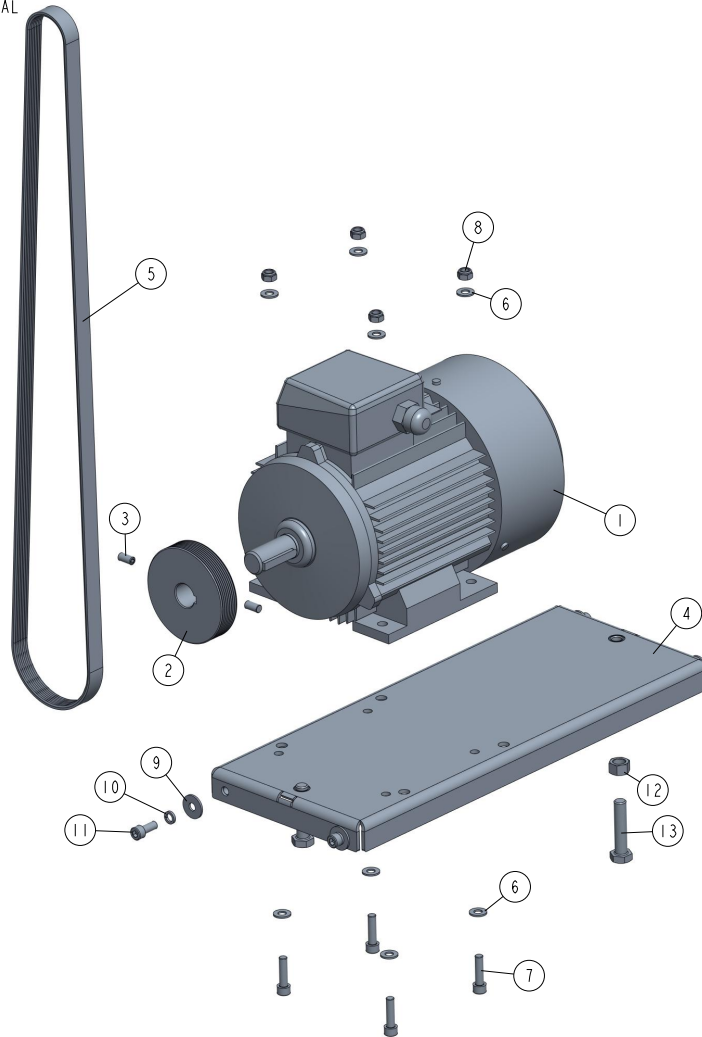
REF	DESCRIPTION (◆ indicates parts available in assemblies only)	PART #	QTY	
-	HORIZONTAL CUTTER DRIVE	537728	1	
1	MOTOR PLATE WELDED / PAINT	534200-1	1	
2	MOTOR, 3SIE100L2A 4KW 2900 R.P.M. 50HZ	537387	1	
3	SHEAVE, MP200 PRO MULTI-GROOVE	533585-P	1	
4	SCREW M8X16 HSS W/FLAT POINT ZC 45H DIN	F81002-124	2	
5	WASHER, 8,4-FLAT ZINC	F81054-1	8	
6	SCREW, M8X30-8.8 HEX SOCKET HEAD CAP ZIN	F81002-31	4	
7	NUT, M8-8-B HEX NYLON ZINC LOCK	F81032-2	4	
8	WASHER, ISO 7093-1-8-200 HV-A2E	F81054-11	4	
9	WASHER, 8.2 SPLIT LOCK	F81054-4	4	
10	SCREW, M8X20-8.8 HEX SOCKET HEAD CAP ZIN	F81002-30	4	
11	NUT, M12-8 ZINC	F81034-1	2	
12	BOLT, M12X75-8.8 HEX HEAD FULL THREAD ZI	F81004-10	2	
13	BELT, 8 PJ 1473 MULTI-RIBBED	537729	1	

3.4 Cutting Head Drive 534196

534196_001_C
534196_MANUAL

REF	DESCRIPTION (◆ indicates parts available in assemblies only)	PART #	QTY
-	CUTTING HEAD DRIVE	534196	1
1	MOTOR 3SIE90L2A, 3KW, 2900 R.P.M, 50HZ	537386	1
2	PULLEY, MULTI-GROOVE ALUMINIUM	533585	1
3	SCREW M8X16 HSS W/FLAT POINT ZC 45H DIN	F81002-124	2
4	MOTOR PLATE WELDED / PAINT	534200-1	1
5	BELT, 8 PJ 1549 MULTI-RIBBED	534201	1
6	WASHER, 8.4 FLAT ZINC	F81054-1	8
7	BOLT, M8 X 30-8.8 SOCKET HEAD	F81002-31	4
8	NUT, M8 8 HEX NYLON ZINC LOCK	F81032-2	4
9	WASHER, ISO 7093-1-8-200 HV-A2E	F81054-11	4
10	WASHER, 8.2 SPLIT LOCK ZINC	F81054-4	4
11	SCREW, M8X20-8.8 HEX SOCKET HEAD CAP ZIN	F81002-30	4
12	NUT M12 ZC 8 DIN 934	F81034-1	2
13	BOLT M12X55 HH ZC FT 8.8 DIN 933	F81004-43	2

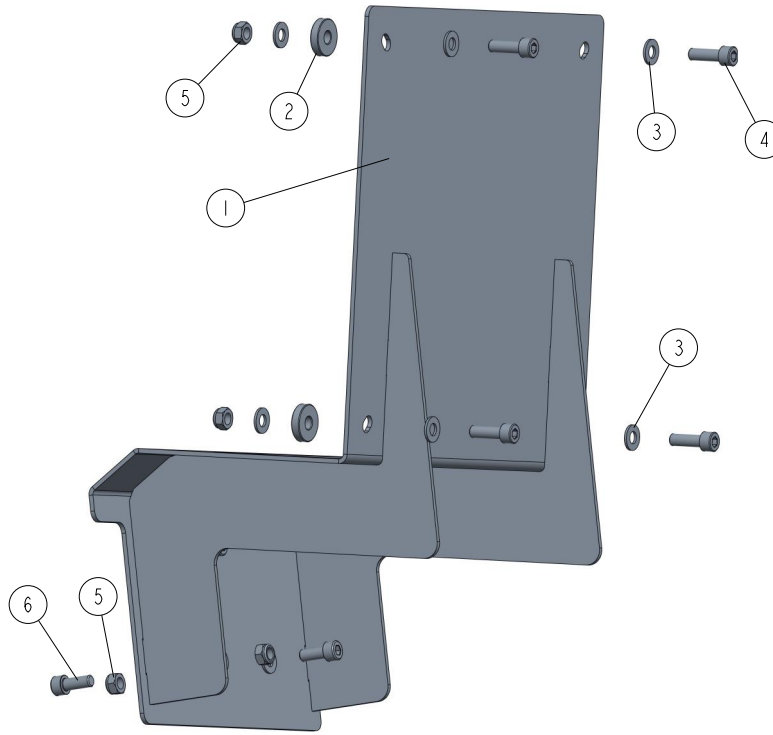
3.5 Cutting Head Drive 534196-6

534196_001_C
534196_MANUAL

REF	DESCRIPTION (◆ indicates parts available in assemblies only)	PART #	QTY	
-	CUTTING HEAD DRIVE	534196-6	1	
1	MOTOR SELHR90-2M2 IMB34/2 2,7KW 230V 4	533651	1	
2	PULLEY, MULTI-GROOVE ALUMINIUM	533585	1	
3	SCREW M8X16 HSS W/FLAT POINT ZC 45H DIN	F81002-124	2	
4	MOTOR PLATE WELDED / PAINT	534200-1	1	
5	BELT, 8 PJ 1549 MULTI-RIBBED	534201	1	
6	WASHER, 8.4 FLAT ZINC	F81054-1	8	
7	BOLT, M8 X 30-8.8 SOCKET HEAD	F81002-31	4	
8	NUT, M8 8 HEX NYLON ZINC LOCK	F81032-2	4	
9	WASHER, ISO 7093-1-8-200 HV-A2E	F81054-11	4	
10	WASHER, 8.2 SPLIT LOCK ZINC	F81054-4	4	
11	SCREW, M8X20-8.8 HEX SOCKET HEAD CAP ZIN	F81002-30	4	
12	NUT M12 ZC 8 DIN 934	F81034-1	2	
13	BOLT M12X55 HH ZC FT 8.8 DIN 933	F81004-43	2	

3.6 Electrical Box Mount 537704

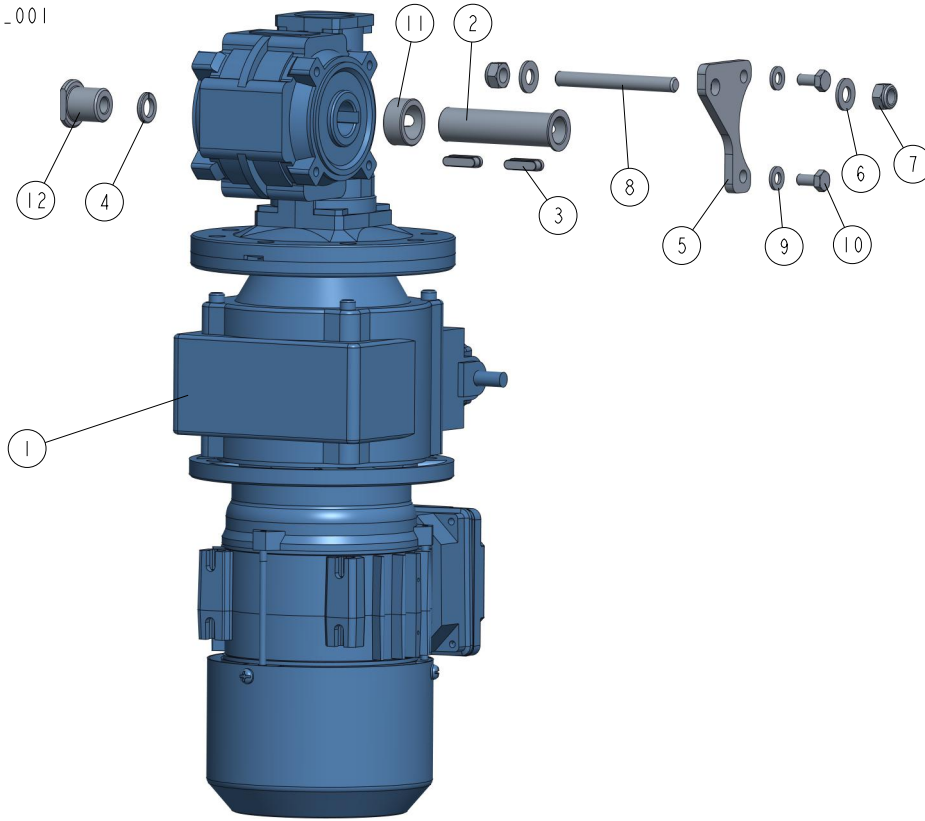
537704_001
537704_MANUAL



REF	DESCRIPTION (◆ indicates parts available in assemblies only)	PART #	QTY	
-	ELECTRICAL BOX MOUNT COMPLETE	537704	1	
1	ELECTRICAL BOX MOUNT WELDMENT	537703-1	1	
2	WASHER, 8.5/25-6 POLYAMIDE	523952	4	
3	WASHER, 8,4-FLAT ZINC	F81054-1	12	
4	SCREW M8X25 SHCS ZC 8.8 DIN 912 ISO 4762	F81002-21	4	
5	NUT, M8-8-B HEX NYLON ZINC LOCK	F81032-2	8	
6	SCREW, M8X20-8.8 HEX SOCKET HEAD CAP ZIN	F81002-30	4	

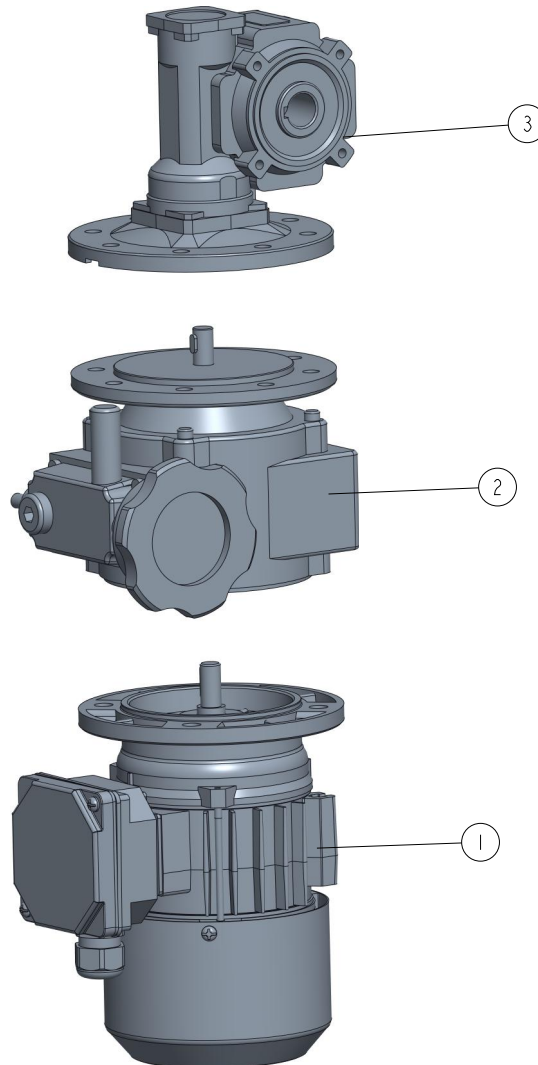
3.7 MP180 PRO Feed Drive 533650-180

533650-180_001
533650-180



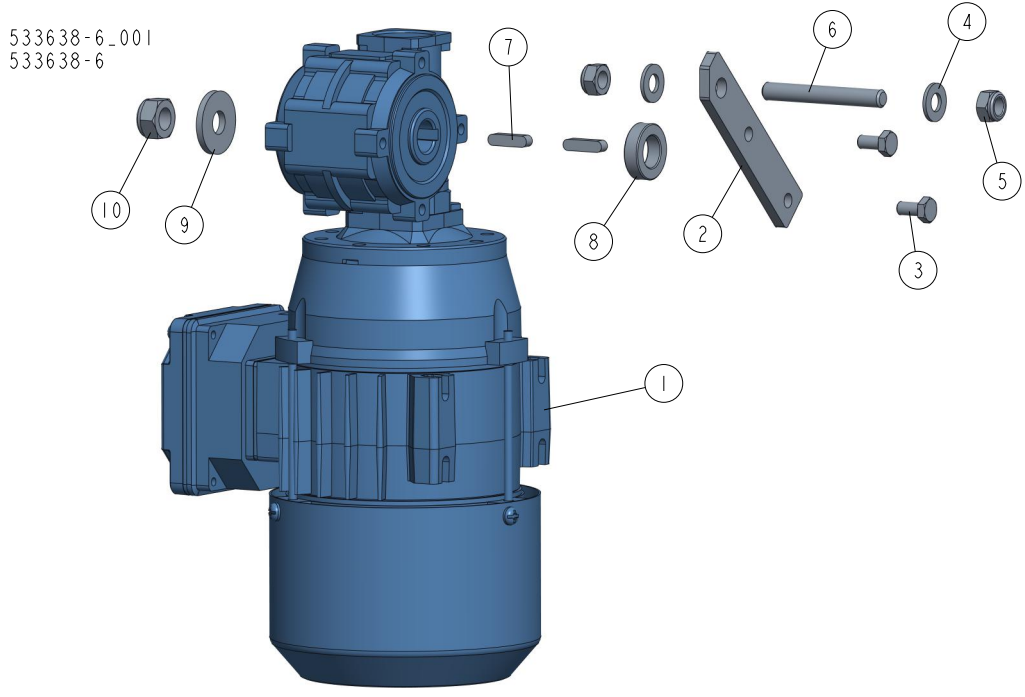
REF	DESCRIPTION (◆ indicates parts available in assemblies only)	PART #	QTY
-	DRIVE, MP180 PRO FEED	533650-180	1
1	REDUCER, PRO KC40/P15+NF003+SKH63-2C See Section 3.8	533640	1
2	BUSHING, REDUCER	533731	1
3	KEY	533732	2
4	WASHER, Z 10.2 SPLIT LOCK ZINC	F81055-2	1
5	ARM, TORQUE	533734-1	1
6	WASHER, 8,4-FLAT ZINC	F81054-1	2
7	NUT, M8-8-B HEX NYLON ZINC LOCK	F81032-2	2
8	BOLT, M8	533635-1-6U	1
9	WASHER, 6.4 FLAT ZINC	F81053-1	2
10	BOLT M6X12 8.8 FE/ZN5 PN-85/M-82105	F81001-7	2
11	BUSHING, REDUCER	541449	1
12	NUT, M10	533733-1-6U	1

3.8 Reducer 533640

533640_001
533640

REF	DESCRIPTION (◆ indicates parts available in assemblies only)	PART #	QTY	
-	REDUCER, PRO KC40/P15+NF003+SKH63-2C	533640	1	
1	MOTOR SKH63-B (0.37 KW; 2800 REV/MIN)	533642	1	
2	SPEED VARIATOR NF003 140/11 V3	533643	1	
3	REDUCER KC40 P15 63 B5 V6 H18 3D	533641	1	

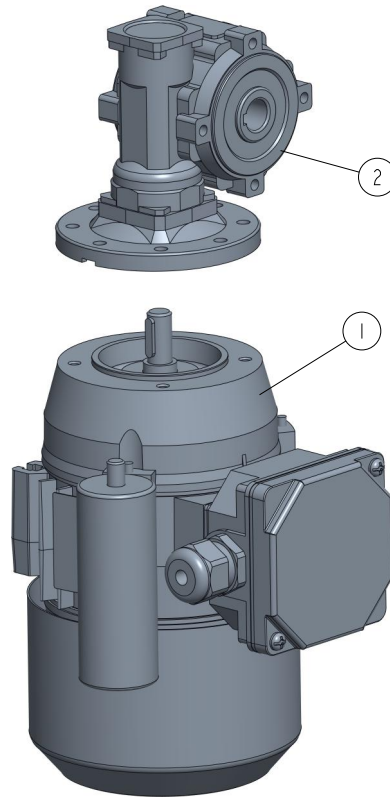
3.9 ECO Feed Drive 533638-6



REF	DESCRIPTION (◆ indicates parts available in assemblies only)	PART #	QTY
-	DRIVE, MP200 ECO FEED	533638-6	1
1	MOTOREDUCER KC30/P30+SEMKH634C2/X See Section 3.10	533654	1
2	ARM, TORQUE	533634-1	1
3	BOLT M6X12 8.8 FE/ZN5 PN-85/M-82105	F81001-7	2
4	WASHER, 8,4-FLAT ZINC	F81054-1	2
5	NUT, M8-8-B HEX NYLON ZINC LOCK	F81032-2	2
6	BOLT, M8	533635-1	1
7	KEY, A5X5X20 PARALLEL	513320	2
8	BUSHING, 14.3/25-7 ZINC-PLATED	533636-1	1
9	WASHER, 10.5 ZINC FLAT SPECIAL	F81055-6	1
10	NUT, M10-8-B NYLON HEX ZINC LOCK	F81033-1	1

3.10 Motoreducer 533654

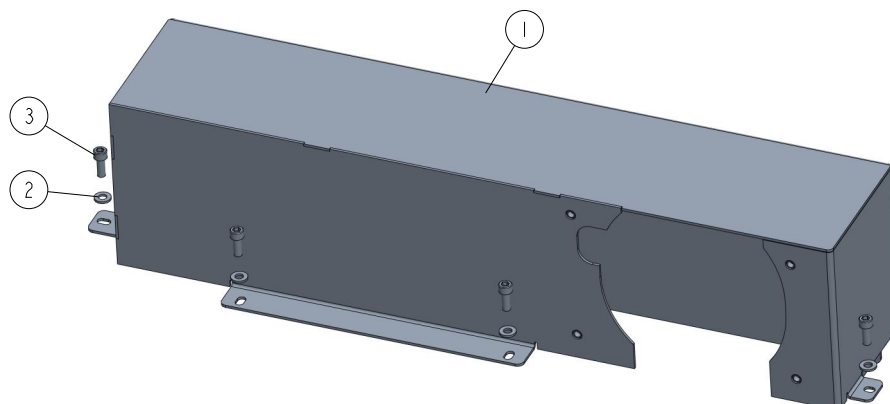
533654_001
533654



REF	DESCRIPTION (◆ indicates parts available in assemblies only)	PART #	QTY	
-	MOTOREDUCER KC30/P30+SEMkh634C2/X	533654	1	
1	MOTOR SEMKH 63-4C2/X 0.18KW	533656	1	
2	REDUCER, KC30/P30 90/11 V6	533637	1	

3.11 Cover 537696

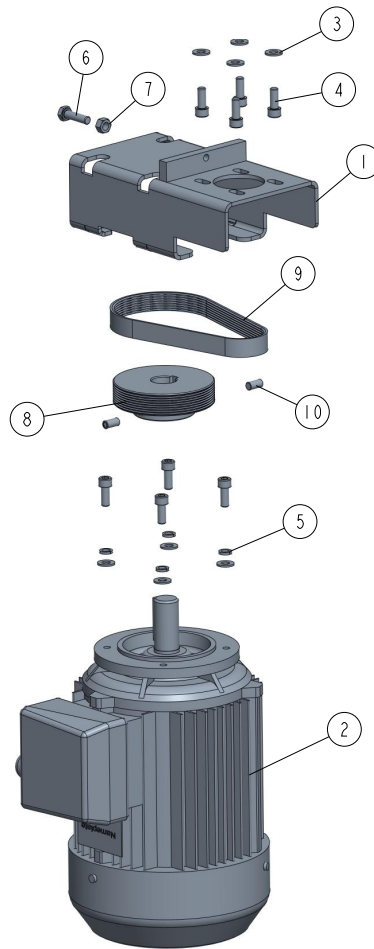
537696_001
537696_MANUAL



REF	DESCRIPTION (◆ indicates parts available in assemblies only)	PART #	QTY	
-	MP180 ECO COVER	537696	1	
1	GUARD WELDMENT	537697-1	1	
2	WASHER, 6.4 FLAT ZINC	F81053-1	4	
3	SCREW, M6X16-8.8 HEX SOCKET HEAD CAP ZIN	F81001-21	4	

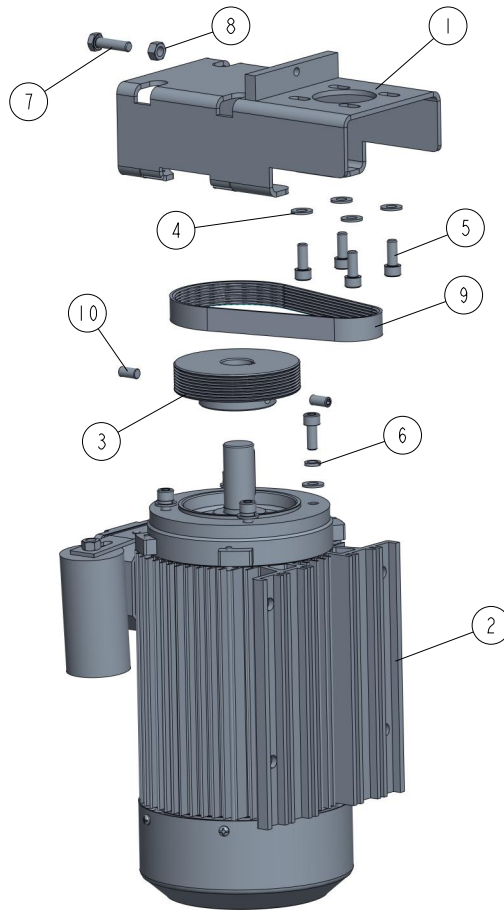
3.12 Side Cutter Drive 533647

533647_001.D
533647_MANUAL



REF	DESCRIPTION (u indicates parts available in assemblies only)	PART #	QTY	
-	SIDE CUTTER DRIVE	533647	1	
1	PLATE WELDMENT, MP200 MOTOR PAINTED MOUN	533649-1	1	
2	MOTOR 3SIEK90L2A, B14/C140, 3KW, 2900 R.	537385	1	
3	WASHER, 8,4-FLAT ZINC	F81054-1	8	
4	SCREW, M8X20-8.8 HEX SOCKET HEAD CAP ZIN	F81002-30	8	
5	WASHER, 8,2 SPLIT LOCK ZINC	F81054-4	4	
6	BOLT M8X30 HH ZC FT 8.8 DIN 933	F81002-7	1	
7	NUT M8 ZC 8 DIN 934	F81032-1	1	
8	PULLEY, MULTI-GROOVE ALUMINIUM	533585	1	
9	BELT, 8 PJ 457 MULTI-RIBBED	533680	1	
10	SCREW M8X16 HSS W/FLAT POINT ZC 45H DIN	F81002-124	2	

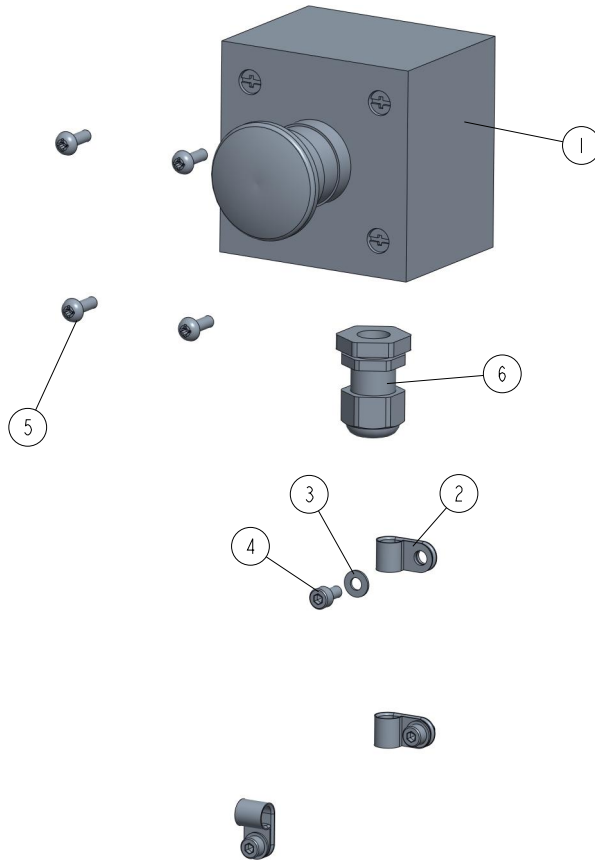
3.13 Side Cutter Drive 533647-6

533647-6_001
533647-6

REF	DESCRIPTION (◆ indicates parts available in assemblies only)	PART #	QTY	
-	SIDE CUTTER DRIVE	533647-6	1	
1	PLATE WELDMENT, MP200 MOTOR PAINTED MOUN	533649-1	1	
2	MOTOR SELHR90-2M2 IMB34/2 2,7KW 230V 4,	533651	1	
3	PULLEY, MULTI-GROOVE ALUMINIUM	533585	1	
4	WASHER, 8,4-FLAT ZINC	F81054-1	8	
5	SCREW, M8X20-8.8 HEX SOCKET HEAD CAP ZIN	F81002-30	8	
6	WASHER, 8.2 SPLIT LOCK	F81054-4	4	
7	BOLT, M8X30 8.8 HEX HEAD FULL THREAD ZIN	F81002-7	1	
8	NUT M8 ZC 8 DIN 934	F81032-1	1	
9	BELT, 8 PJ 457 MULTI-RIBBED	533680	1	
10	SCREW M8X16 HSS W/FLAT POINT ZC 45H DIN	F81002-124	2	

3.14 Emergency Stop Switch Assembly 535669

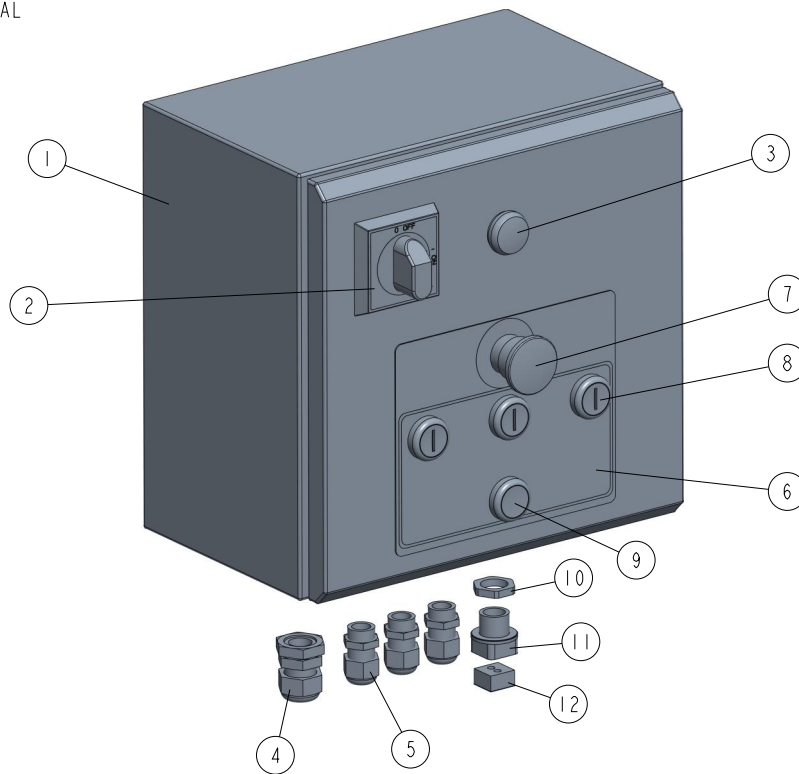
535669_001_B
535669_MANUAL



REF.	DESCRIPTION (* indicates parts available in assemblies only)	PART #	QTY
-	SWITCH ASSEMBLY, MP160 EMERGENCY STOP	535669	1
1	SWITCH, LPZ P1 B5 03 EMERGENCY STOP	536158	1
2	ELEMENT, EE63 MOUNTING	F81080-4	3
3	WASHER, 4.3 FLAT ZINC	F81051-2	3
4	SCREW, M4X8 8.8 HEX SOCKET HEAD CAP ZINC	F81011-36	3
5	SCREW, M4X12 -5,8-B CROSS RECESSED PAN HEAD ZINC	F81011-43	4
6	GLAND, DP 9/H CABLE	F81096-2	1

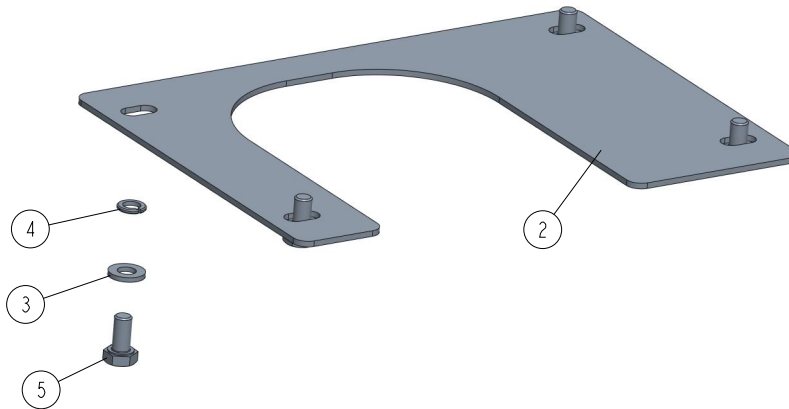
3.15 Electrical Box 537670

537670_001
537670_MANUAL



REF	DESCRIPTION (◆ indicates parts available in assemblies only)	PART #	QTY
-	BOX, MP180H ELECTRICAL - COMPLETE	537670	1
1	BOX, ELECTRICAL MP 200	533149	1
2	SWITCH SIRCO M1 3P 40A 22003004	535522	1
3	LIGHT, LPM LB7 WHITE CONTROL	536919	1
4	GLAND, DP16/H CABLE	F81096-7	1
5	GLAND, DW11/H CABLE	085388	3
6	DECAL, ELECTRICAL BOX	537676	1
7	SWITCH, XB4 BS542 EMERGENCY	535445-K	1
8	BUTTON, LPCBL1117 COMPLETE	535441-K	3
9	BUTTON, LPCB2102 COMPLETE	535437-K	1
10	NUT, M20X1.5 SPLIT CABLE GLAND	F81096-22	1
11	GLAND, QVT20 M20 GREY SPLIT CABLE	F81096-20	1
12	MODULE, QT2/5.5 GROMMET	F81096-25	1

3.17 Bottom Guard 537730

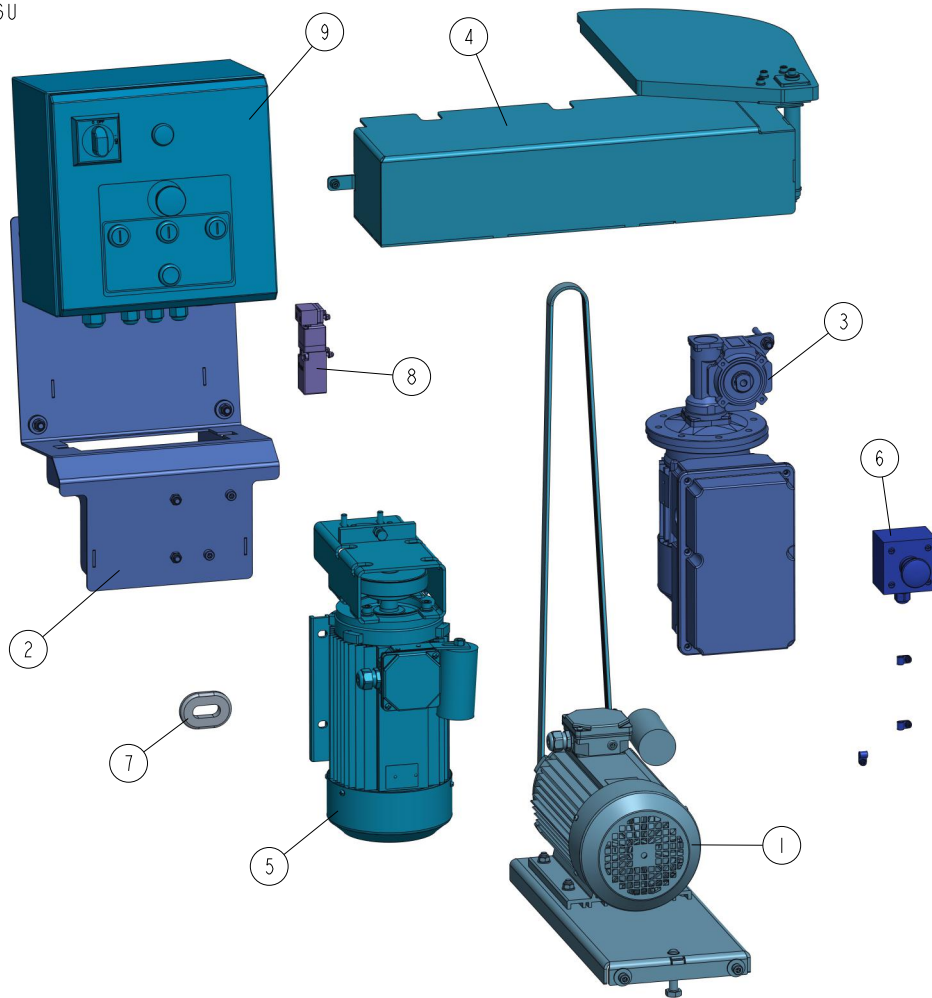
537730_001
537730

REF	DESCRIPTION (◆ indicates parts available in assemblies only)	PART #	QTY	
1	GUARD, BOTTOM	537730	1	
2	PLATE, GUARD	537731-1	1	
3	WASHER, 6.4 FLAT ZINC	F81053-1	4	
4	WASHER, Z 6.1 SPLIT LOCK ZINC	F81053-3	4	
5	BOLT M6X12 8.8 FE/ZN5 PN-85/M-82105	F81001-7	4	

SECTION 4 MOTOR KITS MP180 UL AMERICAN VERSION

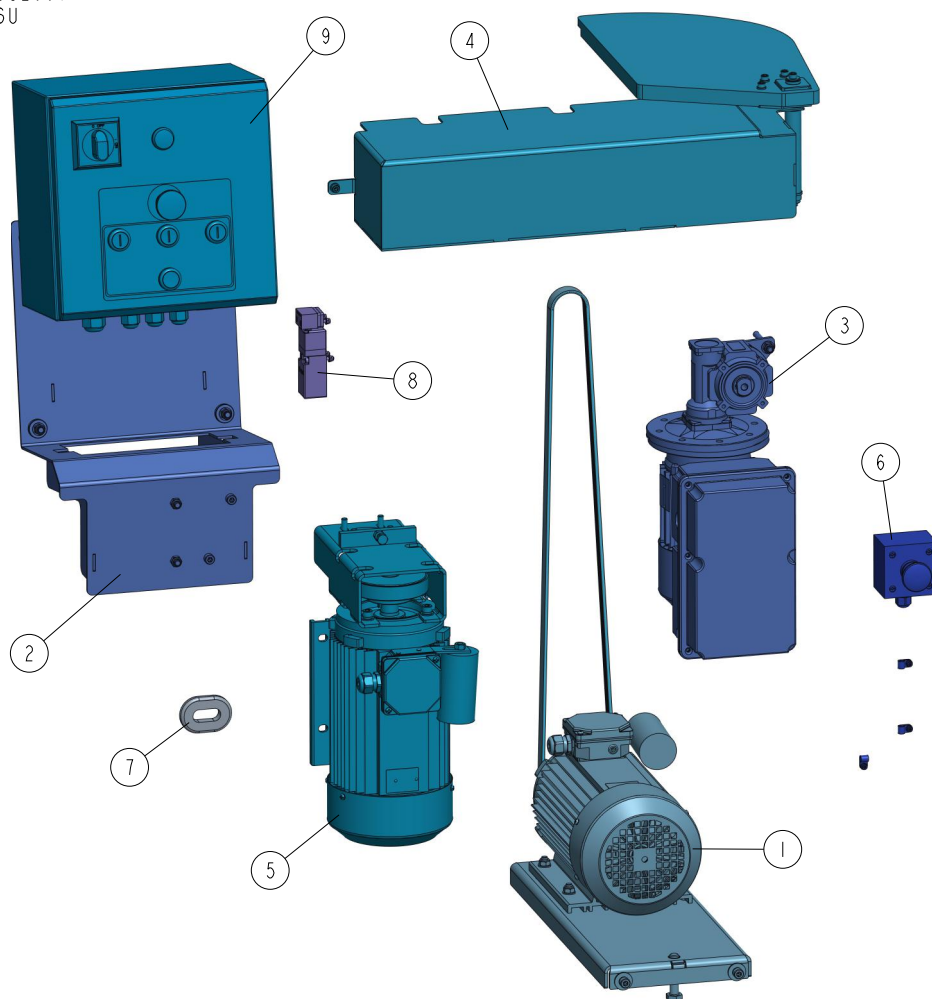
4.1 PRO Motor Kit 537694-2U

537694-6U_001
537694-6U



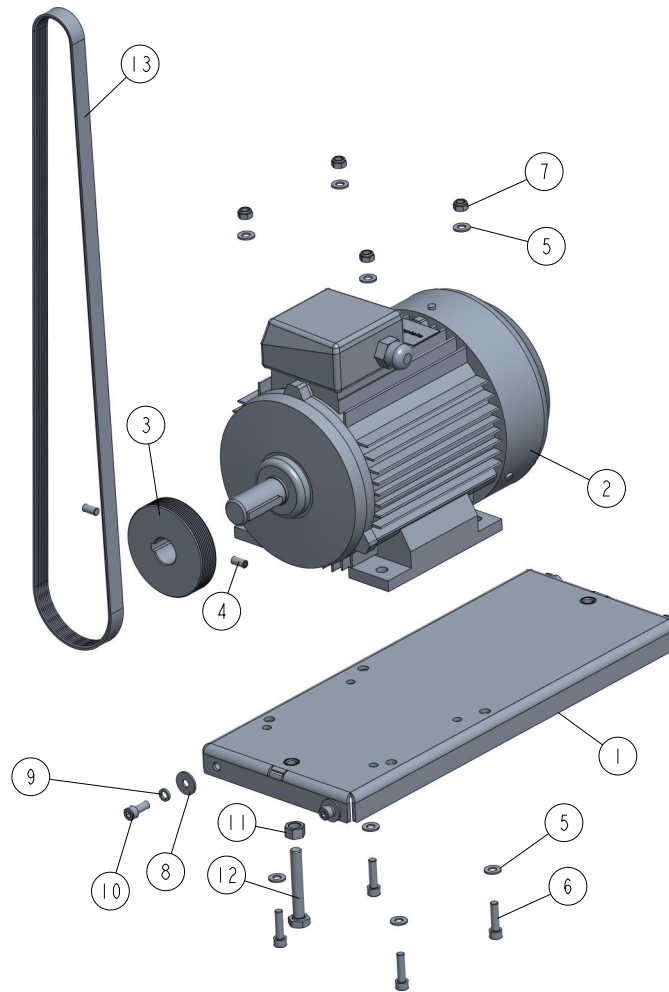
REF	DESCRIPTION (◆ indicates parts available in assemblies only)	PART #	QTY
-	PRO MOTOR KIT FOR MP180B 3x230V UL	537694-2U	1
1	HORIZONTAL CUTTER DRIVE See Section 4.3	537728-UL	1
2	ELECTRICAL BOX MOUNT COMPLETE See Section 3.6	537704	1
3	PRO MOTION DRIVE F/B MP180 UL See Section 4.5	533650-180U	1
4	MP180 UL COVER 1 See Section 4.9	570008	1
5	SIDE CUTTER DRIVE UL See Section 4.11	533647-U	1
6	SWITCH ASSEMBLY, MP160 EMERGENCY STOP See Section 3.14	535669	1
7	SEAL RUBBER, WIRE INSIDE DIA 26MM	085613	1
8	SAFETY SWITCH ASSEMBLY See Section 3.16	537708	1
9	BOX, ELECTRIC - COMPLETE MP180 BU See Section 4.13	537670-2U	1

4.2 PRO Motor Kit 537694-6U

537694-6U_001
537694-6U

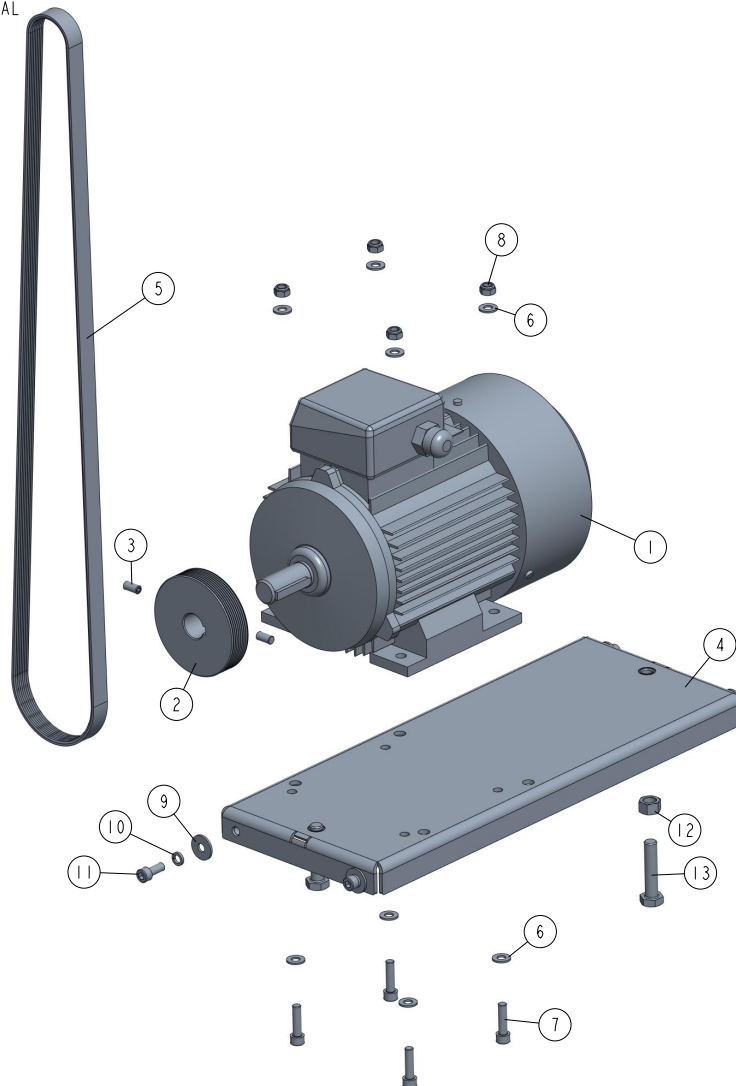
REF	DESCRIPTION (◆ indicates parts available in assemblies only)	PART #	QTY
-	PRO MOTOR KIT FOR MP180A 1X230V UL	537694-6U	1
1	CUTTING HEAD DRIVE See Section 4.4	534196-6U	1
2	ELECTRICAL BOX MOUNT COMPLETE See Section 3.6	537704	1
3	PRO MOTION DRIVE F/B MP180 AU See Section 4.7	533650-180AU	1
4	MP180 UL COVER 1 See Section 4.9	570008	1
5	SIDE CUTTER DRIVE 230V UL See Section 4.12	533647-6U	1
6	SWITCH ASSEMBLY, MP160 EMERGENCY STOP See Section 3.14	535669	1
7	SEAL RUBBER, WIRE INSIDE DIA 26MM	085613	1
8	SAFETY SWITCH ASSEMBLY See Section 3.16	537708	1
9	BOX, ELECTRIC - COMPLETE MP180 AU See Section 4.14	537670-6U	1

4.3 Horizontal Cutter Drive PRO UL 537728-UL

537728_001_B
537728_MANUAL

REF	DESCRIPTION (◆ indicates parts available in assemblies only)	PART #	QTY	
-	HORIZONTAL CUTTER DRIVE PRO UL	537728-UL	1	
1	MOTOR PLATE WELDED / PAINT	534200-1	1	
2	MOTOR, INDUKTA 3SIE100L2A 4KW IMB3 UL	537387-UL	1	
3	SHEAVE, MP200 PRO MULTI-GROOVE	533585-P	1	
4	SCREW M8X16 HSS W/FLAT POINT ZC 45H DIN	F81002-124	2	
5	WASHER, 8,4-FLAT ZINC	F81054-1	8	
6	SCREW, M8X30-8.8 HEX SOCKET HEAD CAP ZIN	F81002-31	4	
7	NUT, M8-8-B HEX NYLON ZINC LOCK	F81032-2	4	
8	WASHER, ISO 7093-1-8-200 HV-A2E	F81054-11	4	
9	WASHER, 8.2 SPLIT LOCK	F81054-4	4	
10	SCREW, M8X20-8.8 HEX SOCKET HEAD CAP ZIN	F81002-30	4	
11	NUT, M12-8 ZINC	F81034-1	2	
12	BOLT, M12X75-8.8 HEX HEAD FULL THREAD ZI	F81004-10	2	
13	BELT, 8 PJ 1473 MULTI-RIBBED	537729	1	

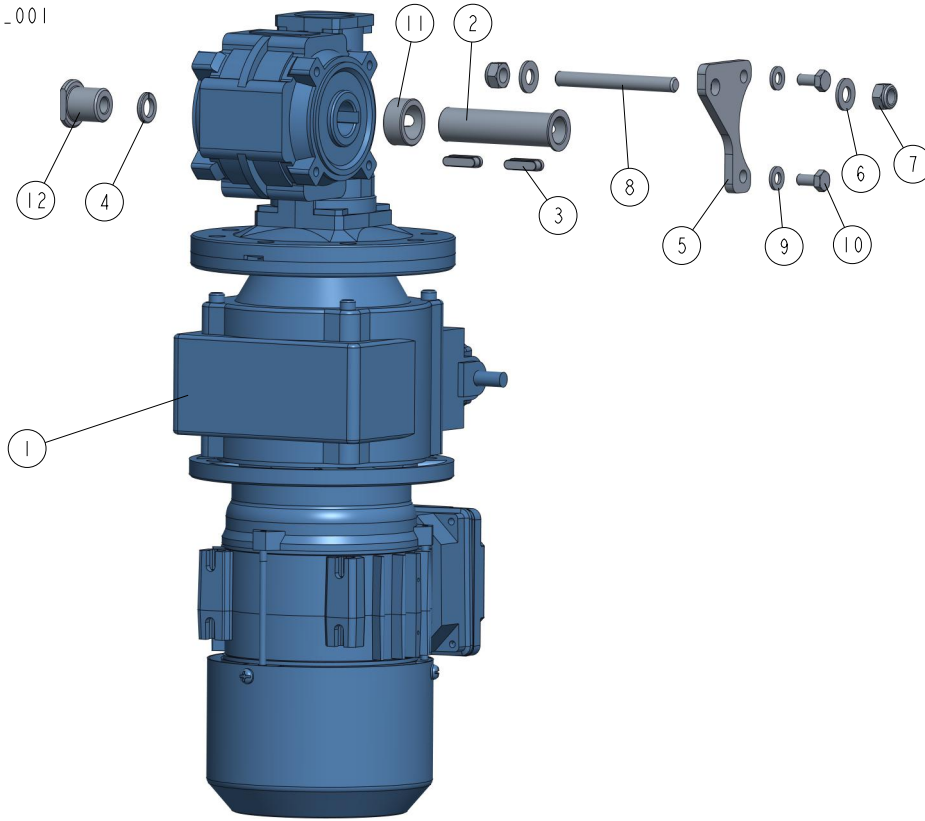
4.4 Cutting Head Drive 534196-6U

534196_001_C
534196_MANUAL

REF	DESCRIPTION (◆ indicates parts available in assemblies only)	PART #	QTY
-	CUTTING HEAD DRIVE	534196-6U	1
1	MOTOR, SELHR90-2M2 IMB34/2 2,7KW 230V UL	533651-UL	1
2	PULLEY, MULTI-GROOVE ALUMINIUM	533585	1
3	SCREW M8X16 HSS W/FLAT POINT ZC 45H DIN	F81002-124	2
4	MOTOR PLATE WELDED / PAINT	534200-1	1
5	BELT, 8 PJ 1549 MULTI-RIBBED	534201	1
6	WASHER, 8.4 FLAT ZINC	F81054-1	8
7	BOLT, M8 X 30-8.8 SOCKET HEAD	F81002-31	4
8	NUT, M8 8 HEX NYLON ZINC LOCK	F81032-2	4
9	WASHER, ISO 7093-1-8-200 HV-A2E	F81054-11	4
10	WASHER, 8.2 SPLIT LOCK ZINC	F81054-4	4
11	SCREW, M8X20-8.8 HEX SOCKET HEAD CAP ZIN	F81002-30	4
12	NUT M12 ZC 8 DIN 934	F81034-1	2
13	BOLT M12X55 HH ZC FT 8.8 DIN 933	F81004-43	2

4.5 MP180 PRO Feed Drive 533650-180U

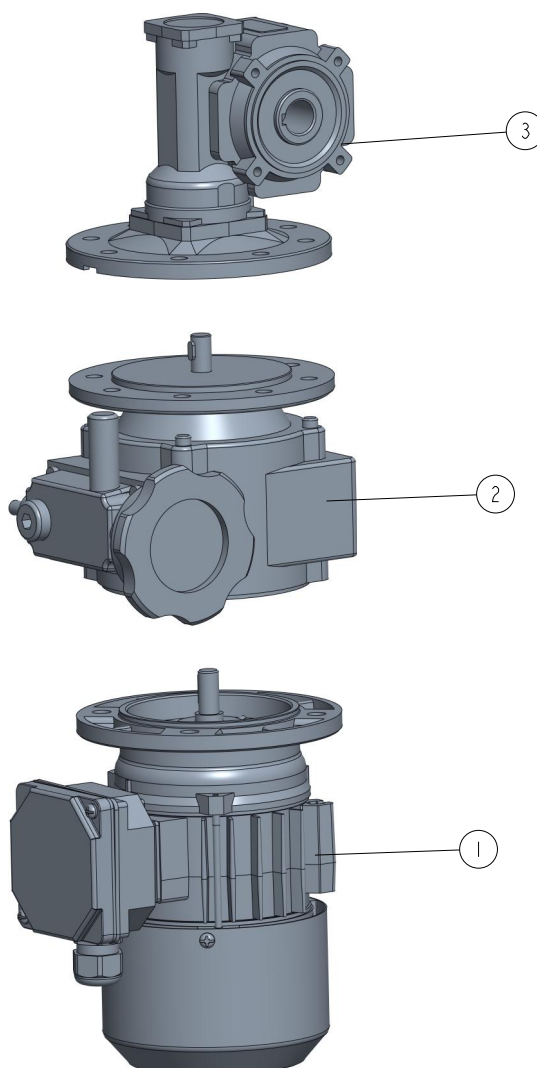
533650-180_001
533650-180



REF	DESCRIPTION (◆ indicates parts available in assemblies only)	PART #	QTY
-	DRIVE, MP180 PRO FEED	533650-180U	1
1	MOTOREDUCER KC40/P 15+ NF003 + SKH63-2 See Section 3.8	533640-UL	1
2	BUSHING, REDUCER	533731	1
3	KEY	533732	2
4	WASHER, Z 10.2 SPLIT LOCK ZINC	F81055-2	1
5	ARM, TORQUE	533734-1	1
6	WASHER, 8,4-FLAT ZINC	F81054-1	2
7	NUT, M8-8-B HEX NYLON ZINC LOCK	F81032-2	2
8	BOLT, M8	533635-1-6U	1
9	WASHER, 6.4 FLAT ZINC	F81053-1	2
10	BOLT M6X12 8.8 FE/ZN5 PN-85/M-82105	F81001-7	2
11	BUSHING, REDUCER	541449	1
12	NUT, M10	533733-1-6U	1

4.6 Motoreducer 533640-UL

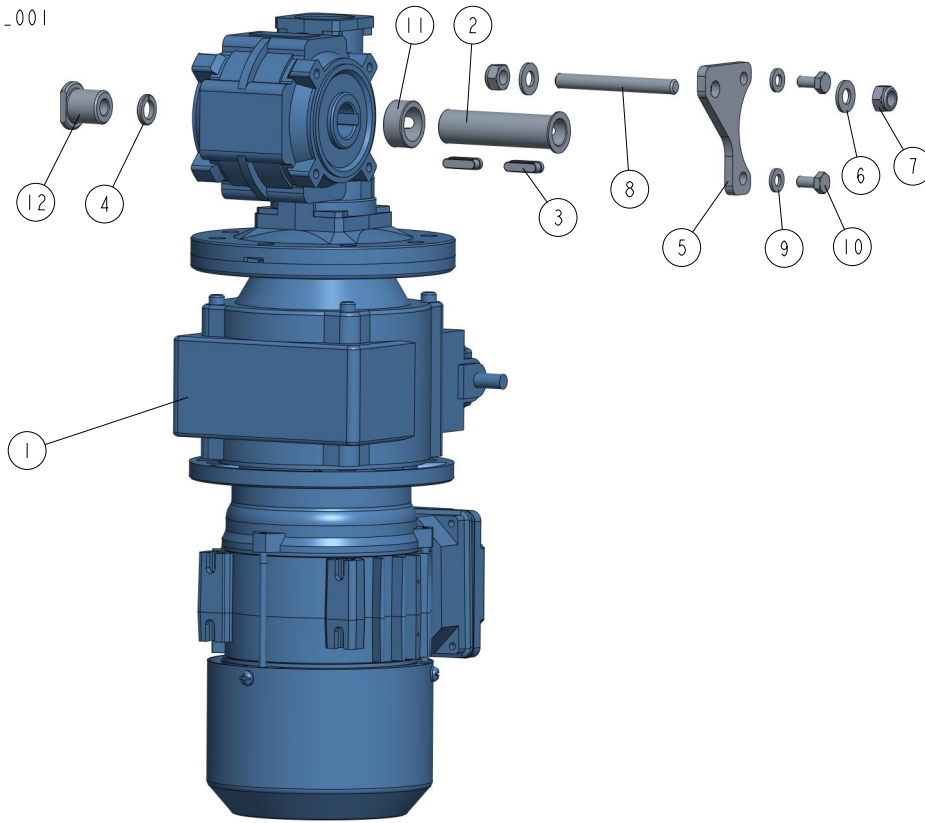
533640_001
533640



REF	DESCRIPTION (◆ indicates parts available in assemblies only)	PART #	QTY
-	MOTOREDUCER 2SIEK6-2C UL/CSA + NF003 + KC40/P	533640-UL	1
1	MOTOR, SKH63-2C2/x UL	533642-UL	1
2	SPEED VARIATOR NF003 140/11 V3	533643	1
3	REDUCER KC40 P15 63 B5 V6 H18 3D	533641	1

4.7 PRO Motion Drive 533650-180AU

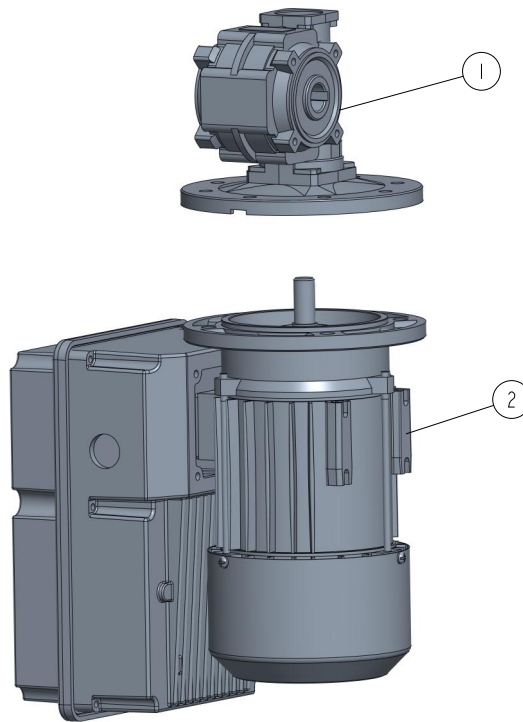
533650-180_001
533650-180



REF	DESCRIPTION (◆ indicates parts available in assemblies only)	PART #	QTY
-	PRO MOTION DRIVE F/B MP180 AU	533650-180AU	1
1	UP/DOWN DRIVE See Section 4.8	597559	1
2	BUSHING, REDUCER	533731	1
3	KEY	533732	2
4	WASHER, Z 10.2 SPLIT LOCK ZINC	F81055-2	1
5	ARM, TORQUE	533734-1	1
6	WASHER, 8,4-FLAT ZINC	F81054-1	2
7	NUT, M8-8-B HEX NYLON ZINC LOCK	F81032-2	2
8	BOLT, M8	533635-1-6U	1
9	WASHER, 6.4 FLAT ZINC	F81053-1	2
10	BOLT M6X12 8.8 FE/ZN5 PN-85/M-82105	F81001-7	2
11	BUSHING, REDUCER	541449	1
12	NUT, M10	533733-1-6U	1

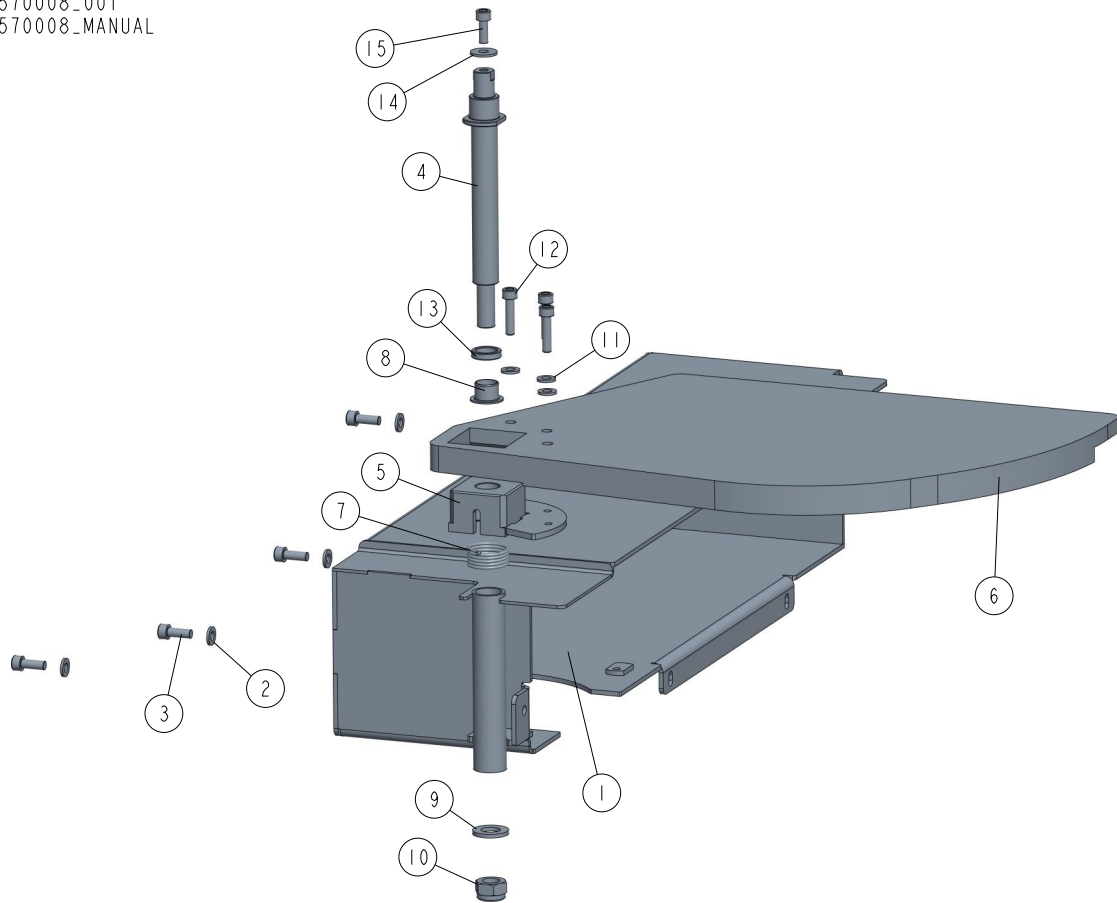
4.8 Up/Down Drive 597559

597559_001
597559



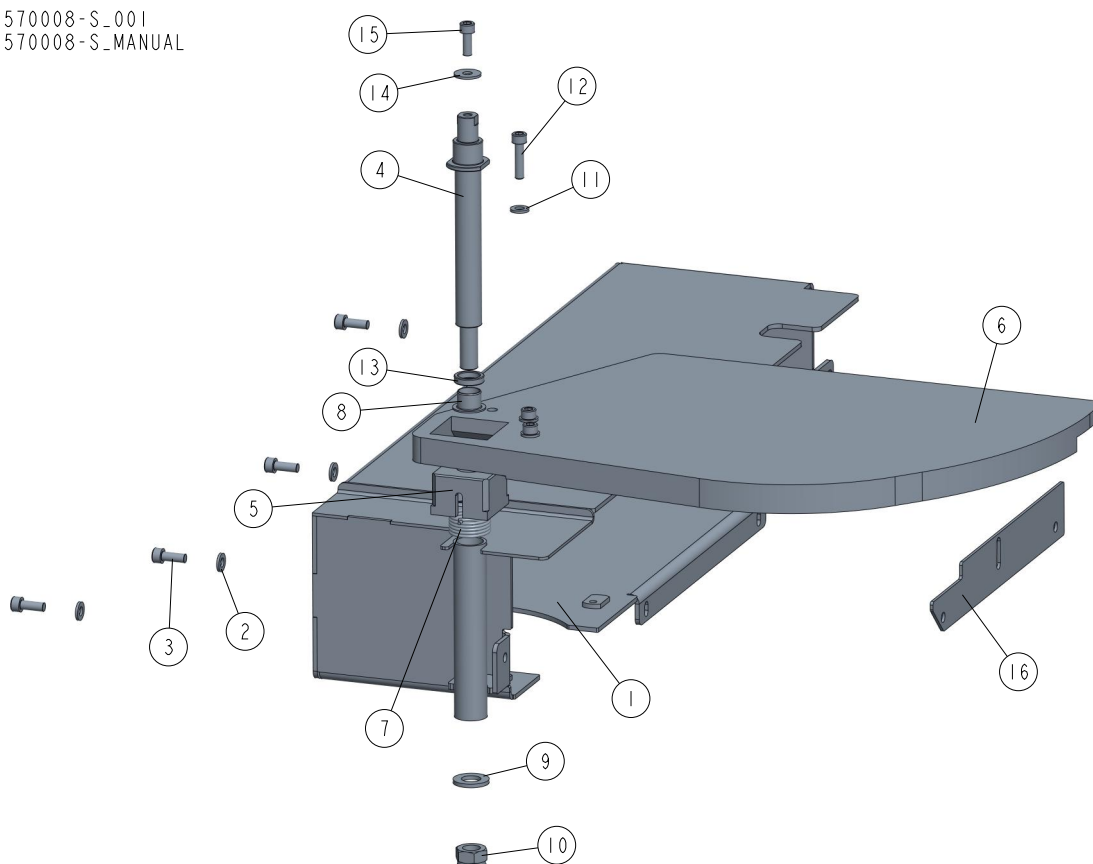
REF	DESCRIPTION (◆ indicates parts available in assemblies only)	PART #	QTY	
-	UP/DOWN DRIVE	597559	1	
1	REDUCER KC40/P15 160/14 V6 H18	535749	1	
2	MOTOR, 2SIEK71X-4C/T	592832	1	

4.9 Cover UL 570008

570008_001
570008_MANUAL

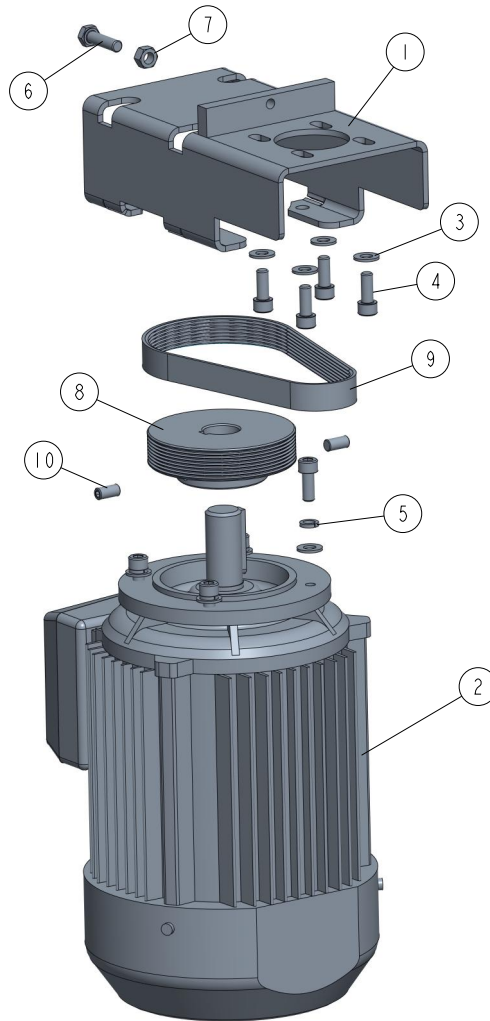
REF	DESCRIPTION (u indicates parts available in assemblies only)	PART #	QTY
-	MP180 UL COVER	570008	1
-	UL COVER - COMPLETE	569020	1
1	COVER - WELDMENT	569015-1	1
2	WASHER 6.4 FE/ZN5 PN-78/M-82005	F81053-1	4
3	SCREW, M6X16 8.8 HEX SOCKET HEAD CAP ZIN	F81001-21	4
-	CUTTER COVER	569008	1
4	PIVOT	569007-1	1
5	BUSHING, MOUNTING	569011-1	1
6	COVER, MOVABLE	568419	1
7	SPRING, TENSION	569012	1
8	BUSHING, SLIDE IGUS: JFM_1416_12_1	569013	1
9	WASHER,13 FLAT ZINC	F81056-1	1
10	NUT, M12 8 HEX NYLON ZINC LOCK	F81034-2	1
11	WASHER 6.4 FE/ZN5 PN-78/M-82005	F81053-1	3
12	SCREW, M6X25-8.8 HEX SOCKET HEAD CAP ZIN	F81001-41	3
13	BUSHING, DISTANCE	570020-1	1
14	WASHER, 6.5 SPECIAL FLAT ZINC	F81053-11	1
15	SCREW, M6X16 8.8 HEX SOCKET HEAD CAP ZIN	F81001-21	1

4.10 Cover UL- Service Kit 570008-S

570008-S_001
570008-S_MANUAL

REF.	DESCRIPTION (◆ indicates parts available in assemblies only)	PART #	QTY
-	MP180 UL COVER - SERVICE KIT	570008-S	1
-	UL COVER - COMPLETE	569020	1
1	COVER - WELDMENT	569015-1	1
2	WASHER, 6.4 FLAT ZINC	F81053-1	4
3	SCREW, M6X16 -8.8 HEX SOCKET HEAD CAP ZI	F81001-21	4
-	CUTTER COVER	569008	1
4	PIVOT	569007-1	1
5	BUSHING, MOUNTING	569011-1	1
6	COVER, MOVABLE	568419	1
7	SPRING, TENSION	569012	1
8	BUSHING, SLIDE IGUS: JFM_1416_12_1	569013	1
9	WASHER, 13 FLAT ZINC	F81056-1	1
10	NUT, M12-8 HEX NYLON ZINC LOCK	F81034-2	1
11	WASHER, M6, FLAT,ZINC, WASHER, 6.4 FLAT ZINC	F81053-1	3
12	SCREW, M6X25 -8.8-HEX SOCKET HEAD CAP ZI	F81001-41	3
13	BUSHING, DISTANCE	570020-1	1
14	WASHER, 6.5 SPECIAL FLAT ZINC-PL.	F81053-11	1
15	SCREW, M6X16 -8.8 HEX SOCKET HEAD CAP ZI	F81001-21	1
16	CHAIN TENSIONER PLATE	537711-1	1

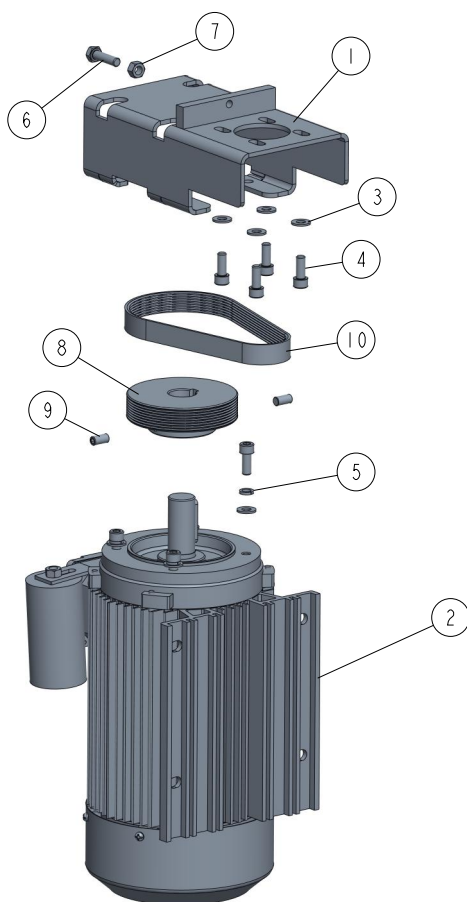
4.11 Side Cutter Drive UL 533647-U

533647-U_001
533647-U

REF	DESCRIPTION (◆ indicates parts available in assemblies only)	PART #	QTY	
-	SIDE CUTTER DRIVE UL	533647-U	1	
1	PLATE WELDMENT, MP200 MOTOR PAINTED MOUN	533649-1	1	
2	MOTOR, INDUKTA 3SIEK90L2A 3KW IMV19 UL	537385-UL	1	
3	WASHER, 8,4-FLAT ZINC	F81054-1	8	
4	SCREW, M8X20-8.8 HEX SOCKET HEAD CAP ZIN	F81002-30	8	
5	WASHER, 8.2 SPLIT LOCK	F81054-4	4	
6	BOLT, M8X30 8.8 HEX HEAD FULL THREAD ZIN	F81002-7	1	
7	NUT M8 ZC 8 DIN 934	F81032-1	1	
8	PULLEY, MULTI-GROOVE ALUMINIUM	533585	1	
9	BELT, 8 PJ 457 MULTI-RIBBED	533680	1	
10	SCREW M8X16 HSS W/FLAT POINT ZC 45H DIN	F81002-124	2	

4.12 Side Cutter Drive 533647-6U

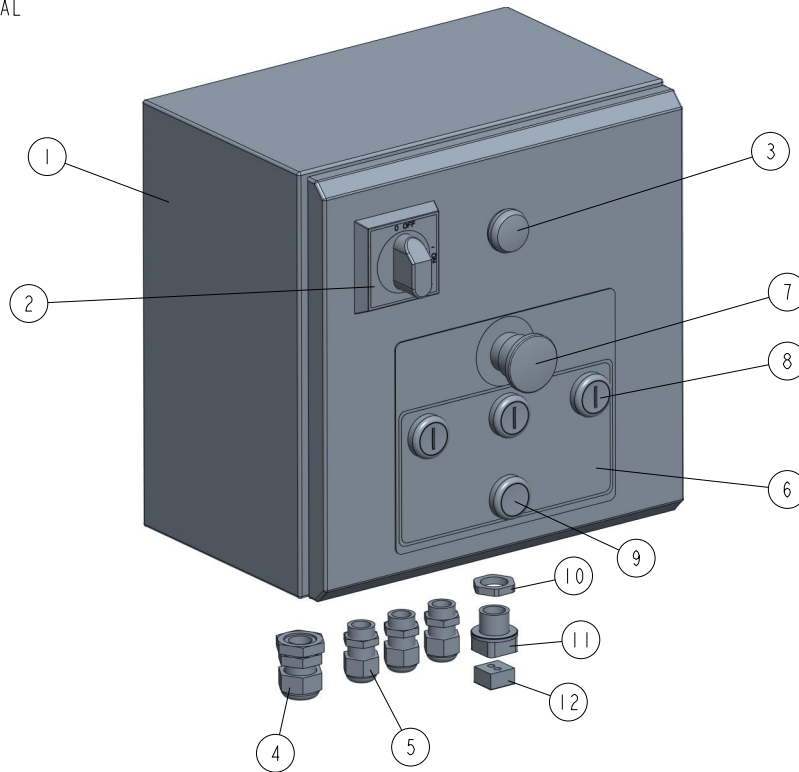
533647-6U_001
533647-6U



REF	DESCRIPTION (◆ indicates parts available in assemblies only)	PART #	QTY	
-	SIDE CUTTER DRIVE 230V UL	533647-6U	1	
1	PLATE WELDMENT, MP200 MOTOR PAINTED MOU	533649-1	1	
2	MOTOR, SELHR90-2M2 IMB34/2 2,7KW 230V UL	533651-UL	1	
3	WASHER, 8.4 FLAT ZINC	F81054-1	8	
4	BOLT, M8 X 20-8.8 SOCKET HEAD	F81002-30	8	
5	WASHER, 8.2 SPLIT LOCK	F81054-4	4	
6	BOLT, M8X30 8.8 HEX HEAD FULL THREAD ZIN	F81002-7	1	
7	NUT, M8-8-B HEX ZINC	F81032-1	1	
8	PULLEY, MULTI-GROOVE ALUMINIUM	533585	1	
9	SCREW M8X16 HSS W/FLAT POINT ZC 45H DIN	F81002-124	2	
10	BELT, 8 PJ 457 MULTI-RIBBED	533680	1	

4.13 Electrical Box 537670-2U

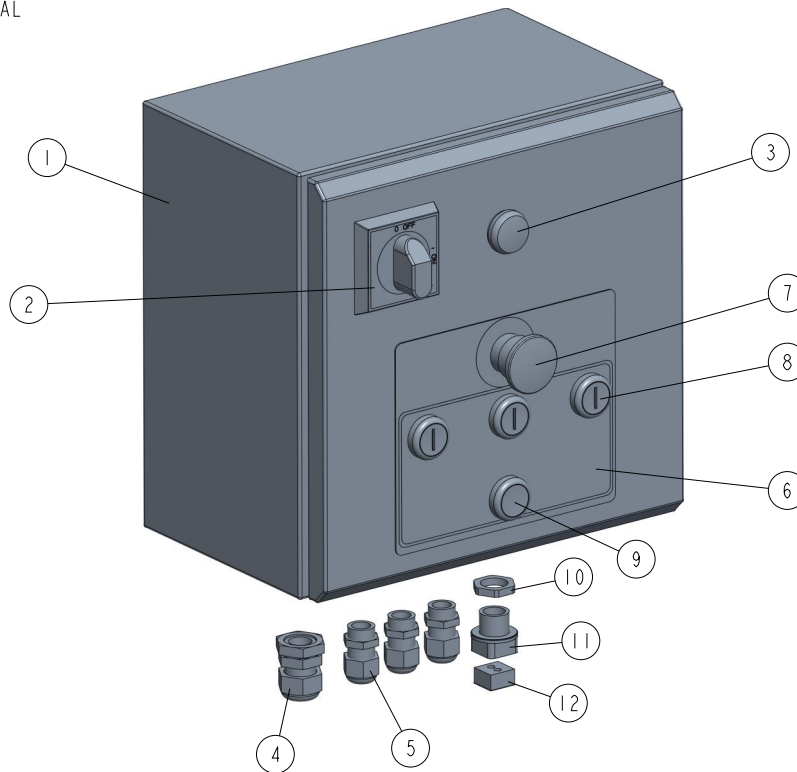
537670_001
537670_MANUAL



REF	DESCRIPTION (◆ indicates parts available in assemblies only)	PART #	QTY
-	BOX, ELECTRIC - COMPLETE MP180 BU	537670-2U	1
1	BOX, ELECTRICAL MP 200	533149	1
2	SWITCH SIRCO M1 3P 40A 22003004	535522	1
3	LIGHT, LPM LB7 WHITE CONTROL	536919	1
4	GLAND, DP16/H CABLE	F81096-7	1
5	GLAND, DW11/H CABLE	085388	3
6	DECAL, ELECTRICAL BOX	537676	1
7	SWITCH, XB4 BS542 EMERGENCY	535445-K	1
8	BUTTON, LPCBL1117 COMPLETE	535441-K	3
9	BUTTON, LPCB2102 COMPLETE	535437-K	1
10	NUT, M20X1.5 SPLIT CABLE GLAND	F81096-22	1
11	GLAND, QVT20 M20 GREY SPLIT CABLE	F81096-20	1
12	MODULE, QT2/5.5 GROMMET	F81096-25	1

4.14 Electrical Box 537670-6U

537670_001
537670_MANUAL



REF	DESCRIPTION (◆ indicates parts available in assemblies only)	PART #	QTY
-	BOX, ELECTRIC - COMPLETE MP180 AU	537670-6U	1
1	BOX, ELECTRICAL MP 200	533149	1
2	SWITCH SIRCO M1 3P 40A 22003004	535522	1
3	LIGHT, LPM LB7 WHITE CONTROL	536919	1
4	GLAND, DP16/H CABLE	F81096-7	1
5	GLAND, DW11/H CABLE	085388	3
6	DECAL, ELECTRICAL BOX	537676	1
7	SWITCH, XB4 BS542 EMERGENCY	535445-K	1
8	BUTTON, LPCBL1117 COMPLETE	535441-K	3
9	BUTTON, LPCB2102 COMPLETE	535437-K	1
10	NUT, M20X1.5 SPLIT CABLE GLAND	F81096-22	1
11	GLAND, QVT20 M20 GREY SPLIT CABLE	F81096-20	1
12	MODULE, QT2/5.5 GROMMET	F81096-25	1