

# D17 Engine

## Safety, Operation, Maintenance & Parts Manual

---

LT15  
LT15W

rev. E8.12  
rev. A1.13

---



**Safety is our #1 concern!** Read and understand all safety information and instructions before operating, setting up or maintaining this machine.

*Form #1630*

© **2018**

Printed in the United States of America. All rights reserved. No part of this manual may be reproduced in any form by any photographic, electronic, mechanical or other means or used in any information storage and retrieval system without written permission from

***Wood-Mizer***

8180 West 10th Street  
Indianapolis, Indiana 46214

<b>Table of Contents</b>	<b>Section-Page</b>
<b>SECTION 1 ABOUT THIS MANUAL</b>	<b>1-1</b>
<b>SECTION 2 OPERATION</b>	<b>2-1</b>
2.1 Starting The Engine.....	2-1
<b>SECTION 3 MAINTENANCE</b>	<b>3-1</b>
3.1 Safety.....	3-1
3.2 Air Filter & Pre-Cleaner.....	3-1
3.3 Fuel Filter.....	3-2
<b>SECTION 4 REPLACEMENT PARTS</b>	<b>4-1</b>
4.1 Fuel Tank.....	4-1
4.2 Engine Assembly.....	5-1
4.3 Throttle/Clutch Assembly.....	5-3
<b>INDEX</b>	<b>I</b>

## SECTION 1 ABOUT THIS MANUAL

This manual is provided as a supplement to the equipment manufacturer's manuals. This manual provides information specific to the use of this equipment on the Wood-Mizer® sawmill. Refer to the sawmill operator's manual and manufacturer's manual before attempting to operate this equipment.



**IMPORTANT!** Read the sawmill operator's manual and engine manufacturer's manual for instructions and safety precautions before operating this equipment.

The information and instructions given in this manual do not amend or extend the limited warranties for the equipment given at the time of purchase.

## SECTION 2 OPERATION

### 2.1 Starting The Engine



**DANGER!** Ensure the blade is disengaged and all persons are out of the path of the blade before starting. Failure to do so will result in death or serious injury.



**DANGER!** Operate your engine only in well ventilated areas. The exhaust gases of your engine can cause nausea, delirium, and potentially death unless adequate ventilation is present.



**DANGER!** Never operate an engine with a fuel or oil leak. This is a fire hazard, which may cause serious injury or death.



**WARNING!** Do not operate engine without proper and operational spark arrester/muffler. Sparks emitted from the engine exhaust could ignite surrounding materials, causing serious injury or death.



**CAUTION!** EPA Compliant Gas Tanks Only: Always relieve all fuel pressure inside the tank prior to filling or connecting fuel fittings. Failure to do so may result in fuel spillage.



**CAUTION!** EPA Compliant Gas Tanks Only: Disconnect the fuel tank when not in use, or engine flooding or fuel spillage may result.

1. See the engine manufacturer's manual for lubricating oil recommendations.
2. Use #2 or better quality diesel fuel for above freezing starting. Use a #1 quality diesel fuel for below freezing starting.
3. Turn the key switch to the start (#2) position and release.
  1. Turn fuel shut-off valve to ON position
  2. Turn engine on/off switch to ON position
  3. Start engine as follows:

Cold engine: Place throttle control midway between SLOW and FAST positions. Place choke control into ON position.

Warm engine: Place throttle control midway between SLOW and FAST positions. Return choke to OFF position as soon as engine starts. A warm engine usually does not require choke on.

4. Slowly pull starter handle until just past compression-STOP! Return starter handle; firmly pull straight out to avoid excessive rope wear from starter rope guide.
5. Gradually return choke control to OFF position after engine starts and warms up. Engine/equipment may be operated during warm up period, but it may be necessary to leave choke partially on until engine warms up.

For more information, see the engine manufacturer's operation manual.

### **ENGINE SHUTOFF**

Turn the key switch to the off (#0) position.

1. Disengage the clutch handle to stop the blade if necessary.
2. Move the throttle control to slow or idle position. Stop the engine.
3. Close the fuel shut-off valve.

## SECTION 3 MAINTENANCE

Refer to the manufacturer's manual for maintenance intervals and procedures unless otherwise instructed in this manual. Follow the manufacturer's recommendations for dusty conditions.



**IMPORTANT!** This manual only provides information about additional procedures or procedures to be performed at different time intervals than found in the manufacturer's manuals. Refer to the manufacturer's manual for complete maintenance instructions.

### 3.1 Safety

Use caution when performing maintenance or service to the engine.



**DANGER!** Always be aware of and take proper protective measures against rotating shafts, pulleys, fans, etc. Always stay a safe distance from rotating members and make sure that loose clothing or long hair does not engage rotating members resulting in possible injury.



**DANGER!** Engine components can become very hot during operation. Avoid contact with any part of a hot engine. The exhaust components of your engine are especially hot during and following operation. Contact with hot engine components can cause serious burns. Therefore, never touch or perform service functions on a hot engine. Allow the engine to cool sufficiently before beginning any service function.



**WARNING!** Remove the blade before performing any engine service. Failure to do so may result in serious injury.



**WARNING!** Always wear proper and necessary safety equipment when performing service functions. Proper safety equipment includes eye protection, breathing protection, hand protection and foot protection.



**This symbol** identifies the interval (hours of operation) at which each maintenance procedure should be performed. "AR" signifies maintenance procedures which should be performed as required.

### 3.2 Air Filter & Pre-Cleaner



**WARNING!** Always wear proper and necessary safety equipment when performing service functions. Proper safety equipment includes

eye protection, breathing protection, hand protection and foot protection.

- ▶<sup>4</sup> Service the pre-cleaner every four hours of operation. Service by gently shaking excess sawdust and debris from the foam piece.
- ▶<sup>8</sup> Clean the air filter (air cleaner element) and pre-cleaner (element wrapper) every eight hours of operation. See the engine manual for further instructions.
- ▶<sup>200</sup> Replace the air filter (cleaner) every 200 hours of operation.
- ▶<sup>2000</sup> Replace the pre-cleaner (element wrapper) every 2000 hours of operation.

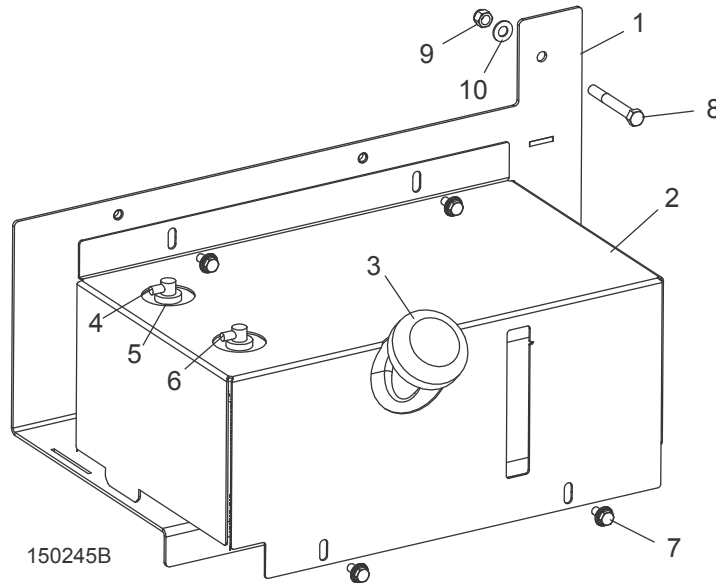
### **3.3 Fuel Filter**

- ▶<sup>100</sup> Replace the fuel filter every 100 hours of operation or as required for engine performance.



## SECTION 4 REPLACEMENT PARTS

### 4.1 Fuel Tank

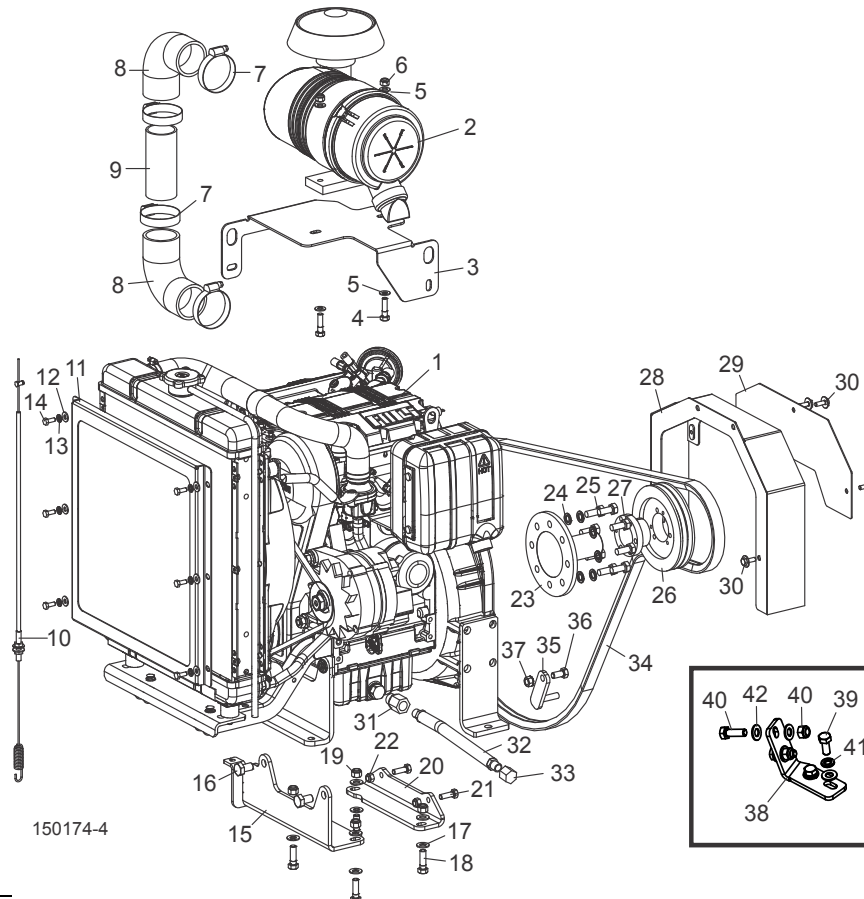


REF	DESCRIPTION (◆ Indicates Parts Available In Assemblies Only)	PART #	QTY.
	<b>TANK ASSEMBLY, 5 GALLON DIESEL</b>	074828	1
1	Weldment, Fuel Tank Tray	103802	1
2	Cover, Fuel Tank	103867	1
	Tank, 5 Gallon Low Pro Diesel	103928	1
3	Cap, Fuel Tank Diesel 080185BE	061257	1
4	Fitting, Pick-Up/Tube Diesel 468871A	061255	1
5	Grommet, Shut Off 046881	061250	2
6	Fitting, Return/tube Diesel 468489	061256	1
7	Bolt, 5/16-18 x 3/4" Hex Head w/Flat&Lock Washer	F05006-101	4
8	Bolt, 3/8-16 x 3" Hex Head Grade 5	F05007-73	2
9	Nut, 3/8-16 Hex Nyloc	F05010-10	2
10	Washer, 3/8" Flat SAE	F05011-3	2
	Hose, Fuel 5/16" EPA 15G CARB	R02423-3	8 Ft.
	Hose, Fuel 1/4" EPA 15G CARB	R02423-2	8 Ft.
	Weldment, Fuel Tank Tray	103802	1
	Clamp, 7/32in-5/8in Hose	P649	2
	Clamp, 1/2EMT Coated	P07584	1

# D17

## 4 Replacement Parts Engine Assembly

### 4.2 Engine Assembly



REF	DESCRIPTION (◆ Indicates Parts Available In Assemblies Only)	PART #	QTY.	
	<b>ENGINE ASSEMBLY, LT15 18HP DIESEL</b>	007333	1	
1	Engine, 18HP Kohler Diesel Model KDW702	007332	1	◆
2	Filter Assembly, Kohler #ED0037004550-S	007401	1	
	Filter, Kohler Secondary Air #ED0021751250-S	007613	1	
	Filter, Kohler Primary Air #ED0021751240-S	007408	1	
	Motor, Kohler Starter #ED0058402240-S	007614	1	
	Alternator, Kohler 65A #ED0011572700-S	065408	1	
	Belt, Kohler Fan #ED0024403160-S	065409	1	
	Filter, Kohler/Lombardini Oil #ED0021752830-S	061187	1	
	Filter, Kohler/Lombardini Fuel #ED0021752880-S	061188	1	
	Switch Kit, Oil Pressure w/Gasket	014557	1	
	Switch, Diesel Fuel Shut-Off	014279	1	
	Pump, Diesel Fuel	014289	1	
	Plug, Diesel Glow	014278	2	

# D17

## Replacement Parts Engine Assembly

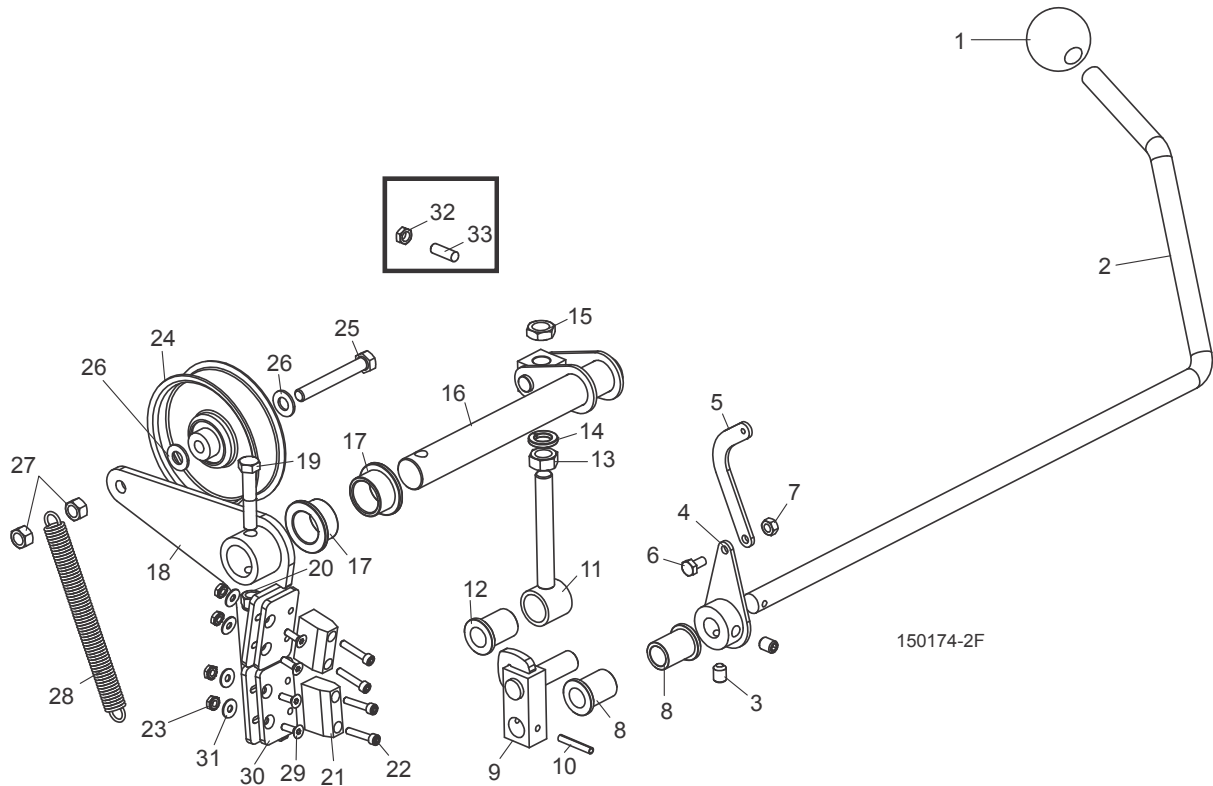
**4**

3	Bracket, Air Filter Mount	074939	1	
4	Bolt, 5/16-18 x 1 1/4" Hex Head Full Thread	F05006-18	2	
5	Washer, 5/16" SAE Flat	F05011-17	4	
6	Nut, 5/16-18 Self-Locking Hex	F05010-20	2	
7	Clamp, 2 1/2" Hose	P09895	4	
8	Elbow, 90° x 2" ID Rubber	007394	2	
9	Tube, 1 3/4" ID x 2" OD x 4"	007395	1	
10	Cable, LT15 D18	007392	1	
11	Guard Weldment, D18 Radiator	007465	1	
12	Washer, 1/4" SAE Flat	F05011-11	6	
13	Washer, 1/4" Split Lock	F05011-14	6	
14	Bolt, M6 x 1.0 x 16mm Hex Head	F05004-219	6	
15	Bracket Weldment, Rear D18 Mount	007427	1	
16	Bolt, M12 x 1.75 x 20mm Hex Head Full Thread	F05004-251	2	
17	Washer, 3/8" SAE Flat	F05011-3	8	
18	Bolt, 3/8-16 x 1 1/4" Hex Head Grade 5	F05007-123	4	
19	Nut, 3/8-16 Hex Nylon Lock	F05010-10	4	
20	Bracket, D18 Front Mount	007426	1	
21	Bolt, 5/16-18 x 1" Hex Head Grade 5	F05006-27	2	
22	Nut, 5/16-18 Hex Nylon Lock	F05010-58	2	
23	Shaft, Diesel Engine Drive	014024	1	
24	Washer, 10mm Split Lock	F05011-88	8	
25	Bolt, M10-1.5 x 24mm Hex Head Grade 8.8	F81003-11	8	
26	Sheave, 3V5.6 x 2-SH	047742	1	
27	Bushing, SH - 1 9/16"	007338	1	
28	Guard Weldment, Motor Pulley	007336	1	
29	Cover, Engine Pulley Guard	007344	1	
30	Bolt, 1/4-20 x 3/4" Hex w/Conical Washer Head	F05005-134	4	
31	Fitting, M18 x 3/8" NPT Adapter	065163	1	
32	Hose, 3/8" NPT x 9 5/8" Rubber	P10082	1	
33	Fitting, 3/8" Galvanized Pipe Cap	P04332	1	
34	<b>BELT, 2/3VFL900 DRIVE</b>	047751	1	
35	<b>SUPPORT WELDMENT, DRIVE BELT</b>	048237	1	
36	<b>BOLT, 3/8-16 X 3/4" HEX HEAD GRADE 5</b>	F05007-118	1	
37	<b>NUT, 3/8-16 SELF-LOCKING HEX</b>	F05010-19	1	
	<b>MOUNT ASSEMBLY, LT15D17 CONTROL</b>	074942	1	
38	Plate, LT15D17 Control Mount	074938	1	
39	Bolt, 5/16-18x3/4 HH Gr5	F05006-102	2	
40	Bolt, 5/16-18x1 Gr5 HH	F05006-27	2	
41	Nut, 5/16-18 Nylok Hex	F05010-58	2	
42	Washer, 5/16 Split Lock	F05011-13	2	
43	Washer, 5/16 SAE Flat	F05011-17	6	

# D17

## 4 Replacement Parts Throttle/Clutch Assembly

### 4.3 Throttle/Clutch Assembly



REF	DESCRIPTION (◆ Indicates Parts Available In Assemblies Only)	PART #	QTY.	
1	<b>KNOB, 5/8-11 BALL</b>	P04211	1	
2	<b>HANDLE, LT15 CLUTCH</b>	062313	1	
3	<b>SCREW, 3/8-16 X 3/8" SOCKET HEAD CUP PT SET</b>	F05007-68	2	
4	<b>ACTUATOR WELDMENT, THROTTLE LT15D&amp;G</b>	034815	1	
5	<b>LINKAGE, THROTTLE LT15D&amp;G</b>	034818	1	
6	<b>BOLT, 1/4-20 X 1/2" HEX HEAD</b>	F05005-15	1	
7	<b>NUT, 1/4-20 SWAGED</b>	F05010-21	1	
8	<b>BUSHING, 5/8" ID X 7/8" OD X 1 1/8" LONG FL BRONZE</b>	016486	2	
9	<b>BLOCK WELDMENT, LINKAGE CLUTCH/BRAKE</b>	065572	1	
10	<b>PIN, 3/16" X 1 1/4" ROLL</b>	F05012-16	1	
	<b>LINKAGE ASSEMBLY, W/BEARING</b>	034605	1	
11	Link Weldment, Clutch/Brake	034604	1	◆
12	Bushing, 5/8" ID x 7/8" OD x 1 1/8" Long Fl Bronze	016486	1	
13	<b>NUT, 1/2-13 FREE HEX, ZINC</b>	F05010-35	1	
14	<b>WASHER, 1/2" SPLIT LOCK</b>	F05011-9	1	
15	<b>NUT, 1/2-13 JAM</b>	F05010-31	1	
16	<b>PIVOT WELDMENT, CLUTCH/BRAKE</b>	034608	1	

# D17

## Replacement Parts Throttle/Clutch Assembly

4

17	<b>BUSHING, 1" X 1 1/4" X 3/4" FLG BRONZE</b>	P737	2	
	<b>BRAKE/CLUTCH ASSEMBLY, LT15</b>	065874	1	
18	Arm Weldment, Clutch/Brake LT15	065873	1	
19	Bolt, 3/8-16 x 2" Hex Head Gr5	F05007-124	1	
20	Nut, 3/8-16 Hex Nylon Lock	F05010-10	1	
21	Block, LT15 Brake	016488	2	
22	Screw, 10-24 x 1" Socket Head	F05004-2	4	
23	Nut, #10-24 Keps	F05010-14	8	
24	Idler, 4" O.D. x 3/8" Bore	034602	1	
25	Bolt, 3/8-16 x 2-3/4" Hex Head Gr5 Full Thread	F05007-230	1	
26	Washer, 3/8 Flat	F05011-3	2	
27	Nut, 3/8-16 Swaged Lock	F05010-25	2	
28	Spring, Idler Arm LT15D/E/G	034810	1	
29	Screw, 10-24 x 5/8" FSHC	F05004-282	4	
30	Plate, Brake Adjustment	065872	2	
31	Washer, #10 SAE Flat	F05011-18	4	

# INDEX

---

## M

maintenance 3-1  
fuel filter 3-2

---

## P

parts list  
engine assembly 5-1  
fuel tank 4-1

---

## S

starting 2-1