

Wood-Mizer®

Twin Vertical Saw

Parts Manual

TVSEH11-SA

rev.A1.01



Safety is our #1 concern! Read and understand all safety information and instructions before operating, setting up or maintaining this machine.

Form #1075

Table of Contents

Section-Page

| | | |
|------------------|--|------------|
| SECTION 1 | GENERAL INFORMATION | 1-1 |
| 1.1 | How To Use the Parts List..... | 1-1 |
| 1.2 | Sample Assembly | 1-1 |
| SECTION 2 | TVS EH11-SA\EH15-SA | 2-1 |
| 2.1 | TVSEH11-2.4SA | 2-1 |
| SECTION 3 | INFEED ROLLER | 3-1 |
| 3.1 | Infeed Roller | 3-1 |
| 3.2 | Log Guide Roller | 3-2 |
| 3.3 | Long Conical Roller Assembly | 3-3 |
| SECTION 4 | TVS SAW HEADS | 4-1 |
| 4.1 | Saw Heads | 4-1 |
| 4.2 | Cutting Width Setting System & LMS Divider Block | 4-3 |
| 4.3 | Cutting Width Setting Handle | 4-5 |
| 4.4 | Cutting Width Setting Handle | 4-6 |
| 4.5 | TVS Hold-Down Wheel | 4-7 |
| 4.6 | Blade Wheel w/Shaft, Idle Side | 4-9 |
| 4.7 | Idle Side Blade Wheel | 4-10 |
| 4.8 | Blade Wheel w/Shaft, Drive Side | 4-11 |
| 4.9 | Drive Side Blade Wheel | 4-12 |
| 4.10 | Saw Head Support Rollers | 4-13 |
| 4.11 | Turnbuckle | 4-14 |
| 4.12 | Blade Guide Assembly & Roller Guide | 4-15 |
| 4.13 | Blade Guide w/Mount Block & Guard | 4-16 |
| 4.14 | Blade Lube Assembly (No. 098583) | 4-17 |
| 4.15 | Blade Guide Assembly (No. 500562) | 4-18 |
| 4.16 | Blade Guide Roller Assembly (No. 500561) | 4-19 |
| 4.17 | Lower Slide Bars | 4-20 |
| 4.18 | Scale Indicator | 4-21 |
| 4.19 | Slide Bars | 4-22 |
| 4.20 | Rocker Arm w/Blade Tensioner | 4-23 |
| 4.21 | Blade Tensioner | 4-24 |
| 4.22 | Cylinder | 4-26 |
| 4.23 | Rocker Arm Guard, Idle Side Blade Wheel | 4-27 |
| 4.24 | Motor Mount Plate | 4-28 |
| 4.25 | Blade Housing Covers | 4-29 |
| 4.26 | Screw Bearing Mount Block (Part No. 500012) | 4-31 |
| 4.27 | Saw Head Support Roller (No. 100179) | 4-32 |
| 4.28 | Saw Head Support Roller (No. 509887) | 4-33 |

Table of Contents

Section-Page

| | | |
|------------------|---|------------|
| SECTION 5 | TVS SA 2.4 FEED TABLE | 5-1 |
| 5.1 | TVS SA 2.4 Feed Table | 5-1 |
| SECTION 6 | TVS ECO 2.4 INFEED TABLE | 6-1 |
| 6.1 | TVS SA 2.4 Infeed Table | 6-1 |
| 6.2 | Hold-Down Wheel Arm | 6-3 |
| SECTION 7 | TVS 2.4 OUTFEED TABLE | 7-1 |
| 7.1 | TVS 2.4 Outfeed Table | 7-1 |
| 7.2 | Chain Drive Assembly | 7-3 |
| 7.3 | Chain Support Bracket | 7-4 |
| SECTION 8 | ADDITIONAL TVS SA HOLD-DOWN WHEEL ASSEMBLY | 8-1 |
| 8.1 | Additional TVS SA Hold-Down Wheel Assembly | 8-1 |
| 8.2 | Additional Hold-Down Wheel | 8-2 |
| SECTION 9 | EH11/EH15 MOTOR KIT | 9-1 |
| 9.1 | EH11/EH15 Motor Kit | 9-1 |

SECTION 1 GENERAL INFORMATION

1.1 How To Use the Parts List

- Use the index above to locate the assembly that contains the part you need.
- Go to the appropriate section and locate the part in the illustration.
- Use the number pointing to the part to locate the correct part number and description in the table.
- Parts shown indented under another part are included with that part.
- Parts marked with a diamond (◆) are only available in the assembly listed above the part.

See the sample table below. Sample Part #A01111 includes part F02222-2 and subassembly A03333. Subassembly A03333 includes part S04444-4 and subassembly K05555. The diamond (◆) indicates that S04444-4 is not available except in subassembly A03333. Subassembly K05555 includes parts M06666 and F07777-77. The diamond (◆) indicates M06666 is not available except in subassembly K05555.

| 1.2 Sample Assembly | | | | |
|---------------------|---|-----------|-----|---|
| REF. | DESCRIPTION (◆ Indicates Parts Available In Assemblies Only) | PART # | QTY | |
| | Sample Assembly, Complete (Includes All Indented Parts Below) | A01111 | 1 | |
| 1 | Sample Part | F02222-22 | 1 | |
| | Sample Subassembly (Includes All Indented Parts Below) | A03333 | 1 | |
| 2 | Sample Part (◆ Indicates Part Is Only Available With A03333) | S04444-4 | 1 | ◆ |
| | Sample Subassembly (Includes All Indented Parts Below) | K05555 | 1 | |
| 3 | Sample Part (◆ Indicates Part Is Only Available With K05555) | M06666 | 2 | ◆ |
| 4 | Sample Part | F07777-77 | 1 | |

To Order Parts:

- From Europe call our European Headquarters and Manufacturing Facility in Kolo, Poland at **+48-63-2626000**. From the continental U.S., call our toll-free Parts hotline at **1-800-525-8100**. Have your customer number, vehicle identification number, and part numbers ready when you call. From other international locations, contact the Wood-Mizer distributor in your area for parts.

Office Hours:

| Country | Monday - Friday | Saturday | Sunday |
|---------|-----------------|-----------------|--------|
| Poland | 7-15 | Closed | Closed |
| US | 8 a.m.- 5 p.m. | 8 a.m.- 12 p.m. | Closed |

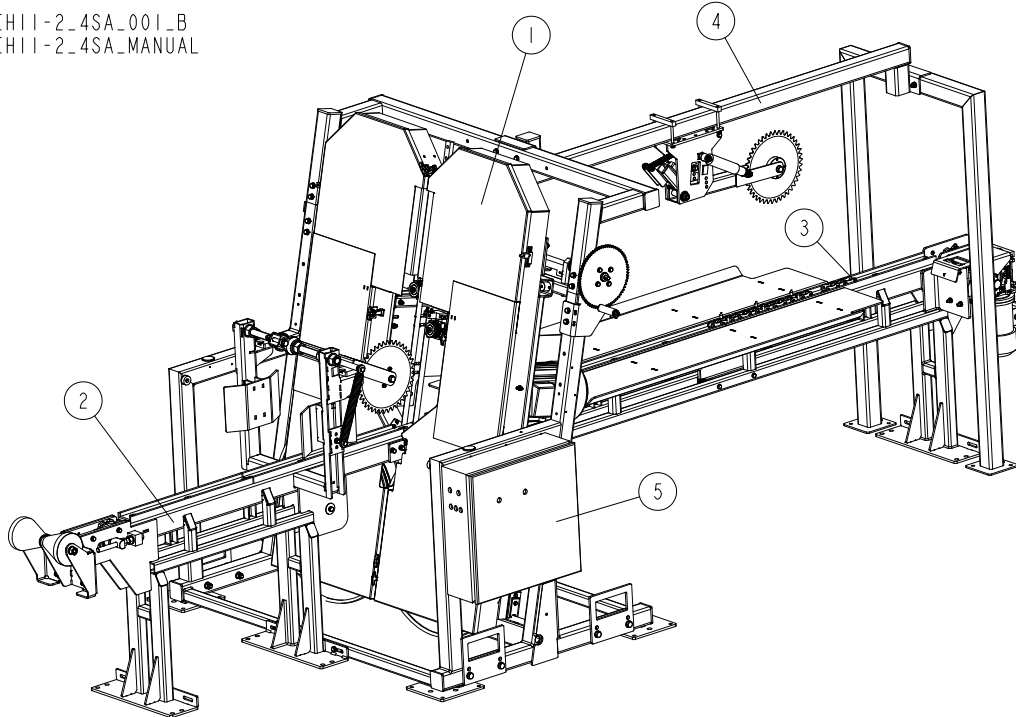


CAUTION! It is strongly recommended that only original spare parts be used.

SECTION 2 TVS EH11-SAEH15-SA

2.1 TVSEH11-2.4SA

TVSEH11-2_4SA_001_B
TVSEH11-2_4SA_MANUAL



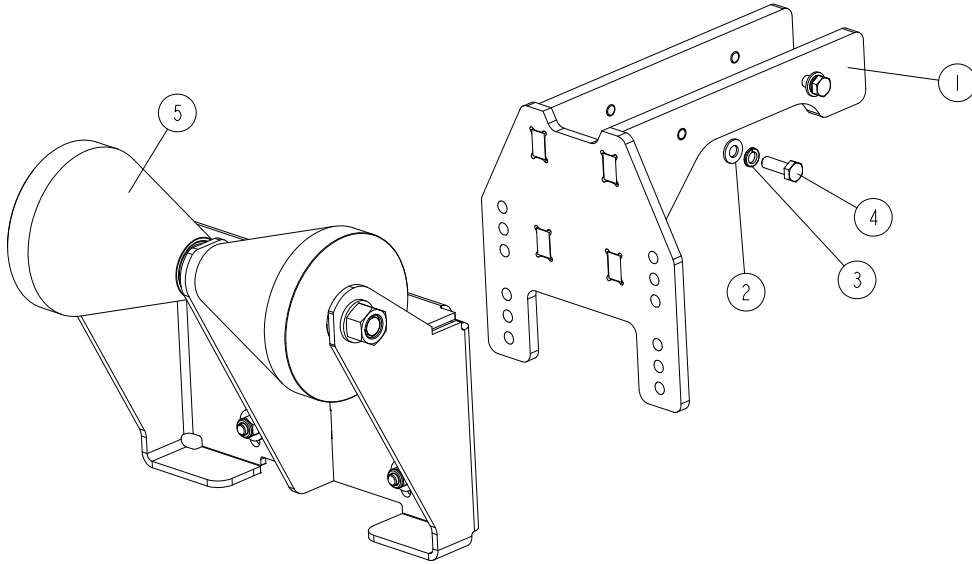
| REF. | DESCRIPTION (* indicates parts available in assemblies only) | PART # | QTY |
|------|---|---------------|-----|
| - | TVSEH11-2.4SA | TVSEH11-2_4SA | 1 |
| 1 | TVS SAW HEAD ASSEMBLY See Section 4.1 | 538130 | 1 |
| 2 | TABLE, TVS SA 2.4 FEED (SHORTENED) See Section 5.1 | 543926 | 1 |
| 3 | CHAIN, 20B P=2" ROLLER W/SPIKES (205-LINK) | 543937-1 | 1 |
| 4 | WHEEL ASSEMBLY, TVS SA HOLD-DOWN - ADDITIONAL See Section 8.1 | 543925 | 1 |
| 5 | MOTOR KIT, EH11 ¹ See Section 9.1 | 538147-3 | 1 |
| | MOTOR KIT, EH15 ¹ See Section 9.1 | 536946-3 | 1 |

¹ The parts numbers for the other voltage versions can be found in the electrical documentation.

SECTION 3 INFEED ROLLER

3.1 Infeed Roller

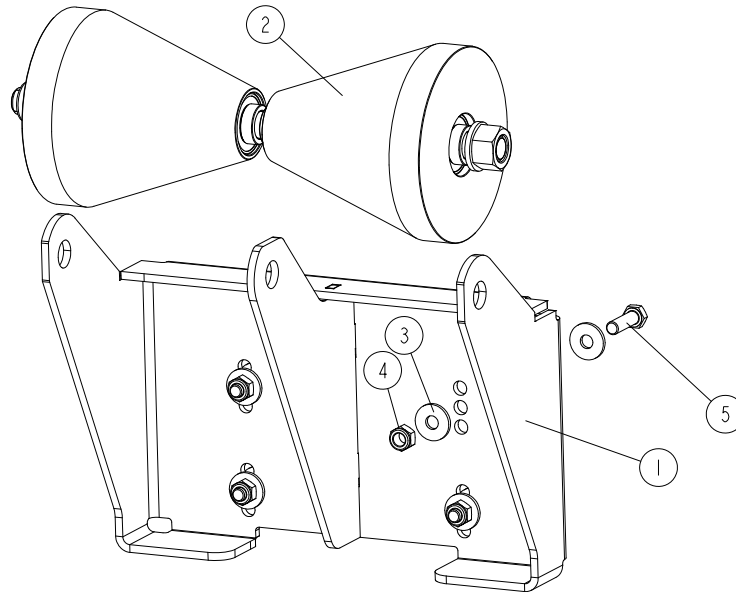
543932_001
 543932_MANUAL



| Ref. | DESCRIPTION (* indicates parts available in assemblies only) | PART # | QTY | |
|------|--|----------|-----|--|
| - | ROLLER, INFEED - COMPLETE | 543932 | 1 | |
| 1 | MOUNT WELDMENT, ROLLER | 543507-1 | 1 | |
| 2 | WASHER, 10.5 FLAT ZINC | F81055-1 | 4 | |
| 3 | WASHER, Z 10.2 SPLIT LOCK ZINC | F81055-2 | 4 | |
| 4 | BOLT, M10X30-8.8 HEX HEAD FULL THREAD ZINC | F81003-2 | 4 | |
| 5 | ROLLER, LOG GUIDE - COMPLETE See Section 3.2 | 543933 | 1 | |

3.2 Log Guide Roller

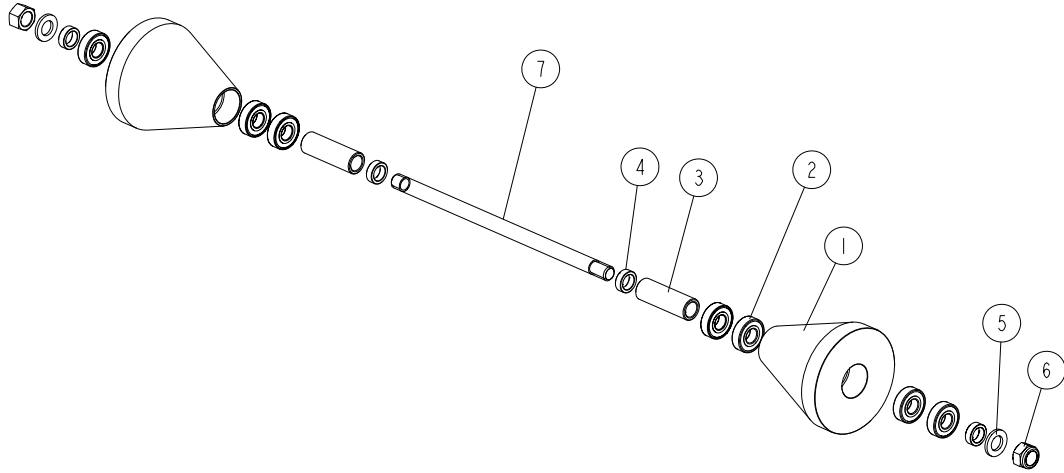
543933_001
 543933_MANUAL



| Ref. | DESCRIPTION (* indicates parts available in assemblies only) | PART # | QTY |
|------|---|-----------|-----|
| - | ROLLER, LOG GUIDE - COMPLETE | 543933 | 1 |
| 1 | BRACKET, LOG GUIDE ROLLER | 543934-1 | 1 |
| 2 | ROLLER ASSEMBLY, LONG CONICAL See Section 3.3 | 508692_ | 1 |
| 3 | WASHER, 10.5 SPECIAL FLAT ZINC | F81055-6 | 8 |
| 4 | NUT, M10-8-B HEX NYLON ZINC LOCK | F81033-1 | 4 |
| 5 | BOLT, M10X35 8.8 HEX HEAD FULL THREAD ZINC | F81003-17 | 4 |

3.3 Long Conical Roller Assembly

508692__001
 508692__MANUAL

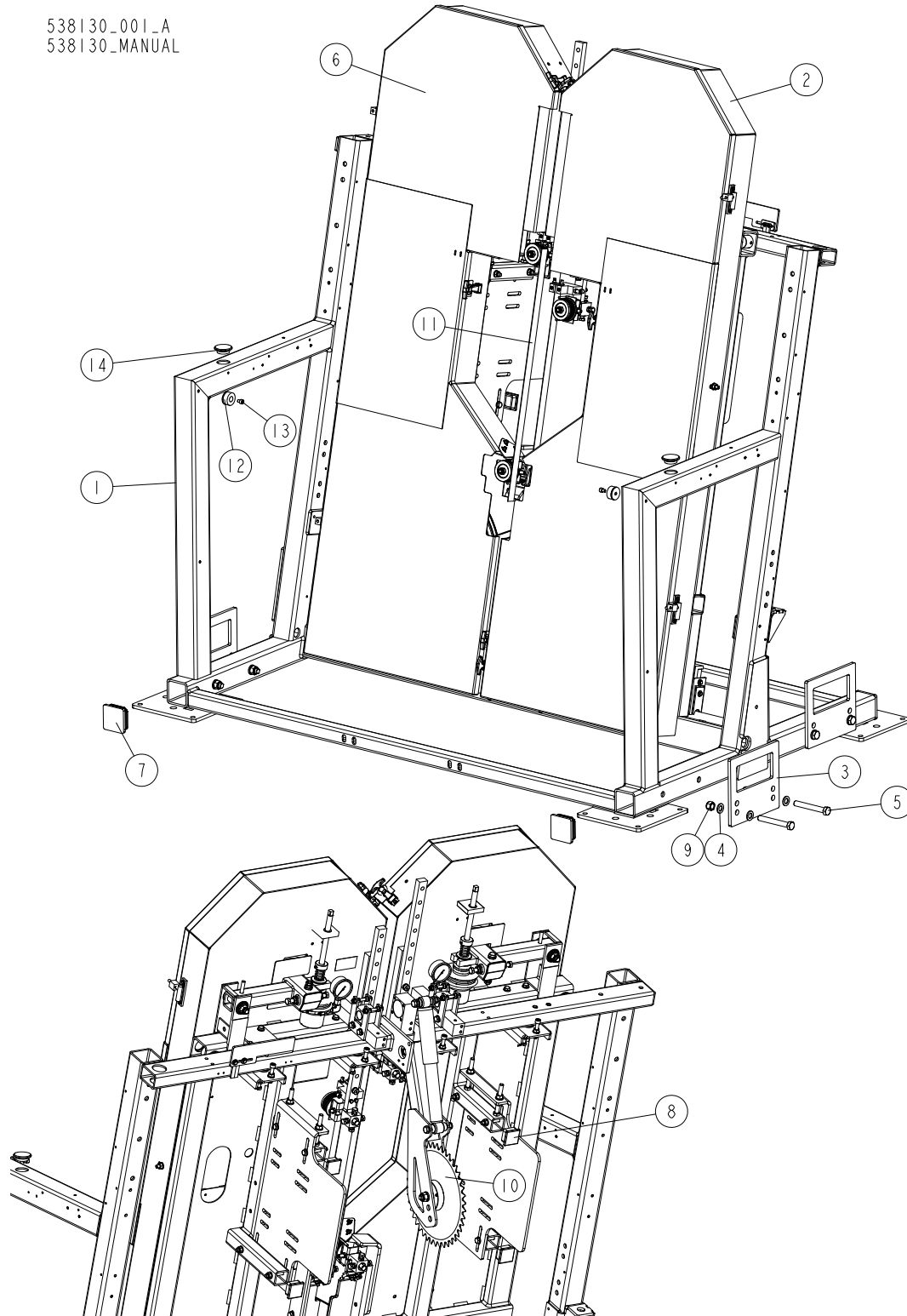


| Ref. | DESCRIPTION (* indicates parts available in assemblies only) | PART # | QTY |
|------|--|----------|-----|
| - | ROLLER ASSEMBLY, LONG CONICAL | 508692_ | 1 |
| 1 | ROLLER, CONICAL ZINC-PLATED | 508533-1 | 2 |
| 2 | BEARING, 6204 2RS CX ROLLING | 088447 | 8 |
| 3 | BUSHING, 21/30-91.3 ZINC-PLATED | 508645-1 | 2 |
| 4 | BUSHING, 21/30-10 ZINC-PLATED | 099351-1 | 4 |
| 5 | WASHER, 21 FLAT ZINC | F81059-2 | 2 |
| 6 | NUT, M20-8 DIN985 HEX NYLON ZINC LOCK | F81037-2 | 1 |
| 7 | SHAFT, CONICAL ROLLER | 508693-1 | 1 |

SECTION 4 TVS SAW HEADS

4.1 Saw Heads

538130_001_A
538130_MANUAL



| REF. | DESCRIPTION (* indicates parts available in assemblies only) | PART # | QTY |
|------|--|--------|-----|
| - | TVS SAW HEAD ASSEMBLY | 538130 | 1 |

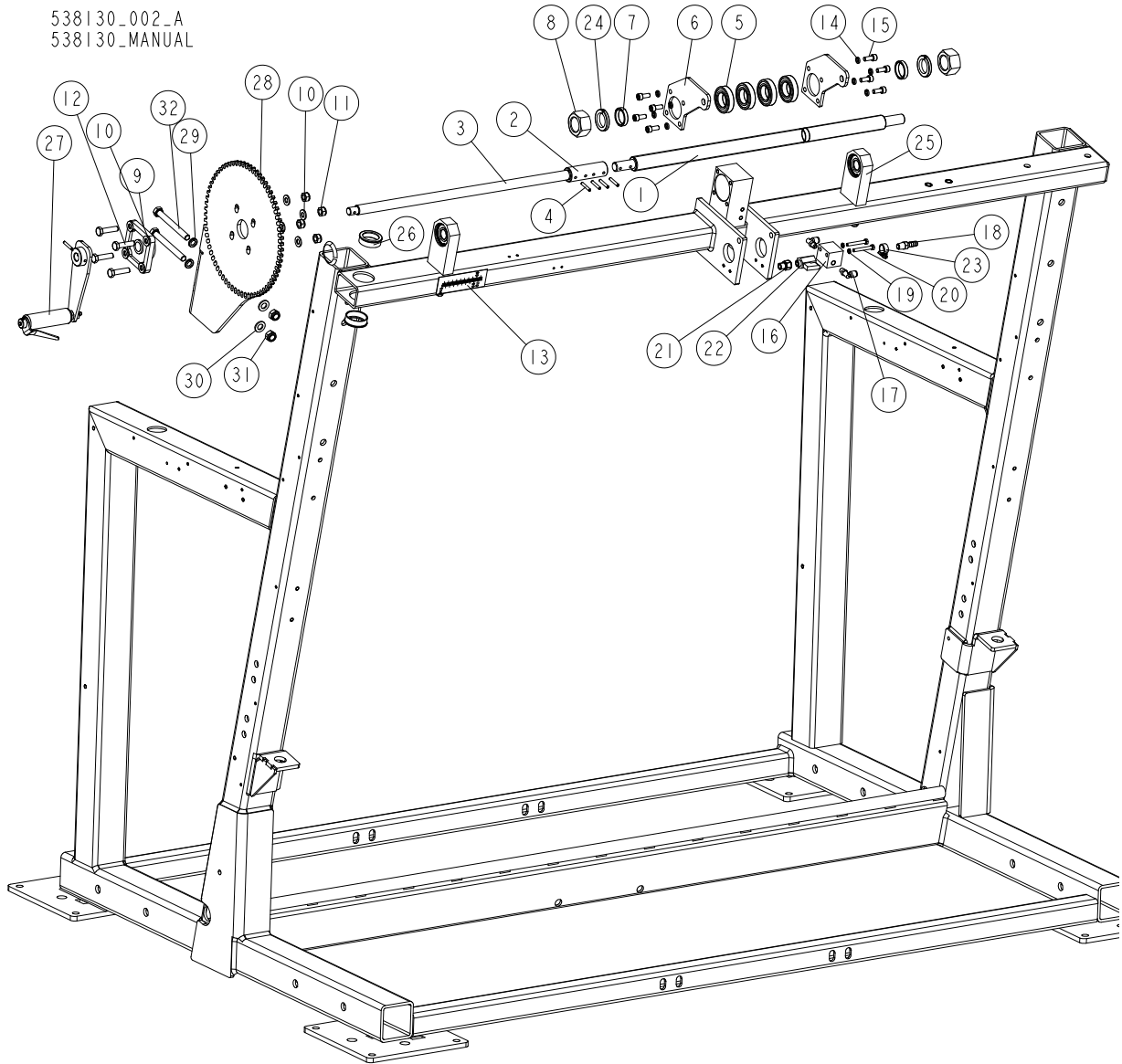
4

TVS SAW HEADS

Saw Heads

| REF. | DESCRIPTION (* indicates parts available in assemblies only) | PART # | QTY |
|------|--|-----------|-----|
| 1 | FRAME WELDMENT, TVS ECO SAW HEAD SUPPORT | 538134-1 | 1 |
| 2 | SAW HEAD, TVS RIGHT - COMPLETE | 538142 | 1 |
| 3 | PLATE, TVS MOUNTING/TRANSPORT | 099145-1 | 4 |
| 4 | WASHER, 17 FLAT ZINC | F81058-1 | 16 |
| 5 | BOLT, ISO 24014 M16X120_8.8 A2E | F81006-25 | 8 |
| 6 | SAW HEAD, TVS LEFT - COMPLETE | 538136 | 1 |
| 7 | CAP, 80X80 2-4 #111227 TUBE END | 089644 | 4 |
| 8 | CAP, 50X50 (3-5MM THICK) (199274MOSS) TUBE END | 095371 | 4 |
| 9 | NUT, M16-8 HEX NYLON ZINC LOCK | F81036-2 | 8 |
| 10 | WHEEL, TVS REAR HOLD-DOWN See Section 4.5 | 517423 | 1 |
| 11 | | PILA1 | 2 |
| 12 | BUMPER, RUBBER | 519866 | 2 |
| 13 | SCREW, M8X10-8.8 HEX SOCKET HEAD CAP ZINC | F81002-32 | 2 |
| 14 | CAP, 40.2 HOLE | 543491 | 2 |

4.2 Cutting Width Setting System & LMS Divider Block



| REF. | DESCRIPTION (* indicates parts available in assemblies only) | PART # | QTY |
|------|--|-----------|-----|
| - | SCREW, TVS CUTTING WIDTH SETTING - COMPLETE | 538263 | 1 |
| 1 | SCREW, TVS CUTTING WIDTH SETTING | 096154-1 | 1 |
| 2 | FASTENER, CUTTING WIDTH SETTING SCREW | 097665-1 | 1 |
| 3 | ROD, CUTTING WIDTH SETTING | 538262-1 | 1 |
| 4 | PIN, 5X30 ZINC-PLATED ROLL | F81044-21 | 4 |
| 5 | BEARING, 6006 2RSR | 096191 | 4 |
| 6 | PLATE, TVS BEARING MOUNT BLOCK | 518889-1 | 2 |
| 7 | BUSHING, 31.6/38-8 ZINC-PLATED | 096356-1 | 2 |
| 8 | NUT, M30-HEX ZINC | F81038-3 | 2 |
| 9 | UNIT, UCF 204 SQUARE FLANGED BALL BEARING | 097667 | 1 |
| 10 | WASHER, 10.5 FLAT ZINC | F81055-1 | 8 |
| 11 | NUT, M10-8-B HEX NYLON ZINC LOCK | F81033-1 | 4 |
| 12 | BOLT, M10X40-8.8 HEX HEAD FULL THREAD ZINC | F81003-16 | 4 |
| 13 | SCALE, TVS METRIC | 098619 | 1 |

4

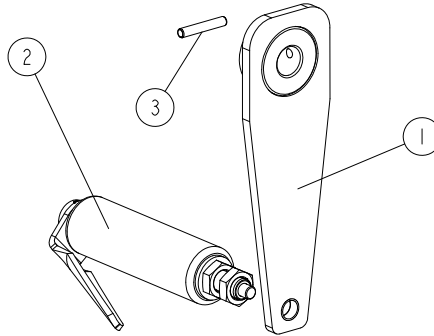
TVS SAW HEADS

Cutting Width Setting System & LMS Divider Block

| REF. | DESCRIPTION (* indicates parts available in assemblies only) | PART # | QTY | |
|------|--|-----------|-----|--|
| 14 | WASHER, 8.2 SPLIT LOCK ZINC | F81054-4 | 8 | |
| 15 | SCREW, M8X20-8.8 HEX SOCKET HEAD CAP ZINC | F81002-30 | 8 | |
| - | BLOCK, TVS DIVIDER - COMPLETE | 555849 | 1 | |
| 16 | BLOCK, TVS LMS DIVIDER | 099213-1 | 1 | |
| 17 | ELBOW, 90 DEG 1/8MPT 1/4 TUBE SWIVEL | P09736 | 2 | |
| 18 | FITTING, 1/4NPT-3/8 BARB | 014685 | 1 | |
| 19 | WASHER, Z 6.1 SPLIT LOCK ZINC | F81053-3 | 2 | |
| 20 | BOLT, M6X45-8.8 HEX HEAD ZINC | F81001-6 | 2 | |
| 21 | FITTING, 2521 1/4-1/4 MALE-FEMALE (CAMOZZI) | 097704 | 1 | |
| 22 | VALVE, FP60.KIT28 G1/4" | 088380 | 1 | |
| 23 | CLAMP, 12-20 | F81080-3 | 1 | |
| 24 | WASHER, Z 30.5 SPLIT LOCK ZINC | F81068-1 | 2 | |
| 25 | BLOCK, SCREW BEARING MOUNT - COMPLETE See Section 0.25 | 500012 | 2 | |
| 26 | GROMMET, MOSS 44.5MM 465901 | R80670-3 | 2 | |
| 27 | HANDLE, MANUAL CUTTING WIDTH SETTING See Section 4.3 | 538266 | 1 | |
| 28 | DISK, CUTTING WIDTH SETTING | 538135-1 | 1 | |
| 29 | WASHER, Z12.2 SPLIT LOCK ZINC | F81056-2 | 2 | |
| 30 | WASHER, 13 FLAT ZINC | F81056-1 | 2 | |
| 31 | NUT, M12-8 DIN 982 HEX NYLON ZINC LOCK | F81034-2 | 2 | |
| 32 | BOLT, M12X110-8.8-B HEX HEAD ZINC | F81004-47 | 2 | |

4.3 Cutting Width Setting Handle

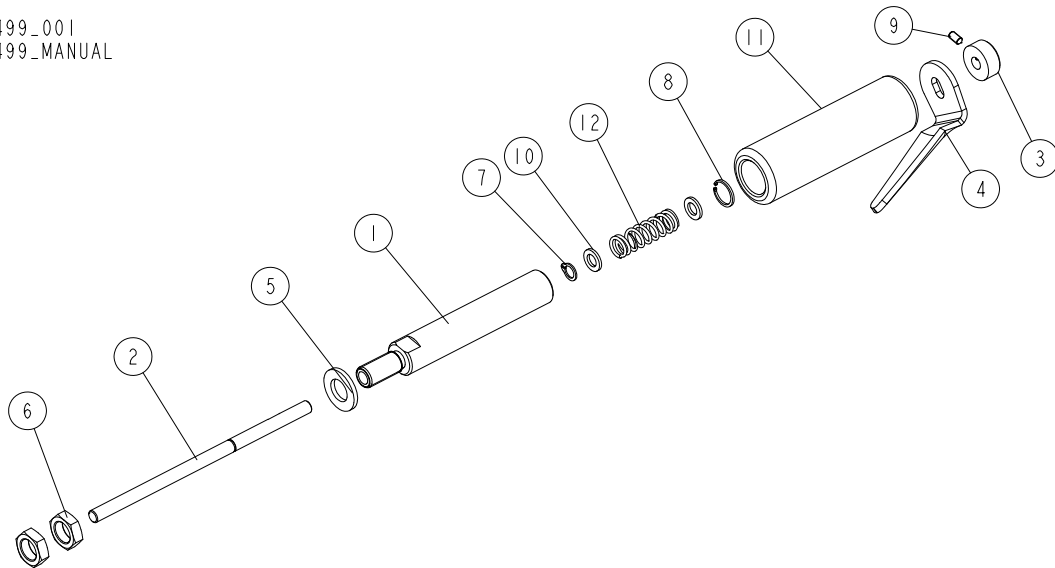
538266_001_A
538266_MANUAL



| REF. | DESCRIPTION (* indicates parts available in assemblies only) | PART # | QTY | |
|------|---|-----------|-----|--|
| - | HANDLE, MANUAL CUTTING WIDTH SETTING | 538266 | 1 | |
| 1 | ARM, HANDLE - COMPLETE | 538265-1 | 1 | |
| 2 | HANDLE, CUTTING WIDTH SETTING See Section 4.4 | 096499 | 1 | |
| 3 | PIN, 5X30 ZINC-PLATED ROLL | F81044-21 | 1 | |

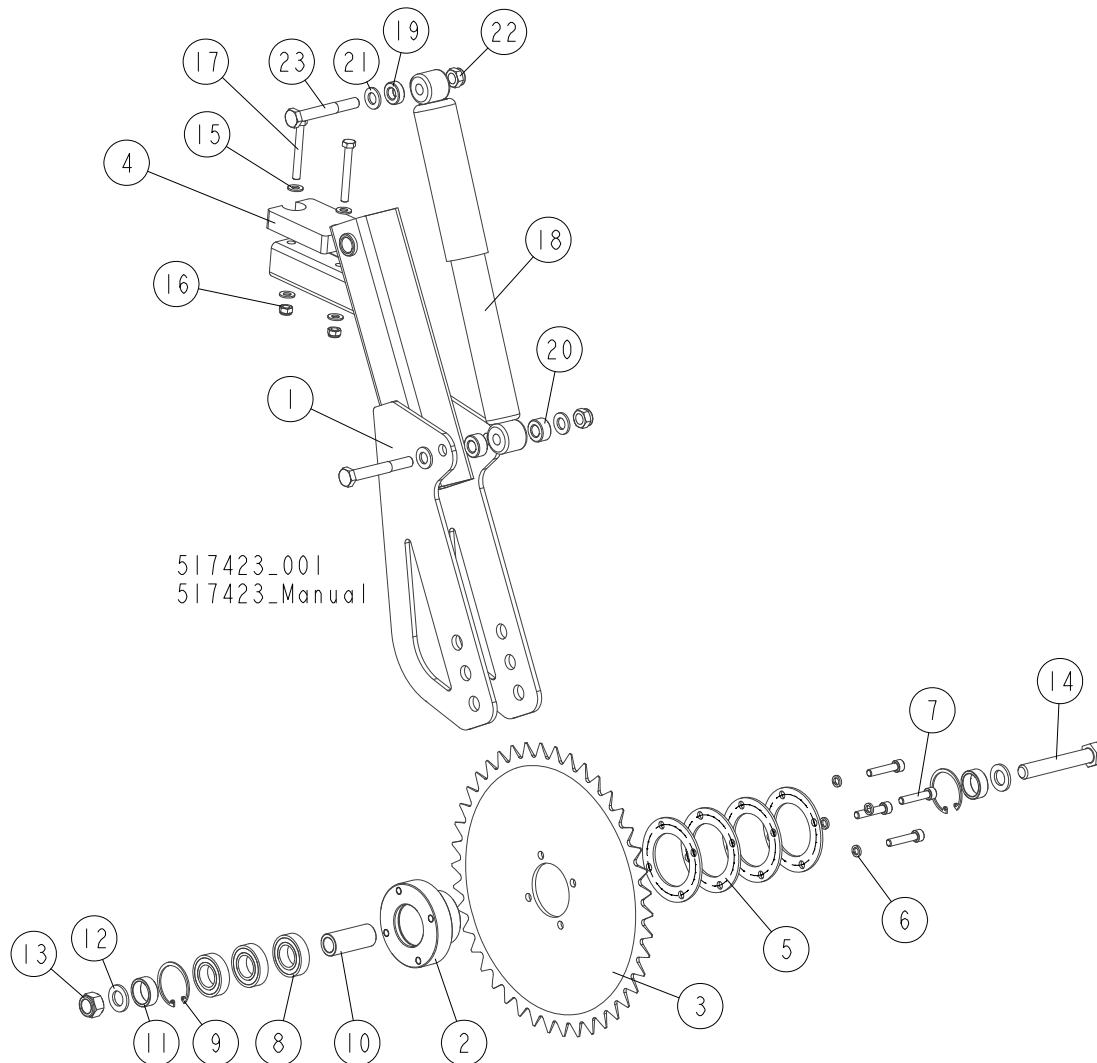
4.4 Cutting Width Setting Handle

096499_001
096499_MANUAL



| Ref. | DESCRIPTION (* indicates parts available in assemblies only) | PART # | QTY |
|------|--|-----------|-----|
| - | HANDLE, CUTTING WIDTH SETTING | 096499 | 1 |
| 1 | SHAFT, HANDLE | 096504-1 | 1 |
| 2 | SHAFT, HANDLE | 097095-1 | 1 |
| 3 | RING, 7 STOPPING LIGHT TYPE | F81039-9 | 1 |
| 4 | PLATE, LX50 | 587015-1 | 1 |
| 5 | WASHER, 13 FLAT ZINC | F81056-1 | 1 |
| 6 | NUT, M12-04-A THIN ZINC | F81034-6 | 2 |
| 7 | RING, Z7 OUTSIDE RETAINING | F81090-17 | 1 |
| 8 | RING, W13 INSIDE RETAINING | F81090-18 | 1 |
| 9 | SCREW, M4X8 GEOMET HEX SOCKET SET W/FLAT POINT | F81011-40 | 1 |
| 10 | WASHER, 7.2/12.5 | 097264 | 2 |
| 11 | TUBE, HANDLE | 097263 | 1 |
| 12 | SPRING, .48 DIA. X 1.5 LONG SS COMPRESSION | 047690 | 1 |

4.5 TVS Hold-Down Wheel

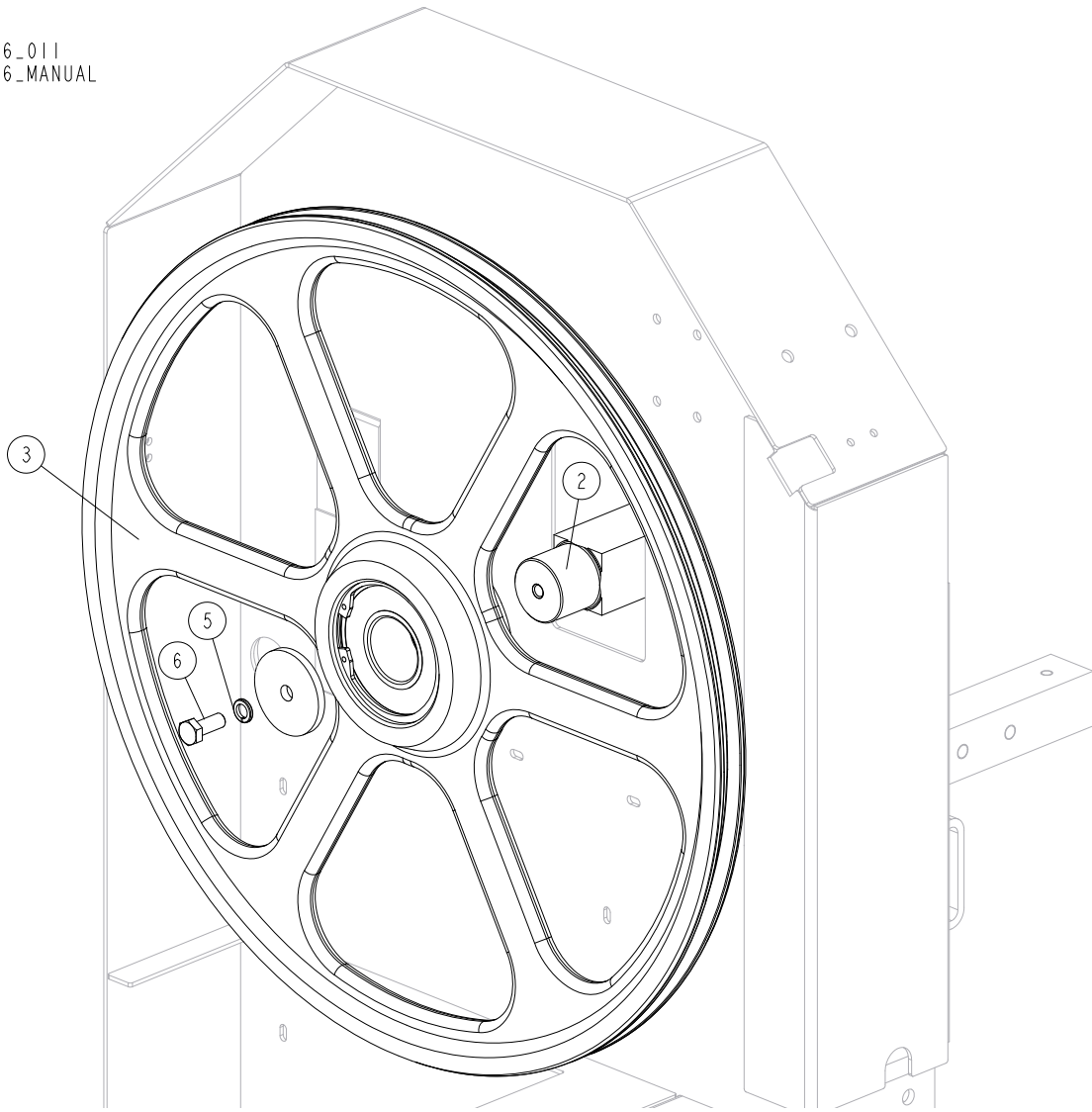


| REF. | DESCRIPTION (◆Indicates Parts Available in Assemblies Only) | PART # | QTY |
|------|---|---------------|----------|
| | WHEEL, TVS HOLD-DOWN | 517423 | 1 |
| 1 | ARM WELDMENT, REAR HOLD-DOWN WHEEL | 517420-1 | 1 |
| 2 | ARBOR, HOLD-DOWN WHEEL | 096351-1 | 1 |
| 3 | WHEEL, TVS HOLD-DOWN | 096352-1 | 1 |
| 4 | BUMPER, GRENE 70 3201 0010 RUBBER | 094969 | 1 |
| 5 | SPACER | 099530-1 | 4 |
| 6 | WASHER, 8.2 SPLIT LOCK ZINC | F81054 | 4 |
| 7 | SCREW, M8x40-8.8 HEX SOCKET HEAD CAP ZINC | F81002-29 | 4 |
| 8 | BEARING, 6005 2RS, PN-85/M-86100 | 089652 | 3 |
| 9 | RING, W47 INSIDE RETAINING | 089653 | 2 |
| 10 | BUSHING, 1 6.5125-60 ZINC-PLATED | 098610-1 | 1 |
| 11 | BUSHING, 25.5132-12 ZINC-PLATED | 097942-1 | 2 |
| 12 | WASHER, 17 SPLIT LOCK ZINC | F81058-1 | 2 |
| 13 | NUT, M16-8 HEX NYLON ZINC LOCK | F81036-2 | 1 |
| 14 | BOLT, M16x100-8.8 HEX HEAD FULL THREAD ZINC | F81006-2 | 1 |

| | | | | |
|----|----------------------------------|----------|---|--|
| 15 | WASHER, 8.4 FLAT ZINC | F81054-1 | 4 | |
| 16 | NUT, M8-8-B HEX NYLON ZINC LOCK | F81032-2 | 2 | |
| 17 | BOLT, M8x65 5.8 HEX HEAD ZINC | F81002-3 | 2 | |
| 18 | ABSORBER, WERTTEILE 554412 SHOCK | 513494 | 1 | |
| 19 | BUSHING, 12.5125-9 | 518735-1 | 2 | |
| 20 | BUSHING, 12.5125-13.2 | 518306-1 | 2 | |
| 21 | WASHER, 13 FLAT ZINC | F81056-1 | 4 | |
| 22 | NUT, M12-8 HEX NYLON ZINC LOCK | F81034-2 | 2 | |
| 23 | BOLT, M12X90 8.8 HEX HEAD ZINC | F81004-2 | 2 | |

4.6 Blade Wheel w/Shaft, Idle Side

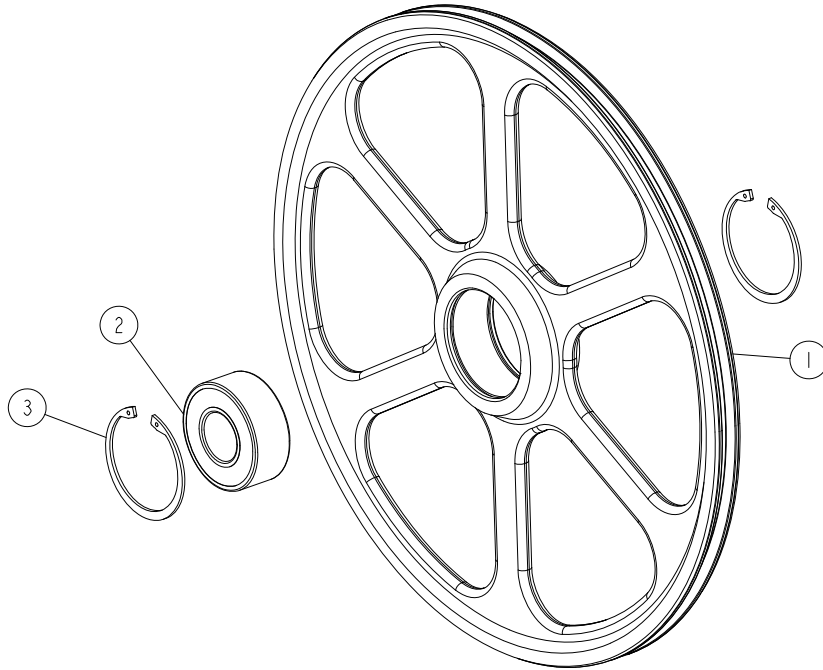
538136_011
538136_MANUAL



| Ref. | DESCRIPTION (* indicates parts available in assemblies only) | PART # | QTY | |
|------|--|-----------|-----|--|
| 1 | WASHER, IDLE SIDE BLADE WHEEL RETAINING | 088957-1 | 1 | |
| 2 | SHAFT, IDLE SIDE BLADE WHEEL | 088474 | 1 | |
| 3 | WHEEL, IDLE SIDE - COMPLETE See Section 4.7 | 088764 | 1 | |
| 4 | WASHER, IDLE SIDE BLADE WHEEL RETAINING | 088957-1 | 1 | |
| 5 | WASHER, Z 10.2 SPLIT LOCK ZINC | F81055-2 | 1 | |
| 6 | BOLT, M10X25 8.8 HEX HEAD FULL THREAD ZINC | F81003-31 | 1 | |

4.7 Idle Side Blade Wheel

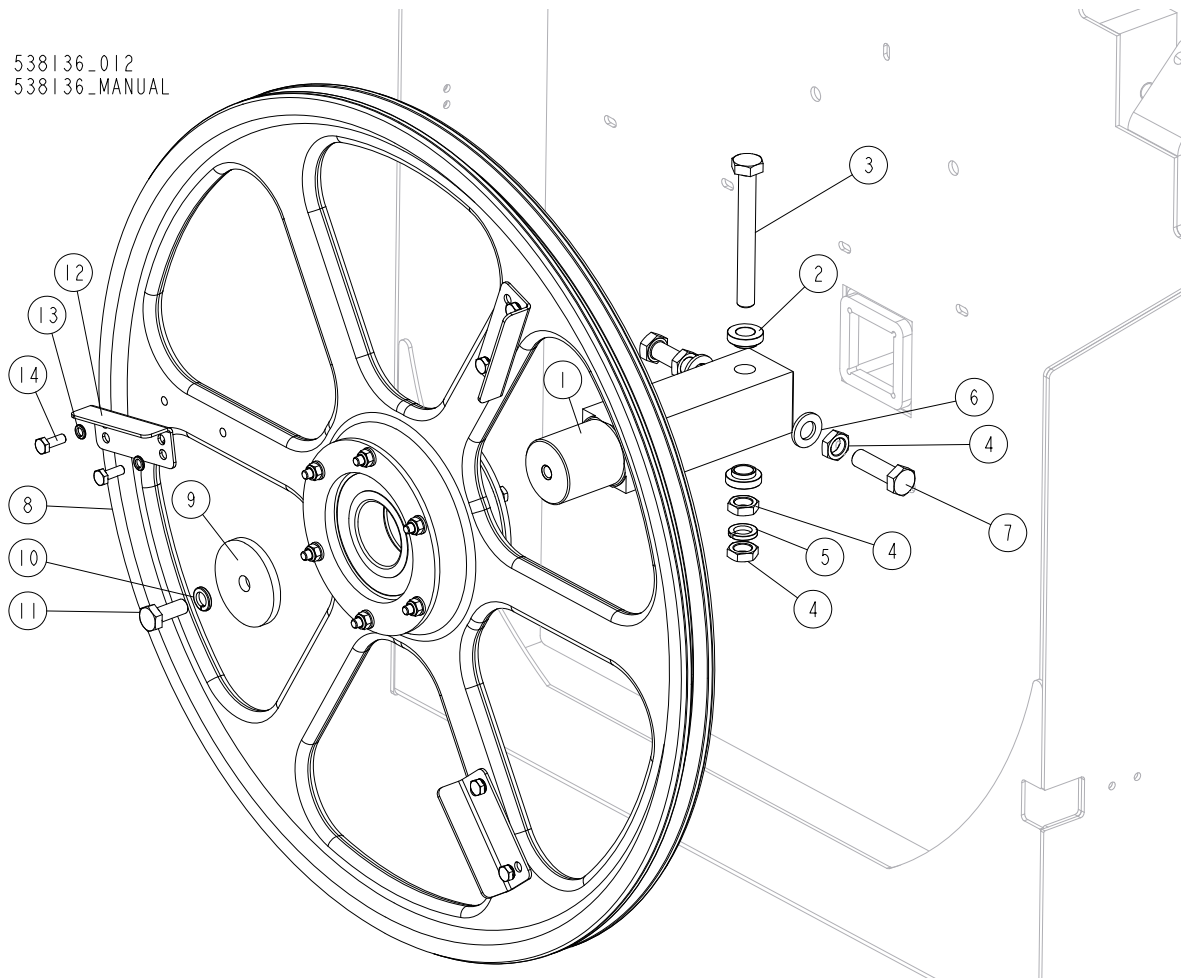
088764_001
 088764_MANUAL



| Ref. | DESCRIPTION (* indicates parts available in assemblies only) | PART # | QTY | |
|------|--|-----------|-----|--|
| - | WHEEL, IDLE SIDE - COMPLETE | 088764 | 1 | |
| 1 | WHEEL, IDLE SIDE BLADE | 090810 | 1 | |
| 2 | BEARING, 3309B-2RSR ROLLING | 086428 | 1 | |
| 3 | RING, W100 INSIDE RETAINING | F81090-10 | 2 | |

4.8 Blade Wheel w/Shaft, Drive Side

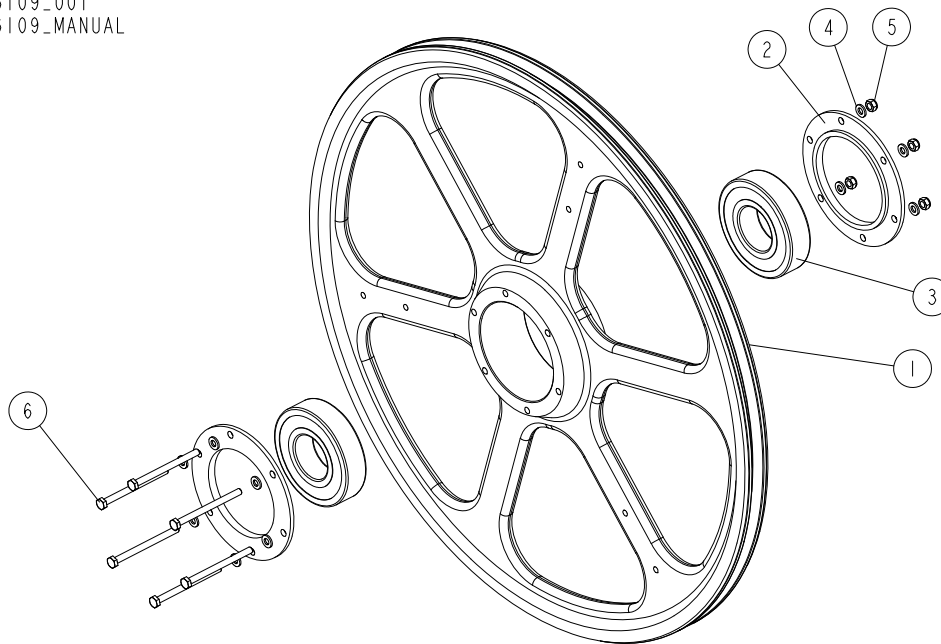
538136_012
538136_MANUAL



| Ref. | DESCRIPTION (* indicates parts available in assemblies only) | PART # | QTY |
|------|--|-----------|-----|
| 1 | SHAFT, TVS DRIVE SIDE BLADE WHEEL | 096110 | 1 |
| 2 | BUSHING, 12.8/23.8-8.6 16-3.3 ZINC-PLATED | 086769-1 | 2 |
| 3 | BOLT, M12X1.25X100-8.8 HEX HEAD FULL THREAD ZINC | F81004-41 | 1 |
| 4 | NUT, M12X1.25-8 THIN ZINC | F81034-5 | 4 |
| 5 | WASHER, Z12.2 SPLIT LOCK ZINC | F81056-2 | 1 |
| 6 | WASHER, 13 FLAT ZINC | F81056-1 | 2 |
| 7 | BOLT, M12X1.25X40-8.8 HEX HEAD FULL THREAD ZINC | F81004-42 | 2 |
| 8 | WHEEL, DRIVE SIDE - COMPLETE See Section 4.9 | 096109 | 1 |
| 9 | WASHER, BLADE WHEEL RETAINING | 088957-1 | 1 |
| 10 | WASHER, Z 10.2 SPLIT LOCK ZINC | F81055-2 | 1 |
| 11 | BOLT, M10X25 8.8 HEX HEAD FULL THREAD ZINC | F81003-31 | 1 |
| 12 | WING | 097808-1 | 3 |
| 13 | WASHER, Z 6.1 SPLIT LOCK ZINC | F81053-3 | 6 |
| 14 | BOLT, M6X16-8.8 HEX HEAD FULL THREAD ZINC | F81001-15 | 6 |
| 15 | WASHER, BLADE WHEEL RETAINING | 088957-1 | 1 |

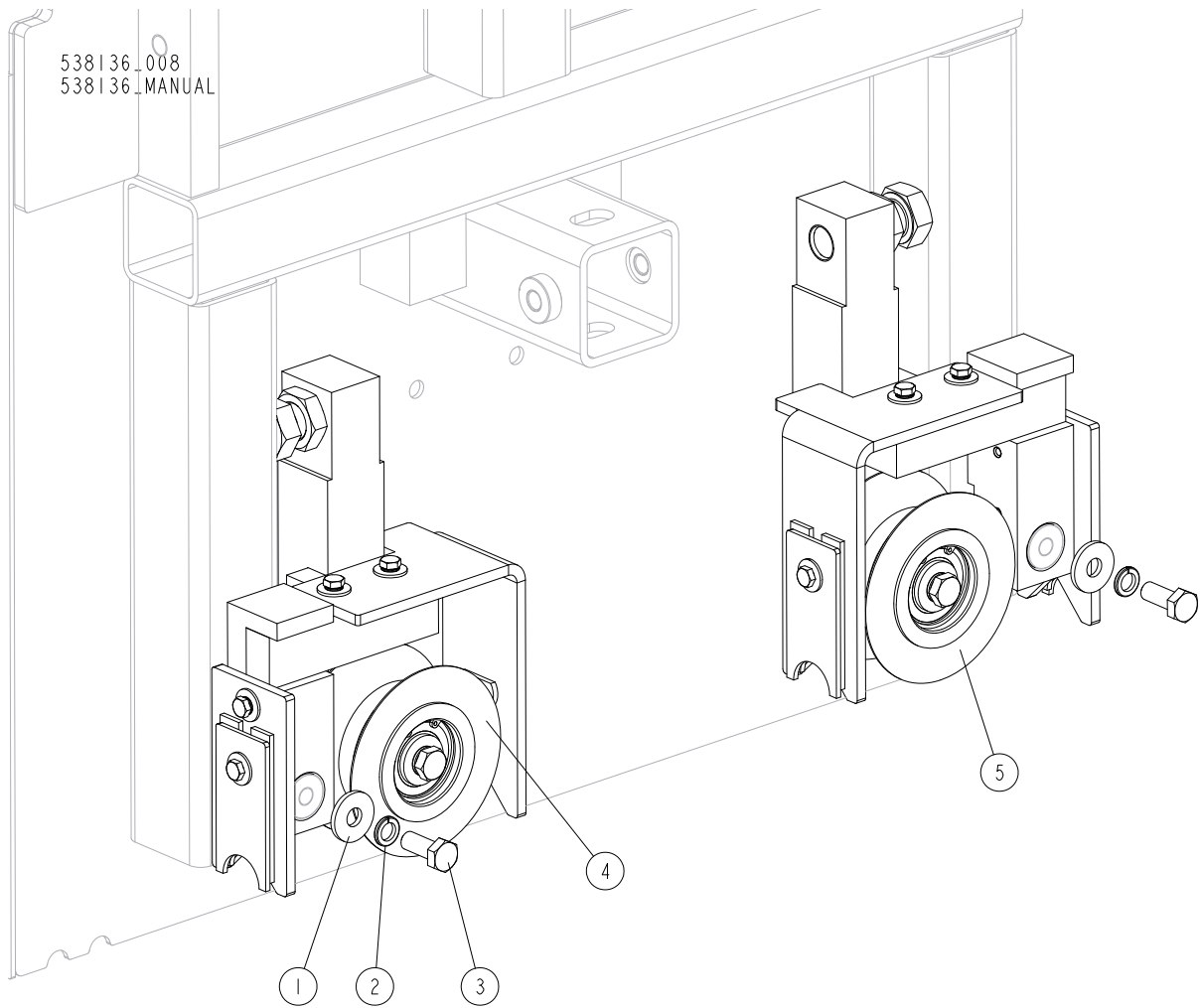
4.9 Drive Side Blade Wheel

096109_001
096109_MANUAL



| Ref. | DESCRIPTION (* indicates parts available in assemblies only) | PART # | QTY | |
|------|--|-----------|-----|--|
| - | WHEEL, TVS DRIVE SIDE - COMPLETE | 096109 | 1 | |
| 1 | WHEEL, DRIVE SIDE BLADE | 096105-1 | 1 | |
| 2 | RING, BEARING MOUNT | 096108-1 | 2 | |
| 3 | BEARING, 6309 2RSR | 096107 | 2 | |
| 4 | WASHER, 6.4 FLAT ZINC | F81053-1 | 12 | |
| 5 | NUT, M6-8-B HEX NYLON ZINC LOCK | F81031-2 | 6 | |
| 6 | BOLT, M6X80 8.8 HEX HEAD FULL THREAD ZINC | F81001-61 | 6 | |

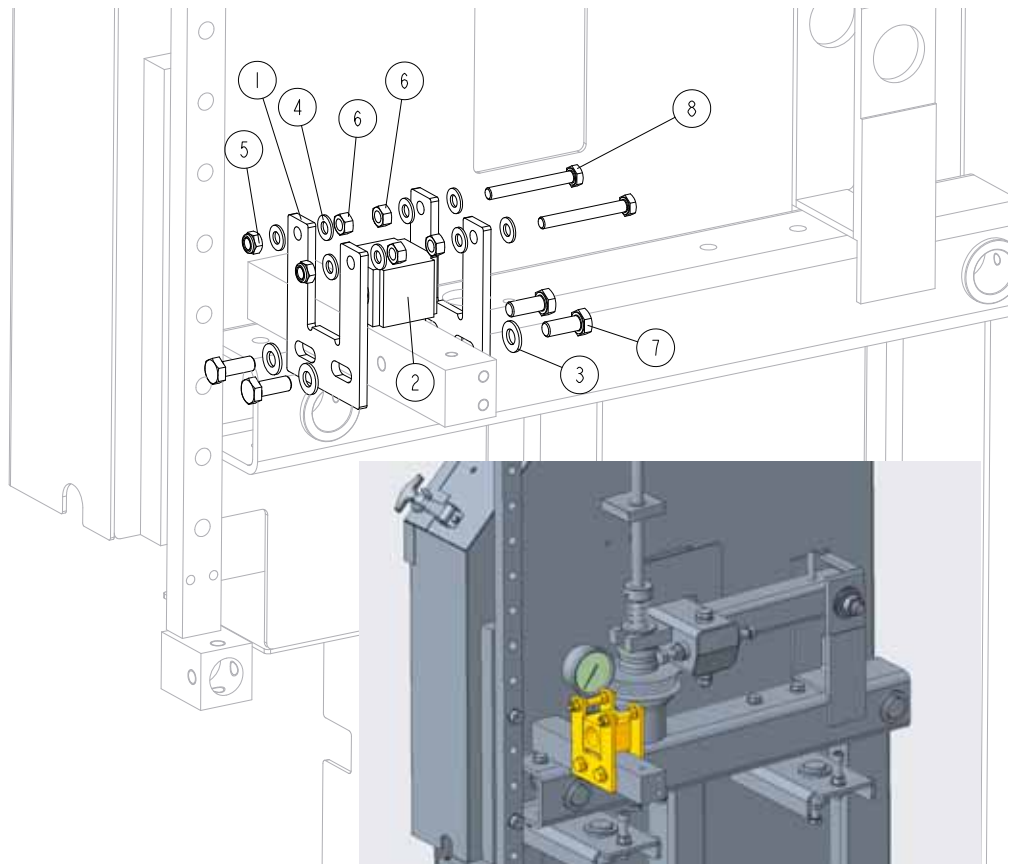
4.10 Saw Head Support Rollers



| Ref. | DESCRIPTION (* indicates parts available in assemblies only) | PART # | QTY | |
|------|---|-----------|-----|--|
| 1 | WASHER, 10.5 SPECIAL FLAT ZINC | F81055-6 | 2 | |
| 2 | WASHER, Z 10.2 SPLIT LOCK ZINC | F81055-2 | 2 | |
| 3 | BOLT, M10X25 8.8 HEX HEAD FULL THREAD ZINC | F81003-31 | 2 | |
| 4 | ROLLER, TVS SAW HEAD SUPPORT - COMPLETE See Section 4.27 | 100179 | 1 | |
| 5 | ROLLER, TVS LEFT SAW HEAD SUPPORT - COMPLETE See Section 0.25 | 509887 | 1 | |

4.11 Turnbuckle

538136_002
538136_MANUAL



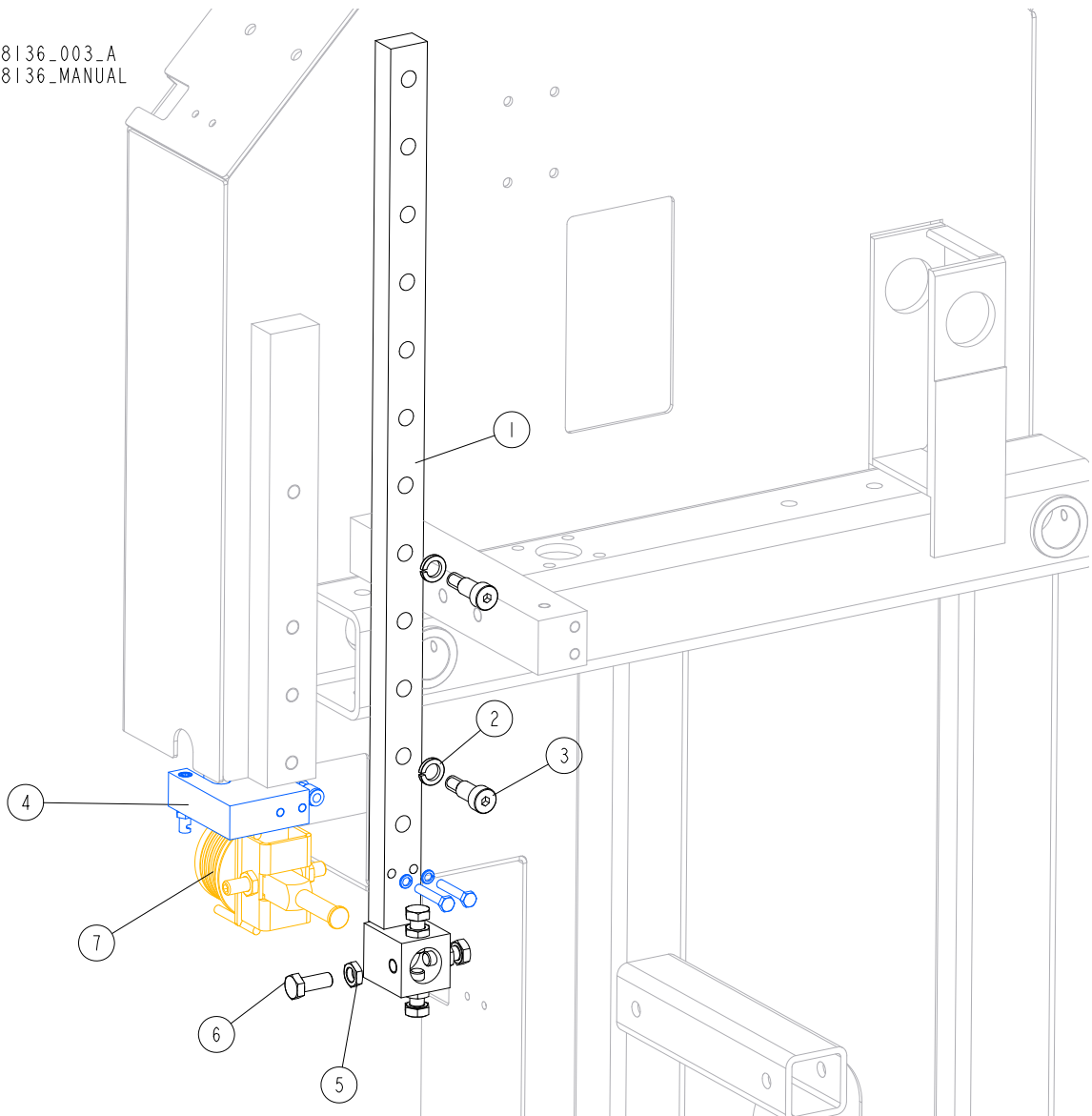
| Ref. | DESCRIPTION (* indicates parts available in assemblies only) | PART # | QTY |
|------|--|---------------------|-----|
| 1 | BRACKET, TURNBUCKLE MOUNT | 096861-1 | 2 |
| 2 | TURNBUCKLE, M30 LH | 101440 ¹ | 1 |
| | TURNBUCKLE, M30 | 101439 ² | 1 |
| 3 | WASHER, 10.5 FLAT ZINC | F81055-1 | 4 |
| 4 | WASHER, 8.4 FLAT ZINC | F81054-1 | 8 |
| 5 | NUT, M8-8-B HEX NYLON ZINC LOCK | F81032-2 | 2 |
| 6 | NUT, M8-8-B HEX ZINC | F81032-1 | 4 |
| 7 | BOLT, M10X25 8.8 HEX HEAD FULL THREAD | F81003-31 | 4 |
| 8 | BOLT, M8X65 8.8 HEX HEAD FULL THREAD ZINC | F81002-9 | 2 |

¹ Included in 538136 (left saw head)

² Included in 538142 (right saw head)

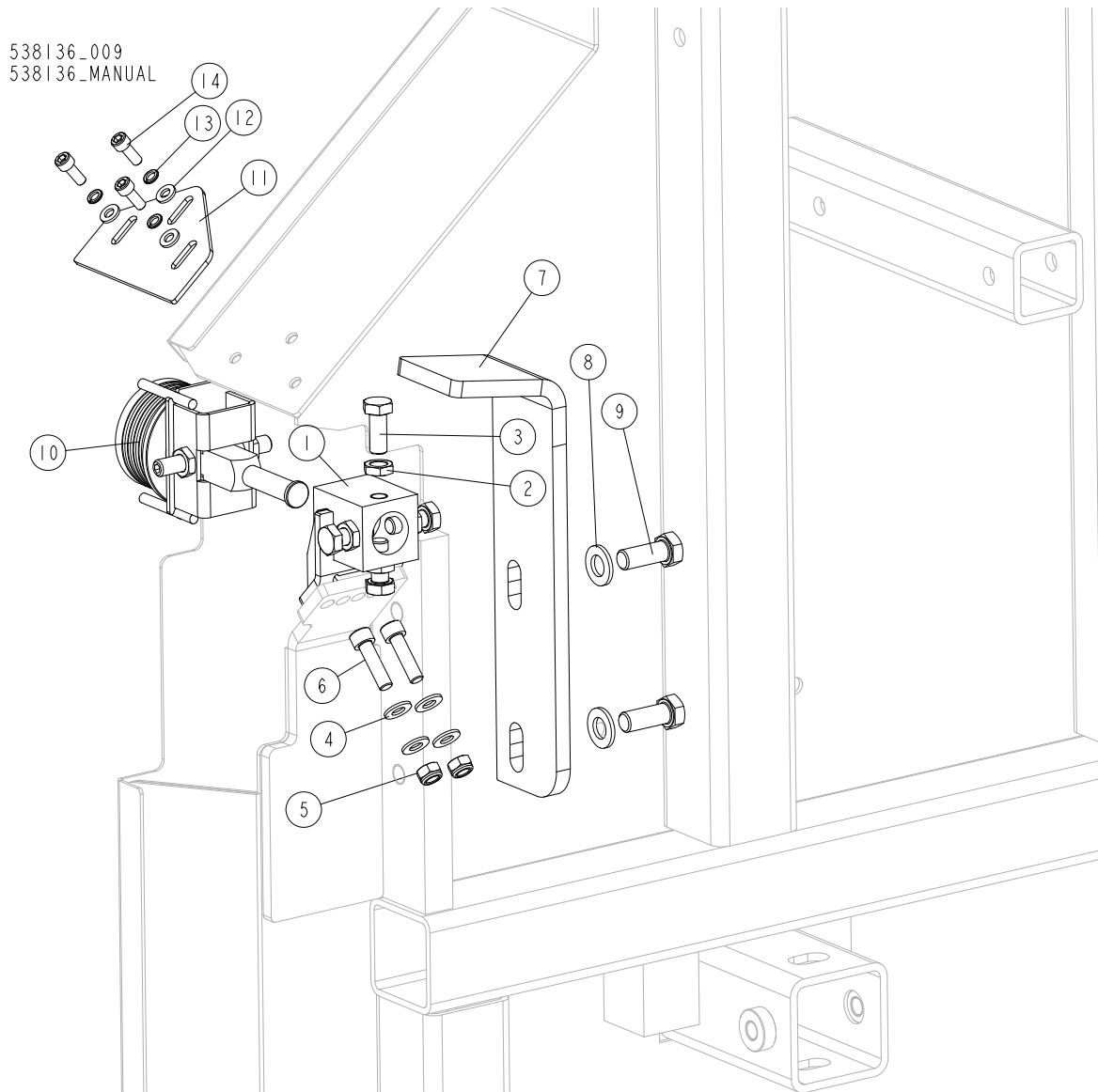
4.12 Blade Guide Assembly & Roller Guide

538136_003_A
538136_MANUAL



| Ref. | DESCRIPTION (* indicates parts available in assemblies only) | PART # | QTY |
|------|--|-----------|-----|
| 1 | GUIDE WELDMENT, TVS FT - RIGHT | 538146-1 | 1 |
| 2 | WASHER, Z12.2 SPLIT LOCK ZINC | F81056-2 | 2 |
| 3 | BOLT, 12/M10X20 SHOULDER | F81003-86 | 2 |
| 4 | LUBE ASSEMBLY, TVS BLADE See Section 4.14 | 098583 | 1 |
| 5 | NUT, M10X1 DIN 439 THIN STAINLESS STEEL | F81033-7 | 4 |
| 6 | BOLT, M10X1X25 DIN 933 STAINLESS STEEL | F81003-28 | 4 |
| 7 | GUIDE ASSEMBLY, TVS BLADE See Section 4.15 | 500562 | 1 |

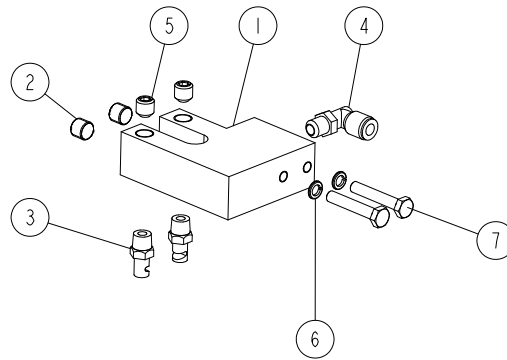
4.13 Blade Guide w/Mount Block & Guard



| Ref. | DESCRIPTION (* indicates parts available in assemblies only) | PART # | QTY |
|------|--|-----------|-----|
| 1 | BLOCK WELDMENT, LEFT BLADE GUIDE MOUNT - COMPLETE | 514887-1 | 1 |
| 2 | NUT, M10X1 DIN 439 THIN STAINLESS STEEL | F81033-7 | 4 |
| 3 | BOLT, M10X1X25 DIN 933 STAINLESS STEEL | F81003-28 | 4 |
| 4 | WASHER, 8.4 FLAT ZINC | F81054-1 | 4 |
| 5 | NUT, M8-8-B HEX NYLON ZINC LOCK | F81032-2 | 2 |
| 6 | SCREW, M8X30-8.8 HEX SOCKET HEAD CAP ZINC | F81002-31 | 2 |
| 7 | GUARD, DRIVE SIDE ROLLER - LEFT | 538218-1 | 1 |
| 8 | WASHER, 13 FLAT ZINC | F81056-1 | 2 |
| 9 | BOLT, M12X30 8.8 HEX HEAD FULL THREAD ZINC | F81004-22 | 2 |
| 10 | GUIDE ASSEMBLY, TVS BLADE See Section 4.15 | 500562 | 1 |
| 11 | PLATE | 538261-1 | 1 |
| 12 | WASHER, 6.4 FLAT ZINC | F81053-1 | 3 |
| 13 | WASHER, Z 6.1 SPLIT LOCK ZINC | F81053-3 | 3 |
| 14 | SCREW, M6X16 8.8 HEX SOCKET HEAD CAP ZINC | F81001-21 | 3 |

4.14 Blade Lube Assembly (No. 098583)

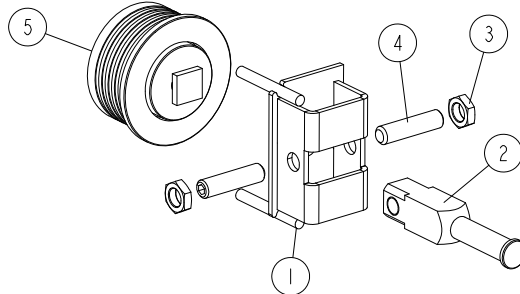
098583_001
098583_MANUAL



| Ref. | DESCRIPTION (* indicates parts available in assemblies only) | PART # | QTY |
|------|--|-----------|-----|
| - | LUBE ASSEMBLY, TVS BLADE | 098583 | 1 |
| 1 | BLOCK, NOZZLE MOUNT ZINC-PLATED | 097943-1 | 1 |
| 2 | PLUG, M10X1 DIN906 BN40 ZINC-PLATED | F81015-3 | 2 |
| 3 | NOZZLE, BLADE LUBE SPRAY | 033479 | 2 |
| 4 | ELBOW, 90 DEG 1/8MPT 1/4 TUBE SWIVEL | P09736 | 1 |
| 5 | FITTING, 1/8 NPT SOCKET PIPE PLUG | P30127 | 2 |
| 6 | WASHER, Z 6.1 SPLIT LOCK ZINC | F81053-3 | 2 |
| 7 | BOLT, M6X35-8.8 HEX HEAD ZINC | F81001-71 | 2 |

4.15 Blade Guide Assembly (No. 500562)

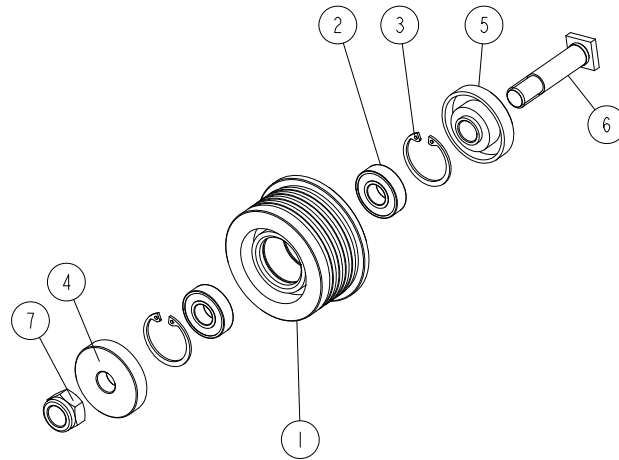
500562_001
500562_MANUAL



| Ref. | DESCRIPTION (* indicates parts available in assemblies only) | PART # | QTY | |
|------|--|-----------|-----|--|
| - | GUIDE ASSEMBLY, TVS BLADE | 500562 | 1 | |
| 1 | BRACKET WELDMENT, BLADE GUIDE ROLLER | 500563-1 | 1 | |
| 2 | SHAFT, ZINC-PLATED BLADE GUIDE MOUNT | 088255-1 | 1 | |
| 3 | NUT, M10X1-04-ST-A2E ISO8675 THIN | F81033-10 | 2 | |
| 4 | SCREW, M10X1X40 DIN913 A2-70 STAINLESS STEEL SET | F81015-2 | 2 | |
| 5 | ROLLER ASSEMBLY, TVS BLADE GUIDE W/BEARINGS See Section 4.16 | 500561 | 1 | |

4.16 Blade Guide Roller Assembly (No. 500561)

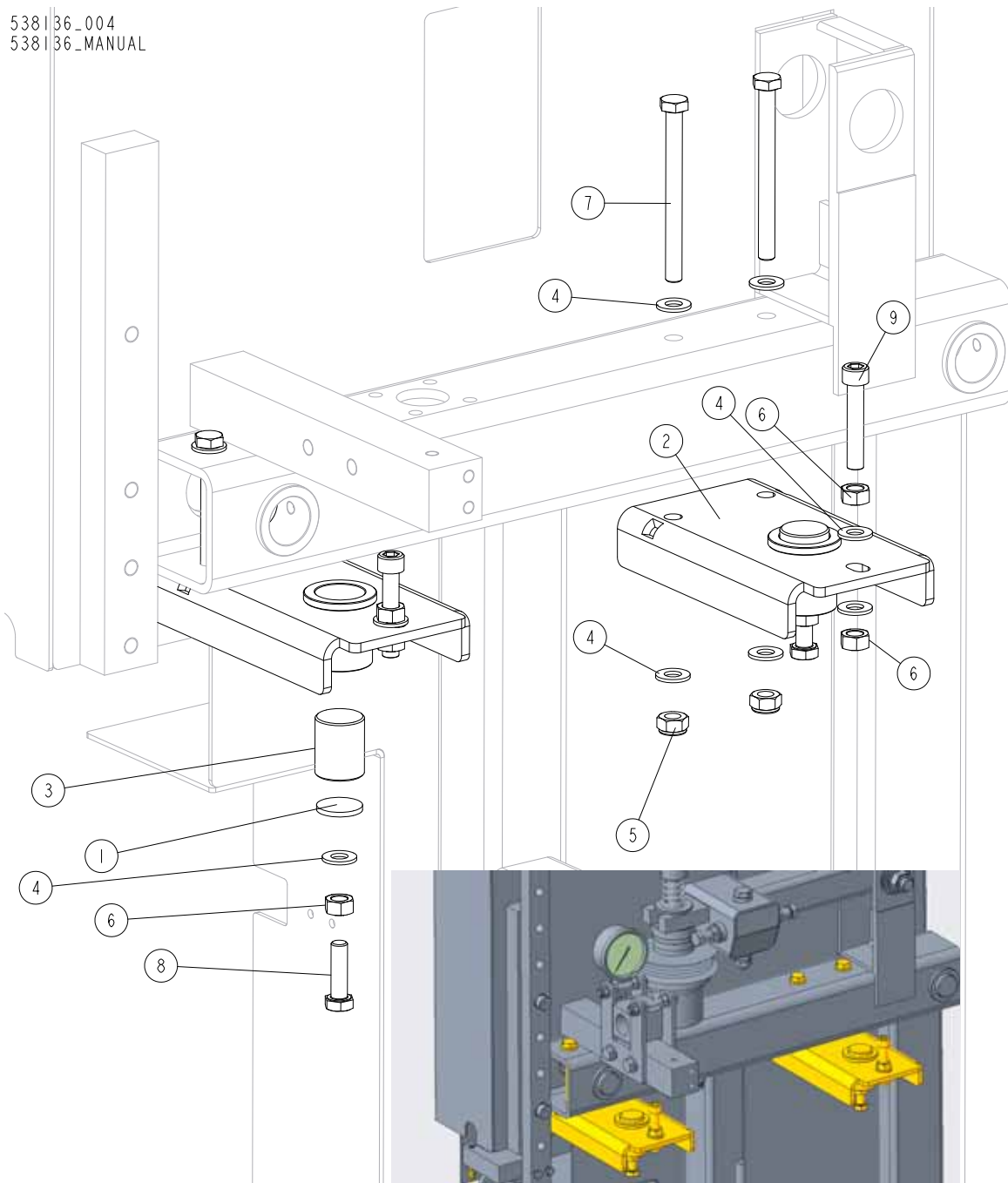
500561_001
500561_MANUAL



| Ref. | DESCRIPTION (* indicates parts available in assemblies only) | PART # | QTY |
|------|--|----------|-----|
| - | ROLLER ASSEMBLY, TVS BLADE GUIDE W/BEARINGS | 500561 | 1 |
| 1 | ROLLER, TVS BLADE GUIDE EXTENDED | 500560 | 1 |
| 2 | BEARING, 6001 2RSR (FAG, SKF) | 087893 | 2 |
| 3 | RING, W28 INSIDE RETAINING | F81090-9 | 2 |
| 4 | RING, ZINC-PLATED SPACER | 087891-1 | 1 |
| 5 | RING, ZINC-PLATED SPACER (EXTENDED BLADE GUIDE ROLLER) | 087892-1 | 1 |
| 6 | SHAFT, EXTENDED BLADE GUIDE ROLLER ZINC-PLATED | 087762-1 | 1 |
| 7 | NUT, M12-8 DIN 982 HEX NYLON ZINC LOCK | F81034-2 | 1 |

4.17 Lower Slide Bars

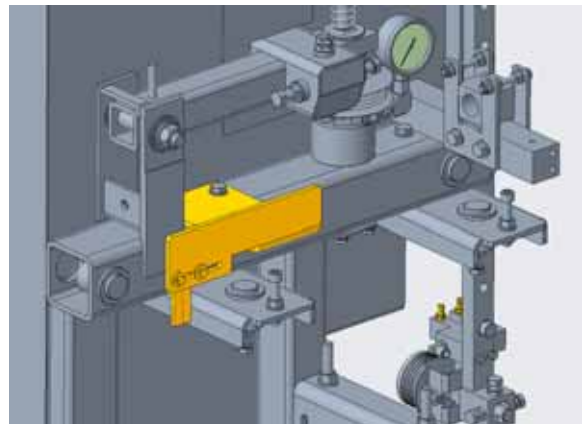
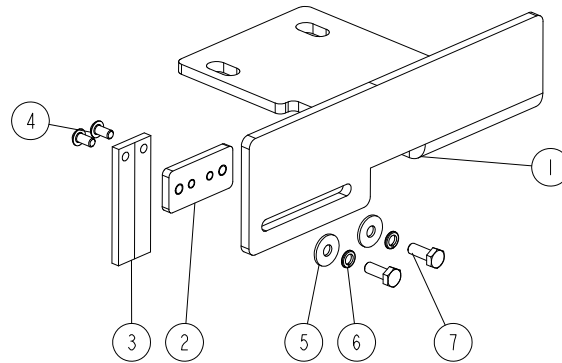
538136_004
538136_MANUAL



| Ref. | DESCRIPTION (* indicates parts available in assemblies only) | PART # | QTY |
|------|--|-----------|-----|
| 1 | WASHER, SLIDE BAR | 096129-1 | 2 |
| 2 | BRACKET WELDMENT, LOWER SLIDE BAR | 096838-1 | 2 |
| 3 | BAR, TVS SLIDE | 096128 | 2 |
| 4 | WASHER, 10.5 FLAT ZINC | F81055-1 | 14 |
| 5 | NUT, M10-8-B HEX NYLON ZINC LOCK | F81033-1 | 4 |
| 6 | NUT, M10 8 HEX ZINC | F81033-3 | 6 |
| 7 | BOLT, M10X110-8.8 HEX HEAD ZINC | F81003-43 | 4 |
| 8 | BOLT, M10X35 8.8 HEX HEAD FULL THREAD ZINC | F81003-17 | 2 |
| 9 | SCREW, M10X55-8.8 HEX SOCKET HEAD CAP ZINC | F81003-55 | 2 |

4.18 Scale Indicator

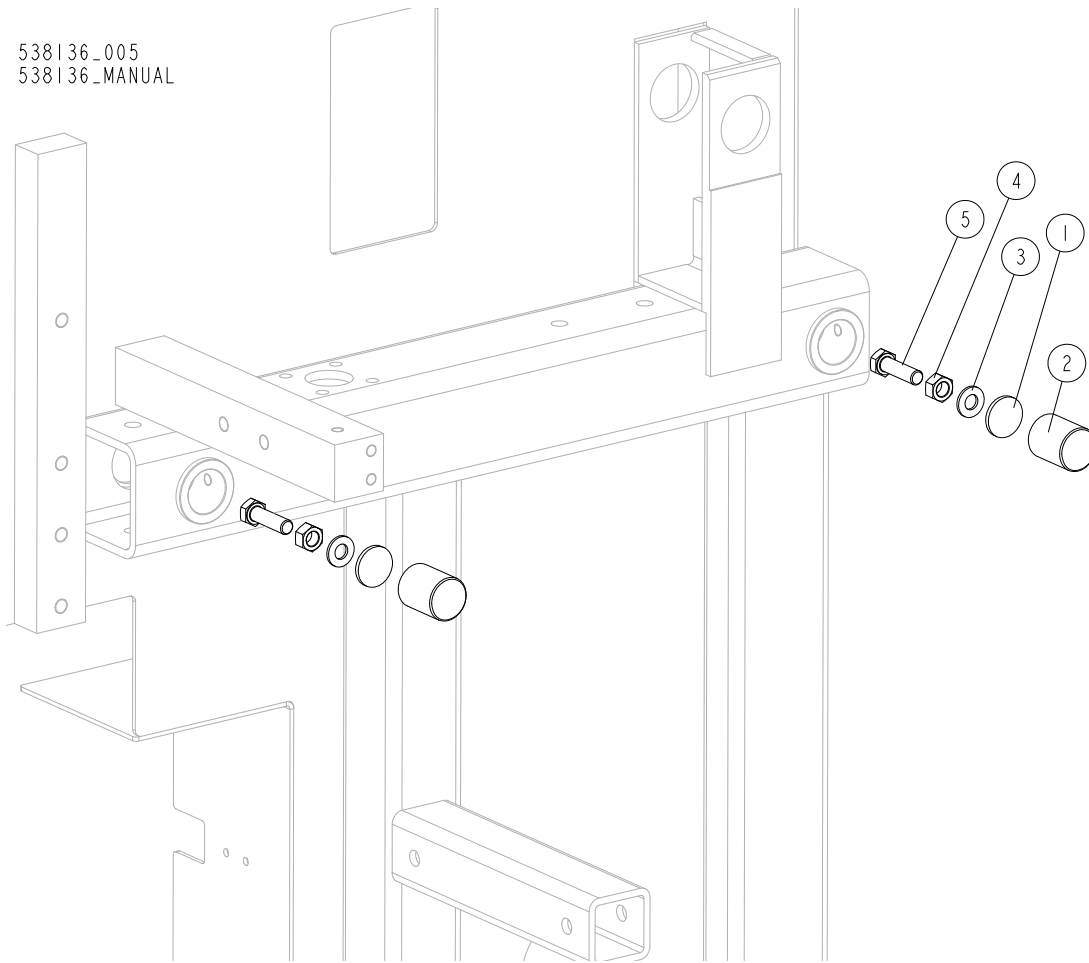
543490_001
543490_MANUAL



| Ref. | DESCRIPTION (* indicates parts available in assemblies only) | PART # | QTY |
|------|--|-----------|-----|
| - | INDICATOR, TVS SCALE - COMPLETE | 543490 | 1 |
| 1 | BRACKET, TVS ECO SCALE INDICATOR | 543489-1 | 1 |
| 2 | PLATE, SCALE INDICATOR ZINC-PLATED MOUNT | 507301-1 | 1 |
| 3 | INDICATOR, SCALE | 094821 | 1 |
| 4 | SCREW, M5X10 ISO7380 HEX SOCKET BUTTON HEAD | F81000-32 | 2 |
| 5 | WASHER, 6.5 SPECIAL FLAT ZINC | F81053-11 | 2 |
| 6 | WASHER, Z 6.1 SPLIT LOCK ZINC | F81053-3 | 2 |
| 7 | BOLT, M6X16-8.8 HEX HEAD FULL THREAD ZINC | F81001-15 | 2 |

4.19 Slide Bars

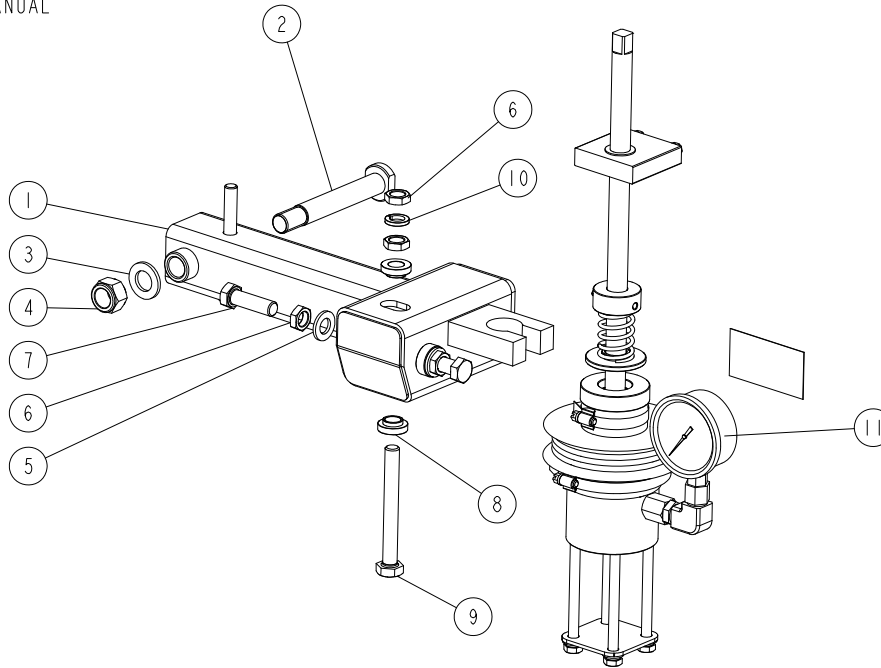
538136_005
538136_MANUAL



| Ref. | DESCRIPTION (* indicates parts available in assemblies only) | PART # | QTY |
|------|--|-----------|-----|
| 1 | WASHER, SLIDE BAR | 096129-1 | 2 |
| 2 | BAR, TVS SLIDE | 096128 | 2 |
| 3 | WASHER, 10.5 FLAT ZINC | F81055-1 | 2 |
| 4 | NUT, M10 8 HEX ZINC | F81033-3 | 2 |
| 5 | BOLT, M10X35 8.8 HEX HEAD FULL THREAD ZINC | F81003-17 | 2 |

4.20 Rocker Arm w/Blade Tensioner

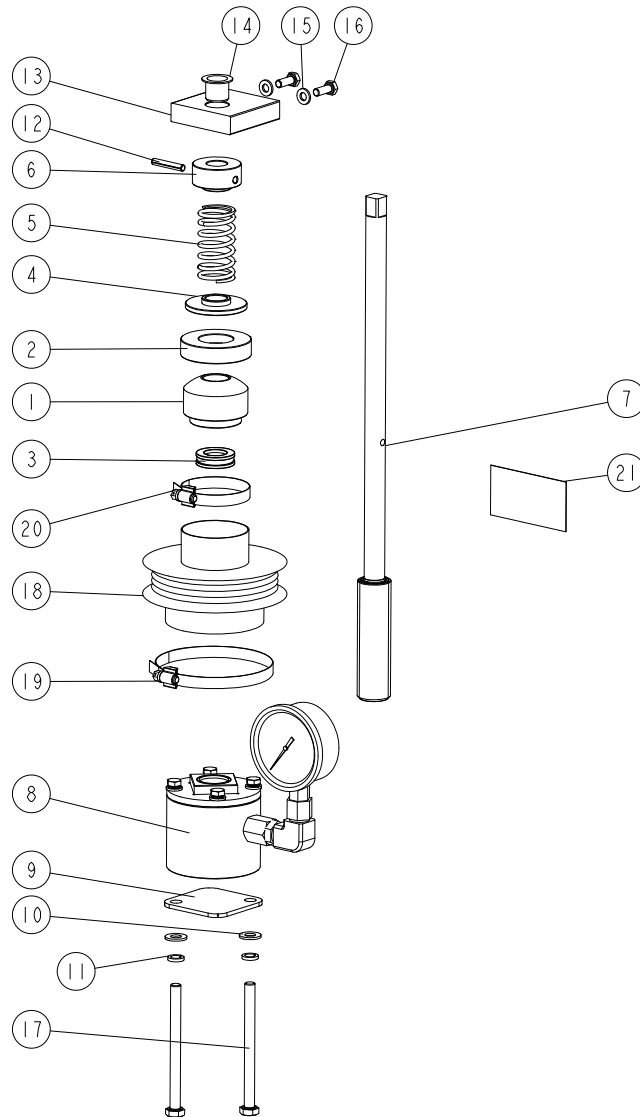
538152-001
538152-MANUAL



| Ref. | DESCRIPTION (* indicates parts available in assemblies only) | PART # | QTY |
|------|--|-----------|-----|
| - | ARM, ROCKER W/BLADE TENSIONER - COMPLETE | 538152 | 1 |
| 1 | ROCKER, TVS IDLE SIDE SAW HEAD 1 | 538154-1 | 1 |
| 2 | BOLT, ARM BEARING MOUNT | 086404 | 1 |
| 3 | WASHER, 17 SPLIT LOCK ZINC | F81058-1 | 1 |
| 4 | NUT, M16-8 HEX NYLON ZINC LOCK | F81036-2 | 1 |
| 5 | WASHER, 13 FLAT ZINC | F81056-1 | 2 |
| 6 | NUT, M12X1.25-8 THIN ZINC | F81034-5 | 4 |
| 7 | BOLT, M12X1.25X40-8.8 HEX HEAD FULL THREAD ZINC | F81004-42 | 2 |
| 8 | BUSHING, 12.8/23.8-8.6 16-3.3 ZINC-PLATED | 086769-1 | 2 |
| 9 | BOLT, M12X1.25X100-8.8 HEX HEAD FULL THREAD ZINC | F81004-41 | 1 |
| 10 | WASHER, Z12.2 SPLIT LOCK ZINC | F81056-2 | 1 |
| 11 | TENSIONER, TVS ECO BLADE See Section 4.21 | 538153 | 1 |

4.21 Blade Tensioner

538153-001
538153_MANUAL

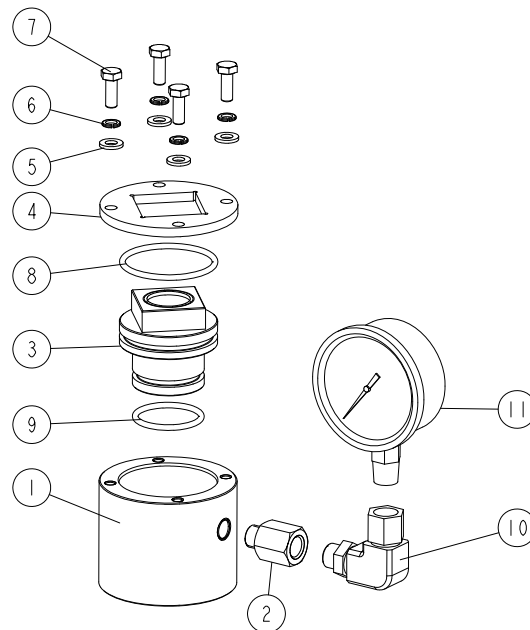


| REF | DESCRIPTION (u indicates parts available in assemblies only) | PART # | QTY |
|-----|--|-----------|-----|
| - | TENSIONER, TVS ECO BLADE | 538153 | 1 |
| 1 | HOUSING, BALL THRUST BEARING | 510635 | 1 |
| 2 | SOCKET, BEARING HOUSING | 510634-1 | 1 |
| 3 | BEARING, 51103. BALL THRUST | 086675 | 1 |
| 4 | WASHER | 510633-1 | 1 |
| 5 | SPRING, 60X23X3 | 088992 | 1 |
| 6 | BUSHING, BLADE TENSIONER SCREW | 510636-1 | 1 |
| 7 | SCREW, BLADE TENSIONER ZINC-PLATED | 510650-1 | 1 |
| 8 | COMPLETE CYLINDER See Section 4.22 | 538160 | 1 |
| 9 | PLATE, TENSIONER COVER | 538156-1 | 1 |
| 10 | WASHER, 8.4 FLAT ZINC | F81054-1 | 2 |
| 11 | WASHER 8,2 SPLIT LOCK ZINC | F81054-4 | 2 |
| 12 | PIN 5X30 ROLL | F81044-21 | 1 |

| REF | DESCRIPTION (u indicates parts available in assemblies only) | PART # | QTY | |
|-----|--|-----------|-----|--|
| 13 | BLOCK, TENSIONER HANDLE MOUNT | 096730 | 1 | |
| 14 | BUSHING, GFM-1618-17 | 089589 | 1 | |
| 15 | WASHER, 6.4 FLAT ZINC | F81053-1 | 2 | |
| 16 | BOLT, M6X16-5.8 HEX HEAD FULL THREAD ZIN | F81001-15 | 2 | |
| 17 | BOLT, M8X100-8.8 HEX HEAD ZINC | F81002-23 | 2 | |
| - | BELLOWS, COMPLETE | 515050 | 1 | |
| 18 | BELLOWS | 515051 | 1 | |
| 19 | CLAMP, 70-80MM DIA. | F81095-5 | 1 | |
| 20 | CLAMP, 40-60MM DIA. | F81095-4 | 1 | |
| 21 | DECAL, PRESSURE SETTING VALUES | 543512 | 1 | |

4.22 Cylinder

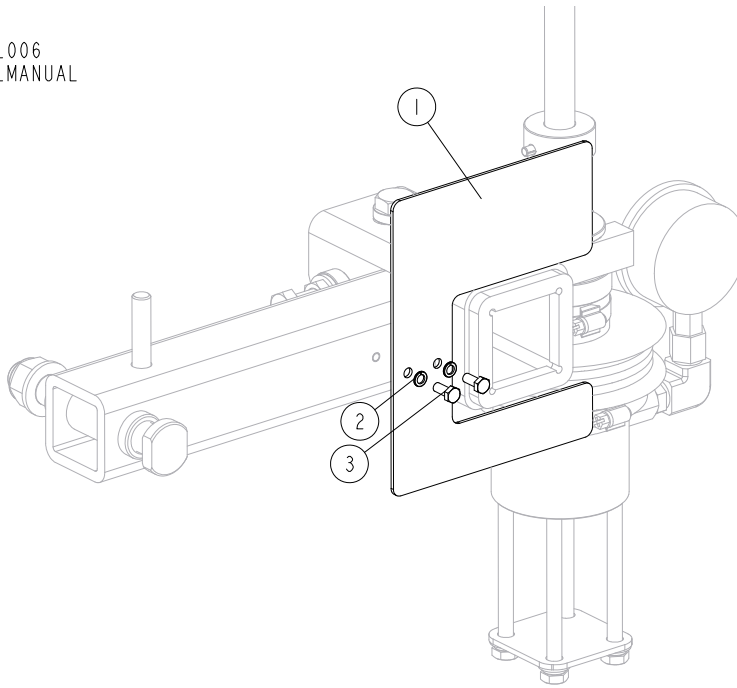
538160-001
538160_MANUAL



| REF | DESCRIPTION (u indicates parts available in assemblies only) | PART # | QTY |
|-----|--|-----------|-----|
| - | COMPLETE CYLINDER | 538160 | 1 |
| - | CYLINDER ASSEMBLY, W/ADAPTER FITTING | 550762-1 | 1 |
| 1 | CYLINDER | 550760 | 1 |
| 2 | FITTING, Z-M12X1/W-1/4NPT ADAPTER | 513280 | 1 |
| 3 | PISTON | 510638 | 1 |
| 4 | PLATE, CYLINDER | 510490-1 | 1 |
| 5 | WASHER, 6.4 FLAT ZINC | F81053-1 | 4 |
| 6 | WASHER, Z 6.1 SPLIT LOCK | F81053-3 | 4 |
| 7 | BOLT, M6X16-5.8 HEX HEAD FULL THREAD ZIN | F81001-15 | 4 |
| 8 | O-RING, 46.2X3 | 510646 | 1 |
| 9 | O-RING, 32.2X3 | 510647 | 1 |
| 10 | FITTING, 90 GW1/4"NPT GZ1/4"NPT | 538161 | 1 |
| 11 | GAUGE, 3000PSI/200 BAR OIL PRESSURE | 505176 | 1 |

4.23 Rocker Arm Guard, Idle Side Blade Wheel

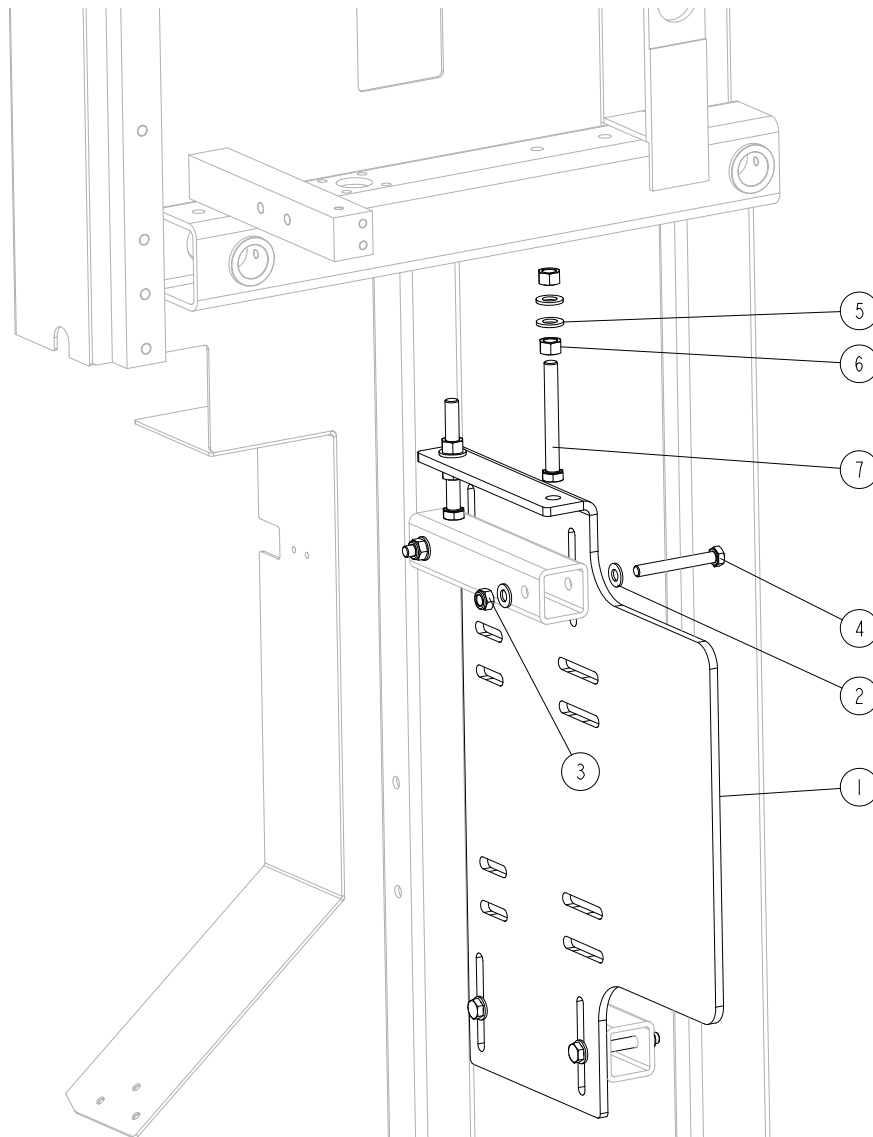
538136_006
538136_MANUAL



| Ref. | DESCRIPTION (* indicates parts available in assemblies only) | PART # | QTY |
|------|--|----------|-----|
| 1 | GUARD, IDLE SIDE BLADE WHEEL ROCKER | 088442-1 | 1 |
| 2 | WASHER, 5.1 SPLIT LOCK ZINC | F81052-2 | 2 |
| 3 | BOLT, M5X12 8.8 HEX HEAD FULL THREAD ZINC | F81000-5 | 2 |

4.24 Motor Mount Plate

538136_007
538136_MANUAL



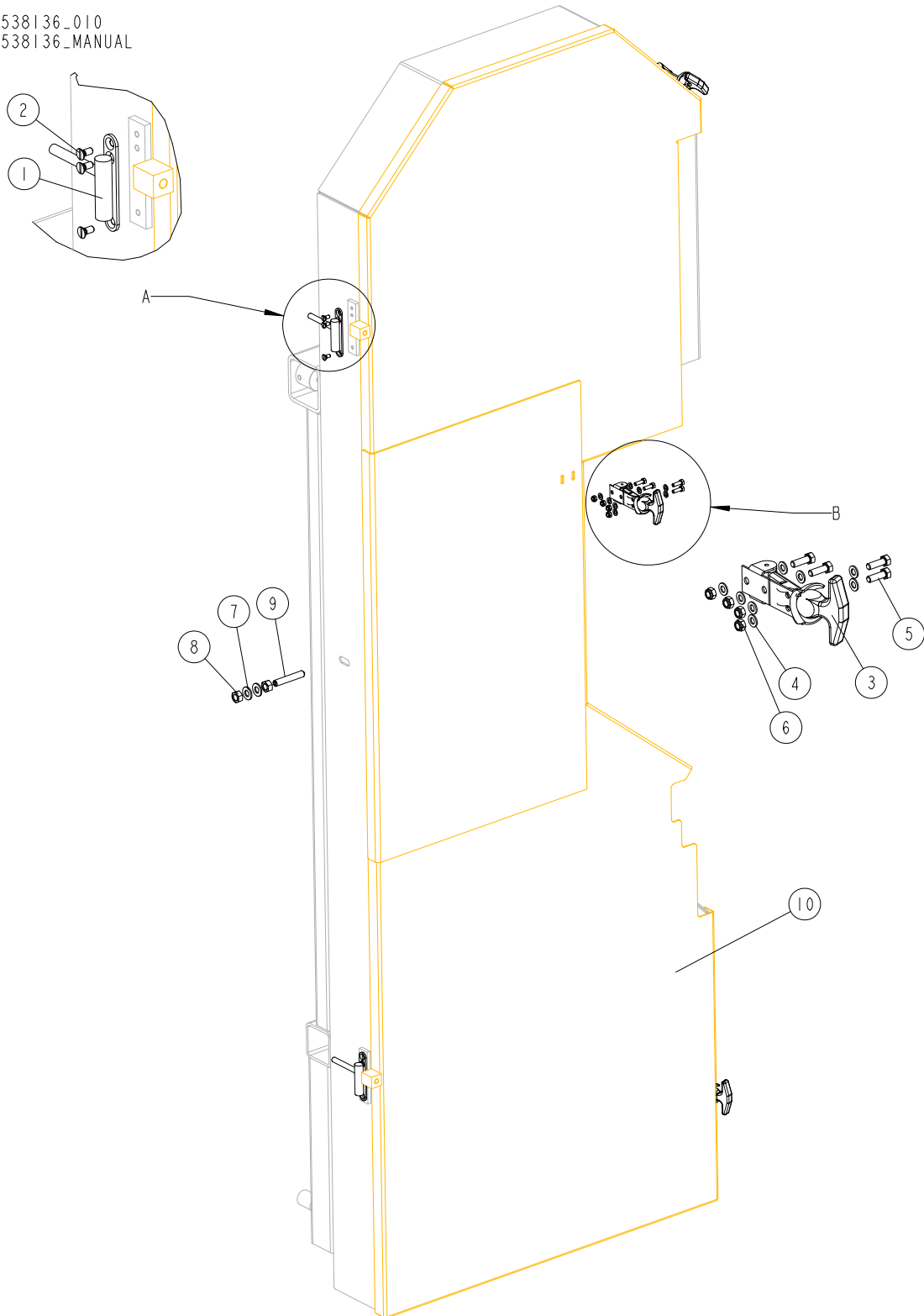
| Ref. | DESCRIPTION (* indicates parts available in assemblies only) | PART # | QTY |
|------|--|-----------------------|-----|
| 1 | PLATE, MOTOR MOUNT - LEFT | 098436-1 ¹ | 1 |
| | PLATE, MOTOR MOUNT - RIGHT | 096123-1 ² | 1 |
| 2 | WASHER, 10.5 FLAT ZINC | F81055-1 | 8 |
| 3 | NUT, M10-8-B HEX NYLON ZINC LOCK | F81033-1 | 4 |
| 4 | BOLT, M10X80-8.8 HEX HEAD ZINC | F81003-50 | 4 |
| 5 | WASHER, 13 FLAT ZINC | F81056-1 | 4 |
| 6 | NUT, M12-8-B HEX ZINC | F81034-1 | 4 |
| 7 | BOLT, M12X100 8.8 HEX HEAD FULL THREAD ZINC | F81004-45 | 2 |

¹ Included in 538136 (left saw head)

² Included in 538142 (right saw head)

4.25 Blade Housing Covers

538136_010
538136_MANUAL



| Ref. | DESCRIPTION (* indicates parts available in assemblies only) | PART # | QTY |
|------|--|-----------|-----|
| 1 | HINGE, COVER | 096146 | 2 |
| 2 | SCREW, M5X12-5.8-B SLOTTED COUNTERSUNK HEAD ZINC | F81000-15 | 6 |
| 3 | LATCH, FLEXIBLE DRAW | 014829 | 3 |

4

TVS SAW HEADS

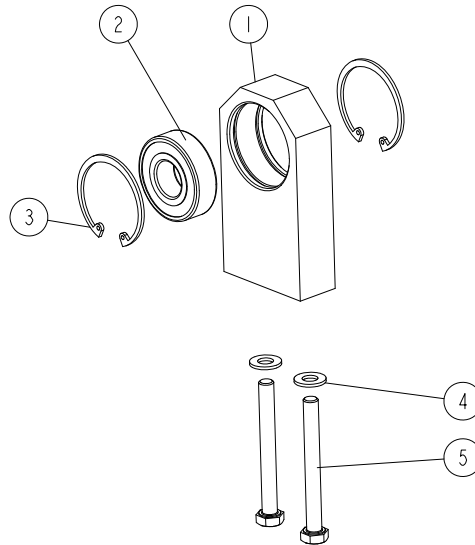
Blade Housing Covers

| Ref. | DESCRIPTION (* indicates parts available in assemblies only) | PART # | QTY | |
|------|--|-----------------------|-----|--|
| 4 | WASHER, 5.3 FLAT ZINC | F81052-1 | 24 | |
| 5 | BOLT, M5X16-8.8 HEX HEAD FULL THREAD ZINC | F81000-51 | 12 | |
| 6 | NUT, M5-8 DIN985 HEX NYLON ZINC LOCK | F81030-2 | 12 | |
| 7 | WASHER, 10.5 FLAT ZINC | F81055-1 | 2 | |
| 8 | NUT, M10 8 HEX ZINC | F81033-3 | 2 | |
| 9 | SCREW, M10X60-45H HEX SOCKET ZINC SET W/FLAT POINT | F81003-87 | 1 | |
| 10 | COVER WELDMENT, TVS BLADE HOUSING - LEFT | 538227-1 ¹ | 1 | |
| | COVER WELDMENT, TVS BLADE HOUSING - RIGHT | 538223-1 ² | 1 | |

¹ Included in 538136 (left saw head)

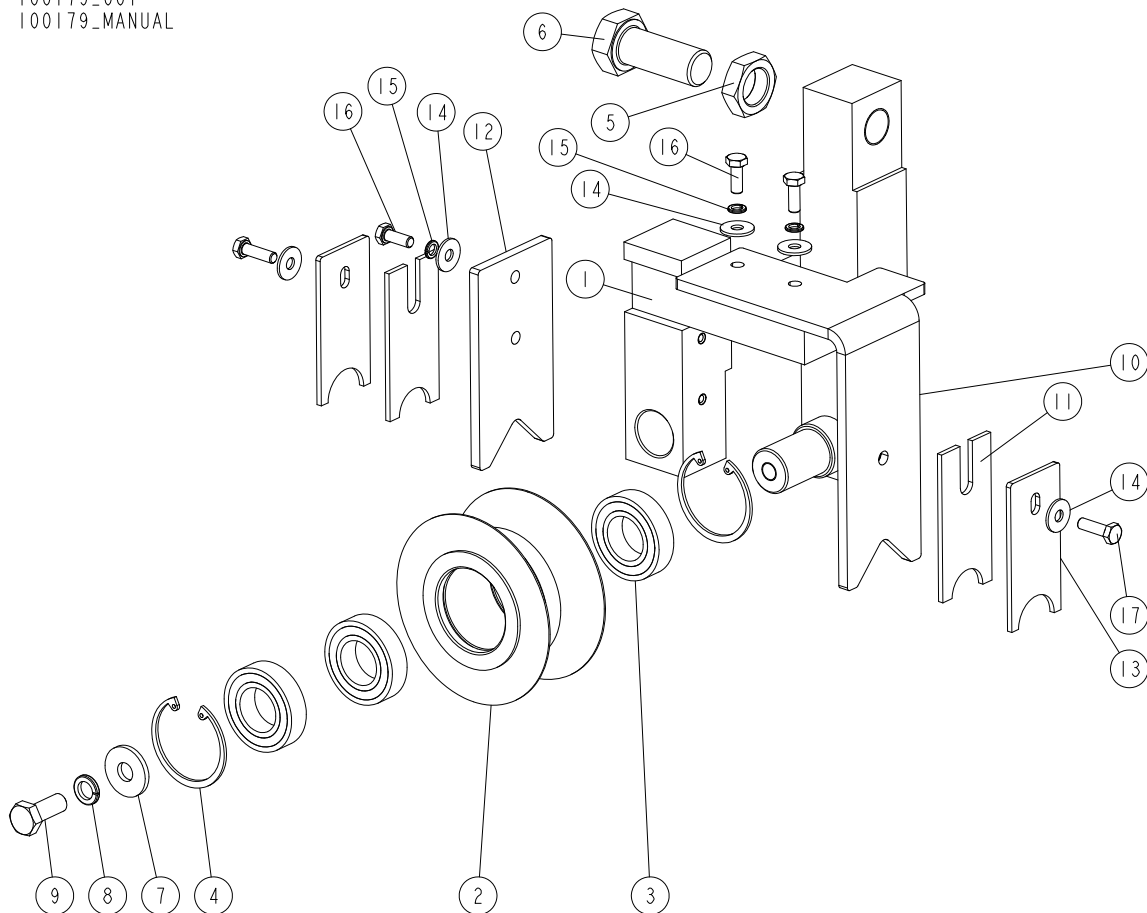
² Included in 538142 (right saw head)

4.26 Screw Bearing Mount Block (Part No. 500012)

500012_001
500012_MANUAL

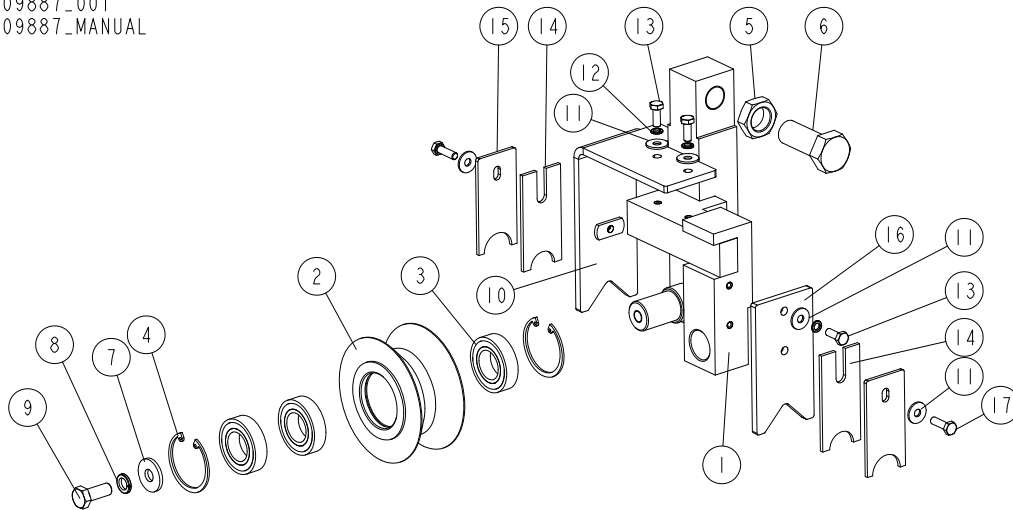
| REF. | DESCRIPTION (◆ indicates parts available in assemblies only) | PART # | QTY | |
|------|--|-----------|-----|--|
| - | BLOCK, SCREW BEARING MOUNT - COMPLETE | 500012 | 1 | |
| 1 | BLOCK, SCREW BEARING MOUNT | 500011-1 | 1 | |
| 2 | BEARING, 6204 2RS CX ROLLING | 088447 | 1 | |
| 3 | RING, W47 INSIDE RETAINING | 089653 | 2 | |
| 4 | WASHER, 8.4 FLAT ZINC | F81054-1 | 2 | |
| 5 | BOLT, M8 X 75 8.8 HEX HEAD ZINC | F81002-91 | 2 | |

4.27 Saw Head Support Roller (No. 100179)

100179_001
100179_MANUAL

| REF. | DESCRIPTION (◆ indicates parts available in assemblies only) | PART # | QTY |
|------|--|-----------|-----|
| - | ROLLER, TVS SAW HEAD SUPPORT - COMPLETE | 100179 | 1 |
| 1 | BRACKET WELDMENT, ROLLER MOUNT | 100177-1 | 1 |
| - | ROLLER, TVS SAW HEAD SUPPORT - COMPLETE | 096835 | 1 |
| 2 | ROLLER, TVS SAW HEAD SUPPORT | 096834-1 | 1 |
| 3 | BEARING, 6005 2RS | 089652 | 3 |
| 4 | RING, W47 INSIDE RETAINING | 089653 | 2 |
| 5 | NUT, M20X1.5 ZINC-PLATED THIN | F81037-7 | 1 |
| 6 | BOLT, M20X1.5X50-8.8-B HEX HEAD FULL THREAD ZINC | F81007-2 | 1 |
| 7 | WASHER, 10.5 SPECIAL FLAT ZINC | F81055-6 | 1 |
| 8 | WASHER, Z 10.2 SPLIT LOCK ZINC | F81055-2 | 1 |
| 9 | BOLT, M10X25 8.8 HEX HEAD FULL THREAD ZINC | F81003-11 | 1 |
| 10 | BRACKET, RIGHT | 101092-1 | 1 |
| 11 | SCRAPER | 101090 | 2 |
| 12 | SUPPORT, LEFT SCRAPER | 101093-1 | 1 |
| 13 | PLATE, SCRAPER CLAMPING | 088559-1 | 2 |
| 14 | WASHER, 6.5 SPECIAL FLAT ZINC | F81053-11 | 5 |
| 15 | WASHER, Z 6.1 SPLIT LOCK ZINC | F81053-3 | 3 |
| 16 | BOLT, M6X16 8.8 HEX HEAD FULL THREAD ZINC | F81001-15 | 3 |
| 17 | BOLT, M6X20-8.8 HEX HEAD FULL THREAD ZINC | F81001-2 | 2 |

4.28 Saw Head Support Roller (No. 509887)

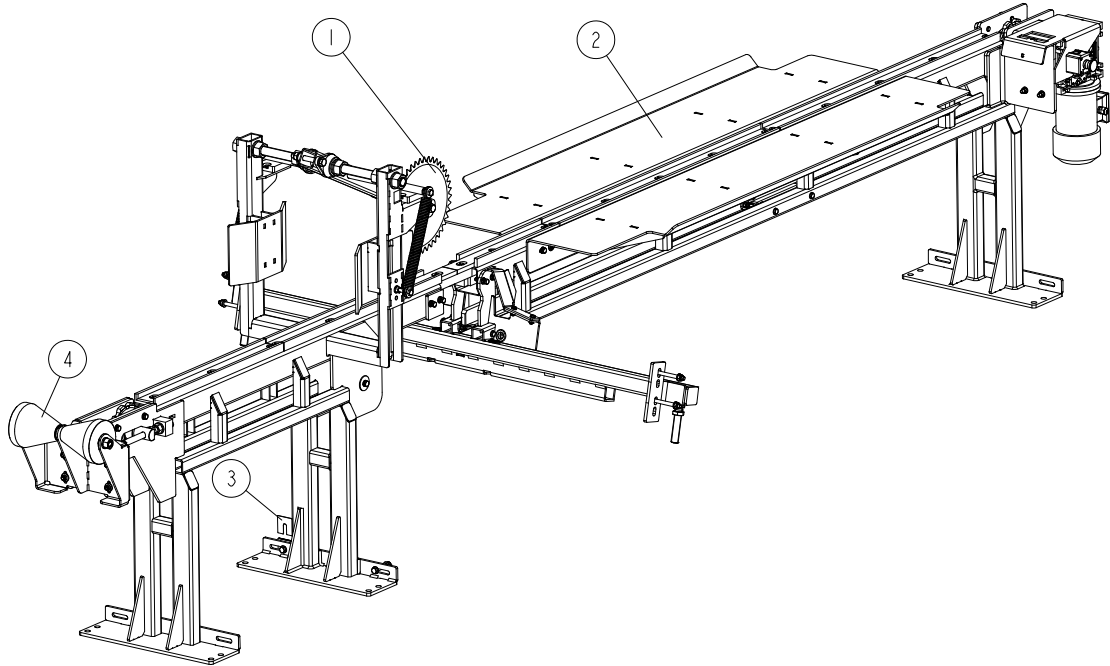
509887_001
509887_MANUAL

| REF. | DESCRIPTION (◆ indicates parts available in assemblies only) | PART # | QTY |
|------|--|-----------|-----|
| - | ROLLER, TVS SAW HEAD LEFT SUPPORT - COMPLETE | 509887 | 1 |
| 1 | BRACKET WELDMENT, SAW HEAD SUPPORT ROLLER - LEFT | 509888-1 | 1 |
| - | ROLLER, TVS SAW HEAD SUPPORT - COMPLETE | 096835 | 1 |
| 2 | ROLLER, TVS SAW HEAD SUPPORT | 096834-1 | 1 |
| 3 | BEARING, 6005 2RS | 089652 | 3 |
| 4 | RING, W47 INSIDE RETAINING | 089653 | 2 |
| 5 | NUT, M20X1.5 ZINC-PLATED THIN | F81037-7 | 1 |
| 6 | BOLT, M20X1.5X50-8.8-B HEX HEAD FULL THREAD ZINC | F81007-2 | 1 |
| 7 | WASHER, 10.5 SPECIAL FLAT ZINC | F81055-6 | 1 |
| 8 | WASHER, Z 10.2 SPLIT LOCK ZINC | F81055-2 | 1 |
| 9 | BOLT, M10 X 25 8.8 HEX HEAD FULL THREAD ZINC | F81003-11 | 1 |
| 10 | BRACKET, LEFT | 509889-1 | 1 |
| 11 | WASHER, 6.5 SPECIAL FLAT ZINC | F81053-11 | 5 |
| 12 | WASHER, Z 6.1 SPLIT LOCK ZINC | F81053-3 | 3 |
| 13 | BOLT, M6X16 8.8 HEX HEAD FULL THREAD ZINC | F81001-15 | 3 |
| 14 | SCRAPER | 101090 | 2 |
| 15 | PLATE, SCRAPER CLAMPING | 088559-1 | 2 |
| 16 | SUPPORT, SCRAPER LEFT | 101093-1 | 1 |
| 17 | BOLT, M6X20-8.8 HEX HEAD FULL THREAD ZINC | F81001-2 | 2 |

SECTION 5 TVS SA 2.4 FEED TABLE

5.1 TVS SA 2.4 Feed Table

543926_001_A
 543926_MANUAL

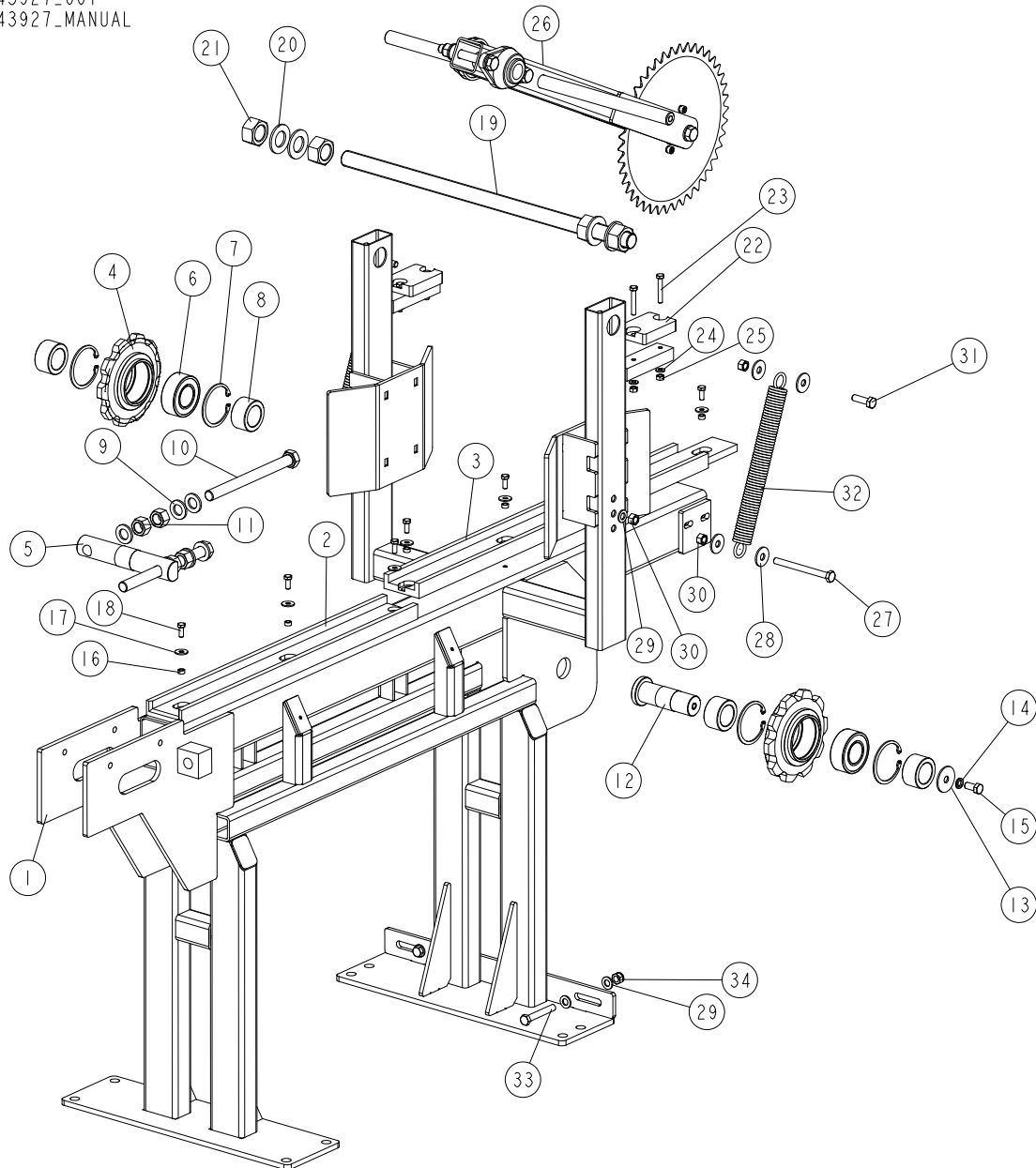


| REF. | DESCRIPTION (* indicates parts available in assemblies only) | PART # | QTY |
|------|---|--------|-----|
| - | TABLE, TVS SA 2.4 FEED (SHORTENED) | 543926 | 1 |
| 1 | TABLE, TVS ECO 2.4 INFEEED See Section 6.1 | 543927 | 1 |
| 2 | TABLE, TVS 2.4 OUTFEED - COMPLETE See Section 7.1 | 538272 | 1 |
| 3 | PLATE, ADJUSTMENT | 543494 | 7 |
| 4 | ROLLER, INFEEED - COMPLETE See Section 3.1 | 543932 | 1 |

SECTION 6 TVS ECO 2.4 INFEED TABLE

6.1 TVS SA 2.4 Infeed Table

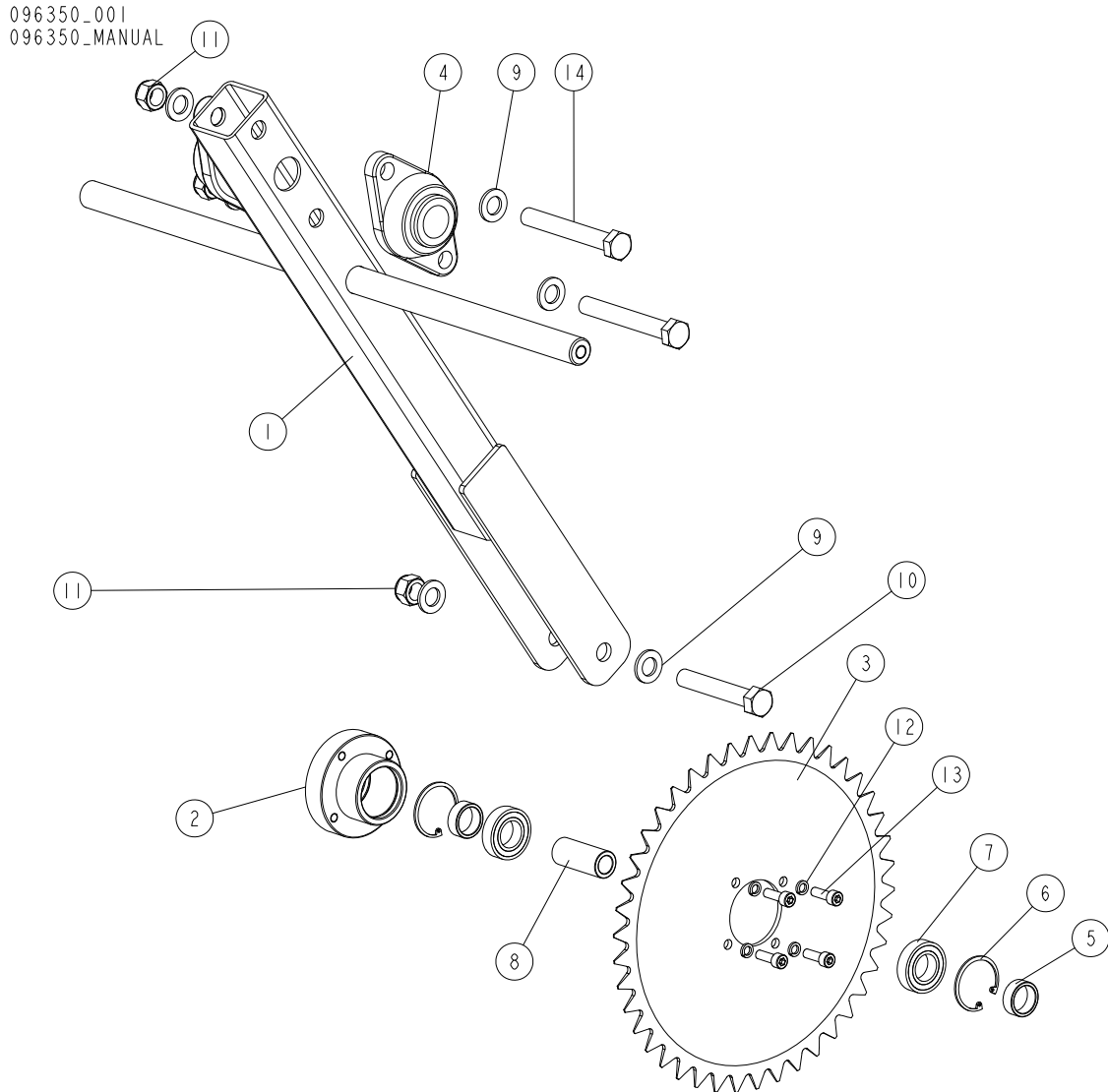
543927_001
543927_MANUAL



| Ref. | DESCRIPTION (* indicates parts available in assemblies only) | PART # | QTY |
|------|--|-----------|-----|
| - | TABLE, TVS ECO 2.4 INFEED | 543927 | 1 |
| 1 | TABLE WELDMENT, 2.4 SHORT INFEED | 543928-1 | 1 |
| 2 | GUIDE, CHAIN | 543931 | 1 |
| 3 | GUIDE, CHAIN - SHORT | 502561 | 1 |
| 4 | SPROCKET, 10Z 20B/2"N80 FRONT | 502566-1 | 2 |
| 5 | SHAFT, IDLER SPROCKET ZINC-PLATED | 089915-1 | 1 |
| 6 | BEARING, 3208. 2RSR. TVH (FAG) ROLLING | 088449 | 2 |
| 7 | RING, W80 INSIDE RETAINING | F81090-25 | 4 |

| Ref. | DESCRIPTION (* indicates parts available in assemblies only) | PART # | QTY | |
|------|---|-----------|-----|--|
| 8 | BUSHING, 40.5/59.9-33 ZINC-PLATED | 089916-1 | 4 | |
| 9 | WASHER, 21 FLAT ZINC | F81059-2 | 6 | |
| 10 | BOLT, M20X240-8.8 HEX HEAD FULL THREAD (BLACK) | F81007-12 | 2 | |
| 11 | NUT, M20-8- HEX ZINC | F81037-1 | 4 | |
| 12 | PIN, IDLER SPROCKET PIVOT | 501689-1 | 1 | |
| 13 | WASHER | 501761-1 | 1 | |
| 14 | WASHER, Z12.2 SPLIT LOCK ZINC | F81056-2 | 1 | |
| 15 | BOLT, M12X25-8.8 HEX HEAD FULL THREAD ZINC | F81004-31 | 1 | |
| 16 | BUSHING, 8.4/12.5-6 ZINC-PLATED | 504040-1 | 7 | |
| 17 | WASHER, ISO 7093-1-8-200 HV-A2E | F81054-11 | 9 | |
| 18 | BOLT, M8X20 8.8 HEX HEAD FULL THREAD ZINC | F81002-4 | 9 | |
| 19 | ROD, M30 (690) HOLD-DOWN ARM ZINC-PLATED THREADED | 096344-1 | 1 | |
| 20 | WASHER, 31-ZINC FLAT | F81061-9 | 4 | |
| 21 | NUT, M30-HEX ZINC | F81038-3 | 4 | |
| 22 | BUMPER, GRENE 70 3201 0010 RUBBER | 094969 | 2 | |
| 23 | BOLT, M8X50 -8.8 HEX HEAD FULL THREAD ZINC | F81002-19 | 4 | |
| 24 | WASHER, 8.4 FLAT ZINC | F81054-1 | 4 | |
| 25 | NUT, M8-8-B HEX ZINC | F81032-1 | 4 | |
| 26 | ARM, HOLD-DOWN WHEEL - COMPLETE See Section 6.2 | 096350 | 1 | |
| 27 | BOLT, M12X130-8.8 HEX HEAD FULL THREAD ZINC | F81004-55 | 2 | |
| 28 | WASHER, 13 SPECIAL FLAT ZINC | F81056-14 | 8 | |
| 29 | WASHER, 13 FLAT ZINC | F81056-1 | 8 | |
| 30 | NUT, M12-8-B HEX ZINC | F81034-1 | 8 | |
| 31 | BOLT, M12X40 8.8 HEX HEAD FULL THREAD ZINC | F81004-4 | 2 | |
| 32 | SPRING, N4.5XN35X303 | 091863 | 2 | |
| 33 | BOLT, M12X80 -8.8 HEX HEAD ZINC | F81004-46 | 2 | |
| 34 | NUT, M12-8 DIN 982 HEX NYLON ZINC LOCK | F81034-2 | 2 | |

6.2 Hold-Down Wheel Arm

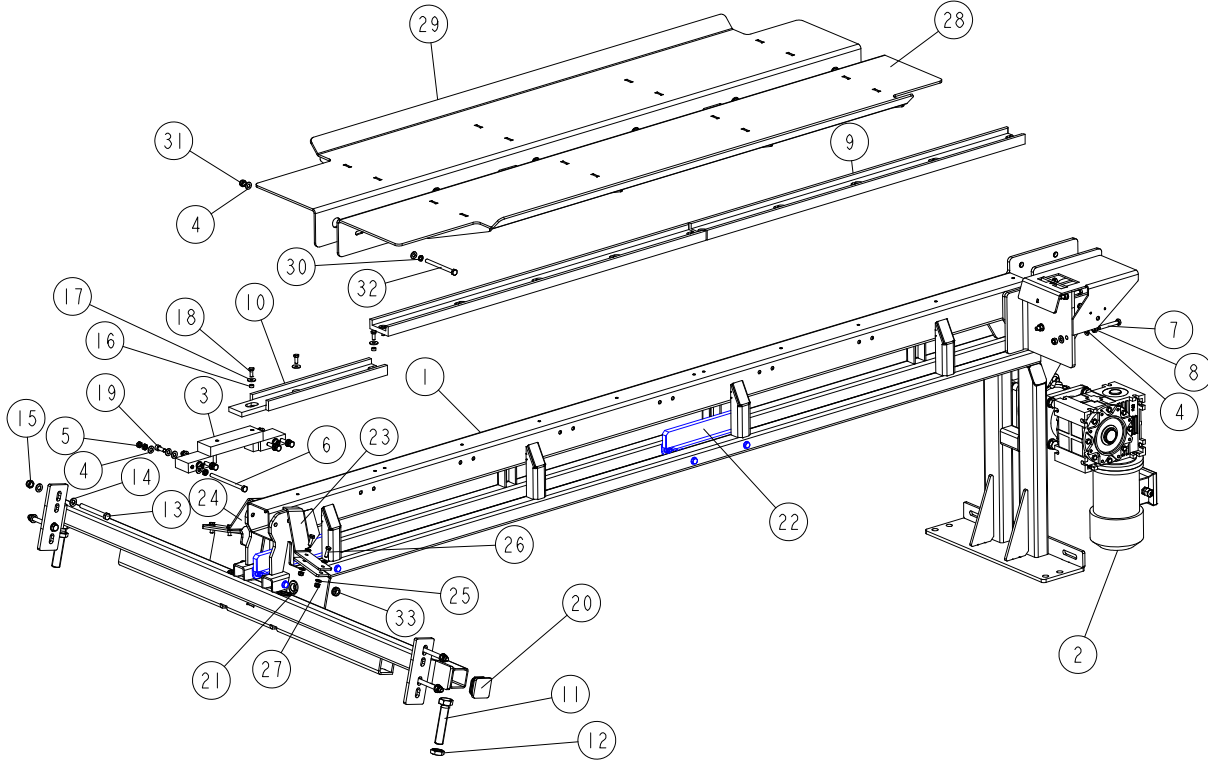


| Ref. | DESCRIPTION (* indicates parts available in assemblies only) | PART # | QTY |
|------|--|-----------|-----|
| - | ARM, HOLD-DOWN WHEEL - COMPLETE | 096350 | 1 |
| 1 | ARM WELDMENT, HOLD-DOWN WHEEL | 096348-1 | 1 |
| 2 | ARBOR, HOLD-DOWN WHEEL | 096351-1 | 1 |
| 3 | WHEEL, TVS HOLD-DOWN | 096352-1 | 1 |
| 4 | BEARING, UCFL 206 (CX) BALL | 090851 | 2 |
| 5 | BUSHING, 25.5/32-12 ZINC-PLATED | 097942-1 | 2 |
| 6 | RING, W47 INSIDE RETAINING | 089653 | 2 |
| 7 | BEARING, 6005 2RS | 089652 | 3 |
| 8 | BUSHING, 16.5/25-60 ZINC-PLATED | 098610-1 | 1 |
| 9 | WASHER, 17 SPLIT LOCK ZINC | F81058-1 | 6 |
| 10 | BOLT, M16X100-8.8 HEX HEAD FULL THREAD ZINC | F81006-2 | 1 |
| 11 | NUT, M16-8 HEX NYLON ZINC LOCK | F81036-2 | 3 |
| 12 | WASHER, 8.2 SPLIT LOCK ZINC | F81054-4 | 4 |
| 13 | SCREW, M8X25-8.8 HEX SOCKET HEAD CAP ZINC | F81002-21 | 4 |
| 14 | BOLT, ISO 24014 M16X120_8.8 A2E | F81006-25 | 2 |

SECTION 7 TVS 2.4 OUTFEED TABLE

7.1 TVS 2.4 Outfeed Table

538272_001
538272_MANUAL



| REF | DESCRIPTION (u indicates parts available in assemblies only) | PART # | QTY |
|-----|--|-----------|-----|
| - | TABLE, TVS 2.4 OUTFEED - COMPLETE | 538272 | 1 |
| 1 | TABLE WELDMENT, 2.4 OUTFEED | 538268-1 | 1 |
| 2 | DRIVE ASSEMBLY, TVS CHAIN See Section 7.2 | 501676 | 1 |
| 3 | BRACKET, JOINING | 501700-1 | 1 |
| 4 | WASHER, 10.5 FLAT ZINC | F81055-1 | 48 |
| 5 | NUT, M10-04-W THIN ZINC | F81033-6 | 12 |
| 6 | BOLT, M10X150-8.8 HEX HEAD FULL THREAD Z | F81003-54 | 4 |
| 7 | BOLT, M10X70 8.8 HEX HEAD FULL THREAD ZI | F81003-20 | 4 |
| 8 | NUT, M10 8 HEX ZINC | F81033-3 | 8 |
| 9 | GUIDE, CHAIN | 502562 | 2 |
| 10 | GUIDE, CHAIN - SHORT | 502616 | 1 |
| 11 | BOLT, M24X120 8.8 HEX HEAD FULL THREAD Z | F81009-6 | 2 |
| 12 | NUT, M24-04-B HEX THIN ZINC | F81039-3 | 2 |
| 13 | BOLT, M12X115-8.8 HEX HEAD ZINC | F81004-33 | 4 |
| 14 | WASHER, 13 FLAT ZINC | F81056-1 | 8 |
| 15 | NUT, M12-8 HEX NYLON ZINC LOCK | F81034-2 | 4 |
| 16 | BUSHING, 8.4/12.5-6 ZINC-PLATED | 504040-1 | 10 |
| 17 | WASHER, ISO 7093-1-8-200 HV-A2E | F81054-11 | 13 |
| 18 | BOLT, M8X20-5.8-HEX HEAD FULL THREAD ZIN | F81002-1 | 13 |

TVS 2.4 OUTFEED TABLE

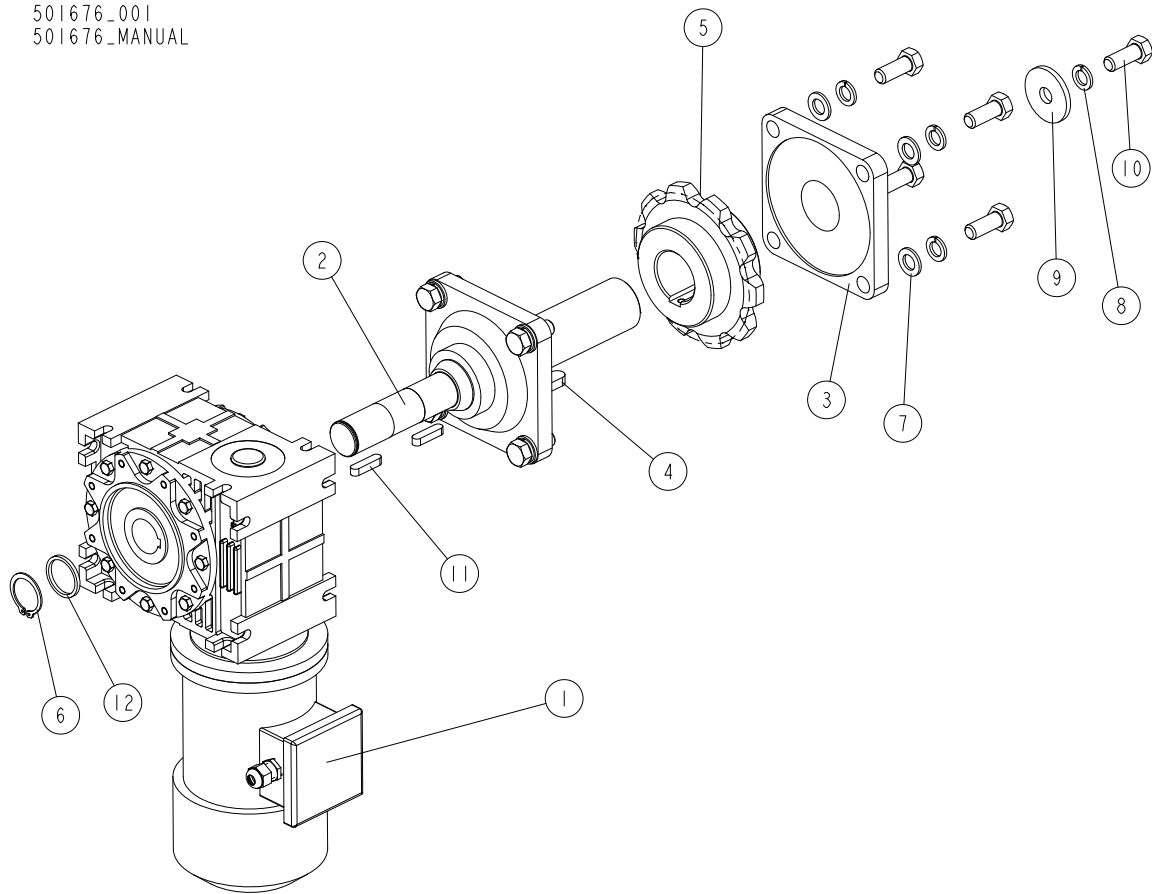
TVS 2.4 Outfeed Table



| REF | DESCRIPTION (u indicates parts available in assemblies only) | PART # | QTY | |
|-----|--|-----------|-----|--|
| 19 | SCREW, M10X25 8.8 HEX SOCKET HEAD CAP ZI | F81003-32 | 4 | |
| 20 | CAP, 60X60 3-4 #199211 TUBE | 089710 | 2 | |
| 21 | GROMMET, 22MM I.D. RUBBER | 087400 | 3 | |
| 22 | BRACKET, CHAIN SUPPORT See Section 7.3 | 504031 | 2 | |
| 23 | GUARD, LEFT | 504224-1 | 1 | |
| 24 | GUARD | 504225-1 | 1 | |
| 25 | WASHER, 8,4-FLAT ZINC | F81054-1 | 8 | |
| 26 | BOLT, M8X25-8.8-B-HEX HEAD FULL THREAD Z | F81002-5 | 4 | |
| 27 | NUT, M8-8-B HEX NYLON ZINC LOCK | F81032-2 | 4 | |
| 28 | PLATE, RIGHT SIDE | 538296-1 | 1 | |
| 29 | PLATE, LEFT SIDE | 538298-1 | 1 | |
| 30 | WASHER, Z 10.2 SPLIT LOCK ZINC | F81055-2 | 12 | |
| 31 | NUT, M10-8-B HEX NYLON ZINC LOCK | F81033-1 | 12 | |
| 32 | BOLT, M10 X 125-8.8 HEX HEAD ZINC | F81003-18 | 12 | |
| 33 | GROMMET, 20/13 RUBBER | 086188 | 1 | |

7.2 Chain Drive Assembly

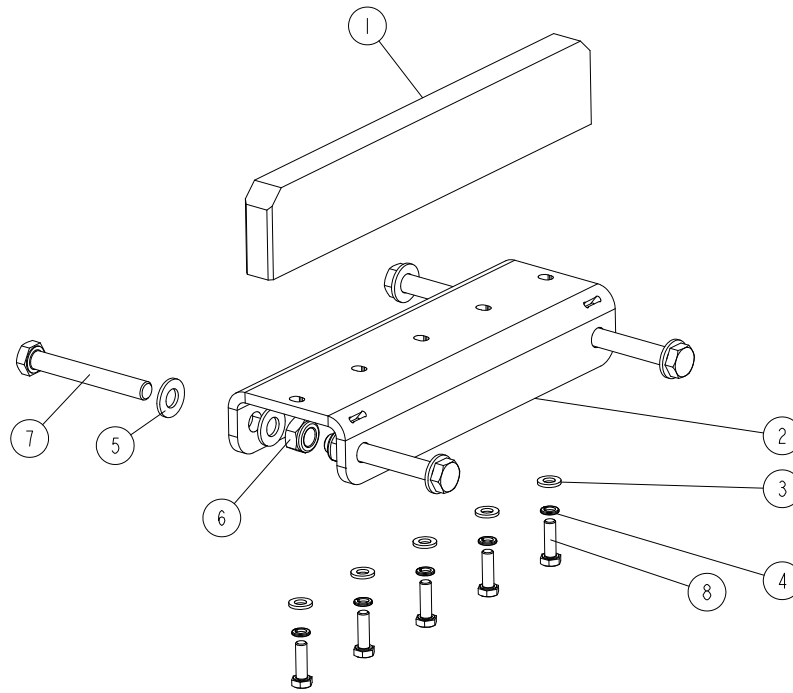
501676-001
501676-MANUAL



| Ref. | DESCRIPTION (* indicates parts available in assemblies only) | PART # | QTY |
|------|--|-----------|-----|
| - | DRIVE ASSEMBLY, TVS CHAIN | 501676 | 1 |
| 1 | GEAR MOTOR, MR-80/64/1.1-1400/F3/V6. | 501706 | 1 |
| 2 | SHAFT, DRIVE | 501705 | 1 |
| 3 | BEARING, UCF211 W/HOUSING | 089889 | 2 |
| 4 | KEY, A16X10X70 PARALLEL | 098029 | 1 |
| 5 | SPROCKET, 10Z 20B/2"N55 | 502565-1 | 1 |
| 6 | RING, Z38 OUTSIDE RETAINING | F81090-26 | 1 |
| 7 | WASHER, 17 SPLIT LOCK ZINC | F81058-1 | 8 |
| 8 | WASHER, 16.3 SPLIT LOCK ZINC | F81058-2 | 9 |
| 9 | WASHER, 17.5/60-6 ZINC-PLATED | 098012-1 | 1 |
| 10 | BOLT, M16X40-8.8 HEX HEAD FULL THREAD ZINC | F81006-13 | 9 |
| 11 | KEY, A10X8X40 PARALLEL | 502045 | 2 |
| 12 | WASHER | 501752-1 | 1 |

7.3 Chain Support Bracket

504031_001
504031_MANUAL

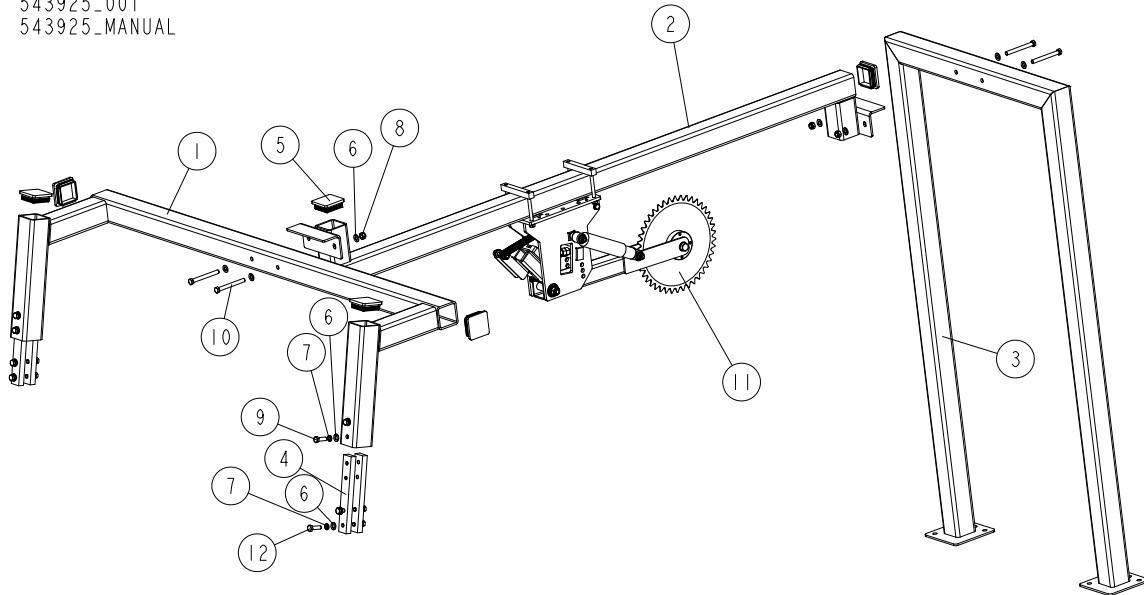


| Ref. | DESCRIPTION (* indicates parts available in assemblies only) | PART # | QTY |
|------|--|-----------|-----|
| - | BRACKET, CHAIN SUPPORT | 504031 | 1 |
| 1 | PLATE, SUPPORT BRACKET | 504032 | 1 |
| 2 | PLATE, MOUNTING | 504033-1 | 1 |
| 3 | WASHER, 6.4 FLAT ZINC | F81053-1 | 5 |
| 4 | WASHER, Z 6.1 SPLIT LOCK ZINC | F81053-3 | 5 |
| 5 | WASHER, 10.5 FLAT ZINC | F81055-1 | 8 |
| 6 | NUT, M10-8-B HEX NYLON ZINC LOCK | F81033-1 | 4 |
| 7 | BOLT, M10X75-8.8 HEX HEAD ZINC | F81003-15 | 4 |
| 8 | BOLT, M6X20 8.8 HEX HEAD FULL THREAD ZINC | F81001-2 | 5 |

SECTION 8 ADDITIONAL TVS SA HOLD-DOWN WHEEL ASSEMBLY

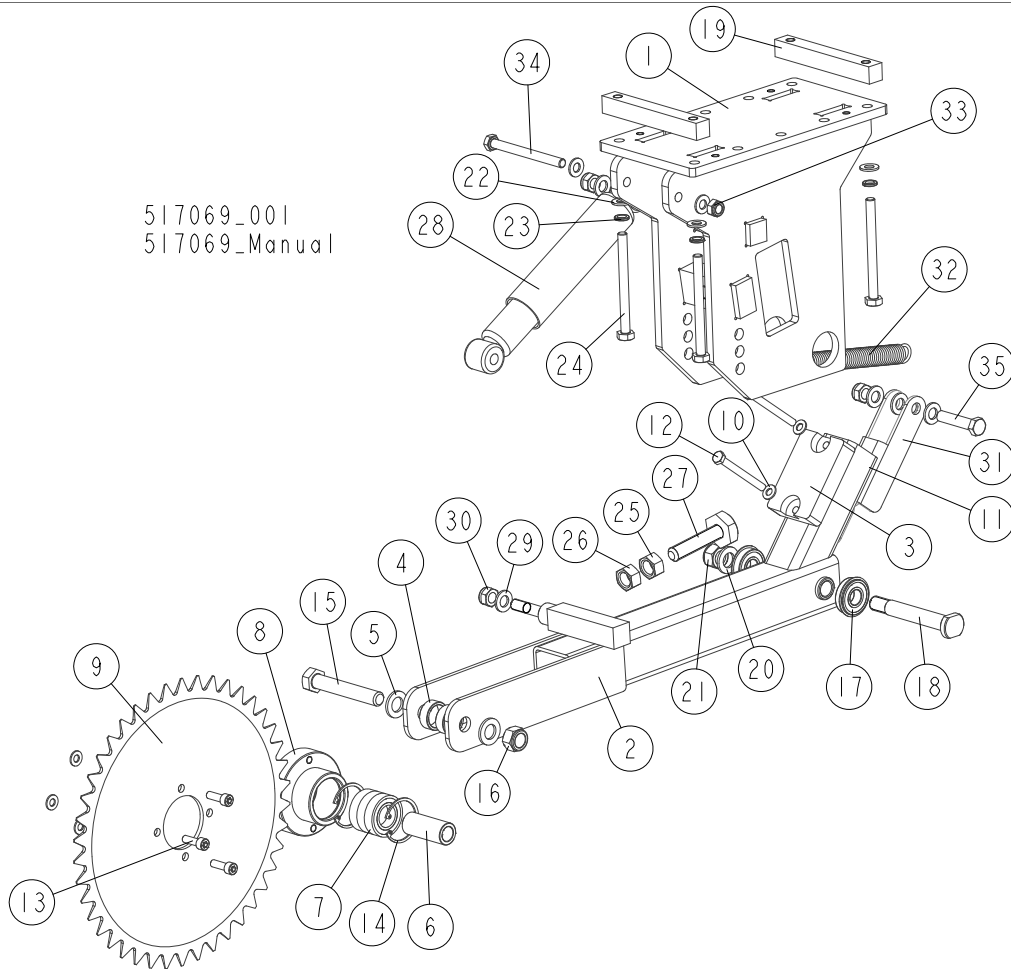
8.1 Additional TVS SA Hold-Down Wheel Assembly

543925_001
543925_MANUAL



| Ref. | DESCRIPTION (* indicates parts available in assemblies only) | PART # | QTY |
|------|--|-----------|-----|
| - | WHEEL ASSEMBLY, ADDITIONAL TVS SA HOLD-DOWN | 543925 | 1 |
| 1 | TUBE WELDMENT, HOLD-DOWN WHEEL SUPPORT - REAR | 100731-1 | 1 |
| 2 | TUBE, HOLD-DOWN WHEEL SUPPORT - MIDDLE | 100945-1 | 1 |
| 3 | FRAME, HOLD-DOWN WHEEL SUPPORT - FRONT | 100738-1 | 1 |
| 4 | BAR, MOUNTING | 100756-1 | 4 |
| 5 | CAP, 80X80 2-4 #111227 TUBE END | 089644 | 6 |
| 6 | WASHER, 13 FLAT ZINC | F81056-1 | 24 |
| 7 | WASHER, Z12.2 SPLIT LOCK ZINC | F81056-2 | 16 |
| 8 | NUT, M12-8 DIN 982 HEX NYLON ZINC LOCK | F81034-2 | 4 |
| 9 | BOLT, M12X35 8.8 HEX HEAD FULL THREAD ZINC | F81004-24 | 14 |
| 10 | BOLT, M12X110-8.8-B HEX HEAD ZINC | F81004-47 | 4 |
| 11 | WHEEL, TVS ADDITIONAL HOLD-DOWN - COMPLETE See Section 8.2 | 517069 | 1 |
| 12 | BOLT, M12X40 8.8 HEX HEAD FULL THREAD ZINC | F81004-4 | 2 |

8.2 Additional Hold-Down Wheel



517069_001
517069_Manual

| REF. | DESCRIPTION (◆ Indicates Parts Available In Assemblies Only) | PART# | QTY |
|------|--|-----------|-----|
| | WHEEL, TVS ADDITIONAL HOLD-DOWN - COMPLETE | 517069 | 1 |
| 1 | BRACKET WELDMENT, HOLD-DOWN WHEEL ARM | 517072-1 | 1 |
| | WHEEL ASSEMBLY, TVS ADDITIONAL HOLD-DOWN | 517071 | 1 |
| 2 | ARM WELDMENT, HOLD-DOWN WHEEL | 517070-1 | 1 |
| 3 | BUMPER, GRENE 70 3201 0010 RUBBER | 094969 | 1 |
| 4 | BUSHING, 25.5/32-12 ZINC-PLATED | 097942-1 | 2 |
| 5 | WASHER, 17 SPLIT LOCK ZINC | F81058-1 | 2 |
| 6 | BUSHING, 16.5/25-60 ZINC-PLATED | 098610-1 | 1 |
| 7 | BEARING, 6005 2RS | 089652 | 3 |
| 8 | ARBOR, HOLD-DOWN WHEEL | 096351-1 | 1 |
| 9 | WHEEL, TVS HOLD-DOWN | 096352-1 | 1 |
| 10 | WASHER, 8.4 FLAT ZINC | F81054-1 | 8 |
| 11 | NUT, M8 8 HEX NYLON ZINC LOCK | F81032-2 | 2 |
| 12 | BOLT, M8X80-8.8 HEX HEAD ZINC | F81002-18 | 2 |
| 13 | SCREW, M8x25 8.8 HEX SOCKET HEAD CAP ZINC | F81002-21 | 4 |
| 14 | RING, W47 INSIDE RETAINING | 089653 | 2 |
| 15 | BOLT, M16x100-8.8 HEX HEAD FULL THREAD ZINC | F81006-2 | 1 |
| 16 | NUT, M16-8 HEX NYLON ZINC LOCK | F81036-2 | 1 |
| 17 | BEARING, 6203-2RS NR NSK W/SNAP RING | 086395 | 2 |



ADDITIONAL TVS SA HOLD-DOWN WHEEL ASSEMBLY

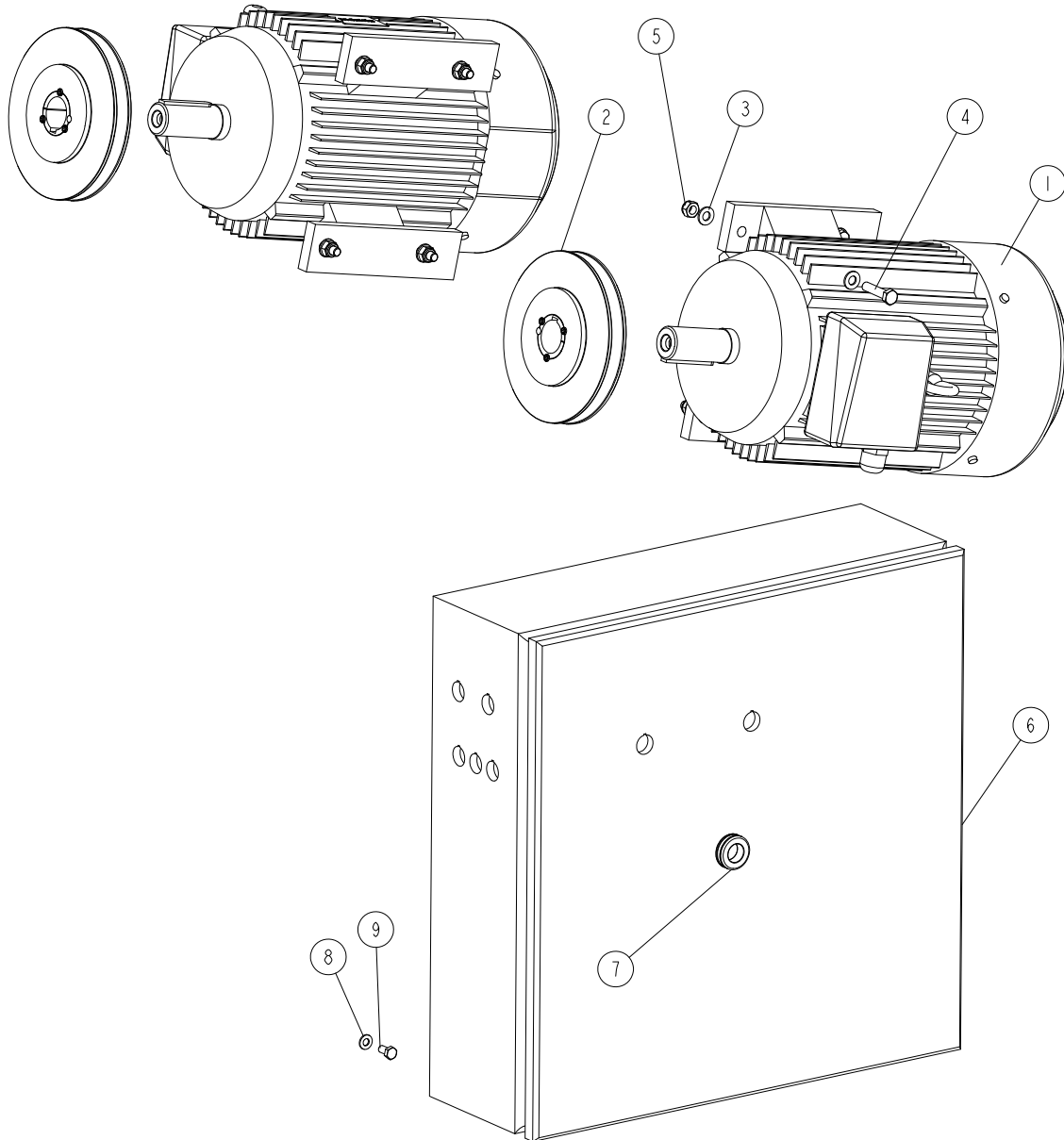
Additional Hold-Down Wheel

| | | | | |
|----|----------------------------------|-----------|---|--|
| 18 | BOLT, ARM BEARING MOUNT | 086404 | 1 | |
| 19 | BAR, MOUNTING | 100757-1 | 2 | |
| 20 | WASHER, 17 SPLIT LOCK ZINC | F81058-1 | 1 | |
| 21 | NUT, M16-8 HEX NYLON ZINC LOCK | F81036-2 | 1 | |
| 22 | WASHER, 10.5 FLAT ZINC | F81055-1 | 6 | |
| 23 | WASHER, Z 10.2 SPLIT LOCK ZINC | F81055-2 | 4 | |
| 24 | BOLT, M10X115-8.8 HEX HEAD | F81003-19 | 4 | |
| 25 | M16 BOLT W/2 NUTS | 093710 | 1 | |
| 26 | NUT, M16 5.8 HEX ZINC | F81036-5 | 2 | |
| 27 | BOLT, M16 BED RAIL ADJUSTMENT | 505006 | 1 | |
| 28 | ABSORBER, WERTTEILE 554412 SHOCK | 513494 | 1 | |
| 29 | WASHER, 13 FLAT ZINC | F81056-1 | 6 | |
| 30 | NUT, M12 8 HEX NYLON ZINC LOCK | F81034-2 | 3 | |
| 31 | BRACKET, SPRING | 518734-1 | 1 | |
| 32 | SPRING, 2.8x22.2x183 | 091864 | 1 | |
| 33 | NUT, M10-8-B HEX NYLON ZINC LOCK | F81033-1 | 1 | |
| 34 | BOLT, M10x110-8.8 HEX HEAD ZINC | F81003-43 | 1 | |
| 35 | BOLT, M12x55-8.8 HEX HEAD ZINC | F81004-12 | 1 | |

SECTION 9 EH11/EH15 MOTOR KIT

9.1 EH11/EH15 Motor Kit

538147-3_001
 538147-3_MANUAL



| REF. | DESCRIPTION (* indicates parts available in assemblies only) | PART # | QTY |
|------|--|----------|-----|
| - | EH11 MOTOR KIT ¹ | 538147-3 | 1 |
| - | EH15 MOTOR KIT ¹ | 536946-3 | 1 |
| 1 | MOTOR, 7.5KW SG132S-2B ELECTRIC ¹ | 526141 | 2 |
| | MOTOR, 11KW PSG132M-2A ELECTRIC ¹ | 526677 | 2 |
| 2 | PULLEY, SPB-B-5V N190X1 GROOVE/N38 (F02346+ T31109) | 099601 | 2 |
| 3 | WASHER, 10.5 FLAT ZINC | F81055-1 | 16 |



EH11/EH15 MOTOR KIT

EH11/EH15 Motor Kit

| REF. | DESCRIPTION (* indicates parts available in assemblies only) | PART # | QTY | |
|------|--|-----------|-----|--|
| 4 | BOLT, M10X45 HEX HEAD FULL THREAD ZINC | F81003-3 | 8 | |
| 5 | NUT, M10-8-B HEX NYLON ZINC LOCK | F81033-1 | 8 | |
| 6 | BOX, TVS EH11 ELECTRICAL ¹ | 536606 | 1 | |
| | BOX, TVS EH15 ELECTRICAL ¹ | 536945 | 1 | |
| 7 | GROMMET, 22MM I.D. RUBBER | 087400 | 1 | |
| 8 | WASHER, 8.4 FLAT ZINC | F81054-1 | 4 | |
| 9 | BOLT, M8X16-8.8-B HEX HEAD FULL THREAD ZINC | F81002-20 | 4 | |

¹ The parts numbers for the other voltage versions can be found in the electrical documentation.