

Wood-Mizer[®] Sawmill

Parts Manual

LT60 Super
LT70 Super

rev. A2.00
rev. A2.00



Safety is our #1 concern! Read and understand all safety information and instructions before operating, setting up or maintaining this machine.

May 2002

Form #1050

Table of Contents

Section-Page

| | | |
|------------------|---|------------|
| SECTION 1 | GENERAL INFORMATION | 1-1 |
| 1.1 | How To Use The Parts List | 1-1 |
| 1.2 | Sample Assembly | 1-1 |
| SECTION 2 | BLADE GUIDE ROLLERS & ARM | 1-1 |
| 2.1 | Blade Guide Assembly, Idle Side..... | 1-1 |
| 2.2 | Blade Guide Assembly, Drive Side..... | 1-3 |
| 2.3 | Blade Guide Arm Drive Assembly..... | 1-5 |
| SECTION 3 | BLADE WHEELS & TENSIONER | 1-1 |
| 3.2 | Idle Blade Wheel Assembly | 1-3 |
| 3.3 | Blade Tensioner Assembly..... | 1-5 |
| 3.4 | Sawdust Flow Guide..... | 1-7 |
| SECTION 4 | SAW HEAD | 1-1 |
| 4.2 | Drive Belt Tensioner | 1-2 |
| 4.3 | Board Return Assembly | 1-3 |
| 4.4 | Water Lube Assembly | 1-4 |
| 4.5 | Saw Head Decals..... | 1-5 |
| 4.6 | Blade Housing Covers..... | 1-6 |
| 4.7 | Sawdust Chute..... | 1-8 |
| SECTION 5 | CONTROL & BATTERY BOXES | 1-1 |
| 5.2 | Drum Switches | 1-3 |
| 5.3 | Front Panel Assembly & Harnesses | 1-4 |
| 5.4 | Circuit Breakers..... | 1-6 |
| 5.5 | Solenoid Assemblies (Gas/Diesel Only) | 1-7 |
| 5.6 | Battery Box Assembly (D42 Only) | 1-8 |
| 5.7 | Fuse Box Assembly (D42 Only) | 1-9 |
| SECTION 6 | UP/DOWN SYSTEM | 1-1 |
| 6.2 | Blade Height Scale | 1-3 |
| 6.3 | Up/Down Chain & Sprockets..... | 1-5 |
| 6.4 | Up/Down Drive Assembly | 1-7 |
| SECTION 7 | FEED SYSTEM & TRACK ROLLERS | 1-1 |
| 7.1 | Upper Track Rollers And Wipers..... | 1-1 |
| 7.2 | Power Feed Assembly | 1-3 |
| 7.3 | Feed Chain/Stop, LT60HD/LT70HD | 1-4 |
| 7.4 | Lower Track Rollers..... | 1-6 |

Table of Contents

Section-Page

SECTION 8 BED FRAME ASSEMBLY

8-1

| | | |
|-----|--|------|
| 8.1 | Bed Rail Assembly, Front And Rear | 8-1 |
| 8.2 | Bed Rail Assembly, Front Middle | 8-3 |
| 8.3 | Bed Rail Assembly, Rear Middle | 8-5 |
| 8.4 | Leg, Stationary | 8-6 |
| 8.5 | Pivot Bed Rail Assembly..... | 8-8 |
| 8.6 | Log Side Support Assembly (Manual) | 8-10 |
| 8.7 | Tie Down Chain Assembly | 8-12 |
| 8.8 | Saw Head Rest Pin Assembly | 8-13 |
| 8.9 | Bed Frame Decals | 8-14 |

SECTION 9 LOG CLAMP

10-1

| | | |
|-----|-------------------------|------|
| 9.1 | Log Clamp | 10-1 |
| 9.2 | Manual Log Turner..... | 10-2 |
| 9.3 | Manual Toe Board..... | 10-4 |
| 9.4 | Log Loading Ramps | 10-6 |

Table of Contents

Section-Page

| | | |
|------------------|---|------------|
| SECTION 1 | GENERAL INFORMATION | 1-1 |
| 1.1 | How To Use The Parts List | 1-1 |
| 1.2 | Sample Assembly | 1-1 |
| SECTION 1 | BLADE GUIDE ROLLERS & ARM | 1-1 |
| 1.1 | Blade Guide Assembly, Idle Side..... | 1-1 |
| 1.2 | Blade Guide Assembly, Drive Side..... | 1-3 |
| 1.3 | Blade Guide Arm Drive Assembly..... | 1-5 |
| SECTION 1 | BLADE WHEELS & TENSIONER | 1-1 |
| 1.2 | Idle Blade Wheel Assembly | 1-3 |
| 1.3 | Blade Tensioner Assembly..... | 1-5 |
| SECTION 1 | SAW HEAD | 1-1 |
| 1.2 | Drive Belt Tensioner | 1-2 |
| 1.3 | Board Return Assembly | 1-3 |
| 1.4 | Water Lube Assembly | 1-4 |
| 1.5 | Saw Head Decals..... | 1-5 |
| 1.6 | Blade Housing Covers..... | 1-6 |
| 1.7 | Sawdust Chute..... | 1-8 |
| SECTION 1 | CONTROL & BATTERY BOXES | 1-1 |
| 1.2 | Drum Switches | 1-3 |
| 1.3 | Front Panel Assembly & Harnesses | 1-4 |
| 1.4 | Circuit Breakers..... | 1-6 |
| 1.5 | Solenoid Assemblies (Gas/Diesel Only) | 1-7 |
| 1.6 | Battery Box Assembly (D42 Only) | 1-8 |
| 1.7 | Fuse Box Assembly (D42 Only) | 1-9 |
| SECTION 1 | UP/DOWN SYSTEM | 1-1 |
| 1.2 | Blade Height Scale | 1-3 |
| 1.3 | Up/Down Chain & Sprockets..... | 1-5 |
| 1.4 | Up/Down Drive Assembly | 1-7 |
| SECTION 1 | FEED SYSTEM & TRACK ROLLERS | 1-1 |
| 1.1 | Upper Track Rollers And Wipers..... | 1-1 |
| 1.2 | Power Feed Assembly | 1-3 |
| 1.3 | Feed Chain/Stop, LT30HD/LT40HD Super | 1-4 |
| 1.4 | Lower Track Rollers..... | 1-6 |
| SECTION 8 | BED FRAME ASSEMBLY | 8-1 |
| 8.1 | Bed Rail Assembly, Front And Rear | 8-1 |
| 8.2 | Bed Rail Assembly, Front Middle | 8-3 |
| 8.3 | Bed Rail Assembly, Rear Middle | 8-5 |

Table of Contents

Section-Page

8.4 Leg, Stationary8-6
8.5 Board Return Table Assembly8-8
8.6 Pivot Bed Rail Assembly.....8-10
8.7 Log Side Support Assembly8-12
8.8 Tie Down Chain Assembly8-14
8.9 Bed Frame Decals8-15

SECTION 9 LOG CLAMP

10-1

9.1 Log Clamp10-1
9.2 Manual Log Turner.....10-2
9.3 Manual Toe Board.....10-4
9.4 Log Loading Ramps10-6

SECTION 1 GENERAL INFORMATION

1.1 How To Use The Parts List

- Use the index above to locate the assembly that contains the part you need.
- Go to the appropriate section and locate the part in the illustration.
- Use the number pointing to the part to locate the correct part number and description in the table.
- Parts shown indented under another part are included with that part.
- Parts marked with a diamond (◆) are only available in the assembly listed above the part.

See the sample table below. Sample Part #A01111 includes part F02222-2 and subassembly A03333. Subassembly A03333 includes part S04444-4 and subassembly K05555. The diamond (◆) indicates that S04444-4 is not available except in subassembly A03333. Subassembly K05555 includes parts M06666 and F07777-77. The diamond (◆) indicates M06666 is not available except in subassembly K05555.

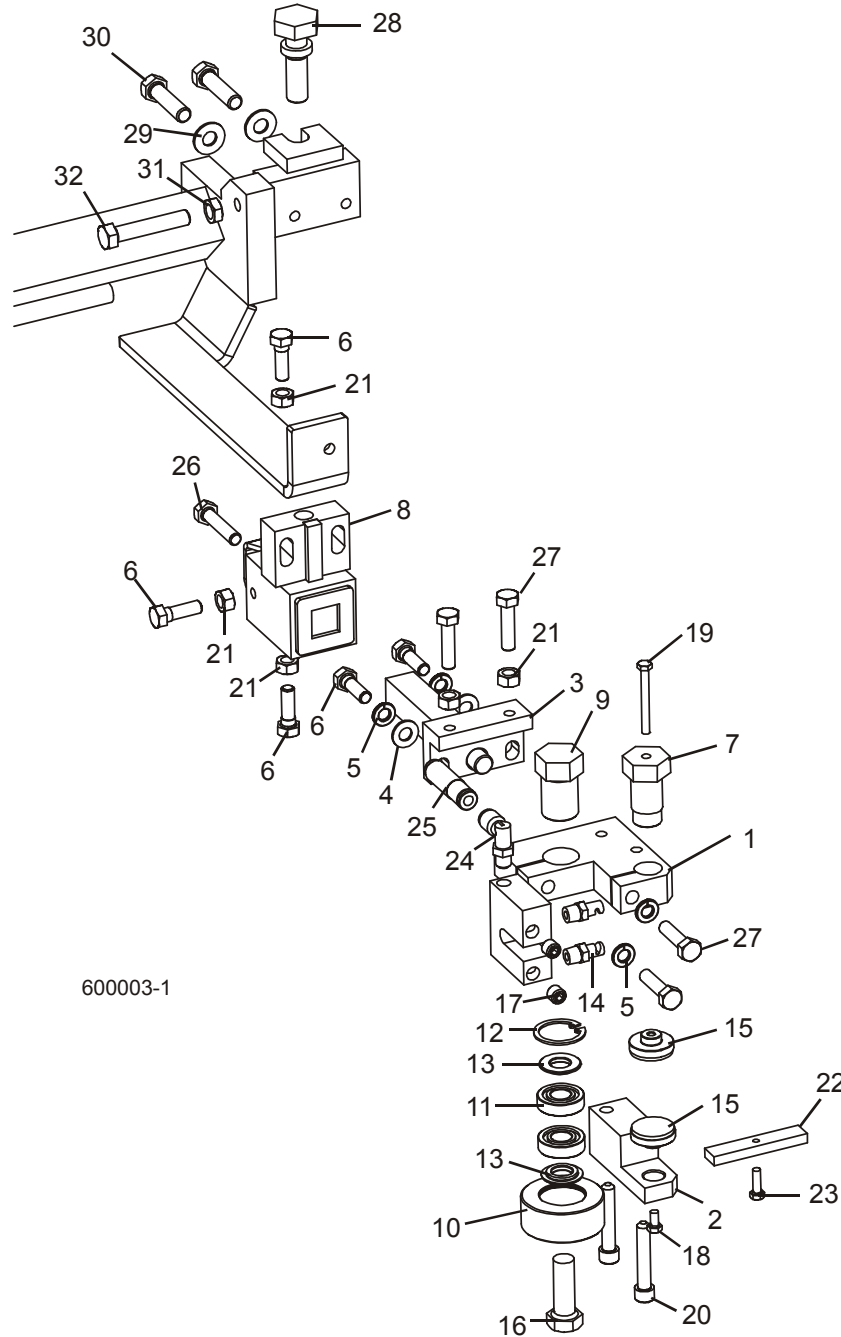
| 1.2 Sample Assembly | | | | |
|----------------------------|---|-----------|------|---|
| REF | DESCRIPTION (◆ Indicates Parts Available In Assemblies Only) | PART # | QTY. | |
| | Sample Assembly, Complete (Includes All Indented Parts Below) | A01111 | 1 | |
| 1 | Sample Part | F02222-22 | 1 | |
| | Sample Subassembly (Includes All Indented Parts Below) | A03333 | 1 | |
| 2 | Sample Part (◆ Indicates Part Is Only Available With A03333) | S04444-4 | 1 | ◆ |
| | Sample Subassembly (Includes All Indented Parts Below) | K05555 | 1 | |
| 3 | Sample Part (◆ Indicates Part Is Only Available With K05555) | M06666 | 2 | ◆ |
| 4 | Sample Part | F07777-77 | 1 | |

To Order Parts:

- From Europe call our European Headquarters and Manufacturing Facility in Kolo, Poland at **+48-63-2610233**. From the continental U.S., call our toll-free Parts hotline at **1-800-448-7881**. Have your customer number, vehicle identification number, and part numbers ready when you call.
- From other international locations, contact the Wood-Mizer distributor in your area for parts.

SECTION 2 BLADE GUIDE ROLLERS & ARM

2.1 Blade Guide Assembly, Idle Side



600003-1

Blade Guide Rollers & Arm

Blade Guide Assembly, Idle Side

2

| REF | DESCRIPTION (◆ Indicates Parts Available In Assemblies Only) | PART # | QTY. | |
|-----|--|------------|------|--|
| | GUIDE ASSEMBLY, IDLE SIDE BLOCK BLADE | 035200 | 1 | |
| 1 | Block Weldment, Blade Guide Idle Side Mount | 035206 | 1 | |
| 2 | Block, Lower Blade Guide Mount | 035213 | 1 | |
| 3 | Shaft Weldment, Blade Guide Mount | 035209 | 1 | |
| 4 | Washer, 5/16" SAE Flat | F05011-17 | 2 | |
| 5 | Washer, 5/16" Split Lock | F05011-13 | 4 | |
| 6 | Bolt, 5/16-18 x 1" Hex Head | F05006-88 | 5 | |
| 7 | Bolt, Blade Guide Insert Mount | 035216 | 1 | |
| 8 | Block Weldment, Blade Guide Mount | 035219 | 1 | |
| 9 | Bolt, Blade Guide Roller Mount | 035215 | 1 | |
| | Roller Assembly, Blade Guide | 023977 | 1 | |
| 10 | Housing, Blade Guide Roller | 017223 | 1 | |
| 11 | Bearing, R8-2RS Blade Guide | 015975 | 2 | |
| 12 | Ring, 1 1/8" IR 3000x112 Retaining | F04254-1 | 1 | |
| 13 | Spacer, Blade Guide Roller | 018948 | 2 | |
| 14 | Fitting, Blade Lube Spray Nozzle | 033479 | 2 | |
| 15 | Insert Assembly, 1 1/4" Blade Guide | 035222 | 2 | |
| 16 | Bolt, 1/2-13 x 1 1/2" Hex Head | F05008-4 | 1 | |
| 17 | Fitting, 1/8" NPT Socket Pipe Plug | P30127 | 2 | |
| 18 | Bolt, #10-32 x 3/8" Hex Head | F05004-171 | 1 | |
| 19 | Bolt, #10-32 x 1 3/4" Hex Head | F05004-178 | 1 | |
| 20 | Bolt, 5/16-18 x 1 3/4" Socket Head | F05006-65 | 2 | |
| 21 | Nut, 5/16-18 Hex | F05010-17 | 6 | |
| 22 | Block, Blade Guide Alignment | 035799 | 1 | |
| 23 | Screw, #10-32 x 5/8 Hex Head Machine | F05004-152 | 1 | |
| 24 | Fitting, 1/8" MPT x 1/4" Tube Swivel Elbow | P09736 | 1 | |
| 25 | Bolt, 5/16-18 x 1 1/2" Full Thread Hex Head | F05006-119 | 1 | |
| 26 | Bolt, 5/16-18 x 1 1/4" Hex Head | F05006-118 | 4 | |
| 27 | BOLT, BLADE GUIDE VERTICAL ADJUSTMENT | 035656 | 1 | |
| 28 | WASHER, 5/16" SAE FLAT | F05011-17 | 2 | |
| 29 | WASHER, 5/16" SPLIT LOCK | F05011-13 | 2 | |
| 30 | BOLT, 5/16-18 X 1 1/2" FULL THREAD HEX HEAD GRADE 5 | F05006-76 | 2 | |
| 31 | NUT, 3/8-16 HEX JAM | F05010-29 | 1 | |
| 32 | BOLT, 3/8-16 X 2" FULL THREAD HEX HEAD | F05007-16 | 1 | |

Blade Guide Rollers & Arm

Blade Guide Assembly, Drive Side

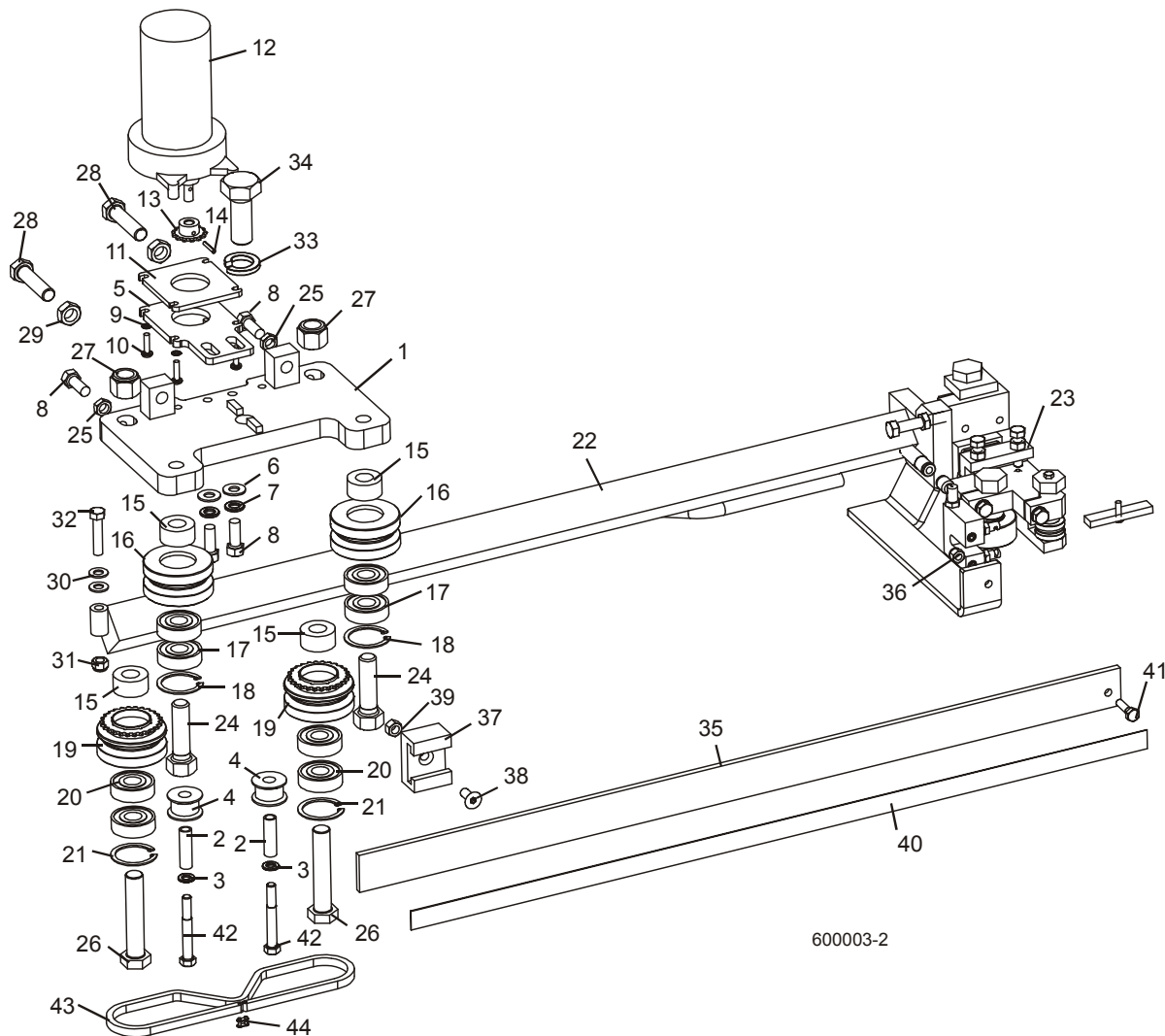
2

| REF | DESCRIPTION (◆ Indicates Parts Available In Assemblies Only) | PART # | QTY. | |
|-----|--|------------|------|---|
| | GUIDE ASSEMBLY, DRIVE SIDE BLADE GUIDE | 034291 | 1 | |
| 1 | Block, Drive Side Blade Guide Mount | 035207 | 1 | |
| 2 | Block, Lower Blade Guide Mount | 035214 | 1 | |
| 3 | Bolt, Blade Guide Insert Mount | 035216 | 1 | |
| 4 | Bolt, Blade Guide Roller Mount | 035215 | 1 | |
| | Roller Assembly, Blade Guide | 023977 | 1 | |
| 5 | Housing, Blade Guide Roller | 017223 | 1 | ◆ |
| 6 | Bearing, R8-2RS Blade Guide | 015975 | 2 | |
| 7 | Ring, 1 1/8" IR 3000x112 Retaining | F04254-1 | 1 | |
| 8 | Spacer, Blade Guide Roller | 018948 | 2 | |
| 9 | Shaft Weldment, Blade Guide Mount | 035209 | 1 | |
| 10 | Washer, 5/16" SAE Flat | F05011-17 | 2 | |
| 11 | Bolt, 5/16-18 x 1" Hex Head Stainless Steel | F05006-88 | 5 | |
| 12 | Block Weldment, Blade Guide Mount | 035219 | 1 | |
| 13 | Insert Assembly, 1 1/4" Blade Guide | 035222 | 2 | |
| 14 | Washer, 5/16" Split Lock | F05011-13 | 4 | |
| 15 | Bolt, 5/16-18 x 1 1/4" Hex Head Stainless Steel | F05006-118 | 4 | |
| 16 | Bolt, 1/2-13 x 1 1/2" Hex Head | F05008-4 | 1 | |
| 17 | Washer, #10 Split Lock | F05011-20 | 2 | |
| 18 | Bolt, #10-32 x 1 3/4" Hex Head Stainless Steel | F05004-178 | 1 | |
| 19 | Bolt, #10-32 x 3/8" Hex Head Stainless Steel | F05004-171 | 1 | |
| 20 | Bolt, 5/16-18 x 1 3/4" Socket Head | F05006-65 | 2 | |
| 21 | Bolt, 5/16-18 x 1 1/2" Full Thread Hex Head Stainless Steel | F05006-119 | 1 | |
| 22 | Nut, 5/16-18 Hex | F05010-17 | 6 | |
| 23 | ARM WELDMENT, DRIVE SIDE BLADE GUIDE | 034292 | 1 | |
| 24 | BOLT, BLADE GUIDE VERTICAL ADJUSTMENT | 035656 | 1 | |
| 25 | WASHER, 1/2" SPLIT LOCK | F05011-9 | 2 | |
| 26 | BOLT, 1/2-13 X 1 1/2" HEX HEAD GRADE 5 | F05008-33 | 2 | |
| 27 | WASHER, 5/16" SAE FLAT | F05011-17 | 2 | |
| 28 | WASHER, 5/16" SPLIT LOCK | F05011-13 | 2 | |
| 29 | BOLT, 5/16-18 X 1 1/2" FULL THREAD HEX HEAD STAINLESS STEEL | F05006-119 | 2 | |

2 Blade Guide Rollers & Arm

Blade Guide Arm Drive Assembly

2.3 Blade Guide Arm Drive Assembly



| REF | DESCRIPTION (◆ Indicates Parts Available In Assemblies Only) | PART # | QTY. |
|-----|--|-----------|------|
| | ARM ASSEMBLY, IDLE SIDE BLADE GUIDE | 034290 | 1 |
| 1 | Plate Weldment, Blade Guide Arm | 034286 | 1 |
| 2 | Spacer, .322" x .44" x 1 1/2" | S09996 | 2 |
| 3 | Washer, 5/16" Split Lock | F05011-13 | 2 |
| 4 | Roller, Blade Guide Drive | S09999 | 2 |
| 5 | Plate, Blade Guide Motor Mount | 033803 | 1 |
| 6 | Washer, 3/8" SAE Flat | F05011-3 | 2 |
| 7 | Washer, 3/8" Split Lock | F05011-4 | 2 |
| 8 | Bolt, 3/8-16 x 1" Hex Head | F05007-7 | 4 |
| 9 | Washer, #10 Split Lock | F05011-20 | 4 |
| 10 | Screw, #10-32 x 3/4" Phillips Head Machine | F05004-38 | 4 |

Blade Guide Rollers & Arm

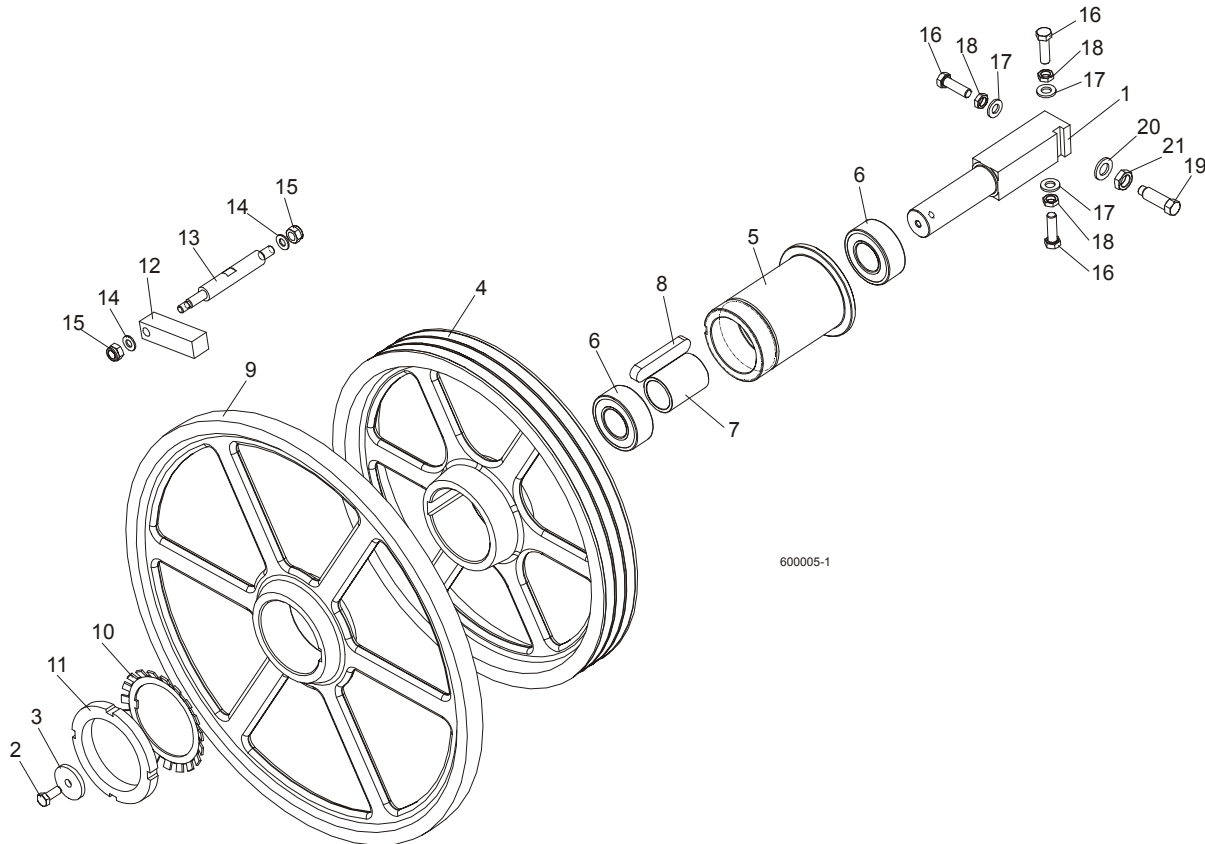
Blade Guide Arm Drive Assembly

2

| | | | | |
|----|---|------------|---|--|
| 11 | Plate, Blade Guide Motor Mount Spacer | 033805 | 1 | |
| 12 | Motor, 1/30 HP 62RPM 12VDC 53:1 Gear | P09698-1 | 1 | |
| 13 | Sprocket, 25B13 x .3130 | P09970 | 1 | |
| 14 | Pin, 1/8" x 3/4" Roll | F05012-6 | 1 | |
| 15 | Spacer, Blade Guide Arm V-Roller | 033913 | 4 | |
| | Roller Assembly, Blade Guide Arm V Idle | 042543 | 2 | |
| 16 | Housing, 2 1/2" V-Groove | 042536 | 1 | |
| 17 | Bearing, 5/8" x 1.7548" x .4724" | P06030-1 | 2 | |
| 18 | Ring, 1.575" ID Beveled 5002-156 Retaining | F04254-8 | 1 | |
| | Roller Assembly, Blade Guide Arm V Drive | 042542 | 2 | |
| 19 | Housing, 2 1/2" V-Groove w/Sprocket | 042541 | 1 | |
| 20 | Bearing, 5/8" x 1.7548" x .4724" | P06030-1 | 2 | |
| 21 | Ring, 1.575" ID Beveled 5002-156 Retaining | F04254-8 | 1 | |
| 22 | Arm Weldment, Blade Guide | 034289 | 1 | |
| 23 | Blade Guide Parts (See Section 2.1) | | | |
| 24 | Bolt, 5/8-18 x 2 1/4" Hex Head Grade 5 | F05009-80 | 2 | |
| 25 | Nut, 3/8-16 Hex Jam | F05010-29 | 2 | |
| 26 | Bolt, 5/8-18 x 3 1/4" Hex Head Grade 5 | F05009-98 | 2 | |
| 27 | Nut, 5/8-18 Hex Nylon Lock | F05010-71 | 2 | |
| 28 | Bolt, 1/2-20 x 2" Hex Head Full Thread | F05008-126 | 2 | |
| 29 | Nut, 1/2-20 Hex Jam | F05010-16 | 2 | |
| 30 | Washer, 5/16" SAE Flat | F05011-17 | 2 | |
| 31 | Nut, 5/16-18 Hex Nylon Lock | F05010-58 | 1 | |
| 32 | Bolt, 5/16-18 x 1 1/2" Hex Head Grade 5 | F05008-96 | 1 | |
| 33 | Washer, 3/4" Split Lock | F05011-6 | 1 | |
| 34 | Bolt, 3/4-16 x 2" Full Thread Hex Head | F05013-1 | 1 | |
| 35 | Guard, Blade Guide Arm | 014955 | 1 | |
| 36 | Nut, 1/4-20 Hex Nylon Lock | F05010-69 | 1 | |
| 37 | Bracket, Blade Guide Arm Guide | 014882 | 1 | |
| 38 | Bolt, 5/16-18 x 3/4" Flat Head Socket | F05006-95 | 1 | |
| 39 | Nut, 5/16-18 Hex Lock | F05010-6 | 1 | |
| 40 | Decal, Blade Guide Arm Warning Stripe | 015849 | 1 | |
| 41 | Screw, 1/4-20 x 1" Hex Head | F05006-10 | 2 | |
| 42 | Bolt, 5/16-18 x 2 1/2" Hex Head | F05006-10 | 2 | |
| 43 | Chain, #25 x 92 Pitches | 042443 | 1 | |
| 44 | Link, #25 Master | P09983 | 2 | |

SECTION 3 BLADE WHEELS & TENSIONER

3.1 Blade Drive Assembly



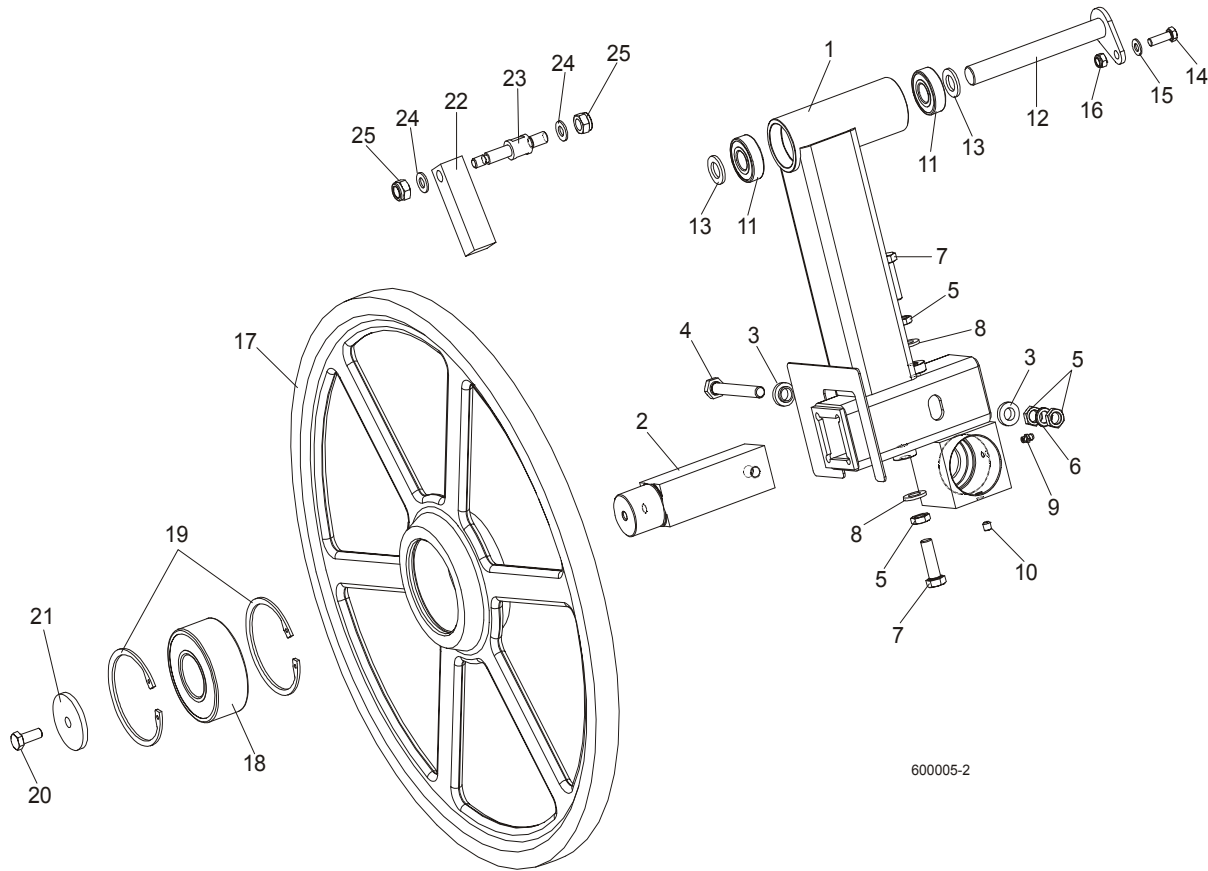
| REF | DESCRIPTION (◆ Indicates Parts Available In Assemblies Only) | PART # | QTY. |
|-----|--|-----------|------|
| 1 | SHAFT, BLADE DRIVE WHEEL | 088475 | 1 |
| 2 | BOLT, M10x25 8.8 HEX HEAD FULL THREAD | F81003-31 | 1 |
| 3 | WASHER, BLADE DRIVE WHEEL | 088956-1 | 1 |
| | PULLEY ASSEMBLY, BLADE DRIVE | 088561 | 1 |
| 4 | Pulley, 3-Groove 484 mm Diameter | 089457-1 | 1 |
| 5 | Bushing, Blade Drive Wheel | 088476 | 1 |
| 6 | Bearing, 3208.2rsr.tvh (FAG) Rolling | 088449 | 2 |
| 7 | Spacer, Drive Bearing | 088478 | 1 |
| 8 | Key, A20x12x100 Parallel | 088477 | 1 |
| 9 | WHEEL, BLADE DRIVE | 088420-1 | 1 |
| 10 | WASHER, MB21 (FAG) LOCK | 088451 | 1 |
| 11 | NUT, KM21(M105X2) (FAG) LOCK | 088450 | 1 |
| 12 | BAR, WHEEL SCRAPER | 088781 | 1 |
| 13 | SHAFT, WHEEL SCRAPER | 088780-1 | 1 |

3 Blade Wheels & Tensioner

Blade Drive Assembly

| | | | | |
|----|--|-----------|---|--|
| 14 | WASHER, 10.5 ZINC FLAT | F81055-1 | 2 | |
| 15 | NUT, M12-8 HEX NYLON ZINC LOCK | F81034-2 | 2 | |
| 16 | BOLT, M12X1.25X40 HEX HEAD | F81004-42 | 3 | |
| 17 | WASHER, 13 FLAT ZINC | F81056-1 | 3 | |
| 18 | NUT, M12X1.25 8.8 THIN ZINC | F81034-5 | 3 | |
| 19 | SCREW, M16X1.5X50-33H HEX HEAD FULL DOG POINT SET ZINC | F81006-14 | 1 | |
| 20 | WASHER, 17 ZINC FLAT | F81058-1 | 1 | |
| 21 | NUT, M16x1.5-08-B ZINC THIN | F81036-6 | | |

3.2 Idle Blade Wheel Assembly



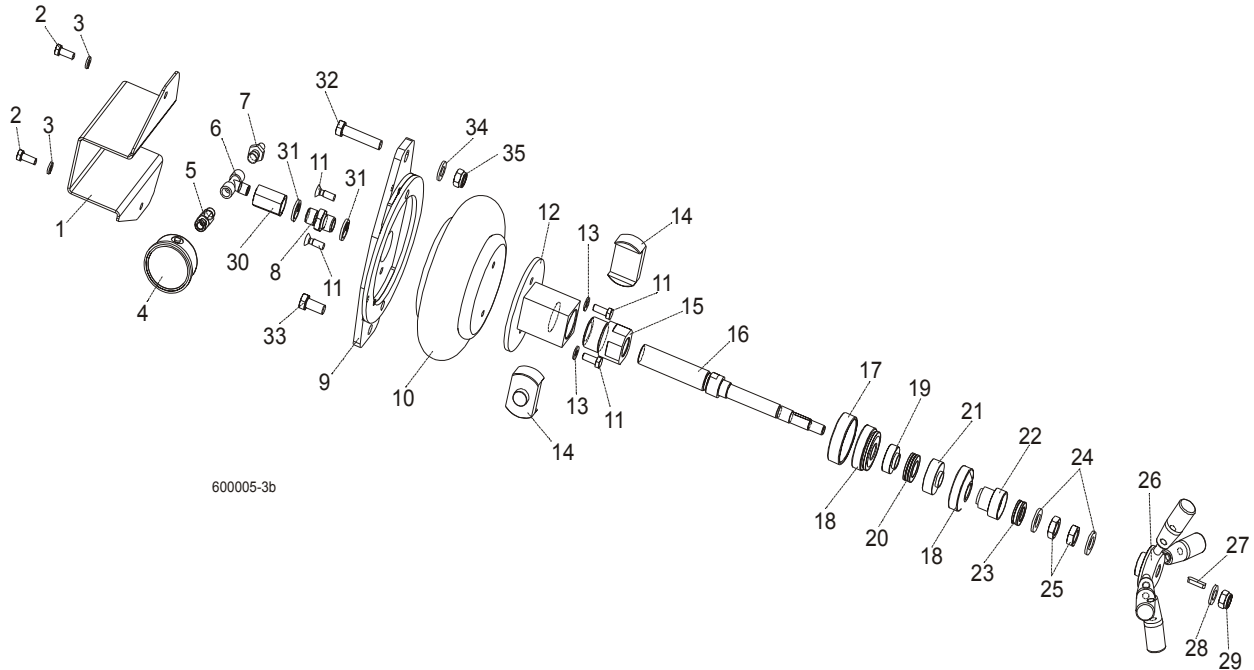
| REF | DESCRIPTION (◆ Indicates Parts Available In Assemblies Only) | PART # | QTY. |
|-----|--|-----------|------|
| | TUBE WELDMENT, LT60 IDLE SIDE BLADE WHEEL COMPLETE | 088762 | 1 |
| 1 | Tube Weldment, LT60 Idle Blade Wheel | 088434-1 | 1 |
| 2 | Shaft, Idle Blade Wheel | 088474 | 1 |
| 3 | Washer, Zinc Special | 086769-1 | 2 |
| 4 | Bolt, M12x1.25x100-8.8 Hex Head Zinc | F81004-41 | 1 |
| 5 | Nut, M12x1.25 8.8 Hex ZincThin | F81034-5 | 4 |
| 6 | Washer, Z12.2 Split Zinc Lock | F81056-2 | 1 |
| 7 | Bolt, M12x1.25x40 Hex Head | F81004-42 | 2 |
| 8 | Washer, 13 Zinc Flat | F81056-1 | 2 |
| 9 | Fitting, M6 Straight Grease | 086280 | 1 |
| 10 | Screw, M8x8-33H Hex Socket Set Flat Point Zinc | F81014-1 | 1 |
| 11 | Bearing, 6204 2RS-CX Rolling | 088447 | 2 |
| 12 | PIN WELDMENT, PIVOT | 088759-1 | 1 |
| 13 | WASHER, 17 ZINC FLAT | F81058-1 | 2 |

3 Blade Wheels & Tensioner

Idle Blade Wheel Assembly

| | | | | |
|----|--|-----------|---|--|
| 14 | BOLT, M8X25-8.8-B HEX HEAD FULL THREAD ZINC | F81002-5 | 1 | |
| 15 | WASHER, 8.4 ZINC FLAT | F81054-1 | 1 | |
| 16 | NUT, M8-8-B HEX NYLON ZINC LOCK | F81032-2 | 1 | |
| | WHEEL ASSEMBLY, IDLE SIDE | 088764 | 1 | |
| 17 | Wheel, Blade Idle Side | 088419-1 | 1 | |
| 18 | Bearing, 3309B.2RSR.TVH-P66 FAG | 086428 | 1 | |
| 19 | Ring, W100 Spring Retaining | F81090-10 | 2 | |
| 20 | BOLT, M10X25 8.8 HEX HEAD FULL THREAD | F81003-31 | 1 | |
| 21 | WASHER, IDLE BLADE WHEEL RETAINING | 088957-1 | 1 | |
| 22 | SCRAPER, IDLE BLADE WHEEL | 088781 | 1 | |
| 23 | SHAFT, SHORT ZINC WHEEL SCRAPER | 088779-1 | 1 | |
| 24 | WASHER, 10.5 ZINC FLAT | F81055-1 | 2 | |
| 25 | NUT, M12-8 HEX NYLON ZINC LOCK | F81034-2 | 2 | |

3.3 Blade Tensioner Assembly



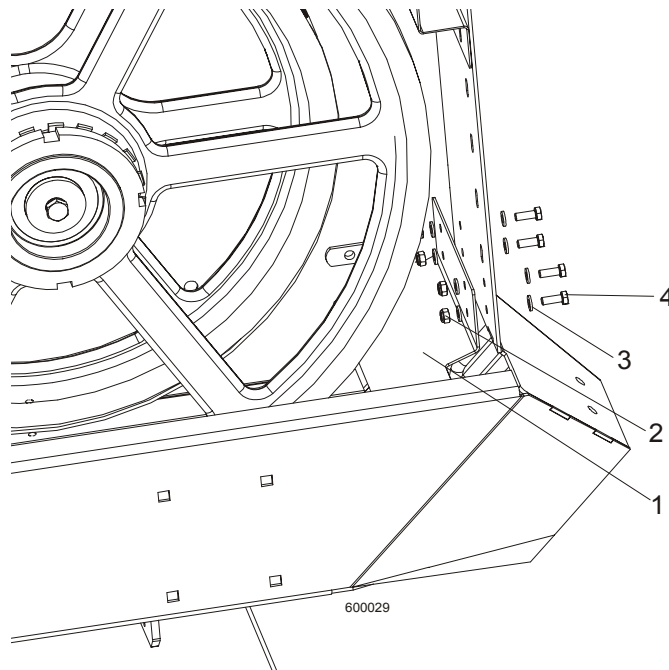
| REF | DESCRIPTION (◆ Indicates Parts Available In Assemblies Only) | PART # | QTY. |
|-----|--|-----------|------|
| | BLADE TENSIONER, COMPLETE | 088790 | 1 |
| 1 | Guard, Air Pressure Gauge | 088924 | 1 |
| 2 | Bolt, M8x20-8.8-B Hex Head Full Thread Zinc | F81002-4 | 2 |
| 3 | Washer 8.2 Zinc Split | F81054-4 | 2 |
| 4 | Gauge, M63T-2,5/20G G 1/8 0-0,6 MPa/PSI Air Pressure | 088568 | 1 |
| 5 | Nipple, 1/8" Thread x 1/4" Thread | 088571 | 1 |
| 6 | Fitting, PO 2301 002 2 Tee Connector | 088573 | 1 |
| 7 | Fitting, 1/4" Thread 390 004 004 0 (REXROTH) Air Tank Valve | 088575 | 1 |
| 8 | Nipple, G1/4z/G1/4z 893-104-430-4 | 090807 | 1 |
| 9 | Bracket, Air Bag Mount | 088798-1 | 1 |
| 10 | Bag, POJ 192 308 100 0 Air | 088576 | 1 |
| 11 | Screw, M8x25 Cross Recessed Countersunk Head Zinc | F81002-51 | 4 |
| 12 | Tube Weldment, Tensioner Nut | 088795-1 | 1 |
| 13 | Washer, 8.4 Zinc Flat | F81054-1 | 2 |
| 14 | Plate, Tube Guide | 089433 | 1 |
| 15 | Nut, Blade Tensioner | 088794 | 1 |
| 16 | Bolt, Blade Tensioner Special | 088793-1 | 1 |
| 17 | Seat, Spherical Bearing Threaded | 088803-1 | 1 |
| 18 | Bearing, GE20 AW (ELGES) Spherical Plain Thrust | 089430 | 2 |
| 19 | Bushing, Bearing Spacer | 088791 | 1 |

3

Blade Wheels & Tensioner*Blade Tensioner Assembly*

| | | | | |
|----|---|-----------|---|--|
| 20 | Bearing, 51104 Thrust Ball | 088989 | 1 | |
| 21 | Seat, 51104 Thrust Bearing | 089439 | 1 | |
| 22 | Seat, 51103 Thrust Bearing | 089440-1 | 1 | |
| 23 | Bearing, 51103 FLT Thrust Ball | 086675 | 1 | |
| 24 | Washer, 17 Zinc Flat | F81058-1 | 2 | |
| 25 | Nut, M16x1,5-08-B Zinc Thin | F81036-6 | 2 | |
| 26 | Handle, Blade Tensioner Complete | 089431 | 1 | |
| 27 | Key, A5x5x25 Parallel | 089432 | 1 | |
| 28 | Washer, 13 Zinc Flat | F81056-1 | 1 | |
| 29 | Nut, M12-8 Hex Nylon Zinc Lock | F81034-2 | 1 | |
| 30 | Nipple, G1/4w/G1/4w 893-302-000-4 | 090808 | 1 | |
| 31 | Seal, G1/4 866-014-000-0 | 090809 | 2 | |
| 32 | BOLT, M12x55-8.8 HEX HEAD ZINC | F81004-12 | 1 | |
| 33 | BOLT, M12x25-8.8 HEX HEAD FULL THREAD ZINC | F81004-31 | 1 | |
| 34 | WASHER,13 ZINC FLAT | F81056-1 | 1 | |
| 35 | NUT, M12-8 HEX NYLON ZINC LOCK | F81034-2 | 1 | |

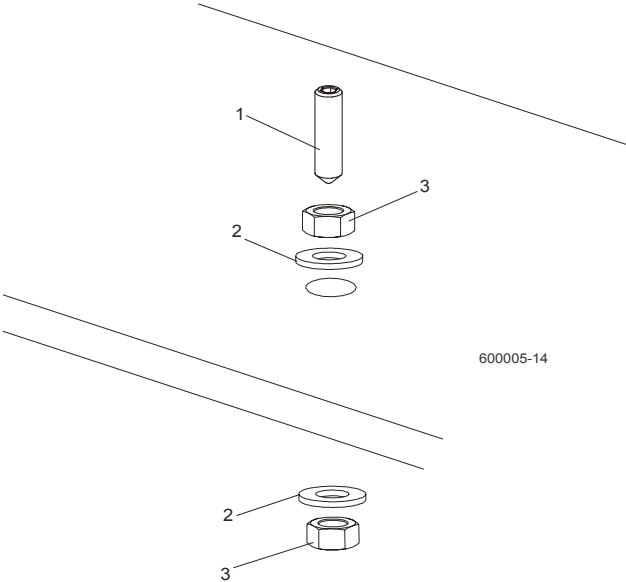
3.4 Sawdust Flow Guide



| REF | DESCRIPTION (◆ Indicates Parts Available In Assemblies Only) | PART # | QTY. | |
|-----|--|-----------|------|--|
| 1 | Guide, Sawdust Flow Painted | 090506 | 1 | |
| 2 | Nut, M6-8-B Hex Nylon Zinc Lock | F81031-2 | 4 | |
| 3 | Washer 6.4 Zinc Flat | F81053-1 | 8 | |
| 4 | Bolt, M6x16-8.8, Hex Head Full Thred, Zinc | F81001-32 | 4 | |

SECTION 4 SAW HEAD

4.1 Middle Throat Screw

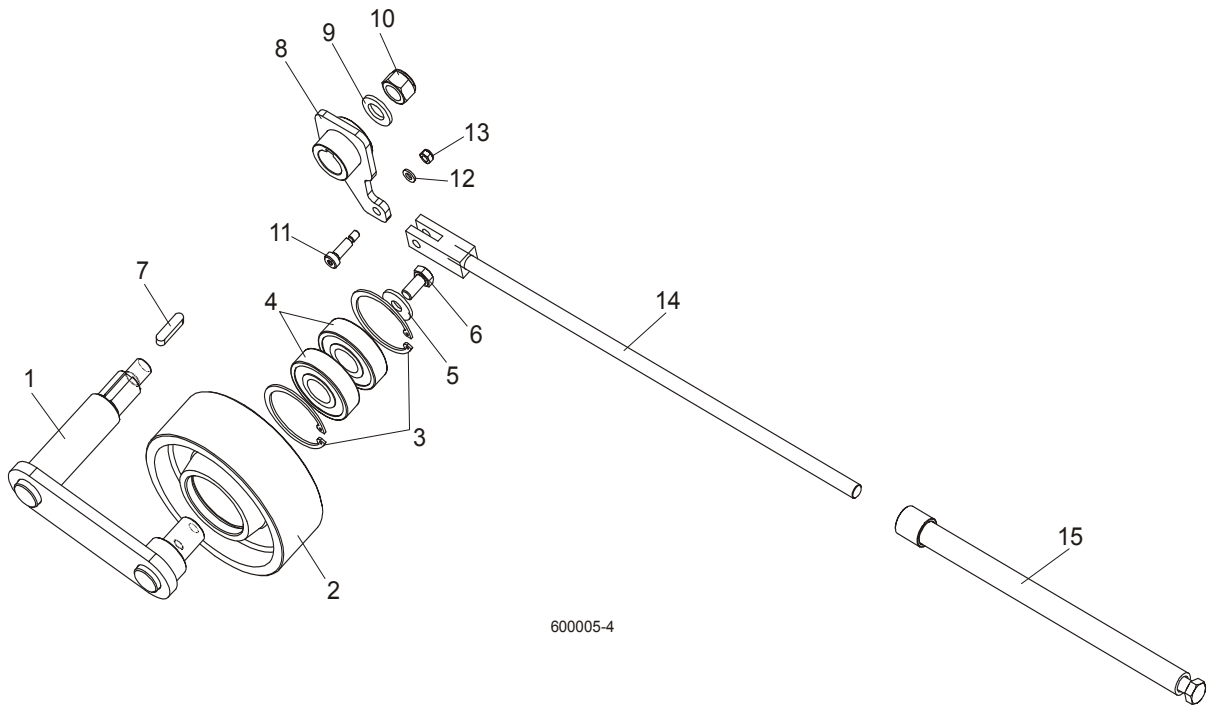


| REF | DESCRIPTION (◆ Indicates Parts Available In Assemblies Only) | PART # | QTY. | |
|-----|--|-----------|------|--|
| 1 | SCREW, M10X40-45H HEX SOCKET SET CONE POINT ZINC | F81003-61 | 1 | |
| 2 | WASHER, 10.5 ZINC FLAT | F81055-1 | 2 | |
| 3 | NUT, M10-8-B ZINC HEX | F81033-3 | 2 | |

4 Saw Head

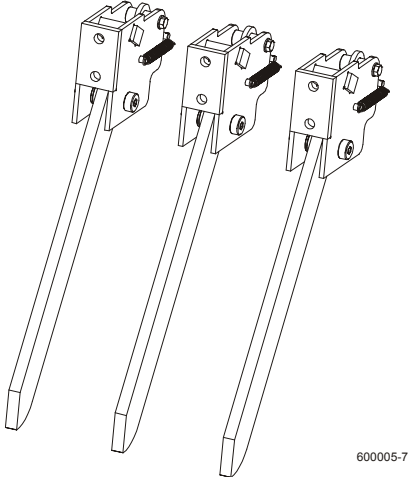
Drive Belt Tensioner

4.2 Drive Belt Tensioner

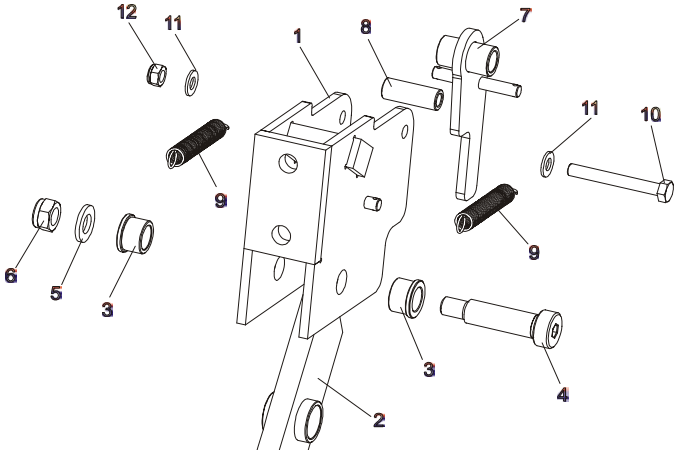


| REF | DESCRIPTION (◆ Indicates Parts Available In Assemblies Only) | PART # | QTY. |
|-----|--|-----------|------|
| | TENSIONER ASSEMBLY, DRIVE BELT | 088786 | 1 |
| 1 | Pivot Weldment, Drive Belt Tensioner | 088810-1 | 1 |
| 2 | Wheel, Belt Tension | 088814 | 1 |
| 3 | Ring, 62 mm Inside Spring Retaining | F81090-1 | 2 |
| 4 | Bearing, 6305 2RS NSK | P08066 | 2 |
| 5 | Washer, 11 Zinc Flat Special | 088787-1 | 1 |
| 6 | Bolt, M10x20-5.8 Hex Head Full Thread Zinc | F81003-1 | 1 |
| 7 | Key, A8X7X32 Parallel | 088564 | 1 |
| 8 | Arm Weldment, Drive Belt Tensioner | 088807-1 | 1 |
| 9 | Washer, 17 Zinc Flat | F81058-1 | 1 |
| 10 | Nut, M16-5.8 Zinc Hex | F81036-1 | 1 |
| 11 | Bolt, 8/M6X20 12.9 ISO 7379 BOSSARD | F81001-25 | 1 |
| 12 | Washer 6.4 Zinc Flat | F81053-1 | 1 |
| 13 | Nut, M6-8-B Hex Nylon Zinc Lock | F81031-2 | 1 |
| 14 | Rod Weldment, Threaded | 088789-1 | 1 |
| 15 | Tube Weldment, Threaded | 088782-1 | 1 |

4.3 Board Return Assembly



600005-7

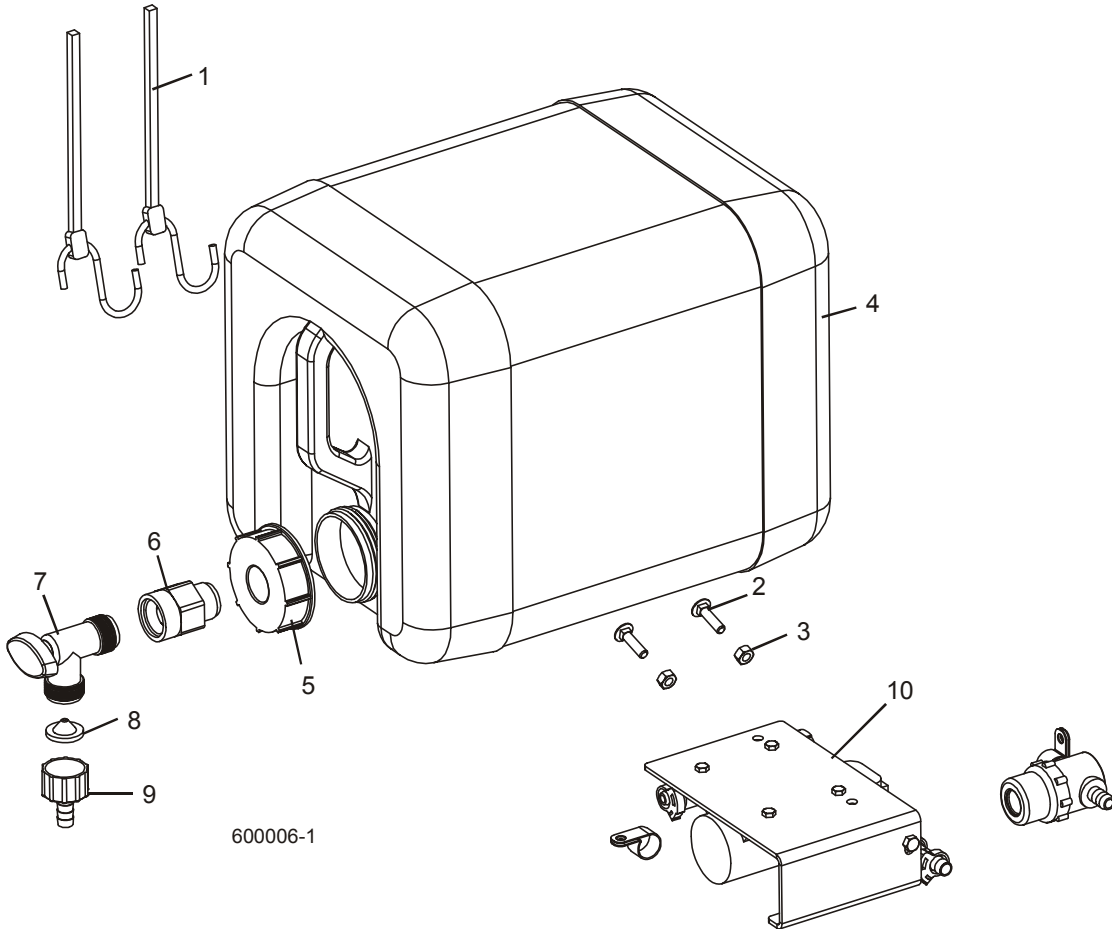


| REF | DESCRIPTION (◆ Indicates Parts Available In Assemblies Only) | PART # | QTY. |
|-----|--|-----------|------|
| | BOARD RETURN ASSEMBLY | 090120 | 3 |
| 1 | MOUNT WELDMENT, BOARD RETURN ARM | 090109-1 | 3 |
| 2 | ARM, BOARD RETURN | 090112-1 | 3 |
| 3 | Bushing, Bronze | 086676 | 6 |
| 4 | BOLT, 16/M12X50-12.9 ISO7379-BOSSARD SOCKET HEAD | F81004-25 | 3 |
| 5 | WASHER, 13 ZINC FLAT | F81056-1 | 3 |
| 6 | NUT, M12-8 HEX NYLON ZINC LOCK | F81034-2 | 6 |
| 7 | LATCH WELDMENT, BOARD RETURN ARM | 090118-1 | 3 |
| 8 | SPACER, ZINC | 090115-1 | 3 |
| 9 | SPRING, 1/2 X 2 1/4 X .06 EXTENSION | 014817 | 6 |
| 10 | BOLT, M8 X 65-5.8 HEX HEAD ZINC | F81002-3 | 3 |
| 11 | WASHER, 8.4 ZINC FLAT | F81054-1 | 6 |
| 12 | NUT, M8-8-B HEX NYLON ZINC LOCK | F81032-2 | 3 |

4 Saw Head

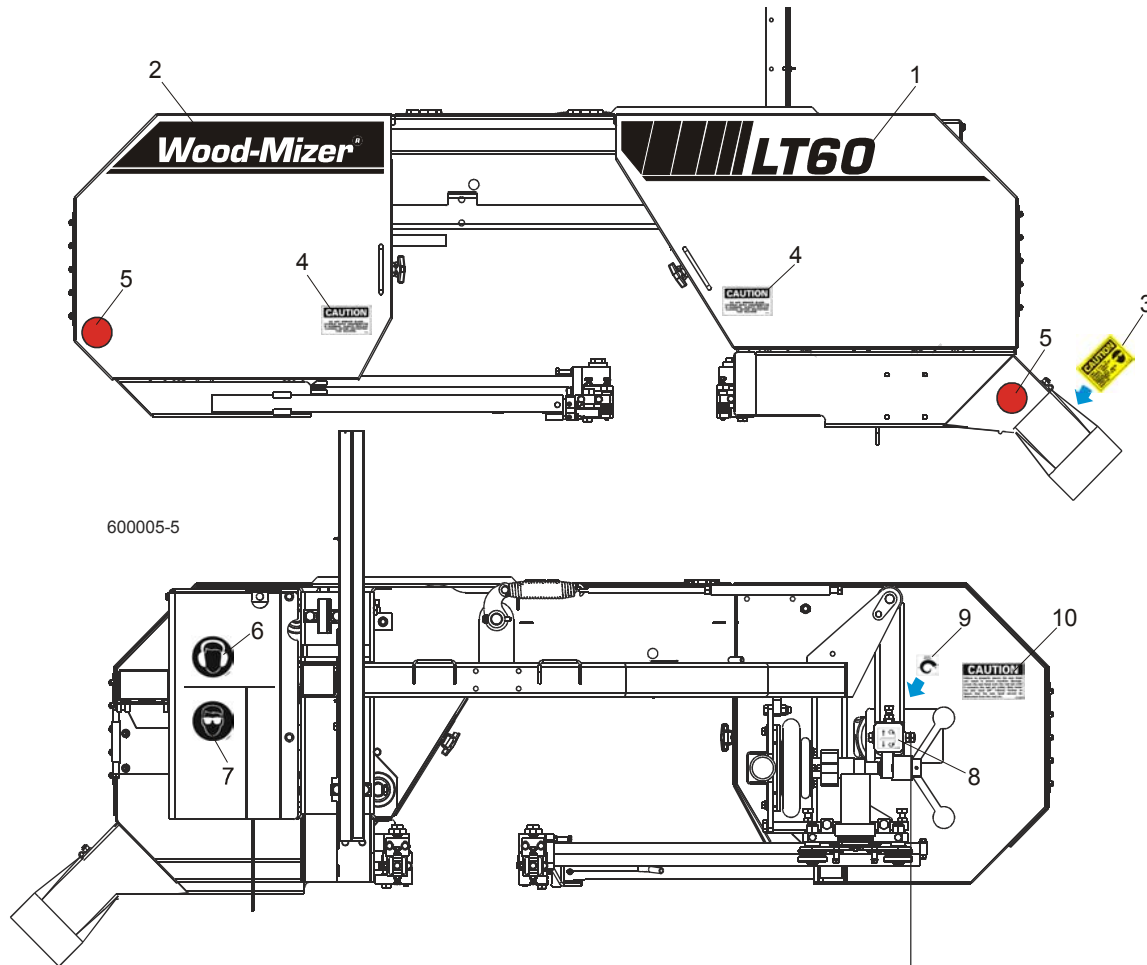
Water Lube Assembly

4.4 Water Lube Assembly



| REF | DESCRIPTION (◆ Indicates Parts Available In Assemblies Only) | PART # | QTY. | |
|-----|--|-----------|------|---|
| 1 | STRAP, 20" RUBBER | P11668 | 2 | |
| 2 | BOLT, 1/4-20 X 1" CARRIAGE HEAD | F05005-34 | 2 | |
| 3 | NUT, 1/4-20 HEX LOCK | F05010-21 | 2 | |
| | BOTTLE ASSY, WATER LUBE | 014642 | 1 | |
| 4 | Bottle, 5-Gallon Water Lube | 014637 | 1 | ◆ |
| 5 | Cap, Water Lube Bottle Buttress Thread | 014773 | 1 | |
| 6 | FITTING, 3/4FPT X 3/4MPT | 014636 | 1 | |
| 7 | FITTING, WATER LUBE SHUTOFF VALVE | 014100 | 1 | |
| 8 | FILTER, WATER LUBE | 016086 | 1 | |
| 9 | FITTING, 5/8" NPT TO 3/8" HOSE BARB | 014113 | 1 | |
| 10 | LUBEMIZER PARTS/HOSES (SEE LUBEMIZER OPTION MANUAL) | | | |

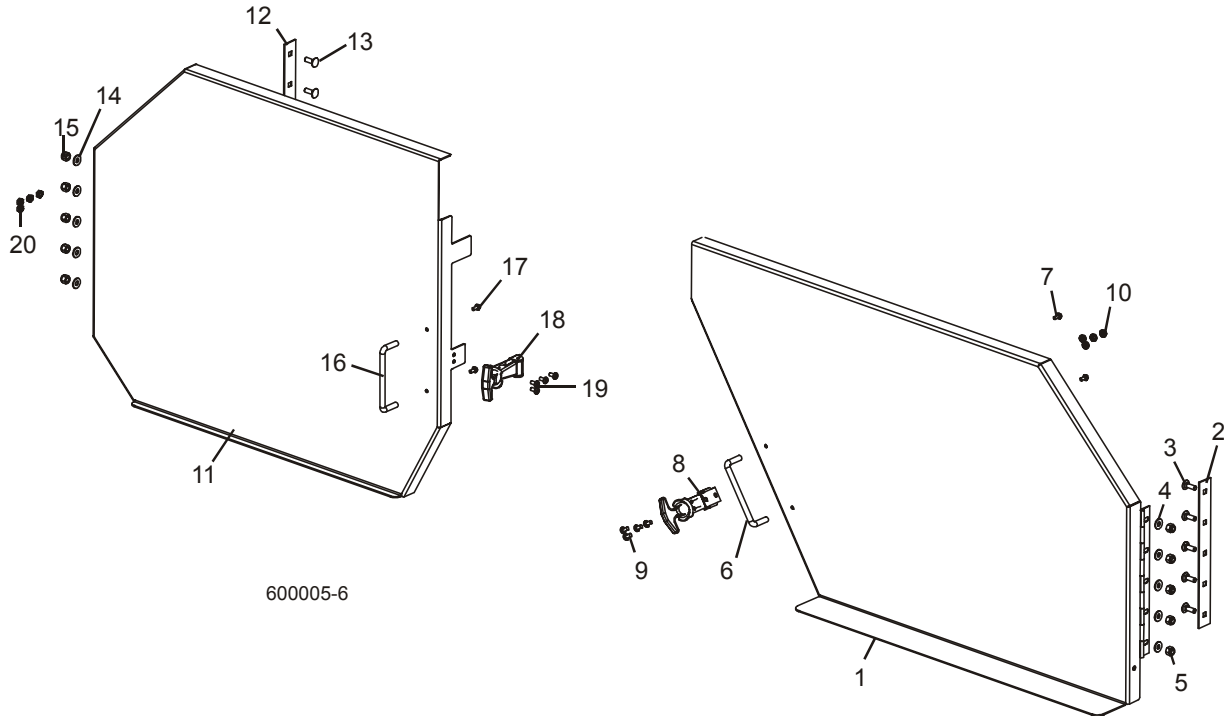
4.5 Saw Head Decals



| REF | DESCRIPTION (◆ Indicates Parts Available In Assemblies Only) | PART # | QTY. |
|-----|--|---------|------|
| 1 | DECAL, LT60 LOGO | 088908 | 1 |
| | DECAL, LT70 LOGO | 089550 | 1 |
| 2 | DECAL, WOOD-MIZER LOGO | 087935 | 1 |
| 3 | DECAL, SAWDUST CHUTE CAUTION | P11754 | 1 |
| 4 | DECAL, BLADE COVERS DANGER | S20039 | 2 |
| 5 | REFLECTOR, 2" RED | P07452 | 2 |
| 6 | DECAL, EYE WARNING | S12004G | 1 |
| 7 | DECAL, EAR WARNING | S12005G | 1 |
| 8 | DECAL, BLADE ALIGNMENT | P11789 | 1 |
| 9 | DECAL, BLADE TENSION SCREW | P11790 | 1 |
| 10 | DECAL, SAW HEAD REST CAUTION | S12581 | 1 |

4 Saw Head Blade Housing Covers

4.6 Blade Housing Covers



600005-6

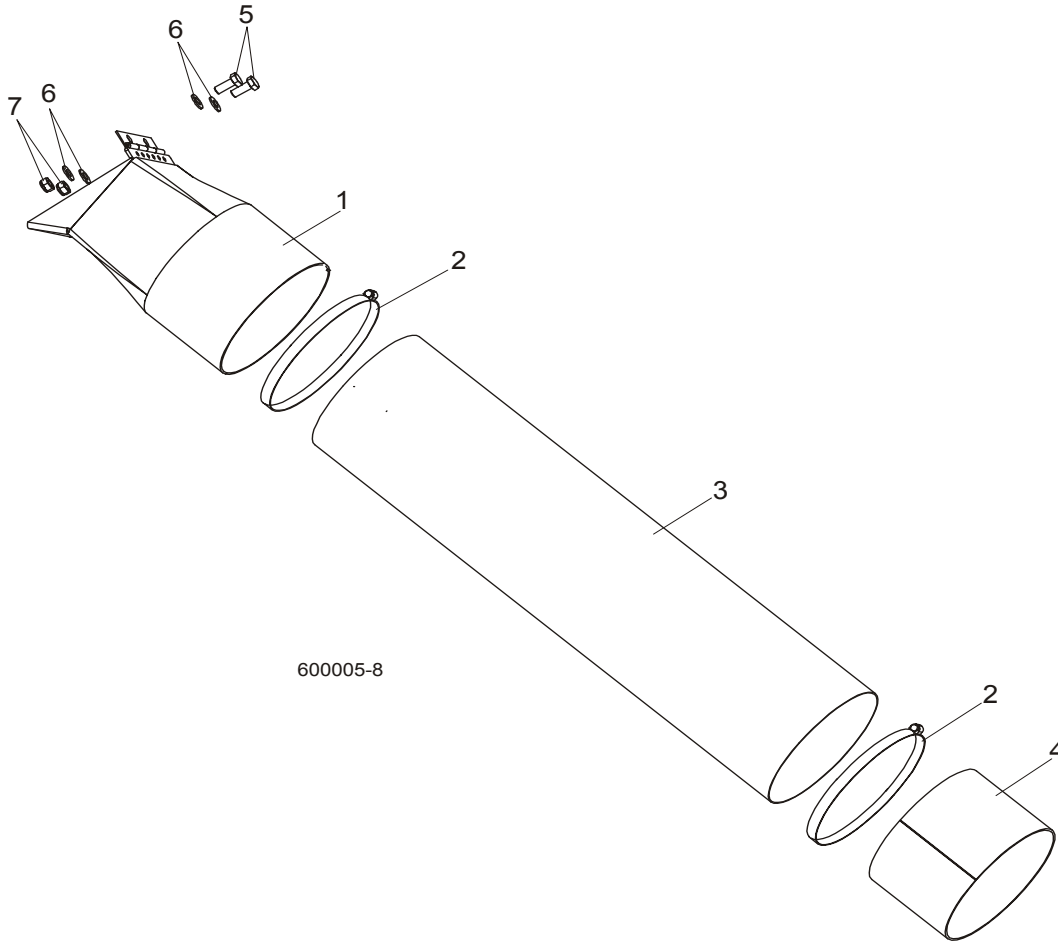
| REF | DESCRIPTION (◆ Indicates Parts Available In Assemblies Only) | PART # | QTY. | |
|-----|--|------------|------|---|
| | COVER ASSEMBLY, DRIVE SIDE BLADE HOUSING | 034374 | 1 | |
| 1 | Cover Weldment, Drive Side Blade Housing | 034317 | 1 | ◆ |
| 2 | Plate, Hinge Backing | 034251 | 1 | |
| 3 | Bolt, 1/4-20 x 3/4" Carriage Head | F05005-113 | 5 | |
| 4 | Washer, 1/4" SAE Flat | F05011-11 | 5 | |
| 5 | Nut, 1/4-20 Hex Nylon Lock | F05010-69 | 5 | |
| 6 | Handle, Blade Housing Cover | P08065 | 1 | |
| 7 | Screw, #8-32 x 3/8" Self-tapping | F05015-8 | 2 | |
| 8 | Latch, Flexible Draw | 014829 | 1 | |
| 9 | Screw, #10-24 x 3/8" Cross Slotted Pan Head | F05004-3 | 4 | |
| 10 | Nut, #10-24 Hex Self-Locking | F05010-14 | 4 | |
| | COVER ASSEMBLY, IDLE SIDE BLADE HOUSING | 034375 | 1 | |
| 11 | Cover Weldment, Idle Side Blade Housing | 034318 | 1 | ◆ |
| 12 | Plate, Hinge Backing | 034251 | 1 | |
| 13 | Bolt, 1/4-20 x 3/4" Carriage Head | F05005-113 | 5 | |
| 14 | Washer, 1/4" SAE Flat | F05011-11 | 5 | |
| 15 | Nut, 1/4-20 Hex Nylon Lock | F05010-69 | 5 | |
| 16 | Handle, Blade Housing Cover | P08065 | 1 | |
| 17 | Screw, #8-32 x 3/8" Self-tapping | F05015-8 | 2 | |
| 18 | Latch, Flexible Draw | 014829 | 1 | |

| | | | | |
|-----------|---|-----------|---|--|
| 19 | Screw, #10-24 x 3/8" Cross Slotted Pan Head | F05004-3 | 4 | |
| 20 | Nut, #10-24 Hex Self-Locking | F05010-14 | 4 | |

4 Saw Head

Sawdust Chute

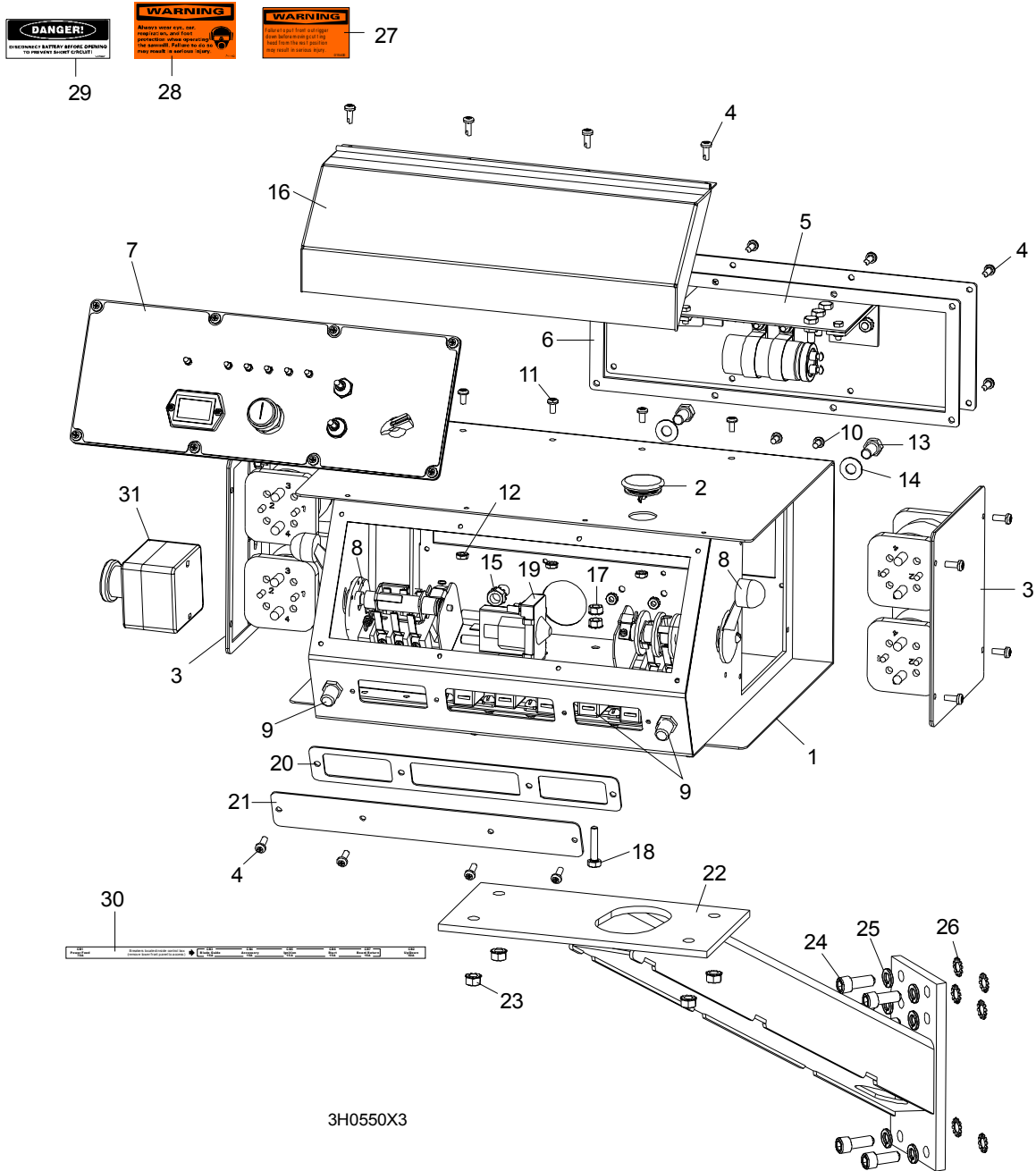
4.7 Sawdust Chute



| REF | DESCRIPTION (◆ Indicates Parts Available In Assemblies Only) | PART # | QTY. | |
|-----|--|----------|------|--|
| 1 | CHUTE WELDMENT, SAWDUST | 089352-1 | 1 | |
| 2 | CLAMP, 152 MM | 089358 | 2 | |
| 3 | TUBE, SAWDUST CHUTE | 090153 | 1 | |
| 4 | TUBE, CHUTE END | 090126-1 | 1 | |
| 5 | BOLT, M8X20-8.8-B HEX HEAD FULL THREAD ZINC | F81002-4 | 2 | |
| 6 | WASHER 8.4 ZINC FLAT | F81054-1 | 4 | |
| 7 | NUT, M8-8-B HEX NYLON ZINC LOCK | F81032-2 | 2 | |

SECTION 5 CONTROL & BATTERY BOXES

5.1 Control Assembly (Gas/Diesel)

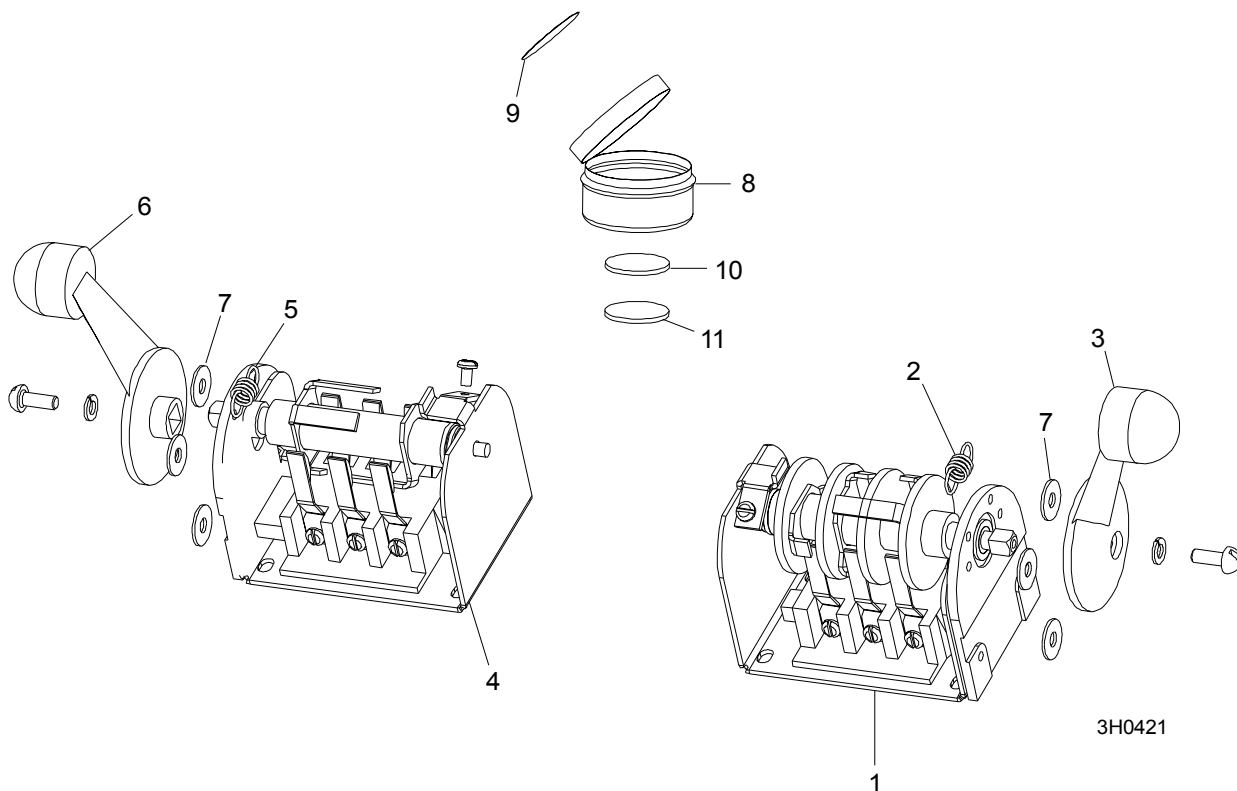


3H0550X3

| REF | DESCRIPTION (◆ Indicates Parts Available In Assemblies Only) | PART # | QTY. |
|-----|--|--------|------|
| | CONTROL BOX ASSEMBLY, E25 | 086571 | 1 |
| | CONTROL BOX ASSEMBLY, D40 | 086572 | 1 |

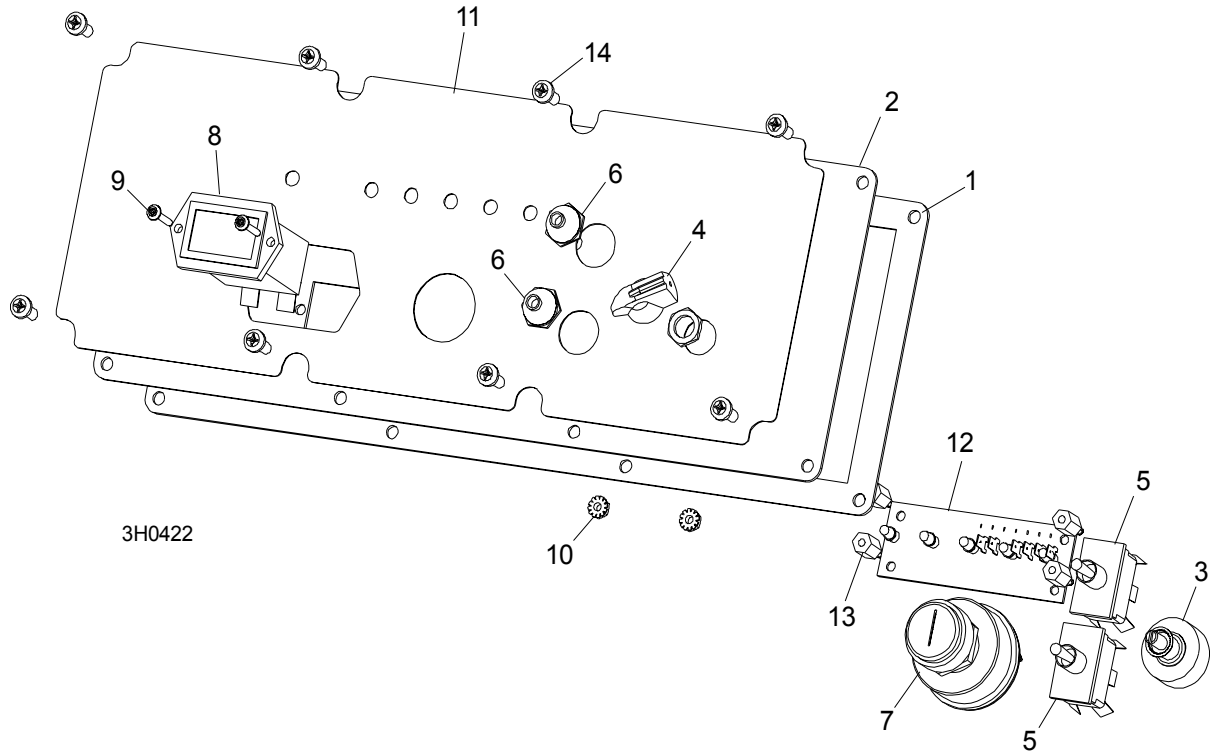
| | | | | |
|----|--|------------|----|---|
| 1 | Box Weldment, Sawmill Control | 016135 | 1 | ◆ |
| 2 | Plug, AS075 Oiltite | E20570 | 1 | |
| 3 | Solenoid Parts (See Section 5.4) | | | |
| 4 | Screw, #10-24 x 1/2" Pan Head | F05015-17 | 16 | |
| 5 | Panel Assembly, Power Feed Control | 024412 | 1 | |
| | Control Module, Power Feed SMT | 024396-1 | 1 | |
| 6 | Gasket, Rear Access Panel | 015278 | 1 | |
| 7 | Front Control Panel & Wiring Harnesses (Section 5.5) | | | |
| 8 | Drum Switches (Section 5.2) | | | |
| 9 | Circuit Breakers (Section 5.3) | | | |
| 10 | Screw, #10-24 x 3/8" Phillips Pan Head | F05004-3 | 2 | |
| 11 | Screw, #10-24 x 3/8" Phillips Pan Head Machine with Neo Washer | F05004-148 | 4 | |
| 12 | Nut, #10-24 Self Locking | F05010-14 | 6 | |
| 13 | Bolt, 3/8-16 x 3/4" Hex Head | F05007-27 | 2 | |
| 14 | Washer, 10.5 Flat | F81055-1 | 2 | |
| 15 | Nut, 3/8" Lock Nut | F05010-19 | 2 | |
| 16 | Cover, Control Box Hinged | 015304 | 1 | |
| 17 | Nut, 1/4-20 Self Locking | F05010-9 | 2 | |
| 18 | Bolt, 1/4-20 x 1 1/4" Hex Head Tap | F05005-3 | 1 | |
| 19 | Solenoid, Accessory | P10449 | 1 | |
| | Diode Assembly, Solenoid Coil Chassis BND | 087496 | 1 | |
| 20 | Gasket, Front Access Panel | 015266 | 1 | |
| 21 | Panel, Control Box Front Access | 086704-1 | 1 | |
| 22 | MOUNT WELDMENT, STANDARD CONTROL BOX | 086732-1 | 1 | |
| 23 | NUT, 5/16-18 SELF-LOCKING HEX | F05010-20 | 4 | |
| 24 | BOLT, M10 X 25-8.8 SOCKET HEAD | F81003-32 | 4 | |
| 25 | WASHER, 10.2 SPLIT LOCK | F81055-2 | 4 | |
| 26 | WASHER, 3/8" EXTERIOR STAR LOCK | F05011-36 | 4 | |
| 27 | DECAL, FRONT OUTRIGGER WARNING | 015400 | 1 | |
| 28 | DECAL, EAR/EYE PROTECTION WARNING | S11753 | 1 | |
| 29 | DECAL, DISCONNECT BATTERY DANGER | S12002 | 1 | |
| 30 | DECAL, CIRCUIT BREAKER ID ('98 SUPER) | 024362 | 1 | |
| 31 | SWITCH, RED EMERGENCY STOP XALJ174F | E22703-2 | 1 | |

5.2 Drum Switches



| REF | DESCRIPTION (◆ Indicates Parts Available In Assemblies Only) | PART # | QTY. | |
|-----|--|-----------|--------|---|
| | SWITCH ASSEMBLY, UP/DOWN DRUM | E20440 | 1 | |
| 1 | Switch, S12 Bulk Drum | E20440-B | 1 | ◆ |
| 2 | Spring, Drum Switch | P12570 | 1 | |
| 3 | Handle, Drum Switch Replacement | P12500 | 1 | |
| | SWITCH ASSEMBLY, POWER FEED DRUM | E20438 | 1 | |
| 4 | Switch, S10 Bulk Drum | E20438-B | 1 | ◆ |
| 5 | Spring, Drum Switch | P12570 | 1 | |
| 6 | Handle, Drum Switch Replacement | P12500 | 1 | |
| 7 | WASHER, #8 SAE FLAT | F05011-41 | 6 | |
| | CUP ASSEMBLY, DRUM SWITCH GREASE | A20463 | 1 | |
| 8 | Cup, Plastic Container | P20464 | 1 | ◆ |
| 9 | Decal, Grease Cup Label | P20467 | 1 | |
| 10 | Pad, Velcro Loop | P20466 | 1 | ◆ |
| 11 | Pad, Velcro Hook | P20465 | 1 | ◆ |
| | Grease, High Temp Drum Switch | P20468 | .011ml | ◆ |

5.3 Front Panel Assembly & Harnesses



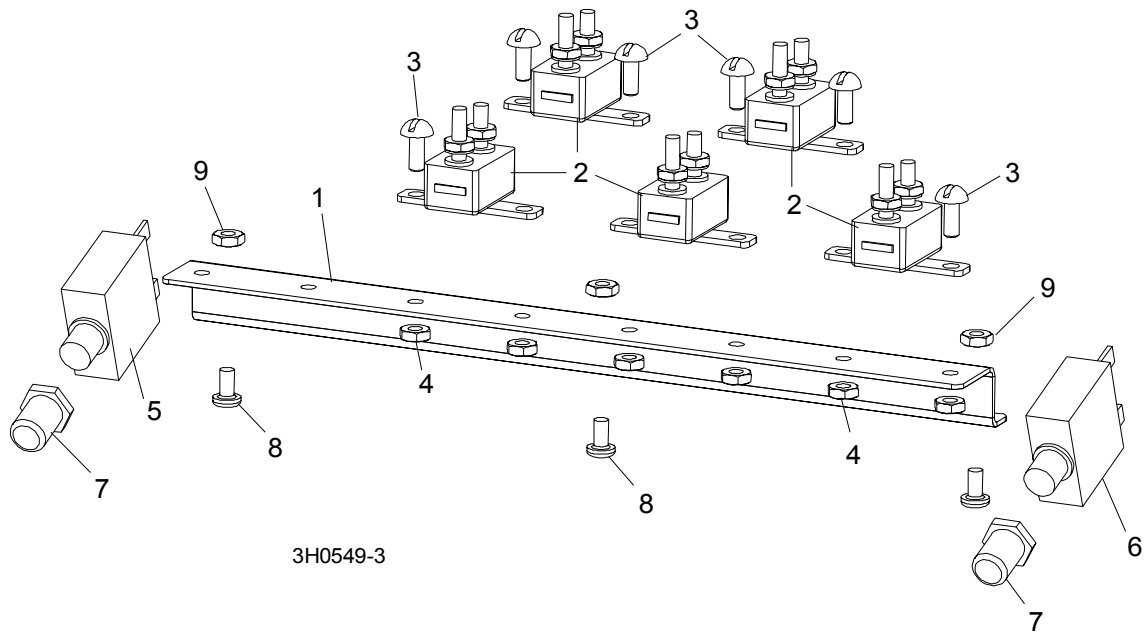
| REF | DESCRIPTION (◆ Indicates Parts Available In Assemblies Only) | PART # | QTY. |
|-----|--|-----------|------|
| | PANEL ASSEMBLY, CONTROL FRONT (E25) | 086760 | 1 |
| | PANEL ASSEMBLY, CONTROL FRONT (D40) | 087401 | 1 |
| 1 | Gasket, Front Panel | 088387 | 1 |
| 2 | Panel Weldment, Control | 015302 | 1 |
| 3 | Switch Assembly, Feed Rate | E20519 | 1 |
| 4 | Knob, Feed Rate With Set Screw | P06257 | 1 |
| 5 | Switch, Toggle | 024200 | 2 |
| 6 | Boot, Toggle Switch Rubber | P02575 | 2 |
| 7 | Switch, Key | P04350 | 1 |
| 8 | Meter, Hour | 015401 | 1 |
| 9 | Screw, 6-42 x 3/4" Socket Button Head Cap Stainless Steel | F05004-93 | 2 |
| 10 | Nut, 6-23 Self Locking | F05010-59 | 2 |
| 11 | Decal, Control Panel (E25) | 015271 | 1 |
| | Decal, Control Panel (D40) | 015269 | 1 |
| 12 | Board, LED Circuit (E25) | 015416 | 1 |
| | Board, LED Circuit (D40) | 015409 | 1 |
| 13 | Spacer, 1/2" -#6 Threaded | 023147 | 4 |

5 Control & Battery Boxes

Front Panel Assembly & Harnesses

| | | | | |
|-----------|--------------------------------------|-----------|---|--|
| | HARNESS ASSEMBLY, UPPER WIRING (E25) | 024843 | 1 | |
| | HARNESS ASSEMBLY, UPPER WIRING (D40) | 087107 | 1 | |
| | HARNESS ASSEMBLY, LOWER WIRING (D40) | 087106 | 1 | |
| | HARNESS ASSEMBLY, LOWER WIRING (E25) | 015421 | 1 | |
| 14 | Screw, #10-24 x 1/2" Pan Head | F05015-17 | 8 | |

5.4 Circuit Breakers

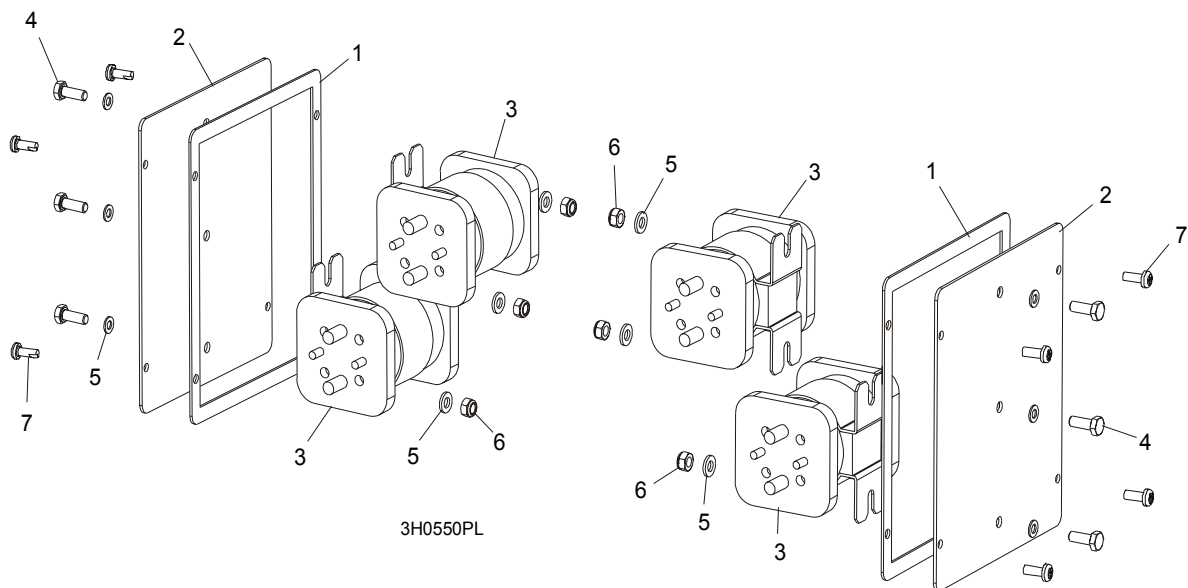


| REF | DESCRIPTION (◆ Indicates Parts Available In Assemblies Only) | PART # | QTY. |
|-----|--|-----------|------|
| | BREAKER ASSEMBLY, SAWMILL CONTROL CIRCUIT | 015621 | 1 |
| 1 | Rail, Circuit Breaker | 015310 | 1 |
| 2 | Breaker, 15 Amp Manual Reset | E20430 | 5 |
| 3 | Screw, #8-32 X 1/2" Slotted Head | F05004-12 | 6 |
| 4 | Nut, #8-32 Hex Self-Locking | F05010-41 | 6 |
| 5 | BREAKER, 70 AMP MANUAL RESET PANEL MOUNT | 015527 | 1 |
| 6 | BREAKER, 50 AMP MANUAL RESET PANEL MOUNT | 021256 | 1 |
| 7 | BOOT, CIRCUIT BREAKER | 021253 | 2 |
| 8 | SCREW, #10-24 X 3/8" PHILLIPS PAN HEAD | F05004-3 | 3 |
| 9 | NUT, #10-24 SELF LOCKING | F05010-14 | 3 |

5 Control & Battery Boxes

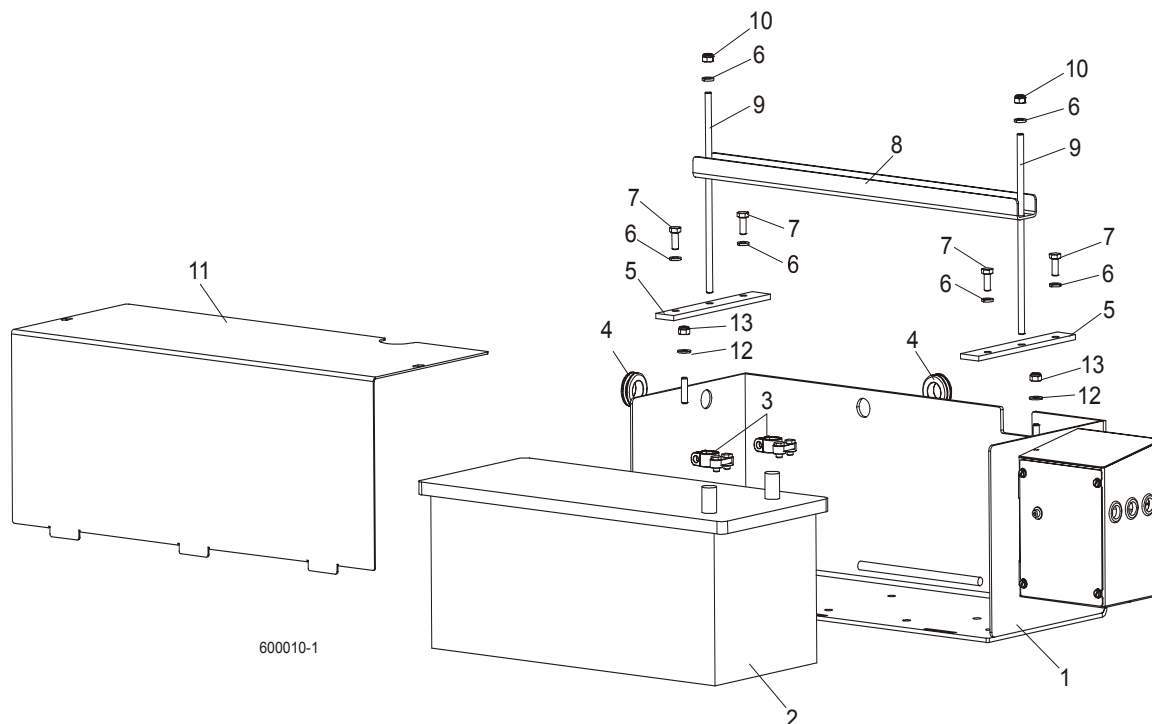
Solenoid Assemblies (Gas/Diesel Only)

5.5 Solenoid Assemblies (Gas/Diesel Only)



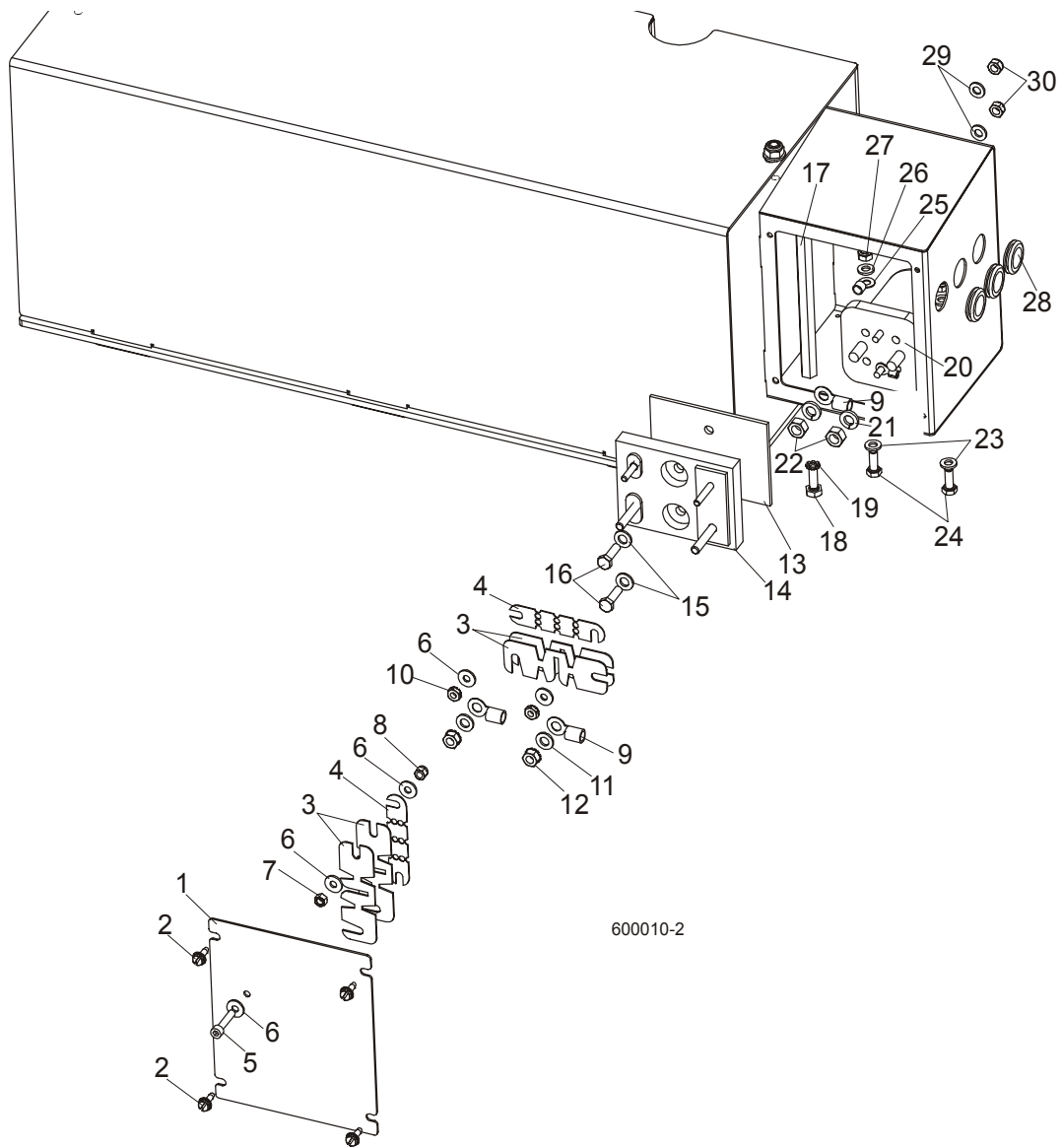
| REF | DESCRIPTION (◆ Indicates Parts Available In Assemblies Only) | PART # | QTY. |
|-----|--|-----------|------|
| 1 | GASKET, SIDE PANEL CONTROL | 015274 | 2 |
| 2 | PANEL WELDMENT, SIDE | 015307 | 2 |
| 3 | SOLENOID, 200A 12V DPST | 015417 | 4 |
| 4 | BOLT, M6 X 16-5.8 HEX HEAD | F81001-14 | 6 |
| 5 | WASHER, 6.4 FLAT | F81053-1 | 12 |
| 6 | NUT, M6-8 HEX | F81031-2 | 6 |
| | DIODE ASSEMBLY, SOLENOID COIL CHASSIS GND | 015426 | 4 |
| 7 | SCREW, #10-24 X 1/2" PAN HEAD | F05015-17 | 8 |

5.6 Battery Box Assembly (D42 Only)



| REF | DESCRIPTION (◆ Indicates Parts Available In Assemblies Only) | PART # | QTY. |
|-----|--|----------|------|
| | BATTERY BOX, COMPLETE | 089794 | 1 |
| 1 | Box Weldment, LT60 Battery | 088677-1 | 1 |
| 2 | Battery, 12V 180Ah "Banner" | 089369 | 1 |
| 3 | Terminal, Battery | P05085 | 2 |
| 4 | Grommet, 22 mm Rubber | 087400 | 2 |
| 5 | Bar, Battery Retainer | 088538-1 | 2 |
| 6 | Washer, 8.2 Split Zinc Lock | F81054-4 | 6 |
| 7 | Bolt, M8x20-5.8 Hex Head Full Thread Zinc | F81002-1 | 4 |
| 8 | Channel, Battery Hold-Down | 088357-1 | 1 |
| 9 | Rod, Battery Hold-Down | 088356-1 | 2 |
| 10 | Nut, M8-8-B Hex Nylon Zinc Lock | F81032-2 | 2 |
| 11 | COVER, BATTERY BOX | 088362-1 | 1 |
| 12 | WASHER, 8.4 ZINC FLAT | F81054-1 | 2 |
| 13 | NUT, M8-8-B HEX NYLON ZINC LOCK | F81032-2 | 2 |

5.7 Fuse Box Assembly (D42 Only)

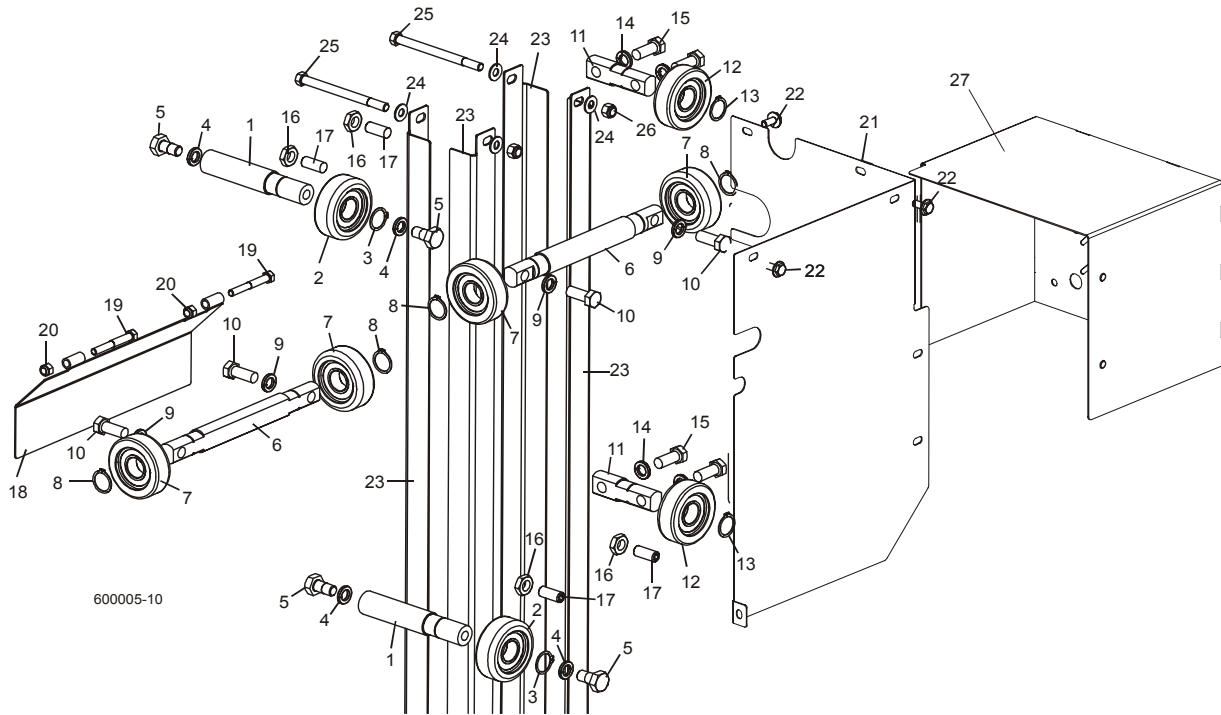


| REF | DESCRIPTION (◆ Indicates Parts Available In Assemblies Only) | PART # | QTY. | |
|-----|--|----------|------|--|
| 1 | COVER, FUSE BOX | 086272-1 | 1 | |
| 2 | SCREW, # 10-24 x 1/2 SELF-TAPPING | F05015-7 | 4 | |
| 3 | FUSE LINK, 12V 225 AMP | P11550 | 4 | |
| 4 | FUSE LINK, 12V 150 AMP | 023361 | 2 | |
| 5 | SCREW, M5 x 25-8.8 HEX SOCKET HEAD CAP ZINC | F81000-7 | 1 | |
| 6 | WASHER, 5.5 FLAT ZINC SPECIAL | F81052-3 | 5 | |
| 7 | NUT, M5-8 ZINC HEX | F81030-1 | 1 | |
| 8 | NUT, M5-8 DIN 985 ZINC | F81030-2 | 1 | |

| | | | | |
|----|---|-----------|---|--|
| 9 | TERMINAL, KO 35/8 RING | F81066-3 | 3 | |
| 10 | NUT, #10-20 HEX ZINC SELF-LOCKING | F05010-14 | 2 | |
| 11 | WASHER, 7.4 ZINC FLAT | F81056-11 | 2 | |
| 12 | NUT, 1/4-20 HEX ZINC SELF-LOCKING | F05010-9 | 2 | |
| 13 | PAD, 1/8" FUSE BOX INSULATOR | 015287 | 1 | |
| 14 | BLOCK, SUPER FUSE MOUNT | 015288 | 1 | |
| 15 | WASHER, 7.4 ZINC FLAT | F81056-11 | 2 | |
| 16 | BOLT, M6 X 20-8.8 HEX HEAD FULL THREAD ZINC | F81001-2 | 2 | |
| 17 | TERMINAL, EXTENDED HEX STUD | 015517 | 1 | |
| 18 | BOLT, 1/4-20 X 3/4" HEX HEAD FULL THREAD ZINC | F05005-1 | 1 | |
| 19 | WASHER, 6.4 EXTERNAL TEETH ZINC LOCK | F81053-2 | 1 | |
| 20 | SOLENOID, 200A 12V SPST HYDRAULIC PUMP 1997 | 015470 | 1 | |
| 21 | WASHER, 8.2 ZINC SPLIT LOCK | F81054-4 | 2 | |
| 22 | NUT, 5/16-24 ZINC HEX | F05010-28 | 2 | |
| 23 | WASHER, 6.4 ZINC FLAT | F81053-1 | 2 | |
| 24 | BOLT, M6 X 16 8.8 HEX HEAD FULL THREAD ZINC | F81001-15 | 2 | |
| 25 | TERMINAL, KO1/8 RING | F05092-7 | 1 | |
| 26 | WASHER, 6.4 ZINC FLAT | F81053-1 | 2 | |
| 27 | NUT, M6-8-B HEX NYLON ZINC LOCK | F81031-2 | 2 | |
| 28 | GROMMET, 5/8" RUBBER WIRE | P11764 | 3 | |
| 29 | WASHER, 6.4 ZINC FLAT | F81053-1 | 2 | |
| 30 | NUT, M6-8-B HEX NYLON ZINC LOCK | F81031-2 | 2 | |

SECTION 6 UP/DOWN SYSTEM

6.1 Up/Down Rollers & Covers



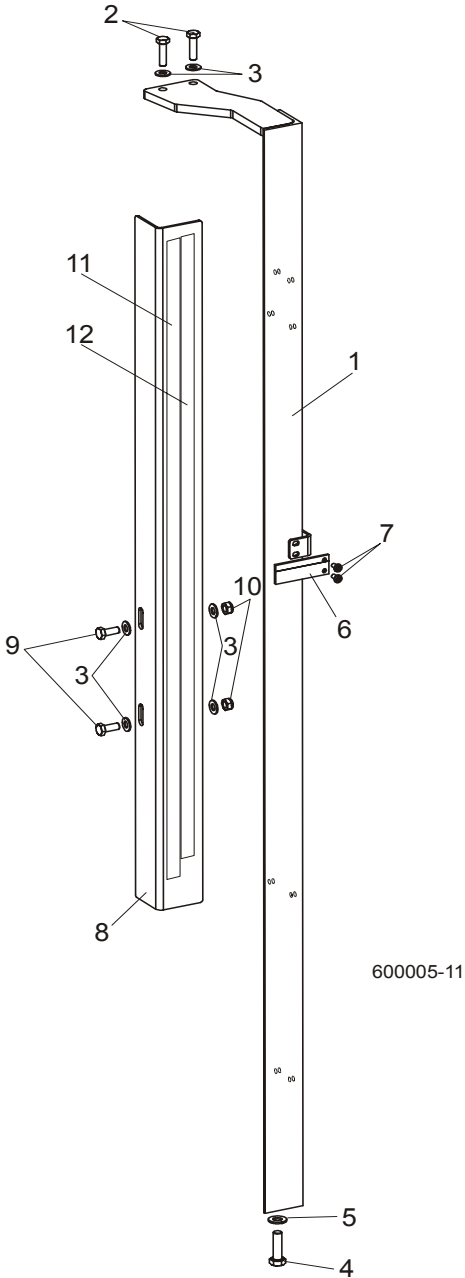
| REF | DESCRIPTION (◆ Indicates Parts Available In Assemblies Only) | PART # | QTY. |
|-----|--|-----------|------|
| | ROLLER ASSEMBLY, INSIDE UP/DOWN | 089456 | 2 |
| 1 | Shaft, Inside Up/Down Roller | 088817 | 1 |
| 2 | Bearing, CBK-468 Rolling | 088433 | 1 |
| 3 | Ring, Z30 Spring Retaining | F81090-23 | 1 |
| 4 | Washer, 13 Zinc Flat | F81056-1 | 2 |
| 5 | Bolt, M12x25-8.8 Hex Head Full Thread Zinc | F81004-31 | 2 |
| | ROLLER ASSEMBLY, OUTSIDE UP/DOWN | 089454 | 2 |
| 6 | Shaft, Long Up/Down Roller | 088815 | 1 |
| 7 | Bearing, CBK-468 Rolling | 088433 | 2 |
| 8 | Ring, Z30 Spring Retaining | F81090-23 | 2 |
| 9 | Washer, 10.5 Zinc Flat | F81055-1 | 3 |
| 10 | Bolt, M10x35-8.8 Hex Head Full Thread Zinc | F81003-17 | 3 |
| | ROLLER ASSEMBLY, SHORT UP/DOWN | 089455 | 2 |
| 11 | Shaft, Short Up/Down Roller | 088816 | 1 |
| 12 | Bearing, CBK-468 Rolling | 088433 | 1 |
| 13 | Ring, Z30 Spring Retaining | F81090-23 | 1 |
| 14 | Washer, 10.5 Zinc Flat | F81055-1 | 2 |
| 15 | Bolt, M10x35-8.8 Hex Head Full Thread Zinc | F81003-17 | 2 |

6

Up/Down System*Up/Down Rollers & Covers*

| | | | | |
|----|---|-----------|----|--|
| 16 | NUT, M10-04-W HEX ZINC THIN | F81033-6 | 4 | |
| 17 | SCREW, GN 913.3-M10-40-MS SET | F81003-65 | 4 | |
| 18 | COVER WELDMENT, UP/DOWN ROLLER | 089483-1 | 1 | |
| 19 | BOLT, M8X16-8.8-B HEX HEAD FULL THREAD ZINC | F81002-20 | 4 | |
| 20 | WASHER, 8.4 ZINC FLAT | F81054-1 | 9 | |
| 21 | UP/DOWN GEAR COVER WELDMENT | 090500-1 | 1 | |
| 22 | BOLT, M8X12-8.8 HEX HEAD FULL THREAD ZINC | F81002-6 | 5 | |
| 23 | ANGLE, MAST TUBE STAINLESS | 088492 | 4 | |
| 24 | WASHER, 10.5 ZINC FLAT | F81055-1 | 12 | |
| 25 | BOLT, M10X125-8.8 HEX HEAD ZINC | F81003-18 | 4 | |
| 26 | NUT, M10-8-B HEX NYLON ZINC LOCK | F81033-1 | 4 | |
| 27 | UP/DOWN MOTOR COVER WELDMENT | 090501-1 | 1 | |

6.2 Blade Height Scale



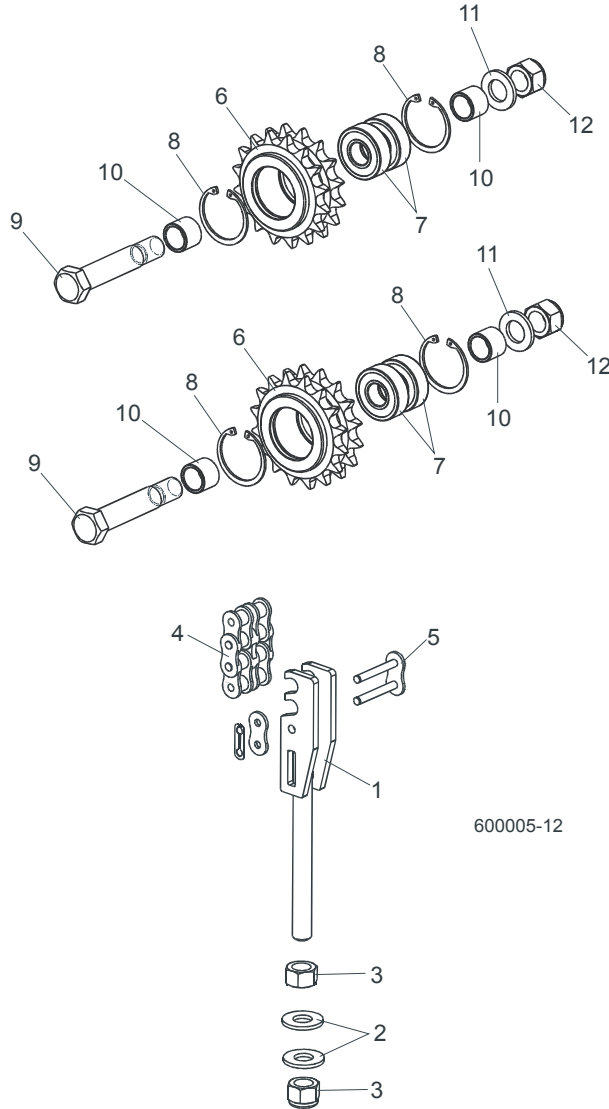
| REF | DESCRIPTION (◆ Indicates Parts Available In Assemblies Only) | PART # | QTY. |
|-----|--|-----------|------|
| 1 | MOUNT WELDMENT, SCALE PAINTED | 088554-1 | 1 |
| 2 | BOLT, M8 x 30-8.8-B HEX HEAD FULL THREAD ZINC | F81002-7 | 2 |
| 3 | WASHER, 8.4 ZINC FLAT | F81054-1 | 6 |
| 4 | BOLT, M10 x 35-8.8 HEX HEAD FULL THREAD ZINC | F81003-17 | 1 |
| 5 | WASHER, 10.5 ZINC FLAT | F81055-1 | 1 |

6 Up/Down System

Blade Height Scale

| | | | | |
|----|---|----------|---|--|
| 6 | POINTER, BLADE HEIGHT | 086691-1 | 1 | |
| 7 | SCREW, #10-24 X 3/8 PHILLIPS PAN HEAD ZINC | F05004-3 | 2 | |
| 8 | ANGLE, SCALE MOUNT | 088785-1 | 1 | |
| 9 | BOLT, M8 X 20-8.8-B HEX HEAD FULL THREAD ZINC | F81002-4 | 2 | |
| 10 | NUT, M8-8-B HEX NYLON ZINC LOCK | F81032-2 | 2 | |
| 11 | DECAL, METRIC SCALE | S11711 | 1 | |
| 12 | DECAL, 16-40 MM METRIC SCALE | P12040-1 | 1 | |

6.3 Up/Down Chain & Sprockets

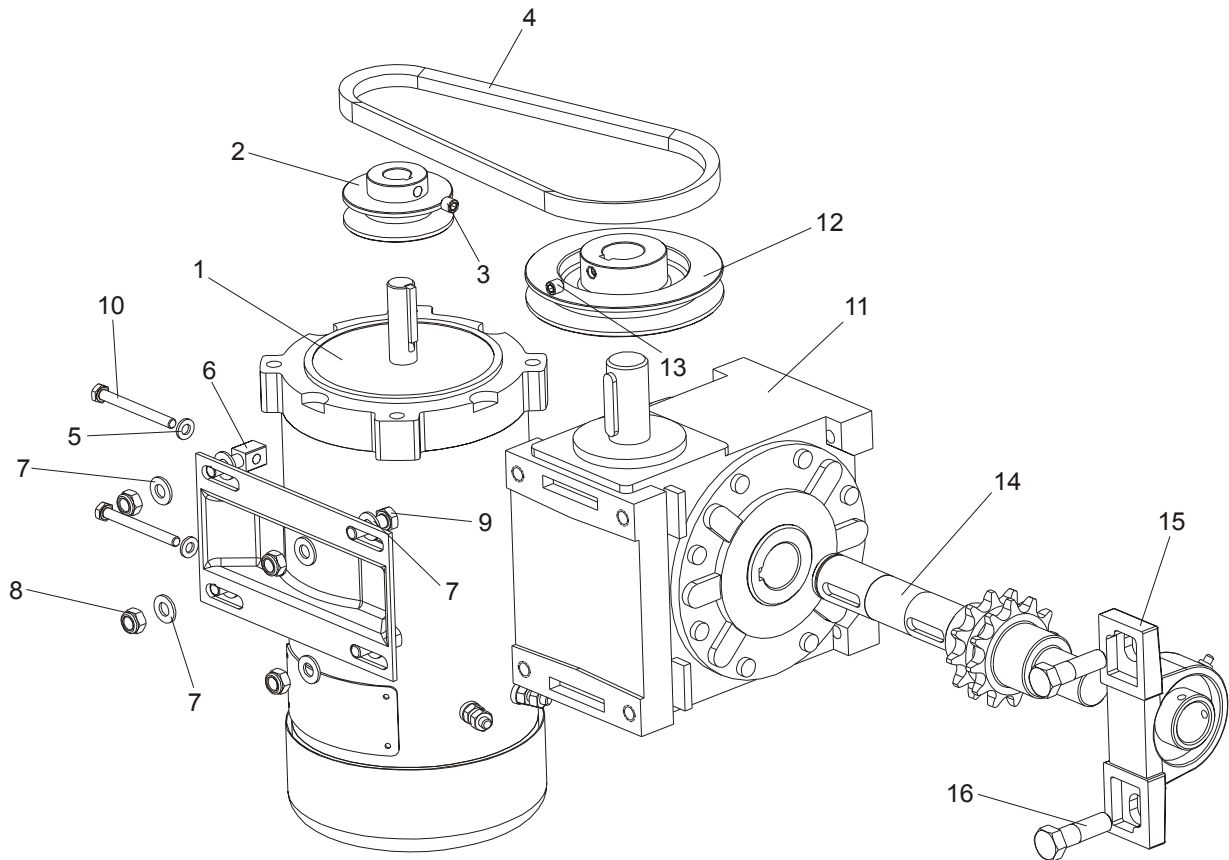


| REF | DESCRIPTION (◆ Indicates Parts Available In Assemblies Only) | PART # | QTY. |
|-----|--|----------|------|
| 1 | TENSIONER WELDMENT, UP/DOWN CHAIN ZINC | 088551-1 | 1 |
| 2 | WASHER, 13 ZINC FLAT | F81056-1 | 2 |
| 3 | NUT, M12-8 HEX NYLON ZINC LOCK | F81034-2 | 2 |
| 4 | CHAIN, 10B-2 113-LINK UP/DOWN | 088672 | 1 |
| 5 | LINK, 10B-2Pz MASTER | 088673 | 1 |
| | SPROCKET ASSEMBLY, UP/DOWN IDLER | 088470 | 1 |
| 6 | Sprocket, Zinc | 088471-1 | 1 |
| 7 | Bearing, 6203-2RS FLT Rolling | 086114 | 2 |

6**Up/Down System***Up/Down Chain & Sprockets*

| | | | | |
|-----------|--|-----------|---|--|
| 8 | Ring, W40 Spring Retaining | F81090-3 | 2 | |
| 9 | Bolt, M16D1F6 x 90-8.8 Hex Fit Short Thread Zinc | F81006-15 | 1 | |
| 10 | Spacer, Idler Zinc | 088792-1 | 2 | |
| 11 | Washer, 17 Zinc Flat | F81058-1 | 1 | |
| 12 | Nut, M16-8 Hex Nylon Zinc Lock | F81036-2 | 1 | |

6.4 Up/Down Drive Assembly



| REF | DESCRIPTION (◆ Indicates Parts Available In Assemblies Only) | PART # | QTY. |
|-----|--|----------|------|
| | MOTOR W/MOUNT BRACKET, DC UP/DOWN | 090492 | 1 |
| 1 | Motor, 2 gear STKg90 6/4L2 IMB14/162 | 015174 | 1 |
| 2 | Pulley, DC Motor | 089528-1 | 1 |
| 3 | Screw, M8x8-33H Hex Socket Set Flat Point Zinc | F81014-1 | 1 |
| 4 | V-Belt, HA-630 | 090558 | 1 |
| 5 | Washer, 6.4 Zinc Flat | F81053-1 | 2 |
| 6 | Bolt, Special - Zinc Plated | 088962-1 | 2 |
| 7 | Washer, 8.4 ZINC FLAT | F81054-1 | 8 |
| 8 | Nut, M8-8-B hex nylon zinc lock | F81032-2 | 4 |
| 9 | Bolt, M8X25-8.8-B hex head full thread zinc | F81002-5 | 2 |
| 10 | Sruba, M6x60-8.8-Fe/Zn5 PN-85/M-82105 | F81001-9 | 2 |
| | GEAR BOX ASSEMBLY, UP/DOWN DRIVE | 089523 | 1 |
| 11 | Gear Box, RA-06/66/D1/N/V5 | 088577 | 1 |
| 12 | Pulley, Up/Down Gear Painted | 089529-1 | 1 |
| 13 | Screw, M8x8-33H Hex Socket Set Flat Point Zinc | F81014-1 | 1 |
| 14 | Output Shaft w/ Sprocket, Up/Down Drive | 089522 | 1 |

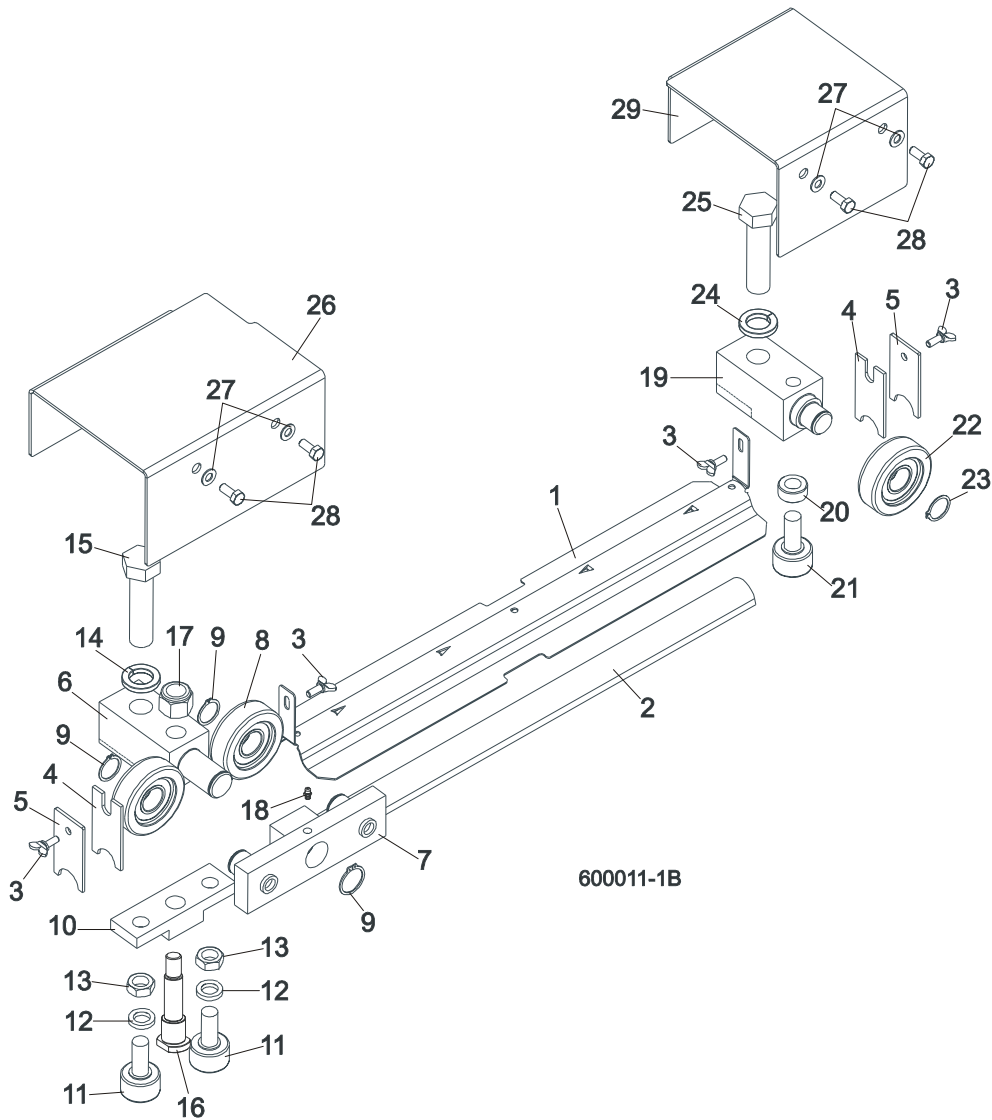
6 Up/Down System

Up/Down Drive Assembly

| | | | | |
|----|--------------------------------------|----------|---|--|
| 15 | Bearings Assembly UCP205 CX | 088468 | 1 | |
| 16 | Bolt, M12 x 40 - 8.8 Hex Head | F81004-1 | 1 | |

SECTION 7 FEED SYSTEM & TRACK ROLLERS

7.1 Upper Track Rollers And Wipers



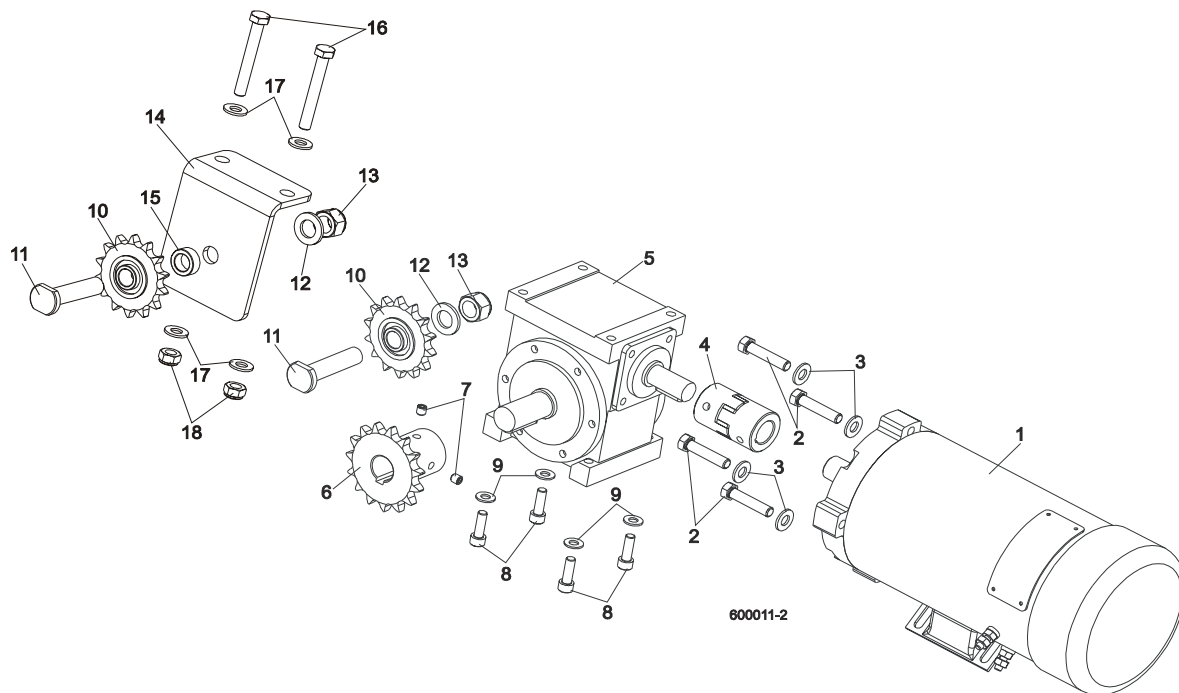
| REF | DESCRIPTION (◆ Indicates Parts Available In Assemblies Only) | PART # | QTY. |
|-----|--|-----------|------|
| 1 | COVER, MIDDLE TRACK | S09917 | 1 |
| 2 | STRIP, FELT | S09915 | 1 |
| 3 | SCREW, M6X16 DIN 316 WING | F81001-16 | 4 |
| 4 | WIPER, TOP RAIL | M04113 | 2 |
| 5 | PLATE, TRACK WIPER | 088559-1 | 2 |
| | ROLLER ASSEMBLY, UPPER TANDEM TRACK | 088530 | 1 |
| 6 | Block, Tandem Roller Mount | 088532 | 1 |

| | | | | |
|----|--|-----------|---|--|
| 7 | Block Assembly, Tandem Roller | 088533 | 1 | |
| 8 | Roller, CBK-468 | 088433 | 2 | |
| 9 | Ring, Z30 Spring Retaining | F81090-23 | 2 | |
| 10 | Block, Cam Follower Mount | 088520 | 1 | |
| 11 | Bearing, Cam Follower (McGill) | 012797 | 2 | |
| 12 | Washer, 16.3 Split Zinc Lock | F81058-2 | 2 | |
| 13 | Nut, 5/8"-18 Zinc | F05010-11 | 2 | |
| 14 | Washer, Z24.5 Split Zinc Lock | F81061-4 | 1 | |
| 15 | Bolt, M24 x 2 x 90-8.8 Hex Head Full Thread Zinc | F81009-2 | 1 | |
| 16 | Pin, Cam Follower Mount | 088531 | 1 | |
| 17 | Nut, M16-8 Hex Nylon Zinc Lock | F81036-2 | 1 | |
| 18 | Fitting, M6 Straight Grease | 086280 | 1 | |
| | ROLLER ASSEMBLY, REAR UPPER TRACK | 088529 | 1 | |
| 19 | Block, Rear Upper Roller Mount | 088528 | 1 | |
| 20 | Spacer, Cam Follower | 088536 | 1 | |
| 21 | Bearing, Cam Follower (McGill) | 012797 | 1 | |
| 22 | Roller, CBK-468 | 088433 | 1 | |
| 23 | Ring, Z30 Spring Retaining | F81090-23 | 1 | |
| 24 | Washer, Z24.5 Split Zinc Lock | F81061-4 | 1 | |
| 25 | Bolt, M24x2x90-8.8 Hex Head Full Thread Zinc | F81009-2 | 1 | |
| 26 | COVER, TANDEM ROLLER | 088526 | 1 | |
| 27 | WASHER, 6.4 ZINC FLAT | F81053-1 | 4 | |
| 28 | BOLT, M6X16 8.8 HEX HEAD FULL THREAD ZINC | F81001-15 | 4 | |
| 29 | COVER, REAR UPPER ROLLER | 088527 | 1 | |

7 Feed System & Track Rollers

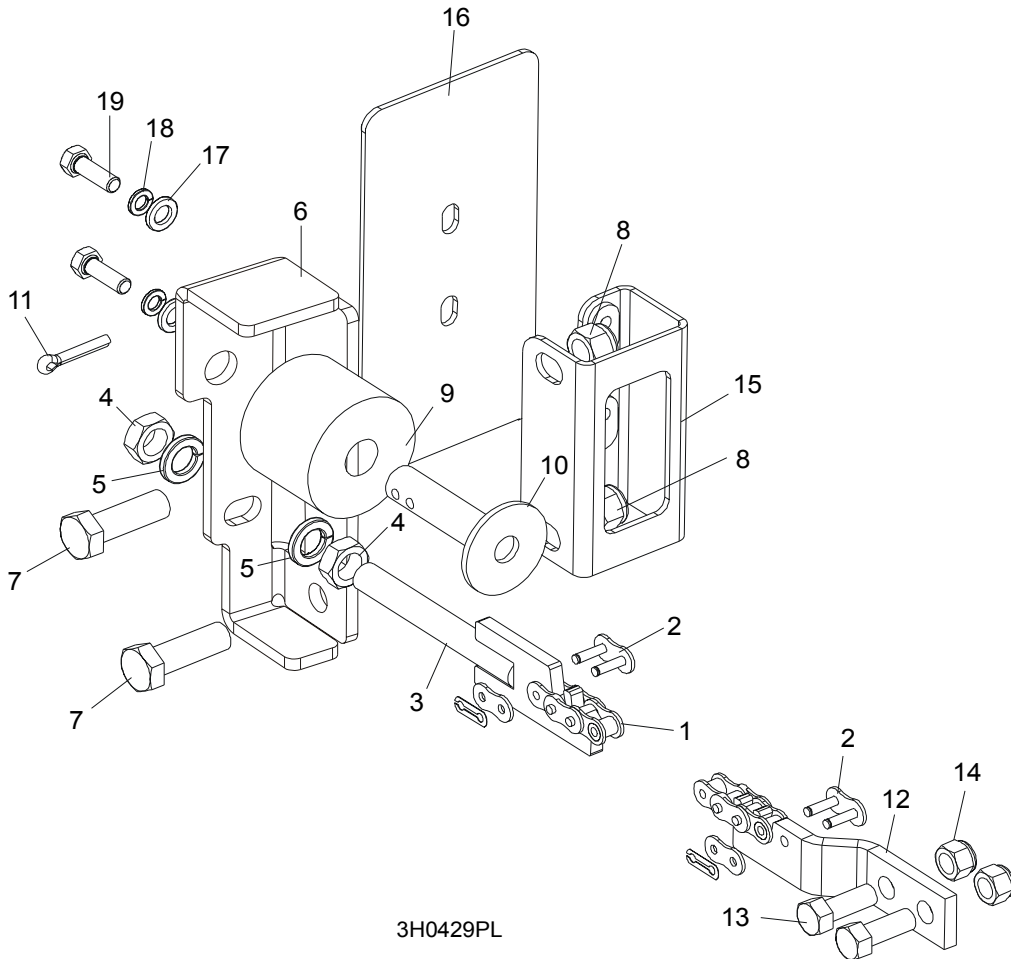
Power Feed Assembly

7.2 Power Feed Assembly



| REF | DESCRIPTION (◆ Indicates Parts Available In Assemblies Only) | PART # | QTY. |
|-----|--|-----------|------|
| 1 | MOTOR, 12V, 0.75KM LEESON | 024169 | 1 |
| 2 | BOLT, 3/8-16x1 3/4 HEX HEAD FULL THREAD | F05007-19 | 4 |
| 3 | WASHER, 10.5 ZINC FLAT | F81055-1 | 4 |
| 4 | COUPLING, SPIDEX 19/ 5/8" b/b ST 92Sh | 090786 | 1 |
| 5 | GEAR BOX, RA-05/7,5/D1/S+N/B8 W/OUTPUT SHAFT | 088578 | 1 |
| 6 | SPROCKET, 10B Z15 ZINC | 088541-1 | 1 |
| 7 | SCREW, M8x8-33H HEX SOCKET SET FLAT POINT ZINC | F81014-1 | 2 |
| 8 | SCREW, M8x25 -8.8 HEX SOCKET HEAD CAP ZINC | F81002-21 | 4 |
| 9 | WASHER, 8.4 ZINC FLAT | F81054-1 | 4 |
| 10 | SPROCKET, KSR 16.L0.10.10.14.08 W/BEARING | 088867 | 2 |
| 11 | PIN, ZINC SPROCKET MOUNT | 088994-1 | 2 |
| 12 | WASHER, 17 ZINC FLAT | F81058-1 | 2 |
| 13 | NUT, M16-8 HEX NYLON ZINC LOCK | F81036-2 | 2 |
| 14 | BRACKET, POWER FEED SPROCKET MOUNT | 088507-1 | 1 |
| 15 | SPACER, POWER FEED SPROCKET | 088550-1 | 1 |
| 16 | BOLT, M10x75-8.8 HEX HEAD ZINC | F81003-15 | 2 |
| 17 | WASHER, 10.5 ZINC FLAT | F81055-1 | 4 |
| 18 | NUT, M10-8-B HEX NYLON ZINC LOCK | F81033-1 | 2 |

7.3 Feed Chain/Stop, LT60HD/LT70HD



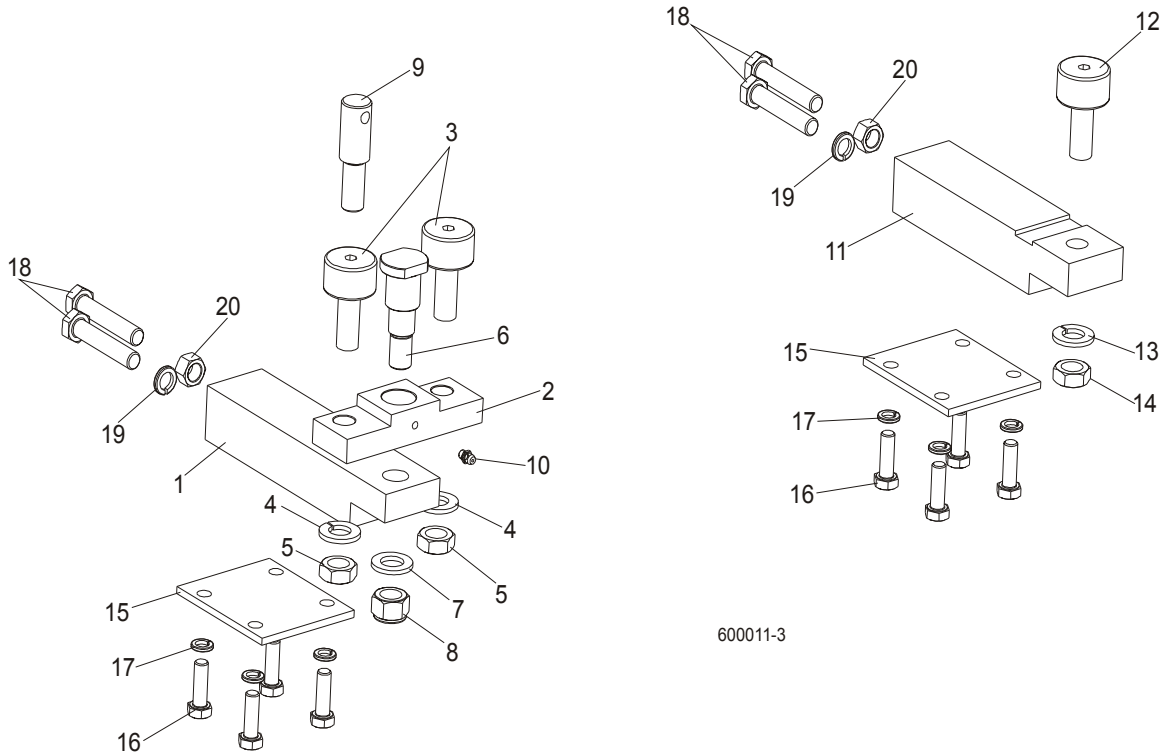
| REF | DESCRIPTION (◆ Indicates Parts Available In Assemblies Only) | PART # | QTY. |
|-----|--|----------|------|
| | CHAIN KIT, LT30 FEED | K10408 | 1 |
| | CHAIN KIT, LT40 FEED | K10410 | 1 |
| 1 | Chain, #40 X 215" LT30 Feed | 014744 | 1 |
| | Chain, #40 X 267.5" LT40 Feed | 014475 | 1 |
| 2 | Link, #40 Master | P04200 | 2 |
| 3 | Tensioner Weldment, Power Feed Chain | 086818-1 | 1 |
| 4 | Nut, M12-5 Hex Jam | F81034-4 | 2 |
| 5 | Washer, 12.2 Split Lock | F81056-2 | 2 |
| 6 | BRACKET, FEED CHAIN REAR MOUNT | 087628-1 | 1 |
| 7 | BOLT, M12 X 40 8.8 HEX HEAD GRADE 5 | F81004-4 | 2 |
| 8 | NUT, M12-8 HEX NYLON LOCK | F81034-2 | 2 |
| | STOP KIT, RUBBER CARRIAGE | K09630 | 2 |
| 9 | Stop, Rubber Carriage | P12165 | 1 |

7 Feed System & Track Rollers

Feed Chain/Stop, LT60HD/LT70HD

| | | | | |
|----|---|-----------|---|--|
| 10 | Pin, Rubber Carriage Stop | W09293 | 1 | |
| 11 | Pin, 3/16" X 1" Cotter | F05012-21 | 1 | |
| 12 | BRACKET, FRONT FEED CHAIN MOUNT | 015008 | 1 | |
| 13 | BOLT, 3/8-16 X 1" HEX HEAD | F05007-7 | 2 | |
| 14 | NUT, 3/8-16 HEX NYLON LOCK | F05010-10 | 2 | |
| 15 | BRACKET WELDMENT, REAR MAIN TUBE COVER MOUNT | 087105-1 | 1 | |
| 16 | COVER, REAR MAIN TUBE | 015023 | 1 | |
| 17 | WASHER, 8.4 FLAT | F81054-1 | 2 | |
| 18 | WASHER, 8.2 SPLIT LOCK | F81054-4 | 2 | |
| 19 | BOLT, 5/16-18 X 1" HEX HEAD | F05006-1 | 2 | |

7.4 Lower Track Rollers



600011-3

| REF | DESCRIPTION (◆ Indicates Parts Available In Assemblies Only) | PART # | QTY. |
|-----|--|-----------|------|
| | BLOCK ASSEMBLY, VERTICAL MAST ALIGNMENT DOUBLE | 088523 | 1 |
| 1 | Block, Vertical Mast Alignment Double | 088517 | 1 |
| 2 | Block, Cam Follower Mount | 088520 | 1 |
| 3 | Bearing, Cam Follower (McGill) | 012797 | 2 |
| 4 | Washer, 16.3 Split Zinc Lock | F81058-2 | 2 |
| 5 | Nut, 5/8"-18 Zinc | F05010-11 | 2 |
| 6 | Pin, Cam Follower Mount | 088521 | 1 |
| 7 | Washer, 17 Zinc Flat | F81058-1 | 1 |
| 8 | Nut, M16-8 Hex Nylon Zinc Lock | F81036-2 | 1 |
| 9 | Pin, Safety Lock | 088519 | 1 |
| 10 | Fitting, M6 Straight Grease | 086280 | 1 |
| | BLOCK ASSEMBLY, VERTICAL MAST ALIGNMENT SINGLE | 088524 | 1 |
| 11 | Block, Vertical Mast Alignment Single | 088518 | 1 |
| 12 | Bearing, Cam Follower (McGill) | 012797 | 1 |
| 13 | Washer, 16.3 Split Zinc Lock | F81058-2 | 1 |
| 14 | Nut, 5/8"-18 Zinc | F05010-11 | 1 |
| 15 | PLATE, LOWER TRACK ROLLER RETAINER | 088516 | 2 |
| 16 | BOLT, M10X30-5.8 HEX HEAD FULL THREAD ZINC | F81003-2 | 8 |
| 17 | WASHER, 10.2 SPLIT ZINC LOCK | F81055-2 | 8 |

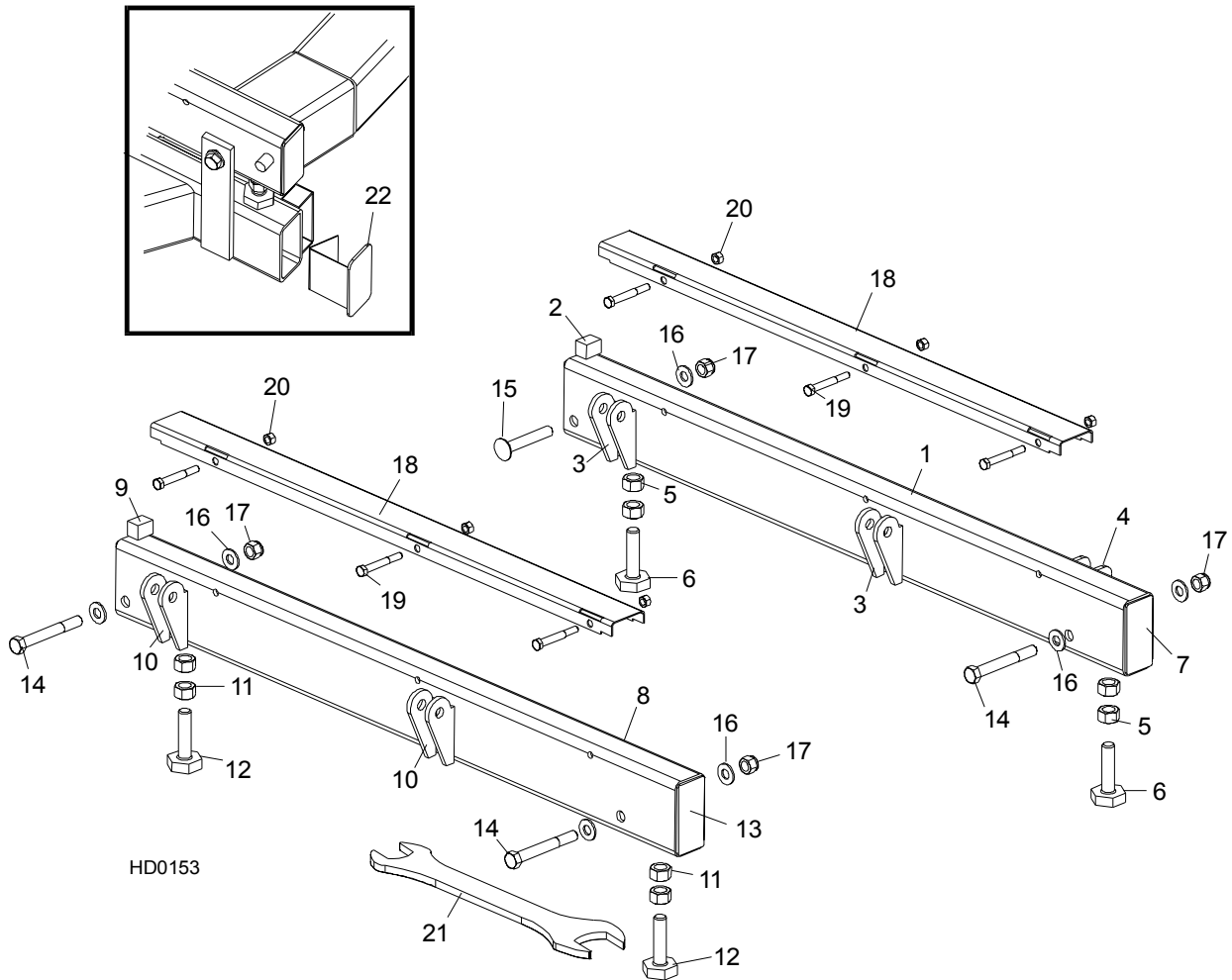
7 Feed System & Track Rollers

Lower Track Rollers

| | | | | |
|-----------|--|-----------|---|--|
| 18 | BOLT, M12X1.25X65-8.8 HEX HEAD FULL THREAD ZINC | F81004-40 | 4 | |
| 19 | WASHER, Z12.2 SPLIT ZINC LOCK | F81056-2 | 2 | |
| 20 | NUT, M12X1.25-8 ZINC HEX | F81034-8 | 2 | |

SECTION 8 BED FRAME ASSEMBLY

8.1 Bed Rail Assembly, Front And Rear



| REF | DESCRIPTION (◆ Indicates Parts Available In Assemblies Only) | PART # | QTY. | |
|-----|--|-----------|------|---|
| | BED RAIL ASSEMBLY, REAR PAINTED | 014467 | 1 | |
| 1 | Bed Rail Tube, Long | 015974 | 1 | ◆ |
| 2 | Block, Log Stop | S09034 | 1 | |
| 3 | Bracket, Roller Toe Board Mount | S13021 | 4 | ◆ |
| 4 | Bracket, Saw Head Rest Pin Mount | 014150 | 2 | ◆ |
| | Bolt Assembly, Bed Rail | 086809 | 2 | ◆ |
| 5 | Nut, 5/8-11 Hex | F05010-54 | 2 | |
| 6 | Bolt, Bed Rail Adjustment | S13006 | 1 | |
| 7 | Plate, Bed Rail End Cap | S04058 | 2 | ◆ |

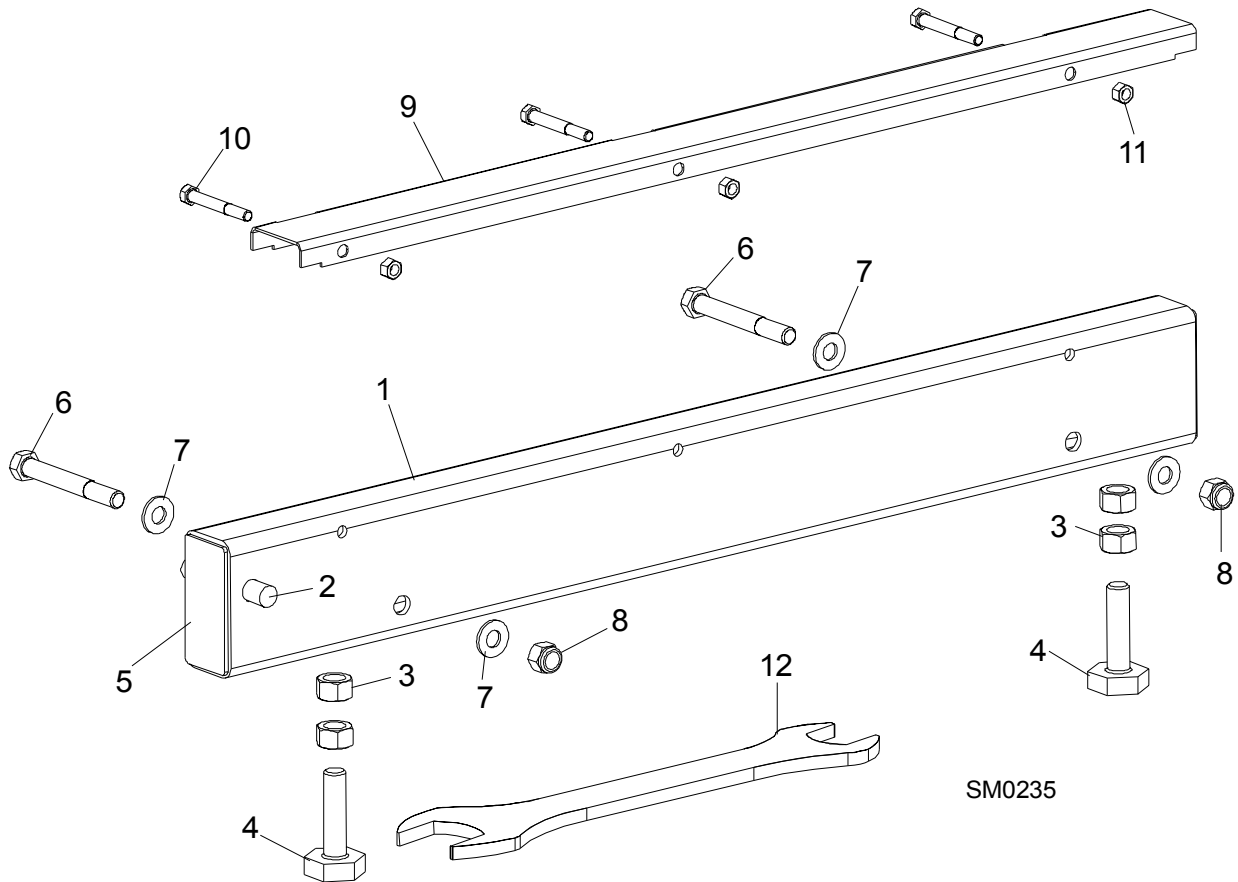
8

Bed Frame Assembly*Bed Rail Assembly, Front And Rear*

| | | | | |
|----|--|------------------------|---|---|
| | BED RAIL ASSEMBLY, FRONT PAINTED | 014455 | 1 | |
| 8 | Bed Rail Tube, Long | 015974 | 1 | ◆ |
| 9 | Block, Log Stop | S09034 | 1 | |
| 10 | Bracket, Roller Toe Board Mount | S13021 | 4 | ◆ |
| | Bolt Assembly, Bed Rail | 086809 | 2 | ◆ |
| 11 | Nut, 5/8-11 Hex | F05010-54 | 2 | |
| 12 | Bolt, Bed Rail Adjustment | S13006 | 1 | |
| 13 | Plate, Bed Rail End Cap | S04058 | 2 | ◆ |
| 14 | BOLT, M12 X 100-8.8 HEX HEAD | F81004-3 | 3 | |
| 15 | BOLT, 1/2-13 X 3 1/2" CARRIAGE | F05008-94 ¹ | 1 | |
| 16 | WASHER, 13 FLAT | F81056-1 | 7 | |
| 17 | NUT, M12-8 NYLON LOCK | F81034-2 | 4 | |
| | COVER ASSEMBLY, STAINLESS STEEL BED RAIL (LONG) | A09956 | 2 | |
| 18 | Cover, Stainless Steel Bed Rail | S09944 | 1 | ◆ |
| 19 | Bolt, 5/16-18 X 2 1/2" Hex Head | F05006-10 | 3 | |
| 20 | Nut, 5/16-18 Hex Lock | F05010-6 | 3 | |
| 21 | WRENCH, BED RAIL ADJUSTMENT | 015970 | 1 | |
| 22 | CAP WELDMENT, BED RAIL REMOVABLE END | 014652 | 2 | |

¹ Used on rear bed rail to allow clearance for side support rollers.

8.2 Bed Rail Assembly, Front Middle

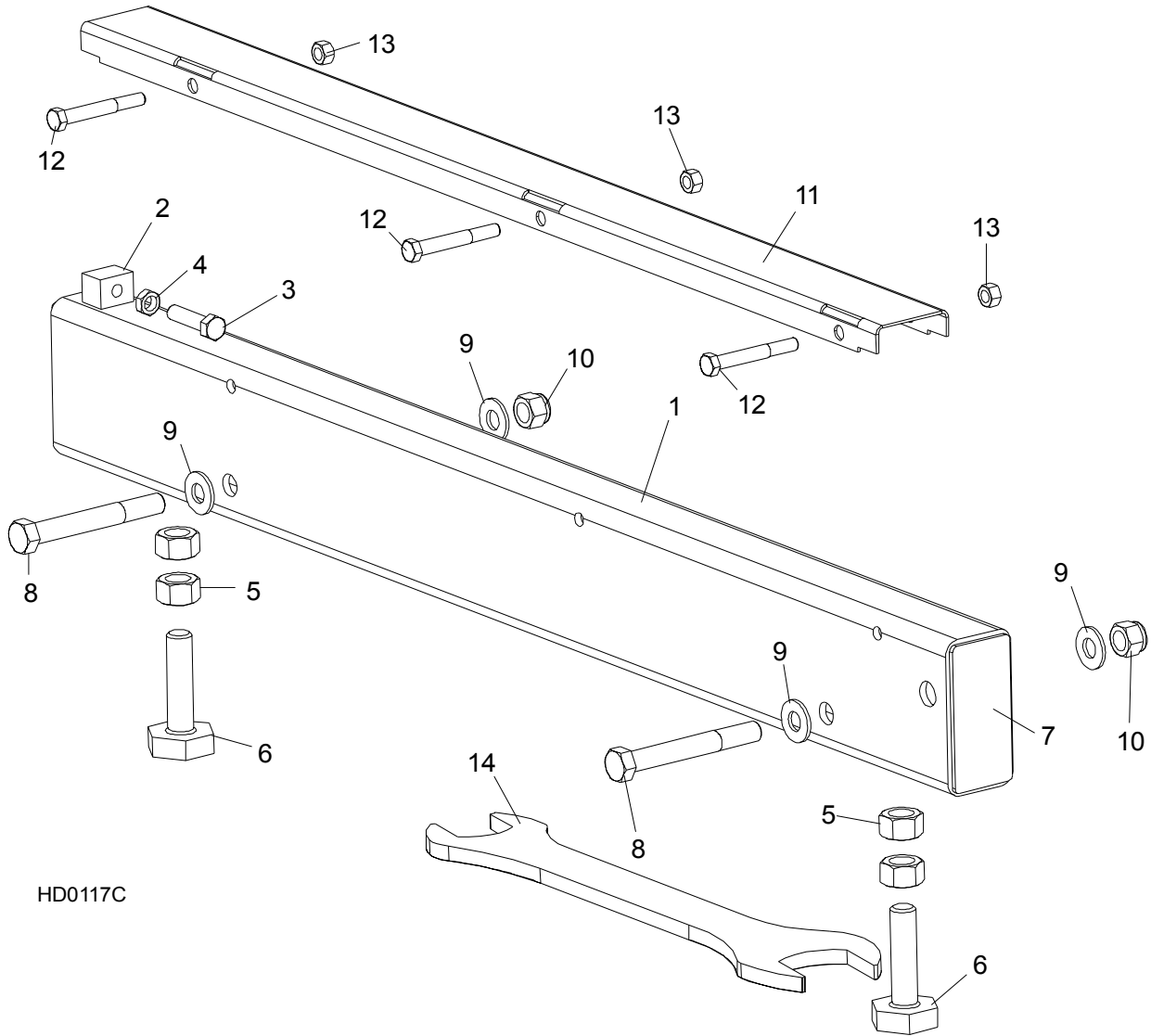


| REF | DESCRIPTION (◆ Indicates Parts Available In Assemblies Only) | PART # | QTY. | |
|-----|--|-----------|------|---|
| | BED RAIL ASSEMBLY, FRONT MIDDLE | A09566 | 1 | |
| 1 | Bed Rail Tube, Short | S09103 | 1 | ◆ |
| 2 | Pin, Ramp Mount | S04030 | 1 | |
| | Bolt Assembly, Bed Rail | 086809 | 2 | ◆ |
| 3 | Nut, 5/8-11 Hex | F05010-54 | 2 | |
| 4 | Bolt, Bed Rail Adjustment | S13006 | 2 | |
| 5 | Plate, Bed Rail End Cap | S04058 | 2 | ◆ |
| 6 | BOLT, M12 X 100-8.8 HEX HEAD | F81004-3 | 2 | |
| 7 | WASHER, 13 FLAT | F81056-1 | 4 | |
| 8 | NUT, M12-8 HEX NYLON LOCK | F81034-2 | 2 | |
| | COVER ASSEMBLY, STAINLESS STEEL BED RAIL (LONG) | A09956 | 1 | |
| 9 | Cover, Stainless Steel Bed Rail | S09944 | 1 | ◆ |
| 10 | Bolt, M8x65-5,8 Zinc Hex Head | F81002-3 | 3 | |
| 11 | Nut, M8-8-B-Zinc Hex Nylon Lock | F81032-2 | 3 | |

8**Bed Frame Assembly***Bed Rail Assembly, Front Middle*

| | | | | |
|----|-----------------------------|--------|---|--|
| 12 | WRENCH, BED RAIL ADJUSTMENT | 015970 | 1 | |
|----|-----------------------------|--------|---|--|

8.3 Bed Rail Assembly, Rear Middle



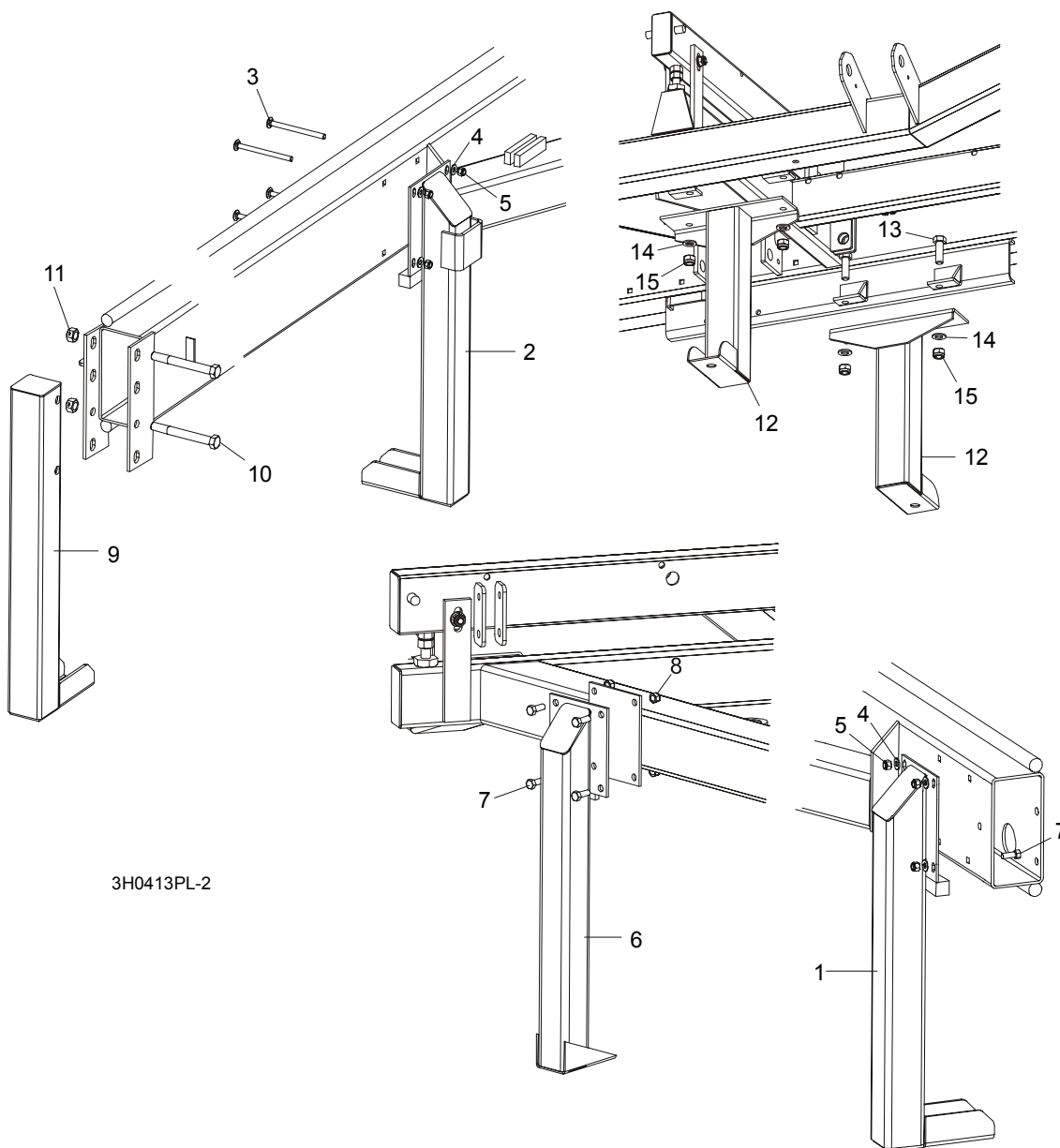
HD0117C

| REF | DESCRIPTION (◆ Indicates Parts Available In Assemblies Only) | PART # | QTY. | |
|-----|--|----------|------|---|
| 13 | BOLT, M12 X 100-8.8 HEX HEAD | F81004-3 | 2 | |
| 14 | WASHER, 13 FLAT | F81056-1 | 4 | |
| 15 | NUT, M12-8 NYLON LOCK | F81034-2 | 2 | |
| | COVER ASSEMBLY, STAINLESS STEEL BED RAIL (LONG) | A09956 | 1 | |
| 16 | Cover, Stainless Steel Bed Rail | S09944 | 1 | ◆ |
| 17 | Bolt, M8x65-5,8 Zinc Hex Head | F81002-3 | 3 | |
| 18 | Nut, M8-8-B-Zinc Hex Nylon Lock | F81032-2 | 3 | |
| 19 | WRENCH, BED RAIL ADJUSTMENT | 015970 | 1 | |

8 Bed Frame Assembly

Leg, Stationary

8.4 Leg, Stationary



| REF | DESCRIPTION (◆ Indicates Parts Available In Assemblies Only) | PART # | QTY. |
|-----|---|-----------|------|
| 1 | LEG, LONG RIGHT STATIONARY (1 REQ'D FOR LT30; 3 REQ'D FOR LT40) | 087451-1 | 1/3 |
| 2 | LEG, LONG STATIONARY W/BOARD RETURN TABLE BRACKET | 087449-1 | 1 |
| 3 | BOLT, M10 X 120-8.8 CARRIAGE HEAD | F81003-33 | 8/12 |
| 4 | WASHER, 10.5 FLAT | F81055-1 | 8/16 |
| 5 | NUT, M10-8-B HEX NYLON LOCK | F81033-1 | 8/16 |

Bed Frame Assembly
Leg, Stationary

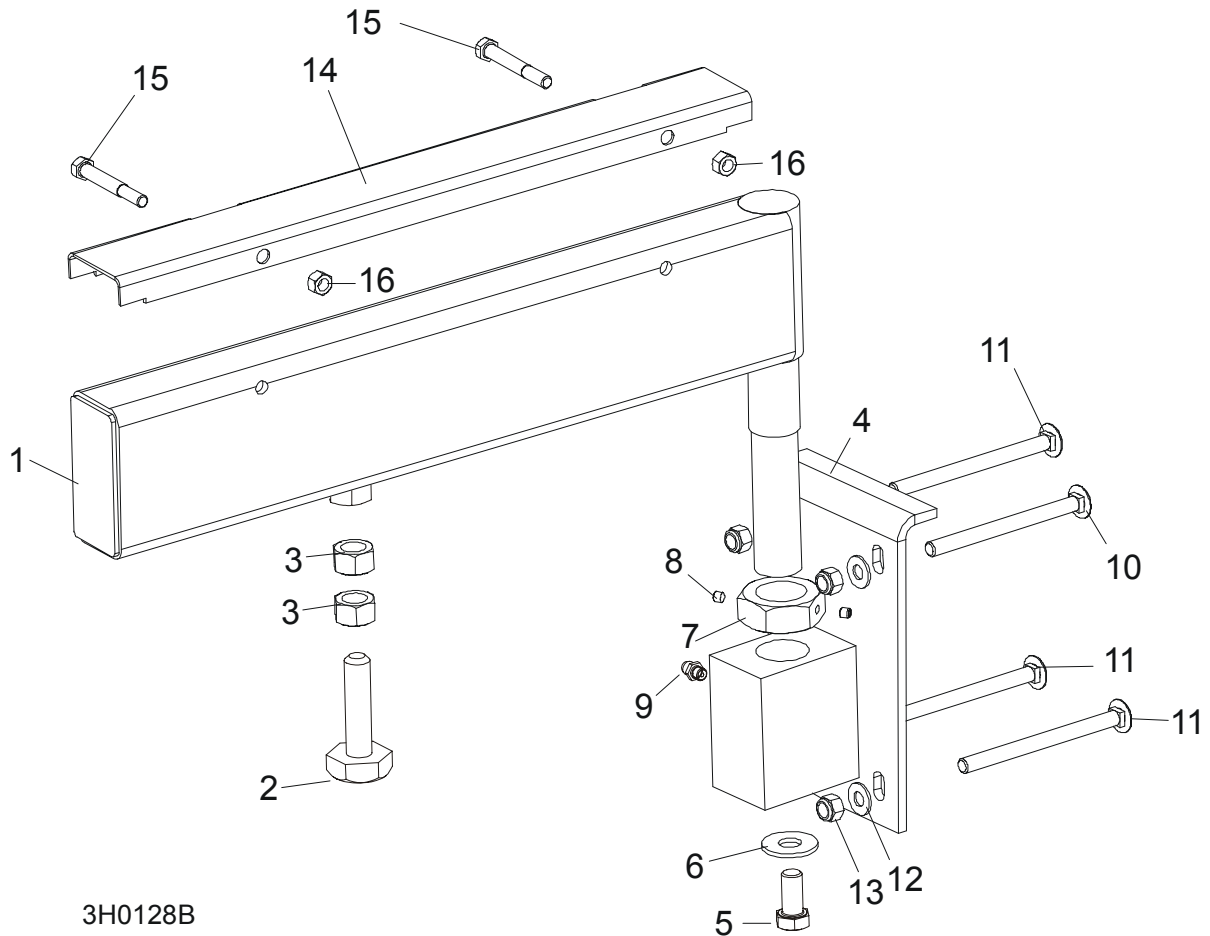
8

| | | | | |
|----|--------------------------------------|-----------|----|--|
| 6 | LEG, SHORT LEFT STATIONARY | 087450-1 | 2 | |
| 7 | BOLT, M10 X 25-8.8 HEX HEAD | F81003-11 | 12 | |
| 8 | NUT, M10-8-B HEX NYLON LOCK | F81033-1 | 12 | |
| 9 | LEG, FRONT STATIONARY | 087452-1 | 1 | |
| 10 | BOLT, M16 X 140-8.8 HEX HEAD GRADE 5 | F81006-4 | 2 | |
| 11 | NUT, M16-8 HEX LOCK | F81036-2 | 2 | |
| 12 | LEG, MIDDLE STATIONARY | 087093-1 | 2 | |
| 13 | BOLT, M16 X 50-8.8 HEX HEAD | F81006-7 | 4 | |
| 14 | WASHER, 17 FLAT | F81058-1 | 4 | |
| 15 | NUT, M16 NYLON LOCK | F81036-2 | 4 | |

8 Bed Frame Assembly

Pivot Bed Rail Assembly

8.5 Pivot Bed Rail Assembly



3H0128B

| REF | DESCRIPTION (◆ Indicates Parts Available In Assemblies Only) | PART # | QTY. |
|-----|--|-----------|------|
| | PIVOT BED RAIL ASSEMBLY () | 087829 | 2 |
| | PIVOT BED RAIL ASSEMBLY () | 087855 | 2 |
| 1 | Pivot Bed Rail Weldment () | 087852 | 1 |
| | Pivot Bed Rail Weldment () | 087848 | 1 |
| | Bolt Assembly, Bed Rail Adjustment | | 1 |
| 2 | Bolt, Bed Rail Adjustment | 086809 | 1 |
| 3 | Nut, 5/8-11 Hex | F81036-1 | 2 |
| 4 | Bracket, Pivot Rail Mounting | 087841-1 | 1 |
| 5 | Bolt, 1/2-13 x 1" Hex Head Grade 2 | F81004-31 | 1 |
| 6 | Washer, 15 Flat | F05011-52 | 1 |
| 7 | Nut, Pivot Rail Adjustment () | F81036-1 | 1 |
| | Nut, Pivot Rail Adjustment () | F81039-2 | |

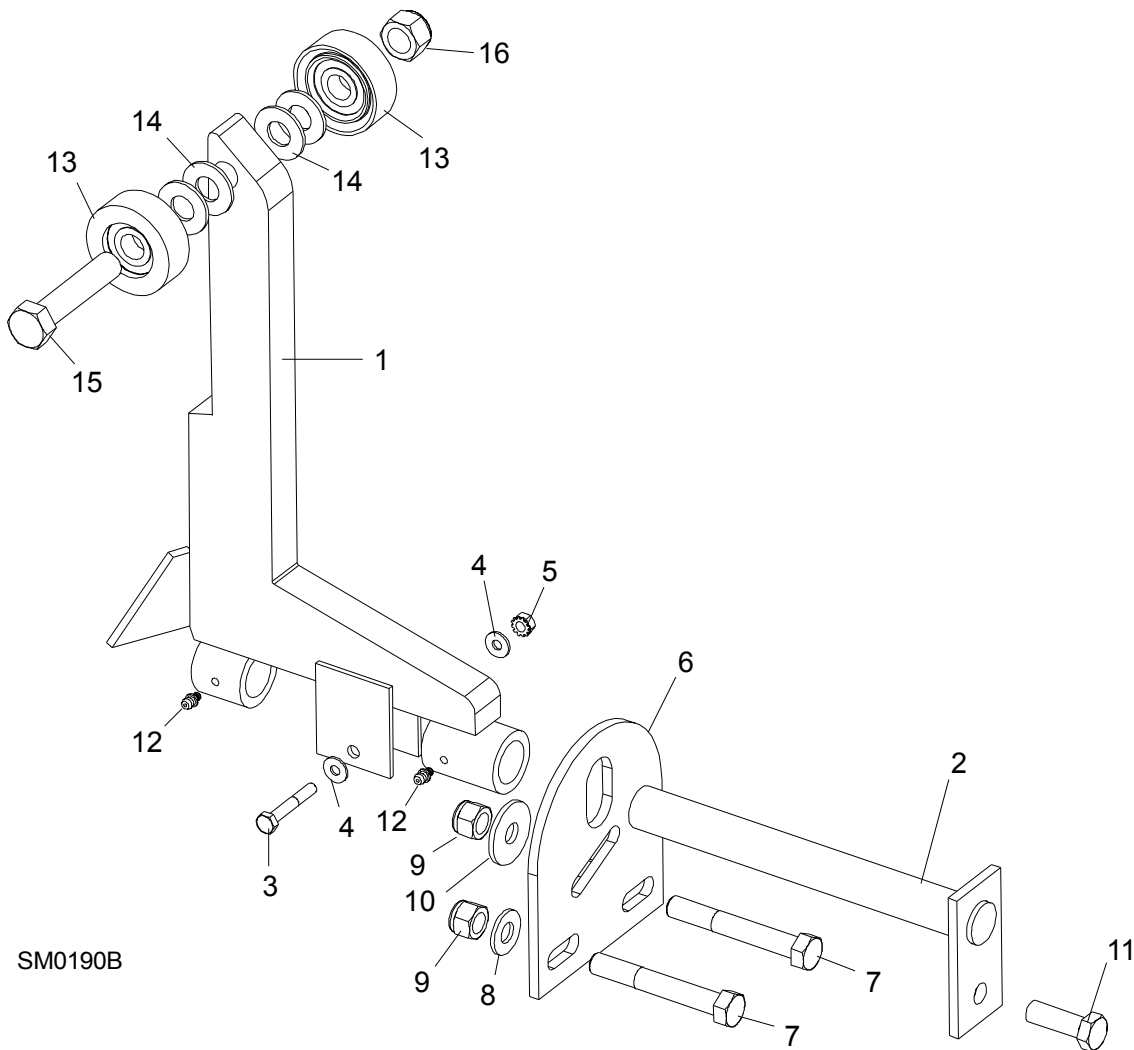
Bed Frame Assembly

Pivot Bed Rail Assembly

8

| | | | | |
|----|--|------------|---|--|
| 8 | Screw, 1/4-28 x 1/4" Brass Tip Set | F05005-42 | 2 | |
| 9 | Fitting, 3/16" Grease | 086280 | 1 | |
| 10 | BOLT, 3M10 X 120-8.8 CARRIAGE HEAD | F81003-14 | 2 | |
| 11 | BOLT, 3/8-16 X 5" CARRIAGE HEAD | F05007-113 | 6 | |
| 12 | WASHER,10.5 FLAT | F81055-1 | 8 | |
| 13 | NUT, M16-8 NYLON LOCK | F81036-2 | 8 | |
| | COVER KIT, PIVOT RAIL STAINLESS STEEL () | 015926 | 2 | |
| | COVER KIT, PIVOT RAIL STAINLESS STEEL () | N/A | 2 | |
| 14 | Cover, Stainless Steel Pivot Bed Rail () | 012994 | 1 | |
| | Cover, Stainless Steel Pivot Bed Rail () | S13012 | 1 | |
| 15 | Bolt, M8x65-5,8 Zinc Hex Head | F81002-3 | 4 | |
| 16 | Nut, M8-8-B-Zinc Hex Nylon Lock | F81032-2 | 4 | |
| | WRENCH, BED RAIL ADJUSTMENT (See Section 8.3) | 015970 | 1 | |

8.6 Log Side Support Assembly (Manual)



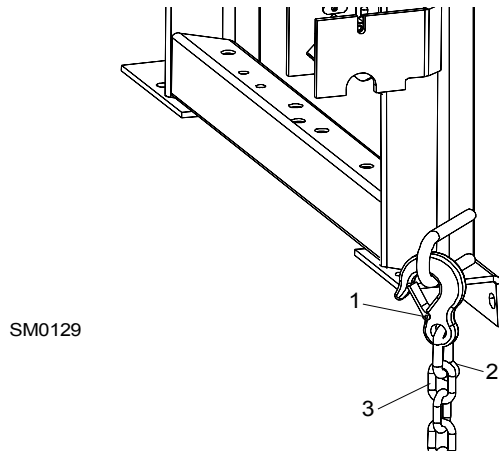
SM0190B

| REF | DESCRIPTION (◆ Indicates Parts Available In Assemblies Only) | PART # | QTY. |
|-----|--|-----------|------|
| 1 | SUPPORT, LOG SIDE | 085538 | |
| | MOUNTING KIT, LOG SIDE SUPPORT | K09440 | |
| 2 | Pin, Log Side Support Pivot | W09238-1 | 1 |
| 3 | Bolt, 1/4-20 X 1 1/2" Hex Head Grade 5 | F05005-4 | 1 |
| 4 | Washer, 7.4 Flat | F81056-11 | 2 |
| 5 | Nut, 1/4-20 Self Locking | F05010-9 | 1 |
| 6 | Plate, Log Side Support End | S09148 | 1 |
| 7 | Bolt, M12 x 90-8.8 Hex Head | F81004-2 | 2 |
| 8 | Washer, 13 Flat | F81056-1 | 2 |

| | | | | |
|-----------|--|------------|---|--|
| 9 | Nut, M12-8 Hex Nylon Lock | F81034-2 | 3 | |
| 10 | Washer, .5" x 1.63" x 11" Ga. | 086184 | 1 | |
| 11 | Bolt, M12 x 35-8.8 Hex Head | F81004-11 | 1 | |
| 12 | FITTING, 3/16" GREASE | P04107 | 2 | |
| | ROLLER KIT, SIDE SUPPORT (OPTIONAL) | 015109 | 4 | |
| 13 | Roller Assembly, Side Support | 015014-1 | 2 | |
| 14 | Washer, 17 Flat | F81058-1 | 4 | |
| 15 | Bolt, 5/8-11 x 3" Hex Head Grade 5 | F05009-37 | 1 | |
| 16 | Nut, 5/8-11 Nylon Lock | F05010-34 | 1 | |
| | Instruction Sheet, Side Support Roller | 015109-526 | 1 | |

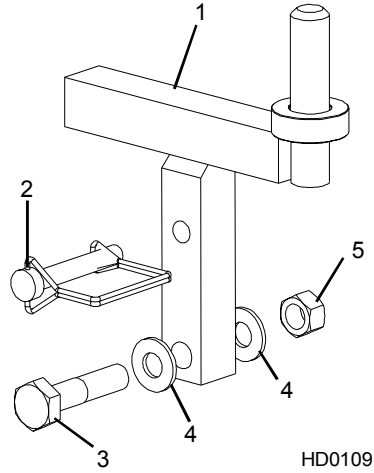
8 **Bed Frame Assembly**
Tie Down Chain Assembly

8.7 Tie Down Chain Assembly



| REF | DESCRIPTION (◆ Indicates Parts Available In Assemblies Only) | PART # | QTY. | |
|----------|--|----------|-------|---|
| | CHAIN ASSEMBLY, TIE DOWN | A04376 | 1 | |
| 1 | Hook, 5/8" Safety Chain | P12075 | 1 | ◆ |
| 2 | Cold Shut, 3/8" Plain | P04772-2 | 1 | ◆ |
| 3 | Chain, N-10 x 35 Unplated | R80558 | .28 m | ◆ |

8.8 Saw Head Rest Pin Assembly

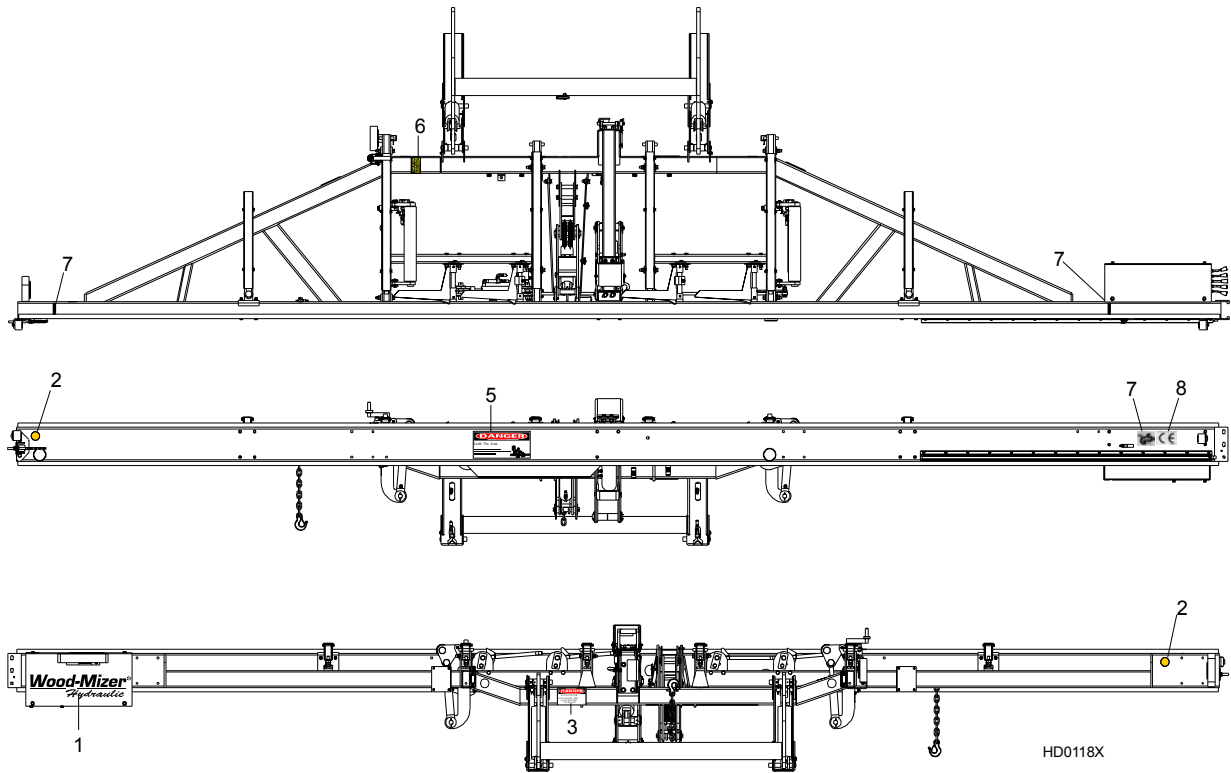


| REF | DESCRIPTION (◆ Indicates Parts Available In Assemblies Only) | PART # | QTY. |
|-----|--|----------|------|
| 1 | PIN, SAW HEAD REST | 085949 | 1 |
| 2 | PIN, 3/8" X 2 1/4" SNAP RETAINER | 014151 | 1 |
| 3 | BOLT, M12 X 60-8.8 HEX HEAD GRADE 5 | F81004-5 | 1 |
| 4 | WASHER, 13 SAE FLAT | F81056-1 | 2 |
| 5 | NUT, 1/2-13 HEX LOCK | F05010-3 | 1 |

8 Bed Frame Assembly

Bed Frame Decals

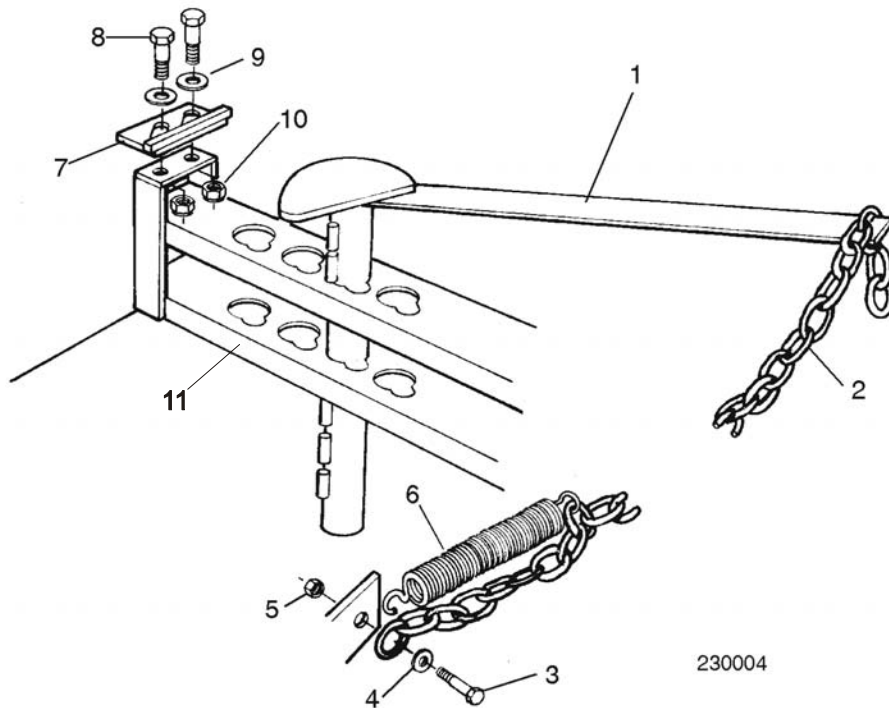
8.9 Bed Frame Decals



| REF | DESCRIPTION (◆ Indicates Parts Available In Assemblies Only) | PART # | QTY. |
|-----|--|--------|------|
| 6 | DECAL, AMBER REFLECTIVE 2" ROUND | P07453 | 2 |
| 7 | DECAL, KEEP AWAY DANGER | S09851 | 1 |
| 8 | DECAL, PINCH POINT DANGER | P10287 | 1 |
| 9 | DECAL, SAW HEAD REST CAUTION | S12581 | 1 |
| 10 | DECAL, LOG LIMIT STRIPE | S12051 | 2 |
| 11 | DECAL, GS SAFETY CERTIFICATION, SMALL | P85072 | 1 |
| 12 | DECAL, CE CERTIFIED SAWMILL, SMALL | P85070 | 1 |

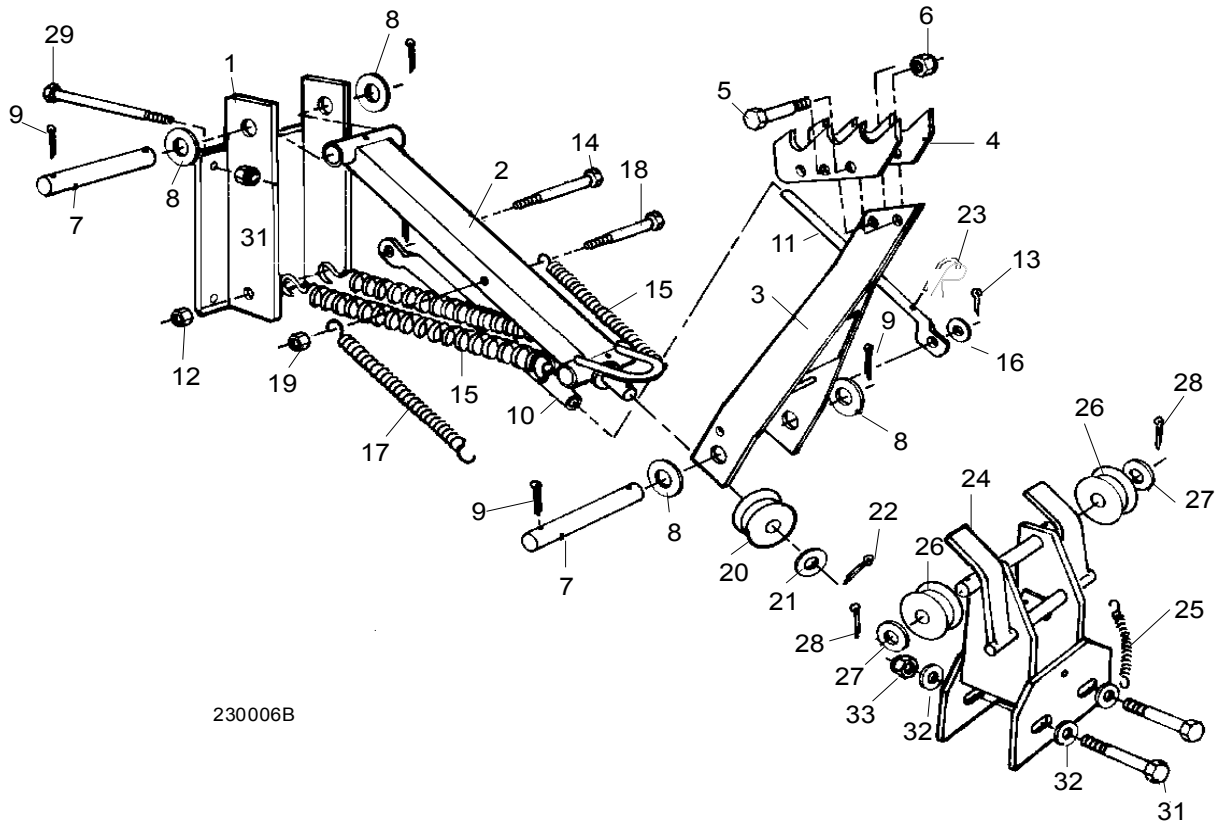
SECTION 9 LOG CLAMP

9.1 Log Clamp



| REF | DESCRIPTION (◆ Indicates Parts Available In Assemblies Only) | PART # | QTY. |
|-----|--|-----------|------|
| 1 | CLAMP, LOG | W09412 | 1 |
| 2 | CHAIN, LOG CLAMP | M04311 | 1 |
| 3 | BOLT, M10X25-8.8-ZINC HEX HEAD | F81003-11 | 1 |
| 4 | WASHER, 10.2 ZINC SPLIT LOCK | F81055-2 | 2 |
| 5 | NUT, M10-8-B -ZINC HEX NYLON LOCK | F81033-1 | 1 |
| 6 | SPRING, LOG CLAMP CHAIN | P09136 | 1 |
| 7 | PLATE, LOG CLAMP STOP | 086980-1 | 1 |
| 8 | BOLT, M12 X 40-8.8 HEX HEAD | F81004-4 | 2 |
| 9 | WASHER, 13 FLAT | F81056-1 | 2 |
| 10 | NUT, M12-8 HEX NYLON LOCK | F81034-2 | 2 |
| 11 | BRACKET, LOG CLAMP | 086512 | 1 |

9.2 Manual Log Turner



230006B

| REF | DESCRIPTION (◆ Indicates Parts Available In Assemblies Only) | PART # | QTY. |
|-----|--|-----------|------|
| | MANUAL LOG TURNER OPTION | LT-A | 1 |
| | Arm Assembly, Manual Log Turner | A09365 | 1 |
| 1 | Bracket, Manual Log Turner Arm Mount | W09424 | 1 |
| 2 | Arm, Lower Manual Turner | W09425 | 1 |
| 3 | Arm, Upper Manual Turner | W09368-1 | 1 |
| 4 | Claw, Log Turner | S09146 | 2 |
| 5 | Bolt, M12 x 60-8.8 Hex Head | F81004-5 | 2 |
| 6 | Nut, M12-8 Hex Nylon Lock | F81034-2 | 2 |
| 7 | Pin, Manual Turner Arm Pivot | 088082-1 | 2 |
| 8 | Washer, 28 Flat | F81061-1 | 4 |
| 9 | Pin, 3/16" x 1 1/2" Cotter | F05012-23 | 4 |
| 10 | Tube, Manual Turner Stop | S09447 | 1 |
| 11 | Rod, Manual Turner Stop | S09545 | 1 |
| 12 | Nut, M12-8 Swaged Hex | F81034-2 | 1 |
| 13 | Pin, 1/8" x 1" Cotter | F05012-1 | 1 |
| 14 | Bolt, M12 x 125-8.8 | F81004-33 | 1 |

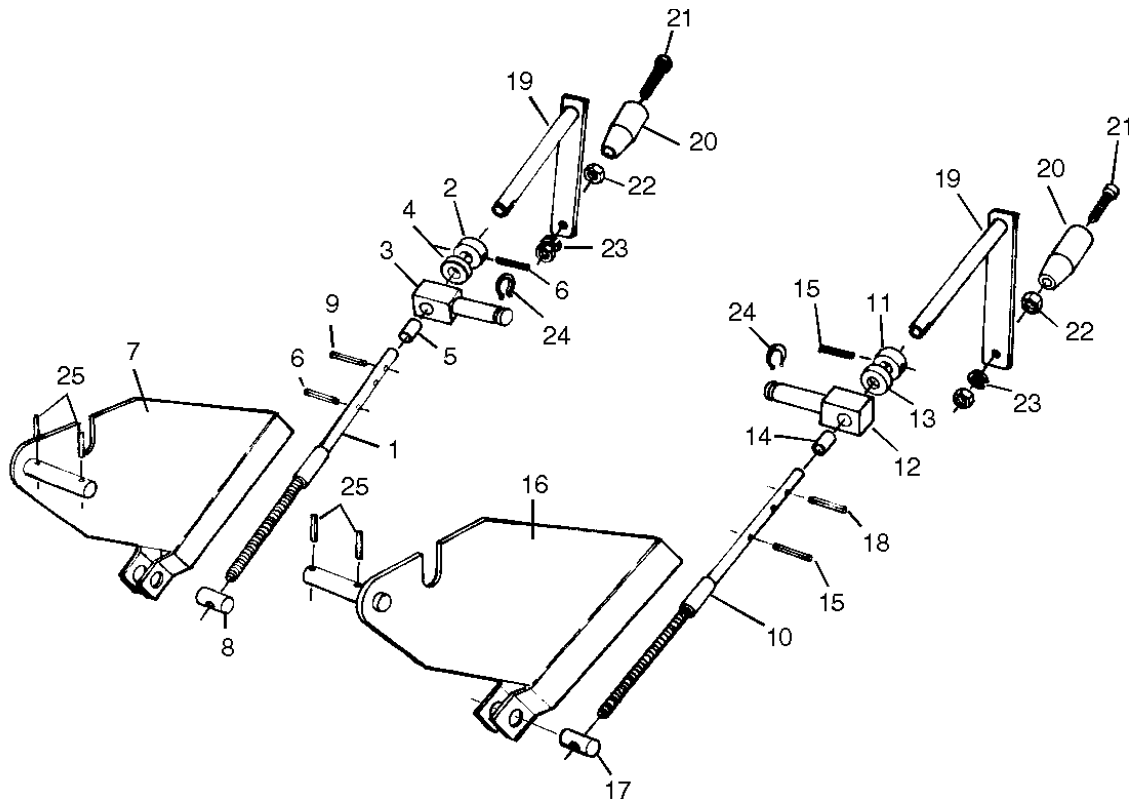
9

Log Clamp

Manual Log Turner

| | | | | |
|----|--------------------------------------|-----------|---|---|
| 15 | Spring, Manual Turner Arm Upper | P09426 | 2 | |
| 16 | Washer, 10.5 Flat | F81055-1 | 1 | |
| 17 | Spring, Manual Turner Arm Lower | P09136 | 2 | |
| 18 | Bolt, 3/8-16 x 4" Hex Head Grade 2 | F05007-4 | 1 | |
| 19 | Nut, 3/8-16 Hex Nylon Lock | F05010-10 | 1 | |
| 20 | Pulley, Manual Turner Cable | S09394-W | 1 | |
| 21 | Washer, 3/4" Standard Flat | F81060-1 | 1 | |
| 22 | Pin, 3/16" x 1 1/2" Cotter | F05012-23 | 1 | |
| 23 | Pin, 3/16" Retaining | P05059 | 1 | |
| | Pulley Assembly, Manual Turner Cable | A09371 | 1 | |
| 24 | Bracket, Manual Turner Cable Pulley | W09428 | 1 | ◆ |
| 25 | Spring, Manual Turner Cable Pulley | P04060 | 1 | |
| 26 | Pulley, Manual Turner Cable | S09394-W | 2 | |
| 27 | Washer, 3/4" Standard Flat | F81060-1 | 2 | |
| 28 | Pin, 3/16" x 1 1/2" Cotter | F05012-23 | 2 | |
| 29 | Bolt, M10 x 125-8.8 Hex Head | F81003-18 | 4 | |
| 30 | Nut, M10-8-B Hex Nylon Lock | F81033-1 | 4 | |
| 31 | Bolt, M12 x 140-8.8 Hex Head | F81004-37 | 2 | |
| 32 | Washer, 13 Flat | F81011-2 | 2 | |
| 33 | Nut, M12-8 Hex Nylon Lock | F81034-2 | 2 | |

9.3 Manual Toe Board



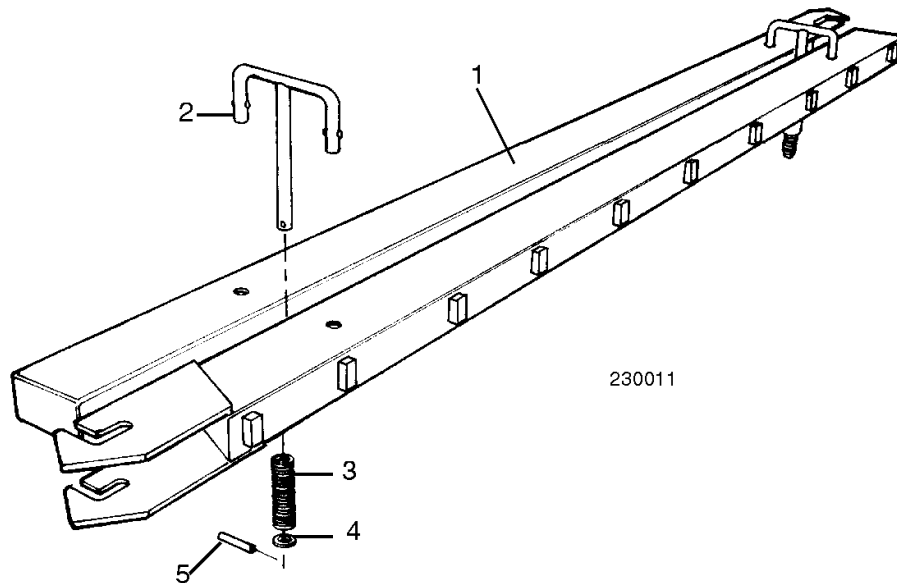
| REF | DESCRIPTION (◆ Indicates Parts Available In Assemblies Only) | PART # | QTY. | |
|-----|--|-----------|------|---|
| | TOE BOARD KIT, MANUAL | A09306 | 1 | |
| | Shaft Assembly, Manual Toe Board | A09490 | 1 | |
| 1 | Shaft, Toe Board | W09289 | 1 | ◆ |
| 2 | Collar, 5/8" I.D. | S09561-W | 1 | |
| 3 | Block, Toe Board Shaft Pivot | S09168 | 1 | |
| 4 | Bearing, 5/8" Thrust | P04214 | 1 | |
| 5 | Spacer, 5/8" I.D. x 3/4" O.D. x .945 Bronze | P09130 | 1 | |
| 6 | Pin, 3/16" x 1 1/4" Roll | F05012-16 | 3 | |
| 7 | Plate, Front Toe Board | W09491 | 1 | |
| 8 | Block, Manual Toe Board Threaded Trunnion | S04427 | 1 | |
| 9 | Pin, 3/16" x 1" Roll | F05012-11 | 1 | |
| | Toe Board, Rear Manual | A09307 | 1 | |
| | Shaft Assembly, Manual Toe Board | A09490 | 1 | |
| 10 | Shaft, Toe Board | W09289 | 1 | ◆ |
| 11 | Collar, 5/8" I.D. | S09561-W | 1 | |
| 12 | Block, Toe Board Shaft Pivot | S09168 | 1 | |
| 13 | Bearing, 5/8" Thrust | P04214 | 1 | |

9 Log Clamp

Manual Toe Board

| | | | | |
|----|--|-----------|---|---|
| 14 | Spacer, 5/8" I.D. x 3/4" O.D. x .945 Bronze | P09130 | 1 | |
| 15 | Pin, 3/16" x 1 1/4" Roll | F05012-16 | 3 | |
| 16 | Plate, Rear Toe Board | W09492 | 1 | |
| 17 | Block, Manual Toe Board Threaded Trunnion | S04427 | 1 | |
| 18 | Pin, 3/16" x 1" Roll | F05012-11 | 1 | |
| | Handle Assembly, Manual Toe Board Crank | A09432 | 2 | |
| 19 | Handle, Manual Toe Board Crank | W09431 | 1 | ◆ |
| 20 | Handle, Crank | S08291-W | 1 | |
| 21 | Screw, 3/8-16 x 2 1/2" Socket Head Cap | F05007-24 | 1 | |
| 22 | Nut, 3/8-16 Hex | F05010-1 | 2 | |
| 23 | Washer, 3/8" Split Lock | F81055-2 | 1 | |
| 24 | Ring, 7/8" O.D. Retaining | F04254-7 | 2 | |
| 25 | Pin, 3/16" x 1" Roll | F05012-11 | 4 | |
| | Instruction Sheet, Manual Toe Board Installation ('87 + Model Mills) | TB-237A | 1 | |

9.4 Log Loading Ramps



| REF | DESCRIPTION (◆ Indicates Parts Available In Assemblies Only) | PART # | QTY. | |
|-----|--|-----------|------|---|
| | RAMP KIT, LOG LOADING WITH RETAINERS | K09466 | 1 | |
| 1 | Ramp, Log Loading | W09014 | 2 | |
| | Retainer Kit, Log Ramp | K09810 | 2 | |
| 2 | Retainer, Log Ramp | W09413 | 1 | ◆ |
| 3 | Spring, Log Ram Retainer | P09335 | 1 | |
| 4 | Washer, 5/8" I.D. x .100" Thick Nylon | F05011-19 | 1 | |
| 5 | Pin, 3/16" x 1" Roll | F05012-11 | 1 | |