



## Replacement Parts

---

**M120**

**rev. A2.00**

---



**Safety is our #1 concern!** Read and understand all safety information and instructions before operating, setting up or maintaining this machine.

*Form #104*

# Table of Contents

# Section-Page

<b>SECTION 1</b>	<b>GENERAL INFORMATION</b>	<b>1-1</b>
1.1	How To Use the Parts List.....	1-1
1.2	Sample Assembly .....	1-1
<b>SECTION 2</b>	<b>SAW HEAD AND MAST ASSEMBLY</b>	<b>2-1</b>
2.1	Blade Housing Cover .....	2-1
2.2	Mast Assembly .....	2-3
2.3	Blade Tensioner Assembly .....	2-6
2.4	Bed Assembly .....	2-8
2.5	Blade Guide Assembly, Drive Side .....	2-10
2.6	Blade Guide Assembly, Idle Side .....	2-11
2.7	Blade Wheel Assembly .....	2-12
2.8	Decals .....	2-13
2.9	Up/Down Mast Guide Brackets .....	2-15
2.10	Blade Height Scale (No. 530667) .....	2-16
2.11	Winch Assembly (No. 532341) .....	2-18
2.12	Friction Torque Limiter (No. 532330) .....	2-20
2.13	Winch Crank (No. 532318) .....	2-21
2.14	Winch Crank Handle (No. 096499) .....	2-22
2.15	Log Clamp (No. 534524) .....	2-23
2.16	Up/Down Mast Guide Bracket (No. 532393) .....	2-24
2.17	Saw Head Rollers (532307, 532308) .....	2-25
2.18	Cable Guide Roller (Part No. 532306) .....	2-26
2.19	Clutch Assembly (No. X100-1192) .....	2-27
<b>SECTION 3</b>	<b>ENGINE/MOTOR KITS</b>	<b>3-1</b>
3.1	Motor Kit, M120 5.5kW (CE Version) .....	3-1
3.2	Engine Kit, 14 HP Gas .....	3-3
3.3	Motor Kit, M120 5.5kW (Non-CE Version) .....	3-5



## SECTION 1 GENERAL INFORMATION

### 1.1 How To Use the Parts List

- Use the index above to locate the assembly that contains the part you need.
- Go to the appropriate section and locate the part in the illustration.
- Use the number pointing to the part to locate the correct part number and description in the table.
- Parts shown indented under another part are included with that part.
- Parts marked with a diamond (◆) are only available in the assembly listed above the part.

See the sample table below. Sample Part #A01111 includes part F02222-2 and subassembly A03333. Subassembly A03333 includes part S04444-4 and subassembly K05555. The diamond (◆) indicates that S04444-4 is not available except in subassembly A03333. Subassembly K05555 includes parts M06666 and F07777-77. The diamond (◆) indicates M06666 is not available except in subassembly K05555.

1.2 Sample Assembly				
REF.	DESCRIPTION (◆ Indicates Parts Available In Assemblies Only)	PART #	QTY	
	Sample Assembly, Complete (Includes All Indented Parts Below)	A01111	1	
1	Sample Part	F02222-22	1	
	Sample Subassembly (Includes All Indented Parts Below)	A03333	1	
2	Sample Part (◆ Indicates Part Is Only Available With A03333)	S04444-4	1	◆
	Sample Subassembly (Includes All Indented Parts Below)	K05555	1	
3	Sample Part (◆ Indicates Part Is Only Available With K05555)	M06666	2	◆
4	Sample Part	F07777-77	1	

#### To Order Parts:

- From Europe call our European Headquarters and Manufacturing Facility in Kolo, Poland at **+48-63-2626000**. From the continental U.S., call our toll-free Parts hotline at **1-800-525-8100**. Have your customer number, vehicle identification number, and part numbers ready when you call. From other international locations, contact the Wood-Mizer distributor in your area for parts.

#### Office Hours:

Country	Monday - Friday	Saturday	Sunday
Poland	7-15	Closed	Closed
US	8 a.m.- 5 p.m.	8 a.m.- 12 p.m.	Closed

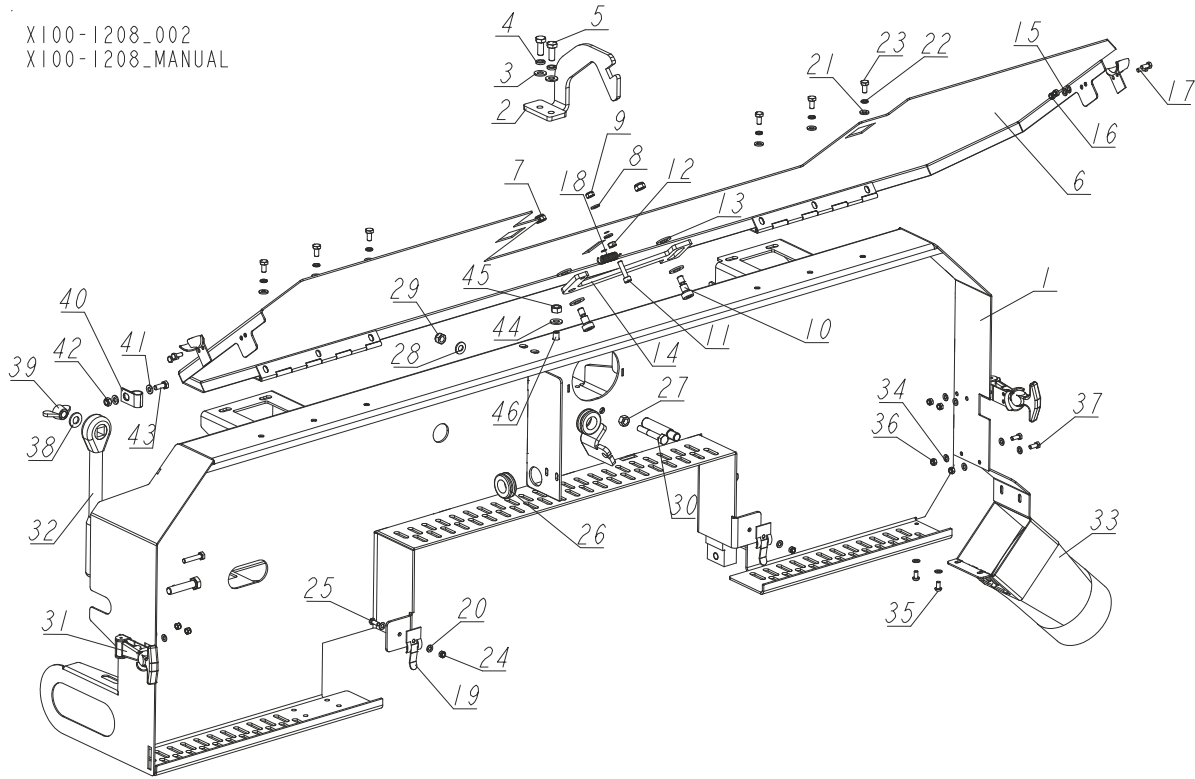


**CAUTION!** It is strongly recommended that only original spare parts be used.

SECTION 2 SAW HEAD AND MAST ASSEMBLY

2.1 Blade Housing Cover

X100-1208\_002  
X100-1208\_MANUAL



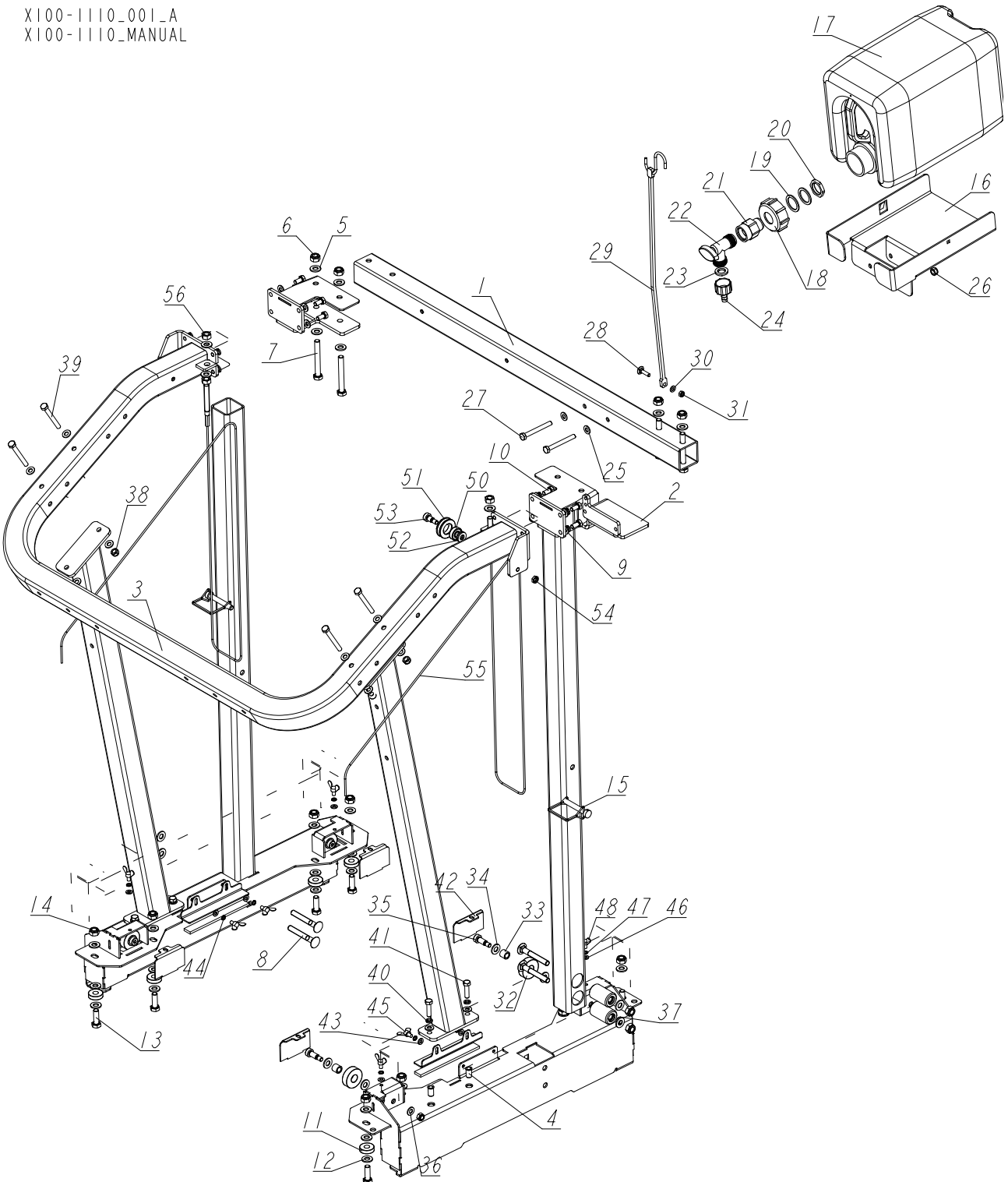
REF.	DESCRIPTION (* indicates parts available in assemblies only)	PART #	QTY
-	<b>SAW HEAD ASSEMBLY</b>	X100-1208	1
-	ASSY, M120 SAWHEAD COVERS	X100-1207	1
1	SAW HEAD WELDMENT	X100-1209	1
-	LATCH ASSEMBLY, COVER	X100-1154	1
2	FLAT PLATE	X100-1155	1
3	WASHER, 8.4 FLAT ZINC	F81054-1	2
4	WASHER, 8.2 SPLIT LOCK ZINC	F81054-4	2
5	BOLT, M8X20-8.8 HEX HEAD FULL THREAD ZINC	F81002-1	2
-	ASSY, HEAD COVER	X100-1199	1
6	WLDMT, COVER HEAD	X100-1152	1
7	NUT, M8-8-B HEX NYLON ZINC LOCK	F81032-2	2
8	WASHER, 6.4 FLAT ZINC	F81053-1	2
9	NUT, M6-8-B HEX NYLON ZINC LOCK	F81031-2	1
10	BOLT, 10/M8X12-12.9 BOSSARD SHOULDER	F81003-62	2
11	SCREW, M6X25-8.8 HEX SOCKET HEAD CAP ZINC	F81001-41	1
12	NUT, M6 8 HEX ZINC	F81031-1	1
13	WASHER, 10.5 FLAT ZINC	F81055-1	4
14	PAWL, LOCKING	090643-1	1
15	WASHER, 5.3 FLAT ZINC	F81052-1	4
16	NUT, M5-8 DIN985 HEX NYLON ZINC LOCK	F81030-2	4

**SAW HEAD AND MAST ASSEMBLY***Blade Housing Cover*

REF.	DESCRIPTION (* indicates parts available in assemblies only)	PART #	QTY
17	BOLT, M5X12 8.8 HEX HEAD FULL THREAD ZINC	F81000-5	4
18	SPRING, 1.6X12X38 EXTENSION	092208	1
19	LATCH, VIBRATION COVER	X100-999	2
20	WASHER, 5.3 FLAT ZINC	F81052-1	8
21	WASHER, 6.4 FLAT ZINC	F81053-1	6
22	WASHER, Z 6.1 SPLIT LOCK ZINC	F81053-3	6
23	BOLT, M6X12 8.8 HEX HEAD FULL THREAD ZINC	F81001-7	6
24	NUT, M5-8 DIN985 HEX NYLON ZINC LOCK	F81030-2	6
25	BOLT, M5X12 8.8 HEX HEAD FULL THREAD ZINC	F81000-5	6
26	GROMMET, 3/4 ID RUBBER	025247	1
27	NUT, M8-8-B HEX ZINC	F81032-1	2
28	WASHER, 8.4 FLAT ZINC	F81054-1	2
29	NUT, M8-8-B HEX NYLON ZINC LOCK	F81032-2	2
30	BOLT, M8X50 HH	F81002-10	2
31	LATCH, FLEXIBLE DRAW	014829	2
32	WRENCH, LT20 BLADE TENSION	091620	1
-	ASSY, SAWDUST CHUTE	X100-1288	1
33	CHUTE WELDMENT, SAWDUST	X100-1105	1
34	WASHER, 5.3 FLAT ZINC	F81052-1	6
35	SCREW, M5X10-8.8 CROSS RECESSED PAN HEAD ZINC	F81000-13	2
36	NUT, M5-8 DIN985 HEX NYLON ZINC LOCK	F81030-2	2
37	BOLT, M5X12 8.8 HEX HEAD FULL THREAD ZINC	F81000-5	2
38	WASHER, 10.5 FLAT ZINC	F81055-1	1
39	NUT, M10 ZINC WING	F81033-8	1
40	CLAMP, 1/2EMT COATED	P07584	1
41	WASHER, 6.4 FLAT ZINC	F81053-1	2
42	NUT, M6-8-B HEX NYLON ZINC LOCK	F81031-2	1
43	BOLT, M6X16-8.8 HEX HEAD FULL THREAD ZINC	F81001-15	1
44	WASHER, 8.4 FLAT ZINC	F81054-1	1
45	NUT, M8-8-B HEX ZINC	F81032-1	1
46	SCREW, M8X40 -45H GEOMET HEX SOCKET SET W/FLAT POINT	F81002-52	1

2.2 Mast Assembly

X100-1110\_001\_A  
 X100-1110\_MANUAL



# 2 SAW HEAD AND MAST ASSEMBLY

## Mast Assembly

REF.	DESCRIPTION (* indicates parts available in assemblies only)	PART #	QTY
-	ASSY, CARRIAGE	X100-1110	1
1	TUBE, 50X50X3 L-958 SQUARE	532400-1	1
-	WLDMNT, CARRIAGE LEFT SIDE POST	X100-1112	1
-	WLDMNT, CARRIAGE RIGHT SIDE POST	X100-1118	1
2	BRACKET, BLADE HEIGHT SCALE	532338	1
3	WLDMNT, BACK TUBE	532394-1	1
-	WLDMNT, LOWER CARRIAGE MEMBER - LEFT	X100-1123	1
-	WLDMNT, LOWER CARRIAGE MEMBER - RIGHT	X100-1129	1
4	NUT, M8 2.0-4.5 RIVET	F81032-10	4
-	ASSY, RETAINING TUBE	X100-1132	2
5	WASHER, 10.5 FLAT ZINC	F81055-1	16
6	NUT, M10-8-B HEX NYLON ZINC LOCK	F81033-1	8
7	BOLT, M10X80-8.8 HEX HEAD ZINC	F81003-50	4
8	BOLT, Z M10X75-8.8 CARRIAGE ZINC	F81003-107	4
9	WASHER, 8.4 FLAT ZINC	F81054-1	20
10	BOLT, M8X16-8.8-B HEX HEAD FULL THREAD ZINC	F81002-20	8
-	ASSY, HORIZONTAL BEARING	X100-1135	8
11	BEARING, LLU 6200	X200-903	1
12	WASHER, 10.5 FLAT ZINC	F81055-1	3
13	BOLT, M10X30-8.8 HEX HEAD FULL THREAD ZINC	F81003-2	1
14	NUT, M10-8-B HEX NYLON ZINC LOCK	F81033-1	1
15	PIN, 3/8X2 1/4 SNAP	014151	2
-	BOTTLE ASSEMBLY, 10 L WATER	517062	1
16	TRAY, 10 L WATER BOTTLE	516436-1	1
-	TANK, OIL - COMPLETE	711401	1
17	TANK, OIL (10L)	711400	1
18	NUT, WATER BOTTLE	513867	1
19	SEAL, 35X26X2 RUBBER	513869	2
20	GLAND NUT, 3/4 NPT	513868	1
21	FITTING, 3/4FPTX3/4MPT	014636	1
22	VALVE, 5/8 90 DEG. MALE SHUTOFF	014100	1
23	FILTER, WATER LUBE	016086	1
24	FITTING, 5/8-3/8 HOSE BARB	014113	1
25	WASHER, 8.4 FLAT ZINC	F81054-1	4
26	NUT, M8-8-B HEX NYLON ZINC LOCK	F81032-2	2
27	BOLT, M8X70-8.8 HEX HEAD ZINC	F81002-71	2
28	BOLT, M6X25-8.8 CARRIAGE ZINC	F81001-20	1
29	STRAP, 15 RUBBER W/S HOOKS	P07461	1
30	WASHER, 6.4 FLAT ZINC	F81053-1	1
31	NUT, M6-8-B HEX NYLON ZINC LOCK	F81031-2	1
-	ASSY, CARRIAGE WHEEL	X100-1136	4
32	BEARING, LLU 6302	X200-957	1
33	BUSHING 10/15-13	X100-1138	1
34	WASHER, 10.5 FLAT ZINC	F81055-1	2
35	BOLT, 10/M8X20-12.9 BOSSARD SHOULDER	F81003-99	1
36	WASHER, 8.4 FLAT ZINC	F81054-1	1
37	NUT, M8-8-B HEX NYLON ZINC LOCK	F81032-2	1



# SAW HEAD AND MAST ASSEMBLY

Mast Assembly

2

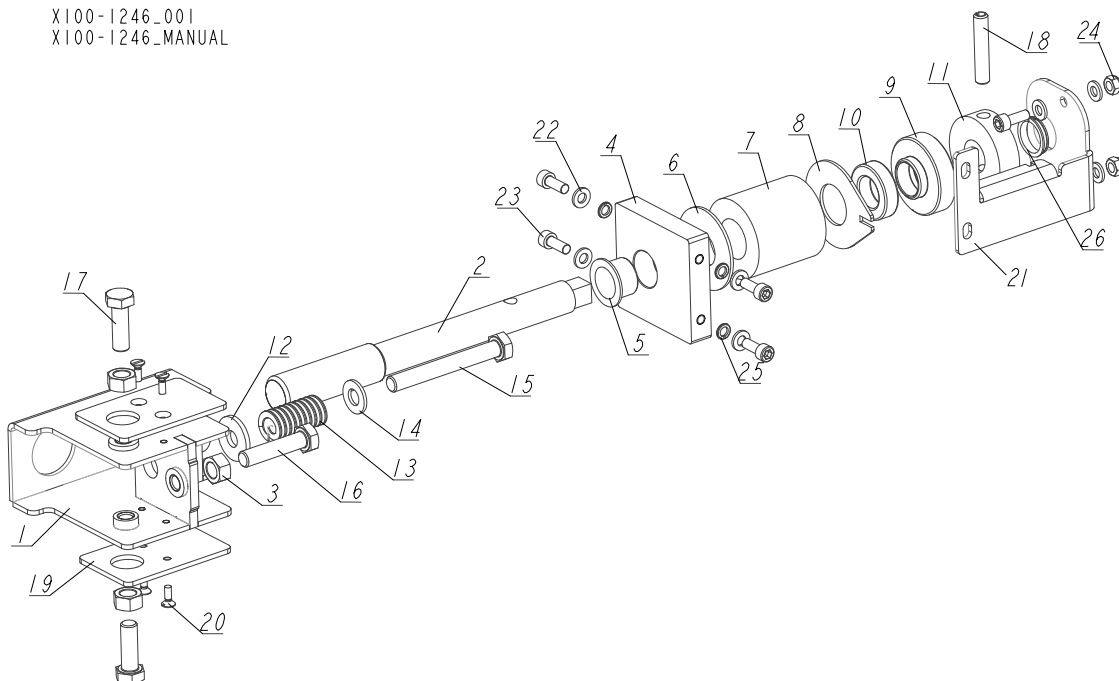
REF.	DESCRIPTION (* indicates parts available in assemblies only)	PART #	QTY	
38	NUT, M8-8-B HEX NYLON ZINC LOCK	F81032-2	4	
39	BOLT, M8X70-8.8 HEX HEAD ZINC	F81002-71	4	
40	WASHER, 8.2 SPLIT LOCK ZINC	F81054-4	12	
41	BOLT, M8X30-8.8-B HEX HEAD FULL THREAD ZINC	F81002-2	4	
42	BENT PLATE	X100-1139	4	
-	ASSY, SWEEPER	X100-1260	2	
43	WASHER, 6.4 FLAT ZINC	F81053-1	2	
44	WASHER, Z 6.1 SPLIT LOCK ZINC	F81053-3	2	
45	SCREW, M6X10 DIN-316/BN-276 ZINC-PL. WING	F81001-49	2	
46	WASHER, 6.4 FLAT ZINC	F81053-1	4	
47	WASHER, Z 6.1 SPLIT LOCK ZINC	F81053-3	4	
48	SCREW, M6X10 DIN-316/BN-276 ZINC-PL. WING	F81001-49	4	
49	WINCH ASSEMBLY	532341	1	
-	ROLLER, LIFT CABLE GUIDE	532306	2	
50	BEARING, 6000 2RSR	087471	1	
51	ROLLER	532000	1	
52	WASHER, 10.5 FLAT ZINC	F81055-1	3	
53	BOLT, 10/M8X12-12.9 BOSSARD SHOULDER	F81003-62	1	
54	NUT, M8-04-HEX THIN ZINC	F81032-8	2	
55	CABLE, FI-3MM L-1750MM CRIMP. M10 STEEL	532326	2	
56	NUT, M10 8 HEX ZINC	F81033-3	4	

# 2 SAW HEAD AND MAST ASSEMBLY

## Blade Tensioner Assembly

### 2.3 Blade Tensioner Assembly

X100-1246\_001  
X100-1246\_MANUAL



REF.	DESCRIPTION (* indicates parts available in assemblies only)	PART #	QTY
-	<b>TENSIONER ASSEMBLY</b>	X100-1246	1
1	TENSIONER WELDMENT	X100-1239	1
2	TENSIONER ROD	X100-1252	1
3	NUT, M10 8 HEX ZINC	F81033-3	3
4	TENSIONER BLOCK	X100-1247	1
5	BUSHING, IGUS GFM-2023-16	X100-1256	1
6	WASHER, 52X21-2	X100-1284	1
7	SPRING, TENSIONER BLADE	014828	1
8	FLAT PLATE	X100-1251	1
9	BEARING BUSHING	X100-1248	1
10	BEARING, 51104 CX BALL THRUST	511979	1
11	BUSHING 16.1/50-15	X100-1250	1
12	WASHER, 10.5 SPECIAL FLAT ZINC	F81055-6	1
13	SPRING, 3/4 O.D.X 1 1/2 DIE	034430	1
14	WASHER, 10.5 FLAT ZINC	F81055-1	1
15	BOLT, M10X80-8.8 HEX HEAD ZINC	F81003-50	1
16	BOLT, M10X45 HEX HEAD FULL THREAD ZINC	F81003-3	1
17	BOLT, M10X30-8.8 HEX HEAD FULL THREAD ZINC	F81003-2	2
18	PIN, 8X45 ROLL ZINC	F81046-6	1
19	POLYETHYLENE PLATE	X100-1249	2
20	SCREW, M4X12 5.8-B SLOTTED COUNTERSUNK HEAD ZINC	F81011-41	4
21	BENT PLATE	X100-1253	1
22	WASHER, 6.4 FLAT ZINC	F81053-1	8
23	SCREW, M6X16 8.8 HEX SOCKET HEAD CAP ZINC	F81001-21	6
24	NUT, M6-8-B HEX NYLON ZINC LOCK	F81031-2	2
25	WASHER, Z 6.1 SPLIT LOCK ZINC	F81053-3	4

# SAW HEAD AND MAST ASSEMBLY

## *Blade Tensioner Assembly*

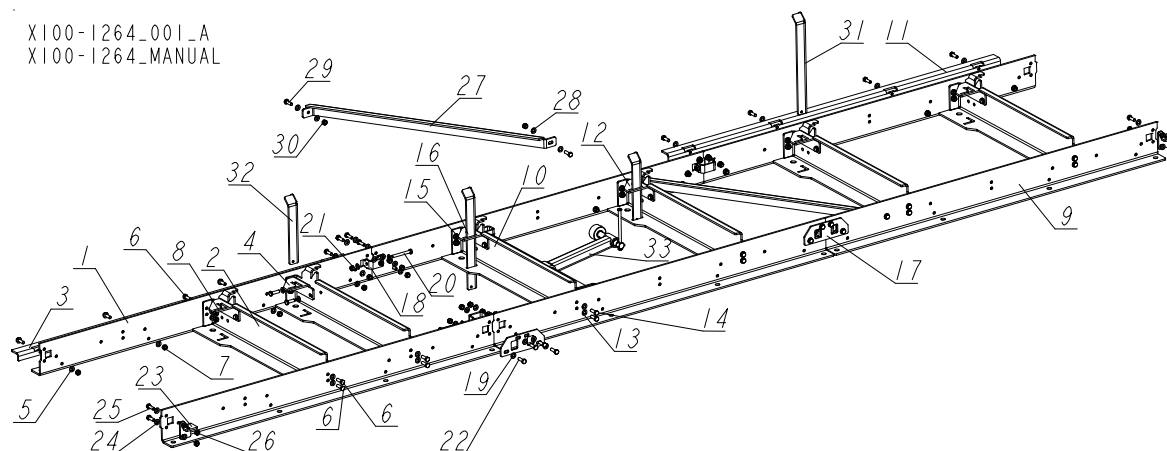
2

REF.	DESCRIPTION (* indicates parts available in assemblies only)	PART #	QTY	
26	CLIP, BEARING MCM-20-03	X100-1259	1	

# 2 SAW HEAD AND MAST ASSEMBLY

## Bed Assembly

### 2.4 Bed Assembly



REF.	DESCRIPTION (* indicates parts available in assemblies only)	PART #	QTY
-	ASSY, M120 BED	X100-1264	1
-	ASSY, FIRST BED SECTION	X100-1265	1
1	BENT PLATE	X100-1266	2
2	BENT PLATE	X100-1267	2
3	BENT PLATE	X100-1268	1
4	BENT PLATE	X100-1269	2
5	WASHER, 10.5 FLAT ZINC	F81055-1	32
6	SCREW, DIN933-M10X30-8.8-A2E HEX CAP FULL THREAD	F81003-111	14
7	NUT, M10-8-B HEX NYLON ZINC LOCK	F81033-1	16
8	BOLT, M10X35 8.8 HEX HEAD FULL THREAD ZINC	F81003-17	2
-	ASSY, BED SECTION	X100-1270	2
9	BENT PLATE	X100-1266	2
10	BENT PLATE	X100-1267	2
11	BENT PLATE	X100-1268	1
12	BENT PLATE	X100-1269	2
13	WASHER, 10.5 FLAT ZINC	F81055-1	32
14	SCREW, DIN933-M10X30-8.8-A2E HEX CAP FULL THREAD	F81003-111	14
15	NUT, M10-8-B HEX NYLON ZINC LOCK	F81033-1	16
16	BOLT, M10X35 8.8 HEX HEAD FULL THREAD ZINC	F81003-17	2
-	ASSY, BED CONNECTION	X100-1271	4
17	FLAT PLATE	X100-1272	1
18	BENT PLATE	X100-1273	1
19	WASHER, 10.5 FLAT ZINC	F81055-1	10
20	BOLT, M10X80-8.8 HEX HEAD ZINC	F81003-50	1
21	NUT, M10-8-B HEX NYLON ZINC LOCK	F81033-1	5
22	SCREW, DIN933-M10X30-8.8-A2E HEX CAP FULL THREAD	F81003-111	4
-	ASSY, END STOP	X100-1274	2
23	BENT PLATE	X100-1275	1
24	WASHER, 10.5 FLAT ZINC	F81055-1	4
25	BOLT, M10X30-8.8 HEX HEAD FULL THREAD ZINC	F81003-2	2
26	NUT, M10-8-B HEX NYLON ZINC LOCK	F81033-1	2

# SAW HEAD AND MAST ASSEMBLY

Bed Assembly

2

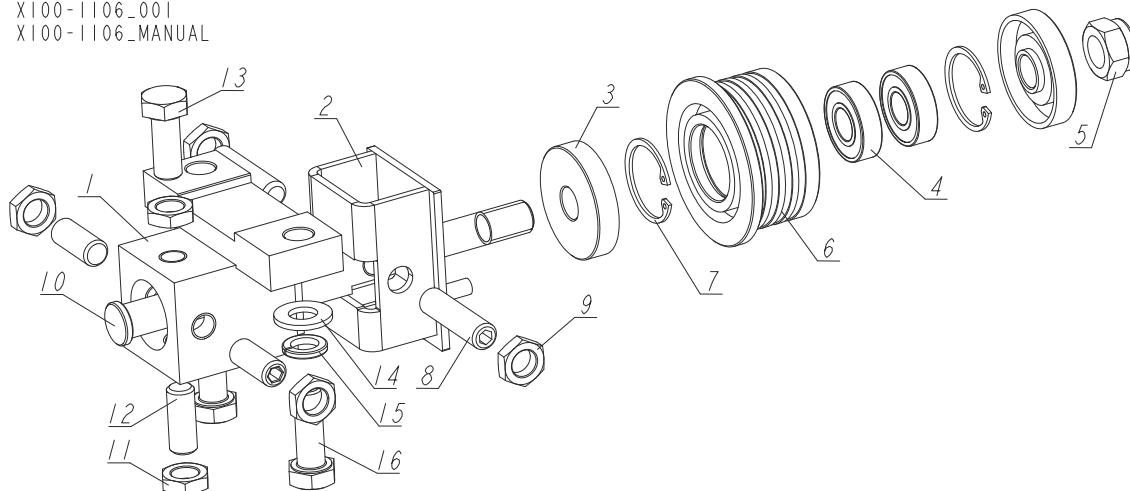
REF.	DESCRIPTION (* indicates parts available in assemblies only)	PART #	QTY	
-	ASSY, CROSS BRACE	X100-1276	2	
27	BENT PLATE	X100-1277	1	
28	WASHER, 10.5 FLAT ZINC	F81055-1	4	
29	BOLT, M10X30-8.8 HEX HEAD FULL THREAD ZINC	F81003-2	2	
30	NUT, M10-8-B HEX NYLON ZINC LOCK	F81033-1	2	
31	BENT PLATE	X100-1278	2	
32	BENT PLATE	X100-1279	2	
33	LOG CLAMP, M120 <a href="#">See Section 2.15</a>	534524	1	

# 2 SAW HEAD AND MAST ASSEMBLY

## Blade Guide Assembly, Drive Side

### 2.5 Blade Guide Assembly, Drive Side

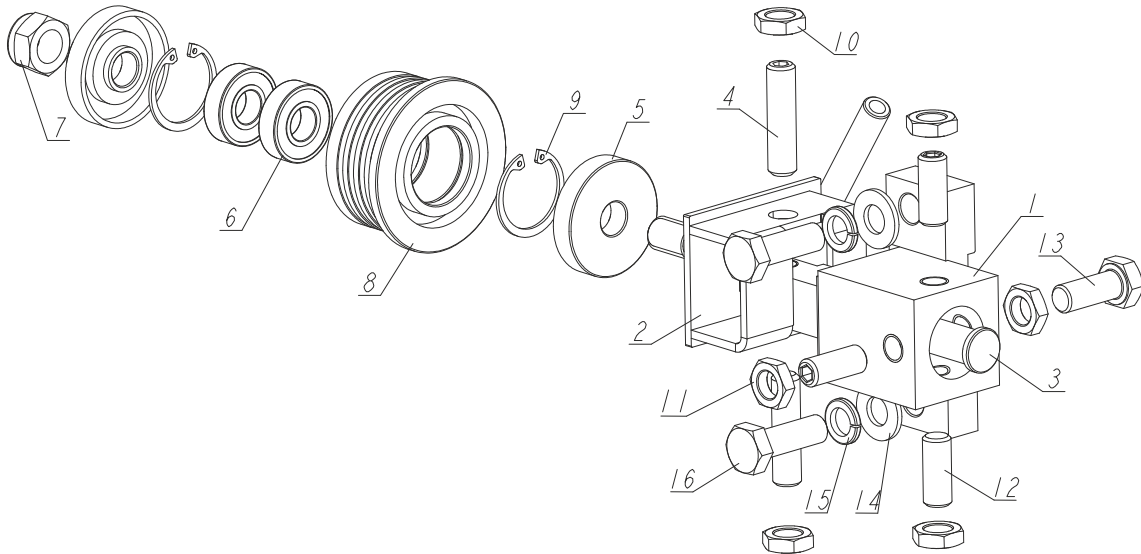
X100-1106\_001  
X100-1106\_MANUAL



REF.	DESCRIPTION (* indicates parts available in assemblies only)	PART #	QTY
-	<b>BLADE GUIDE ASSEMBLY, DRIVE SIDE</b>	X100-1106	1
1	MOUNT WELDMENT, BLADE GUIDE (METRIC GP SAW HEAD)	087744	1
-	BLADE GUIDE ASSEMBLY, DRIVE SIDE	094682	1
2	BRACKET WELDMENT, BLADE GUIDE ROLLER ZINC-PLATED	094679-1	1
-	ROLLER, BLADE GUIDE NARROW W/BEARINGS	087887	1
3	RING, ZINC-PLATED SPACER	087891-1	2
4	BEARING, 6001 2RSR (FAG, SKF)	087893	2
5	NUT, M12 8 HEX NYLON ZINC LOCK	F81034-2	1
6	ROLLER, BLADE GUIDE NARROW	087889	1
7	RING, W28 INSIDE RETAINING	F81090-9	2
8	SCREW, M10X1X40 DIN913 A2-70 STAINLESS STEEL SET	F81015-2	2
9	NUT, M10X1-04-ST-A2E ISO8675 THIN	F81033-10	2
10	SHAFT, ZINC-PLATED BLADE GUIDE MOUNT	503588-1	1
11	NUT, M10X1-04-ST-A2E ISO8675 THIN	F81033-10	4
12	SCREW, M10X1X25 DIN 913 STAINLESS STEEL SET	F81015-4	3
13	BOLT, M10X1X25 DIN 933 STAINLESS STEEL	F81003-28	1
14	WASHER, 10.5 FLAT ZINC	F81055-1	2
15	WASHER, Z 10.2 SPLIT LOCK ZINC	F81055-2	2
16	BOLT, M10X30-8.8 HEX HEAD FULL THREAD ZINC	F81003-2	2

2.6 Blade Guide Assembly, Idle Side

X100-1107\_001  
X100-1107\_MANUAL



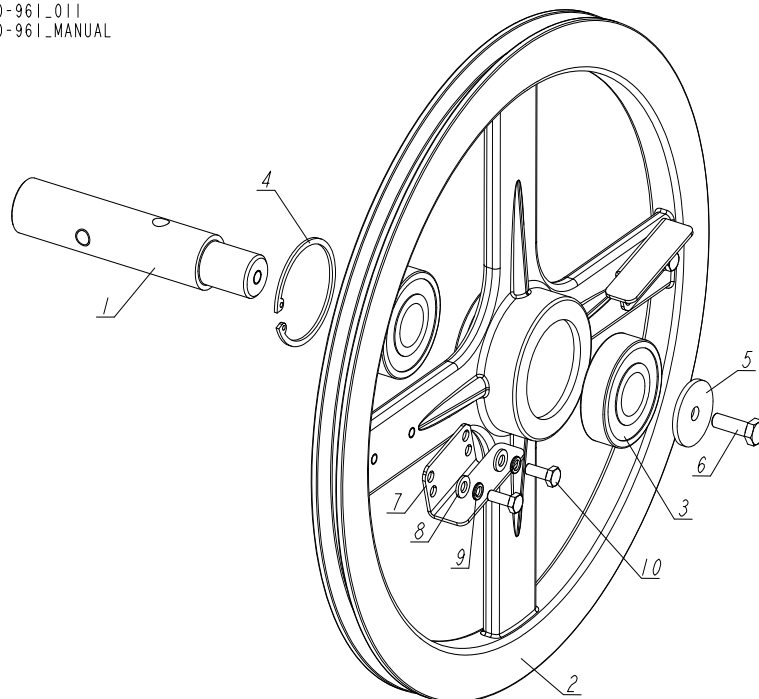
REF.	DESCRIPTION (* indicates parts available in assemblies only)	PART #	QTY
-	<b>BLADE GUIDE ASSEMBLY, IDLE SIDE</b>	X100-1107	1
1	MOUNT WELDMENT, BLADE GUIDE (METRIC GP SAW HEAD)	087744	1
-	BLADE GUIDE ASSEMBLY, IDLE SIDE	094683	1
2	BRACKET WELDMENT, BLADE GUIDE ROLLER ZINC-PLATED	094681-1	1
3	SHAFT, ZINC-PLATED BLADE GUIDE MOUNT	503588-1	1
4	SCREW, M10X1X40 DIN913 A2-70 STAINLESS STEEL SET	F81015-2	2
-	ROLLER, BLADE GUIDE NARROW W/BEARINGS	087887	1
5	SHAFT, BLADE GUIDE ROLLER ZINC-PLATED	087763-1	1
6	RING, ZINC-PLATED SPACER	087891-1	2
7	BEARING, 6001 2RSR (FAG, SKF)	087893	2
8	NUT, M12 8 HEX NYLON ZINC LOCK	F81034-2	1
9	ROLLER, BLADE GUIDE NARROW	087889	1
10	RING, W28 INSIDE RETAINING	F81090-9	2
11	NUT, M10X1-04-ST-A2E ISO8675 THIN	F81033-10	2
12	NUT, M10X1-04-ST-A2E ISO8675 THIN	F81033-10	4
13	SCREW, M10X1X25 DIN 913 STAINLESS STEEL SET	F81015-4	3
14	BOLT, M10X1X25 DIN 933 STAINLESS STEEL	F81003-28	1
15	WASHER, 10.5 FLAT ZINC	F81055-1	2
16	WASHER, Z 10.2 SPLIT LOCK ZINC	F81055-2	2
17	BOLT, M10X30-8.8 HEX HEAD FULL THREAD ZINC	F81003-2	2

# 2 SAW HEAD AND MAST ASSEMBLY

## Blade Wheel Assembly

### 2.7 Blade Wheel Assembly

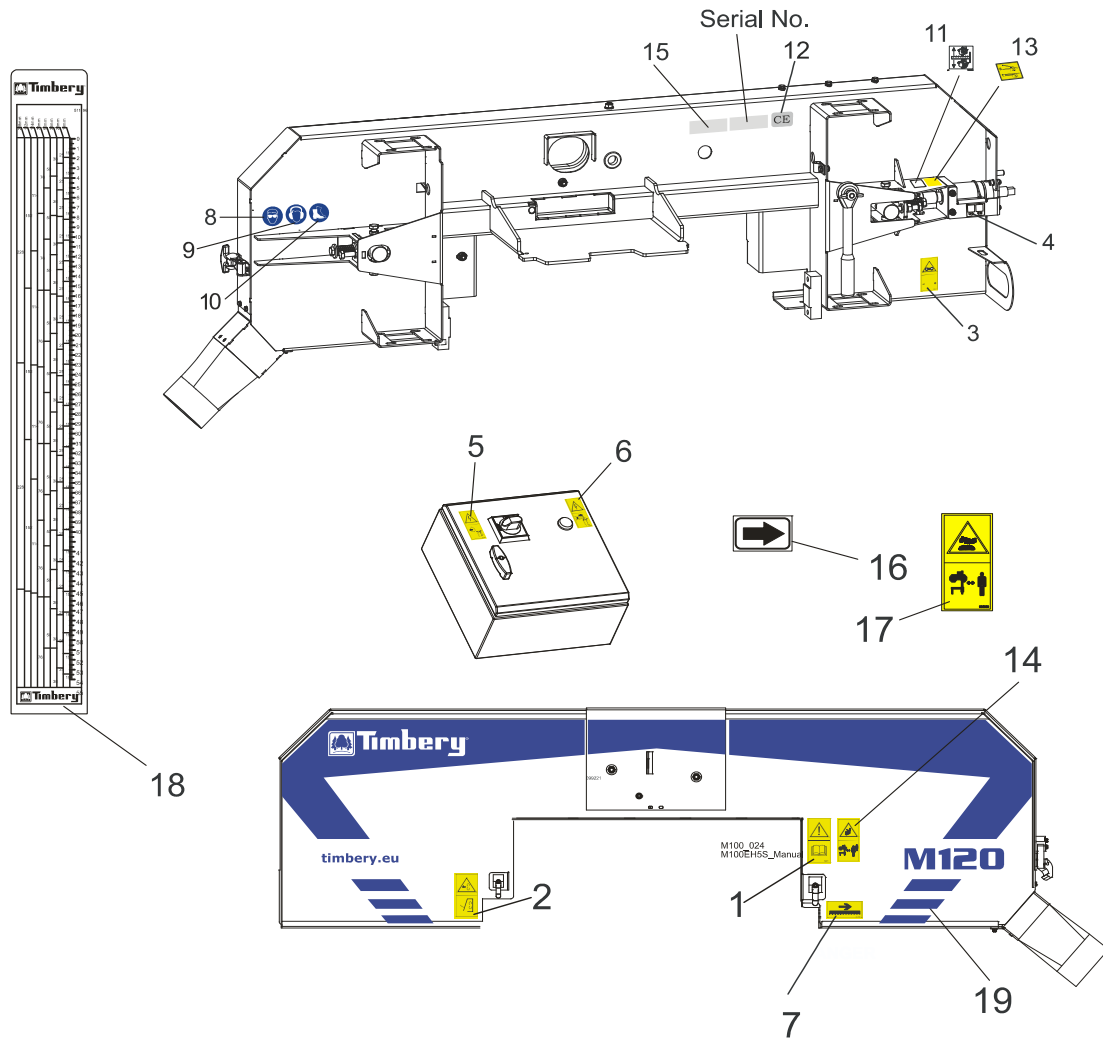
X100-961\_011  
X100-961\_MANUAL



REF.	DESCRIPTION (* indicates parts available in assemblies only)	PART #	QTY
-	ASSY, BANDWHEEL SHAFT	X100-961	2
1	SPINDLE, BLADE WHEEL	X100-301	1
2	SHEAVE, 15 3/8 OD BANDWHEEL	X100-303	1
3	BEARING, 6305 2RS NSK IDLE SIDE WHEEL	P08066	2
4	SNAP RING, 2 7/16 IR BEVELED	F04254-21	1
5	WASHER,.313X1.5X.125	S08220	1
6	BOLT, M8X25-8.8-B HEX HEAD FULL THREAD ZINC	F81002-5	1
7	WING	534492-1	2
8	WASHER, 6.4 FLAT ZINC	F81053-1	4
9	WASHER, Z 6.1 SPLIT LOCK ZINC	F81053-3	4
10	BOLT, M6x16-8.8 HEX HEAD FULL THREAD ZINC	F81001-15	4
	BELT, B47.5 M100	X100-900	1
	BELT, B69 CARLISLE SUPER II M100	X100-905	1



2.8 Decals



REF.	DESCRIPTION (◆ indicates parts available in assemblies only)	PART #	QTY
	<b>DECAL KIT, M120 TIMBERY</b>	<b>529941</b>	<b>1</b>
1	DECAL, "READ THE OPERATOR'S MANUAL" (PICTOGRAM)	096317	1
2	DECAL, CLOSE ALL GUARDS AND COVERS BEFORE STARTING THE MACHINE (PICTOGRAM)	099220	1
3	DECAL, BLADE TENSION (PICTOGRAM)	099219	1
4	DECAL, BLADE TENSION ADJUSTMENT (PICTOGRAM)	527864	1
5	DECAL, HIGH VOLTAGE INSIDE ELECTRIC BOX (AC SAWMILLS ONLY)	096316	1
6	DECAL, DISCONNECT POWER SUPPLY BEFORE OPENING THE ELECTRIC BOX (AC SAWMILLS ONLY)	096319	1
7	DECAL, BLADE MOVEMENT DIRECTION (PICTOGRAM)	096321	1
8	DECAL, EYE PROTECTION WARNING (PICTOGRAM)	S12004G	1
9	DECAL, EAR PROTECTION WARNING (PICTOGRAM)	S12005G	1
10	DECAL, USE SAFETY BOOTS (PICTOGRAM)	501465	1
11	DECAL, BLADE ALIGNMENT (PICTOGRAM)	P11789	1
12	DECAL, CE CERTIFIED SAWMILL	P85070	1
13	DECAL, SAFETY HANDLE	501477	1
14	DECAL, KEEP AWAY DANGER (PICTOGRAM)	099221	1
15	DECAL, SAWMILL LOGO - MULTILINGUAL	515085	1

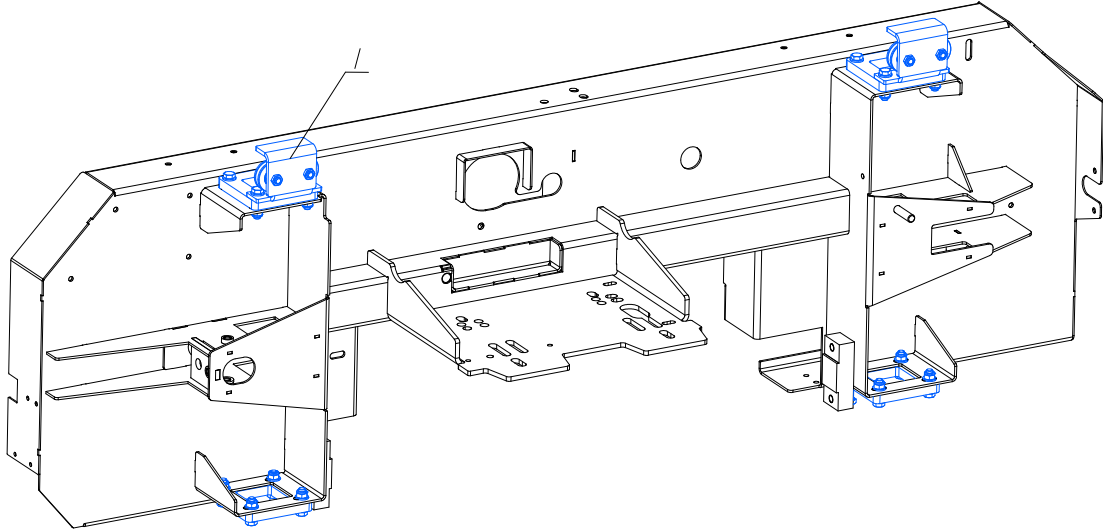
**2****SAW HEAD AND MAST ASSEMBLY***Decals*

---

REF.	DESCRIPTION (◆ indicates parts available in assemblies only)	PART #	QTY	
16	DECAL, MOTOR REVOLUTIONS DIRECTION (AC SAWMILLS ONLY)	s20097	1	
17	DECAL, KEEP AWAY - HOT PARTS (DC SAWMILLS ONLY)	086099	1	
18	DECAL, METRIC SCALE (MILLIMETRES)	511196	1	
19	DECAL, M120	527753	1	

## 2.9 Up/Down Mast Guide Brackets

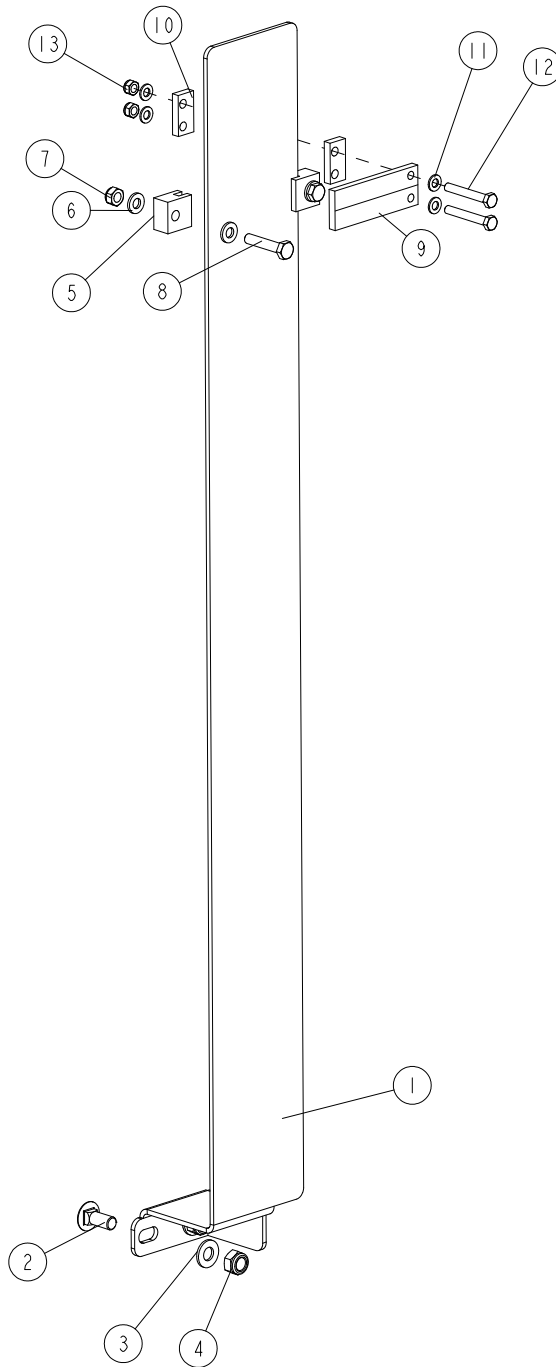
X100-1208\_001\_A  
 X100-1208\_MANUAL



REF.	DESCRIPTION (* indicates parts available in assemblies only)	PART #	QTY
1	BRACKET ASSEMBLY, UP/DOWN MAST GUIDE <a href="#">See Section 2.16</a>	532393	1

**2.10 Blade Height Scale (No. 530667)**

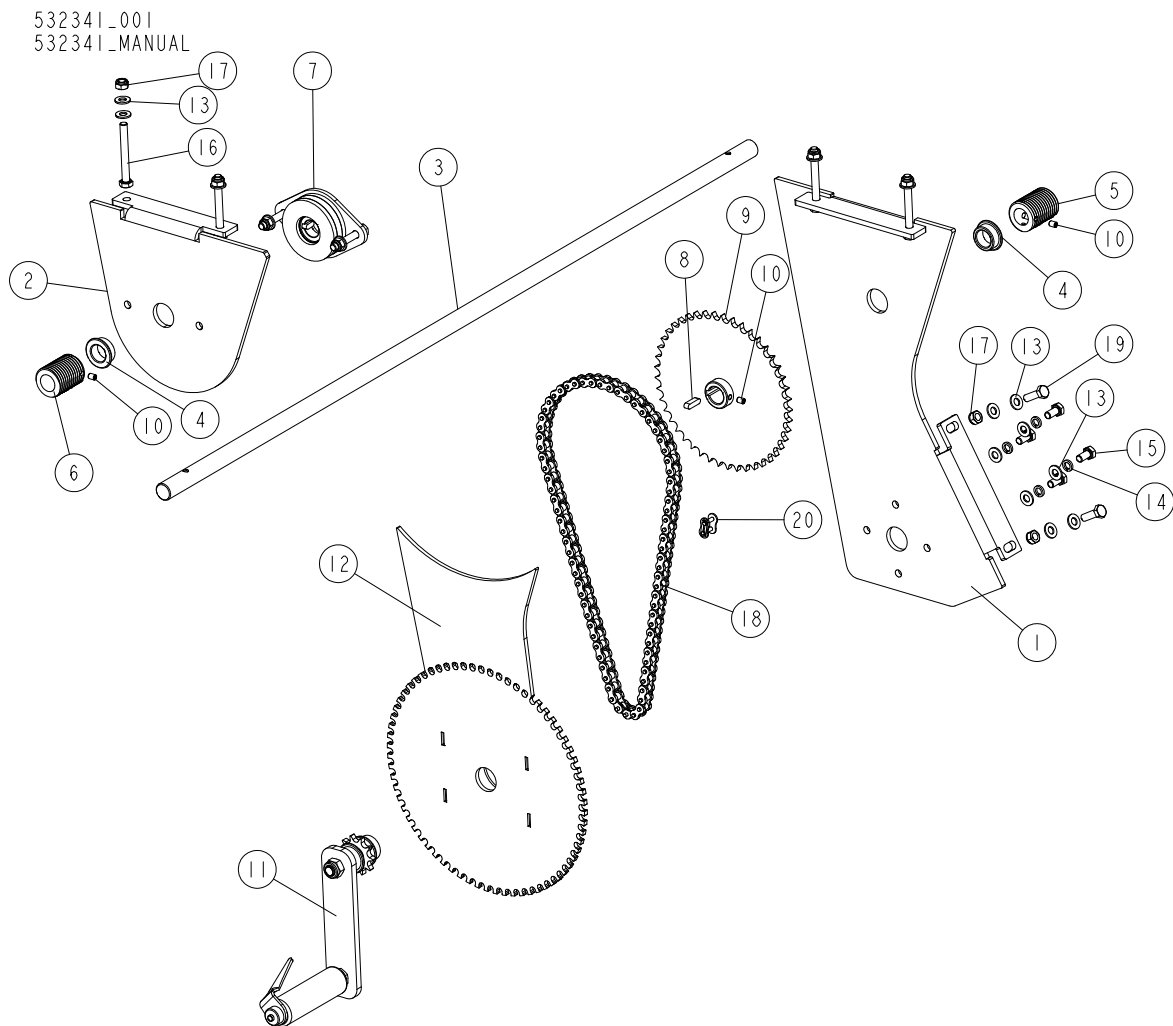
530667\_001\_A  
530667\_MANUAL



REF	DESCRIPTION (u indicates parts available in assemblies only)	PART #	QTY
-	<b>SCALE, LX50 COMPLETE</b>	530667	1
1	PLATE, LX50 ZINC-PLATED SCALE	531993-1	1
2	BOLT, M8X20-8.8 CARRIAGE ZINC	F81002-11	2
3	WASHER, 8.4 FLAT ZINC	F81054-1	2
4	NUT, M8-8-B HEX NYLON ZINC LOCK	F81032-2	2
5	BLOCK, SCALE STIFFENER	X100-1179	2
6	WASHER, 6.4 FLAT ZINC	F81053-1	4

REF	DESCRIPTION (u indicates parts available in assemblies only)	PART #	QTY	
7	NUT, M6-8-B HEX NYLON ZINC LOCK	F81031-2	2	
8	BOLT, M6X30-8.8 HEX HEAD FULL THREAD	F81001-8	2	
9	INDICATOR, BLADE HEIGHT SCALE	094821	1	
10	SPACER, SCALE	550707-1	2	
11	WASHER, 5.3 FLAT ZINC	F81052-1	4	
12	BOLT M5X35 8.8 FE/ZN5 PN-M/82105	F81000-10	2	
13	NUT, M5-8 DIN985 HEX NYLON ZINC LOCK	F81030-2	2	

## 2.11 Winch Assembly (No. 532341)

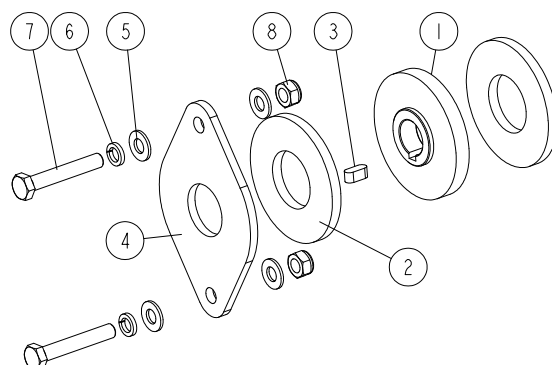


REF.	DESCRIPTION (* indicates parts available in assemblies only)	PART #	QTY
-	<b>WINCH ASSEMBLY</b>	532341	1
1	PLATE, UP/DOWN SHAFT MAIN SUPPORT	532340-1	1
2	PLATE, SUPPORT	532339-1	1
3	SHAFT	532311-1	1
4	BUSHING, SLIDE	532332	2
5	BUSHING FOR LIFT CABLE	534526	1
6	BUSHING FOR LIFT CABLE	534526	1
7	LIMITER, FRICTION TORQUE <a href="#">See Section 2.12</a>	532330	1
8	KEY, A 6X6X22 PARALLEL	519161	1
9	SPROCKET ASSEMBLY, LARGE	532323-1	1
10	SCREW, M6X8-33H-GEOMET HEX SOCKET SET W/FLAT POINT	F81013-1	3
11	CRANK, WINCH <a href="#">See Section 2.12</a>	532318	1
12	DIAL ASSEMBLY	532342-1	1
13	WASHER, 8.4 FLAT ZINC	F81054-1	16
14	WASHER, 8.2 SPLIT LOCK ZINC	F81054-4	4
15	BOLT, M8X16-8.8-B HEX HEAD FULL THREAD ZINC	F81002-20	4

REF.	DESCRIPTION (* indicates parts available in assemblies only)	PART #	QTY	
16	BOLT, M8X70-8.8 HEX HEAD ZINC	F81002-71	4	
17	NUT, M8-8-B HEX NYLON ZINC LOCK	F81032-2	6	
18	CHAIN, 08B L-939 (73-LINK)	532365	1	
19	BOLT, M8X25-8.8-B HEX HEAD FULL THREAD ZINC	F81002-5	2	
20	LINK, 08B-1PZ MASTER	091625	1	

## 2.12 Friction Torque Limiter (No. 532330)

532330\_001  
532330\_MANUAL

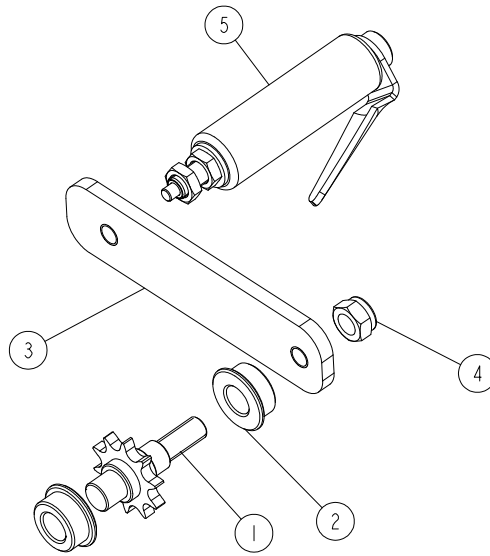


REF.	DESCRIPTION (* indicates parts available in assemblies only)	PART #	QTY
-	<b>LIMITER, FRICTION TORQUE</b>	532330	1
1	BUSHING, FRICTION TORQUE LIMITER	532328-1	1
2	PAD, FRICTION	532329	2
3	KEY, A 6X6X14	516939	1
4	PLATE, CLAMPING	532331-1	1
5	WASHER, 8.4 FLAT ZINC	F81054-1	4
6	WASHER, 8.2 SPLIT LOCK ZINC	F81054-4	2
7	BOLT, M8X50 -8.8 HEX HEAD FULL THREAD ZINC	F81002-19	2
8	NUT, M8-8-B HEX NYLON ZINC LOCK	F81032-2	2



### 2.13 Winch Crank (No. 532318)

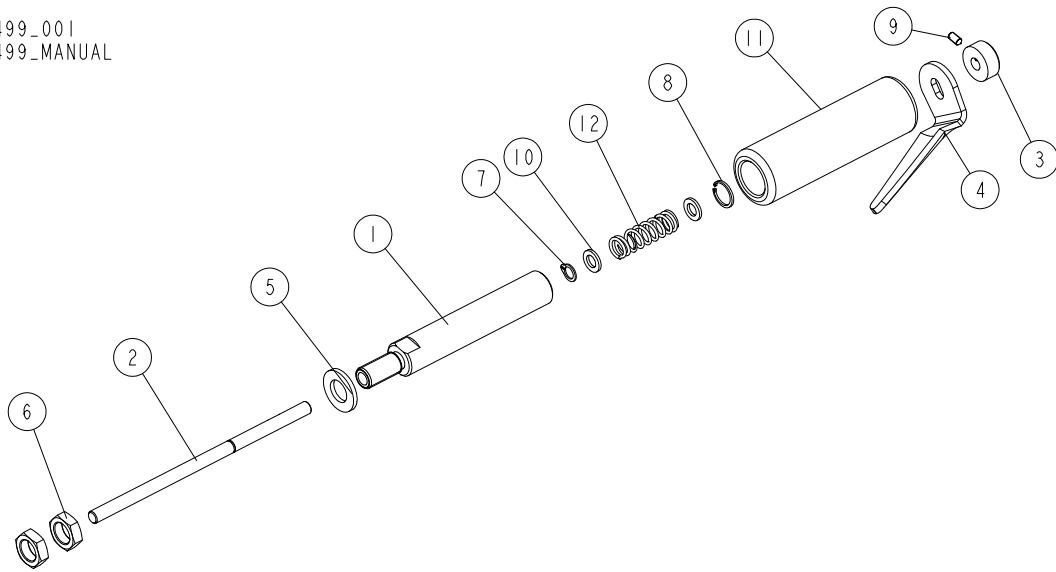
532318\_001  
532318\_MANUAL



REF.	DESCRIPTION (* indicates parts available in assemblies only)	PART #	QTY
-	<b>CRANK, WINCH</b>	532318	1
1	SPROCKET ASSEMBLY, SMALL	532319-1	1
2	BUSHING, SLIDE	532333	2
3	PLATE, CRANK	531997-1	1
4	NUT, M12 8 HEX NYLON ZINC LOCK	F81034-2	1
5	HANDLE, CRANK <a href="#">See Section 2.14</a>	096499	1

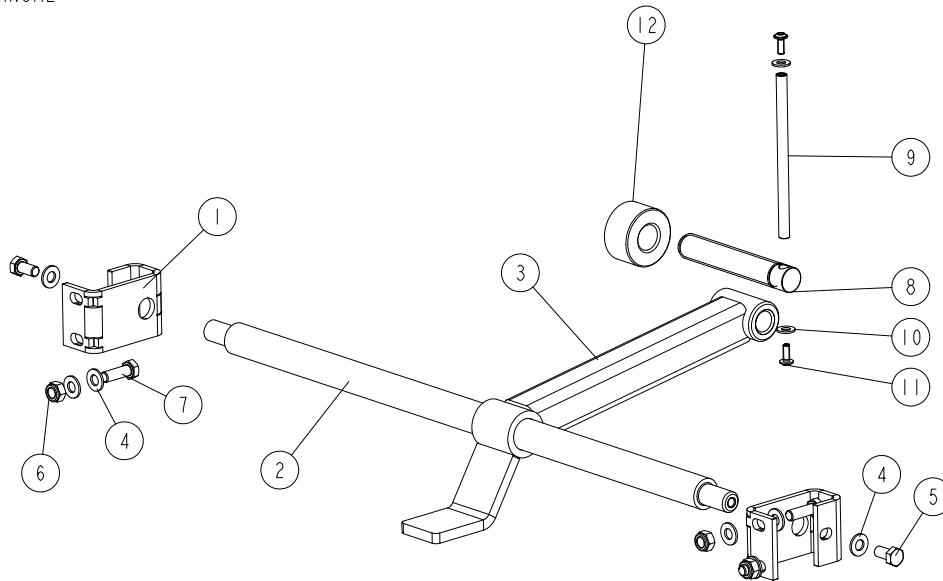
**2.14 Winch Crank Handle (No. 096499)**

096499\_001  
096499\_MANUAL



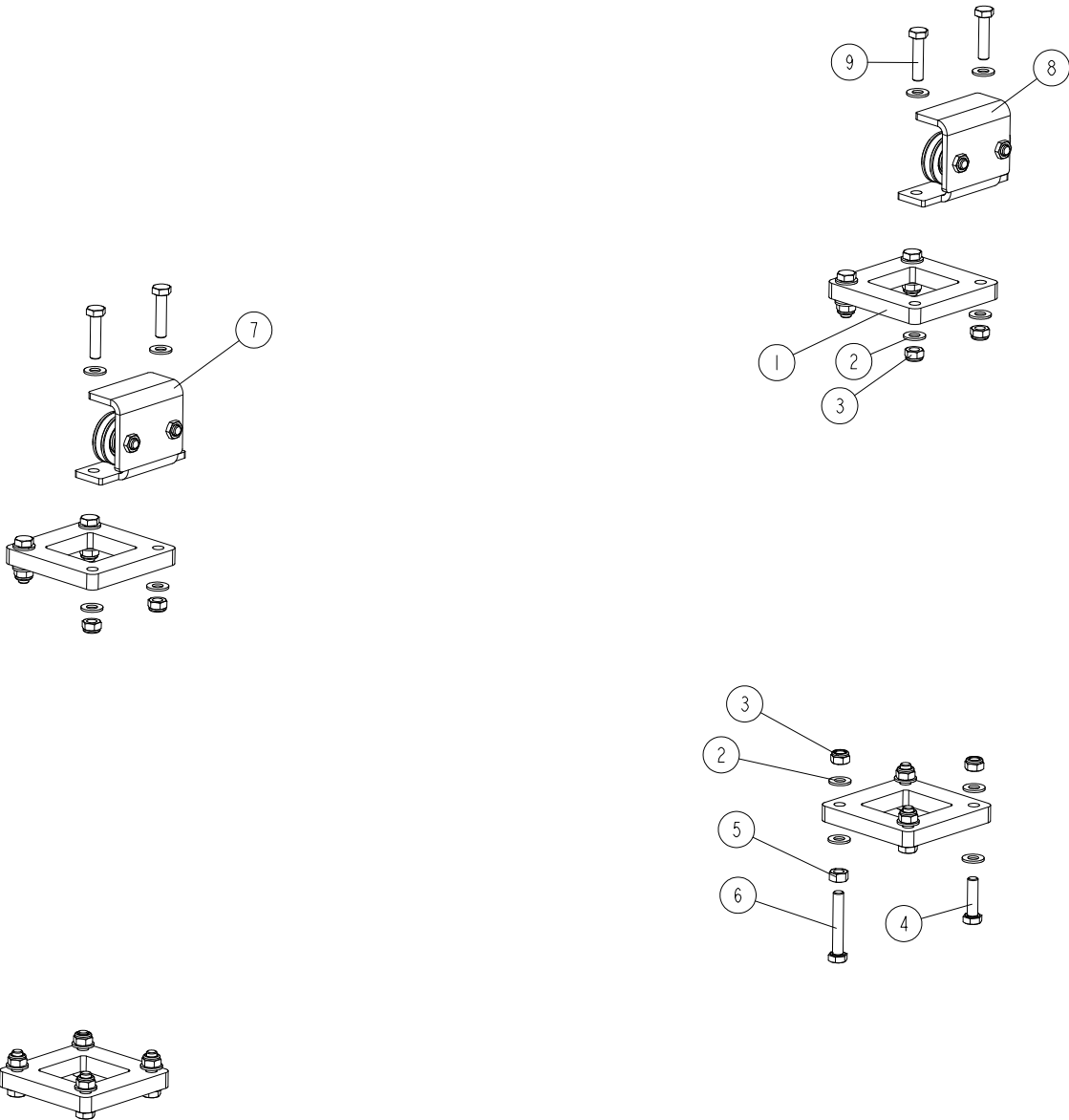
REF.	DESCRIPTION (* indicates parts available in assemblies only)	PART #	QTY
-	<b>HANDLE, CRANK</b>	096499	1
1	MANDREL, CRANK HANDLE	096504-1	1
2	PIN, CRANK HANDLE	097095-1	1
3	RING, 7 STOPPING LIGHT TYPE	F81039-9	1
4	PLATE, EDGER HANDLE	047689	1
5	WASHER, 13 FLAT ZINC	F81056-1	1
6	NUT, M12-04-A THIN ZINC	F81034-6	2
7	RING, Z7 OUTSIDE RETAINING	F81090-17	1
8	RING, W13 INSIDE RETAINING	F81090-18	1
9	SCREW, M4X8 GEOMET HEX SOCKET SET W/FLAT POINT	F81011-40	1
10	WASHER, 7.2/12.5	097264	2
11	TUBE, CRANK HANDLE	097263	1
12	SPRING, .48DIA X 1.5 LONG SS COMPRESSION	047690	1

## 2.15 Log Clamp (No. 534524)

534524\_001  
534524\_MANUAL

REF.	DESCRIPTION (* indicates parts available in assemblies only)	PART #	QTY
-	<b>CLAMP, M120 LOG</b>	534524	1
1	BRACKET, SIDE SUPPORT/LOG CLAMP ZIINC-PLATED MOUNT	530674-1	2
2	ROD, LOG CLAMP MAIN	515059-1	1
3	ARM, LOG CLAMP ZINC-PLATED	530701-1	1
4	WASHER, 10.5 FLAT ZINC	F81055-1	8
5	BOLT, ISO 4017-M10X20-8.8-A2E HEX HEAD FULL THREAD	F81003-53	2
6	NUT, M10-8-B HEX NYLON ZINC LOCK	F81033-1	3
7	SCREW, DIN933-M10X30-8.8-A2E HEX CAP FULL THREAD	F81003-111	3
-	BOLT, LOG CLAMP - COMPLETE	507563	1
8	BOLT, LOG CLAMP	507463	1
-	ROD, COMPLETE	511924	1
9	ROD, ZINC-PLATED	511923-1	1
10	WASHER, 8.4 FLAT ZINC	F81054-1	2
11	SCREW, M6X16 BN 11252 "BOSSARD" BUTTON HEAD SOCKET CAP W/FLANGE	F81001-24	2
12	CAP, MOUNTING	T00414	1

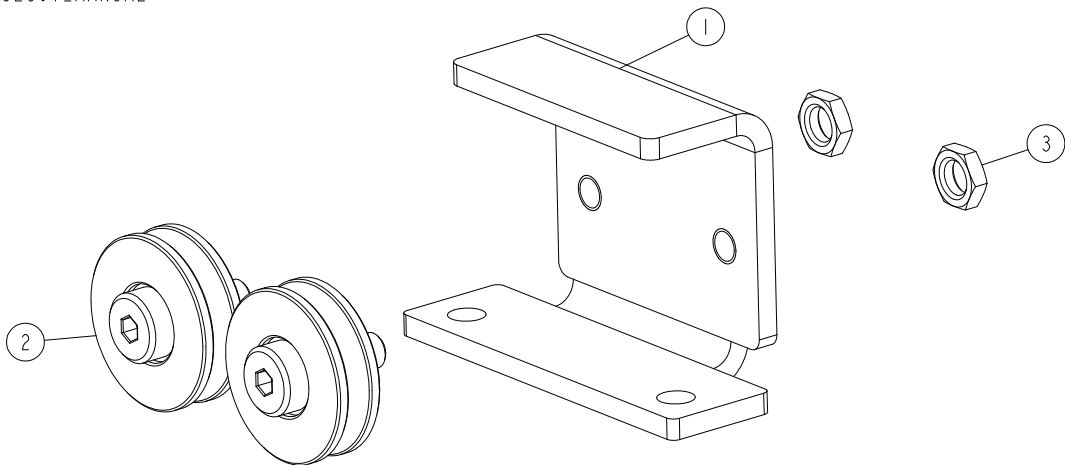
## 2.16 Up/Down Mast Guide Bracket (No. 532393)

532393\_001  
532393\_MANUAL

REF.	DESCRIPTION (* indicates parts available in assemblies only)	PART NO.	QTY	
-	<b>BRACKET ASSEMBLY, UP/DOWN MAST GUIDE</b>	532393	1	
1	BLOCK, VERTICAL SLIDE GUIDE	X100-327	4	
2	WASHER, 8.4 FLAT ZINC	F81054-1	32	
3	NUT, M8-8-B HEX NYLON ZINC LOCK	F81032-2	16	
4	BOLT, M8X30 8.8 HEX HEAD FULL TREAD ZINC	F81002-7	10	
5	NUT, M8-8-B HEX ZINC	F81032-1	2	
6	BOLT, M8 X 65 8.8 FE/ZN5, PN-85/M-82105	F81002-9	2	
7	ROLLER SET, LX50 L SAW HEAD <a href="#">See Section 2.17</a>	532307	1	
8	ROLLER SET, LX50 P SAW HEAD <a href="#">See Section 2.17</a>	532308	1	
9	BOLT, M8X35-8.8 HEX HEAD FULL THREAD ZINC	F81002-13	4	

2.17 Saw Head Rollers (532307, 532308)

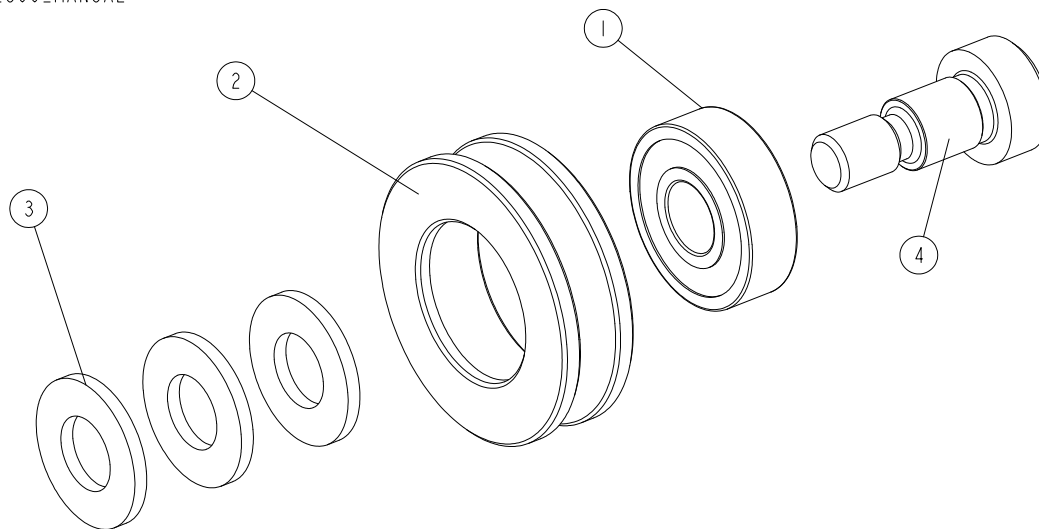
532307\_001  
532307\_MANUAL



REF.	DESCRIPTION (* indicates parts available in assemblies only)	PART NO.	QTY
-	ROLLER SET, SAW HEAD- LEFT	532307	1
-	ROLLER SET, SAW HEAD - RIGHT	532308	1
1	BRACKET, LX50L ROLLER MOUNT	531985-1	1
	BRACKET, LX50 P ROLLER MOUNT	532310-1	1
2	ROLLER, CABLE GUIDE <a href="#">See Section 2.18</a>	532306	2
3	NUT, M8-04 ISO4035 HEX THIN ZINC	F81032-8	2

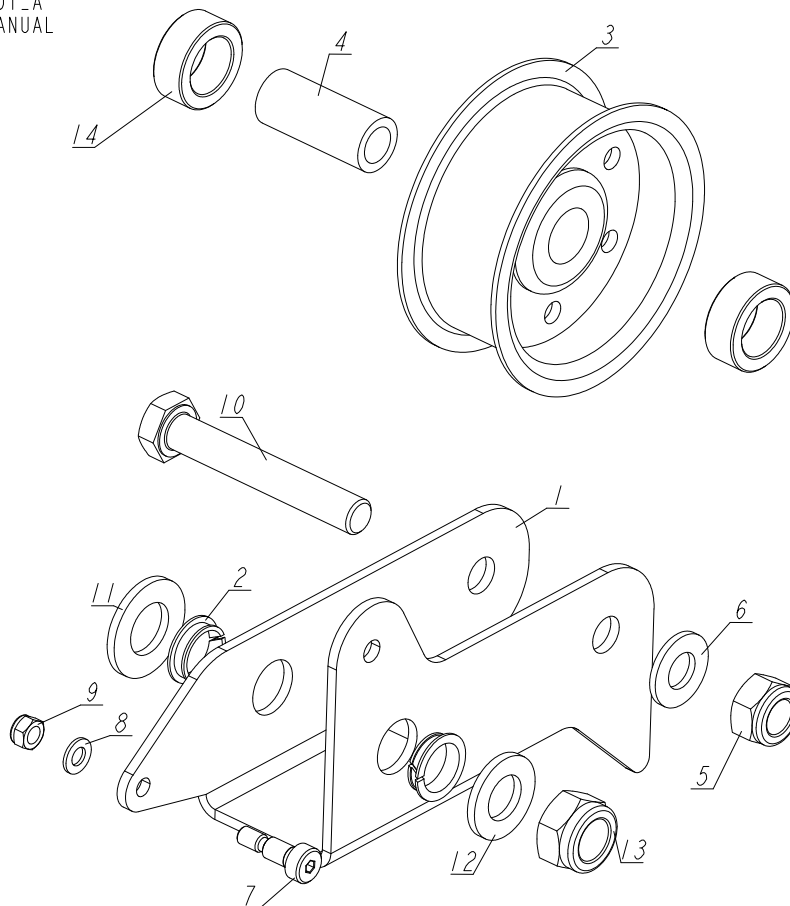
**2.18 Cable Guide Roller (Part No. 532306)**

532306\_001\_A  
532306\_MANUAL



REF.	DESCRIPTION (* indicates parts available in assemblies only)	PART NO.	QTY	
-	ROLLER, CABLE GUIDE	532306	1	
1	BEARING, 6000.2RSR	087471	1	
2	ROLLER	532000	1	
3	WASHER, 10.5 FLAT ZINC	F81055-1	3	
4	BOLT, 10/M8X12-12.9 BOSSARD SHOULDER	F81003-62	1	

## 2.19 Clutch Assembly (No. X100-1192)

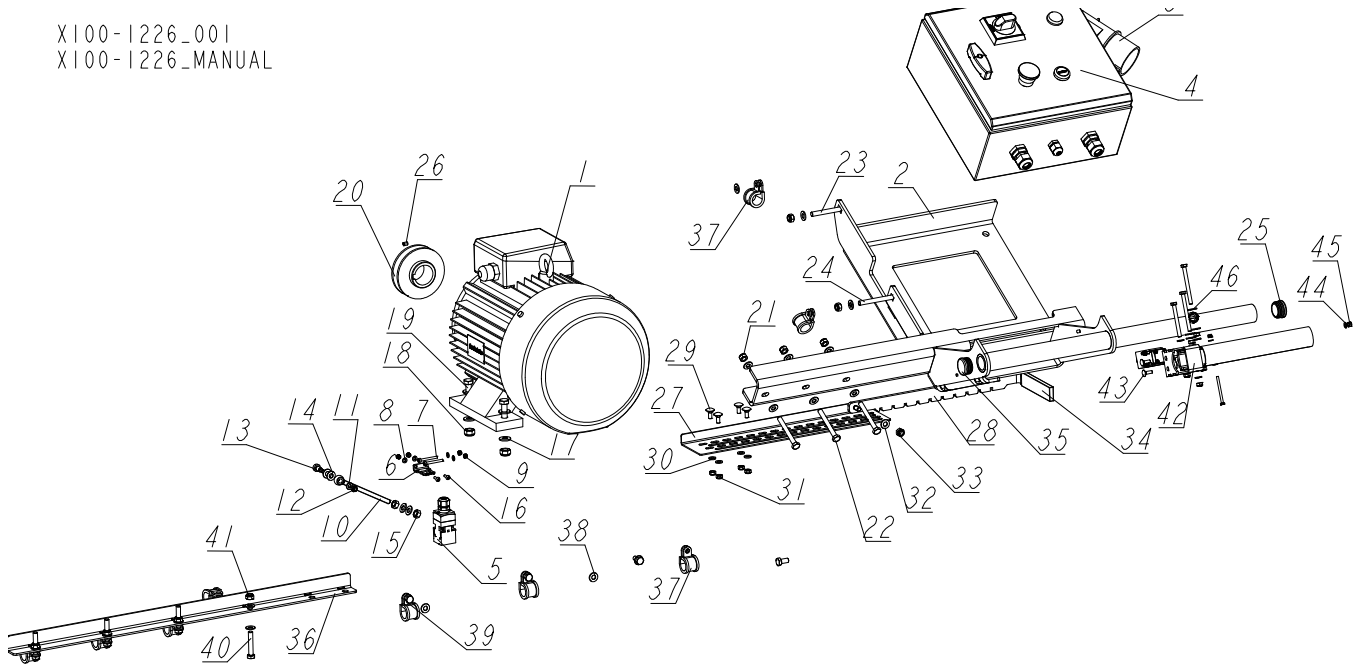
X100-1192\_001\_A  
X100-1192\_MANUAL

REF.	DESCRIPTION (* indicates parts available in assemblies only)	PART #	QTY
-	<b>CLUTCH ASSEMBLY, M120</b>	X100-1192	1
1	ARM, CLUTCH	X100-1195	1
2	CLIP, IGUS MCM-14-03BEARING	X100-1178	2
3	PULLEY, IDLER 5/8X2 3/4	X200-906	1
4	BUSHING, CLUTCH IDLER	X100-390	1
5	NUT, M10-8-B HEX NYLON ZINC LOCK	F81033-1	1
6	WASHER, 10.5 FLAT ZINC	F81055-1	1
7	BOLT, 6/M5X10-12.9 ISO-7379 SHOULDER	F81000-17	1
8	WASHER, 5.3 FLAT ZINC	F81052-1	1
9	NUT, M5-8 DIN985 HEX NYLON ZINC LOCK	F81030-2	1
10	BOLT, M10X65-8.8 HEX HEAD ZINC	F81003-67	1
11	WASHER, 15 FLAT ZINC	F81057-2	1
12	WASHER, 13 FLAT ZINC	F81056-1	1
13	NUT, M12 8 HEX NYLON ZINC LOCK	F81034-2	1
14	BUSHING, 16.3/25-10	088550-1	2

SECTION 3 ENGINE/MOTOR KITS

3.1 Motor Kit, M120 5.5kW (CE Version)

X100-1226\_001  
X100-1226\_MANUAL



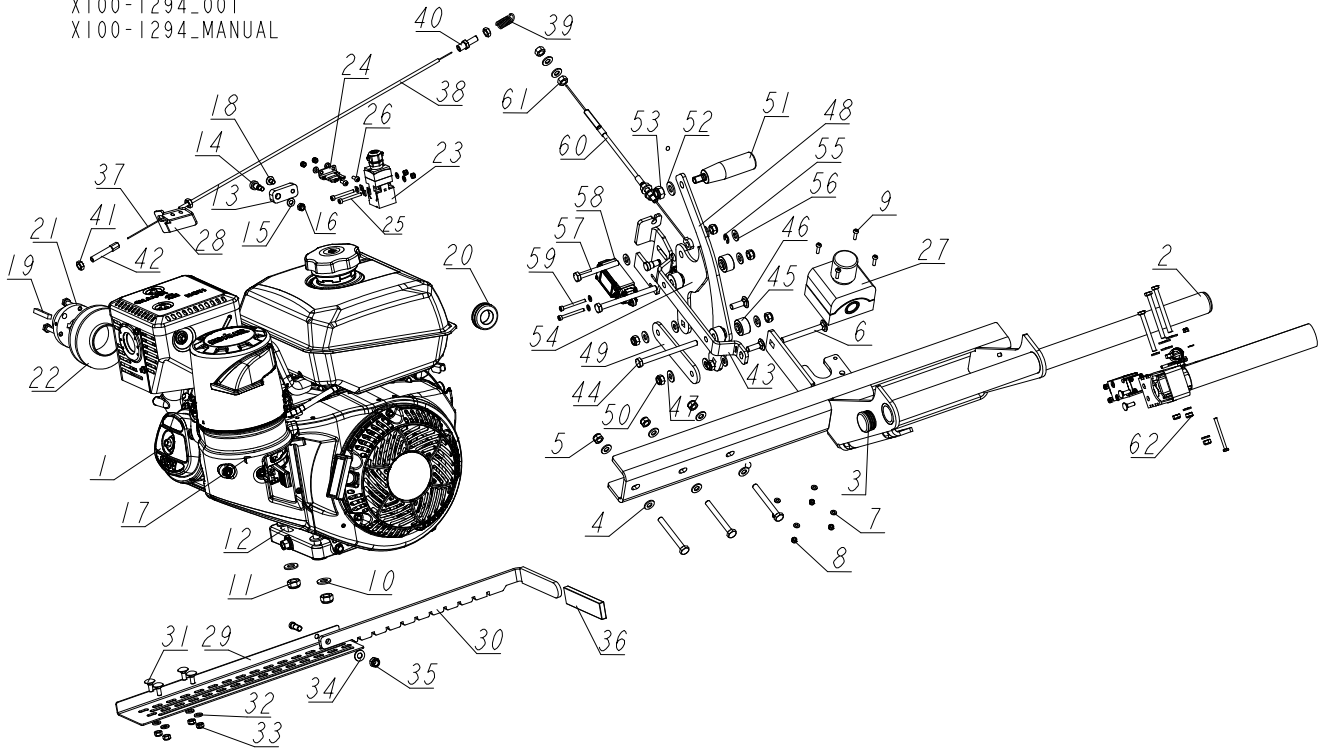
REF.	DESCRIPTION (* indicates parts available in assemblies only)	PART #	QTY
-	<b>MOTOR KIT, 5.5 kW CE</b>	X100-1226	1
1	MOTOR, 5.5KW SG 132S-2A ELECTRIC	526139	1
2	HANDLE WELDMENT, PLATE FOR ELECTRIC BOX	X100-1227	1
-	BOX, M120E7 ELECTRIC	526997	1
3	PLUG, 16A 5P 778152-6 PCE	E85239	1
4	WASHER, 5.3 FLAT ZINC	F81052-1	8
5	SWITCH, AZ17-11ZRK SAFETY	094232	1
6	KEY, AZ17/170-B5 SAFETY SWITCH	094422	1
7	SCREW, M4X35 8.8 HEX SOCKET HEAD CAP ZINC	F81011-34	2
8	WASHER, 4.3 FLAT ZINC	F81051-2	5
9	NUT, M4-8 HEX NYLON ZINC LOCK	F81029-1	4
10	BOLT, M8X120 8.8 DIN444 EYE	F81002-64	1
11	WASHER, 6.4 FLAT ZINC	F81053-1	1
12	NUT, M6-8-B HEX NYLON ZINC LOCK	F81031-2	1
13	BOLT, 8/M6X12-12.9 ISO 7379 SHOULDER	F81001-56	1
14	WASHER, 8.4 FLAT ZINC	F81054-1	12
15	NUT, M8-8-B HEX ZINC	F81032-1	2
16	SCREW, M4X12 -5,8-B CROSS RECESSED PAN HEAD ZINC	F81011-43	3
17	WASHER, 10.5 FLAT ZINC	F81055-1	8



REF.	DESCRIPTION (* indicates parts available in assemblies only)	PART #	QTY
18	NUT, M10-8-B HEX NYLON ZINC LOCK	F81033-1	4
19	BOLT, M10X40-8.8 HEX HEAD FULL THREAD ZINC	F81003-16	4
20	PULLEY, M100 TIMBERY	T00406-1	1
21	NUT, M8-8-B HEX NYLON ZINC LOCK	F81032-2	5
22	BOLT, M8X70-8.8 HEX HEAD ZINC	F81002-71	3
23	BOLT, M8X65-8.8 CARRIAGE ZINC	F81002-24	1
24	BOLT, M8X75 DIN603 CARRIAGE ZINC	F81002-106	1
25	CAP, 1530 (HOLE 30) ROUND TUBE	517616	2
26	SCREW, M6X8-33H-GEOMET HEX SOCKET SET W/FLAT POINT	F81013-1	1
-	ASSY, BLADE COVER	X100-1233	1
27	WLDMT, BLADE COVER	X100-1234	1
28	BAND PLATE	X100-1236	1
29	BOLT, M6X16-8.8 CARRIAGE ZINC	F81001-36	4
30	WASHER, 6.4 FLAT ZINC	F81053-1	4
31	NUT, M6-8-B HEX NYLON ZINC LOCK	F81031-2	4
32	WASHER, 8.4 FLAT ZINC	F81054-1	1
33	NUT, M8-8-B HEX NYLON ZINC LOCK	F81032-2	1
34	SLEEVE, VINYL GUARD	086875	1
35	ELEMENT, EE63 MOUNTING	F81080-4	1
-	ASSY, POWER SUPPLY	X100-1289	1
36	ANGLE, 30X30 L-720	532327-1	1
37	CLIP, RSGU 1.20/20 RETAINING	F81087-2	9
38	WASHER, 8.4 FLAT ZINC	F81054-1	12
39	BOLT, M8X16-8.8-B HEX HEAD FULL THREAD ZINC	F81002-20	4
40	BOLT, M8X45-8.8 HEX HEAD FULL THREAD ZINC	F81002-14	4
41	NUT, M8-8-B HEX NYLON ZINC LOCK	F81032-2	4
-	HANDLE ASSEMBLY, M120 CE SAFETY	532376	1
42	BRACKET, SAFETY HANDLE	532316-1	1
43	BOLT, M5X16 DIN 603 CARRIAGE	F81000-75	2
44	WASHER, 5.3 FLAT ZINC	F81052-1	2
45	NUT, M5-8 DIN985 HEX NYLON ZINC LOCK	F81030-2	2
46	ASSY, TRIGGER PLATE	X100-1231	1

**3.2 Engine Kit, 14 HP Gas**

X100-1294\_001  
 X100-1294\_MANUAL

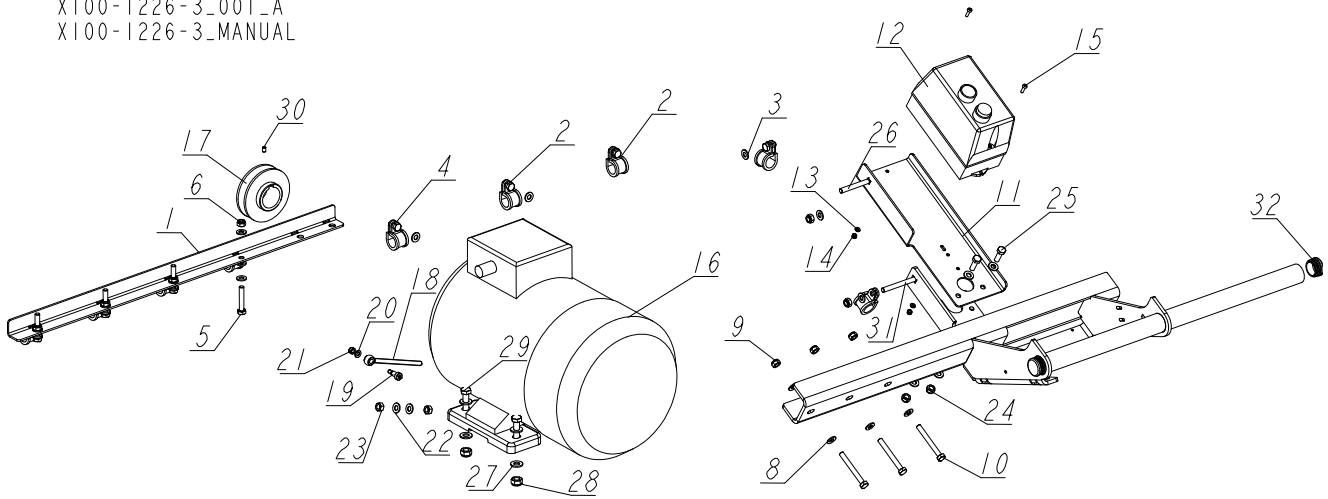


REF.	DESCRIPTION (* indicates parts available in assemblies only)	PART #	QTY
-	<b>ENGINE KIT, 14 HP CE GAS</b>	X100-1294	1
1	ENGINE, KOHLER G14 (CH440-3149)	X200-1201	1
2	HANDLE WELDMENT, M120	X100-1296	1
3	BENT PLATE	X100-1292	1
4	BENT PLATE	X100-1229	1
5	ROUND TUBE 33.7X25.7X570	X100-1230	1
6	CAP, 1530 (HOLE 30) ROUND TUBE	517616	2
7	WASHER, 8.4 FLAT ZINC	F81054-1	13
8	NUT, M8-8-B HEX NYLON ZINC LOCK	F81032-2	5
9	BOLT, M8X75 DIN603 CARRIAGE ZINC	F81002-106	1
10	WASHER, 4.3 FLAT ZINC	F81051-2	12
11	NUT, M4-8 HEX NYLON ZINC LOCK	F81029-1	10
12	SCREW, M4X16 5.8-B CROSS RECESSED PAN HEAD ZINC	F81011-42	4
13	WASHER, 10.5 FLAT ZINC	F81055-1	8
14	NUT, M10-8-B HEX NYLON ZINC LOCK	F81033-1	4
15	BOLT, M10X45 HEX HEAD FULL THREAD ZINC	F81003-3	4
-	LINK, BELT TENSIONER CABLE	514446	1
16	LINK, BELT TENSIONER CABLE	514445-1	1
17	BOLT, 8/M6X12-12.9 ISO 7379 SHOULDER	F81001-56	1
18	WASHER, 6.4 FLAT ZINC	F81053-1	1
19	NUT, M6-8-B HEX NYLON ZINC LOCK	F81031-2	1
20	WASHER, 6.4 EXTERNAL TOOTH ZINC LOCK	F81053-2	1
21	SCREW, M6X10 BN 11252 "BOSSARD" BUTTON HEAD SOCKET CAP W/FLANGE	F81001-57	1

REF.	DESCRIPTION (* indicates parts available in assemblies only)	PART #	QTY
22	KEY, 1/4 X 1 11/16	S04124	1
23	GROMMET, 22MM I.D. RUBBER	087400	1
24	BUSHING, SHX1	039202	1
25	PULLEY, M100	X100-1062	1
26	SWITCH, AZ17-11ZRK SAFETY	094232	1
27	KEY, AZ 17/170-B5 SAFETY SWITCH	094422	1
28	SCREW, M4X35 8.8 HEX SOCKET HEAD CAP ZINC	F81011-34	2
29	SCREW, M4X12 -5,8-B CROSS RECESSED PAN HEAD ZINC	F81011-43	2
30	SWITCH, M22-PV/KCO2 EMERGENCY STOP	094726	1
31	PLATE	524659-1	1
-	ASSY, BLADE COVER	X100-1233	1
32	WLDMT, BLADE COVER	X100-1234	1
33	BAND PLATE	X100-1236	1
34	BOLT, M6X16-8.8 CARRIAGE ZINC	F81001-36	4
35	WASHER, 6.4 FLAT ZINC	F81053-1	4
36	NUT, M6-8-B HEX NYLON ZINC LOCK	F81031-2	4
37	WASHER, 8.4 FLAT ZINC	F81054-1	1
38	NUT, M8-8-B HEX NYLON ZINC LOCK	F81032-2	1
39	SLEEVE, VINYL GUARD	086875	1
-	CABLE, THROTTLE 20X25 SPRINGXCABLE	X100-1092	1
40	CABLE, 7X7 STRANDED 25" GALV.	507062-00X25	1
41	CONDUIT, COATED 20"	415187-00X20	1
42	SPRING, DIE CAST BALL END	26-6306-02	1
43	5/16-24 THREADED CONDUIT FITTING	21-1068-112	1
44	NUT, 5/16-24 JAM	F05010-205	3
45	FITTING, 5/16-24 CONDUIT	21-1064-02	1
-	M120 CLUTCH SYSTEM	X100-1322	1
46	PLATE, CLUTCH ARM MOUNTING	X100-1323	1
47	BOLT, M8X100-8.8 HEX HEAD ZINC	F81002-23	2
48	SPACER	X100-1325	4
49	BOLT, M8X25-8.8-B CARRIAGE ZINC	F81002-59	2
50	JTM-0818-015	X100-1311	4
51	PLATE, CLUTCH MOUNTING ARM	X100-1326	1
52	PLATE, CLUTCH ENGAGEMENT ARM	X100-1310	1
53	NUT, M8-8-B HEX NYLON ZINC LOCK	F81032-2	4
54	KNOB, L=85 M10, RO11-M10 PLASTIC CRANK HANDLE	086338	1
55	WASHER, 10.5 FLAT ZINC	F81055-1	1
56	NUT, M10-8-B HEX NYLON ZINC LOCK	F81033-1	1
57	CLUTCH PIVOT ARM WELDING	X100-1328	1
58	WASHER, 7 DIN6799/PN-85112 RETAINING	F81090-60	1
59	WASHER, 8.4 FLAT ZINC	F81054-1	3
60	BOLT, M8X70-8.8 HEX HEAD ZINC	F81002-71	4
61	SWITCH, FA134 Z11 SAFETY	100910	1
62	SCREW, M4X40 8.8 HEX SOCKET HEAD CAP ZINC	F81011-37	2
63	CABLE, M120 THROTTLE	X100-1305	1
64	NUT, M8-8-B HEX ZINC	F81032-1	4
65	HANDLE ASSEMBLY, M120 CE SAFETY	532376	1

3.3 Motor Kit, M120 5.5kW (Non-CE Version)

X100-1226-3\_001\_A  
X100-1226-3\_MANUAL



REF.	DESCRIPTION (* indicates parts available in assemblies only)	PART #	QTY
-	<b>MOTOR KIT, 5.5 kW</b>	X100-1226-3	1
-	ASSY, POWER SUPPLY	X100-1289	1
1	ANGLE, 30X30 L-720	532327-1	1
2	CLIP, RSGU 1.20/20 RETAINING	F81087-2	9
3	WASHER, 8.4 FLAT ZINC	F81054-1	12
4	BOLT, M8X16-8.8-B HEX HEAD FULL THREAD ZINC	F81002-20	4
5	BOLT, M8X45-8.8 HEX HEAD FULL THREAD ZINC	F81002-14	4
6	NUT, M8-8-B HEX NYLON ZINC LOCK	F81032-2	4
-	HANDLE, M120 COMPLETE	X100-1295	1
7	HANDLE WELDMENT, M120	X100-1296	1
8	WASHER, 8.4 FLAT ZINC	F81054-1	6
9	NUT, M8-8-B HEX NYLON ZINC LOCK	F81032-2	3
10	BOLT, M8X70-8.8 HEX HEAD ZINC	F81002-71	3
11	BENT PLATE	X100-1297	1
12	STARTER, 12A MAX (5.5 KW AT 400V), IP65	517343	1
13	WASHER, 4.3 FLAT ZINC	F81051-2	2
14	NUT, M4-8 HEX NYLON ZINC LOCK	F81029-1	2
15	SCREW, M4X16 5.8-B CROSS RECESSED PAN HEAD ZINC	F81011-42	2
16	MOTOR, 1LA7130-2AA60-Z 5.5KW 400V 50HZ	095785	1
17	PULLEY, M100 TIMBERY	T00406-1	1
18	BOLT, M8X120 8.8 DIN444 EYE	F81002-64	1
19	BOLT, 8/M6X12-12.9 ISO 7379 SHOULDER	F81001-56	1
20	WASHER, 6.4 FLAT ZINC	F81053-1	1
21	NUT, M6-8-B HEX NYLON ZINC LOCK	F81031-2	1
22	WASHER, 8.4 FLAT ZINC	F81054-1	8
23	NUT, M8-8-B HEX ZINC	F81032-1	2
24	NUT, M8-8-B HEX NYLON ZINC LOCK	F81032-2	4
25	BOLT, M8X25-8.8-B HEX HEAD FULL THREAD ZINC	F81002-5	2
26	BOLT, M8X65-8.8 CARRIAGE ZINC	F81002-24	1

REF.	DESCRIPTION (* indicates parts available in assemblies only)	PART #	QTY	
27	WASHER, 10.5 FLAT ZINC	F81055-1	8	
28	NUT, M10-8-B HEX NYLON ZINC LOCK	F81033-1	4	
29	BOLT, M10X40-8.8 HEX HEAD FULL THREAD ZINC	F81003-16	4	
30	SCREW, M6X8-33H-GEOMET HEX SOCKET SET W/FLAT POINT	F81013-1	1	
31	BOLT, M8X75 DIN603 CARRIAGE ZINC	F81002-106	1	
32	CAP, 1530 (HOLE 30) ROUND TUBE	517616	2	