

# Single Horizontal Saw SHS

## Parts Manual

---

<b>SHSEH15S-LC</b>	<b>rev.A1.01</b>
<b>SHSEH20S-LC</b>	<b>rev. A1.01</b>
<b>SHSEH25S-LC</b>	<b>rev.A1.01</b>

---



**Safety is our #1 concern!** Read and understand all safety information and instructions before operating, setting up or maintaining this machine.

*Form #1022*

# Table of Contents

# Section-Page

<b>SECTION 1</b>	<b>GENERAL INFORMATION</b>	<b>1-1</b>
1.1	How To Use the Parts List.....	1-1
1.2	Sample Assembly .....	1-1
<b>SECTION 2</b>	<b>INFEED &amp; OUTFEED TABLE</b>	<b>2-1</b>
2.1	Log Guide Roller .....	2-1
2.2	Feed Chain Drive Assembly .....	2-2
2.3	Infeed Table .....	2-4
2.4	Chain Tensioner .....	2-6
2.5	Log Side Guide .....	2-7
2.6	Roller Attachment Chain w/Dogs .....	2-9
2.7	Infeed & Outfeed Table, 10718 .....	2-11
2.8	Outfeed Table - Module 2900 .....	2-13
2.9	Infeed & Outfeed Table Decals .....	2-15
2.10	Infeed Table 508540 .....	2-16
2.11	Conical Roller Assembly 508534 .....	2-17
2.12	Log Guide Roller 508549 .....	2-18
<b>SECTION 3</b>	<b>SAW HEAD</b>	<b>3-1</b>
3.1	Blade Guide Assembly, Idle Side .....	3-1
3.2	Blade Guide Assembly, Drive Side .....	3-2
3.3	Blade Wheel Assembly, Drive Side .....	3-3
3.4	Idle-Side Blade Wheel .....	3-4
3.5	Drive Shaft, HR500/HR700 .....	3-5
3.6	Hydraulic Blade Tensioner .....	3-6
3.7	Blade Tension Assembly .....	3-8
3.8	Hydraulic Pump Assembly .....	3-9
3.9	Blade Lube Assembly .....	3-11
3.10	SHS Saw Head Warning Decals .....	3-12
3.11	Saw Head .....	3-14
3.12	Front Saw Head Cover .....	3-15
3.13	Adjustable Saw Head Guide Rollers .....	3-17
3.14	Fixed Saw Head Guide Rollers .....	3-18
3.15	SHS Mast .....	3-19
3.16	SHS Saw Head Base .....	3-21
3.17	Saw Head Base - L .....	3-22
3.18	Log Clamp Plate Assembly .....	3-23
3.19	SHS Drive Belt Guard .....	3-25
3.20	Blade Guide Arm .....	3-26
3.21	E20/E25 Motor Assembly .....	3-28
3.22	E15 Motor Assembly .....	3-29
3.23	Electric Box .....	3-30
3.24	Up/Down Drive Assembly .....	3-32

## Table of Contents

## Section-Page

3.25	Manual Up/Down System .....	3-36	
<b>SECTION 4</b>	<b>SIDE FENCE</b>		<b>4-1</b>
4.1	Side Fence .....	4-1	
4.2	Moving Side Fence Support Bracket .....	4-2	
4.3	Fixed Side Fence Support Bracket .....	4-4	
4.4	Side Fence Barrier .....	4-5	
<b>SECTION 5</b>	<b>LOG GIUDE PLATE W/DRIVE</b>		<b>5-1</b>
5.1	Log Guide Plate Assembly .....	5-1	
5.2	Motor Assembly .....	5-2	
5.3	Fixed Beam Assembly .....	5-3	
5.4	Moving Beam Assembly .....	5-4	
5.5	Guards .....	5-5	

## SECTION 1 GENERAL INFORMATION

### 1.1 How To Use the Parts List

- Use the index above to locate the assembly that contains the part you need.
- Go to the appropriate section and locate the part in the illustration.
- Use the number pointing to the part to locate the correct part number and description in the table.
- Parts shown indented under another part are included with that part.
- Parts marked with a diamond (◆) are only available in the assembly listed above the part.

See the sample table below. Sample Part #A01111 includes part F02222-2 and subassembly A03333. Subassembly A03333 includes part S04444-4 and subassembly K05555. The diamond (◆) indicates that S04444-4 is not available except in subassembly A03333. Subassembly K05555 includes parts M06666 and F07777-77. The diamond (◆) indicates M06666 is not available except in subassembly K05555.

1.2 Sample Assembly				
REF.	DESCRIPTION (◆ Indicates Parts Available In Assemblies Only)	PART #	QTY	
	Sample Assembly, Complete (Includes All Indented Parts Below)	A01111	1	
1	Sample Part	F02222-22	1	
	Sample Subassembly (Includes All Indented Parts Below)	A03333	1	
2	Sample Part (◆ Indicates Part Is Only Available With A03333)	S04444-4	1	◆
	Sample Subassembly (Includes All Indented Parts Below)	K05555	1	
3	Sample Part (◆ Indicates Part Is Only Available With K05555)	M06666	2	◆
4	Sample Part	F07777-77	1	

#### To Order Parts:

- From Europe call our European Headquarters and Manufacturing Facility in Kolo, Poland at **+48-63-2626000**. From the continental U.S., call our toll-free Parts hotline at **1-800-525-8100**. Have your customer number, vehicle identification number, and part numbers ready when you call. From other international locations, contact the Wood-Mizer distributor in your area for parts.

#### Office Hours:

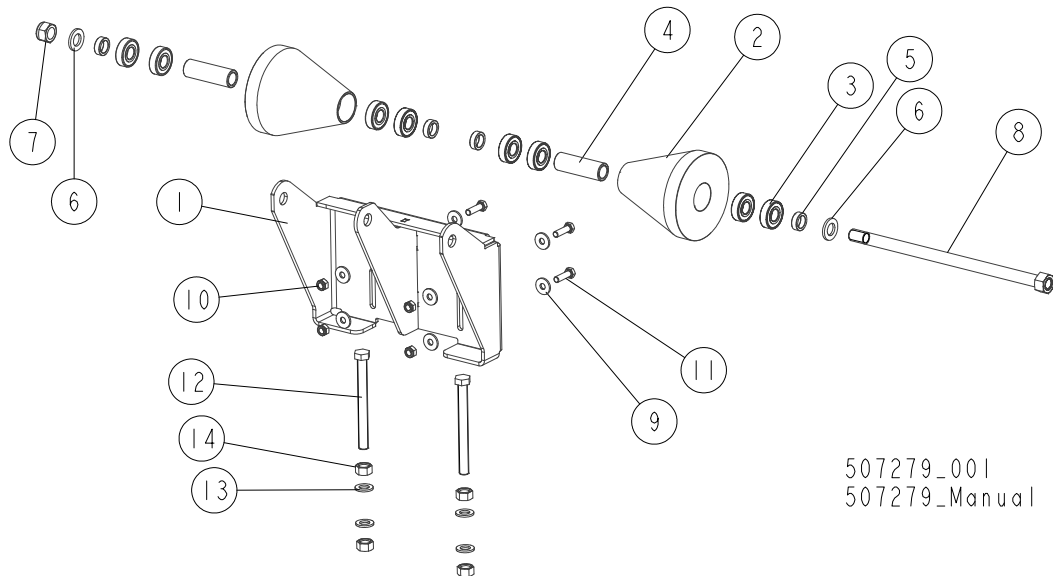
Country	Monday - Friday	Saturday	Sunday
Poland	7-15	Closed	Closed
US	8 a.m.- 5 p.m.	8 a.m.- 12 p.m.	Closed



**CAUTION!** It is strongly recommended that only original spare parts be used.

## SECTION 2 INFEED & OUTFEED TABLE

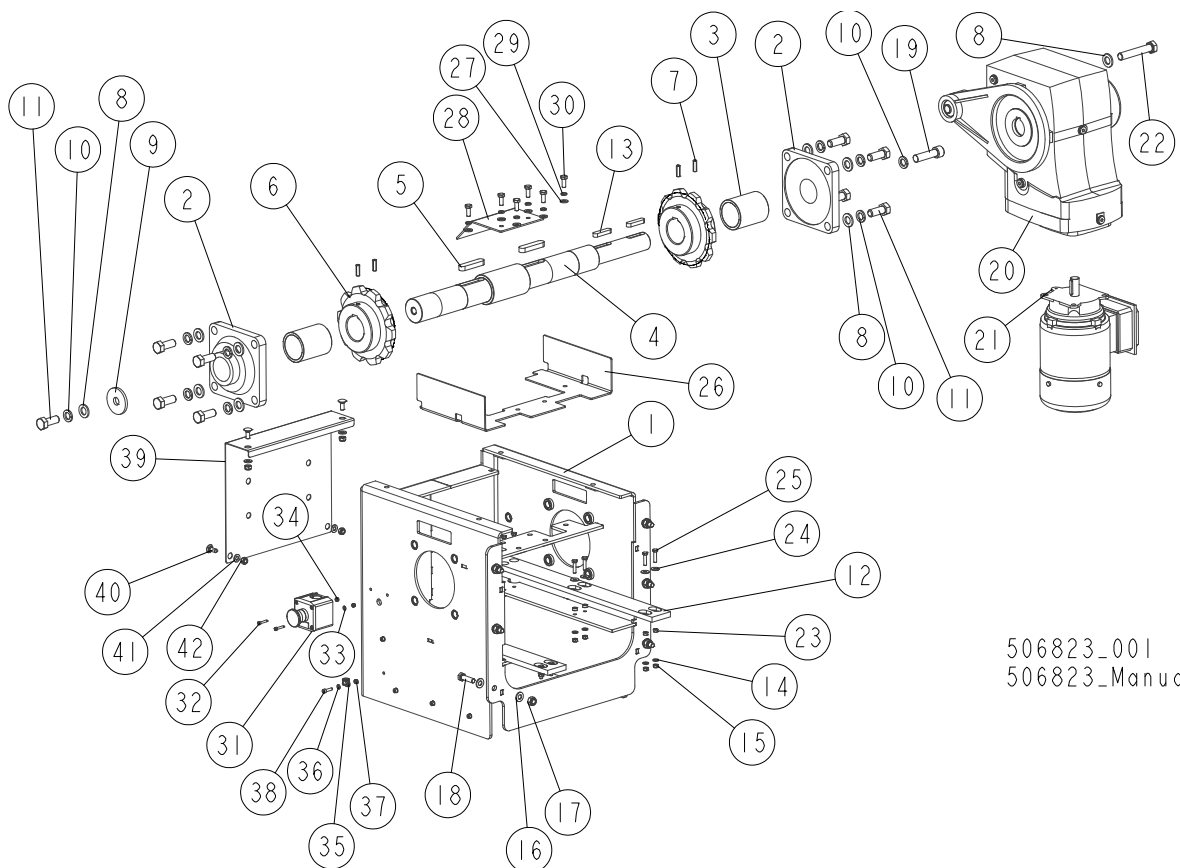
### 2.1 Log Guide Roller



507279\_001  
507279\_Manual

REF.	DESCRIPTION (◆ Indicates Parts Available in Assemblies Only)	PART #	QTY
	<b>ROLLER, LOG GUIDE - COMPLETE</b>	<b>507279</b>	<b>1</b>
1	BRACKET, GUIDE ROLLER MOUNT	507280-1	1
	<b>ROLLER, LONG CONICAL W/AXLE - COMPLETE</b>	<b>508692</b>	<b>1</b>
2	ROLLER, CONICAL ZINC-PLATED GUIDE	508533-1	2
3	BEARING, 6204 2RS CX ROLLING	088447	8
4	BUSHING, 21/30-91.3 ZINC-PLATED	508645-1	2
5	BUSHING, 21/30-10 ZINC-PLATED	099351-1	4
6	WASHER, 21 FLAT ZINC	F81059-2	2
7	NUT, M20-8 DIN985 HEX THIN ZINC	F81037-2	1
8	AXLE, CONICAL GUIDE ROLLER	508693-1	1
9	WASHER, 10.5 SPECIAL FLAT ZINC	F81055-6	8
10	NUT, M10-8-B HEX NYLON ZINC LOCK	F81033-1	4
11	BOLT, M10X35 8.8 HEX HEAD FULL THREAD ZINC	F81003-17	4
12	BOLT, M16X160 8.8 HEX HEAD FULL THREAD ZINC	F81006-23	2
13	WASHER, 17 SPLIT LOCK ZINC	F81058-1	4
14	NUT, M16-8 HEX ZINC	F81036-1	4

**2.2 Feed Chain Drive Assembly**



506823\_001  
506823-Manual

REF.	DESCRIPTION (◆ Indicates Parts Available in Assemblies Only)	PART #	QTY
	<b>DRIVE ASSEMBLY, SHS FEED CHAIN</b>	<b>506823</b>	<b>1</b>
1	MOUNT WELDMENT, FEED CHAIN DRIVE	506820-1	1
2	BEARING, UCF 211 W/HOUSING	089889	2
3	BUSHING, 68X56X84.2 ZINC-PLATED SPACER	506825-1	2
4	SHAFT, FEED CHAIN DRIVE (PHOSPHATIZED)	506824-1	1
5	KEY, A16X10X70 PARALLEL	098029	2
6	SPROCKET, 10Z 20B/2"N55	502565-1	2
7	SCREW, M8X25 DIN 913 A2-70 STAINLESS STEEL SET	F81014-3	4
8	WASHER, 17 SPLIT LOCK ZINC	F81058-1	10
9	WASHER, 17.5/60-6 ZINC-PLATED	098012-1	1
10	WASHER, 16.3 SPLIT LOCK ZINC	F81058-2	10
11	BOLT, M16X40-8.8 HEX HEAD FULL THREAD ZINC	F81006-13	9
12	BAR, CHAIN GUIDE - MEDIUM	099376	2
13	KEY, A12X8X50 PN-70/M85005/DIN6885 PARALLEL	506735	2
14	WASHER, 6.4 FLAT ZINC	F81053-1	12
15	NUT, M6-8-B HEX NYLON ZINC LOCK	F81031-2	12
16	WASHER, 10.5 FLAT ZINC	F81055-1	12
17	NUT, M10-8-B HEX NYLON ZINC LOCK	F81033-1	6
18	BOLT, M10X35 8.8 HEX HEAD FULL THREAD ZINC	F81003-17	6
19	SCREW, M16X60-8.8 HEX SOCKET HEAD CAP ZINC	F81006-19	1

# INFEED & OUTFEED TABLE

## Feed Chain Drive Assembly

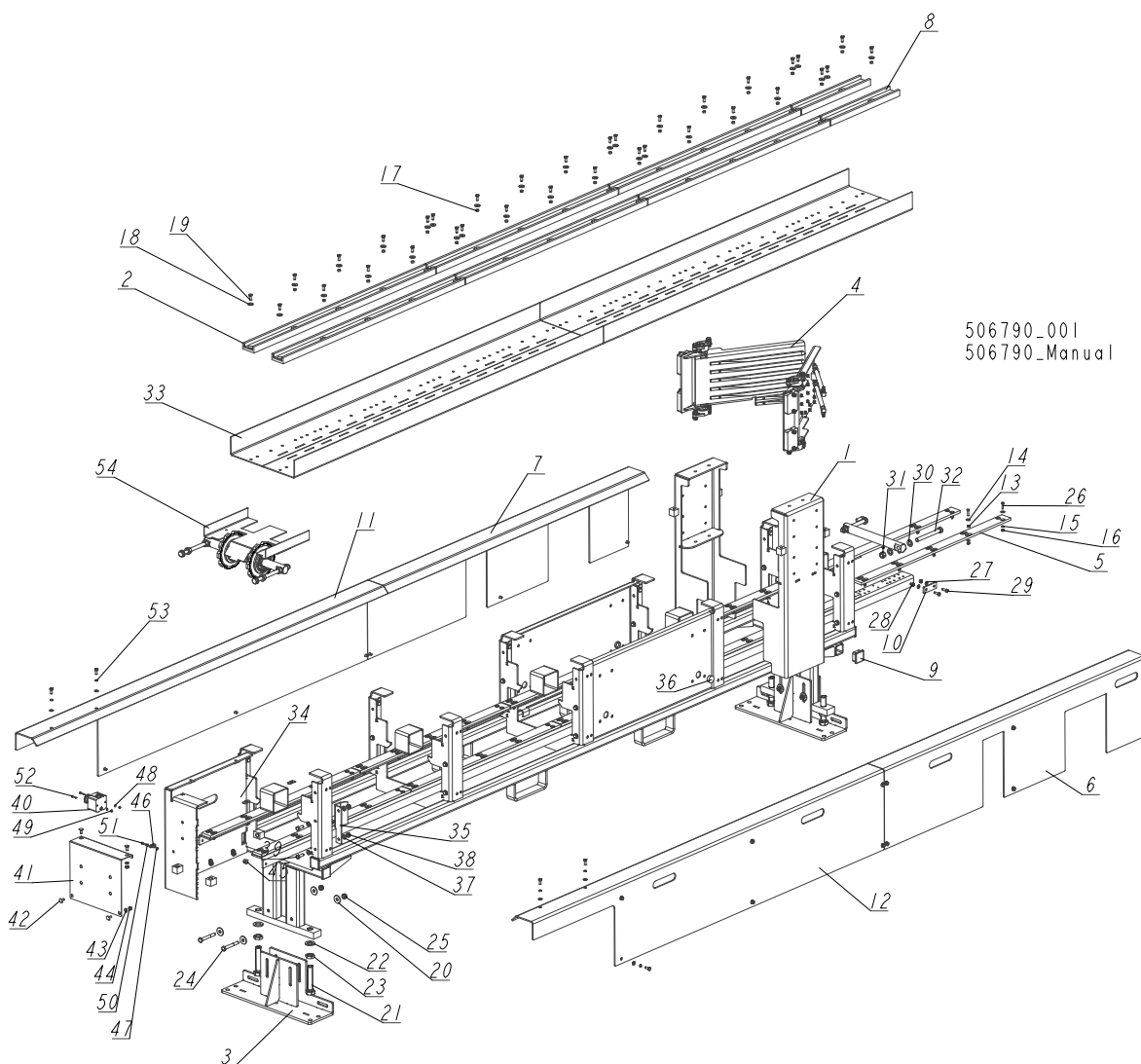
2

REF.	DESCRIPTION (◆ Indicates Parts Available in Assemblies Only)	PART #	QTY
	<b>MOTOREDUCER, SK93772.1ABDH-80LH/4 TF KKV EP W/BOX 3/II RAL9005 (NORD)</b>	<b>508660</b>	<b>1</b>
20	REDUCER, SK93772.1ABDH SYNT. RAL9005 (I=66.96, NORD)	514376	1
21	MOTOR, 80LH/4 KKV EP RAL9005 ( N=0.75 KW, N=1415 r.p.m., NORD)	514377	1
22	BOLT, M16X90-8.8 HEX HEAD ZINC	F81006-17	1
23	BUSHING, 6.2X10X5 ZINC-PLATED SPACER	503674-1	8
24	WASHER, 6.5 SPECIAL FLAT ZINC	F81053-11	12
25	BOLT, M6X25 5.8 HEX HEAD FULL THREAD ZINC	F81001-3	12
	<b>GUARD, CHAIN - COMPLETE</b>	<b>508667</b>	<b>1</b>
26	GUARD, CHAIN	508668-1	1
27	WASHER, 8.4 FLAT ZINC	F81054-1	6
28	GUARD, DRIVE SHAFT	508718-1	1
29	WASHER, 8.2 SPLIT LOCK ZINC	F81054-4	6
30	BOLT, M8X20 8.8 HEX HEAD FULL THREAD ZINC	F81002-4	6
31	SWITCH, XALK 174 EMERGENCY STOP	E22703-P	1
32	SCREW, M4X20 8.8 HEX SOCKET HEAD CAP ZINC	F81011-31	2
33	WASHER, 4.3 FLAT ZINC	F81051-2	2
34	NUT, M4-8 HEX NYLON ZINC LOCK	F81029-1	2
35	CLIP, RSGU 1.10/12W1 RETAINING	086861	5
36	WASHER, 5.3 FLAT ZINC	F81052-1	5
37	NUT, M5-8-FE/ZN5 DIN985	F81030-2	5
38	SCREW, M5X20 8.8 HEX SOCKET HEAD CAP ZINC	F81000-72	5
	<b>PLATE, COVER - COMPLETE</b>	<b>507327</b>	<b>1</b>
39	PLATE, COVER	507326	1
40	BOLT, M8X20-8.8 CARRIAGE ZINC	F81002-11	4
41	WASHER, 8.4 FLAT ZINC	F81054-1	4
42	NUT, M8 8 HEX NYLON ZINC LOCK	F81032-2	4

# 2 INFEED & OUTFEED TABLE

## Infeed Table

### 2.3 Infeed Table



REF.	DESCRIPTION (◆ Indicates Parts Available in Assemblies Only)	PART #	QTY
	<b>TABLE ASSEMBLY, INFEED</b>	<b>506790</b>	<b>1</b>
1	TABLE, INFEED	506792-1	1
2	CHANNEL, 20B CHAIN GUIDE - LONG	506801	6
3	FOOT WELDMENT, TVS TABLE	502750-1	2
4	GUIDE, LOG SIDE - COMPLETE <a href="#">See Section 2.5</a>	507283	1
5	PAD, FEED TRACK PLASTIC	092080	10
6	GUARD, RIGHT SIDE W/CUT-OUTS	507319-1	1
7	GUARD, LEFT SIDE W/CUT-OUTS	507320-1	1
8	CHANNEL, 20B CHAIN GUIDE - SHORT	507321	2
9	CAP, 50X50 (3-5MM THICK) TUBE END (199274MOSS)	095371	8
10	PLATE, ZINC-PLATED TABLE CONNECTION	507323-1	2
11	GUARD, LEFT SIDE	507325-1	1
12	GUARD, RIGHT SIDE	507324-1	1



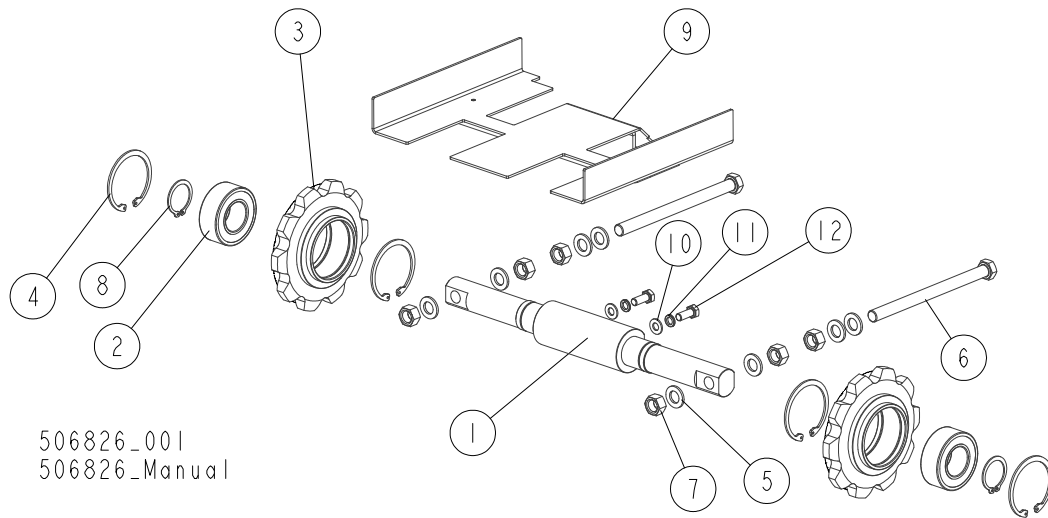
# INFEED & OUTFEED TABLE

*Infeed Table*

2

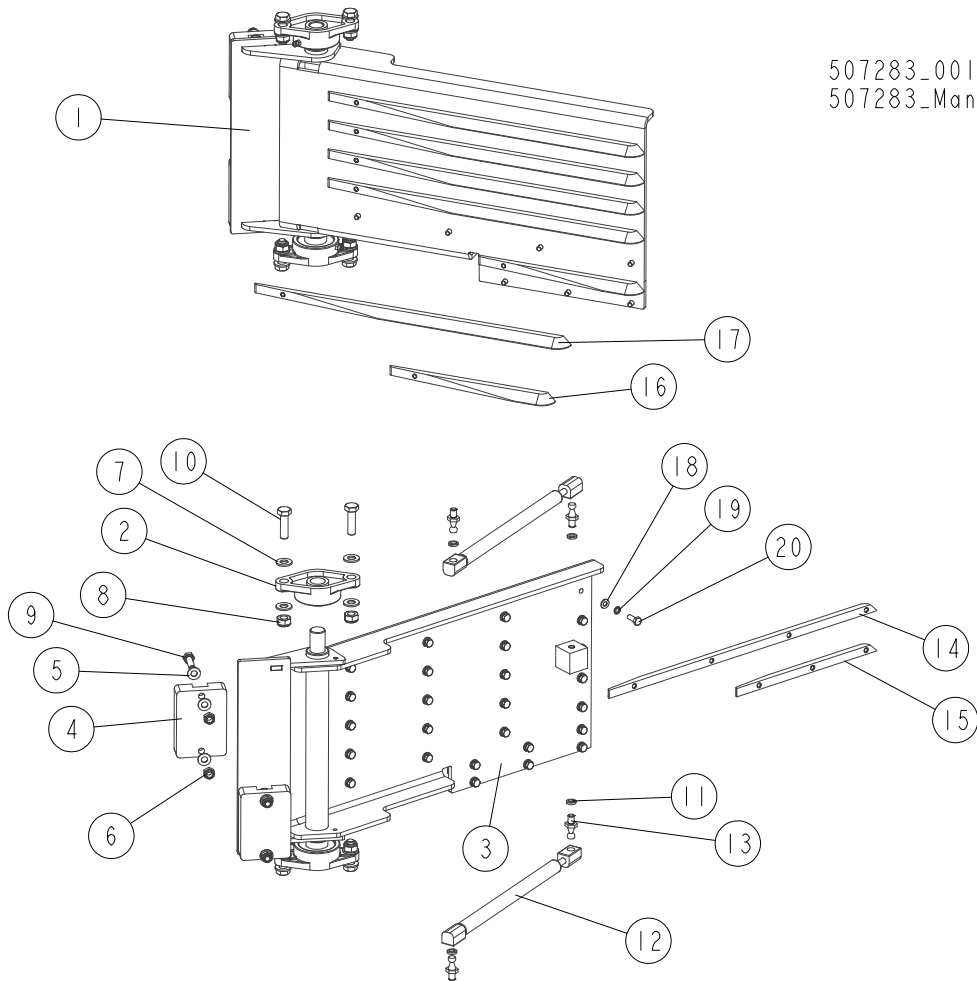
REF.	DESCRIPTION (◆ Indicates Parts Available in Assemblies Only)	PART #	QTY
13	BUSHING, 6.2x10x5 ZINC-PLATED SPACER	503674-1	80
14	WASHER, 6.5 SPECIAL FLAT ZINC	F81053-11	100
15	WASHER, 6.4 FLAT ZINC	F81053-1	100
16	NUT, M6-8-B HEX NYLON ZINC LOCK	F81031-2	100
17	BUSHING, 8.4/12.5-6 ZINC-PLATED	504040-1	26
18	WASHER, ISO 7093-1-8-200 HV-A2E.	F81054-11	34
19	BOLT, M8X20 5.8 HEX HEAD FULL THREAD ZINC	F81002-1	62
20	WASHER, 13 SPECIAL FLAT ZINC	F81056-14	8
21	BOLT, M24x120 8.8 HEX HEAD FULL THREAD ZINC	F81009-6	4
22	WASHER, 25 FLAT ZINC	F81061-3	4
23	NUT, M24-04-B HEX THIN ZINC	F81039-3	4
24	BOLT, M12X90 8.8 HEX HEAD ZINC	F81004-2	4
25	NUT, M12 8 HEX NYLON ZINC LOCK	F81034-2	4
26	BOLT, M6X25 5.8 HEX HEAD FULL THREAD ZINC	F81001-3	100
27	WASHER, 8.4 FLAT ZINC	F81054-1	32
28	NUT, M8 8 HEX NYLON ZINC LOCK	F81032-2	4
29	BOLT, M8x25-8.8-B HEX HEAD FULL THREAD ZINC	F81002-5	4
30	WASHER, 17 SPLIT LOCK ZINC	F81058-1	4
31	NUT, M16-8 HEX NYLON ZINC LOCK	F81036-2	2
32	BOLT, M16X150 HEX HEAD ZINC	F81006-9	2
33	GUARD, DRIVE CHAIN	508661-1	4
34	BRACKET, LOWER CHAIN LEFT GUIDE	507364-1	5
35	BRACKET, LOWER CHAIN RIGHT GUIDE	506804-1	5
36	CAP, 30.1 mm #466861	501292	2
37	WASHER, 10.5 FLAT ZINC	F81055-1	40
38	NUT, M10-8-B HEX NYLON ZINC LOCK	F81033-1	20
39	BOLT, M10x30 5.8 HEX HEAD FULL THREAD ZINC	F81003-2	20
40	SWITCH, XALK 174 EMERGENCY STOP	E22703-P	1
	<b>PLATE, COVER - COMPLETE</b>	<b>507327</b>	<b>1</b>
41	PLATE, COVER	507326	1
42	BOLT, M8x20-8.8 CARRIAGE ZINC	F81002-11	4
43	WASHER, 8.4 FLAT ZINC	F81054-1	4
44	NUT, M8 8 HEX NYLON ZINC LOCK	F81032-2	4
45	CAP, SR1086 15.9x6.4 (MOSS466856)	511829	1
46	CLIP, RSGU 1.10/12W1 RETAINING	086861	5
47	NUT, M5-8-FE/ZN5 DIN985	F81030-2	5
48	WASHER, 4.3 FLAT ZINC	F81051-2	2
49	NUT, M4-8 HEX NYLON ZINC LOCK	F81029-1	2
50	WASHER, 5.3 FLAT ZINC	F81052-1	5
51	SCREW, M5x20 8.8 HEX SOCKET HEAD CAP ZINC	F81000-72	5
52	SCREW, M4X20 8.8 HEX SOCKET HEAD CAP ZINC	F81011-31	2
53	WASHER, 8.2 SPLIT LOCK ZINC	F81054-4	28
54	TENSIONER ASSEMBLY, CHAIN <a href="#">See Section 2.4</a>	506826	1

## 2.4 Chain Tensioner



REF.	DESCRIPTION (◆ Indicates Parts Available in Assemblies Only)	PART #	QTY
	<b>TENSIONER ASSEMBLY, CHAIN</b>	<b>506826</b>	<b>1</b>
1	SHAFT, CHAIN TENSIONER SPROCKET - ZINC-PLATED	506827-1	1
2	BEARING, 3208. 2RSR. TVH (FAG) ROLLING	088449	2
3	SPROCKET, 10Z 20B/2"N80 FRONT	502566-1	2
4	RING, W80 INSIDE RETAINING	F81090-25	4
5	WASHER, 17 SPLIT LOCK ZINC	F81058-1	8
6	BOLT, ISO4017-M16X220-8.8-A2E FULL THREAD	F81006-43	2
7	NUT, M16-8 HEX ZINC	F81036-1	6
8	RING, Z40 OUTSIDE RETAINING	F81090-33	2
	<b>GUARD ASSEMBLY, DRIVE CHAIN TENSIONER</b>	<b>508662</b>	<b>1</b>
9	GUARD, DRIVE CHAIN TENSIONER	508663-1	1
10	WASHER, 10.5 FLAT ZINC	F81055-1	2
11	WASHER, Z 10.2 SPLIT LOCK ZINC	F81055-2	2
12	BOLT, M10X25 8.8 HEX HEAD FULL THREAD	F81003-31	2

2.5 Log Side Guide



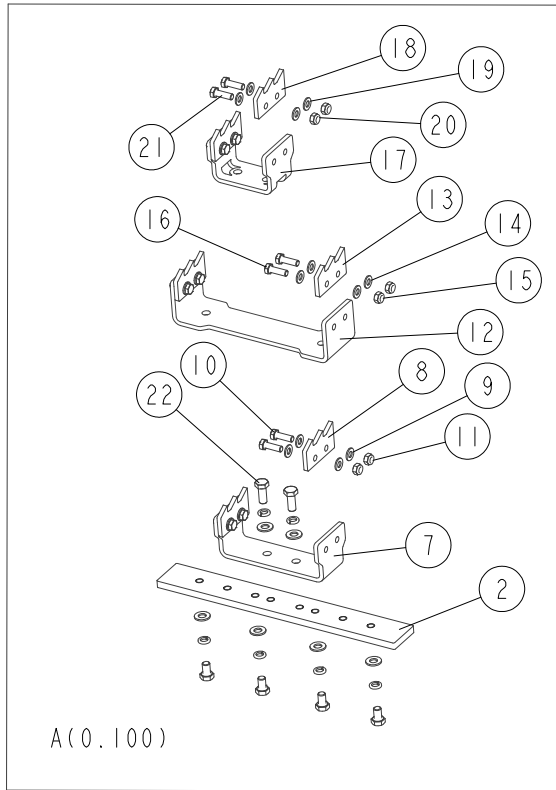
507283\_001  
507283\_Manual

REF.	DESCRIPTION (◆ Indicates Parts Available in Assemblies Only)	PART #	QTY
	<b>GUIDE ASSEMBLY, LOG SIDE</b>	<b>507283</b>	<b>1</b>
1	PLATE, LEFT GUIDE	507284-1	1
2	BEARING, UCFL 204 (CX)	500060	4
3	PLATE, RIGHT GUIDE	507335-1	1
4	BUMPER, GRENE 70 3201 0010 RUBBER	094969	4
5	WASHER, 8.4 FLAT ZINC	F81054-1	16
6	NUT, M8 8 HEX NYLON ZINC LOCK	F81032-2	8
7	WASHER, 10.5 FLAT ZINC	F81055-1	16
8	NUT, M10-8-B HEX NYLON ZINC LOCK	F81033-1	8
9	BOLT, M8X30 8.8 HEX HEAD FULL THREAD ZINC	F81002-7	8
10	BOLT, M10X35 8.8 HEX HEAD FULL THREAD ZINC	F81003-17	8
11	WASHER, 8.2 SPLIT LOCK ZINC	F81054-4	8
	<b>SPRING, 300N GAS - COMPLETE</b>	<b>089212</b>	<b>4</b>
12	SPRING, 300N GAS	089205	1
13	BOLT, M8	089206	2
14	RIB, GUIDE PLATE - LONG RIGHT ZINC-PLATED	508656-1	5

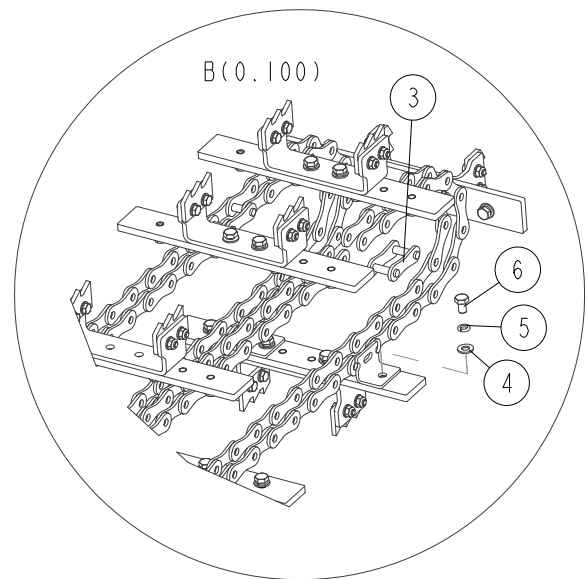
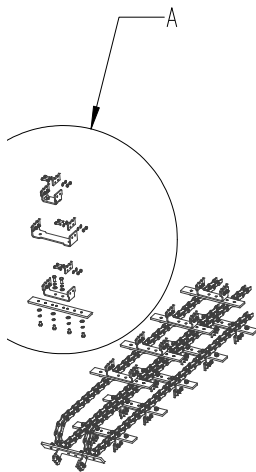
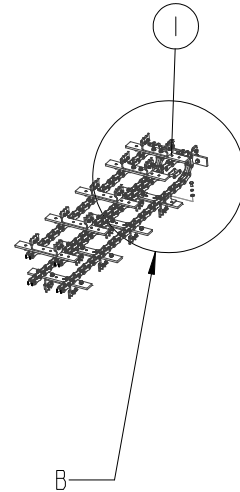
**2****INFEED & OUTFEED TABLE***Log Side Guide*

REF.	DESCRIPTION (◆ Indicates Parts Available in Assemblies Only)	PART #	QTY	
15	RIB, GUIDE PLATE - SHORT RIGHT ZINC-PLATED	508658-1	2	
16	RIB, GUIDE PLATE - SHORT LEFT ZINC-PLATED	508659-1	2	
17	RIB, GUIDE PLATE - LONG LEFT ZINC-PLATED	508657-1	5	
18	WASHER, 6.4 FLAT ZINC	F81053-1	52	
19	WASHER, Z 6.1 SPLIT LOCK ZINC	F81053-3	52	
20	BOLT, M6X16-8.8 HEX HEAD FULL THREAD ZINC	F81001-15	52	

## 2.6 Roller Attachment Chain w/Dogs



506800\_001  
506800\_Manual



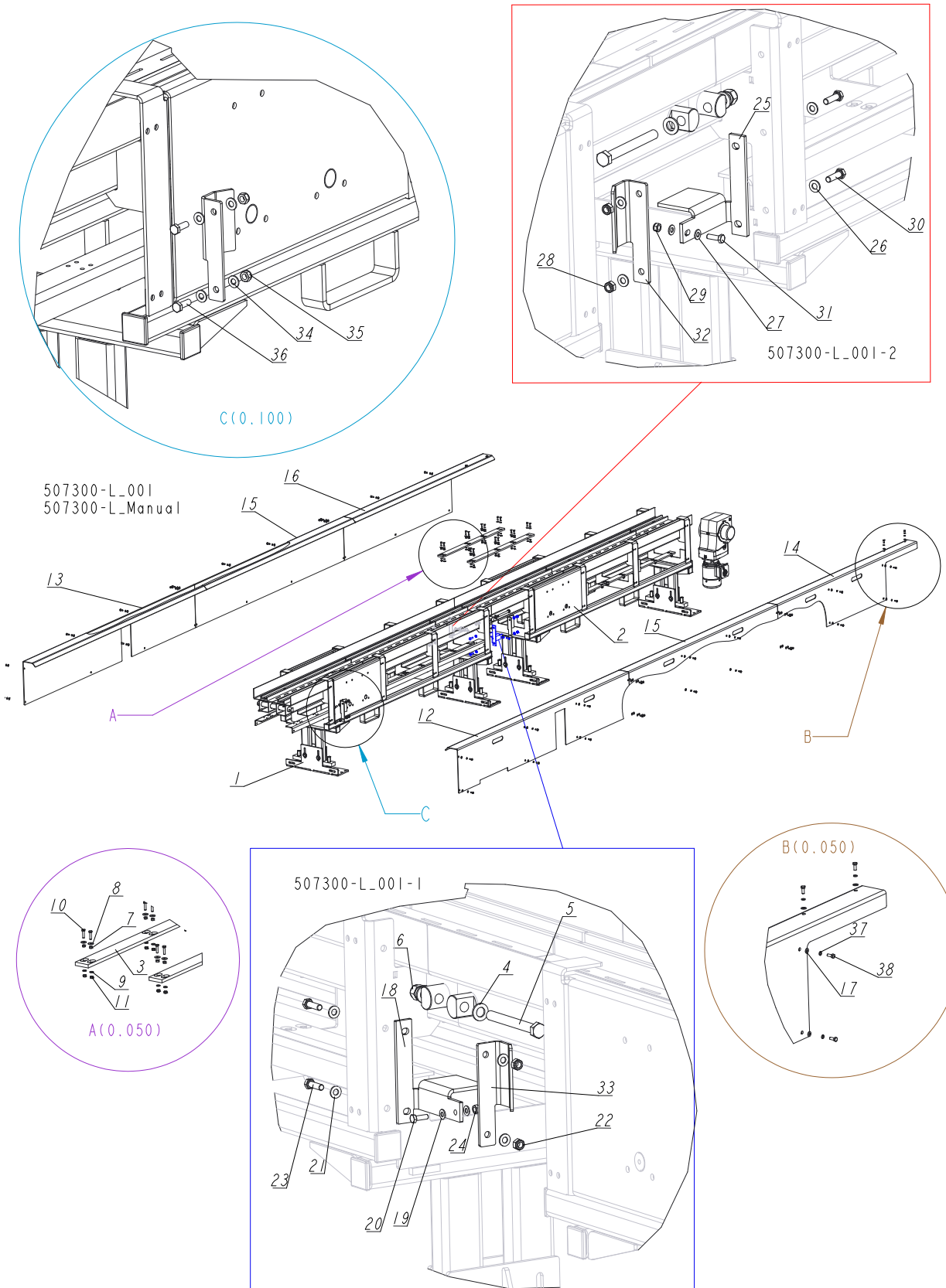
REF.	DESCRIPTION (◆ Indicates Parts Available in Assemblies Only)	PART #	QTY
	<b>CHAIN ASSEMBLY, LONG ROLLER ATTACHEMENT W/DOGS</b>	<b>506800</b>	<b>1</b>
1	CHAIN, ROLLER W/ANGLE ATTACHEMENTS	506795-1	2
2	PLATE, CHAIN DOG ZINC-PLATED MOUNT	506799-1	69
3	LINK, 20B P=2" MASTER	502563	2
4	WASHER, 10.5 FLAT ZINC	F81055-1	414
5	WASHER, Z 10.2 SPLIT LOCK ZINC	F81055-2	414
6	BOLT, M10X16-8.8 HEX HEAD FULL THREAD ZINC	F81003-13	276
	<b>CHAIN DOG W/ HARD TOOTHED PLATE - MEDIUM</b>	<b>508651</b>	<b>69</b>

## 2

**INFEED & OUTFEED TABLE***Roller Attachment Chain w/Dogs*

REF.	DESCRIPTION (◆ Indicates Parts Available in Assemblies Only)	PART #	QTY	
7	DOG, MEDIUM ZINC-PLATED	506802-1	1	
8	PLATE, TOOTHED	508652-1	2	
9	WASHER, 8.4 FLAT ZINC	F81054-1	8	
10	BOLT, M8X25-8.8-B HEX HEAD FULL THREAD ZINC	F81002-5	4	
11	NUT, M8 8 HEX NYLON ZINC LOCK	F81032-2	4	
	<b>CHAIN DOG W/ HARD TOOTHED PLATE - WIDE</b>	<b>508650</b>	<b>1</b>	
12	DOG, WIDE ZINC-PLATED	506798-1	1	
13	PLATE, TOOTHED	508652-1	2	
14	WASHER, 8.4 FLAT ZINC	F81054-1	8	
15	NUT, M8 8 HEX NYLON ZINC LOCK	F81032-2	4	
16	BOLT, M8X25-8.8-B HEX HEAD FULL THREAD ZINC	F81002-5	4	
	<b>CHAIN DOG W/ HARD TOOTHED PLATE - NARROW</b>	<b>508653</b>	<b>1</b>	
17	DOG, NARROW ZINC-PLATED	506803-1	1	
18	PLATE, TOOTHED	508652-1	2	
19	WASHER, 8.4 FLAT ZINC	F81054-1	8	
20	NUT, M8 8 HEX NYLON ZINC LOCK	F81032-2	4	
21	BOLT, M8X25-8.8-B HEX HEAD FULL THREAD ZINC	F81002-5	4	
22	BOLT, M10X25 8.8 HEX HEAD FULL THREAD ZINC	F81003-11	138	

**2.7 Infeed & Outfeed Table, 10718**



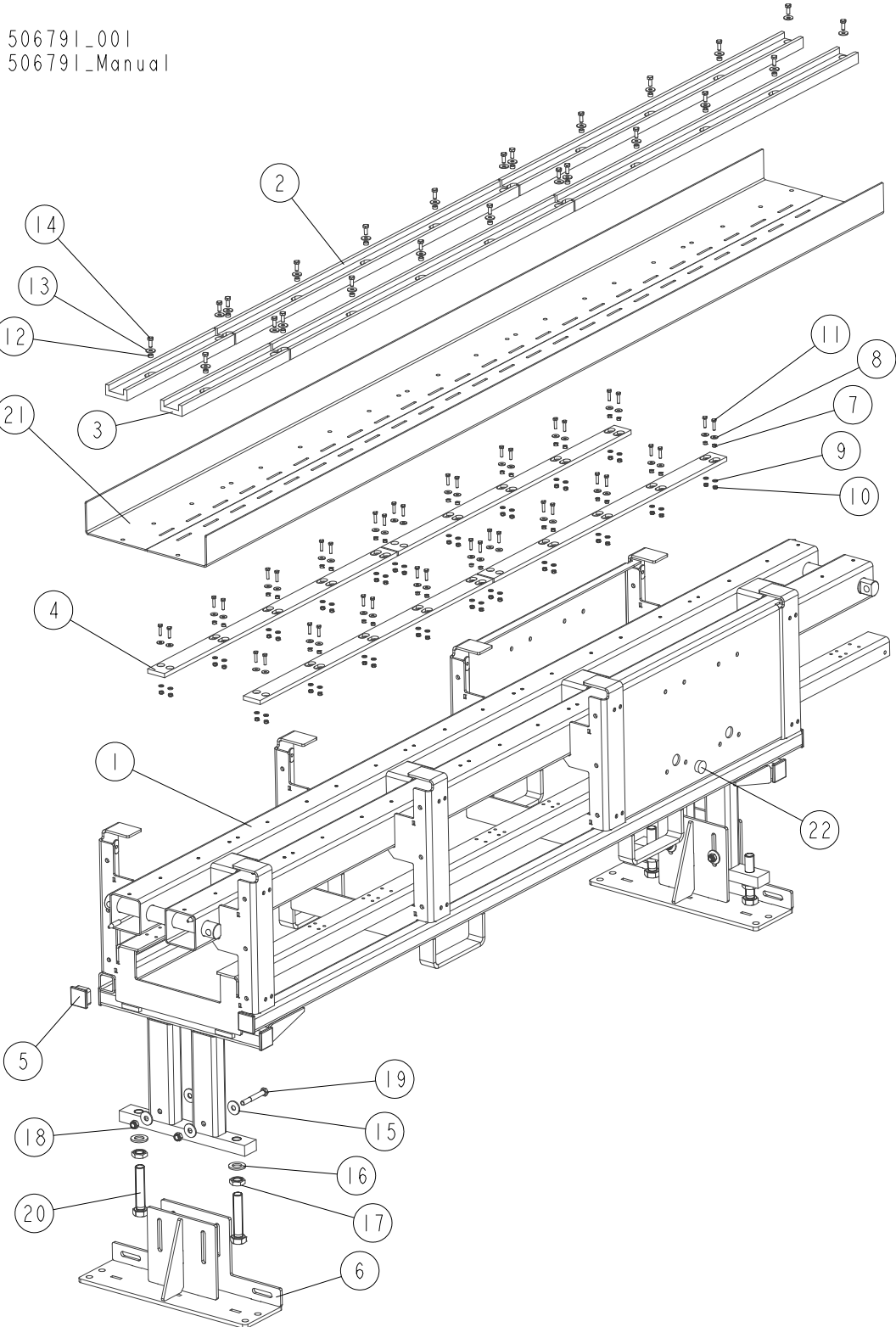
## 2

**INFEED & OUTFEED TABLE***Infeed & Outfeed Table, 10718*

REF.	DESCRIPTION (◆ Indicates Parts Available in Assemblies Only)	PART #	QTY	
	<b>TABLE ASSEMBLY, 10718 INFEED &amp; OUTFEED</b>	<b>506789</b>	<b>1</b>	
1	OUTFEED TABLE - MODULE 2900 - COMPLETE <a href="#">See Section 2.8</a>	506791	1	
2	OUTFEED TABLE - MODULE 2900 - COMPLETE <a href="#">See Section 2.8</a>	506791	1	
3	BAR, CHAIN MIDDLE GUIDE	507333	2	
4	WASHER, 17 SPLIT LOCK ZINC	F81058-1	4	
5	BOLT, M16X150 HEX HEAD ZINC	F81006-9	2	
6	NUT, M16-8 HEX NYLON ZINC LOCK	F81036-2	2	
7	BUSHING, 6.2x10x5 ZINC-PLATED SPACER	503674-1	12	
8	WASHER, 6.5 SPECIAL FLAT ZINC	F81053-11	16	
9	WASHER, 6.4 FLAT ZINC	F81053-1	16	
10	BOLT, M6X25 5.8 HEX HEAD FULL THREAD ZINC	F81001-3	16	
11	NUT, M6-8-B HEX NYLON ZINC LOCK	F81031-2	16	
12	GUARD, RIGHT SIDE	508689-1	1	
13	GUARD, LEFT SIDE	507318-1	1	
14	GUARD, RIGHT SIDE	507322-1	1	
15	GUARD, MIDDLE LEFT & RIGHT	507339-1	2	
16	GUARD, LEFT SIDE	507341-1	1	
17	WASHER, 8.4 FLAT ZINC	F81054-1	48	
	<b>BRACKET, SUPPORT BAR RIGHT CONNECTION - COMPLETE</b>	<b>507343</b>	<b>1</b>	
18	BRACKET, SUPPORT BAR RIGHT CONNECTION	507342-1	1	
19	WASHER, 8.4 FLAT ZINC	F81054-1	2	
20	BOLT, M8x25-8.8-B HEX HEAD FULL THREAD ZINC	F81002-5	1	
21	WASHER, 10.5 FLAT ZINC	F81055-1	4	
22	NUT, M10-8-B HEX NYLON ZINC LOCK	F81033-1	2	
23	BOLT, M10X35 8.8 HEX HEAD FULL THREAD ZINC	F81003-17	2	
24	NUT, M8 8 HEX NYLON ZINC LOCK	F81032-2	1	
	<b>BRACKET, SUPPORT BAR LEFT CONNECTION - COMPLETE</b>	<b>507358</b>	<b>1</b>	
25	BRACKET, SUPPORT BAR LEFT CONNECTION	507357-1	1	
26	WASHER, 10.5 FLAT ZINC	F81055-1	4	
27	WASHER, 8.4 FLAT ZINC	F81054-1	2	
28	NUT, M10-8-B HEX NYLON ZINC LOCK	F81033-1	2	
29	NUT, M8 8 HEX NYLON ZINC LOCK	F81032-2	1	
30	BOLT, M10X35 8.8 HEX HEAD FULL THREAD ZINC	F81003-17	2	
31	BOLT, M8x25-8.8-B HEX HEAD FULL THREAD ZINC	F81002-5	1	
32	BRACKET, LOWER CHAIN LEFT GUIDE	507364-1	7	
33	BRACKET, LOWER CHAIN RIGHT GUIDE	506804-1	7	
34	WASHER, 10.5 FLAT ZINC	F81055-1	48	
35	NUT, M10-8-B HEX NYLON ZINC LOCK	F81033-1	24	
36	BOLT, M10x30 5.8 HEX HEAD FULL THREAD ZINC	F81003-2	24	
37	WASHER, 8.2 SPLIT LOCK ZINC	F81054-4	48	
38	BOLT, M8X20 5.8 HEX HEAD FULL THREAD ZINC	F81002-1	49	



## 2.8 Outfeed Table - Module 2900

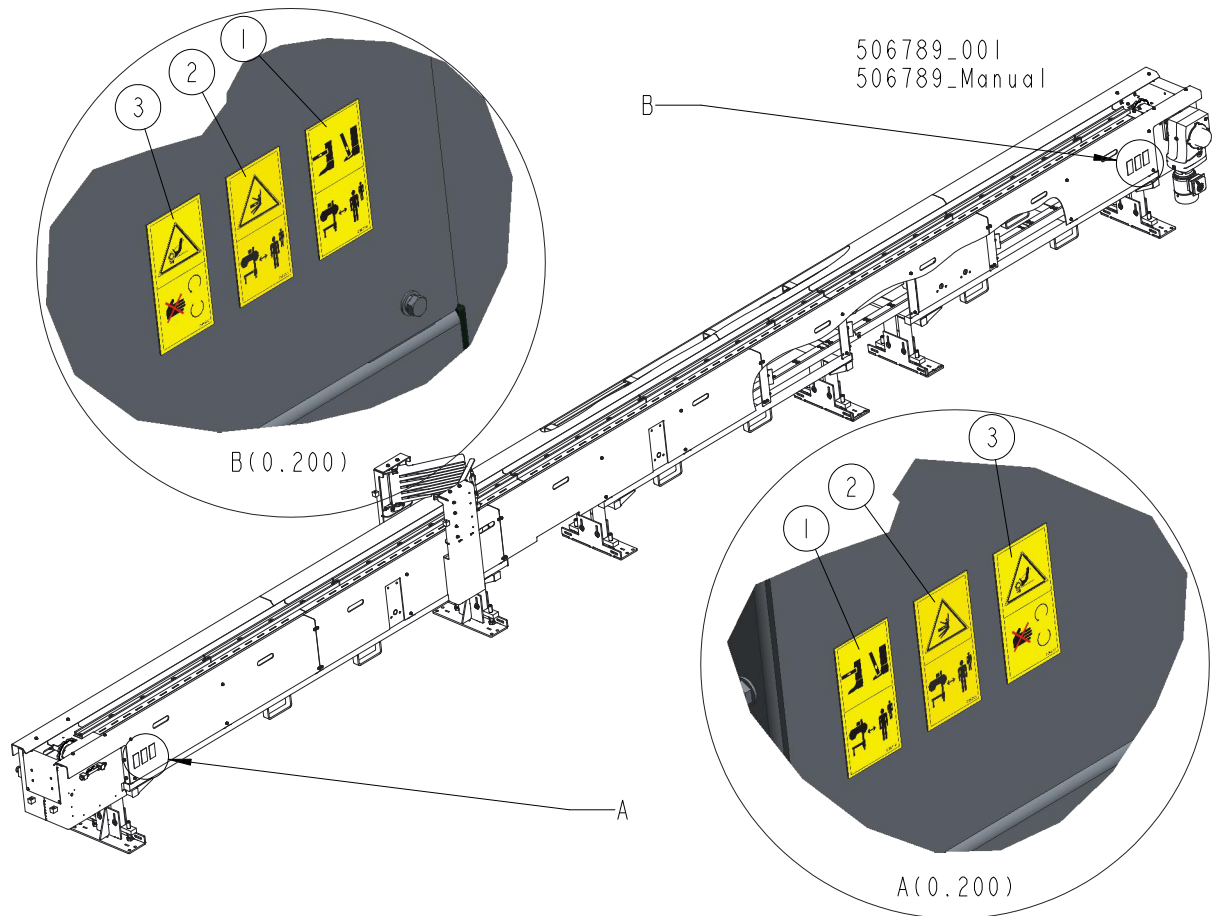


## 2

**INFEED & OUTFEED TABLE***Outfeed Table - Module 2900*

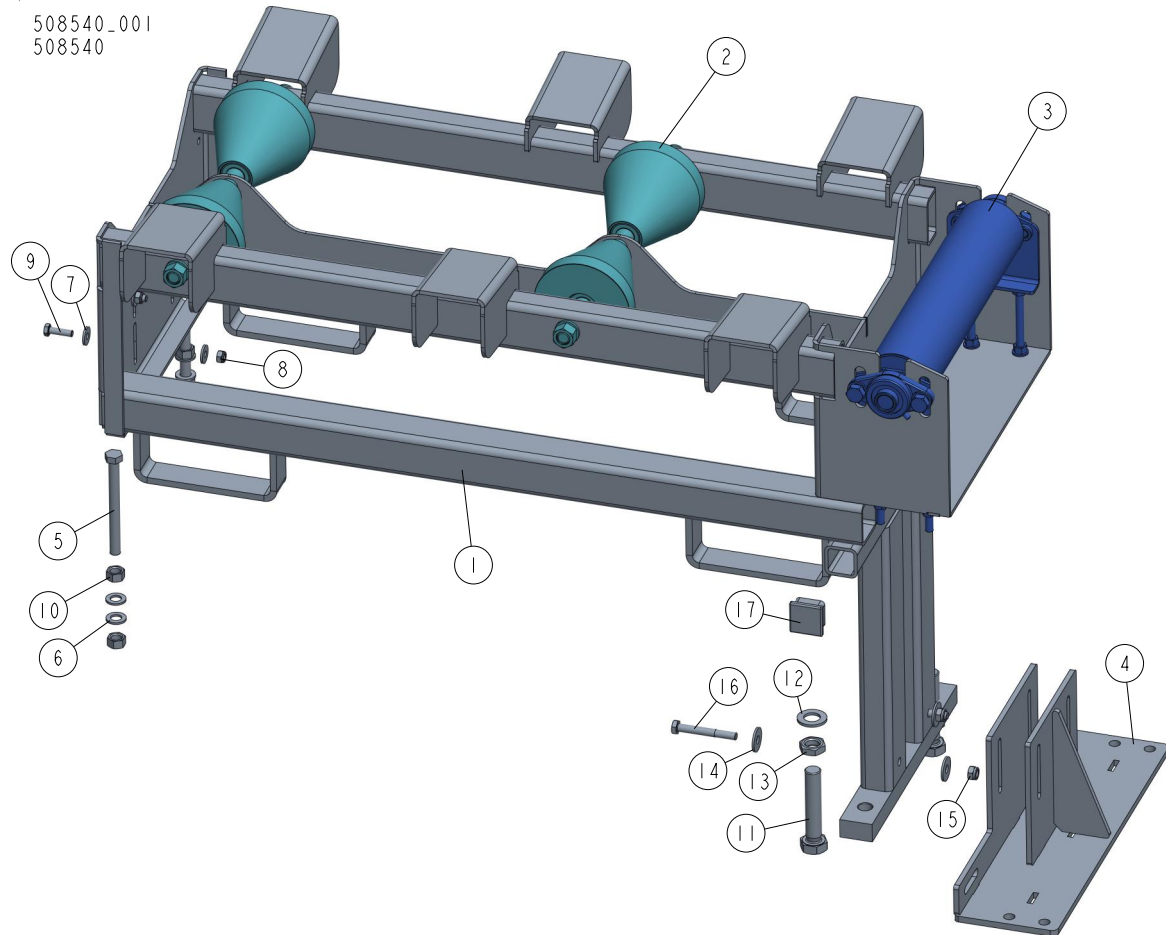
REF.	DESCRIPTION (◆ Indicates Parts Available in Assemblies Only)	PART #	QTY	
	<b>OUTFEED TABLE - MODULE 2900 - COMPLETE</b>	<b>506791</b>	<b>1</b>	
1	TABLE, OUTFEED	506793-1	1	
2	CHANNEL, 20B CHAIN GUIDE - LONG	506801	4	
3	CHANNEL, 20B CHAIN GUIDE - SHORT	507321	2	
4	PAD, FEED TRACK PLASTIC	092080	4	
5	CAP, 50X50 (3-5MM THICK) TUBE END (199274MOSS)	095371	8	
6	FOOT WELDMENT, TVS TABLE	502750-1	2	
7	BUSHING, 6.2X10X5 ZINC-PLATED SPACER	503674-1	32	
8	WASHER, 6.5 SPECIAL FLAT ZINC	F81053-11	40	
9	WASHER, 6.4 FLAT ZINC	F81053-1	40	
10	NUT, M6-8-B HEX NYLON ZINC LOCK	F81031-2	40	
11	BOLT, M6X25 5.8 HEX HEAD FULL THREAD ZINC	F81001-3	40	
12	BUSHING, 8.4/12.5-6 ZINC-PLATED	504040-1	18	
13	WASHER, ISO 7093-1-8-200 HV-A2E	F81054-11	24	
14	BOLT, M8X20 5.8 HEX HEAD FULL THREAD ZINC	F81002-1	24	
15	WASHER, 13 SPECIAL FLAT ZINC	F81056-14	8	
16	WASHER, 25 FLAT ZINC	F81061-3	4	
17	NUT, M24-04-B HEX THIN ZINC	F81039-3	4	
18	NUT, M12 8 HEX NYLON ZINC LOCK	F81034-2	4	
19	BOLT, M12X90 8.8 HEX HEAD ZINC	F81004-2	4	
20	BOLT, M24X120 8.8 HEX HEAD FULL THREAD ZINC	F81009-6	4	
21	GUARD, DRIVE CHAIN (OUTFEED TABLE)	508666-1	2	
22	CAP, 30.1 MM # 466861	501292	4	

**2.9 Infeed & Outfeed Table Decals**



REF.	DESCRIPTION (◆ Indicates Parts Available in Assemblies Only)	PART #	QTY
	<b>PICTOGRAPHIC DECAL KIT, INFEED &amp; OUTFEED TABLE</b>	<b>521867</b>	<b>1</b>
1	DECAL, KEEP AWAY DANGER	096314	2
2	DECAL, KEEP A SAFE DISTANCE	099221	2
3	DECAL, GEAR DANGER	099540	2

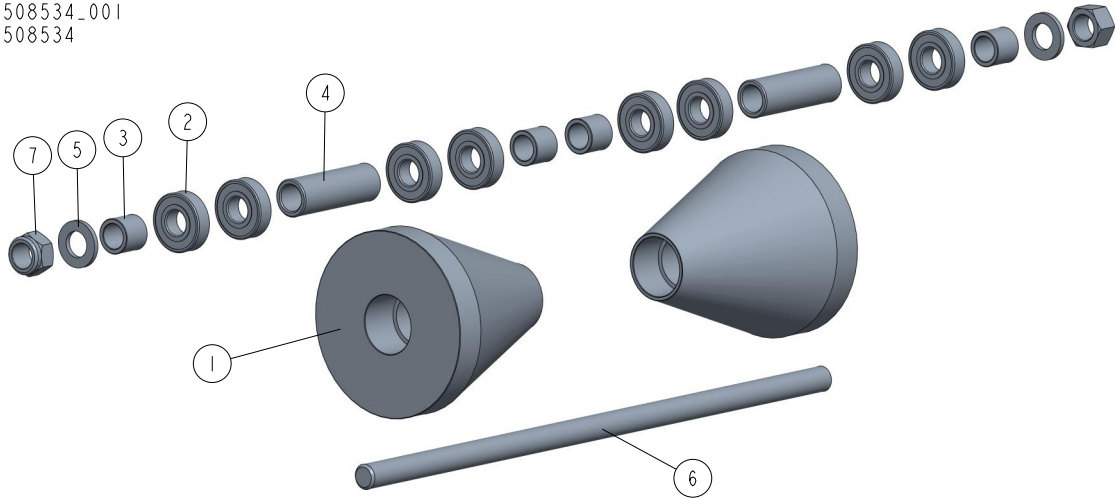
## 2.10 Infeed Table 508540



REF	DESCRIPTION (◆ indicates parts available in assemblies only)	PART #	QTY
-	<b>INFEED TABLE SHS</b>	508540	1
1	FOOT WELDMENT, TVS TABLE	508538-1	1
2	ROLLER ASSEMBLY, CONICAL W/PIVOT BOLT <a href="#">See Section 2.11</a>	508534	2
3	ROLLER, LOG GUIDE - COMPLETE <a href="#">See Section 2.12</a>	508549	1
4	FOOT WELDMENT, TVS TABLE	502750-1	1
5	BOLT, M16X160 8.8 HEX HEAD FULL THREAD Z	F81006-23	2
6	WASHER, 17 SPLIT LOCK ZINC	F81058-1	4
7	WASHER 10,5 ZC FENDER DIN 9021 ISO 7093	F81055-6	8
8	NUT M10 ZC 8 NYLOCK DIN 982 ISO 7040	F81033-1	4
9	BOLT, M10X35-8.8 HEX HEAD FULL THREAD ZI	F81003-17	4
10	NUT, M16-5.8 HEX ZINC	F81036-1	4
11	BOLT, M24X120 8.8 HEX HEAD FULL THREAD Z	F81009-6	2
12	WASHER, 25 FLAT ZINC	F81061-3	2
13	NUT, M24-04-B HEX THIN ZINC	F81039-3	2
14	WASHER, 13 SPECIAL FLAT ZINC	F81056-14	4
15	NUT, M12-8 HEX NYLON ZINC LOCK	F81034-2	2
16	BOLT, M12X90-8.8 HEX HEAD ZINC	F81004-2	2
17	CAP, 50X50 19927 SHR TUBE END (3-5MM THI	095371	2

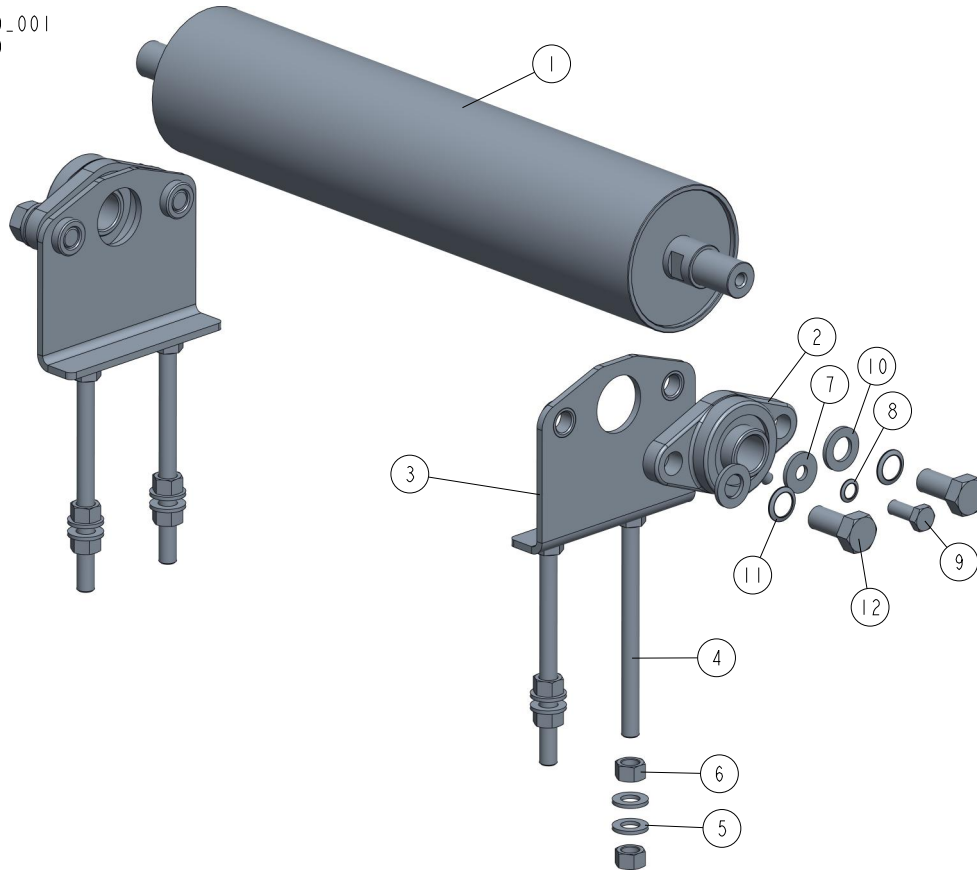
## 2.11 Conical Roller Assembly 508534

508534\_001  
508534



REF	DESCRIPTION (◆ indicates parts available in assemblies only)	PART #	QTY
-	ROLLER ASSEMBLY, CONICAL W/PIVOT BOLT	508534	1
1	ROLLER, CONICAL ZINC-PLATED	508533-1	2
2	BEARING, 6204 2RS CX ROLLING	088447	8
3	BUSHING, 20/28-25 ZINC-PLATED	094156-1	4
4	BUSHING, 21/30-91.3 ZINC-PLATED	508645-1	2
5	WASHER, 21 FLAT ZINC	F81059-2	2
6	BOLT, FEED ROLLER PIVOT	508535-1	1
7	NUT, M20-8 DIN985 HEX NYLON ZINC LOCK	F81037-2	1

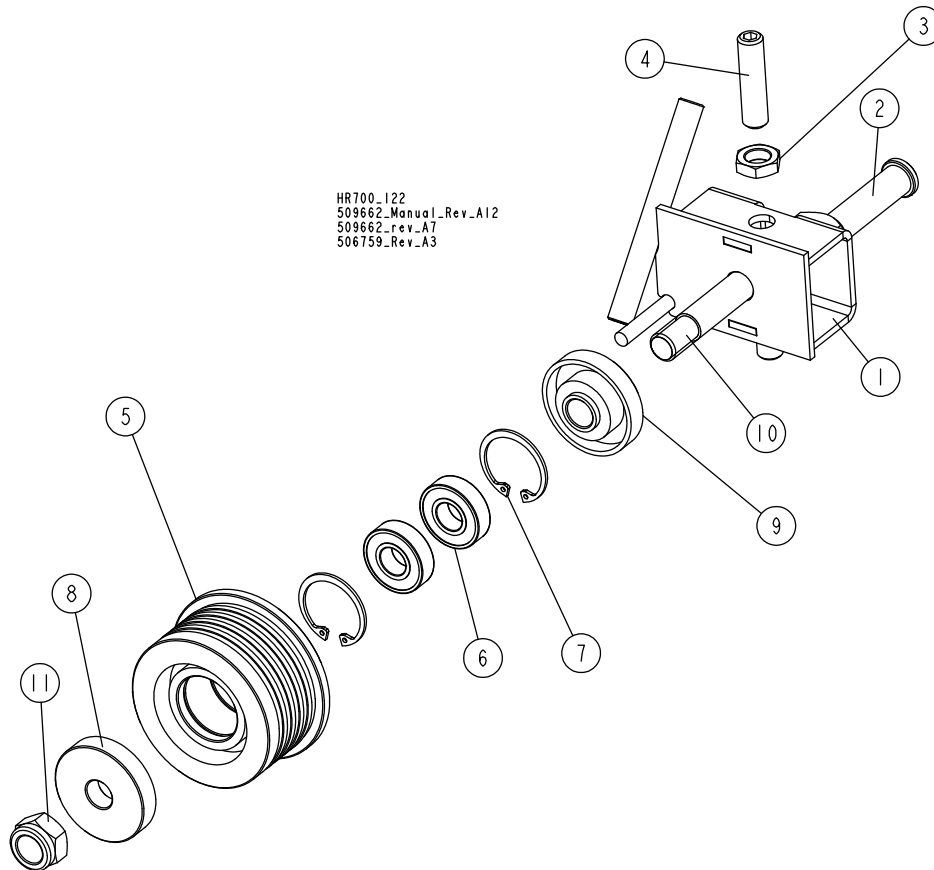
## 2.12 Log Guide Roller 508549

508549\_001  
508549

REF	DESCRIPTION (◆ indicates parts available in assemblies only)	PART #	QTY
-	<b>ROLLER, LOG GUIDE</b>	508549	1
1	ROLLER, PTD HOLD-DOWN	503170-1	1
2	BEARING, UCFL205 W/HOUSING (COMPLEX)	089124	2
3	ARM, BLADE GUIDE	508543-1	2
4	BOLT, M12X150-8.8 HEX HEAD FULL THREAD Z	F81004-54	4
5	WASHER, 13 FLAT ZINC	F81056-1	8
6	NUT, M12, HEXAGON, GRADE 5.8, ZINC	F81034-1	8
7	WASHER 10,5 ZC FENDER DIN 9021 ISO 7093	F81055-6	1
8	WASHER, 791 M10/10.5 SPLIT LOCK	F81055-7	1
9	BOLT, M10X25 8.8 HEX HEAD FULL THREAD ZI	F81003-11	1
10	WASHER, 17 SPLIT LOCK ZINC	F81058-1	4
11	WASHER, BN 791 M16/17 BOS. RIBBED LOCK	F81056-13	4
12	BOLT, ISO 4017-M16X35-8.8-A2E HEX HEAD	F81006-45	4

## SECTION 3 SAW HEAD

### 3.1 Blade Guide Assembly, Idle Side



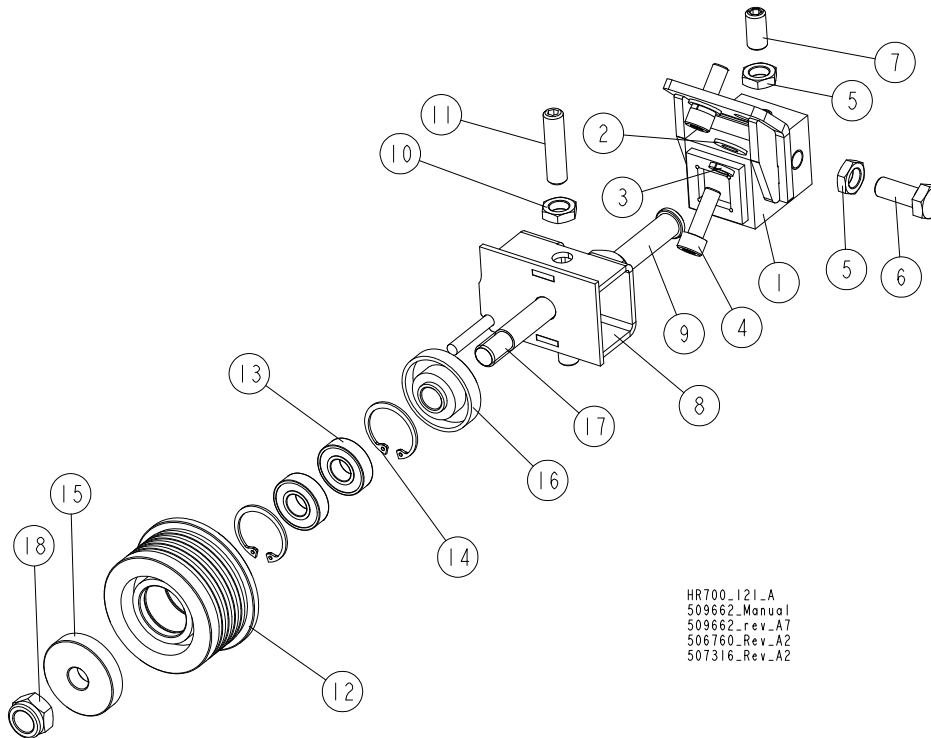
REF.	DESCRIPTION (◆ Indicates Parts Available in Assemblies Only)	PART #	QTY
	<b>BLADE GUIDE W/EXTENDED ROLLER - IDLE SIDE</b>	<b>506759</b>	<b>1</b>
1	BRACKET WELDMENT, IS BLADE GUIDE ZINC-PLATED	500497-1	1
2	SHAFT, BLADE GUIDE MOUNT ZINC-PLATED	088255-1	1
3	NUT, M10X1-04-ST-A2E ISO8675 THIN	F81033-10	2
4	SCREW, M10X1X40 DIN913 A2-70 STAINLESS STEEL SET	F81015-2	2
	ROLLER ASSEMBLY, BLADE GUIDE W/BEARINGS	500561	1
5	ROLLER, EXTENDED BLADE GUIDE	500560	1
6	BEARING, 6001 2RSR (FAG, SKF)	087893	2
7	RING, W28 INSIDE RETAINING	F81090-9	2
8	RING, ZINC-PLATED SPACER	087891-1	1
9	RING, ZINC-PLATED SPACER (EXTENDED BLADE GUIDE ROLLER)	087892-1	1
10	SHAFT, EXTENDED ROLLER ZINC-PLATED	087762-1	1
11	NUT, M12-8 HEX NYLON ZINC LOCK	F81034-2	1

# 3

## SAW HEAD

### Blade Guide Assembly, Drive Side

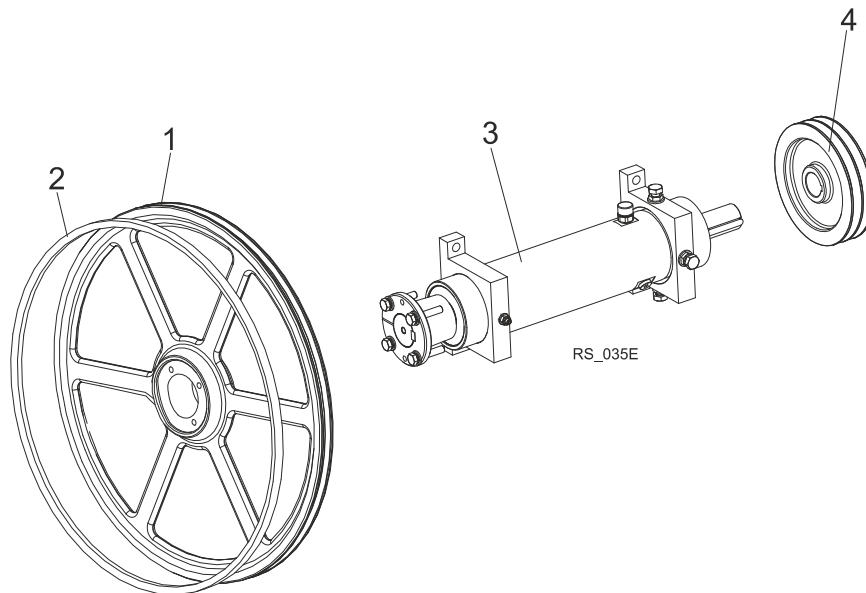
### 3.2 Blade Guide Assembly, Drive Side



REF.	DESCRIPTION (◆ Indicates Parts Available in Assemblies Only)	PART #	QTY
	<b>BLOCK, BLADE GUIDE MOUNT - COMPLETE</b>	<b>507316</b>	<b>1</b>
1	BLOCK WELDMENT, BLADE GUIDE MOUNT	514887-1	1
2	WASHER, 8.4 FLAT ZINC	F81054-1	2
3	WASHER, 8.2 SPLIT LOCK ZINC	F81054-4	2
4	SCREW, M8x25-8.8 HEX SOCKET HEAD CAP ZINC	F81002-21	2
5	NUT, M10X1-04-ST-A2E ISO8675 THIN	F81033-10	4
6	BOLT, M10X1X25 DIN 933 STAINLESS STEEL	F81003-28	1
7	SCREW, M10X1X20 DIN 913 STAINLESS STEEL SET	F81015-1	3
	<b>BLADE GUIDE W/EXTENDED ROLLER - DRIVE SIDE</b>	<b>506760</b>	<b>1</b>
8	BRACKET WELDMENT, DRIVE SIDE BLADE GUIDE ROLLER	500498-1	1
9	SHAFT, BLADE GUIDE MOUNT ZINC-PLATED	088255-1	1
10	NUT, M10X1-04-ST-A2E ISO8675 THIN	F81033-10	2
11	SCREW, M10X1X40 DIN913 A2-70 STAINLESS STEEL SET	F81015-2	2
	<b>ROLLER ASSEMBLY, BLADE GUIDE W/BEARINGS</b>	<b>500561</b>	<b>1</b>
12	ROLLER, EXTENDED BLADE GUIDE	500560	1
13	BEARING, 6001 2RSR (FAG, SKF)	087893	2
14	RING, W28 INSIDE RETAINING	F81090-9	2
15	RING, ZINC-PLATED SPACER	087891-1	1
16	RING, ZINC-PLATED SPACER (EXTENDED BLADE GUIDE ROLLER)	087892-1	1
17	SHAFT, EXTENDED ROLLER ZINC-PLATED	087762-1	1
18	NUT, M12 8 HEX NYLON ZINC LOCK	F81034-2	1



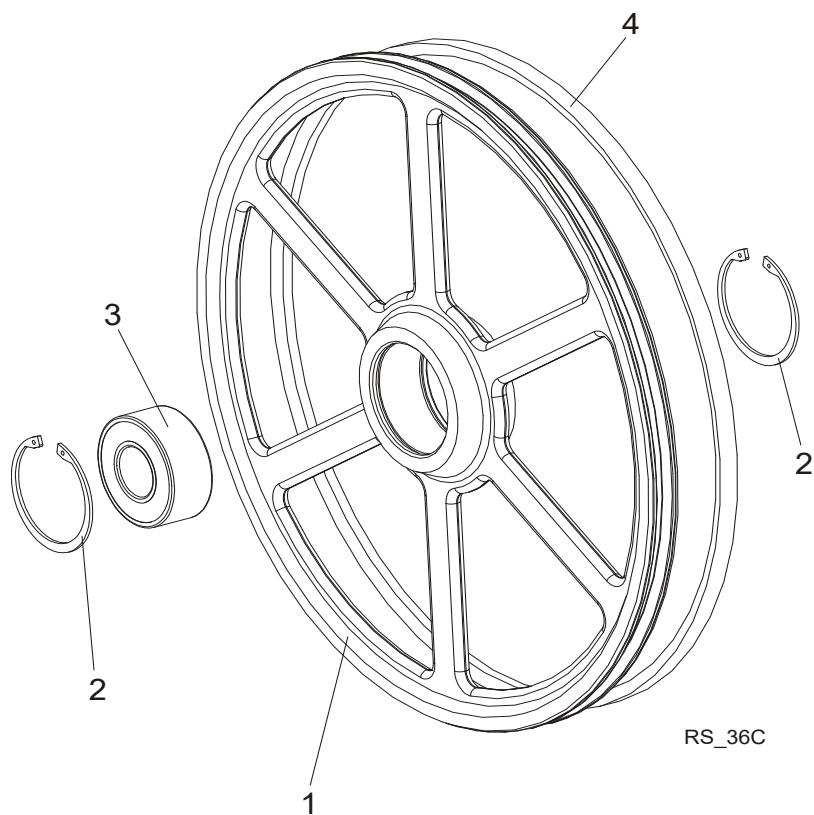
## 3.3 Blade Wheel Assembly, Drive Side



REF.	DESCRIPTION (◆ Indicates Parts Available in Assemblies Only)	PART #	QTY	
1	WHEEL, DRIVE-SIDE RESAW BLADE	500100-1	1	
2	BELT, B72.5 "V"	017922-1	1	
3	SHAFT, RESAW PL HR500/HR700 DRIVE <a href="#">See Section 3.5</a>	525300	1	
4	SHEAVE, SPB $\Phi 224 \times 2 / \Phi 38$ (F02312+T31124)	500177	1	
	SHEAVE, SPB $\Phi 190 \times 2 / \Phi 38$ (F02347+T31124)	500569	1	

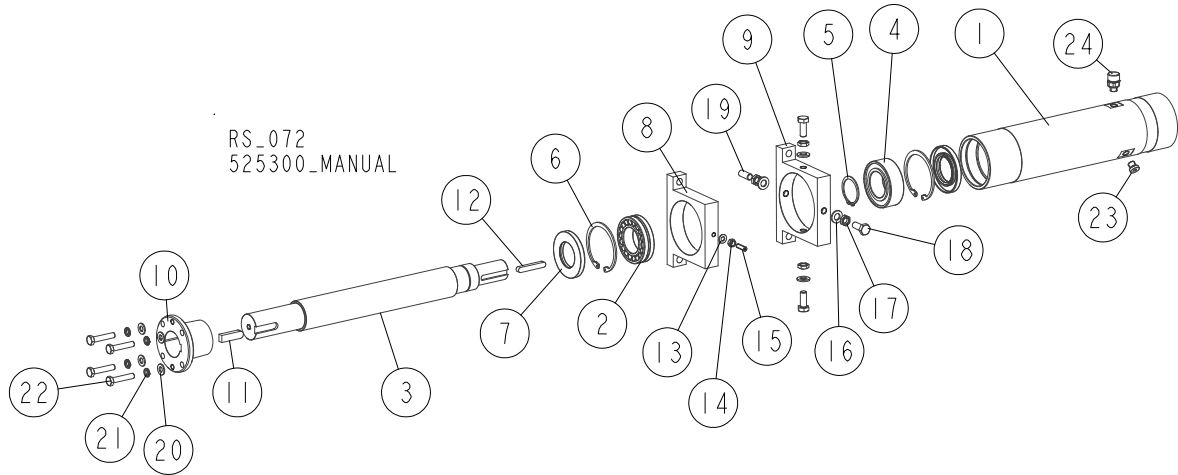
### 3 SAW HEAD Idle-Side Blade Wheel

#### 3.4 Idle-Side Blade Wheel



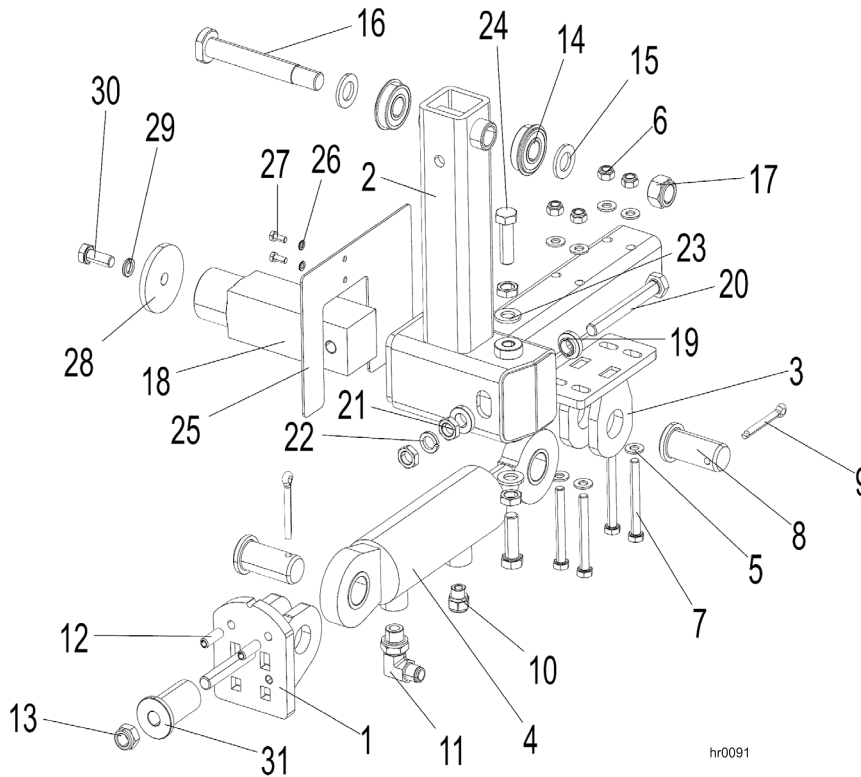
REF.	DESCRIPTION (◆ Indicates Parts Available in Assemblies Only)	PART #	QTY
	<b>IDLE-SIDE BLADE WHEEL - COMPLETE</b>	<b>088764</b>	1
1	Wheel, Idle-Side Blade	090810	1
2	Ring, W100 Inside Retaining	F81090-10	2
3	Bearing, 3309B.2RSR.TVH FAG	086428	1
4	<b>V-BELT, B72.5</b>	017922-1	1

### 3.5 Drive Shaft, HR500/HR700



REF.	DESCRIPTION (◆ Indicates Parts Available in Assemblies Only)	PART #	QTY
-	<b>SHAFT, HR500/HR700 RESAW DRIVE</b>	<b>525300</b>	<b>1</b>
1	BUSHING, DRIVE SHAFT ZINC-PLATED	525301-1	1
2	BEARING, 22210 E1 50X90X23 SPHERICAL ROLLER	520509	1
3	SHAFT, HR500/HR700 RESAW PL DRIVE	525302	1
4	BEARING, 3210A (SKF, FAG) ANGULAR CONTACT BALL	525280	1
5	RING, Z50 OUTSIDE RETAINING	F81090-28	1
6	RING, W90 INSIDE RETAINING	F81090-29	2
7	RING, AO50X90X10 SEALING	525279	2
8	BRACKET, DRIVE SHAFT ADJUSTMENT ZINC-PLATED	093255-1	1
9	BRACKET, DRIVE SHAFT BUSHING MOUNT ZINC-PLATED	094535-1	1
10	BUSHING, N50X109X70 SPLIT TAPER	521125	1
11	KEY, AB 14X9X50 PARALLEL	093266	1
12	KEY, A10X8X63 PARALLEL	088130	1
13	WASHER, 8.4 FLAT ZINC	F81054-1	1
14	NUT, M8-8-B HEX NYLON ZINC LOCK	F81032-2	1
15	SCREW, M8X25 DIN 913 A2-70 STAINLESS STEEL SET	F81014-3	1
16	WASHER, 13 FLAT ZINC	F81056-1	4
17	NUT, M12X1.25 DIN 439 A2-70 STAINLESS STEEL THIN	F81034-9	4
18	BOLT, M12X1.25X30 DIN933 A2-70 STAINLESS STEEL	F81004-44	3
19	SCREW, M12X1.25X30 DIN913 A2-70 SET	F81016-1	1
20	WASHER, 10.5 FLAT ZINC	F81055-1	4
21	WASHER, Z 10.2 SPLIT LOCK ZINC	F81055-2	4
22	BOLT, M10X50-8.8 HEX HEAD FULL THREAD ZINC	F81003-4	4
23	PLUG, GN 749-G1/4-A (ELESA+GANTER) THREADED	525282	1
24	PLUG, GN 882-G1/4-MS-M (ELESA+GANTER) BREATHER	525281	1

**3.6 Hydraulic Blade Tensioner**



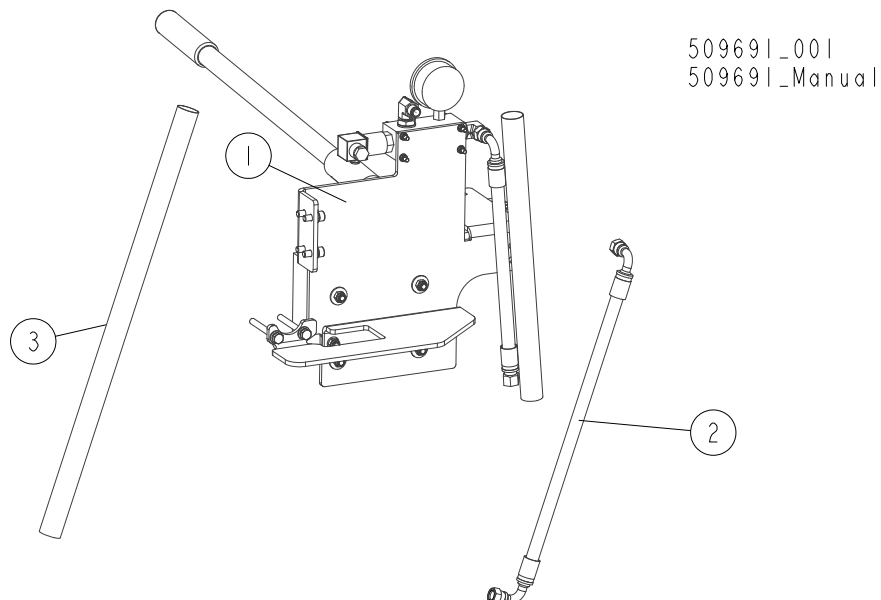
REF.	DESCRIPTION (◆ Indicates Parts Available in Assemblies Only)	PART #	QTY
	<b>HR/SHS HYDRAULIC BLADE TENSIONER - COMPLETE</b>	<b>506750</b>	<b>1</b>
1	BRACKET, PISTON CYLINDER MOUNT	506751-1	1
2	ARM WELDMENT, TVS IDLE BLADE WHEEL (RIGHT-SIDE SAW HEAD)	504817-1	1
3	BRACKET, PISTON CYLINDER UPPER MOUNT	504819-1	1
4	CYLINDER, SJ2F-16-50/28/70 PISTON	504812	1
5	WASHER, 8.4 FLAT ZINC	F81054-1	8
6	NUT, M8 8 HEX NYLON ZINC LOCK	F81032-2	4
7	BOLT, M8x70-8.8 HEX HEAD ZINC	F81002-71	4
8	PIN	504824-1	2
9	PIN, S-Zn-6.3x45 COTTER	F81045-2	2
10	SILENCER, TYPE 2901-14-17	090794	1
11	FITTING, 90° - 3/8 BSP - 9/16 JIC ELBOW	096335	1
12	PIN, 8x26 ZINC ROLL	F81046-4	2
13	NUT, M12 8 HEX NYLON ZINC LOCK	F81034-2	1
14	BEARING, 6203-2RS NR. W/SNAP RING	086395	2
15	WASHER, 17 SPLIT LOCK ZINC	F81058-1	2
16	BOLT, ARM BEARING MOUNT	086404	1
17	NUT, M16-8 HEX NYLON ZINC LOCK	F81036-2	1
18	SHAFT, IDLE-SIDE BLADE WHEEL	088474	1
19	WASHER, FLANGED ZINC-PLATED	086769-1	2
20	BOLT, M12x1.25x100-8.8 HEX HEAD FULL THREAD ZINC	F81004-41	1
21	NUT, M12X1.25-8 THIN ZINC	F81034-5	4

<b>22</b>	WASHER, Z12.2 SPLIT LOCK ZINC	F81056-2	1	
<b>23</b>	WASHER, 13 FLAT ZINC	F81056-1	2	
<b>24</b>	BOLT, M12x1.25x40-8.8 HEX HEAD FULL THREAD ZINC	F81004-42	2	
<b>25</b>	GUARD, IDLE BLADE WHEEL ARM	088442-1	1	
<b>26</b>	WASHER, 5.1 SPLIT LOCK	F81052-2	2	
<b>27</b>	BOLT, M5X12 5.8 HEX HEAD FULL THREAD ZINC	F81000-5	2	
<b>28</b>	WASHER, IDLE BLADE WHEEL RETAINING	088957-1	1	
<b>29</b>	WASHER, Z 10.2 SPLIT LOCK ZINC	F81055-2	1	
<b>30</b>	BOLT, M10X25 8.8 HEX HEAD FULL THREAD	F81003-31	1	
<b>31</b>	BUSHING, 28.5 TO 13 ZINC-PLATED REDUCER	508708-1	1	

# 3 SAW HEAD

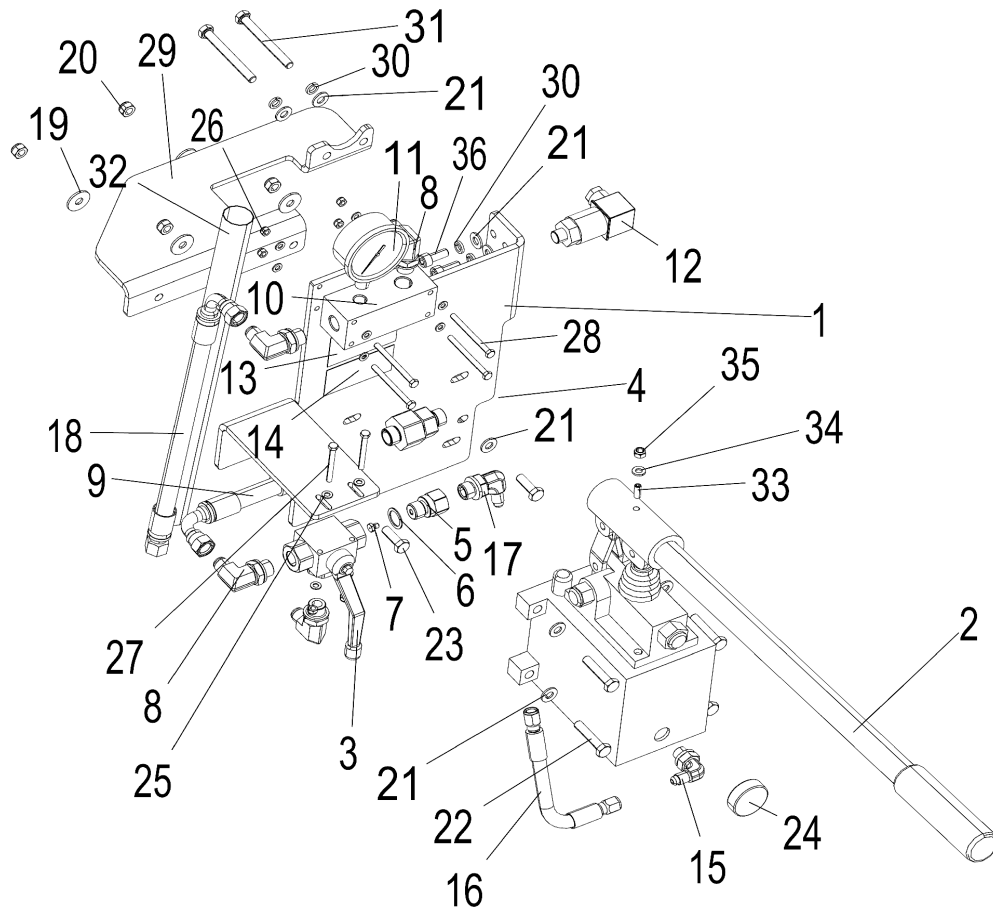
## Blade Tension Assembly

### 3.7 Blade Tension Assembly



REF.	DESCRIPTION (◆ Indicates Parts Available in Assemblies Only)	PART #	QTY
	<b>BLADE TENSION ASSEMBLY FOR SHS, HR500,700-1</b>	<b>509691</b>	<b>1</b>
1	HYDRAULIC PUMP ASSEMBLY, SHS/HR500/HR700 <a href="#">See Section 3.8</a>	506733	1
2	HOSE, 2T3/8X0.43 90W9/16UNF-90W9/16UNF HYDRAULIC	506737	1
3	GUARD, OBLIQUE HOSE	508714	1

### 3.8 Hydraulic Pump Assembly



hr0093\_a  
099662

REF.	DESCRIPTION (◆ Indicates Parts Available in Assemblies Only)	PART #	QTY
	<b>HYDRAULIC PUMP ASSEMBLY, SHS/HR500/HR700</b>	<b>506733</b>	<b>1</b>
1	PLATE, MOUNTING	506734-1	1
2	PUMP, PMS12/TNK1 W/1-LITER TANK	092789	1
3	VALVE, RSAP3 VO2L G3/8" 3-WAY BALL	504803	1
4	VALVE, RHV12LREDA3C (HVR NW10MLED) CHECK	094559	1
	FITTING, G 3/8 W/NOZZLE	096849	1
5	FITTING, G3/8 ZINC-PLATED SPECIAL	096850-1	1
6	WASHER, 16 COPPER	F81058-3	1
7	NOZZLE, D092-O 1MM DIA. PROPANE&BUTANE	091007	1
8	FITTING, 90\$ - 3/8 BSP - 9/16 JIC ELBOW	096335	4
9	HYDRAULIC HOSE, 3/8' W/DKJ 90 DN10 9/16 UNF/DKOL DN10 M18x1.5 END FITTINGS	504831	1
10	BLOCK, MOUNTING	504829-1	1
11	GAUGE, 200 BAR (3000PSI) PRESSURE	505176	1
12	SWITCH, F4-T-1-M3-16 BAR PRESSURE	504830	1
13	DECAL, PRESSURE VALUE SETTING	505348	1
14	DECAL, TVS BLADE TENSIONER HANDLE POSITION	505346	1
15	FITTING, CA-204410-3 (W90HROKO4HJ) G1/4-JIC37.7/16-20 ELBOW	094562	1
16	HOSE, 1/4 (0.19m) HYDRAULIC	505174	1

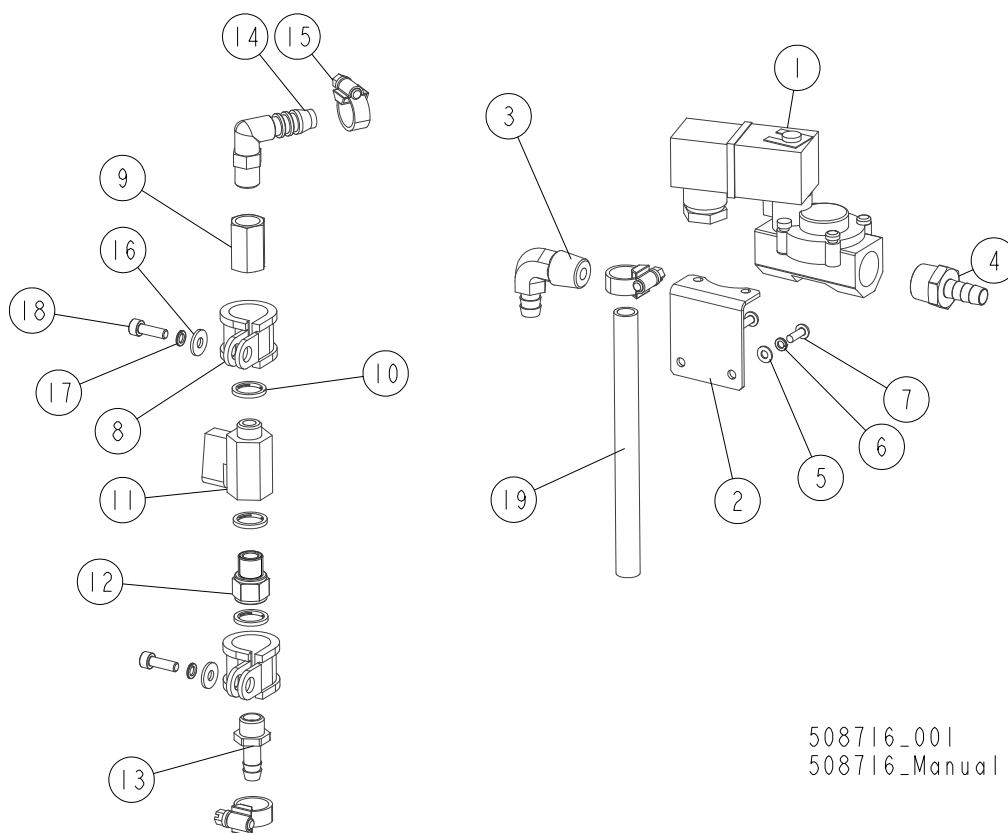
## 3

**SAW HEAD***Hydraulic Pump Assembly*

17	FITTING, CA-204411-3 (W90HROKO6HJ04) G3/8-JIC37.7/16-20 ELBOW	094563	1	
18	HOSE, PHD 2T3/8x0.27 90W9/16UNF-W9/16UNF HYDRAULIC	506736	1	
19	WASHER, ISO 7093-1-8-200 HV-A2E.	F81054-11	4	
20	NUT, M8 8 HEX NYLON ZINC LOCK	F81032-2	6	
21	WASHER, 8.4 FLAT ZINC	F81054-1	14	
22	BOLT, M8X40-8.8 HEX HEAD FULL THREAD ZINC	F81002-15	4	
23	BOLT, M8x25-8.8-B HEX HEAD FULL THREAD ZINC	F81002-5	2	
24	MAGNET, MW 38x12/N38 NEODYMIUM	500022	1	
25	WASHER, 5.3 FLAT ZINC	F81052-1	12	
26	NUT, M5-8-FE/ZN5 DIN985	F81030-2	6	
27	BOLT, M5x45 DIN933-A2-70 STAINLESS STEEL	F81000-22	2	
28	BOLT, M5X60 8.8 HEX HEAD ZINC	F81000-36	4	
29	BRACKET, SUPPORT	506732-1	1	
30	WASHER, 8.2 SPLIT LOCK ZINC	F81054-4	6	
31	BOLT, M8x75-8.8 HEX HEAD ZINC	F81002-91	2	
32	GUARD, VERTICAL HOSE	508713	1	
33	LATCH, GN 615.3-M6-KN BALL THREADED	096874	1	
34	WASHER, 6.4 FLAT ZINC	F81053-1	1	
35	NUT, M6-8-B HEX NYLON ZINC LOCK	F81031-2	1	
36	SCREW, M8x20-8.8 HEX SOCKET HEAD CAP ZINC	F81002-30	4	



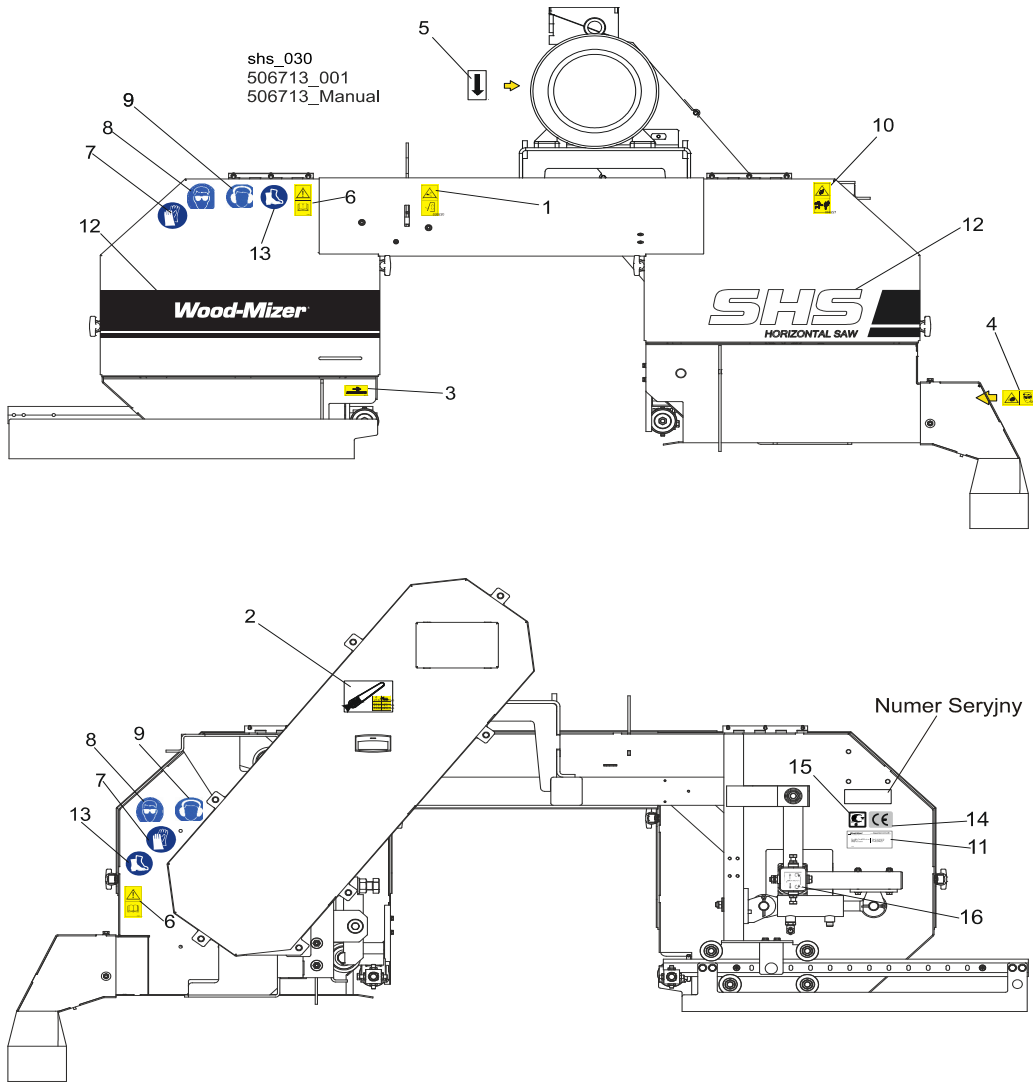
### 3.9 Blade Lube Assembly



508716\_001  
508716\_Manual

REF.	DESCRIPTION (◆ Indicates Parts Available in Assemblies Only)	PART #	QTY
	<b>BLADE LUBE ASSEMBLY, SHS</b>	<b>508716</b>	<b>1</b>
	<b>SOLENOID VALVE, BLADE LUBE SYSTEM - COMPLETE</b>	<b>509702</b>	<b>1</b>
1	VALVE, ASCO SCE238A002 24VDC SOLENOID	510270	1
2	BRACKET, SOLENOID VALVE ZINC-PLATED	092870-1	1
3	FITTING, 1/2NPT-3/8 BARB ELBOW	P12707	1
4	FITTING, 1/2" HOSE END	092356	1
5	WASHER, 4.3 FLAT ZINC	F81051-2	2
6	WASHER, Z 4.1 SPLIT LOCK ZINC	F81051-1	2
7	SCREW, M4X12-5.8-B CROSS RECESSED PAN HEAD ZINC	F81011-43	2
8	CLIP, RSGU 1.20/20 W1 RETAINING	F81087-2	2
9	SLEEVE, G1/4W/G1/4W 893-302-000-4 (REXROTH)	090808	1
10	SEAL, G1/4 866-014-000-0 (REXROTH)	090809	3
11	VALVE, FP60.KIT 28 G1/4	088380	1
12	ADAPTER, 2521 1/4-1/4 (CAMOZZI)	097704	1
13	BUSHING, GT13/09 NR 13539 (RECTUS)	092783	1
14	FITTING, WES 10/R 1/4 ELBOW	088379	1
15	CLAMP, 12-20MM DIA.	F81080-3	3
16	WASHER, 5.5 SPECIAL FLAT ZINC	F81052-3	2
17	WASHER, 5.1 SPLIT LOCK ZINC	F81052-2	2
18	SCREW, M5X16-8.8 HEX SOCKET HEAD CAP ZINC	F81000-25	2
19	HOSE, WATER	508717	1

3.10 SHS Saw Head Warning Decals



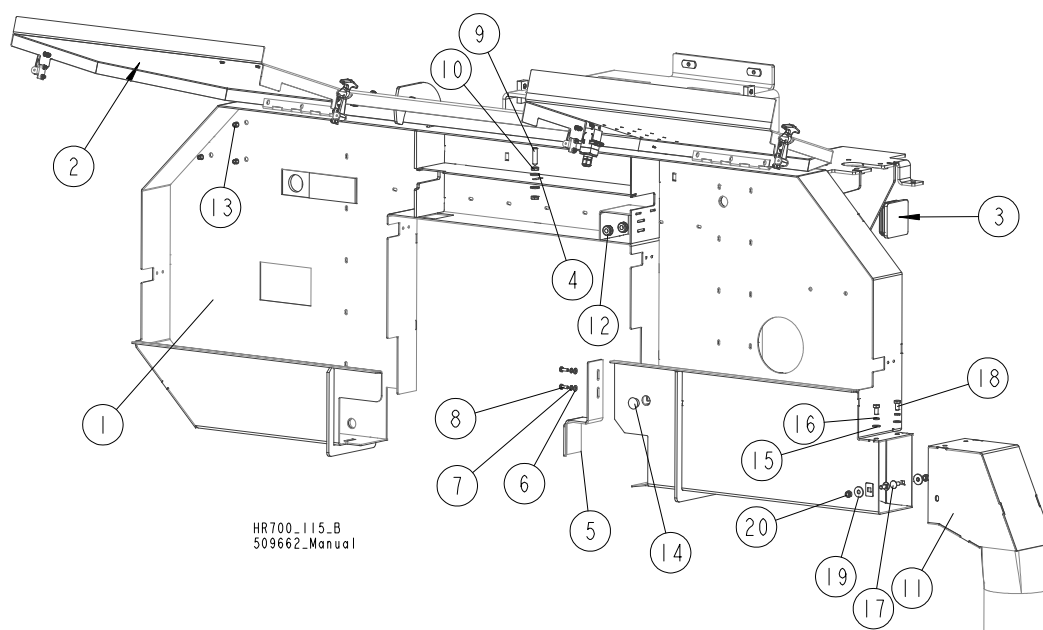
REF.	DESCRIPTION (◆ Indicates Parts Available in Assemblies Only)	PART #	QTY
	<b>DECAL KIT, SHS SAW HEAD</b>	<b>521826</b>	<b>1</b>
1	DECAL "CLOSE ALL GUARDS AND COVERS BEFORE STARTING THE MACHINE"	099220	1
2	DECAL, DRIVE-SIDE WHEEL DIAMETER, LINEAR BLADE SPEED	509025	1
3	DECAL, BLADE MOVEMENT DIRECTION (PICTOGRAM)	096321	1
4	DECAL, SAWDUST CHUTE WARNING (PICTOGRAM)	099222	1
5	DECAL, MOTOR REVOLUTIONS DIRECTION	S20097	1
6	DECAL, READ THE OPERATOR'S MANUAL (PICTOGRAM)	096317	2
7	DECAL, WEAR SAFETY GLOVES (PICTOGRAM)	512107	2
8	DECAL, EYE WARNING (PICTOGRAM)	S12004G	2
9	DECAL, EAR WARNING (PICTOGRAM)	S12005G	2
10	DECAL, KEEP A SAFE DISTANCE AWAY (PICTOGRAM)	099221	1
11	DECAL, EUROPEAN HEADQUARTERS ADDRESS	015841	1
12	DECAL KIT, SHS LOGO	521827	1
13	DECAL, USE SAFETY BOOTS (PICTOGRAM)	501465	2

<b>14</b>	DECAL, CE CERTIFIED MACHINE (SMALL)	P85070	1	
<b>15</b>	DECAL, RUSSIAN SAFETY CERTIFICATION	099401	1	
<b>16</b>	DECAL, BLADE ALIGNMENT	P11789	1	

# 3 SAW HEAD

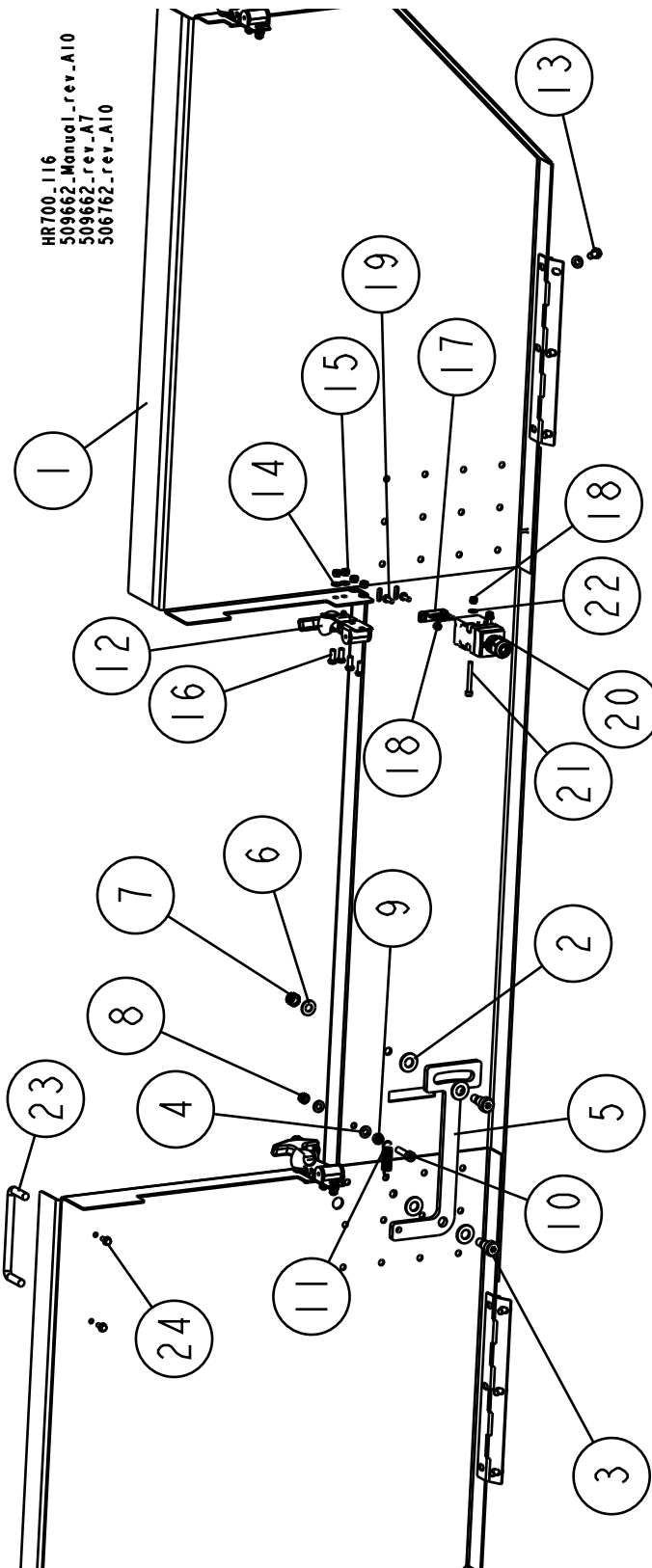
## Saw Head

### 3.11 Saw Head



REF.	DESCRIPTION (◆ Indicates Parts Available in Assemblies Only)	PART #	QTY
1	SAW HEAD, SHS/HR700	506714-1	1
2	COVER, SHS/HR700 FRONT - COMPLETE <a href="#">See Section 3.12</a>	506762	1
3	CAP, 80X80 GR 2-4 #111227 TUBE END	089644	4
4	WASHER, 6.4 FLAT ZINC	F81053-1	2
5	GUARD, BLADE GUIDE ROLLER	516925-1	1
6	WASHER, Z 6.1 SPLIT LOCK	F81053-3	2
7	WASHER, 10.5 FLAT ZINC	F81055-1	2
8	BOLT, M6X16-8.8 HEX HEAD FULL THREAD ZINC	F81001-15	2
9	SCREW, M10X40-45H HEX SOCKET SET CONE POINT ZINC	F81003-61	1
10	NUT, M10-04-A THIN ZINC	F81033-6	2
11	CHUTE, RESAW SAWDUST	094059-1	1
12	GROMMET, 30X42X8 RUBBER	509717	2
13	GROMMET, 3/8" ID RUBBER	025248	2
14	PLUG, SR1086-9.5 #46009 (MOSS) BLANKING	096846	3
15	PLUG, SR1086 22.2 HOLE	093544	1
16	WASHER, 8.4 FLAT ZINC	F81054-1	2
17	WASHER, 8.2 SPLIT LOCK ZINC	F81054-4	2
18	BOLT, M8x20-8.8 CARRIAGE ZINC	F81002-11	2
19	BOLT, M8x16 -8.8-B HEX HEAD FULL THREAD ZINC	F81002-20	2
20	WASHER, 8.5 SPECIAL FLAT ZINC	F81054-11	2
21	NUT, M8-8-B HEX NYLON ZINC LOCK	F81032-2	2

### 3.12 Front Saw Head Cover

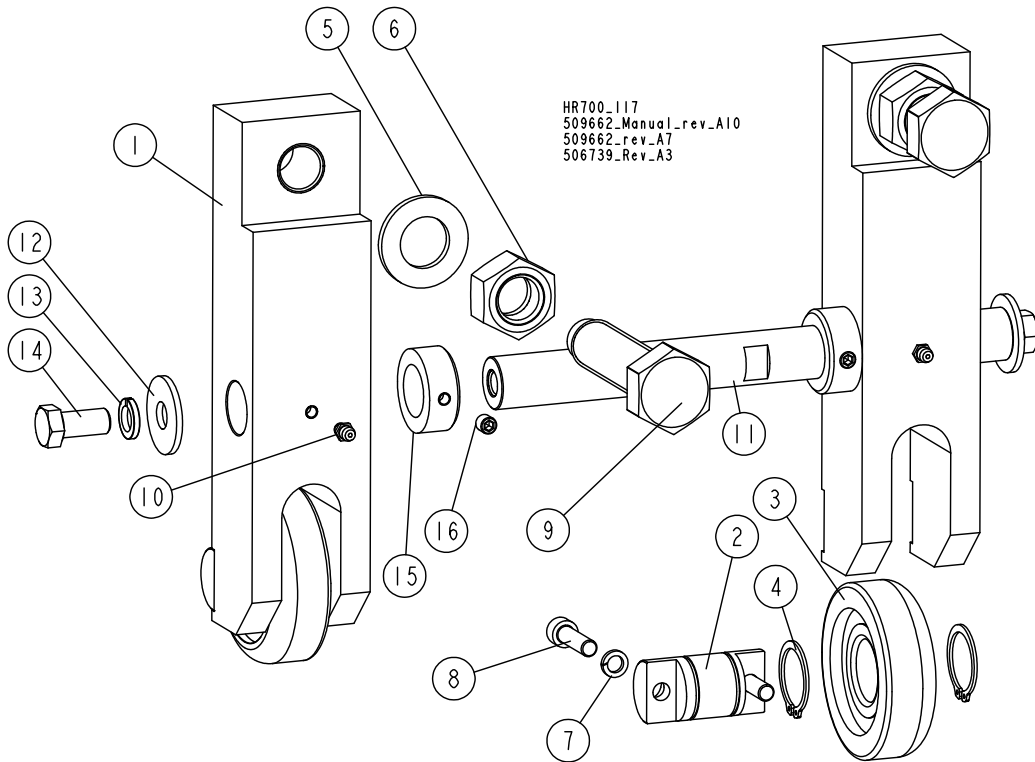


## 3

**SAW HEAD***Front Saw Head Cover*

REF.	DESCRIPTION (◆ Indicates Parts Available in Assemblies Only)	PART #	QTY	
	<b>COVER, SHS/HR700 FRONT - COMPLETE</b>	<b>506762</b>	<b>1</b>	
1	COVER, SHS/HR700 FRONT	506763-1	1	
2	WASHER, 10.5 FLAT ZINC	F81055-1	4	
3	BOLT, 10/M8X12-12.9 BOSSARD SHOULDER	F81003-62	2	
4	WASHER, 6.4 FLAT ZINC	F81053-1	8	
5	PAWL, LOCKING	090643-1	1	
6	WASHER, 8.4 FLAT ZINC	F81054-1	2	
7	NUT, M8 8 HEX NYLON ZINC LOCK	F81032-2	2	
8	NUT, M6-8-B HEX NYLON ZINC LOCK	F81031-2	1	
9	NUT, M6 8 HEX ZINC	F81031-1	1	
10	SCREW, M6X25-8.8 HEX SOCKET HEAD CAP ZINC	F81001-41	1	
11	SPRING, 1.6X12X38 EXTENSION	092208	1	
12	LATCH, FLEXIBLE DRAW	014829	4	
13	BOLT, M6X12 8.8 HEX HEAD FULL THREAD ZINC	F81001-7	6	
14	WASHER, 5.3 FLAT ZINC	F81052-1	16	
15	NUT, M5-8-FE/ZN5 DIN985	F81030-2	16	
16	BOLT, M5X12 5.8 HEX HEAD FULL THREAD ZINC	F81000-5	16	
17	KEY, AZ17/170-B5 SAFETY SWITCH	094422	1	
18	NUT, M4-8 HEX NYLON ZINC LOCK	F81029-1	4	
19	SCREW, M4X12-5.8-B CROSS RECESSED PAN HEAD ZINC	F81011-43	2	
20	SWITCH, AZ17-11ZRK SAFETY	094232	1	
21	SCREW, M4X35 8.8 HEX SOCKET HEAD CAP ZINC	F81011-34	2	
22	WASHER, 4.3 FLAT ZINC	F81051-2	2	
23	HANDLE, 4"	P08065	1	
24	SCREW, #8-32X3/8 SELF-TAPPING	F05015-8	2	

**3.13 Adjustable Saw Head Guide Rollers**

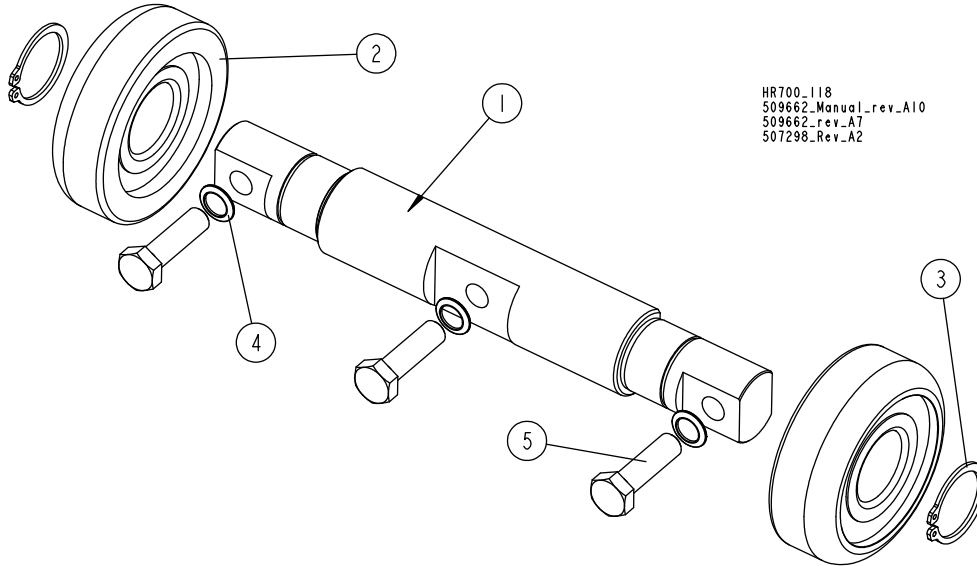


REF.	DESCRIPTION (◆ Indicates Parts Available in Assemblies Only)	PART #	QTY
	<b>ROLLER ASSEMBLY, ADJUSTABLE SAW HEAD GUIDE</b>	<b>506739</b>	<b>1</b>
1	BAR, ROLLER ZINC-PLATED MOUNT	506741-1	2
2	SHAFT, GUIDE ROLLER ZINC-PLATED	506742-1	2
3	ROLLER, SBBA3084-01 (COMPLEX)	088433	2
4	RING, 30Z OUTSIDE RETAINING	F81090-23	4
5	WASHER, 25 FLAT ZINC	F81061-3	2
6	NUT, M24X2-8-B HEX ZINC	F81039-11	2
7	WASHER, 8.2 SPLIT LOCK ZINC	F81054-4	4
8	SCREW, M8X30-8.8 HEX SOCKET HEAD CAP ZINC	F81002-31	4
9	BOLT, M24X2X95 ZINC-PLATED SPECIAL	506748-1	2
10	FITTING, M6 STRAIGHT GREASE	086280	2
11	ROD, GUIDE ROLLER CONNECTION	506747	1
12	WASHER, 13 SPECIAL FLAT ZINC	F81056-14	2
13	WASHER, Z12.2 SPLIT LOCK ZINC	F81056-2	2
14	BOLT, M12X25-8.8 HEX HEAD FULL THREAD ZINC	F81004-31	2
15	RING, 25 STOPPING LIGHT TYPE	F81039-4	2
16	SCREW, M8X8-33H HEX SOCKET FLAT POINT ZINC SET	F81014-1	2

# 3 SAW HEAD

## Fixed Saw Head Guide Rollers

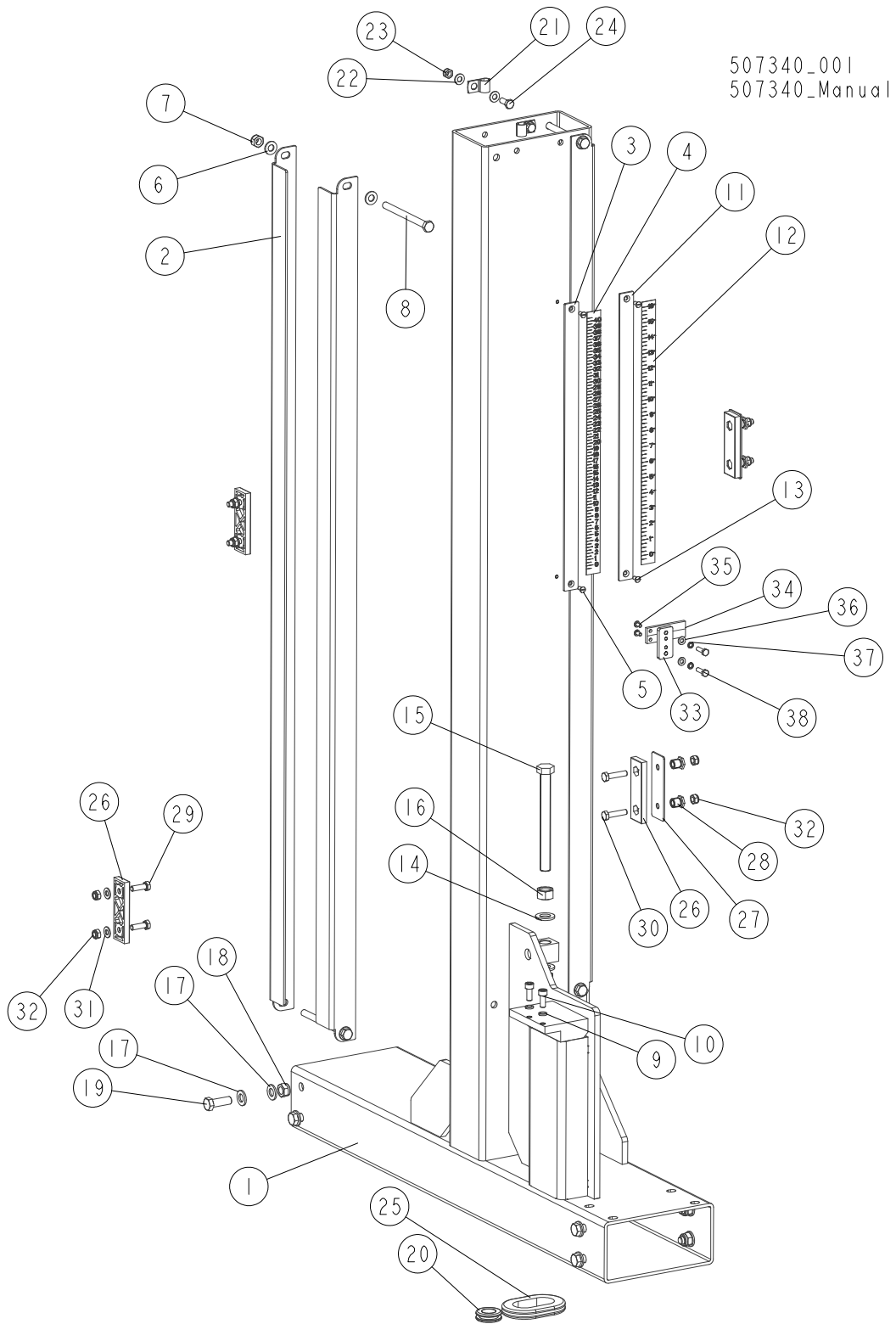
### 3.14 Fixed Saw Head Guide Rollers



REF.	DESCRIPTION (◆ Indicates Parts Available in Assemblies Only)	PART #	QTY
	<b>ROLLER ASSEMBLY, FIXED SAW HEAD GUIDE</b>	<b>507298</b>	<b>1</b>
1	SHAFT, FIXED GUIDE ROLLER LONG ZINC-PLATED	088815-1	1
2	ROLLER, SBBA3084-01 (COMPLEX)	088433	2
3	RING, 30Z OUTSIDE RETAINING	F81090-23	2
4	WASHER, 791 M10/10.5 SPLIT LOCK	F81055-7	3
5	BOLT, M10X35 8.8 HEX HEAD FULL THREAD ZINC	F81003-17	3



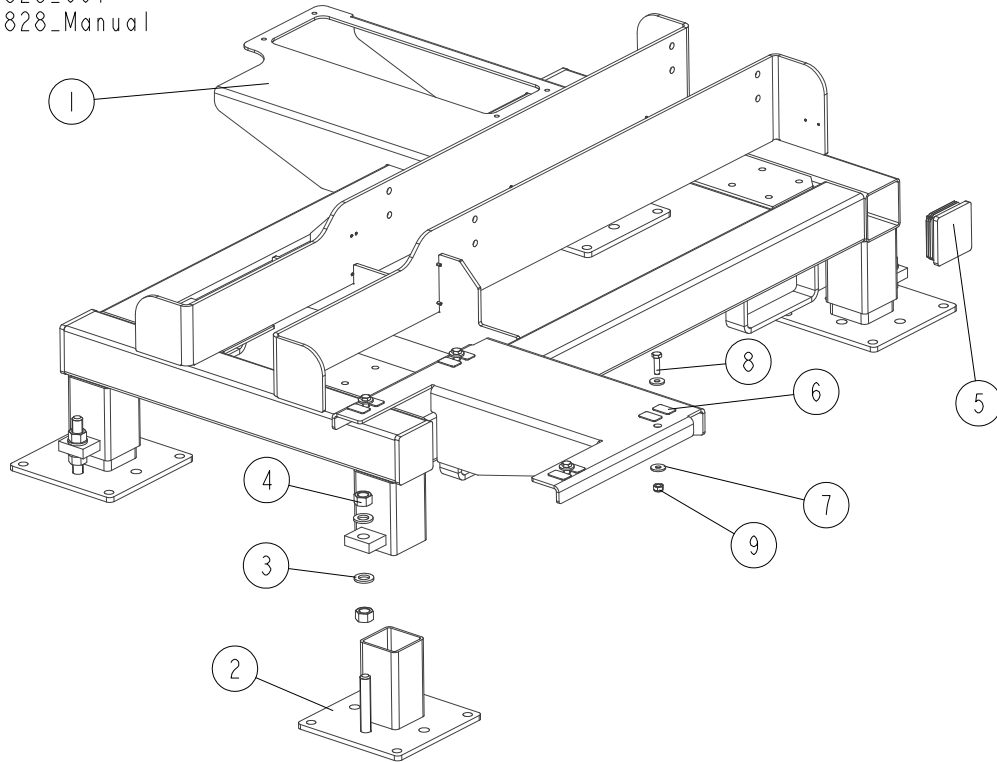
**3.15 SHS Mast**



REF.	DESCRIPTION (◆ Indicates Parts Available in Assemblies Only)	PART #	QTY	
	<b>MAST, SHS COMPLETE</b>	<b>506781</b>	<b>1</b>	
1	MAST, SHS	506782-1	1	
2	ANGLE, VERTICAL MAST TUBE	088492	4	
	<b>SCALE, METRIC BLADE HEIGHT - COMPLETE</b>	<b>507302</b>	<b>1</b>	
3	BAR, SHS/HR700 BLADE HEIGHT SCALE	507303	1	
4	DECAL, 0-40 METRIC BLADE HEIGHT SCALE	507304	1	
5	SCREW, M5X12- 5.8-B SLOTTED COUNTERSUNK HEAD ZINC	F81000-15	2	
6	WASHER, 10.5 FLAT ZINC	F81055-1	8	
7	NUT, M10-8-B HEX NYLON ZINC LOCK	F81033-1	4	
8	BOLT, M10X125 8.8 HEX HEAD ZINC	F81003-18	4	
9	WASHER, 8.2 SPLIT LOCK ZINC	F81054-4	2	
10	SCREW, M8X20-8.8 HEX SOCKET HEAD CAP ZINC	F81002-30	2	
	<b>SCALE, INCH BLADE HEIGHT - COMPLETE</b>	<b>507305</b>	<b>1</b>	
11	BAR, SHS/HR700 BLADE HEIGHT SCALE	507303	1	
12	DECAL, 0-15.75 INCH BLADE HEIGHT SCALE	507306	1	
13	SCREW, M5X12- 5.8-B SLOTTED COUNTERSUNK HEAD ZINC	F81000-15	2	
14	WASHER, 17 SPLIT LOCK ZINC	F81058-1	2	
15	BOLT, M16X160 8.8 HEX HEAD FULL THREAD ZINC	F81006-23	1	
16	NUT, M16-8 HEX ZINC	F81036-1	2	
17	WASHER, 13 FLAT ZINC	F81056-1	16	
18	NUT, M12 8 HEX NYLON ZINC LOCK	F81034-2	8	
19	BOLT, M12X35 8.8 HEX HEAD FULL THREAD ZINC	F81004-24	8	
20	GROMMET, 22MM ID RUBBER	087400	2	
21	CLAMP, 1/2" EMT COATED	P07584	2	
22	WASHER, 8.4 FLAT ZINC	F81054-1	4	
23	NUT, M8 8 HEX NYLON ZINC LOCK	F81032-2	2	
24	BOLT, M8X20 8.8 HEX HEAD FULL THREAD ZINC	F81002-4	2	
25	GROMMET, RUBBER	089532	2	
26	PAD, DELRIN UP/DOWN SLIDE	M04096	4	
27	PLATE, SLIDE PAD MOUNTING	093246-1	2	
28	NUT, SLIDE PAD ZINC-PLATED ADJUSTMENT	086683-1	4	
29	BOLT, M8X25-8.8-B HEX HEAD FULL THREAD ZINC	F81002-5	4	
30	BOLT, M8X35-8.8 HEX HEAD FULL THREAD ZINC	F81002-13	4	
31	WASHER, 8.4 FLAT ZINC	F81054-1	4	
32	NUT, M8 8 HEX NYLON ZINC LOCK	F81032-2	8	
	<b>INDICATOR, BLADE HEIGHT SCALE - COMPLETE</b>	<b>507299</b>	<b>1</b>	
33	PLATE, SCALE INDICATOR ZINC-PLATED MOUNTING	507301-1	1	
34	INDICATOR, BLADE HEIGHT SCALE	094821	1	
35	SCREW, M5X10 ISO 7380	F81000-32	2	
36	WASHER, 6.4 FLAT ZINC	F81053-1	2	
37	WASHER, Z 6.1 SPLIT LOCK ZINC	F81053-3	2	
38	BOLT, M6X20 8.8 HEX HEAD FULL THREAD ZINC	F81001-2	2	

### 3.16 SHS Saw Head Base

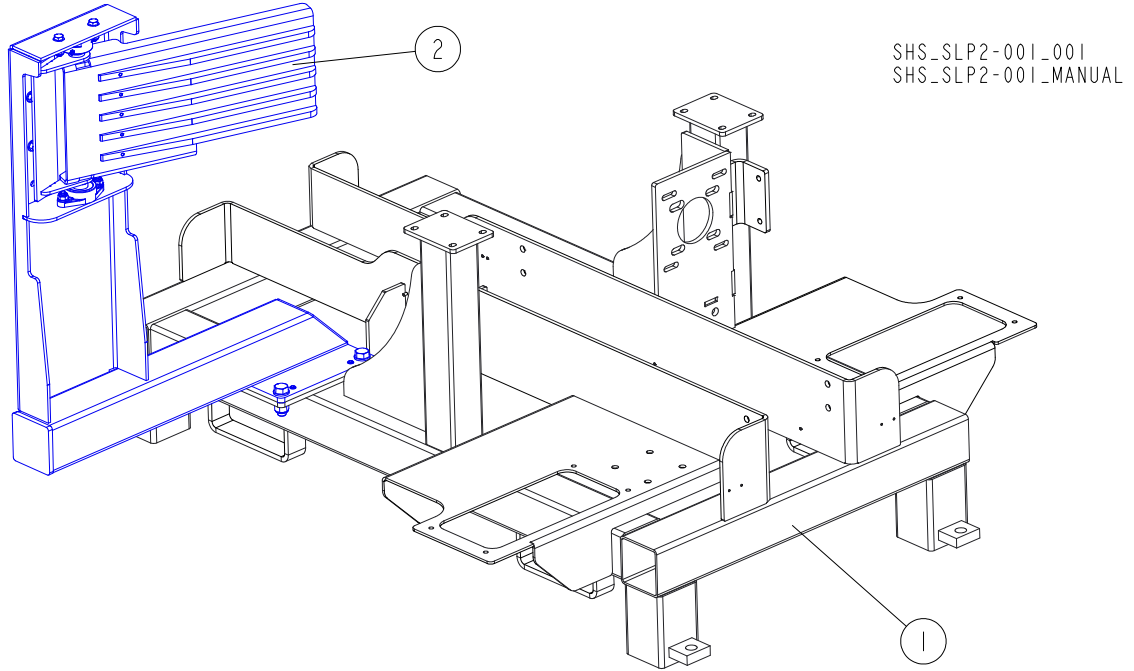
506828\_001  
506828\_Manual



REF.	DESCRIPTION (◆ Indicates Parts Available in Assemblies Only)	PART #	QTY	
	<b>FRAME, SHS SAW HEAD BASE - COMPLETE</b>	<b>506828</b>	<b>1</b>	
1	FRAME, SHS SAW HEAD BASE	506829-1	1	
2	FOOT, LEG ADJUSTABLE	099547-1	4	
3	WASHER, 21 FLAT ZINC	F81059-2	8	
4	NUT, M20-8 HEX ZINC	F81037-1	8	
5	CAP, 100x100 #199200 SQUARE	090694	4	
6	WASHER, CORK SELF-ADHESIVE	502881	8	
7	WASHER, 10.5 SPECIAL FLAT ZINC	F81055-6	8	
8	BOLT, M10X35 8.8 HEX HEAD FULL THREAD ZINC	F81003-17	4	
9	NUT, M10-8-B HEX NYLON ZINC LOCK	F81033-1	4	

**3** **SAW HEAD**  
Saw Head Base - L

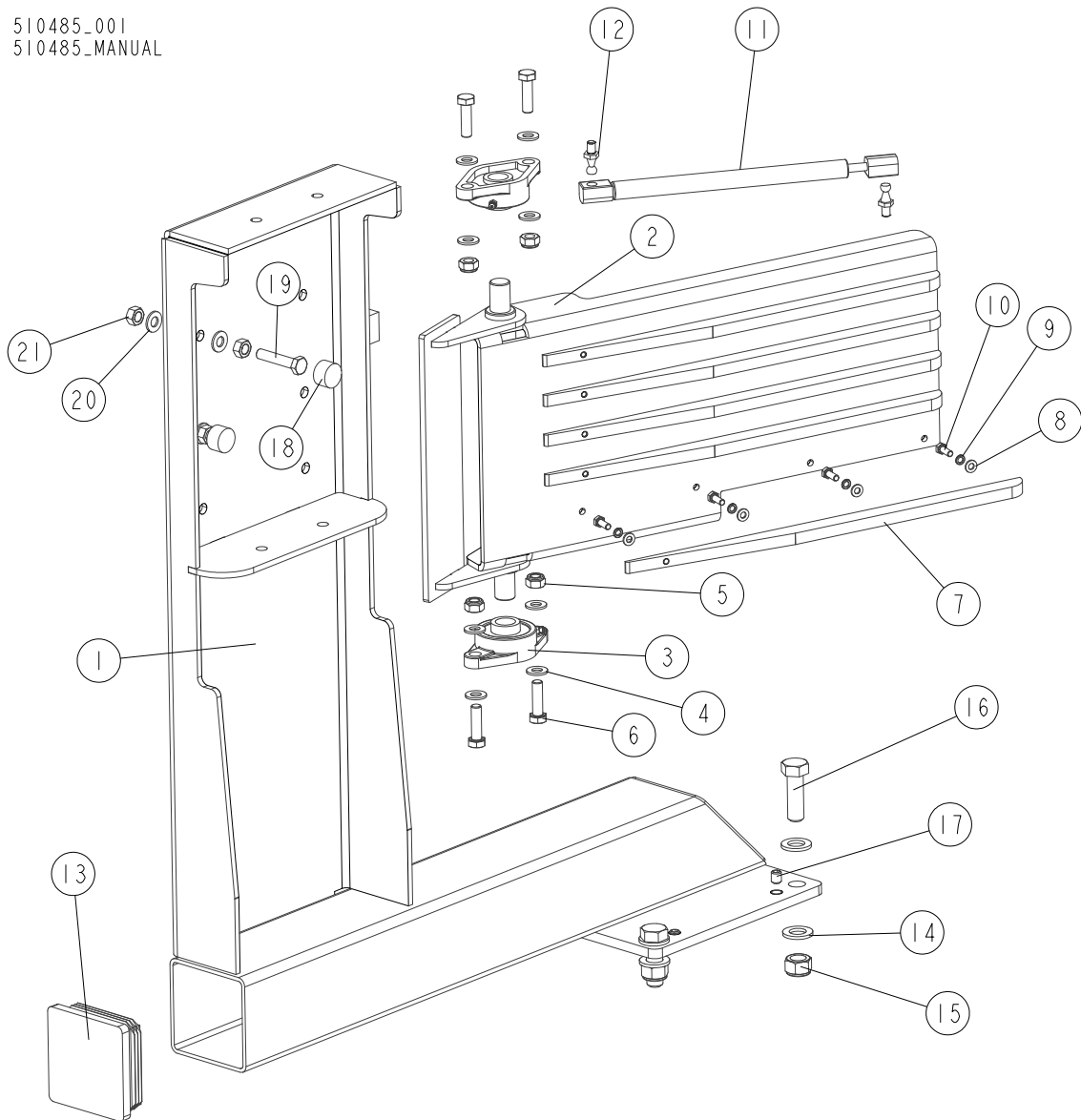
**3.17 Saw Head Base - L**



REF.	DESCRIPTION (◆ Indicates Parts Available in Assemblies Only)	PART #	QTY
1	BASE, SHS/SLP2 SAW HEAD	526980-1	1
2	PLATE ASSEMBLY, LOG CLAMP	510485	1

### 3.18 Log Clamp Plate Assembly

510485-001  
510485-MANUAL



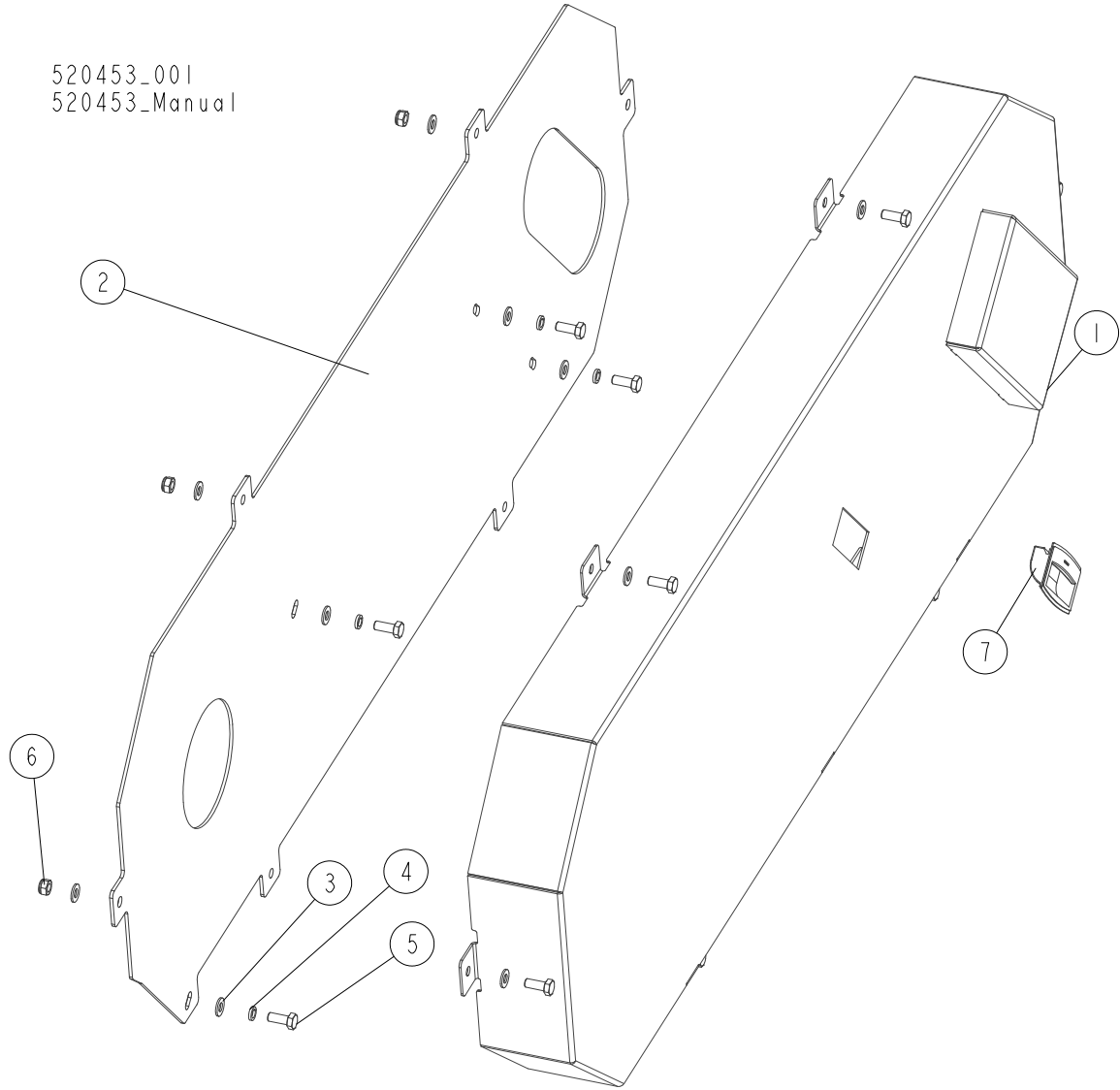
REF.	DESCRIPTION (◆ Indicates Parts Available in Assemblies Only)	PART #	QTY
-	<b>PLATE ASSEMBLY, LOG CLAMP</b>	510485	1
1	BRACKET, CLAMP PLATE MOUNT	510480-1	1
-	PLATE, LOG CLAMP - COMPLETE	510482	1
2	PLATE WELDMENT, LOG CLAMP	510483-1	1
3	BEARING, UCFL 204 (CX)	500060	2
4	WASHER, 10.5 FLAT ZINC	F81055-1	8
5	NUT, M10-8-B HEX NYLON ZINC LOCK	F81033-1	4
6	BOLT, M10X35 8.8 HEX HEAD FULL THREAD ZINC	F81003-17	4
7	RIB, LOG CLAMP PLATE	510481-1	5
8	WASHER, 6.4 FLAT ZINC	F81053-1	20
9	WASHER, Z 6.1 SPLIT LOCK ZINC	F81053-3	20

## 3

**SAW HEAD***Log Clamp Plate Assembly*

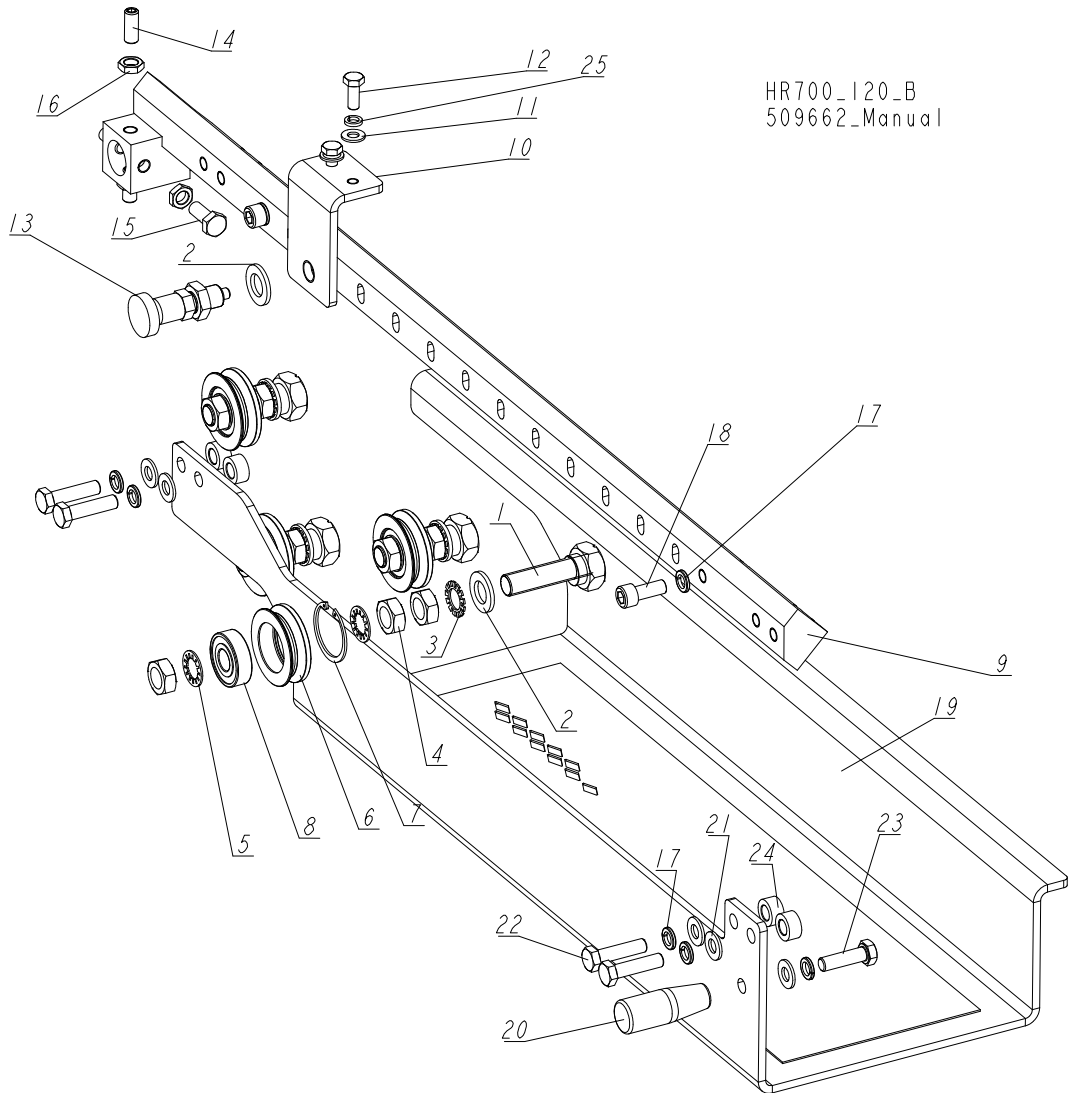
REF.	DESCRIPTION (◆ Indicates Parts Available in Assemblies Only)	PART #	QTY	
10	BOLT, M6X16-8.8 HEX HEAD FULL THREAD ZINC	F81001-15	20	
-	SPRING, 300N GAS - COMPLETE	089212	1	
11	SPRING, 300N GAS	089205	1	
12	STUD, M8 BALL	089206	2	
13	CAP, 100X100 #199200 SQUARE	090694	1	
14	WASHER, 17 SPLIT LOCK ZINC	F81058-1	8	
15	NUT, M16-8 HEX NYLON ZINC LOCK	F81036-2	4	
16	BOLT, M16X50-8.8 HEX HEAD FULL THREAD ZINC	F81006-7	4	
17	SCREW, M12X12 - 33H HEX SOCKET SET W/FLAT POINT	F81004-15	4	
-	BUMPER	510649	2	
18	COVER, RUBBER BUMPER	089083	1	
19	BOLT, M10X50-8.8 HEX HEAD FULL THREAD ZINC	F81003-4	1	
20	WASHER, 10.5 FLAT ZINC	F81055-1	4	
21	NUT, M10 8 HEX ZINC	F81033-3	4	

**3.19 SHS Drive Belt Guard**



REF.	DESCRIPTION (◆ Indicates Parts Available in Assemblies Only)	PART #	QTY
	<b>GUARD, HR700HD DRIVE BELT - COMPLETE</b>	<b>520453</b>	<b>1</b>
1	GUARD, HR700HD DRIVE BELT	520455-1	1
2	PLATE, HR700HD BELT GUARD REAR	520454-1	1
3	WASHER, 8.4 FLAT ZINC	F81054-1	16
4	WASHER, 8.2 SPLIT LOCK ZINC	F81054-4	4
5	BOLT, M8X20 8.8 HEX HEAD FULL THREAD ZINC	F81002-4	10
6	NUT, M8-8-B HEX NYLON ZINC LOCK	F81032-2	6
7	HANDLE, EPR.90-PF-C1(261051-C1) SNAP-IN FLUSH PULL	100012	1

**3.20 Blade Guide Arm**



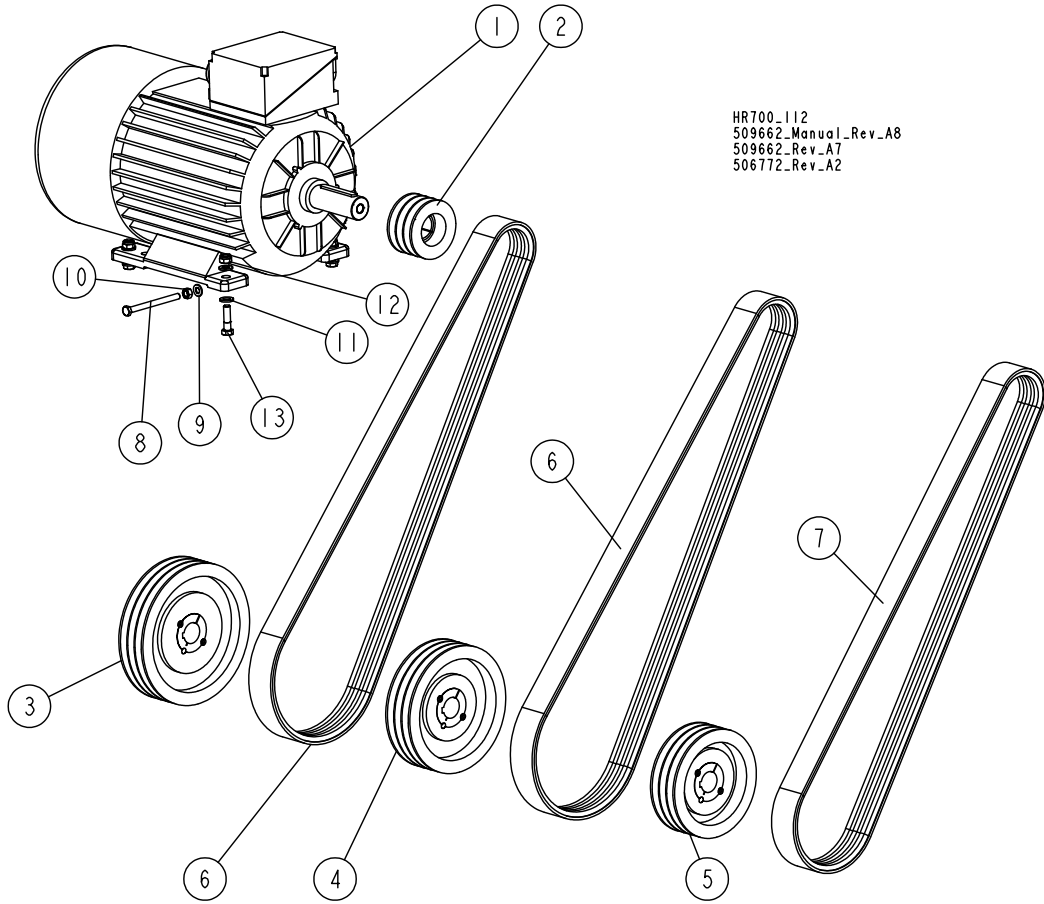
HR700\_120\_B  
509662\_Manual

REF.	DESCRIPTION (◆ Indicates Parts Available in Assemblies Only)	PART #	QTY
	<b>ARM, BLADE GUIDE - COMPLETE</b>	<b>506756</b>	<b>1</b>
1	BOLT WELDMENT, ECCENTRIC	086508-1	4
2	WASHER, 17 SPLIT LOCK ZINC	F81058-1	5
3	WASHER, 5/8" EXTERNAL STAR	F05011-26	4
4	NUT, 5/8"-18 HEX ZINC	F05010-11	12
5	WASHER, 5/8" INTERNAL STAR	F05011-25	8
	<b>ROLLER ASSEMBLY, V-GROOVE W/BEARING</b>	<b>093855</b>	<b>4</b>
6	ROLLER, V-GROOVE ZINC-PLATED	093856-1	1
7	RING, W40 INSIDE RETAINING	F81090-3	1
8	BEARING, 6203 2RSP6-5/8 CX	095087	1
9	ARM, BLADE GUIDE ZINC-PLATED	506757-1	1
10	BRACKET, DETENT PIN MOUNT	099077-1	1
11	WASHER, 8.4 FLAT ZINC	F81054-1	4



REF.	DESCRIPTION (◆ Indicates Parts Available in Assemblies Only)	PART #	QTY	
12	BOLT, M8X25-8.8-B HEX HEAD FULL THREAD ZINC	F81002-5	2	
13	NUT, M8 8 HEX NYLON ZINC LOCK	F81032-2	2	
14	PIN, 45308DNW DETENT	089939	1	
15	SCREW, M10X1X20 DIN 913 STAINLESS STEEL SET	F81015-1	4	
16	NUT, M10X1-04-ST-A2E ISO8675 THIN	F81033-10	4	
17	WASHER, Z10.2 SPLIT LOCK ZINC	F81055-2	7	
18	SCREW, M10X25 8.8 HEX SOCKET HEAD CAP ZINC	F81003-32	2	
19	GUARD, BLADE	506761-1	1	
20	HANDLE, 13870M10 M10 THREAD	089445	1	
21	WASHER, 10.5 FLAT ZINC	F81055-1	5	
22	BOLT, M10X35 8.8 HEX HEAD FULL THREAD ZINC	F81003-17	5	

**3.21 E20/E25 Motor Assembly**



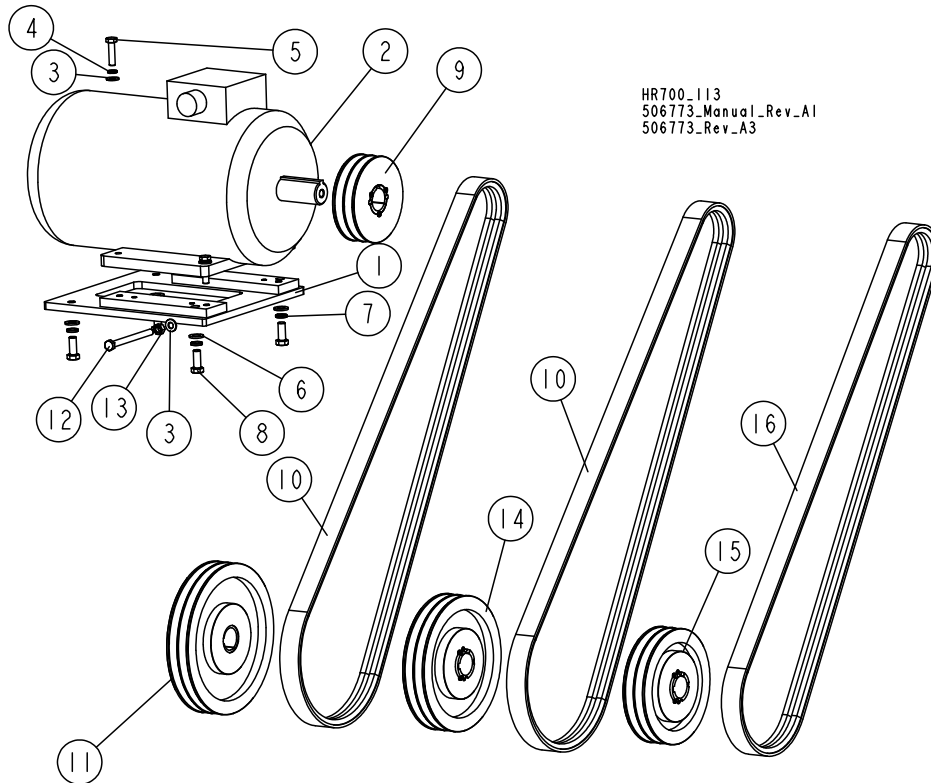
REF.	DESCRIPTION (◆ Indicates Parts Available in Assemblies Only)	PART #	QTY
	<b>MOTOR, E25 SHS/HR700 MAIN - COMPLETE</b>	<b>506771</b>	<b>1/0</b>
	<b>MOTOR, E20 SHS/HR700 MAIN - COMPLETE</b>	<b>506772</b>	<b>0/1</b>
1	MOTOR, PSG-160 L4 18.5KW + H-160+	508712	1/0
	MOTOR, 2SIE-160 L4 400 50HZ+H160 15KW 1460 1/MIN	507317	0/1
2	PULLEY, PBT SPB3 100/42 (F02313+T31081)	506753 <sup>1 2 3</sup>	1
3	PULLEY, PBT SPB3 250/38 (F01816+T31138)	507273 <sup>2</sup>	1
4	PULLEY, PBT SPB3 224/38 (F01876+T31124)	506755 <sup>1</sup>	1
5	PULLEY, PBT SPB3 190/38 (F01802+T31124)	506754 <sup>3</sup>	1
6	V-BELT, KB RED POWER II 3SPB 2240 OPT TRIPLE	088993 <sup>1 2</sup>	2
7	V-BELT, KB RED POWER II 3SPB 2160 TRIPLE	507311 <sup>3</sup>	1
8	BOLT, M10X120-8.8 HEX HEAD FULL THREAD ZINC	F81003-47	2
9	WASHER, 10.5 FLAT ZINC	F81055-1	2
10	NUT, M10 8 HEX ZINC	F81033-3	2
11	WASHER, 13 FLAT ZINC	F81056-1	8
12	NUT, M12 8 HEX NYLON ZINC LOCK	F81034-2	4
13	BOLT, M12X45 8.8 HEX HEAD ZINC	F81004-32	4

<sup>1</sup> For standard blade speed of V=20m/s, mount pulley #506753 on motor shaft, and pulley #506755 with belt #088993 on drive shaft.

<sup>2</sup> For optional blade speed of V=18m/s, mount pulley #506753 on motor shaft, and pulley #507273 with belt #088993 on drive shaft.

<sup>3</sup> For optional blade speed of V=24m/s, mount pulley #506753 on motor shaft, and pulley #506754 with belt #507311 on drive shaft.

### 3.22 E15 Motor Assembly



HR700\_113  
506773\_Manual\_Rev\_AI  
506773\_Rev\_A3

REF.	DESCRIPTION (◆ Indicates Parts Available in Assemblies Only)	PART #	QTY
	<b>MOTOR, E15 SHS/HR700 MAIN - COMPLETE</b>	<b>506773</b>	<b>1</b>
1	PLATE, E15 HR-L MOTOR MOUNT	506774-1	1
2	MOTOR, SG132M-4PC-HM (11KW, 1500 r.p.m.)	093219	1
3	WASHER, 10.5 FLAT ZINC	F81055-1	6
4	WASHER, Z 10.2 SPLIT LOCK ZINC	F81055-2	4
5	BOLT, M10X40-8.8 HEX HEAD FULL THREAD ZINC	F81003-16	4
6	WASHER, 13 FLAT ZINC	F81056-1	4
7	WASHER, Z12.2 SPLIT LOCK ZINC	F81056-2	4
8	BOLT, M12X30 8.8 HEX HEAD FULL THREAD ZINC	F81004-22	4
9	PULLEY, SPB-B-5VN100X2C GROOVES/N38 (F02312+T31079)	500176 <sup>1 2 3</sup>	1
10	V-BELT, KB RED POWER II 2SPB 2240 TRIPLE	507307 <sup>1 2</sup>	2
11	PULLEY, SPB-B-5VN250X2 GROOVES /N38 (F02365+T31124)	507274 <sup>2</sup>	1
12	BOLT, M10X120-8.8 HEX HEAD FULL THREAD ZINC	F81003-47	2
13	NUT, M10 8 HEX ZINC	F81033-3	2
14	PULLEY, SPB-B-5VN224X2 GROOVES /N38 (F02359+T31124)	500177	1
15	PULLEY, SPB-B-5V N190X 2 GROOVES /N38 (F02347+T31124)	500569 <sup>3</sup>	1
16	V-BELT,KB RED POWER II 2SPB 2160 TRIPLE	507315 <sup>3</sup>	1

<sup>1</sup> For standard blade speed of V=20m/s, mount pulley #500176 on motor shaft, and pulley #500177 with belt #507307 on drive shaft.

<sup>2</sup> For optional blade speed of V=18m/s, mount pulley #500176 on motor shaft, and pulley #507274 with belt #507307 on drive shaft.

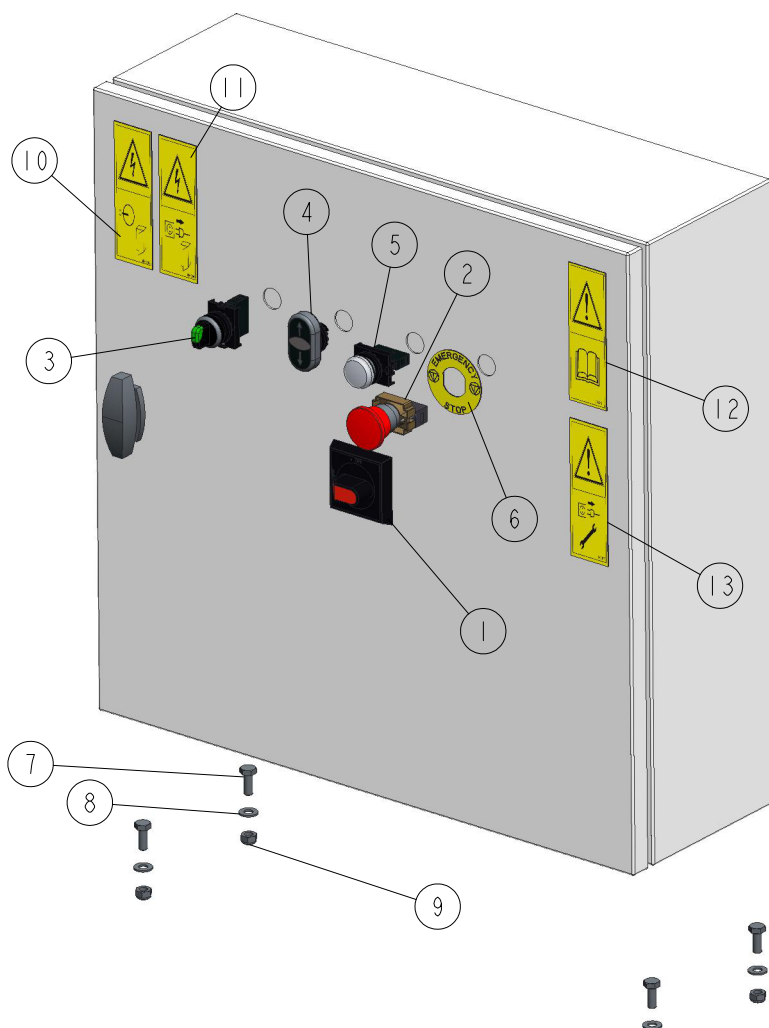
<sup>3</sup> For optional blade speed of V=24m/s, mount pulley #500176 on motor shaft, and pulley #500569 with belt #507315 on drive shaft.

# 3 SAW HEAD

## Electric Box

### 3.23 Electric Box

507340\_002  
507340\_Manual



REF.	DESCRIPTION (◆ Indicates Parts Available in Assemblies Only)	PART #	QTY
	<b>BOX, SHS E15/25 ELECTRIC - COMPLETE</b>	<b>507250</b>	<b>1</b>
	<b>BOX, SHS-L</b>	<b>512114</b>	<b>1</b>
1	HANDLE, ABB OHB2AJ SWITCH	088265-1	1
2	BUTTON, XB4 BS542 EMERGENCY STOP	086556	1
3	SWITCH, MOELLER 3-POSITION GREEN	091359	1
4	ACTUATOR, M22-DD-S-X7/X7 BUTTON	090917	1
5	LIGHT, M22 LED 24V BLUE CONTROL	090448	1
6	WASHER, EMERGENCY STOP BUTTON	086561	1
7	<b>BOLT, M8X20 5.8 HEX HEAD FULL THREAD ZINC</b>	F81002-1	4
8	<b>WASHER, 8.4 FLAT ZINC</b>	F81054-1	4
9	<b>NUT, M8 8 HEX NYLON ZINC LOCK</b>	F81032-2	4
10	<b>DECAL, HAZARDOUS VOLTAGE INSIDE THE ELECTRIC BOX (PICTOGRAM)</b>	096316	1
11	<b>DECAL, REMOVE THE PLUG BEFORE OPENING THE ELECTRIC BOX (PICTOGRAM)</b>	096319	1
12	<b>DECAL, READ THE OPERATOR'S MANUAL (PICTOGRAM)</b>	096317	1
13	<b>DECAL, DISCONNECT POWER SUPPLY BEFORE SERVICING (PICTOGRAM)</b>	098177	1

REF.	DESCRIPTION (◆ Indicates Parts Available in Assemblies Only)	PART #	QTY	
	<b>MOTOR, E15 SHS/HR700 MAIN - COMPLETE</b>	<b>506773</b>	<b>1</b>	
1	PLATE, E15 HR-L MOTOR MOUNT	506774-1	1	
2	MOTOR, SG132M-4PC-HM (11KW 1500 r.p.m.)	093219	1	
3	WASHER, 10.5 FLAT ZINC	F81055-1	6	
4	WASHER, Z10.2 SPLIT LOCK ZINC	F81055-2	4	
5	BOLT, M10X40-8.8 HEX HEAD FULL THREAD ZINC	F81003-16	4	
6	WASHER, 13 FLAT ZINC	F81056-1	4	
7	WASHER, Z12.2 SPLIT LOCK ZINC	F81056-2	4	
8	BOLT, M12X30 8.8 HEX HEAD FULL THREAD ZINC	F81004-22	4	
9	PULLEY, SPB FI100X2/FI38 (F02312+T31079)	500176 <sup>1 2 3</sup>	1	
10	V-BELT, KB RED POWER II 2SPB 2240 TRIPLE	507307 <sup>1 2</sup>	2	
11	PULLEY, SPB FI250X2/FI38 (F02365+T31124)	507274 <sup>2</sup>	1	
12	BOLT, M10X120-8.8 HEX HEAD FULL THREAD ZINC	F81003-47	2	
13	NUT, M10 8 HEX ZINC	F81033-3	2	
14	PULLEY, SPB FI224X2/FI38 (F02359+T31124)	500177	1	
15	PULLEY, SPB FI190X2/FI38 (F02347+T31124)	500569 <sup>3</sup>	1	
16	V-BELT,KB RED POWER II 2SPB 2160 TRIPLE	507315 <sup>3</sup>	1	

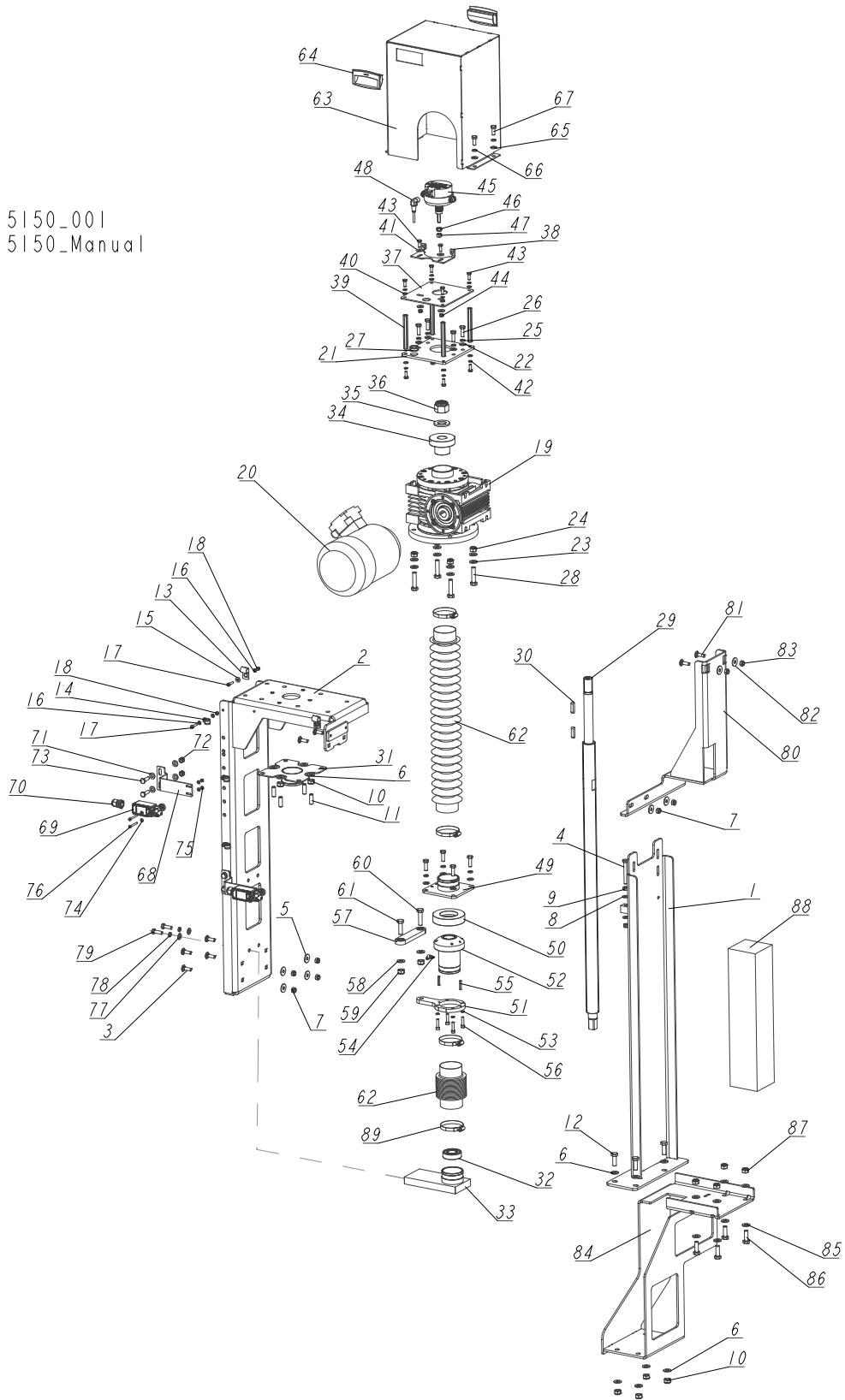
<sup>1</sup> For standard blade speed of V=20m/s, mount pulley #500176 on motor shaft, and pulley #500177 with belt #507307 on drive shaft.

<sup>2</sup> For optional blade speed of V=18m/s, mount pulley #500176 on motor shaft, and pulley #507274 with belt #507307 on drive shaft.

<sup>3</sup> For optional blade speed of V=24m/s, mount pulley #500176 on motor shaft, and pulley #500569 with belt #507315 on drive shaft.

### 3.24 Up/Down Drive Assembly

515150\_001  
515150\_Manual



REF.	DESCRIPTION (◆ Indicates Parts Available in Assemblies Only)	PART #	QTY
	<b>DRIVE ASSEMBLY, SHS UP/DOWN SCREW</b>	<b>515150</b>	<b>1</b>
	<b>BRACKET, SHS UP/DOWN DRIVE SUPPORT - COMPLETE</b>	<b>515158</b>	<b>1</b>
1	BRACKET, UP/DOWN DRIVE SUPPORT - LOWER	511842-1	1
2	BRACKET, SHS/HR700 UP/DOWN DRIVE SUPPORT - UPPER	515155-1	1
3	BOLT, M8X25-8.8 CARRIAGE ZINC	F81002-59	6
4	BOLT, M8X65 8.8 HEX HEAD FULL THREAD ZINC	F81002-9	2
5	WASHER, 8.5 SPECIAL FLAT ZINC	F81054-11	6
6	WASHER, 10.5 FLAT ZINC	F81055-1	12
7	NUT, M8 8 HEX NYLON ZINC LOCK	F81032-2	8
8	WASHER, 8.4 FLAT ZINC	F81054-1	4
9	NUT, M8-8-B HEX ZINC	F81032-1	2
10	NUT, M10-8-B HEX NYLON ZINC LOCK	F81033-1	8
11	SCREW, M10X30-33H-GEOMET HEX SOCKET SET FLAT POINT	F81003-35	4
12	BOLT, M10X30 5.8 HEX HEAD FULL THREAD ZINC	F81003-2	4
13	CLAMP, 1/2" EMT COATED	P07584	2
14	CLAMP, RSGU 1.10/12W1 METAL & RUBBER	086861	3
15	WASHER, 5.5 SPECIAL FLAT ZINC	F81052-3	2
16	WASHER, 5.3 FLAT ZINC	F81052-1	8
17	SCREW, M5X20 8.8 HEX SOCKET HEAD CAP ZINC	F81000-72	5
18	NUT, M5-8-FE/ZN5 DIN985 HEX NYLON LOCK	F81030-2	5
	<b>REDUCER, MRP-63 SHS/HR700 UP/DOWN DRIVE - COMPLETE</b>	<b>515157</b>	<b>1</b>
	<b>REDUCER, MRP-63/16[0.75-1400-120/19]-WMI-[S3=60%]-B/SO/K2/B6</b>	<b>514932</b>	<b>1</b>
19	REDUCER, MRP-63/16 [120/19]SO/K2/B6	514933	1
20	MOTOR, SKH 80-4B2/3045 (N=0.75 kW, N=1380 r.p.m.) INDUCTION	514934	1
21	PLATE, ENCODER MOUNT	515149-1	1
22	WASHER, 8.4 FLAT ZINC	F81054-1	4
23	WASHER, 10.5 FLAT ZINC	F81055-1	8
24	NUT, M10-8-B HEX NYLON ZINC LOCK	F81033-1	4
25	WASHER, 8.2 SPLIT LOCK ZINC	F81054-4	4
26	BOLT, M8X25-8.8-B HEX HEAD FULL THREAD ZINC	F81002-5	4
27	GROMMET, 20/13 RUBBER	086188	1
28	BOLT, M10X45 HEX HEAD FULL THREAD ZINC	F81003-3	4
29	SCREW, TR36X3 ACME ZINC-PLATED	515145-1	1
30	KEY, A8X7X32 PARALLEL	088564	2
31	BRACKET, UP/DOWN SCREW BELLOWS - UPPER	514915-1	1
32	BEARING, 6205 2RSR P6 BALL (FAG,NSK,SKF)	087353	1
33	BRACKET, UP/DOWN SCREW BELLOWS - LOWER	514935-1	1
34	CAP, MRP-63 MOTOREDCER ZINC-PLATED	515144-1	1
35	WASHER, 25 FLAT ZINC	F81061-3	1
36	NUT, M24x2-8 HEX NYLON ZINC LOCK	F81039-10	1
	<b>ENCODER ASSEMBLY, SHS/HR700</b>	<b>515147</b>	<b>1</b>
37	PLATE, ENCODER MOUNT	515148-1	1
38	BRACKET, ENCODER	507372-1	1
39	SPACER, M6X100- BN3319 (BOSSARD)	F81031-10	4
40	WASHER, 6.4 FLAT ZINC	F81053-1	8

## 3

## SAW HEAD

## Up/Down Drive Assembly

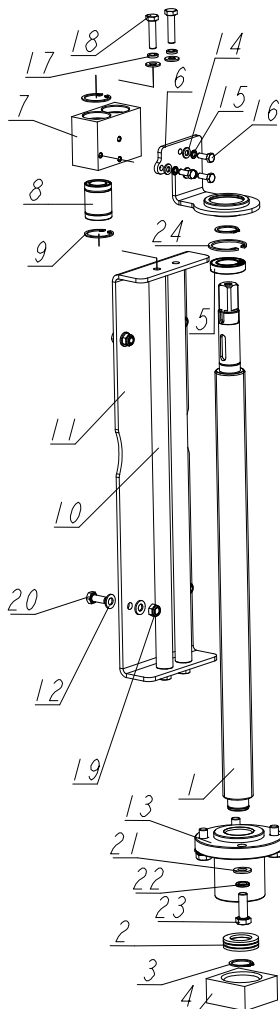
REF.	DESCRIPTION (◆ Indicates Parts Available in Assemblies Only)	PART #	QTY	
41	WASHER, 6.5 SPECIAL FLAT ZINC	F81053-11	4	
42	WASHER, Z6.1 SPLIT LOCK ZINC	F81053-3	8	
43	BOLT, M6X16-8.8 HEX HEAD FULL THREAD ZINC	F81001-15	10	
44	NUT, M6-8-B HEX NYLON ZINC LOCK	F81031-2	2	
45	ENCODER, 48 IMP./TURN 12V DC INCREMENTAL	510285	1	
46	NUT, M8 8 HEX NYLON ZINC LOCK	F81032-2	1	
47	NUT, M8-8-B HEX ZINC	F81032-1	1	
48	CABLE, 5M LIMIT SWITCH	087652	1	
49	BRACKET, UP/DOWN SCREW BELLOWS - MIDDLE	514919-1	1	
50	WASHER, 90X50X20 SPHERICAL ZINC-PLATED SEAT	514898-1	1	
	<b>NUT, TR36X3 UP/DOWN SCREW - COMPLETE</b>	<b>515138</b>	<b>1</b>	
51	PLATE, TR36X3 NUT SEAT	515143-1	1	
52	NUT, TR36X3 ACME SCREW	514899	1	
53	WASHER, Z 6.1 SPLIT LOCK ZINC	F81053-3	4	
54	FITTING, M6 PN/M-86003 GREASE	094213	1	
55	PIN, 5X26 ROLL ZINC	F81044-2	2	
56	SCREW, M6X25-8.8 HEX SOCKET HEAD CAP ZINC	F81001-41	4	
57	LINK, SBPL 10104 PIVOTAL (COMPLEX)	097700	1	
58	WASHER, 10.5 FLAT ZINC	F81055-1	2	
59	NUT, M10-8-B HEX NYLON ZINC LOCK	F81033-1	2	
60	BOLT, M10X40-8.8 HEX HEAD FULL THREAD ZINC	F81003-16	1	
61	BOLT, M10X35 8.8 HEX HEAD FULL THREAD ZINC	F81003-17	1	
62	BELLOWS, 60/520 PROTECTIVE	514918	2	
	<b>GUARD, SHS/HR700 UP/DOWN DRIVE - COMPLETE</b>	<b>515151</b>	<b>1</b>	
63	GUARD, SHS/HR700 UP/DOWN DRIVE	515152-1	1	
64	HANDLE, EPR.90-PF-C1(261051-C1) SNAP-IN FLUSH PULL	100012	2	
65	WASHER, 8.4 FLAT ZINC	F81054-1	4	
66	WASHER, 8.2 SPLIT LOCK ZINC	F81054-4	4	
67	BOLT, M8X20 8.8 HEX HEAD FULL THREAD ZINC	F81002-4	4	
	<b>LIMIT SWITCH ASSEMBLY</b>	<b>515141</b>	<b>2</b>	
68	BRACKET, LIMIT SWITCH MOUNT	515142-1	1	
69	SWITCH, FA138 Z11 LIMIT	100931	1	
70	GLAND, DP9/H CABLE	F81096-2	1	
71	WASHER, 8.4 FLAT ZINC	F81054-1	4	
72	NUT, M8 8 HEX NYLON ZINC LOCK	F81032-2	2	
73	BOLT, M8X25-8.8-B HEX HEAD FULL THREAD ZINC	F81002-5	2	
74	WASHER, 4.3 FLAT ZINC	F81051-2	4	
75	NUT, M4-8 HEX NYLON ZINC LOCK	F81029-1	2	
76	SCREW, M4X35 8.8 HEX SOCKET HEAD CAP ZINC	F81011-34	2	
77	WASHER, 8.4 FLAT ZINC	F81054-1	6	
78	WASHER, 8.2 SPLIT LOCK ZINC	F81054-4	6	
79	BOLT, M8X25-8.8-B HEX HEAD FULL THREAD ZINC	F81002-5	6	
	<b>BRACKET ASSEMBLY, SHS UP/DOWN DRIVE TRANSPORT - UPPER</b>	<b>517318</b>	<b>1</b>	
80	BRACKET, SHS UP/DOWN DRIVE TRANSPORT - UPPER	517313-1	1	
81	BOLT, M8X25-8.8 CARRIAGE ZINC	F81002-59	2	



REF.	DESCRIPTION (◆ Indicates Parts Available in Assemblies Only)	PART #	QTY	
82	WASHER, 8.5 SPECIAL FLAT ZINC	F81054-11	2	
83	NUT, M8 8 HEX NYLON ZINC LOCK	F81032-2	2	
	<b>BRACKET ASSEMBLY, SHS UP/DOWN DRIVE TRANSPORT - LOWER</b>	<b>517314</b>	<b>1</b>	
84	BRACKET, SHS UP/DOWN DRIVE TRANSPORT - LOWER	517315-1	1	
85	WASHER, 10.5 FLAT ZINC	F81055-1	8	
86	BOLT, M10X30 5.8 HEX HEAD FULL THREAD ZINC	F81003-2	4	
87	NUT, M10-8-B HEX NYLON ZINC LOCK	F81033-1	4	
88	BLOCK, SHS SAW HEAD TRANSPORT SUPPORT	517319	1	
89	CLAMP, 50-70 DIN 3017 WORM	F81095-6	4	

# 3 SAW HEAD Manual Up/Down System

## 3.25 Manual Up/Down System



HR700\_108\_A  
509666\_Manual\_Parts  
509666\_Rev\_A10

REF.	DESCRIPTION (◆ Indicates Parts Available In Assemblies Only)	PART #	QTY.
	<b>SAW HEAD HEIGHT ADJUSTMENT ASSEMBLY, SHS/HR700 - MANUAL</b>	<b>506778</b>	<b>1</b>
1	SCREW, TR36X3 ACME ZINC-PLATED	506779-1	1
2	BEARING, 51105 THRUST	088033	1
3	RING, 25Z OUTSIDE RETAINING	F81090-22	2
4	BLOCK, ACME SCREW ZINC-PLATED MOUNT	093265-1	1
5	BEARING, 61905 2RS (COMPLEX)	099037	1
6	BRACKET, ZINC-PLATED RETAINING	507309-1	1
	BLOCK, LASER MOUNT - COMPLETE	504010	1
7	BLOCK, LM 20 UU LINEAR BEARING HOUSING ZINC-PL.	504011-1	1
8	BEARING, LM 20 UU LINEAR MOTION	504012	2
9	RING, 32W INSIDE RETAINING	F81090-5	4
10	ROD, LASER GUIDE (CHROMIUM-PLATED)	504359	2
11	BRACKET, GUIDE ROD MOUNT	507308-1	1
12	WASHER, 8.4 FLAT ZINC	F81054-1	12
13	NUT, TR36X3 ACME SCREW	506780	1

REF.	DESCRIPTION (◆ Indicates Parts Available In Assemblies Only)	PART #	QTY.	
14	WASHER, 6.4 FLAT ZINC	F81053-1	3	
15	WASHER, Z 6.1 SPLIT LOCK ZINC	F81053-3	3	
16	BOLT, M6X16 8.8 HEX HEAD FULL THREAD ZINC	F81001-32	3	
17	WASHER, 8.2 SPLIT LOCK ZINC	F81054-4	4	
18	BOLT, M8X35-8.8 HEX HEAD FULL THREAD ZINC	F81002-13	4	
19	NUT, M8 8 HEX NYLON ZINC LOCK	F81032-2	4	
20	BOLT, M8X20 8.8 HEX HEAD FULL THREAD ZINC	F81002-4	4	
21	WASHER, 10.5 FLAT ZINC	F81055-1	4	
22	WASHER, Z10.2 SPLIT LOCK ZINC	F81055-2	4	
23	BOLT, M10X30 5.8 HEX HEAD FULL THREAD ZINC	F81003-2	4	
24	RING, SEG W042 RETAINING	F81090-19	1	
	<b>RATCHET, 3/4" 645300 HEYCO PUSH-THROUGH</b>	<b>507312</b>	<b>1</b>	

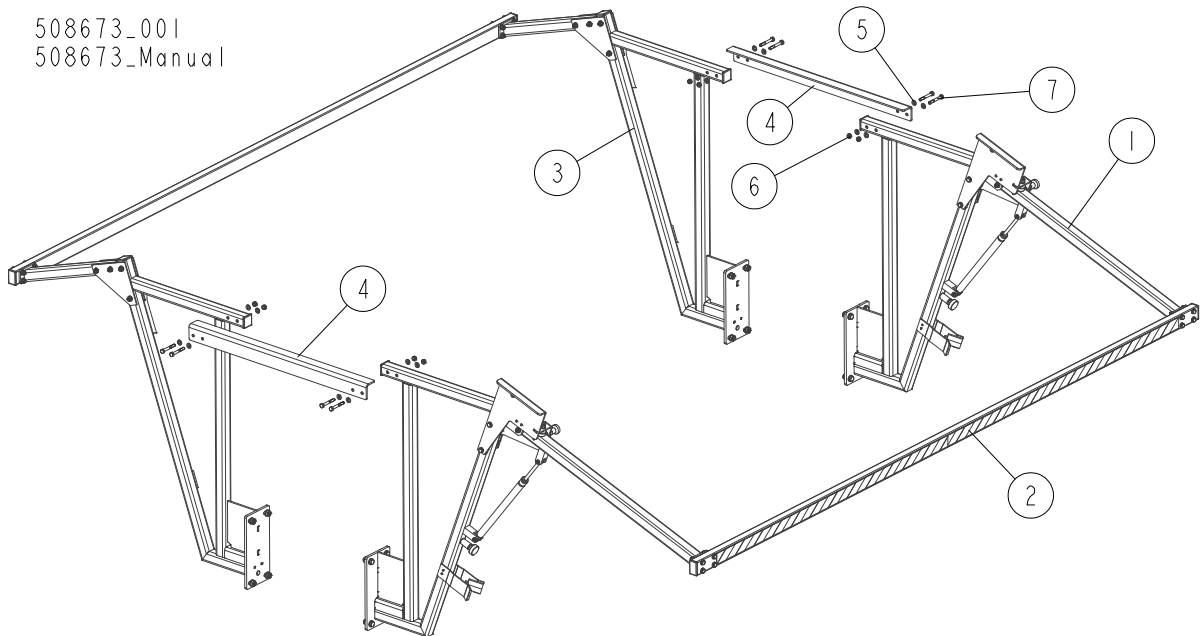
# 4 SIDE FENCE

Side Fence

## SECTION 4 SIDE FENCE

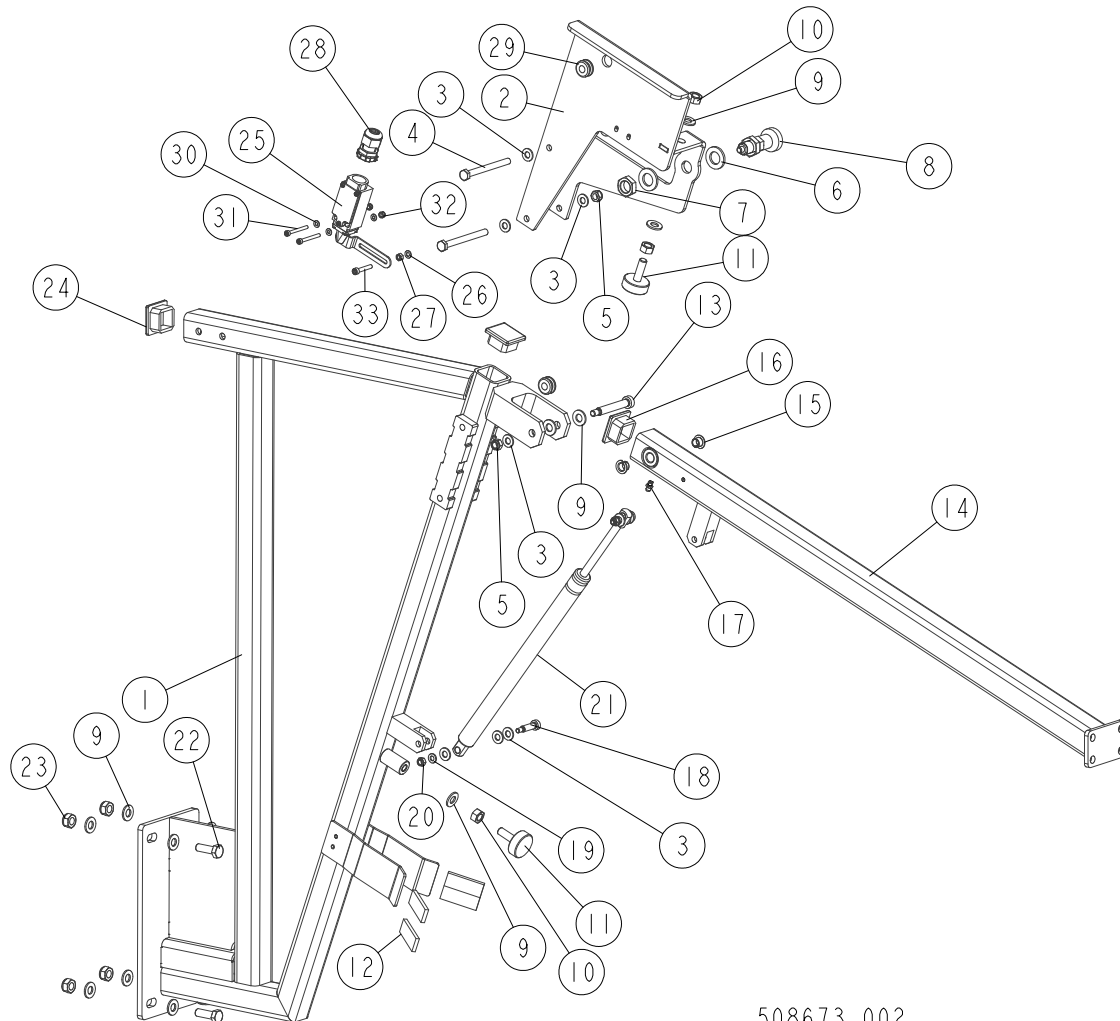
### 4.1 Side Fence

508673\_001  
508673\_Manual



REF.	DESCRIPTION (◆ Indicates Parts Available in Assemblies Only)	PART#	QTY	
	<b>FENCE, SHS SIDE - COMPLETE</b>	<b>508673</b>	<b>1</b>	
1	BRACKET, MOVING SIDE FENCE SUPPORT - COMPLETE <a href="#">See Section 4.2</a>	514374	2	
2	BARRIER, SHS SIDE FENCE - COMPLETE <a href="#">See Section 4.4</a>	508683	2	
3	BRACKET, FIXED SIDE FENCE SUPPORT - COMPLETE <a href="#">See Section 4.3</a>	514375	2	
4	BRACKET, CONNECTION	515252-1	2	
5	WASHER, 8.4 FLAT ZINC	F81054-1	16	
6	NUT, M8 8 HEX NYLON ZINC LOCK	F81032-2	8	
7	BOLT, M8X60 8.8 HEX HEAD ZINC	F81002-54	8	

**4.2 Moving Side Fence Support Bracket**



508673\_002  
508673\_Manual

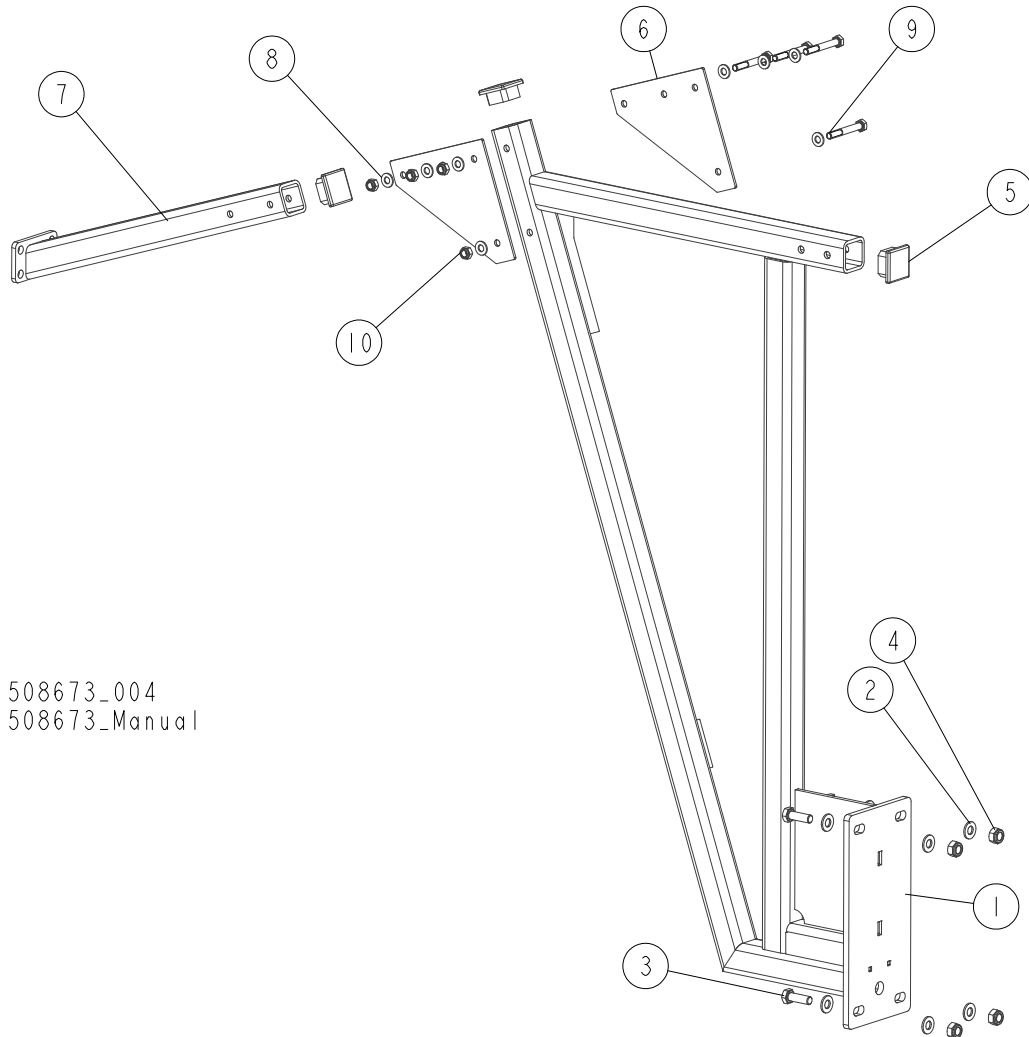
REF.	DESCRIPTION (◆ Indicates Parts Available in Assemblies Only)	PART#	QTY
	<b>BRACKET, MOVING SIDE FENCE SUPPORT - COMPLETE</b>	<b>514374</b>	<b>1</b>
1	BRACKET, MOVING SIDE FENCE SUPPORT	508674-1	1
2	BRACKET, LIMIT SWITCH MOUNT	099470-1	1
3	WASHER, 8.4 FLAT ZINC	F81054-1	11
4	BOLT, M8X90-8.8 HEX HEAD FULL THREAD ZINC	F81002-16	2
5	NUT, M8 8 HEX NYLON ZINC LOCK	F81032-2	3
6	WASHER, 17 SPLIT LOCK ZINC	F81058-1	2
7	NUT, M16X1.5-08-B THIN ZINC	F81036-6	1
8	PIN, 45308DNW DETENT	089939	1
9	WASHER, 10.5 FLAT ZINC	F81055-1	14
10	NUT, M10 8 HEX ZINC	F81033-3	3
11	FOOT, M10	092839	2
12	WASHER, 20X50X5 FELT	515215	4
13	BOLT, 10/M8X60-12.9 ISO7379/BN1359 BOSSARD SHOULDER	F81003-79	1

## 4

**SIDE FENCE***Moving Side Fence Support Bracket*

REF.	DESCRIPTION (◆ Indicates Parts Available in Assemblies Only)	PART#	QTY	
	<b>ARM, SIDE FENCE MOVING - COMPLETE</b>	<b>508682</b>	<b>1</b>	
14	ARM, SIDE FENCE MOVING	508680-1	1	
15	BEARING, TUF1 10.090 (CX) SLIDE	099074	2	
16	CAP, 40X40X(3-4) MOSS TUBE END	097480	1	
17	FITTING, M6 STRAIGHT GREASE	086280	1	
18	BOLT, 8/M6X25-12.9 ISO 7379 SHOULDER	F81001-47	2	
19	WASHER, 6.4 FLAT ZINC	F81053-1	2	
20	NUT, M6-8-B HEX NYLON ZINC LOCK	F81031-2	2	
21	SPRING, MS10-1-1F-1F-1000-100-460 GAS (EUROTECHNIKA)	099446	1	
22	BOLT, M10X30 5.8 HEX HEAD FULL THREAD ZINC	F81003-2	4	
23	NUT, M10-8-B HEX NYLON ZINC LOCK	F81033-1	4	
24	CAP, 40X40X(3-4) MOSS TUBE END	097480	2	
25	<b>SWITCH, XCSPL562 LIMIT</b>	534491	1	
26	<b>WASHER, 5.3 FLAT ZINC</b>	F81052-1	1	
27	<b>NUT, M5 8 HEX ZINC</b>	F81030-1	1	
28	<b>GLAND, PG13.5 CABLE</b>	086524	1	
29	<b>GROMMET, 3/8" ID RUBBER</b>	025248	3	
30	<b>WASHER, 4.3 FLAT ZINC</b>	F81051-2	4	
31	<b>SCREW, M4X40 8.8 HEX SOCKET HEAD CAP ZINC</b>	F81011-37	2	
32	<b>NUT, M4-8 HEX NYLON ZINC LOCK</b>	F81029-1	2	
33	<b>SCREW, M5X30 5.8 HEX SOCKET HEAD CAP ZINC</b>	F81000-71	1	

**4.3 Fixed Side Fence Support Bracket**



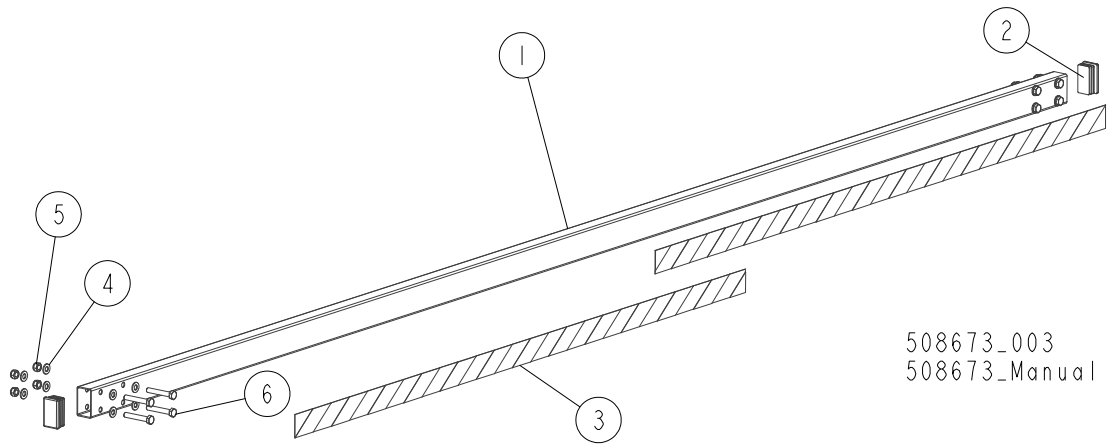
508673\_004  
508673\_Manual

REF.	DESCRIPTION (◆ Indicates Parts Available in Assemblies Only)	PART#	QTY
	<b>BRACKET, FIXED SIDE FENCE SUPPORT - COMPLETE</b>	<b>514375</b>	<b>1</b>
1	BRACKET, FIXED SIDE FENCE SUPPORT	508686-1	1
2	WASHER, 10.5 FLAT ZINC	F81055-1	8
3	BOLT, M10X30 5.8 HEX HEAD FULL THREAD ZINC	F81003-2	4
4	NUT, M10-8-B HEX NYLON ZINC LOCK	F81033-1	4
5	CAP, 40X40X(3-4) MOSS TUBE END	097480	3
6	PLATE, CONNECTION	514532-1	2
7	TUBE, FENCE BARRIER MOUNT	518519-1	1
8	WASHER, 8.4 FLAT ZINC	F81054-1	8
9	BOLT, M8X60 8.8 HEX HEAD ZINC	F81002-54	4
10	NUT, M8 8 HEX NYLON ZINC LOCK	F81032-2	4

# 4 SIDE FENCE

## Side Fence Barrier

### 4.4 Side Fence Barrier

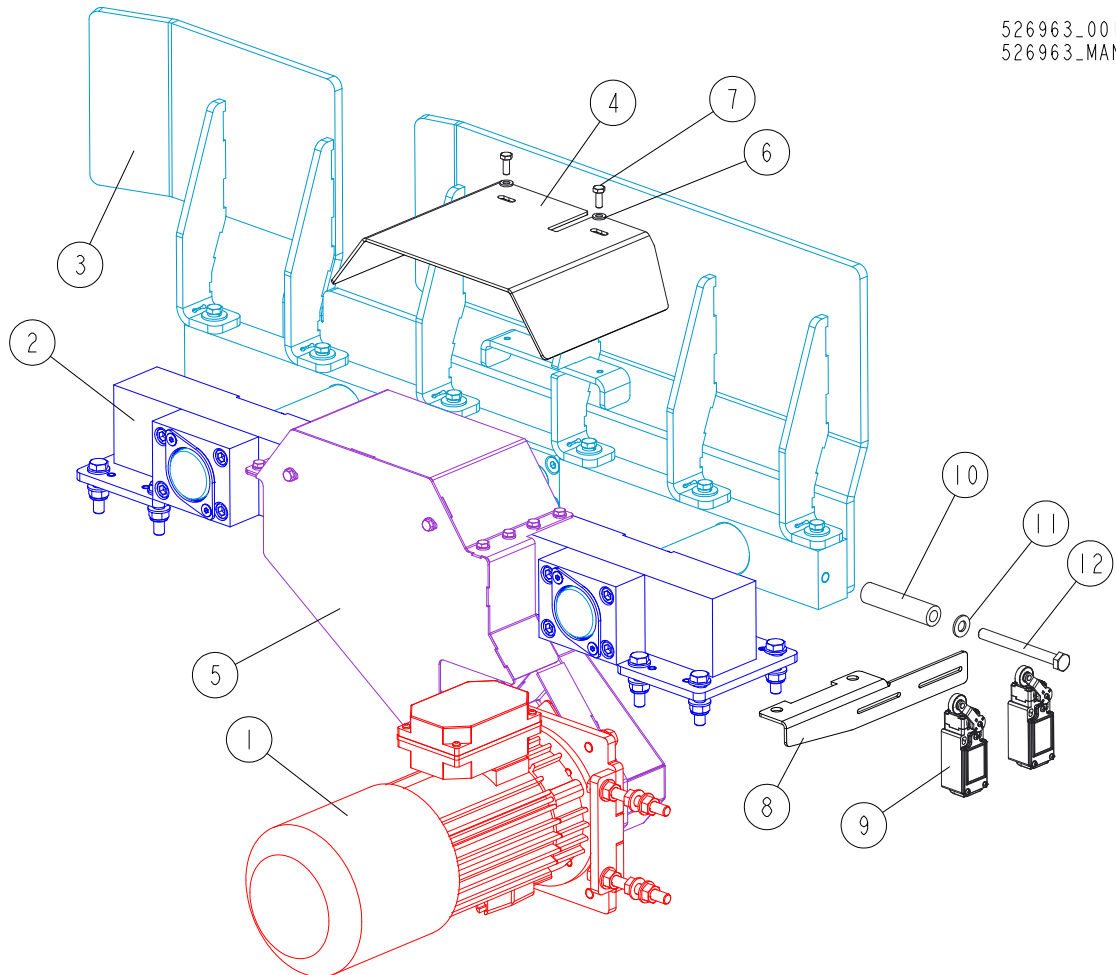


REF.	DESCRIPTION (◆ Indicates Parts Available in Assemblies Only)	PART#	QTY	
	<b>BARRIER, SHS SIDE FENCE - COMPLETE</b>	<b>508683</b>	<b>1</b>	
1	TUBE, SIDE FENCE BARRIER	508684-1	1	
2	CAP, 50X30 GR 1-3 #111366 TUBE END	095919	2	
3	DECAL, L=1200 BLACK & YELLOW WARNING	508685	2	
4	WASHER, 8.4 FLAT ZINC	F81054-1	16	
5	NUT, M8 8 HEX NYLON ZINC LOCK	F81032-2	8	
6	BOLT, M8X50-8.8 HEX HEAD FULL THREAD ZINC	F81002-19	8	



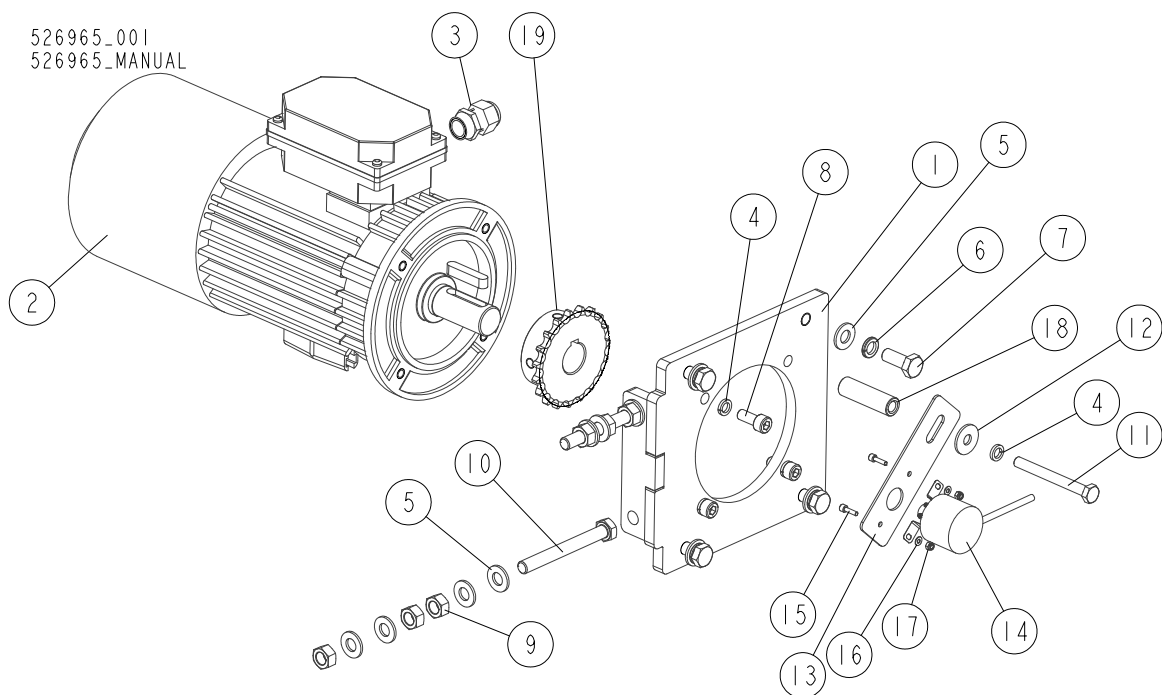
## SECTION 5 LOG GIUIDE PLATE W/DRIVE

## 5.1 Log Guide Plate Assembly

526963\_001  
526963\_MANUAL

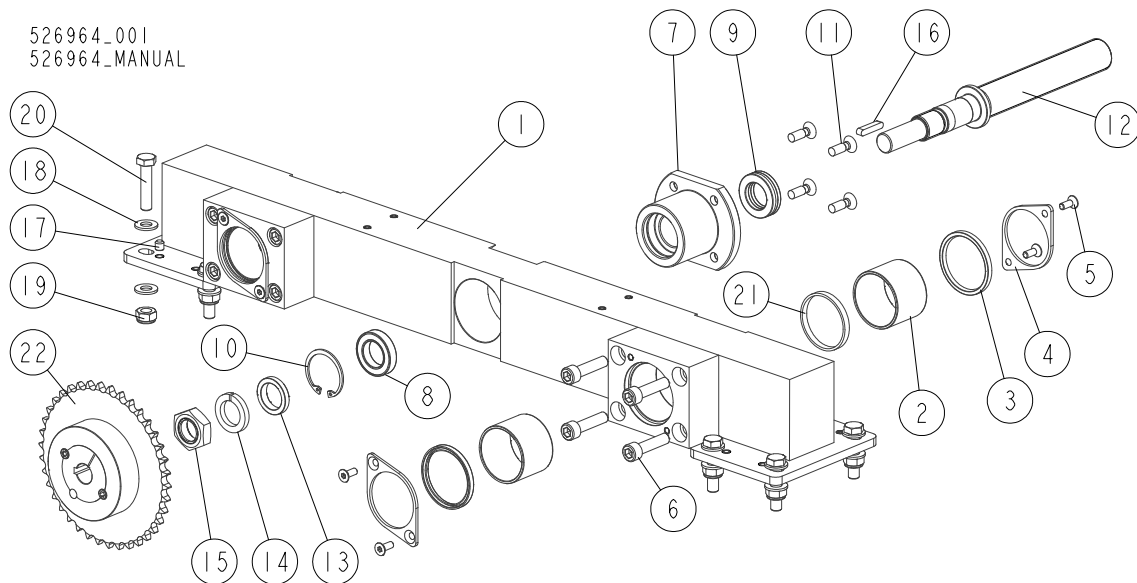
REF.	DESCRIPTION (* Indicates Parts Available in Assemblies Only)	PART #	QTY
-	<b>PLATE ASSEMBLY, LOG GUIDE</b>	526963	1
1	MOTOR ASSEMBLY, SHS SLP2-001 <a href="#">See Section 5.2</a>	526965	1
2	BEAM, FIXED - COMPLETE <a href="#">See Section 5.3</a>	526964	1
3	BEAM, MOVING - COMPLETE <a href="#">See Section 5.4</a>	510400	1
4	GUARD, UPPER	510458-1	1
5	GUARD SET <a href="#">See Section 5.5</a>	526976	1
6	WASHER, 6.4 FLAT ZINC	F81053-1	2
7	BOLT, M6X16-8.8 HEX HEAD FULL THREAD ZINC	F81001-15	2
8	PLATE, LIMIT SWITCH MOUNT	526992-1	1
9	SWITCH, GLCB01A1B LIMIT	100931	2
10	BUSHING, SPACER	526993-1	1
11	WASHER, 10.5 FLAT ZINC	F81055-1	1
12	BOLT, M10X100-8.8 HEX HEAD ZINC	F81003-52	1

## 5.2 Motor Assembly



REF.	DESCRIPTION (* Indicates Parts Available in Assemblies Only)	PART #	QTY
-	<b>MOTOR ASSEMBLY, SHS SLP2-001</b>	526965	1
1	PLATE WELDMENT, MOTOR MOUNT	510418-1	1
2	MOTOR, SKH90-8L1 HPS 0.55KW, 680 r.p.m. 400V	098891	1
3	GLAND, DW11/H CABLE	085388	1
4	WASHER, 8.2 SPLIT LOCK ZINC	F81054-4	4
5	WASHER, 10.5 FLAT ZINC	F81055-1	12
6	WASHER, Z 10.2 SPLIT LOCK ZINC	F81055-2	4
7	BOLT, M10X25 8.8 HEX HEAD FULL THREAD ZINC	F81003-11	4
8	SCREW, M8X20-8.8 HEX SOCKET HEAD CAP ZINC	F81002-30	3
9	NUT, M10 8 HEX ZINC	F81033-3	6
10	BOLT, M10X90-8.8 HEX HEAD FULL THREAD ZINC	F81003-90	2
11	BOLT, M8X75-8.8 HEX HEAD ZINC	F81002-91	1
12	WASHER, ISO 7093-1-8-200 HV-A2E	F81054-11	1
-	<b>PLATE ASSEMBLY, ENCODER MOUNT</b>	526972	1
13	PLATE, ENCODER MOUNT	526969-1	1
14	ENCODER, TRD-SH360-BD	069845	1
15	SCREW, M3X12-8.8 PN-EN ISO 4762 HEX SOCKET HEAD CAP ZINC	F81011-30	2
16	WASHER, 3.2 FLAT ZINC	F81050-2	2
17	NUT, M3-6 HEX NYLON ZINC LOCK	F81028-2	2
18	BUSHING, ENCODER SPACER	526973	1
19	SPROCKET, Z=19/08B-1/24 T72527 HABERKORN	526985	1

## 5.3 Fixed Beam Assembly



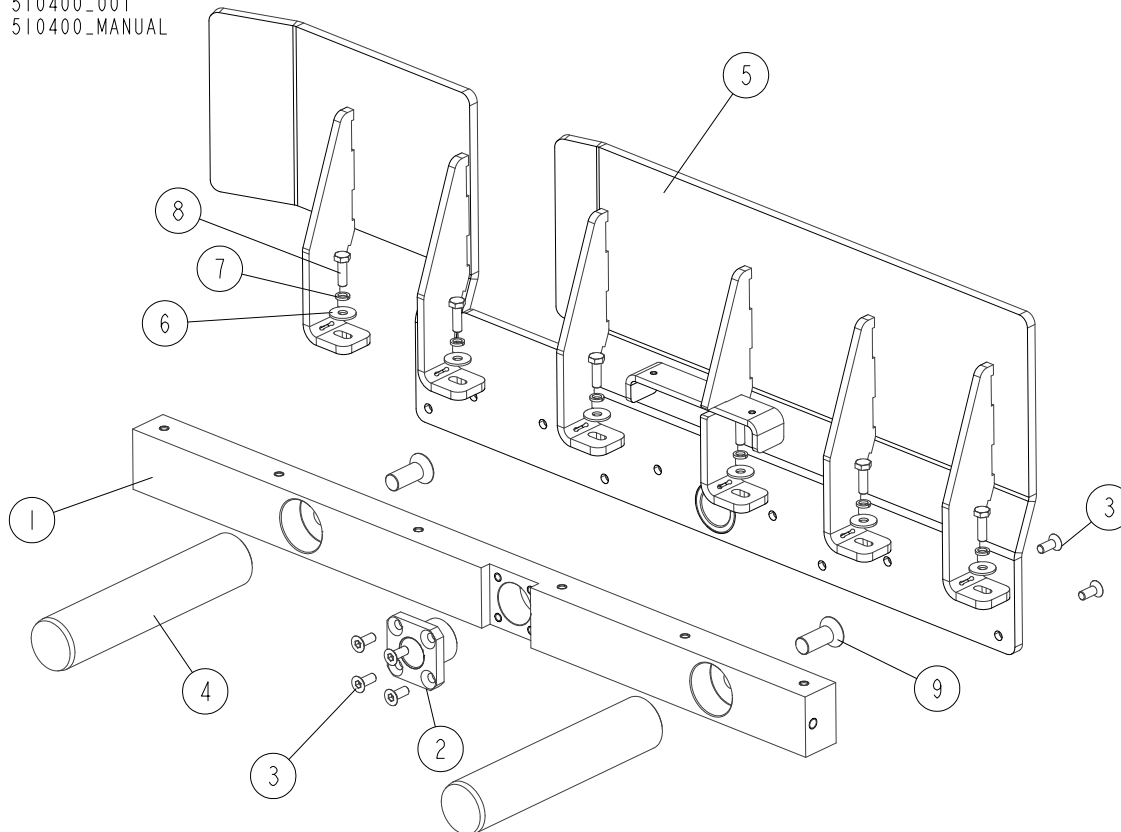
REF.	DESCRIPTION (* Indicates Parts Available in Assemblies Only)	PART #	QTY
-	<b>BEAM, FIXED - COMPLETE</b>	526964	1
1	BEAM WELDMENT, FIXED	510395-1	1
2	BUSHING, 5040BS SELF-LUBRICATING	088660	4
3	WIPER, ZZ-50X60X7	088587	4
4	FLANGE, WIPER	510409-1	4
5	SCREW, M6X16-10.9 DIN7991 FLAT SOCKET HEAD CAP ZINC	F81001-55	8
6	SCREW, M10X40-8.8 HEX SOCKET HEAD CAP ZINC	F81003-22	8
-	<b>SLEEVE W/BEARINGS - COMPLETE</b>	510471	1
7	SLEEVE	510470	1
8	BEARING, 61905 2RS ROLLING (COMPLEX)	099037	1
9	BEARING, 51105 CX BALL THRUST	510473	1
10	RING, W42 INSIDE RETAINING	F81090-51	1
11	WKREŃ ZE ŁBEM STOŹK. M8X25-5.8 CROSS RECESSED FLAT HEAD ZINC	F81002-51	4
12	SHAFT, DRIVE	526968	1
13	WASHER, 25.5/29-8 FLANGE 35-5.5	510415-1	1
14	WASHER, Z 24.5 SPLIT LOCK ZINC	F81061-4	1
15	NUT, M24-04-B ZINC	F81039-3	1
16	KEY, A6X6X30	094245	1
17	SCREW, M8X8-33H GEOMET HEX SOCKET SET W/FLAT POINT	F81014-1	8
18	WASHER, 10.5 FLAT ZINC	F81055-1	16
19	NUT, M10-8-B HEX NYLON ZINC LOCK	F81033-1	8
20	BOLT, M10X45 HEX HEAD FULL THREAD ZINC	F81003-3	8
21	BUSHING, 50.5/54.9-6	510469-1	2
22	SPROCKET, Z=38/08B-1/19 (T43987+T31100)	526967	1

# 5 LOG GUIDE PLATE W/DRIVE

## Moving Beam Assembly

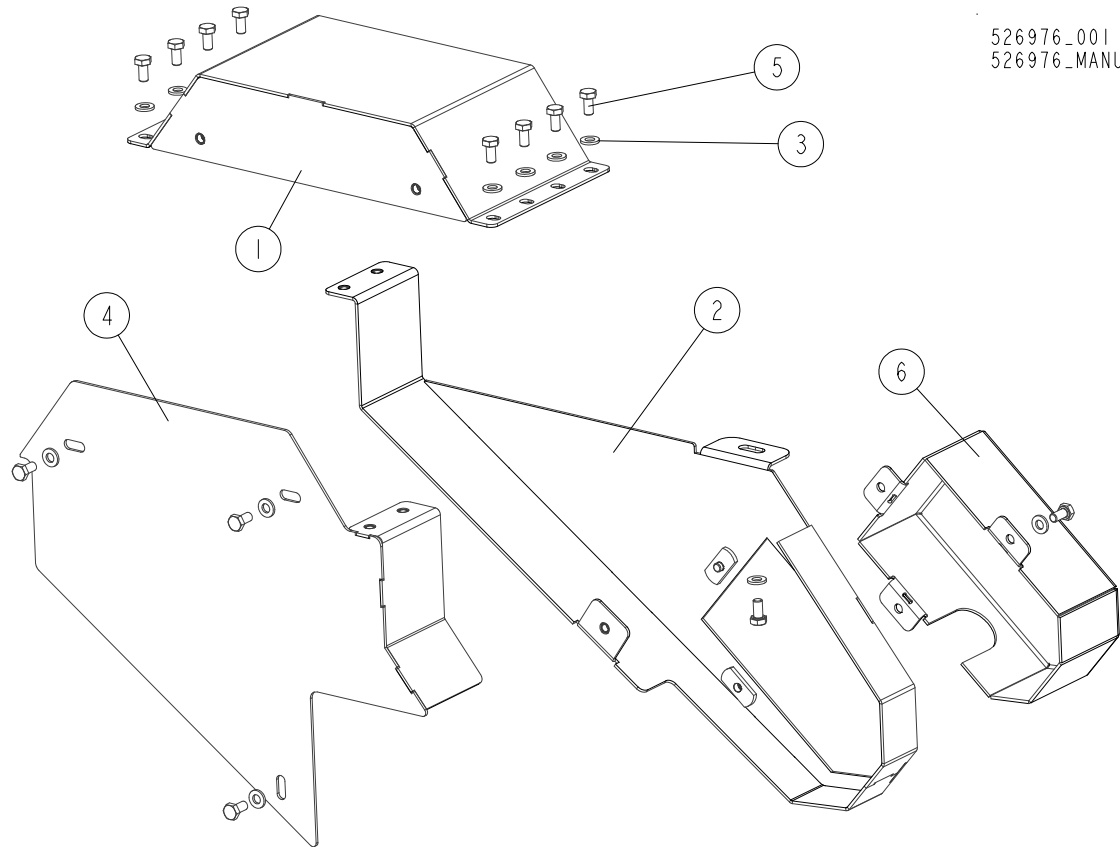
### 5.4 Moving Beam Assembly

510400\_001  
510400\_MANUAL



REF	DESCRIPTION (* Indicates Parts Available in Assemblies Only)	PART #	QTY
-	<b>BEAM, MOVING - COMPLETE</b>	510400	1
1	BEAM, MOVING	510398-1	1
2	BUSHING, THREADED	510396	1
3	SCREW, M8X20-10.9 DIN7991 FLAT SOCKET HEAD CAP ZINC	F81002-113	14
4	ROD, N50	510401	2
5	PLATE WELDMENT, LOG GUIDE	510196-1	1
6	WASHER, ISO 7093-1-8-200 HV-A2E	F81054-11	6
7	WASHER, 8.2 SPLIT LOCK ZINC	F81054-4	6
8	BOLT, M8X25-8.8-B HEX HEAD FULL THREAD ZINC	F81002-5	6
9	SCREW, M16X40-10.9 DIN7991FLAT SOCKET HEAD CAP ZINC	F81006-53	2

5.5 Guards



526976\_001  
526976\_MANUAL

REF.	DESCRIPTION (* Indicates Parts Available in Assemblies Only)	PART #	QTY
-	<b>GUARD SET</b>	526976	1
1	GUARD WELDMENT, PULLEY UPPER	510460-1	1
2	GUARD, CHAIN REAR	526975-1	1
3	WASHER, 6.4 FLAT ZINC	F81053-1	15
4	GUARD, BELT FRONT	510486-1	1
5	BOLT, M6X12 8.8 HEX HEAD FULL THREAD ZINC	F81001-7	15
6	GUARD, ENCODER	526977-1	1