

APPENDIX A WM3500 ELECTRICAL INFORMATION

WM3500

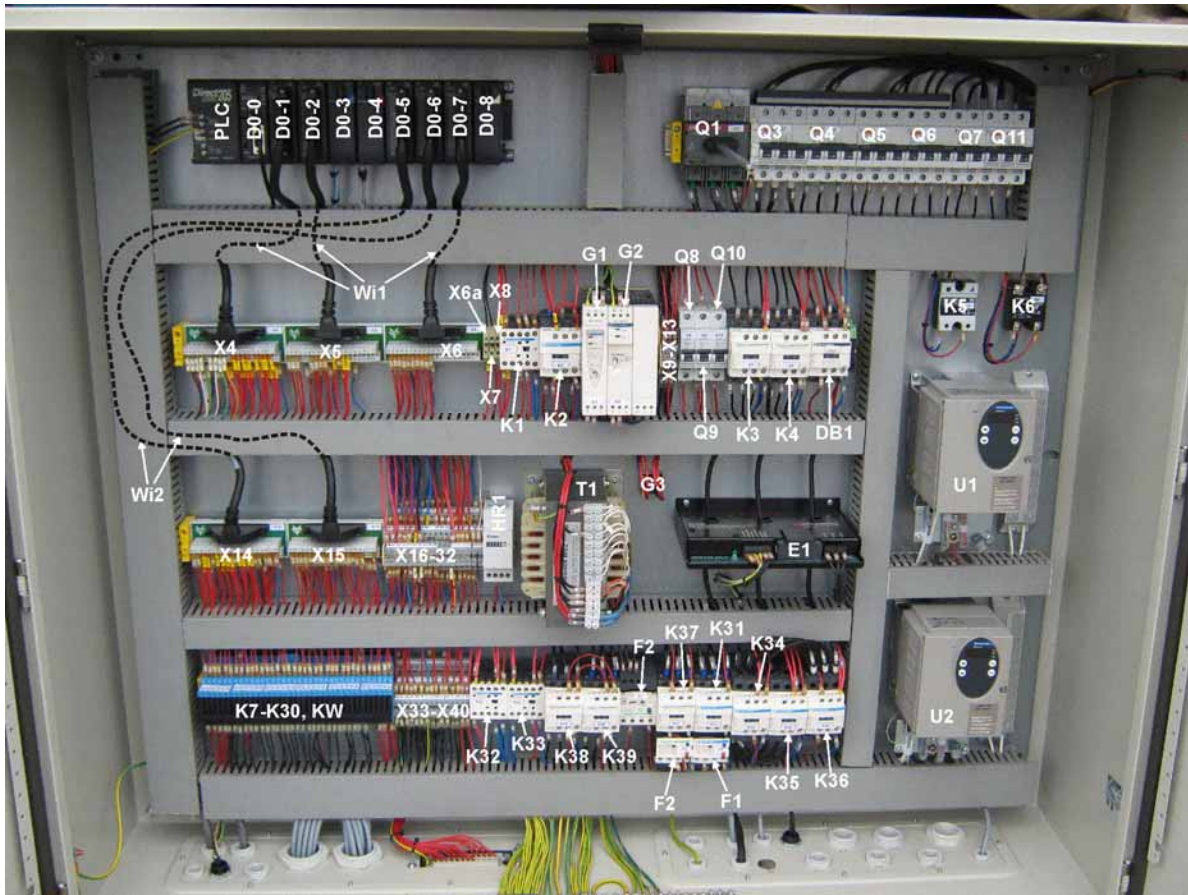
Rev. A1.01

A.1 WM3500CE Electrical Component List		
Item	Description	Wood-Mizer Part No.
Q1	Main Switch, ABB OT100 E3	
Q3	Circuit Breaker, C60N 3P 63A	092482
Q4	Circuit Breaker, C60N 3P 16A	092483
Q5, Q6	Circuit Breaker, C60N 3P 6A	091554
Q7	Circuit Breaker, C60N 2P 6A	
Q8, Q9, Q10	Circuit Breaker, C60N 1P 4A	091457
Q11	Circuit Breaker, C60N 3P 4A	094799
K1	Contactors, CA4KN31BW3	092479
K2 - K4 K37 - K39	Contactors, LC1 D09BD	092477
K5	Relay RM 1A 48 D25	092487
K6	Relay RD 0605-D 5A 60VDC	092488
K7 - K52 KW, KP	Relay 34.81.7.024.9024	094557
K31	Contactors, LC1 D18BD	092476
K32, K33	Contactors, LP4 K09008 BW3	092478
K34 - K36	Contactors, LC1 D38BD	092475
F1	Thermal overload relays LRD-21	502690
F2	Thermal overload relays LRD-14	092480
F3	Thermal overload relays LRD-08	092856
T1	Transformer TSM800/A	092486
G1	Power Supply MDR60/24	
G2	Power Supply MDR100/24	
G3	Rectifier, GBPC35-02 Bridge	084318
E1	Load Cell, UPC Fast	024924
W1, W2	Safety Key Switch, AZ17-11ZRK	087650
B3, B4, B5	Proxy Sensor BES M12MI-PSC40B-S04G	093172
B10, B11	Proxy Sensor BES M12MG-PSC80F-S04G	093168
DO-0	PLC Module, CPU DL-250	024462
DO-1, DO-2	PLC Module, Input D2-32ND3	024896
DO-3	PLC Module, Input F2-04AD-1	024882
DO-4	PLC Module, Output F2-02DAS-1	024883
DO-5 DO-7	PLC Module, Output D2-32TD2	051665
DO-8	PLC Module, Blank Filler D2-Fill	024510
U1, U2	Speed Controller, Altivar ATV31HU15N4	093475
M1	Blade Motors, 1LG4186-4AA60	092610
M2	Motor, 10 HP 2525RPM	008737
M3, M4	Motor C6T17FC9H	
M5	Motor M112 M4	
M6	Motor SKh80X 4C1	
M7	Motor	
P1, P2, P5, P7, P10	Switch Head, ZB4-BA18 White	092712
P3, P6, P9, P17, P18	Switch Head, ZB4-BA68 Blue	092714
P11 - P16	Switch Head, ZB4-BA58 Yellow	092713

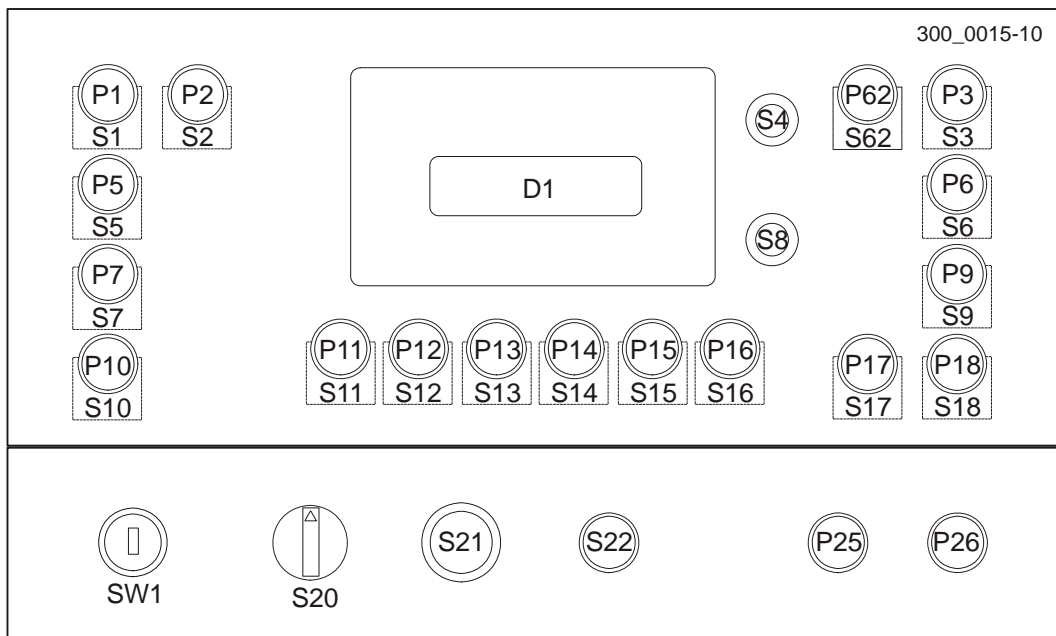
A.1 WM3500CE Electrical Component List

Item	Description	Wood-Mizer Part No.
P26	Light, Red 24V XB4-BVB4	092719
S1, S2, S5, S7, S10	Switch Body ZB4-BW0B11	092715
S3, S6, S9, S17, S18	Switch Body ZB4-BW0B61	092717
S11, S16	Switch Body ZB4-BW0B51	092716
S20	Switch XB4-BJ33	092718
S21	Emergency Stop Switch, XB4 BS542	094232
S22	Switch XB4-BW33B5	092271

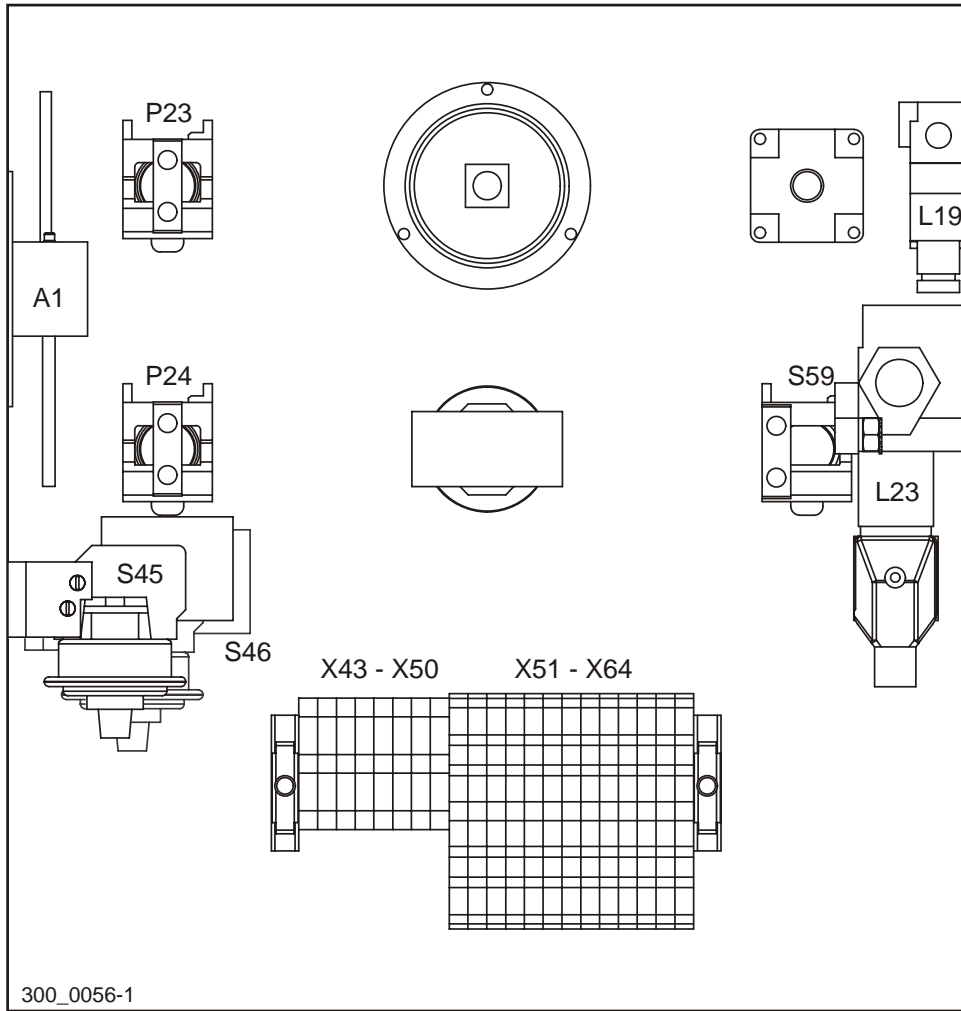
A.2 Component Layouts



ELECTRICAL CABINET



OPERATOR CONTROL BOX



300_0056-1

HEAD/AIR BOX

A.3 Electrical Schematic

