

APPENDIX A WM3000 ELECTRICAL INFORMATION

WM3000

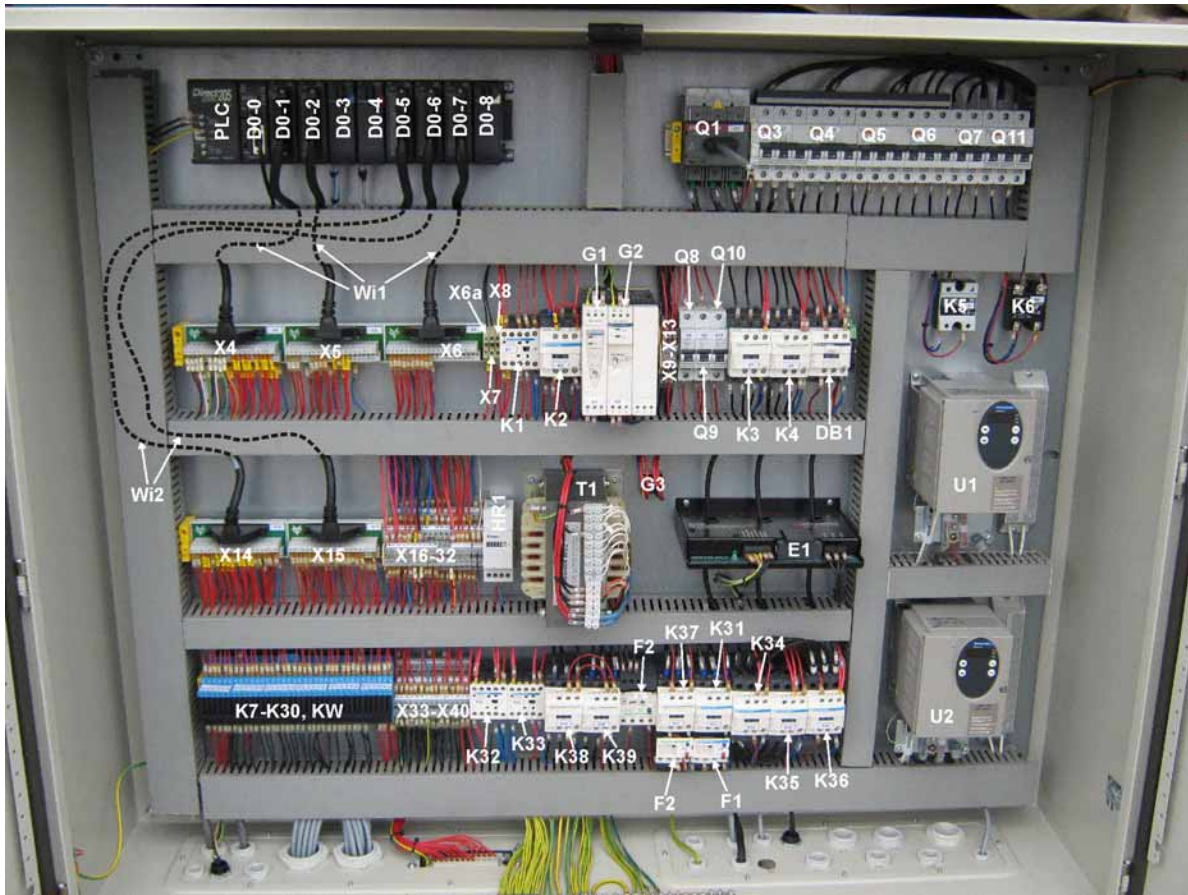
Rev. B1.03

A.1 Component List

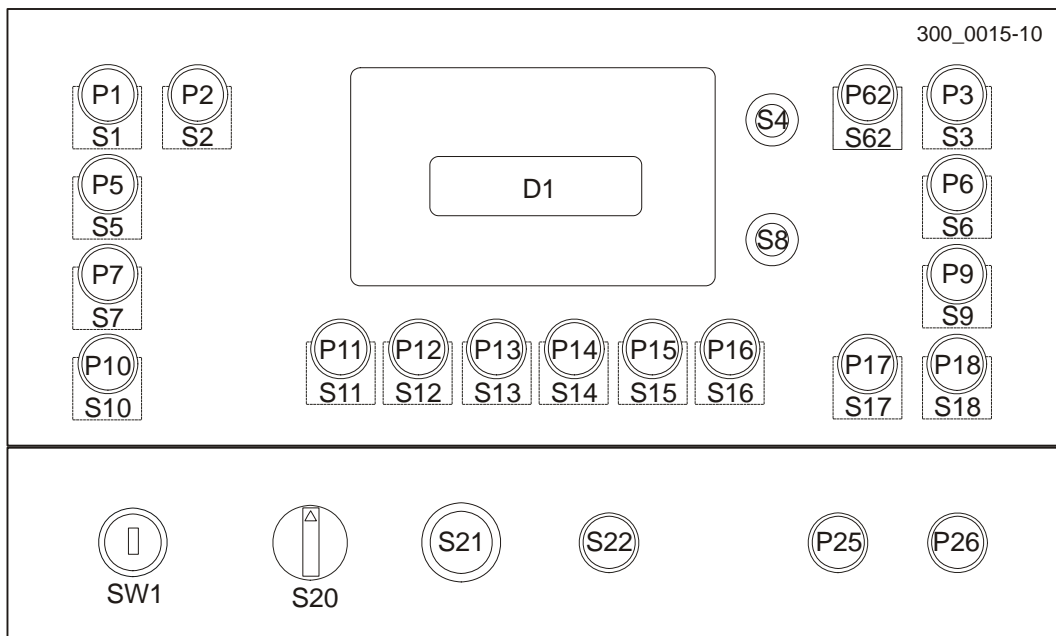
Item	Mfg. Part No.	Mfg.	Wood-Mizer Part No.	Description
A1	CDC 800	Cemar Electro	025124	Power Supply, 10-24V Laser
B3, B4, B5	XS2D12PA140D	Schneider	093172	Proxy Sensor XS2D12PA140D
B10, B11	BESM12MI-PSH80BSO4G	Balluff	093168	Proxy Sensor BESM12MI-PSH80BSO4G
W1, W2	GKMC03W2	Honeywell	087650	Safety Switch
D1	025157	Wood-Mizer	025157	Display, LT300 Operator w/Software
DO-0	D2-250	Automation Direct	024462	PLC Module, CPU DL-250 14.8K
DO-1, DO-2	D2-32ND3	Automation Direct	024896	PLC Module, Input D2-32ND3 32pt
DO-3	F2-04AD-1	Automation Direct	024882	PLC Module, Input F2-04AD-1 4-20mA 4Ch
DO-4	F2-02DAS-1	Automation Direct	024883	PLC Module, Output F2-02DAS-1 4-20mA 2Ch
DO-5, DO-6	D2-32TD2	Automation Direct	051665	PLC Module, Output D2-32TD2 32pt PNP
DO-7, DO-8	D2-FILL	Automation Direct	024510	PLC Module, Blank Filler D2-Fill
E1	UPC Fast	Load Controls	024924	Load Cell, UPC Fast
G1	ABL7RE2402	Schneider	088272	Power Supply, 2A 24VDC Reg Linear
G2	ABL7RE2403	Schneider	092485	Power Supply, 3A 24VDC Reg Linear
G3	GBPC35-02	Liteon	084318	Rectifier, 200 PIV 35A Bridge
K1	CA4KN31BW3	Schneider	092479	Relay, IEC 3NO 1NC 3A 24VDC Control
K2 - K4, K37-K39	LC1D09BD	Schneider	092477	Contact, 3 Pole 9A 24VDC Coil
F1, F2	LRD-14	Schneider	092480	3 Pole Thermal Overload Relays 7-10A
F3	LRD-08	Schneider	092856	3 Pole Thermal Overload Relays 2,5-4A
K5	RM 1A 48 D25	Crouzet	092487	Relay, Solid State 24VDC-480VAC 10A
K6	RD 0605-D 5A 60VDC	Crouzet	092488	Relay, Solid State DC-DC 10A
K7 - K30, KW, KP	38.81.7.024.9024	Finder	094557	Relay, Finder
K31	LC1D18BD	Schneider	092476	Contact, 18A 3 Pole 24V Low Power Coil
K32 - K33	LP4K09008BW3	Schneider	092478	Contact, 2NC 2NO 9A Reversing
K34 - K36	LC1D50BD	Schneider	092475	Contact, 3 Pole 50A 24VDC Coil
L19	35A-AAA-DDAJ-1KJ	Neff	045225	Valve, 3-Way 1/8" NPT Din C Air
L23	55B-12PI-501JJ	Neff	042659	Valve, Blow-Off Air
P1, P2, P5, P7, P10	ZB4BW113	Square D	025237-13	Switch Head, 22mm Mom Ext LED White XB4
P3, P6, P9, P17, P18	ZB4BW163	Square D	025237-63	Switch Head, 22mm Mom Ext LED Blue XB4
P11 - P16	ZB4BW153	Square D	025237-53	Switch Head, 22mm Mom Ext LED Yellow XB4
P23-P25	XB4BVB5	Square D	024970-5	Light, Yellow 24V 22mm LED XB4 Pilot
P26	XB4BVB4	Square D	024970-4	Light, Red 24V 22mm LED XB4 Pilot
Q1	Interpact INS 100	Schneider	092493	Disconnect, 100A 3P IEC
Q3	C60N 3P 63A	Schneider	092482	Breaker, 63A 3 Pole C60N
Q4	C60N 3P 16A	Schneider	092483	Breaker, 16A 3 Pole C60N
Q5 - Q6	C60N 3P 6A	Schneider	091554	Breaker, 6A 480V 3 Pole C60N
Q7	MG24520	Square D	024060	Breaker, 6A 2 Pole Curve D
Q8 - Q10	C60N 1P A	Square D	091457	Breaker, 3A 1 Pole Thermal Magnetic
S1, S2, S5, S7, S10	ZB4BW0B11	Square D	025236-11	Switch Body, 22mm LED White NO 24V XB4
S3, S6, S9, S17, S18	ZB4BW0B61	Square D	025236-61	Switch Body, 22mm LED Blue NO 24V XB4
S4, S8			025159	Switch, 22mm NO Flush Push Button

A.1 Component List				
Item	Mfg. Part No.	Mfg.	Wood-Mizer Part No.	Description
S11 - S16	ZB4BW0B51	Square D	025236-51	Switch Body, 22mm LED Yellow NO 24V XB4
S20	XB4BJ33	Square D	025117	Switch, 3-Position Selector NO 22mm XB4
S21	ZB4BS54	Square D	024945	Switch Head, E-Stop Red 22mm XB4 Push Button
	ZB4BZ102	Square D	025161	Switch Body, NC 22m XB4
S22	XB4BW33B5	Square D	024974-3	Switch, 22mm NO LED 24V XB4
S45 - S46	MSPS-DD100SS@60PSI	Barksdale	045207	Switch, 60PSI Pressure Limit
S59	ZB4BZ101	Square D	025242	Switch Body, 1NO 22mm XB4
	ZB4BW153	Sqaure D	025237-53	Switch Head, 22mm Mom Ext LED Yellow XB4
SW1	1218 W/Boot	BWD Automotive	P04350	Switch, Key
T1	TMM800/A	Breve	092486	Transformer, 800VA 50/60Hz Power
U1, U2	ATV31HU15N4	Schneider	093475	AC Drive Assembly, LT300 Power Feed, Up/Down
X4 - X5, X6 X14 - X15	ZL-CM40	Automation Direct	069364	PCB ASSY, DL PLC 32 I/O PASS THROUGH
Wi1		Wood-Mizer Prod.	053623	CABLE ASSY, 20" LT300 PLC HD I/O
Wi2		Wood-Mizer Prod.	053624	Cable Assy, 35" LT300 PLC HD I/O
X6a - X8, X41 - X50	3004362	Phoenix	024893	Terminal Block, 1 Tier
X9 - X13, X16 - X32, X33 - X40, X51 - X64	2715979	Phoenix	024908	Terminal Block, 3 Tier
HR1		Kübler	095479	Hour Meter, SH17 10-30VDC
W3	GLCB01A2B	Honeywell	086469	Safety Switch

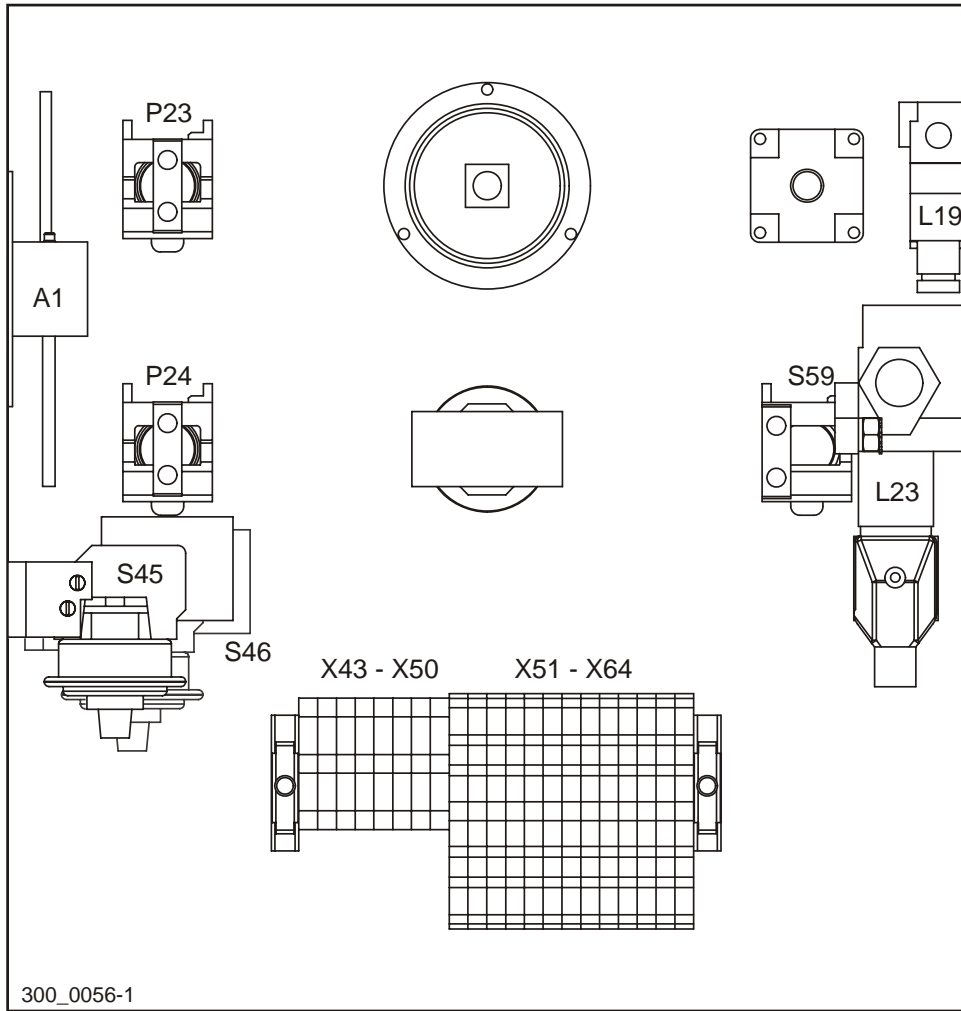
A.2 Component Layouts



ELECTRICAL CABINET



OPERATOR CONTROL BOX



HEAD/AIR BOX

A.3 Electrical Schematic

SYMBOL DIAGRAM (1 OF 18)

